

Eureka, SD

Hillview Farms

Private Treaty Bull Sale

Silent Auction and Open House

February 11, 2017

Lunch at noon • Bids close at 2PM

at the FARM

Selling: 49 Coming 2-Year-Old Polled Hereford Bulls
40 Black Baldy Open Heifers



Featuring
sons of:

DKF RO Cash
Flow 0245 ET
13 SONS SELL!



and

Goble OHR
Full Trust 103A
11 SONS SELL!

WELCOME

We have been selling bulls at Hillsview Farms privately for 26 years now. This is our 5th year to have an open house with a set time to introduce bids. Rather than "first come, first serve," we want everyone to have the opportunity to view all the bulls. They will be available for viewing by mid January. This is the largest group we have ever had to offer, with the quality running deep.

We have been recognized as a Gold TPR (Total Performance Records) Breeder by the American Hereford Association again this year. A first time achievement for us was to be recognized on the national list of top 20 producers of "Dams of Distinction" in the United States. For cows to achieve this award, they must calve within 30 months of age, maintain a calving interval of 370 days, and have had at least 3 calves with at least a 105 WW ratio.

The sale bulls will all have complete records available. They have all been carcass ultra sounded, and have complete performance records and EPD's. This set of bulls was weaned the middle of October last year and had no creep feed. The heifers were weaned the middle of October this year and also had no creep feed.

The bulls spent the summer and fall on grass. They were raised on a high roughage diet and grown up slowly. We like the moderate frame cattle that are easy fleshing with lots of rib shape and muscle. As a bonus this year, about half of these bulls should be calving ease sires and all were born unassisted.

The Hereford bull is still a tremendous cross on those black cows. If you haven't used Hereford bulls on black cows yet, now is the time to start. You won't be disappointed. The heterosis and hybrid vigor will give you more pounds and better feed efficiency. The great disposition of those feed lot calves and replacement heifers is definitely another positive!

Please join us for lunch on February 11, 2017. View the cattle and I hope you are as impressed as we have been. We are looking forward to seeing you! Thank you for your interest.

For more information contact:



Hillsview Farms

Darwin and Cindy Aman
Andrew-Sam-Alex
32824 119th St., Eureka, SD 57437

www.hillsviewherefords.com

*Check out videos of bulls

605-284-2721
Cindy Cell: 605-377-3441
Darwin cell: 605-377-3459
Andrew Cell: 605-228-0629
Sam Cell: 605-377-3460
dcaman@valleytel.net

Hillsvieview Farms

PRIVATE TREATY SALE

5th Annual Silent Auction and Open House

February 11, 2017

Join us for lunch at noon. Final bids close at 2PM

At the Farm, Eureka, SD

Located 7 miles South of Eureka on Hwy 47,
1.1 miles East on Hillsvieview Road (119th St.)

Or

15 miles north of Bowdle on Hwy 47,
1.1 miles East on Hillsvieview Road (119th St.)

SELLING

49 Coming 2-Year-Old Polled Hereford Bulls

40 Black Baldy Open Heifers

GENERAL INFORMATION

Term and Conditions: Terms of the sale are cash. All cattle are the buyer's property as soon as sold and will be taken care of for a reasonable length of time at the buyer's risk. Neither the owners nor any person connected with this sale, assume any liability, legal or otherwise.

Guarantee: Every animal is to the best of our knowledge, free from any disease or defect. All bulls are guaranteed to be breeders. If a bull proves to be a non-breeder, either a bull of comparable rank will be substituted or money refunded or credit will be given in a future sale.

Health: Health of the herd is excellent. All cattle are under a full vaccination program and poured with Dectomax. All bulls will be semen checked and Trich tested prior to February 11. Health papers will be furnished as needed.

Sale Format: The cattle will be sold by silent auction for the opening day. This allows everybody the opportunity to view all the cattle before any are purchased. The cattle will be ready for viewing by mid January and bids may be left during that time. Each bull will have a base price with bids increasing by \$250 increments. We will be offering the baldies in groups of ten where you will bid on the entire pen. As of 2 PM February 11, bids will be final. People still actively bidding at 2 PM, will take place in a bid off if necessary to finish the bidding as quickly after 2 PM as possible. Any cattle available after that time will be sold at their base price.

Discounts: We will still be offering our generous discounts on the bulls. You will receive \$100 off each bull you haul home yourself. In addition, we have volume discounts. If you purchase 2 bulls, you receive \$50 off each bull. If you purchase 3 or more bulls, you receive \$100 off each bull. To receive these discounts bulls must leave the premises within 10 days.

Check out videos of bulls at www.hillsvieviewherefords.com

UNDERSTANDING HEREFORD EPDS

The American Hereford Association (AHA) currently produces expected progeny differences (EPDs) for 15 traits and calculates four profit (\$) indexes. Research is ongoing to develop traits for fertility, feed intake and docility. Today, DNA-marker tests can be used to enhance the accuracy of Hereford EPDs. AHA blends marker information with phenotypic information and pedigree to produce a GE-EPD. Look for the GE-EPD logo denoting an animal has been tested. The current suite of Hereford EPDs and \$ indexes includes:

Calving Ease – Direct (CE) CE EPD is based on calving ease scores and birth weights and is measured on a percentage. CE EPD indicates the influence of the sire on calving ease in females calving at 2 years of age. For example, if sire A has a CE EPD of 6 and sire B has a CE EPD of -2, then you would expect on average if comparably mated, sire A's calves would be born with an 8% more likely chance of being unassisted when compared to sire B's calves.

Birth Weight (BW) BW EPD is an indicator trait for calving ease and is measured in pounds. For example, if sire A has a BW EPD of 3.6 and sire B has a BW EPD of 0.6, then you would expect on average if comparably mated, sire A's calves would come 3 lb. heavier at birth when compared to sire B's calves. Larger BW EPDs usually, but not always, indicate more calving difficulty. The figure in parentheses found after each EPD is an accuracy value or reliability of the EPD.

Weaning Weight (WW) WW EPD is an estimate of pre-weaning growth that is measured in pounds. For example, if sire A has a WW EPD of 60 and sire B has a WW EPD of 40, then you would expect on average if comparably mated, sire A's calves would weigh 20 lb. heavier at weaning when compared to sire B's calves.

Yearling Weight (YW) YW EPD is an estimate of post-weaning growth that is measured in pounds. For example, if sire A has a YW EPD of 100 and sire B has a YW EPD of 70, then you would expect on average if comparably mated, sire A's calves would weigh 30 lb. heavier at a year of age when compared to sire B's calves.

Maternal Milk (MM) The milking ability of a sire's daughters is expressed in pounds of calf weaned. It predicts the difference in average weaning weights of sires' daughters' progeny due to milking ability. Daughters of the sire with a +14 MM EPD should produce progeny with 205-day weights averaging 24 lb. more (as a result of greater milk production) than daughters of a bull with a MM EPD of -10 lb. (14 minus -10.0 = 24 lb.). This difference in weaning weight is due to total milk production during the entire lactation.

Maternal Milk & Growth (M&G) Maternal Milk & Growth reflects what the sire is expected to transmit to his daughters for a combination of growth genetics through weaning and genetics for milking ability. It is an estimate of daughters' progeny weaning weight. A bull with a 29 lb. M&G EPD should sire daughters with progeny weaning weights averaging 19 lb. heavier than progeny of a bull's daughters with a M&G EPD of 10 lb. (29 minus 10 = 19 lb.). It is equal to one-half the sire's weaning weight EPD, plus all of his MM EPD. No accuracy is associated with this since it is simply a mathematical combination of two other EPDs. It is sometimes referred to as "total maternal" or "combined maternal."

Maternal Calving Ease (MCE) MCE EPD predicts how easily a sire's daughters will calve at 2 years of age and is measured on a percentage. For example, if sire A has a MCE EPD of 7 and sire B has a CE EPD of -3, then you would expect on average if comparably mated, sire A's daughters would calve with a 10% more likely chance of being unassisted when compared to sire B's daughters.

Scrotal Circumference (SC) Measured in centimeters and adjusted to 365 days of age, SC EPD is the best estimate of fertility. It is related to the bull's own semen quantity and quality, and is also associated with age at puberty of sons and daughters. Larger SC EPDs suggest younger age at puberty. Yearling sons of a sire with a .7 SC EPD should have yearling scrotal circumference measurements that average 0.7 centimeters (cm) larger than progeny by a bull with an EPD of 0.0 cm.

Ribeye Area (REA) REA EPDs reflect differences in an adjusted 365-day ribeye area measurement based on carcass measurements of harvested cattle. Sires with relatively higher REA EPDs are expected to produce better muscled and higher percentage yielding slaughter progeny than will sires with lower REA EPDs. Ultrasound measurements are also incorporated into this trait and have been shown to be highly correlated with the performance of slaughter progeny. All data is expressed on a carcass scale.

Marbling (MARB) MARB EPDs reflect differences in an adjusted 365-day marbling score (intramuscular fat, [IMF]) based on carcass measurements of harvested cattle. Breeding cattle with higher MARB EPDs should produce slaughter progeny with a higher degree of IMF and therefore higher quality grades. Ultrasound measurements are also incorporated into this trait and have been shown to be highly correlated with the performance of slaughter progeny. All data is expressed on a carcass scale.

Certified Hereford Beef Index (CHBS) This is a terminal sire index that is built on a production system where Hereford bulls sire calves for the CHB market. There is some pressure put on CE and then positive weight on both WW and YW. Remember that all offspring in this index are harvested, so they need to be born alive and then grow fast at all stages of life. Of course, we have much more emphasis on fat in this index, as we want the cattle to stay lean. There is also a significant weight on both REA and IMF with more emphasis again on IMF. This index would be used by producers who have a target of producing bulls for a terminal breeding program. It could be used heavily in the Midwest where bulls are used in rotational breeding programs to produce cattle in a retained ownership program or are simply sold to backgrounders. This is the only index that has no emphasis on fertility. Remember that nothing is retained in the herd.

Breed Avg. EPDs for 2015 Born Calves

CE	BW	WW	YW	MM	M&G	MCE	SC	REA	MARB	CHBS
1.2	3.2	49	79	21	45	1.4	0.9	.34	.09	24

epd's
current as
of 1/15/17.

COMING 2 YEAR OLD BULLS

AMAN 258A DUKE 2C ■ P43595649

DOB: 2/26/15 ■ BW: 76 ■ 205 Day Wt: 639 ■ REA Ratio/cwt: 1.3

BAR JZ JOHN WAYNE 258A

HYALITE ON TARGET 936 (CHB,DLF,HYF,IEF)
(DLF,HYF,IEF)
BAR JZ SCARLET 740U

SCHU-LAR ON TARGET 22S (SOD,CHB,DLF,HYF,IEF)
HYALITE TS LASS 310 (DLF,HYF,IEF)
BAR JZ REDEEMER 854N
BAR JZ 5F LADY 637H
SM UPLoad 26 (CHB,DLF,HYF,IEF)
DCA PROSPECT PRINCESS 16T
MOHICAN QUINTER 226P (SOD)
WOODCREST IDA 27K

AMAN 267X DINAH 180A

AMAN 26T DISCO 267X (DLF,HYF,IEF)
WOODCREST CARMEL 100T

CE	BW	WW	YW	MM	M&G	MCE	SC	REA	MARB	CHB\$
1.6	2.8	58	90	26	55	2.0	1.0	.54	-.02	26

Mother is a first calf heifer. She now has a WW ratio of 106.5 on her first two calves. Fully pigmented on both eyes. Should be a calving ease sire. REA ratio 113.



AMAN 0220 MASTERMIND 14C ■ P43595751

DOB: 3/7/15 ■ BW: 84 ■ 205 Day Wt: 543 ■ REA Ratio/cwt: 1.11

BOYD MASTERPIECE 0220

SHF RIB EYE M326 R117 (CHB,SOD,DLF,HYF,IEF)
(CHB,DLF,HYF,IEF)
SSF P606 MS VICTOR 803 (DLF,HYF,IEF)

KCF BENNETT 3008 M326 (CHB,SOD,DLF,HYF,IEF)
HVH MISS HUDSON 83K 8M
PW VICTOR BOOMER P606 (SOD,DLF,HYF,IEF)
MPH LADY COON EYES C330
CRR ABOUT TIME 743 (CHB,SOD,DLF,HYF,IEF)
JRR MISS TOBEY 711T (DLF,HYF,IEF)
SM UPLoad 26 (CHB,DLF,HYF,IEF)
WOODCREST LISA 74R

AMAN 0245 CASSIE 40A

DKF RO CASH FLOW 0245 ET (DLF,HYF,IEF)
SA 26T LOLA 37W (DOD)

CE	BW	WW	YW	MM	M&G	MCE	SC	REA	MARB	CHB\$
-2.4	5.0	55	92	29	56	1.5	1.0	.43	.05	25

Fully pigmented, conservatively marked bull out of a first calf heifer. He's been a favorite since birth.

COMING 2 YEAR OLD BULLS

AMAN 258A DUKE 22C

P43595710

DOB: 3/9/15 ■ BW: 77 ■ 205 Day Wt: 628 ■ REA Ratio/cwt: 1.16

BAR JZ JOHN WAYNE 258A

HYALITE ON TARGET 936 (CHB,DLF,HYF,IEF)
(DLF,HYF,IEF)
BAR JZ SCARLET 740U

AMAN 1X NIKITA 82A

SM NEON NIGHT 01 ET
AMAN 162U TRINA 106Y

SCHU-LAR ON TARGET 22S (SOD,CHB,DLF,HYF,IEF)
HYALITE TS LASS 310 (DLF,HYF,IEF)
BAR JZ REDEEMER 854N
BAR JZ 5F LADY 637H
GH NEON 17N (CHB,SOD)
LAGRAND MISSY 73P ET
DCA 405S TROUBADOUR 162U
DCA 32S HONEY BEA 277W

CE	BW	WW	YW	MM	M&G	MCE	SC	REA	MARB	CHB\$
1.3	3.6	58	95	25	55	3.6	1.0	.36	.22	30

Another John Wayne son out of a first calf heifer. REA ratio 103; Marb ratio 133.



AMAN 0220 MASTERMIND 27C ET

P43602441

DOB: 3/10/15 ■ BW: 72 ■ 205 Day Wt: 547 ■ REA Ratio/cwt: 1.1

BOYD MASTERPIECE 0220

SHF RIB EYE M326 R117 (CHB,SOD,DLF,HYF,IEF)
(CHB,DLF,HYF,IEF)
SSF P606 MS VICTOR 803 (DLF,HYF,IEF)

AMAN 0245 CASSIE 36Z

DKF RO CASH FLOW 0245 ET (DLF,HYF,IEF)
(DLF,HYF,IEF)
SA 405S ELLY SUE 122W

KCF BENNETT 3008 M326 (CHB,SOD,DLF,HYF,IEF)
HWH MISS HUDSON 83K 8M
PW VICTOR BOOMER P606 (SOD,DLF,HYF,IEF)
MPH LADY COON EYES C330
CRR ABOUT TIME 743 (CHB,SOD,DLF,HYF,IEF)
JRR MISS TOBEY 711T (DLF,HYF,IEF)
HPH 10H SKYLAR 405S (CHB,DLF,HYF,IEF)
SA ELLIE MAE 14S

CE	BW	WW	YW	MM	M&G	MCE	SC	REA	MARB	CHB\$
-1.3	3.9	57	87	30	59	2.2	0.7	.50	.08	27

Little brother of the popular "Elvis" who was a sale topper last year. His recipient cow was a heifer and the AHA doesn't take that into account when adding pounds for 205 day adjusted weight. Always has been one of the top in the group. Goggle eyed. The only bull we got out of that flush.

COMING 2 YEAR OLD BULLS



AMAN 258A DUKE 42C ■ P43595734

DOB: 3/14/15 ■ BW: 73 ■ 205 Day Wt: 600 ■ REA Ratio/cwt: 1.29

BAR JZ JOHN WAYNE 258A

HYALITE ON TARGET 936 (CHB,DLF,HYF,IEF)
 (DLF,HYF,IEF)
 BAR JZ SCARLET 740U

AMAN 0245 CASSIE 56A

DKF RO CASH FLOW 0245 ET (DLF,HYF,IEF)
 ADA 32S HONEY BEA 7X

SCHU-LAR ON TARGET 22S (SOD,CHB,DLF,HYF,IEF)
 HYALITE TS LASS 310 (DLF,HYF,IEF)
 BAR JZ REDEEMER 854N
 BAR JZ 5F LADY 637H
 CRR ABOUT TIME 743 (CHB,SOD,DLF,HYF,IEF)
 JRR MISS TOBEY 711T (DLF,HYF,IEF)
 RANGELINE M326 BUZZ 32S
 DCA 10H CLASSY DELLA 1U

CE	BW	WW	YW	MM	M&G	MCE	SC	REA	MARB	CHB\$
3.2	1.7	53	85	29	55	4.2	1.3	.44	-.03	23

Another John Wayne son out of a Cash Flow heifer. She is moderate and has a very nice udder. He is the top John Wayne son we've had to date in my opinion. Should work on heifers as well as adding performance. Goggle eyed and conservatively marked.

AMAN 0245 CASH FLOW 51C ■ P43595701

DOB: 3/15/15 ■ BW: 77 ■ 205 Day Wt: 550 ■ REA Ratio/cwt: 1.19

DKF RO CASH FLOW 0245 ET

CRR ABOUT TIME 743 (CHB,SOD,DLF,HYF,IEF)
 (DLF,HYF,IEF)
 JRR MISS TOBEY 711T (DLF,HYF,IEF)

AMAN 1111T TILLY 95X

HPH 40P TABOR 111T
 DCA COUNTRY GAL 235M

THM DURANGO 4037 (CHB,SOD,DLF,HYF,IEF)
 CRR D03 CASSIE 206 (DLF,HYF,IEF)
 FELTONS OZZIE 492 (SOD,DLF,HYF,IEF)
 JRR RANDI 524R (DOD,DLF,HYF,IEF)
 NJW 9710 BOULDER 40P ET
 NJW 46B WILMA 111L (DOD,DLF,HYF,IEF)
 DH IDAHO TIGER 6 (SOD)
 DCA VICTOR LASS 36C

CE	BW	WW	YW	MM	M&G	MCE	SC	REA	MARB	CHB\$
2.5	2.1	51	82	26	51	1.5	1.3	.56	-.08	23

Cash Flow son with good carcass data. REA ratio 103, marbling ratio 105. Should be a calving ease sire. Some eye pigment.

COMING 2 YEAR OLD BULLS



AMAN 0245 CASH FLOW 52C

■ P43595637

DOB: 3/15/15 ■ BW: 82 ■ 205 Day Wt: 524 ■ REA Ratio/cwt: 1.23

DKF RO CASH FLOW 0245 ET

CRR ABOUT TIME 743 (CHB,SOD,DLF,HYF,IEF)
(DLF,HYF,IEF)
JRR MISS TOBEY 711T (DLF,HYF,IEF)

DCA 325 HONEY BEA 198U

RANGLINE M326 BUZZ 325
DCA COUNTRY GAL 48N (DOD)

THM DURANGO 4037 (CHB,SOD,DLF,HYF,IEF)
CRR D03 CASSIE 206 (DLF,HYF,IEF)
FELTONS OZZIE 492 (SOD,DLF,HYF,IEF)
JRR RANDI 524R (DOD,DLF,HYF,IEF)
KCF BENNETT 3008 M326 (CHB,SOD,DLF,HYF,IEF)
RANGLINE 11Y JOY 20K
DH IDAHO TIGER 6 (SOD)
DCA VICTOR LASS 89E

CE	BW	WW	YW	MM	M&G	MCE	SC	REA	MARB	CHB\$
1.5	2.6	46	77	24	48	2.2	1.4	.41	.10	24

This Cash Flow son should be a calving ease bull and also has very good carcass data. REA ratio 106; marbling ratio 133. Fully pigmented.

AMAN 3RD REVOLUTION 53C

■ P43595746

DOB: 3/15/15 ■ BW: 79 ■ 205 Day Wt: 505 ■ REA Ratio/cwt: 1.19

R 2ND REVOLUTION 4131

MSU TCF REVOLUTION 4R (SOD,CHB,DLF,HYF,IEF)
(CHB,DLF,HYF,IEF)
R MISS PUCKSTER 139 (DOD,DLF,HYF,IEF)

LAGRAND BETHANY 46T

MC RANGER 9615 (SOD,CHB,DLF,HYF,IEF)
STAR BETHANY 53N

FELTONS LEGEND 242 (SOD,HYF)
MSU TCF RACHAEL ET 54N (DLF,HYF,IEF)
R PUCKSTER 2013 (SOD,DLF,HYF,IEF)
R MISS FELT 337
CIRCLE-D WRANGLER 832W (CHB,SOD,HYF)
SBF ROYAL GYPSY
CS BOOMER 29F (SOD,DLF,HYF,IEF)
BP MS HORNET 48L

CE	BW	WW	YW	MM	M&G	MCE	SC	REA	MARB	CHB\$
2.4	2.7	46	80	18	41	2.0	0.6	.35	.04	22

A calving ease, goggle eyed Revolution son.

COMING 2 YEAR OLD BULLS

AMAN 103A TRUST 68C ■ P43595607

DOB: 3/17/15 ■ BW: 84 ■ 205 Day Wt: 543 ■ REA Ratio/cwt: 1.01

NJW 73S M326 TRUST 100W ET (CHB,DLF,HYF,IEF)
GOBLE OHR FULL TRUST 103A (DLF,HYF,IEF)
 RVP 122L ITS A WRAP ET 1107W

HPH 10H SKYLAR 405S (CHB,DLF,HYF,IEF)
AMAN 405S SUNSHINE 242Z
 DCA 32S HONEY BEA 277W

KCF BENNETT 3008 M326 (CHB,SOD,DLF,HYF,IEF)
 NJW P606 72N DAYDREAM 73S (DLF,HYF,IEF)
 REMITALL ONLINE 122L (CHB,SOD,DLF,HYF,IEF)
 MARJON 29F NAOMI ET 111N
 DR WORLD CLASS 517 10H (SOD,DLF,HYF,IEF)
 WSF MISS ONLINE ESCADA 405 (DOD,DLF,HYF,IEF)
 RANGELINE M326 BUZZ 32S
 LAGRAND VICTORIA 128P ET

CE	BW	WW	YW	MM	M&G	MCE	SC	REA	MARB	CHB\$
0.6	3.8	54	92	27	54	5.3	1.1	.23	.23	29

Mother should be a Dam of Distinction this year. WW ratio of 105.3 on 3 calves. He had very high marbling with a ratio of 118. Fully pigmented.



AMAN 0245 CASH FLOW 78C ■ P43595606

DOB: 3/19/15 ■ BW: 84 ■ 205 Day Wt: 622 ■ REA Ratio/cwt: 1.05

CRR ABOUT TIME 743 (CHB,SOD,DLF,HYF,IEF)
DKF RO CASH FLOW 0245 ET (DLF,HYF,IEF)
 JRR MISS TOBEY 711T (DLF,HYF,IEF)

R 2ND REVOLUTION 4131 (CHB,DLF,HYF,IEF)
AMAN 4131 REVA 243A
 DCA WRANGLER GAL 175T

THM DURANGO 4037 (CHB,SOD,DLF,HYF,IEF)
 CRR D03 CASSIE 206 (DLF,HYF,IEF)
 FELTONS OZZIE 492 (SOD,DLF,HYF,IEF)
 JRR RANDI 524R (DOD,DLF,HYF,IEF)
 MSU TCF REVOLUTION 4R (SOD,CHB,DLF,HYF,IEF)
 R MISS PUCKSTER 139 (DOD,DLF,HYF,IEF)
 WOODCREST WRANGLER 115L (CHB,SOD)
 DCA MS HITTER 86L

CE	BW	WW	YW	MM	M&G	MCE	SC	REA	MARB	CHB\$
1.2	4.6	58	95	26	55	1.1	1.2	.38	-.18	23

Mother is a moderate first calf heifer with a very nice udder. Fully pigmented.

COMING 2 YEAR OLD BULLS



AMAN 0245 CASH FLOW 86C

■ P43595605

DOB: 3/19/15 ■ BW: 89 ■ 205 Day Wt: 574 ■ REA Ratio/cwt: 1.18

DKF RO CASH FLOW 0245 ET

CRR ABOUT TIME 743 (CHB,SOD,DLF,HYF,IEF)
 (DLF,HYF,IEF)
 JRR MISS TOBEY 711T (DLF,HYF,IEF)

DCA 4055 SUNSHINE 243W

HPH 10H SKYLAR 405S (CHB,DLF,HYF,IEF)
 DCA MISS WRANGLER 10R

THM DURANGO 4037 (CHB,SOD,DLF,HYF,IEF)
 CRR D03 CASSIE 206 (DLF,HYF,IEF)
 FELTONS OZZIE 492 (SOD,DLF,HYF,IEF)
 JRR RANDI 524R (DOD,DLF,HYF,IEF)
 DR WORLD CLASS 517 10H (SOD,DLF,HYF,IEF)
 WSF MISS ONLINE ESCADA 405 (DOD,DLF,HYF,IEF)
 WOODCREST WRANGLER 115L (CHB,SOD)
 DCA COUNTRY GAL 262M

CE	BW	WW	YW	MM	M&G	MCE	SC	REA	MARB	CHB\$
0.6	4.2	59	97	26	56	2.5	1.2	.45	-.26	21

A favorite Cash Flow son out of a Skylar mama with a very nice udder. One eye is pigmented.

AMAN 3RD REVOLUTION 94C

■ P43595659

DOB: 3/20/15 ■ BW: 87 ■ 205 Day Wt: 576 ■ REA Ratio/cwt: 1.41

R 2ND REVOLUTION 4131

MSU TCF REVOLUTION 4R (SOD,CHB,DLF,HYF,IEF)
 (CHB,DLF,HYF,IEF)
 R MISS PUCKSTER 139 (DOD,DLF,HYF,IEF)

AMAN 405T TARA 161X

HPH 36N TAGE 405T (CHB)
 DCA MISS MAURINE 89R (DOD)

FELTONS LEGEND 242 (SOD,HYF)
 MSU TCF RACHAEL ET 54N (DLF,HYF,IEF)
 R PUCKSTER 2013 (SOD,DLF,HYF,IEF)
 R MISS FELT 337
 HF 4L BEYOND 36N (SOD,DLF,HYF,IEF)
 WSF MISS ONLINE ESCADA 405 (DOD,DLF,HYF,IEF)
 MOHICAN MITCH 247M
 DCA MS MANDY 224K

CE	BW	WW	YW	MM	M&G	MCE	SC	REA	MARB	CHB\$
0.6	4.4	61	95	18	49	1.2	0.8	.73	-.09	27

Biggest REA of the entire group. Ratio 124. One eye is pigmented.

COMING 2 YEAR OLD BULLS



AMAN 0245 CASH FLOW 117C

P43595610

DOB: 3/23/15 ■ BW: 76 ■ 205 Day Wt: 566 ■ REA Ratio/cwt: 1.19

DKF RO CASH FLOW 0245 ET

CRR ABOUT TIME 743 (CHB,SOD,DLF,HYF,IEF)
 (DLF,HYF,IEF)
 JRR MISS TOBEY 711T (DLF,HYF,IEF)

DCA 325 HONEY BEA 238U

RANGELINE M326 BUZZ 325
 DCA MISS WRANGLER 10R

THM DURANGO 4037 (CHB,SOD,DLF,HYF,IEF)
 CRR D03 CASSIE 206 (DLF,HYF,IEF)
 FELTONS OZZIE 492 (SOD,DLF,HYF,IEF)
 JRR RANDI 524R (DOD,DLF,HYF,IEF)
 KCF BENNETT 3008 M326 (CHB,SOD,DLF,HYF,IEF)
 RANGELINE 11Y JOY 20K
 WOODCREST WRANGLER 115L (CHB,SOD)
 DCA COUNTRY GAL 262M

CE	BW	WW	YW	MM	M&G	MCE	SC	REA	MARB	CHB\$
2.0	1.6	48	75	25	49	3.0	1.3	.30	-.03	19

This should be a calving ease bull. His mother has a BW ratio of 88 on 7 calves. Fully pigmented.

AMAN A8 ATLAS 120C

P43595639

DOB: 3/24/15 ■ BW: 77 ■ 205 Day Wt: 549 ■ REA Ratio/cwt: 1.31

JLCS OHR 1230 ATLAS 4R A8

MSU TCF REVOLUTION 4R (SOD,CHB,DLF,HYF,IEF)
 (DLF,HYF,IEF)
 THM 8703 BEAUTY 1230

AMAN 26T TRIXIE 194A

SM UPLOAD 26 (CHB,DLF,HYF,IEF)
 DCA MISS ROCKETTE 64S (DOD)

FELTONS LEGEND 242 (SOD,HYF)
 MSU TCF RACHAEL ET 54N (DLF,HYF,IEF)
 THM STOUT 8703 ET (DLF,IEF)
 JJD BEAUTY 8050
 LAGRAN RELOAD 80P ET (SOD,DLF,HYF,IEF)
 LAGRAN MISSY 73P ET
 ANL 57G CLEVELAND 86M (CHB,SOD)
 DCA VICTOR LASS 24G

CE	BW	WW	YW	MM	M&G	MCE	SC	REA	MARB	CHB\$
2.1	2.1	50	81	21	46	0.4	0.4	.45	.21	26

Stout, calving ease bull with very good carcass data. REA ratio 103, Marbling ratio 125.

COMING 2 YEAR OLD BULLS



AMAN 103A TRUST 127C

■ P43595625

DOB: 3/24/15 ■ BW: 94 ■ 205 Day Wt: 582 ■ REA Ratio/cwt: 1.07

GOBLE OHR FULL TRUST 103A

NJW 73S M326 TRUST 100W ET (CHB,DLF,HYF,IEF)
(DLF,HYF,IEF)
RVP 122L ITS A WRAP ET 1107W

SM UPLoad 26 (CHB,DLF,HYF,IEF)
DCA LANLADY 220T

AMAN 26T TRIXIE 218Z

KCF BENNETT 3008 M326 (CHB,SOD,DLF,HYF,IEF)
NJW P606 72N DAYDREAM 73S (DLF,HYF,IEF)
REMITALL ONLINE 122L (CHB,SOD,DLF,HYF,IEF)
MARJON 29F NAOMI ET 111N
LAGRAND RELOAD 80P ET (SOD,DLF,HYF,IEF)
LAGRAND MISSY 73P ET
HH LANDLORD 397P
DCA MS HITTER 253N

CE	BW	WW	YW	MM	M&G	MCE	SC	REA	MARB	CHB\$
-2.1	5.8	60	110	25	55	3.0	1.1	.51	.12	30

Very stout, deep bodied bull. Fully pigmented. Scurs.

AMAN 0245 CASH FLOW 138C

■ P43595776

DOB: 3/25/15 ■ BW: 71 ■ 205 Day Wt: 571 ■ REA Ratio/cwt: 1.05

DKF RO CASH FLOW 0245 ET

CRR ABOUT TIME 743 (CHB,SOD,DLF,HYF,IEF)
(DLF,HYF,IEF)
JRR MISS TOBEY 711T (DLF,HYF,IEF)

AMAN 9050 WANITA 6Z

BOYD WORLDWIDE 9050 ET (CHB,DLF,HYF,IEF)
AMAN 26T TRIXIE 141X

THM DURANGO 4037 (CHB,SOD,DLF,HYF,IEF)
CRR D03 CASSIE 206 (DLF,HYF,IEF)
FELTONS OZZIE 492 (SOD,DLF,HYF,IEF)
JRR RANDI 524R (DOD,DLF,HYF,IEF)
SHF RIB EYE M326 R117 (CHB,SOD,DLF,HYF,IEF)
MSU TCF RACHAEL 22S ET
SM UPLoad 26 (CHB,DLF,HYF,IEF)
WOODCREST LISA 73R (DOD)

CE	BW	WW	YW	MM	M&G	MCE	SC	REA	MARB	CHB\$
3.0	2.4	53	92	30	56	2.4	1.4	.34	-.03	24

Calving ease bull with some eye pigment.

COMING 2 YEAR OLD BULLS



AMAN 103A TRUST 141C

■ P43595652

DOB: 3/25/15 ■ BW: 82 ■ 205 Day Wt: 596 ■ REA Ratio/cwt: 1.15

NJW 73S M326 TRUST 100W ET (CHB,DLF,HYF,IEF)
GOBLE OHR FULL TRUST 103A (DLF,HYF,IEF)
 RVP 122L ITS A WRAP ET 1107W

DCA 405S TROUBADOUR 162U

AMAN 162U TRINA 172Z

AMAN 26T TRIXIE 37X

KCF BENNETT 3008 M326 (CHB,SOD,DLF,HYF,IEF)
 NJW P606 72N DAYDREAM 73S (DLF,HYF,IEF)
 REMITALL ONLINE 122L (CHB,SOD,DLF,HYF,IEF)
 MARJON 29F NAOMI ET 111N
 HPH 10H SKYLAR 405S (CHB,DLF,HYF,IEF)
 DCA MISS MAURINE 89R (DOD)
 SM UPLoad 26 (CHB,DLF,HYF,IEF)
 TH 22N 10R JOURNEY 119T

CE	BW	WW	YW	MM	M&G	MCE	SC	REA	MARB	CHB\$
0.3	4.3	63	113	26	57	4.4	0.9	.73	.11	34

A favorite Goble Trust son with eye pigment. REA ratio 107, WW ratio 103, YW ratio 110.

AMAN 0245 CASH FLOW 147C

■ 43595656

DOB: 3/26/15 ■ BW: 88 ■ 205 Day Wt: 592 ■ REA Ratio/cwt: 1.23

CRR ABOUT TIME 743 (CHB,SOD,DLF,HYF,IEF)
DKF RO CASH FLOW 0245 ET (DLF,HYF,IEF)
 JRR MISS TOBEY 711T (DLF,HYF,IEF)

SM UPLoad 26 (CHB,DLF,HYF,IEF)

AMAN 26T TRIXIE 166X (DOD)

BIG 9150 MILLIE 1L

THM DURANGO 4037 (CHB,SOD,DLF,HYF,IEF)
 CRR D03 CASSIE 206 (DLF,HYF,IEF)
 FELTONS OZZIE 492 (SOD,DLF,HYF,IEF)
 JRR RANDI 524R (DOD,DLF,HYF,IEF)
 LAGRAND RELOAD 80P ET (SOD,DLF,HYF,IEF)
 LAGRAND MISSY 73P ET
 C MILESTONE 9150
 GF LADY OSCAR 47YB

CE	BW	WW	YW	MM	M&G	MCE	SC	REA	MARB	CHB\$
-0.1	3.4	53	84	29	56	0.8	1.2	.42	-.11	20

Pigmented on one eye, conservatively marked. Mama is a Dam of Distinction. Dehorned.

COMING 2 YEAR OLD BULLS



AMAN 0245 CASH FLOW 158C

■ P43595677

DOB: 3/27/15 ■ BW: 87 ■ 205 Day Wt: 638 ■ REA Ratio/cwt: 0.97

DKF RO CASH FLOW 0245 ET

CRR ABOUT TIME 743 (CHB,SOD,DLF,HYF,IEF)
 (DLF,HYF,IEF)
 JRR MISS TOBEY 711T (DLF,HYF,IEF)

OHR EFFIE 23T 131X

MRC JOHNNY CASH 524
 REMITALL EFFIE 23T

THM DURANGO 4037 (CHB,SOD,DLF,HYF,IEF)
 CRR D03 CASSIE 206 (DLF,HYF,IEF)
 FELTONS OZZIE 492 (SOD,DLF,HYF,IEF)
 JRR RANDI 524R (DOD,DLF,HYF,IEF)
 REMITALL JONATHON 73J
 RU 8G ROBYN 27L (DOD)
 REMITALL PATRIOT ET 13P (CHB,SOD,DLF,HYF,IEF)
 REMITALL EFFIE 38P

CE	BW	WW	YW	MM	M&G	MCE	SC	REA	MARB	CHB\$
-1.6	4.6	57	98	28	56	2.0	1.4	.33	-.02	24

A performance goggle eyed Cash Flow son. WW ratio 110, YW ratio 110, marbling ratio 112. Scurs.

AMAN 0245 CASH FLOW 159C

■ P43595726

DOB: 3/27/15 ■ BW: 71 ■ 205 Day Wt: 524 ■ REA Ratio/cwt: 1.31

DKF RO CASH FLOW 0245 ET

CRR ABOUT TIME 743 (CHB,SOD,DLF,HYF,IEF)
 (DLF,HYF,IEF)
 JRR MISS TOBEY 711T (DLF,HYF,IEF)

OHR VERA 110U 66Z

SHF VISION R117 U38 (CHB,DLF,IEF)
 (DLF,HYF,IEF)
 OHR FAITH 79G 110U

THM DURANGO 4037 (CHB,SOD,DLF,HYF,IEF)
 CRR D03 CASSIE 206 (DLF,HYF,IEF)
 FELTONS OZZIE 492 (SOD,DLF,HYF,IEF)
 JRR RANDI 524R (DOD,DLF,HYF,IEF)
 SHF RIB EYE M326 R117 (CHB,SOD,DLF,HYF,IEF)
 SHF MISS PROGRESS S03 ET (DLF,HYF,IEF)
 OHR KODIAK D467 75M (DLF,HYF,IEF)
 NJW 832W FAITHFUL 79G

CE	BW	WW	YW	MM	M&G	MCE	SC	REA	MARB	CHB\$
2.9	0.3	42	60	26	47	2.8	1.1	.38	-.06	18

Goggle eyed calving ease bull. Would also sire excellent replacement heifers since mother is moderate, efficient and has a very nice udder. Scurs.

COMING 2 YEAR OLD BULLS



AMAN 103A TRUST 166C

■ P43595708

DOB: 3/28/15 ■ BW: 87 ■ 205 Day Wt: 602 ■ REA Ratio/cwt: 1.21

GOBLE OHR FULL TRUST 103A

NJW 73S M326 TRUST 100W ET (CHB,DLF,HYF,IEF)
(DLF,HYF,IEF)
RVP 122L ITS A WRAP ET 1107W

AMAN 405S SUNSHINE 83Z

HPH 10H SKYLAR 405S (CHB,DLF,HYF,IEF)
DCA 194P JEWEL 119U (DOD)

KCF BENNETT 3008 M326 (CHB,SOD,DLF,HYF,IEF)
NJW P606 72N DAYDREAM 73S (DLF,HYF,IEF)
REMITALL ONLINE 122L (CHB,SOD,DLF,HYF,IEF)
MARJON 29F NAOMI ET 111N
DR WORLD CLASS 517 10H (SOD,DLF,HYF,IEF)
WSF MISS ONLINE ESCADA 405 (DOD,DLF,HYF,IEF)
DCA JURRASIC 194P
DCA VICTOR LASS 7E

CE	BW	WW	YW	MM	M&G	MCE	SC	REA	MARB	CHB\$
-0.2	4.6	63	101	25	56	4.2	1.1	.50	.18	33

Very stout with lots of rib shape. WW ratio 104, YW ratio 104, REA ratio 107, marbling ratio 116. Pigmented on one eye. Mama should be a Dam of Distinction this year. Her WW ratio is 106.7 on 3 calves.

AMAN 258A DUKE 168C

■ P43595614

DOB: 3/28/15 ■ BW: 72 ■ 205 Day Wt: 542 ■ REA Ratio/cwt: 1.23

BAR JZ JOHN WAYNE 258A

HYALITE ON TARGET 936 (CHB,DLF,HYF,IEF)
(DLF,HYF,IEF)
BAR JZ SCARLET 740U

AMAN 4131 REVA 234A

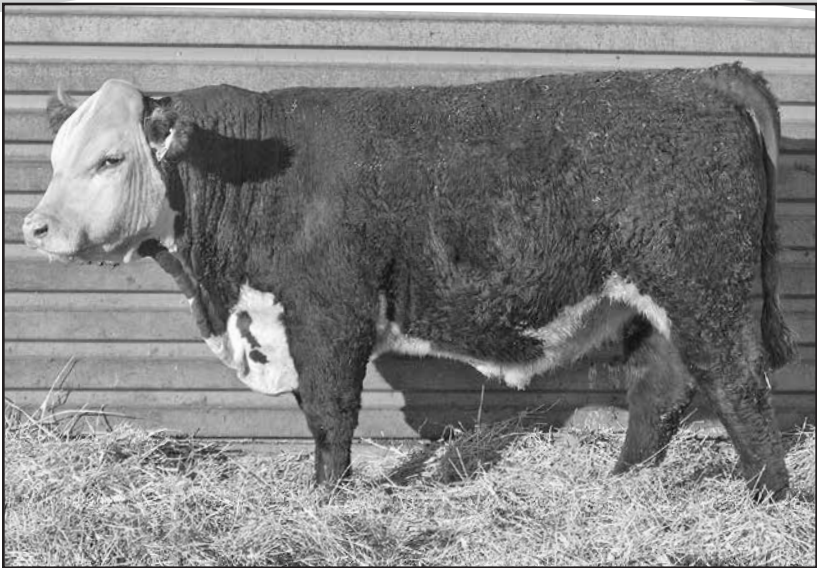
R 2ND REVOLUTION 4131 (CHB,DLF,HYF,IEF)
DCA S46 ELVIRA 159W

SCHU-LAR ON TARGET 22S (SOD,CHB,DLF,HYF,IEF)
HYALITE TS LASS 310 (DLF,HYF,IEF)
BAR JZ REDEEMER 854N
BAR JZ 5F LADY 637H
MSU TCF REVOLUTION 4R (SOD,CHB,DLF,HYF,IEF)
R MISS PUCKSTER 139 (DOD,DLF,HYF,IEF)
RCR WIDELOAD S46
DCA LANDLADY 112S

CE	BW	WW	YW	MM	M&G	MCE	SC	REA	MARB	CHB\$
2.5	2.8	52	87	23	49	3.1	1.4	.37	.00	24

Goggle eyed calving ease bull out of a first calf heifer.

COMING 2 YEAR OLD BULLS



AMAN 3RD REVOLUTION 170C

■ P43595763

DOB: 3/28/15 ■ BW: 92 ■ 205 Day Wt: 644 ■ REA Ratio/cwt: 1.23

R 2ND REVOLUTION 4131

MSU TCF REVOLUTION 4R (SOD,CHB,DLF,HYF,IEF)
 (CHB,DLF,HYF,IEF)
 R MISS PUCKSTER 139 (DOD,DLF,HYF,IEF)

AMAN 26T TRIXIE 24X

SM UPLOAD 26 (CHB,DLF,HYF,IEF)
 DCA PROSPECT PRINCESS 76T

FELTONS LEGEND 242 (SOD,HYF)
 MSU TCF RACHAEL ET 54N (DLF,HYF,IEF)
 R PUCKSTER 2013 (SOD,DLF,HYF,IEF)
 R MISS FELT 337
 LAGRAND RELOAD 80P ET (SOD,DLF,HYF,IEF)
 LAGRAND MISSY 73P ET
 LH PROSPECTOR 564 (CHB)
 DCA MISS ROCKETTE 90R

CE	BW	WW	YW	MM	M&G	MCE	SC	REA	MARB	CHB\$
1.2	4.2	60	89	22	52	0.9	0.9	.40	.15	29

Fully pigmented performance bull with good numbers in all categories. WW ratio 111, YW ratio 103, REA ratio 110, marbling ratio 121.

COMING 2 YEAR OLD BULLS



AMAN 3RD REVOLUTION 171C

■ P43595586

DOB: 3/28/15 ■ BW: 93 ■ 205 Day Wt: 600 ■ REA Ratio/cwt: 1.1

R 2ND REVOLUTION 4131

MSU TCF REVOLUTION 4R (SOD,CHB,DLF,HYF,IEF)
 (CHB,DLF,HYF,IEF)
 R MISS PUCKSTER 139 (DOD,DLF,HYF,IEF)

DCA 325 HONEY BEA 277W

RANGELINE M326 BUZZ 32S
 LAGRAND VICTORIA 128P ET

FELTONS LEGEND 242 (SOD,HYF)
 MSU TCF RACHAEL ET 54N (DLF,HYF,IEF)
 R PUCKSTER 2013 (SOD,DLF,HYF,IEF)
 R MISS FELT 337
 KCF BENNETT 3008 M326 (CHB,SOD,DLF,HYF,IEF)
 RANGELINE 11Y JOY 20K
 RU DUSTER 60D (CHB,DLF,HYF,IEF)
 VICTORIA 4G

CE	BW	WW	YW	MM	M&G	MCE	SC	REA	MARB	CHB\$
1.6	4.7	52	79	20	46	2.3	0.9	.21	.02	23

Fully pigmented performance bull. If you need a pair of bulls, this one really follows the type of 170C. They were even born the same day.

AMAN 103A TRUST 176C

■ P43595697

DOB: 3/28/15 ■ BW: 91 ■ 205 Day Wt: 577 ■ REA Ratio/cwt: 1.22

GOBLE OHR FULL TRUST 103A

NJW 73S M326 TRUST 100W ET (CHB,DLF,HYF,IEF)
 (DLF,HYF,IEF)
 RVP 122L ITS A WRAP ET 1107W

AMAN 0245 CASSIE 103Z

DKF RO CASH FLOW 0245 ET (DLF,HYF,IEF)
 (DLF,HYF,IEF)
 DCA MISS MAURINE 89R (DOD)

KCF BENNETT 3008 M326 (CHB,SOD,DLF,HYF,IEF)
 NJW P606 72N DAYDREAM 73S (DLF,HYF,IEF)
 REMITALL ONLINE 122L (CHB,SOD,DLF,HYF,IEF)
 MARJON 29F NAOMI ET 111N
 CRR ABOUT TIME 743 (CHB,SOD,DLF,HYF,IEF)
 JRR MISS TOBEY 711T (DLF,HYF,IEF)
 MOHICAN MITCH 247M
 DCA MS MANDY 224K

CE	BW	WW	YW	MM	M&G	MCE	SC	REA	MARB	CHB\$
0.1	5.0	63	110	27	58	3.2	1.0	.79	-.03	31

REA ratio 112. Some eye pigment.

COMING 2 YEAR OLD BULLS

AMAN 281A TRUST 187C

P43595669

DOB: 3/29/15 ■ BW: 80 ■ 205 Day Wt: 648 ■ REA Ratio/cwt: 1.29

BAR JZ TRUSTWORTHY 281A ET (DLF,HYF,IEF)

BAR JZ JULIE 118R (DOD,DLF,HYF,IEF)

HPH 10H SKYLAR 4055 (CHB,DLF,HYF,IEF)

DCA 405S SUNSHINE 142W (DOD)

DH PLANED PEACH 782

KCF BENNETT 3008 M326 (CHB,SOD,DLF,HYF,IEF)

NJW P606 72N DAYDREAM 735 (DLF,HYF,IEF)

HARVIE LADIES MAN 4L (SOD)

BAR JZ DEVOTION 442M (DOD)

DR WORLD CLASS 517 10H (SOD,DLF,HYF,IEF)

WSF MISS ONLINE ESCADA 405 (DOD,DLF,HYF,IEF)

DH FAST PLAN 789

DH SCARLET PEACH 508 (DOD)

CE	BW	WW	YW	MM	M&G	MCE	SC	REA	MARB	CHB\$
2.1	2.3	60	89	31	61	3.3	0.8	.66	-.01	28

Cherry colored, with one pigmented eye. Calving ease performance bull. BW ratio 93, WW ratio 112, YW ratio 106, REA ratio 118. Mama is a Dam of Distinction.



AMAN 103A TRUST 189C

P43595596

DOB: 3/29/15 ■ BW: 84 ■ 205 Day Wt: 633 ■ REA Ratio/cwt: 1.06

GOBLE OHR FULL TRUST 103A (DLF,HYF,IEF)

RVP 122L ITS A WRAP ET 1107W

SM UPLOAD 26 (CHB,DLF,HYF,IEF)

AMAN 26T TRIXIE 258X

WOODCREST DUCHESS 80L

KCF BENNETT 3008 M326 (CHB,SOD,DLF,HYF,IEF)

NJW P606 72N DAYDREAM 735 (DLF,HYF,IEF)

REMITALL ONLINE 122L (CHB,SOD,DLF,HYF,IEF)

MARJON 29F NAOMI ET 111N

LAGRAND RELOAD 80P ET (SOD,DLF,HYF,IEF)

LAGRAND MISSY 73P ET

CT CHEQUE 845

WC MS ETTA 10H

CE	BW	WW	YW	MM	M&G	MCE	SC	REA	MARB	CHB\$
-0.3	4.5	66	122	27	60	3.5	0.8	.77	.05	34

A stout performance bull with eye pigmentation. WW ratio 109, YW ratio 117, REA ratio 107. Mama has 4 calves with a WW ratio of 108.3.

COMING 2 YEAR OLD BULLS

AMAN 103A TRUST 190C

P43595571

DOB: 3/29/15 ■ BW: 82 ■ 205 Day Wt: 620 ■ REA Ratio/cwt: 1.2

NJW 73S M326 TRUST 100W ET (CHB,DLF,HYF,IEF)
GOBLE OHR FULL TRUST 103A (DLF,HYF,IEF)
 RVP 122L ITS A WRAP ET 1107W

KCF BENNETT 3008 M326 (CHB,SOD,DLF,HYF,IEF)
 NJW P606 72N DAYDREAM 73S (DLF,HYF,IEF)
 REMITALL ONLINE 122L (CHB,SOD,DLF,HYF,IEF)
 MARJON 29F NAOMI ET 111N
 SHF RIB EYE M326 R117 (CHB,SOD,DLF,HYF,IEF)
 MSU TCF RACHAEL 22S ET
 BAR JZ TRIPLE PLAY 305R
 BAR JZ CATHY 781J (DOD)

BAR JZ WENDY 399Y

BOYD WORLDWIDE 9050 ET (CHB,DLF,HYF,IEF)
 BAR JZ AMELIA 507T

CE	BW	WW	YW	MM	M&G	MCE	SC	REA	MARB	CHB\$
3.8	1.2	56	86	26	54	5.5	1.1	.52	.15	30

Fully pigmented calving ease bull. BW ratio 98, WW ratio 107, REA ratio 100, marbling ratio 118.



AMAN 281A TRUST 201C

P43595622

DOB: 3/31/15 ■ BW: 80 ■ 205 Day Wt: 536 ■ REA Ratio/cwt: 1.18

NJW 73S M326 TRUST 100W ET (CHB,DLF,HYF,IEF)
BAR JZ TRUSTWORTHY 281A ET (DLF,HYF,IEF)
 BAR JZ JULIE 118R (DOD,DLF,HYF,IEF)

KCF BENNETT 3008 M326 (CHB,SOD,DLF,HYF,IEF)
 NJW P606 72N DAYDREAM 73S (DLF,HYF,IEF)
 HARVIE LADIES MAN 4L (SOD)
 BAR JZ DEVOTION 442M (DOD)
 SHF RIB EYE M326 R117 (CHB,SOD,DLF,HYF,IEF)
 LH MS HEMAN 135
 MC RANGER 9615 (SOD,CHB,DLF,HYF,IEF)
 GK EXULTATION D10

LH RIBEYE 933
AMAN 933 REBA 220Y

LAGRAND RANGERETTE D10 307R ET

CE	BW	WW	YW	MM	M&G	MCE	SC	REA	MARB	CHB\$
0.9	2.4	48	77	29	53	2.6	0.8	.41	.03	23

Moderate, stout, calving ease bull. Cherry colored, very goggle eyed and conservatively marked.

COMING 2 YEAR OLD BULLS



AMAN 103A TRUST 204C

DOB: 4/1/15 ■ BW: 92 ■ 205 Day Wt: 622 ■ REA Ratio/cwt: 1.05

GOBLE OHR FULL TRUST 103A (DLF,HYF,IEF)
 RVP 122L ITS A WRAP ET 1107W

SM UPLoad 26 (CHB,DLF,HYF,IEF)

AMAN 26T TRIXIE 62Y

DCA MARTINA 38T

KCF BENNETT 3008 M326 (CHB,SOD,DLF,HYF,IEF)
 NJW P606 72N DAYDREAM 73S (DLF,HYF,IEF)
 REMITALL ONLINE 122L (CHB,SOD,DLF,HYF,IEF)
 MARJON 29F NAOMI ET 111N
 LAGRAND RELOAD 80P ET (SOD,DLF,HYF,IEF)
 LAGRAND MISSY 73P ET
 HH LANDLORD 397P
 DCA MS HITTER 104K (DOD)

CE	BW	WW	YW	MM	M&G	MCE	SC	REA	MARB	CHB\$
-1.3	5.5	64	119	26	58	3.4	1.0	.72	.11	35

Moderate frame, but massive rib shape. WW ratio 107, YW ratio 118, REA ratio 108, marbling 109. His calves should go to town on feed. He has some eye pigment, easy fleshing genetics and longevity in his pedigree. He has always been a favorite, as has his mama.

AMAN 103A TRUST 206C

DOB: 4/1/15 ■ BW: 71 ■ 205 Day Wt: 524 ■ REA Ratio/cwt: 1.35

GOBLE OHR FULL TRUST 103A (DLF,HYF,IEF)
 RVP 122L ITS A WRAP ET 1107W

AMAN 26T DISCO 267X (DLF,HYF,IEF)

AMAN 267X DINAH 279Z

WOODCREST VACA 31S

KCF BENNETT 3008 M326 (CHB,SOD,DLF,HYF,IEF)
 NJW P606 72N DAYDREAM 73S (DLF,HYF,IEF)
 REMITALL ONLINE 122L (CHB,SOD,DLF,HYF,IEF)
 MARJON 29F NAOMI ET 111N
 SM UPLoad 26 (CHB,DLF,HYF,IEF)
 DCA PROSPECT PRINCESS 16T
 JDH 100M BOULDER 6P (SOD)
 WC MS WRANGLER 76K

CE	BW	WW	YW	MM	M&G	MCE	SC	REA	MARB	CHB\$
1.8	1.9	52	93	26	51	4.2	0.7	.65	.15	30

A dark red, goggle eyed calving ease bull with very good carcass data. REA ratio 108 and marbling ratio 108.

COMING 2 YEAR OLD BULLS



AMAN 3RD REVOLUTION 207C

■ P43595651

DOB: 4/1/15 ■ BW: 84 ■ 205 Day Wt: 668 ■ REA Ratio/cwt: 1.07

R 2ND REVOLUTION 4131

MSU TCF REVOLUTION 4R (SOD,CHB,DLF,HYF,IEF)
[CHB,DLF,HYF,IEF]
R MISS PUCKSTER 139 (DOD,DLF,HYF,IEF)

ANL 57G CLEVELAND 86M (CHB,SOD)

DCA MISS ROCKETTE 178S

WC MS WRANGLER 82K

FELTONS LEGEND 242 (SOD,HYF)
MSU TCF RACHAEL ET 54N (DLF,HYF,IEF)
R PUCKSTER 2013 (SOD,DLF,HYF,IEF)
R MISS FELT 337
RU 20X BOULDER 57G (SOD)
KKL 16Y CASSIE 22C
JDF 16D WRANGLER 06 (SOD)
WC MS TARGET 63F

CE	BW	WW	YW	MM	M&G	MCE	SC	REA	MARB	CHB\$
2.7	3.0	59	84	18	48	1.4	1.2	.36	-.03	25

A calving ease performance bull with pigment on one eye. BW ratio 98, WW ratio 115, YW ratio 103. Scurs.

AMAN 3RD REVOLUTION 215C

■ P43595682

DOB: 4/4/15 ■ BW: 78 ■ 205 Day Wt: 555 ■ REA Ratio/cwt: 1.22

R 2ND REVOLUTION 4131

MSU TCF REVOLUTION 4R (SOD,CHB,DLF,HYF,IEF)
[CHB,DLF,HYF,IEF]
R MISS PUCKSTER 139 (DOD,DLF,HYF,IEF)

OHR KODIAK D467 75M (DLF,HYF,IEF)

OHR EFFIE 75M 131X 124Z

OHR EFFIE 23T 131X

FELTONS LEGEND 242 (SOD,HYF)
MSU TCF RACHAEL ET 54N (DLF,HYF,IEF)
R PUCKSTER 2013 (SOD,DLF,HYF,IEF)
R MISS FELT 337
VCR EAST KODIAK 506E (SOD,DLF,HYF,IEF)
HUSO 114 GEM D467
MRC JOHNNY CASH 524
REMITALL EFFIE 23T

CE	BW	WW	YW	MM	M&G	MCE	SC	REA	MARB	CHB\$
1.8	2.9	50	76	19	44	2.3	0.8	.33	.05	22

Conservatively marked calving ease bull with pigment on one eye.

COMING 2 YEAR OLD BULLS

AMAN 0245 CASH FLOW 216C

P43595624

DOB: 4/4/15 ■ BW: 81 ■ 205 Day Wt: 561 ■ REA Ratio/cwt: 1.29

DKF RO CASH FLOW 0245 ET

CRR ABOUT TIME 743 (CHB,SOD,DLF,HYF,IEF)
 (DLF,HYF,IEF)
 JRR MISS TOBEY 711T (DLF,HYF,IEF)

THM DURANGO 4037 (CHB,SOD,DLF,HYF,IEF)
 CRR D03 CASSIE 206 (DLF,HYF,IEF)
 FELTONS OZZIE 492 (SOD,DLF,HYF,IEF)
 JRR RANDI 524R (DOD,DLF,HYF,IEF)
 SHF RIB EYE M326 R117 (CHB,SOD,DLF,HYF,IEF)
 LH MS HEMAN 135
 WOODCREST WRANGLER 115L (CHB,SOD)
 DCA MS HITTER 160J

ADA 933 LIBBY 219Y

LH RIBEYE 933
 DCA MISS LIBERTY 335R

CE	BW	WW	YW	MM	M&G	MCE	SC	REA	MARB	CHB\$
1.4	2.9	54	85	24	51	2.3	0.9	.50	-.09	23

Fully pigmented calving ease bull with very good carcass data. REA ratio 103, marbling ratio 108. Scurs.



AMAN 103A TRUST 219C

P43595744

DOB: 4/4/15 ■ BW: 83 ■ 205 Day Wt: 571 ■ REA Ratio/cwt: 1.22

GOBLE OHR FULL TRUST 103A

NJW 73S M326 TRUST 100W ET (CHB,DLF,HYF,IEF)
 (DLF,HYF,IEF)
 RVP 122L ITS A WRAP ET 1107W

KCF BENNETT 3008 M326 (CHB,SOD,DLF,HYF,IEF)
 NJW P606 72N DAYDREAM 73S (DLF,HYF,IEF)
 REMITALL ONLINE 122L (CHB,SOD,DLF,HYF,IEF)
 MARJON 29F NAOMI ET 111N
 SHF RIB EYE M326 R117 (CHB,SOD,DLF,HYF,IEF)
 LH MS HEMAN 135
 MOHICAN MITCH 247M
 DCA MS MANDY 224K

AMAN 933 REBA 47Y

LH RIBEYE 933
 DCA MISS MAURINE 89R (DOD)

CE	BW	WW	YW	MM	M&G	MCE	SC	REA	MARB	CHB\$
0.6	4.2	64	116	23	55	4.2	1.2	.77	.10	34

Stout bull with one pigmented eye that did really well on feed. Should sire calves who perform in the feedlot. WW ratio 98, YW ratio 110. REA ratio 115, marbling ratio 101.

COMING 2 YEAR OLD BULLS



AMAN 103A TRUST 222C

DOB: 4/4/15 ■ BW: 78 ■ 205 Day Wt: 566 ■ REA Ratio/cwt: 1.17

GOBLE OHR FULL TRUST 103A

NJW 73S M326 TRUST 100W ET (CHB,DLF,HYF,IEF)
(DLF,HYF,IEF)
RVP 122L ITS A WRAP ET 1107W

AMAN 26T TRIxie 37X

SM UPLOAD 26 (CHB,DLF,HYF,IEF)
TH 22N 10R JOURNEY 119T

KCF BENNETT 3008 M326 (CHB,SOD,DLF,HYF,IEF)
NJW P606 72N DAYDREAM 73S (DLF,HYF,IEF)
REMITALL ONLINE 122L (CHB,SOD,DLF,HYF,IEF)
MARJON 29F NAOMI ET 111N
LAGRAND RELOAD 80P ET (SOD,DLF,HYF,IEF)
LAGRAND MISSY 73P ET
TH 48G 20N SPARTAN 10R (DLF,IEF)
TH20K 57G JOURNEY 22N

CE	BW	WW	YW	MM	M&G	MCE	SC	REA	MARB	CHB\$
0.9	2.4	54	102	25	52	4.4	1.3	.76	.17	33

Pigmented calving ease bull that would pair up nicely with 219C with very similar data. These Goble Trust calves really perform well in the feedlot. WW ratio 97, YW ratio 105, REA ratio 105, marbling ratio 111.

AMAN 281A TRUST 223C

DOB: 4/5/15 ■ BW: 85 ■ 205 Day Wt: 611 ■ REA Ratio/cwt: 1.09

BAR JZ TRUSTWORTHY 281A ET

NJW 73S M326 TRUST 100W ET (CHB,DLF,HYF,IEF)
(DLF,HYF,IEF)
BAR JZ JULIE 118R (DOD,DLF,HYF,IEF)

BAR JZ DULCIE 549Y

NJW 4037 80L DURANGO 84U (DLF,HYF,IEF)
BAR JZ FIRESTORM 653U

KCF BENNETT 3008 M326 (CHB,SOD,DLF,HYF,IEF)
NJW P606 72N DAYDREAM 73S (DLF,HYF,IEF)
HARVIE LADIES MAN 4L (SOD)
BAR JZ DEVOTION 442M (DOD)
THM DURANGO 4037 (CHB,SOD,DLF,HYF,IEF)
NJW 12E PRAIRIE 80L (DLF,HYF,IEF)
BAR JZ CROSSFIRE 593S (SOD)
BAR JZ BANKER BABE 426S

CE	BW	WW	YW	MM	M&G	MCE	SC	REA	MARB	CHB\$
2.6	2.7	53	75	30	56	3.1	0.6	.25	.08	25

One of the highest marbling in the group with a ratio of 120. Pigment on one eye.

COMING 2 YEAR OLD BULLS

AMAN 52A TRUST 233C

P43595696

DOB: 4/9/15 ■ BW: 85 ■ 205 Day Wt: 546 ■ REA Ratio/cwt: 1.11

OHR TRUSTWORTHY 41R 52A (DLF,HYF,IEF)
OHR NIKITA 88G 41R

NJW 73S M326 TRUST 100W ET (CHB,DLF,HYF,IEF)

KCF BENNETT 3008 M326 (CHB,SOD,DLF,HYF,IEF)
NJW P606 72N DAYDREAM 73S (DLF,HYF,IEF)
VCR EAST KODIAK 506E (SOD,DLF,HYF,IEF)
SALUNGA GEORGIE GIRL
RU 20X BOULDER 57G (SOD)
KKL 16Y CASSIE 22C
DH IDAHO RHETT 720
DH BE MY VALENTINE 322 (DOD)

DCA MISS ROCKETTE 106T

ANL 57G CLEVELAND 86M (CHB,SOD)
DH IDAHO HEART 35

CE	BW	WW	YW	MM	M&G	MCE	SC	REA	MARB	CHB\$
-0.5	4.3	52	99	24	50	1.9	1.0	.54	.02	26

Mama's WW ratio is 106.4 on 7 calves.

AMAN 281A TRUST 255C

P43595594

DOB: 4/16/15 ■ BW: 91 ■ 205 Day Wt: 504 ■ REA Ratio/cwt: 1.16

BAR JZ TRUSTWORTHY 281A ET (DLF,HYF,IEF)
BAR JZ JULIE 118R (DOD,DLF,HYF,IEF)

NJW 73S M326 TRUST 100W ET (CHB,DLF,HYF,IEF)

KCF BENNETT 3008 M326 (CHB,SOD,DLF,HYF,IEF)
NJW P606 72N DAYDREAM 73S (DLF,HYF,IEF)
HARVIE LADIES MAN 4L (SOD)
BAR JZ DEVOTION 442M (DOD)
HH HUNTER 572P (CHB)
RJ MS WRANGLER 112L
ANL 57G CLEVELAND 86M (CHB,SOD)
DCA VICTOR LASS 24G

DCA S171 HANNAH 264U

HH 572P HUNTER S171
DCA MISS ROCKETTE 259R (DOD)

CE	BW	WW	YW	MM	M&G	MCE	SC	REA	MARB	CHB\$
0.3	4.2	51	81	30	55	1.3	0.4	.47	.05	25

Goggle eyed Trustworthy son. Marbling ratio 114. Mama's WW ratio is 105.3 on 6 calves.

AMAN 3RD REVOLUTION 256C

P43595664

DOB: 4/16/15 ■ BW: 81 ■ 205 Day Wt: 580 ■ REA Ratio/cwt: 1.05

R 2ND REVOLUTION 413I (CHB,DLF,HYF,IEF)
R MISS PUCKSTER 139 (DOD,DLF,HYF,IEF)

MSU TCF REVOLUTION 4R (SOD,CHB,DLF,HYF,IEF)

FELTONS LEGEND 242 (SOD,HYF)
MSU TCF RACHAEL ET 54N (DLF,HYF,IEF)
R PUCKSTER 2013 (SOD,DLF,HYF,IEF)
R MISS FELT 337
DR WORLD CLASS 517 10H (SOD,DLF,HYF,IEF)
WSF MISS ONLINE ESCADA 405 (DOD,DLF,HYF,IEF)
LH PROSPECTOR 564 (CHB)
DCA MISS MAURINE 281R

AMAN 405S SUNSHINE 151X

HPH 10H SKYLAR 405S (CHB,DLF,HYF,IEF)
DCA PROSPECT PRINCESS 20T (DOD)

CE	BW	WW	YW	MM	M&G	MCE	SC	REA	MARB	CHB\$
3.4	2.7	54	83	23	50	3.6	1.0	.18	.20	27

Marbling ratio 126. Mama is a Dam of Distinction. WW ratio of 108.8 on 5 calves. Scurs.

COMING 2 YEAR OLD BULLS



AMAN 267X JAZZ 259C

■ P43595769

DOB: 4/17/15 ■ BW: 92 ■ 205 Day Wt: 545 ■ REA Ratio/cwt: 1.21

AMAN 26T DISCO 267X

SM UPLOAD 26 (CHB,DLF,HYF,IEF)
(DLF,HYF,IEF)
DCA PROSPECT PRINCESS 16T

LAGRAND RELOAD 80P ET (SOD,DLF,HYF,IEF)
LAGRAND MISSY 73P ET
LH PROSPECTOR 564 (CHB)
DCA MISS WRANGLER 10R
MJB BLAZER 1000 (CHB,SOD)
KT MS 517 FELTON 8031 (DOD)
STAR RUMBLE 52L
K SEE K

LAGRAND RUTH 11S

KT TOP SECRET 1030 (CHB,SOD,DLF,HYF,IEF)
STAR KSEE RUTH 49P ET

CE	BW	WW	YW	MM	M&G	MCE	SC	REA	MARB	CHB\$
-0.5	4.2	60	107	21	51	-0.6	1.0	.48	.16	30

Goggle eyed performance bull sired by Disco. Very good carcass data. REA ratio 111, marbling 108. Mama has one of the best udders in the herd.

AMAN A8 ATLAS 261C

■ P43595663

DOB: 4/18/15 ■ BW: 76 ■ 205 Day Wt: 682 ■ REA Ratio/cwt: 1.09

JLCS OHR 1230 ATLAS 4R A8

MSU TCF REVOLUTION 4R (SOD,CHB,DLF,HYF,IEF)
(DLF,HYF,IEF)
THM 8703 BEAUTY 1230

FELTONS LEGEND 242 (SOD,HYF)
MSU TCF RACHAEL ET 54N (DLF,HYF,IEF)
THM STOUT 8703 ET (DLF,IEF)
JJD BEAUTY 8050

AMAN 1031 JACKIE 157A

ECR HEY JACK 1031 (DLF,HYF,IEF)
AMAN PROSPECT PRINCESS 227X

AH JDH CRACKER JACK 26U ET (DLF,HYF,IEF)
ECR 20L GOLDEN LADY 8249 (DLF,HYF,IEF)
LH PROSPECTOR 564 (CHB)
DCA 194P JEWEL 306U

CE	BW	WW	YW	MM	M&G	MCE	SC	REA	MARB	CHB\$
3.1	2.7	60	106	24	54	2.0	0.5	.56	.07	30

Calving ease performance bull. BW ratio 98, WW ratio 117, YW ratio 119. Mama has a WW ratio of 109.5 on 2 calves.

COMING 2 YEAR OLD BULLS

AMAN 52A TRUST 269C

■ P43595771

DOB: 4/21/15 ■ BW: 95 ■ 205 Day Wt: 583 ■ REA Ratio/cwt: 1.04

NJW 73S M326 TRUST 100W ET (CHB,DLF,HYF,IEF)
OHR TRUSTWORTHY 41R 52A (DLF,HYF,IEF)
 OHR NIKITA 88G 41R

KCF BENNETT 3008 M326 (CHB,SOD,DLF,HYF,IEF)
 NJW P606 72N DAYDREAM 73S (DLF,HYF,IEF)
 VCR EAST KODIAK 506E (SOD,DLF,HYF,IEF)
 SALUNGA GEORGIE GIRL
 EPHR WRANGLER 579K
 WC LADY WRANGLER 94L (DOD)
 HA JACKSON J9189 (SOD,CHB)
 WOODCREST LASS 13F

WOODCREST WARRIOR 11N
DCA WARRIOR PRINCESS 10S
 WOODCREST SALLY 30P

CE	BW	WW	YW	MM	M&G	MCE	SC	REA	MARB	CHB\$
-0.6	5.1	52	99	25	50	2.6	0.9	.52	.16	29

Fully pigmented bull with very good marbling. Ratio is 126.



AMAN 52A TRUST 280C

■ 43595722

DOB: 4/30/15 ■ BW: 82 ■ 205 Day Wt: 606 ■ REA Ratio/cwt: 1.3

NJW 73S M326 TRUST 100W ET (CHB,DLF,HYF,IEF)
OHR TRUSTWORTHY 41R 52A (DLF,HYF,IEF)
 OHR NIKITA 88G 41R

KCF BENNETT 3008 M326 (CHB,SOD,DLF,HYF,IEF)
 NJW P606 72N DAYDREAM 73S (DLF,HYF,IEF)
 VCR EAST KODIAK 506E (SOD,DLF,HYF,IEF)
 SALUNGA GEORGIE GIRL
 JDF 16D WRANGLER 06 (SOD)
 WC MS TARGET 42F (DOD)
 LCG MASTER MAN 85D (SOD)
 WC MS RACETTE 43A

WOODCREST WRANGLER 76L (SOD)
WOODCREST LISA 73R (DOD)
 WOODCREST MOLLY 70H (DOD)

CE	BW	WW	YW	MM	M&G	MCE	SC	REA	MARB	CHB\$
-0.2	3.6	54	100	26	53	3.0	1.4	.55	.10	28

Goggle eyed performance bull. WW ratio 106, YW ratio 112, REA ratio 111. Dehorned.

COMING 2 YEAR OLD BULLS

AMAN 0245 CASH FLOW 285C

■ P43595777

DOB: 5/3/15 ■ BW: 90 ■ 205 Day Wt: 558 ■ REA Ratio/cwt: 1.28

DKF RO CASH FLOW 0245 ET (DLF,HYF,IEF)
 CRR ABOUT TIME 743 (CHB,SOD,DLF,HYF,IEF)
 JRR MISS TOBEY 711T (DLF,HYF,IEF)

THM DURANGO 4037 (CHB,SOD,DLF,HYF,IEF)
 CRR D03 CASSIE 206 (DLF,HYF,IEF)
 FELTONS OZZIE 492 (SOD,DLF,HYF,IEF)
 JRR RANDI 524R (DOD,DLF,HYF,IEF)
 SHF RIB EYE M326 R117 (CHB,SOD,DLF,HYF,IEF)
 MSU TCF RACHAEL 22S ET
 SM UPLoad 26 (CHB,DLF,HYF,IEF)
 WOODCREST DUCHESS 80L

AMAN 9050 WANITA 5Z (DLF,HYF,IEF)
 BOYD WORLDWIDE 9050 ET (CHB,DLF,HYF,IEF)
 AMAN 26T TRIXIE 258X

CE	BW	WW	YW	MM	M&G	MCE	SC	REA	MARB	CHB\$
1.4	4.5	59	94	29	59	1.4	1.0	.42	-.08	25

Fully pigmented, stout, correct made Cash Flow bull. Mama is a favorite young Worldwide daughter who perhaps has the best udder in the cow herd.



AMAN 0245 CASH FLOW 288C

■ P43595731

DOB: 5/6/15 ■ BW: 83 ■ 205 Day Wt: 588 ■ REA Ratio/cwt: 1.37

DKF RO CASH FLOW 0245 ET (DLF,HYF,IEF)
 CRR ABOUT TIME 743 (CHB,SOD,DLF,HYF,IEF)
 JRR MISS TOBEY 711T (DLF,HYF,IEF)

THM DURANGO 4037 (CHB,SOD,DLF,HYF,IEF)
 CRR D03 CASSIE 206 (DLF,HYF,IEF)
 FELTONS OZZIE 492 (SOD,DLF,HYF,IEF)
 JRR RANDI 524R (DOD,DLF,HYF,IEF)
 RRR MR FELT 3008 (CHB,SOD,DLF,HYF,IEF)
 KCF MISS 459 F284
 VCR EAST KODIAK 506E (SOD,DLF,HYF,IEF)
 TA-BAR-E-L-740C REBA 91F

OHR MATTIE 10M 59X
 KCF BENNETT 3008 M326 (CHB,SOD,DLF,HYF,IEF)
 OHR MATTIE 91F 10M (DOD)

CE	BW	WW	YW	MM	M&G	MCE	SC	REA	MARB	CHB\$
0.3	3.7	55	92	26	54	2.3	1.6	.53	-.02	25

Fully pigmented, powerful Cash Flow bull. WW ratio 103, YW ratio 107, REA ratio 112, marbling ratio 109.

COMING 2 YEAR OLD BULLS

AMAN 0245 CASH FLOW 298C

P43595680

DOB: 5/19/15 ■ BW: 74 ■ 205 Day Wt: 549 ■ REA Ratio/cwt: 1.41

DKF RO CASH FLOW 0245 ET (DLF,HYF,IEF)
 CRR ABOUT TIME 743 (CHB,SOD,DLF,HYF,IEF)
 JRR MISS TOBEY 711T (DLF,HYF,IEF)

THM DURANGO 4037 (CHB,SOD,DLF,HYF,IEF)
 CRR D03 CASSIE 206 (DLF,HYF,IEF)
 FELTONS OZZIE 492 (SOD,DLF,HYF,IEF)
 JRR RANDI 524R (DOD,DLF,HYF,IEF)
 DR WORLD CLASS 517 10H (SOD,DLF,HYF,IEF)
 WSF MISS ONLINE ESCADA 405 (DOD,DLF,HYF,IEF)
 OXH MARK DOMINO 8020 (SOD,DLF,IEF)
 GERBER 80X DIXIE 106Z

DCA 405S SUNSHINE 126W

HPH 10H SKYLAR 405S (CHB,DLF,HYF,IEF)
 LAGRAND DIXIE 112P ET (DOD)

CE	BW	WW	YW	MM	M&G	MCE	SC	REA	MARB	CHB\$
3.0	1.4	50	78	30	55	3.7	1.2	.50	-.09	21

Fully pigmented, calving ease Cash Flow bull. Mama has a WW ratio of 106.8 on 6 calves.

AMAN 267X JAZZ 302C

P43595665

DOB: 5/23/15 ■ BW: 79 ■ 205 Day Wt: 608 ■ REA Ratio/cwt: 1.13

AMAN 26T DISCO 267X (DLF,HYF,IEF)
 SM UPLOAD 26 (CHB,DLF,HYF,IEF)
 DCA PROSPECT PRINCESS 16T

LAGRAND RELOAD 80P ET (SOD,DLF,HYF,IEF)
 LAGRAND MISSY 73P ET
 LH PROSPECTOR 564 (CHB)
 DCA MISS WRANGLER 10R
 DR WORLD CLASS 517 10H (SOD,DLF,HYF,IEF)
 WSF MISS ONLINE ESCADA 405 (DOD,DLF,HYF,IEF)
 WOODCREST WRANGLER 115L (CHB,SOD)
 DCA COUNTRY GAL 221N

AMAN 405S SUNSHINE 147Y

HPH 10H SKYLAR 405S (CHB,DLF,HYF,IEF)
 DCA MISS WRANGLER 78S (DOD)

CE	BW	WW	YW	MM	M&G	MCE	SC	REA	MARB	CHB\$
0.3	3.3	57	88	21	50	1.8	0.7	.22	.12	26

Dark red, calving ease bull with one eye pigmented.

AMAN 3RD REVOLUTION 303C

P43595653

DOB: 5/25/15 ■ BW: 80 ■ 205 Day Wt: 526 ■ REA Ratio/cwt: 1.47

R 2ND REVOLUTION 4131 (CHB,DLF,HYF,IEF)
 MSU TCF REVOLUTION 4R (SOD,CHB,DLF,HYF,IEF)
 R MISS PUCKSTER 139 (DOD,DLF,HYF,IEF)

FELTONS LEGEND 242 (SOD,HYF)
 MSU TCF RACHAEL ET 54N (DLF,HYF,IEF)
 R PUCKSTER 2013 (SOD,DLF,HYF,IEF)
 R MISS FELT 337
 LAGRAND RELOAD 80P ET (SOD,DLF,HYF,IEF)
 LAGRAND MISSY 73P ET
 MOHICAN MITCH 247M
 WOODCREST MOLLY 57K

AMAN 26T RHETTA 171X

SM UPLOAD 26 (CHB,DLF,HYF,IEF)
 DCA MISS MITCHIE 167S

CE	BW	WW	YW	MM	M&G	MCE	SC	REA	MARB	CHB\$
2.1	2.6	52	85	22	48	2.1	0.7	.49	.11	25

Stout, correct, calving ease bull with one eye pigmented.

BLACK BALDY HEIFERS



This year we have 40 Black Baldy heifers in the sale offering.

These heifers are Angus/Hereford cross and were born in March and April, 2016.

We intend to pen them in four groups with 10 head in each pen according to weight.

You will bid on the entire pen. These heifers have excellent dispositions and were taken right out of our replacement pen.

AI SIRE



BOYD MASTERPIECE 0220 {CHB,DLF,HYF,IEF}

P43145081

DOB: 3/3/10

SHF RIB EYE M326 R117

KCF BENNETT 3008 M326 {CHB,SOD,DLF,HYF,IEF}
{CHB,SOD,DLF,HYF,IEF}
HVH MISS HUDSON 83K 8M

SSF P606 MS VICTOR 803

PW VICTOR BOOMER P606 {SOD,DLF,HYF,IEF}
{DLF,HYF,IEF}
MPH LADY COON EYES C330

RRH MR FELT 3008 {CHB,SOD,DLF,HYF,IEF}
KCF MISS 459 F284
MSU MF HUDSON 19H {SOD,CHB,DLF,HYF,IEF}
SUN VINDY MISS 83K
REMITALL BOOMER 46B {SOD,DLF,HYF,IEF}
PW VICTORIA 964 8114 {DLF,HYF,IEF}
DUNWALKE COON EYES 536E
MPH MS VICTRA F927

CE	BW	WW	YW	MM	M&G	MCE	SC	REA	MARB	CHB\$
-4.1	5.3	57	95	31	59	1.6	0.6	.52	.24	29

Masterpiece calves have plenty of eye pigment. We used him primarily on Cash Flow daughters to refine udders and add marbling. We have two top bulls sired by him.

AI SIRE



DKF RO CASH FLOW 0245 ET {DLF,HYF,IEF} ■ P43135190
 DOB: 4/2/10

CRR ABOUT TIME 743 {CHB,SOD,DLF,HYF,IEF} THM DURANGO 4037 {CHB,SOD,DLF,HYF,IEF} CS BOOMER 29F {SOD,DLF,HYF,IEF}

CRR D03 CASSIE 206 {DLF,HYF,IEF} THM 7085 VICTRA 9036 {DLF,HYF,IEF}

JRR MISS TOBEY 711T {DLF,HYF,IEF} SHF INTERSTATE 20X D03 {SOD,CHB,DLF,HYF,IEF}

FELTONS OZZIE 492 {SOD,DLF,HYF,IEF} CRR 475E CASSIE 838

JRR RANDI 524R {DOD,DLF,HYF,IEF} FELTONS DOMINO 774 {CHB,SOD,DLF,HYF,IEF}

FELTONS G11

RJH NEW DIMENSION K40 {SOD,CHB,HYF}

JRR MISS STARBUCK 13K

CE	BW	WW	YW	MM	M&G	MCE	SC	REA	MARB	CHBS
1.2	3.3	56	90	31	59	1.6	1.3	.58	-.27	21

His sons are our sale features. He has lots of rib shape and style and passes it on to his calves. He has sired many champions nationwide. One recent win was the Champion Polled Hereford heifer at the Junior National this summer. These fancy daughters are also making fabulous mamas as a Cash Flow daughter raised the Champion Horned Hereford heifer at the Junior National. She won many more shows including Supreme Champion at the SD State Fair over all breeds. He is deceased so we are only able to use him artificially now and semen is in very limited supply. We have 13 sons sired by him this year.

HERD SIRE



GOBLE OHR FULL TRUST 103A {DLF,HYF,IEF}

P43357679

DOB: 1/5/13

NJW 73S M326 TRUST 100W ET {CHB,DLF,HYF,IEF}
 KCF BENNETT 3008 M326 {CHB,SOD,DLF,HYF,IEF}
 NJW P606 72N DAYDREAM 73S {DLF,HYF,IEF}

RVP 122L ITS A WRAP ET 1107W
 REMITALL ONLINE 122L {CHB,SOD,DLF,HYF,IEF}
 MARJON 29F NAOMI ET 111N

RRH MR FELT 3008 {CHB,SOD,DLF,HYF,IEF}
 KCF MISS 459 F284
 PW VICTOR BOOMER P606 {SOD,DLF,HYF,IEF}
 NJW 94J DEW 72N {DLF,HYF,IEF}
 REMITALL EMBRACER 8E {SOD,HYF}
 REMITALL CATALINA 24H
 CS BOOMER 29F {SOD,DLF,HYF,IEF}
 WALPOLE DAWNE 8J

CE	BW	WW	YW	MM	M&G	MCE	SC	REA	MARB	CHB\$
0.3	4.0	68	120	29	62	6.3	1.2	.86	.18	39

103A really follows the type of Cash Flow--easy fleshing with lots of rib shape. His calves are top performers. We have 11 sons sired by him.

HERD SIRE



R 2ND REVOLUTION 4131 {CHB,DLF,HYF,IEF} ■ P43204187
 DOB: 3/12/11

MSU TCF REVOLUTION 4R

FELTONS LEGEND 242 {SOD,HYF}
 {SOD,CHB,DLF,HYF,IEF}
 MSU TCF RACHAEL ET 54N {DLF,HYF,IEF}

R MISS PUCKSTER 139

{DOD,DLF,HYF,IEF}
 R PUCKSTER 2013 {SOD,DLF,HYF,IEF}
 R MISS FELT 337

FELTONS DOMINO 774 {CHB,SOD,DLF,HYF,IEF}
 FELTONS G15
 REMITALL ONLINE 122L {CHB,SOD,DLF,HYF,IEF}
 HH MISS ADV 786G 1ET
 BAR JZ PUCKSTER 892H {SOD}
 R MISS PATEND 421
 SSS 9922 ENDURANCE 0102 {CHB}
 R MISS WRANGLER 94

CE	BW	WW	YW	MM	M&G	MCE	SC	REA	MARB	CHB\$
4.9	2.3	54	83	20	47	2.9	0.8	.48	-.03	25

He is very stout and well balanced and passes those traits on to his calves. Eight of his sons are in the offering.

HERD SIRE



BAR JZ TRUSTWORTHY 281A ET {DLF,HYF,IEF} ■ P43381605
 DOB: 3/19/13

NJW 73S M326 TRUST 100W ET {CHB,DLF,HYF,IEF}
 KCF BENNETT 3008 M326 {CHB,SOD,DLF,HYF,IEF}
 NJW P606 72N DAYDREAM 73S {DLF,HYF,IEF}

BAR JZ JULIE 118R {DOD,DLF,HYF,IEF}
 HARVIE LADIES MAN 4L {SOD}
 BAR JZ DEVOTION 442M {DOD}

RRH MR FELT 3008 {CHB,SOD,DLF,HYF,IEF}
 KCF MISS 459 F284
 PW VICTOR BOOMER P606 {SOD,DLF,HYF,IEF}
 NJW 94J DEW 72N {DLF,HYF,IEF}
 HARVIE HILLS 68H
 HARVIE MISS JULIE 9J
 BAR JZ DEVO 394K {SOD}
 BAR JZ MILESTONE 010K

CE	BW	WW	YW	MM	M&G	MCE	SC	REA	MARB	CHB\$
2.1	1.8	57	86	40	68	3.0	0.9	.63	.06	29

Trustworthy has fabulous udder and milk EPD's. We have 4 sons sired by him.

HERD SIRE



OHR TRUSTWORTHY 41R 52A {DLF,HYF,IEF}

■ P43441750

DOB: 2/21/13

NJW 73S M326 TRUST

KCF BENNETT 3008 M326 {CHB,SOD,DLF,HYF,IEF}

100W ET {CHB,DLF,HYF,IEF}

NJW P606 72N DAYDREAM 73S {DLF,HYF,IEF}

OHR NIKITA 88G 41R

VCR EAST KODIAK 506E {SOD,DLF,HYF,IEF}

SALUNGA GEORGIE GIRL

RRH MR FELT 3008 {CHB,SOD,DLF,HYF,IEF}

KCF MISS 459 F284

PW VICTOR BOOMER P606 {SOD,DLF,HYF,IEF}

NJW 94J DEW 72N {DLF,HYF,IEF}

WTK 55Y BOND 75A {SOD,DLF,HYF,IEF}

VCR MIS FLO JO 849X

WILL-VIA HEADLINE S133 {SOD}

CSSBRN RSHNG DL 306R 21C

CE	BW	WW	YW	MM	M&G	MCE	SC	REA	MARB	CHB\$
-1.0	3.4	51	98	29	54	3.9	1.4	.64	.14	27

This is the 3rd Trust 100W son we used and think it really helped have a uniform calf crop. 52A really follows the type of the other two Trust sons and we are looking forward to calving out the heifers this year to see how they do! Four sons are sired by 52A.

HERD SIRE



AMAN 26T DISCO 267X {DLF,HYF,IEF} ■ P43100245
 DOB: 5/14/10

SM UPLOAD 26 {CHB,DLF,HYF,IEF}

LAGRAND RELOAD 80P ET {SOD,DLF,HYF,IEF}
 LAGRAND MISSY 73P ET

DCA PROSPECT PRINCESS 16T

LH PROSPECTOR 564 {CHB}
 DCA MISS WRANGLER 10R

AA PRF WIDELOAD {SOD,DLF,HYF,IEF}
 TSF MS KEYNOTE 729
 KT TOP SECRET 1030 {CHB,SOD,DLF,HYF,IEF}
 OSU 19D MISSY 8501
 HUTH PROSPECTOR K085 {SOD,CHB,DLF,HYF,IEF}
 LH MS RENAE 0123
 WOODCREST WRANGLER 115L {CHB,SOD}
 DCA COUNTRY GAL 262M

CE	BW	WW	YW	MM	M&G	MCE	SC	REA	MARB	CHB\$
-1.4	3.5	58	101	22	51	0.1	0.9	.51	.16	28

A home raised Upload son who really adds length and style to his calves. Selling two sons. This was Disco's last calf crop, but we have a lot of really nice performing daughters from him in our herd.

HERD SIRE



BAR JZ JOHN WAYNE 258A {DLF,HYF,IEF} ■ P43381479
 DOB: 3/15/13

HYALITE ON TARGET 936 {CHB,DLF,HYF,IEF}
 SCHU-LAR ON TARGET 22S {SOD,CHB,DLF,HYF,IEF}
 HYALITE TS LASS 310 {DLF,HYF,IEF}

BAR JZ SCARLET 740U

BAR JZ REDEEMER 854N
 BAR JZ 5F LADY 637H

SCHU-LAR 5N OF 9L 3008 {CHB,SOD,DLF,HYF,IEF}
 SCHU-LAR 208 OF 1H 121 ET {DOD}
 KT TOP SECRET 1030 {CHB,SOD,DLF,HYF,IEF}
 HYALITE 215F LASS 812 {DOD}
 REMITALL EMBRACER 8E {SOD,HYF}
 BAR JZ SCARLET 481G
 MSU WNH FELTON 5F
 BAR JZ 434 LADY 364F

CE	BW	WW	YW	MM	M&G	MCE	SC	REA	MARB	CHBS
3.9	1.9	53	84	26	53	3.3	1.4	.32	.08	26

John Wayne was purchased to use on heifers and is still being used on heifers. He sired four sons that should be calving ease bulls but still have performance.

HERD SIRE



JLCS OHR 1230 ATLAS 4R A8 {DLF,HYF,IEF} ■ P43410337
 DOB: 2/4/13

MSU TCF REVOLUTION 4R

FELTONS LEGEND 242 (SOD,HYF)
(SOD,CHB,DLF,HYF,IEF)
 MSU TCF RACHAEL ET 54N (DLF,HYF,IEF)

THM 8703 BEAUTY 1230

THM STOUT 8703 ET (DLF,IEF)
 JJD BEAUTY 8050

FELTONS DOMINO 774 (CHB,SOD,DLF,HYF,IEF)
 FELTONS G15
 REMITALL ONLINE 122L (CHB,SOD,DLF,HYF,IEF)
 HH MISS ADV 786G 1ET
 STAR BRIGHT FUTURE 533P ET (DLF,HYF,IEF)
 THM 7085 VICTRA 9036 (DLF,HYF,IEF)
 PW MOHICAN NASDAQ P316 (SOD,CHB,DLF,HYF,IEF)
 JJD 217 SOUTHERN BEAUTY 902 232

CE	BW	WW	YW	MM	M&G	MCE	SC	REA	MARB	CHB\$
5.9	-1.1	44	75	20	42	2.4	0.5	.57	.15	24

Atlas was the high selling bull in Olson's 2015 sale. He is another Revolution son and follows type quite a bit with 4131. He has been used completely on heifers and is consistent with calving ease. We have two bulls sired by him and they should both be calving ease sires.

Hillsview Welding

Andrew Aman Hosmer, SD

(605) 228-0629



facebook.com/hillsviewwelding



Bale Feeder



24' Free Standing Panel
Optional 16' gate



24' Bottomless Bunk



ATV Cattle Guard Ramp



26' Guard Rail Windbreak



24' Super Steel Windbreak

Continuous Fence Available. 20' 6 bar
Installation Available

Contact us to see what we can do for you!

Hillview Farms

32824 119th St.

Eureka, SD 57437

