

Eureka, SD

Hillview Farms

Private Treaty Bull Sale
Silent Auction and Open House

February 15, 2020

Lunch at noon • Bids close at 2PM

at the FARM

**Selling: 34 Coming 2-year-old
Polled Hereford Bulls**



**Featuring
sons of:**

**Goble OHR
Full Trust 103A**



and

**Sleepy
Hometown
456ET**

WELCOME

We have been selling bulls at Hillsview Farms privately for 29 years now. This is our 8th year to have an open house with a set time to introduce bids. We want everyone to have the opportunity to view all the bulls. They will be available for viewing in January.

We have once again been recognized by the American Hereford Association as a top producer of "Dams of Distinction" in the United States. This was the 4th year for us to be among the top 20 producers. For cows to achieve this award, they must calve within 30 months of age, maintain a calving interval of 370 days, and have had at least 3 calves with at least a 105 WW ratio.



The sale bulls will all have complete records available including performance reports and EPD's. This set of bulls was weaned the end of October last year and had no creep feed. The bulls spent the summer and fall on grass with no supplements other than trace mineral blocks. They were raised on a high roughage diet and grown up slowly. We brought them home the end of November and started feeding them silage. The poorer performers were culled at that time. We like the moderate frame cattle that are easy fleshing with lots of rib shape and muscle. We want them to be able to maintain themselves on grass.

The Hereford bull is still a tremendous cross on those black cows. If you haven't used Hereford bulls on black cows yet, now is the time to start. You won't be disappointed. The heterosis and hybrid vigor will give you more pounds and better feed efficiency. The great disposition of those feedlot calves and replacement heifers is definitely another positive!

Please join us for lunch on February 15, 2020. View the cattle and I hope you are as impressed as we have been. We are looking forward to seeing you! Thank you for your interest.

For more information contact:

Hillsview Farms

Darwin and Cindy Aman
Andrew — Alex
Sam and Audra Aman
32824 119th St., Eureka, SD 57437

www.hillsviewherefords.com

*Check out videos of bulls

605-284-2721
Cindy Cell: 605-377-3441
Darwin cell: 605-377-3459
Andrew Cell: 605-228-0629
Sam Cell: 605-377-3460
dcaman@valleytel.net

Hillsvview Farms

PRIVATE TREATY SALE

8th Annual Silent Auction and Open House

February 15, 2020

Join us for lunch at noon. Final bids close at 2PM

At the Farm, Eureka, SD

Located 7 miles South of Eureka on Hwy 47,
1.1 miles East on Hillsvview Road (119th St.)

Or

15 miles north of Bowdle on Hwy 47,
1.1 miles East on Hillsvview Road (119th St.)

SELLING

34 Coming 2-year-old Polled Hereford Bulls

GENERAL INFORMATION

Term and Conditions: Terms of the sale are cash. All cattle are the buyer's property as soon as sold and will be taken care of for a reasonable length of time at the buyer's risk. Neither the owners nor any person connected with this sale, assume any liability, legal or otherwise.

Guarantee: Every animal is to the best of our knowledge, free from any disease or defect. All bulls are guaranteed to be breeders. If a bull proves to be a non-breeder, either a bull of comparable rank will be substituted or money refunded or credit will be given in a future sale.

Health: Health of the herd is excellent. All cattle are under a full vaccination program and poured with Dectomax. All bulls will be fertility tested prior to February 15. Health papers will be furnished as needed and trich testing will be done if needed.

Sale Format: The cattle will be sold by silent auction for the opening day. This allows everybody the opportunity to view all the cattle before any are purchased. The cattle will be ready for viewing by mid January and bids may be left during that time. Each bull will have a base price with bids increasing by \$250 increments. As of 2 PM February 15, bids will be final. People still actively bidding at 2 PM, will take place in a bid off if necessary to finish the bidding as quickly after 2 PM as possible. Any cattle available after that time will be sold at their base price.

Discounts: We will still be offering our generous discounts on the bulls. You will receive \$100 off each bull you haul home yourself. In addition, we have volume discounts. If you purchase 2 bulls, you receive \$50 off each bull. If you purchase 3 or more bulls, you receive \$100 off each bull. To receive these discounts bulls must leave the premises within 10 days.

Check out videos of bulls at www.hillsvviewherefords.com

TRAIT DEFINITIONS

The American Hereford Association (AHA) currently produces expected progeny differences (EPDs) for 17 traits and calculates three profit (\$) indexes.

CALVING EASE DIRECT (CE) – CE EPD is based on calving ease scores and birth weights and is measured on a percentage. CE EPD indicates the influence of the sire on calving ease in females calving at 2 years of age. For example, if sire A has a CE EPD of 6 and sire B has a CE EPD of -2, then you would expect on average if comparably mated, sire A's calves would be born with an 8% more likely chance of being unassisted when compared to sire B's calves.

BIRTH WEIGHT (BW) – BW EPD is an indicator trait for calving ease and is measured in pounds. For example, if sire A has a BW EPD of 3.6 and sire B has a BW EPD of 0.6, then you would expect on average if comparably mated, sire A's calves would come 3 lb. heavier at birth when compared to sire B's calves. Larger BW EPDs usually, but not always, indicate more calving difficulty. The figure in parentheses found after each EPD is an accuracy value or reliability of the EPD.

WEANING WEIGHT (WW) – WW EPD is an estimate of pre-weaning growth that is measured in pounds. For example, if sire A has a WW EPD of 60 and sire B has a WW EPD of 40, then you would expect on average if comparably mated, sire A's calves would weigh 20 lb. heavier at weaning when compared to sire B's calves.

YEARLING WEIGHT (YW) – YW EPD is an estimate of post-weaning growth that is measured in pounds. For example, if sire A has a YW EPD of 100 and sire B has a YW EPD of 70, then you would expect on average if comparably mated, sire A's calves would weigh 30 lb. heavier at a year of age when compared to sire B's calves.

MATERNAL MILK (MM) – The milking ability of a sire's daughters is expressed in pounds of calf weaned. It predicts the difference in average weaning weights of sires' daughters' progeny due to milking ability. Daughters of the sire with a +14 MM EPD should produce progeny with 205-day weights averaging 24 lb. more (as a result of greater milk production) than daughters of a bull with a MM EPD of -10 lb. (14 minus -10.0 = 24 lb.). This difference in weaning weight is due to total milk production during the entire lactation.

MATERNAL MILK & GROWTH (M&G) – Maternal Milk & Growth reflects what the sire is expected to transmit to his daughters for a combination of growth genetics through weaning and genetics for milking ability. It is an estimate of daughters' progeny weaning weight. A bull with a 29 lb. M&G EPD should sire daughters with progeny weaning weights averaging 19 lb. heavier than progeny of a bull's daughters with a M&G EPD of 10 lb. (29 minus 10 = 19 lb.). It is equal to one-half the sire's weaning weight EPD, plus all of his MM EPD. No accuracy is associated with this since it is simply a mathematical combination of two other EPDs. It is sometimes referred to as "total maternal" or "combined maternal."

MATERNAL CALVING EASE (MCE) – MCE EPD predicts how easily a sire's daughters will calve at 2 years of age and is measured on a percentage. For example, if sire A has a MCE EPD of 7 and sire B has a CE EPD of -3, then you would expect on average if comparably mated, sire A's daughters would calve with a 10% more likely chance of being unassisted when compared to sire B's daughters.

MATURE COW WEIGHT (MCW) – The MCW EPD was designed to help breeders select sires that will either increase or decrease mature size of cows in the herd. The trait was developed after years of cow weight data collection and the EPD relates directly to the maintenance requirements of a cow herd. An example of how the MCW EPD allows breeders to compare sires: If sire A has a MCW EPD of 100 and sire B has an EPD of 85, then you would expect the females of sire A, if mated to similar cows, to be 15 lb. heavier at mature size.

UDDER SUSPENSION (UDDR) – Scores range from 9 (very tight) to 1 (very pendulous) and represent assessments of udder support. Weak udder suspension results in pendulous udders that make it difficult for a calf to nurse. Weak suspension in the udder indicates a lack of support in the ligament that ties the udder to the cow's body wall. Over time, weakness in this ligament will allow the udder to hang down too far from the body and may subject the udder to serious problems and increased potential for injury. UDDR EPDs are reported on the scoring scale. Differences in sire EPDs predict the difference expected in the sires' daughters' udder characteristics when managed in the same environment. For example, if sire A has a UDDR EPD of 0.4, and sire B has a UDDR EPD of -0.1, the difference in the values is 0.5, or one-half of a score. If daughters of sires A and B are raised and managed in the same environment, you would expect half a score better udder suspension in daughters of sire A, compared to sire B.

TEAT SIZE (TEAT) – Scores range from 9 (very small) to 1 (very large, balloon shaped) and are subjective assessments of the teat length and circumference. Oversized teats are difficult for newborn calves to nurse, and the calf may not receive adequate colostrum. This could lead to a higher incidence of scours or decreased immunity levels in the newborn calf. TEAT EPDs are reported on the scoring scale. Differences in sire EPDs predict the difference expected in the sires' daughters' udder characteristics when managed in the same environment. For example, if sire A has a teat size EPD of 0.4, and sire B has a teat size EPD of -0.1, the difference in the values is 0.5, or one-half of a score. If daughters of sires A and B are raised and managed in the same environment, you would expect half a score smaller teat size in daughters of sire A, compared to sire B.

SCROTAL CIRCUMFERENCE (SC) – Measured in centimeters and adjusted to 365 days of age, SC EPD is the best estimate of fertility. It is related to the bull's own semen quantity and quality, and is also associated with age at puberty of sons and daughters. Larger SC EPDs suggest younger age at puberty. Yearling sons of a sire with a .7 SC EPD should have yearling scrotal circumference measurements that average 0.7 centimeters (cm) larger than progeny by a bull with an EPD of 0.0 cm. In the Hereford genetic analysis, a multiple-trait model was used for scrotal circumference. Weaning weight was used as a predictor variable to increase the prediction accuracy of SC EPDs. Therefore, an animal with a weaning weight EPD should also have a SC EPD.

SUSTAINED COW FERTILITY (SCF) – The AHA’s new Sustained Cow Fertility EPD (SCF) is a prediction of a cow’s ability to continue to calve from three years of age through twelve years of age, given she calved as a two-year-old. The EPD is expressed as a deviation in the proportion of the ten-possible calving’s to twelve years old expressed as a probability. For example, the daughters of a bull with a 30 EPD would have the genetic potential to have one more calf by age twelve than the daughters from a bull with a 20 EPD. In other words, the daughters from the 30 EPD bull would have a 10% greater probability of having one more calf than the bull with a 20 EPD. This is equivalent to saying that the daughters are 10% more likely to remain in the herd to age 12.

DRY MATTER INTAKE (DMI) – The Dry Matter Intake EPD predicts the daily consumption of pounds of feed. For example, if sire A has a DMI EPD of 1.1 and sire B has a DMI EPD of 0.1, you would expect sire B’s progeny, if comparably mated, to consume on average 1 pound of feed less per day.

CARCASS WEIGHT (CW) – Carcass weight is a beneficial trait when considering the impact that pounds have relative to end product value. At the same age constant endpoint, sires with higher values for carcass weight will add more pounds of hot carcass weight compared to sires with lower values for carcass weight. For example, if sire A has a CW EPD of 84 and sire B has a CW EPD 64, then you would expect the progeny of sire A, if harvested at the same age constant endpoint, to have a 20-lb. advantage in terms of hot carcass weight.

RIB FAT (FAT) – The FAT EPD reflects differences in adjusted 365-day, 12th-rib fat thickness based on carcass measurements of harvested cattle. Sires with low, or negative FAT EPDs are expected to produce leaner progeny than sires with higher EPDs. Ultrasound measures are also incorporated into this trait and have been shown to be highly correlated with the performance of slaughter progeny. All data is expressed on a carcass scale.

RIBEYE AREA (REA) – REA EPDs reflect differences in an adjusted 365-day ribeye area measurement based on carcass measurements of harvested cattle. Sires with relatively higher REA EPDs are expected to produce better-muscled and higher percentage yielding slaughter progeny than will sires with lower REA EPDs. Ultrasound measurements are also incorporated into this trait and have been shown to be highly correlated with the performance of slaughter progeny. All data is expressed on a carcass scale.

MARBLING (MARB) – MARB EPDs reflect differences in an adjusted 365-day marbling score (intramuscular fat, [IMF]) based on carcass measurements of harvested cattle. Breeding cattle with higher MARB EPDs should produce slaughter progeny with a higher degree of IMF and therefore higher quality grades. Ultrasound measurements are also incorporated into this trait and have been shown to be highly correlated with the performance of slaughter progeny. All data is expressed on a carcass scale.

BALDY MATERNAL INDEX (BMSI) – The Baldy Maternal Index is a maternally focused index that is based on a production system that uses Hereford x Angus cross cows. Progeny of these cows are directed towards Certified Hereford Beef. This index has significant weight on Sustained Cow Fertility, which predicts fertility and longevity of females. There is a slightly positive weight on Weaning Weight, Mature Cow Weight and Milk which accounts for enough growth but ensures females do not increase inputs. There is some negative emphasis on Dry Matter Intake, but a positive weighting on Carcass Weight which is anticipated to provide profitability from finishing of non-replacement females and castrated males. Marbling and Rib-eye Area are also positively weighted to keep the harvested progeny successful for CHB. This index is geared to identify Hereford bulls that will be profitable when used in a rotational cross with mature commercial Angus cows.

BRAHMAN INFLUENCE INDEX (BIIS) – The Brahman Influence Index is a maternally focused index that is based on a production system that uses Brahman x Hereford cross cows. Progeny of these cows are directed towards a commodity beef market since Certified Hereford Beef does not accept Brahman influenced cattle. This index has significant weight on Sustained Cow Fertility, which predicts fertility and longevity of females. There is a slightly positive weight on Weaning Weight, Mature Cow Weight and Milk which accounts for enough growth but ensures females do not increase inputs. There is some negative emphasis on Dry Matter Intake, but a positive weighting on Carcass Weight which is anticipated to provide profitability in finishing non-replacement females and castrated males. Marbling and Rib-eye Area are also positively weighted to keep harvested progeny successful for a variety of commodity based programs. This index targets producers that use Hereford bulls on Brahman influenced cows.

CERTIFIED HEREFORD BEEF INDEX (CHBS) – The Certified Hereford Beef Index is a terminal sire index that is built on a production system where Hereford bulls are mated to mature commercial Angus cows and all progeny will be targeted for Certified Hereford Beef after the finishing phase. This index has significant weight on Carcass Weight to ensure profit on the rail. As well there is a positive weighting for Average Daily Gain along with a negative weighting on Dry Matter Intake to ensure efficient pounds of growth in the finishing phase. Keep in mind, this production system takes advantage of complimentary breeding with the commercial Angus cow. Although Marbling is weighted positively in this index, a positive weighting for Rib-eye Area and a negative weighting for Back Fat are a greater priority in this index to allow for optimum end-product merit. This is the only index that has no emphasis on fertility. Remember that no replacement heifers are being retained.

Breed Avg. EPDs for 2018 Born Calves

CE	BW	WW	YW	DMI	SC	SCF	MM	M&G	MCE
2.3	3.0	51	83	0.2	0.9	14.8	23	49	1.8
MCW	UDDR	TEAT	CW	FAT	REA	MARB	BMSI	BIIS	CHBS
88	1.22	1.22	64	.011	.36	.08	320	385	99

epd’s
current as
of 12/23/19.

COMING 2-YEAR-OLD BULLS

AMAN B261 SUMMIT 4F

P43935411

DOB: 2/27/18 BW: 80 205 Day Wt: 674

KCF BENNETT INFLUENCE Z80

CHB,DLF,HYF,IEF

KCF BENNETT SUMMIT B261 ET

CHB,DLF,HYF,IEF,MSUDF

KCF MISS 3027 Z44 ET

DLF,HYF,IEF,MSUDF

OHR HOMEFRONT 1K 51B ET

DLF,HYF,IEF

AMAN 51B HOLLY 14D

AMAN 26T TRIXIE 271A

KCF BENNETT REVOLUTION X51

CHB,SOD,DLF,HYF,IEF

KCF MISS M326 R52

SOD,DLF,HYF,IEF,MSUDF

KCF MISS DURANGO X72

DLF,HYF,IEF

NJW 735 W18 HOMETOWN 10Y ET

SOD,CHB,DLF,HYF,IEF,MSUDF

ANL 60D BANNER GIRL 1K

DLF,HYF,IEF

SM UPLOAD 26

SOD,DLF,HYF,IEF

AMAN 405S SUNSHINE 151X

DOD

CE	BW	WW	YW	SC	MM	M&G	MCE	UDDR	TEAT	REA	MARB	CHBS
4.9	3.1	62	86	1.0	24	55	3.8	1.20	1.20	.61	.31	117

Polled • Eye Pigment: RE 0% / LE 0%



AMAN 103A TRUST 45F

P43936200

DOB: 3/16/18 BW: 94 205 Day Wt: 647

GOBLE OHR FULL TRUST 103A

DLF,HYF,IEF

NJW 735 M326 TRUST 100W ET

SOD,CHB,DLF,HYF,IEF,MSUDF

RVP 122L ITS A WRAP ET 1107W

DKF RO CASH FLOW 0245 ET

SOD,DLF,HYF,IEF

AMAN 0245 CASSIE 81Z

DOD

DCA LANDLADY 131S

DOD

KCF BENNETT 3008 M326

SOD,DLF,HYF,IEF

NJW P606 72N DAYDREAM 73S

DLF,HYF,IEF,MSUDF

REMITALL ONLINE 122L

CHB,SOD,DLF,HYF,IEF

MARJON 29F NAOMI ET 111N

CRR ABOUT TIME 743

SOD,DLF,HYF,IEF

JRR MISS TOBEY 711T

DLF,HYF,IEF

HH LANDLORD 397P

DCA MS HITTER 253N

CE	BW	WW	YW	SC	MM	M&G	MCE	UDDR	TEAT	REA	MARB	CHBS
-1.2	4.2	63	109	1.2	32	63	2.0	1.20	1.20	.56	.04	116

Polled • Eye Pigment: RE 100% / LE 100%

COMING 2-YEAR-OLD BULLS

AMAN 52A TRUST 47F ■ P43936217

DOB: 3/16/18 ■ BW: 80 ■ 205 Day Wt: 518

NJW 735 M326 TRUST 100W ET SOD,CHB,DLF,HYF,IEF,MSUDF
OHR TRUSTWORTHY 41R 52A DLF,HYF,IEF
 OHR NIKITA 88G 41R

ADA 4055 BIG SKY 269Y DLF,HYF,IEF
AMAN 269Y BELLA 297A
 BAR JZ ISABELLA 064X

KCF BENNETT 3008 M326 SOD,DLF,HYF,IEF
 NJW P606 72N DAYDREAM 735 DLF,HYF,IEF,MSUDF
 VCR EAST KODIAK 506E SOD,DLF,HYF,IEF
 SALUNGA GEORGIE GIRL
 HPH 10H SKYLAR 4055 SOD,DLF,HYF,IEF
 LAGRAN TRISH 17T
 BAR JZ LEGENDARY 819T DLF,IEF
 BAR JZ RENE 719U

CE	BW	WW	YW	SC	MM	M&G	MCE	UDDR	TEAT	REA	MARB	CHBS
4.6	2.5	53	94	1.0	22	48	6.1	1.20	1.20	.43	.08	110

Polled • Eye Pigment: RE 100% / LE 100%



AMAN 52A TRUST 107F ■ P43936288

DOB: 3/23/18 ■ BW: 88 ■ 205 Day Wt: 615

NJW 735 M326 TRUST 100W ET SOD,CHB,DLF,HYF,IEF,MSUDF
OHR TRUSTWORTHY 41R 52A DLF,HYF,IEF
 OHR NIKITA 88G 41R

R 2ND REVOLUTION 4131 DLF,HYF,IEF
AMAN 4131 REVA 17C
 AMAN 405T TARA 133X

KCF BENNETT 3008 M326 SOD,DLF,HYF,IEF
 NJW P606 72N DAYDREAM 735 DLF,HYF,IEF,MSUDF
 VCR EAST KODIAK 506E SOD,DLF,HYF,IEF
 SALUNGA GEORGIE GIRL
 MSU TCF REVOLUTION 4R SOD,CHB,DLF,HYF,IEF
 R MISS PUCKSTER 139 DOD,DLF,HYF,IEF
 HPH 36N TAGE 405T SOD
 DCA COUNTRY GAL 262M

CE	BW	WW	YW	SC	MM	M&G	MCE	UDDR	TEAT	REA	MARB	CHBS
0.9	4.4	63	109	0.9	22	53	5.4	1.20	1.20	.45	.00	105

Polled • Eye Pigment: RE 100% / LE 100%

COMING 2-YEAR-OLD BULLS

AMAN 1521 RED BARON 117F

DOB: 3/25/18 BW: 80 205 Day Wt: 510

P43936295

VIN-MAR TCC BPF RED BARON 338 DLF,HYF,IEF
TTFL 906 338 RED BARON 1521 DLF,HYF,IEF,MSUDF
 TTFL ERICA'S RED OBSIDIAN 906

DKF RO CASH FLOW 0245 ET SOD,DLF,HYF,IEF
AMAN 0245 CASSIE 119Z DOD
 DCA 4055 NELLY 214U

K&B BARON 0183X DLF,HYF,IEF
 VIN-MAR NANCY 810 DLF,HYF,IEF
 TCW RED OBSIDIAN M326 412R SOD
 CKP ERICA 0719
 CRR ABOUT TIME 743 SOD,DLF,HYF,IEF
 JRR MISS TOBEY 711T DLF,HYF,IEF
 HPH 10H SKYLAR 405S SOD,DLF,HYF,IEF
 DH BASIC NELL 726

CE	BW	WW	YW	SC	MM	M&G	MCE	UDDR	TEAT	REA	MARB	CHBS
4.7	1.9	52	82	1.4	25	51	6.5	1.00	1.00	.42	.07	109

Polled • Eye Pigment: RE 0% / LE 100%



AMAN 456 HOMETOWN 126F

DOB: 3/28/18 BW: 87 205 Day Wt: 579

P43936299

NJW 73S W18 HOMETOWN 10Y ET SOD,CHB,DLF,HYF,IEF,MSUDF
SLEEPY HOMETOWN 456ET DLF,HYF,IEF,MSUDF
 LCX UNLEASHED KEEPSAKE 1111 ET DLF,HYF,IEF

SHF RIB EYE M326 R117 SOD,DLF,HYF,IEF
OHR VINDI 116G 52X
 MOHICAN VINDI 116G DOD

SHF WONDER M326 W18 ET CHB,DLF,HYF,IEF
 NJW P606 72N DAYDREAM 73S DLF,HYF,IEF,MSUDF
 TRIARA UNLEASHED 893U
 LCX NEON KEEPSAKE 902 ET
 KCF BENNETT 3008 M326 SOD,DLF,HYF,IEF
 HVH MISS HUDSON 83K 8M
 MOHICAN DAYTA 1ET
 MOHICAN VINDI M78C

CE	BW	WW	YW	SC	MM	M&G	MCE	UDDR	TEAT	REA	MARB	CHBS
3.0	4.0	59	93	1.0	23	52	-1.0	1.30	1.30	.50	.10	109

Polled • Eye Pigment: RE 100% / LE 50%

COMING 2-YEAR-OLD BULLS

AMAN 103A TRUST 134F

P43936308

DOB: 3/25/18 BW: 79 205 Day Wt: 538

NJW 73S M326 TRUST 100W ET SOD,CHB,DLF,HYF,IEF,MSUDF
GOBLE OHR FULL TRUST 103A DLF,HYF,IEF
 RVP 122L ITS A WRAP ET 1107W

NJW 4037 80L DURANGO 84U DLF,HYF,IEF
BAR JZ DULCIE 549Y
 BAR JZ FIRESTORM 653U

KCF BENNETT 3008 M326 SOD,DLF,HYF,IEF
 NJW P606 72N DAYDREAM 73S DLF,HYF,IEF,MSUDF
 REMITALL ONLINE 122L CHB,SOD,DLF,HYF,IEF
 MARJON 29F NAOMI ET 111N
 THM DURANGO 4037 SOD,DLF,HYF,IEF
 NJW 12E PRAIRIE 80L DLF,HYF,IEF
 BAR JZ CROSSFIRE 593S SOD
 BAR JZ BANKER BABE 426S

CE	BW	WW	YW	SC	MM	M&G	MCE	UDDR	TEAT	REA	MARB	CHBS
0.6	3.3	58	92	0.7	25	54	3.2	1.30	1.40	.38	.07	102

Polled • Eye Pigment: RE 75% / LE 100%



AMAN 103A TRUST 138F

P43936314

DOB: 3/27/18 BW: 85 205 Day Wt: 559

NJW 73S M326 TRUST 100W ET SOD,CHB,DLF,HYF,IEF,MSUDF
GOBLE OHR FULL TRUST 103A DLF,HYF,IEF
 RVP 122L ITS A WRAP ET 1107W

DKF RO CASH FLOW 0245 ET SOD,DLF,HYF,IEF
AMAN 0245 CASSIE 161C
 DCA WRANGLER GAL 214S DOD

KCF BENNETT 3008 M326 SOD,DLF,HYF,IEF
 NJW P606 72N DAYDREAM 73S DLF,HYF,IEF,MSUDF
 REMITALL ONLINE 122L CHB,SOD,DLF,HYF,IEF
 MARJON 29F NAOMI ET 111N
 CRR ABOUT TIME 743 SOD,DLF,HYF,IEF
 JRR MISS TOBEY 711T DLF,HYF,IEF
 WOODCREST WRANGLER 115L SOD
 DCA MS STOCKMAN 105F DOD

CE	BW	WW	YW	SC	MM	M&G	MCE	UDDR	TEAT	REA	MARB	CHBS
2.0	2.6	55	87	1.1	30	58	4.3	1.20	1.20	.52	.04	114

Polled • Eye Pigment: RE 100% / LE 100%

COMING 2-YEAR-OLD BULLS



AMAN 281A TRUST 142F

P43936319

DOB: 3/27/18 ■ BW: 81 ■ 205 Day Wt: 656

NJW 73S M326 TRUST 100W ET SOD,CHB,DLF,HYF,IEF,MSUDF
BAR JZ TRUSTWORTHY 281A ET DLF,HYF,IEF
 BAR JZ JULIE 118R DOD,DLF,HYF,IEF

LH RIBEYE 933
AMAN 933 REBA 220Y DOD
 LAGRAND RANGERETTE D10 307R ET

KCF BENNETT 3008 M326 SOD,DLF,HYF,IEF
 NJW P606 72N DAYDREAM 73S DLF,HYF,IEF,MSUDF
 HARVIE LADIES MAN 4L SOD
 BAR JZ DEVOTION 442M DOD
 SHF RIB EYE M326 R117 SOD,DLF,HYF,IEF
 LH MS HEMAN 135
 MC RANGER 9615 SOD,CHB,DLF,HYF,IEF
 GK EXULTATION D10

CE	BW	WW	YW	SC	MM	M&G	MCE	UDDR	TEAT	REA	MARB	CHBS
5.6	2.6	62	102	1.2	23	54	4.5	1.10	1.20	.47	.08	110

Polled • Eye Pigment: RE 100% / LE 100%

COMING 2-YEAR-OLD BULLS



AMAN 456 HOMETOWN 144F

P43936321

DOB: 3/28/18 BW: 91 205 Day Wt: 639

NJW 73S W18 HOMETOWN 10Y ET SOD,CHB,DLF,HYF,IEF,MSUDF
SLEEPY HOMETOWN 456ET DLF,HYF,IEF,MSUDF
 LCX UNLEASHED KEEPSAKE 1111 ET DLF,HYF,IEF

DKF RO CASH FLOW 0245 ET SOD,DLF,HYF,IEF
AMAN 0245 CASSIE 83A
 AMAN 26T TRIxie 166X DOD

SHF WONDER M326 W18 ET CHB,DLF,HYF,IEF
 NJW P606 72N DAYDREAM 73S DLF,HYF,IEF,MSUDF
 TRIARA UNLEASHED 893U
 LCX NEON KEEPSAKE 902 ET
 CRR ABOUT TIME 743 SOD,DLF,HYF,IEF
 JRR MISS TOBEY 711T DLF,HYF,IEF
 SM UPLOAD 26 SOD,DLF,HYF,IEF
 BIG 9150 MILLIE 1L

CE	BW	WW	YW	SC	MM	M&G	MCE	UDDR	TEAT	REA	MARB	CHBS
-3.0	4.7	63	102	1.1	32	63	-2.2	1.30	1.30	.59	-.03	113

Polled • Eye Pigment: RE 100% / LE 100%

COMING 2-YEAR-OLD BULLS



AMAN 52A TRUST 154F

P43936334

DOB: 3/29/18 ■ BW: 82 ■ 205 Day Wt: 536

NJW 73S M326 TRUST 100W ET SOD,CHB,DLF,HYF,IEF,MSUDF
OHR TRUSTWORTHY 41R 52A DLF,HYF,IEF
 OHR NIKITA 88G 41R

AMAN 26T DISCO 267X DLF,HYF,IEF
AMAN 267X DINAH 110C
 DCA 397P LANDLADY 42U

KCF BENNETT 3008 M326 SOD,DLF,HYF,IEF
 NJW P606 72N DAYDREAM 73S DLF,HYF,IEF,MSUDF
 VCR EAST KODIAK 506E SOD,DLF,HYF,IEF
 SALUNGA GEORGIE GIRL
 SM UPLOAD 26 SOD,DLF,HYF,IEF
 DCA PROSPECT PRINCESS 16T
 HH LANDLORD 397P
 DCA MISS ROCKETTE 198R

CE	BW	WW	YW	SC	MM	M&G	MCE	UDDR	TEAT	REA	MARB	CHBS
-0.1	4.3	54	98	1.0	19	46	3.3	1.30	1.30	.43	-.01	108

Polled • Eye Pigment: RE 100% / LE 100%

COMING 2-YEAR-OLD BULLS



AMAN 1521 RED BARON 159F

DOB: 3/30/18 ■ BW: 87 ■ 205 Day Wt: 583

■ P43936345

TTFL 906 338 RED BARON 1521 DLF,HYF,IEF,MSUDF

VIN-MAR TCC BPF RED BARON 338 DLF,HYF,IEF

TTFL ERICA'S RED OBSIDIAN 906

ADA 325 HONEY BEA 7X

RANGELINE M326 BUZZ 325 SOD

DCA 10H CLASSY DELLA 1U

K&B BARON 0183X DLF,HYF,IEF

VIN-MAR NANCY 810 DLF,HYF,IEF

TCW RED OBSIDIAN M326 412R SOD

CKP ERICA 0719

KCF BENNETT 3008 M326 SOD,DLF,HYF,IEF

RANGELINE 11Y JOY 20K

DR WORLD CLASS 517 10H SOD,DLF,HYF,IEF

LAGRAND ADELA 66S

CE	BW	WW	YW	SC	MM	M&G	MCE	UDDR	TEAT	REA	MARB	CHBS
4.0	3.2	58	92	1.5	20	50	4.9	1.30	1.30	.38	.19	108

Polled • Eye Pigment: RE 100% / LE 100%

COMING 2-YEAR-OLD BULLS

AMAN 5113 LEGO 172F ■ P43936431

DOB: 4/1/18 ■ BW: 81 ■ 205 Day Wt: 587

CKP LEGO 5113 DLF,HYF,IEF,MSUDF

H WR LEGO 3076 ET DLF,HYF,IEF

CKP NANCY JT 1013 DOD

OHR MATTIE 10M 59X

KCF BENNETT 3008 M326 SOD,DLF,HYF,IEF

OHR MATTIE 91F 10M DOD

WLB LEGO 83T 90X DLF,HYF,IEF
K&B RED LADY 8045U DLF,HYF,IEF,MSUDF
CKP JUSTIN TIME 0933 DLF,HYF,IEF
CKP KH NANCY K 0217 DOD
RRH MR FELT 3008 CHB,SOD,DLF,HYF,IEF
KCF MISS 459 F284
VCR EAST KODIAK 506E SOD,DLF,HYF,IEF
TA-BAR-E-L-740C REBA 91F

CE	BW	WW	YW	SC	MM	M&G	MCE	UDDR	TEAT	REA	MARB	CHBS
6.4	2.9	61	89	1.4	21	51	4.9	1.20	1.10	.48	.09	105

Polled • Eye Pigment: RE 100% / LE 100%

AMAN 52A TRUST 175F ■ P43936434

DOB: 4/2/18 ■ BW: 86 ■ 205 Day Wt: 573

OHR TRUSTWORTHY 41R 52A DLF,HYF,IEF

NJW 73S M326 TRUST 100W ET SOD,CHB,DLF,HYF,IEF,MSUDF

OHR NIKITA 88G 41R

AMAN 5W TERRI 313A

TC TERRIFIC 5W DLF,HYF,IEF

WOODCREST VACA 31S

KCF BENNETT 3008 M326 SOD,DLF,HYF,IEF
NJW P606 72N DAYDREAM 73S DLF,HYF,IEF,MSUDF
VCR EAST KODIAK 506E SOD,DLF,HYF,IEF
SALUNGA GEORGIE GIRL
HARVIE TRAVELER 69T
ADK MISS GAI'S DELIGHT 312
JDH 100M BOULDER 6P SOD
WC MS WRANGLER 76K

CE	BW	WW	YW	SC	MM	M&G	MCE	UDDR	TEAT	REA	MARB	CHBS
-3.6	4.2	57	103	0.9	22	51	0.1	1.20	1.10	.38	.02	105

Polled • Eye Pigment: RE 100% / LE 100%

AMAN 52A TRUST 177F ■ P43936436

DOB: 4/2/18 ■ BW: 86 ■ 205 Day Wt: 521

OHR TRUSTWORTHY 41R 52A DLF,HYF,IEF

NJW 73S M326 TRUST 100W ET SOD,CHB,DLF,HYF,IEF,MSUDF

OHR NIKITA 88G 41R

AMAN 26T TRIXIE 110Y

SM UPLoad 26 SOD,DLF,HYF,IEF

AA COUNTRY GAL 259N DOD

KCF BENNETT 3008 M326 SOD,DLF,HYF,IEF
NJW P606 72N DAYDREAM 73S DLF,HYF,IEF,MSUDF
VCR EAST KODIAK 506E SOD,DLF,HYF,IEF
SALUNGA GEORGIE GIRL
LAGRAND RELOAD 80P ET SOD,CHB,DLF,HYF,IEF
LAGRAND MISSY 73P ET
DH IDAHO TIGER 6 SOD
DCA BASIC GAL 20K DOD

CE	BW	WW	YW	SC	MM	M&G	MCE	UDDR	TEAT	REA	MARB	CHBS
-1.9	4.2	56	109	0.9	22	50	3.6	1.20	1.10	.50	-.02	110

Polled • Eye Pigment: RE 100% / LE 100%

COMING 2-YEAR-OLD BULLS



AMAN D300 DELTA 188F

P43936453

DOB: 4/2/18 ■ BW: 76 ■ 205 Day Wt: 538

SHF DELTA A191 D300 ET

SHF ALL STAR 42X A191 CHB,DLF,HYF,IEF

DLF,HYF,IEF,MSUDF

SHF L388 T57 Y54 ET DLF,HYF,IEF

AMAN 0245 CASSIE 224C

DKF RO CASH FLOW 0245 ET SOD,DLF,HYF,IEF

DCA LANDLADY 131S DOD

K&B SENTINEL 0042X CHB,DLF,HYF,IEF

SHF MISS M326 T08 ET DLF,HYF,IEF

SHF TUG R117 T57 SOD,DLF,HYF,IEF,MSUDF

SHF PROGRESS T101 DLF,HYF,IEF

CRR ABOUT TIME 743 SOD,DLF,HYF,IEF

JRR MISS TOBEY 711T DLF,HYF,IEF

HH LANDLORD 397P

DCA MS HITTER 253N

CE	BW	WW	YW	SC	MM	M&G	MCE	UDDR	TEAT	REA	MARB	CHBS
6.8	2.0	46	78	1.5	33	56	6.7	1.30	1.30	.44	.09	103

Polled • Eye Pigment: RE 100% / LE 100%

AMAN 5113 LEGO 200F

P43936769

DOB: 4/5/18 ■ BW: 86 ■ 205 Day Wt: 628

CKP LEGO 5113

DLF,HYF,IEF,MSUDF

H WR LEGO 3076 ET DLF,HYF,IEF

CKP NANCY JT 1013 DOD

AMAN 405S SUNSHINE 242Z

HPH 10H SKYLAR 405S SOD,DLF,HYF,IEF

DOD

DCA 32S HONEY BEA 277W

WLB LEGO 83T 90X DLF,HYF,IEF

K&B RED LADY 8045U DLF,HYF,IEF,MSUDF

CKP JUSTIN TIME 0933 DLF,HYF,IEF

CKP KH NANCY K 0217 DOD

DR WORLD CLASS 517 10H SOD,DLF,HYF,IEF

WSF MISS ONLINE ESCADA 405 DOD,DLF,HYF,IEF

RANGELINE M326 BUZZ 32S SOD

LAGRAND VICTORIA 128P ET

CE	BW	WW	YW	SC	MM	M&G	MCE	UDDR	TEAT	REA	MARB	CHBS
1.6	4.4	67	93	1.1	23	56	5.2	1.20	1.20	.44	.09	103

Polled • Eye Pigment: RE 0% / LE 100%

COMING 2-YEAR-OLD BULLS



AMAN 456 HOMETOWN 207F

■ P43936791

DOB: 4/5/18 ■ BW: 85 ■ 205 Day Wt: 550

NJW 73S W18 HOMETOWN 10Y ET SOD,CHB,DLF,HYF,IEF,MSUDF
SLEEPY HOMETOWN 456ET DLF,HYF,IEF,MSUDF
 LCX UNLEASHED KEEPSAKE 1111 ET DLF,HYF,IEF

R 2ND REVOLUTION 4131 DLF,HYF,IEF
AMAN 4131 REVA 53B
 LAGRANDBETHANY 46T

SHF WONDER M326 W18 ET CHB,DLF,HYF,IEF
 NJW P606 72N DAYDREAM 73S DLF,HYF,IEF,MSUDF
 TRIARA UNLEASHED 893U
 LCX NEON KEEPSAKE 902 ET
 MSU TCF REVOLUTION 4R SOD,CHB,DLF,HYF,IEF
 R MISS PUCKSTER 139 DOD,DLF,HYF,IEF
 MC RANGER 9615 SOD,CHB,DLF,HYF,IEF
 STAR BETHANY 53N

CE	BW	WW	YW	SC	MM	M&G	MCE	UDDR	TEAT	REA	MARB	CHBS
1.1	4.2	57	96	0.8	23	52	0.4	1.20	1.30	.52	.08	114

Polled • Eye Pigment: RE 0% / LE 100%

AMAN 456 HOMETOWN 221F

■ P43936846

DOB: 4/7/18 ■ BW: 89 ■ 205 Day Wt: 607

NJW 73S W18 HOMETOWN 10Y ET SOD,CHB,DLF,HYF,IEF,MSUDF
SLEEPY HOMETOWN 456ET DLF,HYF,IEF,MSUDF
 LCX UNLEASHED KEEPSAKE 1111 ET DLF,HYF,IEF

SM UPLOAD 26 SOD,DLF,HYF,IEF
AMAN 26T TRIXIE 212Y
 DCA MISS ROCKETTE 140T DOD

SHF WONDER M326 W18 ET CHB,DLF,HYF,IEF
 NJW P606 72N DAYDREAM 73S DLF,HYF,IEF,MSUDF
 TRIARA UNLEASHED 893U
 LCX NEON KEEPSAKE 902 ET
 LAGRANDBETHANY 46T SOD,CHB,DLF,HYF,IEF
 LAGRANDBETHANY 46T
 ANL 57G CLEVELAND 86M SOD
 WC MS WRANGLER 41K

CE	BW	WW	YW	SC	MM	M&G	MCE	UDDR	TEAT	REA	MARB	CHBS
-1.4	4.8	66	110	0.9	24	57	-1.6	1.30	1.30	.63	.13	117

Polled • Eye Pigment: RE 0% / LE 50%

COMING 2-YEAR-OLD BULLS



AMAN 103A TRUST 237F

P43936869

DOB: 4/10/18 BW: 90 205 Day Wt: 607

NJW 73S M326 TRUST 100W ET SOD,CHB,DLF,HYF,IEF,MSUDF
GOBLE OHR FULL TRUST 103A DLF,HYF,IEF
 RVP 122L ITS A WRAP ET 1107W

DKF RO CASH FLOW 0245 ET SOD,DLF,HYF,IEF
AMAN 0245 CASSIE 40A
 SA 26T LOLA 37W bod

KCF BENNETT 3008 M326 SOD,DLF,HYF,IEF
 NJW P606 72N DAYDREAM 73S DLF,HYF,IEF,MSUDF
 REMITALL ONLINE 122L CHB,SOD,DLF,HYF,IEF
 MARJON 29F NAOMI ET 111N
 CRR ABOUT TIME 743 SOD,DLF,HYF,IEF
 JRR MISS TOBEY 711T DLF,HYF,IEF
 SM UPLOAD 26 SOD,DLF,HYF,IEF
 WOODCREST LISA 74R

CE	BW	WW	YW	SC	MM	M&G	MCE	UDDR	TEAT	REA	MARB	CHBS
-1.7	4.1	65	105	1.4	30	63	3.5	1.20	1.20	.64	.02	119

Polled • Eye Pigment: RE 100% / LE 100%

COMING 2-YEAR-OLD BULLS



AMAN 281A TRUST 238F

P43936870

DOB: 4/10/18 ■ BW: 78 ■ 205 Day Wt: 629

NJW 73S M326 TRUST 100W ET SOD,CHB,DLF,HYF,IEF,MSUDF
BAR JZ TRUSTWORTHY 281A ET DLF,HYF,IEF
 BAR JZ JULIE 118R DOD,DLF,HYF,IEF

R 2ND REVOLUTION 4131 DLF,HYF,IEF
AMAN 4131 REVA 57C
 DCA S46 ELVIRA 184W DOD

KCF BENNETT 3008 M326 SOD,DLF,HYF,IEF
 NJW P606 72N DAYDREAM 73S DLF,HYF,IEF,MSUDF
 HARVIE LADIES MAN 4L SOD
 BAR JZ DEVOTION 442M DOD
 MSU TCF REVOLUTION 4R SOD,CHB,DLF,HYF,IEF
 R MISS PUCKSTER 139 DOD,DLF,HYF,IEF
 RCR WIDELOAD S46
 DCA COUNTRY GAL 158N

CE	BW	WW	YW	SC	MM	M&G	MCE	UDDR	TEAT	REA	MARB	CHBS
4.6	2.6	63	97	1.1	23	55	5.8	1.10	1.20	.43	.05	104

Polled • Eye Pigment: RE 100% / LE 100%

COMING 2-YEAR-OLD BULLS



AMAN 456 HOMETOWN 240F

P43938080

DOB: 4/10/18 ■ BW: 89 ■ 205 Day Wt: 587

NJW 73S W18 HOMETOWN 10Y ET SOD,CHB,DLF,HYF,IEF,MSUDF
SLEEPY HOMETOWN 456ET DLF,HYF,IEF,MSUDF
 LCX UNLEASHED KEEPSAKE 1111 ET DLF,HYF,IEF

PWF MOHICAN SONIC BOOM P522 ET
PH SONYA 1393
 RJ WESTERN GAL 44P

SHF WONDER M326 W18 ET CHB,DLF,HYF,IEF
 NJW P606 72N DAYDREAM 73S DLF,HYF,IEF,MSUDF
 TRIARA UNLEASHED 893U
 LCX NEON KEEPSAKE 902 ET
 REMITALL BOOMER 46B CHB,SOD,DLF,HYF,IEF
 PW VICTORIA 964 8114 DLF,HYF,IEF
 BAR JZ WESTERN 114J SOD
 RJ MEGAN 104L

CE	BW	WW	YW	SC	MM	M&G	MCE	UDDR	TEAT	REA	MARB	CHBS
-0.8	4.5	56	98	0.7	26	54	0.2	1.30	1.30	.51	.05	106

Polled • Eye Pigment: RE 100% / LE 100%

COMING 2-YEAR-OLD BULLS



AMAN D300 DELTA 244F

P43938092

DOB: 4/11/18 ■ BW: 81 ■ 205 Day Wt: 631

SHF DELTA A191 D300 ET

SHF ALL STAR 42X A191 CHB,DLF,HYF,IEF

DLF,HYF,IEF,MSUDF

SHF L388 T57 Y54 ET DLF,HYF,IEF

AMAN 0245 CASSIE 147A

DKF RO CASH FLOW 0245 ET SOD,DLF,HYF,IEF

DCA LANDLADY 131S DOD

K&B SENTINEL 0042X CHB,DLF,HYF,IEF

SHF MISS M326 T08 ET DLF,HYF,IEF

SHF TUG R117 T57 SOD,DLF,HYF,IEF,MSUDF

SHF PROGRESS T101 DLF,HYF,IEF

CRR ABOUT TIME 743 SOD,DLF,HYF,IEF

JRR MISS TOBEY 711T DLF,HYF,IEF

HH LANDLORD 397P

DCA MS HITTER 253N

CE	BW	WW	YW	SC	MM	M&G	MCE	UDDR	TEAT	REA	MARB	CHBS
5.4	3.1	56	98	1.6	33	61	5.4	1.30	1.30	.52	.08	104

Polled • Eye Pigment: RE 100% / LE 100%

COMING 2-YEAR-OLD BULLS



AMAN 52A TRUST 247F

P43938097

DOB: 4/11/18 ■ BW: 84 ■ 205 Day Wt: 637

NJW 73S M326 TRUST 100W ET SOD,CHB,DLF,HYF,IEF,MSUDF

OHR TRUSTWORTHY 41R 52A DLF,HYF,IEF

OHR NIKITA 88G 41R

BAR JZ ABSOLUTELY 022Z DLF,HYF,IEF

AMAN 22Z ABBY 48B

DCA MISS MITCHIE 193S

KCF BENNETT 3008 M326 SOD,DLF,HYF,IEF

NJW P606 72N DAYDREAM 73S DLF,HYF,IEF,MSUDF

VCR EAST KODIAK 506E SOD,DLF,HYF,IEF

SALUNGA GEORGIE GIRL

MCCOY 55M ABSOLUTE 49S SOD,DLF,HYF,IEF

BAR JZ RUTHIE 994W

MOHICAN MITCH 247M

DCA COUNTRY GAL 164L

CE	BW	WW	YW	SC	MM	M&G	MCE	UDDR	TEAT	REA	MARB	CHBS
4.1	3.7	60	99	0.8	22	52	6.9	1.20	1.20	.52	.01	107

Polled • Eye Pigment: RE 100% / LE 100%

COMING 2-YEAR-OLD BULLS



AMAN 281A TRUST 253F

P43938109

DOB: 4/12/18 ■ BW: 74 ■ 205 Day Wt: 541

NJW 735 M326 TRUST 100W ET SOD,CHB,DLF,HYF,IEF,MSUDF
BAR JZ TRUSTWORTHY 281A ET DLF,HYF,IEF
 BAR JZ JULIE 118R DOD,DLF,HYF,IEF

RANGELINE M326 BUZZ 32S SOD
DCA 32S HONEY BEA 238U
 DCA MISS WRANGLER 10R

KCF BENNETT 3008 M326 SOD,DLF,HYF,IEF
 NJW P606 72N DAYDREAM 73S DLF,HYF,IEF,MSUDF
 HARVIE LADIES MAN 4L SOD
 BAR JZ DEVOTION 442M DOD
 KCF BENNETT 3008 M326 SOD,DLF,HYF,IEF
 RANGELINE 11Y JOY 20K
 WOODCREST WRANGLER 115L SOD
 DCA COUNTRY GAL 262M

CE	BW	WW	YW	SC	MM	M&G	MCE	UDDR	TEAT	REA	MARB	CHBS
10.5	1.2	51	83	1.1	19	45	7.7	1.30	1.40	.27	.15	96

Polled • Eye Pigment: RE 100% / LE 100%

COMING 2-YEAR-OLD BULLS



AMAN 1521 RED BARON 257F

P43938116

DOB: 4/14/18 ■ BW: 88 ■ 205 Day Wt: 664

TTFL 906 338 RED BARON 1521 DLF,HYF,IEF,MSUDF

VIN-MAR TCC BPF RED BARON 338 DLF,HYF,IEF

TTFL ERICA'S RED OBSIDIAN 906

TAR Z5 CALL ME 2R

LCG MAY REPLY 220Y DOD

LCG CLASSY MAY 46P DOD

K&B BARON 0183X DLF,HYF,IEF

VIN-MAR NANCY 810 DLF,HYF,IEF

TCW RED OBSIDIAN M326 412R SOD

CKP ERICA 0719

BRL CALL 100L SOD,CHB,DLF,IEF

TAR Z5 MISS BRAXTON 28M

DR WORLD CLASS 517 10H SOD,DLF,HYF,IEF

LCG MAY TARGET 35J

CE	BW	WW	YW	SC	MM	M&G	MCE	UDDR	TEAT	REA	MARB	CHBS
4.1	3.1	61	92	1.2	25	55	7.8	1.20	1.20	.46	.10	108

Polled • Eye Pigment: RE 100% / LE 100%

COMING 2-YEAR-OLD BULLS



AMAN 281A TRUST 258F

P43938378

DOB: 4/14/18 ■ BW: 88 ■ 205 Day Wt: 700

NJW 73S M326 TRUST 100W ET SOD,CHB,DLF,HYF,IEF,MSUDF
BAR JZ TRUSTWORTHY 281A ET DLF,HYF,IEF
 BAR JZ JULIE 118R DOD,DLF,HYF,IEF

DCA 405S TROUBADOUR 162U
AMAN 162U TRINA 231Z DOD
 AMAN 111T TILLY 95X

KCF BENNETT 3008 M326 SOD,DLF,HYF,IEF
 NJW P606 72N DAYDREAM 73S DLF,HYF,IEF,MSUDF
 HARVIE LADIES MAN 4L SOD
 BAR JZ DEVOTION 442M DOD
 HPH 10H SKYLAR 405S SOD,DLF,HYF,IEF
 DCA MISS MAURINE 89R DOD
 HPH 40P TABOR 111T
 DCA COUNTRY GAL 235M

CE	BW	WW	YW	SC	MM	M&G	MCE	UDDR	TEAT	REA	MARB	CHBS
1.7	3.7	66	95	0.8	27	60	2.7	1.10	1.10	.50	.05	107

Polled • Eye Pigment: RE 100% / LE 100%

COMING 2-YEAR-OLD BULLS



AMAN 5113 LEGO 266F

P43938386

DOB: 4/15/18 BW: 80 205 Day Wt: 625

CKP LEGO 5113 DLF,HYF,IEF,MSUDF

H WR LEGO 3076 ET DLF,HYF,IEF

CKP NANCY JT 1013 DOD

AMAN 267X DINAH 214B

AMAN 26T DISCO 267X DLF,HYF,IEF

AMAN 405S SUNSHINE 242Z DOD

WLB LEGO 83T 90X DLF,HYF,IEF

K&B RED LADY 8045U DLF,HYF,IEF,MSUDF

CKP JUSTIN TIME 0933 DLF,HYF,IEF

CKP KH NANCY K 0217 DOD

SM UPLOAD 26 SOD,DLF,HYF,IEF

DCA PROSPECT PRINCESS 16T

HPH 10H SKYLAR 405S SOD,DLF,HYF,IEF

DCA 32S HONEY BEA 277W

CE	BW	WW	YW	SC	MM	M&G	MCE	UDDR	TEAT	REA	MARB	CHBS
1.6	4.5	71	115	1.1	20	56	4.5	1.20	1.20	.58	.07	110

Polled • Eye Pigment: RE 100% / LE 100%

AMAN 5113 LEGO 272F

P43938391

DOB: 4/16/18 BW: 83 205 Day Wt: 585

CKP LEGO 5113 DLF,HYF,IEF,MSUDF

H WR LEGO 3076 ET DLF,HYF,IEF

CKP NANCY JT 1013 DOD

AMAN 4131 REVA 137C

R 2ND REVOLUTION 4131 DLF,HYF,IEF

AMAN PROSPECT PRINCESS 45Y

WLB LEGO 83T 90X DLF,HYF,IEF

K&B RED LADY 8045U DLF,HYF,IEF,MSUDF

CKP JUSTIN TIME 0933 DLF,HYF,IEF

CKP KH NANCY K 0217 DOD

MSU TCF REVOLUTION 4R SOD,CHB,DLF,HYF,IEF

R MISS PUCKSTER 139 DOD,DLF,HYF,IEF

LH PROSPECTOR 564

DCA MISS ROCKETTE 178S

CE	BW	WW	YW	SC	MM	M&G	MCE	UDDR	TEAT	REA	MARB	CHBS
1.1	4.2	71	112	1.0	21	56	2.2	1.10	1.10	.57	.04	107

Polled Eye Pigment: RE 100% / LE 50%

COMING 2-YEAR-OLD BULLS



AMAN 1521 RED BARON 279F

P43938405

DOB: 4/18/18 BW: 90 205 Day Wt: 623

VIN-MAR TCC BPF RED BARON 338 DLF,HYF,IEF
TTL 906 338 RED BARON 1521 DLF,HYF,IEF,MSUDF
 TTL ERICA'S RED OBSIDIAN 906

DCA 405S TROUBADOUR 162U
AMAN 162U TRINA 172Z
 AMAN 26T TRIXIE 37X

K&B BARON 0183X DLF,HYF,IEF
 VIN-MAR NANCY 810 DLF,HYF,IEF
 TCW RED OBSIDIAN M326 412R SOD
 CKP ERICA 0719
 HPH 10H SKYLAR 405S SOD,DLF,HYF,IEF
 DCA MISS MAURINE 89R DOD
 SM UPLOAD 26 SOD,DLF,HYF,IEF
 TH 22N 10R JOURNEY 119T

CE	BW	WW	YW	SC	MM	M&G	MCE	UDDR	TEAT	REA	MARB	CHBS
-0.6	4.7	67	112	1.3	22	55	1.6	1.20	1.20	.55	.09	115

Polled • Eye Pigment: RE 0% / LE 100%

AMAN D300 DELTA 281F

P43938407

DOB: 4/20/18 BW: 88 205 Day Wt: 618

SHF ALL STAR 42X A191 CHB,DLF,HYF,IEF
SHF DELTA A191 D300 ET DLF,HYF,IEF,MSUDF
 SHF L388 T57 Y54 ET DLF,HYF,IEF

DKF RO CASH FLOW 0245 ET SOD,DLF,HYF,IEF
AMAN 0245 CASSIE 183B
 SA 405S ELLY SUE 122W

K&B SENTINEL 0042X CHB,DLF,HYF,IEF
 SHF MISS M326 T08 ET DLF,HYF,IEF
 SHF TUG R117 T57 SOD,DLF,HYF,IEF,MSUDF
 SHF PROGRESS T101 DLF,HYF,IEF
 CRR ABOUT TIME 743 SOD,DLF,HYF,IEF
 JRR MISS TOBEY 711T DLF,HYF,IEF
 HPH 10H SKYLAR 405S SOD,DLF,HYF,IEF
 SA ELLIE MAE 145

CE	BW	WW	YW	SC	MM	M&G	MCE	UDDR	TEAT	REA	MARB	CHBS
2.3	3.7	59	93	1.6	34	64	3.9	1.30	1.30	.52	.11	105

Scurs • Eye Pigment: RE 50% / LE 75%

COMING 2-YEAR-OLD BULLS



AMAN 1521 RED BARON 282F

P43938408

DOB: 4/19/18 BW: 80 205 Day Wt: 609

VIN-MAR TCC BPF RED BARON 338 DLF,HYF,IEF
TTL 906 338 RED BARON 1521 DLF,HYF,IEF,MSUDF
 TTL ERICA'S RED OBSIDIAN 906

DKF RO CASH FLOW 0245 ET SOD,DLF,HYF,IEF
AMAN 0245 CASSIE 225C
 DCA MISS ROCKETTE 140T DOD

K&B BARON 0183X DLF,HYF,IEF
 VIN-MAR NANCY 810 DLF,HYF,IEF
 TCW RED OBSIDIAN M326 412R SOD
 CKP ERICA 0719
 CRR ABOUT TIME 743 SOD,DLF,HYF,IEF
 JRR MISS TOBEY 711T DLF,HYF,IEF
 ANL 57G CLEVELAND 86M SOD
 WC MS WRANGLER 41K

CE	BW	WW	YW	SC	MM	M&G	MCE	UDDR	TEAT	REA	MARB	CHBS
2.6	3.3	61	107	1.4	27	57	4.7	1.20	1.20	.45	.08	108

Polled • Eye Pigment: RE 100% / LE 50%

AMAN 628C FOUNDATION 315F

P43938461

DOB: 5/9/18 BW: 83 205 Day Wt: 644

LOEWEN FOUNDATION 34X DLF,HYF,IEF,MSUDF
BAR JZ FOUNDATION 628C DLF,HYF,IEF,MSUDF
 BAR JZ HOPE 991A DLF,HYF,IEF

R 2ND REVOLUTION 4131 DLF,HYF,IEF
AMAN 4131 REVA 59D
 AMAN 26T TRIXIE 287Z DOD

PCR 286 MR ADVISOR 502R CHB,DLF,HYF,IEF
 LOEWEN R125 MISS 53T DLF,HYF,IEF
 NJW 73S M326 TRUST 100W ET SOD,CHB,DLF,HYF,IEF,MSUDF
 BAR JZ 434 LADY 932P
 MSU TCF REVOLUTION 4R SOD,CHB,DLF,HYF,IEF
 R MISS PUCKSTER 139 DOD,DLF,HYF,IEF
 SM UPLOAD 26 SOD,DLF,HYF,IEF
 DCA ROSA MARIE 164R

CE	BW	WW	YW	SC	MM	M&G	MCE	UDDR	TEAT	REA	MARB	CHBS
-2.2	3.6	61	89	0.9	23	54	0.8	1.10	1.00	.47	.01	105

Polled • Eye Pigment: RE 100% / LE 100%

COMING 2-YEAR-OLD BULLS



AMAN 52A TRUST 338F

P43938830

DOB: 6/10/18 ■ BW: 89 ■ 205 Day Wt: 586

NJW 73S M326 TRUST 100W ET SOD,CHB,DLF,HYF,IEF,MSUDF
OHR TRUSTWORTHY 41R 52A DLF,HYF,IEF
 OHR NIKITA 88G 41R

AMAN 933 PRIME RIB 250Y DLF,HYF,IEF
AMAN 250Y PATRICIA 265B
 AMAN 162U TRINA 106Y

KCF BENNETT 3008 M326 SOD,DLF,HYF,IEF
 NJW P606 72N DAYDREAM 73S DLF,HYF,IEF,MSUDF
 VCR EAST KODIAK 506E SOD,DLF,HYF,IEF
 SALUNGA GEORGIE GIRL
 LH RIBEYE 933
 DH IM NO FOOL 32
 DCA 405S TROUBADOUR 162U
 DCA 32S HONEY BEA 277W

CE	BW	WW	YW	SC	MM	M&G	MCE	UDDR	TEAT	REA	MARB	CHBS
-1.3	4.6	58	106	1.0	26	55	3.7	1.20	1.20	.43	.03	107

Polled • Eye Pigment: RE 100% / LE 100%

Thank you for your interest.

AI SIRE



KCF BENNETT SUMMIT B261 ET CHB,DLF,HYF,IEF,MSUDF

P43500552 ■ DOB: 2/22/14

KCF BENNETT INFLUENCE Z80 CHB,DLF,HYF,IEF

KCF BENNETT REVOLUTION X51 CHB,SOD,DLF,HYF,IEF

KCF MISS M326 R52 DOD,DLF,HYF,IEF

KCF MISS 3027 Z44 ET DLF,HYF,IEF,MSUDF

UPS DOMINO 3027 SOD,DLF,HYF,IEF,MSUDF

KCF MISS DURANGO X72 DLF,HYF,IEF

MSU TCF REVOLUTION 4R SOD,CHB,DLF,HYF,IEF

KCF MISS PROFICIENT U201 DLF,HYF,IEF,MSUDF

KCF BENNETT 3008 M326 SOD,DLF,HYF,IEF

KCF MISS 774 N45

CL 1 DOMINO 9126J 1ET SOD,DLF,IEF

UPS MISS DIAMOND 1353 DLF,HYF,IEF,MSUDF

THM DURANGO 4037 SOD,DLF,HYF,IEF

KCF MISS PROFICIENT U224 DLF,HYF,IEF



CE	BW	WW	YW	SC	MM	M&G	MCE	UDDR	TEAT	REA	MARB	CHBS
5.1	3.7	59	97	0.7	14	44	3.4	1.40	1.50	.60	.47	124

We used B261 for his high carcass and udder EPD's.

HERD SIRE



GOBLE OHR FULL TRUST 103A DLF,HYF,IEF

P43357679 ■ DOB: 1/5/13

KCF BENNETT 3008 M326 SOD,DLF,HYF,IEF
NJW 73S M326 TRUST 100W ET SOD,CHB,DLF,HYF,IEF,MSUDF
 NJW P606 72N DAYDREAM 73S DLF,HYF,IEF,MSUDF

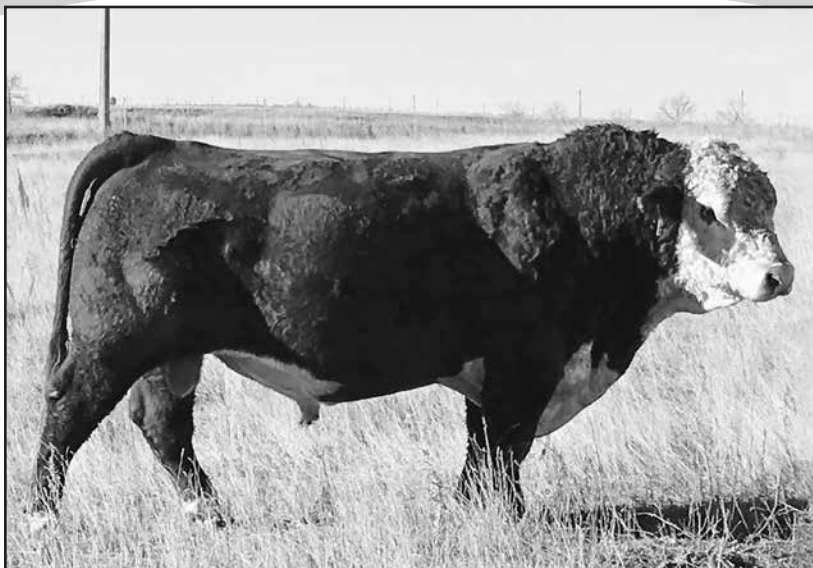
REMITALL ONLINE 122L CHB,SOD,DLF,HYF,IEF
RVP 122L ITS A WRAP ET 1107W
 MARJON 29F NAOMI ET 111N

RRH MR FELT 3008 CHB,SOD,DLF,HYF,IEF
 KCF MISS 459 F284
 PW VICTOR BOOMER P606 SOD,DLF,HYF,IEF
 NJW 94J DEW 72N DLF,HYF,IEF
 REMITALL EMBRACER 8E SOD,HYF
 REMITALL CATALINA 24H
 CS BOOMER 29F SOD,DLF,HYF,IEF
 WALPOLE DAWNE 8J

CE	BW	WW	YW	SC	MM	M&G	MCE	UDDR	TEAT	REA	MARB	CHBS
1.3	3.0	66	113	1.2	26	59	2.2	1.30	1.30	.62	.23	126

103A is really easy fleshing with lots of rib shape. His calves are top performers. His daughters have really nice udders. He serviced 35 cows this year as a six year old, with no open or late.

HERD SIRE



SLEEPY HOMETOWN 456ET DLF,HYF,IEF,MSUDF

P43518341 ■ DOB: 4/13/14

SHF WONDER M326 W18 ET CHB,DLF,HYF,IEF
NJW 73S W18 HOMETOWN 10Y ET SOD,CHB,DLF,HYF,IEF,MSUDF
 NJW P606 72N DAYDREAM 73S DLF,HYF,IEF,MSUDF

TRIARA UNLEASHED 893U
LCX UNLEASHED KEEPSAKE 1111 ET DLF,HYF,IEF
 LCX NEON KEEPSAKE 902 ET

KCF BENNETT 3008 M326 SOD,DLF,HYF,IEF
 SHF GOVERNESS 236G L37 DLF,HYF,IEF
 PW VICTOR BOOMER P606 SOD,DLF,HYF,IEF
 NJW 94J DEW 72N DLF,HYF,IEF
 CCR 57G STAMINA ET 199S CHB
 JOYCLIFF RUBY JANE 129M
 GH NEON 17N CHB,SOD,DLF,HYF,IEF,MSUDF
 MSU KEEPSAKE 14S DLF,HYF,IEF

CE	BW	WW	YW	SC	MM	M&G	MCE	UDDR	TEAT	REA	MARB	CHBS
1.9	4.4	61	101	0.9	23	54	-2.4	1.40	1.30	.61	.10	118

We purchased 456 from Sleepy Hollow in The I-29 sale. He once again sired a very uniform group. They are all thick, solid built bulls.

HERD SIRE



BAR JZ TRUSTWORTHY 281A ET DLF,HYF,IEF

P43381605 ■ DOB: 3/19/13

KCF BENNETT 3008 M326 SOD,DLF,HYF,IEF
NJW 73S M326 TRUST 100W ET SOD,CHB,DLF,HYF,IEF,MSUDF
 NJW P606 72N DAYDREAM 73S DLF,HYF,IEF,MSUDF

HARVIE LADIES MAN 4L SOD
BAR JZ JULIE 118R DOD,DLF,HYF,IEF
 BAR JZ DEVOTION 442M DOD

RRH MR FELT 3008 CHB,SOD,DLF,HYF,IEF
 KCF MISS 459 F284
 PW VICTOR BOOMER P606 SOD,DLF,HYF,IEF
 NJW 94J DEW 72N DLF,HYF,IEF
 HARVIE HILLS 68H
 HARVIE MISS JULIE 9J
 BAR JZ DEVO 394K SOD
 BAR JZ MILESTONE 010K

CE	BW	WW	YW	SC	MM	M&G	MCE	UDDR	TEAT	REA	MARB	CHBS
7.2	1.8	59	91	1.1	24	54	7.0	1.20	1.40	.40	.07	107

Trustworthy has fabulous udder and milk EPD's. His sons have performance as well as calving ease.

HERD SIRE



OHR TRUSTWORTHY 41R 52A DLF,HYF,IEF

P43441750 ■ DOB: 2/21/13

KCF BENNETT 3008 M326 SOD,DLF,HYF,IEF
NJW 73S M326 TRUST 100W ET SOD,CHB,DLF,HYF,IEF,MSUDF
 NJW P606 72N DAYDREAM 73S DLF,HYF,IEF,MSUDF

OHR NIKITA 88G 41R
 VCR EAST KODIAK 506E SOD,DLF,HYF,IEF
 SALUNGA GEORGIE GIRL

RRH MR FELT 3008 CHB,SOD,DLF,HYF,IEF
 KCF MISS 459 F284
 PW VICTOR BOOMER P606 SOD,DLF,HYF,IEF
 NJW 94J DEW 72N DLF,HYF,IEF
 WTK 55Y BOND 75A SOD,DLF,HYF,IEF
 VCR MIS FLO JO 849X
 WILL-VIA HEADLINE S133 SOD
 CSSBRN RSHNG DL 306R 21C

CE	BW	WW	YW	SC	MM	M&G	MCE	UDDR	TEAT	REA	MARB	CHBS
2.0	3.8	55	108	1.0	22	50	8.6	1.20	1.20	.46	.03	113

This is the 3rd Trust 100W son we've used for the 4th year. 52A really follows the type of the other two Trust sons. Their daughters are doing a fabulous job. They all had very good udders and held up very well.

HERD SIRE



CKP LEGO 5113 DLF,HYF,IEF,MSUDF

P43620464 ■ DOB: 4/5/15

H WR LEGO 3076 ET DLF,HYF,IEF

WLB LEGO 83T 90X DLF,HYF,IEF

K&B RED LADY 8045U DLF,HYF,IEF,MSUDF

CKP JUSTIN TIME 0933 DLF,HYF,IEF

CKP KH NANCY K 0217 DOD

WLB ELI 10H 83T DLF,HYF,IEF

WLB 50S GLORIA 35U

KCF BENNETT 3008 M326 SOD,DLF,HYF,IEF

K&B DOMINETTE 2510 DOD

CRR ABOUT TIME 743 SOD,DLF,HYF,IEF

CKP GYPSY 0128 DLF,HYF,IEF

VCR EAST KODIAK 506E SOD,DLF,HYF,IEF

CKP NANCY B 9904 DOD

CKP NANCY JT 1013 DOD

CE	BW	WW	YW	SC	MM	M&G	MCE	UDDR	TEAT	REA	MARB	CHBS
1.5	4.8	78	120	1.2	19	58	3.8	1.30	1.20	.75	-.02	121

This is Lego's second calf crop. He contributes performance and maternal characteristics.

HERD SIRE



TTFL 906 338 RED BARON 1521 DLF,HYF,IEF,MSUDF

P43631190 ■ DOB: 2/26/15

VIN-MAR TCC BPF RED BARON 338 DLF,HYF,IEF

K&B BARON 0183X DLF,HYF,IEF

VIN-MAR NANCY 810 DLF,HYF,IEF

TTFL ERICA'S RED OBSIDIAN 906

TCW RED OBSIDIAN M326 412R SOD

CKP ERICA 0719

K&B BANDIDO 8227U ET CHB,DLF,HYF,IEF

K&B ENCHANTRESS 7008T

DR WORLD CLASS 517 10H SOD,DLF,HYF,IEF

LAGRAND NANCY 30R

KCF BENNETT 3008 M326 SOD,DLF,HYF,IEF

TCW HIGH HEELS F48 5J

SB 122L GIT-R-DONE 19R ET SOD,DLF,HYF,IEF

KAYLA ERICA 0048



CE	BW	WW	YW	SC	MM	M&G	MCE	UDDR	TEAT	REA	MARB	CHBS
3.6	3.5	67	108	1.7	16	49	4.4	1.30	1.30	.49	.15	115

Red Baron sires massive bodied easy keeping calves. This is his second calf crop.

HERD SIRE



SHF DELTA A191 D300 ET DLF,HYF,IEF,MSUDF

P43676340 ■ DOB: 2/5/16

SHF ALL STAR 42X A191

K&B SENTINEL 0042X CHB,DLF,HYF,IEF
CHB,DLF,HYF,IEF
SHF MISS M326 T08 ET DLF,HYF,IEF

SHF L388 T57 Y54 ET

DLF,HYF,IEF

SHF TUG R117 T57 SOD,DLF,HYF,IEF,MSUDF
SHF PROGRESS T101 DLF,HYF,IEF

UPS DOMINO 3027 SOD,DLF,HYF,IEF,MSUDF
K&B RED LADY 8045U DLF,HYF,IEF,MSUDF
KCF BENNETT 3008 M326 SOD,DLF,HYF,IEF
SHF POSTIVE MISS 73C M15 DLF,HYF,IEF
SHF RIB EYE M326 R117 SOD,DLF,HYF,IEF
SHF BOOMER P606 R80
SHF PROGRESS P20 SOD,DLF,HYF,IEF
SHF BOOMER P606 R17 ET DLF,HYF,IEF



CE	BW	WW	YW	SC	MM	M&G	MCE	UDDR	TEAT	REA	MARB	CHBS
6.3	3.0	56	88	2.1	30	58	4.2	1.50	1.50	.57	.25	104

Delta came from Sandhill Farms in southern Kansas. He has adjusted very well to the weather here. He holds his condition very well as do his calves.

HERD SIRE



BAR JZ FOUNDATION 628C DLF,HYF,IEF,MSUDF

P43582064 ■ DOB: 3/9/15

LOEWEN FOUNDATION 34X DLF,HYF,IEF,MSUDF

PCR 286 MR ADVISOR 502R CHB,DLF,HYF,IEF

LOEWEN R125 MISS 53T DLF,HYF,IEF

NJW 73S M326 TRUST 100W ET SOD,CHB,DLF,HYF,IEF,MSUDF

BAR JZ HOPE 991A DLF,HYF,IEF

BAR JZ 434 LADY 932P

HUTH FULL HOUSE N003

PCR JACKLYN NIKOLE 344N DLF,HYF,IEF

SHF RADAR M326 R125 SOD,DLF,HYF,IEF

HVH OKSANA 4L 33N DLF,HYF,IEF

KCF BENNETT 3008 M326 SOD,DLF,HYF,IEF

NJW P606 72N DAYDREAM 73S DLF,HYF,IEF,MSUDF

BAR JZ TRADITION 434V SOD,DLF,HYF,IEF

BAR JZ SUNNY 315M



CE	BW	WW	YW	SC	MM	M&G	MCE	UDDR	TEAT	REA	MARB	CHBS
2.6	1.4	51	78	0.9	17	43	1.5	1.10	1.00	.31	.03	96

Foundation has been used exclusively on heifers proving to be very good with calving ease.

NOTES

Stand out with Proven Genetics

THE HEREFORD ADVANTAGE PROGRAM

Increase added market power and brand recognition with feeder cattle sired by a Hereford bull battery ranking in the top 50% for CHB\$ index.



PROGRAM BENEFITS:

- ✓ EPD ranking summary
- ✓ Added market exposure
- ✓ Genetic improvement tool
- ✓ Access to AHA resources
- ✓ Get started at HerefordFeederCattle.com

“The Hereford Advantage program helps us to focus on providing the best quality genetics that we can possibly provide to our customers - the cattle feeder. We try to select bulls who will sire calves that will excel in the feed yard.”

-NANCY BOWLING
BOWLING RANCH, NEWKIRK, OKLA.



Certified Hereford Beef Index(CHB\$) is a terminal sire index that is built on a production system where Hereford bulls are used on Angus-based cows with a focus on feedlot performance and end-product merit. To qualify for the Hereford Advantage program, cattle must be sired by registered Hereford bulls with transferred ownership, and the Hereford bull battery must have a CHB\$ value ranking in the top 50%.

Hillview Farms

32824 119th St.
Eureka, SD 57437

