



BARTLING HEREFORDS

• **SALE** • **Friday, April 15, 2016**

1:00 PM (CDT) • free lunch at 11:30 • at the ranch, Herrick, SD

Selling: 53 Yearling Bulls & 42 Heifers

BARTLING HEREFORDS

• SALE • Friday, April 15, 2016

1:00 PM (CDT) • free lunch at 11:30 • at the ranch, Herrick, SD

Selling: 53 Yearling Bulls & 42 Heifers

**The Livestock
Link**

Videos will be online to view
at www.TheLivestockLink.com

This sale will be broadcast live on the internet.

DVAuction
Broadcasting Real-Time Auctions
Real time bidding & proxy bidding available.

Dear Beef Producers,

In our breeding program, we are always trying to improve our cattle, concentrating on the important traits of raising cattle with good fertility, milk, soundness and pounds. We select bulls with moderate birth weights, rapid growth, with a strong emphasis on udder quality and good dispositions. We don't push our cattle hard, so as to keep their feet sound and hope they can hold up better than a fat bull. We hope you can find the seedstock you are looking for and buy with confidence in our program.

Thanks to our customers and friends who take interest in our cattle.

Matt Bartling

Bull Breeding Guarantee

All bulls will be tested before the sale. We guarantee the first 60 days breeding season. If adjustment is necessary it will be made with a suitable replacement or credit in the next sale.

Mortality Insurance

We offer 6 months mortality insurance on our bulls (covers mortality, accident, sickness, disease). We will pay 2% and buyer pays 2% of the sale price. Buyer has the option to purchase 12 months insurance for 2% more. We recommend this insurance on all bulls left here for a period of time. Heifer insurance is available at buyer expense. We highly recommend this insurance as your protection for issues outside of our Bull Breeding Guarantee.

No Creep Feed

Weaned November 9th

Auctioneer: Dillon Lambley

Phone: 605-830-2378

Auctioneer will settle any bidding disputes that might arise.

Decisions made sale day take precedence over anything printed in this catalog.

Not responsible for accidents.

Directions 4½ miles east of Burke, South Dakota on the Burke Lake road and ½ mile North.

Contact:

Matt Bartling

29045 349th Ave.

Herrick, SD 57538

Ph: 605-775-2275

Cell: 605-830-1714

The calves are all tagged the same as the cows.

EPD's current as of 3/17/2016.



KB L1 DOMINO 874U Sons

KB LI DOMINO 874U ET

DOB: 1/29/2008 • REG. #: 42878639

CL I DOMINO 212M {CHB,SOD,DLF,IEF}
CL I DOMINO 417P {CHB,DLF,IEF}
 CL I DOMINETTE 0112K IET

CL I DOMINO 9126J IET {SOD,CHB,DLF,IEF}
 CL I DOMINETTE 8104H IET
 CL I DOMINO 5131E {SOD,DLF,IEF}
 CL I DOMINETTE 411

HH ADVANCE 0072K {DLF,HYF,IEF}
MONTANA MISS 295
 MONTANA MISS 037 {DOD}

CL I DOMINO 7120G ET
 HH MS ADVANCE 8084H
 HH ADVANCE 7038G {SOD}
 MONTANA MISS 6154 {DOD}

BW	WW	YW	M	M&G	CW	FAT	REA	MRB	CHB\$
4.2	51	75	31	57	60	0.004	0.11	0.23	\$27

Cooper and Holden breedings in this bull's pedigree. Sires extra pigment, thickness and great females. High libido bull that really covers the pasture. There are many sons in the sale and many bulls out of his daughters.



KB L1 DOMINO 874U ET
 SIRE OF BOTH BULLS AND HEIFERS



210



600

TAG # **210** **BJ 874U MONTANA DOMINO 5065**
 DOB: 03/21/2015 • REG. #: 43620445 • BW: 95 • 205: 629 • RATIO: 107

CL I DOMINO 417P {CHB,DLF,IEF}
KB LI DOMINO 874U ET
 MONTANA MISS 295

CL I DOMINO 212M {CHB,SOD,DLF,IEF}
 CL I DOMINETTE 0112K IET
 HH ADVANCE 0072K {DLF,HYF,IEF}
 MB ADVANCER LASS 938 {DOD}

UPS DOMINO 4261
BJ DELLA 210 {DOD}
 BJ CENTURION 1037

SR DOMINO 700 {CHB}
 UPS MISS DIAMOND 1473
 K CENTURION LAD 433
 MB ADVANCER LASS 938 {DOD}

BW	WW	YW	M	M&G	CW	FAT	REA	MRB	CHB\$
5.0	52	81	31	57	63	0.006	0.25	0.14	\$26

One of the thickest 874U bulls in the pen out of a UPS 4261 dam that really milks. You will like him.

TAG # **600** **BJ 874U MONTANA DOMINO 5038**
 DOB: 03/24/2015 • REG. #: 43620485 • BW: 85 • 205: 603 • RATIO: 103

CL I DOMINO 417P {CHB,DLF,IEF}
KB LI DOMINO 874U ET
 MONTANA MISS 295

CL I DOMINO 212M {CHB,SOD,DLF,IEF}
 CL I DOMINETTE 0112K IET
 HH ADVANCE 0072K {DLF,HYF,IEF}
 MONTANA MISS 037 {DOD}

IH 286 SABRE 4243
BJ SALLY 600
 BJ MISS FLINT 071

IH 769 SABRE 286
 IH 821 DOMINETTE 209
 K&B FLINT 6348 {SOD}
 BJ DOMINO LASS 978

BW	WW	YW	M	M&G	CW	FAT	REA	MRB	CHB\$
4.6	50	81	27	52	62	-0.002	0.23	0.13	\$25

Thick made bull, smooth front end, full pigment, out of a Sabre cow that really milks.

TAG # **390** **BJ 874U MONTANA DOMINO 5078**
 DOB: 03/26/2015 • REG. #: 43620457 • BW: 90 • 205: 575 • RATIO: 98

CL I DOMINO 417P {CHB,DLF,IEF}
KB LI DOMINO 874U ET
 MONTANA MISS 295

CL I DOMINO 212M {CHB,SOD,DLF,IEF}
 CL I DOMINETTE 0112K IET
 HH ADVANCE 0072K {DLF,HYF,IEF}
 MONTANA MISS 037 {DOD}

OXH ADVANCE 3088 {SOD}
BJ ROSE 390
 BJ MADALLION LASS 1714

HH ADVANCE 767G IET {SOD,CHB,DLF,IEF}
 OXH JEAN 9101
 SR MEDALLION 292
 BJ ADVANCE LASS 921

BW	WW	YW	M	M&G	CW	FAT	REA	MRB	CHB\$
3.5	45	73	30	52	59	0.004	0.10	0.16	\$23

Ring eyed bull that's coming on thick. Made red to the hoof out of a very clean stylish 3088 daughter.



KB L1 DOMINO 874U Sons



TAG #
610 **BJ 874U MONTANA DOMINO 5053**
DOB: 03/26/2015 • REG. #: 43620486 • BW: 92 • 205: 633 • RATIO: 108

CL I DOMINO 417P {CHB,DLF,IEF} | CL I DOMINO 212M {CHB,SOD,DLF,IEF}
KB LI DOMINO 874U ET | CL I DOMINETTE 01 I2K IET
 MONTANA MISS 295 | HH ADVANCE 0072K {DLF,HYF,IEF}
 MONTANA MISS 037 {DOD}

UPS DOMINO 4261 | SR DOMINO 700 {CHB}
BJ DELLA 610 | UPS MISS DIAMOND 1473
 BJ ROSE 1186 | OXH ADVANCE 3088 {SOD}
 BJ 7527 DOMINO LASS 393

BW	WW	YW	M	M&G	CW	FAT	REA	MRB	CHB\$
4.6	49	78	32	56	61	0.000	0.23	0.16	\$25

Full pigment, thick butt, free moving bull out of a great milking UPS 4261 Dam.



TAG #
980 **BJ 874U MONTANA DOMINO 5090**
DOB: 04/01/2015 • REG. #: 43620524 • BW: 95 • 205: 490 • RATIO: 74

CL I DOMINO 417P {CHB,DLF,IEF} | CL I DOMINO 212M {CHB,SOD,DLF,IEF}
KB LI DOMINO 874U ET | CL I DOMINETTE 01 I2K IET
 MONTANA MISS 295 | HH ADVANCE 0072K {DLF,HYF,IEF}
 MONTANA MISS 037 {DOD}

OXH ADVANCE 3088 {SOD} | HH ADVANCE 767G IET {SOD,CHB,DLF,IEF}
BJ ROSE 980 | OXH JEAN 9101
 BJ MISS ADVANCE 463 | K LI ADVANCE 634 {SOD}
 BJ MS STAR DUST 185

BW	WW	YW	M	M&G	CW	FAT	REA	MRB	CHB\$
2.6	38	64	24	43	54	-0.004	0.06	0.15	\$20

Full pigmented April bull, moderate framed, but coming on. Out of a good OXH 3088 daughter.



TAG #
910 **BJ 874U MONTANA DOMINO 5101**
DOB: 03/16/2015 • REG. #: 43620520 • BW: 95 • 205: 649 • RATIO: 111

CL I DOMINO 417P {CHB,DLF,IEF} | CL I DOMINO 212M {CHB,SOD,DLF,IEF}
KB LI DOMINO 874U ET | CL I DOMINETTE 01 I2K IET
 MONTANA MISS 295 | HH ADVANCE 0072K {DLF,HYF,IEF}
 MONTANA MISS 037 {DOD}

UPS DOMINO 4261 | SR DOMINO 700 {CHB}
BJ DELLA 910 {DOD} | UPS MISS DIAMOND 1473
 BJ STARLETT ADVANCE 1266 | K&B 927 ADVANCE 2419
 BJ DOMINETTE 068

BW	WW	YW	M	M&G	CW	FAT	REA	MRB	CHB\$
5.3	52	80	30	56	62	0.000	0.27	0.12	\$25

This bull is going to be big. He is out of a real broody UPS 4261 cow with a perfect udder. Cow maker with a big hip.



TAG #
1159 **BJ 874U MONTANA DOMINO 5108**
DOB: 04/23/2015 • REG. #: 43620547 • BW: 90 • 205: 609 • RATIO: 104

CL I DOMINO 417P {CHB,DLF,IEF} | CL I DOMINO 212M {CHB,SOD,DLF,IEF}
KB LI DOMINO 874U ET | CL I DOMINETTE 01 I2K IET
 MONTANA MISS 295 | HH ADVANCE 0072K {DLF,HYF,IEF}
 MONTANA MISS 037 {DOD}

UPS DOMINO 4261 | SR DOMINO 700 {CHB}
BJ DELLA 1159 | UPS MISS DIAMOND 1473
 BJ CENTURION GAL 1686 | K CENTURION LAD 433
 MB STARDUST 622

BW	WW	YW	M	M&G	CW	FAT	REA	MRB	CHB\$
5.2	51	80	27	53	63	0.002	0.24	0.13	\$25

Late April bull out of a good milking UPS 4261 Dam.

KB L1 DOMINO 874U Sons



TAG #
1409 **BJ 874U MONTANA DOMINO 5084**
DOB: 03/24/2015 • REG. #: 43620606 • BW: 83 • 205: 596 • RATIO: 102

CL I DOMINO 417P {CHB,DLF,IEF} | CL I DOMINO 212M {CHB,SOD,DLF,IEF}
KB LI DOMINO 874U ET | CL I DOMINETTE 0112K 1ET
 MONTANA MISS 295 | HH ADVANCE 0072K {DLF,HYF,IEF}
 MONTANA MISS 037 {DOD}

OXH ADVANCE 3088 {SOD} | HH ADVANCE 767G 1ET {SOD,CHB,DLF,IEF}
BJ ROSE 1409 | OXH JEAN 9101
 BJ ADVANCE LASS 293 | K&B ADVANCE 1638 {DLF,IEC}
 BJ DOMINETTE 679

BW	WW	YW	M	M&G	CW	FAT	REA	MRB	CHB\$
4.4	49	78	25	50	62	0.004	0.18	0.16	\$25

Here is a bull you don't want to miss. He is Mr. Right. Terrific OXH 3088 Dam. She might be the best cow on the place for perfect udder and milk.



TAG #
1599 **BJ 874U MONTANA DOMINO 5052**
DOB: 03/10/2015 • REG. #: 43620638 • BW: 92 • 205: 615 • RATIO: 105

CL I DOMINO 417P {CHB,DLF,IEF} | CL I DOMINO 212M {CHB,SOD,DLF,IEF}
KB LI DOMINO 874U ET | CL I DOMINETTE 0112K 1ET
 MONTANA MISS 295 | HH ADVANCE 0072K {DLF,HYF,IEF}
 MONTANA MISS 037 {DOD}

IH 286 SABRE 4243 | IH 769 SABRE 286
BJ SALLY 1599 | IH 821 DOMINETTE 209
 BJ 7527 DOMINO LASS 002 | IH 2110 DOMINO 7527
 BJ DOMINETTE 458

BW	WW	YW	M	M&G	CW	FAT	REA	MRB	CHB\$
4.9	52	83	27	53	64	-0.002	0.25	0.14	\$26

Bull with good length and big hip, looks a lot like bull 910. Dam is a great Sabre cow that always raises a good one.

K BIG ABE 904 Sons

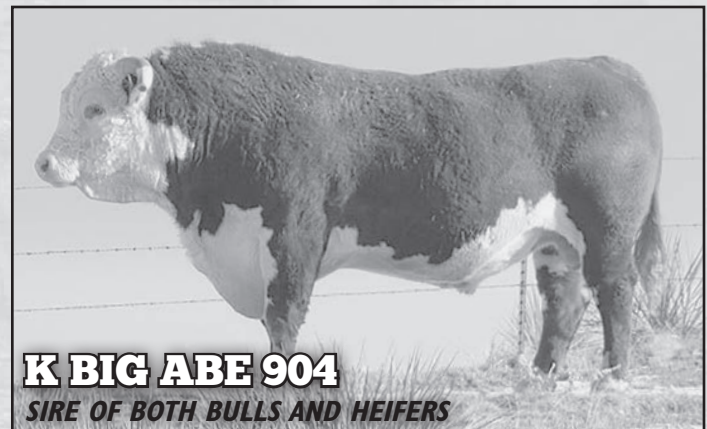
K BIG ABE 904
DOB: 1/5/2009 • REG. #: 43049865

GO EXCEL L18 {CHB,SOD,DLF,HYF,IEF} | DD EXCEL DESIGN 40 {SOD}
GO ABE T32 {CHB,SOD,DLF,HYF,IEF} | GO MS 124 ADVANCE 7005
 GO MS STARMAN M174 {DOD,DLF,IEF} | B STARMAN 906J {SOD}
 GO MS EXCEL 9006

K LI ADVANCER 061 {SOD} | HH ADVANCE 767G 1ET {SOD,CHB,DLF,IEF}
K LADY ADVANCER 285 {DOD} | K LADY DOMINO 841 {DOD}
 K LADY ADVANCER 036 | K LADY DOMINO 479

BW	WW	YW	M	M&G	CW	FAT	REA	MRB	CHB\$
2.0	57	82	42	71	66	-0.030	0.22	-0.07	\$26

Very comfortable birth weights here. Produces extra muscle and awesome females. Great udders. Some top bulls out of Abe.



K BIG ABE 904
SIRE OF BOTH BULLS AND HEIFERS

TAG #
070 **BJ 904 BIG ABE 5100**
DOB: 03/12/2015 • REG. #: 43620430 • BW: 90 • 205: 641 • RATIO: 109

GO ABET32 {CHB,SOD,DLF,HYF,IEF} | GO EXCEL L18 {CHB,SOD,DLF,HYF,IEF}
K BIG ABE 904 | GO MS STARMAN M174 {DOD,DLF,IEF}
 K LADY ADVANCER 285 {DOD} | K LI ADVANCER 061 {SOD}
 K LADY ADVANCER 036

KB LI DOMINO 874U ET | CL I DOMINO 417P {CHB,DLF,IEF}
BJ PATTY 070 {DOD} | MONTANA MISS 295
 BJ DELLA 1498 | UPS DOMINO 4261
 BJ MADALLION LASS 1895

BW	WW	YW	M	M&G	CW	FAT	REA	MRB	CHB\$
3.7	55	83	38	66	65	-0.010	0.24	0.05	\$26

This is one very good ABE bull. He should get big. Thick, clean and smooth describes him. He is out of our best older 874U cows. She never misses. Is a good milking, broody cow. Dam of Distinction.



070

K BIG ABE 904 Sons



1066

TAG # **1066** **BJ 904 BIG ABE 5049**
 DOB: 02/25/2015 • REG. #: 43620531 • BW: 70 • 205: 602 • RATIO: 103

K BIG ABE 904 GO ABET32 {CHB,SOD,DLF,HYF,IEF} GO EXCEL L18 {CHB,SOD,DLF,HYF,IEF}
 GO MS STARMAN M174 {DOD,DLF,IEF}
 K LADY ADVANCER 285 {DOD} K L1 ADVANCER 061 {SOD}
 K LADY ADVANCER 036

BJ ROSE 1066 OXH ADVANCE 3088 {SOD} HH ADVANCE 767G 1ET {SOD,CHB,DLF,IEF}
 OXH JEAN 9101
 K&B STARFIRE 9676
 MB MS GENERATOR 639 {DOD}

BW	WW	YW	M	M&G	CW	FAT	REA	MRB	CHB\$
3.3	54	83	31	58	65	-0.018	0.21	-0.01	\$25

Calving ease here. This bull is really put together. Thick, smooth bull.



1446

TAG # **1446** **BJ 904 BIG ABE 5061**
 DOB: 03/01/2015 • REG. #: 43620614 • BW: 82 • 205: 600 • RATIO: 102

K BIG ABE 904 GO ABET32 {CHB,SOD,DLF,HYF,IEF} GO EXCEL L18 {CHB,SOD,DLF,HYF,IEF}
 GO MS STARMAN M174 {DOD,DLF,IEF}
 K LADY ADVANCER 285 {DOD} K L1 ADVANCER 061 {SOD}
 K LADY ADVANCER 036

BJ MADALLION LASS 1446 SR MEDALLION 292 HR ROBIN HOOD 52F {SOD,DLF,IEF}
 MB ADVANCE LASS 1070 PH SILVER BELLE 8674
 K L1 ADVANCER 634 {SOD}
 LADY GEN 750 {DOD}

BW	WW	YW	M	M&G	CW	FAT	REA	MRB	CHB\$
2.7	47	74	35	58	61	-0.008	0.12	0.01	\$21

Full pigmented, real deep bodied ABE son out of a good producing deep ribbed cow.

TAG # **1246** **BJ 904 BIG ABE 5122**
 DOB: 04/10/2015 • REG. #: 43620573 • BW: 80 • 205: 540 • RATIO: 92

K BIG ABE 904 GO ABET32 {CHB,SOD,DLF,HYF,IEF} GO EXCEL L18 {CHB,SOD,DLF,HYF,IEF}
 GO MS STARMAN M174 {DOD,DLF,IEF}
 K LADY ADVANCER 285 {DOD} K L1 ADVANCER 061 {SOD}
 K LADY ADVANCER 036

BJ MADALLION LASS 1246 SR MEDALLION 292 HR ROBIN HOOD 52F {SOD,DLF,IEF}
 MB DOMINETTE 569 PH SILVER BELLE 8674
 EE DOMINO 4021 {SOD}
 MB MS STAR DUST 351 {DOD}

BW	WW	YW	M	M&G	CW	FAT	REA	MRB	CHB\$
3.0	45	70	30	52	57	-0.007	0.07	0.00	\$19

Moderate framed, ring eyed April bull out of a big ring eyed cow.



1615

TAG # **1615** **BJ 904 BIG ABE 5060**
 DOB: 03/09/2015 • REG. #: 43620640 • BW: 82 • 205: 609 • RATIO: 104

K BIG ABE 904 GO ABET32 {CHB,SOD,DLF,HYF,IEF} GO EXCEL L18 {CHB,SOD,DLF,HYF,IEF}
 GO MS STARMAN M174 {DOD,DLF,IEF}
 K LADY ADVANCER 285 {DOD} K L1 ADVANCER 061 {SOD}
 K LADY ADVANCER 036

BJ ROSE 1615 {DOD} OXH ADVANCE 3088 {SOD} HH ADVANCE 767G 1ET {SOD,CHB,DLF,IEF}
 BJ MISS SKYLINE 560 {DOD} OXH JEAN 9101
 K&B SKYLINE 3845 {SOD}
 BJ 335F DONNA 425

BW	WW	YW	M	M&G	CW	FAT	REA	MRB	CHB\$
2.9	52	81	33	59	64	-0.015	0.22	0.01	\$24

Looks a lot like his sire. Well muscled bull. Calving ease bull. Grandam on Dam of Distinction list.



KB L1 DOMINO 396A Sons

KB L1 DOMINO 396A {DLF,HYF,IEF}

DOB: 2/06/2013 • REG. #: 43415069

CL I DOMINO 849U {CHB,DLF,HYF,IEF}
KB L1 DOMINO 121Y {DLF,HYF,IEF}
 KB L1 DOMINETTE 945W {DLF,HYF,IEF}

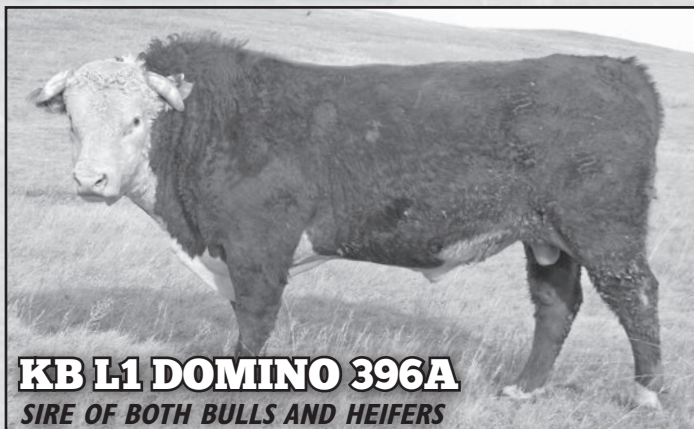
CL I DOMINO 648S {SOD,CHB,DLF,IEF}
 CL I DOMINETTE 591R IET
 HH ADVANCE 5104R {SOD,CHB,DLF,IEF}
 KB L1 MARKETTE 243 {DLF,HYF,IEF}

KB L1 DOMINO 844U {DLF,HYF,IEF}
KB L1 DOMINETTE 1175Y {DLF,HYF,IEF}
 KB L1 DOMINETTE 336

KB L1 DOMINO 521R {CHB,DLF,HYF,IEF}
 KB DOMINETTE 353N ET {DLF,HYF,IEF}
 CL I DOMINO 484 {CHB,SOD,DLF,HYF,IEF}
 KB L1 DOMINETTE 718

BW	VW	YW	M	M&G	CW	FAT	REA	MRB	CHB\$
3.8	53	90	27	54	66	-0.004	0.04	0.12	\$26

We used this bull on heifers and got along real well. He is a red necked, red to the ground, good pigmented 121 son. Is a very long bodied bull that takes a long stride. Dam 1175 is a big, broody, light colored 844 Baker Dam. Her sire produces a lot of rib volume and muscle with great females.



KB L1 DOMINO 396A
SIRE OF BOTH BULLS AND HEIFERS



3980



3907

TAG # **3980** **BJ 396A DOMINO 5009**
 DOB: 03/06/2015 • REG. #: 43635058 • BW: 88 • 205: 662 • RATIO: 112

KB L1 DOMINO 121Y {DLF,HYF,IEF}
KB L1 DOMINO 396A {DLF,HYF,IEF}
 KB L1 DOMINETTE 1175Y {DLF,HYF,IEF}

CL I DOMINO 849U {CHB,DLF,HYF,IEF}
 KB L1 DOMINETTE 945W {DLF,HYF,IEF}
 KB L1 DOMINO 844U {DLF,HYF,IEF}
 KB L1 DOMINETTE 336

K BIG ABE 904
BJ ABBY 3980
 BJ PATTY 080

GO ABET32 {CHB,SOD,DLF,HYF,IEF}
 K LADY ADVANCER 285 {DOD}
 KB L1 DOMINO 874U ET
 BJ DELLA 1108

BW	VW	YW	M	M&G	CW	FAT	REA	MRB	CHB\$
4.1	58	91	34	63	68	-0.007	0.19	0.08	\$28

Good thick bull, out of a first calf heifer. Grandam is 080. He should be good.

TAG # **3907** **BJ 396A DOMINO 5004**
 DOB: 04/02/2015 • REG. #: 43635052 • BW: 77 • 205: 552 • RATIO: 94

KB L1 DOMINO 121Y {DLF,HYF,IEF}
KB L1 DOMINO 396A {DLF,HYF,IEF}
 KB L1 DOMINETTE 1175Y {DLF,HYF,IEF}

CL I DOMINO 849U {CHB,DLF,HYF,IEF}
 KB L1 DOMINETTE 945W {DLF,HYF,IEF}
 KB L1 DOMINO 844U {DLF,HYF,IEF}
 KB L1 DOMINETTE 336

K BIG ABE 904
BJ ABBY 3907
 BJ PATTY 140 {DOD}

GO ABET32 {CHB,SOD,DLF,HYF,IEF}
 K LADY ADVANCER 285 {DOD}
 KB L1 DOMINO 874U ET
 BJ SALLY 1298

BW	VW	YW	M	M&G	CW	FAT	REA	MRB	CHB\$
3.0	50	80	30	54	62	-0.010	0.09	0.08	\$24

April bull out of an ABE daughter with smooth shoulders and could be used on heifers.

TAG # **3960** **BJ 396A DOMINO 5017**
 DOB: 03/04/2015 • REG. #: 43635057 • BW: 85 • 205: 609 • RATIO: 103

KB L1 DOMINO 121Y {DLF,HYF,IEF}
KB L1 DOMINO 396A {DLF,HYF,IEF}
 KB L1 DOMINETTE 1175Y {DLF,HYF,IEF}

CL I DOMINO 849U {CHB,DLF,HYF,IEF}
 KB L1 DOMINETTE 945W {DLF,HYF,IEF}
 KB L1 DOMINO 844U {DLF,HYF,IEF}
 KB L1 DOMINETTE 336

K ADVANCER LAD 165 {DLF,HYF,IEF}
BJ TERRIE 3960
 BJ ABBY 1011

GO TORRINGTON W16 {DLF,IEF}
 K LADY MABEL 934 {DOD}
 K BIG ABE 904
 BJ DELLA 1567

BW	VW	YW	M	M&G	CW	FAT	REA	MRB	CHB\$
3.8	60	93	31	61	70	-0.001	0.18	0.10	\$28

Good muscle, stands wide. Grandam is an ABE with a perfect udder and could be used on heifers.



3960

KB L1 DOMINO 396A Sons



3156

TAG # **3156** **BJ 396A DOMINO 5006**
 DOB: 03/04/2015 • REG. #: 43635049 • BW: 88 • 205: 660 • RATIO: 112

KB LI DOMINO 121Y {DLF,HYF,IEF} | CL I DOMINO 849U {CHB,DLF,HYF,IEF}
KB LI DOMINO 396A {DLF,HYF,IEF} | KB LI DOMINETTE 945W {DLF,HYF,IEF}
 KB LI DOMINETTE 1175Y {DLF,HYF,IEF} | KB LI DOMINO 844U {DLF,HYF,IEF}
 KB LI DOMINETTE 336

KB LI DOMINO 1107Y {DLF,HYF,IEF} | HH ADVANCE 5104R {SOD,CHB,DLF,IEF}
BJ BECKY 3156 | MONTANA MISS 760T {DOD,DLF,HYF,IEF}
 BJ DELLA 1077 | UPS DOMINO 4261
 BJ 7527 DOMINO LASS 823

BW	WW	YW	M	M&G	CW	FAT	REA	MRB	CHB\$
4.5	58	98	29	58	71	-0.009	0.32	0.08	\$29

Big tall, long bull out of a first calf heifer. A lot of growth here.



3140

TAG # **3140** **BJ 396A DOMINO 5016**
 DOB: 03/22/2015 • REG. #: 43635046 • BW: 85 • 205: 605 • RATIO: 103

KB LI DOMINO 121Y {DLF,HYF,IEF} | CL I DOMINO 849U {CHB,DLF,HYF,IEF}
KB LI DOMINO 396A {DLF,HYF,IEF} | KB LI DOMINETTE 945W {DLF,HYF,IEF}
 KB LI DOMINETTE 1175Y {DLF,HYF,IEF} | KB LI DOMINO 844U {DLF,HYF,IEF}
 KB LI DOMINETTE 336

K ADVANCER LAD 9170 | CL I DOMINO 705T
BJ KAREN 3140 | K LADY ADVANCER 724
 BJ STARLETT ADVANCE 1577 | K&B 927 ADVANCE 2419
 BJ ADVANCE LASS 451

BW	WW	YW	M	M&G	CW	FAT	REA	MRB	CHB\$
3.5	52	86	25	50	65	-0.008	0.15	0.03	\$24

Deep ribbed bull out of a calving ease Dam.



3146

TAG # **3146** **BJ 396A DOMINO 5029**
 DOB: 03/21/2015 • REG. #: 43635047 • BW: 90 • 205: 577 • RATIO: 98

KB LI DOMINO 121Y {DLF,HYF,IEF} | CL I DOMINO 849U {CHB,DLF,HYF,IEF}
KB LI DOMINO 396A {DLF,HYF,IEF} | KB LI DOMINETTE 945W {DLF,HYF,IEF}
 KB LI DOMINETTE 1175Y {DLF,HYF,IEF} | KB LI DOMINO 844U {DLF,HYF,IEF}
 KB LI DOMINETTE 336

KB LI DOMINO 874U ET | CL I DOMINO 417P {CHB,DLF,IEF}
BJ PATTY 3146 | MONTANA MISS 295
 BJ ROSE 1589 {DOD} | OXH ADVANCE 3088 {SOD}
 BJ ADVANCE LASS 1094

BW	WW	YW	M	M&G	CW	FAT	REA	MRB	CHB\$
3.9	50	84	27	52	63	-0.001	0.11	0.14	\$25

Full pigment red to the hoof. Grandam 1589 is a Dam of Distinction cow. May be the best milking cow we have.



3128

TAG # **3128** **BJ 396A DOMINO 5012**
 DOB: 03/01/2015 • REG. #: 43635043 • BW: 80 • 205: 649 • RATIO: 110

KB LI DOMINO 121Y {DLF,HYF,IEF} | CL I DOMINO 849U {CHB,DLF,HYF,IEF}
KB LI DOMINO 396A {DLF,HYF,IEF} | KB LI DOMINETTE 945W {DLF,HYF,IEF}
 KB LI DOMINETTE 1175Y {DLF,HYF,IEF} | KB LI DOMINO 844U {DLF,HYF,IEF}
 KB LI DOMINETTE 336

K ADVANCER LAD 9170 | CL I DOMINO 705T
BJ KAREN 3128 | K LADY ADVANCER 724
 BJ ROSE 1066 | OXH ADVANCE 3088 {SOD}
 BJ STARDUST 173

BW	WW	YW	M	M&G	CW	FAT	REA	MRB	CHB\$
3.4	52	87	26	52	65	-0.006	0.13	0.06	\$25

One of the best 396A bulls to offer. Calving ease throughout this pedigree, good thick bull, red to the hoof.

KB L1 DOMINO 396A Sons



TAG # **3110** **Bj 396A DOMINO 5008**
 DOB: 03/16/2015 • REG. #: 43635039 • BW: 80 • 205: 625 • RATIO: 106

KB LI DOMINO 121Y {DLF,HYF,IEF} | CL I DOMINO 849U {CHB,DLF,HYF,IEF}
KB LI DOMINO 396A {DLF,HYF,IEF} | KB LI DOMINETTE 945W {DLF,HYF,IEF}
 KB LI DOMINETTE 1175Y {DLF,HYF,IEF} | KB LI DOMINO 844U {DLF,HYF,IEF}
 KB LI DOMINETTE 336

KB LI DOMINO 874U ET | CL I DOMINO 417P {CHB,DLF,IEF}
Bj PATTY 3110 | MONTANA MISS 295
 Bj ROSE 1179 | OXH ADVANCE 3088 {SOD}
 Bj MISS ADVANCE 1394

BW	WW	YW	M	M&G	CW	FAT	REA	MRB	CHB\$
4.0	54	87	29	56	66	-0.001	0.15	0.13	\$27

Another top son of 396A. Good hind legs and thick bull and out of a 874U daughter.

TAG # **3101** **Bj 396A DOMINO 5010**
 DOB: 03/19/2015 • REG. #: 43635038 • BW: 85 • 205: 631 • RATIO: 107

KB LI DOMINO 121Y {DLF,HYF,IEF} | CL I DOMINO 849U {CHB,DLF,HYF,IEF}
KB LI DOMINO 396A {DLF,HYF,IEF} | KB LI DOMINETTE 945W {DLF,HYF,IEF}
 KB LI DOMINETTE 1175Y {DLF,HYF,IEF} | KB LI DOMINO 844U {DLF,HYF,IEF}
 KB LI DOMINETTE 336

K BIG ABE 904 | GO ABET32 {CHB,SOD,DLF,HYF,IEF}
Bj ABBY 3101 | K LADY ADVANCER 285 {DOD}
 Bj ROSE 390 | OXH ADVANCE 3088 {SOD}
 Bj MADALLION LASS 1714

BW	WW	YW	M	M&G	CW	FAT	REA	MRB	CHB\$
3.4	53	86	32	58	66	-0.007	0.13	0.07	\$25

Big thick bull out of an ABE first calf heifer, real gentle bull.

K ADVANCER LAD 165 Sons

K ADVANCER LAD 165 {DLF,HYF,IEF}
 DOB: 1/21/2011 • REG. #: 43234253 **SIRE OF BOTH BULLS AND HEIFERS**

HH ADVANCE 7195T {CHB,SOD,DLF,HYF,IEF} | LI DOMINO 03571 {CHB,DLF,HYF,IEF}
GO TORRINGTON W16 {DLF,IEF} | HH MISS ADVANCE 3128N
 GO MS 3196 ADVANCET134 {DOD} | HH ADVANCE 3196N {CHB,SOD,DLF,IEC}
 GO MS L18 EXCEL P40

GO ABET32 {CHB,SOD,DLF,HYF,IEF} | GO EXCEL L18 {CHB,SOD,DLF,HYF,IEF}
K LADY MABEL 934 {DOD} | GO MS STARMAN M174 {DOD,DLF,IEF}
 K LADY ROBIN 325 | HR ROBIN HOOD 52F {SOD,DLF,IEF}
 K LADY DOMINO 841 {DOD}

BW	WW	YW	M	M&G	CW	FAT	REA	MRB	CHB\$
3.2	75	106	34	71	79	0.019	0.26	0.14	\$35

Used on heifers for 2 years with good results. Sires extra length and pigment. Daughters have nice clean udders with small teats. Fast growing calves with plenty of vigor.



TAG # **040** **Bj 165 ADVANCE LAD 5098**
 DOB: 04/06/2015 • REG. #: 43620427 • BW: 80 • 205: 168 • RATIO: 106

GO TORRINGTON W16 {DLF,IEF} | HH ADVANCE 7195T {CHB,SOD,DLF,HYF,IEF}
K ADVANCER LAD 165 {DLF,HYF,IEF} | GO MS 3196 ADVANCET134 {DOD}
 K LADY MABEL 934 {DOD} | GO ABE T32 {CHB,SOD,DLF,HYF,IEF}
 K LADY ROBIN 325

KB LI DOMINO 874U ET | CL I DOMINO 417P {CHB,DLF,IEF}
Bj PATTY 040 | MONTANA MISS 295
 Bj ROSE 1048 {DOD} | OXH ADVANCE 3088 {SOD}
 Bj 7527 DOMINO LASS 823

BW	WW	YW	M	M&G	CW	FAT	REA	MRB	CHB\$
3.7	63	94	31	63	71	0.009	0.23	0.15	\$31

Dehorned bull out of a 874U daughter that really milks. His Grandam is 1048, an OXH 3088, Dam of Distinction cow. A good, long, thick bull.



K ADVANCER LAD 165 Sons

TAG #
080 **BJ 165 ADVANCE LAD 5074**
DOB: 03/15/2015 • REG. #: 43620432 • BW: 90 • 205: 678 • RATIO: 116

GO TORRINGTON W16 {DLF,IEF} | HH ADVANCE 7195T {CHB,SOD,DLF,HYF,IEF}
K ADVANCER LAD 165 {DLF,HYF,IEF} | GO MS 3196 ADVANCET134 {DOD}
K LADY MABEL 934 {DOD} | GO ABET32 {CHB,SOD,DLF,HYF,IEF}
K LADY ROBIN 325

KB LI DOMINO 874U ET | CL I DOMINO 417P {CHB,DLF,IEF}
BJ PATTY 080 | MONTANA MISS 295
BJ DELLA 1108 | UPS DOMINO 4261
BJ MISS ADVANCE 1685

BW	VW	YW	M	M&G	CW	FAT	REA	MRB	CHB\$
4.3	65	96	35	68	73	0.010	0.28	0.15	\$32

The 080 cow is one of the best 874U cows we have, very deep ribbed, easy keeping cow with lots of milk. A whale of a bull. Full pigment.



TAG #
1739 **BJ 165 ADVANCE LAD 5050**
DOB: 03/12/2015 • REG. #: 43620699 • BW: 85 • 205: 629 • RATIO: 107

GO TORRINGTON W16 {DLF,IEF} | HH ADVANCE 7195T {CHB,SOD,DLF,HYF,IEF}
K ADVANCER LAD 165 {DLF,HYF,IEF} | GO MS 3196 ADVANCET134 {DOD}
K LADY MABEL 934 {DOD} | GO ABET32 {CHB,SOD,DLF,HYF,IEF}
K LADY ROBIN 325

UPS DOMINO 4261 | SR DOMINO 700 {CHB}
BJ DELLA 1739 {DOD} | UPS MISS DIAMOND 1473
BJ CENTURION GAL 1556 | K CENTURION LAD 433
MB DOMINETTE 682

BW	VW	YW	M	M&G	CW	FAT	REA	MRB	CHB\$
4.5	62	93	32	63	71	0.009	0.29	0.09	\$29

Full pigment extremely long sided bull, plenty of frame and good disposition. Out of a UPS 4261 Dam of Distinction cow.



TAG #
270 **BJ 165 ADVANCE LAD 50576**
DOB: 03/25/2015 • REG. #: 43620448 • BW: 85 • 205: 636 • RATIO: 109

GO TORRINGTON W16 {DLF,IEF} | HH ADVANCE 7195T {CHB,SOD,DLF,HYF,IEF}
K ADVANCER LAD 165 {DLF,HYF,IEF} | GO MS 3196 ADVANCET134 {DOD}
K LADY MABEL 934 {DOD} | GO ABET32 {CHB,SOD,DLF,HYF,IEF}
K LADY ROBIN 325

KB LI DOMINO 874U ET | CL I DOMINO 417P {CHB,DLF,IEF}
BJ PATTY 270 | MONTANA MISS 295
BJ ROSE 1328 {DOD} | OXH ADVANCE 3088 {SOD}
BJ 9597 DOMINET 043

BW	VW	YW	M	M&G	CW	FAT	REA	MRB	CHB\$
3.8	64	94	32	64	71	0.008	0.23	0.14	\$31

Moderate framed bull, full pigment, out of another good 874U daughter, Grandam is a Dam of Distinction cow.

TAG #
2111 **BJ 165 ADVANCE LAD 5005**
DOB: 03/16/2015 • REG. #: 43620709 • BW: 86 • 205: 726 • RATIO: 124

GO TORRINGTON W16 {DLF,IEF} | HH ADVANCE 7195T {CHB,SOD,DLF,HYF,IEF}
K ADVANCER LAD 165 {DLF,HYF,IEF} | GO MS 3196 ADVANCET134 {DOD}
K LADY MABEL 934 {DOD} | GO ABET32 {CHB,SOD,DLF,HYF,IEF}
K LADY ROBIN 325

KB LI DOMINO 874U ET | CL I DOMINO 417P {CHB,DLF,IEF}
BJ PATTY 2111 | MONTANA MISS 295
BJ DELLA 1739 {DOD} | UPS DOMINO 4261
BJ CENTURION GAL 1556

BW	VW	YW	M	M&G	CW	FAT	REA	MRB	CHB\$
5.1	72	105	34	69	78	0.014	0.35	0.14	\$34

He's got the look, one of the best 165 sons ever. Out of a young 874U Dam and Grandam is a Dam of Distinction cow 1739. Should produce some great females.

TAG #
310 **BJ 165 ADVANCE LAD 5096**
DOB: 03/13/2015 • REG. #: 43620452 • BW: 88 • 205: 684 • RATIO: 117

GO TORRINGTON W16 {DLF,IEF} | HH ADVANCE 7195T {CHB,SOD,DLF,HYF,IEF}
K ADVANCER LAD 165 {DLF,HYF,IEF} | GO MS 3196 ADVANCET134 {DOD}
K LADY MABEL 934 {DOD} | GO ABET32 {CHB,SOD,DLF,HYF,IEF}
K LADY ROBIN 325

KB LI DOMINO 874U ET | CL I DOMINO 417P {CHB,DLF,IEF}
BJ PATTY 310 | MONTANA MISS 295
BJ AMBER 1558 | KB LI DOMINO 6135
BJ MISS ADVANCE 1054

BW	VW	YW	M	M&G	CW	FAT	REA	MRB	CHB\$
4.4	68	100	32	66	75	0.003	0.32	0.11	\$33

Thick with full pigment, long and deep. He's got the herd bull look and a stand out bull all summer. Awesome 874U Dam!



K ADVANCER LAD 165 Sons



TAG #
2115 **BJ 165 ADVANCE LAD 5011**
DOB: 03/17/2015 • REG. #: 43620710 • BW: 83 • 205: 660 • RATIO: 113

GO TORRINGTON W16 {DLF,IEF} | HH ADVANCE 7195T {CHB,SOD,DLF,HYF,IEF}
K ADVANCER LAD 165 {DLF,HYF,IEF} | GO MS 3196 ADVANCET134 {DOD}
K LADY MABEL 934 {DOD} | GO ABE T32 {CHB,SOD,DLF,HYF,IEF}
K LADY ROBIN 325

KB LI DOMINO 874U ET | CL I DOMINO 417P {CHB,DLF,IEF}
BJ PATTY 2115 | MONTANA MISS 295
BJ CENTURION GAL 1569 | K CENTURION LAD 433
BJ MADALLION LASS 1825

BW	WW	YW	M	M&G	CW	FAT	REA	MRB	CHB\$
4.7	67	99	31	64	74	0.016	0.24	0.12	\$31

Very long sided bull with full pigment. Looks a lot like 310 and out of a young good 874U daughter.

TAG #
2126 **BJ 165 ADVANCE LAD 5036**
DOB: 03/13/2015 • REG. #: 43620715 • BW: 85 • 205: 589 • RATIO: 101

GO TORRINGTON W16 {DLF,IEF} | HH ADVANCE 7195T {CHB,SOD,DLF,HYF,IEF}
K ADVANCER LAD 165 {DLF,HYF,IEF} | GO MS 3196 ADVANCET134 {DOD}
K LADY MABEL 934 {DOD} | GO ABE T32 {CHB,SOD,DLF,HYF,IEF}
K LADY ROBIN 325

KB LI DOMINO 874U ET | CL I DOMINO 417P {CHB,DLF,IEF}
BJ PATTY 2126 | MONTANA MISS 295
BJ CENTURION GAL 1369 | K CENTURION LAD 433
BJ MISS ADVANCE 1685

BW	WW	YW	M	M&G	CW	FAT	REA	MRB	CHB\$
4.4	65	97	29	62	73	0.012	0.24	0.12	\$31

Real yellow 165 son, good hip. Will cover the pasture. Out of a good producing 874U Dam.

TAG #
2138 **BJ 165 ADVANCE LAD 5026**
DOB: 03/04/2015 • REG. #: 43620717 • BW: 80 • 205: 659 • RATIO: 113

GO TORRINGTON W16 {DLF,IEF} | HH ADVANCE 7195T {CHB,SOD,DLF,HYF,IEF}
K ADVANCER LAD 165 {DLF,HYF,IEF} | GO MS 3196 ADVANCET134 {DOD}
K LADY MABEL 934 {DOD} | GO ABE T32 {CHB,SOD,DLF,HYF,IEF}
K LADY ROBIN 325

K BIG ABE 904 | GO ABE T32 {CHB,SOD,DLF,HYF,IEF}
BJ ABBY 2138 | K LADY ADVANCER 285 {DOD}
BJ CENTURION GAL 1609 | K CENTURION LAD 433
BJ ROSE 1465

BW	WW	YW	M	M&G	CW	FAT	REA	MRB	CHB\$
4.1	69	102	33	67	76	0.005	0.29	0.05	\$31

Ring eyed, gentle, well muscled bull out of a great young ABE daughter with a perfect udder. Granddam 1609 is a real good Centurion cow.

TAG #
2164 **BJ 165 ADVANCE LAD 5034**
DOB: 03/18/2015 • REG. #: 43620723 • BW: 85 • 205: 618 • RATIO: 106

GO TORRINGTON W16 {DLF,IEF} | HH ADVANCE 7195T {CHB,SOD,DLF,HYF,IEF}
K ADVANCER LAD 165 {DLF,HYF,IEF} | GO MS 3196 ADVANCET134 {DOD}
K LADY MABEL 934 {DOD} | GO ABE T32 {CHB,SOD,DLF,HYF,IEF}
K LADY ROBIN 325

BJ OX ADVANCE 690 | OXH ADVANCE 3088 {SOD}
BJ 690 ROSE 2164 | BJ MISS ADVANCE 1144
BJ STARDUST 273 | K&B STARFIRE 9676
MB ALBERTA LADY 944

BW	WW	YW	M	M&G	CW	FAT	REA	MRB	CHB\$
3.7	60	92	26	56	70	0.003	0.22	0.08	\$28

Full pigment, sharp looking Lad, out of a 2nd calf heifer.



TAG #
2174 **BJ 165 ADVANCE LAD 5003**
DOB: 03/15/2015 • REG. #: 43620728 • BW: 80 • 205: 628 • RATIO: 107

GO TORRINGTON W16 {DLF,IEF} | HH ADVANCE 7195T {CHB,SOD,DLF,HYF,IEF}
K ADVANCER LAD 165 {DLF,HYF,IEF} | GO MS 3196 ADVANCET134 {DOD}
K LADY MABEL 934 {DOD} | GO ABE T32 {CHB,SOD,DLF,HYF,IEF}
K LADY ROBIN 325

K BIG ABE 904 | GO ABE T32 {CHB,SOD,DLF,HYF,IEF}
BJ ABBY 2174 | K LADY ADVANCER 285 {DOD}
BJ ROSE 1478 {DOD} | OXH ADVANCE 3088 {SOD}
BJ STARDUST 273

BW	WW	YW	M	M&G	CW	FAT	REA	MRB	CHB\$
3.1	63	93	34	66	71	0.000	0.23	0.06	\$29

Good long sided bull. Cow has a perfect udder.



K ADVANCER LAD 165 Sons



TAG # **2187** **BJ 165 ADVANCE LAD 5031**
 DOB: 03/15/2015 • REG. #: 43620741 • BW: 88 • 205: 713 • RATIO: 122

GO TORRINGTON W16 {DLF,IEF} | HH ADVANCE 7195T {CHB,SOD,DLF,HYF,IEF}
K ADVANCER LAD 165 {DLF,HYF,IEF} | GO MS 3196 ADVANCET134 {DOD}
 K LADY MABEL 934 {DOD} | GO ABE T32 {CHB,SOD,DLF,HYF,IEF}
 | K LADY ROBIN 325

K BIG ABE 904 | GO ABE T32 {CHB,SOD,DLF,HYF,IEF}
BJ ABBY 2187 | K LADY ADVANCER 285 {DOD}
 BJ ROSE 1048 {DOD} | OXH ADVANCE 3088 {SOD}
 | BJ 7527 DOMINO LASS 823

BW	WW	YW	M	M&G	CW	FAT	REA	MRB	CHB\$
5.0	73	114	36	73	83	-0.008	0.57	0.01	\$35

One of the best out of 165 and you will like him. Out of an outstanding ABE Daughter Grandam, is 1048 Dam of Distinction cow.

TAG # **2207** **BJ 165 ADVANCE LAD 5002**
 DOB: 03/18/2015 • REG. #: 43620730 • BW: 84 • 205: 603 • RATIO: 103

GO TORRINGTON W16 {DLF,IEF} | HH ADVANCE 7195T {CHB,SOD,DLF,HYF,IEF}
K ADVANCER LAD 165 {DLF,HYF,IEF} | GO MS 3196 ADVANCET134 {DOD}
 K LADY MABEL 934 {DOD} | GO ABE T32 {CHB,SOD,DLF,HYF,IEF}
 | K LADY ROBIN 325

BJ UPS DOMINO 340 | UPS DOMINO 4261
BJ 340 DELLA 2207 | BJ CENTURION GAL 1427
 BJ ROSE 1066 | OXH ADVANCE 3088 {SOD}
 | BJ STARDUST 173

BW	WW	YW	M	M&G	CW	FAT	REA	MRB	CHB\$
4.0	60	91	29	59	70	0.006	0.24	0.08	\$28

Full pigment, just another long 165 son. Grandam is a low birth weight 3088 Dam.



R 0141 NORTH STAR 27A Sons

R 0141 NORTH STAR 27A {DLF,HYF,IEF}

DOB: 3/11/2013 • REG. #: 43398467

CL I DOMINO 860U {SOD,CHB,DLF,HYF,IEF}
CL I DOMINO 0141 IET {CHB,DLF,HYF,IEF}
 CL I DOMINETTE 475P {DLF,HYF,IEF}

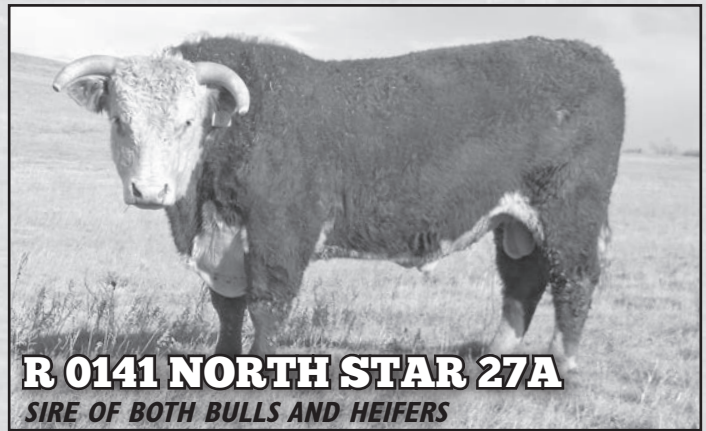
CL I DOMINO 637S IET {CHB}
 CL I DOMINETTE 5142R {DOD,DLF,HYF,IEF}
 CL I DOMINO 824H {SOD,DLF,IEF}
 CL I DOMINETTE 200M {DOD}

R 0041 NORTH STAR 40U {CHB,DLF,IEF}
R STARLETTE 006 {DOD}
 LCI BD 107R RIBSTONE LASS 328U

CJH LI DOMINO 004I {SOD,DLF,IEF}
 R STARLETTE 511 {DOD,DLF,IEF}
 LCI 157K RIBSTONE 107R {CHB}
 LCI BD 6N PENNY 414S

BW	VW	YW	M	M&G	CW	FAT	REA	MRB	CHB\$
5.4	78	125	42	81	89	0.001	0.75	0.00	\$37

A Cooper bred bull on top side of pedigree and Canadian on the bottom side. He is thick made and gentle, producing a lot of thickness and frame. His sire 0141 is one of Ridder's top herd bulls. Females are terrific, says John Ridder. They have thickness and lots of pigment on both eyes and bags. We bought this bull to put a little Canadian influence back in the herd. Big REA, big scrotal and extra milk in this bull.



R 0141 NORTH STAR 27A
SIRE OF BOTH BULLS AND HEIFERS

TAG # 0151 BJ 27A NORTH STAR 5117

DOB: 04/26/2015 • REG. #: 43620437 • BW: 90 • 205: 663 • RATIO: 116

CL I DOMINO 0141 IET {CHB,DLF,HYF,IEF}
R 0141 NORTH STAR 27A {DLF,HYF,IEF}
 R STARLETTE 006 {DOD}

CL I DOMINO 860U {SOD,CHB,DLF,HYF,IEF}
 CL I DOMINETTE 475P {DLF,HYF,IEF}
 R 0041 NORTH STAR 40U {CHB,DLF,IEF}
 LCI BD 107R RIBSTONE LASS 328U

KB LI DOMINO 874U ET
BJ PATTY 0151
 BJ ROSE 1188

CL I DOMINO 417P {CHB,DLF,IEF}
 MONTANA MISS 295
 OXH ADVANCE 3088 {SOD}
 BJ 7527 DOMINO LASS 853

BW	VW	YW	M	M&G	CW	FAT	REA	MRB	CHB\$
5.4	69	109	34	69	79	0.000	0.51	0.08	\$34

Real thick made 27A bull with a big hip and good disposition. Late April calf but a good one.



0901

TAG # 0701 BJ 27A NORTH STAR 5116

DOB: 05/11/2015 • REG. #: 43620501 • BW: 85 • 205: 619 • RATIO: 109

CL I DOMINO 0141 IET {CHB,DLF,HYF,IEF}
R 0141 NORTH STAR 27A {DLF,HYF,IEF}
 R STARLETTE 006 {DOD}

CL I DOMINO 860U {SOD,CHB,DLF,HYF,IEF}
 CL I DOMINETTE 475P {DLF,HYF,IEF}
 R 0041 NORTH STAR 40U {CHB,DLF,IEF}
 LCI BD 107R RIBSTONE LASS 328U

OXH ADVANCE 3088 {SOD}
BJ ROSE 0701
 BJ MISS ADVANCE 1054

HH ADVANCE 767G IET {SOD,CHB,DLF,IEF}
 OXH JEAN 9101
 K LI ADVANCE 634 {SOD}
 BJ DOMINETTE 058

BW	VW	YW	M	M&G	CW	FAT	REA	MRB	CHB\$
4.4	62	101	35	66	75	-0.006	0.47	0.04	\$30

Younger bull here but is really coming on. Grandam is a super 12-year-old cow 1054.

TAG # 0901 BJ 27A NORTH STAR 5125

DOB: 05/15/2015 • REG. #: 43620518 • BW: 90 • 205: 552 • RATIO: 97

CL I DOMINO 0141 IET {CHB,DLF,HYF,IEF}
R 0141 NORTH STAR 27A {DLF,HYF,IEF}
 R STARLETTE 006 {DOD}

CL I DOMINO 860U {SOD,CHB,DLF,HYF,IEF}
 CL I DOMINETTE 475P {DLF,HYF,IEF}
 R 0041 NORTH STAR 40U {CHB,DLF,IEF}
 LCI BD 107R RIBSTONE LASS 328U

K BIG ABE 904
BJ ABBY 0901
 BJ SALLY 1597

GO ABE T32 {CHB,SOD,DLF,HYF,IEF}
 K LADY ADVANCER 285 {DOD}
 IH 286 SABRE 4243
 BJ MISS ADVANCE 1115

BW	VW	YW	M	M&G	CW	FAT	REA	MRB	CHB\$
4.1	62	100	35	66	74	-0.013	0.49	0.00	\$29

Another May bull out of a good ABE 904 daughter.

TAG # 0831 BJ 27A NORTH STAR 5119

DOB: 05/23/2015 • REG. #: 43620507 • BW: 90 • 205: 610 • RATIO: 107

CL I DOMINO 0141 IET {CHB,DLF,HYF,IEF}
R 0141 NORTH STAR 27A {DLF,HYF,IEF}
 R STARLETTE 006 {DOD}

CL I DOMINO 860U {SOD,CHB,DLF,HYF,IEF}
 CL I DOMINETTE 475P {DLF,HYF,IEF}
 R 0041 NORTH STAR 40U {CHB,DLF,IEF}
 LCI BD 107R RIBSTONE LASS 328U

UPS DOMINO 4261
BJ DELLA 0831
 BJ STARLETT ADVANCE 1546

SR DOMINO 700 {CHB}
 UPS MISS DIAMOND 1473
 K&B 927 ADVANCE 2419
 BJ ADVANCE LASS 191

BW	VW	YW	M	M&G	CW	FAT	REA	MRB	CHB\$
5.4	62	101	35	66	75	-0.006	0.56	0.01	\$29

A May 23rd bull — one of the thickest bulls in the group, out of a UPS 4261 dam.



0831

R 0141 NORTH STAR 27A Sons



0941

TAG #
0941 **BJ 27A NORTH STAR 5080**
DOB: 04/01/2015 • REG. #: 43620522 • BW: 90 • 205: 641 • RATIO: 110

CL I DOMINO 0141 IET {CHB,DLF,HYF,IEF}
R 0141 NORTH STAR 27A {DLF,HYF,IEF}
R STARLETTE 006 {DOD}

CL I DOMINO 860U {SOD,CHB,DLF,HYF,IEF}
CL I DOMINETTE 475P {DLF,HYF,IEF}
R 0041 NORTH STAR 40U {CHB,DLF,IEF}
LCI BD 107R RIBSTONE LASS 328U

OXH ADVANCE 3088 {SOD}
BJ ROSE 0941
BJ STARDUST 273

HH ADVANCE 767G IET {SOD,CHB,DLF,IEF}
OXH JEAN 9101
K&B STARFIRE 9676
MB ALBERTA LADY 944

BW	WW	YW	M	M&G	CW	FAT	REA	MRB	CHB\$
5.0	66	108	31	64	78	-0.005	0.51	0.02	\$32

Thick butted, gentle 27A bull, out of a young 3088 daughter.



2152

TAG #
2152 **BJ 27A NORTH STAR 5024**
DOB: 03/18/2015 • REG. #: 43620719 • BW: 95 • 205: 688 • RATIO: 117

CL I DOMINO 0141 IET {CHB,DLF,HYF,IEF}
R 0141 NORTH STAR 27A {DLF,HYF,IEF}
R STARLETTE 006 {DOD}

CL I DOMINO 860U {SOD,CHB,DLF,HYF,IEF}
CL I DOMINETTE 475P {DLF,HYF,IEF}
R 0041 NORTH STAR 40U {CHB,DLF,IEF}
LCI BD 107R RIBSTONE LASS 328U

BJ MONTANA DOMINO 240
BJAYO PATTY 2152
BJ ADVANCE LASS 191

KB LI DOMINO 874U ET
BJ ROSE 1478 {DOD}
K LI ADVANCE 634 {SOD}
BJ DOMINETTE 068

BW	WW	YW	M	M&G	CW	FAT	REA	MRB	CHB\$
4.9	63	100	35	66	75	-0.005	0.46	0.04	\$30

This guy will be big — real yellow, 1/2 pigment — you'll want to look him up.

TAG #
0971 **BJ 27A NORTH STAR 5077**
DOB: 04/08/2015 • REG. #: 43620523 • BW: 85 • 205: 584 • RATIO: 99

CL I DOMINO 0141 IET {CHB,DLF,HYF,IEF}
R 0141 NORTH STAR 27A {DLF,HYF,IEF}
R STARLETTE 006 {DOD}

CL I DOMINO 860U {SOD,CHB,DLF,HYF,IEF}
CL I DOMINETTE 475P {DLF,HYF,IEF}
R 0041 NORTH STAR 40U {CHB,DLF,IEF}
LCI BD 107R RIBSTONE LASS 328U

UPS DOMINO 4261
BJ DELLA 0971
BJ ROSE 1206

SR DOMINO 700 {CHB}
UPS MISS DIAMOND 1473
OXH ADVANCE 3088 {SOD}
BJ ADVANCE LASS 153

BW	WW	YW	M	M&G	CW	FAT	REA	MRB	CHB\$
4.8	60	99	33	63	74	-0.002	0.53	0.06	\$29

Good, thick bull across the top — very clean made UPS 4261 Dam.



TAG #
1061 **BJ 27A NORTH STAR 5091**
DOB: 03/04/2015 • REG. #: 43620530 • BW: 90 • 205: 678 • RATIO: 116

CL I DOMINO 0141 IET {CHB,DLF,HYF,IEF}
R 0141 NORTH STAR 27A {DLF,HYF,IEF}
R STARLETTE 006 {DOD}

CL I DOMINO 860U {SOD,CHB,DLF,HYF,IEF}
CL I DOMINETTE 475P {DLF,HYF,IEF}
R 0041 NORTH STAR 40U {CHB,DLF,IEF}
LCI BD 107R RIBSTONE LASS 328U

K BIG ABE 904
BJ ABBY 1061 {DOD}
BJ CENTURION 1037

GO ABET 32 {CHB,SOD,DLF,HYF,IEF}
K LADY ADVANCER 285 {DOD}
K CENTURION LAD 433
MB ADVANCER LASS 938 {DOD}

BW	WW	YW	M	M&G	CW	FAT	REA	MRB	CHB\$
4.7	68	106	39	73	78	-0.004	0.51	-0.02	\$31

Power house cow bull, full pigment, out of one of my favorite ABE daughters — she has a full brother on the ground now. He will be a herd improver.



1061

KB L1 DOMINO 1107Y Sons

KB L1 DOMINO 1107Y {DLF,HYF,IEF}

DOB: 2/10/2011 • REG. #: 43179265

CL I DOMINO 206M {CHB,DLF,HYF,IEF}
HH ADVANCE 5104R {SOD,CHB,DLF,IEF}
 HH MISS ADVANCE 153L {DOD,DLF,IEF}

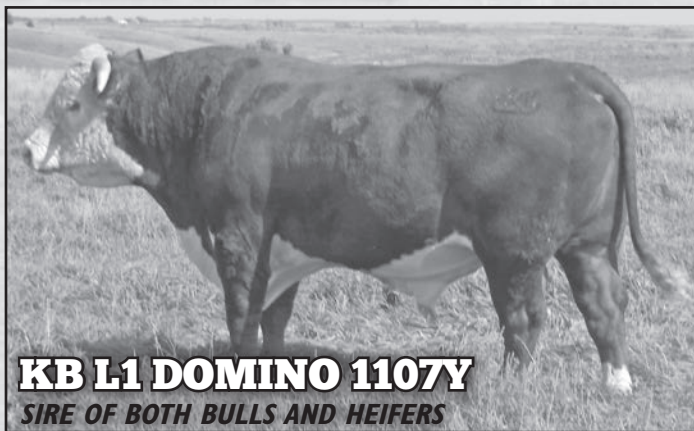
CL I DOMINO 9126J IET {SOD,CHB,DLF,IEF}
 CL I DOMINETTE 825H {DOD,DLF,HYF,IEF}
 CL I DOMINO 986J {SOD,DLF,IEF}
 HH MISS ADVANCE 912J

KB L1 DOMINO 521R {CHB,DLF,HYF,IEF}
MONTANA MISS 760T {DOD,DLF,HYF,IEF}
 MONTANA MISS 524R {DLF,HYF,IEF}

CL I DOMINO 3138N IET {CHB,DLF,HYF,IEF}
 MONTANA MISS 310 {DOD,DLF,HYF,IEF}
 GB L1 DOMINO 175E {CHB,SOD,DLF,HYF,IEF}
 MONTANA MISS 1164

BW	WW	YW	M	M&G	CW	FAT	REA	MRB	CHB\$
3.6	65	114	33	66	80	-0.029	0.70	-0.03	\$33

Awesome herd bull. He is a pigmented, red marked 5104 son that has frame, length, depth, thickness and powerful EPD's, out of a top 521 daughter. His calves are very uniform, with plenty of growth, great females.



KB L1 DOMINO 1107Y
 SIRE OF BOTH BULLS AND HEIFERS



1707



1478

TAG # **1707** **BJ 1107 DOMINO 5051**
 DOB: 03/17/2015 • REG. #: 43620694 • BW: 78 • 205: 515 • RATIO: 88

HH ADVANCE 5104R {SOD,CHB,DLF,IEF}
KB L1 DOMINO 1107Y {DLF,HYF,IEF}
 MONTANA MISS 760T {DOD,DLF,HYF,IEF}

CL I DOMINO 206M {CHB,DLF,HYF,IEF}
 HH MISS ADVANCE 153L {DOD,DLF,IEF}
 KB L1 DOMINO 521R {CHB,DLF,HYF,IEF}
 MONTANA MISS 524R {DLF,HYF,IEF}

IH 286 SABRE 4243
BJ SALLY 1707
 BJ MADALLION LASS 1875

IH 769 SABRE 286
 IH 821 DOMINETTE 209
 SR MEDALLION 292
 MB STARDUST 082

BW	WW	YW	M	M&G	CW	FAT	REA	MRB	CHB\$
3.6	52	93	24	50	69	-0.014	0.43	0.02	\$26

Red to the ground, long bodied bull, out of a 4243 Sabre cow.

TAG # **1478** **BJ 1107 DOMINO 5043**
 DOB: 03/11/2015 • REG. #: 43620626 • BW: 85 • 205: 609 • RATIO: 104

HH ADVANCE 5104R {SOD,CHB,DLF,IEF}
KB L1 DOMINO 1107Y {DLF,HYF,IEF}
 MONTANA MISS 760T {DOD,DLF,HYF,IEF}

CL I DOMINO 206M {CHB,DLF,HYF,IEF}
 HH MISS ADVANCE 153L {DOD,DLF,IEF}
 KB L1 DOMINO 521R {CHB,DLF,HYF,IEF}
 MONTANA MISS 524R {DLF,HYF,IEF}

OXH ADVANCE 3088 {SOD}
BJ ROSE 1478 {DOD}
 BJ STARDUST 273

HH ADVANCE 767G IET {SOD,CHB,DLF,IEF}
 OXH JEAN 9101
 K&B STARFIRE 9676
 MB ALBERTA LADY 944

BW	WW	YW	M	M&G	CW	FAT	REA	MRB	CHB\$
3.7	55	96	30	57	71	-0.019	0.44	0.00	\$27

Full pigment, moderate framed bull out of a great 3088 Dam of Distinction dam — she's always one of the first to calve.

TAG # **1638** **BJ 1107 DOMINO 5095**
 DOB: 03/20/2015 • REG. #: 43620642 • BW: 83 • 205: 550 • RATIO: 94

HH ADVANCE 5104R {SOD,CHB,DLF,IEF}
KB L1 DOMINO 1107Y {DLF,HYF,IEF}
 MONTANA MISS 760T {DOD,DLF,HYF,IEF}

CL I DOMINO 206M {CHB,DLF,HYF,IEF}
 HH MISS ADVANCE 153L {DOD,DLF,IEF}
 KB L1 DOMINO 521R {CHB,DLF,HYF,IEF}
 MONTANA MISS 524R {DLF,HYF,IEF}

IH 286 SABRE 4243
BJ SALLY 1638
 BJ MISS FLINT 071

IH 769 SABRE 286
 IH 821 DOMINETTE 209
 K&B FLINT 6348 {SOD}
 BJ DOMINO LASS 978

BW	WW	YW	M	M&G	CW	FAT	REA	MRB	CHB\$
4.0	53	95	26	53	69	-0.019	0.48	0.00	\$26

Full pigment out of a standout 4243 Sabre dam — one of my favorite Sabre cows.



KB L1 DOMINO 1107Y Sons



TAG #
1398 **BJ 1107 DOMINO 5085**
DOB: 03/12/2015 • REG. #: 43620599 • BW: 83 • 205: 670 • RATIO: 114

HH ADVANCE 5104R {SOD,CHB,DLF,IEF} | CL I DOMINO 206M {CHB,DLF,HYF,IEF}
KB LI DOMINO 1107Y {DLF,HYF,IEF} | HH MISS ADVANCE 153L {DOD,DLF,IEF}
 MONTANA MISS 760T {DOD,DLF,HYF,IEF} | KB LI DOMINO 521R {CHB,DLF,HYF,IEF}
 MONTANA MISS 524R {DLF,HYF,IEF}

OXH ADVANCE 3088 {SOD} | HH ADVANCE 767G 1ET {SOD,CHB,DLF,IEF}
BJ ROSE 1398 | OXH JEAN 9101
 BJ MISS ADVANCE 613 | K LI ADVANCE 634 {SOD}
 MB MS STAR DUST 803

BW	WW	YW	M	M&G	CW	FAT	REA	MRB	CHB\$
3.6	56	96	31	59	72	-0.017	0.46	0.02	\$28

Here is a guy that's really put together — he's a stud — out of a real good 3088 daughter.



TAG #
1278 **BJ 1107 DOMINO 5115**
DOB: 04/25/2015 • REG. #: 43620580 • BW: 85 • 205: 576 • RATIO: 98

HH ADVANCE 5104R {SOD,CHB,DLF,IEF} | CL I DOMINO 206M {CHB,DLF,HYF,IEF}
KB LI DOMINO 1107Y {DLF,HYF,IEF} | HH MISS ADVANCE 153L {DOD,DLF,IEF}
 MONTANA MISS 760T {DOD,DLF,HYF,IEF} | KB LI DOMINO 521R {CHB,DLF,HYF,IEF}
 MONTANA MISS 524R {DLF,HYF,IEF}

UPS DOMINO 4261 | SR DOMINO 700 {CHB}
BJ DELLA 1278 | UPS MISS DIAMOND 1473
 BJ ROSE 1615 {DOD} | OXH ADVANCE 3088 {SOD}
 BJ MISS SKYLINE 560 {DOD}

BW	WW	YW	M	M&G	CW	FAT	REA	MRB	CHB\$
3.8	52	92	30	56	68	-0.016	0.48	0.04	\$27

Out of a great 4261 DOD dam — should produce some great females — Grandam is also a Dam of Distinction cow.



TAG #
1298 **BJ 1107 DOMINO 5088**
DOB: 03/14/2015 • REG. #: 43620581 • BW: 83 • 205: 539 • RATIO: 92

HH ADVANCE 5104R {SOD,CHB,DLF,IEF} | CL I DOMINO 206M {CHB,DLF,HYF,IEF}
KB LI DOMINO 1107Y {DLF,HYF,IEF} | HH MISS ADVANCE 153L {DOD,DLF,IEF}
 MONTANA MISS 760T {DOD,DLF,HYF,IEF} | KB LI DOMINO 521R {CHB,DLF,HYF,IEF}
 MONTANA MISS 524R {DLF,HYF,IEF}

IH 286 SABRE 4243 | IH 769 SABRE 286
BJ SALLY 1298 | IH 821 DOMINETTE 209
 MB MISS ADVANCER 771 | K&B ADVANCER 5256 {SOD}
 MB ADVANCE LASS 319

BW	WW	YW	M	M&G	CW	FAT	REA	MRB	CHB\$
3.1	50	89	25	50	67	-0.018	0.43	0.01	\$25

Deep ribbed bull with full pigment — good cow family.



TAG #
1218 **BJ 1107 DOMINO 5039**
DOB: 03/14/2015 • REG. #: 43620571 • BW: 85 • 205: 564 • RATIO: 96

HH ADVANCE 5104R {SOD,CHB,DLF,IEF} | CL I DOMINO 206M {CHB,DLF,HYF,IEF}
KB LI DOMINO 1107Y {DLF,HYF,IEF} | HH MISS ADVANCE 153L {DOD,DLF,IEF}
 MONTANA MISS 760T {DOD,DLF,HYF,IEF} | KB LI DOMINO 521R {CHB,DLF,HYF,IEF}
 MONTANA MISS 524R {DLF,HYF,IEF}

IH 286 SABRE 4243 | IH 769 SABRE 286
BJ SALLY 1218 | IH 821 DOMINETTE 209
 BJ ADVANCE LASS III | K LI ADVANCE 634 {SOD}
 BJ MS STAR DUST 702

BW	WW	YW	M	M&G	CW	FAT	REA	MRB	CHB\$
3.1	51	92	28	53	69	-0.019	0.48	0.02	\$26

Full pigment — real easy bull to look at — style and depth — out of another Sabre cow.

KB L1 DOMINO 1107Y Sons

TAG #
1168

BJ 1107 DOMINO 5057
DOB: 04/03/2015 • REG. #: 43620549 • BW: 98 • 205: 651 • RATIO: 111

HH ADVANCE 5104R {SOD,CHB,DLF,IEF} | CL I DOMINO 206M {CHB,DLF,HYF,IEF}
 HH MISS ADVANCE 153L {DOD,DLF,IEF} | HH MISS ADVANCE 153L {DOD,DLF,IEF}
KB LI DOMINO 1107Y {DLF,HYF,IEF} | KB LI DOMINO 521R {CHB,DLF,HYF,IEF}
 MONTANA MISS 760T {DOD,DLF,HYF,IEF} | MONTANA MISS 524R {DLF,HYF,IEF}

OXH ADVANCE 3088 {SOD} | HH ADVANCE 767G 1ET {SOD,CHB,DLF,IEF}
BJ ROSE 1168 | OXH JEAN 9101
 BJ STARDUST 883 | K&B STARFIRE 9676
 MB ADVANCE LASS 189

BW	VW	YW	M	M&G	CW	FAT	REA	MRB	CHB\$
4.3	60	104	27	57	75	-0.019	0.48	0.01	\$30

Herd bull material here — one of my favorites. He's long, deep, good and very gentle. Out of a great 3088 OXH cow.



1048



TAG #
1048

BJ 1107 DOMINO 5081
DOB: 03/20/2015 • REG. #: 43620527 • BW: 80 • 205: 570 • RATIO: 97

HH ADVANCE 5104R {SOD,CHB,DLF,IEF} | CL I DOMINO 206M {CHB,DLF,HYF,IEF}
KB LI DOMINO 1107Y {DLF,HYF,IEF} | HH MISS ADVANCE 153L {DOD,DLF,IEF}
 MONTANA MISS 760T {DOD,DLF,HYF,IEF} | KB LI DOMINO 521R {CHB,DLF,HYF,IEF}
 MONTANA MISS 524R {DLF,HYF,IEF}

OXH ADVANCE 3088 {SOD} | HH ADVANCE 767G 1ET {SOD,CHB,DLF,IEF}
BJ ROSE 1048 {DOD} | OXH JEAN 9101
 BJ 7527 DOMINO LASS 823 | IH 2110 DOMINO 7527
 BJ MISS SKYLINE 487

BW	VW	YW	M	M&G	CW	FAT	REA	MRB	CHB\$
3.4	53	94	29	56	69	-0.019	0.42	0.03	\$27

One red eye, very smooth made bull. Real gentle, red to the hoof, out of one of our favorite OXH 3088 cows.



BJ MONTANA DOMINO 300 Daughters

BJ MONTANA DOMINO 300

DOB: 3/15/2010 • REG. #: 43109910

CL I DOMINO 417P {CHB,DLF,IEF} | CL I DOMINO 212M {CHB,SOD,DLF,IEF}
KB LI DOMINO 874U ET | CL I DOMINETTE 0112K IET
 MONTANA MISS 295 | HH ADVANCE 0072K {DLF,HYF,IEF}
 MONTANA MISS 037 {DOD}

KB LI DOMINO 6135 | KB LI DOMINO 218 {CHB,DLF,IEF}
BJ AMBER 1358 {DOD} | KB AMY 1167
 BJ MISS ADVANCE 1144 | K LI ADVANCE 634 {SOD}
 BJ DOMINETTE 028

BW	VW	YW	M	M&G	CW	FAT	REA	MRB	CHB\$
4.5	52	82	24	50	64	-0.015	0.29	0.08	\$27

Good maternal sire. Sire of some of the heifers.



BJ MONTANA DOMINO 300

TAG # 500 BJ 300 PATTY 5110

DOB: 04/14/2015 • REG. #: 43620466

KB LI DOMINO 874U ET | CL I DOMINO 417P {CHB,DLF,IEF}
BJ MONTANA DOMINO 300 | MONTANA MISS 295
 BJ AMBER 1358 {DOD} | KB LI DOMINO 6135
 BJ MISS ADVANCE 1144

IH 286 SABRE 4243 | IH 769 SABRE 286
BJ SALLY 500 {DOD} | IH 821 DOMINETTE 209
 BJ ADVANCE LASS 521 | K LI ADVANCE 634 {SOD}
 BJ MISS SKYLINE 487

BW	VW	YW	M	M&G	CW	FAT	REA	MRB	CHB\$
4.7	54	89	23	50	68	-0.011	0.36	0.08	\$27

TAG # 1269 BJ 300 PATTY 5094

DOB: 03/31/2015 • REG. #: 43620578

KB LI DOMINO 874U ET | CL I DOMINO 417P {CHB,DLF,IEF}
BJ MONTANA DOMINO 300 | MONTANA MISS 295
 BJ AMBER 1358 {DOD} | KB LI DOMINO 6135
 BJ MISS ADVANCE 1144

OXH ADVANCE 3088 {SOD} | HH ADVANCE 767G IET {SOD,CHB,DLF,IEF}
BJ ROSE 1269 | OXH JEAN 9101
 BJ 9597 DOMINET 243 | IH 7159 DOMINO 9597
 BJ MISS FLINT 550

BW	VW	YW	M	M&G	CW	FAT	REA	MRB	CHB\$
4.3	51	82	25	50	63	-0.012	0.25	0.07	\$26

TAG # 1054 BJ 300 PATTY 5114

DOB: 04/20/2015 • REG. #: 43620529

KB LI DOMINO 874U ET | CL I DOMINO 417P {CHB,DLF,IEF}
BJ MONTANA DOMINO 300 | MONTANA MISS 295
 BJ AMBER 1358 {DOD} | KB LI DOMINO 6135
 BJ MISS ADVANCE 1144

K LI ADVANCE 634 {SOD} | HH ADVANCE 492D {SOD,DLF,IEF}
BJ MISS ADVANCE 1054 | K LADY TOTAL 090
 BJ DOMINETTE 058 | EE DOMINO 4021 {SOD}
 BJ LADY UPDATE 091 {DOD}

BW	VW	YW	M	M&G	CW	FAT	REA	MRB	CHB\$
3.9	45	72	23	46	59	-0.016	0.20	0.06	\$22

TAG # 1709 BJ 300 PATTY 5111

DOB: 04/25/2015 • REG. #: 43620695

KB LI DOMINO 874U ET | CL I DOMINO 417P {CHB,DLF,IEF}
BJ MONTANA DOMINO 300 | MONTANA MISS 295
 BJ AMBER 1358 {DOD} | KB LI DOMINO 6135
 BJ MISS ADVANCE 1144

OXH ADVANCE 3088 {SOD} | HH ADVANCE 767G IET {SOD,CHB,DLF,IEF}
BJ ROSE 1709 | OXH JEAN 9101
 BJ STARLETT ADVANCE 1614 | K&B 927 ADVANCE 2419
 MB MS GENERATOR 639 {DOD}

BW	VW	YW	M	M&G	CW	FAT	REA	MRB	CHB\$
3.4	42	71	22	43	57	-0.014	0.18	0.03	\$20

TAG # 1236 BJ 300 PATTY 5092

DOB: 04/10/2015 • REG. #: 43620572

KB LI DOMINO 874U ET | CL I DOMINO 417P {CHB,DLF,IEF}
BJ MONTANA DOMINO 300 | MONTANA MISS 295
 BJ AMBER 1358 {DOD} | KB LI DOMINO 6135
 BJ MISS ADVANCE 1144

K CENTURION LAD 433 | KB CENTURION 179 {SOD}
BJ CENTURION GAL 1236 | K LADY ADVANCER 077 {DOD}
 BJ DOMINETTE 802 | IH 7159 DOMINO 9597
 BJ MISS ADVANCER 1150 {DOD}

BW	VW	YW	M	M&G	CW	FAT	REA	MRB	CHB\$
5.3	53	84	22	48	64	-0.005	0.24	0.02	\$24

TAG # 1875 BJ 300 PATTY 5099

DOB: 03/29/2015 • REG. #: 43620706

KB LI DOMINO 874U ET | CL I DOMINO 417P {CHB,DLF,IEF}
BJ MONTANA DOMINO 300 | MONTANA MISS 295
 BJ AMBER 1358 {DOD} | KB LI DOMINO 6135
 BJ MISS ADVANCE 1144

SR MEDALLION 292 | HR ROBIN HOOD 52F {SOD,DLF,IEF}
BJ MADALLION LASS 1875 | PH SILVER BELLE 8674
 MB STARDUST 082 | K&B STARFIRE 9676
 MB ADVANCER LASS 938 {DOD}

BW	VW	YW	M	M&G	CW	FAT	REA	MRB	CHB\$
4.4	47	76	19	42	60	-0.002	0.13	0.07	\$22

KB L1 DOMINO 874U Daughters

TAG #
520 **BJ 874U PATTY 5068**
DOB: 03/31/2015 • REG. #: 43620474

CL I DOMINO 417P {CHB,DLF,IEF}
KB LI DOMINO 874U ET
MONTANA MISS 295

IH 286 SABRE 4243
BJ SALLY 520
BJ ADVANCE LASS 632

CL I DOMINO 212M {CHB,SOD,DLF,IEF}
CL I DOMINETTE 01 I2K 1ET
HH ADVANCE 0072K {DLF,HYF,IEF}
MONTANA MISS 037 {DOD}

IH 769 SABRE 286
IH 821 DOMINETTE 209
K LI ADVANCE 634 {SOD}
BJ ALBERTA LASS 615

BW	WW	YW	M	M&G	CW	FAT	REA	MRB	CHB\$
4.0	49	79	28	52	63	-0.003	0.26	0.14	\$25

TAG #
1629 **BJ 874U PATTY 5042**
DOB: 04/05/2015 • REG. #: 43620641

CL I DOMINO 417P {CHB,DLF,IEF}
KB LI DOMINO 874U ET
MONTANA MISS 295

IH 286 SABRE 4243
BJ SALLY 1629
MB DOMINETTE 1012

CL I DOMINO 212M {CHB,SOD,DLF,IEF}
CL I DOMINETTE 01 I2K 1ET
HH ADVANCE 0072K {DLF,HYF,IEF}
MONTANA MISS 037 {DOD}

IH 769 SABRE 286
IH 821 DOMINETTE 209
IH 7159 DOMINO 9597
MB MISS ADVANCER 1080 {DOD}

BW	WW	YW	M	M&G	CW	FAT	REA	MRB	CHB\$
4.1	48	77	26	50	60	-0.003	0.20	0.14	\$25

TAG #
550 **BJ 874U PATTY 5070**
DOB: 03/25/2015 • REG. #: 43620475

CL I DOMINO 417P {CHB,DLF,IEF}
KB LI DOMINO 874U ET
MONTANA MISS 295

IH 286 SABRE 4243
BJ SALLY 550
BJ ROSE 1615 {DOD}

CL I DOMINO 212M {CHB,SOD,DLF,IEF}
CL I DOMINETTE 01 I2K 1ET
HH ADVANCE 0072K {DLF,HYF,IEF}
MONTANA MISS 037 {DOD}

IH 769 SABRE 286
IH 821 DOMINETTE 209
OXH ADVANCE 3088 {SOD}
BJ MISS SKYLINE 560 {DOD}

BW	WW	YW	M	M&G	CW	FAT	REA	MRB	CHB\$
4.2	50	81	27	52	63	0.000	0.24	0.15	\$26

TAG #
1649 **BJ 874U PATTY 5082**
DOB: 03/14/2015 • REG. #: 43620645

CL I DOMINO 417P {CHB,DLF,IEF}
KB LI DOMINO 874U ET
MONTANA MISS 295

IH 286 SABRE 4243
BJ SALLY 1649 {DOD}
BJ ADVANCE LASS 112

CL I DOMINO 212M {CHB,SOD,DLF,IEF}
CL I DOMINETTE 01 I2K 1ET
HH ADVANCE 0072K {DLF,HYF,IEF}
MONTANA MISS 037 {DOD}

IH 769 SABRE 286
IH 821 DOMINETTE 209
K LI ADVANCE 634 {SOD}
BJ DOMINETTE 397

BW	WW	YW	M	M&G	CW	FAT	REA	MRB	CHB\$
4.2	48	78	26	50	62	-0.003	0.22	0.14	\$25

TAG #
820 **BJ 874U PATTY 5040**
DOB: 03/23/2015 • REG. #: 43620505

CL I DOMINO 417P {CHB,DLF,IEF}
KB LI DOMINO 874U ET
MONTANA MISS 295

OXH ADVANCE 3088 {SOD}
BJ ROSE 820 {DOD}
BJ MISS ADVANCE 1394

CL I DOMINO 212M {CHB,SOD,DLF,IEF}
CL I DOMINETTE 01 I2K 1ET
HH ADVANCE 0072K {DLF,HYF,IEF}
MONTANA MISS 037 {DOD}

HH ADVANCE 767G 1ET {SOD,CHB,DLF,IEF}
OXH JEAN 9101
K LI ADVANCE 634 {SOD}
BJ ALBERTA LASS 615

BW	WW	YW	M	M&G	CW	FAT	REA	MRB	CHB\$
3.6	49	78	31	56	62	-0.001	0.20	0.14	\$25

TAG #
1729 **BJ 874U PATTY 5104**
DOB: 03/12/2015 • REG. #: 43620698

CL I DOMINO 417P {CHB,DLF,IEF}
KB LI DOMINO 874U ET
MONTANA MISS 295

UPS DOMINO 4261
BJ DELLA 1729
BJ ROSE 1116

CL I DOMINO 212M {CHB,SOD,DLF,IEF}
CL I DOMINETTE 01 I2K 1ET
HH ADVANCE 0072K {DLF,HYF,IEF}
MONTANA MISS 037 {DOD}

SR DOMINO 700 {CHB}
UPS MISS DIAMOND 1473
OXH ADVANCE 3088 {SOD}
BJ STARDUST 883

BW	WW	YW	M	M&G	CW	FAT	REA	MRB	CHB\$
3.8	42	69	25	46	56	-0.004	0.15	0.16	\$22



K BIG ABE 904 Daughters

TAG #
1126 **BJ 904 ABBY 5066**
DOB: 03/03/2015 • REG. #: 43620540

K BIG ABE 904
GO ABET32 {CHB,SOD,DLF,HYF,IEF}
K LADY ADVANCER 285 {DOD}

BJ ROSE 1126
OXH ADVANCE 3088 {SOD}
BJ STARDUST 653

GO EXCEL L18 {CHB,SOD,DLF,HYF,IEF}
GO MS STARMAN M174 {DOD,DLF,IEF}
K LI ADVANCER 061 {SOD}
K LADY ADVANCER 036

HH ADVANCE 767G 1ET {SOD,CHB,DLF,IEF}
OXH JEAN 9101
K&B STARFIRE 9676
LADY GEN 750 {DOD}

BW	WW	YW	M	M&G	CW	FAT	REA	MRB	CHB\$
2.8	51	80	28	53	63	-0.019	0.19	0.00	\$24

TAG #
1466 **BJ 904 ABBY 5041**
DOB: 03/23/2015 • REG. #: 43620622

K BIG ABE 904
GO ABET32 {CHB,SOD,DLF,HYF,IEF}
K LADY ADVANCER 285 {DOD}

BJ ADVANCE LASS 1466
K&B ADVANCE 1638 {DLF,IEC}
MB 079 ADVANCE LASS 791

GO EXCEL L18 {CHB,SOD,DLF,HYF,IEF}
GO MS STARMAN M174 {DOD,DLF,IEF}
K LI ADVANCER 061 {SOD}
K LADY ADVANCER 036

HH ADVANCE 6052F {SOD,DLF,IEC}
K&B FERN 5261 {DOD}
MB ADVANCE 079
MB ADVANCER LASS 199 {DOD}

BW	WW	YW	M	M&G	CW	FAT	REA	MRB	CHB\$
3.1	49	76	26	51	61	-0.009	0.20	0.03	\$22

TAG #
1185 **BJ 904 ABBY 5062**
DOB: 03/09/2015 • REG. #: 43620559

K BIG ABE 904
GO ABET32 {CHB,SOD,DLF,HYF,IEF}
K LADY ADVANCER 285 {DOD}

BJ ADVANCE LASS 1185
K&B ADVANCE 1638 {DLF,IEC}
BJ MISS SKYLINE 459

GO EXCEL L18 {CHB,SOD,DLF,HYF,IEF}
GO MS STARMAN M174 {DOD,DLF,IEF}
K LI ADVANCER 061 {SOD}
K LADY ADVANCER 036

HH ADVANCE 6052F {SOD,DLF,IEC}
K&B FERN 5261 {DOD}
K&B SKYLINE 3845 {SOD}
BJ MS STAR DUST 783

BW	WW	YW	M	M&G	CW	FAT	REA	MRB	CHB\$
3.1	45	73	24	47	58	-0.012	0.16	0.03	\$21

TAG #
1685 **BJ 904 ABBY 5087**
DOB: 03/05/2015 • REG. #: 43620648

K BIG ABE 904
GO ABET32 {CHB,SOD,DLF,HYF,IEF}
K LADY ADVANCER 285 {DOD}

BJ MISS ADVANCE 1685
K LI ADVANCE 634 {SOD}
BJ DOMINETTE 458

GO EXCEL L18 {CHB,SOD,DLF,HYF,IEF}
GO MS STARMAN M174 {DOD,DLF,IEF}
K LI ADVANCER 061 {SOD}
K LADY ADVANCER 036

HH ADVANCE 492D {SOD,DLF,IEF}
K LADY TOTAL 090
EE DOMINO 4021 {SOD}
BJ MS STAR DUST 371

BW	WW	YW	M	M&G	CW	FAT	REA	MRB	CHB\$
1.8	39	62	30	50	54	-0.024	0.08	-0.01	\$17

TAG #
1396 **BJ 904 ABBY 5073**
DOB: 03/23/2015 • REG. #: 43620598

K BIG ABE 904
GO ABET32 {CHB,SOD,DLF,HYF,IEF}
K LADY ADVANCER 285 {DOD}

BJ MADALLION LASS 1396
SR MEDALLION 292
MB MISS FLINT 858

GO EXCEL L18 {CHB,SOD,DLF,HYF,IEF}
GO MS STARMAN M174 {DOD,DLF,IEF}
K LI ADVANCER 061 {SOD}
K LADY ADVANCER 036

HR ROBIN HOOD 52F {SOD,DLF,IEF}
PH SILVER BELLE 8674
K&B FLINT 6348 {SOD}
MB LADY CURRENT 033

BW	WW	YW	M	M&G	CW	FAT	REA	MRB	CHB\$
2.6	41	66	31	51	55	-0.012	0.03	-0.01	\$17

TAG #
1726 **BJ 904 ABBY 5093**
DOB: 04/03/2015 • REG. #: 43620697

K BIG ABE 904
GO ABET32 {CHB,SOD,DLF,HYF,IEF}
K LADY ADVANCER 285 {DOD}

BJ MADALLION LASS 1726
SR MEDALLION 292
BJ DOMINETTE 389 {DOD}

GO EXCEL L18 {CHB,SOD,DLF,HYF,IEF}
GO MS STARMAN M174 {DOD,DLF,IEF}
K LI ADVANCER 061 {SOD}
K LADY ADVANCER 036

HR ROBIN HOOD 52F {SOD,DLF,IEF}
PH SILVER BELLE 8674
EE DOMINO 4021 {SOD}
BJ MS STAR DUST 332

BW	WW	YW	M	M&G	CW	FAT	REA	MRB	CHB\$
3.4	47	73	32	55	59	-0.007	0.09	-0.01	\$20



KB L1 DOMINO 396A Daughters

TAG #
3114 **BJ 3963A DARLA 5023**
DOB: 03/14/2015 • REG. #: 43635040

KB LI DOMINO 121Y {DLF,HYF,IEF}
KB LI DOMINO 396A {DLF,HYF,IEF}
KB LI DOMINETTE 1175Y {DLF,HYF,IEF}

CL I DOMINO 849U {CHB,DLF,HYF,IEF}
KB LI DOMINETTE 945W {DLF,HYF,IEF}
KB LI DOMINO 844U {DLF,HYF,IEF}
KB LI DOMINETTE 336

KB LI DOMINO 1107Y {DLF,HYF,IEF}
BJ BECKY 3114
BJ STARLETT ADVANCE 1067

HH ADVANCE 5104R {SOD,CHB,DLF,IEF}
MONTANA MISS 760T {DOD,DLF,HYF,IEF}
K&B 927 ADVANCE 2419
BJ ADVANCE LASS 191

BW	WW	YW	M	M&G	CW	FAT	REA	MRB	CHB\$
3.6	50	86	24	49	64	-0.014	0.21	0.03	\$24

TAG #
3901 **BJ 396A DARLA 5035**
DOB: 03/24/2015 • REG. #: 43635051

KB LI DOMINO 121Y {DLF,HYF,IEF}
KB LI DOMINO 396A {DLF,HYF,IEF}
KB LI DOMINETTE 1175Y {DLF,HYF,IEF}

CL I DOMINO 849U {CHB,DLF,HYF,IEF}
KB LI DOMINETTE 945W {DLF,HYF,IEF}
KB LI DOMINO 844U {DLF,HYF,IEF}
KB LI DOMINETTE 336

K ADVANCER LAD 165 {DLF,HYF,IEF}
BJ TERRIE 3901
BJ ABBY 0901

GO TORRINGTON W16 {DLF,IEF}
K LADY MABEL 934 {DOD}
K BIG ABE 904
BJ SALLY 1597

BW	WW	YW	M	M&G	CW	FAT	REA	MRB	CHB\$
3.4	57	90	29	57	68	-0.003	0.14	0.09	\$27

TAG #
3118 **BJ 396A DARLA 5014**
DOB: 03/14/2015 • REG. #: 43635041

KB LI DOMINO 121Y {DLF,HYF,IEF}
KB LI DOMINO 396A {DLF,HYF,IEF}
KB LI DOMINETTE 1175Y {DLF,HYF,IEF}

CL I DOMINO 849U {CHB,DLF,HYF,IEF}
KB LI DOMINETTE 945W {DLF,HYF,IEF}
KB LI DOMINO 844U {DLF,HYF,IEF}
KB LI DOMINETTE 336

KB LI DOMINO 1107Y {DLF,HYF,IEF}
BJ BECKY 3118
BJ SALLY 1298

HH ADVANCE 5104R {SOD,CHB,DLF,IEF}
MONTANA MISS 760T {DOD,DLF,HYF,IEF}
IH 286 SABRE 4243
MB MISS ADVANCER 771

BW	WW	YW	M	M&G	CW	FAT	REA	MRB	CHB\$
4.0	56	95	27	55	70	-0.009	0.29	0.07	\$27

TAG #
3910 **BJ 396A DARLA 5020**
DOB: 03/15/2015 • REG. #: 43635054

KB LI DOMINO 121Y {DLF,HYF,IEF}
KB LI DOMINO 396A {DLF,HYF,IEF}
KB LI DOMINETTE 1175Y {DLF,HYF,IEF}

CL I DOMINO 849U {CHB,DLF,HYF,IEF}
KB LI DOMINETTE 945W {DLF,HYF,IEF}
KB LI DOMINO 844U {DLF,HYF,IEF}
KB LI DOMINETTE 336

K ADVANCER LAD 165 {DLF,HYF,IEF}
BJ TERRIE 3910
BJ DELLA 0831

GO TORRINGTON W16 {DLF,IEF}
K LADY MABEL 934 {DOD}
UPS DOMINO 4261
BJ STARLETT ADVANCE 1546

BW	WW	YW	M	M&G	CW	FAT	REA	MRB	CHB\$
4.3	59	94	30	59	70	0.001	0.20	0.10	\$28

TAG #
3132 **BJ 396A DARLA 5015**
DOB: 03/11/2015 • REG. #: 43635044

KB LI DOMINO 121Y {DLF,HYF,IEF}
KB LI DOMINO 396A {DLF,HYF,IEF}
KB LI DOMINETTE 1175Y {DLF,HYF,IEF}

CL I DOMINO 849U {CHB,DLF,HYF,IEF}
KB LI DOMINETTE 945W {DLF,HYF,IEF}
KB LI DOMINO 844U {DLF,HYF,IEF}
KB LI DOMINETTE 336

KB LI DOMINO 1107Y {DLF,HYF,IEF}
BJ BECKY 3132
BJ ROSE 1128

HH ADVANCE 5104R {SOD,CHB,DLF,IEF}
MONTANA MISS 760T {DOD,DLF,HYF,IEF}
OXH ADVANCE 3088 {SOD}
BJ MISS ADVANCE 663

BW	WW	YW	M	M&G	CW	FAT	REA	MRB	CHB\$
3.2	50	88	29	54	65	-0.013	0.20	0.07	\$25

TAG #
3930 **BJ 396A DARLA 5028**
DOB: 04/07/2015 • REG. #: 43635055

KB LI DOMINO 121Y {DLF,HYF,IEF}
KB LI DOMINO 396A {DLF,HYF,IEF}
KB LI DOMINETTE 1175Y {DLF,HYF,IEF}

CL I DOMINO 849U {CHB,DLF,HYF,IEF}
KB LI DOMINETTE 945W {DLF,HYF,IEF}
KB LI DOMINO 844U {DLF,HYF,IEF}
KB LI DOMINETTE 336

KB LI DOMINO 874U ET
BJ PATTY 3930
BJ DELLA 910 {DOD}

CL I DOMINO 417P {CHB,DLF,IEF}
MONTANA MISS 295
UPS DOMINO 4261
BJ STARLETT ADVANCE 1266

BW	WW	YW	M	M&G	CW	FAT	REA	MRB	CHB\$
4.8	55	88	29	56	66	-0.001	0.18	0.12	\$27

TAG #
3197 **BJ 396A DARLA 5037**
DOB: 03/26/2015 • REG. #: 43635050

KB LI DOMINO 121Y {DLF,HYF,IEF}
KB LI DOMINO 396A {DLF,HYF,IEF}
KB LI DOMINETTE 1175Y {DLF,HYF,IEF}

CL I DOMINO 849U {CHB,DLF,HYF,IEF}
KB LI DOMINETTE 945W {DLF,HYF,IEF}
KB LI DOMINO 844U {DLF,HYF,IEF}
KB LI DOMINETTE 336

KB LI DOMINO 1107Y {DLF,HYF,IEF}
BJ BECKY 3197
BJ DELLA 1567

HH ADVANCE 5104R {SOD,CHB,DLF,IEF}
MONTANA MISS 760T {DOD,DLF,HYF,IEF}
UPS DOMINO 4261
BJ MISS ADVANCE 513

BW	WW	YW	M	M&G	CW	FAT	REA	MRB	CHB\$
3.6	50	86	28	53	65	-0.012	0.23	0.07	\$25

TAG #
3990 **BJ 396A DARLA 5018**
DOB: 03/06/2015 • REG. #: 43635059

KB LI DOMINO 121Y {DLF,HYF,IEF}
KB LI DOMINO 396A {DLF,HYF,IEF}
KB LI DOMINETTE 1175Y {DLF,HYF,IEF}

CL I DOMINO 849U {CHB,DLF,HYF,IEF}
KB LI DOMINETTE 945W {DLF,HYF,IEF}
KB LI DOMINO 844U {DLF,HYF,IEF}
KB LI DOMINETTE 336

K ADVANCER LAD 165 {DLF,HYF,IEF}
BJ TERRIE 3990
BJ ROSE 0861

GO TORRINGTON W16 {DLF,IEF}
K LADY MABEL 934 {DOD}
OXH ADVANCE 3088 {SOD}
BJ MISS ADVANCE 663

BW	WW	YW	M	M&G	CW	FAT	REA	MRB	CHB\$
3.2	53	87	28	55	66	-0.001	0.10	0.11	\$26

K ADVANCER LAD 165 Daughters

TAG #
140 **BJ 165 TERRIE 5071**
DOB: 03/08/2015 • REG. #: 43620435

GO TORRINGTON W16 {DLF,IEF}
K ADVANCER LAD 165 {DLF,HYF,IEF}
K LADY MABEL 934 {DOD}

HH ADVANCE 7195T {CHB,SOD,DLF,HYF,IEF}
GO MS 3196 ADVANCET I 34 {DOD}
GO ABET 32 {CHB,SOD,DLF,HYF,IEF}
K LADY ROBIN 325

KB LI DOMINO 874U ET
BJ PATTY 140 {DOD}
BJ SALLY 1298

CL I DOMINO 417P {CHB,DLF,IEF}
MONTANA MISS 295
IH 286 SABRE 4243
MB MISS ADVANCER 771

BW	WW	YW	M	M&G	CW	FAT	REA	MRB	CHB\$
3.2	58	87	30	59	67	0.008	0.19	0.14	\$28

TAG #
1259 **BJ 165 TERRIE 5044**
DOB: 03/15/2015 • REG. #: 43620576

GO TORRINGTON W16 {DLF,IEF}
K ADVANCER LAD 165 {DLF,HYF,IEF}
K LADY MABEL 934 {DOD}

HH ADVANCE 7195T {CHB,SOD,DLF,HYF,IEF}
GO MS 3196 ADVANCET I 34 {DOD}
GO ABET 32 {CHB,SOD,DLF,HYF,IEF}
K LADY ROBIN 325

OXH ADVANCE 3088 {SOD}
BJ ROSE 1259
BJ 7527 DOMINO LASS 393

HH ADVANCE 767G 1ET {SOD,CHB,DLF,IEF}
OXH JEAN 9101
IH 2110 DOMINO 7527
BJ LADY MAGIC 365

BW	WW	YW	M	M&G	CW	FAT	REA	MRB	CHB\$
3.4	58	89	30	59	68	0.004	0.19	0.10	\$27

TAG #
2117 **BJ 165 TERRIE 5001**
DOB: 03/16/2015 • REG. #: 43620712

GO TORRINGTON W16 {DLF,IEF}
K ADVANCER LAD 165 {DLF,HYF,IEF}
K LADY MABEL 934 {DOD}

HH ADVANCE 7195T {CHB,SOD,DLF,HYF,IEF}
GO MS 3196 ADVANCET I 34 {DOD}
GO ABET 32 {CHB,SOD,DLF,HYF,IEF}
K LADY ROBIN 325

K BIG ABE 904
BJ ABBY 2117
BJ ROSE 1179

GO ABET 32 {CHB,SOD,DLF,HYF,IEF}
K LADY ADVANCER 285 {DOD}
OXH ADVANCE 3088 {SOD}
BJ MISS ADVANCE 1394

BW	WW	YW	M	M&G	CW	FAT	REA	MRB	CHB\$
3.5	69	101	35	70	76	0.003	0.32	0.07	\$32

TAG #
2118 **BJ 165 TERRIE 5032**
DOB: 03/03/2015 • REG. #: 43620713

GO TORRINGTON W16 {DLF,IEF}
K ADVANCER LAD 165 {DLF,HYF,IEF}
K LADY MABEL 934 {DOD}

HH ADVANCE 7195T {CHB,SOD,DLF,HYF,IEF}
GO MS 3196 ADVANCET I 34 {DOD}
GO ABET 32 {CHB,SOD,DLF,HYF,IEF}
K LADY ROBIN 325

K BIG ABE 904
BJ ABBY 2118
BJ CENTURION GAL 1329

GO ABET 32 {CHB,SOD,DLF,HYF,IEF}
K LADY ADVANCER 285 {DOD}
K CENTURION LAD 433
BJ STARLETT ADVANCE 1135

BW	WW	YW	M	M&G	CW	FAT	REA	MRB	CHB\$
3.3	61	90	31	62	69	0.002	0.21	0.03	\$27

TAG #
2142 **BJ 165 TERRIE 5000**
DOB: 03/27/2015 • REG. #: 43620718

GO TORRINGTON W16 {DLF,IEF}
K ADVANCER LAD 165 {DLF,HYF,IEF}
K LADY MABEL 934 {DOD}

HH ADVANCE 7195T {CHB,SOD,DLF,HYF,IEF}
GO MS 3196 ADVANCET I 34 {DOD}
GO ABET 32 {CHB,SOD,DLF,HYF,IEF}
K LADY ROBIN 325

K BIG ABE 904
BJ ABBY 2142
BJ ROSE 1199

GO ABET 32 {CHB,SOD,DLF,HYF,IEF}
K LADY ADVANCER 285 {DOD}
OXH ADVANCE 3088 {SOD}
BJ ADVANCE LASS 153

BW	WW	YW	M	M&G	CW	FAT	REA	MRB	CHB\$
3.0	63	93	33	65	72	0.003	0.25	0.08	\$29

TAG #
2168 **BJ 165 TERRIE 5025**
DOB: 03/16/2015 • REG. #: 43620725

GO TORRINGTON W16 {DLF,IEF}
K ADVANCER LAD 165 {DLF,HYF,IEF}
K LADY MABEL 934 {DOD}

HH ADVANCE 7195T {CHB,SOD,DLF,HYF,IEF}
GO MS 3196 ADVANCET I 34 {DOD}
GO ABET 32 {CHB,SOD,DLF,HYF,IEF}
K LADY ROBIN 325

BJ UPS DOMINO 340
BJ 340 DELLA 2168
BJ MADALLION LASS 1446

UPS DOMINO 4261
BJ CENTURION GAL 1427
SR MEDALLION 292
MB ADVANCE LASS 1070

BW	WW	YW	M	M&G	CW	FAT	REA	MRB	CHB\$
4.2	61	92	31	62	71	0.013	0.24	0.10	\$28

TAG #
2206 **BJ 165 TERRIE 5019**
DOB: 03/16/2015 • REG. #: 43620729

GO TORRINGTON W16 {DLF,IEF}
K ADVANCER LAD 165 {DLF,HYF,IEF}
K LADY MABEL 934 {DOD}

HH ADVANCE 7195T {CHB,SOD,DLF,HYF,IEF}
GO MS 3196 ADVANCET I 34 {DOD}
GO ABET 32 {CHB,SOD,DLF,HYF,IEF}
K LADY ROBIN 325

K BIG ABE 904
BJ ABBY 2206
BJ SALLY 1208

GO ABET 32 {CHB,SOD,DLF,HYF,IEF}
K LADY ADVANCER 285 {DOD}
IH 286 SABRE 4243
MB ADVANCE LASS 121

BW	WW	YW	M	M&G	CW	FAT	REA	MRB	CHB\$
3.0	62	93	31	62	71	0.000	0.26	0.07	\$29

TAG #
2213 **BJ 165 TERRI 5021**
DOB: 03/10/2015 • REG. #: 43620731

GO TORRINGTON W16 {DLF,IEF}
K ADVANCER LAD 165 {DLF,HYF,IEF}
K LADY MABEL 934 {DOD}

HH ADVANCE 7195T {CHB,SOD,DLF,HYF,IEF}
GO MS 3196 ADVANCET I 34 {DOD}
GO ABET 32 {CHB,SOD,DLF,HYF,IEF}
K LADY ROBIN 325

BJ UPS DOMINO 340
BJ 340 DELLA 2213
BJ ADVANCE LASS 1816

UPS DOMINO 4261
BJ CENTURION GAL 1427
K&B ADVANCE 1638 {DLF,IEC}
MB ADVANCE LASS 039

BW	WW	YW	M	M&G	CW	FAT	REA	MRB	CHB\$
4.4	62	93	30	61	71	0.014	0.28	0.11	\$29

TAG #
1071 **BJ 165 TERRIE 5112**
DOB: 05/28/2015 • REG. #: 43620534

GO TORRINGTON W16 {DLF,IEF}
K ADVANCER LAD 165 {DLF,HYF,IEF}
K LADY MABEL 934 {DOD}

HH ADVANCE 7195T {CHB,SOD,DLF,HYF,IEF}
GO MS 3196 ADVANCET I 34 {DOD}
GO ABET 32 {CHB,SOD,DLF,HYF,IEF}
K LADY ROBIN 325

K BIG ABE 904
BJ ABBY 1071
BJ STARLETT ADVANCE 1497

GO ABET 32 {CHB,SOD,DLF,HYF,IEF}
K LADY ADVANCER 285 {DOD}
K&B 927 ADVANCE 2419
BJ ADVANCE LASS 632

BW	WW	YW	M	M&G	CW	FAT	REA	MRB	CHB\$
4.1	63	100	35	66	75	-0.013	0.50	-0.04	\$29

R 0141 NORTH STAR 27A Daughters

TAG #
0801 **BJ 27A SARA 5124**
DOB: 05/04/2015 • REG. #: 43620503

CL I DOMINO 0141 IET {CHB,DLF,HYF,IEF}
R 0141 NORTH STAR 27A {DLF,HYF,IEF}
R STARLETTE 006 {DOD}

CL I DOMINO 860U {SOD,CHB,DLF,HYF,IEF}
CL I DOMINETTE 475P {DLF,HYF,IEF}
R 0041 NORTH STAR 40U {CHB,DLF,IEF}
LCI BD 107R RIBSTONE LASS 328U

UPS DOMINO 4261
BJ DELLA 0801
BJ ROSE 1066

SR DOMINO 700 {CHB}
UPS MISS DIAMOND 1473
OXH ADVANCE 3088 {SOD}
BJ STARDUST 173

BW	WW	YW	M	M&G	CW	FAT	REA	MRB	CHB\$
4.8	59	97	31	61	72	-0.006	0.50	0.04	\$29

TAG #
1021 **BJ 27A SARA 5069**
DOB: 03/25/2015 • REG. #: 43620526

CL I DOMINO 0141 IET {CHB,DLF,HYF,IEF}
R 0141 NORTH STAR 27A {DLF,HYF,IEF}
R STARLETTE 006 {DOD}

CL I DOMINO 860U {SOD,CHB,DLF,HYF,IEF}
CL I DOMINETTE 475P {DLF,HYF,IEF}
R 0041 NORTH STAR 40U {CHB,DLF,IEF}
LCI BD 107R RIBSTONE LASS 328U

IH 656 DOMINO 8177
BJ SABRINA 1021
BJ STARLETT ADVANCE 1806

IH 769 SABRE 656
IH SABRINA 5293
K&B 927 ADVANCE 2419
MB 7527 DOMINETTE 601

BW	WW	YW	M	M&G	CW	FAT	REA	MRB	CHB\$
5.6	64	105	31	63	76	-0.008	0.50	0.00	\$29

TAG #
0671 **BJ 27A SARA 5118**
DOB: 04/27/2015 • REG. #: 43620499

CL I DOMINO 0141 IET {CHB,DLF,HYF,IEF}
R 0141 NORTH STAR 27A {DLF,HYF,IEF}
R STARLETTE 006 {DOD}

CL I DOMINO 860U {SOD,CHB,DLF,HYF,IEF}
CL I DOMINETTE 475P {DLF,HYF,IEF}
R 0041 NORTH STAR 40U {CHB,DLF,IEF}
LCI BD 107R RIBSTONE LASS 328U

OXH ADVANCE 3088 {SOD}
BJ ROSE 0671
BJ 9597 DOMINET 233

HH ADVANCE 767G IET {SOD,CHB,DLF,IEF}
OXH JEAN 9101
IH 7159 DOMINO 9597
BJ MISS FLINT 239 {DOD}

BW	WW	YW	M	M&G	CW	FAT	REA	MRB	CHB\$
4.7	64	103	35	67	75	-0.005	0.48	0.03	\$31

TAG #
0271 **BJ 27A SARA 5126**
DOB: 05/05/2015 • REG. #: 43620450

CL I DOMINO 0141 IET {CHB,DLF,HYF,IEF}
R 0141 NORTH STAR 27A {DLF,HYF,IEF}
R STARLETTE 006 {DOD}

CL I DOMINO 860U {SOD,CHB,DLF,HYF,IEF}
CL I DOMINETTE 475P {DLF,HYF,IEF}
R 0041 NORTH STAR 40U {CHB,DLF,IEF}
LCI BD 107R RIBSTONE LASS 328U

KB LI DOMINO 874U ET
BJ PATTY 0271
BJ AMBER 1358 {DOD}

CL I DOMINO 417P {CHB,DLF,IEF}
MONTANA MISS 295
KB LI DOMINO 6135
BJ MISS ADVANCE 1144

BW	WW	YW	M	M&G	CW	FAT	REA	MRB	CHB\$
4.7	63	100	33	64	74	-0.010	0.49	0.04	\$31

KB L1 DOMINO 1107Y Daughters

TAG #
1188 **BJ 1107 BECKY 5063**
DOB: 03/30/2015 • REG. #: 43620562

HH ADVANCE 5104R {SOD,CHB,DLF,IEF}
KB LI DOMINO 1107Y {DLF,HYF,IEF}
MONTANA MISS 760T {DOD,DLF,HYF,IEF}

CL I DOMINO 206M {CHB,DLF,HYF,IEF}
HH MISS ADVANCE 153L {DOD,DLF,IEF}
KB LI DOMINO 521R {CHB,DLF,HYF,IEF}
MONTANA MISS 524R {DLF,HYF,IEF}

OXH ADVANCE 3088 {SOD}
BJ ROSE 1188
BJ 7527 DOMINO LASS 853

HH ADVANCE 767G IET {SOD,CHB,DLF,IEF}
OXH JEAN 9101
IH 2110 DOMINO 7527
BJ MISS SKYLINE 617

BW	WW	YW	M	M&G	CW	FAT	REA	MRB	CHB\$
3.1	50	89	28	53	66	-0.020	0.38	0.02	\$25

TAG #
1427 **BJ 1107 BECKY 5097**
DOB: 03/23/2015 • REG. #: 43620610

HH ADVANCE 5104R {SOD,CHB,DLF,IEF}
KB LI DOMINO 1107Y {DLF,HYF,IEF}
MONTANA MISS 760T {DOD,DLF,HYF,IEF}

CL I DOMINO 206M {CHB,DLF,HYF,IEF}
HH MISS ADVANCE 153L {DOD,DLF,IEF}
KB LI DOMINO 521R {CHB,DLF,HYF,IEF}
MONTANA MISS 524R {DLF,HYF,IEF}

K CENTURION LAD 433
BJ CENTURION GAL 1427
MB DOMINETTE 752

KB CENTURION 179 {SOD}
K LADY ADVANCER 077 {DOD}
IH 7159 DOMINO 9597
MB DOMINETTE 150 {DOD}

BW	WW	YW	M	M&G	CW	FAT	REA	MRB	CHB\$
5.3	62	102	29	59	74	-0.012	0.47	-0.05	\$28



TAG #
1428 **BJ 1107 BECKY 5107**
DOB: 03/13/2015 • REG. #: 43620612

HH ADVANCE 5104R {SOD,CHB,DLF,IEF}
KB LI DOMINO 1107Y {DLF,HYF,IEF}
MONTANA MISS 760T {DOD,DLF,HYF,IEF}

CL I DOMINO 206M {CHB,DLF,HYF,IEF}
HH MISS ADVANCE 153L {DOD,DLF,IEF}
KB LI DOMINO 521R {CHB,DLF,HYF,IEF}
MONTANA MISS 524R {DLF,HYF,IEF}

UPS DOMINO 4261
BJ DELLA 1428
BJ STARLETT ADVANCE 1275

SR DOMINO 700 {CHB}
UPS MISS DIAMOND 1473
K&B 927 ADVANCE 2419
BJ ADVANCE LASS 191

BW	WW	YW	M	M&G	CW	FAT	REA	MRB	CHB\$
4.0	51	90	27	53	67	-0.020	0.49	-0.01	\$25

BARTLING HEREFORDS

Matt Bartling

29045 349th Ave.

Herrick, SD 57538

FIRST CLASS
US POSTAGE

PAID

Fargo, ND
Permit No. 684



BARTLING HEREFORDS

• SALE • Friday, April 15, 2016