

REDstock®

The Power of RED

Joint Production Sale at Litton Ag Center, Chillicothe, Missouri • 1:00 PM (CT)

SATURDAY, MARCH 10, 2018



DVAuction
Broadcasting Real-Time Auctions

Welcome to the Fourth Annual Sale....

REDstock®

The Power of RED

We welcome you to our fourth annual REDstock® Partners sale at the Litton Agri-Science Center in Chillicothe, Missouri. On behalf of Bachman Cattle Farms, Bieber Red Angus Ranch, Emerald Earth Cattle Company, James Red Angus Ranch, Kluesner Family Cattle and Spreutels Red Angus Farms, we trust you will find some exceptional cattle to purchase for your operations.

We want to thank Bill Schreurs of Mud Creek Red Angus for joining us last year as one of the partners in REDstock®. We enjoyed your trust in our program and wish you the best in dispersing your registered herd.

We always wish to emphasize this is not a consignment sale, but a program to place pressure on breeding direction and to deliver a set of bulls and females who will work in your environment and deliver profits to your bottom line. We are focusing our breeding, developing and culling practices to deliver bulls and females who are eye-appealing yet commercially viable for your operation. We believe in the tools that the Red Angus Association provides us to evaluate the Economically Relevant Traits (ERTs) to help deliver profitable cattle for you. That means we measure everything during these cattle's lives while they are with us. We measure for actual performance and evaluate their genetics through EPD benchmarking as well as using DNA technology to improve their worthiness to you.

We have applied extensive review of these animals throughout their lives with us. We are aggressive at culling for lack of performance, poor feet, poor udders and poor dispositions. We are tackling the No. 1 issue in the phenotypical construction of good feet and legs in the Red Angus Industry. These animals have been highly selected and have met their performance and physical review benchmarks before being placed in this catalog.

Lastly, we wish to provide excellent customer service to you, our valued customers. To become a partner in REDstock®, each member must agree to provide a 100% Satisfaction guaranteed policy to replacing any defective animal in its first breeding or calving season. You choose what the definition of "satisfaction" is and we simply deliver that. If that's replacing your money, then we do that. If you want a replacement bull of equal value and merit, then we do that. We want you to keep coming back!

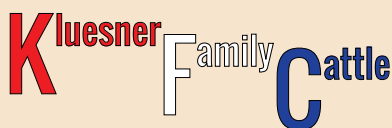
Thank you again in your interest in our program and these great Red Angus cattle.

Sincerely,

REDstock® Partners



Scott Bachman 660-247-1112
17520 Hwy JJ, Chillicothe, MO 64601
scott_bachman@yahoo.com
www.BachmanCattleFarms.com



Tony Kluesner 608-379-3113
Brenda Kluesner 608-732-5184



Craig Bieber 605-216-8169
Office 605-439-3628
11450 353rd Ave, Leola, SD 57456
www.bieberredangus.com



Wilbur Spreutels 417-280-2552
Rt. 2 Box 129A
Koshkonong, MO 65692



Dale James 405-258-6017
Michelle James 405-258-6018



Gina Jewison 608-778-6748
Joe Jewison 608-778-6736
1838 Old Lancaster Rd,
Platteville, WI 53818
www.emeraldearthcattle.com

REDstock®

The Power of RED

Joint Production Sale at Litton Ag Center, Chillicothe, Missouri • 1:00 PM (CT)
SATURDAY, MARCH 10, 2018

SALE LOCATION

Litton Agri-Science Learning Center 660-646-3131
10780 LIV 235
Highway 190
Chillicothe, Missouri 64601
The Litton Center is located northwest of Chillicothe, Missouri, on Hwy 190, and is only 1 1/2 miles west of US Hwy 65.

SALE DAY PHONES

Scott Bachman	660-247-1112
Craig Bieber	605-216-8169
Wilbur Spreutels	417-280-2552
Joe Jewison	608-778-6736
Gina Jewison	608-778-6748
Tony Kluesner	608-379-3113
Dale James	405-258-6018
Clint Berry	417-844-1009

AUCTIONEER

Charly Cummings

LIVESTOCK PRESS REPRESENTATIVES

Tom Rooney, *Lee Agri Media*
Andy Atzenweiler, *Missouri Beef Cattleman*

ASSOCIATION REPRESENTATIVES

Harold Bertz, Red Angus Association of America

INSURANCE

Insurance will be available on sale day.

TERMS AND CONDITIONS

All cattle sell under the standard terms and condition of the Red Angus Association of America.

SUPPLEMENT SHEET

Updated data on the bulls and females selling will be available sale day and online prior to the sale.

SCHEDULE OF EVENTS

FRIDAY, MARCH 9

All day Cattle available for viewing. Refreshments served.

SATURDAY, MARCH 10

8:00 AM Cattle available for viewing
9:00 AM Coffee and Rolls
11:00 AM Lunch Served
12:30 PM Pre-sale introductions, announcements and sale instructions

1:00 PM **REDstock® Joint Production Sale**

ACCOMMODATIONS

SALE HEADQUARTERS

Comfort Inn & Suites	660-646-9900
250 Business 36, Chillicothe, MO 64601	
Fairfield Inn & Suites	660-646-3100
220 Business 36, Chillicothe, MO 64601	
Econo Lodge Inn & Suites	660-646-0572
1020 South Washington Street, Chillicothe, MO 64601	
Super 8 Chillicothe	660-646-7888
500 Business Hwy 36 East & Mitchell St., Chillicothe, MO 64601	

BID LIVE ONLINE

The sale will be broadcast live online through DV Auction.
www.dvauction.com

DVAuction
Broadcasting Real-Time Auctions

Sale Day Information

DELIVERY POLICY

Free delivery on all purchases over \$3,500 per lot to central points up to 300 miles. Volume purchases of 5 or more lots selling to one ranch delivered up to 500 miles. All bulls under \$3,500 and females will be delivered at cost. Central point for delivery will include auction barns, vet clinics and ranches that offer to serve as a delivery point. We simply ask for your cooperation in arranging the delivery of your cattle. This will keep the cattle from being on the truck longer than necessary and help to get the cattle to you with the least possible stress and in the best possible condition.

HEALTH

Chillicothe Animal Hospital, 660-646-3670, will be available on sale day to issue health certificates as part of the clerking / check-out process. The **REDstock**® Partners wish to communicate they adhere to a very comprehensive herd health set of protocols. Each ranch operation has slight variations in the herd-health management of their cattle. We encourage you to discuss with each **REDstock**® Partner separately their herd health protocol.

BULL/FEMALE DEVELOPMENT

Please see page 4 for more information on how the cattle were developed.

DNA TESTING

All bulls in this sale were DNA typed and sampled for the Red Angus Association GGP-LD test. All bulls were also BVD-PI tested and found negative. In some cases, we ordered further tests for other genetic defects and parentage verification. No bull was found negative to any condition tested, but in some cases parentage was not verified. We invite you to look up the individual bulls' registration number and validate their test results.

RETAINED INTEREST

Each **REDstock**® Partner who is supplying bulls will retain 1/2 interest in all bulls in the sale. Each Partner is selling the remaining 1/2 interest, full possession and full salvage value on these bulls. This option gives each **REDstock**® Partner the option to collect, use and market semen from the bull and does not restrict the purchaser from doing the same. This collection, unless agreed otherwise, would be done at the expense of the **REDstock**® Partner who owned the bull, at the buyer's convenience. Also, at the time of purchase, the highest bidder on a retained interest bull may elect to purchase exclusive semen rights for 100% of the purchase price in addition to the purchased price on retained bulls. If a buyer elects to purchase exclusive semen rights, the bull owned by the **REDstock**® Partner who owned him prior to the sale, interest then becomes in herd use only, but each **REDstock**® Partner retains all rights to use the bull within their herd.

FEEDING

Feeding and boarding arrangements are available at a charge of \$5.00 per head per day. We will feed your purchases from the sale day until you are ready to pick them up, or when we deliver them.

BREEDING SOUNDNESS EVALUATION

All bulls have passed a BSE as close to thirty days prior to sale. The age advantage bulls will have been tested twice, once at their yearling performance review, and again around thirty days prior. To fully insure your breeding season the **REDstock**® Partners would recommend bulls be re-tested 4 to 6 weeks prior to your breeding season. All Bulls sold are guaranteed breeders for the 2018 season if managed properly. If a problem occurs, **REDstock**® Partners will do our very best to make sure you are satisfied.

BREEDING DATA/CALVING DATA ON BRED FEMALES

Breeding data on all bred females is verified by ultrasound and the calving date of the pregnancy is an estimate. Many years of ultrasound data has proven it to be 99% accurate. These ultrasounds are called to the best of veterinarian's ability depending on the embryo age. The Bieber fall calving cows were ultrasounded on 1/22/2018 and will be armed to verify pregnancy before the sale. Spreutels females were ultrasounded on 2/20/2018 and will be armed to verify pregnancy before the sale. Any updates to pregnancy status will be available on sale day.



I've had the honor and privilege to work with the **REDstock**® Partners from the beginning and witness the maturity they are bringing to provide high quality Red Angus bulls to you, the commercial cattlemen and cattlemen. They have teamed together to bring you something different in this type of production sale. Their program-managed approach to seedstock development is yielding substantial benefits to your operation.

I have observed how this team is working on a common breeding platform to force more uniformity in the bull selection. Their use of the best benchmarking tools and forcing the bulls to be developed in large contemporary groups will make a better product for you. This team understands we need bulls that are eye appealing to you, but are phenotypically and genetically in the top of their class. They are making tremendous strides to allow the best EPDs and test performances match up with physical balance and power while standing on top of great feet and legs.

I have worked with this team to apply some of the most stringent testing and culling practices so they can present to you a great set of bulls. I'm looking forward to watching this group provide fescue adapted bulls for you and backed up with one of the best customer service commitments out there in the seedstock world.

See you Sale Day,
Clint Berry
Allied Genetic Resources

About the Cattle Selling...

BULL DEVELOPMENT We continue to refine a methodical, well balanced bull development program that is so important to the **REDstock**® partnership. We leverage the combined 50 years of bull development experience used by the Bieber Red Angus operation and the unparalleled experience of Clint Berry who is intimately involved with buying thousands of bulls for a large customer base.

Bull development starts with a thorough evaluation of the mamma cow factory that's producing these bulls. We are benchmarking these cows to track their performance to ensure you are getting bulls from great mamma cows. Next, we apply our sire selections from a rigorous review of our approved sire program. These sires have been reviewed, benchmarked for their performance, and selected as sires to produce the bulls you see in this catalog. We are still refining this process and feel we are on track to reduce the overall number of sires used to build our offering to maximize the consistency in our bull product.

This year you will see the transition from individually testing bulls for feed efficiency to testing without gathering individual Dry Matter Conversion (DMC) and Residual Feed Intake (RFI) data. The older set of bulls will be presented with this data and the younger set of yearling will not be presented with this data. Why is that? We have been supplying DMC and RFI data to the Red Angus Association for several test cycles to develop a feed efficiency EPD. We support the work to develop this EPD and the rest of the Red Angus producers will benefit from this without having to pay the extra DMC and RFI data expense.

Not all data will be finished by the time the catalog inputs are closed. We will supply the remaining data for the bulls as supplement sheets. Those supplement sheets will be available on-line before the sale as well as available on sale day.

All bulls are guaranteed breeders through their first breeding season. All bulls must pass their Breeding Soundness Exams within 30 days of the sale and we recommend another test before turning these bulls in with cows if they are going to be inactive for any extended period.

REDstock® is interested in developing a relationship with our bull customers to help facilitate the commercial Red Angus Feeder Calf program through the FCCP Yellow Tag certification program.



Bulls with the Missouri Show-Me-Select® logo qualify as bulls who meet the requirements as calving ease bulls to use on replacement heifers.

FEMALE DEVELOPMENT Unlike the centralized approach to bull testing, the female offering in this sale reflects the individual partner's development program at their home ranches. Having said this, however, we started the analysis of the female cow base of each operation, benchmarking and setting the plan for improving each generation of replacement heifers to come over the next few years. There are some common aspects to these females:

- 100% of the females are "home raised", not repurposed or resold from sale barns.
- All yearling heifers offered are subjected to their pre-breeding health protocols in compliance to the Missouri Show-Me Select® Heifer Replacement Program. Go to <http://agebb.missouri.edu/select/prgmreq.htm> to see the requirements.



All bred heifers are compliant with the Missouri Show-Me Select® Heifer Replacement Program whether they have been ear tagged with the Missouri Show-Me Select® tag or not. They are not "approved" as Missouri Show-Me Select® bred heifers, but we've followed the same protocol.

Meet the Partners...



BIEBER RED ANGUS RANCH

focuses on Red Angus genetics and has been breeding Red Angus Cattle since 1968. One of the nation's largest Red Angus Seedstock producers, Bieber Red Angus Ranch has been consistent in their approach to cattle breeding using the latest

proven technology in selection to improve performance and carcass traits. EPD (Expected Progeny Difference), carcass ultrasound, and the latest in DNA technology are all used by the operation to improve the performance and eating quality of the genetics they produce. Bieber Red Angus genetics are utilized worldwide and one of the top suppliers to the major bull stud companies.

The involvement of the operation in projects like the NCBA Carcass Tenderness project, RAA carcass progeny testing, and the most recently RAA 50K research project have given them a unique insight to how genetics affect profitability and a satisfying eating experience. We have been fortunate to be listed for the past years as one of the Seedstock Top 100 producers in the U.S.

Bieber Red Angus Ranch runs two production sales per year, one in March and one in November while joining the **REDstock**® Partners team to help develop that team and market in the Midwest. We are one of the primary suppliers of genetics for the **REDstock**® team and provide support to their marketing plans.



EMERALD EARTH CATTLE

is a Red Angus seed stock producer located in the rolling green hills of southwest Wisconsin. Over the past 10 years we have strived very hard to develop a cow herd that has good feet, good teats and udders, good dispositions, and always raises a good calf. We are at a point where every single cow in our herd has reached that level. It gives us great confidence in selling bulls knowing that their dams are good momma cows,

that anyone would be happy to own. We have feed efficiency tested many bulls and females over the years. It has been eye opening to see the huge difference that cattle convert grain into gain. Through this time, we have continually selected cows and sires that excel in feed efficiency. Our bulls in this sale carry many generations of feed efficient genetics.

All of us at **REDstock**® have been striving to meet every bar in producing good dispositioned, good performing, good type, and good EPD bulls. We are confident that you will be able to find the perfect bull to meet your needs at the 2018 **REDstock**® sale.



SPREUTELS FARM

at Koshkonong, MO is located just off Rt. 63 in the Ozarks area. Cattle are all home-raised, registered, and commercial Red Angus since 1991. We are family owned and operated with 400 cows and private treaty bull and female sales, and we have received 10 Grid Master awards. Since joining forces with **REDstock**® Partners, Spreutels has been using many of the bulls provided by Scott Bachman. We see this as an opportunity to further increase the EPD ratings in our herd.

BACHMAN CATTLE FARMS

"Anyone who listens to my teaching and follows it is wise, like a person who builds a house on a solid rock." (Matthew 7:24) Sue and I share our beliefs that God and our relationship to our Savior, Jesus Christ is our solid rock which provides our decision points to be in the Red Angus seedstock business. We are called to be stewards of God's Kingdom on Earth and care for His Red Angus animals in our operation.



Red Angus is our cattle foundation, it's our "solid rock". We have made substantial investments in believing that we can place Red Angus seedstock cattle into the market who performs well for the commercial cattlemen and cattlemen who are feeding the nation and being influential in feeding the world a very healthy, necessary protein-base food.

We strive to have eye-appealing cattle meeting our 75/75/35 goals (75% of our seedstock females producing progeny with 75% of their collective EPDs in the Top 35% ranking) who generates profits for our customers, whether they sell pound calves or sell into premium grids. This means developing a breeding program to emphasize balanced EPDs across Economically Relevant Traits (ERTs) of calving ease, growth, maternal superiority and dynamic carcass qualities. We want to achieve these goals while providing superior service to you, our customers and potential customers. We simply guarantee 100% satisfaction with your purchase or your money back.

JAMES RED ANGUS RANCH is located in central Oklahoma. We are family owned and operated, paying close attention to genetic lines and EPDs. To achieve our goal of providing top ranked seedstock, a minimum of 80% of our dams are AI bred with the use of top sires and the remainder being a mix of embryo and natural service. With our high culling program, we can ensure continued performance in calving ease, growth, and carcass traits.

We have continued to build our selected traits and facilities to accommodate over the past decade and look forward to providing top quality Red Angus through **REDstock**®.

KLUESNER FAMILY CATTLE would like to thank you for your interest in the 4th annual **REDstock** sale. We are a small family farm in Southwest Wisconsin who love the Red Angus breed. We focus a lot on growth, and still strive for great maternal traits. Feel free to look us up at the sale, or give us a call. We would love to talk cattle with you.

What a PRESTIGIOUS way to open the RED-stock sale with this fantastic 2-yr old bull. Here's a calving-ease deluxe, sure-fire heifer bull who will also add tremendous depth to replacement females in your herd. His sire, BROWN PRESTIGIOUS B5153, who sold to Select Sires for \$45,000 for 50% interest, has over 300 progeny recorded and his Dam, BROWN MS P707 Y7741 was the \$36,000 Donor cow with over 23 recorded progeny and averaging 16 embryos per flush. Bachman Cattle Farms has used this bull in our spring heifer breeding program and he will be ready to go for your next breeding season.



BACH MR PRESTIGIOUS S030D Sells as Lot 1.

1 BACH MR PRESTIGIOUS S030D

Bull Reg# 3518456

CAT 1A - 100% AR

DAM MPPA 85.92

Birthdate: 02-20-2016 Tattoo: S030D

LSF TAKEOVER 9943W
BROWN AA PRESTIGIOUS B5153
BROWN MS DESTINATION T7634

BECKTON NEBULA P P707
BROWN MS P707 Y7741
BROWN BLUE MOON U7791

HrdBlDr	GrdMstr	CED	BW	WW	YW	Milk	ME	HPG	CEM	STAY	Marb	YG	CW	REA	FAT
170	52	10	-6.1	53	88	20	2	14	4	15	0.96	0.05	14	0.16	0.03
4%	15%	16%	2%	67%	53%	38%	68%	17%	53%	3%	2%	62%	72%	33%	91%
BW	Adj. WW	Adj. YW	% IMF	REA	SC	FS	GGP								
75	495	850	3.73	11.9	31.47	3.48	GGP								

2 BACH MR MCCOY F031D ET

Bull Reg# 3565600

CAT 1A - 100% AR

DAM MPPA 100

Birthdate: 09-17-2016 Tattoo: F031D

BIEBER H HUGHES W109
BIEBER REAL MCCOY Y124
BIEBER TORYANNA 263W

HXC CONQUEST 4405P
NOLIN'S MISS KAREY 663
SUTH TRENDY SPECS 9127

HrdBlDr	GrdMstr	CED	BW	WW	YW	Milk	ME	HPG	CEM	STAY	Marb	YG	CW	REA	FAT
167	51	10	-4.1	75	115	20	1	13	4	15	0.36	0.09	32	0.48	0.06
5%	26%	17%	13%	4%	7%	44%	55%	23%	56%	5%	57%	78%	16%	4%	98%
BW	Adj. WW	Adj. YW	% IMF	REA	SC	FS	GGP								
88	614	1213	1.72	12.56	39.01	5.06	GGP								



BACH MR MCCOY F031D ET Sells as Lot 2.

What a powerhouse of a bull that brings calving ease together with power, performance and great eye appeal. His sire, BIEBER REAL MCCOY Y124, has always been a favorite combined with a super cow that came from the Nolin herd, NOLIN'S MS KAREY 663. This CONQUEST 4405P daughter is powerful, thick and became one of our donor cows. Look at his performance of a WDA of 3.74 lbs./day of gain (112% ratio), an AYW of 1213 lbs. with a spread of a CED EPD of 10, BW EPD of -4.1 and Top 4% AWW EPD and Top 7% AYW EPD. We have collected over 200 units of semen on this bull and using him to breed into this fall's heifers. Great eye appeal, powerful EPDs and massive performance!

Age-Advantaged Bulls

Here's one of the best BROWN JYJ REDEMPTION Y1334 sons in the entire sale. The Spreutels have been raising registered Red Angus for many years and the REDstock bull development program has helped this bull express an absolutely fantastic phenotype. Combine this with the Packer and Mission Statement influence and you'll see why this bull is a Top 1% Herdbuilder and Top 4% Gridmaster index animal. This bull is the real deal.....great eye appeal, great structural balance and a great EPD set. **GAME CHANGER!**



WES DEMPTION D79 Sells as Lot 3.

3 WES DEMPTION D79

Bull Reg# 3573791

CAT 1A - 100% AR

DAM MPPA 105.71

Birthdate: 09-05-2016 Tattoo: D79

BECKTON NEBULA P P707
BROWN JYJ REDEMPTION Y1334
JYJ MS JOLENE W16

MESSMER PACKER S008
WES BIZZIE B75
WES MS VISUAL W66

HrdBlDr	GrdMstr	CED	BW	WW	YW	Milk	ME	HPG	CEM	STAY	Marb	YG	CW	REA	FAT
199	55	11	-2	76	129	19	0	11	6	17	0.68	0.12	44	0.11	0.01
1%	4%	11%	43%	4%	1%	51%	44%	53%	28%	1%	12%	88%	2%	44%	64%
BW	Adj. WW	Adj. YW	% IMF	REA	SC	FS	GGP								
62	769	1209	2.9	12.79	32.25	5.35	GGP								

4 WES PROFIT D96

Bull Reg# 3573789

CAT 1A - 100% AR

DAM MPPA 106.86

Birthdate: 09-11-2016 Tattoo: D96

LSF TAKEOVER 9943W
H2R PROFITBUILDER B403
BROWN MS P707 Y6674

PELTON % IMF 48S
WES CINTHY B78
WES HYACINTH W17

HrdBlDr	GrdMstr	CED	BW	WW	YW	Milk	ME	HPG	CEM	STAY	Marb	YG	CW	REA	FAT
152	58	-3	1.8	102	160	17	4	14	2	13	0.63	0.15	67	0.17	-0.01
10%	1%	99%	96%	1%	1%	70%	86%	16%	82%	15%	15%	93%	1%	33%	28%
BW	Adj. WW	Adj. YW	% IMF	REA	SC	FS	GGP								
78	786	1324	3.46	13.38	40.44	6.42	GGP								



WES PROFIT D96 Sells as Lot 4.

The power, the depth, the capacity of this bull to seriously change your program in a big way are some of the attributes of this offering from the Spreutels program. Once again you see the selection of H2R PROFITBUILDER B403 combined with PELTON % IMF 48S sire and MISSION STATEMENT P27 is delivering superior performance in this bull. Powerfully built and backed by a calving ease birth weight of 78 lbs., a 205-day adjusted weaning weight of 786 lbs. (that's WOW!), combined with a HUGE 1324 lb. adjusted yearling weight. Rock and roll with this one!

5 BACH MR TYSON F027D

Bull Reg# 3565596

CAT 1A - 100% AR

DAM MPPA 105.33

Birthdate: 09-17-2016 Tattoo: F027D

MUSHRUSH IMPRESSIVE CA U236
LSF SRR TYSON 3025A
LSF JIBA R5009 W9247

BIEBER MAKIN HAY X390
BACHMAN X390-WRK942
HMF MISS CAPTIVATOR 942

HrdBldr	GrdMstr	CED	BW	WW	YW	Milk	ME	HPG	CEM	STAY	Marb	YG	CW	REA	FAT
150	52	7	-2.7	78	121	17	7	13	4	13	0.55	0.08	38	0.19	0.01
12%	17%	37%	32%	2%	3%	74%	96%	25%	54%	12%	24%	75%	7%	29%	69%
BW	Adj. WW	Adj. YW	% IMF	REA	SC	FS	GGP								
68	660	1150	2.11	12.36	39.01	2.8									

Look at this powerfully made LSF SRR TYSON 3025A son and you will enjoy that deep cherry red coloring combined with his excellent structure and eye appeal. He brings depth and great balance combined with exceptional ADG performance at 4.1 lbs./day of gain during his test. He has always been one of our favorites and his maternal grandsire is one of the most profitable bulls we've ever owned - BIEBER MAKIN HAY X390.



LSF SRR TYSON 3025A Sire of Lot 5.

6 WES PROFIT D104

Bull Reg# 3573739

CAT 1A - 100% AR

DAM MPPA 100.8

Birthdate: 09-13-2016 Tattoo: D104

LSF TAKEOVER 9943W
H2R PROFITBUILDER B403
BROWN MS P707 Y6674

LJC MISSION STATEMENT P27
WES KEELY X18
WES KEE DESIGN U32

HrdBldr	GrdMstr	CED	BW	WW	YW	Milk	ME	HPG	CEM	STAY	Marb	YG	CW	REA	FAT
162	58	3	-2.2	81	131	17	9	10	-2	15	0.84	0	45	0.33	-0.01
6%	1%	71%	40%	1%	1%	69%	99%	67%	99%	4%	4%	39%	2%	14%	23%
BW	Adj. WW	Adj. YW	% IMF	REA	SC	FS	GGP								
74	677	1163	4.26	13.81	37.51	5.94									

74 lb. BW, 677 lb. AWW, 1163 AYW. Top that with 136 ratio for the % IMF and Top 6% and Top 1% Gridmaster Indices. Big with loads of guts, capacity and power to spare!



WES PROFIT D104 Sells as Lot 6.

7 WES TYSON D88

Bull Reg# 3573794

CAT 1A - 100% AR

DAM MPPA 97.14

Birthdate: 09-08-2016 Tattoo: D88

MUSHRUSH IMPRESSIVE CA U236
LSF SRR TYSON 3025A
LSF JIBA R5009 W9247

MESSMER PACKER S008
WES BROOKE B65
WES MAT GINA S85

HrdBldr	GrdMstr	CED	BW	WW	YW	Milk	ME	HPG	CEM	STAY	Marb	YG	CW	REA	FAT
201	53	9	-3.5	73	118	18	7	11	3	19	0.46	-0.02	35	0.42	0.01
1%	9%	21%	21%	6%	5%	58%	97%	46%	71%	1%	37%	33%	11%	9%	62%
BW	Adj. WW	Adj. YW	% IMF	REA	SC	FS	GGP								
60	663	1152	2.8	15.23	32.35	5.39									

What a spread.....60 lb. BW, 663 lb. AWW, 1152 AYW.....that's just flat getting with the program. Another example of the influence of LSF SRR TYSON 3025A and what he can do to rev up your program. Home run with another Top 1% Herdbuilder, Top 9% Gridmaster, breeding and game-changing machine!





BACH MR STORMER F018D ET Sells as Lot 8.

8 BACH MR STORMER F018D ET

Bull Reg# 3565587

CAT 1A - 100% AR

DAM MPPA 100

Birthdate: 09-14-2016 Tattoo: F018D

LSF CYCLONE 9934W
BIEBER STORMER Z433
BIEBER SUE 359X

HXC CONQUEST 4405P
NOLIN'S MISS KAREY 663
SUTH TRENDY SPECS 9127

HrdBlDr	GrdMstr	CED	BW	WW	YW	Milk	ME	HPG	CEM	STAY	Marb	YG	CW	REA	FAT
110	51	9	-3.7	70	119	22	9	5	2	10	0.17	0.14	36	0.13	0.03
50%	29%	22%	17%	11%	4%	27%	99%	99%	86%	42%	90%	92%	10%	40%	90%
BW	Adj. WW	Adj. YW	% IMF	REA	SC	FS	GGP								
95	616	1181	1.45	11.61	39.42	5.52									

How many times can we say WOW! Here's another NOLIN MS KAREY 663 son out of BIEBER STORMER Z433. This great breeding gives us an exceptional bull with tons of POWER! Combine his CED of 9, his BW EPD of -3.7, his Top 5% AYW EPD along with being exceptionally thick and powerful. Lots of power and performance.



WES TAKER D121 Sells as Lot 9.

9 WES TAKER D121

Bull Reg# 3573710

CAT 1A - 100% AR

DAM MPPA 98.26

Birthdate: 09-17-2016 Tattoo: D121

LSF TAKEOVER 9943W
BIEBER TAKEOVER Z206
BIEBER ROSE 116W

LCC MAJOR LEAGUE A502M
WES ML POSEY S22
WES POSENONE M11

HrdBlDr	GrdMstr	CED	BW	WW	YW	Milk	ME	HPG	CEM	STAY	Marb	YG	CW	REA	FAT
126	50	3	-1.6	66	96	17	1	13	2	12	0.31	-0.05	25	0.29	-0.01
31%	37%	72%	52%	20%	35%	72%	54%	27%	82%	23%	69%	21%	37%	18%	34%
BW	Adj. WW	Adj. YW	% IMF	REA	SC	FS	GGP								
80	665	1217	3.43	13.58	37.64	5.74									

Solid , functional bull with a really good spread from an 80 lb. BW, a 665 lb. AWW to a 1217 lb. AYW. Very balanced EPD set with 50% of the EPDs in the Top 35% of the breed. Solid indeed!



H2R PROFITBUILDER B403 Sire of Lot 10.

10 WES PROFIT D108

Bull Reg# 3573784

CAT 1A - 100% AR

DAM MPPA 98.29

Birthdate: 09-14-2016 Tattoo: D108

LSF TAKEOVER 9943W
H2R PROFITBUILDER B403
BROWN MS P707 Y6674

WES GOOD PROOF U14
WES BERKEE B48
WES ERIKKEE X33

HrdBlDr	GrdMstr	CED	BW	WW	YW	Milk	ME	HPG	CEM	STAY	Marb	YG	CW	REA	FAT
147	55	4	-3	66	101	14	1	15	2	12	0.9	0.05	25	0.01	0
13%	3%	64%	27%	18%	26%	91%	59%	10%	84%	19%	3%	66%	35%	63%	47%
BW	Adj. WW	Adj. YW	% IMF	REA	SC	FS	GGP								
66	676	1078	3.38	12.93	38.54	4.45									

Nice ProfitBuilder son with strong balanced EPDs that emphasizes a big spread from a 66 lb. BW to a 676lb. AWW. Excellent carcass EPDs leads to the Top 3% Gridmaster index.

11 BACH MR COMMANDER F038D

Bull Reg# 3565608

CAT 1A - 100% AR

DAM MPPA 97.71

Birthdate: 09-21-2016 Tattoo: F038D

BIEBER PACKER X375 BIEBER MAKIN HAY X390
BACHMAN COMMANDER ET12A **BACHMAN X390-U4 PACE**
 HUS MS JOLENE 301N 946 JP SHIANN MAJOR DESIGN U4

HrdBldr	GrdMstr	CED	BW	WW	YW	Milk	ME	HPG	CEM	STAY	Marb	YG	CW	REA	FAT
141	53	3	0.8	82	126	18	3	15	2	12	0.33	-0.04	46	0.34	-0.03
17%	11%	73%	89%	1%	2%	59%	73%	5%	81%	21%	63%	26%	2%	13%	9%
BW	Adj. WW	Adj. YW	% IMF	REA	SC	FS	GGP								
82	616	1185	3.03	10.12	36.14	4.86									

As we continue to develop "BACHMAN BRED" to sell at REDstock, we see the effect of using our BACHMAN COMMANDER ET12A sire influence. BACH F038D expresses explosive growth, exceptional Carcass Weight EPDs with very strong balance in the Herdbuilder and Gridmaster Indices. Another bull with lots of power, performance and extremely eye appealing.



BACHMAN COMMANDER ET12A Sire of Lots 11, 12.

12 WES COMMAND D146

Bull Reg# 3573767

CAT 1A - 100% AR

DAM MPPA 97.71

Birthdate: 09-27-2016 Tattoo: D146

BIEBER PACKER X375 PELTON % IMF 48S
BACHMAN COMMANDER ET12A **WES ZARA Z7**
 HUS MS JOLENE 301N 946 WES CLARA T88

HrdBldr	GrdMstr	CED	BW	WW	YW	Milk	ME	HPG	CEM	STAY	Marb	YG	CW	REA	FAT
118	56	2	-1.3	75	120	21	3	12	3	9	0.81	-0.01	39	0.57	0.02
40%	2%	86%	56%	4%	4%	32%	76%	40%	77%	60%	5%	35%	5%	2%	83%
BW	Adj. WW	Adj. YW	% IMF	REA	SC	FS	GGP								
74	672	1138	3.26	12.74	32.96	6.1									

Another very good spread-oriented bull with a 74 lb. BW and Top 4% for both the WW and YW EPD. Excellent carcass traits leads to a Top 2% Gridmaster Index. The Spreutels have won 11 Gridmaster awards from the Red Angus Association and they know how to breed to develop superior grid premiums.

13 WES PROFIT D92

Bull Reg# 3573751

CAT 1A - 100% AR

DAM MPPA 101.54

Birthdate: 09-11-2016 Tattoo: D92

LSF TAKEOVER 9943W WES GOOD PROOF U14
H2R PROFITBUILDER B403 **WES GOOD JUDY Y62**
 BROWN MS P707 Y6674 JSN 63

HrdBldr	GrdMstr	CED	BW	WW	YW	Milk	ME	HPG	CEM	STAY	Marb	YG	CW	REA	FAT
145	54	3	-1.6	71	104	17	5	13	4	12	0.86	0.11	29	-0.25	-0.02
15%	4%	71%	51%	10%	21%	69%	92%	22%	64%	18%	4%	85%	24%	97%	15%
BW	Adj. WW	Adj. YW	% IMF	REA	SC	FS	GGP								
76	640	1108	2.91	12.18	34.44	6.17									

Rock solid ProfitBuilder son with excellent carcass traits. Meatmaker specialist!

14 BACH MR TYSON F015D

Bull Reg# 3565584

CAT 1A - 100% AR

DAM MPPA 105.38

Birthdate: 09-13-2016 Tattoo: F015D

MUSHRUSH IMPRESSIVE CA U236 HUST CHIEF SEQUOYA R336
LSF SRR TYSON 3025A **EURA MELISSA 5061-1125**
 LSF JIBA R5009 W9247 JACOBSON MELISSA R5061

HrdBldr	GrdMstr	CED	BW	WW	YW	Milk	ME	HPG	CEM	STAY	Marb	YG	CW	REA	FAT
161	53	6	-2.2	78	118	23	6	13	4	14	0.65	0.04	37	0.22	0
7%	12%	43%	41%	2%	5%	15%	94%	28%	53%	5%	13%	61%	9%	26%	54%
BW	Adj. WW	Adj. YW	% IMF	REA	SC	FS	GGP								
80	603	1099	1.84	11.99	37.38	4.76									

Very solid, deeply balanced LSF SRR TYSON 3025A son with a maternal pedigree that comes from the HUST CHIEF SEQUOYA R336 family heritage. You receive a eye-appealing phenotype with excellent foot & bone structure. Couple that with 63% of the EPDs in the Top 35% and you find a bull that exemplifies, "BACHMAN BRED".



BACH MR TYSON F015D Sells as Lot 14.



BACH MR TYSON F043D Sells as Lot 15.

15 BACH MR TYSON F043D

Bull Reg# 3565616

CAT 1A - 100% AR

DAM MPPA 100.95

Birthdate: 09-28-2016 Tattoo: F043D

MUSHRUSH IMPRESSIVE CA U236
LSF SRR TYSON 3025A
LSF JIBA R5009 W9247

BIEBER MAKE MIMI 7249
FEDES BLOCKANA R64
FEDES BLOCKANA 351

HrdBlDr	GrdMstr	CED	BW	WW	YW	Milk	ME	HPG	CEM	STAY	Marb	YG	CW	REA	FAT
156	56	4	-0.2	81	128	21	3	10	2	14	1.06	0.16	46	0.04	0.01
9%	1%	61%	77%	1%	1%	37%	78%	73%	81%	8%	1%	94%	2%	57%	70%
BW	Adj. WW	Adj. YW	% IMF	REA	SC	FS	GGP								
82	650	1150	2.39	10.83	38.87	5.45									

TYSON crossed with the famous BLOCKANA cow family....WOW! This one's a hit. Check out his presence and power, his depth and balance in conjunction with an absolutely outstanding pedigree. Combine that with his Top 10% Herdbuilder and Top 1% Gridmaster Indices and we've shown you the power of "BACHMAN BRED"!

16 WES COMMAND D84

Bull Reg# 3573769

CAT 1A - 100% AR

DAM MPPA 101.33

Birthdate: 09-09-2016 Tattoo: D84

BIEBER PACKER X375
BACHMAN COMMANDER ET12A
HUS MS JOLENE 301N 946

PELTON % IMF 48S
WES ALICE Z93
MUSHRUSH ATHENA 1146

HrdBlDr	GrdMstr	CED	BW	WW	YW	Milk	ME	HPG	CEM	STAY	Marb	YG	CW	REA	FAT
113	54	0	0.6	81	129	25	5	13	3	9	0.52	0.07	48	0.4	0.02
47%	5%	94%	87%	1%	1%	7%	91%	28%	69%	62%	27%	74%	1%	10%	80%
BW	Adj. WW	Adj. YW	% IMF	REA	SC	FS	GGP								
74	679	1118	2.43	12.65	30.38	6.4									

BACHMAN COMMANDER ET12A brings out the spread of a 74 lb. BW to 679 lb. AWW again. This Top 1% growth performance in both the WW and YW EPDs are combined with the Top 5% Gridmaster Index. Low birth weight, explosive growth and excellent carcass traits. Go collect your grid premiums with this bull!

17 BACH MR TYSON F028D

Bull Reg# 3565597

CAT 1A - 100% AR

DAM MPPA 99.43

Birthdate: 09-17-2016 Tattoo: F028D

MUSHRUSH IMPRESSIVE CA U236
LSF SRR TYSON 3025A
LSF JIBA R5009 W9247

BIEBER MAKIN HAY X390
BACHMAN X390-WRK971
HMF MISS CAPTIVATOR 971

HrdBlDr	GrdMstr	CED	BW	WW	YW	Milk	ME	HPG	CEM	STAY	Marb	YG	CW	REA	FAT
159	48	8	-4.4	64	99	19	2	8	4	16	0.33	0.03	22	0.14	0.01
7%	66%	26%	11%	25%	29%	49%	64%	91%	63%	1%	64%	53%	44%	37%	67%
BW	Adj. WW	Adj. YW	% IMF	REA	SC	FS	GGP								
58	584	1113	2.25	11.76	39.51	4.81									

Tyson son with really strong Herdbuilder qualities. Good balance of calving ease combined with a well developed stayability influence for future replacement females. Tyson's influence combined with the profitability of BIEBER MAKIN HAY X390 will be a positive influence for your herd.



BIEBER ROLLIN DEEP Y118 Sire of Lot 18.

18 JAMES ROLLING DEEP D22 DMJR

Bull Reg# 3622013

CAT 1A - 100% AR

DAM MPPA 110.18

Birthdate: 08-28-2016 Tattoo: D22

BIEBER ROOSEVELT W384
BIEBER ROLLIN DEEP Y118
BIEBER TILLY 399W

VGW OLY 903
BIEBER PRIMROSE 346Z
BIEBER OPAL 268X

HrdBlDr	GrdMstr	CED	BW	WW	YW	Milk	ME	HPG	CEM	STAY	Marb	YG	CW	REA	FAT
110	52	6	-2.4	67	113	25	-1	11	5	9	0.4	0.11	34	0.05	0.01
50%	20%	50%	37%	18%	8%	8%	38%	54%	42%	69%	47%	85%	12%	56%	66%
BW	Adj. WW	Adj. YW	% IMF	REA	SC	FS	GGP								
76	629	1026													

This is James Ranch's 1st bull for the REDstock program and he's a good one! This BIEBER ROLLIN DEEP Y118 son is very thick and eye appealing with the benefit of coming out of the PRIMROSE cow family that goes back to the famous BIEBER MAKIN HAY 9913 bull. You know the BIEBER program and this bull expresses everything good from that heritage.

Red Angus Guide to EPDs

HB HerdBuilder Index – Need bulls for developing a profitable cowherd and maximizing the value of marketed progeny? Select a bull with a high HB value.

GM GridMaster Index – If you market all of your calf crop and want to increase the value of that calf crop, select a bull with a high GM value to maximize your profit.

CED Calving Ease Direct – Breeding Heifers? Select bulls with a high CED to increase the probability that the heifers will calve unassisted.

BW..... Birth Weight – Predicts differences in birth weight. BW is included in the CED EPD, so simplify your decisions by selecting bulls based on CED instead of BW.

WW Weaning Weight and **YW** Yearling Weight – Predicts differences in weight at weaning and yearling. While selection based on these growth measures can increase your payweight, be cautious what the bull's other EPDs are.

Milk Milk – Predicts differences in weaning weight of daughter's progeny due to milk production.

ME Maintenance Energy – Selecting bulls with a lower ME EPD will decrease the amount of feed his daughters will require to maintain body weight.

HPG..... Heifer Pregnancy – Retaining heifers? Select bulls with a high HPG to increase the percentage of exposures that result in a calving observation.

CEM Calving Ease Maternal – Another number to pay attention to if you are retaining heifers. Selecting bulls with a high CEM will increase the probability of those daughters calving unassisted.

STAY.... Stayability – The most important trait if your goal is developing cows that stay productive, thus increasing your profitability. Bulls that have a high Stay EPD are expected to sire daughters that remain productive in the herd until at least 6 years of age.

MARB .. Marbling Score – Select bulls with high MARB EPD to increase the number of progeny that grade Choice or Prime.

YG Yield Grade – Marketing calves on a grid? Placing selection pressure on YG EPD will decrease the number of YG discounts on grid-marketed progeny.

CW..... Carcass Weight – Selecting bulls with a high CW EPD will increase the weight of the hanging carcass, which directly impacts revenue.

REA Rib Eye Area – Need to add muscle? Select bulls with a high REA EPD to increase rib eye area, which favorably increases Yield Grade.

FAT Backfat – Need to reduce waste in carcasses? Select bulls with a low FAT EPD to reduce backfat, which favorably increases Yield Grade.

Ranch Tested. Rancher Trusted.

Red Angus

(940) 387-3502 | RedAngus.org



For more information on EPDs, visit redangus.org.

Yearling Bulls

We lead off the yearling bull section with one powerful BROWN BLW LEGEND A1965 son out of the famous ELEANOR cow family (LSF and Montvue). HUGE (yes, President Trump HUGE) EPD set, great phenotype and recording a powerful AWW measurement at 786 lbs. Legend has almost 475 progeny records and the Dam of this bull is one of our donors with a MPPA of 114.



BACH MR LEGEND S018E Sells as Lot 19.

19 BACH MR LEGEND S018E

Bull Reg# 3622521

CAT 1A - 100% AR

DAM MPPA 114.32

Birthdate: 01-14-2017 Tattoo: S018E

BECKTON EPIC R397 K
BROWN BLW LEGEND A1965
HXC PATRICIA ROSE 102Y

LSF JBOB EXPECTATION 6034S
LRF MS EXP A130
LRF ELEANORS JEWEL X122

HrdBldr	GrdMstr	CEB	BW	WW	YW	Milk	ME	HPG	CEM	STAY	Marb	YG	CW	REA	FAT	
164	54	6	-2	75	116	22	-2	16	5	13	0.94	0.08	36	0.17	0.01	
6%	7%	46%	45%	4%	6%	28%	30%	5%	38%	9%	2%	78%	10%	32%	74%	
BW		Adj. WW			Adj. YW											
90		786			1291											

20 BACH MR SILVERBOW S012E ET

Bull Reg# 3622509

CAT 1A - 100% AR

DAM MPPA 115.11

Birthdate: 01-12-2017 Tattoo: S012E

BROWN JYJ REDEMPTION Y1334
FEDDES SILVER BOW B226
FEDDES LAKINA Y17

ANDRAS IN FOCUS B152
ANDRAS KURUBA R253
ANDRAS KURUBA B111

HrdBldr	GrdMstr	CEB	BW	WW	YW	Milk	ME	HPG	CEM	STAY	Marb	YG	CW	REA	FAT	
122	51	9	-2.5	62	104	27	-5	14	7	9	0.53	0	29	0.31	0.01	
35%	23%	22%	34%	33%	20%	3%	12%	15%	17%	66%	26%	42%	25%	15%	69%	
BW		Adj. WW			Adj. YW											
80		672			1085											



BACH MR SILVERBOW S012E ET Sells as Lot 20.

We claim bragging rights to owning the best Silverbow son on the market and we think you'll be able to see why when you look at this bull. He's been a standout calf from the beginning and has clocked performance all the way to this sale. He has abundant style, great length with a depth of volume throughout his body - an extremely well balanced bull.

This is a powerful LSF SRR TYSON 3025A son who has great depth of rib and tremendous volume. He's freight-train long, thick and stout and comes from an excellent cow family pedigree - The BJR & LSF BONNEBELL cow family. Top 6% Herdbuilder and Top 15% Gridmaster Indices .



BACH MR TYSON S024E Sells as Lot 21.

21 BACH MR TYSON S024E

Bull Reg# 3622527

CAT 1A - 100% AR

DAM MPPA 98.86

Birthdate: 01-15-2017 Tattoo: S024E

MUSHRUSH IMPRESSIVE CA U236
LSF SRR TYSON 3025A
LSF JIBA R5009 W9247

LSF NEXTPECTATION 0083X
BJR BONNEBELL 32A
PFFR MS BONNEBELL 25Y

HrdBlDr	GrdMstr	CED	BW	WW	YW	Milk	ME	HPG	CEM	STAY	Marb	YG	CW	REA	FAT
167	53	6	-4.1	70	109	23	0	15	2	15	0.74	0	29	0.29	0.01
5%	7%	44%	13%	11%	12%	16%	49%	7%	80%	4%	8%	42%	24%	18%	64%
BW		Adj. WW			Adj. YW										
72		645			1234										

22 BACH MR LEGEND S007E

Bull Reg# 3622501

CAT 1A - 100% AR

DAM MPPA 109.71

Birthdate: 01-10-2017 Tattoo: S007E

BECKTON EPIC R397 K
BROWN BLW LEGEND A1965
HXC PATRICIA ROSE 102Y

LSF SRR TYSON 3025A
BJR QUEEN JEWEL 507C
HUS QUEEN JEWEL P431 W04

HrdBlDr	GrdMstr	CED	BW	WW	YW	Milk	ME	HPG	CEM	STAY	Marb	YG	CW	REA	FAT
163	51	7	-2.5	74	110	21	-2	14	2	15	0.8	0.19	31	0.07	0.05
6%	30%	34%	36%	5%	12%	33%	29%	12%	83%	3%	5%	97%	18%	52%	97%
BW		Adj. WW			Adj. YW										
88		769			1250										



BACH MR LEGEND S007E Sells as Lot 22.

Here's a bull who topped the Clint Berry visual scoring system who is long bodied with loads of style. This bull has an extremely strong bone set, great feet with tremendous depth of rib, volume and overall depth. Lets line up the pedigree here: EPIC, HXC PATRICIA ROSE 102Y, TYSON and QUEEN JEWEL. If you follow any of the great sires and dams in the Red Angus world, these are some of the greats! Match this with his exceptional performance: 88 lb. BW to 769 lb. AWW and hitting the scales at 1150 lbs. at his mid-point test on December 27 and you have a winner! Yes, he's almost 70% of his EPDs in the top 35% with a Top 4% Herdbuilder and Top 13% Gridmaster Indices.

Yearling Bulls

This may be one of the best ProfitBuilder sons to sell this year! Check him out for yourself...Great EPD's, loads of style, round-ribbed dam with nice udder and small teats. Customers are telling us they LOVE their ProfitBuilder calves and are super-excited about their ProfitBuilder daughters. This bull is going to make super replacement females!



EEC PROFITBUILDER E716 Sells as Lot 23.

23 EEC PROFITBUILDER E716

Bull Reg# 3745551


CAT 1A - 100% AR

DAM MPPA 102.18

Birthdate: 02-26-2017 Tattoo: E716

LSF TAKEOVER 9943W
H2R PROFITBUILDER B403
BROWN MS P707 Y6674

LCOC ROMERO A007T
EEC FORTUNE Z11T
SRN FORTUNE 7011

HrdBlDr	GrdMstr	CED	BW	WW	YW	Milk	ME	HPG	CEM	STAY	Marb	YG	CW	REA	FAT
209	57	9	-5.2	77	124	19	2	11	0	19	0.89	0.07	36	0.06	-0.01
1%	1%	21%	6%	3%	2%	48%	71%	57%	95%	1%	3%	71%	9%	54%	34%
BW		Adj. WW			Adj. YW				GGP						
81		779													

24 BACH MR PLATINUM S084E ET

Bull Reg# 3622655


CAT 1A - 100% AR

DAM MPPA 85.92

Birthdate: 03-12-2017 Tattoo: S084E

BROWN INCREDABULL Z7277
LSF MEW PLATINUM 5660C
BROWN MS NEW STANDARD A7053

BECKTON NEBULA P P707
BROWN MS P707 Y7741
BROWN BLUE MOON U7791

HrdBlDr	GrdMstr	CED	BW	WW	YW	Milk	ME	HPG	CEM	STAY	Marb	YG	CW	REA	FAT
166	56	9	-4.7	61	106	18	-2	14	6	12	1.05	0.06	26	0.34	0.04
5%	1%	19%	9%	35%	17%	63%	33%	10%	20%	19%	1%	67%	31%	13%	94%
BW		Adj. WW			Adj. YW										
91		715			1231										



LSF MEW PLATINUM 5660C Sire of Lot 24.

Ring the alarm bells! This is the first LSF MEW PLATINUM 5660C bull we are selling and he is SPECIAL! 81% of EPDs in the Top 35% of the breed combined with a knock-your-socks-off pedigree. We're combining the power of the \$150,000 Platinum bull with the \$36,000 BROWN MS P707 Y7741 donor cow. He is thick and stout with very good muscle tone and very masculine to look at.....WOW!

25 BACH MR PREMIER S059E

Bull Reg# 3622603

CAT 1A - 100% AR

DAM MPPA 109.2

Birthdate: 02-06-2017 Tattoo: S059E

BECKTON NEBULA P P707

LSF PROSPECT 2035Z

BROWN PREMIER X7876

BJR BONNEBELL 504C

BROWN MS DESTINATION T7664

BJR BONNEBELL 32A

HrdBlDr	GrdMstr	CED	BW	WW	YW	Milk	ME	HPG	CEM	STAY	Marb	YG	CW	REA	FAT
186	57	9	-1.8	84	140	19	1	13	11	13	0.82	0.16	51	0.15	0.02
2%	1%	23%	47%	1%	1%	47%	55%	26%	1%	11%	5%	94%	1%	35%	79%

BW	Adj. WW	Adj. YW	
96	808	1382	

Power, power, how many times can we say POWER! Top 1% EPDS for Herdbuilder, Gridmaster, Weaning Weight, Yearling Weight, Calving Ease Maternal and Carcass Weight. Run these numbers in the EPD finder and there is NO OTHER bull born in 2017 with these numbers. He will be a bigger framed bull, probably 6.0- 6.5 and we'd say use this boy on cows, not heifers. He tipped the scales at 96 lbs. at birth, but blew away the scales at 808 lbs. for his 205-day adjusted weaning weight. He crushed the scales at 1100 lbs. for his mid-point gain test and was gaining at 4.51 lbs./day. BEASTY BOY!



BACH MR PREMIER S059E Sells as Lot 25.

26 EEC PROFITBUILDER E711

Bull Reg# 3745633

CAT 1A - 100% AR

DAM MPPA 102

Birthdate: 02-24-2017 Tattoo: E711

LSF TAKEOVER 9943W

LW HAY DAY T509 Z01

H2R PROFITBUILDER B403

EEC JANIE C38

BROWN MS P707 Y6674

SRN JANKE 7145

HrdBlDr	GrdMstr	CED	BW	WW	YW	Milk	ME	HPG	CEM	STAY	Marb	YG	CW	REA	FAT
173	55	7	-4.2	80	127	19	2	9	3	15	0.61	0.09	39	0.06	0
3%	3%	38%	13%	1%	2%	55%	65%	84%	69%	3%	16%	81%	6%	53%	48%

BW	Adj. WW	Adj. YW	
72	783		GGP

This has been my favorite ProfitBuilder calf since birth. He does everything right; looks good, super growth, great carcass merit. In addition his dam is very attractive, structurally correct, perfect teats and udder, and super Quiet!



EEC PROFITBUILDER E711 Sells as Lot 26.

27 EEC ABSOLUTE 160 E724

Bull Reg# 3745559

CAT 1A - 100% AR

DAM MPPA 100

Birthdate: 03-02-2017 Tattoo: E724

K C F BENNETT ABSOLUTE

LCOC ROMERO A007T

EEC ABSOLUTE A160B

EEC TORY Z55CT

EEC PEACHA Y14T

SRN TYRA 7155

HrdBlDr	GrdMstr	CED	BW	WW	YW	Milk	ME	HPG	CEM	STAY	Marb	YG	CW	REA	FAT
142	52	10	-3.2	61	106	11	-1	11	5	11	0.45	0.11	29	0.35	0.06
16%	19%	15%	25%	37%	17%	96%	37%	46%	36%	30%	38%	85%	24%	13%	98%

BW	Adj. WW	Adj. YW	
82	775		GGP

Wide hiped, slick haired, stylish, muscular, calving ease bull. Sire and Dam are both proven feed efficient leaders. Use this bull to improve your cow herd and reduce your feed costs at the same time. REAL OUTCROSS! This bull can be used on P707 and Mission Statement daughters.



EEC ABSOLUTE 160 E724 Sells as Lot 27.



BACH MR COMMANDER S014E Sells as Lot 28.

28 BACH MR COMMANDER S014E

Bull Reg# 3622513

CAT 1A - 100% AR

DAM MPPA 103.85

Birthdate: 01-13-2017 Tattoo: S014E

BIEBER PACKER X375
BACHMAN COMMANDER ET12A
HUS MS JOLENE 301N 946

HXC CONQUEST 4405P
GMRA PEACHA 055
GMRA PEACHA 563

HrdBlDr	GrdMstr	CED	BW	WW	YW	Milk	ME	HPG	CEM	STAY	Marb	YG	CW	REA	FAT
139	53	9	-3	76	116	20	2	11	2	11	0.53	0.03	34	0.28	0.01
19%	10%	22%	28%	4%	6%	40%	66%	51%	85%	27%	25%	53%	13%	19%	67%

BW	Adj. WW	Adj. YW	
88	724	1177	

This bull expresses the power and depth of BACHMAN COMMANDER ET12A. 88 lb. BW to a top performance of 724 lb. AWW. He's an extremely stylish bull with plenty of masculinity, stout and powerful. Nice moderate frame of 5.5 and very balanced in eye appeal and great EPDs. Out of a great cow family from Green Mountain Red Angus - the PEACHA cow family.



FEDDES SILVER BOW B226 Sire of Lot 29.

29 BACH MR SILVERBOW S009E ET

Bull Reg# 3622503

CAT 2 - 100% AR

DAM MPPA 115.11

Birthdate: 01-11-2017 Tattoo: S009E

BROWN JYJ REDEMPTION Y1334
FEDDES SILVER BOW B226
FEDDES LAKINA Y17

ANDRAS IN FOCUS B152
ANDRAS KURUBA R253
ANDRAS KURUBA B111

HrdBlDr	GrdMstr	CED	BW	WW	YW	Milk	ME	HPG	CEM	STAY	Marb	YG	CW	REA	FAT
122	51	9	-2.5	62	104	27	-5	14	7	9	0.53	0	29	0.31	0.01
35%	23%	22%	34%	33%	20%	3%	12%	15%	17%	66%	26%	42%	25%	15%	69%

BW	Adj. WW	Adj. YW	
90	678	1229	

Full sib brother to the Lot 20 Silverbow son out of the Andras Kuruba cow family. This one should be a CAT 2 because of the white ahead of his navel.



H2R PROFITBUILDER B403 Sire of Lot 30.

30 EEC PROFITBUILDER E702

Bull Reg# 3745655

CAT 1A - 100% AR

DAM MPPA 97.6

Birthdate: 02-15-2017 Tattoo: E702

LSF TAKEOVER 9943W
H2R PROFITBUILDER B403
BROWN MS P707 Y6674

LW HAY DAY T509 Z01
EEC MATILDA C39
MCCR GILDA 2091

HrdBlDr	GrdMstr	CED	BW	WW	YW	Milk	ME	HPG	CEM	STAY	Marb	YG	CW	REA	FAT
172	53	11	-7.3	65	102	21	2	14	2	15	0.87	0.2	20	-0.15	0.05
4%	10%	11%	1%	22%	23%	33%	64%	13%	85%	4%	3%	97%	53%	91%	96%

BW	Adj. WW	Adj. YW	
60	697		GGP

ProfitBuilder has the "look" all of us like! This son is extra thick and stout. His dam is correctly made with a tight level udder and good teat structure.

31 D2H 30

Bull Reg# 3786551

CAT 1A - 100% AR

DAM MPPA

Birthdate: 12-27-2016 Tattoo: 30

LSF TAKEOVER 9943W TJC MULBERRY 014X
 H2R PROFITBUILDER B403 TJC 6055 BELINDA 474B
 BROWN MS P707 Y6674 SRN MS. SILVER 6055

HrdBldr	GrdMstr	CED	BW	WW	YW	Milk	ME	HPG	CEM	STAY	Marb	YG	CW	REA	FAT	
163	54	2	-1.6	65	105	17	1	12	5	15	0.63	0.08	30	-0.01	0	
6%	7%	82%	52%	22%	18%	69%	57%	37%	41%	3%	15%	78%	20%	69%	48%	
BW		Adj. WW			Adj. YW											
67		579			1187											

The Halley's are just joining REDstock and this is the only bull they are presenting in this sale. Very nice PROFITBUILDER son out of a MULBERRY 26P grandsire on the maternal side.



D2H 30 Sells as Lot 31.

32 BACH MR LEGEND S013E

Bull Reg# 3622517

CAT 1A - 100% AR

DAM MPPA

Birthdate: 01-13-2017 Tattoo: S013E

BECKTON EPIC R397 K C-BAR CONTOUR 107X
 BROWN BLW LEGEND A1965 JEFFRIES MS JOLINE Z243
 HXC PATRICIA ROSE 102Y BROWN MS BIG SKY U7877

HrdBldr	GrdMstr	CED	BW	WW	YW	Milk	ME	HPG	CEM	STAY	Marb	YG	CW	REA	FAT	
167	51	8	-4.2	62	99	20	-2	14	3	15	0.66	0.06	23	0.24	0.03	
5%	25%	26%	13%	34%	29%	41%	30%	10%	77%	3%	13%	67%	43%	23%	91%	
BW		Adj. WW			Adj. YW											
92		721			1147											

Nice calving ease bull out of a Jefferies Joline donor cow with very good EPDs and average depth and balance.



BACH MR LEGEND S013E Sells as Lot 32.

33 EEC PROFITBUILDER E706

Bull Reg# 3745625

CAT 1A - 100% AR

DAM MPPA 97.2

Birthdate: 02-23-2017 Tattoo: E706

LSF TAKEOVER 9943W BROWN SOLID ROCK Z7245
 H2R PROFITBUILDER B403 EEC ROSABELLA C37
 BROWN MS P707 Y6674 SRN RACHEL 7056

HrdBldr	GrdMstr	CED	BW	WW	YW	Milk	ME	HPG	CEM	STAY	Marb	YG	CW	REA	FAT	
178	54	8	-6	63	99	17	1	12	5	16	1.12	0.15	20	-0.06	0.04	
3%	4%	31%	3%	30%	28%	66%	59%	40%	42%	2%	1%	93%	51%	77%	93%	
BW		Adj. WW			Adj. YW											
61		689													GGP	

Sleep all night heifer bull with style! This deep sided, masculine bull will catch your eye as you walk through the pens. His dam is a quiet, and beautiful Solid Rock daughter with perfect teats and udder.

34 BACH MR TAKEOVER S015E ET

Bull Reg# 3622511

CAT 1A - 100% AR

DAM MPPA 104.59

Birthdate: 01-13-2017 Tattoo: S015E

HXC CONQUEST 4405P BECKTON JULIAN GG B571
 LSF TAKEOVER 9943W BROWN MS JULIAN Y7810
 LSF WIDELoad R5014 U8061 BROWN MS ABIGRACE L7730

HrdBldr	GrdMstr	CED	BW	WW	YW	Milk	ME	HPG	CEM	STAY	Marb	YG	CW	REA	FAT	
159	53	9	-5.1	56	90	23	4	16	5	12	0.69	-0.04	16	0.27	0.01	
8%	8%	21%	6%	54%	48%	17%	81%	3%	38%	16%	10%	24%	65%	19%	64%	
BW		Adj. WW			Adj. YW											
98		588			1054											

We're bring back a breeding out of our relationship with the Ludvigson's to mate LSF 9943W to the Brown donor cows we jointly owned. We had great results with the combination with BROWN MS P707 Y7810 who is an ABIGRACE daughter. We recently sold this donor cow for \$17,000 and think you'll find this bull put together very well.



BROWN BLW STATISTICIAN B5240 Sire of Lot 35.

35 WES STATION E32

Bull Reg# 3710585 CAT 1A - 100% AR
 DAM MPPA 102.4 Birthdate: 03-10-2017 Tattoo: E32

BROWN JYJ REDEMPTION Y1334 WES BIG ML DESIGN T13
 BROWN BLW STATISTICIAN B5240 WES MILLIE B114
 BROWN MS REVELATION U7748 WES WINDOSE Z131

HrdBldr	GrdMstr	CED	BW	WW	YW	Milk	ME	HPG	CEM	STAY	Marb	YG	CW	REA	FAT	
150	50	9	-2.8	66	98	17	3	11	4	14	0.53	-0.09	24	0.36	-0.01	
11%	35%	21%	31%	21%	32%	72%	80%	59%	58%	8%	26%	12%	40%	13%	23%	
BW		Adj. WW			Adj. YW											
78		666			1067											

First BROWN BLW STATISTICIAN B5240 bull with 75% of his EPDs in the Top 35% of the breed. Balanced masculine bull with good balance across rib, volume and depth.



BACH MR TAKEOVER S034E ET Sells as Lot 36.

36 BACH MR TAKEOVER S034E ET

Bull Reg# 3622549 CAT 1A - 100% AR
 DAM MPPA 104.59 Birthdate: 01-18-2017 Tattoo: S034E

HXC CONQUEST 4405P BECKTON JULIAN GG B571
 LSF TAKEOVER 9943W BROWN MS JULIAN Y7810
 LSF WIDELoad R5014 U8061 BROWN MS ABIGRACE L7730

HrdBldr	GrdMstr	CED	BW	WW	YW	Milk	ME	HPG	CEM	STAY	Marb	YG	CW	REA	FAT	
159	53	9	-5.1	56	90	23	4	16	5	12	0.69	-0.04	16	0.27	0.01	
8%	8%	21%	6%	54%	48%	17%	81%	3%	38%	16%	10%	24%	65%	19%	64%	
BW		Adj. WW			Adj. YW											
80		701			1095											

Very stylish LSF 9943W son with very good balance across his depth of rib, volume and capacity. Full sib brother to Lot 34 and had a very good spread from an 80 lb. BW to a 701 lb. AWW.

37 EEC PROFITBUILDER E727

Bull Reg# 3745563 CAT 1A - 100% AR
 DAM MPPA 101.45 Birthdate: 03-04-2017 Tattoo: E727

LSF TAKEOVER 9943W MONTVUE RED FUTURE W439
 H2R PROFITBUILDER B403 REV RLK RED FUTURE Z008
 BROWN MS P707 Y6674 REV MS RADICALLY PERFECT 501

HrdBldr	GrdMstr	CED	BW	WW	YW	Milk	ME	HPG	CEM	STAY	Marb	YG	CW	REA	FAT	
158	54	5	-5.4	63	97	20	0	13	3	14	1.06	0.12	20	0.12	0.05	
8%	5%	56%	5%	27%	32%	43%	52%	19%	66%	8%	1%	88%	52%	41%	97%	
BW		Adj. WW			Adj. YW										GGP	
71		728													GGP	

ProfitBuilder 'stamps' his progeny with good looks, this bull included! Plus this bulls dam backs up those looks as an 'eye-catcher' herself! Turn his genetics lose in your herd!

38 EEC PROFITBUILDER E725

Bull Reg# 3745547 CAT 1A - 100% AR
 DAM MPPA 97.6 Birthdate: 03-02-2017 Tattoo: E725

LSF TAKEOVER 9943W RED CROWFOOT OLE'S OSCAR
 H2R PROFITBUILDER B403 DKK DAZZLE 102
 BROWN MS P707 Y6674 DKK DAZZLE 9066

HrdBldr	GrdMstr	CED	BW	WW	YW	Milk	ME	HPG	CEM	STAY	Marb	YG	CW	REA	FAT	
175	55	6	-6	60	91	17	2	12	6	15	1.06	0.02	15	0.28	0.04	
3%	3%	46%	3%	41%	47%	70%	71%	38%	31%	3%	1%	52%	68%	19%	93%	
BW		Adj. WW			Adj. YW										GGP	
73		671													GGP	

This Slick haired bull comes from a quiet, big ribbed dam. ProfitBuilder calves are easy to work with, and this well balanced bull will put that quietness to work in your herd!

39 EEC PROFITBUILDER E726

Bull Reg# 3745589

CAT 1A - 100% AR

DAM MPPA 101.33

Birthdate: 03-04-2017 Tattoo: E726

LSF TAKEOVER 9943W
H2R PROFITBUILDER B403
BROWN MS P707 Y6674

LOOSLI HOBO 1163
EEC ROSIE A04
DKK DAZZLE 102

HrdBldr	GrdMstr	CED	BW	WW	YW	Milk	ME	HPG	CEM	STAY	Marb	YG	CW	REA	FAT
172	55	6	-4	71	107	20	2	13	4	15	1.06	0.16	28	0.05	0.04
4%	3%	49%	14%	10%	15%	43%	68%	25%	61%	4%	1%	95%	28%	56%	95%
BW			Adj. WW			Adj. YW						GGP			
78			731												

Another ProfitBuilder son with style, structure, and disposition to improve your herd!

40 WES STATION E04

Bull Reg# 3710591

CAT 1A - 100% AR

DAM MPPA 102.8

Birthdate: 02-26-2017 Tattoo: E04

BROWN JYJ REDEMPTION Y1334
BROWN BLW STATISTICIAN B5240
BROWN MS REVELATION U7748

WES TOBUNGA Y87
WES BESTA B120
WES BELLISSA Z10

HrdBldr	GrdMstr	CED	BW	WW	YW	Milk	ME	HPG	CEM	STAY	Marb	YG	CW	REA	FAT
147	51	9	-2.8	64	96	19	3	11	4	13	0.59	-0.07	23	0.32	-0.01
13%	25%	23%	31%	26%	36%	56%	77%	56%	50%	12%	18%	18%	44%	15%	36%
BW			Adj. WW			Adj. YW									
70			671			1099									

Another 1/2 brother to lot 35.

41 WES COMRAD E42

Bull Reg# 3710491

CAT 1A - 100% AR

DAM MPPA 94.86

Birthdate: 03-20-2017 Tattoo: E42

BIEBER PACKER X375
BACHMAN COMMANDER ET12A
HUS MS JOLENE 301N 946

WES GOOD PROOF U14
WES BRENDA B45
STRG CHEROKEE SUPREME R511

HrdBldr	GrdMstr	CED	BW	WW	YW	Milk	ME	HPG	CEM	STAY	Marb	YG	CW	REA	FAT
137	55	3	0.3	78	123	17	6	14	-1	12	0.57	-0.04	43	0.47	-0.01
20%	3%	75%	83%	2%	3%	71%	94%	14%	98%	21%	21%	26%	3%	5%	34%
BW			Adj. WW			Adj. YW									
76			673			1309									

68% of EPDs in the Top 35% of the breed. Use this bull on cows only and experience very good growth and carcass.

42 BACH MR SILVERBOW S019E ET

Bull Reg# 3622519

CAT 1A - 100% AR

DAM MPPA 115.11

Birthdate: 01-14-2017 Tattoo: S019E

BROWN JYJ REDEMPTION Y1334
FEDDES SILVER BOW B226
FEDDES LAKINA Y17

ANDRAS IN FOCUS B152
ANDRAS KURUBA R253
ANDRAS KURUBA B111

HrdBldr	GrdMstr	CED	BW	WW	YW	Milk	ME	HPG	CEM	STAY	Marb	YG	CW	REA	FAT
122	51	9	-2.5	62	104	27	-5	14	7	9	0.53	0	29	0.31	0.01
35%	23%	22%	34%	33%	20%	3%	12%	15%	17%	66%	26%	42%	25%	15%	69%
BW			Adj. WW			Adj. YW									
82			595			981									

Another solid Silverbow son balanced across rib, volume depth and length. Full sib brother to Lots 20 an 29.



Choice⁺

Premium Red Angus Grid

"The Choice+ Grid has really worked for our cattle. 168 head of our Red Angus FCCP-tagged steers have averaged \$60.33/head in premiums."

Clay Anderson, Anderson Land & Cattle Co. - Oberlin, KS

Tyson Fresh Meats' Red Angus grid focuses on the strengths of Red Angus cattle verified through the FCCP "Yellow Tag" program.



Ranch Tested. Packer Trusted.

Red Angus

Contact the Red Angus Association of America at (940) 387-3502 or visit RedAngus.org.

43 EEC SOLID ROCK E735

Bull Reg# 3745581

CAT 1A - 100% AR

DAM MPPA 104

Birthdate: 03-24-2017 Tattoo: E735

BROWN PARAMOUNT X7879 HOLDEN LEAD TIME 120
 BROWN SOLID ROCK Z7245 EEC ANNIE A19
 BROWN MS ABIGRACE L7730 EEC PRINCESS X52T

HrdBldr	GrdMstr	CED	BW	WW	YW	Milk	ME	HPG	CEM	STAY	Marb	YG	CW	REA	FAT
167	54	5	-2.5	68	105	16	4	19	5	14	1.14	0.14	28	-0.07	0.02
5%	7%	52%	36%	16%	19%	77%	82%	1%	40%	8%	1%	91%	25%	80%	76%
BW			Adj. WW			Adj. YW						GGP			
82			734												

Solid Rock has bred some fantastic traits into all of his progeny; structure, growth, marbling, and QUIET! This son shows off all of those traits! His dam is super quiet, with perfect teats and udder, and is quite attractive herself. E735 will make wonderful replacement females in your herd.



LSF PROSPECT 2035Z Sire of Lot 45.



EEC BOURNE E714 Sells as Lot 46.

44 WES STATION E35

Bull Reg# 3710547

CAT 1A - 100% AR

DAM MPPA 100.4

Birthdate: 03-10-2017 Tattoo: E35

BROWN JYJ REDEMPTION Y1334 WES CHATPAC U73
 BROWN BLW STATISTICIAN B5240 WES CLAUDIA C28
 BROWN MS REVELATION U7748 WES OLIVIA X43

HrdBldr	GrdMstr	CED	BW	WW	YW	Milk	ME	HPG	CEM	STAY	Marb	YG	CW	REA	FAT
151	52	9	-2.9	62	98	19	3	12	5	13	0.64	-0.1	24	0.39	-0.01
11%	13%	23%	28%	33%	32%	51%	80%	38%	40%	13%	14%	12%	40%	11%	28%
BW			Adj. WW			Adj. YW									
72			640			1137									

Another STATISTICIAN bull with 68% of the EPDs in the Top 35% with calving ease and moderate growth characteristics. Very good carcass EPDs.

45 BACH MR PROSPECT S010E ET

Bull Reg# 3622505

CAT 1A - 100% AR

DAM MPPA 104.59

Birthdate: 01-11-2017 Tattoo: S010E

LSF NIGHT CALVER 9921W BECKTON JULIAN GG B571
 LSF PROSPECT 2035Z BROWN MS JULIAN Y7810
 LSF BLACKBIRD N3080 X0406 BROWN MS ABIGRACE L7730

HrdBldr	GrdMstr	CED	BW	WW	YW	Milk	ME	HPG	CEM	STAY	Marb	YG	CW	REA	FAT
150	53	12	-4.8	59	99	32	9	14	6	11	0.64	-0.02	22	0.25	0
11%	8%	7%	8%	43%	29%	1%	99%	15%	20%	35%	14%	31%	45%	21%	59%
BW			Adj. WW			Adj. YW									
84			605			1036									

Extremely nice LSF PROSPECT 2035Z son out of the same BROWN MS P707 Y7810 donor cow as Lots 34 and 36. Big framed bull (6.5) with great length and very good rib, volume and depth. Calving ease deluxe bull with a very nice EPD set of 75% of his EPDs in the Top 35% of the breed.

46 EEC BOURNE E714

Bull Reg# 3745623

CAT 1A - 100% AR

DAM MPPA 100

Birthdate: 02-25-2017 Tattoo: E714

5L ADVANTAGE 3267-221Y BROWN SOLID ROCK Z7245
 5L BOURNE 117-48A EEC FABIOLA C30
 5L ROXIE 854-117 SRN FORTUNE 7011

HrdBldr	GrdMstr	CED	BW	WW	YW	Milk	ME	HPG	CEM	STAY	Marb	YG	CW	REA	FAT
139	53	9	-2.9	69	103	19	2	14	5	11	0.98	0.1	27	-0.08	0
19%	11%	25%	28%	14%	22%	56%	66%	18%	37%	36%	2%	82%	31%	82%	53%
BW			Adj. WW			Adj. YW						GGP			
70			742												

Super Stylish heifer bull out of the popular 5L Bourne. His dam is one of our favorite Solid Rock daughters and our 7011 Donor Cow. Heifer Bull!

47 EEC BOURNE E712

Bull Reg# 3745649 CAT 1A - 100% AR

DAM MPPA 100.4 Birthdate: 02-25-2017 Tattoo: E712

5L ADVANTAGE 3267-221Y BROWN SOLID ROCK Z7245
 5L BOURNE 117-48A EEC MONEYPENNY C07
 5L ROXIE 854-117 EEC MS MONEYPENNY Z11ET

HrdBldr	GrdMstr	CED	BW	WW	YW	Milk	ME	HPG	CEM	STAY	Marb	YG	CW	REA	FAT
156	54	10	-3	71	103	17	0	14	4	12	1.29	0.12	26	0.05	0.03
9%	4%	17%	28%	10%	21%	70%	51%	17%	49%	20%	1%	87%	31%	57%	87%
BW		Adj. WW		Adj. YW										GGP	
74		749													

5L Bourne was the top selling sire last spring at 5L sale. This thick bull has great length! Use him on P707 and B571 influenced females. Heifer Bull!

48 EEC PROFITBUILDER E713

Bull Reg# 3745665 CAT 1A - 100% AR

DAM MPPA 98.8 Birthdate: 02-25-2017 Tattoo: E713

LSF TAKEOVER 9943W BROWN PARAMOUNT X7879
 H2R PROFITBUILDER B403 EEC DAIZY C11
 BROWN MS P707 Y6674 EEC ROSIE A04

HrdBldr	GrdMstr	CED	BW	WW	YW	Milk	ME	HPG	CEM	STAY	Marb	YG	CW	REA	FAT
192	56	6	-3.2	78	123	13	0	15	5	16	1.1	0.27	38	-0.28	0.03
1%	1%	42%	25%	2%	3%	93%	50%	6%	32%	2%	1%	99%	7%	98%	88%
BW		Adj. WW		Adj. YW										GGP	
70		722													

Square made, balanced bull, out of a barrel-ribbed Paramount daughter. Top 1% Herdbuilder and GridMaster. Don't pass up the chance to get some ProfitBuilder influence in your herd!

49 EEC PROFITBUILDER E707

Bull Reg# 3745669 CAT 1A - 100% AR

DAM MPPA 103.6 Birthdate: 02-23-2017 Tattoo: E707

LSF TAKEOVER 9943W LCOO LEAD TIME A034A
 H2R PROFITBUILDER B403 EEC FRIEDA C22
 BROWN MS P707 Y6674 EEC MS FORTUNE Y05T

HrdBldr	GrdMstr	CED	BW	WW	YW	Milk	ME	HPG	CEM	STAY	Marb	YG	CW	REA	FAT
174	54	6	-3.5	75	121	17	1	12	2	16	0.68	0.1	37	0.07	0.01
3%	4%	49%	21%	4%	4%	73%	61%	41%	84%	2%	11%	84%	9%	52%	64%
BW		Adj. WW		Adj. YW										GGP	
72		815													

ProfitBuilder is becoming one of the most popular sires in Red Angus. Sons like this are why! Huge BW to WW to YW spread. Loads of growth and Slick Haired to boot!

50 EEC PROFITBUILDER E722

Bull Reg# 3745595 CAT 1A - 100% AR

DAM MPPA 99.33 Birthdate: 02-28-2017 Tattoo: E722

LSF TAKEOVER 9943W LCOO DENIRO A027Z
 H2R PROFITBUILDER B403 EEC DELIA B31
 BROWN MS P707 Y6674 SRN RACHEL 7056

HrdBldr	GrdMstr	CED	BW	WW	YW	Milk	ME	HPG	CEM	STAY	Marb	YG	CW	REA	FAT
181	56	8	-4.7	71	109	20	1	10	4	16	0.94	0.06	28	0.02	0
2%	2%	32%	9%	10%	13%	42%	54%	69%	54%	2%	2%	70%	27%	63%	49%
BW		Adj. WW		Adj. YW										GGP	
62		571													

Usually twins do not make it to our bull development program, but Lot 32 and Lot 37 were so impressive we thought they deserved a chance to prove themselves. This is a thick and stylish heifer bull that will bring loads of performance to your herd.

51 KFC E705 PROFITBUILDER

Bull Reg# 3724573 CAT 1A - 100% AR

DAM MPPA 100 Birthdate: 12-17-2016 Tattoo: E705

LSF TAKEOVER 9943W BIEBER ROMEO 10107
 H2R PROFITBUILDER B403 SRN BONNY 7117
 BROWN MS P707 Y6674 RED BONNY 6275

HrdBldr	GrdMstr	CED	BW	WW	YW	Milk	ME	HPG	CEM	STAY	Marb	YG	CW	REA	FAT
161	56	4	-0.7	72	116	18	1	7	5	14	0.86	0.28	38	-0.24	0.04
7%	2%	65%	67%	8%	6%	64%	57%	97%	47%	5%	4%	99%	7%	96%	92%
BW		Adj. WW		Adj. YW										GGP	
84		626		1037											

This ProfitBuilder son stood out from the herd all year, and with an average daily gain of 4.31 he is sure to sire calves that stand out anywhere. His dam is a very stylish deep cow that stands on a set of excellent feet & legs.



H2R PROFITBUILDER B403 Sire of Lot 51.

52 EEC PROFITBUILDER E717

Bull Reg# 3745677


CAT 1A - 100% AR

DAM MPPA 99.2

Birthdate: 02-26-2017 Tattoo: E717

LSF TAKEOVER 9943W
H2R PROFITBUILDER B403
BROWN MS P707 Y6674

BROWN PREMIER X7876
EEC SHANIA C19
SRN SHANIA 7139

HrdBlDr	GrdMstr	CED	BW	WW	YW	Milk	ME	HPG	CEM	STAY	Marb	YG	CW	REA	FAT
191	57	8	-4.4	70	116	14	1	12	7	15	0.89	0.08	33	-0.04	-0.01
1%	1%	26%	11%	11%	6%	89%	57%	45%	13%	3%	3%	75%	15%	75%	30%
BW			Adj. WW			Adj. YW						GGP			
72			733												

Heifer bull! Top 1% Herdbuilder and GridMaster. 11 EPD's in the top 30% of the breed! Profit Builder makes good-footed, structurally correct progeny and this sale offers over 20 sons to choose from....check them out and buy your favorite!

53 WES COMMAND E28

Bull Reg# 3710509


CAT 1A - 100% AR

DAM MPPA 110.86

Birthdate: 03-06-2017 Tattoo: E28

BIEBER PACKER X375
BACHMAN COMMANDER ET12A
HUS MS JOLENE 301N 946

WES FIELD KING U53
WES BELINA B26
HUST AZALEA M113

HrdBlDr	GrdMstr	CED	BW	WW	YW	Milk	ME	HPG	CEM	STAY	Marb	YG	CW	REA	FAT
142	55	2	0.8	87	137	16	4	10	0	13	0.38	0.04	52	0.35	-0.01
16%	3%	86%	89%	1%	1%	75%	87%	68%	97%	11%	51%	61%	1%	13%	36%
BW			Adj. WW			Adj. YW						GGP			
86			744			1244									

Stylish dark red BACHMAN COMMANDER ET12A son with great length and good rib, volume and depth. Great growth EPDs with exceptional carcass capacities.

54 KFC E708 PROFITBUILDER

Bull Reg# 3724607


CAT 1A - 100% AR

DAM MPPA 100

Birthdate: 12-30-2016 Tattoo: E708

LSF TAKEOVER 9943W
H2R PROFITBUILDER B403
BROWN MS P707 Y6674

LCC NEW CHAPTER A705L
MCCR RAINDANCE 1114
MCCR RAINDANCE T732

HrdBlDr	GrdMstr	CED	BW	WW	YW	Milk	ME	HPG	CEM	STAY	Marb	YG	CW	REA	FAT
167	49	10	-4.5	67	96	20	1	8	1	17	0.43	0.06	20	0.05	0.01
5%	50%	17%	11%	17%	35%	42%	62%	93%	91%	1%	41%	67%	52%	56%	73%
BW			Adj. WW			Adj. YW						GGP			
62			497			921									

Another ProfitBuilder son that ranks high in both Herdbuilder and GridMaster. And ranks in the top 1% for stayability. He also averaged 4.61 lbs./day, the second highest of all the yearling bulls in this offering. Above average length and depth. A real eye catcher!

55 EEC PROFITBUILDER E721

Bull Reg# 3745593


CAT 1A - 100% AR

DAM MPPA 99.33

Birthdate: 02-28-2017 Tattoo: E721

LSF TAKEOVER 9943W
H2R PROFITBUILDER B403
BROWN MS P707 Y6674

LCOE DENIRO A027Z
EEC DELIA B31
SRN RACHEL 7056

HrdBlDr	GrdMstr	CED	BW	WW	YW	Milk	ME	HPG	CEM	STAY	Marb	YG	CW	REA	FAT
167	54	6	-4	66	103	21	1	6	3	16	0.72	0.03	26	0.09	0
5%	5%	49%	14%	20%	21%	32%	54%	99%	72%	1%	9%	53%	34%	46%	45%
BW			Adj. WW			Adj. YW						GGP			
75			575												

Square made, masculine bull, with lots of muscle expression. Twin to Lot 32, whose dam raised both calves and weaned an actual 1096 pounds at 194 days... with No Creep feed!



EEC PROFITBUILDER E710 Sells as Lot 56.

56 EEC PROFITBUILDER E710

Bull Reg# 3745683


CAT 1A - 100% AR

DAM MPPA 102

Birthdate: 02-24-2017 Tattoo: E710

LSF TAKEOVER 9943W
H2R PROFITBUILDER B403
BROWN MS P707 Y6674

LCOE DENIRO A027Z
EEC GWYN C40
EEC GWYN A14

HrdBlDr	GrdMstr	CED	BW	WW	YW	Milk	ME	HPG	CEM	STAY	Marb	YG	CW	REA	FAT
187	56	2	-1.9	83	129	15	2	12	1	17	0.64	0.07	44	0.01	-0.02
1%	2%	81%	45%	1%	1%	83%	64%	43%	89%	1%	14%	74%	3%	63%	13%
BW			Adj. WW			Adj. YW						GGP			
90			781												

This ProfitBuilder son will add some pounds at weaning to your calves, in addition to improving carcass merit. He is thick and stout. Use him on your mature cows.

57 WES PROFIT E25

Bull Reg# 3630189

CAT 1A - 100% AR

DAM MPPA 95.2

Birthdate: 03-05-2017 Tattoo: E25

LSF TAKEOVER 9943W
H2R PROFITBUILDER B403
BROWN MS P707 Y6674

BIEBER MAKE MIMI 7249
WES POSEMIM X15
WES ML POSEY S22

HrdBldr	GrdMstr	CED	BW	WW	YW	Milk	ME	HPG	CEM	STAY	Marb	YG	CW	REA	FAT
163	52	5	-4	63	97	17	1	12	1	16	0.62	0	22	0.02	-0.02
6%	13%	52%	15%	29%	33%	74%	62%	42%	92%	2%	16%	39%	46%	61%	19%

BW	Adj. WW	Adj. YW
74	610	1097

Balanced, square-made PROFITBUILDER son with Top 5% Herdbuilder and Top 8% Gridmaster Indices.

58 EEC SOLID ROCK E737

Bull Reg# 3745533

CAT 1A - 100% AR

DAM MPPA 101.6

Birthdate: 03-25-2017 Tattoo: E737

BROWN PARAMOUNT X7879
BROWN SOLID ROCK Z7245
BROWN MS ABIGRACE L7730

BECKTON NEBULA L P093
EEC COPPER CORIE X60T
SRN COPPERQUEEN 7160

HrdBldr	GrdMstr	CED	BW	WW	YW	Milk	ME	HPG	CEM	STAY	Marb	YG	CW	REA	FAT
148	51	6	-1.2	63	97	15	4	15	9	12	0.7	0.08	26	-0.26	-0.03
13%	27%	49%	59%	30%	33%	86%	85%	8%	5%	19%	10%	78%	33%	97%	11%

BW	Adj. WW	Adj. YW
88	673	

This Solid Rock son is a bit on the young side for this sale, but he has impressed us with his ability to keep up with his contemporaries. His Quiet dam is moderate and feminine, with great feet, and perfect teats and udder! He will sire sound and quiet cattle.

59 BACH MR DOMINATOR S073E

Bull Reg# 3622633

CAT 1A - 100% AR

DAM MPPA 108

Birthdate: 02-19-2017 Tattoo: S073E

BIEBER ROOSEVELT W384
BACHMAN DOMINATOR 79Z
BASIN PRIMROSE 7407

BIEBER TAKEOVER Z206
BACH MS TAKEOVER S012B
MANN MS NOEQUAL32T 6141 Y66

HrdBldr	GrdMstr	CED	BW	WW	YW	Milk	ME	HPG	CEM	STAY	Marb	YG	CW	REA	FAT
131	49	7	-2.7	60	84	26	0	13	5	12	0.58	0.04	16	0.19	0.03
26%	57%	36%	32%	41%	61%	6%	46%	22%	41%	21%	20%	61%	66%	29%	91%

BW	Adj. WW	Adj. YW
78	754	1120

Solid, balanced and good looking bull out of BACHMAN DOMINATOR 79Z who is a BIEBER ROOSEVELT W384 son. Our Dominator animals have very good eye appeal with average EPD sets.



BACHMAN DOMINATOR 79Z Sire of Lot 59.

60 BACH MR TYSON S068E

Bull Reg# 3622621

CAT 1A - 100% AR

DAM MPPA 101.76

Birthdate: 02-13-2017 Tattoo: S068E

MUSHRUSH IMPRESSIVE CA U236
LSF SRR TYSON 3025A
LSF JIBA R5009 W9247

BASIN LOGAN 3011
BASIN ANISE 5307
BASIN ANISE 3115

HrdBldr	GrdMstr	CED	BW	WW	YW	Milk	ME	HPG	CEM	STAY	Marb	YG	CW	REA	FAT
153	49	6	-0.7	65	93	18	5	11	4	15	0.59	0	24	0.11	-0.01
10%	51%	46%	69%	22%	41%	60%	92%	48%	59%	3%	19%	39%	38%	42%	30%

BW	Adj. WW	Adj. YW
96	717	1094

Soft made and soggy TYSON son with great rib, volume depth and length. Comes out of the BASIN ANISE cow family and crossed the 205-day adjusted scales at 707 lbs.



LSF SRR TYSON 3025A Sire of Lot 60.



61 BACH MR TAKEOVER S033E ET

Bull Reg# 3622551

CAT 1A - 100% AR

DAM MPPA 104.59

Birthdate: 01-18-2017 Tattoo: S033E

HXC CONQUEST 4405P

BECKTON JULIAN GG B571

LSF TAKEOVER 9943W

BROWN MS JULIAN Y7810

LSF WIDELOAD R5014 U8061

BROWN MS ABIGRACE L7730

HrdBldr	GrdMstr	CED	BW	WW	YW	Milk	ME	HPG	CEM	STAY	Marb	YG	CW	REA	FAT
159	53	9	-5.1	56	90	23	4	16	5	12	0.69	-0.04	16	0.27	0.01
8%	8%	21%	6%	54%	48%	17%	81%	3%	38%	16%	10%	24%	65%	19%	64%
BW			Adj. WW			Adj. YW									
87			578			1027									

Another full sib brother to Lots 34 and 36.



62 BACH MR FEDERATION S069E ET

Bull Reg# 3622625

CAT 1A - 100% AR

DAM MPPA 102.67

Birthdate: 02-14-2017 Tattoo: S069E

ANDRAS FUSION R236

SCHULER ENDURANCE 2101Z

BIEBER FEDERATION B544

BIEBER ADELLE 184B

BASIN PRIMROSE 0T43

BIEBER ADELLE 311Y

HrdBldr	GrdMstr	CED	BW	WW	YW	Milk	ME	HPG	CEM	STAY	Marb	YG	CW	REA	FAT
134	52	6	-1.6	67	103	22	6	11	4	12	0.64	0	29	0.13	-0.01
23%	16%	47%	51%	18%	21%	25%	93%	60%	50%	23%	15%	39%	24%	38%	22%
BW			Adj. WW			Adj. YW									
92			608			1054									

Stacked pedigree from the two best BIEBER donor cows (BASIN PRIMROSE 2043 and 0T43) combined with the great BIEBER ADELLE 311Y donor cow. Fantastic cow family influence from the Biebers.

BIEBER FEDERATION B544 Sire of Lot 62.



64 BACH MR LEGEND S022E

Bull Reg# 3622531

CAT 1A - 100% AR

DAM MPPA 99.6

Birthdate: 01-15-2017 Tattoo: S022E

BECKTON EPIC R397 K

GMRA TRILOGY 0226

BROWN BLW LEGEND A1965

BJR TIDY BEE 511C

HXC PATRICIA ROSE 102Y

HHFF-ATKN TIDY BEE 2066-914X

HrdBldr	GrdMstr	CED	BW	WW	YW	Milk	ME	HPG	CEM	STAY	Marb	YG	CW	REA	FAT
167	49	11	-4.6	58	91	16	-4	14	7	15	0.34	0.03	18	0.14	0.02
5%	60%	10%	9%	48%	45%	75%	20%	18%	14%	5%	62%	53%	60%	37%	78%
BW			Adj. WW			Adj. YW									
76			650			1104									

1/2 sib brother on the top-side of the pedigree to Lots 19, 22, 32.

BROWN BLW LEGEND A1965 Sire of Lot 64.

65 KFC E716 HARD DRIVE

Bull Reg# 3724639

CAT 1A - 100% AR

DAM MPPA 102

Birthdate: 01-07-2017 Tattoo: E716

BIEBER HARD DRIVE Y120 BECKTON HERITAGE W027 J3
 B146 KFC BROOKWOOD BARRY MOLLY
 SRN BLACKCAP 7138 SRN MIMI 7045

HrdBlDr	GrdMstr	CED	BW	WW	YW	Milk	ME	HPG	CEM	STAY	Marb	YG	CW	REA	FAT
148	50	13	-4.8	43	72	25	0	14	5	13	0.44	-0.05	7	0.24	0.01
12%	48%	6%	8%	90%	81%	7%	48%	15%	42%	15%	40%	21%	87%	23%	74%
BW			Adj. WW			Adj. YW						GGP			
56			571			984									

E716 is a Hard Drive descendent with calving ease direct of 13 and -4.8 BW. A very long and attractive bull.



66 WES PROFIT E19

Bull Reg# 3630179

CAT 1A - 100% AR

DAM MPPA 102

Birthdate: 03-03-2017 Tattoo: E19

LSF TAKEOVER 9943W WES CHATPAC U73
 H2R PROFITBUILDER B403 WES CORINNE C27
 BROWN MS P707 Y6674 WES RED DESIGN S23

HrdBlDr	GrdMstr	CED	BW	WW	YW	Milk	ME	HPG	CEM	STAY	Marb	YG	CW	REA	FAT
153	56	1	-1.5	72	120	18	6	13	2	14	0.62	0.1	39	0.02	0
10%	2%	87%	54%	8%	4%	65%	94%	29%	85%	8%	16%	84%	5%	61%	44%
BW			Adj. WW			Adj. YW									
74			656			1228									

Nice spread from 74 lb. BW to 656 lb. AWW.

67 WES TYSON E06

Bull Reg# 3710583

CAT 1A - 100% AR

DAM MPPA 103.6

Birthdate: 02-27-2017 Tattoo: E06

MUSHRUSH IMPRESSIVE CA U236 WES MAXIJUL X64
 LSF SRR TYSON 3025A WES FIGGY B113
 LSF JIBA R5009 W9247 WES BELINE X53

HrdBlDr	GrdMstr	CED	BW	WW	YW	Milk	ME	HPG	CEM	STAY	Marb	YG	CW	REA	FAT
156	50	6	-3.2	64	94	21	5	12	1	16	0.56	-0.01	21	0.13	-0.01
9%	43%	45%	25%	25%	39%	36%	89%	37%	89%	2%	22%	35%	49%	40%	38%
BW			Adj. WW			Adj. YW									
72			682			1119									

Good spread from 72 lb. BW to 682 AWW. TYSON is consistent and

68 KFC E723 ROMERO

Bull Reg# 3724569

CAT 1A - 100% AR

DAM MPPA 104.29

Birthdate: 01-13-2017 Tattoo: E723

LCOC ROMERO A007T SCHULER SILVER BULLET 4604P
 LCOC ROMERO A010Z SRN ELEANOR 7533
 DAMAR LAKOTA X005 LCC ELEANOR NA282

HrdBlDr	GrdMstr	CED	BW	WW	YW	Milk	ME	HPG	CEM	STAY	Marb	YG	CW	REA	FAT
148	50	9	-3	64	103	15	4	7	4	14	0.44	0.11	27	0.44	0.07
13%	35%	24%	28%	25%	21%	83%	82%	96%	60%	6%	40%	87%	29%	8%	99%
BW			Adj. WW			Adj. YW						GGP			
76			662			1120									

This Romero son should make some beautiful daughters. His dam Eleanor 7533 is a real eye catching cow, with near perfect teats and udder. In addition his ADG came in at 4.02



KFC E723 ROMERO Sells as Lot 68.



ANDRAS NEW DIRECTION R240 Sire of Lot 70.

69 BACH MR BEEF4DINNER S042E

Bull Reg# 3622571

CAT 1A - 100% AR

DAM MPPA 102

Birthdate: 01-30-2017 Tattoo: S042E

LSF BOXED BEEF 9063W
TBJR BEEF4DINNER 3850A
SRR KIMA 0185-627

LSF NEXTPECTATION 0083X
BJR BONNEBELL 31A
PFFR MS BONNEBELL 25Y

HrdBldr	GrdMstr	CED	BW	WW	YW	Milk	ME	HPG	CEM	STAY	Marb	YG	CW	REA	FAT	
121	54	6	-2.7	62	96	20	6	12	4	9	0.93	-0.07	23	0.43	0	
36%	5%	47%	31%	33%	35%	45%	94%	33%	55%	58%	2%	15%	42%	9%	58%	
BW		Adj. WW			Adj. YW											
90		689			1140											

BONNEBELL cow family influence out of the TBJR BEEF4DINNER 3850A bull that has great carcass EPDs.

70 KFC E706 NEW DIRECTION

Bull Reg# 3724649

CAT 1A - 100% AR

DAM MPPA 102.86

Birthdate: 12-21-2016 Tattoo: E706

ANDRAS IN FOCUS B152 GRILL GOLD RUSH 19X
ANDRAS NEW DIRECTION R240 B1413 KFC MICKI
ANDRAS KURUBA B111 3SCC SALLEE X327

HrdBldr	GrdMstr	CED	BW	WW	YW	Milk	ME	HPG	CEM	STAY	Marb	YG	CW	REA	FAT	
86	49	4	-2.6	57	92	19	-4	12	4	7	0.52	0.13	22	0.07	0.04	
79%	52%	61%	34%	53%	43%	49%	19%	33%	51%	84%	28%	90%	47%	52%	95%	
BW		Adj. WW			Adj. YW											
71		569			1019											

We used New Direction after seeing a group of heifers out of him, needless to say we were impressed. With a balanced set of EPD's we believe he would a good sire for anyone.

71 KFC E720 ROMERO

Bull Reg# 3724575

CAT 1A - 100% AR

DAM MPPA 100.86

Birthdate: 01-15-2017 Tattoo: E720

LCOC ROMERO A007T LCC STERLING B055M
LCOC ROMERO A010Z BIEBER SIERRA 146T
DAMAR LAKOTA X005 BIEBER SIERRA 9652

HrdBldr	GrdMstr	CED	BW	WW	YW	Milk	ME	HPG	CEM	STAY	Marb	YG	CW	REA	FAT	
131	47	7	-2.1	64	88	11	4	7	5	14	0.57	0.3	19	-0.26	0.07	
25%	86%	36%	42%	24%	52%	97%	81%	98%	46%	8%	21%	99%	56%	97%	99%	
BW		Adj. WW			Adj. YW										GGP	
89		659			989										GGP	

Nice angular made, stout bull, out of one the most docile cows in our herd. Another bull that should make eye catching daughters.

72 WES PROFIT E10

Bull Reg# 3630169

CAT 1A - 100% AR

DAM MPPA 99.2

Birthdate: 03-01-2017 Tattoo: E10

LSF TAKEOVER 9943W GMRA TRILOGY 0226
H2R PROFITBUILDER B403 WES CLARITY C04
BROWN MS P707 Y6674 WES POSEMIM X15

HrdBldr	GrdMstr	CED	BW	WW	YW	Milk	ME	HPG	CEM	STAY	Marb	YG	CW	REA	FAT	
165	54	5	-3.1	67	107	15	1	11	3	15	0.68	0.03	29	0.12	0	
5%	5%	54%	25%	17%	16%	82%	58%	53%	69%	4%	11%	56%	24%	40%	46%	
BW		Adj. WW			Adj. YW											
76		613			1167											

Nice bull with great rib, volume, depth and capacity with Top 6% Herdbuilder and Top 6% Gridmaster Indices.

73 KFC E743 ROMERO

Bull Reg# 3724615

CAT 1A - 100% AR

DAM MPPA 104.36

Birthdate: 01-20-2017 Tattoo: E743

LCOC ROMERO A007T RED CROWFOOT OLE'S OSCAR
LCOC ROMERO A010Z EEC SALLEE Z37X
DAMAR LAKOTA X005 3SCC SALLEE X327

HrdBldr	GrdMstr	CED	BW	WW	YW	Milk	ME	HPG	CEM	STAY	Marb	YG	CW	REA	FAT	
149	48	10	-6.2	48	70	20	3	10	6	15	0.77	0.14	3	0.22	0.1	
12%	75%	17%	2%	81%	84%	46%	80%	72%	23%	4%	7%	92%	92%	25%	99%	
BW		Adj. WW			Adj. YW										GGP	
74		593			952										GGP	

Here is a dark red calving ease bull, with a -6.2 BW. That is in the top 10% of Herdbuilder, out of one of our best looking cows, she really stands out!



RED RIGHT. NOW.

An independent university study compared six years of Superior Livestock Auction data, revealing Red Angus-sired heifers commanded from \$5 to \$9/cwt. more than females of all other breed types.

Learn more about the value of Red Angus-sired replacement females at
redangus.org.

The Red Angus female is the rancher favorite for replacements that deliver real profitability.

Ranch Tested. Rancher Trusted.

Red Angus



BIEBER MIMI 236C Sells as Lot 100.

100 BIEBER MIMI 236C

Cow Reg# 3474627

CAT 1A - 100% AR

DAM MPPA 100

Birthdate: 2/19/2015

Tattoo: 236C

ANDRAS IN FOCUS B175
ANDRAS FUSION R236
ANDRAS BELLE B167

VGW OLY 903
BIEBER MIMI 379Z
BIEBER MIMI 321S

HrdBldr	GrdMstr	CED	BW	WW	YW	Milk	ME	HPG	CEM	STAY	Marb	YG	CW	REA	FAT
104	51	7	-5.1	45	78	23	-1	9	5	9	0.68	-0.04	10	0.09	0
52%	14%	32%	5%	82%	63%	23%	28%	85%	44%	64%	7%	24%	76%	37%	47%

BW	Adj. WW	Adj. YW
66	582	873

BULL CALF DUE 8/20/2018 Sired by PIE STOCKMAN 4051.

Est. Calf EPDs	CED	BW	WW	YW	Milk	ME	HPG	CEM	STAY	Marb	YG	CW	REA	FAT
6	-4.1	65	106	17	-2	11	5	11	0.64	0.06	27	0.02	0	

The Fusion daughters have been solid in our herd and this one stacks the Mimi cowline which produced Bieber Make Mimi 7249.



BIEBER DURHEIM 413B Sells as Lot 101.

101 BIEBER DURHEIM 413B

Cow Reg# 1694097

CAT 2B - 98.3% AR 1.7% XX

DAM MPPA 100.57

Birthdate: 6/1/2014

Tattoo: 413B

CCF GOLD BAR 0251
RHRA GOLD RUSH 402 17T
RHRA MATTIE CHEY 019 402P

HXC JACKHAMMER 8800U
121 BD3P
BD3P DURHEIM 983

HrdBldr	GrdMstr	CED	BW	WW	YW	Milk	ME	HPG	CEM	STAY	Marb	YG	CW	REA	FAT
93	53	5	-2.4	68	108	23	4	12	5	6	0.61	-0.09	30	0.39	-0.02
66%	4%	48%	30%	10%	9%	20%	68%	32%	45%	89%	10%	11%	16%	6%	17%

BW	Adj. WW	Adj. YW
68	622	1062

BULL CALF DUE 8/20/2018 Sired by BIEBER SPARTACUS A193.

Est. Calf EPDs	CED	BW	WW	YW	Milk	ME	HPG	CEM	STAY	Marb	YG	CW	REA	FAT
3	-3.5	68	105	22	3	13	3	7	0.62	-0.02	27	0.35	0.01	

Goldrush daughters have great udders. This lot has some power with WW and YW in the top 10% of the breed.



BIEBER SUPRISE 320B Sells as Lot 102.

102 BIEBER SUPRISE 320B

Cow Reg# 1687581

CAT 1A - 100% AR

DAM MPPA 93.08

Birthdate: 4/1/2014

Tattoo: 320B

BIEBER ROUGH RIDER 10712
BIEBER ROOSEVELT W384
BIEBER SHEBA 9602

HUST CHIEF SEQUOYA R336
BIEBER SUPRISE 295X
BIEBER SUPRISE 8957

HrdBldr	GrdMstr	CED	BW	WW	YW	Milk	ME	HPG	CEM	STAY	Marb	YG	CW	REA	FAT
125	54	9	-1.7	62	98	16	5	13	3	9	1.14	0.24	26	-0.04	0.07
26%	2%	19%	43%	25%	23%	72%	76%	21%	66%	63%	1%	99%	27%	65%	99%

BW	Adj. WW	Adj. YW
73	585	872

HEIFER CALF DUE 8/20/2018 Sired by BIEBER SPARTACUS A193.

Est. Calf EPDs	CED	BW	WW	YW	Milk	ME	HPG	CEM	STAY	Marb	YG	CW	REA	FAT
5	-3.1	65	100	18	3	13	3	8	0.88	0.15	25	0.14	0.05	

Our Roosevelt daughters have been producing many of the herd bulls in our program. They are fault free and very low maintenance.

103 BIEBER DURHEIM 258B

Cow Reg# 1687404 CAT 2B - 93.8% AR 6.2% XX

DAM MPPA 99.18 Birthdate: 3/9/2014 Tattoo: 258B

BASIN EXT 5233 5L NORSEMAN KING 2291
 BASIN EXT 8628 BD3P DURHEIM 938
 BASIN DUCHESS 6033 DURHEIM 38BD3P

HrdBldr	GrdMstr	CED	BW	WW	YW	Milk	ME	HPG	CEM	STAY	Marb	YG	CW	REA	FAT
87	51	-2	3.9	80	123	18	7	11	5	8	0.51	0.11	49	0.36	0.03
73%	12%	97%	99%	1%	2%	55%	89%	47%	42%	79%	19%	88%	1%	7%	92%

BW	Adj. WW	Adj. YW
104	620	868

HEIFER CALF DUE 8/20/2018 SIRED BY BIEBER SPARTACUS A193.

Est. Calv EPDs	CED	BW	WW	YW	Milk	ME	HPG	CEM	STAY	Marb	YG	CW	REA	FAT
-1	-0.3	74	113	20	4	12	3	8	0.57	0.08	36	0.34	0.03	

This high growth EXT daughter posted WW in the top 1% and YW in the top 2%. If you want more pounds this is the way to get there.



104 BIEBER TILLY 492C

Cow Reg# 3474229 CAT 1A - 100% AR

DAM MPPA 108.66 Birthdate: 4/2/2015 Tattoo: 492C

ANDRAS IN FOCUS B175 BIEBER ROUGH RIDER 10712
 ANDRAS FUSION R236 BIEBER TILLY 362W
 ANDRAS BELLE B167 BIEBER TILLY 119T

HrdBldr	GrdMstr	CED	BW	WW	YW	Milk	ME	HPG	CEM	STAY	Marb	YG	CW	REA	FAT
100	55	9	-1.6	55	100	25	-12	11	2	6	0.67	-0.04	28	0.32	0
57%	1%	17%	43%	52%	19%	14%	1%	44%	78%	91%	7%	28%	21%	10%	52%

BW	Adj. WW	Adj. YW
79	666	886

BULL CALF DUE 8/20/2018 SIRED BY BIEBER SPARTACUS A193.

Est. Calv EPDs	CED	BW	WW	YW	Milk	ME	HPG	CEM	STAY	Marb	YG	CW	REA	FAT
5	-3.1	62	102	23	-5	12	2	7	0.65	0.01	26	0.32	0.02	

This lot's dam was in our ET program and produced several great bulls that are working at Sutphin Cattle Co and Shieldknight Land and Cattle.



ANDRAS FUSION R236 Sire of Lot 104.

105 BIEBER MISS DANA 108B

Cow Reg# 1687812 CAT 1A - 100% AR

DAM MPPA 105.09 Birthdate: 1/27/2014 Tattoo: 108B

LACY GOLD BAR 8123 RED SSS NORTHERN 625X
 BIEBER HARD DRIVE Y120 BIEBER MISS DANA 169Z
 BIEBER LAURA 158W BIEBER MISS DANA 134W

HrdBldr	GrdMstr	CED	BW	WW	YW	Milk	ME	HPG	CEM	STAY	Marb	YG	CW	REA	FAT
124	51	9	-5	65	105	22	-1	13	1	10	0.39	0.03	25	0.34	0.03
27%	16%	17%	6%	17%	12%	30%	27%	25%	86%	44%	41%	59%	28%	8%	93%

BW	Adj. WW	Adj. YW
75	640	948

BULL CALF DUE 8/20/2018 SIRED BY BIEBER SPARTACUS A193.

Est. Calv EPDs	CED	BW	WW	YW	Milk	ME	HPG	CEM	STAY	Marb	YG	CW	REA	FAT
5	-4.8	67	104	21	1	13	2	9	0.51	0.04	25	0.33	0.04	

Hard Drive's daughters have been great for our program. They will put extra length in your cattle.



BIEBER SPARTACUS A193 Service sire of Lot 105.



BIEBER H HUGHES W109 Sire of Lot 106.

106 BIEBER DUREHEIM 243A

Cow Reg# 1616833

CAT 3 - 71.9% AR 28.1% XX

DAM MPPA 104.62

Birthdate: 3/14/2013

Tattoo: 243A

BASIN HOBO 0545
BIEBER H HUGHES W109
BASIN ROSE 06T0

BD3P 159

HrdBldr	GrdMstr	CED	BW	WW	YW	Milk	ME	HPG	CEM	STAY	Marb	YG	CW	REA	FAT	
106	55	6	1.5	78	122	15	4	13	9	5	0.5	-0.23	44	1.05	-0.01	
49%	1%	39%	91%	1%	2%	78%	74%	27%	7%	95%	21%	1%	2%	1%	28%	
BW			Adj. WW				Adj. YW									
83			583				866									

UNSEXED CALF DUE 9/11/2018 SIRED BY GMRA TRINITY 5222.

Est. Calf EPDs	CED	BW	WW	YW	Milk	ME	HPG	CEM	STAY	Marb	YG	CW	REA	FAT
7	-0.8	73	114	15	3	13	9	9	0.54	-0.04	36	0.58	0.02	

Hughes daughters hit a lot of the sweet spots for profit, but their carcass is where they really excel.



BIEBER DURHEIM 288B Sells as Lot 107.

107 BIEBER DURHEIM 288B

Cow Reg# 1687731

CAT 3 - 68.8% AR 23.4% SM 7.8% XX

DAM MPPA 95.2

Birthdate: 3/17/2014

Tattoo: 288B

BIEBER H HUGHES W109
BIEBER REAL MCCOY Y124
BIEBER TORYANNA 263W

WS BEEF MAKER R13
BD3P DURHEIM 25
DURHEIM 316

HrdBldr	GrdMstr	CED	BW	WW	YW	Milk	ME	HPG	CEM	STAY	Marb	YG	CW	REA	FAT	
120	50	5	0.6	65	94	17	-2	11	6	11	0.26	-0.2	27	0.54	-0.03	
31%	30%	48%	82%	16%	29%	65%	21%	57%	31%	41%	75%	2%	24%	2%	6%	
BW			Adj. WW				Adj. YW									
86			514				804									

BULL CALF DUE 8/20/2018 SIRED BY BIEBER SPARTACUS A193.

Est. Calf EPDs	CED	BW	WW	YW	Milk	ME	HPG	CEM	STAY	Marb	YG	CW	REA	FAT
3	-2	67	99	19	0	12	4	9	0.45	-0.07	25	0.43	0	

This is a Red Angus and Simmental hybrid. This lot will give your calves more punch.



PIE STOCKMAN 40514 Service sire of Lot 108.

108 BIEBER TILLY 495C

Cow Reg# 3474372

CAT 1A - 100% AR

DAM MPPA 108.66

Birthdate: 4/5/2015

Tattoo: 495C

ANDRAS IN FOCUS B175
ANDRAS FUSION R236
ANDRAS BELLE B167

BIEBER ROUGH RIDER 10712
BIEBER TILLY 362W
BIEBER TILLY 119T

HrdBldr	GrdMstr	CED	BW	WW	YW	Milk	ME	HPG	CEM	STAY	Marb	YG	CW	REA	FAT	
98	56	6	-0.3	47	88	24	-2	12	0	7	0.92	-0.15	23	0.25	-0.05	
60%	1%	34%	68%	78%	42%	16%	24%	34%	93%	88%	2%	5%	35%	15%	3%	
BW			Adj. WW				Adj. YW									
78			549				855									

BULL CALF DUE 8/20/2018 SIRED BY PIE STOCKMAN 4051.

Est. Calf EPDs	CED	BW	WW	YW	Milk	ME	HPG	CEM	STAY	Marb	YG	CW	REA	FAT
6	-1.7	66	111	18	-3	13	3	10	0.76	0.01	34	0.1	-0.02	

109 BIEBER JOAN 396C

Cow Reg# 3474545

CAT 1A - 100% AR

DAM MPPA 102.18

Birthdate: 5/4/2015

Tattoo: 396C

ANDRAS IN FOCUS B175 LSF TAKEOVER 9943W
 ANDRAS FUSION R236 BIEBER JOAN 140Z
 ANDRAS BELLE B167 BIEBER JOAN 188X

HrdBldr	GrdMstr	CED	BW	WW	YW	Milk	ME	HPG	CEM	STAY	Marb	YG	CW	REA	FAT
103	52	8	-2.6	55	97	25	3	12	5	7	0.45	-0.02	25	0.15	-0.01
52%	7%	22%	27%	51%	23%	13%	58%	34%	46%	83%	29%	32%	30%	28%	28%
BW			Adj. WW					Adj. YW							
82			584					943							

HEIFER CALF DUE 8/20/2018 Sired by PIE STOCKMAN 4051.

Est. Calf EPDs	CED	BW	WW	YW	Milk	ME	HPG	CEM	STAY	Marb	YG	CW	REA	FAT
7	-2.8	70	115	18	0	13	5	10	0.53	0.07	35	0.05	-0.01	



ANDRAS FUSION R236 Sire of Lot 109.

110 BIEBER LASS 204B

Cow Reg# 1687594

CAT 2B - 100% AR

DAM MPPA 99.2

Birthdate: 3/3/2014

Tattoo: 204B

TE MANIA ADA A149 BASIN EXT 8628
 PARINGA IRON ORE E27 BIEBER LASS 311X
 STORTH OAKS LOWAN C1(TW) BIEBER LASS 10034

HrdBldr	GrdMstr	CED	BW	WW	YW	Milk	ME	HPG	CEM	STAY	Marb	YG	CW	REA	FAT
122	56	-1	2	82	137	17	1	11	4	10	0.73	0.21	55	0.22	0.04
29%	1%	93%	94%	1%	1%	68%	45%	55%	54%	49%	5%	98%	1%	18%	96%
BW			Adj. WW					Adj. YW							
91			643					894							

UNSEXED CALF DUE 9/11/2018 Sired by GMRA TRINITY 5222.

Est. Calf EPDs	CED	BW	WW	YW	Milk	ME	HPG	CEM	STAY	Marb	YG	CW	REA	FAT
4	-0.6	75	121	16	2	12	6	12	0.66	0.18	41	0.17	0.04	

This Iron Ore daughter has been outstanding and comes from one of the oldest cowlines at Bieber Red Angus.

111 BIEBER GALLEE 548C

Cow Reg# 3474236

CAT 1A - 100% AR

DAM MPPA 110.51

Birthdate: 5/2/2015

Tattoo: 548C

ANDRAS IN FOCUS B175 BROWN VACATION H7106
 ANDRAS FUSION R236 BIEBER GALLEE 291X
 ANDRAS BELLE B167 BIEBER GALEE 9513

HrdBldr	GrdMstr	CED	BW	WW	YW	Milk	ME	HPG	CEM	STAY	Marb	YG	CW	REA	FAT
167	55	7	1.1	66	99	17	-1	17	4	13	1.15	0.02	30	0.13	-0.01
3%	1%	26%	87%	14%	21%	63%	31%	2%	54%	13%	1%	50%	16%	30%	38%
BW			Adj. WW					Adj. YW							
83			615					865							

BULL CALF DUE 8/20/2018 Sired by PIE STOCKMAN 4051.

Est. Calf EPDs	CED	BW	WW	YW	Milk	ME	HPG	CEM	STAY	Marb	YG	CW	REA	FAT
7	-1	76	116	14	-2	16	5	13	0.88	0.09	37	0.04	0	

112 BIEBER SUPRISE 324C

Cow Reg# 3475080

CAT 1A - 100% AR

DAM MPPA 99.33

Birthdate: 3/7/2015

Tattoo: 324C

BUF CRK THE RIGHT KIND U199 BIEBER H HUGHES W109
 PIE RIGHT KIND 342 BIEBER TILLY 419A
 PIE FAYE 1278 BIEBER TILLY 283W

HrdBldr	GrdMstr	CED	BW	WW	YW	Milk	ME	HPG	CEM	STAY	Marb	YG	CW	REA	FAT
176	55	9	-3.4	54	95	22	-2	10	8	14	0.88	0.03	22	0.55	0.06
2%	1%	15%	17%	56%	28%	27%	24%	61%	10%	6%	2%	55%	39%	2%	99%
BW			Adj. WW					Adj. YW							
73			528					975							

UNSEXED CALF DUE 9/27/2018 Sired by GMRA TRINITY 5222

Est. Calf EPDs	CED	BW	WW	YW	Milk	ME	HPG	CEM	STAY	Marb	YG	CW	REA	FAT
9	-3.3	61	100	19	0	12	8	14	0.73	0.09	25	0.33	0.06	

113 BIEBER ROSE 481C

Cow Reg# 3474405

CAT 1A - 100% AR

DAM MPPA 109.68

Birthdate: 3/18/2015

Tattoo: 481C

LACY GOLD BAR 8123 BIEBER ROMERO 9136
 BIEBER HARD DRIVE Y120 BIEBER ROSE 246U
 BIEBER LAURA 158W BIEBER ROSE 7933

HrdBldr	GrdMstr	CED	BW	WW	YW	Milk	ME	HPG	CEM	STAY	Marb	YG	CW	REA	FAT
87	53	0	-1.6	68	107	22	1	11	1	8	0.77	0.08	31	-0.13	-0.02
73%	5%	89%	43%	11%	10%	30%	48%	45%	84%	79%	4%	80%	14%	82%	20%
BW			Adj. WW					Adj. YW							
84			709					967							

BULL CALF DUE 8/20/2018 Sired by BIEBER SPARTACUS A193.

Est. Calf EPDs	CED	BW	WW	YW	Milk	ME	HPG	CEM	STAY	Marb	YG	CW	REA	FAT
0	-3.1	68	105	21	2	12	2	8	0.7	0.07	28	0.09	0.01	



LSF RAB EXCLUSIVE 2793Z Sire of Lot 115.

114 BIEBER JOAN 159C

Cow Reg# 3474975

CAT 1A - 100% AR

DAM MPPA 102

Birthdate: 2/5/2015

Tattoo: 159C

LACY GOLD BAR 8123
BIEBER HARD DRIVE Y120
BIEBER LAURA 158W

BIEBER ROUSE SAMURAI X22
BIEBER JOAN 134A
BIEBER JOAN 312Y

HrdBlDr	GrdMstr	CED	BW	WW	YW	Milk	ME	HPG	CEM	STAY	Marb	YG	CW	REA	FAT	
108	57	2	1.4	80	129	17	2	13	3	7	0.84	-0.03	49	0.51	-0.01	
46%	1%	78%	90%	1%	1%	65%	54%	24%	66%	85%	3%	32%	1%	2%	41%	
BW			Adj. WW				Adj. YW									
91			591				984									

BULL CALF DUE 8/20/2018 SIRED BY BIEBER ROLLIN DEEP Y118.

Est. Calf EPDs	CED	BW	WW	YW	Milk	ME	HPG	CEM	STAY	Marb	YG	CW	REA	FAT	
3	0.7	78	124	21	0	13	3	7	0.65	0.08	45	0.38	0.02		

115 BIEBER TILLY 504C

Cow Reg# 3474363

CAT 1A - 100% AR

DAM MPPA 108.66

Birthdate: 3/14/2015

Tattoo: 504C

BROWN PARAMOUNT X7879
LSF RAB EXCLUSIVE 2793Z
BROWN MS MISSION STMT W7525

BIEBER ROUGH RIDER 10712
BIEBER TILLY 362W
BIEBER TILLY 119T

HrdBlDr	GrdMstr	CED	BW	WW	YW	Milk	ME	HPG	CEM	STAY	Marb	YG	CW	REA	FAT	
91	51	3	-1.8	49	74	23	-4	13	-1	8	0.88	-0.09	12	-0.17	-0.06	
68%	18%	61%	39%	72%	71%	25%	15%	19%	94%	71%	2%	13%	70%	88%	2%	
BW			Adj. WW				Adj. YW									
73			540				815									

HEIFER CALF DUE 8/20/2018 SIRED BY BIEBER SPARTACUS A193.

Est. Calf EPDs	CED	BW	WW	YW	Milk	ME	HPG	CEM	STAY	Marb	YG	CW	REA	FAT	
2	-3.2	59	89	22	-1	13	1	8	0.73	-0.02	18	0.07	-0.01		

116 BIEBER YOD 415B

Cow Reg# 1694247

CAT 1A - 100% AR

DAM MPPA 100.77

Birthdate: 6/3/2014

Tattoo: 415B

BIEBER H HUGHES W109
BIEBER REAL MCCOY Y124
BIEBER TORYANNA 263W

BIEBER ROUGH RIDER 10712
BIEBER YOD 340X
OLC YOD R387

HrdBlDr	GrdMstr	CED	BW	WW	YW	Milk	ME	HPG	CEM	STAY	Marb	YG	CW	REA	FAT	
171	51	8	-0.5	64	91	17	-3	13	5	16	0.46	-0.22	23	0.74	-0.01	
3%	20%	24%	63%	20%	37%	68%	18%	24%	41%	3%	26%	2%	36%	1%	26%	
BW			Adj. WW				Adj. YW									
78			565				942									

BULL CALF DUE 8/27/2018 SIRED BY GMRA TRINITY 5222.

Est. Calf EPDs	CED	BW	WW	YW	Milk	ME	HPG	CEM	STAY	Marb	YG	CW	REA	FAT	
8	-1.8	66	98	16	0	13	7	14	0.52	-0.03	25	0.43	0.02		



PARINGA IRON ORE E27 Sire of Lot 117.

117 BIEBER PRIMROSE 520C

Cow Reg# 3474348

CAT 1A - 100% AR

DAM MPPA 104.85

Birthdate: 3/22/2015

Tattoo: 520C

TE MANIA ADA A149
PARINGA IRON ORE E27
STORTH OAKS LOWAN C1(TW)

BASIN TREND SETTER 6074
BASIN PRIMROSE 0T43
BASIN PRIMROSE 2043

HrdBlDr	GrdMstr	CED	BW	WW	YW	Milk	ME	HPG	CEM	STAY	Marb	YG	CW	REA	FAT	
104	55	4	-1.7	60	108	14	1	10	1	8	0.62	0.04	33	0.05	-0.01	
51%	1%	53%	43%	31%	9%	81%	44%	70%	86%	75%	10%	64%	11%	47%	28%	
BW			Adj. WW				Adj. YW									
77			514				789									

HEIFER CALF DUE 8/20/2018 SIRED BY PIE STOCKMAN 4051.

Est. Calf EPDs	CED	BW	WW	YW	Milk	ME	HPG	CEM	STAY	Marb	YG	CW	REA	FAT	
5	-2.4	73	121	13	-1	12	4	11	0.61	0.1	39	0	-0.01		

118 BIEBER DURHEIM 344B

Cow Reg# 1687820 CAT 3 - 85.9% AR 12.5% SM 1.6% XX

DAM MPPA 106.15 Birthdate: 4/18/2014 Tattoo: 344B

BIEBER H HUGHES W109 5L NORSEMAN KING 2291
 BIEBER REAL MCCOY Y124 177 BD3P
 BIEBER TORYANNA 263W BD3P DURHEIM 758

HrdBlDr	GrdMstr	CED	BW	WW	YW	Milk	ME	HPG	CEM	STAY	Marb	YG	CW	REA	FAT
120	52	1	4.1	81	119	22	-2	13	2	11	0.36	-0.13	46	0.58	-0.04
30%	12%	85%	99%	1%	3%	25%	21%	18%	74%	34%	46%	6%	1%	1%	5%
BW			Adj. WW					Adj. YW							
98			613					836							

BULL CALF DUE 8/20/2018 SIRED BY BIEBER ROLLIN DEEP Y118.

Est. Calif EPDs	CED	BW	WW	YW	Milk	ME	HPG	CEM	STAY	Marb	YG	CW	REA	FAT
	3	2	78	119	24	-2	13	3	9	0.41	0.02	43	0.42	0.01



BIEBER REAL MCCOY Y124 Sire of Lot 118.

119 BIEBER DURHEIM 290A

Cow Reg# 1617073 CAT 2B - 87.5% AR 12.5% XX

DAM MPPA 100 Birthdate: 3/24/2013 Tattoo: 290A

BASIN HOBO 0545 MESSMER JUDGE 36N
 BIEBER H HUGHES W109 BD3P DURHEIM 751
 BASIN ROSE 06T0 DURHEIM 888

HrdBlDr	GrdMstr	CED	BW	WW	YW	Milk	ME	HPG	CEM	STAY	Marb	YG	CW	REA	FAT
106	46	8	-3.7	45	61	19	-3	10	9	9	0.71	0.09	0	-0.14	0.03
49%	86%	22%	14%	83%	89%	50%	16%	62%	6%	58%	6%	83%	91%	85%	94%
BW			Adj. WW					Adj. YW							
75			536					821							

UNSEXED CALF DUE 9/11/2018 SIRED BY GMRA TRINITY 5222.

Est. Calif EPDs	CED	BW	WW	YW	Milk	ME	HPG	CEM	STAY	Marb	YG	CW	REA	FAT
	8	-3.4	56	83	17	0	12	9	11	0.64	0.13	14	-0.01	0.04

120 BIEBER ROSE 195C

Cow Reg# 3474900 CAT 2B - 100% AR

DAM MPPA 94.86 Birthdate: 2/14/2015 Tattoo: 195C

BUF CRK THE RIGHT KIND U199 BIEBER ROUSE SAMURAI X22
 PIE RIGHT KIND 342 BIEBER ROSE 487A
 PIE FAYE 1278 BASIN ROSE P090

HrdBlDr	GrdMstr	CED	BW	WW	YW	Milk	ME	HPG	CEM	STAY	Marb	YG	CW	REA	FAT
95	54	5	-3	60	96	18	8	7	5	6	0.65	-0.12	23	0.04	-0.06
64%	1%	41%	23%	32%	26%	57%	94%	97%	41%	89%	8%	8%	37%	49%	1%
BW			Adj. WW					Adj. YW							
70			518					843							

HEIFER CALF DUE 8/20/2018 SIRED BY BIEBER DEEP END B597

Est. Calif EPDs	CED	BW	WW	YW	Milk	ME	HPG	CEM	STAY	Marb	YG	CW	REA	FAT
	5	-1.3	75	118	19	5	10	4	7	0.74	-0.06	38	0.28	-0.03

View videos of the offering online

www.dvauction.com

DVAuction
 Broadcasting Real-Time Auctions

Achieve it!

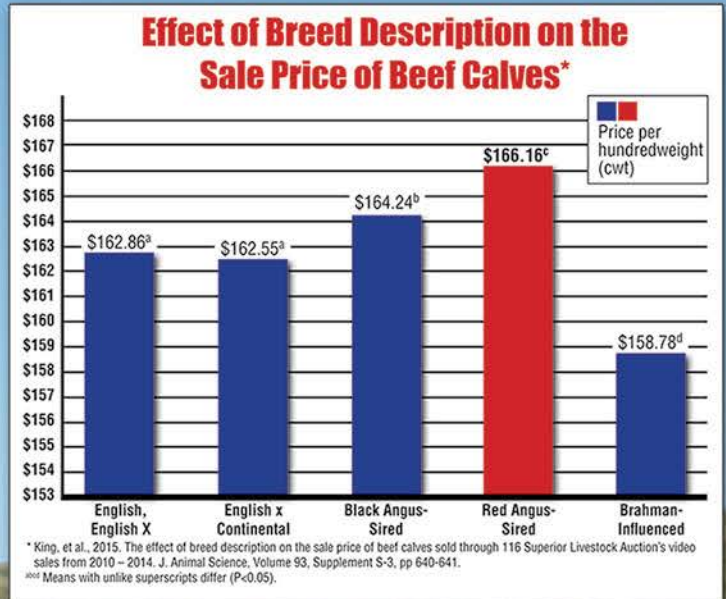
RETURN ON INVESTMENT

Red Angus genetics will improve your return on investment!



"For 10 to 15 years all the buyers ever talked about was black calves, and the black calves always brought more than everything else. Now I can honestly say that good Red Angus calves outsell the black calves and I know the Red Angus bred heifers will outsell black Angus bred heifers of equal quality every day."

— Jim Davis, Superior Livestock Auction



Independent research shows Red Angus-sired calves sold for a higher price than all other breed groups. Red Angus bulls make a positive difference in your breeding program's bottom line.

Invest in your future today!

Red Angus Marketing Programs

- Free-Enrollment Tag Programs
- Dedicated Feeder Calf Sales
- Free Marketing Assistance from RAAA Staff
- Red Angus Grids
 - Tyson's Choice+ Premium Grid
 - Greater Omaha's G.O. Red Grid

Contact the Association today for more information on achieving the most return on your Red Angus investment.

Ranch Tested. Rancher Trusted.

Red Angus

RedAngus.org
(940) 387-3502



121 BIEBER LANA 265D

Cow Reg# 3536816

CAT 1A - 100% AR

DAM MPPA 100

Birthdate: 2/15/2016 Tattoo: 265D

BIEBER ROOSEVELT W384 LCOE HIGH NOON A093R
 BIEBER ROLLIN DEEP Y118 BIEBER LANA 250X
 BIEBER TILLY 399W OLC LANA S41

HrdBldr	GrdMstr	CED	BW	WW	YW	Milk	ME	HPG	CEM	STAY	Marb	YG	CW	REA	FAT
83	49	7	-2.7	52	82	25	-6	10	4	7	0.4	-0.2	15	0.58	-0.01
80%	50%	38%	31%	68%	63%	6%	8%	65%	60%	82%	46%	5%	66%	2%	23%
BW			Adj. WW					Adj. YW							
72			500					717							

HEIFER CALF DUE 8/20/2018 Sired by BIEBER GLADIATOR C386.

Est. Calf EPDs	CED	BW	WW	YW	Milk	ME	HPG	CEM	STAY	Marb	YG	CW	REA	FAT
4	-3.6	61	100	23	-1	11	4	8	0.6	-0.1	24	0.54	0	



BIEBER LANA 265D Sells as Lot 121.

122 BIEBER ANKONY FLORA 139D

Cow Reg# 3536473

CAT 1A - 100% AR

DAM MPPA 100.57

Birthdate: 1/20/2016 Tattoo: 139D

BIEBER ROUSE SAMURAI X22 BIEBER ROLLIN DEEP Y118
 BIEBER SPARTACUS A193 BIEBER ANKONY FLORA 240B
 BIEBER TILLY 233U BIEBER ANKONY FLORA 225W

HrdBldr	GrdMstr	CED	BW	WW	YW	Milk	ME	HPG	CEM	STAY	Marb	YG	CW	REA	FAT
146	52	9	-2.3	74	110	20	10	10	3	13	0.63	0.04	31	0.2	0.01
12%	20%	21%	37%	5%	11%	45%	99%	78%	74%	8%	13%	62%	17%	27%	66%
BW			Adj. WW					Adj. YW							
88			578					786							

HEIFER CALF DUE 8/20/2018 Sired by PIE STOCKMAN 4051.

Est. Calf EPDs	CED	BW	WW	YW	Milk	ME	HPG	CEM	STAY	Marb	YG	CW	REA	FAT
7	-2.7	80	121	15	4	12	5	14	0.62	0.1	38	0.07	0	

This bred heifer stacks two great sires. Spartacus and Rollin Deep have been turning heads throughout the breed and this female adds a sire we think will be a future great - Stockman 4051.



BIEBER ANKONY FLORA 139D Sells as Lot 122.

123 BIEBER DURHEIM 443D

Cow Reg# 3540049

CAT 2B - 96.5% AR 3.5% XX

DAM MPPA 101.45

Birthdate: 5/7/2016 Tattoo: 443D

BIEBER ROOSEVELT W384 CHAT 923W
 BIEBER ROLLIN DEEP Y118 BIEBER DURHEIM 350Z
 BIEBER TILLY 399W BD3P DURHEIM 56

HrdBldr	GrdMstr	CED	BW	WW	YW	Milk	ME	HPG	CEM	STAY	Marb	YG	CW	REA	FAT
145	51	3	-1.2	60	96	24	5	13	4	14	0.32	-0.06	26	0.04	-0.05
13%	27%	69%	58%	36%	33%	10%	90%	27%	56%	6%	64%	18%	32%	59%	5%
BW			Adj. WW					Adj. YW							
90			605					849							

HEIFER CALF DUE 8/20/2018 Sired by BIEBER SPARTACUS A193.

Est. Calf EPDs	CED	BW	WW	YW	Milk	ME	HPG	CEM	STAY	Marb	YG	CW	REA	FAT
2	-2.9	65	100	22	4	13	3	11	0.48	-0.01	25	0.18	0	





BIEBER LAURA 504D Sells as Lot 124.

124 BIEBER LAURA 504D

Cow Reg# 3537026

CAT 1A - 100% AR

DAM MPPA 109.14

Birthdate: 3/12/2016

Tattoo: 504D

BECKTON EPIC K F075
BECKTON EPIC R397 K
BECKTON KIT F468 JL

LJC MISSION STATEMENT P27
BIEBER LAURA 112W
BASIN LAURA 7535

HrdBlDr	GrdMstr	CED	BW	WW	YW	Milk	ME	HPG	CEM	STAY	Marb	YG	CW	REA	FAT
134	54	7	-0.8	65	105	22	2	12	2	11	0.69	-0.02	32	0.39	0.01
20%	6%	33%	64%	22%	17%	22%	67%	43%	82%	29%	9%	31%	17%	10%	64%
BW			Adj. WW					Adj. YW							
75			678					833							

UNSEXED CALF DUE 9/15/2018 SIRED BY GMRA TRINITY 5222.

Est. Calf EPDs	CED	BW	WW	YW	Milk	ME	HPG	CEM	STAY	Marb	YG	CW	REA	FAT
8	-2	66	105	19	2	13	5	12	0.63	0.07	30	0.25	0.03	

This lot is a maternal sister to Bieber Forefront B281, who is in Pieper Red Angus's herdsire lineup.



BIEBER FEDERATION B544 Sire of Lot 125.

125 BIEBER GALEE 167D

Cow Reg# 3536594

CAT 1A - 100% AR

DAM MPPA 103.33

Birthdate: 1/25/2016

Tattoo: 167D

ANDRAS FUSION R236
BIEBER FEDERATION B544
BASIN PRIMROSE 0T43

BECKTON EPIC R397 K
BIEBER GALEE 461B
BIEBER GALEE 9513

HrdBlDr	GrdMstr	CED	BW	WW	YW	Milk	ME	HPG	CEM	STAY	Marb	YG	CW	REA	FAT
106	56	-1	3.3	77	125	17	3	13	-2	9	0.71	-0.05	49	0.31	-0.04
53%	1%	97%	99%	3%	2%	74%	80%	22%	99%	64%	8%	23%	1%	14%	6%
BW			Adj. WW					Adj. YW							
95			611					831							

BULL CALF DUE 8/20/2018 SIRED BY BIEBER GLADIATOR C386.

Est. Calf EPDs	CED	BW	WW	YW	Milk	ME	HPG	CEM	STAY	Marb	YG	CW	REA	FAT
0	-0.6	74	121	18	4	13	1	9	0.76	-0.03	41	0.41	-0.01	



BIEBER ADELLE 620D Sells as Lot 126.

126 BIEBER ADELLE 620D

Cow Reg# 3537236

CAT 1A - 100% AR

DAM MPPA 105.83

Birthdate: 5/8/2016

Tattoo: 620D

BIEBER ROUSE SAMURAI X22
BIEBER SPARTACUS A193
BIEBER TILLY 233U

HUST CHIEF SEQUOYA R336
BIEBER ADELLE 311Y
BIEBER ADELLE 8958

HrdBlDr	GrdMstr	CED	BW	WW	YW	Milk	ME	HPG	CEM	STAY	Marb	YG	CW	REA	FAT
105	51	7	-4.7	71	108	25	8	12	3	9	0.49	-0.06	27	0.16	-0.03
55%	21%	38%	8%	9%	13%	8%	98%	28%	74%	69%	28%	18%	28%	32%	8%
BW			Adj. WW					Adj. YW							
72			615					875							

BULL CALF DUE 8/20/2018 SIRED BY PIE STOCKMAN 4051.

Est. Calf EPDs	CED	BW	WW	YW	Milk	ME	HPG	CEM	STAY	Marb	YG	CW	REA	FAT
6	-3.9	78	121	18	2	13	5	11	0.55	0.05	36	0.05	-0.01	

The Spartacus daughters are looking really great in the Bieber program and this one is stacked to succeed. She is from the same cowline that produced Makin Hay 9913.

127 BIEBER ROSE 624D

Cow Reg# 3537240

CAT 1A - 100% AR

DAM MPPA 100

Birthdate: 5/10/2016 Tattoo: 624D

BIEBER ROUSE SAMURAI X22 EXAR 263C
 BIEBER SPARTACUS A193 BASIN ROSE 0T54
 BIEBER TILLY 233U BASIN ROSE F521

HrdBldr	GrdMstr	CED	BW	WW	YW	Milk	ME	HPG	CEM	STAY	Marb	YG	CW	REA	FAT
93	53	3	-6.1	68	100	21	-2	15	3	6	1.02	0.04	20	0.33	0.04
70%	8%	73%	2%	14%	26%	35%	34%	6%	67%	87%	1%	58%	51%	13%	95%
BW			Adj. WW					Adj. YW							
77			669					900							

UNSEXED CALF DUE 9/3/2018 SIRED BY GMRA TRINITY 5222.

Est. Calif EPDs	CED	BW	WW	YW	Milk	ME	HPG	CEM	STAY	Marb	YG	CW	REA	FAT
5	-4.6	68	103	18	0	15	6	10	0.8	0.1	24	0.22	0.04	

This Spartacus daughter with a maternal outcross twist may be producing the breeds next great donor dam or herdsire.



BIEBER ROSE 624D Sells as Lot 127.

128 BIEBER CHINOOK 466D

Cow Reg# 3539970

CAT 1A - 100% AR

DAM MPPA 100.77

Birthdate: 5/18/2016 Tattoo: 466D

ANDRAS FUSION R236 MESSMER PACKER S008
 MLK CRK UNIFIED 4207 BIEBER CHINOOK 158Y
 MLK CRK LAKOTA 953 BASIN CHINOOK W043

HrdBldr	GrdMstr	CED	BW	WW	YW	Milk	ME	HPG	CEM	STAY	Marb	YG	CW	REA	FAT
147	54	1	-1.4	78	127	13	4	16	0	13	0.65	0.11	44	0.47	0.05
11%	3%	91%	53%	2%	1%	91%	83%	3%	97%	8%	11%	86%	3%	7%	98%
BW			Adj. WW					Adj. YW							
92			662					953							

BULL CALF DUE 8/20/2018 SIRED BY BIEBER SPARTACUS A193.

Est. Calif EPDs	CED	BW	WW	YW	Milk	ME	HPG	CEM	STAY	Marb	YG	CW	REA	FAT
1	-3	73	115	17	3	14	1	10	0.64	0.08	34	0.39	0.04	

129 BIEBER ENCHANTRESS 605D

Cow Reg# 3537221

CAT 1A - 100% AR

DAM MPPA 107.47

Birthdate: 5/3/2016 Tattoo: 605D

BIEBER ROUSE SAMURAI X22 A-1 HAY MAKER 511V
 BIEBER SPARTACUS A193 BIEBER ENCHANTRESS 150Y
 BIEBER TILLY 233U BIEBER ENCHANTRESS 121W

HrdBldr	GrdMstr	CED	BW	WW	YW	Milk	ME	HPG	CEM	STAY	Marb	YG	CW	REA	FAT
74	52	3	-2.7	72	108	24	3	13	-1	6	0.35	-0.19	30	0.37	-0.06
86%	18%	70%	30%	8%	13%	10%	76%	26%	98%	88%	58%	5%	20%	11%	4%
BW			Adj. WW					Adj. YW							
74			551					826							

BULL CALF DUE 8/20/2018 SIRED BY PIE STOCKMAN 4051.

Est. Calif EPDs	CED	BW	WW	YW	Milk	ME	HPG	CEM	STAY	Marb	YG	CW	REA	FAT
5	-2.9	78	121	18	0	13	3	10	0.48	-0.02	37	0.16	-0.03	

130 BIEBER SUPRISE 532D

Cow Reg# 3537053

CAT 1A - 100% AR

DAM MPPA 102.85

Birthdate: 3/25/2016 Tattoo: 532D

BIEBER ROOSEVELT W384 LJC MISSION STATEMENT P27
 BIEBER ROLLIN DEEP Y118 BIEBER ENCHANTRESS 176W
 BIEBER TILLY 399W BASIN ENCHANTRESS 190Z

HrdBldr	GrdMstr	CED	BW	WW	YW	Milk	ME	HPG	CEM	STAY	Marb	YG	CW	REA	FAT
103	53	6	-0.7	67	114	24	6	12	1	8	0.27	-0.09	37	0.36	-0.03
57%	7%	40%	66%	16%	7%	13%	96%	43%	91%	78%	76%	14%	7%	11%	8%
BW			Adj. WW					Adj. YW							
90			725					843							

HEIFER CALF DUE 8/20/2018 SIRED BY PIE STOCKMAN 4051.

Est. Calif EPDs	CED	BW	WW	YW	Milk	ME	HPG	CEM	STAY	Marb	YG	CW	REA	FAT
6	-1.9	76	124	17	2	13	4	11	0.44	0.04	41	0.15	-0.01	



BIEBER ROLLIN DEEP Y118 Sire of Lot 130.



BIEBER TAKEOVER Z206 Sire of Lot 131.

131 WES TAKA D113

Cow Reg# 3573712

CAT 1A - 100% AR

DAM MPPA 110.11

Birthdate: 09-16-2016 Tattoo: D113

LSF TAKEOVER 9943W
BIEBER TAKEOVER Z206
BIEBER ROSE 116W

LCC MAJOR LEAGUE A502M
WES ML SHOWY T16
MS NEO-SHO PROJECTK188

HrdBldr	GrdMstr	CED	BW	WW	YW	Milk	ME	HPG	CEM	STAY	Marb	YG	CW	REA	FAT
88	50	2	-1.7	64	95	24	4	16	2	7	0.38	-0.05	24	0.21	-0.01
75%	40%	85%	49%	26%	36%	11%	87%	3%	83%	81%	51%	23%	39%	26%	22%

BW	Adj. WW	Adj. YW
80	597	791

CALF DUE 9/10/2018 SIRED BY H2R PROFITBUILDER B403 (1683223).

Est. Calf EPDs	CED	BW	WW	YW	Milk	ME	HPG	CEM	STAY	Marb	YG	CW	REA	FAT
2	-2.2	70	111	21	2	13	1	15	0.70	0.08	33	0.07	0.00	



BIEBER FEDERATION B544 Sire of Lot 132.

132 WES FEDORA D112

Cow Reg# 3573724

CAT 1A - 100% AR

DAM MPPA 104.94

Birthdate: 09-15-2016 Tattoo: D112

ANDRAS FUSION R236
BIEBER FEDERATION B544
BASIN PRIMROSE 0T43

LJC MISSION STATEMENT P27
WES HYACINTH W17
WES ML POSEY S22

HrdBldr	GrdMstr	CED	BW	WW	YW	Milk	ME	HPG	CEM	STAY	Marb	YG	CW	REA	FAT
116	53	1	0.8	59	93	20	6	11	2	11	0.68	-0.11	27	0.33	-0.03
40%	7%	88%	88%	40%	41%	37%	94%	49%	88%	34%	9%	10%	30%	13%	9%

BW	Adj. WW	Adj. YW
82	513	698

CALF DUE 9/10/2018 SIRED BY LSF MEW PLATINUM 5660C (1751232).

Est. Calf EPDs	CED	BW	WW	YW	Milk	ME	HPG	CEM	STAY	Marb	YG	CW	REA	FAT
2	0.3	69	111	21	0	15	4	10	0.76	-0.02	37	0.53	0.02	



BACHMAN COMMANDER ET12A Sire of Lot 133.

133 WES 664

Cow Reg# 3573819

CAT 1B - 93.8% AR 6.2% XX

DAM MPPA 88.57

Birthdate: 09-14-2016 Tattoo: 664

BIEBER PACKER X375
BACHMAN COMMANDER ET12A
HUS MS JOLENE 301N 946

C-BAR ANTICIPATION 101W
WES314
SPRE016

HrdBldr	GrdMstr	CED	BW	WW	YW	Milk	ME	HPG	CEM	STAY	Marb	YG	CW	REA	FAT
142	54	5	-1.6	71	113	17	4	14	6	11	0.5	-0.08	35	0.43	-0.02
14%	5%	48%	49%	9%	8%	72%	81%	9%	29%	31%	28%	14%	11%	8%	18%

BW	Adj. WW	Adj. YW
72	572	755

CALF DUE 9/10/2018 SIRED BY LSF SRR TYSON 3025A (1623805).

Est. Calf EPDs	CED	BW	WW	YW	Milk	ME	HPG	CEM	STAY	Marb	YG	CW	REA	FAT
7	-2.8	71	111	20	3	12	3	13	0.60	-0.03	32	0.28	-0.01	

134 WES MICA D129

Cow Reg# 3573757

CAT 1A - 100% AR

DAM MPPA 96.36

Birthdate: 09-18-2016 Tattoo: D129

BIEBER H HUGHES W109
BIEBER REAL MCCOY Y124
BIEBER TORYANNA 263W

PELTON % IMF 48S
WES ZELAH Z19
WES BONNIEBELL N21

HrdBldr	GrdMstr	CED	BW	WW	YW	Milk	ME	HPG	CEM	STAY	Marb	YG	CW	REA	FAT
135	51	3	-0.6	60	95	19	3	14	5	12	0.51	0.02	26	0.07	-0.01
19%	31%	73%	69%	37%	36%	47%	73%	11%	32%	16%	26%	52%	32%	52%	34%
BW			Adj. WW					Adj. YW							
76			550					741							

CALF DUE 9/10/2018 Sired by BROWN BLW STATISTICIAN B5240 (1697167).

Est. Calf EPDs	CED	BW	WW	YW	Milk	ME	HPG	CEM	STAY	Marb	YG	CW	REA	FAT
9	-2.0	64	103	20	2	12	6	13	0.63	-0.03	29	0.24	-0.01	



BIEBER REAL MCCOY Y124 Sire of Lot 134.

135 WES ABBIE D127

Cow Reg# 3573773

CAT 1A - 100% AR

DAM MPPA

Birthdate: 09-19-2016 Tattoo: D127

LSF CONQUEROR 0026X
WES CLASSIC A08
WES AMATHA Y01

WES FIELD KING U53
WES ABBINA A49
WES MM ROBIN W70

HrdBldr	GrdMstr	CED	BW	WW	YW	Milk	ME	HPG	CEM	STAY	Marb	YG	CW	REA	FAT
95	50	4	-1.5	67	112	17	6	7	2	9	0.25	0.16	35	-0.1	0.01
68%	42%	60%	51%	16%	9%	71%	95%	97%	83%	58%	80%	96%	11%	85%	74%
BW			Adj. WW					Adj. YW							
72			608					849							

CALF DUE 9/10/2018 Sired by BROWN BLW STATISTICIAN B5240 (1697167).

Est. Calf EPDs	CED	BW	WW	YW	Milk	ME	HPG	CEM	STAY	Marb	YG	CW	REA	FAT
9	-2.5	68	113	19	3	9	4	12	0.50	0.04	34	0.18	0.00	

136 WES 691

Cow Reg# 3573818

CAT 1B - 93.8% AR 6.2% XX

DAM MPPA 96.36

Birthdate: 10-01-2016 Tattoo: 691

RED HILL 17P JULIAN 101S
WES MAXIJUL X64
WES MIMIMAX U75

WES GOOD PROOF U14
WES267
SPRE728

HrdBldr	GrdMstr	CED	BW	WW	YW	Milk	ME	HPG	CEM	STAY	Marb	YG	CW	REA	FAT
104	48	4	0.9	58	81	21	8	12	4	10	0.3	-0.02	19	0.03	-0.02
55%	80%	64%	90%	45%	66%	30%	98%	33%	50%	40%	71%	31%	54%	61%	14%
BW			Adj. WW					Adj. YW							
86			614					799							

CALF DUE 9/10/2018 Sired by BROWN BLW STATISTICIAN B5240 (1697167).

Est. Calf EPDs	CED	BW	WW	YW	Milk	ME	HPG	CEM	STAY	Marb	YG	CW	REA	FAT
9	-1.2	64	98	21	4	11	5	12	0.52	-0.05	27	0.24	-0.02	

137 WES 695

Cow Reg# 3705521

CAT 1B - 93.8% AR 6.2% XX

DAM MPPA 98

Birthdate: 10-06-2016 Tattoo: 695

RED HILL 17P JULIAN 101S
WES MAXIJUL X64
WES MIMIMAX U75

WES RED MISSION X27
WES 260
SPRE 811

HrdBldr	GrdMstr	CED	BW	WW	YW	Milk	ME	HPG	CEM	STAY	Marb	YG	CW	REA	FAT
106	50	4	-0.2	59	96	22	8	11	2	11	0.27	0	27	0.05	-0.02
54%	43%	66%	75%	42%	35%	22%	98%	61%	89%	37%	76%	41%	29%	55%	12%
BW			Adj. WW					Adj. YW							
70			600					747							

CALF DUE 9/10/2018 Sired by BROWN BLW STATISTICIAN B5240 (1697167).

Est. Calf EPDs	CED	BW	WW	YW	Milk	ME	HPG	CEM	STAY	Marb	YG	CW	REA	FAT
9	-1.9	64	105	21	4	10	4	12	0.51	-0.04	30	0.26	-0.02	

138 WES 686

Cow Reg# 3839701

CAT 1B - 93.8% AR 6.2% XX

DAM MPPA 97.6

Birthdate: 09-27-2016 Tattoo: 686

RED HILL 17P JULIAN 101S
WES MAXIJUL X64
WES MIMIMAX U75

LSF CONQUEROR 0026X
239
102

HrdBldr	GrdMstr	CED	BW	WW	YW	Milk	ME	HPG	CEM	STAY	Marb	YG	CW	REA	FAT
17	49	9	-1.3	54	79	20	0	0	2	0	0.3	0	15	-0.02	-0.01
99%	65%	19%	55%	60%	71%	40%	48%	99%	88%	99%	71%	39%	68%	70%	26%
BW			Adj. WW					Adj. YW							
70			524												

CALF DUE 9/10/2018 Sired by BROWN BLW STATISTICIAN B5240 (1697167).

Est. Calf EPDs	CED	BW	WW	YW	Milk	ME	HPG	CEM	STAY	Marb	YG	CW	REA	FAT	



BACH MS TIDY BEE S040E Sells as Lot 139.

139 BACH MS TIDY BEE S040E

Cow Reg# 3622569

CAT 1A - 100% AR

DAM MPPA 99.2

Birthdate: 01-26-2017 Tattoo: S040E

BROWN JYJ REDEMPTION Y1334
BROWN BLW STATISTICIAN B5240
BROWN MS REVELATION U7748

GMRA TRILOGY 0226
BJR TIDY BEE 510C
HHFF-ATKN TIDY BEE 2066-914X

HrdBlDr	GrdMstr	CEW	BW	WW	YW	Milk	ME	HPG	CEM	STAY	Marb	YG	CW	REA	FAT
148	51	12	-2.5	63	101	16	1	10	8	12	0.49	-0.02	27	0.18	-0.01
11%	20%	8%	34%	27%	24%	77%	56%	75%	9%	20%	29%	31%	30%	30%	25%
BW								Adj. WW							
82								587							

SELLS OPEN.

We kick off the open heifers with a prime example of what it means to be "BACHMAN BRED". We combine an eye appealing heifer with depth and capacity who's pedigree is stacked for future performance. Add to that strong base an EPD profile that's simply outstanding - 81% in the Top 35% or better. Think of all the combinations of breeding you can go with an animal of this caliber!



BROWN BLW STATISTICIAN B5240 Sire of Lot 140.

140 BACH MS RIGHT KIND S004E

Cow Reg# 3622493

CAT 1A - 100% AR

DAM MPPA 99.27

Birthdate: 01-08-2017 Tattoo: S004E

BROWN JYJ REDEMPTION Y1334
BROWN BLW STATISTICIAN B5240
BROWN MS REVELATION U7748

BUF CRK THE RIGHT KIND U199
PCHFRK PRINCESS R. KIND B806
PCHFRK PRINCESS MISSION T04

HrdBlDr	GrdMstr	CEW	BW	WW	YW	Milk	ME	HPG	CEM	STAY	Marb	YG	CW	REA	FAT
174	55	11	-3	67	113	20	0	11	7	14	0.64	-0.05	33	0.39	-0.01
3%	2%	8%	27%	17%	8%	38%	48%	52%	19%	7%	12%	21%	13%	10%	33%
BW								Adj. WW							
80								570							

SELLS OPEN.

Another masterpiece of an open heifer where you have so many options for breeding. BROWN BLW STATISTICIAN B5240 is simply the best Redemption son on the market (in our opinion) and combine this with a fantastic donor cow - PITCHFORK MS RIGHT KIND B806. Put all this together with 81% of her EPDs in the Top 35% of the breed and see what "BACHMAN BRED" means!



5L INDEPENDENCE 560-298Y Sire of Lot 141.

141 BACH MS QUEEN JEWEL S002E

Cow Reg# 3622489

CAT 1A - 100% AR

DAM MPPA 101.6

Birthdate: 01-06-2017 Tattoo: S002E

BUF CRK THE RIGHT KIND U199
5L INDEPENDENCE 560-298Y
5L BLACK ADINA 525-560

LSF SRR TYSON 3025A
BJR QUEEN JEWEL 508C
HUS QUEEN JEWEL P431 W04

HrdBlDr	GrdMstr	CEW	BW	WW	YW	Milk	ME	HPG	CEM	STAY	Marb	YG	CW	REA	FAT
163	54	9	-3.2	70	112	25	0	12	8	13	0.83	0.02	32	0.29	0.01
5%	6%	18%	23%	10%	9%	8%	48%	39%	9%	10%	4%	49%	17%	16%	72%
BW								Adj. WW							
80								620							

SELLS OPEN.

80 lb. BW heifer with a 620 lb. AWW. Combine that with 75% of her EPDs in the Top 35%.

142 BACH MS JOLINE S035E ET

Cow Reg# 3622547

CAT 1A - 100% AR

DAM MPPA

Birthdate: 01-18-2017 Tattoo: S035E

BECKTON EPIC R397 K
BROWN BLW LEGEND A1965
HXC PATRICIA ROSE 102Y

C-BAR CONTOUR 107X
JEFFRIES MS JOLINE Z243
BROWN MS BIG SKY U7877

HrdBldr	GrdMstr	CED	BW	WW	YW	Milk	ME	HPG	CEM	STAY	Marb	YG	CW	REA	FAT
167	51	8	-4.2	62	99	20	-2	14	3	15	0.66	0.06	23	0.24	0.03
4%	23%	24%	12%	33%	28%	40%	30%	9%	78%	2%	11%	68%	41%	22%	92%
BW								Adj. WW							
80								550							

SELLS OPEN.

Very nice ET heifer calf giving you great breeding options. 68% of EPDs in the Top 35%.



BROWN BLW LEGEND A1965 Sire of Lot 142.

143 BACH MS NOEQUAL S043E

Cow Reg# 3622573

CAT 1A - 100% AR

DAM MPPA 102.67

Birthdate: 01-31-2017 Tattoo: S043E

LSF CYCLONE 9934W
BIEBER STORMER Z433
BIEBER SUE 359X

PELTON EQUAL 32T
MANN MS NOEQUAL32T 6141 Y66
PELTON MISS LILY 9640S

HrdBldr	GrdMstr	CED	BW	WW	YW	Milk	ME	HPG	CEM	STAY	Marb	YG	CW	REA	FAT
108	51	5	-2.3	65	108	26	9	9	1	10	0.47	0.03	31	0.16	0
51%	21%	53%	37%	21%	14%	5%	99%	81%	91%	40%	32%	58%	18%	32%	54%
BW								Adj. WW							
82								636							

SELLS OPEN.

Powerfully built BIEBER STORMER Z433 daughter with a great PELTON EQUAL 32T backdrop in her pedigree.



BACH MS NOEQUAL S043E Sells as Lot 143.

144 BACH MS GOLD S045E

Cow Reg# 3622577

CAT 1A - 100% AR

DAM MPPA 98.46

Birthdate: 02-02-2017 Tattoo: S045E

LSF CYCLONE 9934W
BIEBER STORMER Z433
BIEBER SUE 359X

MAF GOLD M3 P4
HMF MISS GOLD 987
KRW MACHITA

HrdBldr	GrdMstr	CED	BW	WW	YW	Milk	ME	HPG	CEM	STAY	Marb	YG	CW	REA	FAT
75	49	6	-3.2	49	83	24	11	8	-1	8	0.38	0.01	15	0.22	0.02
86%	50%	43%	23%	78%	63%	13%	99%	95%	99%	74%	49%	44%	67%	24%	86%
BW								Adj. WW							
81								552							

SELLS OPEN.



BIEBER STORMER Z433 Sire of Lot 144.



145 BACH MS CAPTIVATOR S051E

Cow Reg# 3622589

CAT 1A - 100% AR

DAM MPPA 104.62

Birthdate: 02-04-2017 Tattoo: S051E

LSF CYCLONE 9934W
BIEBER STORMER Z433
BIEBER SUE 359X

HMF CAPTIVATOR 702
HMF MISS CAPTIVATOR 913
HMF JR LADY 201

HrdBldr	GrdMstr	CED	BW	WW	YW	Milk	ME	HPG	CEM	STAY	Marb	YG	CW	REA	FAT
100	50	6	-2.9	62	103	21	8	10	3	9	0.3	0.05	28	0.06	0
62%	44%	44%	28%	32%	20%	34%	99%	67%	79%	59%	69%	63%	26%	54%	47%
BW								Adj. WW							
78								606							

SELLS OPEN.

146 BACH MS ESTONIA S057E

Cow Reg# 3622601

CAT 1A - 100% AR

DAM MPPA 104.8

Birthdate: 02-06-2017 Tattoo: S057E

BIEBER ROOSEVELT W384
BACHMAN DOMINATOR 79Z
BASIN PRIMROSE 7407

GMRA MAKE IT EASY 8226
LGR ESTONIA 09Z
LGR ESTONIA 2002

HrdBldr	GrdMstr	CED	BW	WW	YW	Milk	ME	HPG	CEM	STAY	Marb	YG	CW	REA	FAT
126	50	6	0.4	71	109	24	2	9	8	11	0.38	0.16	36	0.04	0.03
29%	45%	39%	84%	9%	12%	11%	68%	79%	9%	34%	49%	95%	10%	59%	88%
BW								Adj. WW							
99								658							

SELLS OPEN.

147 BACH MS ADELLE S071E ET

Cow Reg# 3622627

CAT 1A - 100% AR

DAM MPPA 102.67

Birthdate: 02-17-2017 Tattoo: S071E

ANDRAS FUSION R236
BIEBER FEDERATION B544
BASIN PRIMROSE 0T43

SCHULER ENDURANCE 2101Z
BIEBER ADELLE 184B
BIEBER ADELLE 311Y

HrdBldr	GrdMstr	CED	BW	WW	YW	Milk	ME	HPG	CEM	STAY	Marb	YG	CW	REA	FAT
134	52	6	-1.6	67	103	22	6	11	4	12	0.64	0	29	0.13	-0.01
21%	15%	45%	49%	17%	20%	24%	93%	59%	50%	20%	13%	39%	23%	37%	22%
BW								Adj. WW							
92								491							

SELLS OPEN.

148 BACH MS PRIMROSE S070E

Cow Reg# 3622631

CAT 1A - 100% AR

DAM MPPA 99.43

Birthdate: 02-19-2017 Tattoo: S070E

LSF TAKEOVER 9943W
LSF SRR OVERTAKE 4059B
LACY LANA 7012

LSF HERDBUILDER 1058Y
BJR PRIMROSE 40B
BASIN PRIMROSE 72T8

HrdBldr	GrdMstr	CED	BW	WW	YW	Milk	ME	HPG	CEM	STAY	Marb	YG	CW	REA	FAT
173	52	9	-2.9	64	99	22	-1	14	5	15	0.57	0.04	25	0.29	0.03
3%	18%	18%	28%	25%	27%	26%	39%	9%	42%	3%	18%	58%	35%	17%	90%
BW								Adj. WW							
99								594							

SELLS OPEN.

If you like the LSF TAKEOVER 9943W sire portion of the pedigree combined with the famous BASIN PRIMROSE cow family, then this heifer is for you.

149 BACH MS ABIGRACE S082E

Cow Reg# 3622651

CAT 1A - 100% AR

DAM MPPA 101.14

Birthdate: 03-03-2017 Tattoo: S082E

BIEBER ROOSEVELT W384
BACHMAN DOMINATOR 79Z
BASIN PRIMROSE 7407

BROWN BETTER ANSWER Z7257
LSF ABIGRACE X7580 B4247
BROWN MS P707 X7580

HrdBlDr	GrdMstr	CEB	BW	WW	YW	Milk	ME	HPG	CEM	STAY	Marb	YG	CW	REA	FAT
154	51	7	-1.1	64	105	20	-2	14	7	13	0.49	0.17	31	-0.08	0.02
8%	26%	33%	58%	24%	18%	37%	33%	10%	14%	10%	29%	96%	18%	82%	86%
BW								Adj. WW							
86								606							

SELLS OPEN.

BACHMAN DOMINATOR 79Z is a spitting image of the BIEBER ROOSEVELT W384 bull. This heifer gets a great start with that side of the pedigree. We then add the history and power of the BROWN MS P707 X7580 donor cow that produced an outstanding daughter we have here at Bachman Cattle Farms.

150 BACH MS QUEEN JEWEL S088E

Cow Reg# 3622661

CAT 1A - 100% AR

DAM MPPA 100

Birthdate: 03-21-2017 Tattoo: S088E

MUSHRUSH IMPRESSIVE CA U236
LSF SRR TYSON 3025A
LSF JIBA R5009 W9247

LCC ROYAL GORGE A389M
HUS QUEEN JEWEL P431 W04
CCF QUEEN JEWEL 4912 P431

HrdBlDr	GrdMstr	CEB	BW	WW	YW	Milk	ME	HPG	CEM	STAY	Marb	YG	CW	REA	FAT
126	50	5	-3.1	69	102	25	4	13	1	13	0.77	0.1	26	0.27	0.05
28%	39%	50%	24%	13%	22%	6%	81%	26%	93%	14%	5%	83%	32%	18%	98%
BW								Adj. WW							
80								625							

SELLS OPEN.



View videos of the offering online
www.dvauction.com

Reaching the World's LARGEST Buyer Base!



*Market Your
Cattle The
Superior Way!*



CLINT BERRY

417-844-1009

- 15-Plus Years Marketing Red Angus
- Specializing in Replacement Females
- Custom Seedstock Procurement



www.superiorlivestock.com

ALLIED
GENETIC RESOURCES

www.alliedgeneticresources.com

CHILLICOTHE ANIMAL HOSPITAL

DANIEL D. ROSS, DVM

JENNIFER M. LINK, DVM

1011 S. WASHINGTON STREET, CHILLICOTHE, MO 64601



660-646-3670

HEIFER DEVELOPMENT
SYNCHRONIZATION & AI



ULTRASOUND FOR EARLY PREGNANCY DETECTING AND FETAL SEXING

North Central MFA

Chillicothe	Hale	Brookfield	Marceline
646-5000	565-2216	258-2284	376-2028

- Crop Protection
- Seed
- Fertilizer



- Precision Ag
- Grain
- Feed

MADE FOR AGRICULTURE





Delivering Nutrition *and More* . . .

Get **proper nutrition** for your cattle with **QLF liquid supplements and tubs.**

- Flexibility: free-choice lick tanks, direct treatment of hay bales or tubs
- The ultimate in convenience
- Minimal feeding costs



www.qlf.com • 800.236.2345

WITH THE RIGHT TOOLS, ANYTHING IS POSSIBLE

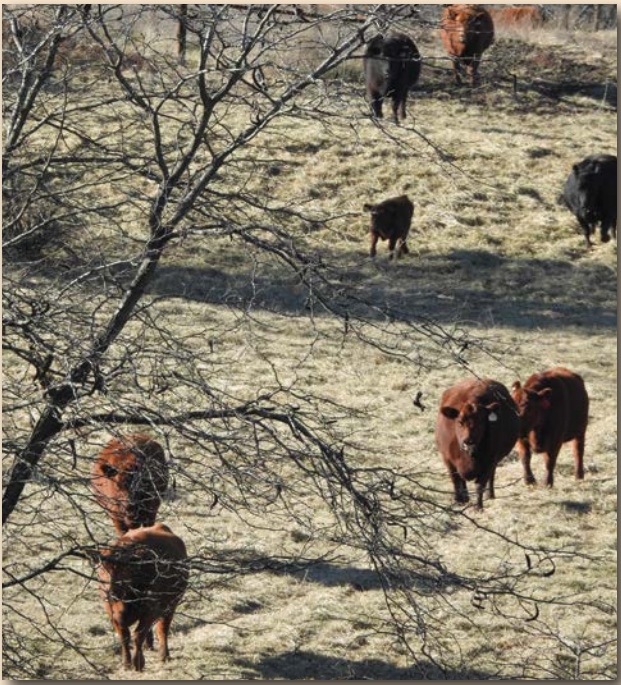


IN VITRO FERTILIZATION • EMBRYO TRANSFER • SEXED SEMEN • RECIPIENT OPTIONS
VIAGEN CLONING TECHNOLOGY • FRESH SHIP PROGRAM • LIVE CALF PROGRAM

Chillicothe, Missouri
800.372.3586

multiply success[®]
www.transova.com







H2R PROFITBUILDER B403

H2R PROFITBUILDER B403

Bull Reg# 1683223 CAT 1 A - 100% AR

Birthdate: 01-30-2014 Tattoo: B403

HXC CONQUEST 4405P BECKTON NEBULA P P707
 LSF TAKEOVER 9943W BROWN MS P707 Y6674
 LSF WIDELOAD R5014 U8061 BROWN MS MISSION STMT T6963

HrdBlDr	GrdMstr	CED	BW	WW	YW	Milk	ME	HPG	CEM	STAY	Marb	YG	CW	REA	FAT
199	57	2	-3.5	78	128	17	1	13	1	19	0.87	0.16	41	-0.11	0
1%	3%	80%	27%	9%	7%	64%	55%	34%	87%	1%	10%	89%	11%	79%	51%



BROWN BLW STATISTICIAN B5240

BROWN BLW STATISTICIAN B5240

Bull Reg# 1697167 CAT 1 A - 100% AR

Birthdate: 02-01-2014 Tattoo: B5240

BECKTON NEBULA P P707 BROWN REVELATION P7021
 BROWN JYJ REDEMPTION Y1334 BROWN MS REVELATION U7748
 JYJ MS JOLENE W16 BROWN MS ABBY P7944

HrdBlDr	GrdMstr	CED	BW	WW	YW	Milk	ME	HPG	CEM	STAY	Marb	YG	CW	REA	FAT
182	55	14	-3.5	68	114	21	1	10	6	14	0.76	-0.09	33	0.46	-0.01
4%	10%	6%	26%	26%	18%	44%	55%	67%	30%	10%	15%	21%	24%	16%	29%

PIE STOCKMAN 4051

Bull Reg# 1724236 CAT 1 A - 100% AR

Birthdate: 02-23-2014 Tattoo: 4051

BECKTON EPIC R397 K HXC CONQUEST 4405P
 LSF SAGA 1040Y PIE LAKOTA 046
 LSF MINOLA T7172 W9041 TPIE LAKOTA 806

HrdBlDr	GrdMstr	CED	BW	WW	YW	Milk	ME	HPG	CEM	STAY	Marb	YG	CW	REA	FAT
169	54	6	-3	85	133	11	-3	14	6	14	0.61	0.16	44	-0.06	0
9%	15%	50%	34%	3%	4%	89%	37%	23%	32%	14%	26%	89%	8%	72%	50%

BACH MR PROSPECT F030C ET

Bull Reg# 3506158 CAT 1 A - 100% AR

Birthdate: 09-17-2015 Tattoo: F030C

LSF NIGHT CALVER 9921W BECKTON JULIAN GG B571
 LSF PROSPECT 2035Z BROWN MS JULIAN Y7810
 LSF BLACKBIRD N3080 X0406 BROWN MS ABIGRACE L7730

HrdBlDr	GrdMstr	CED	BW	WW	YW	Milk	ME	HPG	CEM	STAY	Marb	YG	CW	REA	FAT
135	52	13	-3.8	58	94	32	2	14	7	9	0.57	-0.05	20	0.25	-0.01
20%	14%	6%	16%	47%	40%	1%	64%	15%	15%	57%	20%	22%	50%	21%	38%

BACHMAN DOMINATOR 79Z

Bull Reg# 1590817 CAT 1 A - 100% AR

Birthdate: 09-02-2012 Tattoo: BCF79Z

BIEBER ROUGH RIDER 10712 BASIN EXT 5233
 BIEBER ROOSEVELT W384 BASIN PRIMROSE 7407
 BIEBER SHEBA 9602 BASIN PRIMROSE 4167

HrdBlDr	GrdMstr	CED	BW	WW	YW	Milk	ME	HPG	CEM	STAY	Marb	YG	CW	REA	FAT
130	51	4	1	63	99	26	-3	14	6	11	0.53	0.19	31	0.15	0.06
23%	24%	58%	88%	29%	28%	8%	27%	13%	28%	33%	24%	95%	20%	34%	97%

LSF SRR TYSON 3025A

Bull Reg# 1623805 CAT 1 A - 100% AR

Birthdate: 01-26-2013 Tattoo: 3025A

BUF CRK LANCER R017 MESSMER PACKER S008
 MUSHRUSH IMPRESSIVE CA U236 LSF JIBA R5009 W9247
 MUSHRUSH MADAM LT R265 LSF JIBA K1004 R5009

HrdBlDr	GrdMstr	CED	BW	WW	YW	Milk	ME	HPG	CEM	STAY	Marb	YG	CW	REA	FAT
185	52	8	-4.2	73	111	23	2	12	1	18	0.75	-0.01	30	0.22	-0.01
3%	26%	33%	21%	16%	21%	30%	66%	46%	83%	1%	16%	41%	33%	37%	35%

BACHMAN COMMANDER ET12A

Bull Reg# 1588948 CAT 1 A - 100% AR

Birthdate: 03-16-2013 Tattoo: ET12A

MESSMER PACKER S008 LJC MISSION STATEMENT P27
 BIEBER PACKER X375 HUS MS JOLENE 301N 946
 BASIN LASS 6415 HXC JOLENE 301N

HrdBlDr	GrdMstr	CED	BW	WW	YW	Milk	ME	HPG	CEM	STAY	Marb	YG	CW	REA	FAT
180	59	4	-0.7	91	155	19	2	14	1	14	0.6	-0.03	61	0.74	0
4%	1%	60%	68%	1%	1%	56%	62%	19%	87%	10%	27%	35%	1%	5%	48%



BACHMAN COMMANDER ET12A

BIEBER FEDERATION B544

Bull Reg# 1689752 CAT 1 A - 100% AR

Birthdate: 03-24-2014 Tattoo: B544

ANDRAS IN FOCUS B175 BASIN TREND SETTER 6074
 ANDRAS FUSION R236 BASIN PRIMROSE 0T43
 ANDRAS BELLE B167 BASIN PRIMROSE 2043

HrdBlDr	GrdMstr	CED	BW	WW	YW	Milk	ME	HPG	CEM	STAY	Marb	YG	CW	REA	FAT
89	54	1	0.7	58	88	21	8	8	2	8	0.96	-0.14	24	0.31	-0.04
69%	15%	82%	82%	54%	57%	43%	92%	84%	79%	66%	7%	13%	47%	29%	8%



BIEBER FEDERATION B544

LSF MEW PLATINUM 5660C

Bull Reg# 1751232 CAT 1 A - 100% AR

Birthdate: 01-18-2015 Tattoo: 5660C

S A V FINAL ANSWER 0035 LCC NEW STANDARD
 BROWN INCREDABULL Z7277 BROWN MS NEW STANDARD A7053
 BROWN MS MISSION STMT X7559 BROWN MS DESTINATION U7733

HrdBlDr	GrdMstr	CED	BW	WW	YW	Milk	ME	HPG	CEM	STAY	Marb	YG	CW	REA	FAT
150	58	4	-0.3	78	128	22	-3	19	6	9	0.92	0.01	46	0.83	0.05
17%	3%	65%	72%	9%	6%	37%	34%	2%	30%	56%	8%	49%	7%	4%	94%



LSF MEW PLATINUM 5660C

BROWN SOLID ROCK Z7245

Bull Reg# 1550477 CAT 1 A - 100% AR

Birthdate: 01-23-2012 Tattoo: Z7245

BECKTON NEBULA P P707 GLACIER LOGAN 210
 BROWN PARAMOUNT X7879 BROWN MS ABIGRACE L7730
 BROWN MS DESTINATION T7664 LCHMN ABIGAIL E1013

HrdBlDr	GrdMstr	CED	BW	WW	YW	Milk	ME	HPG	CEM	STAY	Marb	YG	CW	REA	FAT
150	52	3	-0.3	75	111	14	6	19	11	11	1.32	0.17	35	-0.63	-0.05
17%	24%	75%	72%	12%	22%	80%	85%	3%	5%	31%	1%	89%	21%	99%	2%

EEC ABSOLUTE A160B

Bull Reg# 1681456 CAT 1 2 - 100% AR

Birthdate: 02-17-2014 Tattoo: A160B

S A V FINAL ANSWER 0035 BECKTON HERITAGE W027 J3
 K C F BENNETT ABSOLUTE EEC PEACHA Y14T
 THOMAS MISS LUCY 5152 SRN PEACHA 7114

HrdBlDr	GrdMstr	CED	BW	WW	YW	Milk	ME	HPG	CEM	STAY	Marb	YG	CW	REA	FAT
109	57	8	-2.2	74	131	16	-2	12	7	5	0.82	0.05	45	0.88	0.08
44%	1%	26%	37%	6%	1%	71%	32%	39%	17%	92%	5%	64%	3%	1%	99%

REDstock

17520Hwy JJ, Chillicothe, MO 64601

Presorted
First Class
US Postage
PAID
SlateGroup



REDstock®
The Power of RED

Joint Production Sale at Litton Ag Center, Chillicothe, Missouri • 1:00 PM (CT)

SATURDAY, MARCH 10, 2018