

CARMICHAEL **Herefords**

**46th Annual
Proven Genetics Sale**



Lot 8

SELLING

70 Bulls

20 Yearling, 50 Two-Year-Olds



Lot 61

Saturday,

February 21, 2015

1:00 p.m. at the ranch

Meadow, SD



Lot 34

Lot 12



Lot 10

Lot 15



Lot 65

Lot 41



Lot 19

CARMICHAEL HEREFORDS

46th Annual Production Sale

Saturday, February 21, 2015

Complimentary Lunch at 11:00 AM

Sale at 1:00 PM at the ranch south of Meadow

SELLING: 70 BULLS

20 Yearlings, 50 Two-Year-Olds

1 Ranch Gelding

Auctioneer: Doug Dietterle

Veterinarian: Rett Scoggin

Ringmen/Publication Representatives:

Scott Weishaar, Cattle Business Weekly, 701/872-5299;

Scott Dirk, 605/380-6024 (cell), Tri-State Livestock News;

Levi Landers, 308/730-1396, American Hereford Association;

Jill Hotchkiss, 605/866-4495 (o), 490-1409 (cell), Hereford America

Sale Day Phone: 605/788-2962

Insurance on Bulls:

*Carmichael Herefords will pay half of the insurance premium
(through Harding & Harding Insurance)*

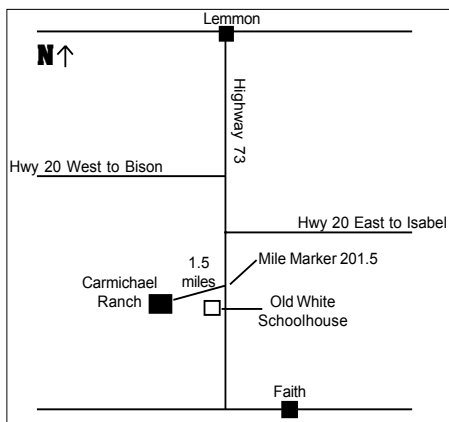
for the first six months from the time you purchase your bull.

For details on this plan contact Keith.

DIRECTIONS:

Sale is at the ranch.

We're easy to find but if you need some help please give us a call.



40 miles south of Lemmon, SD or 26 miles north of Faith, SD
off Hwy 73. Look for the old white schoolhouse on the
West side of the highway by Mile Marker 201.5.
Ranch is just 1.5 miles off the highway to the west.

TERMS & CONDITIONS

Terms: Cash

- Each bull is property of the last bidder when sold. If necessary, bulls will be taken care of for a reasonable length of time after sale at buyer's risk.
- All animals of breeding age are guaranteed breeders. Customary guarantees will apply.
- Health certificates and brand clearances will be available. All cattle will meet requirements to go anywhere.
- The auctioneer will settle all bidding disputes.
- All persons who are attending this sale do so at their own risk. Owners assume no liability, legal or otherwise, for any accidents which may occur.
- If you cannot make the sale, you may send or call in your bidding instructions. Your bids will be handled as directed and in your best interest.

NEW POLICY (3 options)

Add \$150 per bull if left until May 1.

Subtract \$150 from the price of your bull if taken on day of the sale.

OR we will deliver your bull by March 1 for the sale price.

For more information contact:

CARMICHAEL HEREFORDS

Keith Carmichael

14111 SD Hwy 73, Meadow, SD 57644

605/788-2962 • Cell: 605/490-7659

Bryan: 605/788-2831

Catalog and bull videos may also be viewed online at
www.herefordamerica.com or www.carmichaelherefords.com

• **Catalog by HEREFORD AMERICA** •

Unfortunately all birth weight records were lost for the 2014 calves. Washing machines are hard on record books. All bull calves were DNA tested and have GE-EPDs to provide you with the most accurate EPDs possible.

Not every bull can index over 100 because we have a very strict culling process at branding and again during fall shots. Only the top 50% are retained.

All cow photos were taken in mid-December. The cows were just on grass and water with no supplements.

HERD BULLS

B&D ADVANCE 9162 *DLF,HYF,IEF*

DOB: 9/5/2009

REG# 43107496

CL 1 DOMINO 206M *DLF,HYF,IEF*
HH ADVANCE 5104R *SOD,CHB,DLF,IEF*
 HH MISS ADVANCE 153L *DOD,DLF,IEF*

CL 1 DOMINO 9126J 1ET *SOD,CHB,DLF,IEF*
 CL 1 DOMINETTE 825H *DOD,DLF,HYF,IEF*
 CL 1 DOMINO 986J *SOD,DLF,IEF*
 HH MISS ADVANCE 912J

JA L1 DOMINO 9217 *CHB*
B&D L1 DOMINET 7171 *DLF,HYF,IEF*
 B&D L1 DOMINET 3103

CL 1 DOMINO 484 *CHB,SOD,DLF,HYF,IEF*
 JA L1 DOMINETTE 6421
 CL 1 DOMINO 048K *DLF,IEF*
 B&D L1 DOMINET 955

BW	WW	YW	Milk	M&G	Fat	Rea	Marb
0.4	47	80	31	54	-.009	.35	.01

Sired the top selling sire group in our 2014 sale. Sires low birth weight, high performing offspring. Daughters have excellent udders and plenty of milk. All of his sons were used in our program last summer on heifers. They have been trich tested and are ready to go to work. Several stout sons sell.

HERD BULLS



F 157K RIBSTONE 765 *CHB,DLF,HYF,IEF* DOB: 1/23/2007
REG# 42781681

K 64H RIBSTONE LAD 157K *CHB,SOD,DLF,HYF,IEF* } STANDARD RIBSTONE 16E
STANDARD LASS 23E
SNS SUPER PACE ET 61Z *CHB*
K 61Z SUPER LADY 41G } K 58X MASTER LADY 89Z

F MS BONANZA 246 } LPG BONANZA 52G
CTY EXTRA 335C *CHB*
LPG 8080 VOLT LASS 22C
LH 804 DOM 9322 1ET *SOD*
F MS SPECTRE 225 *DOD*

BW	WW	YW	Milk	M&G	Fat	Rea	Marb
5.0	51	96	31	56	.001	.11	.14

765 sons have been very popular with our customers. Several sons and grandsons sell. Seven trait EPD leader.

KC L1 DOMINO 09005 *DLF,HYF,IEF* DOB: 3/12/2009
REG# 43048434

UPS DOMINO 3027 *CHB,SOD,DLF,HYF,IEF* } CL 1 DOMINO 9126J 1ET *SOD,CHB,DLF,IEF*
UPS DOMINO 5216 *SOD,CHB,DLF,IEF* } UPS MISS DIAMOND 1353
UPS MISS MOM 2756 *DOD* } /S MISTER MOM 7745 *SOD,DLF,IEF*
UPS MS ADVANCE 7573

CL 1 DOMINO 0123K *SOD* } CL 1 DOMINO 8146H 1ET *CHB*
KC L1 DOMETT 02010 *DOD* } CL 1 DOMINETTE 767G *DOD*
C L1 DOMETT 3158 } BB HI VOLT 8141 1ET
CL 1 DOMINETTE 9034

BW	WW	YW	Milk	M&G	Fat	Rea	Marb
-0.2	38	68	23	41	.047	.42	.07

Sires easy fleshing, thick, big hipped offspring with large scrotal measurements. Remember scrotal measurements translate to fertility and milking ability.

HH ADVANCE 0149X *DLF,HYF,IEF* DOB: 1/19/2010
REG# 43074015

L1 DOMINO 03571 *CHB,DLF,HYF,IEF* } L1 DOMINO 01384 *CHB*
HH ADVANCE 8019U ET *CHB,DLF,HYF,IEF* } L1 DOMINETTE 00532
HH MISS ADVANCE 4098P *DLF,HYF,IEF* } HH ADVANCE 145L *SOD,CHB,DLF,IEF*
HH MISS ADVANCE 912J

HH ADVANCE 255M 1ET *CHB,DLF,IEC* } HH ADVANCE 041K 1ET *CHB,DLF,IEC*
HH MISS ADVANCE 7088T ET *DLF,HYF,IEF* } HH MISS ADVANCE 793G *DOD,DLF,HYF,IEF*
HH MISS ADVANCE 9030J *DOD,DLF,IEF* } HH ADVANCE 740G
HH MS ADVANCE 7065G

BW	WW	YW	Milk	M&G	Fat	Rea	Marb
3.1	62	105	21	53	.161	.17	.34

Proven Holden herd sire we were fortunate to get to use. This proven herd sire left us a great set of calves. 11 sons sell.

HERD BULLS



CL 1 DOMINO 6105S *CHB*

DOB: 1/17/2006

REG# 42673500

L1 DOMINO 00552
L1 DOMINO 03396 *CHB,DLF,IEF*
 L1 DOMINETTE 96893 *DOD*

L1 DOMINO 97363
 L1 DOMINETTE 95365
 L1 DOMINO 93546
 L1 DOMINETTE 880276

CL 1 DOMINO 9126J 1ET *SOD,CHB,DLF,IEF*
CL 1 DOMINETTE 243M
 CL 1 DOMINETTE 8151H

HH ADVANCE 767G 1ET *SOD,CHB,DLF,IEF*
 CL 1 DOMINETTE 490 *DOD*
 CL 1 DOMINO 522E *SOD*
 CL 1 DOMINETTE 5104E

BW	WW	YW	Milk	M&G	Fat	Rea	Marb
3.4	59	84	16	46	-.009	.46	.09

Proven herd sire purchased in the 2011 Baker dispersion. Sires high performing progeny with lots of eye appeal. Whether you're selling feeder steers or replacement heifers, eye appeal is always easy to sell. Take a good look at his sons.



K&B THUNDERSTRUCK 113Y 1ET *DLF,HYF,IEF*

REG# 43201116

DOB: 3/30/2011

CL 1 DOMINO 9126J 1ET *SOD,CHB,DLF,IEF*
UPS DOMINO 3027 *SOD,CHB,DLF,HYF,IEF*
 UPS MISS DIAMOND 1353

HH ADVANCE 767G 1ET *SOD,CHB,DLF,IEF*
 CL 1 DOMINETTE 490 *DOD*
 SH DIAMOND 881 *SOD,DLF,HYF,IEF*
 UPS MS MILEHIGH 8330

GO EXCEL L18 *CHB,SOD,DLF,HYF,IEF*
K&B MISS EXCEL 4216
 K&B MISS ADVANCE 9665

DD EXCEL DESIGN 40 *SOD*
 GO MS 124 ADVANCE 7005
 K&B ADVANCER 6321
 K&B IDA 7723

BW	WW	YW	Milk	M&G	Fat	Rea	Marb
4.4	51	81	36	62	-.045	.44	.16

Purchased from K&B at Denver in 2012. Progeny are THICK, deep bodied, big hipped and easy fleshing. Very maternal pedigree. First sons sell.

HERD BULLS



BCC ADVANCE 103Y ET *DLF,HYF,IEF*

DOB: 2/11/2011

REG# 43224376

- | | | |
|--|---|--|
| CL 1 DOMINO 638S <i>DLF,IEF</i> | } | L1 DOMINO 03396 <i>CHB,DLF,IEF</i> |
| CL 1 DOMINO 886U <i>CHB,DLF,HYF,IEF</i> | | CL 1 DOMINETTE 475P <i>DLF,HYF,IEF</i> |
| CL 1 DOMINETTE 440P 1ET <i>DLF,HYF,IEF</i> | | CL 1 DOMINO 9126J 1ET <i>SOD,CHB,DLF,IEF</i> |
| | | CL 1 DOMINETTE 974J |
| HH ADVANCE 145L <i>SOD,CHB,DLF,IEF</i> | } | HH ADVANCE 6052F <i>SOD,DLF,IEC</i> |
| HH MISS ADVANCE 4021P ET <i>DLF,HYF,IEF</i> | | HH MISS ADVANCE 766G |
| CL 1 DOMINET 496 1ET | | CL 1 DOMINO 386 <i>SOD,DLF,IEF</i> |
| | | L1 DOMINETTE 850413 |

BW	WW	YW	Milk	M&G	Fat	Rea	Marb
5.2	57	88	27	55	.055	.11	.16

JC L1 DOMINO 5031R

DOB: 3/31/2005

REG# 42642039

- | | | | | |
|------------------------------|---|----------------------------------|---|--------------------------------------|
| CL 1 DOMINO 1108L <i>SOD</i> | } | CL 1 DOMINO 8146H 1ET <i>CHB</i> | } | CL 1 DOMINO 5131E <i>SOD,DLF,IEF</i> |
| | | CL 1 DOMINETTE 8123H 2ET | | CL 1 DOMINETTE 9053 <i>DOD</i> |
| | | | | CL 1 DOMINO 670F 1ET |
| | | | | CL 1 DOMINETTE 272 <i>DOD</i> |
| CL 1 DOMETT 00073 | } | CL 1 DOMINO 848H <i>SOD</i> | } | HH ADVANCE 438D <i>SOD,DLF</i> |
| | | C L1 DOMETT 7111 | | CL 1 DOMINETTE 405 |
| | | | | KB L1 DOMINO 599 |
| | | | | C L1 DOMETT 4056 |

BW	WW	YW	Milk	M&G	Fat	Rea	Marb
2.5	46	58	9	32	.018	.17	-.13

5031R sires easy fleshing, good footed offspring that really get out and travel and last a long time.

KC MR RIBSTONE 11119 *DLF,HYF,IEF*

DOB: 4/26/2011

REG# 43230687

- | | | |
|--|---|--|
| K 64H RIBSTONE LAD 157K <i>CHB,SOD,DLF,HYF,IEF</i> | } | STANDARD 16E RIBSTONE 64H |
| F 157K RIBSTONE 765 <i>CHB,DLF,HYF,IEF</i> | | K 61Z SUPER LADY 41G |
| F MS BONANZA 246 | | LPG BONANZA 52G |
| | | F MS 9322 DOMINO 851 <i>DOD</i> |
| CL 1 DOMINO 212M <i>CHB,SOD,DLF,IEF</i> | } | CL 1 DOMINO 9126J 1ET <i>SOD,CHB,DLF,IEF</i> |
| KC L1 DOMETT 05017 <i>DOD</i> | | CL 1 DOMINETTE 8104H 1ET |
| KC L1 DOMETT 03035 | | CL 1 DOMINO 0123K <i>SOD</i> |
| | | C L1 DOMETT 5170 |

BW	WW	YW	Milk	M&G	Fat	Rea	Marb
1.6	51	82	26	52	.002	.24	.04

Owned with Hermann Ranch.

YEARLING BULLS



LOT 1 KC L1 DOMINO 14019 *DLF,HYF,IEF*

REG# 43531158

DOB: 3/26/2014

HH ADVANCE 8019U ET *CHB,DLF,HYF,IEF*
HH ADVANCE 0149X *DLF,HYF,IEF*
 HH MISS ADVANCE 7088T ET *DLF,HYF,IEF*

L1 DOMINO 03571 *CHB,DLF,HYF,IEF*
 HH MISS ADVANCE 4098P *DLF,HYF,IEF*
 HH ADVANCE 255M 1ET *CHB,DLF,IEC*
 HH MISS ADVANCE 9030J *DOD,DLF,IEF*

KC L1 DOMINO 05012
KC L1 DOMETT 08092 *DOD*
 CL1 DOMETT 00162

CL 1 DOMINO 212M *CHB,SOD,DLF,IEF*
 KC L1 DOMETT 01092 *DOD*
 HH ADVANCE 7042G *SOD*
 C L1 DOMETT 8071

BW	WW
NA	670



BW	WW	YW	Milk	M&G
2.4	51	85	23	48

Dam's MPPA: 106.4 on 5 head.

Maternal half brother sells as Lot 45. Son sold to Norman Ranch in our 2014 sale.



LOT 2 KC L1 DOMINO 14029 *DLF,HYF,IEF*

REG# 43531160

DOB: 3/29/2014

HH ADVANCE 8019U ET *CHB,DLF,HYF,IEF*
HH ADVANCE 0149X *DLF,HYF,IEF*
 HH MISS ADVANCE 7088T ET *DLF,HYF,IEF*

L1 DOMINO 03571 *CHB,DLF,HYF,IEF*
 HH MISS ADVANCE 4098P *DLF,HYF,IEF*
 HH ADVANCE 255M 1ET *CHB,DLF,IEC*
 HH MISS ADVANCE 9030J *DOD,DLF,IEF*

KC L1 DOMINO 05012
KC L1 DOMETT 08090
 KC L1 DOMETT 03012

CL 1 DOMINO 212M *CHB,SOD,DLF,IEF*
 KC L1 DOMETT 01092 *DOD*
 CL 1 DOMINO 0123K *SOD*
 C L1 DOMETT 2030

BW	WW
NA	615



BW	WW	YW	Milk	M&G
3.1	47	80	22	46

Dam's MPPA: 102.9 on 4 head.

YEARLING BULLS



LOT 3 KC L1 DOMINO 14036 *DLF,HYF,IEF*

REG# 43531175

DOB: 3/30/2014

HH ADVANCE 8019U ET *CHB,DLF,HYF,IEF*
HH ADVANCE 0149X *DLF,HYF,IEF*
 HH MISS ADVANCE 7088T ET *DLF,HYF,IEF*

L1 DOMINO 03571 *CHB,DLF,HYF,IEF*
 HH MISS ADVANCE 4098P *DLF,HYF,IEF*
 HH ADVANCE 255M 1ET *CHB,DLF,IEC*
 HH MISS ADVANCE 9030J *DOD,DLF,IEF*

CL 1 DOMINO 648S *CHB,DLF,IEF*
KC L1 DOMETT 08056
 KC L1 DOMETT 03004 *DOD*

CL 1 DOMINO 461P 1ET *CHB,DLF,IEF*
 CL 1 DOMINETTE 249M
 OXH DOMINO 0138 *SOD*
 KC L1 DOMETT 01006

BW	WW
NA	663



BW	WW	YW	Milk	M&G
3.2	54	92	25	52

Dam's MPPA: 104.4 on 4 head.

Dam has produced sons for Hetle, Benson and Northrop Ranches.

14036 ranks in the top 15% of the breed for YW and the top 20% for M&G.



LOT 4 KC L1 DOMINO 14051 *DLF,HYF,IEF*

REG# 43531176

DOB: 4/2/2014

HH ADVANCE 8019U ET *CHB,DLF,HYF,IEF*
HH ADVANCE 0149X *DLF,HYF,IEF*
 HH MISS ADVANCE 7088T ET *DLF,HYF,IEF*

L1 DOMINO 03571 *CHB,DLF,HYF,IEF*
 HH MISS ADVANCE 4098P *DLF,HYF,IEF*
 HH ADVANCE 255M 1ET *CHB,DLF,IEC*
 HH MISS ADVANCE 9030J *DOD,DLF,IEF*

CL 1 DOMINO 04011 *CHB,DLF,IEF*
KC L1 DOMETT 08001
 KC L1 DOMETT 01004 *DOD*

CL 1 DOMINO 212M *CHB,SOD,DLF,IEF*
 C L1 DOMETT 7112
 CL 1 DOMINO 320
 C L1 DOMETT 4212

BW	WW
NA	690

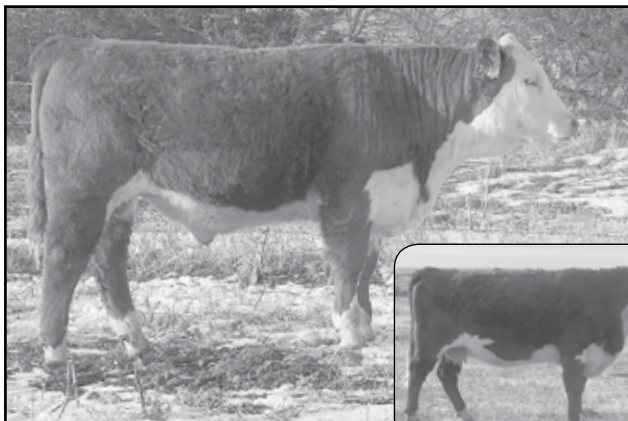


BW	WW	YW	Milk	M&G
3.8	60	101	17	47

Dam's MPPA: 103.1 on 5 head.

14051 ranks in the top 5% of the breed for WW and YW.

YEARLING BULLS



LOT 5

KC L1 DOMINO 14052 *DLF,HYF,IEF*

REG# 43531177

DOB: 4/2/2014

HH ADVANCE 8019U ET *CHB,DLF,HYF,IEF*
HH ADVANCE 0149X *DLF,HYF,IEF*
 HH MISS ADVANCE 7088T ET *DLF,HYF,IEF*

L1 DOMINO 03571 *CHB,DLF,HYF,IEF*
 HH MISS ADVANCE 4098P *DLF,HYF,IEF*
 HH ADVANCE 255M 1ET *CHB,DLF,IEC*
 HH MISS ADVANCE 9030J *DOD,DLF,IEF*

CL 1 DOMINO 848H *SOD*
KC L1 DOMETT 06005
 KC L1 DOMETT 04003

HH ADVANCE 438D *SOD,DLF*
 CL 1 DOMINETTE 405
 CL 1 DOMINO 212M *CHB,SOD,DLF,IEF*
 CL1 DOMETT 00098

BW	WW
NA	626



BW	WW	YW	Milk	M&G
3.7	53	89	20	47

*Dam's MPPA: 100.2 on 6 head.
 Maternal brother sold to Bell Ranch, MN.*

LOT 6

KC L1 DOMINO 14065 *DLF,HYF,IEF*

REG# 43531178

DOB: 4/3/2014

HH ADVANCE 8019U ET *CHB,DLF,HYF,IEF*
HH ADVANCE 0149X *DLF,HYF,IEF*
 HH MISS ADVANCE 7088T ET *DLF,HYF,IEF*

L1 DOMINO 03571 *CHB,DLF,HYF,IEF*
 HH MISS ADVANCE 4098P *DLF,HYF,IEF*
 HH ADVANCE 255M 1ET *CHB,DLF,IEC*
 HH MISS ADVANCE 9030J *DOD,DLF,IEF*

CL 1 DOMINO 0123K *SOD*
KC L1 DOMETT 02010 *DOD*
 C L1 DOMETT 3158

CL 1 DOMINO 8146H 1ET *CHB*
 CL 1 DOMINETTE 767G *DOD*
 BB HI VOLT 8141 1ET
 CL 1 DOMINETTE 9034

BW	WW
NA	642



BW	WW	YW	Milk	M&G
4.1	50	86	19	44

*Dam's MPPA: NA
 Mother has raised several top sons including our 09005 herd bull. Sons are also serving in several other top herds including Vandervorst, Norman, Marty and Flying Y Ranches.*

LOT 7

KC L1 DOMINO 14081 *DLF,HYF,IEF*

REG# 43531180

DOB: 4/7/2014

HH ADVANCE 8019U ET *CHB,DLF,HYF,IEF*
HH ADVANCE 0149X *DLF,HYF,IEF*
 HH MISS ADVANCE 7088T ET *DLF,HYF,IEF*

L1 DOMINO 03571 *CHB,DLF,HYF,IEF*
 HH MISS ADVANCE 4098P *DLF,HYF,IEF*
 HH ADVANCE 255M 1ET *CHB,DLF,IEC*
 HH MISS ADVANCE 9030J *DOD,DLF,IEF*

CL 1 DOMINO 648S *CHB,DLF,IEF*
KC L1 DOMETT 08004
 KC L1 DOMETT 05081

CL 1 DOMINO 461P 1ET *CHB,DLF,IEF*
 CL 1 DOMINETTE 249M
 CHURCHILL ADVANCE 363 *CHB,DLF,IEF*
 KC L1 DOMETT 01162

BW	WW
NA	685



BW	WW	YW	Milk	M&G
3.2	60	99	26	56

*Dam's MPPA: 112.2 on 4 head.
 Dam has produced sons for Martin Ranch, Keller Ranch and Mrnak Herefords.
 14081 ranks in the top 6% of the breed for WW and YW and the top 7% for M&G.*

YEARLING BULLS



LOT 8

KC L1 DOMINO 14083 *DLF,HYF,IEF*

REG# 43531183

DOB: 4/7/2014

HH ADVANCE 8019U ET *CHB,DLF,HYF,IEF*
HH ADVANCE 0149X *DLF,HYF,IEF*
 HH MISS ADVANCE 7088T ET *DLF,HYF,IEF*

L1 DOMINO 03571 *CHB,DLF,HYF,IEF*
 HH MISS ADVANCE 4098P *DLF,HYF,IEF*
 HH ADVANCE 255M 1ET *CHB,DLF,IEC*
 HH MISS ADVANCE 9030J *DOD,DLF,IEF*

CL 1 DOMINO 285M *CHB,SOD,DLF,HYF,IEF*
KC L1 DOMETT 04008 *DLF,HYF,IEF*
 C L1 DOMETT 5170

CL 1 DOMINO 9126J 1ET *SOD,CHB,DLF,IEF*
 CL 1 DOMINETTE 8184H *DOD*
 CL 1 DOMINO 320
 C L1 MISS VOLT 2232

BW	WW
NA	689



BW	WW	YW	Milk	M&G
1.1	50	78	19	44

Dam's MPPA: 101.2 on 9 head.

Retaining 1/4 semen interest. Dam is a great old cow that just doesn't miss. Sons have sold to Logterman Herefords, Hettle Herefords, Weishaar Herefords, Hackamore, Davis and Vig Ranches.



LOT 9

KC L1 DOMINO 14090 *DLF,HYF,IEF*

REG# 43531197

DOB: 4/9/2014

HH ADVANCE 8019U ET *CHB,DLF,HYF,IEF*
HH ADVANCE 0149X *DLF,HYF,IEF*
 HH MISS ADVANCE 7088T ET *DLF,HYF,IEF*

L1 DOMINO 03571 *CHB,DLF,HYF,IEF*
 HH MISS ADVANCE 4098P *DLF,HYF,IEF*
 HH ADVANCE 255M 1ET *CHB,DLF,IEC*
 HH MISS ADVANCE 9030J *DOD,DLF,IEF*

CL 1 DOMINO 04011 *CHB,DLF,IEF*
KC L1 DOMETT 09004
 KC L1 DOMETT 04092

CL 1 DOMINO 212M *CHB,SOD,DLF,IEF*
 C L1 DOMETT 7112
 OXH DOMINO 1240
 C L1 DOMETT 4245

BW	WW
NA	629



BW	WW	YW	Milk	M&G
4.5	62	102	16	47

Dam's MPPA: 94 on 4 head.

14090 ranks in the top 4% of the breed for WW and YW.

YEARLING BULLS



LOT 10 KC L1 DOMINO 14092 *DLF,HYF,IEF*

REG# 43531199

DOB: 4/10/2014

HH ADVANCE 8019U ET *CHB,DLF,HYF,IEF*
HH ADVANCE 0149X *DLF,HYF,IEF*
 HH MISS ADVANCE 7088T ET *DLF,HYF,IEF*

L1 DOMINO 03571 *CHB,DLF,HYF,IEF*
 HH MISS ADVANCE 4098P *DLF,HYF,IEF*
 HH ADVANCE 255M 1ET *CHB,DLF,IEC*
 HH MISS ADVANCE 9030J *DOD,DLF,IEF*

CL 1 DOMINO 04011 *CHB,DLF,IEF*
KC L1 DOMETT 06012
 KC L1 DOMETT 04113

CL 1 DOMINO 212M *CHB,SOD,DLF,IEF*
 C L1 DOMETT 7112
 OXH DOMINO 1240
 C L1 MISS VOLT 2206

BW	WW
NA	701



BW	WW	YW	Milk	M&G
4.1	62	99	21	52

Dam's MPPA: 102.2 on 7 head.

Maternal half brother sold to Capp Ranch in our 2013 sale.

14092 ranks in the top 4% of the breed for WW and the top 6% for YW.



LOT 11 KC L1 DOMINO 14071 *DLF,HYF,IEF*

REG# 43531179

DOB: 4/4/2014

HH ADVANCE 8019U ET *CHB,DLF,HYF,IEF*
HH ADVANCE 0149X *DLF,HYF,IEF*
 HH MISS ADVANCE 7088T ET *DLF,HYF,IEF*

L1 DOMINO 03571 *CHB,DLF,HYF,IEF*
 HH MISS ADVANCE 4098P *DLF,HYF,IEF*
 HH ADVANCE 255M 1ET *CHB,DLF,IEC*
 HH MISS ADVANCE 9030J *DOD,DLF,IEF*

CL 1 DOMINO 976J *SOD*
JC L1 DOMETT 4054P
 C L1 DOMINO 9070

HH ADVANCE 767G 1ET *SOD,CHB,DLF,IEF*
 CL 1 DOMINETTE 6121F
 CL 1 DOMINO 5151E
 C L1 DOMETT 4222

BW	WW
NA	713



BW	WW	YW	Milk	M&G
2.3	49	78	19	44

Dam's MPPA: 103.2 on 8 head.

Dam is a great old 10 year old cow that has produced sons for Mortenson Cattle Co. and Price Ranch. Excellent uddered cow family in this pedigree. 4071 got an ear infection after weaning and still holds his head a little tilted. It won't affect his progeny. Don't overlook him.

YEARLING BULLS



LOT 12 KC L1 DOMINO 14011 *DLF,HYF,IEF*

REG# 43530820

DOB: 3/22/2014

UPS DOMINO 3027 *CHB,SOD,DLF,HYF,IEF*
K&B THUNDERSTRUCK 113Y 1ET *DLF,HYF,IEF*
 K&B MISS EXCEL 4216

CL 1 DOMINO 9126J 1ET *SOD,CHB,DLF,IEF*
 UPS MISS DIAMOND 1353
 GO EXCEL L18 *CHB,SOD,DLF,HYF,IEF*
 K&B MISS ADVANCE 9665

CL 1 DOMINO 4162P 1ET *CHB,SOD,DLF,IEF*
KC L1 DOMETT 06038 *DOD*
 KC L1 DOMETT 02067

CL 1 DOMINO 9126J 1ET *SOD,CHB,DLF,IEF*
 CL 1 DOMINETTE 8104H 1ET
 HH ADVANCE 7042G *SOD*
 C L1 DOMETT 4061

BW	WW
NA	589



BW	WW	YW	Milk	M&G
2.4	41	73	33	53

Dam has a 106% WW ratio and a 107.4% YW ratio on her progeny. She has produced sons for Klein and Price Ranches.

14011 ranks in the top 2% of the breed for Milk and the top 15% for M&G.

LOT 13 KC L1 DOMINO 14014 *DLF,HYF,IEF*

REG# 43530919

DOB: 3/24/2014

UPS DOMINO 3027 *CHB,SOD,DLF,HYF,IEF*
K&B THUNDERSTRUCK 113Y 1ET *DLF,HYF,IEF*
 K&B MISS EXCEL 4216

CL 1 DOMINO 9126J 1ET *SOD,CHB,DLF,IEF*
 UPS MISS DIAMOND 1353
 GO EXCEL L18 *CHB,SOD,DLF,HYF,IEF*
 K&B MISS ADVANCE 9665

F PROGRESS 930
KC L1 DOMETT 11021
 KC MISS RIBSTONE 09040 *DOD*

CJH HARLAND 408 *SOD,CHB,DLF,HYF,IEF*
 F MS 157K RIBSTONE 758 *DOD*
 F 157K RIBSTONE 765 *CHB,DLF,HYF,IEF*
 KC L1 DOMETT 06100 *DOD*

BW	WW
NA	656



BW	WW	YW	Milk	M&G
3.9	46	79	37	60

Dam's MPPA: 103.7 on 2 head.

14014 ranks in the top 1% of the breed for Milk and the top 3% for M&G.

The Bull's Purpose #1

Your bull's #1 purpose is to get your cows bred and produce a live calf. That is why we put so much emphasis on moderate birth weights because we range calve all our cows. Our program is built on raising structurally correct, sound footed bulls with big scrotal measurements. It is a proven fact that large scrotal measurements translate to fertility and milk.

YEARLING BULLS



LOT 14 KC L1 DOMINO 14016 *DLF,HYF,IEF*

REG# 43530962

DOB: 3/24/2014

UPS DOMINO 3027 *CHB,SOD,DLF,HYF,IEF*
K&B THUNDERSTRUCK 113Y 1ET *DLF,HYF,IEF*
 K&B MISS EXCEL 4216

CL 1 DOMINO 9126J 1ET *SOD,CHB,DLF,IEF*
 UPS MISS DIAMOND 1353
 GO EXCEL L18 *CHB,SOD,DLF,HYF,IEF*
 K&B MISS ADVANCE 9665

F 157K RIBSTONE 765 *CHB,DLF,HYF,IEF*
KC MISS RIBSTONE 11045
 KC L1 DOMETT 04008 *DLF,HYF,IEF*

K 64H RIBSTONE LAD 157K *CHB,SOD,DLF,HYF,IEF*
 F MS BONANZA 246
 CL 1 DOMINO 285M *CHB,SOD,DLF,HYF,IEF*
 C L1 DOMETT 5170

BW	WW
NA	662



BW	WW	YW	Milk	M&G
2.8	46	71	33	56

Dam's MPPA: 98.6 on 2 head.

Maternal grandam is also the dam of Lot 8.

14016 ranks in the top 2% of the breed for Milk and the top 8% for M&G.



LOT 15 KC L1 DOMINO 14023 *DLF,HYF,IEF*

REG# 43530709

DOB: 3/27/2014

UPS DOMINO 3027 *CHB,SOD,DLF,HYF,IEF*
K&B THUNDERSTRUCK 113Y 1ET *DLF,HYF,IEF*
 K&B MISS EXCEL 4216

CL 1 DOMINO 9126J 1ET *SOD,CHB,DLF,IEF*
 UPS MISS DIAMOND 1353
 GO EXCEL L18 *CHB,SOD,DLF,HYF,IEF*
 K&B MISS ADVANCE 9665

OXH DOMINO 1240
KC L1 DOMETT 04092
 C L1 DOMETT 4245

CL 1 DOMINO 5131E *SOD,DLF,IEF*
 OXH ROXI 1273
 CL 1 VOLT 1094
 C L1 DOMINETTE 7061

BW	WW
NA	663



BW	WW	YW	Milk	M&G
4.0	44	72	27	49

Dam's MPPA: 98.4 on 8 head.

14023 ranks in the top 15% of the breed for Milk.

YEARLING BULLS



LOT 16 **KC L1 DOMINO 14028** *DLF,HYF,IEF* DOB: 3/29/2014

REG# 43530875

UPS DOMINO 3027 *CHB,SOD,DLF,HYF,IEF*
K&B THUNDERSTRUCK 113Y 1ET *DLF,HYF,IEF*
 K&B MISS EXCEL 4216

CL 1 DOMINO 9126J 1ET *SOD,CHB,DLF,IEF*
 UPS MISS DIAMOND 1353
 GO EXCEL L18 *CHB,SOD,DLF,HYF,IEF*
 K&B MISS ADVANCE 9665

UPS DOMINO 5216 *SOD,CHB,DLF,IEF*
KC L1 DOMETT 10006
 KC L1 DOMETT 03049

UPS DOMINO 3027 *CHB,SOD,DLF,HYF,IEF*
 UPS MISS MOM 2756 *DOD*
 KB L1 DOMINO 8170 *SOD*
 C L1 DOMETT 4240

BW	WW
NA	628



BW	WW	YW	Milk	M&G
4.5	47	74	29	52

Dam's MPPA: 97.0 on 2 head.

14028 ranks in the top 8% of the breed for Milk.



LOT 17 **KC L1 DOMINO 14033** *DLF,HYF,IEF* DOB: 3/29/2014

REG# 43530973

UPS DOMINO 3027 *CHB,SOD,DLF,HYF,IEF*
K&B THUNDERSTRUCK 113Y 1ET *DLF,HYF,IEF*
 K&B MISS EXCEL 4216

CL 1 DOMINO 9126J 1ET *SOD,CHB,DLF,IEF*
 UPS MISS DIAMOND 1353
 GO EXCEL L18 *CHB,SOD,DLF,HYF,IEF*
 K&B MISS ADVANCE 9665

F PROGRESS 930
KC L1 DOMETT 11092
 KC L1 DOMETT 09024

CJH HARLAND 408 *SOD,CHB,DLF,HYF,IEF*
 F MS 157K RIBSTONE 758 *DOD*
 UPS DOMINO 5216 *SOD,CHB,DLF,IEF*
 KC L1 DOMETT 04051

BW	WW
NA	667



BW	WW	YW	Milk	M&G
3.4	47	76	34	57

Dam's MPPA: 100.6 on 2 head.

Dam is one of the most popular young cows on the ranch. Maternal half brother sells as Lot 21.

14033 ranks in the top 1% of the breed for Milk and the top 8% for M&G.

YEARLING BULLS



LOT 18 KC L1 DOMINO 14038 *DLF,HYF,IEF* DOB: 3/31/2014

REG# 43530712

UPS DOMINO 3027 *CHB,SOD,DLF,HYF,IEF*
K&B THUNDERSTRUCK 113Y 1ET *DLF,HYF,IEF*
 K&B MISS EXCEL 4216

CL 1 DOMINO 9126J 1ET *SOD,CHB,DLF,IEF*
 UPS MISS DIAMOND 1353
 GO EXCEL L18 *CHB,SOD,DLF,HYF,IEF*
 K&B MISS ADVANCE 9665

OXH DOMINO 1240
KC L1 DOMETT 04109 *DOD*
 C L1 DOMETT 4146

CL 1 DOMINO 5131E *SOD,DLF,IEF*
 OXH ROXI 1273
 CL 1 DOMINO 158
 C L1 MISS VOLT 0126

BW	WW
NA	672



BW	WW	YW	Milk	M&G
3.9	44	70	31	53

Dam's MPPA: 107 on 9 head.

Dam of Distinction cow that has a perfect udder at 10 years of age. 4038 should sire a tremendous set of females. 4109 sons have sold to ranches in ND, SD and TX. 14038 ranks in the top 4% of the breed for Milk and the top 15% for M&G.

The Bull's Purpose #2

Your bull's #2 purpose is for your range/herd bull to sire progeny with eye appeal and performance. Eye appeal is and has always been, easy to market.

YEARLING BULLS



LOT 19 KC L1 DOMINO 14059 *DLF,HYF,IEF*

REG# 43530860

DOB: 4/3/2014

UPS DOMINO 3027 *CHB,SOD,DLF,HYF,IEF*
K&B THUNDERSTRUCK 113Y 1ET *DLF,HYF,IEF*
 K&B MISS EXCEL 4216

CL 1 DOMINO 9126J 1ET *SOD,CHB,DLF,IEF*
 UPS MISS DIAMOND 1353
 GO EXCEL L18 *CHB,SOD,DLF,HYF,IEF*
 K&B MISS ADVANCE 9665

UPS DOMINO 5216 *SOD,CHB,DLF,IEF*
KC L1 DOMETT 09041
 KC L1 DOMETT 05099 *DOD*

UPS DOMINO 3027 *CHB,SOD,DLF,HYF,IEF*
 UPS MISS MOM 2756 *DOD*
 CHURCHILL ADVANCE 363 *CHB,DLF,IEF*
 KC L1 DOMETT 02033

BW	WW
NA	711



BW	WW	YW	Milk	M&G
3.8	51	73	33	58

Dam's MPPA: 105.8 on 3 head.

Full brother sells as Lot 39.

14059 ranks in the top 2% of the breed for Milk and the top 5% for M&G.

LOT 20 KC L1 DOMINO 14077 *DLF,HYF,IEF*

REG# 43530862

DOB: 4/6/2014

UPS DOMINO 3027 *CHB,SOD,DLF,HYF,IEF*
K&B THUNDERSTRUCK 113Y 1ET *DLF,HYF,IEF*
 K&B MISS EXCEL 4216

CL 1 DOMINO 9126J 1ET *SOD,CHB,DLF,IEF*
 UPS MISS DIAMOND 1353
 GO EXCEL L18 *CHB,SOD,DLF,HYF,IEF*
 K&B MISS ADVANCE 9665

CL 1 DOMINO 04011 *CHB,DLF,IEF*
KC L1 DOMETT 09044
 KC L1 DOMETT 03021 *DOD*

CL 1 DOMINO 212M *CHB,SOD,DLF,IEF*
 C L1 DOMETT 7112
 OXH DOMINO 1240
 CL1 DOMETT 00182

BW	WW
NA	612



BW	WW	YW	Milk	M&G
3.1	45	74	26	48

Dam's MPPA: 98 on 4 head.

TWO-YEAR OLD BULLS



LOT 21 KC L1 DOMINO 13001

DOB: 3/11/2013

REG# 43431262

HH ADVANCE 5104R SOD,CHB,DLF,IEF
B&D ADVANCE 9162 DLF,HYF,IEF
 B&D L1 DOMINET 7171 DLF,HYF,IEF

CL 1 DOMINO 206M DLF,HYF,IEF
 HH MISS ADVANCE 153L DOD,DLF,IEF
 JA L1 DOMINO 9217 CHB
 B&D L1 DOMINET 3103

F PROGRESS 930
KC L1 DOMETT 11092
 KC L1 DOMETT 09024

CJH HARLAND 408 SOD,CHB,DLF,HYF,IEF
 F MS 157K RIBSTONE 758 DOD
 UPS DOMINO 5216 SOD,CHB,DLF,IEF
 KC L1 DOMETT 04051

BW	WW Ratio	YW Ratio
74	98	99

BW	WW	YW	Milk	M&G
1.4	43	73	29	50

Dam's MPPA: 100.6 on 2 head.

Low birth weight bull with tremendous length, thickness and eye appeal. He has a great young mother with a picture perfect udder. Used on heifers. Trich tested.
 13001 ranks in the top 10% of the breed for Milk and the top 15% for BW.



LOT 22 JC L1 DOMINO 3003A

DOB: 3/21/2013

REG# 43434416

CL 1 DOMINO 886U CHB,DLF,HYF,IEF
BCC ADVANCE 103Y ET DLF,HYF,IEF
 HH MISS ADVANCE 4021P ET DLF,HYF,IEF

CL 1 DOMINO 638S DLF,IEF
 CL 1 DOMINETTE 440P 1ET DLF,HYF,IEF
 HH ADVANCE 145L SOD,CHB,DLF,IEF
 CL 1 DOMINET 496 1ET

JC L1 DOMINO 5031R
JC L1 DOMETT 8087U
 CL1 DOMETT 00192

CL1 DOMINO 1108L SOD
 CL1 DOMETT 00073
 CL 1 DOMINO 5109E SOD
 C L1 DOMETT 5100

BW	WW Ratio	YW Ratio
89	98	99

BW	WW	YW	Milk	M&G
3.4	47	73	17	41

Dam's MPPA: 93.7 on 5 head.
 Used on heifers. Trich tested.

TWO-YEAR OLD BULLS



LOT 23

JC L1 DOMINO 3005A

DOB: 3/24/2013

REG# 43434411

JC L1 DOMINO 5031R

CL1 DOMINO 1108L SOD

CL1 DOMETT 00073

CL 1 DOMINO 8146H 1ET CHB
CL 1 DOMINETTE 8123H 2ET
CL 1 DOMINO 848H SOD
C L1 DOMETT 7111

JC L10METT 8020U

HH ADVANCE 3143N

JC L1 DOMETT 3003N

CL 1 DOMINO 500E SOD,DLF,IEF
HH MS ADV 824H 1ET
CL 1 DOMINO 848H SOD
C L1 DOMETT 8056

BW	WW Ratio	YW Ratio
88	107	106

BW	WW	YW	Milk	M&G
1.7	46	70	15	38

Dam's MPPA: 101.1 on 5 head.
Dam produced a son for Tenold Ranch.



LOT 24

JC L1 DOMINO 3009A

DOB: 3/25/2013

REG# 43434292

JC L1 DOMINO 1029Y

HH ADVANCE 338N 1ET DLF,IEF

DLF,HYF,IEF

JC L1 DOMETT 3028N DOD

HH ADVANCE 0024K SOD,DLF,IEF
CL 1 DOMINET 496 1ET
CL 1 DOMINO 014K SOD
JC L1 DOMETT 1039L

JC L1 DOMETT 0038X

CL 1 DOMINO 747T 1ET

JC L1 DOMETT 3030N DOD

HH ADVANCE 3113N 1ET SOD,CHB
CL 1 DOMINETTE 0112K 1ET
CL 1 DOMINO 976J SOD
CL1 DOMETT 00093 DOD

BW	WW Ratio	YW Ratio
90	91	106

BW	WW	YW	Milk	M&G
4.2	45	84	25	48

Excellent cow family behind this guy. Three DOD cows plus three SOD bulls in his pedigree. Photo of grandam, 3030.

TWO-YEAR OLD BULLS



LOT 25 KC L1 DOMINO 13010

DOB: 3/19/2013

REG# 43431256

HH ADVANCE 5104R *SOD,CHB,DLF,IEF*
B&D ADVANCE 9162 *DLF,HYF,IEF*
 B&D L1 DOMINET 7171 *DLF,HYF,IEF*

CL 1 DOMINO 206M *DLF,HYF,IEF*
 HH MISS ADVANCE 153L *DOD,DLF,IEF*
 JA L1 DOMINO 9217 *CHB*
 B&D L1 DOMINET 3103

F 157K RIBSTONE 765 *CHB,DLF,HYF,IEF*
KC MISS RIBSTONE 11084
 KC L1 DOMETT 06048

K 64H RIBSTONE LAD 157K *CHB,SOD,DLF,HYF,IEF*
 F MS BONANZA 246
 CL 1 DOMINO 4102P 1ET *CHB,DLF,IEF*
 KC L1 DOMETT 02008

BW	WW Ratio	YW Ratio
85	103	103

BW	WW	YW	Milk	M&G
3.2	49	82	26	51

*Dam's MPPA: 102.9 on 2 head.
 Used on heifers. Trich tested.*



LOT 26 KC RIBSTONE 13013

DOB: 3/19/2013

REG# 43430592

K 64H RIBSTONE LAD 157K *CHB,SOD,DLF,HYF,IEF*
F 157K RIBSTONE 765 *CHB,DLF,HYF,IEF*
 F MS BONANZA 246

STANDARD 16E RIBSTONE 64H
 K 61Z SUPER LADY 41G
 LPG BONANZA 52G
 F MS 9322 DOMINO 851 *DOD*

CL 1 DOMINO 04011 *CHB,DLF,IEF*
KC L1 DOMETT 07051
 KC L1 DOMETT 01075 *DOD*

CL 1 DOMINO 212M *CHB,SOD,DLF,IEF*
 C L1 DOMETT 7112
 CL 1 DOMINO 450 *SOD*
 C L1 DOMETT 4146

BW	WW Ratio	YW Ratio
89	91	97

BW	WW	YW	Milk	M&G
3.8	44	80	22	44

Big, stout Ribstone son. This is the last of the direct sons of 765 to sell although his influence will remain for years to come.

TWO-YEAR OLD BULLS

LOT 27 KC L1 DOMINO 13122

DOB: 6/3/2013

REG# 43430615

HH ADVANCE 8203U ET *CHB,DLF,IEF*
HH ADVANCE 0207X *DLF,HYF,IEF*
 HH MISS ADVANCE 7066T *DOD,DLF,HYF,IEF*

HH ADVANCE 5161R *CHB,DLF,IEF*
 HH MISS ADVANCE 752G
 CL 1 DOMINO 320N *CHB,SOD,DLF,HYF,IEF*
 HH MISS ADVANCE 5193R

CL 1 DOMINO 648S *CHB,DLF,IEF*
KC L1 DOMETT 08047
 KC L1 DOMETT 04109 *DOD*

CL 1 DOMINO 461P 1ET *CHB,DLF,IEF*
 CL 1 DOMINETTE 249M
 OXH DOMINO 1240
 C L1 DOMETT 4146

BW	WW Ratio	YW Ratio
101	98	NA

BW	WW	YW	Milk	M&G
6.7	58	100	25	54

Dam's MPPA: 98.6 on 5 head.

Dam produced a son for Benson Ranch in our 2013 sale.

13122 ranks in the top 5% of the breed for YW and the top 15% for WW and M&G.

LOT 28 JC L1 DOMINO 3015A

DOB: 3/30/2013

REG# 43434396

CL 1 DOMINO 1108L *SOD*
JC L1 DOMINO 5031R
 CL 1 DOMETT 00073

CL 1 DOMINO 8146H 1ET *CHB*
 CL 1 DOMINETTE 8123H 2ET
 CL 1 DOMINO 848H *SOD*
 C L1 DOMETT 7111

KC L1 DOMINO 05009
JC L1 DOMETT 7002T
 JC L1 DOMETT 5113R *DOD*

CL 1 DOMINO 212M *CHB,SOD,DLF,IEF*
 KC L1 DOMETT 03119 *DOD*
 CL 1 DOMINO 019K *SOD*
 JC L1 DOMETT 2004M *DOD*

BW	WW Ratio	YW Ratio
68	100	100

BW	WW	YW	Milk	M&G
1.8	45	63	15	38

Dam's MPPA: 98.6 on 7 head.

Full brother sold to Mortenson Cattle Co. in our 2014 sale.



LOT 29 JC L1 DOMINO 3024A

DOB: 4/3/2013

REG# 43434291

CL 1 DOMINO 886U *CHB,DLF,HYF,IEF*
BCC ADVANCE 103Y ET *DLF,HYF,IEF*
 HH MISS ADVANCE 4021P ET *DLF,HYF,IEF*

CL 1 DOMINO 638S *DLF,IEF*
 CL 1 DOMINETTE 440P 1ET *DLF,HYF,IEF*
 HH ADVANCE 145L *SOD,CHB,DLF,IEF*
 CL 1 DOMINET 496 1ET

CL 1 DOMINO 747T 1ET
JC L1 DOMETT 0034X
 JC L1 DOMETT 3045N

HH ADVANCE 3113N 1ET *SOD,CHB*
 CL 1 DOMINETTE 0112K 1ET
 CL 1 DOMINO 976J *SOD*
 CL 1 DOMETT 00177

BW	WW Ratio	YW Ratio
85	94	102

BW	WW	YW	Milk	M&G
3.0	44	76	24	47

Dam's MPPA: 97.7 on 3 head.

Used on heifers. Trich tested.

TWO-YEAR OLD BULLS



LOT30 JC L1 DOMINO 3030A

DOB: 4/5/2013

REG# 43434420

L1 DOMINO 03396 *CHB,DLF,IEF*
CL 1 DOMINO 6105S CHB
 CL 1 DOMINETTE 243M

L1 DOMINO 00552
 L1 DOMINETTE 96893 *DOD*
 CL 1 DOMINO 9126J 1ET *SOD,CHB,DLF,IEF*
 CL 1 DOMINETTE 8151H

JC L1 DOMINO 5031R
JC L1 DOMETT 9078W
 JC L1 DOMETT 2065M

CL1 DOMINO 1108L *SOD*
 CL1 DOMETT 00073
 CL 1 DOMINO 855H
 C L1 DOMETT 99004

BW	WW Ratio	YW Ratio
90	102	100

BW	WW	YW	Milk	M&G
4.0	56	81	13	41

Dam's MPPA: 99.1 on 4 head.

Maternal half brother sold to Northrop Ranch in our 2014 sale.

LOT31 JC L1 DOMINO 3032A

DOB: 4/7/2013

REG# 43434427

L1 DOMINO 03396 *CHB,DLF,IEF*
CL 1 DOMINO 6105S CHB
 CL 1 DOMINETTE 243M

L1 DOMINO 00552
 L1 DOMINETTE 96893 *DOD*
 CL 1 DOMINO 9126J 1ET *SOD,CHB,DLF,IEF*
 CL 1 DOMINETTE 8151H

CL1 DOMINO 1108L *SOD*
JC L1 DOMETT 4085P DOD
 JC L1 DOMETT 1012L *DOD*

CL 1 DOMINO 8146H 1ET *CHB*
 CL 1 DOMINETTE 8123H 2ET
 CL 1 DOMINO 848H *SOD*
 C L1 DOMETT 8021

BW	WW Ratio	YW Ratio
75	100	100

BW	WW	YW	Milk	M&G
4.1	58	85	15	44

Dam's MPPA: 102.8 on 10 head.

Maternal half brother sold to Holt Ranch in our 2014 sale. Pedigree is stacked with great cows.

LOT32 KC L1 DOMINO 13027

DOB: 3/23/2013

REG# 43431253

HH ADVANCE 5104R *SOD,CHB,DLF,IEF*
B&D ADVANCE 9162 DLF,HYF,IEF
 B&D L1 DOMINET 7171 *DLF,HYF,IEF*

CL 1 DOMINO 206M *DLF,HYF,IEF*
 HH MISS ADVANCE 153L *DOD,DLF,IEF*
 JA L1 DOMINO 9217 *CHB*
 B&D L1 DOMINET 3103

F 157K RIBSTONE 765 *CHB,DLF,HYF,IEF*
KC MISS RIBSTONE 11063
 KC L1 DOMETT 07092

K 64H RIBSTONE LAD 157K *CHB,SOD,DLF,HYF,IEF*
 F MS BONANZA 246
 KC L1 DOMINO 05012
 KC L1 DOMETT 03045

BW	WW Ratio	YW Ratio
84	103	113

BW	WW	YW	Milk	M&G
3.3	52	98	27	53

Dam's MPPA: 103.4 on 2 head.

Used on heifers. Trich tested.

13027 ranks in the top 7% of the breed for YW and the top 15% for Milk and M&G.

TWO-YEAR OLD BULLS



LOT 33

KC L1 DOMINO 13029

DOB: 3/24/2013

REG# 43430550

HH ADVANCE 8203U ET *CHB,DLF,IEF*
HH ADVANCE 0207X *DLF,HYF,IEF*
 HH MISS ADVANCE 7066T *DOD,DLF,HYF,IEF*

HH ADVANCE 5161R *CHB,DLF,IEF*
 HH MISS ADVANCE 752G
 CL 1 DOMINO 320N *CHB,SOD,DLF,HYF,IEF*
 HH MISS ADVANCE 5193R

CL 1 DOMINO 0123K *SOD*
KC L1 DOMETT 03035
 C L1 DOMETT 5170

CL 1 DOMINO 8146H 1ET *CHB*
 CL 1 DOMINETTE 767G *DOD*
 CL 1 DOMINO 320
 C L1 MISS VOLT 2232

BW	WW Ratio	YW Ratio
88	91	93

BW	WW	YW	Milk	M&G
3.5	47	75	21	45

*Dam's MPPA: 98.5 on 10 head.
 Maternal half brother sold to Seim Ranch.*



LOT 34

JC L1 DOMINO 3028A

DOB: 4/5/2013

REG# 43434327

L1 DOMINO 03396 *CHB,DLF,IEF*
CL 1 DOMINO 6105S *CHB*
 CL 1 DOMINETTE 243M

L1 DOMINO 00552
 L1 DOMINETTE 96893 *DOD*
 CL 1 DOMINO 9126J 1ET *SOD,CHB,DLF,IEF*
 CL 1 DOMINETTE 8151H

CL 1 DOMINO 976J *SOD*
JC L1 DOMETT 2023M
 CL1 DOMETT 00093 *DOD*

HH ADVANCE 767G 1ET *SOD,CHB,DLF,IEF*
 CL 1 DOMINETTE 6121F
 CL 1 DOMINO 7140G *SOD*
 C L1 DOMETT 5055

BW	WW Ratio	YW Ratio
88	96	85

BW	WW	YW	Milk	M&G
2.8	44	57	19	41

Dam's MPPA: 95.0 on 10 head.

TWO-YEAR OLD BULLS



LOT35 JC L1 DOMINO 3034A

DOB: 4/7/2013

REG# 43434388

L1 DOMINO 03396 *CHB,DLF,IEF*
CL 1 DOMINO 6105S *CHB*
 CL 1 DOMINETTE 243M

CL 1 DOMINO 4162P 1ET *CHB,SOD,DLF,IEF*
JC L1 DOMETT 6043S *DOD*
 JC L1 DOMETT 3053N

L1 DOMINO 00552
 L1 DOMINETTE 96893 *DOD*
 CL 1 DOMINO 9126J 1ET *SOD,CHB,DLF,IEF*
 CL 1 DOMINETTE 8151H

CL 1 DOMINO 9126J 1ET *SOD,CHB,DLF,IEF*
 CL 1 DOMINETTE 8104H 1ET
 CL 1 DOMINO 014K *SOD*
 JC L1 DOMETT 1003L

BW	WW Ratio	YW Ratio
88	105	105

BW	WW	YW	Milk	M&G
1.7	50	74	22	47

*Dam's MPPA: 105.8 on 7 head.
 Sons have sold to Beer and Fox Ranches.*



LOT36 JC L1 DOMINO 3040A

DOB: 4/10/2013

REG# 43434417

JC L1 DOMINO 5031R
 CL1 DOMINO 1108L *SOD*
 CL1 DOMETT 00073

JC L1 DOMETT 9000W
 KC L1 DOMINO 05009
 JC L1 DOMETT 2004M *DOD*

CL 1 DOMINO 8146H 1ET *CHB*
 CL 1 DOMINETTE 8123H 2ET
 CL 1 DOMINO 848H *SOD*
 C L1 DOMETT 7111

CL 1 DOMINO 212M *CHB,SOD,DLF,IEF*
 KC L1 DOMETT 03119 *DOD*
 CL 1 DOMINO 848H *SOD*
 C L1 DOMETT 8115

BW	WW Ratio	YW Ratio
100	97	100

BW	WW	YW	Milk	M&G
5.4	51	75	13	39

Dam's MPPA: 98.9 on 4 head.

TWO-YEAR OLD BULLS



LOT 37

JC L1 DOMINO 3046A

DOB: 4/12/2013

REG# 43434403

CL1 DOMINO 1108L *SOD*

JC L1 DOMINO 5031R

CL1 DOMETT 00073

CL 1 DOMINO 8146H 1ET *CHB*

CL 1 DOMINETTE 8123H 2ET

CL 1 DOMINO 848H *SOD*

C L1 DOMETT 7111

CL 1 DOMINO 4162P 1ET *CHB,SOD,DLF,IEF*

JC L1 DOMETT 7030T

JC L1 DOMETT 4107P

CL 1 DOMINO 9126J 1ET *SOD,CHB,DLF,IEF*

CL 1 DOMINETTE 8104H 1ET

CL 1 DOMINO 019K *SOD*

JC L1 DOMETT 2004M *DOD*

BW	WW Ratio	YW Ratio
87	95	91

BW	WW	YW	Milk	M&G
0.8	42	53	17	38

Dam's MPPA: 98.8 on 6 head.

Dam has sons working for Krueger Ranch, TX, and one in our operation.

3046A ranks in the top 10% of the breed for BW.

LOT 38

KC RIBSTONE 13039

DOB: 3/24/2013

REG# 43432892

F 157K RIBSTONE 765 *CHB,DLF,HYF,IEF*

KC MR RIBSTONE 11119 *DLF,HYF,IEF*

KC L1 DOMETT 05017 *DOD*

K 64H RIBSTONE LAD 157K *CHB,SOD,DLF,HYF,IEF*

F MS BONANZA 246

CL 1 DOMINO 212M *CHB,SOD,DLF,IEF*

KC L1 DOMETT 03035

CL 1 DOMINO 04011 *CHB,DLF,IEF*

KC L1 DOMETT 08006

CL1 DOMETT 00126

CL 1 DOMINO 212M *CHB,SOD,DLF,IEF*

C L1 DOMETT 7112

CL 1 DOMINO 450 *SOD*

C L1 DOMETT 6096

BW	WW Ratio	YW Ratio
79	95	91

BW	WW	YW	Milk	M&G
0.5	41	61	19	40

Dam's MPPA: 97.5 on 4 head.

Used on heifers. Trich tested.

13039 ranks in the top 10% of the breed for BW.



TWO-YEAR OLD BULLS



LOT 39 KC L1 DOMINO 13042

DOB: 3/26/2013

REG# 43430628

UPS DOMINO 3027 *CHB,SOD,DLF,HYF,IEF*
 K&B THUNDERSTRUCK 113Y 1ET *DLF,HYF,IEF*
 K&B MISS EXCEL 4216

CL 1 DOMINO 9126J 1ET *SOD,CHB,DLF,IEF*
 UPS MISS DIAMOND 1353
 GO EXCEL L18 *CHB,SOD,DLF,HYF,IEF*
 K&B MISS ADVANCE 9665

UPS DOMINO 5216 *SOD,CHB,DLF,IEF*
KC L1 DOMETT 09041
 KC L1 DOMETT 05099 *DOD*

UPS DOMINO 3027 *CHB,SOD,DLF,HYF,IEF*
 UPS MISS MOM 2756 *DOD*
 CHURCHILL ADVANCE 363 *CHB,DLF,IEF*
 KC L1 DOMETT 02033

BW	WW Ratio	YW Ratio
97	113	102

BW	WW	YW	Milk	M&G
5.1	55	77	30	58

Dam's MPPA: 105.8 on 3 head.

Full brother sells as Lot 19.

13042 ranks in the top 5% of the breed for Milk and M&G.



LOT 40 KC RIBSTONE 13043

DOB: 3/26/2013

REG# 43432885

F 157K RIBSTONE 765 *CHB,DLF,HYF,IEF*
KC MR RIBSTONE 11119 *DLF,HYF,IEF*
 KC L1 DOMETT 05017 *DOD*

K 64H RIBSTONE LAD 157K *CHB,SOD,DLF,HYF,IEF*
 F MS BONANZA 246
 CL 1 DOMINO 212M *CHB,SOD,DLF,IEF*
 KC L1 DOMETT 03035

HH ADVANCE 7042G *SOD*
KC L1 DOMETT 03015
 C L1 DOMETT 5234

HH ADVANCE 526E
 HH MS ADVANCE 5032E
 HH ADVANCE 137A
 C L1 DOMETT 2051

BW	WW Ratio	YW Ratio
83	94	97

BW	WW	YW	Milk	M&G
2.0	41	75	18	39

Dam's MPPA: 100.2 on 10 head.

Used on heifers. Trich tested.

Dam produced a son for Jerde Ranch in our 2014 sale.

TWO-YEAR OLD BULLS



LOT 41 KC L1 DOMINO 13044

DOB: 3/26/2013

REG# 43431222

HH ADVANCE 5104R *SOD,CHB,DLF,IEF*
B&D ADVANCE 9162 *DLF,HYF,IEF*
 B&D L1 DOMINET 7171 *DLF,HYF,IEF*

CL 1 DOMINO 206M *DLF,HYF,IEF*
 HH MISS ADVANCE 153L *DOD,DLF,IEF*
 JA L1 DOMINO 9217 *CHB*
 B&D L1 DOMINET 3103

HH ADVANCE 8097U ET *DLF,IEF*
KC L1 DOMETT 11006
 KC L1 DOMETT 08059

L1 DOMINO 03571 *CHB,DLF,HYF,IEF*
 HH MISS ADVANCE 1088L *DOD,DLF,HYF,IEF*
 CJH L1 DOMINO 0041 *DLF,IEF*
 C L1 DOMETT 4029

BW	WW Ratio	YW Ratio
86	102	103

BW	WW	YW	Milk	M&G
3.1	46	78	28	51

*Dam's MPPA: 98.6 on 2 head.
 Used on heifers. Trich tested.
 13044 ranks in the top 10% of the breed for Milk.*

LOT 42 KC RIBSTONE 13048

DOB: 3/30/2013

REG# Unregistered

F 157K RIBSTONE 765 *CHB,DLF,HYF,IEF*
KC MR RIBSTONE 11119 *DLF,HYF,IEF*
 KC L1 DOMETT 05017 *DOD*

K 64H RIBSTONE LAD 157K *CHB,SOD,DLF,HYF,IEF*
 F MS BONANZA 246
 CL 1 DOMINO 212M *CHB,SOD,DLF,IEF*
 KC L1 DOMETT 03035

BW	WW Ratio	YW Ratio
69		

BW	WW	YW	Milk	M&G

Recommended for heifers. Used on heifers. Trich tested.

The Bull's Purpose #3

Your bull's #3 purpose is to leave you with a strong maternal base. Hereford and Hereford cross females are the most sought after females in the cattle industry today. This offering is represented by the most maternal sires in the breed (5104, 3027, Ribstone, L18, 767G and many more).

If these traits are as important to you as they are to us then plan to join us on February 21st at 1 PM at the ranch.

TWO-YEAR OLD BULLS



LOT 43 JC L1 DOMINO 3049A

DOB: 4/12/2013

REG# 43434419

L1 DOMINO 03396 *CHB,DLF,IEF*
CL 1 DOMINO 6105S CHB
 CL 1 DOMINETTE 243M

JC L1 DOMINO 5031R
JC L1 DOMETT 9026W
 JC L1 DOMETT 2033M

BW	WW Ratio	YW Ratio
95	102	99

Dam's MPPA: 100.7 on 4 head.

L1 DOMINO 00552
 L1 DOMINETTE 96893 *DOD*
 CL 1 DOMINO 9126J 1ET *SOD,CHB,DLF,IEF*
 CL 1 DOMINETTE 8151H

CL1 DOMINO 1108L *SOD*
 CL1 DOMETT 00073
 CL 1 DOMINO 855H
 C L1 DOMETT 99020

BW	WW	YW	Milk	M&G
3.6	54	78	14	41

LOT 44 JC L1 DOMINO 3052A

DOB: 4/14/2013

REG# 43434424

JC L1 DOMINO 5031R
 CL1 DOMINO 1108L *SOD*
 CL1 DOMETT 00073

JC L1 DOMETT 9097W
 CL 1 DOMINO 747T 1ET
 JC L1 DOMETT 3028N *DOD*

BW	WW Ratio	YW Ratio
102	102	99

Dam's MPPA: 101.3 on 4 head.

CL 1 DOMINO 8146H 1ET *CHB*
 CL 1 DOMINETTE 8123H 2ET
 CL 1 DOMINO 848H *SOD*
 C L1 DOMETT 7111

HH ADVANCE 3113N 1ET *SOD,CHB*
 CL 1 DOMINETTE 0112K 1ET
 CL 1 DOMINO 014K *SOD*
 JC L1 DOMETT 1039L

BW	WW	YW	Milk	M&G
5.0	48	69	17	41



TWO-YEAR OLD BULLS



LOT 45 KC RIBSTONE 13051

DOB: 3/26/2013

REG# 43430621

K 64H RIBSTONE LAD 157K *CHB,SOD,DLF,HYF,IEF*
F 157K RIBSTONE 765 *CHB,DLF,HYF,IEF*
 F MS BONANZA 246

STANDARD 16E RIBSTONE 64H
 K 61Z SUPER LADY 41G
 LPG BONANZA 52G
 F MS 9322 DOMINO 851 *DOD*

KC L1 DOMINO 05012
KC L1 DOMETT 08092 *DOD*
 CL1 DOMETT 00162

CL 1 DOMINO 212M *CHB,SOD,DLF,IEF*
 KC L1 DOMETT 01092 *DOD*
 HH ADVANCE 7042G *SOD*
 C L1 DOMETT 8071

BW	WW Ratio	YW Ratio
86	105	94

BW	WW	YW	Milk	M&G
2.7	40	69	26	47

*Dam's MPPA: 106.4 on 5 head.
 Maternal half brother sells as Lot 1.*

LOT 46 KC RIBSTONE 13050

DOB: 3/26/2013

REG# 43432891

F 157K RIBSTONE 765 *CHB,DLF,HYF,IEF*
KC MR RIBSTONE 11119 *DLF,HYF,IEF*
 KC L1 DOMETT 05017 *DOD*

K 64H RIBSTONE LAD 157K *CHB,SOD,DLF,HYF,IEF*
 F MS BONANZA 246
 CL 1 DOMINO 212M *CHB,SOD,DLF,IEF*
 KC L1 DOMETT 03035

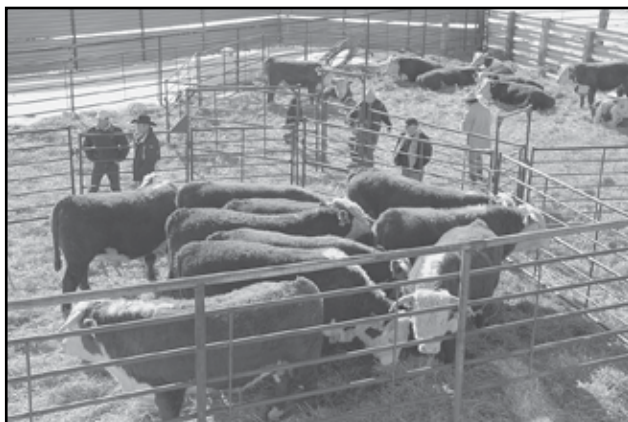
CL 1 DOMINO 4102P 1ET *CHB,DLF,IEF*
KC L1 DOMETT 06048
 KC L1 DOMETT 02008

CL 1 DOMINO 212M *CHB,SOD,DLF,IEF*
 CL 1 DOMINETTE 8184H *DOD*
 CL 1 DOMINO 0123K *SOD*
 C L1 DOMETT 5057

BW	WW Ratio	YW Ratio
83	106	101

BW	WW	YW	Milk	M&G
0.9	46	70	22	45

*Dam's MPPA: 100.6 on 7 head.
 Used on heifers. Trich tested.
 13050 ranks in the top 10% of the breed for BW.*



TWO-YEAR OLD BULLS



LOT 47 KC L1 DOMINO 13053

DOB: 3/27/2013

REG# 43431254

HH ADVANCE 5104R SOD,CHB,DLF,IEF
 B&D ADVANCE 9162 DLF,HYF,IEF
 B&D L1 DOMINET 7171 DLF,HYF,IEF

CL 1 DOMINO 206M DLF,HYF,IEF
 HH MISS ADVANCE 153L DOD,DLF,IEF
 JA L1 DOMINO 9217 CHB
 B&D L1 DOMINET 3103

F 157K RIBSTONE 765 CHB,DLF,HYF,IEF
 KC MISS RIBSTONE 11073
 KC L1 DOMETT 06112

K 64H RIBSTONE LAD 157K CHB,SOD,DLF,HYF,IEF
 F MS BONANZA 246
 CL 1 DOMINO 4162P 1ET CHB,SOD,DLF,IEF
 KC L1 DOMETT 04015

BW	WW Ratio	YW Ratio
81	103	115

BW	WW	YW	Milk	M&G
2.8	51	98	28	53

Dam's MPPA: 97.7 on 2 head.

Used on heifers. Trich tested.

13053 ranks in the top 7% of the breed for YW, the top 10% for Milk and the top 15% for M&G.



LOT 48 JC L1 DOMINO 3059A

DOB: 4/18/2013

REG# 43434391

L1 DOMINO 03396 CHB,DLF,IEF
 CL 1 DOMINO 6105S CHB
 CL 1 DOMINETTE 243M

L1 DOMINO 00552
 L1 DOMINETTE 96893 DOD
 CL 1 DOMINO 9126J 1ET SOD,CHB,DLF,IEF
 CL 1 DOMINETTE 8151H

JC L1 DOMINO 3085N
 JC L1 DOMETT 6096S DOD
 JC L1 DOMETT 3014N

CL 1 DOMINO 848H SOD
 SBH DOMINETTE 6013
 CL 1 DOMINO 976J SOD
 CL1 DOMETT 00041

BW	WW Ratio	YW Ratio
100	117	112

BW	WW	YW	Milk	M&G
5.1	61	89	21	51

Dam has ratios of 110.6% for weaning and 103.6% yearling on her progeny.

3059A ranks in the top 5% of the breed for WW.

TWO-YEAR OLD BULLS

LOT 49

JC L1 DOMINO 3061A

DOB: 4/19/2013

REG# 43434281

CL 1 DOMINO 886U *CHB,DLF,HYF,IEF*
BCC ADVANCE 103Y ET *DLF,HYF,IEF*
 HH MISS ADVANCE 4021P ET *DLF,HYF,IEF*

CL 1 DOMINO 638S *DLF,IEF*
 CL 1 DOMINETTE 440P 1ET *DLF,HYF,IEF*
 HH ADVANCE 145L *SOD,CHB,DLF,IEF*
 CL 1 DOMINET 496 1ET

KC L1 DOMINO 05009
JC L1 DOMETT 0002X
 JC L1 DOMETT 3027N

CL 1 DOMINO 212M *CHB,SOD,DLF,IEF*
 KC L1 DOMETT 03119 *DOD*
 CL 1 DOMINO 848H *SOD*
 C L1 DOMETT 7001

BW	WW Ratio	YW Ratio
92	100	106

BW	WW	YW	Milk	M&G
4.1	52	86	20	46

Dam's MPPA: 102.3 on 3 head.



LOT 50

JC L1 DOMINO 3064A

DOB: 4/24/2013

REG# 43434415

L1 DOMINO 03396 *CHB,DLF,IEF*
CL 1 DOMINO 6105S *CHB*
 CL 1 DOMINETTE 243M

L1 DOMINO 00552
 L1 DOMINETTE 96893 *DOD*
 CL 1 DOMINO 9126J 1ET *SOD,CHB,DLF,IEF*
 CL 1 DOMINETTE 8151H

HH ADVANCE 3143N
JC L1 DOMETT 8079U
 JC L1 DOMETT 3082N

CL 1 DOMINO 500E *SOD,DLF,IEF*
 HH MS ADV 824H 1ET
 CL1 DOMINO 1108L *SOD*
 CL1 DOMETT 00092 *DOD*

BW	WW Ratio	YW Ratio
105	106	105

BW	WW	YW	Milk	M&G
5.5	58	91	17	46

Dam's MPPA: 104.9 on 5 head.

3064A ranks in the top 15% of the breed for WW and the top 16% for YW.



TWO-YEAR OLD BULLS



LOT 51 JC L1 DOMINO 3067A

DOB: 4/27/2013

REG# 43434376

JC L1 DOMINO 5031R

CL1 DOMINO 1108L *SOD*

CL1 DOMETT 00073

CL 1 DOMINO 8146H 1ET *CHB*
CL 1 DOMINETTE 8123H 2ET
CL 1 DOMINO 848H *SOD*
C L1 DOMETT 7111

JC L1 DOMETT 5075R

CL1 DOMINO 1116L

C L1 DOMETT 8093

CL 1 DOMINO 888H 1ET
CL 1 DOMINETTE 7146G
HH ADVANCE 422D
C L1 DOMETT 6086

BW	WW Ratio	YW Ratio
90	95	98

BW	WW	YW	Milk	M&G
2.7	40	57	14	34

Dam's MPPA: 98.6 on 8 head.
Full brothers have sold to Beer Ranch and Jess Carmichael.

LOT 52 KC L1 DOMINO 13061

DOB: 3/29/2013

REG# 43431208

B&D ADVANCE 9162 *DLF,HYF,IEF*

HH ADVANCE 5104R *SOD,CHB,DLF,IEF*

B&D L1 DOMINET 7171 *DLF,HYF,IEF*

CL 1 DOMINO 206M *DLF,HYF,IEF*
HH MISS ADVANCE 153L *DOD,DLF,IEF*
JA L1 DOMINO 9217 *CHB*
B&D L1 DOMINET 3103

KC L1 DOMETT 11002

KC L1 DOMINO 08013

KC L1 DOMETT 06041

CL 1 DOMINO 648S *CHB,DLF,IEF*
KC L1 DOMETT 04007 *DOD*
CL 1 DOMINO 233M
KC L1 DOMETT 04109 *DOD*

BW	WW Ratio	YW Ratio
86	91	98

BW	WW	YW	Milk	M&G
2.7	46	80	25	48

Dam's MPPA: 93.1 on 2 head.
Used on heifers. Trich tested.

TWO-YEAR OLD BULLS

LOT 53

KC RIBSTONE 13068

DOB: 3/31/2013

REG# 43432893

F 157K RIBSTONE 765 *CHB,DLF,HYF,IEF*
KC MR RIBSTONE 11119 *DLF,HYF,IEF*
 KC L1 DOMETT 05017 *DOD*

K 64H RIBSTONE LAD 157K *CHB,SOD,DLF,HYF,IEF*
 F MS BONANZA 246
 CL 1 DOMINO 212M *CHB,SOD,DLF,IEF*
 KC L1 DOMETT 03035

CJH L1 DOMINO 0041 *DLF,IEF*
KC L1 DOMETT 08051
 C L1 DOMETT 7112

CJH L1 DOMINO 821 *CHB,SOD*
 CJH STARLET LASS 151
 CL 1 DOMINO 5151E
 C L1 DOMETT 4071

BW	WW Ratio	YW Ratio
84	94	94

BW	WW	YW	Milk	M&G
1.5	39	61	26	45

*Dam's MPPA: 103.3 on 4 head.
 Used on heifers. Trich tested.*



LOT 54

KC L1 DOMINO 13070

DOB: 3/31/2013

REG# 43430636

UPS DOMINO 3027 *CHB,SOD,DLF,HYF,IEF*
K&B THUNDERSTRUCK 113Y 1ET *DLF,HYF,IEF*
 K&B MISS EXCEL 4216

CL 1 DOMINO 9126J 1ET *SOD,CHB,DLF,IEF*
 UPS MISS DIAMOND 1353
 GO EXCEL L18 *CHB,SOD,DLF,HYF,IEF*
 K&B MISS ADVANCE 9665

UPS DOMINO 5216 *SOD,CHB,DLF,IEF*
KC L1 DOMETT 10004
 KC L1 DOMETT 01004 *DOD*

UPS DOMINO 3027 *CHB,SOD,DLF,HYF,IEF*
 UPS MISS MOM 2756 *DOD*
 CL 1 DOMINO 320
 C L1 DOMETT 4212

BW	WW Ratio	YW Ratio
88	105	105

BW	WW	YW	Milk	M&G
4.8	51	84	29	54

*Dam's MPPA: 106 on 2 head.
 13070 ranks in the top 10% of the breed for Milk and the top 15% for M&G.*

LOT 55

KC L1 DOMINO 13074

DOB: 3/31/2013

REG# 43430574

UPS DOMINO 5216 *SOD,CHB,DLF,IEF*
KC L1 DOMINO 09005 *DLF,HYF,IEF*
 KC L1 DOMETT 02010 *DOD*

UPS DOMINO 3027 *CHB,SOD,DLF,HYF,IEF*
 UPS MISS MOM 2756 *DOD*
 CL 1 DOMINO 0123K *SOD*
 C L1 DOMETT 3158

OXH DOMINO 0138 *SOD*
KC L1 DOMETT 05135
 CL 1 DOMETT 802

CL 1 DOMINO 5131E *SOD,DLF,IEF*
 OXH TONI 0130 *DOD*
 C L1 DOMINO 3001 1ET
 C L1 ANN 076

BW	WW Ratio	YW Ratio
86	96	93

BW	WW	YW	Milk	M&G
0.9	32	56	22	38

*Dam's MPPA: 98.6 on 6 head.
 Used on heifers. Trich tested.
 Dam produced a son for Weishaar Ranch in our 2013 sale.
 13074 ranks in the top 10% of the breed for BW.*

TWO-YEAR OLD BULLS



LOT 56 KC L1 DOMINO 13082

DOB: 4/3/2013

REG# 43431189

UPS DOMINO 3027 *CHB,SOD,DLF,HYF,IEF*
K&B THUNDERSTRUCK 113Y 1ET *DLF,HYF,IEF*
 K&B MISS EXCEL 4216

CL 1 DOMINO 9126J 1ET *SOD,CHB,DLF,IEF*
 UPS MISS DIAMOND 1353
 GO EXCEL L18 *CHB,SOD,DLF,HYF,IEF*
 K&B MISS ADVANCE 9665

F 157K RIBSTONE 765 *CHB,DLF,HYF,IEF*
KC RIBSTONE 10047
 KC L1 DOMETT 04007 *DOD*

K 64H RIBSTONE LAD 157K *CHB,SOD,DLF,HYF,IEF*
 F MS BONANZA 246
 CL 1 DOMINO 285M *CHB,SOD,DLF,HYF,IEF*
 KC L1 DOMETT 02014

BW	WW Ratio	YW Ratio
81	112	113

BW	WW	YW	Milk	M&G
3.5	53	93	31	58

Dam's MPPA: 105.4 on 3 head.

13082 ranks in the top 5% of the breed for Milk and M&G and the top 15% for YW.



TWO-YEAR OLD BULLS



LOT 57

JC L1 DOMINO 3083A

DOB: 5/27/2013

REG# 43434393

L1 DOMINO 03396 *CHB,DLF,IEF*
CL 1 DOMINO 6105S *CHB*
 CL 1 DOMINETTE 243M

L1 DOMINO 00552
 L1 DOMINETTE 96893 *DOD*
 CL 1 DOMINO 9126J 1ET *SOD,CHB,DLF,IEF*
 CL 1 DOMINETTE 8151H

CL1 DOMINO 1108L *SOD*
JC L1 DOMETT 6098S
 CL1 DOMETT 00158 *DOD*

CL 1 DOMINO 8146H 1ET *CHB*
 CL 1 DOMINETTE 8123H 2ET
 CL 1 DOMINO 7140G *SOD*
 C L1 DOMETT 6018

BW	WW Ratio	YW Ratio
94	99	NA

BW	WW	YW	Milk	M&G
4.2	55	82	16	43

*Dam's MPPA: 99.4 on 7 head.
 Dam has produced three sons for the Beer Ranch.*



TWO-YEAR OLD BULLS



LOT 58 JC L1 DOMINO 3084A

DOB: 5/31/2013

REG# 43434394

L1 DOMINO 03396 *CHB,DLF,IEF*
CL 1 DOMINO 6105S *CHB*
 CL 1 DOMINETTE 243M

CL1 DOMINO 1108L *SOD*
JC L1 DOMETT 6104S *DOD*
 C L1 DOMETT 8067

BW	WW Ratio	YW Ratio
88	101	NA

Dam's MPPA: 101.1 on 7 head.

L1 DOMINO 00552
 L1 DOMINETTE 96893 *DOD*
 CL 1 DOMINO 9126J 1ET *SOD,CHB,DLF,IEF*
 CL 1 DOMINETTE 8151H

CL 1 DOMINO 8146H 1ET *CHB*
 CL 1 DOMINETTE 8123H 2ET
 CL 1 DOMINO 216
 C L1 DOMETT 6091

BW	WW	YW	Milk	M&G
2.8	53	76	17	43



TWO-YEAR OLD BULLS



LOT 59

JC L1 DOMINO 3079A

DOB: 5/11/2013

REG# 43434373

L1 DOMINO 03396 *CHB,DLF,IEF*
CL 1 DOMINO 6105S CHB
 CL 1 DOMINETTE 243M

L1 DOMINO 00552
 L1 DOMINETTE 96893 *DOD*
 CL 1 DOMINO 9126J 1ET *SOD,CHB,DLF,IEF*
 CL 1 DOMINETTE 8151H

CL1 DOMINO 1108L *SOD*
JC L1 DOMETT 5032R
 CL1 DOMETT 00060

CL 1 DOMINO 8146H 1ET *CHB*
 CL 1 DOMINETTE 8123H 2ET
 CL 1 DOMINO 848H *SOD*
 C L1 DOMETT 7060

BW	WW Ratio	YW Ratio
96	93	95

BW	WW	YW	Milk	M&G
4.1	52	78	13	39

Dam's MPPA: 100.5 on 7 head.



LOT 60

JC L1 DOMINO 3069A

DOB: 5/1/2013

REG# 43434374

CL1 DOMINO 1108L *SOD*
JC L1 DOMINO 5031R
 CL1 DOMETT 00073

CL 1 DOMINO 8146H 1ET *CHB*
 CL 1 DOMINETTE 8123H 2ET
 CL 1 DOMINO 848H *SOD*
 C L1 DOMETT 7111

CL 1 DOMINO 976J *SOD*
JC L1 DOMETT 5049R
 C L1 DOMETT 8056

HH ADVANCE 767G 1ET *SOD,CHB,DLF,IEF*
 CL 1 DOMINETTE 6121F
 C L1 DOMINO 3001 1ET
 C L1 DOMETT 2002

BW	WW Ratio	YW Ratio
94	102	91

BW	WW	YW	Milk	M&G
2.4	39	49	19	38

Dam's MPPA: 105.7 on 8 head.

Excellent uddered cow family. Full brother sold to the Norman Ranch in our 2014 sale.

TWO-YEAR OLD BULLS



LOT 61 KC L1 DOMINO 13085

DOB: 4/4/2013

REG# 43430630

UPS DOMINO 3027 *CHB,SOD,DLF,HYF,IEF*
K&B THUNDERSTRUCK 113Y 1ET *DLF,HYF,IEF*
 K&B MISS EXCEL 4216

CL 1 DOMINO 9126J 1ET *SOD,CHB,DLF,IEF*
 UPS MISS DIAMOND 1353
 GO EXCEL L18 *CHB,SOD,DLF,HYF,IEF*
 K&B MISS ADVANCE 9665

UPS DOMINO 5216 *SOD,CHB,DLF,IEF*
KC L1 DOMETT 09046
 KC L1 DOMETT 05051

UPS DOMINO 3027 *CHB,SOD,DLF,HYF,IEF*
 UPS MISS MOM 2756 *DOD*
 KC L1 DOMINO 03095
 KC L1 DOMETT 01017

BW	WW Ratio	YW Ratio
81	111	113

BW	WW	YW	Milk	M&G
3.2	52	88	29	55

*Dam's MPPA: 101.8 on 4 head.
 Double bred 3027 grandson that has the Herd Bull look plus the numbers to go with it.
 13085 ranks in the top 10% of the breed for Milk and M&G.*



TWO-YEAR OLD BULLS



LOT 62 KC RIBSTONE 13093

DOB: 4/6/2013

REG# 43430568

K 64H RIBSTONE LAD 157K *CHB,SOD,DLF,HYF,IEF*
 F 157K RIBSTONE 765 *CHB,DLF,HYF,IEF*
 F MS BONANZA 246

STANDARD 16E RIBSTONE 64H
 K 61Z SUPER LADY 41G
 LPG BONANZA 52G
 F MS 9322 DOMINO 851 *DOD*

CL 1 DOMINO 212M *CHB,SOD,DLF,IEF*
KC L1 DOMETT 05004
 KC L1 DOMETT 03015

CL 1 DOMINO 9126J 1ET *SOD,CHB,DLF,IEF*
 CL 1 DOMINETTE 8104H 1ET
 HH ADVANCE 7042G *SOD*
 C L1 DOMETT 5234

BW	WW Ratio	YW Ratio
86	91	99

BW	WW	YW	Milk	M&G
3.5	45	87	21	43

*Dam's MPPA: 93.3 on 8 head.
 Full brother sold to Kennedy Ranch.*



TWO-YEAR OLD BULLS



LOT 63 KC L1 DOMINO 13096

DOB: 4/9/2013

REG# 43431261

HH ADVANCE 5104R *SOD,CHB,DLF,IEF*
B&D ADVANCE 9162 *DLF,HYF,IEF*
 B&D L1 DOMINET 7171 *DLF,HYF,IEF*

CL 1 DOMINO 206M *DLF,HYF,IEF*
 HH MISS ADVANCE 153L *DOD,DLF,IEF*
 JA L1 DOMINO 9217 *CHB*
 B&D L1 DOMINET 3103

F PROGRESS 930
KC L1 DOMETT 11091
 KC MISS DOMETT 09115

CJH HARLAND 408 *SOD,CHB,DLF,HYF,IEF*
 F MS 157K RIBSTONE 758 *DOD*
 HH ADVANCE 338N 1ET *DLF,IEF*
 KC L1 DOMETT 03035

BW	WW Ratio	YW Ratio
88	105	110

BW	WW	YW	Milk	M&G
4.2	52	94	29	55

*Dam's MPPA: 101.1 on 2 head.
 Used on heifers. Trich tested.*

13096 ranks in the top 10% of the breed for Milk and M&G and the top 12% for YW.

LOT 64 KC L1 DOMINO 13098

DOB: 4/10/2013

REG# 43430622

UPS DOMINO 5216 *SOD,CHB,DLF,IEF*
KC L1 DOMINO 09005 *DLF,HYF,IEF*
 KC L1 DOMETT 02010 *DOD*

UPS DOMINO 3027 *CHB,SOD,DLF,HYF,IEF*
 UPS MISS MOM 2756 *DOD*
 CL 1 DOMINO 0123K *SOD*
 C L1 DOMETT 3158

CL 1 DOMINO 04011 *CHB,DLF,IEF*
KC L1 DOMETT 09002
 KC L1 DOMETT 01024

CL 1 DOMINO 212M *CHB,SOD,DLF,IEF*
 C L1 DOMETT 7112
 HH ADVANCE 422D
 CL 1 MISS VOLT 1023

BW	WW Ratio	YW Ratio
75	93	95

BW	WW	YW	Milk	M&G
-0.6	36	65	18	36

*Dam has ratios of 105.5% for weaning and 105.5% for yearling on her progeny.
 Used on heifers. Trich tested. Dam has produced sons for Dorsey and Klein Ranches.
 13098 ranks in the top 2% of the breed for BW.*



TWO-YEAR OLD BULLS



LOT 65 KC L1 DOMINO 13105

DOB: 4/13/2013

REG# 43430644

UPS DOMINO 3027 *CHB,SOD,DLF,HYF,IEF*
K&B THUNDERSTRUCK 113Y 1ET *DLF,HYF,IEF*
 K&B MISS EXCEL 4216

CL 1 DOMINO 9126J 1ET *SOD,CHB,DLF,IEF*
 UPS MISS DIAMOND 1353
 GO EXCEL L18 *CHB,SOD,DLF,HYF,IEF*
 K&B MISS ADVANCE 9665

UPS DOMINO 5216 *SOD,CHB,DLF,IEF*
KC L1 DOMETT 10019
 KC L1 DOMETT 07005 1ET

UPS DOMINO 3027 *CHB,SOD,DLF,HYF,IEF*
 UPS MISS MOM 2756 *DOD*
 CL 1 DOMINO 4162P 1ET *CHB,SOD,DLF,IEF*
 C L1 DOMETT 7092

BW	WW Ratio	YW Ratio
86	95	91

BW	WW	YW	Milk	M&G
3.0	43	63	29	50

*Dam's MPPA: 95.4 on 2 head.
 13105 ranks in the top 10% of the breed for Milk.*



LOT 66 KC L1 DOMINO 13110

DOB: 4/21/2013

REG# 43431188

HH ADVANCE 8203U ET *CHB,DLF,IEF*
HH ADVANCE 0207X *DLF,HYF,IEF*
 HH MISS ADVANCE 7066T *DOD,DLF,HYF,IEF*

HH ADVANCE 5161R *CHB,DLF,IEF*
 HH MISS ADVANCE 752G
 CL 1 DOMINO 320N *CHB,SOD,DLF,HYF,IEF*
 HH MISS ADVANCE 5193R

UPS DOMINO 5216 *SOD,CHB,DLF,IEF*
KC L1 DOMETT 10039
 KC L1 DOMETT 05063

UPS DOMINO 3027 *CHB,SOD,DLF,HYF,IEF*
 UPS MISS MOM 2756 *DOD*
 OXH DOMINO 0138 *SOD*
 C L1 DOMETT 6086

BW	WW Ratio	YW Ratio
96	106	106

BW	WW	YW	Milk	M&G
5.7	54	91	27	54

*Dam's MPPA: 102 on 3 head.
 13110 ranks in the top 15% of the breed for Milk and M&G and the top 17% for YW.*

TWO-YEAR OLD BULLS



LOT 67 KC L1 DOMINO 13111

DOB: 4/23/2013

REG# 43430587

UPS DOMINO 5216 *SOD,CHB,DLF,IEF*
KC L1 DOMINO 09005 *DLF,HYF,IEF*
 KC L1 DOMETT 02010 *DOD*

UPS DOMINO 3027 *CHB,SOD,DLF,HYF,IEF*
 UPS MISS MOM 2756 *DOD*
 CL 1 DOMINO 0123K *SOD*
 C L1 DOMETT 3158

CL 1 DOMINO 4162P 1ET *CHB,SOD,DLF,IEF*
KC L1 DOMETT 06112
 KC L1 DOMETT 04015

CL 1 DOMINO 9126J 1ET *SOD,CHB,DLF,IEF*
 CL 1 DOMINETTE 8104H 1ET
 CL 1 DOMINO 285M *CHB,SOD,DLF,HYF,IEF*
 C L1 DOMETT 4028

BW	WW Ratio	YW Ratio
94	88	99

BW	WW	YW	Milk	M&G
2.1	39	73	24	43

Dam's MPPA: 99.4 on 6 head.

LOT 68 KC L1 DOMINO 13115

DOB: 4/25/2013

REG# Unregistered

HH ADVANCE 5104R *SOD,CHB,DLF,IEF*
B&D ADVANCE 9162 *DLF,HYF,IEF*
 B&D L1 DOMINET 7171 *DLF,HYF,IEF*

CL 1 DOMINO 206M *DLF,HYF,IEF*
 HH MISS ADVANCE 153L *DOD,DLF,IEF*
 JA L1 DOMINO 9217 *CHB*
 B&D L1 DOMINET 3103

BW	WW Ratio	YW Ratio
66	87	90

BW	WW	YW	Milk	M&G

Recommended for use on heifers. Used on heifers. Trich tested.

LOT 69 KC L1 DOMINO 13119

DOB: 5/6/2013

REG# 43430645

HH ADVANCE 8203U ET *CHB,DLF,IEF*
HH ADVANCE 0207X *DLF,HYF,IEF*
 HH MISS ADVANCE 7066T *DOD,DLF,HYF,IEF*

HH ADVANCE 5161R *CHB,DLF,IEF*
 HH MISS ADVANCE 752G
 CL 1 DOMINO 320N *CHB,SOD,DLF,HYF,IEF*
 HH MISS ADVANCE 5193R

UPS DOMINO 5216 *SOD,CHB,DLF,IEF*
KC L1 DOMETT 10028
 KC L1 DOMETT 06051 *DOD*

UPS DOMINO 3027 *CHB,SOD,DLF,HYF,IEF*
 UPS MISS MOM 2756 *DOD*
 CL 1 DOMINO 4162P 1ET *CHB,SOD,DLF,IEF*
 CL1 DOMETT 00012

BW	WW Ratio	YW Ratio
81	100	100

BW	WW	YW	Milk	M&G
2.7	49	83	27	52

Dam's MPPA: 105.5 on 3 head.

Dam produced a son for Weishaar Herefords in our 2014 sale.

13119 ranks in the top 15% of the breed for Milk and the top 20% for M&G.

TWO-YEAR OLD BULLS

LOT 70

KC L1 DOMINO 13120

DOB: 5/11/2013

REG# 43430579

UPS DOMINO 5216 *SOD, CHB, DLF, IEF*
KC L1 DOMINO 09005 *DLF, HYF, IEF*
 KC L1 DOMETT 02010 *DOD*

UPS DOMINO 3027 *CHB, SOD, DLF, HYF, IEF*
 UPS MISS MOM 2756 *DOD*
 CL 1 DOMINO 0123K *SOD*
 C L1 DOMETT 3158

CL 1 DOMINO 04011 *CHB, DLF, IEF*
KC L1 DOMETT 06012
 KC L1 DOMETT 04113

CL 1 DOMINO 212M *CHB, SOD, DLF, IEF*
 C L1 DOMETT 7112
 OXH DOMINO 1240
 C L1 MISS VOLT 2206

BW	WW Ratio	YW Ratio
78	108	102

BW	WW	YW	Milk	M&G
0.3	42	72	22	43

*Dam's MPPA: 102.2 on 7 head.
 Used on heifers. Trich tested.
 Maternal half brother sells as Lot 10.*



RANCH HORSE



LOT 71

BEAR

DOB: 2009

REG# Unregistered

*Bear is a six year old ranch raised gelding. Broke to ride and gentle. He comes from Sutton Sandquist, my nephew, and out of one of my home raised mares. Sutton does a great job starting these horses and he has seen everything on the ranch. Rode hard in big, rough country and seen a lot of time in the branding pen. Bear is a nice gelding for the whole family to get on and go!
 For more information contact Jed Seim at 605/788-2981.*

CARMICHAEL HEREFORDS

14111 SD Hwy 73 • Meadow, SD 57644

FIRST CLASS
MAIL
US POSTAGE

PAID

Fargo, ND
Permit No. 684



Lot 26