

# **Durbin Creek Ranch**

**Cattle for Commercial Cowmen**

**From Commercial Cowmen**

# **The Agar Family**

3292 Grass Creek Rd ★ Thermopolis WY 82443 ★ (307) 867-2404 ★ [www.durbincreekranch.com](http://www.durbincreekranch.com)

# **4<sup>th</sup> Annual Bull Sale**

**Friday, February 19, 2016**

**Worland, Wyoming**

**65 Coming 2-Year-Old Elite Range Ready Hereford Bulls**

**F1 Baldy Yearling Replacement Heifers**

**Select Performance Ranch Horses**

**1 Border Collie Stock Dog**

**Fellow Cattlemen,**

Once again we would like to welcome you to the Durbin Creek program and thank you for taking the time to look at the bulls, heifers and horses. We truly love the way we make a living and are proud of the product we have put before you. We would also like to thank our previous customers for the faith you have in our program. You made it another great year. The Lord has truly blessed us with good friends, family and livestock.

To tell a little about our registered program, it is quite simple; every cow pays her way, every year in a problem free way...Period. There are no excuses, no frills, no gimmicks and absolutely no second chances. The cows summer at 8,000 feet in a commercial setting and winter at 5,500 feet on forage. This allows us to focus on the ever important economic traits. We can not afford diminished calf crops, low conception rates or poor production and carcass traits. Like you, the cattle business is our livelihood, the cattle must perform.

I believe that this is the most powerful set of bulls we have ever offered. From lot 1 to lot 65 they are all very useful sires. It is definitely a set of bulls that we are really pleased with and know you will like. They feature a few new sire groups to Durbin Creek that you will see more of in the future.

The baldy heifer calves are straight out of our commercial program. They are the keeping kind and will work well wherever they go. They have been developed on long hay and a few pounds of a creep pellet. They are not overly fat but in perfect condition to take home and breed.

We live our lives horse back and try to raise the kind that make it enjoyable. This may be only our second set of horses in the sale but they are the kind we have been raising for almost 20 years. They are fun to sit in the middle of.

We would also like to take the time to thank the Durbin Creek employees for their dedication. With out them our lifestyle is not possible.

God Bless,

Wyatt Agar and the Agar Family



# Durbin Creek Ranch Annual Bull Sale

Friday, February 19, 2016  
Worland Livestock Auction 1:00 pm mst

1310 Lane 12, Worland WY

## Sale Day Phone Numbers

**Worland Livestock Auction: (307) 347-9201**

**Wyatt Agar Cell: (541) 709-0232**

**Bruce Agar Cell: (307) 921-3021**

**Jake Agar Cell: (541) 519-5366**

*We would love it if you would join us*

Thursday, February 18 for our  
Pre-Sale Dinner at The Eagles  
just down the street from the sale barn  
6:00 pm

**Bulls will be available for viewing all day  
Thursday and Friday**

For questions about the bulls, please contact Wyatt Agar (307) 867-2404 or email  
[durbincreekranch@yahoo.com](mailto:durbincreekranch@yahoo.com)

**Sale Location:** The sale will be held at the Worland Livestock Auction located at 1310 Lane 12.

**Terms and Conditions:** Terms of the sale are cash or check. Every animal becomes the property of the buyer directly after the animal has been sold.

**Guarantee:** All cattle are, to the best of our knowledge, free from disease or defect. All cattle are guaranteed breeders and have passed an extensive breeding soundness test. If an animal fails to breed after a six month trial period, it may be returned to the seller in good condition. The seller reserves the right to try said animal 90 days, and if proves to be a breeder, return it to buyer at buyer's expense. If the animal proves to be a non-breeder an animal of comparable value will be substituted to the buyer. No adjustments will be made after nine months.

**Delivery:** Free delivery to central locations in the Wyoming area. For buyers from Oregon, Idaho, Washington and Nevada, bulls will be hauled to Huntington, Oregon where buyers can pick them up or make other arrangements.

**Development:** Bulls are run in a commercial environment beside their mothers on native forage until weaning. After weaning they are developed on hay and forage pellets through the winter, and then returned to forage as yearlings.

**Liability:** All persons who attend the sale do so at their own risk, and the owners and sale barn assume no liability

# Sales Staff

Jim Newby, Worland Livestock Auction: (307) 431-9999

Joe Goggins, Auctioneer: (406) 861-5664

Devin Murnin, Western Livestock Journal: (406) 696-1502

Curt Cox, Wyoming Livestock Roundup: (406) 630-4604

Dwayne Dietz, Western Ag Reporter: (406) 672-8500

Scott Dirk, Tri-State Livestock News: (605) 380-6024

Lander Nicodemus, American Hereford Association: (307) 421-8141

Marc & Jill Hotchkiss, Hereford America: (605) 866-4495

Matt Agar, Agar Livestock, Special Assignment: (208) 739-0689

## Hotel Information

Ask for the "Bull Sale" rate at

### Days Inn

500 N 10<sup>th</sup> St.  
Worland, Wy  
(307) 347-4251

Or

### Comfort Inn

100 N Rd 11  
Worland, Wy  
(307) 347-9898

## For Directions to the Worland Livestock Auction;

- From Big Horn Ave., turn South onto 5th street
- Go two blocks and turn West (right) onto Culbertson Ave.
- Then S.W. (left) onto Railroad Ave.
- Go 7 blocks and turn West (right) onto a dirt road that crosses the railroad tracks, directly across from Washakie Ave.

For more information on Durbin Creek Ranch Registered Hereford and Quarter Horse program, go to our website, [www.durbincreekranch.com](http://www.durbincreekranch.com)



## **HOW TO PARTICIPATE AS AN ABSENTEE BUYER**

We have made preparations to bid and buy livestock through Superior Productions' "Call or Click-To-Bid" service for those unable to attend in person on sale day. **Please note that all of the lots in the sale will also be available for viewing online prior to sale day at [www.superiorlivestock.com](http://www.superiorlivestock.com).**

### HERE'S HOW IT WORKS

**Turn in Bids Over the Phone.** This is our traditional method of buying livestock and is the suggested process for anyone who does not have consistent, high-speed internet. To get started simply go online to [www.superiorlivestock.com](http://www.superiorlivestock.com) and click on the tab titled "Register for a Buyer Number". Select the registration form for Superior Productions and print the registration form. Fill it out and fax it in to Superior Productions at (817) 378-3380 with a signature on it. You can also mail it in to the address provided on the form. Upon receipt of this information Superior will call you with a buyer's number and the bid line phone number that you will use on sale day to place bids over the phone.

**Click-To-Bid.** This is Superior's online bidding program for cattle buying. **Please note that high speed internet is required – this is not for dial-up or satellite internet.** Registration is free, but you must become a member of [www.superiorclicktobid.com](http://www.superiorclicktobid.com) to sign up. Becoming a member is easy – just go to the homepage of [www.superiorclicktobid.com](http://www.superiorclicktobid.com) and follow the out-lined steps to get started. Input your information and select a username and password. You will receive an e-mail confirming you are a member. From that point forward you just have to sign in and select the sale you would like to register for and once approved by the ranch you will receive an e-mail confirming which sale you are now registered for.

**Viewing the Auction.** The sale will be broadcast via satellite on Dish Network channel 998. *Please note that there is a delay if you are watching the auction on television so be sure to call in a couple lots ahead of the lot you are interested in bidding on.* The sale will also be broadcast live on the internet at both [www.superiorlivestock.com](http://www.superiorlivestock.com) and [www.superiorclicktobid.com](http://www.superiorclicktobid.com). The video feed on the homepage of [www.superiorlivestock.com](http://www.superiorlivestock.com) looks the same as the video feed on TV and can be watched over a smartphone or tablet. Remember you can call in to bid whether watching on the TV or on the internet, but you must be a member of [www.superiorclicktobid.com](http://www.superiorclicktobid.com) to "click-to-bid".

**Buyers will be contacted by the ranch after the sale for payment and delivery details. IF YOU NEED ANY ASSISTANCE CALL SUPERIOR AT (800) 422-2117.**

A

**2013 Grade Tri-Colored Male**  
**Border Collie Stock Dog**

“Buddy”  
is a 3 year old tri-colored male, grade Border Collie. He is a very friendly people dog. He has been used on everything from sheep to cow-calf pairs. He has nice outruns and a very good fetch. He will grip a bit much on sheep if not kept under control but is very easy to control. He has no problems biting a cow head or heel. Buddy is very good with children. He does not work well with older male dogs. He is a very nice ranch dog as he works everything very well. He would make a nice trial dog also.



For more information call Jake  
at (307) 867-2403.

To view a video of the stock  
dog please visit  
[www.durbincreek ranch.com](http://www.durbincreek ranch.com)

# Reference Sire

# DCR Koot 713



- Remital Kootenay 9K
- UPS Kootenay 3232 1ET
- UPS Miss Pure Gold 0613
- Bar JZ Devo 394K
- DH Sweet Honesty 128
- DH Top Scarlet 720
- Remital Hollywood 37H
- Remital Ginger 23G
- C-S Pure Gold 98170
- UPS Miss Bang 6627
- JSF 37 271 Devo 23C
- Bar JZ 326C Ellie 389F
- DH Top Performer 419
- DH Just Scarlet 720

BW 0.8 WW 58 YW 106 Milk 21 M&G 50 SC +1.0 Fat -0.017 REA +0.73 Marb +0.14 BMI 21 CEZ 17 BII 17 CHB 34

## 7 trait breed leader! True curve bender!

Few bulls of any breed bring together the physical mass and EPD profile of 713 all the while breeding consistent and true to type. His sons are loved by the commercial cowman and daughters are the highlight of our young cow herd.



Picture taken December, 2013; 7 years old

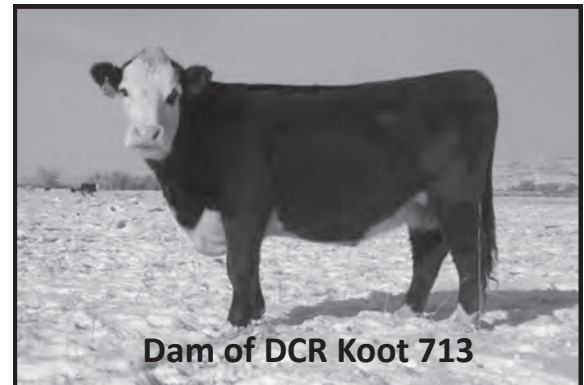
## DCR 713 Kootenay 135



135 is a son of 713 we used in our registered program.

*"Our 713 sons are thick, hold their flesh extremely well, while covering our large pastures & rough country with ease. We are proud of the influence they are having."*

**Ty Bevan**  
**Nick Mountain Ranch**  
**Colorado**



**Dam of DCR Koot 713**

1

UPS Kootenay 3232 1ET

DCR Koot 713

DH Sweet Honesty 128

**DCR 713 Kootenay 429**

**DOB: Apr 09, 2014**

**BW:**

SB Boomer 14K

DCR Diana 7020

DCR 703 Diana 2008

Remitall Kootenay 9K

UPS Miss Pure Gold

Bar JZ Devo 394K

DH Top Scarlet 720

Remitall Boomer 46B

RWS Miss Vicky 64V

Marc 9603 Optimum

DCR Diana 5036



**BW 2.5 WW 48 YW 86 Milk 18 M&G 42 SC +0.8 Fat 0.000 REA +0.59 Marb +0.10 BMI 18 CEZ 15 BII 16 CHB 25**



**Dam of lot 1**

An easy fleshing, economic powerhouse, with 7020 as his dam. He should sire light birth weights with plenty of performance. Full siblings working for Sargents Ranch and Robby McNeel. 7020 has a Weaning Weight ratio of 101%

**Retaining an interest**

2

UPS Kootenay 3232 1ET

DCR Koot 713

DH Sweet Honesty 128

**DCR 713 Kootenay 440**

**DOB: Apr 10,**

**BW: 78**

SHF Radar M326 R125

Red Hills Rockette M14

Red Hills MS Clinton M14

Remitall Kootenay 9K

UPS Miss Pure Gold

Bar JZ Devo 394K

DH Top Scarlet 720

KCF Bennett 3008 M326

SHF Postive Miss 73C M15

Red Hills Clinton 262D

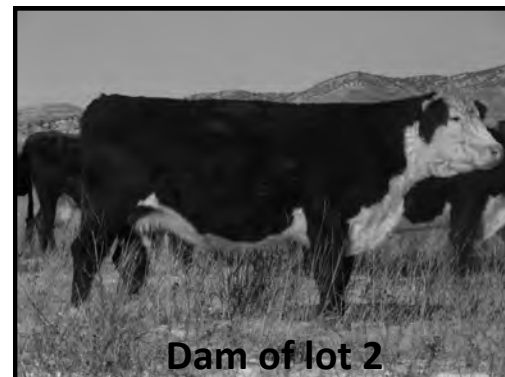
Lake MS Jane 17M



**Dam of lot 2**

**BW 2.6 WW 53 YW 96 Milk 19 M&G 46 SC +0.8 Fat +0.003 REA +0.54 Marb +0.09 BMI 17 CEZ 13 BII 14 CHB 27**

A big barreled, thick quartered bull with loads of fleshing ability. The W31 cow has continued to impress us with her sound udder and fleshing ability. 440 has a Birth Weight ratio of 100% and his dam has a Weaning Weight ratio of 103.5%.





3

UPS Kootenay 3232 1ET  
DCR Koot 713  
DH Sweet Honesty 128

Remitall Kootenay 9K  
UPS Miss Pure Gold  
Bar JZ Devo 394K  
DH Top Scarlet 720  
Remitall Keynote 20X  
WNH MS Optima 9401  
Bar JZ Eclipse 930H  
DH Fast Lauretta 330



**DCR 713 Kootenay 484**

**DOB: Apr 11,**

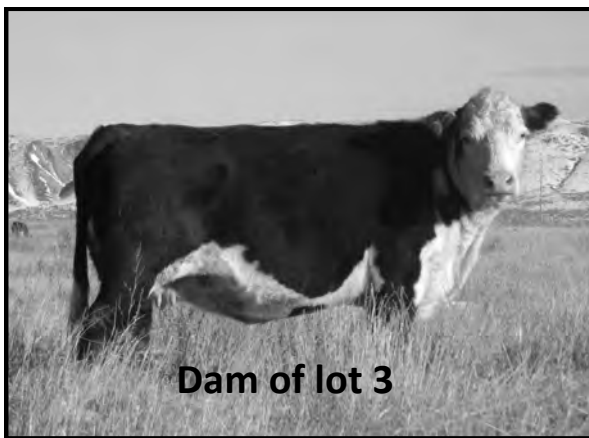
**BW: 76**

WNH Keynote 9401

DCR 3281 Lauretta

DH Lauretta Bell 281

**BW 2.3 WW 51 YW 89 Milk 17 M&G 43 SC +0.7 Fat -0.012 REA +0.60 Marb +0.04 BMI 18 CEZ 15 BII 15 CHB 26**



**Dam of lot 3**

Power & Performance with tons of pigment.  
Lauretta is one of the most production driven cows you will find. The dam has a Weaning Wight ratio of 102% and a Yearling Weight ratio of 103.5%

4

DCR Koot 713  
DCR 713 Kootenay 57X  
DCR 703 Diana 2008

UPS Kootenay 3232 1ET  
DH Sweet Honesty 128  
Marc 9603 Optimum 703  
DCR Diana 5036  
Remitall Kootenay 9K  
UPS Miss Pure Gold 0613  
Marc 9603 Optimum 703  
DCR 703 Lady Mischief 20123  
DCR Lady Mischief 604

**DCR 106 Equity 427**

**DOB: Apr 12, 2014**

**BW: 80**

UPS Kootenay 3232 1ET

DCR 3232 Daisy 9031



**BW 4.5 WW 43 YW 72 Milk 15 M&G 36 SC +1.0 Fat +0.001 REA +0.33 Marb +0.12 BMI 20 CEZ 13 BII 20 CHB 21**

Deep sided, easy fleshing bull out of the Mischief cow family. Very bold in his design and will sire calves that perform well.

5

UPS Kootenay 3232 1ET

DCR Koot 713

DH Sweet Honesty 128

**DCR 713 Rancher Made 402**

**DOB: Apr 14,**

**BW: 74**

NJW 139J Duster 47P

Heritage Taylormade

TF Cow Made 920 226

Remitall Kootenay 9K

UPS Miss Pure Gold

Bar JZ Devo 394K

DH Top Scarlet 720

RU Duster 60D

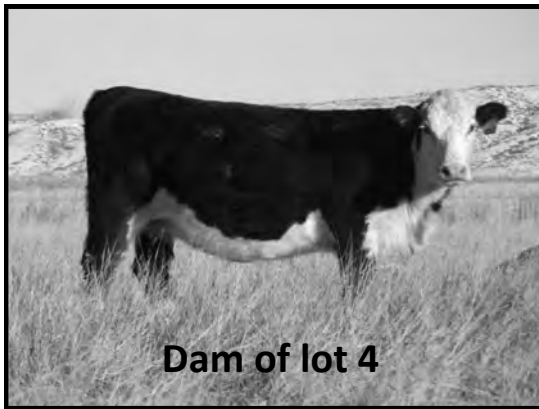
SDL VLY 7C Serenade 139J

Boyd Cow Maker 0101

TF Lady P606 920



**BW 1.9 WW 52 YW 86 Milk 21 M&G 47 SC +0.9 Fat +0.006 REA +0.56 Marb +0.09 BMI 19 CEZ 16 BII 16 CHB 26**



**Dam of lot 4**

An eye appealing, calving ease sire. Dam is fairly new to our program but is getting it done. 402 has a Weaning Weight ratio of 100% and dam has a Weaning Weight ratio of 106.5%

6

UPS Kootenay 3232 1ET

DCR Koot 713

DH Sweet Honesty 128

**DCR 713 Kootenay 424**

**DOB: Apr 14, 2014**

**BW: 74**

K&B Red Felton 7006T

DCR 7006 Ella 9014

DCR 14K Paulina 4001

Remitall Kootenay 9K

UPS Miss Pure Gold 0613

Bar JZ Devo 394K

DH Top Scarlet 720

KCF Bennett 3008 M326

K&B Sweet Sally 5044

SB Boomer 14K

DCR Ella 45G 0019



**BW 2.7 WW 54 YW 91 Milk 19 M&G 46 SC +1.1 Fat -0.009 REA +0.57 Marb +0.15 BMI 22 CEZ 16 BII 19 CHB 29**

Loose hide, mellow designed bull that should sire awesome females. Brother sold as lot 1 last year with semen rights going to Argentina.



**Dam of lot 5**

7

DCR Koot 713  
DCR 713 Kootenay 135  
DCR 703 Flora 1015

**DCR 135 Kootenay 429**

**DOB: Apr. 23,**  
**BW: 80** Remitall Patriot ET  
DCR 3232 Desert Rose  
DH Bouquet of Roses 219

UPA Kootenay 3232 1ET  
DH Sweet Honesty 128  
Marc 9603 Optimum  
DCR Flora 5035  
UPS Kootenay 3232 1ET  
DCR Dutchess 6103  
BAR JZ Tradition 938H  
DH Linda Rose 518



**BW 3.4 WW 48 YW 79 Milk 13 M&G 37 SC +0.8 Fat -0.011 REA +0.45 Marb +0.02 BMI 19 CEZ 14 BII 17 CHB 23**

A long sided, good footed bull out of an extremely easy fleshing cow. Would sire great baldy females.



8

DCR Koot 713  
DCR 713 Kootenay 135  
DCR 703 Flora 1015

**DCR 135 Kootenay 439**

**DOB: Apr. 21, 2014**  
**BW: 79** WNH Keynote 9401 0302  
DCR 0302 Ella 8030  
DCR 14K Pauline 4001

UPS Kootenay 3232  
DH Sweet Honesty 128  
Marc 9603 Optimum 703  
DCR Flora 5035  
Remitall Keynote 20X  
WNH MS Optima 9401  
SB Boomer 14K  
DCR Ella 45G 0019

**BW 3.9 WW 47 YW 80 Milk 16 M&G 40 SC +0.8 Fat +0.009 REA +0.49 Marb +0.03 BMI 17 CEZ 13 BII 16 CHB 22**

Combines two of our best cow families. Should sire great females & steers that are retail product driven. 439 has a Birth Weight ratio of 100% and his dam has a Weaning Weight ratio of 103.7% and is coming 8.



9

UPS Kootenay 3232

DCR Koot 713

DH Sweet Honesty 128

**DCR 713 Kootenay 441**

**DOB: May 12, 2014**

**BW: 76**

Remitall Precision

Boss Ann 101W

Remitall Ann 376S

Remitall Kootenay 9K

UPS Miss Pure Gold 0613

Bar JZ Devo 394K

DH Top Scarlet 720

Remitall Medallion 58M

Remitall Catalina ET 69L

Remitall Pirate ET 135P

RU 20L Ann 7P



**BW 3.4 WW 56 YW 95 Milk 19 M&G 47 SC +0.9 Fat -0.012 REA +0.55 Marb +0.10 BMI 19 CEZ 15 BII 16 CHB 29**



**Dam of lot 9**

A moderate, mellow made son of the Ann 101W cow. Should produce efficient grass oriented calves. 441 has a Weaning Weight ratio of 107%.

10

DCR Koot 713

DCR 713 Kootenay 57X

DCR 703 Diana 2008

**DCR 57X Kootenay 447**

**DOB: Apr 24, 2014**

**BW: 78**

EPHR Performer 554D

DH Fancy 763

DH Winnie Tara 438

UPS Kootenay 3232 1ET

DH Sweet Honesty 128

Marc 9603 Optimum 703

DCR Diana 5036

KE Idaho Guy 206B

EPHR Ida May 653Y

DH Rhett 79

DH Winnie Jo Lin



**BW 3.4 WW 46 YW 74 Milk 10 M&G 33 SC +0.6 Fat +0.002 REA +0.39 Marb -0.06 BMI 16 CEZ 14 BII 15 CHB 19**

Very correct made 57X out of a coming 13 year old cow. Would sire a fancy set of grass calves. This bull has a Weaning Weight ratio of 101%.

**11**

DCR Koot 713

DCR 713 Kootenay 135

DCR 703 Flora 1015

**DCR 135 Kootenay 452****DOB: Apr 16, 2014****BW: 81**

UPS Kootenay 3232 1ET

DCR 3232 Standard 8027

DCR 703 Miss Standard 1007

UPS Kootenay 3232 1ET

DH Sweet Honesty 128

Marc 9603 Optimum 703

DCR Flora 5035

Remitall Kootenay 9K

UPS Miss Pure Gold 0613

Marc 9603 Optimum 703

DCR Miss Bushman 903

**BW 3.7 WW 43 YW 75 Milk 17 M&G 38 SC +0.7 Fat -0.013 REA +0.41 Marb +0.05 BMI 16 CEZ 13 BII 15 CHB 21**

Long sided, deep quartered bull. Out of a very reliable, coming 8 year old cow. Should add some performance and growth to a set of calves. The dam has WW ratio of 101.5% and a YW ratio of 107%.

**12**

DCR Koot 713

DCR 713 Kootenay 57X

DCR 703 Diana 2008

**DCR 57X Kootenay 454****DOB: Apr 17, 2014****BW: 81**

NJW 167L Radar 38T

DCR 38T Sweet Wine 002

DCR 2D Lady Red Wine 8004

UPS Kootenay 3232 1ET

DH Sweet Honesty 128

Marc 9603 Optimum 703

DCR Diana 5036

SHF Radar M326 R125

NJW45G Ladysport 167L

Huth Enhancer 2D

DCR 3107 Wine 6052

**BW 3.1 WW 48 YW 77 Milk 19 M&G 43 SC +0.7 Fat +0.004 REA +0.38 Marb +0.06 BMI 17 CEZ 14 BII 15 CHB 23**

A growthy, long strided 57X. Dam is extremely easy fleshing. Should sire grass oriented calves. The dam is coming 6.

**13**

UPS Kootenay 3232 1ET

DCR Koot 713

DH Sweet Honesty 128

**DCR HD 135 Kootenay 461****DOB: Apr 22, 2014****BW: 80**

K&amp;B Red Felton 7006T

DCR 7006 Mary 131X

DCR Mary 5007

Remitall Kootenay 9K

UPS Miss Pure Gold 0613

Bar JZ Devo 394K

DH Top Scarlet 720

KCF Bennett 3008 M326

K&amp;B Sweet Sally 5044

SB Boomer 14K

DCR Miss Marathon 6102

**BW 4.7 WW 45 YW 78 Milk 16 M&G 39 SC +0.9 Fat +0.000 REA +0.43 Marb +0.08 BMI 18 CEZ 13 BII 18 CHB 22**

Big topped, thick quartered, early maturing bull that would really work on a set of black cows. The dam has a BW ratio of 100.7% and a YW ratio of 100%.

14

DCR Koot 713

DCR 713 Kootenay 57X

DCR 703 Diana 2008

**DCR HD 57X Kootenay 462**

**DOB: May 04,**

**BW: 81**

DCR 0302 Keynote

DCR 638 Image 0104

DH Prospect Image 771

UPS Kootenay 3232 1ET

DH Sweet Honesty 128

Marc 9603 Optimum

DCR Diana 5036

WNH Keynote 9401 0302

DH Holy Cow 724

Bar JZ Prospector 790G

Dh Scarlet Image 48



**BW 4.3 WW 49 YW 81 Milk 16 M&G 41 SC +0.6 Fat 0.000 REA +0.35 Marb +0.01 BMI 15 CEZ 13 BII 13 CHB 22**

Dark colored, deep ribbed 57X. Use to moderate frame and increase fleshing ability. 462 has a WW ratio of 107%. The dam has a lifetime WW ratio of 103.5%



15

UPS Kootenay 3232 1ET

DCR Koot 713

DH Sweet Honesty 128

**DCR HD 713 Kootenay 465**

**DOB: Apr 11, 2014**

**BW: 78**

K&B Red Felton 7006T

DCR 713 Diana 0103

DCR 14K Diana 4017

Remital Kootenay 9K

UPS Miss Pure Gold 0613

Bar JZ Devo 394K

DH Top Scarlet 720

KCF Bennett 3008 M326

K&B Sweet Sally 5044

SB Boomer 14K

DCR Diana 5036

**BW 3.7 WW 48 YW 85 Milk 21 M&G 44 SC +1.0 Fat -0.006 REA +0.55 Marb +0.14 BMI 20 CEZ 15 BII 18 CHB 26**

Very early maturing, masculine bull that will hold his flesh well. Out of a great Diana cow. Use to increase fleshing ability.



16

DCR Koot 713

DCR 713 Kootenay 57X

DCR 703 Diana 2008

**DCR 106 Equity 477**

**DOB: Apr 21,**

**BW: 83**

Remital Precision 455P

Remital Polly 411T

Remital Polly 17M

UPS Kootenay 3232 1ET

DH Sweet Honesty 128

Marc 9603 Optimum 703

DCR Diana 5036

Remital Medallion 58M

Remital Catalina ET 69L

Remital Kootenay 9K

Remital Polly 4K

**BW 5.6 WW 48 YW 79 Milk 15 M&G 39 SC +0.9 Fat -0.004 REA +0.42 Marb +0.14 BMI 19 CEZ 13 BII 19 CHB 24**

Rugged performance orientated 57X out of 411T. Use to improve feedlot traits.

17

UPS Kootenay 3232 1ET  
DCR Koot 713  
DH Sweet Honesty 128

**DCR 713 Kootenay 478**

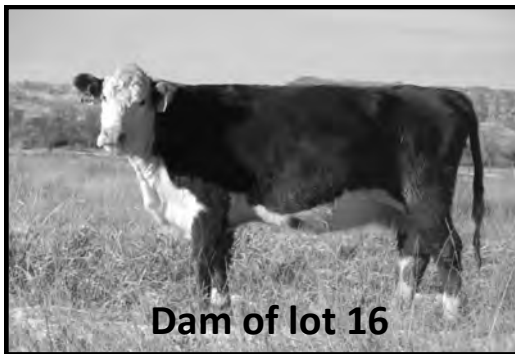
**DOB: May 06,**  
**BW: 74**

Remitall Kootenay 9K  
Remitall Catalina 64P  
Remitall Edna 5E

Remitall Kootenay 9K  
UPS Miss Pure Gold  
Bar JZ Devo 394K  
DH Top Scarlet 720  
Remitall Hollwood 37H  
Remitall Ginger 23G  
Remitall Ace ET 145A  
Remitall Catalina 139C



**BW 2.4 WW 52 YW 89 Milk 13 M&G 39 SC +0.7 Fat -0.014 REA +0.49 Marb +0.17 BMI 19 CEZ 15 BII 17 CHB 29**



**Dam of lot 16**

Long sided, easy moving bull that should cover a lot of country. 64P has become a mainstay at DCR. Brother is working at Brewsters. 478 has a WW ratio of 106%.



18

UPS Kootenay 3232 1ET  
DCR Koot 713  
DH Sweet Honesty 128

**DCR 713 Kootenay 481**

**DOB: Apr 16, 2014**  
**BW: 77**

SB Boomer 14K  
DCR 14K Diana 4017  
DCR Diana 5036

Remitall Kootenay 9K  
UPS Miss Pure Gold 0613  
Bar JZ Devo 394K  
DH Top Scarlet 720  
Remitall Boomer 46B  
RWS Miss Vicky 64V  
GK Solo Voyageur 34W  
DCR Woodrow Daisy 734

**BW 3.1 WW 46 YW 81 Milk 19 M&G 42 SC +0.8 Fat -0.001 REA +0.51 Marb +0.09 BMI 18 CEZ 14 BII 16 CHB 24**

Efficient, early maturing bull that should make great females. Dam is coming 12 and never misses. Diana 4017 has a WW ratio of 103.2%.



**Dam of lot 17**

19

UPS Kootenay 3232 1ET

DCR Koot 713

DH Sweet Honesty 128

**DCR 713 Kootenay 482**

**DOB: Apr 11, 2014**

**BW: 76**

BBSF 610F Justify 79J

DCR 49J Oriana 4014

DCR Oriana 619

Remitall Kootenay 9K

UPS Miss Pure Gold 0613

Bar JZ Devo 394K

DH Top Scarlet 720

Davis 28U Fairply ET610F

WTK 55Y Nola 108B

GK Solo Voyageur 34W

DCR Lady Misc 401



**BW 2.2 WW 43 YW 77 Milk 16 M&G 37 SC +0.7 Fat -0.004 REA +0.39 Marb +0.01 BMI 17 CEZ 15 BII 15 CHB 21**

Deep ribbed, easy fleshing bull out of a cow that was in production until she was 11.

Have 2 sisters in the herd that are powerful females.



20

UPS Kootenay 3232 1ET

DCR Koot 713

DH Sweet Honesty 128

**DCR 713 Kootenay 483**

**DOB: Apr 07, 2014**

**BW: 74**

Bar JZ Eclipse 930H

DH Laurretta Bell 281

DH Fast Laurretta 330

Remitall Kootenay 9K

UPS Miss Pure Gold 0613

Bar JZ Devo 394K

DH Top Scarlet 720

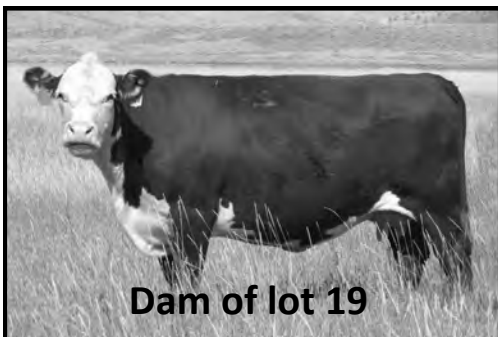
Bar JZ Tradition 434V

Bar JZ 326C Lady 276E

EPHR Performer 554D

DH Hey Laurretta 194

**BW 2.3 WW 49 YW 84 Milk 15 M&G 40 SC +0.6 Fat -0.021 REA +0.53 Marb +0.03 BMI 18 CEZ 16 BII 15 CHB 26**



Big performing bull out of the Laurretta cow family. Brother was a high seller to Bar RZ in Alberta last year. Dam is coming 13. This dam has a YW ratio of 109%.



## Reference Sires

# NJW 12E 4037 Duration 136X ET



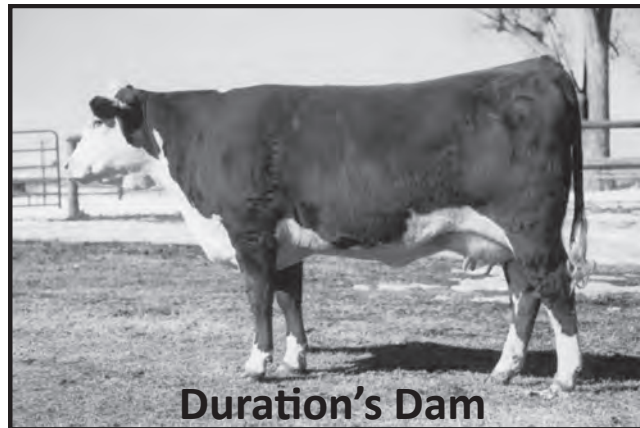
CS Boomer 29F  
THM Durango 4037  
THM 7085  
NJW 217 Vaquero 25C  
NJW 25C 1A Vaca 12E  
NJW 563 Nickette 1A

Remittal Boomer 46B  
CS Miss 1ST Flag 21A  
THM Victor Dom  
THM Victra 5404 7073  
JR Southern Cross Z17  
CIRCLE-D 832W Duches  
CL 1 Domino 563  
NJW P183 003 Nickette 1W

BW 4.7 WW 54 YW 81 Milk 21 M&G 48 SC +0.6 Fat -0.027 REA +0.20 Marb -0.03 BMI 17 CEZ 17 BII 13 CHB 25

### Sires ton of performance!

After looking for several years for a son of Durango that would sire better uddered females we purchased Duration with Te Taumata Pollled Herefords of New Zealand. When we saw his dam at 16 we knew we had found the bull. His calves preform well on grass and are easy fleshing. The first daughters are in production and they are awesome!



21

THM Durango 4037  
NJW 12E 4037 Duration 136X ET  
NJW 25C 1A Vaca 12E

**DCR 136X Duration 403**

**DOB: Apr 09, 2014**

**BW: 79**

UPS Kootenay 3232  
DCR 3232 Ella C 8026  
DCR Ella 45G 0019

CS Boomer 29F  
THM 7085 Victra 9036  
NJW Z17 Vaquero 25C  
NJW 563 Nickette 1A  
Remitall Kootenay 9K  
UPS Miss Pure Gold 0613  
NJW 832W D32 Latigo  
DCR Ella C 804



**BW 3.6 WW 42 YW 65 Milk 17 M&G 38 SC +0.7 Fat -0.024 REA +0.25 Marb +0.06 BMI 18 CEZ 17 BII 17 CHB 21**

Dark colored, short marked bull out of the Ella cow family.



22

THM Durango 4037  
NJW 12E 4037 Duration 136X ET  
NJW 25C 1A Vaca 12E

**DCR 136X Duration 404**

**DOB: Apr 15, 2014**

**BW: 80**

WNH Keynote 9401 0302  
DCR 0302 Standard 8028  
DCR 703 Standard 2001

CS Boomer 29F  
THM 7085 Victra 9036  
NJW Z17 Vaquero 25C  
NJW 563 Nickette 1A  
Remitall Keynote 20X  
WNH MS Optima 9401  
Marc 9603 Optimum 703  
DCR Miss Bushman 903

**BW 4.8 WW 49 YW 76 Milk 16 M&G 41 SC +0.6 Fat -0.005 REA +0.30 Marb -0.02 BMI 15 CEZ 14 BII 14 CHB 21**

Rugged made and masculine. Out of a coming 8 year old cow. Will produce lots of performance.

23

THM Durango 4037  
Red Hills Big Gun Y215  
RPH Deanna 69R

**DCR Y215 Durango 408**

**DOB: May 14, 2014**

**BW: 80**

K&B Red Felton 7006T  
DCR 7006 Royal Red 9034  
DH Holly Cow 724

CS Boomer 29F  
THM 7085 Victra 9036  
Star 5L Bozz 43N  
RPH Playmate 17L  
KCF Bennett 3008 M326  
K&B Sweet Sally 5044  
Bar JZ Eclipse 930H  
DH Royal Tara 8



**BW 4.4 WW 51 YW 77 Milk 19 M&G 44 SC +0.7 Fat -0.009 REA +0.03 Marb +0.10 BMI 18 CEZ 15 BII 15 CHB 25**

Long sided, growth orientated bull that should sire great grass calves.

24

THM Durango 4037

NJW 12E 4037 Duration 136X ET

NJW 25C 1A Vaca 12E

**DCR 136X Duration 410**

**DOB: May 2, 2014**

**BW: 80**

UPS Kootenay 3232 1ET

DCR 3232 Dominet 7021

DCR Dutchess E50 0016

CS Boomer 29F

THM 7085 Victra 9036

NJW Z17 Vaquero 25C

NJW 563 Nickette 1A

Remitall Kootenay 9K

UPS Miss Pure Gold

DCR 826 Duke E50

DCR Dominette 7009



**BW 3.9 WW 45 YW 68 Milk 15 M&G 37 SC +0.6 Fat -0.026 REA +0.19 Marb +0.03 BMI 17 CEZ 15 BII 16 CHB 21**

Dark colored, soggy made bull that should cover a lot of cows. Granddam produced until she was 14.



25

THM Durango 4037

NJW 12E 4037 Duration 136X ET

NJW 25C 1A Vaca 12E

**DCR 136X Duration 415**

**DOB: Apr 4, 2014**

**BW: 80**

K&B Red Felton 7006T

DCR 7006 Red Pearl 0121

DCR 347 Pearl 6016

CS Boomer 29F

THM 7085 Victra 9036

NJW Z17 Vaquero 25C

NJW 563 Nickette 1A

KCF Bennett 3008 M326

K&B Sweet Sally 5044

SB Boomer 14K

DH Sunny Pearl 47

**BW 5.2 WW 48 YW 77 Milk 21 M&G 45 SC +0.9 Fat -0.010 REA +0.25 Marb +0.09 BMI 19 CEZ 15 BII 17 CHB 23**

Long sided, easy moving cowboy kind of bull should cover lots of miles. Dam is one of our best up and coming cows with a lifetime WW ratio of 102% and YW ratio of 109%.

26

THM Durango 4037

NJW 12E 4037 Duration 136X ET

NJW 25C 1A Vaca 12E

**DCR 136X Duration 438**

**DOB: Apr 9, 2014**

**BW: 81**

SB Boomer 14K

DCR 2008 Diana 6058

DCR 703 Diana 2008

CS Boomer 29F

THM 7085 Victra 9036

NJW Z17 Vaquero 25C

NJW 563 Nickette 1A

Remitall Boomer 46B

RWS Miss Vicky 64V

Marc 9603 Optimum

DCR Diana 5036



**BW 5.2 WW 48 YW 78 Milk 18 M&G 42 SC +0.6 Fat -0.007 REA +0.37 Marb 0.00 BMI 15 CEZ 14 BII 13 CHB 22**

Efficient, loose hided bull out of a 10 year old cow that has a lifetime weaning ratio of 102%. Maternal brothers working for True Ranches.

27

THM Durango 4037  
NJW 12E 4037 Duration 136X ET  
NJW 25C 1A Vaca 12E

**DCR 136X Duration 445**

**DOB: Apr 17, 2014**

**BW: 80**

DCR Koot 713  
DCR 713 Ella C 0113  
DCR 703 Pauline 1001

CS Boomer 29F  
THM 7085 Victra 9036  
NJW Z17 Vaquero 25C  
NJW 563 Nickette 1A  
UPS Kootenay 3232 1ET  
DH Sweet Honesty 128  
Marc 9603 Optimum 703  
DCR Ella C 804



**BW 3.8 WW 51 YW 80 Milk 19 M&G 45 SC +0.6 Fat -0.017 REA +0.36 Marb -0.02 BMI 16 CEZ 15 BII 13 CHB 24**

Rugged, mellow made bull out of a coming 6 year old cow. Really efficient in his design .



28

THM Durango 4037  
NJW 12E 4037 Duration 136X  
NJW 25C 1A Vaca 12E

**DCR 136X Duration 449**

**DOB: Apr 21,**

**BW: 80**

SB Boomer 14K  
DCR 14K Tara 7016  
DH Tara Tradition 278

CS Boomer 29F  
THM 7085 Victra 9036  
NJW Z17 Vaquero 25C  
NJW 563 Nickette 1A  
Remitall Boomer 46B  
RWS Miss Vicky 64V  
Bar JZ Tradition 938H  
DH Tara Wood 309

**BW 4.4 WW 47 YW 75 Milk 17 M&G 40 SC +0.6 Fat -0.016 REA +0.38 Marb 0.00 BMI 17 CEZ 16 BII 14 CHB 22**

Soggy & soft sided.

29

THM Durango 4037  
NJW 12E 4037 Duration 136X ET  
NJW 25C 1A Vaca 12E

**DCR 136X Duration 490**

**DOB: Apr 10, 2014**

**BW: 71**

SB Boomer 14K  
DCR Dominet 5005  
DCR 703 Dominet 1016

CS Boomer 29F  
THM 7085 Victra 9036  
NJW Z17 Vaquero 25C  
NJW 563 Nickette 1A  
Remitall Boomer 46B  
RWS Miss Vicky 64V  
Marc 9603 Optimum 703  
DCR Dom 4003



**BW 4.6 WW 44 YW 69 Milk 15 M&G 37 SC +0.5 Fat -0.015 REA +0.28 Marb -0.02 BMI 15 CEZ 14 BII 14 CHB 19**

Long strided, cowboy kind out of a coming 11 year old cow.

30

THM Durango 4037

NJW 12E 4037 Duration 136X ET

NJW 25C 1A Vaca 12E

**DCR 136X Duration 435**

DOB: Apr 10,

BW: 71

SB Boomer 14K

DCR Dominet 5005

DCR 703 Dominet 1016

CS Boomer 29F

THM 7085 Victra 9036

NJW Z17 Vaquero 25C

NJW 563 Nickette 1A

Remitall Boomer 46B

RWS Miss Vicky 64V

Marc 9603 Optimum 703

DCR Dom 4003



**BW 4.6 WW 44 YW 69 Milk 15 M&G 37 SC +0.5 Fat -0.015 REA +0.28 Marb -0.02 BMI 15 CEZ 14 BII 14 CHB 19**

Twin to the 490 bull and very much like him in type and kind. This cow has been good to us. Weaning ratio of 102 and yearling ratio of 103.



31

THM Durango 4037

NJW 12E 4037 Duration

NJW 25C 1A Vaca 12E

**DCR 136X Duration 491**

DOB: Apr 10,

BW: 77

SB Boomer 14K

Commercial Cow 7031

Commercial Cow

CS Boomer 29F

THM 7085 Victra 9036

NJW Z17 Vaquero 25C

NJW 563 Nickette 1A

Remitall Boomer 46B

RWS Miss Vicky 64V

SBR Duke 4B

Commercial Cow

Short marked, eye appealing bull out of a commercial cow that we have used to raise bulls for our commercial division.



Cooper and Tylee holding their first calf at the fire on two good old horses.

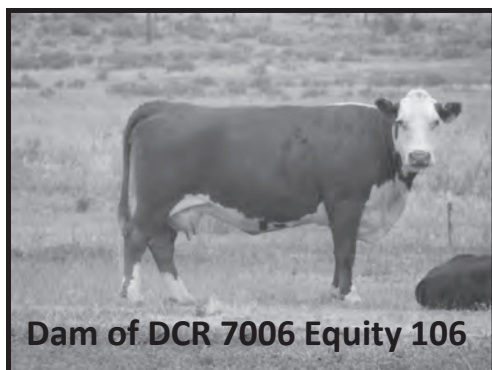
# Reference Sire

# DCR 7006 Equity 106



RRH MR Felt 3008  
 KCF Bennett 3008 M326  
 K&B Red Felton 7006T  
 K&B Sweet Sally 5044  
 Marc 9603 Optimum 703  
 DCR 703 Diana 2008  
 DCR Diana 5036  
 KCF Miss 459  
 PW Victor Boomer P606  
 K&B Fern 6334  
 WNH CHR MCA Decathlete  
 Marc 9603 Optimum 703  
 GK Solo Voyageur 34W  
 DCR Woodrow Daisy 734

**BW 6.0 WW 49 YW 85 Milk 19 M&G 43 SC +1.2 Fat +0.007 REA +0.41 Marb +0.12 BMI 20 CEZ 13 BII 20 CHB 24**



**Rugged & performance based!**  
 Sires cattle with tons of volume and rib shape that perform really well on grass.  
 Dam is 14 and still in natural production.

**32**

K&B Red Felton 7006T  
 DCR 7006 Equity 106  
 DCR 703 Diana 2008  
**DCR 106 Equity 407**  
**DOB: Apr 11,**  
**BW: 84**  
 UPS Kootenay 3232 1ET  
 DCR 3232 Trudy 9006  
 DCR 328 Miss Daisy

KCF Bennett 3008 M326  
 K&B Sweet Sally 5044  
 Marc 9603 Optimum 703  
 DCR Diana 5036  
 Remitall Kootenay 9K  
 UPS Miss Pure Gold 0613  
 NH Cowboy Pride 328M ET  
 DCR Dutchess E50 0023



**BW 5.3 WW 47 YW 82 Milk 15 M&G 39 SC +0.9 Fat -0.010 REA +0.44 Marb +0.13 BMI 19 CEZ 12 BII 18 CHB 24**

Stout made, loose hided bull that should sire high performance, retail productive drive calves.

33

K&B Red Felton 7006T

DCR 7006 Equity 106

DCR 703 Diana 2008

**DCR 106 Equity 422**

**DOB: Apr 1, 2014**

**BW: 80**

NH Cowboy Pride 328M

DCR 07 Vicki 6023

DCR Gail 28E 0007

KCF Bennett 3008 M326

K&B Sweet Sally 5044

Marc 9603 Optimum 703

DCR Diana 5036

Remitall Keynote 20X

MSU Pearl 67G

Circle-D 832W Einstne 28

DCR Vicki 410



**BW 5.9 WW 48 YW 81 Milk 17 M&G 40 SC +1.0 Fat -0.007 REA +0.41 Marb +0.07 BMI 19 CEZ 14 BII 19 CHB 20**

Rugged made bull that offers lots of foot and bone. Should cover lots of rough country. Dam is coming 10.



34

K&B Red Felton 7006T

DCR 7006 Equity 106

DCR 703 Diana 2008

**DCR 106 Equity 426**

**DOB: Apr 19, 2014**

**BW: 80**

NJW 167L Radar 38T

DCR 38T Image 006

DCR Image 8039

KCF Bennett 3008 M326

K&B Sweet Sally 5044

Marc 9603 Optimum 703

DCR Diana 5036

SHF Radar M326 R125

NJW G Ladysport 167L

DCR Pendletons 614

DH Prospect Image 771

**BW 4.1 WW 45 YW 72 Milk 18 M&G 40 SC +0.9 Fat +0.005 REA +0.35 Marb +0.08 BMI 19 CEZ 14 BII 18 CHB 21**

Loose hided, mello made bull that offers lots of efficiency. WR 101% out of a very good uddered cow.

35

K&B Red Felton 7006T

DCR 7006 Equity 106

DCR 703 Diana 2008

**DCR 106 Equity 458**

**DOB: Apr 1, 2014**

**BW: 80**

UPS Kootenay 3232 1ET

DCR 3019 Paulina 6051

DCR Paulina 28K 3019

KCF Bennett 3008 M326

K&B Sweet Sally 5044

Marc 9603 Optimum 703

DCR Diana 5036

Remitall Kootenay 9K

UPS Miss Pure Gold 0613

Sun 7056 Venture 28K

DCR Ella 45G 0019



**BW 4.4 WW 41 YW 68 Milk 18 M&G 38 SC +0.9 Fat -0.007 REA +0.36 Marb +0.11 BMI 19 CEZ 14 BII 19 CHB 20**

Very eye appealing and long sided. Offers great maternal strengths. Dam is coming 10 years old, out of the Ella cow family.

# Reference Sire

# DCR Justify 716



Davis 28U Fairply ET610F  
 BBSF 610F Justify 79J  
 WTK 55Y Nola 108B  
 SQCF Gerrits Basic Boom 0P14  
 DH Rich Rose 505  
 DH Rich Amber 188

Glen Poundmaker 28U  
 Woolford P183 Unique 13U  
 WTK 80U Premium 55Y  
 WTK 26X Nola 36Z  
 S&S Basic 1G  
 FPH Eve E236  
 DH King Vindi 419  
 DH ENF Trixi

**BW 4.3 WW 43 YW 69 Milk 15 M&G 36 SC +0.4 Fat +0.008 REA +0.25 Marb -0.08 BMI 11 CEZ 10 BII 11 CHB 15**

716 is a home raised bull that was used extensively in the commercial program. The older his daughters get the more impressive they are. They are truly deluxe range cows! His sons are growthy and built to cover lots of rough country.



**36**

BBSF 610F Justify 79J  
 DCR Justify 716  
 DH Rich Rose 505

**DCR 716 Justice 413**

**DOB: Apr 13, 2014**

**BW: 80**

Remital RR Delivery ET 347R  
 Boss Kim 94W  
 Remital Kim 438S

Davis 28U Fairply ET610F  
 WTK 55Y Nola 108B  
 SQCF Gerrits Basic Boom 0P14  
 DH Rich Amber 188  
 MC Ranger 9615  
 Remital Catalina ET 143M  
 Remital Nighthawk 100N  
 Remital Kim Classic 134C



**BW 4.5 WW 42 YW 65 Milk 15 M&G 36 SC +0.5 Fat -0.009 REA +0.25 Marb -0.03 BMI 13 CEZ 11 BII 13 CHB 17**

Short marked, deep ribbed bull that should sire efficient females and performance driven steers.



37

BBSF 610F Justify 79J

DCR Justify 716

DH Rich Rose 505

**DCR 716 Justice 466**

**DOB: May 8, 2014**

**BW: 81** DCR 0302 Keynote 638

DCR 638 Sweet Wine 134X

DH Rich Wine 107

Davis 28U Fairply ET610F

WTK 55Y Nola 108B

SQCF Gerrits Basic Boom

DH Rich Amber 188

WNH Keynote 9401 0302 ET

DH Holy Cow 724

DH Rolo Eclipse 25

DH Copper Wine 731



**BW 4.6 WW 44 YW 60 Milk 15 M&G 37 SC +0.3 Fat -0.001 REA +0.19 Marb -0.09 BMI 11 CEZ 12 BII 11 CHB 15**

Stout, loose hided and masculine bull out of a great uddered 6 year old cow who has a lifetime WW ratio of 102.5%.



## Reference Sires

# BP 44U Anchor 38Y

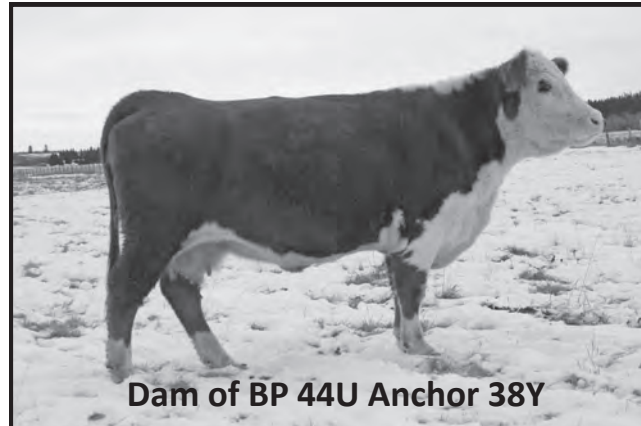


Anchor 49R  
Anchor 44U  
Anchor 5M  
Standard 16E Ribstone 64H  
K 64H Ribstone Lady 184M  
K 45D Super Lady 180J  
Anchor 32N  
Anchor 11M  
Vescovi D149  
Anchor 37E  
Standard Ribstone 16E  
Standard Lass 23E  
K 61Z Super Lad 45D  
K 68T Red Lady 89A

BW 2.4 WW 43 YW 77 Milk 15 M&G 37 SC +0.7 Fat +0.017 REA +0.20 Marb +0.16 BMI 18 CEZ 16 BII 16 CHB 22

### Easy fleshing & mellow designed!

His calves are born light, grow fast and mature early. We are excited to see his first daughters in production. They are very pretty and powerful.



38

Anchor 44U

BP 44U Anchor 38Y

K 64H Ribstone Lady 184M

**DCR 38Y Anchor 405**

**DOB: May 28, 2014**

**BW: 78**

K&B Red Felton 7006T

DCR 7006 Miss Daisy 9037

DCR Patricia 28E 0013

Anchor 49R

Anchor 5M

Standard 16E Ribstone 64H

K 45D Super Lady 180J

KCF Bennett 3008 M326

K&B Sweet Sally 5044

Circle-D 832 Einstn 28E

DCR Lady Voyager 711



**BW 3.9 WW 47 YW 78 Milk 14 M&G 38 SC +1.1 Fat +0.003 REA +0.28 Marb +0.16 BMI 22 CEZ 15 BII 21 CHB 24**

A heavy pigmented, loose hided bull out of a powerful 7 year old cow. WW ratio of 111%.

39

Anchor 44U

BP 44U Anchor 38Y

K 64H Ribstone Lady

**DCR 38Y Anchor 414**

**DOB: Apr 18, 2014**

**BW: 73**

DCR Koot 713

DCR 713 Standard 1028

DCR 1012 Standard 6030

Anchor 49R

Anchor 5M

Standard 16E Ribstone 64H

NJW 563 Nickette 1A

UPS Kootenay 3232 1ET

CH Sweet Honesty 128

SB Boomer 14K

DCR 703 Miss Standard 1012



**BW 2.5 WW 46 YW 79 Milk 16 M&G 39 SC +0.7 Fat +0.001 REA +0.38 Marb +0.09 BMI 18 CEZ 15 BII 16 CHB 23**

Long strided, good moving bull that should cover lots of country. Dam is coming 5 with a WW ratio of 103%

40

Anchor 44U

BP 44U Anchor 38Y

K 64H Ribstone Lady 184 M

**DCR 38Y Anchor 416**

**DOB: May 16,**

**BW: 74**

K&B Red Felton 7006T

DCR 7006 Standard 1017

DCR Standard 5012

Anchor 49R

Anchor 5M

Standard 16E Ribstone 64H

K 45D Super Lady 180J

KCF Bennett 3008 M326

K&B Sweet Sally 5044

NH Cowboy Pride 328M

DCR Patricia 28E 0013



**BW 3.7 WW 46 YW 77 Milk 16 M&G 39 SC +1.0 Fat +0.002 REA +0.30 Marb +0.16 BMI 21 CEZ 16 BII 20 CHB 24**

41

Anchor 44U

BP 44U Anchor 38Y

K 64H Ribstone Lady 184M

**DCR 38Y Anchor 417**

**DOB: Apr 3, 2014**

**BW: 75**

K&B Red Felton 7006T

DCR 7006 Diana 1004

DCR 3232 Diana 7001

Anchor 49R

Anchor 5M

Standard 16E Ribstone 64H

K 45D Super Lady 180J

KCF Bennett 3008 M326

K&B Sweet Sally 5044

UPS Kootenay 3232 1ET

DCR 14K Diana 4017



**BW 3.6 WW 42 YW 72 Milk 18 M&G 39 SC +0.9 Fat +0.002 REA +0.32 Marb +0.18 BMI 20 CEZ 15 BII 19 CHB 22**

Thick made, deep quartered bull out of the Diana cow family. Should make nice females. Dam is coming 5.



42

Anchor 44U

BP 44U Anchor 38Y

K 64H Ribstone Lady

**DCR 38Y Anchor 420**

**DOB: Apr 21, 2014**

**BW: 72**

DCR Koot 713

DCR 713 Daisy 1012

DCR 328 Miss Daisy 4025A

Anchor 49R

Anchor 5M

Standard 16E Ribstone 64H

NJW 563 Nickette 1A

UPS Kootenay 3232 1ET

CH Sweet Honesty 128

NH Cowboy Pride 328M

DCR Dutchess E50 0023

**BW 2.4 WW 47 YW 79 Milk 15 M&G 39 SC +0.7 Fat +0.003 REA +0.37 Marb +0.07 BMI 18 CEZ 16 BII 16 CHB 23**

Very efficient, early maturing bull. Dam is a great 5 year old cow.

43

Anchor 44U

BP 44U Anchor 38Y

K 64H Ribstone Lady 184 M

**DCR 38Y Anchor 425**

**DOB: May 16,**

**BW: 72**

NJW 167L Radar 38T

DCR 38T Ella 1051

DCR 722 Ella 9022

Anchor 49R

Anchor 5M

Standard 16E Ribstone

K 45D Super Lady 180J

SHF Radar M326 R125

NJW 45G Ladysport 167L

DCR Koot 722

DCR 703 Pauline 1001



**BW 1.7 WW 42 YW 65 Milk 16 M&G 37 SC +0.6 Fat +0.004 REA +0.32 Marb +0.07 BMI 17 CEZ 16 BII 16 CHB 20**

Active, easy moving bull that should cover a lot of cows. Dam is coming 5.

44

Anchor 44U  
BP 44U Anchor 38Y

K 64H Ribstone Lady

**DCR 38Y Anchor 428**

**DOB: Apr 23, 2014**

**BW: 73**

DCR Koot 713  
DCR 713 Perfect 1030

DH Hello Dolly 744

Anchor 49R

Anchor 5M

Standard 16E Ribstone 64H

K 45D Super Lady 180J

UPS Kootenay 3232 1ET

DH Sweet Honesy 128

SQCF Gerrits Basic Boom 0P14

DH Perfect Tara 448



**BW 1.9 WW 36 YW 67 Milk 17 M&G 35 SC +0.6 Fat +0.004 REA +0.32 Marb +0.10 BMI 16 CEZ 15 BII 15 CHB 17**

Mello, yellow and easy fleshing. Should sire great females. Cow died, so he weaned lighter and it shows in his EPD profile



45

Anchor 44U

BP 44U Anchor 38Y

K 64H Ribstone Lady

**DCR 38Y Anchor 430**

**DOB: Apr 16, 2014**

**BW: 73**

DCR Koot 713  
DCR 713 Lady Dom 1022

DCR Lady Dom 79J 4028

Anchor 49R

Anchor 5M

Standard 16E Ribstone 64H

NJW 563 Nickette 1A

UPS Kootenay 3232 1ET

CH Sweet Honesty 128

BBSF 610 Justify 79J

DCR Lady Dom 28E 0011

**BW 2.1 WW 44 YW 76 Milk 16 M&G 38 SC +0.8 Fat +0.001 REA +0.32 Marb +0.07 BMI 19 CEZ 16 BII 17 CHB 22**

Super thick & soggy. Should sire cattle that do well on grass. Cow is coming 5.

46

Anchor 44U  
BP 44U Anchor 38Y

K 64H Ribstone Lady 184 M

**DCR 38Y Anchor 431**

**DOB: Apr 22, 2014**

**BW: 79**

Bar JZ Eclipse 930H  
DH Sweet Tomorrow 780

DH Scarlet Penny 303

Anchor 49R

Anchor 5M

Standard 16E Ribstone 64H

K 45D Super Lady 180J

Bar JZ Tradition 434V

Bar JZ 326C Lady 276E

NH Rhett 79

DH Valuable Penny 80



**BW 3.4 WW 35 YW 62 Milk 14 M&G 31 SC +0.3 Fat -0.007 REA +0.24 Marb +0.05 BMI 15 CEZ 16 BII 13 CHB 17**

An economic designed bull out of a coming 13 year old cow.

**47**

Anchor 44U

BP 44U Anchor 38Y

K 64H Ribstone Lady 184M

**DCR 38Y Anchor 432****DOB: May 20, 2014****BW: 76**

SB Boomer 14K

DCR 14K Sweet Scarlet 8020

DH Sweet Honest 128

Anchor 49R

Anchor 5M

Standard 16E Ribstone 64H

K 45D Super Lady 180J

Remitall Boomer 46B

RWS Miss Vicky 64V

Bar JZ Devo 394K

DH Top Scarlet 720



**BW 3.3 WW 49 YW 84 Milk 18 M&G 42 SC +0.7 Fat +0.004 REA +0.41 Marb +0.06 BMI 17 CEZ 15 BII 14 CHB 24**

Full pigmented and longsided out of a maternal sister to 713. The dam has a lifetime WW ratio of 102%

**48**

Anchor 44U

BP 44U Anchor 38Y

K 64H Ribstone Lady

**DCR 38Y Anchor 434****DOB: Apr 13, 2014****BW: 71**

K&amp;B Red Felton 7006T

DCR 7006 Diana 1013

DCR Diana 7020

Anchor 49R

Anchor 5M

Standard 16E Ribstone 64H

NJW 563 Nickette 1A

KCF Bennett 3008 M326

K&amp;B Sweet Sally 5044

SB Boomer 14K

DCR 703 Diana 2008

**BW 3.4 WW 45 YW 76 Milk 17 M&G 40 SC +0.9 Fat +0.013 REA +0.37 Marb +0.16 BMI 20 CEZ 15 BII 18 CHB 23**

Moderate, deep ribbed and economic. Out of donor cow Diana 1013. Should sire great baldy females.

**49**

Anchor 44U

BP 44U Anchor 38Y

K 64H Ribstone Lady 184

**DCR 38Y Anchor 436****DOB: Apr 13,****BW: 72**

Feltons Legend 242

DCR 242 Diana 1000

DCR 14K Diana 4017

Anchor 49R

Anchor 5M

Standard 16E Ribstone 64H

K 45D Super Lady 180J

Feltons Domino 774

Feltons G15

SB Boomer 14K

DCR Diana 5036



**BW 1.9 WW 39 YW 66 Milk 16 M&G 35 SC +0.7 Fat +0.029 REA +0.19 Marb +0.17 BMI 18 CEZ 17 BII 17 CHB 19**

A light birth weight bull, yellow colored out of the Diana cow family. Has a BW ratio of 96%.

50

Anchor 44U

BP 44U Anchor 38Y

K 64H Ribstone Lady 184M

**DCR 38Y Anchor 442**

**DOB: Apr 23, 2014**

**BW: 74**

K&B Red Felton 7006T

DCR 7006 Trixi 1015

DH Rich Rose 505

Anchor 49R

Anchor 5M

Standard 16E Ribstone

K 45D Super Lady 180J

KCF Bennett 3008 M326

K&B Sweet Sally 5044

SQCF Gerrits Basic Boom

DH Rich Amber 188



**BW 3.2 WW 43 YW 71 Milk 18 M&G 39 SC +0.9 Fat +0.013 REA +0.25 Marb +0.12 BMI 19 CEZ 15 BII 18 CHB 20**

Long sided, easy moving cowboy kind of bull should cover lots of miles. Dam is coming 10.



51

Anchor 44U

BP 44U Anchor 38Y

K 64H Ribstone Lady

**CR HD 38Y Anchor 463**

**DOB: May 11, 2014**

**BW: 78**

DCR Koot 722

DCR 722 L1 Dom 009

DCR 3232 Dom 7019

Anchor 49R

Anchor 5M

Standard 16E Ribstone 64H

NJW 563 Nickette 1A

UPS Kootenay 3232 1ET

DCR Dutchess 6103

UPS Kootenay 3232 1ET

Sun MS L1 Dom 58L

**BW 2.7 WW 45 YW 74 Milk 15 M&G 38 SC +0.7 Fat -0.008 REA +0.34 Marb +0.14 BMI 19 CEZ 15 BII 17 CHB 24**

Efficient, loose hided bull out of a 6 year old cow that has a lifetime weaning ratio of 103.



## Reference Sire

# TH 43P 719T Victor 453Y



HRP THM Victor 109W 9329

DRF THM Victor 711

RHF 964 Victra 4057

TH 122 711 Victor 719T

NJW 1Y Wrangler 19D

KBCR 19D Dominette 122

KBCR Dominette 9112

Boyd Z 86 Limited 8146

Bar JZ Tradition 434V

TH 121L 8146 Cassandra 43P

Boyd Z86 Limited 8146

KB 17F Cassandra 121L

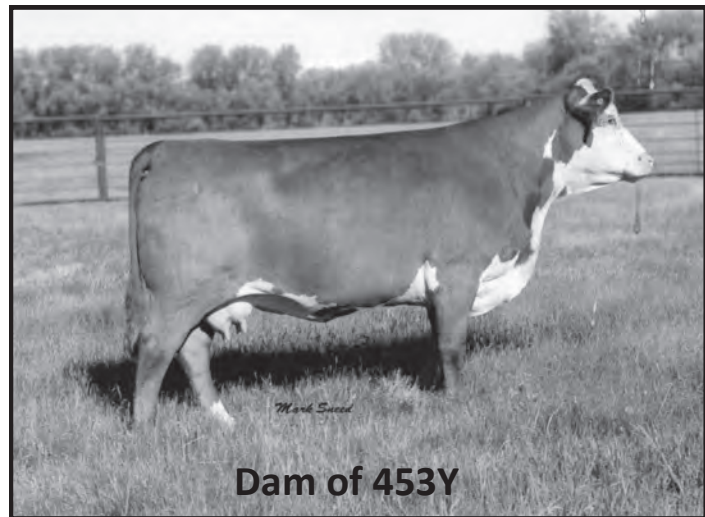
TEE-Jay 707B Falcon 17F

Hillside Cassandra 401D

BW 1.9 WW 52 YW 75 Milk 21 M&G 47 SC +0.8 Fat +0.013 REA +0.15 Marb +0.10 BMI 18 CEZ 17 BII 16 CHB 24

### Calving Ease Specialist!

Used heavy here at DCR with great results. Calves come light, are shaped right and have tons of vigor.



Dam of 453Y

*"For many years now we have fed Durbin Creek Ranch's home raised cattle. Whether as calves or yearlings the cattle gain and perform. Sunshine and mild weather to cold and snowy winters, the cattle always convert their feed in the top percentile, compared to all the cattle at all of our operations."*

**Dan Timmerman**

**Timmermans & Sons, Custom Feeders**



52

TH 453 711 Victor 719T  
 TH 43P 719T Victor 453Y ET  
 TH 121L 8146 Cassandra

**DCR 453Y Unlimited**  
**DOB: May 21,**  
**BW: 68**

DCR 38T Radar 05X  
 DCR 05X Sweet Wine  
 DCR 7006 Dom 9032

DRF Jwr Prince Victor  
 KBCR 19D Dominette  
 Boyd Z86 Limited 8146  
 KB 17F Cassandra 121L  
 NJW 167L Radar 38T  
 DCR 3232 Ella C 8026  
 NJW 167L Radar 38T  
 DCR 2D Lady Red Wine 8004



**BW 1.6 WW 53 YW 77 Milk 20 M&G 46 SC +0.9 Fat +0.008 REA +0.22 Marb +0.11 BMI 20 CEZ 17 BII 17 CHB 25**

Calving ease deluxe yet still maintain style and rib. Use with confidence on heifers. BW ratio of 96%, WW ratio of 115%. Big spread calf!



53

TH 453 711 Victor 719T  
 TH 43P 719T Victor 453Y ET  
 TH 121L 8146 Cassandra 43P

**DCR 453Y Unlimited 437**  
**DOB: Apr 11, 2014**  
**BW: 71**

DCR Koot 713  
 DCR 7006 Daisy 2052  
 DCR 14K Daisy 7005

DRF Jwr Prince Victor 711  
 KBCR 19D Dominette 122  
 Boyd Z86 Limited 8146  
 KB 17F Cassandra 121L  
 UPS Kootenay 3232 1ET  
 DH Sweet Honest 128  
 SB Boomer 14K  
 DCR Queen 9001

**BW 2.7 WW 49 YW 81 Milk 19 M&G 43 SC +0.7 Fat +0.002 REA +0.33 Marb +0.10 BMI 17 CEZ 15 BII 15 CHB 24**

A moderate made, light birth weight bull who should be a great calving ease sire that leaves good females behind.

54

TH 453 711 Victor 719T  
 TH 43P 719T Victor 453Y ET  
 TH 121L 8146 Cassandra 43P

**DCR 453Y Unlimited**  
**DOB: Apr 23, 2014**  
**BW:**

DCR Koot 713  
 DCR 713 Miss Daisy 2036  
 DCR 328 Miss Daisy

DRF Jwr Prince Victor  
 KBCR 19D Dominette  
 Boyd Z86 Limited 8146  
 KB 17F Cassandra 121L  
 UPS Kootenay 3232 ET  
 DH Sweet Honesty 128  
 NH Cowboy Pride 328M  
 DCR Dutchess E50 0023



**BW 2.2 WW 45 YW 73 Milk 21 M&G 43 SC +0.6 Fat +0.001 REA +0.29 Marb +0.07 BMI 16 CEZ 17 BII 14 CHB 22**

Big spread bull that will sire light birth weights with lots of early performance. WW ratio 104%

56

TH 453 711 Victor 719T DRF Jwr Prince Victor 711  
 TH 43P 719T Victor 453Y ET KBCR 19D Dominette 122  
 TH 121L 8146 Cassandra 43P Boyd Z86 Limited 8146  
**DCR 453Y Unlimited 450** KB 17F Cassandra 121L  
**DOB: Apr 19, 2014** UPS Kootenay 3232 ET  
**BW: 69** DCR Koot 713 DH Sweet Honesty 128  
 DCR 713 Devo Lady 2007 Bar JZ Devo 323K  
 DH Devo Lady 141 DH Fast Whisper 141



**BW 2.2 WW 45 YW 73 Milk 21 M&G 43 SC +0.6 Fat +0.001 REA +0.29 Marb +0.07 BMI 16 CEZ 17 BII 14 CHB 22**

A long sided, eye appealing, calving ease sire that will give plenty of performance.



57

TH 453 711 Victor 719T DRF Jwr Prince Victor 711  
 TH 43P 719T Victor 453Y ET KBCR 19D Dominette 122  
 TH 121L 8146 Cassandra 43P Boyd Z86 Limited 8146  
**DCR 453Y Unlimited 456** KB 17F Cassandra 121L  
**DOB: Apr 13, 2014** UPS Kootenay 3232 1ET  
**BW: 70** DCR Koot 713 DH Sweet Honesty 128  
 DCR 713 Beauty 2017 WNH Keynote 9401 0302ET  
 DCR 3551 Beauty 6021 DH Simply 551

**BW 2.3 WW 53 YW 83 Milk 19 M&G 45 SC +0.8 Fat +0.004 REA +0.35 Marb +0.10 BMI 19 CEZ 16 BII 16 CHB 26**

Power house calving ease prospect out of a real pretty 713 daughter. 456 should sire light birth weights, but has the power to give tons of performance. WW ratio of 103%

58

TH 453 711 Victor 719T DRF Jwr Prince Victor 711  
 TH 43P 719T Victor 453Y ET KBCR 19D Dominette 122  
 TH 121L 8146 Cassandra 43P Boyd Z86 Limited 8146  
**DCR 453Y Unlimited 459** KB 17F Cassandra 121L  
**DOB: Apr 16, 2014** UPS Kootenay 3232 1ET  
**BW: 70** DCR Koot 713 DH Sweet Honesty 128  
 DCR 713 Standard UPS Kootenay 3232 1ET  
 DCR 3232 Standard 7018 DCR Patricia 28E 0013



**BW 2.1 WW 50 YW 81 Milk 19 M&G 44 SC +0.9 Fat -0.004 REA +0.33 Marb +0.13 BMI 20 CEZ 17 BII 18 CHB 26**

A freckle face and mello made calving ease sire. 453Y Worked well on the 713 daughters.

## Reference Sire

# TW Hercules



Feltons Legend 242  
MSU TCF Revolution 4R  
MSU TCF Rachael ET 54N  
Mohican Plentywood  
Ash Anne 52U  
Ash Annie 53R

Feltons Domino 774  
Feltons G15  
Remitall Online 122L  
HH Miss ADV 786G 1ET  
Haroldson's Drummond 45G  
Mohican Miss 424G  
Mohican Mint 19M  
Tana Dom 977

BW 2.7 WW 43 YW 69 Milk 22 M&G 43 SC +0.5 Fat +0.020 REA +0.44 Marb +0.10 BMI 15 CEZ 16 BII 13 CHB 21

### The efficiency expert!

Light birth, fast early growth and early maturity. His first daughters in production were amazing. They were milky yet extremely easy fleshing. Use his sons to improve on economic traits.



**59**

MSU TCF Revolution 4R  
 TW Hercules  
 Ash Anne 52U

**DCR Legend 406****DOB: May 17, 2014****BW: 72**

TW Hercules  
 DCR Sunny 2002

DCR 7006 Dom 9023

Feltons Legend 242  
 MSU TCF Rachael ET 54N  
 Mohican Plentywood 428P  
 Ash Annie 53R  
 MSU TCF Revolution 4R  
 MSU TCF Rachael ET 54N  
 K&B Red Felton 7006T  
 Sun MS L1 Dom 58L



**BW 2.7 WW 47 YW 73 Milk 22 M&G 45 SC +0.7 Fat +0.012 REA +0.39 Marb +0.12 BMI 17 CEZ 16 BII 15 CHB 23**

Moderate, big ribbed out of one of our best young cows. She has a WW ratio of 114%. Should sire very productive, early maturing females.

**60**

MSU TCF Revolution 4R  
 TW Hercules  
 Ash Anne 52U

**DCR Legend 443****DOB: Apr 23, 2014****BW: 70**

DCR 38T Radar 05X  
 DCR 05X Wine 2009  
 DCR 38T Wine 018

Feltons Legend 242  
 MSU TCF Rachael ET 54N  
 Mohican Plentywood 428P  
 Ash Annie 53R  
 NJW 167L Radar 38T  
 DCR 3232 Ella C 8026  
 DCR 38T Radar 38T  
 DCR 3232 Red Wine 8037

**BW 2.3 WW 44 YW 70 Milk 19 M&G 42 SC +0.7 Fat +0.006 REA +0.39 Marb +0.09 BMI 18 CEZ 16 BII 16 CHB 22**

Loose hided and masculine with a WW ratio of 102%. Should sire performance and early maturity.

**61**

MSU TCF Revolution 4R  
 TW Hercules  
 Ash Anne 52U

**DCR HD 453Y Unlimited 460****DOB: May 26, 2014****BW: 69**

NJW 167L Radar 38T  
 DCR HD 38T Beauty 205Z

DCR 7006 Red Beauty 0124

Feltons Legend 242  
 MSU TCF Rachael ET 54N  
 Mohican Plentywood 428P  
 Ash Annie 53R  
 SHF Radar M326 R125  
 NJW 45G Ladysport 167L  
 K&B Red Felton 7006T  
 DCR 388 Beauty 6015



**BW 2.4 WW 54 YW 77 Milk 21 M&G 48 SC +0.9 Fat +0.006 REA +0.25 Marb +0.10 BMI 19 CEZ 16 BII 17 CHB 25**

Big topped and bold in his rib design. Will put some power in a calf crop and leave productive cows.

62

Feltons Legend 242

DCR 242 Legend 107

DH Sweet Honesty 128

**DCR Legend 403**

**DOB: , 2014**

**BW:**

UPS Kootenay 3232 1ET

DCR 3232 Ella 7026

DCR Ella 45G 0019

Feltons Domino 774

Feltons G15

BAR JZ Devo 394K

DH Top Scarlet 720

Remitall Kootenay 9K

UPS Miss Pure Gold 0613

GK Solo Voyageur 34W

DCR Pauline 105



**BW 1.7 WW 42 YW 65 Milk 17 M&G 38 SC +0.8 Fat +0.000 REA +0.35 Marb +0.10 BMI 20 CEZ 18 BII 19 CHB 22**

Moderate, big ribbed and soft. Out of the Ella cow family.

63

Feltons Legend 242

DCR 242 Legend 107

DH Sweet Honesty 128

**DCR Legend 448**

**DOB: , 2014**

**BW:**

WNH Keynote 9401 0302

DCR 0302 Wine 7032

DH Rich Wine 107

Feltons Domino 774

Feltons G15

BAR JZ Devo 394K

DH Top Scarlet 720

Remitall Keynote 20X

WNH MS Optima Z03

DH Rolo Eclipse 25

DH Copper Wine 731



**BW 2.6 WW 45 YW 77 Milk 16 M&G 40 SC +0.7 Fat +0.001 REA +0.30 Marb +0.03 BMI 16 CEZ 16 BII 14 CHB 21**

Dark colored and thick. Out of Wine 7032, maternal brother is working for Bar Pipe Herefords out of Alberta.

64

Feltons Legend 242

DCR 242 Legend 107

DH Sweet Honesty 128

**DCR Legend 401**

**DOB: , 2014**

**BW:**

NJW 167L Radar 38T

DCR 38T Daisy 0110

DCR 9001 Daisy 6010

Feltons Domino 774

Feltons G15

BAR JZ Devo 394K

DH Top Scarlet 720

SHF Radar M326 R125

NJW 45G Ladysport 167L

SB Boomer 14K

DCR Queen 9001



**BW 1.5 WW 42 YW 65 Milk 19 M&G 40 SC +0.6 Fat +0.018 REA +0.29 Marb +0.07 BMI 17 CEZ 17 BII 15 CHB 19**

Long sided and good moving. Should sire great grass calves.

65

Feltons Legend 242

DCR 242 Legend 107

DH Sweet Honesty 128

**DCR Legend 433**

DOB: , 2014

BW:

Remitall Transamerica 236T

Boss Susie 89W

Remitall Ms Susie 121T

Feltons Domino 774

Feltons G15

BAR JZ Devo 394K

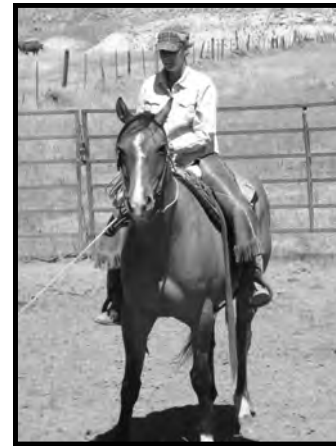
DH Top Scarlet 720

Remitall Route 66 ET 346R

Remitall Marvel 195P

Remitall Patriot ET 13P

MHPH MS 4L Susie 128N



**BW 3.3 WW 51 YW 83 Milk 20 M&G 46 SC +0.9 Fat +0.014 REA +0.23 Marb +0.11 BMI 18 CEZ 15 BII 16 CHB 24**

Performance orientated bull that should sire powerful calves.



# 100 Head of F1 Baldy Heifer Calves Sired Exclusively by DCR Bulls

75 Black Baldies, 25 Red Baldies

- ◆ A 7% advantage in conception rate
- ◆ \$51 more per cow per year
- ◆ Improve disposition & handling ability
- ◆ Increase value of females
- ◆ Data based on the Circle A Ranch Heterosis Project beginning in 2007, conducted by Circle A Angus Ranch.



Selling in groups of 5 with a run on the pen if desired.

# Power of the Baldy Cow

Reprint from August issue of The White Face.

Using Hereford bulls on Angus based cows will give producers advantages in profitability, cash flow, herd size and retained females fertility and longevity according to a recently completed study at Circle A Angus Ranch. In fact, when the data were further analyzed for economic emphasis, the results showed an advantage of \$514 net per cow over a period of 10 years. That's a \$51 difference per cow per year!

Economic models also predicted that if replacement females are retained over a period of 10 years, Hereford sired females will generate a 20% advantage in herd size for the same relative cost versus the straight Angus commercial cows because of increased fertility and longevity.

The study, conducted by Circle A Ranch headquartered in Iberia Mo., in cooperation with the American Hereford Association was started in 2007. Mark Akin, Circle A Ranch manager says, "The female side was what really peaked my interest, because we've bred purebred Angus for all these years, and I was curious if the heterosis from the cross would make available a better conception rate for us, and it did."

To start the project, Circle A Ranch AI bred 600 commercial Angus cows to 10 Hereford bulls with the goal of comparing the best of its Angus to the best of the Hereford-Angus cross. The control group included progeny from three proven Angus sires. The average EPD's of the Angus sires would place them in the top 30% of the Angus breed for birth weight and the top 20% of the breed for weaning weight. All the cows and the resulting calves were commingled and managed the same.

Data were collected by Circle A staff and interpreted by Dan Moser, Kansas State University associate professor of genetics, and Vern Pierce, University of Missouri associate professor of agricultural economics.

The Hereford cross calves showed the advantage from birth. Average birth weight for the Hereford sired calves was 72 lbs., 3lbs. heavier than the Angus sires, but still desirable and nearly ideal for commercial operations, according to Moser.

At weaning the Hereford sired calves were 11.9 lbs. heavier than the Angus sired calves, despite the Angus sires ranking in the top 20% of the breed for weaning weight EPD.

After being weaned, a portion of the steers were fed at Circle A's feedlot in Huntsville, Mo., where the Hereford sired steers outgained the Angus by about .15 lbs. per day.

While both breed groups were similar for fat thickness (Angus =0.52; Hereford =0.54), the Hereford sired steers had 13 lbs. more of carcass weight and about ¼ of an inch more ribeye area.

Heifer calves were developed and bred at Circle A's Lineville, Iowa, ranch. The Hereford sired heifers showed their prowess as productive females by boasting a 7% advantage in conception rate over the Angus heifers.

Seventy-five of the bred heifers were sold at the Circle A's annual production sale and averaged \$110 more per head than the commercial Angus Counterparts.

Maternal traits and the effect on birth and weaning weights of the calves will continue to be measured as the retained heifers calve and rebreed.

Although difficult to measure, Circle A staff members say they were impressed with the baldies' quiet, easy to handle disposition as well.

Pierce evaluated the performance differences between the Hereford and Angus sire groups including birth, weaning and feedlot growth and carcass data on the steer calves and pregnancy rates from the female progeny of the sire groups. He developed an economic model projecting the added value of the Hereford heterosis over a 10 year period.



# 2016 Sale Horse Information

The horses that we are offering at our 2016 sale include four geldings and two mares. They are young horses that have all been used on the ranch. We believe that each one of them will make a great asset to any ranch or go on to be performance horses as well. At sale time all horses will have fresh shoes as well as had their teeth floated and thoroughly checked and been dewormed recently. You will see the RDA prefix on some of the sale horses. This prefix belongs to Matt and Debbie Agar. They run their horses right along side of ours. We are very excited about this set of sale horses and look forward to sharing them with you!

## Guarantee:

If a buyer is not satisfied with their horse in the first 30 days after purchase the horse can be returned to the seller for 100% of the purchase price. Our horses are also guaranteed sound for the first 30 days after purchase. If a horse appears to be unsound in the first 30 days the horse can be returned to the seller for 100% of the purchase price, with a vet check (paid by seller) stating the unsoundness is the seller's responsibility.

## Mare 1st Right or Refusal:

On the sale of mares, Durbin Creek Ranch wishes to obtain the first right to buy back the mare if the new owner ever wishes to sell them.

## Trying Horses Before Sale:

If you would like to ride a horse before the sale please call and we will make an appointment with you to do so. Horses will not be available for riding once they have reached the sale location.

For more information on sale horses or to view a video of each lot please visit [www.durbincreekranch.com](http://www.durbincreekranch.com) or visit our Facebook page titled **Durbin Creek Ranch Registered Quarter Horses.**

**Jake: (307) 867-2403 Jake Cell: (541) 519-5366**

**[durbincreekranch@gmail.com](mailto:durbincreekranch@gmail.com)**

1A

Sun Frost

PC Wades Frost

PC Wades World

**DCR Diamond Deck**

2013 Sorrel Gelding

Roan For Cash

Dollitas Cash

Dandy Dollita

Doc's Jack Frost

Prissy Cline

Docs Oaks Sugar

Cowan Kitten

Flashy Nobleman

Bucky Reed Hancock

Kellys Golden Dun

Barbalita



"Diamond" will have over 60 days of ranch work. He is a very broke horse, leave him set for a month, saddle him, get right on and rope a cow. He has been roped off of, worked in a sorting alley, loaded trucks and does great. He handles nicely but has been a little unwilling to lope circles. As good of a ranch horse as he is we haven't pushed the circles. He is going to be a good sized horse. Guaranteed 100% sound.

2A



**Mickey**  
2007 Grade  
Buckskin Gelding



"Mickey" has been Jake's number one go to horse for the last several years. This horse has done everything there is to do on the ranch. He has been started out of the box and is a great heel horse. Mickey has that extra edge to be a winner. Not a beginner horse. Guaranteed 100% sound.

3A

LZM Brown Conchos

DCR Speedy Fair

Twinkle Fair

**DCR Neon Rose**

2011 Bay Roan Mare

Roan For Cash

DCR Barbra

Barbalita

Frostys War Chief

Conchos Lady 025

Lord Fairfax

Betwinkle

Flashy Nobleman

Bucky Reed Hancock

Leo Doc Bar

Breezalita



"Neon" has just been started and has about 15 rides. She will have over 45 days at sale time. She has been wonderful to start. She has never had any buck. She went to work outside on the ranch after just two sessions in the round pen and arena. This young mare is going to have a larger than life stop and turn around. There is nothing this nice horse won't be great at. Guaranteed 100% sound.

4A

**RDA Conchos Moon**  
2013 Buckskin Gelding

- [Frostys War Chief](#)
- [LZM Brown Conchos](#)
- [Conchos Lady 025](#)
- [Goldchankingmaker](#)
- [Lady Sugarlita](#)
- [Lady Deckalita](#)
- [War Concho](#)
- [Frostena](#)
- [War Concho](#)
- [Watch Joy](#)
- [Subaru](#)
- [Oahe Duchess](#)
- [Kellys Golden Dun](#)
- [Dim Beauty](#)



"Dillon" will have over 60 days of ranch work at sale time. He hasn't had any buck when laid off but will be a bit more watchy. He is a very nice ranch horse. He is good with a rope. He has worked in the corral and is a great using horse. Going to be a nice stout big boned and footed horse. He would make a very nice head horse. He has lots of cow. Guaranteed 100% sound.

5A



**DCR Silver Badger**  
2013 Grullo Gelding

- [Orphan Drift](#)
- [Ciderwood](#)
- [TKM Kusterwood](#)
- [Sarca Katy](#)
- [DCR Bessys Concho](#)
- [Bessalita](#)
- [Poco Judy Sue](#)
- [San Zorro](#)
- [Katy Last](#)
- [Frostys War Chief](#)
- [LZM Brown Conchos](#)
- [Conchos Lady 025](#)
- [Kellys Golden Dun](#)
- [Silvalita](#)

"Badger" will have over 60 days of ranch work. He is going to be a very gentle horse. He has sat for a month and had no problems going back to work. He has roped big yearlings and been used to work colts off of. He has loaded trucks and done some corral work as well. Guaranteed 100% sound.

6A

**DCR Golden Lady**  
2013 Buckskin Mare

- [Ciderwood](#)
- [TKM Kusterwood](#)
- [Sarca Katy](#)
- [Orphan Drift](#)
- [Poco Judy Sue](#)
- [San Zorro](#)
- [Katy Last](#)
- [Frostys War Chief](#)
- [LZM Brown Conchos](#)
- [Conchos Lady 025](#)
- [DCR Rose Concho](#)
- [Moons Red Rose](#)
- [Kellys Golden Moon](#)
- [Barbalita](#)



"Katy" will have over 60 days of ranch work. She can be a bit cold backed if laid off when first saddled but it has never been much. She has been an awesome ranch horse. She has loaded trucks, roped outside, works a gate and handles very well. She has a very nice stop. This mare would make a great calf roping or heel horse. She is an excellent ranch horse already. Guaranteed 100% sound.

# RANCH HORSES READY TO PERFORM



*DCR Speedy Fair*



*PC Wades Frost*



*TKM Kusterwood*



*LZM Brown Conchos*

## Stallions

Our stallions are primarily Sun Frost and Driftwood bred. We choose these bloodlines because they have been proven time and again to produce horses with a sound mind and tremendous athletic ability.

## Mares

Our mares are the direct descendants of the Lockett horse program of Eastern, OR. The majority of them are out of a Windchester X Poco Bueno stallion and trace back to Gusdusted on their maternal sides. Gusdusted was a full brother to the great Leo.

## Horses We Raise

By crossing our Driftwood/Sun Frost stallions on Windchester/Poco Bueno mares we are able to produce a horse that is put together durable and structurally correct as well as being extremely athletic and of sound mind. They are phenomenal ranch horses that excel in the arena as well!

# Horses In Action



Taylor & DCR Roany 104



Taylor & Rylee with their prizes from running barrels in 2015



Rylee & Meshewas Maverick



Tylee & PC Wades Frost



Clint heading on DCR Sagewood & Jake heeling on Patty



Hannah & Lot 5A as a foal



Bruce heading on DCR Bay Star and Jake heeling on Mickey

Joey running barrels on DCR Twist An Drift



Full brother to lot 4A holding a bull



Cooper roping on Meshewas Maverick



# Thank you to all who made last years sale a great success!



Mary keeping the crew fed the morning of the sale.

Taylor & Rylee singing before the sale.



Jim and Stacy Newby, owners of Worland Livestock Auction



Bruce & Mary with Darrell & Vicki Barnum of Stapleton, NE, returning bull buyers

We would like to thank all the people behind the scenes who help make this sale happen.

The many volunteers and those part of the Durbin Creek team, who are:

The Abbe Family

The Peil Family

The Skelton family

The Buchanan Family

Asa Stothart



**The Durbin Creek difference is that the cattle are designed and managed in a manner where they go on and earn a living for their new owners instead of the new owners earning a living for them!**



Durbin Creek Ranch  
3292 Grass Creek Rd  
Thermopolis, WY 82443

*Thank you for your interest in the  
Durbin Creek Program. We hope  
to see you again next year.*

