

Dvorak Herefords



Bull & Female Sale
Friday, February 5, 2016 - 1:00 CST

Selling: 6 Yearling Bulls, 4 Fall Bulls
30 Coming Two-Year-Old Bulls
30 Reg. Hereford Heifers

Dvorak Herefords

Welcome to our 2016 Bull & Female Sale

All sale animals are being fed at the farm North of Marty, and will be moved to the sale site at the ranch northeast of Pickstown, Thursday afternoon, the 5th. The cattle will be penned and available for viewing sale day.

The entire sale offering will be sold via video in our remodeled, heated barn.

Bull Development

The two-year-old bulls were fed as calves in our back-grounding yard alongside their steermates until grass time in the spring of 2015. The two-year-olds were brought off grass around Labor Day time, and all sale bulls have been fed a 48neg balanced grower ration consisting of oatlage, corn silage, cracked corn, ground hay, and alfalfa.

Videos of the bulls and heifers can be seen on our website, www.dvorakherefords.com, or through links at Hereford America.com, American Hereford Association market-place link, or through DVAuction.



Like Dvorak Herefords
on Facebook

DVAuction
Broadcasting Real-Time Auctions

Can't make the sale?
Let DVAuction bring the sale
to you!

Busy during the sale?
Let DVAuction represent
your bid!

Visit www.DVAuction.com
and Register Today

For General Questions
Please Contact Our Office:
(402) 316-5460 or
support@dvauction.com



Dvorak Herefords **Bull & Female Sale** **Friday, February 5, 2016** **Complimentary Lunch 12 pm, Sale Time 1 pm CST**

A red sign with white text that reads "DVORAK RANCH" with a stylized 'D' and 'R'.

GPS Coordinates

N 43°04.335' • W098°31.571'

"If you are using a GPS to get to the sale site, enter these coordinates. The 911 address will not get you to the sale site"

Sale day phone:

Boyd Dvorak 605-491-7090

Jeff Dvorak 605-491-2068

Ben Roudabush 276-692-8118

Jenni Dvorak 605-491-7091

Cody Chambliss 605-730-1837

Acknowledgments

SDHA Secretary - Phil Eggers

SDHA President - Jerome Ollrich

SDJHA Queen - Sydney Dvorak

Veterinarian- Northwest Vet Clinic - Dr. Chris Freidl

Nutritionist- Country Pride Coop - Angela Koenig

Ultrasound- Midwest Sonatech - Steve & Amy Muller

Embryologist- Simple Dreams Genetics - Jim Vierhout
- Dandy Enterprises, Neil Johnson

Photography- FOCUS Marketing Group - Kyla Copeland,

LC Promotions - Lacey Caffee, and Sydney Dvorak

Catalog Design & Layout -

CAVENEEDesign (605) 830-9025

scavenee@gwtc.net • Bonesteel, SD

Auctioneer - Brad Veurink, Corsica, SD, (605) 680-1281

Marketing Representatives

Levi Landers - Hereford World, (308) 730-1396

Art Handel - Handel Marketing, (605) 391-8233

Marc & Jill Hotchkiss - Hereford America,
(605) 490-1513

Alex Cosgray - Streamline Genetics, (765) 490-6286

Ben Roudabush, (276) 692-8118

Tom Granzow - Kansas Hereford
Assn., (785) 466-6790



Located at our ranch, Pickstown, SD, watch for the sign from the Jct's of US 281 & 18, and SD Hwy 46 at Pickstown - 1/4 mile east, 1/4 mile north

Sale terms & Conditions - All cattle selling will be sold to the highest bidder. Any disputes will be settled by the auctioneer at the time of sale, and his decision will be final. All announcements made immediately before an animal is sold takes precedence over information printed in this catalog. All cattle are to be paid for by the purchaser immediately following the sale, unless prior arrangements have been made with either Jeff or Boyd Dvorak.

Absentee bidding - If you would not be able to attend the sale, and would like to place a bid on any of the sale lots, we would gladly assist you, by either leaving a bid with Dvorak Herefords, or other sale staff. If you wish to be on the phone for the bidding, we will try to line up someone to be on the phone with you for the lots in which you are interested. Bidding can also be done through DV Auction. Be sure to get pre sale bidder approval.

Liability - All animals and merchandise sold will be at the buyer's risk as soon as sale is complete. Neither the owner's, auctioneers, or any other personnel will be responsible for an injury or loss that may occur during the sale or on the premises.

Guarantee - All animals sold by Dvorak Herefords will be guaranteed breeders, and all bulls have passed a semen evaluation. If an animal fails to be a breeder, buyers can choose a replacement, if one is available at the time, or receive credit. Dvorak Herefords will not warranty a bull for death, but offers to pay one half of a six month term of mortality insurance the day of the sale. Any animal left in care of Dvorak Herefords must be insured. Guarantee is void if improper management in caring for an animal, or sickness, or injury occurred after taking possession of said animal.

Health - All bulls selling have passed a breeding soundness exam from Northwest Vet Clinic at Wagner, SD, including a semen evaluation. All animals sold by Dvorak Herefords will have been test clean for BVD PI. They have been on an extensive vaccination protocol since birth, and received their first footrot shot, and breeding shot of Preg Guard Gold 10 mid January 2015. All animals sold in this sale will be sold with health papers for interstate travel.

Delivery/Extended Care - We will deliver within a reasonable distance, and cooperate with buyers on further destinations. No delivery on heifers. We will begin to deliver bulls within a week or two after the sale depending on our schedule. Yearlings bulls we would like to keep and feed here until May 1 at no extra charge. Two-year-old and fall bulls we encourage you to take delivery on. If you choose to leave them in Dvorak Herefords care you may do so for \$5/day charge.

Registrations - All animals selling with registration numbers, will be sold as registered, and registration papers will be transferred into whomever's name the buyer wishes to have them transferred.

Volume Discounts - Anyone purchasing two or more bulls will receive a \$50/bull discount. Those purchasing four or more bulls, will receive a \$100/bull discount.

This sale will be broadcast live on the internet.

DVAuction
Broadcasting Real-Time Auctions

Real time bidding & proxy bidding available.

For questions contact Justin Dikoff at (605) 290-0635 - jdikoff@dvauction.com

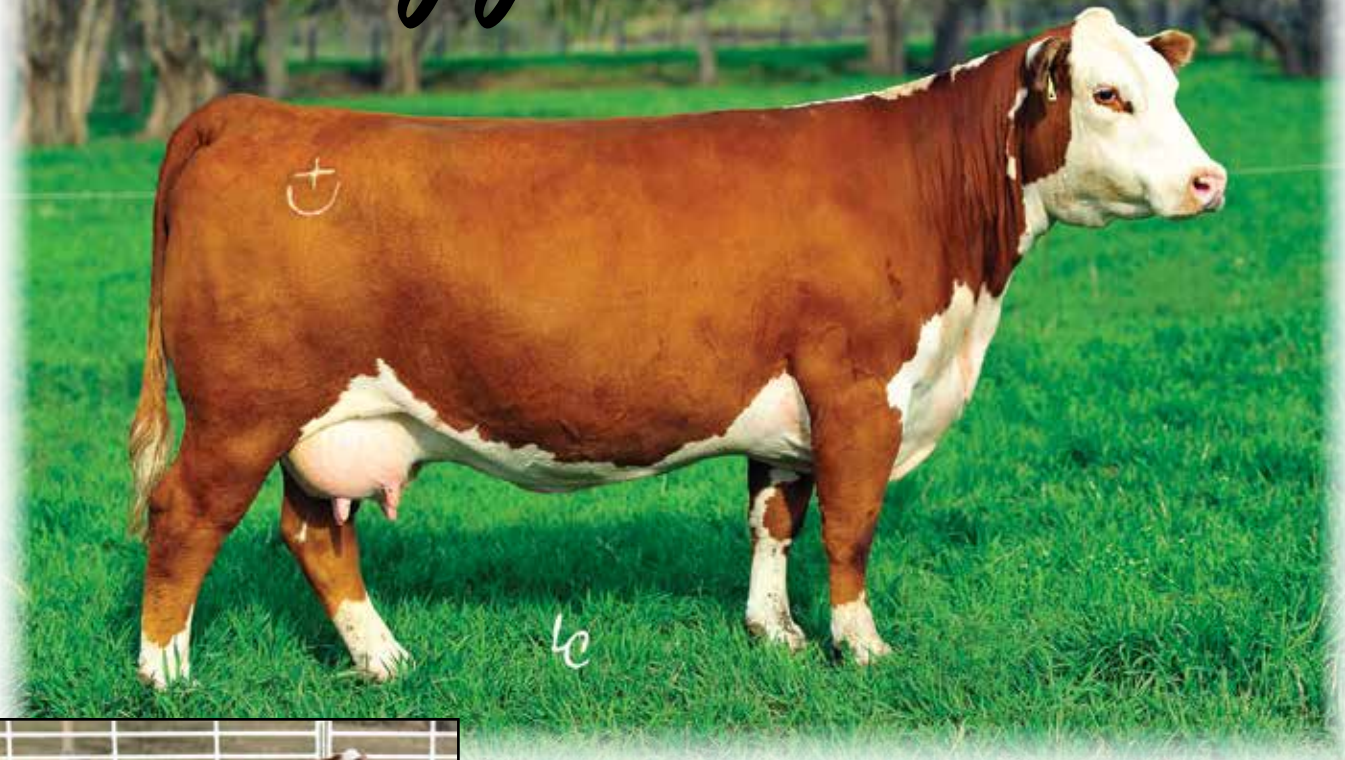
Boyd, Jeff, & Richard Dvorak

Boyd (605) 491-7090 • Jeff (605) 491-2068

d7barranch@charles-mix.com

29738 383rd Ave., Lake Andes, SD 57356

SHF Maggie R117 W46



DVOR Roudy LC Aries 506C ET - Full Sister to Lot 7

SHF Maggie R117 W46

Who would have guessed that this female would have made the impact she has when we bought her at Sandhills. She has met every challenge we have thrown at her. After we bought her, we flushed her twice and then kicked her out in the river hills to see how she would hold up. She bred first service, and didn't melt a bit. She also bred back first service this year. She has worked with every sire we have used, as evident by the calves in this sale. Ranks above breed average for 16 of the 19 EPD evaluated traits, while being in the top 20% for Weaning Weight, Calving Ease, Maternal, Fat, Ribeye, and CHB Index, but more important than the EPD values is her ability to excel as a cow.

DVOR Roudy LC Atlas 556C ET



Cracker Jack 26U ET

Atlas was a stand out all summer. He was the heaviest calf at both weaning and yearling. We feel that this is Cracker Jack's replacement in our program, with more performance, along with added bone and stifle. He will be 50K tested by sale time. Also he will not be delivered to the new partner until we have frozen some semen for use this spring. *Terms available sale day.*



DVOR ROUDY LC ATLAS 556C ET

(P43618677) 3/2/15 Act. BW 95 WW 725 Polled

NJW 1Y WRANGLER 19D {CHB,SOD,DLF,HYF,IEF} (P23758169)
AH JDH CRACKER JACK 26U ET {CHB,DLF,HYF,IEF} (P42924297)
 CRR D03 VIOLET 349 {DLF,HYF,IEF} (P42428481)

SHF RIB EYE M326 R117 {CHB,SOD,DLF,HYF,IEF} (P42584003)
SHF MAGGIE R117 W46 {DLF,HYF,IEF} (P42991543)
 SHR BOOMER P606 R05 (P42583959)

CE	BW	WW	YW	M	MG	CEM	MCW	SC	Fat	REA	MB
+4	+4.0	+54	+81	+24	+51	+3.7	+94	+0.7	+0.002	+52	+19
BMI	CEZ	BII	CHB								
+\$19	+\$15	+\$15	+\$28								

DVOR ROUDY LC TITUS 574C ET



Lot 1-5

With the success we have had with our Cracker Jack progeny, it only seemed logical to flush Maggie that way. Combining breed legends of Ribeye and P606 with the likes of 19D and Interstate had to have positive results, but we could not have expected this. We believe these calves are in all likelihood homozygous polled and we will have those results by sale time. **Full sisters sell as lots 41 and 42.**

2
&
3

DVOR ROUDY LC TITUS 574C ET

2 - (P43618679) 3/6/15 Act. BW 85 WW 633

DVOR ROUDY LC EROS 564C ET

3 - (P43618678) 3/4/15 Act. BW 101 WW 662 Polled

NJW 1Y WRANGLER 19D {CHB,SOD,DLF,HYF,IEF} (P23758169)

AH JDH CRACKER JACK 26U ET {CHB,DLF,HYF,IEF} (P42924297)

CRR D03 VIOLET 349 {DLF,HYF,IEF} (P42428481)

SHF RIB EYE M326 R117 {CHB,SOD,DLF,HYF,IEF} (P42584003)

SHF MAGGIE R117 W46 {DLF,HYF,IEF} (P42991543)

SHR BOOMER P606 R05 (P42583959)

DVOR ROUDY LC EROS 564C ET



CE	BW	WW	YW	M	MG	CEM	MCW	SC	Fat	REA	MB
+4	+4.0	+54	+81	+24	+51	+3.7	+94	+7	+0.02	+52	+19
BMI	CEZ	BII	CHB								
+\$ 19	+\$ 15	+\$ 15	+\$ 28								

DVOR ROUDY LC Adonis 549C ET



4
&
5

DVOR ROUDY LC ADONIS 549C ET

4 - (P43618521) 3/1/15 Act. BW 78 WW 549 Polled

DVOR ROUDY LC ASTERION 5106 ET

5 - (P43618680) 3/12/15 Act. BW 112 WW 586

NJW 1Y WRANGLER 19D {CHB,SOD,DLF,HYF,IEF} (P23758169)

AH JDH CRACKER JACK 26U ET {CHB,DLF,HYF,IEF} (P42924297)

CRR D03 VIOLET 349 {DLF,HYF,IEF} (P42428481)

SHF RIB EYE M326 R117 {CHB,SOD,DLF,HYF,IEF} (P42584003)

SHF MAGGIE R117 W46 {DLF,HYF,IEF} (P42991543)

SHR BOOMER P606 R05 (P42583959)

DVOR ROUDY LC Asterion 5106 ET



CE	BW	WW	YW	M	MG	CEM	MCW	SC	Fat	REA	MB
+4	+4.0	+54	+81	+24	+51	+3.7	+94	+7	+0.02	+52	+19
BMI	CEZ	BII	CHB								
+\$19	+\$15	+\$15	+\$28								

DVOR Roudy BoJangles 495 ET



Indigo, Full Sister



RV Ms Red Dog 0705

What can we say about this mating other than "if it isn't broke don't fix it"? Her first calf was a full sib that Delaney's showed a couple years ago, and are going to campaign another full sib this summer. Another full sister we showed was 2nd in her class at the Junior National this summer. His full brother was a feature seller that went to the Peterson family last year. This guy may be the best designed one yet; you have to watch the video. If you are still not sure, look at how small ch started and how he blew the carcass data out of the water with a 79 ratio on Fat and 119 Marbling. I think this guy is better than a BoJangles biscuit.

6 DVOR ROUDY BOJANGLES 495 ET
(P43482742) 3/13/14 Act. BW 66 WW -NA- Polled

NJW 1Y WRANGLER 19D {CHB,SOD,DLF,HYF,IEF} (P23758169)
AH JDH CRACKER JACK 26U ET {CHB,DLF,HYF,IEF} (P42924297)
CRR D03 VIOLET 349 {DLF,HYF,IEF} (P42428481)

FFF MOELERS RED DOG 711S {DLF,IEF} (P42767709)
RV MS RED DOG 0705 {DLF,HYF,IEF} (P43139995)
RV HARRIET 7205 (P42856360)

CE	BW	WW	YW	M	MG	CEM	MCW	SC	Fat	REA	MB
-.6	+5.3	+45	+73	+21	+44	+2.2	+93	+6	+0.11	+0.07	+2.1
BMI	CEZ	BII	CHB								
+\$16	+\$14	+\$14	+\$23								

Herd Sire *Victor 468Z*

TH 89T 755T



TH 16G Gemini 89T

I think it is easy to see why 468Z has become a mainstay in our program. Siring both the top selling bull and heifer in last year's sale, as well as the heifer we sold at the American Royal this Fall. This is the first offering of two year old bulls and they do not disappoint. We can not wait to calve out his first set of daughters this Spring.

TH 89T 755T Victor 468Z



(43279203) {DLF,HYF,IEF} 3/10/12 Polled

DRF JWR PRINCE VICTOR 711 {CHB,SOD} (P41141619)

TH 223 711 VICTOR 755T {CHB,DLF,HYF,IEF} (P42800887)

KBCR 19D DOMINETTE 223 {DLF,IEF} (P42320158)

NPH 20X SPARTAN 20N {CHB,SOD,DLF,HYC,IEF} (P42389552)

TH 16G 20N GEMINI 89T {DLF,HYF,IEF} (P42779363)

TEE-JAY 707B GEMINI 16G ET (P42210391)

CE	BW	WW	YW	M	MG	CEM	MCW	SC	Fat	REA	MB
-2.2	+5.3	+49	+85	+23	+48	-.9	+103	+3	-.021	+.66	+.32
BMI	CEZ	BII	CHB								
+\$14	+\$11	+\$12	+\$31								

DVOR Roudy LC Orion 504C ET



DVOR Roudy LC Athena 507C ET - Full Sister to Lot 7

One of the most exciting matings this fall after we sold his full sister in the American Royal national sale to Austin Howe and Deana Jak Farms. This guy is no different than his sister; a real standout. He excels on paper, particularly as you look at his end product merit, ranking in the top 20% for Marbling and above the top 10% for both Fat and Ribeye Area. Don't let his performance fool you, he was raised by a heifer but has been catching up every day.

7 DVOR ROUDY LC ORION 504C ET

(P43616998) 2/1/15 Act. BW 83 WW 563 Polled

TH 223 711 VICTOR 755T {CHB,DLF,HYF,IEF} (P42800887)

TH 89T 755T VICTOR 468Z {DLF,HYF,IEF} (P43279203)

TH 16G 20N GEMINI 89T {DLF,HYF,IEF} (P42779363)

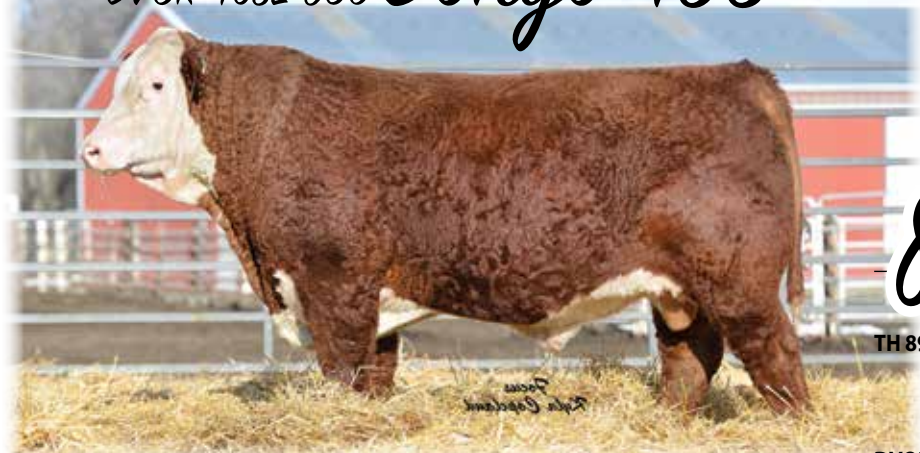
SHF RIB EYE M326 R117 {CHB,SOD,DLF,HYF,IEF} (P42584003)

SHF MAGGIE R117 W46 {DLF,HYF,IEF} (P42991543)

SHR BOOMER P606 R05 (P42583959)

CE	BW	WW	YW	M	MG	CEM	MCW	SC	Fat	REA	MB
-1.0	+5.0	+54	+86	+24	+50	+1.5	+92	+7	-.029	+.72	+19
BMI	CEZ	BII	CHB								
+\$18	+\$13	+\$16	+\$31								

DVOR 468Z 930 *Bongo 498*



Highest marbling bull in the sale, ratioing 113 with a 0.37 EPD ranking in the top 1.5% of the breed. Full sister sells as Lot 43. His mother is one of the easiest keeping females in the herd and a crowd favorite.

8 DVOR 468Z 930 BONGO 498

(P43482569) 3/14/14 Act. BW 93 WW 513 YW 1046 Polled

TH 223 711 VICTOR 755T {CHB,DLF,HYF,IEF} (P42800887)

TH 89T 755T VICTOR 468Z {DLF,HYF,IEF} (P43279203)

TH 16G 20N GEMINI 89T {DLF,HYF,IEF} (P42779363)

SHF TUG R117 T57 {SOD,CHB,DLF,HYF,IEF} (P42795820)

DVOR T57 MISS RIBTUG 930 (P43046654)

DVOR 2321 MISS DAKOTA 753 (42855491)

CE	BW	WW	YW	M	MG	CEM	MCW	SC	Fat	REA	MB
-.6	+2.7	+51	+80	+27	+53	+1.1	+96	+8	+.043	+.41	+.37
BMI	CEZ	BII	CHB								
+\$18	+\$14	+\$16	+\$28								

DVOR 468Z 9199 *Boz 4211*



This guy scanned just over 4% IMF with a 1.26 REA/hundred weight and a REA EPD in the top 25% making him a combination carcass Sire for anyone wanting to retain their steer calves. This bull's mother has put every calf in the bull sale, this being her 4th.

9 DVOR 468Z 9199 BOZ 4211

(P43482581) 4/05/14 Act. BW 92 WW 540 YW 1002 Polled

TH 223 711 VICTOR 755T {CHB,DLF,HYF,IEF} (P42800887)

TH 89T 755T VICTOR 468Z {DLF,HYF,IEF} (P43279203)

TH 16G 20N GEMINI 89T {DLF,HYF,IEF} (P42779363)

K L1 ADVANCER 219 {CHB,SOD,DLF,IEF} (42329602)

DVOR 219 MISS DOMINO 9199 (42994381)

DVOR MISS DOMINO 306 {DOD} (42379075)

CE	BW	WW	YW	M	MG	CEM	MCW	SC	Fat	REA	MB
+1.5	+3.0	+48	+77	+26	+50	+2	+81	+6	-.009	+.45	+.16
BMI	CEZ	BII	CHB								
+\$16	+\$15	+\$13	+\$26								

DVOR 468Z 6203 Boris 4150



10

DVOR 468Z 6203 BORIS 4150

(P43482659) 3/21/14 Act. BW 108 WW 550 YW 1135 Polled

TH 223 711 VICTOR 755T {CHB,DLF,HYF,IEF} (P42800887)

TH 89T 755T VICTOR 468Z {DLF,HYF,IEF} (P43279203)

TH 16G 20N GEMINI 89T {DLF,HYF,IEF} (P42779363)

F 915 STAR 142 {CHB,SOD,DLF,IEF} (42149114)

DVOR MISS STAR 6203 (42708079)

MISS FANCY ADVANCE 864 {DLF,IEF} (41067972)

CE	BW	WW	YW	M	MG	CEM	MCW	SC	Fat	REA	MB
-.7	+5.9	+50	+86	+22	+47	-1.1	+110	+5	-.009	+.60	+.27
BMI	CEZ	BII	CHB								
+\$16	+\$12	+\$14	+\$30								

13 inch eye with a 126 IMF ratio, His mother is a mainstay around here raising one every year. Including the donation heifer for the Rancher Relief Fund, we sold at the Black Hills Stock Show.

DVOR 468Z 805 Butler 4157



11

DVOR 468Z 805 BUTLER 4157

(P43482574) 3/23/14 Act. BW 100 WW 531 YW 1029 Polled

TH 223 711 VICTOR 755T {CHB,DLF,HYF,IEF} (P42800887)

TH 89T 755T VICTOR 468Z {DLF,HYF,IEF} (P43279203)

TH 16G 20N GEMINI 89T {DLF,HYF,IEF} (P42779363)

UPS ODYSSEY 1ET {CHB,SOD,DLF,HYF,IEF} (42472287)

DVOR MISS ODYSSEY 805 ET (42896182)

CL 1 DOMINETTE 825H {DOD,DLF,HYF,IEF} (41011012)

CE	BW	WW	YW	M	MG	CEM	MCW	SC	Fat	REA	MB
-1.3	+4.9	+50	+76	+20	+45	+.1	+87	+5	-.016	+.54	+.30
BMI	CEZ	BII	CHB								
+\$18	+\$13	+\$16	+\$30								

Top 5% IMF and 20% REA EPD's, validated by his 104 REA and 119 IMF ratios. Some may recognize his grandmother 825H, we purchased those eggs from Churchill Cattle Company, good investment.

DVOR 468Z 0730 Bovee 4192



Phenotype, carcass bulls in the sale.

12

DVOR 468Z 0730 BOVEE 4192

(P43482611) 3/29/14 Act. BW 97 WW 531 YW 1018 Horned

TH 223 711 VICTOR 755T {CHB,DLF,HYF,IEF} (P42800887)

TH 89T 755T VICTOR 468Z {DLF,HYF,IEF} (P43279203)

TH 16G 20N GEMINI 89T {DLF,HYF,IEF} (P42779363)

TH 157M 20N SPARTAN 122T {CHB,DLF,HYF,IEF} (P42779584)

RV LADY SPARTAN 0730 {DLF,HYF,IEF} (P43139997)

RV EUREKA LADY 7030 (P42856950)

CE	BW	WW	YW	M	MG	CEM	MCW	SC	Fat	REA	MB
-2.2	+5.6	+50	+87	+23	+48	-0.9	+103	+5	-.053	+.68	+.09
BMI	CEZ	BII	CHB								
+\$14	+\$11	+\$12	+\$29								

DVOR 468Z 764 Bogart 4108



High growth ratio 113 at weaning and 107 as a yearling. Second highest REA EPD in the sale, ratio 110 on his actual scan. His mother has a 111 nursing ratio on 5 calves.

13

DVOR 468Z 764 BOGART 4108

(P43482694) 3/15/14 Act. BW 102 WW 616 YW 1202 Scurred

TH 223 711 VICTOR 755T {CHB,DLF,HYF,IEF} (P42800887)

TH 89T 755T VICTOR 468Z {DLF,HYF,IEF} (P43279203)

TH 16G 20N GEMINI 89T {DLF,HYF,IEF} (P42779363)

DVOR L1 DOMINO 407 {CHB} (42498054)

DVOR 407 MISS DOMINO 764 (42829172)

DVOR MISS DOMINO 502 (42626942)

CE	BW	WW	YW	M	MG	CEM	MCW	SC	Fat	REA	MB
+1.4	+3.8	+54	+89	+27	+55	+1.5	+92	+5	-.031	+.66	+.18
BMI	CEZ	BII	CHB								
+\$16	+\$15	+\$12	+\$32								

Herd Size Boyd Stout 1094 ET



Boyd Stout 1094 ET

(P43186793) {DLF,HYF,IEF} 4/21/11 Polled



SHF RIB EYE M326 R117 {CHB,SOD,DLF,HYF,IEF} (P42584003)

BOYD WORLDWIDE 9050 ET {CHB,DLF,HYF,IEF} (P42982024)

MSU TCF RACHAEL 225 ET (P42709823)

PW VICTOR BOOMER P606 {SOD,CHB,DLF,HYF,IEF} (P24020737)

SSF P606 MS VICTOR 803 {DLF,HYF,IEF} (P42610510)

MPH LADY COON EYES C330 (P42361139)



SSF P606 Ms Victor 803

CE	BW	WW	YW	M	MG	CEM	MCW	SC	Fat	REA	MB
+1	+4.2	+58	+87	+29	+58	+8	+73	+6	-.013	+60	+19
BMI	CEZ	BII	CHB								
+\$17	+\$14	+\$13	+\$32								

Mr. Consistency, These things are peas in a pod. A maternal brother to the Genex's Masterpiece. His first sons last year were the top-selling set of two year olds last year and this group is no different. His daughters are some of the best young cows, Similar to his mother.

DVOR 1094 1127 Baja 427



This lead off bull of the 1094 group ratioed 125 for IMF, with that 70 pound birth weight and 2.7 birth weight EPD

14 DVOR 1094 1127 BAJA 427

(P43482604) 3/4/14 Act. BW 70 WW 509 YW 962 Polled

BOYD WORLDWIDE 9050 ET {CHB,DLF,HYF,IEF} (P42982024)

BOYD STOUT 1094 ET {CHB,DLF,HYF,IEF} (P43186793)

SSF P606 MS VICTOR 803 {DLF,HYF,IEF} (P42610510)

G DOMINO 442 {DLF,HYF,IEF} (42534749)

DVOR 442 575 MISS DOMINO 1127 (43185258)

DVOR MISS DOMINO 575 (42588484)

CE	BW	WW	YW	M	MG	CEM	MCW	SC	Fat	REA	MB
+0.9	+2.2	+45	+65	+25	+47	+1.1	+62	+7	+0.007	+0.05	+0.20
BMI	CEZ	BII	CHB								
+\$17	+\$15	+\$15	+\$22								

DVOR 1094 1172 Bayou 490



This bull is bred just like those featured two year old bulls last year a 1094 out of a 665 daughter. His mother records 3 calves at a 106 ratio. His individual data leaps off the page with a 117 weaning ratio, 106 at a year and 111 REA area.

15 DVOR 1094 1172 BAYOU 490

(P43482599) 3/13/14 Act. BW 94 WW 637 YW 1188 Polled

BOYD WORLDWIDE 9050 ET {CHB,DLF,HYF,IEF} (P42982024)

BOYD STOUT 1094 ET {CHB,DLF,HYF,IEF} (P43186793)

SSF P606 MS VICTOR 803 {DLF,HYF,IEF} (P42610510)

KB L1 DOMINO 665 {CHB,DLF,HYF,IEF} (42674365)

DVOR 665 939 MISS DOMINO 1172 (43185245)

DVOR 219 MISS DOMINO 939 {DOD} (42994348)

CE	BW	WW	YW	M	MG	CEM	MCW	SC	Fat	REA	MB
+3.3	+2.3	+54	+90	+29	+56	+1.6	+74	+1.0	+0.001	+0.46	+0.13
BMI	CEZ	BII	CHB								
+\$19	+\$17	+\$15	+\$28								

DVOR 1094 144 Bentley 4212



16

DVOR 1094 144 BENTLEY 4212

(P43482638) 4/05/14 Act. BW 96 WW 500 YW 1045 Polled

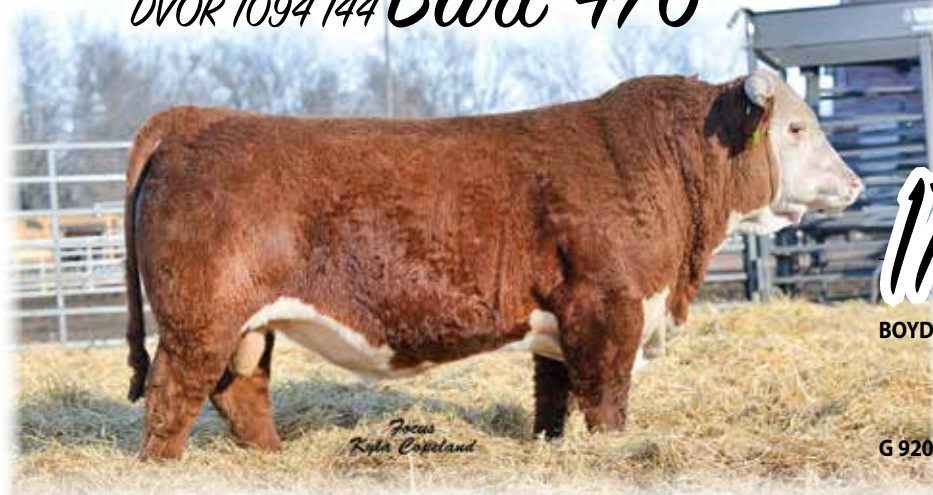
BOYD WORLDWIDE 9050 ET {CHB,DLF,HYF,IEF} (P42982024)
BOYD STOUT 1094 ET {CHB,DLF,HYF,IEF} (P43186793)
 SSF P606 MS VICTOR 803 {DLF,HYF,IEF} (P42610510)

S WINCHESTER 24T ET {DLF,IEF} (42826350)
DVOR 24T 3257 MISS GENERAL 144 (43185243)
 DVOR MISS DOMINO 3257 {DLF,IEF} (42379065)

CE	BW	WW	YW	M	MG	CEM	MCW	SC	Fat	REA	MB
-.2	+4.4	+47	+75	+22	+46	+1.1	+79	+6	-.019	+.21	+.09
BMI	CEZ	BII	CHB								
+\$15	+\$14	+\$13	+\$23								

Conservatively marked, red to the ground. Mother has 3 calves at a 101 ratio.

DVOR 1094 144 Bart 476



17

DVOR 1094 1174 BART 476

(43482677) 3/11/14 Act. BW 82 WW 591 YW 1031 Horned

BOYD WORLDWIDE 9050 ET {CHB,DLF,HYF,IEF} (P42982024)
BOYD STOUT 1094 ET {CHB,DLF,HYF,IEF} (P43186793)
 SSF P606 MS VICTOR 803 {DLF,HYF,IEF} (P42610510)

G RED DIAMOND 920 (42982981)
G 920 RED LASS 1174 (43178734)
 G DOMINO LASS 701 (42790100)

CE	BW	WW	YW	M	MG	CEM	MCW	SC	Fat	REA	MB
+1.5	+2.0	+50	+75	+26	+51	+0.7	+68	+7	-.022	+.62	-.08
BMI	CEZ	BII	CHB								
+\$15	+\$15	+\$13	+\$23								

A weaning ratio of 108 and REA at 107. Dam has a 102.5 nursing ratio. High milk with a big ribeye EPD, backed up by a 1.46 REA per 100 weight highest in the sale.

DVOR 1094 144 Basil 486



Another 1094 out of a 665 daughter, that combination just works. Full brother sold in last year's sale to Tyler VanWinkle. His 0.3 birth weight EPD along with 77 pound birth weight validate his calving ease potential. Along with a 107 weaning ratio make him ideal for selling calves in the Fall or if you want to retain them and gather the value of his 1.44 REA/hundred weight.

18 DVOR 1094 197 BASIL 486

(43482632) 3/13/14 Act. BW 77 WW 581 YW 1096 Horned

BOYD WORLDWIDE 9050 ET {CHB,DLF,HYF,IEF} (P42982024)

BOYD STOUT 1094 ET {CHB,DLF,HYF,IEF} (P43186793)

SSF P606 MS VICTOR 803 {DLF,HYF,IEF} (P42610510)

KB L1 DOMINO 665 {CHB,DLF,HYF,IEF} (42674365)

DVOR 665 9177 MISS DOMINO 197 (43185216)

DVOR 28T MISS SANDY 9177 (42994263)

CE	BW	WW	YW	M	MG	CEM	MCW	SC	Fat	REA	MB
+4.0	-.1	+48	+72	+27	+51	+2.8	+56	+1.0	+0.13	+45	+19
BMI	CEZ	BII	CHB								
+\$22	+\$19	+\$18	+\$26								

DVOR 1094 144 Barow 448



Highest yearling weight bull in the sale. The growth potential is there with a 118m weaning ratio and 116 at a year. 3.52 IMF ratioing 114. Mother has 3 at 110 and this is her first bull.

19 DVOR 1094 1126 BARON 448

(P43482605) 3/8/14 Act. BW 95 WW 644 YW 1300 Polled

BOYD WORLDWIDE 9050 ET {CHB,DLF,HYF,IEF} (P42982024)

BOYD STOUT 1094 ET {CHB,DLF,HYF,IEF} (P43186793)

SSF P606 MS VICTOR 803 {DLF,HYF,IEF} (P42610510)

KB L1 DOMINO 454P {CHB,DLF,IEF} (42523485)

DVOR 454 8102 MISS DOMINO 1126 (43185231)

DVOR 219 MISS DOMINO 8102 (42896117)

CE	BW	WW	YW	M	MG	CEM	MCW	SC	Fat	REA	MB
+2.3	+2.4	+48	+87	+32	+56	+0.1	+82	+9	-.002	+34	+20
BMI	CEZ	BII	CHB								
+\$17	+\$15	+\$14	+\$27								

Herd Sire KB L1 **Domino 665**



KB L1 Domino 665



(42674365) {CHB,DLF,HYF,IEF} 2/3/06 Horned

CL 1 DOMINO 9126J 1ET {SOD,CHB,DLF,IEF} (41113279)

CL 1 DOMINO 3138N 1ET {CHB,DLF,HYF,IEF} (42385269)

CL 1 DOMINETTE 825H {DOD,DLF,HYF,IEF} (41011012)

HH ADVANCE 836H {SOD,DLF,HYF,IEC} (41009427)

MONTANA MISS 466P ET {DLF,HYF,IEC} (42526776)

MONTANA MISS 8119 1ET (41041936)

CE	BW	WW	YW	M	MG	CEM	MCW	SC	Fat	REA	MB
+9.8	-4.8	+32	+78	+32	+48	+4.1	+55	+1.6	+0.14	-.10	+3.9
BMI	CEZ	BII	CHB								
+\$27	+\$26	+\$23	+\$25								

The old boy is still getting it done at 10-years-old. He is the #1 proven Sire for birth weight out of 962 head at a -4.8 EPD. We have recorded 158 calves to date and all have natural service. We bred the first AI this past Spring. He pulled pasture duty again this past Spring, more importantly than any other number is daughters record a 102.1 nursing ratio.



Like Dvorak Herefords
on Facebook

DVOR 665 208 Buck 4130



20

DVOR 665 208 BUCK 4130 {DLF,HYF,IEF}

(43482631) 3/18/14 Act. BW 78 WW 625 YW 1164 Horned

CL 1 DOMINO 3138N 1ET {CHB,DLF,HYF,IEF} (42385269)

KB L1 DOMINO 665 {CHB,DLF,HYF,IEF} (42674365)

MONTANA MISS 466P ET {DLF,HYF,IEC} (42526776)

KB L1 DOMINO 454P {CHB,DLF,IEF} (42523485)

DVOR 454 4100 MISS DOMINO 208 {DLF,HYF,IEC} (43280827)

DVOR MISS DOMINO 4100 {DOD,DLF,IEC} (42494104)

CE	BW	WW	YW	M	MG	CEM	MCW	SC	Fat	REA	MB	
+7.7	-1.8	+40	+77	+34	+54	+2.8	+87	+1.3	+0.26	+0.02	+0.21	
BMI	CEZ	BII	CHB									
+\$21	+\$22	+\$18	+\$23									

Calving ease bull here with a -1.7 birth weight EPD and a +7.4 calving ease direct ranking. In the top couple percent of the breed in both categories, along with a 115 weaning weight ratio. Mother has 2 at 112, this combined with his outstanding milk number tends to make ideal daughters. DNA tested clean from all known genetic abnormalities.

DVOR 665 283 Buckshot 489



21

DVOR 665 283 BUCKSHOT 489

(43482702) 3/13/14 Act. BW 70 WW 524 YW 1005 Horned

CL 1 DOMINO 3138N 1ET {CHB,DLF,HYF,IEF} (42385269)

KB L1 DOMINO 665 {CHB,DLF,HYF,IEF} (42674365)

MONTANA MISS 466P ET {DLF,HYF,IEC} (42526776)

KB L1 DOMINO 454P {CHB,DLF,IEF} (42523485)

DVOR 454 384 MISS DOMINO 283 (43280918)

DVOR L1 MISS DOMINO 384 {DOD} (42378966)

CE	BW	WW	YW	M	MG	CEM	MCW	SC	Fat	REA	MB	
+8.1	-3.3	+29	+59	+32	+46	+3.2	+62	+1.2	+0.024	-.06	+0.24	
BMI	CEZ	BII	CHB									
+\$22	+\$23	+\$20	+\$18									

Calving ease extreme, top 1% of the breed for birth weight and calving ease direct. Along with a 116 IMF ratio and top 5% milk. Calving ease index is off the chart.

DVOR 665 2228 *Buckhead 415*



22

DVOR 665 2228 BUCKHEAD 415

(43482662) 2/27/14 Act. BW 70 WW 635 YW 1181 Horned

CL 1 DOMINO 3138N 1ET {CHB,DLF,HYF,IEF} (42385269)

KB L1 DOMINO 665 {CHB,DLF,HYF,IEF} (42674365)

MONTANA MISS 466P ET {DLF,HYF,IEC} (42526776)

MH MONUMENT 909 {CHB,DLF,HYF,IEF} (43019669)

DVOR 909 958 MISS MONUMENT 2228 (43280890)

DVOR 543 MISS EXCEL 958 (42994356)

CE	BW	WW	YW	M	MG	CEM	MCW	SC	Fat	REA	MB
+7.0	-1.6	+44	+84	+31	+53	+1.5	+84	+1.2	+0.13	+0.08	+1.5
BMI	CEZ	BII	CHB								
+\$ 20	+\$ 21	+\$ 16	+\$ 24								

Big Spread! Top couple percent of birth weight and calving direct and still an 85 pound yearling weight ratioed 117 at weaning and 105 at a year, being raised by a heifer.

DVOR 665 2222 *Buckaroo 4120*



23

DVOR 665 2222 BUCKAROO 4120

(43482665) 3/17/14 Act. BW 80 WW 578 YW 1151 Horned

CL 1 DOMINO 3138N 1ET {CHB,DLF,HYF,IEF} (42385269)

KB L1 DOMINO 665 {CHB,DLF,HYF,IEF} (42674365)

MONTANA MISS 466P ET {DLF,HYF,IEC} (42526776)

PF ABOUT TIME 0031 {CHB,DLF,HYF,IEF} (P43150574)

DVOR 0031 7190 MISSN TIME 2222 (43280876)

DVOR 543 MISS EXCEL 7190 (42829252)

CE	BW	WW	YW	M	MG	CEM	MCW	SC	Fat	REA	MB
+6.3	+2	+41	+80	+31	+52	+1.6	+74	+1.3	-.030	+0.18	+0.25
BMI	CEZ	BII	CHB								
+\$ 23	+\$ 21	+\$ 20	+\$ 28								

Another calving ease prospect, that blew the top off the IMF scan with a 138 ratio. Weaned with a 106 ratio.

Herd Sire

LCX Helton Bolt 1210 ET



LCX Helton Bolt 1210 ET

(P43313501) {DLF,HYF,IEF} 3/25/12 Polled

GO L18 EXCEL T31 {CHB,DLF,HYF,IEF} (42791931)

CRR Helton 980 {CHB,DLF,HYF,IEF} (P43032013)

CRR 9B JULIANNE 405 {DLF,HYF,IEF} (P42519516)

BR MOLER ET {CHB,DLF,IEF} (P42516026)

MSU Keepsake 14S {DLF,HYF,IEF} (P42709435)

MSU KEEPSAKE 32N {DLF,HYF,IEF} (P42392375)

CE	BW	WW	YW	M	MG	CEM	MCW	SC	Fat	REA	MB
-4.0	+5.8	+61	+99	+19	+50	+1.7	+118	+6	+0.37	+32	+15
BMI	CEZ	BII	CHB								
+\$14	+\$10	+\$11	+\$27								

This power bull has made a big impact in our lineup that is evident with this first offering of sons. Bolt won his division as a calf in Kansas City, following in his mother's example as she was 2008 Reserve National Champion Female.

For full pedigree, video clips, photos and more info.

www.dvorakherefords.com

DVOR 1210 1125 Brew 4208



Power bull with style, he is sure to catch your attention in the pen. If you sell them weight times the money this is your kind of bull.



24 DVOR 1210 1125 BREW 4208

(43482680) 4/04/14 Act. BW 90 WW 529 YW 1097 Horned

CRR HELTON 980 {CHB,DLF,HYF,IEF} (P43032013)

LCX HELTON BOLT 1210 ET {DLF,HYF,IEF} (P43313501)

MSU KEEPSAKE 145 {DLF,HYF,IEF} (P42709435)

F RIBSTONE LAD 621 {CHB,DLF,IEF} (42671374)

DVOR 621 7146 MISS RIBSTONE 1125 (43185290)

DVOR 219 MISS DOMINO 7146 {DLF,HYF,IEF} (42829737)

CE	BW	WW	YW	M	MG	CEM	MCW	SC	Fat	REA	MB
-.6	+4.5	+56	+93	+21	+48	+2.4	+99	+9	+.068	+.20	+.11
BMI	CEZ	BII	CHB								
+\$16	+\$14	+\$13	+\$23								

DVOR 1210 923 Bubba 4137



25 DVOR 1210 923 BUBBA 4137

(P43482573) 3/19/14 Act. BW 92 WW 542 YW 1133 Scurred

CRR HELTON 980 {CHB,DLF,HYF,IEF} (P43032013)
LCX HELTON BOLT 1210 ET {DLF,HYF,IEF} (P43313501)
 MSU KEEPSAKE 14S {DLF,HYF,IEF} (P42709435)

SHF TUG R117 T57 {SOD,CHB,DLF,HYF,IEF} (P42795820)
DVOR T57 MISS RIBTUG 923 (P43046661)

DVOR 219 MISS DOMINO 7194 (42829243)

CE	BW	WW	YW	M	MG	CEM	MCW	SC	Fat	REA	MB
-.6	+3.2	+55	+89	+26	+53	+2.5	+92	+1.2	+.092	+.13	+.42
BMI	CEZ	BII	CHB								
+\$ 21	+\$ 15	+\$ 18	+\$ 27								

Out of one of our favorite Tug daughters that has raised 5 at 103.4 and raised one of the top-sellers two years ago. Ratioed 126 IMF

DVOR 1210 939 Buster 4149



26 DVOR 1210 939 BUSTER 4149

(P43482606) 3/21/14 Act. BW 100 WW 559 YW 1095 Polled

CRR HELTON 980 {CHB,DLF,HYF,IEF} (P43032013)
LCX HELTON BOLT 1210 ET {DLF,HYF,IEF} (P43313501)
 MSU KEEPSAKE 14S {DLF,HYF,IEF} (P42709435)

K L1 ADVANCER 219 {CHB,SOD,DLF,IEF} (42329602)
DVOR 219 MISS DOMINO 939 {DOD} (42994348)

DVOR MISS BONANZA 4172 (42494019)

CE	BW	WW	YW	M	MG	CEM	MCW	SC	Fat	REA	MB
-.6	+4.9	+49	+84	+24	+48	+1.1	+98	+8	+.031	+.18	-.05
BMI	CEZ	BII	CHB								
+\$ 13	+\$ 13	+\$ 11	+\$ 19								

Out of a sure shot cow raising 5 at 105 nursing ratio.

DVOR 1210 Y117 Brutus 4199



This bull's mother made it to the Donor pen last year after she raised the lead off two year old in last year's sale. He ratioed 117 at weaning and possesses the largest weaning and yearling EPD's in the sale ranking in the top 5% for both.

27 DVOR 1210 Y117 BRUTUS 4199

(P43482578) 4/01/14 Act. BW 93 WW 637 YW 1266 Polled

CRR HELTON 980 {CHB,DLF,HYF,IEF} (P43032013)
LCX HELTON BOLT 1210 ET {DLF,HYF,IEF} (P43313501)
 MSU KEEPSAKE 14S {DLF,HYF,IEF} (P42709435)

KOANUI ROCKET 0219 {CHB,DLF,HYF,IEF} (P43064935)
KEG MS ROCKET Y117 (P43197456)
 KEG MS 48K LEXUS S651 {DOD} (P42729305)

CE	BW	WW	YW	M	MG	CEM	MCW	SC	Fat	REA	MB
-1.1	+4.7	+65	+103	+22	+55	+0.1	+126	+6	+0.39	+0.39	+0.07
BMI	CEZ	BII	CHB								
+\$13	+\$11	+\$9	+\$28								

DVOR 1210 1113 Bullet 4118



Another top yearling weight bull at a 103 EPD and a 104 Weaning ratio.

28 DVOR 1210 1113 BULLET 4118

(P43482682) 3/17/14 Act. BW 93 WW 565 YW 1136 Scurred

CRR HELTON 980 {CHB,DLF,HYF,IEF} (P43032013)
LCX HELTON BOLT 1210 ET {DLF,HYF,IEF} (P43313501)
 MSU KEEPSAKE 14S {DLF,HYF,IEF} (P42709435)

F RIBSTONE LAD 621 {CHB,DLF,IEF} (42671374)
DVOR 621 7162 MISS RIBSTONE 1113 (43185289)
 DVOR 142 MISS STAR 7162 {DOD} (42829347)

CE	BW	WW	YW	M	MG	CEM	MCW	SC	Fat	REA	MB
-1.9	+6.9	+59	+102	+22	+51	+1.1	+117	+9	+0.22	+0.40	-0.01
BMI	CEZ	BII	CHB								
+\$15	+\$12	+\$12	+\$25								

Herd Sire

TG Red Diamond 0139

Great cows – breed great bulls, and his mother is a great cow at Gustafson Herefords. We saw him first at her side, and when we saw him again in Denver we knew he needed to join the bull battery.

TG Red Diamond 0139



(43086277) {DLF,HYF,IEF} 3/23/10

CTY RED DIAMOND 9919J (41154939)
CTY RED DIAMOND 6628S {DLF,HYF,IEF} (42760843)
 COURTNEY LASS 42B P44 (42550017)

SR RAPTURE 312 {CHB,SOD} (42287250)
G MS RAPTURE 835 {DOD,DLF,HYF,IEF} (42894347)
 SANDHILL BELLE U6 (41019292)

CE	BW	WW	YW	M	MG	CEM	MCW	SC	Fat	REA	MB
-.7	+5.1	+47	+71	+18	+42	-.7	+90	+.8	-.011	+.51	+.01
BMI	CEZ	BII	CHB								
+\$17	+\$13	+\$17	+\$22								

DVOR 0139 015 BAXTER 4183



Another moderate calving ease bull with below average birth weight and 78 pound actual birth weight. Come in with a 104 ratio at weaning and a 3.74 actual IMF.

DVOR 0139 9136 BLUES 477



Growth bull with a 112 weaning ratio and 108 at a year. Mother is consistent producer with 5 at a 103.4 ratio.

29 DVOR 0139 015 BAXTER 4183

(43482575) 3/26/14 Act. BW 78 WW 568 YW 1116 Horned

CTY RED DIAMOND 6628S {DLF,HYF,IEF} (42760843)
TG RED DIAMOND 0139 {DLF,HYF,IEF} (43086277)
 G MS RAPTURE 835 {DOD,DLF,HYF,IEF} (42894347)

G DOMINO 442 {DLF,HYF,IEF} (42534749)
-G DOMINET 015 (43102560)
 -G DOMINET 712T (42818320)

CE	BW	WW	YW	M	MG	CEM	MCW	SC	Fat	REA	MB
+.5	+2.2	+42	+65	+21	+42	+.5	+72	+.9	+.003	+.23	+.09
BMI	CEZ	BII	CHB								
+\$18	+\$15	+\$18	+\$19								

30 DVOR 0139 9136 BLUES 477

(43482649) 3/11/14 Act. BW 98 WW 613 YW 1215 Horned

CTY RED DIAMOND 6628S {DLF,HYF,IEF} (42760843)
TG RED DIAMOND 0139 {DLF,HYF,IEF} (43086277)
 G MS RAPTURE 835 {DOD,DLF,HYF,IEF} (42894347)

F 915 STAR 142 {CHB,SOD,DLF,IEF} (42149114)
DVOR 142 MISS DOMINO 9136 {DOD} (42994349)
 DVOR MISS DOMINO 4197 {DLF,IEF} (42493889)

CE	BW	WW	YW	M	MG	CEM	MCW	SC	Fat	REA	MB
+1.0	+4.6	+47	+80	+22	+45	-.4	+96	+.8	-.008	+.43	+.05
BMI	CEZ	BII	CHB								
+\$17	+\$14	+\$15	+\$23								

Herd Size

MH Monument 909



MH Monument 909



(43019669) {CHB,DLF,HYF,IEF} 3/5/09 Horned

MH DAKOTA 0230 {CHB,SOD,DLF,HYF,IEF} (42090398)

MH Monument 3147 {CHB,SOD,DLF,HYF,IEF} (42403631)

MH MISS 97 DOMNET (42521314)

HH ADVANCE 836H {SOD,DLF,HYF,IEC} (41009427)

MH MISS 97 DOMNET 416 (42521314)

MH MISS KINSMAN 2102 (42308224)

CE	BW	WW	YW	M	MG	CEM	MCW	SC	Fat	REA	MB
-1.8	+6.4	+68	+113	+30	+64	-6.5	+127	+3	-.004	+.58	-.06
BMI	CEZ	BII	CHB								
+\$6	+\$7	+\$2	+\$31								

We unfortunately lost 909, and those shoes will be hard to fill as he was our high growth sire in top 1% at weaning and 2% at yearling. His sons have been sale toppers and daughters are making great cows.

DVOR 909 0125X Big Boy 4166



31 DVOR 909 0125X BIG BOY 4166

(43482721) 3/24/15 Act. BW 101 WW 594 YW 1153 Horned

MH MONUMENT 3147 {CHB,SOD,DLF,HYF,IEF} (42403631)

MH MONUMENT 909 {CHB,DLF,HYF,IEF} (43019669)

MH MISS 97 DOMNET 416 (42521314)

KB L1 DOMINO 641 (42687708)

KB L1 DOMINETTE 0125X {DOD} (43086387)

KB L1 DOMINETTE 4152 {DLF,HYF,IEF} (42526880)

CE	BW	WW	YW	M	MG	CEM	MCW	SC	Fat	REA	MB
-1.4	+5.4	+59	+97	+30	+60	-3.6	+112	+5	-.009	+.35	-.11
BMI	CEZ	BII	CHB								
+\$8	+\$9	+\$5	+\$24								

This is the last opportunity to buy a 909, as we lost him two summers ago. His daughters are maintaining his legacy. Out of a Baker cow, that records 3 at a 107.7 nursing ratio.

Herd Size

DVOR 665 9175 Domino 150

DVOR 665 9175 Domino 150



(43185217) 3/11/11 Horned



CL 1 DOMINO 3138N 1ET {CHB,DLF,HYF,IEF} (42385269)

KB L1 DOMINO 665 {CHB,DLF,HYF,IEF} (42674365)

MONTANA MISS 466P ET {DLF,HYF,IEC} (42526776)

S FENCE POST 28T {DLF,IEF} (42826316)

DVOR 28T MISS SANDY 9175 (42994262)

DVOR 2321 MISS DAKOTA 7207 (42855494)

CE	BW	WW	YW	M	MG	CEM	MCW	SC	Fat	REA	MB
+4	-2.1	+36	+66	+27	+45	+2.8	+68	+9	+0.06	+0.08	+0.20
BMI	CEZ	BII	CHB								
+\$19	+\$19	+\$17	+\$20								

DVOR 665 218 BUCKWHEAT 482



32 DVOR 665 218 BUCKWHEAT 482

(P43482712) 3/12/14 Act. BW 94 WW 609 YW 1181 Scurred

KB L1 DOMINO 665 {CHB,DLF,HYF,IEF} (42674365)

DVOR 665 9175 DOMINO 150 (43185217)

DVOR 28T MISS SANDY 9175 (42994262)

HARVIE DAN T-BONE 196T (P42843277)

AA SHO BONNIE 218 (P43314440)

AF MS KESHA THUNDER 7184 ET (P42852097)

CE	BW	WW	YW	M	MG	CEM	MCW	SC	Fat	REA	MB
+6	+3.8	+58	+99	+25	+54	+1.5	+102	+9	+0.03	+0.50	+0.06
BMI	CEZ	BII	CHB								
+\$17	+\$14	+\$13	+\$28								

Maternal sister sell as lot 46, out of our pick at Able Acres, a 112 weaning ratio and 109 ribeye area ratio. Moderate birth with a 100 pound yearling EPD. Mother has 2 at a 106.5 ratio.

DVOR 0139 9136 BLUES 477



33 DVOR 0139 9136 BLUES 477

(43482649) 3/11/14 Act. BW 78 WW 570 YW 1183 Horned

CTY RED DIAMOND 6628S {DLF,HYF,IEF} (42760843)

TG RED DIAMOND 0139 {DLF,HYF,IEF} (43086277)

G MS RAPTURE 835 {DOD,DLF,HYF,IEF} (42894347)

F 915 STAR 142 {CHB,SOD,DLF,IEF} (42149114)

DVOR 142 MISS DOMINO 9136 {DOD} (42994349)

DVOR MISS DOMINO 4197 {DLF,IEF} (42493889)

CE	BW	WW	YW	M	MG	CEM	MCW	SC	Fat	REA	MB
+1.0	+4.6	+47	+80	+22	+45	-.4	+96	+8	-.008	+0.43	+0.05
BMI	CEZ	BII	CHB								
+\$17	+\$14	+\$15	+\$23								

Calving ease prospect, with some spread +1.2 BW to 89 YW. Ratio 110 on his REA. Dam has 2 at a 107 ratio.

DVOR 719T 2142 *Balboa 411*



34 DVOR 719T 2142 BALBOA 411
(P43482623) 2/13/14 Act. BW 70 WW 604 YW 1053 Scurred

DRF JWR PRINCE VICTOR 711 {CHB,SOD} (P41141619)
TH 122 711 VICTOR 719T {SOD,CHB,DLF,HYF,IEF} (P42800895)
KBCR 19D DOMINETTE 122 {DLF,IEF} (P42220359)

CRR ABOUT TIME 743 {CHB,SOD,DLF,HYF,IEF} (P42797564)
BBH CBH 743 ZIGGY 214Z (P43302744)
KLB BBH 477T SASSY 042X (P43127444)

Maternal sister sells as lot 44. Sired by the Immortal 719T out of a 2-year-old About Time daughter, that we found out of the Blueberry Hill program. Calving ease bull, that reported a 111 weaning ratio. Cow has 2 at 105 and has made her way to the Donor pen.

CE	BW	WW	YW	M	MG	CEM	MCW	SC	Fat	REA	MB
+6.0	+3	+55	+76	+28	+55	-.4	+85	+1.0	-.012	+.30	+.06
BMI	CEZ	BII	CHB								
+\$20	+\$19	+\$17	+\$27								

DVOR 3027 261 *Bahama 420*



35 DVOR 3027 261 BAHAMA 420
(43482705) 3/2/14 Act. BW 76 WW 565 YW 1120 Horned

CL 1 DOMINO 9126J 1ET {SOD,CHB,DLF,IEF} (41113279)
UPS DOMINO 3027 {CHB,SOD,DLF,HYF,IEF} (42426386)
UPS MISS DIAMOND 1353 (42181624)

PONCA MORTGAGE LIFTER 930 (43039570)
PONCA 930 M LIFTER LADY261 {DLF,HYF,IEF} (43327382)
PONCA JAKE LADY 967 (43039563)

Calving ease with 104 weaning ratio and 81 pound yearling EPD

CE	BW	WW	YW	M	MG	CEM	MCW	SC	Fat	REA	MB
+7.2	+5	+47	+81	+29	+53	+4.7	+81	+9	-.003	+.34	+.18
BMI	CEZ	BII	CHB								
+\$21	+\$22	+\$16	+\$27								

Herd Sire GV CMR Future Dom Y133 ET



GV CMR Future Dom Y133 ET

(P43260841) {DLF,HYF,IEF} 1/3/11 Polled

REMITALL ONLINE 122L {CHB,SOD,DLF,HYF,IEF} (P42254372)

STAR BRIGHT FUTURE 533P ET {CHB,DLF,HYF,IEF} (P42483846)

RB L1 DOMINETTE 8116 {DLF,HYF,IEF} (41050714)

L1 DOMINO 920501 {SOD} (19314369)

CJH L1 Dominette 0064 {DLF,HYF,IEF} (42118907)

CJH L1 DOMINETTE 759 {DLF,HYF,IEF} (40051103)

CE	BW	WW	YW	M	MG	CEM	MCW	SC	Fat	REA	MB
+2.8	+4.5	+66	+104	+22	+55	+3.6	+109	+1.2	+0.39	+0.32	+0.20
BMI	CEZ	BII	CHB								
+\$21	+\$13	+\$17	+\$31								

This maternal brother to the ABS Legend CJH Harland. We gained this bull with the purchase of the Four Corners cows. He was one of the heaviest yearling weights ever recorded at Grandview.

4-C 961 World Class Y-133 364



36 4-C 961 WORLD CLASS Y-133 364

(P43450744) 10/07/13 Act. BW 75 WW -NA YW -NA Scurred

STAR BRIGHT FUTURE 533P ET {CHB,DLF,HYF,IEF} (P42483846)

GV CMR FUTURE DOM Y133 ET {DLF,HYF,IEF} (P43260841)

CJH L1 DOMINETTE 0064 {DLF,HYF,IEF} (42118907)

DR WORLD CLASS 517 10H {SOD,CHB,DLF,HYF,IEF} (P41000194)

4-C 609 CLASSY LADY 961 (P43128719)

JYF MISS MIXER 9N 609 {DOD} (P42757776)

CE	BW	WW	YW	M	MG	CEM	MCW	SC	Fat	REA	MB
+0	+3.8	+61	+98	+26	+56	+4.6	+103	+1.2	+0.027	+0.27	+0.11
BMI	CEZ	BII	CHB								
+\$20	+\$15	+\$16	+\$28								

We used this bull last Spring to clean up heifers. Out of a world class daughter. Tons of longevity on the cow stand every female is still in the herd.

37 DVOR Y133 956 SOUTHERN BOY 467

(43641814) 11/15/14 Act. BW 70 WW -NA- Horned

STAR BRIGHT FUTURE 533P ET {CHB,DLF,HYF,IEF} (P42483846)

GV CMR FUTURE DOM Y133 ET {DLF,HYF,IEF} (P43260841)

CJH L1 DOMINETTE 0064 {DLF,HYF,IEF} (42118907)

DR WORLD CLASS 517 10H {SOD,CHB,DLF,HYF,IEF} (P41000194)

4-C 510 CLASSY LADY 956 (P43128718)

4-C P606 BOOMTOWN QUEEN 510 ET (P42629205)

CE	BW	WW	YW	M	MG	CEM	MCW	SC	Fat	REA	MB
-0.8	+3.4	+56	+85	+26	+54	+3.9	+93	+1.2	+0.36	+0.29	+1.5
BMI	CEZ	BII	CHB								
+\$20	+\$15	+\$17	+\$25								

38 DVOR Y133 051 SOUTHERN BOY 454

(P43641817) 9/13/14 Act. BW 68 WW -NA- Polled

STAR BRIGHT FUTURE 533P ET {CHB,DLF,HYF,IEF} (P42483846)

GV CMR FUTURE DOM Y133 ET {DLF,HYF,IEF} (P43260841)

CJH L1 DOMINETTE 0064 {DLF,HYF,IEF} (42118907)

BKR SANDERSON 73C 60S {DLF,HYF,IEF} (P42696328)

4-C MISS SANDERSON 757 051 (P43230463)

4C 206 MISS DAYTONA 757 (P42875736)

CE	BW	WW	YW	M	MG	CEM	MCW	SC	Fat	REA	MB
-1.7	+5.1	+60	+99	+20	+50	+1.7	+106	+9	+0.42	+0.26	+1.0
BMI	CEZ	BII	CHB								
+\$17	+\$12	+\$13	+\$26								

39 DVOR Y133 205 SOUTHERN BOY 461

(P43641795) 9/24/14 Act. BW 72 WW -NA- Polled

STAR BRIGHT FUTURE 533P ET {CHB,DLF,HYF,IEF} (P42483846)

Sire: GV CMR FUTURE DOM Y133 ET {DLF,HYF,IEF} (P43260841)

CJH L1 DOMINETTE 0064 {DLF,HYF,IEF} (42118907)

EF 821C MR CARCASS G824 {CHB} (P24033975)

Dam: JYF MISS MIXER G824 0205 (P42350921)

JYF VICTRESS H310 9724 {DOD} (P24025822)

CE	BW	WW	YW	M	MG	CEM	MCW	SC	Fat	REA	MB
-2.3	+5.1	+60	+101	+23	+53	+2.1	+116	+1.0	+0.03	+0.43	+0.9
BMI	CEZ	BII	CHB								
+\$18	+\$12	+\$15	+\$29								

DVOR Y133 956 SOUTHERN BOY 467



DVOR Y133 051 SOUTHERN BOY 454



These four bulls (Lots 37-40) are Fall bulls that came along side their mothers when we bought the Four Corners Cows. They have high growth potential, they were born in North Carolina and still had to put up with the South Dakota Spring. We have run them pretty hard just like our two year olds. Take advantage of these guys increased age and breeding potential.

40 DVOR Y133 873 SOUTHERN BOY 464

(P43641810) 9/26/14 Act. BW 95 WW -NA- Polled

STAR BRIGHT FUTURE 533P ET {CHB,DLF,HYF,IEF} (P42483846)

GV CMR FUTURE DOM Y133 ET {DLF,HYF,IEF} (P43260841)

CJH L1 DOMINETTE 0064 {DLF,HYF,IEF} (42118907)

AB DAYTONA 6008 2032 ET (P42350573)

4-C 2032 VICTORIA 206 873 (P42957285)

4-C 920J MISS GUARANTY 206 (P42299915)

CE	BW	WW	YW	M	MG	CEM	MCW	SC	Fat	REA	MB
-1.5	+4.8	+58	+93	+19	+48	+1.6	+104	+9	+0.017	+0.32	+1.4
BMI	CEZ	BII	CHB								
+\$18	+\$13	+\$15	+\$27								

DVOR Roudy LC Maggie 539C ET



41
&
42

DVOR Roudy LC Maggie 539C ET

41 - (P43618682) 2/27/15 Act. BW 91 WW 553 Polled

DVOR Roudy LC Maggie 560C ET

42 - (43618684) 3/3/15 Act. BW 82 WW 509 Polled

NJW 1Y WRANGLER 19D {CHB,SOD,DLF,HYF,IEF} (P23758169)

AH JDH CRACKER JACK 26U ET {CHB,DLF,HYF,IEF} (P42924297)

CRR D03 VIOLET 349 {DLF,HYF,IEF} (P42428481)

SHF RIB EYE M326 R117 {CHB,SOD,DLF,HYF,IEF} (P42584003)

SHF MAGGIE R117 W46 {DLF,HYF,IEF} (P42991543)

SHR BOOMER P606 R05 (P42583959)

DVOR Roudy LC Maggie 560C ET



CE	BW	WW	YW	M	MG	CEM	MCW	SC	Fat	REA	MB
+4	+4	+54	+81	+24	+51	+3.7	+94	+7	+0.02	+52	+19
BMI	CEZ	BII	CHB								
+\$19	+\$15	+\$15	+\$28								

Full sisters to Lots 1-5 bulls, the legacy of the now deceased Cracker Jack will certainly be his daughters, and not just in the show ring. As he has sired more state, regional, and national show champions than any other bull recently. If you have seen any wet daughters, you know that they are more than just pretty. So combining those traits with the cow power and end product merit of Maggie just seemed logical. They are not too hard to look at either. We expect these heifers to be very successful in whichever endeavor their new owner should choose: show ring or front pasture.

DVOR 468Z 930 Miss Vic 521C



This 468Z daughter is out of one of the crowd favorite cows in our pasture. She always looks good and is always in good shape. We expect this heifer to be the same way. She just reads cow from nose to tail-head.

43 DVOR 468Z 930 Miss Vic 521C
(P43637839) 2/21/15 Act. BW 85 WW 531 Polled

TH 223 711 VICTOR 755T {CHB,DLF,HYF,IEF} (P42800887)
TH 89T 755T VICTOR 468Z {DLF,HYF,IEF} (P43279203)
TH 16G 20N GEMINI 89T {DLF,HYF,IEF} (P42779363)

SHF TUG R117 T57 {SOD,CHB,DLF,HYF,IEF} (P42795820)
DVOR T57 MISS RIBTUG 930 (P43046654)
DVOR 2321 MISS DAKOTA 753 (42855491)

CE	BW	WW	YW	M	MG	CEM	MCW	SC	Fat	REA	MB
-1.2	+2.6	+47	+77	+27	+50	+0.8	+101	+0.8	+0.031	+0.46	+3.5
BMI	CEZ	BII	CHB								
+\$18	+\$13	+\$16	+\$26								

DVOR 468Z 214Z Miss Ziggy 512C



This flashy 468Z daughter is out of one of our new donors. An extremely good About Time daughter we got out of the Blueberry Hill program. Top 10% of the breed for Fat and REA. Dam has 2 at a 105 nursing ratio.

44 DVOR 468Z 214Z Miss Ziggy 512C
(P43617012) 2/14/15 Act. BW 85 WW 542 Scurred

TH 223 711 VICTOR 755T {CHB,DLF,HYF,IEF} (P42800887)
TH 89T 755T VICTOR 468Z {DLF,HYF,IEF} (P43279203)
TH 16G 20N GEMINI 89T {DLF,HYF,IEF} (P42779363)

CRR ABOUT TIME 743 {CHB,SOD,DLF,HYF,IEF} (P42797564)
BBH CBH 743 ZIGGY 214Z (P43302744)
KLB BBH 477T SASSY 042X (P43127444)

CE	BW	WW	YW	M	MG	CEM	MCW	SC	Fat	REA	MB
+7.2	+5	+47	+81	+29	+53	+4.7	+81	+9	-.003	+0.34	+1.8
BMI	CEZ	BII	CHB								
+\$21	+\$22	+\$16	+\$27								

DVOR 502Z 218 Miss Bonnie 514C



45 DVOR 502Z 218 Miss Bonnie 514C
(P43617016) 2/20/15 Act. BW 87 WW 553 Polled

TH 122 711 VICTOR 719T {SOD,CHB,DLF,HYF,IEF} (P42800895)

TH 89T 719T TAURUS 502Z {DLF,HYF,IEF} (P43273134)

TH 16G 20N GEMINI 89T {DLF,HYF,IEF} (P42779363)

HARVIE DAN T-BONE 196T (P42843277)

AA SHO BONNIE 218 (P43314440)

AF MS KESHA THUNDER 7184 ET (P42852097)

CE	BW	WW	YW	M	MG	CEM	MCW	SC	Fat	REA	MB
-9	+5.4	+63	+102	+22	+54	-.7	+106	+8	-.006	+.67	+.04
BMI	CEZ	BII	CHB								
+\$16	+\$12	+\$13	+\$31								

The first 502Z daughter to sell, out of our pick of the Able Acres sale. Dark red and cowy, mixed with huge growth numbers and top indexing carcass numbers will make this female a real breeding piece. We think this female will succeed in the pasture when you are done like her mother having nursed 2 calves with a 106.5 ratio.

46 DVOR 468Z 0224 Miss Vic 5170C

(P43641810) 9/26/14 Act. BW 86 WW 546 Polled

TH 223 711 VICTOR 755T {CHB,DLF,HYF,IEF} (P42800887)

TH 89T 755T VICTOR 468Z {DLF,HYF,IEF} (P43279203)

TH 16G 20N GEMINI 89T {DLF,HYF,IEF} (P42779363)

S FENCE POST 28T {DLF,IEF} (42826316)

DVOR 28T MISS SANDY 0224 (43096585)

DVOR MISS DOMINO 5140 (42588611)

CE	BW	WW	YW	M	MG	CEM	MCW	SC	Fat	REA	MB
-.2	+2.9	+45	+73	+19	+42	+1.1	+97	+6	-.013	+.37	+.14
BMI	CEZ	BII	CHB								
+\$17	+\$14	+\$15	+\$24								

47 DVOR 502 2232 Miss Taurus 516C

(P43637837) 2/20/15 Act. BW 78 WW 486 Polled

TH 122 711 VICTOR 719T {SOD,CHB,DLF,HYF,IEF} (P42800895)

TH 89T 719T TAURUS 502Z {DLF,HYF,IEF} (P43273134)

TH 16G 20N GEMINI 89T {DLF,HYF,IEF} (P42779363)

PF ABOUT TIME 0031 {CHB,DLF,HYF,IEF} (P43150574)

DVOR 0031 732 MISSN TIME 2232 (P43280834)

VOH MISS DOMINETTE 732 {DLF,IEF} (42857603)

CE	BW	WW	YW	M	MG	CEM	MCW	SC	Fat	REA	MB
+1.8	+1.4	+44	+71	+23	+45	-0.6	+86	+8	-.028	+.47	+.08
BMI	CEZ	BII	CHB								
+\$18	+\$16	+\$17	+\$24								

48 DVOR 502 2060 Miss Taurus 582C

(P43637856) 3/7/15 Twin Act. BW 66 WW 499 Horned

TH 122 711 VICTOR 719T {SOD,CHB,DLF,HYF,IEF} (P42800895)

TH 89T 719T TAURUS 502Z {DLF,HYF,IEF} (P43273134)

TH 16G 20N GEMINI 89T {DLF,HYF,IEF} (P42779363)

TH 71U 719T MR HEREFORD 11X {CHB,DLF,HYF,IEF} (P43101172)

BOYD MISS AMERICAN 2060 (P43273775)

CT MISS MARY ELLEN 65W (P43056506)

CE	BW	WW	YW	M	MG	CEM	MCW	SC	Fat	REA	MB
+2.4	+2.3	+57	+85	+23	+51	+8	+79	+8	-.018	+.51	+.11
BMI	CEZ	BII	CHB								
+\$19	+\$16	+\$16	+\$30								

49 DVOR 502 7122 Miss Taurus 5159

(P43637891) 3/24/15 Act. BW 72 WW 428 Polled

TH 122 711 VICTOR 719T {SOD,CHB,DLF,HYF,IEF} (P42800895)

TH 89T 719T TAURUS 502Z {DLF,HYF,IEF} (P43273134)

TH 16G 20N GEMINI 89T {DLF,HYF,IEF} (P42779363)

K L1 ADVANCER 219 {CHB,SOD,DLF,IEF} (42329602)

DVOR 219 L1 MISS DOMINO 7122 {DLF,HYF,IEF} (42829241)

DVOR L1 MISS DOMINO 312 (42379070)

CE	BW	WW	YW	M	MG	CEM	MCW	SC	Fat	REA	MB
+2.7	.0	+37	+64	+29	+47	-1.7	+77	+1.1	-.003	+.38	+.16
BMI	CEZ	BII	CHB								
+\$19	+\$17	+\$19	+\$21								

50 DVOR Y133 506 Miss Belle 506

(P43641839) 2/16/15 Act. BW 65 WW 515 Scurred

STAR BRIGHT FUTURE 533P ET {CHB,DLF,HYF,IEF} (P42483846)

GV CMR FUTURE DOM Y133 ET {DLF,HYF,IEF} (P43260841)

CJH L1 DOMINETTE 0064 {DLF,HYF,IEF} (42118907)

DR JYF VICTOR P606 R10 ET (P42598761)

4-C 072 SASSY 274 (P43348642)

4-C 801 MISS SANDERS 072 (P43150923)

CE	BW	WW	YW	M	MG	CEM	MCW	SC	Fat	REA	MB
-1.1	+3.1	+53	+85	+23	+49	+1.7	+96	+1.0	+.043	+.35	+.12
BMI	CEZ	BII	CHB								
+\$18	+\$14	+\$16	+\$23								

51 DVOR Y133 273 Miss Belle 507

(P43641841) 2/16/15 Act. BW 72 WW 530 Polled

STAR BRIGHT FUTURE 533P ET {CHB,DLF,HYF,IEF} (P42483846)

GV CMR FUTURE DOM Y133 ET {DLF,HYF,IEF} (P43260841)

CJH L1 DOMINETTE 0064 {DLF,HYF,IEF} (42118907)

DR JYF VICTOR P606 R10 ET (P42598761)

4-C 051 MISS SANDERSON 273 (P43348641)

4-C MISS SANDERSON 757 051 (P43230463)

CE	BW	WW	YW	M	MG	CEM	MCW	SC	Fat	REA	MB
-1.8	+4.7	+56	+91	+21	+49	+1.4	+98	+9	+.037	+.39	+.10
BMI	CEZ	BII	CHB								
+\$17	+\$12	+\$14	+\$25								

TH 89T 719T Taurus 502Z

(P43273134) 4/16/12 Polled

DRF JWR PRINCE VICTOR 711 {CHB,SOD} (P41141619)

TH 122 711 VICTOR 719T {SOD,CHB,DLF,HYF,IEF} (P42800895)

KBCR 19D DOMINETTE 122 {DLF,IEF} (P42220359)

NPH 20X SPARTAN 20N {CHB,SOD,DLF,HYC,IEF} (P42389552)

TH 16G 20N GEMINI 89T {DLF,HYF,IEF} (P42779363)

TEE-JAY 707B GEMINI 16G ET (P42210391)

CE	BW	WW	YW	M	MG	CEM	MCW	SC	Fat	REA	MB
+2.7	+1.8	+54	+81	+19	+46	-1.0	+74	+8	-.015	+.55	+.16
BMI	CEZ	BII	CHB								
+\$20	+\$16	+\$18	+\$30								

Hard Sire

TH 89T 719T Taurus 502Z



This 7/8 brother to 468Z, led off the 2014 TOPP Herefords Bull Sale. We expect him to follow in his brother's footsteps and add a little different twist of his \$117,000 mother 89T's influence to the program.

Sire of Lots 45, 47-49.

DVOR Y133 257 Miss Belle 514



52

DVOR Y133 257 Miss Belle 514

(P43641847) 3/6/15 Act. BW 78 WW 600 Polled

STAR BRIGHT FUTURE 533P ET {CHB,DLF,HYF,IEF} (P42483846)

GV CMR FUTURE DOM Y133 ET {DLF,HYF,IEF} (P43260841)

CJH L1 DOMINETTE 0064 {DLF,HYF,IEF} (42118907)

4-C MR P606 BELLMAN 8004556 ET (P42638660)

4-C 711 VICTORIA BELLE 257 (P43348629)

JYF VICTORIA 9N 711 (P42852038)

CE	BW	WW	YW	M	MG	CEM	MCW	SC	Fat	REA	MB
-2.3	+5.8	+62	+97	+24	+55	+1.0	+98	+9	+0.32	+0.35	+0.13
BMI	CEZ	BII	CHB								
+\$16	+\$11	+\$13	+\$28								

53 DVOR 1094 6104 Miss Stout 5134

(P43637884) 3/19/15 Act. BW 58 WW 511 Polled

BOYD WORLDWIDE 9050 ET {CHB,DLF,HYF,IEF} (P42982024)

BOYD STOUT 1094 ET {CHB,DLF,HYF,IEF} (P43186793)

SSF P606 MS VICTOR 803 {DLF,HYF,IEF} (P42610510)

K L1 ADVANCER 219 {CHB,SOD,DLF,IEF} (42329602)

DVOR MISS DOMINO 6104 {DOD} (42708007)

DVOR MISS MARK DOMINO 219 (42289038)

CE	BW	WW	YW	M	MG	CEM	MCW	SC	Fat	REA	MB
+1.5	+2.8	+44	+71	+31	+53	+3	+74	+8	+0.020	+0.26	+0.13
BMI	CEZ	BII	CHB								
+\$15	+\$15	+\$13	+\$21								

54 DVOR 1094 7212 Miss Stout 5174

(P43637896) 4/4/15 Act. BW 97 WW 484 Polled

BOYD WORLDWIDE 9050 ET {CHB,DLF,HYF,IEF} (P42982024)

BOYD STOUT 1094 ET {CHB,DLF,HYF,IEF} (P43186793)

SSF P606 MS VICTOR 803 {DLF,HYF,IEF} (P42610510)

F 915 STAR 142 {CHB,SOD,DLF,IEF} (42149114)

DVOR 142 MISS STAR 7212 (42829213)

DVOR L1 MISS DOMINO 042 {DOD,DLF,IEF} (42059055)

CE	BW	WW	YW	M	MG	CEM	MCW	SC	Fat	REA	MB
+6	+5.3	+50	+78	+27	+51	-1	+74	+8	+0.019	+0.40	+0.16
BMI	CEZ	BII	CHB								
+\$17	+\$14	+\$15	+\$25								

55 DVOR 665 360 Miss Domino 555C

(43637851) 3/1/15 Act. BW 77 WW 505 Polled

CL 1 DOMINO 3138N 1ET {CHB,DLF,HYF,IEF} (42385269)

KB L1 DOMINO 665 {CHB,DLF,HYF,IEF} (42674365)

MONTANA MISS 466P ET {DLF,HYF,IEC} (42526776)

MH MONUMENT 909 {CHB,DLF,HYF,IEF} (43019669)

DVOR 909 0258 MS MONUMENT 360 (P43376554)

RV LADY SPARTAN 0258 {DLF,HYF,IEF} (P43140021)

CE	BW	WW	YW	M	MG	CEM	MCW	SC	Fat	REA	MB
+3.4	+1.4	+46	+90	+30	+53	-.6	+84	+9	-.016	+.39	+.15
BMI	CEZ	BII	CHB								
+\$ 17	+\$ 16	+\$ 14	+\$ 27								

56 DVOR 0139 724 Miss Red 517C

(43637838) 2/20/15 Act. BW 65 WW 434 Polled

CTY RED DIAMOND 6628S {DLF,HYF,IEF} (42760843)

TG RED DIAMOND 0139 {DLF,HYF,IEF} (43086277)

G MS RAPTURE 835 {DOD,DLF,HYF,IEF} (42894347)

K L1 ADVANCER 219 {CHB,SOD,DLF,IEF} (42329602)

DVOR 219 MISS DOMINO 724 (42829500)

DVOR MISS DOMINO 3257 {DLF,IEF} (42379065)

CE	BW	WW	YW	M	MG	CEM	MCW	SC	Fat	REA	MB
+1.7	-.3	+25	+45	+21	+34	-1.0	+91	+7	-.021	+.25	+.03
BMI	CEZ	BII	CHB								
+\$ 16	+\$ 16	+\$ 17	+\$ 13								

57 DVOR 150 3150 Dominette 534C

(43637842) 2/25/15 Act. BW 78 WW 533 Horned

KB L1 DOMINO 665 {CHB,DLF,HYF,IEF} (42674365)

DVOR 665 9175 DOMINO 150 (43185217)

DVOR 28T MISS SANDY 9175 (42994262)

KB L1 DOMINO 665 {CHB,DLF,HYF,IEF} (42674365)

DVOR 665 1141 MISS DOMINO 3150 {DLF,HYF,IEF} (43375846)

DVOR 24T 4100 MISS GENERAL 1141 {DLF,HYF,IEC} (43185242)

CE	BW	WW	YW	M	MG	CEM	MCW	SC	Fat	REA	MB
+5.0	-.2	+40	+76	+27	+47	+2.8	+69	+1.1	+.017	-.03	+.23
BMI	CEZ	BII	CHB								
+\$ 21	+\$ 20	+\$ 18	+\$ 22								

58 DVOR 502 2060 Miss Taurus 582C

(P43637856) 3/7/15 Act. BW 68 WW 480 Polled

TH 122 711 VICTOR 719T {SOD,CHB,DLF,HYF,IEF} (P42800895)

TH 89T 719T TAURUS 502Z {DLF,HYF,IEF} (P43273134)

TH 16G 20N GEMINI 89T {DLF,HYF,IEF} (P42779363)

TH 71U 719T MR HEREFORD 11X {CHB,DLF,HYF,IEF} (P43101172)

BOYD MISS AMERICAN 2060 (P43273775)

CT MISS MARY ELLEN 65W (P43056506)

CE	BW	WW	YW	M	MG	CEM	MCW	SC	Fat	REA	MB
+2.4	+2.3	+57	+85	+23	+51	+.8	+79	+.8	-.018	+.51	+.11
BMI	CEZ	BII	CHB								
+\$ 19	+\$ 16	+\$ 16	+\$ 30								

59 DVOR 150 380 Dominette 596C

(43637858) 3/10/15 Act. BW 75 WW 535 Horned

KB L1 DOMINO 665 {CHB,DLF,HYF,IEF} (42674365)

DVOR 665 9175 DOMINO 150 (43185217)

DVOR 28T MISS SANDY 9175 (42994262)

TG RED DIAMOND 0139 {DLF,HYF,IEF} (43086277)

DVOR 0139 939 MISS DIAMOND 380 (43375850)

DVOR 219 MISS DOMINO 939 {DOD} (42994348)

CE	BW	WW	YW	M	MG	CEM	MCW	SC	Fat	REA	MB
+3.0	+.3	+41	+68	+25	+45	+1.4	+72	+.9	-.008	+.28	+.04
BMI	CEZ	BII	CHB								
+\$ 18	+\$ 17	+\$ 16	+\$ 20								

DVAuction
Broadcasting Real-Time Auctions

Never Miss An Auction Again!
Watch & Bid online for FREE!

**Visit www.DVAuction.com
and Register Today!**

For General Questions Please Contact Our Office:
(402) 316-5460 or support@dvauction.com

DVOR 150 321 *Dominette 5118C*



60 DVOR 150 321 *Dominette 5118C*

(43637861) 3/15/15 Act. BW 68 WW 535 Horned

KB L1 DOMINO 665 {CHB,DLF,HYF,IEF} (42674365)

DVOR 665 9175 DOMINO 150 (43185217)

DVOR 28T MISS SANDY 9175 (42994262)

KB L1 DOMINO 665 {CHB,DLF,HYF,IEF} (42674365)

DVOR 665 1120 MISS DOMINO 321 (43375899)

DVOR 621 6203 MISS RIBSTONE 1120 (43185297)

CE	BW	WW	YW	M	MG	CEM	MCW	SC	Fat	REA	MB
+5.3	-2.1	+38	+74	+26	+45	+2.9	+74	+1.2	+0.17	+0.09	+0.22
BMI	CEZ	BII	CHB								
+\$22	+\$21	+\$19	+\$22								

61 DVOR 1210 181 *Miss Bolt 570C*

(P43637852) 3/5/15 Act. BW 93 WW 654 Polled

CRR HELTON 980 {CHB,DLF,HYF,IEF} (P43032013)

LCX HELTON BOLT 1210 ET {DLF,HYF,IEF} (P43313501)

MSU KEEPSAKE 14S {DLF,HYF,IEF} (P42709435)

KB L1 DOMINO 665 {CHB,DLF,HYF,IEF} (42674365)

DVOR 665 9103 MISS DOMINO 181 (43185276)

DVOR 543 MISS EXCEL 9103 (42994318)

CE	BW	WW	YW	M	MG	CEM	MCW	SC	Fat	REA	MB
+3	+4.7	+59	+102	+26	+56	+1.9	+99	+1.0	+0.015	+0.16	+0.14
BMI	CEZ	BII	CHB								
+\$17	+\$14	+\$13	+\$29								

62 DVOR 1210 5112 *Miss Bolt 5148C*

(P43637889) 3/21/15 Act. BW 105 WW 525 Polled

CRR HELTON 980 {CHB,DLF,HYF,IEF} (P43032013)

LCX HELTON BOLT 1210 ET {DLF,HYF,IEF} (P43313501)

MSU KEEPSAKE 14S {DLF,HYF,IEF} (P42709435)

ARROW CL1 1127 {DLF,IEF} (42238123)

KB L1 DOMINETTE 5112R (42570575)

OXH CRYSTAL 1222 {DOD} (42180561)

CE	BW	WW	YW	M	MG	CEM	MCW	SC	Fat	REA	MB
-2.5	+6.9	+55	+92	+20	+48	+1.6	+100	+0.7	+0.012	+0.21	-0.01
BMI	CEZ	BII	CHB								
+\$13	+\$11	+\$11	+\$23								

63 DVOR 2025 0174 Sensation 595C
(43648816) 3/10/15 Act. BW 108 WW 486 Horned

CHURCHILL SENSATION 028X {CHB,DLF,HYF,IEF} (43092364)

UPS SENSATION 2025 {DLF,HYF,IEF} (43311056)

UPS MISS BRUTUS 0147 (43111257)

F RIBSTONE LAD 621 {CHB,DLF,IEF} (42671374)

DVOR 621 MISS RIBSTONE 0174 (43096639)

DVOR MISS DOMINO 6104 {DOD} (42708007)

CE	BW	WW	YW	M	MG	CEM	MCW	SC	Fat	REA	MB
+3.1	+6.4	+55	+95	+30	+58	+2.1	+93	+1.4	+0.070	+1.14	+1.16
BMI	CEZ	BII	CHB								
+\$ 20	+\$ 17	+\$ 16	+\$ 24								

64 DVOR 2025 9236 Sensation 511C
(43648817) 3/14/15 Act. BW 90 WW 459 Horned

CHURCHILL SENSATION 028X {CHB,DLF,HYF,IEF} (43092364)

UPS SENSATION 2025 {DLF,HYF,IEF} (43311056)

UPS MISS BRUTUS 0147 (43111257)

S WINCHESTER 24T ET {DLF,IEF} (42826350)

DVOR 24T MISS GENERAL 9236 (42994368)

DVOR MISS DOMINO 6104 {DOD} (42708007)

CE	BW	WW	YW	M	MG	CEM	MCW	SC	Fat	REA	MB
+3.7	+2.7	+45	+74	+31	+54	+1.8	+69	+1.2	+0.055	-.04	+0.21
BMI	CEZ	BII	CHB								
+\$ 19	+\$ 18	+\$ 17	+\$ 20								

DVOR 2025 275 Sensation 5113C



65 DVOR 2025 275 Sensation 5113C
(43618546) 3/14/15 Act. BW 71 WW 508 Horned

CHURCHILL SENSATION 028X {CHB,DLF,HYF,IEF} (43092364)

UPS SENSATION 2025 {DLF,HYF,IEF} (43311056)

UPS MISS BRUTUS 0147 (43111257)

KB L1 DOMINO 665 {CHB,DLF,HYF,IEF} (42674365)

DVOR 665 0171 MISS DOMINO 275 (43280928)

DVOR 621 MISS RIBSTONE 0171 (43096692)

CE	BW	WW	YW	M	MG	CEM	MCW	SC	Fat	REA	MB
+6.0	+3	+55	+76	+28	+55	-.4	+85	+1.0	-.012	+0.30	+0.06
BMI	CEZ	BII	CHB								
+\$ 20	+\$ 19	+\$ 17	+\$ 27								

For full pedigree, video clips, photos and more info.

www.dvorakherefords.com

66 DVOR 2025 261 Sensation 5122C

(43648819) 3/15/15 Act. BW 89 WW 528 Horned

CHURCHILL SENSATION 028X {CHB,DLF,HYF,IEF} (43092364)

UPS SENSATION 2025 {DLF,HYF,IEF} (43311056)

UPS MISS BRUTUS 0147 (43111257)

PONCA MORTGAGE LIFTER 930 (43039570)

PONCA 930 M LIFTER LADY261 {DLF,HYF,IEF} (43327382)

PONCA JAKE LADY 967 (43039563)

CE	BW	WW	YW	M	MG	CEM	MCW	SC	Fat	REA	MB
+3.8	+3.3	+52	+84	+29	+54	+2.7	+86	+1.1	+0.34	+1.4	+21
BMI	CEZ	BII	CHB								
+\$20	+\$18	+\$16	+\$26								

67 DVOR 2025 0131 Sensation 5155C

(43648821) 3/23/15 Act. BW 97 WW 524 Horned

CHURCHILL SENSATION 028X {CHB,DLF,HYF,IEF} (43092364)

UPS SENSATION 2025 {DLF,HYF,IEF} (43311056)

UPS MISS BRUTUS 0147 (43111257)

S WINCHESTER 24T ET {DLF,IEF} (42826350)

DVOR 24T MISS GENERAL 0131 (43096608)

DVOR MISS DOMINO 306 {DOD} (42379075)

CE	BW	WW	YW	M	MG	CEM	MCW	SC	Fat	REA	MB
+3.3	+4.1	+56	+85	+28	+56	+2.6	+73	+1.1	+0.58	+0.9	+12
BMI	CEZ	BII	CHB								
+\$19	+\$17	+\$15	+\$24								

68 DVOR 2025 811 Sensation 5188C

(43648825) 4/11/15 Act. BW 89 WW 536 Horned

CHURCHILL SENSATION 028X {CHB,DLF,HYF,IEF} (43092364)

UPS SENSATION 2025 {DLF,HYF,IEF} (43311056)

UPS MISS BRUTUS 0147 (43111257)

AGA 121G STANMORE 20J {CHB} (42319233)

DVOR 20J MISS STANMORE 811 (42942605)

DVOR MISS DOMINO 670 (42708075)

CE	BW	WW	YW	M	MG	CEM	MCW	SC	Fat	REA	MB
+3.9	+2.9	+53	+83	+33	+59	+3.5	+105	+1.1	+0.26	+1.7	+26
BMI	CEZ	BII	CHB								
+\$21	+\$18	+\$16	+\$28								

69 DVOR 2025 9230 Sensation 5230C

(43648826) 4/28/15 Act. BW 83 WW 516 Horned

CHURCHILL SENSATION 028X {CHB,DLF,HYF,IEF} (43092364)

UPS SENSATION 2025 {DLF,HYF,IEF} (43311056)

UPS MISS BRUTUS 0147 (43111257)

F L18 EXCEL 543 {DLF,IEF} (42569409)

DVOR 543 MISS EXCEL 9230 (42994325)

DVOR MISS DOMINO 549 {DLF,IEF} (42588552)

CE	BW	WW	YW	M	MG	CEM	MCW	SC	Fat	REA	MB
+3.5	+3.5	+49	+77	+33	+58	+1.9	+89	+1.2	+0.35	+1.0	+19
BMI	CEZ	BII	CHB								
+\$20	+\$18	+\$17	+\$24								

70 DVOR 2025 9116 Sensation 5205C

(43648827) 5/1/15 Act. BW 85 WW 546 Horned

CHURCHILL SENSATION 028X {CHB,DLF,HYF,IEF} (43092364)

UPS SENSATION 2025 {DLF,HYF,IEF} (43311056)

UPS MISS BRUTUS 0147 (43111257)

F 915 STAR 142 {CHB,SOD,DLF,IEF} (42149114)

DVOR 142 MISS STAR 9116 (42994340)

DVOR L1 MISS DOMINO 2175 {DOD,DLF,IEF} (42289204)

CE	BW	WW	YW	M	MG	CEM	MCW	SC	Fat	REA	MB
+4.3	+4.1	+48	+81	+34	+58	+1.7	+93	+1.2	+0.22	+2.2	+22
BMI	CEZ	BII	CHB								
+\$20	+\$18	+\$17	+\$26								

Herd Sire
UPS Sensation 2025



2025 was our selection and top-seller at the 2014 Upstream Bull Sale. This son of the Genex great Sensation, was added to cement the calving ease and maternal traits. *Sire of Lots 63-70.*

Dvorak Herefords

29738 383rd Ave.,
Lake Andes, SD 57356
www.dvorakherefords.com



*thanks
for takin'
a look*

Bull & Female Sale
Friday, February 5, 2016 - 1:00 CST
www.dvorakherefords.com

