

Dvorak Herefords



Bull & Female Sale

Friday, February 3, 2017 - 1:00 CST

**Selling: 14 Long Yearling Bulls
30 Coming Two-Year-Old Bulls
30 Reg. Hereford Heifers**

Dvorak Herefords

Welcome to our 2017 Bull & Female Sale

All sale animals are being fed at the farm North of Marty, and will be moved to the sale site at the ranch northeast of Pickstown, Thursday afternoon, the 2nd. The cattle will be penned and available for viewing sale day.

The entire sale offering will be sold via video in our remodeled, heated barn.

Bull Development

The two-year-old bulls were fed as calves in our back-grounding yard alongside their steermates until grass time in the spring of 2016. The two-year-olds were brought off grass around Labor Day time, and all sale bulls have been fed a 48neg balanced grower ration consisting of oatlage, corn silage, cracked corn, ground hay, and alfalfa.

Acquisition of Triple M Ranch cows

In our 2015 sale, we offered a set of polled bulls bred by our friends at Triple M Ranch. They were fed with the bulls that we raised, and sold at the top end in our sale. When we received the call in the fall of that year that Bill Mericka had passed, and the cow herd was for sale to settle their estate, we knew we wanted to make every effort to own that set of cows. Shortly after our sale last year, the Triple M cows arrived. They have adapted well, and look forward to developing our polled program around this set of cows along with the cows from Four Corners. We feel very blessed and honored to be able to own this truly outstanding set of polled cows.



We will continue to breed a set of horned cows, horned, and the best polled cows, polled. The balance of the registered cows will be mated to what we feel compliments them best. It is not our aim to breed just horned, or just polled, but the best Hereford cattle that fits our environment.

The set of long yearling bulls in the sale is the breeding of the Four Corners, and Triple M Ranch cowherds. There will not be long yearling/fall bulls offered after this year, as we have converted those fall calving cows to springs.

Videos of the bulls and heifers can be seen on our website, www.dvorakherefords.com, or through links at [Hereford America.com](http://HerefordAmerica.com), American Hereford Association marketplace link, or through DVAuction.

DVAuction
Broadcasting Real-Time Auctions

Can't make the sale?
Let DVAuction bring the sale to you!

Busy during the sale?
Let DVAuction represent your bid!

Visit www.DVAuction.com and Register Today

For General Questions
Please Contact Our Office:
(402) 316-5460 or
support@dvauction.com



Like Dvorak Herefords
on Facebook



Dvorak Herefords **Bull & Female Sale** **Friday, February 3, 2017** **Complimentary Lunch 12 pm, Sale Time 1 pm CST**



GPS Coordinates

N 43°04.335' • W098°31.571'

"If you are using a GPS to get to the sale site, enter these coordinates. The 911 address will not get you to the sale site"

Sale day phone:

Boyd Dvorak 605-491-7090

Jeff Dvorak 605-491-2068

Ben Roudabush 276-692-8118

Jenni Dvorak 605-491-7091

Cody Chambliss 605-730-1837

Acknowledgments

SDHA Secretary - Mark & Jeanne Johnson

SDHA President - Seth Zilverberg

SDJHA Queen - Haley Ringkob

Veterinarian - Northwest Vet Clinic - Dr. Chris Freidl

Nutritionist - Country Pride Coop

Ultrasound - Midwest Sonatech - Steve & Amy Muller

Photography - ALM Photography (219) 776-0594

Catalog Design & Advertising -

CAVENEEDesign (605) 830-9025

stephcavenee@gmail.com • Miller, SD

Auctioneer - Will Epperly, Dunlop, IA 712-269-5677

Marketing Representatives

Brad Veurink (605) 680-1281

Levi Landers - Hereford World, (308) 730-1396

Art Handel - Handel Marketing, (605) 391-8233

Marc & Jill Hotchkiss - Hereford America,

(605) 490-1513

Alex Cosgray - Streamline Genetics, (765) 490-6286

Ben Roudabush, (276) 692-8118

Tom Granzow - Kansas Hereford Assn., (785) 466-6790

Chris Effling, Tri State Livestock News (605) 769-0142

Jim Scheel, Cattle Business Weekly

(605) 545-1521

MIke Mericka (336) 337-5480



Located at our ranch, Pickstown, SD, watch for the sign from the Jct's of US 281 & 18, and SD Hwy 46 at Pickstown - 1/4 mile east, 1/4 mile north

Sale terms & Conditions - All cattle selling will be sold to the highest bidder. Any disputes will be settled by the auctioneer at the time of sale, and his decision will be final. All announcements made immediately before an animal is sold takes precedence over information printed in this catalog. All cattle are to be paid for by the purchaser immediately following the sale, unless prior arrangements have been made with either Jeff or Boyd Dvorak.

Absentee bidding - If you would not be able to attend the sale, and would like to place a bid on any of the sale lots, we would gladly assist you, by either leaving a bid with Dvorak Herefords, or other sale staff. If you wish to be on the phone for the bidding, we will try to line up someone to be on the phone with you for the lots in which you are interested. Bidding can also be done through DV Auction. Be sure to get pre sale bidder approval.

Liability - All animals and merchandise sold will be at the buyer's risk as soon as sale is complete. Neither the owner's, auctioneers, or any other personnel will be responsible for an injury or loss that may occur during the sale or on the premises.

Guarantee - All animals sold by Dvorak Herefords will be guaranteed breeders, and all bulls have passed a semen evaluation. If an animal fails to be a breeder, buyers can choose a replacement, if one is available at the time, or receive credit. Dvorak Herefords will not warranty a bull for death, but offers to pay one half of a six month term of mortality insurance the day of the sale. Any animal left in care of Dvorak Herefords must be insured. Guarantee is void if improper management in caring for an animal, or sickness, or injury occurred after taking possession of said animal.

Health - All bulls selling have passed a breeding soundness exam from Northwest Vet Clinic at Wagner, SD, including a semen evaluation. All animals sold by Dvorak Herefords will have been test clean for BVD PI. They have been on an extensive vaccination protocol since birth, and received their first footrot shot, and breeding shot of Preg Guard Gold 10 mid January 2016. All animals sold in this sale will be sold with health papers for interstate travel.

Delivery/Extended Care - We will deliver within a reasonable distance, and cooperate with buyers on further destinations. No delivery on heifers. We will begin to deliver bulls within a week or two after the sale depending on our schedule. If you choose to leave them in Dvorak Herefords care you may do so for \$5/day charge.

Registrations - All animals selling with registration numbers, will be sold as registered, and registration papers will be transferred into whomever's name the buyer wishes to have them transferred.

Volume Discounts - Anyone purchasing two or more bulls will receive a \$50/bull discount. Those purchasing four or more bulls, will receive a \$100/bull discount.

This sale will be broadcast live on the internet.

DVAuction

Broadcasting Real-Time Auctions

Real time bidding & proxy bidding available.

For questions contact Justin Dikoff at (605) 290-0635 - jdikoff@dvauction.com

Boyd, Jeff, & Richard Dvorak

Boyd (605) 491-7090 • Jeff (605) 491-2068

d7barranch@charles-mix.com

29738 383rd Ave., Lake Andes, SD 57356

Herd Sire *Victor 468Z*

TH 89T 755T



TH 89T 755T Victor 468Z



(43279203) {DLF,HYF,IEF} 3/10/12 Polled

DRF JWR PRINCE VICTOR 711 {CHB,SOD} (P41141619)
TH 223 711 VICTOR 755T {CHB,DLF,HYF,IEF} (P42800887)
 KBCR 19D DOMINETTE 223 {DLF,IEF} (P42320158)

NPH 20X SPARTAN 20N {CHB,SOD,DLF,HYC,IEF} (P42389552)
TH 16G 20N GEMINI 89T {DLF,HYF,IEF} (P42779363)
 TEE-JAY 707B GEMINI 16G ET (P42210391)

After three calving seasons 468Z has over 300 calves on the ground. We were first attracted to him for his pedigree and phenotype. As a mature bull he is appreciated for his length-of-body, muscle mass, athleticism, and eye-appeal in his calves.

CE	BW	WW	YW	M	MG	CEM	MCW	SC	Fat	REA	MB
-4	+5.1	+44	+68	+23	+45	-1.6	+79	+4	+0.18	+0.60	+0.30
BMI	CEZ	BII	CHB								
+\$15	+\$13	+\$14	+\$25								

DVOR 468Z 073 Victor 567C



DVOR 468Z 073 VICTOR 567C

(P43618060) 3/5/15 Act. BW 98 WW 590 YW 1100 Polled
 Weight: 1840 Act. Scrotal: 49 Pigment - L- 100 R- 100

TH 223 711 VICTOR 755T {CHB,DLF,HYF,IEF} (P42800887)
TH 89T 755T VICTOR 468Z {CHB,DLF,HYF,IEF} (P43279203)
 TH 16G 20N GEMINI 89T {DLF,HYF,IEF} (P42779363)

F RIBSTONE LAD 621 {DLF,IEF} (42671374)
DVOR 621 MISS RIBSTONE 073 (43096581)
 DVOR MISS DOMINO 6141 {DOD} (42708123)

CE	BW	WW	YW	M	MG	CEM	MCW	SC	Fat	REA	MB
+4	+4.3	+47	+70	+23	+47	+5	+70	+1.4	+0.36	+0.36	+0.25
BMI	CEZ	BII	CHB								
+\$24	+\$16	+\$24	+\$24								

Here is a solid footed, athletic 468Z son. There is a lot of longevity bred into the cow side of his pedigree, with over 30 natural born calves in the last four generations. 567 had a n IMF ratio of 109 and had an adjusted yearling scrotal of 41.5 to 112

DVOR468Z 159P *Zenner* 554 ET



*Star TCF ADV Ora Lee
159P ET donor cow*



*DVOR 468Z 159P Bond
431 ET is a full-sibling
that sold in our 2015 sale.*

2 *DVOR 468Z 159P ZENNER 554 ET*
 {DLF,HYF,IEF} (P43618686) 3/2/15 Act. BW 99 WW 625 YW 1172 P
 Weight: 1830 Act. Scrotal: 43.5 Pigment -L- 60 R- 0

TH 223 71I VICTOR 755T {CHB,DLF,HYF,IEF} (P42800887)
TH 89T 755T VICTOR 468Z {CHB,DLF,HYF,IEF} (P43279203)
 TH 16G 20N GEMINI 89T {DLF,HYF,IEF} (P42779363)

EMITALL ONLINE 122L {CHB,SOD,DLF,HYF,IEF} (P42254372)
STAR TCF ADV ORALEE 159P ET {DLF,HYF,IEF} (P42485007)
 HH MISS ADV 786G 1ET (40007389)

CE	BW	WW	YW	M	MG	CEM	MCW	SC	Fat	REA	MB
+1.9	+3.6	+45	+78	+22	+45	+2.1	+81	+6	+0.01	+48	+10
BMI	CEZ	BII	CHB								
+\$16	+\$14	+\$14	+\$24								

Every so often you come across a bull that you believe could change your program and has the potential to be a breed changer. I'm not saying this is the one, but this may be as close as we have every come. Zenner has the look, the stride, and the power. We used him as a calf, and would like to continue to do so if possible. We will have 20+ calves by him this spring and have quality semen froze. We have multiple parties interested in semen and possession. *Sale terms to be announced prior to sale.*

Herd Sire UPS Sensation 2025



UPS Sensation 2025



(43311056) {DLF,HYF,IEF} 3/14/12 Horned

UPS DOMINO 3027 {CHB,SOD,DLF,HYF,IEF} (42426386)

CHURCHILL SENSATION 028X {CHB,DLF,HYF,IEF} (43092364)

CHURCHILL LADY 7202T ET {DLF,HYF,IEF} (42856776)

UPS BRUTUS {DLF,HYF,IEF} (42814193)

UPS MISS BRUTUS 0147 (43111257)

UPS MISS DOMINO 5677 {DOD} (42623755)

2025 was added to our program three years ago. This is the first set of bulls to sell from this powerful breeding bull. His calves are conservatively marked, and seem to have fairly consistent birth weights. He is a very strong breeder, having been turned in with 45 cows for 60 days with no opens.

CE	BW	WW	YW	M	MG	CEM	MCW	SC	Fat	REA	MB
+6.6	+1.3	+48	+79	+37	+61	+3.5	+79	+1.02	+0.059	+0.04	+0.39
BMI	CEZ	BII	CHB								
+\$23	+\$21	+\$18	+\$27								

DVOR 2025 828 Sensation 585C



3

DVOR 2025 828 SENSATION 585C

(43618150) 3/8/15 Act. BW 85 WW 616 YW 1152 Horned
Weight: 1780 Act. Scrotal: 44 Pigment - L- 85 R- 100

CHURCHILL SENSATION 028X {CHB,DLF,HYF,IEF} (43092364)

UPS SENSATION 2025 {DLF,HYF,IEF} (43311056)

UPS MISS BRUTUS 0147 (43111257)

F L18 EXCEL 543 {DLF,IEF} (42569409)

DVOR 543 MISS EXCEL 828 (42895963)

DVOR L1 MISS DOMINO 214 (42289030)

CE	BW	WW	YW	M	MG	CEM	MCW	SC	Fat	REA	MB
+5.9	+9	+48	+73	+57	+3.5	+76	+1.1	+1.1	+0.37	+21	+38
BMI	CEZ	BII	CHB								
+\$23	+\$21	+\$19	+\$28								

Here is a big, powered up, straight horned bull. Red necked with enough mass, power, and bone. Balanced set of EPD's. He is an exception to the rule that says you can't have ribeye and marbling. He scanned a 14.8 REA to a ratio of 112, and a IMF % of 4.38 to ratio of 154. Maybe you really can have it all.

DVOR 2025 026 Sensation 5108C



4

DVOR 2025 026 SENSATION 5108C

(43618164) 3/13/15 Act. BW 85 WW 601 YW 1123 Horned
Weight: 1785 Act. Scrotal: 39 Pigment - L- 40 R- 20

CHURCHILL SENSATION 028X {CHB,DLF,HYF,IEF} (43092364)

UPS SENSATION 2025 {DLF,HYF,IEF} (43311056)

UPS MISS BRUTUS 0147 (43111257)

KB L1 DOMINO 665 {DLF,HYF,IEF} (42674365)

DVOR 665 MISS DOMINO 026 (43096626)

DVOR 219 MISS DOMINO 7194 (42829243)

CE	BW	WW	YW	M	MG	CEM	MCW	SC	Fat	REA	MB
+7.6	+1	+47	+80	+32	+56	+3.3	+69	+6	+0.23	+31	+25
BMI	CEZ	BII	CHB								
+\$17	+\$21	+\$12	+\$27								

Super nice 2025 son that has a very nicely balanced look to him, as well as his EPD profile. His dam 026 is one of the most consistent cows on the place. My only regret is selling her first born as a feature in our sale.

DVOR 2025 1172 Sensation 587C



If you like your bulls short marked, red necked, horned, with pigment to burn, this is your bull. His dam 1172 is not only a herd favorite but also earned Dam of Distinction status. She has been getting the job done and is raising top quality cattle. A son was a top seller in last year's sale. She raised another one for the sale next year as well. She carries a nursing ratio of four at 106.5

5

DVOR 2025 1172 SENSATION 587C

(43618154) 3/8/15 Act. BW 96 WW 603 YW 1121 Horned
Weight: 1740 Act. Scrotal: 44 Pigment - L- 100 R- 100

CHURCHILL SENSATION 028X {CHB,DLF,HYF,IEF} (43092364)

UPS SENSATION 2025 {DLF,HYF,IEF} (43311056)

UPS MISS BRUTUS 0147 (43111257)

KB L1 DOMINO 665 {DLF,HYF,IEF} (42674365)

DVOR 665 939 MISS DOMINO 1172 {DOD} (43185245)

DVOR 219 MISS DOMINO 939 {DOD} (42994348)

CE	BW	WW	YW	M	MG	CEM	MCW	SC	Fat	REA	MB
+6.3	+1.7	+46	+81	+34	+58	+2.5	+79	+1.3	+0.23	+1.7	+1.9
BMI	CEZ	BII	CHB								
+\$21	+\$21	+\$18	+\$25								

DVOR 2025 194 Sensation 5137



Straight horned 2025 son. He looks like he will mature into a pretty good sized bull. He should have plenty of frame if you like them bigger. He had a weaning ratio of 122.

6

DVOR 2025 194 SENSATION 5137C

(43618411) 3/19/15 Act. BW 94 WW 671 YW 1177 Horned
Weight: 1915 Act. Scrotal: 44 Pigment - L- 65 R- 25

CHURCHILL SENSATION 028X {CHB,DLF,HYF,IEF} (43092364)

UPS SENSATION 2025 {DLF,HYF,IEF} (43311056)

UPS MISS BRUTUS 0147 (43111257)

PONCA MORTGAGE LIFTER {CHB,DLF,IEF} (42829880)

PONCA M LIFTER LADY 194 {DLF,HYF,IEF} (43303186)

PONCA 017 DOMINETTE 579 (42635937)

CE	BW	WW	YW	M	MG	CEM	MCW	SC	Fat	REA	MB
+2.9	+2.7	+50	+80	+30	+56	+2.4	+89	+1.1	+0.37	+1.8	+1.7
BMI	CEZ	BII	CHB								
+\$19	+\$17	+\$16	+\$24								

DVOR 150 3212 Spot On 5165C



This picture doesn't do this bull justice. The amount of depth of rib this bull carries is unbelievable. Belly dragger! This short marked, straight horned bull is the replacement female maker. 118 weaning ratio, good scan with a REA ratio of 108, and an IMF ratio of 109.

7 DVOR 150 3212 SPOT ON 5165C

(43618456) 3/29/15 Act. BW 85 WW 647 YW 1222 Horned
Weight: 1775 Act. Scrotal: 38.5 Pigment - L- 0 R- 80

KB L1 DOMINO 665 {DLF,HYF,IEF} (42674365)

DVOR 665 9175 DOMINO 150 (43185217)

DVOR 28T MISS SANDY 9175 (42994262)

BOYD STOUT 1094 ET {CHB,DLF,HYF,IEF} (P43186793)

DVOR 1094 1126 MISS STOUT 3212 (43375849)

DVOR 454 8102 MISS DOMINO 1126 (43185231)

CE	BW	WW	YW	M	MG	CEM	MCW	SC	Fat	REA	MB
+1.5	+1.8	+49	+82	+31	+55	+1	+78	+8	-.019	+.44	+.15
BMI	CEZ	BII	CHB								
+\$17	+\$15	+\$14	+\$27								

Herd Sire

DVOR 665 9175

Domino 150



Herd Sire

LCX Helton Bolt 1210 ET

LCX Helton Bolt 1210 ET

(P43313501) {DLF,HYF,IEF} 3/25/12 Polled

GO L18 EXCEL T31 {CHB,DLF,HYF,IEF} (42791931)

CRR Helton 980 {CHB,DLF,HYF,IEF} (P43032013)

CRR 9B JULIANNE 405 {DLF,HYF,IEF} (P42519516)

BR MOLER ET {CHB,DLF,IEF} (P42516026)

MSU Keepsake 14S {DLF,HYF,IEF} (P42709435)

MSU KEEPSAKE 32N {DLF,HYF,IEF} (P42392375)

CE	BW	WW	YW	M	MG	CEM	MCW	SC	Fat	REA	MB
-4.4	+7.4	+59	+106	+18	+47	+2	+125	+5	+0.32	+29	+17
BMI	CEZ	BII	CHB								
+\$12	+\$8	+\$9	+\$28								

This power bull has made a big impact in our lineup that is evident with this first offering of sons. Bolt won his division as a calf in Kansas City, following in his mother's example as she was 2008 Reserve National Champion Female.



DVOR1210 2107 Lightning 580C



8

DVOR 1210 2107 LIGHTNING 580C

(43618146) 3/7/15 Act. BW 80 WW 642 YW 1155 Horned
Weight: 1715 Act. Scrotal: 41 Pigment - L- 75 R- 50

CRR HELTON 980 {CHB,DLF,HYF,IEF} (P43032013)

LCX HELTON BOLT 1210 ET {DLF,HYF,IEF} (P43313501)

MSU KEEPSAKE 14S {DLF,HYF,IEF} (P42709435)

KB L1 DOMINO 665 {DLF,HYF,IEF} (42674365)

DVOR 665 0224 MISS DOMINO 2107 (43280844)

DVOR 28T MISS SANDY 0224 (43096585)

CE	BW	WW	YW	M	MG	CEM	MCW	SC	Fat	REA	MB
+2.8	+1.7	+47	+84	+21	+45	+2.7	+104	+9	+0.11	+23	+0.9
BMI	CEZ	BII	CHB								
+\$18	+\$17	+\$15	+\$23								

Nicely patterned Bolt son out of a 665 daughter. He had a nice spread of an 80# birth weight to a weaning ratio of 109. He as slow to gain weight this fall, as he had an infection in her rear hock. He is feeling well now and is coming on as the day's pass.

DVOR 1210 1032 Flash 559C



HW4 Mystique 1032, is the dam of Lot 9.

9 DVOR 1210 1032 FLASH 559C

(P43617880) 3/3/15 Act. BW 76 WW 672 YW 1280 Polled
Weight: 1885 Act. Scrotal: 45.5 Pigment - L- 100 R- 100

CRR HELTON 980 {CHB,DLF,HYF,IEF} (P43032013)

LCX HELTON BOLT 1210 ET {DLF,HYF,IEF} (P43313501)

MSU KEEPSAKE 145 {DLF,HYF,IEF} (P42709435)

AH JDH CRACKER JACK 26U ET {DLF,HYF,IEF} (P42924297)

HW4 MYSTIQUE 1032 (P43188073)

K&B SULTANA 7151T {DLF,HYF,IEF} (P42828596)

CE	BW	WW	YW	M	MG	CEM	MCW	SC	Fat	REA	MB
+7	+2.6	+54	+87	+22	+48	+3.4	+101	+6	+0.39	+0.37	+0.44
BMI	CEZ	BII	CHB								
+\$19	+\$15	+\$15	+\$31								

Here is another real special bull. Flash was showed by JaCee and was champion Hereford bull at Western Junior as a weaned calf. He is dog gentle. This bull has outperformed on all levels. 76# birthweight, 114 weaning weight, 109 yearling ratio. Scanned a 14.6 REA for a 110 ratio, IMF % of 4.6 to ratio of 162 with only .3 of fat. He is herd bull caliber. His dam is a future donor. Her second calf was JaCee's show heifer and her 2016 calf is halter broke as well.

Herd Sire

KB L1 *Domino 665*

KB L1 *Domino 665*



(42674365) {CHB,DLF,HYF,IEF} 2/3/06 Horned

CL 1 DOMINO 9126J 1ET {SOD,CHB,DLF,IEF} (41113279)

CL 1 DOMINO 3138N 1ET {CHB,DLF,HYF,IEF} (42385269)

CL 1 DOMINETTE 825H {DOD,DLF,HYF,IEF} (41011012)

HH ADVANCE 836H {SOD,DLF,HYF,IEC} (41009427)

MONTANA MISS 466P ET {DLF,HYF,IEC} (42526776)

MONTANA MISS 8119 1ET (41041936)



CE	BW	WW	YW	M	MG	CEM	MCW	SC	Fat	REA	MB
+8.2	-3.3	+39	+81	+33	+53	+3.6	+64	+1.5	+0.11	+22	+29
BMI	CEZ	BII	CHB								
+\$25	+\$24	+\$22	+\$26								

At eleven years of age, 665 will again go to pasture this summer to breed heifers. We have never used a sire that has been so consistent for Low birth weight. He is nearly perfect footed, and has never had, nor needed his feet trimmed. He is at the top end of the breed for Calving Ease and Birth Weight, and also a trait leader for Milk, Mature Cow Weight, Scrotal, and Marbling.

DVOR 665 159A *Badlands 545C*



10

DVOR 665 159A *BADLANDS 545C*

(P43672375) 2/28/15 Act. BW 70 WW 672 YW 1280 Scurs

Weight: 1680 Act. Scrotal: 38.5 Pigment - L- 100 R- 100

CL 1 DOMINO 3138N 1ET {DLF,HYF,IEF} (42385269)

KB L1 DOMINO 665 {DLF,HYF,IEF} (42674365)

MONTANA MISS 466P ET {DLF,HYF,IEC} (42526776)

TH 223 711 CONQUER 409X ET {CHB,DLF,HYF,IEF} (P43084552)

TH 505U 409X BURGUNDY 159A {DLF,HYF,IEF} (P43359987)

TH 557E 45P BURGUNDY 505U ET (P42898493)

CE	BW	WW	YW	M	MG	CEM	MCW	SC	Fat	REA	MB
+5	-.3	+44	+77	+28	+50	+1.7	+73	+6	+0.09	+27	+15
BMI	CEZ	BII	CHB								
+\$16	+\$18	+\$12	+\$24								

Here is a fully pigmented, polled, 665 son. A 70# birth weight out of the 159A Topp Hereford cow that we expect to do great things for us in the future. This bull is bred to be a moderate and trouble free. Do not look past him.

DVOR 665 311 *Domino 5114C*



11

DVOR 665 3111 *DOMINO 5114C*

(P43618554) 3/14/15 Act. BW 65 WW 474 YW 1090 Scurs
Weight: 1620 Act. Scrotal: 41 Pigment - L- 50 R- 0

CL 1 DOMINO 3138N 1ET {DLF,HYF,IEF} (42385269)

KB L1 DOMINO 665 {DLF,HYF,IEF} (42674365)

MONTANA MISS 466P ET {DLF,HYF,IEC} (42526776)

BOYD STOUT 1094 ET {CHB,DLF,HYF,IEF} (P43186793)

DVOR 1094 109 MISS STOUT 3111 (P43375937)

DVOR 665 9213 MISS DOMINO 109 (43185267)

CE	BW	WW	YW	M	MG	CEM	MCW	SC	Fat	REA	MB
+7.5	-3.7	+36	+69	+30	+48	+3.9	+39	+1.3	+0.33	+1.15	+3.39
BMI	CEZ	BII	CHB								
+\$25	+\$23	+\$22	+\$24								

Sometimes you just have to own one built for comfort and not speed. This one is bred to keep your birth weights in check and get his business done quietly. He won't blow you away however he will get his work done.

DVOR 665 3181 *Domino 5133C*



12

DVOR 665 3181 *DOMINO 5133C*

(43637883) 3/19/15 Act. BW 89 WW 589 YW 1142 Horned
Weight: 1725 Act. Scrotal: 42 Pigment - L- 100 R- 100

CL 1 DOMINO 3138N 1ET {DLF,HYF,IEF} (42385269)

KB L1 DOMINO 665 {DLF,HYF,IEF} (42674365)

MONTANA MISS 466P ET {DLF,HYF,IEC} (42526776)

TG RED DIAMOND 0139 {DLF,HYF,IEF} (43086277)

DVOR 0139 0131 MS DIAMOND 3181 (43376548)

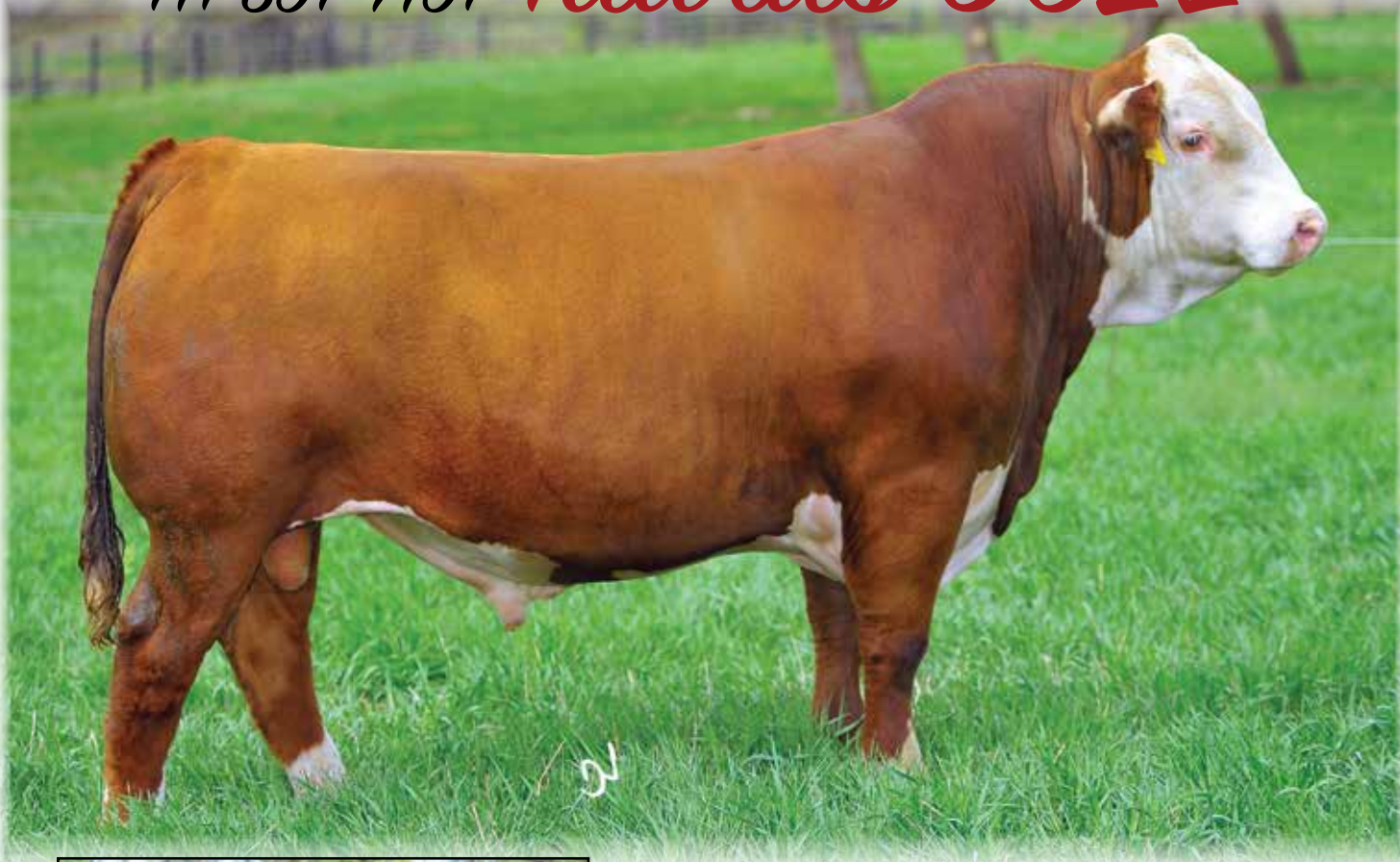
DVOR 24T MISS GENERAL 0131 {DOD} (43096608)

CE	BW	WW	YW	M	MG	CEM	MCW	SC	Fat	REA	MB
+2.4	+2.4	+53	+87	+26	+53	+8	+84	+1.2	+0.14	+4.2	+1.10
BMI	CEZ	BII	CHB								
+\$21	+\$17	+\$18	+\$26								

Straight horned bred 665 son. Short marked, red necked, and fully pigmented. More of 665's consistency.

Herd Sire *Taurus 502Z*

TH 89T 719T



TH 16G Gemini 89T

A 7/8 brother to our 468Z sire, 502 adds a tremendous amount of thickness, and natural depth of body. His calves are easy fleshing, and conservatively marked. He was the leadoff bull in Topp's 2014 sale.
**Homozygous polled, Owned with Jeff Gerlach.*

TH 89T 719T Taurus 502Z

(P43273134) 4/16/12 Polled

DRF JWR PRINCE VICTOR 711 {CHB,SOD} (P41141619)
TH 122 711 VICTOR 719T {SOD,CHB,DLF,HYF,IEF} (P42800895)
 KBCR 19D DOMINETTE 122 {DLF,IEF} (P42220359)

NPH 20X SPARTAN 20N {CHB,SOD,DLF,HYC,IEF} (P42389552)
TH 16G 20N GEMINI 89T {DLF,HYF,IEF} (P42779363)
 TEE-JAY 707B GEMINI 16G ET (P42210391)

CE	BW	WW	YW	M	MG	CEM	MCW	SC	Fat	REA	MB
+3.6	+3	+61	+98	+21	+51	-.5	+78	+1.2	-.004	+.77	+.14
BMI	CEZ	BII	CHB								
+\$24	+\$17	+\$20	+\$33								

DVOR 502 2631 Mr Taurus 515



13

DVOR 502 2631 MR TAURUS 515

(P43637836) 2/20/15 Act. BW 88 WW 531 YW 1250 Polled
Weight: 2150 Act. Scrotal: 47 Pigment - L- 35 R- 60

TH 122 711 VICTOR 719T {SOD,CHB,DLF,HYF,IEF} (P42800895)

TH 89T 719T TAURUS 502Z {DLF,HYF,IEF} (P43273134)

TH 16G 20N GEMINI 89T {DLF,HYF,IEF} (P42779363)

SHF EXCELLENT R117 X181 {CHB,DLF,HYF,IEF} (P43078202)

RV MS EXCELLENT 2631 (P43325696)

RV LUCKY LADY 6431 (P42756420)

CE	BW	WW	YW	M	MG	CEM	MCW	SC	Fat	REA	MB
+2.3	+3.6	+52	+102	+23	+49	+1.3	+88	+1.4	-.007	+1.54	+21
BMI	CEZ	BII	CHB								
+\$24	+\$17	+\$21	+\$31								

Here is another long bodied 502 son. A maternal sister was a feature heifer in our sale two years ago. This bull has plenty of extension of leg and body. He scanned a nice 14 inch REA and his mother carries a nursing ratio of 3 at 103.

DVOR502 007 Sirius 543C



14

DVOR 502 007 SIRIUS 543C

(P43617277) 2/28/15 Act. BW 98 WW 629 YW 1245 Scurred
Weight: 2130 Act. Scrotal: 44 Pigment - L- 100 R- 60

TH 122 711 VICTOR 719T {SOD,CHB,DLF,HYF,IEF} (P42800895)

TH 89T 719T TAURUS 502Z {DLF,HYF,IEF} (P43273134)

TH 16G 20N GEMINI 89T {DLF,HYF,IEF} (P42779363)

AGA 121G STANMORE 20J {CHB} (42319233)

DVOR 20J MISS STANMORE 007 ET (43096697)

MONTANA MISS 907 {DLF,IEF} (41166288)

CE	BW	WW	YW	M	MG	CEM	MCW	SC	Fat	REA	MB
+1.8	+4.6	+55	+93	+21	+48	+1.6	+109	+9	-.031	+1.45	+14
BMI	CEZ	BII	CHB								
+\$20	+\$16	+\$17	+\$31								

Here's a big powered up range bull. He posted a 107 weaning ratio and a 104 yearling ratio. Is the pound making kind. His mother 007 was an embryo calf that has done well. Her 04' heifer calf is now a super cow of Nolan's.

DVOR 502 831 Draco 563C



15

DVOR 502 831 DRACO 563C

(P43618054) 3/4/15 Act. BW 80 WW 588 YW 1110 Scurred
Weight: 1610 Act. Scrotal: 40 Pigment - L- 0 R- 5

TH 122 711 VICTOR 719T {SOD,CHB,DLF,HYF,IEF} (P42800895)

TH 89T 719T TAURUS 502Z {DLF,HYF,IEF} (P43273134)

TH 16G 20N GEMINI 89T {DLF,HYF,IEF} (P42779363)

K L1 ADVANCER 219 {SOD,DLF,IEF} (42329602)

DVOR 219 MISS DOMINO 831 (42895997)

DVOR MISS DOMINO 2244 (42289241)

CE	BW	WW	YW	M	MG	CEM	MCW	SC	Fat	REA	MB
+5.2	0.0	+42	+65	+23	+44	+1.3	+50	+1.1	+0.28	+30	+14
BMI	CEZ	BII	CHB								
+\$22	+\$20	+\$20	+\$21								

These 502 sons are so consistent throughout. Wide based, big bellied, full of red meat. Nicely balanced EPD's. Dam 831 has been a consistent producer for us. She has a nursing ratio of 7 at 102.

DVOR 502 958 Juno 557C



16

DVOR 502 958 JUNO 557C

(P43617879) 3/2/15 Act. BW 86 WW 626 YW 1195 Polled
Weight: 1840 Act. Scrotal: 44 Pigment - L- 95 R- 100

TH 122 711 VICTOR 719T {SOD,CHB,DLF,HYF,IEF} (P42800895)

TH 89T 719T TAURUS 502Z {DLF,HYF,IEF} (P43273134)

TH 16G 20N GEMINI 89T {DLF,HYF,IEF} (P42779363)

F L18 EXCEL 543 {DLF,IEF} (42569409)

DVOR 543 MISS EXCEL 958 (42994356)

DVOR MISS DOMINO 5148 (42588561)

CE	BW	WW	YW	M	MG	CEM	MCW	SC	Fat	REA	MB
+3.2	+2.5	+51	+81	+24	+50	+9	+82	+1.4	-.025	+44	+12
BMI	CEZ	BII	CHB								
+\$25	+\$18	+\$22	+\$28								

Here is another big, rugged, 502 son. He is the range bull kind. Carries a weaning ratio of 106. IMF scan ratio of 130.

DVOR 502 0007 Cephheus 530C



17

DVOR 502 0007 CEPHEUS 530C

(P43617271) 2/25/15 Act. BW 91 WW 538 YW 1145 Polled
Weight: 1770 Act. Scrotal: 42 Pigment - L- 0 R- 50

TH 122 71I VICTOR 719T {SOD,CHB,DLF,HYF,IEF} (P42800895)

TH 89T 719T TAURUS 502Z {DLF,HYF,IEF} (P43273134)

TH 16G 20N GEMINI 89T {DLF,HYF,IEF} (P42779363)

K&B HEADLINE 7018T {DLF,HYF,IEF} (P42828609)

RV HEADLINE LADY 0007 {DLF,HYF,IEF} (P43140105)

HLG 35C RENAE 7S (P42734747)

CE	BW	WW	YW	M	MG	CEM	MCW	SC	Fat	REA	MB
+2.5	+2	+49	+84	+18	+43	+1.4	+74	+1.5	-.024	+.56	+.05
BMI	CEZ	BII	CHB								
+\$26	+\$18	+\$24	+\$26								

Athletic 502 son that moves and strides out well. Dam 0007 has had a bull on the sale before. He scanned a 13.7 REA, had a yearling scrotal of 40 cm for a 109 ratio.

DVOR 502 708 Callisto 525C



18

DVOR 502 708 CALLISTO 525C

(P43617268) 2/23/15 Act. BW 102 WW 547 YW 1170 Scurred
Weight: 1820 Act. Scrotal: 42.5 Pigment - L- 10 R- 0

TH 122 71I VICTOR 719T {SOD,CHB,DLF,HYF,IEF} (P42800895)

TH 89T 719T TAURUS 502Z {DLF,HYF,IEF} (P43273134)

TH 16G 20N GEMINI 89T {DLF,HYF,IEF} (P42779363)

CL 1 DOMINO 9126J 1ET {SOD,DLF,IEF} (41113279)

DVOR 9126 L1 MISS DOMINO 708 {DOD} (42848858)

DVOR L1 MISS DOMINO 406 {DLF,IEF} (42498071)

CE	BW	WW	YW	M	MG	CEM	MCW	SC	Fat	REA	MB
+3.6	+2.8	+49	+85	+25	+49	+5	+90	+1.2	-.027	+.42	+.05
BMI	CEZ	BII	CHB								
+\$21	+\$18	+\$19	+\$26								

He is on that has a cowman's bull kind of look. Wide based, solid, and soggy. The kind that will look like a beef bull. His 9126J sired dam has done such a nice job for us. She has nursed a calf the last three years with only half a bag. We decided to cull her this fall and hated to see her go. We know the udder issue has slowed down her calves, but she still managed to have a nursing ratio of 7 at 101. Her 2016 heifer calf sells as lot 69.

DVOR 502 210 Scout 529C



Another thick, soggy made 502 son. He will have a little more frame than some of the other 502's. 4 Balanced set of EPD's. Scanned a monster 15 REA for a ratio of 112. Fully pigmented, short marked. His .75 REA EPD placed him in the top 3% of the breed.

19

DVOR 502 210 SCOUT 529C

(P43617270) 2/24/15 Act. BW 85 WW 523 YW 1175 Polled
Weight: 1855 Act. Scrotal: 44 Pigment - L- 100 R- 100

TH 122 71I VICTOR 719T {SOD,CHB,DLF,HYF,IEF} (P42800895)
TH 89T 719T TAURUS 502Z {DLF,HYF,IEF} (P43273134)
TH 16G 20N GEMINI 89T {DLF,HYF,IEF} (P42779363)

MH MONUMENT 909 {CHB,DLF,HYF,IEF} (43019669)
DVOR 909 939 MISS MONUMENT 210 (43280829)
DVOR 219 MISS DOMINO 939 {DOD} (42994348)

CE	BW	WW	YW	M	MG	CEM	MCW	SC	Fat	REA	MB
+3	+3.1	+53	+92	+23	+50	-1.4	+81	+9	-.029	+75	+0.1
BMI	CEZ	BII	CHB								
+\$18	+\$16	+\$15	+\$29								

20

DVOR 502 15Y GALILEO 561C

(P43618052) 3/3/15 Act. BW 78 WW 625 YW 1175 Polled
Weight: 1745 Act. Scrotal: 38 Pigment - L- 100 R- 100

TH 122 71I VICTOR 719T {SOD,CHB,DLF,HYF,IEF} (P42800895)
TH 89T 719T TAURUS 502Z {DLF,HYF,IEF} (P43273134)
TH 16G 20N GEMINI 89T {DLF,HYF,IEF} (P42779363)

LCG MASTER HIGHWAY 31W (P42985945)
LCG DORA 31W 15Y {DOD,DLF,HYF,IEF} (P43183244)
LCG DORA TRAILDRIVE 1W (P42985909)

CE	BW	WW	YW	M	MG	CEM	MCW	SC	Fat	REA	MB
+4.3	+1.2	+53	+80	+24	+50	+2.6	+72	+6	-.025	+63	+0.6
BMI	CEZ	BII	CHB								
+\$18	+\$18	+\$14	+\$28								

Short marked, fully pigmented 502 son that sure looks like he would work on heifers. His dam of Distinction mother has been sure fire for us and has just raised her third bull to make the sale pen. Dam 154 carries a nursing ratio of 4 at 107.5. This bull also yielded a big 14.5 REA for a ratio of 109.



LCG Dora 31W 15Y, Lot 20's dam.

DVOR 0139 939 Flint Rock 5168C



This bull represents the end on both sides of his pedigree. This will be the last of the 0139's to sell and the last of the progeny out of the great 989 cow. She had a son in last year's sale and two daughters have bulls this sale.

21

DVOR 0139 939 FLINT ROCK 5168C

(43618457) 3/31/15 Act. BW 93 WW 571 YW 1114 Horned
Weight: 1825 Act. Scrotal: 41 Pigment - L- 90 R- 100

CTY RED DIAMOND 6628S {DLF,HYF,IEF} (42760843)

TG RED DIAMOND 0139 {DLF,HYF,IEF} (43086277)

G MS RAPTURE 835 {DOD,DLF,HYF,IEF} (42894347)

K L1 ADVANCER 219 {SOD,DLF,IEF} (42329602)

DVOR 219 MISS DOMINO 939 {DOD} (42994348)

DVOR MISS BONANZA 4172 (42494019)

CE	BW	WW	YW	M	MG	CEM	MCW	SC	Fat	REA	MB
+1.3	+4.1	+44	+72	+24	+46	-.5	+109	+9	-.027	+.47	-.04
BMI	CEZ	BII	CHB								
+\$17	+\$15	+\$16	+\$21								

TMR Sanderson K215 N510



510 is one of the bulls that came with the Triple M cowherd. Nice K215 son. He weaned off at just under 700lbs. He has the look of a strong breeding bull.

22

TMR SANDERSON K215 N510

(P43580610) 2/13/15 Act. BW 74 WW 690 YW 1145 Scurred
Weight: 1830 Act. Scrotal: 40 Pigment - L- 25 R- 25

BKR SANDERSON 73C 60S {DLF,HYF,IEF} (P42696328)

TMR SANDERSON K215 {DLF,HYF,IEF} (P43317028)

TMR MISS CLASSY S857 {DOD,DLF,HYF,IEF} (P42970087)

KB RB LINER 122L ET B631 (P42539303)

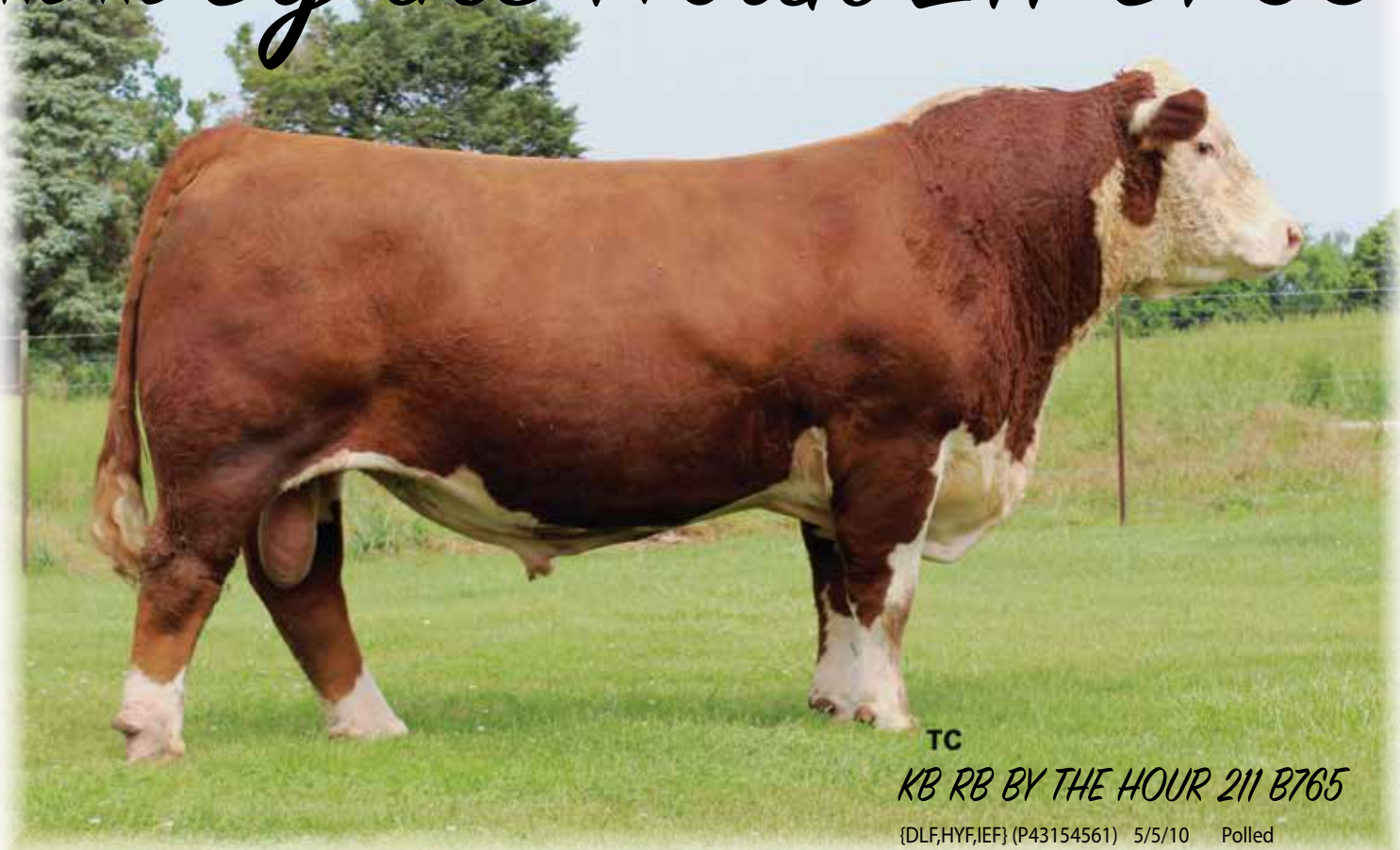
TMR NIKKI LINER B256 (P43367919)

TMR MISS WORLD CLASS W810 (P42908992)

CE	BW	WW	YW	M	MG	CEM	MCW	SC	Fat	REA	MB
+2.9	+1.9	+51	+96	+23	+48	+3.2	+98	+1	+.039	+.27	+.15
BMI	CEZ	BII	CHB								
+\$19	+\$17	+\$15	+\$26								

Herd Sire

KB RB By the Hour 211 B765



TC

KB RB BY THE HOUR 211 B765

{DLF,HYF,IEF} (P43154561) 5/5/10 Polled

Blinson By The Hour B765

B765 was the sire for the cattle that came with the acquisition of the Triple M cattle. He was the Supreme Champion bull at the North Carolina State Fair in 2012. His calves are stout, with good bone and structurally correct.

THM DURANGO 4037 {CHB,SOD,DLF,HYF,IEF} (P42460503)

CRR ABOUT TIME 743 {CHB,SOD,DLF,HYF,IEF} (P42797564)

CRR D03 CASSIE 206 {DLF,HYF,IEF} (P42330554)

RU COLONEL 60C (P23896911)

WPHF KB ELIZABETH 60C 211 {DLF,HYF,IEF} (P42374324)

SCH VICTORIA 751 F3 (P23919296)

CE	BW	WW	YW	M	MG	CEM	MCW	SC	Fat	REA	MB
+2.8	+2.1	+50	+73	+23	+48	+1.4	+96	+7	-.020	+.42	+.03
BMI	CEZ	BII	CHB								
+\$18	+\$17	+\$15	+\$24								

TMR By The Hour B765 R516



Here is a bull that came with the Triple M cowherd, but is an example of why we bought that herd. HE has the look, dimension, and size of what we are trying to produce. His dam 003 carries a nursing ratio of 5 at 105. She has the most beautiful udder and will be flushed this spring.

23 TMR BY THE HOUR B765 R516

(P43580629) 2/28/15 Act. BW 80 WW 665 YW 1005 Polled
Weight: 1770 Act. Scrotal: 38.5 Pigment - L- 100 R- 100

CRR ABOUT TIME 743 {CHB,SOD,DLF,HYF,IEF} (P42797564)

KB RB BY THE HOUR 211 B765 {DLF,HYF,IEF} (P43154561)

WPHF KB ELIZABETH 60C 211 {DLF,HYF,IEF} (P42374324)

DR WORLD CLASS 517 10H {SOD,DLF,HYF,IEF} (P41000194)

TMR P606 MISS WORLD CLASS W003 (P43128398)

TMR P606 MISS INAUGURATOR P457 {DOD} (P42555910)

CE	BW	WW	YW	M	MG	CEM	MCW	SC	Fat	REA	MB
+2.4	+1.7	+45	+61	+27	+49	+3.1	+78	+8	+0.16	+0.31	+0.02
BMI	CEZ	BII	CHB								
+\$17	+\$17	+\$15	+\$19								

TMR B765 Mr Bill R562



The eight yearling bulls are going to be 13-15 month old bulls at sale time, and came with the Triple M Cattle. There are some very top-notch bulls in this group. Several of the mothers will be donors in our program.

24 TMR B765 MR BILL R562

(P43658472) 11/17/15 Act. BW 80 WW 626 YW 952 Polled
Weight: 1295 Act. Scrotal: 36 Pigment - L- 15 R- 100

CRR ABOUT TIME 743 {CHB,SOD,DLF,HYF,IEF} (P42797564)

KB RB BY THE HOUR 211 B765 {DLF,HYF,IEF} (P43154561)

WPHF KB ELIZABETH 60C 211 {DLF,HYF,IEF} (P42374324)

BKR SANDERSON 73C 60S {DLF,HYF,IEF} (P42696328)

TMR 60S SANDI K113 (P43197130)

TMR P606 MISS WORLD CLASS W808 (P42908989)

CE	BW	WW	YW	M	MG	CEM	MCW	SC	Fat	REA	MB
+2.6	+2	+51	+81	+24	+49	+2.3	+89	+8	+0.037	+0.37	-0.01
BMI	CEZ	BII	CHB								
+\$16	+\$16	+\$13	+\$21								

TMR B765 Timothy R563



25 TMR B765 TIMOTHY R563

(P43658472) 3/13/14 Act. BW 84 WW 532 YW 838 Polled
Weight: 1145 Act. Scrotal: 33 Pigment - L- 90 R- 100

CRR ABOUT TIME 743 {CHB,SOD,DLF,HYF,IEF} (P42797564)

KB RB BY THE HOUR 211 B765 {DLF,HYF,IEF} (P43154561)

WPHF KB ELIZABETH 60C 211 {DLF,HYF,IEF} (P42374324)

BKR SANDERSON 73C 60S {DLF,HYF,IEF} (P42696328)

TMR 60S SANDI K217 (P43317035)

TMR P606 MISS WORLD CLASS W003 (P43128398)

CE	BW	WW	YW	M	MG	CEM	MCW	SC	Fat	REA	MB
+1.8	+2.9	+52	+77	+25	+51	+1.8	+91	+8	+0.028	+0.27	+0.01
BMI	CEZ	BII	CHB								
+\$16	+\$16	+\$13	+\$21								



26 TMR B765 EVAN R560

(P43658477) 11/12/15 Act. BW 72 WW 480 YW 725 Polled
Weight: 1005 Act. Scrotal: 33 Pigment - L- 5 R- 0

CRR ABOUT TIME 743 {CHB,SOD,DLF,HYF,IEF} (P42797564)

KB RB BY THE HOUR 211 B765 {DLF,HYF,IEF} (P43154561)

WPHF KB ELIZABETH 60C 211 {DLF,HYF,IEF} (P42374324)

BKR SANDERSON 73C 60S {DLF,HYF,IEF} (P42696328)

TMR 60S SANDI K130 (P43197123)

TMR MISS CLASSY S857 {DOD,DLF,HYF,IEF} (P42970087)

CE	BW	WW	YW	M	MG	CEM	MCW	SC	Fat	REA	MB
+3.7	+5	+47	+75	+25	+49	+2	+87	+8	+0.014	+2.9	+0.4
BMI	CEZ	BII	CHB								
+\$17	+\$18	+\$14	+\$22								



27 TMR B765 JEFFREY R553

(P43658485) 10/27/15 Act. BW 84 WW 460 YW 748 Polled
Weight: 1025 Act. Scrotal: 33 Pigment - L- 5 R- 95

CRR ABOUT TIME 743 {CHB,SOD,DLF,HYF,IEF} (P42797564)

KB RB BY THE HOUR 211 B765 {DLF,HYF,IEF} (P43154561)

WPHF KB ELIZABETH 60C 211 {DLF,HYF,IEF} (P42374324)

DR WORLD CLASS 517 10H {SOD,DLF,HYF,IEF} (P41000194)

TMR MISS WORLD CLASS W810 (P42908992)

TMR VICTORS GAL 407 V876 (P41164645)

CE	BW	WW	YW	M	MG	CEM	MCW	SC	Fat	REA	MB
+2.4	+2.5	+49	+76	+24	+48	+2.6	+93	+9	+0.008	+2.4	+0.7
BMI	CEZ	BII	CHB								
+\$19	+\$17	+\$16	+\$23								



28 TMR B765 SCOTTY R550

(P43658467) 10/2/15 Act. BW 72 WW 442 YW 736 Polled
Weight: 1020 Act. Scrotal: 36 Pigment - L- 60 R- 85

CRR ABOUT TIME 743 {CHB,SOD,DLF,HYF,IEF} (P42797564)

KB RB BY THE HOUR 211 B765 {DLF,HYF,IEF} (P43154561)

WPHF KB ELIZABETH 60C 211 {DLF,HYF,IEF} (P42374324)

KB RB LINER 122L ET B631 (P42539303)

TMR PRINCESS LINER B311 (P43422439)

TMR PRINCESS TYLER T860 (P42970084)

CE	BW	WW	YW	M	MG	CEM	MCW	SC	Fat	REA	MB
+2.2	+2	+46	+64	+19	+42	+2.1	+85	+7	+0.018	+1.5	+1.4
BMI	CEZ	BII	CHB								
+\$18	+\$17	+\$17	+\$21								

29 TMR B765 MICHAEL R554

(P43658475) 10/29/15 Act. BW 82 WW 482 YW 812 Polled
Weight: 1135 Act. Scrotal: 35.5 Pigment - L- 60 R- 75

CRR ABOUT TIME 743 {CHB,SOD,DLF,HYF,IEF} (P42797564)

KB RB BY THE HOUR 211 B765 {DLF,HYF,IEF} (P43154561)

WPHF KB ELIZABETH 60C 211 {DLF,HYF,IEF} (P42374324)

BKR SANDERSON 73C 60S {DLF,HYF,IEF} (P42696328)

MPH 60S SANDI K129 (P43197122)

MPH MISS CLSSY S853 (P42970088)

CE	BW	WW	YW	M	MG	CEM	MCW	SC	Fat	REA	MB
+3.2	+2.3	+51	+81	+23	+48	+1.4	+89	+8	+0.29	+2.5	+0.2
BMI	CEZ	BII	CHB								
+\$17	+\$17	+\$13	+\$22								

TMR B765 MICHAEL R554



30 TMR B765 BRYCE R559

(P43658481) 11/10/15 Act. BW 82 WW 638 YW 920 Polled
Weight: 1200 Act. Scrotal: 39 Pigment - L- 10 R- 10

CRR ABOUT TIME 743 {CHB,SOD,DLF,HYF,IEF} (P42797564)

KB RB BY THE HOUR 211 B765 {DLF,HYF,IEF} (P43154561)

WPHF KB ELIZABETH 60C 211 {DLF,HYF,IEF} (P42374324)

BKR SANDERSON 73C 60S {DLF,HYF,IEF} (P42696328)

TMR 60S SANDI K218 (P43317021)

TMR PRINCESS 09L L470 (P42555930)

CE	BW	WW	YW	M	MG	CEM	MCW	SC	Fat	REA	MB
+2.5	+1.9	+48	+80	+22	+46	+9	+86	+6	+0.18	+4.6	+0.3
BMI	CEZ	BII	CHB								
+\$15	+\$16	+\$12	+\$22								

TMR B765 BRYCE R559



31 TMR B765 TYLER R565

(P43658470) 12/29/15 Act. BW 84 WW 473 YW 718 Polled
Weight: 956 Act. Scrotal: 32.5 Pigment - L- 100 R- 25

CRR ABOUT TIME 743 {CHB,SOD,DLF,HYF,IEF} (P42797564)

KB RB BY THE HOUR 211 B765 {DLF,HYF,IEF} (P43154561)

WPHF KB ELIZABETH 60C 211 {DLF,HYF,IEF} (P42374324)

CMF 440H FOCAL 667M (P42373532)

TMR TYLERS PRINCESS FOCAL F914 (P43013327)

TMR TYLER'S 09L PRINCESS L556 {DOD} (P42655972)

CE	BW	WW	YW	M	MG	CEM	MCW	SC	Fat	REA	MB
+1.1	+3.5	+47	+74	+19	+42	+3	+89	+6	-.001	+3.3	.00
BMI	CEZ	BII	CHB								
+\$15	+\$15	+\$13	+\$21								



Herd Sire GV CMR Future Dom Y133 ET



GV CMR Future Dom Y133 ET

(P43260841) {DLF,HYF,IEF} 1/3/11 Polled

REMITALL ONLINE 122L {CHB,SOD,DLF,HYF,IEF} (P42254372)

STAR BRIGHT FUTURE 533P ET {CHB,DLF,HYF,IEF} (P42483846)

RB L1 DOMINETTE 8116 {DLF,HYF,IEF} (41050714)

L1 DOMINO 920501 {SOD} (19314369)

CJH L1 Dominette 0064 {DLF,HYF,IEF} (42118907)

CJH L1 DOMINETTE 759 {DLF,HYF,IEF} (40051103)

CE	BW	WW	YW	M	MG	CEM	MCW	SC	Fat	REA	MB
-1.6	+2.9	+67	+99	+23	+56	+4.4	+101	+1.1	+0.72	+16	+10
BMI	CEZ	BII	CHB								
+\$18	+\$13	+\$14	+\$26								

32 DVOR Y133 262 SOUTHERN BOY 517
(43641851) 3/15/15 Act. BW 82 WW 682 YW 1224 Horned
Weight: 1800 Act. Scrotal: 42 Pigment - L- 85 R- 100

STAR BRIGHT FUTURE 533P ET {DLF,HYF,IEF} (P42483846)

GV CMR FUTURE DOM Y133 ET {DLF,HYF,IEF} (P43260841)

CJH L1 DOMINETTE 0064 {DLF,HYF,IEF} (42118907)

4-C MR P606 BELLMAN 8004556 ET (P42638660)

4-C 869 VICTORIA BELLE 262 (P43348637)

4-C SASSY SARINA 313 869 (P42957279)

CE	BW	WW	YW	M	MG	CEM	MCW	SC	Fat	REA	MB
-1.1	+5.7	+66	+103	+23	+56	+1.2	+145	+8	+0.24	+59	-03
BMI	CEZ	BII	CHB								
+\$15	+\$12	+\$11	+\$28								

This maternal brother to the ABS Legend CJH Harland. We gained this bull with the purchase of the Four Corners cows. He was one of the heaviest yearling weights ever recorded at Grandview.

DVOR Y133 262 Southern Boy 517



This is one of those bulls that doesn't grab you when you look through the pen. Do not let that fool you. He was one of the most powerful growth bulls a year ago. He posted a big weaning ratio at 124 and a yearling ratio of 105. He got up and grew after an 82pound start.

DVOR Y133 906 Southern Boy 501



33

DVOR Y133 906 SOUTHERN BOY 501

(43641836) 1/13/15 Act. BW 76 WW 662 YW 1154 Horned
Weight: 2050 Act. Scrotal: 40 Pigment - L- 10 R- 10

STAR BRIGHT FUTURE 533P ET {DLF,HYF,IEF} (P42483846)

GV CMR FUTURE DOM Y133 ET {DLF,HYF,IEF} (P43260841)

CJH L1 DOMINETTE 0064 {DLF,HYF,IEF} (42118907)

REMITALL ONLINE 122L {CHB,SOD,DLF,HYF,IEF} (P42254372)

4-C 780 ON STRAWBERRY LINE 906 {DLF,HYF,IEF} (P42974420)

ESBDRF STRAWBRY WINE 780 (P23925005)

CE	BW	WW	YW	M	MG	CEM	MCW	SC	Fat	REA	MB	
-1	+4.2	+60	+98	+20	+50	+4.1	+112	+3	+0.18	+16	+12	
BMI	CEZ	BII	CHB									
+\$13	+\$13	+\$7	+\$28									

Big, powerful horned bull with plenty of bone, rear quarter, and muscle mass. Dam 906 is a granddaughter of the famous Delivery Queen cow and will have multiple 468Z calves in next year's sale, another daughter will be a show heifer this summer. Weaning ratio of 104, yearling ratio of 102, MARB scan ratio of 119. Maternal ET sister sells as lot 59.

DVOR Y133 Southern Boy 503



34

DVOR Y133 Southern Boy 503

(P43641833) 1/18/15 Act. BW 76 WW 598 YW 1122 Polled
Weight: 1775 Act. Scrotal: 39.5 Pigment - L- 100 R- 50

STAR BRIGHT FUTURE 533P ET {DLF,HYF,IEF} (P42483846)

GV CMR FUTURE DOM Y133 ET {DLF,HYF,IEF} (P43260841)

CJH L1 DOMINETTE 0064 {DLF,HYF,IEF} (42118907)

BKR SANDERSON 73C 60S {DLF,HYF,IEF} (P42696328)

4-C 609 LADY SANDERSON 152 (P43248193)

JYF MISS MIXER 9N 609 {DOD} (P42757776)

CE	BW	WW	YW	M	MG	CEM	MCW	SC	Fat	REA	MB	
+3	+3	+62	+100	+23	+54	+2.7	+101	+6	+0.81	+24	-0.3	
BMI	CEZ	BII	CHB									
+\$12	+\$13	+\$7	+\$22									

Super patterned, correct made bull. He really maintains a strong balance between style and a commercial industry need. He carried an acceptable REA ratio of 102. His mother has a nursing ratio of 3 at 105. This bull's growth EPD's are in the top 3% of the breed.



35 508 is one of the longest bodies bulls in the sale, packing plenty of weight from his shoulders to his hips. After going through this miserably humid summer this past year, I would think that 508's smoother hair would make him shed easier and handle the heat better. He grew well and had a yearling ratio of 102. His dam is doing well, as we defined her 2016 heifer calf as a replacement heifer.



36 Wide based, stout made bull. What he lacks in height, he makes up for in thickness. He weaned off nicely with a weaning ratio of 110. He dam is doing a great job raising another nice bull for next years' sale.



37 Another Y133 patterned much like the 505 bull, wide based, deep sided, and soggy. 513 posted a big ol' 14.4" REA and had a ratio 108. Scrotal ratio of 107. A ¾ sibling sells as lot 42.

35 DVOR Y133 254 SOUTHERN BOY 508

(P43641842) 2/18/15 Act. BW 75 WW 588 YW 1152 Polled

Weight: 1935 Act. Scrotal: 48.5 Pigment - L- 95 R- 90

STAR BRIGHT FUTURE 533P ET {DLF,HYF,IEF} (P42483846)

GV CMR FUTURE DOM Y133 ET {DLF,HYF,IEF} (P43260841)

CJH L1 DOMINETTE 0064 {DLF,HYF,IEF} (42118907)

4-C MR P606 BELLMAN 8004556 ET (P42638660)

4-C 609 BELLE 254 (P43348628)

JYF MISS MIXER 9N 609 {DOD} (P42757776)

CE	BW	WW	YW	M	MG	CEM	MCW	SC	Fat	REA	MB
-1	+3.8	+57	+94	+25	+54	+1.8	+107	+1.3	+0.45	+2.7	+0.5
BMI	CEZ	BII	CHB								
+\$19	+\$14	+\$16	+\$24								

36 DVOR Y133 060 SOUTHERN BOY 505

(P43641824) 2/3/15 Act. BW 74 WW 647 YW 1136 Polled

Weight: 1815 Act. Scrotal: 42 Pigment - L- 60 R- 50

STAR BRIGHT FUTURE 533P ET {DLF,HYF,IEF} (P42483846)

GV CMR FUTURE DOM Y133 ET {DLF,HYF,IEF} (P43260841)

CJH L1 DOMINETTE 0064 {DLF,HYF,IEF} (42118907)

BKR SANDERSON 73C 60S {DLF,HYF,IEF} (P42696328)

4-C SANDERS VICTRESS 060 (P43149780)

JYF VICTRESS L210 0311 {DOD} (P42437961)

CE	BW	WW	YW	M	MG	CEM	MCW	SC	Fat	REA	MB
+9	+1.9	+60	+88	+23	+53	+2.1	+90	+1	+1.13	-.08	+0.6
BMI	CEZ	BII	CHB								
+\$16	+\$15	+\$12	+\$19								

37 DVOR Y133 168 SOUTHERN BOY 513

(P43641835) 3/1/15 Act. BW 80 WW 601 YW 1068 Scurred

Weight: 1680 Act. Scrotal: 42 Pigment - L- 5 R- 50

STAR BRIGHT FUTURE 533P ET {DLF,HYF,IEF} (P42483846)

GV CMR FUTURE DOM Y133 ET {DLF,HYF,IEF} (P43260841)

CJH L1 DOMINETTE 0064 {DLF,HYF,IEF} (42118907)

AB DAYTONA 6008 2032 ET (P42350573)

R4-C 868 DAYTONA MISS 168 (P43251799)

4-C SASSY DARLIN 312 858 (P42957269)

CE	BW	WW	YW	M	MG	CEM	MCW	SC	Fat	REA	MB
.0	+1.8	+57	+79	+21	+49	+1.8	+79	+1.3	+0.42	+4.0	+0.3
BMI	CEZ	BII	CHB								
+\$22	+\$15	+\$20	+\$23								

The six long yearlings Y133 sons are the breeding from the Four Corners cowherd. They were bred in North Carolina, born, raised, and developed here. They are good, sound, functional set of long yearlings ready to breed cows.

38 DVOR Y133 404 CAHOL 5225C

(43624172) 9/22/15 Act. BW 68 WW 404 YW 749 Horned
Weight: 1130 Act. Scrotal: 35.5 Pigment - L- 15 R- 100

STAR BRIGHT FUTURE 533P ET {DLF,HYF,IEF} (P42483846)

GV CMR FUTURE DOM Y133 ET {DLF,HYF,IEF} (P43260841)

CJH L1 DOMINETTE 0064 {DLF,HYF,IEF} (42118907)

AB TALLADEGA 6008 2042 ET (P42350574)

JYF TROPHY QUEEN 2042 404 (P42542109)

JC BHR TROPHY QUEEN (P23929399)

CE	BW	WW	YW	M	MG	CEM	MCW	SC	Fat	REA	MB
+1.3	+6	+49	+77	+19	+44	+4.1	+88	+8	+0.19	+33	-.01
BMI	CEZ	BII	CHB								
+\$18	+\$16	+\$15	+\$21								

39 DVOR Y133 304 CARONA 5235C

(P43637347) 10/05/15 Act. BW 83 WW 589 YW 976 Polled
Weight: 1300 Act. Scrotal: 38 Pigment - L- 60 R- 5

STAR BRIGHT FUTURE 533P ET {DLF,HYF,IEF} (P42483846)

GV CMR FUTURE DOM Y133 ET {DLF,HYF,IEF} (P43260841)

CJH L1 DOMINETTE 0064 {DLF,HYF,IEF} (42118907)

OXH MARK DOMINO 8020 {SOD,DLF,IEF} (18950672)

JYF VICTORIA 8020 0304 (P42437967)

JJJ VICTORIA 407 564 (P23908883)

CE	BW	WW	YW	M	MG	CEM	MCW	SC	Fat	REA	MB
+5	+3.3	+62	+95	+23	+54	+2.3	+96	+1.1	+0.17	+30	+0.3
BMI	CEZ	BII	CHB								
+\$19	+\$15	+\$16	+\$27								

40 DVOR Y133 301 CRISCO 5226C

(P43624173) 9/22/15 Act. BW 85 WW 524 YW 872 Scurred
Weight: 1190 Act. Scrotal: 37 Pigment - L- 100 R- 85

STAR BRIGHT FUTURE 533P ET {DLF,HYF,IEF} (P42483846)

GV CMR FUTURE DOM Y133 ET {DLF,HYF,IEF} (P43260841)

CJH L1 DOMINETTE 0064 {DLF,HYF,IEF} (42118907)

DR JYF VICTOR P606 R10 ET (P42598761)

4-C 956 CLASSY MISS R-10 301 (P43517349)

4-C 510 CLASSY LADY 956 (P43128718)

CE	BW	WW	YW	M	MG	CEM	MCW	SC	Fat	REA	MB
-.5	+2.9	+58	+87	+25	+54	+2.5	+92	+1.1	+0.056	+31	+1.0
BMI	CEZ	BII	CHB								
+\$19	+\$14	+\$16	+\$24								





41



42



43

41 DVOR Y133 961 CASH 5231C

(43624177) 9/20/15 Act. BW 100 WW 500 YW 771 Horned
 Weight: 1145 Act. Scrotal: 36.5 Pigment - L- 0 R- 0

STAR BRIGHT FUTURE 533P ET {DLF,HYF,IEF} (P42483846)
GV CMR FUTURE DOM Y133 ET {DLF,HYF,IEF} (P43260841)
 CJH L1 DOMINETTE 0064 {DLF,HYF,IEF} (42118907)

DR WORLD CLASS 517 10H {SOD,DLF,HYF,IEF} (P41000194)
4-C 609 CLASSY LADY 961 (P43128719)
 JYF MISS MIXER 9N 609 {DOD} (P42757776)

CE	BW	WW	YW	M	MG	CEM	MCW	SC	Fat	REA	MB
-0.6	+4.3	+60	+91	+25	+55	+4.2	+100	+1.0	+0.68	+0.6	+1.4
BMI	CEZ	BII	CHB								
+\$17	+\$14	+\$13	+\$24								

42 DVOR Y133 858 COMET 5233C

(P43637344) 10/03/15 Act. BW 95 WW 495 YW 846 Polled
 Weight: 1305 Act. Scrotal: 37.5 Pigment - L- 15 R- 20

STAR BRIGHT FUTURE 533P ET {DLF,HYF,IEF} (P42483846)
GV CMR FUTURE DOM Y133 ET {DLF,HYF,IEF} (P43260841)
 CJH L1 DOMINETTE 0064 {DLF,HYF,IEF} (42118907)

DR JYF VICTOR P606 R10 ET (P42598761)
4-C SASSY DARLIN 312 858 (P42957269)
 JYF VICKIE 7026 0312 (P42437969)

CE	BW	WW	YW	M	MG	CEM	MCW	SC	Fat	REA	MB
-1.1	+3.9	+58	+91	+20	+49	+7	+99	+1.0	+0.037	+0.38	+0.1
BMI	CEZ	BII	CHB								
+\$17	+\$13	+\$15	+\$24								

43 DVOR Y133 205 CHUMLEY 5234C

(P43637343) 10/17/15 Act. BW 85 WW 457 YW 815 Polled
 Weight: 1165 Act. Scrotal: 35 Pigment - L- 100 R- 100

STAR BRIGHT FUTURE 533P ET {DLF,HYF,IEF} (P42483846)
GV CMR FUTURE DOM Y133 ET {DLF,HYF,IEF} (P43260841)
 CJH L1 DOMINETTE 0064 {DLF,HYF,IEF} (42118907)

EF 821C MR CARCASS G824 {CHB} (P24033975)
JYF MISS MIXER G824 0205 (P42350921)
 JYF VICTRESS H310 9724 {DOD} (P24025822)

CE	BW	WW	YW	M	MG	CEM	MCW	SC	Fat	REA	MB
-1.1	+3.7	+59	+97	+23	+52	+2.7	+113	+0.9	+0.035	+0.30	+0.9
BMI	CEZ	BII	CHB								
+\$17	+\$13	+\$13	+\$26								

44 DVOR 665 4107 DESTINY 6003D

(43758211) 4/10/16 Act. BW WW -NA- Horned

Weight: Pigment - L- R-

CL 1 DOMINO 3138N 1ET {DLF,HYF,IEF} (42385269)

KB L1 DOMINO 665 {DLF,HYF,IEF} (42674365)

MONTANA MISS 466P ET {DLF,HYF,IEC} (42526776)

BOYD STOUT 1094 ET {CHB,DLF,HYF,IEF} (P43186793)

DVOR 1094 1150 BEBE 4107 (P43482679)

DVOR 621 6104 MISS RIBSTONE 1150 (43185298)

CE	BW	WW	YW	M	MG	CEM	MCW	SC	Fat	REA	MB
+3.6	+1.5	+48	+86	+30	+54	+2.1	+72	+1.3	+0.14	+30	+2.3
BMI	CEZ	BII	CHB								
+\$22	+\$18	+\$18	+\$27								

45 DVOR 665 4133 LADY DOMINO 622D

(43689364) 2/26/16 Act. BW 74 WW -NA- Horned

Weight: Pigment - L- R-

CL 1 DOMINO 3138N 1ET {DLF,HYF,IEF} (42385269)

KB L1 DOMINO 665 {DLF,HYF,IEF} (42674365)

MONTANA MISS 466P ET {DLF,HYF,IEC} (42526776)

BOYD STOUT 1094 ET {CHB,DLF,HYF,IEF} (P43186793)

DVOR 1094 126 BETTINA 4133 (43482643)

DVOR 621 7127 MISS RIBSTONE 126 (43185235)

CE	BW	WW	YW	M	MG	CEM	MCW	SC	Fat	REA	MB
+4.9	+0.9	+49	+86	+31	+56	+2.6	+61	+1.2	-.001	+4.2	+1.9
BMI	CEZ	BII	CHB								
+\$22	+\$19	+\$18	+\$28								

46 DVOR 665 S4168 LADY DOMINO 660

(43689395) 3/3/16 Act. BW 69 WW -NA- Horned

Weight: Pigment - L- R-

CL 1 DOMINO 3138N 1ET {DLF,HYF,IEF} (42385269)

KB L1 DOMINO 665 {DLF,HYF,IEF} (42674365)

MONTANA MISS 466P ET {DLF,HYF,IEC} (42526776)

BOYD STOUT 1094 ET {CHB,DLF,HYF,IEF} (P43186793)

DVOR 1094 149 BOO BOO 4168 (P43482570)

DVOR 621 7122 MISS RIBSTONE 149 (43185295)

CE	BW	WW	YW	M	MG	CEM	MCW	SC	Fat	REA	MB
+5.1	+0.4	+47	+85	+30	+54	+2.5	+60	+1.3	+0.10	+3.6	+2.2
BMI	CEZ	BII	CHB								
+\$23	+\$20	+\$19	+\$27								

47 DVOR 665 4158 LADY DOMINO 680D

(43690053) 3/5/16 Act. BW 80 WW -NA- Horned

Weight: Pigment - L- R-

CL 1 DOMINO 3138N 1ET {DLF,HYF,IEF} (42385269)

KB L1 DOMINO 665 {DLF,HYF,IEF} (42674365)

MONTANA MISS 466P ET {DLF,HYF,IEC} (42526776)

DVOR 665 9175 DOMINO 150 (43185217)

DVOR 150 275 BLONDELLE 4158 (43482703)

DVOR 665 0171 MISS DOMINO 275 (43280928)

CE	BW	WW	YW	M	MG	CEM	MCW	SC	Fat	REA	MB
+7.6	-3.9	+35	+68	+29	+46	+4.3	+53	+1.3	+0.034	+0.09	+2.6
BMI	CEZ	BII	CHB								
+\$24	+\$23	+\$21	+\$21								

48 DVOR 665 460 LADY DOMINO 6184D

(43690230) 3/20/16 Act. BW 72 WW -NA- Horned

Weight: Pigment - L- R-

CL 1 DOMINO 3138N 1ET {DLF,HYF,IEF} (42385269)

KB L1 DOMINO 665 {DLF,HYF,IEF} (42674365)

MONTANA MISS 466P ET {DLF,HYF,IEC} (42526776)

LCX HELTON BOLT 1210 ET {DLF,HYF,IEF} (P43313501)

DVOR 1210 831 BELLE 460 (43482690)

DVOR 219 MISS DOMINO 831 (42895997)

CE	BW	WW	YW	M	MG	CEM	MCW	SC	Fat	REA	MB
+4.9	+0.4	+38	+75	+26	+44	+2.5	+72	+1	+0.025	+0.06	+1.9
BMI	CEZ	BII	CHB								
+\$19	+\$19	+\$17	+\$20								

49 DVOR 665 4112 LADY DOMINO 6218

(43690737) 3/28/16 Act. BW 72 WW -NA- Horned

Weight: Pigment - L- R-

CL 1 DOMINO 3138N 1ET {DLF,HYF,IEF} (42385269)

KB L1 DOMINO 665 {DLF,HYF,IEF} (42674365)

MONTANA MISS 466P ET {DLF,HYF,IEC} (42526776)

BOYD STOUT 1094 ET {CHB,DLF,HYF,IEF} (P43186793)

DVOR 1094 1120 BELDA 4112 (43482681)

DVOR 621 6203 MISS RIBSTONE 1120 (43185297)

CE	BW	WW	YW	M	MG	CEM	MCW	SC	Fat	REA	MB
+4.8	+0.7	+43	+79	+28	+49	+2.6	+62	+1.1	+0.006	+0.39	+1.9
BMI	CEZ	BII	CHB								
+\$21	+\$20	+\$18	+\$25								

50 DVOR 665 360A LADY DOMINO 6242

(P43690758) 4/8/16 Act. BW 80 WW -NA- Polled

Weight: Pigment - L- R-

CL 1 DOMINO 3138N 1ET {DLF,HYF,IEF} (42385269)

KB L1 DOMINO 665 {DLF,HYF,IEF} (42674365)

MONTANA MISS 466P ET {DLF,HYF,IEC} (42526776)

GV CMR FUTURE DOM Y133 ET {DLF,HYF,IEF} (P43260841)

4-C 404 BRIGHT LADY Y133 360 (P43450740)

JYF TROPHY QUEEN 2042 404 (P42542109)

CE	BW	WW	YW	M	MG	CEM	MCW	SC	Fat	REA	MB
+3.7	+7	+53	+94	+26	+53	+3.4	+89	+1.2	+0.28	+2.8	+1.8
BMI	CEZ	BII	CHB								
+\$21	+\$18	+\$17	+\$27								

51 DVOR 665 471 LADY DOMINO 62480

(43690761) 4/10/16 Act. BW 71 WW -NA- Horned

Weight: Pigment - L- R-

CL 1 DOMINO 3138N 1ET {DLF,HYF,IEF} (42385269)

KB L1 DOMINO 665 {DLF,HYF,IEF} (42674365)

MONTANA MISS 466P ET {DLF,HYF,IEC} (42526776)

MH MONUMENT 909 {CHB,DLF,HYF,IEF} (43019669)

DVOR 909 808 BIANCA 471 (43482609)

DVOR 20J MISS STANMORE 808 {DOD} (42942608)

CE	BW	WW	YW	M	MG	CEM	MCW	SC	Fat	REA	MB
+5.0	+5	+49	+86	+30	+54	+1.5	+86	+1	-.012	+3.3	+2.0
BMI	CEZ	BII	CHB								
+\$20	+\$19	+\$16	+\$29								

52 DVOR 665 437 LADY DOMINO 62550

(43690778) 4/15/16 Act. BW 70 WW -NA- Horned

Weight: Pigment - L- R-

CL 1 DOMINO 3138N 1ET {DLF,HYF,IEF} (42385269)

KB L1 DOMINO 665 {DLF,HYF,IEF} (42674365)

MONTANA MISS 466P ET {DLF,HYF,IEC} (42526776)

TH 89T 755T VICTOR 468Z {CHB,DLF,HYF,IEF} (P43279203)

DVOR 468Z 159P BOBBI 437 ET (P43482741)

STAR TCF ADV ORALEE 159P ET {DLF,HYF,IEF} (P42485007)

CE	BW	WW	YW	M	MG	CEM	MCW	SC	Fat	REA	MB
+6	-.2	+45	+82	+28	+50	+3.4	+72	+1.1	+0.004	+4.4	+2.1
BMI	CEZ	BII	CHB								
+\$22	+\$21	+\$18	+\$27								

53 DVOR 2025 261 SENSATION 6070

(43683623) 2/23/16 Act. BW 75 WW -NA- Horned

Weight: Pigment - L- R-

CHURCHILL SENSATION 028X {CHB,DLF,HYF,IEF} (43092364)

UPS SENSATION 2025 {DLF,HYF,IEF} (43311056)

UPS MISS BRUTUS 0147 (43111257)

PONCA MORTGAGE LIFTER 930 (43039570)

PONCA 930 M LIFTER LADY261 {DLF,HYF,IEF} (43327382)

PONCA JAKE LADY 967 (43039563)

CE	BW	WW	YW	M	MG	CEM	MCW	SC	Fat	REA	MB
+4.9	+1.1	+42	+72	+29	+50	+2.9	+70	+9	+0.031	+0.04	+2.6
BMI	CEZ	BII	CHB								
+\$19	+\$19	+\$16	+\$23								

54 DVOR 2025 285 LADY SENSE 62510

(43690769) 4/12/16 Act. BW 73 WW -NA- Horned

Weight: Pigment - L- R-

CHURCHILL SENSATION 028X {CHB,DLF,HYF,IEF} (43092364)

UPS SENSATION 2025 {DLF,HYF,IEF} (43311056)

UPS MISS BRUTUS 0147 (43111257)

KB L1 DOMINO 665 {DLF,HYF,IEF} (42674365)

DVOR 665 073 MISS DOMINO 285 (43280854)

DVOR 621 MISS RIBSTONE 073 (43096581)

CE	BW	WW	YW	M	MG	CEM	MCW	SC	Fat	REA	MB
+7.1	-.1	+43	+77	+32	+54	+3.9	+75	+1.4	+0.048	+0.06	+3.4
BMI	CEZ	BII	CHB								
+\$24	+\$23	+\$21	+\$25								

55 DVOR 364 474 LADY DOMINO 62600

(PENDING) 3/13/14 Act. BW 78 WW -NA- Polled

Weight: Pigment - L- R-

GV CMR FUTURE DOM Y133 ET {DLF,HYF,IEF} (P43260841)

4-C 961 WORLD CLASS Y-133 364 (P43450744)

4-C 609 CLASSY LADY 961 (P43128719)

KB L1 DOMINO 665 {DLF,HYF,IEF} (42674365)

DVOR 665 229 BASHIRA 474 (43482626)

DVOR 0031 575 MISSN TIME 229 (P43280839)

CE	BW	WW	YW	M	MG	CEM	MCW	SC	Fat	REA	MB
+3.2	+1.7	+53	+90	+27	+54	+3.2	+88	+1.1	+0.029	+2.6	+0.8
BMI	CEZ	BII	CHB								
+\$20	+\$18	+\$16	+\$25								

56 DVOR 468Z 214 DAMSEL 6001D ET

(P43699457) 3/1/16 Act. BW 71 WW -NA- Polled

Weight: Pigment - L- R-

TH 223 711 VICTOR 755T {CHB,DLF,HYF,IEF} (P42800887)

TH 89T 755T VICTOR 468Z {CHB,DLF,HYF,IEF} (P43279203)

TH 16G 20N GEMINI 89T {DLF,HYF,IEF} (P42779363)

CRR ABOUT TIME 743 {CHB,SOD,DLF,HYF,IEF} (P42797564)

BBH CBH 743 ZIGGY 214Z {DLF,HYF,IEF} (P43302744)

KLB BBH 477T SASSY 042X (P43127444)

CE	BW	WW	YW	M	MG	CEM	MCW	SC	Fat	REA	MB
+1	+3.7	+47	+73	+24	+47	+2	+88	+5	-.009	+.54	+.14
BMI	CEZ	BII	CHB								
+\$16	+\$14	+\$13	+\$25								

57 DVOR 468Z 274 VICTORIAN 632D

(P43689372) 2/28/16 Act. BW 85 WW -NA- Polled

Weight: Pigment - L- R-

TH 223 711 VICTOR 755T {CHB,DLF,HYF,IEF} (P42800887)

TH 89T 755T VICTOR 468Z {CHB,DLF,HYF,IEF} (P43279203)

TH 16G 20N GEMINI 89T {DLF,HYF,IEF} (P42779363)

DR JYF VICTOR P606 R10 ET (P42598761)

4-C 072 SASSY 274 (P43348642)

4-C 801 MISS SANDERS 072 (P43150923)

CE	BW	WW	YW	M	MG	CEM	MCW	SC	Fat	REA	MB
+5	+3.7	+44	+69	+23	+45	-1.1	+69	+6	+.034	+.46	+.16
BMI	CEZ	BII	CHB								
+\$15	+\$14	+\$14	+\$21								

58 DVOR 468Z 102 LADY VIC 683D

(P43690058) 3/6/16 Act. BW 80 WW -NA- Polled

Weight: Pigment - L- R-

TH 223 711 VICTOR 755T {CHB,DLF,HYF,IEF} (P42800887)

TH 89T 755T VICTOR 468Z {CHB,DLF,HYF,IEF} (P43279203)

TH 16G 20N GEMINI 89T {DLF,HYF,IEF} (P42779363)

BKR SANDERSON 73C 60S {DLF,HYF,IEF} (P42696328)

4C 858 MISS SANDERS 102 (P43225466)

4-C SASSY DARLIN 312 858 (P42957269)

CE	BW	WW	YW	M	MG	CEM	MCW	SC	Fat	REA	MB
+1.7	+2.6	+48	+75	+23	+47	-.6	+78	+6	+.054	+.46	+.14
BMI	CEZ	BII	CHB								
+\$15	+\$15	+\$13	+\$22								

59 DVOR 468Z 906 LADY BERRY 695ET

(43690065) 3/7/16 Act. BW 94 WW -NA- Horned

Weight: Pigment - L- R-

TH 223 711 VICTOR 755T {CHB,DLF,HYF,IEF} (P42800887)

TH 89T 755T VICTOR 468Z {CHB,DLF,HYF,IEF} (P43279203)

TH 16G 20N GEMINI 89T {DLF,HYF,IEF} (P42779363)

REMITALL ONLINE 122L {CHB,SOD,DLF,HYF,IEF} (P42254372)

4-C 780 ON STRAWBERRY LINE 906 {DLF,HYF,IEF} (P42974420)

ESBDRF STRAWBRY WINE 780 (P23925005)

CE	BW	WW	YW	M	MG	CEM	MCW	SC	Fat	REA	MB
+1	+5	+49	+80	+20	+45	+.9	+90	+4	-.006	+.43	+.19
BMI	CEZ	BII	CHB								
+\$15	+\$13	+\$12	+\$26								

60 DVOR 468Z 273 LADY VIC 6130D

(P43690088) 3/11/16 Act. BW 79 WW -NA- Polled

Weight: Pigment - L- R-

TH 223 711 VICTOR 755T {CHB,DLF,HYF,IEF} (P42800887)

TH 89T 755T VICTOR 468Z {CHB,DLF,HYF,IEF} (P43279203)

TH 16G 20N GEMINI 89T {DLF,HYF,IEF} (P42779363)

DR JYF VICTOR P606 R10 ET (P42598761)

4-C 051 MISS SANDERSON 273 (P43348641)

4-C MISS SANDERSON 757 051 (P43230463)

CE	BW	WW	YW	M	MG	CEM	MCW	SC	Fat	REA	MB
+7	+3.3	+43	+69	+21	+43	-.8	+64	+5	+.031	+.51	+.15
BMI	CEZ	BII	CHB								
+\$15	+\$14	+\$14	+\$21								

61 DVOR 4040 R424 LADY KNOX 6176D

(P43758302) 3/18/14 Act. BW 70 WW -NA- Polled

Weight: Pigment - L- R-

TH 22R 16S LAMBEAU 17Y {DLF,HYF,IEF} (P43171190)

BOYD FT KNOX 17Y XZ5 4040 {DLF,HYF,IEF} (P43472233)

DOSS MY EYES ADORE U DHZ5 {DLF,HYF,IEF} (P43265710)

KB RB BY THE HOUR 211 B765 {DLF,HYF,IEF} (P43154561)

TMR MISS ROSSIE B R424 (P43475873)

TMR 579 VICKI 9655 A365 (P42508394)

CE	BW	WW	YW	M	MG	CEM	MCW	SC	Fat	REA	MB
+4.6	+1.1	+45	+72	+23	+46	+2.0	+81	+7	+.030	+.19	+.15
BMI	CEZ	BII	CHB								
+\$17	+\$18	+\$14	+\$22								

62 DVOR 1210 1182 LADY BOLT 6620

(P43690035) 3/4/16 Act. BW 80 WW -NA- Polled

Weight: Pigment - L- R-

CRR HELTON 980 {CHB,DLF,HYF,IEF} (P43032013)

LCX HELTON BOLT 1210 ET {DLF,HYF,IEF} (P43313501)

MSU KEEPSAKE 14S {DLF,HYF,IEF} (P42709435)

F RIBSTONE LAD 621 {DLF,IEF} (42671374)

DVOR 621 732 MS RIBSTONE 1182 (43185251)

VOH MISS DOMINETTE 732 {DLF,IEF} (42857603)

CE	BW	WW	YW	M	MG	CEM	MCW	SC	Fat	REA	MB
-8	+5	+53	+98	+18	+44	+1.8	+112	+1	+0.24	+36	+0.4
BMI	CEZ	BII	CHB								
+\$17	+\$14	+\$15	+\$24								

63 DVOR 1210 0191 LADY BOLT 61070

(43690073) 3/9/16 Act. BW 96 WW -NA- Horned

Weight: Pigment - L- R-

CRR HELTON 980 {CHB,DLF,HYF,IEF} (P43032013)

LCX HELTON BOLT 1210 ET {DLF,HYF,IEF} (P43313501)

MSU KEEPSAKE 14S {DLF,HYF,IEF} (P42709435)

S WINCHESTER 24T ET {DLF,IEF} (42826350)

DVOR 24T MISS GENERAL 0191 (43096641)

DVOR L1 MISS DOMINO 5258 (42588535)

CE	BW	WW	YW	M	MG	CEM	MCW	SC	Fat	REA	MB
-2.8	+7.2	+56	+97	+15	+43	+5	+110	+8	+0.13	+17	+0.8
BMI	CEZ	BII	CHB								
+\$16	+\$11	+\$14	+\$25								

64 DVOR 1210 6141 LADY BOLT 61490

(P43690110) 3/15/16 Act. BW 100 WW -NA- Polled

Weight: Pigment - L- R-

CRR HELTON 980 {CHB,DLF,HYF,IEF} (P43032013)

LCX HELTON BOLT 1210 ET {DLF,HYF,IEF} (P43313501)

MSU KEEPSAKE 14S {DLF,HYF,IEF} (P42709435)

DVOR L1 DOMINO 407 (42498054)

DVOR MISS DOMINO 6141 {DOD} (42708123)

DVOR L1 MISS DOMINO 1102 {DOD} (42173906)

CE	BW	WW	YW	M	MG	CEM	MCW	SC	Fat	REA	MB
-6	+5.8	+43	+77	+21	+42	+1.1	+89	+4	-0.07	+20	+1.8
BMI	CEZ	BII	CHB								
+\$14	+\$13	+\$12	+\$23								

65 DVOR 1210 125 LADY BOLT 61560

(P43690115) 3/16/16 Act. BW 91 WW -NA- Polled

Weight: Pigment - L- R-

CRR HELTON 980 {CHB,DLF,HYF,IEF} (P43032013)

LCX HELTON BOLT 1210 ET {DLF,HYF,IEF} (P43313501)

MSU KEEPSAKE 14S {DLF,HYF,IEF} (P42709435)

S WINCHESTER 24T ET {DLF,IEF} (42826350)

DVOR 24T 4175 MISS GENERAL 125 (43185241)

DVOR MISS DOMINO 4175 (42494084)

CE	BW	WW	YW	M	MG	CEM	MCW	SC	Fat	REA	MB
-1.1	+5.3	+43	+82	+15	+37	+7	+99	+7	+0.05	-0.2	+1.9
BMI	CEZ	BII	CHB								
+\$16	+\$13	+\$15	+\$22								

66 DVOR 1210 0165 LADY BOLT 62220

(P43690743) 4/1/16 Act. BW 100 WW -NA- Polled

Weight: Pigment - L- R-

CRR HELTON 980 {CHB,DLF,HYF,IEF} (P43032013)

LCX HELTON BOLT 1210 ET {DLF,HYF,IEF} (P43313501)

MSU KEEPSAKE 14S {DLF,HYF,IEF} (P42709435)

F RIBSTONE LAD 621 {DLF,IEF} (42671374)

DVOR 621 MISS RIBSTONE 0165 (43096586)

DVOR MISS DOMINO 4189 (42494091)

CE	BW	WW	YW	M	MG	CEM	MCW	SC	Fat	REA	MB
-2.5	+7.7	+58	+104	+18	+47	+6	+111	+9	+0.27	+23	+1.8
BMI	CEZ	BII	CHB								
+\$17	+\$11	+\$14	+\$28								

67 DVOR 1210 0224 LADY BOLT 62310

(P43690750) 4/3/16 Act. BW 103 WW -NA- Polled

Weight: Pigment - L- R-

CRR HELTON 980 {CHB,DLF,HYF,IEF} (P43032013)

LCX HELTON BOLT 1210 ET {DLF,HYF,IEF} (P43313501)

MSU KEEPSAKE 14S {DLF,HYF,IEF} (P42709435)

S FENCE POST 28T {DLF,IEF} (42826316)

DVOR 28T MISS SANDY 0224 (43096585)

DVOR MISS DOMINO 5140 (42588611)

CE	BW	WW	YW	M	MG	CEM	MCW	SC	Fat	REA	MB
-2.4	+6.8	+52	+88	17	+43	+8	+119	+7	+0.09	+20	+0.5
BMI	CEZ	BII	CHB								
+\$15	+\$12	+\$13	+\$23								

68 DVOR 1094 147 LADY STOUT 625D

(43689367) 2/26/16 Act. BW 86 WW -NA- Horned

Weight: Act. Scrotal: Pigment - L- R-

BOYD WORLDWIDE 9050 ET {CHB,DLF,HYF,IEF} (P42982024)

BOYD STOUT 1094 ET {CHB,DLF,HYF,IEF} (P43186793)

SSF P606 MS VICTOR 803 {DLF,HYF,IEF} (P42610510)

KB L1 DOMINO 454P {DLF,IEF} (42523485)

DVOR 454 884 MISS DOMINO 147 (43185318)

DVOR 621 MISS RIBSTONE 884 (42896008)

CE	BW	WW	YW	M	MG	CEM	MCW	SC	Fat	REA	MB
+1.6	+2.6	+47	+75	+28	+52	+1.3	+70	+9	-.008	+4.1	+1.0
BMI	CEZ	BII	CHB								
+\$18	+\$16	+\$16	+\$24								

69 DVOR 1094 708 LADY STOUT 6198D

(43690689) 3/22/16 Act. BW 92 WW -NA- Horned

Weight: Act. Scrotal: Pigment - L- R-

BOYD WORLDWIDE 9050 ET {CHB,DLF,HYF,IEF} (P42982024)

BOYD STOUT 1094 ET {CHB,DLF,HYF,IEF} (P43186793)

SSF P606 MS VICTOR 803 {DLF,HYF,IEF} (P42610510)

CL 1 DOMINO 9126J 1ET {SOD,DLF,IEF} (41113279)

DVOR 9126 L1 MISS DOMINO 708 {DOD} (42848858)

DVOR L1 MISS DOMINO 406 {DLF,IEF} (42498071)

CE	BW	WW	YW	M	MG	CEM	MCW	SC	Fat	REA	MB
+2.6	+3	+43	+69	+29	+50	+1.2	+66	+9	-.029	+3.2	+1.1
BMI	CEZ	BII	CHB								
+\$19	+\$17	+\$17	+\$24								

70 DVOR 1094 899 LADY TAURUS 6249

(P43690764) 4/10/16 Act. BW 107 WW -NA- Polled

Weight: Act. Scrotal: Pigment - L- R-

BOYD WORLDWIDE 9050 ET {CHB,DLF,HYF,IEF} (P42982024)

BOYD STOUT 1094 ET {CHB,DLF,HYF,IEF} (P43186793)

SSF P606 MS VICTOR 803 {DLF,HYF,IEF} (P42610510)

F 915 STAR 142 {SOD,DLF,IEF} (42149114)

DVOR 142 MISS POWER 899 (42896004)

DVOR MISS DOMINO 4197 {DLF,IEF} (42493889)

CE	BW	WW	YW	M	MG	CEM	MCW	SC	Fat	REA	MB
-.5	+6.8	+49	+76	+27	+52	-1.4	+66	+6	-.021	+3.6	+0.8
BMI	CEZ	BII	CHB								
+\$14	+\$12	+\$12	+\$24								

71 DVOR 502 202 LADY TAURUS 6142D

(P43690102) 3/13/16 Act. BW 89 WW -NA- Polled

Weight: Act. Scrotal: Pigment - L- R-

TH 122 711 VICTOR 719T {SOD,CHB,DLF,HYF,IEF} (P42800895)

TH 89T 719T TAURUS 502Z {DLF,HYF,IEF} (P43273134)

TH 16G 20N GEMINI 89T {DLF,HYF,IEF} (P42779363)

MH MONUMENT 909 {CHB,DLF,HYF,IEF} (43019669)

DVOR 909 826 MISS MONUMENT 202 (43280945)

DVOR 219 MISS DOMINO 826 (42895972)

CE	BW	WW	YW	M	MG	CEM	MCW	SC	Fat	REA	MB
+1.9	+4.3	+54	+94	+24	+51	-1.6	+87	+1	-.022	+5.4	+0.6
BMI	CEZ	BII	CHB								
+\$18	+\$15	+\$16	+\$29								

72 DVOR 502 Y117 LADY TAURUS 6238

(P43690755) 4/7/16 Act. BW 95 WW -NA- Polled

Weight: Act. Scrotal: Pigment - L- R-

TH 122 711 VICTOR 719T {SOD,CHB,DLF,HYF,IEF} (P42800895)

TH 89T 719T TAURUS 502Z {DLF,HYF,IEF} (P43273134)

TH 16G 20N GEMINI 89T {DLF,HYF,IEF} (P42779363)

KOANUI ROCKET 0219 {SOD,DLF,HYF,IEF} (P43064935)

KEG MS ROCKET Y117 {DOD} (P43197456)

KEG MS 48K LEXUS S651 {DOD} (P42729305)

CE	BW	WW	YW	M	MG	CEM	MCW	SC	Fat	REA	MB
+1.4	+4.3	+56	+94	+22	+50	-2.5	+95	+8	+0.006	+5.1	+0.4
BMI	CEZ	BII	CHB								
+\$16	+\$13	+\$13	+\$27								

73 DVOR B765 662 LADY HOUR 6177D

(P43690137) 3/18/16 Act. BW 86 WW -NA- Polled

Weight: Act. Scrotal: Pigment - L- R-

CRR ABOUT TIME 743 {CHB,SOD,DLF,HYF,IEF} (P42797564)

KB RB BY THE HOUR 211 B765 {DLF,HYF,IEF} (P43154561)

WPHF KB ELIZABETH 60C 211 {DLF,HYF,IEF} (P42374324)

LLL PRINCE 09L (P42149282)

TMR PRINCESS 09L L662 (P42759847)

TMR MISS HEADLINE H612 (P23914308)

CE	BW	WW	YW	M	MG	CEM	MCW	SC	Fat	REA	MB
+2.5	+1.3	+38	+63	+22	+41	+1	+79	+6	-.004	+3.4	+1.0
BMI	CEZ	BII	CHB								
+\$16	+\$16	+\$15	+\$20								



622



6149



6001



6184



6105



6242

Dvorak Herefords

29738 383rd Ave.,
Lake Andes, SD 57356
www.dvorakherefords.com



*thanks
for takin'
a look*

Bull & Female Sale
Friday, February 3, 2017 - 1:00 CST
www.dvorakherefords.com

