

DVORAK

HEREFORDS

2020 BULL SALE
FEBRUARY 7



WELCOME FELLOW CATTLEMEN

The Dvorak family wants to first welcome everyone to the 2020 edition of our bull sale. It is because of the long-standing relationships and support we have cultured with you, our repeat customers, that we have been able to continue to grow this generational enterprise. It is our hope that the continued business is met with the same fervor, and that is why we continue to attract new customers. As we look past 2019, and not only move on to a new year, but also a new decade, we have been met with some tough times, but we see increased optimism as we have seen recent up swings in the feeder cattle market. We expect to continue, as the world demands, a wholesome beef product. We, the US producers, work day and night to produce the safest, highest quality beef protein in the world. We project this year, given the droughts in the southern hemisphere and China needing to replace pork in their diets, to see a correction in the cattle market as a whole.

It is hard not to be optimistic when you evaluate this set of bulls. We think they fully exemplify the mission and goals of Dvorak Herefords. We have taken the same values that we have believed in from the day Richard bought his first Herefords and combined those with the scientific tools we have today to produce a set of bulls that we are extremely proud of. We believe these bulls and cows need to work not only for us but also you, our customers. We run these registered females right along with our commercial herd in the exact same fashion we believe you do. Any female we don't believe can raise a high caliber bull is immediately moved to the commercial herd. We expect these cows to raise their calves with minimal inputs and no creep. This is why as you study the catalog, we hope you find the pressures we place on easy fleshing, low maintenance, sound, functional, good uddered, fertile cattle that have maternal, commercial, and terminal traits still aligned. We do not chase trends. We do not use extremes. We use tested proven genetics from what we feel are the best cow families in the Hereford breed to produce these bulls. We chose, in an effort to embrace all technologies available to give you the best product possible, to do a 50K genomic profile on each bull in the sale. This, coupled with the diligent phenotypic data collection and carcass ultrasound, gives you the best data set possible to make your selection decisions. We hope we have taken all the guess work out of it for you. Please see the explanation of the 50K genomics test on page 4 or call if you have any questions regarding it.

Along with these technologies we have continued to set up our embryo transfer and artificial insemination programs, to fully utilize the very best genetics available. This also gives us the opportunity to produce full and half brothers that provide continuity which allows you to produce a consistent group of calves. We feel that the females we use as donors are some of the best cows out there and their track records certainly indicate we aren't wrong. We feel it is our responsibility to replicate the best females with the best bulls available to produce you the absolute best future sires for your calf crops.

As we look toward the future with continued optimism we have decided to retain the entirety of our heifer calf crop to not only continue to grow and develop, but set the stage for the future Dvorak Herefords Female Production Sales.

Again, we humbly invite your family to join us for our annual bull sale February 7th, at the ranch in Pickstown, SD. Please if you have any question, comments, or concerns please do not hesitate to contact us or any of our sale staff.

- BOYD & JEFF DVORAK

SALE SCHEDULE

THURSDAY, 2.6.20

1PM • CATTLE ON DISPLAY

FRIDAY, 2.7.20

9AM • CATTLE ON DISPLAY

12PM • LUNCH

1PM • DVORAK 2020 BULL SALE



ALL BULLS SELLING IN THIS SALE
HAVE BEEN PARENT VERIFIED & GENOMICALLY ENHANCED
SEE PAGE 4 FOR MORE INFORMATION



The Power of Genomically Enhanced EPDs

The American Hereford Association (AHA) has embraced the use of genomics into their genetic evaluation by launching a first of its kind single step analysis that utilizes the marker effects of specific traits. Likewise, AHA is directly estimating accuracy values rather than approximating. The direct estimation of accuracy results in a more conservative value but a more accurate value than previous methodologies. The AHA is producing the most reliable genetic evaluation that is supported by Whole Herd TPR™ and genomics, which will give prospective buyers added confidence in purchasing young and unproven animals.

Buying animals that have a genomic profile incorporated into their Expected Progeny Difference (EPD) offers many advantages that allow for quicker breed and herd improvement. Below is a table showing the average increase in accuracy when buying a young animal with a Genomic Enhanced EPD (GE-EPD) versus an animal without a GE-EPD. Similarly, an effective progeny number increase is listed by trait that shows how many progeny equate to a genomic enhancement of a young animal (e.g. yearling). That's right, buying a young animal that has been genotyped is like having 2-17 progeny, depending on the trait. The proof gained on young, non-parent animals, through a genomic enhancement is valuable and greatly mitigates the risk and allows for more directed selection.



Each animal tested is recognized with the AHA GE-EPD logo.

AHA Trait	Accuracy Improvement	Effective Progeny Number Increase*
Calving Ease	0.09	17
Birth Weight	0.12	8
Weaning Weight	0.14	12
Yearling Weight	0.16	9
Scrotal Circumference	0.17	6
Mature Cow Weight	0.12	4
Udder Suspension	0.17	7
Teat Size	0.17	7
Carcass Weight	0.11	3
Fat	0.08	2
Rib-Eye Area	0.07	2
Marbling	0.10	3

* Effective Progeny Number Increase (EPNI) - EPNI is the difference gained for genotyped animals versus non-genotyped animals.



AUCTIONEER

Seth Weishaar – 605.210.1124

SALE STAFF

Alex Acheson – AHA/ Hereford World – 785.366.1185
Art Handel – Handel Marketing – 605.391.8233
Dennis Ginkens – Tri State Livestock News – 406.670.9839
Wyatt Schaak – Cattle Business Weekly – 308.202.0004
Tom Granzow – KS Hereford Assoc. – 485.466.6790
Marc Hotchkiss – The Livestock Link – 605.210.1956
Joe Epperly – Special Assignment – 303.884.3900
Will Epperly – Special Assignment – 712.269.5677
Brad Veurink – Special Assignment – 605.680.1281

LIABILITY

All persons who attend the sale do so at their own risk. Dvorak Herefords assumes no liability, legal or otherwise, for any accidents which may occur.

TERMS & CONDITIONS

All cattle will sell under the suggested terms and conditions of the American Hereford Association. All cattle are to be paid for by the purchaser immediately following the sale, unless prior arrangements have been made with either Boyd or Jeff Dvorak.

ANNOUNCEMENTS

- Any announcements from the auction block regarding the cattle selling in this sale will take precedence over information printed in this book.
- A supplement sheet will be available sale day.
- All EPDs printed in this book are current as of January 9, 2020.

GUARANTEE

All animals sold by Dvorak Herefords have passed a semen evaluation, and are guaranteed sound breeders. If an animal fails to be a breeder, buyers can choose a replacement if one is available at the time, or receive credit. Dvorak Herefords will not warranty a bull for death, but offers to pay one half of a six month term of mortality insurance. Any animal left in the care of Dvorak Herefords must be insured. The guarantee becomes void if the animal in question has been improperly managed or if sickness/injury occurred after the buyer has taken possession of said animal. All bulls have been genomically enhanced.

HEALTH

All bulls selling have passed a breeding soundness exam from Northwest Vet Clinic at Wagner, SD this also includes a semen evaluation. All animals sold by Dvorak Herefords will have been tested clean for BVD PI. They have been on an extensive vaccination protocol since birth, and received their first footrot shot along with Preg Guard Gold 10 in mid January 2020. All animals sold in this sale will be sold with health papers for interstate travel.

Consulting Veterinarian

Dr. Chris Freidel, Northwest Vet Clinic – 605.384.5561

Ultrasound

Bruns Ultrasound – Kama Bruns

DELIVERY & EXTENDED CARE

We will deliver bulls within a reasonable distance, and cooperate with buyers on further destinations. We will begin to deliver bulls within a week or two after the sale depending on our schedule.

- If you choose to leave an animal in Dvorak Herefords care, there will be a charge of \$5/day.

REGISTRATIONS

All animals selling as registered, will be sold as such and registration papers will be transferred to the buyers at the sellers expense.

VOLUME DISCOUNTS

Anyone purchasing two or more bulls will receive a \$50/bull discount. Those purchasing four or more bulls, will receive a \$100/bull discount.

ONLINE BIDDING

Mariah Miller – LiveAuctions.TV – 712-294.4731.



PRINT MEDIA & PHOTOGRAPHY

ALM, LLC – Allison Lynn Manchester
allisonlynnmanchester@gmail.com – 219.776.0594

VIDEOGRAPHY

Phil Eggers – The Livestock Link – 605.351.5438

SALE DAY PHONES

Boyd Dvorak – 605.491.7090
Jeff Dvorak – 605.491.2068
Ben Roudabush – 276.692.8118
Jenni Dvorak – 605.491.7091
Sydney Dvorak – 605.491.6561
Maesa Dvroak – 605.491.3987

SALE LOCATION

Dvorak herefords Sale Facility

1/4 mile E, 1/4 Mile N of Pickstown, SD

GPS Coordinates: N43 04.335" – W098 31.571

Please note that our physical address will NOT bring you to the sale site.



DVORAK
HEREFORDS

BOYD & JEFF DVORAK
29738 383RD AVE, LAKE ANDES, SD 57356
D7BARRANCH@CHARLES-MIX.COM

REFERENCE SIRE

DVOR 468Z 159P ZENNER 554 ET

AHA 43618686 DOB: 03/02/2015 TATTOO:554 POLLED BW 99

TH 223 71I VICTOR 755T
TH 89T 755T VICTOR 468Z
TH 16G 20N GEMINI 89T

DRF JWR PRINCE VICTOR 71I
KBCR 19D DOMINETTE 223
NPH 20X SPARTAN 20N
TEE-JAY 707B GEMINI 16G ET

REMITALL ONLINE 122L
STAR TCF ADV ORALEE 159P ET
HH MISS ADV 786G 1ET

REMITALL EMBRACER 8E
REMITALL CATALINA 24H
CL 1 DOMINO 500E
HH MISS ADVANCE 251B

CED	BW	WW	YW	SC	MILK	M&G	MCW	FAT	REA	MARB	BMI	CHB
1.6	3.7	64	98	0.9	19	50	104	-0.015	0.62	0.05	293	113



ZENNER

1 DVOR 554 1032 ZEN 837F ET

AHA 43910249 DOB: 3/2/2018 TATTOO:837 POLLED

TH 89T 755T VICTOR 468Z
DVOR 468Z 159P ZENNER 554 ET
STAR TCF ADV ORALEE 159P ET

TH 223 71I VICTOR 755T
TH 16G 20N GEMINI 89T
REMITALL ONLINE 122L
HH MISS ADV 786G 1ET

AH JDH CRACKER JACK 26U ET
H W4 MYSTIQUE 1032
K&B SULTANA 7151T

NJW 1Y WRANGLER 19D
CRR D03 VIOLET 349
K&B RED FELTON 5162
K&B MISS EXCEL 4216

NEW YORK STATE													
ACT. BW		ADJ. WW		WW RATIO		ADJ. YW		YW RATIO		DAM PRODUCTION		L EYE PIGMENT	R EYE PIGMENT
92		680		114		1243		110		6 @ 103		20	40
CED	BW	WW	YW	SC	MILK	M&G	MCW	FAT	REA	MARB	BMI	CHB	
-2	4.4	64	97	0.9	22	54	90	0.001	0.56	0.01	281	111	

2 DVOR 554 1032 ZEN 873F ET

AHA 43910639 DOB: 3/5/2018 TATTOO:873 HOMO POLLED

ACT. BW		ADJ. WW		WW RATIO		ADJ. YW		YW RATIO		DAM PRODUCTION		L EYE PIGMENT		R EYE PIGMENT	
ET		603		ET		1014		ET		6 @ 103		0		100	
CED	BW	WW	YW	SC	MILK	M&G	MCW	FAT	REA	MARB	BMI	CHB			
1.4	3.5	43	72	0.7	22	44	90	0.011	0.18	-0.02	249	82			

It is easy to see why we chose to make this mating. One of the super productive females that has already produced a son topping the bull sale with the bull that no doubt has made the largest impact to date on our program. Their mother has 6 calves with a 102.5 weaning ratio and two daughters that have produced 3 calves with a 103.3 nursing ratio. We all need this kind of cow. Easy to see why she made the donor pen.

Lot 1

- Individual ratios of 114 at weaning and 110 at yearling weights
- Ranks in top 20% of breed for YW, udder scores, and REA. Top 10% for weaning weight.

Lot 2

- Should make easy keeping females ranking in the top 15% for Dry Matter Intake and teat size.



559 | MATERNAL BROTHER TO LOTS 1 & 2



410 | MATERNAL SISTER TO LOTS 1 & 2



H W4 MYSTIQUE 1032



3

ROUDY 554 W46 ZEN 853F ET

AHA 43910321 DOB: 3/3/2018 TATTOO:853 HOMO POLLED

TH 89T 755T VICTOR 468Z

DVOR 468Z 159P ZENNER 554 ET

STAR TCF ADV ORALEE 159P ET

SHF RIB EYE M326 R117

SHF MAGGIE R117 W46

SHR BOOMER P606 R05

TH 223 71I VICTOR 755T

TH 16G 20N GEMINI 89T

REMITALL ONLINE 122L

HH MISS ADV 786G 1ET

KCF BENNETT 3008 M326

HVH MISS HUDSON 83K 8M

PW VICTOR BOOMER P606

SHF TARGET 634E N07

ACT. BW		ADJ. WW		WW RATIO		ADJ. YW		YW RATIO		DAM PRODUCTION		L EYE PIGMENT		REYE PIGMENT	
ET		649		ET		995		ET		7 @ 100		100		100	
CED	BW	WW	YW	SC	MILK	M&G	MCW	FAT	REA	MARB	BMI	CHB			
6.2	1.8	55	76	0.7	23	50	87	-0.039	0.43	0.09	365	88			

4

ROUDY 554 W46 ZEN 875F ET

AHA 43910641 DOB: 3/6/2018 TATTOO:875 POLLED

ACT. BW		ADJ. WW		WW RATIO		ADJ. YW		YW RATIO		DAM PRODUCTION		L EYE PIGMENT		R EYE PIGMENT	
ET		664		ET		993		ET		7 @ 100		100		100	
CED	BW	WW	YW	SC	MILK	M&G	MCW	FAT	REA	MARB	BMI	CHB			
-0.8	5.2	61	89	0.5	23	53	87	-0.019	0.77	-0.02	385	113			

5

ROUDY DVOR 554 W46 ZEN 8109 ET

AHA 43911026 DOB: 3/10/2018 TATTOO:8109 POLLED

ACT. BW		ADJ. WW		WW RATIO		ADJ. YW		YW RATIO		DAM PRODUCTION		L EYE PIGMENT		R EYE PIGMENT	
ET		659		ET		1056		ET		7 @ 100		60		50	
CED	BW	WW	YW	SC	MILK	M&G	MCW	FAT	REA	MARB	BMI	CHB			
-4.4	5.7	69	106	1	23	57	87	-0.019	0.64	-0.08	383	117			

W46 has become a cornerstone of our program. She has made an impact from the moment she entered our program. She combines many of the traits we stress: fertility, ease of fleshing, and end product merit. We have 5 daughters in several programs which have a combined nursing ratio of 103.2 on 13 calves.

Lot 3

- The calving ease version of this set of brothers backed by a top 25% ranking of both calving ease and birth weight.
- Grid marketing oriented with and breed leading EPD for Fat thickness and a 104 ratio for marbling.

Lot 4

- Recorded a 102 REA ratio with the rare combination of a 124 IMF ratio. Combine this with a top 10% ranking for Backfat leads to a \$113 CHB index.

Lot 5

- One of the largest rib eyed bulls in the sale with a 111 ratio and a 102-marbling ratio.
- Genomics matched well with this bull's phenotype proving what we could already see. This is a high performance, carcass sire with growth values in the top 5% of the breed, 3 of 4 carcass bars in the top fifth, and a \$CHB in the Top 10%

**SHF MAGGIE R117 W46**

6

ROUDY 554 558 ZEN 8138F

AHA 43911060 DOB: 3/13/2018 TATTOO:8138 HOMO POLLED

TH 89T 755T VICTOR 468Z

DVOR 468Z 159P ZENNER 554 ET

STAR TCF ADV ORALEE 159P ET

AH JDH CRACKER JACK 26U ET

DVOR ROUDY LC MAGGIE 558C ET

SHF MAGGIE R117 W46

TH 223 71I VICTOR 755T

TH 16G 20N GEMINI 89T

REMITALL ONLINE 122L

HH MISS ADV 786G 1ET

NJW 1Y WRANGLER 19D

CRR D03 VIOLET 349

SHF RIB EYE M326 R117

SHR BOOMER P606 R05

ACT. BW	ADJ. WW		WW RATIO		ADJ. YW	YW RATIO		DAM PRODUCTION		L EYE PIGMENT		R EYE PIGMENT	
96	677		124		1002	105		3 @ 129		0		60	
CED	BW	WW	YW	SC	MILK	M&G	MCW	FAT	REA	MARB	BMI	CHB	
-0.5	5.6	65	91	0.4	23	56	102	0.041	0.34	0.02	308	83	

Wow, this guy rang the bell at weaning with a 124 ratio and what's even crazier is he pulled his mother's average down! She is our newest Dam of Distinction and will enter the donor pen this spring. She is also going to have her 4th calf this spring and we have only ever used 4 units of semen.

- He recorded a 105 YW, 109 REA, and 101 IMF ratios.
- If that's not enough he is top 10% weaning weight, teat size, and udder suspension.

**558C | DAM OF LOT 6 | MATERNAL SISTER TO LOTS 3-5****556 | MATERNAL BROTHER TO LOTS 3-5****817 | FULL SISTER TO LOTS 3-5**



LOT 4



LOT 5



Lot 7

- The calving ease brother of this flush, ranking in the top 10% calving ease direct and calving ease maternal. Two traits that rarely align. Also backed by a top quarter status for birth weight.
- Not only are those daughters going to calve easy, they are going to be low input oriented with a trait leading dry matter intake.

Lot 8

- 105 weaning ratio and 107 IMF ratio.
- Extremely balanced EPD profile with genomic preference for dry matter intake and udder quality.

Lot 9

- The yield-based brother of this trio with ultrasound values of 116 ribeye ratio and a 48 ratio for back fat thickness. This is validated by a top 25% ranking for \$CHB.
- Considerably above average for both calving ease values, dry matter input, teat size, udder suspension, and CHB Index.

7 ROUDY 554 20R ZEN 810F ET

AHA 43910909 DOB: 2/25/2018 TATTOO:810 POLLED

TH 89T 755T VICTOR 468Z
DVOR 468Z 159P ZENNER 554 ET
STAR TCF ADV ORALEE 159P ET

PW VICTOR BOOMER P606
JDH MS P606 BOOMER 20R
JDH MS ONLINE 13N

TH 223 71I VICTOR 755T
TH 16G 20N GEMINI 89T
REMITALL ONLINE 122L
HH MISS ADV 786G 1ET
REMITALL BOOMER 46B
PW VICTORIA 964 8114
REMITALL ONLINE 122L
JDH MS 4B EXCEED 23G

ACT. BW		ADJ. WW		WW RATIO		ADJ. YW		YW RATIO		DAM PRODUCTION		L EYE PIGMENT		R EYE PIGMENT	
75		531		86		1027		89		22* @ 96		15		15	
CED	BW	WW	YW	SC	MILK	M&G	MCW	FAT	REA	MARB	BMI	CHB			
9.4	1.7	39	66	0	20	40	94	-0.009	0.4	0.01	299	91			

8 ROUDY 554 20R ZEN 852F ET

AHA 43910910 DOB: 3/3/2018 TATTOO:852 POLLED

ACT. BW		ADJ. WW		WW RATIO		ADJ. YW		YW RATIO		DAM PRODUCTION		L EYE PIGMENT		R EYE PIGMENT	
96		633		105		1019		100		22* @ 96		0		0	
CED	BW	WW	YW	SC	MILK	M&G	MCW	FAT	REA	MARB	BMI	CHB			
3.6	3.5	47	71	0.7	20	44	94	0.031	0.41	-0.06	292	86			

9 ROUDY 554 20R ZEN 8110F ET

AHA 43911027 DOB: 3/10/2018 TATTOO:8110 HORNED

ACT. BW		ADJ. WW		WW RATIO		ADJ. YW		YW RATIO		DAM PRODUCTION		L EYE PIGMENT		R EYE PIGMENT	
ET		623		ET		1017		ET		22* @ 96		0		0	
CED	BW	WW	YW	SC	MILK	M&G	MCW	FAT	REA	MARB	BMI	CHB			
4.1	5	47	82	0.6	20	44	94	0.001	0.45	-0.09	305	107			

If you have spent any time in the Hereford breed the mother of these bulls needs no introduction. 20R has made a huge impact on every program she has touched, and has to be one of the most prolific cows ever in the breed. Yeah that's 22 calves recording weaning ratios.



LOT 10



503 | MATERNAL BROTHER TO LOT 10



LOT 11

10 DVOR 554 152 ZEN 825F

AHA 43910192 DOB: 2/28/2018 TATTOO:825 SCURRED

TH 89T 755T VICTOR 468Z
DVOR 468Z 159P ZENNER 554 ET
 STAR TCF ADV ORALEE 159P ET

BKR SANDERSON 73C 60S
4-C 609 LADY SANDERSON 152
 JYF MISS MIXER 9N 609

TH 223 71I VICTOR 755T
 TH 16G 20N GEMINI 89T
 REMITALL ONLINE 122L
 HH MISS ADV 786G 1ET
 RF POSTIVE PLUS 73C
 BKR VICTORIA 262D 4J
 LJR 73C NILES 9N
 JYF MISS MIXER G824 0205

PARENT DATA													
ACT. BW		ADJ. WW		WW RATIO		ADJ. YW		YW RATIO		DAM PRODUCTION		L EYE PIGMENT	R EYE PIGMENT
97		593		107		1143		107		5 @ 106		100	100
CED	BW	WW	YW	SC	MILK	M&G	MCW	FAT	REA	MARB	BMI	CHB	
-0.2	3.9	68	112	0.3	23	57	93	0.061	0.37	-0.01	226	97	

- Ratioed 107 at weaning and yearling, along with a 104 REA.
- Out of a super productive cow family with some serious longevity. We just culled his great grandmother last year and solely due to age.
- Mother is a DOD with 5 calves at 105.8 weaning ratio, and two daughters with 5 calves at 110.8 nursing ratio.
- High performance, big spread bull ranking in the top 5% for both weaning and yearling weights.

11 DVOR 554 5223 ZEN 801

AHA 43905951 DOB: 2/19/2018 TATTOO:801 HORNED

TH 89T 755T VICTOR 468Z
DVOR 468Z 159P ZENNER 554 ET
 STAR TCF ADV ORALEE 159P ET

GV CMR FUTURE DOM Y133 ET
DVOR Y133 051 LADY BELLE 5223C
 4-C MISS SANDERSON 757 051

TH 223 71I VICTOR 755T
 TH 16G 20N GEMINI 89T
 REMITALL ONLINE 122L
 HH MISS ADV 786G 1ET
 STAR BRIGHT FUTURE 533P ET
 CJH L1 DOMINETTE 0064
 BKR SANDERSON 73C 60S
 4C 206 MISS DAYTONA 757

DAM PRODUCTION															
ACT. BW		ADJ. WW		WW RATIO		ADJ. YW		YW RATIO		DAM PRODUCTION		L EYE PIGMENT		R EYE PIGMENT	
78		610		110		1111		104		2 @ 105.5		20		10	
CED	BW	WW	YW	SC	MILK	M&G	MCW	FAT	REA	MARB	BMI	CHB			
0.1	3.7	55	90	0.5	22	49	94	0.011	0.41	0.01	225	102			

- 110 weaning, 104 yearling, 100 REA, and 117 IMF ratios.
- Cow has weaned two calves with a 105.5 ratio.
- Above average growth and end product indicators.



LOT 12



7261E | FULL SISTER TO LOT 12



LOT 13



MPH SCOTTYS SANDI K215 N457

12 ROUDY 554 4230 ZEN 8130F

AHA 43911052 DOB: 3/12/2018 TATTOO:8130 POLLED

TH 89T 755T VICTOR 468Z
DVOR 468Z 159P ZENNER 554 ET
STAR TCF ADV ORALEE 159P ET

LCX HE'S A TRUCK 104 ET
ROUDY 104 1971 MISS LIZZY 4230
RV RED LADY 1971

NEW 10/02/2017 ADVANCE 10/17															
ACT. BW		ADJ. WW		WW RATIO		ADJ. YW		YW RATIO		DAM PRODUCTION		LEYE PIGMENT		REYE PIGMENT	
92		698		128		1048		110		2 @ 116.5		0		0	
CED		BW	WW	YW	SC	MILK	M&G	MCW	FAT	REA	MARB	BMI	CHB		
2.1		3.5	48	81	0.3	21	44	114	0.041	0.1	0.03	186	68		

- 128 weaning, 110 yearling, 114 at both REA and Marbling ratios. Hard combination to get.
- Mother has really been productive on her two calves 116.5 at weaning, 101.5 at a year, 105.5 REA, and 115.5 IMF.
- If that's not enough, look at his sister that was a feature in our first female sale.
- Genomics did not like this bull, but I think if you look at the production records both he and his mother have posted combined with his phenotype you will understand why he has been a favorite around here.

13 DVOR 554 N457 ZEN 8238F

AHA 43913702 DOB: 3/30/2018 TATTOO:8238 HOMO POLLED

TH 89T 755T VICTOR 468Z
DVOR 468Z 159P ZENNER 554 ET
STAR TCF ADV ORALEE 159P ET

TMR SANDERSON K215
MPH SCOTTYS SANDI K215 N457
NNF MADDIE W249 Y681

FOR ALL BREEDS OF COWS															
ACT. BW		ADJ. WW		WW RATIO		ADJ. YW		YW RATIO		DAM PRODUCTION		LEYE PIGMENT		REYE PIGMENT	
94		664		121		1094		115		3 @ 117		25		100	
CED		BW	WW	YW	SC	MILK	M&G	MCW	FAT	REA	MARB	BMI	CHB		
3.4		3.5	66	107	1	24	58	98	0.051	0.48	0.12	287	107		

- 121 weaning, 115 at a year, 113 REA ratios.
- One of our best young cows with 3 calves at 117 weaning, 107.5 yearling and REA, and 119 IMF ratios. Her daughters first calved had a nursing ratio of 116.
- Big growth and end point genomic indicators tied with top quarter udder quality

14

DVOR 554 119 ZEN 8111F

AHA 43911028 DOB: 3/10/2018 TATTOO:8111 POLLED

TH 89T 755T VICTOR 468Z

DVOR 468Z 159P ZENNER 554 ET

STAR TCF ADV ORALEE 159P ET

BKR SANDERSON 73C 60S

TMR 60S SANDI K119

TMR PRINCESS TYLER T860

TH 223 71I VICTOR 755T

TH 16G 20N GEMINI 89T

REMITALL ONLINE 122L

HH MISS ADV 786G 1ET

RF POSTIVE PLUS 73C

BKR VICTORIA 262D 4J

TMR TYLER'S PRIDE P606 P450

DRF H454 VICKY H18

ACT. BW		ADJ. WW		WW RATIO		ADJ. YW		YW RATIO		DAM PRODUCTION		L EYE PIGMENT		REYE PIGMENT	
82		603		109		894		94		6 @ 102		100		100	
CED	BW	WW	YW	SC	MILK	M&G	MCW	FAT	REA	MARB	BMI	CHB			
13.3	0.1	46	63	0.4	21	44	89	0.041	0.29	0.12	261	85			

- Great early growth sire posting an 87 birth ratio making it to 109 ratio by weaning. With carcass merit of 103 REA and 123 Marbling ratios.
- A Generational calving ease sire ranking in the top 5% of the breed for Birth weight and both calving ease values.

**LOT 14**

15

DVOR 554 S499 ZEN 8127F

AHA 43911049 DOB: 3/12/2018 TATTOO:8127 POLLED

TH 89T 755T VICTOR 468Z

DVOR 468Z 159P ZENNER 554 ET

STAR TCF ADV ORALEE 159P ET

TH 89T 755T VICTOR 468Z

DVOR 468Z 006 BERTA 499

DVOR L18 MISS EXCEL 006 ET

TH 223 71I VICTOR 755T

TH 16G 20N GEMINI 89T

REMITALL ONLINE 122L

HH MISS ADV 786G 1ET

TH 223 71I VICTOR 755T

TH 16G 20N GEMINI 89T

GO EXCEL L18

KSU MISS EXPLOSION 252 ET

ACT. BW		ADJ. WW		WW RATIO		ADJ. YW		YW RATIO		DAM PRODUCTION		L EYE PIGMENT		REYE PIGMENT	
90		568		102		947		99		2 @ 100*		50		0	
CED	BW	WW	YW	SC	MILK	M&G	MCW	FAT	REA	MARB	BMI	CHB			
2.5	3.4	50	80	0.9	20	45	106	0.031	0.12	0.04	222	79			

- Supreme udder quality combined with a 102 weaning ratio.

**DVOR 468Z 006 BERTA 499**

16

DVOR 554 912 ZEN 8258F

AHA 43913992 DOB: 4/6/2018 TATTOO:8258 POLLED

TH 89T 755T VICTOR 468Z

DVOR 468Z 159P ZENNER 554 ET

STAR TCF ADV ORALEE 159P ET

PW VICTOR BOOMER P606

4-C P606 BOOMTOWN LADY 912 ET

4CMS GEORGIA PROPHETC511

TH 223 71I VICTOR 755T

TH 16G 20N GEMINI 89T

REMITALL ONLINE 122L

HH MISS ADV 786G 1ET

REMITALL BOOMER 46B

PW VICTORIA 964 8114

BIG T CURIOUS GEORGE Z7

TMR PROPHETESS P909

PARTIAL RESULTS													
ACT. BW		ADJ. WW		WW RATIO		ADJ. YW		YW RATIO		DAM PRODUCTION		L EYE PIGMENT	R EYE PIGMENT
90		592		107		909		95		5 @ 104.4*		75	10
CED	BW	WW	YW	SC	MILK	M&G	MCW	FAT	REA	MARB	BMI	CHB	
-3.1	4.3	55	81	0.1	23	50	90	0.001	0.57	0.06	335	103	

- A 142 IMF ratio and he didn't have a small eye. He still ratioed 101 for REA.
- 107 Weaning ratio. His mother boasts a 104.4 nursing ratio on 5 calves.
- Sure wish we had taken a photo of this cow when she was younger. Rock solid pedigree.
- Low input and quality udder indicators.



REFERENCE SIRE

TH 89T 755T VICTOR 468Z

AHA 43279203 DOB: 03/10/2012 TATTOO:468Z POLLED BW 83

DRF JWR PRINCE VICTOR 711
TH 223 711 VICTOR 755T
KBCR 19D DOMINETTE 223

NPH 20X SPARTAN 20N
TH 16G 20N GEMINI 89T
TEE-JAY 707B GEMINI 16G ET

HRP THM VICTOR 109W 9329
RHF 964 VICTRA 4057
NJW 1Y WRANGLER 19D
KBCR 631 DOMINETTE 066
REMITALL KEYNOTE 20X
WGF RACHAEL 50C {DOD}
KLONDIKE 28U 707B
KILMRLE 452M GEMINI R261

CED	BW	WW	YW	SC	MILK	M&G	MCW	FAT	REA	MARB	BMI	CHB
-0.6	4.9	46	69	0.5	17	38	103	0.005	0.52	0.15	318	107



VICTOR 468Z

17

DVOR 468Z 159P VICTOR 834F ET

AHA 43910224 DOB: 3/2/2018 TATTOO:834 POLLED

TH 223 711 VICTOR 755T
TH 89T 755T VICTOR 468Z
TH 16G 20N GEMINI 89T

REMITALL ONLINE 122L
STAR TCF ADV ORALEE 159P ET
HH MISS ADV 786G 1ET

DRF JWR PRINCE VICTOR 711
KBCR 19D DOMINETTE 223
NPH 20X SPARTAN 20N
TEE-JAY 707B GEMINI 16G ET
REMITALL EMBRACER 8E{HYF}
REMITALL CATALINA 24H
CL 1 DOMINO 500E
HH MISS ADVANCE 251B

TOP FIVE ADVANCE LEVELS												
ACT. BW	ADJ. WW		WW RATIO		ADJ. YW	YW RATIO		DAM PRODUCTION		L EYE PIGMENT	R EYE PIGMENT	
ET	600		ET		1011	ET		7 @ 102		10	50	
CED	BW	WW	YW	SC	MILK	M&G	MCW	FAT	REA	MARB	BMI	CHB
6.2	2.6	46	71	0.1	19	42	92	0.051	0.24	0.15	218	81

We debated whether to start the catalog with these bulls, but thought you would fully understand why we went back and repeated this mating by the time you got here. 159P has become a household name around here, and if you look down the page at her progeny it easy to see why. She also has a nursing ratio of 102.1 and a yearling ratio of 104.5 on her calves.

Lot 17

- Balanced genetic profile with a preference for calving ease, low maintenance, high quality udders, and marbling.
- 114 IMF ratio.

Lot 18

- Ranks in the top 10% for Fat, Teat size, and Dry matter intake.
- Top 20% for Ribeye Area and \$CHB.

Lot 19

- 117 IMF ratio.

Lot 20

- 110 Ribeye Area ratio.
- Above average Calving ease, with top third growth, dry matter intake, udder predictions, carcass weight, and ribeye area.
- Top 5% \$CHB of \$122.

18

DVOR 468Z 159P VICTOR 830 ET

AHA 43910203 DOB: 3/1/2018 TATTOO:830 HOMO POLLED

ACT. BW	ADJ. WW		WW RATIO		ADJ. YW	YW RATIO		DAM PRODUCTION		L EYE PIGMENT		R EYE PIGMENT	
ET	620		ET		1086	ET		7 @ 102		0		0	
CED	BW	WW	YW	SC	MILK	M&G	MCW	FAT	REA	MARB	BMI	CHB	
-2	4.8	44	75	0.8	19	41	92	-0.049	0.56	-0.02	238	113	

19

DVOR 468Z 159P VICTOR 842F ET

AHA 43914094 DOB: 3/2/2018 TATTOO:842 HORNED

ACT. BW		ADJ. WW		WW RATIO		ADJ. YW		YW RATIO		DAM PRODUCTION		L EYE PIGMENT		R EYE PIGMENT	
ET		593		ET		1122		ET		7 @ 102		40		80	
CED	BW	WW	YW	SC	MILK	M&G	MCW	FAT	REA	MARB	BMI	CHB			
-2.2	5	45	77	0.5	19	42	92	0.001	0.24	0.19	228	92			

20

DVOR 468Z 159P VICTOR 809 ET

AHA 43910166 DOB: 2/25/2018 TATTOO:809 HOMO POLLED

ACT. BW		ADJ. WW		WW RATIO		ADJ. YW		YW RATIO		DAM PRODUCTION		L EYE PIGMENT		R EYE PIGMENT	
93		615		ET		1157		ET		7 @ 102		60		100	
CED	BW	WW	YW	SC	MILK	M&G	MCW	FAT	REA	MARB	BMI	CHB			
3.3	4	57	92	0.8	19	48	92	0.001	0.62	-0.09	243	122			



STAR TCF ADV ORALEE 159P ET



FULL SIBS TO LOTS 17-20





LOT 21



ROUDY DVOR 26U 0705 BABS 457 ET

21 ROUDY 468Z 457 VICTOR 864F

AHA 43910628 DOB: 3/4/2018 TATTOO:864 POLLED

TH 223 71I VICTOR 755T
TH 89T 755T VICTOR 468Z
TH 16G 20N GEMINI 89T

AH JDH CRACKER JACK 26U ET
ROUDY DVOR 26U 0705 BABS 457ET
RV MS RED DOG 0705

DRF JWR PRINCE VICTOR 71I
KBCR 19D DOMINETTE 223
NPH 20X SPARTAN 20N
TEE-JAY 707B GEMINI 16G ET

NJW 1Y WRANGLER 19D
CRR D03 VIOLET 349
FFF MOELERS RED DOG 711S
RV HARRIET 7205

Breeders' Choice													
ACT. BW		ADJ. WW		WW RATIO		ADJ. YW		YW RATIO		DAM PRODUCTION		L EYE PIGMENT	R EYE PIGMENT
82		506		89		800		84		NA		100	100
CED	BW	WW	YW	SC	MILK	M&G	MCW	FAT	REA	MARB	BMI	CHB	
0.5	2.9	41	56	0.4	18	39	85	0.051	0.17	0.19	234	79	

- 129 IMF ratio, boosting him to the top 15% of the breed.
- His sisters post a 103 nursing ratio.
- Breed leading Dry Matter Input combined with moderate birth, and above average cow weights and udder quality.

22 DVOR 468Z 372 VICTOR 855F

AHA 43910328 DOB: 3/4/2018 TATTOO:855 HORNED

TH 223 71I VICTOR 755T
TH 89T 755T VICTOR 468Z
TH 16G 20N GEMINI 89T

GV CMR FUTURE DOM Y133 ET
4-C X102 GLORIA Y133 372
TF ADVANTAGEOUS S109 X102 ET

DRF JWR PRINCE VICTOR 71I
KBCR 19D DOMINETTE 223
NPH 20X SPARTAN 20N
TEE-JAY 707B GEMINI 16G ET

STAR BRIGHT FUTURE 533P ET
CJH L1 DOMINETTE 0064
GO 3196 ADVANCE S109
SB 122L GLORIA 10S ET

US BEEF CATTLE															
ACT. BW		ADJ. WW		WW RATIO		ADJ. YW		YW RATIO		DAM PRODUCTION		L EYE PIGMENT		R EYE PIGMENT	
87		621		113		991		104		4 @ 110		0		100	
CED	BW	WW	YW	SC	MILK	M&G	MCW	FAT	REA	MARB	BMI	CHB			
8.2	2.9	53	84	0.7	23	50	99	0.021	0.56	-0.03	241	117			

- Ideal performance ratios 95 at birth, 113 at weaning, 104 at yearling, and a 108 REA.
- Undoubtedly out of the most productive cow on the place. She made Dam of Distinction on her first 3 calves. Well, that's not entirely true. She actually had one too young to count and still rebred and had another who was the top weaning calf before she was two. I really don't know why we haven't flushed this cow. Her calves' ratios on 4, 92.5 birth, 109.8 weaning, and 105 yearling.
- Top 15% calving ease, Carcass weight, REA, and \$CHB.



673 | 15/16 SIBLING TO LOT 22

23

ROUDY 468Z R418 VICTOR 876F

AHA 43910643 DOB: 3/6/2018 TATTOO:876 SCURRED

TH 223 71I VICTOR 755T

TH 89T 755T VICTOR 468Z

TH 16G 20N GEMINI 89T

KB RB BY THE HOUR 211 B765

TMR MISS ROSSIE B R418

TMR P606 MISS WORLD CLASS W003

DRF JWR PRINCE VICTOR 71I

KBCR 19D DOMINETTE 223

NPH 20X SPARTAN 20N

TEE-JAY 707B GEMINI 16G ET

CRR ABOUT TIME 743

WPHF KB ELIZABETH 60C 211

DR WORLD CLASS 517 10H

TMR P606 MISS INAUGURATOR P457

ACT. BW		ADJ. WW		WW RATIO		ADJ. YW		YW RATIO		DAM PRODUCTION		L EYE PIGMENT		REYE PIGMENT	
90		502		83		798.2		84		3 @ 90		0		90	
CED	BW	WW	YW	SC	MILK	M&G	MCW	FAT	REA	MARB	BMI	CHB			
2.1	3.1	48	65	0.5	20	44	89	0.031	0.4	0	332	113			

- Breed leading indicators for cow maintenance, udder suspension, and teat size.
- Top 20% \$CHB.

**TMR MISS ROSSIE B R418**

24

DVOR 468Z 013 VICTOR 8153F

AHA 43911950 DOB: 3/14/2018 TATTOO:8153 SCURRED

TH 223 71I VICTOR 755T

TH 89T 755T VICTOR 468Z

TH 16G 20N GEMINI 89T

TMR TYLER'S PRIDE P606 P450

TMR PRINCESS TYLER T013

TMR PRINCESS 09L L568

DRF JWR PRINCE VICTOR 71I

KBCR 19D DOMINETTE 223

NPH 20X SPARTAN 20N

TEE-JAY 707B GEMINI 16G ET

PW VICTOR BOOMER P606

TMR PRINCESS COON EYES C217

LLL PRINCE 09L

DRF H454 VICKY H18

BEEF MEAT FROM THE													
ACT. BW		ADJ. WW		WW RATIO		ADJ. YW		YW RATIO		DAM PRODUCTION		L EYE PIGMENT	REYE PIGMENT
98		573		103		896.92		94		6 @ 90		100	100
CED	BW	WW	YW	SC	MILK	M&G	MCW	FAT	REA	MARB	BMI	CHB	
-3.7	3.7	44	65	0.4	16	38	91	0.011	0.33	0.12	263	88	

- Ratios of 103 weaning, 105 Ribeye, and 116 IMF.
- Top 5% for cow maintenance.



REFERENCE SIRE

UPS CATAPULT 5819 ET

AHA 43655664 DOB: 10/01/2015 TATTOO:5819 POLLED

TH 122 71I VICTOR 719T
CRR 719 CATAPULT 109
CRR 4037 ECLIPSE 808

DRF JWR PRINCE VICTOR 71I
TH 223 71I DOMINETTE 404X ET
KBCR 19D DOMINETTE 223

DRF JWR PRINCE VICTOR 71I RHF
KBCR 19D DOMINETTE 122
THM DURANGO 4037
CRR 420 ECLIPSE 688
HRP THM VICTOR 109W 9329
RHF 964 VICTRA 4057
NJW 1Y WRANGLER 19D
KBCR 631 DOMINETTE 066

CED	BW	WW	YW	SC	MILK	M&G	MCW	FAT	REA	MARB	BMI	CHB
+0.9	4.0	54	86	0.6	16	43	120	0.001	0.46	0.02	263	96



25

DVOR 5819 527 CATAPULT 808

AHA 43910165 DOB: 2/25/2018 TATTOO:808 SCURRED

CRR 719 CATAPULT 109
UPS CATAPULT 5819 ET
TH 223 71I DOMINETTE 404X ET

TH 89T 755T VICTOR 468Z
DVOR 468Z 159P CLASSY 527ET
STAR TCF ADV ORALEE 159P ET

TH 122 71I VICTOR 719T
CRR 4037 ECLIPSE 808
DRF JWR PRINCE VICTOR 71I
KBCR 19D DOMINETTE 223
TH 223 71I VICTOR 755T
TH 16G 20N GEMINI 89T
REMITALL ONLINE 122L
HH MISS ADV 786G 1ET

ACT. BW		ADJ. WW		WW RATIO		ADJ. YW		YW RATIO		DAM PRODUCTION		L EYE PIGMENT		R EYE PIGMENT	
84		521		92		973		89		2 @ 96.5		50		40	
CED	BW	WW	YW	SC	MILK	M&G	MCW	FAT	REA	MARB	BMI	CHB			
7.8	1.3	43	69	1.3	24	46	94	-0.049	0.21	0.15	305	101			

- This bull is the donor 527's first calf, with 159P, 786G, 404X, and 223 in this pedigree it takes the guess work out.
- Top 25% for calving ease, birth weight, cow intake, scrotal, maternal calving ease, udder quality, fat, and marbling.



DVOR 468Z 159P CLASSY 527 ET

26

DVOR 5819 W46 CATAPULT 8210F

AHA 43913655 DOB: 3/23/2018 TATTOO:8210 SCURRED

CRR 719 CATAPULT 109
UPS CATAPULT 5819 ET
TH 223 71I DOMINETTE 404X ET

SHF RIB EYE M326 R117
SHF MAGGIE R117 W46
SHR BOOMER P606 R05

TH 122 71I VICTOR 719T
CRR 4037 ECLIPSE 808
DRF JWR PRINCE VICTOR 71I
KBCR 19D DOMINETTE 223
KCF BENNETT 3008 M326
HVH MISS HUDSON 83K 8M
PW VICTOR BOOMER P606
SHF TARGET 634E N07

ACT. BW		ADJ. WW		WW RATIO		ADJ. YW		YW RATIO		DAM PRODUCTION		L EYE PIGMENT		R EYE PIGMENT	
105		575		103		940.04		99		7 @ 100		100		100	
CED	BW	WW	YW	SC	MILK	M&G	MCW	FAT	REA	MARB	BMI	CHB			
6.1	5.2	62	97	1	27	58	86	-0.039	0.52	-0.06	453	122			

- Natural calf out of Maggie that posts 103 weaning ratio, and brother to lots 3-5.
- Ranks above average for all but two of the 20 traits, with 13 of those being above the top third of the breed.
- All economic indices and profit indicators being in the top 5% of the breed; a very hard combination to find.



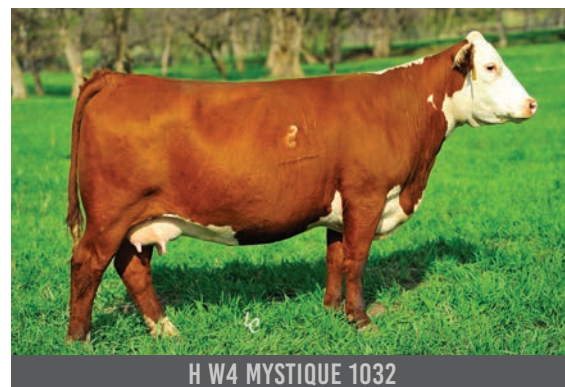
SHF MAGGIE R117 W46



LOT 27



LOT 28



H W4 MYSTIQUE 1032

27 DVOR 502 5819 CATAPULT 846F

AHA 43910303 DOB: 3/2/2018 TATT00:846 HOMO POLLED

CRR 719 CATAPULT 109
UPS CATAPULT 5819 ET
TH 223 71I DOMINETTE 404X ET

TH 89T 755T VICTOR 468Z
DVOR 468Z 350 VICKY 502C
DVOR 1009 159P MISS KAHUNA 350

CHARACTERISTICS OF THE LACTATING DAIRY COW															
ACT. BW		ADJ. WW		WW RATIO		ADJ. YW		YW RATIO		DAM PRODUCTION		L EYE PIGMENT		R EYE PIGMENT	
92		562		100		984.11		103		3 @ 118		95		100	
CED		BW	WW	YW	SC	MILK	M&G	MCW	FAT	REA	MARB	BMI	CHB		
3.1		4.5	51	82	0.8	28	53	102	0.001	0.22	-0.07	293	100		

- Ratios of 100 at weaning, 103 yearling, and 118 IMF.
- Dam has 3 calves at 118 weaning ratio and 104.5 yearling.
- Very balanced numbers with a preference for calving ease, inputs, milk, and back fat.

28 DVOR 5819 1032 CATAPULT 8114F

AHA 43911031 DOB: 3/11/2018 TATT00:8114 POLLED

CRR 719 CATAPULT 109
UPS CATAPULT 5819 ET
TH 223 71I DOMINETTE 404X ET

AH JDH CRACKER JACK 26U ET
H W4 MYSTIQUE 1032
K&B SULTANA 7151T

RED WING BREEDERS															
ACT. BW		ADJ. WW		WW RATIO		ADJ. YW		YW RATIO		DAM PRODUCTION		L EYE PIGMENT		R EYE PIGMENT	
70		522		92		938.49		98		6 @ 103		10		40	
CED		BW	WW	YW	SC	MILK	M&G	MCW	FAT	REA	MARB	BMI	CHB		
11.6		0	43	75	1.1	27	49	85	0.001	0.18	0.09	343	107		

- This is 1032's natural calf, maternal brother to lots 1 & 2.
- A real ultrasound gem with a 69 fat, 101 REA, and 100 IMF ratios.
- A real heifer bull prospect with double digit calving ease and trait leading birth weight.
- Combined with low cow input increased fertility, milk, and udders.



LOT 29



DVOR 0139 2171 MISS RED 550C



LOT 30



DVOR 468Z 906 LADY BERRY 648 ET

29 DVOR 2025 550 SENSATION 886F

AHA 43910672 DOB: 3/7/2018 TATTOO:886 HORNED

CHURCHILL SENSATION 028X
UPS SENSATION 2025
UPS MISS BRUTUS 0147

UPS DOMINO 3027
CHURCHILL LADY 7202T ET
UPS BRUTUS
UPS MISS DOMINO 5677

TG RED DIAMOND 0139
DVOR 0139 2171 MISS RED 550C
DVOR 665 0134 MISS DOMINO 2171

CTY RED DIAMOND 6628S
G MS RAPTURE 835
KB L1 DOMINO 665
DVOR 621 MISS RIBSTONE 0134

ACT. BW		ADJ. WW		WW RATIO		ADJ. YW		YW RATIO		DAM PRODUCTION		L EYE PIGMENT		REYE PIGMENT	
97		553		99		940		99		2 @ 96.5		0		100	
CED	BW	WW	YW	SC	MILK	M&G	MCW	FAT	REA	MARB	BMI	CHB			
1.1	2.3	41	74	1.6	30	50	81	0.011	0.07	0.1	218	65			

- His sire's daughters post a nursing ratio of 103.4 on twenty calves.
- Moderate birth, big scrotaled, increased milk with superior udder quality, and high marbling sire has turned heads of visitors.

30 DVOR 665 648 DOMINO 812F

AHA 43910169 DOB: 2/26/2018 TATTOO:812 SSCURRED

CL 1 DOMINO 3138N 1ET
KB L1 DOMINO 665
MONTANA MISS 466P ET

CL 1 DOMINO 9126J 1ET
CL 1 DOMINETTE 825H
HH ADVANCE 836H(DLF, HYF, IEC)
MONTANA MISS 8119 1ET

TH 89T 755T VICTOR 468Z
DVOR 468Z 906 LADY BERRY 648ET
4-C 780 ON STRAWBERRY LINE 906

TH 223 71I VICTOR 755T
TH 166 20N GEMINI 89T
REMITALL ONLINE 122L
ESBDRF STRAWBRY WINE 780

ACT. BW		ADJ. WW		WW RATIO		ADJ. YW		YW RATIO		DAM PRODUCTION		L EYE PIGMENT		R EYE PIGMENT	
81		569		102		1091		102		2 @ 103		100		100	
CED	BW	WW	YW	SC	MILK	M&G	MCW	FAT	REA	MARB	BMI	CHB			
-1.2	3.7	59	96	0.6	18	47	100	-0.029	0.44	0.04	242	118			

- This first calf out of the donor 648, cleared the individual hurdles of 96 ratio at birth with a 102 ratio at both weaning and yearling, and 102 Ribeye.
- This is a big spread son of the immortal 665, from moderate birth to near triple digit yearling.



LOT 31



7111 | MATERNAL BROTHER TO LOT 31



LOT 32



7113 | MATERNAL SISTER TO LOT 32

31 DVOR 124C 385 RUMBLER 8164F

AHA 43913452 DOB: 3/16/2018 TATTOO:8164 POLLED

H DIMAGGIO 2094 ET
JDH AH DIMAGGIO RUMBLER 124C
AH MS 25L RUMBLER 19Z

KJ HVH 33N REDEEM 485T ET
HH MISS ADVANCE 5139R ET
BAR JZ RUMBLE 525X
AH JDH MS 25L WRANGLER 34X ET

BOYD STOUT 1094 ET
DVOR 1094 1172 MISS STOUT 385
DVOR 665 939 MISS DOMINO 1172

BOYD WORLDWIDE 9050 ET
SSF P606 MS VICTOR 803
KB L1 DOMINO 665
DVOR 219 MISS DOMINO 939

DAM 210 AND 215 DAMS														
ACT. BW	ADJ. WW		WW RATIO		ADJ. YW		YW RATIO		DAM PRODUCTION		L EYE PIGMENT		R EYE PIGMENT	
89	611		111		1020		107		5 @ 107.4		100		100	
CED	BW	WW	YW	SC	MILK	M&G	MCW	FAT	REA	MARB	BMI	CHB		
2.2	2.8	61	96	1	27	58	78	0.031	0.46	0.05	334	98		

- Boasts a 96 birth, 111 weaning, 107 yearling, and 110 IMF ratios.
- Mother has a 107.4 nursing ratio of 5 calves.
- Above average for 16 of the 20 traits.

32 DVOR 1094 B256 STOUT 8181F

AHA 43913468 DOB: 3/18/2018 TATTOO:8181 HORNED

BOYD WORLDWIDE 9050 ET
BOYD STOUT 1094 ET
SSF P606 MS VICTOR 803

SHF RIB EYE M326 R117
MSU TCF RACHAEL 22S ET
PW VICTOR BOOMER P606
MPH LADY COON EYES C330

KB RB LINER 122L ET B631
TMR NIKKI LINER B256
TMR MISS WORLD CLASS W810

REMITALL ONLINE 122L
KB WPHF JORDACHE 19D 072
DR WORLD CLASS 517 10H
TMR VICTORS GAL 407 V876

ACT. BW		ADJ. WW		WW RATIO		ADJ. YW		YW RATIO		DAM PRODUCTION		L EYE PIGMENT		R EYE PIGMENT	
90		650		119		953		100		4 @ 108		0		100	
CED	BW	WW	YW	SC	MILK	M&G	MCW	FAT	REA	MARB	BMI	CHB			
-0.5	3.7	53	81	0.2	25	52	80	-0.009	0.57	0.19	373	96			

- High preforming ratios of 97 at birth, 119 at weaning, 100 at a year, and 101 Ribeye area.
- Mother has 4 calves at 107.8 weaning and 102.3 yearling ratios.
- Ranks in the top 20% for 3 of 4 of the carcass predictors.

REFERENCE SIRE

DVOR 1094 1127 BAJA 427

AHA 43482604 DOB: 03/04/2014 TATTOO:427 POLLED BW 70

BOYD WORLDWIDE 9050 ET
BOYD STOUT 1094 ET
SSF P606 MS VICTOR 803

SHF RIB EYE M326 R117
MSU TCF RACHAEL 22S ET
PW VICTOR BOOMER P606
MPH LADY COON EYES C330

G DOMINO 442
DVOR 442 575 MISS DOMINO 1127
DVOR MISS DOMINO 575

L1 DOMINO 0091
L1 DOMINETTE 9987
K L1 ADVANCER 219
DVOR MISS DOMINO 306 {DOD}

CED	BW	WW	YW	SC	MILK	M&G	MCW	FAT	REA	MARB	BMI	CHB
5.5	2.2	60	77	0.9	22	49	69	-0.025	0.31	0.25	318	80



33

DVOR 427 6126 BAJA 841F

AHA 43910286 DOB: 3/2/2018 TATTOO:841 SCURRED

BOYD STOUT 1094 ET
DVOR 1094 1127 BAJA 427
DVOR 442 575 MISS DOMINO 1127

BOYD WORLDWIDE 9050 ET
SSF P606 MS VICTOR 803
G DOMINO 442
DVOR MISS DOMINO 575

KB L1 DOMINO 665
DVOR 665 4100 LADY DOMINO6126
DVOR 028X 253 BARBIE 4100

CL 1 DOMINO 3138N 1ET
MONTANA MISS 466P ET
CHURCHILL SENSATION 028X
PONCA 0145X DOMINETTE 253

ACT. BW		ADJ. WW		WW RATIO		ADJ. YW		YW RATIO		DAM PRODUCTION		LEYE PIGMENT		REYE PIGMENT	
87		601		108		1181		111		1 @ 106		100		100	
CED	BW	WW	YW	SC	MILK	M&G	MCW	FAT	REA	MARB	BMI	CHB			
6.7	0.8	53	90	1.8	27	54	64	0.011	0.18	0.17	269	68			

- 108 weaning, 111 yearling, and 118 IMF ratios.
- Sire posts a calf weaning ratio of 102.2, and his daughters have a 114.3 nursing ratio.
- This heifer bull prospect with above average growth, extreme scrotal, and impressive milk, udders, and marbling.



34

DVOR 427 603 BAJA 862F

AHA 43910625 DOB: 3/4/2018 TATTOO:862 SCURRED

BOYD STOUT 1094 ET
DVOR 1094 1127 BAJA 427
DVOR 442 575 MISS DOMINO 1127

BOYD WORLDWIDE 9050 ET
SSF P606 MS VICTOR 803
G DOMINO 442
DVOR MISS DOMINO 575

GV CMR FUTURE DOM Y133 ET
DVOR Y133 152 CAROLINA 603D
4-C 609 LADY SANDERSON 152

STAR BRIGHT FUTURE 533P ET
CJH L1 DOMINETTE 0064
BKR SANDERSON 73C 60S
JYF MISS MIXER 9N 609

DAM PRODUCTION															
ACT. BW		ADJ. WW		WW RATIO		ADJ. YW		YW RATIO		DAM PRODUCTION		LEYE PIGMENT		REYE PIGMENT	
80		722		133		1049		110		2 @ 124		30		100	
CED	BW	WW	YW	SC	MILK	M&G	MCW	FAT	REA	MARB	BMI	CHB			
3.7	2.2	67	95	0.3	26	60	92	0.021	0.23	0.09	257	83			

- What growth potential, starting at a 94 birth ratio and ballooning to a 133 weaning ratio and not slowing to a 110 yearling ratio and a 104 REA ratio.
- Cow has a 124 weaning ratio on 2 calves, and sire has a 102.2 weaning ratio means if you sell your calves like most the homework is done here. This is substantiated by his breed rank of top 5% for weaning.



4-C 059 MISS SADERS 275 | DAM OF LOT 36

REFERENCE SIRE

TH 89T 719T TAURUS 502Z

AHA 43273134 DOB: 04/16/2012 TATTOO:502Z POLLED BW 80

DRF JWR PRINCE VICTOR 71I
TH 122 71I VICTOR 719T
KBCR 19D DOMINETTE 122

NPH 20X SPARTAN 20N
TH 16G 20N GEMINI 89T
TEE-JAY 707B GEMINI 16G ET

HRP THM VICTOR 109W 9329
RHF 964 VICTRA 4057
NJW 1Y WRANGLER 19D
KBCR DOMINETTE 9112
REMITALL KEYNOTE 20X
WGF RACHAEL 50C {DOD}
KLONDIKE 28U 707B
KILMRLE 452M GEMINI R261

CED	BW	WW	YW	SC	MILK	M&G	MCW	FAT	REA	MARB	BMI	CHB
1.3	3.8	61	100	1.3	12	38	92	0.005	0.63	-0.02	408	116



TAURUS 502Z

35 DVOR 502 405 TAURUS 884F

AHA 43910671 DOB: 3/7/2018 TATTOO:884 HOMO POLLED

TH 122 71I VICTOR 719T
TH 89T 719T TAURUS 502Z
TH 16G 20N GEMINI 89T

BOYD MASTERPIECE 0220
H 0220 BELAMIE 405
H MISS WRANGLER Y06

DRF JWR PRINCE VICTOR 71I
KBCR 19D DOMINETTE 122
NPH 20X SPARTAN 20N
TEE-JAY 707B GEMINI 16G ET
SHF RIB EYE M326 R117
SSF P606 MS VICTOR 803
PWF RHF 25L WRANGLER 9001W
H MISS HEADLINER 665

ACT. BW	ADJ. WW	WW RATIO	ADJ. YW	YW RATIO	DAM PRODUCTION	L EYE PIGMENT	R EYE PIGMENT
100	605	109	997.67	105	3 @ 98	0	15

CED	BW	WW	YW	SC	MILK	M&G	MCW	FAT	REA	MARB	BMI	CHB
-3.5	5.6	64	104	1.2	14	45	88	0.001	0.6	-0.15	381	114

- Impressive ratios of 109 weaning, 105 yearling, 103 for both REA and IMF.
- Triple digit yearling weight, with top 10% values for weaning, yearling, carcass weight, and ribeye with increased fertility and udder quality.

36 DVOR 502Z 275 TAURUS 8106F

AHA 43911023 DOB: 3/10/2018 TATTOO:8106 HOMO POLLED

TH 122 71I VICTOR 719T
TH 89T 719T TAURUS 502Z
TH 16G 20N GEMINI 89T

DR JYF VICTOR P606 R10 ET
4-C 059 MISS SADERS 275
4-C 60S MS CARCASS 059

DRF JWR PRINCE VICTOR 71I
KBCR 19D DOMINETTE 122
NPH 20X SPARTAN 20N
TEE-JAY 707B GEMINI 16G ET
PW VICTOR BOOMER P606
FOF 3N SASSY GAL B33
BKR SANDERSON 73C 60S
JYF MISS MIXER 6824 0205

ACT. BW	ADJ. WW	WW RATIO	ADJ. YW	YW RATIO	DAM PRODUCTION	L EYE PIGMENT	R EYE PIGMENT
98	588	106	919.87	96	1 @ 106*	100	100

CED	BW	WW	YW	SC	MILK	M&G	MCW	FAT	REA	MARB	BMI	CHB
2.3	2.9	58	91	0.9	18	47	84	0.001	0.51	-0.12	340	111

- Weaning ratio of 106, along with a 101 REA and 69 Fat ratios.
- From a cow family with extreme longevity.
- Above the mean for calving ease, birth weight, scrotal, cow fertility, cow weight, and all three profit indices. Ranking in top 30% for both growth traits, carcass weight, fat, ribeye, and \$CHB.

37 DVOR 502Z 273 TAURUS 8134F

AHA 43911056 DOB: 3/13/2018 TATTOO:8134 POLLED

TH 122 71I VICTOR 719T
TH 89T 719T TAURUS 502Z
TH 16G 20N GEMINI 89T

DR JYF VICTOR P606 R10 ET
4-C 051 MISS SANDERSON 273
4-C MISS SANDERSON 757 051

DRF JWR PRINCE VICTOR 71I
KBCR 19D DOMINETTE 122
NPH 20X SPARTAN 20N
TEE-JAY 707B GEMINI 16G ET
PW VICTOR BOOMER P606
FOF 3N SASSY GAL B33
BKR SANDERSON 73C 60S
4C 206 MISS DAYTONA 757

ACT. BW	ADJ. WW	WW RATIO	ADJ. YW	YW RATIO	DAM PRODUCTION	L EYE PIGMENT	R EYE PIGMENT
80	597	108	932.22	98	5 @ 99.4	0	50

CED	BW	WW	YW	SC	MILK	M&G	MCW	FAT	REA	MARB	BMI	CHB
13	0.2	52	76	0.8	15	41	66	0.001	0.61	0.06	340	96

- This calving ease prospect is validated by genomics as well as an 86 birth ratio, combined with an 108 weaning ratio and 105 Ribeye area ratio.
- Top 10% of the breed for birth weight and both calving ease values, both udder indicators, and ribeye area.
- Double digit calving ease.

38 DVOR 502Z 373 TAURUS 8221F

AHA 43913680 DOB: 3/26/2018 TATTOO:8221 HOMO POLLED

TH 122 71I VICTOR 719T
TH 89T 719T TAURUS 502Z
TH 16G 20N GEMINI 89T

DR JYF VICTOR P606 R10 ET
4-C R10 161 LADY BELLE 373
4-C L-180 LADY BELLE 556 161

DRF JWR PRINCE VICTOR 71I
KBCR 19D DOMINETTE 122
NPH 20X SPARTAN 20N
TEE-JAY 707B GEMINI 16G ET
PW VICTOR BOOMER P606
FOF 3N SASSY GAL B33
4-C MR P606 BELLMAN 8004556 ET
3D RED HILLS VICTORIA 45H L180

ACT. BW	ADJ. WW	WW RATIO	ADJ. YW	YW RATIO	DAM PRODUCTION	L EYE PIGMENT	R EYE PIGMENT
93	629	114	896.1	94	3 @ 106.3	50	50

CED	BW	WW	YW	SC	MILK	M&G	MCW	FAT	REA	MARB	BMI	CHB
1.4	2.6	53	75	1	19	45	86	-0.019	0.71	-0.05	366	107

- Individual data of 114 ratio at weaning and 103 ribeye area ratio. His dam posts a nursing ratio of 106.3 on 3 calves.
- A flat EPD profile with advantages for sustained fertility, mature weight, udders, carcass weight, fat, REA, scrotal. In the top third of the breed for all three dollar values.

DVORAK

HEREFORDS

29738 383 AVE
LAKE ANDES, SD 57356

