



MONTANA MADE
PRODUCTION SALE

SATURDAY, SEPTEMBER 18, 2021
SMART AUCTIONS ONLINE SALE & RANCH OPEN HOUSE



Open House starts at 1:00 PM / Sale Cattle will be on display

Please, join us for supper served after the close out of the sale, 5:00 PM

Everyone is welcome to come earlier if you have interest in looking at other cattle that are located at different places on the ranch.



MONTANA MADE PRODUCTION SALE

SATURDAY, SEPTEMBER 18, 2021
SMART AUCTIONS ONLINE SALE
& RANCH OPEN HOUSE

*Welcome to our
Montana Made Female Sale and Open House!*

What a difference a year makes; from the loss of a 25-year pasture lease to record breaking heat and drought to welcoming 2 grandsons, Maverick and McCoy Merkel, this year has really been a whirlwind.

This year's offering has expanded numbers of bred heifers due to the drought in our area. Basically, the bred heifer offering includes everything that was checked safe in calf and that was in pasture with 98G. There are also a few select heifer calves on offer as well as an exciting opportunity to flush our 835 cow an outstanding embryo lot. Both the flush and the embryos are out of cows sired by PYRAMID 16W 110T 9116. We hope there is something for everyone in this offering.

All animals in the catalog have been DNA'd or have DNA in process. All animals will have AHA Genetically Enhanced EPDs.

We are happy to be working again with Smart Auctions to bring you this sale in a convenient, mobile, reliable, and secure online bidding setting. You will be able to view, select, bid, buy and pay for animals in our sale from the convenience of your smartphone, tablet, or PC. . If you have any questions about getting registered to bid with Smart Auctions, please reach out to their customer service team at 937-733-6000.

Though we are working with Smart Auctions to help make our sale convenient for you, you are still invited to the ranch on Saturday, September 18th for our ranch Open House. We will have sale cattle on display and facilitate the viewing of other cattle at various ranch locations. Online bidding options will be available at the ranch, and we will start serving supper at 5pm, you can watch the sale closeout and enjoy some live music!

Our breeding philosophy is to focus on the female. Our cows are expected to perform; calve and mother without assistance, breed back in a timely manner and wean a good calf. The registered cattle are managed the same as the commercial cows. We don't single trait select, nor do we select for extremes. We select for traits that will complement one another, while continuously working at keeping our genetics problem free.

The females being offered represent our very best top end and are indicative of the future here.

Thanks to our current/past customers for cattle from our program to make a difference in yours. We appreciate your confidence and support. Be sure to reach out with any questions you may have. Our family is truly blessed to be involved in agriculture and with this great breed of cattle.

Warmest Regards, *the Ehlke Family*

Mark Ehlke 406-439-4311 / Lacey Jepson 406-439-1544
Jane'a Merkel 406-202-2766



3925 MT Highway 284 / P.O. Box 178 / Townsend, MT 59644
info@ehlkeherefords.com / www.ehlkeherefords.com



RANCH OPEN HOUSE SCHEDULE

Saturday, September 18th

1:00 PM Sale cattle on display at the ranch.
Everyone is welcome to come earlier if you have interest in looking at other cattle located at different places on the ranch.
 5:00 PM Supper and social during sale close-out

SALE INFORMATION & FORMAT smartauctions

Visit smartauctions.co to sign up as a bidder and register for Ehlke Herefords auction alerts. Starting Tuesday, September 14, 2021, you may view the Ehlke Montana Made Female Sale and be sure to **Text EHLKE to 76278 to receive mobile alerts.**

Sale closes Horse Race Style at 5:00 PM MST on Saturday, September, 18, 2021.

Dustin Layton, Layton Auction Services/SmartAuctions .405-464-2455
 Smart Auctions Customer Service937-733-6000

SALE DAY PHONES & INFORMATION

Mark Ehlke406-439-4311
 Lacey Ehlke Jepson406-439-1544
 Jane'a Ehlke Merkel406-202-2766
 Della Ehlke406-439-4300
info@ehlkeherefords.com

SALE REPRESENTATIVES

Dale Stith918-760-1550
 Dustin Layton, Smart Auctions405-464-2455
 Kevin Murnin, AHA406-853-4638
 John Goggins, Western Livestock Reporter406-698-4159
 Marc & Jill Hotchkiss, Hereford America605-490-1513
 Devin Murnin, Western Livestock Journal406-696-1502

DELIVERY

Bob Woolsey Trucking406-670-1877
 Transportation will be provided at cost to central points, buyers share not to exceed \$500/animal.

TERMS & CONDITIONS

All cattle sell under the terms and conditions of the American Hereford Association. The Terms & Conditions can be reviewed online at, <https://tinyurl.com/ahasaleterms> or printed copies are available upon request.

SALE UPDATES

Corrections or additions of any information contained in the sale catalog will be provided via supplemental information and will take precedence over any printed material.

MONTANA MADE PRODUCTION SALE

SALE INFORMATION



DIRECTIONS

Ranch Location Address: 3925 Highway 284, Townsend, MT
Entering Townsend from either direction you will be on Front St (Highway 287), turn East at the flashing light onto Broadway St (Highway 12) for 2 miles and turn left at the next flashing light, head North on Highway 284 for another 2.5 miles, Ranch turnoff is on your RIGHT with a white archway with two grain silos. Signs will be up.

AIR TRAVEL

Helena Regional Airport is approx. 40 miles from the ranch, and Bozeman Yellowstone International Airport in Belgrade is approx. 60 miles from the ranch. Both have rental car agencies in the airports and both have Delta, United, Alaska and some American and Frontier airline flights.

LODGING

Mustang Motel (cabins are bigger than regular rooms) 406-266-3491
412 N Front Street Townsend, MT (4 miles from ranch)
Sacajawea Hotel406-285-6515
5 N Main Street Three Forks, MT (appx. 35 miles from ranch)
Most hotel chains are available in both Helena (40 miles) and Belgrade/Bozeman (60 miles).

LIABILITY

Anyone attending the Open House/Sale Close out does so at their own risk and without liability on the part of the owners or their employees.

ACKNOWLEDGMENTS

Chuteside Vet, Three Forks, MT / Herd Vet
Aaron Friedt, Livestock Link / Videos
Katelyn Knebel / Photos
Will Malcolm, Sleeping Giant Genetics / Embryologist
Generation 6 Marketing / Sale Catalog
LivestockDirect / Sale Catalog Printing

GENOMIC EPDS

All sale cattle were genetically tested to provide genomic enhanced EPDs. EPDs are current as of catalog printing but do change slightly periodically. You are able to view an animal's most current EPDS on the AHA website.



Pyramid Daughters

Flush of our 835 Donor and Embryos by 837



835 Donor

835 ILR 16W *Lady Beth* ^{Flush} 835 ET

{DLF, HYF, IEF, MSUDF, MDF} | POLLED | BD: 3/24/18 | AHA#: 43925932

FHF M33 STARBUCK 110T ET REMITALL BOOMER 46B [SOD, CHB]
PYRAMID 16W 110T 9116 [SOD] DJB 46B BETH 1L
 FHF 51M ACHIEVA 70T PW VICTORIA 964 8114

CE	BW	WW	YW	SC	Milk	M&G	CEM	Fat	REA	Marb	BMI\$	BIIS	CHBS
-0.8	4.4	87	91	0.8	36	64	4.1	0.024	0.93	0.16	\$525	\$605	\$164

Selling the right to one IVF flush

Once in a lifetime opportunity here. Nowhere else can you acquire a genetic base like this; Pyramid 9116 x Beth IL. The maternal makeup behind 835 is impeccable, all while posting an impressive EPD profile. 835 should have calved by sale day. Guarantee of at 6 embryos Owned with Iron Lake Ranch.

873 ILR 16W *Lady Mariah* ^{3 Embryos} 873 ET

{DLF, HYF, IEF, MSUDF, MDF} | POLLED | BD: 10/26/18 | AHA#: 43982658
OWNED WITH IRON LAKE RANCH

873 E 174 E *Yellowstone* 0001E

{DLF, HYF, IEF, MSUDF, MDF} | POLLED | BD: 2/29/20 | AHA#: 44117751

Progeny Expected EPDs

CE	BW	WW	YW	SC	Milk	M&G	CEM	Fat	REA	Marb	BMI\$	BIIS	CHBS
2.0	3.0	61	97	1.5	30	60	2.9	0.039	0.81	-0.09	\$432	\$497	\$109

TH FRONTIER 174E PYRAMID 16W 110T 9116 [SOD]
E 174 E YELLOWSTONE 0001 ET **ILR 16W LADY MARIAH 873 ET**
 E 332A EDNA D160 H W4 MARIAH 0103 ET

This mating is special. The 0001 bull has been greatly appreciated by all who have seen him and goes back to the Beth IL cow and other breed standouts. This mating could be the sleeper of this offering.

BRED HEIFERS



9004



G72

9004 E 507C *Lady Dew* 9004 ET

{DLF, HYF, IEF, MSUDF, MDF} | POLLED | BD: 8/17/19 | AHA#: 44079609 | BW: 85 LBS.

NJW 98S R117 RIBEYE 88X ET
CHURCHILL TORO 507C
 SR CCC LADYSPORT 2205 Z ET

PW MOHICAN NASDAQ P316 [SOD]
E MC P316 MS NASDAQ 701A ET
 HARVIE MISS FIREFLY 51F

CE	BW	WW	YW	SC	Milk	M&G	CEM	Fat	REA	Marb	BMI\$	BII\$	CHB\$
5.6	3.1	57	92	0.6	26	54	1.5	-0.006	0.66	0.03	\$469	\$540	\$111

In the spirit of offering our best, here is one of the most complete bred heifers we have ever offered. 9004 traces back to some standout individuals both top and bottom sides of her pedigree. 9004 is deep set with a powerful hip all while maintaining her femininity and posting and impressive number profile. *Vet ultrasound shows safe in calf AI to ILR U201 SOONER 6112 ET. AI'd to ILR U201 SOONER 6112 ET on 4/19, pasture exposed to NJW 202C 81E STEWARD 98G ET from 6/8 to 7/23.*

G72 E 172E *Janice* G72

{DLF, HYF, IEF, MSUDF, MDF} | POLLED | BD: 8/17/19 | AHA#: 44075981 | BW: 95 LBS.

NJW 73S W18 HOMEGROWN 8Y ET [SOD] NJW 73S M326 TRUST 100W ET
NJW 0118 8Y HOMEGROWN 172E ET ILR IRON LADY 366A [DOD]
 BOYD E70 QUEEN 0118 E S604 BOOMER LADY W50

CE	BW	WW	YW	SC	Milk	M&G	CEM	Fat	REA	Marb	BMI\$	BII\$	CHB\$
1.2	3.1	48	73	0.5	31	55	3.9	0.004	0.52	0.06	\$392	\$454	\$102

The only 172E daughter in the offering and she is a nice one. G72 is moderate framed but very deep ribbed with a nice hip. G72's dam is a DOD. This heifer has caught people's attention since day one. *AI'd to EFBEEF X651 TESTED A250 on 4/20, pasture exposed to NJW 202C 81E STEWARD 98G ET from 6/8 to 7/23. Vet ultrasound shows safe in calf to pasture exposure*

BRED HEIFERS



Daughters of
Schatzee

G118



Dam of G119



G119

G118

E D83 *Shiney* G118

{DLF, HYF, IEF, MSUDF, MDF} | POLLED | BD: 9/11/19 | AHA#: 44075937 | BW: 80 LBS.

E 4L SCHATZEE ET Z712
E Z712 SCHATZEE D83
EPHR LINNETTE 530T

E BRAXTON 719 [SOD]
E T719 LADY BRAXTON C010
E 337U DIVA A030

CE	BW	WW	YW	SC	Milk	M&G	CEM	Fat	REA	Marb	BMI\$	BII\$	CHB\$
-2.8	3.6	60	94	0.4	27	57	-1.1	0.034	0.75	0.05	\$373	\$444	\$124

Another example of a cross we really like; Schatzee influence on the Braxton blood line. G118 scanned an 11.6 Ribeye and 3.61 IMF. *Vet ultrasound called safe in calf AI to ILR U201 SOONER 6112 ET with a heifer calf. AI'd to ILR U201 SOONER 6112 ET on 4/21, pasture exposed to NJW 202C 81E STEWARD 98G ET from 6/8 to 7/23.*

G119

E D83 *Shiney* G119

{DLF, HYF, IEF, MSUDF, MDF} | POLLED | BD: 9/11/19 | AHA#: 44075994 | BW: 79 LBS.

E 4L SCHATZEE ET Z712
E Z712 SCHATZEE D83
EPHR LINNETTE 530T

ILR HOMETOWN 332A ET [CHB]
E 332A SASSY D43
HARVIE MS MEDONTE 184W

CE	BW	WW	YW	SC	Milk	M&G	CEM	Fat	REA	Marb	BMI\$	BII\$	CHB\$
-1.0	2.8	56	99	0.8	15	43	2.4	0.024	0.80	-0.02	\$336	\$397	\$109

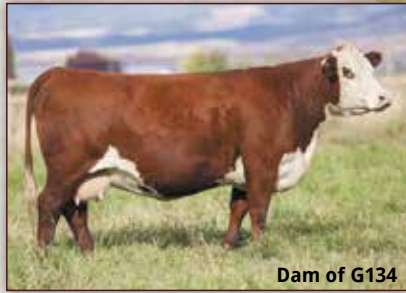
G119 ranks at the top of most visitors' list. Her dam and maternal granddam have been visitor favorites as well and stellar producers for us. G119's pregnancy should be very special. *Vet Ultrasound called safe in calf AI to EFBEEF X651 TESTED A250 with a bull calf. AI'd to EFBEEF X651 TESTED A250 on 4/20, pasture exposed to NJW 202C 81E STEWARD 98G ET from 6/8 to 7/23.*

BRED HEIFERS



E Z712 SCHATZEE D83 - Reference Sire

G134: Highly pigmented, short marked D83 daughter whose dam is one of the best uddered cows on the place and who is also the dam of our C009 herd bull. G134's mating to the 98G bull should work extremely well. *Pasture exposed to NJW 202C 81E STEWARD 98G ET from 6/8 to 7/23.*



Dam of G134



G134

G104

E D83 *Shiney* G104

{DLF, HYF, IEF, MSUDF, MDF} | POLLED | BD: 9/3/19 | AHA#: 44086064 | BW: 78 LBS.

E 4L SCHATZEE ET Z712 HARVIE DAN SNIPER 203Z
E Z712 SCHATZEE D83 E 203Z DANELLE E99
 EPHR LINNETTE 530T E 38T JUDI C051

CE	BW	WW	YW	SC	Milk	M&G	CEM	Fat	REA	Marb	BMI\$	BIIS	CHBS
7.5	1.4	51	85	0.9	24	50	4.5	0.040	0.56	0.20	\$460	\$538	\$127

G134

E D83 *Shiney* G134

{DLF, HYF, IEF, MSUDF, MDF} | POLLED | BD: 10/8/19 | AHA#: 44075954 | BW: 89 LBS.

E 4L SCHATZEE ET Z712 SNOWSHOE 743 REGULATOR 08X
E Z712 SCHATZEE D83 E 337U DIVA A008
 EPHR LINNETTE 530T E M211 LADY RANGER U855

CE	BW	WW	YW	SC	Milk	M&G	CEM	Fat	REA	Marb	BMI\$	BIIS	CHBS
2.2	4.1	64	105	0.9	27	59	4.4	0.004	0.75	-0.09	\$395	\$462	\$124

G133

E D83 *Shiney* G133

{DLF, HYF, IEF, MSUDF, MDF} | POLLED | BD: 10/2/19 | AHA#: 44075930 | BW: 86 LBS.

E 4L SCHATZEE ET Z712 B NORTHSTAR 951
E Z712 SCHATZEE D83 B LADY NORTHSTAR 221
 EPHR LINNETTE 530T EPHR LINNETTE 530T

CE	BW	WW	YW	SC	Milk	M&G	CEM	Fat	REA	Marb	BMI\$	BIIS	CHBS
0.9	3.5	55	88	0.8	17	44	4.2	0.014	0.37	-0.06	\$300	\$359	\$99

G133 is line bred 530T, with Schatzee and Braxton influence as well, which should result in G133 being super maternal. *Vet ultrasound shows safe in calf AI to ILR U201 SOONER 6112 ET. AI'd to ILR U201 SOONER 6112 ET on 5/2, pasture exposed to NJW 202C 81E STEWARD 98G ET from 6/8 to 7/23.*

BRED HEIFERS



Daughters of Digby

8G



Dam of G62



G62

8G

LJE 20C *Ursula* 8G

{DLF, HYF, IEF, MSUDF, MDF} | POLLED | BD: 8/10/19 | AHA#: 44184346 | BW: 75 LBS.

OTAPAWA SKYMATE 2046 (ET)
RSK E 2046 DIGBY ET 20C
HARVIE MISS FIRELY 51F

E BRAXTON 719 [SOD]
LJE 719 LADY BRAXTON 002C
LJE 337U DIVA 019A

G62

E 20C *Ursula* G62

{DLF, HYF, IEF, MSUDF, MDF} | POLLED | BD: 8/15/19 | AHA#: 44078793 | BW: 82 LBS.

OTAPAWA SKYMATE 2046 (ET)
RSK E 2046 DIGBY ET 20C
HARVIE MISS FIRELY 51F

HARVIE SAFNBFI COLATERAL 337U
E 337U DIVA A014
E T731 OPTIMA W1

CE	BW	WW	YW	SC	Milk	M&G	CEM	Fat	REA	Marb	BMI\$	BIIS	CHBS
5.0	1.7	51	76	0.6	17	42	1.3	-0.020	0.68	0.03	\$310	\$367	\$124

This Digby heifer combines everything in a complete package. She has tons of red and pigment, calving ease bred in and goes back to two of the most influential sires in our program, Braxton 719 and Colateral 337U. Her dam is a really feminine, freckle faced cow that's done a great job for us. *Pasture exposed to NJW 202C 81E STEWARD 98G ET from 6/8 to 7/23. Vet ultrasound shows safe in calf.*

CE	BW	WW	YW	SC	Milk	M&G	CEM	Fat	REA	Marb	BMI\$	BIIS	CHBS
0.6	3.8	54	85	0.9	18	45	-0.3	-0.010	0.49	0.05	\$350	\$415	\$120

We sure love this Digby heifer who goes back to a super Colateral daughter. Her dam has produced good one after good one that have all gone in the bull pen or sold in our female sale. This heifer falls right in line with what we expect from her. Phenotypically she's made right and is very balanced on paper. *Vet ultrasound called safe in calf AI to EFBEEF X651 TESTED A250. AI'd to EFBEEF X651 TESTED A250 on 4/19, pasture exposed to NJW 202C 81E STEWARD 98G ET from 6/8 to 7/23.*

BRED HEIFERS



G68



Dam of G68



Dam of G49

G68 E 20C *Ursula* G68

{DLF, HYF, IEF, MSUDF, MDF} | POLLED | BD: 8/16/19 | AHA#: 44078795 | BW: 75 LBS.

OTAPAWA SKYMATE 2046 (ET) KT BUILT TUFF 1010
RSK E 2046 DIGBY ET 20C **ERNST MS BUILT TUFF 499**
 HARVIE MISS FIRELY 51F ERNST MS 8619 DOMINO 248

CE	BW	WW	YW	SC	Milk	M&G	CEM	Fat	REA	Marb	BMI\$	BIIS	CHBS
9.2	0.5	51	68	0.7	31	57	1.6	-0.050	0.34	0.03	\$420	\$501	\$134

This bred heifer balances out really well in person and on paper. She's built right with sure fire calving ease and ranks in the top 10% of the breed for IMF and \$CHB. We love this heifer's dam, who we purchased from Ernst Herefords in the 2017 Mile High Sale. She's done a great job and has produced some good ones ever since we got her home. *AI'd to NJW 202C 81E STEWARD 98G ET on 4/20, pasture exposed to NJW 202C 81E STEWARD 98G ET from 6/8 to 7/23. Vet ultrasound shows safe in calf to AI exposure.*

G49 E 20C *Ursula* G49

{DLF, HYF, IEF, MSUDF, MDF} | POLLED | BD: 8/11/19 | AHA#: 44078792 | BW: 82 LBS.

OTAPAWA SKYMATE 2046 (ET) CHURCHILL RED BULL 200Z [SOD]
RSK E 2046 DIGBY ET 20C **CHURCHILL LADY 5146C**
 HARVIE MISS FIRELY 51F E MC 719 VICTORIA X1

CE	BW	WW	YW	SC	Milk	M&G	CEM	Fat	REA	Marb	BMI\$	BIIS	CHBS
3.6	1.5	43	67	0.7	22	44	1.8	-0.036	0.27	0.07	\$415	\$475	\$104

Sure fire calving ease bred in here, this heifer goes back to both Churchill Red Bull and Braxton 719. G49's dam was purchased from Churchill Cattle Company back in 2016 and she's done a great job for us. Lots of potential with this heifer. *AI'd to ILR U201 SOONER 6112 ET on 4/20, pasture exposed to NJW 202C 81E STEWARD 98G ET from 6/8 to 7/23. Vet ultrasound shows safe in calf to pasture exposure.*



BRED HEIFERS



G75

G75: Another one of our favorite Digby heifers here. She's made right with a big square hip, lots of rib shape and length - typical of the Digby offspring. She combines power with femininity in an ideal package. Her dam goes back to some Bayers breeding on the bottom side. Lots of potential with this one. *AI'd to EFBEEF X651 TESTED A250 on 4/19, pasture exposed to NJW 202C 81E STEWARD 98G ET from 6/8 to 7/23. Vet ultrasound shows safe in calf to pasture exposure.*

Daughters of Hometown 332A

G108: Powerful, deep set, well pigmented Schatzee daughter here with performance bred in. Vet Ultrasound called safe in calf AI to EFBEEF X651 TESTED A250 with bull calf. *AI'd to EFBEEF X651 TESTED A250 on 4/20, pasture exposed to NJW 202C 81E STEWARD 98G ET from 6/8 to 7/23.*



G108

G75

E 20C Ursula G75

{DLF, HYF, IEF, MSUDF, MDF} | POLLED | BD: 8/18/19 | AHA#: 44078796 | BW: 92 LBS.

OTAPAWA SKYMATE 2046 (ET) E 306U SHTCHMAN B011
RSK E 2046 DIGBY ET 20C **E B011 DOMINETTE D63**
 HARVIE MISS FIRELY 51F B LADY RAMBO 411

CE	BW	WW	YW	SC	Milk	M&G	CEM	Fat	REA	Marb	BMI\$	BII\$	CHB\$
-3.1	5.0	55	95	0.7	18	45	-4.6	-0.030	0.59	-0.02	\$296	\$354	\$118

G108

E Z712 Grace G108

{DLF, HYF, IEF, MSUDF, MDF} | POLLED | BD: 9/7/19 | AHA#: 44078786 | BW: 102 LBS.

HARVIE LADIES MAN 4L HARVIE DAN T-BONE 196T
E 4L SCHATZEE ET Z712 **E 196T GYPSY X25**
 HARVIE MS FIREFLY ET 186W BE MISS ANCHOR 342 [DOD]

CE	BW	WW	YW	SC	Milk	M&G	CEM	Fat	REA	Marb	BMI\$	BII\$	CHB\$
-11.3	9.1	70	119	0.8	25	50	-2.5	-0.010	0.61	0.20	\$327	\$388	\$92



E 4L SCHATZEE ET Z712 - Reference Sire

G129

E Z712 Grace G129

{DLF, HYF, IEF, MSUDF, MDF} | POLLED | BD: 9/22/19 | AHA#: 44075939 | BW: 87 LBS.

HARVIE LADIES MAN 4L E BRAXTON 719 [SOD]
E 4L SCHATZEE ET Z712 **E T719 LADY BRAXTON D3**
 HARVIE MS FIREFLY ET 186W E 337U DIVA B048

CE	BW	WW	YW	SC	Milk	M&G	CEM	Fat	REA	Marb	BMI\$	BII\$	CHB\$
-2.4	5.1	58	88	0.2	22	51	0.6	0.014	0.49	-0.15	\$432	\$494	\$74

A real solid Schatzee daughter in the offering. Schatzee crossed on the Braxton blood line just flat works. *Pasture exposed to NJW 202C 81E STEWARD 98G ET from 6/8 to 7/23. Vet ultrasound shows safe in calf.*

BRED HEIFERS



G81

G81: This heifer is an eye catcher, she's big and powerful, soggy with tons of middle and is red all over. Her 11 year old Ranger dam has been consistent year after year and always one we can count on. Our 332A daughters are highly complimented by visitors and we're still using the bull heavily. Vet ultrasounds indicates safe in calf AI to EFBEEF X651 TESTED A250. AI'd to EFBEEF X651 TESTED A250 on 5/9, pasture exposed to NJW 202C 81E STEWARD 98G ET from 6/8 to 7/23.



Dam of G81

12G: High performing 332A daughter. The 332A sired cattle have proven themselves to be very sound, functional cattle. Vet ultrasound called safe to AI date to A250 with a heifer calf. *Vet ultrasound indicates safe in calf AI to EFBEEF X651 TESTED A250 with a heifer calf.* AI'd to EFBEEF X651 TESTED A250 on 4/20, pasture exposed to NJW 202C 81E STEWARD 98G ET from 6/8 to 7/23.



12G

G81 E 332A Edna G81

{DLF, HYF, IEF, MSUDF, MDF} | POLLED | BD: 8/20/19 | AHA#: 44086051 | BW: 92 LBS.

NJW 73S W18 HOMETOWN 10Y ET E RANGER T791
ILR HOMETOWN 332A ET E T791 LADY RANGER X 74
 NJW 43T 4037 FOREVER EDNA 28X ET B BRAXTON LASS 233 [DOD]

CE	BW	WW	YW	SC	Milk	M&G	CEM	Fat	REA	Marb	BMI\$	BIIS	CHBS
-5.5	5.8	55	102	1.3	31	58	-3.9	0.000	0.30	0.12	\$300	\$370	\$118

12G LJE 332A Edna 12G

{DLF, HYF, IEF, MSUDF, MDF} | POLLED | BD: 8/18/19 | AHA#: 44075990 | BW: 105 LBS.

NJW 73S W18 HOMETOWN 10Y ET E MC 7W SOLID ET Z833
ILR HOMETOWN 332A ET LJE Z833 MARVEL 5D
 NJW 43T 4037 FOREVER EDNA 28X ET LJE 11X MISS ANCHOR 006A

CE	BW	WW	YW	SC	Milk	M&G	CEM	Fat	REA	Marb	BMI\$	BIIS	CHBS
-5.3	5.9	63	113	0.9	29	61	-3.2	0.004	0.33	0.02	\$343	\$417	\$118

G54 E 332A Edna G54

{DLF, HYF, IEF, MSUDF, MDF} | POLLED | BD: 8/13/19 | AHA#: 44075997 | BW: 90 LBS.

NJW 73S W18 HOMETOWN 10Y ET HARVIE SAFNBFI COLATERAL 337U
ILR HOMETOWN 332A ET E 337U DIVA A072
 NJW 43T 4037 FOREVER EDNA 28X ET E 19D WRANGLER STAR P433

CE	BW	WW	YW	SC	Milk	M&G	CEM	Fat	REA	Marb	BMI\$	BIIS	CHBS
-0.7	4.7	61	104	0.8	18	49	0.2	-0.070	0.34	-0.19	\$304	\$359	\$97

This heifer is a typical 332A daughter, powerful, soggy, tons of middle and rib shape. She is red to the ground with a ton of pigment and is an all-around eye catcher. Her dam was one of our favorite Colateral daughters who was highly complemented by ranch visitors. AI'd to ILR U201 SOONER 6112 ET on 5/8, pasture exposed to NJW 202C 81E STEWARD 98G ET from 6/8 to 7/23. *Vet Ultrasound shows safe in calf to pasture exposure.*



Dam of G54

BRED HEIFERS



G84



G128

Daughters of
Schatzee
D31

G84 E D31 *Jan* G84

{DLF, HYF, IEF, MSUDF, MDF} | POLLED | BD: 8/22/19 | AHA#: 44086054 | BW: 95 LBS.

E 4L SCHATZEE ET Z712 E P606 BOOMER S604
E Z712 SCHATZEE D31 E S604
E T719 LADY BRAXTON Z855 E 100L CALL GIRL S649ET

CE	BW	WW	YW	SC	Milk	M&G	CEM	Fat	REA	Marb	BMI\$	BIIS	CHBS
-9.6	6.1	53	80	1.1	24	51	-1.7	0.004	0.63	-0.21	\$344	\$391	\$87

To say we like this heifer would be an understatement. Phenotypically, she's one of our favorites in the sale. Out of a 10 year old cow who goes back to P606 and the great JV Shirley 414 cow. She's produced several good ones for us over the years and this heifer is no exception. *Vet ultrasounds indicates safe in calf AI to EFBEEF X651 TESTED A250. AI'd to EFBEEF X651 TESTED A250 on 5/9, pasture exposed to NJW 202C 81E STEWARD 98G ET from 6/8 to 7/23.*

G128 E D31 *Jan* G128

{DLF, HYF, IEF, MSUDF, MDF} | POLLED | BD: 9/21/19 | AHA#: 44075907 | BW: 95 LBS.

E 4L SCHATZEE ET Z712 HARVIE SAFNBFI COLATERAL 337U
E Z712 SCHATZEE D31 E 337U DIVA A057
E T719 LADY BRAXTON Z855 E 0024K MISS ADVANCE S612 [DOD]

CE	BW	WW	YW	SC	Milk	M&G	CEM	Fat	REA	Marb	BMI\$	BIIS	CHBS
-8.1	6.5	63	95	1.1	24	56	-5.1	-0.060	0.56	0.56	\$376	\$436	\$90

You'd be hard pressed to find a heifer that has more red than this one, she carries it to the ground and has great pigment. G128's dam is a Colateral daughter, which if you follow our program, you know how fond we are of this bull who remains in the top 1% of the breed for udder quality. His daughters still remain at the top for some of our best cows. *AI'd to EFBEEF X651 TESTED A250 on 4/19, pasture exposed to NJW 202C 81E STEWARD 98G ET from 6/8 to 7/23. Vet ultrasound shows safe in calf to pasture exposure.*

BRED HEIFERS



915

915: We really like this Schatzee D31 heifer. Combine her phenotype and number profile and you have a complete package. She's red down to the ground with good pigment and has performance bred into her. She goes back to the great JV Shirley 414 cow. *AI'd to EFBEEF X651 TESTED A250 on 4/19, pasture exposed to NJW 202C 81E STEWARD 98G ET from 6/8 to 7/23. Vet ultrasound shows safe in calf to pasture exposure.*

18G: Nice made D31 daughter who has a shot of Braxton influence both on the top and bottom side of her pedigree. The calf 18G is carrying could be special. *Vet ultrasounds indicates safe in calf AI to EFBEEF X651 TESTED A250 with a bull calf. AI'd to EFBEEF X651 TESTED A250 on 5/9, pasture exposed to NJW 202C 81E STEWARD 98G ET from 6/8 to 7/23.*



18G

915

LJE D31 *Jan* 915

{DLF, HYF, IEF, MSUDF, MDF} | POLLED | BD: 9/23/19 | AHA#: 44075985 | BW: 84 LBS.

E 4L SCHATZEE ET Z712
E Z712 SCHATZEE D31
E T719 LADY BRAXTON Z855

E U806 VICTOR X84
LJE X84 VICTORIA 5018
LJE S638 CALL GIRL 0805

CE	BW	WW	YW	SC	Milk	M&G	CEM	Fat	REA	Marb	BMI\$	BIIS	CHBS
-2.6	3.8	54	86	0.9	28	55	1.1	0.024	0.68	0.06	\$392	\$460	\$110

18G

LJE D31 *Jan* 18G

{DLF, HYF, IEF, MSUDF, MDF} | POLLED | BD: 9/4/19 | AHA#: 44075992 | BW: 82 LBS.

E 4L SCHATZEE ET Z712
E Z712 SCHATZEE D31
E T719 LADY BRAXTON Z855

E S604 BOOMER Z545
E Z545 DIVA MISCHIEF 032B [DOD]
LJE 337U DIVA Y901

CE	BW	WW	YW	SC	Milk	M&G	CEM	Fat	REA	Marb	BMI\$	BIIS	CHBS
1.8	4.4	53	88	0.7	30	57	3.6	-0.020	0.46	-0.14	\$426	\$482	\$99

14G

LJE D31 *Jan* 14G

{DLF, HYF, IEF, MSUDF, MDF} | POLLED | BD: 8/27/19 | AHA#: 44075931 | BW: 88 LBS.

E 4L SCHATZEE ET Z712
E Z712 SCHATZEE D31
E T719 LADY BRAXTON Z855

HARVIE SAFNBFI COLATERAL 337U
LJE 337U DIVA 025A
LJE SASSY 0702

CE	BW	WW	YW	SC	Milk	M&G	CEM	Fat	REA	Marb	BMI\$	BIIS	CHBS
7.1	3.6	43	70	0.2	17	39	6.2	-0.010	0.56	-0.07	\$450	\$501	\$102

Well balanced heifer here with a very reliable pedigree that is stacked with solid producing cattle. *AI'd to EFBEEF X651 TESTED A250 on 4/19, pasture exposed to NJW 202C 81E STEWARD 98G ET from 6/8 to 7/23. Vet ultrasound shows safe in calf to pasture exposure.*



E Z712 SCHATZEE D31 - Reference Sire

BRED HEIFERS



Daughters of
Holloway
C039

G101



G43



E ILR 14Z HOLLOWAY C039 - Reference Sire

G101

E C039 *Fireplay* G101

{DLF, HYF, IEF, MSUDF, MDF} | DEHORND | BD: 9/1/19 | AHA#: 44075900 | BW: 82 LBS.

TH 512X 719T PLAYMAKER 14Z
E ILR 14Z HOLLOWAY C039
HARVIE E MS FIREFLY ET 19Z

REMITALL-WEST GAME DAY ET 74Y
REMITALL WEST MARVEL 21A
REMITALL-WEST MARVEL ET 38Y

CE	BW	WW	YW	SC	Milk	M&G	CEM	Fat	REA	Marb	BMI\$	BII\$	CHBS
-2.5	3.5	61	97	1.7	32	63	3.3	-0.016	0.29	0.18	\$304	\$384	\$127

G101 goes back to some very solid Remittal breeding on the bottom side. There is real performance here as well as carcass characteristics. *AI'd to E 719 BRAXTON A012 on 4/21, pasture exposed to NJW 202C 81E STEWARD 98G ET from 6/8 to 7/23. Vet Ultrasound shows safe in calf to pasture exposure.*

G43

E C039 *Fireplay* G43

{DLF, HYF, IEF, MSUDF, MDF} | POLLED | BD: 8/9/19 | AHA#: 44075984 | BW: 62 LBS.

TH 512X 719T PLAYMAKER 14Z
E ILR 14Z HOLLOWAY C039
HARVIE E MS FIREFLY ET 19Z

SNOWSHOE 743 REGULATOR 08X
E 08X MISS MONTANA A029
E S638 SHIRLEY X63

CE	BW	WW	YW	SC	Milk	M&G	CEM	Fat	REA	Marb	BMI\$	BII\$	CHBS
2.7	2.1	62	92	1.0	31	62	5.8	-0.020	0.62	0.26	\$433	\$521	\$140

G43 is a twin to G42. G43's EPD profile indicates a little more growth with solid carcass indications. *AI'd to ILR U201 SOONER 6112 ET on 4/19, pasture exposed to NJW 202C 81E STEWARD 98G ET from 6/8 to 7/23. Vet Ultrasound shows safe in calf to pasture exposure.*

BRED HEIFERS



G42 E C039 *Fireplay* G42

{DLF, HYF, IEF, MSUDF, MDF} | POLLED | BD: 8/9/19 | AHA#: 44075983 | BW: 55 LBS.

TH 512X 719T PLAYMAKER 14Z SNOWSHOE 743 REGULATOR 08X
E ILR 14Z HOLLOWAY C039 E 08X MISS MONTANA A029
 HARVIE E MS FIREFLY ET 19Z E S638 SHIRLEY X63

CE	BW	WW	YW	SC	Milk	M&G	CEM	Fat	REA	Marb	BMI\$	BII\$	CHB\$
3.5	0.9	57	86	1.5	34	63	6.1	0.024	0.45	0.17	\$374	\$452	\$127

Low birthweight here that posts a very nice number profile as well. The C039 offspring have done a nice job for us. *AI'd to ILR U201 SOONER 6112 ET on 4/19, pasture exposed to NJW 202C 81E STEWARD 98G ET from 6/8 to 7/23. Vet ultrasound shows safe in calf to pasture exposure.*

G112 E C039 *Fireplay* G112

{DLF, HYF, IEF, MSUDF, MDF} | POLLED | BD: 9/8/19 | AHA#: 44075921 | BW: 79 LBS.

TH 512X 719T PLAYMAKER 14Z E 337U COLLATERAL Y80
E ILR 14Z HOLLOWAY C039 E Y80 ROXIE B080 [DOD]
 HARVIE E MS FIREFLY ET 19Z BE LADY BRAXTON 308

CE	BW	WW	YW	SC	Milk	M&G	CEM	Fat	REA	Marb	BMI\$	BII\$	CHB\$
2.5	1.9	48	69	0.7	28	52	4.7	-0.050	0.60	0.60	\$368	\$411	\$83

Lower birthweight heifer here. G112 is an example of breeding decisions that have sure worked for us. *Vet ultrasound called safe in calf AI to Sooner 6112. AI'd to ILR U201 SOONER 6112 ET on 5/8, pasture exposed to NJW 202C 81E STEWARD 98G ET from 6/8 to 7/23.*

G91 E C039 *Fireplay* G91

{DLF, HYF, IEF, MSUDF, MDF} | POLLED | BD: 8/26/19 | AHA#: 44075961 | BW: 80 LBS.

TH 512X 719T PLAYMAKER 14Z HARVIE SAFNBFI COLATERAL 337U
E ILR 14Z HOLLOWAY C039 E 337U DIVA B056
 HARVIE E MS FIREFLY ET 19Z E 7W LADY TAILOR Y625

CE	BW	WW	YW	SC	Milk	M&G	CEM	Fat	REA	Marb	BMI\$	BII\$	CHB\$
-2.0	3.4	62	88	1.0	21	52	0.8	-0.010	0.16	-0.17	\$415	\$480	\$68

G91 has udder quality and maternal bred in. Dam is a Colateral daughter and with the 19Z cow on the top side; you have the foundation for a maternal machine. *AI'd to ILR U201 SOONER 6112 ET on 4/19, pasture exposed to NJW 202C 81E STEWARD 98G ET from 6/8 to 7/23. Vet Ultrasound shows safe in calf to pasture exposure.*

G137 E C029 *Fireplay* G137

{DLF, HYF, IEF, MSUDF, MDF} | POLLED | BD: 10/15/19 | AHA#: 44075949 | BW: 92 LBS.

TH 512X 719T PLAYMAKER 14Z E U806 VICTOR X84
E ILR 14Z HOLLOWAY C039 E X84 VICTORIA C076
 HARVIE E MS FIREFLY ET 19Z ANCHOR 57Y

CE	BW	WW	YW	SC	Milk	M&G	CEM	Fat	REA	Marb	BMI\$	BII\$	CHB\$
-0.4	2.9	57	80	0.8	28	57	3.1	0.004	0.43	0.18	\$346	\$424	\$111

G137 goes back to some solid producing cattle out of the Anchor program. The Anchor blood lines have worked very well in our program. *AI'd to ILR U201 SOONER 6112 ET on 4/19, pasture exposed to NJW 202C 81E STEWARD 98G ET from 6/8 to 7/23. Vet Ultrasound shows safe in calf to pasture exposure.*

BRED HEIFERS



G60

G60

E 737 *Megan* G60

{DLF, HYF, IEF, MSUDF, MDF} | POLLED | BD: 8/14/19 | AHA#: 44075969 | BW: 84 LBS.

MOHICAN BAR STAR REVVED UP 78A HARVIE SAFNBFI COLATERAL 337U
BAR STAR MAGNITUDE 737 E 337U DIVA B061
 BAR STAR 91X WHATAGIRL 410 MC E GOVERNESS 346R 1091 ET

CE	BW	WW	YW	SC	Milk	M&G	CEM	Fat	REA	Marb	BMI\$	BII\$	CHBS
-0.8	5.3	65	111	0.9	21	54	-0.7	0.010	0.23	0.02	\$315	\$390	\$99

G60 is the first of two 737 daughters on offer and she IS special. G60's dam is one of the very best Colateral daughters we have worked with. Tons of performance bred in here. AI'd to ILR U201 SOONER 6112 ET on 4/19, pasture exposed to NJW 202C 81E STEWARD 98G ET from 6/8 to 7/23. Vet Ultrasound shows safe in calf to pasture exposure.



BAR STAR MAGNITUDE 737 - Sire of G60 and G66

G66

E 737 *Megan* G66

{DLF, HYF, IEF, MSUDF, MDF} | POLLED | BD: 8/16/19 | AHA#: 44075989 | BW: 80 LBS.

MOHICAN BAR STAR REVVED UP 78A EPHR REAGAL 42R
BAR STAR MAGNITUDE 737 EPHR LINNETTE 530T
 BAR STAR 91X WHATAGIRL 410 EPHR MILLEY 96 R [DOD]

CE	BW	WW	YW	SC	Milk	M&G	CEM	Fat	REA	Marb	BMI\$	BII\$	CHBS
-1.2	3.7	51	84	1.2	18	44	0.2	0.000	0.24	0.02	\$311	\$371	\$104

Another good 737 daughter here. G66 is a half-sister to our herd bull D83. G66's dam, the 530T cow did a great job for us. We could sure make the argument that G66 should stay here. Vet Ultrasound shows safe in calf AI to ILR U201 SOONER 6112 ET with heifer calf. AI'd to ILR U201 SOONER 6112 ET on 4/21, pasture exposed to NJW 202C 81E STEWARD 98G ET from 6/8 to 7/23.



E 719 BRAXTON A012 - Sire of 93

93

LJE A012 *Lady Braxton* 93

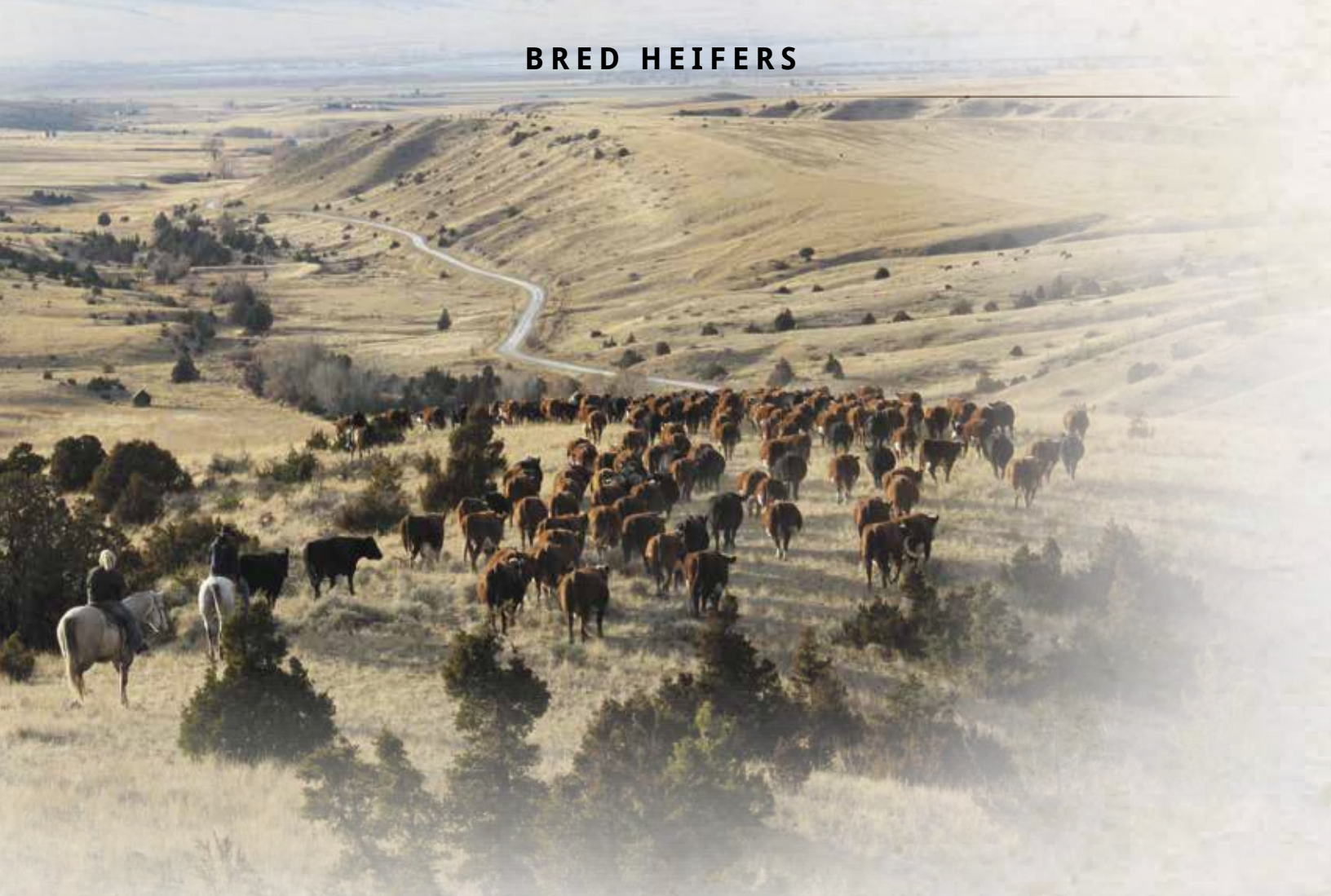
{DLF, HYF, IEF, MSUDF, MDF} | POLLED | BD: 8/12/19 | AHA#: 44092017 | BW: 70 LBS.

E BRAXTON 719 [SOD] E MC 7W SOLID ET Z833
E 719 BRAXTON A012 LJE Z833 MARVEL 710
 CHURCHILL LADY 1149Y LJE U832 MS BOULDER Y21

CE	BW	WW	YW	SC	Milk	M&G	CEM	Fat	REA	Marb	BMI\$	BII\$	CHBS
2.2	0.4	33	46	0.2	21	38	1.9	-0.006	0.28	0.09	\$336	\$385	\$83

One of the darker heifers in the sale with great pigment. A little smaller framed heifer here out of our home raised A012 Braxton son who goes back to Outcross. Her dam is a beautifully underdressed Z833 who has a really feminine makeup with tons of red. AI'd to ILR U201 SOONER 6112 ET on 4/19, pasture exposed to NJW 202C 81E STEWARD 98G ET from 6/8 to 7/23. Vet Ultrasound shows safe in calf to pasture exposure.

BRED HEIFERS



G56

E 4140B *Riley* G56

{DLF, HYF, IEF, MSUDF, MDF} | POLLED | BD: 8/13/19 | AHA#: 44075946 | BW: 72 LBS.

C MILES MCKEE2103 ET [SOD, CHB] HARVIE DAN SNIPER 203Z
ILR H MILES 4140B ET E 203Z DANELLE E107
 BOYD E70 QUEEN 0118 E 61Z BERVA C055

CE	BW	WW	YW	SC	Milk	M&G	CEM	Fat	REA	Marb	BMI\$	BII\$	CHB\$
9.5	0.0	47	72	0.9	33	56	5.1	-0.010	0.37	0.06	\$340	\$400	\$93

Low birth weight, nicely made daughter of Miles 4140B out of a young Harvie Sniper daughter. G56 is nicely balanced in the flesh and on paper. Udder quality and milk should be ideal here. Her heifer calf out of 98G should be exciting. *AI'd to NJW 202C 81E STEWARD 98G ET on 5/8, pasture exposed to NJW 202C 81E STEWARD 98G ET from 6/8 to 7/23. Vet ultrasound shows safe in calf to AI date with heifer calf.*

G82

E 4140B *Riley* G82

{DLF, HYF, IEF, MSUDF, MDF} | POLLED | BD: 8/21/19 | AHA#: 44085840 | BW: 75 LBS.

C MILES MCKEE2103 ET [SOD, CHB] E MC 7W SOLID ET Z833
ILR H MILES 4140B ET E Z833 MARVEL E98
 BOYD E70 QUEEN 0118 E 08XMARVEL A062

CE	BW	WW	YW	SC	Milk	M&G	CEM	Fat	REA	Marb	BMI\$	BII\$	CHB\$
1.0	2.5	49	80	0.7	23	47	4.4	-0.050	0.45	0.17	\$378	\$446	\$130

A Miles daughter here out of a very feminine, dark, goggled eyed Z833 daughter. G82's dam was one of the first cows picked and bought by a producer out of Big Fork, MT this summer. This heifer is very balanced in her makeup and brings a complete package to the table. *AI'd to NJW 202C 81E STEWARD 98G ET on 5/8, pasture exposed to NJW 202C 81E STEWARD 98G ET from 6/8 to 7/23. Vet ultrasound shows safe in calf to AI date with heifer calf.*

G74

E 4140B *Riley* G74

{DLF, HYF, IEF, MSUDF, MDF} | POLLED | BD: 8/17/19 | AHA#: 44075909 | BW: 83 LBS.

C MILES MCKEE2103 ET [SOD, CHB] HARVIE DAN SNIPER 203Z
ILR H MILES 4140B ET E 203Z DANELLE E106
 BOYD E70 QUEEN 0118 E 100W MS NORTHSTAR C027

CE	BW	WW	YW	SC	Milk	M&G	CEM	Fat	REA	Marb	BMI\$	BII\$	CHB\$
1.5	4.5	58	95	0.9	39	68	2.6	-0.080	0.58	0.17	\$438	\$517	\$127

A nice balanced heifer here with a great look. Out of a first calf Harvie Sniper daughter who's doing a great job. Our Sniper females have been rising to the top with their phenotype, udder quality and numbers. We see a lot of potential in this heifer. *AI'd to ILR U201 SOONER 6112 ET on 4/19, pasture exposed to NJW 202C 81E STEWARD 98G ET from 6/8 to 7/23. Vet Ultrasound shows safe in calf to pasture exposure*



The Ehlke Advantage

ACCURACY

We believe the only good kind of data is accurate data! When it comes to utilizing EPDs and performance data in our herd we recognize these resources as tools that work side by side with phenotype selection. We realize the importance of accurate records and how that information plays a role in building a successful, predictable cow herd.

1ST GENERATION

Our family is proud to be first generation ranchers and have enjoyed watching our kids grow up in the cattle business. We are excited to have the second generation involved on the ranch as we continue to grow. **Starting from humble beginnings has challenged us to work hard and expect more from our cow herd – every cow has to earn her keep!**

OUTCROSS

When searching for new genetics to add to our herd we know the importance of powerful, outcross genetics that will perform with predictability. If you're looking for an outcross or something different to add to your herd, we look forward to the opportunity to get to know your operation and help create your success!

WEANED HEIFER CALVES



J17



Dam of J17



J17

J17

E 252F *Whitney* J17

{DLF, HYF, IEF, MSUDF, MDF} | POLLED | BD: 2/22/21 | AHA#: 44247336 | BW: 85 LBS.

NJW 160Z 10W WHIT 33B

HARVIE SAFNBFI COLATERAL 337U

NJW 79Z 33B FORWARD 252F

E 337U DIVA B048 [DOD]

BW 91H 100W RITA 79Z ET

E 832 MISS BOULDER X9

One really has to admire the depth and dimension of these 252F daughters. Udder quality is bred in here. J17 should mature into a front pasture female.

CE	BW	WW	YW	SC	Milk	M&G	CEM	Fat	REA	Marb	BMI\$	BII\$	CHB\$
-2.5	4.4	66	104	1.0	25	58	-1.2	0.014	0.52	-0.05	\$427	\$505	\$102

WEANED HEIFER CALVES



J13



Dam of J13



Dam of J18



J18

J13

E 252 F *Whitney* J13

{DLF, HYF, IEF, MSUDF, MDF} | POLLED | BD: 2/18/21 | AHA#: 44247334 | BW: 88 LBS.

NJW 160Z 10W WHIT 33B
 NJW 79Z 33B FORWARD 252F
 BW 91H 100W RITA 79Z ET

E BRAXTON 719
 E T719 LADY BRAXTON A039
 CHURCHILL LADY 1172Y ET

CE	BW	WW	YW	SC	Milk	M&G	CEM	Fat	REA	Marb	BMI\$	BIIS	CHBS
-0.6	5.8	71	117	0.7	26	61	-1.9	-0.010	0.53	0.07	\$424	\$510	\$121

One of two Forward 252F heifer calves in the offering. With the Braxton influence on the bottom of her pedigree this heifer should turn out to be very maternal.

J18

E 98G *Clara* J18

{DLF, HYF, IEF, MSUDF, MDF} | POLLED | BD: 2/24/21 | AHA#: 44246585 | BW: 85 LBS.

NJW 160B 028X HISTORIC 81E ET
 NJW 202C 81E STEWARD 98G ET
 NJW 160Z 8Y HOME MAKER 202C

E 4L SCHATZEE ET Z712
 E Z712 GRACE C100
 E X84 VICTORIA Z842

CE	BW	WW	YW	SC	Milk	M&G	CEM	Fat	REA	Marb	BMI\$	BIIS	CHBS
4.2	2.3	58	90	1.3	29	58	2.6	0.054	0.69	0.27	\$445	\$533	\$141

The first Steward 98G offspring to be offered, we sure like our 98G calves up to now and are looking forward to expected progeny this fall. J18 posts an impressive EPD profile. Pay attention here.

WEANED HEIFER CALVES



J32



Dam of J32



Dam of J25



J25

J32

E D83 *Shiney* J32

{DLF, HYF, IEF, MSUDF, MDF} | POLLED | BD: 3/30/21 | AHA#: 44246556 | BW: 85 LBS.

OTAPAWA SKYMATE 2046 (ET) SR CCC TOP TIER 1414B ET
 E Z712 SCHATZEE D83 E ILR 1414 MARIA 7005
 HARVIE MISS FIRELY 51F HARVIE MS FIREFLY ET 19Z

CE	BW	WW	YW	SC	Milk	M&G	CEM	Fat	REA	Marb	BMI\$	BII\$	CHB\$
-0.1	4.1	54	87	0.7	25	52	3.7	-0.010	0.63	0.00	\$361	\$422	\$111

Even though J32 is the youngest heifer calf on offer, she is really starting to show her potential, being very deep set, big hipped and very feminine on the front end. J32 is line bred Firefly tracing back to the 51F cow on the top and bottom of her pedigree. Just a real solid prospect here.

J25

E 135G *Ms Unique* J25

{DLF, HYF, IEF, MSUDF, MDF} | POLLED | BD: 3/9/21 | AHA#: 44246548 | BW: 83 LBS.

NJW 79Z Z311 ENDURE 173D ET HARVIE SAFNBFI COLATERAL 337U
 HARVIE EXPANSION ET 135G E 337U DIVA A067
 HARVIE MS UNIQUE ET 26D E LADY RANGER R558

CE	BW	WW	YW	SC	Milk	M&G	CEM	Fat	REA	Marb	BMI\$	BII\$	CHB\$
-0.3	3.7	63	97	0.8	20	51	-5.3	0.010	0.62	0.22	\$436	\$525	\$139

J25 has "unique" genetic background. There are some really sold individuals in this heifers background. Udder quality should be exceptional here.

Reference Sires



REFERENCE SIRES

98G

NJW 202C 81E STEWARD 98G

{DLF, HYF, IEF, MSUDF, MDF} | POLLED | BD: 2/11/19 | AHA#: 44056521

CHURCHILL SENSATION 028X [SOD] NJW 73S W18 HOMEGROWN 8YET
 NJW 160B 028X HISTORIC 81E ET [CHB] NJW 160Z 8Y HOME MAKER 202C
 NJW 73S 38W DAYDREAM 160B NJW 73S 88X DAYDREAM 160Z[DOD]

CE	BW	WW	YW	SC	Milk	M&G	CEM	Fat	REA	Marb	BMI\$	BII\$	CHB\$
7.6	1.8	52	79	1.3	40	66	5.0	0.034	0.80	0.27	\$487	\$569	\$133

98G was pasture exposure bull on all bred heifers in the catalog. Also sire to one weaned heifer calf in the sale. We are thrilled to have been able to add 98G to our program. This guy brings an incredible maternal background into breeding decisions. He is homozygous polled and the number profile backing this guy up is also exceptional.



NJW 202C 81E STEWARD 98G

C039

E ILR 14Z HOLLOWAY C039

{DLF, HYF, IEF, MSUDF, MDF} | POLLED | BD: 2/9/15 | AHA#: 43587878

TH 122 71I VICTOR 719T [SOD] PW VICTOR BOOMER P606[SOD]
 TH 512X 719T PLAYMAKER 14Z HARVIE E MS FIREFLY ET 19Z
 TH 122 71I DOMINETTE 512X ET HARVIE MISS FIREFLY 51F

CE	BW	WW	YW	SC	Milk	M&G	CEM	Fat	REA	Marb	BMI\$	BII\$	CHB\$
1.8	2.0	61	84	0.9	27	58	5.8	0.046	0.50	-0.02	\$393	\$462	\$97

Holloway C039 is on his way to becoming a superior performance sire as well as adding all the important maternal traits; milk, fertility and udder quality. C039's dam is one of the best P606 daughters you will find anywhere. Top side of this pedigree has doubled down on the maternal and growth aspect. Owned with Iron Lake Ranch.



E ILR 14Z HOLLOWAY C039

D31

E Z712 SCHATZEE D31

{DLF, HYF, IEF, MSUDF, MDF} | POLLED | BD: 2/11/16 | AHA#: 43693292

HARVIE LADIES MAN 4L E BRAXTON 719 [SOD]
 E 4L SCHATZEE ET Z712 E T719 LADY BRAXTON Z855
 HARVIE MS FIREFLY ET 186W E M211 LADY RANGER U855

CE	BW	WW	YW	SC	Milk	M&G	CEM	Fat	REA	Marb	BMI\$	BII\$	CHB\$
2.1	4.6	45	78	0.8	25	47	4.0	0.014	0.50	-0.16	\$382	\$428	\$83

D31 is a great example of a genetic blend we really like; blending the power, performance and growth of Schatzee Z712 with the maternal aspect of the Braxton line covers all the bases. It would be hard to put more muscle, depth and dimension into an individual as this bull possesses. This bull is homozygous polled.



E Z712 SCHATZEE D31

D83

E Z712 SCHATZEE D83

{CHB, DLF, HYF, IEF, MSUDF, MDF} | POLLED | BD: 3/14/16 | AHA#: 43693243

HARVIE LADIES MAN 4L EPHR REAGAL 42R
 E 4L SCHATZEE ET Z712 EPHR LINNETTE 530T
 HARVIE MS FIREFLY ET 186W EPHR MILLEY 96 R [DOD]

CE	BW	WW	YW	SC	Milk	M&G	CEM	Fat	REA	Marb	BMI\$	BII\$	CHB\$
-2.0	3.9	62	103	0.7	19	50	1.4	0.014	0.72	-0.06	\$337	\$402	\$114

D83 is a goggle eyed, dark red, high performance Schatzee Z712 who certainly catches the eye of every ranch visitor. D83's dam was a highly predictable producer for us. This free moving guy will continue to see use here. This bull is homozygous polled.



E Z712 SCHATZEE D83

REFERENCE SIRES



ILR HOMETOWN 332A ET

332A ILR HOMETOWN 332A ET [CHB]

{DLF, HYF, IEF, MSUDF, MDF} | POLLED | BD: 3/7/13 | AHA#: 43385499

SHF WONDER M326 W18 ET [CHB, SOD] THM DURANGO 4037 [SOD]
 NJW 73S W18 HOMETOWN 10Y ET [SOD, CHB] NJW 43T 4037 FOREVER EDNA 28X ET
 NJW P606 72N DAYDREAM 73S NJW FOREVER RADIANT 43T ET

CE	BW	WW	YW	SC	Milk	M&G	CEM	Fat	REA	Marb	BMI\$	BII\$	CHB\$
0.4	2.9	51	103	0.9	32	57	-0.2	-0.016	0.59	0.08	\$368	\$432	\$131

Powerfully constructed 10Y son with depth, muscle definition and length of spine. 332A is well pigmented, structurally sound and posts an outstanding EPD profile. The 332A daughters in production here are outstanding young cows; tidy udders and good milk flow are the norm. 332A is one of the best 10Y sons working today. Owned with Iron Lake Ranch, Woolfolk Farms and McGuffee Polled Herefords.



RSK E 2046 DIGBY 20C

20C RSK E 2046 DIGBY 20C

{DLF, HYF, IEF, MSUDF, MDF} | POLLED | BD: 1/26/15 | AHA#: 43864448

SKY 236G PREMIER 132K HARVIE DEYNOTE 61D
 OTAPAWA SKYMATE 2046 ET HARVIE MISS FIREFLY 51F
 OTAPAWA LEONORA P23 HARVIE MISS NYLON 1Y

CE	BW	WW	YW	SC	Milk	M&G	CEM	Fat	REA	Marb	BMI\$	BII\$	CHB\$
-1.4	4.6	55	90	0.7	20	48	-2.3	-0.056	0.52	-0.09	\$349	\$405	\$109

Very correct in his structure, with a big solid foot. He has a presence and stature that can't be copied. Long necked and long spined, he will add pounds and performance to progeny all while maintaining appeal. Digby was the 2017 CWA Canadian National Champion Bull and the 2017 Candian Agribition champion polled bull. Owned with RSK Farms.



EF BEEF X651 TESTED A250

A250 EF BEEF X651 TESTED A250 [CHB]

{DLF, HYF, IEF, MSUDF, MDF} | POLLED | BD: 3/13/13 | AHA#: 43440096

EFBEEF FOREMOST U208 [SOD, CHB] R7R PRIME CUT 6378 ET [CHB]
 EFBEEF TFL U208 TESTED X651 ET [CHB, SOD] EFBEEF 6378 KATE W484
 EFBEEF P606 MABEL R415 EFBEEF G825 KATE R428

CE	BW	WW	YW	SC	Milk	M&G	CEM	Fat	REA	Marb	BMI\$	BII\$	CHB\$
11.2	-0.1	61	92	1.3	27	57	3.1	0.084	0.27	0.64	\$443	\$561	\$156

Homozygous polled. Used AI



ILR U201 SOONER 6112

6112 ILR U201 SOONER 6112

{DLF, HYF, IEF, MSUDF, MDF} | POLLED | BD: 11/10/16 | AHA#: 43779997

REMITALL ONLINE 122L [CHB, SOD] EF BEEF SCHU-LAR PROFICIENT N093 [SOD]
 DM BR SOONER [CHB] KFC MISS PROFICIENT U201
 DM L1 DOMINETTE 901 KCF MISS 774 L82

CE	BW	WW	YW	SC	Milk	M&G	CEM	Fat	REA	Marb	BMI\$	BII\$	CHB\$
2.5	1.9	54	81	0.6	27	53	-3.1	-0.006	0.78	0.11	\$402	\$470	\$136

Used AI

***Bulls for Sale Private Treaty
Spring and Fall, 18-month-old
and yearlings.***



Thank You!

for checking out our sale offering. We hope to see you at the ranch on Saturday, September 18th or online at Smartauctions.co!

Terms & Conditions

Bidder/User Registration and Responsibility: Buyers (a.k.a. users) must register to participate. Establishing a user account or bidding or buying at this auction/sale acknowledges bidders consent to the terms and conditions as outlined below. Bidders will be solely responsible for any and all actions taken with their bidding account including all purchase amounts, freight, and any costs associated with collecting same

Cattle will sell under the standard terms and conditions recommended by the American Hereford Association. Invoices will be sent via Smart Auctions immediately following the close of the sale, payment is due per their terms, or can be made at the ranch for those in attendance.

Terms of all sales will be cash unless arrangements are made between purchaser and seller prior to sale. Individual health papers will be furnished with each animal permitting shipment to any state.

Certificates of registration are all in order and will be transferred to the new owner when payment is made.

All sale cattle have DNA tested to be free of any known genetic diseases or defects recognized, parentage has been verified and EPDs genomically enhanced. EPDs are current as of catalog print date.

The animal becomes the property of the purchaser as soon as sold but it shall be the responsibility of the seller to see that animals are properly cared for until delivered to the purchaser.

Any death or injury after the animal is sold is at the buyer's risk. Buyers are encouraged to insure their purchases. Livestock mortality insurance contacts will be available.

Anyone attending the Open House/Sale Close out does so at their own risk and without liability on the part of the owners or their employees.

Corrections or additions of any information contained in the sale catalog will be provided via supplemental information and will take precedence over any printed material.



P.O. Box 178
Townsend, MT 59644



Catalog designed by
 **Generation 6**
marketing
www.generation6.co