

Friedt Herefords

Annual Production Sale

Wednesday,
February 10, 2016

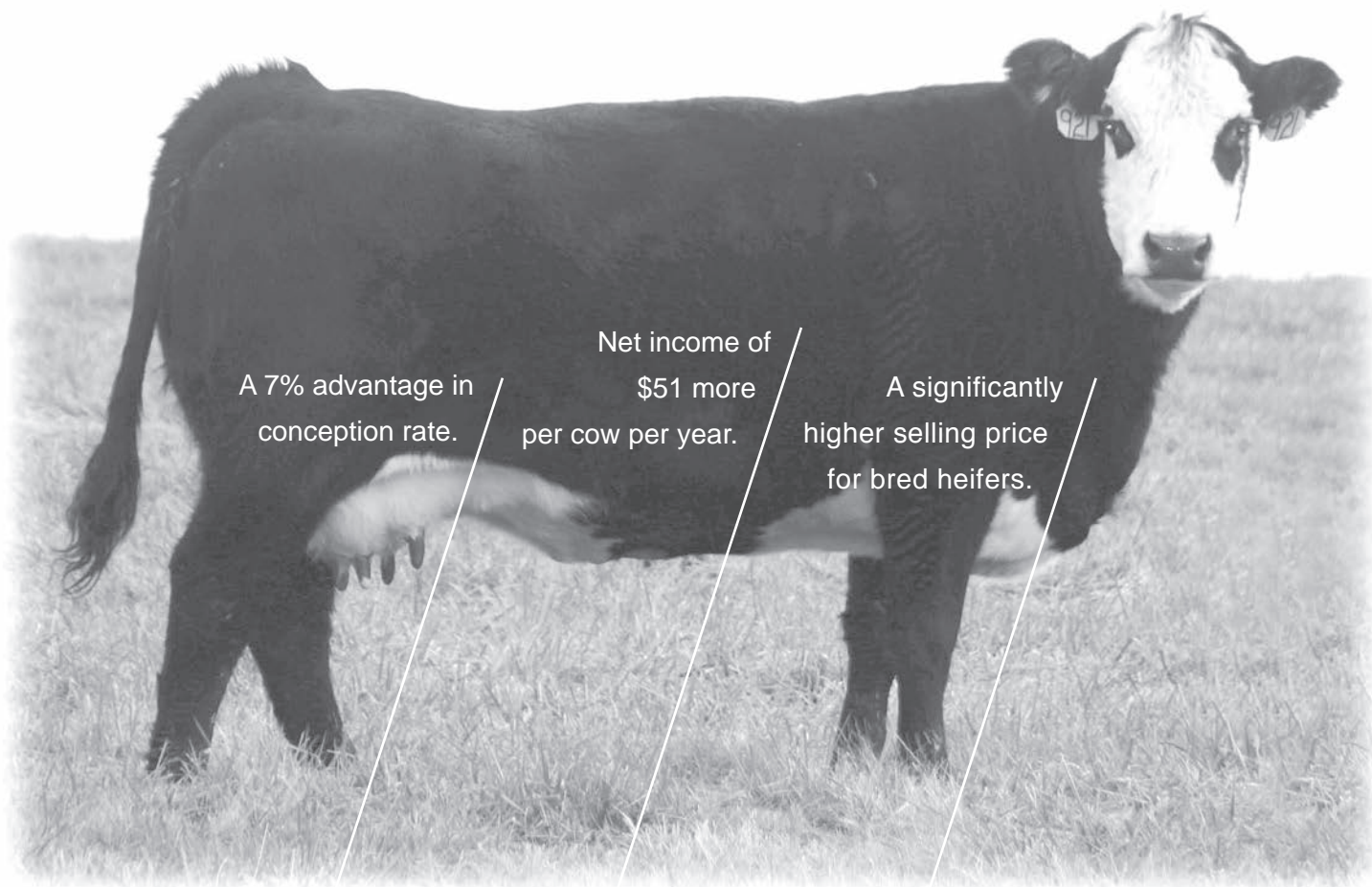
1 p.m. MST Stockmen's West, Dickinson, ND



SELLING: 37 Yearling Bulls
6 Coming 2-year old Bulls
41 Heifers

Where performance counts

Hereford-sired Mama: the one to bank on



New data proves it

All this from Hereford-sired females compared to straight Angus females in a recent, large-scale study documenting the advantage of Hereford-based heterosis.* See all the data at www.hereford.org.

Hereford — making black better.

*Data from the Circle A Ranch Heterosis Project begun in 2007 and conducted by Circle A Angus Ranch



P.O. Box 014059
Kansas City, MO 64101
816.842.3757
www.hereford.org

Friedt Herefords

Where you can buy with confidence

8th Annual Production Sale

Wed., February 10, 2016

1 p.m. MST

Stockmen's West, Dickinson, ND

SELLING

37 Yearling Bulls

6 Coming 2-Year-Old Bulls

41 Registered Yearling Heifers

SALE STAFF

Stockmen's West	701-225-8145
Auctioneer: Scott Weishaar	701-872-5299
Cell.....	701-426-6826
Jill & Marc Hotchkiss, Hereford America.....	605-866-4495
Jill Cell.....	605-490-1409

Ringmen:

Art Handel	605-399-9278
Cell.....	605-391-8233
Levi Landers, AHA	308-730-1396
Alex Acheson, Farm & Ranch Guide	785-366-1185

Insurance:

Art Handel, Merkel Livestock Insurance	605-391-8233
Troy Bargmann, Dakota Community Bank	701-227-4000
Cell.....	701-290-4043



Delivery: We will cooperate on delivery or take \$50.00 off sale price picked up on sale day (bulls only). Free delivery on purchases of \$5,000 or more. *No free delivery on heifers.

Heifers: We will be selling 20-25 head of registered heifers individually to the highest bidder. The remaining heifers will be sold as a group of commercial heifers, with the buyer having the option to purchase the papers after the sale for \$100 per head. Pictures of heifers will be available on our website.

Feeding arrangements: We will offer to feed only the yearling bulls until April 1st at a cost of \$100 per head. The charge will be made at the time of settlement on sale day. We would appreciate that the animal be insured before delivery back to the seller, as injury or death is an insurable risk. Animals that are being cared for by seller are done so at the purchaser's risk. Insurance representatives Art Handel and Troy Bargmann will be on hand to provide this service.

Welcome:

Welcome to our annual production sale. We are offering a very useful set of yearling bulls, a solid group of two year olds and a very uniform set of yearling heifers.

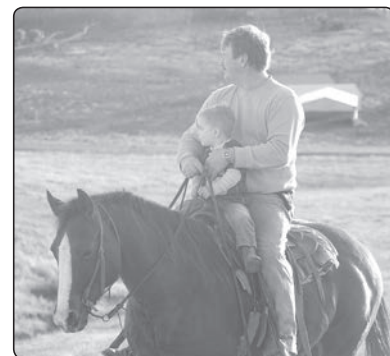
The weather has provided with a very good feeding period and the cattle have responded well. We are offering some new genetics that should offer our customers some good choices.

We are trying to maintain acceptable birth weights, but we also sell cattle by the pound and therefore appreciate outstanding performance and good milking females with functional udders.

We believe our genetics offer you numerous choices to fill your needs. Please feel free to call us with questions and stop by the ranch for a visit.

A performance supplement sheet will be available on our website and also on sale day.

Please join us for a Certified Hereford Beef lunch.



See **VIDEOS** of sale cattle on our website at www.FriedtHerefords.com



Friedt Herefords

Where you can buy with confidence

Gary, Kirsten and Aaron Friedt
Megan and Dusty Dukart
Lindsey and Drew Courtney
8733 55th St. S.W.
Mott, ND 58646

701-824-2300 • 701-290-7231 - Gary cell
Megan cell: 701-290-7230 Aaron cell: 701-530-9597
gfriedt@hotmail.com • www.friedtherefords.com

Catalog by **HEREFORD AMERICA**

HERD BULLS

FH L1 DOMINO 902 CHB,DLF,HYF,IEF

DOB: 1/15/2009 Reg. # 43034275

HH ADVANCE 5104R SOD,CHB,DLF,IEF
HH ADVANCE 7056T CHB,DLF,IEF
 HH MISS ADVANCE 5020R ET DLF,IEF

CL 1 DOMINO 206M DLF,HYF,IEF
 HH MISS ADVANCE 153L DOD,DLF,IEF
 CL 1 DOMINO 180L CHB,DLF,IEF
 HH MISS ADVANCE 1028L DLF,HYF,IEF

OXH MARK DOMINO 3043 CHB,DLF,IEF
FH L1 DOMINETTE 535 DOD,DLF,HYF,IEF
 OXH BESS 8268 DOD,DLF,HYF,IEF

OXH MARK DOMINO 8020 SOD,CHB,DLF,IEF
 OXH CHRISTI 1019 DOD
 OXH STEALTH 3361 CHB,SOD
 OXH LOLA 6014

BW	WW	YW	MILK	M&G	REA	MARB	CHB
4.1	64	112	26	58	.39	.09	\$34

This bull consistently breeds performance. His bulls have always risen to the top and have been sale toppers. The daughters are tremendous producers that put everything into their calves. Owned with Boehnke Herefords.



H5 9131 DOMINO 2185 DLF,HYF,IEF

DOB: 2/16/2012 Reg. # 43280136

CHURCHILL YANKEE ET CHB,SOD,DLF,HYF,IEF
H5 YANKEE 9131 CHB,DLF,HYF,IEF
 H5 MS 9126 DOMET 594 DOD,DLF,HYF,IEF

GH NEON 17N CHB,SOD
 CHURCHILL LADY 202 DLF,HYF,IEF
 CL 1 DOMINO 9126J 1ET SOD,CHB,DLF,IEF
 H5 MS 7038 DOM 9182 DOD

CJH HARLAND 408 SOD,CHB,DLF,HYF,IEF
H5 MS 408 DOMET 915 DOD,DLF,HYF,IEF
 H5 MS 465 DOMET 7272

HH ADVANCE 9005J CHB,DLF,IEF
 CJH L1 DOMINETTE 0064 DLF,HYF,IEF
 H5 9126 DOMINO 465 SOD,DLF,IEF
 H5 MS 9213 ADVANCE 4117

BW	WW	YW	MILK	M&G	REA	MARB	CHB
3.0	66	113	31	63	.30	.28	\$29

We purchased 2185 in the 2013 Harrell Hereford Ranch sale with 3 other partners. He had tremendous performance with excellent carcass traits and a wonderful mother. He has some impressive bull calves in the sale and the females look like they will be very functional females.



SR NAVARRO 740X DLF,HYF,IEF

DOB: 3/8/2010 Reg. # 43106214

UPS DOMINO 5216 CHB,DLF,IEF
UPS NAVARRO CHB,DLF,HYF,IEF
 UPS MISS DOMINO 5875 DLF,IEF

UPS DOMINO 3027 CHB,SOD,DLF,HYF,IEF
 UPS MISS MOM 2756 DOD
 JA L1 DOMINO 2228M SOD,CHB,DLF,IEF
 UPS MISS KNIGHT 3910

CJH HARLAND 408 SOD,CHB,DLF,HYF,IEF
SR HARLET 872 DOD
 SR MONITA 613

HH ADVANCE 9005J CHB,DLF,IEF
 CJH L1 DOMINETTE 0064 DLF,HYF,IEF
 FA BRITISHER 41M
 SR MINA 955

BW	WW	YW	MILK	M&G	REA	MARB	CHB
2.8	52	93	31	57	.49	.41	\$32

740 has worked his way into herd sire status. His EPD profile is impressive with marbling in the top 5% in the breed. He consistently sires long sided progeny who have impressive thickness and depth.



HH ADVANCE 1098Y CHB,DLF,HYF,IEF

DOB: 1/11/2011 Reg. # 43173131

L1 DOMINO 03571 CHB,DLF,HYF,IEF
HH ADVANCE 8050U ET CHB,DLF,HYF,IEF
 HH MISS ADVANCE 365N DLF,HYF,IEF

L1 DOMINO 01384 CHB
 L1 DOMINETTE 00532
 HH ADVANCE 0024K SOD,DLF,IEF
 HH MISS ADVANCE 103L

HH ADVANCE 7101T CHB,DLF,HYF,IEF
HH MISS ADVANCE 9065W ET DLF,HYF,IEF
 HH MISS ADVANCE 1028L DLF,HYF,IEF

HH ADVANCE 4140P SOD,CHB,DLF,IEF
 HH MISS ADVANCE 1121L
 HH ADVANCE 6052F SOD,DLF,IEF
 HH MISS ADVANCE 731G

BW	WW	YW	MILK	M&G	REA	MARB	CHB
2.5	56	80	31	59	.46	-.01	\$27

2012 high selling bull at Holden Herefords. He is a high maternal bull that sires a lot of pigment.



HERD BULLS

SR SCOPE 53A DLF,HYF,IEF

DOB: 3/8/2013

Reg. # 43421724

CL 1 DOMINO 860U *CHB,DLF,HYF,IEF*
CL 1 DOMINO 0130X 1ET *CHB,DLF,HYF,IEF*
 CL 1 DOMINETTE 440P 1ET *DLF,HYF,IEF*

CL 1 DOMINO 637S 1ET *CHB*
 CL 1 DOMINETTE 5142R *DOD,DLF,HYF,IEF*
 CL 1 DOMINO 9126J 1ET *SOD,CHB,DLF,IEF*
 CL 1 DOMINETTE 974J

CJH HARLAND 408 *SOD,CHB,DLF,HYF,IEF*
SR HARLET 076X *DLF,HYF,IEF*
 SR CADDIE 874

HH ADVANCE 9005J *CHB,DLF,IEF*
 CJH L1 DOMINETTE 0064 *DLF,HYF,IEF*
 KB L1 DOMINO 6119S
 SR DELIGHT 6136

BW	WW	YW	MILK	M&G	REA	MARB	CHB
1.4	57	96	31	59	.38	.23	\$31

The top selling bull in the 2014 Stuber Ranch sale, 53A was purchased because of his low birthweight pedigree and outstanding carcass performance. His calves come easy and are very vigorous at birth. He sired a nice set of calves that could be used on heifers. Owned with Boehnke Herefords.



YEARLING BULLS

Lot 1

FH NAVARRO 4101 BA

DOB: 12/4/2014

Reg. # 43637380

UPS NAVARRO *CHB,DLF,HYF,IEF*
SR NAVARRO 740X *DLF,HYF,IEF*
 SR HARLET 872 *DOD*

UPS DOMINO 5216 *SOD,CHB,DLF,IEF*
 UPS MISS DOMINO 5875 *DLF,IEF*
 CJH HARLAND 408 *SOD,CHB,DLF,HYF,IEF*
 SR MONITA 613

KB L1 DOMINO 311 *CHB,SOD,DLF,IEF*
MONTANA MISS 937W
 MONTANA MISS 235

CL 1 DOMINO 484 *CHB,SOD,DLF,HYF,IEF*
 MONTANA MISS 1134
 JNHR DIAMOND ET 414B *SOD*
 MONTANA MISS 909

BW	WW	YW	MILK	M&G	REA	MARB	CHB
2.6	46	78	26	48	.25	.17	\$23

A long sided yearling with a little extra age on him. He is thick quartered with a good uddered mother. Check out his carcass numbers.

Lot 2

FH 2185 DOMINO 503

DOB: 1/10/2015

Reg. # 43639431

H5 YANKEE 9131 *CHB,DLF,HYF,IEF*
H5 9131 DOMINO 2185 *DLF,HYF,IEF*
 H5 MS 408 DOMET 915 *DOD,DLF,HYF,IEF*

CHURCHILL YANKEE ET *CHB,SOD,DLF,HYF,IEF*
 H5 MS 9126 DOMET 594 *DOD,DLF,HYF,IEF*
 CJH HARLAND 408 *SOD,CHB,DLF,HYF,IEF*
 H5 MS 465 DOMET 7272

CL 1 DOMINO 648S *CHB,DLF,IEF*
H5 MS 648 DOMET 8237
 H5 MS 9213 DOMET 5116

CL 1 DOMINO 461P 1ET *CHB,DLF,IEF*
 CL 1 DOMINETTE 249M
 JA L1 DOMINO 9213 *SOD,CHB,DLF,IEF*
 H5 MS 986 DOMET 1166

BW	WW	YW	MILK	M&G	REA	MARB	CHB
2.5	57	96	30	59	.08	.16	\$26

He is a solid marked calf that is red to the ground. He has a herd bull look about him and comes from a good uddered dam we purchased at Harrels.

Lot 3

FH NAVARRO 506 MD

DOB: 1/11/2015

Reg. # 43635748

UPS NAVARRO *CHB,DLF,HYF,IEF*
SR NAVARRO 740X *DLF,HYF,IEF*
 SR HARLET 872 *DOD*

UPS DOMINO 5216 *SOD,CHB,DLF,IEF*
 UPS MISS DOMINO 5875 *DLF,IEF*
 CJH HARLAND 408 *SOD,CHB,DLF,HYF,IEF*
 SR MONITA 613

FH 026K DOMINO 304 *CHB,DLF,IEF*
FH L1 DOMINETTE 839
 LS SABRINA 081 *DOD*

HH ADVANCE 026K 1ET *CHB,DLF,HYF,IEF*
 RCH DOMINETTE 9029 *DOD*
 OXH SABRE 7299 *SOD,DLF,IEF*
 LS MANDY 811

BW	WW	YW	MILK	M&G	REA	MARB	CHB
3.9	56	96	28	56	.55	.17	\$30

Here is a lengthy, thick, heavy muscled calf that will sire awesome feeder cattle and productive females. He is the twin to our entry at the Black Hills Stock Show.



Lot 4

FH L1 DOMINO 507 BA

DOB: 1/15/2015

Reg. # 43639433

H5 YANKEE 9131 *CHB,DLF,HYF,IEF*
H5 9131 DOMINO 2185 *DLF,HYF,IEF*
 H5 MS 408 DOMET 915 *DOD,DLF,HYF,IEF*

CHURCHILL YANKEE ET *CHB,SOD,DLF,HYF,IEF*
 H5 MS 9126 DOMET 594 *DOD,DLF,HYF,IEF*
 CJH HARLAND 408 *SOD,CHB,DLF,HYF,IEF*
 H5 MS 465 DOMET 7272

JH MARK 9454 1ET
MONTANA MISS 8165U
 MONTANA MISS J336 *DOD*

JD BIG ARTHUR I80
 IMR L1 MARKETTE 6062
 CL 1 DOMINO 501 *SOD,DLF,HYF,IEF*
 HH MISS ADVANCE 629U

BW	WW	YW	MILK	M&G	REA	MARB	CHB
2.7	52	85	29	55	.10	.21	\$23

We really like this 2185 son out of a very feminine made cow owned by our partner Bruce Anderson. He should cover all the bases of performance at any operation.



YEARLING BULLS

Lot
5

FH L1 DOMINO 508 BA

DOB: 1/16/2015 Reg. # 43639436

H5 YANKEE 9131 *CHB,DLF,HYF,IEF*
H5 9131 YANKEE 156 *DLF,HYF,IEF*
 H5 MS 001 DOMET 8147 *DLF,HYF,IEF*

CHURCHILL YANKEE ET *CHB,SOD,DLF,HYF,IEF*
 H5 MS 9126 DOMET 594 *DOD,DLF,HYF,IEF*
 H5 501 DOMINO 001 *DLF,IEF*
 H5 MS 9126 DOMET 589

RGH ADVANCE 2139 *DLF,IEF*
KB L1 DOMINETTE 592R
 KB AMY 393

HH ADVANCE 965J
 RB L1 DOMINETTE 8025 *DLF,IEC*
 JNHR DIAMOND ET 414B *SOD*
 KB L1 DOMINETTE 6131

BW	WW	YW	MILK	M&G	REA	MARB	CHB
4.2	51	86	22	48	.30	.07	\$25

His sire, 156, has sired more than one sale topper for us and he could be another! He has extra depth and thickness and is very easy to look at.



Lot
6

FH 156 DOMINO 519

DOB: 1/21/2015 Reg. # 43639444

H5 YANKEE 9131 *CHB,DLF,HYF,IEF*
H5 9131 YANKEE 156 *DLF,HYF,IEF*
 H5 MS 001 DOMET 8147 *DLF,HYF,IEF*

CHURCHILL YANKEE ET *CHB,SOD,DLF,HYF,IEF*
 H5 MS 9126 DOMET 594 *DOD,DLF,HYF,IEF*
 H5 501 DOMINO 001 *DLF,IEF*
 H5 MS 9126 DOMET 589

CL 1 DOMINO 417P *CHB,DLF,IEF*
JBN L1 DOMINETTE 87
 JBN L1 DOMINETTE 412 *DLF,IEF*

CL 1 DOMINO 212M *CHB,SOD,DLF,IEF*
 CL 1 DOMINETTE 0112K 1ET
 ARROW CL1 1127 *DLF,IEF*
 JBN L1 DOMINETTE 003

BW	WW	YW	MILK	M&G	REA	MARB	CHB
4.1	49	80	23	47	.11	.11	\$23

This is a correctly made calf whose quiet disposition is an added bonus.



Lot
7

FH L1 DOMINO 527 LC

DOB: 1/28/2015 Reg. # 43639451

H5 YANKEE 9131 *CHB,DLF,HYF,IEF*
H5 9131 YANKEE 156 *DLF,HYF,IEF*
 H5 MS 001 DOMET 8147 *DLF,HYF,IEF*

CHURCHILL YANKEE ET *CHB,SOD,DLF,HYF,IEF*
 H5 MS 9126 DOMET 594 *DOD,DLF,HYF,IEF*
 H5 501 DOMINO 001 *DLF,IEF*
 H5 MS 9126 DOMET 589

KB L1 DOMINO 1135 *CHB*
FH L1 DOMINETTE 323 LF *DLF,IEF*
 FH MISS 3007 009 LF

JA L1 DOMINO 503 2ET *SOD*
 MONTANA MISS J336 *DOD*
 OXH ADVANCE 3007 *SOD,DLF*
 FH MS WASH 803

BW	WW	YW	MILK	M&G	REA	MARB	CHB
3.2	50	79	28	53	.05	.07	\$21

He is a lighter birthweight calf that is really complete. His 12 year old dam has put 5 females back into our herd.



Lot
8

FH L1 DOMINO 528

DOB: 1/28/2015 Reg. # 43639452

H5 YANKEE 9131 *CHB,DLF,HYF,IEF*
H5 9131 YANKEE 156 *DLF,HYF,IEF*
 H5 MS 001 DOMET 8147 *DLF,HYF,IEF*

CHURCHILL YANKEE ET *CHB,SOD,DLF,HYF,IEF*
 H5 MS 9126 DOMET 594 *DOD,DLF,HYF,IEF*
 H5 501 DOMINO 001 *DLF,IEF*
 H5 MS 9126 DOMET 589

K&B TAILOR MADE 9017W ET *CHB,DLF,HYF,IEF*
FH MISS TAILOR MAID 153
 K&B KNOCKOUT LADY 7051T *DOD*

CJH HARLAND 408 *SOD,CHB,DLF,HYF,IEF*
 K&B MISS EXCEL 4216 *DLF,HYF,IEF*
 UPS KOOTENAY 3251 1ET *CHB*
 OXH MRNA 2180

BW	WW	YW	MILK	M&G	REA	MARB	CHB
3.1	52	87	28	54	.44	.23	\$30

A solid red calf out of a moderat framed K&B bred female. He has an excellent EPD package with outstanding carcass numbers.



YEARLING BULLS

Lot
9

FH L1 DOMINO 530

DOB: 1/28/2015

Reg. # 43639453

H5 YANKEE 9131 *CHB,DLF,HYF,IEF*
H5 9131 DOMINO 2185 *DLF,HYF,IEF*
 H5 MS 408 DOMET 915 *DOD,DLF,HYF,IEF*

CHURCHILL YANKEE ET *CHB,SOD,DLF,HYF,IEF*
 H5 MS 9126 DOMET 594 *DOD,DLF,HYF,IEF*
 CJH HARLAND 408 *SOD,CHB,DLF,HYF,IEF*
 H5 MS 465 DOMET 7272

FH L1 DOMINO 902 *CHB,DLF,HYF,IEF*
FH L1 DOMINETTE 118
 FH 1135 DOMINETTE 509

HH ADVANCE 7056T *CHB,DLF,IEF*
 FH L1 DOMINETTE 535 *DOD,DLF,HYF,IEF*
 KB L1 DOMINO 1135 *CHB*
 FH L1 DOMINETTE 330

BW	WW	YW	MILK	M&G	REA	MARB	CHB
3.6	62	107	29	59	.28	.20	\$29

A maternal brother to our high selling bull to Bert Hauge, of New Town. His mother is one of our top 902 daughters and he looks the part. We will be keeping an interest, to be announce on sale day.



Lot
10

FH SCOPE 533 BA

DOB: 1/30/2015

Reg. # 43639460

CL 1 DOMINO 0130X 1ET *CHB,DLF,HYF,IEF*
SR SCOPE 53A *DLF,HYF,IEF*
 SR HARLET 076X *DLF,HYF,IEF*

CL 1 DOMINO 860U *CHB,DLF,HYF,IEF*
 CL 1 DOMINETTE 440P 1ET *DLF,HYF,IEF*
 CJH HARLAND 408 *SOD,CHB,DLF,HYF,IEF*
 SR CADDIE 874

CL 1 DOMINO 124Y 1ET *CHB,DLF,HYF,IEF*
FH L1 DOMINETTE 315 BA
 MONTANA MISS 163Y

CL 1 DOMINO 9125W 1ET *CHB,DLF,HYF,IEF*
 CL 1 DOMINETTE 6128S 1ET *DOD,DLF,IEF*
 CL 1 DOMINO 849U *CHB,DLF,HYF,IEF*
 MONTANA MISS 937W

BW	WW	YW	MILK	M&G	REA	MARB	CHB
1.7	54	86	29	56	.26	.14	\$26

The first son of the Stuber 53A bull. He is smaller framed but if you are looking for a sure fire heifer bull here he is!



Lot
11

FH L1 DOMINO 540

DOB: 2/3/2015

Reg. # 43639469

H5 YANKEE 9131 *CHB,DLF,HYF,IEF*
H5 9131 YANKEE 156 *DLF,HYF,IEF*
 H5 MS 001 DOMET 8147 *DLF,HYF,IEF*

CHURCHILL YANKEE ET *CHB,SOD,DLF,HYF,IEF*
 H5 MS 9126 DOMET 594 *DOD,DLF,HYF,IEF*
 H5 501 DOMINO 001 *DLF,IEF*
 H5 MS 9126 DOMET 589

CJH HARLAND 408 *SOD,CHB,DLF,HYF,IEF*
FH L1 DOMINETTE 723 *DLF,HYF,IEF*
 FH PATTI 701 *DLF,HYF,IEF*

HH ADVANCE 9005J *CHB,DLF,IEF*
 CJH L1 DOMINETTE 0064 *DLF,HYF,IEF*
 MH PATRIOT 3159 *SOD*
 FH MISS RED 001

BW	WW	YW	MILK	M&G	REA	MARB	CHB
2.7	53	87	25	52	.29	.24	\$27

This calf is a lower birthweight son of 156 out of a moderate framed Harland daughter. She has a full brother working for Chase Strand, SD.



Lot
12

FH SCOPE 546 AF

DOB: 2/4/2015

Reg. # 43640745

CL 1 DOMINO 0130X 1ET *CHB,DLF,HYF,IEF*
SR SCOPE 53A *DLF,HYF,IEF*
 SR HARLET 076X *DLF,HYF,IEF*

CL 1 DOMINO 860U *CHB,DLF,HYF,IEF*
 CL 1 DOMINETTE 440P 1ET *DLF,HYF,IEF*
 CJH HARLAND 408 *SOD,CHB,DLF,HYF,IEF*
 SR CADDIE 874

FH L1 DOMINO 902 *CHB,DLF,HYF,IEF*
FH L1 DOMINETTE 321 AF
 FH L1 DOMINETTE 802 AF *DOD*

HH ADVANCE 7056T *CHB,DLF,IEF*
 FH L1 DOMINETTE 535 *DOD,DLF,HYF,IEF*
 FH 026K DOMINO 304 *CHB,DLF,IEF*
 FH L1 DOMINETTE 340 AF *DOD*

BW	WW	YW	MILK	M&G	REA	MARB	CHB
2.6	59	99	27	57	.40	.13	\$30

A complete, solid marked calf from a first calf heifer. She did a good job here.



YEARLING BULLS

Lot
13

FH L1 DOMINO 549 ET BA

DOB: 2/6/2015

Reg. # U43645831

HH ADVANCE 8050U ET *CHB,DLF,HYF,IEF*
HH ADVANCE 1098Y *CHB,DLF,HYF,IEF*
 HH MISS ADVANCE 9065W ET *DLF,HYF,IEF*

L1 DOMINO 03571 *CHB,DLF,HYF,IEF*
 HH MISS ADVANCE 365N *DLF,HYF,IEF*
 HH ADVANCE 7101T *CHB,DLF,HYF,IEF*
 HH MISS ADVANCE 1028L *DLF,HYF,IEF*

JA L1 DOMINO 6002S *DLF,HYF,IEF*
KB L1 DOMINETTE 879U *DLF,HYF,IEF*
 KB L1 DOMINETTE 647 *DLF,HYF,IEF*

GB L1 DOMINO 935C *SOD,CHB,DLF,IEF*
 JA L1 DOMINETTE 9203
 KB L1 DOMINO 454P *CHB,DLF,IEF*
 KB L1 DOMINETTE 414P *DOD,DLF,HYF,IEF*

BW	WW	YW	MILK	M&G	REA	MARB	CHB
NA	NA	NA	NA	NA	NA	NA	NA

This is an ET calf sired by the Holden 1098Y bull. His dam is a breed leading cow with Baker bloodlines. Owned with our partner Bruce Anderson.



Lot
14

FH L1 DOMINO 551 AF

DOB: 2/7/2015

Reg. # 43640746

H5 YANKEE 9131 *CHB,DLF,HYF,IEF*
H5 9131 YANKEE 156 *DLF,HYF,IEF*
 H5 MS 001 DOMET 8147 *DLF,HYF,IEF*

CHURCHILL YANKEE ET *CHB,SOD,DLF,HYF,IEF*
 H5 MS 9126 DOMET 594 *DOD,DLF,HYF,IEF*
 H5 501 DOMINO 001 *DLF,IEF*
 H5 MS 9126 DOMET 589

FH L1 DOMINO 902 *CHB,DLF,HYF,IEF*
FH L1 DOMINETTE 2024 AF
 FH L1 DOMINETTE 545

HH ADVANCE 7056T *CHB,DLF,IEF*
 FH L1 DOMINETTE 535 *DOD,DLF,HYF,IEF*
 KB L1 DOMINO 1135 *CHB*
 FH STARLET 104

BW	WW	YW	MILK	M&G	REA	MARB	CHB
4.5	61	104	28	58	.35	.07	\$30

This is one stout dude! He has a head turning profile and will sire calves that push the scale down. Out of a dam with a perfect udder.



Lot
15

FH ADVANCE 554 BA

DOB: 2/9/2015

Reg. # 43639480

HH ADVANCE 8050U ET *CHB,DLF,HYF,IEF*
HH ADVANCE 1098Y *CHB,DLF,HYF,IEF*
 HH MISS ADVANCE 9065W ET *DLF,HYF,IEF*

L1 DOMINO 03571 *CHB,DLF,HYF,IEF*
 HH MISS ADVANCE 365N *DLF,HYF,IEF*
 HH ADVANCE 7101T *CHB,DLF,HYF,IEF*
 HH MISS ADVANCE 1028L *DLF,HYF,IEF*

KB L1 DOMINO 521R *CHB,DLF,HYF,IEF*
KB L1 DOMINETTE 731T
 KB L1 DOMINETTE 592R

CL 1 DOMINO 3138N 1ET *CHB,DLF,HYF,IEF*
 MONTANA MISS 310 *DOD,DLF,HYF,IEF*
 RCH ADVANCE 2139 *DLF,IEF*
 KB AMY 393

BW	WW	YW	MILK	M&G	REA	MARB	CHB
3.2	51	79	27	52	.23	.09	\$25

Sired by the Holden 1098Y bull who was the top seller in 2012. He is clean made and marked correct, with muscle in all the right places.



Lot
16

FH L1 DOMINO 560 MD

DOB: 2/9/2015

Reg. # 43640747

HH ADVANCE 7056T *CHB,DLF,IEF*
FH L1 DOMINO 902 *CHB,DLF,HYF,IEF*
 FH L1 DOMINETTE 535 *DOD,DLF,HYF,IEF*

HH ADVANCE 5104R *SOD,CHB,DLF,IEF*
 HH MISS ADVANCE 5020R ET *DLF,IEF*
 OXH MARK DOMINO 3043 *CHB,DLF,IEF*
 OXH BESS 8268 *DOD,DLF,HYF,IEF*

FH L1 DOMINO 695 MF *CHB,DLF,HYF,IEF*
FH L1 DOMINETTE 944 MF
 FH L1 DOMINETTE 612 MF

FH 026K DOMINO 304 *CHB,DLF,IEF*
 OXH LOLA 7002 *DOD*
 CL 1 DOMINO 9126J 1ET *SOD,CHB,DLF,IEF*
 OXH MRNA 1363

BW	WW	YW	MILK	M&G	REA	MARB	CHB
3.7	59	96	26	56	.38	.05	\$29

This calf is the result of combining two of our home raised sires, and it really works! Turn this guy out with some black cows and wait for the F1 calves.



YEARLING BULLS

Lot
17

FH L1 DOMINO 561 BA

DOB: 2/10/2015

Reg. # 43639492

H5 YANKEE 9131 CHB,DLF,HYF,IEF
H5 9131 YANKEE 156 DLF,HYF,IEF
 H5 MS 001 DOMET 8147 DLF,HYF,IEF

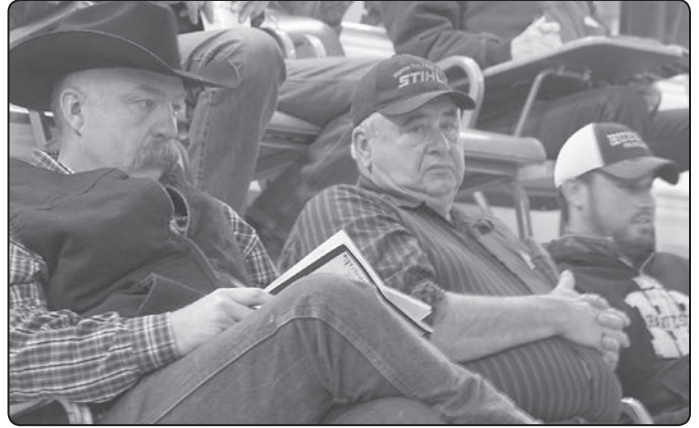
CHURCHILL YANKEE ET CHB,SOD,DLF,HYF,IEF
 H5 MS 9126 DOMET 594 DOD,DLF,HYF,IEF
 H5 501 DOMINO 001 DLF,IEF
 H5 MS 9126 DOMET 589

KB L1 DOMINO 842U DLF,IEF
FH L1 DOMINETTE 223 BA
 MONTANA MISS 9160W DOD

KB L1 DOMINO 655 ET CHB,DLF,IEF
 MONTANA MISS 310 DOD,DLF,HYF,IEF
 CL 1 DOMINO 0152K DLF,IEF
 MONTANA MISS 5107R

BW	WW	YW	MILK	M&G	REA	MARB	CHB
3.3	56	90	27	55	.31	.02	\$25

Here is a moderate framed calf with consistent performance. Comes from a good uddered dam.



Lot
18

FH L1 DOMINO 562

DOB: 2/11/2015

Reg. # 43639493

CL 1 DOMINO 0130X 1ET CHB,DLF,HYF,IEF
SR SCOPE 53A DLF,HYF,IEF
 SR HARLET 076X DLF,HYF,IEF

CL 1 DOMINO 860U CHB,DLF,HYF,IEF
 CL 1 DOMINETTE 440P 1ET DLF,HYF,IEF
 CJH HARLAND 408 SOD,CHB,DLF,HYF,IEF
 SR CADDIE 874

H5 9131 YANKEE 156 DLF,HYF,IEF
FH L1 DOMINETTE 318
 K&B KNOCKOUT LADY 7051T DOD

H5 YANKEE 9131 CHB,DLF,HYF,IEF
 H5 MS 001 DOMET 8147 DLF,HYF,IEF
 UPS KOOTENAY 3251 1ET CHB
 OXH MRNA 2180

BW	WW	YW	MILK	M&G	REA	MARB	CHB
2.2	54	92	27	54	.44	.23	\$31

A lower birthweight calf that sure could work on heifers. His carcass EPD's are an added bonus.



Lot
19

FH SCOPE 563 LC

DOB: 2/11/2015

Reg. # 43639494

CL 1 DOMINO 0130X 1ET CHB,DLF,HYF,IEF
SR SCOPE 53A DLF,HYF,IEF
 SR HARLET 076X DLF,HYF,IEF

CL 1 DOMINO 860U CHB,DLF,HYF,IEF
 CL 1 DOMINETTE 440P 1ET DLF,HYF,IEF
 CJH HARLAND 408 SOD,CHB,DLF,HYF,IEF
 SR CADDIE 874

CL 1 DOMINO 124Y 1ET CHB,DLF,HYF,IEF
FH L1 DOMINETTE 319 LF
 FH L1 DOMINETTE 323 LF DLF,IEF

CL 1 DOMINO 9125W 1ET CHB,DLF,HYF,IEF
 CL 1 DOMINETTE 6128S 1ET DOD,DLF,IEF
 KB L1 DOMINO 1135 CHB
 FH MISS 3007 009 LF

BW	WW	YW	MILK	M&G	REA	MARB	CHB
2.1	54	86	29	56	.22	.16	\$26

Another lighter birthweight bull sired by 53A out of a daughter of our Cooper 124Y, who was also a good heifer bull.



Lot
20

FH L1 DOMINO 565 MD

DOB: 2/11/2015

Reg. # 43639495

H5 YANKEE 9131 CHB,DLF,HYF,IEF
H5 9131 YANKEE 156 DLF,HYF,IEF
 H5 MS 001 DOMET 8147 DLF,HYF,IEF

CHURCHILL YANKEE ET CHB,SOD,DLF,HYF,IEF
 H5 MS 9126 DOMET 594 DOD,DLF,HYF,IEF
 H5 501 DOMINO 001 DLF,IEF
 H5 MS 9126 DOMET 589

CL 1 DOMINO 417P CHB,DLF,IEF
MONTANA MISS 847U ET DOD
 MONTANA MISS 295

CL 1 DOMINO 212M CHB,SOD,DLF,IEF
 CL 1 DOMINETTE 0112K 1ET
 HH ADVANCE 0072K DLF,HYF,IEF
 MONTANA MISS 037 DOD

BW	WW	YW	MILK	M&G	REA	MARB	CHB
3.1	51	81	26	51	.21	.16	\$25

A top prospect by the Harrell 156Y bull, his dam is a top cow purchased from Baker Herefords.



YEARLING BULLS

Lot
21

FH L1 DOMINO 567

DOB: 2/12/2015 Reg. # 43639498

H5 YANKEE 9131 *CHB,DLF,HYF,IEF*
H5 9131 DOMINO 2185 *DLF,HYF,IEF*
 H5 MS 408 DOMET 915 *DOD,DLF,HYF,IEF*

CHURCHILL YANKEE ET *CHB,SOD,DLF,HYF,IEF*
 H5 MS 9126 DOMET 594 *DOD,DLF,HYF,IEF*
 CJH HARLAND 408 *SOD,CHB,DLF,HYF,IEF*
 H5 MS 465 DOMET 7272

KB L1 DOMINO 1135 *CHB*
FH L1 DOMINETTE 518
 FH MISS M PLAN 303 *DOD*

JA L1 DOMINO 503 2ET *SOD*
 MONTANA MISS J336 *DOD*
 BP MASTER PLAN ET *SOD*
 FH L1 VANNA 510

BW	WW	YW	MILK	M&G	REA	MARB	CHB
3.4	54	89	27	54	.22	.16	\$24

This calf has really come on since weaning; he is thick with extra capacity. His mother is a hardworking 10 year old.



Lot
22

FH L1 DOMINO 568

DOB: 2/12/2015 Reg. # 43639499

HH ADVANCE 7056T *CHB,DLF,IEF*
FH L1 DOMINO 902 *CHB,DLF,HYF,IEF*
 FH L1 DOMINETTE 535 *DOD,DLF,HYF,IEF*

HH ADVANCE 5104R *SOD,CHB,DLF,IEF*
 HH MISS ADVANCE 5020R ET *DLF,IEF*
 OXH MARK DOMINO 3043 *CHB,DLF,IEF*
 OXH BESS 8268 *DOD,DLF,HYF,IEF*

FH L1 DOMINO 695 MF *CHB,DLF,HYF,IEF*
FH L1 DOMINETTE 9937
 FH 1135 DOMINETTE 509

FH 026K DOMINO 304 *CHB,DLF,IEF*
 OXH LOLA 7002 *DOD*
 KB L1 DOMINO 1135 *CHB*
 FH L1 DOMINETTE 330

BW	WW	YW	MILK	M&G	REA	MARB	CHB
4.2	58	99	27	56	.27	.12	\$30

If you are looking for a beef making machine, her he is. This calf is long, thick, and deep, with outstanding performance. His mother is the granddam of the Lot 9 calf, and comes from consistent performing cow family.



Lot
23

FH L1 DOMINO 570 AF

DOB: 2/13/2015 Reg. # 43640749

H5 YANKEE 9131 *CHB,DLF,HYF,IEF*
H5 9131 YANKEE 156 *DLF,HYF,IEF*
 H5 MS 001 DOMET 8147 *DLF,HYF,IEF*

CHURCHILL YANKEE ET *CHB,SOD,DLF,HYF,IEF*
 H5 MS 9126 DOMET 594 *DOD,DLF,HYF,IEF*
 H5 501 DOMINO 001 *DLF,IEF*
 H5 MS 9126 DOMET 589

FH L1 DOMINO 902 *CHB,DLF,HYF,IEF*
FH L1 DOMINETTE 2036 AF
 FH L1 DOMINETTE 340 AF *DOD*

HH ADVANCE 7056T *CHB,DLF,IEF*
 FH L1 DOMINETTE 535 *DOD,DLF,HYF,IEF*
 KB L1 DOMINO 1135 *CHB*
 FH STARLET 104

BW	WW	YW	MILK	M&G	REA	MARB	CHB
3.9	59	97	26	55	.33	.04	\$27

This 156 sired calf has a big top on him. His 3 year old dam is one of our best with a small, tight udder.



Lot
24

RAFTER T 156 DOMINO 571 FH

DOB: 2/13/2015 Reg. # 43639501

H5 YANKEE 9131 *CHB,DLF,HYF,IEF*
H5 9131 YANKEE 156 *DLF,HYF,IEF*
 H5 MS 001 DOMET 8147 *DLF,HYF,IEF*

CHURCHILL YANKEE ET *CHB,SOD,DLF,HYF,IEF*
 H5 MS 9126 DOMET 594 *DOD,DLF,HYF,IEF*
 H5 501 DOMINO 001 *DLF,IEF*
 H5 MS 9126 DOMET 589

CL 1 DOMINO 0100X *DLF,HYF,IEF*
RAFTER T L1 DOMINETTE 224 FH
 MONTANA MISS 038X

CL 1 DOMINO 860U *CHB,DLF,HYF,IEF*
 CL1 DOMINETTE 193L
 HH ADVANCE 6001S
 MONTANA MISS 7146T

BW	WW	YW	MILK	M&G	REA	MARB	CHB
3.1	53	88	29	55	.19	.08	\$24

Herd sire 156 consistently produces great bulls and females. 571 fits the mold of his herd mates.



YEARLING BULLS

Lot
25

FH L1 DOMINO 577

DOB: 2/15/2015

Reg. # 43639507

H5 YANKEE 9131 *CHB,DLF,HYF,IEF*
H5 9131 YANKEE 156 *DLF,HYF,IEF*
 H5 MS 001 DOMET 8147 *DLF,HYF,IEF*

CHURCHILL YANKEE ET *CHB,SOD,DLF,HYF,IEF*
 H5 MS 9126 DOMET 594 *DOD,DLF,HYF,IEF*
 H5 501 DOMINO 001 *DLF,IEF*
 H5 MS 9126 DOMET 589

KB L1 DOMINO 842U *DLF,IEF*

KB L1 DOMINO 655 ET *CHB,DLF,IEF*
 MONTANA MISS 310 *DOD,DLF,HYF,IEF*
 CL 1 DOMINO 7110T *CHB,DLF,HYF,IEF*
 KB L1 DOMINETTE 721T

FH L1 DOMINETTE 211

KB L1 DOMINETTE 9134W

BW	WW	YW	MILK	M&G	REA	MARB	CHB
3.2	54	88	28	55	.24	.04	\$24

This may be the most complete calf in the sale. He has the herd bull look and is extra thick. His dam is moderate framed and had one of our high selling heifers in last year's sale to Steve Bauer, WI. We will keep an interest, to be announced sale day.



Lot
26

FH L1 DOMINO 582

DOB: 2/19/2015

Reg. # 43639514

H5 YANKEE 9131 *CHB,DLF,HYF,IEF*
H5 9131 YANKEE 156 *DLF,HYF,IEF*
 H5 MS 001 DOMET 8147 *DLF,HYF,IEF*

CHURCHILL YANKEE ET *CHB,SOD,DLF,HYF,IEF*
 H5 MS 9126 DOMET 594 *DOD,DLF,HYF,IEF*
 H5 501 DOMINO 001 *DLF,IEF*
 H5 MS 9126 DOMET 589

SR SAGA 1447 *CHB,DLF,HYF,IEF*
SR DILIA 2103Z

SR SHANA 4111

CJH HARLAND 408 *SOD,CHB,DLF,HYF,IEF*
 SR ROSA 3101 *DOD,DLF,IEF*
 BP 146D SANDMAN 46H *SOD*
 SR YAMPETTE 706 *DOD*

BW	WW	YW	MILK	M&G	REA	MARB	CHB
4.1	56	94	27	55	.38	.08	\$28

156 was turned out with all of the first calf heifers in 2014 because of his consistent performance. Here is another good son out of a good Stuber cow.



Lot
27

FH L1 DOMINO 589

DOB: 2/23/2015

Reg. # 43639972

CL 1 DOMINO 0130X 1ET *CHB,DLF,HYF,IEF*
SR SCOPE 53A *DLF,HYF,IEF*
 SR HARLET 076X *DLF,HYF,IEF*

CL 1 DOMINO 860U *CHB,DLF,HYF,IEF*
 CL 1 DOMINETTE 440P 1ET *DLF,HYF,IEF*
 CJH HARLAND 408 *SOD,CHB,DLF,HYF,IEF*
 SR CADDIE 874

FH L1 DOMINO 902 *CHB,DLF,HYF,IEF*

HH ADVANCE 7056T *CHB,DLF,IEF*
 FH L1 DOMINETTE 535 *DOD,DLF,HYF,IEF*
 CL 1 DOMINO 648S *CHB,DLF,IEF*
 H5 MS 9213 DOMET 5116

FH L1 DOMINETTE 305

H5 MS 648 DOMET 8237

BW	WW	YW	MILK	M&G	REA	MARB	CHB
2.5	57	96	29	58	.25	.14	\$30

The 53A calves are very consistent, and he fits the group, showing ample volume and thickness. His mother is a 902 first calf heifer.



Lot
28

FH L1 DOMINO 590 LC

DOB: 2/23/2015

Reg. # 43640820

CL 1 DOMINO 0130X 1ET *CHB,DLF,HYF,IEF*
SR SCOPE 53A *DLF,HYF,IEF*
 SR HARLET 076X *DLF,HYF,IEF*

CL 1 DOMINO 860U *CHB,DLF,HYF,IEF*
 CL 1 DOMINETTE 440P 1ET *DLF,HYF,IEF*
 CJH HARLAND 408 *SOD,CHB,DLF,HYF,IEF*
 SR CADDIE 874

CL 1 DOMINO 862U *CHB,DLF,IEF*

CL 1 DOMINO 637S 1ET *CHB*
 CL 1 DOMINETTE 5131R *DLF,HYF,IEF*
 CJH HARLAND 408 *SOD,CHB,DLF,HYF,IEF*
 IH 503 DOMINETA 8335 *DOD,DLF,IEF*

FH L1 DOMINETTE 322 LF

FH L1 DOMINETTE 737 LF *DOD*

BW	WW	YW	MILK	M&G	REA	MARB	CHB
2.5	54	91	30	56	.34	.29	\$31

A good 53A son out of a first calf heifer. Solid marked with a lot of pigment.



YEARLING BULLS

Lot
29

FH 902 DOMINO 595

DOB: 2/24/2015

Reg. # 43639973

HH ADVANCE 7056T CHB,DLF,IEF
FH L1 DOMINO 902 CHB,DLF,HYF,IEF

FH L1 DOMINETTE 535 DOD,DLF,HYF,IEF

HH ADVANCE 5104R SOD,CHB,DLF,IEF
HH MISS ADVANCE 5020R ET DLF,IEF
OXH MARK DOMINO 3043 CHB,DLF,IEF
OXH BESS 8268 DOD,DLF,HYF,IEF

CL 1 DOMINO 849U CHB,DLF,HYF,IEF
FH L1 DOMINETTE 2312

FH L1 DOMINETTE 330

CL 1 DOMINO 648S CHB,DLF,IEF
CL 1 DOMINETTE 591R 1ET
KB L1 DOMINO 1135 CHB
FH ANDI 606 1ET

BW	WW	YW	MILK	M&G	REA	MARB	CHB
3.8	58	96	27	56	.19	.08	\$29

Another calf out of a first calf heifer. He is upheaded and thick, and is sure to perform.



Lot
30

FH 53A SCOPE 596 MD

DOB: 2/24/2015

Reg. # 43640751

CL 1 DOMINO 0130X 1ET CHB,DLF,HYF,IEF
SR SCOPE 53A DLF,HYF,IEF

SR HARLET 076X DLF,HYF,IEF

CL 1 DOMINO 860U CHB,DLF,HYF,IEF
CL 1 DOMINETTE 440P 1ET DLF,HYF,IEF
CJH HARLAND 408 SOD,CHB,DLF,HYF,IEF
SR CADDIE 874

UPS NAVARRO CHB,DLF,HYF,IEF
FH NAVIA 249 MD

FH L1 DOMINETTE 616MF

UPS DOMINO 5216 SOD,CHB,DLF,IEF
UPS MISS DOMINO 5875 DLF,IEF
CL 1 DOMINO 9126J 1ET SOD,CHB,DLF,IEF
OXH JEAN 9250

BW	WW	YW	MILK	M&G	REA	MARB	CHB
2.7	53	93	31	58	.42	.23	\$29

This calf has a super EPD profile and some of the top performance sires listed on his pedigree. Sired by Stuber 53A, he also has Harland 408, Navarro, and 9126J listed, all Hereford greats. Adding to that he is solid marked calf with 2 red eyes, this is a great prospect.



Lot
31

FH 2185 DOMINO 597 LC

DOB: 2/25/2015

Reg. # 43639974

H5 YANKEE 9131 CHB,DLF,HYF,IEF
H5 9131 DOMINO 2185 DLF,HYF,IEF

H5 MS 408 DOMET 915 DOD,DLF,HYF,IEF

CHURCHILL YANKEE ET CHB,SOD,DLF,HYF,IEF
H5 MS 9126 DOMET 594 DOD,DLF,HYF,IEF
CJH HARLAND 408 SOD,CHB,DLF,HYF,IEF
H5 MS 465 DOMET 7272

FH 026K DOMINO 304 CHB,DLF,IEF
FH L1 DOMINETTE 710 LF

FH L1 DOMINETTE 323 LF DLF,IEF

HH ADVANCE 026K 1ET CHB,DLF,HYF,IEF
RCH DOMINETTE 9029 DOD
KB L1 DOMINO 1135 CHB
FH MISS 3007 009 LF

BW	WW	YW	MILK	M&G	REA	MARB	CHB
3.3	61	100	29	59	.23	.18	\$27

2185 did an outstanding job on this mating. He is moderate framed, long, and thick. His 8 year old dam came from a high maternal line.



Lot
32

FH 902 DOMINO 599

DOB: 2/27/2015

Reg. # 43639976

HH ADVANCE 7056T CHB,DLF,IEF
FH L1 DOMINO 902 CHB,DLF,HYF,IEF

FH L1 DOMINETTE 535 DOD,DLF,HYF,IEF

HH ADVANCE 5104R SOD,CHB,DLF,IEF
HH MISS ADVANCE 5020R ET DLF,IEF
OXH MARK DOMINO 3043 CHB,DLF,IEF
OXH BESS 8268 DOD,DLF,HYF,IEF

KB L1 DOMINO 632 CHB,DLF,IEF
FH L1 DOMINETTE 013 MD

FH L1 DOMINETTE 441 MF

CL 1 DOMINO 417P CHB,DLF,IEF
KB L1 DOMINETTE 415P
OXH DOMINO 1095 SOD,DLF,IEF
OXH BESS 0343

BW	WW	YW	MILK	M&G	REA	MARB	CHB
4.2	57	94	21	49	.29	.17	\$29

This 902 son is marked right and travels well on his feet and legs. Good carcass figures help complete the package.



YEARLING BULLS

Lot
33

FH 53A SCOPE 5009

DOB: 3/8/2015 Reg. # 4363986

CL 1 DOMINO 0130X 1ET *CHB,DLF,HYF,IEF*
SR SCOPE 53A *DLF,HYF,IEF*
 SR HARLET 076X *DLF,HYF,IEF*

H5 9131 YANKEE 156 *DLF,HYF,IEF*
FH L1 DOMINETTE 355
 FH L1 DOMINETTE 5100

BW	WW	YW	MILK	M&G	REA	MARB	CHB
3.7	62	106	28	59	.43	.18	\$31

Another solid marked calf with 2 red eyes. He is sired by the Stuber 53A heifer bull and is from one of our higher performing first calf heifers.



Lot
34

FH 740X NAVARRO 5015 MD

DOB: 3/15/2015 Reg. # 4363991

UPS NAVARRO *CHB,DLF,HYF,IEF*
SR NAVARRO 740X *DLF,HYF,IEF*
 SR HARLET 872 DOD

FH 026K DOMINO 304 *CHB,DLF,IEF*
FH L1 DOMINETTE 729 MF
 FH L1 DOMINETTE 441 MF

BW	WW	YW	MILK	M&G	REA	MARB	CHB
3.6	55	96	27	55	.51	.30	\$32

Here is another great son by 740X. Dam is a solid producer with Oxley breeding on the bottom side.

Lot
35

FH 902 DOMINO 5016 AF

DOB: 3/17/2015 Reg. # 43640756

HH ADVANCE 7056T *CHB,DLF,IEF*
FH L1 DOMINO 902 *CHB,DLF,HYF,IEF*
 FH L1 DOMINETTE 535 *DOD,DLF,HYF,IEF*

FH 026K DOMINO 304 *CHB,DLF,IEF*
FH L1 DOMINETTE 806 AF *DLF,HYF,IEF*
 FH STARLET 104

BW	WW	YW	MILK	M&G	REA	MARB	CHB
4.3	60	100	24	54	.38	.05	\$30

This moderate framed calf is really thick. His dam was flushed to Sensation 028X and we have some fancy heifer calves so far.

Lot
36

FH 222X BRITISHER 5023 JB

DOB: 3/25/2015 Reg. # 43640001

BANNERLANE 251N STANDARD 39S
DA 39S BRITISHER 222X
 DA 121M LADY BRITISHER 88T

DOMINO 0322 JB
PH TRACY BA 8678
 MONTANA MISS 0144

BW	WW	YW	MILK	M&G	REA	MARB	CHB
4.8	54	87	18	45	.32	.12	\$25

His dam was bought in the Perman dispersal. He has Canadian bloodlines on top and good L1 genetics on the bottom. Solid marked, he shows a lot of muscling.



Lot
37

FH 902 DOMINO 5027

DOB: 3/28/2015 Reg. # 43640002

HH ADVANCE 7056T *CHB,DLF,IEF*
FH L1 DOMINO 902 *CHB,DLF,HYF,IEF*
 FH L1 DOMINETTE 535 *DOD,DLF,HYF,IEF*

KB L1 DOMINO 1135 *CHB*
FH L1 DOMINETTE 758
 UU MS NEFF 9057

BW	WW	YW	MILK	M&G	REA	MARB	CHB
4.6	55	94	26	53	.25	.08	\$28

He is the youngest bull in the sale, but he shows a lot of style and growth in spite of it. Maternally, very strong.



2-YEAR-OLD BULLS

The two year old bulls are the late calves born in 2014. They developed with longevity in mind and are not overfed or highly conditioned.

Let
38

FH NAVARRO 479 AF

DOB: 2/21/2014 Reg. # 43514935

SR NAVARRO 740X CHB,DLF,HYF,IEF
DLF,HYF,IEF
SR HARLET 872 DOD

FH STARLET 104
ST STAR MARK 988 STAR MARK B280 5ET
FH MS WASH 804 T MS ADVANCE 2101
BB WASHINGTON 2041
FH MISS M PLAN 303 DOD

BW	WW	YW	MILK	M&G	REA	MARB	CHB
3.1	44	76	25	47	.37	.10	\$22

This calf lost his mother as a calf and was bottle fed, so he didn't develop as fast when he was younger, but he sure has caught up now. His mother was 13 when she had him and was one of our best cows.



Let
39

FH NAVARRO 4017

DOB: 3/21/2014 Reg. # 43514843

SR NAVARRO 740X CHB,DLF,HYF,IEF
DLF,HYF,IEF
SR HARLET 872 DOD

JBN L1 DOMINETTE 826
KB L1 DOMINO 521R CHB,DLF,HYF,IEF CL 1 DOMINO 3138N 1ET CHB,DLF,HYF,IEF
JBN L1 DOMINETTE 413 DLF,IEF MONTANA MISS 310 DOD,DLF,HYF,IEF
ARROW CL1 1127 DLF,IEF
JBN L1 DOMINETTE 17 DLF,IEF

BW	WW	YW	MILK	M&G	REA	MARB	CHB
3.3	45	77	26	48	.15	.25	\$24

The heavy weight in the pen, he is put together well with a big top and thick rear quarter.



Let
40

FH L1 DOMINO 4021 MD

DOB: 4/2/2014 Reg. # 43514927

FH L1 DOMINO 902 CHB,DLF,HYF,IEF
HH ADVANCE 7056T CHB,DLF,IEF HH ADVANCE 5104R SOD,CHB,DLF,IEF
FH L1 DOMINETTE 535 DOD,DLF,HYF,IEF HH MISS ADVANCE 5020R ET DLF,IEF
OXH MARK DOMINO 3043 CHB,DLF,IEF
OXH BESS 8268 DOD,DLF,HYF,IEF

FH L1 DOMINETTE 144 MD
FH L1 DOMINO 695 MF CHB,DLF,HYF,IEF FH 026K DOMINO 304 CHB,DLF,IEF
FH L1 DOMINETTE 329 MF OXH LOLA 7002 DOD
OXH 5125 DOMINO 7358
LS SABRINA 081 DOD

BW	WW	YW	MILK	M&G	REA	MARB	CHB
3.3	54	88	26	53	.29	.08	\$27

This is a bull that is solid marked and thick. His dam is from a good cow family and she has a nice tight udder. Full brother to heifer Lot 5012.



Let
41

FH NAVARRO 4037 MD

DOB: 4/23/2014 Reg. # 43514838

SR NAVARRO 740X CHB,DLF,HYF,IEF
DLF,HYF,IEF
SR HARLET 872 DOD

MISS L1 ADVANCE 0841 JB
L1 ADVANCE DOMINO 0615 JB FH 026K DOMINO 304 CHB,DLF,IEF
MISS DOMINO 0444 JB MISS DOMINO 0034 JB
ARROW CL1 8107
TONI DOMINO 0006 JB DOD

BW	WW	YW	MILK	M&G	REA	MARB	CHB
3.5	52	93	25	51	.35	.27	\$29

This dark red bull has a lot of style and substance. He is long sided and clean made.



2-YEAR-OLD BULLS

Lot 42 **FH L1 DOMINO 4143**
 DOB: 5/13/2014 Reg. # 43514841

SR RENDITION 568
SR RAZOR 861Y DLF,HYF,IEF
 DS MAXIE 916W

CHURCHILL YANKEE ET *CHB,SOD,DLF,HYF,IEF*
 SR PEGGY 075 *DOD,DLF,IEF*
 KB L1 DOMINO 655 ET *CHB,DLF,IEF*
 DLS HARLET 600

FH 026K DOMINO 304 *CHB,DLF,IEF* HH ADVANCE 026K 1ET *CHB,DLF,HYF,IEF*
FH L1 DOMINETTE 836 RCH DOMINETTE 9029 *DOD*
 FH MISS GENERAL 202 *DLF,IEF* JV GENERAL 660 *SOD*
 UU MS NEFF 0082

BW	WW	YW	MILK	M&G	REA	MARB	CHB
2.1	43	69	27	48	.16	.18	\$20

This bull should sire some awesome calves when used on black cows.



Lot 43 **FH L1 DOMINO 4150B**
 DOB: 6/5/2014 Reg. # 43515225

UPS DOMINO 3027 *CHB,SOD,DLF,HYF,IEF* CL 1 DOMINO 9126J 1ET *SOD,CHB,DLF,IEF*
K&B SENTINEL 0040X DLF,HYF,IEF UPS MISS DIAMOND 1353
 K&B MISTY 7003T *DLF,HYF,IEF* K&B EXCEL 5042 *CHB*
 K&B LYNN DOM 4096 *DLF,HYF,IEF*

OXH DOMINO 2211 *SOD,DLF,IEF* OXH DOMINO 9340
FH L1 MISS ADA 043 OXH LOLA 8255
 FH L1 DOMINETTE 834 *DOD,DLF,HYF,IEF* FH 026K DOMINO 304 *CHB,DLF,IEF*
 FH L1 DOMINETTE 4027

BW	WW	YW	MILK	M&G	REA	MARB	CHB
3.0	50	86	34	59	.30	.08	\$26

This free-strided bull comes from a very maternal cow family. He should sire awesome females.



YEARLING HEIFERS

These heifers are a very good group from the heart of our replacements. They are sired by various sires and are from both younger and older cows, which allows you to select from a good cross section of our breeding program.

Lot 512 **FH L1 DOMINETTE 512**
 DOB: 1/18/2015 Reg. # 43639439

H5 YANKEE 9131 *CHB,DLF,HYF,IEF* CHURCHILL YANKEE ET *CHB,SOD,DLF,HYF,IEF*
H5 9131 DOMINO 2185 DLF,HYF,IEF H5 MS 9126 DOMET 594 *DOD,DLF,HYF,IEF*
 H5 MS 408 DOMET 915 *DOD,DLF,HYF,IEF* CJH HARLAND 408 *SOD,CHB,DLF,HYF,IEF*
 H5 MS 465 DOMET 7272

OXH DOMINO 2211 *SOD,DLF,IEF* OXH DOMINO 9340
FH L1 MISS ADA 011 OXH LOLA 8255
 FH L1 DOMINETTE 605 FH 026K DOMINO 304 *CHB,DLF,IEF*
 FH MS WASH 802

BW	WW	YW	MILK	M&G	REA	MARB	CHB
2.8	54	92	31	58	.31	.07	\$23

Lot 526 **FH L1 DOMINO 565 MD**
 DOB: 2/11/2015 Reg. # 43639495

H5 YANKEE 9131 *CHB,DLF,HYF,IEF* CHURCHILL YANKEE ET *CHB,SOD,DLF,HYF,IEF*
H5 9131 YANKEE 156 DLF,HYF,IEF H5 MS 9126 DOMET 594 *DOD,DLF,HYF,IEF*
 H5 MS 001 DOMET 8147 *DLF,HYF,IEF* H5 501 DOMINO 001, *DLF,IEF*
 H5 MS 9126 DOMET 589

CL 1 DOMINO 417P *CHB,DLF,IEF* CL 1 DOMINO 212M *CHB,SOD,DLF,IEF*
MONTANA MISS 847U ET DOD CL 1 DOMINETTE 0112K 1ET
 MONTANA MISS 295 HH ADVANCE 0072K *DLF,HYF,IEF*
 MONTANA MISS 037 *DOD*

BW	WW	YW	MILK	M&G	REA	MARB	CHB
3.1	51	81	26	51	.21	.16	\$25

This is a very angular heifer by the Cooper 124Y bull. Her mother did a good job with her first calf.

Lot 531 **RAFTER T MISS ADVANCE 531**
 DOB: 1/29/2015 Reg. # 43639455

HH ADVANCE 8050U ET *CHB,DLF,HYF,IEF* L1 DOMINO 03571 *CHB,DLF,HYF,IEF*
HH ADVANCE 1098Y CHB,DLF,HYF,IEF HH MISS ADVANCE 365N *DLF,HYF,IEF*
 HH MISS ADVANCE 9065W ET *DLF,HYF,IEF* HH ADVANCE 7101T *CHB,DLF,HYF,IEF*
 HH MISS ADVANCE 1028L *DLF,HYF,IEF*

L1 DOMINO 02336 L1 DOMINO 00499
KB L1 DOMINETTE 6143 L1 DOMINETTE 95443
 KB L1 DOMINETTE 589 CL 1 DOMINO 501 *SOD,DLF,HYF,IEF*
 CL 1 DOMINETTE 752

BW	WW	YW	MILK	M&G	REA	MARB	CHB
2.3	41	64	23	44	.18	.06	\$21

A good straight Line I pedigree on this female. Sired by the great 1098Y.



Lot 531

YEARLING HEIFERS

Lot
532

FH MISS SCOPE 532 AF

DOB: 1/29/2015

Reg. # 43640743

CL 1 DOMINO 0130X 1ET CHB,DLF,HYF,IEF
SR SCOPE 53A DLF,HYF,IEF
SR HARLET 076X DLF,HYF,IEF

CL 1 DOMINO 860U CHB,DLF,HYF,IEF
CL 1 DOMINETTE 440P 1ET DLF,HYF,IEF
CJH HARLAND 408 SOD,CHB,DLF,HYF,IEF
SR CADDIE 874

CL 1 DOMINO 124Y 1ET
FH L1 DOMINETTE 316 AF
FH L1 DOMINETTE 905 AF CHB,DLF,HYF,IEF

CL 1 DOMINO 9125W 1ET CHB,DLF,HYF,IEF
CL 1 DOMINETTE 6128S 1ET DOD,DLF,IEF
FH L1 DOMINO 695 MF CHB,DLF,HYF,IEF
FH STARLET 104

BW	WW	YW	MILK	M&G	REA	MARB	CHB
2.6	57	92	29	57	.36	.12	\$27



Lot
536

FH 2185 DOMINETTE 536

DOB: 2/2/2015

Reg. # 43639464

H5 YANKEE 9131 CHB,DLF,HYF,IEF
H5 9131 DOMINO 2185 DLF,HYF,IEF
H5 MS 408 DOMET 915 DOD,DLF,HYF,IEF

CHURCHILL YANKEE ET CHB,SOD,DLF,HYF,IEF
H5 MS 9126 DOMET 594 DOD,DLF,HYF,IEF
CJH HARLAND 408 SOD,CHB,DLF,HYF,IEF
H5 MS 465 DOMET 7272

UPS NAVARRO CHB,DLF,HYF,IEF
FH MISS NAVIA 035
FH MISS L1 026K 411

UPS DOMINO 5216 SOD,CHB,DLF,IEF
UPS MISS DOMINO 5875 DLF,IEF
HH ADVANCE 026K 1ET CHB,DLF,HYF,IEF
FH PATTI 701 DLF,HYF,IEF

BW	WW	YW	MILK	M&G	REA	MARB	CHB
2.9	55	95	27	54	.49	.32	\$29

A moderate framed heifer that is wide topped, deep sided, with a square hip. She has excellent carcass EPD's.



Lot
550

FH L1 DOMINETTE 550

DOB: 2/7/2015

Reg. # 43639475

H5 YANKEE 9131 CHB,DLF,HYF,IEF
H5 9131 YANKEE 156 DLF,HYF,IEF
H5 MS 001 DOMET 8147 DLF,HYF,IEF

CHURCHILL YANKEE ET CHB,SOD,DLF,HYF,IEF
H5 MS 9126 DOMET 594 DOD,DLF,HYF,IEF
H5 501 DOMINO 001 DLF,IEF
H5 MS 9126 DOMET 589

FH L1 DOMINO 745 DLF,HYF,IEF
FH L1 DOMINO 2021
FH L1 DOMINETTE 518

KB L1 DOMINO 1135 CHB
FH ANDI 607 1ET
KB L1 DOMINO 1135 CHB
FH MISS M PLAN 303 DOD

BW	WW	YW	MILK	M&G	REA	MARB	CHB
4.6	55	90	25	53	.29	.07	\$26

Lot
552

FH L1 DOMINETTE 552 LC

DOB: 2/8/2015

Reg. # 43639477

H5 YANKEE 9131 CHB,DLF,HYF,IEF
H5 9131 YANKEE 156 DLF,HYF,IEF
H5 MS 001 DOMET 8147 DLF,HYF,IEF

CHURCHILL YANKEE ET CHB,SOD,DLF,HYF,IEF
H5 MS 9126 DOMET 594 DOD,DLF,HYF,IEF
H5 501 DOMINO 001 DLF,IEF
H5 MS 9126 DOMET 589

CHURCHILL YANKEE ET CHB,SOD,DLF,HYF,IEF
MACS DOODLES 256Z
MAC'S HARLET 7118

GH NEON 17N CHB,SOD
CHURCHILL LADY 202 DLF,HYF,IEF
CJH HARLAND 408 SOD,CHB,DLF,HYF,IEF
MAC'S FRECKLES 330

BW	WW	YW	MILK	M&G	REA	MARB	CHB
3.4	58	96	26	55	.21	.35	\$31

Here is an outstanding heifer that is correct in her structure and really thick. She will work in any program.

Lot
557

FH L1 DOMINETTE 557 BA

DOB: 2/9/2015

Reg. # 43639489

H5 YANKEE 9131 CHB,DLF,HYF,IEF
H5 9131 DOMINO 2185 DLF,HYF,IEF
H5 MS 408 DOMET 915 DOD,DLF,HYF,IEF

CHURCHILL YANKEE ET CHB,SOD,DLF,HYF,IEF
H5 MS 9126 DOMET 594 DOD,DLF,HYF,IEF
CJH HARLAND 408 SOD,CHB,DLF,HYF,IEF
H5 MS 465 DOMET 7272

CL 1 DOMINO 0152K DLF,IEF
MONTANA MISS 9160W DOD
MONTANA MISS 5107R

HH ADVANCE 8093H CHB,DLF,IEF
CL 1 DOMINETTE 874H 1ET
KB L1 DOMINO 218 CHB,DLF,IEF
MONTANA MISS 1134

BW	WW	YW	MILK	M&G	REA	MARB	CHB
2.4	54	94	29	56	.19	.18	\$25

Lot
569

FH L1 DOMINO 569

DOB: 2/13/2015

Reg. # 43639500

HH ADVANCE 7056T CHB,DLF,IEF
FH L1 DOMINO 902 CHB,DLF,HYF,IEF
FH L1 DOMINETTE 535 DOD,DLF,HYF,IEF

HH ADVANCE 5104R SOD,CHB,DLF,IEF
HH MISS ADVANCE 5020R ET DLF,IEF
OXH MARK DOMINO 3043 CHB,DLF,IEF
OXH BESS 8268 DOD,DLF,HYF,IEF

CL 1 DOMINO 417P CHB,DLF,IEF
JBN L1 DOMINETTE 812
JBN 111 DOMINETTE 417 DLF,IEF

CL 1 DOMINO 212M CHB,SOD,DLF,IEF
CL 1 DOMINETTE 0112K 1ET
JBN 714 DOMINO 111
MISS DEBONAIR 6271

BW	WW	YW	MILK	M&G	REA	MARB	CHB
3.3	47	85	21	45	.22	.18	\$26

YEARLING HEIFERS

Lot
573

FH L1 DOMINETTE 573

DOB: 2/13/2015

Reg. # 43639502

H5 YANKEE 9131 CHB,DLF,HYF,IEF
H5 9131 YANKEE 156 DLF,HYF,IEF
 H5 MS 001 DOMET 8147 DLF,HYF,IEF

CHURCHILL YANKEE ET CHB,SOD,DLF,HYF,IEF
 H5 MS 9126 DOMET 594 DOD,DLF,HYF,IEF
 H5 501 DOMINO 001 DLF,IEF
 H5 MS 9126 DOMET 589

FH L1 DOMINO 902 CHB,DLF,HYF,IEF
FH L1 DOMINETTE 254
 FH MISS L1 026K 411

HH ADVANCE 7056T CHB,DLF,IEF
 FH L1 DOMINETTE 535 DOD,DLF,HYF,IEF
 HH ADVANCE 026K 1ET CHB,DLF,HYF,IEF
 FH PATTI 701 DLF,HYF,IEF

BW	WW	YW	MILK	M&G	REA	MARB	CHB
2.7	56	88	25	53	.41	.10	\$27

This heifer has brood cow written all over her. Feminine with a deep body, this one was hard to let go.



Lot
574

FH L1 DOMINETTE 574

DOB: 2/23/2015

Reg. # 43639503

H5 YANKEE 9131 CHB,DLF,HYF,IEF
H5 9131 YANKEE 156 DLF,HYF,IEF
 H5 MS 001 DOMET 8147 DLF,HYF,IEF

CHURCHILL YANKEE ET CHB,SOD,DLF,HYF,IEF
 H5 MS 9126 DOMET 594 DOD,DLF,HYF,IEF
 H5 501 DOMINO 001 DLF,IEF
 H5 MS 9126 DOMET 589

FH L1 DOMINO 695 MF CHB,DLF,HYF,IEF
FH L1 DOMINETTE 269
 K&B KNOCKOUT LADY 7051T DOD

FH 026K DOMINO 304 CHB,DLF,IEF
 OXH LOLA 7002 DOD
 UPS KOOTENAY 3251 1ET CHB
 OXH MRNA 2180

BW	WW	YW	MILK	M&G	REA	MARB	CHB
3.6	57	95	27	55	.44	.15	\$30



Lot 574

Lot
576

FH MISS SCOPE 576

DOB: 2/14/2015

Reg. # 43639506

CL 1 DOMINO 0130X 1ET CHB,DLF,HYF,IEF
SR SCOPE 53A DLF,HYF,IEF
 SR HARLET 076X DLF,HYF,IEF

CL 1 DOMINO 860U CHB,DLF,HYF,IEF
 CL 1 DOMINETTE 440P 1ET DLF,HYF,IEF
 CJH HARLAND 408 SOD,CHB,DLF,HYF,IEF
 SR CADDIE 874

UPS NAVARRO CHB,DLF,HYF,IEF
FH MISS NAVARRO 345
 FH L1 DOMINETTE 019

UPS DOMINO 5216 SOD,CHB,DLF,IEF
 UPS MISS DOMINO 5875 DLF,IEF
 KB L1 DOMINO 632 CHB,DLF,IEF
 FH L1 DOMINETTE 758

BW	WW	YW	MILK	M&G	REA	MARB	CHB
3.2	54	94	29	55	.37	.30	\$31



Lot
578

FH L1 DOMINETTE 578

DOB: 2/15/2015

Reg. # 43639508

H5 YANKEE 9131 CHB,DLF,HYF,IEF
H5 9131 DOMINO 2185 DLF,HYF,IEF
 H5 MS 408 DOMET 915 DOD,DLF,HYF,IEF

CHURCHILL YANKEE ET CHB,SOD,DLF,HYF,IEF
 H5 MS 9126 DOMET 594 DOD,DLF,HYF,IEF
 CJH HARLAND 408 SOD,CHB,DLF,HYF,IEF
 H5 MS 465 DOMET 7272

FH L1 DOMINO 838
FH L1 DOMINETTE 0180 MD
 FH L1 DOMINETTE 537 MF

FH 026K DOMINO 304 CHB,DLF,IEF
 FH L1 DOMINETTE 346
 KB L1 DOMINO 1135 CHB
 OXH BESS 0343

BW	WW	YW	MILK	M&G	REA	MARB	CHB
3.8	54	92	25	52	.24	.15	\$25



Lot 578

YEARLING HEIFERS

Lot
579

FH L1 DOMINETTE 579 LC

DOB: 2/15/2015

Reg. # 43639510

H5 YANKEE 9131 CHB,DLF,HYF,IEF
H5 9131 DOMINO 2185 DLF,HYF,IEF
H5 MS 408 DOMET 915 DOD,DLF,HYF,IEF

CHURCHILL YANKEE ET CHB,SOD,DLF,HYF,IEF
H5 MS 9126 DOMET 594 DOD,DLF,HYF,IEF
CJH HARLAND 408 SOD,CHB,DLF,HYF,IEF
H5 MS 465 DOMET 7272

HH ADVANCE 7022T CHB
FH L1 DOMINETTE 940
FH L1 DOMINETTE 4027

HH ADVANCE 5212R CHB,DLF,HYF,IEF
HH MISS ADVANCE 4158P DLF,IEF
OXH MARK DOMINO 2292 DLF,IEF
OXH BESS 8268 DOD,DLF,HYF,IEF

BW	WW	YW	MILK	M&G	REA	MARB	CHB
3.2	55	96	27	55	.18	.26	\$27

A very feminine heifer by the Harrel 2185 bull. 2185 throws a little extra dimension and good carcass traits.



Lot 579

Lot
580

FH L1 DOMINETTE 580 BA

DOB: 2/15/2015

Reg. # 43639511

H5 YANKEE 9131 CHB,DLF,HYF,IEF
H5 9131 YANKEE 156 DLF,HYF,IEF
H5 MS 001 DOMET 8147 DLF,HYF,IEF

CHURCHILL YANKEE ET CHB,SOD,DLF,HYF,IEF
H5 MS 9126 DOMET 594 DOD,DLF,HYF,IEF
H5 501 DOMINO 001 DLF,IEF
H5 MS 9126 DOMET 589

CL 1 DOMINO 6105S CHB
FH L1 DOMINETTE 218 BA
MONTANA MISS 8165U

L1 DOMINO 03396 CHB,SOD,DLF,IEF
CL 1 DOMINETTE 243M
JH MARK 9454 1ET
MONTANA MISS J336 DOD

BW	WW	YW	MILK	M&G	REA	MARB	CHB
3.5	57	87	26	54	.30	.11	\$27

This is a moderate framed female with a lot of natural thickness. Her 3 year old dam had a bull in last years sale to Jade Lyon. She has a perfect udder.



Lot 580

Lot
584

FH L1 DOMINETTE 584 MD

DOB: 2/19/2015

Reg. # 43639965

H5 YANKEE 9131 CHB,DLF,HYF,IEF
H5 9131 YANKEE 156 DLF,HYF,IEF
H5 MS 001 DOMET 8147 DLF,HYF,IEF

CHURCHILL YANKEE ET CHB,SOD,DLF,HYF,IEF
H5 MS 9126 DOMET 594 DOD,DLF,HYF,IEF
H5 501 DOMINO 001 DLF,IEF
H5 MS 9126 DOMET 589

UPS BRUTUS CHB,DLF,HYF,IEF
FH MISS B NEON 046 MD
FH L1 DOMINETTE 753 MF

GH NEON 17N CHB,SOD
UPS MISS DIAMOND 2226 DOD,DLF,IEF
FH 026K DOMINO 304 CHB,DLF,IEF
OXH BESS 0343

BW	WW	YW	MILK	M&G	REA	MARB	CHB
4.3	60	102	25	54	.50	.09	\$30

This is a high performing heifer from a good cow family. A lot of milk behind her.



Lot 584

Lot
588

FH 2185 DOMINETTE 588 LC

DOB: 2/23/2015

Reg. # 43639971

H5 YANKEE 9131 CHB,DLF,HYF,IEF
H5 9131 DOMINO 2185 DLF,HYF,IEF
H5 MS 408 DOMET 915 DOD,DLF,HYF,IEF

CHURCHILL YANKEE ET CHB,SOD,DLF,HYF,IEF
H5 MS 9126 DOMET 594 DOD,DLF,HYF,IEF
CJH HARLAND 408 SOD,CHB,DLF,HYF,IEF
H5 MS 465 DOMET 7272

FH 026K DOMINO 304 CHB,DLF,IEF
FH L1 DOMINETTE 8800
FH L1 DOMINETTE 323 LF DLF,IEF

HH ADVANCE 026K 1ET CHB,DLF,HYF,IEF
RCH DOMINETTE 9029 DOD
KB L1 DOMINO 1135 CHB
FH MISS 3007 009 LF

BW	WW	YW	MILK	M&G	REA	MARB	CHB
3.3	62	103	28	59	.29	.18	\$28



Lot 588

YEARLING HEIFERS

Lot 598 **RAFTER T 902 DOMINETTE 598 FH**
 DOB: 2/26/2015 Reg. # 43639975

HH ADVANCE 7056T *CHB,DLF,IEF*
FH L1 DOMINO 902 *CHB,DLF,HYF,IEF*
 FH L1 DOMINETTE 535 *DOD,DLF,HYF,IEF*

HH ADVANCE 5104R *SOD,CHB,DLF,IEF*
 HH MISS ADVANCE 5020R *ET DLF,IEF*
 OXH MARK DOMINO 3043 *CHB,DLF,IEF*
 OXH BESS 8268 *DOD,DLF,HYF,IEF*

HH ADVANCE 6001S
MONTANA MISS 038X
 MONTANA MISS 7146T

CL 1 DOMINO 206M *DLF,HYF,IEF*
 HH MISS ADVANCE 1088L *DOD,DLF,HYF,IEF*
 CL 1 DOMINO 417P *CHB,DLF,IEF*
 L1 DOMINETTE 05417 *DLF,HYF,IEF*

BW	WW	YW	MILK	M&G	REA	MARB	CHB
3.7	54	90	27	54	.27	.17	\$29



Lot 4100 **FH L1 DOMINETTE 4100**
 DOB: 11/20/2014 Reg. # 43637378

H5 YANKEE 9131 *CHB,DLF,HYF,IEF*
H5 9131 YANKEE 156 *DLF,HYF,IEF*
 H5 MS 001 DOMET 8147 *DLF,HYF,IEF*

CHURCHILL YANKEE ET *CHB,SOD,DLF,HYF,IEF*
 H5 MS 9126 DOMET 594 *DOD,DLF,HYF,IEF*
 H5 501 DOMINO 001 *DLF,IEF*
 H5 MS 9126 DOMET 589

SR NAVARRO 740X *DLF,HYF,IEF*
FH L1 DOMINETTE 240 {*DLF,HYF,IEF*}
 FH L1 DOMINETTE 803

UPS NAVARRO *CHB,DLF,HYF,IEF*
 SR HARLET 872 *DOD*
 FH 026K DOMINO 304 *CHB,DLF,IEF*
 FH PATTI 701 *DLF,HYF,IEF*

BW	WW	YW	MILK	M&G	REA	MARB	CHB
3.5	59	101	27	57	.46	.20	\$31

A big-outlined, powerful made heifer. She is long and thick with a lot of pigment.



Lot 4100

Lot 4102 **FH MISS NAVARRO 4102 MD**
 DOB: 12/15/2014 Reg. # 43637381

UPS NAVARRO *CHB,DLF,HYF,IEF*
SR NAVARRO 740X *DLF,HYF,IEF*
 SR HARLET 872 *DOD*

UPS DOMINO 5216 *SOD,CHB,DLF,IEF*
 UPS MISS DOMINO 5875 *DLF,IEF*
 CJH HARLAND 408 *SOD,CHB,DLF,HYF,IEF*
 SR MONITA 613

KB L1 DOMINO 1135 *CHB*
FH L1 DOMINETTE 529 MF
 OXH JEAN 9250

JA L1 DOMINO 503 2ET *SOD*
 MONTANA MISS J336 *DOD*
 OXH SIGNATURE 6360
 OXH PATTI 2227

BW	WW	YW	MILK	M&G	REA	MARB	CHB
4.1	45	78	26	48	.23	.22	\$24

This heifer is the complete package. Angular through her front end and correct on her feet and legs.



Lot 4102

Lot 4105 **FH L1 DOMINETTE 4105**
 DOB: 12/17/2014 Reg. # 43637383

H5 YANKEE 9131 *CHB,DLF,HYF,IEF*
H5 9131 YANKEE 156 *DLF,HYF,IEF*
 H5 MS 001 DOMET 8147 *DLF,HYF,IEF*

CHURCHILL YANKEE ET *CHB,SOD,DLF,HYF,IEF*
 H5 MS 9126 DOMET 594 *DOD,DLF,HYF,IEF*
 H5 501 DOMINO 001 *DLF,IEF*
 H5 MS 9126 DOMET 589

SR NAVARRO 740X *DLF,HYF,IEF*
FH MISS NAVIA 267
 FH L1 DOMINETTE 9937

UPS NAVARRO *CHB,DLF,HYF,IEF*
 SR HARLET 872 *DOD*
 FH L1 DOMINO 695 MF *CHB,DLF,HYF,IEF*
 FH 1135 DOMINETTE 509

BW	WW	YW	MILK	M&G	REA	MARB	CHB
3.5	57	95	30	58	.37	.18	\$29

This heifer comes from one of our best cow families. Her grandam has Lot 22 in the sale.



Lot 4105

YEARLING HEIFERS

Lot 5004 **FH 902 DOMINETTE 5004 MD**
 DOB: 3/2/2015 Reg. # 43640752

HH ADVANCE 7056T CHB,DLF,IEF
FH L1 DOMINO 902 CHB,DLF,HYF,IEF
 FH L1 DOMINETTE 535 DOD,DLF,HYF,IEF

CJH HARLAND 408 SOD,CHB,DLF,HYF,IEF
FH L1 DOMINETTE 798 MF
 FH L1 DOMINETTE 612 MF

HH ADVANCE 5104R SOD,CHB,DLF,IEF
 HH MISS ADVANCE 5020R ET DLF,IEF
 OXH MARK DOMINO 3043 CHB,DLF,IEF
 OXH BESS 8268 DOD,DLF,HYF,IEF

HH ADVANCE 9005J CHB,DLF,IEF
 CJH L1 DOMINETTE 0064 DLF,HYF,IEF
 CL 1 DOMINO 9126J 1ET SOD,CHB,DLF,IEF
 OXH MRNA 1363

BW	WW	YW	MILK	M&G	REA	MARB	CHB
3.9	56	93	26	54	.24	.16	\$29

Another good 902 daughter. His daughter ratio is over 100A% on weaning weight ratio. Her dam has sent 2 other heifers to the Black Hills Stock Show.



Lot 5005 **FH 902 DOMINETTE 5005 AF**
 DOB: 3/2/2015 Reg. # 43640754

HH ADVANCE 7056T CHB,DLF,IEF
FH L1 DOMINO 902 CHB,DLF,HYF,IEF
 FH L1 DOMINETTE 535 DOD,DLF,HYF,IEF

KB L1 DOMINO 1135 CHB
FH L1 DOMINETTE 545
 FH STARLET 104

HH ADVANCE 5104R SOD,CHB,DLF,IEF
 HH MISS ADVANCE 5020R ET DLF,IEF
 OXH MARK DOMINO 3043 CHB,DLF,IEF
 OXH BESS 8268 DOD,DLF,HYF,IEF

JA L1 DOMINO 503 2ET SOD
 MONTANA MISS J336 DOD
 ST STAR MARK 988
 FH MS WASH 804

BW	WW	YW	MILK	M&G	REA	MARB	CHB
5.0	57	99	25	53	.25	.06	\$28

Lot 5006 **FH 902 DOMINETTE 5006 MD**
 DOB: 3/4/2015 Reg. # 43639983

HH ADVANCE 7056T CHB,DLF,IEF
FH L1 DOMINO 902 CHB,DLF,HYF,IEF
 FH L1 DOMINETTE 535 DOD,DLF,HYF,IEF

FH L1 DOMINO 695 MF CHB,DLF,HYF,IEF
FH L1 DOMINETTE 955 MF
 FH L1 DOMINETTE 329 MF

HH ADVANCE 5104R SOD,CHB,DLF,IEF
 HH MISS ADVANCE 5020R ET DLF,IEF
 OXH MARK DOMINO 3043 CHB,DLF,IEF
 OXH BESS 8268 DOD,DLF,HYF,IEF

FH 026K DOMINO 304 CHB,DLF,IEF
 OXH LOLA 7002 DOD
 OXH 5125 DOMINO 7358
 LS SABRINA 081 DOD

BW	WW	YW	MILK	M&G	REA	MARB	CHB
3.5	54	92	24	51	.31	.05	\$26

A long made heifer that has a brood cow look about her. She is one of my favorites. Full sister in blood to 5012, look at the consistency.

Lot 5011 **FH 53A MISS SCOPE 5011**
 DOB: 3/10/2015 Reg. # 43639988

CL 1 DOMINO 0130X 1ET CHB,DLF,HYF,IEF
SR SCOPE 53A DLF,HYF,IEF
 SR HARLET 076X DLF,HYF,IEF

CL 1 DOMINO 7110T CHB,DLF,HYF,IEF
KB L1 DOMINETTE 9134W
 KB L1 DOMINETTE 721T

CL 1 DOMINO 860U CHB,DLF,HYF,IEF
 CL 1 DOMINETTE 440P 1ET DLF,HYF,IEF
 CJH HARLAND 408 SOD,CHB,DLF,HYF,IEF
 SR CADDIE 874

CL 1 DOMINO 590R CHB,DLF,IEF
 CL 1 DOMINETTE 332N DOD,DLF,HYF,IEF
 CL 1 DOMINO 3138N 1ET CHB,DLF,HYF,IEF
 KB L1 DOMINETTE 4152 DLF,HYF,IEF

BW	WW	YW	MILK	M&G	REA	MARB	CHB
1.7	54	90	27	54	.19	.19	\$27



Lot 5012 **FH 902 DOMINETTE 5012 MD**
 DOB: 3/10/2015 Reg. # 43639989

HH ADVANCE 7056T CHB,DLF,IEF
FH L1 DOMINO 902 CHB,DLF,HYF,IEF
 FH L1 DOMINETTE 535 DOD,DLF,HYF,IEF

FH L1 DOMINO 695 MF CHB,DLF,HYF,IEF
FH L1 DOMINETTE 144 MD
 FH L1 DOMINETTE 329 MF

HH ADVANCE 5104R SOD,CHB,DLF,IEF
 HH MISS ADVANCE 5020R ET DLF,IEF
 OXH MARK DOMINO 3043 CHB,DLF,IEF
 OXH BESS 8268 DOD,DLF,HYF,IEF

FH 026K DOMINO 304 CHB,DLF,IEF
 OXH LOLA 7002 DOD
 OXH 5125 DOMINO 7358
 LS SABRINA 081 DOD

BW	WW	YW	MILK	M&G	REA	MARB	CHB
3.3	55	89	26	54	.30	.09	\$27



YEARLING HEIFERS

Lot
5014

FH 740X NAVITA 5014

DOB: 3/13/2015

Reg. # 43639990

UPS NAVARRO CHB,DLF,HYF,IEF
SR NAVARRO 740X DLF,HYF,IEF
SR HARLET 872 DOD

UPS DOMINO 5216 SOD,CHB,DLF,IEF
UPS MISS DOMINO 5875 DLF,IEF
CJH HARLAND 408 SOD,CHB,DLF,HYF,IEF
SR MONITA 613

CL 1 DOMINO 849U CHB,DLF,HYF,IEF
FH L1 DOMINETTE 2316
FH L1 DOMINETTE 535 DOD,DLF,HYF,IEF

CL 1 DOMINO 648S CHB,DLF,IEF
CL 1 DOMINETTE 591R 1ET
OXH MARK DOMINO 3043 CHB,DLF,IEF
OXH BESS 8268 DOD,DLF,HYF,IEF

BW	WW	YW	MILK	M&G	REA	MARB	CHB
3.7	55	96	29	57	.41	.21	\$32



Lot 5014

Lot
5017

FH 90 DOMINETTE 5012 AF

DOB: 3/17/2015

Reg. # 43640757

HH ADVANCE 7056T CHB,DLF,IEF
FH L1 DOMINO 902 CHB,DLF,HYF,IEF
FH L1 DOMINETTE 535 DOD,DLF,HYF,IEF

HH ADVANCE 5104R SOD,CHB,DLF,IEF
HH MISS ADVANCE 5020R ET DLF,IEF
OXH MARK DOMINO 3043 CHB,DLF,IEF
OXH BESS 8268 DOD,DLF,HYF,IEF

CJH HARLAND 408 SOD,CHB,DLF,HYF,IEF
FH L1 HARLIE 121 AF
FH L1 DOMINETTE 340 AF DOD

HH ADVANCE 9005J CHB,DLF,IEF
CJH L1 DOMINETTE 0064 DLF,HYF,IEF
KB L1 DOMINO 1135 CHB
FH STARLET 104

BW	WW	YW	MILK	M&G	REA	MARB	CHB
3.8	58	101	27	56	.30	.14	\$29



Lot 5017

Lot
5019

FH 902 DOMINETTE 5019

DOB: 3/22/2015

Reg. # 43639993

HH ADVANCE 7056T CHB,DLF,IEF
FH L1 DOMINO 902 CHB,DLF,HYF,IEF
FH L1 DOMINETTE 535 DOD,DLF,HYF,IEF

HH ADVANCE 5104R SOD,CHB,DLF,IEF
HH MISS ADVANCE 5020R ET DLF,IEF
OXH MARK DOMINO 3043 CHB,DLF,IEF
OXH BESS 8268 DOD,DLF,HYF,IEF

FH L1 DOMINO 695 MF CHB,DLF,HYF,IEF
FH L1 DOMINETTE 999
FH L1 DOMINETTE 423

FH 026K DOMINO 304 CHB,DLF,IEF
OXH LOLA 7002 DOD
KB L1 DOMINO 1135 CHB
FH TONI 625

BW	WW	YW	MILK	M&G	REA	MARB	CHB
4.3	57	98	25	53	.31	.11	\$29

Lot
5028

FH 902 DOMINETTE 5028

DOB: 3/28/2015

Reg. # 43640003

HH ADVANCE 7056T CHB,DLF,IEF
FH L1 DOMINO 902 CHB,DLF,HYF,IEF
FH L1 DOMINETTE 535 DOD,DLF,HYF,IEF

HH ADVANCE 5104R SOD,CHB,DLF,IEF
HH MISS ADVANCE 5020R ET DLF,IEF
OXH MARK DOMINO 3043 CHB,DLF,IEF
OXH BESS 8268 DOD,DLF,HYF,IEF

CL 1 DOMINO 417P CHB,DLF,IEF
JBN L1 DOMINETTE 823
LGM 065 DOMNET 8120

CL 1 DOMINO 212M CHB,SOD,DLF,IEF
CL 1 DOMINETTE 0112K 1ET
WT 90 DOMINO 065 SOD
L MS TRANSITION 6192

BW	WW	YW	MILK	M&G	REA	MARB	CHB
3.8	51	88	25	50	.21	.13	\$26

Lot
5034

FH 902 DOMINETTE 5034

DOB: 3/31/2015

Reg. # 43639995

HH ADVANCE 7056T CHB,DLF,IEF
FH L1 DOMINO 902 CHB,DLF,HYF,IEF
FH L1 DOMINETTE 535 DOD,DLF,HYF,IEF

HH ADVANCE 5104R SOD,CHB,DLF,IEF
HH MISS ADVANCE 5020R ET DLF,IEF
OXH MARK DOMINO 3043 CHB,DLF,IEF
OXH BESS 8268 DOD,DLF,HYF,IEF

CL 1 DOMINO 417P CHB,DLF,IEF
JBN L1 DOMINETTE 813
JBN DOMINETTE 526

CL 1 DOMINO 212M CHB,SOD,DLF,IEF
CL 1 DOMINETTE 0112K 1ET
KB L1 DOMINO 218 CHB,DLF,IEF
MS MASTERCHARGE 5284

BW	WW	YW	MILK	M&G	REA	MARB	CHB
3.8	52	92	21	48	.34	.07	\$28

Lot
5037

FH 740X NAVITA 5037 MD

DOB: 4/1/2015

Reg. # 43640758

UPS NAVARRO CHB,DLF,HYF,IEF
SR NAVARRO 740X DLF,HYF,IEF
SR HARLET 872 DOD

UPS DOMINO 5216 SOD,CHB,DLF,IEF
UPS MISS DOMINO 5875 DLF,IEF
CJH HARLAND 408 SOD,CHB,DLF,HYF,IEF
SR MONITA 613

FH L1 DOMINO 902 CHB,DLF,HYF,IEF
FH L1 DOMINETTE 134 AF
FH L1 DOMINETTE 541 AF

HH ADVANCE 7056T CHB,DLF,IEF
FH L1 DOMINETTE 535 DOD,DLF,HYF,IEF
KB L1 DOMINO 1135 CHB
OXH SHELA 1193

BW	WW	YW	MILK	M&G	REA	MARB	CHB
3.4	51	88	27	53	.29	.27	\$29

YEARLING HEIFERS

Let 5040 **FH 861Y DOMINETTE 5040 AF**

DOB: 4/7/2015 Reg. # 43640760

SR RENDITION 568
SR RAZOR 861Y *DLF,HYF,IEF*
DS MAXIE 916W

CHURCHILL YANKEE ET *CHB,SOD,DLF,HYF,IEF*
SR PEGGY 075 *DOD,DLF,IEF*
KB L1 DOMINO 655 ET *CHB,DLF,IEF*
DLS HARLET 600

FH L1 DOMINO 695 MF *CHB,DLF,HYF,IEF*
FH L1 DOMINETTE 905 AF
FH STARLET 104

FH 026K DOMINO 304 *CHB,DLF,IEF*
OXH LOLA 7002 *DOD*
ST STAR MARK 988
FH MS WASH 804

BW	WW	YW	MILK	M&G	REA	MARB	CHB
3.0	46	73	26	49	.25	.05	\$20

Let 5049 **FH L1 DOMINETTE 5049**

DOB: 4/14/2015 Reg. # 43640766

HH ADVANCE 7056T *CHB,DLF,IEF*
FH L1 DOMINO 902 *CHB,DLF,HYF,IEF*
FH L1 DOMINETTE 535 *DOD,DLF,HYF,IEF*

HH ADVANCE 5104R *SOD,CHB,DLF,IEF*
HH MISS ADVANCE 5020R ET *DLF,IEF*
OXH MARK DOMINO 3043 *CHB,DLF,IEF*
OXH BESS 8268 *DOD,DLF,HYF,IEF*

SR NAVARRO 740X *DLF,HYF,IEF*
FH L1 DOMINETTE 2041
FH L1 DOMINETTE 964

UPS NAVARRO *CHB,DLF,HYF,IEF*
SR HARLET 872 *DOD*
OXH DOMINO 2211 *SOD,DLF,IEF*
OXH JUDI 7331 *DOD*

BW	WW	YW	MILK	M&G	REA	MARB	CHB
4.1	54	94	29	56	.34	.16	\$29

Let 5052 **FH L1 NAVITA 5052 MD**

DOB: 4/17/2015 Reg. # 43640769

UPS NAVARRO *CHB,DLF,HYF,IEF*
SR NAVARRO 740X *DLF,HYF,IEF*
SR HARLET 872 *DOD*

UPS DOMINO 5216 *SOD,CHB,DLF,IEF*
UPS MISS DOMINO 5875 *DLF,IEF*
CJH HARLAND 408 *SOD,CHB,DLF,HYF,IEF*
SR MONITA 613

KB L1 DOMINO 1135 *CHB*
FH L1 DOMINETTE 537 MF
OXH BESS 0343

JA L1 DOMINO 503 2ET *SOD*
MONTANA MISS J336 *DOD*
OXH STEALTH 3361 *CHB,SOD*
OXH LONA 1232

BW	WW	YW	MILK	M&G	REA	MARB	CHB
3.2	48	79	26	50	.41	.24	\$27

Let 5063 **FH L1 DOMINETTE 5063**

DOB: 5/12/2015 Reg. # 43640790

CL 1 DOMINO 9125W 1ET *CHB,DLF,HYF,IEF*
CL 1 DOMINO 124Y 1ET *CHB,DLF,HYF,IEF*
CL 1 DOMINETTE 6128S 1ET *DOD,DLF,IEF*

CL 1 DOMINO 732T *CHB,DLF,IEF*
CL 1 DOMINETTE 475P *DLF,HYF,IEF*
L1 DOMINO 03396 *CHB,SOD,DLF,IEF*
CL 1 DOMINETTE 095K *DLF,IEF*

HH ADVANCE 7056T *CHB,DLF,IEF*
FH L1 DOMINETTE 263 ET
OXH BESS 8268 *DOD,DLF,HYF,IEF*

HH ADVANCE 5104R *SOD,CHB,DLF,IEF*
HH MISS ADVANCE 5020R ET *DLF,IEF*
OXH STEALTH 3361 *CHB,SOD*
OXH LOLA 6014

BW	WW	YW	MILK	M&G	REA	MARB	CHB
2.3	56	88	28	56	.34	.11	\$26

Let 5101 **FH 156 MISS YANKEE 5101**

DOB: 2/28/2015 Reg. # 43639978

H5 YANKEE 9131 *CHB,DLF,HYF,IEF*
H5 9131 YANKEE 156 *DLF,HYF,IEF*
H5 MS 001 DOMET 8147 *DLF,HYF,IEF*

CHURCHILL YANKEE ET *CHB,SOD,DLF,HYF,IEF*
H5 MS 9126 DOMET 594 *DOD,DLF,HYF,IEF*
H5 501 DOMINO 001 *DLF,IEF*
H5 MS 9126 DOMET 589

FH L1 DOMINO 623 MF *DLF,HYF,IEF*
FH L1 DOMINETTE 2022
FH L1 DOMINETTE 731 *DLF,HYF,IEF*

CL 1 DOMINO 212M *CHB,SOD,DLF,IEF*
LS SABRINA 081 *DOD*
FH 026K DOMINO 304 *CHB,DLF,IEF*
FH L1 DOMINETTE 325

BW	WW	YW	MILK	M&G	REA	MARB	CHB
3.4	56	90	26	54	.34	.01	\$25



Let 5801 **FH L1 DOMINETTE 5801**

DOB: 2/17/2015 Reg. # 43639512

H5 YANKEE 9131 *CHB,DLF,HYF,IEF*
H5 9131 DOMINO 2185 *DLF,HYF,IEF*
H5 MS 408 DOMET 915 *DOD,DLF,HYF,IEF*

CHURCHILL YANKEE ET *CHB,SOD,DLF,HYF,IEF*
H5 MS 9126 DOMET 594 *DOD,DLF,HYF,IEF*
CJH HARLAND 408 *SOD,CHB,DLF,HYF,IEF*
H5 MS 465 DOMET 7272

KB L1 DOMINO 1135 *CHB*
FH 1135 DOMINETTE 509
FH L1 DOMINETTE 330

JA L1 DOMINO 503 2ET *SOD*
MONTANA MISS J336 *DOD*
KB L1 DOMINO 1135 *CHB*
FH ANDI 606 1ET

BW	WW	YW	MILK	M&G	REA	MARB	CHB
3.3	55	95	28	56	.17	.23	\$26



Lot 5801

NATIONAL CATTLE EVALUATION TERMS

EPD — EXPECTED PROGENY DIFFERENCE:

Estimate of a bull or cow's future progeny performance compared to progeny of a breed average sire or dam. EPDs are expressed in actual pounds, plus or minus, for birth, weaning and yearling weights and maternal performance.

CED — Calving Ease Direct

BW — Birth Weight

WW — Weaning Weight

YW — Yearling Weight

MILK

M&G — Milk & Growth

CEM — Calving Ease Maternal

SCROTAL EVALUATION

Age in Months	12-14	15-20	21-30	30 plus
Acceptable Range (cm)	30-35	31-37	32-39	33-40

SC — SCROTAL CIRCUMFERENCE:

A measure of fertility. Testicle size indicated by scrotal circumference measured in centimeters is a highly heritable trait very much correlated to reproductive efficiency. A valuable indicator of bull fertility and puberty, and highly related to early puberty in heifers and cow fertility, increased bull scrotal circumference should improve fertility and inherent cow herd productivity.

2014 HEREFORD BREED EPD AVERAGE

CED	BW	WW	YW	M	M&G	CEM	FAT	REA	IMF
1.1	3.3	48	78	19	44	1.3	.003	.31	.09

TERMS & CONDITIONS

All cattle will be sold to the highest bidder without reserve. The terms of the sale will be cash. The auctioneer will settle any dispute as to bids.

Each animal will become the property of the buyer as soon as sold. Cattle will be cared for a reasonable length of time after the sale, at the buyer's risk.

All bulls of breeding age are guaranteed breeders. If an animal fails to breed after a trial of six months, it may be returned to the seller at buyer's expense. The seller reserves the right to try said animal for six months and if it proves a breeder to return it to the station of buyer at seller's expense. If the animal proves to be a non-breeder an equal animal substituted or credit on the purchase of another animal. No adjustments after 9 months.

Herd Health is excellent. Our herd veterinarian is Dr. Travis Kuklha, DVM 701-400-2953.

Extreme care has been taken in copying each pedigree to avoid errors. We are not to be held responsible for any error which might appear and which is beyond our control in the printing of the catalog. Everyone attending this sale does so at his own responsibility and risk, and without liability on the part of the owner or his employees.





Gary, Kirsten and Aaron Friedt
Megan and Dusty Dukart
Lindsey and Drew Courtney
8733 55th St. S.W.
Mott, ND 58646

PRESORTED
FIRST CLASS
US POSTAGE
PAID
 Fargo, ND
Permit No. 684

Wednesday,
February 10, 2016
1 p.m. MST Stockmen's West, Dickinson, ND



LOT 20



LOT 4100

Where you can buy with confidence