

Friedt Herefords

Annual Production Sale

Wednesday,
February 10, 2021

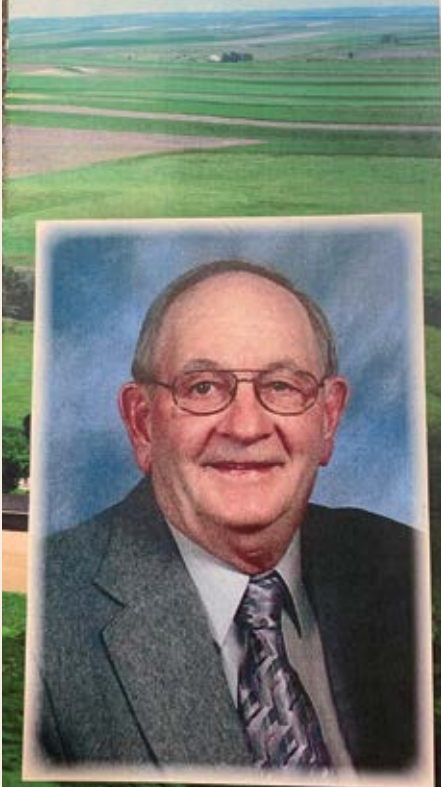
1 p.m. MST Stockmen's West, Dickinson, ND



SELLING: 33 Yearling Bulls (*including 5 polled and horned bulls from Jill Hotchkiss*)
12 2-year old Bulls
12 Registered Yearling Heifers
26 Unregistered Yearling Heifers
45 F1 BWF yearling heifers from Duane and Garrett Zent
58 F1 BWF yearling heifers from Dallas Miller
70 F1 BWF yearling heifers from Bert Hauge
39 Black Angus Bred Heifers from Aaron Friedt and Jarret Nauman

Where performance counts

~ Treasured Memories of ~
William "Willie" Friedt
April 21, 1931 - November 15, 2020



Friedt Herefords

Where you can buy with confidence

14th Annual Production Sale
Wed., February 10, 2021
1 p.m. MST
Stockmen's West, Dickinson, ND



SELLING

- 33 Yearling Bulls (including 5 polled and horned bulls from Jill Hotchkiss)
- 12 2-Year-Old Bulls
- 12 Registered Yearling Heifers
- 26 Unregistered Yearling Heifers
- 45 F1 BWF yearling heifers from Duane and Garrett Zent.....701-974-3640 or 701-974-3813
- 58 F1 BWF yearling heifers from Dallas Miller.....701-400-0238
- 70 F1 BWF yearling heifers from Bert Hauge.....701-421-1535
- 39 Black Angus Bred Heifers from Aaron Friedt...701-590-9597 and Jarret Naumann...701-290-5337



SALE STAFF

Stockmen's West	701-225-8145
Auctioneer: Scott Weishaar	701-872-5299
Cell.....	701-426-6826
Jill Hotchkiss, Hereford America.....	605-490-1409
Travis Kuhlka, DVM	Herd Veterinarian

Ringmen:

Art Handel	605-399-9278
Cell.....	605-391-8233
Kevin Murnin, AHA.....	406-853-4638
Will Bollum, Western Ag Reporter.....	507-244-0833
Scott Dirk, Tri-State Livestock News	605-380-6024

Insurance:

Art Handel, Merkel Livestock Insurance	605-391-8233
Troy Bargmann, Dakota Community Bank.....	701-227-4000
Cell.....	701-290-4043

Online Bidding:

Please visit www.TheLivestockLink.com and click the "Online Auctions" tab. For questions please call Aaron Friedt at 701/590-9597.

Videos will be available for viewing on our website two to three weeks prior to sale day.
Supplement sheet with final weights and ultrasound data will be available on sale day and on our website prior to the sale.

Friedt Herefords

Where you can buy with confidence

Gary and Kirsten Friedt
Megan and Dusty Dukart
Aaron and Tatian Friedt
Lindsey and Drew Courtney
8733 55th St. S.W.
Mott, ND 58646

(701) 824-2300 - home • (701) 290-7231 - Gary cell
(701) 290-7230 - Megan • (701) 590-9597 - Aaron
gfriedt@hotmail.com • www.friedtherefords.com

Welcome to the Friedt Herefords Production Sale.

We would like to you welcome you to our 14th annual Friedt Herefords Production Sale being held February 10, 2021 at Stockmen's West in Dickinson, ND. If you are unable to attend please contact us or one of the sale representatives or view the sale on The Livestock Link live bidding page. For help with online bidding, please call 701-590-9597 and talk with Aaron.

We are selling an outstanding group of bulls. The bull calves are the most consistent we have raised with the depth of quality also increasing. The coming two year old bulls are the best set we have brought to town. They are long bodied and deep sided with plenty of natural thickness. The disposition on these cattle has been kid tested, as our oldest three grandsons are regulars when we are feeding or weighing the bulls. The registered heifers are a sale feature as grass is our limiting factor, so we always have to sell some of the good ones.

2020 has been a trying year due to the market gyrations caused by Covid-19. We all know that farmers and ranchers are "essential workers" and social distancing isn't usually a problem. It just makes enjoying our friends and neighbors more difficult.

2020 had its ups and downs in our family as well. We add two grandchildren, Claire Courtney in January and Heston Dukart in June. Our son Aaron married Tatian Stennes in June at the ranch before Covid really went crazy. We also suffered the loss of our father, grandfather and great-grandfather, William F. Friedt, in November. He spent many years tending the soil and livestock on this place we call home.

We welcome all the consignors of the F1 BWF yearling heifers that are sired by our bulls. They are high quality, replacement type females. Feel free to contact any of them with questions about their heifers.

Videos of the sale cattle will be available on our website after January 15. Feel free to contact us about any of the sale cattle in this year's offering. The sale cattle are also available for viewing at the ranch prior to sale day. We look forward to seeing you at the sale.

Please join us for a 4 Brothers Hereford Beef lunch.

Catalog by HEREFORD AMERICA

HERD BULLS

H5 2185 DOMINO 799 DLF,HYF,IEF,MSUDF

DOB: 2/10/2017 Reg. # 43792538

H5 YANKEE 9131 DLF,HYF,IEF
H5 9131 DOMINO 2185 DLF,HYF,IEF
 H5 MS 408 DOMET 915 DOD,DLF,HYF,IEF

CHURCHILL YANKEE ET SOD,DLF,HYF,IEF
 H5 MS 9126 DOMET 594 DOD,DLF,HYF,IEF
 CJH HARLAND 408 SOD,DLF,HYF,IEF,MSUDF,MDF
 H5 MS 465 DOMET 7272

H5 501 DOMINO 001 SOD,DLF,IEF
H5 MS 001 DOMET 9210 DOD,DLF,HYF,IEF
 H5 MS 9126 DOMET 5106

CL 1 DOMINO 501 SOD,DLF,HYF,IEF
 H5 MS 500 DOMET 8182
 CL 1 DOMINO 9126J 1ET SOD,CHB,DLF,IEF
 H5 MS 303 ADVAN 5166 DOD

BW	WW	YW	MILK	M&G	REA	MARB	CHB
3.0	60	97	35	65	.50	.20	\$131

This bull was purchased in the 2018 Harrell Ranch bull sale because of his impressive performance data and carcass strength. He has sired some high performing bulls and females in the sale. His dam ratios 121% on IMF on 8 calves.



FH NAVARRO 242 MD DLF,HYF,IEF

DOB: 2/11/2012 Reg. # 43295208

UPS DOMINO 5216 SOD,DLF,IEF
UPS NAVARRO SOD,CHB,DLF,HYF,IEF
 UPS MISS DOMINO 5875 DLF,IEF

UPS DOMINO 3027 SOD,DLF,HYF,IEF,MSUDF,MDF
 UPS MISS MOM 2756 DOD
 JA L1 DOMINO 2228M SOD,DLF,IEF
 UPS MISS KNIGHT 3910

CL 1 DOMINO 9126J 1ET SOD,CHB,DLF,IEF
FH L1 DOMINETTE 612 MF DLF,HYF,IEF,MSUDF
 OXH MRNA 1363

HH ADVANCE 767G 1ET SOD,DLF,IEF
 CL 1 DOMINETTE 490 DOD
 MR BEEF 9045 SOD,DLF,HYF,IEF
 OXH RUBY 4042 DOD

BW	WW	YW	MILK	M&G	REA	MARB	CHB
2.2	52	93	36	62	.54	.07	112

This is a home raised bull we are very proud of. He showcases all the traits we've been working hard to develop. He is below average in birth weight, yet has the power to pass on extra performance to his offspring.



H5 1147 ADVANCE 417 DLF,HYF,IEF

DOB: 1/27/2014 Reg. # 43471019

HH ADVANCE 4055P DLF,IEF
H5 4055 ADVANCE 1147 1 ET SOD,DLF,HYF,IEF
 H5 MS 767 ADVAN 298 DOD,DLF,HYF,IEF

HH ADVANCE 145L SOD,DLF,IEF
 HH MISS ADVANCE 9065J DOD
 HH ADVANCE 767G 1ET SOD,DLF,IEF
 H5 MS 398 DOMET 795

H5 408 DOMINO 7100 SOD,DLF,HYF,IEF
H5 MS 7100 DOMET 215 DLF,HYF,IEF
 H5 MS YANKEE 0125 1ET

CJH HARLAND 408 SOD,DLF,HYF,IEF,MSUDF,MDF
 H5 MS 001 DOMET 4193 DOD,DLF,HYF,IEF
 CHURCHILL YANKEE ET SOD,DLF,HYF,IEF
 H5 MS 767 ADVANC 231 DOD,DLF,HYF,IEF

BW	WW	YW	MILK	M&G	REA	MARB	CHB
3.9	73	112	36	72	.22	.34	128

Friedt Herefords purchased a semen interest in this co-top selling bull at Harrell Hereford Ranch, Baker City, Oregon because of his individual performance, carcass data and outstanding first calf producing dam. 417 has proven himself to be a performance breeding bull with outstanding carcass data. 417 sired the high selling bull in our 2020 sale and has 5 outstanding ET calves and numerous AI sired calves in this sale. Owned with Sand Rock Ranch, Benton, WI and Harrell Hereford Ranch. Semen available.



SR SUSTAIN 814B CHB,DLF,HYF,IEF

DOB: 3/9/2014 Reg. # 43486675

UPS DOMINO 3027 SOD,DLF,HYF,IEF,MSUDF,MDF
CHURCHILL SENSATION 028X SOD,DLF,HYF,IEF,MDF
 CHURCHILL LADY 7202T ET DLF,HYF,IEF

CL 1 DOMINO 9126J 1ET SOD,CHB,DLF,IEF
 UPS MISS DIAMOND 1353 DLF,HYF,IEF,MSUDF
 GH RAMBO 279R CHB,SOD,DLF,HYF,IEF
 CL 1 DOMINETTE 301N DLF,HYF,IEF

LBH 39T STERLING 53W CHB,DLF,HYF,IEF
MACS SHERRY 285Z
 MAC'S NAVITA 0131X DOD,DLF,HYF,IEF,MSUDF

CC 77J STERLING 39T DLF,HYF,IEF
 LBH 157K MISS RIBSTONE 209T
 UPS NAVARRO SOD,CHB,DLF,HYF,IEF
 MAC'S MONITA 610 DOD

BW	WW	YW	MILK	M&G	REA	MARB	CHB
2.7	58	99	42	70	.63	.30	135

SR Sustain 814B was purchased from Stuber Ranch. He was used on heifers with good results and when moved to use on the cow herd, he has produced some stout calves with extra capacity.



HERD BULLS

BR BELLE AIR 6011 DLF,HYF,IEF,MSUDF

DOB: 2/3/2016 Reg. # 43724674

CHURCHILL SENSATION 028X SOD,DLF,HYF,IEF,MDF
BAR S LHF 028 240 DLF,HYF,IEF
 CHURCHILL LADY 078X DLF,HYF,IEF

GOLDEN OAK OUTCROSS 18U SOD,CHB,DLF,HYF,IEF,MSUDF
BR BELLE 4082 ET DLF,HYF,IEF,MSUDF
 BR CSF BRIELLE 8052 ET DLF,HYF,IEF

BW	WW	YW	MILK	M&G	REA	MARB	CHB
2.1	61	101	43	73	.42	.59	166

We had the chance to use some Belle Air semen last year and will breed cows to him again in 2021. This bull is just flat out good and he passes it along to his calves. Known for low birth weight his dam is known for having an exceptional udder, according to Colyers who are now one of the owners of Belle Air. This bull won Denver in 2017 and 2019 for good reasons. Take a look at his son 40H. He brings it all together. (BR Belle Air 6011 is owned by Barber Ranch, Rylee Barber, Colyers and Bill King.)



MOHICAN HYTEK422C ET

DLF,HYF,IEF,MSUDF,MDF

DOB: 2/17/2015 Reg. # P43588394

TH 71U 719T MR HEREFORD 11X SOD,DLF,HYF,IEF
TH 113W 11X HI-TECH 17A DLF,HYF,IEF,MSUDF
 TH 105S 755T GEMINI 113W DLF,HYF,IEF

KCF BENNETT 3008 M326 SOD,DLF,HYF,IEF,MDF
NJW M326 UNFORGETTABLE 76W ET DLF,HYF,IEF
 NJW P606 72N DAYDREAM 73S DLF,HYF,IEF,MSUDF,MDF

BW	WW	YW	MILK	M&G	REA	MARB	CHB
4.5	58	96	30	59	.54	.14	122

Hytek was the top seller in the 2016 Mohican West sale. He was a stand-out then and continues on with natural thickness, volume, pigment galore and a solid EPD package that is strong in Milk and Carcass characteristics. He weighed about 2,400 lbs. last summer and will pass that along to his calves. With our small herd, we only have two of his sons on offer this year, Lots 120H and 200H, but they are good ones.



SR SCOPE 53A DLF,HYF,IEF

DOB: 3/8/2013 Reg. # 43421724

CL 1 DOMINO 860U SOD,DLF,HYF,IEF
CL 1 DOMINO 0130X 1ET CHB,DLF,HYF,IEF
 CL 1 DOMINETTE 440P 1ET DLF,HYF,IEF

CJH HARLAND 408 SOD,DLF,HYF,IEF,MSUDF,MDF
SR HARLET 076X DLF,HYF,IEF
 SR CADDIE 874

BW	WW	YW	MILK	M&G	REA	MARB	CHB
0.6	54	90	22	49	.26	.23	120

The top selling bull in the 2014 Stuber Ranch sale. 53A was purchased because of his low birth weight pedigree and outstanding carcass performance. His calves come easy and are very vigorous at birth. He was used as the main bull on our yearling heifers and used on a number of cows to utilize his low birth weight genetics. Owned with Boehnke Herefords.



FH NAVARRO 227 DLF,HYF,IEF

DOB: 2/5/2012 Reg. # 43295206

UPS DOMINO 5216 SOD,DLF,IEF
UPS NAVARRO SOD,CHB,DLF,HYF,IEF
 UPS MISS DOMINO 5875 DLF,IEF

KB L1 DOMINO 1135
FH L1 DOMINETTE 330
 FH ANDI 606 1ET

BW	WW	YW	MILK	M&G	REA	MARB	CHB
3.2	51	88	27	52	.27	.40	135

He sired our largest sire group and did not disappoint us. His heifers are the keeping kind and his bulls carry extra thickness and depth.

UUU SENSATION 7056E DLF,HYF,IEF,MSUDF

DOB: 2/9/2017 Reg. # 43790056

UPS DOMINO 3027 SOD,DLF,HYF,IEF,MSUDF,MDF
CHURCHILL SENSATION 028X SOD,DLF,HYF,IEF,MDF
 CHURCHILL LADY 7202T ET DLF,HYF,IEF

SR BAKKEN 62Z DLF,HYF,IEF
UU MS BAKKEN 5126
 UU HALEY 2056 DOD

BW	WW	YW	MILK	M&G	REA	MARB	CHB
0.8	65	101	52	85	.39	.23	116

7056 was purchased as a low birth weight bull with added performance and great carcass traits. He has sired some outstanding light birth weight calves with exceptional growth.

YEARLING BULLS



SR BAKKETTE 553C - 43613447
 553C has been an outstanding donor cow for us. She produced the high selling bull in our 2020 production sale selling to Knippling Herefords and two ET first calf heifers that will calve in the spring of 2021. We are offering three ET full brothers that are truly outstanding in Lots 020, 033 and 035, all herd bull prospects and two yearling ET full sisters, 023 and 025 of the same 417 by 553 mating. She has a great EPD package with 14 traits above the 30th percentile and 8 above the 10th percentile. She is red eyed and red to the ground, with a very functional udder.

BW	WW	YW	MILK	M&G	REA	MARB	CHB
2.2	48	81	35	59	.50	.28	136

Lot 002 **FH 227 NAVARRO 002**
 DOB: 12/23/2019 Reg. # 44174138

UPS NAVARRO SOD,CHB,DLF,HYF,IEF
FH NAVARRO 227 DLF,HYF,IEF
 FH L1 DOMINETTE 330

UPS DOMINO 5216 SOD,DLF,IEF
 UPS MISS DOMINO 5875 DLF,IEF
 KB L1 DOMINO 1135
 FH ANDI 606 1ET

H5 9131 DOMINO 2185 DLF,HYF,IEF
FH 2185 DOMINETTE 418 DLF,HYF,IEF
 FH L1 DOMINETTE 642

H5 YANKEE 9131 DLF,HYF,IEF
 H5 MS 408 DOMET 915 DOD,DLF,HYF,IEF
 KB L1 DOMINO 1135
 RCH DOMINETTE 9029 DOD

BW	WW	YW	MILK	M&G	REA	MARB	CHB		
85	604	4.0	56	98	28	56	.35	.26	135

Pigment LE 100% RE 80%.
 This FH Navarro 227 son is super thick and really travels free and wide. His dam is one of the easiest fleshing females on the place.



Lot 006 **FH 227 NAVARRO 006 MD**
 DOB: 1/11/2020 Reg. # 44174143

UPS NAVARRO SOD,CHB,DLF,HYF,IEF
FH NAVARRO 227 DLF,HYF,IEF
 FH L1 DOMINETTE 330

UPS DOMINO 5216 SOD,DLF,IEF
 UPS MISS DOMINO 5875 DLF,IEF
 KB L1 DOMINO 1135
 FH ANDI 606 1ET

CL 1 DOMINO 215Z CHB,DLF,HYF,IEF,MSUDF,MDF
FH L1 DOMINETTE 713 MD
 FH MISS B NEON 029 MD DLF,HYF,IEF

CL 1 DOMINO 9122W 1ET DLF,HYF,IEF
 CL 1 DOMINETTE 055X DOD,DLF,HYF,IEF
 UPS BRUTUS DLF,HYF,IEF
 FH L1 DOMINETTE 612 MF DLF,HYF,IEF,MSUDF

BW	WW	YW	MILK	M&G	REA	MARB	CHB		
82	608	3.1	55	89	26	53	.26	.40	137

Pigment LE 20% RE 70%.
 This calf is built a lot like his half brother 002. His 215Z dam adds a perfect udder with added performance.



Lot 010 **FH 7056E SENSATION 010 BA**
 DLF,HYF,IEF,MSUDF
 DOB: 1/14/2020 Reg. # 44174148

CHURCHILL SENSATION 028X SOD,DLF,HYF,IEF,MDF
UU SENSATION 7056E DLF,HYF,IEF,MSUDF
 UU MS BAKKEN 5126

UPS DOMINO 3027 SOD,DLF,HYF,IEF,MSUDF,MDF
 CHURCHILL LADY 7202T ET DLF,HYF,IEF
 SR BAKKEN 622 DLF,HYF,IEF
 UU HALEY 2056 DOD

JA L1 DOMINO 6002S DLF,HYF,IEF
KB L1 DOMINETTE 879U DLF,HYF,IEF
 KB L1 DOMINETTE 647 DLF,HYF,IEF

GB L1 DOMINO 935C SOD,DLF,IEF
 JA L1 DOMINETTE 9203
 KB L1 DOMINO 454P SOD,DLF,IEF
 KB L1 DOMINETTE 414P DOD,DLF,HYF,IEF

BW	WW	YW	MILK	M&G	REA	MARB	CHB		
84	634	2.2	59	96	43	72	.29	.20	115

Pigment LE 100% RE 80%.
 This 7056 son is red eyed and red to the ground. He has extra capacity and a huge rear quarter. His mom is a royally bred L1 cow with Baker influence.



YEARLING BULLS

Let 016 FH 227 NAVARRO 016 AF

DOB: 2/6/2020 Reg. # 44179624

UPS NAVARRO SOD,CHB,DLF,HYF,IEF
FH NAVARRO 227 DLF,HYF,IEF
 FH L1 DOMINETTE 330

CJH HARLAND 408 SOD,DLF,HYF,IEF,MSUDF,MDF
FH L1 HARLIE 121 AF DLF,HYF,IEF
 FH L1 DOMINETTE 340 AF DOD

UPS DOMINO 5216 SOD,DLF,IEF
 UPS MISS DOMINO 5875 DLF,IEF
 KB L1 DOMINO 1135
 FH ANDI 606 1ET

HH ADVANCE 9005J DLF,IEF
 CJH L1 DOMINETTE 0064 DLF,HYF,IEF
 KB L1 DOMINO 1135
 FH STARLET 104

BW	WW	BW	WW	YW	MILK	M&G	REA	MARB	CHB
85	618	3.3	49	84	27	51	.31	.23	121

Pigment LE 10% RE 70%.
 016 offers extra length and performance. He is backed by longevity as his 9 year old mother consistently bring in a good calf.

Let 020 FH 417 ADVANCE 020 ET

DOB: 2/6/2020 Reg. # 44176063

H5 4055 ADVANCE 1147 1 ET SOD,DLF,HYF,IEF
H5 1147 ADVANCE 417 DLF,HYF,IEF
 H5 MS 7100 DOMET 215 DLF,HYF,IEF

SR BAKKEN 62Z DLF,HYF,IEF
SR BAKKETTE 553C DLF,HYF,IEF,MSUDF
 SR DELIGHT 767

HH ADVANCE 4055P DLF,IEF
 H5 MS 767 ADVAN 298 DOD,DLF,HYF,IEF
 H5 408 DOMINO 7100 SOD,DLF,HYF,IEF
 H5 MS YANKEE 0125 1ET

UPS NAVARRO SOD,CHB,DLF,HYF,IEF
 SR SCRIPTIA 926W DOD,DLF,HYF,IEF,MSUDF
 SR RAPTURE 342
 SR FRANCI 988

BW	WW	BW	WW	YW	MILK	M&G	REA	MARB	CHB
89	702	3.0	62	97	35	66	.38	.31	133

Pigment LE 50% RE 10%.
 Full ET brother to 033 and 035, this calf packs a knockout punch. From every angle he is impressive in his total body mass and overall thickness and length. 13 traits in the upper 20% of EPDs. Retaining 1/4 semen interest.

Let 022 FH 619D DOMINATOR 022

DOB: 2/17/2020 Reg. # 44179597

CL 1 DOMINO 215Z CHB,DLF,HYF,IEF,MSUDF,MDF
BCC DOMINATOR 619D CHB,DLF,HYF,IEF,MSUDF
 BCC MISS BELL 206Z DLF,HYF,IEF,MSUDF

FH L1 DOMINO 902 SOD,DLF,HYF,IEF
FH L1 DOMINETTE 118 DOD,DLF,HYF,IEF,MSUDF
 FH 1135 DOMINETTE 509

CL 1 DOMINO 9122W 1ET DLF,HYF,IEF
 CL 1 DOMINETTE 055X DOD,DLF,HYF,IEF
 BCC L1 HOGAN 710 DLF,HYF,IEF
 BCC LACEY 048X DLF,HYF,IEF,MSUDF

HH ADVANCE 7056T SOD,DLF,IEF
 FH L1 DOMINETTE 535 DOD,DLF,HYF,IEF
 KB L1 DOMINO 1135
 FH L1 DOMINETTE 330

BW	WW	BW	WW	YW	MILK	M&G	REA	MARB	CHB
84	655	2.9	58	105	26	55	.45	.13	130

Pigment LE 10% RE 5%.
 This BCC Dominator 619D son is thick quartered and easy on the eyes. His dam is one of our top performers and has been in our ET program.

Let 030 FH 417 ADVANCE 030

DOB: 2/8/2020 Reg. # 44201062

H5 4055 ADVANCE 1147 1 ET SOD,DLF,HYF,IEF
H5 1147 ADVANCE 417 DLF,HYF,IEF
 H5 MS 7100 DOMET 215 DLF,HYF,IEF

FH NAVARRO 242 MD DLF,HYF,IEF
FH MISS NAVARRO 403 DLF,HYF,IEF
 FH L1 DOMINETTE 112 DLF,HYF,IEF

HH ADVANCE 4055P DLF,IEF
 H5 MS 767 ADVAN 298 DOD,DLF,HYF,IEF
 H5 408 DOMINO 7100 SOD,DLF,HYF,IEF
 H5 MS YANKEE 0125 1ET

UPS NAVARRO SOD,CHB,DLF,HYF,IEF
 FH L1 DOMINETTE 612 MF DLF,HYF,IEF,MSUDF
 H5 001 DOMINO 819 DLF,HYF,IEF
 FH L1 DOMINETTE 910 DOD,DLF,HYF,IEF

BW	WW	BW	WW	YW	MILK	M&G	REA	MARB	CHB
85	707	3.3	65	103	36	68	.29	.16	108

Pigment LE 100% RE 100%.
 030 is continued proof that 417 doesn't miss. On the bottom side he is backed by a phenomenal 242 sired dam. He has two red eyes, red neck, and red to the ground. Phenotypically he is correct as they come with ample expression of muscle and rib shape and a big ole backside. He has 14 traits in the top 30 with 11 of those in the top 10. This bull is guaranteed to put pounds on the scale. Retaining 1/4 semen interest.

Let 017 FH 2185 DOMINO 017 AF

DOB: 2/6/2020 Reg. # 44179625

H5 YANKEE 9131 DLF,HYF,IEF
H5 9131 DOMINO 2185 DLF,HYF,IEF
 H5 MS 408 DOMET 915 DOD,DLF,HYF,IEF

CHURCHILL YANKEE ET SOD,DLF,HYF,IEF
 H5 MS 9126 DOMET 594 DOD,DLF,HYF,IEF
 CJH HARLAND 408 SOD,DLF,HYF,IEF,MSUDF,MDF
 H5 MS 465 DOMET 7272

FH L1 DOMINO 902 SOD,DLF,HYF,IEF
FH L1 DOMINETTE 321 AF DLF,HYF,IEF
 FH L1 DOMINETTE 802 AF DOD

HH ADVANCE 7056T SOD,DLF,IEF
 FH L1 DOMINETTE 535 DOD,DLF,HYF,IEF
 FH 026K DOMINO 304 SOD,CHB,DLF,IEF
 FH L1 DOMINETTE 340 AF DOD

BW	WW	BW	WW	YW	MILK	M&G	REA	MARB	CHB
84	668	3.5	61	100	35	66	.57	.09	121

Pigment LE 100% RE 80%.
 His sire, 2185, is one of the strongest breeding bulls we've used. This bull is long sided with plenty of thickness.



Sire of 022: BCC Dominator 619D



YEARLING BULLS

Lot 031 **FH 8217 ADVANCE 031**
 DOB: 2/8/2020 Reg. # 44205659

HH ADVANCE 5019C ET *CHB,DLF,HYF,IEF,MSUDF*
H5 5019 ADVANCE 8217 *DLF,HYF,IEF*
 H5 MS 161 ADVANCE 429 *DLF,HYF,IEF*

CL 1 DOMINO 215Z *CHB,DLF,HYF,IEF,MSUDF,MDF*
 HH MISS ADVANCE 1072Y ET *DLF,HYF,IEF*
 H5 9027 ADVANCE 161 *DLF,HYF,IEF*
 H5 MS 8252 DOMET 263

H5 9131 DOMINO 2185 *DLF,HYF,IEF*
FH L1 DOMINETTE 853F
 FH L1 DOMINETTE 162 *DOD,DLF,HYF,IEF*

H5 YANKEE 9131 *DLF,HYF,IEF*
 H5 MS 408 DOMET 915 *DOD,DLF,HYF,IEF*
 FH L1 DOMINO 695 MF *DLF,HYF,IEF*
 UU MS NEFF 0161

BW	WW	BW	WW	YW	MILK	M&G	REA	MARB	CHB
81	636	3.3	62	104	32	63	.38	.27	133

Pigment LE 70% RE 70%.
 Born unassisted out of a first calf heifer, this calf has really developed into a thick made bull.

Lot 20H **B 7056E 710 SENSATION 20H**
 DOB: 2/8/2020 Reg. # 44145752

CHURCHILL SENSATION 028X *SOD,DLF,HYF,IEF,MDF*
UU SENSATION 7056E *DLF,HYF,IEF,MSUDF*
 UU MS BAKKEN 5126

UPS DOMINO 3027 *SOD,DLF,HYF,IEF,MSUDF,MDF*
 CHURCHILL LADY 7202T ET *DLF,HYF,IEF*
 SR BAKKEN 622 *DLF,HYF,IEF*
 UU HALEY 2056 *DOD*

SR RIGHT ON 2203 Z ET *CHB,DLF,HYF,IEF*
B RIGHTEOUS LADY 710 *DLF,HYF,IEF*
 MC 680 EXPLOSION 1273 *DLF,HYF,IEF*

CHURCHILL SENSATION 028X *SOD,DLF,HYF,IEF,MDF*
 NJW BW LADYSPORT DEW 78P ET *DLF,HYF,IEF*
 DJF R23 S07 WAYLON 980
 MC 8006 BELLE S689 ET *DLF,HYF,IEF*

BW	WW	BW	WW	YW	MILK	M&G	REA	MARB	CHB
80	681	3.6	63	100	42	74	.39	.17	115

Pigment LE 60% RE 70%.
 A standout since birth, and out of our favorite cow "Donna," this bull calf keeps coming on and shows it in his thickness and depth.

Lot 033 **FH 417 ADVANCE 033 ET**
 DOB: 2/10/2020 Reg. # 44179611

H5 4055 ADVANCE 1147 1 ET *SOD,DLF,HYF,IEF*
H5 1147 ADVANCE 417 *DLF,HYF,IEF*
 H5 MS 7100 DOMET 215 *DLF,HYF,IEF*

HH ADVANCE 4055P *DLF,IEF*
 H5 MS 767 ADVAN 298 *DOD,DLF,HYF,IEF*
 H5 408 DOMINO 7100 *SOD,DLF,HYF,IEF*
 H5 MS YANKEE 0125 1ET

SR BAKKEN 62Z *DLF,HYF,IEF*
SR BAKKETTE 553C *DLF,HYF,IEF,MSUDF*
 SR DELIGHT 767

UPS NAVARRO *SOD,CHB,DLF,HYF,IEF*
 SR SCRIPTIA 926W *DOD,DLF,HYF,IEF,MSUDF*
 SR RAPTURE 342
 SR FRANCI 988

BW	WW	BW	WW	YW	MILK	M&G	REA	MARB	CHB
86	697	2.8	62	97	35	66	.38	.31	132

Pigment LE 100% RE 100%.
 033 is the kind we strive for. This short marked, cherry red calf will sire added power and dimension with exceptional width over his top and a robust hind end. He combines this power with length of body and a correct structure to wheel is all around. This calf is a full ET brother to 020 and 035 and heifer 023 and 025. His dam has been a proven producer within our herd and his sire 417 from Harrell Hereford Ranch has seen continued use in our AI program. An ET full brother was last year's high seller to Knippling Ranch. Retaining 1/4 semen interest.

Lot 034 **FH 0945 MARK DOM 034 MD**
 DOB: 2/10/2020 Reg. # 44179600

LJS MARK DOMINO 0709 *CHB,DLF,HYF,IEF*
LJS MARK DOMINO 0945 *CHB,DLF,HYF,IEF,MSUDF*
 LJS MS ADVANCE 0601 *DLF,HYF,IEF*

OXH MARK DOMINO 0125 *SOD,DLF,IEF*
 LJS MS MARK DOMINO 0414 *DOD,DLF,HYF,IEF*
 HH ADVANCE 255M 1ET *CHB,DLF,IEF*
 LJS MS MARK DOMINO 0344

UPS NAVARRO *SOD,CHB,DLF,HYF,IEF*
FH NAVIA 249 MD *DLF,HYF,IEF*
 FH L1 DOMINETTE 616MF

UPS DOMINO 5216 *SOD,DLF,IEF*
 UPS MISS DOMINO 5875 *DLF,IEF*
 CL 1 DOMINO 9126J 1ET *SOD,CHB,DLF,IEF*
 OXH JEAN 9250

BW	WW	BW	WW	YW	MILK	M&G	REA	MARB	CHB
85	610	4.3	53	94	34	60	.82	.35	160

Pigment LE 100% RE 100%.
 This LJS Mark Domino 0945 son is a real eye catcher. He is cool fronted and transitions that well into a middle with added depth rib and a deep flank. He is smooth made and tracks well. His EPD profile will help improve carcass traits across the board. He has 12 traits in the upper 30%, with REA and Marb. in the top 10%. He is a full brother to one of last year's top selling bulls to Koehn Herefords. Retaining 1/4 semen interest.



YEARLING BULLS

Lot 035 FH 417 ADVANCE 035 ET

DOB: 2/10/2020 Reg. # 44176066

H5 4055 ADVANCE 1147 1 ET SOD,DLF,HYF,IEF
H5 1147 ADVANCE 417 DLF,HYF,IEF
 H5 MS 7100 DOMET 215 DLF,HYF,IEF

HH ADVANCE 4055P DLF,IEF
 H5 MS 767 ADVAN 298 DOD,DLF,HYF,IEF
 H5 408 DOMINO 7100 SOD,DLF,HYF,IEF
 H5 MS YANKEE 0125 1ET

SR BAKKEN 62Z DLF,HYF,IEF
SR BAKKETTE 553C DLF,HYF,IEF,MSUDF
 SR DELIGHT 767

UPS NAVARRO SOD,CHB,DLF,HYF,IEF
 SR SCRIPTA 926W DOD,DLF,HYF,IEF,MSUDF
 SR RAPTURE 342
 SR FRANCI 988

BW	WW
84	651

BW	WW	YW	MILK	M&G	REA	MARB	CHB
2.2	59	93	35	65	.34	.32	129

Pigment LE 0% RE 0%.

This ET calf is the result of our Harrell 417 bull and Stuber 553 cow. He continues to be a stand out in the sale pen. He is long bodied, deep ribbed, and packed full of muscle when you get behind him. A full ET brother was our high seller to Knippling Ranch in our 2020 sale. 035 is a full ET brother to 020 and 033 and heifers 023 and 025. He boasts 11 traits in the upper 30%.



Lot 036 FH SCOPE 036 AF DLF,HYF,IEF,MSUDF

DOB: 2/11/2020 Reg. # 44179607

CL 1 DOMINO 0130X 1ET CHB,DLF,HYF,IEF
SR SCOPE 53A DLF,HYF,IEF
 SR HARLET 076X DLF,HYF,IEF

CL 1 DOMINO 860U SOD,DLF,HYF,IEF
 CL 1 DOMINETTE 440P 1ET DLF,HYF,IEF
 CJH HARLAND 408 SOD,DLF,HYF,IEF,MSUDF,MDF
 SR CADDIE 874

NJW 73S W18 HOMETOWN 10Y ET SOD,CHB,DLF,HYF,IEF,MSUDF,MDC
FH MISS HOMETOWN 842F AF
 FH L1 HARLIE 121 AF DLF,HYF,IEF

SHF WONDER M326 W18 ET CHB,SOD,DLF,HYF,IEF,MDC
 NJW P606 72N DAYDREAM 73S DLF,HYF,IEF,MSUDF,MDF
 CJH HARLAND 408 SOD,DLF,HYF,IEF,MSUDF,MDF
 FH L1 DOMINETTE 340 AF DOD

BW	WW
75	667

BW	WW	YW	MILK	M&G	REA	MARB	CHB
0.1	58	94	27	56	.31	.13	120

Pigment LE 100% RE 90%.

This light BW is a great heifer bull prospect, but will still add performance. His sire is moderate framed with extra thickness and his mother, a first calf heifer, has a picture perfect udder and is off to a great start.



Lot 039 FH 814 SENSATION 039

DOB: 2/12/2020 Reg. # 44201221

CHURCHILL SENSATION 028X SOD,DLF,HYF,IEF,MDF
SR SUSTAIN 814B CHB,DLF,HYF,IEF
 MACS SHERRY 285Z

UPS DOMINO 3027 SOD,DLF,HYF,IEF,MSUDF,MDF
 CHURCHILL LADY 7202T ET DLF,HYF,IEF
 LBH 39T STERLING 53W CHB,DLF,HYF,IEF
 MAC'S NAVITA 0131X DOD,DLF,HYF,IEF,MSUDF

HH ADVANCE 6199D DLF,HYF,IEF,MSUDF
FH MISS ADA 839F BA
 FH L1 DOMINETTE 223 BA DLF,HYF,IEF

HH ADVANCE 3006A DLF,HYF,IEF
 HH MISS ADVANCE 4048B ET DLF,HYF,IEF,MSUDF
 KB L1 DOMINO 0102X DLF,HYF,IEF
 MONTANA MISS 9160W DOD,DLF,HYF,IEF

BW	WW
79	657

BW	WW	YW	MILK	M&G	REA	MARB	CHB
3.1	59	95	37	66	.53	.16	125

Pigment LE 70% RE 90%.

Born unassisted to a first calf heifer, this calf has shown potential since day one. 13 traits above the top 30th percentile.



Lot 041 FH 417 ADVANCE 041

DOB: 2/13/2020 Reg. # 44179614

H5 4055 ADVANCE 1147 1 ET SOD,DLF,HYF,IEF
H5 1147 ADVANCE 417 DLF,HYF,IEF
 H5 MS 7100 DOMET 215 DLF,HYF,IEF

HH ADVANCE 4055P DLF,IEF
 H5 MS 767 ADVAN 298 DOD,DLF,HYF,IEF
 H5 408 DOMINO 7100 SOD,DLF,HYF,IEF
 H5 MS YANKEE 0125 1ET

H5 9131 DOMINO 2185 DLF,HYF,IEF
FH 2185 DOMINETTE 658 ET DLF,HYF,IEF
 KB L1 DOMINETTE 879U DLF,HYF,IEF

H5 YANKEE 9131 DLF,HYF,IEF
 H5 MS 408 DOMET 915 DOD,DLF,HYF,IEF
 JA L1 DOMINO 6002S DLF,HYF,IEF
 KB L1 DOMINETTE 647 DLF,HYF,IEF

BW	WW
89	705

BW	WW	YW	MILK	M&G	REA	MARB	CHB
4.8	68	110	37	71	.24	.22	116

Pigment LE 30% RE 10%.

This bull will put a lot of performance in his calves. He is short marked and comes from two of the top performance lines from Harrell Hereford Ranch.

To Participate as an Absentee Buyer:

Livestock Videoing • Video Sales • Bid-by-Click Online Sales

The **Livestock**
Link

Please visit www.TheLivestockLink.com and click the "Online Auctions" tab. Online buyers must be registered at least 24 hours before the date of sale. For questions please call 701/590-9597.

YEARLING BULLS

Lot
042

FH 799 L1 DOMINO 042 AF

DLF,HYF,IEF,MSUDF

DOB: 2/13/2020 Reg. # 44175815

H5 9131 DOMINO 2185 DLF,HYF,IEF
H5 2185 DOMINO 799 DLF,HYF,IEF,MSUDF
 H5 MS 001 DOMET 9210 DOD,DLF,HYF,IEF

H5 YANKEE 9131 DLF,HYF,IEF
 H5 MS 408 DOMET 915 DOD,DLF,HYF,IEF
 H5 501 DOMINO 001 SOD,DLF,IEF
 H5 MS 9126 DOMET 5106

FH L1 DOMINO 040 DLF,HYF,IEF
FH L1 DOMINETTE 231 AF DLF,HYF,IEF,MSUDF
 FH L1 DOMINETTE 762 AF

H5 501 DOMINO 001 SOD,DLF,IEF
 FH L1 DOMINETTE 5100
 KB L1 DOMINO 1135
 OXH SHELA 1193

BW	WW
86	734

BW	WW	YW	MILK	M&G	REA	MARB	CHB
3.6	59	92	29	59	.29	.18	104

Pigment LE 100% RE 70%.
 042 has been a stud since the day he was born. He is one of our top herd bull prospects. He is red to the ground and deep. 042 packs plenty of eye appeal into a balanced package with a nice clean front and smooth shoulder while maintaining muscle expression, depth of body, and rib shape. Get behind him and you will witness the natural thickness in his rear quarter and the added width over his top. Retaining 1/4 semen interest.



Dam: FH L1 Dominette 231 AF

Lot
048

FH 417 ADVANCE 048 MD

DOB: 2/15/2020 Reg. # 44179615

H5 4055 ADVANCE 1147 1 ET SOD,DLF,HYF,IEF
H5 1147 ADVANCE 417 DLF,HYF,IEF
 H5 MS 7100 DOMET 215 DLF,HYF,IEF

HH ADVANCE 4055P DLF,IEF
 H5 MS 767 ADVAN 298 DOD,DLF,HYF,IEF
 H5 408 DOMINO 7100 SOD,DLF,HYF,IEF
 H5 MS YANKEE 0125 1ET

FH L1 DOMINO 902 SOD,DLF,HYF,IEF
FH L1 DOMINETTE 426 MD DLF,HYF,IEF
 FH L1 DOMINETTE 953 MF DLF,HYF,IEF

HH ADVANCE 7056T SOD,DLF,IEF
 FH L1 DOMINETTE 535 DOD,DLF,HYF,IEF
 FH L1 DOMINO 695 MF DLF,HYF,IEF
 LS SABRINA 081 DOD

BW	WW
88	656

BW	WW	YW	MILK	M&G	REA	MARB	CHB
4.0	68	106	36	70	.15	.19	112

Pigment LE 100% RE 100%.
 This calf has extra performance with a consistent and heavy milking dam. She ratios 108.7 for weaning weight and 102.7 for yearling weight on her calves. Full brother sold to Blaine Welstad in 2020.



Lot
049

FH 7056E SENSATION 049 HJD

DOB: 2/15/2020 Reg. # 44205635

CHURCHILL SENSATION 028X SOD,DLF,HYF,IEF,MDF
UU SENSATION 7056E DLF,HYF,IEF,MSUDF
 UU MS BAKKEN 5126

UPS DOMINO 3027 SOD,DLF,HYF,IEF,MSUDF,MDF
 CHURCHILL LADY 72027 ET DLF,HYF,IEF
 SR BAKKEN 622 DLF,HYF,IEF
 UU HALEY 2056 DOD

SR SCOPE 53A DLF,HYF,IEF
FH MISS SCOPE 827 MD
 FH L1 DOMINETTE 256 DLF,HYF,IEF

CL 1 DOMINO 0130X 1ET CHB,DLF,HYF,IEF
 SR HARLET 076X DLF,HYF,IEF
 FH L1 DOMINO 695 MF DLF,HYF,IEF
 FH L1 DOMINETTE 537 MF

BW	WW
82	615

BW	WW	YW	MILK	M&G	REA	MARB	CHB
2.2	57	93	38	67	.33	.17	113

Pigment LE 0% RE 0%.
 This calf out of a first calf heifer has hit the ground running, is stylish with a lot of depth and width over his back. Low birth weight on both sides of his pedigree.



YEARLING BULLS

Lot
050

FH 7056E SENSATION 050

DLF,HYF,IEF,MSUDF

DOB: 2/16/2020 Reg. # 44179604

CHURCHILL SENSATION 028X SOD,DLF,HYF,IEF,MDF
UU SENSATION 7056E DLF,HYF,IEF,MSUDF
 UU MS BAKKEN 5126

UPS DOMINO 3027 SOD,DLF,HYF,IEF,MSUDF,MDF
 CHURCHILL LADY 7202T ET DLF,HYF,IEF
 SR BAKKEN 62Z DLF,HYF,IEF
 UU HALEY 2056 DOD

FH L1 DOMINO 695 MF DLF,HYF,IEF
FH L1 DOMINO 469 DLF,HYF,IEF
 FH 014 DOMINETTE 226

FH 026K DOMINO 304 SOD,CHB,DLF,IEF
 OXH LOLA 7002 DOD
 FH 7358 DOMINO 014
 FH COMMANDESS 904

BW	WW
80	695

BW	WW	YW	MILK	M&G	REA	MARB	CHB
0.9	62	93	41	72	.50	.25	122

Pigment LE 0% RE 100%.

This moderate framed calf carries himself like a herd bull. He his long sided, wide topped, and correct on his feet and legs. His dam is a consistent producer with a good udder.



Lot
051

FH 53A SCOPE 051

DOB: 2/16/2020 Reg. # 44205637

CL 1 DOMINO 0130X 1ET CHB,DLF,HYF,IEF
SR SCOPE 53A DLF,HYF,IEF
 SR HARLET 076X DLF,HYF,IEF

CL 1 DOMINO 860U SOD,DLF,HYF,IEF
 CL 1 DOMINETTE 440P 1ET DLF,HYF,IEF
 CJH HARLAND 408 SOD,DLF,HYF,IEF,MSUDF,MDF
 SR CADDIE 874

FH NAVARRO 242 MD DLF,HYF,IEF
FH 242 MISS AVA 813
 FH L1 DOMINETTE 9937 DLF,HYF,IEF

UPS NAVARRO SOD,CHB,DLF,HYF,IEF
 FH L1 DOMINETTE 612 MF DLF,HYF,IEF,MSUDF
 HH ADVANCE 7022T
 FH 1135 DOMINETTE 509

BW	WW
80	640

BW	WW	YW	MILK	M&G	REA	MARB	CHB
2.2	54	90	27	54	.35	.12	116

Pigment LE 100% RE 100%.

His sire, Scope 53A, was used on heifers with many years with great success. The bottom side of his pedigree has some of our top females in it.



Lot
40H

B 6011 7100 BELLE AIR 40H

DOB: 2/16/2020 Reg. # 44146117

BAR S LHF 028 240 DLF,HYF,IEF
BR BELLE AIR 6011 DLF,HYF,IEF,MSUDF
 BR BELLE 4082 ET DLF,HYF,IEF,MSUDF

CHURCHILL SENSATION 028X SOD,DLF,HYF,IEF,MDF
 CHURCHILL LADY 078X DLF,HYF,IEF
 GOLDEN OAK OUTCROSS 18U SOD,CHB,DLF,HYF,IEF,MSUDF
 BR CSF BRIELLE 8052 ET DLF,HYF,IEF

SR SCOPE 53A DLF,HYF,IEF
FH MISS SCOPE 7100 DLF,HYF,IEF
 FH L1 DOMINETTE 436 BA DLF,HYF,IEF

CL 1 DOMINO 0130X 1ET CHB,DLF,HYF,IEF
 SR HARLET 076X DLF,HYF,IEF
 H5 9131 DOMINO 2185 DLF,HYF,IEF
 MONTANA MISS 9160W DOD,DLF,HYF,IEF

BW	WW
76	757

BW	WW	YW	MILK	M&G	REA	MARB	CHB
1.9	60	99	36	67	.55	.38	150

Pigment LE 0% RE 100%.

Outstanding horned son of BR Belle Air 6011 out of a Scope 53A daughter. He has natural thickness and dimension with a straight, wide top, very correct with loads of pigment. He is in the top 5% in five traits, including CHB and Marbling. His sire was 2017 and 2019 Grand Champion Hereford Bull and Supreme Champion in Denver.



Lot
052

FH 7056E SENSATION 052

DOB: 2/17/2020 Reg. # 44205639

CHURCHILL SENSATION 028X SOD,DLF,HYF,IEF,MDF
UU SENSATION 7056E DLF,HYF,IEF,MSUDF
 UU MS BAKKEN 5126

UPS DOMINO 3027 SOD,DLF,HYF,IEF,MSUDF,MDF
 CHURCHILL LADY 7202T ET DLF,HYF,IEF
 SR BAKKEN 62Z DLF,HYF,IEF
 UU HALEY 2056 DOD

FH NAVARRO 242 MD DLF,HYF,IEF
FH MISS NAVARRO 610 DLF,HYF,IEF
 FH L1 DOMINETTE 271 DLF,HYF,IEF

UPS NAVARRO SOD,CHB,DLF,HYF,IEF
 FH L1 DOMINETTE 612 MF DLF,HYF,IEF,MSUDF
 FH L1 DOMINO 040 DLF,HYF,IEF
 JBN L1 DOMINETTE 823

BW	WW
83	565

BW	WW	YW	MILK	M&G	REA	MARB	CHB
2.7	54	97	39	66	.36	.14	120

Pigment LE 100% RE 100%.

You have to appreciate the overall depth and thickness of this bull calf. His dam is one of our better young cows.

Lot
054

FH 7056E SENSATION 054

DOB: 2/24/2020 Reg. # 44205641

CHURCHILL SENSATION 028X SOD,DLF,HYF,IEF,MDF
UU SENSATION 7056E DLF,HYF,IEF,MSUDF
 UU MS BAKKEN 5126

UPS DOMINO 3027 SOD,DLF,HYF,IEF,MSUDF,MDF
 CHURCHILL LADY 7202T ET DLF,HYF,IEF
 SR BAKKEN 62Z DLF,HYF,IEF
 UU HALEY 2056 DOD

SR SCOPE 53A DLF,HYF,IEF
FH 53A MISS SOPHIE 7109
 SR BAKKETTE 553C DLF,HYF,IEF,MSUDF

CL 1 DOMINO 0130X 1ET CHB,DLF,HYF,IEF
 SR HARLET 076X DLF,HYF,IEF
 SR BAKKEN 62Z DLF,HYF,IEF
 SR DELIGHT 767

BW	WW
80	604

BW	WW	YW	MILK	M&G	REA	MARB	CHB
1.4	60	97	39	69	.42	.24	123

Pigment LE 70% RE 90%.

This Sensation 7056E calf is patterned like the rest of his sons, low birth weight, vigorous at birth, really deep and thick as they mature.

YEARLING BULLS

Lot 056 FH 227 NAVARRO 056 MD

DOB: 2/18/2020 Reg. # 44205642

UPS NAVARRO SOD,CHB,DLF,HYF,IEF
FH NAVARRO 227 DLF,HYF,IEF
 FH L1 DOMINETTE 330

UPS DOMINO 5216 SOD,DLF,IEF
 UPS MISS DOMINO 5875 DLF,IEF
 KB L1 DOMINO 1135
 FH ANDI 606 1ET

FH L1 DOMINO 695 MF DLF,HYF,IEF
FH L1 DOMINETTE 953 MF DLF,HYF,IEF
 LS SABRINA 081 DOD

FH 026K DOMINO 304 SOD,CHB,DLF,IEF
 OXH LOLA 7002 DOD
 OXH SABRE 7299 SOD,DLF,IEF
 LS MANDY 811

BW	WW	BW	WW	YW	MILK	M&G	REA	MARB	CHB
85	646	3.9	52	84	27	53	.23	.17	108

Pigment LE 100% RE 10%.
 Sired by Navarro 227. This calf was raised by an 11 year old cow and she is bred back for 2021. Structurally sound, he is extra long and thick.

Lot 059 FH 7056E SENSATION 059

DOB: 2/20/2020 Reg. # 44206661

CHURCHILL SENSATION 028X SOD,DLF,HYF,IEF,MDF
UU SENSATION 7056E DLF,HYF,IEF,MSUDF
 UU MS BAKKEN 5126

UPS DOMINO 3027 SOD,DLF,HYF,IEF,MSUDF,MDF
 CHURCHILL LADY 7202T ET DLF,HYF,IEF
 SR BAKKEN 62Z DLF,HYF,IEF
 UU HALEY 2056 DOD

SR NAVARRO 740X CHB,DLF,HYF,IEF
FH L1 DOMINETTE 2041 DLF,HYF,IEF
 FH L1 DOMINETTE 964

UPS NAVARRO SOD,CHB,DLF,HYF,IEF
 SR HARLET 872 DOD
 OXH DOMINO 2211 SOD,DLF,IEF
 OXH JUDI 7331 DOD

BW	WW	BW	WW	YW	MILK	M&G	REA	MARB	CHB
78	559	1.5	49	79	41	66	.31	.18	114

Pigment LE 100% RE 100%.
 Light birth weight calf that sure could be used as a heifer bull. The 7056 calves come small but have vigor and the ability to grow, with good muscle expression.

Lot 060 FH 7056E SENSATION 060

DOB: 2/21/2020 Reg. # 44205647

CHURCHILL SENSATION 028X SOD,DLF,HYF,IEF,MDF
UU SENSATION 7056E DLF,HYF,IEF,MSUDF
 UU MS BAKKEN 5126

UPS DOMINO 3027 SOD,DLF,HYF,IEF,MSUDF,MDF
 CHURCHILL LADY 7202T ET DLF,HYF,IEF
 SR BAKKEN 62Z DLF,HYF,IEF
 UU HALEY 2056 DOD

SR SCOPE 53A DLF,HYF,IEF
FH MISS SCOPE 830F DLF,HYF,IEF,MSUDF
 FH L1 DOMINETTE 112 DLF,HYF,IEF

CL 1 DOMINO 0130X 1ET CHB,DLF,HYF,IEF
 SR HARLET 076X DLF,HYF,IEF
 H5 001 DOMINO 819 DLF,HYF,IEF
 FH L1 DOMINETTE 910 DOD,DLF,HYF,IEF

BW	WW	BW	WW	YW	MILK	M&G	REA	MARB	CHB
80	622	1.5	59	93	41	71	.22	.19	106

Pigment LE 10% RE 70%.
 This moderate framed bull sired by Sensation 7056E has really come on since calving ease on both sides of his pedigree.



Lot 90H B 227 619 NAVARRO 90H

DOB: 2/24/2020 Reg. # 44141298

UPS NAVARRO SOD,CHB,DLF,HYF,IEF
FH NAVARRO 227 DLF,HYF,IEF
 FH L1 DOMINETTE 330

UPS DOMINO 5216 SOD,DLF,IEF
 UPS MISS DOMINO 5875 DLF,IEF
 KB L1 DOMINO 1135
 FH ANDI 606 1ET

CHSF 51Y AXEL 43A DLF,HYF,IEF
B LADY ANCHOR 619 DLF,HYF,IEF
 ANCHOR 18Z

CHSF 28T RANCH HAND 51Y
 CHSF 52U LADY HOPE 6X
 ANCHOR 31X
 ANCHOR 4X

BW	WW	BW	WW	YW	MILK	M&G	REA	MARB	CHB
85	728	4.0	57	92	23	52	.26	.21	113

Pigment LE 50% RE 70%.
 Great natural thickness in this calf. Fantastic combination of horned and polled bloodlines. Grandson of UPS Navarro on the sire's side. Dam is from Anchor Polled Herefords and her sire is a good Canadian bull who sired of one of JB's herd bulls.



Lot 078 FH 227 NAVARRO 078 LC

DOB: 2/27/2020 Reg. # 44179598

UPS NAVARRO SOD,CHB,DLF,HYF,IEF
FH NAVARRO 227 DLF,HYF,IEF
 FH L1 DOMINETTE 330

UPS DOMINO 5216 SOD,DLF,IEF
 UPS MISS DOMINO 5875 DLF,IEF
 KB L1 DOMINO 1135
 FH ANDI 606 1ET

H5 9131 YANKEE 156 DLF,HYF,IEF
FH L1 DOMINETTE 501 LC DLF,HYF,IEF
 FH L1 DOMINETTE 737 LF DOD

H5 YANKEE 9131 DLF,HYF,IEF
 H5 MS 001 DOMET 8147 DLF,HYF,IEF
 CJH HARLAND 408 SOD,DLF,HYF,IEF,MSUDF,MDF
 IH 503 DOMINETA 8335 DOD,DLF,IEF

BW	WW	BW	WW	YW	MILK	M&G	REA	MARB	CHB
87	687	3.4	54	90	29	56	.28	.25	119

Pigment LE 100% RE 70%.
 This calf is extra long with a top and rear quarter. His young mother has a near perfect udder and comes from a consistent cow family.



YEARLING BULLS

Lot
083

FH 6964 LEADER 083 AF

DOB: 3/7/2020

Reg. # P44205649

HYALITE ON TARGET 936 SOD,DLF,HYF,IEF,MSUDC
R LEADER 6964 CHB,DLF,HYF,IEF,MSUDF
R MISS REVOLUTION 1009 DOD,DLF,HYF,IEF

SCHU-LAR ON TARGET 22S SOD,DLF,HYF,IEF,MSUDF
HYALITE TS LASS 310 DLF,HYF,IEF
MSU TCF REVOLUTION 4R SOD,CHB,DLF,HYF,IEF
R MISS WRANGLER 3007

FH 026K DOMINO 304 SOD,CHB,DLF,IEF
FH L1 DOMINETTE 824 AF DLF,HYF,IEF
OXH SHELA 1193

HH ADVANCE 026K 1ET CHB,DLF,HYF,IEF
RCH DOMINETTE 9029 DOD
OXH SIGNATURE 8346
OXH PATTI 7167

BW	WW
81	544

BW	WW	YW	MILK	M&G	REA	MARB	CHB
2.8	56	91	18	46	.29	.10	112

Pigment LE 30% RE 10%.

This Leader son could be used as a heifer bull, small headed with smooth shoulder.



Lot
092

FH 7056E SENSATION 092 LC

DOB: 3/8/2020

Reg. # 44179608

CHURCHILL SENSATION 028X SOD,DLF,HYF,IEF,MDF
UU SENSATION 7056E DLF,HYF,IEF,MSUDF
UU MS BAKKEN 5126

UPS DOMINO 302T SOD,DLF,HYF,IEF,MSUDF,MDF
CHURCHILL LADY 7202T ET DLF,HYF,IEF
SR BAKKEN 62Z DLF,HYF,IEF
UU HALEY 2056 DOD

FH L1 DOMINO 902 SOD,DLF,HYF,IEF
FH L1 DOMINETTE 105 LF DLF,HYF,IEF
FH L1 DOMINETTE 710 LF

HH ADVANCE 7056T SOD,DLF,IEF
FH L1 DOMINETTE 535 DOD,DLF,HYF,IEF
FH 026K DOMINO 304 SOD,CHB,DLF,IEF
FH L1 DOMINETTE 323 LF DLF,IEF

BW	WW
83	660

BW	WW	YW	MILK	M&G	REA	MARB	CHB
2.3	64	99	43	75	.37	.11	102

Pigment LE 100% RE 100%.

This moderate framed calf by our UU Sensation 7056E bull is trim fronted and packed full of muscle of front to rear. These 7056E calves are thick!! 092 has a top producing dam. This bull boasts a wide birth weight to yearling weight spread.



Lot
120H

B 422C 711 RIGHT TEK 120H

DOB: 3/10/2020

Reg. # P44138456

TH 113W 11X HI-TECH 17A DLF,HYF,IEF,MSUDF
MOHICAN HYTEK422C ET DLF,HYF,IEF,MSUDF,MDF
NJW M326 UNFORGETTABLE 76W ET DLF,HYF,IEF

TH 71U 719T MR HEREFORD 11X SOD,DLF,HYF,IEF
TH 105S 755T GEMINI 113W DLF,HYF,IEF
KCF BENNETT 3008 M326 SOD,DLF,HYF,IEF,MDF
NJW P606 72N DAYDREAM 73S DLF,HYF,IEF,MSUDF,MDF

SR RIGHT ON 2203 Z ET CHB,DLF,HYF,IEF
B RIGHTEOUS LADY 711
ANCHOR 26A

CHURCHILL SENSATION 028X SOD,DLF,HYF,IEF,MDF
NJW BW LADYSPORT DEW 78P ET DLF,HYF,IEF
ANCHOR 28U SOD,DLF,HYF,IEF
ANCHOR 4X

BW	WW
82	747

BW	WW	YW	MILK	M&G	REA	MARB	CHB
4.2	60	97	33	63	.48	.14	119

Pigment LE 20% RE 80%.

A really nice polled Hytek calf with lots of length, pigment and red to the ground. His sire has loads of pigment along with growth and was over 2400 lbs. in his prime.



Lot
200H

B 422C 034B BRIDGER 200H

DOB: 3/16/2020

Reg. # P44136830

TH 113W 11X HI-TECH 17A DLF,HYF,IEF,MSUDF
MOHICAN HYTEK422C ET DLF,HYF,IEF,MSUDF,MDF
NJW M326 UNFORGETTABLE 76W ET DLF,HYF,IEF

TH 71U 719T MR HEREFORD 11X SOD,DLF,HYF,IEF
TH 105S 755T GEMINI 113W DLF,HYF,IEF
KCF BENNETT 3008 M326 SOD,DLF,HYF,IEF,MDF
NJW P606 72N DAYDREAM 73S DLF,HYF,IEF,MSUDF,MDF

HARVIE SAFNBFI COLATERAL 337U DLF,HYF,IEF,MDF
E 337U DIVA 034B DLF,HYF,IEF
ANCHOR 28Y DLF,HYF,IEF

HARVIE RAFTSMAN 16R SOD,DLF,HYF,IEF,MDF
HARVIE MS MEDONTE 1S
VESCOVI P203 DLF,HYF,IEF
ANCHOR P432 ET DOD

BW	WW
84	635

BW	WW	YW	MILK	M&G	REA	MARB	CHB
3.7	58	90	22	51	.36	.13	110

Pigment LE 100% RE 0%.

Another super-nice, polled Hytek calf with lots of frame and growth, dark cherry red and well marked. Another interesting pedigree here.



2-YEAR-OLD BULLS

We are offering a good selection of 2 year old bulls that were summered on pasture. They are sound on their feet, correct in their structure and not overfed. We use a late February/early March cutoff date for a bull calf to be sold as a yearling. These bulls have not been offered for sale at public auction prior to the sale.

Lot 938 **FH 227 NAVARRO 938 AF**
 DOB: 2/5/2019 Reg. # 44053465

UPS NAVARRO SOD,CHB,DLF,HYF,IEF
FH NAVARRO 227 DLF,HYF,IEF
 FH L1 DOMINETTE 330

UPS DOMINO 5216 SOD,DLF,IEF
 UPS MISS DOMINO 5875 DLF,IEF
 KB L1 DOMINO 1135
 FH ANDI 606 1ET

CJH HARLAND 408 SOD,DLF,HYF,IEF,MSUDF,MDF
FH L1 HARLIE 121 AF DLF,HYF,IEF
 FH L1 DOMINETTE 340 AF DOD

HH ADVANCE 9005J DLF,IEF
 CJH L1 DOMINETTE 0064 DLF,HYF,IEF
 KB L1 DOMINO 1135
 FH STARLET 104

BW	WW	YW	BW	WW	YW	MILK	M&G	REA	MARB	CHB
90	670	1191	3.9	53	89	27	53	.43	.23	128

Pigment LE 100% RE 100%.
 This bull has it all! He is deep sided, long bodied, and packed full of muscle and width when viewed from behind. In addition to this, he is above average in 15 traits and in the top 15th percentile for both CHB and marbling and the top 10th percentile for scrotal circumference. He's a big bodied bull with rib shape and ample muscle expression. The bottom side of his pedigree is backed by generations of proven maternal cows.



Lot 974 **FH 227 NAVARRO 974 AF**
 DOB: 2/23/2019 Reg. # 44060326

UPS NAVARRO SOD,CHB,DLF,HYF,IEF
FH NAVARRO 227 DLF,HYF,IEF
 FH L1 DOMINETTE 330

UPS DOMINO 5216 SOD,DLF,IEF
 UPS MISS DOMINO 5875 DLF,IEF
 KB L1 DOMINO 1135
 FH ANDI 606 1ET

FH L1 DOMINO 695 MF DLF,HYF,IEF
FH L1 DOMINETTE 905 AF DLF,HYF,IEF
 FH STARLET 104

FH 026K DOMINO 304 SOD,CHB,DLF,IEF
 OXH LOLA 7002 DOD
 ST STAR MARK 988
 FH MS WASH 804

BW	WW	YW	BW	WW	YW	MILK	M&G	REA	MARB	CHB
85	645	1184	3.5	49	82	26	50	.25	.26	118

Pigment LE 80% RE 80%.
 This FH Navarro 227 son is long sided and deep ribbed. He is easy traveling and structurally correct. He is backed by a consistent 12 year old dam.



Lot 982 **FH 242 NAVARRO 982**
 DLF,HYF,IEF,MSUDF
 DOB: 2/26/2019 Reg. # 44060333

UPS NAVARRO SOD,CHB,DLF,HYF,IEF
FH NAVARRO 242 MD DLF,HYF,IEF
 FH L1 DOMINETTE 612 MF DLF,HYF,IEF,MSUDF

UPS DOMINO 5216 SOD,DLF,IEF
 UPS MISS DOMINO 5875 DLF,IEF
 CL 1 DOMINO 9126J 1ET SOD,CHB,DLF,IEF
 OXH MRNA 1363

HH ADVANCE 1038Y ET DLF,HYF,IEF
KB L1 DOMINETTE 378 A ET DOD,DLF,HYF,IEF
 KB L1 DOMINETTE 879U DLF,HYF,IEF

HH ADVANCE 8050U ET SOD,DLF,HYF,IEF
 HH MISS ADVANCE 6109S DLF,IEF
 JA L1 DOMINO 6002S DLF,HYF,IEF
 KB L1 DOMINETTE 647 DLF,HYF,IEF

BW	WW	YW	BW	WW	YW	MILK	M&G	REA	MARB	CHB
88	636	1211	2.8	51	83	27	52	.53	.10	109

Pigment LE 100% RE 100%.
 This solid marked FH Navarro 242 MD son is solid marked and sure to add pounds to his calves. He is Baker bred on the bottom side. He will work well on a set of black cows.



2-YEAR-OLD BULLS

**Lot
9114**

FH 227 NAVARRO 9114

DOB: 3/7/2019 Reg. # 44065661

UPS NAVARRO SOD,CHB,DLF,HYF,IEF
 FH NAVARRO 227 DLF,HYF,IEF
 FH L1 DOMINETTE 330

UPS DOMINO 5216 SOD,DLF,IEF
 UPS MISS DOMINO 5875 DLF,IEF
 KB L1 DOMINO 1135
 FH ANDI 606 1ET

FH L1 DOMINO 902 SOD,DLF,HYF,IEF
 FH L1 DOMINETTE 432 DLF,HYF,IEF
 MONTANA MISS 038X

HH ADVANCE 7056T SOD,DLF,IEF
 FH L1 DOMINETTE 535 DOD,DLF,HYF,IEF
 HH ADVANCE 6001S
 MONTANA MISS 7146T

BW	WW	YW
85	612	1125

BW	WW	YW	MILK	M&G	REA	MARB	CHB
3.7	54	89	27	54	.25	.26	125

Pigment LE 0% RE 10%.

This 227 son is sure to catch your eye. He is long sided, deep bodied, and wide when viewed from behind. In addition to his muscle and natural thickness, he is quiet dispositioned. He is sure to add extra pounds to his steer calves and his heifers are sure to be the kind you want to keep. 227 continues to sire high performance bulls and females that work in our program.



**Lot
9124**

FH 417 ADVANCE 9124 ET

DLF,HYF,IEF,MSUDF

DOB: 3/16/2019 Reg. # 44065694

H5 4055 ADVANCE 1147 1 ET SOD,DLF,HYF,IEF
 H5 1147 ADVANCE 417 DLF,HYF,IEF
 H5 MS 7100 DOMET 215 DLF,HYF,IEF

HH ADVANCE 4055P DLF,IEF
 H5 MS 767 ADVAN 298 DOD,DLF,HYF,IEF
 H5 408 DOMINO 7100 SOD,DLF,HYF,IEF
 H5 MS YANKEE 0125 1ET

SR BAKKEN 62Z DLF,HYF,IEF
 SR BAKKETTE 553C DLF,HYF,IEF,MSUDF
 SR DELIGHT 767

UPS NAVARRO SOD,CHB,DLF,HYF,IEF
 SR SCRIPTA 926W DOD,DLF,HYF,IEF,MSUDF
 SR RAPTURE 342
 SR FRANCI 988

BW	WW	YW
84	679	

BW	WW	YW	MILK	M&G	REA	MARB	CHB
2.8	57	91	35	63	.29	.30	124

Pigment LE 30% RE 20%.

9124 is a product of the 417 and 553C mating. He is a full sibling to Lots 020, 033, and 035 as well as heifers 023 and 025. He is moderate framed and big topped. His Stuber bred dam adds performance and carcass quality.

**Lot
9128**

FH 227 NAVARRO 9128

DLF,HYF,IEF,MSUDF

DOB: 3/18/2019 Reg. # 44060806

UPS NAVARRO SOD,CHB,DLF,HYF,IEF
 FH NAVARRO 227 DLF,HYF,IEF
 FH L1 DOMINETTE 330

UPS DOMINO 5216 SOD,DLF,IEF
 UPS MISS DOMINO 5875 DLF,IEF
 KB L1 DOMINO 1135
 FH ANDI 606 1ET

KB L1 DOMINO 842U DLF,IEF
 FH L1 DOMINETTE 211 DOD,DLF,HYF,IEF
 KB L1 DOMINETTE 9134W

KB L1 DOMINO 655 ET CHB,DLF,IEF
 MONTANA MISS 310 DOD,DLF,HYF,IEF
 CL 1 DOMINO 7110T DLF,HYF,IEF
 KB L1 DOMINETTE 721T

BW	WW	YW
89	675	

BW	WW	YW	MILK	M&G	REA	MARB	CHB
3.2	54	86	22	49	.45	.22	129

Pigment LE 50% RE 40%.

This 227 son continues to be a favorite. He is sure to add carcass quality and is backed by a heavy milking, good uddered dam.



**Lot
9131**

FH 799 DOMINO 9131

DOB: 3/20/2019 Reg. # 44066212

H5 9131 DOMINO 2185 DLF,HYF,IEF
 H5 2185 DOMINO 799 DLF,HYF,IEF,MSUDF
 H5 MS 001 DOMET 9210 DOD,DLF,HYF,IEF

H5 YANKEE 9131 DLF,HYF,IEF
 H5 MS 408 DOMET 915 DOD,DLF,HYF,IEF
 H5 501 DOMINO 001 SOD,DLF,IEF
 H5 MS 9126 DOMET 5106

FH L1 DOMINO 695 MF DLF,HYF,IEF
 FH L1 DOMINO 469 DLF,HYF,IEF
 FH 014 DOMINETTE 226

FH 026K DOMINO 304 SOD,CHB,DLF,IEF
 OXH LOLA 7002 DOD
 FH 7358 DOMINO 014
 FH COMMANDESS 904

BW	WW	YW
87	625	1168

BW	WW	YW	MILK	M&G	REA	MARB	CHB
4.1	56	92	29	57	.36	.14	118

Pigment LE 100% RE 100%.

This 799 son who boasts ample depth and rib shaped and is packed full of muscle and natural thickness. He is structurally correct and free traveling.

**Lot
9136**

FH 227 NAVARRO 9136

DOB: 3/21/2019 Reg. # 44066222

UPS NAVARRO SOD,CHB,DLF,HYF,IEF
 FH NAVARRO 227 DLF,HYF,IEF
 FH L1 DOMINETTE 330

UPS DOMINO 5216 SOD,DLF,IEF
 UPS MISS DOMINO 5875 DLF,IEF
 KB L1 DOMINO 1135
 FH ANDI 606 1ET

H5 9131 YANKEE 156 DLF,HYF,IEF
 FH 2185 DOMINETTE 5007 DLF,HYF,IEF
 K&B KNOCKOUT LADY 8019U DLF,IEF

H5 YANKEE 9131 DLF,HYF,IEF
 H5 MS 001 DOMET 8147 DLF,HYF,IEF
 UPS KOOTENAY 3251 1ET
 K&B MS 4197 DOM 6206S

BW	WW	YW
86	651	1217

BW	WW	YW	MILK	M&G	REA	MARB	CHB
4.5	55	97	27	55	.18	.21	117

Pigment LE 100% RE 100%.

9136 is a soggy sided, long bodied 227 son. He is larger outlined and packs on the muscle all around, especially when you get behind him. This bull will catch your eye and add pounds to any calf.



2-YEAR-OLD BULLS

Lot 9149 FH 227 NAVARRO 9149 HDD
 DOB: 3/28/2019 Reg. # 44066261

UPS NAVARRO SOD,CHB,DLF,HYF,IEF
FH NAVARRO 227 DLF,HYF,IEF
 FH L1 DOMINETTE 330

CL 1 DOMINO 124Y 1ET DLF,HYF,IEF
FH L1 DOMINETTE 361 MD DOD,DLF,HYF,IEF
 SR NAVITA 101Y DLF,HYF,IEF

UPS DOMINO 5216 SOD,DLF,IEF
 UPS MISS DOMINO 5875 DLF,IEF
 KB L1 DOMINO 1135
 FH ANDI 606 1ET

CL 1 DOMINO 9125W 1ET SOD,DLF,HYF,IEF
 CL 1 DOMINETTE 6128S 1ET DOD,DLF,IEF
 UPS NAVARRO SOD,CHB,DLF,HYF,IEF
 SR DOODLES 8103

BW	WW	YW	BW	WW	YW	MILK	M&G	REA	MARB	CHB
82	618	1173	1.6	46	79	27	50	.17	.35	117

Pigment LE 100% RE 100%.
 This FH Navarro 227 son is long sided, dark red, and heavily pigmented. He is as quiet as they come and will work well on a set of black cows. Hudson's bull.

Lot 9158 FH 242 NAVARRO 9158 MD
 DOB: 4/6/2019 Reg. # 44066285

UPS NAVARRO SOD,CHB,DLF,HYF,IEF
FH NAVARRO 242 MD DLF,HYF,IEF
 FH L1 DOMINETTE 612 MF DLF,HYF,IEF,MSUDF

CL 1 DOMINO 9126J 1ET SOD,CHB,DLF,IEF
 OXH MRNA 1363

UPS DOMINO 5216 SOD,DLF,IEF
 UPS MISS DOMINO 5875 DLF,IEF
 CL 1 DOMINO 9126J 1ET SOD,CHB,DLF,IEF
 OXH MRNA 1363

CJH HARLAND 408 SOD,DLF,HYF,IEF,MSUDF,MDF
FH L1 DOMINETTE 808 MF DLF,HYF,IEF
 FH L1 DOMINETTE 616MF

HH ADVANCE 9005J DLF,IEF
 CJH L1 DOMINETTE 0064 DLF,HYF,IEF
 CL 1 DOMINO 9126J 1ET SOD,CHB,DLF,IEF
 OXH JEAN 9250

BW	WW	YW	BW	WW	YW	MILK	M&G	REA	MARB	CHB
81	580	1055	3.2	51	92	34	59	.38	.13	115

Pigment LE 100% RE 90%.
 Another 242 son who has really excelled since coming home from summer pasture. He is backed by longevity as his dam raised 10 calves in her time on the ranch.

Lot 9159 FH 799 DOMINO 9159
 DOB: 4/6/2019 Reg. # 44066287

H5 9131 DOMINO 2185 DLF,HYF,IEF
H5 2185 DOMINO 799 DLF,HYF,IEF,MSUDF
 H5 MS 001 DOMET 9210 DOD,DLF,HYF,IEF

CL 1 DOMINO 849U DLF,HYF,IEF
FH L1 DOMINETTE 2304 DLF,HYF,IEF
 FH L1 DOMINETTE 536

H5 YANKEE 9131 DLF,HYF,IEF
 H5 MS 408 DOMET 915 DOD,DLF,HYF,IEF
 H5 501 DOMINO 001 SOD,DLF,IEF
 H5 MS 9126 DOMET 5106

CL 1 DOMINO 648S SOD,DLF,IEF
 CL 1 DOMINETTE 591R 1ET
 KB L1 DOMINO 1135
 UU MS NEFF 0042

BW	WW	YW	BW	WW	YW	MILK	M&G	REA	MARB	CHB
87	702	1150	3.4	62	95	36	67	.40	.16	117

Pigment LE 30% RE 10%.
 This 799 son has always been impressive. He is long sided and deep ribbed. He is smooth shouldered and has strong growth traits. He will add pounds to his calves.

Lot 9163 FH 242 NAVARRO 9163 AF
 DOB: 4/7/2019 Reg. # 44066291

UPS NAVARRO SOD,CHB,DLF,HYF,IEF
FH NAVARRO 242 MD DLF,HYF,IEF
 FH L1 DOMINETTE 612 MF DLF,HYF,IEF,MSUDF

CL 1 DOMINO 9126J 1ET SOD,CHB,DLF,IEF
 OXH MRNA 1363

UPS DOMINO 5216 SOD,DLF,IEF
 UPS MISS DOMINO 5875 DLF,IEF
 CL 1 DOMINO 9126J 1ET SOD,CHB,DLF,IEF
 OXH MRNA 1363

H5 9131 DOMINO 2185 DLF,HYF,IEF
FH MISS SENSATION 553 AF ET DLF,HYF,IEF
 KB L1 DOMINETTE 879U DLF,HYF,IEF

H5 YANKEE 9131 DLF,HYF,IEF
 H5 MS 408 DOMET 915 DOD,DLF,HYF,IEF
 JA L1 DOMINO 6002S DLF,HYF,IEF
 KB L1 DOMINETTE 647 DLF,HYF,IEF

BW	WW	YW	BW	WW	YW	MILK	M&G	REA	MARB	CHB
81	558	1062	2.0	49	89	33	58	.45	.09	114

Pigment LE 100% RE 100%.
 This 242 red eyed bull has ample thickness and is structurally correct. He is clean fronted and smooth shouldered. 242 continues to be consistent within our herd.



REGISTERED YEARLING HEIFERS

The registered heifers will be sold in groups of three with the high bidder getting the option of choice or all three heifers. The remaining heifers will be sold as commercial heifers with the option to buy the papers for \$100.

Lot 005 FH 227 STEFANIE 005
 DOB: 1/10/2020 Reg. # 44174142

UPS NAVARRO SOD,CHB,DLF,HYF,IEF
FH NAVARRO 227 DLF,HYF,IEF
 FH L1 DOMINETTE 330

CL 1 DOMINO 215Z CHB,DLF,HYF,IEF,MSUDF,MDF
FH L1 DOMINETTE 711
 MONTANA MISS 9160W DOD,DLF,HYF,IEF

UPS DOMINO 5216 SOD,DLF,IEF
 UPS MISS DOMINO 5875 DLF,IEF
 KB L1 DOMINO 1135
 FH ANDI 606 1ET

CL 1 DOMINO 9122W 1ET DLF,HYF,IEF
 CL 1 DOMINETTE 055X DOD,DLF,HYF,IEF
 CL 1 DOMINO 0152K SOD,DLF,IEF
 MONTANA MISS 5107R

BW	WW	BW	WW	YW	MILK	M&G	REA	MARB	CHB
80	558	2.6	54	90	25	52	.31	.39	140

Pigment LE 100% RE 100%.
 This is a really feminine heifer out of a good 215Z heifer. We will calve out our first Navarro 227 daughters this year they look like brood cows.



REGISTERED YEARLING HEIFERS

Lot
021

FH 799 DOMINETTE 021

DOB: 2/7/2020

Reg. # 44174165

H5 9131 DOMINO 2185 DLF,HYF,IEF
H5 2185 DOMINO 799 DLF,HYF,IEF,MSUDF
 H5 MS 001 DOMET 9210 DOD,DLF,HYF,IEF

H5 9131 YANKEE 156 DLF,HYF,IEF
FH L1 DOMINETTE 502 DLF,HYF,IEF
 FH L1 DOMINETTE 910 DOD,DLF,HYF,IEF

H5 YANKEE 9131 DLF,HYF,IEF
 H5 MS 408 DOMET 915 DOD,DLF,HYF,IEF
 H5 501 DOMINO 001 SOD,DLF,IEF
 H5 MS 9126 DOMET 5106

BW	WW
80	531

BW	WW	YW	MILK	M&G	REA	MARB	CHB
3.2	58	96	35	64	.35	.07	110

Pigment LE 10% RE 10%.

We aren't offering many 799 heifers, but here is your chance to get a good one. Her dam is really thick made and broody with a good udder.



Lot
023

FH 417 ADA 023 ET

DOB: 2/8/2020

Reg. # 44205665

H5 4055 ADVANCE 1147 1 ET SOD,DLF,HYF,IEF
H5 1147 ADVANCE 417 DLF,HYF,IEF
 H5 MS 7100 DOMET 215 DLF,HYF,IEF

SR BAKKEN 62Z DLF,HYF,IEF
SR BAKKETTE 553C DLF,HYF,IEF,MSUDF
 SR DELIGHT 767

HH ADVANCE 4055P DLF,IEF
 H5 MS 767 ADVAN 298 DOD,DLF,HYF,IEF
 H5 408 DOMINO 7100 SOD,DLF,HYF,IEF
 H5 MS YANKEE 0125 1ET

BW	WW
81	548

BW	WW	YW	MILK	M&G	REA	MARB	CHB
2.9	61	96	35	66	.36	.31	131

Pigment LE 100% RE 100%.

Selling choice of two ET heifers that are full siblings to Lots 020, 033 and 035. Take a look at these two heifers and take your pick. There is power in the pedigree as the three bulls in the sale are all impressive.



Lot
025

FH 417 ADA 025 ET

DOB: 2/8/2020

Reg. # 44205664

H5 4055 ADVANCE 1147 1 ET SOD,DLF,HYF,IEF
H5 1147 ADVANCE 417 DLF,HYF,IEF
 H5 MS 7100 DOMET 215 DLF,HYF,IEF

SR BAKKEN 62Z DLF,HYF,IEF
SR BAKKETTE 553C DLF,HYF,IEF,MSUDF
 SR DELIGHT 767

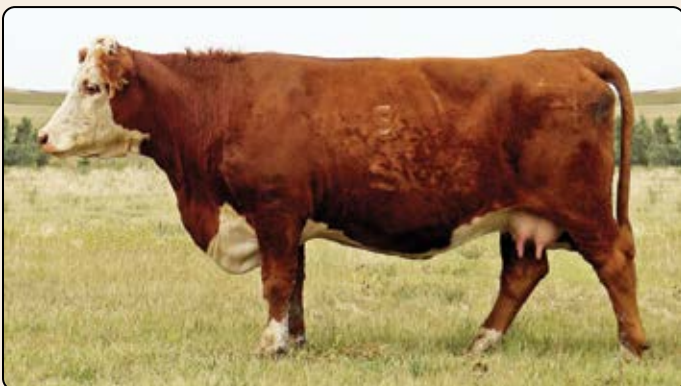
HH ADVANCE 4055P DLF,IEF
 H5 MS 767 ADVAN 298 DOD,DLF,HYF,IEF
 H5 408 DOMINO 7100 SOD,DLF,HYF,IEF
 H5 MS YANKEE 0125 1ET

BW	WW
80	

BW	WW	YW	MILK	M&G	REA	MARB	CHB
2.9	61	96	35	66	.36	.31	131

Pigment LE 100% RE 0%.

Selling choice of two ET heifers that are full siblings to Lots 020, 033 and 035. Take a look at these two heifers and take your pick. There is power in the pedigree as the three bulls in the sale are all impressive.



Dam of 023 and 025: SR Bakkette 553C



REGISTERED YEARLING HEIFERS

Lot 026 FH 799 MISS DOMINO 026

DOB: 2/7/2020 Reg. # 44205667

H5 9131 DOMINO 2185 *DLF,HYF,IEF*
H5 2185 DOMINO 799 *DLF,HYF,IEF,MSUDF*
 H5 MS 001 DOMET 9210 *DOD,DLF,HYF,IEF*

H5 YANKEE 9131 *DLF,HYF,IEF*
 H5 MS 408 DOMET 915 *DOD,DLF,HYF,IEF*
 H5 501 DOMINO 001 *SOD,DLF,IEF*
 H5 MS 9126 DOMET 5106

KB L1 DOMINO 0102X *DLF,HYF,IEF*
KB L1 DOMINETTE 371 A *DOD,DLF,HYF,IEF*
 KB L1 DOMINETTE 879U *DLF,HYF,IEF*

CL 1 DOMINO 592R 1ET
 KB L1 DOMINETTE 616 *DOD,DLF,HYF,IEF*
 JA L1 DOMINO 6002S *DLF,HYF,IEF*
 KB L1 DOMINETTE 647 *DLF,HYF,IEF*

BW	WW	BW	WW	YW	MILK	M&G	REA	MARB	CHB
85	609	3.8	55	89	34	62	.40	.10	120

Pigment LE 100% RE 100%.
 This thick made 799 heifer is really feminine and angular. She comes from a great cow line. Grandam, 879, is dam to bull calf 010.

Lot 057 FH 7056E MISS SENSATION 057

DOB: 2/24/2020 Reg. # 44205677

CHURCHILL SENSATION 028X *SOD,DLF,HYF,IEF,MDF*
UU SENSATION 7056E *DLF,HYF,IEF,MSUDF*
 UU MS BAKKEN 5126

UPS DOMINO 3027 *SOD,DLF,HYF,IEF,MSUDF,MDF*
 CHURCHILL LADY 7202T ET *DLF,HYF,IEF*
 SR BAKKEN 62Z *DLF,HYF,IEF*
 UU HALEY 2056 *DOD*

SR NAVARRO 740X *CHB,DLF,HYF,IEF*
FH L1 DOMINETTE 5906 *DLF,HYF,IEF*
 MONTANA MISS 8165U *DLF,HYF,IEF*

UPS NAVARRO *SOD,CHB,DLF,HYF,IEF*
 SR HARLET 872 *DOD*
 JH MARK 9454 1ET
 MONTANA MISS J336 *DOD*

BW	WW	BW	WW	YW	MILK	M&G	REA	MARB	CHB
84	557	2.5	55	90	41	69	.31	.19	115

Pigment LE 100% RE 90%.
 This moderate framed heifer has cow written all over her. She is bred to raise calves.

Lot 060 FH 7056E MISS SENSATION 060 AF

DOB: 2/20/2020 Reg. # 44205654

CHURCHILL SENSATION 028X *SOD,DLF,HYF,IEF,MDF*
UU SENSATION 7056E *DLF,HYF,IEF,MSUDF*
 UU MS BAKKEN 5126

UPS DOMINO 3027 *SOD,DLF,HYF,IEF,MSUDF,MDF*
 CHURCHILL LADY 7202T ET *DLF,HYF,IEF*
 SR BAKKEN 62Z *DLF,HYF,IEF*
 UU HALEY 2056 *DOD*

H5 9131 DOMINO 2185 *DLF,HYF,IEF*
FH L1 DOMINETTE 856F AF
 FH L1 DOMINETTE 321 AF *DLF,HYF,IEF*

H5 YANKEE 9131 *DLF,HYF,IEF*
 H5 MS 408 DOMET 915 *DOD,DLF,HYF,IEF*
 FH L1 DOMINO 902 *SOD,DLF,HYF,IEF*
 FH L1 DOMINETTE 802 AF *DOD*

BW	WW	BW	WW	YW	MILK	M&G	REA	MARB	CHB
75	612	2.4	67	106	45	78	.53	.17	120

Pigment LE 60% RE 0%.
 A good-patterned Sensation 7056E daughter out of a first calf heifer. There is plenty of performance in this well bred heifer.



Lot 063 FH 227 STEFANIE 063 AF

DOB: 2/26/2020 Reg. # 44205670

UPS NAVARRO *SOD,CHB,DLF,HYF,IEF*
FH NAVARRO 227 *DLF,HYF,IEF*
 FH L1 DOMINETTE 330

UPS DOMINO 5216 *SOD,DLF,IEF*
 UPS MISS DOMINO 5875 *DLF,IEF*
 KB L1 DOMINO 1135
 FH ANDI 606 1ET

FH L1 DOMINO 695 MF *DLF,HYF,IEF*
FH L1 DOMINETTE 905 AF *DLF,HYF,IEF*
 FH STARLET 104

FH 026K DOMINO 304 *SOD,CHB,DLF,IEF*
 OXH LOLA 7002 *DOD*
 ST STAR MARK 988
 FH MS WASH 804

BW	WW	BW	WW	YW	MILK	M&G	REA	MARB	CHB
80	611	3.5	51	84	26	51	.31	.20	114

Pigment LE 90% RE 100%.
 This heifer is very complete in her makeup. Her eleven year old dam has a good production record of 105.3 weaning ratio, and 101.3 yearling ratio.



REGISTERED YEARLING HEIFERS

Lot 073 **FH 227 AVA 073 LC**
 DOB: 3/3/2020 Reg. # 44205680

UPS NAVARRO SOD,CHB,DLF,HYF,IEF UPS DOMINO 5216 SOD,DLF,IEF
 FH NAVARRO 227 DLF,HYF,IEF UPS MISS DOMINO 5875 DLF,IEF
 FH L1 DOMINETTE 330 KB L1 DOMINO 1135
 FH ANDI 606 1ET
 H5 9131 YANKEE 156 DLF,HYF,IEF H5 YANKEE 9131 DLF,HYF,IEF
 FH L1 DOMINETTE 615 LC DLF,HYF,IEF H5 MS 001 DOMET 8147 DLF,HYF,IEF
 FH L1 DOMINETTE 323 LF DLF,IEF KB L1 DOMINO 1135
 FH MISS 3007 009 LF

BW	WW	BW	WW	YW	MILK	M&G	REA	MARB	CHB
83	590	3.5	54	92	30	57	.21	.17	109

Pigment LE 100% RE 100%.
 This moderate framed heifer is very feminine and the bottom side of her pedigree has some of our best maternal females in it.



Lot 0104 **FH 799 MISS DOMINO 0104 LC**
 DOB: 3/13/2020 Reg. # 44205679

H5 9131 DOMINO 2185 DLF,HYF,IEF H5 YANKEE 9131 DLF,HYF,IEF
 H5 2185 DOMINO 799 DLF,HYF,IEF,MSUDF H5 MS 408 DOMET 915 DOD,DLF,HYF,IEF
 H5 MS 001 DOMET 9210 DOD,DLF,HYF,IEF H5 MS 501 DOMINO 001 SOD,DLF,IEF
 H5 MS 9126 DOMET 5106
 CL 1 DOMINO 862U CHB,DLF,IEF CL 1 DOMINO 637S 1ET CHB
 FH L1 DOMINETTE 322 LF DLF,HYF,IEF CL 1 DOMINETTE 5131R DLF,HYF,IEF
 FH L1 DOMINETTE 737 LF DOD CJH HARLAND 408 SOD,DLF,HYF,IEF,MSUDF,MDF
 IH 503 DOMINETA 8335 DOD,DLF,IEF

BW	WW	BW	WW	YW	MILK	M&G	REA	MARB	CHB
82	589	2.7	53	87	34	61	.43	.22	128

Pigment LE 100% RE 100%.
 This good 799 heifer has a high performing dam for a mother, 103.6 weaning ratio, and 107.3 yearling ratio.



Lot 0111 **FH 7146 MISS DOM 0111 MD**
 DOB: 3/18/2020 Reg. # 44206662

H5 9131 YANKEE 156 DLF,HYF,IEF H5 YANKEE 9131 DLF,HYF,IEF
 FH 156 YANKEE 7146 DLF,HYF,IEF,MSUDF H5 MS 001 DOMET 8147 DLF,HYF,IEF
 FH L1 DOMINETTE 2304 DLF,HYF,IEF CL 1 DOMINO 849U DLF,HYF,IEF
 FH L1 DOMINETTE 536
 H5 9131 DOMINO 2185 DLF,HYF,IEF H5 YANKEE 9131 DLF,HYF,IEF
 FH 2185 DOMINETTE 591 MD DLF,HYF,IEF H5 MS 408 DOMET 915 DOD,DLF,HYF,IEF
 FH L1 DOMINETTE 612 MF DLF,HYF,IEF,MSUDF CL 1 DOMINO 9126J 1ET SOD,CHB,DLF,IEF
 OXH MRNA 1363

BW	WW	BW	WW	YW	MILK	M&G	REA	MARB	CHB
82	599	3.8	59	94	35	64	.38	.10	113

Pigment LE 100% RE 100%.
 This March heifer is younger than the rest, but she really pushes the scale down for her age. She is feminine with good thickness and depth.



Lot 0112 **FH 299 MISS DOM 0112 BA**
 DOB: 3/21/2020 Reg. # 44205676

H5 9131 DOMINO 2185 DLF,HYF,IEF H5 YANKEE 9131 DLF,HYF,IEF
 H5 2185 DOMINO 799 DLF,HYF,IEF,MSUDF H5 MS 408 DOMET 915 DOD,DLF,HYF,IEF
 H5 MS 001 DOMET 9210 DOD,DLF,HYF,IEF H5 MS 501 DOMINO 001 SOD,DLF,IEF
 H5 MS 9126 DOMET 5106
 KB L1 DOMINO 311 CHB,SOD,DLF,IEF CL 1 DOMINO 484 SOD,DLF,HYF,IEF
 MONTANA MISS 937W DLF,HYF,IEF MONTANA MISS 1134
 MONTANA MISS 235 JNHR DIAMOND ET 414B SOD
 MONTANA MISS 909

BW	WW	BW	WW	YW	MILK	M&G	REA	MARB	CHB
84	582	3.2	54	85	26	53	.33	.08	110

Pigment LE 40% RE 60%.
 Another 799 heifer that will catch your eye. Her 11 year old dam is very consistent with a beautiful udder.



26 UNREGISTERED YEARLING HEIFERS

The unregistered heifers will be sold as commercial heifers with the option to buy the papers for an extra \$100.

ID	Birth Date	Sire
008	1/12/2020	814B
038	2/12/2020	227
043	2/14/2020	7056E
047	2/15/2020	799
068	2/28/2020	8217
069	2/28/2020	8217
075	3/4/2020	799
076	3/4/2020	7056E
087	3/7/2020	799
862	3/7/2020	799
097	3/10/2020	7146
0109	3/17/2020	242
0110	3/18/2020	799

ID	Birth Date	Sire
0118	3/21/2020	7146
0119	3/25/2020	242
0120	3/29/2020	799
0125	4/3/2020	242
0136	4/7/2020	758
0138	4/10/2020	799
0141	4/22/2020	227
0145	4/26/2020	227
0146	4/26/2020	227
0147	4/27/2020	7138
0149	4/30/2020	799
0152	5/6/2020	7146
0157	5/14/2020	799

BRED ANGUS HEIFERS

This year Aaron Friedt and Jarret Naumann are offering a consignment of heifers bred to Friedt Hereford calving ease heifer bulls. These heifers come from one ranch and are backed by 20 years of Artificial Insemination to breed leading Angus bulls. Heifers were poured with Ivermectin and dewormed with Safeguard last fall. These heifers were also vaccinated with PregGuard Gold FP10 last spring. Heifers will weigh around 1150 on sale day. For more information on the bred heifers contact Aaron Friedt (701-590-9597) or Jarret Naumann (701-290-5337).

Lot A: 23 Black Angus heifers AI'd to SR Scope 53A to calve March 15th.

Lot B: 16 Black Angus heifers bull bred to SR Scope 53A son due to start calving March 27 for 45 days.





THE HEREFORD ADVANTAGE BRED HEIFER SALE

We are pleased to announce that we have teamed up with Tessier Herefords to offer our customers the opportunity to earn a premium on their bred females! The Hereford Advantage Bred Heifer Sale will be held Tuesday, December 14th, 2021 at Stockmen's West in Dickinson, ND. Take advantage of the superior maternal genetics offered in our sale by consigning your bred females. Qualifications for consignments are heifers that are either bred from our program or bred to our bulls. For more information, contact Aaron Friedt at 701-590-9597.

NATIONAL CATTLE EVALUATION TERMS

EPD — EXPECTED PROGENY DIFFERENCE:

Estimate of a bull or cow's future progeny performance compared to progeny of a breed average sire or dam. EPDs are expressed in actual pounds, plus or minus, for birth, weaning and yearling weights and maternal performance.

CED — Calving Ease Direct

BW — Birth Weight

WW — Weaning Weight

YW — Yearling Weight

MILK

M&G — Milk & Growth

CEM — Calving Ease Maternal

FAT — Rib Fat

REA — Ribeye Area

Marb (IMF) — Marbling

CHBS\$ — Certified Hereford Beef Index

SCROTAL EVALUATION

Age in Months	12-14	15-20	21-30	30 plus
Acceptable Range (cm)	30-35	31-37	32-39	33-40

SC — SCROTAL CIRCUMFERENCE:

A measure of fertility. Testicle size indicated by scrotal circumference measured in centimeters is a highly heritable trait very much correlated to reproductive efficiency. A valuable indicator of bull fertility and puberty, and highly related to early puberty in heifers and cow fertility, increased bull scrotal circumference should improve fertility and inherent cow herd productivity.

2019 HEREFORD BREED EPD AVERAGE

CEM	BW	WW	YW	M	M&G	CEM	FAT	REA	MARB	CHBS
+2.4	2.9	52	84	24	51	1.8	0.12	0.37	0.10	110

TERMS & CONDITIONS

All cattle will be sold to the highest bidder without reserve. The terms of the sale will be cash. The auctioneer will settle any dispute as to bids.

Each animal will become the property of the buyer as soon as sold. Cattle will be cared for a reasonable length of time after the sale, at the buyer's risk.

All bulls of breeding age are guaranteed breeders. If an animal fails to breed after a trial of six months, it may be returned to the seller at buyer's expense. The seller reserves the right to try said animal for six months and if it proves a breeder to return it to the station of buyer at seller's expense. If the animal proves to be a non-breeder an equal animal substituted or credit on the purchase of another animal. No adjustments after 9 months.

Herd Health is excellent. Our herd veterinarian is Dr. Travis Kuhlka, DVM 701-400-2953.

Extreme care has been taken in copying each pedigree to avoid errors. We are not to be held responsible for any error which might appear and which is beyond our control in the printing of the catalog.

Everyone attending this sale does so at his own responsibility and risk, and without liability on the part of the owner or his employees.

Delivery: \$50 off sale price if picked up on sale day (bulls only). Free delivery within 300 miles. We will cooperate on all deliveries regardless of number of head or distance.

New for 2021 - Volume Buyer Discount:

3% on 3 bulls, 4% on 4 bulls, 5% on 5 or more bulls.

Heifers: The registered heifers will be sold in groups of three with the bidder getting the option of choice or all three heifers. The remaining heifers will be sold as commercial heifers with the option to buy the papers for \$100.

Feeding arrangements: We will offer to feed the yearling bulls until April 1st at a cost of \$150 per head. This will also include 1 semen evaluation. The charge will be made at the time of settlement on sale day. We would appreciate that the animal be insured before delivery back to the seller, as injury or death is an insurable risk. Animals that are being cared for by seller are done so at the purchaser's risk. Insurance representatives Art Handel and Troy Bargmann will be on hand to provide insurance.



THE BALD-FACED TRUTH

ABOUT HEREFORD GENETICS

It's obvious – Hereford-sired calves deliver a \$51 increase in net profit per cow, per year.* Hereford genetics bring legendary hybrid vigor, improved fertility, feed efficiency and easy-handling docility to your program. Read the research, and see why Hereford heterosis pays off, at [Hereford.org/genetics](https://hereford.org/genetics)



*Compared to Angus-sired calves. Source: Daley, David A. and Earley, Sean P. Impacts of Crossbreeding on Profitability in Vertically Coordinated Beef Industry Marketing Systems. American Hereford Association. Retrieved from <https://hereford.org/wp-content/uploads/2017/02/HarrisHeterosisReport.pdf>



Gary and Kirsten Friedt
Megan and Dusty Dukart
Aaron and Tatian Friedt
Lindsey and Drew Courtney
8733 55th St. S.W.
Mott, ND 58646

PRESORTED
FIRST CLASS
US POSTAGE
PAID
Fargo, ND
Permit No. 684



Wednesday,
February 10, 2021

1 p.m. MST Stockmen's West, Dickinson, ND



LOT 025



LOT 063

Where you can buy with confidence