

WWW.DEEPCREEKANGUSRANCH.COM



DEEP CREEK ANGUS RANCH

"Where quality runs Generations Deep"



Annual Bull Sale



February 23, 2016

12:00 p.m. MT • Philip Livestock Auction, Philip, South Dakota

DEEP CREEK ANGUS RANCH

February 23, 2016

12:00 p.m. MT • Philip Livestock Auction, Philip, SD

Sale Location: 607 Pleasant Street, Philip, SD 57567



Auctioneer:
Doug Dietterle
605-788-2963

Sale Day Numbers:
Sale Barn 605-859-2577
TJ's Cell 605-280-3069

Livestock Reps Billy Markwed; Philip Livestock Auction 605-567-3385
Bob Anderson; Philip Livestock Auction 605-347-0151
Don Ravellette; RPI Promotions 605-685-5147
Beau Ravellette; RPI Promotions, 605-685-8155
Scott Dirk; Tri-State Livestock News 605-456-1499
Dan Piroutek; Tri-State Livestock News 605-544-3316
Vern Frey; Frey Livestock Services 701-537-5383
Jason Frey; Western Ag Reporter 701-300-0845

Accommodations Motel West, Philip, SD (605) 859-2546
We will be more than happy to take care of your accommodations for you,
just let us know how we can assist you.

Lunch The PLA Café located in Philip Livestock will be open throughout the day.
Complimentary donuts, coffee and lunch will be provided before the sale.

Liability All persons attend the sale at their own risk and the seller and sales management
assume no liability, legal or otherwise, for any accidents occurring in, or about
the premises. The buyer must look to the seller for fulfillment of all guarantees
and representations made hereunder.

Inspection of the Cattle Cattle may be seen at any time at the ranch prior to Monday, February 22.
On Monday, the bulls will be moved to Philip Livestock and should be in place
by 2 pm. They can be viewed there up until sale time on Tuesday. Videos of
each lot are also available and can be viewed at
www.deepcreekangusranch.com on our sales page.

Terms The terms of the sale are cash or check. Registration certificates will be
transferred to the new owner(s) after payment is made.

Feeding & Delivery Free keep on all bulls, at our risk, until you need them. Free delivery to
adjoining states.

Guarantee The bulls are guaranteed 100% for everything the first breeding season.
Fertility is guaranteed 100% in the first breeding season and is credited
100%. If you have any problems with the bulls, please contact us immediately.
A replacement bull will be provided, if one is available.

Announcements If errors in the catalog are found they will be announced from the block and
take precedence sale day.

View Sale Online at: www.dvauction.com

Catalog design by: Mary Ravellette • 605-441-9911 | Printed by: RPI Promotions • 605-859-2516 • Philip, SD 57567

Thank you
to our past buyers, we
appreciate your business!

**T.J. & Jeanine Gabriel
and Family**

23940 200th Street
Midland, SD 57552
Home: 605-567-3327
Cell: 605-280-3069
tjrancho@gwtc.net



Dear Cattlemen,

We at Deep Creek Angus Ranch would like to extend a personal invitation and welcome you to our 17th Annual Bull sale. We would also like to take this opportunity to say Thanks to all our past bidders and buyers. We truly believe the best part of our program is our Customers! We are proud of the cattle we raise, but PROUDER OF THE PEOPLE THAT USE THEM. We are very humbled that you have considered and chosen us to be your seed stock source. We do not take that responsibility lightly and work very hard with every calf crop to ensure that they will add value to your operation.



The family keeps growing up and seems to never slow down! Dylan (13) is literally my right hand man. He does anything you ask of him and does it well. If you ever stop by the ranch, he can tell you about the cattle better than I can. Our daughter Kori (11) is becoming quite the lady and helps mom keep a very tidy house. Tyler (5) is about two steps behind me at all times, and can repeat about everything I say, which isn't always good! Jeanine, not only helps out at home on the ranch, but also drives the kids to school in town and works an 8 to 5 job too. It may sound like I'm bragging but I am just so proud of each and every one of them.

I get asked a lot, "What are your best calves out of this year?" I like to tell people my customers cows! There is nothing that makes us prouder, then seeing a ring full of sale topping calves sired by our bulls, and our customer's success. If you are looking to improve your next calf crop, I think the bulls in this catalog are sure to fit the bill. The quality runs as deep in the sale order as it ever has. From the first pen to the last you will find good bulls. We have never chased fads or numbers but bred cattle that would thrive in our environment and on our customer's operations. The bulls are naturally thick, structurally correct, easy fleshing and have great maternal traits bred in for generations.

We will keep the bulls free of charge and at our risk until you need them, semen test and give them their spring shots and deliver them to your ranch. Be assured that we do everything possible to ensure the success of the bulls. From the time they hit the ground till the breeding pasture we condition them to be successful. The bulls sell with our unconditional breeding season guarantee. If you have any trouble or problem we will take care of it, immediately, GUARANTEED. In most cases if your bull goes down, we can have you another one in a couple days! We are committed to making and keeping you completely satisfied and happy!

The bulls will be in Philip on Monday, February 22 and can be viewed up until sale time on Tuesday. We invite you to Philip on Monday afternoon to view the bulls and that evening for drinks and steaks at The Steakhouse on Main street. On Tuesday, come early and enjoy conversation, refreshments and donuts. As always dinner is on us too. We look forward to visiting with you in the future and seeing you at the sale.

"Where quality runs Generations Deep"

HERD HEALTH

All cattle have been on an extensive health program.

- ** Cow Herd: Spring Time: Preg Guard Gold 10, Anthrax, Injectable Cydectin, Multi-Min and Cydectin Pour-On
Weaning Time: Injectable Cydectin, Cydectin Pour-On
- ** Bulls: Spring Time: Vison 7/Somnus, Vista Once, Enforce, Injectable Cydectin, Multi-Min, Cydectin Pour-On
July: Vison 7/Somnus, Vista Once, Enforce, poured with Cyonara
Weaning Time: Injectable Cydectin, Cydectin Pour-On
Spring Turn-Out: Preg Guard Gold 10, Anthrax, 2 Fusogard (footrot) shots, Pinkeye Shield T4, Injectable Cydectin, Cydectin Pour-On. If you would like us to brand the bulls before we deliver them, we are more than happy to do that.
All bulls selling are AM, NH, CA and DD free by test or pedigree



Reference Sires

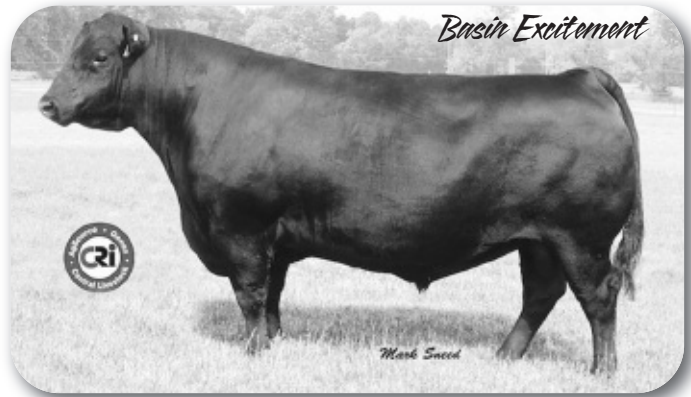
BASIN EXCITEMENT

BD: 02/03/2008 Reg. No.: 16047404 Brand: U678

BW	WW	YW	Milk	Marb	RE	Fat
-.1	73	129	19	.35	.58	.050

GARDENS EXPEDITION BASIN EXPEDITION R156 BASIN PRIMROSE LADY 5287 VERMILION PAYWEIGHT J847 BASIN LADY S532 AK BASIN LADY 306E	N BAR EMULATION EXT GREEN GARDEN GINA 2268 S2 BASIN AMBUSH 3905 BASIN PRIMROSE LADY 296E VERMILION DATELINE 7078 VERMILION LASS 7969 BASIN MAX 806C BASIN LADY 183C
--	--

Excitement is truly the epitome of curve-bending genetics. He is the only sire above .90 accuracy in the breed that can go from a negative BW or less to a +73 WW EPD or higher. A true calving ease bull without sacrificing the traits often lost in typical calving ease cattle. Excitement is sound made, clean fronted and offers an outcross pedigree. His progeny have excellent muscle, rib, and thickness. *Selling 7 sons.*



RATHBUN ACCELERATE Z523

BD: 08/23/2012 Reg. No.: 17425053 Brand: Z523

BW	WW	YW	Milk	Marb	RE	Fat
2.2	64	108	31	.49	1.14	.011

LEACHMAN RIGHT TIME 338-5605 WMR TIMELESS 458 WMR BLACKCAP 521 BOYD NEW DAY 8005 RATHBUN HEIRESS X686 RATHBUN HEIRESS M677	HYLINE RIGHT TIME 338 LEACHMAN ERICA 1201 W M R DATELINE 210 W M R BLACKCAP 043 A A R NEW TREND S V F FOREVER LADY 57D SAR PLOWMAN 647 RATHBUN MAGGIE G553
---	---

Accelerate was the featured and high selling bull at the Rathbun Angus Ranch bull sale, WA. This exciting new sire is moderate framed and muscular. He combines two outstanding performance sires with Timeless and New Day. Accelerate comes from a line of low birth weight cows, with four generations of negative BW and high CED EPD's. He offers a combination of calving ease, performance and muscle with \$ Indexes at the top of the breed. *Selling 9 sons.*



CONNELY ARSENAL 2174

BD: 01/25/2012 Reg. No.: 17314528 Brand: 2174

BW	WW	YW	Milk	Marb	RE	Fat
.4	70	133	24	.59	.47	.015

FELTONS MEAT PACKER 62 CONNEALY PACKER 547 BESTRELLE OF CONANGA 539 CONNEALY FORWARD BLACK RICE OF CONANGA 9529 BLACK RITA OF CONANGA 123	FINKS 5522-6148 GRAHAM N MISTRESS 8 DALEBANKS EXTENDER 6012 BESTA OF CONANGA 6538 CONNEALY ONWARD BECKY LEE OF CONANGA 74 CONNEALY FOREFRONT BLACK RHEA OF CONANGA 64122
--	---

Arsenal is wide topped, deep flanked and very stout. A real meatwagon with tremendous growth. He is very well balanced with a clean front end. His daughters look like they will be great females. *Selling 9 sons.*



BRUIN UPROAR 0070

BD: 02/27/2010 Reg. No.: +16858775 Brand: 0070

BW	WW	YW	Milk	Marb	RE	Fat
1.4	66	124	20	.79	.61	.036

CONNEALY ONWARD SITZ UPWARD 307R SITZ HENRIETTA PRIDE 81M CONNEALY DATELINE FALCON BLACKBIRD 6071 VERMILION BLACKBIRD 5044	CONNEALY LEAD ON ALTUNE OF CONANGA 6104 SITZ VALUE 7097 SITZ HENRIETTA PRIDE 1370 D H D TRAVELER 6807 EILA EILA OF CONANGA LEACHMAN RIGHT TIME VERMILION BLACKBIRD 3525
---	--

One of the most exciting bulls in the Genex lineup with near perfect phenotype and a tremendous EPD profile that sires powerhouse sons and beautiful daughters. Out of a full sister to VRD, this Upward son offers tremendous muscle mass, rib shape, eye appeal and foot structure in a more moderate, easier fleshing package. He possesses a MILK EPD with double digit DOC and breed-leading SCR and \$B. *Selling 7 sons.*



Reference Sires

Sitz Superior 10971



SITZ SUPERIOR 10971

BD: 02/07/2011 Reg. No.: 16852500 Brand: 10971

BW	WW	YW	Milk	Marb	RE	Fat
4.1	62	118	27	.53	.31	.063

BOYD NEW DAY 8005	A A R NEW TREND
GDAR GAME DAY 449	S V F FOREVER LADY 57D
G D A R MISS WIX 474	TEHAMA BAND 207
	G D A R MISS WIX 749
CONNEALY ONWARD	CONNEALY LEAD ON
SITZ RLS EISA EVERGREEN 5279	ALTUNE OF CONANGA 6104
SITZ RLS EISA EVERGREEN 4451	SITZ TRAVELER 10089
	R L S EISA EVERGREEN 643

Superior was one of the stoutest and most powerfully constructed bulls to sell in 2012. He posted a WW ratio of 112 and YW ratio of 111. He is a heavy muscled, big bodied and big scrotal bull with growth in the top 10% of the breed. Excellent structure, very sound, free and easy moving. *Selling 3 sons.*

CONNEALY IMPRESSION 540C

BD: 02/03/2011 Reg. No.: 17029936 Brand: 1414

BW	WW	YW	Milk	Marb	RE	Fat
2.3	46	91	30	.13	.82	-.026

CONNEALY REFLECTION	BON VIEW NEW DESIGN 878
CONNEALY IMPRESSION	HAPPY GRILL OF CONANGA 6260
PEARL PAMMY OF CONANGA 194	VERMILION DATELINE 7078
	PEARL JAM OF CONANGA 6114
BOYD NEW DAY 8005	A A R NEW TREND
ALEENA OF CONANGA 1164	S V F FOREVER LADY 57D
ALINE OF CONANGA 5072	SITZ RELIANT 8898
	ALMOND OF CONANGA

1414 was our pick of the Connealy Impression sire group at Connealy's 2012 sale. He is extremely long, thick and very stylish. His dam is a pathfinder, posting a WW of 5 @ 106 and YW of 5 @ 106. She has another son working at KG Ranch, Three Forks, MT. 1414's progeny have excellent depth of rib and great length. *Selling 1 son.*

Raven Bullock 1693



RAVEN BULLOCK 1693

BD: 02/09/2013 Reg. No.: +17636138 Brand: 1693

BW	WW	YW	Milk	Marb	RE	Fat
1.6	72	123	28	.23	.49	.078

S ALLIANCE 3313	PAWS UP ALLIANCE 9561
S CHISUM 6175	PAWS UP 9048 EMULATION EXT
S GLORIA 464	S ECLIPSE 169
	S GLORIA 209
WOODHILL ADMIRAL 77K	S A F FOCUS OF E R
RAVEN BLACKBIRD 315	WOODHILL LASS 344-1178
RAVEN BLACKBIRD 1693	SITZ ALLIANCE 6595
	RAVEN BLACKBIRD Y33

Bullock was our pick of the 2014 Raven Angus Bull sale. A complete standout in a group of 6 flush brothers that averaged \$12,000. A direct ET son by the Blackbird 315 cow that consistently stamps her progeny with phenotype and performance. Maternal, carcass and outstanding performance. *Selling 5 sons.*

DEEP CREEK CUTBANK 312

BD: 02/10/2013 Reg. No.: 17692161 Brand: 312

BW	WW	YW	Milk	Marb	RE	Fat
3.2	65	102	21	.40	.48	.011

DEEP CREEK ROCK STAR 935	MA & PA FEATURE PRESENTATION
DEEP CREEK RIPTIDE 129	DEEP CREEK RO LAVICE 506
KMD LASS 528	K C F BENNETT TOTAL
	KMD MISS NEUTRON 377 330
BON VIEW NEW DESIGN 878	B/R NEW DESIGN 036
DEEP CREEK 878 VIXEN 515	BON VIEW GAMMER 85
B&C 979 NEW TREND 124-3079	V D A R NEW TREND 124
	B3R 813 KAREN 30136

Cutbank was the high selling bull in our 2014 sale selling to Charles and Rosalie Tennis, Vale, SD. His calves are extremely thick and heavy muscled. His first 11 progeny had an average WW ratio of 105. *Selling 4 sons.*

Deep Creek Cutbank 312



Reference Sires

GMAR GAME TIME A018

BD: 01/01/2013	Reg. No.: +17494520	Brand: A018	
BW	WW	YW	Milk
2.3	49	88	25
Marb	RE	Fat	
.75	.52	-.002	

BOYD NEW DAY 8005 GDAR GAME DAY 449 G D A R MISS WIX 474 CONNEALY LEAD ON JVC ALTUNE OF CONANGA 803 ALTUNE OF CONANGA 6104	A A R NEW TREND S V F FOREVER LADY 57D TEHAMA BAND 207 G D A R MISS WIX 749 G D A R MISS WIX 749 ELIGENCE PLUS OF CONANGA G A R TRAVELER 1489 AVALON 1418 OF CONANGA 6276
---	--

Game Time was our pick of the 2013 Green Mountain Angus Ranch bull sale. A calving ease genetic powerhouse from a deep and strong flush. Admired for his super rib, structure, nice front, big hip and rump with a superior rear view. The donor dam, JVC Altune of Conanga 803 is a full sister to the renowned pathfinder performance sire, Connealy Onward. *Selling 2 sons.*



CONNEALY PACKER 547

BD: 01/19/2004	Reg. No.: #14843207	Brand: 431	
BW	WW	YW	Milk
1.1	60	112	24
Marb	RE	Fat	
.81	.50	.004	

FINKS 5522-6148 FELTONS MEAT PACKER 62 GRAHAM N MISTRESS 8 DALEBANKS EXTENDER 6012 BESTRELLE OF CONANGA 539 BESTA OF CONANGA 6538	EMULATION N BAR 5522 FINKS PROUD FORMERA 614 BIG ELBAN OF GRAHAM 26445 GRAHAM N MISTRESS 6 N BAR EMULATION EXT PRINCESS 4007 OF DALEBANKS CONNEALY DATELINE BABES FORTUNE OF CONANGA 6308
--	--

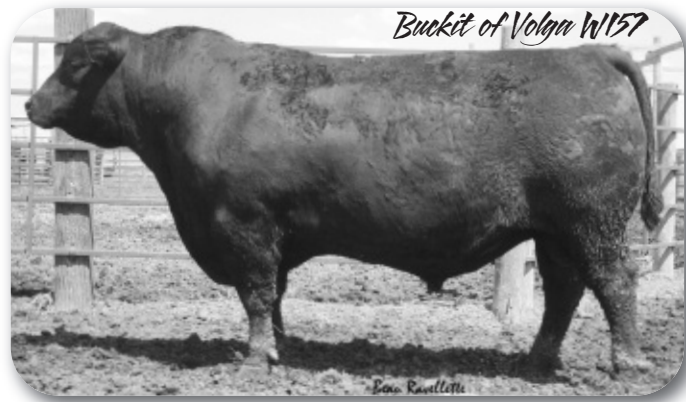
Packer has proved himself as a calving ease sire with strong growth. He truly has the mass and capacity to sire steers that will wean heavy and make females that will stay in the herd. He was a big butted, mid-6 frame bull that had plenty of eye appeal, a big hip, and a great disposition. Deceased. *Selling 1 son.*

BUCKIT OF VOLGA W157

BD: 02/25/2011	Reg. No.: 17177744	Brand: W157	
BW	WW	YW	Milk
2.4	16	28	11
Marb	RE	Fat	
.12	-.13	.053	

BONANZA OF WYE COEBURN OF WYE UMF 9154 COPELAND OF WYE UMF 7546 N BAR EMULATION EXT BARBARA OF COMO W106 LARA OF VOLGA 9653	FRANCIS OF WYE BLYTHE OF WYE ANGWIN OF WYE UMF 7097 COPELAND OF WYE UMF 7029 EMULATION N BAR 5522 N BAR PRIMROSE 2424 THESPIAN OF VOLGA 9312 LARA OF VOLGA 9307
--	--

We selected Buckit at the Cotton/Hyland/Doyle sale in 2012. He is an outcross pedigree to most of today's Angus cattle. His EXT mother defines productivity with a WW of 8 @ 111 and YW of 8 @ 106. Buckits calves are easy fleshing and highly maternal. *Selling 5 sons.*



DEEP CREEK WOODROW 109

BD: 02/13/2011	Reg. No.: 17123660	Brand: 109	
BW	WW	YW	Milk
1.5	60	81	23
Marb	RE	Fat	
.41	.15	-.011	

HERO 6267 OF R R 2418 DEEP CREEK WILLSON 906 DEEP CREEK TOTAL LASS 701 K C F BENNETT COALITION SCC DEEP CREEK CO ERINTHIA 510 DEEP CREEK VRD 208	R R HERO 6267 R R EVERELDA ENTENSE 0413 K C F BENNETT TOTAL DEEP CREEK 193 LASS 516 SITZ ALLIANCE 6595 PLEASANT PILL OF CONANGA VERMILION DATELINE 7078 DEEP CREEK C LASS 634
---	--

Woodrow sold in our 2012 sale to Ma & Pa Angus, Presho, SD. He was a big, wide backed, huge hipped performance bull. We calved his first daughters this year and they are fantastic. His dam 510 is currently being flushed at Trans Ova. Look for future progeny from her. *Selling 1 son.*

DEEP CREEK ROLLING STONE 324

BD: 02/04/2013	Reg. No.: 17692164	Brand: 324	
BW	WW	YW	Milk
2.3	58	90	23
Marb	RE	Fat	
.55	.10	.058	

DEEP CREEK ROCK STAR 935 DEEP CREEK ROCK N ROLL 123 DEEP CREEK FF BLOSSOM 417 DEEP CREEK CEDAR 709 DEEP CREEK CEDAR LASS 909 DEEP CREEK 878 LASS 302	MA & PA FEATURE PRESENTATION DEEP CREEK RO LAVICE 506 CONNEALY FOREFRONT 2100 BLOSSOM OF I A R 018 K C F BENNETT COALITION SCC B&C 049 FOCUS 879 MONEY BON VIEW NEW DESIGN 878 DEEP CREEK C LASS 634
---	---

Rolling Stone sold in our 2014 sale to Tommy Simons, Mud Butte, SD. A very maternal, wedge shaped bull backed by a great cow family. *Selling 2 sons.*



Beau Ravellette

Lot 1



Deep Creek Tunstall 422

Maternal Brother to Dam of Lot 1

Beau Ravellette



**Maternal Brother sold to
Jim Johnson in 2012!**

Lot 1

DEEP CREEK ENERGIZE 503

BD: 01/14/2015 Reg No: 18312360 Brand: 503

Act. BW	205 Adj.	Ratio	365 Adj.	Ratio	ADG	BW	WW	YW	Milk
80	811	116	1387	111	3.56	.8	69	115	24

BASIN EXPEDITION R156
BASIN EXCITEMENT
BASIN LADY S532 AK

K C F BENNETT TOTAL
DEEP CREEK TOTAL LASS 701
DEEP CREEK 193 LASS 516

GARDENS EXPEDITION
BASIN PRIMROSE LADY 5287
VERMILION PAYWEIGHT J847
BASIN LADY 306E
SITZ ALLIANCE 6595
EXT OF CONANGA 6790
SIVAGE 193 FOCUS 953 BANDO
DEEP CREEK VRD LASS 204

ULTRASOUND
%IMF / Ratio
5.48 / 105

Ribeye / Ratio
15.4 / 118

Scrotal: 38 Pelvic: 192 Frame Score: 6.5

10-9-15: Calf Wt.: 952 lbs. Cow Wt.: 1525 lbs. Weaning Wt./Body Wt.: 62%

- Dam has WW of 7 @ 117 *Pathfinder
- Dam has IMF of 6 @ 100, REA of 6 @ 105
- Granddam has 5 @ 106 *Pathfinder
- Retaining 1/3 Semen Interest
- Recommended for heifers
- Energize earned top spot and Lot 1 for his outstanding herd bull potential. He combines performance, structure, carcass and maternal traits to be a bull that will cover all the bases! We feel he could be one of the most complete bulls ever to come from Deep Creek. Top 2% of the breed for WW and top 3% for YW.
- 701's first son, Deep Creek Willson, topped our sale in 2010 selling to the Chase Ranch, Midland, SD. She sold another son in 2012 to Jim and Jean Johnson, Quinn, SD. Four daughters have been retained.



Lot 2

Beau Ravellette

Lot 2

DEEP CREEK DOUBLE BARREL 536

BD: 01/13/2015 Reg No: 18312361 Brand: 536

Act. BW	205 Adj.	Ratio	365 Adj.	Ratio	ADG	BW	WW	YW	Milk
72	777	111	1342	108	3.49	-.1	58	102	25

CONNEALY PACKER 547
CONNEALY ARSENAL 2174
BLACK RICE OF CONANGA 9529

HYLINE RIGHT WAY 781
DEEP CREEK RW LASS 607
DEEP CREEK C LASS 625

FELTONS MEAT PACKER 62
BESTRELLE OF CONANGA 539
CONNEALY FORWARD
BLACK RITA OF CONANGA 123
HYLINE RIGHT TIME 338
HYLINE ELLEN 86
CROOK MT HIGHROLLER 162
M ALAMA LASS 277

ULTRASOUND
%IMF / Ratio
5.68 / 109

Ribeye / Ratio
11.3 / 86

Scrotal: 39 Pelvic: 176 Frame Score: 6.5

10-9-15: Calf Wt.: 914 lbs. Cow Wt.: 1475 lbs. Weaning Wt./Body Wt.: 62%

- Dam's WW Ratio: 8 @ 107 *Pathfinder
- Recommended for heifers
- Retaining 1/3 semen interest
- Double Barrel is sure to catch your eye. He is big, stout, deep chested and deep flanked. He will make some great top producing females.
- 607 is one of the great foundation cows at Deep Creek. Five sons have sold through our sale and one daughter retained in herd.
- Maternal brothers have sold to Judy, Steve and Julie Daly, Dan and Barb Neuhauser, Hand Bros. and LB Haase and Sons.



Deep Creek Chick Flick

Maternal Brother to Lot 2



Deep Creek Hollywood 321

Maternal Brother to Lot 2



**DEEP CREEK
ANGUS RANCH**



Lot 3 DEEP CREEK TOP GUN 537

BD: 01/14/2015		Reg No: 18312363		Brand: 537					
Act. BW	205 Adj.	Ratio	365 Adj.	Ratio	ADG	BW	WW	YW	Milk
73	768	110	1432	115	4.11	.5	65	124	27

CONNEALY PACKER 547	FELTONS MEAT PACKER 62	ULTRASOUND
CONNEALY ARSENAL 2174	BESTRELLE OF CONANGA 539	
BLACK RICE OF CONANGA 9529	CONNEALY FORWARD	5.12 / 98
CONNEALY REFLECTION	BLACK RITA OF CONANGA 123	Ribeye / Ratio
DEEP CREEK R BLACKBIRD 210	BON VIEW NEW DESIGN 878	12.1 / 92
DEEP CREEK CB BLACKBIRD 003	HAPPY GRILL OF CONANGA 6260	
	21AR COAL BANK C014	
	DEEP CREEK MP BLACKBIRD 819	

Scrotal: 37	Pelvic: 176	Frame Score: 6
10-9-15: Calf Wt.: 858 lbs.	Cow Wt.: 1230 lbs.	Weaning Wt./Body Wt.: 70%

- Dam's WW Ratio: 1 @ 110
- Recommended for heifers
- Retaining 1/3 semen interest
- The classic Angus bull! Nice head, clean front, big top and travels out very well. Top 4% of the breed for WW and 1% for YW.
- 210 is one of the great up and coming cows at Deep Creek. Real long necked and wedge shaped.



Lot 4

Beau Ravellette

Lot 4

DEEP CREEK ARSENAL 534

BD: 01/11/2015 Reg No: 18312357 Brand: 534

Act. BW	205 Adj.	Ratio	365 Adj.	Ratio	ADG	BW	WW	YW	Milk
70	751	107	1337	107	3.63	-.8	55	98	27

CONNEALY PACKER 547
CONNEALY ARSENAL 2174
BLACK RICE OF CONANGA 9529

ELI OF VOLGA 0720
DEEP CREEK ELI LASS 015
DEEP CREEK RO LASS 508

FELTONS MEAT PACKER 62
BESTRELLE OF CONANGA 539
CONNEALY FORWARD
BLACK RITA OF CONANGA 123
MORE OF VOLGA 0149
EILEEN OF VOLGA 2095
THREE TREES ROCK ON 0059
DEEP CREEK 631 LASS 101

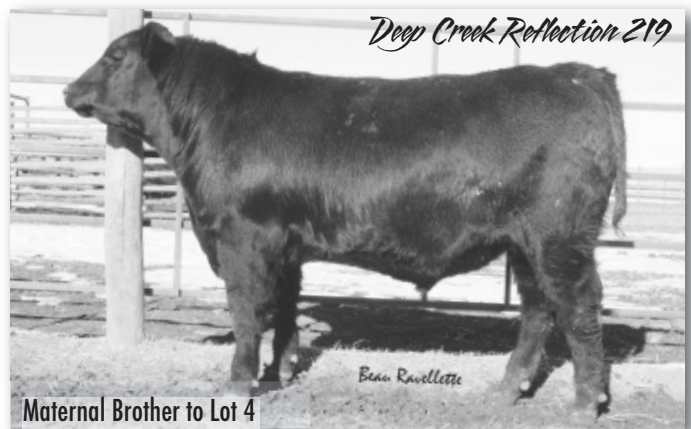
ULTRASOUND
%IMF / Ratio
3.91 / 75

Ribeye / Ratio
12.7 / 97

Scrotal: 37 Pelvic: 204 Frame Score: 6.5

10-9-15: Calf Wt.: 886 lbs. Cow Wt.: 1380 lbs. Weaning Wt./Body Wt.: 64%

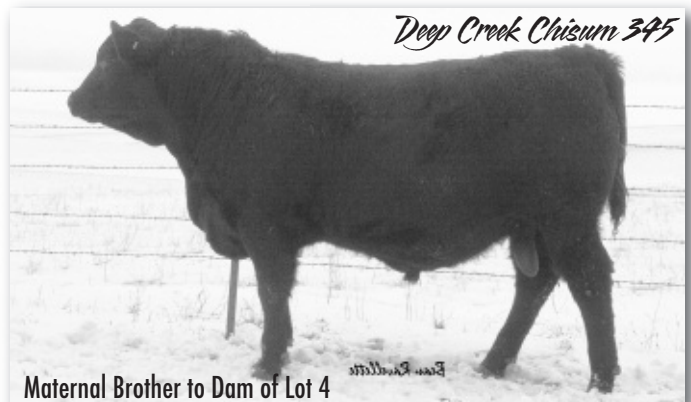
- Dam's WW Ratio: 4 @ 107 *Pathfinder
- Dam has REA of 4 @ 102
- Recommended for heifers
- One cool looking dude! Big, stout and as thick as they come. 534 is unique in his combination of calving ease and thickness.
- Maternal brother in 2013 sold for \$9,500 to longtime customers Steve, Julie and Judy Daly, Midland, SD.



Deep Creek Reflection 219

Beau Ravellette

Maternal Brother to Lot 4



Deep Creek Chisum 345

Beau Ravellette

Maternal Brother to Dam of Lot 4



Lot 5 DEEP CREEK ARSENAL 542

BD: 01/25/2015 Reg No: 18312266 Brand: 542

Act. BW	205 Adj.	Ratio	365 Adj.	Ratio	ADG	BW	WW	YW	Milk
79	794	113	1392	111	3.71	1.2	67	120	23

CONNEALY PACKER 547 CONNEALY ARSENAL 2174 BLACK RICE OF CONANGA 9529	FELTONS MEAT PACKER 62 BESTRELLE OF CONANGA 539 CONNEALY FORWARD BLACK RITA OF CONANGA 123 CONNEALY LEADTIME ELIGENCE PLUS OF CONANGA CONNEALY FORECAST DCC LADY EXPO 642H	ULTRASOUND %IMF / Ratio 5.09 / 98 Ribeye / Ratio 13.3 / 102
--	---	--

Scrotal: 40 Pelvic: 180 Frame Score: 6

10-9-15: Calf Wt.: 888 lbs. Cow Wt.: 1595 lbs. Weaning Wt./Body Wt.: 56%

- Dam's WW Ratio: 8 @ 105
- Dam has REA of 6 @ 104
- Recommended for heifers
- Extra frame in this Arsenal son. 542 is deep ribbed with a thick top and a great disposition.
- Maternal brothers have sold to Allan Knippling, Chase Ranch, and Kyle Grace.

Lot 6 DEEP CREEK ARSENAL 532

BD: 01/11/2015 Reg No: 18312356 Brand: 532

Act. BW	205 Adj.	Ratio	365 Adj.	Ratio	ADG	BW	WW	YW	Milk
74	785	112	1359	109	3.55	0	66	115	27

CONNEALY PACKER 547 CONNEALY ARSENAL 2174 BLACK RICE OF CONANGA 9529	FELTONS MEAT PACKER 62 BESTRELLE OF CONANGA 539 CONNEALY FORWARD BLACK RITA OF CONANGA 123 K C F BENNETT COALITION SCC B&C 049 FOCUS 879 MONEY MA & PA FEATURE PRESENTATION DEEP CREEK 193 LASS 516	ULTRASOUND %IMF / Ratio 5.71 / 110 Ribeye / Ratio 13.9 / 106
--	--	---

Scrotal: 38 Pelvic: 192 Frame Score: 6.5

10-9-15: Calf Wt.: 908 lbs. Cow Wt.: 1485 lbs. Weaning Wt./Body Wt.: 61%

- Dam's WW Ratio: 3 @ 106
- Dam has IMF of 3 @ 118, REA of 3 @ 105
- Granddam has WW of 5 @ 106 *Pathfinder
- Great Granddam has WW of 9 @ 103 *Pathfinder
- Recommended for heifers
- One big, soggy made rascal! 532 is sure to sire calves that flesh easy and have extra capacity. Top 3% of the breed for WW and YW.
- 109 is a maternal sister to the \$20,000 Deep Creek Doc Holiday. Two daughters retained in herd.



**Maternal Brother to Lot 5
sold to Alan Knippling!**



Lot 7 DEEP CREEK BULLOCK 544

BD: 01/13/2015 Reg No: 18312293 Brand: 544

Act. BW	205 Adj.	Ratio	365 Adj.	Ratio	ADG	BW	WW	YW	Milk
83	768	110	1333	107	3.49	1.7	65	110	29

S CHISUM 6175
 RAVEN BULLOCK 1693
 RAVEN BLACKBIRD 315

CONNEALY REFLECTION
 DEEP CREEK R ERICA 141
 MOGCK ERICA 795

S ALLIANCE 3313
 S GLORIA 464
 WOODHILL ADMIRAL 77K
 RAVEN BLACKBIRD 1693
 BON VIEW NEW DESIGN 878
 HAPPY GRILL OF CONANGA 6260
 K C F BENNETT COALITION SCC
 MOGCK ERICA C1199

ULTRASOUND
 %IMF / Ratio
 4.59 / 88
 Ribeye / Ratio
 13.7 / 105

Scrotal: 38 Pelvic: 180 Frame Score: 6

10-9-15: Calf Wt.: 884 lbs. Cow Wt.: 1285 lbs. Weaning Wt./Body Wt.: 69%

- Dam's WW Ratio: 3 @ 105
- Granddam has WW of 8 @ 107 *Pathfinder
- The first son of our herd sire Raven Bullock to sell. 544 is a extra long made bull with loads of capacity. His calves will have excellent gain ability and be easy fleshing.
- 141 is one of the prettiest cows on the ranch, a real looker. Wedge shaped, deep chested and perfect udder. One daughter retained in herd.

Raven Blackbird 315





Lot 8 DEEP CREEK BULLOCK 548

BD: 03/15/2015 Reg No: 18312312 Brand: 548

Act. BW	205 Adj.	Ratio	365 Adj.	Ratio	ADG	BW	WW	YW	Milk
79	808	115	1420	114	3.83	1.4	68	116	27

S CHISUM 6175	S ALLIANCE 3313	ULTRASOUND %IMF / Ratio 5.09 / 98
RAVEN BULLOCK 1693	S GLORIA 464	
RAVEN BLACKBIRD 315	WOODHILL ADMIRAL 77K	
CONNEALY REFLECTION	BON VIEW NEW DESIGN 878	Ribeye / Ratio 11.9 / 91
DEEP CREEK R FOREVERLADY 139	HAPPY GRILL OF CONANGA 6260	
DEEP CREEK FOREVER LADY 828	S S OBJECTIVE T510 0T26	
	BALDRIDGE FOREVER LADY L23	

Scrotal: 40 Pelvic: 176 Frame Score: 6.5

10-9-15: Calf Wt.: 800 lbs. Cow Wt.: 1400 lbs. Weaning Wt./Body Wt.: 57%

- Dam's WW Ratio: 3 @ 104
- A real performance bull! Bullock adds capacity, fleshing ability, and excellent maternal traits.
- Top 2% of the breed for WW, 3% for YW, 10% for \$W and 10% for \$B
- Maternal brother sells as Lot 51, Deep Creek Buckit 475.

Lot 9 DEEP CREEK BULLOCK 547

BD: 03/10/2015 Reg No: 18312346 Brand: 547

Act. BW	205 Adj.	Ratio	365 Adj.	Ratio	ADG	BW	WW	YW	Milk
83	791	113	1330	106	3.37	2.4	71	117	25

S CHISUM 6175	S ALLIANCE 3313	ULTRASOUND %IMF / Ratio 4.54 / 88
RAVEN BULLOCK 1693	S GLORIA 464	
RAVEN BLACKBIRD 315	WOODHILL ADMIRAL 77K	
VERMILION X FACTOR	NICHOLS EXTRA K205	Ribeye / Ratio 15.7 / 119
DEEP CREEK XF LASS 130	VERMILION LADY 2888	
DEEP CREEK MAPA LASS 720	MA & PA FEATURE PRESENTATION	
	DEEP CREEK RO LASS 509	

Scrotal: 38 Pelvic: 176 Frame Score: 6.5

10-9-15: Calf Wt.: 796 lbs. Cow Wt.: 1440 lbs. Weaning Wt./Body Wt.: 55%

- Dam's WW Ratio: 3 @ 109
- Dam has IMF of 2 @ 119
- 547 is extremely easy fleshing with added capacity. Scanned the largest Ribeye in the offering.
- Maternal brother working for Tim Larson, Pierre, SD.

“Where quality runs Generations Deep”



Lot 10 DEEP CREEK ACCELERATE 515

BD: 01/17/2015 Reg No: 18312355 Brand: 515

Act. BW	205 Adj.	Ratio	365 Adj.	Ratio	ADG	BW	WW	YW	Milk
80	795	114	1377	111	3.60	1.8	68	112	28

WMR TIMELESS 458
RATHBUN ACCELERATE Z523
RATHBUN HEIRESS X686

VERMILION X FACTOR
DEEP CREEK XF VIXEN 012
DEEP CREEK 878 VIXEN 515

LEACHMAN RIGHT TIME 338-5605
WMR BLACKCAP 521
BOYD NEW DAY 8005
RATHBUN HEIRESS M677
NICHOLS EXTRA K205
VERMILION LADY 2888
BON VIEW NEW DESIGN 878
B&C 979 NEW TREND 124-3079

ULTRASOUND
%IMF / Ratio
5.86 / 113

Ribeye / Ratio
15.5 / 118

Scrotal: 39 Pelvic: 192 Frame Score: 6.5

10-9-15: Calf Wt.: 928 lbs. Cow Wt.: 1630 lbs. Weaning Wt./Body Wt.: 56%

- Dam's WW Ratio: 4 @ 109 *Pathfinder
- Granddam has WW of 8 @ 105
- Accelerate stamps his calves with a great thick top, heavy muscle pattern and excellent phenotype. Combine those traits with an excellent ultrasound scan and one of the best cows on the ranch, 515 is sure to make an excellent herd bull!
- Maternal brothers have sold in 2014 to Clint and Laura Alleman, Hayes, SD for \$12,000 and one in 2015 to LB Haase and Sons, Valentine, NE for \$17,000.



**Maternal Brother sold to
LB Haase and Sons in 2015!**



Lot 11

Bean Ravellette



Deep Creek Reflection 421

Maternal Brother to Lot 11

Bean Ravellette



Lot 11 DEEP CREEK ACCELERATE 511

BD: 01/14/2015		Reg No: 18312354		Brand: 511					
Act. BW	205 Adj.	Ratio	365 Adj.	Ratio	ADG	BW	WW	YW	Milk
82	795	114	1299	104	3.12	2.7	58	96	30

WMR TIMELESS 458	LEACHMAN RIGHT TIME 338-5605	ULTRASOUND
RATHBUN ACCELERATE Z523	WMR BLACKCAP 521	
RATHBUN HEIRESS X686	BOYD NEW DAY 8005	4.80 / 92
	RATHBUN HEIRESS M677	
K C F BENNETT COALITION SCC	SITZ ALLIANCE 6595	Ribeye / Ratio
DEEP CREEK CO PRINCESS 513	PLEASANT PILL OF CONANGA	14.9 / 114
DEEP CREEK PRINCESS 2010	AMBUSH 999	
	S MISS ELDORA 987	

Scrotal: 38	Pelvic: 192	Frame Score: 6.5
10-9-15: Calf Wt.: 906 lbs.	Cow Wt.: 1510 lbs.	Weaning Wt./Body Wt.: 60%

- Dam's WW Ratio: 8 @ 106
- Dam has REA of 5 @ 105
- 511 had lots of friends this year on the SD Angus Tour. Thick topped, big hipped and long as a well rope. Use him to had carcass, maternal traits and pounds at weaning. Top 15% of breed for \$W and 25% for \$B.
- Maternal brothers have sold to Judy, Steve and Julie Daly, Foland Ranch and in 2015 to Tim and Jan Larson, Pierre, SD for \$9,500.

**Maternal Brother sold to
Tim & Jan Larson in 2015!**



Lot 12 DEEP CREEK EXPEDITE 513

BD: 01/15/2015 Reg No: 18312362 Brand: 513

Act. BW	205 Adj.	Ratio	365 Adj.	Ratio	ADG	BW	WW	YW	Milk
78	770	110	1295	104	3.24	2.0	61	101	30

WMR TIMELESS 458	LEACHMAN RIGHT TIME 338-5605	ULTRASOUND	
RATHBUN ACCELERATE Z523	WMR BLACKCAP 521		%IMF / Ratio
RATHBUN HEIRESS X686	BOYD NEW DAY 8005	4.75 / 91	
CONNEALY REFLECTION	RATHBUN HEIRESS M677	Ribeye / Ratio	
DEEP CREEK R LASS 144	BON VIEW NEW DESIGN 878		14.0 / 107
DEEP CREEK RW LASS 707	HAPPY GRILL OF CONANGA 6260		
	HYLINE RIGHT WAY 781		
	DEEP CREEK 878 LASS 302		

Scrotal: 36	Pelvic: 180	Frame Score: 6.5
10-9-15: Calf Wt.: 884 lbs.	Cow Wt.: 1575 lbs.	Weaning Wt./Body Wt.: 56%

- Dam's WW Ratio: 3 @ 105
- Granddam has WW of 5 @ 108
- Retaining 1/3 Semen Interest
- We have watched 513 since he was a calf and we like him better every day. He is extremely long, good muscle pattern and real free moving. Top 10% of the breed for \$B and \$W.
- 144 is a high volume daughter of Reflection with a perfect udder. Two daughters retained in herd.





Lot 13

Beau Ravellette



Lot 13 DEEP CREEK UPLOAD 560

BD: 01/29/2015		Reg No: 18312358		Brand: 560					
Act. BW	205 Adj.	Ratio	365 Adj.	Ratio	ADG	BW	WW	YW	Milk
80	811	116	1337	107	3.25	1.2	66	111	23
SITZ UPWARD 307R		CONNEALY ONWARD		ULTRASOUND					
BRUIN UPROAR 0070		SITZ HENRIETTA PRIDE 81M		%IMF / Ratio					
FALCON BLACKBIRD 6071		CONNEALY DATELINE		5.11 / 98					
CONNEALY REFLECTION		VERMILION BLACKBIRD 5044		Ribeye / Ratio					
DEEP CREEK R BLACKBIRD 143		BON VIEW NEW DESIGN 878		12.9 / 98					
DEEP CREEK MP BLACKBIRD 818		HAPPY GRILL OF CONANGA 6260							
		MA & PA FEATURE PRESENTATION							
		B&C 862 BANDO 598-618							
Scrotal: 38		Pelvic: 208		Frame Score: 6					
10-9-15: Calf Wt.: 908 lbs.		Cow Wt.: 1315 lbs.		Weaning Wt./Body Wt.: 69%					

- Dam's WW Ratio: 3 @ 107
- Recommended for heifers
- Retaining 1/3 semen interest
- A true power bull! Upload is the thickest topped bull in the offering. Extra wide base and a very deep chest. Upload some outstanding traits into your cow herd.



Lot 14

Beau Ravellette

Lot 14 DEEP CREEK UPROAR 558

BD: 01/28/2015 Reg No: 18312353 Brand: 558

Act. BW	205 Adj.	Ratio	365 Adj.	Ratio	ADG	BW	WW	YW	Milk
79	764	109	1377	110	3.78	1.7	63	114	20

SITZ UPWARD 307R
BRUIN UPROAR 0070
FALCON BLACKBIRD 6071

CONNEALY REFLECTION
DEEP CREEK REFLECT LASS 216
DEEP CREEK TIMELINE LASS 306

CONNEALY ONWARD
SITZ HENRIETTA PRIDE 81M
CONNEALY DATELINE
VERMILION BLACKBIRD 5044
BON VIEW NEW DESIGN 878
HAPPY GRILL OF CONANGA 6260
CONNEALY TIMELINE
B&C 537 BANDO 701 OF 324

ULTRASOUND
%IMF / Ratio
5.80 / 112

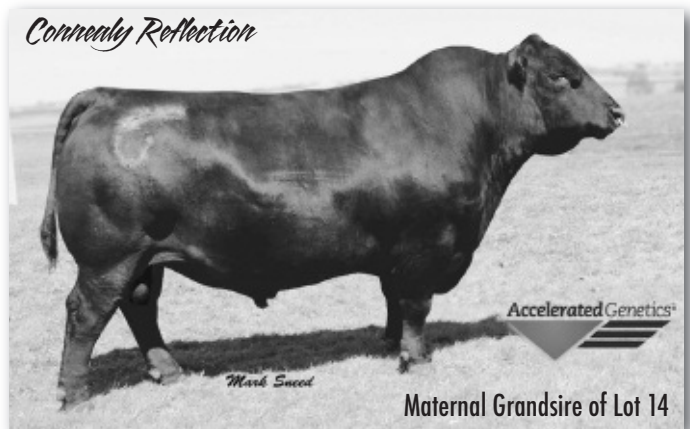
Ribeye / Ratio
12.6 / 96

Scrotal: 37 Pelvic: 176 Frame Score: 5.5

10-9-15: Calf Wt.: 830 lbs. Cow Wt.: 1160 lbs. Weaning Wt./Body Wt.: 72%

- Dam's WW Ratio: 2 @ 100
- Dam has IMF of 1 @ 112
- One of my top picks. The Reflection x Uproar cross seems to work very well. Three quarter brother to Lot 13, Deep Creek Upload 560.

Connealy Reflection



Maternal Grand sire of Lot 14



Lot 15 DEEP CREEK ACCELERATE 508

BD: 01/10/2015 Reg No: 18312350 Brand: 508

Act. BW	205 Adj.	Ratio	365 Adj.	Ratio	ADG	BW	WW	YW	Milk
73	788	113	1294	104	3.13	2.4	60	99	31

WMR TIMELESS 458 RATHBUN ACCELERATE Z523 RATHBUN HEIRESS X686	LEACHMAN RIGHT TIME 338-5605 WMR BLACKCAP 521 BOYD NEW DAY 8005 RATHBUN HEIRESS M677 CONNEALY IMPRESSION ALEENA OF CONANGA 1164 COLE CREEK BLACK CEDAR 46P DEEP CREEK PRINCESS 2010	ULTRASOUND %IMF / Ratio 4.30 / 83 Ribeye / Ratio 15.2 / 116
---	--	--

Scrotal: 34 Pelvic: 180 Frame Score: 5.5

10-9-15: Calf Wt.: 850 lbs. Cow Wt.: 1185 lbs. Weaning Wt./Body Wt.: 72%

- Dam's WW Ratio: 1 @ 113
- Granddam has WW of 2 @ 103
- One of the biggest ribeye's in the sale. 508 is sure to sire a great set of feeder calves. Top 2% of the breed for RE with a +1.06.

Lot 17 DEEP CREEK EXCITEMENT 504

BD: 01/15/2015 Reg No: 18312257 Brand: 504

Act. BW	205 Adj.	Ratio	365 Adj.	Ratio	ADG	BW	WW	YW	Milk
81	722	110	1255	100	2.98	1.1	63	102	24

BASIN EXPEDITION R156 BASIN EXCITEMENT BASIN LADY S532 AK	GARDENS EXPEDITION BASIN PRIMROSE LADY 5287 VERMILION PAYWEIGHT J847 BASIN LADY 306E S A F 598 BANDO 5175 J K S MISS CHEYENNE 196 N F ALLIANCE 348-3 MILLARS BALERICA BREEZE 4502	ULTRASOUND %IMF / Ratio 5.89 / 113 Ribeye / Ratio 13.7 / 105
---	--	---

Scrotal: 39 Pelvic: 208 Frame Score: 6

10-9-15: Calf Wt.: 904 lbs. Cow Wt.: 1315 lbs. Weaning Wt./Body Wt.: 69%

- Dam's WW Ratio: 6 @ 105 *Pathfinder
- Dam has IMF of 5 @ 121, REA of 5 @ 103
- Granddam has WW of 8 @ 103 *Pathfinder
- Recommended for heifers
- Extra frame in this Excitement son. 504 is sure to add capacity, width of base and extra heel.
- Maternal brothers have sold in 2011 to Ross and Jan Krull, Harrold, SD and in 2014 and 2015 to Kyle Grace, Hartford, SD.



Lot 16 DEEP CREEK EXCITEMENT 500

BD: 12/24/2014 Reg No: 18312364 Brand: 500

Act. BW	205 Adj.	Ratio	365 Adj.	Ratio	ADG	BW	WW	YW	Milk
65	710	100	1250	100	3.51	1.2	62	105	23

BASIN EXPEDITION R156 BASIN EXCITEMENT BASIN LADY S532 AK	GARDENS EXPEDITION BASIN PRIMROSE LADY 5287 VERMILION PAYWEIGHT J847 BASIN LADY 306E CROOK MT REALLY WINDY 104 REVOLUTION 231 OF CROOK MT DEEP CREEK CEDAR 709 DEEP CREEK MP LASS 933	ULTRASOUND %IMF / Ratio 5.06 / 98 Ribeye / Ratio 11.9 / 91
---	--	---

Scrotal: 38 Pelvic: 208 Frame Score: 6

10-9-15: Calf Wt.: 882 lbs. Cow Wt.: 1380 lbs. Weaning Wt./Body Wt.: 64%

- Dam's WW Ratio: 1 @ 100
- Granddam has WW of 3 @ 106
- Great Granddam has WW of 5 @ 106 *Pathfinder
- 500 was the only calf born before January 1, 2015 so he is in his own contemporary group
- Recommended for heifers
- 3/4 brother to Lots 27 and 28
- Stems from the cow family that produced the \$20,000 Deep Creek Doc Holiday



Lot 18 DEEP CREEK ACCELERATE 516

BD: 01/22/2015 Reg No: 18312330 Brand: 516

Act. BW	205 Adj.	Ratio	365 Adj.	Ratio	ADG	BW	WW	YW	Milk
82	806	115	1240	99	2.68	2.5	67	100	27

WMR TIMELESS 458 RATHBUN ACCELERATE Z523 RATHBUN HEIRESS X686	LEACHMAN RIGHT TIME 338-5605 WMR BLACKCAP 521 BOYD NEW DAY 8005 RATHBUN HEIRESS M677 M A BROADSIDE 1334-822 TC BARBARA 5016 THREE TREES ROCK ON 0059 B&C 683 OF 3005-423	ULTRASOUND %IMF / Ratio 4.76 / 92 Ribeye / Ratio 14.9 / 114
---	---	--

Scrotal: 38 Pelvic: 165 Frame Score: 6.5

10-9-15: Calf Wt.: 914 lbs. Cow Wt.: 1510 lbs. Weaning Wt./Body Wt.: 61%

- Dam's WW Ratio: 2 @ 112
- Dam has REA of 2 @ 106
- Granddam has WW of 8 @ 102 *Pathfinder
- Top 2% of the breed for WW, 15% for RE, 5% for \$W, and 15% for \$B.
- 137 is a maternal sister to Deep Creek Rock Star, who was a high seller in 2010 selling to the Chase Ranch, Midland, SD.



Lot 19

Beau Ravellette

Lot 19 DEEP CREEK CUTBANK 561

BD: 01/21/2015 Reg No: 18312261 Brand: 561

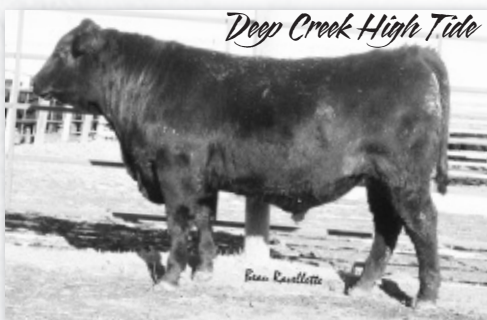
Act. BW	205 Adj.	Ratio	365 Adj.	Ratio	ADG	BW	WW	YW	Milk
92	733	105	1360	109	3.87	3.6	56	97	27

DEEP CREEK RIPTIDE 129 DEEP CREEK CUTBANK 312 DEEP CREEK 878 VIXEN 515	DEEP CREEK ROCK STAR 935 KMD LASS 528 BON VIEW NEW DESIGN 878 B&C 979 NEW TREND 124-3079 G D A R TRAVELER 71 SITZ EVERELDA ENTENSE 1137 B A R EXT TRAVELER 205 VERMILION SUSIE 9083	ULTRASOUND %IMF / Ratio 4.30 / 83 Ribeye / Ratio 13.1 / 100
--	--	--

Scrotal: 38 Pelvic: 208 Frame Score: 6

10-9-15: Calf Wt.: 846 lbs. Cow Wt.: 1640 lbs. Weaning Wt./Body Wt.: 52%

- Dam's WW Ratio: 4 @ 112
- Granddam has WW of 12 @ 103
- 561 is the first Deep Creek Cutbank son to sell. Cutbank was our high selling bull in 2014 to Charles and Rosalie Tennis, Vale, SD. 561 is thick topped and heavy muscled backed by a maternal matron.
- Maternal brothers have sold in 2013 to Boyd Larson and in 2014 to Bear Paw Ranch.



Deep Creek High Tide

Beau Ravellette

Maternal brother to Lot 19

Lot 20 DEEP CREEK CUTBANK 563

BD: 01/29/2015 Reg No: 18312258 Brand: 563

Act. BW	205 Adj.	Ratio	365 Adj.	Ratio	ADG	BW	WW	YW	Milk
81	763	109	1342	108	3.58	2.4	60	92	25

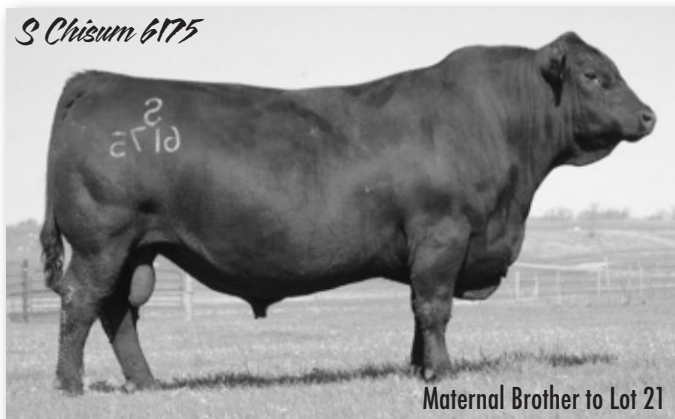
DEEP CREEK RIPTIDE 129 DEEP CREEK CUTBANK 312 DEEP CREEK 878 VIXEN 515	DEEP CREEK ROCK STAR 935 KMD LASS 528 BON VIEW NEW DESIGN 878 B&C 979 NEW TREND 124-3079 R R HERO 6267 R R EVERELDA ENTENSE 0413 HYLINE RIGHT WAY 781 PETRYS PRIDE 841	ULTRASOUND %IMF / Ratio 5.08 / 98 Ribeye / Ratio 13.8 / 105
--	---	--

Scrotal: 39 Pelvic: 180 Frame Score: 6

10-9-15: Calf Wt.: 870 lbs. Cow Wt.: 1300 lbs. Weaning Wt./Body Wt.: 67%

- Dam's WW Ratio: 5 @ 103
- Dam has IMF of 4 @ 100, REA of 4 @ 102
- Easy moving, thick topped bull with loads of muscle.
- Maternal brother in 2015 sold to Seth Thomsen, Longvalley, SD.
- 901 is an own daughter of the great Hero 2418. Two daughters have been retained in herd. A daughter 346, by Chisum, posted a WW of 118 on her first calf.





Lot 21 DEEP CREEK PACKER 5105

BD: 02/25/2015		Reg No: +18357909		Brand: 5105					
Act. BW	205 Adj.	Ratio	365 Adj.	Ratio	ADG	BW	WW	YW	Milk
97	736	100	1356	108	3.87	2.2	61	107	27

FELTONS MEAT PACKER 62	FINKS 5522-6148	ULTRASOUND
CONNEALY PACKER 547	GRAHAM N MISTRESS 8	
BESTRELLE OF CONANGA 539	DALEBANKS EXTENDER 6012	4.86 / 100
S ECLIPSE 169	BESTA OF CONANGA 6538	Ribeye / Ratio
S GLORIA 464	S S TRAVELER 6807 T510	13.0 / 100
S GLORIA 209	H L LADY TRAVELER 416	
	LEACHMAN RIGHT TIME	
	S GLORIA 0118	

Scrotal: 36	Pelvic: 176	Frame Score: 6
10-9-15: Calf Wt.: 806 lbs.	Cow Wt.: 1345 lbs.	Weaning Wt./Body Wt.: 60%

- Dam has WW of 4 @ 111
- Deep Creek teamed up with Raven Angus and purchased embryos from the North Dakota Select sale consigned by Spickler Angus, 5105 is a result.
- 5105 is an own son of Connealy Packer 547 and S Gloria 464, dam to S Chisum 6175.
- Deep flank, wide base, good length and plenty of thickness. 5105 will sire a great set of feeder calves and backed by S Gloria 464, keep every daughter for the replacement pen. Your chance to own a maternal brother to S Chisum 6175.

Lot 22 DEEP CREEK ARSENAL 539

BD: 01/17/2015 Reg No: 18312352 Brand: 539

Act. BW	205 Adj.	Ratio	365 Adj.	Ratio	ADG	BW	WW	YW	Milk
81	746	107	1204	97	2.82	.8	50	86	27

CONNEALY PACKER 547 CONNEALY ARSENAL 2174 BLACK RICE OF CONANGA 9529	FELTONS MEAT PACKER 62 BESTRELLE OF CONANGA 539 CONNEALY FORWARD BLACK RITA OF CONANGA 123 MORE OF VOLGA 0149 EILEEN OF VOLGA 2095 BON VIEW NEW DESIGN 878 B A LUCKY LADY 1273	ULTRASOUND %IMF / Ratio 5.02 / 97 Ribeye / Ratio 12.4 / 95
--	---	---

Scrotal: 37 Pelvic: 192 Frame Score: 5.5

10-9-15: Calf Wt.: 870 lbs. Cow Wt.: 1460 lbs. Weaning Wt./Body Wt.: 60%

- Dam's WW Ratio: 4 @ 107 *Pathfinder
- Dam has REA of 4 @ 107
- Recommend for heifers
- Real smooth shouldered, wedge shaped and wide based.
- Maternal brother in 2015 sold to Gerald Booth, Timberlake, SD for \$15,000.
- 032 is a top producing ELI female with two daughters retained in herd.



Dam to Lot 23

Lot 23 DEEP CREEK ACCELERATE 509

BD: 01/12/2015 Reg No: 18312264 Brand: 509

Act. BW	205 Adj.	Ratio	365 Adj.	Ratio	ADG	BW	WW	YW	Milk
73	725	104	1229	99	3.12	1.1	58	98	27

WMR TIMELESS 458 RATHBUN ACCELERATE Z523 RATHBUN HEIRESS X686	LEACHMAN RIGHT TIME 338-5605 WMR BLACKCAP 521 BOYD NEW DAY 8005 RATHBUN HEIRESS M677 BON VIEW NEW DESIGN 878 HAPPY GRILL OF CONANGA 6260 K C F BENNETT COALITION SCC DEEP CREEK PRINCESS 2010	ULTRASOUND %IMF / Ratio 5.92 / 114 Ribeye / Ratio 15.2 / 116
---	--	---

Scrotal: 38 Pelvic: 176 Frame Score: 5.5

10-9-15: Calf Wt.: 836 lbs. Cow Wt.: 1490 lbs. Weaning Wt./Body Wt.: 56%

- Dam's WW Ratio: 3 @ 100
- Dam has IMF of 3 @ 104, REA of 3 @ 107
- Recommended for heifers
- Outstanding ultrasound scan, big rib and loads of IMF.
- 138 is real wedge shaped with an excellent udder. Two daughters retained in herd.

Lot 24 DEEP CREEK ACCELERATE 507

BD: 01/07/2015 Reg No: 18312338 Brand: 507

Act. BW	205 Adj.	Ratio	365 Adj.	Ratio	ADG	BW	WW	YW	Milk
63	742	106	1224	98	2.97	.3	58	88	27

WMR TIMELESS 458 RATHBUN ACCELERATE Z523 RATHBUN HEIRESS X686	LEACHMAN RIGHT TIME 338-5605 WMR BLACKCAP 521 BOYD NEW DAY 8005 RATHBUN HEIRESS M677 DEEP CREEK ROCK STAR 935 DEEP CREEK FF BLOSSOM 417 ELI OF VOLGA 0720 DEEP CREEK RO BLACKBIRD 507	ULTRASOUND %IMF / Ratio 5.47 / 105 Ribeye / Ratio 11.6 / 89
---	--	--

Scrotal: 40 Pelvic: 165 Frame Score: 6

10-9-15: Calf Wt.: 825 lbs. Cow Wt.: 1130 lbs. Weaning Wt./Body Wt.: 73%

- Dam's WW Ratio: 1 @ 106
- Granddam has WW of 4 @ 103
- Recommended for heifers
- Another long sided Accelerate son out of a first calf Rock N Roll daughter.



Maternal Brother sold to Gerald Booth in 2015!





Lot 25

Beau Ravellette



Deep Creek Riptide

Maternal Brother to Lot 25



Maternal Brother sold to Simons Ranch in 2012!

Lot 25 DEEP CREEK DEADWOOD 543

BD: 01/11/2015	Reg No: 18312359	Brand: 543							
Act. BW 74	205 Adj. 723	Ratio 103	365 Adj. 1334	Ratio 107	ADG 3.78	BW .4	WW 62	YW 109	Milk 22

S CHISUM 6175	S ALLIANCE 3313	ULTRASOUND
RAVEN BULLOCK 1693	S GLORIA 464	
RAVEN BLACKBIRD 315	WOODHILL ADMIRAL 77K	%IMF / Ratio
	RAVEN BLACKBIRD 1693	3.76 / 72
K C F BENNETT TOTAL	SITZ ALLIANCE 6595	Ribeye / Ratio
KMD LASS 528	EXT OF CONANGA 6790	13.0 / 99
KMD MISS NEUTRON 377 330	S A NEUTRON 377	
	D C C MISS TRAVELER 83C	

Scrotal: 38	Pelvic: 195	Frame Score: 5.5
10-9-15: Calf Wt.: 826 lbs.	Cow Wt.: 1310 lbs.	Weaning Wt./Body Wt.: 63%

- Dam's WW Ratio: 8 @ 103 *Pathfinder
- Dam has IMF of 6 @ 105, REA of 6 @ 102
- Recommended for heifers
- Retaining 1/3 semen interest
- There is no gamble with Deadwood, he is a sure fire bet! With his wedge shape, moderate frame, thick top and maternal traits you can't lose.
- Maternal brothers have sold in 2010 to Allan Knipling, DJ Land and Cattle and another one in 2012 to Mickey and Drinda Simons.



Lot 26

Beau Ravellette

Lot 26 DEEP CREEK EXCITEMENT 506

BD: 01/16/2015 Reg No: 18312259 Brand: 506

Act. BW	205 Adj.	Ratio	365 Adj.	Ratio	ADG	BW	WW	YW	Milk
79	732	105	1247	100	3.19	2.0	66	111	22

BASIN EXPEDITION R156
BASIN EXCITEMENT
BASIN LADY S532 AK

CONNEALY REFLECTION
DEEP CREEK R NACOMA 313
DEEP CREEK XF NACOMA 127

GARDENS EXPEDITION
BASIN PRIMROSE LADY 5287
VERMILION PAYWEIGHT J847
BASIN LADY 306E
BON VIEW NEW DESIGN 878
HAPPY GRILL OF CONANGA 6260
VERMILION X FACTOR
DEEP CREEK RO NACOMA 505

ULTRASOUND
%IMF / Ratio
4.40 / 85

Ribeye / Ratio
13.7 / 105

Scrotal: 37 Pelvic: 180 Frame Score: 5.5

10-9-15: Calf Wt.: 774 lbs. Cow Wt.: 1290 lbs. Weaning Wt./Body Wt.: 60%

- Dam's WW Ratio: 1 @ 105
- Granddam has WW of 3 @ 112
- 506 is moderate framed with a huge hip. Great disposition. Top 3% of the breed for WW and 10% for YW.

Vermilion X Factor



John Gaggins

**DEEP CREEK
ANGUS RANCH**



Lot 27 DEEP CREEK EXCITEMENT 502

BD: 01/11/2015 Reg No: 18312301 Brand: 502

Act. BW	205 Adj.	Ratio	365 Adj.	Ratio	ADG	BW	WW	YW	Milk
75	748	107	1425	114	4.19	1.5	66	118	22

BASIN EXPEDITION R156	GARDENS EXPEDITION	ULTRASOUND
BASIN EXCITEMENT	BASIN PRIMROSE LADY 5287	
BASIN LADY S532 AK	VERMILION PAYWEIGHT J847	%IMF / Ratio
	BASIN LADY 306E	5.16 / 99
CROOK MT WINDY 17	CROOK MT REALLY WINDY 104	Ribeye / Ratio
DEEP CREEK W PRINCESS 305	REVOLUTION 231 OF CROOK MT	14.9 / 114
DEEP CREEK R PRINCESS 138	CONNEALY REFLECTION	
	DEEP CREEK CO PRINCESS 513	

Scrotal: 39	Pelvic: 192	Frame Score: 5.5
10-9-15: Calf Wt.: 798 lbs.	Cow Wt.: 1140 lbs.	Weaning Wt./Body Wt.: 70%

- Dam's WW Ratio: 1 @ 107
- 3/4 brother to Lots 16 and 28
- Recommended for heifers
- Your chance to put together three, three quarter brothers in Lots 16, 27 and 28. All are phenotypically, pedigree and performance matched. Top 3% of the breed for WW and 2% of YW.



Lot 28 DEEP CREEK EXCITEMENT 501

BD: 01/11/2015 Reg No: 18312267 Brand: 501

Act. BW	205 Adj.	Ratio	365 Adj.	Ratio	ADG	BW	WW	YW	Milk
70	740	106	1390	112	4.02	.4	64	115	21

BASIN EXPEDITION R156	GARDENS EXPEDITION	ULTRASOUND
BASIN EXCITEMENT	BASIN PRIMROSE LADY 5287	
BASIN LADY S532 AK	VERMILION PAYWEIGHT J847	%IMF / Ratio
	BASIN LADY 306E	5.56 / 107
CROOK MT WINDY 17	CROOK MT REALLY WINDY 104	Ribeye / Ratio
DEEP CREEK W BLACKBIRD 304	REVOLUTION 231 OF CROOK MT	13.4 / 102
DEEP CREEK SRT BLACKBIRD 119	SCHAUER RIGHT TIME 828	
	DEEP CREEK MP BLACKBIRD 931	

Scrotal: 39	Pelvic: 192	Frame Score: 5.5
10-9-15: Calf Wt.: 792 lbs.	Cow Wt.: 1310 lbs.	Weaning Wt./Body Wt.: 60%

- Dam's WW Ratio: 1 @ 106
- Granddam has 3 @ 102
- Recommended for heifers
- 3/4 brother to Lots 16 and 27
- 501 is a real thick, wedged shaped bull. Excellent maternal traits and calving ease. Top 5% of the breed for WW and 3% for YW.



Lot 29 DEEP CREEK BULLOCK 545

BD: 02/27/2015 Reg No: 18312318 Brand: 545

Act. BW	205 Adj.	Ratio	365 Adj.	Ratio	ADG	BW	WW	YW	Milk
83	739	106	1192	96	2.79	2.9	64	101	24

S CHISUM 6175	S ALLIANCE 3313	ULTRASOUND
RAVEN BULLOCK 1693	S GLORIA 464	
RAVEN BLACKBIRD 315	WOODHILL ADMIRAL 77K	%IMF / Ratio
	RAVEN BLACKBIRD 1693	3.90 / 75
VERMILION X FACTOR	NICHOLS EXTRA K205	Ribeye / Ratio
DEEP CREEK XF LADY 133	VERMILION LADY 2888	14.2 / 108
DEEP CREEK 878 LADY 300	BON VIEW NEW DESIGN 878	
	B A LUCKY LADY 1273	

Scrotal: 35	Pelvic: 180	Frame Score: 5.5
10-9-15: Calf Wt.: 768 lbs.	Cow Wt.: 1590 lbs.	Weaning Wt./Body Wt.: 48%

- Dam's WW Ratio: 3 @ 102
- 545 has one of the best profiles of all the bulls. His dam, 133, is the best X Factor daughter on the ranch. Real loose made and easy moving.

Lot 30 DEEP CREEK CUTBANK 562

BD: 01/26/2015 Reg No: 18312310 Brand: 562

Act. BW	205 Adj.	Ratio	365 Adj.	Ratio	ADG	BW	WW	YW	Milk
80	733	105	1199	96	2.88	2.3	57	91	22

DEEP CREEK RIPTIDE 129	DEEP CREEK ROCK STAR 935	ULTRASOUND
DEEP CREEK CUTBANK 312	KMD LASS 528	
DEEP CREEK 878 VIXEN 515	BON VIEW NEW DESIGN 878	%IMF / Ratio
	B&C 979 NEW TREND 124-3079	8.15 / 157
SITZ RAINMAKER 9723	SITZ RAINMAKER 6169	Ribeye / Ratio
DEEP CREEK RM BLACKBIRD 914	SITZ MISS BURGESS 1591	11.4 / 87
BALDRIDGE BLACKBIRD N907	SITZ TRAVELER 5556	
	BALDRIDGE BLACKBIRD 736F	

Scrotal: 37	Pelvic: 165	Frame Score: 6
10-9-15: Calf Wt.: 840 lbs.	Cow Wt.: 1520 lbs.	Weaning Wt./Body Wt.: 55%

- Dam's WW Ratio: 5 @ 105
- Dam has IMF of 5 @ 121, REA of 5 @ 95
- Granddam has WW of 10 @ 105
- Largest IMF of the offering.
- Maternal brothers have sold to Mickey Daly, and Marty and Kelly Kinsley in 2013 and one in 2015.



Lot 31 DEEP CREEK UPROAR 555

BD: 01/21/2015 Reg No: 18312321 Brand: 555

Act. BW	205 Adj.	Ratio	365 Adj.	Ratio	ADG	BW	WW	YW	Milk
77	719	103	1321	106	3.72	.8	52	93	22

SITZ UPWARD 307R
 BRUI N UPROAR 0070
 FALCON BLACKBIRD 6071
 ELI OF VOLGA 0720
 DEEP CREEK ELI BLACKBIRD 033
 DEEP CREEK RO BLACKBIRD 507

CONNELLY ONWARD
 SITZ HENRIETTA PRIDE 81M
 CONNEALY DATELINE
 VERMILION BLACKBIRD 5044
 MORE OF VOLGA 0149
 EILEEN OF VOLGA 2095
 THREE TREES ROCK ON 0059
 B&C S37 BANDO 701 OF 324

ULTRASOUND
 %IMF / Ratio
 5.10 / 98
 Ribeye / Ratio
 12.7 / 97

Scrotal: 39 Pelvic: 176 Frame Score: 5.5

10-9-15: Calf Wt.: 832 lbs. Cow Wt.: 1510 lbs. Weaning Wt./Body Wt.: 55%

- Dam's WW Ratio: 4 @ 103
- Dam has IMF of 4 @ 117
- Recommended for heifers
- Female making machine! 555 will sire daughters that are easy fleshing, moderate framed and perfect uddered.
- 033 is a real easy fleshing very correct made female. Three daughters retained in herd.



Lot 32 DEEP CREEK ACCELERATE 514

BD: 01/15/2015 Reg No: 18312329 Brand: 514

Act. BW	205 Adj.	Ratio	365 Adj.	Ratio	ADG	BW	WW	YW	Milk
68	728	104	1258	101	3.27	.3	59	95	25

WMR TIMELESS 458 RATHBUN ACCELERATE Z523 RATHBUN HEIRESS X686	LEACHMAN RIGHT TIME 338-5605 WMR BLACKCAP 521 BOYD NEW DAY 8005 RATHBUN HEIRESS M677 NICHOLS EXTRA K205 VERMILION LADY 2888 B&C 753 BANDO 598-320 132 DEEP CREEK C LASS 634	ULTRASOUND %IMF / Ratio 4.26 / 82 Ribeye / Ratio 13.1 / 100
---	--	--

Scrotal: 36 Pelvic: 192 Frame Score: 6

10-9-15: Calf Wt.: 836 lbs. Cow Wt.: 1330 lbs. Weaning Wt./Body Wt.: 63%

- Dam's WW Ratio: 3 @ 102
- Long and powerful! 514 has the look of a herd bull. Super made X Factor daughter behind this bull.



Lot 33 DEEP CREEK ARSENAL 541

BD: 01/23/2015 Reg No: 18312327 Brand: 541

Act. BW	205 Adj.	Ratio	365 Adj.	Ratio	ADG	BW	WW	YW	Milk
80	734	105	1337	107	3.72	.7	57	110	23

CONNEALY PACKER 547 CONNEALY ARSENAL 2174 BLACK RICE OF CONANGA 9529	FELTONS MEAT PACKER 62 BESTELLE OF CONANGA 539 CONNEALY FORWARD BLACK RITA OF CONANGA 123 O C C GREAT PLAINS 943G MA & PA BLACKBIRD 858M BUBS DOLLAR DIRECT H821 BLACKBIRD 574 OF CROOK MT	ULTRASOUND %IMF / Ratio 6.26 / 120 Ribeye / Ratio 12.0 / 92
--	---	--

Scrotal: 37 Pelvic: 180 Frame Score: 6

10-9-15: Calf Wt.: 846 lbs. Cow Wt.: 1555 lbs. Weaning Wt./Body Wt.: 55%

- Dam's WW Ratio: 5 @ 97
- Dam has IMF of 3 @ 110
- Recommended for heifers
- Real wedge shaped bull. Excellent IMF of 6.26. 541 will sire a great set of calves sure to fit any kill grid.

Lot 34 DEEP CREEK UPROAR 552

BD: 01/19/2015 Reg No: 18312263 Brand: 552

Act. BW	205 Adj.	Ratio	365 Adj.	Ratio	ADG	BW	WW	YW	Milk
94	639	91	1287	103	3.30	3.5	46	91	21

SITZ UPWARD 307R BRUIN UPROAR 0070 FALCON BLACKBIRD 6071	CONNEALY ONWARD SITZ HENRIETTA PRIDE 81M CONNEALY DATELINE VERMILION BLACKBIRD 5044 MORE OF VOLGA 0149 EILEEN OF VOLGA 2095 BON VIEW NEW DESIGN 878 2100 BLOSSOM OF I A R 018	ULTRASOUND %IMF / Ratio 4.56 / 88 Ribeye / Ratio 12.6 / 96
--	--	---

Scrotal: 36 Pelvic: 165 Frame Score: 6

10-9-15: Calf Wt.: 738 lbs. Cow Wt.: 1550 lbs. Weaning Wt./Body Wt.: 48%

- Dam's WW Ratio: 4 @ 97
- 552 is the deepest bodied bull in the sale. He is sure to add capacity and rib shape to his progeny.
- Maternal brothers have sold in 2013 to Mickey Daly and one in 2014 to Labrier Ranch.

Lot 35 DEEP CREEK UPROAR 554

BD: 01/21/2015 Reg No: 18312319 Brand: 554

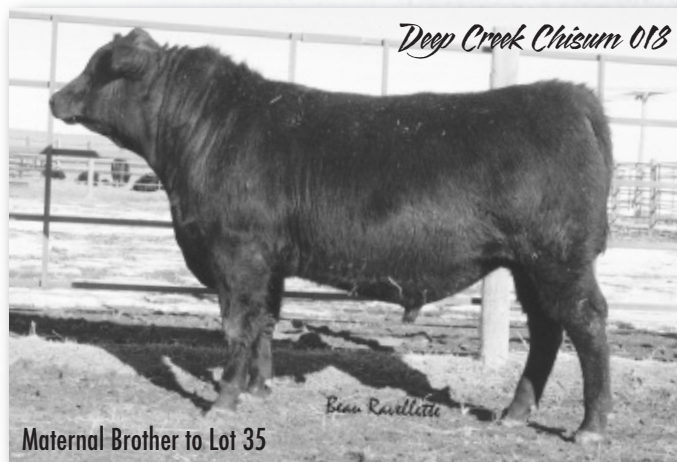
Act. BW	205 Adj.	Ratio	365 Adj.	Ratio	ADG	BW	WW	YW	Milk
78	656	94	1312	105	4.06	.8	47	89	23

SITZ UPWARD 307R BRUIN UPROAR 0070 FALCON BLACKBIRD 6071	CONNEALY ONWARD SITZ HENRIETTA PRIDE 81M CONNEALY DATELINE VERMILION BLACKBIRD 5044 MORE OF VOLGA 0149 EILEEN OF VOLGA 2095 BALDRIDGE LANCELOT L15 S A QUEEN LORI 839	ULTRASOUND %IMF / Ratio 4.27 / 82 Ribeye / Ratio 12.4 / 95
--	--	---

Scrotal: 36 Pelvic: 180 Frame Score: 5.5

10-9-15: Calf Wt.: 758 lbs. Cow Wt.: 1505 lbs. Weaning Wt./Body Wt.: 50%

- Dam's WW Ratio: 4 @ 100
- Recommended for heifers
- Easy fleshing and highly maternal.
- Maternal brothers have sold to Larry and Chauncey Labrier in 2013 and to Ruby Gabriel in 2015.



Maternal Brother to Lot 35

"Where quality runs Generations Deep"

Lot 36 DEEP CREEK ARSENAL 530

BD: 01/09/2015 Reg No: 18312325 Brand: 530

Act. BW	205 Adj.	Ratio	365 Adj.	Ratio	ADG	BW	WW	YW	Milk
70	709	101	1290	103	3.60	.1	59	109	22

CONNEALY PACKER 547	FELTONS MEAT PACKER 62	ULTRASOUND
CONNEALY ARSENAL 2174	BESTRELLE OF CONANGA 539	
BLACK RICE OF CONANGA 9529	CONNEALY FORWARD	%IMF / Ratio
	BLACK RITA OF CONANGA 123	4.81 / 93
SCHAUER RIGHT TIME 828	LEACHMAN RIGHT TIME	Ribeye / Ratio
DEEP CREEK RIGHT NELLE 246	CARLSON 0016 FOREVER LADY603	
KMD MISS SUPER X 745 36	MC BEE WMR SUPER X 745	12.3 / 94
	KMD NELLE 192	

Scrotal: 39 Pelvic: 180 Frame Score: 6

10-9-15: Calf Wt.: 794 lbs. Cow Wt.: 1375 lbs. Weaning Wt./Body Wt.: 58%

- Dam's WW Ratio: 1 @ 101
- Granddam has WW of 8 @ 105
- Recommended for heifers
- Smooth shoulder and extra length makes 530 an excellent calving ease prospect.
- 246 is a picture perfect grand daughter of Leachman Right Time. Easy fleshing, wedge shaped and perfect uddered.



Lot 37 DEEP CREEK UPROAR 559

BD: 01/28/2015 Reg No: 18312295 Brand: 559

Act. BW	205 Adj.	Ratio	365 Adj.	Ratio	ADG	BW	WW	YW	Milk
78	702	100	1252	100	3.40	2.1	63	114	21

SITZ UPWARD 307R	CONNEALY ONWARD	ULTRASOUND
BRUIN UPROAR 0070	SITZ HENRIETTA PRIDE 81M	
FALCON BLACKBIRD 6071	CONNEALY DATELINE	%IMF / Ratio
	VERMILION BLACKBIRD 5044	4.25 / 82
WMR TIMELESS 458	LEACHMAN RIGHT TIME 338-5605	Ribeye / Ratio
DEEP CREEK TIMELESS LASS 240	WMR BLACKCAP 521	
KMD LASS 528	K C F BENNETT TOTAL	12.2 / 93
	KMD MISS NEUTRON 377 330	

Scrotal: 36 Pelvic: 176 Frame Score: 5.5

10-9-15: Calf Wt.: 758 lbs. Cow Wt.: 1325 lbs. Weaning Wt./Body Wt.: 57%

- Dam's WW Ratio: 2 @ 100
- Dam has IMF of 1 @ 131, REA of 1 @ 112
- Granddam has WW of 8 @ 103 *Pathfinder
- Another nice Uproar son. Moderate made and thick.



Lot 38 DEEP CREEK GAME TIME 524

BD: 02/08/2015 Reg No: 18312344 Brand: 524

Act. BW	205 Adj.	Ratio	365 Adj.	Ratio	ADG	BW	WW	YW	Milk
79	731	104	1248	100	3.20	1.7	55	92	24

GDAR GAME DAY 449	BOYD NEW DAY 8005	ULTRASOUND
GMAR GAME TIME A018	G D A R MISS WIX 474	
JVC ALTUNE OF CONANGA 803	CONNEALY LEAD ON	%IMF / Ratio
	ALTUNE OF CONANGA 6104	7.25 / 139
DEEP CREEK RIPTIDE 129	DEEP CREEK ROCK STAR 935	Ribeye / Ratio
DEEP CREEK RIP BLACKBIRD 350	KMD LASS 528	
DEEP CREEK CB BLACKBIRD 003	21AR COAL BANK C014	13.4 / 102
	DEEP CREEK MP BLACKBIRD 819	

Scrotal: 37 Pelvic: 165 Frame Score: 5.5

10-9-15: Calf Wt.: 738 lbs. Cow Wt.: 1085 lbs. Weaning Wt./Body Wt.: 68%

- Dam's WW Ratio: 1 @ 104
- Recommended for heifers
- 524 is the first son to sell out of our herd bull, GMAR Game Time. Smooth shoulder and a big hip out of a first calf Deep Creek Rip Tide daughter.

Thank you for your interest in our program

Lot 39 DEEP CREEK ARSENAL 538

BD: 01/16/2015		Reg No: 18312328		Brand: 538					
Act. BW	205 Adj.	Ratio	365 Adj.	Ratio	ADG	BW	WW	YW	Milk
80	715	102	1254	100	3.33	2.1	59	98	25

CONNEALY PACKER 547 CONNEALY ARSENAL 2174 BLACK RICE OF CONANGA 9529	FELTONS MEAT PACKER 62 BESTRELLE OF CONANGA 539 CONNEALY FORWARD BLACK RITA OF CONANGA 123 HERO 6267 OF R R 2418 DEEP CREEK TOTAL LASS 701 ELI OF VOLGA 0720 DEEP CREEK RO BLACKBIRD 507	ULTRASOUND %IMF / Ratio 5.54 / 107 Ribeye / Ratio 11.1 / 85
--	---	--

Scrotal: 37	Pelvic: 180	Frame Score: 5.5
10-9-15: Calf Wt.: 790 lbs.	Cow Wt.: 1225 lbs.	Weaning Wt./Body Wt.: 64%

- Dam's WW Ratio: 2 @ 102
- Dam has IMF of 1 @ 157
- Granddam has WW of 4 @ 103
- Maternal brother sold in 2015 to Ronnie and Peggy Wetz.

Lot 40 DEEP CREEK ROLLING STONE 570

BD: 03/11/2015		Reg No: 18312260		Brand: 570					
Act. BW	205 Adj.	Ratio	365 Adj.	Ratio	ADG	BW	WW	YW	Milk
80	776	111	1246	99	2.94	1.1	58	89	24

DEEP CREEK ROCK N ROLL 123 DEEP CREEK ROLLING STONE 324 DEEP CREEK CEDAR LASS 909	DEEP CREEK ROCK STAR 935 DEEP CREEK FF BLOSSOM 417 DEEP CREEK CEDAR 709 DEEP CREEK 878 LASS 302 HERO 6267 OF R R 2418 H A RITO BLACKCAP 9038 V D A R NEW TREND 315 NACOMA OF S A R 338	ULTRASOUND %IMF / Ratio 3.92 / 76 Ribeye / Ratio 11.0 / 85
---	---	---

Scrotal: 37	Pelvic: 165	Frame Score: 5.5
10-9-15: Calf Wt.: 794 lbs.	Cow Wt.: 1520 lbs.	Weaning Wt./Body Wt.: 52%

- Dam's WW Ratio: 7 @ 98
- Recommended for heifers
- Deep Creek Rolling Stone was a real standout that sold in our 2014 sale to Tommy Simons. Our replacement pen has some outstanding Rolling Stone daughters in it. Use 570 to add maternal traits.
- 715 has three daughters retained in herd.



Lot 41 DEEP CREEK ROLLING STONE 567

BD: 01/30/2015		Reg No: 18312262		Brand: 567					
Act. BW	205 Adj.	Ratio	365 Adj.	Ratio	ADG	BW	WW	YW	Milk
80	674	96	1212	97	3.32	1.0	48	77	22

DEEP CREEK ROCK N ROLL 123 DEEP CREEK ROLLING STONE 324 DEEP CREEK CEDAR LASS 909	DEEP CREEK ROCK STAR 935 DEEP CREEK FF BLOSSOM 417 DEEP CREEK CEDAR 709 DEEP CREEK 878 LASS 302 SITZ ALLIANCE 6595 EXT OF CONANGA 6790 THREE TREES ROCK ON 0059 B&C 683 OF 3005-423	ULTRASOUND %IMF / Ratio 5.96 / 115 Ribeye / Ratio 11.4 / 87
---	--	--

Scrotal: 37	Pelvic: 180	Frame Score: 5.5
10-9-15: Calf Wt.: 766 lbs.	Cow Wt.: 1385 lbs.	Weaning Wt./Body Wt.: 55%

- Dam's WW Ratio: 7 @ 105 *Pathfinder
- Dam has REA of 7 @ 104
- Granddam has WW of 8 @ 102 *Pathfinder
- Recommended for heifers
- A real calving ease specialist. 567 has a long neck and smooth shoulder.
- 702 has been a real constestant producer. Four sons have sold through our sale and two daughters have been retained in herd.
- Maternal brothers have sold to Charles and Rosalie Tennis, Shane Grubl, and Allan Knipping.

Lot 42 DEEP CREEK EXCITEMENT 505

BD: 01/15/2015		Reg No: 18312265		Brand: 505					
Act. BW	205 Adj.	Ratio	365 Adj.	Ratio	ADG	BW	WW	YW	Milk
61	713	102	1209	97	3.07	.1	63	108	19

BASIN EXPEDITION R156 BASIN EXCITEMENT BASIN LADY 5532 AK	GARDENS EXPEDITION BASIN PRIMROSE LADY 5287 VERMILION PAYWEIGHT J847 BASIN LADY 306E DEEP CREEK ROCK STAR 935 KMD LASS 528 BALDRIDGE NEBRASKA 901 VERMILION LASS 1129	ULTRASOUND %IMF / Ratio 5.58 / 107 Ribeye / Ratio 13.6 / 104
---	--	---

Scrotal: 36	Pelvic: 180	Frame Score: 6
10-9-15: Calf Wt.: 756 lbs.	Cow Wt.: 1195 lbs.	Weaning Wt./Body Wt.: 63%

- Dam's WW Ratio: 1 @ 102
- Recommended for heifers
- Twin to a heifer
- Six generations of calving ease bred into this Excitement son. 505 is very smooth shouldered with a nice head. Top 10% of the breed in WW and YW.

Lot 43 DEEP CREEK UPROAR 556

BD: 01/22/2015		Reg No: 18321619		Brand: 556					
Act. BW	205 Adj.	Ratio	365 Adj.	Ratio	ADG	BW	WW	YW	Milk
75	663	95	1207	97	3.36	.9	58	105	21

SITZ UPWARD 307R BRUIN UPROAR 0070 FALCON BLACKBIRD 6071	CONNEALY ONWARD SITZ HENRIETTA PRIDE 81M CONNEALY DATELINE VERMILION BLACKBIRD 5044 LEACHMAN RIGHT TIME 338-5605 WMR BLACKCAP 521 K C F BENNETT TOTAL DEEP CREEK RO LAVICE 506	ULTRASOUND %IMF / Ratio 3.15 / 61 Ribeye / Ratio 12.6 / 96
--	---	---

Scrotal: 35	Pelvic: 180	Frame Score: 5.5
10-9-15: Calf Wt.: 722 lbs.	Cow Wt.: 1345 lbs.	Weaning Wt./Body Wt.: 54%

- Dam's WW Ratio: 1 @ 95
- Granddam has WW of 7 @ 105 *Pathfinder
- Recommended for heifers
- A real moderate framed, stout made Uproar.

Lot 44 DEEP CREEK CUTBANK 564

BD: 03/11/2015 Reg No: 18312349 Brand: 564

Act.	BW	205 Adj.	Ratio	365 Adj.	Ratio	ADG	BW	WW	YW	Milk
83	790	113	1189	96	2.49	1.8	52	81	26	

DEEP CREEK RIPTIDE 129	DEEP CREEK ROCK STAR 935	ULTRASOUND
DEEP CREEK CUTBANK 312	KMD LASS 528	
DEEP CREEK 878 VIXEN 515	BON VIEW NEW DESIGN 878	%IMF / Ratio
	B&C 979 NEW TREND 124-3079	4.42 / 85
	MORE OF VOLGA 0149	Ribeye / Ratio
ELI OF VOLGA 0720	EILEEN OF VOLGA 2095	12.4 / 95
DEEP CREEK ELI LASS 035	BON VIEW NEW DESIGN 878	
DEEP CREEK 878 LASS 302	DEEP CREEK C LASS 634	

Scrotal: 36 Pelvic: 180 Frame Score: 5.5

10-9-15: Calf Wt.: 808 lbs. Cow Wt.: 1365 lbs. Weaning Wt./Body Wt.: 59%

- Dam's WW Ratio: 2 @ 115
- Moderate made and full of muscle. 564 is a smooth, easy moving Cutbank.

Lot 45 DEEP CREEK WOODROW 574

BD: 02/02/2015 Reg No: 18312323 Brand: 574

Act.	BW	205 Adj.	Ratio	365 Adj.	Ratio	ADG	BW	WW	YW	Milk
80	728	104	1194	96	2.88	2.5	60	87	27	

DEEP CREEK WILLSON 906	HERO 6267 OF R R 2418	ULTRASOUND
DEEP CREEK WOODROW 109	DEEP CREEK TOTAL LASS 701	
DEEP CREEK CO ERINTHIA 510	K C F BENNETT COALITION SCC	%IMF / Ratio
	DEEP CREEK VRD 208	7.47 / 144
WMR TIMELESS 458	LEACHMAN RIGHT TIME 338-5605	Ribeye / Ratio
DEEP CREEK TL BREEZE 239	WMR BLACKCAP 521	12.7 / 97
DEEP CREEK BANDO BREEZE 803	H S A F BANDO 1961	
	MILLARS BALERICA BREEZE 602	

Scrotal: 37 Pelvic: 180 Frame Score: 5.5

10-9-15: Calf Wt.: 780 lbs. Cow Wt.: 1255 lbs. Weaning Wt./Body Wt.: 62%

- Dam has WW of 2 @ 110
- Dam has IMF of 2 @ 132
- The only son of Deep Creek Woodrow 109 in the sale. 574 is a nice made, highly maternal bull.
- 239 is a super, sweet cow who has one daughter retained in herd.

Lot 46 DEEP CREEK ACCELERATE 510

BD: 01/14/2015 Reg No: 18312292 Brand: 510

Act.	BW	205 Adj.	Ratio	365 Adj.	Ratio	ADG	BW	WW	YW	Milk
71	735	105	1132	91	2.45	1.2	59	91	29	

WMR TIMELESS 458	LEACHMAN RIGHT TIME 338-5605	ULTRASOUND
RATHBUN ACCELERATE Z523	WMR BLACKCAP 521	
RATHBUN HEIRESS X686	BOYD NEW DAY 8005	%IMF / Ratio
	RATHBUN HEIRESS M677	6.19 / 119
CONNEALY REFLECTION	BON VIEW NEW DESIGN 878	Ribeye / Ratio
DEEP CREEK R SUPREME 311	HAPPY GRILL OF CONANGA 6260	12.1 / 92
DEEP CREEK CB SUPREME 113	21AR COAL BANK C014	
	DEEP CREEK MP SUPREME 923	

Scrotal: 34 Pelvic: 180 Frame Score: 5

10-9-15: Calf Wt.: 700 lbs. Cow Wt.: 1205 lbs. Weaning Wt./Body Wt.: 58%

- Dam's WW Ratio: 1 @ 105
- Recommended for heifers
- Nice made, moderate, calving ease bull that you could use on your heifers for many years.

Lot 47 DEEP CREEK GAME TIME 518

BD: 01/17/2015 Reg No: 18312337 Brand: 518

Act.	BW	205 Adj.	Ratio	365 Adj.	Ratio	ADG	BW	WW	YW	Milk
72	717	102	1155	92	2.72	2.1	53	81	25	

GDAR GAME DAY 449	BOYD NEW DAY 8005	ULTRASOUND
GMAR GAME TIME A018	G D A R MISS WIX 474	
JVC ALTUNE OF CONANGA 803	CONNEALY LEAD ON	%IMF / Ratio
	ALTUNE OF CONANGA 6104	5.15 / 99
CROOK MT WINDY 17	CROOK MT REALLY WINDY 104	Ribeye / Ratio
DEEP CREEK W BLACKBIRD 308	REVOLUTION 231 OF CROOK MT	11.3 / 86
DEEP CREEK R BLACKBIRD 143	CONNEALY REFLECTION	
	DEEP CREEK MP BLACKBIRD 818	

Scrotal: 38 Pelvic: 180 Frame Score: 5.5

10-9-15: Calf Wt.: 756 lbs. Cow Wt.: 1125 lbs. Weaning Wt./Body Wt.: 67%

- Dam's WW Ratio: 1 @ 102
- Granddam has WW of 3 @ 107
- 308 is a maternal sister to Lot 13, Deep Creek Upload 560.



Watch & bid online for FREE at

DVAuction
Broadcasting Real Time Auctions

Buying online is as easy as 1, 2, 3...

1. Create an account at www.dvauction.com under the "register" tab
2. Apply for bidding approval by clicking on the "details" tab at least 24 hours prior to the auction-a DV representative will notify you once you have been approved
3. Tune in for the sale and make your purchases!

High speed internet is required for bidding-be sure to check the lag-time monitor in the top left corner to ensure real-time broadcasts.

Proxy bidding-register a proxy bid & let our system represent your bid while you're away. Look for the "proxy bid" tab on the auction listing, and fill in your maximum bids. We'll handle the rest!

Having troubles? You can type a message to the operator or call (402) 474-5557.

Two Year Old Bulls

Lot 48 DEEP CREEK SUPERIOR 450

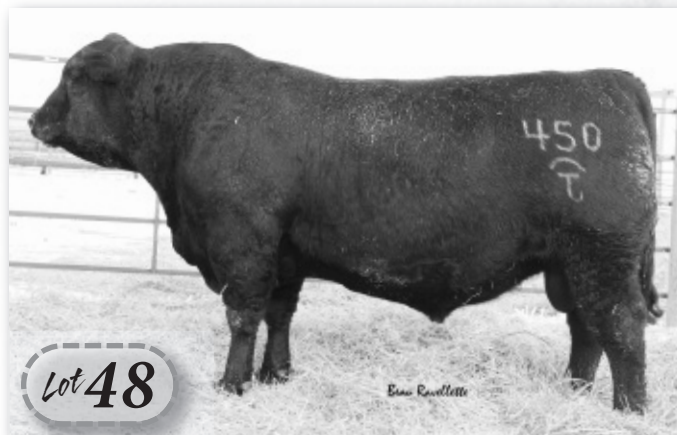
BD: 03/26/2014 Reg No: 17970453 Brand: 450

Act. BW	205 Adj.	Ratio	365 Adj.	Ratio	BW	WW	YW	Milk
95	767	111	1314	108	4.2	49	89	27

GDAR GAME DAY 449 SITZ SUPERIOR 10971 SITZ RLS EISA EVERGREEN 5279	BOYD NEW DAY 8005 G D A R MISS WIX 474 CONNEALY ONWARD SITZ RLS EISA EVERGREEN 4451 O C C GREAT PLAINS 943G MA & PA BLACKBIRD 858M CROOK MT HIGHROLLER 162 D RITA LASS 338	ULTRASOUND %IMF / Ratio 6.21 / 109 Ribeye / Ratio 12.4 / 97
--	---	--

Scrotal: 41 Pelvic: 221 Frame Score: 5.5

- 1/18/16 Weight: 1,800 lbs.
- Dam has WW of 2 @ 111
- Dam has IMF of 1 @ 109
- A real Herd Bull! 450 has as much thickness and capacity as you could put in a bull! We used him clean-up on a group of our first calf heifers last year for about two weeks. He traveled very well and got them covered in fine fashion.



Lot 49 DEEP CREEK BUCKIT 477

BD: 03/29/2014 Reg No: 17970400 Brand: 477

Act. BW	205 Adj.	Ratio	365 Adj.	Ratio	BW	WW	YW	Milk
77	781	113	1298	106	1.7	38	60	19

COEBURN OF WYE UMF 9154 BUCKIT OF VOLGA W157 BARBARA OF COMO W106	BONANZA OF WYE COPELAND OF WYE UMF 7546 N BAR EMULATION EXT LARA OF VOLGA 9653 B/R NEW DESIGN 036 BON VIEW GAMMER 85 V D A R NEW TREND 124 B3R 813 KAREN 30136	ULTRASOUND %IMF / Ratio 4.99 / 87 Ribeye / Ratio 12.6 / 98
---	---	---

Scrotal: 43 Pelvic: 238 Frame Score: 6

- 1/18/16 Weight: 1,725 lbs.
- Dam has WW of 8 @ 105
- One of my favorite two year olds. 477 is a very docile bull that is always waiting by the gate for you. Good thickness and real smooth.
- Maternal brother to the \$14,000 high selling bull in 2014, Deep Creek Cutbank, who was purchased by Charles and Rosalie Tennis.



Maternal Brother sold to
Charles & Rosalie Tennis in 2014!



Lot 50

Bean Ravellette

Lot 50 DEEP CREEK BUCKIT 471

BD: 03/06/2014		Reg No: 17970419		Brand: 471	
Act. BW	205 Adj.	Ratio	365 Adj.	Ratio	BW WW YW Milk
80	664	96	1248	102	1.8 33 64 10

COEBURN OF WYE UMF 9154	BONANZA OF WYE	ULTRASOUND
BUCKIT OF VOLGA W157	COPELAND OF WYE UMF 7546	
BARBARA OF COMO W106	N BAR EMULATION EXT	%IMF / Ratio
	LARA OF VOLGA 9653	6.83 / 119
BALDRIDGE KABOOM K243 KCF	JAUER 353 TRAVELER 589 27	Ribeye / Ratio
BALDRIDGE FOREVER LADY S296	PLEASANTA OF CONANGA 736	
BALDRIDGE FOREVER LADY M535	SITZ TRAVELER 5556	12.3 / 95
	BALDRIDGE FOREVER LADY 230J	
Scrotal: 41	Pelvic: 234	Frame Score: 6

- 1/18/16 Weight: 1,755 lbs.
- Dam has WW of 8 @ 98
- Dam has IMF of 4 @ 106, REA of 4 @ 102
- 471 is a real clean made bull with excellent rib shape and thickness.
- Maternal brother was purchased by Charlie Thompson, Ft. Pierre, SD in 2014.
- 6296 is a big volume cow that has a lot of capacity and is very easy fleshing. Five daughters retained in herd.



Maternal Brother sold to Charlie Thompson in 2014!



Lot 51 DEEP CREEK BUCKIT 475

BD: 03/27/2014		Reg No: 17970416		Brand: 475				
Act. BW	205 Adj.	Ratio	365 Adj.	Ratio	BW	WW	YW	Milk
105	751	108	1262	103	5.9	37	64	18
COEBURN OF WYE UMF 9154		BONANZA OF WYE		ULTRASOUND				
BUCKIT OF VOLGA W157		COPELAND OF WYE UMF 7546		%IMF / Ratio				
BARBARA OF COMO W106		N BAR EMULATION EXT		6.13 / 107				
		LARA OF VOLGA 9653		Ribeye / Ratio				
CONNEALY REFLECTION		BON VIEW NEW DESIGN 878		12.6 / 98				
DEEP CREEK R FOREVERLADY 139		HAPPY GRILL OF CONANGA 6260						
DEEP CREEK FOREVER LADY 828		S S OBJECTIVE T510 OT26						
		BALDRIDGE FOREVER LADY L23						
Scrotal: 42			Pelvic: 266		Frame Score: 7			

- 1/18/16 Weight: 1,925 lbs.
- Dam has WW of 3 @ 104
- One big, stout son of gun. 475 is a gentle giant that is sure to add pounds to your next calf crop.
- Maternal brother to Lot 8, Deep Creek Bullock 548.



Lot 52 DEEP CREEK SUPERIOR 449
 BD: 03/26/2014 Reg No: 17970406 Brand: 449

Act. BW	205 Adj.	Ratio	365 Adj.	Ratio	BW	WW	YW	Milk
79	694	100	1139	93	2.4	50	91	20

GDAR GAME DAY 449 SITZ SUPERIOR 10971 SITZ RLS EISA EVERGREEN 5279	BOYD NEW DAY 8005 G D A R MISS WIX 474 CONNEALY ONWARD SITZ RLS EISA EVERGREEN 4451 ROCKN D AMBUSH 1531 STEVENSON BLACKBIRD H601 V D A R BANDO 701 B&C 324 OF IDEAL 0160-908	ULTRASOUND %IMF / Ratio 5.89 / 103 Ribeye / Ratio 12.3 / 96
--	---	--

Scrotal: 43 Pelvic: 221 Frame Score: 5.5

- 1/18/16 Weight: 1,635 lbs.
- Dam has WW of 9 @ 91
- Moderate framed with good length and thickness.
- 507 is a real clean made, moderate framed cow with a near perfect udder. Two daughters retained in herd.

Lot 53 DEEP CREEK SUPERIOR 453
 BD: 03/29/2014 Reg No: 17970455 Brand: 453

Act. BW	205 Adj.	Ratio	365 Adj.	Ratio	BW	WW	YW	Milk
76	677	98	1206	99	2.2	57	109	20

GDAR GAME DAY 449 SITZ SUPERIOR 10971 SITZ RLS EISA EVERGREEN 5279	BOYD NEW DAY 8005 G D A R MISS WIX 474 CONNEALY ONWARD SITZ RLS EISA EVERGREEN 4451 NICHOLS EXTRA K205 VERMILION LADY 2888 BALDRIDGE KABOOM K243 KCF BALDRIDGE FOREVER LADY M535	ULTRASOUND %IMF / Ratio 5.16 / 90 Ribeye / Ratio 11.5 / 90
--	---	---

Scrotal: 39 Pelvic: 208 Frame Score: 5

- 1/18/16 Weight: 1,650 lbs.
- Dam has WW of 2 @ 104
- A Superior son that is real moderate made with an extreme thick top. 453 is chucked full of muscle and is extremely wide based.

Lot 54 DEEP CREEK IMPRESSION 467
 BD: 04/08/2014 Reg No: 17970458 Brand: 467

Act. BW	205 Adj.	Ratio	365 Adj.	Ratio	BW	WW	YW	Milk
77	765	100	1149	100	2.0	35	65	28

CONNEALY IMPRESSION CONNEALY IMPRESSION 540C ALEENA OF CONANGA 1164	CONNEALY REFLECTION PEARL PAMMY OF CONANGA 194 BOYD NEW DAY 8005 ALINE OF CONANGA 5072 CEDRIC OF WYE UMF 8998 BLACKBIRD OF VOLGA 0409 ASAPH OF VOLGA 0522 LUCY OF VOLGA 9527	ULTRASOUND %IMF / Ratio 4.35 / 100 Ribeye / Ratio 12.5 / 100
---	---	---

Scrotal: 41 Pelvic: 234 Frame Score: 5.5

- 1/18/16 Weight: 1,595 lbs.
- Dam has WW of 3 @ 105
- Nice head, smooth shoulder and deep flanked. Good solid made bull.

Lot 55 DEEP CREEK BUCKIT 473
 BD: 03/15/2014 Reg No: 17970413 Brand: 473

Act. BW	205 Adj.	Ratio	365 Adj.	Ratio	BW	WW	YW	Milk
76	689	99	1092	90	1.5	31	55	19

COEBURN OF WYE UMF 9154 BUCKIT OF VOLGA W157 BARBARA OF COMO W106	BONANZA OF WYE COPELAND OF WYE UMF 7546 N BAR EMULATION EXT LARA OF VOLGA 9653 BASIN MAX 602C LEACHMAN LASS 5014 K C F BENNETT COALITION SCC DEEP CREEK FORECAST LASS 206	ULTRASOUND %IMF / Ratio 7.23 / 126 Ribeye / Ratio 12.4 / 97
---	--	--

Scrotal: 43 Pelvic: 234 Frame Score: 5

- 1/18/16 Weight: 1,570 lbs.
- Dam has WW of 5 @ 102
- Dam has IMF of 4 @ 113, REA of 4 @ 99
- Recommended for heifers
- Nice made Buckit son that is backed by a tremendous cow.
- Maternal brothers have sold to Lerhkamp Livestock in 2013 and Charles and Rosalie Tennis in 2014.

Lot 56 DEEP CREEK BUCKIT 474
 BD: 03/26/2014 Reg No: 17970417 Brand: 474

Act. BW	205 Adj.	Ratio	365 Adj.	Ratio	BW	WW	YW	Milk
77	681	98	1117	92	1.0	34	60	15

COEBURN OF WYE UMF 9154 BUCKIT OF VOLGA W157 BARBARA OF COMO W106	BONANZA OF WYE COPELAND OF WYE UMF 7546 N BAR EMULATION EXT LARA OF VOLGA 9653 S S TRAVELER 6807 T510 S S MISS RITA R011 7R8 SITZ ALLIANCE 6595 ALC BALDRIDGE FOREVERLDY20G	ULTRASOUND %IMF / Ratio 5.36 / 94 Ribeye / Ratio 13.7 / 107
---	--	--

Scrotal: 40 Pelvic: 252 Frame Score: 5.5

- 1/18/16 Weight: 1,670 lbs.
- Dam has WW of 6 @ 98
- Recommended for heifers
- Very deep sided and gentle made bull.
- Maternal brother in 2014 sold to Tony Geditz, Ipswich, SD.

Lot 57 DEEP CREEK BUCKIT 478
 BD: 04/08/2014 Reg No: 17970438 Brand: 478

Act. BW	205 Adj.	Ratio	365 Adj.	Ratio	BW	WW	YW	Milk
76	663	96	1100	90	1.7	32	58	18

COEBURN OF WYE UMF 9154 BUCKIT OF VOLGA W157 BARBARA OF COMO W106	BONANZA OF WYE COPELAND OF WYE UMF 7546 N BAR EMULATION EXT LARA OF VOLGA 9653 BON VIEW NEW DESIGN 878 HAPPY GRILL OF CONANGA 6260 WOODHILL FORESIGHT MISS J T SKYMER 272	ULTRASOUND %IMF / Ratio 5.26 / 92 Ribeye / Ratio 12.0 / 94
---	--	---

Scrotal: 42 Pelvic: 221 Frame Score: 5.5

- 1/18/16 Weight: 1,610 lbs.
- Dam has WW of 3 @ 96
- Another nice Buckit son. Good length and great disposition.

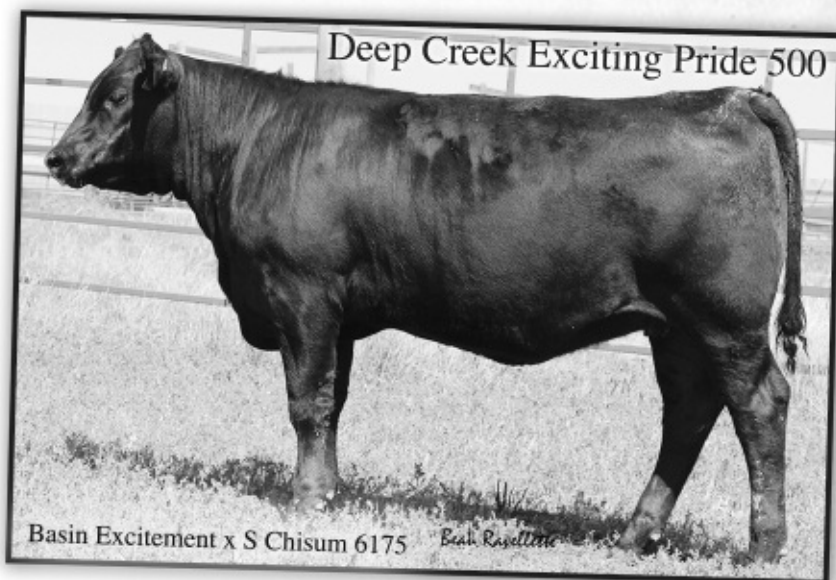
Thank you to our past Bidders and Buyers!

Thank you to Ravellette Cattle

for their purchase of the 2015 pick of the heifers!

The heifer was purchased
at the 2015 SD Angus
Association's Elite Female Sale
held in conjunction with
the 2015 SD Angus Tour.

Thank you to everyone
who supported the sale and tour.



Elite Female Sale

Alleman Ranch

Guest Consignment of Commercial Angus Replacement Heifers

CLINT & LAURA ALLEMAN, HAYES, SD

45 head of home-raised Angus replacement heifers. For years, the Alleman family has bought sale topping bulls out of the Deep Creek Angus program. These heifers showcase the best of those genetics. They are fancy, front-end cow makers. The heifers have been on a full health program, are bangs vaccinated, tagged and freeze branded to match.

Health on Heifers: Birth – Alpha 7

Branding – Inforce 3

Ultrabac 7

Bovi Sheild Gold 5

Fall – Vista Once

Vision 7/Somnus

Cyonara Pour On

Fall Booster – Vista Once

Vision 7/Somnus

Agrimectin Pour On

*For more information contact:
Clint Alleman (605)567-3599 or
T.J. Gabriel (605)567-3327*



Labrier Ranch

Guest Consignment of Commercial Angus Replacement Heifers

LARRY LABRIER FAMILY, MURDO, SD

200 head of home-raised Angus replacement heifers. These heifers will be heavily influenced by Deep Creek and Millar Angus genetics. They will be easily fleshing, maternal cow makers. An outstanding opportunity to buy from a reputation ranch. The heifers have been on a full health program and are bangs vaccinated.

Health on heifers: May - Vista Once
Branding Time - 7 Way with Blackleg
Fall - Vista Once
7 Way with Blackleg
Poured

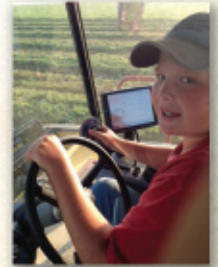
*For more information contact: Larry Labrier (605)669-2606 or
T.J. Gabriel (605)567-3327*



2015 SD Angus Tour



*A special Thank You to all
who attended our tour stop!*





FIRST CLASS MAIL
U.S. POSTAGE
PAID
PHILIP, SD
PERMIT NO. 20

T.J. & Jeanine Gabriel and Family
23940 200th Street
Midland, SD 57552

Join us!

Annual Bull Sale • 12:00 p.m. MT
Tuesday, February 23, 2016
Philip Livestock Auction, Philip, SD

Address Service Requested



“Where quality runs Generations Deep”