

Ladies in *Black*  
Female Sale

Friday, October 30, 2015 • 1pm  
at Grandview Angus Ranch, Rapid City, SD



Dan & Amy Lewis – 605.391.7090

Jamie Lewis – 605.391.6399

Jake Lewis – 605.430.3312

Rapid City, SD • [www.GrandviewAngus.com](http://www.GrandviewAngus.com)



Don & Tami Ravellette – 605.685.5147

Beau & Mary Ravellette – 605.685.8155

Philip, SD



# Ladies in **Black** Female Sale

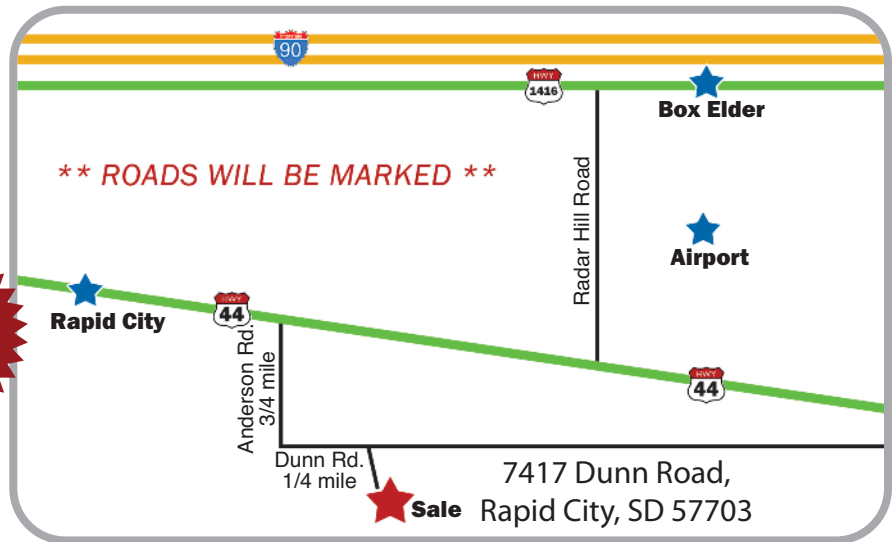
**FRIDAY,  
OCTOBER 30, 2015**

Lunch 12:00 p.m. • Sale 1:00 p.m. MST  
at Grandview Angus Ranch, Rapid City, SD

*Direction: Hwy 44 turn south on Anderson Road 3/4 mile, then turn east on Dunn Road 1/4 mile,  
ROAD WILL BE MARKED.*

## 86 Angus Lots

- 24 Spring bred cows
- 15 Spring bred heifers
- 26 Fall cow/calf pairs
- 20 Heifer calves
- 1 Pick of the fall open heifers



### SALE DAY PHONES

Dan Lewis.....Cell 605.391.7090  
 Jamie Lewis .....Cell 605.391.6399  
 Beau Ravellette .....Cell 605.685.8155  
 Don Ravellette .....Cell 605.685.5147

### AUCTIONEER

Doug Dietterle .....605.580.1362

### SPECIAL GUESTS

Paul Dykstra, *Certified Angus Beef* .....308.874.2203  
 Larry Gran, *Zoetis*.....605.641.3254

### TERMS AND CONDITIONS

All purchases are to be settled for sale day. Cattle will sell under the suggested terms and conditions of the American Angus Association. You may load out cattle after the completion of the sale and upon settlement in full.

### SUPPLEMENTAL INFORMATION

A supplemental sheet will be available sale day with any corrections to the information in the catalog. Announcements from the block take precedence over sale book information.

### HERD HEALTH

All cattle will be accompanied by proper health certificates and brand papers for immediate shipment. Pregnancy information determined by ultrasound.

### SALE DAY REPRESENTATIVES

Parker Frederick, *Sale Consultant* .....254.413.2420  
 Vern Frey, *Sale Consultant*.....701.721.0344  
 Dan Piroutek, *Tri-State Livestock News* .....605.685.4556  
 Rod Geppert, *Angus Journal* .....605.295.3673  
 Jim Geiss, *Western Livestock Reporter* .....970.590.0500  
 Marc Hotchkiss, *Livestock Link*.....605.490.1513

### LIABILITY

All persons who attend this sale do so at their own risk, legal or otherwise, for their safety and for the behavior of the animals. The owners, sale management firm, sale facility and sale staff assumes no liability for property loss or any accident that may occur.

### VIEWING OF THE CATTLE

Cattle may be viewed at the ranch anytime prior to sale. Call Dan 605-391-7090 or Jamie 605-391-6399.

### TRUCKING

Truckers believed to be reliable will be available to assist you in shipping your purchases.



**CATALOG PRODUCED BY: RPI PROMOTIONS**  
 A Division of Ravellette Publications, Inc.  
 PO Box 788 • Philip, SD 57567 • (605)859-2516  
 Don Ravellette (605)685-5147 • Beau Ravellette (605)685-8155  
 ads@pioneer-review.com • www.RPIpromotions.com

**DVAuction**  
*Broadcasting Real-Time Auctions*

Never Miss An Auction Again! Watch & Bid online for FREE!

**Visit [www.DVAuction.com](http://www.DVAuction.com)  
and Register Today!**

For General Questions Please Contact Our Office:  
 (402) 316-5460 or support@dvauction.com

## *Dear Friends,*

It is with excitement, pride and pleasure that Grandview Angus is able to invite you all to our very first all female sale, "Ladies in Black"! We are thrilled to host our first female sale at our home place near Rapid City, SD. We would like to welcome back those that have bought cattle from us in the past as well as new faces. This compelling line up for the sale will include some of the top cut females from our program and the Angus breed.

These ladies are from the heart of our herd and we encourage you to analyze their phenotype, data, and pedigree. Pedigrees encompassed in this sale come from years of meticulous selections and have proven performance. You'll see complete and balanced cows and heifers that are maternally driven. We stand behind the excellent quality in all of our females. The charming females presented to you will include spring bred cows and heifers, fall cow/calf pairs, heifer calves, and a pick of the fall open heifers. This is a great opportunity to gain quality females for your own program whether you are just starting out or are wanting to add great genetics to your existing herd.

Take the time to study Lots 55 & 56 in this catalog. We are offering two proven highly maternal donor cows that we believe will enhance any cowherd.

They always look better in person, so come on down and see what "Ladies in Black" has to offer! We're sure you'll like what you see at the sale and of course, if you have any questions or concerns please let us know.

Sincerely,  
Grandview Angus

## *Welcome,*

Our family welcomes you to the "Ladies In Black" Angus female sale. The genetics that have been compiled in this sale book are outstanding. There are proven genetics from long standing cows and some of the freshest, highly sought after sired females within the industry. As you look through the catalog, and study the performance numbers and phenotype, I hope you are as amazed as we were when picking the offering.

The bred females and fall pairs have been mated to make what we feel will be very productive genetics for any herd. Many cows offered in this sale have withstood the test of time within our herd and produced some outstanding offspring. The young females offered are out of some of the top producing cows that will continue to work for us. We give a special thanks to Dan and Amy Lewis and family for the opportunity to be a part of this sale. We invite you to the sale on Friday, October 30th, have lunch and look at some great Angus cattle. Please don't hesitate to call if you have any questions.

Sincerely,  
Ravellette Cattle



Video of sale cattle will be online on October 15, 2015 at [www.GrandviewAngus.com](http://www.GrandviewAngus.com) and [www.RPIpromotions.com](http://www.RPIpromotions.com)





Lot  
**1**

**JL PRINCESS 825**

BD: 01/15/2015      Cow: 18186237      Tattoo: 825

GEIS BALOO 13'08  
KG HIGH REGARD 2073      AAA 17399875  
KG MISS WIX 0680

HF KODIAK 5R  
KBJ QUEEN 461L  
CONNEALY FULL FREIGHT  
KG MISS WIX 6854

CONNEALY CONSENSUS 7229  
DL PRINCESS 1091      AAA 16968948  
JL PRINCESS 689

CONNEALY CONSENSUS  
BLUE LILLY OF CONANGA 16  
SITZ ALLIANCE 9800  
KG PRINCESS 6302

CED	BW	WW	YW	Milk	Marb	REA	Fat	SW	SB
11	.8	56	95	27	.07	.26	.064	75.33	56.37

zoetis Percent Rank

CED	BW	WW	YW	RFI	DMI	YH	SC	Doc	HP	CEM	Milk	MW	MH	CW	Marb	RE	Fat	Tend
50	30	54	64	78	78	84	57	28	89	47	16	91	62	77	98	86	89	17

- BW: 70 lbs
- Been a standout heifer all year; just combines it all in one great package
- One of the first heifers to sell out of the \$70,000 High Regard bull
- Dam is an excellent Consensus dam
- Dam's Ratios - BW 2 @ 97, WW 2 @ 104, YW 1 @ 102, IMF 1 @ 107

*Outcross genetics out of a  
Consensus female here!*



LOT 1 SIRE: KG HIGH REGARD 2073 - AAA 17399875



Lot  
**2**

**DL BRIDGETT 1185**

BD: 01/21/2015

Cow: 18186253

Tattoo: 1185

RITO 707 OF IDEAL 3407 7075  
S A V RESOURCE 1441 AAA +17016597  
S A V BLACKCAP MAY 4136

R R RITO 707  
IDEAL 3407 OF 1418 076  
S A V 8180 TRAVELER 004  
S A V MAY 2397

SITZ ALLIANCE 6595  
DL BRIDGETT 418 AAA #16431325  
DL BARBARA 134

SITZ TRAVELER 8180  
SITZ BARBARAMERE JET 2698  
B T ULTRAVOX 297E  
D L BRIDGETT 610

CED	BW	WW	YW	Milk	Marb	REA	Fat	SW	SB
8	2.8	57	108	30	.37	.62	.049	64.31	146.37

zoetis Percent Rank

CED	BW	WW	YW	RFI	DMI	YH	SC	Doc	HP	CEM	Milk	MW	MH	CW	Marb	RE	Fat	Tend
73	79	49	37	92	60	64	17	3	83	81	50	86	87	45	90	66	90	77

- BW: 72
- Thick made Resource daughter
- Very functional, deep bodied heifer
- Heifer that just keeps getting better and better
- Dam's Ratios - BW 4 @ 98, WW 4 @ 105, YW 1 @ 105, IMF 1 @ 127
- Dam always has a high quality calf year in and year out



LOT 2 SIRE: S A V RESOURCE 1441 - AAA +17016597





Lot  
3

### DL WINDSONG GIRL 1045

BD: 01/18/2015

Cow: 18186251

Tattoo: 1045

S A V IRON MOUNTAIN 8066  
S A V ANGUS VALLEY 1867 AAA +17016630  
S A V MAY 2397

CONNEALY CONSENSUS 7229  
DL WINDSONG GIRL 322 AAA 17281924  
DL WINDSONG GIRL 1030

TC GRIDIRON 258  
S A V MADAME PRIDE 3249  
S A F 598 BANDO 5175  
S A V MAY 7238

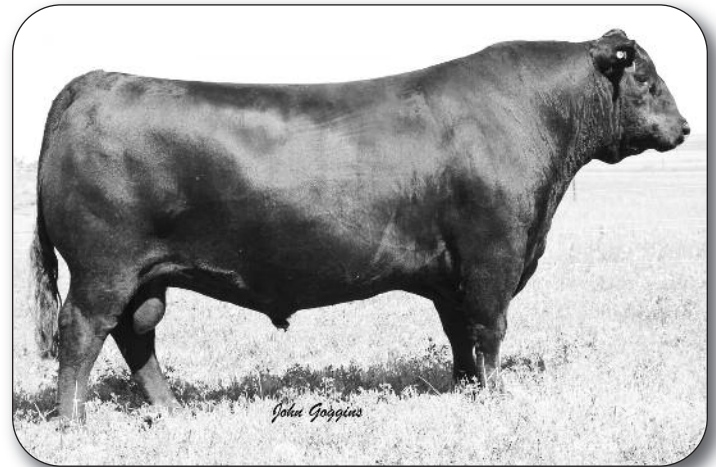
CONNEALY CONSENSUS  
BLUE LILLY OF CONANGA 16  
S A V 004 TRAVELER 4151  
DL WINDSONG GIRL 34

CED	BW	WW	YW	Milk	Marb	REA	Fat	SW	SB
7	1.1	57	99	22	.74	.44	.068	58.15	127.79

zoetis Percent Rank

CED	BW	WW	YW	RFI	DMI	YH	SC	Doc	HP	CEM	Milk	MW	MH	CW	Marb	RE	Fat	Tend
81	68	12	24	38	87	37	11	23	30	71	48	31	22	31	63	74	94	17

- BW: 70 lbs.
- Extremely functional and stylish Angus Valley daughter
- The Angus Valley cross on the Consensus daughters has been a home run in our herd, great cross, keep all the daughters
- Same cow family as Lot 6 and the bred heifer Lot 26
- High performance heifer backed by great 50K data



CONNEALY CONSENSUS 7229 - MATERNAL SIRE TO LOTS 3 & 4  
Consensus females sold \$38,000 & \$31,000 bull calves in 2015 bull sale.

Video of sale cattle will be online on October 15, 2015 at  
[www.GrandviewAngus.com](http://www.GrandviewAngus.com) and [www.RPIpromotions.com](http://www.RPIpromotions.com)

Lot  
**4**

## DL BARBARA 905

BD: 01/16/2015 Cow: 18186242 Tattoo: 905

S A V IRON MOUNTAIN 8066  
S A V ANGUS VALLEY 1867 AAA +17016630  
S A V MAY 2397

TC GRIDIRON 258  
S A V MADAME PRIDE 3249  
S A F 598 BANDO 5175  
S A V MAY 7238

CONNEALY CONSENSUS 7229  
DL BARBARA 1562 AAA +17294835  
DL BARBARA 238

CONNEALY CONSENSUS  
BLUE LILLY OF CONANGA 16  
BASIN RAINMAKER 747L  
D L BARBARA 666

CED	BW	WW	YW	Milk	Marb	REA	Fat	SW	SB
8	2.0	56	99	24	.81	.57	.024	54.24	124.91

### zoetis Percent Rank

CED	BW	WW	YW	RFI	DMI	YH	SC	Doc	HP	CEM	Milk	MW	MH	CW	Marb	RE	Fat	Tend
79	82	27	29	36	76	73	41	68	24	78	45	17	20	43	56	52	63	72

- BW: 68 lbs.
- A heifer that will make you look at her, she has the look
- Been a favorite all year
- Super complete heifer that is an Angus Valley daughter
- Dam is ET daughter of the 238 donor who sells in the sale as Lot 55
- Dam's Ratios - BW 1 @ 94, WW 1 @ 110, IMF 1 @ 114



Lot  
**5**

## DL MARY 725

BD: 01/14/2015 Cow: 18186233 Tattoo: 725

S A V IRON MOUNTAIN 8066  
S A V ANGUS VALLEY 1867 AAA +17016630  
S A V MAY 2397

TC GRIDIRON 258  
S A V MADAME PRIDE 3249  
S A F 598 BANDO 5175  
S A V MAY 7238

S A V FINAL ANSWER 0035  
DL MARY 472 AAA +17294705  
DL MARY 143

SITZ TRAVELER 8180  
S A V EMULOUS 8145  
LEACHMAN RIGHT TIME  
D L BLUE RIBBON MARY 71

CED	BW	WW	YW	Milk	Marb	REA	Fat	SW	SB
15	-.3	59	106	21	.57	.59	.039	62.40	110.98

### zoetis Percent Rank

CED	BW	WW	YW	RFI	DMI	YH	SC	Doc	HP	CEM	Milk	MW	MH	CW	Marb	RE	Fat	Tend
12	17	11	11	93	95	79	9	27	53	4	67	56	57	69	78	73	80	6

- BW: 64 lbs.
- Low birth Angus Valley daughter with performance
- Heifer that just puts it all together
- Very balanced with a great look from the profile
- Great 50K data in the BW, WW, YW, SC
- Dam's Ratios - WW 1 @ 114, Dam is an ET daughter out of the great 143 cow which is one of the core cows in the herd



Lot  
**6**

## DL WINDSONG GIRL 775

BD: 01/14/2015 Cow: 18186236 Tattoo: 775

CONNEALY CONSENSUS 7229  
DL CONSENSUS 462 AAA 17281930  
DL LADY IDA 1018

S A V 004 TRAVELER 4151  
DL WINDSONG GIRL 1030 AAA #16771286  
DL WINDSONG GIRL 34

CONNEALY CONSENSUS  
BLUE LILLY OF CONANGA 16  
M A LAW 124 40  
D L LADY IDA 745

S A V 8180 TRAVELER 004  
S A V EMBLYNETTE 7261  
SITZ ALLIANCE 9800  
D L WINDSONG GIRL 731

CED	BW	WW	YW	Milk	Marb	REA	Fat	SW	SB
2	2.7	55	90	32	.75	.11	.051	63.02	124.63

### zoetis Percent Rank

CED	BW	WW	YW	RFI	DMI	YH	SC	Doc	HP	CEM	Milk	MW	MH	CW	Marb	RE	Fat	Tend
94	90	41	48	18	37	47	23	36	70	84	43	42	48	48	58	93	90	11

- BW: 80 lbs.
- Powerful, thick made 462 daughter
- Two maternal sisters sell in the sale
- Dam's Ratios - BW 3 @ 99, WW 3 @ 108, YW 1 @ 109



- BW: 76 lbs.
- A great heifer by the Ridl Farms herd sire DL Consensus 462
- A heifer that is exciting to look at, great thickness and rib shape combines that into a high quality heifer. One of the best 462 daughters we have raised.
- A low birth weight with carcass.



Lot  
7

### RC QUEEN IMPRESSION 205

BD: 01/08/2015 Cow: 18186887 Tattoo: 205

CONNEALY CONSENSUS 7229  
DL CONSENSUS 462 AAA 17281930  
DL LADY IDA 1018

CONNEALY IMPRESSION  
RC QUEEN'S IMPRESSION 21 AAA 16951528  
SUA BN VERMILLION QUEEN U875

CONNEALY CONSENSUS  
BLUE LILLY OF CONANGA 16  
M A LAW 124 40  
D L LADY IDA 745

CONNEALY REFLECTION  
PEARL PAMMY OF CONANGA 194  
BALDRIDGE NEBRASKA 901  
VERMILION QUEEN 0547

CED	BW	WW	YW	Milk	Marb	REA	Fat	SW	SB
9	.9	55	92	23	.70	.27	.028	61.83	106.47

zoetis Percent Rank

CED	BW	WW	YW	RFI	DMI	YH	SC	Doc	HP	CEM	Milk	MW	MH	CW	Marb	RE	Fat	Tend
53	35	44	56	82	34	41	17	80	75	6	49	43	31	58	58	63	58	2

Lot  
8

### JL QUEEN ELBA 685

BD: 01/13/2015 Cow: 18188905 Tattoo: 685

CONNEALY CONSENSUS 7229  
DL CONSENSUS 462 AAA 17281930  
DL LADY IDA 1018

S V F BANDOLIER  
FV QUEEN ELBA R323 AAA +15160063  
R F QUEEN ELBA 632A

CONNEALY CONSENSUS  
BLUE LILLY OF CONANGA 16  
M A LAW 124 40  
D L LADY IDA 745

BON VIEW BANDO 598  
S V F PRIMROSE LADY 9446  
Q A S TRAVELER 23-4  
SKARSHIP QUEEN ELBA 324

CED	BW	WW	YW	Milk	Marb	REA	Fat	SW	SB
8	2.1	49	78	28	.67	.19	.017	52.95	107.43

zoetis Percent Rank

CED	BW	WW	YW	RFI	DMI	YH	SC	Doc	HP	CEM	Milk	MW	MH	CW	Marb	RE	Fat	Tend
65	69	65	82	48	31	33	90	21	90	71	28	18	7	45	59	58	47	1



- BW: 70 lbs.
- Great functional 462 daughter that is very long sided
- One of the first DL Consensus 462 daughters to sell and he is the \$21,000 herd sire at Ridl Farms
- Dam's Ratios - BW 6 @ 98, WW 6 @ 103, YW 2 @ 107, IMF 2 @ 102
- Maternal sister sells as Lot 28

Lot  
8



- BW: 74 lbs.
- Super attractive heifer out of the \$180,000 Big Sky bull
- Great balance, heavy muscled, tremendous rib shape, just super complete
- Great phenotype and data
- No holes heifer, look her up!
- Dam is a very attractive Upscale cow out of the great 238 donor who sells in the sale as Lot 55



Lot  
**9**

**DL BARBARA 945**

BD: 01/16/2015      Cow: 18186833      Tattoo: 945

CONNEALY EARNAN 076E  
MUSGRAVE BIG SKY      AAA 17614813  
SAV PRIMROSE 7861

SITZ UPSCALE 671T  
DL BARBARA 1102      AAA +17294789  
DL BARBARA 238

CONNEALY CONSENSUS  
BRAZILA OF CONANGA 3991 839A  
S A F 598 BANDO 5175  
S A V PRIMROSE 8244  
CONNEALY ONWARD  
SITZ HENRIETTA PRIDE 81M  
BASIN RAINMAKER 747L  
D L BARBARA 666

CED	BW	WW	YW	Milk	Marb	REA	Fat	SW	SB
7	1.1	68	119	27	.99	.48	.032	75.17	139.07

zoetis Percent Rank

CED	BW	WW	YW	RFI	DMI	YH	SC	Doc	HP	CEM	Milk	MW	MH	CW	Marb	RE	Fat	Tend
75	77	16	13	88	55	45	7	26	14	58	36	31	35	40	38	49	76	99

Lot  
**10**

**JLBELLE 885**

BD: 01/15/2015      Cow: 18186838      Tattoo: 885

CONNEALY EARNAN 076E  
MUSGRAVE BIG SKY      AAA 17614813  
SAV PRIMROSE 7861

S A V FINAL ANSWER 0035  
DL BELLE 42      AAA 17281905  
BT BELLE 152L

CONNEALY CONSENSUS  
BRAZILA OF CONANGA 3991 839A  
S A F 598 BANDO 5175  
S A V PRIMROSE 8244  
SITZ TRAVELER 8180  
S A V EMULOUS 8145  
TC DIVIDEND 963  
BT BELLE 499J

CED	BW	WW	YW	Milk	Marb	REA	Fat	SW	SB
11	-.9	66	109	22	.60	.26	.032	73.71	97.48

zoetis Percent Rank

CED	BW	WW	YW	RFI	DMI	YH	SC	Doc	HP	CEM	Milk	MW	MH	CW	Marb	RE	Fat	Tend
47	31	33	44	2	28	74	18	73	27	32	80	35	34	90	67	81	75	31



- BW: 70 lbs.
- Another great heifer out of the \$180,000 Big Sky bull
- Very balanced heifer with great rib shape and thickness
- Docile heifer that will catch your eye when you see her
- Dam Ratio's - WW 1 @ 105, YW 1 @ 104

Lot  
**10**

Lot  
**11**

## DL MARY 735

BD: 01/14/2015

Cow: 18186834

Tattoo: 735

CONNEALY EARNAN 076E  
MUSGRAVE BIG SKY AAA 17614813  
SAV PRIMROSE 7861

S A V FINAL ANSWER 0035  
DL MARY 732 AAA +17294706  
DL MARY 143

CONNEALY CONSENSUS  
BRAZILA OF CONANGA 3991 839A  
S A F 598 BANDO 5175  
S A V PRIMROSE 8244

SITZ TRAVELER 8180  
S A V EMULOUS 8145  
LEACHMAN RIGHT TIME  
D L BLUE RIBBON MARY 71

CED	BW	WW	YW	Milk	Marb	REA	Fat	SW	SB
4	1.5	68	117	23	.58	.52	.012	74.23	122.98

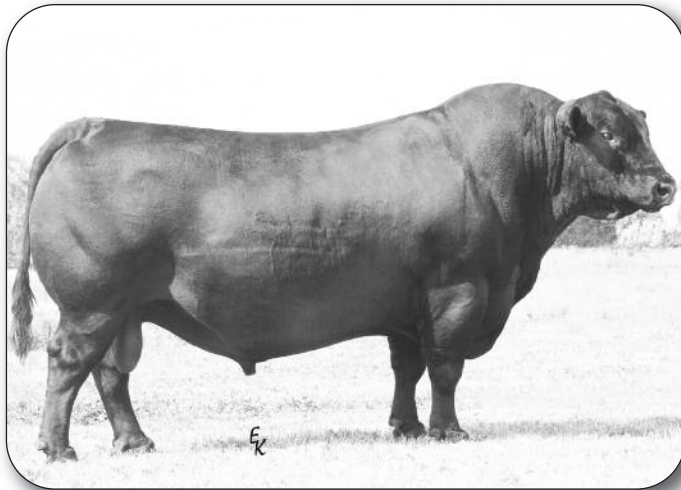
zoetis Percent Rank

CED	BW	WW	YW	RFI	DMI	YH	SC	Doc	HP	CEM	Milk	MW	MH	CW	Marb	RE	Fat	Tend
70	59	22	16	30	55	71	51	30	46	42	55	48	48	71	72	64	58	89

- BW: 70 lbs.
- Another great Big Sky daughter
- Very feminine heifer with tremendous capacity
- Dam is a daughter of the great 143 donor in our herd
- Great EPDs and phenotype



LOTS 9, 10, 11 & 12 SIRE: MUSGRAVE BIG SKY - AAA 17614813  
EPDS: BW: 1.2 • WW 81 • YW 136 • MILK 24 • SB 151.67



LOTS 11 & 12 MATERNAL GRANDSIRE:  
S A V FINAL ANSWER 0035 - AAA #13592905

Lot  
**12**

## JL ANITA 575

BD: 01/12/2015

Cow: 18186836

Tattoo: 575

CONNEALY EARNAN 076E  
MUSGRAVE BIG SKY AAA 17614813  
SAV PRIMROSE 7861

S A V FINAL ANSWER 0035  
DL ANITA 1452 AAA 17281972  
J L ANITA 357

CONNEALY CONSENSUS  
BRAZILA OF CONANGA 3991 839A  
S A F 598 BANDO 5175  
S A V PRIMROSE 8244  
SITZ TRAVELER 8180  
S A V EMULOUS 8145  
S A V 8180 TRAVELER 004  
BT ANITA 46L

CED	BW	WW	YW	Milk	Marb	REA	Fat	SW	SB
4	1.4	64	109	22	.75	.50	.032	68.07	128.33

zoetis Percent Rank

CED	BW	WW	YW	RFI	DMI	YH	SC	Doc	HP	CEM	Milk	MW	MH	CW	Marb	RE	Fat	Tend
73	62	34	32	15	51	60	13	78	33	14	59	47	79	62	63	60	79	41

- BW: 70 lbs.
- One of the first heifers out of \$180,000 Big Sky bull to sell in the country
- Very complete heifer, that gives you a great look from all angles
- Grandma sells in this sale as Lot 59
- Dam is a low birth weight Final Answer daughter

### Next up . . . International



Your chance  
to harvest a  
great set of  
International  
2020 daughters!!  
Powerful cow  
prospects here!

S A V INTERNATIONAL 2020 - AAA 17318795  
EPDS: BW: 3.8 • WW 74 • YW 132 • MILK 24 • SB 162.44



**Lot 13****DL RITA 265**

BD: 01/09/2015 Cow: 18186258 Tattoo: 265

S A V HARVESTOR 0338  
S A V INTERNATIONAL 2020 AAA 17318795  
S A V EMBLYNETTE 5483

G A R EXPECTATION 4915  
M A EXPECTATION 403 AAA +14914114  
G A R PLOWMAN 1949

S A V HERITAGE 6295  
S A V EMBLYNETTE 7749  
S A V 8180 TRAVELER 004  
S A V EMBLYNETTE 7260

N BAR EMULATION EXT  
G A R TRAVELER 2421  
PLOWMAN 1627 OF MILLBRAE SAR  
G A R BANDO 1174

CED	BW	WW	YW	Milk	Marb	REA	Fat	SW	SB
5	2.7	58	106	17	.27	.60	.031	40.83	130.95

**zoetis Percent Rank**

CED	BW	WW	YW	RFI	DMI	YH	SC	Doc	HP	CEM	Milk	MW	MH	CW	Marb	RE	Fat	Tend
77	91	49	38	64	39	41	82	97	46	57	90	9	30	44	81	44	85	15

- BW: 80 lbs.
- Tremendous powerful, high performance heifer
- Been one of the top International heifers all year
- Heavy muscle, long sided heifer that's worth a look!
- Dam's Ratios - BW 7 @ 98, WW 7 @ 100

**Lot 14****JL VANITY BESS 285**

BD: 01/09/2015 Cow: 18186201 Tattoo: 285

S A V HARVESTOR 0338  
S A V INTERNATIONAL 2020 AAA 17318795  
S A V EMBLYNETTE 5483

S A V 004 TRAVELER 4151  
JL VANITY BESS 979 AAA 16505779  
BT VANITY BESS 651M

S A V HERITAGE 6295  
S A V EMBLYNETTE 7749  
S A V 8180 TRAVELER 004  
S A V EMBLYNETTE 7260

S A V 8180 TRAVELER 004  
S A V EMBLYNETTE 7261  
SITZ ALLIANCE 8199  
BT VANITY BESS 381H

CED	BW	WW	YW	Milk	Marb	REA	Fat	SW	SB
4	1.6	49	86	25	.40	.35	.091	57.25	94.39

**zoetis Percent Rank**

CED	BW	WW	YW	RFI	DMI	YH	SC	Doc	HP	CEM	Milk	MW	MH	CW	Marb	RE	Fat	Tend
88	76	75	84	7	25	75	62	75	21	81	83	94	96	95	83	90	100	4

- BW: 84 lbs.
- A long, deep made female that is very functional
- Lower birth weight International daughter
- Dam's Ratios - BW 2 @ 97, WW 2 @ 103, YW 2 @ 100, IMF 2 @ 109, REA 2 @ 100
- Dam also sells as Lot 52

**Lot 16****DL DUCHESS 665**

BD: 01/13/2015 Cow: 18186230 Tattoo: 665

S A V HARVESTOR 0338  
S A V INTERNATIONAL 2020 AAA 17318795  
S A V EMBLYNETTE 5483

S A V FINAL ANSWER 0035  
DL DUCHESS 78 AAA 16431343  
D L DUCHESS 729

S A V HERITAGE 6295  
S A V EMBLYNETTE 7749  
S A V 8180 TRAVELER 004  
S A V EMBLYNETTE 7260

SITZ TRAVELER 8180  
S A V EMULOUS 8145  
B T ULTRAVOX 297E  
BT MISS DUCHESS 183D

CED	BW	WW	YW	Milk	Marb	REA	Fat	SW	SB
-8	3.4	61	108	20	.37	.82	.083	54.54	119.91

**zoetis Percent Rank**

CED	BW	WW	YW	RFI	DMI	YH	SC	Doc	HP	CEM	Milk	MW	MH	CW	Marb	RE	Fat	Tend
99	90	40	41	65	34	37	21	35	36	90	83	69	77	68	81	42	98	24

- BW: 74 lbs.
- Very attractive, balanced daughter out of the \$400,000 SAV International bull
- Tremendous length and performance
- Dam also sells in the sale as Lot 47
- Dam's Ratios - YW 4 @ 100, IMF 4 @ 108, REA 4 @ 106

**Lot 15****DL RUBY 395**

BD: 01/10/2015 Cow: 18186210 Tattoo: 395

S A V HARVESTOR 0338  
S A V INTERNATIONAL 2020 AAA 17318795  
S A V EMBLYNETTE 5483

S A V FINAL ANSWER 0035  
DL RUBY 212 AAA 17281914  
DL ELMINEMERE 158

S A V HERITAGE 6295  
S A V EMBLYNETTE 7749  
S A V 8180 TRAVELER 004  
S A V EMBLYNETTE 7260

SITZ TRAVELER 8180  
S A V EMULOUS 8145  
BOYD NEW DAY 8005  
D L ELMINEMERE 1142

CED	BW	WW	YW	Milk	Marb	REA	Fat	SW	SB
-5	3.1	68	121	22	.52	.87	.024	60.44	147.09

**zoetis Percent Rank**

CED	BW	WW	YW	RFI	DMI	YH	SC	Doc	HP	CEM	Milk	MW	MH	CW	Marb	RE	Fat	Tend
95	87	7	7	42	58	29	30	22	26	84	76	21	35	49	68	38	68	59

- BW: 74 lbs.
- Very feminine, pretty fronted
- A well balanced International heifer
- Growth and performance heifer
- Dam is a bigger framed Final Answer daughter
- Dam's Ratios - WW 1 @ 100, YW 1 @ 104, REA 1 @ 108



LOT 16 SIRE: S A V INTERNATIONAL 2020 - AAA 17318795



**Lot 17** **DL MISSHO 365**  
 BD: 01/10/2015 Cow: 18186207 Tattoo: 365

EXAR WORLDWIDE 9600B  
 EXAR GRIT 1025B AAA 16832616  
 EXAR LADY BLANCHE 9739  
 BOYD NEW DAY 8005  
 DL MISSHO 118 AAA #16431339  
 DL MISSHO 654  
 EXAR SPARTAN 6225  
 DIXIE ERICA OF RR 6289  
 EXAR 263C  
 EXAR LADY BLANCHE 372  
 A A R NEW TREND  
 S V F FOREVER LADY 57D  
 J D DAIGGER 901  
 SODAK MISSHO 5077

CED	BW	WW	YW	Milk	Marb	REA	Fat	SW	SB
7	1.7	52	94	22	.14	.08	.036	51.19	70.61

**zoetis Percent Rank**

CED	BW	WW	YW	RFI	DMI	YH	SC	Doc	HP	CEM	Milk	MW	MH	CW	Marb	RE	Fat	Tend
49	71	70	61	62	58	30	10	81	28	51	67	69	90	69	86	92	71	10

- BW: 70 lbs.
- Good balanced Grit daughter that is long and deep sided
- Outcross pedigree, free of Final Answer, In Focus and Consensus
- Out of a great uddered New Day cow
- Dam's Ratios - WW 5 @ 103, YW 2 @ 100
- Good maternal line, multiple maternal sisters working in our herd



LOT 18 SIRE: KG SOLUTION 0018 - AAA 16796888

LOT 17 SIRE: EXAR GRIT 1025B - AAA 16832616



One of the top bulls from 2015, sired by Grit

**Lot 18** **DL MISSHO 145**  
 BD: 01/07/2015 Cow: 18186190 Tattoo: 145

MOGCK SURE SHOT  
 KG SOLUTION 0018 AAA 16796888  
 KG RITO LADY 8724  
 CONNEALY CONSENSUS 7229  
 DL MISSHO 333 AAA 17600044  
 DL MISSHO 654  
 MYTTY IN FOCUS  
 MOGCK BLACK LASS 2065  
 KG ONWARD 6221  
 KG RITO LADY 8187  
 CONNEALY CONSENSUS  
 BLUE LILLY OF CONANGA 16  
 J D DAIGGER 901  
 SODAK MISSHO 5077

CED	BW	WW	YW	Milk	Marb	REA	Fat	SW	SB
9	0	60	105	28	-	-	-	60.25	-

- BW: 64 lbs.
- Attractive low birth weight Solution daughter
- Super gentle
- Out of a thick made Consensus daughter
- Calving ease with performance
- High maternal line, 5 maternal sisters working in the herd



Lot  
**19**

**DL ELLMINEMERE 235**

BD: 01/08/2015 Cow: 18186197 Tattoo: 235

BALDRIDGE WAYLON W34  
BALDRIDGE DOWNLOAD Z013 AAA 17314910  
BALDRIDGE BLOSSOM U51

SITZ UPSCALE 671T  
DL ELLMINEMERE 1483 AAA 17600076  
DL ELLMINEMERE1148

GAR-EGL PROTEGE  
BALDRIDGE BLACKCAP T163  
S S OBJECTIVE T510 OT26  
BALDRIDGE BLOSSOM S325

CONNELY ONWARD  
SITZ HENRIETTA PRIDE 81M  
S A V 004 TRAVELER 4151  
DL ELLMINEMERE 103

CED	BW	WW	YW	Milk	Marb	REA	Fat	SW	SB
7	1.6	52	98	27	1.06	.48	.004	51.92	155.62

zoetis Percent Rank

CED	BW	WW	YW	RFI	DMI	YH	SC	Doc	HP	CEM	Milk	MW	MH	CW	Marb	RE	Fat	Tend
54	80	17	11	76	39	72	30	81	37	58	61	33	39	14	26	60	37	39

- BW: 64 lbs.
- Loads of style and very attractive on the profile
- Gives a great look from all angles
- Highest marbling EPD in the sale +1.06
- Great 50K data
- Dam is a tremendous 2-year-old Upscale daughter
- Granddam has two sons working in registered herds

Lot  
**20**

**DL BARBARA 495**

BD: 01/11/2015 Cow: 18186213 Tattoo: 495

BALDRIDGE WAYLON W34  
BALDRIDGE DOWNLOAD Z013 AAA 17314910  
BALDRIDGE BLOSSOM U51

SITZ UPSCALE 671T  
DL BARBARA 1083 AAA 17600064  
D L BARBARA 637

GAR-EGL PROTEGE  
BALDRIDGE BLACKCAP T163  
S S OBJECTIVE T510 OT26  
BALDRIDGE BLOSSOM S325

CONNELY ONWARD  
SITZ HENRIETTA PRIDE 81M  
DL SHOWTIME 373  
D L BARBARA 95

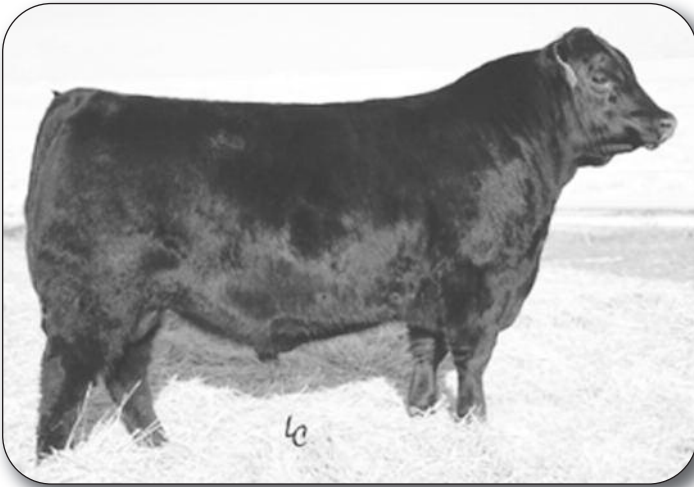
CED	BW	WW	YW	Milk	Marb	REA	Fat	SW	SB
1	3.8	59	106	25	.66	.36	-.024	50.09	141.61

zoetis Percent Rank

CED	BW	WW	YW	RFI	DMI	YH	SC	Doc	HP	CEM	Milk	MW	MH	CW	Marb	RE	Fat	Tend
86	98	5	5	89	31	19	27	65	44	94	46	22	23	17	49	73	9	67

- BW: 78 lbs.
- Big time performance
- Great length of body that is very functional in type and kind
- Out of a great 2-year-old Upscale daughter
- 50K data backs up the performance even more for this heifer

*Your chance to own a set of 3/4 sisters*  
**Great Numbers! Nice Phenotype! Fresh Genetics!**



LOTS 19 & 20 SIRE: BALDRIDGE DOWNLOAD Z013 - AAA 17314910



LOTS 19 & 20 MATERNAL GRANDSIRE: SITZ UPSCALE 671T - AAA +15836555

<sup>Lot</sup>  
**21** *Pick of the entire fall heifer crop*  
*They will be on display sale day!!*

Buyer will have the opportunity to pick from our entire fall 2014 born heifers!



Tag	Reg. No.	Sire	CED	BW	WW	YW	Milk	\$W	\$F	\$G	\$B
2304	18225420	S A V Angus Valley 1867	+13	-.7	+56	+108	+23	+51.31	+57.65	+21.74	+130.37
2314	18225419	Connealy Final Product	-2	+2.3	+73	+117	+26	+81.10	+77.83	+30.12	+120.76
2344	18119336	S A V Angus Valley 1867	+9	+1.7	+46	+86	+18	+33.34	+30.03	+20.74	+87.02
2374	18120922	S A V Angus Valley 1867	+6	+1.2	+67	+124	+24	+61.38	+79.64	+25.26	+140.34
2424	18120953	S A V Resource 1441	+10	+1.5	+57	+102	+30	+73.69	+64.37	+20.54	+126.55
2444	18225418	S A V Angus Valley 1867	+7	+1.3	+55	+105	+19	+50.93	+56.60	+30.37	+130.83
2454	18225417	S A V Angus Valley 1867	+11	+6	+56	+102	+19	+46.41	+52.92	+36.37	+128.36
2464	18120929	S A V Resource 1441	+11	+1.0	+66	+117	+34	+84.16	+86.45	+12.24	+143.29
2484	18120947	S A V Resource 1441	-1	+3.6	+66	+113	+28	+69.07	+76.83	+36.02	+172.87
2494	18225416	S A V Resource 1441	+2	+2.8	+63	+114	+27	+64.20	+80.97	+11.73	+148.85
2544	18225415	S A V Resource 1441	+9	+8	+55	+105	+31	+66.22	+69.74	+7.55	+132.34
2554	18119337	S A V Resource 1441	-5	+5.2	+64	+116	+26	+55.45	+86.26	+14.09	+155.95
2564	18120917	S A V Angus Valley 1867	+10	+7	+55	+107	+16	+45.54	+56.97	+29.27	+128.79
2584	18120937	S A V Resource 1441	+1	+2.6	+77	+135	+34	+87.59	+114.52	+2.25	+150.95
2604	18119339	DL Bismarck 1711	+4	+2.0	+52	+91	+22	+47.22	+54.56	+29.75	+99.69
2614	18119340	GMAR Final Product Z014	+0	+3.5	+57	+101	+24	+58.10	+47.91	+15.57	+98.43
2624	18119338	DL Bismarck 1711	+3	+2.5	+52	+86	+23	+53.43	+44.37	+7.93	+75.51





# Bred Heifers



- Very stylish performance driven bred heifer
- Individual Weaning ratio of 102
- Out of a very complete all around daughter
- Outcross pedigree free of Final Answer and In Focus
- Bred to MAR Net Worth 4629, due 2-22-16

MAR NET WORTH 4629 - AAA 18028224  
 BW: .4 • WW 61 • YW 101 • MILK 21

**Lot 22** **JL BELLE 604**  
 BD: 01/13/2014 Cow: 17918418 Tattoo: 604

EXAR WORLDWIDE 9600B  
 EXAR GRIT 1025B AAA 16832616  
 EXAR LADY BLANCHE 9739

CONNEALY ALL AROUND  
 JL BELLE 570 AAA 16809470  
 BT BELLE 152L

EXAR SPARTAN 6225  
 DIXIE ERICA OF RR 6289  
 EXAR 263C  
 EXAR LADY BLANCHE 372

CONNEALY WHITMAN  
 ENTRUST OF CONANGA 894  
 TC DIVIDEND 963  
 BT BELLE 499J

**Lot 23** **DL ELLUNA 1374**  
 BD: 02/06/2014 Cow: 17967216 Tattoo: 1374

RITO 707 OF IDEAL 3407 7075  
 S A V RESOURCE 1441 AAA +17016597  
 S A V BLACKCAP MAY 4136

S A V 004 DENSITY 4336  
 MA ELLUNA 041 AAA 17621252  
 M A 878 NEW DESIGN 369

R R RITO 707  
 IDEAL 3407 OF 1418 076  
 S A V 8180 TRAVELER 004  
 S A V MAY 2397

S A V 8180 TRAVELER 004  
 S A V MAY 7238  
 BON VIEW NEW DESIGN 878  
 V D A R ELLUNA 6156

CED	BW	WW	YW	Milk	Marb	REA	Fat	SW	SB
3	2.8	55	96	20	.13	.42	-.008	43.94	123.52

zoetis Percent Rank

CED	BW	WW	YW	RFI	DMI	YH	SC	Doc	HP	CEM	Milk	MW	MH	CW	Marb	RE	Fat	Tend
73	95	52	58	11	8	6	62	40	42	59	76	29	53	26	77	46	27	69

CED	BW	WW	YW	Milk	Marb	REA	Fat	SW	SB
7	1.6	59	108	30	.09	.75	.031	67.17	136.63

zoetis Percent Rank

CED	BW	WW	YW	RFI	DMI	YH	SC	Doc	HP	CEM	Milk	MW	MH	CW	Marb	RE	Fat	Tend
78	63	31	36	30	66	89	72	19	69	96	35	44	72	50	99	42	78	52

- A.I. bred to DL Sonic due 1-31-16
- Low birth Resource heifer that is deep sided and very attractive from the profile
- Individual Weaning ratio of 102



**A.I. SIRE: DL SONIC**

The \$38,000 KG Solution son sold in Lewis Bros. sale in 2015 to Stevenson Diamond Dot, Hobson, MT and Ravellette Cattle, Philip, SD.





**Lot 24** **RC CHLOE 1764**  
 BD: 02/25/2014 Cow: 17938045 Tattoo: 1764

S A V FINAL ANSWER 0035  
 DL INCENTIVE 228 AAA 16287091  
 DL PRINCESS 233

EXAR 263C  
 BASIN CHLOE U518 AAA 16010590  
 BASIN CHLOE 3R21

SITZ TRAVELER 8180  
 S A V EMULOUS 8145  
 S A F FOCUS OF E R  
 D L PRINCESS 471

BON VIEW NEW DESIGN 1407  
 EXAR JUNE C 3577  
 BASIN EXPEDITION 801N  
 BASIN CHLOE 962N

CED	BW	WW	YW	Milk	Marb	REA	Fat	SW	SB
2	2.0	68	117	30	.56	.42	.010	77.51	122.63

**zoetis Percent Rank**

CED	BW	WW	YW	RFI	DMI	YH	SC	Doc	HP	CEM	Milk	MW	MH	CW	Marb	RE	Fat	Tend
63	54	17	19	55	17	64	55	33	16	40	40	47	23	76	47	70	62	18

- A.I. Bred to DL Sonic 444, due 1-10-16
- Very balanced Incentive daughter out of U518 donor that sells as Lot 56
- Curve-bending genetics and 50K
- Had a BW ratio of 97 and Weaning of 108
- Dam also sells

**Lot 26** **DL WINDSONG GIRL 674**  
 BD: 01/14/2014 Cow: 17917957 Tattoo: 674

S A V IRON MOUNTAIN 8066  
 S A V ANGUS VALLEY 1867 AAA +17016630  
 S A V MAY 2397

S A V 004 TRAVELER 4151  
 DL WINDSONG GIRL 1030 AAA #16771286  
 DL WINDSONG GIRL 34

TC GRIDIRON 258  
 S A V MADAME PRIDE 3249  
 S A F 598 BANDO 5175  
 S A V MAY 7238

S A V 8180 TRAVELER 004  
 S A V EMBLYNETTE 7261  
 SITZ ALLIANCE 9800  
 D L WINDSONG GIRL 731

CED	BW	WW	YW	Milk	Marb	REA	Fat	SW	SB
13	-.3	42	82	25	.51	.29	.123	40.88	105.41

**zoetis Percent Rank**

CED	BW	WW	YW	RFI	DMI	YH	SC	Doc	HP	CEM	Milk	MW	MH	CW	Marb	RE	Fat	Tend
55	47	74	60	47	68	50	25	62	28	36	69	40	24	48	81	94	100	51

- Bred to DL Sonic 444, due 1-10-16
- Low birth weight female with style and performance
- BW ratio of 93, WWR of 100
- Dam's Ratios: BW 99, WW 108, YW 109
- Maternal sister sells also

**Lot 25** **DL PRINCESS 1034**  
 BD: 01/24/2014 Cow: 17917992 Tattoo: 1034

S A V IRON MOUNTAIN 8066  
 S A V ANGUS VALLEY 1867 AAA +17016630  
 S A V MAY 2397

E A R BIG TIME K53 537  
 DL PRINCESS 524 AAA 14896593  
 D L PRINCESS 780

TC GRIDIRON 258  
 S A V MADAME PRIDE 3249  
 S A F 598 BANDO 5175  
 S A V MAY 7238

SITZ TRAVELER 7594  
 LADY RITO POWER 1137 E A R  
 B T ULTRAVOX 297E  
 D L PRINCESS 906

CED	BW	WW	YW	Milk	Marb	REA	Fat	SW	SB
4	3.0	48	94	16	.52	.59	.014	30.73	118.61

**zoetis Percent Rank**

CED	BW	WW	YW	RFI	DMI	YH	SC	Doc	HP	CEM	Milk	MW	MH	CW	Marb	RE	Fat	Tend
92	96	60	48	33	52	17	30	40	15	87	85	50	34	53	76	57	48	62

- A.I. Bred to DL Sonic 444, due 1-10-16
- Angus Valley daughter that will catch your eye
- Very feminine and well balance female
- Dam's Ratios: 3 at YW of 101, 3 at %IMF at 104, 3 at REA of 105, and 3 at Fat of 103
- Dam, Granddam have been very productive cows in our herd



AI SIRE: DL SONIC



LOTS 25 & 26 SIRE:  
 S A V ANGUS VALLEY 1867 - AAA +17016630





**Lot 27** **DL WINDSONG GIRL 644**  
 BD: 01/14/2014 Cow: 17917955 Tattoo: 644

CONNEALY CONSENSUS  
 CONNEALY CONSENSUS 7229 AAA 16447771  
 BLUE LILLY OF CONANGA 16

DL ALLIANCE 295  
 D L WINDSONG GIRL 287 AAA 15912582  
 DL WINDSONG GIRL 23

KMK ALLIANCE 6595 187  
 BLINDA OF CONANGA 004  
 WOODHILL ADMIRAL 77K  
 BLUE CASH OF CONANGA 6020

SITZ ALLIANCE 9800  
 DL MARY 143  
 WHITE OAK PRECISE 6002  
 D L WINDSONG GIRL 731

CED	BW	WW	YW	Milk	Marb	REA	Fat	SW	SB
3	2.3	57	98	20	.69	.37	-.016	66.31	123.00

**zoetis** Percent Rank

CED	BW	WW	YW	RFI	DMI	YH	SC	Doc	HP	CEM	Milk	MW	MH	CW	Marb	RE	Fat	Tend
80	84	29	39	51	71	59	50	38	72	83	29	89	70	49	58	68	14	22

- Bred to DL Sure Shot 703, due 2-14-16
- Very complete 7229 daughter
- Dam is a very maternal Driven 295 daughter still working in the herd today.

**Lot 29** **RC ERICA 244**  
 BD: 01/07/2014 Cow: 17924298 Tattoo: 244

MOGCK SURE SHOT  
 MOGCK BULLSEYE AAA 17102085  
 MOGCK MARY 1255

H A IMAGE MAKER 0415  
 BASIN ERICA 6228 AAA 16049787  
 BASIN ERICA 343S

MYTTY IN FOCUS  
 MOGCK BLACK LASS 2065  
 K C F BENNETT COALITION SCC  
 MOGCK MARY C 1757

HERO 6267 OF R R 2418  
 H A RITO BLACKCAP 9038  
 BASIN MAX 140P  
 BASIN ERICA 163N

CED	BW	WW	YW	Milk	Marb	REA	Fat	SW	SB
8	.4	62	110	23	.43	.49	.025	61.91	131.15

**zoetis** Percent Rank

CED	BW	WW	YW	RFI	DMI	YH	SC	Doc	HP	CEM	Milk	MW	MH	CW	Marb	RE	Fat	Tend
44	28	10	12	40	11	18	12	40	29	17	35	16	25	46	67	62	79	12

- A.I. Bred to DL Sonic, due 1-29-16
- Long, stylish made bred heifer with great EPDs and 50K
- Had a weaning ratio of 101
- Dam's Ratios: WW 4 @ 105, YW 1 @ 113
- Very docile heifer
- Dam sells as Lot 50

**Lot 28** **JL QUEEN ELBA 684**  
 BD: 01/14/2014 Cow: 17918511 Tattoo: 684

MOGCK SURE SHOT  
 MOGCK BULLSEYE AAA 17102085  
 MOGCK MARY 1255

S V F BANDOLIER  
 FV QUEEN ELBA R323 AAA +15160063  
 R F QUEEN ELBA 632A

MYTTY IN FOCUS  
 MOGCK BLACK LASS 2065  
 K C F BENNETT COALITION SCC  
 MOGCK MARY C 1757

BON VIEW BANDO 598  
 S V F PRIMROSE LADY 9446  
 Q A S TRAVELER 23-4  
 SKARSHIP QUEEN ELBA 324

CED	BW	WW	YW	Milk	Marb	REA	Fat	SW	SB
-3	3.9	59	105	26	.61	.50	.021	55.17	137.15

**zoetis** Percent Rank

CED	BW	WW	YW	RFI	DMI	YH	SC	Doc	HP	CEM	Milk	MW	MH	CW	Marb	RE	Fat	Tend
91	93	12	12	81	39	4	20	12	63	68	17	34	8	26	51	46	74	5

- Bred to MAR Net Worth 4629, due 2-21-16
- Very high performing Bullseye daughter
- Individual WW ratio of 103
- Dam's Ratios: BW 6 @ 98, WW 6 @ 103, YW 2 @ 107 and is still producing in our herd today.



- Bred to DL Sure Shot 703, due 2-9-16
- Thick made Final Product daughter that is very dimensional in type and kind
- Great EPDs and 50K
- Style with performance
- Dam sells as Lot 77



**Lot 30**

**RC SARA 2063**

BD: 08/22/2013 Cow: 17677132 Tattoo: 2063

CONNEALY PRODUCT 568  
 CONNEALY FINAL PRODUCT AAA 15848422  
 EBONISTA OF CONANGA 471

LCC NEW STANDARD  
 RIVER HILLS SARA W190 AAA 16586933  
 RIVER HILLS SARA R790

G A R RETAIL PRODUCT  
 PRIDE FINE OF CONANGA 566  
 CONNEALY DEEP CANYON 454  
 EBONISA OF CONANGA 5469  
 BON VIEW NEW DESIGN 1407  
 LCC SUNSET K3118  
 WOODHILL ADMIRAL 77K  
 CHAMPION HILL SARA 1366

CED	BW	WW	YW	Milk	Marb	REA	Fat	SW	SB
4	.2	59	110	29	.57	.60	.040	71.99	113.05

zoetis Percent Rank

CED	BW	WW	YW	RFI	DMI	YH	SC	Doc	HP	CEM	Milk	MW	MH	CW	Marb	RE	Fat	Tend
70	9	27	17	26	96	83	46	86	48	31	10	65	24	48	59	37	91	58

**Lot 31**

**DL ENCHANTMENT 1104**

BD: 01/28/2014 Cow: 17917962 Tattoo: 1104

CONNEALY ONWARD  
 SITZ UPSCALE 671T AAA +15836555  
 SITZ HENRIETTA PRIDE 81M

S A V 8180 TRAVELER 004  
 DL ENCHANTMENT 76 AAA 15425523  
 D L ENCHANTMENT 856

CONNEALY LEAD ON  
 ALTUNE OF CONANGA 6104  
 SITZ VALUE 7097  
 SITZ HENRIETTA PRIDE 1370  
 SITZ TRAVELER 8180  
 BOYD FOREVER LADY 8003  
 MC CLINTOCK OF MEMORY  
 F M K ENCHANTMENT VS53

CED	BW	WW	YW	Milk	Marb	REA	Fat	SW	SB
9	.8	50	93	20	.34	.38	.023	45.76	134.26

zoetis Percent Rank

CED	BW	WW	YW	RFI	DMI	YH	SC	Doc	HP	CEM	Milk	MW	MH	CW	Marb	RE	Fat	Tend
41	32	50	41	86	69	37	14	77	5	40	66	54	45	19	95	55	63	6



- Low birth weight Upscale daughter
- Very balanced and functional bred heifer
- Bred to MAR Net Worth 4629, due 2-26-16
- MAR NET WORTH 4629 - AAA 18028224  
 BW: .4 • WW 61 • YW 101 • MILK 21





**Lot 32** **RC EVERELDA ENTENSE 1494**  
 BD: 02/11/2014 Cow: 17938052 Tattoo: 1494

CONNEALY ONWARD  
 SITZ UPSCALE 671T AAA +15836555  
 SITZ HENRIETTA PRIDE 81M

SITZ ALLIANCE 6595  
 COLEMAN EVERELDA ENTENSE 8166 AAA 16121754  
 COLEMAN EVERELDA ENTENSE 595

CONNEALY LEAD ON  
 ALTUNE OF CONANGA 6104  
 SITZ VALUE 7097  
 SITZ HENRIETTA PRIDE 1370

SITZ TRAVELER 8180  
 SITZ BARBARAMERE JET 2698  
 G A R INTEGRITY  
 SITZ EVERELDA ENTENSE 4789

CED	BW	WW	YW	Milk	Marb	REA	Fat	SW	SB
7	.1	57	107	28	.43	.36	.032	63.89	144.78

zoetis Percent Rank

CED	BW	WW	YW	RFI	DMI	YH	SC	Doc	HP	CEM	Milk	MW	MH	CW	Marb	RE	Fat	Tend
51	47	23	15	100	98	17	12	49	33	46	20	53	48	7	82	60	81	85

- Bred to DL Sure Shot 703, due 2-20-16
- Very complete heifer that has great rib shape plus feminine fronted
- Out of a Coleman Entense that is a very thick, deep bodied cow
- Calving ease heifer with performance
- Had a WW ratio of 107

**Lot 34** **JL BELLE 1284**  
 BD: 02/02/2014 Cow: 17918003 Tattoo: 1284

CONNEALY FINAL PRODUCT  
 GMAR FINAL PRODUCT Z014 AAA +17189764  
 JVC ALTUNE OF CONANGA 803

DL INCENTIVE 228  
 DL BELLE 692 AAA 17283302  
 JL BELLE 578

CONNEALY PRODUCT 568  
 EBONISTA OF CONANGA 471  
 CONNEALY LEAD ON  
 ALTUNE OF CONANGA 6104

S A V FINAL ANSWER 0035  
 DL PRINCESS 233  
 SITZ ALLIANCE 6595  
 BT BELLE 152L

CED	BW	WW	YW	Milk	Marb	REA	Fat	SW	SB
0	2.7	69	118	25	.47	.30	.027	66.69	121.18

zoetis Percent Rank

CED	BW	WW	YW	RFI	DMI	YH	SC	Doc	HP	CEM	Milk	MW	MH	CW	Marb	RE	Fat	Tend
87	58	12	8	83	89	4	12	13	42	85	50	16	9	45	73	70	75	19

- Bred to DL Sure Shot 703, due 2-11-16
- Performance female, backed up with performance driven 50K results
- Individual WW ratio of 108
- Out of an Incentive daughter

**Lot 33** **DL CHLOE 1264**  
 BD: 02/01/2014 Cow: 17917968 Tattoo: 1264

CONNEALY CONSENSUS 7229  
 DL CONSENSUS 262 AAA 17281918  
 DL PRINCESS 1520

HOOVER DAM  
 DL CHLOE 1122 AAA +17281991  
 BASIN CHLOE 8377

CONNEALY CONSENSUS  
 BLUE LILLY OF CONANGA 16  
 DL INCENTIVE 228  
 D L PRINCESS 917

SYDGEN C C & 7  
 ERICA OF ELLSTON C124  
 EXAR 263C  
 BASIN CHLOE 812L

CED	BW	WW	YW	Milk	Marb	REA	Fat	SW	SB
6	1.0	58	96	27	.98	.68	.031	68.01	129.99

zoetis Percent Rank

CED	BW	WW	YW	RFI	DMI	YH	SC	Doc	HP	CEM	Milk	MW	MH	CW	Marb	RE	Fat	Tend
58	53	36	50	13	38	38	8	51	36	34	12	36	19	29	26	30	57	14

- Bred to DL Sure Shot 703, due 2-06-16
- Service sire is maternal brother to the high selling Consensus son to Mangen Angus Ranch in last year's bull sale
- Dam is an ET cow from the great Basin Chloe 8377 cow
- Calving ease bred heifer with tremendous carcass numbers
- Individual Ratios: BW 94, WW 104
- Dam sells as Lot 60

**DL SURE SHOT 703**

Reg: AAA 17600103

CED	BW	WW	YW	M	SB
7	.9	62	99	33	132.90

Sire: MOGCK Sure Shot (AAA 15899735)  
 Maternal Grand sire: Sitz Dash 10277 (AAA #15656868)

**Service sire to Lots 27, 30, 32,  
 33, 34, 36**



**Lot 35**

**DL BARBARA 354**

BD: 01/09/2014 Cow: 17923689 Tattoo: 354

DIAMOND RAINMAKER 154E	BLACK TOOTH RAINMAKER 911
BASIN RAINMAKER 747L AAA #13830028	BASIN BLACKCAP C S 815A
BASIN JOY 912C	G T MAXIMUM
	BASIN JOY 540Y
DL INCENTIVE 228	S A V FINAL ANSWER 0035
DL BARBARA 562 AAA 17281936	DL PRINCESS 233
D L BARBARA 305	B T ULTRAVOX 297E
	D L BARBARA 551

CED	BW	WW	YW	Milk	Marb	REA	Fat	SW	SB
11	-1.3	46	81	22	.48	.26	-.026	51.51	73.08

zoetis Percent Rank

CED	BW	WW	YW	RFI	DMI	YH	SC	Doc	HP	CEM	Milk	MW	MH	CW	Marb	RE	Fat	Tend
58	10	90	91	55	58	77	51	86	38	78	81	61	92	84	57	86	24	12

- A.I. bred to DL Sonic, due 1-28-16
- Negative calving ease heifer that has a lot of capacity to her
- Individual Ratios: BW 94, WW 102
- Out of the Basin Rainmaker 747L bull which has been a very good maternal sire in our herd; great females

**Lot 36**

**RC MISS ANGUS 1564**

BD: 02/15/2014 Cow: 17938050 Tattoo: 1564

CONNEALY ONWARD	CONNEALY LEAD ON
SITZ UPSCALE 671T AAA +15836555	ALTUNE OF CONANGA 6104
SITZ HENRIETTA PRIDE 81M	SITZ VALUE 7097
	SITZ HENRIETTA PRIDE 1370
MYTTY IN FOCUS	S A F FOCUS OF E R
STEVENS ON MISS ANGUS 4648 AAA 16114034	MYTTY COUNTESS 906
STEVENS ON MISS ANGUS 6334	BOYD ON TARGET 1083
	STEVENS ON MISS ANGUS 362F

CED	BW	WW	YW	Milk	Marb	REA	Fat	SW	SB
-1	1.9	56	109	19	.21	.07	.018	46.63	115.14

zoetis Percent Rank

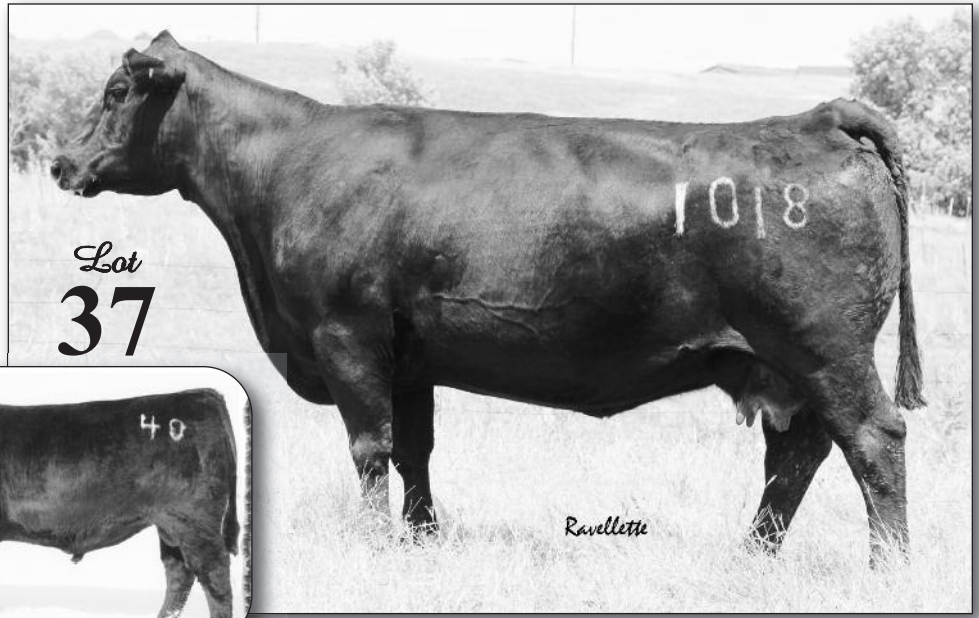
CED	BW	WW	YW	RFI	DMI	YH	SC	Doc	HP	CEM	Milk	MW	MH	CW	Marb	RE	Fat	Tend
75	73	17	7	99	72	54	5	80	42	49	73	37	61	36	91	89	61	28

- Bred to DL Sure Shot 703, due 2-6-16
- High growth female backed by great growth numbers on the 50K
- A stylish Upscale daughter out of a thick made In Focus cow
- Dam sells as Lot 41

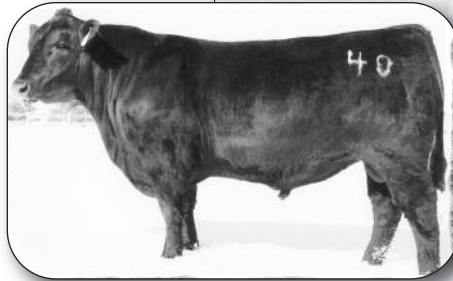


# Spring Cows

- A.I. bred to VAR Index, due 1-17-16
- Highly productive cow that is a high-light in the Grandview herd.
- Sold two sons for an average of \$16,500 in our bull sale.
- Has a tremendous daughter working in the Grandview herd
- Sold a son to JD Wasserburger in 2012 and to Ridl Farms in 2013
- BW 4 at 95, WWR 4 at 111, YWR 4 at 112, IMF at 118
- Cow that is a performance great and one of our best producers



Lot  
**37**



M A LAW 124 40 - AAA 14859968

Lot  
**37**

**DL LADY IDA 1018**

BD: 02/08/2008

Cow: #16431344

Tattoo: 1018

SCHURRTOP M C  
M A LAW 124 40 AAA 14859968  
M A M-SUPREME 80 124

DL JAKER 443  
D L LADY IDA 745 AAA 15208704  
SODAK SARAH 6042-96

PAPA EQUATOR 2928  
SCHURRTOP 1483 9024  
G MARCYS 98 SUPREME 7  
CASEYS COWGIRL 80  
VERMILION DATELINE 7078  
D L BARBARA 748  
R R HOMERUN 2447  
N BAR LADY IDA 0752

CED	BW	WW	YW	Milk	Marb	REA	Fat	SW	SB
2	3.2	49	83	36	.41	-.26	.004	50.92	87.69

Lot  
**38**

**DL QUEEN ELBA 1182**

S A V 8180 TRAVELER 004

S A V 004 TRAVELER 4151

S A V EMBLYNETTE 7261

S V F BANDOLIER  
FV QUEEN ELBA R323

R F QUEEN ELBA 632A

SITZ TRAVELER 8180

BOYD FOREVER LADY 8003

N BAR EMULATION EXT

S A V EMBLYNETTE APRIL 1509

BON VIEW BANDO 598

S V F PRIMROSE LADY 9446

Q A S TRAVELER 23-4

SKARSHIP QUEEN ELBA 324

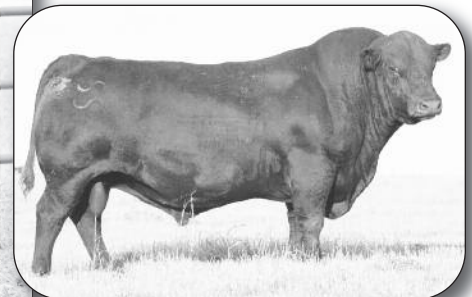
AAA 14739116

AAA +15160063

CED	BW	WW	YW	Milk	Marb	REA	Fat	SW	SB
7	.4	41	71	25	.52	.23	.041	41.56	98.48



Lot  
**38**



- A.I. bred to Consensus 7229, due 2-3-16
- Powerful, thick made 4151 daughter
- Low birth weight cow with substance
- Dam is great producer. Ratio 6 at 98 for BW, 6 at 103 for WW, 2 at 107 for YW, 2 at 107 for IMF

S A V 004 TRAVELER 4151 - AAA 14739116

- A.I. bred to DL Grandview 53, due 2-7-16
- Low birth, thick made Hoover Dam daughter
- Very attractive cow on the profile that produced two sons which sold in Lewis Brothers' Bull Sale.
- Ratios 2 at 96 for BW, 2 at 102 for WW, 2 at 109 for IMF



**Lot 39**

**DL LADY1391**

BD: 02/18/2011 Cow: 16968893 Tattoo: 1391

HOOVER DAM SYDGEN C C & 7 AAA #16124994  
 ERICA OF ELLSTON C124  
 DIAMOND JUSTICE 901S  
 BASIN LADY 9302 AAA 16378208  
 BASIN LADY 3054

S A F CONNECTION  
 SYDGEN FOREVER LADY 4087  
 TC GRIDIRON 258  
 ERICA OF ELLSTON V65  
 ER JUSTICE N013  
 ERISKAY OF ER J238  
 VERMILION PAYWEIGHT J847  
 BASIN LADY 734J

CED	BW	WW	YW	Milk	Marb	REA	Fat	SW	SB
7	1.0	52	97	27	.54	.75	-.010	59.88	120.36

**Lot 40**

**DL BARBARA 892**

BD: 01/18/2012 Cow: +17294827 Tattoo: 892

CONNEALY CONSENSUS  
 CONNEALY CONSENSUS 7229 AAA 16447771  
 BLUE LILLY OF CONANGA 16

BASIN RAINMAKER 747L  
 DL BARBARA 238 AAA 16431341  
 D L BARBARA 666

KMK ALLIANCE 6595 I87  
 BLINDA OF CONANGA 004  
 WOODHILL ADMIRAL 77K  
 BLUE CASH OF CONANGA 6020  
 DIAMOND RAINMAKER 154E  
 BASIN JOY 912C  
 B T ULTRAVOX 297E  
 D L BARBARA 450

CED	BW	WW	YW	Milk	Marb	REA	Fat	SW	SB
6	1.8	55	94	31	.81	.49	.003	69.30	102.83



- A.I. bred to DL Grandview 53, due 1-13-16
- Very attractive Consensus 7229 daughter out of the 238 Donor Cow, who sells as Lot 55
- Pretty fronted, deep sided, heavy muscled cow that just puts it all together.
- A sale highlight
- One of the best ET daughters in the herd





**Lot 41** **STEVENSON MISS ANGUS 4648**  
 BD: 01/28/2008 Cow: 16114034 Tattoo: 4648

S A F FOCUS OF E R  
 MYTTY IN FOCUS AAA #13880818  
 MYTTY COUNTESS 906

BOYD ON TARGET 1083  
 STEVENSON MISS ANGUS 6334 AAA 14701193  
 STEVENSON MISS ANGUS 362F

S A F FAME  
 G D A R FOREVER LADY 246  
 SITZ ALLIANCE 6595  
 BALDRIDGE COUNTESS 357

S A F 598 BANDO 5175  
 BOYD FOREVER LADY 7095  
 BASIN RAINMAKER 2844  
 MISS J R S ANGUS 609Y

CED	BW	WW	YW	Milk	Marb	REA	Fat	SW	SB
2	2.1	45	83	17	.46	-.20	.011	34.33	77.21

- A.I. bred to DL Grandview 53, due 1-18-16
- Daughter sells as Lot 36
- We purchased this Mytty In Focus daughter from Stevenson Angus, MT as a bred heifer. A great cow coming with a great calf early 2016 sired by Grandview 53!

**Lot 43** **R&D BLACKBIRD 822**  
 BD: 02/05/2008 Cow: #16409732 Tattoo: 822

SITZ TRAVELER 8180  
 S A V 8180 TRAVELER 004 AAA #13512009  
 BOYD FOREVER LADY 8003

STEVENSUN HUNTER 616K  
 R&D MISS HUNTER 267 AAA 14242106  
 R&D EXT FRONTIER

G D A R TRAVELER 71  
 SITZ EVERELDA ENTENSE 1137  
 A A R NEW TREND  
 S V F FOREVER LADY 57D

R&S FORTUNE HUNTER M27  
 JRS LASS 118B  
 N BAR EMULATION EXT  
 LANDMARK BLACKBIRD 6867

CED	BW	WW	YW	Milk	Marb	REA	Fat	SW	SB
-1	3.2	51	90	25	.20	.21	.051	42.91	111.14

- A.I. bred to DL Grandview 53, due 1-17-16
- Pathfinder
- Average Ratios - WW 5 @ 101, YW 2 @ 111, REA 3 @ 105
- One daughter retained in the herd
- Sold sons totaling \$11,250
- A great cow for us that we purchased in a group of flush sisters from Robb & Dana Cook, NE. Her offspring has been popular and her performance impeccable.

**Lot 42** **DL ROSE 631**  
 BD: 01/17/2011 Cow: 16968917 Tattoo: 631

SITZ UPWARD 307R  
 SITZ DASH 10277 AAA #15656868  
 SITZ EVERELDA ENTENSE 2665

DAKOTA SOMETHING SPECIAL 642  
 DL ROSE 929 AAA 16505883  
 DL ROSE 163

CONNELLY ONWARD  
 SITZ HENRIETTA PRIDE 81M  
 O C C EMBLAZON 854E  
 SITZ EVERELDA ENTENSE 4948

S A V FINAL ANSWER 0035  
 FAYES MISS TRIXIE 472  
 S A F FOCUS OF E R  
 D L ROSE 111

CED	BW	WW	YW	Milk	Marb	REA	Fat	SW	SB
3	2.6	49	87	18	.32	.57	.035	41.84	88.68

- A.I. bred to VAR Index, due 2-8-16
- Complete Dash Daughter
- Bred to Index, which was the high seller in the 2014 Vintage Angus Sale out of the great Sandpoint Blackbird 8809 cow.
- Dam ratios 3 at 106 for WW, 1 at 134 for YW
- Maternal sister, DL Rose 642, sells with fall calf as Lot 72

**Lot 44** **SANDPOINT PRIDE 1232**  
 BD: 03/30/2011 Cow: 17066432 Tattoo: 1232

CAR DON WARM FRONT 8592  
 LAFLINS NORTHERN LIGHTS AAA 16071777  
 LAFLINS SUNSET 2077

MYTTY IN FOCUS  
 SANDPOINT PRIDE 8023 AAA 16083094  
 SANDPOINT PRIDE 6779

CONNELLY FOREFRONT  
 C O EVERELDA ENTENSE 9060  
 W C NORTHERN EDGE 0C04  
 LAFLINS EMULOUS SUNSET 962

S A F FOCUS OF E R  
 MYTTY COUNTESS 906  
 S A V 8180 TRAVELER 004  
 KOUPL PROSPECTOR PRIDE 5021

CED	BW	WW	YW	Milk	Marb	REA	Fat	SW	SB
-3	3.1	48	79	22	.41	.64	.018	43.45	88.09

- A.I. bred to DL Sonic 444, due 1-18-16
- Individual Ratios - WW 103, YW 102, REA 130
- Average Ratio - IMF 1 @ 112
- A young cow with an interesting pedigree that is bred early to calve to Sonic.



**Lot 45** **DL ERICA 52**  
 BD: 01/04/2012 Cow: 17281906 Tattoo: 52

CONNEALY ONWARD  
 SITZ UPSCALE 671T AAA #15836555  
 SITZ HENRIETTA PRIDE 81M

CONNEALY LEAD ON  
 ALTUNE OF CONANGA 6104  
 SITZ VALUE 7097  
 SITZ HENRIETTA PRIDE 1370  
 E A R BIG TIME K53 537  
 D L EISA ERICA 829  
 VERMILLION DATELINE 7078  
 D L ERICA 799

CED	BW	WW	YW	Milk	Marb	REA	Fat	SW	SB
11	-.4	60	106	28	.34	.51	.020	67.71	119.86

- A.I. bred to Consensus 7229, due 3-3-16
- High performing Upscale daughter
- Loads of length and extension
- Out of a tremendous cow, 617, which is show champion and great producer
- Individual Ratio 1 at 107 WW
- Dams Ratio 6 at 97 for BW, 6 at 105 for WW, 2 at 103 for YW.

**Lot 46** **RIVER HILLS JOY W212**  
 BD: 01/31/2009 Cow: 16586937 Tattoo: W212

CONNEALY DANNY BOY  
 WOODHILL MAINLINE AAA #14793708  
 WOODHILL BLACKBIRD 1288-138K

CONNEALY TIMELINE  
 ENERGY OF CONANGA 4851  
 N BAR BANDO 598 Y2587  
 WOODHILL BLACKBIRD 463-1288

B/R NEW FRONTIER 095  
 RIVER HILLS JOY P4581 AAA #14973835  
 EAGLE MISS JOY 5300 G

B/R NEW DESIGN 036  
 WHITE FENCE PRIDE H1  
 MARCYS GOLD RUSH  
 PARKERS JOY 145

CED	BW	WW	YW	Milk	Marb	REA	Fat	SW	SB
-3	4.2	50	93	17	.28	.56	.008	24.41	103.82

- A.I. bred to DL Sonic 444, due 2-4-16
- Individual Ratios - WW 115, YW 116, REA 115
- One daughter retained in our herd
- Nice phenotype cow here with depth of rib and long bodied



**Lot 47** **DIAMOND PRIDE LADY 5W40**  
 BD: 02/18/2009 Cow: 16335339 Tattoo: 5W40

G T MAXIMUM  
 BASIN MAX 602C AAA #11951654  
 BASIN ELINE ERICA 315U

SCOTCH CAP  
 GT MISS TRAVELER 58  
 G D A R RAINMAKER 340  
 BASIN ELINE ERICA 1313  
 BROOKS EXT 792  
 DIAMOND BLACKCAP 188H  
 STEVENSON HEISMAN J3G  
 R&S PRIDE LADY L853

DIAMOND EXT 9N19  
 DIAMOND PRIDE LADY 346R AAA 14983366  
 R&S PRIDE LADY N105

CED	BW	WW	YW	Milk	Marb	REA	Fat	SW	SB
3	1.7	41	81	22	.50	-.16	.030	34.97	86.47

- A.I. bred to DL Grandview 53, due 2-3-16
- Individual Ratios - WW 105 - Average Ratios - BW 4 @ 100, IMF 2 @ 134
- One daughter retained in herd
- Sold bulls totaling \$13,750
- 5W40 is a great cow with years of life ahead of her. We are keeping a daughter and her bull calves have been popular. We purchased her as a bred heifer from Stevenson Diamond Dot, Hobson, MT. A 602C daughter that carries a Grandview 53 calf. The possibilities await you in early February.



Lot  
**48**

**DL DUCHESS 78**

BD: 01/02/2008

Cow: 16431343

Tattoo: 78

SITZ TRAVELER 8180  
S A V FINAL ANSWER 0035 AAA #13592905  
S A V EMULOUS 8145

G D A R TRAVELER 71  
SITZ EVERELDA ENTENSE 1137  
BON VIEW BANDO 598  
S A V SKY EMULOUS 2124

B T ULTRAVOX 297E  
D L DUCHESS 729 AAA 14328841  
BT MISS DUCHESS 183D

O S U 6T6 ULTRA  
FINKS VIXON 788  
B T BROST ARGUS  
DAVIS MISS DUCHESS 115

CED	BW	WW	YW	Milk	Marb	REA	Fat	SW	SB
4	1.4	55	93	19	.53	.66	.059	54.40	66.42

- A.I. bred to Consensus 7229, due 2-3-16
- Long bodied, Final Answer daughter
- Functional cow that has been a good producer
- Ratios 5 at 99 for WW, 4 at 100 for YW, 4 at 108 for IMF, 4 at 106 for REA
- Daughter sells also as Lot 16



Lot  
**49**

**JL DELIA 173**

BD: 01/05/2013

Cow: 17600039

Tattoo: 173

CONNEALY PRODUCT 568  
CONNEALY FINAL PRODUCT AAA 15848422  
EBONISTA OF CONANGA 471

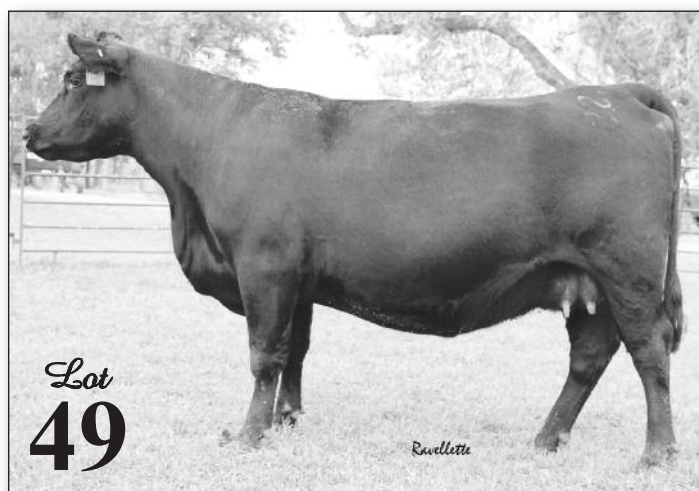
G A R RETAIL PRODUCT  
PRIDE FINE OF CONANGA 566  
CONNEALY DEEP CANYON 454  
EBONISA OF CONANGA 5469

CONNEALY ALL AROUND  
JL DELIA 480 AAA #16809464  
L A DELIA 2805

CONNEALY WHITMAN  
ENTRUST OF CONANGA 894  
KCH PRECISION 78  
L A DELIA 926

CED	BW	WW	YW	Milk	Marb	REA	Fat	SW	SB
0	2.4	57	98	27	.46	.62	.010	55.03	108.18

- A.I. bred to Consensus 7229, due 2-3-16
- Great Young Cow
- Never gives you a bad look, Attractive and very balanced, Final Product daughter out of a great all-around cow.
- One of the best young cows we have, she has been a favorite all her life.
- Dam's Ratios at 3 at 99 for BW, 3 at 108 for WW, 1 at 102 for YW, 1 at 128 for IMF, 1 at 103 for REA.



Lot  
**50**

**BASIN ERICA 6228**

BD: 01/11/2008

Cow: 16049787

Tattoo: 6228

HERO 6267 OF R R 2418  
H A IMAGE MAKER 0415 AAA #+13739532  
H A RITO BLACKCAP 9038

R R HERO 6267  
R R EVERELDA ENTENSE 0413  
H 96 RITO 2100 7371  
H 96 BLACKCAP 3835

BASIN MAX 140P  
BASIN ERICA 343S AAA 15360071  
BASIN ERICA 163N

BASIN MAX 602C  
BASIN TROJAN ERICA 856L  
BON VIEW NEW DESIGN 1407  
BASIN ERICA 9L11

CED	BW	WW	YW	Milk	Marb	REA	Fat	SW	SB
13	-.18	52	93	26	.41	.12	-.006	55.65	98.88

- Due to calve in February 2016 to GMAR Final Product Z014
- Individual Ratios - IMF 105
- Average Ratios - WW 4 @ 105, YW 1 @ 113
- One daughter retained in herd
- Sold a son in 2014 for \$6,500
- Selling daughter as Lot 29
- An Image Maker daughter out of a Basin Erica female making machine, calving ease numbers and great phenotype!

**GMAR FINAL PRODUCT Z014**

Reg: AAA +17189764

CED	BW	WW	YW	M	SB
0	3.8	62	109	28	118.67

Sire: Connealy Final Product (AAA 15848422)  
Dam: JVC Altune of Conanga 803 (AAA +16046632)

**Service sire to Lots 50 & 51**



**Lot 51** **JL VANITY BESS 979**  
 BD: 01/29/2009 Cow: 16505779 Tattoo: 979

S A V 8180 TRAVELER 004  
 S A V 004 TRAVELER 4151 AAA 14739116  
 S A V EMBLYNETTE 7261

SITZ TRAVELER 8180  
 BOYD FOREVER LADY 8003  
 N BAR EMULATION EXT  
 S A V EMBLYNETTE APRIL 1509

SITZ ALLIANCE 8199  
 BT VANITY BESS 651M AAA #14425999  
 BT VANITY BESS 381H

SITZ TRAVELER 8180  
 SITZ EISA EVERGREEN 1572  
 BT ULTIMA 75E  
 4 S VANITY BESS 96

CED	BW	WW	YW	Milk	Marb	REA	Fat	SW	SB
10	.2	34	61	31	.58	.03	.073	45.79	64.39

- Due to calve in February 2016 to GMAR Final Product Z014
- Heavy muscled 4151 daughter that is low birth weight
- Cow that always has a good calf year in and year out.
- Ratios 2 at 97 for BW, 2 at 103 for WW, 2 at 100 for YW, 2 at 109 for IMF, 2 at 100 for REA

**Lot 53** **DL ERICA 259**  
 BD: 01/05/2009 Cow: 16505889 Tattoo: 259

S A V 8180 TRAVELER 004  
 S A V NET WORTH 4200 AAA #14739204  
 S A V MAY 2410

B T ULTRAVOX 297E  
 D L ERICA 799 AAA #13489503  
 D L ERICA 716

SITZ TRAVELER 8180  
 BOYD FOREVER LADY 8003  
 S A F 598 BANDO 5175  
 S A V MAY 6269

O S U 6T6 ULTRA  
 FINKS VIXON 788  
 V A R GATEWAY 4101  
 D L L ERICA 42

CED	BW	WW	YW	Milk	Marb	REA	Fat	SW	SB
4	4.3	49	92	20	.50	.44	.034	36.10	112.00

- A.I. bred to Consensus 7229, due 3-6-16
- Tremendously thick Net Worth daughter with substance
- Two daughters retained in the herd
- Good disposition
- BW ratio 3 at 96

**Lot 52** **VERMILION BLACKBIRD 8462**  
 BD: 03/11/2008 Cow: 16060334 Tattoo: 8462

VERMILION DATELINE 7078  
 VERMILION 7078 DATELINE N539 AAA 14411069  
 VERMILION LASS 9498

BALDRIDGE NEBRASKA 901  
 VERMILION BLACKBIRD 5152 AAA 15009481  
 VERMILION BLACKBIRD 2238

CONNEALY DATELINE  
 VERMILION BLACKBIRD 5044  
 LEACHMAN RIGHT TIME  
 VERMILION LASS 3363

S A F FOCUS OF E R  
 BALDRIDGE FLOSSIE 367  
 VERMILION 7078 DATELINE J860  
 VERMILION BLACKBIRD 8020

CED	BW	WW	YW	Milk	Marb	REA	Fat	SW	SB
-1	3.8	52	90	22	.47	.18	.011	42.81	102.77

- A.I. bred to DL Sonic 444, due 2-4-16
- Individual Ratios - WW 117, YW 105
- Average Ratios - WW 4 @ 100, YW 2 @ 102
- One daughter is being retained in our herd
- Sold sons totaling \$12,750
- A nice VRD daughter we purchased as a bred heifer from Vermilion Ranch, MT. In early February, you will have a Sonic "Boom" calf and both heifer or bull will be powerful in performance and carcass numbers.

MAKE PLANS FOR THE  
**LEWIS BROS. ANGUS**  
 ANNUAL BULL SALE

**Friday, February 19, 2016**  
**St. Oge (SD) Livestock Auction**  
*Selling 100 Angus Bulls and a group of commercial heifers*



Lot  
**54**

**BASIN PAMELA 6608**

BD: 02/01/2008

Cow: #16010506

Tattoo: 6608

MYTTY IN FOCUS  
B P F SPECIAL FOCUS 504 AAA #15140670  
B P F BLACK CASH 341

BASIN YELLOWSTONE 116P  
BASIN PAMELA 3577 AAA 15332561  
BASIN PAMELA 114N

S A F FOCUS OF E R  
MYTTY COUNTESS 906  
J R SOMETHING SPECIAL  
B P F BLACK CASH 944

VERMILION YELLOWSTONE  
BASIN PRIDE 5231  
SUMMITCREST HIGH PRIME 0H29  
BASIN PAMELA 4431

CED	BW	WW	YW	Milk	Marb	REA	Fat	SW	SB
12	-.5	52	90	25	.84	.06	.048	58.68	118.29

- A.I. bred to DL Grandview 53, due 1-18-16
- Pathfinder
- Average Ratios - WW 5 @ 104, YW 3 @ 103, IMF 3 @ 129
- One daughter retained in our herd.
- Sold sons totaling \$16,750
- A never miss cow with both heifers and bulls from her selling well. She is bred early again! Ratios to top any sale.



*Two proven donor cows here . . .*

Lot  
**55**

**DL BARBARA 238**

BD: 01/06/2008

Cow: 16431341

Tattoo: 238

DIAMOND RAINMAKER 154E  
BASIN RAINMAKER 747L AAA #13830028  
BASIN JOY 912C

B T ULTRAVOX 297E  
D L BARBARA 666 AAA 16170815  
D L BARBARA 450

BLACK TOOTH RAINMAKER 911  
BASIN BLACKCAP C S 815A  
G T MAXIMUM  
BASIN JOY 540Y  
O S U 6T6 ULTRA  
FINKS VIXON 788  
CONNELLY FRONTLINE  
D L BARBARA 748

CED	BW	WW	YW	Milk	Marb	REA	Fat	SW	SB
7	1.7	47	84	34	.56	.45	-.025	56.21	78.53

- Sells open, ready to flush
- Cow that has done it all for us
- 12 daughters working in the herd
- Ratio 4 at 94 for BW, 4 at 113 for WW
- Donor with look, power and substance
- 2 sons working in registered herds, Nansel's Flying N and Wilson Ranches
- Daughter sells as Lot 40



Lot  
**56**

**BASIN CHLOE U518**

BD: 02/09/2008

Cow: 16010590

Tattoo: U518

BON VIEW NEW DESIGN 1407  
EXAR 263C AAA #15012747  
EXAR JUNE C 3577

BASIN EXPEDITION 801N  
BASIN CHLOE 3R21 AAA 15026216  
BASIN CHLOE 962N

B/R NEW DESIGN 036  
BON VIEW PRIDE 664  
BR MIDLAND  
PAF 9611 616 1161  
BASIN EXPEDITION 290L  
JOLLY R ROSE 259H  
VERMILION PAYWEIGHT J847  
BASIN CHLOE 618J

CED	BW	WW	YW	Milk	Marb	REA	Fat	SW	SB
-1	3.3	46	90	37	.65	.31	-.005	46.93	111.08

- Open and ready to flush
- Average Ratios - WW 4 @ 110, YW 1 @ 109, IMF 1 @ 109
- Selling daughter as Lot 24
- Donor cow; we flushed her and will have ET calves on the ground in January 2016
- Purchased her as a bred heifer from Basin Angus, MT. The 263C x Basin Chloe cow family is a good one. No doubt she could be flushed again for some great females or bred for many years naturally.



*Great cow making genetics that work!*



**Lot 57** **SHILO MISS EVERGREEN 2547**  
 BD: 01/16/2007 Cow: 15782066 Tattoo: 2547

TC TOTAL 410  
 BON VIEW NEW DESIGN 208  
 AAA #14844711  
 TC ERICA EILEEN 2047  
 D A J S BENCHMARK H83  
 SHILO MISS EVERGREEN 2244 AAA 14753507  
 WINDY RIDGE GIDGET 547  
 B/R NEW DESIGN 036  
 BON VIEW ERICA 443  
 TWIN VALLEY PRECISION E161  
 TC ERICA EILEEN 5116  
 N BAR EMULATION EXT  
 G BAR H JUANA E71  
 PAPA EQUATOR 2928  
 G T HEROINE 176

CED	BW	WW	YW	Milk	Marb	REA	Fat	SW	SB
-2	2.8	56	97	20	.46	.32	-.023	42.21	107.10

- A.I. bred to DL Grandview 53, due 1-14-16
- Powerful, long body, Total daughter
- In our herd ratio 3 calves for 103 at weaning
- Performance driven female and bred to Grandview so expect a great cross

**Lot 59** **SANDPOINT PRIDE 8764**  
 BD: 12/31/2007 Cow: +16083424 Tattoo: 8764

CONNEALY POWER ONE  
 C R A BEXTOR 872 5205 608  
 AAA #15148585  
 BRITNEY OF CONANGA  
 LEMMON PRIDE E804  
 N BAR EMULATION EXT  
 AAA +13632780  
 WHITE FENCE PRIDE H1  
 B A R EXT TRAVELER 205  
 CRA LADY JAYE 608 498 S EASY  
 BON VIEW BANDO 598  
 BABES BEST OF CONANGA  
 EMULATION N BAR 5522  
 N BAR PRIMROSE 2424  
 CONNEALY DATELINE  
 PLEASANT PILL OF CONANGA

CED	BW	WW	YW	Milk	Marb	REA	Fat	SW	SB
3	2.3	39	71	20	.40	.62	-.018	32.53	89.03

- A.I. bred to DL Sonic 444, due 2-4-16
- Individual Ratio - REA 102
- Average Ratio - REA 2 @ 104
- Sold a son in 2015 for \$7,500
- A nice cow that has been good to us and is carrying a calf from the \$38,000 DL Sonic 444. A great genetic script could be written here.

**Lot 58** **J L ANITA 357**  
 BD: 01/17/2007 Cow: 15912628 Tattoo: 357

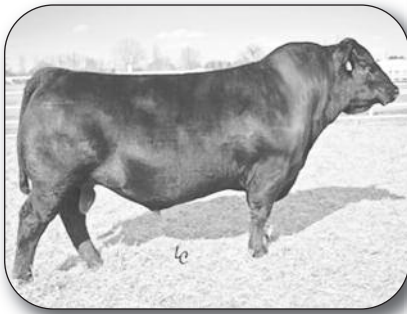
S A V 8180 TRAVELER 004  
 AAA #13512009  
 BOYD FOREVER LADY 8003  
 HERO 6267 OF R R 2418  
 BT ANITA 46L  
 AAA #14002354  
 BT ANITA 270J  
 S I T Z TRAVELER 8180  
 G D A R TRAVELER 71  
 S I T Z EVERELDA ENTENSE 1137  
 A A R NEW TREND  
 S V F FOREVER LADY 57D  
 R R HERO 6267  
 R R EVERELDA ENTENSE 0413  
 BT BISHOP 92B  
 BT ANITA 485A

CED	BW	WW	YW	Milk	Marb	REA	Fat	SW	SB
4	2.5	47	77	22	.23	.16	.036	44.10	82.97

- A.I. bred to Consensus 7229, due 2-9-16
- Proven producer out of 004 bull
- Maternal line, three working daughters in the herd
- Dam was our pick from the Beartooth Angus dispersion
- Individual Ratios - 6 at 95 for BW, 6 at 100 for WW



# Outstanding set of Fall Pairs begin here!

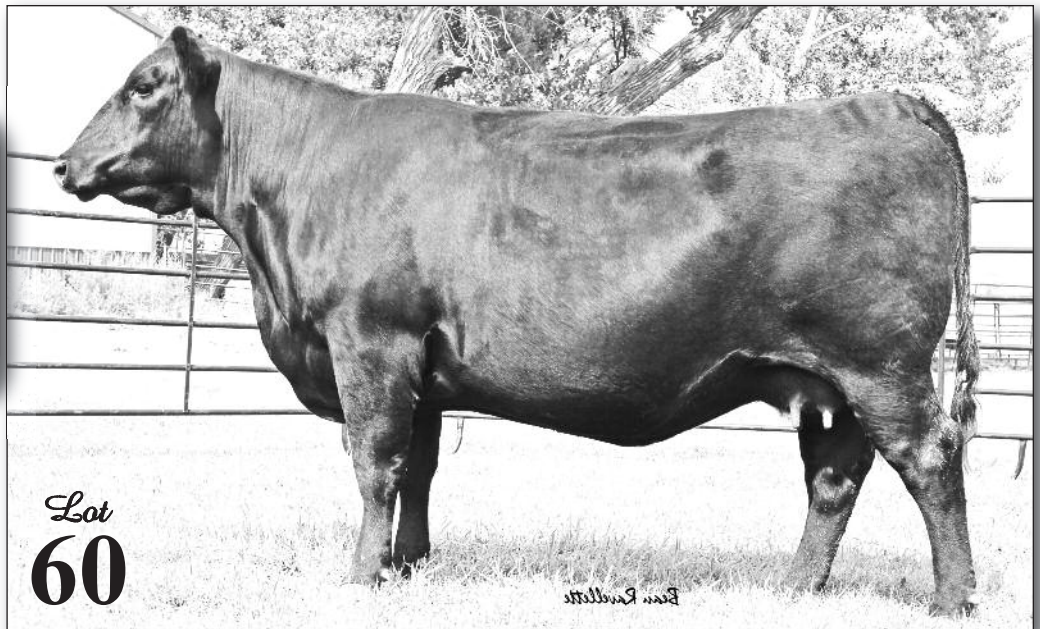


**LOT 60 SERVICE SIRE:  
KROUPALS B&B EXTRA 0011**

**AAA 16710494**

**EPDS: BW: 2.9 • WW 74 • YW 128**

**MILK 23 • SB 171.61**



**Lot 60**

**DL CHLOE 1122**

**BD: 01/22/2012**

**Cow: +17281991**

**Tattoo: 1122**

**HOOVER DAM**  
SYDGEN C C & 7  
ERICA OF ELLSTON C124  
AAA #16124994

**BASIN CHLOE 8377**  
EXAR 263C  
BASIN CHLOE 812L  
AAA +16010730

**S A F CONNECTION**  
SYDGEN FOREVER LADY 4087  
TC GRIDIRON 258  
ERICA OF ELLSTON V65  
BON VIEW NEW DESIGN 1407  
EXAR JUNE C 3577  
GARDENS EXPEDITION  
BASIN CHLOE 6198

CED	BW	WW	YW	Milk	Marb	REA	Fat	SW	SB
6	.8	53	97	25	.78	.58	.005	52.76	120.89

- Bull calf at side by Extra, born on 9-3-15
- Balanced, massive thick fall cow.
- Long and deep, loads of performance.
- She was purchased as an embryo from Basin Dispersion; dam was purchased by Express Ranch. The Great Grandma was sold for \$100,000.
- Low birth weight cow with carcass
- Highlight of the sale
- Daughter sells as Lot 33 as bred heifer

**Lot 62**

**RC SHEBA 2043**

**BD: 08/19/2013**

**Cow: 17676009**

**Tattoo: 2043**

**MOGCK BULLSEYE**  
MOGCK SURE SHOT  
MOGCK MARY 1255  
AAA 17102085

**SODAK SHEBA W796**  
SODAK OVATION T314  
SODAK SHEBA S735  
AAA 16608973

**MYTTY IN FOCUS**  
MOGCK BLACK LASS 2065  
K C F BENNETT COALITION SCC  
MOGCK MARY C 1757  
S A V FINAL ANSWER 0035  
SODAK ERICA R026  
SODAK DIRECT DRIVE N343  
SODAK SHOBANDA 8090-98

CED	BW	WW	YW	Milk	Marb	REA	Fat	SW	SB
4	.4	63	108	26	.59	.53	.052	67.80	109.39

- Bull calf at side by Musgrave Big Sky, born on 8-24-15
- BW: 60 lbs, WW: 746/109
- Dam sells as Lot 74
- Very nice phenotype depth and performance package in this young female. She is sired by Bullseye out of W796 and the maternal herd from Sodak Angus. Big time bull prospect from Big Sky!

**Lot 61**

**RC BLACKBIRD 2092**

**BD: 09/24/2012**

**Cow: 17683044**

**Tattoo: 2092**

**DL INCENTIVE 228**  
S A V FINAL ANSWER 0035  
DL PRINCESS 233  
AAA 16287091

**R&D BLACKBIRD 832**  
S A V 8180 TRAVELER 004  
R&D MISS HUNTER 267  
AAA +16409734

**SITZ TRAVELER 8180**  
S A V EMULOUS 8145  
S A F FOCUS OF E R  
D L PRINCESS 471  
SITZ TRAVELER 8180  
BOYD FOREVER LADY 8003  
STEVENSON HUNTER 616K  
R&D EXT FRONTIER

CED	BW	WW	YW	Milk	Marb	REA	Fat	SW	SB
2	2.0	72	120	22	.28	.31	.046	74.05	121.87

- Bull calf at side by Musgrave Big Sky, born on 9-7-15
- BW: 74 lbs.
- Dam sells as Lot 79
- Great Final Answer x Traveler pedigree backs this nice bodied cow. Balanced set of numbers here with a highly sought after Musgrave Big Sky bull calf that goes with the package.
- 2092 is out of a Blackbird cow we purchased from Robb & Dana Cook (NE) as a bred heifer. She has raised some good ones!

**Lot 63**

**PINE COULEE PRIDE ANN 6W**

**BD: 01/21/2009**

**Cow: 16678270**

**Tattoo: 6W**

**S A V FINAL ANSWER 0035**  
SITZ TRAVELER 8180  
S A V EMULOUS 8145  
AAA #13592905

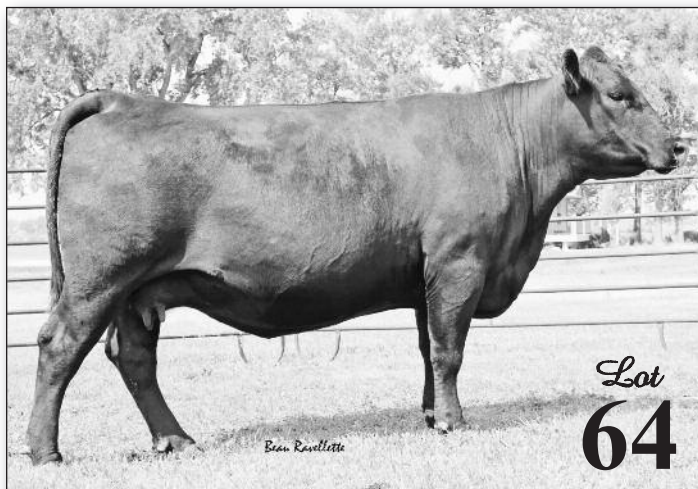
**B 5 PRIDE ANN 922**  
S A F FAME  
W P A PRIDE ANN 120  
AAA 13457135

**G D A R TRAVELER 71**  
SITZ EVERELDA ENTENSE 1137  
BON VIEW BANDO 598  
S A V SKY EMULOUS 2124  
MINERTS FORTUNE 2000  
S A F ROYAL LASS 1027  
RITO 2100 G D A R  
BARTONS MISS PATSY ANN

CED	BW	WW	YW	Milk	Marb	REA	Fat	SW	SB
10	-.2	46	79	16	.49	.39	.075	41.44	69.89

- Due to calf April 3 to DL Sonic 444
- Average Ratios - YW 2 @ 104, IMF 1 @ 114, REA 1 @ 106
- Two daughters retained in our herd
- Sold a son in 2015 for \$9,500
- A great female maker for our program. Her bull calf in 2015 showed what she is made of.





Lot  
**64**

**DL BARBARA 571**

BD: 01/17/2011

Cow: 16968918

Tattoo: 571

S A V FINAL ANSWER 0035  
DL INCENTIVE 228  
DL PRINCESS 233

AAA 16287091

HOFF TRIUMPH S C 754 169  
D L BARBARA 1242  
D L BARBARA 35

SITZ TRAVELER 8180  
S A V EMULOUS 8145  
S A F FOCUS OF E R  
D L PRINCESS 471

HOFF TRIUMPH S C 927  
HOFF LADY S EXT S C 534  
LEACHMAN RIGHT TIME  
D L L BARBARA 12

CED	BW	WW	YW	Milk	Marb	REA	Fat	SW	SB
0	1.9	67	116	27	.02	.27	.014	71.26	102.81

- Heifer calf at side by SAV Rockwell, born on 9-21-15
- Performance cow, lower birth with high growth
- Long, deep and thick
- Ratios 1 at 104 for WW

Lot  
**65**

**DL BARBARA 1081**

BD: 01/31/2011

Cow: 16968949

Tattoo: 1081

CONNEALY ALL AROUND  
DL ALL AROUND 529  
D L PRINCESS 375

AAA 16611676

M A LAW 124 40  
DL BARBARA 758  
D L BARBARA 450

AAA #16431334

CONNEALY WHITMAN  
ENTRUST OF CONANGA 894  
CONNEALY LEAD ON  
DL PRINCESS 233

SCHURRTOP M C  
M A M-SUPREME 80 124  
CONNEALY FRONTLINE  
D L BARBARA 748

CED	BW	WW	YW	Milk	Marb	REA	Fat	SW	SB
-7	4.2	60	98	28	.47	.03	-.013	59.38	108.04

- Will have heifer calf at side by SAV Rockwell
- Heavy muscled, very dimensional 529 daughter that will produce pounds
- Outcross pedigree with performance



Lot  
**66**

**DL ABBEY 2042**

BD: 08/26/2012

Cow: 17335651

Tattoo: 2042

S A V FINAL ANSWER 0035  
DL INCENTIVE 228  
DL PRINCESS 233

AAA 16287091

LEMAR WINDY 117P  
SODAK ABBEY T128  
SODAK ABBEY P012

SITZ TRAVELER 8180  
S A V EMULOUS 8145  
S A F FOCUS OF E R  
D L PRINCESS 471

H A R B WINDY 702 JH  
LEMAR BLACKBIRD 2029  
SITZ ALLIANCE 9720  
SODAK CONNIE M074

CED	BW	WW	YW	Milk	Marb	REA	Fat	SW	SB
10	-.1	65	109	21	.26	.38	.039	70.43	100.52

- Will have calf at side by SAV Rockwell
- Great young cow in fall herd
- Very complete and balanced incentive daughter that is light birth weighted
- Curve bending genetics
- Dams sells as Lot 84



Lot  
**67**

## RC OLIVE 1972

BD: 08/06/2012

Cow: 17683058

Tattoo: 1972

S A V FINAL ANSWER 0035  
DL INCENTIVE 228 AAA 16287091  
DL PRINCESS 233

SITZ TRAVELER 8180  
S A V EMULOUS 8145  
S A F FOCUS OF E R  
D L PRINCESS 471

LEMAR WINDY 117P  
SODAK OLIVE W735 AAA 16608946  
SODAK OLIVE M231

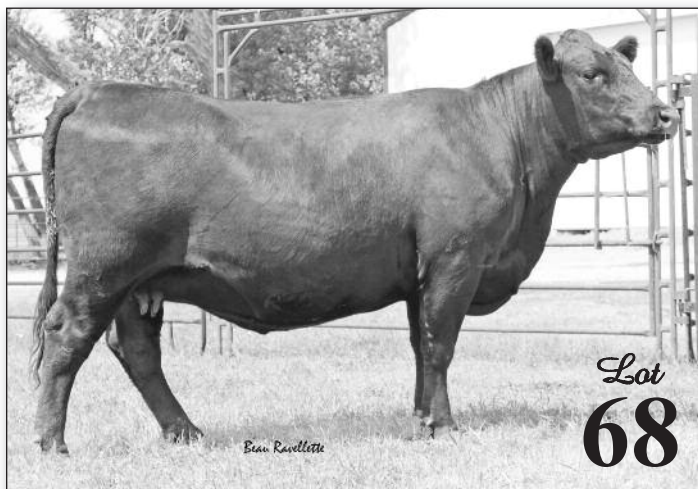
H A R B WINDY 702 JH  
LEMAR BLACKBIRD 2029  
WK ONLINE 9191  
SODAK PAULA 6022-96

CED	BW	WW	YW	Milk	Marb	REA	Fat	SW	SB
0	2.8	71	114	20	.34	.35	.018	68.87	112.29

• Heifer calf at side by Musgrave Big Sky, born on 9-5-15

• BW: 72 lbs.

• Solid numbers and a solid pedigree. Sired by DL Incentive 228, an outstanding Final Answer grandson that has produced numerous high selling bulls in past Lewis Bros. sales. RC Olive 1972 is out of a fall bred cow we purchased from Sodak Angus. She is long bodied and heavy topped like her mother.



Lot  
**68**

## DL ELMINEMERE 1912

BD: 07/29/2012

Cow: 17335644

Tattoo: 1912

S A V FINAL ANSWER 0035  
DL INCENTIVE 228 AAA 16287091  
DL PRINCESS 233

SITZ TRAVELER 8180  
S A V EMULOUS 8145  
S A F FOCUS OF E R  
D L PRINCESS 471

CONNEALY ALL AROUND  
DL ELMINEMERE 440 AAA 16771282  
DL ELMINEMERE 234

CONNEALY WHITMAN  
ENTRUST OF CONANGA 894  
SITZ ALLIANCE 9800  
D L ELMINEMERE 481

CED	BW	WW	YW	Milk	Marb	REA	Fat	SW	SB
6	.9	68	111	22	.71	.32	0	73.20	122.36

• Heifer calf at side by DL Bismarck, born on 9-17-15

• Very complete, sound female

• Low birth, high growth and carcass

• Very exciting, young fall cow with a great future

Lot  
**69**

## DL MARY 1152

BD: 01/24/2012

Cow: +17294794

Tattoo: 1152

CONNEALY ONWARD  
SITZ UPSCALE 671T AAA +15836555  
SITZ HENRIETTA PRIDE 81M

CONNEALY LEAD ON  
ALTUNE OF CONANGA 6104  
SITZ VALUE 7097  
SITZ HENRIETTA PRIDE 1370

LEACHMAN RIGHT TIME  
DL MARY 143 AAA #14650664  
D L BLUE RIBBON MARY 71

N BAR EMULATION EXT  
LEACHMAN ERICA 0025  
CONNEALY DATELINE  
D L BLUE RIBBON MARY 889

CED	BW	WW	YW	Milk	Marb	REA	Fat	SW	SB
7	.8	54	100	20	.15	.44	-.011	51.32	121.31

• Will have calf at side by SAV Rockwell

• ET daughter out of the 143 Donor Cow

• Level made, great in her profile

• An Upscale performance daughter that is low birth weight





**Lot 70**

**JL ELLUNA 1090**

BD: 02/08/2010 Cow: 16789035 Tattoo: 1090

WOODHILL ADMIRAL 77K  
 CONNEALY ADMIRAL 3349 AAA 15150659  
 ENLUCIA OF CONANGA 874

ROTH REGULATOR 0405  
 SCR ELLUNA 4706 AAA #14861102  
 R K MISS SPADE ELLUNA 7

S A F FOCUS OF E R  
 WOODHILL LASS 344-1178  
 CONNEALY DEEP CANYON 454  
 ENLISTA OF CONANGA 866

GDAR SVF RUSS 184B  
 BEAR MTN LADY ERALINE 302  
 CARLSON SPADE DOMINATOR OH13  
 R K MISS AMTRACK ELLUNA 1 A

CED	BW	WW	YW	Milk	Marb	REA	Fat	SW	SB
-3	4.1	56	94	25	.04	.02	-.013	49.20	93.21

- Heifer calf at side by Tour of Duty, born on 9-4-15
- Thick, massive Admiral daughter that is impressive to look at
- Heaviest muscled cow in the fall program
- Cow that always performs
- Ratios: 2 at 99 for BW, 2 at 105 for WW, 2 at 105 for YW

**Lot 71**

**DL PRIDE 2082**

BD: 09/20/2012 Cow: 17335654 Tattoo: 2082

S A V FINAL ANSWER 0035  
 DL INCENTIVE 228 AAA 16287091  
 DL PRINCESS 233

BASIN RAINMAKER P175  
 BASIN PRIDE 9163 AAA 16378149  
 BASIN PRIDE 7784

SITZ TRAVELER 8180  
 S A V EMULOUS 8145  
 S A F FOCUS OF E R  
 D L PRINCESS 471

BASIN RAINMAKER 747L  
 BASIN BLACKCAP LADY 693L  
 BASIN MAX 2840  
 BASIN PRIDE 933G

CED	BW	WW	YW	Milk	Marb	REA	Fat	SW	SB
8	1.4	73	117	24	.43	.23	.037	81.17	102.97

- Will have calf at side by SAV Rockwell
- Another very balanced Incentive daughter
- Great numbers
- Out of a great cow we got from the Basin dispersion

**Lot 72**

**DL ROSE 642**

BD: 01/13/2012 Cow: 17281941 Tattoo: 642

CONNEALY ONWARD  
 SITZ UPSCALE 671T AAA +158365  
 SITZ HENRIETTA PRIDE 81M

DAKOTA SOMETHING SPECIAL 642  
 DL ROSE 929 AAA 16505883  
 DL ROSE 163

CONNEALY LEAD ON  
 ALTUNE OF CONANGA 6104  
 SITZ VALUE 7097  
 SITZ HENRIETTA PRIDE 1370

S A V FINAL ANSWER 0035  
 FAYES MISS TRIXIE 472  
 S A F FOCUS OF E R  
 D L ROSE 111

CED	BW	WW	YW	Milk	Marb	REA	Fat	SW	SB
4	.7	71	133	26	.29	.47	.012	71.46	135.84

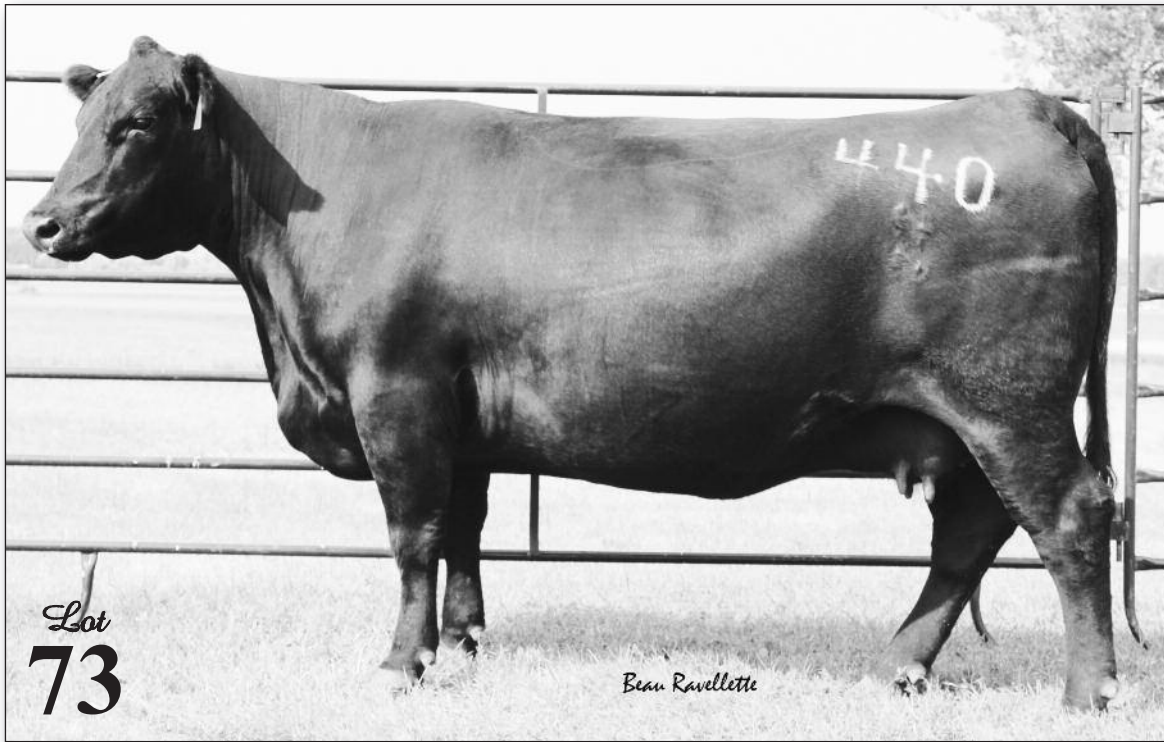
- Heifer calf at side by Tour of Duty, born on 9-8-15
- Performance driven
- Low birth, high yearling
- Thick, long, deep Upscale daughter



LOT 72 SIRE: SITZ UPSCALE 671T - AAA +15836555

EPDS: CED: 12 • BW: -1.5 • WW 62 • YW 123 • MILK 25 • SB 153.29





**Lot 73** **DL ELMINEMERE 440**  
 BD: 01/12/2010 Cow: 16771282 Tattoo: 440

CONNEALY WHITMAN  
 CONNEALY ALL AROUND AAA #15490811  
 ENTRUST OF CONANGA 894

SITZ ALLIANCE 9800  
 DL ELMINEMERE 234 AAA #14896584  
 D L ELMINEMERE 481

BON VIEW NEW DESIGN 208  
 ELLA TINA OF CONANGA 989  
 C R A BEXTOR 872 5205 608  
 ENDALLA OF CONANGA 4860

SITZ ALLIANCE 6595  
 SITZ BARBARA PERFECTION 3171  
 BALDRIDGE JETHRO 75J  
 D L ELMINEMERE 899

CED	BW	WW	YW	Milk	Marb	REA	Fat	SW	SB
4	1.0	55	86	26	.89	.35	-.015	65.86	113.70

- Heifer calf at side by SAV Rockwell
- Highly maternal driven cow with three daughters working in the herd.
- Phenotypically she is great, long, thick and deep.
- High marbling EPD of +.88
- Be sure to look her up on sale day.

**Lot 74** **SODAK SHEBA W796**  
 BD: 09/01/2009 Cow: 16608973 Tattoo: W796

S A V FINAL ANSWER 0035  
 SODAK OVATION T314 AAA 15821667  
 SODAK ERICA R026

SITZ TRAVELER 8180  
 S A V EMULOUS 8145  
 SODAK DIRECT DRIVE N343  
 SODAK ERICA N096

SODAK DIRECT DRIVE N343  
 SODAK SHEBA S735 AAA 15701476  
 SODAK SHOBANDA 8090-98

C A FUTURE DIRECTION 5321  
 SODAK SARAH 6043-96  
 R L B KRUGERRAND 61  
 SODAK SHOBANDA 4012

CED	BW	WW	YW	Milk	Marb	REA	Fat	SW	SB
3	1.1	40	71	28	.58	.11	.078	51.54	48.31

- Bull calf at side by Musgrave Big Sky, born on 8-21-15
- Average Ratios - BW 2 @ 97, WW 2 @ 107
- Selling a daughter as Lot 62
- We purchased this good sided, good maternal cow with a package of fall cows from Sodak Angus that began our fall program.



**Lot 75** **DL KARAMA 39**  
 BD: 01/01/2009 Cow: 16505900 Tattoo: 39

A A R NEW TREND  
 BOYD NEW DAY 8005 AAA #+13050780  
 S V F FOREVER LADY 57D

V D A R SHOSHONE 548  
 DONNA A A R 74  
 LEACHMAN RIGHT TIME  
 S V F FOREVER LADY 1128

S A V 8180 TRAVELER 004  
 DL KARAMA 256 AAA 15407966  
 DL KARAMA 173

SITZ TRAVELER 8180  
 BOYD FOREVER LADY 8003  
 BT NEW TREND 172K  
 D L KARAMA 827

CED	BW	WW	YW	Milk	Marb	REA	Fat	SW	SB
8	1.5	54	91	30	.13	.35	.046	63.37	60.62

- Heifer calf at side by Grandview, born on 8-29-15
- Standout in the fall herd
- Excellent phenotype, so complete and powerful
- Great New Day cow with three daughters in the herd
- Ratios 3 of 96 for BW, 3 of 109 for WW, 1 at 103 for YW



**Lot 76** **SODAK BELLE W124**  
 BD: 03/13/2009 Cow: 16439528 Tattoo: W124

S A V 8180 TRAVELER 004  
 SODAK TRAVELER S343 AAA 15469899  
 SODAK LADY IDA P085

N F WINDY 71601  
 SODAK BELLE P071 AAA #14794448  
 SODAK BELLE L180

SITZ TRAVELER 8180  
 BOYD FOREVER LADY 8003  
 SODAK PRIME RIB M304  
 SODAK LADY IDA M085

A A R REALLY WINDY 1205  
 N F DUCHESS 47099  
 WK CHATTER  
 SODAK BELLE 8125-98

CED	BW	WW	YW	Milk	Marb	REA	Fat	SW	SB
1	3.8	54	93	19	.14	-.07	.045	47.83	74.77

- Heifer calf at side by Tour of Duty, born on 9-8-15
- Massive, thick made 004 daughter
- Very balanced and correct cow
- Maternal line, two daughters in the herd

**Lot 77** **RIVER HILLS SARA W190 (DDC)**  
 BD: 01/29/2009 Cow: 16586933 Tattoo: W190

BON VIEW NEW DESIGN 1407  
 LCC NEW STANDARD AAA #14218253  
 LCC SUNSET K3118

WOODHILL ADMIRAL 77K  
 RIVER HILLS SARA R790 AAA +15343668  
 CHAMPION HILL SARA 1366

B/R NEW DESIGN 036  
 BON VIEW PRIDE 664  
 WAR VENTURE 8030 6008  
 LEACHMAN SUNSET G3008

S A F FOCUS OF E R  
 WOODHILL LASS 344-1178  
 N BAR EMULATION EXT  
 WAR SARA 7142 0003

CED	BW	WW	YW	Milk	Marb	REA	Fat	SW	SB
8	.4	56	103	30	.61	.39	.018	66.29	113.18

- Heifer calf at side by Sitz Game Day, born on 9-9-15
- Individual Ratios - WW 113, YW 111, REA 118
- Great bodied cow with the maternal characteristics of New Standard and depth and structure of Admiral 77K. She has great numbers and her calf by Sitz Game Day has a chance to be a great female.
- Her bred heifer daughter sells as Lot 30



**Lot 78** **DL PRINCESS 779**  
 BD: 01/12/2009 Cow: 16505888 Tattoo: 779

S A V 8180 TRAVELER 004  
 S A V NET WORTH 4200 AAA #14739204  
 S A V MAY 2410

B T ULTRAVOX 297E  
 D L PRINCESS 780 AAA #14295120  
 D L PRINCESS 906

SITZ TRAVELER 8180  
 BOYD FOREVER LADY 8003  
 S A F 598 BANDO 5175  
 S A V MAY 6269

O S U 6T6 ULTRA  
 FINKS VIXON 788  
 V A R GATEWAY 4101  
 LARKOTA CONTENDER 115

CED	BW	WW	YW	Milk	Marb	REA	Fat	SW	SB
1	4.0	49	96	25	.65	.53	.014	40.50	124.59

- Twin bull calf at side by Grandview, born on 8-27-15. He already looks great
- Massive, thick made Net Worth daughter
- Very gentle, super dimension from any angle
- 3 at 101 for WW, 3 at 101 for YW
- Sold three high quality sons in our bull sale







**Lot 79**

**R&D BLACKBIRD 832**

BD: 02/06/2008 Cow: +16409734 Tattoo: 832

SITZ TRAVELER 8180  
S A V 8180 TRAVELER 004 AAA #13512009  
BOYD FOREVER LADY 8003  
  
STEVENSON HUNTER 616K  
R&D MISS HUNTER 267 AAA 14242106  
R&D EXT FRONTIER

G D A R TRAVELER 71  
SITZ EVERELDA ENTENSE 1137  
A A R NEW TREND  
S V F FOREVER LADY 57D  
  
R&S FORTUNE HUNTER M27  
JRS LASS 118B  
N BAR EMULATION EXT  
LANDMARK BLACKBIRD 6867

CED	BW	WW	YW	Milk	Marb	REA	Fat	SW	SB
1	2.8	51	88	22	.33	.11	.053	44.85	115.98

- Bull calf at side by Musgrave Big Sky, born on 9-9-15
- One daughter retained in herd
- Selling daughter as Lot 61
- This Blackbird 832 cow has raised some good ones and is selling with a great prospect. The sire to the bull calf, Big Sky is powerful and has great phenotype projected EPDs of the bull calf. BW 2, WW 68, YW 112, M 23

**Lot 81**

**JL PRINCESS 689**

BD: 01/11/2009 Cow: 16505775 Tattoo: 689

SITZ ALLIANCE 6595  
SITZ ALLIANCE 9800 AAA #+13531260  
SITZ BARBARA PERFECTION 3171  
  
KG FREIGHTLINER 3234  
KG PRINCESS 6302 AAA 15572078  
KG PRINCESS 1182

SITZ TRAVELER 8180  
SITZ BARBARAMERE JET 2698  
G D A R TRAVELER 71  
SITZ BARBARA PERFECTION 2248  
  
CONNELLY FREIGHTLINER  
KG QUEEN MOTHER 7160  
KG BATMAN 9240  
H A PRINCESS 2340

CED	BW	WW	YW	Milk	Marb	REA	Fat	SW	SB
4	1.4	33	62	26	.29	.12	.019	38.40	40.85

- Heifer calf at side by Extra, born on 9-4-15
- Moderate frame cow
- High maternal, with two great daughters working in the herd
- Grandma of the great High Regard heifer calf in the sale

**Lot 80**

**L A BLACKETTE LADY 693**

BD: 03/10/2006 Cow: +15490733 Tattoo: 693

HYLINE WMR SUPER X 502  
MC BEE WMR SUPER X 745 AAA #12923633  
HYLINE PRIDE 833  
  
G D A R TRAVELER 71  
L A BLACKETTE LADY 317 AAA #12020031  
G D A R BLACKETTE LADY 698

IDEAL 0340 SUPER X 5189 8234  
W M R PRIDE 217-168  
A A R NEW TREND  
PRIDE OF HYLINE 154  
  
TRAVELER 1148 G D A R  
G D A R MISS BLACKCAP 567  
SKARSHIP SARATOGA  
BLACKETTE LADY 0133 G D A R

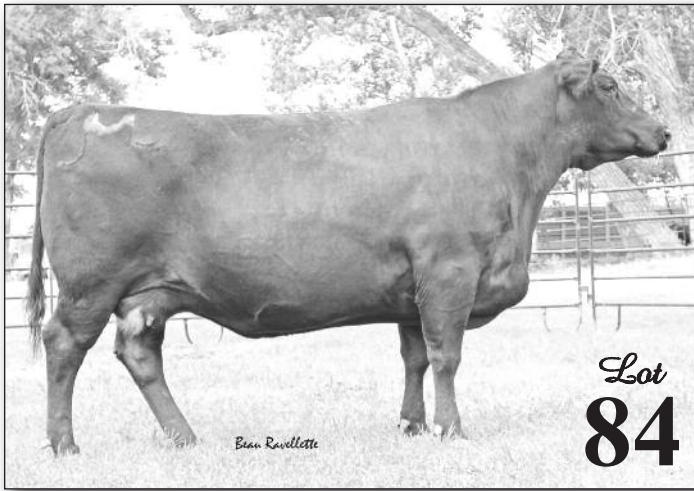
CED	BW	WW	YW	Milk	Marb	REA	Fat	SW	SB
1	3.7	35	63	24	.06	-.33	.041	25.65	44.53

- Heifer calf by Tour of Duty, born on 9-14-15
- Long made Super X daughter
- Maternal driven fall cow
- Ratios: 6 at 100 for WW, 4 at 105 for YW
- Two daughters in our Grandview herd









**Lot 84** **SODAK ABBEY T128**  
 BD: 03/10/2007 Cow: 15821651 Tattoo: T128

H A R B WINDY 702 JH  
 LEMAR WINDY 117P AAA 14878087  
 LEMAR BLACKBIRD 2029

SITZ ALLIANCE 9720  
 SODAK ABBEY P012 AAA 14794422  
 SODAK CONNIE M074

A A R REALLY WINDY 1205  
 H A R B BLACK LADY 073 J H  
 PAPA UNIVERSE 515  
 LEMAR BLACKBIRD 4C

SITZ ALLIANCE 6595  
 SITZ ENNOBLES EMMA 2768  
 SODAK FAME 9317-99  
 SODAK CONNIE K133

CED	BW	WW	YW	Milk	Marb	REA	Fat	SW	SB
7	1.5	42	72	24	.27	.35	.058	42.41	79.93

- Heifer calf at side by Grandview, born on 8-29-15
- One of my favorites in the fall herd
- Heavy muscled Windy daughter that is great in the profile.
- She had the top selling fall bull in the 2013 sale.

**Lot 85** **DL PRINCESS 558**  
 BD: 01/14/2008 Cow: 16431331 Tattoo: 558

SITZ ALLIANCE 9800  
 DL ALLIANCE 295 AAA 15315489  
 DL MARY 143

CONNEALY LEAD ON  
 D L PRINCESS 375 AAA 15208683  
 DL PRINCESS 233

SITZ ALLIANCE 6595  
 SITZ BARBARA PERFECTION 3171  
 LEACHMAN RIGHT TIME  
 D L BLUE RIBBON MARY 71

CONNEALY LEADTIME  
 ELIGENCE PLUS OF CONANGA  
 S A F FOCUS OF E R  
 D L PRINCESS 471

CED	BW	WW	YW	Milk	Marb	REA	Fat	SW	SB
2	1.8	46	81	21	.11	.29	-.031	48.80	80.32

- Will have calf at side by SAV Rockwell
- A balance and very functional Incentive daughter
- Very gentle
- Low birth weight cow with substance



**Lot 86** **L A BLACK PEARL 745**  
 BD: 02/15/2007 Cow: 15835936 Tattoo: 745

W M R DATELINE 210  
 WMR DATELINE 675 AAA 15177330  
 WMR LUCY 925

H C SITZ TRAVELER 602  
 L A BLACK PEARL 357 AAA #14483151  
 L A BLACK PEARL 522

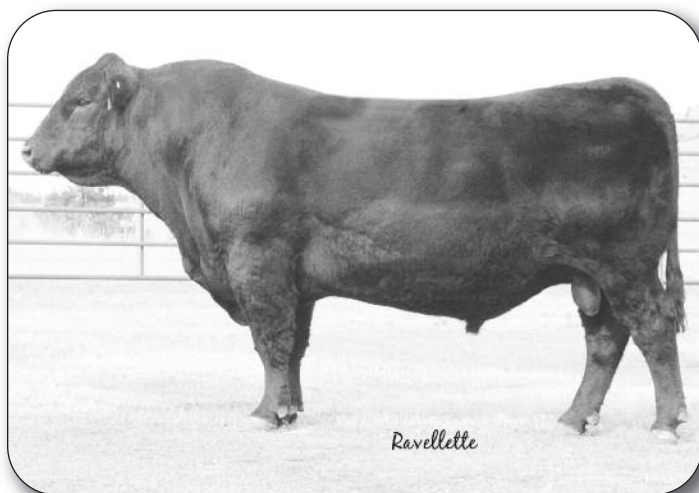
CONNEALY DATELINE  
 W M R PRIDE 217-168  
 MC BEE WMR SUPER X 745  
 HYLINE W M R LUCY PRIDE 454

SITZ TRAVELER 8523  
 WARDS LUCY 414  
 N BAR EMULATION EXT  
 L A BLACK PEARL 019

CED	BW	WW	YW	Milk	Marb	REA	Fat	SW	SB
12	.7	37	65	27	.47	.03	.058	45.85	56.55

- Heifer calf at side by Grandview, born on 9-1-15
- Low birth weight cow with substance
- Deep, soft sided Dateline daughter
- Cow that just always stays in great shape
- Ratios 5 at 93 for BW, 5 at 100 for WW, 4 at 102 for YW, 1 at 130 for IMF

# Reference Sires & Female Service Sires from our Program



**DL INCENTIVE 228 - AAA 16287091**

CED	BW	WW	YW	M	\$B
4	.7	90	148	21	128.70



**DL CONSENSUS 462 - AAA 17281930**

CED	BW	WW	YW	M	\$B
2	2.7	63	96	31	127.01



**DL SONIC 444 - AAA 17918412**

CED	BW	WW	YW	M	\$B
10	.7	72	127	30	160.67



**DL GRANDVIEW 53 - AAA 17600041**

CED	BW	WW	YW	M	\$B
11	-1.8	77	137	27	123.18

*Thank you for your interest in this sale!*



Dan & Amy Lewis – 605.391.7090  
 Jamie Lewis – 605.391.6399  
 Jake Lewis – 605.430.3312  
 Rapid City, SD • [www.GrandviewAngus.com](http://www.GrandviewAngus.com)



Don & Tami Ravellette – 605.685.5147  
 Beau & Mary Ravellette – 605.685.8155  
 Philip, SD





Offering  
A Pick of our entire Fall Open Heifers



Great Genetics behind  
this set of heifer calves  
Selling 20 "Herd Enhancing" Open Heifers





2601 Grandview Dr.  
Rapid City, SD 57701

FIRST CLASS MAIL  
U.S. POSTAGE  
**PAID**  
PHILIP, SD  
PERMIT NO. 20

# Angus Female Sale

## Friday, October 30, 2015

1 pm • at Grandview Angus Ranch, Rapid City, SD

- ✓ 24 Spring Bred Cows
- ✓ 15 Spring Bred Heifers
- ✓ 1 Pick of the fall open heifers
- ✓ 26 Fall cow/calf pairs
- ✓ 20 Heifer calves



Address Service Requested

*Offering*  
**A Pick of the Fall Heifers**  
*"Some of our freshest genetics"*

