

# JAMISON *&* JAMISON

## *First* Bull *&* Female Sale

**Saturday, October 26, 2013**

12:30 p.m. • At the Ranch, Beggs, Oklahoma

**241 Head Sell...**

*Registered Hereford & Angus Bulls*

*Registered Hereford Open Heifers*

*Commercial Bred Heifers*



**CL 1 Domino 6388**  
*His sons & daughters sell*



# JAMISON *&* JAMISON

Jamison Ranch • Beggs, Oklahoma

Jamison Herefords • Quinter, Kansas



Lot 9



Lot 1



Lot 3



Lot 8



*“Bred and developed  
for ranchers!”*

This sale will be broadcast live on the internet.

**DVAuction**  
Broadcasting Real-Time Auctions

Real time bidding & proxy bidding available.





# *First* Bull & Female Sale

## Saturday, October 26th

*Selling 48 Registered Hereford Bulls & 23 Registered Angus Bulls...semen checked and ready to go!*

*20 Registered Hereford Open Heifers...spring and fall 2012 females*

*150 Commercial Bred Heifers...50 Hereford, 50 Black Baldy, 50 Angus*

*...bred to calve from February 15th to March 15th*

12:30 p.m. • At the Ranch near Beggs, Oklahoma



*From US Highway 75, go west 8 miles on Hwy. 16 to the Henson Feed Store.*

*Turn right on Dentonville Road and go 3 miles north to the Jamison Ranch headquarters.*

*From the west: take Hwy. 16 and go 16 miles east of Bristow to the Henson Feed Store.*

*Turn left and go 3 miles north to the Jamison Ranch headquarters.*





## WELCOME TO JAMISON RANCH

Dear Friends and Fellow Breeders:

The Jamison Family welcomes you to our first sale! Our family has been ranching in Creek and Okmulgee counties for nearly 120 years, and we are thankful for the foundation in ranching they left us.

Our goal is to produce and offer the best Hereford and beef cattle genetics. The cattle are bred and developed for ranchers. We believe in these strong Line One Horned Hereford genetics. The optimal cross for a Hereford bull is a set of black cows. The sale bulls have been fertility tested and will be trich tested if your state requires it. All bulls are virgin sires and backed by the "whole bull" guarantee.

Our family has been doing business with the Gordon Jamison Family for more than 35 years. In that time, we have developed a strong friendship and a great business relationship. Gordon has brought a strong set of two-year-old Hereford bulls.

We have also done business with Express Ranches for more than a decade and are happy they brought us an outstanding set of Angus bulls. We also want to thank our friends at Curry Herefords for the stout set of bulls they brought. And of course, these consignors will guarantee their bulls just like we will.

Call if you have any questions. We look forward to seeing you Saturday, October 26th!

Sincerely,



Rusty Jamison and the Jamison Family and Crew

### JAMISON RANCH

MARY LOU JAMISON  
RUSTY & CAROLYN JAMISON  
P.O. Box 900, Beggs, OK 74421  
(918) 267-4686  
(918) 230-7707

### JAMISON HEREFORDS

GORDON JAMISON & SONS  
2271 CR 74  
Quinter, KS 67752  
Office (785) 754-3639  
Cell (785) 299-0441  
www.jamisonranch.com

### Curry Herefords

CURTIS CURRY  
2501 Hereford Drive  
McAlester, OK 74501  
(918) 521-4629  
curtis.curry@sbcglobal.net



BOB FUNK Owner  
JAROLD CALLAHAN President  
2202 N. 11th, Yukon, OK 73099  
(405) 350-0044  
www.expressranches.com





## Motel Accommodations

Holiday Inn Express *Sale Headquarters*  
2780 N. Wood Drive, Okmulgee, OK—(918) 246-6071  
Best Western, Okmulgee  
3499 N. Wood Drive, Okmulgee, OK—(918) 756-9200

## Sale Staff

Eddie Sims, Auctioneer—(580) 595-1626  
Matt Sims, Auctioneer—(405) 641-6081  
Joe Rickabaugh, *Hereford World*—(785) 633-3188  
Chisolm Kinder, *Oklahoma Cowman*—(405) 747-4683  
Mark Sims, *High Plains Journal*—(580) 595-0901  
Don Frailey, Frailey Auction Service—(918) 640-9880  
Bobby Franke, Franke Auction Service—(979) 224-0058

## Sale Terms & Conditions

CASH. Each animal will be sold to the highest bidder. The auctioneer will settle any disputes as to bids.

All cattle are to be paid for by the purchaser during or immediately after the sale and will not be released until after settlement has been made, unless other arrangements have been made through the owners or the sale manager. Cattle will not be transferred until paid for in full.

## Health

All cattle will have interstate health charts required for shipping into other sections of the United States. The commercial females have been pregnancy examined. Bulls will be fertility tested. Trichomoniasis tests upon request.

## Guarantee

The registered cattle offered for sale are sold under the current terms and conditions recommended by the American Hereford Association, [www.hereford.org](http://www.hereford.org), or American Angus Association, [www.angus.org](http://www.angus.org).

## Registration Certificates

Registered animals will be transferred to the buyer at the seller's expense. Each buyer must be sure to give the clerk the proper name and address for making transfers. No registration on commercial lots.

## Announcements

Announcements made at the sale by the owners or the auctioneer concerning the cattle will take precedence over statements in the sale catalog. We reserve the right to withdraw any sale lot not meeting our specifications prior to sale time.

## AHA Expected Progeny Differences (EPDs)

Expected progeny differences are statistical predictions, or estimates, of expected performance of future progeny—not guarantees of performance.

Throughout the catalog, all EPDs preceded by the words "Est." have been estimated by us based on the animal's ancestors' EPDs and are not the animal's actual EPDs, which may be available at a later date.

## Note

As the sale manager, National Cattle Services, Inc. is only an agent for the seller and has no responsibilities other than those involved in conducting the sale. All persons who attend the sale do so at their own risk; neither Jamison Ranch, the consignors nor the sale manager assume liability, legal or otherwise, for accidents or loss of property.

# NATIONAL CATTLE SERVICES, INC.

P. O. Box 170, Elgin, Oklahoma 73538 (580) 492-4590 Fax (580) 492-4594 E-mail [simsncs@aol.com](mailto:simsncs@aol.com)

Dear Hereford Friends and Cattlemen,

On behalf of the Rusty Jamison Family and their sale guests, Jamison Herefords, Express Ranches and Curry Herefords, we welcome you to the Jamison and Jamison Production Sale.

In this offering, you will find a menu of some super beef cattle genetics. A very sound, productive set of Hereford and Angus bulls backed by some of the best genetics of both breeds will sell. These ranches have been supplying high quality bulls to both commercial and purebred producers for a long time.

Jamison Ranch is also offering a super set of young purebred Hereford heifers from the top of their replacements.

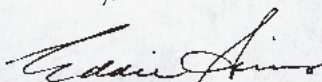
If you're in the market for some top-notch commercial females, the offering will include a really nice set of 50 Hereford bred heifers, 50 black/white-face bred heifers and 50 Angus bred heifers. All these heifers are safe in calf to Express Ranches Angus bulls to start calving in February.

These cattle come from reputation ranches, and I feel you will find them to your liking.

We hope you will plan to join us Saturday, October 26th, and enjoy the hospitality of Mary Lou and all the gang at Jamison Ranch. If you have any questions about the cattle, give me a call, or Rusty at Jamison Ranch, Gordon Jamison, Jarold Callahan or Kevin Hafner at Express, or Ted Curry at Curry Herefords.

We will look forward to seeing you sale day!

Sincerely,



Eddie C. Sims

Sale Manager



Catalog online at:  
[nationalcattle.com](http://nationalcattle.com)

## ACKNOWLEDGEMENTS

Sale Catalog and Advertising:

Prepared by National Cattle Services, Inc.,  
(580) 492-4590

Produced by Southwest TypeStyles, (405) 381-3591

Photography by Vickie (Bishop) Kern and Chisolm Kinder







**JAMISON & JAMISON  
HEREFORD BULLS**

*Lots 1-38*

**FALL TWO YEAR OLDS**



**LOTS 1-17**



Lot 1

**1**

**B&B Li Domino II43**

Aug. 26, 2011 • Bull: 43303760 • Tattoo: LE 1143

CL 1 DOMINO 732T  
CL 1 DOMINO 9125W 1ET  
CL 1 DOMINETTE 475P

BJH J2215 DOMINO 12M  
B&B L1 DOMINETTE 7139  
B&B L1 DOMINETTE 5105

CL 1 DOMINO 590R  
CL 1 DOMINETTE 507R  
CL 1 DOMINO 824H  
CL 1 DOMMINETTE 200M  
SR MARK I J215  
BJH KT VICTRA 18K  
CL 1 DOMINO 8153H  
B&B MS ADVANCE 5175

CED	BW	WW	YW	Milk	M&G	SC	REA	Marb
+0.5	+1.9	+44	+63	+28	+50	+0.6	+0.05	+0.10

• BW 74 lbs.



Lot 2

**2**

**B&B Li Domino II48**

Aug. 29, 2011 • Bull: 43303690 • Tattoo: LE 1148

HH ADVANCE 3113N 1ET  
CL 1 DOMINO 555R  
CL 1 DOMINETTE 3174N

CL 1 DOMINO 8153H  
B&B L1 DOMINETTE 2125  
B&B MS L1 DOM 2110

L1 DOMINO 99496  
HH MS ADV 875H 1ET  
CL 1 DOMINO 9126J 1ET  
CL 1 DOMINETTE 810H  
CL 1 DOMINO 5131E  
CL 1 DOMINET 496 1ET  
DR ACHIEVER 8403  
B&B L1 DOMINET 7138

CED	BW	WW	YW	Milk	M&G	SC	REA	Marb
+1.5	+1.4	+36	+63	+23	+41	+1.0	+0.02	-0.06

• BW 75 lbs.



Lot 3

**3**

**B&B Li Domino II52**

Aug. 30, 2011 • Bull: 43303670 • Tattoo: LE 1152

HH ADVANCE 3113N 1ET  
CL 1 DOMINO 555R  
CL 1 DOMINETTE 3174N

CL 1 DOMINO 8153H  
B&B L1 DOMINETTE 452  
B&B L1 DOMINETE 8106

L1 DOMINO 99496  
HH MS ADV 875H 1ET  
CL 1 DOMINO 9126J 1ET  
CL 1 DOMINETTE 810H  
CL 1 DOMINO 5131E  
CL 1 DOMINET 596 1ET  
KB L1 DOMINO 441  
B&B L1 DOMINETTE 512

CED	BW	WW	YW	Milk	M&G	SC	REA	Marb
+1.1	+2.5	+39	+66	+22	+41	+1.0	+0.09	-0.11





4

**B&B Li Domino II79**

Sept. 8, 2011 • Bull: 43303751 • Tattoo: LE 1179

HH ADVANCE 3113N 1ET  
**CL 1 DOMINO 555R**  
 CL 1 DOMINETTE 3174N

CL 1 DOMINO 555R  
**B&B L1 DOMINETTE 7124**  
 B&B L1 DOMINETTE 479

L1 DOMINO 99496  
 HH MS ADV 875H 1ET  
 CL 1 DOMINO 9126J 1ET  
 CL 1 DOMINETTE 810H  
 HH ADVANCE 3113N 1ET  
 CL 1 DOMINETTE 3174N  
 CL 1 DOMINO 8153H  
 B&B L1 DOMINETE 6165

CED	BW	WW	YW	Milk	M&G	SC	REA	Marb
+2.2	+1.6	+44	+69	+27	+49	+1.3	+0.08	-0.12

• BW 80 lbs. WW ratio 102.



Lot 4

5

**B&B Li Domino I206**

Sept. 16, 2011 • Bull: 43303747 • Tattoo: LE 1206

HH ADVANCE 3113N 1ET  
**CL 1 DOMINO 555R**  
 CL 1 DOMINETTE 3174N

JA L1 DOMINO 426P  
**B&B L1 DOMINETTE 7111**  
 B&B L1 DOMINETTE 2175

L1 DOMINO 99496  
 HH MS ADV 875H 1ET  
 CL 1 DOMINO 9126J 1ET  
 CL 1 DOMINETTE 810H  
 CL 1 DOMINO 0157K  
 JA L1 DOMINETTE 7070  
 CL 1 DOMINO 8153H  
 B&B L1 DOMINET 1063

CED	BW	WW	YW	Milk	M&G	SC	REA	Marb
+2.3	+2.4	+49	+78	+26	+51	+1.2	+0.11	-0.04

• BW 80 lbs. WW ratio 103.



Lot 5

6

**JA Li Domino I60Y**

Sept. 19, 2011 • Bull: Reg. Pending • Tattoo: RE 160

CL 1 DOMINO 4134P 1ET  
**JA L1 DOMINO 8513U**  
 JA L1 DOMINETTE 1223L

HH ADVANCE 286M 1ET  
**JA L1 DOMINETTE 6601S**  
 JA L1 DOMINETTE 3290N

CL 1 DOMINO 9126J 1ET  
 CL 1 DOMINETTE 8104H 1ET  
 CL 1 DOMINO 484  
 JA L1 DOMINETTE 503  
 HH ADVANCE 0024K  
 HH MISS ADVANCE 752G  
 JA L1 DOMINO 9213  
 JA L1 DOMINETTE 1800L

CED	BW	WW	YW	Milk	M&G	SC	REA	Marb
Est. +1.6	+2.9	+51	+86	+17	+43	+0.8	+0.37	+0.04

• BW 74 lbs. Actual WW (4/2/12) 665 lbs.  
 • A calving ease bull that performed and is stout made.



Lot 6

7

**JA Li Domino I65Y**

Sept. 20, 2011 • Bull: Reg. Pending • Tattoo: RE 165

CL 1 DOMINO 4134P 1ET  
**JA L1 DOMINO 8513U**  
 JA L1 DOMINETTE 1223L

CL 1 DOMINO 638S  
**JA L1 DOMINETTE 8324U**  
 JA L1 DOMINETTE 6102S

CL 1 DOMINO 9126J 1ET  
 CL 1 DOMINETTE 8104H 1ET  
 CL 1 DOMINO 484  
 JA L1 DOMINETTE 503  
 L1 DOMINO 03396  
 CL 1 DOMINETTE 475P  
 JA L1 DOMINO 208M  
 JA L1 DOMINETTE 4913P

CED	BW	WW	YW	Milk	M&G	SC	REA	Marb
Est. +0.7	+3.0	+49	+80	+20	+45	+0.9	+0.40	+0.08

• BW 82 lbs. Actual WW (4/2/12) 610 lbs.



Lot 7





Lot 8

**8**

**B&B Li Domino I2I5**

Sept. 22, 2011 • Bull: 43303675 • Tattoo: LE 1215

HH ADVANCE 3113N 1ET  
**CL 1 DOMINO 555R**  
CL 1 DOMINETTE 3174N

CL 1 DOMINO 8153H  
**B&B L1 DOMINETTE 461**  
B&B L1 DOMINETE 6185

L1 DOMINO 99496  
HH MS ADV 875H 1ET  
CL 1 DOMINO 9126J 1ET  
CL 1 DOMINETTE 810H  
CL 1 DOMINO 5131E  
CL 1 DOMINET 496 1ET  
B&B MR MAX 1082  
B&B MS TRAC II 9145

CED	BW	WW	YW	Milk	M&G	SC	REA	Marb
+1.3	+2.2	+42	+67	+24	+45	+1.1	+15	-.11

• BW 77 lbs.



Lot 10

**10**

**JA Li Domino I67Y**

Oct. 2, 2011 • Bull: Reg. Pending • Tattoo: RE 167

CL 1 DOMINO 4134P 1ET  
**JA L1 DOMINO 8513U**  
JA L1 DOMINETTE 1223L

JA L1 DOMINO 7321  
**JA L1 DOMINETTE 1980L**  
JA L1 DOMINETTE 9857

CL 1 DOMINO 9126J 1ET  
CL 1 DOMINETTE 8104H 1ET  
CL 1 DOMINO 484  
JA L1 DOMINETTE 503  
CL 1 DOMINO 307  
JA L1 DOMINETTE 5613  
HH ADVANCE 40250  
JA L1 DOMINETTE 701

CED	BW	WW	YW	Milk	M&G	SC	REA	Marb
Est. +0.2	+3.1	+44	+73	+23	+46	+0.7	+35	+0.08

• BW 85 lbs. Actual WW (4/2/12) 650 lbs.

• Dam is 12 years old and still going strong. Lots of beef in this package.



Lot 9

**9**

**JA Li Domino I63Y**

Sept. 29, 2011 • Bull: Reg. Pending • Tattoo: RE 163

CL 1 DOMINO 4134P 1ET  
**JA L1 DOMINO 8513U**  
JA L1 DOMINETTE 1223L

HH ADVANCE 286M 1ET  
**JA L1 DOMINETTE 8622U**  
JA L1 DOMINETTE 320N

CL 1 DOMINO 9126J 1ET  
CL 1 DOMINETTE 8104H 1ET  
CL 1 DOMINO 484  
JA L1 DOMINETTE 503  
HH ADVANCE 0024K  
HH MISS ADVANCE 752G  
CL 1 DOMINO 0157K  
JA L1 DOMINETTE 0244

CED	BW	WW	YW	Milk	M&G	SC	REA	Marb
Est. +0.9	+2.5	+50	+85	+17	+42	+0.7	+38	+0.06

• BW 80 lbs. Actual WW (4/2/12) 610 lbs.

• A big beef bull with lots of depth and volume. Also good pigmentation.

**11**

**FWS 426 Domino III6**

Oct. 7, 2011 • Bull: 43234633 • Tattoo: BE 1116

CL 1 DOMINO 0157K  
**JA L1 DOMINO 426P**  
JA L1 DOMINETTE 7070

JA L1 DOMINO 2405M  
**FWS 2405 ADRIANA 0909**  
FWS MS 343 ADVANCE 9902

HH ADVANCE 767G 1ET  
CL 1 DOMINETTE 861H  
DR DOMINO 3135  
JA L1 DOMINETTE 1213  
HH ADVANCE 8012H 1ET  
JA L1 DOMINETTE 9263  
HH ADVANCE 343C  
FWS PARTY GIRL 9380

CED	BW	WW	YW	Milk	M&G	SC	REA	Marb
+3.0	+2.8	+54	+91	+25	+52	+0.9	+0.08	+17

• BW 81 lbs. WW ratio 121.

• Dam records BW 2@94 and WW 2@113.

**12**

**FWS 426 Domino II2I**

Oct. 11, 2011 • Bull: 43234638 • Tattoo: BE 1121

CL 1 DOMINO 0157K  
**JA L1 DOMINO 426P**  
JA L1 DOMINETTE 7070

JA L1 DOMINO 2405M  
**FWS 2405 ADELE 0904**  
FWS MS STARFIRE 0127

HH ADVANCE 767G 1ET  
CL 1 DOMINETTE 861H  
DR DOMINO 3135  
JA L1 DOMINETTE 1213  
HH ADVANCE 8012H 1ET  
JA L1 DOMINETTE 9263  
K&B STARFIRE 8429  
K&B MS ADVANCE 9558

CED	BW	WW	YW	Milk	M&G	SC	REA	Marb
+1.2	+5.5	+60	+100	+25	+55	+0.8	+10	+14

• BW 90 lbs. WW ratio 112.

• Dam records 2@113 for WW ratio.



13

**FWS 426 Domino II23**

Oct. 12, 2011 • Bull: 43234640 • Tattoo: BE 1123

CL 1 DOMINO 0157K  
**JA L1 DOMINO 426P**  
 JA L1 DOMINETTE 7070  
  
 CH OK ADVANCE 1007  
**HF MISS ADVANCE 1007 413**  
 HF MISS CL1 DOMINO 8032

HH ADVANCE 767G 1ET  
 CL 1 DOMINETTE 861H  
 DR DOMINO 3135  
 JA L1 DOMINETTE 1213  
  
 HH ADVANCE 647F 1ET  
 CH LADY DOM 7031  
 CL1 DOMINO 6140F 1ET  
 HF MISS PACE 1031

CED	BW	WW	YW	Milk	M&G	SC	REA	Marb
+1.6	+5.2	+52	+89	+19	+45	+0.7	-.01	+0.09

- BW 85 lbs. WW ratio 101.
- Dam records WW 7@102 and YW 4@104.



Lot 16



Lot 14

14

**JA Li Domino I70Y**

Oct. 18, 2011 • Bull: Reg. Pending • Tattoo: RE 170

CL 1 DOMINO 4134P 1ET  
**JA L1 DOMINO 8513U**  
 JA L1 DOMINETTE 1223L  
  
 JA L1 DOMINO 0224  
**JA L1 DOMINETTE 4277P**  
 JA L1 DOMINETTE 6911

CL 1 DOMINO 9126J 1ET  
 CL 1 DOMINETTE 8104H 1ET  
 CL 1 DOMINO 484  
 JA L1 DOMINETTE 503  
  
 CL 1 DOMINO 484  
 JA L1 DOMINETTE 7100  
 HH ADVANCE 400D 1ET  
 JA L1 DOMINETTE 1554

CED	BW	WW	YW	Milk	M&G	SC	REA	Marb
Est. +3.3	+49	+85	+18	+42	+0.6	+21	+0.3	

- BW 85 lbs. Actual WW (4/2/12) 560 lbs.
- Very clean fronted and attractive with good muscle structure.

16

**JA Li Domino I68Y**

Oct. 22, 2011 • Bull: Reg. Pending • Tattoo: RE 168

CL 1 DOMINO 4134P 1ET  
**JA L1 DOMINO 8513U**  
 JA L1 DOMINETTE 1223L  
  
 HH ADVANCE 286M 1ET  
**JA L1 DOMINETTE 8623U**  
 JA L1 DOMINETTE 1252L

CL 1 DOMINO 9126J 1ET  
 CL 1 DOMINETTE 8104H 1ET  
 CL 1 DOMINO 484  
 JA L1 DOMINETTE 503  
  
 HH ADVANCE 0024K  
 HH MISS ADVANCE 894H  
 HH ADVANCE 6063F  
 JA L1 LADY 6900 5ET

CED	BW	WW	YW	Milk	M&G	SC	REA	Marb
Est. +0.8	+1.4	+47	+78	+17	+41	+0.7	+.37	+.03

- BW 82 lbs. Actual WW (4/2/12) 525 lbs.

17

**JA Li Domino I74Y**

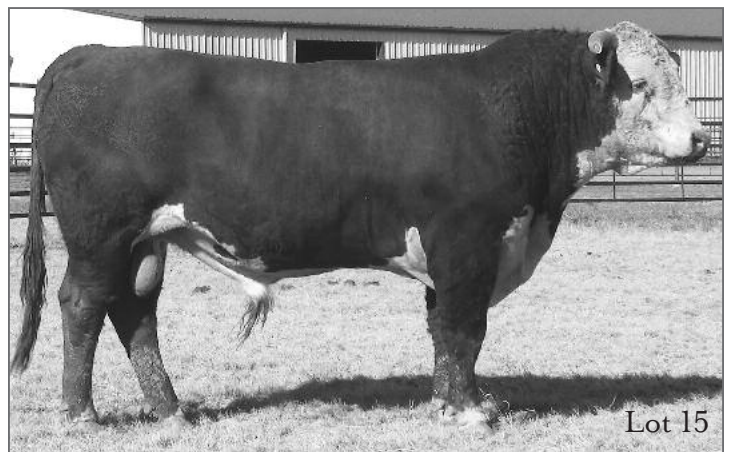
Nov. 30, 2011 • Bull: Reg. Pending • Tattoo: RE 174

CL 1 DOMINO 4134P 1ET  
**JA L1 DOMINO 8513U**  
 JA L1 DOMINETTE 1223L  
  
 JA L1 DOMINO 208M  
**JA L1 DOMINETTE 4118P**  
 JA L1 DOMINETTE 1421L

CL 1 DOMINO 9126J 1ET  
 CL 1 DOMINETTE 8104H 1ET  
 CL 1 DOMINO 484  
 JA L1 DOMINETTE 503  
  
 HH ADVANCE 767G 1ET  
 JA L1 DOMINETTE 0008  
 HH ADVANCE 8012H  
 JA L1 DOMINETTE 8616

CED	BW	WW	YW	Milk	M&G	SC	REA	Marb
Est. +2.8	+2.3	+38	+61	+21	+39	+0.6	+.18	+.10

- BW 82 lbs. Actual WW (4/2/12) 500 lbs.



Lot 15

15

**B&B Li Domino I239**

Oct. 19, 2011 • Bull: 43303696 • Tattoo: LE 1239

HH ADVANCE 3113N 1ET  
**CL 1 DOMINO 555R**  
 CL 1 DOMINETTE 3174N  
  
 CL 1 DOMINO 8153H  
**B&B L1 DOMINETTE 2150**  
 B&B MS L1 DOMINETE 8154

L1 DOMINO 99496  
 HH MS ADV 875H 1ET  
 CL 1 DOMINO 9126J 1ET  
 CL 1 DOMINETTE 810H  
  
 CL 1 DOMINO 5131E  
 CL 1 DOMINET 496 1ET  
 DHR L1 DOMINO 512D  
 B&B MS L1 DOM 2119

CED	BW	WW	YW	Milk	M&G	SC	REA	Marb
+1.8	+2.4	+44	+77	+24	+46	+1.1	+.21	-.12

- BW 80 lbs. WW ratio 102. YW ratio 104.



**SPRING COMING  
TWO YEAR OLDS**



**LOTS 18-27**



JA L1 Domino 8633U...8 sons sell

**18**

**TPV 8633 Domino 21Z**

Feb. 8, 2012 • Bull: 43290536 • Tattoo: BE 21

HH ADVANCE 286M 1ET  
**JA L1 DOMINO 8633U**  
JA L1 DOMINETTE 0409

TJV 9126 MARK DOM 464 11ET  
**TPV MS 464 DOMINO 03X**  
TPV MS DIAMOND 505 4ET

HH ADVANCE 0024K  
HH MISS ADVANCE 752G  
HH ADVANCE 8012H 1ET  
JA L1 DOMINETTE 6805  
CL 1 DOMINO 9126J 1ET  
MH C11 MARKETTE 720  
JNHR 414 DIAMND 164D  
TPV MS HOMEBUILDER 1258

CED	BW	WW	YW	Milk	M&G	SC	REA	Marb
-0.7	+5.1	+48	+85	+21	+45	+1.0	+28	+19

- BW 73 lbs. Adj. WW 616 lbs., ratio 103. Adj. YW 1200 lbs., ratio 102. IMF ratio 117.
- Out of a first-calf heifer, this bull did well. Pedigree throws a little more birth weight, but the pounds will be there.

**19**

**TPV 8633 Domino 26Z**

Feb. 15, 2012 • Bull: 43288347 • Tattoo: BE 26

HH ADVANCE 286M 1ET  
**JA L1 DOMINO 8633U**  
JA L1 DOMINETTE 0409

TJV 9126 MARK DOM 464 11ET  
**TV MISS 464 DOMINO 228**  
TV MS GENESIS 470

HH ADVANCE 0024K  
HH MISS ADVANCE 752G  
HH ADVANCE 8012H 1ET  
JA L1 DOMINETTE 6805  
CL 1 DOMINO 9126J 1ET  
MH C11 MARKETTE 720  
HH GENESIS 5898  
TV MS TNT DOM 395

CED	BW	WW	YW	Milk	M&G	SC	REA	Marb
-0.1	+3.7	+46	+86	+21	+44	+1.1	+30	+18

- BW 82 lbs. Adj. WW 657 lbs., ratio 100. Adj. YW 1290 lbs., ratio 106. REA ratio 102. IMF ratio 119.
- A big-time performance bull that will add pounds. Out of an excellent cow family for performance and fertility. The 8633 calves have all scanned very well, and this bull is no exception. A top pick for an all-around performance bull.

**20**

**TJV 065X Domino 21OZ**

Feb. 18, 2012 • Bull: 43288355 • Tattoo: BE 210

CL 1 DOMINO 7139T  
**CL 1 DOMINO 065X 1ET**  
CL 1 DOMINETTE 5142R

TJV RAM DOMINO 613  
**TJV MISS RAM DOMINO 99**  
TJV MS 8020 DOM 67

CL 1 DOMINO 590R  
CL 1 DOMINETTE 530R  
CL 1 DOMINO 1172L  
CL 1 DOMINETTE 810H  
CSU RAM DOMINATOR 4203  
TJV 501 ADV LADY 450 1ET  
OXH MARK DOMINO 8020  
TJV 9126 MARKETTE 454 1ET

CED	BW	WW	YW	Milk	M&G	SC	REA	Marb
+3.6	+1.5	+44	+70	+30	+52	+0.7	+09	+04

- BW 74 lbs. Adj. WW 680 lbs., ratio 106. Adj. YW 1250 lbs., ratio 104. IMF ratio 100.
- First son of the Cooper 065X sire. Performed well in all categories and a very solid bull. Cow family is top notch, and this bull will make very profitable daughters. We are very excited about his half sisters.

**21**

**TPV 8633 Domino 213Z**

Feb. 19, 2012 • Bull: 43288360 • Tattoo: BE 213

HH ADVANCE 286M 1ET  
**JA L1 DOMINO 8633U**  
JA L1 DOMINETTE 0409

TJV MARK LASALLE 239  
**TV MS LASALLE 45**  
TV MS ADVANCE 73N

HH ADVANCE 0024K  
HH MISS ADVANCE 752G  
HH ADVANCE 8012H 1ET  
JA L1 DOMINETTE 6805  
MH L1 LASALLE 03  
MH C11 MARKETTE 720  
LF L1 DOMINO 8560  
TV MS TNT ADV 325

CED	BW	WW	YW	Milk	M&G	SC	REA	Marb
+0.2	+3.6	+43	+77	+18	+39	+0.9	+28	+12

- BW 78 lbs. Adj. WW 695 lbs., ratio 101. Adj. YW 1250 lbs., ratio 101. REA ratio 101.
- Another larger framed performance bull who dam worked well here. Pounds on payday equals money in the bank!

**22**

**TPV 8633 Domino 215Z**

Feb. 22, 2012 • Bull: 43288359 • Tattoo: BE 215

HH ADVANCE 286M 1ET  
**JA L1 DOMINO 8633U**  
JA L1 DOMINETTE 0409

HH GENESIS 5898  
**TV MS GENESIS 51L**  
TV MISS ADVANCE 359

HH ADVANCE 0024K  
HH MISS ADVANCE 752G  
HH ADVANCE 8012H 1ET  
JA L1 DOMINETTE 6805  
CFR ROBINSON 359  
SH STRIKETTE 8503  
HH ADVANCE R3034  
TV MISS L1 DOM 462

CED	BW	WW	YW	Milk	M&G	SC	REA	Marb
-1.1	+4.0	+49	+87	+19	+43	+1.1	+62	-.08

- BW 80 lbs. Adj. WW 730 lbs., ratio 111. Adj. YW 1275 lbs., ratio 107. REA ratio 114.
- We thought long and hard about keeping this bull to use, but just too many sisters in the herd. His dam has done very well for us. Longevity out of an older pedigree on her side makes for the right kind of females every time. A 3/4 brother was the lead off bull in our 2012 NWSS pen. Look him up sale day!



CL 1 Domino 065X 1ET...sire of Lot 20



23

**TPV 8633 Domino 220Z**

Feb. 25, 2012 • Bull: 43288365 • Tattoo: BE 220

HH ADVANCE 286M 1ET  
**JA L1 DOMINO 8633U**  
 JA L1 DOMINETTE 0409

LF L1 DOMINO 8560  
**TV MS 8560 DOM 24**  
 TV MS GENESIS 51L

HH ADVANCE 0024K  
 HH MISS ADVANCE 752G  
 HH ADVANCE 8012H 1ET  
 JA L1 DOMINETTE 6805  
 CL1 DOMINO 6140F 1ET  
 LF DOMINETTE 4308  
 HH GENESIS 5898  
 TV MISS ADVANCE 359

CED	BW	WW	YW	Milk	M&G	SC	REA	Marb
+0.1	+3.7	+46	+81	+18	+41	+1.0	+4.4	+0.1

- BW 86 lbs. Adj. WW 673 lbs. Adj. YW 1190 lbs. REA ratio 104.
- From the same cow family as Lot 22 with a little less frame but no less quality. Pounds in the right kind of package has always been the goal for us, and this bull does it well. Dam is super easy keeping and just short of making the AHA Dam of Distinction list.

26

**TPV 8633 Domino 239Z**

Mar. 29, 2012 • Bull: 43288368 • Tattoo: BE 239

HH ADVANCE 286M 1ET  
**JA L1 DOMINO 8633U**  
 JA L1 DOMINETTE 0409

TJV 9126 MARK DOM 460 7ET  
**TV MS 460 DOM 17**  
 TV MS 8560 DOM 24

HH ADVANCE 0024K  
 HH MISS ADVANCE 752G  
 HH ADVANCE 8012H 1ET  
 JA L1 DOMINETTE 6805  
 CL 1 DOMINO 9126J 1ET  
 MH C11 MARKETTE 720  
 LF L1 DOMINO 8560  
 TV MS GENESIS 51L

CED	BW	WW	YW	Milk	M&G	SC	REA	Marb
+1.6	+2.4	+46	+87	+21	+44	+1.1	+4.2	+0.9

- BW 74 lbs. Adj. WW 760 lbs., ratio 105. Adj. YW 1180 lbs., ratio 106. IMF ratio 102.
- Lots 22, 23 and 26 are from the same cow family. 239Z's dam is a very easy keeping, super deep bodied power type of cow. Pounds, carcass females...what more can a bull do? A full brother is working for a high altitude registered outfit.

24

**TPV 8633 Domino 230Z**

Mar. 3, 2012 • Bull: 43288356 • Tattoo: BE 230

HH ADVANCE 286M 1ET  
**JA L1 DOMINO 8633U**  
 JA L1 DOMINETTE 0409

JA L1 DOMINO 1617L  
**TV MS 1617 DOM 85**  
 TV MS PATRIOT 62

HH ADVANCE 0024K  
 HH MISS ADVANCE 752G  
 HH ADVANCE 8012H 1ET  
 JA L1 DOMINETTE 6805  
 GB L1 DOMINO 5128  
 JA L1 DOMINETTE 7820  
 HH MINUTEMAN 8921  
 TV MISS K DOMINO 341

CED	BW	WW	YW	Milk	M&G	SC	REA	Marb
+0.9	+1.5	+42	+75	+17	+38	+0.8	+4.0	+2.0

- BW 74 lbs. Adj. WW 685 lbs. Adj. YW 1175 lbs. REA ratio 109.
- This bull's dam has been our most consistent cow as far as carcass scans are concerned. With an easy keeping mother and being a solid performer, this bull will make pounds and profit.

27

**TPV 8633 Domino 242Z**

Apr. 13, 2012 • Bull: 43288334 • Tattoo: BE 242

HH ADVANCE 286M 1ET  
**JA L1 DOMINO 8633U**  
 JA L1 DOMINETTE 0409

TJV 9126 MARK DOM 464 11ET  
**TV MS 464 DOMINO 910**  
 TV 8560 DOMINETTE 213

HH ADVANCE 0024K  
 HH MISS ADVANCE 752G  
 HH ADVANCE 8012H 1ET  
 JA L1 DOMINETTE 6805  
 CL 1 DOMINO 9126J 1ET  
 MH C11 MARKETTE 720  
 LF L1 DOMINO 8560  
 TV MS GENESIS D 99

CED	BW	WW	YW	Milk	M&G	SC	REA	Marb
-0.5	+5.0	+48	+87	+20	+44	+1.0	+3.0	+1.0

- BW 88 lbs. Adj. WW 698 lbs., ratio 104. Adj. YW 1125 lbs., ratio 100.
- The youngest of the spring yearling bulls, but no less quality. A favorite here and the kind that will make pounds, pounds and more pounds. His full sister is doing a great job with her first calf.

25

**TPV Advance 235Z**

Mar. 17, 2012 • Bull: 43288333 • Tattoo: BE 235

HH ADVANCE 4140P  
**TJV 4140 ADVANCE 92**  
 HH MISS ADVANCE 109L

TJV 9126 MARK DOM 464 11ET  
**TV MS 464 DOMINO 915**  
 TV MS AWESOME 181L

HH ADVANCE 0024K  
 HH MISS ADVANCE 2111 M  
 CL 1 DOMINO 500E  
 HH MISS ADVANCE 752G  
 CL 1 DOMINO 9126J 1ET  
 MH C11 MARKETTE 720  
 CHH AWESOME 2198  
 TV MS HOMEBUILDER T 119

CED	BW	WW	YW	Milk	M&G	SC	REA	Marb
+1.1	+2.6	+34	+54	+21	+38	+0.7	+3.1	-.05

- BW 74 lbs. Adj. WW 576 lbs. Adj. YW 975 lbs.
- This bull is a "bet the ranch" calving ease bull. A definite prospect for starting heifers right and still creating value in those calves.

**Can't make the sale?  
 Watch it LIVE and bid in  
 real-time on**

***DVAuction***  
*Broadcasting Real-Time Auctions*

**The Livestock Industry's  
 Leading Online Marketplace!**

**www.dvauction.com**  
**Technical Support**  
**(402) 474-5557 | support@dvauction.com**  
**General Questions/BidderApproval**  
**(402) 649-7946 | roxane@dvauction.com**  
**(402) 649-8048 | kate@dvauction.com**

View the  
*Jamison Herefords Sale Bull Video*  
 ...online at [www.jamisonranch.com](http://www.jamisonranch.com)





**FALL YEARLINGS**



**LOTS 28-38**



Lot 28



Lot 29

**28 JR LI Domino 2354Z**

Sept. 5, 2012 • Bull: Reg. Pending • Tattoo: BE 2354

GB L1 DOMINO 175E  
**CO L1 DOMINO 943W**  
 JA L1 DOMINETTE 999

JA L1 DOMINO 8513U  
**JR L1 DOMINETTE 0118W**  
 JA L1 DOMINETTE 1202L

HH ADVANCE 767G 1ET  
 GB L1 DOM PRCS 3134  
 JAK L1 DOMINO E34  
 CL 1 DOMINETTE 5038

CL 1 DOMINO 4134P 1ET  
 JA L1 DOMINETTE 1223L  
 CL 1 DOMINO 484  
 JA L1 DOMINETTE 934

	CED	BW	WW	YW	Milk	M&G	SC	REA	Marb
Est.	+2.1	+3.1	+50	+90	+26	+52	+0.7	+19	+13

• BW 78 lbs.

**29 JR LI Domino 2360Z**

Sept. 5, 2012 • Bull: Reg. Pending • Tattoo: BE 2360

GB L1 DOMINO 175E  
**CO L1 DOMINO 943W**  
 JA L1 DOMINETTE 999

HH ADVANCE 8012H  
**JA L1 DOMINO 3424 N**  
 JA L1 DOMINETTE 0012

HH ADVANCE 767G 1ET  
 GB L1 DOM PRCS 3134  
 JAK L1 DOMINO E34  
 CL 1 DOMINETTE 5038

HH ADVANCE 697F 1ET  
 HH MISS ADVANCE 160A  
 CL 1 DOMINO 6129F  
 JA L1 DOMINETTE 7816

	CED	BW	WW	YW	Milk	M&G	SC	REA	Marb
Est.	+2.6	+2.0	+37	+62	+21	+40	+0.6	+23	+11

• BW 76 lbs.



CO L1 Domino 943W...five sons sell

**30 JR LI Domino 2355Z**

Sept. 12, 2012 • Bull: 43412395 • Tattoo: BE 2355

GB L1 DOMINO 175E  
**CO L1 DOMINO 943W**  
 JA L1 DOMINETTE 999

JA L1 DOMINO 426P  
**FWS 426 CAPRICE 1059**  
 FWS MS STARFIRE 0101

HH ADVANCE 767G 1ET  
 GB L1 DOM PRCS 3134  
 JAK L1 DOMINO E34  
 CL 1 DOMINETTE 5038

CL 1 DOMINO 0157K  
 JA L1 DOMINETTE 7070  
 K&B STARFIRE 8429  
 FWS XMAS EVE 9421

	CED	BW	WW	YW	Milk	M&G	SC	REA	Marb
Est.	+2.5	+3.1	+49	+84	+25	+50	+0.7	+15	+12

• BW 82 lbs.





Lot 31

**33**

**JR LI Domino 2357Z**

Oct. 1, 2012 • Bull: 43412385 • Tattoo: BE 2357

GB L1 DOMINO 175E  
**CO L1 DOMINO 943W**  
 JA L1 DOMINETTE 999

JA L1 DOMINO 8513U  
**JA L1 DOMINETTE 0119W**  
 JA L1 DOMINETTE 0253

HH ADVANCE 767G 1ET  
 GB L1 DOM PRCS 3134  
 JAK L1 DOMINO E34  
 CL 1 DOMINETTE 5038  
 CL 1 DOMINO 4134P 1ET  
 JA L1 DOMINETTE 1223L  
 CL 1 DOMINO 484  
 JA L1 DOMINETTE 5516

Est.	CED	BW	WW	YW	Milk	M&G	SC	REA	Marb
	+2.6	+2.7	+48	+83	+25	+49	+0.7	+1.7	+1.0

• BW 78 lbs.

**31**

**JR LI Domino 2363Z**

Sept. 19, 2012 • Bull: 43412384 • Tattoo: BE 2363

GB L1 DOMINO 175E  
**CO L1 DOMINO 943W**  
 JA L1 DOMINETTE 999

JA L1 DOMINO 8513U  
**JL L1 DOMINETTE 0110W**  
 JA L1 DOMINETTE 0251

HH ADVANCE 767G 1ET  
 GB L1 DOM PRCS 3134  
 JAK L1 DOMINO E34  
 CL 1 DOMINETTE 5038  
 CL 1 DOMINO 4134P 1ET  
 JA L1 DOMINETTE 1223L  
 CL 1 DOMINO 484  
 JA L1 DOMINETTE 609

Est.	CED	BW	WW	YW	Milk	M&G	SC	REA	Marb
	+2.8	+2.6	+47	+82	+24	+48	+0.7	+2.0	+1.0

• BW 77 lbs.

**34**

**FWS 9125 Domino I254**

Oct. 2, 2012 • Bull: 43341671 • Tattoo: RE 1254

CL 1 DOMINO 732T  
**CL 1 DOMINO 9125W 1ET**  
 CL 1 DOMINETTE 475P

CL 1 DOMINO 484  
**FWS 484 DOMINETTE 0677**  
 OXH LONA 9116

CL 1 DOMINO 590R  
 CL 1 DOMINETTE 507R  
 CL 1 DOMINO 824H  
 CL 1 DOMINETTE 200M  
 L1 DOMINO 890061  
 CL 1 DOMINETTE 761  
 OXH MARK DOMINO 8020  
 OXH IVY 7106

Est.	CED	BW	WW	YW	Milk	M&G	SC	REA	Marb
	+1.6	+3.6	+54	+87	+29	+56	+0.9	+0.05	+1.4



Lot 32

**32**

**JR LI Domino 2148Z**

Sept. 30, 2012 • Bull: 43412392 • Tattoo: BE 2148

L1 DOMINO 03396  
**CL 1 DOMINO 638S**  
 CL 1 DOMINETTE 475P

CL 1 DOMINO 638S  
**JA L1 DOMINETTE 8324U**  
 JA L1 DOMINETTE 6102S

L1 DOMINO 00552  
 L1 DOMINETTE 96893  
 CL 1 DOMINO 824H  
 CL 1 DOMINETTE 200M  
 L1 DOMINO 03396  
 CL 1 DOMINETTE 475P  
 JA L1 DOMINO 208M  
 JA L1 DOMINETTE 4913P

Sire:	CED	BW	WW	YW	Milk	M&G	SC	REA	Marb
	+0.5	+4.9	+50	+70	+42	+67	+0.9	-.26	+2.0

• BW 88 lbs.

**JAMISON RANCH**

Beggs, Oklahoma



CL 1 Domino 638S...several sons and daughters sell





Lot 35

**36 FWS 9125 Domino I257**  
Oct. 7, 2012 • Bull: 43341674 • Tattoo: RE 1257

CL 1 DOMINO 732T  
CL 1 DOMINO 9125W 1ET  
CL 1 DOMINETTE 475P

OXH MADISON 1267  
FWS MISS DOLLEY 0718  
FWS MS STARFIRE 0064

CL 1 DOMINO 590R  
CL 1 DOMINETTE 507R  
CL 1 DOMINO 824H  
CL 1 DOMMINETTE 200M

OXH SIGNATURE 8346  
OXH BETTI 4148  
K&B STARFIRE 8429  
FWS MISS VISA 9742

CED	BW	WW	YW	Milk	M&G	SC	REA	Marb
-0.5	+3.3	+63	+101	+28	+59	+0.9	+23	+14

- High growth bull with a 110 ratio for weaning weight.
- Dam records 4@102 for WW ratio.

**35 FWS 555 Domino I256**  
Oct. 4, 2012 • Bull: 43341673 • Tattoo: RE 1256

HH ADVANCE 3113N 1ET  
CL 1 DOMINO 555R  
CL 1 DOMINETTE 3174N

CH OK ADVANCE 1007  
HF MISS ADVANCE 1007 413  
HF MISS CL1 DOMINO 8032

L1 DOMINO 99496  
HH MS ADV 875H 1ET  
CL 1 DOMINO 9126J 1ET  
CL 1 DOMINETTE 810H

HH ADVANCE 647F 1ET  
CH LADY DOM 7031  
CL1 DOMINO 6140F 1ET  
HF MISS PACE 1031

CED	BW	WW	YW	Milk	M&G	SC	REA	Marb
+1.4	+3.5	+43	+71	+23	+44	+1.0	-.07	-.03

- Dam records 7@102 for WW ratio and 4@104 for YW ratio.

**37 FWS 426 Domino I258**  
Oct. 19, 2012 • Bull: 43341675 • Tattoo: RE 1258

CL 1 DOMINO 0157K  
JA L1 DOMINO 426P  
JA L1 DOMINETTE 7070

FWS 343 ADVANCER 0300  
SMC ADVANCER VISA 0701  
FWS 9912 MS ADVANCE 0123

HH ADVANCE 767G 1ET  
CL 1 DOMINETTE 861H  
DR DOMINO 3135  
JA L1 DOMINETTE 1213

HH ADVANCE 343C  
FWS MS STARFIRE 0056  
FWS 343 ADVANCER 9912  
FWS MISS VISA 9616

CED	BW	WW	YW	Milk	M&G	SC	REA	Marb
+3.0	+3.3	+52	+90	+24	+50	+1.0	+0.09	+11

- WW ratio 105.
- Dam records 4@105 for WW ratio and 2@102 for YW ratio.



**38 FWS 426 Domino I262**  
Nov. 3, 2012 • Bull: 43341679 • Tattoo: RE 1262

CL 1 DOMINO 0157K  
JA L1 DOMINO 426P  
JA L1 DOMINETTE 7070

JA L1 DOMINO 2405M  
FWS 2405 ADRIANA 0909  
FWS MS 343 ADVANCE 9902

HH ADVANCE 767G 1ET  
CL 1 DOMINETTE 861H  
DR DOMINO 3135  
JA L1 DOMINETTE 1213

HH ADVANCE 8012H 1ET  
J1 LA DOMINETTE 9263  
HH ADVANCE 343C  
FWS PARTY GIRL 9380

CED	BW	WW	YW	Milk	M&G	SC	REA	Marb
+2.6	+3.2	+49	+86	+25	+50	+0.9	+0.01	+16

- WW ratio 104.
- Dam records 2@113 for WW ratio.







*Jamison Ranch was pleased to welcome members of the Oklahoma Cattlemen's Association in late June for the final stop on their 2013 Summer Ranch Tour. Thanks to the Oklahoma Cattlemen's Association for providing these tour photos.*



*Rusty Jamison*



*Mary Lou & Carolyn Jamison*





# BULLS FROM CURRY HEREFORDS

*Lots 39-48*



HH Advance 9075W ET...  
sire of Lots 39-48

**HH Advance 9075W ET** is the sire of the ten Curry bulls. 9075 is goggle eyed and red to the ground, just like his sire and grandsire. He is a long spined, deep sided bull with lots of eye appeal and was the No. 1 bull in Holden's 2010 sale for REA with his 16.3 square inch adjusted REA and 118 ratio. Holden retained a 1/2 semen interest in 9075.

One of the reasons we purchased 9075 was because his dam is the great HH Miss Advance 1028L. She is one of the top females ever produced in the Holden herd and was pictured on the cover of their 2008 Female Sale catalog. 9075's full sister was the dam of the 1098Y bull that topped Holden's 2012 sale at \$102,000.

9075 semen has been sold to numerous reputation herds, including Hoffman, ABC Ranch, Harrell, Hawks, Coleman, Van Newkirk, Fawcett, Flying S, Judd Bowen, Glen Britton and others. Holden and Harrell sold several sons very successfully in their sales last year. A yearling daughter of 9075 is highlighted in Holden's Elite Female Sale this fall. Don't miss the opportunity to add these genetics to your breeding program!

**39**

## CH Advance 2001

Jan. 1, 2012 • Bull: 43335000 • Tattoo: BE 2001

HH ADVANCE 7101T  
**HH ADVANCE 9075W ET**  
HH MISS ADVANCE 1028L

HH ADVANCE 134L ET  
**CH MISS OK ADVANCE 5110**  
CH MS OK ADVANCE 1078

HH ADVANCE 4140P  
HH MISS ADVANCE 1121L  
HH ADVANCE 6052F  
HH MISS ADVANCE 731G

CL 1 DOMINO 824H  
HH MS ADVANCE 5039E  
HH ADVANCE 647F 1ET  
CH MISS OKIE 8027

CED	BW	WW	YW	Milk	M&G	SC	REA	Marb
+0.3	+3.6	+44	+75	+28	+50	+0.7	+41	.00

• Dam records 4@111 for WW ratio.

**40**

## CH Advance 2002

Jan. 1, 2012 • Bull: 43334999 • Tattoo: BE 2002

HH ADVANCE 7101T  
**HH ADVANCE 9075W ET**  
HH MISS ADVANCE 1028L

HH ADVANCE 1023L  
**CH MISS OK ADVANCE 5105**  
CH MS OK ADVANCE 2060

HH ADVANCE 4140P  
HH MISS ADVANCE 1121L  
HH ADVANCE 6052F  
HH MISS ADVANCE 731G

CL 1 DOMINO 7120G ET  
HH MS ADVANCE 8046H  
CH OKLA DOM 9001  
CH MS L1 OKIE 6017

CED	BW	WW	YW	Milk	M&G	SC	REA	Marb
+2.2	+2.6	+39	+66	+19	+39	+0.7	+43	-.04



# 41 CH OK Advance 2005Z

Jan. 5, 2012 • Bull: 43409869 • Tattoo: BE 2005

HH ADVANCE 7101T <b>HH ADVANCE 9075W ET</b> HH MISS ADVANCE 1028L	HH ADVANCE 4140P HH MISS ADVANCE 1121L HH ADVANCE 6052F HH MISS ADVANCE 731G
HH ADVANCE 4089P ET <b>CH MISS OK ADVANCE 8137</b> CH MS OK ADVANCE 4111	HH ADVANCE 0024K HH MS ADV 7008G 1ET HH ADVANCE 134L ET CH MS OK ADV 0016

CED	BW	WW	YW	Milk	M&G	SC	REA	Marb
+0.8	+3.6	+44	+74	+27	+50	+0.8	+49	-.08

# 45 CH OK Advance 2015

Jan. 16, 2012 • Bull: 43409824 • Tattoo: BE 2015

HH ADVANCE 7101T <b>HH ADVANCE 9075W ET</b> HH MISS ADVANCE 1028L	HH ADVANCE 4140P HH MISS ADVANCE 1121L HH ADVANCE 6052F HH MISS ADVANCE 731G
HH ADVANCE 4089P ET <b>CH MS OK ADVANCE 6178</b> CH MS OK ADVANCE 4114	HH ADVANCE 0024K HH MS ADV 7008G 1ET HH ADVANCE 134L ET CH MISS OKIE 8031

CED	BW	WW	YW	Milk	M&G	SC	REA	Marb
+1.5	+2.8	+43	+72	+29	+50	+0.8	+50	-.07

# 42 CH OK Advance 2006

Jan. 6, 2012 • Bull: 43409825 • Tattoo: BE 2006

HH ADVANCE 7101T <b>HH ADVANCE 9075W ET</b> HH MISS ADVANCE 1028L	HH ADVANCE 4140P HH MISS ADVANCE 1121L HH ADVANCE 6052F HH MISS ADVANCE 731G
HH ADVANCE 4089P ET <b>CH MISS OK ADVANCE 8123</b> CH MISS OK ADVANCE 4188	HH ADVANCE 0024K HH MS ADV 7008G 1ET HH ADVANCE 134L ET CH MS OK ADVANCE 2024

CED	BW	WW	YW	Milk	M&G	SC	REA	Marb
+1.2	+3.2	+43	+74	+24	+46	+0.7	+50	-.08

# 46 CH OK Advance 2104

Jan. 25, 2012 • Bull: 43343635 • Tattoo: BE 2104

HH ADVANCE 7101T <b>HH ADVANCE 9075W ET</b> HH MISS ADVANCE 1028L	HH ADVANCE 4140P HH MISS ADVANCE 1121L HH ADVANCE 6052F HH MISS ADVANCE 731G
CH LAST CHANCE 6003 ET <b>CH OK PRINCESS 8129</b> CH MS OK ADVANCE 4130	KJ BJ BOUNTY HUNTER 741P JC L1 GOLDEN GIRL 0212 HH ADVANCE 1023L CH MISS OKIE 8036

CED	BW	WW	YW	Milk	M&G	SC	REA	Marb
+0.8	+3.9	+47	+76	+26	+49	+0.7	+71	-.09

• This bull's +.71 REA EPD ranks in the breed's top 3%!

# 43 CH Advance 2007

Jan. 8, 2012 • Bull: 43334988 • Tattoo: BE 2007

HH ADVANCE 7101T <b>HH ADVANCE 9075W ET</b> HH MISS ADVANCE 1028L	HH ADVANCE 4140P HH MISS ADVANCE 1121L HH ADVANCE 6052F HH MISS ADVANCE 731G
HH ADVANCE 134L ET <b>CH MS OK ADVANCE 4105</b> CH MS OK ADVANCE 9035	CL 1 DOMINO 824H HH MS ADVANCE 5039E HH ADVANCE 343C CH MS L1 OKIE 6017

CED	BW	WW	YW	Milk	M&G	SC	REA	Marb
+0.5	+3.3	+39	+64	+28	+48	+0.7	+35	-.01

• Dam records 4@108 for WW ratio.

# 47 CH OK Advance 2105

Jan. 30, 2012 • Bull: 43343636 • Tattoo: BE 2105

HH ADVANCE 7101T <b>HH ADVANCE 9075W ET</b> HH MISS ADVANCE 1028L	HH ADVANCE 4140P HH MISS ADVANCE 1121L HH ADVANCE 6052F HH MISS ADVANCE 731G
CH L1 MOLER 7014 ET <b>CH L1 MOLLY 9175</b> CH MS OK ADVANCE 6176	BR MOLER ET HH MS ADVANCE 0028K 1ET HH ADVANCE 4089P ET CH MS OK ADVANCE 4112

CED	BW	WW	YW	Milk	M&G	SC	REA	Marb
+0.8	+4.2	+46	+79	+25	+48	+0.6	+54	-.08

• Out of a first-calf heifer, 2105 posted a 105 WW ratio.

# 44 CH OK Advance 2011

Jan. 11, 2012 • Bull: 43409823 • Tattoo: BE 2011

HH ADVANCE 7101T <b>HH ADVANCE 9075W ET</b> HH MISS ADVANCE 1028L	HH ADVANCE 4140P HH MISS ADVANCE 1121L HH ADVANCE 6052F HH MISS ADVANCE 731G
CH L1 CUSTOM 3015 1ET <b>CH MISS OK ADVANCE 8119</b> CH MS OK ADVANCE 1009	HH ADVANCE 026K 1ET HH MS ADVANCE 5010E HH ADVANCE 647F 1ET CH MISS OKIE 7012

CED	BW	WW	YW	Milk	M&G	SC	REA	Marb
+1.5	+3.4	+42	+67	+22	+43	+0.7	+38	+0.03

# 48 CH Advance 2025

Feb. 26, 2012 • Bull: 43335003 • Tattoo: BE 2025

HH ADVANCE 7101T <b>HH ADVANCE 9075W ET</b> HH MISS ADVANCE 1028L	HH ADVANCE 4140P HH MISS ADVANCE 1121L HH ADVANCE 6052F HH MISS ADVANCE 731G
C GAME DAY 3087 <b>CH MS OK GAME ADVANCE 7103</b> CH MS OK ADVANCE 2020	C-S PURE GOLD 98170 C 492D MS ADV 96007 CH OKLA DOM 9001 CH MS OK ADVANCE 9035

CED	BW	WW	YW	Milk	M&G	SC	REA	Marb
-0.8	+4.4	+45	+75	+27	+49	+0.7	+55	-.04



# ANGUS BULLS FROM EXPRESS RANCHES

*Lots 49-71*



**PF50 Percentile Rankings** (located beneath EPDs) Livestock evaluation and expected progeny differences (EPDs) have now evolved to include the use of DNA as the most predictable, accurate information to assess the actual merit for quality and production of an individual animal. Today these are known as genomic-enhanced EPDs, or GE-EPDs. Zoetis, formerly known as Pfizer Animal Health, has formed a partnership with Angus Genetics, Inc., allowing Angus breeders to increase accuracy and dependability of EPDs. GE-EPDs are important because they make use of the results from the DNA test in addition to all other sources of information to provide added accuracy and reliability to the animal's EPD. In fact, depending on the trait, GE-EPDs on unproven animals have the same amount of accuracy as if they already had 8-20 calves recorded. If you are making selection decisions for traits that have an EPD provided, then the EPD should be considered the selection tool of choice, since EPDs account for all the available information on an animal, such as individual measures, progeny data, pedigree and genomic results. Percentile ranks range from 1 to 100, with *lower values indicating a more favorable ranking for the trait*. Learn more at [www.angus.org](http://www.angus.org).



EXAR Wanted 9732B...sire of Lot 49

## 49 EXAR Wanted 2432B

Feb. 28, 2012 • Bull: +17201037 • Tattoo: 2432B

EXAR LUTTON 1831  
EXAR WANTED 9732B  
TWIN EAGLES BLACKBIRD 174K

BR MIDLAND  
EXAR FOREVER LADY 2627  
V A R FOREVER LADY 4304

NORTHERN IMPROVEMENT 4480 GF  
EXAR SARAS DREAM 9809  
TWIN VALLEY PRECISION E161  
SUMMITCREST BLACKBIRD F161  
TWIN VALLEY PRECISION E161  
BR ROYAL LASS 7036-19  
G D A R EXECUTIVE 727  
BLACKCAP LADY 384 G D A R

CED	BW	WW	YW	Milk	SC	Marb	REA	\$Beef
+6	+2.9	+42	+71	+24	+41	+18	+36	+52.15

CED	BW	WW	YW	RFI	DMI	YH	SC	DOC	HP	CEM	Milk	MW	MH	CW	Marb	RE	Fat	Tend
63	81	80	86	44	26	56	68	86	100	28	76	91	86	85	89	71	41	77

- BW 82 lbs. Adj. WW 660 lbs. Adj. YW 1119 lbs. Adj. %IMF 4.46. Adj. REA 12.6.
- Great cow families show up in the pedigree of this Lutton grandson.

## 50 EXAR Whiplash 2072

Mar. 1, 2012 • Bull: 17303754 • Tattoo: 2072

C R A BEXTOR 872 5205 608  
EXAR WHIPLASH 9793B  
EXAR MISS BARBARA 5940

EXAR NUMERICAL 3919  
EXAR ROSETTA 8806  
EXAR ROSETTA 5682

B A R EXT TRAVELER 205  
CRA LADY JAYE 608 498 S EASY  
BR MIDLAND  
SOUTHERN MISS BARBARA 2710  
BR MIDLAND  
LEACHMAN ERICA 6267  
EXAR NEW DESIGN 3932  
EXAR ROSETTA 3426

CED	BW	WW	YW	Milk	SC	Marb	REA	\$Beef
+15	+0.3	+44	+86	+23	-.01	+94	+60	+67.47

CED	BW	WW	YW	RFI	DMI	YH	SC	DOC	HP	CEM	Milk	MW	MH	CW	Marb	RE	Fat	Tend
11	35	89	83	19	59	29	64	96	9	38	55	89	77	85	20	43	91	78

- BW 76 lbs. Adj. WW 744 lbs. Adj. YW 1266 lbs. Adj. %IMF 4.63. Adj. REA 15.7.
- Calving ease Bextor grandson with added muscle. Top 1% CED, top 4% Marb.

## 51 EXAR Emblazon 2358B

Mar. 1, 2012 • Bull: 17187538 • Tattoo: 2358B

RITO 6EM3 OF 4L1 EMBLAZON  
EXAR EMBLAZON 0067  
RR BLACKETTE LADY 3134

WK NETWORK 8365  
EXAR BLACKBIRD 0309  
EXAR BLACKBIRD 8756

O C C EMBLAZON 854E  
RITA 4L1 OF 2536 208  
LUKENS FUTURE 7320  
GDAR BLACKETTE LADY 9204  
CONNEALY NETWORK  
WK CASSIE 5081  
RR 2418 HERO 5701  
ROLLIN ROCK BLACKBIRD 6172

CED	BW	WW	YW	Milk	SC	Marb	REA	\$Beef
+12	-0.3	+44	+77	+16	-.31	+31	+39	+46.51

CED	BW	WW	YW	RFI	DMI	YH	SC	DOC	HP	CEM	Milk	MW	MH	CW	Marb	RE	Fat	Tend
60	39	65	70	3	19	97	81	41	100	90	88	36	90	84	91	67	46	86

- BW 60 lbs. Adj. WW 651 lbs. Adj. YW 1145 lbs. Adj. %IMF 5.38. Adj. REA 14.4.
- Calving ease grandson of 6EM3. Top 5% CED, top 10% BW.





Connealy Consensus 7229...sire of Lots 52 & 53

## 52 EXAR Consensus Z27

Mar. 1, 2012 • Bull: 17339939 • Tattoo: Z27

CONNEALY CONSENSUS  
CONNEALY CONSENSUS 7229  
BLUE LILLY OF CONANGA 16

SCHURRTOP MC 2500  
EXAR RITA 3567  
EXAR RITA 5084

KMK ALLIANCE 6595 I87  
BLINDA OF CONANGA 004  
WOODHILL ADMIRAL 77K  
BLUE CASH OF CONANGA 6020  
SCHURRTOP M C  
SCHURRTOP R S 1413 2153  
RITO 112 OF 2536 RITO 616  
BSS RITA 9955

CED	BW	WW	YW	Milk	SC	Marb	REA	\$Beef
+6	+1.0	+53	+93	+21	+0.6	+48	+43	+72.34

CED	BW	WW	YW	RFI	DMI	YH	SC	DOC	HP	CEM	Milk	MW	MH	CW	Marb	RE	Fat	Tend
69	19	27	13	51	4	61	73	17	83	79	81	38	53	78	64	79	30	74

- BW 80 lbs. Adj. WW 661 lbs. Adj. YW 1181 lbs. Adj. %IMF 4.42. Adj. REA 14.7.
- Calving ease Consensus son.

## 53 EXAR Consensus 2949B

Mar. 5, 2012 • Bull: +17214011 • Tattoo: 2949B

CONNEALY CONSENSUS  
CONNEALY CONSENSUS 7229  
BLUE LILLY OF CONANGA 16

G A R PREDESTINED  
H P C A PREDESTINED 435  
G A R EXPECTATION 461

KMK ALLIANCE 6595 I87  
BLINDA OF CONANGA 004  
WOODHILL ADMIRAL 77K  
BLUE CASH OF CONANGA 6020  
B/R NEW DESIGN 036  
G A R EXT 4206  
G A R EXPECTATION 4915  
G A R PRECISION 2536

CED	BW	WW	YW	Milk	SC	Marb	REA	\$Beef
+5	+2.9	+55	+102	+19	+1.2	+79	+67	+90.31

CED	BW	WW	YW	RFI	DMI	YH	SC	DOC	HP	CEM	Milk	MW	MH	CW	Marb	RE	Fat	Tend
53	69	14	6	86	78	59	49	55	86	43	81	50	61	28	32	26	83	28

- BW 76 lbs. Adj. WW 787 lbs. Adj. YW 1229 lbs. Adj. %IMF 5.70. Adj. REA 13.3.
- A very complete Consensus son who ranks among the top 3% for \$B.

## 54 EXAR Rio A2155

Mar. 6, 2012 • Bull: 17286991 • Tattoo: A2155

RITO 6EM3 OF 4L1 EMBLAZON  
EXAR RIO 8189  
EXAR MISS BARBARA 6457

TC TOTAL 410  
BLACKJACKS LADYMERE 741  
SUMMITCREST LADYMERE 265R

O C C EMBLAZON 854E  
RITA 4L1 OF 2536 208  
CONNEALY ONWARD  
SOUTHERN MISS BARBARA 2710  
BON VIEW NEW DESIGN 208  
TC ERICA EILEEN 2047  
SUMMITCREST HIGH PRIME 0H29  
SUMMITCREST LADYMERE 361M

CED	BW	WW	YW	Milk	SC	Marb	REA	\$Beef
+0	+3.1	+52	+94	+22	+1.09	+36	+57	+66.34

CED	BW	WW	YW	RFI	DMI	YH	SC	DOC	HP	CEM	Milk	MW	MH	CW	Marb	RE	Fat	Tend
84	61	34	42	52	91	4	9	74	87	80	79	9	35	66	71	75	64	24

- BW 88 lbs. Adj. WW 690 lbs. Adj. YW 1256 lbs. Adj. %IMF 5.49. Adj. REA 14.6.
- High performing 6EM3 grandson.

## 55 EXAR Franchise A2156

Mar. 6, 2012 • Bull: 17286992 • Tattoo: A2156

BASIN FRANCHISE P142  
A CROSS FRANCHISE A915  
R T R RITA 5116

O C C EMBLAZON 854E  
COLEMAN EVERELDA ENTENSE 958  
COLEMAN EVERELDA ENTENSE 455

CA FUTURE DIRECTION 5321  
BASIN CHLOE 812L  
BR MIDLAND  
PAF 1206 NEW DESIGN E019  
D H D TRAVELER 6807  
DIXIE ERICA OF C H 1019  
G A R EXPECTATION 4915  
SITZ EVERELDA ENTENSE 4789

CED	BW	WW	YW	Milk	SC	Marb	REA	\$Beef
+11	+1.2	+61	+99	+25	+9.6	+46	+48	+58.90

CED	BW	WW	YW	RFI	DMI	YH	SC	DOC	HP	CEM	Milk	MW	MH	CW	Marb	RE	Fat	Tend
19	40	38	53	25	29	97	33	57	100	59	67	99	98	89	68	53	94	53

- BW 76 lbs. Adj. WW 692 lbs. Adj. YW 1225 lbs. Adj. %IMF 4.85. Adj. REA 12.6.
- Calving ease Franchise grandson with added weaning punch! Top 1% \$W, top 4% WW, top 10% CED.

## 56 EXAR 263C 230T 2570B

Mar. 9, 2012 • Bull: 17187544 • Tattoo: 2570B

EXAR 263C  
BASIN 263C 230T  
BASIN LUCY N728

GARDENS PRIME STAR  
EXAR BLACKCAP 9174  
THREE TREES BLACKCAP 5554

BON VIEW NEW DESIGN 1407  
EXAR JUNE C 3577  
C A FUTURE DIRECTION 5321  
BASIN LUCY 178E  
N BAR PRIME TIME D806  
GREEN GARDEN JILT C242 S1  
BON VIEW NEW DESIGN 208  
G A R PRECISION 4519

CED	BW	WW	YW	Milk	SC	Marb	REA	\$Beef
+12	+1.9	+26	+72	+26	+7.4	+90	+62	+59.52

CED	BW	WW	YW	RFI	DMI	YH	SC	DOC	HP	CEM	Milk	MW	MH	CW	Marb	RE	Fat	Tend
12	57	85	58	18	21	73	27	91	95	26	13	88	60	70	17	42	99	31

- BW 78 lbs. Adj. WW 656 lbs. Adj. YW 1162 lbs. Adj. %IMF 5.11. Adj. REA 14.8.
- Grandson of the great 263C! Top 5% CED and Marbling.

## 57 EXAR Predestined 2376B

Mar. 13, 2012 • Bull: 17205042 • Tattoo: 2376B

G A R PREDESTINED  
EXAR PREDESTINED 7844  
BASIN CHLOE 812L

BASIN FRANCHISE P142  
EXAR PRINCESS 8658  
WK PRINCESS 6227

B/R NEW DESIGN 036  
G A R EXT 4206  
GARDENS EXPEDITION  
BASIN CHLOE 6198  
C A FUTURE DIRECTION 5321  
BASIN CHLOE 812L  
BON VIEW NEW DESIGN 1407  
WK PRINCESS 1446

CED	BW	WW	YW	Milk	SC	Marb	REA	\$Beef
+10	+1.4	+38	+72	+20	+4.7	+54	+35	+62.40

CED	BW	WW	YW	RFI	DMI	YH	SC	DOC	HP	CEM	Milk	MW	MH	CW	Marb	RE	Fat	Tend
42	64	80	79	58	61	92	69	85	93	18	67	83	91	58	34	80	84	6

- BW 80 lbs. Adj. WW 734 lbs. Adj. YW 1259 lbs. Adj. %IMF 5.00. Adj. REA 14.2.
- Calving ease Predestined grandson with above average muscle.

## 58 EXAR Duvall 2377B

Mar. 16, 2012 • Bull: 17205043 • Tattoo: 2377B

EXAR LUTTON 1831  
EXAR DUVALL 0461B  
EXAR PENNY 5178

BC 7022 RAVEN 7965  
EXAR MISS EMULOUS 9551  
EXAR MISS EMULOUS 4267

NORTHERN IMPROVEMENT 4480 GF  
EXAR SARAS DREAM 9809  
BR MIDLAND  
EXAR PENNY 5170  
B C MARATHON 7022  
O C C BLACKBIRD 7965F  
EXAR NOMINAL 3550  
EXAR MISS EMULOUS 2467

CED	BW	WW	YW	Milk	SC	Marb	REA	\$Beef
+10	+2.2	+49	+89	+18	-.04	+41	+08	+68.25

CED	BW	WW	YW	RFI	DMI	YH	SC	DOC	HP	CEM	Milk	MW	MH	CW	Marb	RE	Fat	Tend
39	64	68	78	87	13	80	96	75	100	56	83	22	26	78	79	91	39	84

- BW 82 lbs. Adj. WW 689 lbs. Adj. YW 1196 lbs. Adj. %IMF 4.91. Adj. REA 12.1.
- Lutton grandson with extra marbling.



# 59 EXAR Moneymaker 2583B

Mar. 16, 2012 • Bull: 17191891 • Tattoo: 2583B

BOYD ON TARGET 1083  
STEVENSON MONEYMAKER R185  
STEVENSON CLOVA PRIDE L888

S A F 598 BANDO 5175  
BOYD FOREVER LADY 7095  
VDAR AMBUSH 2478  
STEVENSON CLOVA PRIDE 712H

21AR ROUNDUP 7005  
EXAR BLACKCAP 9176  
VAR BLACKCAP 5241

HARB PENDLETON 765 J H  
21AR BLACKBIRD LADY F645  
EXAR NEW LOOK 2971  
G A R 044 TRAVELER 2328

CED	BW	WW	YW	Milk	SC	Marb	REA	\$Beef
+6	+2.8	+51	+91	+16	-.14	+.37	+.84	+74.48

CED	BW	WW	YW	RFI	DMI	YH	SC	DOC	HP	CEM	Milk	MW	MH	CW	Marb	RE	Fat	Tend
40	63	60	60	19	7	57	74	82	100	48	96	26	36	65	78	30	48	42

- BW 84 lbs. Adj. WW 804 lbs. Adj. YW 1254 lbs. Adj. %IMF 5.38. Adj. REA 15.0.
- Deep, stout Moneymaker son with great muscle, ranking in the top 10% for REA.

# 60 EXAR Predestined 2378B

Mar. 17, 2012 • Bull: 17205044 • Tattoo: 2378B

G A R PREDESTINED  
EXAR PREDESTINED 7844  
BASIN CHLOE 812L

B/R NEW DESIGN 036  
G A R EXT 4206  
GARDENS EXPEDITION  
BASIN CHLOE 6198

BC 7022 RAVEN 7965  
BPF ELINE 609U  
EXAR ELINE 3637

B C MARATHON 7022  
O C C BLACKBIRD 796F  
BR MIDLAND  
LEACHMAN ELINE 0028

CED	BW	WW	YW	Milk	SC	Marb	REA	\$Beef
+11	+1.3	+37	+74	+17	-.70	+.90	+.38	+73.55

CED	BW	WW	YW	RFI	DMI	YH	SC	DOC	HP	CEM	Milk	MW	MH	CW	Marb	RE	Fat	Tend
36	59	69	53	79	42	97	97	64	93	59	74	56	84	83	17	73	80	65

- BW 80 lbs. Adj. WW 658 lbs. Adj. YW 1140 lbs. Adj. %IMF 4.62. Adj. REA 13.0.
- Calving ease Predestined x Raven grandson. Top 5% Marbling, top 10% CED.

# 61 EXAR Pioneer 6632B

Mar. 23, 2012 • Bull: 17205131 • Tattoo: 6632B

S A V PIONEER 7301  
SANDPOINT PIONEER X263  
C F PRIDE 505

S A V FINAL ANSWER 0035  
S A V BLACKBIRD 5297  
SITZ TRADITION RLS 8702  
DAMERON PRIDE 188

BR MIDLAND  
EXAR BLACKCAP 3219  
EXG BLACKCAP R054 R3

TWIN VALLEY PRECISION E161  
BR ROYAL LASS 7036-19  
EXAR SUDDEN IMPACT 1537  
EXG BLACKCAP N145 R3

CED	BW	WW	YW	Milk	SC	Marb	REA	\$Beef
+9	+2.3	+54	+97	+20	+.34	+.15	+.36	+48.9

CED	BW	WW	YW	RFI	DMI	YH	SC	DOC	HP	CEM	Milk	MW	MH	CW	Marb	RE	Fat	Tend
52	64	40	44	11	47	51	29	40	81	66	88	25	34	91	94	80	73	6

- BW 76 lbs. Adj. WW 765 lbs. Adj. YW 1365 lbs. Adj. %IMF 4.33. Adj. REA 13.4.
- High performing Final Answer great-grandson.

# 62 EXAR Upshot 2441B

Mar. 29, 2012 • Bull: +17234128 • Tattoo: 2441B

SITZ UPWARD 307R  
EXAR UPSHOT 0562B  
EXAR BARBARA T020

CONNEALY ONWARD  
SITZ HENRIETTA PRIDE 81M  
ISU IMAGING Q 9111  
LCC MC HENRY BARBAR MG382

G A R PREDESTINED  
EXAR RITA 8573  
G A R OBJECTIVE L166

B/R NEW DESIGN 036  
G A R EXT 4206  
S S OBJECTIVE T510 OT26  
G A R 1407 NEW DESIGN 1942

CED	BW	WW	YW	Milk	SC	Marb	REA	\$Beef
+5	+2.7	+58	+111	+29	+.31	+1.03	+.67	+101.76

CED	BW	WW	YW	RFI	DMI	YH	SC	DOC	HP	CEM	Milk	MW	MH	CW	Marb	RE	Fat	Tend
67	83	18	7	97	98	3	58	51	4	55	11	39	37	12	8	49	53	55

- BW 88 lbs. Adj. WW 690 lbs. Adj. YW 1226 lbs. Adj. %IMF 4.80. Adj. REA 13.2.
- High growth Upshot son that rings the bell! Top 1% \$B, top 3% Marb and YW.

# 63 Double R Bar Juneau Z172

Mar. 29, 2012 • Bull: 17291066 • Tattoo: Z172

O C C JUNEAU 807J  
COLEMAN JUNEAU 044  
COLEMAN DONNA 714

O C C EMBLAZON 854E  
O C C DIXIE ERICA 903E  
CONNEALY ONWARD  
COLEMAN DONNA 386

KOUPALS MO CO 253  
ROBBINS HOLLY MYRA 7087  
BAX HOLLY MYRA 134-412

O C C JUNEAU 807J  
BEEFLAND EBONETTE 835  
O C C HOMER 650H  
BAX MYRA ASTORIA 412-528

CED	BW	WW	YW	Milk	SC	Marb	REA	\$Beef
+11	-0.9	+42	+76	+30	+.63	+.11	+.39	+28.45

CED	BW	WW	YW	RFI	DMI	YH	SC	DOC	HP	CEM	Milk	MW	MH	CW	Marb	RE	Fat	Tend
26	14	96	89	49	10	100	41	68	73	91	66	97	98	99	100	91	46	23

- BW 70 lbs. Adj. WW 692 lbs. Adj. YW 1182 lbs. Adj. %IMF 3.75. Adj. REA 13.9.
- Calving ease bull going back to Emblazon. Top 5% BW, top 10% CED and Milk.

# 64 EXAR Duvall 2388B

Apr. 1, 2012 • Bull: 17213943 • Tattoo: 2388B

EXAR LUTTON 1831  
EXAR DUVALL 0461B  
EXAR PENNY 5178

NORTHERN IMPROVEMENT 4480 GF  
EXAR SARAS DREAM 9809  
BR MIDLAND  
EXAR PENNY 5170

BC 7022 RAVEN 7965  
EXAR LADY 9605  
EXAR RITO LADY 3436

B C MARATHON 7022  
O C C BLACKBIRD 796F  
BR MIDLAND  
EXAR RITO LADY 3436

CED	BW	WW	YW	Milk	SC	Marb	REA	\$Beef
+8	+2.7	+49	+91	+23	-.16	+.66	+.15	+72.64

CED	BW	WW	YW	RFI	DMI	YH	SC	DOC	HP	CEM	Milk	MW	MH	CW	Marb	RE	Fat	Tend
40	70	73	58	17	14	68	98	82	78	34	68	47	26	71	64	76	64	82

- BW 88 lbs. Adj. WW 752 lbs. Adj. YW 1195 lbs. Adj. %IMF 6.04. Adj. REA 11.7.
- Duvall son with a high IMF score.

# 65 EXAR War Bonnet 2389B

Apr. 1, 2012 • Bull: 17213944 • Tattoo: 2389B

RITO 6EM3 OF 4L1 EMBLAZON  
EXAR WAR BONNET 9253B  
WK PRINCESS 1194

O C C EMBLAZON 854E  
RITA 4L1 OF 2536 208  
BON VIEW NEW DESIGN 1407  
WK PRINCESS 8401

EXAR PREDESTINED 7844  
EXAR BABE 0634  
EXAR BABE 8060

G A R PREDESTINED  
BASIN CHLOE 812L  
BC 7022 RAVEN 7965  
TF BABE 6194

CED	BW	WW	YW	Milk	SC	Marb	REA	\$Beef
+0	+3.7	+45	+74	+16	-.52	+.34	+.56	+59.31

CED	BW	WW	YW	RFI	DMI	YH	SC	DOC	HP	CEM	Milk	MW	MH	CW	Marb	RE	Fat	Tend
79	66	74	80	15	31	97	98	95	100	87	91	55	86	76	68	43	77	72

- BW 84 lbs. Adj. WW 681 lbs. Adj. YW 1188 lbs. Adj. %IMF 5.19. Adj. REA 14.5.
- No big holes in the paperwork of this 6EM3 grandson.



EXAR Upshot 0562B...sire of Lot 62



# 66 EXAR Network 2392B

Apr. 1, 2012 • Bull: 17213947 • Tattoo: 2392B

CONNEALY NETWORK  
WK NETWORK 8279  
WK FANNY 5509

STEVENSON MONEYMAKER R185  
EXAR RITA 81242  
SHERMANS RITA 282

G A R GRID MAKER  
ELIGENCE PLUS OF CONANGA  
WK MIDLAND 3021  
WK FANNY 3028  
BOYD ON TARGET 1083  
STEVENSON CLOVA PRIDE L888  
B/R NEW DESIGN 323  
G A R EXT 604

CED	BW	WW	YW	Milk	SC	Marb	REA	\$Beef
+9	+1.4	+47	+74	+23	+32	+71	+25	+52.52

CED	BW	WW	YW	RFI	DMI	YH	SC	DOC	HP	CEM	Milk	MW	MH	CW	Marb	RE	Fat	Tend
43	56	73	77	22	59	77	35	38	98	58	61	14	29	92	36	88	25	95

- BW 76 lbs. Adj. WW 729 lbs. Adj. YW 1073 lbs. Adj. %IMF 4.32. Adj. REA 12.4.
- High Marbling WK Network son.

# 67 EXAR Final Answer 6742B

Apr. 5, 2012 • Bull: 17205142 • Tattoo: 6742B

S A V FINAL ANSWER 0035  
SANDPOINT FINAL ANSWER X792  
E&B LADY ERICA 128

S A V BISMARCK 5682  
DEER VALLEY PRIMROSE 9945  
ROTH PRIMROSE 1247

SITZ TRAVELER 8180  
S A V EMULOUS 8145  
N BAR EMULATION EXT  
E&B 6807 LADY TRAVELER 61  
G A R GRID MAKER  
S A V ABIGALE 0451  
TWIN VALLEY PRECISION E161  
N BAR PRIMROSE 2424

CED	BW	WW	YW	Milk	SC	Marb	REA	\$Beef
+9	+1.3	+40	+76	+22	-.22	-.01	+62	+39.62

CED	BW	WW	YW	RFI	DMI	YH	SC	DOC	HP	CEM	Milk	MW	MH	CW	Marb	RE	Fat	Tend
30	33	47	55	31	5	87	83	85	100	2	60	50	94	77	100	61	92	3

- BW 72 lbs. Adj. WW 626 lbs. Adj. YW 1197 lbs. Adj. %IMF 4.55. Adj. REA 14.0.
- Calving ease Final Answer grandson.

# 68 EXAR First Class 2850

Apr. 8, 2012 • Bull: +17207111 • Tattoo: 2850

EXG RS FIRST RATE S903 R3  
DAMERON FIRST CLASS  
DAMERON NORTHERN MISS 3114

BC 7022 RAVEN 7965  
EXAR FOREVER LADY 9233  
BOYD FOREVER LADY 4004

EXAR LUTTON 1831  
RAFTER S BLACKCAP P909  
DAMERON P V F RAPTOR 702  
DAMERON MISS 550  
B C MARATHON 7022  
O C C BLACKBIRD 796F  
BR MIDLAND  
BOYD FOREVER LADY 811

CED	BW	WW	YW	Milk	SC	Marb	REA	\$Beef
-1	+4.7	+56	+98	+26	-.63	+19	+24	+47.91

CED	BW	WW	YW	RFI	DMI	YH	SC	DOC	HP	CEM	Milk	MW	MH	CW	Marb	RE	Fat	Tend
96	100	61	52	36	21	59	100	93	78	92	72	49	39	74	83	75	69	65

- BW 82 lbs. Adj. WW 467 lbs. Adj. YW 1014 lbs. Adj. %IMF 4.02. Adj. REA 11.5.
- This First Class son should transmit that added "look" to his offspring.



Dameron First Class...sire of Lot 68

# 69 Double R Bar Juneau Z191

Apr. 9, 2012 • Bull: 17262639 • Tattoo: Z191

O C C JUNEAU 807J  
COLEMAN JUNEAU 044  
COLEMAN DONNA 714

DDA EMBLAZON 27C  
ROBBINS MISS BANDO 7096  
MAR MISS BANDO PRIDE 37 M340

O C C EMBLAZON 854E  
O C C DIXIE ERICA 903E  
CONNEALY ONWARD  
COLEMAN DONNA 386  
O C C EMBLAZON 854E  
D D A MELISA 824  
BON VIEW BANDO 148  
M A R MISS FIX QUEEN 81 M178

CED	BW	WW	YW	Milk	SC	Marb	REA	\$Beef
+13	-1.2	+45	+79	+27	-.55	+32	+35	+44.28

CED	BW	WW	YW	RFI	DMI	YH	SC	DOC	HP	CEM	Milk	MW	MH	CW	Marb	RE	Fat	Tend
26	15	90	82	53	46	95	95	16	5	62	74	89	91	86	92	49	35	70

- BW 70 lbs. Adj. WW 704 lbs. Adj. YW 1179 lbs. Adj. %IMF 3.90. Adj. REA 13.0.
- Calving ease specialist! Top 3% CED and top 4% BW.

# 70 EXAR Goodnight Z66

Apr. 23, 2012 • Bull: 17339942 • Tattoo: Z66

RITO 6EM3 OF 4L1 EMBLAZON  
EXAR GOODNIGHT 0716B  
EXAR BLACKBIRD 4448

DALEBANKS EXTENDER 6012  
EXAR TF QUEEN MOTHER 7200  
SEDGWICKS QUEEN MOTHER 2465

O C C EMBLAZON 854E  
RITA 4L1 OF 2536 208  
EXAR LUTTON 1831  
WK BLACKBIRD 7308  
N BAR EMULATION EXT  
PRINCESS 4007 OF DALEBANKS  
K M FUTURE DIRECTION 3902  
SEDGWICKS QUEEN MOTHER 246

CED	BW	WW	YW	Milk	SC	Marb	REA	\$Beef
+11	+0.1	+53	+88	+24	+.89	+.06	+.51	+47.07

CED	BW	WW	YW	RFI	DMI	YH	SC	DOC	HP	CEM	Milk	MW	MH	CW	Marb	RE	Fat	Tend
43	54	84	75	45	22	72	45	96	97	24	56	74	88	65	97	45	83	56

- BW 75 lbs. Adj. WW 720 lbs. Adj. YW 1216 lbs. Adj. %IMF 4.15. Adj. REA 15.5.
- Calving ease 6EM3 grandson with a 15.5 sq. inch ribeye. Top 10% CED.

# 71 EXAR First Impression 2864B

May 28, 2012 • Bull: +17269951 • Tattoo: 2864B

S A V BRILLIANCE 8077  
DAMERON FIRST IMPRESSION  
DAMERON NORTHERN MISS 3114

BC 7022 RAVEN 7965  
EXAR PRINCESS 9830  
EXAR PRINCESS 6414

S A V BISMARCK 5682  
S A V BLACKCAP MAY 5270  
DAMERON P V F RAPTOR 702  
DAMERON MISS 550  
B C MARATHON 7022  
O C C BLACKBIRD 796F  
EXAR LUTTON 1831  
GREENS PRINCESS 1012

CED	BW	WW	YW	Milk	SC	Marb	REA	\$Beef
+2	+3.4	+53	+98	+24	+.62	+.17	+.42	+66.94

CED	BW	WW	YW	RFI	DMI	YH	SC	DOC	HP	CEM	Milk	MW	MH	CW	Marb	RE	Fat	Tend
85	91	40	39	60	18	86	47	47	71	70	61	46	62	47	90	50	26	36

- BW 78 lbs. Adj. WW 617 lbs. Adj. YW 1310 lbs. Adj. %IMF 4.00. Adj. REA 13.9.
- Nice, balanced EPD profile on this First Impression son that goes back to Raven.



Dameron First Impression...sire of Lot 71





# JAMISON RANCH REGISTERED HEREFORD HEIFERS

*Lots 72-91*

## SPRING & FALL 2012 OPEN HEIFERS



### 72 JR Li Dominette 2202Z

Feb. 3, 2012 • Cow: 43273156 • Tattoo: BE 2202

CL 1 DOMINO 4134P 1ET  
JA L1 DOMINO 8513U  
JA L1 DOMINETTE 1223L

CL 1 DOMINO 0157K  
JA L1 DOMINETTE 6207S  
JA L1 DOMINETTE 9238

CL 1 DOMINO 9126J 1ET  
CL 1 DOMINETTE 8104H 1ET  
CL 1 DOMINO 484  
JA L1 DOMINETTE 503  
HH ADVANCE 767G 1ET  
CL 1 DOMINETTE 861H  
CL 1 DOMINO 484  
JA L1 DOMINETTE 6459

	CED	BW	WW	YW	Milk	M&G	REA	Marb
Est.	+3.2	+2.1	+49	+92	+23	+47	+30	+.05

- Dam records 3@104 for WW ratio and 1@112 for YW ratio.
- Sells open.



### 73 JR Li Dominette 2201Z

Feb. 11, 2012 • Cow: 43273155 • Tattoo: BE 2201

CL 1 DOMINO 4134P 1ET  
JA L1 DOMINO 8513U  
JA L1 DOMINETTE 1223L

JA L1 DOMINO 208M  
JA L1 DOMINETTE 7104R  
JA L1 DOMINETTE 5611R

CL 1 DOMINO 9126J 1ET  
CL 1 DOMINETTE 8104H 1ET  
CL 1 DOMINO 484  
JA L1 DOMINETTE 503  
HH ADVANCE 767G 1ET  
JA L1 DOMINETTE 0008  
HH ADVANCE 286M 1ET  
JA L1 DOMINETTE 2258M

	CED	BW	WW	YW	Milk	M&G	REA	Marb
Est.	+2.1	+3.3	+47	+79	+29	+43	+24	+.06

- Sells open.



### 74 JR Li Dominette 2103z

Feb. 12, 2012 • Cow: 43273140 • Tattoo: BE 2103

L1 DOMINO 03396  
CL 1 DOMINO 638S  
CL 1 DOMINETTE 475P

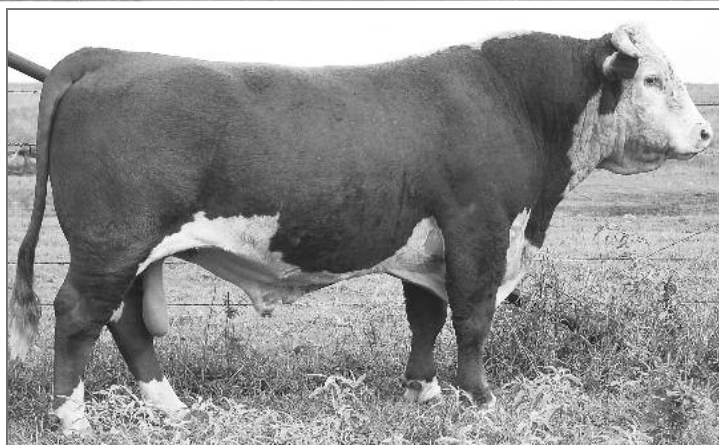
CL 1 DOMINO 4134P 1ET  
JA L1 DOMINETTE 9522W  
JA L1 DOMINETTE 0600

L1 DOMINO 00552  
L1 DOMINETTE 96893  
CL 1 DOMINO 824H  
CL 1 DOMINETTE 200M  
CL 1 DOMINO 9126J 1ET  
CL 1 DOMINETTE 8104H 1ET  
GB L1 DOMINO 5128  
JA L1 DOMINETTE 6451

	CED	BW	WW	YW	Milk	M&G	REA	Marb
Est.	+1.3	+3.1	+51	+91	+23	+49	+38	+.11

- Dam records 1@115 for WW ratio and 1@103 for YW ratio.
- Sells open.





JA L1 Domino 8513U...sire of Lots 75, 78 & 79

**75**

**JR LI Dominette 221Z**

Feb. 13, 2012 • Cow: 43273163 • Tattoo: BE 2211

CL 1 DOMINO 4134P 1ET  
**JA L1 DOMINO 8513U**  
 JA L1 DOMINETTE 1223L

JA L1 DOMINO 426P  
**JA L1 DOMINETTE 670S**  
 JA L1 DOMINETTE 3231N

CL 1 DOMINO 9126J 1ET  
 CL 1 DOMINETTE 8104H 1ET  
 CL 1 DOMINO 484  
 JA L1 DOMINETTE 503  
 CL 1 DOMINO 0157K  
 JA L1 DOMINETTE 7070  
 JA L1 DOMINO 0224  
 JA L1 DOMINETTE 7806

	CED	BW	WW	YW	Milk	M&G	REA	Marb
Est.	+1.8	+3.5	+56	+99	+20	+49	+2.5	+0.7

• Sells open.

**76**

**JR LI Dominette 2102Z**

Feb. 15, 2012 • Cow: 43273139 • Tattoo: BE 2102

L1 DOMINO 03396  
**CL 1 DOMINO 638S**  
 CL 1 DOMINETTE 475P

JA L1 DOMINO 0224  
**JA L1 DOMINETTE 3231N**  
 JA L1 DOMINETTE 7806

L1 DOMINO 00552  
 L1 DOMINETTE 96893  
 CL 1 DOMINO 824H  
 CL 1 DOMINETTE 200M  
 CL 1 DOMINO 484  
 JA L1 DOMINETTE 7100  
 HH ADVANCE 388C  
 JA L1 DOMINETTE 219

	CED	BW	WW	YW	Milk	M&G	REA	Marb
Est.	+1.0	+3.8	+52	+82	+31	+57	-1.0	+1.3

• Dam records 4@113 for WW ratio and 2@113 for YW ratio.

• Sells open.

**77**

**JR LI Dominette 2106Z**

Feb. 16, 2012 • Cow: 43273143 • Tattoo: BE 2106

L1 DOMINO 03396  
**CL 1 DOMINO 638S**  
 CL 1 DOMINETTE 475P

CL 1 DOMINO 557E  
**JA L1 DOMINETTE 0101**  
 JA L1 DOMINETTE 6911

L1 DOMINO 00552  
 L1 DOMINETTE 96893  
 CL 1 DOMINO 824H  
 CL 1 DOMINETTE 200M  
 HH ADVANCE 125A  
 CL 1 DOMINETTE 139  
 HH ADVANCE 400D 1ET  
 JA L1 DOMINETTE 1554

	CED	BW	WW	YW	Milk	M&G	REA	Marb
Est.	+0.5	+4.1	+48	+85	+17	+42	+2.5	+1.3

• Dam records 8@103 for WW ratio and 5@103 for YW ratio, plus 3@108 for REA and 3@121 for IMF ratios.

• Sells open.

**78**

**JR LI Dominette 2203Z**

Feb. 18, 2012 • Cow: 43273157 • Tattoo: BE 2203

CL 1 DOMINO 4134P 1ET  
**JA L1 DOMINO 8513U**  
 JA L1 DOMINETTE 1223L

JA L1 DOMINO 208M  
**JA L1 DOMINETTE 4103P**  
 JA L1 DOMINETTE 1255L

CL 1 DOMINO 9126J 1ET  
 CL 1 DOMINETTE 8104H 1ET  
 CL 1 DOMINO 484  
 JA L1 DOMINETTE 503  
 HH ADVANCE 767G 1ET  
 JA L1 DOMINETTE 0008  
 HH ADVANCE 6063F  
 JA L1 DOMINETTE 5929

	CED	BW	WW	YW	Milk	M&G	REA	Marb
Est.	+2.8	+2.6	+42	+68	+21	+42	+0.8	+1.0

• Sells open.



Lot 79

**79**

**JR LI Dominette 2205Z**

Feb. 18, 2012 • Cow: 43273159 • Tattoo: BE 2205

CL 1 DOMINO 4134P 1ET  
**JA L1 DOMINO 8513U**  
 JA L1 DOMINETTE 1223L

HH ADVANCE 286M 1ET  
**JA L1 DOMINETTE 8634U**  
 JA L1 DOMINETTE 216M

CL 1 DOMINO 9126J 1ET  
 CL 1 DOMINETTE 8104H 1ET  
 CL 1 DOMINO 484  
 JA L1 DOMINETTE 503  
 HH ADVANCE 0024K  
 HH MISS ADVANCE 752G  
 CL 1 DOMINO 0157K  
 JA L1 DOMINETTE 8616

	CED	BW	WW	YW	Milk	M&G	REA	Marb
Est.	+3.2	+1.9	+46	+85	+23	+45	+2.6	+1.1

• Sells open.



Lot 77





**80**

**JR LI Dominette 2II6Z**

Feb. 20, 2012 • Cow: 43273147 • Tattoo: BE 2116

L1 DOMINO 03396  
**CL 1 DOMINO 638S**  
CL 1 DOMINETTE 475P

CL 1 DOMINO 484  
**JA L1 DOMINETTE 6252S**  
JA L1 DOMINETTE 4118P

L1 DOMINO 00552  
L1 DOMINETTE 96893  
CL 1 DOMINO 824H  
CL 1 DOMMINETTE 200M

L1 DOMINO 890061  
CL 1 DOMINETTE 761  
JA L1 DOMINO 208M  
JA L1 DOMINETTE 1421L

	CED	BW	WW	YW	Milk	M&G	REA	Marb
Est.	+0.6	+2.6	+44	+73	+21	+43	+10	+09

- Dam records 1@127 for IMF ratio.
- Sells open.



Lot 81

**83**

**JR LI Dominette 2I42Z**

Sept. 11, 2012 • Cow: 43412371 • Tattoo: BE 2142

L1 DOMINO 03396  
**CL 1 DOMINO 638S**  
CL 1 DOMINETTE 475P

JA L1 DOMINO 426P  
**FWS 426 CELESTE 1072**  
FWS MISS DOLLEY 0718

L1 DOMINO 00552  
L1 DOMINETTE 96893  
CL 1 DOMINO 824H  
CL 1 DOMMINETTE 200M

CL 1 DOMINO 0157K  
JA L1 DOMINETTE 7070  
OXH MADISON 1267  
FWS MS STARFIRE 0064

	CED	BW	WW	YW	Milk	M&G	REA	Marb
Est.	+1.1	+4.8	+51	+80	+31	+56	-.08	+17

- BW 88 lbs.
- Sells open.



Lot 84

**81**

**JR LI Dominette 2220Z**

Feb. 25, 2012 • Cow: 43273167 • Tattoo: BE 2220

CL 1 DOMINO 4134P 1ET  
**JA L1 DOMINO 8513U**  
JA L1 DOMINETTE 1223L

CL 1 DOMINO 638S  
**JA L1 DOMINETTE 8337U**  
JA L1 DOMINETTE 4414P

CL 1 DOMINO 9126J 1ET  
CL 1 DOMINETTE 8104H 1ET  
CL 1 DOMINO 484  
JA L1 DOMINETTE 503

L1 DOMINO 03396  
CL 1 DOMINETTE 475P  
HH ADVANCE 8012H 1ET  
JA L1 DOMINETTE 6013

	CED	BW	WW	YW	Milk	M&G	REA	Marb
Est.	+1.1	+3.7	+47	+78	+27	+51		

- Sells open.

**84**

**JR LI Dominette 2350Z**

Sept. 15, 2012 • Cow: 43412350 • Tattoo: BE 2350

GB L1 DOMINO 175E  
**CO L1 DOMINO 943W**  
JA L1 DOMINETTE 999

JA L1 DOMINO 426P  
**FWS 426 CARLA 1065**  
HF MISS ADVANCE 1007 419

HH ADVANCE 767G 1ET  
GB L1 DOM PRCS 3134  
JAK L1 DOMINO E34  
CL 1 DOMINETTE 5038

CL 1 DOMINO 0157K  
JA L1 DOMINETTE 7070  
CH OK ADVANCE 1007  
HF MISS CL1 DOMINO 8054

	CED	BW	WW	YW	Milk	M&G	REA	Marb
Est.	+2.1	+4.4	+50	+87	+26	+50	+10	+11

- BW 84 lbs.
- Sells open.



**82**

**JR LI Dominette 2I45Z**

Sept. 10, 2012 • Cow: 43412353 • Tattoo: BE 2145

L1 DOMINO 03396  
**CL 1 DOMINO 638S**  
CL 1 DOMINETTE 475P

GL1 DOMINO 405L  
**JA L1 DOMINETTE 8708U**  
JA L1 DOMINETTE 670S

L1 DOMINO 00552  
L1 DOMINETTE 96893  
CL 1 DOMINO 824H  
CL 1 DOMMINETTE 200M

GL1 DOMINO 907D  
HH MS ADVANCE 8085H  
JA L1 DOMINO 426P  
JA L1 DOMINETTE 3231N

	CED	BW	WW	YW	Milk	M&G	REA	Marb
Sire:	+0.5	+4.9	+50	+70	+42	+67	-.26	+20

- Sells open.

**85**

**JR LI Dominette 2I49Z**

Sept. 17, 2012 • Cow: 43412362 • Tattoo: BE 2149

L1 DOMINO 03396  
**CL 1 DOMINO 638S**  
CL 1 DOMINETTE 475P

CL 1 DOMINO 0157K  
**JA L1 DOMINETTE 645S**  
JA L1 DOMINETTE 1413L

L1 DOMINO 00552  
L1 DOMINETTE 96893  
CL 1 DOMINO 824H  
CL 1 DOMMINETTE 200M

HH ADVANCE 767G 1ET  
CL 1 DOMINETTE 861H  
HH ADVANCE 8012H 1ET  
JA L1 DOMINETTE 800

	CED	BW	WW	YW	Milk	M&G	REA	Marb
Est.	+3.1	+2.3	+39	+63	+31	+51	-.22	+12

- BW 80 lbs.
- Sells open.





Lot 86

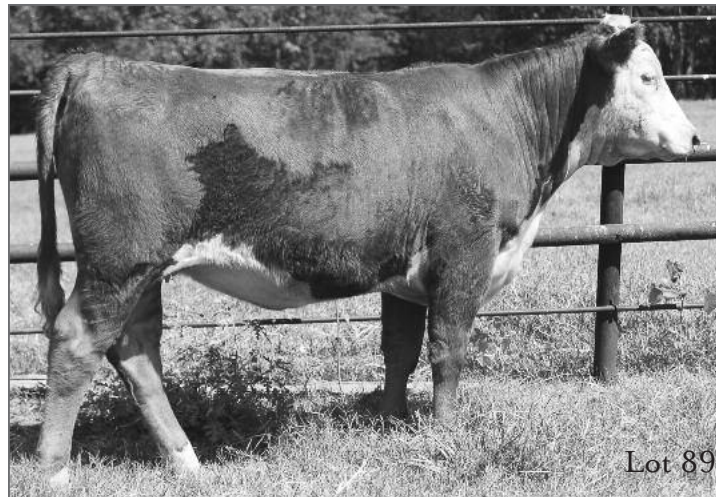
**86** JR LI Dominette 2147Z  
 Sept. 20, 2012 • Cow: 43412361 • Tattoo: BE 2147

CL 1 DOMINO 638S  
 CL 1 DOMINETTE 475P  
 HH ADVANCE 286M 1ET  
 JA L1 DOMINETTE 7644T  
 JA L1 DOMINETTE 216M

L1 DOMINO 00552  
 L1 DOMINETTE 96893  
 CL 1 DOMINO 824H  
 CL 1 DOMMINETTE 200M  
 HH ADVANCE 0024K  
 HH MISS ADVANCE 752G  
 CL 1 DOMINO 0157K  
 JA L1 DOMINETTE 8616

Est.	CED	BW	WW	YW	Milk	M&G	REA	Marb
	+1.7	+3.6	+50	+77	+30	+55	-.01	+.13

- BW 87 lbs.
- Sells open.



Lot 89

**89** JR LI Dominette 2150Z  
 Sept. 27, 2012 • Cow: 43412358 • Tattoo: BE 2150

CL 1 DOMINO 638S  
 CL 1 DOMINETTE 475P  
 JA L1 DOMINO 426P  
 JA L1 DOMINETTE 820U  
 JA L1 DOMINETTE 502R

L1 DOMINO 00552  
 L1 DOMINETTE 96893  
 CL 1 DOMINO 824H  
 CL 1 DOMMINETTE 200M  
 CL 1 DOMINO 0157K  
 JA L1 DOMINETTE 7070  
 CL 1 DOMINO 0157K  
 JA L1 DOMINETTE 1250L

Sire	CED	BW	WW	YW	Milk	M&G	REA	Marb
	+0.5	+4.9	+50	+70	+42	+67	-.26	+.20

- Sells open.

**87** JR LI Dominette 2352Z  
 Sept. 22, 2012 • Cow: 43412352 • Tattoo: BE 2352

CO L1 DOMINO 943W  
 JA L1 DOMINETTE 999  
 GB L1 DOMINO 6134K  
 JA L1 DOMINETTE 096W  
 JA L1 DOMINETTE 8831U

HH ADVANCE 767G 1ET  
 GB L1 DOM PRCS 3134  
 JAK L1 DOMINO E34  
 CL 1 DOMINETTE 5038  
 GB L1 DOMINO 471H  
 GB L1 DOM PRCS 4103H ET  
 CL 1 DOMINO 560R  
 JA L1 DOMINETTE 1202L

Est.	CED	BW	WW	YW	Milk	M&G	REA	Marb
	+2.4	+3.0	+51	+90	+27	+53	+.15	+.18

- BW 82 lbs.
- Sells open.

**90** JR LI Dominette 2364Z  
 Sept. 29, 2012 • Cow: Reg. Pending • Tattoo: BE 2364

CO L1 DOMINO 943W  
 JA L1 DOMINETTE 999  
 JA L1 DOMINO 8513U  
 JR L1 DOMINETTE 0121W  
 JA L1 DOMINETTE 2536M

HH ADVANCE 767G 1ET  
 GB L1 DOM PRCS 3134  
 JAK L1 DOMINO E34  
 CL 1 DOMINETTE 5038  
 CL 1 DOMINO 4134P  
 JA L1 DOMINETTE 1223L  
 CL 1 DOMINO 7176G  
 JA L1 DOMINETTE 7828

Est.	CED	BW	WW	YW	Milk	M&G	REA	Marb
	+3.3	+2.5	+45	+75	+23	+45	+.23	+.10

- BW 78 lbs.
- Sells open.

**88** FWS 9125 Farah 1253  
 Sept. 27, 2012 • Cow: 43341670 • Tattoo: RE 1253

CL 1 DOMINO 732T  
 CL 1 DOMINO 9125W 1ET  
 CL 1 DOMINETTE 475P  
 JA L1 DOMINO 2405M  
 FWS 2405 ADDISON 0903  
 FWS 9912 MS ADVANCE 0267

CL 1 DOMINO 590R  
 CL 1 DOMINETTE 507R  
 CL 1 DOMINO 824H  
 CL 1 DOMMINETTE 200M  
 HH ADVANCE 8012H 1ET  
 JA L1 DOMINETTE 9263  
 FWS 343 ADVANCER 9912  
 FWS MS ADVANCE 9627

	CED	BW	WW	YW	Milk	M&G	REA	Marb
	+1.1	+3.0	+52	+82	+28	+54	+.01	+.16

- Sells open.

**91** JR LI Dominette 2359Z  
 Oct. 1, 2012 • Cow: Reg. Pending • Tattoo: BE 2359

CO L1 DOMINO 943W  
 JA L1 DOMINETTE 999  
 GB L1 DOMINO 6134K  
 JR L1 DOMINETTE 060X  
 JA L1 DOMINETTE 8853U

HH ADVANCE 767G 1ET  
 GB L1 DOM PRCS 3134  
 JAK L1 DOMINO E34  
 CL 1 DOMINETTE 5038  
 GB L1 DOMINO 471H  
 GB L1 DOM PRCS 4103H  
 CL 1 DOMINO 560R  
 JA L1 DOMINETTE 9110

Sire	CED	BW	WW	YW	Milk	M&G	REA	Marb
	+3.6	+2.1	+47	+84	+28	+52	+.23	+.14

- BW 80 lbs.
- Sells open.





# **JAMISON RANCH COMMERCIAL BRED HEIFERS**

*Start at Lot 101*

*150 Commercial Bred Heifers Sell...*

50 Hereford

50 Black Baldy

50 Angus

*Bred to calve from February 15th to March 15th*

*...Selling in uniform groups of five head each*

## **JAMISON RANCH**

*Beggs, Oklahoma*

In the 1890s, Mary Lou Jamison's grandfather, W.M. "Rusty" Thompson, came to Creek and Okmulgee counties in east central Oklahoma and began ranching. Today, Mary Lou, her son Rusty, and his wife, Carolyn, operate what is now Jamison Ranch. The operation is mainly a cow/calf operation, utilizing registered and commercial Hereford cows and commercial Angus cows that produce registered Herefords and black baldy calves. Each year, Jamison Ranch develops and sells many Hereford, black and black-baldy bred heifers that continue to top replacement female sales across Oklahoma. In 2007, the Jamisons purchased a set of registered Hereford cows from longtime friends, the Gordon Jamison Family. This is the first sale offering held at Jamison Ranch, and your interest is sincerely appreciated!





*150 Commercial Bred  
Heifers sell... following  
the registered lots.*





**NATIONAL CATTLE SERVICES INC.**  
P.O. Box 170, Elgin, OK 73538  
(580) 492-4590 • Fax 492-4594  
Eddie Sims Cell (580) 595-1626  
simsncs@aol.com  
www.nationalcattle.com

FIRST CLASS  
U.S. POSTAGE  
**PAID**  
PERMIT NO. 6  
ELGIN, OK  
73538

FIRST CLASS MAIL  
TIME DATED: PLEASE DO NOT DELAY

# JAMISON *&* JAMISON

Jamison Ranch • Beggs, Oklahoma      Jamison Herefords • Quinter, Kansas

REGISTERED & COMMERCIAL

*Bull & Female Sale*  
**Saturday, October 26<sup>th</sup>**  
Beggs, Oklahoma



25/26