

8826

JAMISON HEREFORDS

TOTAL PERFORMANCE PRODUCTION SALE

FEBRUARY 28, 2014

QUINTER, KANSAS

**HEREFORD LINE 1
PERFORMANCE GENETICS
FOR THE BREED AND INDUSTRY!**



UNITED LIVESTOCK BROKERS, INC.

JAMISON LINE 1 HEREFORDS



THE COWMAN'S BREEDING BULL SOURCE!

- Linebred Line 1 • Functional, Efficient Beef Bulls • Trait Balanced • Maternal is #1
- Carcass Ultrasound • Range Raised (No Creep) • Volume Selection



Lot 1 Sire: HH Advance 1098Y



Lot 2 Sire: HH Advance 1098Y



Lot 15 Sire: CL1 Domino 9125W



Lot 16 Sire: CL1 Domino 9125W



Lot 26 Sire: CL1 Domino 9125W



Lot 30 Sire: CL1 Domino 555R



Lot 41 Sire: JA L1 Domino 1602Y



Lot 42 Sire: JA L1 Domino 1602Y



Lot 58 Sire: CL1 Domino 860U



Lot 22 Sire: CL1 Domino 9125W



Lot 59 Sire: CL1 Domino 860U



Lot 62 Sire: CL1 Domino 860U

JAMISON HEREFORDS

TOTAL PERFORMANCE PRODUCTION SALE

FRIDAY **FEBRUARY 28** 2014

12 Noon (CST) • AT THE RANCH
Located off I-70, Quinter Exit 107, 2 miles South,
1 mile East, 1 1/2 miles South

200 HEREFORD BULLS

74 Yearlings • 25 2012 Fall Yearlings • 100 Two Yr. Olds
Performance Tested • Fertility Tested • Carcass Ultrasounded

— AUCTIONEER —

LYNN WEISHAAR • Reva, SD • 605/866-4670 or 605/641-6248

— SALE REPRESENTATIVES —

Levi Landers, AMERICAN HEREFORD ASSN.
308/730-1396

Trey Befort, CERTIFIED HEREFORD BEEF
620/770-3419

Tom Granzow, KANSAS HEREFORD ASSN.
785/466-2226

Marc Hotchkiss, HEREFORD AMERICA
605/866-4495

Jim Gies, WESTERN LIVESTOCK JOURNAL
970/454-3836

Doug Paul, THE STOCK EXCHANGE
405/820-3982

Guy Pevery, HIGH PLAINS JOURNAL
785/456-9911

Andrew Sylvester, KANSAS STOCKMAN
785/456-4352

Scott Dirk, TRI-STATE LIVESTOCK NEWS
605/380-6024

Jim Williams, CATTLE BUSINESS WEEKLY
308/222-0170

— INSURANCE —

Harding & Harding • **Jim Gies** 970/454-3836



UNITED LIVESTOCK BROKERS, INC.

Jay George • 605/391-6230
1025 28th Rd. NW
Lebo, Kansas 66856

Photography by Jay George

— VETERINARIAN —

Max Mann, DVM • Quinter, KS • 785/754-3411

SALE DAY PHONE: 785/754-3424

GENERAL INFORMATION... Sale terms, motels, airports, etc., see page 36.

JAMISON HEREFORDS SALE BULL VIDEO

Online at: www.jamisonranch.com

Video by Marc Hotchkiss

www.jamisonranch.com

JAMISON HEREFORDS

GORDON JAMISON & SONS

Gordon 785/754-3639

2271 COUNTY RD. 74 • QUINTER, KANSAS 67752



**SINCE 1944... Quality, Performance
and Linebred Genetics for America's
Cowmen!**



Our Auctioneer... **Col. Lynn Weishaar**

Denver National Western 2014 Marketeers Hall of Fame

Premier auctioneer ...rancher, stockman, horseman ... a true Marketeer who has impacted the entire purebred and commercial cattle and performance horse industries. His leadership, passion and dedication for doing good business for his ranchers and breeders is unparalleled.

"A true professional, he knows the heart and soul of this livestock business!" — Gordon Jamison

WELCOME

The Jamison family welcomes you to our annual spring bull sale. We value our relationships with ranchers and friends. The best way to enhance our interaction is to offer trouble-free, profit making genetics. Our program stresses calving ease, fleshing ability, and maternal traits and we want the bulls to have optimal growth and be sound in every way. We like pigment on Hereford cattle and are getting closer to our goal of 100 percent pigmentation on every bull.

We believe in these linebred Line One, Horned Hereford genetics. Our cattle have been linebred for generations since 1970 and we think by so doing our customers will reap full benefit of heterosis when crossing with unrelated lines of other breeds. The optimal cross for a Hereford bull is a Black and Red Angus cow ...she will take the horns off and he will add vigor and extra pounds. And, no sire helps disposition like a Hereford bull will.

The bulls are ultrasounded for carcass information; they all sell fertility tested and the bulls are BVD-PI tested as yearlings. We offer free delivery on volume purchases to central points.

We have several bulls in the sale from herd bull partners and guest breeder consignors. These bulls have been developed here in our management program and carry the full JA guarantee.

Call if you have questions ...we look forward to seeing you on February 28th!

Sincerely,
Gordon Jamison

You're Invited... **HEREFORD STEAK SUPPER!**

A Pre-Sale Get-together ...Thurs. Evening, Feb. 27th

The Historic Western Kansas Saloon

"The best steak in Western Kansas...bar none!"

Main St. • Wakeeney, Kansas

Near the Wakeeney Best Western Sale Headquarters

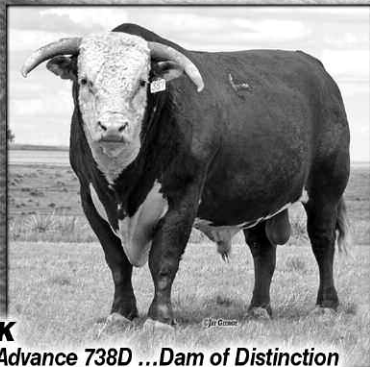
View the auction live! Bid online ...you're ringside
right at your own desk!

DVAuction
Broadcasting Real-Time Auctions

www.dvauction.com

Visit our website ...for more information and to register
to bid! Call Tami McIntosh 308/870-3661

JA COWHERD SIRES...



CL1 DOMINO 0157K

CL1 Domino 767G x HH Advance 738D ...Dam of Distinction
23 herds / 299 progeny / 116 dgrs. • Trait Leader ...CED • BW • MILK • CEM • CEZ
CED **7.9*** BW **-0.9*** WW **36** YW **75** MILK **30*** M&G **48** / REA **-.14** MB **.03**
Landmark Calving Ease, Hi-Maternal, 5-Trait Leader!



HH ADVANCE 286M

HH Advance 0024K x KB L1 Domino 519
22 herds / 637 progeny / 199 dgrs. • Trait Leader ...REA • BMI • BII
CED **0.2** BW **2.9** WW **55** YW **85** MILK **15** M&G **42** / REA **.50*** MB **-.01**
Muscle, Paywt., Pigment, Carcass ...Functional, Efficient Daughters!



CL1 DOMINO 560R

CL1 Domino 3162N x CL1 Domino 888H ...dam, 4 clvs. / WR 115
11 herds / 209 progeny / 47 dgrs.
CED **-0.2** BW **5.2** WW **59** YW **87** MILK **30** M&G **59** / REA **.04** MB **.18**
Hi-Performance, Hi-Maternal, Carcass Value Bull!



CL1 DOMINO 638S

L1 Domino 03396 x CL1 Domino 824H (#475 cow)
20 herds / 257 progeny / 68 dgrs. • Trait Leader ...MILK • M&G • MARB
CED **0.5** BW **4.9** WW **49** YW **69** MILK **41*** M&G **65*** / REA **-.27** MB **.19***
Breed Elite Maternal Sire ...Premier Cooper Cow Line!

JA REFERENCE SIRES...



CL1 DOMINO 860U

Jan. 10, 2008 • #42897554

CL1 DOMINO 637S

L1 DOMINO 03396

CL1 DOMINETTE 118L

CL1 DOMINETTE 5142R

Dam of Distinction
4 clvs. WR 105

CL1 DOMINO 1172L

CL1 DOMINETTE 810H

L1 DOMINO 00552

L1 DOMINETTE 96893 (DOD)

CL1 DOMINO 888H

CL1 DOMINETTE 903J

HH ADVANCE 767G 1ET

CL1 DOMINETTE 7192G (DOD)

CL1 DOMINO 640F

CL1 DOMINETTE 6117F

CED **-2.4** BW **4.7** WW **64*** YW **117*** MILK **34*** M&G **66***
Carcass EPDs: REA **.42*** MARB **.04**

860U is the \$55,000 powerhouse that topped Cooper's 2009 sale. Backed by a superb Dam of Distinction cow, he was an imposing, big ribbed, square structured bull that recorded an in-herd 205 wt.873/119, 365 wt.1487/116. Now proven through a hi-accuracy progeny record, 860U ranks as one of Hereford's elite performance leaders with breed impact outlier EPDs for pounds of performance, daughters' milk and carcass REA. 860U is making his mark as a dominant herd mover. Owned with Colyer, King, Fawcett, GKB, Dufur, Genoa and Cooper.

Six-Trait Leader: WW • YW • MILK • M&G • REA • CHB

A POWERHOUSE, 6-TRAIT PERFORMANCE LEADER!



CL1 DOMINO 9125W

Jan. 18, 2009 • #42994844

CL1 DOMINO 732T

CL1 DOMINO 590R

CL1 DOMINETTE 507R (DOD)
4 clvs. WR 110 / YR 107

CL1 DOMINETTE 475P

2 clvs. WR 108

CL1 DOMINO 824H

CL1 DOMINETTE 200M (DOD)
4 clvs. WR 106 / YR 102

CL1 DOMINO 246M

CL1 DOMINETTE 258M

HH ADVANCE 3113N

CL1 DOMINETTE 1120L

CL1 DOMINO 640F

CL1 DOMINETTE 6148F

CL1 DOMINO 9126J

CL1 DOMINETTE 8131

CED **-0.3** BW **3.3** WW **65*** YW **102*** MILK **43*** M&G **76***
Carcass EPDs: REA **.17** MARB **.19***

9125W is a real cowman's herd bull whose rugged phenotype, strong performance and potent genetics are the solid foundation behind this herd impact sire. His deep maternal pedigree features dam 475P, mother of sire CL1 Domino 638S, and elite Cooper Dam of Distinction granddams 507R and 200M. Strong structured, deep, big quartered and easy fleshing, 9125W is an "ideal" ranchers' bull that sires a high percentage of quality, hi-performance progeny including, both, his well muscled, payweight bulls and broody, high maternal daughters. Owned with B&B, KS and Cooper, MT.

Six-Trait Leader: WW • YW • MILK • M&G • MARB • CHB

COWMAN'S SIX-TRAIT LEADER HERD BULL!

JA REFERENCE SIRES...



CL 1 DOMINO 555R Jan. 13, 2005 • #42573506

HH ADVANCE 3113N	L1 DOMINO 99496	L1 DOMINO 97349
	HH MISS ADV 875H 1ET	L1 DOMINET 95369 (DOD)
CL 1 DOMINETTE 3174N	CL 1 DOMINO 9126J 1ET	HH ADVANCE 671F 1ET
	Dam of Distinction 5 clvs. WR 105	HH MS ADVNC 339C (DOD)
	CL 1 DOMINETTE 810H	HH ADVANCE 767G 1ET
		CL 1 DOMINET 490 (DOD)
		CL 1 DOMINO 640F
		CL 1 DOMINETTE 6117F

CED **2.8** BW **2.5** WW **50** YW **83** MILK **33*** M&G **58***
Carcass EPDs: REA **.06** MARB **-.08**

555R is moderate framed, solid red, high maternal bull with balanced numbers. Dam 3174N was a top Cooper Dam of Distinction, 5 clvs./ avg. 105. 555R is a potent sire of red-meated, pigmented, problem-free, high quality cattle including our 2009, 2010 and 2011 high selling bulls. Daughters are one of our best-ever sire groups of productive, young cows and are the future of our cowherd!

Three-Trait Leader: MILK • M&G • SC

HI-MATERNAL TRAIT LEADER ...COWHERD BUILDER!



JA L1 DOMINO 7640T Feb. 13, 2007 • #42848084

HH ADVANCE 286M	HH ADVANCE 0024K	CL 1 DOMINO 824H
	HH MISS ADVANCE 752G	HH MISS ADVANCE 894H
JA L1 DOMINETTE 1409L	HH ADVANCE 8012H	KB L1 DOMINO 519
	9 clvs. WR 105	HH MISS ADVANCE 454D
	JA L1 DOMINETTE 8800 (DOD)	HH ADVANCE 697F 1ET
		HH MS ADVNC 160A (DOD)
		CL 1 DOMINO 386
		JA L1 DOMINETTE 6421

CED **2.5** BW **1.2** WW **38** YW **76** MILK **23** M&G **43**
Carcass EPDs: REA **.40*** MARB **.00**

7640T is red-meated, moderate framed, total trait, high carcass bull. One of HH Advance 286M's best sons, his mother 1409 has been a longtime top producer, 9 clvs./ WR 105. 7640T's combination of low birth wt. with high yearling growth and breed leading REA has few equals. Progeny offer superb calving ease plus performance, extra pigment and more carcass value. Daughters are solid red, moderate sized, very efficient, productive cows. Owned with Oleen Bros. KS.

Trait Leader: MCW • REA

**CALVING EASE DELUXE ...A DOUBLE-TRAIT,
COW EFFICIENCY, CARCASS REA LEADER!**



HH ADVANCE 0085X Jan. 9, 2010 • #43074001

HH ADVANCE 8203U	HH ADVANCE 5161R	HH ADVANCE 396N
	HH MISS ADVANCE 752G	HH MS ADVANCE 2118M
HH MISS ADVANCE 7017T	CL 1 DOMINO 320N	KB L1 DOMINO 519
	3 clvs. WR 107	HH MISS ADVANCE 454D
	HH MISS ADVANCE 5106R	CL 1 DOMINO 019K
		CL 1 DOMINETTE 996J
		CL 1 DOMINO 2136M
		HH MISS ADVANCE 330N

CED **-1.7** BW **3.5** WW **55** YW **83** MILK **25** M&G **53**
Carcass EPDs: REA **.30** MARB **.19**

HH Advance 085X is an outstanding rancher's herd bull combining the performance, substance, structural balance and pigment that appeals to good cowmen. A solid red, "cowboy built," deep ribbed, big quartered, rugged boned bull, his EPD numbers are complete for paywt., maternal traits and carcass value. Out of a top Holden cow, 3 clvs./ WR 107, he recorded a WW 759/ 103, YW 1355/ 103, REA 14.8 in-herd record. His progeny are eye appealing, solid performance, grid value cattle and daughters are top replacements. Owned with Blue Top, KS and Frey & Graham, OK.

RANCHER'S BULL ...COMPLETE, BALANCED, MUSCLE!



JA L1 DOMINO 1602Y Jan. 30, 2011 • #43232230

JA L1 DOMINO 7640T	HH ADVANCE 286M	HH ADVANCE 0024K
	JA L1 DOMINETTE 1409L	HH MISS ADVANCE 752G
JA L1 DOMINETTE 9204W	CL 1 DOMINO 555R	HH ADVANCE 8012H
	3 clvs. WR 106	JA L1 DOMINET 8800 (DOD)
	JA L1 DOMINETTE 4119P	HH ADVANCE 3113N
		CL 1 DOMINET 3174N (DOD)
		JA L1 DOMINO 208M
		JA L1 DOMINET 1317L (DOD)

CED **4.5** BW **0.6** WW **43** YW **70** MILK **26** M&G **48**
Carcass EPDs: REA **.41** MARB **-.04**

JA 1602Y was our 2012 \$22,500 high selling bull and out of a superb, young CL1 Domino 555R daughter, 3 clvs. / WR 106. Backed by a powerful cow family, she is a future JA franchise matron. 1602Y's first progeny are top performance prospects trademarked with their sire's calving ease and pigment. 1602Y is the next link to build a strong line of pigmented, complete, calving ease, curve bender Herefords through our best cow families. Owned with Jamison Ranch, OK.

**SUPERB CALVING EASE, RED MEAT, PIGMENT
...A PEDIGREE OF GREAT COWS!**

JA REFERENCE SIRES...



JA L1 DOMINO 9800W Jan. 21, 2009 • #43032770

CL 1 DOMINO 555R	HH ADVANCE 3113N	L1 DOMINO 99496
	CL 1 DOMINETTE 3174N (DOD)	HH MS ADV 875H
JA L1 DOMINETTE 4152P	CL 1 DOMINO 9126J	CL 1 DOMINO 166
	CL 1 DOMINETTE 810H	HH MISS ADV 7011W
	CL 1 DOMINO 6150	HH ADVANCE 388C
	JA L1 DOMINETTE 6815	JA L1 DOMINETTE 0120

7 clvs. WR 102 / YR 106
2010 Cow Sale \$18,000 top selling lot

CED **2.7** BW **2.2** WW **54** YW **83** MILK **28*** M&G **55***
Carcass EPDs: REA .12 MARB -.06

9800W was the 2010 \$18,000 Jamison top selling bull ...and his dam 4152 with her twin heifer calves was the \$18,000 high selling lot in the JA 2010 Cow Sale. An impressive, bold, well muscled Hereford with real "herd bull" character, his moderate 79 lb. BW, big WR 114/ YR 112 in-herd record, balanced EPDs and great mother cow make bonafide herdsire credentials. A powerful bull backed by hi-maternal, total trait numbers, 9800W is siring complete Hereford cattle that cover the bases from cowherd to carcass. Owned with Oleen Bros., KS.

Six-Trait Leader: MILK • M&G • SC • BMI • CEZ • BII

POWERFUL, HI-MATERNAL, MULTI-TRAIT LEADER!



CO L1 DOMINO 946W Mar. 20, 2009 • #43003699

GB L1 DOMINO 175E	HH ADVANCE 767G	CL 1 DOMINO 500E
	GB L1 DOM PRCS 3134 (DOD)	HH MISS ADVANCE 251B
CO L1 DOMINETTE 523R	GB L1 DOMINO 935C	GB L1 DOMINO 159
	CL 1 DOMINO 5131E	GB L1 DOM PRCS 105
	CL 1 DOMINO 917D	CO L1 DOMINETTE 913
	CO L1 DOMINETTE 206M	

Dam of Distinction
7 clvs. WR 106

CED **3.1** BW **2.3** WW **34** YW **65** MILK **32** M&G **48**
Carcass EPDs: REA .00 MARB .09

946W is a moderate, very complete, red pigmented bull backed by potent, Trait Leader, Line 1 genetics. Sired by Coleman Herefords' powerful, 7-Trait Leader, Pedretti-bred GB L1 Domino 175E, 946W is out of an outstanding Dam of Distinction mother ...7 clvs./WR 106. 946W progeny are complete made, well pigmented and offer moderate birth weights with solid performance and hi-maternal traits.

**HI-MATERNAL SON OF GB L1 DOMINO 175E
...AN ELITE COLEMAN COW!**



JA L1 DOMINO 0908X Mar. 11, 2010 • #43130247

GB L1 DOMINO 6134K	GB L1 DOMINO 471H	GB L1 DOMINO 1144E
	GB L1 DOM PRCS 4103H (DOD)	GB L1 DOM PRCS 1139E
JA L1 DOMINETTE 8810U	CL 1 DOMINO 560R	CL 1 DOMINO 9126J
	JA L1 DOMINETTE 4652P	GB L1 DOM PRCS 626 (DOD)
	CL 1 DOMINO 3162N	CL 1 DOMINO 118L
	HH ADVANCE 286M	JA L1 DOMET 100L (DOD)

3 clvs./WR 107

CED **2.2** BW **3.3** WW **49** YW **87** MILK **26** M&G **50**
Carcass EPDs: REA .02 MARB .17

0908X is the ideal, all-around Hereford bull whose phenotype and EPD numbers, both, meet the criteria of discriminating cowmen. For stockmen who appreciate balanced, complete, well muscled, sound cattle, he's flawless. For performance that combines moderate BW, growth, carcass value and high maternal, he puts it all together. Out of a standout, young cow and very strong maternal family, 0908X sires progeny that fit Hereford's role as problem-free, efficient, total performance cattle.

**PERFORMANCE & PHENOTYPE ...THE IDEAL,
ALL-AROUND HEREFORD SIRE!**



JA L1 DOMINO 0413X Feb. 7, 2010 • #43130100

HH ADVANCE 7085T	L1 DOMINO 03571	L1 DOMINO 01384
	HH MS ADVANCE 1088L (DOD)	L1 DOMINETTE 00532
JA L1 DOMINETTE 432P	CL 1 DOMINO 0157K	CL 1 DOMINO 824H
	JA L1 DOMINETTE 1223L	HH MS ADVANCE 8016H
	HH ADVANCE 767G	CL 1 DOMINETTE 861H (DOD)
	CL 1 DOMINO 484	JA L1 DOMINET 503 (DOD)

CED **3.7** BW **1.3** WW **40** YW **73** MILK **29** M&G **49**
Carcass EPDs: REA .04 MARB .11

0413X is an impressive beef bull that boasts a very balanced EPD performance line from cowherd to carcass. He is backed by some of Herefords' best maternal genetics with every 1st, 2nd and 3rd generation sire in his pedigree being a recognized as a Maternal Leader and cowherd builder. Deep ribbed, rugged and well muscled, 0413X sires high volume, muscular cattle that are complete for moderate BW, lbs. of performance, hi-maternal and carcass value. Owned by Climbin' Tree Ranch, CO.

STOCKMAN'S TRAIT BALANCED HERD BULL!

A.I. REFERENCE SIRES...



HH ADVANCE 1098Y Jan. 11, 2011 • #43173131

HH ADVANCE 8050U

L1 DOMINO 03571
HH MISS ADVANCE 365N

HH MS ADVANCE 9065W

HH ADVANCE 7101T
HH MISS ADVANCE 1028L

3 clvs. WR 103

*Holden Herefords' 2012 \$102,000 top selling bull
Total Performance, Calving Ease, Pigment
...A Superb Holden Cow Family!*

CED	...3.2
BW	...3.4
WW	...66
YW	...99
MILK	...33
M&G	...67
Carcass EPDs:	
REA	...56
MARB	...07



HH ADVANCE 0132X Jan. 17, 2010 • #43073963

CL1 DOMINO 7128T

HH ADVANCE 3113N
CL 1 DOMINETTE 0112K

HH MS ADVANCE 6054S

CL 1 DOMINO 320N
HH MISS ADVANCE 4053P

5 clvs. WR 106

*Flawless phenotype with calving ease
...powerful maternal pedigree!*

**Impressive 8-Trait Leader ...Problem-Free,
Hi-Maternal, Hi-Quality Cattle!**

CED	...3.8
BW	...0.7
WW	...49
YW	...69
MILK	...27
M&G	...51
Carcass EPDs:	
REA	...15
MARB	...23



HH ADVANCE 9075W Jan. 11, 2011 • #43173131

HH ADVANCE 7101T

HH ADVANCE 4140P
HH MISS ADVANCE 1121L

HH MS ADVANCE 1028L

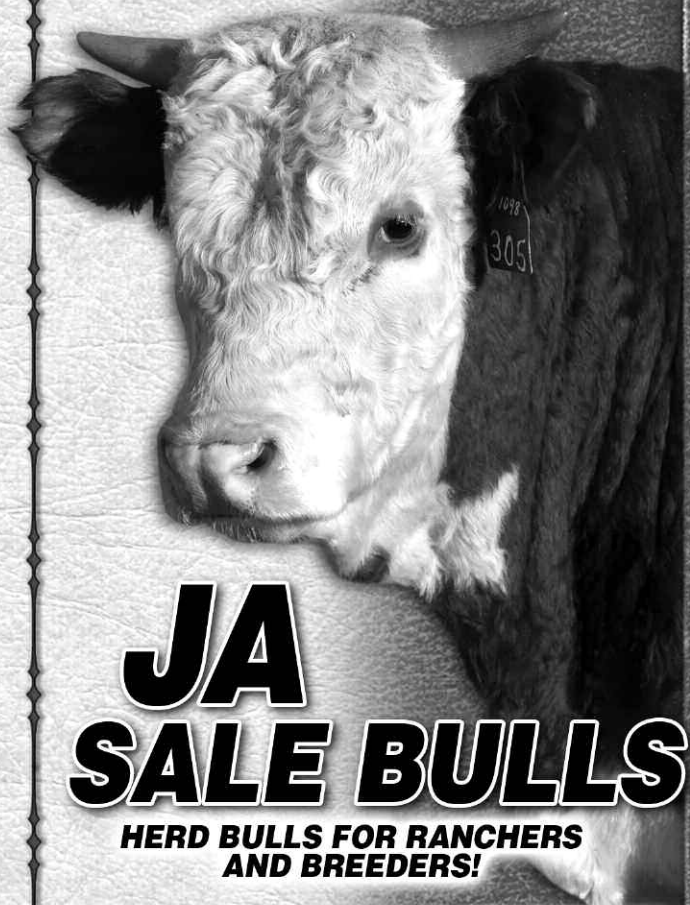
HH ADVANCE 6052F
HH MISS ADVANCE 731G

8 clvs. WR 102

*Dam 1028L is a landmark producer of \$250,000 in progeny
sales. She is granddam of sire 1098Y!*

**A Five-Trait Performance, Maternal
and Carcass Leader!**

CED	...0.3
BW	...4.4
WW	...50
YW	...89
MILK	...31
M&G	...56
Carcass EPDs:	
REA	...66
MARB	...03



JA SALE BULLS

**HERD BULLS FOR RANCHERS
AND BREEDERS!**

JAMISON 2014 YEARLING SALE BULL AVG.

68 Yrlg. Sale Bull Averages:

BW 82 • Act. WW 741 lbs. • 205 Wt. 717 lbs.

BW	WW	YW	MILK	M&G
2.9	51	86	28	54

BREED AVG. 2012 YEARLING BULLS

BW	WW	YW	MILK	M&G
3.5	46	75	19	42

JA SALE GUEST CONSIGNORS...

Herd bull partners and breeders who have selected cows out of the JA program ...all bulls have been developed at Jamison Herefords since weaned. They carry solid JA Line 1 genetics and are backed 100 percent by the JA Guarantee.

- **Oleen Bros.**, Dwight, KS
- **Coleman Herefords**, Westcliffe, CO
- **Climbin' Tree Ranch**, Westcliffe, CO
- **B&B Cattle Co.**, Virgil, KS
- **Blue Top Herefords**, Inman, KS
- **Harmony Herefords**, Quinter, KS

YEARLING BULLS...



LOT 1
Sire: *HH Advance 1098Y*
BW **1.6** WW **51** YW **82** MILK **27** M&G **53**

1
YEARLING
Act. BW ... **71**
Act. WW ... **720**
Adj. 205 ... **713**
EPDs:
BW ... **1.6**
WW ... **51**
YW ... **82**
MILK ... **27**
M&G ... **53**
Eye Pigment:
LE **70** / RE **100**

JA L1 DOMINO 302A Jan. 28, 2013 • #43385008
HH ADVANCE 8050U
HH ADVANCE 1098Y
HH MS ADVANCE 9065W
JA L1 DOMINO 7640T
JA L1 DOMINETTE 1633Y
JA L1 DOMINETTE 9225W
Carcass: REA **.38** / MARB **-.02**
L1 DOMINO 0357I
HH MISS ADVANCE 365N
HH ADVANCE 7101T
HH MISS ADVANCE 1028L
HH ADVANCE 286M
JA L1 DOMINETTE 1409L
CL 1 DOMINO 555R
JA L1 DOMINETTE 5772R

Sired by the top selling bull in Holden's 2012 sale and one of 1098's first sons to sell. Deep ribbed and long with very sound structure, this herd bull prospect is backed up by an outstanding 7640 two year old dam and he has just a 71 lb. birth weight. A candidate to use on heifers and also add performance.



LOT 2
Sire: *HH Advance 1098Y*
BW **3.4** WW **57** YW **91** MILK **31** M&G **59**

2
YEARLING
Act. BW ... **82**
Act. WW ... **740**
Adj. 205 ... **736**
EPDs:
BW ... **3.4**
WW ... **57**
YW ... **91**
MILK ... **31**
M&G ... **59**
Eye Pigment:
LE **100** / RE **100**

CTR L1 DOMINO 305A Feb. 1, 2013 • #43385027
HH ADVANCE 8050U
HH ADVANCE 1098Y
HH MS ADVANCE 9065W
H5 408 DOMINO 7100
UU HALEY 1156
UU MS ADV 529 9004
Carcass: REA **.33** / MARB **.00**
L1 DOMINO 0357I
HH MISS ADVANCE 365N
HH ADVANCE 7101T
HH MISS ADVANCE 1028L
CJH HARLAND 408
H5 MS 001 DOMET 4193
H5 255 ADVANCE 529
UU MS YAMPA 3082

Strong made, rugged herd bull prospect out of a really nice two year old Harland granddaughter. Lot 2 has extra muscle and bone and lots of red.



LOT 4
Sire: *HH Advance 9075W*
BW **3.9** WW **48** YW **85** MILK **25** M&G **50**

3
YEARLING
Act. BW ... **85**
Act. WW ... **685**
Adj. 205 ... **683**
EPDs:
BW ... **3.9**
WW ... **61**
YW ... **97**
MILK ... **28**
M&G ... **59**
Eye Pigment:
LE **100** / RE **100**

JA L1 DOMINO 306A Feb. 3, 2013 • #43385011
HH ADVANCE 8050U
HH ADVANCE 1098Y
HH MS ADVANCE 9065W
CL 1 DOMINO 555R
JA L1 DOMINETTE 1208Y
JA L1 DOMINETTE 4244P
Carcass: REA **.36** / MARB **-.03**
L1 DOMINO 0357I
HH MISS ADVANCE 365N
HH ADVANCE 7101T
HH MISS ADVANCE 1028L
HH ADVANCE 3113N
CL 1 DOMINETTE 3174N
JA L1 DOMINO 9213
JA L1 DOMINETTE 5601

Generations of tight made, sound udders behind this 1098 son. Dam is a two year old with a pretty udder. Build a cow herd with this guy.



LOT 5
Sire: *HH Advance 9075W*
BW **3.9** WW **50** YW **87** MILK **25** M&G **50**

4
YEARLING
Act. BW ... **81**
Act. WW ... **685**
Adj. 205 ... **679**
EPDs:
BW ... **3.9**
WW ... **48**
YW ... **85**
MILK ... **25**
M&G ... **50**
Eye Pigment:
LE **100** / RE **100**

JA L1 DOMINO 322A Jan. 31, 2013 • #43385016
HH ADVANCE 7101T
HH ADVANCE 9075W
HH MS ADVANCE 1028L
JA L1 DOMINO 7640T
JA L1 DOMINETTE 1619Y
JA L1 DOMINETTE 9000W
Carcass: REA **.49** / MARB **-.01**
HH ADVANCE 4140P
HH MISS ADVANCE 1121L
HH ADVANCE 6052F
HH MISS ADVANCE 731G
HH ADVANCE 286M
JAL L1 DOMINETTE 1409L
JA L1 DOMINO 6001S
JA L1 DOMINETTE 6602S

Moderate framed and straight lined with lots of eye appeal. Another outstanding 7640 two year old raised a good one.

5

JA L1 DOMINO 325A

Feb. 12, 2013 • #43385019

YEARLING
Act. BW ... **81**
Act. WW ... **675**
Adj. 205 ... **690**
EPDs:
BW ... **3.9**
WW ... **50**
YW ... **87**
MILK ... **25**
M&G ... **50**
Eye Pigment:
LE **40** / RE **100**

HH ADVANCE 7101T
HH ADVANCE 9075W
| HH MS ADVANCE 1028L

JA L1 DOMINO 6001S
JA L1 DOMINETTE 1004Y
| JA L1 DOMINETTE 9652W

Carcass: REA **.45** / MARB **.04**

Solid, beautiful udders stacked for generations. Note the dam 1004 is double-bred to 0212 that we considered one of our best ever cows. Lot 5 is square and correct with a strong top and he is an eye catcher.

HH ADVANCE 4140P
HH MISS ADVANCE 1121L
HH ADVANCE 6052F
HH MISS ADVANCE 731G
GB L1 DOMINO 935C
JA L1 DOMINETTE 0212
HH ADVANCE 286M
JA L1 DOMINETTE 0212



LOT 7
Sire: HH Advance 0132X
BW **2.3** WW **51** YW **77** MILK **23** M&G **49**

6

JA L1 DOMINO 326A

Feb. 16, 2013 • #43385020

YEARLING
Act. BW ... **76**
Act. WW ... **785**
Adj. 205 ... **758**
EPDs:
BW ... **2.0**
WW ... **45**
YW ... **78**
MILK ... **27**
M&G ... **50**
Eye Pigment:
LE **100** / RE **100**

HH ADVANCE 7101T
HH ADVANCE 9075W
| HH MS ADVANCE 1028L

CL 1 DOMINO 555R
JA L1 DOMINETTE 0212X
| JA L1 DOMINETTE 3502N

Carcass: REA **.28** / MARB **.08**

Lot 6 started at just 76 lbs. and earned a 107 WWR. He is long sided and full of muscle with complete pigmentation. An outstanding 555 dam adds spice to the package.

HH ADVANCE 4140P
HH MISS ADVANCE 1121L
HH ADVANCE 6052F
HH MISS ADVANCE 731G
HH ADVANCE 3113N
CL 1 DOMINETTE 3174N
CL 1 DOMINO 7176G
JA L1 DOMINETTE 9247



LOT 8
Sire: HH Advance 0132X
BW **0.7** WW **41** YW **60** MILK **27** M&G **47**

7

JA L1 DOMINO 340A

Feb. 2, 2013 • #43385021

YEARLING
Act. BW ... **82**
Act. WW ... **740**
Adj. 205 ... **690**
EPDs:
BW ... **2.3**
WW ... **51**
YW ... **77**
MILK ... **23**
M&G ... **49**
Eye Pigment:
LE **50** / RE **50**

CL 1 DOMINO 7128T
HH ADVANCE 0132X
| HH MS ADVANCE 6054S

HH ADVANCE 7085T
JA L1 DOMINETTE 0441X
| JA L1 DOMINETTE 3249N

Carcass: REA **-.03** / MARB **.14**

0132 sired just what we hoped he would and Lot 7 is a good one. Red necked with balance and eye appeal, this herd bull prospect should work on heifers and add muscle.

HH ADVANCE 3113N
CL 1 DOMINETTE 0112K
CL 1 DOMINO 320N
HH MISS ADVANCE 4053P
L1 DOMINO 03571
HH MISS ADVANCE 1088L
JA L1 DOMINO 0224
JA L1 DOMINETTE 7217



LOT 11
Sire: HH Advance 0132X
BW **1.2** WW **45** YW **70** MILK **25** M&G **48**

8

JA L1 DOMINO 342A

Feb. 7, 2013 • #43385023

YEARLING
Act. BW ... **78**
Act. WW ... **800**
Adj. 205 ... **753**
EPDs:
BW ... **0.7**
WW ... **41**
YW ... **60**
MILK ... **27**
M&G ... **47**
Eye Pigment:
LE **60** / RE **100**

CL 1 DOMINO 7128T
HH ADVANCE 0132X
| HH MS ADVANCE 6054S

CL 1 DOMINO 555R
JA L1 DOMINETTE 0200X
| JA L1 DOMINETTE 2151M

Carcass: REA **-.09** / MARB **.08**

Lot 8 has a feminine, beautiful uddered mother, started at 78 lbs. and has a WWR of 106. A red necked bull that's really long made and clean fronted with a calving ease look and a nice, smooth shoulder. Another strong heifer bull candidate with all the pieces.

HH ADVANCE 3113N
CL 1 DOMINETTE 0112K
CL 1 DOMINO 320N
HH MISS ADVANCE 4053P
HH ADVANCE 3113N
CL 1 DOMINETTE 3174N
DH DOMINO 6150
JA L1 DOMINETTE 0951



LOT 12
Sire: JA L1 Domino 6001S
BW **4.1** WW **52** YW **84** MILK **23** M&G **49**

YEARLING BULLS...



©Jay George

LOT 13

Sire: CL1 Domino 9125W

BW **3.7** WW **59** YW **88** MILK **36** M&G **66**

9

JA L1 DOMINO 343A

Feb. 10, 2013 • #43385024

YEARLING

Act. BW ... **80**

Act. WW ... **685**

Adj. 205 ... **695**

EPDs:

BW ... **2.7**

WW ... **52**

YW ... **85**

MILK ... **26**

M&G ... **52**

Eye Pigment:

LE **100** / RE **60**

CL 1 DOMINO 7128T

HH ADVANCE 0132X

HH MS ADVANCE 6054S

JA L1 DOMINO 7640T

JA L1 DOMINETTE 1612Y

JA L1 DOMINETTE 9816W

Carcass: REA **.11** / MARB **.14**

I gave his 7640 mother an udder score of 9 when 343 was born and she milks well. Calving ease, lots of maternal strength and solid, dependable performance here.

HH ADVANCE 3113N

CL 1 DOMINETTE 0112K

CL 1 DOMINO 320N

HH MISS ADVANCE 4053P

HH ADVANCE 286M

JAL L1 DOMINETTE 1409L

CL 1 DOMINO 560R

JA L1 DOMINETTE 1317L

10

JA L1 DOMINO 345A

Feb. 13, 2013 • #43385025

YEARLING

Act. BW ... **84**

Act. WW ... **815**

Adj. 205 ... **782**

EPDs:

BW ... **2.8**

WW ... **54**

YW ... **84**

MILK ... **25**

M&G ... **52**

Eye Pigment:

LE **100** / RE **90**

CL 1 DOMINO 7128T

HH ADVANCE 0132X

HH MS ADVANCE 6054S

CL 1 DOMINO 860U

JA L1 DOMINETTE 0722X

JA L1 DOMINETTE 2870M

Carcass: REA **.12** / MARB **.12**

An 0132 x 860 with a bright future. Lot 10 has a WWR of 110 and one of the best 205 day wts. Granddam 2870 was one of our best ever. Lot 10 is long sided, moves out freely on good feet, we consider him a herd bull.

HH ADVANCE 3113N

CL 1 DOMINETTE 0112K

CL 1 DOMINO 320N

HH MISS ADVANCE 4053P

CL 1 DOMINO 637S

CL 1 DOMINETTE 5142R

JAK L1 DOMINO H448

JA L1 DOMINETTE 8402



©Jay George

LOT 14

Sire: CL1 Domino 9125W

BW **2.3** WW **56** YW **90** MILK **32** M&G **60**

11

JA L1 DOMINO 346A

Feb. 18, 2013 • #43385026

YEARLING

Act. BW ... **80**

Act. WW ... **865**

Adj. 205 ... **842**

EPDs:

BW ... **1.2**

WW ... **45**

YW ... **70**

MILK ... **25**

M&G ... **48**

Eye Pigment:

LE **100** / RE **100**

CL 1 DOMINO 7128T

HH ADVANCE 0132X

HH MS ADVANCE 6054S

JA L1 DOMINO 7640T

JA L1 DOMINETTE 0613X

JA L1 DOMINETTE 570R

Carcass: REA **.05** / MARB **.09**

Lot 11 looks just like his sire. Notice his 842 lb. 205 wt. which earned him a WWR of 119. Red necked, completely pigmented, he is thick and well balanced and just looks like a herd bull. Dam 0613 is a moderate-sized cow and what you would want the dam of your herd sire to be. **Retaining an interest in Lot 11.**

HH ADVANCE 3113N

CL 1 DOMINETTE 0112K

CL 1 DOMINO 320N

HH MISS ADVANCE 4053P

HH ADVANCE 286M

JAL L1 DOMINETTE 1409L

CL 1 DOMINO 246M

JA L1 DOMINETTE 3406N



©Jay George

LOT 15

Sire: CL1 Domino 9125W

BW **2.5** WW **51** YW **80** MILK **31** M&G **56**

12

JA L1 DOMINO 3000A

Feb. 8, 2013 • #43381414

YEARLING

Act. BW ... **85**

Act. WW ... **650**

Adj. 205 ... **657**

EPDs:

BW ... **4.1**

WW ... **52**

YW ... **84**

MILK ... **23**

M&G ... **49**

Eye Pigment:

LE **100** / RE **100**

GB L1 DOMINO 935C

JA L1 DOMINO 6001S

JA L1 DOMINETTE 0212

JA L1 DOMINO 7640T

JA L1 DOMINETTE 1615Y

JA L1 DOMINETTE 9901W

Carcass: REA **.23** / MARB **.06**

The only 6001 son in the yearling offering and he's a good one. Dam is moderate-sized, very sound and proves why we think the 7640 daughters are front row.

CL 1 DOMINO 5131E

GB L1 DOM PRCS 115

CL 1 DOMINO 484

JA L1 DOMINETTE 731E

HH ADVANCE 286M

JAL L1 DOMINETTE 1409L

JA L1 DOMINO 4922P

JA L1 DOMINETTE 329N



©Jay George

LOT 16

Sire: CL1 Domino 9125W

BW **4.5** WW **60** YW **94** MILK **32** M&G **62**

13

JA L1 DOMINO 3101A

Jan. 29, 2013 • #43381477

YEARLING	
Act. BW	85
Act. WW	770
Adj. 205	690
EPDs:	
BW	3.7
WW	59
YW	88
MILK	36
M&G	66
Eye Pigment:	
LE	100 / RE 100

CL 1 DOMINO 732T
CL 1 DOMINO 9125W
 CL 1 DOMINETTE 475P

CL 1 DOMINO 638S
JA L1 DOMINETTE 9304W
 JA L1 DOMINETTE 7605T

Carcass: REA .00 / MARB .15

Lot 13 has lots of pigment and that deep bodied, easy keeping look that 9125 stamps on his sons. Being double bred to the 475 cow insures maternal strength. Dam 9304 has an average WWR of 107 on her three calves.

CL 1 DOMINO 590R
 CL 1 DOMINETTE 507R
 CL 1 DOMINO 824H
 CL 1 DOMINETTE 200M
 L1 DOMINO 03396
 CL 1 DOMINETTE 475P
 HH ADVANCE 286M
 JA L1 DOMINETTE 0253

17

JA L1 DOMINO 3116A

Feb. 16, 2013 • #43381437

YEARLING	
Act. BW	83
Act. WW	760
Adj. 205	692
EPDs:	
BW	2.5
WW	50
YW	84
MILK	30
M&G	55
Eye Pigment:	
LE	90 / RE 90

CL 1 DOMINO 732T
CL 1 DOMINO 9125W
 CL 1 DOMINETTE 475P

GB L1 DOMINO 935C
JA L1 DOMINETTE 5024R
 JA L1 DOMINETTE 1413L

Carcass: REA .06 / MARB .17

Dam 5024 is a very sound, consistent producer. Lot 17's numbers indicate calving ease, maternal strength and performance.

CL 1 DOMINO 590R
 CL 1 DOMINETTE 507R
 CL 1 DOMINO 824H
 CL 1 DOMINETTE 200M
 CL 1 DOMINO 5131E
 GB L1 DOM PRCS 114
 HH ADVANCE 8012H
 JA L1 DOMINETTE 800

14

BT L1 DOMINO 3102A

Feb. 1, 2013 • #43428116

YEARLING	
Act. BW	84
Act. WW	780
Adj. 205	700
EPDs:	
BW	2.3
WW	56
YW	90
MILK	32
M&G	60
Eye Pigment:	
LE	40 / RE 50

CL 1 DOMINO 732T
CL 1 DOMINO 9125W
 CL 1 DOMINETTE 475P

CL 1 DOMINO 4134P
JA L1 DOMINETTE 8527U
 JA L1 DOMINETTE 204M

Carcass: REA .17 / MARB .15

Deep ribbed and rugged, his dam is fault-free and a very consistent producer. Lot 14 is stouter made than the traditional heifer bull look, but his numbers indicate he just might work.

CL 1 DOMINO 590R
 CL 1 DOMINETTE 507R
 CL 1 DOMINO 824H
 CL 1 DOMINETTE 200M
 CL 1 DOMINO 9126J
 CL 1 DOMINETTE 8104H
 HH ADVANCE 767G
 JA L1 DOMINETTE 0628

18

JA L1 DOMINO 3118A

Feb. 16, 2013 • #43381440

YEARLING	
Act. BW	85
Act. WW	840
Adj. 205	777
EPDs:	
BW	3.3
WW	59
YW	91
MILK	28
M&G	58
Eye Pigment:	
LE	20 / RE 30

CL 1 DOMINO 732T
CL 1 DOMINO 9125W
 CL 1 DOMINETTE 475P

HH ADVANCE 286M
JA L1 DOMINETTE 8614U
 JA L1 DOMINETTE 1215L

Carcass: REA .20 / MARB .10

Lot 18 is a solid performer with a WWR of 110 and note his actual WW. Very typical of the 9125 sons, they are peas in a pod.

CL 1 DOMINO 590R
 CL 1 DOMINETTE 507R
 CL 1 DOMINO 824H
 CL 1 DOMINETTE 200M
 HH ADVANCE 0024K
 HH MISS ADVANCE 752G
 CL 1 DOMINO 484
 JA L1 DOMINETTE 504

15

JA L1 DOMINO 3104A

Feb. 4, 2013 • #43381418

YEARLING	
Act. BW	83
Act. WW	800
Adj. 205	729
EPDs:	
BW	2.5
WW	51
YW	80
MILK	31
M&G	56
Eye Pigment:	
LE	100 / RE 100

CL 1 DOMINO 732T
CL 1 DOMINO 9125W
 CL 1 DOMINETTE 475P

CL 1 DOMINO 555R
JA L1 DOMINETTE 9220W
 JA L1 DOMINETTE 4123P

Carcass: REA .00 / MARB .10

A red-necked beef bull with extra thickness. An 83 lb. BW and a WWR of 103 make the picture complete.

CL 1 DOMINO 590R
 CL 1 DOMINETTE 507R
 CL 1 DOMINO 824H
 CL 1 DOMINETTE 200M
 HH ADVANCE 3113N
 CL 1 DOMINETTE 3174N
 JA L1 DOMINO 208M
 JA L1 DOMINETTE 1413L

19

JA L1 DOMINO 3122A

Feb. 27, 2013 • #43381448

YEARLING	
Act. BW	81
Act. WW	600
Adj. 205	585
EPDs:	
BW	2.1
WW	53
YW	83
MILK	32
M&G	58
Eye Pigment:	
LE	90 / RE 90

CL 1 DOMINO 732T
CL 1 DOMINO 9125W
 CL 1 DOMINETTE 475P

CL 1 DOMINO 555R
JA L1 DOMINETTE 9225W
 JA L1 DOMINETTE 5772R

Carcass: REA .07 / MARB .10

Very moderate framed, Lot 19 is very traditionally marked with good pigment and lots of yellow hair.

CL 1 DOMINO 590R
 CL 1 DOMINETTE 507R
 CL 1 DOMINO 824H
 CL 1 DOMINETTE 200M
 HH ADVANCE 3113N
 CL 1 DOMINETTE 3174N
 CL 1 DOMINO 965J
 JA L1 DOMINETTE 2608M

16

JA L1 DOMINO 3105A

Feb. 4, 2013 • #43381420

YEARLING	
Act. BW	89
Act. WW	790
Adj. 205	721
EPDs:	
BW	4.5
WW	60
YW	94
MILK	32
M&G	62
Eye Pigment:	
LE	100 / RE 100

CL 1 DOMINO 732T
CL 1 DOMINO 9125W
 CL 1 DOMINETTE 475P

CL 1 DOMINO 560R
JA L1 DOMINETTE 9836W
 JA L1 DOMINETTE 2418M

Carcass: REA .14 / MARB .14

Another very red marked, pigmented bull with excellent length. His 790 lb. actual weaning wt. proves what his dam can do.

CL 1 DOMINO 590R
 CL 1 DOMINETTE 507R
 CL 1 DOMINO 824H
 CL 1 DOMINETTE 200M
 CL 1 DOMINO 3162N
 CL 1 DOMINETTE 118L
 HH ADVANCE 8012H
 JA L1 DOMINETTE 9372

20

JA L1 DOMINO 3123A

Mar. 6, 2013 • #43381476

YEARLING	
Act. BW	86
Act. WW	750
Adj. 205	731
EPDs:	
BW	3.5
WW	62
YW	96
MILK	31
M&G	62
Eye Pigment:	
LE	100 / RE 0

CL 1 DOMINO 732T
CL 1 DOMINO 9125W
 CL 1 DOMINETTE 475P

HH ADVANCE 286M
JA L1 DOMINETTE 8604U
 JA L1 DOMINETTE 1206L

Carcass: REA .24 / MARB .12

A good performer at weaning and he is still coming on. Lots of hair for those of you in cold country and good EPD's all across the board.

CL 1 DOMINO 590R
 CL 1 DOMINETTE 507R
 CL 1 DOMINO 824H
 CL 1 DOMINETTE 200M
 HH ADVANCE 0024K
 HH MISS ADVANCE 752G
 CL 1 DOMINO 484
 JA L1 DOMINETTE 6419

YEARLING BULLS...



LOT 17
Sire: CL1 Domino 9125W
BW 2.5 WW 50 YW 84 MILK 30 M&G 55



LOT 22
Sire: CL1 Domino 9125W
BW 3.7 WW 58 YW 93 MILK 36 M&G 65



LOT 25
Sire: CL1 Domino 9125W
BW 3.1 WW 55 YW 86 MILK 37 M&G 65



LOT 26
Sire: CL1 Domino 9125W
BW 3.7 WW 58 YW 89 MILK 30 M&G 59

21

JA L1 DOMINO 3124A

Mar. 8, 2013 • #43381587

YEARLING
Act. BW ... **85**
Act. WW ... **755**
Adj. 205 ... **754**
EPDs:
BW ... **3.8**
WW ... **60**
YW ... **95**
MILK ... **35**
M&G ... **65**
Eye Pigment:
LE **100** / RE **100**

CL 1 DOMINO 732T
CL 1 DOMINO 9125W
CL 1 DOMINETTE 475P

CL 1 DOMINO 638S
JA L1 DOMINETTE 9328W
JA L1 DOMINETTE 5606R

Carcass: REA **.08** / MARB **.16**

CL 1 DOMINO 590R
CL 1 DOMINETTE 507R
CL 1 DOMINO 824H
CL 1 DOMINETTE 200M
L1 DOMINO 03396
CL 1 DOMINETTE 475P
HH ADVANCE 286M
JA L1 DOMINETTE 2202M

These 9125 sons are almost carbon copies of him. Lot 21 weaned off heavy and should sire calves that do the same.

22

JA L1 DOMINO 3127A

Mar. 12, 2013 • #43381617

YEARLING
Act. BW ... **90**
Act. WW ... **785**
Adj. 205 ... **778**
EPDs:
BW ... **3.7**
WW ... **58**
YW ... **93**
MILK ... **36**
M&G ... **65**
Eye Pigment:
LE **100** / RE **100**

CL 1 DOMINO 732T
CL 1 DOMINO 9125W
CL 1 DOMINETTE 475P

JA L1 DOMINO 4224P
JA L1 DOMINETTE 8251U
JA L1 DOMINETTE 563R

Carcass: REA **.11** / MARB **.11**

CL 1 DOMINO 590R
CL 1 DOMINETTE 507R
CL 1 DOMINO 824H
CL 1 DOMINETTE 200M
JA L1 DOMINO 9213
JA L1 DOMINETTE 8800
CL 1 DOMINO 246M
JA L1 DOMINETTE 3505N

Powerfully made, big ribbed, red-necked, high performance bull that recorded a 110 WWR. Dam has an average WWR 110 on 4 calves.

23

JA L1 DOMINO 3128A

Mar. 12, 2013 • #43381619

YEARLING
Act. BW ... **86**
Act. WW ... **730**
Adj. 205 ... **725**
EPDs:
BW ... **3.4**
WW ... **60**
YW ... **96**
MILK ... **30**
M&G ... **60**
Eye Pigment:
LE **50** / RE **0**

CL 1 DOMINO 732T
CL 1 DOMINO 9125W
CL 1 DOMINETTE 475P

HH ADVANCE 286M
JA L1 DOMINETTE 8616U
JA L1 DOMINETTE 3502N

Carcass: REA **.24** / MARB **.13**

CL 1 DOMINO 590R
CL 1 DOMINETTE 507R
CL 1 DOMINO 824H
CL 1 DOMINETTE 200M
HH ADVANCE 0024K
HH MISS ADVANCE 752G
CL 1 DOMINO 7176G
JA L1 DOMINETTE 9247

The 9125 x 286 cross always works and insures sound, easy keeping, trouble-free rancher bulls.

24

JA L1 DOMINO 3129A

Mar. 11, 2013 • #43381621

YEARLING
Act. BW ... **82**
Act. WW ... **725**
Adj. 205 ... **732**
EPDs:
BW ... **3.0**
WW ... **57**
YW ... **92**
MILK ... **29**
M&G ... **57**
Eye Pigment:
LE **100** / RE **70**

CL 1 DOMINO 732T
CL 1 DOMINO 9125W
CL 1 DOMINETTE 475P

HH ADVANCE 286M
JA L1 DOMINETTE 9653W
JA L1 DOMINETTE 3243N

Carcass: REA **.19** / MARB **.08**

CL 1 DOMINO 590R
CL 1 DOMINETTE 507R
CL 1 DOMINO 824H
CL 1 DOMINETTE 200M
HH ADVANCE 0024K
HH MISS ADVANCE 752G
JA L1 DOMINO 0224
JA L1 DOMINETTE 800

Dam is very consistent with lots of black pigment, an udder score of 9 and an average WWR 103 on three calves.

25

JA L1 DOMINO A3131A

Mar. 18, 2013 • #43382506

YEARLING
Act. BW ... 85
Act. WW ... 735
Adj. 205 ... 756
EPDs:
BW ... 3.1
WW ... 55
YW ... 86
MILK ... 37
M&G ... 65
Eye Pigment:
LE 100 / RE 100

CL 1 DOMINO 732T
CL 1 DOMINO 9125W
 | CL 1 DOMINETTE 475P

CL 1 DOMINO 638S
JA L1 DOMINETTE 9305W
 | JA L1 DOMINETTE 637S

Carcass: REA **-.04** / MARB **.15**

A deep full quarter and he has lots of hair and complete pigmentation. Another that is double-bred to the 475 cow and is a bull that catches your eye and moves out freely.

CL 1 DOMINO 590R
 CL 1 DOMINETTE 507R
 CL 1 DOMINO 824H
 CL 1 DOMINETTE 200M
 L1 DOMINO 03396
 CL 1 DOMINETTE 475P
 CL 1 DOMINO 0157K
 JA L1 DOMINETTE 2282M

29

CTR L1 DOMINO 3215A

Feb. 13, 2013 • #43376647

YEARLING
Act. BW ... 86
Act. WW ... 820
Adj. 205 ... 747
EPDs:
BW ... 2.3
WW ... 50
YW ... 77
MILK ... 30
M&G ... 54
Eye Pigment:
LE 100 / RE 100

HH ADVANCE 3113N
CL 1 DOMINO 555R
 | CL 1 DOMINETTE 3174N

L1 DOMINO 05503
CL1 DOMINETTE 842U
 | CL 1 DOMINETTE 627S

Carcass: REA **.04** / MARB **.05**

An eye catcher that is heavily pigmented and rang the bell at weaning time. He is long sided and traditionally marked with eye appeal.

L1 DOMINO 99496
 HH MS ADV 875H
 CL 1 DOMINO 9126J
 CL 1 DOMINETTE 810H
 L1 DOMINO 02423
 L1 DOMINETTE 00479
 CL 1 DOMINO 246M
 CL 1 DOMINETTE 460P

26

BT L1 DOMINO 3305A

Feb. 14, 2013 • #43398517

YEARLING
Act. BW ... 88
Act. WW ... 825
Adj. 205 ... 755
EPDs:
BW ... 3.7
WW ... 58
YW ... 89
MILK ... 30
M&G ... 59
Eye Pigment:
LE 50 / RE 70

CL 1 DOMINO 732T
CL 1 DOMINO 9125W
 | CL 1 DOMINETTE 475P

JA L1 DOMINO 5617R
BT L1 DOMINETTE 8625
 | ER L1 DOMINETTE 0317K

Carcass: REA **.18** / MARB **-.06**

Very rugged with extra bone and volume. He weaned off heavy from a nice uddered cow. Heavy muscled, easy keeping bulls like this are what keeps ranchers using Hereford bulls.

CL 1 DOMINO 590R
 CL 1 DOMINETTE 507R
 CL 1 DOMINO 824H
 CL 1 DOMINETTE 200M
 HH ADVANCE 286M
 JA L1 DOMINETTE 204M
 CL 1 DOMINO 6105F
 ER MISS ADVANCE 2156

30

JA L1 DOMINO 3220A

Feb. 28, 2013 • #43382068

YEARLING
Act. BW ... 86
Act. WW ... 810
Adj. 205 ... 776
EPDs:
BW ... 3.8
WW ... 51
YW ... 82
MILK ... 32
M&G ... 57
Eye Pigment:
LE 100 / RE 100

HH ADVANCE 3113N
CL 1 DOMINO 555R
 | CL 1 DOMINETTE 3174N

CL 1 DOMINO 638S
JA L1 DOMINETTE 8326U
 | JA L1 DOMINETTE 564R

Carcass: REA **.03** / MARB **.04**

Herd bull prospect that is red-necked and very thick with a long level top. His WWR is 110 and his dam has an average WWR 107 on four calves.

L1 DOMINO 99496
 HH MS ADV 875H
 CL 1 DOMINO 9126J
 CL 1 DOMINETTE 810H
 L1 DOMINO 03396
 CL 1 DOMINETTE 475P
 JA L1 DOMINO 228M
 JA L1 DOMINETTE 3604N

27

JA L1 DOMINO 3208A

Feb. 4, 2013 • #43382026

YEARLING
Act. BW ... 78
Act. WW ... 800
Adj. 205 ... 710
EPDs:
BW ... 0.5
WW ... 40
YW ... 70
MILK ... 29
M&G ... 49
Eye Pigment:
LE 100 / RE 100

HH ADVANCE 3113N
CL 1 DOMINO 555R
 | CL 1 DOMINETTE 3174N

CL 1 DOMINO 9126J
JA L1 DOMINETTE 460P
 | JA L1 DOMINETTE 2003M

Carcass: REA **.06** / MARB **-.02**

A red-necked, black tailed bull with lots of depth and volume. Dam 460 has herd bull sons working for Blue Top Herefords and Lee Butler with an average WWR 108 on 8 calves.

L1 DOMINO 99496
 HH MS ADV 875H
 CL 1 DOMINO 9126J
 CL 1 DOMINETTE 810H
 HH ADVANCE 767G
 CL 1 DOMINETTE 490
 RH DOMINO 6008
 JA L1 DOMINETTE 8100

31

JA L1 DOMINO 3227A

Feb. 28, 2013 • #43382068

YEARLING
Act. BW ... 88
Act. WW ... 675
Adj. 205 ... 716
EPDs:
BW ... 2.9
WW ... 49
YW ... 75
MILK ... 30
M&G ... 54
Eye Pigment:
LE 100 / RE 100

HH ADVANCE 3113N
CL 1 DOMINO 555R
 | CL 1 DOMINETTE 3174N

CL 1 DOMINO 560R
JA L1 DOMINETTE 8813U
 | JA L1 DOMINETTE 452P

Carcass: REA **-.06** / MARB **.04**

A younger-aged calf with a big red spot on his face and a strong top. Dam is a big, easy keeping cow with an average WWR 103 on four calves.

L1 DOMINO 99496
 HH MS ADV 875H
 CL 1 DOMINO 9126J
 CL 1 DOMINETTE 810H
 CL 1 DOMINO 3162N
 CL 1 DOMINETTE 118L
 HH ADVANCE 767G
 JA L1 DOMINO 244M

28

JA L1 DOMINO 3213A

Feb. 10, 2013 • #43382044

YEARLING
Act. BW ... 86
Act. WW ... 840
Adj. 205 ... 764
EPDs:
BW ... 3.3
WW ... 50
YW ... 79
MILK ... 29
M&G ... 54
Eye Pigment:
LE 100 / RE 50

HH ADVANCE 3113N
CL 1 DOMINO 555R
 | CL 1 DOMINETTE 3174N

CL 1 DOMINO 638S
JA L1 DOMINETTE 8313U
 | JA L1 DOMINETTE 6601S

Carcass: REA **.03** / MARB **.00**

A WWR of 108 and he hasn't backed off any. The 555 sons stay sound. 555 is still working two seasons every year breeding lots of cows at age nine. Lots of longevity in this pedigree with very strong performance.

L1 DOMINO 99496
 HH MS ADV 875H
 CL 1 DOMINO 9126J
 CL 1 DOMINETTE 810H
 L1 DOMINO 03396
 CL 1 DOMINETTE 475P
 HH ADVANCE 286M
 JA L1 DOMINETTE 3290N

32

JA L1 DOMINO 3665A

Mar. 29, 2013 • #43382274

YEARLING
Act. BW ... 79
Act. WW ... 635
Adj. 205 ... 703
EPDs:
BW ... 1.2
WW ... 45
YW ... 81
MILK ... 25
M&G ... 48
Eye Pigment:
LE 100 / RE 100

HH ADVANCE 286M
JA L1 DOMINO 7640T
 | JA L1 DOMINETTE 1409L

JA L1 DOMINO 6001S
JA L1 DOMINETTE 8005U
 | JA L1 DOMINETTE 5952R

Carcass: REA **.13** / MARB **.03**

A very eye appealing 7640 son with extra pigment, a low birth wt., and all the performance credentials. He should work on heifers and be very strong maternally.

HH ADVANCE 0024K
 HH MS ADVANCE 752G
 HH ADVANCE 8012H
 JA L1 DOMINETTE 8800
 GB L1 DOMINO 935C
 JA L1 DOMINETTE 0212
 JA L1 DOMINO 3918N
 JA L1 DOMINETTE 3512N

YEARLING BULLS...



©JAY GEORGE **LOT 28**
Sire: CL1 Domino 555R
BW **3.3** WW **50** YW **79** MILK **29** M&G **54**

33 **BT L1 DOMINO 3302A** Feb. 7, 2013 • #43429426

YEARLING	HH ADVANCE 8203U	HH ADVANCE 5161R
Act. BW ... 71	HH ADVANCE 0085X	HH MISS ADVANCE 752G
Act. WW ... 685	HH MISS ADVANCE 7017T	CL 1 DOMINO 320N
Adj. 205 ... 690	JA L1 DOMINO 5617R	HH MISS ADVANCE 5106R
EPDs:	BT L1 DOMINETTE 9660	HH ADVANCE 286M
BW ... 1.3	JA L1 DOMINETTE 8437	JA L1 DOMINETTE 204M
WW ... 42	Carcass: REA .06 / MARB .07	HH ADVANCE 400D
YW ... 59		JA L1 DOMINETTE 5514
MILK ... 22		
M&G ... 43		
Eye Pigment:		
LE 20 / RE 100		

A beef bull with muscle and mass. I gave his dam an udder score of nine. With just a 71 lb. birth wt., Lot 33 should work on heifers.



©JAY GEORGE **LOT 30**
Sire: CL1 Domino 555R
BW **3.8** WW **51** YW **82** MILK **32** M&G **57**

34 **BT L1 DOMINO 3303A** Feb. 10, 2013 • #43429424

YEARLING	HH ADVANCE 8203U	HH ADVANCE 5161R
Act. BW ... 77	HH ADVANCE 0085X	HH MISS ADVANCE 752G
Act. WW ... 765	HH MISS ADVANCE 7017T	CL 1 DOMINO 320N
Adj. 205 ... 701	JA L1 DOMINO 5617R	HH MISS ADVANCE 5106R
EPDs:	BT L1 DOMINETTE 9665	HH ADVANCE 286M
BW ... 0.9	JA L1 DOMINETTE 406P	JA L1 DOMINETTE 204M
WW ... 47	Carcass: REA .19 / MARB .10	CL 1 DOMINO 0157K
YW ... 69		JA L1 DOMINETTE 7809
MILK ... 27		
M&G ... 50		
Eye Pigment:		
LE 60 / RE 50		

We bought 0085 hoping this is what he would produce and he rang the bell. Lot 34 has volume, eye appeal, just a 77 lb. BW, and a 701 lb. 205 day wt. His dam has a near perfect udder.



©JAY GEORGE **LOT 34**
Sire: HH Advance 0085X
BW **0.9** WW **47** YW **69** MILK **27** M&G **50**

35 **BT L1 DOMINO 3306A** Feb. 16, 2013 • #43429434

YEARLING	HH ADVANCE 8203U	HH ADVANCE 5161R
Act. BW ... 83	HH ADVANCE 0085X	HH MISS ADVANCE 752G
Act. WW ... 715	HH MISS ADVANCE 7017T	CL 1 DOMINO 320N
Adj. 205 ... 680	GL1 DOMINO 6012A	HH MISS ADVANCE 5106R
EPDs:	BT MS DOMINETTE 340	CL 1 DOMINO 166
BW ... 2.8	BT MS DOMINO 452	L1 DOMINETTA 343
WW ... 41	Carcass: REA .17 / MARB .06	BT L1 DOMINO 227
YW ... 66		CK DYAWNA 5134
MILK ... 21		
M&G ... 42		
Eye Pigment:		
LE 70 / RE 30		

Raised by an eleven year old cow that bred back and is ready to do it again.



©JAY GEORGE **LOT 38**
Sire: CO L1 Domino 946W
BW **2.0** WW **37** YW **66** MILK **29** M&G **48**

36 **BT L1 DOMINO 3307A** Feb. 27, 2013 • #43429431

YEARLING	HH ADVANCE 8203U	HH ADVANCE 5161R
Act. BW ... 80	HH ADVANCE 0085X	HH MISS ADVANCE 752G
Act. WW ... 710	HH MISS ADVANCE 7017T	CL 1 DOMINO 320N
Adj. 205 ... 695	HH ADVANCE 286M	HH MISS ADVANCE 5106R
EPDs:	JA L1 DOMINETTE 7611T	HH ADVANCE 0024K
BW ... 1.8	JA L1 DOMINETTE 9238	HH MISS ADVANCE 752G
WW ... 50	Carcass: REA .36 / MARB .13	CL 1 DOMINO 484
YW ... 81		JA L1 DOMINETTE 6459
MILK ... 20		
M&G ... 45		
Eye Pigment:		
LE 70 / RE 100		

Double-bred to 286's dam, the 752 cow. The 7611 cow is bigger than average, but good uddered and heavily pigmented.

37

JA L1 DOMINO 3500A

Feb. 12, 2013 • #43382134

YEARLING

Act. BW ... **73**
 Act. WW ... **635**
 Adj. 205 ... **647**
 EPDs:
 BW ... **1.5**
 WW ... **37**
 YW ... **67**
 MILK ... **30**
 M&G ... **48**

Eye Pigment:
 LE **100** / RE **100**

GB L1 DOMINO 175E
CO L1 DOMINO 946W
 | CO L1 DOMINETTE 523R

JA L1 DOMINO 7640T
JA L1 DOMINETTE 1607Y
 | JA L1 DOMINETTE 9305W

Carcass: REA **.05** / MARB **.09**

Red-necked, deep and thick. His two year old mama did a great job. Should work on heifers and sure add pigment.

HH ADVANCE 767G
 GB L1 DOM PRCS 3134
 GB L1 DOMINO 935C
 CO L1 DOMINETTE 206M
 HH ADVANCE 286M
 JAL L1 DOMINETTE 1409L
 CL 1 DOMINO 638S
 JA L1 DOMINETTE 637S

41

JA L1 DOMINO 3601A

Jan. 26, 2013 • #43409014

YEARLING

Act. BW ... **77**
 Act. WW ... **690**
 Adj. 205 ... **676**
 EPDs:
 BW ... **2.6**
 WW ... **50**
 YW ... **82**
 MILK ... **26**
 M&G ... **51**

Eye Pigment:
 LE **100** / RE **100**

JA L1 DOMINO 7640T
JA L1 DOMINO 1602Y
 | JA L1 DOMINETTE 9204W

JA L1 DOMINO 6001S
JA L1 DOMINETTE 1005Y
 | JA L1 DOMINETTE 9404W

Carcass: REA **.28** / MARB **.05**

The first son from 1602, the high selling bull in our 2012 sale to Jamison Ranch in Oklahoma. A chip off the old block, Lot 41 is google-eyed and heavily pigmented. His two year old dam raised him well and we are counting on her to develop into one of our best.

HH ADVANCE 286M
 JA L1 DOMINETTE 1409L
 CL 1 DOMINO 555R
 JA L1 DOMINETTE 4119P
 GB L1 DOMINO 935C
 JA L1 DOMINETTE 0212
 HH ADVANCE 7085T
 JA L1 DOMINETTE 669S

38

JA L1 DOMINO 3502A

Feb. 12, 2013 • #43382138

YEARLING

Act. BW ... **78**
 Act. WW ... **615**
 Adj. 205 ... **629**
 EPDs:
 BW ... **2.0**
 WW ... **37**
 YW ... **66**
 MILK ... **29**
 M&G ... **48**

Eye Pigment:
 LE **90** / RE **100**

GB L1 DOMINO 175E
CO L1 DOMINO 946W
 | CO L1 DOMINETTE 523R

JA L1 DOMINO 7640T
JA L1 DOMINETTE 1602Y
 | JA L1 DOMINETTE 9828W

Carcass: REA **.07** / MARB **.09**

Very moderate on frame size as is his dam and sire. This red-necked beef bull will cut back on frame without giving up all the pounds. Double-bred to 1409, 7640's dam.

HH ADVANCE 767G
 GB L1 DOM PRCS 3134
 GB L1 DOMINO 935C
 CO L1 DOMINETTE 206M
 HH ADVANCE 286M
 JAL L1 DOMINETTE 1409L
 CL 1 DOMINO 560R
 JA L1 DOMINETTE 1409L

42

JA L1 DOMINO 3603A

Jan. 26, 2013 • #43409015

YEARLING

Act. BW ... **80**
 Act. WW ... **730**
 Adj. 205 ... **712**
 EPDs:
 BW ... **2.1**
 WW ... **47**
 YW ... **81**
 MILK ... **26**
 M&G ... **50**

Eye Pigment:
 LE **100** / RE **100**

JA L1 DOMINO 7640T
JA L1 DOMINO 1602Y
 | JA L1 DOMINETTE 9204W

CL 1 DOMINO 860U
JA L1 DOMINETTE 1705Y
 | JA L1 DOMINETTE 2400M

Carcass: REA **.32** / MARB **.00**

Google-eyed, red-necked, moderate in frame, and full of beef. His outstanding two year old 860 dam is a maternal sister to a bull doing a great job for Messners in Oklahoma. Cutting edge genetics in a prospect that puts all the pieces together.

HH ADVANCE 286M
 JA L1 DOMINETTE 1409L
 CL 1 DOMINO 555R
 JA L1 DOMINETTE 4119P
 CL 1 DOMINO 637S
 CL 1 DOMINETTE 5142R
 HH ADVANCE 8012H
 JA L1 DOMINETTE 9220

39

JA L1 DOMINO 3503A

Feb. 13, 2013 • #43382140

YEARLING

Act. BW ... **76**
 Act. WW ... **575**
 Adj. 205 ... **585**
 EPDs:
 BW ... **2.0**
 WW ... **40**
 YW ... **73**
 MILK ... **28**
 M&G ... **48**

Eye Pigment:
 LE **100** / RE **100**

GB L1 DOMINO 175E
CO L1 DOMINO 946W
 | CO L1 DOMINETTE 523R

JA L1 DOMINO 7640T
JA L1 DOMINETTE 1601Y
 | JA L1 DOMINETTE 9809W

Carcass: REA **.15** / MARB **.09**

Lots of eye appeal and pigment and again the 946 x 7640 cross insures moderation in frame size. Should work back on heifers.

HH ADVANCE 767G
 GB L1 DOM PRCS 3134
 GB L1 DOMINO 935C
 CO L1 DOMINETTE 206M
 HH ADVANCE 286M
 JAL L1 DOMINETTE 1409L
 CL 1 DOMINO 560R
 JA L1 DOMINETTE 4660P

43

CTR L1 DOMINO 3604A

Feb. 4, 2013 • #43432005

YEARLING

Act. BW ... **81**
 Act. WW ... **735**
 Adj. 205 ... **715**
 EPDs:
 BW ... **3.0**
 WW ... **49**
 YW ... **83**
 MILK ... **23**
 M&G ... **48**

Eye Pigment:
 LE **20** / RE **100**

JA L1 DOMINO 7640T
JA L1 DOMINO 1602Y
 | JA L1 DOMINETTE 9204W

JA L1 DOMINO 6001S
CTR L1 DOMINETTE 1030Y
 | JA L1 DOMINETTE 9704W

Carcass: REA **.25** / MARB **.04**

A well balanced, deep ribbed bull raised by his two year old dam.

HH ADVANCE 286M
 JA L1 DOMINETTE 1409L
 CL 1 DOMINO 555R
 JA L1 DOMINETTE 4119P
 GB L1 DOMINO 935C
 JA L1 DOMINETTE 0212
 GB L1 DOMINO 6134K
 JA L1 DOMINETTE 7912T

40

JA L1 DOMINO 3504A

Feb. 15, 2013 • #43382142

YEARLING

Act. BW ... **84**
 Act. WW ... **690**
 Adj. 205 ... **711**
 EPDs:
 BW ... **3.7**
 WW ... **43**
 YW ... **78**
 MILK ... **28**
 M&G ... **49**

Eye Pigment:
 LE **90** / RE **50**

GB L1 DOMINO 175E
CO L1 DOMINO 946W
 | CO L1 DOMINETTE 523R

CL 1 DOMINO 555R
JA L1 DOMINETTE 1210Y
 | JA L1 DOMINETTE 2256M

Carcass: REA **.00** / MARB **.05**

A very well made, attractive herd bull prospect. Dam is a full sister to a herd bull working for Keith and Brian Coon and a top, young cow. The easy keeping, easy-to-like kind.

HH ADVANCE 767G
 GB L1 DOM PRCS 3134
 GB L1 DOMINO 935C
 CO L1 DOMINETTE 206M
 HH ADVANCE 3113N
 CL 1 DOMINETTE 3174N
 JA L1 DOMINO 0224
 CL 1 DOMINETTE 508

44

JA L1 DOMINO 3605A

Feb. 8, 2013 • #43409016

YEARLING

Act. BW ... **87**
 Act. WW ... **630**
 Adj. 205 ... **632**
 EPDs:
 BW ... **3.7**
 WW ... **47**
 YW ... **82**
 MILK ... **25**
 M&G ... **48**

Eye Pigment:
 LE **100** / RE **100**

JA L1 DOMINO 7640T
JA L1 DOMINO 1602Y
 | JA L1 DOMINETTE 9204W

GB L1 DOMINO 6134K
JA L1 DOMINETTE 100Y
 | JA L1 DOMINETTE 8751U

Carcass: REA **.22** / MARB **.02**

Lots of pigment and again, moderate in frame size. All the 1602 sons were raised by heifers.

HH ADVANCE 286M
 JA L1 DOMINETTE 1409L
 CL 1 DOMINO 555R
 JA L1 DOMINETTE 4119P
 GB L1 DOMINO 471H
 GB L1 DOM PRCS 4103H
 JA L1 DOMINO 3105N
 JA L1 DOMINETTE 6636S

YEARLING BULLS...



LOT 40
Sire: CO L1 Domino 946W
BW **3.7** WW **43** YW **78** MILK **28** M&G **49**

45

JA L1 DOMINO 3607A

Feb. 11, 2013 • #43409018

YEARLING

Act. BW **73**
Act. WW **545**
Adj. 205 **562**
EPDs:
BW **1.2**
WW **46**
YW **80**
MILK **27**
M&G **50**
Eye Pigment:
LE **100** / RE **100**

JA L1 DOMINO 7640T
| JA L1 DOMINETTE 9204W

CL 1 DOMINO 860U
JA L1 DOMINETTE 1718Y

| JA L1 DOMINETTE 460P
Carcass: REA **.34** / MARB **-.01**

HH ADVANCE 286M
JA L1 DOMINETTE 1409L
CL 1 DOMINO 555R
JA L1 DOMINETTE 4119P
CL 1 DOMINO 637S
CL 1 DOMINETTE 5142R
CL 1 DOMINO 9126J
JA L1 DOMINETTE 2003M

Very correct in his structure and only a 73 lb. birth weight. His 860 dam is by the best 9126 daughter we ever had, 460. She is still working hard at age 10 and shows no sign of slowing down.



LOT 41
Sire: JA L1 Domino 1602Y
BW **2.6** WW **50** YW **82** MILK **26** M&G **51**

46

CTR L1 DOMINO 3651A

Jan. 16, 2013 • #43391948

YEARLING

Act. BW **77**
Act. WW **800**
Adj. 205 **765**
EPDs:
BW **2.1**
WW **46**
YW **85**
MILK **23**
M&G **46**
Eye Pigment:
LE **100** / RE **100**

HH ADVANCE 286M
JA L1 DOMINO 7640T
| JA L1 DOMINETTE 1409L

EL ADVANCE 640S
EL MISS ADVANCE 124Y

| EL MISS ADVANCE 741T
Carcass: REA **.24** / MARB **.07**

HH ADVANCE 0024K
HH MISS ADVANCE 752G
HH ADVANCE 8012H
JA L1 DOMINETTE 8800
HH ADVANCE 1117L
DBH MS CHALLENGE 239H
HH ADVANCE 399N
HH MISS ADVANCE 0078K

Red necked, heavily pigmented, and thick with long, yellow hair. A 77 lb. BW and sired by 7640 should insure calving ease. A herd bull prospect with extra eye appeal!



LOT 42
Sire: JA L1 Domino 1602Y
BW **2.1** WW **47** YW **81** MILK **26** M&G **50**

47

JA L1 DOMINO 3653A

Jan. 29, 2013 • #43382260

YEARLING

Act. BW **82**
Act. WW **650**
Adj. 205 **643**
EPDs:
BW **2.8**
WW **42**
YW **76**
MILK **23**
M&G **45**
Eye Pigment:
LE **70** / RE **90**

HH ADVANCE 286M
JA L1 DOMINO 7640T
| JA L1 DOMINETTE 1409L

CL 1 DOMINO 555R
JA L1 DOMINETTE 1213Y

| JA L1 DOMINETTE 1413L
Carcass: REA **.22** / MARB **-.02**

HH ADVANCE 0024K
HH MISS ADVANCE 752G
HH ADVANCE 8012H
JA L1 DOMINETTE 8800
HH ADVANCE 3113N
CL 1 DOMINETTE 3174N
HH ADVANCE 8012H
JA L1 DOMINETTE 800

Clean made and correct with a very moderate frame size. Double-bred to the 8012 bull which always means extra muscle.



LOT 46
Sire: JA L1 Domino 7640T
BW **2.1** WW **46** YW **85** MILK **23** M&G **46**

48

JA L1 DOMINO 3656A

Feb. 20, 2013 • #43382261

YEARLING

Act. BW **81**
Act. WW **800**
Adj. 205 **762**
EPDs:
BW **2.0**
WW **43**
YW **79**
MILK **28**
M&G **49**
Eye Pigment:
LE **80** / RE **70**

HH ADVANCE 286M
JA L1 DOMINO 7640T
| JA L1 DOMINETTE 1409L

HH ADVANCE 7085T
JA L1 DOMINETTE 9404W

| JA L1 DOMINETTE 669S
Carcass: REA **.20** / MARB **.07**

HH ADVANCE 0024K
HH MISS ADVANCE 752G
HH ADVANCE 8012H
JA L1 DOMINETTE 8800
L1 DOMINO 0357I
HH MISS ADVANCE 1088L
JA L1 DOMINO 426P
JA L1 DOMINETTE 4469P

A high WWR calf at 108 and only an 81 lb. BW. Dam has a strong WWR 111on three calves. Lot 48 could work on heifers.

49

JA L1 DOMINO 3658A

Mar. 2, 2013 • #43382263

YEARLING

Act. BW ... **76**
 Act. WW ... **755**
 Adj. 205 ... **725**
 EPDs:
 BW ... **1.5**
 WW ... **38**
 YW ... **67**
 MILK ... **22**
 M&G ... **41**
 Eye Pigment:
 LE **100** / RE **100**

HH ADVANCE 286M

JA L1 DOMINO 7640T

JA L1 DOMINETTE 1409L

JA L1 DOMINO 208M

JA L1 DOMINETTE 8102U

JA L1 DOMINETTE 6708S

Carcass: REA **.16** / MARB **.02**

One of the very best performers and he started out at 76 lbs. Lot 49 is coon-eyed with extra red, and is thick topped and attractive. I consider him a herd bull candidate.

HH ADVANCE 0024K

HH MISS ADVANCE 752G

HH ADVANCE 8012H

JA L1 DOMINETTE 8800

HH ADVANCE 767G

JA L1 DOMINETTE 0008

CL 1 DOMINO 8153H

JA L1 DOMINETTE 1217L

50

JA L1 DOMINO 3659A

Mar. 3, 2013 • #43391011

YEARLING

Act. BW ... **77**
 Act. WW ... **720**
 Adj. 205 ... **709**
 EPDs:
 BW ... **1.5**
 WW ... **42**
 YW ... **70**
 MILK ... **25**
 M&G ... **46**
 Eye Pigment:
 LE **90** / RE **80**

HH ADVANCE 286M

JA L1 DOMINO 7640T

JA L1 DOMINETTE 1409L

CL 1 DOMINO 560R

JA L1 DOMINETTE 9825W

JA L1 DOMINETTE 1252L

Carcass: REA **.16** / MARB **.05**

Herd bull prospect that is sure deep ribbed, thick and correct. Should be a calving ease bull that will add pigment and keep the performance and fleshing ability strong.

HH ADVANCE 0024K

HH MISS ADVANCE 752G

HH ADVANCE 8012H

JA L1 DOMINETTE 8800

CL 1 DOMINO 3162N

CL 1 DOMINETTE 118L

HH ADVANCE 6063F

JA L1 LADY 6900

51

JA L1 DOMINO 3661A

Mar. 7, 2013 • #43382265

YEARLING

Act. BW ... **86**
 Act. WW ... **755**
 Adj. 205 ... **738**
 EPDs:
 BW ... **2.0**
 WW ... **39**
 YW ... **72**
 MILK ... **26**
 M&G ... **46**
 Eye Pigment:
 LE **100** / RE **100**

HH ADVANCE 286M

JA L1 DOMINO 7640T

JA L1 DOMINETTE 1409L

CL 1 DOMINO 638S

JA L1 DOMINETTE 8317U

JA L1 DOMINETTE 601S

Carcass: REA **.10** / MARB **.08**

Another strong performing, calving ease prospect with complete pigment on both eyes and a 104 WWR. Dam has been consistent and this pedigree has some of the great cows of the breed ...475, 1409 and 752.

HH ADVANCE 0024K

HH MISS ADVANCE 752G

HH ADVANCE 8012H

JA L1 DOMINETTE 8800

L1 DOMINO 03396

CL 1 DOMINETTE 475P

CL 1 DOMINO 0157K

JA L1 DOMINETTE 1412L

52

JA L1 DOMINO 3702A

Feb. 6, 2013 • #43382293

YEARLING

Act. BW ... **85**
 Act. WW ... **835**
 Adj. 205 ... **774**
 EPDs:
 BW ... **2.9**
 WW ... **53**
 YW ... **93**
 MILK ... **31**
 M&G ... **57**
 Eye Pigment:
 LE **10** / RE **100**

CL 1 DOMINO 637S

CL 1 DOMINO 860U

CL 1 DOMINETTE 5142R

CL 1 DOMINO 555R

JA L1 DOMINETTE 8204U

JA L1 DOMINETTE 1250L

Carcass: REA **.19** / MARB **.06**

Big framed 860U son with a moderate birth weight. Dam 8204 really milks with avg. WWR 108 on four calves. Lot 52 had an actual WW 835.

L1 DOMINO 03396

CL 1 DOMINETTE 118L

CL 1 DOMINO 1172L

CL 1 DOMINETTE 810H

HH ADVANCE 3113N

CL 1 DOMINETTE 3174N

HH ADVANCE 6063F

HH MISS ADVANCE 111A



**SINCE 1944... Quality,
 Performance and Linebred
 Genetics for America's
 Cowmen!**



NOTES

YEARLING BULLS...



LOT 53
Sire: CL1 Domino 860U
BW 2.7 WW 51 YW 95 MILK 31 M&G 57

53 **JA L1 DOMINO 3708A** Feb. 13, 2013 • #43382386

CL 1 DOMINO 637S
CL 1 DOMINO 860U
CL 1 DOMINETTE 5142R

CL 1 DOMINO 0157K
JA L1 DOMINETTE 807U
JA L1 DOMINETTE 6719S

Carcass: REA .21 / MARB .00

YEARLING
Act. BW ...86
Act. WW ...925
Adj. 205 ...848

EPDs:
BW2.7
WW51
YW95
MILK31
M&G57

Eye Pigment:
LE 100 / RE 100

L1 DOMINO 03396
CL 1 DOMINETTE 118L
CL 1 DOMINO 1172L
CL 1 DOMINETTE 810H
HH ADVANCE 767G
CL 1 DOMINETTE 861H
CL 1 DOMINO 8153H
JA L1 DOMINETTE 2284M

Strong performer with a 205 wt. of 848 and a WWR of 120. All this with just an 86 lb. birth weight and an extra big scrotum make 3708 one of the best herd bull prospects. Dam has a nice udder and an average WWR on 4 of 113.



LOT 54
Sire: CL1 Domino 860U
BW 4.3 WW 60 YW 102 MILK 29 M&G 59

54 **JA L1 DOMINO 3709A** Feb. 13, 2013 • #43382387

CL 1 DOMINO 637S
CL 1 DOMINO 860U
CL 1 DOMINETTE 5142R

GB L1 DOMINO 935C
JA L1 DOMINETTE 7001T
JA L1 DOMINETTE 101L

Carcass: REA .15 / MARB .11

YEARLING
Act. BW ...79
Act. WW ...775
Adj. 205 ...702

EPDs:
BW2.1
WW50
YW90
MILK29
M&G54

Eye Pigment:
LE 90 / RE 100

L1 DOMINO 03396
CL 1 DOMINETTE 118L
CL 1 DOMINO 1172L
CL 1 DOMINETTE 810H
CL 1 DOMINO 5131E
GB L1 DOM PRCS 115
HH ADVANCE 767G
JA L1 DOMINETTE 9222

One of the lowest birth weight 860 sons and he is thick and well made with length and eye appeal. Dam always has a low birth weight calf ...Lot 54 might work on heifers.



LOT 55
Sire: CL1 Domino 860U
BW 4.5 WW 60 YW 109 MILK 30 M&G 60

55 **JA L1 DOMINO 3710A** Feb. 14, 2013 • #43382389

CL 1 DOMINO 637S
CL 1 DOMINO 860U
CL 1 DOMINETTE 5142R

CL 1 DOMINO 560R
JA L1 DOMINETTE 9815W
JA L1 DOMINETTE 2526M

Carcass: REA .26 / MARB .08

YEARLING
Act. BW ...85
Act. WW ...820
Adj. 205 ...768

EPDs:
BW4.3
WW60
YW102
MILK29
M&G59

Eye Pigment:
LE 100 / RE 100

L1 DOMINO 03396
CL 1 DOMINETTE 118L
CL 1 DOMINO 1172L
CL 1 DOMINETTE 810H
CL 1 DOMINO 3162N
CL 1 DOMINETTE 118L
CL 1 DOMINO 7176G
JA L1 DOMINETTE 7504

The most moderate framed son of 860, Lot 55 is very thick, red all over with good pigment and good footed. This herd bull prospect has eye appeal and his dam is one of my favorites. She is a maternal sister to a bull being used by Dufur's in Oklahoma. Dam 9815 has an average WWR of 104 on four head.



LOT 56
Sire: CL1 Domino 860U
BW 4.5 WW 54 YW 96 MILK 31 M&G 58

56 **JA L1 DOMINO 3711A** Feb. 15, 2013 • #43382390

CL 1 DOMINO 637S
CL 1 DOMINO 860U
CL 1 DOMINETTE 5142R

JA L1 DOMINO 0224
JA L1 DOMINETTE 2256M
JA L1 DOMINETTE 508

Carcass: REA .18 / MARB .06

YEARLING
Act. BW ...92
Act. WW ...770
Adj. 205 ...730

EPDs:
BW5.3
WW60
YW107
MILK25
M&G55

Eye Pigment:
LE 100 / RE 100

L1 DOMINO 03396
CL 1 DOMINETTE 118L
CL 1 DOMINO 1172L
CL 1 DOMINETTE 810H
CL 1 DOMINO 484
JA L1 DOMINETTE 7100
CL 1 DOMINO 177
JA L1 DOMINETTE 9217

Lot 56 is long sided and red legged with performance and pigmentation. Dam 2256 has a herd bull son working for Coons here in Kansas and several daughters in our herd. Her average WWR on nine calves is 105.

57

JA L1 DOMINO 3713A

Feb. 15, 2013 • #43382392

YEARLING
Act. BW ... **89**
Act. WW ... **775**
Adj. 205 ... **707**
EPDs:
BW ... **4.5**
WW ... **60**
YW ... **109**
MILK ... **30**
M&G ... **60**
Eye Pigment:
LE **100** / RE **50**

CL 1 DOMINO 637S
CL 1 DOMINO 860U
CL 1 DOMINETTE 5142R

CL 1 DOMINO 4134P
JA L1 DOMINETTE 7521T
JA L1 DOMINETTE 3716N

Carcass: REA **.39** / MARB **.05**

Extra thick and correct with good pigment, Lot 57 is a herd bull prospect with a bit more frame and size in his pedigree. He probably has the strongest growth EPD's of any bull in the sale and note his rib eye EPD as well. Dam has an avg. WWR of 108 on five calves.

L1 DOMINO 03396
CL 1 DOMINETTE 118L
CL 1 DOMINO 1172L
CL 1 DOMINETTE 810H
CL 1 DOMINO 9126J
CL 1 DOMINETTE 8104H
CL 1 DOMINO 1170L
JA L1 DOMINETTE 0107



LOT 59
Sire: CL1 Domino 860U
BW **6.2** WW **57** YW **99** MILK **29** M&G **57**

58

JA L1 DOMINO 3718A

Feb. 18, 2013 • #43382397

YEARLING
Act. BW ... **86**
Act. WW ... **830**
Adj. 205 ... **787**
EPDs:
BW ... **4.5**
WW ... **54**
YW ... **96**
MILK ... **31**
M&G ... **58**
Eye Pigment:
LE **100** / RE **100**

CL 1 DOMINO 637S
CL 1 DOMINO 860U
CL 1 DOMINETTE 5142R

HH ADVANCE 7085T
JA L1 DOMINETTE 9415W
JA L1 DOMINETTE 6000S

Carcass: REA **.14** / MARB **.05**

A rancher bull with a bit more set on the hind legs which helps these big bulls stay sound. He is long sided and from a feminine, good uddered dam.

L1 DOMINO 03396
CL 1 DOMINETTE 118L
CL 1 DOMINO 1172L
CL 1 DOMINETTE 810H
L1 DOMINO 03571
HH MISS ADVANCE 1088L
GB L1 DOMINO 935C
JA L1 DOMINETTE 8437



LOT 60
Sire: CL1 Domino 860U
BW **3.4** WW **50** YW **88** MILK **31** M&G **57**

59

JA L1 DOMINO 3719A

Feb. 18, 2013 • #43382398

YEARLING
Act. BW ... **105**
Act. WW ... **840**
Adj. 205 ... **781**
EPDs:
BW ... **6.2**
WW ... **57**
YW ... **99**
MILK ... **29**
M&G ... **57**
Eye Pigment:
LE **100** / RE **100**

CL 1 DOMINO 637S
CL 1 DOMINO 860U
CL 1 DOMINETTE 5142R

CL 1 DOMINO 555R
JA L1 DOMINETTE 8205U
JA L1 DOMINETTE 6750S

Carcass: REA **.17** / MARB **-.01**

Lots of muscle and very thick with a WWR 110. Dam has just a 1.6 BW EPD and this is the first heavy calf she has had. Take him south or use him on mature cows and all should be well.

L1 DOMINO 03396
CL 1 DOMINETTE 118L
CL 1 DOMINO 1172L
CL 1 DOMINETTE 810H
HH ADVANCE 3113N
CL 1 DOMINETTE 3174N
GL1 DOMINO 405L
JA L1 DOMINETTE 4108L



LOT 62
Sire: CL1 Domino 860U
BW **3.6** WW **56** YW **98** MILK **27** M&G **55**

60

JA L1 DOMINO 3722A

Feb. 21, 2013 • #43382401

YEARLING
Act. BW ... **86**
Act. WW ... **775**
Adj. 205 ... **740**
EPDs:
BW ... **3.4**
WW ... **50**
YW ... **88**
MILK ... **31**
M&G ... **57**
Eye Pigment:
LE **30** / RE **30**

CL 1 DOMINO 637S
CL 1 DOMINO 860U
CL 1 DOMINETTE 5142R

CL 1 DOMINO 638S
JA L1 DOMINETTE 9318W
JA L1 DOMINETTE 601S

Carcass: REA **.05** / MARB **.10**

Big framed beef bull with lots of performance and only an 86 lb. birth weight. Use Lot 60 to add pounds, add maternal strength, and do this without adding birth weight.

L1 DOMINO 03396
CL 1 DOMINETTE 118L
CL 1 DOMINO 1172L
CL 1 DOMINETTE 810H
L1 DOMINO 03396
CL 1 DOMINETTE 475P
CL 1 DOMINO 0157K
JA L1 DOMINETTE 1421L



LOT 63
Sire: CL1 Domino 860U
BW **2.8** WW **52** YW **92** MILK **28** M&G **54**

61**JA L1 DOMINO 3729A**

Mar. 1, 2013 • #43382408

YEARLING

Act. BW ... **76**
 Act. WW ... **700**
 Adj. 205 ... **662**
 EPDs:
 BW ... **2.1**
 WW ... **50**
 YW ... **89**
 MILK ... **24**
 M&G ... **48**

Eye Pigment:
 LE **100** / RE **50**

CL 1 DOMINO 637S
CL 1 DOMINO 860U
 | CL 1 DOMINETTE 5142R

HH ADVANCE 286M
JA L1 DOMINETTE 5621R
 | JA L1 DOMINETTE 2623M

Carcass: REA **.29** / MARB **.06**

Red necked and pigmented with eye appeal. Dam is good eye and sound uddered and a calving ease cow. Note the 76 lb. BW here from a mature cow and he continued to grow and weaned off at 700 lbs.

L1 DOMINO 03396
 CL 1 DOMINETTE 118L
 CL 1 DOMINO 1172L
 CL 1 DOMINETTE 810H
 HH ADVANCE 0024K
 HH MISS ADVANCE 752G
 GB L1 DOMINO 5128
 JA L1 DOMINETTE 9118

65**JA L1 DOMINO 3745A**

Mar. 30, 2013 • #43382451

YEARLING

Act. BW ... **86**
 Act. WW ... **685**
 Adj. 205 ... **720**
 EPDs:
 BW ... **4.8**
 WW ... **60**
 YW ... **102**
 MILK ... **33**
 M&G ... **63**

Eye Pigment:
 LE **40** / RE **90**

CL 1 DOMINO 637S
CL 1 DOMINO 860U
 | CL 1 DOMINETTE 5142R

CL 1 DOMINO 638S
JA L1 DOMINETTE 8316U
 | JA L1 DOMINETTE 4236P

Carcass: REA **.24** / MARB **.08**

Lot 65 shows extra muscle and hair with eye appeal. His pedigree shows a number of top cows ... 5142, 475 and the 6421 cow on the bottom was one of our best ever.

L1 DOMINO 03396
 CL 1 DOMINETTE 118L
 CL 1 DOMINO 1172L
 CL 1 DOMINETTE 810H
 L1 DOMINO 03396
 CL 1 DOMINETTE 475P
 JA L1 DOMINO 0224
 JA L1 DOMINETTE 6421

62**JA L1 DOMINO 3732A**

Mar. 4, 2013 • #43382437

YEARLING

Act. BW ... **83**
 Act. WW ... **800**
 Adj. 205 ... **790**
 EPDs:
 BW ... **3.6**
 WW ... **56**
 YW ... **98**
 MILK ... **27**
 M&G ... **55**

Eye Pigment:
 LE **100** / RE **100**

CL 1 DOMINO 637S
CL 1 DOMINO 860U
 | CL 1 DOMINETTE 5142R

JA L1 DOMINO 4922P
JA L1 DOMINETTE 9901W
 | JA L1 DOMINETTE 329N

Carcass: REA **.21** / MARB **.02**

A herd bull prospect that looks a lot like 860 did at the same age. Lot 62 travels well, is very thick, and has extra pigment. Lots of high volume, easy keeping cattle in this pedigree.

L1 DOMINO 03396
 CL 1 DOMINETTE 118L
 CL 1 DOMINO 1172L
 CL 1 DOMINETTE 810H
 HH ADVANCE 8017H
 JA L1 DOMINETTE 7444
 CL 1 DOMINO 0157K
 JA L1 DOMINETTE 7100

66**JA L1 DOMINO 3801A**

Feb. 25, 2013 • #43382456

YEARLING

Act. BW ... **77**
 Act. WW ... **700**
 Adj. 205 ... **693**
 EPDs:
 BW ... **1.3**
 WW ... **49**
 YW ... **77**
 MILK ... **28**
 M&G ... **52**

Eye Pigment:
 LE **100** / RE **100**

CL 1 DOMINO 555R
JA L1 DOMINO 9800W
 | JA L1 DOMINETTE 4152P

CL 1 DOMINO 555R
JA L1 DOMINETTE 0203X
 | JA L1 DOMINETTE 4211P

Carcass: REA **.06** / MARB **-.02**

Calving ease prospect that is double bred 555. Dam 0203 is a maternal sister to Lot 63 and is off to a good start. Should be safe to use on heifers.

HH ADVANCE 3113N
 CL 1 DOMINETTE 3174N
 DH DOMINO 6150
 JA L1 DOMINETTE 6815
 HH ADVANCE 3113N
 CL 1 DOMINETTE 3174N
 CL 1 DOMINO 484
 JA L1 DOMINETTE 2524M

63**JA L1 DOMINO 3737A**

Mar. 16, 2013 • #43382442

YEARLING

Act. BW ... **80**
 Act. WW ... **735**
 Adj. 205 ... **735**
 EPDs:
 BW ... **2.8**
 WW ... **52**
 YW ... **92**
 MILK ... **28**
 M&G ... **54**

Eye Pigment:
 LE **100** / RE **100**

CL 1 DOMINO 637S
CL 1 DOMINO 860U
 | CL 1 DOMINETTE 5142R

CL 1 DOMINO 484
JA L1 DOMINETTE 4211P
 | JA L1 DOMINETTE 2524M

Carcass: REA **.17** / MARB **.05**

Google-eyed, low birth weight, calving ease herd bull prospect that is one of my favorites. Dam is a moderate sized, good uddered 484 daughter with an average WWR 104 / 7 calves. **Retaining a one-quarter semen interest.**

L1 DOMINO 03396
 CL 1 DOMINETTE 118L
 CL 1 DOMINO 1172L
 CL 1 DOMINETTE 810H
 L1 DOMINO 890061
 CL 1 DOMINETTE 761
 CL 1 DOMINO 7176G
 JA L1 DOMINETTE 7502

67**JA L1 DOMINO 3802A**

Mar. 2, 2013 • #43382457

YEARLING

Act. BW ... **70**
 Act. WW ... **650**
 Adj. 205 ... **655**
 EPDs:
 BW ... **2.2**
 WW ... **48**
 YW ... **79**
 MILK ... **24**
 M&G ... **48**

Eye Pigment:
 LE **100** / RE **100**

CL 1 DOMINO 555R
JA L1 DOMINO 9800W
 | JA L1 DOMINETTE 4152P

DH DOMINO 575
JA L1 DOMINETTE 071X
 | JA L1 DOMINETTE 8320U

Carcass: REA **.17** / MARB **.01**

With only a 70 lb. BW, Lot 67 should work great on heifers. Dam is a high volume, easy keeping cow.

HH ADVANCE 3113N
 CL 1 DOMINETTE 3174N
 DH DOMINO 6150
 JA L1 DOMINETTE 6815
 L1 DOMINO 99496
 DH DOMINETTE 995
 CL 1 DOMINO 638S
 JA L1 DOMINETTE 6000S

64**JA L1 DOMINO 3740A**

Mar. 17, 2013 • #43382445

YEARLING

Act. BW ... **80**
 Act. WW ... **670**
 Adj. 205 ... **671**
 EPDs:
 BW ... **4.0**
 WW ... **55**
 YW ... **98**
 MILK ... **26**
 M&G ... **53**

Eye Pigment:
 LE **80** / RE **100**

CL 1 DOMINO 637S
CL 1 DOMINO 860U
 | CL 1 DOMINETTE 5142R

JA L1 DOMINO 9213
JA L1 DOMINETTE 4244P
 | JA L1 DOMINETTE 5601

Carcass: REA **.27** / MARB **.07**

Good pigment and eye appeal from a nice 9213 daughter. Lot 64 is a twin to a bull and was raised by his own dam.

L1 DOMINO 03396
 CL 1 DOMINETTE 118L
 CL 1 DOMINO 1172L
 CL 1 DOMINETTE 810H
 CL 1 DOMINO 484
 JA L1 DOMINETTE 6554
 GB L1 DOMINO 919
 JA L1 DOMINETTE 8402

68**JA L1 DOMINO 3900A**

Feb. 16, 2013 • #43382461

YEARLING

Act. BW ... **89**
 Act. WW ... **680**
 Adj. 205 ... **702**
 EPDs:
 BW ... **5.0**
 WW ... **54**
 YW ... **97**
 MILK ... **26**
 M&G ... **53**

Eye Pigment:
 LE **100** / RE **70**

GB L1 DOMINO 6134K
JA L1 DOMINO 0908X
 | JA L1 DOMINETTE 8810U

DH DOMINO 539
JA L1 DOMINETTE 101Y
 | JA L1 DOMINETTE 7515T

Carcass: REA **.18** / MARB **.14**

Dam is a two year old. Lot 68 will be a performance beef bull.

GB L1 DOMINO 471H
 GB L1 DOM PRCS 4103H
 CL 1 DOMINO 560R
 JA L1 DOMINETTE 4652P
 L1 DOMINO 99496
 DH MS ADVANCE 1003
 CL 1 DOMINO 4134P
 JA L1 DOMINETTE 300N

69

CO L1 DOMINO 301A

Feb. 23, 2013 • #43432010

YEARLING

Act. BW ... **84**
Act. WW ... **na**
Adj. 205 ... **723**
EPDs:
BW ... **2.7**
WW ... **51**
YW ... **87**
MILK ... **25**
M&G ... **51**
Eye Pigment:
LE **50** / RE **80**

JA L1 DOMINO 1602Y
| JA L1 DOMINETTE 9204W

HH ADVANCE 286M
JA L1 DOMINETTE 1409L
CL 1 DOMINO 555R
JA L1 DOMINETTE 4119P

GB L1 DOMINO 175E
CO L1 DOMINETTE 137Y
| CO L1 DOMINETTE 312N

HH ADVANCE 767G
GB L1 DOM PRCS 3134
GB L1 DOMINO 168E
CO L1 DOMINETTE 914

Carcass: REA **.33** / MARB **.02**

PAP score: 38. A well marked deep-sided 1602 son with solid numbers. Out of a hard working 175E daughter.

72

CO L1 DOMINO 326A

Mar. 7, 2013 • #43375717

YEARLING

Act. BW ... **83**
Act. WW ... **na**
Adj. 205 ... **626**
EPDs:
BW ... **2.6**
WW ... **45**
YW ... **82**
MILK ... **31**
M&G ... **54**
Eye Pigment:
LE **80** / RE **100**

CL 1 DOMINO 9105W
CL 1 DOMINO 186Y
| CL 1 DOMINETTE 5142R

CL 1 DOMINO 732T
CL 1 DOMINETTE 591R
CL 1 DOMINO 1172L
CL 1 DOMINETTE 810H

GB L1 DOMINO 175E
CO L1 DOMINETTE 090X
| JA L1 DOMINETTE 9209

HH ADVANCE 767G
GB L1 DOM PRCS 3134
CL 1 DOMINO 484
JA L1 DOMINETTE 6700

Carcass: REA **.16** / MARB **-.03**

PAP score: 33. A 186 son that's put together very well. Out of a heavily pigmented 175E daughter with red teats and super udder.

70

CO L1 DOMINO 308A

Feb. 28, 2013 • #43375701

YEARLING

Act. BW ... **86**
Act. WW ... **na**
Adj. 205 ... **727**
EPDs:
BW ... **3.5**
WW ... **50**
YW ... **84**
MILK ... **29**
M&G ... **54**
Eye Pigment:
LE **100** / RE **100**

CL 1 DOMINO 019K
CL 1 DOMINO 320N
| CL 1 DOMINETTE 996J

HH ADVANCE 8093H
CL 1 DOMINETTE 8151H
HH ADVANCE 629F
CL 1 DOMINETTE 544E

GB L1 DOMINO 471H
CO L1 DOMINETTE 151Y
| CO L1 DOMINETTE 708T

GB L1 DOMINO 1144E
GB L1 DOM PRCS 1139E
HH ADVANCE 286M
CO L1 DOMINETTE 547R

Carcass: REA **.05** / MARB **.12**

PAP score: 38. This bull should produce some fantastic females. Sired by 320N who has produced many top donor cows for Holdens and out of one of our best cow families. Several great uddered females in this bull's pedigree.

73

CO L1 DOMINO 352A

Mar. 27, 2013 • #43375667

YEARLING

Act. BW ... **90**
Act. WW ... **na**
Adj. 205 ... **781**
EPDs:
BW ... **2.9**
WW ... **58**
YW ... **93**
MILK ... **31**
M&G ... **60**
Eye Pigment:
LE **100** / RE **100**

CL 1 DOMINO 7139T
CL 1 DOMINO 065X
| CL 1 DOMINETTE 5142R

CL 1 DOMINO 590R
CL 1 DOMINETTE 530R
CL 1 DOMINO 1172L
CL 1 DOMINETTE 810H

GB L1 DOMINO 175E
CO L1 DOMINETTE 929W
| CO L1 DOMINETTE 619S

HH ADVANCE 767G
GB L1 DOM PRCS 3134
HH ADVANCE 216M
CO L1 DOMINETTE 312N

Carcass: REA **.14** / MARB **.02**

PAP score: 47. We feel Lot 73 is a top herd bull prospect! He's well made, well marked and has a lot of performance. Out of a outstanding 175E daughter.

71

CO L1 DOMINO 321A

Mar. 5, 2013 • #43432112

YEARLING

Act. BW ... **84**
Act. WW ... **na**
Adj. 205 ... **725**
EPDs:
BW ... **2.9**
WW ... **55**
YW ... **85**
MILK ... **29**
M&G ... **57**
Eye Pigment:
LE **100** / RE **100**

CL 1 DOMINO 732T
CL 1 DOMINO 9125W
| CL 1 DOMINETTE 475P

CL 1 DOMINO 590R
CL 1 DOMINETTE 507R
CL 1 DOMINO 824H
CL 1 DOMINETTE 200M

HH ADVANCE 286M
CO L1 DOMINETTE 716T
| CO L1 DOMINETTE 507R

HH ADVANCE 0024K
HH MISS ADVANCE 752G
CL 1 DOMINO 9126J
CO L1 DOMINETTE 301N

Carcass: REA **.22** / MARB **.11**

PAP score: 76. A lot of depth and volume in this well marked 9125 son. Dam is a top 286 daughter with a nice udder and extra pigment.

74

CTR L1 DOMINO 3402A

Mar. 4, 2013 • #43371491

YEARLING

Act. BW ... **84**
Act. WW ... **800**
Adj. 205 ... **790**
EPDs:
BW ... **2.4**
WW ... **51**
YW ... **82**
MILK ... **27**
M&G ... **52**
Eye Pigment:
LE **80** / RE **20**

HH ADVANCE 7085T
JA L1 DOMINO 0413X
| JA L1 DOMINETTE 432P

L1 DOMINO 0357I
HH MISS ADVANCE 1088L
CL 1 DOMINO 0157K
JA L1 DOMINETTE 1223L

CL 1 DOMINO 560R
JA L1 DOMINETTE 8810U
| JA L1 DOMINETTE 4652P

CL 1 DOMINO 3162N
CL 1 DOMINETTE 118L
HH ADVANCE 286M
JA L1 DOMINETTE 100L

Carcass: REA **.08** / MARB **.11**

THE JAMISON COWHERD...

A functional, efficient working factory that runs in the hard grass, Smokey Hill canyon country of Gove Country, western Kansas...



The strength of their linebred Line 1 genetics and generations of American Hereford "Whole Herd" Total Performance Records are the performance warranty behind every JA bred bull!

FALL YEARLING BULLS...

75

CTR L1 DOMINO 2525 ET

Sept. 6, 2012 • #43350151

FALL YRLG
Act. BW ... **87**
EPDs:
BW ... **3.4**
WW ... **54**
YW ... **81**
MILK ... **28**
M&G ... **55**
Eye Pigment:
LE **100** / RE **100**

CL 1 DOMINO 637S
CL 1 DOMINO 955W
| CL 1 DOMINETTE 5152R

JA L1 DOMINO 208M
JA L1 DOMINETTE 4119P
| JA L1 DOMINETTE 1317L
Carcass: REA **.18** / MARB **.04**

L1 DOMINO 03396
CL 1 DOMINETTE 118L
CL 1 DOMINO 3162N
CL 1 DOMINETTE 392N
HH ADVANCE 767G
JA L1 DOMINETTE 0008
GB L1 DOMINO 947C
JA L1 DOMINETTE 9257

This stout made, rugged herd bull prospect has extra bone. His dam was a high seller in our 2010 cow sale to Jon Miller. She is also the grandmother of our 1602 herd bull.

76

CTR L1 DOMINO 2531 ET

Sept. 2, 2012 • #43350144

FALL YRLG
Act. BW ... **83**
EPDs:
BW ... **2.2**
WW ... **52**
YW ... **79**
MILK ... **29**
M&G ... **55**
Eye Pigment:
LE **100** / RE **100**

CL 1 DOMINO 637S
CL 1 DOMINO 955W
| CL 1 DOMINETTE 5152R

DH DOMINO 6150
JA L1 DOMINETTE 4152P
| JA L1 DOMINETTE 6815
Carcass: REA **.22** / MARB **.04**

L1 DOMINO 03396
CL 1 DOMINETTE 118L
CL 1 DOMINO 3162N
CL 1 DOMINETTE 392N
CL 1 DOMINO 166
HH MISS ADV 7011W
HH ADVANCE 388C
JA L1 DOMINETTE 0120

ET son of the 4152 cow, a top seller in our 2010 cow sale. She is also the dam of herd bull 9800 that we own with Oleen Bros.

77

CTR L1 DOMINO 2535 ET

Sept. 5, 2012 • #43350150

FALL YRLG
Act. BW ... **87**
EPDs:
BW ... **3.4**
WW ... **54**
YW ... **81**
MILK ... **28**
M&G ... **55**
Eye Pigment:
LE **100** / RE **100**

CL 1 DOMINO 637S
CL 1 DOMINO 955W
| CL 1 DOMINETTE 5152R

JA L1 DOMINO 208M
JA L1 DOMINETTE 4119P
| JA L1 DOMINETTE 1317L
Carcass: REA **.18** / MARB **.04**

L1 DOMINO 03396
CL 1 DOMINETTE 118L
CL 1 DOMINO 3162N
CL 1 DOMINETTE 392N
HH ADVANCE 767G
JA L1 DOMINETTE 0008
GB L1 DOMINO 947C
JA L1 DOMINETTE 9257

ET full brother to Lot 75 and much the same kind.

78

B&B L1 DOMINO 282

Aug. 16, 2012 • #43405967

FALL YRLG
Act. BW ... **81**
EPDs:
BW ... **2.5**
WW ... **34**
YW ... **53**
MILK ... **23**
M&G ... **40**
Eye Pigment:
LE **0** / RE **0**

CL 1 DOMINO 555R
B&B L1 DOMINO 045
| B&B L1 DOMINETE 918

DHR L1 DOMINO 828D
B&B L1 DOMINETTE 2226
| B&B L1 DOMINET 7199
Carcass: REA **.04** / MARB **-.02**

HH ADVANCE 3113N
CL 1 DOMINETTE 3174N
DHR L1 DOMINO 512D
B&B MS L1 DOMINO 266
L1 GENVIR 110
CLH MS STARLET 5074
B&B MR MAX 1082
B&B MS J215 DOM 2142

80

B&B L1 DOMINO 294

Sept. 2, 2012 • #43405966

FALL YRLG
Act. BW ... **78**
EPDs:
BW ... **2.4**
WW ... **45**
YW ... **70**
MILK ... **28**
M&G ... **50**
Eye Pigment:
LE **30** / RE **90**

CL 1 DOMINO 732T
CL 1 DOMINO 9125W
| CL 1 DOMINETTE 475P

BJH J215 DOMINO 12M
B&B L1 DOMINETTE 7139
| B&B L1 DOMINETTE 5105
Carcass: REA **.08** / MARB **.11**

CL 1 DOMINO 590R
CL 1 DOMINETTE 507R
CL 1 DOMINO 824H
CL 1 DOMINETTE 200M
SR MARK I J215
BJH KT VICTRA 18K
CL 1 DOMINO 8153H
B&B MS ADVANCE 5175

81

B&B L1 DOMINO 2101

Sept. 5, 2012 • #43405955

FALL YRLG
Act. BW ... **86**
EPDs:
BW ... **2.0**
WW ... **49**
YW ... **85**
MILK ... **31**
M&G ... **56**
Eye Pigment:
LE **100** / RE **100**

CL 1 DOMINO 732T
CL 1 DOMINO 9125W
| CL 1 DOMINETTE 475P

CL 1 DOMINO 0157K
B&B L1 DOMINETE 646
| B&B L1 DOMINETE 328
Carcass: REA **.08** / MARB **.09**

CL 1 DOMINO 590R
CL 1 DOMINETTE 507R
CL 1 DOMINO 824H
CL 1 DOMINETTE 200M
HH ADVANCE 767G
CL 1 DOMINETTE 861H
CL 1 DOMINO 8153H
B&B MS L1 DOMINO 423

82

B&B L1 DOMINO 2114

Sept. 10, 2012 • #43405929

FALL YRLG
Act. BW ... **75**
EPDs:
BW ... **2.8**
WW ... **46**
YW ... **81**
MILK ... **22**
M&G ... **45**
Eye Pigment:
LE **100** / RE **100**

JA L1 DOMINO 7640T
JA L1 DOMINO 0615X
| JA L1 DOMINETTE 5754R

CL 1 DOMINO 555R
B&B L1 DOMINETTE 0197
| B&B L1 DOMINETTE 465
Carcass: REA **.20** / MARB **.01**

HH ADVANCE 286M
JAL L1 DOMINETTE 1409L
JA L1 DOMINO 242M
JA L1 DOMINETTE 3213N
HH ADVANCE 3113N
CL 1 DOMINETTE 3174N
CL 1 DOMINO 8153H
B&B MS 335F DOM 1018

83

B&B L1 DOMINO 2115

Sept. 10, 2012 • #43406051

FALL YRLG
Act. BW ... **82**
EPDs:
BW ... **3.1**
WW ... **50**
YW ... **84**
MILK ... **27**
M&G ... **52**
Eye Pigment:
LE **60** / RE **60**

HH ADVANCE 3113N
CL 1 DOMINO 555R
| CL 1 DOMINETTE 3174N

JA L1 DOMINO 426P
B&B L1 DOMINETTE 8128
| B&B L1 DOMINETE 962
Carcass: REA **.08** / MARB **.00**

L1 DOMINO 99496
HH MS ADV 875H
CL 1 DOMINO 9126J
CL 1 DOMINETTE 810H
CL 1 DOMINO 0157K
JA L1 DOMINETTE 7070
DHR L1 DOMINO 512D
B&B MS TRAC II 9107

Powerful 555 son with good numbers and an 82 lb. BW.

79

B&B L1 DOMINO 293

Aug. 18, 2012 • #43405987

FALL YRLG
Act. BW ... **79**
EPDs:
BW ... **1.4**
WW ... **41**
YW ... **69**
MILK ... **22**
M&G ... **42**
Eye Pigment:
LE **50** / RE **10**

CL 1 DOMINO 555R
B&B L1 DOMINO 045
| B&B L1 DOMINETE 918

JA L1 DOMINO 426P
B&B L1 DOMINETTE 7111
| B&B L1 DOMINETTE 2175
Carcass: REA **.16** / MARB **.02**

HH ADVANCE 3113N
CL 1 DOMINETTE 3174N
DHR L1 DOMINO 512D
B&B MS L1 DOMINO 266
CL 1 DOMINO 0157K
JA L1 DOMINETTE 7070
CL 1 DOMINO 8153H
B&B L1 DOMINET 1063

Lot 79 had an actual WW of 840 pounds. He is extremely thick and well balanced. His 79 lb. BW sure indicates calving ease. Strong maternal herd bull prospect.

84

B&B L1 DOMINO 2128

Sept. 15, 2012 • #43406034

FALL YRLG
Act. BW ... **80**
EPDs:
BW ... **2.2**
WW ... **53**
YW ... **86**
MILK ... **30**
M&G ... **56**
Eye Pigment:
LE **80** / RE **70**

CL 1 DOMINO 732T
CL 1 DOMINO 9125W
| CL 1 DOMINETTE 475P

JA L1 DOMINO 426P
B&B L1 DOMINETTE 7186
| B&B L1 DOMINETTE 3110
Carcass: REA **.10** / MARB **.14**

CL 1 DOMINO 590R
CL 1 DOMINETTE 507R
CL 1 DOMINO 824H
CL 1 DOMINETTE 200M
CL 1 DOMINO 0157K
JA L1 DOMINETTE 7070
DHR L1 DOMINO 512D
B&B MS ADVANCE 5120

85

B&B L1 DOMINO 2133

Sept. 15, 2012 • #43405945

FALL YRLG

Act. BW **80**
 EPDs:
 BW **2.0**
 WW **47**
 YW **79**
 MILK **26**
 M&G **50**

Eye Pigment:
 LE **100** / RE **100**

CL 1 DOMINO 732T
CL 1 DOMINO 9125W
 | CL 1 DOMINETTE 475P

CL 1 DOMINO 8153H
B&B L1 DOMINETTE 466
 | B&B L1 DOMINET 7113

Carcass: REA **.16** / MARB **.07**

Herd bull prospect that weaned off at 800 lbs. after starting out with a low birth weight. His 100% pigmentation will help as well.

CL 1 DOMINO 590R
 CL 1 DOMINETTE 507R
 CL 1 DOMINO 824H
 CL 1 DOMINETTE 200M
 CL 1 DOMINO 5131E
 CL 1 DOMINET 496
 HH ADVANCE 388C
 B&B L1 DOMINETE 3136

90

B&B L1 DOMINO 2153

Sept. 29, 2012 • #43406043

FALL YRLG

Act. BW **86**
 EPDs:
 BW **3.4**
 WW **57**
 YW **93**
 MILK **30**
 M&G **59**

Eye Pigment:
 LE **80** / RE **90**

CL 1 DOMINO 732T
CL 1 DOMINO 9125W
 | CL 1 DOMINETTE 475P

CL 1 DOMINO 555R
B&B L1 DOMINETTE 7235
 | B&B L1 DOMINETTE 453

Carcass: REA **.15** / MARB **.05**

CL 1 DOMINO 590R
 CL 1 DOMINETTE 507R
 CL 1 DOMINO 824H
 CL 1 DOMINETTE 200M
 HH ADVANCE 3113N
 CL 1 DOMINETTE 3174N
 CL 1 DOMINO 8153H
 B&B L1 DOMINET 7116

86

B&B L1 DOMINO 2136

Sept. 15, 2012 • #43405974

FALL YRLG

Act. BW **86**
 EPDs:
 BW **3.8**
 WW **57**
 YW **94**
 MILK **31**
 M&G **59**

Eye Pigment:
 LE **100** / RE **100**

CL 1 DOMINO 732T
CL 1 DOMINO 9125W
 | CL 1 DOMINETTE 475P

JA L1 DOMINO 426P
B&B L1 DOMINETTE 7127
 | B&B L1 DOMINETTE 2189

Carcass: REA **.17** / MARB **.11**

CL 1 DOMINO 590R
 CL 1 DOMINETTE 507R
 CL 1 DOMINO 824H
 CL 1 DOMINETTE 200M
 CL 1 DOMINO 0157K
 JA L1 DOMINETTE 7070
 CL 1 DOMINO 8153H
 B&B L1 DOMINET 7193

91

B&B L1 DOMINO 2155

Sept. 30, 2012 • #43405977

FALL YRLG

Act. BW **90**
 EPDs:
 BW **4.0**
 WW **58**
 YW **97**
 MILK **30**
 M&G **59**

Eye Pigment:
 LE **100** / RE **100**

CL 1 DOMINO 732T
CL 1 DOMINO 9125W
 | CL 1 DOMINETTE 475P

JA L1 DOMINO 426P
B&B L1 DOMINETTE 6142
 | B&B L1 DOMINETTE 2128

Carcass: REA **.18** / MARB **.11**

CL 1 DOMINO 590R
 CL 1 DOMINETTE 507R
 CL 1 DOMINO 824H
 CL 1 DOMINETTE 200M
 CL 1 DOMINO 0157K
 JA L1 DOMINETTE 7070
 CL 1 DOMINO 8153H
 B&B L1 DOMINETE 6112

87

B&B L1 DOMINO 2146

Sept. 20, 2012 • #43405978

FALL YRLG

Act. BW **67**
 EPDs:
 BW **0.9**
 WW **40**
 YW **71**
 MILK **19**
 M&G **39**

Eye Pigment:
 LE **100** / RE **100**

JA L1 DOMINO 7640T
JA L1 DOMINO 0615X
 | JA L1 DOMINETTE 5754R

GM L1 444-790
B&B L1 DOMINETTE 0175
 | B&B L1 DOMINETTE 7162

Carcass: REA **.20** / MARB **.04**

HH ADVANCE 286M
 JAL L1 DOMINETTE 1409L
 JA L1 DOMINO 242M
 JA L1 DOMINETTE 3213N
 GM L1 244 444
 CL 1 DOMINETTE 095K
 CL 1 DOMINO 8153H
 B&B L1 DOMINETTE 5112

92

B&B L1 DOMINO 2159

Sept. 20, 2012 • #43405946

FALL YRLG

Act. BW **90**
 EPDs:
 BW **4.2**
 WW **55**
 YW **90**
 MILK **28**
 M&G **55**

Eye Pigment:
 LE **70** / RE **5**

CL 1 DOMINO 732T
CL 1 DOMINO 9125W
 | CL 1 DOMINETTE 475P

CL 1 DOMINO 8153H
B&B L1 DOMINETE 468
 | B&B MS ADVANCE 5132

Carcass: REA **.18** / MARB **.05**

CL 1 DOMINO 590R
 CL 1 DOMINETTE 507R
 CL 1 DOMINO 824H
 CL 1 DOMINETTE 200M
 CL 1 DOMINO 5131E
 CL 1 DOMINET 496
 HH ADVANCE 388C
 B&B L1 DOMINETE 3130

The 9125 x 8153 cross really clicks as proven by Lot 92. He's a big, bold, rancher bull.

88

B&B L1 DOMINO 2148

Sept. 21, 2012 • #43405926

FALL YRLG

Act. BW **76**
 EPDs:
 BW **2.2**
 WW **44**
 YW **77**
 MILK **21**
 M&G **43**

Eye Pigment:
 LE **100** / RE **100**

JA L1 DOMINO 7640T
JA L1 DOMINO 0615X
 | JA L1 DOMINETTE 5754R

GM L1 444-790
B&B L1 DOMINETTE 0189
 | B&B L1 DOMINETTE 7164

Carcass: REA **.16** / MARB **.04**

HH ADVANCE 286M
 JAL L1 DOMINETTE 1409L
 JA L1 DOMINO 242M
 JA L1 DOMINETTE 3213N
 GM L1 244 444
 CL 1 DOMINETTE 095K
 CL 1 DOMINO 555R
 B&B L1 DOMINETTE 464

93

B&B L1 DOMINO 2162

Oct. 1, 2012 • #43405933

FALL YRLG

Act. BW **84**
 EPDs:
 BW **3.8**
 WW **51**
 YW **89**
 MILK **23**
 M&G **49**

Eye Pigment:
 LE **30** / RE **30**

JA L1 DOMINO 7640T
JA L1 DOMINO 0615X
 | JA L1 DOMINETTE 5754R

CL 1 DOMINO 555R
B&B L1 DOMINETTE 0212
 | B&B L1 DOMINETTE 5159

Carcass: REA **.20** / MARB **.01**

HH ADVANCE 286M
 JAL L1 DOMINETTE 1409L
 JA L1 DOMINO 242M
 JA L1 DOMINETTE 3213N
 HH ADVANCE 3113N
 CL 1 DOMINETTE 3174N
 CL 1 DOMINO 8153H
 B&B L1 DOMINET 7188

89

B&B L1 DOMINO 2151

Sept. 24, 2012 • #43405973

FALL YRLG

Act. BW **85**
 EPDs:
 BW **3.8**
 WW **52**
 YW **87**
 MILK **25**
 M&G **51**

Eye Pigment:
 LE **70** / RE **70**

CL 1 DOMINO 732T
CL 1 DOMINO 9125W
 | CL 1 DOMINETTE 475P

CL 1 DOMINO 8153H
B&B L1 DOMINETTE 5109
 | B&B L1 DOMINETTE 6120

Carcass: REA **.19** / MARB **.03**

CL 1 DOMINO 590R
 CL 1 DOMINETTE 507R
 CL 1 DOMINO 824H
 CL 1 DOMINETTE 200M
 CL 1 DOMINO 5131E
 CL 1 DOMINET 496
 HH ADVANCE 311C
 B&B MS L1 DOM 2122

94

B&B L1 DOMINO 2171

Oct. 22, 2012 • #43405988

FALL YRLG

Act. BW **86**
 EPDs:
 BW **2.8**
 WW **56**
 YW **90**
 MILK **30**
 M&G **61**

Eye Pigment:
 LE **100** / RE **100**

CL 1 DOMINO 732T
CL 1 DOMINO 9125W
 | CL 1 DOMINETTE 475P

CL 1 DOMINO 555R
B&B L1 DOMINETTE 7112
 | B&B L1 DOMINETTE 472P

Carcass: REA **.13** / MARB **.05**

CL 1 DOMINO 590R
 CL 1 DOMINETTE 507R
 CL 1 DOMINO 824H
 CL 1 DOMINETTE 200M
 HH ADVANCE 3113N
 CL 1 DOMINETTE 3174N
 CL 1 DOMINO 8153H
 B&B MS L1 DOM 2119

FALL YEARLING BULLS...

95

B&B L1 DOMINO 2180

Nov. 17, 2012 • #43406063

FALL YRLG

Act. BW ... **89**

EPDs:

BW ... **3.5**

WW ... **51**

YW ... **87**

MILK ... **26**

M&G ... **51**

Eye Pigment:

LE **100** / RE **100**

HH ADVANCE 3113N

CL 1 DOMINO 555R

CL 1 DOMINETTE 3174N

JA L1 DOMINO 426P

B&B L1 DOMINETTE 8184

B&B L1 DOMINETTE 2153

Carcass: REA **.11** / MARB **-.03**

Younger aged bull that still managed an actual WW of 750 lbs. Lot 95 is thick made and clean fronted with good pigment.

L1 DOMINO 99496

HH MS ADV 875H

CL 1 DOMINO 9126J

CL 1 DOMINETTE 810H

CL 1 DOMINO 0157K

JA L1 DOMINETTE 7070

CL 1 DOMINO 8153H

B&B MS 335F DOM 1020

96

B&B L1 DOMINO 2187

Dec. 12, 2012 • #43406054

FALL YRLG

Act. BW ... **85**

EPDs:

BW ... **2.8**

WW ... **52**

YW ... **87**

MILK ... **24**

M&G ... **50**

Eye Pigment:

LE **60** / RE **80**

HH ADVANCE 3113N

CL 1 DOMINO 555R

CL 1 DOMINETTE 3174N

JA L1 DOMINO 426P

B&B L1 DOMINETTE 8137

B&B L1 DOMINETTE 2147

Carcass: REA **.10** / MARB **-.03**

L1 DOMINO 99496

HH MS ADV 875H

CL 1 DOMINO 9126J

CL 1 DOMINETTE 810H

CL 1 DOMINO 0157K

JA L1 DOMINETTE 7070

CL 1 DOMINO 8153H

B&B MS LEGACY 1009

97

B&B L1 DOMINO 2192

Oct. 15, 2012 • #43405969

FALL YRLG

Act. BW ... **85**

EPDs:

BW ... **3.0**

WW ... **48**

YW ... **81**

MILK ... **27**

M&G ... **51**

Eye Pigment:

LE **30** / RE **40**

CL 1 DOMINO 732T

CL 1 DOMINO 9125W

CL 1 DOMINETTE 475P

CL 1 DOMINO 8153H

B&B L1 DOMINETTE 2914

B&B L1 DOMINET 7191

Carcass: REA **.18** / MARB **.05**

CL 1 DOMINO 590R

CL 1 DOMINETTE 507R

CL 1 DOMINO 824H

CL 1 DOMINETTE 200M

CL 1 DOMINO 5131E

CL 1 DOMINET 496

HH ADVANCE 388C

B&B LADY RIPPER 0118

98

B&B L1 DOMINO 2193Z

Oct. 15, 2012 • #43405981

FALL YRLG

Act. BW ... **86**

EPDs:

BW ... **3.0**

WW ... **60**

YW ... **98**

MILK ... **31**

M&G ... **61**

Eye Pigment:

LE **100** / RE **100**

CL 1 DOMINO 732T

CL 1 DOMINO 9125W

CL 1 DOMINETTE 475P

JA L1 DOMINO 426P

B&B L1 DOMINETTE 6180

B&B L1 DOMINETTE 2175

Carcass: REA **.19** / MARB **.13**

CL 1 DOMINO 590R

CL 1 DOMINETTE 507R

CL 1 DOMINO 824H

CL 1 DOMINETTE 200M

CL 1 DOMINO 0157K

JA L1 DOMINETTE 7070

CL 1 DOMINO 8153H

B&B L1 DOMINET 1063



JA TWO YEAR OLD BULLS

**RANGE DEVELOPED PERFORMANCE
BULLS FOR BIG COUNTRY RANCHERS!**



**For High Altitude Cowmen...
COLEMAN HEREFORDS PAP TESTED BULLS**
...Coleman bulls are all tested for altitude adaption (PAP score) at an elevation of 8000 feet. **Yearling Bulls Lots 69 - 73 ...Two-Yr.-Old Bulls Lots 147 - 167.**

TWO YEAR OLD BULLS...

99

JA L1 DOMINO 170Y

Oct. 18, 2011 • Reg. Pending

2 YR. OLD
Act. BW **85**
EPDs:
BW **3.3**
WW **49**
YW **85**
MILK **18**
M&G **42**
Eye Pigment:
LE **80** / RE **100**

CL 1 DOMINO 4134P
JA L1 DOMINO 8513U
| JA L1 DOMINETTE 1223L

JA L1 DOMINO 0224
JA L1 DOMINETTE 4277P
| JA L1 DOMINETTE 6911

Carcass: REA **.21** / MARB **.03**

CL 1 DOMINO 9126J
CL 1 DOMINETTE 8104H
CL 1 DOMINO 484
JA L1 DOMINETTE 503
CL 1 DOMINO 484
JA L1 DOMINETTE 7100
HH ADVANCE 400D
JA L1 DOMINETTE 1554



LOT 100
Sire: CL1 Domino 9125W
BW **4.1** WW **64** YW **100** MILK **33** M&G **64**

100

JA L1 DOMINO 2109Z

Feb. 5, 2012 • #43298666

2 YR. OLD
Act. BW **86**
EPDs:
BW **4.1**
WW **64**
YW **100**
MILK **33**
M&G **64**
Eye Pigment:
LE **80** / RE **100**

CL 1 DOMINO 732T
CL 1 DOMINO 9125W
| CL 1 DOMINETTE 475P

CL 1 DOMINO 560R
JA L1 DOMINETTE 9809W
| JA L1 DOMINETTE 4660P

Carcass: REA **.19** / MARB **.16**

CL 1 DOMINO 590R
CL 1 DOMINETTE 507R
CL 1 DOMINO 824H
CL 1 DOMINETTE 200M
CL 1 DOMINO 3162N
CL 1 DOMINETTE 118L
HH ADVANCE 286M
JA L1 DOMINETTE 1217L

Big, rugged rancher bull that will really cover the country. Lot 100 has a disposition we would not recommend for those who want a calm one.



LOT 101
Sire: CL1 Domino 9125W
BW **3.9** WW **60** YW **97** MILK **29** M&G **59**

101

JA L1 DOMINO 2130Z

Mar. 31, 2012 • #43298700

2 YR. OLD
Act. BW **82**
EPDs:
BW **3.9**
WW **60**
YW **97**
MILK **29**
M&G **59**
Eye Pigment:
LE **100** / RE **100**

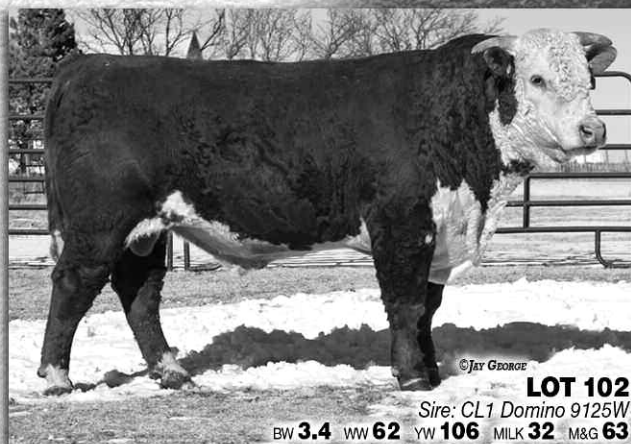
CL 1 DOMINO 732T
CL 1 DOMINO 9125W
| CL 1 DOMINETTE 475P

HH ADVANCE 286M
JA L1 DOMINETTE 9653W
| JA L1 DOMINETTE 3243N

Carcass: REA **.21** / MARB **.07**

CL 1 DOMINO 590R
CL 1 DOMINETTE 507R
CL 1 DOMINO 824H
CL 1 DOMINETTE 200M
HH ADVANCE 0024K
HH MS ADVANCE 752G
JA L1 DOMINO 0224
JA L1 DOMINETTE 800

Top herd bull prospect. Dam has a beautiful udder and lots of pigment as does Lot 101. Full brother sells as Lot 24.



LOT 102
Sire: CL1 Domino 9125W
BW **3.4** WW **62** YW **106** MILK **32** M&G **63**

102

JA L1 DOMINO 2132Z

Apr. 7, 2012 • #43298702

2 YR. OLD
Act. BW **80**
EPDs:
BW **3.4**
WW **62**
YW **106**
MILK **32**
M&G **63**
Eye Pigment:
LE **100** / RE **100**

CL 1 DOMINO 732T
CL 1 DOMINO 9125W
| CL 1 DOMINETTE 475P

GB L1 DOMINO 6134K
JA L1 DOMINETTE 9707W
| JA L1 DOMINETTE 7641T

Carcass: REA **.23** / MARB **.16**

CL 1 DOMINO 590R
CL 1 DOMINETTE 507R
CL 1 DOMINO 824H
CL 1 DOMINETTE 200M
GB L1 DOMINO 471H
GB L1 DOM PRCS 4103H
HH ADVANCE 286M
JA L1 DOMINETTE 1203L

Full of beef and a bull that should cover the country. Strong numbers all across the board.



LOT 103
Sire: CL1 Domino 9125W
BW **3.1** WW **57** YW **87** MILK **31** M&G **59**

103

JA L1 DOMINO 2134Z

Apr. 17, 2012 • #43298704

2 YR. OLD
Act. BW **83**
EPDs:
BW **3.1**
WW **57**
YW **87**
MILK **31**
M&G **59**
Eye Pigment:
LE **70** / RE **100**

CL 1 DOMINO 732T
CL 1 DOMINO 9125W
| CL 1 DOMINETTE 475P

HH ADVANCE 286M
JA L1 DOMINETTE 9638W
| JA L1 DOMINETTE 3264N

Carcass: REA **.18** / MARB **.06**

CL 1 DOMINO 590R
CL 1 DOMINETTE 507R
CL 1 DOMINO 824H
CL 1 DOMINETTE 200M
HH ADVANCE 0024K
HH MS ADVANCE 752G
HH ADVANCE 6063F
JA L1 DOMINETTE 830

Dam has an excellent udder that I score a 9 and is a maternal sister to the 8801 bull we used and owned with Oleen Bros.

TWO YEAR OLD BULLS...



©JAY GEORGE
LOT 104
 Sire: CO L1 Domino 946W
 BW 2.0 WW 41 YW 72 MILK 30 M&G 50



©JAY GEORGE
LOT 105
 Sire: CO L1 Domino 946W
 BW 5.0 WW 45 YW 79 MILK 26 M&G 49



©JAY GEORGE
LOT 115
 Sire: CL1 Domino 860U
 BW 4.0 WW 55 YW 95 MILK 32 M&G 59



©JAY GEORGE
LOT 116
 Sire: CL1 Domino 860U
 BW 2.9 WW 49 YW 86 MILK 29 M&G 53

104

JA L1 DOMINO 2505Z

Feb. 10, 2012 • #43298791

2 YR. OLD
 Act. BW ... **71**
 EPDs:
 BW **2.0**
 WW **41**
 YW **72**
 MILK **30**
 M&G **50**
 Eye Pigment:
 LE **80** / RE **80**

GB L1 DOMINO 175E
CO L1 DOMINO 946W
 | CO L1 DOMINETTE 523R
 CL 1 DOMINO 555R
JA L1 DOMINETTE 0203X
 | JA L1 DOMINETTE 4211P

HH ADVANCE 767G
 GB L1 DOM PRCS 3134
 GB L1 DOMINO 935C
 CO L1 DOMINETTE 206M
 HH ADVANCE 3113N
 CL 1 DOMINETTE 3174N
 CL 1 DOMINO 484
 JA L1 DOMINETTE 2524M

Carcass: REA **.02** / MARB **.06**

Out of a two yr. old heifer that is a maternal sister to Lot 63.

105

JA L1 DOMINO 2507Z

Feb. 12, 2012 • #43298795

2 YR. OLD
 Act. BW ... **90**
 EPDs:
 BW **5.0**
 WW **45**
 YW **79**
 MILK **26**
 M&G **49**
 Eye Pigment:
 LE **100** / RE **100**

GB L1 DOMINO 175E
CO L1 DOMINO 946W
 | CO L1 DOMINETTE 523R
 HH ADVANCE 7085T
JA L1 DOMINETTE 0441X
 | JA L1 DOMINETTE 3249N

HH ADVANCE 767G
 GB L1 DOM PRCS 3134
 GB L1 DOMINO 935C
 CO L1 DOMINETTE 206M
 L1 DOMINO 0357I
 HH MISS ADVANCE 1088L
 JA L1 DOMINO 0224
 JA L1 DOMINETTE 7217

Carcass: REA **.05** / MARB **.05**

Thick and stout, Lot 105 should work well on mature cows.

106

JA L1 DOMINO 2510Z

Feb. 19, 2012 • #43298797

2 YR. OLD
 Act. BW ... **85**
 EPDs:
 BW **4.0**
 WW **41**
 YW **73**
 MILK **29**
 M&G **49**
 Eye Pigment:
 LE **10** / RE **20**

GB L1 DOMINO 175E
CO L1 DOMINO 946W
 | CO L1 DOMINETTE 523R
 JA L1 DOMINO 7640T
JA L1 DOMINETTE 0619X
 | JA L1 DOMINETTE 5151R

HH ADVANCE 767G
 GB L1 DOM PRCS 3134
 GB L1 DOMINO 935C
 CO L1 DOMINETTE 206M
 HH ADVANCE 286M
 JAL L1 DOMINETTE 1409L
 JA L1 DOMINO 3105N
 JA L1 DOMINETTE 3215N

Carcass: REA **.04** / MARB **.00**

107

JA L1 DOMINO 2511Z

Feb. 19, 2012 • #43298799

2 YR. OLD
 Act. BW ... **85**
 EPDs:
 BW **3.4**
 WW **44**
 YW **82**
 MILK **30**
 M&G **52**
 Eye Pigment:
 LE **100** / RE **100**

GB L1 DOMINO 175E
CO L1 DOMINO 946W
 | CO L1 DOMINETTE 523R
 CL 1 DOMINO 555R
JA L1 DOMINETTE 0204X
 | JA L1 DOMINETTE 316N

HH ADVANCE 767G
 GB L1 DOM PRCS 3134
 GB L1 DOMINO 935C
 CO L1 DOMINETTE 206M
 HH ADVANCE 3113N
 CL 1 DOMINETTE 3174N
 CL 1 DOMINO 0157K
 JA L1 DOMINETTE 9233

Carcass: REA **.02** / MARB **-.01**

108

JA L1 DOMINO 2513Z

Mar. 1, 2012 • #43298802

2 YR. OLD
 Act. BW ... **81**
 EPDs:
 BW **3.5**
 WW **40**
 YW **75**
 MILK **27**
 M&G **48**
 Eye Pigment:
 LE **0** / RE **0**

GB L1 DOMINO 175E
CO L1 DOMINO 946W
 | CO L1 DOMINETTE 523R
 CL 1 DOMINO 860U
JA L1 DOMINETTE 0722X
 | JA L1 DOMINETTE 2870M

HH ADVANCE 767G
 GB L1 DOM PRCS 3134
 GB L1 DOMINO 935C
 CO L1 DOMINETTE 206M
 CL 1 DOMINO 637S
 CL 1 DOMINETTE 5142R
 JAK L1 DOMINO H448
 JA L1 DOMINETTE 8402

Carcass: REA **.13** / MARB **.06**

109

JA L1 DOMINO 2514Z

Mar. 11, 2012 • #43298803

2 YR. OLD
Act. BW ... **76**
EPDs:
BW ... **2.1**
WW ... **35**
YW ... **64**
MILK ... **26**
M&G ... **43**
Eye Pigment:
LE **100** / RE **100**

GB L1 DOMINO 175E
CO L1 DOMINO 946W
| CO L1 DOMINETTE 523R

CL 1 DOMINO 555R
JA L1 DOMINETTE 0211X
| JA L1 DOMINETTE 2751M

Carcass: REA **-.08** / MARB **.04**

HH ADVANCE 767G
GB L1 DOM PRCS 3134
GB L1 DOMINO 935C
CO L1 DOMINETTE 206M
HH ADVANCE 3113N
CL 1 DOMINETTE 3174N
LF L1 DOMINO 605
JA L1 DOMINETTE 0107

114

JA L1 DOMINO 2739Z

Feb. 25, 2012 • #43298869

2 YR. OLD
Act. BW ... **85**
EPDs:
BW ... **3.1**
WW ... **53**
YW ... **80**
MILK ... **27**
M&G ... **53**
Eye Pigment:
LE **100** / RE **90**

CL 1 DOMINO 637S
CL 1 DOMINO 860U
| CL 1 DOMINETTE 5142R

HH ADVANCE 286M
JA L1 DOMINETTE 4652P
| JA L1 DOMINETTE 100L

Carcass: REA **.34** / MARB **-.03**

L1 DOMINO 03396
CL 1 DOMINETTE 118L
CL 1 DOMINO 1172L
CL 1 DOMINETTE 810H
HH ADVANCE 0024K
HH MS ADVANCE 752G
HH ADVANCE 767G
JA L1 DOMINETTE 9202

Top rancher bull out of our oldest 286 daughter still going strong at age 10.

110

JA L1 DOMINO 2516Z

Mar. 12, 2012 • #43298806

2 YR. OLD
Act. BW ... **79**
EPDs:
BW ... **3.8**
WW ... **37**
YW ... **71**
MILK ... **26**
M&G ... **45**
Eye Pigment:
LE **100** / RE **100**

GB L1 DOMINO 175E
CO L1 DOMINO 946W
| CO L1 DOMINETTE 523R

DH DOMINO 575
JA L1 DOMINETTE 071X
| JA L1 DOMINETTE 8320U

Carcass: REA **.08** / MARB **.07**

HH ADVANCE 767G
GB L1 DOM PRCS 3134
GB L1 DOMINO 935C
CO L1 DOMINETTE 206M
L1 DOMINO 99496
DH DOMINETTE 995
CL 1 DOMINO 638S
JA L1 DOMINETTE 6000S

115

JA L1 DOMINO 2745Z

Mar. 12, 2012 • #43298878

2 YR. OLD
Act. BW ... **85**
EPDs:
BW ... **4.0**
WW ... **55**
YW ... **95**
MILK ... **32**
M&G ... **59**
Eye Pigment:
LE **100** / RE **100**

CL 1 DOMINO 637S
CL 1 DOMINO 860U
| CL 1 DOMINETTE 5142R

CL 1 DOMINO 638S
JA L1 DOMINETTE 8319U
| JA L1 DOMINETTE 6613S

Carcass: REA **.16** / MARB **.09**

L1 DOMINO 03396
CL 1 DOMINETTE 118L
CL 1 DOMINO 1172L
CL 1 DOMINETTE 810H
L1 DOMINO 03396
CL 1 DOMINETTE 475P
HH ADVANCE 286M
JA L1 DOMINETTE 318N

Complete pigment and powerful numbers on this big 860 son. Dam has an average WWR of 111 on her three calves.

111

JA L1 DOMINO 2518Z

Apr. 22, 2012 • Unregistered

2 YR. OLD
Act. BW ... **80**
EPDs:
BW ... **2.1**
WW ... **41**
YW ... **70**
MILK ... **30**
M&G ... **51**
Eye Pigment:
LE **90** / RE **100**

GB L1 DOMINO 175E
CO L1 DOMINO 946W
| CO L1 DOMINETTE 523R

CL 1 DOMINO 638S
JA L1 DOMINETTE 0337X
| JA L1 DOMINETTE 617S

Carcass: REA **.10** / MARB **.10**

HH ADVANCE 767G
GB L1 DOM PRCS 3134
GB L1 DOMINO 935C
CO L1 DOMINETTE 206M
L1 DOMINO 03396
CL 1 DOMINETTE 475P
CL 1 DOMINO 0157K
JA L1 DOMINETTE 1801L

116

JA L1 DOMINO 2748Z

Mar. 26, 2012 • #43298881

2 YR. OLD
Act. BW ... **81**
EPDs:
BW ... **2.9**
WW ... **49**
YW ... **86**
MILK ... **29**
M&G ... **53**
Eye Pigment:
LE **10** / RE **30**

CL 1 DOMINO 637S
CL 1 DOMINO 860U
| CL 1 DOMINETTE 5142R

CL 1 DOMINO 555R
JA L1 DOMINETTE 8205U
| JA L1 DOMINETTE 6750S

Carcass: REA **.14** / MARB **.02**

L1 DOMINO 03396
CL 1 DOMINETTE 118L
CL 1 DOMINO 1172L
CL 1 DOMINETTE 810H
HH ADVANCE 3113N
CL 1 DOMINETTE 3174N
GL1 DOMINO 405L
JA L1 DOMINETTE 4108P

Big framed bull that travels well and just an 81 lb. BW.

112

JA L1 DOMINO 2700Z

Jan. 25, 2012 • #43298826

2 YR. OLD
Act. BW ... **82**
EPDs:
BW ... **3.4**
WW ... **53**
YW ... **101**
MILK ... **29**
M&G ... **56**
Eye Pigment:
LE **100** / RE **100**

CL 1 DOMINO 637S
CL 1 DOMINO 860U
| CL 1 DOMINETTE 5142R

CL 1 DOMINO 0157K
JA L1 DOMINETTE 633S
| JA L1 DOMINETTE 1206L

Carcass: REA **.19** / MARB **.05**

L1 DOMINO 03396
CL 1 DOMINETTE 118L
CL 1 DOMINO 1172L
CL 1 DOMINETTE 810H
HH ADVANCE 767G
CL 1 DOMINETTE 861H
CL 1 DOMINO 484
JA L1 DOMINETTE 6419

Full of performance, Lot 112 is a twin raised by his own dam. Dam 633 milks well ... we let her keep both calves and she weaned off 1280 lbs. with no supplemental feed.

117

JA L1 DOMINO 2752Z

Apr. 26, 2012 • #43298885

2 YR. OLD
Act. BW ... **85**
EPDs:
BW ... **4.8**
WW ... **58**
YW ... **102**
MILK ... **28**
M&G ... **57**
Eye Pigment:
LE **60** / RE **100**

CL 1 DOMINO 637S
CL 1 DOMINO 860U
| CL 1 DOMINETTE 5142R

CL 1 DOMINO 560R
JA L1 DOMINETTE 8822U
| JA L1 DOMINETTE 3769N

Carcass: REA **.26** / MARB **.01**

L1 DOMINO 03396
CL 1 DOMINETTE 118L
CL 1 DOMINO 1172L
CL 1 DOMINETTE 810H
CL 1 DOMINO 3162N
CL 1 DOMINETTE 118L
CL1 DOMINO 1168L
JA L1 DOMINETTE 0204

Solid rancher bull that will get big, but stay sound.

113

JA L1 DOMINO 2736Z

Feb. 20, 2012 • #43298866

2 YR. OLD
Act. BW ... **90**
EPDs:
BW ... **4.8**
WW ... **58**
YW ... **106**
MILK ... **29**
M&G ... **58**
Eye Pigment:
LE **100** / RE **100**

CL 1 DOMINO 637S
CL 1 DOMINO 860U
| CL 1 DOMINETTE 5142R

CL 1 DOMINO 555R
JA L1 DOMINETTE 7212T
| JA L1 DOMINETTE 4270P

Carcass: REA **.26** / MARB **-.01**

L1 DOMINO 03396
CL 1 DOMINETTE 118L
CL 1 DOMINO 1172L
CL 1 DOMINETTE 810H
HH ADVANCE 3113N
CL 1 DOMINETTE 3174N
JA L1 DOMINO 0224
JA L1 DOMINETTE 3567

118

JA L1 DOMINO 2753Z

Apr. 25, 2012 • #43298880

2 YR. OLD
Act. BW ... **80**
EPDs:
BW ... **2.7**
WW ... **52**
YW ... **95**
MILK ... **31**
M&G ... **57**
Eye Pigment:
LE **100** / RE **100**

CL 1 DOMINO 637S
CL 1 DOMINO 860U
| CL 1 DOMINETTE 5142R

CL 1 DOMINO 555R
JA L1 DOMINETTE 7206T
| JA L1 DOMINETTE 4461P

Carcass: REA **.15** / MARB **.06**

L1 DOMINO 03396
CL 1 DOMINETTE 118L
CL 1 DOMINO 1172L
CL 1 DOMINETTE 810H
HH ADVANCE 3113N
CL 1 DOMINETTE 3174N
JA L1 DOMINO 1424L
JA L1 DOMINETTE 216M

We really like the 860 x 555 cross. Low birth weight bull with power in the growth numbers and maternal strength.

TWO YEAR OLD BULLS...



©JAY GEORGE
LOT 117
Sire: CL1 Domino 860U
BW 4.8 WW 58 YW 102 MILK 28 M&G 57



©JAY GEORGE
LOT 118
Sire: CL1 Domino 860U
BW 2.7 WW 52 YW 95 MILK 31 M&G 57



©JAY GEORGE
LOT 119
Sire: CL1 Domino 860U
BW 3.0 WW 56 YW 98 MILK 26 M&G 55



©JAY GEORGE
LOT 120
Sire: JA L1 Domino 9800W
BW 2.7 WW 52 YW 80 MILK 27 M&G 53

119

JA L1 DOMINO 2754Z

Apr. 25, 2012 • #43298886

2 YR. OLD

Act. BW ... **83**

EPDs:

BW **3.0**

WW **56**

YW **98**

MILK **26**

M&G **55**

Eye Pigment:

LE **100** / RE **100**

CL 1 DOMINO 637S

CL 1 DOMINO 860U

CL 1 DOMINETTE 5142R

HH ADVANCE 286M

JA L1 DOMINETTE 5625R

JA L1 DOMINETTE 2502M

Carcass: REA **.37** / MARB **.04**

L1 DOMINO 03396
CL 1 DOMINETTE 118L
CL 1 DOMINO 1172L
CL 1 DOMINETTE 810H
HH ADVANCE 0024K
HH MS ADVANCE 752G
CL 1 DOMINO 7176G
JA L1 DOMINETTE 6253

Dam is one of my favorite cows with a near perfect udder. Delbert Swihart is using a son.

120

JA L1 DOMINO 2801Z

Feb. 27, 2012 • #43298888

2 YR. OLD

Act. BW ... **86**

EPDs:

BW **2.7**

WW **52**

YW **80**

MILK **27**

M&G **53**

Eye Pigment:

LE **100** / RE **80**

CL 1 DOMINO 555R

JA L1 DOMINO 9800W

JA L1 DOMINETTE 4152P

CL 1 DOMINO 555R

JA L1 DOMINETTE 7213T

JA L1 DOMINETTE 4203P

Carcass: REA **.11** / MARB **-.04**

HH ADVANCE 3113N
CL 1 DOMINETTE 3174N
DH DOMINO 6150
JA L1 DOMINETTE 6815
HH ADVANCE 3113N
CL 1 DOMINETTE 3174N
JA L1 DOMINO 9213
JA L1 DOMINETTE 6560

Thick and full of beef. Dam is our oldest 555 daughter and an outstanding cow with an avg. WWR 110 on 4 calves.

121

JA L1 DOMINO 2811Z

Apr. 24, 2012 • #43298900

2 YR. OLD

Act. BW ... **84**

EPDs:

BW **2.1**

WW **46**

YW **71**

MILK **22**

M&G **45**

Eye Pigment:

LE **100** / RE **100**

CL 1 DOMINO 555R

JA L1 DOMINO 9800W

JA L1 DOMINETTE 4152P

HH ADVANCE 286M

JA L1 DOMINETTE 7629T

JA L1 DOMINETTE 1419L

Carcass: REA **.13** / MARB **-.01**

HH ADVANCE 3113N
CL 1 DOMINETTE 3174N
DH DOMINO 6150
JA L1 DOMINETTE 6815
HH ADVANCE 0024K
HH MS ADVANCE 752G
HH ADVANCE 8012H
JA L1 DOMINETTE 8404

Complete pigment and a thick made solid prospect.

122

JA L1 DOMINO 2812Z

May 2, 2012 • #43298901

2 YR. OLD

Act. BW ... **73**

EPDs:

BW **1.9**

WW **40**

YW **70**

MILK **25**

M&G **45**

Eye Pigment:

LE **10** / RE **100**

HH ADVANCE 3113N

CL 1 DOMINO 555R

CL 1 DOMINETTE 3174N

JA L1 DOMINO 1424L

JA L1 DOMINETTE 4468P

JA L1 DOMINETTE 214M

Carcass: REA **-.09** / MARB **.01**

L1 DOMINO 99496
HH MS ADV 875H
CL 1 DOMINO 9126J
CL 1 DOMINETTE 810H
HH ADVANCE 8012H
JA L1 DOMINETTE 8437
CL 1 DOMINO 0157K
JA L1 DOMINETTE 9254

123

JA L1 DOMINO 2813Z

May 30, 2012 • #43324727

2 YR. OLD

Act. BW ... **76**

EPDs:

BW **2.1**

WW **47**

YW **76**

MILK **25**

M&G **49**

Eye Pigment:

LE **100** / RE **80**

CL 1 DOMINO 555R

JA L1 DOMINO 9800W

JA L1 DOMINETTE 4152P

CL 1 DOMINO 9126J

JA L1 DOMINETTE 465P

JA L1 DOMINETTE 1282L

Carcass: REA **.12** / MARB **-.02**

HH ADVANCE 3113N
CL 1 DOMINETTE 3174N
DH DOMINO 6150
JA L1 DOMINETTE 6815
HH ADVANCE 767G
CL 1 DOMINETTE 490
CL 1 DOMINO 484
JA L1 DOMINETTE 650

Dam is freckle-faced with a beautiful udder.

TWO YEAR OLD BULLS...

124

JA L1 DOMINO 2910Z

Feb. 15, 2012 • #43298904

2 YR. OLD
Act. BW **86**
EPDs:
BW **2.7**
WW **47**
YW **84**
MILK **21**
M&G **44**
Eye Pigment:
LE **80** / RE **90**

GB L1 DOMINO 471H
GB L1 DOMINO 6134K
| GB L1 DOM PRCS 4103H

GB L1 DOMINO 1144E
GB L1 DOM PRCS 1139E
CL 1 DOMINO 9126J
GB L1 DOM PRCS 626
GB L1 DOMINO 3100
GB L1 DOMINO 2173
CL 1 DOMINO 484
JA L1 DOMINETTE 7721

GB L1 DOMINO 808A
JA L1 DOMINETTE 4810P
| JA L1 DOMINETTE 0221

Carcass: REA **.05** / MARB **.14**

125

JA L1 DOMINO 2421Z

Jan. 30, 2012 • #43298080

2 YR. OLD
Act. BW **80**
EPDs:
BW **2.1**
WW **50**
YW **76**
MILK **32**
M&G **56**
Eye Pigment:
LE **100** / RE **100**

CL 1 DOMINO 732T
CL 1 DOMINO 9125W
| CL 1 DOMINETTE 475P

CL 1 DOMINO 590R
CL 1 DOMINETTE 507R
CL 1 DOMINO 824H
CL 1 DOMINETTE 200M
CL 1 DOMINO 166
HH MISS ADV 7011W
HH ADVANCE 388C
JA L1 DOMINETTE 0120

DH DOMINO 6150
JA L1 DOMINETTE 4152P
| JA L1 DOMINETTE 6815

Carcass: REA **.06** / MARB **.08**

126

JA L1 DOMINO 271Z ET

Jan. 26, 2012 • #43324953

2 YR. OLD
Act. BW **76**
EPDs:
BW **1.9**
WW **51**
YW **93**
MILK **30**
M&G **56**
Eye Pigment:
LE **80** / RE **100**

CL 1 DOMINO 637S
CL 1 DOMINO 955W
| CL 1 DOMINETTE 5152R

L1 DOMINO 0339E
CL 1 DOMINETTE 118L
CL 1 DOMINO 3162N
CL 1 DOMINETTE 392N
HH ADVANCE 767G
CL 1 DOMINETTE 861H
CL 1 DOMINO 484
JA L1 DOMINETTE 6257

CL 1 DOMINO 0157K
JA L1 DOMINETTE 705T
| JA L1 DOMINETTE 9202

Carcass: REA **.21** / MARB **.08**

An ET bull from Jon Miller, Lot 126 carries extra thickness and is an easy keeper that travels well.

127

BT L1 DOMINO 2001

Feb. 10, 2012 • #43310134

2 YR. OLD
Act. BW **78**
EPDs:
BW **1.2**
WW **48**
YW **81**
MILK **21**
M&G **44**
Eye Pigment:
LE **50** / RE **50**

JA L1 DOMINO 6001S
JA L1 DOMINO 8000U
| JA L1 DOMINETTE 460P

GB L1 DOMINO 935C
JA L1 DOMINETTE 0212
CL 1 DOMINO 9126J
JA L1 DOMINETTE 2003M
HH ADVANCE 0024K
HH MS ADVANCE 752G
CL 1 DOMINO 484
JA L1 DOMINETTE 6459

HH ADVANCE 286M
JA L1 DOMINETTE 7611T
| JA L1 DOMINETTE 9238

Carcass: REA **.34** / MARB **.09**

128

BT L1 DOMINO 2003

Feb. 12, 2012 • #43310142

2 YR. OLD
Act. BW **87**
EPDs:
BW **3.3**
WW **47**
YW **62**
MILK **25**
M&G **49**
Eye Pigment:
LE **100** / RE **80**

JA L1 DOMINO 6001S
JA L1 DOMINO 8000U
| JA L1 DOMINETTE 460P

GB L1 DOMINO 935C
JA L1 DOMINETTE 0212
CL 1 DOMINO 9126J
JA L1 DOMINETTE 2003M
HH ADVANCE 3113N
CL 1 DOMINETTE 3174N
HH ADVANCE 286M
JA L1 DOMINETTE 3808N

CL 1 DOMINO 555R
JA L1 DOMINETTE 0225X
| JA L1 DOMINETTE 6602S

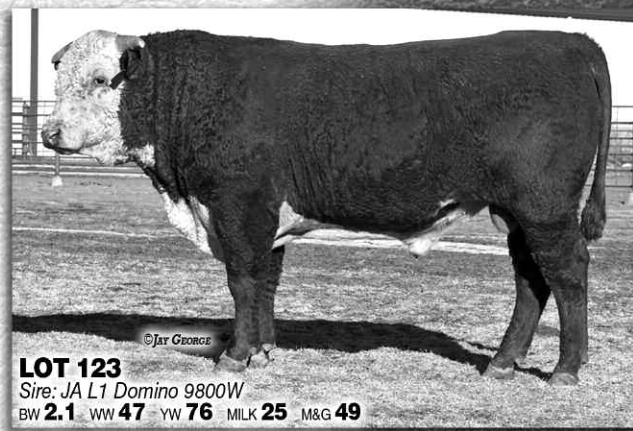
Carcass: REA **.09** / MARB **-.02**



LOT 121
Sire: JA L1 Domino 9800W
BW **2.1** WW **46** YW **71** MILK **22** M&G **45**



LOT 122
Sire: CL1 Domino 555R
BW **1.9** WW **40** YW **70** MILK **25** M&G **45**



LOT 123
Sire: JA L1 Domino 9800W
BW **2.1** WW **47** YW **76** MILK **25** M&G **49**



LOT 125
Sire: CL1 Domino 9125W
BW **2.1** WW **50** YW **76**
MILK **32** M&G **56**

TWO YEAR OLD BULLS...



LOT 126

Sire: CL1 Domino 955W

BW **1.9** WW **53** YW **91** MILK **30** M&G **56**



LOT 128

Sire: JA L1 Domino 8000U

BW **3.3** WW **47** YW **62** MILK **25** M&G **49**



LOT 129

Sire: JA L1 Domino 8000U

BW **1.3** WW **37** YW **50** MILK **22** M&G **40**



Herd sire JA L1 Domino 7640T
...a Calving-Ease Performance Sire!

129

BT L1 DOMINO 2011

Feb. 25, 2012 • #43310124

2 YR. OLD

Act. BW ... **75**

EPDs:

BW ... **1.3**

WW ... **37**

YW ... **50**

MILK ... **22**

M&G ... **40**

Eye Pigment:

LE **80** / RE **80**

JA L1 DOMINO 6001S

JA L1 DOMINO 8000U

JA L1 DOMINETTE 460P

JA L1 DOMINO 5617R

BT L1 DOMINETTE 9660

JA L1 DOMINETTE 8437

Carcass: REA **-.04** / MARB **.00**

GB L1 DOMINO 935C
JA L1 DOMINETTE 0212
CL 1 DOMINO 9126J
JA L1 DOMINETTE 2003M
HH ADVANCE 286M
JA L1 DOMINETTE 204M
HH ADVANCE 400D
JA L1 DOMINETTE 5514

130

BT L1 DOMINO 2013

Mar. 3, 2012 • #43310128

2 YR. OLD

Act. BW ... **76**

EPDs:

BW ... **1.7**

WW ... **46**

YW ... **73**

MILK ... **20**

M&G ... **43**

Eye Pigment:

LE **10** / RE **60**

JA L1 DOMINO 6001S

JA L1 DOMINO 8000U

JA L1 DOMINETTE 460P

HH ADVANCE 286M

BT L1 DOMINETTE 8630

JA L1 DOMINETTE 8404

Carcass: REA **.18** / MARB **.05**

GB L1 DOMINO 935C
JA L1 DOMINETTE 0212
CL 1 DOMINO 9126J
JA L1 DOMINETTE 2003M
HH ADVANCE 0024K
HH MS ADVANCE 752G
HH ADVANCE 400D
JA L1 DOMINETTE 5601

131

BT L1 DOMINO 2014

Mar. 3, 2012 • #43310131

2 YR. OLD

Act. BW ... **83**

EPDs:

BW ... **2.5**

WW ... **48**

YW ... **76**

MILK ... **24**

M&G ... **48**

Eye Pigment:

LE **90** / RE **60**

JA L1 DOMINO 6001S

JA L1 DOMINO 8000U

JA L1 DOMINETTE 460P

JA L1 DOMINO 5617R

BT L1 DOMINETTE 8606

ER L1 DOMINETTE M026

Carcass: REA **.19** / MARB **.03**

GB L1 DOMINO 935C
JA L1 DOMINETTE 0212
CL 1 DOMINO 9126J
JA L1 DOMINETTE 2003M
HH ADVANCE 286M
JA L1 DOMINETTE 204M
CL 1 DOMINO 0167K
ER L1 DOMINETTE 0190K

132

BT L1 DOMINO 2017

Mar. 7, 2012 • #43310137

2 YR. OLD

Act. BW ... **87**

EPDs:

BW ... **3.2**

WW ... **43**

YW ... **72**

MILK ... **22**

M&G ... **43**

Eye Pigment:

LE **80** / RE **90**

JA L1 DOMINO 6001S

JA L1 DOMINO 8000U

JA L1 DOMINETTE 460P

RH DOMINO 6008

BT L1 DOMINETTE 7017

BT MS DOMINETTE 590

Carcass: REA **.13** / MARB **.01**

GB L1 DOMINO 935C
JA L1 DOMINETTE 0212
CL 1 DOMINO 9126J
JA L1 DOMINETTE 2003M
L1 DOMINO 910282
HH MISS ADVANCE 922Y
GL1 DOMINO 6012A
BT L1 DOMINETTE 314

133

BT L1 DOMINO 2018

Mar. 7, 2012 • #43310133

2 YR. OLD

Act. BW ... **85**

EPDs:

BW ... **3.0**

WW ... **55**

YW ... **100**

MILK ... **25**

M&G ... **52**

Eye Pigment:

LE **30** / RE **50**

JA L1 DOMINO 6001S

JA L1 DOMINO 8000U

JA L1 DOMINETTE 460P

CL 1 DOMINO 4134P

BT L1 DOMINETTE 8504

JA L1 DOMINETTE 9238

Carcass: REA **.40** / MARB **.13**

GB L1 DOMINO 935C
JA L1 DOMINETTE 0212
CL 1 DOMINO 9126J
JA L1 DOMINETTE 2003M
CL 1 DOMINO 9126J
CL 1 DOMINETTE 8104H
CL 1 DOMINO 484
JA L1 DOMINETTE 6459

134

BT L1 DOMINO 2019

Mar. 11, 2012 • #43310139

2 YR. OLD
Act. BW **80**
EPDs:
BW **3.1**
WW **51**
YW **95**
MILK **26**
M&G **52**
Eye Pigment:
LE **100** / RE **90**

JA L1 DOMINO 6001S
JA L1 DOMINO 8000U
| JA L1 DOMINETTE 460P

CL 1 DOMINO 860U
BT L1 DOMINETTE 0710
| JA L1 DOMINETTE 8527U
Carcass: REA **.29** / MARB **.10**

GB L1 DOMINO 935C
JA L1 DOMINETTE 0212
CL 1 DOMINO 9126J
JA L1 DOMINETTE 2003M
CL 1 DOMINO 637S
CL 1 DOMINETTE 5142R
CL 1 DOMINO 4134P
JA L1 DOMINETTE 204M

139

L1 HARMONY 221Z

Mar. 6, 2012 • #43277810

2 YR. OLD
Act. BW **88**
EPDs:
BW **3.2**
WW **48**
YW **76**
MILK **24**
M&G **48**
Eye Pigment:
LE **100** / RE **100**

CL 1 DOMINO 0157K
JA L1 DOMINO 719T
| JA L1 DOMINETTE 0008

JA L1 DOMINO 5778R
L1 MS HARMONY 904W
| L1 MS HARMONY 737T
Carcass: REA **-.04** / MARB **.07**

HH ADVANCE 767G
CL 1 DOMINETTE 861H
CL 1 DOMINO 6129F
JA L1 DOMINETTE 7410
CL 1 DOMINO 965J
JA L1 DOMINETTE 200M
JA L1 DOMINO 005
L1 MISS HARMONY 116

135

L1 HARMONY 201Z

Feb. 6, 2012 • #43277800

2 YR. OLD
Act. BW **62**
EPDs:
BW **-1.1**
WW **40**
YW **66**
MILK **23**
M&G **43**
Eye Pigment:
LE **70** / RE **90**

CL 1 DOMINO 555R
JA L1 DOMINO 9208W
| JA L1 DOMINETTE 432P

JA L1 DOMINO 801U
L1 MS HARMONY 015X
| L1 MS HARMONY 301
Carcass: REA **.10** / MARB **.07**

HH ADVANCE 3113N
CL 1 DOMINETTE 3174N
CL 1 DOMINO 0157K
JA L1 DOMINETTE 1223L
JA L1 DOMINO 426P
JA L1 DOMINETTE 5625R
JA L1 DOMINO 005
L1 MISS HARMONY 115

140

L1 HARMONY 223Z

Mar. 6, 2012 • #43277807

2 YR. OLD
Act. BW **83**
EPDs:
BW **3.3**
WW **45**
YW **76**
MILK **24**
M&G **46**
Eye Pigment:
LE **90** / RE **80**

CL 1 DOMINO 555R
JA L1 DOMINO 9208W
| JA L1 DOMINETTE 432P

JA L1 DOMINO 719T
L1 MS HARMONY 035X
| L1 MISS HARMONY 125
Carcass: REA **.09** / MARB **.01**

HH ADVANCE 3113N
CL 1 DOMINETTE 3174N
CL 1 DOMINO 0157K
JA L1 DOMINETTE 1223L
CL 1 DOMINO 0157K
JA L1 DOMINETTE 0008
L1 HARMONY 714
L1 MISS HARMONY 629

136

L1 HARMONY 202Z

Feb. 17, 2012 • #43277830

2 YR. OLD
Act. BW **79**
EPDs:
BW **0.9**
WW **41**
YW **57**
MILK **24**
M&G **45**
Eye Pigment:
LE **10** / RE **80**

CL 1 DOMINO 0157K
JA L1 DOMINO 719T
| JA L1 DOMINETTE 0008

JA L1 DOMINO 5778R
L1 MS HARMONY 850U
| L1 MS HARMONY 537R
Carcass: REA **-.04** / MARB **.07**

HH ADVANCE 767G
CL 1 DOMINETTE 861H
CL 1 DOMINO 6129F
JA L1 DOMINETTE 7410
CL 1 DOMINO 965J
JA L1 DOMINETTE 200M
JA L1 DOMINO 005
L1 MISS HARMONY 132

141

L1 HARMONY 224Z

Mar. 8, 2012 • #43277823

2 YR. OLD
Act. BW **90**
EPDs:
BW **3.4**
WW **42**
YW **64**
MILK **23**
M&G **44**
Eye Pigment:
LE **70** / RE **50**

CL 1 DOMINO 0157K
JA L1 DOMINO 719T
| JA L1 DOMINETTE 0008

L1 HARMONY 515R
L1 MS HARMONY 721T
| L1 MS HARMONY 530R
Carcass: REA **.00** / MARB **.01**

HH ADVANCE 767G
CL 1 DOMINETTE 861H
CL 1 DOMINO 6129F
JA L1 DOMINETTE 7410
JA L1 DOMINO 005
L1 MS HARMONY 216
JA L1 DOMINO 2615M
L1 MISS HARMONY 118

137

L1 HARMONY 207Z

Feb. 22, 2012 • #43277488

2 YR. OLD
Act. BW **79**
EPDs:
BW **2.9**
WW **56**
YW **88**
MILK **28**
M&G **56**
Eye Pigment:
LE **100** / RE **100**

CL 1 DOMINO 555R
JA L1 DOMINO 9208W
| JA L1 DOMINETTE 432P

CL 1 DOMINO 860U
L1 MS HARMONY 011X
| JA L1 DOMINETTE 8535U
Carcass: REA **.26** / MARB **.02**

HH ADVANCE 3113N
CL 1 DOMINETTE 3174N
CL 1 DOMINO 0157K
JA L1 DOMINETTE 1223L
CL 1 DOMINO 637S
CL 1 DOMINETTE 5142R
CL 1 DOMINO 4134P
JA L1 DOMINETTE 2536M

142

L1 HARMONY 226Z

Mar. 10, 2012 • #43277801

2 YR. OLD
Act. BW **70**
EPDs:
BW **0.3**
WW **45**
YW **85**
MILK **23**
M&G **46**
Eye Pigment:
LE **100** / RE **5**

JA L1 DOMINO 426P
JA L1 DOMINO 801U
| JA L1 DOMINETTE 5625R

JA L1 DOMINO 7640T
L1 MS HARMONY 017X
| L1 MS HARMONY 638S
Carcass: REA **.28** / MARB **.12**

CL 1 DOMINO 0157K
JA L1 DOMINETTE 7070
HH ADVANCE 286M
JA L1 DOMINETTE 2502M
HH ADVANCE 286M
JAL L1 DOMINETTE 1409L
JA L1 DOMINO 005
L1 MISS HARMONY 733

138

L1 HARMONY 211Z

Feb. 26, 2012 • #43277802

2 YR. OLD
Act. BW **83**
EPDs:
BW **4.5**
WW **54**
YW **92**
MILK **22**
M&G **49**
Eye Pigment:
LE **80** / RE **90**

CL 1 DOMINO 555R
JA L1 DOMINO 9208W
| JA L1 DOMINETTE 432P

JA L1 DOMINO 719T
L1 MS HARMONY 021X
| L1 MS HARMONY 648S
Carcass: REA **.29** / MARB **.00**

HH ADVANCE 3113N
CL 1 DOMINETTE 3174N
CL 1 DOMINO 0157K
JA L1 DOMINETTE 1223L
CL 1 DOMINO 0157K
JA L1 DOMINETTE 0008
JA L1 DOMINO 2615M
L1 MISS HARMONY 321

143

L1 HARMONY 227Z

Mar. 11, 2012 • #43277821

2 YR. OLD
Act. BW **80**
EPDs:
BW **2.7**
WW **38**
YW **62**
MILK **22**
M&G **41**
Eye Pigment:
LE **70** / RE **70**

JA L1 DOMINO 8801U
L1 HARMONY 020X
| L1 MS HARMONY 432

L1 HARMONY 510R
L1 MS HARMONY 708T
| L1 MS HARMONY 447P
Carcass: REA **-.04** / MARB **.02**

CL 1 DOMINO 555R
JA L1 DOMINETTE 3264N
JA L1 DOMINO 9004
L1 MISS HARMONY 125
JA L1 DOMINO 2615M
L1 MISS HARMONY 259
JA L1 DOMINO 005
L1 MISS HARMONY 152

144

L1 HARMONY 231Z

Mar. 21, 2012 • #43277808

2 YR. OLD
 Act. BW ... **68**
 EPDs:
 BW ... **0.5**
 WW ... **47**
 YW ... **91**
 MILK ... **23**
 M&G ... **47**
 Eye Pigment:
 LE **90** / RE **90**

JA L1 DOMINO 426P
JA L1 DOMINO 801U
 | JA L1 DOMINETTE 5625R
 JA L1 DOMINO 8801U
L1 MS HARMONY 038X
 | JA L1 DOMINETTE 710T

Carcass: REA **.19** / MARB **.06**

CL 1 DOMINO 0157K
 JA L1 DOMINETTE 7070
 HH ADVANCE 286M
 JA L1 DOMINETTE 2502M
 CL 1 DOMINO 555R
 JA L1 DOMINETTE 3264N
 CL 1 DOMINO 0157K
 JA L1 DOMINETTE 5772R

149

CO L1 DOMINO 220Z

Mar. 16, 2012 • #43280615

2 YR. OLD
 Act. BW ... **75**
 EPDs:
 BW ... **0.3**
 WW ... **33**
 YW ... **44**
 MILK ... **23**
 M&G ... **39**
 Eye Pigment:
 LE **50** / RE **100**

CL 1 DOMINO 7139T
CL 1 DOMINO 065X
 | CL 1 DOMINETTE 5142R
 GB L1 DOMINO 168E
CO L1 DOMINETTE 405P
 | HH MISS ADVANCE 0117K

Carcass: REA **-.04** / MARB **.01**

PAP score: 37. This bull should work on heifers.

CL 1 DOMINO 590R
 CL 1 DOMINETTE 530R
 CL 1 DOMINO 1172L
 CL 1 DOMINETTE 810H
 GB L1 DOMINO 935C
 GB L1 DOM PRCS 960C
 HH ADVANCE 8060H
 MONTANA MISS 708

145

L1 HARMONY 234Z

Mar. 25, 2012 • #43277806

2 YR. OLD
 Act. BW ... **83**
 EPDs:
 BW ... **3.9**
 WW ... **54**
 YW ... **107**
 MILK ... **21**
 M&G ... **48**
 Eye Pigment:
 LE **80** / RE **80**

JA L1 DOMINO 426P
JA L1 DOMINO 801U
 | JA L1 DOMINETTE 5625R
 JA L1 DOMINO 8801U
L1 MS HARMONY 030X
 | L1 MS HARMONY 323

Carcass: REA **.26** / MARB **.06**

CL 1 DOMINO 0157K
 JA L1 DOMINETTE 7070
 HH ADVANCE 286M
 JA L1 DOMINETTE 2502M
 CL 1 DOMINO 555R
 JA L1 DOMINETTE 3264N
 JA L1 DOMINO 9004
 L1 MISS HARMONY 801

150

CO L1 DOMINO 223Z

Mar. 19, 2012 • #43280564

2 YR. OLD
 Act. BW ... **80**
 EPDs:
 BW ... **1.4**
 WW ... **45**
 YW ... **62**
 MILK ... **19**
 M&G ... **42**
 Eye Pigment:
 LE **100** / RE **100**

CL 1 DOMINO 7128T
HH ADVANCE 0118X
 | HH MISS ADVANCE 6074S
 RH DOMINO 6050
CO L1 DOMINETTE 967W
 | CO L1 DOMINETTE 501R

Carcass: REA **.19** / MARB **.04**

PAP score: 46

HH ADVANCE 3113N
 CL 1 DOMINETTE 0112K
 CL 1 DOMINO 2136M
 HH MS ADVANCE 1013L
 XP L1 DOMINO 00063
 RH DOMINETTE 1059
 KB CENTURION 388
 MONTANA MISS 058

146

L1 HARMONY 239Z

Apr. 21, 2012 • #43277820

2 YR. OLD
 Act. BW ... **86**
 EPDs:
 BW ... **4.8**
 WW ... **44**
 YW ... **72**
 MILK ... **26**
 M&G ... **48**
 Eye Pigment:
 LE **100** / RE **100**

JA L1 DOMINO 8801U
L1 HARMONY 020X
 | L1 MS HARMONY 432
 JA L1 DOMINO 005
L1 MS HARMONY 649S
 | L1 MS HARMONY 162

Carcass: REA **.01** / MARB **-.03**

CL 1 DOMINO 555R
 JA L1 DOMINETTE 3264N
 JA L1 DOMINO 9004
 L1 MISS HARMONY 125
 HH ADVANCE 767G
 JA L1 DOMINETTE 8211
 CHURCHILL BLAZE 6110
 CH L1 DOMINETTE 8169

151

CO L1 DOMINO 233Z

Mar. 22, 2012 • #43280627

2 YR. OLD
 Act. BW ... **72**
 EPDs:
 BW ... **0.8**
 WW ... **41**
 YW ... **68**
 MILK ... **28**
 M&G ... **48**
 Eye Pigment:
 LE **50** / RE **100**

CL 1 DOMINO 7139T
CL 1 DOMINO 065X
 | CL 1 DOMINETTE 5142R
 GB L1 DOMINO 471H
CO L1 DOMINETTE 038X
 | CO L1 DOMINETTE 730T

Carcass: REA **.01** / MARB **.12**

PAP score: 37. Good PAP score on this heifer bull prospect. Dam has a great udder.

CL 1 DOMINO 590R
 CL 1 DOMINETTE 530R
 CL 1 DOMINO 1172L
 CL 1 DOMINETTE 810H
 GB L1 DOMINO 1144E
 GB L1 DOM PRCS 1139E
 CL 1 DOMINO 3147N
 CO L1 DOMINETTE 512R

147

CO L1 DOMINO 209Z

Mar. 7, 2012 • #43280639

2 YR. OLD
 Act. BW ... **80**
 EPDs:
 BW ... **2.8**
 WW ... **49**
 YW ... **70**
 MILK ... **28**
 M&G ... **52**
 Eye Pigment:
 LE **100** / RE **40**

CL 1 DOMINO 7139T
CL 1 DOMINO 065X
 | CL 1 DOMINETTE 5142R
 GB L1 DOMINO 471H
CO L1 DOMINETTE 005X
 | CO L1 DOMINETTE 821U

Carcass: REA **.02** / MARB **.08**

PAP score: 36. A bull you can send to the top of the mountain.

CL 1 DOMINO 590R
 CL 1 DOMINETTE 530R
 CL 1 DOMINO 1172L
 CL 1 DOMINETTE 810H
 GB L1 DOMINO 1144E
 GB L1 DOM PRCS 1139E
 GB L1 DOMINO 647K
 CO L1 DOMINETTE 521R

152

CO L1 DOMINO 238Z

Mar. 24, 2012 • #43280563

2 YR. OLD
 Act. BW ... **88**
 EPDs:
 BW ... **3.7**
 WW ... **50**
 YW ... **87**
 MILK ... **23**
 M&G ... **49**
 Eye Pigment:
 LE **80** / RE **100**

CL 1 DOMINO 7128T
HH ADVANCE 0118X
 | HH MISS ADVANCE 6074S
 GB L1 DOMINO 175E
CO L1 DOMINETTE 969W
 | JA L1 DOMINETTE 9209

Carcass: REA **.20** / MARB **.03**

PAP score: 37. Nice 0118 son out of a top 175E daughter that has a gorgeous udder.

HH ADVANCE 3113N
 CL 1 DOMINETTE 0112K
 CL 1 DOMINO 2136M
 HH MS ADVANCE 1013L
 HH ADVANCE 767G
 GB L1 DOM PRCS 3134
 CL 1 DOMINO 484
 JA L1 DOMINETTE 6700

148

CO L1 DOMINO 212Z

Mar. 12, 2012 • #43280555

2 YR. OLD
 Act. BW ... **90**
 EPDs:
 BW ... **4.2**
 WW ... **44**
 YW ... **77**
 MILK ... **27**
 M&G ... **49**
 Eye Pigment:
 LE **100** / RE **100**

HH ADVANCE 7101T
HH ADVANCE 9075W
 | HH MS ADVANCE 1028L
 L1 DOMINO 99496
CO L1 DOMINETTE 703T
 | HH MS ADVANCE 2214M

Carcass: REA **.46** / MARB **.04**

PAP score: 36. Rugged made with an excellent PAP score.

HH ADVANCE 4140P
 HH MS ADVANCE 112L
 HH ADVANCE 6052F
 HH MS ADVANCE 731G
 L1 DOMINO 97349
 L1 DOMINETTE 95369
 CL 1 DOMINO 824H
 HH MS ADVANCE 9066J

153

CO L1 DOMINO 239Z

Mar. 25, 2012 • #43289056

2 YR. OLD
 Act. BW ... **80**
 EPDs:
 BW ... **1.9**
 WW ... **38**
 YW ... **68**
 MILK ... **20**
 M&G ... **39**
 Eye Pigment:
 LE **90** / RE **80**

CL 1 DOMINO 824H
HH ADVANCE 0024K
 | HH MS ADVANCE 894H
 HH ADVANCE 216M
CO L1 DOMINETTE 541R
 | CO L1 DOMINETTE 202M

Carcass: REA **.30** / MARB **-.10**

PAP score: 42. A son of the old 0024 Holden bull and out of a easy keeping 216M daughter.

CL 1 DOMINO 640F
 CL 1 DOMINETTE 6148F
 CL 1 DOMINO 403
 HH MS ADV 4045D
 HH ADVANCE 836H
 HH MS ADVANCE 621F
 GB L1 DOMINO 017D
 CO L1 DOMINETTE 68

154

CO L1 DOMINO 241Z

Mar. 26, 2012 • #43280588

2 YR. OLD
Act. BW **87**
EPDs:
BW **4.1**
WW **44**
YW **81**
MILK **24**
M&G **45**

Eye Pigment:
LE **80** / RE **100**

HH ADVANCE 7101T
HH ADVANCE 9075W
| HH MS ADVANCE 1028L

L1 DOMINO 99496
CO L1 DOMINETTE 808U
| CO L1 DOMINETTE 533R

Carcass: REA **.42** / MARB **.09**

PAP score: 37. Clean fronted, well muscled 9075 son out of a 99496 daughter with a great udder.

HH ADVANCE 4140P
HH MS ADVANCE 1121L
HH ADVANCE 6052F
HH MS ADVANCE 731G
L1 DOMINO 97349
L1 DOMINETTE 95369
GB L1 DOMINO 935C
CO L1 DOMINETTE 801

159

CO L1 DOMINO 254Z

Apr. 5, 2012 • #43280613

2 YR. OLD
Act. BW **80**
EPDs:
BW **0.9**
WW **42**
YW **68**
MILK **27**
M&G **48**

Eye Pigment:
LE **50** / RE **80**

HH ADVANCE 767G
GB L1 DOMINO 175E
| GB L1 DOM PRCS 3134

HH ADVANCE 8017H
CO L1 DOMINETTE 439P
| CO L1 DOMINETTE 913

Carcass: REA **.20** / MARB **.12**

PAP score: 37. This nice 175E son can go to the top of the mountain and breed heifers when he gets there. Out of a grand ol' 8017 daughter.

CL 1 DOMINO 500E
HH MS ADVANCE 251B
GB L1 DOMINO 159
GB L1 DOM PRCS 105
XP L1 DOMINO 90085
HH MS ADVANCE 251B
HH ADVANCE 3010C
LH ADVANCERETTE 4011

155

CO L1 DOMINO 244Z

Mar. 28, 2012 • #43280612

2 YR. OLD
Act. BW **80**
EPDs:
BW **0.2**
WW **42**
YW **74**
MILK **27**
M&G **48**

Eye Pigment:
LE **100** / RE **100**

CL 1 DOMINO 637S
CL 1 DOMINO 955W
| CL 1 DOMINETTE 5152R

CL 1 DOMINO 0157K
CO L1 DOMINETTE 503R
| JA L1 DOMINETTE 9209

Carcass: REA **.01** / MARB **.11**

PAP score: 34 on this 955 son.

L1 DOMINO 03396
CL 1 DOMINETTE 118L
CL 1 DOMINO 3162N
CL 1 DOMINETTE 392N
HH ADVANCE 767G
CL 1 DOMINETTE 861H
CL 1 DOMINO 484
JA L1 DOMINETTE 6700

160

CO L1 DOMINO 255Z

Apr. 6, 2012 • #43341900

2 YR. OLD
Act. BW **88**
EPDs:
BW **1.4**
WW **40**
YW **65**
MILK **24**
M&G **44**

Eye Pigment:
LE **100** / RE **100**

HH ADVANCE 767G
GB L1 DOMINO 175E
| GB L1 DOM PRCS 3134

XP L1 DOMINO 00063
XP L1 DOMINETTE 05048
| XP L1 DOMINETTE 00087

Carcass: REA **.16** / MARB **.13**

PAP score: 42

CL 1 DOMINO 500E
HH MS ADVANCE 251B
GB L1 DOMINO 159
GB L1 DOM PRCS 105
L1 DOMINO 95461
XP L1 DOMINETTE 93153
XP L1 DOMINO 97028
XP L1 DOMINETTE 98024

156

CO L1 DOMINO 246Z

Mar. 28, 2012 • #43280607

2 YR. OLD
Act. BW **89**
EPDs:
BW **4.2**
WW **45**
YW **66**
MILK **19**
M&G **42**

Eye Pigment:
LE **100** / RE **100**

CL 1 DOMINO 7128T
HH ADVANCE 0118X
| HH MISS ADVANCE 6074S

HH ADVANCE 216M
CO L1 DOMINETTE 603S
| CO L1 DOMINETTE 201M

Carcass: REA **.03** / MARB **-.01**

PAP score: 38

HH ADVANCE 3113N
CL 1 DOMINETTE 0112K
CL 1 DOMINO 2136M
HH MS ADVANCE 1013L
HH ADVANCE 836H
HH MS ADVANCE 621F
GB L1 DOMINO 817A
CO L1 DOMINETTE 802

161

CO L1 DOMINO 256Z

Apr. 6, 2012 • #43280575

2 YR. OLD
Act. BW **97**
EPDs:
BW **4.1**
WW **59**
YW **108**
MILK **27**
M&G **56**

Eye Pigment:
LE **100** / RE **100**

GB L1 DOMINO 534J
GB L1 DOMINO 8139M
| GB L1 DOM PRCS 4103H

GB L1 DOMINO 175E
CO L1 DOMINETTE 929W
| CO L1 DOMINETTE 619S

Carcass: REA **.27** / MARB **.06**

PAP score: 40. Rugged made 8139 son with a lot of bone. Out of a top 175E daughter.

GB L1 DOMINO 1144E
GB L1 DOM PRCS 922C
CL 1 DOMINO 9126J
GB L1 DOM PRCS 626
HH ADVANCE 767G
GB L1 DOM PRCS 3134
HH ADVANCE 216M
CO L1 DOMINETTE 312N

157

CO L1 DOMINO 247Z

Mar. 29, 2012 • #43280596

2 YR. OLD
Act. BW **85**
EPDs:
BW **2.0**
WW **50**
YW **81**
MILK **30**
M&G **55**

Eye Pigment:
LE **70** / RE **50**

HH ADVANCE 767G
GB L1 DOMINO 175E
| GB L1 DOM PRCS 3134

L1 DOMINO 99496
CO L1 DOMINETTE 711T
| CO L1 DOMINETTE 000

Carcass: REA **.29** / MARB **.09**

PAP score: 79

CL 1 DOMINO 500E
HH MS ADVANCE 251B
GB L1 DOMINO 159
GB L1 DOM PRCS 105
L1 DOMINO 97349
L1 DOMINETTE 95369
HH ADVANCE 438D
CO L1 DOMINETTE 800

162

CO L1 DOMINO 257Z

Apr. 6, 2012 • #43280571

2 YR. OLD
Act. BW **80**
EPDs:
BW **1.5**
WW **51**
YW **94**
MILK **27**
M&G **52**

Eye Pigment:
LE **50** / RE **100**

GB L1 DOMINO 534J
GB L1 DOMINO 8139M
| GB L1 DOM PRCS 4103H

GB L1 DOMINO 175E
CO L1 DOMINETTE 945W
| CO L1 DOMINETTE 405P

Carcass: REA **.26** / MARB **.07**

PAP score: 36. Excellent PAP score on this thick 8139 son.

GB L1 DOMINO 1144E
GB L1 DOM PRCS 922C
CL 1 DOMINO 9126J
GB L1 DOM PRCS 626
HH ADVANCE 767G
GB L1 DOM PRCS 3134
GB L1 DOMINO 168E
HH MISS ADVANCE 0117K

158

CO L1 DOMINO 253Z

Apr. 4, 2012 • #43280619

2 YR. OLD
Act. BW **88**
EPDs:
BW **3.3**
WW **47**
YW **84**
MILK **25**
M&G **49**

Eye Pigment:
LE **80** / RE **50**

HH ADVANCE 767G
GB L1 DOMINO 175E
| GB L1 DOM PRCS 3134

GB L1 DOMINO 168E
CO L1 DOMINETTE 312N
| CO L1 DOMINETTE 914

Carcass: REA **.22** / MARB **.06**

PAP score: 41

CL 1 DOMINO 500E
HH MS ADVANCE 251B
GB L1 DOMINO 159
GB L1 DOM PRCS 105
GB L1 DOMINO 935C
GB L1 DOM PRCS 960C
CL 1 DOMINO 166
CO L1 DOMINETTE 64

163

CO L1 DOMINO 259Z

Apr. 7, 2012 • #43280586

2 YR. OLD
Act. BW **98**
EPDs:
BW **5.6**
WW **50**
YW **88**
MILK **27**
M&G **52**

Eye Pigment:
LE **100** / RE **100**

HH ADVANCE 7101T
HH ADVANCE 9075W
| HH MS ADVANCE 1028L

L1 DOMINO 99496
CO L1 DOMINETTE 817U
| CO L1 DOMINETTE 553R

Carcass: REA **.42** / MARB **.06**

PAP score: 39

HH ADVANCE 4140P
HH MS ADVANCE 112L
HH ADVANCE 6052F
HH MS ADVANCE 731G
L1 DOMINO 97349
L1 DOMINETTE 95369
HH ADVANCE 216M
CO L1 DOMINETTE 321N

TWO YEAR OLD BULLS...



LOT 169
Sire: *HH Advance 6001S* GEORGE
BW **2.5** WW **43** YW **74**
MILK **30** M&G **52**



LOT 170
Sire: *CL1 Domino 0100X*
BW **3.8** WW **48** YW **83**
MILK **24** M&G **48**

167

CO L1 DOMINO 269Z

Apr. 24, 2012 • #43280593

2 YR. OLD
Act. BW **76**
EPDs:
BW **0.4**
WW **38**
YW **75**
MILK **24**
M&G **43**
Eye Pigment:
LE **100** / RE **90**

GB L1 DOMINO 1144E
GB L1 DOMINO 471H
| GB L1 DOM PRCS 1139E

CL 1 DOMINO 3147N
CO L1 DOMINETTE 730T
| CO L1 DOMINETTE 512R

Carcass: REA **.04** / MARB **.29**

PAP score: 39. Heifer bull prospect.

GB L1 DOMINO 935C
GB L1 DOM PRCS 9132C
HH ADVANCE 767G
GB L1 DOM PRCS 7113
CL 1 DOMINO 9126J
CL 1 DOMINETTE 8104H
GB L1 DOMINO 935C
CO L1 DOMINETTE 102L

168

CTR L1 DOMINO 202Z

Jan. 2, 2012 • #43267914

2 YR. OLD
Act. BW **85**
EPDs:
BW **2.8**
WW **46**
YW **76**
MILK **26**
M&G **49**
Eye Pigment:
LE **80** / RE **100**

HH ADVANCE 1117L
EL ADVANCE 640S
| DBH MS CHALLENGE 239H

HH ADVANCE 5212R
HH MISS ADVANCE 7105T
| HH MISS ADVANCE 4119P

Carcass: REA **.04** / MARB **.18**

HH ADVANCE 836H
HH MISS ADVANCE 339C
HH ADVANCE 872X
BR MS SUMMIT 9127
CL 1 DOMINO 206M
HH MISS ADVANCE 1028L
CL 1 DOMINO 0124K
HH MISS ADVANCE 175L

164

CO L1 DOMINO 260Z

Apr. 7, 2012 • #43280587

2 YR. OLD
Act. BW **76**
EPDs:
BW **1.3**
WW **34**
YW **64**
MILK **24**
M&G **41**
Eye Pigment:
LE **100** / RE **100**

HH ADVANCE 7101T
HH ADVANCE 9075W
| HH MS ADVANCE 1028L

L1 DOMINO 99496
CO L1 DOMINETTE 816U
| CO L1 DOMINETTE 503R

Carcass: REA **.27** / MARB **.08**

PAP score: 35

HH ADVANCE 4140P
HH MS ADVANCE 1121L
HH ADVANCE 6052F
HH MS ADVANCE 731G
L1 DOMINO 97349
L1 DOMINETTE 95369
CL 1 DOMINO 0157K
JA L1 DOMINETTE 9209

169

CTR L1 DOMINO 210Z

Jan. 15, 2012 • #43267927

2 YR. OLD
Act. BW **78**
EPDs:
BW **2.5**
WW **43**
YW **74**
MILK **30**
M&G **52**
Eye Pigment:
LE **80** / RE **90**

CL 1 DOMINO 206M
HH ADVANCE 6001S
| HH MS ADVANCE 1088L

KB L1 DOMINO 521R
KB L1 DOMINETTE 0143X
| KB L1 DOMINETTE 601

Carcass: REA **.10** / MARB **.11**

CL 1 DOMINO 9126J
CL 1 DOMINETTE 825H
CL 1 DOMINO 824H
HH MS ADVANCE 8016H
CL 1 DOMINO 3138N
MONTANA MISS 310
KB L1 DOMINO 454P
KB L1 DOMINETTE 423P

165

CO L1 DOMINO 263Z

Apr. 9, 2012 • #43280562

2 YR. OLD
Act. BW **80**
EPDs:
BW **1.2**
WW **47**
YW **83**
MILK **25**
M&G **48**
Eye Pigment:
LE **100** / RE **100**

GB L1 DOMINO 534J
GB L1 DOMINO 8139M
| GB L1 DOM PRCS 4103H

GB L1 DOMINO 175E
CO L1 DOMINETTE 974W
| CO L1 DOMINETTE 306N

Carcass: REA **.16** / MARB **.06**

PAP score: 36. Good PAP score, light birth weight and strong performance.

GB L1 DOMINO 1144E
GB L1 DOM PRCS 922C
CL 1 DOMINO 9126J
GB L1 DOM PRCS 626
HH ADVANCE 767G
GB L1 DOM PRCS 3134
GB L1 DOMINO 168E
HH MISS ADVANCE 0117K

170

CTR L1 DOMINO 212Z

Jan. 18, 2012 • #43267928

2 YR. OLD
Act. BW **88**
EPDs:
BW **3.8**
WW **48**
YW **83**
MILK **24**
M&G **48**
Eye Pigment:
LE **90** / RE **90**

CL 1 DOMINO 860U
CL 1 DOMINO 0100X
| CL 1 DOMINETTE 193L

CL 1 DOMINO 6105S
KB L1 DOMINETTE 088X
| KB L1 DOMINETTE 702T

Carcass: REA **.16** / MARB **-.06**

CL 1 DOMINO 637S
CL 1 DOMINETTE 5142R
HH ADVANCE 767G
CL 1 DOMINETTE 318
L1 DOMINO 03396
CL 1 DOMINETTE 243M
HH ADVANCE 396N
KB L1 DOMINETTE 335

166

CO L1 DOMINO 264Z

Apr. 9, 2012 • #43280590

2 YR. OLD
Act. BW **82**
EPDs:
BW **3.0**
WW **46**
YW **82**
MILK **19**
M&G **42**
Eye Pigment:
LE **40** / RE **50**

GB L1 DOMINO 1144E
GB L1 DOMINO 471H
| GB L1 DOM PRCS 1139E

JA L1 DOMINO 5603R
CO L1 DOMINETTE 803U
| CO L1 DOMINETTE 644S

Carcass: REA **.02** / MARB **.19**

PAP score: 37. Lot 166 is out of a real nice, moderate-framed Homer daughter with an excellent udder.

GB L1 DOMINO 935C
GB L1 DOM PRCS 9132C
HH ADVANCE 767G
GB L1 DOM PRCS 7113
HH ADVANCE 286M
JA L1 DOMINETTE 2210M
L1 DOMINO 99496
CO L1 DOMINETTE 411P

171

CTR L1 DOMINO 213Z

Jan. 23, 2012 • #43267913

2 YR. OLD
Act. BW **85**
EPDs:
BW **2.5**
WW **50**
YW **80**
MILK **29**
M&G **54**
Eye Pigment:
LE **100** / RE **100**

CL 1 DOMINO 860U
CL 1 DOMINO 0100X
| CL 1 DOMINETTE 193L

CL 1 DOMINO 592R
MONTANA MISS 791T
| MONTANA MISS 4169

Carcass: REA **-.02** / MARB **.04**

CL 1 DOMINO 637S
CL 1 DOMINETTE 5142R
HH ADVANCE 767G
CL 1 DOMINETTE 318
CL 1 DOMINO 9126J
CL 1 DOMINETTE 974J
CL 1 DOMINO 965J
JA L1 DOMINETTE 0220

172

CTR L1 DOMINO 214Z

Jan. 25, 2012 • #43267920

2 YR. OLD
Act. BW **85**
EPDs:
BW **3.0**
WW **53**
YW **82**
MILK **23**
M&G **50**
Eye Pigment:
LE **100** / RE **100**

L1 DOMINO 03396
CL 1 DOMINO 6105S
| CL 1 DOMINETTE 243M

CL 1 DOMINO 592R
KB L1 DOMINETTE 8135U
| KB L1 DOMINETTE 335

Carcass: REA **.33** / MARB **.12**

L1 DOMINO 00552
L1 DOMINETTE 96893
CL 1 DOMINO 9126J
CL 1 DOMINETTE 8151H
CL 1 DOMINO 9126J
CL 1 DOMINETTE 974J
JA L1 DOMINO 9213
KB L1 DOMINETTE 823

177

CTR L1 DOMINO 220Z

Feb. 1, 2012 • #43267917

2 YR. OLD
Act. BW **79**
EPDs:
BW **3.4**
WW **51**
YW **86**
MILK **28**
M&G **53**
Eye Pigment:
LE **100** / RE **100**

KB L1 DOMINO 521R
KB L1 DOMINO 844U
| KB L1 DOMINETTE 353N

CL 1 DOMINO 590R
MONTANA MISS 8107U
| MONTANA MISS 4169

Carcass: REA **.00** / MARB **.15**

CL 1 DOMINO 3138N
MONTANA MISS 310
JD BIG ARTHUR 180
CL 1 DOMINETTE 7188G
CL 1 DOMINO 246M
CL 1 DOMINETTE 258M
CL 1 DOMINO 965J
JA L1 DOMINETTE 0220

173

CTR L1 DOMINO 215Z

Jan. 18, 2012 • #43267918

2 YR. OLD
Act. BW **94**
EPDs:
BW **6.3**
WW **53**
YW **91**
MILK **28**
M&G **55**
Eye Pigment:
LE **100** / RE **80**

KB L1 DOMINO 521R
KB L1 DOMINO 844U
| KB DOMINETTE 353N

CL 1 DOMINO 592R
KB L1 DOMINETTE 8121U
| KB DOMINETTE 238

Carcass: REA **.19** / MARB **.10**

CL 1 DOMINO 3138N
MONTANA MISS 310
JD BIG ARTHUR 180
CL 1 DOMINETTE 7188G
CL 1 DOMINO 9126J
CL 1 DOMINETTE 974J
SNS 47G SILVER DANDY 11J
KB L1 DOMINETTE 937

178

CTR L1 DOMINO 221Z

Feb. 7, 2012 • #43267924

2 YR. OLD
Act. BW **85**
EPDs:
BW **3.7**
WW **51**
YW **79**
MILK **28**
M&G **54**
Eye Pigment:
LE **5** / RE **60**

KB L1 DOMINO 655
KB L1 DOMINO 842U
| MONTANA MISS 310

CL 1 DOMINO 0152K
MONTANA MISS 9153W
| MONTANA MISS 561R

Carcass: REA **.22** / MARB **-.02**

CL 1 DOMINO 9126J
MONTANA MISS 6154
CL 1 DOMINO 484
MONTANA MISS 837
HH ADVANCE 8093H
CL 1 DOMINETTE 874H
CL 1 DOMINO 9126J
MONTANA MISS 1134

174

CTR L1 DOMINO 216Z

Jan. 27, 2012 • #43267929

2 YR. OLD
Act. BW **83**
EPDs:
BW **3.6**
WW **49**
YW **82**
MILK **26**
M&G **50**
Eye Pigment:
LE **100** / RE **10**

CL 1 DOMINO 860U
CL 1 DOMINO 0100X
| CL 1 DOMINETTE 193L

CL 1 DOMINO 849U
KB L1 DOMINETTE 0146X
| KB L1 DOMINETTE 891U

Carcass: REA **-.09** / MARB **-.03**

CL 1 DOMINO 637S
CL 1 DOMINETTE 5142R
HH ADVANCE 767G
CL 1 DOMINETTE 318
CL 1 DOMINO 648S
CL 1 DOMINETTE 591R
JA L1 DOMINO 6002S
KB L1 DOMINETTE 635

179

CTR L1 DOMINO 222Z

Mar. 5, 2012 • #43267919

2 YR. OLD
Act. BW **85**
EPDs:
BW **4.2**
WW **62**
YW **95**
MILK **25**
M&G **56**
Eye Pigment:
LE **80** / RE **100**

L1 DOMINO 03396
CL 1 DOMINO 6105S
| CL 1 DOMINETTE 243M

JA L1 DOMINO 6002S
MONTANA MISS 8130U
| MONTANA MISS 637

Carcass: REA **.36** / MARB **.12**

L1 DOMINO 00552
L1 DOMINETTE 96893
CL 1 DOMINO 9126J
CL 1 DOMINETTE 8151H
GB L1 DOMINO 935C
JA L1 DOMINETTE 9203
CL 1 DOMINO 3162N
HH MS ADVANCE 5048E

175

CTR L1 DOMINO 218Z

Jan. 30, 2012 • #43267922

2 YR. OLD
Act. BW **86**
EPDs:
BW **3.8**
WW **53**
YW **79**
MILK **26**
M&G **53**
Eye Pigment:
LE **100** / RE **100**

KB L1 DOMINO 655
KB L1 DOMINO 842U
| MONTANA MISS 310

CL 1 DOMINO 648S
MONTANA MISS 918W
| MONTANA MISS 497P

Carcass: REA **.13** / MARB **-.09**

CL 1 DOMINO 9126J
MONTANA MISS 6154
CL 1 DOMINO 484
MONTANA MISS 837
CL 1 DOMINO 461P
CL 1 DOMINETTE 249M
HH ADVANCE 0072K
MONTANA MISS 247

180

CTR L1 DOMINO 2900Z

Jan. 3, 2012 • #43267912

2 YR. OLD
Act. BW **82**
EPDs:
BW **1.6**
WW **48**
YW **88**
MILK **26**
M&G **50**
Eye Pigment:
LE **80** / RE **80**

GB L1 DOMINO 471H
GB L1 DOMINO 6134K
| GB L1 DOM PRCS 4103H

CL 1 DOMINO 0157K
JA L1 DOMINETTE 723T
| JA L1 DOMINETTE 0278M

Carcass: REA **.09** / MARB **.17**

GB L1 DOMINO 1144E
GB L1 DOM PRCS 1139E
CL 1 DOMINO 9126J
GB L1 DOM PRCS 626
HH ADVANCE 767G
CL 1 DOMINETTE 861H
GB L1 DOMINO 935C
JA L1 DOMINETTE 0854

176

CTR L1 DOMINO 219Z

Jan. 30, 2012 • #43267921

2 YR. OLD
Act. BW **96**
EPDs:
BW **6.6**
WW **59**
YW **85**
MILK **26**
M&G **55**
Eye Pigment:
LE **100** / RE **80**

KB L1 DOMINO 655
KB L1 DOMINO 842U
| MONTANA MISS 310

CL 1 DOMINO 795T
KB L1 DOMINETTE 908W
| KB L1 DOMINETTE 744T

Carcass: REA **.16** / MARB **.00**

CL 1 DOMINO 9126J
MONTANA MISS 6154
CL 1 DOMINO 484
MONTANA MISS 837
CL 1 DOMINO 477P
CL 1 DOMINETTE 258M
KB L1 DOMINO 521R
KB L1 DOMINETTE 514R

181

CTR L1 DOMINO 2901Z

Mar. 12, 2012 • #43274696

2 YR. OLD
Act. BW **73**
EPDs:
BW **2.0**
WW **47**
YW **80**
MILK **27**
M&G **50**
Eye Pigment:
LE **50** / RE **60**

GB L1 DOMINO 471H
GB L1 DOMINO 6134K
| GB L1 DOM PRCS 4103H

CL 1 DOMINO 750T
HH MISS ADVANCE 9222W
| HH MS ADVANCE 7009T

Carcass: REA **.08** / MARB **.18**

GB L1 DOMINO 1144E
GB L1 DOM PRCS 1139E
CL 1 DOMINO 9126J
GB L1 DOM PRCS 626
CL 1 DOMINO 477P
CL 1 DOMINETTE 221M
HH ADVANCE 396N
HH MS ADVANCE 4131P

182

CTR L1 DOMINO 2913Z

Feb. 24, 2012 • #43274699

2 YR. OLD
Act. BW **80**
EPDs:
BW **3.2**
WW **47**
YW **87**
MILK **18**
M&G **41**
Eye Pigment:
LE **80** / RE **80**

GB L1 DOMINO 471H
GB L1 DOMINO 6134K
| GB L1 DOM PRCS 4103H

CL 1 DOMINO 8153H
JA L1 DOMINETTE 7724T
| JA L1 DOMINETTE 4656P

Carcass: REA **.20** / MARB **.07**

GB L1 DOMINO 1144E
GB L1 DOM PRCS 1139E
CL 1 DOMINO 9126J
GB L1 DOM PRCS 626
CL 1 DOMINO 5131E
CL 1 DOMINET 496
HH ADVANCE 286M
JA L1 DOMINETTE 1291L

187

JAK L1 DOMINO Z49

Feb. 17, 2012 • #43283029

2 YR. OLD
Act. BW **82**
EPDs:
BW **4.1**
WW **52**
YW **75**
MILK **29**
M&G **55**
Eye Pigment:
LE **100** / RE **90**

CL 1 DOMINO 7139T
CL 1 DOMINO 065X
| CL 1 DOMINETTE 5142R

GB L1 DOMINO 647K
JAK L1 DOMINETTE X112
| JAK L1 DOMINETTE S33

Carcass: REA **.13** / MARB **.09**

Rugged rancher bull.

CL 1 DOMINO 590R
CL 1 DOMINETTE 530R
CL 1 DOMINO 1172L
CL 1 DOMINETTE 810H
CL 1 DOMINO 246M
GB L1 DOM PRCS 626
JAK L1 DOMINO N306
JAK L1 DOMINETTE K210

183

CTR L1 DOMINO 2914Z

Feb. 24, 2012 • #43274700

2 YR. OLD
Act. BW **80**
EPDs:
BW **3.2**
WW **47**
YW **87**
MILK **18**
M&G **41**
Eye Pigment:
LE **80** / RE **40**

GB L1 DOMINO 471H
GB L1 DOMINO 6134K
| GB L1 DOM PRCS 4103H

CL 1 DOMINO 8153H
JA L1 DOMINETTE 7724T
| JA L1 DOMINETTE 4656P

Carcass: REA **.20** / MARB **.07**

GB L1 DOMINO 1144E
GB L1 DOM PRCS 1139E
CL 1 DOMINO 9126J
GB L1 DOM PRCS 626
CL 1 DOMINO 5131E
CL 1 DOMINET 496
HH ADVANCE 286M
JA L1 DOMINETTE 1291L

188

JAK L1 DOMINO Z58

Feb. 21, 2012 • #43282935

2 YR. OLD
Act. BW **81**
EPDs:
BW **1.2**
WW **41**
YW **65**
MILK **25**
M&G **46**
Eye Pigment:
LE **50** / RE **60**

JA L1 DOMINO 4922P
JAK L1 DOMINO U142
| JAK L1 DOMINETTE N248

JA L1 DOMINO 315N
JAK L1 DOMINETTE T370
| JAK L1 DOMINETTE R175

Carcass: REA **-.04** / MARB **.10**

HH ADVANCE 8017H
JA L1 DOMINETTE 7444
JA L1 DOMINO 9213
JAK L1 DOMINETTE J203
CL 1 DOMINO 0157K
JA L1 DOMINETTE 8800
JA L1 DOMINO 208M
JAK L1 DOMINETTE D128

184

CTR L1 DOMINO 2920Z

Apr. 10, 2012 • #43274698

2 YR. OLD
Act. BW **83**
EPDs:
BW **3.6**
WW **53**
YW **100**
MILK **25**
M&G **51**
Eye Pigment:
LE **10** / RE **10**

GB L1 DOMINO 471H
GB L1 DOMINO 6134K
| GB L1 DOM PRCS 4103H

JA L1 DOMINO 426P
JA L1 DOMINETTE 660S
| JA L1 DOMINETTE 3804N

Carcass: REA **.15** / MARB **.19**

GB L1 DOMINO 1144E
GB L1 DOM PRCS 1139E
CL 1 DOMINO 9126J
GB L1 DOM PRCS 626
CL 1 DOMINO 0157K
JA L1 DOMINETTE 7070
GB L1 DOMINO 808A
JA L1 DOMINETTE 8206

189

JAK L1 DOMINO Z63

Feb. 21, 2012 • #43282852

2 YR. OLD
Act. BW **82**
EPDs:
BW **2.1**
WW **47**
YW **71**
MILK **28**
M&G **52**
Eye Pigment:
LE **100** / RE **50**

JA L1 DOMINO 4922P
JAK L1 DOMINO U142
| JAK L1 DOMINETTE N248

JAK L1 DOMINO N306
JAK L1 DOMINETTE S404
| JAK L1 DOMINETTE E228

Carcass: REA **.30** / MARB **.04**

Heavy boned prospect with eye appeal. Dam has an average WWR 114 on 5 calves.

HH ADVANCE 8017H
JA L1 DOMINETTE 7444
JA L1 DOMINO 9213
JAK L1 DOMINETTE J203
JA L1 DOMINO 8088
JAK L1 DOMINETTE K274
IH DUKE 8365
JAK L1 DOMINETTE Y52

185

JAK L1 DOMINO Z06

Feb. 3, 2012 • #43282796

2 YR. OLD
Act. BW **86**
EPDs:
BW **4.0**
WW **51**
YW **82**
MILK **22**
M&G **47**
Eye Pigment:
LE **0** / RE **15**

JA L1 DOMINO 4922P
JAK L1 DOMINO U142
| JAK L1 DOMINETTE N248

JAK L1 DOMINO H448
JAK L1 DOMINETTE L257
| JAK L1 DOMINETTE G78

Carcass: REA **.42** / MARB **-.16**

HH ADVANCE 8017H
JA L1 DOMINETTE 7444
JA L1 DOMINO 9213
JAK L1 DOMINETTE J203
JAK L1 DOMINO F230
JA L1 DOMINETTE 3206
JA L1 DOMINO 395
JAK L1 SWEDETTE A13

190

JAK L1 DOMINO Z75

Feb. 26, 2012 • #43282985

2 YR. OLD
Act. BW **83**
EPDs:
BW **4.4**
WW **53**
YW **70**
MILK **21**
M&G **48**
Eye Pigment:
LE **90** / RE **90**

JA L1 DOMINO 4922P
JA L1 DOMINO 9922W
| JA L1 DOMINETTE 3215N

GB L1 DOMINO 647K
JAK L1 DOMINETTE W50
| JAK L1 DOMINETTE L458

Carcass: REA **.07** / MARB **.15**

HH ADVANCE 8017H
JA L1 DOMINETTE 7444
JA L1 DOMINO 0224
JA L1 DOMINETTE 8905
CL 1 DOMINO 246M
GB L1 DOM PRCS 626
JAK L1 DOMINO F230
JAK L1 DOMINETTE F155

186

JAK L1 DOMINO Z23

Feb. 10, 2012 • #43282843

2 YR. OLD
Act. BW **85**
EPDs:
BW **0.9**
WW **37**
YW **61**
MILK **25**
M&G **44**
Eye Pigment:
LE **100** / RE **90**

JA L1 DOMINO 4922P
JAK L1 DOMINO U142
| JAK L1 DOMINETTE N248

JA L1 DOMINO 315N
JAK L1 DOMINETTE R368
| JAK L1 DOMINETTE N201

Carcass: REA **-.03** / MARB **.12**

Low birth weight bull that has lots of eye appeal.

HH ADVANCE 8017H
JA L1 DOMINETTE 7444
JA L1 DOMINO 9213
JAK L1 DOMINETTE J203
CL 1 DOMINO 0157K
JA L1 DOMINETTE 8800
JA L1 DOMINO 3202
JAK L1 DOMINETTE L380

191

JAK L1 DOMINO Z81

Feb. 28, 2012 • #43283042

2 YR. OLD
Act. BW **85**
EPDs:
BW **5.2**
WW **52**
YW **81**
MILK **22**
M&G **48**
Eye Pigment:
LE **20** / RE **30**

JA L1 DOMINO 6001S
JA L1 DOMINO 9015W
| JA L1 DOMINETTE 8905

GB L1 DOMINO 647K
JAK L1 DOMINETTE X138
| JAK L1 DOMINETTE R41

Carcass: REA **.14** / MARB **.11**

GB L1 DOMINO 935C
JA L1 DOMINETTE 0212
JAK L1 DOMINO E34
JA L1 DOMINETTE 6418
CL 1 DOMINO 246M
GB L1 DOM PRCS 626
JA L1 DOMINO 9213
MCR PPF MARK DMNT 232

192

JAK L1 DOMINO Z103

Mar. 4, 2012 • #43282944

2 YR. OLD

Act. BW92
 EPDs:
 BW5.1
 WW52
 YW89
 MILK21
 M&G47

Eye Pigment:
 LE 80 / RE 100

JA L1 DOMINO 4922P
JAK L1 DOMINO 9922W
 | JA L1 DOMINETTE 3215N

JA L1 DOMINO 624S
JAK L1 DOMINETTE U17
 | JAK L1 DOMINETTE M312

Carcass: REA .01 / MARB .01

Big framed and rugged with a bit extra white.

HH ADVANCE 8017H
 JA L1 DOMINETTE 7444
 JA L1 DOMINO 0224
 JA L1 DOMINETTE 8905
 CL 1 DOMINO 0157K
 JA L1 DOMINETTE 1252L
 JAK L1 DOMINO K74
 JAK L1 DOMINETTE K50

197

FWS 484 DOMINO 1230

Jan. 25, 2012 • #43267432

2 YR. OLD

Act. BW91
 EPDs:
 BW5.3
 WW50
 YW88
 MILK17
 M&G42

Eye Pigment:
 LE 90 / RE 80

L1 DOMINO 890061
CL 1 DOMINO 484
 | CL 1 DOMINETTE 761

OXH MADISON 1267
FWS MS DOLLEY 0854
 | CJH MISS ADVANCE 224

Carcass: REA .07 / MARB .11

L1 DOMINO 870130
 L1 DOMINETTE 850625
 HH ADVANCE S436
 CL 1 DOMINETTE 3033
 OXH SIGNATURE 8346
 OXH BETTI 4148
 HH ADVANCE 6052F
 CJH L1 DOMINETTE 635

193

JAK L1 DOMINO Z135

Mar. 22, 2012 • #43282930

2 YR. OLD

Act. BW77
 EPDs:
 BW1.7
 WW41
 YW64
 MILK18
 M&G39

Eye Pigment:
 LE 80 / RE 100

JA L1 DOMINO 4922P
JAK L1 DOMINO U142
 | JAK L1 DOMINETTE N248

JA L1 DOMINO 3918N
JAK L1 DOMINETTE T329
 | JAK L1 DOMINETTE M169

Carcass: REA .15 / MARB .03

HH ADVANCE 8017H
 JA L1 DOMINETTE 7444
 JA L1 DOMINO 9213
 JAK L1 DOMINETTE J203
 HH ADVANCE 8017H
 JA L1 DOMINETTE 9350
 JA L1 DOMINO 9213
 JAK L1 DOMINETTE K40

198

FWS 484 DOMINO 1233

Jan. 29, 2012 • #43267437

2 YR. OLD

Act. BW80
 EPDs:
 BW2.8
 WW46
 YW80
 MILK22
 M&G45

Eye Pigment:
 LE 40 / RE 80

L1 DOMINO 890061
CL 1 DOMINO 484
 | CL 1 DOMINETTE 761

FWS 343 ADVANCER 0300
FWS 300 MISS 0861
 | FWS MISS VISA 9616

Carcass: REA .02 / MARB .05

L1 DOMINO 870130
 L1 DOMINETTE 850625
 HH ADVANCE S436
 CL 1 DOMINETTE 3033
 HH ADVANCE 343C
 FWS MS STARFIRE 0056
 C MASTER PLAN 93099
 HF L1 PACETTE 755

194

JAK L1 DOMINO Z140

Mar. 27, 2012 • #43282809

2 YR. OLD

Act. BW87
 EPDs:
 BW2.7
 WW46
 YW67
 MILK23
 M&G46

Eye Pigment:
 LE 80 / RE 100

JA L1 DOMINO 4922P
JAK L1 DOMINO U142
 | JAK L1 DOMINETTE N248

JA L1 DOMINO 9213
JAK L1 DOMINETTE N384
 | JAK L1 DOMINETTE G419

Carcass: REA .13 / MARB .02

HH ADVANCE 8017H
 JA L1 DOMINETTE 7444
 JA L1 DOMINO 9213
 JAK L1 DOMINETTE J203
 CL 1 DOMINO 484
 JA L1 DOMINETTE 6554
 DH ADVANCE 2100
 JA L1 DOMINETTE 0824

199

FWS 426 DOMINO 1237

Jan. 6, 2012 • #43267475

2 YR. OLD

Act. BW88
 EPDs:
 BW4.6
 WW49
 YW82
 MILK22
 M&G47

Eye Pigment:
 LE 100 / RE 100

CL 1 DOMINO 0157K
JA L1 DOMINO 426P
 | JA L1 DOMINETTE 7070

JA L1 DOMINO 2405M
FWS 2045 MS DOMINETTE 0875
 | FWS MS STARFIRE 0101

Carcass: REA .00 / MARB .13

HH ADVANCE 767G
 CL 1 DOMINETTE 861H
 DR DOMINO 3135
 JA L1 DOMINETTE 1213
 HH ADVANCE 8012H
 JA L1 DOMINETTE 9263
 K&B STARFIRE 8429
 FWS XMAS EVE 9421

195

JAK L1 DOMINO Z162

Apr. 29, 2012 • #43282928

2 YR. OLD

Act. BW86
 EPDs:
 BW3.3
 WW52
 YW83
 MILK23
 M&G49

Eye Pigment:
 LE 100 / RE 100

JA L1 DOMINO 4922P
JAK L1 DOMINO U142
 | JAK L1 DOMINETTE N248

JA L1 DOMINO 4922P
JAK L1 DOMINETTE T312A
 | JAK L1 DOMINETTE L234

Carcass: REA .14 / MARB .03

Red-necked bull that is thick and correct. Double-bred to 4922 which insures volume and fleshing ability. Dam has an average WWR 105 on 5 calves.

HH ADVANCE 8017H
 JA L1 DOMINETTE 7444
 JA L1 DOMINO 9213
 JAK L1 DOMINETTE J203
 HH ADVANCE 8017H
 JA L1 DOMINETTE 7444
 JA L1 DOMINO 9213
 JAK L1 DOMINETTE J237

200

FWS 426 DOMINO 1246

Mar. 11, 2012 • #43267508

2 YR. OLD

Act. BW94
 EPDs:
 BW6.0
 WW56
 YW95
 MILK22
 M&G50

Eye Pigment:
 LE 20 / RE 0

CL 1 DOMINO 0157K
JA L1 DOMINO 426P
 | JA L1 DOMINETTE 7070

FWS 343 ADVANCER 0300
FWS 300 MISS 0859
 | HF MISS 1131L 328

Carcass: REA .04 / MARB .11

HH ADVANCE 767G
 CL 1 DOMINETTE 861H
 DR DOMINO 3135
 JA L1 DOMINETTE 1213
 HH ADVANCE 343C
 FWS MS STARFIRE 0056
 CL 1 DOMINO 1131L
 MS HF CL 1 DOMINO 9006

196

CTR L1 DOMINO 2611Z

May 1, 2012 • #43286101

2 YR. OLD

Act. BW80
 EPDs:
 BW1.5
 WW36
 YW73
 MILK19
 M&G37

Eye Pigment:
 LE 100 / RE 80

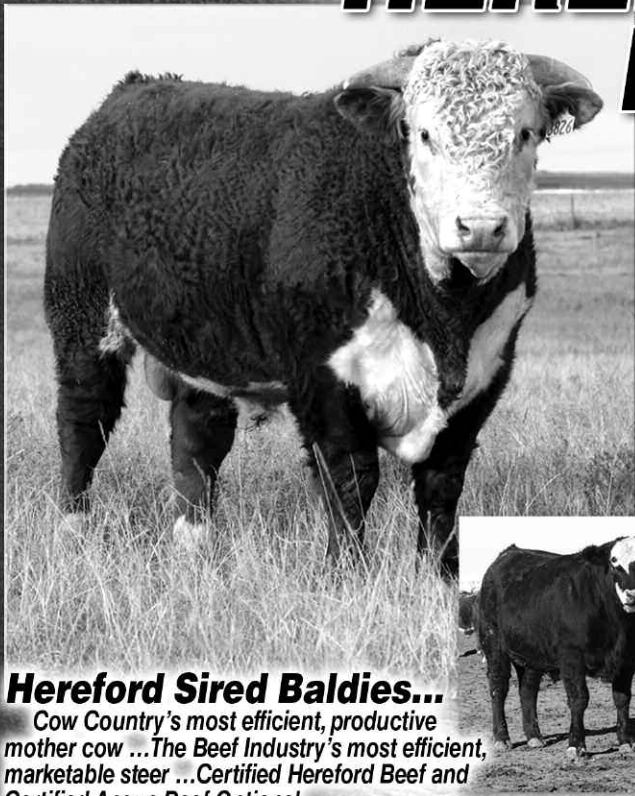
HH ADVANCE 286M
JA L1 DOMINO 7640T
 | JA L1 DOMINETTE 1409L

HH ADVANCE 216M
CO L1 DOMINETTE 619S
 | CO L1 DOMINETTE 312N

Carcass: REA .17 / MARB .06

HH ADVANCE 0024K
 HH MISS ADVANCE 752G
 HH ADVANCE 8012H
 JA L1 DOMINETTE 8800
 HH ADVANCE 836H
 HH MISS ADVANCE 621F
 GB L1 DOMINO 168E
 CO L1 DOMINETTE 914

HEREFORD BULLS...



Hereford Sired Baldies...

Cow Country's most efficient, productive mother cow ... The Beef Industry's most efficient, marketable steer ... Certified Hereford Beef and Certified Angus Beef Options!



THE #1 CROSSBREEDING SIRE...

The Most Powerful, Profitable
Choice for Your Black Cows!

- More Cows Bred!
- More Calf Vigor!
- More Lbs. of Performance!
- More Cowherd & Feedlot Efficiency
- More Market Value



GENERAL INFORMATION

DATE: Friday, FEBRUARY 28, 2014

TIME: 12 Noon CST

LOCATION: Headquarters located off I-70, Quinter Exit 107, 2 mi. south, 1 mi. east, 1 1/2 miles south

LUNCH: Available on the grounds.

PHONES: Gordon Jamison 785/754-3639, (cell) 785/299-0441
Daron Jamison 785/650-9639

SALE DAY PHONE: 785/754-3424

BID ONLINE: www.dvauction.com ...for information and to register for bidding online, call Tami McIntosh 308/870-3661.

SALE HEADQUARTERS:

Best Western, Wakeeney, KS • 785/743-2700

Located 20 miles east of ranch on I-70

Ask for Jamison Ranch sale rate. Free, full service breakfast.

Other Motels: Wakeeney (20 miles east): Super 8 785/743-6628; Econo Lodge 785/743-5505; Oakley (30 mi. west): Best Western Golden Plains 785/672-3254; Kansas Kountry Inn 785/672-3131; Oakley Sleep Inn 785/671-1111; Quinter: Q Inn 785/754-3337.

AIRPORTS: Commercial air service is available to Hays, KS or Garden City, KS. Private planes may land at Quinter, KS (sod strip), Wakeeney (3500 ft. paved) or Oakley (5000 ft. paved).

TERMS & CONDITIONS: Terms of the sale are cash. Every sale animal will be sold to the highest bidder with the auctioneer settling bid disputes. Announced changes in catalog information on sale day take precedence over printed material. All cattle are the buyer's property as soon as sold and will be cared for a reasonable length of time at the buyer's risk. Any person attending the sale does so at his own risk. Neither the sale management, owners, nor any person connected with this sale, assumes any liability, legal or otherwise.

In the event of default in any part of the Terms and Conditions for this sale by buyer or seller, it shall be the responsibility of the buyer or seller to instigate action needed to bring about a fair settlement of any claims and to be responsible for any and all costs involved.

GUARANTEE: Every animal in this sale is, to our knowledge, free from any disease or defect. Any known defect will be called at sale time. All bulls have been fertility tested by Hawkeye Breeders Services, Adel, Iowa prior to the sale. They are guaranteed breeders. If an animal fails to breed after a six month trial, it may be returned to the seller if it is in good condition and in compliance with Kansas health regulations. The seller reserves the right to try said animal for 90 days, and if it proves a breeder, return it to the buyer at the buyer's expense. If the animal proves to be a non-breeder, an animal of comparable rank will be substituted or the purchase price will be credited toward purchase of an animal in the next sale. We assume no liability, legal or otherwise, to make any further compensation to the buyer. No warranty of any nature is expressed or implied. All sale cattle are IE and Diluter free.

HEALTH: Herd health is excellent. Individual health papers will be furnished for shipment.

REGISTRATION & TRANSFER: American Hereford Assn. registration certificates will be transferred upon request to respective buyers at seller's expense. At time of settlement, buyers must give complete information.

PERFORMANCE: Complete Total Performance Records are available on all cattle. Current weight, WDA and scrotal will be available sale day. Carcass ultrasound data will be available on the yearling bulls.

DELIVERY: Free delivery is provided on volume purchases of \$3500 or more. All other deliveries will be provided at cost.

INSURANCE: Insurance can be arranged through Harding & Harding Livestock agent Jim Gies, CO, 970/454-3836.

ABSENTEE BIDS: Those who cannot attend the sale may place phone or mail bids by contacting Gordon Jamison, Jay George (United Livestock Brokers) or any listed sale representative.

SALE MANAGEMENT:

United Livestock Brokers, Inc.

Jay George 605/391-6230 (cell)

1025 28th Rd. NW • Lebo, KS 66856

Sale management acts as agent only and assumes no legal responsibility.

JAMISON HEREFORDS

SINCE 1944... A Respected Cowherd and
Premier Hereford Performance Bull Breeder



THE JA Line 1 Mother Cows...

Backed by generations of production testing,
linebreeding and building upon elite cow families!

A PERFORMANCE BULL

FACTORY... Linebred Line 1 • Trait Balanced
• Maternal is #1 • Functional, Efficient Mother
Cows • Range Raised ...no creep • Commercial
Industry Proven



© Jay Coover **CL1
DOMINO 638S**
Hi-Maternal Trait Leader ...Elite Cooper Cow Family!



© Jay Coover **CL1
DOMINO 555R**
Cowherd Building 3-Trait Maternal Leader!



© Jay Coover **CL1
DOMINO 0157K**
Breed Impact, Calving Ease, Hi-Maternal 5-Trait Leader!



© Jay Coover **HH
ADVANCE 286MK**
Muscle, Paywt., Carcass...Problem-Free, Pigmented
Efficient Daughters!

JAMISON RANCH

2271 COUNTY RD. 74
QUINTER, KANSAS 67752

ADDRESS SERVICE REQUESTED

Pre-sort
FIRST CLASS MAIL
U.S. POSTAGE
PAID
Permit #123
Pierre, SD

FIRST CLASS



CL1 DOMINO 860U

**BREED LEADING
SIREs...** Generations of Trait Leader,
Cowherd Builders!



CL1 DOMINO 555R

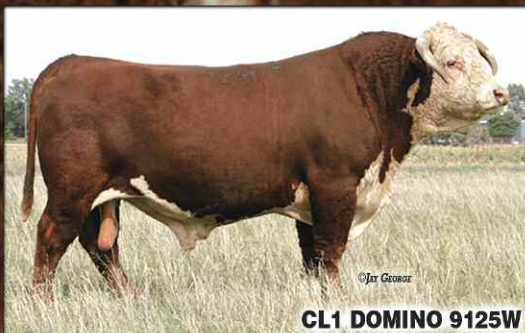
SINCE 1944...
70 Years of Hereford Breed Leadership
and Proven Total Performance!



JA L1 DOMINO 1602Y



JA L1 DOMINO 7640T



CL1 DOMINO 9125W



JA L1 DOMINO 9800W