

JAMISON HEREFORDS

**SINCE 1944 ...71 YEARS OF
HEREFORD BREED LEADERSHIP!**



**TOTAL PERFORMANCE
PRODUCTION SALE**

FEBRUARY 27, 2015

QUINTER, KANSAS



UNITED LIVESTOCK BROKERS, INC.

JAMISON HEREFORDS

**SINCE 1944 ...71 YEARS OF HEREFORD
BREED LEADERSHIP!**

*Generations of production testing, linebreeding
and stacking proven, total performance, herd
building sires!*



HERD SIRES for RANCHERS and BREEDERS!



CL1 DOMINO 860U

Six-Trait Leader: WW • YW • MILK • M&G • REA • CHB
**A Powerhouse, Breed Impact Performance
& Carcass Leader!**



HH ADVANCE 2181Z

**Headline, Total Trait Record ...Elite Maternal
Pedigree ...Standout 1st Calf Crop!**



JA L1 DOMINO 9800W

Eight-Trait Leader: MILK • M&G • CEM • MCW
SC • BMI • CEZ • BII
**Multi-Trait, All-Around Beef Bull
...Functional, Productive Cows!**



CL1 DOMINO 216Z

Five-Trait Leader: CED • YW • MILK • M&G • CEZ
**Complete, Moderate, Calving Ease to
Yearling Wt. Curve-Bender!**



CL1 DOMINO 555R

Four-Trait Leader: MILK • M&G • SC • CEZ
**Hi-Maternal, Cowherd Builder
...Beautiful, Role Model Daughters!**



JA L1 DOMINO 1602Y

**Superb Calving Ease, Red Pigment, Carcass REA
...A Pedigree of Great Cows!**



CL1 DOMINO 9125W

Four-Trait Leader: WW • MILK • M&G • MARB
**Cowman's Hi-Maternal Herdsire ...Big Volume,
Good Doin', Quality Cattle!**

JAMISON HEREFORDS

TOTAL PERFORMANCE PRODUCTION SALE

FRIDAY **FEBRUARY 27** 2015
12 Noon (CST) • AT THE RANCH
Located off I-70, Quinter Exit 107, 2 miles South,
1 mile East, 1 1/2 miles South

187 HEREFORD BULLS

72 Yearlings • 20 2013 Fall Yearlings • 95 Two Yr. Olds
Performance Tested • Fertility Tested • Carcass Ultrasounded

— AUCTIONEER —

LYNN WEISHAAR • Reva, SD • 605/866-4670 or 605/641-6248

— SALE REPRESENTATIVES —

Levi Landers, AMERICAN HEREFORD ASSN.
308/730-1396

Trey Befort, CERTIFIED HEREFORD BEEF
620/770-3419

Tom Granzow, KANSAS HEREFORD ASSN.
785/466-2226

Marc Hotchkiss, HEREFORD AMERICA
605/866-4495

Jim Gies, WESTERN LIVESTOCK JOURNAL
970/454-3836

Doug Paul, THE STOCK EXCHANGE
405/820-3982

Guy Peverly, HIGH PLAINS JOURNAL
785/456-9911

Andrew Sylvester, KANSAS STOCKMAN
785/456-4352

Scott Dirk, TRI-STATE LIVESTOCK NEWS
605/380-6024

— INSURANCE —

American Live Stock / Markell
Cheri & Jim Gies (h) 970/454-3836 or (c) 970/590-0500



UNITED LIVESTOCK BROKERS, INC.

Jay George • 605/391-6230
1025 28th Rd. NW
Lebo, Kansas 66856

Photography by Jay George

— VETERINARIAN —

Max Mann, DVM • Quinter, KS • 785/754-3411

SALE DAY PHONE: 785/754-3424

GENERAL INFORMATION... Sale terms, motels, airports, etc., see page 31.

JAMISON HEREFORDS SALE BULL VIDEO

Online at: www.jamisonranch.com

Video by Shawna Chabot

www.jamisonranch.com

JAMISON HEREFORDS

GORDON JAMISON & SONS

Gordon 785/754-3639

2271 COUNTY RD. 74 • QUINTER, KANSAS 67752



**SINCE 1944... Quality, Performance
and Linebred Genetics for America's
Cowmen!**

WELCOME

The Jamison Family welcomes you to our annual spring bull sale. We value our rancher customers and friends and continue to strive to offer you problem-free, profitable, performance genetics. Maternal traits are our program's #1 priority and we think our cowherd demonstrates that plan. We stress calving ease, fleshing ability, optimal growth and structural soundness in our effort to produce breeding bulls that are sound, fertile and trait balanced. And, we are getting closer to our quest for 100 percent red pigment on every JA bull.

We believe in Line 1 Hereford cattle and have linebred our program to those genetics since 1970. Line 1 Herefords are true, balanced performance cattle recognized for maternal excellence and an optimal combination of calving ease and growth. Ranchers have the opportunity to reap full benefit of heterosis with our linebred bulls. The beef industry's most proven cross is the Hereford bull and Black & Red Angus cows ...she genetically takes the horns off and his Black Baldie progeny add the vigor, performance, cowherd longevity and feedlot gain & efficiency that comes with his Whiteface brand!

The bulls are ultrasounded for carcass data; they sell fertility tested and are all BVD-PI tested as yearlings. Free delivery is offered on volume purchases to central points.

Call with your questions ...we like to talk Hereford cattle. We'll look forward to seeing you on February 27th!

Sincerely,
Gordon Jamison

You're Invited... **HEREFORD STEAK SUPPER!**

A Pre-Sale Get-together ...Thurs. Evening, Feb. 26th

The Historic Western Kansas Saloon

"The best steak in Western Kansas...bar none!"

Main St. • Wakeeney, Kansas

Near the Wakeeney Best Western Sale Headquarters

View the auction live! Bid online ...you're ringside
right at your own desk!

DVAuction
Broadcasting Real-Time Auctions

www.dvauction.com

Visit our website ...for more information and to register
to bid! Call Tami McIntosh 308/870-3661

JA COWHERD SIRES...



CL1 DOMINO 0157K

CL1 Domino 767G x

HH Advance 438D ...Dam of Distinction

23 herds / 299 progeny / 124 dgtrs.

CED 7.9 BW -1.0 WW 36 YW 74 MILK 29 M&G 47 / REA -.14 MB .04

Landmark Calving Ease, Hi-Maternal, Cowherd Builder!



HH ADVANCE 286M

HH Advance 0024K x KB L1 Domino 519 ...Dam, 4 clvs./ WR 108

23 herds / 659 progeny / 217 dgtrs. • 5-Trait Leader ...US • TS • REA • BMI • BI

CED 0.0 BW 2.7 WW 55 YW 84 MILK 19 M&G 47 / REA .52* MB -.02

Muscle, Paywt., Pigment, Carcass ...Functional, Problem-Free, Efficient Daughters!



CL1 DOMINO 560R

CL1 Domino 3162N x CL1 Domino 888H ...Dam, 4 clvs. / WR 118

11 herds / 209 progeny / 55 dgtrs.

CED 0.0 BW 5.1 WW 58 YW 87 MILK 30 M&G 59 / REA .01 MB .18

Hi-Performance, Hi-Maternal, Grid Value Sire!



CL1 DOMINO 638S

L1 Domino 03396 x

CL1 Domino 824H (#475 cow, 2 clvs./ WR 107)

20 herds / 284 progeny / 84 dgtrs. • Trait Leader ...MILK • M&G • MARB

CED 0.5 BW 4.8 WW 48 YW 69 MILK 38* M&G 62* / REA -.33 MB .20*

Breed Elite Maternal Sire ...Premier Cooper Cow Line!

JA REFERENCE SIRES...



CL1 DOMINO 860U

Jan. 10, 2008 • #42897554

CL1 DOMINO 637S

L1 DOMINO 03396

CL1 DOMINETTE 118L

CL1 DOMINETTE 5142R

Dam of Distinction

4 clvs. WR 115

CL1 DOMINO 1172L

CL1 DOMINETTE 810H

L1 DOMINO 00552

L1 DOMINETTE 96893 (DOD)

CL1 DOMINO 888H

CL1 DOMINETTE 903J

HH ADVANCE 767G 1ET

CL1 DOMINETTE 7192G (DOD)

CL1 DOMINO 640F

CL1 DOMINETTE 6117F

CED -0.8 BW 4.5 WW 65* YW 121* MILK 37* M&G 69*

Carcass EPDs: REA .44* MARB .03

860U is the \$55,000 powerhouse that topped Cooper's 2009 sale. Backed by a superb Dam of Distinction cow, he was an imposing, big ribbed, square structured bull that recorded an in-herd 205 wt.873/119, 365 wt.1487/116. Now proven through a hi-accuracy progeny record, 860U ranks as one of Hereford's elite performance leaders with breed impact outlier EPDs for pounds of performance, daughters' milk and carcass REA. 860U is making his mark as a dominant herd mover. Owned with Colyer, King, Fawcett, GKB, Dufur, Genoa and Cooper.

Six-Trait Leader: WW • YW • MILK • M&G • REA • CHB

A POWERHOUSE, 6-TRAIT PERFORMANCE & CHB LEADER!



CL1 DOMINO 555R

Jan. 13, 2005 • #42573506

HH ADVANCE 3113N

L1 DOMINO 99496

HH MISS ADV 875H 1ET

CL1 DOMINETTE 3174N

Dam of Distinction

5 clvs. WR 105

CL1 DOMINO 9126J 1ET

CL1 DOMINETTE 810H

L1 DOMINO 97349

L1 DOMINET 95369 (DOD)

HH ADVANCE 671F 1ET

HH MS ADVNC 339C (DOD)

HH ADVANCE 767G 1ET

CL1 DOMINET 490 (DOD)

CL1 DOMINO 640F

CL1 DOMINETTE 6117F

CED 3.3 BW 2.1 WW 52 YW 83 MILK 35* M&G 61*

Carcass EPDs: REA .09 MARB -.05

555R is moderate framed, solid red, high maternal bull with balanced numbers. Dam 3174N was a top Cooper Dam of Distinction, 5 clvs./ avg. 105. 555R is a potent sire of red-meated, pigmented, problem-free, high quality cattle including our 2009, 2010 and 2011 high selling bulls. Daughters are one of the best-ever female sire groups ...moderate, broody, beautiful and balanced with ultra perfect udders, they are model Hereford cows that anchor our cowherd!

Four-Trait Leader: MILK • M&G • SC • CEZ

HI-MATERNAL, 4-TRAIT COWHERD BUILDER!



CL 1 DOMINO 9125W Jan. 18, 2009 • #42994844

CL 1 DOMINO 732T	CL 1 DOMINO 590R	CL 1 DOMINO 246M
	CL 1 DOMINETTE 507R (DOD)	CL 1 DOMINETTE 258M
CL 1 DOMINETTE 475P 2 clvs. WR 108	CL 1 DOMINO 824H	CL 1 DOMINETTE 1120L
	CL 1 DOMINETTE 200M (DOD)	CL 1 DOMINO 640F
		CL 1 DOMINETTE 6148F
		CL 1 DOMINO 9126J
		CL 1 DOMINETTE 8131

CED **0.1** BW **3.1** WW **62★** YW **94** MILK **38★** M&G **69★**
Carcass EPDs: REA **.17** MARB **.16★**

9125W is a real cowman's herd bull whose rugged phenotype, strong performance and potent genetics are the solid foundation behind this herd impact sire. His deep maternal pedigree features dam 475P, mother of sire CL1 Domino 638S, and elite Cooper Dam of Distinction granddams 507R and 200M. Strong structured, deep, big quartered and easy fleshing, 9125W is an "ideal" ranchers' bull that sires a high percentage of quality, hi-performance progeny including, both, his well muscled, payweight bulls and broody, high maternal daughters. Owned with B&B, KS and Cooper, MT.

Four-Trait Leader: WW • MILK • M&G • MARB

COWMAN'S, 4-TRAIT LEADER BEEF BULL!



HH ADVANCE 2181Z Feb. 5, 2012 • #43270986

CL 1 DOMINO 886U	CL 1 DOMINO 638S	L1 DOMINO 03396
	CL 1 DOMINETTE 440P	CL 1 DOMINETTE 475P
HH MS ADVANCE 6054S 6 clvs. WR 105	CL 1 DOMINO 320N	CL 1 DOMINO 9126J
	HH MISS ADVANCE 4053P	CL 1 DOMINETTE 974J
		CL 1 DOMINO 019K
		CL 1 DOMINETTE 996J
		HH ADVANCE 145L
		HH MISS ADVANCE 011K

CED **3.4** BW **3.5** WW **67** YW **98** MILK **31** M&G **64**
Carcass EPDs: REA **.29** MARB **.04**

2181 is a hi-performance, young sire out of the elite Holden "herd bull" cow and ET Donor 6054, dam of noted herdsire HH Advance 0132X. Backed by landmark paternal granddam 475, mother of our CL1 Domino 638S and 9125W sires, he is stacked deep with powerful maternal genetics. A long, well muscled, strong structured bull with big testicles, he recorded an impressive WW 836/ 110, YW 1431/ 105 in-herd record. Siring standout calves with performance and muscle, 2181's progeny performance and potent maternal blood mark him a future cowherd builder.

POWERFUL RECORD ...HI-MATERNAL, BALANCED TRAITS ...STANDOUT 1ST CALF CROP!

JA REFERENCE SIRE...



HH ADVANCE 1098Y Jan. 11, 2011 • #43173131

HH ADVANCE 8050U	L1 DOMINO 03571
	HH MISS ADVANCE 365N
HH MS ADVANCE 9065W 4 clvs. WR 104	HH ADVANCE 7101T
	HH MISS ADVANCE 1028L

Holden's 2012 \$102,000 top selling bull!
Owners: Holden, Flying S, TX; Harrison, OK; Stromsmoe
Six-Trait Leader: CED • MILK • M&G • FAT • REA • CEZ
Performance Balanced Breed Builder!

CED **★4.6**
BW ...**2.7**
WW ...**53**
YW ...**80**
MILK ...**★35**
M&G ...**★61**
Carcass EPDs:
REA ...**★.48**
MARB ...**-.06**



HH ADVANCE 0132X Jan. 17, 2010 • #43073963

CL1 DOMINO 7128T	HH ADVANCE 3113N
	CL 1 DOMINETTE 0112K
HH MS ADVANCE 6054S 6 clvs. WR 105	CL 1 DOMINO 320N
	HH MISS ADVANCE 4053P

Owners: Holden, MT; Stuber, ND; Churchill, MT; Genex
9-Trait Leader: CED • MILK • M&G • TS • SC • MARB • BMI • CEZ • BII
Impressive, Complete, 9-Trait Leader ...Problem-Free, Quality Cattle!

CED **★4.5**
BW ...**1.3**
WW ...**48**
YW ...**75**
MILK ...**★29**
M&G ...**★53**
Carcass EPDs:
REA ...**-.16**
MARB ...**★.38**



CL 1 DOMINO 216Z Jan. 17, 2010 • #43073963

CL 1 DOMINO 860U	CL 1 DOMINO 637S
	CL 1 DOMINETTE 5142R (DOD)
CL 1 DOMINETTE 759T	CL 1 DOMINO 590R
	CL 1 DOMINETTE 193L

Cooper's 2013 \$80,000 top seller!
Owners: Van Newkirk, Pedretti, Southern Cross, Cooper
Five-Trait Leader: CED • YW • MILK • M&G • CEZ
Complete, Moderate, 5-Trait, Calving Ease Curve-Bender!

CED **★5.8**
BW ...**1.1**
WW ...**54**
YW ...**★99**
MILK ...**★31**
M&G ...**58**
Carcass EPDs:
REA ...**-.13**
MARB ...**-.04**

JA REFERENCE SIRES...



JA L1 DOMINO 1602Y Jan. 30, 2011 • #43232230

JA L1 DOMINO 7640T	HH ADVANCE 286M JA L1 DOMINETTE 1409L
JA L1 DOMINETTE 9204W	CL 1 DOMINO 555R JA L1 DOMINETTE 4119P

4 clvs. WR 103

The Jamison 2012 \$22,500 top selling bull!
Owned with Jamison Ranch, OK
Super Calving Ease, Pigment, Carcass REA
...A Pedigree of Great Cows!

CED	... 4.1
BW	... 0.6
WW	... 41
YW	... 62
MILK	... 28
M&G	... 49
Carcass EPDs:	
REA	... 44
MARB	... 12



JA L1 DOMINO 0908X Mar. 11, 2010 • #43130247

GB L1 DOMINO 6134K	GB L1 DOMINO 471H GB L1 DOM PRCS 4103H (DOD)
JA L1 DOMINETTE 8810U	CL 1 DOMINO 560R JA L1 DOMINETTE 4652P

3 clvs. WR 107

Owner: Jamison
Performance, Phenotype ...An All-Around Hereford Sire!

CED	... 2.2
BW	... 3.4
WW	... 37
YW	... 74
MILK	... 26
M&G	... 45
Carcass EPDs:	
REA	... 07
MARB	... 16



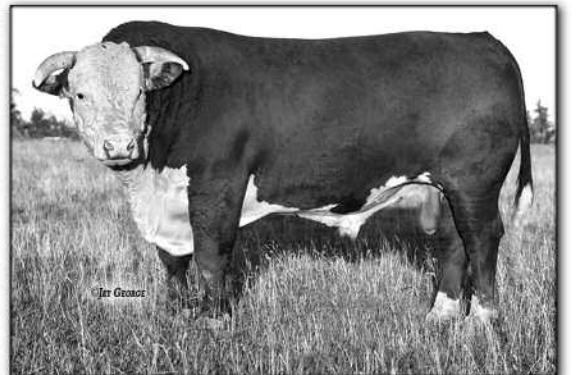
JA L1 DOMINO 9800W Jan. 21, 2009 • #43032770

CL1 DOMINO 555R	HH ADVANCE 3113N CL 1 DOMINETTE 3174N (DOD)
JA L1 DOMINETTE 4152P	DH DOMINO 6150 JA L1 DOMINETTE 6815

8 clvs. WR 102

2010 Cow Sale \$18,000 top selling lot
Owned with Oleen Bros., KS
Eight-Trait Leader: MILK • M&G • CEM • MCW • SC • BMI • CEZ • BII
Powerful Beef Bull ...Multi-Trait, Cowherd Builder!

CED	... 3.2
BW	... 1.7
WW	... 56
YW	... 81
MILK	... 28
M&G	... 56
Carcass EPDs:	
REA	... 14
MARB	... 03



JA L1 DOMINO 0413X Feb. 7, 2010 • #43130100

HH ADVANCE 7085T	L1 DOMNO 03571 HH MS ADVANCE 1088L (DOD)
JA L1 DOMINETTE 432P	CL 1 DOMINO 0157K JA L1 DOMINETTE 1223L

Owner: Climbin' Tree Ranch, CO
Stockman's Trait Balanced Herd Bull!

CED	... 3.1
BW	... 0.7
WW	... 36
YW	... 68
MILK	... 28
M&G	... 46
Carcass EPDs:	
REA	... 02
MARB	... 11



DH ADVANCE 031 Jan. 17, 2010 • #43073963

HH ADVANCE 8050U	L1 DOMINO 03571 HH MISS ADVANCE 365N
DH DOMINETTE 7155	DH DOMINO 302 DH MISS ADVANCE 3169

3 clvs. WR 104

Herd bull bred by Debter Herefords, one of Hereford's most respected Line 1 programs. Owned with Debter Herefords, AL.
Standout HH Advance 8050U son
...Red Meated, Pigment, Total Trait Balance!

CED	... 2.2
BW	... 3.2
WW	... 51
YW	... 83
MILK	... 26
M&G	... 52
Carcass EPDs:	
REA	... 34
MARB	... 10



CO L1 DOMINO 946W Mar. 20, 2009 • #43003699

GB L1 DOMINO 175E	HH ADVANCE 767G GB L1 DOM PRCS 3134 (DOD)
CO L1 DOMINETTE 523R	GB L1 DOMINO 935C CO L1 DOMINETTE 206M

Dam of Distinction, 8/WR 105

Owner: Jamison
A Hi-Maternal Son of GB L1 Domino 175E
...An Elite Coleman Dam of Distinction!

CED	... 3.1
BW	... 2.1
WW	... 27
YW	... 68
MILK	... 36
M&G	... 49
Carcass EPDs:	
REA	... 12
MARB	... 12



American Hereford
Genomic-Enhanced
EPDs
...GeneSeek, Inc.
50K Tested

JA SALE BULLS



HERD BULLS FOR RANCHERS AND BREEDERS!

- 2014 SPRING YEARLING BULLS.....LOTS 1 - 72
- 2013 FALL YEARLING BULLS.....LOTS 93 - 92
- 2013 TWO-YR.-OLD BULLS.....LOTS 93 -187

JAMISON 2015 YEARLING SALE BULL AVG.

72 Yrlg. Sale Bull Averages:

BW 83 • Act. WW 760 lbs. • 205 Wt. 703 lbs.

BW	WW	YW	MILK	M&G
2.9	55	90	29	57

BREED AVG. 2013 YEARLING BULLS

BW	WW	YW	MILK	M&G
3.3	47	77	19	43

JA CO-OP HERDS and GUEST CONSIGNORS...

Herd bull partners and breeders who have invested in JA program genetics. All bulls have been developed at Jamison Herefords since weaned. They carry proven Line 1 genetics and are backed 100 percent by the JA Guarantee.

- Oleen Bros., Dwight, KS
- Coleman Herefords, Westcliffe, CO
- Climbin' Tree Ranch, Westcliffe, CO
- B&B Cattle Co., Virgil, KS
- Blue Top Herefords, Inman, KS
- Harmony Herefords, Quinter, KS
- Miller Line One Herefords, Winfield, KS

1

JA L1 DOMINO 401B

Jan. 29, 2014 • #43486363

YEARLING

Act. BW	84
Act. WW	770
Adj. 205	692
EPDs:	
BW	3.2
WW	53
YW	88
MILK	27
M&G	54
Eye Pigment:	
LE	15 / RE 15

HH ADVANCE 8050U

HH ADVANCE 1098Y

HH MS ADVANCE 9065W

DH DOMINO 539

JA L1 DOMINETTE 104Y

JA L1 DOMINETTE 5625R

Carcass: REA .47 / MARB .02

L1 DOMINO 03571
HH MISS ADVANCE 365N
HH ADVANCE 7101T
HH MISS ADVANCE 1028L
L1 DOMINO 99496
DH MS ADVANCE 1003
HH ADVANCE 286M
JA L1 DOMINETTE 2502M

A red necked, balanced and correct bull that scanned a REA ratio of 105 and an MARB ratio of 106. Grandam 5625, at age 10, still has a beautiful udder and is a top cow.

2

JA L1 DOMINO 402B

Jan. 30, 2014 • #43486365

YEARLING

Act. BW	80
Act. WW	760
Adj. 205	686
EPDs:	
BW	2.7
WW	55
YW	86
MILK	30
M&G	58
Eye Pigment:	
LE	100 / RE 95

HH ADVANCE 8050U

HH ADVANCE 1098Y

HH MS ADVANCE 9065W

CL 1 DOMINO 9125W

JA L1 DOMINETTE 1116Y

JA L1 DOMINETTE 8638U

Carcass: REA .38 / MARB .01

L1 DOMINO 03571
HH MISS ADVANCE 365N
HH ADVANCE 7101T
HH MISS ADVANCE 1028L
CL 1 DOMINO 732T
CL 1 DOMINETTE 475P
HH ADVANCE 286M
JA L1 DOMINETTE 4468P

Red necked with a big red spot on his face and a moderate sized frame. Could work as a calving ease bull with strong growth numbers. Dam has avg. WWR 101.5 on two head.



3

JA L1 DOMINO 404B

Feb. 1, 2014 • #43486378

YEARLING

Act. BW	88
Act. WW	790
Adj. 205	713
EPDs:	
BW	3.4
WW	55
YW	92
MILK	31
M&G	58
Eye Pigment:	
LE	100 / RE 100

HH ADVANCE 8050U

HH ADVANCE 1098Y

HH MS ADVANCE 9065W

CL 1 DOMINO 860U

JA L1 DOMINETTE 1705Y

JA L1 DOMINETTE 2400M

Carcass: REA .48 / MARB -.03

L1 DOMINO 03571
HH MISS ADVANCE 365N
HH ADVANCE 7101T
HH MISS ADVANCE 1028L
CL 1 DOMINO 637S
CL 1 DOMINETTE 5142R
HH ADVANCE 8012H
JA L1 DOMINETTE 9220

Goggle-eyed and red necked, Lot 3 is a top herd bull prospect. Dam's first son sold last year to Dufur Herefords, Oklahoma. Lot 3 is above average on both REA and MARB and weaned off at 790 lbs.! Cow family is very strong. One of the top bulls in the sale for YW EPD and REA EPD. Will retain a one-quarter interest.

4**JA L1 DOMINO 405B**

Feb. 4, 2014 • #43486408

YEARLING

Act. BW ... **87**
 Act. WW ... **830**
 Adj. 205 ... **757**
 EPDs:
 BW ... **3.8**
 WW ... **57**
 YW ... **94**
 MILK ... **30**
 M&G ... **58**
 Eye Pigment:
 LE **100** / RE **85**

HH ADVANCE 1098Y

HH ADVANCE 8050U

HH MS ADVANCE 9065W

CL 1 DOMINO 860U

JA L1 DOMINETTE 1712Y

JA L1 DOMINETTE 6254S

Carcass: REA **.40** / MARB **-.01**

This red necked bull scored a 110 ratio on weaning wt. and a 119 ratio on REA with a 119 on REA to weight ratio. The 1098 x 860 cross always clicks and it sure worked here. Dam is super sound and calved in late January this year.

L1 DOMINO 03571
 HH MISS ADVANCE 365N
 HH ADVANCE 7101T
 HH MISS ADVANCE 1028L
 CL 1 DOMINO 637S
 CL 1 DOMINETTE 5142R
 CL 1 DOMINO 484
 JA L1 DOMINETTE 4123P



Lot 5

5**JA L1 DOMINO 408B**

Feb. 18, 2014 • #43486414

YEARLING

Act. BW ... **86**
 Act. WW ... **815**
 Adj. 205 ... **751**
 EPDs:
 BW ... **2.7**
 WW ... **52**
 YW ... **83**
 MILK ... **33**
 M&G ... **59**
 Eye Pigment:
 LE **100** / RE **100**

HH ADVANCE 1098Y

HH ADVANCE 8050U

HH MS ADVANCE 9065W

JA L1 DOMINO 7640T

JA L1 DOMINETTE 0613X

JA L1 DOMINETTE 570R

Carcass: REA **.43** / MARB **-.07**

Powerful and heavily pigmented, Lot 5 is loaded with muscle. Note his weaning weight information and dam 0613 produces the milk from a near perfect udder. Her last year's son sold to LC Ranch Co., SD.

L1 DOMINO 03571
 HH MISS ADVANCE 365N
 HH ADVANCE 7101T
 HH MISS ADVANCE 1028L
 HH ADVANCE 286M
 JAL L1 DOMINETTE 1409L
 CL 1 DOMINO 246M
 JA L1 DOMINETTE 3406N

6**JA L1 DOMINO 410B**

Feb. 19, 2014 • #43477677

YEARLING

Act. BW ... **84**
 Act. WW ... **800**
 Adj. 205 ... **739**
 EPDs:
 BW ... **2.9**
 WW ... **51**
 YW ... **79**
 MILK ... **32**
 M&G ... **58**
 Eye Pigment:
 LE **10** / RE **20**

HH ADVANCE 1098Y

HH ADVANCE 8050U

HH MS ADVANCE 9065W

JA L1 DOMINO 7640T

JA L1 DOMINETTE 0619X

JA L1 DOMINETTE 5151R

Carcass: REA **.32** / MARB **-.08**

A thick quartered prospect with lots of style and balance. Moderate on calving ease with extra punch at weaning. Dam is beautiful uddered and has an avg WWR of 105 on three calves. Lot 6 is a big ribeye bull with a REA ratio of 112 and MARB ratio of 102.

L1 DOMINO 03571
 HH MISS ADVANCE 365N
 HH ADVANCE 7101T
 HH MISS ADVANCE 1028L
 HH ADVANCE 286M
 JAL L1 DOMINETTE 1409L
 JA L1 DOMINO 3105N
 JA L1 DOMINETTE 3215N



Lot 7

7**JA L1 DOMINO 434B**

Jan. 28, 2014 • #43478646

YEARLING

Act. BW ... **86**
 Act. WW ... **775**
 Adj. 205 ... **742**
 EPDs:
 BW ... **4.4**
 WW ... **56**
 YW ... **95**
 MILK ... **29**
 M&G ... **57**
 Eye Pigment:
 LE **100** / RE **100**

HH ADVANCE 0132X

CL 1 DOMINO 7128T

HH MS ADVANCE 6054S

CL 1 DOMINO 860U

JA L1 DOMINETTE 2734Z

JA L1 DOMINETTE 2256M

Carcass: REA **-.02** / MARB **.20**

Strong growth numbers and a well balanced, correct prospect from a top 860 dam that's just a two year old. Lot 7 scanned above average on REA and a big 119 ratio on MARB. Note his Marbling EPD.

HH ADVANCE 3113N
 CL 1 DOMINETTE 0112K
 CL 1 DOMINO 320N
 HH MISS ADVANCE 4053P
 CL 1 DOMINO 637S
 CL 1 DOMINETTE 5142R
 JA L1 DOMINO 0224
 JA L1 DOMINETTE 508

8**JA L1 DOMINO 435B**

Jan. 31, 2014 • #43478647

YEARLING

Act. BW ... **76**
 Act. WW ... **675**
 Adj. 205 ... **650**
 EPDs:
 BW ... **1.9**
 WW ... **49**
 YW ... **82**
 MILK ... **30**
 M&G ... **54**
 Eye Pigment:
 LE **100** / RE **100**

HH ADVANCE 0132X

CL 1 DOMINO 7128T

HH MS ADVANCE 6054S

CL 1 DOMINO 860U

JA L1 DOMINETTE 2730Z

JA L1 DOMINETTE 8204U

Carcass: REA **-.02** / MARB **.22**

Lot 8 has a big tear drop on his face and is a clean made, long necked, level topped prospect. A calving ease bull that should work on heifers and is strong on MARB.

HH ADVANCE 3113N
 CL 1 DOMINETTE 0112K
 CL 1 DOMINO 320N
 HH MISS ADVANCE 4053P
 CL 1 DOMINO 637S
 CL 1 DOMINETTE 5142R
 CL 1 DOMINO 555R
 JA L1 DOMINETTE 1250L



Lot 9

9

JA L1 DOMINO 4105B

Feb. 2, 2014 • #43477673

YEARLING

Act. BW	82
Act. WW	770
Adj. 205	658
EPDs:	
BW	2.1
WW	48
YW	81
MILK	30
M&G	54
Eye Pigment:	
LE	35 / RE 50

CL 1 DOMINO 732T	CL 1 DOMINO 590R
CL 1 DOMINO 9125W	CL 1 DOMINETTE 507R
CL 1 DOMINETTE 475P	CL 1 DOMINO 824H
	CL 1 DOMINETTE 200M
CL 1 DOMINO 555R	HH ADVANCE 3113N
JA L1 DOMINETTE 8205U	CL 1 DOMINETTE 3174N
JA L1 DOMINETTE 6750S	GB1 DOMINO 405L
	JA L1 DOMINETTE 4108P

Carcass: REA **-.05** / MARB **.12**

A typical 9125 son, stout, deep ribbed and rugged. A calving ease bull that's very good on MARB.



Lot 12

12

JA L1 DOMINO 4109B

Feb. 4, 2014 • #43477676

YEARLING

Act. BW	86
Act. WW	880
Adj. 205	766
EPDs:	
BW	3.4
WW	61
YW	95
MILK	30
M&G	61
Eye Pigment:	
LE	70 / RE 65

CL 1 DOMINO 732T	CL 1 DOMINO 590R
CL 1 DOMINO 9125W	CL 1 DOMINETTE 507R
CL 1 DOMINETTE 475P	CL 1 DOMINO 824H
	CL 1 DOMINETTE 200M
HH ADVANCE 286M	HH ADVANCE 0024K
JA L1 DOMINETTE 9646W	HH MISS ADVANCE 752G
JA L1 DOMINETTE 1217L	CL 1 DOMINO 484
	JA L1 DOMINETTE 5608

Carcass: REA **.24** / MARB **.11**

Lot 12 was born on a cold night and lost his ears, but charged on and ratioed 112 at weaning. A herd bull prospect that is a calving ease bull with lots of growth. Dam has a very good udder and an avg. WWR 110 on four calves. Lot 12 is the high volume, easy keeping kind!

10

JA L1 DOMINO 4107B

Feb. 3, 2014 • #43477675

YEARLING

Act. BW	83
Act. WW	740
Adj. 205	642
EPDs:	
BW	2.8
WW	52
YW	82
MILK	28
M&G	54
Eye Pigment:	
LE	100 / RE 100

CL 1 DOMINO 732T	CL 1 DOMINO 590R
CL 1 DOMINO 9125W	CL 1 DOMINETTE 507R
CL 1 DOMINETTE 475P	CL 1 DOMINO 824H
	CL 1 DOMINETTE 200M
JA L1 DOMINO 4922P	HH ADVANCE 8017H
JA L1 DOMINETTE 9901W	JA L1 DOMINETTE 7444
JA L1 DOMINETTE 329N	CL 1 DOMINO 0157K
	JA L1 DOMINETTE 7100

Carcass: REA **.03** / MARB **.10**

Thick and deep bodied with a moderate frame. Dam 9901 has an avg. WWR of 108 on three calves.



Lot 13

13

JA L1 DOMINO 4119B

Feb. 14, 2014 • #43477687

YEARLING

Act. BW	85
Act. WW	830
Adj. 205	742
EPDs:	
BW	2.1
WW	54
YW	87
MILK	34
M&G	61
Eye Pigment:	
LE	70 / RE 95

CL 1 DOMINO 732T	CL 1 DOMINO 590R
CL 1 DOMINO 9125W	CL 1 DOMINETTE 507R
CL 1 DOMINETTE 475P	CL 1 DOMINO 824H
	CL 1 DOMINETTE 200M
CL 1 DOMINO 555R	HH ADVANCE 3113N
JA L1 DOMINETTE 9210W	CL 1 DOMINETTE 3174N
JA L1 DOMINETTE 622S	CL 1 DOMINO 0157K
	JA L1 DOMINETTE 0409

Carcass: REA **.11** / MARB **.09**

A powerful herd bull prospect that should be calving ease as well. Lot 13 is extra thick and heavy muscled and has a big, wide top with a level tail set. He should sire big ribeye calves with that something extra!

11

JA L1 DOMINO 4108B

Feb. 5, 2014 • #43522532

YEARLING

Act. BW	86
Act. WW	800
Adj. 205	686
EPDs:	
BW	2.7
WW	54
YW	85
MILK	28
M&G	55
Eye Pigment:	
LE	100 / RE 75

CL 1 DOMINO 732T	CL 1 DOMINO 590R
CL 1 DOMINO 9125W	CL 1 DOMINETTE 507R
CL 1 DOMINETTE 475P	CL 1 DOMINO 824H
	CL 1 DOMINETTE 200M
HH ADVANCE 286M	HH ADVANCE 0024K
JA L1 DOMINETTE 7634T	HH MISS ADVANCE 752G
JA L1 DOMINETTE 2153M	DH DOMINO 6150
	JA L1 DOMINETTE 0611

Carcass: REA **.26** / MARB **.07**

Lots of red, length and style with a very quiet disposition. Dam is a good 286 daughter that just keeps cranking out the good ones!



Lot 14

14

JA L1 DOMINO 4122B

Feb. 15, 2014 • #43477690

YEARLING

Act. BW ... **84**
 Act. WW ... **800**
 Adj. 205 ... **718**
 EPDs:
 BW ... **2.6**
 WW ... **53**
 YW ... **81**
 MILK ... **33**
 M&G ... **59**
 Eye Pigment:
 LE **100** / RE **100**

CL 1 DOMINO 732T
CL 1 DOMINO 9125W
 CL 1 DOMINETTE 475P

CL 1 DOMINO 560R
JA L1 DOMINETTE 9828W
 JA L1 DOMINETTE 1409L

Carcass: REA **.04** / MARB **.17**

Big beef bull with added size and volume. A herd bull prospect with a great disposition, he will follow you around the pen wanting to be scratched. From the same cow family as our 7640 herd bull. A big ribeye and a big weaning weight!

CL 1 DOMINO 590R
 CL 1 DOMINETTE 507R
 CL 1 DOMINO 824H
 CL 1 DOMINETTE 200M
 CL 1 DOMINO 3162N
 CL 1 DOMINETTE 118L
 HH ADVANCE 8012H
 JA L1 DOMINETTE 8800



Lot 15

15

JA L1 DOMINO 4124B

Feb. 17, 2014 • #43477692

YEARLING

Act. BW ... **87**
 Act. WW ... **880**
 Adj. 205 ... **793**
 EPDs:
 BW ... **4.7**
 WW ... **68**
 YW ... **104**
 MILK ... **30**
 M&G ... **64**
 Eye Pigment:
 LE **70** / RE **80**

CL 1 DOMINO 732T
CL 1 DOMINO 9125W
 CL 1 DOMINETTE 475P

HH ADVANCE 286M
JA L1 DOMINETTE 9618W
 JA L1 DOMINETTE 7916T

Carcass: REA **.34** / MARB **.06**

Rugged herd bull prospect with extra volume and a nice flex on the hind leg which should insure soundness. One of the top WWR calves at 116 and he scored a REA ratio of 114. Dam is tops and has an avg WWR of 114 on three.

CL 1 DOMINO 590R
 CL 1 DOMINETTE 507R
 CL 1 DOMINO 824H
 CL 1 DOMINETTE 200M
 HH ADVANCE 0024K
 HH MISS ADVANCE 752G
 JA L1 DOMINO 4922P
 JA L1 DOMINETTE 2282M

16

JA L1 DOMINO 4128B

Feb. 21, 2014 • #43477724

YEARLING

Act. BW ... **83**
 Act. WW ... **800**
 Adj. 205 ... **729**
 EPDs:
 BW ... **2.4**
 WW ... **54**
 YW ... **87**
 MILK ... **34**
 M&G ... **61**
 Eye Pigment:
 LE **50** / RE **45**

CL 1 DOMINO 732T
CL 1 DOMINO 9125W
 CL 1 DOMINETTE 475P

HH ADVANCE 7085T
JA L1 DOMINETTE 9406W
 JA L1 DOMINETTE 606S

Carcass: REA **.03** / MARB **.15**

Lot 16 is very sound in his structure with added length of body. A moderate birth weight with lots of growth. Dam is one of our best and has a WWR of 112 on three calves.

CL 1 DOMINO 590R
 CL 1 DOMINETTE 507R
 CL 1 DOMINO 824H
 CL 1 DOMINETTE 200M
 L1 DOMINO 0357I
 HH MISS ADVANCE 1088L
 CL 1 DOMINO 0157K
 JA L1 DOMINETTE 2613W



Lot 17

17

JA L1 DOMINO 4129B

Feb. 21, 2014 • #43477811

YEARLING

Act. BW ... **85**
 Act. WW ... **785**
 Adj. 205 ... **716**
 EPDs:
 BW ... **3.7**
 WW ... **58**
 YW ... **90**
 MILK ... **31**
 M&G ... **60**
 Eye Pigment:
 LE **100** / RE **100**

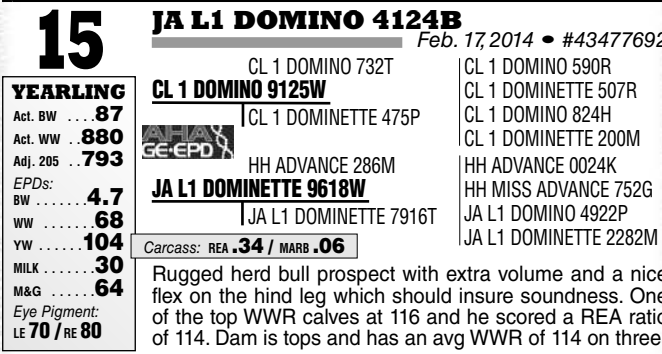
CL 1 DOMINO 732T
CL 1 DOMINO 9125W
 CL 1 DOMINETTE 475P

CL 1 DOMINO 560R
JA L1 DOMINETTE 9827W
 JA L1 DOMINETTE 3807N

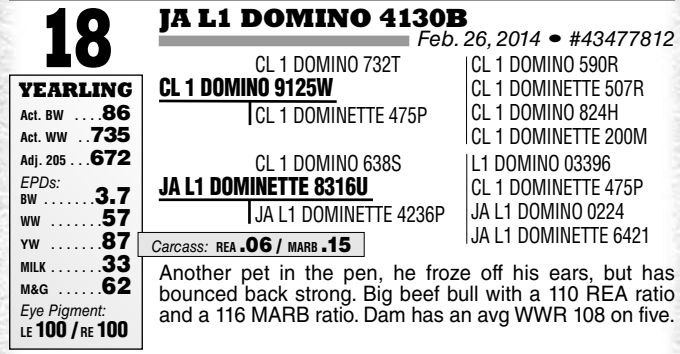
Carcass: REA **.16** / MARB **.12**

A red necked, extra pigment herd bull prospect with power, volume and extra rib depth. He scanned above average on ribeye. Dam is goggle eyed, good uddered and has ratioed 106 on four calves at weaning.

CL 1 DOMINO 590R
 CL 1 DOMINETTE 507R
 CL 1 DOMINO 824H
 CL 1 DOMINETTE 200M
 CL 1 DOMINO 3162N
 CL 1 DOMINETTE 118L
 GB L1 DOMINO 808A
 JA L1 DOMINETTE 7011



Lot 15



Lot 17

18

JA L1 DOMINO 4130B

Feb. 26, 2014 • #43477812

YEARLING

Act. BW ... **86**
 Act. WW ... **735**
 Adj. 205 ... **672**
 EPDs:
 BW ... **3.7**
 WW ... **57**
 YW ... **87**
 MILK ... **33**
 M&G ... **62**
 Eye Pigment:
 LE **100** / RE **100**

CL 1 DOMINO 732T
CL 1 DOMINO 9125W
 CL 1 DOMINETTE 475P

CL 1 DOMINO 638S
JA L1 DOMINETTE 8316U
 JA L1 DOMINETTE 4236P

Carcass: REA **.06** / MARB **.15**

Another pet in the pen, he froze off his ears, but has bounced back strong. Big beef bull with a 110 REA ratio and a 116 MARB ratio. Dam has an avg WWR 108 on five.

CL 1 DOMINO 590R
 CL 1 DOMINETTE 507R
 CL 1 DOMINO 824H
 CL 1 DOMINETTE 200M
 L1 DOMINO 03396
 JA L1 DOMINETTE 475P
 JA L1 DOMINO 0224
 JA L1 DOMINETTE 6421

19

JA L1 DOMINO 4131B

Feb. 26, 2014 • #43477813

YEARLING

Act. BW ... **86**
 Act. WW ... **750**
 Adj. 205 ... **685**
 EPDs:
 BW ... **3.0**
 WW ... **54**
 YW ... **88**
 MILK ... **31**
 M&G ... **58**
 Eye Pigment:
 LE **95** / RE **95**

CL 1 DOMINO 732T
CL 1 DOMINO 9125W
 | CL 1 DOMINETTE 475P
 CL 1 DOMINO 590R
 CL 1 DOMINETTE 507R
 CL 1 DOMINO 824H
 CL 1 DOMINETTE 200M
 HH ADVANCE 3113N
 CL 1 DOMINETTE 3174N
 CL 1 DOMINO 1168L
 CH L1 DOMINETTE 9135

Carcass: REA **.11** / MARB **.03**

JA L1 DOMINETTE 8200U
 | JA L1 DOMINETTE 3756N
 A red necked, red-all-over bull with volume and capacity. He lost a bit of tail in cold weather, but can still swat flies. He scored a 121 ratio on his MARB and comes from a calving ease cow family. Dam has indexed 104 on five calves for weaning weight.

23

JA L1 DOMINO 4148B

Mar. 25, 2014 • #43477843

YEARLING

Act. BW ... **83**
 Act. WW ... **675**
 Adj. 205 ... **688**
 EPDs:
 BW ... **2.5**
 WW ... **57**
 YW ... **87**
 MILK ... **34**
 M&G ... **63**
 Eye Pigment:
 LE **0** / RE **50**

CL 1 DOMINO 732T
CL 1 DOMINO 9125W
 | CL 1 DOMINETTE 475P
 CL 1 DOMINO 590R
 CL 1 DOMINETTE 507R
 CL 1 DOMINO 824H
 CL 1 DOMINETTE 200M
 HH ADVANCE 3113N
 CL 1 DOMINETTE 3174N
 HH ADVANCE 767G
 JA L1 DOMINETTE 0204

Carcass: REA **.04** / MARB **.08**

JA L1 DOMINETTE 0213X
 | JA L1 DOMINETTE 202M
 A long haired, easy keeping rancher bull that is above average on carcass numbers. Dam is solid with WR 107 on three calves.

20

JA L1 DOMINO 4138B

Mar. 9, 2014 • #43477830

YEARLING

Act. BW ... **85**
 Act. WW ... **735**
 Adj. 205 ... **701**
 EPDs:
 BW ... **3.6**
 WW ... **60**
 YW ... **91**
 MILK ... **30**
 M&G ... **60**
 Eye Pigment:
 LE **30** / RE **75**

CL 1 DOMINO 732T
CL 1 DOMINO 9125W
 | CL 1 DOMINETTE 475P
 CL 1 DOMINO 590R
 CL 1 DOMINETTE 507R
 CL 1 DOMINO 824H
 CL 1 DOMINETTE 200M
 CL 1 DOMINO 560R
 CL 1 DOMINO 3162N
JA L1 DOMINETTE 9815W
 | CL 1 DOMINETTE 118L
 CL 1 DOMINO 7176G
 JA L1 DOMINETTE 7504

Carcass: REA **.13** / MARB **.13**

A traditionally marked bull with big growth numbers. Extra deep bodied with lots of capacity, he scored a 112 on his REA ratio. Dam is solid with a WWR of 103 on five calves.

24

JA L1 DOMINO 4151B

Mar. 27, 2014 • #43477846

YEARLING

Act. BW ... **83**
 Act. WW ... **690**
 Adj. 205 ... **685**
 EPDs:
 BW ... **2.2**
 WW ... **54**
 YW ... **85**
 MILK ... **33**
 M&G ... **59**
 Eye Pigment:
 LE **85** / RE **85**

CL 1 DOMINO 732T
CL 1 DOMINO 9125W
 | CL 1 DOMINETTE 475P
 CL 1 DOMINO 590R
 CL 1 DOMINETTE 507R
 CL 1 DOMINO 824H
 CL 1 DOMINETTE 200M
 CL 1 DOMINO 555R
 CL 1 DOMINETTE 3113N
JA L1 DOMINETTE 7206T
 | CL 1 DOMINETTE 3174N
 JA L1 DOMINO 1424L
 JA L1 DOMINETTE 216M

Carcass: REA **.05** / MARB **.14**

A younger-aged bull that could work on heifers. Dam is sound uddered with good numbers.

21

JA L1 DOMINO 4144B

Mar. 16, 2014 • #43477839

YEARLING

Act. BW ... **84**
 Act. WW ... **665**
 Adj. 205 ... **638**
 EPDs:
 BW ... **2.2**
 WW ... **49**
 YW ... **79**
 MILK ... **29**
 M&G ... **54**
 Eye Pigment:
 LE **100** / RE **100**

CL 1 DOMINO 732T
CL 1 DOMINO 9125W
 | CL 1 DOMINETTE 475P
 CL 1 DOMINO 590R
 CL 1 DOMINETTE 507R
 CL 1 DOMINO 824H
 CL 1 DOMINETTE 200M
 GB L1 DOMINO 935C
 CL 1 DOMINO 5131E
JA L1 DOMINETTE 7001T
 | GB L1 DOM PRC5 115
 HH ADVANCE 767G
 JA L1 DOMINETTE 101L
 JA L1 DOMINETTE 9222

Carcass: REA **-.02** / MARB **.16**

A calving ease pedigree and a solid dam with a good udder. Lot 21 is red necked and red legged with volume and muscle. He has a 117 ratio on REA and a 105 ratio on MARB.



Lot 25

22

JA L1 DOMINO 4145B

Mar. 17, 2014 • #43477840

YEARLING

Act. BW ... **89**
 Act. WW ... **600**
 Adj. 205 ... **580**
 EPDs:
 BW ... **3.5**
 WW ... **55**
 YW ... **86**
 MILK ... **32**
 M&G ... **59**
 Eye Pigment:
 LE **100** / RE **100**

CL 1 DOMINO 732T
CL 1 DOMINO 9125W
 | CL 1 DOMINETTE 475P
 CL 1 DOMINO 590R
 CL 1 DOMINETTE 507R
 CL 1 DOMINO 824H
 CL 1 DOMINETTE 200M
 CL 1 DOMINO 638S
 L1 DOMINO 03396
JA L1 DOMINETTE 8319U
 | CL 1 DOMINETTE 475P
 HH ADVANCE 286M
 JA L1 DOMINETTE 318N

Carcass: REA **.04** / MARB **.15**

Lots of muscle, deep bodied and thick. Extra power in the growth numbers and above average on the carcass information.

25

JA L1 DOMINO 4200B

Mar. 5, 2014 • #43478006

YEARLING

Act. BW ... **79**
 Act. WW ... **770**
 Adj. 205 ... **741**
 EPDs:
 BW ... **2.4**
 WW ... **56**
 YW ... **87**
 MILK ... **29**
 M&G ... **57**
 Eye Pigment:
 LE **100** / RE **100**

HH ADVANCE 3113N
CL 1 DOMINO 555R
 | CL 1 DOMINETTE 3174N
 HH ADVANCE 7085T
JA L1 DOMINETTE 0441X
 | JA L1 DOMINETTE 3249N
 L1 DOMINO 99496
 HH MS ADV 875H
 CL 1 DOMINO 9126J
 CL 1 DOMINETTE 810H
 L1 DOMINO 03571
 HH MISS ADVANCE 1088L
 JA L1 DOMINO 0224
 JA L1 DOMINETTE 7217

Carcass: REA **.14** / MARB **-.01**

There won't be many more 555 sons and this herd bull prospect is a good one! He is red necked and red legged with a wide base and lots of style. Dam has a very nice udder.

26

BT L1 DOMINO 4003B

Feb. 4, 2014 • #43499352

YEARLING

Act. BW ... **83**
 Act. WW ... **795**
 Adj. 205 ... **721**
 EPDs:
 BW ... **3.4**
 WW ... **48**
 YW ... **76**
 MILK ... **28**
 M&G ... **52**
 Eye Pigment:
 LE **50** / RE **70**

HH ADVANCE 3113N
CL 1 DOMINO 555R
 | CL 1 DOMINETTE 3174N
 JA L1 DOMINO 8000U
BT L1 DOMINETTE 1115
 | JA L1 DOMINETTE 8437

Carcass: REA **-.05** / MARB **-.04**

Deep ribbed, red necked, and red legged, Lot 26 is a typical 555 son and should be a strong female producer. He indexed 106 at weaning, a 104 ratio and a 109 MARB ratio.

L1 DOMINO 99496
 HH MS ADV 875H
 CL 1 DOMINO 9126J
 CL 1 DOMINETTE 810H
 JA L1 DOMINO 6001S
 JA L1 DOMINETTE 460P
 HH ADVANCE 400D
 JA L1 DOMINETTE 5514

30

JA L1 DOMINO 4407B

Feb. 15, 2014 • #43478657

YEARLING

Act. BW ... **82**
 Act. WW ... **790**
 Adj. 205 ... **721**
 EPDs:
 BW ... **2.3**
 WW ... **57**
 YW ... **87**
 MILK ... **29**
 M&G ... **58**
 Eye Pigment:
 LE **85** / RE **45**

CL 1 DOMINO 886U
HH ADVANCE 2181Z
 | HH MISS ADVANCE 6054S
 CL 1 DOMINO 555R
JA L1 DOMINETTE 0203X
 | JA L1 DOMINETTE 4211P

Carcass: REA **.12** / MARB **-.03**

A big framed, red necked bull with calving ease. Dam is above average on her progeny WWR and way below average on the birth weights.

CL 1 DOMINO 638S
 CL 1 DOMINETTE 440P
 CL 1 DOMINO 320N
 HH MISS ADVANCE 4053P
 HH ADVANCE 3113N
 CL 1 DOMINETTE 3174N
 CL 1 DOMINO 484
 JA L1 DOMINETTE 2524M

27

JA L1 DOMINO 4251B

Mar. 16, 2014 • #43478014

YEARLING

Act. BW ... **84**
 Act. WW ... **715**
 Adj. 205 ... **697**
 EPDs:
 BW ... **2.7**
 WW ... **57**
 YW ... **87**
 MILK ... **25**
 M&G ... **54**
 Eye Pigment:
 LE **85** / RE **40**

CL 1 DOMINO 555R
JA L1 DOMINO 9800W
 | JA L1 DOMINETTE 4152P
 HH ADVANCE 286M
JA L1 DOMINETTE 9620W
 | JA L1 DOMINETTE 7511T

Carcass: REA **.32** / MARB **-.02**

Lots of hair and the grow-look to go with the numbers. He scored a 119 on his MARB ratio. Dam milks well and has a good udder.

HH ADVANCE 3113N
 CL 1 DOMINETTE 3174N
 DH DOMINO 6150
 JA L1 DOMINETTE 6815
 HH ADVANCE 0024K
 HH MISS ADVANCE 752G
 CL 1 DOMINO 4134P
 JA L1 DOMINETTE 3769N



Lot 31

28

CTR L1 DOMINO 4076B

Mar. 21, 2014 • #43502460

YEARLING

Act. BW ... **75**
 Act. WW ... **670**
 Adj. 205 ... **721**
 EPDs:
 BW ... **2.6**
 WW ... **57**
 YW ... **85**
 MILK ... **30**
 M&G ... **59**
 Eye Pigment:
 LE **100** / RE **100**

CL 1 DOMINO 555R
JA L1 DOMINO 9800W
 | JA L1 DOMINETTE 4152P
 CL 1 DOMINO 955W
CTR L1 DOMINETTE 2514
 | JA L1 DOMINETTE 4119P

Carcass: REA **.22** / MARB **.01**

Long made, stylish 9800 son whose dam calved at 18 months of age and still weaned off a 107 index. Lot 28 scored a 116 IMF ratio and probably should work on heifers.

HH ADVANCE 3113N
 CL 1 DOMINETTE 3174N
 DH DOMINO 6150
 JA L1 DOMINETTE 6815
 CL 1 DOMINO 637S
 CL 1 DOMINETTE 5152R
 JA L1 DOMINO 208M
 JA L1 DOMINETTE 1317L

31

JA L1 DOMINO 4410B

Feb. 17, 2014 • #43478807

YEARLING

Act. BW ... **82**
 Act. WW ... **780**
 Adj. 205 ... **691**
 EPDs:
 BW ... **2.3**
 WW ... **58**
 YW ... **91**
 MILK ... **24**
 M&G ... **53**
 Eye Pigment:
 LE **30** / RE **100**

CL 1 DOMINO 886U
HH ADVANCE 2181Z
 | HH MISS ADVANCE 6054S
 HH ADVANCE 286M
JA L1 DOMINETTE 7602T
 | JA L1 DOMINETTE 202M

Carcass: REA **.31** / MARB **-.02**

Another red necked bull that should work on heifers. The 2181 sons were our high indexing sire group at weaning time.

CL 1 DOMINO 638S
 CL 1 DOMINETTE 440P
 CL 1 DOMINO 320N
 HH MISS ADVANCE 4053P
 HH ADVANCE 0024K
 HH MISS ADVANCE 752G
 HH ADVANCE 767G
 JA L1 DOMINETTE 0204

29

JA L1 DOMINO 4402B

Feb. 2, 2014 • #43478650

YEARLING

Act. BW ... **80**
 Act. WW ... **765**
 Adj. 205 ... **694**
 EPDs:
 BW ... **2.7**
 WW ... **54**
 YW ... **85**
 MILK ... **27**
 M&G ... **54**
 Eye Pigment:
 LE **90** / RE **90**

CL 1 DOMINO 886U
HH ADVANCE 2181Z
 | HH MISS ADVANCE 6054S
 CL 1 DOMINO 555R
JA L1 DOMINETTE 1213Y
 | JA L1 DOMINETTE 1413L

Carcass: REA **.17** / MARB **-.03**

Thick and correct with lots of muscle. The 2181 sons travel well and are impressive. Should be a calving ease bull.

CL 1 DOMINO 638S
 CL 1 DOMINETTE 440P
 CL 1 DOMINO 320N
 HH MISS ADVANCE 4053P
 HH ADVANCE 3113N
 CL 1 DOMINETTE 3174N
 HH ADVANCE 8012H
 JA L1 DOMINETTE 800



Lot 29

32

JA L1 DOMINO 4412B

Feb. 22, 2014 • #43478809

YEARLING

Act. BW ... **84**
 Act. WW ... **785**
 Adj. 205 ... **749**
 EPDs:
 BW ... **3.1**
 WW ... **61**
 YW ... **98**
 MILK ... **31**
 M&G ... **62**
 Eye Pigment:
 LE **80** / RE **60**

HH ADVANCE 2181Z



JA L1 DOMINETTE 1701Y

Carcass: REA **.26** / MARB **-.01**

Traditional markings and a long sided, easy traveling kind of bull. Dam and granddam have near perfect udders.

CL 1 DOMINO 886U
 CL 1 DOMINO 638S
 CL 1 DOMINETTE 440P
 CL 1 DOMINO 320N
 HH MISS ADVANCE 6054S
 HH MISS ADVANCE 4053P
 CL 1 DOMINO 860U
 CL 1 DOMINO 637S
 CL 1 DOMINETTE 5142R
 CL 1 DOMINO 0157K
 JA L1 DOMINETTE 100L

36

JA L1 DOMINO 4418B

Mar. 15, 2014 • #43478815

YEARLING

Act. BW ... **82**
 Act. WW ... **680**
 Adj. 205 ... **692**
 EPDs:
 BW ... **2.1**
 WW ... **54**
 YW ... **87**
 MILK ... **29**
 M&G ... **56**
 Eye Pigment:
 LE **100** / RE **10**

HH ADVANCE 2181Z



JA L1 DOMINETTE 1634Y

Carcass: REA **.26** / MARB **-.02**

Heifer bull prospect with a 120 ratio on REA and a 106 on IMF. Dam is a very nice young 7640 daughter.

CL 1 DOMINO 886U
 CL 1 DOMINO 638S
 CL 1 DOMINETTE 440P
 CL 1 DOMINO 320N
 HH MISS ADVANCE 6054S
 HH MISS ADVANCE 4053P
 JA L1 DOMINO 7640T
 HH ADVANCE 286M
 JAL L1 DOMINETTE 1409L
 CL 1 DOMINO 555R
 JA L1 DOMINETTE 622S

33

JA L1 DOMINO 4414B

Mar. 6, 2014 • #43478811

YEARLING

Act. BW ... **81**
 Act. WW ... **730**
 Adj. 205 ... **724**
 EPDs:
 BW ... **3.4**
 WW ... **64**
 YW ... **104**
 MILK ... **28**
 M&G ... **60**
 Eye Pigment:
 LE **90** / RE **5**

HH ADVANCE 2181Z



JA L1 DOMINETTE 1111Y

Carcass: REA **.28** / MARB **.05**

Red legged and easy to look at with a 106 WWR. Dam moved her calving date from March 6 on this guy to January 29 in 2015.

CL 1 DOMINO 886U
 CL 1 DOMINO 638S
 CL 1 DOMINETTE 440P
 CL 1 DOMINO 320N
 HH MISS ADVANCE 6054S
 HH MISS ADVANCE 4053P
 CL 1 DOMINO 9125W
 CL 1 DOMINO 732T
 CL 1 DOMINETTE 475P
 JA L1 DOMINO 426P
 JA L1 DOMINETTE 5636R

37

JA L1 DOMINO 4421B

Mar. 19, 2014 • #43478818

YEARLING

Act. BW ... **83**
 Act. WW ... **700**
 Adj. 205 ... **719**
 EPDs:
 BW ... **2.4**
 WW ... **53**
 YW ... **82**
 MILK ... **25**
 M&G ... **52**
 Eye Pigment:
 LE **100** / RE **50**

JA L1 DOMINO 9800W



JA L1 DOMINETTE 1617Y

Carcass: REA **.24** / MARB **-.01**

9800 son with lots of pigment and he's above average on the carcass numbers. Should be good for use on heifers with the 7640 by 6001 combination on the bottom.

CL 1 DOMINO 555R
 HH ADVANCE 3113N
 CL 1 DOMINETTE 3174N
 DH DOMINO 6150
 JA L1 DOMINETTE 6815
 HH ADVANCE 286M
 JAL L1 DOMINETTE 1409L
 JA L1 DOMINO 6001S
 JA L1 DOMINETTE 2258M

34

JA L1 DOMINO 4416B

Mar. 11, 2014 • #43478813

YEARLING

Act. BW ... **82**
 Act. WW ... **650**
 Adj. 205 ... **654**
 EPDs:
 BW ... **3.2**
 WW ... **57**
 YW ... **94**
 MILK ... **26**
 M&G ... **54**
 Eye Pigment:
 LE **100** / RE **95**

HH ADVANCE 2181Z



JA L1 DOMINETTE 1214Y

Carcass: REA **.27** / MARB **-.02**

Red necked with extra spots of red on his face. He scored a 106 on REA.

CL 1 DOMINO 886U
 CL 1 DOMINO 638S
 CL 1 DOMINETTE 440P
 CL 1 DOMINO 320N
 HH MISS ADVANCE 6054S
 HH MISS ADVANCE 4053P
 CL 1 DOMINO 555R
 HH ADVANCE 3113N
 CL 1 DOMINETTE 3174N
 HH ADVANCE 286M
 JA L1 DOMINETTE 2623M



Lot 38

35

JA L1 DOMINO 4417B

Mar. 12, 2014 • #43478814

YEARLING

Act. BW ... **76**
 Act. WW ... **685**
 Adj. 205 ... **688**
 EPDs:
 BW ... **2.0**
 WW ... **54**
 YW ... **85**
 MILK ... **28**
 M&G ... **55**
 Eye Pigment:
 LE **70** / RE **65**

HH ADVANCE 2181Z



JA L1 DOMINETTE 1603Y

Carcass: REA **.23** / MARB **.03**

Moderate framed with a long level top. Above average on REA, here is a bull that should work on heifers.

CL 1 DOMINO 886U
 CL 1 DOMINO 638S
 CL 1 DOMINETTE 440P
 CL 1 DOMINO 320N
 HH MISS ADVANCE 6054S
 HH MISS ADVANCE 4053P
 JA L1 DOMINO 7640T
 HH ADVANCE 286M
 JAL L1 DOMINETTE 1409L
 CL 1 DOMINO 638S
 JA L1 DOMINETTE 5606R

38

JA L1 DOMINO 4423B

Mar. 28, 2014 • #43478821

YEARLING

Act. BW ... **81**
 Act. WW ... **700**
 Adj. 205 ... **742**
 EPDs:
 BW ... **3.1**
 WW ... **64**
 YW ... **104**
 MILK ... **29**
 M&G ... **61**
 Eye Pigment:
 LE **100** / RE **100**

HH ADVANCE 2181Z



JA L1 DOMINETTE 1718Y

Carcass: REA **.35** / MARB **-.01**

A rugged made, traditionally marked beef bull with long, yellow hair and lots of volume. His numbers indicate moderate calving ease. A full sister to his dam is being flushed by Lee Butler and another full sister sold to Harrell Herefords, OR.

CL 1 DOMINO 886U
 CL 1 DOMINO 638S
 CL 1 DOMINETTE 440P
 CL 1 DOMINO 320N
 HH MISS ADVANCE 6054S
 HH MISS ADVANCE 4053P
 CL 1 DOMINO 860U
 HH ADVANCE 286M
 JAL L1 DOMINETTE 1409L
 CL 1 DOMINO 9126J
 JA L1 DOMINETTE 2003M

39

BT L1 DOMINO 4006B

Feb. 18, 2014 • #43499357

YEARLING

Act. BW ... **92**
 Act. WW ... **835**
 Adj. 205 ... **766**
 EPDs:
 BW ... **3.8**
 WW ... **60**
 YW ... **90**
 MILK ... **29**
 M&G ... **59**
 Eye Pigment:
 LE **10** / RE **0**

CL 1 DOMINO 886U
HH ADVANCE 2181Z
 HH MISS ADVANCE 6054S

CL 1 DOMINO 638S
 CL 1 DOMINETTE 440P
 CL 1 DOMINO 320N
 HH MISS ADVANCE 4053P
 HH ADVANCE 3113N
 CL 1 DOMINETTE 3174N
 DH DOMINO 6150
 JA L1 DOMINETTE 6815

CL 1 DOMINO 555R
JA L1 DOMINETTE 0202X
 JA L1 DOMINETTE 4152P

Carcass: REA **.21** / MARB **-.05**

Long sided and a lot of grow look. He indexed 113 on WWR and weaned off at 835 lbs. Dam is a full sister to our 9800 herd sire.



Lot 40

40

BT L1 DOMINO 4021B

Feb. 14, 2014 • #43499358

YEARLING

Act. BW ... **84**
 Act. WW ... **780**
 Adj. 205 ... **708**
 EPDs:
 BW ... **2.5**
 WW ... **56**
 YW ... **82**
 MILK ... **28**
 M&G ... **55**
 Eye Pigment:
 LE **100** / RE **100**

CL 1 DOMINO 886U
HH ADVANCE 2181Z
 HH MISS ADVANCE 6054S

CL 1 DOMINO 638S
 CL 1 DOMINETTE 440P
 CL 1 DOMINO 320N
 HH MISS ADVANCE 4053P
 HH ADVANCE 3113N
 CL 1 DOMINETTE 3174N
 DH DOMINO 6150
 JA L1 DOMINETTE 6815

CL 1 DOMINO 555R
JA L1 DOMINETTE 0201X
 JA L1 DOMINETTE 4152P

Carcass: REA **.18** / MARB **-.05**

Red necked and heavy muscled with a deep full quarter. An eye appealing herd bull prospect whose dam is also a full sister to 9800.

41

CTR L1 DOMINO 4052B

Jan. 30, 2014 • #43468896

YEARLING

Act. BW ... **89**
 Act. WW ... **770**
 Adj. 205 ... **666**
 EPDs:
 BW ... **4.0**
 WW ... **62**
 YW ... **97**
 MILK ... **28**
 M&G ... **59**
 Eye Pigment:
 LE **65** / RE **75**

CL 1 DOMINO 886U
HH ADVANCE 2181Z
 HH MISS ADVANCE 6054S

CL 1 DOMINO 638S
 CL 1 DOMINETTE 440P
 CL 1 DOMINO 320N
 HH MISS ADVANCE 4053P
 HH ADVANCE 3113N
 CL 1 DOMINETTE 3174N
 DH DOMINO 6150
 JA L1 DOMINETTE 6815

CL 1 DOMINO 9125W
CTR L1 DOMINETTE 1130Y
 JA L1 DOMINETTE 8505U

Carcass: REA **.27** / MARB **.04**

Sound made bull with traditional markings and long, yellow hair.



Lot 42

42

CTR L1 DOMINO 4055B

Feb. 2, 2014 • #43468894

YEARLING

Act. BW ... **84**
 Act. WW ... **815**
 Adj. 205 ... **709**
 EPDs:
 BW ... **2.9**
 WW ... **58**
 YW ... **91**
 MILK ... **28**
 M&G ... **57**
 Eye Pigment:
 LE **95** / RE **55**

CL 1 DOMINO 886U
HH ADVANCE 2181Z
 HH MISS ADVANCE 6054S

CL 1 DOMINO 638S
 CL 1 DOMINETTE 440P
 CL 1 DOMINO 320N
 HH MISS ADVANCE 4053P
 HH ADVANCE 286M
 JAL L1 DOMINETTE 1409L
 HH ADVANCE 7085T
 JA L1 DOMINETTE 7634T

JA L1 DOMINO 7640T
CTR L1 DOMINETTE 1650Y
 JA L1 DOMINETTE 9408W

Carcass: REA **.32** / MARB **-.01**

Very deep and thick with a moderate frame and lots of volume. He is red necked and red legged and weaned off at 815 lbs. Lot 42 scanned a REA ratio of 104 and has the "full of muscle" look.

43

CTR L1 DOMINO 4056B

Feb. 3, 2014 • #43468901

YEARLING

Act. BW ... **85**
 Act. WW ... **855**
 Adj. 205 ... **745**
 EPDs:
 BW ... **3.8**
 WW ... **61**
 YW ... **96**
 MILK ... **28**
 M&G ... **58**
 Eye Pigment:
 LE **90** / RE **100**

CL 1 DOMINO 886U
HH ADVANCE 2181Z
 HH MISS ADVANCE 6054S

CL 1 DOMINO 638S
 CL 1 DOMINETTE 440P
 CL 1 DOMINO 320N
 HH MISS ADVANCE 4053P
 HH ADVANCE 1117L
 DBH MS CHALLENGE 239H
 HH ADVANCE 399N
 HH MISS ADVANCE 0078K

EL ADVANCE 640S
EL MISS ADVANCE 145Y
 EL MISS ADVANCE 742T

Carcass: REA **.22** / MARB **.04**

Lot 43 rationed 111 at weaning and 120 on his REA. A beef bull with the 2181 performance and look.

44

CTR L1 DOMINO 4057B

Feb. 6, 2014 • #43468903

YEARLING

Act. BW ... **89**
 Act. WW ... **815**
 Adj. 205 ... **715**
 EPDs:
 BW ... **4.1**
 WW ... **60**
 YW ... **96**
 MILK ... **28**
 M&G ... **58**
 Eye Pigment:
 LE **80** / RE **10**

CL 1 DOMINO 886U
HH ADVANCE 2181Z
 HH MISS ADVANCE 6054S

CL 1 DOMINO 638S
 CL 1 DOMINETTE 440P
 CL 1 DOMINO 320N
 HH MISS ADVANCE 4053P
 HH ADVANCE 1117L
 DBH MS CHALLENGE 239H
 HH ADVANCE 399N
 HH MISS ADVANCE 0078K

EL ADVANCE 640S
EL MISS ADVANCE 124Y
 EL MISS ADVANCE 741T

Carcass: REA **.19** / MARB **.04**

Another high performance 2181 son, he will be one of the high yearling weight bulls as his gain is exceptional.

45

CTR L1 DOMINO 4065B
Feb. 18, 2014 • #43468897

YEARLING
Act. BW ... **86**
Act. WW ... **735**
Adj. 205 ... **637**
EPDs:
BW ... **2.3**
WW ... **54**
YW ... **84**
MILK ... **27**
M&G ... **54**
Eye Pigment:
LE **100** / RE **95**

CL 1 DOMINO 886U
HH ADVANCE 2181Z
HH MISS ADVANCE 6054S
CL 1 DOMINO 648S
MONTANA MISS 918W
MONTANA MISS 497P
Carcass: REA **.08** / MARB **-.01**
Full of muscle as indicated by his 103 REA ratio. Lot 45 is red necked and red legged.

CL 1 DOMINO 638S
CL 1 DOMINETTE 440P
CL 1 DOMINO 320N
HH MISS ADVANCE 4053P
CL 1 DOMINO 461P
CL 1 DOMINETTE 249M
HH ADVANCE 0072K
MONTANA MISS 247

48

JA L1 DOMINO 4508B
Feb. 3, 2014 • #43542609

YEARLING
Act. BW ... **73**
Act. WW ... **735**
Adj. 205 ... **680**
EPDs:
BW ... **2.5**
WW ... **55**
YW ... **93**
MILK ... **27**
M&G ... **54**
Eye Pigment:
LE **100** / RE **100**

CL 1 DOMINO 860U
CL 1 DOMINO 216Z
CL 1 DOMINETTE 759T
CL 1 DOMINO 4134P
JA L1 DOMINETTE 0513X
JA L1 DOMINETTE 6118S
Carcass: REA **.17** / MARB **.05**
Another red necked, red legged bull with style and freedom of movement. Should work for heifers.

CL 1 DOMINO 637S
CL 1 DOMINETTE 5142R
CL 1 DOMINO 590R
CL 1 DOMINETTE 193L
CL 1 DOMINO 9126J
CL 1 DOMINETTE 8104H
JA L1 DOMINO 208M
JA L1 DOMINETTE 4454P

46

CTR L1 DOMINO 4067B
Feb. 19, 2014 • #43468905

YEARLING
Act. BW ... **88**
Act. WW ... **750**
Adj. 205 ... **663**
EPDs:
BW ... **3.5**
WW ... **60**
YW ... **93**
MILK ... **24**
M&G ... **54**
Eye Pigment:
LE **100** / RE **65**

CL 1 DOMINO 886U
HH ADVANCE 2181Z
HH MISS ADVANCE 6054S
CL 1 DOMINO 6105S
MONTANA MISS 009X
MONTANA MISS 488P
Carcass: REA **.30** / MARB **.04**
Deep bodied and red footed, Lot 46 is very thick and well balanced. He has long, yellow hair and is an easy keeper.

CL 1 DOMINO 638S
CL 1 DOMINETTE 440P
CL 1 DOMINO 320N
HH MISS ADVANCE 4053P
L1 DOMINO 03396
CL 1 DOMINETTE 243M
CL 1 DOMINO 9126J
HH MS ADVANCE 5048E

49

JA L1 DOMINO 4509B
Feb. 4, 2014 • #43493049

YEARLING
Act. BW ... **81**
Act. WW ... **800**
Adj. 205 ... **695**
EPDs:
BW ... **2.7**
WW ... **56**
YW ... **96**
MILK ... **26**
M&G ... **54**
Eye Pigment:
LE **50** / RE **45**

CL 1 DOMINO 860U
CL 1 DOMINO 216Z
CL 1 DOMINETTE 759T
CL 1 DOMINO 9125W
JA L1 DOMINETTE 1100Y
JA L1 DOMINETTE 8300U
Carcass: REA **.18** / MARB **.04**
Extra long with a long clean made neck and a smooth shoulder. We really like our 216 calves.

CL 1 DOMINO 637S
CL 1 DOMINETTE 5142R
CL 1 DOMINO 590R
CL 1 DOMINETTE 193L
CL 1 DOMINO 9125W
CL 1 DOMINETTE 475P
CL 1 DOMINO 638S
JA L1 DOMINETTE 5788R



Lot 47

50

CTR L1 DOMINO 4066B
Feb. 18, 2014 • #43495437

YEARLING
Act. BW ... **80**
Act. WW ... **750**
Adj. 205 ... **639**
EPDs:
BW ... **1.0**
WW ... **46**
YW ... **79**
MILK ... **28**
M&G ... **51**
Eye Pigment:
LE **50** / RE **100**

CL 1 DOMINO 860U
CL 1 DOMINO 216Z
CL 1 DOMINETTE 759T
CL 1 DOMINO 592R
MONTANA MISS 791T
MONTANA MISS 4169
Carcass: REA **.03** / MARB **.06**
Strong heifer bull candidate with lots of style and long yellow hair.

CL 1 DOMINO 637S
CL 1 DOMINETTE 5142R
CL 1 DOMINO 590R
CL 1 DOMINETTE 193L
CL 1 DOMINO 9126J
CL 1 DOMINETTE 974J
CL 1 DOMINO 965J
JA L1 DOMINETTE 0220

47

JA L1 DOMINO 4506B
Feb. 1, 2014 • #43493047

YEARLING
Act. BW ... **79**
Act. WW ... **740**
Adj. 205 ... **667**
EPDs:
BW ... **1.6**
WW ... **51**
YW ... **91**
MILK ... **26**
M&G ... **51**
Eye Pigment:
LE **90** / RE **100**

CL 1 DOMINO 860U
CL 1 DOMINO 216Z
CL 1 DOMINETTE 759T
JA L1 DOMINO 7640T
JA L1 DOMINETTE 1601Y
JA L1 DOMINETTE 9809W
Carcass: REA **.23** / MARB **-.01**
Our first son of 216 and he is a herd bull prospect. Lot 47 is red necked and red legged with volume and thickness. Should be a heifer bull and he scanned well on rib eye.

CL 1 DOMINO 637S
CL 1 DOMINETTE 5142R
CL 1 DOMINO 590R
CL 1 DOMINETTE 193L
HH ADVANCE 286M
JAL L1 DOMINETTE 1409L
CL 1 DOMINO 560R
JA L1 DOMINETTE 4660P

51

CTR L1 DOMINO 4071B
Feb. 24, 2014 • #43495433

YEARLING
Act. BW ... **80**
Act. WW ... **760**
Adj. 205 ... **662**
EPDs:
BW ... **1.5**
WW ... **48**
YW ... **84**
MILK ... **26**
M&G ... **50**
Eye Pigment:
LE **60** / RE **60**

CL 1 DOMINO 860U
CL 1 DOMINO 216Z
CL 1 DOMINETTE 759T
CL 1 DOMINO 592R
KB L1 DOMINETTE 8121U
KB L1 DOMINETTE 238
Carcass: REA **.19** / MARB **.03**
Low birth weight, heifer bull prospect. Lot 51 is long and very correct and red necked and red legged. He indexed 106 on both REA and MARB.

CL 1 DOMINO 637S
CL 1 DOMINETTE 5142R
CL 1 DOMINO 590R
CL 1 DOMINETTE 193L
CL 1 DOMINO 9126J
CL 1 DOMINETTE 974J
SS 47G SILVER DANDY 11J
KB L1 DOMINETTE 937



52

JA L1 DOMINO 4601B

Jan. 27, 2014 • #43478855

YEARLING
Act. BW ... **76**
Act. WW ... **770**
Adj. 205 ... **685**
EPDs:
BW ... **1.9**
WW ... **38**
YW ... **65**
MILK ... **25**
M&G ... **44**
Eye Pigment:
LE **60** / RE **100**

JA L1 DOMINO 7640T
JA L1 DOMINO 1602Y
| JA L1 DOMINETTE 9204W
GB L1 DOMINO 6134K
JA L1 DOMINETTE 100Y
| JA L1 DOMINETTE 8751U

Carcass: REA **.15** / MARB **-.02**

Very typical of the 1602 sons, Lot 52 is marked with lots of red and is moderate in frame size. Lots of volume and extra bone on a calving ease herd bull prospect. Granddam 8751 produced a \$12,000 heifer in last fall's sale and a \$7000 heifer in the 2013 sale. Lot 52 is a twin.

HH ADVANCE 286M
JA L1 DOMINETTE 1409L
CL 1 DOMINO 555R
JA L1 DOMINETTE 4119P
GB L1 DOMINO 471H
GB L1 DOM PRCS 4103H
JA L1 DOMINO 3105N
JA L1 DOMINETTE 6636S

53

JA L1 DOMINO 4604B

Jan. 29, 2014 • #43478859

YEARLING
Act. BW ... **79**
Act. WW ... **740**
Adj. 205 ... **663**
EPDs:
BW ... **1.7**
WW ... **45**
YW ... **77**
MILK ... **27**
M&G ... **49**
Eye Pigment:
LE **100** / RE **100**

JA L1 DOMINO 7640T
JA L1 DOMINO 1602Y
| JA L1 DOMINETTE 9204W
DH DOMINO 539
JA L1 DOMINETTE 101Y
| JA L1 DOMINETTE 7515T

Carcass: REA **.39** / MARB **.00**

Google-eyed, red marked, long and clean made with extra muscle. Should be excellent to use on heifers. Lot 53 scored a 105 on his REA ratio.

HH ADVANCE 286M
JA L1 DOMINETTE 1409L
CL 1 DOMINO 555R
JA L1 DOMINETTE 4119P
L1 DOMINO 99496
DH MS ADVANCE 1003
CL 1 DOMINO 4134P
JA L1 DOMINETTE 300N

54

JA L1 DOMINO 4605B

Feb. 16, 2014 • #43478860

YEARLING
Act. BW ... **78**
Act. WW ... **680**
Adj. 205 ... **679**
EPDs:
BW ... **1.8**
WW ... **47**
YW ... **79**
MILK ... **28**
M&G ... **52**
Eye Pigment:
LE **100** / RE **100**

JA L1 DOMINO 7640T
JA L1 DOMINO 1602Y
| JA L1 DOMINETTE 9204W
CL 1 DOMINO 860U
JA L1 DOMINETTE 2704Z
| JA L1 DOMINETTE 7001T

Carcass: REA **.29** / MARB **-.02**

Moderate framed, clean made, red necked and red legged. Calving ease and performance all in one package. The 1602 x 860 pedigree insures lots of maternal strength. Lot 54 has a 117 MARB ratio.

HH ADVANCE 286M
JA L1 DOMINETTE 1409L
CL 1 DOMINO 555R
JA L1 DOMINETTE 4119P
CL 1 DOMINO 637S
CL 1 DOMINETTE 5142R
GB L1 DOMINO 935C
JA L1 DOMINETTE 101L

55

JA L1 DOMINO 4606B

Feb. 21, 2014 • #43478861

YEARLING
Act. BW ... **77**
Act. WW ... **660**
Adj. 205 ... **670**
EPDs:
BW ... **2.2**
WW ... **48**
YW ... **74**
MILK ... **30**
M&G ... **54**
Eye Pigment:
LE **100** / RE **100**

JA L1 DOMINO 7640T
JA L1 DOMINO 1602Y
| JA L1 DOMINETTE 9204W
CL 1 DOMINO 9125W
JA L1 DOMINETTE 2120Z
| JA L1 DOMINETTE 9328W

Carcass: REA **.21** / MARB **.02**

A 116 MARB ratio and a really nice 9125 two year old dam. These low birth weight, high performing 1602 sons will build a cow herd!

HH ADVANCE 286M
JA L1 DOMINETTE 1409L
CL 1 DOMINO 555R
JA L1 DOMINETTE 4119P
CL 1 DOMINO 732T
CL 1 DOMINETTE 475P
CL 1 DOMINO 638S
JA L1 DOMINETTE 5606R

56

JA L1 DOMINO 4607B

Feb. 26, 2014 • #43478863

YEARLING
Act. BW ... **70**
Act. WW ... **675**
Adj. 205 ... **693**
EPDs:
BW ... **2.1**
WW ... **54**
YW ... **87**
MILK ... **29**
M&G ... **56**
Eye Pigment:
LE **80** / RE **95**

JA L1 DOMINO 7640T
JA L1 DOMINO 1602Y
| JA L1 DOMINETTE 9204W
CL 1 DOMINO 860U
JA L1 DOMINETTE 2717Z
| JA L1 DOMINETTE 807U

Carcass: REA **.37** / MARB **-.06**

Extra low birth weight and he still earned a 101 WWR. His two year old 860 dam is off to a great start. All of the 1602 sons were above average on their MARB.

HH ADVANCE 286M
JA L1 DOMINETTE 1409L
CL 1 DOMINO 555R
JA L1 DOMINETTE 4119P
CL 1 DOMINO 637S
CL 1 DOMINETTE 5142R
CL 1 DOMINO 0157K
JA L1 DOMINETTE 6719S

57

KB L1 DOMINO 405B

Feb. 17, 2014 • #43465907

YEARLING
Act. BW ... **89**
Act. WW ... **720**
Adj. 205 ... **685**
EPDs:
BW ... **3.5**
WW ... **57**
YW ... **86**
MILK ... **33**
M&G ... **61**
Eye Pigment:
LE **40** / RE **15**

JA L1 DOMINO 7640T
JA L1 DOMINO 1602Y
| JA L1 DOMINETTE 9204W
CL 1 DOMINO 9125W
JA L1 DOMINETTE 2103Z
| JA L1 DOMINETTE 9815W

Carcass: REA **.38** / MARB **-.03**

Very attractive 1602 son out of a two year old 9125 daughter that Ken Bowling bought in our 2013 sale. Lot 57 weaned off heavy and is gaining well.

HH ADVANCE 286M
JA L1 DOMINETTE 1409L
CL 1 DOMINO 555R
JA L1 DOMINETTE 4119P
CL 1 DOMINO 732T
CL 1 DOMINETTE 475P
CL 1 DOMINO 560R
JA L1 DOMINETTE 2526M

58

JA L1 DOMINO 4701B

Jan. 30, 2014 • #43479421

YEARLING
Act. BW ... **87**
Act. WW ... **860**
Adj. 205 ... **738**
EPDs:
BW ... **4.4**
WW ... **60**
YW ... **100**
MILK ... **34**
M&G ... **64**
Eye Pigment:
LE **80** / RE **100**

CL 1 DOMINO 637S
CL 1 DOMINO 860U
| CL 1 DOMINETTE 5142R
CL 1 DOMINO 638S
JA L1 DOMINETTE 9304W
| JA L1 DOMINETTE 7605T

Carcass: REA **.15** / MARB **.06**

A powerful performance herd bull prospect with lots of eye appeal. Lot 58 is red necked and red legged and one of the high YW EPD bulls in the sale. Dam has a great record with a WWR of 107 on four calves.

L1 DOMINO 03396
CL 1 DOMINETTE 118L
CL 1 DOMINO 1172L
CL 1 DOMINETTE 810H
L1 DOMINO 03396
CL 1 DOMINETTE 475P
HH ADVANCE 286M
JA L1 DOMINETTE 0253

59

JA L1 DOMINO 4712B

Feb. 4, 2014 • #43479431

YEARLING

Act. BW ... **86**
 Act. WW ... **815**
 Adj. 205 ... **709**
 EPDs:
 BW ... **3.3**
 WW ... **53**
 YW ... **95**
 MILK ... **32**
 M&G ... **59**
 Eye Pigment:
 LE **100** / RE **100**

CL 1 DOMINO 860U

CL 1 DOMINO 637S
 CL 1 DOMINETTE 5142R



CL 1 DOMINO 555R

JA L1 DOMINETTE 9219W

JA L1 DOMINETTE 4801P

Carcass: REA **.20** / MARB **.00**

Lots of pigment and a great disposition. Lot 59 weaned off heavy and is still coming on strong. His eye appealing dam has a WWR of 104 on four calves and is coon eyed.

L1 DOMINO 03396
 CL 1 DOMINETTE 118L
 CL 1 DOMINO 1172L
 CL 1 DOMINETTE 810H
 HH ADVANCE 3113N
 CL 1 DOMINETTE 3174N
 GB L1 DOMINO 808A
 JA L1 DOMINETTE 0221



Lot 62

60

JA L1 DOMINO 4713B

Feb. 5, 2014 • #43479433

YEARLING

Act. BW ... **85**
 Act. WW ... **825**
 Adj. 205 ... **719**
 EPDs:
 BW ... **3.6**
 WW ... **57**
 YW ... **101**
 MILK ... **28**
 M&G ... **57**
 Eye Pigment:
 LE **80** / RE **40**

CL 1 DOMINO 860U

CL 1 DOMINO 637S
 CL 1 DOMINETTE 5142R



HH ADVANCE 286M

JA L1 DOMINETTE 9614W

JA L1 DOMINETTE 4160P

Carcass: REA **.41** / MARB **.01**

Rugged, big framed 860 son with a bit more white than the rest. Lot 60 really scanned well with a 102 on REA and a 106 on MARB. Dam is the kind that keeps you in the cow business.

L1 DOMINO 03396
 CL 1 DOMINETTE 118L
 CL 1 DOMINO 1172L
 CL 1 DOMINETTE 810H
 HH ADVANCE 0024K
 HH MISS ADVANCE 752G
 DH DOMINO 6150
 JA L1 DOMINETTE 5562

62

JA L1 DOMINO 4725B

Feb. 11, 2014 • #43479458

YEARLING

Act. BW ... **85**
 Act. WW ... **840**
 Adj. 205 ... **744**
 EPDs:
 BW ... **4.0**
 WW ... **61**
 YW ... **108**
 MILK ... **30**
 M&G ... **60**
 Eye Pigment:
 LE **100** / RE **100**

CL 1 DOMINO 860U

CL 1 DOMINO 637S
 CL 1 DOMINETTE 5142R



HH ADVANCE 286M

JA L1 DOMINETTE 9604W

JA L1 DOMINETTE 5005R

Carcass: REA **.45** / MARB **.06**

An eye catcher, Lot 62 has a strong top and a red neck. He scored a 108 on REA and a 102 on MARB. Dam 9604 has a near perfect udder and a WWR of 106 on four. This guy indexed 109 at weaning and will probably be even higher on YWR.

L1 DOMINO 03396
 CL 1 DOMINETTE 118L
 CL 1 DOMINO 1172L
 CL 1 DOMINETTE 810H
 HH ADVANCE 0024K
 HH MISS ADVANCE 752G
 GB L1 DOMINO 935C
 JA L1 DOMINETTE 9238

61

JA L1 DOMINO 4723B

Feb. 10, 2014 • #43479456

YEARLING

Act. BW ... **89**
 Act. WW ... **820**
 Adj. 205 ... **716**
 EPDs:
 BW ... **4.6**
 WW ... **62**
 YW ... **113**
 MILK ... **32**
 M&G ... **63**
 Eye Pigment:
 LE **70** / RE **25**

CL 1 DOMINO 860U

CL 1 DOMINO 637S
 CL 1 DOMINETTE 5142R



JA L1 DOMINO 426P

JA L1 DOMINETTE 800U

JA L1 DOMINETTE 5019R

Carcass: REA **.32** / MARB **.10**

I would predict that Lot 61 would be a strong female producer. He is long sided and his dam is the soggy, easy keeping kind with a 107 WWR on four. Note his YW EPD.

L1 DOMINO 03396
 CL 1 DOMINETTE 118L
 CL 1 DOMINO 1172L
 CL 1 DOMINETTE 810H
 CL 1 DOMINO 0157K
 JA L1 DOMINETTE 7070
 GB L1 DOMINO 935C
 JA L1 DOMINETTE 1255L

63

JA L1 DOMINO 4726B

Feb. 12, 2014 • #43479459

YEARLING

Act. BW ... **87**
 Act. WW ... **840**
 Adj. 205 ... **746**
 EPDs:
 BW ... **4.3**
 WW ... **62**
 YW ... **111**
 MILK ... **33**
 M&G ... **64**
 Eye Pigment:
 LE **40** / RE **70**

CL 1 DOMINO 860U

CL 1 DOMINO 637S
 CL 1 DOMINETTE 5142R



HH ADVANCE 7085T

JA L1 DOMINETTE 9407W

JA L1 DOMINETTE 7523T

Carcass: REA **.30** / MARB **.09**

Strong performance bull, note his growth EPDs. Dam is a heavy milking 7085 daughter. Lot 63 ratioed 109 at weaning.

L1 DOMINO 03396
 CL 1 DOMINETTE 118L
 CL 1 DOMINO 1172L
 CL 1 DOMINETTE 810H
 L1 DOMINO 03571
 HH MISS ADVANCE 1088L
 CL 1 DOMINO 4134P
 JA L1 DOMINETTE 3800N



Lot 58 ...pedigree on facing page

64

JA L1 DOMINO 4731B

Feb. 19, 2014 • #43479468

YEARLING

Act. BW ... **85**
 Act. WW ... **735**
 Adj. 205 ... **667**
 EPDs:
 BW ... **3.1**
 WW ... **55**
 YW ... **97**
 MILK ... **30**
 M&G ... **57**
 Eye Pigment:
 LE **90** / RE **80**

CL 1 DOMINO 860U

CL 1 DOMINO 637S
 CL 1 DOMINETTE 5142R

CL 1 DOMINO 555R

JA L1 DOMINETTE 9225W

JA L1 DOMINETTE 5772R

Carcass: REA **.25** / MARB **.04**

A red necked beef bull, more strong numbers and a 103 MARB ratio.

L1 DOMINO 03396
 CL 1 DOMINETTE 118L
 CL 1 DOMINO 1172L
 CL 1 DOMINETTE 810H
 HH ADVANCE 3113N
 CL 1 DOMINETTE 3174N
 CL 1 DOMINO 965J
 JA L1 DOMINETTE 2608M

YEARLINGS



Lot 65

65 JA L1 DOMINO 4739B Feb. 15, 2014 • #43479477

CL 1 DOMINO 637S
CL 1 DOMINO 860U
 CL 1 DOMINETTE 5142R

YEARLING
 Act. BW ... **85**
 Act. WW ... **870**
 Adj. 205 ... **780**
 EPDs:
 BW ... **3.5**
 WW ... **66**
 YW ... **111**
 MILK ... **30**
 M&G ... **62**
 Eye Pigment:
 LE **100** / RE **100**

HH ADVANCE 286M
JA L1 DOMINETTE 9634W
 JA L1 DOMINETTE 5754R

Carcass: REA **.40** / MARB **.05**

L1 DOMINO 03396
 CL 1 DOMINETTE 118L
 CL 1 DOMINO 1172L
 CL 1 DOMINETTE 810H
 HH ADVANCE 0024K
 HH MISS ADVANCE 752G
 JA L1 DOMINO 242M
 JA L1 DOMINETTE 3213N

Herd bull prospect, he is moderate framed, extra thick and full of muscle. Red necked, red legged, and red eyed, Lot 65 is a wide-based bull with muscle expression in the lower stifle and forearm. We lost dam 9634, but have a two year old daughter by 9125 in herd. Lot 65 has a 117 REA ratio, indexed 114 WWR and will be one of the high yearling weight bulls. **We will retain an interest.**

66 JA L1 DOMINO 4740B Mar. 2, 2014 • #43479478

CL 1 DOMINO 637S
CL 1 DOMINO 860U
 CL 1 DOMINETTE 5142R

YEARLING
 Act. BW ... **87**
 Act. WW ... **820**
 Adj. 205 ... **768**
 EPDs:
 BW ... **4.3**
 WW ... **61**
 YW ... **107**
 MILK ... **34**
 M&G ... **65**
 Eye Pigment:
 LE **100** / RE **100**

CL 1 DOMINO 638S
JA L1 DOMINETTE 9334W
 JA L1 DOMINETTE 613S

Carcass: REA **.22** / MARB **.08**

L1 DOMINO 03396
 CL 1 DOMINETTE 118L
 CL 1 DOMINO 1172L
 CL 1 DOMINETTE 810H
 L1 DOMINO 03396
 CL 1 DOMINETTE 475P
 CL 1 DOMINO 0157K
 JA L1 DOMINETTE 0101

Long hiped and extra frame with a 112 WWR. Above average on REA and some of the breed's top cows on both top and bottom of his pedigree. Dam has WWR of 112 on three calves.

67 JA L1 DOMINO 4742B Feb. 27, 2014 • #43479482

CL 1 DOMINO 637S
CL 1 DOMINO 860U
 CL 1 DOMINETTE 5142R

YEARLING
 Act. BW ... **85**
 Act. WW ... **820**
 Adj. 205 ... **760**
 EPDs:
 BW ... **4.1**
 WW ... **60**
 YW ... **107**
 MILK ... **33**
 M&G ... **63**
 Eye Pigment:
 LE **80** / RE **50**

HH ADVANCE 7085T
JA L1 DOMINETTE 9405W
 JA L1 DOMINETTE 7002T

Carcass: REA **.23** / MARB **.11**

L1 DOMINO 03396
 CL 1 DOMINETTE 118L
 CL 1 DOMINO 1172L
 CL 1 DOMINETTE 810H
 L1 DOMINO 03571
 HH MISS ADVANCE 1088L
 GB L1 DOMINO 935C
 JA L1 DOMINETTE 304N

Lots of frame and well made with a long clean neck, Lot 67 has a white leg on the front, but good pigment. He scanned a 105 REA ratio and a 112 MARB ratio.

68 JA L1 DOMINO 4744B Mar. 2, 2014 • #43479486

CL 1 DOMINO 637S
CL 1 DOMINO 860U
 CL 1 DOMINETTE 5142R

YEARLING
 Act. BW ... **85**
 Act. WW ... **770**
 Adj. 205 ... **708**
 EPDs:
 BW ... **3.7**
 WW ... **58**
 YW ... **102**
 MILK ... **26**
 M&G ... **56**
 Eye Pigment:
 LE **100** / RE **100**

HH ADVANCE 286M
JA L1 DOMINETTE 7642T
 JA L1 DOMINETTE 3923N

Carcass: REA **.39** / MARB **.06**

L1 DOMINO 03396
 CL 1 DOMINETTE 118L
 CL 1 DOMINO 1172L
 CL 1 DOMINETTE 810H
 HH ADVANCE 0024K
 HH MISS ADVANCE 752G
 HH ADVANCE 8017H
 JA L1 DOMINETTE 9243

Red necked beef bull with good indexes and high performance EPDs. Dam is high volume and an easy keeper, the kind we like on dry Kansas buffalo grass pasture.

69 JA L1 DOMINO 4745B Mar. 4, 2014 • #43479487

CL 1 DOMINO 637S
CL 1 DOMINO 860U
 CL 1 DOMINETTE 5142R

YEARLING
 Act. BW ... **84**
 Act. WW ... **770**
 Adj. 205 ... **725**
 EPDs:
 BW ... **3.3**
 WW ... **59**
 YW ... **105**
 MILK ... **31**
 M&G ... **61**
 Eye Pigment:
 LE **70** / RE **50**

DH DOMINO 539
JA L1 DOMINETTE 9105W
 JA L1 DOMINETTE 7202T

Carcass: REA **.38** / MARB **.06**

L1 DOMINO 03396
 CL 1 DOMINETTE 118L
 CL 1 DOMINO 1172L
 CL 1 DOMINETTE 810H
 L1 DOMINO 99496
 DH MS ADVANCE 1003
 CL 1 DOMINO 555R
 JA L1 DOMINETTE 421P

Stout made and deep bodied with lots of hair. He is an eye catching bull and scored a 103 MARB ratio.

70 JA L1 DOMINO 4803B Feb. 11, 2014 • #43479493

HH ADVANCE 8050U
DH ADVANCE 031
 DH DOMINETTE 7155

YEARLING
 Act. BW ... **84**
 Act. WW ... **670**
 Adj. 205 ... **661**
 EPDs:
 BW ... **4.3**
 WW ... **54**
 YW ... **92**
 MILK ... **26**
 M&G ... **53**
 Eye Pigment:
 LE **100** / RE **100**

CL 1 DOMINO 860U
JA L1 DOMINETTE 2709Z
 JA L1 DOMINETTE 8637U

Carcass: REA **.33** / MARB **-.04**

L1 DOMINO 03571
 HH MISS ADVANCE 365N
 DH DOMINO 302
 DH MISS ADVANCE 3169
 CL 1 DOMINO 637S
 CL 1 DOMINETTE 5142R
 HH ADVANCE 286M
 JA L1 DOMINETTE 222M

Our first son of the Debter 031 bull, he has extra pigmentation and a really nice 860 two year old dam. Lot 70 is very moderate framed as is his sire and grandsire.

71 JA L1 DOMINO 4808B Mar. 18, 2014 • #43479646

HH ADVANCE 8050U
DH ADVANCE 031
 DH DOMINETTE 7155

YEARLING
 Act. BW ... **74**
 Act. WW ... **650**
 Adj. 205 ... **705**
 EPDs:
 BW ... **3.7**
 WW ... **57**
 YW ... **97**
 MILK ... **28**
 M&G ... **57**
 Eye Pigment:
 LE **100** / RE **100**

CL 1 DOMINO 860U
JA L1 DOMINETTE 2711Z
 JA L1 DOMINETTE 8604U

Carcass: REA **.42** / MARB **-.03**

L1 DOMINO 03571
 HH MISS ADVANCE 365N
 DH DOMINO 302
 DH MISS ADVANCE 3169
 CL 1 DOMINO 637S
 CL 1 DOMINETTE 5142R
 HH ADVANCE 286M
 JA L1 DOMINETTE 1206L

Big time eye pigment and red necked. Also very moderate framed and he really scanned well on both REA and MARB. The 860 daughters have made great cows and dam 2711 is no exception.

72 CTR L1 DOMINO 4063B Feb. 16, 2014 • #43502463

HH ADVANCE 8050U
DH ADVANCE 031
 DH DOMINETTE 7155

YEARLING
 Act. BW ... **83**
 Act. WW ... **715**
 Adj. 205 ... **686**
 EPDs:
 BW ... **3.8**
 WW ... **51**
 YW ... **86**
 MILK ... **25**
 M&G ... **51**
 Eye Pigment:
 LE **100** / RE **100**

GB L1 DOMINO 6134K
CTR L1 DOMINETTE 2906Z
 HH MISS ADVANCE 9206W

Carcass: REA **.18** / MARB **.09**

L1 DOMINO 03571
 HH MISS ADVANCE 365N
 DH DOMINO 302
 DH MISS ADVANCE 3169
 GB L1 DOMINO 471H
 GB L1 DOM PRCS 4103H
 HH ADVANCE 4055P
 HH MISS ADVANCE 5162R

Moderate framed and thick made with lots pigment, Lot 72 scanned a 104 REA and a 119 MARB. An easy keeper with strong carcass information.

73 B&B L1 DOMINO 3120 Sept. 3, 2013 • #43444937

FALL YRLG	Act. BW ... 84	CL 1 DOMINO 7139T	CL 1 DOMINO 590R
	EPDs:	CL 1 DOMINO 030X	CL 1 DOMINETTE 530R
	BW ... 2.4	CL 1 DOMINETTE 5142R	CL 1 DOMINO 1172L
	WW ... 47		CL 1 DOMINETTE 810H
	YW ... 78	CL 1 DOMINO 555R	HH ADVANCE 3113N
	MILK ... 26	B&B L1 DOMINETTE 1155	CL 1 DOMINETTE 3174N
	M&G ... 49	B&B L1 DOMINETTE 7162	CL 1 DOMINO 8153H
	Eye Pigment:		B&B L1 DOMINET 5112
	LE 100 / RE 100	Carcass: REA .05 / MARB -.04	

78 B&B L1 DOMINO 3140 Sept. 10, 2013 • #43444990

FALL YRLG	Act. BW ... 77	HH ADVANCE 3113N	L1 DOMINO 99496
	EPDs:	CL 1 DOMINO 555R	HH MS ADV 875H
	BW ... 2.4	CL 1 DOMINETTE 3174N	CL 1 DOMINO 9126J
	WW ... 53		CL 1 DOMINETTE 810H
	YW ... 88	JA L1 DOMINO 426P	CL 1 DOMINO 0157K
	MILK ... 28	B&B L1 DOMINETTE 6180	JA L1 DOMINETTE 7070
	M&G ... 55	B&B L1 DOMINETTE 2175	CL 1 DOMINO 8153H
	Eye Pigment:		B&B L1 DOMINET 1063
	LE 80 / RE 90	Carcass: REA .20 / MARB .01	

74 B&B L1 DOMINO 3133 Sept. 9, 2013 • #43445059

FALL YRLG	Act. BW ... 81	HH ADVANCE 3113N	L1 DOMINO 99496
	EPDs:	CL 1 DOMINO 555R	HH MS ADV 875H
	BW ... 2.3	CL 1 DOMINETTE 3174N	CL 1 DOMINO 9126J
	WW ... 44		CL 1 DOMINETTE 810H
	YW ... 76	JA L1 DOMINO 426P	CL 1 DOMINO 0157K
	MILK ... 26	B&B L1 DOMINETTE 7185	JA L1 DOMINETTE 7070
	M&G ... 47	B&B L1 DOMINETTE 2143	CL 1 DOMINO 8153H
	Eye Pigment:		B&B MS MARKETTE 1094
	LE 80 / RE 80	Carcass: REA .08 / MARB -.01	

79 B&B L1 DOMINO 3142 Sept. 11, 2013 • #43445033

FALL YRLG	Act. BW ... 82	CL 1 DOMINO 732T	CL 1 DOMINO 590R
	EPDs:	CL 1 DOMINO 9125W	CL 1 DOMINETTE 507R
	BW ... 3.3	CL 1 DOMINETTE 475P	CL 1 DOMINO 824H
	WW ... 55		CL 1 DOMINETTE 200M
	YW ... 89	JA L1 DOMINO 426P	CL 1 DOMINO 0157K
	MILK ... 28	B&B L1 DOMINETTE 7125	JA L1 DOMINETTE 7070
	M&G ... 55	B&B L1 DOMINETTE 5159	CL 1 DOMINO 8153H
	Eye Pigment:		B&B L1 DOMINET 7188
	LE 90 / RE 30	Carcass: REA .16 / MARB .11	

75 B&B L1 DOMINO 3134 Sept. 9, 2013 • #43445064

FALL YRLG	Act. BW ... 80	HH ADVANCE 3113N	L1 DOMINO 99496
	EPDs:	CL 1 DOMINO 555R	HH MS ADV 875H
	BW ... 2.8	CL 1 DOMINETTE 3174N	CL 1 DOMINO 9126J
	WW ... 46		CL 1 DOMINETTE 810H
	YW ... 78	CL 1 DOMINO 8153H	CL 1 DOMINO 5131E
	MILK ... 23	B&B L1 DOMINETTE 7217	CL 1 DOMINET 496
	M&G ... 46	B&B L1 DOMINETTE 3130	CL 1 DOMINO 8153H
	Eye Pigment:		B&B L1 DOMINET 7149
	LE 80 / RE 80	Carcass: REA .23 / MARB -.10	

80 B&B L1 DOMINO 3143 Sept. 11, 2013 • #43445027

FALL YRLG	Act. BW ... 76	CL 1 DOMINO 732T	CL 1 DOMINO 590R
	EPDs:	CL 1 DOMINO 9125W	CL 1 DOMINETTE 507R
	BW ... 2.7	CL 1 DOMINETTE 475P	CL 1 DOMINO 824H
	WW ... 47		CL 1 DOMINETTE 200M
	YW ... 74	CL 1 DOMINO 8153H	CL 1 DOMINO 5131E
	MILK ... 24	B&B L1 DOMINETTE 6249	CL 1 DOMINET 496
	M&G ... 48	B&B L1 DOMINETTE 7125	B&B MR MAX 1082
	Eye Pigment:		B&B L1 DOMINET 9116
	LE 95 / RE 100	Carcass: REA .19 / MARB .03	

76 B&B L1 DOMINO 3135 Sept. 9, 2013 • #43445087

FALL YRLG	Act. BW ... 77	CL 1 DOMINO 732T	CL 1 DOMINO 590R
	EPDs:	CL 1 DOMINO 9125W	CL 1 DOMINETTE 507R
	BW ... 2.5	CL 1 DOMINETTE 475P	CL 1 DOMINO 824H
	WW ... 56		CL 1 DOMINETTE 200M
	YW ... 87	CL 1 DOMINO 555R	HH ADVANCE 3113N
	MILK ... 31	B&B L1 DOMINETTE 8155	CL 1 DOMINETTE 3174N
	M&G ... 59	B&B L1 DOMINETTE 5210	CL 1 DOMINO 8153H
	Eye Pigment:		B&B MS PACKER 1098
	LE 95 / RE 95	Carcass: REA .20 / MARB .05	

81 B&B L1 DOMINO 3149 Sept. 14, 2013 • #43445046

FALL YRLG	Act. BW ... 86	CL 1 DOMINO 732T	CL 1 DOMINO 590R
	EPDs:	CL 1 DOMINO 9125W	CL 1 DOMINETTE 507R
	BW ... 3.1	CL 1 DOMINETTE 475P	CL 1 DOMINO 824H
	WW ... 50		CL 1 DOMINETTE 200M
	YW ... 81	CL 1 DOMINO 555R	HH ADVANCE 3113N
	MILK ... 29	B&B L1 DOMINETTE 7164	CL 1 DOMINETTE 3174N
	M&G ... 54	B&B L1 DOMINETTE 464	CL 1 DOMINO 8153H
	Eye Pigment:		B&B MS ADVANCE 5120
	LE 50 / RE 60	Carcass: REA .10 / MARB .04	

77 B&B L1 DOMINO 3137 Sept. 9, 2013 • #43444923

FALL YRLG	Act. BW ... 78	CL 1 DOMINO 732T	CL 1 DOMINO 590R
	EPDs:	CL 1 DOMINO 9125W	CL 1 DOMINETTE 507R
	BW ... 3.0	CL 1 DOMINETTE 475P	CL 1 DOMINO 824H
	WW ... 44		CL 1 DOMINETTE 200M
	YW ... 74	CL 1 DOMINO 8153H	CL 1 DOMINO 5131E
	MILK ... 23	B&B L1 DOMINETTE 462	CL 1 DOMINET 496
	M&G ... 45	B&B L1 DOMINETTE 6110	JA L1 DOMINO 3565
	Eye Pigment:		B&B MS L1 DOM 2123
	LE 60 / RE 50	Carcass: REA .10 / MARB .07	

82 B&B L1 DOMINO 3152 Sept. 18, 2013 • #43445030

FALL YRLG	Act. BW ... 89	CL 1 DOMINO 732T	CL 1 DOMINO 590R
	EPDs:	CL 1 DOMINO 9125W	CL 1 DOMINETTE 507R
	BW ... 3.5	CL 1 DOMINETTE 475P	CL 1 DOMINO 824H
	WW ... 54		CL 1 DOMINETTE 200M
	YW ... 87	CL 1 DOMINO 555R	HH ADVANCE 3113N
	MILK ... 29	B&B L1 DOMINETTE 7122	CL 1 DOMINETTE 3174N
	M&G ... 56	B&B L1 DOMINETTE 466	CL 1 DOMINO 8153H
	Eye Pigment:		B&B L1 DOMINET 7113
	LE 50 / RE 95	Carcass: REA .15 / MARB .04	

FALL YEARLINGS

83

B&B L1 DOMINO 3153

Sept. 18, 2013 • #43445052

FALL YRLG

Act. BW ... **79**
 EPDs:
 BW **2.2**
 WW **43**
 YW **71**
 MILK **26**
 M&G **48**
 Eye Pigment:
 LE **60** / RE **70**

CL 1 DOMINO 555R

HH ADVANCE 3113N
 | CL 1 DOMINETTE 3174N

B&B L1 DOMINETTE 7174

JA L1 DOMINO 426P
 | B&B L1 DOMINETTE 861

Carcass: REA **.00** / MARB **.03**

L1 DOMINO 99496
 HH MS ADV 875H
 CL 1 DOMINO 9126J
 CL 1 DOMINETTE 810H
 CL 1 DOMINO 0157K
 JA L1 DOMINETTE 7070
 KB L1 DOMINO 441
 B&B MS L1 DOMINO 475

88

B&B L1 DOMINO 3185

Sept. 30, 2013 • #43445061

FALL YRLG

Act. BW ... **82**
 EPDs:
 BW **3.0**
 WW **58**
 YW **92**
 MILK **30**
 M&G **59**
 Eye Pigment:
 LE **100** / RE **70**

CL 1 DOMINO 9125W

CL 1 DOMINO 732T
 | CL 1 DOMINETTE 475P

B&B L1 DOMINETTE 7198

JA L1 DOMINO 426P
 | B&B L1 DOMINETTE 3117

Carcass: REA **.20** / MARB **.12**

CL 1 DOMINO 590R
 CL 1 DOMINETTE 507R
 CL 1 DOMINO 824H
 CL 1 DOMINETTE 200M
 CL 1 DOMINO 0157K
 JA L1 DOMINETTE 7070
 DHR L1 DOMINO 512D
 DHR 4119 DOMET 1065

84

B&B L1 DOMINO 3156

Sept. 18, 2013 • #43445067

FALL YRLG

Act. BW ... **84**
 EPDs:
 BW **3.0**
 WW **54**
 YW **85**
 MILK **31**
 M&G **58**
 Eye Pigment:
 LE **50** / RE **80**

CL 1 DOMINO 9125W

CL 1 DOMINO 732T
 | CL 1 DOMINETTE 475P

B&B L1 DOMINETTE 7232

CL 1 DOMINO 555R
 | B&B L1 DOMINETTE 476

Carcass: REA **.18** / MARB **.04**

CL 1 DOMINO 590R
 CL 1 DOMINETTE 507R
 CL 1 DOMINO 824H
 CL 1 DOMINETTE 200M
 HH ADVANCE 3113N
 CL 1 DOMINETTE 3174N
 CL 1 DOMINO 8153H
 B&B L1 DOMINETA 6152

89

B&B L1 DOMINO 3186

Sept. 30, 2013 • #43445094

FALL YRLG

Act. BW ... **83**
 EPDs:
 BW **2.8**
 WW **53**
 YW **87**
 MILK **28**
 M&G **55**
 Eye Pigment:
 LE **100** / RE **100**

CL 1 DOMINO 9125W

CL 1 DOMINO 732T
 | CL 1 DOMINETTE 475P

B&B L1 DOMINETTE 8232

JA L1 DOMINO 426P
 | B&B L1 DOMINETE 986

Carcass: REA **.14** / MARB **.12**

CL 1 DOMINO 590R
 CL 1 DOMINETTE 507R
 CL 1 DOMINO 824H
 CL 1 DOMINETTE 200M
 CL 1 DOMINO 0157K
 JA L1 DOMINETTE 7070
 DHR L1 DOMINO 512D
 DHR MS L1 DOMINO 448

85

B&B L1 DOMINO 3160

Sept. 19, 2013 • #43445100

FALL YRLG

Act. BW ... **79**
 EPDs:
 BW **1.6**
 WW **43**
 YW **76**
 MILK **28**
 M&G **50**
 Eye Pigment:
 LE **100** / RE **100**

CL 1 DOMINO 555R

HH ADVANCE 3113N
 | CL 1 DOMINETTE 3174N

B&B L1 DOMINETTE 646

CL 1 DOMINO 0157K
 | B&B L1 DOMINETTE 328

Carcass: REA **.06** / MARB **-.03**

L1 DOMINO 99496
 HH MS ADV 875H
 CL 1 DOMINO 9126J
 CL 1 DOMINETTE 810H
 HH ADVANCE 767G
 CL 1 DOMINETTE 861H
 CL 1 DOMINO 8153H
 B&B MS L1 DOMINO 423

90

B&B L1 DOMINO 3194

Oct. 5, 2013 • #43445105

FALL YRLG

Act. BW ... **79**
 EPDs:
 BW **2.6**
 WW **49**
 YW **82**
 MILK **27**
 M&G **52**
 Eye Pigment:
 LE **100** / RE **100**

CL 1 DOMINO 555R

HH ADVANCE 3113N
 | CL 1 DOMINETTE 3174N

B&B L1 DOMINET 9113

JA L1 DOMINO 426P
 | B&B L1 DOMINETTE 409

Carcass: REA **.12** / MARB **.00**

L1 DOMINO 99496
 HH MS ADV 875H
 CL 1 DOMINO 9126J
 CL 1 DOMINETTE 810H
 CL 1 DOMINO 0157K
 JA L1 DOMINETTE 7070
 CL 1 DOMINO 8153H
 B&B MS L1 DOMINO 301

86

B&B L1 DOMINO 3171

Sept. 22, 2013 • #43444921

FALL YRLG

Act. BW ... **86**
 EPDs:
 BW **3.5**
 WW **46**
 YW **78**
 MILK **23**
 M&G **46**
 Eye Pigment:
 LE **10** / RE **0**

MCCABE 03571 DOMINO 1980

L1 DOMINO 03571
 | EE MS 0024 L1 740

B&B L1 DOMINETTE 456

CL 1 DOMINO 8153H
 | B&B L1 DOMINETTE 7132

Carcass: REA **.23** / MARB **.01**

L1 DOMINO 01384
 L1 DOMINETTE 00532
 HH ADVANCE 0024K
 EE MS 127 L1 346
 CL 1 DOMINO 5131E
 CL 1 DOMINET 496
 B&B MR MAX 1082
 B&B MS PACKER 1124

91

B&B L1 DOMINO 3205

Oct. 21, 2013 • #43445107

FALL YRLG

Act. BW ... **84**
 EPDs:
 BW **3.4**
 WW **54**
 YW **87**
 MILK **21**
 M&G **48**
 Eye Pigment:
 LE **70** / RE **100**

MCCABE 03571 DOMINO 1980

L1 DOMINO 03571
 | EE MS 0024 L1 740

B&B L1 DOMINETTE 450

CL 1 DOMINO 8153H
 | B&B L1 DOMINET 7114

Carcass: REA **.29** / MARB **.04**

L1 DOMINO 01384
 L1 DOMINETTE 00532
 HH ADVANCE 0024K
 EE MS 127 L1 346
 CL 1 DOMINO 5131E
 CL 1 DOMINET 496
 HH ADVANCE 388C
 B&B MS TRAC II 1007

87

B&B L1 DOMINO 3184

Sept. 30, 2013 • #43445093

FALL YRLG

Act. BW ... **83**
 EPDs:
 BW **3.2**
 WW **56**
 YW **88**
 MILK **31**
 M&G **59**
 Eye Pigment:
 LE **100** / RE **60**

CL 1 DOMINO 9125W

CL 1 DOMINO 732T
 | CL 1 DOMINETTE 475P

B&B L1 DOMINETTE 8210

CL 1 DOMINO 555R
 | B&B L1 DOMINETTE 465

Carcass: REA **.21** / MARB **.04**

CL 1 DOMINO 590R
 CL 1 DOMINETTE 507R
 CL 1 DOMINO 824H
 CL 1 DOMINETTE 200M
 HH ADVANCE 3113N
 CL 1 DOMINETTE 3174N
 CL 1 DOMINO 8153H
 B&B MS 335F DOM 1018

92

B&B L1 DOMINO 3224

Nov. 27, 2013 • #43445028

FALL YRLG

Act. BW ... **87**
 EPDs:
 BW **3.5**
 WW **54**
 YW **86**
 MILK **32**
 M&G **58**
 Eye Pigment:
 LE **100** / RE **100**

CL 1 DOMINO 9125W

CL 1 DOMINO 732T
 | CL 1 DOMINETTE 475P

B&B L1 DOMINETTE 7112

CL 1 DOMINO 555R
 | B&B L1 DOMINETTE 472P

Carcass: REA **.16** / MARB **.04**

CL 1 DOMINO 590R
 CL 1 DOMINETTE 507R
 CL 1 DOMINO 824H
 CL 1 DOMINETTE 200M
 HH ADVANCE 3113N
 CL 1 DOMINETTE 3174N
 CL 1 DOMINO 8153H
 B&B MS L1 DOM 2119

JAMISON TWO YR. OLD BULLS

**SINCE 1944 ...A Respected Cowherd
and Premier Hereford Performance Breeder!**



THE COWMAN'S BREEDING BULL FACTORY!
TRAIT BALANCED ...LINEBRED ...RANGE DEVELOPED ...VOLUME SELECTION!



Lot 93

93

JA L1 DOMINO 323A

Feb. 8, 2013 • #43385017

2 YR. OLD

Act. BW **86**

EPDs:

BW **3.8**

WW **53**

YW **82**

MILK **27**

M&G **53**

Eye Pigment:

LE **100** / RE **100**

HH ADVANCE 7101T

HH ADVANCE 9075W

| HH MS ADVANCE 1028L

CL 1 DOMINO 555R

JA L1 DOMINETTE 0231X

| JA L1 DOMINETTE 2526M

Carcass: REA **.56** / MARB **-.11**

Thick rancher bull with balance and style.

HH ADVANCE 4140P

HH MISS ADVANCE 1121L

HH ADVANCE 6052F

HH MISS ADVANCE 731G

HH ADVANCE 3113N

CL 1 DOMINETTE 3174N

CL 1 DOMINO 7176G

JA L1 DOMINETTE 7504

94

JA L1 DOMINO 390A

Sept. 15, 2013 • #43544230

2 YR. OLD

Act. BW **76**

EPDs:

BW **3.1**

WW **40**

YW **74**

MILK **28**

M&G **48**

Eye Pigment:

LE **95** / RE **95**

GB L1 DOMINO 6134K

JA L1 DOMINO 0908X

| JA L1 DOMINETTE 8810U

CL 1 DOMINO 638S

JA L1 DOMINETTE 8318U

| JA L1 DOMINETTE 432P

Carcass: REA **-.10** / MARB **.15**

Thick and well made, a very eye appealing package.

GB L1 DOMINO 471H

GB L1 DOM PRCS 4103H

CL 1 DOMINO 560R

JA L1 DOMINETTE 4652P

L1 DOMINO 03396

CL 1 DOMINETTE 475P

CL 1 DOMINO 0157K

JA L1 DOMINETTE 1223L

95

JA L1 DOMINO 3119A

Feb. 18, 2013 • #43381442

2 YR. OLD

Act. BW **88**

EPDs:

BW **3.6**

WW **56**

YW **90**

MILK **26**

M&G **54**

Eye Pigment:

LE **10** / RE **50**

CL 1 DOMINO 732T

CL 1 DOMINO 9125W

| CL 1 DOMINETTE 475P

GB L1 DOMINO 935C

JA L1 DOMINETTE 5000R

| JA L1 DOMINETTE 0216

Carcass: REA **.10** / MARB **.11**

CL 1 DOMINO 590R

CL 1 DOMINETTE 507R

CL 1 DOMINO 824H

CL 1 DOMINETTE 200M

CL 1 DOMINO 5131E

GB L1 DOM PRCS 115

CL 1 DOMINO 484

JA L1 DOMINETTE 8513

96

JA L1 DOMINO 3122A

Feb. 27, 2013 • #43381448

2 YR. OLD

Act. BW ... **81**

EPDs:

BW **1.6**

WW **46**

YW **72**

MILK **29**

M&G **52**

Eye Pigment:

LE **95** / RE **95**

CL 1 DOMINO 732T
CL 1 DOMINO 9125W

CL 1 DOMINETTE 475P

CL 1 DOMINO 555R
JA L1 DOMINETTE 9225W
JA L1 DOMINETTE 5772R

Carcass: REA **.05** / MARB **.11**

CL 1 DOMINO 590R
CL 1 DOMINETTE 507R
CL 1 DOMINO 824H
CL 1 DOMINETTE 200M
HH ADVANCE 3113N
CL 1 DOMINETTE 3174N
CL 1 DOMINO 965J
JA L1 DOMINETTE 2608M



Lot 97

97

JA L1 DOMINO 3126A

Mar. 11, 2013 • #43381615

2 YR. OLD

Act. BW ... **85**

EPDs:

BW **3.3**

WW **58**

YW **83**

MILK **29**

M&G **59**

Eye Pigment:

LE **20** / RE **30**

CL 1 DOMINO 732T
CL 1 DOMINO 9125W

CL 1 DOMINETTE 475P

CL 1 DOMINO 560R
JA L1 DOMINETTE 9821W
JA L1 DOMINETTE 3200N

Carcass: REA **.04** / MARB **.13**

CL 1 DOMINO 590R
CL 1 DOMINETTE 507R
CL 1 DOMINO 824H
CL 1 DOMINETTE 200M
CL 1 DOMINO 3162N
CL 1 DOMINETTE 118L
CL 1 DOMINO 484
JA L1 DOMINETTE 1980L



Lot 98

98

JA L1 DOMINO 3132A

Mar. 20, 2013 • #43381627

2 YR. OLD

Act. BW ... **88**

EPDs:

BW **3.9**

WW **62**

YW **93**

MILK **30**

M&G **61**

Eye Pigment:

LE **100** / RE **100**

CL 1 DOMINO 732T
CL 1 DOMINO 9125W

CL 1 DOMINETTE 475P

CL 1 DOMINO 560R
JA L1 DOMINETTE 9809W
JA L1 DOMINETTE 4660P

Carcass: REA **.18** / MARB **.13**

CL 1 DOMINO 590R
CL 1 DOMINETTE 507R
CL 1 DOMINO 824H
CL 1 DOMINETTE 200M
CL 1 DOMINO 3162N
CL 1 DOMINETTE 118L
HH ADVANCE 286M
JA L1 DOMINETTE 1217L

Big framed, sound structured bull with eye appeal. He will cover the country.



Lot 99

99

JA L1 DOMINO 3134A

Mar. 28, 2013 • #43381631

2 YR. OLD

Act. BW ... **84**

EPDs:

BW **3.4**

WW **57**

YW **83**

MILK **31**

M&G **59**

Eye Pigment:

LE **10** / RE **10**

CL 1 DOMINO 732T
CL 1 DOMINO 9125W

CL 1 DOMINETTE 475P

CL 1 DOMINO 560R
JA L1 DOMINETTE 9845W
JA L1 DOMINETTE 2231M

Carcass: REA **.01** / MARB **.17**

CL 1 DOMINO 590R
CL 1 DOMINETTE 507R
CL 1 DOMINO 824H
CL 1 DOMINETTE 200M
CL 1 DOMINO 3162N
CL 1 DOMINETTE 118L
CL 1 DOMINO 484
JA L1 DOMINETTE 5601

Big framed and clean made with a long, easy stride.

100

JA L1 DOMINO 3136A

Apr. 5, 2013 • #43381642

2 YR. OLD

Act. BW ... **83**

EPDs:

BW **3.1**

WW **55**

YW **91**

MILK **28**

M&G **55**

Eye Pigment:

LE **30** / RE **70**

CL 1 DOMINO 732T
CL 1 DOMINO 9125W

CL 1 DOMINETTE 475P

HH ADVANCE 286M
JA L1 DOMINETTE 8612U
JA L1 DOMINETTE 6202S

Carcass: REA **.26** / MARB **.08**

CL 1 DOMINO 590R
CL 1 DOMINETTE 507R
CL 1 DOMINO 824H
CL 1 DOMINETTE 200M
HH ADVANCE 0024K
HH MISS ADVANCE 752G
HH ADVANCE 1018L
JA L1 DOMINETTE 322N

A deep bodied high performance volume bull that is sound and thick made.

101

JA L1 DOMINO 3137A

Apr. 10, 2013 • #43382017

2 YR. OLD

Act. BW ... **86**

EPDs:

BW **3.4**

WW **54**

YW **84**

MILK **26**

M&G **53**

Eye Pigment:

LE **70** / RE **90**

CL 1 DOMINO 732T
CL 1 DOMINO 9125W

CL 1 DOMINETTE 475P

HH ADVANCE 286M
JA L1 DOMINETTE 7642T
JA L1 DOMINETTE 3923N

Carcass: REA **.20** / MARB **.11**

CL 1 DOMINO 590R
CL 1 DOMINETTE 507R
CL 1 DOMINO 824H
CL 1 DOMINETTE 200M
HH ADVANCE 0024K
HH MISS ADVANCE 752G
HH ADVANCE 8017H
JA L1 DOMINETTE 9243

Red necked, red legged, and a stout rancher bull with the high volume, easy keeping look.



Lot 102

102

JA L1 DOMINO 3140A

Apr. 27, 2013 • #43382019

2 YR. OLD
Act. BW ... **87**
EPDs:
BW **4.4**
WW **60**
YW **94**
MILK **34**
M&G **64**
Eye Pigment:
LE **90** / RE **100**

CL 1 DOMINO 732T
CL 1 DOMINO 9125W
CL 1 DOMINETTE 475P

CL 1 DOMINO 560R
JA L1 DOMINETTE 9816W
JA L1 DOMINETTE 1317L

Carcass: REA **.16** / MARB **.08**

Lot 102 indexed 107 at weaning and 106 on yearling weight. Lots of red and pigment.

CL 1 DOMINO 590R
CL 1 DOMINETTE 507R
CL 1 DOMINO 824H
CL 1 DOMINETTE 200M
CL 1 DOMINO 3162N
CL 1 DOMINETTE 118L
GB L1 DOMINO 947C
JA L1 DOMINETTE 9257



Lot 106

106

JA L1 DOMINO 3231A

Mar. 26, 2013 • #43444997

2 YR. OLD
Act. BW ... **86**
EPDs:
BW **3.2**
WW **45**
YW **97**
MILK **26**
M&G **48**
Eye Pigment:
LE **100** / RE **100**

HH ADVANCE 3113N
CL 1 DOMINO 555R
CL 1 DOMINETTE 3174N

HH ADVANCE 286M
JA L1 DOMINETTE 7629T
JA L1 DOMINETTE 1419L

Carcass: REA **.20** / MARB **.02**

HH ADVANCE 99496
HH MS ADV 875H
CL 1 DOMINO 9126J
CL 1 DOMINETTE 810H
HH ADVANCE 0024K
HH MISS ADVANCE 752G
HH ADVANCE 8012H
JA L1 DOMINETTE 8404

103

JA L1 DOMINO 3221A

Feb. 28, 2013 • #43382069

2 YR. OLD
Act. BW ... **83**
EPDs:
BW **3.0**
WW **48**
YW **80**
MILK **32**
M&G **56**
Eye Pigment:
LE **100** / RE **50**

HH ADVANCE 3113N
CL 1 DOMINO 555R
CL 1 DOMINETTE 3174N

CL 1 DOMINO 638S
JA L1 DOMINETTE 8320U
JA L1 DOMINETTE 6000S

Carcass: REA **-.04** / MARB **.03**

L1 DOMINO 99496
HH MS ADV 875H
CL 1 DOMINO 9126J
CL 1 DOMINETTE 810H
L1 DOMINO 03396
CL 1 DOMINETTE 475P
GB L1 DOMINO 935C
JA L1 DOMINETTE 8437

107

JA L1 DOMINO 3232A

May 14, 2013 • #43445005

2 YR. OLD
Act. BW ... **86**
EPDs:
BW **2.5**
WW **45**
YW **69**
MILK **31**
M&G **54**
Eye Pigment:
LE **80** / RE **90**

HH ADVANCE 3113N
CL 1 DOMINO 555R
CL 1 DOMINETTE 3174N

CL 1 DOMINO 638S
JA L1 DOMINETTE 8314U
JA L1 DOMINETTE 4450P

Carcass: REA **-.15** / MARB **.04**

L1 DOMINO 99496
HH MS ADV 875H
CL 1 DOMINO 9126J
CL 1 DOMINETTE 810H
L1 DOMINO 03396
CL 1 DOMINETTE 475P
JA L1 DOMINO 1424L
JA L1 DOMINETTE 213M

104

JA L1 DOMINO 3228A

Mar. 13, 2013 • #43444995

2 YR. OLD
Act. BW ... **73**
EPDs:
BW **-0.8**
WW **29**
YW **25**
MILK **28**
M&G **42**
Eye Pigment:
LE **100** / RE **100**

HH ADVANCE 3113N
CL 1 DOMINO 555R
CL 1 DOMINETTE 3174N

HH ADVANCE 286M
JA L1 DOMINETTE 9638W
JA L1 DOMINETTE 3264N

Carcass: REA **-.16** / MARB **-.11**

L1 DOMINO 99496
HH MS ADV 875H
CL 1 DOMINO 9126J
CL 1 DOMINETTE 810H
HH ADVANCE 0024K
HH MISS ADVANCE 752G
HH ADVANCE 6063F
JA L1 DOMINETTE 830



Lot 108

108

JA L1 DOMINO 3233A

Feb. 17, 2013 • #43382083

2 YR. OLD
Act. BW ... **80**
EPDs:
BW **1.7**
WW **48**
YW **81**
MILK **28**
M&G **52**
Eye Pigment:
LE **50** / RE **90**

HH ADVANCE 3113N
CL 1 DOMINO 555R
CL 1 DOMINETTE 3174N

HH ADVANCE 286M
JA L1 DOMINETTE 7621T
JA L1 DOMINETTE 214M

Carcass: REA **.14** / MARB **-.01**

L1 DOMINO 99496
HH MS ADV 875H
CL 1 DOMINO 9126J
CL 1 DOMINETTE 810H
HH ADVANCE 0024K
HH MISS ADVANCE 752G
CL 1 DOMINO 0157K
JA L1 DOMINETTE 9254

105

JA L1 DOMINO 3229A

Apr. 19, 2013 • #43445002

2 YR. OLD
Act. BW ... **76**
EPDs:
BW **0.1**
WW **41**
YW **69**
MILK **28**
M&G **49**
Eye Pigment:
LE **40** / RE **90**

HH ADVANCE 3113N
CL 1 DOMINO 555R
CL 1 DOMINETTE 3174N

CL 1 DOMINO 0157K
JA L1 DOMINETTE 808U
JA L1 DOMINETTE 6618S

Carcass: REA **-.05** / MARB **.02**

L1 DOMINO 99496
HH MS ADV 875H
CL 1 DOMINO 9126J
CL 1 DOMINETTE 810H
HH ADVANCE 767G
CL 1 DOMINETTE 861H
HH ADVANCE 286M
JA L1 DOMINETTE 3606N

Big, stout beef bull traveling out freely on a wide base.

109

BT L1 DOMINO 3306A

Feb. 16, 2013 • #43429434

2 YR. OLD

Act. BW ... **83**

EPDs:

BW **2.6**

WW **36**

YW **60**

MILK **22**

M&G **41**

Eye Pigment:

LE **75** / RE **15**

HH ADVANCE 8203U

HH ADVANCE 0085X

HH MISS ADVANCE 7017T

GL1 DOMINO 6012A

BT MS DOMINETTE 340

BT MS DOMINO 452

Carcass: REA **.00** / MARB **.10**

Long sided rancher bull.

HH ADVANCE 5161R

HH MISS ADVANCE 752G

CL 1 DOMINO 320N

HH MISS ADVANCE 5106R

CL 1 DOMINO 166

L1 DOMINETTA 343

BT L1 DOMINO 227

CK DYAWNA 5134

113

JA L1 DOMINO 3517A

Apr. 9, 2013 • #43382242

2 YR. OLD

Act. BW ... **72**

EPDs:

BW **2.4**

WW **36**

YW **72**

MILK **28**

M&G **46**

Eye Pigment:

LE **80** / RE **80**

GB L1 DOMINO 175E

CO L1 DOMINO 946W

CO L1 DOMINETTE 523R

JA L1 DOMINO 6001S

JA L1 DOMINETTE 1003Y

JA L1 DOMINETTE 9604W

Carcass: REA **.08** / MARB **.12**

HH ADVANCE 767G

GB L1 DOM PRCS 3134

GB L1 DOMINO 935C

CO L1 DOMINETTE 206M

GB L1 DOMINO 935C

JA L1 DOMINETTE 0212

HH ADVANCE 286M

JA L1 DOMINETTE 5005R

110

JA L1 DOMINO 3407A

Feb. 15, 2013 • #43495410

2 YR. OLD

Act. BW ... **79**

EPDs:

BW **na**

WW **na**

YW **na**

MILK **na**

M&G **na**

Eye Pigment:

LE **100** / RE **100**

HH ADVANCE 8050U

HH ADVANCE 1098Y

HH MISS ADVANCE 9065W

CL 1 DOMINO 860U

BK MS 860U DOMINETTE 1079

BK MISS GAME PLAN 5179

Carcass: REA **na** / MARB **na**

Low birth weight bull with eye appeal, volume and muscle.

L1 DOMINO 03571

HH MISS ADVANCE 365N

HH ADVANCE 7101T

HH MISS ADVANCE 1028L

CL 1 DOMINO 637S

CL 1 DOMINETTE 5142R

C GAME PLAN 2040

BK 214 LADY 8049

114

JA L1 DOMINO 3550A

July 1, 2013 • #43466694

2 YR. OLD

Act. BW ... **76**

EPDs:

BW **2.3**

WW **39**

YW **79**

MILK **32**

M&G **52**

Eye Pigment:

LE **100** / RE **80**

GB L1 DOMINO 175E

CO L1 DOMINO 946W

CO L1 DOMINETTE 523R

CL 1 DOMINO 555R

JA L1 DOMINETTE 1206Y

JA L1 DOMINETTE 316N

Carcass: REA **-.04** / MARB **.06**

HH ADVANCE 767G

GB L1 DOM PRCS 3134

GB L1 DOMINO 935C

CO L1 DOMINETTE 206M

HH ADVANCE 3113N

CL 1 DOMINETTE 3174N

CL 1 DOMINO 0157K

JA L1 DOMINETTE 9233

Younger-aged bull that will cover a lot of cows. He is red necked with extra eye appeal.



Lot 111

111

JA L1 DOMINO 3511A

Mar. 3, 2013 • #43382222

2 YR. OLD

Act. BW ... **76**

EPDs:

BW **2.3**

WW **36**

YW **76**

MILK **31**

M&G **49**

Eye Pigment:

LE **20** / RE **30**

GB L1 DOMINO 175E

CO L1 DOMINO 946W

CO L1 DOMINETTE 523R

CL 1 DOMINO 860U

JA L1 DOMINETTE 1714Y

JA L1 DOMINETTE 7642T

Carcass: REA **.06** / MARB **.10**

Lots of muscle and thickness on a moderate frame. Should work on heifers. We considered saving Lot 111 back for our own use, his mother is outstanding.

HH ADVANCE 767G

GB L1 DOM PRCS 3134

GB L1 DOMINO 935C

CO L1 DOMINETTE 206M

CL 1 DOMINO 637S

CL 1 DOMINETTE 5142R

HH ADVANCE 286M

JA L1 DOMINETTE 3923N

115

JA L1 DOMINO 3605A

Feb. 8, 2013 • #43409016

2 YR. OLD

Act. BW ... **87**

EPDs:

BW **3.3**

WW **37**

YW **64**

MILK **25**

M&G **43**

Eye Pigment:

LE **100** / RE **100**

JA L1 DOMINO 7640T

JA L1 DOMINO 1602Y

JA L1 DOMINETTE 9204W

GB L1 DOMINO 6134K

JA L1 DOMINETTE 100Y

JA L1 DOMINETTE 8751U

Carcass: REA **.07** / MARB **-.08**

HH ADVANCE 286M

JA L1 DOMINETTE 1409L

CL 1 DOMINO 555R

JA L1 DOMINETTE 4119P

GB L1 DOMINO 471H

GB L1 DOM PRCS 4103H

JA L1 DOMINO 3105N

JA L1 DOMINETTE 6636S



Lot 116

112

JA L1 DOMINO 3514A

Mar. 28, 2013 • #43382238

2 YR. OLD

Act. BW ... **76**

EPDs:

BW **1.7**

WW **35**

YW **77**

MILK **33**

M&G **50**

Eye Pigment:

LE **100** / RE **100**

GB L1 DOMINO 175E

CO L1 DOMINO 946W

CO L1 DOMINETTE 523R

JA L1 DOMINO 7640T

JA L1 DOMINETTE 1634Y

JA L1 DOMINETTE 9210W

Carcass: REA **.07** / MARB **.07**

Very moderate framed, lots of red and pigment and the thick, easy keeping kind. Calving ease bull with it built in on both sides of the pedigree.

HH ADVANCE 767G

GB L1 DOM PRCS 3134

GB L1 DOMINO 935C

CO L1 DOMINETTE 206M

HH ADVANCE 286M

JAL L1 DOMINETTE 1409L

CL 1 DOMINO 555R

JA L1 DOMINETTE 622S

116

JA L1 DOMINO 3663A

Mar. 29, 2013 • #43382271

2 YR. OLD

Act. BW ... **81**

EPDs:

BW **2.3**

WW **43**

YW **73**

MILK **22**

M&G **43**

Eye Pigment:

LE **80** / RE **100**

HH ADVANCE 286M

JA L1 DOMINO 7640T

JA L1 DOMINETTE 1409L

JA L1 DOMINO 6001S

JA L1 DOMINETTE 8005U

JA L1 DOMINETTE 5952R

Carcass: REA **.26** / MARB **.01**

HH ADVANCE 0024K

HH MISS ADVANCE 752G

HH ADVANCE 8012H

JA L1 DOMINETTE 8800

GB L1 DOMINO 935C

JA L1 DOMINETTE 0212

JA L1 DOMINO 3918N

JA L1 DOMINETTE 3512N



Lot 117

117

JA L1 DOMINO 3664A

Apr. 5, 2013 • #43382273

2 YR. OLD

Act. BW ... **78**

EPDs:

BW **2.4**

WW **42**

YW **76**

MILK **23**

M&G **44**

Eye Pigment:

LE **100** / RE **95**

HH ADVANCE 286M
JA L1 DOMINO 7640T
| CL 1 DOMINETTE 1409L

JA L1 DOMINO 4922P
JA L1 DOMINETTE 8916U
| JA L1 DOMINETTE 8905

Carcass: REA **.23** / MARB **.00**

Low birth weight bull that indexed 103 at yearling. Moderate framed, clean made, lots of red pigment.

HH ADVANCE 0024K
HH MISS ADVANCE 752G
HH ADVANCE 8012H
JA L1 DOMINETTE 8800
HH ADVANCE 8017H
JA L1 DOMINETTE 7444
JAK L1 DOMINO E34
JA L1 DOMINETTE 6418

121

JA L1 DOMINO 3716A

Feb. 16, 2013 • #43382395

2 YR. OLD

Act. BW ... **80**

EPDs:

BW **1.6**

WW **48**

YW **91**

MILK **34**

M&G **58**

Eye Pigment:

LE **100** / RE **100**

CL 1 DOMINO 637S
CL 1 DOMINO 860U
| CL 1 DOMINETTE 5142R

CL 1 DOMINO 555R
JA L1 DOMINETTE 9210W
| JA L1 DOMINETTE 622S

Carcass: REA **.17** / MARB **.03**

Clean made bull with extra frame.

L1 DOMINO 03396
CL 1 DOMINETTE 118L
CL 1 DOMINO 1172L
CL 1 DOMINETTE 810H
HH ADVANCE 3113N
CL 1 DOMINETTE 3174N
CL 1 DOMINO 0157K
JA L1 DOMINETTE 0409



Lot 122

122

JA L1 DOMINO 3717A

Feb. 17, 2013 • #43382396

2 YR. OLD

Act. BW ... **95**

EPDs:

BW **6.0**

WW **65**

YW **111**

MILK **27**

M&G **59**

Eye Pigment:

LE **100** / RE **100**

CL 1 DOMINO 637S
CL 1 DOMINO 860U
| CL 1 DOMINETTE 5142R

JA L1 DOMINO 4922P
JA L1 DOMINETTE 9905W
| JA L1 DOMINETTE 2513M

Carcass: REA **.35** / MARB **.01**

WWR of 107, YWR of 110, Lot 122 is a big framed, hi-performance rancher bull that will travel big country.

L1 DOMINO 03396
CL 1 DOMINETTE 118L
CL 1 DOMINO 1172L
CL 1 DOMINETTE 810H
HH ADVANCE 8017H
JA L1 DOMINETTE 7444
CL 1 DOMINO 7176G
JA L1 DOMINETTE 6256

118

JA L1 DOMINO 3702A

Feb. 6, 2013 • #43382293

2 YR. OLD

Act. BW ... **85**

EPDs:

BW **2.6**

WW **53**

YW **94**

MILK **33**

M&G **59**

Eye Pigment:

LE **10** / RE **50**

CL 1 DOMINO 637S
CL 1 DOMINO 860U
| CL 1 DOMINETTE 5142R

CL 1 DOMINO 555R
JA L1 DOMINETTE 8204U
| JA L1 DOMINETTE 1250L

Carcass: REA **.20** / MARB **.06**

L1 DOMINO 03396
CL 1 DOMINETTE 118L
CL 1 DOMINO 1172L
CL 1 DOMINETTE 810H
HH ADVANCE 3113N
CL 1 DOMINETTE 3174N
HH ADVANCE 6063F
HH MISS ADVANCE 111A

119

JA L1 DOMINO 3710A

Feb. 14, 2013 • #43382389

2 YR. OLD

Act. BW ... **85**

EPDs:

BW **3.8**

WW **61**

YW **102**

MILK **31**

M&G **61**

Eye Pigment:

LE **100** / RE **100**

CL 1 DOMINO 637S
CL 1 DOMINO 860U
| CL 1 DOMINETTE 5142R

CL 1 DOMINO 560R
JA L1 DOMINETTE 9815W
| JA L1 DOMINETTE 2526M

Carcass: REA **.30** / MARB **.06**

Herd bull prospect that is moderate framed and sure good to look at. Lot 119 has a WWR of 109 and a YWR of 107. Dam is outstanding. One of the very best of the 860 sons, check out his numbers, there are no holes.

L1 DOMINO 03396
CL 1 DOMINETTE 118L
CL 1 DOMINO 1172L
CL 1 DOMINETTE 810H
CL 1 DOMINO 3162N
CL 1 DOMINETTE 118L
CL 1 DOMINO 7176G
JA L1 DOMINETTE 7504



Lot 123

123

JA L1 DOMINO 3726A

Feb. 25, 2013 • #43382405

2 YR. OLD

Act. BW ... **89**

EPDs:

BW **4.0**

WW **57**

YW **103**

MILK **26**

M&G **55**

Eye Pigment:

LE **100** / RE **100**

CL 1 DOMINO 637S
CL 1 DOMINO 860U
| CL 1 DOMINETTE 5142R

HH ADVANCE 286M
JA L1 DOMINETTE 8637U
| JA L1 DOMINETTE 222M

Carcass: REA **.36** / MARB **.01**

A big, red tear drop on his face, lots of pigment and eye appeal.

L1 DOMINO 03396
CL 1 DOMINETTE 118L
CL 1 DOMINO 1172L
CL 1 DOMINETTE 810H
HH ADVANCE 0024K
HH MISS ADVANCE 752G
JA L1 DOMINO 005
JA L1 DOMINETTE 9370

120

JA L1 DOMINO 3712A

Feb. 15, 2013 • #43382391

2 YR. OLD

Act. BW ... **90**

EPDs:

BW **4.9**

WW **69**

YW **127**

MILK **28**

M&G **63**

Eye Pigment:

LE **50** / RE **50**

CL 1 DOMINO 637S
CL 1 DOMINO 860U
| CL 1 DOMINETTE 5142R

JA L1 DOMINO 426P
JA L1 DOMINETTE 802U
| JA L1 DOMINETTE 5636R

Carcass: REA **.42** / MARB **.08**

L1 DOMINO 03396
CL 1 DOMINETTE 118L
CL 1 DOMINO 1172L
CL 1 DOMINETTE 810H
CL 1 DOMINO 0157K
JA L1 DOMINETTE 7070
HH ADVANCE 286M
JA L1 DOMINETTE 2251M

124

JA L1 DOMINO 3738A

Mar. 17, 2013 • #43382443

2 YR. OLD

Act. BW ... **88**

EPDs:

BW **3.7**

WW **56**

YW **98**

MILK **29**

M&G **56**

Eye Pigment:

LE **100** / RE **100**

CL 1 DOMINO 637S

CL 1 DOMINO 860U

CL 1 DOMINETTE 5142R

GB L1 DOMINO 935C

JA L1 DOMINETTE 7000T

JA L1 DOMINETTE 1980L

Carcass: REA **.35** / MARB **.05**

L1 DOMINO 03396
CL 1 DOMINETTE 118L
CL 1 DOMINO 1172L
CL 1 DOMINETTE 810H
CL 1 DOMINO 5131E
GB L1 DOM PRCS 115
JA L1 DOMINO 7321
JA L1 DOMINETTE 9857



Lot 127

125

JA L1 DOMINO 3741A

Mar. 17, 2013 • #43382446

2 YR. OLD

Act. BW **76**

EPDs:

BW **2.6**

WW **47**

YW **89**

MILK **27**

M&G **51**

Eye Pigment:

LE **50** / RE **80**

CL 1 DOMINO 637S

CL 1 DOMINO 860U

CL 1 DOMINETTE 5142R

JA L1 DOMINO 9213

JA L1 DOMINETTE 4244P

JA L1 DOMINETTE 5601

Carcass: REA **.18** / MARB **.05**

L1 DOMINO 03396
CL 1 DOMINETTE 118L
CL 1 DOMINO 1172L
CL 1 DOMINETTE 810H
CL 1 DOMINO 484
JA L1 DOMINETTE 6554
GB L1 DOMINO 919
JA L1 DOMINETTE 8402



Lot 126

126

JA L1 DOMINO 3749A

Apr. 27, 2013 • #43382455

2 YR. OLD

Act. BW **80**

EPDs:

BW **3.9**

WW **62**

YW **117**

MILK **30**

M&G **61**

Eye Pigment:

LE **95** / RE **100**

CL 1 DOMINO 637S

CL 1 DOMINO 860U

CL 1 DOMINETTE 5142R

CL 1 DOMINO 4134P

JA L1 DOMINETTE 7513T

JA L1 DOMINETTE 3804N

Carcass: REA **.43** / MARB **.08**

This bull will get big. He is clean made and good footed and should stay sound and cover lots of country.

L1 DOMINO 03396
CL 1 DOMINETTE 118L
CL 1 DOMINO 1172L
CL 1 DOMINETTE 810H
CL 1 DOMINO 9126J
CL 1 DOMINETTE 8104H
GB L1 DOMINO 808A
JA L1 DOMINETTE 8206



Lot 130 ...pedigree to the right

127

JA L1 DOMINO 3807A

Mar. 16, 2013 • #43382460

2 YR. OLD

Act. BW **87**

EPDs:

BW **2.9**

WW **61**

YW **97**

MILK **28**

M&G **58**

Eye Pigment:

LE **90** / RE **90**

CL 1 DOMINO 555R

JA L1 DOMINO 9800W

JA L1 DOMINETTE 4152P

CL 1 DOMINO 555R

JA L1 DOMINETTE 0204X

JA L1 DOMINETTE 316N

Carcass: REA **.17** / MARB **-.06**

Big, high volume, easy keeping beef bull with all the extras. Dam and granddam are two of our best.

HH ADVANCE 3113N
CL 1 DOMINETTE 3174N
DH DOMINO 6150
JA L1 DOMINETTE 6815
HH ADVANCE 3113N
CL 1 DOMINETTE 3174N
CL 1 DOMINO 0157K
JA L1 DOMINETTE 9233

128

JA L1 DOMINO 3901A

Feb. 15, 2013 • #43382462

2 YR. OLD

Act. BW **76**

EPDs:

BW **2.6**

WW **38**

YW **76**

MILK **24**

M&G **43**

Eye Pigment:

LE **95** / RE **60**

GB L1 DOMINO 6134K

JA L1 DOMINO 0908X

JA L1 DOMINETTE 8810U

DH DOMINO 539

JA L1 DOMINETTE 104Y

JA L1 DOMINETTE 5625R

Carcass: REA **.12** / MARB **.13**

GB L1 DOMINO 471H
GB L1 DOM PRCS 4103H
CL 1 DOMINO 560R
JA L1 DOMINETTE 4652P
L1 DOMINO 99496
DH MS ADVANCE 1003
HH ADVANCE 286M
JA L1 DOMINETTE 2502M

129

JA L1 DOMINO 3907A

Mar. 3, 2013 • #43382476

2 YR. OLD

Act. BW **78**

EPDs:

BW **3.5**

WW **47**

YW **92**

MILK **27**

M&G **50**

Eye Pigment:

LE **100** / RE **100**

GB L1 DOMINO 6134K

JA L1 DOMINO 0908X

JA L1 DOMINETTE 8810U

CL 1 DOMINO 9125W

JA L1 DOMINETTE 1111Y

JA L1 DOMINETTE 802U

Carcass: REA **.08** / MARB **.16**

Red necked and red-all-over in a well made package.

GB L1 DOMINO 471H
GB L1 DOM PRCS 4103H
CL 1 DOMINO 560R
JA L1 DOMINETTE 4652P
CL 1 DOMINO 732T
CL 1 DOMINETTE 475P
JA L1 DOMINO 426P
JA L1 DOMINETTE 5636R

130

JA L1 DOMINO 3908A

Mar. 3, 2013 • #43382478

2 YR. OLD

Act. BW **77**

EPDs:

BW **2.8**

WW **42**

YW **74**

MILK **23**

M&G **44**

Eye Pigment:

LE **95** / RE **20**

GB L1 DOMINO 6134K

JA L1 DOMINO 0908X

JA L1 DOMINETTE 8810U

JA L1 DOMINO 6001S

JA L1 DOMINETTE 1007Y

JA L1 DOMINETTE 9614W

Carcass: REA **.09** / MARB **.12**

GB L1 DOMINO 471H
GB L1 DOM PRCS 4103H
CL 1 DOMINO 560R
JA L1 DOMINETTE 4652P
GB L1 DOMINO 935C
JA L1 DOMINETTE 0212
HH ADVANCE 286M
JA L1 DOMINETTE 4160P

Thick made and high volume with lots of yellow hair.

131

JA L1 DOMINO 3909A

Mar. 6, 2013 • #43382479

2 YR. OLD
Act. BW ... **80**
EPDs:
BW **3.2**
WW **44**
YW **73**
MILK **25**
M&G **47**
Eye Pigment:
LE **95** / RE **95**

GB L1 DOMINO 6134K
JA L1 DOMINO 0908X
| JA L1 DOMINETTE 8810U

JA L1 DOMINO 6001S
JA L1 DOMINETTE 1016Y
| JA L1 DOMINETTE 9407W

Carcass: REA **.02** / MARB **.14**

Red necked and correct, Lot 131 has the herd bull look with balanced numbers.

GB L1 DOMINO 471H
GB L1 DOM PRCS 4103H
CL 1 DOMINO 560R
JA L1 DOMINETTE 4652P
GB L1 DOMINO 935C
JA L1 DOMINETTE 0212
HH ADVANCE 7085T
JA L1 DOMINETTE 7523T

132

BT L1 DOMINO 3005A

Feb. 9, 2013 • #43395834

2 YR. OLD
Act. BW ... **79**
EPDs:
BW **3.2**
WW **36**
YW **58**
MILK **17**
M&G **35**
Eye Pigment:
LE **95** / RE **95**

JA L1 DOMINO 6001S
JA L1 DOMINO 8000U
| JA L1 DOMINETTE 460P

JA L1 DOMINO 5617R
BT L1 DOMINETTE 1625
| JA L1 DOMINETTE 951

Carcass: REA **.02** / MARB **-.01**

GB L1 DOMINO 935C
JA L1 DOMINETTE 0212
CL 1 DOMINO 9126J
JA L1 DOMINETTE 2003M
HH ADVANCE 286M
JA L1 DOMINETTE 204M
HH ADVANCE 438D
JA L1 DOMINETTE 7080

133

BT L1 DOMINO 3203A ET

Jan. 19, 2013 • #43408301

2 YR. OLD
Act. BW ... **ET**
EPDs:
BW **1.1**
WW **50**
YW **78**
MILK **29**
M&G **54**
Eye Pigment:
LE **90** / RE **100**

HH ADVANCE 3113N
CL 1 DOMINO 555R
| CL 1 DOMINETTE 3174N

DH DOMINO 6150
JA L1 DOMINETTE 3100N
| JA L1 DOMINETTE 7505

Carcass: REA **.17** / MARB **-.05**

Extra volume and ruggedness along with lots of red markings. A 555 son that's a full brother to a Dufur Herefords herd bull. Three full sisters in our herd.

L1 DOMINO 99496
HH MS ADV 875H
CL 1 DOMINO 9126J
CL 1 DOMINETTE 810H
CL 1 DOMINO 166
HH MISS ADV 7011W
HH ADVANCE 3021C
JA L1 DOMINETTE 5420

134

BT L1 DOMINO 3209A ET

Apr. 15, 2013 • #43398511

2 YR. OLD
Act. BW ... **ET**
EPDs:
BW **1.2**
WW **51**
YW **79**
MILK **27**
M&G **53**
Eye Pigment:
LE **100** / RE **100**

HH ADVANCE 3113N
CL 1 DOMINO 555R
| CL 1 DOMINETTE 3174N

DH DOMINO 6150
JA L1 DOMINETTE 3100N
| JA L1 DOMINETTE 7505

Carcass: REA **.21** / MARB **-.05**

Red necked and red legged with lots of pigment. A full brother is working for Dufur Herefords and is a top, young sire.

L1 DOMINO 99496
HH MS ADV 875H
CL 1 DOMINO 9126J
CL 1 DOMINETTE 810H
CL 1 DOMINO 166
HH MISS ADV 7011W
HH ADVANCE 3021C
JA L1 DOMINETTE 5420

135

BT L1 DOMINO 3304A

Feb. 10, 2013 • #43429429

2 YR. OLD
Act. BW ... **83**
EPDs:
BW **2.9**
WW **41**
YW **81**
MILK **23**
M&G **44**
Eye Pigment:
LE **100** / RE **100**

HH ADVANCE 8203U
HH ADVANCE 0085X
| HH MISS ADVANCE 7017T

JA L1 DOMINO 5617R
BT L1 DOMINETTE 8613
| BT MS DOMINETTE 340

Carcass: REA **.21** / MARB **.09**

HH ADVANCE 5161R
HH MISS ADVANCE 752G
CL 1 DOMINO 320N
HH MISS ADVANCE 5106R
HH ADVANCE 286M
JA L1 DOMINETTE 204M
GL1 DOMINO 6012A
BT MS DOMINO 452

136

BT L1 DOMINO 3310A

Mar. 13, 2013 • #43429433

2 YR. OLD
Act. BW ... **98**
EPDs:
BW **5.1**
WW **42**
YW **73**
MILK **22**
M&G **43**
Eye Pigment:
LE **100** / RE **100**

HH ADVANCE 8203U
HH ADVANCE 0085X
| HH MISS ADVANCE 7017T

RH DOMINO 6008
BT L1 DOMINETTE 7017
| BT MS DOMINETTE 590

Carcass: REA **.09** / MARB **.04**

HH ADVANCE 5161R
HH MISS ADVANCE 752G
CL 1 DOMINO 320N
HH MISS ADVANCE 5106R
L1 DOMINO 910282
HH MISS ADVANCE 922Y
GL1 DOMINO 6012A
BT L1 DOMINETTE 314

137

BT L1 DOMINO 3644A

Mar. 9, 2013 • #43398264

2 YR. OLD
Act. BW ... **80**
EPDs:
BW **0.3**
WW **38**
YW **59**
MILK **24**
M&G **43**
Eye Pigment:
LE **100** / RE **80**

JA L1 DOMINO 7640T
JA L1 DOMINO 0620X
| JA L1 DOMINETTE 428P

JA L1 DOMINO 8000U
BT L1 DOMINETTE 1122
| BT L1 DOMINETTE 9657

Carcass: REA **.08** / MARB **.06**

HH ADVANCE 286M
JA L1 DOMINETTE 1409L
CL 1 DOMINO 0157K
JA L1 DOMINETTE 656
JA L1 DOMINO 6001S
JA L1 DOMINETTE 460P
JA L1 DOMINO 5617R
JA L1 DOMINETTE 9238

138

BT L1 DOMINO 3810A

Mar. 20, 2013 • #43398513

2 YR. OLD
Act. BW ... **68**
EPDs:
BW **-0.9**
WW **41**
YW **53**
MILK **27**
M&G **47**
Eye Pigment:
LE **80** / RE **80**

CL 1 DOMINO 555R
JA L1 DOMINO 9800W
| JA L1 DOMINETTE 4152P

CL 1 DOMINO 555R
JA L1 DOMINETTE 0201X
| JA L1 DOMINETTE 4152P

Carcass: REA **.01** / MARB **-.02**

HH ADVANCE 3113N
CL 1 DOMINETTE 3174N
DH DOMINO 6150
JA L1 DOMINETTE 6815
HH ADVANCE 3113N
CL 1 DOMINETTE 3174N
DH DOMINO 6150
JA L1 DOMINETTE 6815

139

BT L1 DOMINO 3906A

Feb. 28, 2013 • #43398266

2 YR. OLD
Act. BW ... **85**
EPDs:
BW **3.6**
WW **42**
YW **77**
MILK **25**
M&G **46**
Eye Pigment:
LE **100** / RE **80**

GB L1 DOMINO 6134K
JA L1 DOMINO 0908X
| JA L1 DOMINETTE 8810U

JA L1 DOMINO 8000U
BT L1 DOMINETTE 1108
| JA L1 DOMINETTE 406P

Carcass: REA **.00** / MARB **.10**

Good looking and moderate framed with lots of red and pigment.

GB L1 DOMINO 471H
GB L1 DOM PRCS 4103H
CL 1 DOMINO 560R
JA L1 DOMINETTE 4652P
JA L1 DOMINO 6001S
JA L1 DOMINETTE 460P
CL 1 DOMINO 0157K
JA L1 DOMINETTE 7809

140

L1 HARMONY 303A

Feb. 22, 2013 • #43387105

2 YR. OLD
Act. BW ... **78**
EPDs:
BW **2.8**
WW **48**
YW **87**
MILK **24**
M&G **48**
Eye Pigment:
LE **0** / RE **0**

JA L1 DOMINO 7640T
JA L1 DOMINO 1624Y
| JA L1 DOMINETTE 9001W

DH DOMINO 539
L1 MS HARMONY 102Y
| L1 MS HARMONY 432

Carcass: REA **.29** / MARB **.08**

HH ADVANCE 286M
JA L1 DOMINETTE 1409L
JA L1 DOMINO 6001S
JA L1 DOMINETTE 3762N
L1 DOMINO 99496
DH MS ADVANCE 1003
JA L1 DOMINO 9004
L1 MS HARMONY 125

141

L1 HARMONY 304A

Feb. 24, 2013 • #43387108

2 YR. OLD

Act. BW ... **90**

EPDs:

BW **3.7**

WW **54**

YW **90**

MILK **23**

M&G **50**

Eye Pigment:

LE **95** / RE **100**

JA L1 DOMINO 7640T
JA L1 DOMINO 1624Y
| JA L1 DOMINETTE 9001W

JA L1 DOMINO 9208W
L1 MS HARMONY 107Y
| L1 MS HARMONY 810U

Carcass: REA **.29** / MARB **.00**

HH ADVANCE 286M
JA L1 DOMINETTE 1409L
JA L1 DOMINO 6001S
JA L1 DOMINETTE 3762N
CL 1 DOMINO 555R
JA L1 DOMINETTE 432P
L1 HARMONY 510R
L1 MS HARMONY 507R

146

JM L1 DOMINO 3135A

Feb. 3, 2013 • #43545450

2 YR. OLD

Act. BW ... **84**

EPDs:

BW **1.0**

WW **45**

YW **73**

MILK **32**

M&G **54**

Eye Pigment:

LE **80** / RE **100**

HH ADVANCE 7026T
HH ADVANCE 0002X
| HH MISS ADVANCE 8163U

CL 1 DOMINO 886U
HH MISS ADVANCE 1035Y
| HH MISS ADVANCE 5162R

Carcass: REA **.19** / MARB **.01**

HH ADVANCE 5161R
HH MISS ADVANCE 2111M
HH ADVANCE 5104R
HH MISS ADVANCE 6032S
CL 1 DOMINO 638S
CL 1 DOMINETTE 440P
L1 DOMINO 96943
HH MS ADV 7008G

142

L1 HARMONY 327A

Mar. 15, 2013 • #43387682

2 YR. OLD

Act. BW ... **88**

EPDs:

BW **4.1**

WW **51**

YW **90**

MILK **23**

M&G **49**

Eye Pigment:

LE **85** / RE **100**

JA L1 DOMINO 8801U
L1 HARMONY 020X
| L1 MS HARMONY 432

CL 1 DOMINO 4134P
JA L1 DOMINETTE 8535U
| JA L1 DOMINETTE 2536M

Carcass: REA **.20** / MARB **.04**

CL 1 DOMINO 555R
JA L1 DOMINETTE 3264N
JA L1 DOMINO 9004
L1 MS HARMONY 125
CL 1 DOMINO 9126P
CL 1 DOMINETTE 8104H
CL 1 DOMINO 7176G
JA L1 DOMINETTE 7828

147

JM L1 DOMINO 3137A

Mar. 16, 2013 • #43545448

2 YR. OLD

Act. BW ... **91**

EPDs:

BW **4.9**

WW **55**

YW **87**

MILK **31**

M&G **58**

Eye Pigment:

LE **70** / RE **100**

HH ADVANCE 4140P
HH ADVANCE 9169W
| HH MISS ADVANCE 4019P

HH ADVANCE 4055P
HH MISS ADVANCE 0249X
| HH MISS ADVANCE 6031S

Carcass: REA **.45** / MARB **.08**

HH ADVANCE 0024K
HH MISS ADVANCE 2111M
CL 1 DOMINO 206M
HH MISS ADVANCE 1028L
HH ADVANCE 145L
HH MISS ADVANCE 9065J
CL 1 DOMINO 180L
HH MS ADVANCE 8037H

143

L1 HARMONY 332A

Mar. 17, 2013 • #43387097

2 YR. OLD

Act. BW ... **79**

EPDs:

BW **1.2**

WW **37**

YW **62**

MILK **23**

M&G **42**

Eye Pigment:

LE **100** / RE **100**

CL 1 DOMINO 555R
JA L1 DOMINO 9208W
| JA L1 DOMINETTE 432P

JA L1 DOMINO 719T
L1 MS HARMONY 035X
| L1 MISS HARMONY 125

Carcass: REA **.00** / MARB **.02**

HH ADVANCE 3113N
CL 1 DOMINETTE 3174N
CL 1 DOMINO 0157K
JA L1 DOMINETTE 1223L
CL 1 DOMINO 0157K
JA L1 DOMINETTE 0008
L1 HARMONY 714
L1 MS HARMONY 629

148

CO L1 DOMINO 325A

Mar. 6, 2013 • #43375698

2 YR. OLD

Act. BW ... **88**

EPDs:

BW **3.1**

WW **44**

YW **68**

MILK **34**

M&G **56**

Eye Pigment:

LE **80** / RE **90**

CL 1 DOMINO 019K
CL 1 DOMINO 320N
| CL 1 DOMINETTE 996J

GB L1 DOMINO 175E
CO L1 DOMINETTE 176Y
| CO L1 DOMINETTE 707T

Carcass: REA **.02** / MARB **.03**

HH ADVANCE 8093H
CL 1 DOMINETTE 8151H
HH ADVANCE 629F
CL 1 DOMINETTE 544E
HH ADVANCE 767G
GB L1 DOM PRCS 3134
HH ADVANCE 286M
CO L1 DOMINETTE 523R

Lot 148 should sire some outstanding females. Dam is a heavily pigmented cow with a great udder. A moderate framed bull with extra muscle.

144

JM L1 DOMINO 3132A

Jan. 6, 2013 • #43545453

2 YR. OLD

Act. BW ... **86**

EPDs:

BW **1.1**

WW **45**

YW **77**

MILK **34**

M&G **57**

Eye Pigment:

LE **80** / RE **100**

HH ADVANCE 7026T
HH ADVANCE 0002X
| HH MISS ADVANCE 8163U

HH ADVANCE 9169W
HH MISS ADVANCE 1110Y
| HH MISS ADVANCE 8185U

Carcass: REA **.47** / MARB **.04**

HH ADVANCE 5161R
HH MISS ADVANCE 2111M
HH ADVANCE 5104R
HH MISS ADVANCE 6032S
HH ADVANCE 4140P
HH MISS ADVANCE 4019P
HH ADVANCE 5061R
HH MISS ADVANCE 4030P

149

CO L1 DOMINO 327A

Mar. 7, 2013 • #43375690

2 YR. OLD

Act. BW ... **78**

EPDs:

BW **0.1**

WW **37**

YW **64**

MILK **26**

M&G **44**

Eye Pigment:

LE **100** / RE **100**

HH ADVANCE 7101T
HH ADVANCE 9075W
| HH MS ADVANCE 1028L

CL 1 DOMINO 0157K
CO L1 DOMINETTE 503R
| JA L1 DOMINETTE 9209

Carcass: REA **.30** / MARB **.01**

HH ADVANCE 4140P
HH MISS ADVANCE 1121L
HH ADVANCE 6052F
HH MISS ADVANCE 731G
HH ADVANCE 767G
CL 1 DOMINETTE 861H
CL 1 DOMINO 484
JA L1 DOMINETTE 6700

Huge pigmentation out of a top 0157K daughter. Should make a heifer bull.

145

JM L1 DOMINO 3133A

Jan. 14, 2013 • #43545482

2 YR. OLD

Act. BW ... **80**

EPDs:

BW **1.6**

WW **46**

YW **69**

MILK **24**

M&G **49**

Eye Pigment:

LE **80** / RE **90**

CL 1 DOMINO 7139T
CL 1 DOMINO 017X
| CL 1 DOMINETTE 8108U

HH ADVANCE 4055P
HH MISS ADVANCE 1231Y
| HH MISS ADVANCE 7253T

Carcass: REA **-.08** / MARB **.25**

CL 1 DOMINO 590R
CL 1 DOMINETTE 530R
CL 1 DOMINO 638S
CL 1 DOMINETTE 8184H
HH ADVANCE 145L
HH MISS ADVANCE 9065J
L1 DOMINO 0357I
HH MISS ADVANCE 2118M

150

CO L1 DOMINO 353A

Mar. 28, 2013 • #43375658

2 YR. OLD

Act. BW ... **90**

EPDs:

BW **4.2**

WW **47**

YW **87**

MILK **19**

M&G **43**

Eye Pigment:

LE **100** / RE **100**

L1 DOMINO 99496
CO L1 DOMINO 847U
| CO L1 DOMINETTE 226M

RH DOMINO 6050
CO L1 DOMINETTE 981W
| CO L1 DOMINETTE 548R

Carcass: REA **.13** / MARB **.22**

L1 DOMINO 97349
L1 DOMINETTE 95369
GB L1 DOMINO 017D
CO L1 DOMINETTE 911
XP L1 DOMINO 00063
RH DOMINETTE 1059
HH ADVANCE 216M
CO L1 DOMINETTE 322N

Lot 150 travels well with extra depth and volume. He also has a PAP score of 38 which should insure he will work at any altitude.

151

CO L1 DOMINO 357A

Apr. 1, 2013 • #43375684

2 YR. OLD
Act. BW ... **96**
EPDs:
BW **3.3**
WW **46**
YW **79**
MILK **32**
M&G **55**
Eye Pigment:
LE **100** / RE **95**

CL 1 DOMINO 9105W
CO L1 DOMINO 186Y
| CL 1 DOMINETTE 5142R

L1 DOMINO 99496
CO L1 DOMINETTE 653S
| CO L1 DOMINETTE 321N

Carcass: REA **.17** / MARB **.01**

CL 1 DOMINO 732T
CL 1 DOMINETTE 591R
CL 1 DOMINO 1172L
CL 1 DOMINETTE 810H
L1 DOMINO 97349
L1 DOMINETTE 95369
GB L1 DOMINO 177E
CO L1 DOMINETTE 000

Thick made bull with extra bone. Dam is a favorite in the Coleman herd and their best 99496 daughter. Maternal brother sold to Granzow Herefords.

152

CO L1 DOMINO 360A

Apr. 7, 2013 • #43375691

2 YR. OLD
Act. BW ... **87**
EPDs:
BW **2.6**
WW **35**
YW **59**
MILK **19**
M&G **36**
Eye Pigment:
LE **25** / RE **0**

L1 DOMINO 99496
CO L1 DOMINO 847U
| CO L1 DOMINETTE 226M

HH ADVANCE 8017H
CO L1 DOMINETTE 439P
| CO L1 DOMINETTE 913

Carcass: REA **.04** / MARB **.20**

L1 DOMINO 97349
L1 DOMINETTE 95369
GB L1 DOMINO 017D
CO L1 DOMINETTE 911
XP L1 DOMINO 90085
HH MISS ADVANCE 251B
HH ADVANCE 3010C
LH ADVANCERETTE 4011

A smooth shouldered beef bull out of an eleven year old cow who is still getting it done.

153

CO L1 DOMINO 373A

Apr. 24, 2013 • #43375723

2 YR. OLD
Act. BW ... **78**
EPDs:
BW **1.8**
WW **51**
YW **80**
MILK **24**
M&G **49**
Eye Pigment:
LE **40** / RE **30**

CL 1 DOMINO 7139T
CL 1 DOMINO 065X
| CL 1 DOMINETTE 5142R

GB L1 DOMINO 175E
CO L1 DOMINETTE 034X
| KB L1 DOMINETTE 623

Carcass: REA **.09** / MARB **.03**

CL 1 DOMINO 590R
CL 1 DOMINETTE 530R
CL 1 DOMINO 1172L
CL 1 DOMINETTE 810H
HH ADVANCE 767G
GB L1 DOM PRCS 3134
KB L1 DOMINO 383
KB L1 DOMINETTE 356

The calving ease look with the numbers to back it up, should make a great heifer bull.

154

CO L1 DOMINO 377A

May 11, 2013 • #43375681

2 YR. OLD
Act. BW ... **88**
EPDs:
BW **3.3**
WW **53**
YW **88**
MILK **31**
M&G **58**
Eye Pigment:
LE **100** / RE **100**

CL 1 DOMINO 9105W
CO L1 DOMINO 186Y
| CL 1 DOMINETTE 5142R

HH ADVANCE 286M
CO L1 DOMINETTE 708T
| CO L1 DOMINETTE 547R

Carcass: REA **.20** / MARB **-.05**

CL 1 DOMINO 732T
CL 1 DOMINETTE 591R
CL 1 DOMINO 1172L
CL 1 DOMINETTE 810H
HH ADVANCE 0024K
HH MISS ADVANCE 752G
CL 1 DOMINO 0157K
JA L1 DOMINETTE 9263

Herd bull prospect that's coon eyed, moderate framed with WWR of 105 and YWR of 104. Dam is a picture perfect 286 daughter that Colemans use currently in their ET program.

155

CTR L1 DOMINO 3211A

Feb. 8, 2013 • #43376655

2 YR. OLD
Act. BW ... **86**
EPDs:
BW **0.7**
WW **38**
YW **64**
MILK **29**
M&G **48**
Eye Pigment:
LE **90** / RE **95**

HH ADVANCE 3113N
CL 1 DOMINO 555R
| CL 1 DOMINETTE 3174N

L1 DOMINO 04434
L1 DOMINETTE 07499
| L1 DOMINETTE 01397

Carcass: REA **-.10** / MARB **.08**

L1 DOMINO 99496
HH MS ADV 875H
CL 1 DOMINO 9126J
CL 1 DOMINETTE 810H
L1 DOMINO 02492
L1 DOMINETTE 97325
L1 DOMINO 98367
L1 DOMINETTE 95443

156

CTR L1 DOMINO 3401A

Mar. 3, 2013 • #43371497

2 YR. OLD
Act. BW ... **82**
EPDs:
BW **1.4**
WW **40**
YW **75**
MILK **23**
M&G **43**
Eye Pigment:
LE **40** / RE **95**

HH ADVANCE 7085T
JA L1 DOMINO 0413X
| JA L1 DOMINETTE 432P

KB L1 DOMINO 311
KB L1 DOMINETTE 878U
| KB MISS CENTURION 283

Carcass: REA **.03** / MARB **.08**

L1 DOMINO 03571
HH MISS ADVANCE 1088L
CL 1 DOMINO 0157K
JA L1 DOMINETTE 1223L
CL 1 DOMINO 484
MONTANA MISS 1134
BAR-N CENTURION 921J
KB L1 DOMET 6147

157

CTR L1 DOMINO 3403A

Mar. 4, 2013 • #43371495

2 YR. OLD
Act. BW ... **80**
EPDs:
BW **1.2**
WW **44**
YW **80**
MILK **30**
M&G **52**
Eye Pigment:
LE **100** / RE **70**

HH ADVANCE 7085T
JA L1 DOMINO 0413X
| JA L1 DOMINETTE 432P

HH ADVANCE 5104R
HH MISS ADVANCE 7240T
| HH MISS ADVANCE 5164R

Carcass: REA **.18** / MARB **.09**

L1 DOMINO 03571
HH MISS ADVANCE 1088L
CL 1 DOMINO 0157K
JA L1 DOMINETTE 1223L
CL 1 DOMINO 206M
HH MISS ADVANCE 153L
CL 1 DOMINO 180L
HH MISS ADVANCE 793G

158

CTR L1 DOMINO 3404A

Mar. 5, 2013 • #43371496

2 YR. OLD
Act. BW ... **84**
EPDs:
BW **1.2**
WW **36**
YW **70**
MILK **26**
M&G **44**
Eye Pigment:
LE **100** / RE **50**

HH ADVANCE 7085T
JA L1 DOMINO 0413X
| JA L1 DOMINETTE 432P

EL ADVANCE 611 S
EL MISS ADVANCE 906W
| HH MISS ADVANCE 4043P

Carcass: REA **.19** / MARB **.04**

L1 DOMINO 03571
HH MISS ADVANCE 1088L
CL 1 DOMINO 0157K
JA L1 DOMINETTE 1223L
CL 1 DOMINO 9126J
CL 1 DOMINETTE 996J
HH ADVANCE 0024K
HH MS ADV 7008G

159

CTR L1 DOMINO 3405A

Mar. 6, 2013 • #43371492

2 YR. OLD
Act. BW ... **86**
EPDs:
BW **1.4**
WW **39**
YW **69**
MILK **28**
M&G **48**
Eye Pigment:
LE **20** / RE **20**

HH ADVANCE 7085T
JA L1 DOMINO 0413X
| JA L1 DOMINETTE 432P

JA L1 DOMINO 6002S
MONTANA MISS 8130U
| MONTANA MISS 637

Carcass: REA **-.06** / MARB **.13**

L1 DOMINO 03571
HH MISS ADVANCE 1088L
CL 1 DOMINO 0157K
JA L1 DOMINETTE 1223L
GB L1 DOMINO 935C
JA L1 DOMINETTE 9203
CL 1 DOMINO 3162N
HH MS ADVANCE 5048E

160

CTR L1 DOMINO 3406A

Mar. 13, 2013 • #43371500

2 YR. OLD
Act. BW ... **86**
EPDs:
BW **1.9**
WW **43**
YW **77**
MILK **28**
M&G **49**
Eye Pigment:
LE **100** / RE **100**

HH ADVANCE 7085T
JA L1 DOMINO 0413X
| JA L1 DOMINETTE 432P

HH ADVANCE 399N
EL MISS ADVANCE 741T
| HH MISS ADVANCE 0078K

Carcass: REA **.11** / MARB **.14**

L1 DOMINO 03571
HH MISS ADVANCE 1088L
CL 1 DOMINO 0157K
JA L1 DOMINETTE 1223L
CL 1 DOMINO 180L
HH MISS ADVANCE 119L
CL 1 DOMINO 824H
HH MS ADVANCE 8035H

161

CTR L1 DOMINO 3408A

Mar. 8, 2013 • #43376377

2 YR. OLD

Act. BW ... **75**

EPDs:

BW **1.0**

WW **42**

YW **73**

MILK **24**

M&G **45**

Eye Pigment:

LE **100** / RE **80**

HH ADVANCE 7085T
JA L1 DOMINO 0413X
| JA L1 DOMINETTE 432P

CL 1 DOMINO 6105S
KB L1 DOMINETTE 950W
| KB L1 DOMINETTE 636

Carcass: REA **.04** / MARB **.15**

L1 DOMINO 03571
HH MISS ADVANCE 1088L
CL 1 DOMINO 0157K
JA L1 DOMINETTE 1223L
L1 DOMINO 03396
CL 1 DOMINETTE 243M
CL 1 DOMINO 180L
KB L1 DOMINETTE 323

166

CTR L1 DOMINO 3416A

May 10, 2013 • #43385422

2 YR. OLD

Act. BW ... **80**

EPDs:

BW **0.9**

WW **39**

YW **69**

MILK **28**

M&G **47**

Eye Pigment:

LE **20** / RE **10**

HH ADVANCE 7085T
JA L1 DOMINO 0413X
| JA L1 DOMINETTE 432P

HH ADVANCE 7085T
JA L1 DOMINETTE 9408W
| JA L1 DOMINETTE 7634T

Carcass: REA **.04** / MARB **.10**

L1 DOMINO 03571
HH MISS ADVANCE 1088L
CL 1 DOMINO 0157K
JA L1 DOMINETTE 1223L
L1 DOMINO 03571
HH MISS ADVANCE 1088L
HH ADVANCE 286M
JA L1 DOMINETTE 2153M

162

CTR L1 DOMINO 3409A

Mar. 8, 2013 • #43371501

2 YR. OLD

Act. BW ... **75**

EPDs:

BW **0.5**

WW **42**

YW **71**

MILK **24**

M&G **45**

Eye Pigment:

LE **80** / RE **80**

HH ADVANCE 7085T
JA L1 DOMINO 0413X
| JA L1 DOMINETTE 432P

CL 1 DOMINO 6105S
MONTANA MISS 009X
| MONTANA MISS 488P

Carcass: REA **.13** / MARB **.14**

L1 DOMINO 03571
HH MISS ADVANCE 1088L
CL 1 DOMINO 0157K
JA L1 DOMINETTE 1223L
L1 DOMINO 03396
CL 1 DOMINETTE 243M
CL 1 DOMINO 9126J
HH MS ADVANCE 5048E

167

CTR L1 DOMINO 3641A

Mar. 14, 2013 • #43391936

2 YR. OLD

Act. BW ... **80**

EPDs:

BW **2.3**

WW **42**

YW **65**

MILK **23**

M&G **44**

Eye Pigment:

LE **15** / RE **50**

JA L1 DOMINO 7640T
JA L1 DOMINO 0620X
| JA L1 DOMINETTE 428P

EL ADVANCE 640S
EL MISS ADVANCE 111Y
| EL MISS ADVANCE 801U

Carcass: REA **-.02** / MARB **.08**

HH ADVANCE 286M
JA L1 DOMINETTE 1409L
CL 1 DOMINO 0157K
JA L1 DOMINETTE 656
HH ADVANCE 1117L
DBH MS CHALLENGE 239H
HH ADVANCE 671F
HH MISS ADVANCE 346N

163

CTR L1 DOMINO 3411A

Mar. 19, 2013 • #43371493

2 YR. OLD

Act. BW ... **87**

EPDs:

BW **2.3**

WW **42**

YW **73**

MILK **26**

M&G **47**

Eye Pigment:

LE **0** / RE **100**

HH ADVANCE 7085T
JA L1 DOMINO 0413X
| JA L1 DOMINETTE 432P

CL 1 DOMINO 592R
KB L1 DOMINETTE 8121U
| KB DOMINETTE 238

Carcass: REA **.14** / MARB **.10**

L1 DOMINO 03571
HH MISS ADVANCE 1088L
CL 1 DOMINO 0157K
JA L1 DOMINETTE 1223L
CL 1 DOMINO 9126J
CL 1 DOMINETTE 974J
SNS 47G SILVER DANDY 11J
KB L1 DOMINETTE 937

168

CTR L1 DOMINO 3642A

Apr. 14, 2013 • #43391935

2 YR. OLD

Act. BW ... **79**

EPDs:

BW **1.3**

WW **43**

YW **69**

MILK **28**

M&G **50**

Eye Pigment:

LE **60** / RE **10**

JA L1 DOMINO 7640T
JA L1 DOMINO 0620X
| JA L1 DOMINETTE 428P

CL 1 DOMINO 933W
EL MISS ADVANCE 128Y
| EL MISS ADVANCE 802U

Carcass: REA **.13** / MARB **.05**

HH ADVANCE 286M
JA L1 DOMINETTE 1409L
CL 1 DOMINO 0157K
JA L1 DOMINETTE 656
CL 1 DOMINO 637S
CL 1 DOMINETTE 5142R
EL ADVANCE 512R
HH MISS ADVANCE 3180N

164

CTR L1 DOMINO 3412A

Mar. 20, 2013 • #43372605

2 YR. OLD

Act. BW ... **88**

EPDs:

BW **2.1**

WW **33**

YW **60**

MILK **28**

M&G **44**

Eye Pigment:

LE **85** / RE **100**

HH ADVANCE 7085T
JA L1 DOMINO 0413X
| JA L1 DOMINETTE 432P

HH ADVANCE 5212R
HH MISS ADVANCE 7105T
| HH MISS ADVANCE 4119P

Carcass: REA **-.06** / MARB **.18**

L1 DOMINO 03571
HH MISS ADVANCE 1088L
CL 1 DOMINO 0157K
JA L1 DOMINETTE 1223L
CL 1 DOMINO 206M
HH MISS ADVANCE 1028L
CL 1 DOMINO 0124K
HH MISS ADVANCE 175L

169

CTR L1 DOMINO 3655A

Feb. 3, 2013 • #43391946

2 YR. OLD

Act. BW ... **85**

EPDs:

BW **3.3**

WW **46**

YW **82**

MILK **27**

M&G **50**

Eye Pigment:

LE **80** / RE **40**

HH ADVANCE 286M
JA L1 DOMINO 7640T
| JA L1 DOMINETTE 1409L

EL ADVANCE 839U
EL MISS ADVANCE 142Y
| HH MISS ADVANCE 9206W

Carcass: REA **.23** / MARB **.11**

HH ADVANCE 0024K
HH MISS ADVANCE 752G
HH ADVANCE 8012H
JA L1 DOMINETTE 8800
EL ADVANCE 611 S
HH MISS ADVANCE 3180N
HH ADVANCE 4055P
HH MISS ADVANCE 5162R

165

CTR L1 DOMINO 3413A

Mar. 21, 2013 • #43371494

2 YR. OLD

Act. BW ... **85**

EPDs:

BW **2.4**

WW **41**

YW **71**

MILK **22**

M&G **42**

Eye Pigment:

LE **30** / RE **100**

HH ADVANCE 7085T
JA L1 DOMINO 0413X
| JA L1 DOMINETTE 432P

CL 1 DOMINO 8153H
JA L1 DOMINETTE 7712T
| JA L1 DOMINETTE 4106P

Carcass: REA **.09** / MARB **.03**

L1 DOMINO 03571
HH MISS ADVANCE 1088L
CL 1 DOMINO 0157K
JA L1 DOMINETTE 1223L
CL 1 DOMINO 5131E
CL 1 DOMINET 496
JA L1 DOMINO 208M
JA L1 DOMINETTE 2219M

170

CTR L1 DOMINO 3811A

Mar. 21, 2013 • #43376658

2 YR. OLD

Act. BW ... **78**

EPDs:

BW **2.2**

WW **57**

YW **89**

MILK **28**

M&G **57**

Eye Pigment:

LE **95** / RE **95**

CL 1 DOMINO 555R
JA L1 DOMINO 9800W
| JA L1 DOMINETTE 4152P

KB L1 DOMINO 521R
KB L1 DOMINETTE 0143X
| KB L1 DOMINETTE 601

Carcass: REA **.16** / MARB **.03**

HH ADVANCE 3113N
CL 1 DOMINETTE 3174N
DH DOMINO 6150
JA L1 DOMINETTE 6815
CL 1 DOMINO 3138N
MONTANA MISS 310
KB L1 DOMINO 454P
KB L1 DOMINETTE 423P

171

CTR L1 DOMINO 3912A Mar 7, 2013 • #43376656

2 YR. OLD
Act. BW ... **80**
EPDs:
BW **2.5**
WW **38**
YW **72**
MILK **26**
M&G **46**
Eye Pigment:
LE **100** / RE **100**

GB L1 DOMINO 6134K
JAK L1 DOMINO 0908X
| JAK L1 DOMINETTE 8810U

JA L1 DOMINO 7640T
CTR L1 DOMINETTE 1650Y
| JAK L1 DOMINETTE 9408W
Carcass: REA **.07** / MARB **.09**

GB L1 DOMINO 471H
GB L1 DOM PRC5 4103H
CL 1 DOMINO 560R
JA L1 DOMINETTE 4652P
HH ADVANCE 286M
JAL L1 DOMINETTE 1409L
HH ADVANCE 7085T
JA L1 DOMINO 7634T

176

JAK L1 DOMINO A59 Feb. 25, 2013 • #43385360

2 YR. OLD
Act. BW ... **68**
EPDs:
BW **1.9**
WW **39**
YW **64**
MILK **21**
M&G **41**
Eye Pigment:
LE **100** / RE **15**

JA L1 DOMINO 6001S
JAK L1 DOMINO 1008Y
| JAK L1 DOMINETTE 9620W

JA L1 DOMINO 9015W
JAK L1 DOMINETTE Y18
| JAK L1 DOMINETTE T135
Carcass: REA **.13** / MARB **.04**

GB L1 DOMINO 935C
JA L1 DOMINETTE 0212
HH ADVANCE 286M
JA L1 DOMINETTE 7511T
JA L1 DOMINO 6001S
JA L1 DOMINETTE 8905
JA L1 DOMINO 4922P
JAK L1 DOMINETTE N386

172

JAK L1 DOMINO A38 Feb. 17, 2013 • #43385079

2 YR. OLD
Act. BW ... **79**
EPDs:
BW **2.6**
WW **43**
YW **69**
MILK **25**
M&G **47**
Eye Pigment:
LE **100** / RE **100**

JA L1 DOMINO 7640T
JAK L1 DOMINO 1609Y
| JAK L1 DOMINETTE 9334W

JA L1 DOMINO 208M
JAK L1 DOMINETTE R165
| JAK L1 DOMINETTE J320
Carcass: REA **.18** / MARB **.05**

HH ADVANCE 286M
JAL L1 DOMINETTE 1409L
CL 1 DOMINO 638S
JA L1 DOMINETTE 613S
HH ADVANCE 767G
JA L1 DOMINETTE 0008
JAK L1 DOMINO D231
JAK L1 DOMINETTE E54

177

JAK L1 DOMINO A63 Feb. 28, 2013 • #43385073

2 YR. OLD
Act. BW ... **86**
EPDs:
BW **3.9**
WW **51**
YW **77**
MILK **27**
M&G **53**
Eye Pigment:
LE **100** / RE **100**

JA L1 DOMINO 7640T
JAK L1 DOMINO 1609Y
| JAK L1 DOMINETTE 9334W

JA L1 DOMINO 9213
JAK L1 DOMINETTE N384
| JAK L1 DOMINETTE G419
Carcass: REA **.25** / MARB **-.05**

HH ADVANCE 286M
JAL L1 DOMINETTE 1409L
CL 1 DOMINO 638S
JA L1 DOMINETTE 613S
CL 1 DOMINO 484
JA L1 DOMINETTE 6554
DH ADVANCE 2100
JA L1 DOMINETTE 0824

Extra volume and capacity with long, yellow hair and lots of eye appeal.

173

JAK L1 DOMINO A48 Feb. 19, 2013 • #43385086

2 YR. OLD
Act. BW ... **92**
EPDs:
BW **5.3**
WW **51**
YW **90**
MILK **31**
M&G **56**
Eye Pigment:
LE **100** / RE **100**

JA L1 DOMINO 7640T
JAK L1 DOMINO 1609Y
| JAK L1 DOMINETTE 9334W

JAK L1 DOMINO N306
JAK L1 DOMINETTE S397
| JAK L1 DOMINETTE L473
Carcass: REA **.21** / MARB **.05**

HH ADVANCE 286M
JAL L1 DOMINETTE 1409L
CL 1 DOMINO 638S
JA L1 DOMINETTE 613S
JA L1 DOMINO 8088
JAK L1 DOMINETTE K274
JA L1 DOMINO 9213
JAK L1 DOMINETTE J302

178

JAK L1 DOMINO A75 Mar. 7, 2013 • #43428094

2 YR. OLD
Act. BW ... **88**
EPDs:
BW **4.7**
WW **53**
YW **92**
MILK **28**
M&G **54**
Eye Pigment:
LE **5** / RE **50**

JA L1 DOMINO 7640T
JAK L1 DOMINO 1609Y
| JAK L1 DOMINETTE 9334W

JA L1 DOMINO 624S
JAK L1 DOMINETTE W341
| JAK L1 DOMINETTE S204
Carcass: REA **.25** / MARB **-.06**

HH ADVANCE 286M
JAL L1 DOMINETTE 1409L
CL 1 DOMINO 638S
JA L1 DOMINETTE 613S
CL 1 DOMINO 0157K
JA L1 DOMINETTE 1252L
JAK L1 DOMINO N306
JAK L1 DOMINETTE M324

174

JAK L1 DOMINO A56 Feb. 25, 2013 • #43385324

2 YR. OLD
Act. BW ... **80**
EPDs:
BW **3.8**
WW **57**
YW **80**
MILK **26**
M&G **55**
Eye Pigment:
LE **100** / RE **90**

JA L1 DOMINO 7640T
JAK L1 DOMINO 1609Y
| JAK L1 DOMINETTE 9334W

JA L1 DOMINO 4922P
JAK L1 DOMINETTE U378
| JAK L1 DOMINETTE N204
Carcass: REA **.33** / MARB **-.14**

HH ADVANCE 286M
JAL L1 DOMINETTE 1409L
CL 1 DOMINO 638S
JA L1 DOMINETTE 613S
HH ADVANCE 8017H
JA L1 DOMINETTE 7444
JA L1 DOMINO 9213
JAK L1 DOMINETTE L257

Red necked, deep bodied and sure an easy keeper. Big, solid beef bull.

179

JAK L1 DOMINO A83 Mar. 9, 2013 • #43385085

2 YR. OLD
Act. BW ... **94**
EPDs:
BW **5.6**
WW **55**
YW **92**
MILK **31**
M&G **58**
Eye Pigment:
LE **100** / RE **100**

JA L1 DOMINO 7640T
JAK L1 DOMINO 1609Y
| JAK L1 DOMINETTE 9334W

JAK L1 DOMINO N306
JAK L1 DOMINETTE S33
| JAK L1 DOMINETTE K210
Carcass: REA **.41** / MARB **.05**

HH ADVANCE 286M
JAL L1 DOMINETTE 1409L
CL 1 DOMINO 638S
JA L1 DOMINETTE 613S
JA L1 DOMINO 8088
JAK L1 DOMINETTE K274
JAK L1 DOMINO D231
JA L1 DOMINETTE 4953

A big-country rancher bull with more frame and muscle.

175

JAK L1 DOMINO A58 Feb. 25, 2013 • #43385357

2 YR. OLD
Act. BW ... **70**
EPDs:
BW **2.1**
WW **45**
YW **70**
MILK **24**
M&G **46**
Eye Pigment:
LE **50** / RE **10**

JA L1 DOMINO 6001S
JAK L1 DOMINO 1008Y
| JAK L1 DOMINETTE 9620W

JA L1 DOMINO 9922W
JAK L1 DOMINETTE Y02
| JAK L1 DOMINETTE U159
Carcass: REA **.14** / MARB **.03**

GB L1 DOMINO 935C
JA L1 DOMINETTE 0212
HH ADVANCE 286M
JA L1 DOMINETTE 7511T
JA L1 DOMINO 4922P
JA L1 DOMINETTE 3215N
JA L1 DOMINO 9213
JAK L1 DOMINETTE R237

180

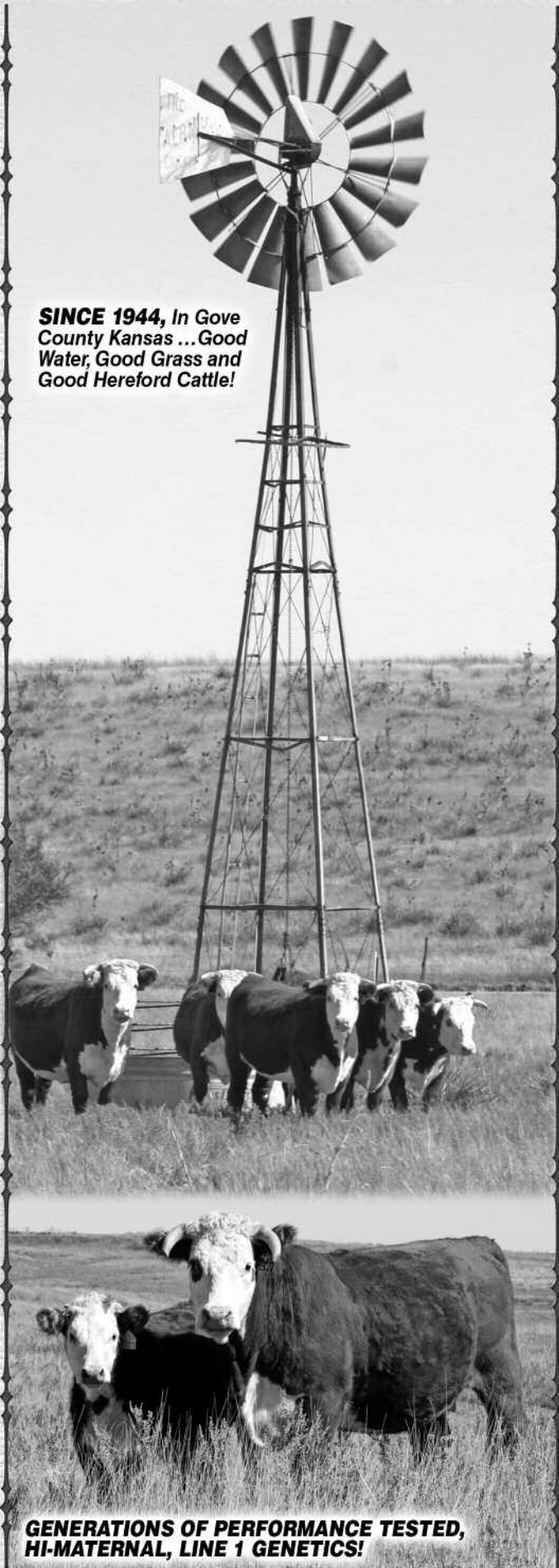
JAK L1 DOMINO A87 Mar. 11, 2013 • #43385098

2 YR. OLD
Act. BW ... **86**
EPDs:
BW **3.1**
WW **45**
YW **81**
MILK **27**
M&G **49**
Eye Pigment:
LE **50** / RE **50**

L1 DOMINO 99496
DH DOMINO 539
| DH MS ADVANCE 1003

JA L1 DOMINO 315N
JAK L1 DOMINETTE T370
| JAK L1 DOMINETTE R175
Carcass: REA **.14** / MARB **.12**

L1 DOMINO 97349
L1 DOMINETTE 95369
HH ADVANCE 8093H
LG MISS RED 210
CL 1 DOMINO 0157K
JA L1 DOMINETTE 8800
JA L1 DOMINO 208M
JAK L1 DOMINETTE D128



SINCE 1944, In Gove County Kansas ... Good Water, Good Grass and Good Hereford Cattle!

GENERATIONS OF PERFORMANCE TESTED, HI-MATERNAL, LINE 1 GENETICS!

GENERAL INFORMATION

DATE: Friday, FEBRUARY 27, 2015

TIME: 12 Noon CST

LOCATION: Headquarters located off I-70, Quinter Exit 107, 2 mi. south, 1 mi. east, 1 1/2 miles south

LUNCH: Available on the grounds.

PHONES: Gordon Jamison 785/754-3639, (c) 785/299-0441
Daron Jamison 785/650-9639

SALE DAY PHONE: 785/754-3424

BID ONLINE: www.dvauction.com ...for information and to register for bidding online, call Tami McIntosh 308/870-3661.

SALE HEADQUARTERS:

Best Western, Wakeeney, KS • 785/743-2700

Located 20 miles east of ranch on I-70

Ask for Jamison Ranch sale rate. Free, full service breakfast.

Other Motels: Wakeeney (20 miles east): Super 8 785/743-6628; Econo Lodge 785/743-5505; **Oakley (30 mi. west):** Best Western Golden Plains 785/672-3254; Kansas Kountry Inn 785/672-3131; Oakley Sleep Inn 785/671-1111; **Quinter:** Q Inn 785/754-3337.

AIRPORTS: Commercial air service is available to Hays, KS or Garden City, KS. Private planes may land at Quinter, KS (sod strip), Wakeeney (3500 ft. paved) or Oakley (5000 ft. paved).

TERMS & CONDITIONS: Terms of the sale are cash. Every sale animal will be sold to the highest bidder with the auctioneer settling bid disputes. Announced changes in catalog information on sale day take precedence over printed material. All cattle are the buyer's property as soon as sold and will be cared for a reasonable length of time at the buyer's risk. Any person attending the sale does so at his own risk. Neither the sale management, owners, nor any person connected with this sale, assumes any liability, legal or otherwise.

In the event of default in any part of the Terms and Conditions for this sale by buyer or seller, it shall be the responsibility of the buyer or seller to instigate action needed to bring about a fair settlement of any claims and to be responsible for any and all costs involved.

GUARANTEE: Every animal in this sale is, to our knowledge, free from any disease or defect. Any known defect will be called at sale time. All bulls have been fertility tested by Hawkeye Breeders Services, Adel, Iowa prior to the sale. They are guaranteed breeders. If an animal fails to breed after a six month trial, it may be returned to the seller if it is in good condition and in compliance with Kansas health regulations. The seller reserves the right to try said animal for 90 days, and if it proves a breeder, return it to the buyer at the buyer's expense. If the animal proves to be a non-breeder, an animal of comparable rank will be substituted or the purchase price will be credited toward purchase of an animal in the next sale. We assume no liability, legal or otherwise, to make any further compensation to the buyer. No warranty of any nature is expressed or implied. All sale cattle are IE and Diluter free.

HEALTH: Herd health is excellent. Individual health papers will be furnished for shipment.

REGISTRATION & TRANSFER: American Hereford Assn. registration certificates will be transferred upon request to respective buyers at seller's expense. At time of settlement, buyers must give complete information.

PERFORMANCE: Complete Total Performance Records are available on all cattle. Current weight, WDA and scrotal will be available sale day. Carcass ultrasound data will be available on the yearling bulls.

DELIVERY: Free delivery is provided on volume purchases of \$3500 or more. All other deliveries will be provided at cost.

INSURANCE: Insurance can be arranged through American Live Stock / Markell, Cheri & Jim Gies, CO, (c) 970/590-0500 or (h) 970/454-3836.

ABSENTEE BIDS: Those who cannot attend the sale may place phone or mail bids by contacting Gordon Jamison, Jay George (United Livestock Brokers) or any listed sale representative.

SALE MANAGEMENT:

United Livestock Brokers, Inc.

Jay George

605/391-6230 (cell)

1025 28th Rd. NW • Lebo, KS 66856

Sale management acts as agent only and assumes no legal responsibility.

JAMISON HEREFORD BULLS

**1st Choice on
your Black Cows**

**...Breeding the
Black Baldie Heterosis
Advantage!**



BULL POWER

More Breeding Bull Capacity & Durability
Fertility, structural soundness, disposition
...he'll cover his pasture and get cows bred!



CALF CROP HETEROSIS

**More calf crop vigor ...More
lbs. of performance!**

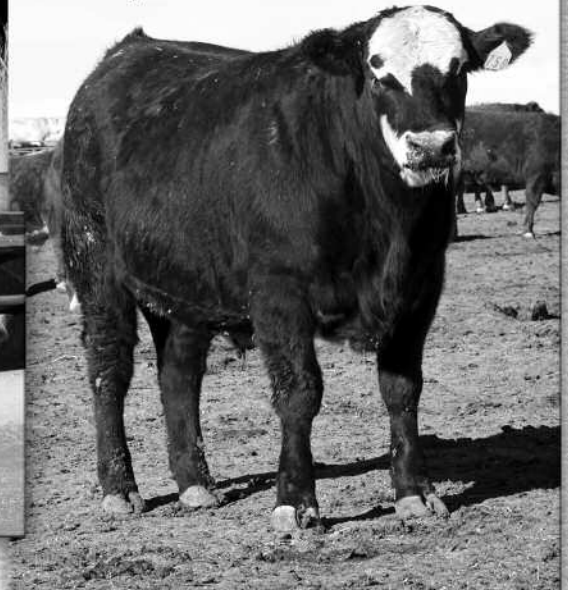
Range Country's #1 Mother Cow!



THE BLACK BALDIE FEMALE...

Maximum Efficiency, Function and Longevity!

The Industry's Most Profitable Steer!



BLACK BALDIE FEEDLOT PERFORMANCE / GRID VALUE

**More Feedlot Gain ...Maximum Efficiency ...Cheaper Cost of Gain,
Added Grid Options ...More End-Product Value!**

JAMISON HEREFORDS

SINCE 1944... 71 Years of Hereford Leadership

THE JA Line 1 Mother Cows...

Generations of production testing, linebreeding, stacking proven, hi-maternal, cowherd builder sires and building upon elite cow families!

THE COWHERD SIRES...



THE COWMAN'S BREEDING BULL FACTORY!

- Linebred Line 1 • Trait Balanced • Maternal is #1
- Functional, Efficient Mother Cows • Range Raised (No Creep)
- Commercial Industry Proven

JA BROOD MATRONS...

The performance warranty behind every Jamison-bred bull!



JAMISON RANCH

2271 COUNTY RD. 74
QUINTER, KANSAS 67752

ADDRESS SERVICE REQUESTED

Pre-sort
FIRST CLASS MAIL
U.S. POSTAGE
PAID
Permit #123
Pierre, SD

FIRST CLASS



THE COWMAN'S BREEDING BULL SOURCE!
TRAIT BALANCED • LINEBRED LINE 1 • RANGE DEVELOPED • VOLUME SELECTION