



**SINCE 1944 ...72 YEARS OF
HEREFORD BREED LEADERSHIP!**

JAMISON HEREFORDS

**TOTAL PERFORMANCE
PRODUCTION SALE
FEBRUARY 26, 2016
QUINTER, KANSAS**

 **UNITED LIVESTOCK BROKERS, INC.**



JAMISON HEREFORDS

**SINCE 1944 ...72 YEARS OF HEREFORD
BREED LEADERSHIP AND PROVEN
PERFORMANCE!**

HERD SIRES for RANCHERS and BREEDERS!
Linebred Line 1 • Trait Balanced • Maternal is #1 • Functional,
Efficient Beef Cattle • Range Raised (no creep) • Volume Selection



**Generations of Proven,
Breed Building Line 1 Sires!**

One of America's Most Respected Cowherds!



**THE JA Line 1
Maternal Factory...**

**Backed by generations of production testing, line
breeding, stacking cowherd builder sires and
building upon elite cow families!**



JAMISON HEREFORDS

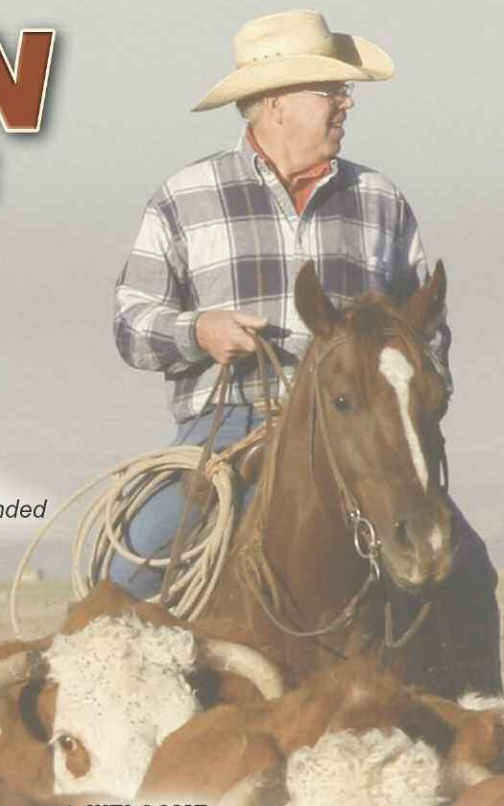
TOTAL PERFORMANCE PRODUCTION SALE

FRIDAY **FEBRUARY 26**, 2016

12 Noon (CST) • AT THE RANCH
Located off I-70, Quinter Exit 107, 2 miles South,
1 mile East, 1 1/2 miles South

202 HEREFORD BULLS

74 Yearlings • 108 Two Yr. Olds • 20 Fall Yearlings
Performance Tested • Fertility Tested • Carcass Ultrasounded



— AUCTIONEER —

LYNN WEISHAAR • Reva, SD • 605/866-4670 or 605/641-6248

— SALE REPRESENTATIVES —

Levi Landers, American Hereford Assn. • 308/730-1396

Tom Granzow, Kansas Hereford Assn. • 785/466-2226

Marc Hotchkiss, Hereford America &
The Livestock Link • 605/866-4495

Jim Gies, Western Livestock Journal • 970/454-3836

Guy Pevery, The Stock Exchange • 785/456-9911

Stephen Russell, Kansas Stockman • 785/ 458-2650

Scott Dirk, Tri-State Livestock News • 605/380-6024

Chisolm Kinder, Oklahoma Cowman • 405/235-4391

— INSURANCE —

American Live Stock / Markel

Cheri & Jim Gies (h) 970/454-3836 or (c) 970/590-0500



UNITED LIVESTOCK BROKERS, INC.

Jay George • 605/391-6230
1025 28th Rd. NW
Lebo, Kansas 66856

Photography by Jay George

— VETERINARIAN —

Max Mann, DVM • Quinter, KS • 785/754-3411

SALE DAY PHONE: 785/754-3424

GENERAL INFORMATION...

Sale terms, motels, airports, etc., see Inside Back Cover

SALE BULL VIDEO

Video footage on every bull at: www.jamisonranch.com

Video by Shawna Chabot

www.jamisonranch.com

JAMISON HEREFORDS

GORDON JAMISON & SONS

Gordon (h) 785/754-3639 • Cody (c) 785/299-0020

Daron (c) 785/650-9639

2271 COUNTY RD. 74 • QUINTER, KANSAS 67752

WELCOME...

The Jamison Family welcomes all our rancher customers and friends to our annual spring bull sale. You are the heart and soul of our lifelong business as breeders of Hereford seedstock. We continue to strive offering you problem-free, profitable, performance Hereford genetics. Maternal traits are our #1 priority and we feel our cowherd demonstrates that plan. In our effort to produce breeding bulls that are sound, fertile and trait balanced, our selection process stresses calving ease with optimal growth plus fleshing ability and structural soundness. And, we are getting closer to our quest for 100 percent red pigment on every JA bull.

The Line 1 Herefords founded at the Miles City, MT Range Station in 1934 are true, balanced performance cattle recognized for maternal excellence and the right combination of calving ease and growth. We have linebred Line 1 genetics in our program since 1970. Ranchers will reap full benefit of heterosis with our linebred bulls with the industry's most proven cross ...the Hereford bull on Black and Red Angus cows. That cow genetically takes the horns off and the Hereford sired Black and Red Baldie progeny add the vigor, performance, cowherd longevity and feedlot gain and efficiency that trademark the Whiteface brand.

The bulls are carcass ultrasounded, fertility tested and all BVD-PI tested as yearlings. Free delivery is offered on volume purchases to central points.

Call with your questions ...we like to talk Hereford cattle. And, we'll look forward to seeing you Feb. 26th.

Gordon Jamison and Family

You're Invited...

HEREFORD STEAK SUPPER!

A Pre-Sale Get-together ...Thursday Evening, Feb. 25th

The Historic Western Kansas Saloon

"The best steak in Western Kansas...bar none!"

Main Street • Wakeeney, Kansas

View the auction live! Bid online ...you're ringside
right at your own desk!

DVAuction
Broadcasting Real-Time Auctions

www.dvauction.com

Visit our website ...for more information and to register
to bid! Call Tami McIntosh 308/870-3661

JA COWHERD SIRES



CL 1 DOMINO 0157K Feb. 2, 2000 • #42044529

HH ADVANCE 767G

CL 1 DOMINO 500E
HH MISS ADVANCE 251B

CL 1 DOMINO 166
CL 1 DOMINETTE 7013
HH ADVANCE 9012Y
HH MISS ADVANCE 063Z

CL 1 DOMINETTE 861H

Dam of Distinction
5 clvs. WR 105

HH ADVANCE 438D
CL 1 DOMINETTE 544E
DOD, 5 clvs. WR 109

HH ADVANCE 249B
HH MISS ADV 1100A
CL 1 DOMINO 166
CL 1 DOMINETTE 178

CED **7.8** BW **-1.0** WW **36** YW **75** MILK **28** M&G **46**
Carcass EPDs: REA **-.08** MARB **.05**
24 Herds / 299 Progeny / 124 Daughters

Landmark Calving Ease, Hi-Maternal, Cowherd Builder!



HH ADVANCE 286M Jan. 11, 2002 • #42302052

HH ADVANCE 0024K

CL 1 DOMINO 824H
HH MISS ADVANCE 894H

CL 1 DOMINO 640F
CL 1 DOMINETTE 6148F
CL 1 DOMINO 403
HH MS ADV 4045D

HH MISS ADVANCE 752G

4 clvs. WR 108

KB L1 DOMINO 519
HH MISS ADVANCE 454D

HH ADVANCE 311C
CL 1 DOMINETTE 6008
CL 1 DOMINO 185
HH MISS ADVANCE 001Z

CED **0.1** BW **2.7** WW **55** YW **82** MILK **18** M&G **46**
Carcass EPDs: REA **-.56** MARB **.04**
25 Herds / 672 Progeny / 220 Daughters

Trait Leader: US • TS • REA • BMI • BII

Muscle, Paywt., Pigment, Carcass ...Functional, Problem-free, Efficient Daughters!



CL 1 DOMINO 638S Jan. 11, 2006 • #42673573

L1 DOMINO 03396

L1 DOMINO 00552
L1 DOMINETTE 96893 (DOD)

L1 DOMINO 97363
L1 DOMINETTE 95365
L1 DOMINO 93546
L1 DOMINETTE 880276

CL 1 DOMINETTE 475P

2 clvs. WR 107

CL 1 DOMINO 824H
CL 1 DOMINETTE 200M (DOD)
DOD, 4 clvs. WR 106

CL 1 DOMINO 640F
CL 1 DOMINETTE 6148F
CL 1 DOMINO 9126J
CL 1 DOMINETTE 8131

CED **0.7** BW **4.8** WW **47** YW **65** MILK **38** M&G **61**
Carcass EPDs: REA **-.38** MARB **.21**
21 Herds / 317 Progeny / 92 Daughters ...progeny avg. WR 103

Trait Leader: MILK • M&G • MARB

Breed Elite Maternal Sire ...Premier Cooper Cow Line!



CL 1 DOMINO 555R Jan. 13, 2005 • #42573506

HH ADVANCE 3113N

L1 DOMINO 99496
HH MISS ADV 875H 1ET

L1 DOMINO 97349
L1 DOMINET 95369 (DOD)
HH ADVANCE 671F 1ET
HH MS ADVNC 339C (DOD)

CL 1 DOMINETTE 3174N

Dam of Distinction
5 clvs. WR 104

CL 1 DOMINO 9126J 1ET
CL 1 DOMINETTE 810H

HH ADVANCE 767G 1ET
CL 1 DOMINET 490 (DOD)
CL 1 DOMINO 640F
CL 1 DOMINETTE 6117F

CED **3.0** BW **2.3** WW **52** YW **87** MILK **36** M&G **62**
Carcass EPDs: REA **.09** MARB **-.01**
24 Herds / 408 Progeny / 159 Daughters ...progeny avg. WR 101

Trait Leader: MILK • M&G • SC • CEZ
Hi-Maternal Cowherd Builder ...Moderate, Milky, Females!

HH ADVANCE 2181Z Feb. 5, 2012 • #43270986

CL 1 DOMINO 886U	CL 1 DOMINO 638S	L1 DOMINO 03396
	CL 1 DOMINETTE 440P	CL 1 DOMINETTE 475P
HH MISS ADVANCE 6054S 7 clvs. WR 104	CL 1 DOMINO 320N	CL 1 DOMINO 9126J
	HH MISS ADVANCE 4053P	CL 1 DOMINETTE 974J
		CL 1 DOMINO 019K
		CL 1 DOMINETTE 996J
		HH ADVANCE 145L
		HH MISS ADVANCE 011K

CED **2.6** BW **3.9** WW **66*** YW **96** MILK **31*** M&G **64***
Carcass EPDs: REA **.28** MARB **-.14** 6 Herds / 108 Progeny ...avg. WR 103

Trait Leader: WW • MILK • M&G • SC

Owners: Jamison, Oleen Bros., KS, Climbin' Tree, CO, Holden, MT

Potent Performance, Powerful Record, Landmark Cowherd Builder Pedigree ...Standout Progeny!

CL 1 DOMINO 860U Jan. 10, 2008 • #42897554

CL 1 DOMINO 637S	L1 DOMINO 03396	L1 DOMINO 00552
	CL1 DOMINETTE 118L	L1 DOMINETTE 96893
CL 1 DOMINETTE 5142R Dam of Distinction 4 clvs. WR 115	CL1 DOMINO 1172L	CL 1 DOMINO 888H
	CL 1 DOMINETTE 810H	CL 1 DOMINETTE 903J
		HH ADVANCE 767G
		CL 1 DOMINETTE 7192G
		CL 1 DOMINO 640F
		CL 1 DOMINETTE 6117F

CED **-1.4** BW **4.5** WW **65*** YW **119*** MILK **34*** M&G **67***
Carcass EPDs: REA **.37** MARB **.02**
49 Herds / 903 Progeny ...avg. WR 102 / YW 103 • 315 Dgtrs.prog. avg. WR 101

Trait Leader: WW • YW • MILK • M&G • CW • CHB

Owners: Jamison, Colyer, ID, King, NM, Cooper, MT

Breed Impact, 6-Trait Performance, Maternal Leader!

CL 1 DOMINO 9125W Jan. 18, 2009 • #42994844

CL 1 DOMINO 732T	CL 1 DOMINO 590R	CL 1 DOMINO 246M
	CL1 DOMINETTE 507R	CL 1 DOMINETTE 258M
CL 1 DOMINETTE 475P 2 clvs. WR 107	CL 1 DOMINO 824H	HH ADVANCE 3113N
	CL 1 DOMINETTE 200M	CL1 DOMINETTE 1120L
	DOD, 4 clvs. WR 106	CL 1 DOMINO 640F
		CL 1 DOMINETTE 6148F
		CL 1 DOMINO 9126J
		CL 1 DOMINETTE 8131

CED **0.3** BW **3.4** WW **63*** YW **100*** MILK **35*** M&G **66***
Carcass EPDs: REA **.33** MARB **.12**
26 Herds / 516 Progeny ...avg. WR 101 / YW 101 • 73 Dgtrs.prog. avg. WR 101

Trait Leader: WW • YW • MILK • M&G • CW

Owners: Jamison, B&B, KS, Cooper, MT

Cowman's 5-Trait Leader ...Herd Impact Daughters!

CO L1 DOMINO 946W March 20, 2009 • #43003699

GB L1 DOMINO 175E	HH ADVANCE 767G	CL 1 DOMINO 500E
	GB L1 DOM PRCS 3134 (DOD)	HH MISS ADVANCE 251B
CO L1 DOMINETTE 523R Dam of Distinction 8 clvs. WR 105	GB L1 DOMINO 935C	GB L1 DOMINO 159
	CO L1 DOMINETTE 206M	GB L1 DOM PRCS 105
		CL 1 DOMINO 5131E
		GB L1 DOM PRCS 115
		GB L1 DOMINO 017D
		CO L1 DOMINETTE 913

CED **2.7** BW **2.1** WW **26** YW **68** MILK **37** M&G **50**
Carcass EPDs: REA **-.19** MARB **.17**

Owned by Jamison

Hi-Maternal GB L1 Domino 175E Son ...Elite Dam!

DH ADVANCE 031 October 5, 2010 • #43220398

HH ADVANCE 8050U	L1 DOMINO 03571	L1 DOMINO 01384
	HH MISS ADVANCE 365N	L1 DOMINETTE 00532
DH DOMINETTE 7155 4 clvs. WR 102	DH DOMINO 302	HH ADVANCE 0024K
	DH MISS ADVANCE 3169	HH MISS ADVANCE 103L
		CL 1 DOMINO 0144K
		DH DOMINETTE 2151
		DH ADVANCE 1008
		DH DOMINETTE 5112

CED **2.6** BW **3.1** WW **46** YW **75** MILK **26** M&G **49**
Carcass EPDs: REA **.12** MARB **-.03**

Owners: Jamison and Debter, AL

Red Meat, Pigment, Trait Balance ...A Debter Bred HH Advance 8050U Son!



JA REFERENCE SIRES

2181Z
AHA GE-EPD



860U
AHA GE-EPD



9125W
AHA GE-EPD



946W



031

JA REFERENCE SIRES



HH ADVANCE 0085X Jan. 9, 2010 • #43074001

HH ADVANCE 8203U	HH ADVANCE 5161R	HH ADVANCE 396N
	HH MISS ADVANCE 752G	HH MS ADVANCE 2118M
HH MISS ADVANCE 7017T 4 clvs. WR 106	CL 1 DOMINO 320N	KB L1 DOMINO 519
	HH MISS ADVANCE 5106R	HH MISS ADVANCE 454D
		CL 1 DOMINO 019K
		CL 1 DOMINETTE 996J
		CL 1 DOMINO 2136M
		HH MISS ADVANCE 330N

CED **-0.6** BW **3.5** WW **49** YW **76** MILK **28★** M&G **52**
Carcass EPDs: REA **.21** MARB **.16★**

Trait Leader: MILK • FAT • MARB • BMI • BII
Owners: Jamison, Blue Top, KS, Frey & Graham, OK
5-Trait Leader ...Hi-Maternal, Carcass Quality, Pigmented, Problem-Free Sire

HH ADVANCE 3040A Jan. 4, 2013 • #43368367

HH ADVANCE 0132X	CL 1 DOMINO 7128T	HH ADVANCE 3113N
	HH MISS ADVANCE 6054S	CL 1 DOMINETTE 0112K
HH MISS ADVANCE 6155S 4 clvs. WR 100 • Full sister to herdsire HH Advance 8050U	L1 DOMINO 03571	CL 1 DOMINO 320N
	HH MISS ADVANCE 365N	HH MS ADVANCE 4053P
		L1 DOMINO 01384
		L1 DOMINETTE 00532
		HH ADVANCE 0024K
		HH MISS ADVANCE 103L

CED **2.4** BW **2.1** WW **42** YW **69** MILK **32** M&G **53**
Carcass EPDs: REA **-.15** MARB **.13**

Owners: Jamison, Oleen Bros., KS, Cooper, MT
Complete, Moderate, Fault-Free, Balanced Performance Beef Bull!

JA L1 DOMINO 7640T Feb. 13, 2007 • #42848084

HH ADVANCE 286M	HH ADVANCE 0024K	CL 1 DOMINO 824H
	HH MISS ADVANCE 752G	HH MISS ADVANCE 894H
JAL L1 DOMINETTE 1409L 9 clvs. WR 105	HH ADVANCE 8012H	KB L1 DOMINO 519
	JA L1 DOMINETTE 8800 (DOD)	HH MISS ADVANCE 454D
	DOD, 8 clvs. WR 106	HH ADVANCE 697F
		HH MISS ADVANCE 160A
		CL 1 DOMINO 386
		JA L1 DOMINETTE 6421

CED **1.7** BW **1.1** WW **40** YW **72** MILK **27★** M&G **47**
Carcass EPDs: REA **.45★** MARB **.00**

Trait Leader: MILK • MCW • TS • REA
Owners: Jamison and Oleen Bros., KS
Four-Trait Leader ...Calving Ease, Pigment, Carcass REA & Perfect Mother Cows!

JA L1 DOMINO 1602Y Jan. 30, 2011 • #43232230

JA L1 DOMINO 7640T	HH ADVANCE 286M	HH ADVANCE 0024K
	JAL L1 DOMINETTE 1409L	HH MS ADVANCE 752G
JA L1 DOMINETTE 9204W 4 clvs. WR 103	CL 1 DOMINO 555R	HH ADVANCE 8012H
	JA L1 DOMINETTE 4119P	JA L1 DOMINETTE 8800
		HH ADVANCE 3113N
		CL 1 DOMINETTE 3174N
		JA L1 DOMINO 208M
		JA L1 DOMINETTE 1317L

CED **4.2★** BW **0.4★** WW **42** YW **63** MILK **28★** M&G **49**
Carcass EPDs: REA **.46★** MARB **-.08** • 17 Herds / 135 Progeny ...avg. WR 100

Trait Leader: CED • BW • MILK • MCW • REA • CEZ
Owners: Jamison and Jamison Cattle Co., OK
Six-Trait Leader ...Superb CE, Carcass REA, Standout Daughters!

HH ADVANCE 0118X Jan. 14, 2010 • #43073967

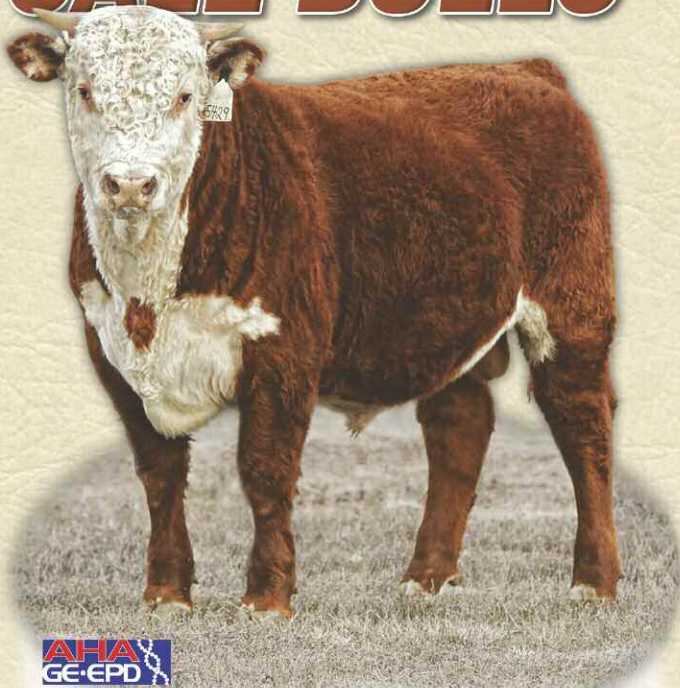
CL 1 DOMINO 7128T	HH ADVANCE 3113N	L1 DOMINO 99496
	CL 1 DOMINETTE 0112K	HH MS ADV 875H
HH MISS ADVANCE 6074S 5 clvs. WR 101	CL 1 DOMINO 2136M	CL 1 DOMINO 5131E
	HH MISS ADVANCE 1013L	CL 1 DOMINETTE 411
		CL 1 DOMINO 9126J
		CL 1 DOMINETTE 8124H
		HH ADVANCE 8060H
		HH MISS ADVANCE 989J

CED **2.6** BW **2.7** WW **47** YW **63** MILK **26** M&G **50**
Carcass EPDs: REA **.24** MARB **-.02** • 13 Herds / 155 Progeny ...avg. WR 101

Trait Leader: MCW • US
Owners: Jamison, B&B, KS, Coleman, CO, Cooper, MT
Stockman's Beef Bull ...Problem-Free, "Milky" Dgtrs.!

JA SALE BULLS

SALE BULL VIDEOS
Available on every bull!
www.jamisonranch.com



Thirty Yearling Bulls have been DNA Tested for American Hereford Genomic-Enhanced EPDs • Results & EPD Updates available online at www.jamisonranch.com and on salesupplement sheet

HERD BULLS FOR RANCHERS AND BREEDERS!

- 2015 SPRING YEARLING BULLS.....LOTS 1-74
- 2014 SPRING 2 YR. OLD BULLS..... LOTS 75-182
- 2014 FALL YEARLING BULLS..... LOTS 183-202

JAMISON 2016 YEARLING SALE BULL AVG. 74 Yrlg. Sale Bull Averages:

BW 83 • Act. WW 648 lbs. • 205 Wt. 665 lbs.

BW	WW	YW	MILK	M&G
2.9	53	86	28	55

BREED AVG. 2014 YEARLING BULLS

BW	WW	YW	MILK	M&G
3.3	48	78	20	44

JA CO-OP HERDS and GUEST CONSIGNORS...

Herd bull partners and breeders who have invested in JA genetics. All bulls have been developed at Jamison Herefords since weaned. They carry proven Line 1 genetics backed 100 percent by the JA Guarantee.

- **Oleen Bros.**, Dwight, KS
- **Coleman Herefords**, Westcliffe, CO
- **Climbin' Tree Ranch**, Westcliffe, CO
- **B&B Cattle Co.**, Virgil, KS
- **Blue Top Herefords**, Inman, KS
- **Harmony Herefords**, Quinter, KS

1

JA L1 DOMINO 500C

Jan. 27, 2015 • #43598277

YEARLING

Act. BW **78**

Act. WW **575**

Adj. 205 **568**

EPDs:

BW **2.3**

WW **44**

YW **72**

MILK **31**

M&G **52**

Eye Pigment:

LE **100** / RE **100**

HH ADVANCE 0132X

HH ADVANCE 3040A

HH MISS ADVANCE 6155S

CL 1 DOMINO 9125W

JA L1 DOMINETTE 2106Z

JA L1 DOMINETTE 9305W

Carcass: REA **-.10** / MARB **.12**

CL 1 DOMINO 7128T

HH MISS ADVANCE 6054S

L1 DOMINO 03571

HH MISS ADVANCE 365N

CL 1 DOMINO 732T

CL 1 DOMINETTE 475P

CL 1 DOMINO 638S

JA L1 DOMINETTE 637S

Low birth weight, possible heifer bull prospect with a big red spot on his face. A thick made, moderate framed beef bull.

2

JA L1 DOMINO 501C

Jan. 28, 2015 • #43598279

YEARLING

Act. BW **75**

Act. WW **665**

Adj. 205 **623**

EPDs:

BW **1.4**

WW **36**

YW **65**

MILK **25**

M&G **43**

Eye Pigment:

LE **100** / RE **100**

HH ADVANCE 0132X

HH ADVANCE 3040A

HH MISS ADVANCE 6155S

CL 1 DOMINO 860U

JA L1 DOMINETTE 1712Y

JA L1 DOMINETTE 6254S

Carcass: REA **-.09** / MARB **.08**

CL 1 DOMINO 7128T

HH MISS ADVANCE 6054S

L1 DOMINO 03571

HH MISS ADVANCE 365N

CL 1 DOMINO 637S

CL 1 DOMINETTE 5142R

CL 1 DOMINO 484

JA L1 DOMINETTE 4123P

Heifer bull with very moderate frame and complete pigment on both eyes

3

JA L1 DOMINO 502C

Jan. 29, 2015 • #43598281

YEARLING

Act. BW **80**

Act. WW **570**

Adj. 205 **607**

EPDs:

BW **3.2**

WW **48**

YW **88**

MILK **30**

M&G **54**

Eye Pigment:

LE **100** / RE **100**

HH ADVANCE 0132X

HH ADVANCE 3040A

HH MISS ADVANCE 6155S

CL 1 DOMINO 860U

JA L1 DOMINETTE 3731A

JA L1 DOMINETTE 8200U

Carcass: REA **.01** / MARB **.06**

CL 1 DOMINO 7128T

HH MISS ADVANCE 6054S

L1 DOMINO 03571

HH MISS ADVANCE 365N

CL 1 DOMINO 637S

CL 1 DOMINETTE 5142R

CL 1 DOMINO 555R

JA L1 DOMINETTE 3756N

Red necked, clean made and a very moderate frame size.

4

JA L1 DOMINO 503C

Jan. 29, 2015 • #43598282

YEARLING

Act. BW **78**

Act. WW **625**

Adj. 205 **668**

EPDs:

BW **2.8**

WW **54**

YW **89**

MILK **30**

M&G **57**

Eye Pigment:

LE **100** / RE **90**

HH ADVANCE 0132X

HH ADVANCE 3040A

HH MISS ADVANCE 6155S

CL 1 DOMINO 860U

JA L1 DOMINETTE 3714A

JA L1 DOMINETTE 7634T

Carcass: REA **.20** / MARB **.07**

CL 1 DOMINO 7128T

HH MISS ADVANCE 6054S

L1 DOMINO 03571

HH MISS ADVANCE 365N

CL 1 DOMINO 637S

CL 1 DOMINETTE 5142R

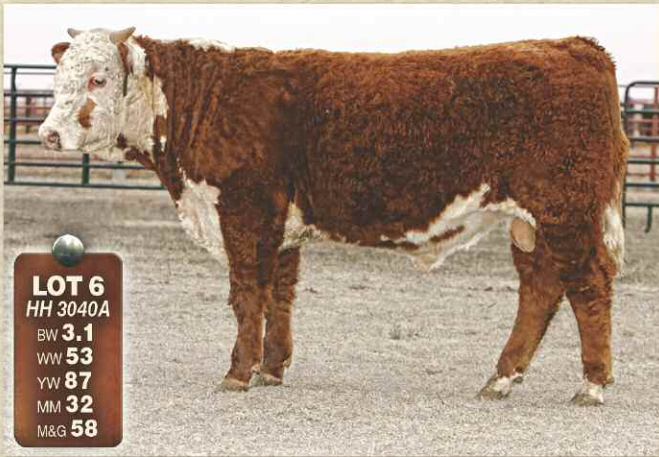
HH ADVANCE 286M

JA L1 DOMINETTE 2153M

Another possible heifer bull that is very thick made and moderate framed.



LOT 5
HH 3040A
BW **2.9**
WW **52**
YW **82**
MM **32**
M&G **58**



LOT 6
HH 3040A
BW **3.1**
WW **53**
YW **87**
MM **32**
M&G **58**



LOT 7
HH 3040A
BW **3.1**
WW **52**
YW **85**
MM **28**
M&G **54**



LOT 8
HH 3040A
BW **3.4**
WW **55**
YW **90**
MM **28**
M&G **55**

5

JA L1 DOMINO 509C

Feb. 3, 2015 • #43598292

YEARLING

Act. BW **79**
Act. WW **.685**
Adj. 205 **.690**

EPDs:
BW **2.9**
WW **52**
YW **82**

MILK **32**
M&G **58**
Eye Pigment:
LE **100** / RE **100**

HH ADVANCE 0132X
HH ADVANCE 3040A

HH MISS ADVANCE 6155S

CL 1 DOMINO 9125W
JA L1 DOMINETTE 2108Z

JA L1 DOMINETTE 9816W

Carcass: REA **.06** / MARB **.10**

CL 1 DOMINO 7128T
HH MISS ADVANCE 6054S
L1 DOMINO 03571
HH MISS ADVANCE 365N
CL 1 DOMINO 732T
CL 1 DOMINETTE 475P
CL 1 DOMINO 560R
JA L1 DOMINETTE 1317L

Herd bull prospect with a great balance of numbers and the looks to go with the numbers. Dam has a WWR of 106 on her two calves and puts the milk out of a pretty udder. Lot 5 has great pigmentation and it is stacked-up generations deep.

6

JA L1 DOMINO 512C

Feb. 7, 2015 • #43598295

YEARLING

Act. BW **85**
Act. WW **.690**
Adj. 205 **.704**

EPDs:
BW **3.1**
WW **53**
YW **87**

MILK **32**
M&G **58**
Eye Pigment:
LE **80** / RE **100**

HH ADVANCE 0132X
HH ADVANCE 3040A

HH MISS ADVANCE 6155S

CL 1 DOMINO 860U
JA L1 DOMINETTE 2730Z

JA L1 DOMINETTE 8204U

Carcass: REA **.02** / MARB **.09**

CL 1 DOMINO 7128T
HH MISS ADVANCE 6054S
L1 DOMINO 03571
HH MISS ADVANCE 365N
CL 1 DOMINO 637S
CL 1 DOMINETTE 5142R
CL 1 DOMINO 555R
JA L1 DOMINETTE 1250L

Level topped, thick made, muscle bull with a red spot on his face and good pigment. Lot 6 indexed 111 at weaning and dam and granddam have solid udders. Herd bull prospect!

7

JA L1 DOMINO 513C

Feb. 8, 2015 • #43598296

YEARLING

Act. BW **83**
Act. WW **.630**
Adj. 205 **.645**

EPDs:
BW **3.1**
WW **52**
YW **85**

MILK **28**
M&G **54**
Eye Pigment:
LE **80** / RE **100**

HH ADVANCE 0132X
HH ADVANCE 3040A

HH MISS ADVANCE 6155S

CL 1 DOMINO 860U
JA L1 DOMINETTE 2724Z

JA L1 DOMINETTE 8614U

Carcass: REA **.10** / MARB **.06**

CL 1 DOMINO 7128T
HH MISS ADVANCE 6054S
L1 DOMINO 03571
HH MISS ADVANCE 365N
CL 1 DOMINO 637S
CL 1 DOMINETTE 5142R
HH ADVANCE 286M
JA L1 DOMINETTE 1215L

Correct herd bull prospect with eye appeal, thickness and a top young 860 mother. The number balance here is great and the cow family behind Lot 7 is just frosting on the cake.

8

JA L1 DOMINO 515C

Feb. 11, 2015 • #43598298

YEARLING

Act. BW **84**
Act. WW **.660**
Adj. 205 **.684**

EPDs:
BW **3.4**
WW **55**
YW **90**

MILK **28**
M&G **55**
Eye Pigment:
LE **90** / RE **90**

HH ADVANCE 0132X
HH ADVANCE 3040A

HH MISS ADVANCE 6155S

CL 1 DOMINO 860U
JA L1 DOMINETTE 2747Z

JA L1 DOMINETTE 8638U

Carcass: REA **.14** / MARB **.07**

CL 1 DOMINO 7128T
HH MISS ADVANCE 6054S
L1 DOMINO 03571
HH MISS ADVANCE 365N
CL 1 DOMINO 637S
CL 1 DOMINETTE 5142R
HH ADVANCE 286M
JA L1 DOMINETTE 4468P

The 3040 x 860 cross sure seems to work and Lot 8 is correct and clean made with a 108 WWR and the top yearling weight EPD of the 3040 sons.

9**JA L1 DOMINO 507C**

Feb. 1, 2015 • #43598288

YEARLING

Act. BW ... **81**
 Act. WW ... **.625**
 Adj. 205 ... **.628**
 EPDs:
 BW ... **2.6**
 WW ... **.50**
 YW ... **.85**
 MILK ... **.28**
 M&G ... **.54**
 Eye Pigment:
 LE **100** / RE **90**

HH ADVANCE 3040A

HH ADVANCE 0132X
 | HH MISS ADVANCE 6155S

JA L1 DOMINETTE 2746Z

CL 1 DOMINO 860U
 | JA L1 DOMINETTE 803U

Carcass: REA **.04** / MARB **.11**

Biggest frame size of the 3040 sons with excellent length and a moderate birth weight.

CL 1 DOMINO 7128T
 HH MISS ADVANCE 6054S
 L1 DOMINO 03571
 HH MISS ADVANCE 365N
 CL 1 DOMINO 637S
 CL 1 DOMINETTE 5142R
 JA L1 DOMINO 426P
 JA L1 DOMINETTE 5780R

13**JA L1 DOMINO 5101C**

Feb. 21, 2015 • #43583769

YEARLING

Act. BW ... **84**
 Act. WW ... **.635**
 Adj. 205 ... **.663**
 EPDs:
 BW ... **3.5**
 WW ... **.56**
 YW ... **.90**
 MILK ... **.32**
 M&G ... **.60**
 Eye Pigment:
 LE **100** / RE **100**

CL 1 DOMINO 9125W

CL 1 DOMINO 732T
 | CL 1 DOMINETTE 475P

JA L1 DOMINETTE 1815Y

JA L1 DOMINO 9800W
 | JA L1 DOMINETTE 8320U

Carcass: REA **.10** / MARB **.10**

A coon-eyed bull with eye appeal and a great balance of numbers.

CL 1 DOMINO 590R
 CL 1 DOMINETTE 507R
 CL 1 DOMINO 824H
 CL 1 DOMINETTE 200M
 CL 1 DOMINO 555R
 JA L1 DOMINETTE 4152P
 CL 1 DOMINO 638S
 JA L1 DOMINETTE 6000S

10**JA L1 DOMINO 508C**

Feb. 3, 2015 • #43598290

YEARLING

Act. BW ... **.78**
 Act. WW ... **.565**
 Adj. 205 ... **.572**
 EPDs:
 BW ... **2.2**
 WW ... **.44**
 YW ... **.75**
 MILK ... **.26**
 M&G ... **.48**
 Eye Pigment:
 LE **100** / RE **100**

HH ADVANCE 3040A

HH ADVANCE 0132X
 | HH MISS ADVANCE 6155S

JA L1 DOMINETTE 2749Z

CL 1 DOMINO 860U
 | JA L1 DOMINETTE 5621R

Carcass: REA **.02** / MARB **.08**

Very clean made up front and he started out at just 78 lbs. Could be a heifer bull. Lot 10 has big red eyes.

CL 1 DOMINO 7128T
 HH MISS ADVANCE 6054S
 L1 DOMINO 03571
 HH MISS ADVANCE 365N
 CL 1 DOMINO 637S
 CL 1 DOMINETTE 5142R
 HH ADVANCE 286M
 JA L1 DOMINETTE 2623M

14**JA L1 DOMINO 5105C**

March 2, 2015 • #43582881

YEARLING

Act. BW ... **.80**
 Act. WW ... **.650**
 Adj. 205 ... **.674**
 EPDs:
 BW ... **2.7**
 WW ... **.53**
 YW ... **.83**
 MILK ... **.31**
 M&G ... **.58**
 Eye Pigment:
 LE **100** / RE **100**

CL 1 DOMINO 9125W

CL 1 DOMINO 732T
 | CL 1 DOMINETTE 475P

JA L1 DOMINETTE 9219W

CL 1 DOMINO 555R
 | JA L1 DOMINETTE 4810P

Carcass: REA **.12** / MARB **.06**

Red necked with lots of pigment and a 106 WWR after starting at just 80 lbs. Dam 9219 is one of our best!

CL 1 DOMINO 590R
 CL 1 DOMINETTE 507R
 CL 1 DOMINO 824H
 CL 1 DOMINETTE 200M
 HH ADVANCE 3113N
 CL 1 DOMINETTE 3174N
 GB L1 DOMINO 808A
 JA L1 DOMINETTE 0221

11**JA L1 DOMINO 510C**

Feb. 4, 2015 • #43598293

YEARLING

Act. BW ... **.76**
 Act. WW ... **.620**
 Adj. 205 ... **.627**
 EPDs:
 BW ... **2.1**
 WW ... **.47**
 YW ... **.79**
 MILK ... **.28**
 M&G ... **.51**
 Eye Pigment:
 LE **100** / RE **100**

HH ADVANCE 3040A

HH ADVANCE 0132X
 | HH MISS ADVANCE 6155S

JA L1 DOMINETTE 2709Z

CL 1 DOMINO 860U
 | JA L1 DOMINETTE 8637U

Carcass: REA **.05** / MARB **.08**

Very smooth made through the shoulder with a long clean neck that looks like calving ease. Numbers back that up. Complete pigmentation and it's stacked generations deep.

CL 1 DOMINO 7128T
 HH MISS ADVANCE 6054S
 L1 DOMINO 03571
 HH MISS ADVANCE 365N
 CL 1 DOMINO 637S
 CL 1 DOMINETTE 5142R
 HH ADVANCE 286M
 JA L1 DOMINETTE 222M

15**JA L1 DOMINO 5106C**

March 3, 2015 • #43582882

YEARLING

Act. BW ... **.85**
 Act. WW ... **.600**
 Adj. 205 ... **.624**
 EPDs:
 BW ... **3.2**
 WW ... **.52**
 YW ... **.79**
 MILK ... **.29**
 M&G ... **.55**
 Eye Pigment:
 LE **90** / RE **80**

CL 1 DOMINO 9125W

CL 1 DOMINO 732T
 | CL 1 DOMINETTE 475P

JA L1 DOMINETTE 9205W

CL 1 DOMINO 555R
 | JA L1 DOMINETTE 4162P

Carcass: REA **.13** / MARB **.07**

Moderate framed bull with lots of hair and a good 555 mama.

CL 1 DOMINO 590R
 CL 1 DOMINETTE 507R
 CL 1 DOMINO 824H
 CL 1 DOMINETTE 200M
 HH ADVANCE 3113N
 CL 1 DOMINETTE 3174N
 DH DOMINO 6150
 JA L1 DOMINETTE 5700

12**JA L1 DOMINO 511C**

Feb. 7, 2015 • #43598294

YEARLING

Act. BW ... **.84**
 Act. WW ... **.610**
 Adj. 205 ... **.623**
 EPDs:
 BW ... **3.0**
 WW ... **.49**
 YW ... **.81**
 MILK ... **.28**
 M&G ... **.53**
 Eye Pigment:
 LE **100** / RE **100**

HH ADVANCE 3040A

HH ADVANCE 0132X
 | HH MISS ADVANCE 6155S

JA L1 DOMINETTE 2743Z

CL 1 DOMINO 860U
 | JA L1 DOMINETTE 7634T

Carcass: REA **.07** / MARB **.06**

Thick ended and clean fronted, again with 100 per cent pigmentation on both eyes

CL 1 DOMINO 7128T
 HH MISS ADVANCE 6054S
 L1 DOMINO 03571
 HH MISS ADVANCE 365N
 CL 1 DOMINO 637S
 CL 1 DOMINETTE 5142R
 HH ADVANCE 286M
 JA L1 DOMINETTE 2153M

16**JA L1 DOMINO 5110C**

March 19, 2015 • #43582888

YEARLING

Act. BW ... **.84**
 Act. WW ... **.600**
 Adj. 205 ... **.659**
 EPDs:
 BW ... **3.3**
 WW ... **.57**
 YW ... **.91**
 MILK ... **.28**
 M&G ... **.57**
 Eye Pigment:
 LE **80** / RE **60**

CL 1 DOMINO 9125W

CL 1 DOMINO 732T
 | CL 1 DOMINETTE 475P

JA L1 DOMINETTE 9007W

JA L1 DOMINO 6001S
 | JA L1 DOMINETTE 1206L

Carcass: REA **.22** / MARB **.12**

Red marked herd bull prospect with lots of volume and that typical 9125 deep rib capacity. A WWR of 104 and dam has an average on 5 calves of 103.

CL 1 DOMINO 590R
 CL 1 DOMINETTE 507R
 CL 1 DOMINO 824H
 CL 1 DOMINETTE 200M
 GB L1 DOMINO 935C
 JA L1 DOMINETTE 0212
 CL 1 DOMINO 484
 JA L1 DOMINETTE 6419

17**JA L1 DOMINO 5111C**

March 21, 2015 • #43582889

YEARLING

Act. BW ... **86**
 Act. WW ... **560**
 Adj. 205 ... **617**
 EPDs:
 BW ... **3.4**
 WW ... **56**
 YW ... **88**
 MILK ... **25**
 M&G ... **53**
 Eye Pigment:
 LE **100** / RE **100**

CL 1 DOMINO 732T
CL 1 DOMINO 9125W
 | CL 1 DOMINETTE 475P

HH ADVANCE 286M
JA L1 DOMINETTE 7642T
 | JA L1 DOMINETTE 3923N

Carcass: REA **.27** / MARB **.11**

Thick made and red necked with great depth of body and lots of easy keeping kind of cows behind him.

CL 1 DOMINO 590R
 CL 1 DOMINETTE 507R
 CL 1 DOMINO 824H
 CL 1 DOMINETTE 200M
 HH ADVANCE 0024K
 HH MISS ADVANCE 752G
 HH ADVANCE 8017H
 JA L1 DOMINETTE 9243

18**JA L1 DOMINO 5113C**

March 26, 2015 • #43583775

YEARLING

Act. BW ... **88**
 Act. WW ... **590**
 Adj. 205 ... **672**
 EPDs:
 BW ... **3.2**
 WW ... **56**
 YW ... **87**
 MILK ... **31**
 M&G ... **59**
 Eye Pigment:
 LE **60** / RE **80**

CL 1 DOMINO 732T
CL 1 DOMINO 9125W
 | CL 1 DOMINETTE 475P

CL 1 DOMINO 555R
JA L1 DOMINETTE 0244X
 | JA L1 DOMINETTE 1251L

Carcass: REA **.16** / MARB **.08**

A WWR of 106 and dam has averaged 104 on four calves. Red necked and sure a typical 9125 ... deep ribbed, high volume and easy keeping.

CL 1 DOMINO 590R
 CL 1 DOMINETTE 507R
 CL 1 DOMINO 824H
 CL 1 DOMINETTE 200M
 HH ADVANCE 3113N
 CL 1 DOMINETTE 3174N
 HH ADVANCE 6063F
 JA L1 DOMINETTE 723

19**JA L1 DOMINO 5114C**

March 27, 2015 • #43583779

YEARLING

Act. BW ... **82**
 Act. WW ... **585**
 Adj. 205 ... **660**
 EPDs:
 BW ... **2.1**
 WW ... **56**
 YW ... **92**
 MILK ... **32**
 M&G ... **60**
 Eye Pigment:
 LE **80** / RE **10**

CL 1 DOMINO 732T
CL 1 DOMINO 9125W
 | CL 1 DOMINETTE 475P

CL 1 DOMINO 555R
JA L1 DOMINETTE 9212W
 | JA L1 DOMINETTE 317N

Carcass: REA **.15** / MARB **.09**

A deep bodied, easy keeper with an above average WWR. Birth weight and EPD say he could make a heifer bull.

CL 1 DOMINO 590R
 CL 1 DOMINETTE 507R
 CL 1 DOMINO 824H
 CL 1 DOMINETTE 200M
 HH ADVANCE 3113N
 CL 1 DOMINETTE 3174N
 CL 1 DOMINO 0157K
 JA L1 DOMINETTE 0223

20**JA L1 DOMINO 5305C**

Jan. 28, 2015 • #43583831

YEARLING

Act. BW ... **80**
 Act. WW ... **675**
 Adj. 205 ... **654**
 EPDs:
 BW ... **2.9**
 WW ... **52**
 YW ... **80**
 MILK ... **26**
 M&G ... **52**
 Eye Pigment:
 LE **0** / RE **100**

HH ADVANCE 8203U
HH ADVANCE 0085X
 | HH MISS ADVANCE 7017T

JA L1 DOMINO 6001S
JA L1 DOMINETTE 1016Y
 | JA L1 DOMINETTE 9407W

Carcass: REA **.22** / MARB **.16**

An eye catcher with one big goggle eye. He is thick made and deep ribbed and sure the rancher kind.

HH ADVANCE 5161R
 HH MISS ADVANCE 752G
 CL 1 DOMINO 320N
 HH MISS ADVANCE 5106R
 GB L1 DOMINO 935C
 JA L1 DOMINETTE 0212
 HH ADVANCE 7085T
 JA L1 DOMINETTE 7523T

21**JA L1 DOMINO 5311C**

Feb. 4, 2015 • #43583845

YEARLING

Act. BW ... **84**
 Act. WW ... **710**
 Adj. 205 ... **678**
 EPDs:
 BW ... **3.4**
 WW ... **54**
 YW ... **85**
 MILK ... **25**
 M&G ... **52**
 Eye Pigment:
 LE **0** / RE **60**

HH ADVANCE 8203U
HH ADVANCE 0085X
 | HH MISS ADVANCE 7017T

HH ADVANCE 286M
JA L1 DOMINETTE 9620W
 | JA L1 DOMINETTE 7511T

Carcass: REA **.36** / MARB **.10**

Herd bull prospect with lots of bone and a rugged look. Red necked, below average BW and a 107 WWR. Lots of high volume cows in this pedigree, the 9620 cow has been a very consistent producer. Lot 21 is pictured at the top of page 9.

HH ADVANCE 5161R
 HH MISS ADVANCE 752G
 CL 1 DOMINO 320N
 HH MISS ADVANCE 5106R
 HH ADVANCE 0024K
 HH MISS ADVANCE 752G
 CL 1 DOMINO 4134P
 JA L1 DOMINETTE 3769N

22**JA L1 DOMINO 5319C**

Feb. 15, 2015 • #43583865

YEARLING

Act. BW ... **79**
 Act. WW ... **645**
 Adj. 205 ... **657**
 EPDs:
 BW ... **2.2**
 WW ... **46**
 YW ... **73**
 MILK ... **25**
 M&G ... **48**
 Eye Pigment:
 LE **100** / RE **100**

HH ADVANCE 8203U
HH ADVANCE 0085X
 | HH MISS ADVANCE 7017T

JA L1 DOMINO 7640T
JA L1 DOMINETTE 1617Y
 | JA L1 DOMINETTE 9013W

Carcass: REA **.26** / MARB **.11**

Just a 79 lb. BW, should work on heifers. Lot 22 posted a 104 WWR and has great pigmentation. Dam 1617 has averaged 105 on her calves and is moderate framed and good uddered.

HH ADVANCE 5161R
 HH MISS ADVANCE 752G
 CL 1 DOMINO 320N
 HH MISS ADVANCE 5106R
 HH ADVANCE 286M
 JAL L1 DOMINETTE 1409L
 JA L1 DOMINO 6001S
 JA L1 DOMINETTE 2258M

23**JA L1 DOMINO 5326C**

March 5, 2015 • #43586230

YEARLING

Act. BW ... **84**
 Act. WW ... **570**
 Adj. 205 ... **615**
 EPDs:
 BW ... **3.7**
 WW ... **51**
 YW ... **83**
 MILK ... **25**
 M&G ... **51**
 Eye Pigment:
 LE **100** / RE **100**

HH ADVANCE 8203U
HH ADVANCE 0085X
 | HH MISS ADVANCE 7017T

DH DOMINO 539
JA L1 DOMINETTE 102Y
 | JA L1 DOMINETTE 7521T

Carcass: REA **.33** / MARB **.13**

Extra pigment on this guy and a great balance of numbers with good carcass EPD's.

HH ADVANCE 5161R
 HH MISS ADVANCE 752G
 CL 1 DOMINO 320N
 HH MISS ADVANCE 5106R
 L1 DOMINO 99496
 DH MS ADVANCE 1003
 CL 1 DOMINO 4134P
 JA L1 DOMINETTE 3716N

24**BT L1 DOMINO 5006C**

Feb. 5, 2015 • #43596847

YEARLING

Act. BW ... **86**
 Act. WW ... **785**
 Adj. 205 ... **703**
 EPDs:
 BW ... **2.6**
 WW ... **52**
 YW ... **79**
 MILK ... **29**
 M&G ... **55**
 Eye Pigment:
 LE **20** / RE **0**

HH ADVANCE 8203U
HH ADVANCE 0085X
 | HH MISS ADVANCE 7017T

CL 1 DOMINO 555R
JA L1 DOMINETTE 0202X
 | JA L1 DOMINETTE 4152P

Carcass: REA **.11** / MARB **.09**

Lot 24 marked a 205 day wt. of 703 after starting out at 86 lbs. He is long sided and backed by a great cow and cow family. Dam 0202 has averaged 109 WWR on her four calves and grandma 4152 is the dam of our 9800 herd bull and has been in Jon Miller's embryo transfer program.

HH ADVANCE 5161R
 HH MISS ADVANCE 752G
 CL 1 DOMINO 320N
 HH MISS ADVANCE 5106R
 HH ADVANCE 3113N
 CL 1 DOMINETTE 3174N
 DH DOMINO 6150
 JA L1 DOMINETTE 6815

25

JA L1 DOMINO 5317C

Feb. 10, 2015 • #43583857

YEARLING

Act. BW ... **94**
 Act. WW ... **710**
 Adj. 205 ... **700**
 EPDs:
 BW ... **4.3**
 WW ... **55**
 YW ... **92**
 MILK ... **28**
 M&G ... **56**
 Eye Pigment:
 LE **100** / RE **100**

HH ADVANCE 0085X

HH ADVANCE 8203U
 HH MISS ADVANCE 7017T

JA L1 DOMINETTE 0204X

CL 1 DOMINO 555R
 JA L1 DOMINETTE 316N

Carcass: REA **.19** / MARB **.04**

Red necked, soggy made herd bull prospect that's thick over the top and down through the quarter. Lots of pigment and generations deep of our very top cows. **We will retain an interest in Lot 25.**

HH ADVANCE 5161R
 HH MISS ADVANCE 752G
 CL 1 DOMINO 320N
 HH MISS ADVANCE 5106R
 HH ADVANCE 3113N
 CL 1 DOMINETTE 3174N
 CL 1 DOMINO 0157K
 JA L1 DOMINETTE 9233



LOT 21
 HH 0085X
 BW **3.4**
 WW **54**
 YW **85**
 MM **25**
 M&G **52**

Pedigree & performance on page 8

26

JA L1 DOMINO 5318C

Feb. 12, 2015 • #43583862

YEARLING

Act. BW ... **90**
 Act. WW ... **745**
 Adj. 205 ... **740**
 EPDs:
 BW ... **3.9**
 WW ... **52**
 YW ... **78**
 MILK ... **29**
 M&G ... **55**
 Eye Pigment:
 LE **30** / RE **5**

HH ADVANCE 0085X

HH ADVANCE 8203U
 HH MISS ADVANCE 7017T

JA L1 DOMINETTE 0337X

CL 1 DOMINO 638S
 JA L1 DOMINETTE 617S

Carcass: REA **.08** / MARB **.14**

A 740 lb. 205 wt. and a high volume, deep ribbed, thick-ended kind of bull. Dam 0337 really milks and has an average WWR of 112 on three calves.

HH ADVANCE 5161R
 HH MISS ADVANCE 752G
 CL 1 DOMINO 320N
 HH MISS ADVANCE 5106R
 L1 DOMINO 0339E
 CL 1 DOMINETTE 475P
 CL 1 DOMINO 0157K
 JA L1 DOMINETTE 1801L



LOT 25
 HH 0085X
 BW **4.3**
 WW **55**
 YW **92**
 MM **28**
 M&G **56**

27

JA L1 DOMINO 5400C

Jan. 27, 2015 • #43586246

YEARLING

Act. BW ... **80**
 Act. WW ... **700**
 Adj. 205 ... **675**
 EPDs:
 BW ... **2.6**
 WW ... **54**
 YW ... **85**
 MILK ... **29**
 M&G ... **56**
 Eye Pigment:
 LE **0** / RE **70**

HH ADVANCE 2181Z

CL 1 DOMINO 886U
 HH MISS ADVANCE 6054S

JA L1 DOMINETTE 1633Y

JA L1 DOMINO 7640T
 JA L1 DOMINETTE 9225W

Carcass: REA **.26** / MARB **-.05**

Just an 80 lb BW and a 107 WWR. Dam produced our 302 herd bull that topped our 2014 sale and we share with Lee Butler. A full sister to 5400 is in our replacements and will calve soon.

CL 1 DOMINO 638S
 CL 1 DOMINETTE 440P
 CL 1 DOMINO 320N
 HH MISS ADVANCE 4053P
 HH ADVANCE 286M
 JAL L1 DOMINETTE 1409L
 CL 1 DOMINO 555R
 JA L1 DOMINETTE 5772R



LOT 26
 HH 0085X
 BW **3.9**
 WW **52**
 YW **78**
 MM **29**
 M&G **55**

28

JA L1 DOMINO 5401C

Jan. 28, 2015 • #43586247

YEARLING

Act. BW ... **82**
 Act. WW ... **725**
 Adj. 205 ... **702**
 EPDs:
 BW ... **3.6**
 WW ... **66**
 YW ... **103**
 MILK ... **28**
 M&G ... **61**
 Eye Pigment:
 LE **100** / RE **90**

HH ADVANCE 2181Z

CL 1 DOMINO 886U
 HH MISS ADVANCE 6054S

JA L1 DOMINETTE 1111Y

CL 1 DOMINO 9125W
 JA L1 DOMINETTE 802U

Carcass: REA **.34** / MARB **-.02**

Herd bull prospect with outstanding numbers. Note his 103 YW EPD. Rugged, very thick and looks to be full of muscle, Lot 28 indexed 111 at weaning. Dam is an outstanding 9125 daughter. **We will retain a one-quarter interest.**

CL 1 DOMINO 638S
 CL 1 DOMINETTE 440P
 CL 1 DOMINO 320N
 HH MISS ADVANCE 4053P
 CL 1 DOMINO 732T
 CL 1 DOMINETTE 475P
 JA L1 DOMINO 426P
 JA L1 DOMINETTE 5636R



LOT 28
 HH 2181Z
 BW **3.6**
 WW **66**
 YW **103**
 MM **28**
 M&G **61**

29**JA L1 DOMINO 5404C**

Feb. 1, 2015 • #43586249

YEARLING

Act. BW ... **90**
 Act. WW ... **.665**
 Adj. 205 ... **.627**
 EPDs:
 BW ... **4.8**
 WW ... **.60**
 YW ... **.90**
 MILK ... **.26**
 M&G ... **.56**
 Eye Pigment:
 LE **30** / RE **40**

CL 1 DOMINO 886U
HH ADVANCE 2181Z
 | HH MISS ADVANCE 6054S

CL 1 DOMINO 560R
JA L1 DOMINETTE 8822U
 | JA L1 DOMINETTE 3769N

Carcass: REA **.23** / MARB **-.09**

Strong growth numbers with a heavy milking dam. Not a heifer bull, but would sure add some pounds on some black cows.

CL 1 DOMINO 638S
 CL 1 DOMINETTE 440P
 CL 1 DOMINO 320N
 HH MISS ADVANCE 4053P
 CL 1 DOMINO 3162N
 CL1 DOMINETTE 118L
 CL1 DOMINO 1168L
 JA L1 DOMINETTE 0204

30**JA L1 DOMINO 5407C**

Feb. 3, 2015 • #43586253

YEARLING

Act. BW ... **79**
 Act. WW ... **.720**
 Adj. 205 ... **.707**
 EPDs:
 BW ... **2.5**
 WW ... **.59**
 YW ... **.89**
 MILK ... **.29**
 M&G ... **.59**
 Eye Pigment:
 LE **100** / RE **100**

CL 1 DOMINO 886U
HH ADVANCE 2181Z
 | HH MISS ADVANCE 6054S

JA L1 DOMINO 7640T
JA L1 DOMINETTE 1607Y
 | JA L1 DOMINETTE 9305W

Carcass: REA **.26** / MARB **-.04**

Rugged beef bull with a super good 205 wt. and a really nice, heavy milking 7640 dam. Just a 79 lb. birth weight, he should be a calving ease bull.

CL 1 DOMINO 638S
 CL 1 DOMINETTE 440P
 CL 1 DOMINO 320N
 HH MISS ADVANCE 4053P
 HH ADVANCE 286M
 JAL L1 DOMINETTE 1409L
 CL 1 DOMINO 638S
 JA L1 DOMINETTE 637S

31**JA L1 DOMINO 5414C**

Feb. 4, 2015 • #43591503

YEARLING

Act. BW ... **80**
 Act. WW ... **.625**
 Adj. 205 ... **.617**
 EPDs:
 BW ... **3.1**
 WW ... **.58**
 YW ... **.92**
 MILK ... **.26**
 M&G ... **.55**
 Eye Pigment:
 LE **95** / RE **95**

CL 1 DOMINO 886U
HH ADVANCE 2181Z
 | HH MISS ADVANCE 6054S

CL 1 DOMINO 860U
JA L1 DOMINETTE 1714Y
 | JA L1 DOMINETTE 7642T

Carcass: REA **.25** / MARB **-.04**

Extra framed and very long sided with a lower end birth weight. Sure should sire some pounds.

CL 1 DOMINO 638S
 CL 1 DOMINETTE 440P
 CL 1 DOMINO 320N
 HH MISS ADVANCE 4053P
 CL 1 DOMINO 637S
 CL 1 DOMINETTE 5142R
 HH ADVANCE 286M
 JA L1 DOMINETTE 3923N

32**JA L1 DOMINO 5418C**

Feb. 10, 2015 • #43586275

YEARLING

Act. BW ... **95**
 Act. WW ... **.735**
 Adj. 205 ... **.740**
 EPDs:
 BW ... **5.1**
 WW ... **.67**
 YW ... **.107**
 MILK ... **.29**
 M&G ... **.63**
 Eye Pigment:
 LE **100** / RE **80**

CL 1 DOMINO 886U
HH ADVANCE 2181Z
 | HH MISS ADVANCE 6054S

CL 1 DOMINO 860U
JA L1 DOMINETTE 1718Y
 | JA L1 DOMINETTE 460P

Carcass: REA **.31** / MARB **-.08**

A power bull with bigger frame size and a 740 lb. 205 weight. Dam is outstanding and a full sister is a top cow for Lee Butler. Lot 32 needs to be used on mature cows, but he's a true performance bull.

CL 1 DOMINO 638S
 CL 1 DOMINETTE 440P
 CL 1 DOMINO 320N
 HH MISS ADVANCE 4053P
 CL 1 DOMINO 637S
 CL 1 DOMINETTE 5142R
 CL 1 DOMINO 9126J
 JA L1 DOMINETTE 2003M

33**JA L1 DOMINO A5419C**

Feb. 9, 2015 • #43586274

YEARLING

Act. BW ... **84**
 Act. WW ... **.740**
 Adj. 205 ... **.714**
 EPDs:
 BW ... **3.1**
 WW ... **.59**
 YW ... **.93**
 MILK ... **.29**
 M&G ... **.58**
 Eye Pigment:
 LE **40** / RE **60**

CL 1 DOMINO 886U
HH ADVANCE 2181Z
 | HH MISS ADVANCE 6054S

CL 1 DOMINO 555R
JA L1 DOMINETTE 8200U
 | JA L1 DOMINETTE 3756N

Carcass: REA **.20** / MARB **-.07**

Herd bull prospect with lots of grow. He is deep and thick and strides out like you want one to. Lot 33 was one of our heaviest at weaning. Dam has averaged 105 on six calves and produces milk from a pretty udder. **We will retain a one-quarter interest.**

CL 1 DOMINO 638S
 CL 1 DOMINETTE 440P
 CL 1 DOMINO 320N
 HH MISS ADVANCE 4053P
 HH ADVANCE 3113N
 CL 1 DOMINETTE 3174N
 CL1 DOMINO 1168L
 CH L1 DOMINETTE 9135

34**JA L1 DOMINO 5425C**

Feb. 17, 2015 • #43586293

YEARLING

Act. BW ... **83**
 Act. WW ... **.625**
 Adj. 205 ... **.621**
 EPDs:
 BW ... **3.4**
 WW ... **.59**
 YW ... **.95**
 MILK ... **.27**
 M&G ... **.57**
 Eye Pigment:
 LE **10** / RE **20**

CL 1 DOMINO 886U
HH ADVANCE 2181Z
 | HH MISS ADVANCE 6054S

DH DOMINO 539
JA L1 DOMINETTE 101Y
 | JA L1 DOMINETTE 7515T

Carcass: REA **.30** / MARB **.00**

Below average birth weight and above average weaning weight, just what a solid producer like 101 cranks out.

CL 1 DOMINO 638S
 CL 1 DOMINETTE 440P
 CL 1 DOMINO 320N
 HH MISS ADVANCE 4053P
 L1 DOMINO 99496
 DH MS ADVANCE 1003
 CL 1 DOMINO 4134P
 JA L1 DOMINETTE 300N

35**JA L1 DOMINO 5438C**

March 4, 2015 • #43586409

YEARLING

Act. BW ... **86**
 Act. WW ... **.685**
 Adj. 205 ... **.715**
 EPDs:
 BW ... **3.8**
 WW ... **.60**
 YW ... **.93**
 MILK ... **.29**
 M&G ... **.60**
 Eye Pigment:
 LE **70** / RE **50**

CL 1 DOMINO 886U
HH ADVANCE 2181Z
 | HH MISS ADVANCE 6054S

HH ADVANCE 7085T
JA L1 DOMINETTE 9404W
 | JA L1 DOMINETTE 669S

Carcass: REA **.18** / MARB **-.01**

A 715 pound 205 day wt., he shows why 2181 has been our high performance bull the last two seasons. Lot 35's dam is a beautiful uddered, power cow with an average WWR of 110 on five calves. No holes in this package.

CL 1 DOMINO 638S
 CL 1 DOMINETTE 440P
 CL 1 DOMINO 320N
 HH MISS ADVANCE 4053P
 L1 DOMINO 03571
 HH MISS ADVANCE 1088L
 JA L1 DOMINO 426P
 JA L1 DOMINETTE 4469P

36**JA L1 DOMINO 5439C**

March 7, 2015 • #43586410

YEARLING

Act. BW ... **87**
 Act. WW ... **.585**
 Adj. 205 ... **.637**
 EPDs:
 BW ... **4.2**
 WW ... **.61**
 YW ... **.100**
 MILK ... **.26**
 M&G ... **.57**
 Eye Pigment:
 LE **95** / RE **40**

CL 1 DOMINO 886U
HH ADVANCE 2181Z
 | HH MISS ADVANCE 6054S

CL 1 DOMINO 555R
JA L1 DOMINETTE 1214Y
 | JA L1 DOMINETTE 5621R

Carcass: REA **.30** / MARB **-.05**

Rugged made and stout from a top cow family.

CL 1 DOMINO 638S
 CL 1 DOMINETTE 440P
 CL 1 DOMINO 320N
 HH MISS ADVANCE 4053P
 HH ADVANCE 3113N
 CL 1 DOMINETTE 3174N
 HH ADVANCE 286M
 JA L1 DOMINETTE 2623M

37

JA L1 DOMINO 5417C

Feb. 6, 2015 • #43586273

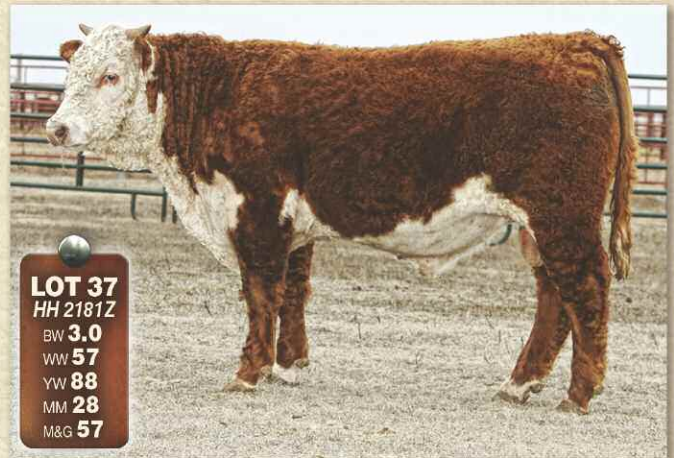
YEARLING

Act. BW ... **82**
 Act. WW ... **710**
 Adj. 205 ... **705**
 EPDs:
 BW ... **3.0**
 WW ... **57**
 YW ... **88**
 MILK ... **28**
 M&G ... **57**
 Eye Pigment:
 LE **80** / RE **100**

CL 1 DOMINO 886U
HH ADVANCE 2181Z
 | HH MISS ADVANCE 6054S
 CL 1 DOMINO 638S
 CL 1 DOMINETTE 440P
 CL 1 DOMINO 320N
 HH MISS ADVANCE 4053P
 CL 1 DOMINO 555R
JA L1 DOMINETTE 1213Y
 | JA L1 DOMINETTE 1413L
 CL 1 DOMINO 638S
 CL 1 DOMINETTE 440P
 CL 1 DOMINO 320N
 HH MISS ADVANCE 4053P
 HH ADVANCE 3113N
 CL 1 DOMINETTE 3174N
 HH ADVANCE 8012H
 JA L1 DOMINETTE 800

Carcass: REA **.17** / MARB **-.06**

Another rugged, high performance 2181 son that sure has herd bull credentials. A great cow and cow family behind Lot 37 ...granddam 1413 was a top producer and had sons that worked well for the Verquers, Oleen Bros and Ron Bauer. This kind of performance with a below average BW EPD is what we strive to produce.



LOT 37
HH 2181Z
 BW **3.0**
 WW **57**
 YW **88**
 MM **28**
 M&G **57**

38

JA L1 DOMINO 5429C

Feb. 18, 2015 • #43586302

YEARLING

Act. BW ... **87**
 Act. WW ... **720**
 Adj. 205 ... **718**
 EPDs:
 BW ... **3.8**
 WW ... **62**
 YW ... **93**
 MILK ... **24**
 M&G ... **55**
 Eye Pigment:
 LE **60** / RE **100**

CL 1 DOMINO 886U
HH ADVANCE 2181Z
 | HH MISS ADVANCE 6054S
 CL 1 DOMINO 638S
 CL 1 DOMINETTE 440P
 CL 1 DOMINO 320N
 HH MISS ADVANCE 4053P
 JA L1 DOMINO 4922P
JA L1 DOMINETTE 9901W
 | JA L1 DOMINETTE 329N
 CL 1 DOMINO 638S
 CL 1 DOMINETTE 440P
 CL 1 DOMINO 320N
 HH MISS ADVANCE 4053P
 HH ADVANCE 8017H
 JA L1 DOMINETTE 7444
 CL 1 DOMINO 0157K
 JA L1 DOMINETTE 7100

Carcass: REA **.23** / MARB **-.06**

Herd bull prospect that will catch your eye. Lot 38 is a stout, rugged beef bull with extra thickness. Dam has been very consistent, always calves early and has an average WWR of 106 on five. We can't decide which 2181 son we want to use so **will keep interests in several including Lot 38.**



LOT 38
HH 2181Z
 BW **3.8**
 WW **62**
 YW **93**
 MM **24**
 M&G **55**

39

JA L1 DOMINO 5436C

March 2, 2015 • #43586407

YEARLING

Act. BW ... **82**
 Act. WW ... **695**
 Adj. 205 ... **704**
 EPDs:
 BW ... **2.6**
 WW ... **50**
 YW ... **78**
 MILK ... **26**
 M&G ... **51**
 Eye Pigment:
 LE **80** / RE **100**

CL 1 DOMINO 886U
HH ADVANCE 2181Z
 | HH MISS ADVANCE 6054S
 CL 1 DOMINO 638S
 CL 1 DOMINETTE 440P
 CL 1 DOMINO 320N
 HH MISS ADVANCE 4053P
 HH ADVANCE 286M
JA L1 DOMINETTE 9646W
 | JA L1 DOMINETTE 1217L
 CL 1 DOMINO 638S
 CL 1 DOMINETTE 440P
 CL 1 DOMINO 320N
 HH MISS ADVANCE 4053P
 HH ADVANCE 0024K
 HH MISS ADVANCE 752G
 CL1 DOMINO 484
 JA L1 DOMINETTE 5608

Carcass: REA **.16** / MARB **-.04**

Another high performer with a lower end birth weight, he is a thick ended beef bull. Dam is a high capacity, easy keeping cow with an average WWR of 106 on five calves.



LOT 39
HH 2181Z
 BW **2.6**
 WW **50**
 YW **78**
 MM **26**
 M&G **51**

40

CTR L1 DOMINO 5054C

Feb. 3, 2015 • #43582331

YEARLING

Act. BW ... **91**
 Act. WW ... **750**
 Adj. 205 ... **700**
 EPDs:
 BW ... **4.4**
 WW ... **59**
 YW ... **92**
 MILK ... **27**
 M&G ... **57**
 Eye Pigment:
 LE **5** / RE **5**

CL 1 DOMINO 886U
HH ADVANCE 2181Z
 | HH MISS ADVANCE 6054S
 CL 1 DOMINO 638S
 CL 1 DOMINETTE 440P
 CL 1 DOMINO 320N
 HH MISS ADVANCE 4053P
 GB L1 DOMINO 6134K
CTR L1 DOMINETTE 2906Z
 | HH MISS ADVANCE 9206W
 CL 1 DOMINO 638S
 CL 1 DOMINETTE 440P
 CL 1 DOMINO 320N
 HH MISS ADVANCE 4053P
 GB L1 DOMINO 471H
 GB L1 DOM PRCS 4103H
 HH ADVANCE 4055P
 HH MISS ADVANCE 5162R

Carcass: REA **.13** / MARB **.08**

Really good performance numbers and from a young cow that is off to a great start. Put Lot 40 on some good black cows and watch the pounds roll in.

SINCE 1944...
Generations of Proven
Genetics, Performance
and Quality!



CL Domino 0157K

41**CTR L1 DOMINO 5083C**

March 26, 2015 • #43582547

YEARLINGAct. BW ... **84**
Act. WW ... **585**
Adj. 205 ... **677**EPDs:
BW ... **3.1**
WW ... **56**
YW ... **88**MILK ... **28**
M&G ... **56**Eye Pigment:
LE **100** / RE **100**CL 1 DOMINO 886U
HH ADVANCE 2181Z
| HH MISS ADVANCE 6054SH5 408 DOMINO 7100
UU HALEY 1156
| UU MS ADV 529 9004Carcass: REA **.14** / MARB **.00**

Good pigment on a traditionally marked, really nice 2181 son. He weaned off heavy, note that he is a late March. Dam produced a herd bull for Messners in Oklahoma.

CL 1 DOMINO 638S
CL 1 DOMINETTE 440P
CL 1 DOMINO 320N
HH MISS ADVANCE 4053P
CJH HARLAND 408
H5 MS 001 DOMET 4193
H5 255 ADVANCE 529
UU MS YAMPA 3082**42****JA L1 DOMINO 5502C**

March 5, 2015 • #43586332

YEARLINGAct. BW ... **86**
Act. WW ... **625**
Adj. 205 ... **654**EPDs:
BW ... **2.6**
WW ... **37**
YW ... **76**MILK ... **33**
M&G ... **51**Eye Pigment:
LE **80** / RE **50**GB L1 DOMINO 175E
CO L1 DOMINO 946W
| CO L1 DOMINETTE 523RCL 1 DOMINO 555R
JA L1 DOMINETTE 9211W
| JA L1 DOMINETTE 5776RCarcass: REA **-.04** / MARB **.11**

Sire 946 started out here as a heifer bull, was never used to best advantage, but daughters in production have caught our attention. 946 x 555 is a powerful maternal punch.

HH ADVANCE 767G
GB L1 DOM PRCS 3134
GB L1 DOMINO 935C
CO L1 DOMINETTE 206M
HH ADVANCE 3113N
CL 1 DOMINETTE 3174N
CL 1 DOMINO 965J
JA L1 DOMINETTE 1806L**43****JA L1 DOMINO 5505C**

March 24, 2015 • #43586336

YEARLINGAct. BW ... **78**
Act. WW ... **545**
Adj. 205 ... **608**EPDs:
BW ... **1.0**
WW ... **33**
YW ... **61**MILK ... **34**
M&G ... **51**Eye Pigment:
LE **100** / RE **100**GB L1 DOMINO 175E
CO L1 DOMINO 946W
| CO L1 DOMINETTE 523RCL 1 DOMINO 638S
JA L1 DOMINETTE 9301W
| JA L1 DOMINETTE 450PCarcass: REA **-.19** / MARB **.17**

Heifer bull candidate that is easy on the eye. He is moderate framed, red necked and goggle eyed as is his sire.

HH ADVANCE 767G
GB L1 DOM PRCS 3134
GB L1 DOMINO 935C
CO L1 DOMINETTE 206M
L1 DOMINO 0339E
CL 1 DOMINETTE 475P
HH ADVANCE 767G
JA L1 DOMINETTE 2412M**44****JA L1 DOMINO 5507C**

March 28, 2015 • #43586339

YEARLINGAct. BW ... **83**
Act. WW ... **515**
Adj. 205 ... **581**EPDs:
BW ... **2.3**
WW ... **33**
YW ... **67**MILK ... **29**
M&G ... **46**Eye Pigment:
LE **100** / RE **100**GB L1 DOMINO 175E
CO L1 DOMINO 946W
| CO L1 DOMINETTE 523RJA L1 DOMINO 208M
JA L1 DOMINETTE 8102U
| JA L1 DOMINETTE 6708SCarcass: REA **-.14** / MARB **.15**

Lot 44 is coon eyed, moderate birth weight and moderate framed. Dam has posted 105 WWR on six calves.

HH ADVANCE 767G
GB L1 DOM PRCS 3134
GB L1 DOMINO 935C
CO L1 DOMINETTE 206M
HH ADVANCE 767G
JA L1 DOMINETTE 0008
CL 1 DOMINO 8153H
JA L1 DOMINETTE 1217L**45****JA L1 DOMINO 5503C**

March 7, 2015 • #43586333

YEARLINGAct. BW ... **78**
Act. WW ... **675**
Adj. 205 ... **711**EPDs:
BW ... **3.0**
WW ... **47**
YW ... **88**MILK ... **31**
M&G ... **54**Eye Pigment:
LE **30** / RE **100**GB L1 DOMINO 175E
CO L1 DOMINO 946W
| CO L1 DOMINETTE 523RHH ADVANCE 286M
JA L1 DOMINETTE 9618W
| JA L1 DOMINETTE 7916TCarcass: REA **.22** / MARB **.10**

Low birth weight and a strong 205 weight. Herd bull prospect from a dam that has an average WWR of 114 on four calves. The 946 x 286 cross should produce the cows you dream about. Lot 45 is pictured at the top of page 13.

HH ADVANCE 767G
GB L1 DOM PRCS 3134
GB L1 DOMINO 935C
CO L1 DOMINETTE 206M
HH ADVANCE 0024K
HH MISS ADVANCE 752G
JA L1 DOMINO 4922P
JA L1 DOMINETTE 2282M**46****JA L1 DOMINO 5550C**

March 7, 2015 • #43586427

YEARLINGAct. BW ... **75**
Act. WW ... **510**
Adj. 205 ... **553**EPDs:
BW ... **0.8**
WW ... **41**
YW ... **63**MILK ... **30**
M&G ... **51**Eye Pigment:
LE **100** / RE **90**CL 1 DOMINO 555R
JA L1 DOMINO 9800W
| JA L1 DOMINETTE 4152PJA L1 DOMINO 7640T
JA L1 DOMINETTE 1604Y
| JA L1 DOMINETTE 9319WCarcass: REA **-.05** / MARB **.06**

Very low BW heifer bull that should be extra strong maternally. Dam 1604 has a near perfect udder.

HH ADVANCE 3113N
CL 1 DOMINETTE 3174N
DH DOMINO 6150
JA L1 DOMINETTE 6815
HH ADVANCE 286M
JAL L1 DOMINETTE 1409L
CL 1 DOMINO 638S
JA L1 DOMINETTE 5510R**47****JA L1 DOMINO 5552C**

April 1, 2015 • #43586429

YEARLINGAct. BW ... **81**
Act. WW ... **535**
Adj. 205 ... **583**EPDs:
BW ... **2.1**
WW ... **48**
YW ... **73**MILK ... **25**
M&G ... **49**Eye Pigment:
LE **100** / RE **100**CL 1 DOMINO 555R
JA L1 DOMINO 9800W
| JA L1 DOMINETTE 4152PJA L1 DOMINO 6001S
JA L1 DOMINETTE 9000W
| JA L1 DOMINETTE 6602SCarcass: REA **.07** / MARB **.08**

Young April calf that would work on some heifers.

HH ADVANCE 3113N
CL 1 DOMINETTE 3174N
DH DOMINO 6150
JA L1 DOMINETTE 6815
GB L1 DOMINO 935C
JA L1 DOMINETTE 0212
HH ADVANCE 286M
JA L1 DOMINETTE 3808N**48****JA L1 DOMINO 5600C**

Jan. 26, 2015 • #43577528

YEARLINGAct. BW ... **79**
Act. WW ... **615**
Adj. 205 ... **647**EPDs:
BW ... **2.9**
WW ... **51**
YW ... **85**MILK ... **25**
M&G ... **51**Eye Pigment:
LE **100** / RE **75**JA L1 DOMINO 7640T
JA L1 DOMINO 1602Y
| JA L1 DOMINETTE 9204WCL 1 DOMINO 860U
JA L1 DOMINETTE 3703A
| JA L1 DOMINETTE 3712NCarcass: REA **.46** / MARB **-.07**

Red necked with lots of pigment. Low birth weight and above average on weaning.

HH ADVANCE 286M
JA L1 DOMINETTE 1409L
CL 1 DOMINO 555R
JA L1 DOMINETTE 4119P
CL 1 DOMINO 637S
CL 1 DOMINETTE 5142R
CL1 DOMINO 1170L
JA L1 DOMINETTE 0102

49

JA L1 DOMINO 5605C

Feb. 4, 2015 • #43586350

YEARLING

Act. BW ... **81**
 Act. WW ... **765**
 Adj. 205 ... **741**
 EPDs:
 BW ... **2.2**
 WW ... **54**
 YW ... **85**
 MILK ... **26**
 M&G ... **53**
 Eye Pigment:
 LE **100** / RE **100**

HH ADVANCE 286M
JA L1 DOMINO 7640T
 JA L1 DOMINETTE 1409L

HH ADVANCE 0024K
 HH MISS ADVANCE 752G
 HH ADVANCE 8012H
 JA L1 DOMINETTE 8800
 L1 DOMINO 03571
 HH MISS ADVANCE 1088L
 JA L1 DOMINO 0224
 JA L1 DOMINETTE 7217

HH ADVANCE 7085T
JA L1 DOMINETTE 0441X
 JA L1 DOMINETTE 3249N

Carcass: REA **.36** / MARB **.02**

A red-necked heifer bull with more. Lot 49 is goggle eyed and clean fronted and indexed 117 on 205 day wt. Dam is pretty uddered and consistent.



LOT 45
 CO 946W
 BW **3.0**
 WW **47**
 YW **88**
 MM **31**
 M&G **54**

Pedigree & performance on page 12

50

JA L1 DOMINO 5607C

Feb. 7, 2015 • #43586353

YEARLING

Act. BW ... **80**
 Act. WW ... **635**
 Adj. 205 ... **648**
 EPDs:
 BW ... **2.4**
 WW ... **52**
 YW ... **95**
 MILK ... **27**
 M&G ... **53**
 Eye Pigment:
 LE **100** / RE **100**

HH ADVANCE 286M
JA L1 DOMINO 7640T
 JA L1 DOMINETTE 1409L

HH ADVANCE 0024K
 HH MISS ADVANCE 752G
 HH ADVANCE 8012H
 JA L1 DOMINETTE 8800
 CL 1 DOMINO 860U
JA L1 DOMINETTE 2737Z
 JA L1 DOMINETTE 802U
 CL 1 DOMINO 637S
 CL 1 DOMINETTE 5142R
 JA L1 DOMINO 426P
 JA L1 DOMINETTE 5636R

Carcass: REA **.43** / MARB **.03**

A level tail set and a deep, thick, full hind quarter. Should be a heifer bull and pass on the pigment.



LOT 49
 JA 7640T
 BW **2.2**
 WW **54**
 YW **85**
 MM **26**
 M&G **53**

51

JA L1 DOMINO 5610C

Feb. 10, 2015 • #43586364

YEARLING

Act. BW ... **86**
 Act. WW ... **740**
 Adj. 205 ... **732**
 EPDs:
 BW ... **3.0**
 WW ... **53**
 YW ... **89**
 MILK ... **28**
 M&G ... **54**
 Eye Pigment:
 LE **100** / RE **80**

HH ADVANCE 286M
JA L1 DOMINO 7640T
 JA L1 DOMINETTE 1409L

HH ADVANCE 0024K
 HH MISS ADVANCE 752G
 HH ADVANCE 8012H
 JA L1 DOMINETTE 8800
 GB L1 DOMINO 6134K
JA L1 DOMINETTE 0914X
 JA L1 DOMINETTE 8319U
 GB L1 DOMINO 471H
 GB L1 DOM PRCS 4103H
 CL 1 DOMINO 638S
 JA L1 DOMINETTE 6613S

Carcass: REA **.29** / MARB **.13**

Not the prettiest bull in the sale, but he is a performance powerhouse. Deep ribbed and easy keeping, he indexed 116 at weaning and is still coming on strong. *We will retain an interest.*



LOT 51
 JA 7640T
 BW **3.0**
 WW **53**
 YW **89**
 MM **28**
 M&G **54**

52

JA L1 DOMINO 5618C

March 5, 2015 • #43577503

YEARLING

Act. BW ... **78**
 Act. WW ... **590**
 Adj. 205 ... **702**
 EPDs:
 BW ... **2.5**
 WW ... **58**
 YW ... **100**
 MILK ... **28**
 M&G ... **57**
 Eye Pigment:
 LE **100** / RE **100**

JA L1 DOMINO 7640T
JA L1 DOMINO 1602Y
 JA L1 DOMINETTE 9204W

HH ADVANCE 286M
 JA L1 DOMINETTE 1409L
 CL 1 DOMINO 555R
 JA L1 DOMINETTE 4119P
 CL 1 DOMINO 637S
 CL 1 DOMINETTE 5142R
 HH ADVANCE 286M
 JA L1 DOMINETTE 2502M

CL 1 DOMINO 860U
JA L1 DOMINETTE 3747A
 JA L1 DOMINETTE 5625R

Carcass: REA **.53** / MARB **-.01**

Herd bull prospect that is a heifer's first calf. Red necked and goggle eyed with just a 78 lb. birth weight. Granddam 5625 is one of our best ever 286 daughters, still going strong and doubles up the 286 in this pedigree.



LOT 52
 JA 1602Y
 BW **2.5**
 WW **58**
 YW **100**
 MM **28**
 M&G **57**

53

JA L1 DOMINO 5611C

Feb. 10, 2015 • #43586366

YEARLING

Act. BW ... **80**
 Act. WW ... **.630**
 Adj. 205 ... **.650**
 EPDs:
 BW **2.4**
 WW **.49**
 YW **.82**
 MILK **.28**
 M&G **.52**
 Eye Pigment:
 LE **100** / RE **100**

HH ADVANCE 286M
JA L1 DOMINO 7640T
 | JA L1 DOMINETTE 1409L

HH ADVANCE 0024K
 HH MISS ADVANCE 752G
 HH ADVANCE 8012H
 JA L1 DOMINETTE 8800
 CL 1 DOMINO 555R
 JA L1 DOMINETTE 4152P
 CL 1 DOMINO 560R
 JA L1 DOMINETTE 3701N

JA L1 DOMINO 9800W
JA L1 DOMINETTE 2807Z
 | JA L1 DOMINETTE 8815U

Carcass: REA **.31** / MARB **.03**

Could be used on heifers. Complete pigment on both eyes and above average at weaning weight time.

54

JA L1 DOMINO 5612C

Feb. 14, 2015 • #43586368

YEARLING

Act. BW ... **85**
 Act. WW ... **.620**
 Adj. 205 ... **.632**
 EPDs:
 BW **2.5**
 WW **.46**
 YW **.84**
 MILK **.26**
 M&G **.49**
 Eye Pigment:
 LE **100** / RE **100**

HH ADVANCE 286M
JA L1 DOMINO 7640T
 | JA L1 DOMINETTE 1409L

HH ADVANCE 0024K
 HH MISS ADVANCE 752G
 HH ADVANCE 8012H
 JA L1 DOMINETTE 8800
 CL 1 DOMINO 637S
 CL 1 DOMINETTE 5142R
 CL 1 DOMINO 0157K
 JA L1 DOMINETTE 9110

CL 1 DOMINO 860U
JA L1 DOMINETTE 1719Y
 | JA L1 DOMINETTE 726T

Carcass: REA **.28** / MARB **.04**

Good pigment and out of a big 860 daughter. Should be really strong maternally.

55

JA L1 DOMINO 5613C

Feb. 13, 2015 • #43577529

YEARLING

Act. BW ... **.73**
 Act. WW ... **.695**
 Adj. 205 ... **.771**
 EPDs:
 BW **1.0**
 WW **.47**
 YW **.76**
 MILK **.33**
 M&G **.56**
 Eye Pigment:
 LE **0** / RE **90**

JA L1 DOMINO 7640T
JA L1 DOMINO 1602Y
 | JA L1 DOMINETTE 9204W

HH ADVANCE 286M
 JA L1 DOMINETTE 1409L
 CL 1 DOMINO 555R
 JA L1 DOMINETTE 4119P
 GB L1 DOMINO 175E
 CO L1 DOMINETTE 523R
 CL 1 DOMINO 860U
 JA L1 DOMINETTE 504R

CO L1 DOMINO 946W
JA L1 DOMINETTE 3505A
 | JA L1 DOMINETTE 1701Y

Carcass: REA **.28** / MARB **.02**

Extremely strong heifer bull candidate with our highest 205 day wt. He is off a heifer, got some adjustment from that and probably won't be a performance powerhouse, but don't overlook this guy. Dam and her cow family are as good as we've produced.

56

JA L1 DOMINO 5616C

March 5, 2015 • #43577524

YEARLING

Act. BW ... **.76**
 Act. WW ... **.525**
 Adj. 205 ... **.579**
 EPDs:
 BW **1.5**
 WW **.43**
 YW **.68**
 MILK **.28**
 M&G **.50**
 Eye Pigment:
 LE **100** / RE **100**

JA L1 DOMINO 7640T
JA L1 DOMINO 1602Y
 | JA L1 DOMINETTE 9204W

HH ADVANCE 286M
 JA L1 DOMINETTE 1409L
 CL 1 DOMINO 555R
 JA L1 DOMINETTE 4119P
 CL 1 DOMINO 7128T
 HH MISS ADVANCE 6054S
 CL 1 DOMINO 9125W
 JA L1 DOMINETTE 8300U

HH ADVANCE 0132X
JA L1 DOMINETTE 341A
 | JA L1 DOMINETTE 1100Y

Carcass: REA **.18** / MARB **.06**

Another heifer bull by 1602 and out of a first calf 0132 daughter. Complete pigmentation on both eyes.

57

JA L1 DOMINO 5619C

March 7, 2015 • #43577530

YEARLING

Act. BW ... **.79**
 Act. WW ... **.515**
 Adj. 205 ... **.609**
 EPDs:
 BW **2.6**
 WW **.53**
 YW **.83**
 MILK **.31**
 M&G **.58**
 Eye Pigment:
 LE **100** / RE **90**

JA L1 DOMINO 7640T
JA L1 DOMINO 1602Y
 | JA L1 DOMINETTE 9204W

CL 1 DOMINO 9125W
JA L1 DOMINETTE 3110A
 | JA L1 DOMINETTE 9424W

Carcass: REA **.33** / MARB **.00**

Calving ease and performance all wrapped up in a red necked, goggle eyed, very moderate framed package.

58

JA L1 DOMINO 5701C

Feb. 14, 2015 • #43586389

YEARLING

Act. BW ... **.87**
 Act. WW ... **.690**
 Adj. 205 ... **.680**
 EPDs:
 BW **3.6**
 WW **.60**
 YW **1.05**
 MILK **.31**
 M&G **.61**
 Eye Pigment:
 LE **10** / RE **30**

CL 1 DOMINO 637S
CL 1 DOMINO 860U
 | CL 1 DOMINETTE 5142R

DH DOMINO 539
JA L1 DOMINETTE 9105W
 | JA L1 DOMINETTE 7202T

Carcass: REA **.31** / MARB **.06**

Big performance 860 son, note his YW EPD and 107 WWR with just a breed average BW EPD. Dam is a moderate sized cow with a great udder.

59

JA L1 DOMINO 5712C

March 15, 2015 • #43586406

YEARLING

Act. BW ... **.86**
 Act. WW ... **.635**
 Adj. 205 ... **.710**
 EPDs:
 BW **4.4**
 WW **.66**
 YW **1.12**
 MILK **.30**
 M&G **.63**
 Eye Pigment:
 LE **10** / RE **25**

CL 1 DOMINO 637S
CL 1 DOMINO 860U
 | CL 1 DOMINETTE 5142R

CL 1 DOMINO 9125W
JA L1 DOMINETTE 1116Y
 | JA L1 DOMINETTE 8638U

Carcass: REA **.40** / MARB **.05**

Very correct in his structure and up towards the top in 205 day wt. The 860 x 9125 cross combines some of Cooper Herefords' very best cow families.

60

JA L1 DOMINO 5714C

March 28, 2015 • #43586414

YEARLING

Act. BW ... **.80**
 Act. WW ... **.610**
 Adj. 205 ... **.691**
 EPDs:
 BW **2.1**
 WW **.57**
 YW **.88**
 MILK **.28**
 M&G **.56**
 Eye Pigment:
 LE **100** / RE **100**

CL 1 DOMINO 637S
CL 1 DOMINO 860U
 | CL 1 DOMINETTE 5142R

HH ADVANCE 286M
JA L1 DOMINETTE 9638W
 | JA L1 DOMINETTE 3264N

Carcass: REA **.32** / MARB **.02**

Really clean made with a youthful look, dam 9638 is one of my favorite 286 daughters. Lot 60 ratioed 119 on his weaning weight and has complete pigment on both eyes as does his sire and dam.

61

JA L1 DOMINO 5700C

Feb. 12, 2015 • #43586383

YEARLING

Act. BW ... **86**
 Act. WW ... **710**
 Adj. 205 ... **703**
 EPDs:
 BW ... **3.2**
 WW ... **58**
 YW ... **101**
 MILK ... **33**
 M&G ... **62**
 Eye Pigment:
 LE **20** / RE **0**

CL 1 DOMINO 637S
CL 1 DOMINO 860U
 | CL 1 DOMINETTE 5142R
 CL 1 DOMINO 555R
JA L1 DOMINETTE 0203X
 | JA L1 DOMINETTE 4211P

Carcass: REA **.16** / MARB **.01**

The most moderate framed of the 860 sons. Red necked with volume and a deep rib, and the easy fleshing we all need. Really strong numbers to back it all up.

L1 DOMINO 0339E
 CL 1 DOMINETTE 118L
 CL 1 DOMINO 1172L
 CL 1 DOMINETTE 810H
 HH ADVANCE 3113N
 CL 1 DOMINETTE 3174N
 CL 1 DOMINO 484
 JA L1 DOMINETTE 2524M



LOT 61
CL1 860U
 BW **3.2**
 WW **58**
 YW **101**
 MM **33**
 M&G **62**

62

JA L1 DOMINO 5702C

Feb. 16, 2015 • #43586390

YEARLING

Act. BW ... **85**
 Act. WW ... **655**
 Adj. 205 ... **646**
 EPDs:
 BW ... **2.8**
 WW ... **55**
 YW ... **102**
 MILK ... **28**
 M&G ... **55**
 Eye Pigment:
 LE **30** / RE **40**

CL 1 DOMINO 637S
CL 1 DOMINO 860U
 | CL 1 DOMINETTE 5142R
 JA L1 DOMINO 6001S
JA L1 DOMINETTE 8018U
 | JA L1 DOMINETTE 507R

Carcass: REA **.25** / MARB **.06**

The thick topped, easy keeping, high volume kind out of a power cow. Oleen Bros and Jon and Justin Miller are using sons of this cow. Herd bull prospect that could work on some heifers and not back off any performance or maternal strength.

L1 DOMINO 0339E
 CL 1 DOMINETTE 118L
 CL 1 DOMINO 1172L
 CL 1 DOMINETTE 810H
 GB L1 DOMINO 935C
 JA L1 DOMINETTE 0212
 CL 1 DOMINO 0157K
 JA L1 DOMINETTE 9202



LOT 62
CL1 860U
 BW **2.8**
 WW **55**
 YW **102**
 MM **28**
 M&G **55**

63

JA L1 DOMINO 5703C

Feb. 16, 2015 • #43586392

YEARLING

Act. BW ... **84**
 Act. WW ... **670**
 Adj. 205 ... **664**
 EPDs:
 BW ... **3.4**
 WW ... **56**
 YW ... **97**
 MILK ... **27**
 M&G ... **55**
 Eye Pigment:
 LE **10** / RE **0**

CL 1 DOMINO 637S
CL 1 DOMINO 860U
 | CL 1 DOMINETTE 5142R
 HH ADVANCE 286M
JA L1 DOMINETTE 9614W
 | JA L1 DOMINETTE 4160P

Carcass: REA **.36** / MARB **.03**

Herd bull candidate out of one of my all time favorite cows with a near perfect udder. Lot 63 has less frame than most 860 sons, but will sure stack on the performance and keep BW under control.

L1 DOMINO 0339E
 CL 1 DOMINETTE 118L
 CL 1 DOMINO 1172L
 CL 1 DOMINETTE 810H
 HH ADVANCE 0024K
 HH MISS ADVANCE 752G
 DH DOMINO 6150
 JA L1 DOMINETTE 5562



LOT 63
CL1 860U
 BW **3.4**
 WW **54**
 YW **97**
 MM **27**
 M&G **55**

64

JA L1 DOMINO 5715C

April 5, 2015 • #43586415

YEARLING

Act. BW ... **86**
 Act. WW ... **520**
 Adj. 205 ... **625**
 EPDs:
 BW ... **3.8**
 WW ... **58**
 YW ... **99**
 MILK ... **27**
 M&G ... **56**
 Eye Pigment:
 LE **10** / RE **80**

CL 1 DOMINO 637S
CL 1 DOMINO 860U
 | CL 1 DOMINETTE 5142R
 JA L1 DOMINO 6001S
JA L1 DOMINETTE 1009Y
 | JA L1 DOMINETTE 9646W

Carcass: REA **.25** / MARB **.06**

Typical 860 with eye appeal, numbers and maternal strength. Note the April 5 birth date ... an outstanding young bull with lots of future!

L1 DOMINO 0339E
 CL 1 DOMINETTE 118L
 CL 1 DOMINO 1172L
 CL 1 DOMINETTE 810H
 GB L1 DOMINO 935C
 JA L1 DOMINETTE 0212
 HH ADVANCE 286M
 JA L1 DOMINETTE 1217L



THE COWMAN'S PROGRAM!

- Linebred Line 1 • Performance Balanced • Maternal is #1
- Functional, Efficient Beef Cattle • Range Raised
- Commercial Industry Proven



LOT 65
CL1 860U
 BW **4.5**
 WW **62**
 YW **105**
 MM **34**
 M&G **65**



LOT 66
CL1 860U
 BW **2.7**
 WW **60**
 YW **105**
 MM **34**
 M&G **64**



LOT 67
DH 031
 BW **2.6**
 WW **52**
 YW **79**
 MM **29**
 M&G **55**

65

JA L1 DOMINO 5708C

March 1, 2015 • #43586402

YEARLING

Act. BW ... **88**
 Act. WW ... **710**
 Adj. 205 ... **743**

EPDs:
 BW **4.5**
 WW **62**
 YW **105**

MILK **34**

M&G **65**

Eye Pigment:
 LE **100** / RE **70**

CL 1 DOMINO 637S
CL 1 DOMINO 860U
 | CL 1 DOMINETTE 5142R

JA L1 DOMINO 7640T
JA L1 DOMINETTE 0619X
 | JA L1 DOMINETTE 5151R

Carcass: REA **.34** / MARB **-.03**

L1 DOMINO 0339E
 CL 1 DOMINETTE 118L
 CL 1 DOMINO 1172L
 CL 1 DOMINETTE 810H
 HH ADVANCE 286M
 JAL L1 DOMINETTE 1409L
 JA L1 DOMINO 3105N
 JA L1 DOMINETTE 3215N

Numbers bull that gets his moderate frame from the 7640 side. His 743 lb. 205 weight is one of the highest and he has good pigment. Dam has a beautiful udder and an average WWR of 108 on four calves.

66

JA L1 DOMINO 5717C

April 26, 2015 • #43586417

YEARLING

Act. BW ... **80**
 Act. WW ... **590**
 Adj. 205 ... **753**

EPDs:
 BW **2.7**
 WW **60**
 YW **105**

MILK **34**

M&G **64**

Eye Pigment:
 LE **20** / RE **95**

CL 1 DOMINO 637S
CL 1 DOMINO 860U
 | CL 1 DOMINETTE 5142R

JA L1 DOMINO 7640T
JA L1 DOMINETTE 0613X
 | JA L1 DOMINETTE 570R

Carcass: REA **.42** / MARB **.00**

L1 DOMINO 0339E
 CL 1 DOMINETTE 118L
 CL 1 DOMINO 1172L
 CL 1 DOMINETTE 810H
 HH ADVANCE 286
 JAL L1 DOMINETTE 1409L
 CL 1 DOMINO 246M
 JA L1 DOMINETTE 3406N

Our highest indexing calf at weaning, Lot 66 is correct made with a big red spot on his face. Dam has an average WWR of 115 on four calves and a near perfect udder.

67

JA L1 DOMINO 5803C

March 2, 2015 • #43586421

YEARLING

Act. BW ... **80**
 Act. WW ... **615**
 Adj. 205 ... **674**

EPDs:
 BW **2.6**
 WW **52**
 YW **79**

MILK **29**

M&G **55**

Eye Pigment:
 LE **100** / RE **100**

HH ADVANCE 8050U
DH ADVANCE 031
 | DH DOMINETTE 7155

CL 1 DOMINO 9125W
JA L1 DOMINETTE 2120Z
 | JA L1 DOMINETTE 9328W

Carcass: REA **.11** / MARB **.09**

L1 DOMINO 03571
 HH MISS ADVANCE 365N
 DH DOMINO 302
 DH MISS ADVANCE 3169
 CL 1 DOMINO 732T
 CL 1 DOMINETTE 475P
 CL 1 DOMINO 638S
 JA L1 DOMINETTE 5606R

Very red marked and lots of pigment. Should be a calving ease specialist that won't back off on performance. The 031 daughters are just coming into production and look good.

68

CO L1 DOMINO 504C

March 1, 2015 • #43581795

YEARLING

Act. BW ... **83**
 Act. WW ... **650**
 Adj. 205 ... **661**

EPDs:
 BW **3.6**
 WW **53**
 YW **82**

MILK **27**

M&G **54**

Eye Pigment:
 LE **100** / RE **100**

CL 1 DOMINO 7128T
HH ADVANCE 0132X
 | HH MS ADVANCE 6054S

HH ADVANCE 1098Y
CO L1 DOMINETTE 309A
 | CO L1 DOMINETTE 170Y

Carcass: REA **.06** / MARB **.16**

HH ADVANCE 3113N
 CL 1 DOMINETTE 0112K
 CL 1 DOMINO 320N
 HH MISS ADVANCE 4053P
 HH ADVANCE 8050U
 HH MISS ADVANCE 9065W
 DH ADVANCE 505
 CO L1 DOMINETTE 754T

Eye appealing, well marked prospect out of a great, two year old 1098 daughter and from an outstanding cow family. **PAP score 36.**

69

CO L1 DOMINO 514C

March 4, 2015 • #43581801

YEARLING

Act. BW ... **90**
 Act. WW ... **756**
 Adj. 205 ... **709**
 EPDs:
 BW ... **3.8**
 WW ... **57**
 YW ... **88**
 MILK ... **25**
 M&G ... **54**
 Eye Pigment:
 LE **90** / RE **10**

CL 1 DOMINO 7128T
HH ADVANCE 0118X
 | HH MISS ADVANCE 6074S

HH ADVANCE 3113N
 CL 1 DOMINETTE 0112K
 CL 1 DOMINO 2136M
 HH MISS ADVANCE 1013L
 DH ADVANCE 505
CO L1 DOMINETTE 135Y
 | CO L1 DOMINETTE 605S
 CL 1 DOMINO 484
 CO L1 DOMINETTE 416P

Carcass: REA **.18** / MARB **.04**

Herd bull prospect with lots of growth and from a top cow. HH Advance 0118X is a massive, moderate framed beef bull that sired a good one in Lot 69. **PAP score 41.**

70

CO L1 DOMINO 516C

March 5, 2015 • #43581803

YEARLING

Act. BW ... **97**
 Act. WW ... **692**
 Adj. 205 ... **651**
 EPDs:
 BW ... **4.3**
 WW ... **64**
 YW ... **98**
 MILK ... **25**
 M&G ... **57**
 Eye Pigment:
 LE **70** / RE **20**

HH ADVANCE 8203U
HH ADVANCE 2029Z
 | HH MISS ADVANCE 5139R

HH ADVANCE 5161R
 HH MISS ADVANCE 752G
 CL 1 DOMINO 2136M
 HH MS ADVANCE 8037H
 GB L1 DOMINO 471H
CO L1 DOMINETTE 151Y
 | CO L1 DOMINETTE 708T
 GB L1 DOMINO 1144E
 GB L1 DOM PRCS 1139E
 HH ADVANCE 286M
 CO L1 DOMINETTE 547R

Carcass: REA **.17** / MARB **.24**

Top performing beef bull with a low PAP score. Outstanding cow family, Coleman's flushed granddam 708 last year. Good balance of numbers all across the board in a wide based, thick ended, high volume prospect. **PAP score 35.**

71

CO L1 DOMINO 522C

March 6, 2015 • #43581808

YEARLING

Act. BW ... **70**
 Act. WW ... **740**
 Adj. 205 ... **698**
 EPDs:
 BW ... **2.2**
 WW ... **58**
 YW ... **82**
 MILK ... **30**
 M&G ... **59**
 Eye Pigment:
 LE **100** / RE **100**

HH ADVANCE 8203U
HH ADVANCE 2029Z
 | HH MISS ADVANCE 5139R

HH ADVANCE 5161R
 HH MISS ADVANCE 752G
 CL 1 DOMINO 2136M
 HH MS ADVANCE 8037H
 CL 1 DOMINO 320N
CO L1 DOMINETTE 124Y
 | CO L1 DOMINETTE 949W
 CL 1 DOMINO 019K
 CL 1 DOMINETTE 996J
 GB L1 DOMINO 175E
 CO L1 DOMINETTE 653S

Carcass: REA **.13** / MARB **.19**

Low birth weight, calving ease prospect that had a WWR of 109. Very deep bodied with great spring of rib and lots of muscle. Dam is a beautiful uddered 320 daughter that has an average WWR of 109 on four. Herd bull prospect with complete pigmentation. Check the video on this top prospect! **PAP score 40.**

72

CO L1 DOMINO 526C

March 7, 2015 • #43582936

YEARLING

Act. BW ... **85**
 Act. WW ... **698**
 Adj. 205 ... **640**
 EPDs:
 BW ... **0.9**
 WW ... **44**
 YW ... **69**
 MILK ... **26**
 M&G ... **48**
 Eye Pigment:
 LE **100** / RE **100**

HH ADVANCE 0132X
HH ADVANCE 3040A
 | HH MISS ADVANCE 6155S

CL 1 DOMINO 7128T
 HH MISS ADVANCE 6054S
 L1 DOMINO 0357I
 HH MISS ADVANCE 365N
 RH DOMINO 6050
CO L1 DOMINETTE 948W
 | CO L1 DOMINETTE 521R
 XP L1 DOMINO 00063
 RH DOMINETTE 1059
 HH ADVANCE 0024K
 CO L1 DOMINETTE 315N

Carcass: REA **.04** / MARB **.09**

Herd bull prospect with a deep, thick quarter and lots of volume and capacity. Dam has a near perfect udder and has produced a son working for Granzow Herefords. Calving ease, performance and maternal strength all in one package. A real breeder prospect ...check the video! **Coleman Herefords will retain a one-quarter interest. PAP score 38.**

COLEMAN HEREFORDS

Ken & Suzanne Coleman 719/783-9324 • (c) 719/276-4471
 Westcliffe, Colorado • www.colemanherefords.com
SALE BULL VIDEOS available on every bull at:
 ...www.jamisonranch.com



LOT 69
 HH 0118X
 BW **3.8**
 WW **57**
 YW **88**
 MM **25**
 M&G **54**

CO L1 Dominette 948W
 • Dam, Lot 72
 • 4 clvs. / WR 101



CO L1 Dominette 124Y
 • Dam, Lot 71
 • 4 clvs. / WR 109

73

CO L1 DOMINO 548C

March 21, 2015 • #43581932

YEARLING

Act. BW ... **94**
 Act. WW ... **680**
 Adj. 205 ... **647**
 EPDs:
 BW ... **3.6**
 WW ... **50**
 YW ... **75**
 MILK ... **26**
 M&G ... **51**
 Eye Pigment:
 LE **100** / RE **100**

CL 1 DOMINO 7128T
HH ADVANCE 0118X
 | HH MISS ADVANCE 6074S

HH ADVANCE 3113N
 CL 1 DOMINETTE 0112K
 CL 1 DOMINO 2136M
 HH MISS ADVANCE 1013L
 HH ADVANCE 286M
CO L1 DOMINETTE 707T
 | CO L1 DOMINETTE 523R
 HH ADVANCE 0024K
 HH MISS ADVANCE 752G
 GB L1 DOMINO 935C
 CO L1 DOMINETTE 206M

Carcass: REA **.23** / MARB **.03**

Red necked, high volume, clean fronted and heavy muscled. Lots of pigment with a great dam. She has an average WWR of 105 on seven calves. Full brother to 548 in use at Thorson Herefords in South Dakota. **PAP score 38.**

74

CO L1 DOMINO 551C

March 22, 2015 • #43581936

YEARLING

Act. BW ... **81**
 Act. WW ... **622**
 Adj. 205 ... **594**
 EPDs:
 BW ... **2.3**
 WW ... **43**
 YW ... **74**
 MILK ... **24**
 M&G ... **45**
 Eye Pigment:
 LE **100** / RE **90**

HH ADVANCE 7101T
HH ADVANCE 9075W
 | HH MISS ADVANCE 1028L

HH ADVANCE 4140P
 HH MISS ADVANCE 1121L
 HH ADVANCE 6052F
 HH MISS ADVANCE 731G
 HH ADVANCE 216M
CO L1 DOMINETTE 754T
 | JA L1 DOMINETTE 8206
 HH ADVANCE 836H
 HH MISS ADVANCE 621F
 CL 1 DOMINO 484
 JA L1 DOMINETTE 6543

Carcass: REA **.34** / MARB **.01**

Moderate and correct with a thick rear end and muscle showing over the top. **PAP score 36.**

JAMISON TWO YR. OLD BULLS

**SINCE 1944 ...A Respected Cowherd
and Premier Hereford Performance Breeder!**



THE COWMAN'S BREEDING BULL FACTORY!
TRAIT BALANCED ...LINEBRED LINE 1 ...RANGE DEVELOPED ...VOLUME SELECTION!

SALE BULL VIDEOS available on every bull ...www.jamisonranch.com

75

JA L1 DOMINO 406B

Feb. 1, 2014 • #43486410

2 YR. OLD

Act. BW ... **85**

EPDs:

BW **3.4**

WW **51**

YW **82**

MILK **27**

M&G **53**

Eye Pigment:

LE **70** / RE **40**

HH ADVANCE 8050U

HH ADVANCE 1098Y

HH MS ADVANCE 9065W

CL 1 DOMINO 860U

JA L1 DOMINETTE 2732Z

JA L1 DOMINETTE 726T

Carcass: REA **.21** / MARB **.01**

L1 DOMINO 0357I

HH MISS ADVANCE 365N

HH ADVANCE 7101T

HH MISS ADVANCE 1028L

CL 1 DOMINO 637S

CL 1 DOMINETTE 5142R

CL 1 DOMINO 0157K

JA L1 DOMINETTE 9110

77

JA L1 DOMINO 4133B

March 1, 2014 • #43477822

2 YR. OLD

Act. BW ... **80**

EPDs:

BW **2.2**

WW **51**

YW **73**

MILK **26**

M&G **51**

Eye Pigment:

LE **90** / RE **90**

CL 1 DOMINO 732T

CL 1 DOMINO 9125W

CL 1 DOMINETTE 475P

HH ADVANCE 286M

JA L1 DOMINETTE 9612W

JA L1 DOMINETTE 5008R

Carcass: REA **.25** / MARB **.09**

CL 1 DOMINO 590R

CL 1 DOMINETTE 507R

CL 1 DOMINO 824H

CL 1 DOMINETTE 200M

HH ADVANCE 0024K

HH MISS ADVANCE 752G

GB L1 DOMINO 935C

JA L1 DOMINETTE 0601

76

JA L1 DOMINO 4127B

Feb. 20, 2014 • #43477723

2 YR. OLD

Act. BW ... **84**

EPDs:

BW **3.6**

WW **53**

YW **96**

MILK **31**

M&G **58**

Eye Pigment:

LE **100** / RE **100**

CL 1 DOMINO 732T

CL 1 DOMINO 9125W

CL 1 DOMINETTE 475P

CL 1 DOMINO 555R

JA L1 DOMINETTE 9211W

JA L1 DOMINETTE 5776R

Carcass: REA **.19** / MARB **.08**

CL 1 DOMINO 590R

CL 1 DOMINETTE 507R

CL 1 DOMINO 824H

CL 1 DOMINETTE 200M

HH ADVANCE 3113N

CL 1 DOMINETTE 3174N

CL 1 DOMINO 965J

JA L1 DOMINETTE 1806L

78

JA L1 DOMINO 4160B

March 26, 2014 • #43478003

2 YR. OLD

Act. BW ... **80**

EPDs:

BW **3.1**

WW **50**

YW **79**

MILK **25**

M&G **51**

Eye Pigment:

LE **60** / RE **100**

CL 1 DOMINO 732T

CL 1 DOMINO 9125W

CL 1 DOMINETTE 475P

JA L1 DOMINO 6001S

JA L1 DOMINETTE 9000W

JA L1 DOMINETTE 6602S

Carcass: REA **.19** / MARB **.09**

CL 1 DOMINO 590R

CL 1 DOMINETTE 507R

CL 1 DOMINO 824H

CL 1 DOMINETTE 200M

GB L1 DOMINO 935C

JA L1 DOMINETTE 0212

HH ADVANCE 286M

JA L1 DOMINETTE 3808N

79

JA L1 DOMINO 4140B

March 12, 2014 • #43477834

2 YR. OLD

Act. BW ... **81**

EPDs:

BW ... **2.2**

WW ... **50**

YW ... **84**

MILK ... **27**

M&G ... **52**

Eye Pigment:

LE **100** / RE **100**

CL 1 DOMINO 732T
CL 1 DOMINO 9125W
| CL 1 DOMINETTE 475P

JA L1 DOMINO 426P
JA L1 DOMINETTE 803U
| JA L1 DOMINETTE 5780R

Carcass: REA **.14** / MARB **.15**

Big, stout, high volume bull that should qualify for calving ease.

CL 1 DOMINO 590R
CL 1 DOMINETTE 507R
CL 1 DOMINO 824H
CL 1 DOMINETTE 200M
CL 1 DOMINO 0157K
JA L1 DOMINETTE 7070
CL 1 DOMINO 965J
JA L1 DOMINETTE 2400M

80

JA L1 DOMINO 4142B

March 13, 2014 • #43477837

2 YR. OLD

Act. BW ... **76**

EPDs:

BW ... **2.1**

WW ... **53**

YW ... **93**

MILK ... **29**

M&G ... **55**

Eye Pigment:

LE **100** / RE **100**

CL 1 DOMINO 732T
CL 1 DOMINO 9125W
| CL 1 DOMINETTE 475P

CL 1 DOMINO 555R
JA L1 DOMINETTE 9215W
| JA L1 DOMINETTE 4270P

Carcass: REA **.19** / MARB **.08**

Herd bull prospect with just a 76 lb. birth weight. Lots of volume and the easy keeping kind.

CL 1 DOMINO 590R
CL 1 DOMINETTE 507R
CL 1 DOMINO 824H
CL 1 DOMINETTE 200M
HH ADVANCE 3113N
CL 1 DOMINETTE 3174N
JA L1 DOMINO 0224
JA L1 DOMINETTE 3567

81

JA L1 DOMINO 4149B

March 21, 2014 • #43477844

2 YR. OLD

Act. BW ... **85**

EPDs:

BW ... **3.0**

WW ... **51**

YW ... **86**

MILK ... **27**

M&G ... **52**

Eye Pigment:

LE **100** / RE **80**

CL 1 DOMINO 732T
CL 1 DOMINO 9125W
| CL 1 DOMINETTE 475P

JA L1 DOMINO 6001S
JA L1 DOMINETTE 9011W
| JA L1 DOMINETTE 0409

Carcass: REA **.24** / MARB **.15**

Red marked and high volume. Out of the same cow family as our 7640 herd bull.

CL 1 DOMINO 590R
CL 1 DOMINETTE 507R
CL 1 DOMINO 824H
CL 1 DOMINETTE 200M
GB L1 DOMINO 935C
JA L1 DOMINETTE 0212
HH ADVANCE 8012H
JA L1 DOMINETTE 6805

82

JA L1 DOMINO 4251B

March 16, 2014 • #43478014

2 YR. OLD

Act. BW ... **84**

EPDs:

BW ... **2.8**

WW ... **54**

YW ... **87**

MILK ... **28**

M&G ... **55**

Eye Pigment:

LE **60** / RE **40**

CL 1 DOMINO 555R
JA L1 DOMINO 9800W
| JA L1 DOMINETTE 4152P

HH ADVANCE 286M
JA L1 DOMINETTE 9620W
| JA L1 DOMINETTE 7511T

Carcass: REA **.16** / MARB **.09**

Middle of the road calving ease, pigment and performance.

HH ADVANCE 3113N
CL 1 DOMINETTE 3174N
DH DOMINO 6150
JA L1 DOMINETTE 6815
HH ADVANCE 0024K
HH MISS ADVANCE 752G
CL 1 DOMINO 4134P
JA L1 DOMINETTE 3769N

83

JA L1 DOMINO 4252B

March 22, 2014 • #43478016

2 YR. OLD

Act. BW ... **83**

EPDs:

BW ... **2.6**

WW ... **48**

YW ... **80**

MILK ... **30**

M&G ... **54**

Eye Pigment:

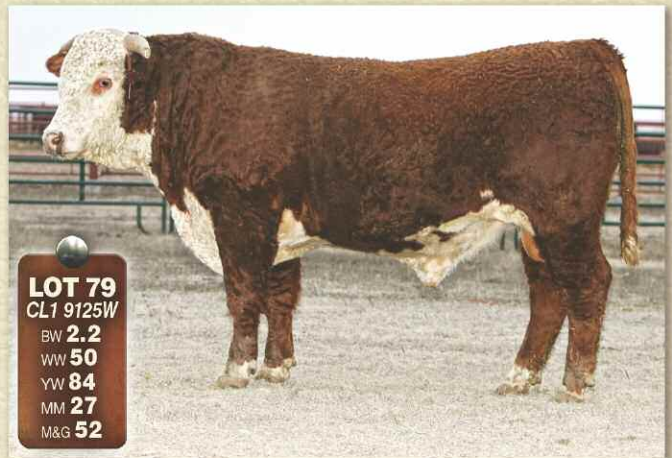
LE **80** / RE **80**

CL 1 DOMINO 555R
JA L1 DOMINO 9800W
| JA L1 DOMINETTE 4152P

GB L1 DOMINO 6134K
JA L1 DOMINETTE 0914X
| JA L1 DOMINETTE 8319U

Carcass: REA **-.06** / MARB **.16**

HH ADVANCE 3113N
CL 1 DOMINETTE 3174N
DH DOMINO 6150
JA L1 DOMINETTE 6815
GB L1 DOMINO 471H
GB L1 DOM PRCS 4103H
CL 1 DOMINO 638S
JA L1 DOMINETTE 6613S



LOT 79
CL1 9125W
BW **2.2**
WW **50**
YW **84**
MM **27**
M&G **52**



LOT 80
CL1 9125W
BW **2.1**
WW **53**
YW **93**
MM **29**
M&G **55**



LOT 81
CL1 9125W
BW **3.0**
WW **51**
YW **86**
MM **27**
M&G **52**



LOT 84
HH 2181Z
BW **2.4**
WW **57**
YW **92**
MM **29**
M&G **57**

84

JA L1 DOMINO 4418B

March 15, 2014 • #43478815

2 YR. OLD
Act. BW ... **82**
EPDs:
BW **2.4**
WW **57**
YW **92**
MILK **29**
M&G **57**
Eye Pigment:
LE **100** / RE **10**

CL 1 DOMINO 886U
HH ADVANCE 2181Z

HH MISS ADVANCE 6054S

JA L1 DOMINO 7640T
JA L1 DOMINETTE 1634Y

JA L1 DOMINETTE 9210W

Carcass: REA **.44** / MARB **-.02**

Low birth weight performance bull out of a super good goggle eyed cow. Herd bull prospect that indexed 120 on his REA and 106 on IMF. **Will retain a one-quarter interest.**

85

JA L1 DOMINO 4426B

April 29, 2014 • #43478824

2 YR. OLD
Act. BW ... **84**
EPDs:
BW **3.6**
WW **61**
YW **96**
MILK **30**
M&G **60**
Eye Pigment:
LE **5** / RE **40**

CL 1 DOMINO 886U
HH ADVANCE 2181Z

HH MISS ADVANCE 6054S

CL 1 DOMINO 555R
JA L1 DOMINETTE 1208Y

JA L1 DOMINETTE 4244P

Carcass: REA **.21** / MARB **-.05**

Breed average for calving ease and a 112 WWR. Performance bull with eye appeal.



LOT 85
HH 2181Z
BW **3.6**
WW **61**
YW **96**
MM **30**
M&G **60**

86

JA L1 DOMINO 4300B

Feb. 23, 2014 • #43478066

2 YR. OLD
Act. BW ... **86**
EPDs:
BW **4.2**
WW **53**
YW **85**
MILK **25**
M&G **52**
Eye Pigment:
LE **90** / RE **100**

HH ADVANCE 8203U
HH ADVANCE 0085X

HH MISS ADVANCE 7017T

DH DOMINO 539
JA L1 DOMINETTE 102Y

JA L1 DOMINETTE 7521T

Carcass: REA **.34** / MARB **.13**

Rugged, thick and durable.

87

JA L1 DOMINO 4303B

March 4, 2014 • #43478068

2 YR. OLD
Act. BW ... **80**
EPDs:
BW **2.6**
WW **47**
YW **77**
MILK **23**
M&G **46**
Eye Pigment:
LE **100** / RE **100**

HH ADVANCE 8203U
HH ADVANCE 0085X

HH MISS ADVANCE 7017T

CL 1 DOMINO 555R
JA L1 DOMINETTE 0231X

JA L1 DOMINETTE 2526M

Carcass: REA **.21** / MARB **.05**

Nice balance of numbers on a big, stout, rugged, goggle eyed bull.



LOT 86
HH 0085X
BW **4.2**
WW **53**
YW **85**
MM **25**
M&G **52**

88

JA L1 DOMINO 4308B

March 20, 2014 • #43478638

2 YR. OLD
Act. BW ... **89**
EPDs:
BW **3.9**
WW **46**
YW **68**
MILK **24**
M&G **46**
Eye Pigment:
LE **20** / RE **0**

HH ADVANCE 8203U
HH ADVANCE 0085X

HH MISS ADVANCE 7017T

JA L1 DOMINO 6001S
JA L1 DOMINETTE 1007Y

JA L1 DOMINETTE 9614W

Carcass: REA **.16** / MARB **.11**

HH ADVANCE 5161R
HH MISS ADVANCE 752G
CL 1 DOMINO 320N
HH MISS ADVANCE 5106R
HH ADVANCE 3113N
CL 1 DOMINETTE 3174N
CL 1 DOMINO 7176G
JA L1 DOMINETTE 7504
HH ADVANCE 5161R
HH MISS ADVANCE 752G
CL 1 DOMINO 320N
HH MISS ADVANCE 5106R
HH ADVANCE 3113N
GB L1 DOMINO 935C
JA L1 DOMINETTE 0212
HH ADVANCE 286M
JA L1 DOMINETTE 4160P

89**JA L1 DOMINO 4309B**

March 27, 2014 • #43478639

2 YR. OLDAct. BW ... **87**

EPDs:

BW **2.9**WW **39**YW **72**MILK **28**M&G **47**

Eye Pigment:

LE **100** / RE **100**HH ADVANCE 8203U
HH ADVANCE 0085X
| HH MISS ADVANCE 7017TCL 1 DOMINO 555R
JA L1 DOMINETTE 0204X
| JA L1 DOMINETTE 316NCarcass: REA **.01** / MARB **.04**HH ADVANCE 5161R
HH MISS ADVANCE 752G
CL 1 DOMINO 320N
HH MISS ADVANCE 5106R
HH ADVANCE 3113N
CL 1 DOMINETTE 3174N
CL 1 DOMINO 0157K
JA L1 DOMINETTE 9233**94****JA L1 DOMINO 4617B**

April 26, 2014 • #43478869

2 YR. OLDAct. BW ... **85**

EPDs:

BW **3.5**WW **58**YW **89**MILK **29**M&G **58**

Eye Pigment:

LE **0** / RE **20**JA L1 DOMINO 7640T
JA L1 DOMINO 1602Y
| JA L1 DOMINETTE 9204WCL 1 DOMINO 9125W
JA L1 DOMINETTE 2101Z
| JA L1 DOMINETTE 9815WCarcass: REA **.53** / MARB **.00**HH ADVANCE 286M
JA L1 DOMINETTE 1409L
CL 1 DOMINO 555R
JA L1 DOMINETTE 4119P
CL 1 DOMINO 732T
CL 1 DOMINETTE 475P
CL 1 DOMINO 560R
JA L1 DOMINETTE 2526M**90****JA L1 DOMINO 4311B**

April 29, 2014 • #43478641

2 YR. OLDAct. BW ... **87**

EPDs:

BW **3.1**WW **49**YW **74**MILK **27**M&G **51**

Eye Pigment:

LE **90** / RE **90**HH ADVANCE 8203U
HH ADVANCE 0085X
| HH MISS ADVANCE 7017TCL 1 DOMINO 560R
JA L1 DOMINETTE 8813U
| JA L1 DOMINETTE 452PCarcass: REA **.11** / MARB **.15**HH ADVANCE 5161R
HH MISS ADVANCE 752G
CL 1 DOMINO 320N
HH MISS ADVANCE 5106R
CL 1 DOMINO 3162N
CL1 DOMINETTE 118L
HH ADVANCE 767G
JA L1 DOMINETTE 244M**95****JA L1 DOMINO 4620B**

March 1, 2014 • #43479419

2 YR. OLDAct. BW ... **85**

EPDs:

BW **3.0**WW **48**YW **78**MILK **22**M&G **46**

Eye Pigment:

LE **100** / RE **100**HH ADVANCE 0024K
HH ADVANCE 286M
| HH MISS ADVANCE 752GCL 1 DOMINO 860U
JA L1 DOMINETTE 1719Y
| JA L1 DOMINETTE 726TCarcass: REA **.25** / MARB **.04**CL 1 DOMINO 824H
HH MISS ADVANCE 894H
KB L1 DOMINO 519
HH MISS ADVANCE 454D
CL 1 DOMINO 637S
CL 1 DOMINETTE 5142R
CL 1 DOMINO 0157K
JA L1 DOMINETTE 9110**91****JA L1 DOMINO 4312B**

April 25, 2014 • #43478642

2 YR. OLDAct. BW ... **86**

EPDs:

BW **2.9**WW **49**YW **73**MILK **27**M&G **52**

Eye Pigment:

LE **80** / RE **100**HH ADVANCE 8203U
HH ADVANCE 0085X
| HH MISS ADVANCE 7017TCL 1 DOMINO 555R
JA L1 DOMINETTE 0244X
| JA L1 DOMINETTE 1251LCarcass: REA **.13** / MARB **.10**HH ADVANCE 5161R
HH MISS ADVANCE 752G
CL 1 DOMINO 320N
HH MISS ADVANCE 5106R
HH ADVANCE 3113N
CL 1 DOMINETTE 3174N
HH ADVANCE 6063F
JA L1 DOMINETTE 723**96****JA L1 DOMINO 4703B**

Jan. 30, 2014 • #43479423

2 YR. OLDAct. BW ... **78**

EPDs:

BW **3.1**WW **53**YW **85**MILK **26**M&G **52**

Eye Pigment:

LE **90** / RE **100**CL 1 DOMINO 637S
CL 1 DOMINO 860U
| CL 1 DOMINETTE 5142RHH ADVANCE 286M
JA L1 DOMINETTE 8614U
| JA L1 DOMINETTE 1215LCarcass: REA **.25** / MARB **-.01**L1 DOMINO 03396
CL 1 DOMINETTE 118L
CL 1 DOMINO 1172L
CL 1 DOMINETTE 810H
HH ADVANCE 0024K
HH MISS ADVANCE 752G
CL 1 DOMINO 484
JA L1 DOMINETTE 504**92****JA L1 DOMINO 4602B**

Jan. 27, 2014 • #43478857

2 YR. OLDAct. BW ... **75**

EPDs:

BW **1.7**WW **38**YW **68**MILK **25**M&G **43**

Eye Pigment:

LE **100** / RE **80**JA L1 DOMINO 7640T
JA L1 DOMINO 1602Y
| JA L1 DOMINETTE 9204WGB L1 DOMINO 6134K
JA L1 DOMINETTE 100Y
| JA L1 DOMINETTE 8751UCarcass: REA **.16** / MARB **.01**HH ADVANCE 286M
JA L1 DOMINETTE 1409L
CL 1 DOMINO 555R
JA L1 DOMINETTE 4119P
GB L1 DOMINO 471H
GB L1 DOM PRCS 4103H
JA L1 DOMINO 3105N
JA L1 DOMINETTE 6636S

Low birth weight calving ease bull that is very red and very moderate framed.

97**JA L1 DOMINO 4710B**

Feb. 3, 2014 • #43479428

2 YR. OLDAct. BW ... **78**

EPDs:

BW **1.4**WW **39**YW **82**MILK **29**M&G **48**

Eye Pigment:

LE **100** / RE **100**CL 1 DOMINO 637S
CL 1 DOMINO 860U
| CL 1 DOMINETTE 5142RCL 1 DOMINO 9126J
JA L1 DOMINETTE 460P
| JA L1 DOMINETTE 2003PCarcass: REA **.09** / MARB **.04**L1 DOMINO 03396
CL 1 DOMINETTE 118L
CL 1 DOMINO 1172L
CL 1 DOMINETTE 810H
HH ADVANCE 767G
CL 1 DOMINETTE 490
RH DOMINO 6008
JA L1 DOMINETTE 8100**93****JA L1 DOMINO 4608B**

March 6, 2014 • #43478864

2 YR. OLDAct. BW ... **82**

EPDs:

BW **1.7**WW **40**YW **67**MILK **26**M&G **46**

Eye Pigment:

LE **20** / RE **20**JA L1 DOMINO 7640T
JA L1 DOMINO 1602Y
| JA L1 DOMINETTE 9204WJA L1 DOMINO 9800W
JA L1 DOMINETTE 2800Z
| JA L1 DOMINETTE 460PCarcass: REA **.19** / MARB **-.03**HH ADVANCE 286M
JA L1 DOMINETTE 1409L
CL 1 DOMINO 555R
JA L1 DOMINETTE 4119P
CL 1 DOMINO 555R
JA L1 DOMINETTE 4152P
CL 1 DOMINO 9126J
JA L1 DOMINETTE 2003M**98****JA L1 DOMINO 4718B**

Feb. 6, 2014 • #43479444

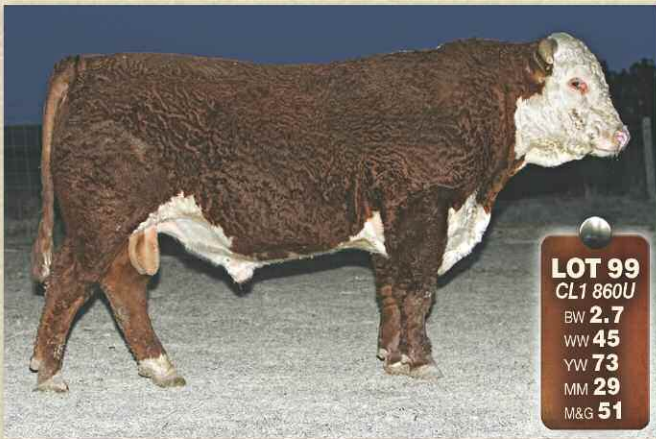
2 YR. OLDAct. BW ... **83**

EPDs:

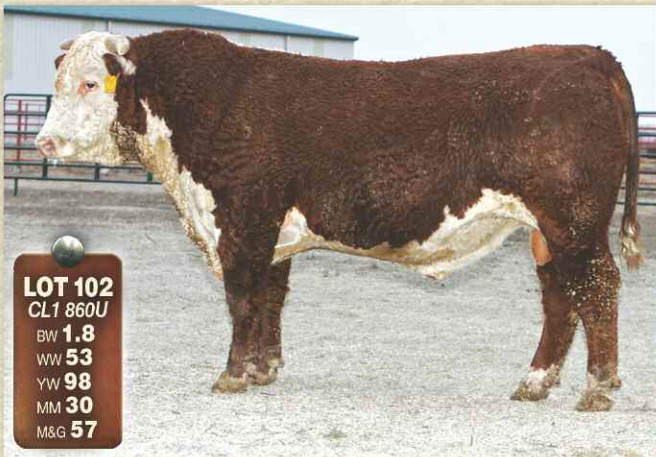
BW **4.4**WW **65**YW **121**MILK **29**M&G **62**

Eye Pigment:

LE **100** / RE **100**CL 1 DOMINO 637S
CL 1 DOMINO 860U
| CL 1 DOMINETTE 5142RGB L1 DOMINO 6134K
JA L1 DOMINETTE 9707W
| JA L1 DOMINETTE 7641TCarcass: REA **.39** / MARB **.09**L1 DOMINO 03396
CL 1 DOMINETTE 118L
CL 1 DOMINO 1172L
CL 1 DOMINETTE 810H
GB L1 DOMINO 471H
GB L1 DOM PRCS 4103H
HH ADVANCE 286M
JA L1 DOMINETTE 1203L



LOT 99
CL1 860U
BW **2.7**
WW **45**
YW **73**
MM **29**
M&G **51**



LOT 102
CL1 860U
BW **1.8**
WW **53**
YW **98**
MM **30**
M&G **57**



LOT 103
CL1 860U
BW **2.2**
WW **47**
YW **92**
MM **28**
M&G **52**

99

JA L1 DOMINO 4706B

Feb. 1, 2014 • #43479424

2 YR. OLD

Act. BW ... **82**
EPDs:
BW **2.7**
WW **45**
YW **73**
MILK **29**
M&G **51**
Eye Pigment:
LE **100** / RE **80**

CL 1 DOMINO 637S
CL 1 DOMINO 860U
| CL 1 DOMINETTE 5142R

CL 1 DOMINO 555R
JA L1 DOMINETTE 9205W
| JA L1 DOMINETTE 4162P

Carcass: REA **.04** / MARB **.00**

Lots of pigment and volume with just an 82 lb. birth weight.

L1 DOMINO 03396
CL 1 DOMINETTE 118L
CL 1 DOMINO 1172L
CL 1 DOMINETTE 810H
HH ADVANCE 3113N
CL 1 DOMINETTE 3174N
DH DOMINO 6150
JA L1 DOMINETTE 5700

100

JA L1 DOMINO 4724B

Feb. 11, 2014 • #43479457

2 YR. OLD

Act. BW ... **85**
EPDs:
BW **4.2**
WW **55**
YW **94**
MILK **27**
M&G **55**
Eye Pigment:
LE **100** / RE **70**

CL 1 DOMINO 637S
CL 1 DOMINO 860U
| CL 1 DOMINETTE 5142R

CL 1 DOMINO 560R
JA L1 DOMINETTE 9836W
| JA L1 DOMINETTE 2418M

Carcass: REA **.23** / MARB **.04**

L1 DOMINO 03396
CL 1 DOMINETTE 118L
CL 1 DOMINO 1172L
CL 1 DOMINETTE 810H
CL 1 DOMINO 3162N
CL1 DOMINETTE 118L
HH ADVANCE 8012H
JA L1 DOMINETTE 9372

101

JA L1 DOMINO 4734B

Feb. 21, 2014 • #43479472

2 YR. OLD

Act. BW ... **84**
EPDs:
BW **3.7**
WW **56**
YW **96**
MILK **29**
M&G **57**
Eye Pigment:
LE **90** / RE **80**

CL 1 DOMINO 637S
CL 1 DOMINO 860U
| CL 1 DOMINETTE 5142R

CL 1 DOMINO 560R
JA L1 DOMINETTE 9844W
| JA L1 DOMINETTE 465P

Carcass: REA **.23** / MARB **.04**

L1 DOMINO 03396
CL 1 DOMINETTE 118L
CL 1 DOMINO 1172L
CL 1 DOMINETTE 810H
CL 1 DOMINO 3162N
CL1 DOMINETTE 118L
CL 1 DOMINO 9126J
JA L1 DOMINETTE 1282L

102

JA L1 DOMINO 4743B

Feb. 27, 2014 • #43479484

2 YR. OLD

Act. BW ... **80**
EPDs:
BW **1.8**
WW **53**
YW **98**
MILK **30**
M&G **57**
Eye Pigment:
LE **60** / RE **100**

CL 1 DOMINO 637S
CL 1 DOMINO 860U
| CL 1 DOMINETTE 5142R

CL 1 DOMINO 0157K
JA L1 DOMINETTE 504R
| JA L1 DOMINETTE 100L

Carcass: REA **.18** / MARB **.06**

Herd bull prospect with calving ease and backed by a really good dam. She has an average WWR of 104 on eight calves.

L1 DOMINO 03396
CL 1 DOMINETTE 118L
CL 1 DOMINO 1172L
CL 1 DOMINETTE 810H
HH ADVANCE 767G
CL 1 DOMINETTE 861H
HH ADVANCE 767G
JA L1 DOMINETTE 9202

103

JA L1 DOMINO 4747B

March 17, 2014 • #43479489

2 YR. OLD

Act. BW ... **84**
EPDs:
BW **2.2**
WW **47**
YW **92**
MILK **28**
M&G **52**
Eye Pigment:
LE **70** / RE **70**

CL 1 DOMINO 637S
CL 1 DOMINO 860U
| CL 1 DOMINETTE 5142R

CL 1 DOMINO 0157K
JA L1 DOMINETTE 808U
| JA L1 DOMINETTE 6618S

Carcass: REA **.10** / MARB **.07**

Big, strong 860 son with some calving ease numbers and performance.

L1 DOMINO 03396
CL 1 DOMINETTE 118L
CL 1 DOMINO 1172L
CL 1 DOMINETTE 810H
HH ADVANCE 767G
CL 1 DOMINETTE 861H
HH ADVANCE 286M
JA L1 DOMINETTE 3606N

104

JA L1 DOMINO 4575B 1ET

April 22, 2014 • #43656565

2 YR. OLD
Act. BW ... **70**
EPDs:
BW **0.5**
WW **43**
YW **81**
MILK **26**
M&G **48**
Eye Pigment:
LE **100** / RE **5**

CL 1 DOMINO 860U
CL 1 DOMINO 216Z
| CL 1 DOMINETTE 759T

CL 1 DOMINO 0157K
JA L1 DOMINETTE 325N
| JA L1 DOMINETTE 5613

Carcass: REA .02 / MARB .00

CL 1 DOMINO 637S
CL 1 DOMINETTE 5142R
CL 1 DOMINO 590R
CL 1 DOMINETTE 193L
HH ADVANCE 767G
CL 1 DOMINETTE 861H
GB L1 DOMINO 919
JA L1 DOMINETTE 5860

109

JA L1 DOMINO 4806B

March 13, 2014 • #43479644

2 YR. OLD
Act. BW ... **84**
EPDs:
BW **3.4**
WW **48**
YW **91**
MILK **28**
M&G **52**
Eye Pigment:
LE **100** / RE **100**

HH ADVANCE 8050U
DH ADVANCE 031
| DH DOMINETTE 7155

CL 1 DOMINO 860U
JA L1 DOMINETTE 2715Z
| JA L1 DOMINETTE 8200U

Carcass: REA .14 / MARB .00

L1 DOMINO 03571
HH MISS ADVANCE 365N
DH DOMINO 302
DH MISS ADVANCE 3169
CL 1 DOMINO 637S
CL 1 DOMINETTE 5142R
CL 1 DOMINO 555R
JA L1 DOMINETTE 3756N

105

JA L1 DOMINO 4741B

March 4, 2014 • #43479480

2 YR. OLD
Act. BW ... **85**
EPDs:
BW **3.7**
WW **57**
YW **95**
MILK **27**
M&G **55**
Eye Pigment:
LE **80** / RE **80**

CL 1 DOMINO 637S
CL 1 DOMINO 860U
| CL 1 DOMINETTE 5142R

HH ADVANCE 286M
JA L1 DOMINETTE 8613U
| JA L1 DOMINETTE 2153M

Carcass: REA .39 / MARB .01

L1 DOMINO 03396
CL 1 DOMINETTE 118L
CL 1 DOMINO 1172L
CL 1 DOMINETTE 810H
HH ADVANCE 0024K
HH MISS ADVANCE 752G
DH DOMINO 6150
JA L1 DOMINETTE 0611

110

JA L1 DOMINO 4814B

May 5, 2014 • #43479651

2 YR. OLD
Act. BW ... **83**
EPDs:
BW **3.7**
WW **44**
YW **73**
MILK **23**
M&G **45**
Eye Pigment:
LE **100** / RE **100**

HH ADVANCE 8050U
DH ADVANCE 031
| DH DOMINETTE 7155

JA L1 DOMINO 7640T
JA L1 DOMINETTE 2607Z
| JA L1 DOMINETTE 9000W

Carcass: REA .18 / MARB .00

L1 DOMINO 03571
HH MISS ADVANCE 365N
DH DOMINO 302
DH MISS ADVANCE 3169
HH ADVANCE 286M
JAL L1 DOMINETTE 1409L
JA L1 DOMINO 6001S
JA L1 DOMINETTE 6602S

106

JA L1 DOMINO 4748B

March 23, 2014 • #43522967

2 YR. OLD
Act. BW ... **80**
EPDs:
BW **2.9**
WW **51**
YW **97**
MILK **31**
M&G **56**
Eye Pigment:
LE **0** / RE **5**

CL 1 DOMINO 637S
CL 1 DOMINO 860U
| CL 1 DOMINETTE 5142R

CL 1 DOMINO 555R
JA L1 DOMINETTE 9204W
| JA L1 DOMINETTE 4119P

Carcass: REA .24 / MARB .00

L1 DOMINO 03396
CL 1 DOMINETTE 118L
CL 1 DOMINO 1172L
CL 1 DOMINETTE 810H
HH ADVANCE 3113N
CL 1 DOMINETTE 3174N
JA L1 DOMINO 208M
JA L1 DOMINETTE 1317L

111

BT L1 DOMINO 4001B

Jan. 30, 2014 • #43504571

2 YR. OLD
Act. BW ... **75**
EPDs:
BW **0.2**
WW **39**
YW **61**
MILK **25**
M&G **45**
Eye Pigment:
LE **80** / RE **50**

JA L1 DOMINO 7640T
JA L1 DOMINO 1602Y
| JA L1 DOMINETTE 9204W

JA L1 DOMINO 8000U
BT L1 DOMINETTE 1108
| JA L1 DOMINETTE 406P

Carcass: REA .22 / MARB .00

HH ADVANCE 286M
JA L1 DOMINETTE 1409L
CL 1 DOMINO 555R
JA L1 DOMINETTE 4119P
JA L1 DOMINO 6001S
JA L1 DOMINETTE 460P
CL 1 DOMINO 0157K
JA L1 DOMINETTE 7809

Only a 75 lb. birth weight and out of a second calf cow. Red all over and ready for the big country.

107

JA L1 DOMINO 4802B

Feb. 11, 2014 • #43479492

2 YR. OLD
Act. BW ... **78**
EPDs:
BW **3.3**
WW **50**
YW **82**
MILK **26**
M&G **51**
Eye Pigment:
LE **100** / RE **100**

HH ADVANCE 8050U
DH ADVANCE 031
| DH DOMINETTE 7155

CL 1 DOMINO 860U
JA L1 DOMINETTE 2747Z
| JA L1 DOMINETTE 8638U

Carcass: REA .19 / MARB .00

L1 DOMINO 03571
HH MISS ADVANCE 365N
DH DOMINO 302
DH MISS ADVANCE 3169
CL 1 DOMINO 637S
CL 1 DOMINETTE 5142R
HH ADVANCE 286M
JA L1 DOMINETTE 4468P

112

BT L1 DOMINO 4011B

March 12, 2014 • #43499356

2 YR. OLD
Act. BW ... **83**
EPDs:
BW **2.3**
WW **46**
YW **70**
MILK **23**
M&G **47**
Eye Pigment:
LE **5** / RE **20**

HH ADVANCE 8203U
HH ADVANCE 0085X
| HH MISS ADVANCE 7017T

CL 1 DOMINO 555R
JA L1 DOMINETTE 0233X
| JA L1 DOMINETTE 6901S

Carcass: REA .10 / MARB .11

HH ADVANCE 5161R
HH MISS ADVANCE 752G
CL 1 DOMINO 320N
HH MISS ADVANCE 5106R
HH ADVANCE 3113N
CL 1 DOMINETTE 3174N
HH ADVANCE 8017H
JA L1 DOMINETTE 101L

Heifer bull prospect that's red necked, red legged and out of a top cow.

108

JA L1 DOMINO 4805B

Feb. 19, 2014 • #43479495

2 YR. OLD
Act. BW ... **87**
EPDs:
BW **4.6**
WW **51**
YW **83**
MILK **24**
M&G **49**
Eye Pigment:
LE **100** / RE **80**

HH ADVANCE 8050U
DH ADVANCE 031
| DH DOMINETTE 7155

CL 1 DOMINO 860U
JA L1 DOMINETTE 2749Z
| JA L1 DOMINETTE 5621R

Carcass: REA .16 / MARB -.01

L1 DOMINO 03571
HH MISS ADVANCE 365N
DH DOMINO 302
DH MISS ADVANCE 3169
CL 1 DOMINO 637S
CL 1 DOMINETTE 5142R
HH ADVANCE 286M
JA L1 DOMINETTE 2623M

113

BT L1 DOMINO 4012B

March 12, 2014 • #43499351

2 YR. OLD
Act. BW ... **82**
EPDs:
BW **2.7**
WW **44**
YW **66**
MILK **24**
M&G **46**
Eye Pigment:
LE **0** / RE **5**

HH ADVANCE 8203U
HH ADVANCE 0085X
| HH MISS ADVANCE 7017T

JA L1 DOMINO 8000U
BT L1 DOMINETTE 1122
| BT L1 DOMINETTE 9657

Carcass: REA .15 / MARB .09

HH ADVANCE 5161R
HH MISS ADVANCE 752G
CL 1 DOMINO 320N
HH MISS ADVANCE 5106R
JA L1 DOMINO 6001S
JA L1 DOMINETTE 460P
JA L1 DOMINO 5617R
JA L1 DOMINETTE 9238

114**BT L1 DOMINO 4015B**

March 27, 2014 • #43499342

2 YR. OLD
Act. BW ... **78**
EPDs:
BW **1.6**
WW **50**
YW **81**
MILK **28**
M&G **53**

Eye Pigment:
LE **70** / RE **80**

CL 1 DOMINO 555R
JA L1 DOMINO 9800W
| JA L1 DOMINETTE 4152P

JA L1 DOMINO 5617R
BT L1 DOMINETTE 9658
| JA L1 DOMINETTE 704T

Carcass: REA **.06** / MARB **.03**

Calving ease heifer bull candidate and sure the athletic rancher kind.

HH ADVANCE 3113N
CL 1 DOMINETTE 3174N
DH DOMINO 6150
JA L1 DOMINETTE 6815
HH ADVANCE 286M
JA L1 DOMINETTE 204M
CL 1 DOMINO 0157K
JA L1 DOMINETTE 8437

115**BT L1 DOMINO 4022B**

May 10, 2014 • #43499343

2 YR. OLD
Act. BW ... **78**
EPDs:
BW **1.8**
WW **50**
YW **79**
MILK **31**
M&G **56**

Eye Pigment:
LE **70** / RE **10**

HH ADVANCE 3113N
CL 1 DOMINO 555R
| CL 1 DOMINETTE 3174N

JA L1 DOMINO 5617R
BT L1 DOMINETTE 9657
| JA L1 DOMINETTE 9238

Carcass: REA **.18** / MARB **.01**

L1 DOMINO 99496
HH MS ADV 875H
CL 1 DOMINO 9126J
CL 1 DOMINETTE 810H
HH ADVANCE 286M
JA L1 DOMINETTE 204M
CL 1 DOMINO 484
JA L1 DOMINETTE 6459

116**CTR L1 DOMINO 4062B**

Feb. 15, 2014 • #43468902

2 YR. OLD
Act. BW ... **79**
EPDs:
BW **2.0**
WW **53**
YW **82**
MILK **29**
M&G **56**

Eye Pigment:
LE **90** / RE **90**

CL 1 DOMINO 886U
HH ADVANCE 2181Z
| HH MISS ADVANCE 6054S

KB L1 DOMINO 521R
KB L1 DOMINETTE 0143X
| KB L1 DOMINETTE 601

Carcass: REA **.13** / MARB **-.03**

CL 1 DOMINO 638S
CL 1 DOMINETTE 440P
CL 1 DOMINO 320N
HH MISS ADVANCE 4053P
CL 1 DOMINO 3138N
MONTANA MISS 310
KB L1 DOMINO 454P
KB L1 DOMINETTE 423P

117**CTR L1 DOMINO 4069B**

Feb. 24, 2014 • #43472528

2 YR. OLD
Act. BW ... **78**
EPDs:
BW **1.0**
WW **37**
YW **68**
MILK **30**
M&G **48**

Eye Pigment:
LE **100** / RE **100**

HH ADVANCE 7085T
JA L1 DOMINO 0413X
| JA L1 DOMINETTE 432P

CL 1 DOMINO 993W
EL MISS ADVANCE 128Y
| EL MISS ADVANCE 802U

Carcass: REA **.02** / MARB **.10**

L1 DOMINO 0357I
HH MISS ADVANCE 1088L
CL 1 DOMINO 0157K
JA L1 DOMINETTE 1223L
CL 1 DOMINO 637S
CL 1 DOMINETTE 5142R
EL ADVANCE 512R
HH MISS ADVANCE 3180N

118**CTR L1 DOMINO 4070B**

Feb. 24, 2014 • #43502462

2 YR. OLD
Act. BW ... **77**
EPDs:
BW **2.5**
WW **44**
YW **73**
MILK **25**
M&G **47**

Eye Pigment:
LE **30** / RE **50**

HH ADVANCE 8050U
DH ADVANCE 031
| DH DOMINETTE 7155

GB L1 DOMINO 6134K
CTR L1 DOMINETTE 2917Z
| EL MISS ADVANCE 916W

Carcass: REA **.07** / MARB **.05**

L1 DOMINO 0357I
HH MISS ADVANCE 365N
DH DOMINO 302
DH MISS ADVANCE 3169
GB L1 DOMINO 471H
GB L1 DOM PRCS 4103H
HH ADVANCE 872X
HH MISS ADVANCE 7240T

Red necked, moderate framed and thick.

119**CTR L1 DOMINO 4073B**

March 9, 2014 • #43501527

2 YR. OLD
Act. BW ... **84**
EPDs:
BW **1.6**
WW **41**
YW **74**
MILK **30**
M&G **50**

Eye Pigment:
LE **10** / RE **20**

HH ADVANCE 7085T
JA L1 DOMINO 0413X
| JA L1 DOMINETTE 432P

CL 1 DOMINO 0152K
MONTANA MISS 9153W
| MONTANA MISS 561R

Carcass: REA **.05** / MARB **.14**

L1 DOMINO 0357I
HH MISS ADVANCE 1088L
CL 1 DOMINO 0157K
JA L1 DOMINETTE 1223L
HH ADVANCE 8093H
CL 1 DOMINETTE 874H
CL 1 DOMINO 9126J
MONTANA MISS 1134

120**CTR L1 DOMINO 4074B**

March 12, 2014 • #43502457

2 YR. OLD
Act. BW ... **76**
EPDs:
BW **2.2**
WW **34**
YW **67**
MILK **32**
M&G **49**

Eye Pigment:
LE **50** / RE **100**

GB L1 DOMINO 175E
CO L1 DOMINO 946W
| CO L1 DOMINETTE 523R

CL 1 DOMINO 993W
CTR L1 DOMINETTE 201Z
| EL MISS ADVANCE 801U

Carcass: REA **-.08** / MARB **.12**

HH ADVANCE 767G
GB L1 DOM PRCS 3134
GB L1 DOMINO 935C
CO L1 DOMINETTE 206M
CL 1 DOMINO 637S
CL 1 DOMINETTE 5142R
HH ADVANCE 671F
HH MISS ADVANCE 346N

Low birth weight and just what 946 mass produces, red markings and moderate frame.

121**CTR L1 DOMINO 4081B**

April 15, 2014 • #43468904

2 YR. OLD
Act. BW ... **78**
EPDs:
BW **1.7**
WW **37**
YW **66**
MILK **24**
M&G **43**

Eye Pigment:
LE **70** / RE **10**

HH ADVANCE 7085T
JA L1 DOMINO 0413X
| JA L1 DOMINETTE 432P

EL ADVANCE 640S
EL MISS ADVANCE 111Y
| EL MISS ADVANCE 801U

Carcass: REA **-.06** / MARB **.11**

L1 DOMINO 0357I
HH MISS ADVANCE 1088L
CL 1 DOMINO 0157K
JA L1 DOMINETTE 1223L
HH ADVANCE 1117L
DBH MS CHALLENGE 239H
HH ADVANCE 671F
HH MISS ADVANCE 346N

122**CTR L1 DOMINO 4082B**

April 21, 2014 • #43468895

2 YR. OLD
Act. BW ... **87**
EPDs:
BW **3.8**
WW **58**
YW **91**
MILK **28**
M&G **57**

Eye Pigment:
LE **50** / RE **100**

CL 1 DOMINO 886U
HH ADVANCE 2181Z
| HH MISS ADVANCE 6054S

H5 408 DOMINO 7100
UU HALEY 1156
| UU MS ADV 529 9004

Carcass: REA **.15** / MARB **.00**

CL 1 DOMINO 638S
CL 1 DOMINETTE 440P
CL 1 DOMINO 320N
HH MISS ADVANCE 4053P
CJH HARLAND 408
H5 MS 001 DOMET 4193
H5 255 ADVANCE 529
UU MS YAMPA 3082

Big framed, sound performance bull.

123**CTR L1 DOMINO 4084B**

May 10, 2014 • #43502459

2 YR. OLD
Act. BW ... **80**
EPDs:
BW **3.3**
WW **38**
YW **72**
MILK **30**
M&G **49**

Eye Pigment:
LE **60** / RE **60**

GB L1 DOMINO 175E
CO L1 DOMINO 946W
| CO L1 DOMINETTE 523R

KB L1 DOMINO 842U
CTR L1 DOMINETTE 2915Z
| KB L1 DOMINETTE 950W

Carcass: REA **-.01** / MARB **.09**

HH ADVANCE 767G
GB L1 DOM PRCS 3134
GB L1 DOMINO 935C
CO L1 DOMINETTE 206M
KB L1 DOMINO 655
MONTANA MISS 310
CL 1 DOMINO 6105S
KB L1 DOMINETTE 636

124

JAK L1 DOMINO B12

Feb. 8, 2014 • #43505129

2 YR. OLD
Act. BW ... **83**
EPDs:
BW **2.1**
WW **47**
YW **78**
MILK **27**
M&G **51**

Eye Pigment:
LE **100** / RE **100**

GB L1 DOMINO 175E
GB L1 DOMINO 140R
| GB L1 DOM PRCS 720L

JA L1 DOMINO 624S
JAK L1 DOMINETTE U63
| JAK L1 DOMINETTE P01

Carcass: REA **-.17** / MARB **-.05**

Well balanced, eye appealing bull with a moderate birth weight.

HH ADVANCE 767G
GB L1 DOM PRCS 3134
GB L1 DOMINO 534J
CL 1 DOMINETTE 767G
CL 1 DOMINO 0157K
JA L1 DOMINETTE 1252L
JA L1 DOMINO 1209L
JAK L1 DOMINETTE L463

125

JAK L1 DOMINO B20

Feb. 12, 2014 • #43505128

2 YR. OLD
Act. BW ... **84**
EPDs:
BW **2.2**
WW **47**
YW **74**
MILK **27**
M&G **50**

Eye Pigment:
LE **100** / RE **100**

GB L1 DOMINO 175E
GB L1 DOMINO 140R
| GB L1 DOM PRCS 720L

JA L1 DOMINO 624S
JAK L1 DOMINETTE U33
| JAK L1 DOMINETTE P06

Carcass: REA **-.17** / MARB **-.05**

Dam has an average WWR of 104 on six calves and is a Dam of Distinction.

HH ADVANCE 767G
GB L1 DOM PRCS 3134
GB L1 DOMINO 534J
CL 1 DOMINETTE 767G
CL 1 DOMINO 0157K
JA L1 DOMINETTE 1252L
JA L1 DOMINO 1209L
JAK L1 DOMINETTE L421

126

JAK L1 DOMINO B24

Feb. 13, 2014 • #43505081

2 YR. OLD
Act. BW ... **72**
EPDs:
BW **1.2**
WW **46**
YW **84**
MILK **26**
M&G **49**

Eye Pigment:
LE **100** / RE **100**

JA L1 DOMINO 9800W
JA L1 DOMINO 2809Z
| JA L1 DOMINETTE 808U

JA L1 DOMINO 8633U
JAK L1 DOMINETTE Y209
| JAK L1 DOMINETTE W110

Carcass: REA **.17** / MARB **.26**

A 72 lb. birth weight ... calving ease bull.

CL 1 DOMINO 555R
JA L1 DOMINETTE 4152P
CL 1 DOMINO 0157K
JA L1 DOMINETTE 6618S
HH ADVANCE 286M
JA L1 DOMINETTE 0409
GB L1 DOMINO 647K
JAK L1 DOMINETTE S316

127

JAK L1 DOMINO B27

Feb. 15, 2014 • #43505154

2 YR. OLD
Act. BW ... **90**
EPDs:
BW **4.8**
WW **57**
YW **89**
MILK **30**
M&G **58**

Eye Pigment:
LE **100** / RE **100**

JA L1 DOMINO 7640T
JA L1 DOMINO 1609Y
| JA L1 DOMINETTE 9334W

GB L1 DOMINO 647K
JAK L1 DOMINETTE X113
| JAK L1 DOMINETTE S404

Carcass: REA **.36** / MARB **.10**

A WWR of 103 and dam has an average WWR of 108 on three calves.

HH ADVANCE 286M
JA L1 DOMINETTE 1409L
CL 1 DOMINO 638S
JA L1 DOMINETTE 613S
CL 1 DOMINO 246M
GB L1 DOM PRCS 626
JAK L1 DOMINO N306
JAK L1 DOMINETTE E228

128

JAK L1 DOMINO B29

Feb. 16, 2014 • #43505134

2 YR. OLD
Act. BW ... **86**
EPDs:
BW **3.6**
WW **57**
YW **81**
MILK **27**
M&G **56**

Eye Pigment:
LE **100** / RE **100**

GB L1 DOMINO 175E
GB L1 DOMINO 140R
| GB L1 DOM PRCS 720L

JA L1 DOMINO 4922P
JAK L1 DOMINETTE U378
| JAK L1 DOMINETTE N204

Carcass: REA **.13** / MARB **-.19**

Solid growth bull from a very consistent cow.

HH ADVANCE 767G
GB L1 DOM PRCS 3134
GB L1 DOMINO 534J
CL 1 DOMINETTE 767G
HH ADVANCE 8017H
JA L1 DOMINETTE 7444
JA L1 DOMINO 9213
JAK L1 DOMINETTE L257

129

JAK L1 DOMINO B39

Feb. 22, 2014 • #43505082

2 YR. OLD
Act. BW ... **80**
EPDs:
BW **2.9**
WW **52**
YW **92**
MILK **24**
M&G **50**

Eye Pigment:
LE **100** / RE **100**

JA L1 DOMINO 9800W
JA L1 DOMINO 2809Z
| JA L1 DOMINETTE 808U

HH ADVANCE 7102T
JAK L1 DOMINETTE Y212
| JAK L1 DOMINETTE T379

Carcass: REA **.21** / MARB **.05**

Moderate calving ease with strong growth numbers.

CL 1 DOMINO 555R
JA L1 DOMINETTE 4152P
CL 1 DOMINO 0157K
JA L1 DOMINETTE 6618S
HH ADVANCE 4140P
HH MISS ADVANCE 2146M
JA L1 DOMINO 5603R
JAK L1 DOMINETTE N369

130

JAK L1 DOMINO B49

Feb. 28, 2014 • #43505131

2 YR. OLD
Act. BW ... **80**
EPDs:
BW **2.5**
WW **52**
YW **86**
MILK **26**
M&G **52**

Eye Pigment:
LE **100** / RE **90**

GB L1 DOMINO 175E
GB L1 DOMINO 140R
| GB L1 DOM PRCS 720L

JA L1 DOMINO 4922P
JAK L1 DOMINETTE U240
| JAK L1 DOMINETTE N407

Carcass: REA **.05** / MARB **-.06**

Calving ease and growth plus maternal strength.

HH ADVANCE 767G
GB L1 DOM PRCS 3134
GB L1 DOMINO 534J
CL 1 DOMINETTE 767G
HH ADVANCE 8017H
JA L1 DOMINETTE 7444
JA L1 DOMINO 9213
JAK L1 DOMINETTE J102

131

JAK L1 DOMINO B52

March 1, 2014 • #43505160

2 YR. OLD
Act. BW ... **79**
EPDs:
BW **2.5**
WW **48**
YW **77**
MILK **24**
M&G **48**

Eye Pigment:
LE **90** / RE **90**

JA L1 DOMINO 7640T
JA L1 DOMINO 1609Y
| JA L1 DOMINETTE 9334W

JA L1 DOMINO 6001S
JAK L1 DOMINETTE X364
| JAK L1 DOMINETTE T300

Carcass: REA **.25** / MARB **.06**

Note the 79 lb. birth weight.

HH ADVANCE 286M
JA L1 DOMINETTE 1409L
CL 1 DOMINO 638S
JA L1 DOMINETTE 613S
GB L1 DOMINO 935C
JA L1 DOMINETTE 0212
JA L1 DOMINO 5603R
JAK L1 DOMINETTE M231

132

JAK L1 DOMINO B57

March 4, 2014 • #43505132

2 YR. OLD
Act. BW ... **88**
EPDs:
BW **2.5**
WW **47**
YW **72**
MILK **24**
M&G **48**

Eye Pigment:
LE **100** / RE **100**

GB L1 DOMINO 175E
GB L1 DOMINO 140R
| GB L1 DOM PRCS 720L

JA L1 DOMINO 624S
JAK L1 DOMINETTE U262
| JAK L1 DOMINETTE S318

Carcass: REA **-.20** / MARB **-.03**

HH ADVANCE 767G
GB L1 DOM PRCS 3134
GB L1 DOMINO 534J
CL 1 DOMINETTE 767G
CL 1 DOMINO 0157K
JA L1 DOMINETTE 1252L
JA L1 DOMINO 3918N
JAK L1 DOMINETTE N407

133

JAK L1 DOMINO B64

March 12, 2014 • #43505085

2 YR. OLD
Act. BW ... **80**
EPDs:
BW **2.6**
WW **49**
YW **86**
MILK **23**
M&G **48**

Eye Pigment:
LE **100** / RE **100**

JA L1 DOMINO 9800W
JA L1 DOMINO 2809Z
| JA L1 DOMINETTE 808U

JA L1 DOMINO 6001S
JAK L1 DOMINETTE Y278
| JAK L1 DOMINETTE U242

Carcass: REA **.06** / MARB **.18**

CL 1 DOMINO 555R
JA L1 DOMINETTE 4152P
CL 1 DOMINO 0157K
JA L1 DOMINETTE 6618S
GB L1 DOMINO 935C
JA L1 DOMINETTE 0212
JA L1 DOMINO 4922P
JA L1 DOMINETTE 4248P

134

JAK L1 DOMINO B65 March 15, 2014 • #43505136

2 YR. OLD
Act. BW ... **80**
EPDs:
BW **1.6**
WW **50**
YW **74**
MILK **28**
M&G **53**
Eye Pigment:
LE **100** / RE **100**

GB L1 DOMINO 175E
GB L1 DOMINO 140R
| GB L1 DOM PRCS 720L

JA L1 DOMINO 624S
JAK L1 DOMINETTE W183
| JAK L1 DOMINETTE S144

Carcass: REA **-.05** / MARB **-.06**

Calving ease bull.

HH ADVANCE 767G
GB L1 DOM PRCS 3134
GB L1 DOMINO 534J
CL 1 DOMINETTE 767G
CL 1 DOMINO 0157K
JA L1 DOMINETTE 1252L
JAK L1 DOMINO N306
JAK L1 DOMINETTE M235

139

JAK L1 DOMINO B76 March 20, 2014 • #43505089

2 YR. OLD
Act. BW ... **95**
EPDs:
BW **5.3**
WW **55**
YW **106**
MILK **24**
M&G **52**
Eye Pigment:
LE **100** / RE **40**

JA L1 DOMINO 9800W
JA L1 DOMINO 2809Z
| JA L1 DOMINETTE 808U

JA L1 DOMINO 8633U
JAK L1 DOMINETTE Y445
| JAK L1 DOMINETTE W304

Carcass: REA **.33** / MARB **.05**

CL 1 DOMINO 555R
JA L1 DOMINETTE 4152P
CL 1 DOMINO 0157K
JA L1 DOMINETTE 6618S
HH ADVANCE 286M
JA L1 DOMINETTE 0409
JA L1 DOMINO 6001S
JAK L1 DOMINETTE L279

135

JAK L1 DOMINO B69 March 16, 2014 • #43505097

2 YR. OLD
Act. BW ... **79**
EPDs:
BW **1.9**
WW **49**
YW **77**
MILK **31**
M&G **55**
Eye Pigment:
LE **100** / RE **100**

GB L1 DOMINO 175E
GB L1 DOMINO 140R
| GB L1 DOM PRCS 720L

JAK L1 DOMINO N306
JAK L1 DOMINETTE S29
| JAK L1 DOMINETTE L458

Carcass: REA **.13** / MARB **.09**

Heifer bull prospect.

HH ADVANCE 767G
GB L1 DOM PRCS 3134
GB L1 DOMINO 534J
CL 1 DOMINETTE 767G
JA L1 DOMINO 8088
JAK L1 DOMINETTE K274
JAK L1 DOMINO F230
JAK L1 DOMINETTE F155

140

JAK L1 DOMINO B79 March 24, 2014 • #43505078

2 YR. OLD
Act. BW ... **86**
EPDs:
BW **4.7**
WW **57**
YW **102**
MILK **26**
M&G **54**
Eye Pigment:
LE **90** / RE **100**

JA L1 DOMINO 7640T
JA L1 DOMINO 1609Y
| JA L1 DOMINETTE 9334W

JA L1 DOMINO 9922W
JAK L1 DOMINETTE Y103
| JAK L1 DOMINETTE U07

Carcass: REA **.36** / MARB **.06**

HH ADVANCE 286M
JA L1 DOMINETTE 1409L
CL 1 DOMINO 638S
JA L1 DOMINETTE 613S
JA L1 DOMINO 4922P
JA L1 DOMINETTE 3215N
JAK L1 DOMINO P64
JAK L1 DOMINETTE S08

136

JAK L1 DOMINO B71 March 17, 2014 • #43505115

2 YR. OLD
Act. BW ... **92**
EPDs:
BW **3.3**
WW **43**
YW **75**
MILK **25**
M&G **46**
Eye Pigment:
LE **100** / RE **100**

JA L1 DOMINO 7640T
JA L1 DOMINO 1609Y
| JA L1 DOMINETTE 9334W

JAK L1 DOMINO P64
JAK L1 DOMINETTE T08
| JAK L1 DOMINETTE P218

Carcass: REA **.18** / MARB **.06**

HH ADVANCE 286M
JA L1 DOMINETTE 1409L
CL 1 DOMINO 638S
JA L1 DOMINETTE 613S
GB L1 DOMINO 935C
JAK L1 DOMINETTE M347
RH DOMINO 6008
JA L1 DOMINETTE 5352

141

JAK L1 DOMINO B81 March 26, 2014 • #43505146

2 YR. OLD
Act. BW ... **78**
EPDs:
BW **3.3**
WW **52**
YW **84**
MILK **25**
M&G **51**
Eye Pigment:
LE **90** / RE **100**

GB L1 DOMINO 175E
GB L1 DOMINO 140R
| GB L1 DOM PRCS 720L

GB L1 DOMINO 647K
JAK L1 DOMINETTE X49
| JAK L1 DOMINETTE P01

Carcass: REA **-.05** / MARB **.04**

HH ADVANCE 767G
GB L1 DOM PRCS 3134
GB L1 DOMINO 534J
CL 1 DOMINETTE 767G
CL 1 DOMINO 246M
GB L1 DOM PRCS 626
JA L1 DOMINO 1209L
JAK L1 DOMINETTE L463

137

JAK L1 DOMINO B73 March 20, 2014 • #43503730

2 YR. OLD
Act. BW ... **92**
EPDs:
BW **4.4**
WW **55**
YW **83**
MILK **28**
M&G **55**
Eye Pigment:
LE **100** / RE **100**

JA L1 DOMINO 7640T
JA L1 DOMINO 1609Y
| JA L1 DOMINETTE 9334W

JA L1 DOMINO 8633U
JAK L1 DOMINETTE X426
| JAK L1 DOMINETTE U259

Carcass: REA **.29** / MARB **.01**

Performance bull with a WWR of 109.

HH ADVANCE 286M
JA L1 DOMINETTE 1409L
CL 1 DOMINO 638S
JA L1 DOMINETTE 613S
HH ADVANCE 286M
JA L1 DOMINETTE 0409
JA L1 DOMINO 6001S
JAK L1 DOMINETTE R191

142

JAK L1 DOMINO B85 March 29, 2014 • #43505116

2 YR. OLD
Act. BW ... **85**
EPDs:
BW **2.5**
WW **49**
YW **72**
MILK **26**
M&G **51**
Eye Pigment:
LE **100** / RE **100**

GB L1 DOMINO 175E
GB L1 DOMINO 140R
| GB L1 DOM PRCS 720L

JA L1 DOMINO 4922P
JAK L1 DOMINETTE T106
| JAK L1 DOMINETTE N201

Carcass: REA **-.10** / MARB **-.01**

HH ADVANCE 767G
GB L1 DOM PRCS 3134
GB L1 DOMINO 534J
CL 1 DOMINETTE 767G
HH ADVANCE 8017H
JA L1 DOMINETTE 7444
JA L1 DOMINO 3202
JAK L1 DOMINETTE L380

138

JAK L1 DOMINO B75 March 20, 2014 • #43505077

2 YR. OLD
Act. BW ... **94**
EPDs:
BW **5.5**
WW **54**
YW **89**
MILK **29**
M&G **56**
Eye Pigment:
LE **100** / RE **100**

JA L1 DOMINO 7640T
JA L1 DOMINO 1609Y
| JA L1 DOMINETTE 9334W

JA L1 DOMINO 9015W
JAK L1 DOMINETTE Y76
| JAK L1 DOMINETTE S404

Carcass: REA **.40** / MARB **.00**

HH ADVANCE 286M
JA L1 DOMINETTE 1409L
CL 1 DOMINO 638S
JA L1 DOMINETTE 613S
JA L1 DOMINO 6001S
JA L1 DOMINETTE 8905
JAK L1 DOMINO N306
JAK L1 DOMINETTE E228

143

JAK L1 DOMINO B87 April 1, 2014 • #43505137

2 YR. OLD
Act. BW ... **94**
EPDs:
BW **4.4**
WW **58**
YW **93**
MILK **31**
M&G **60**
Eye Pigment:
LE **100** / RE **100**

GB L1 DOMINO 175E
GB L1 DOMINO 140R
| GB L1 DOM PRCS 720L

JA L1 DOMINO 624S
JAK L1 DOMINETTE W341
| JAK L1 DOMINETTE S204

Carcass: REA **.05** / MARB **-.20**

HH ADVANCE 767G
GB L1 DOM PRCS 3134
GB L1 DOMINO 534J
CL 1 DOMINETTE 767G
CL 1 DOMINO 0157K
JA L1 DOMINETTE 1252L
JAK L1 DOMINO N306
JAK L1 DOMINETTE M234

Strong growth and performance bull.

144

JAK L1 DOMINO B93

April 16, 2014 • #43505088

2 YR. OLD
Act. BW ... **90**
EPDs:
BW **5.1**
WW **59**
YW **95**
MILK **23**
M&G **53**
Eye Pigment:
LE **60** / RE **100**

JA L1 DOMINO 7640T
JA L1 DOMINO 1609Y
| JA L1 DOMINETTE 9334W

HH ADVANCE 286M
JA L1 DOMINETTE 9605W
| JA L1 DOMINETTE 3756N

HH ADVANCE 286M
JA L1 DOMINETTE 1409L
CL 1 DOMINO 638S
JA L1 DOMINETTE 613S
HH ADVANCE 0024K
HH MISS ADVANCE 752G
CL1 DOMINO 1168L
CH L1 DOMINETTE 9135

Carcass: REA **.41** / MARB **-.01**

149

CO L1 DOMINO 418B

March 11, 2014 • #43490055

2 YR. OLD
Act. BW ... **86**
EPDs:
BW **3.8**
WW **47**
YW **78**
MILK **22**
M&G **45**
Eye Pigment:
LE **100** / RE **80**

CL 1 DOMINO 7128T
HH ADVANCE 0118X
| HH MISS ADVANCE 6074S

DH ADVANCE 505
CO L1 DOMINETTE 170Y
| CO L1 DOMINETTE 754T

HH ADVANCE 3113N
CL 1 DOMINETTE 0112K
CL 1 DOMINO 2136M
HH MISS ADVANCE 1013L
DH ADVANCE 1008
DH DOMINETTE 2151
HH ADVANCE 216M
JA L1 DOMINETTE 8206

Carcass: REA **.12** / MARB **.06**

145

CO L1 DOMINO 401B

March 3, 2014 • #43490031

2 YR. OLD
Act. BW ... **78**
EPDs:
BW **0.4**
WW **28**
YW **38**
MILK **22**
M&G **36**
Eye Pigment:
LE **100** / RE **100**

CL 1 DOMINO 7128T
HH ADVANCE 0118X
| HH MISS ADVANCE 6074S

L1 DOMINO 99496
CO L1 DOMINETTE 660S
| JA L1 DOMINETTE 4916

HH ADVANCE 3113N
CL 1 DOMINETTE 0112K
CL 1 DOMINO 2136M
HH MISS ADVANCE 1013L
L1 DOMINO 97349
L1 DOMINETTE 95369
CL 1 DOMINO 9017
JA L1 DOMINETTE 4074

Carcass: REA **.00** / MARB **.08**

Low birth weight, should work on heifers. Lots of longevity in this bull's pedigree. **PAP score 34.**

150

CO L1 DOMINO 423B

March 15, 2014 • #43490026

2 YR. OLD
Act. BW ... **84**
EPDs:
BW **3.4**
WW **45**
YW **67**
MILK **19**
M&G **42**
Eye Pigment:
LE **70** / RE **40**

CL 1 DOMINO 7128T
HH ADVANCE 0118X
| HH MISS ADVANCE 6074S

JA L1 DOMINO 5603R
CO L1 DOMINETTE 727T
| CO L1 DOMINETTE 312N

HH ADVANCE 3113N
CL 1 DOMINETTE 0112K
CL 1 DOMINO 2136M
HH MISS ADVANCE 1013L
HH ADVANCE 286M
JA L1 DOMINETTE 2210M
GB L1 DOMINO 168E
CO L1 DOMINETTE 914

Carcass: REA **.18** / MARB **-.04**

PAP score 34.

146

CO L1 DOMINO 410B

March 6, 2014 • #43490015

2 YR. OLD
Act. BW ... **96**
EPDs:
BW **4.7**
WW **46**
YW **82**
MILK **19**
M&G **42**
Eye Pigment:
LE **60** / RE **50**

L1 DOMINO 99496
CO L1 DOMINO 847U
| CO L1 DOMINETTE 226M

RH DOMINO 6050
CO L1 DOMINETTE 981W
| CO L1 DOMINETTE 548R

L1 DOMINO 97349
L1 DOMINETTE 95369
GB L1 DOMINO 017D
CO L1 DOMINETTE 911
XP L1 DOMINO 00063
RH DOMINETTE 1059
HH ADVANCE 216M
CO L1 DOMINETTE 322N

Carcass: REA **.09** / MARB **.22**

PAP score 36.

151

CO L1 DOMINO 424B

March 15, 2014 • #43490059

2 YR. OLD
Act. BW ... **94**
EPDs:
BW **3.7**
WW **46**
YW **68**
MILK **25**
M&G **48**
Eye Pigment:
LE **100** / RE **100**

CL 1 DOMINO 7128T
HH ADVANCE 0118X
| HH MISS ADVANCE 6074S

GB L1 DOMINO 175E
CO L1 DOMINETTE 155Y
| CO L1 DOMINETTE 533R

HH ADVANCE 3113N
CL 1 DOMINETTE 0112K
CL 1 DOMINO 2136M
HH MISS ADVANCE 1013L
HH ADVANCE 767G
GB L1 DOM PRCS 3134
GB L1 DOMINO 935C
CO L1 DOMINETTE 801

Carcass: REA **.12** / MARB **.02**

Beef bull by 0118 out of a top cow. **PAP score 57.**

147

CO L1 DOMINO 414B

March 9, 2014 • #43490044

2 YR. OLD
Act. BW ... **66**
EPDs:
BW **-0.1**
WW **48**
YW **76**
MILK **25**
M&G **49**
Eye Pigment:
LE **100** / RE **100**

CL 1 DOMINO 7139T
CL 1 DOMINO 065X
| CL 1 DOMINETTE 5142R

HH ADVANCE 9075W
CO L1 DOMINETTE 230Z
| CO L1 DOMINETTE 653S

CL 1 DOMINO 590R
CL 1 DOMINETTE 530R
CL1 DOMINO 1172L
CL 1 DOMINETTE 810H
HH ADVANCE 7101T
HH MISS ADVANCE 1028L
L1 DOMINO 99496
CO L1 DOMINETTE 321N

Carcass: REA **.33** / MARB **.07**

Top herd bull prospect! BW 66 lbs., WWR 109 / YWR 106. Well marked, deep sided and low PAP score. The picture didn't turn out on Lot 147, be sure and see him on the video. **PAP score 34.**

152

CO L1 DOMINO 426B

March 16, 2014 • #43490037

2 YR. OLD
Act. BW ... **94**
EPDs:
BW **3.8**
WW **38**
YW **64**
MILK **18**
M&G **37**
Eye Pigment:
LE **100** / RE **100**

L1 DOMINO 99496
CO L1 DOMINO 847U
| CO L1 DOMINETTE 226M

HH ADVANCE 8017H
CO L1 DOMINETTE 439P
| CO L1 DOMINETTE 913

L1 DOMINO 97349
L1 DOMINETTE 95369
GB L1 DOMINO 017D
CO L1 DOMINETTE 911
XP L1 DOMINO 90085
HH MISS ADVANCE 251B
HH ADVANCE 3010C
LH ADVANCERETTE 4011

Carcass: REA **.05** / MARB **.21**

PAP score 37.

148

CO L1 DOMINO 417B

March 11, 2014 • #43490071

2 YR. OLD
Act. BW ... **88**
EPDs:
BW **2.8**
WW **48**
YW **68**
MILK **23**
M&G **46**
Eye Pigment:
LE **100** / RE **100**

CL 1 DOMINO 7128T
HH ADVANCE 0118X
| HH MISS ADVANCE 6074S

RH DOMINO 6050
CO L1 DOMINETTE 102Y
| CO L1 DOMINETTE 842U

HH ADVANCE 3113N
CL 1 DOMINETTE 0112K
CL 1 DOMINO 2136M
HH MISS ADVANCE 1013L
XP L1 DOMINO 00063
RH DOMINETTE 1059
GB L1 DOMINO 647K
CO L1 DOMINETTE 439P

Carcass: REA **.18** / MARB **.11**

PAP score 37.

153

CO L1 DOMINO 429B

March 16, 2014 • #43490073

2 YR. OLD
Act. BW ... **82**
EPDs:
BW **1.2**
WW **51**
YW **86**
MILK **20**
M&G **46**
Eye Pigment:
LE **100** / RE **100**

CL 1 DOMINO 7139T
CL 1 DOMINO 065X
| CL 1 DOMINETTE 5142R

GB L1 DOMINO 175E
CO L1 DOMINETTE 090X
| JA L1 DOMINETTE 9209

CL 1 DOMINO 590R
CL 1 DOMINETTE 530R
CL1 DOMINO 1172L
CL 1 DOMINETTE 810H
HH ADVANCE 767G
GB L1 DOM PRCS 3134
CL 1 DOMINO 484
JA L1 DOMINETTE 6700

Carcass: REA **.10** / MARB **.09**

Heifer bull prospect. **PAP score 53.**

154

CO L1 DOMINO 430B

March 17, 2014 • #43490065

2 YR. OLD
Act. BW ... **90**
EPDs:
BW **4.0**
WW **49**
YW **74**
MILK **29**
M&G **54**

Eye Pigment:
LE **80** / RE **100**

CL 1 DOMINO 7128T
HH ADVANCE 0118X
| HH MISS ADVANCE 6074S

CL 1 DOMINO 320N
CO L1 DOMINETTE 118Y
| CO L1 DOMINETTE 955W

Carcass: REA **.12** / MARB **.01**

A powerful long bodied, well muscled bull with lots of thickness. **PAP score 49.**

HH ADVANCE 3113N
CL 1 DOMINETTE 0112K
CL 1 DOMINO 2136M
HH MISS ADVANCE 1013L
CL 1 DOMINO 019K
CL 1 DOMINETTE 996J
GB L1 DOMINO 175E
CO L1 DOMINETTE 610S

155

CO L1 DOMINO 432B

March 17, 2014 • #43490035

2 YR. OLD
Act. BW ... **98**
EPDs:
BW **4.8**
WW **43**
YW **79**
MILK **33**
M&G **55**

Eye Pigment:
LE **100** / RE **100**

CL 1 DOMINO 9105W
CO L1 DOMINO 186Y
| CL 1 DOMINETTE 5142R

GB L1 DOMINO 935C
CO L1 DOMINETTE 523R
| CO L1 DOMINETTE 206M

Carcass: REA **-.06** / MARB **.02**

Maternal brother to herd sire CO L1 Domino 946W. **PAP score 34.**

CL 1 DOMINO 732T
CL 1 DOMINETTE 591R
CL 1 DOMINO 1172L
CL 1 DOMINETTE 810H
CL 1 DOMINO 5131E
GB L1 DOM PRCS 115
GB L1 DOMINO 017D
CO L1 DOMINETTE 913

156

CO L1 DOMINO 437B

March 19, 2014 • #43490053

2 YR. OLD
Act. BW ... **88**
EPDs:
BW **2.5**
WW **40**
YW **70**
MILK **21**
M&G **41**

Eye Pigment:
LE **50** / RE **95**

L1 DOMINO 99496
CO L1 DOMINO 847U
| CO L1 DOMINETTE 226M

GB L1 DOMINO 8139M
CO L1 DOMINETTE 179Y
| CO L1 DOMINETTE 902W

Carcass: REA **.04** / MARB **.20**

PAP score 37.

L1 DOMINO 97349
L1 DOMINETTE 95369
GB L1 DOMINO 017D
CO L1 DOMINETTE 911
GB L1 DOMINO 534J
GB L1 DOM PRCS 4103H
RH DOMINO 6050
CO L1 DOMINETTE 660S

157

CO L1 DOMINO 444B

March 22, 2014 • #43490052

2 YR. OLD
Act. BW ... **80**
EPDs:
BW **1.6**
WW **39**
YW **64**
MILK **19**
M&G **39**

Eye Pigment:
LE **100** / RE **100**

L1 DOMINO 99496
CO L1 DOMINO 847U
| CO L1 DOMINETTE 226M

CL 1 DOMINO 065X
CO L1 DOMINETTE 200Z
| CO L1 DOMINETTE 090X

Carcass: REA **-.02** / MARB **.17**

PAP score 34.

L1 DOMINO 97349
L1 DOMINETTE 95369
GB L1 DOMINO 017D
CO L1 DOMINETTE 911
CL 1 DOMINO 7139T
CL 1 DOMINETTE 5142R
GB L1 DOMINO 175E
JA L1 DOMINETTE 9209

158

CO L1 DOMINO 449B

March 24, 2014 • #43490034

2 YR. OLD
Act. BW ... **85**
EPDs:
BW **2.6**
WW **35**
YW **66**
MILK **16**
M&G **34**

Eye Pigment:
LE **100** / RE **100**

L1 DOMINO 99496
CO L1 DOMINO 847U
| CO L1 DOMINETTE 226M

HH ADVANCE 216M
CO L1 DOMINETTE 541R
| CO L1 DOMINETTE 202M

Carcass: REA **-.06** / MARB **.20**

PAP score 37.

L1 DOMINO 97349
L1 DOMINETTE 95369
GB L1 DOMINO 017D
CO L1 DOMINETTE 911
HH ADVANCE 836H
HH MISS ADVANCE 621F
GB L1 DOMINO 017D
CO L1 DOMINETTE 68

159

CO L1 DOMINO 451B

March 25, 2014 • #43490041

2 YR. OLD
Act. BW ... **83**
EPDs:
BW **2.8**
WW **43**
YW **74**
MILK **20**
M&G **42**

Eye Pigment:
LE **100** / RE **100**

L1 DOMINO 99496
CO L1 DOMINO 847U
| CO L1 DOMINETTE 226M

CL 1 DOMINO 065X
CO L1 DOMINETTE 243Z
| CO L1 DOMINETTE 000X

Carcass: REA **.19** / MARB **.01**

PAP score 36.

L1 DOMINO 97349
L1 DOMINETTE 95369
GB L1 DOMINO 017D
CO L1 DOMINETTE 911
CL 1 DOMINO 7139T
CL 1 DOMINETTE 5142R
GB L1 DOMINO 471H
CO L1 DOMINETTE 803U

160

CO L1 DOMINO 453B

March 26, 2014 • #43490373

2 YR. OLD
Act. BW ... **75**
EPDs:
BW **0.3**
WW **44**
YW **67**
MILK **27**
M&G **49**

Eye Pigment:
LE **60** / RE **60**

CL 1 DOMINO 7128T
HH ADVANCE 0118X
| HH MISS ADVANCE 6074S

GB L1 DOMINO 175E
CO L1 DOMINETTE 073X
| CO L1 DOMINETTE 221M

Carcass: REA **.18** / MARB **.08**

Heifer bull with performance and out of a top 175E daughter. **PAP score 56.**

HH ADVANCE 3113N
CL 1 DOMINETTE 0112K
CL 1 DOMINO 2136M
HH MISS ADVANCE 1013L
HH ADVANCE 767G
GB L1 DOM PRCS 3134
GB L1 DOMINO 017D
CO L1 DOMINETTE 900

161

CO L1 DOMINO 457B

March 27, 2014 • #43490019

2 YR. OLD
Act. BW ... **68**
EPDs:
BW **0.6**
WW **39**
YW **60**
MILK **22**
M&G **41**

Eye Pigment:
LE **100** / RE **100**

CL 1 DOMINO 7128T
HH ADVANCE 0118X
| HH MISS ADVANCE 6074S

RH DOMINO 6050
CO L1 DOMINETTE 930W
| CO L1 DOMINETTE 503R

Carcass: REA **.05** / MARB **.08**

PAP score 35.

HH ADVANCE 3113N
CL 1 DOMINETTE 0112K
CL 1 DOMINO 2136M
HH MISS ADVANCE 1013L
XP L1 DOMINO 00063
RH DOMINETTE 1059
CL 1 DOMINO 0157K
JA L1 DOMINETTE 9209

162

CO L1 DOMINO 466B

April 20, 2014 • #43490056

2 YR. OLD
Act. BW ... **82**
EPDs:
BW **1.9**
WW **47**
YW **77**
MILK **34**
M&G **57**

Eye Pigment:
LE **100** / RE **100**

CL 1 DOMINO 9105W
CO L1 DOMINO 186Y
| CL 1 DOMINETTE 5142R

GB L1 DOMINO 175E
CO L1 DOMINETTE 168Y
| L1 DOMINETTE 07427

Carcass: REA **.02** / MARB **.00**

Low birth weight and good performance. Granddam is now a donor cow for Holden's. **PAP score 37.**

CL 1 DOMINO 732T
CL 1 DOMINETTE 591R
CL 1 DOMINO 1172L
CL 1 DOMINETTE 810H
HH ADVANCE 767G
GB L1 DOM PRCS 3134
L1 DOMINO 04380
L1 DOMINETTE 05539

163

L1 HARMONY 407B

Feb. 27, 2014 • #43481581

2 YR. OLD
Act. BW ... **84**
EPDs:
BW **3.7**
WW **47**
YW **83**
MILK **25**
M&G **48**

Eye Pigment:
LE **20** / RE **20**

JA L1 DOMINO 7640T
JA L1 DOMINO 1624Y
| JA L1 DOMINETTE 9001W

JA L1 DOMINO 9208W
L1 MS HARMONY 228Z
| L1 MS HARMONY 953W

Carcass: REA **.21** / MARB **.02**

Red necked and red all over. Good rancher bull.

HH ADVANCE 286M
JA L1 DOMINETTE 1409L
JA L1 DOMINO 6001S
JA L1 DOMINETTE 3762N
CL 1 DOMINO 555R
JA L1 DOMINETTE 432P
JA L1 DOMINO 719T
L1 MS HARMONY 752T

164**L1 HARMONY 413B**

March 5, 2014 • #43481555

2 YR. OLDAct. BW ... **77**

EPDs:

BW **2.3**WW **44**YW **83**MILK **22**M&G **44**

Eye Pigment:

LE **20** / RE **10**

CL 1 DOMINO 0157K

JA L1 DOMINO 719T

| JA L1 DOMINETTE 0008

JA L1 DOMINO 8801U

L1 MS HARMONY 030X

| L1 MS HARMONY 323

Carcass: REA **.09** / MARB **.04**

HH ADVANCE 767G

CL 1 DOMINETTE 861H

CL 1 DOMINO 6129F

JA L1 DOMINETTE 7410

CL 1 DOMINO 555R

JA L1 DOMINETTE 3246N

JA L1 DOMINO 9004

L1 MS HARMONY 801

169**WF ADVANCE 401B ET**

Jan. 3, 2014 • #43542190

2 YR. OLDAct. BW ... **ET**

EPDs:

BW **3.7**WW **58**YW **85**MILK **25**M&G **54**

Eye Pigment:

LE **100** / RE **100**

HH ADVANCE 8050U

HH ADVANCE 1098Y

| HH MS ADVANCE 9065W

HH ADVANCE 8203U

HH MISS ADVANCE 1139Y

| HH MISS ADVANCE 8262U

Carcass: REA **.32** / MARB **.13**

L1 DOMINO 0357I

HH MISS ADVANCE 365N

HH ADVANCE 7101T

HH MISS ADVANCE 1028L

HH ADVANCE 5161R

HH MISS ADVANCE 752G

HH ADVANCE 5104R

HH MISS ADVANCE 6031S

An ET bull with lots going for him. Pigment and muscle and a strong Line 1 pedigree.

165**L1 HARMONY 414B**

March 5, 2014 • #43481574

2 YR. OLDAct. BW ... **67**

EPDs:

BW **-0.4**WW **41**YW **67**MILK **24**M&G **44**

Eye Pigment:

LE **100** / RE **100**

CL 1 DOMINO 555R

JA L1 DOMINO 9208W

| JA L1 DOMINETTE 432P

JA L1 DOMINO 801U

L1 MS HARMONY 214Z

| JA L1 DOMINETTE 0245X

Carcass: REA **.14** / MARB **.07**

HH ADVANCE 3113N

CL 1 DOMINETTE 3174N

CL 1 DOMINO 0157K

JA L1 DOMINETTE 1223L

JA L1 DOMINO 426P

JA L1 DOMINETTE 5625R

CL 1 DOMINO 555R

JA L1 DOMINETTE 6051S

170**WF ROSCO ADVANCE 403B ET**

Jan. 4, 2014 • #43542191

2 YR. OLDAct. BW ... **ET**

EPDs:

BW **3.7**WW **58**YW **85**MILK **25**M&G **54**

Eye Pigment:

LE **100** / RE **100**

HH ADVANCE 8050U

HH ADVANCE 1098Y

| HH MS ADVANCE 9065W

HH ADVANCE 8203U

HH MISS ADVANCE 1139Y

| HH MISS ADVANCE 8262U

Carcass: REA **.32** / MARB **.13**

L1 DOMINO 0357I

HH MISS ADVANCE 365N

HH ADVANCE 7101T

HH MISS ADVANCE 1028L

HH ADVANCE 5161R

HH MISS ADVANCE 752G

HH ADVANCE 5104R

HH MISS ADVANCE 6031S

Another ET and a carbon copy of his full brother, Lot 169.

166**L1 HARMONY 415B**

March 8, 2014 • #43481553

2 YR. OLDAct. BW ... **91**

EPDs:

BW **4.1**WW **51**YW **91**MILK **20**M&G **46**

Eye Pigment:

LE **70** / RE **50**

CL 1 DOMINO 0157K

JA L1 DOMINO 719T

| JA L1 DOMINETTE 0008

JA L1 DOMINO 426P

JA L1 DOMINETTE 029Y

| JA L1 DOMINETTE 5625R

Carcass: REA **.17** / MARB **.10**

HH ADVANCE 767G

CL 1 DOMINETTE 861H

CL 1 DOMINO 6129F

JA L1 DOMINETTE 7410

CL 1 DOMINO 0157K

JA L1 DOMINETTE 7070

HH ADVANCE 286M

JA L1 DOMINETTE 2502M

171**WF CL1 DOMINO RANGER 406B**

March 1, 2014 • #43501893

2 YR. OLDAct. BW ... **85**

EPDs:

BW **2.8**WW **55**YW **85**MILK **37**M&G **65**

Eye Pigment:

LE **100** / RE **45**

CL 1 DOMINO 929W

CL 1 DOMINO 105Y

| CL 1 DOMINETTE 9140W

CL 1 DOMINO 042X

CL 1 DOMINETTE 2104Z

| CL 1 DOMINETTE 0112X

Carcass: REA **.01** / MARB **-.15**

CL 1 DOMINO 637S

CL 1 DOMINETTE 615S

CL 1 DOMINO 732T

CL 1 DOMINETTE 475P

CL 1 DOMINO 7139T

CL 1 DOMINETTE 5142R

GB L1 DOMINO 719L

CL 1 DOMINETTE 743T

Extra frame on this package.

167**L1 HARMONY 417B**

March 9, 2014 • #43481578

2 YR. OLDAct. BW ... **84**

EPDs:

BW **3.7**WW **46**YW **76**MILK **23**M&G **46**

Eye Pigment:

LE **100** / RE **100**

CL 1 DOMINO 555R

JA L1 DOMINO 9208W

| JA L1 DOMINETTE 432P

JA L1 DOMINO 719T

L1 MS HARMONY 217Z

| L1 MS HARMONY 826U

Carcass: REA **.09** / MARB **.03**

HH ADVANCE 3113N

CL 1 DOMINETTE 3174N

CL 1 DOMINO 0157K

JA L1 DOMINETTE 1223L

CL 1 DOMINO 0157K

JA L1 DOMINETTE 0008

L1 HARMONY 510R

L1 MS HARMONY 405

172**WF CL1 DOMINO 407B**

Feb. 28, 2014 • #43532306

2 YR. OLDAct. BW ... **92**

EPDs:

BW **3.0**WW **49**YW **86**MILK **31**M&G **56**

Eye Pigment:

LE **45** / RE **100**

CL 1 DOMINO 860U

CL 1 DOMINO 0123X

| CL 1 DOMINETTE 490P

HH ADVANCE 9016W

CL 1 DOMINETTE 1144Y

| CL 1 DOMINETTE 826U

Carcass: REA **.20** / MARB **.04**

CL 1 DOMINO 637S

CL 1 DOMINETTE 5142R

CL 1 DOMINO 9126J

CL 1 DOMINETTE 974J

HH ADVANCE 5061R

HH MISS ADVANCE 4016P

CL 1 DOMINO 637S

CL 1 DOMINETTE 298M

168**L1 HARMONY 436B**

April 5, 2014 • #43481759

2 YR. OLDAct. BW ... **93**

EPDs:

BW **2.2**WW **56**YW **96**MILK **24**M&G **52**

Eye Pigment:

LE **100** / RE **100**

JA L1 DOMINO 426P

JA L1 DOMINO 801U

| JA L1 DOMINETTE 5625R

JA L1 DOMINO 005

L1 MS HARMONY 638S

| L1 MISS HARMONY 733

Carcass: REA **.33** / MARB **.14**

CL 1 DOMINO 0157K

JA L1 DOMINETTE 7070

HH ADVANCE 286M

JA L1 DOMINETTE 2502M

HH ADVANCE 767G

JA L1 DOMINETTE 8211

L1 HARMONY 549

L1 MISS HARMONY 412

173**WF CL1 DOMINO 408B**

Feb. 9, 2014 • #43532307

2 YR. OLDAct. BW ... **89**

EPDs:

BW **2.1**WW **49**YW **88**MILK **30**M&G **55**

Eye Pigment:

LE **20** / RE **90**

CL 1 DOMINO 637S

CL 1 DOMINO 988W

| CL 1 DOMINETTE 3174N

CL 1 DOMINO 860U

CL 1 DOMINETTE 1130Y

| CL 1 DOMINETTE 5131R

Carcass: REA **.36** / MARB **-.01**

L1 DOMINO 0339E

CL 1 DOMINETTE 118L

CL 1 DOMINO 9126J

CL 1 DOMINETTE 810H

CL 1 DOMINO 637S

CL 1 DOMINETTE 5142R

HH ADVANCE 3113N

CL 1 DOMINETTE 291M

Should be calving ease and a line bred pedigree.

Very correct and well made with a 117 WWR and low birth weight with outstanding growth EPD's.

174**WB L1 DOMINO 1602 429B**

March 3, 2014 • #43522401

2 YR. OLD
Act. BW ... **79**
EPDs:
BW **1.6**
WW **47**
YW **74**
MILK **28**
M&G **52**

Eye Pigment:
LE **95** / RE **50**

JA L1 DOMINO 7640T
JA L1 DOMINO 1602Y
| JA L1 DOMINETTE 9204W

CL 1 DOMINO 9125W
JA L1 DOMINETTE 2131Z
| JA L1 DOMINETTE 9700W

Carcass: REA **.27** / MARB **.01**

Calving ease 1602 son out of a 9125 first calf heifer.

HH ADVANCE 286M
JA L1 DOMINETTE 1409L
CL 1 DOMINO 555R
JA L1 DOMINETTE 4119P
CL 1 DOMINO 732T
CL 1 DOMINETTE 475P
GB L1 DOMINO 6134K
JA L1 DOMINETTE 7211T

175**JA L1 DOMINO 408B**

Feb. 18, 2014 • #43486414

2 YR. OLD
Act. BW ... **86**
EPDs:
BW **2.5**
WW **53**
YW **86**
MILK **33**
M&G **59**

Eye Pigment:
LE **100** / RE **100**

HH ADVANCE 8050U
HH ADVANCE 1098Y
| HH MS ADVANCE 9065W

JA L1 DOMINO 7640T
JA L1 DOMINETTE 0613X
| JA L1 DOMINETTE 570R

Carcass: REA **.37** / MARB **-.05**

L1 DOMINO 0357I
HH MISS ADVANCE 365N
HH ADVANCE 7101T
HH MISS ADVANCE 1028L
HH ADVANCE 286M
JAL L1 DOMINETTE 1409L
CL 1 DOMINO 246M
JA L1 DOMINETTE 3406N

176**JA L1 DOMINO 480B**

Sept. 7, 2014 • #43655011

2 YR. OLD
Act. BW ... **79**
EPDs:
BW **2.5**
WW **33**
YW **68**
MILK **33**
M&G **50**

Eye Pigment:
LE **100** / RE **100**

GB L1 DOMINO 175E
CO L1 DOMINO 946W
| CO L1 DOMINETTE 523R

CL 1 DOMINO 638S
JA L1 DOMINETTE 8318U
| JA L1 DOMINETTE 432P

Carcass: REA **-.17** / MARB **.16**

HH ADVANCE 767G
GB L1 DOM PRCS 3134
GB L1 DOMINO 935C
CO L1 DOMINETTE 206M
L1 DOMINO 0339E
CL 1 DOMINETTE 475P
CL 1 DOMINO 0157K
JA L1 DOMINETTE 1223L

177**JA L1 DOMINO 485B**

Oct. 15, 2014 • #43655012

2 YR. OLD
Act. BW ... **72**
EPDs:
BW **1.5**
WW **32**
YW **71**
MILK **31**
M&G **47**

Eye Pigment:
LE **100** / RE **100**

GB L1 DOMINO 175E
CO L1 DOMINO 946W
| CO L1 DOMINETTE 523R

CL 1 DOMINO 0157K
JA L1 DOMINETTE 325N
| JA L1 DOMINETTE 5613

Carcass: REA **-.09** / MARB **.15**

HH ADVANCE 767G
GB L1 DOM PRCS 3134
GB L1 DOMINO 935C
CO L1 DOMINETTE 206M
HH ADVANCE 767G
CL 1 DOMINETTE 861H
GB L1 DOMINO 919
JA L1 DOMINETTE 5860

178**JA L1 DOMINO 4820**

May 15, 2014 • #UNREGISTERED

2 YR. OLD
Act. BW ... **78**
EPDs:
BW **NA**
WW **NA**
YW **NA**
MILK **NA**
M&G **NA**

Eye Pigment:
LE **90** / RE **100**

HH ADVANCE 8050U
DH ADVANCE 031
| DH DOMINETTE 7155

CL 1 DOMINO 555R
JA L1 9207 Commercial
| JA L1 3201

Carcass: REA **na** / MARB **na**

L1 DOMINO 0357I
HH MISS ADVANCE 365N
DH DOMINO 302
DH MISS ADVANCE 3169
HH ADVANCE 3113N
CL 1 DOMINETTE 3174N
CL 1 DOMINO 484
JA L1 1108

179**JM L1 DOMINO 401B**

Jan. 28, 2014 • #43654636

2 YR. OLD
Act. BW ... **77**
EPDs:
BW **2.1**
WW **44**
YW **77**
MILK **30**
M&G **52**

Eye Pigment:
LE **100** / RE **100**

CL 1 DOMINO 860U
CL 1 DOMINO 216Z
| CL 1 DOMINETTE 759T

CL 1 DOMINO 946W
JA L1 DOMINETTE 2515Z
| JA L1 DOMINETTE 0244X

Carcass: REA **-.06** / MARB **-.01**

The high volume, deep ribbed kind that will sure catch your eye. A WWR of 112 and he has kept on coming.

CL 1 DOMINO 637S
CL 1 DOMINETTE 5142R
CL 1 DOMINO 590R
CL 1 DOMINETTE 193L
GB L1 DOMINO 175E
CO L1 DOMINETTE 523R
CL 1 DOMINO 555R
JA L1 DOMINETTE 1251L

180**JM L1 DOMINO 403B**

Jan. 24, 2014 • #43654637

2 YR. OLD
Act. BW ... **62**
EPDs:
BW **-0.2**
WW **42**
YW **69**
MILK **29**
M&G **50**

Eye Pigment:
LE **20** / RE **10**

HH ADVANCE 0132X
HH ADVANCE 2214Z
| HH MISS ADVANCE 8005U

HH ADVANCE 5104R
FS MISS ADVANCE 209Y
| EL MISS ADVANCE 531

Carcass: REA **.23** / MARB **.06**

CL 1 DOMINO 7128T
HH MISS ADVANCE 6054S
HH ADVANCE 5104R
HH MISS ADVANCE 2105M
CL 1 DOMINO 206M
HH MISS ADVANCE 153L
HH ADVANCE 872X
HH MISS ADVANCE 0100K

181**JM L1 DOMINO 406B**

March 22, 2014 • #43654638

2 YR. OLD
Act. BW ... **72**
EPDs:
BW **0.5**
WW **44**
YW **76**
MILK **26**
M&G **48**

Eye Pigment:
LE **10** / RE **40**

CL 1 DOMINO 555R
JA L1 DOMINO 9800W
| JA L1 DOMINETTE 4152P

CL 1 DOMINO 0157K
JA L1 DOMINETTE 701T
| JA L1 DOMINETTE 2513M

Carcass: REA **-.03** / MARB **.04**

HH ADVANCE 3113N
CL 1 DOMINETTE 3174N
DH DOMINO 6150
JA L1 DOMINETTE 6815
HH ADVANCE 767G
CL 1 DOMINETTE 861H
CL 1 DOMINO 7176G
JA L1 DOMINETTE 6256

182**JM L1 DOMINO 408B**

May 18, 2014 • #43654639

2 YR. OLD
Act. BW ... **65**
EPDs:
BW **0.2**
WW **34**
YW **63**
MILK **26**
M&G **43**

Eye Pigment:
LE **100** / RE **90**

HH ADVANCE 7085T
JA L1 DOMINO 0413X
| JA L1 DOMINETTE 432P

JA L1 DOMINO 7640T
JA L1 DOMINETTE 1610Y
| JA L1 DOMINETTE 9007W

Carcass: REA **.14** / MARB **.09**

L1 DOMINO 0357I
HH MISS ADVANCE 1088L
CL 1 DOMINO 0157K
JA L1 DOMINETTE 1223L
HH ADVANCE 286M
JAL L1 DOMINETTE 1409L
JA L1 DOMINO 6001S
JA L1 DOMINETTE 1206L

**JAMISON RANCH**

Hereford Bred Heifer & Quarter Horse
FALL PRODUCTION SALE

NOVEMBER 4, 2016

150 Bred Heifers ... Registered & Commercial
60 AQHA Ranch Horses • 30 2016 AQHA Foals

183

B&B L1 DOMINO 495
August 26, 2014 • #43551169

FALL YRLG
Act. BW ... **78**
EPDs:
BW **2.3**
WW **42**
YW **73**
MILK **22**
M&G **43**
Eye Pigment:
LE **100** / RE **100**

HH ADVANCE 3113N
CL 1 DOMINO 555R
CL 1 DOMINETTE 3174N
CL 1 DOMINO 8153H
B&B L1 DOMINETTE 5109
B&B L1 DOMINETTE 6120
Carcass: REA **.14** / MARB **-.05**

L1 DOMINO 99496
HH MS ADV 875H
CL 1 DOMINO 9126J
CL 1 DOMINETTE 810H
CL 1 DOMINO 5131E
CL 1 DOMINET 496
HH ADVANCE 311C
B&B MS L1 DOM 2122

184

B&B L1 DOMINO 497
August 27, 2014 • #43551182

FALL YRLG
Act. BW ... **81**
EPDs:
BW **2.5**
WW **51**
YW **84**
MILK **28**
M&G **53**
Eye Pigment:
LE **70** / RE **70**

CL 1 DOMINO 732T
CL 1 DOMINO 9125W
CL 1 DOMINETTE 475P
CL 1 DOMINO 555R
B&B L1 DOMINETTE 7154
B&B L1 DOMINETTE 478P
Carcass: REA **.20** / MARB **.05**

CL 1 DOMINO 590R
CL 1 DOMINETTE 507R
CL 1 DOMINO 824H
CL 1 DOMINETTE 200M
HH ADVANCE 3113N
CL 1 DOMINETTE 3174N
CL 1 DOMINO 8153H
B&B L1 DOMINET 7188

Outstanding rancher bull, deep ribbed and lots of middle. The golden cross, 9125 x 555, it works every time.

185

B&B L1 DOMINO 4100
August 28, 2014 • #43551256

FALL YRLG
Act. BW ... **75**
EPDs:
BW **1.4**
WW **47**
YW **70**
MILK **28**
M&G **52**
Eye Pigment:
LE **80** / RE **80**

CL 1 DOMINO 7128T
HH ADVANCE 0118X
HH MISS ADVANCE 6074S
CL 1 DOMINO 9125W
B&B L1 DOMINETTE 1171
B&B L1 DOMINETTE 8167
Carcass: REA **.23** / MARB **.02**

HH ADVANCE 3113N
CL 1 DOMINETTE 0112K
CL 1 DOMINO 2136M
HH MISS ADVANCE 1013L
CL 1 DOMINO 732T
CL 1 DOMINETTE 475P
CL 1 DOMINO 555R
B&B L1 DOMINETTE 456

186

B&B L1 DOMINO 4115
Sept. 1, 2014 • #43551220

FALL YRLG
Act. BW ... **85**
EPDs:
BW **2.8**
WW **53**
YW **84**
MILK **28**
M&G **54**
Eye Pigment:
LE **10** / RE **10**

CL 1 DOMINO 7128T
HH ADVANCE 0132X
HH MS ADVANCE 6054S
CL 1 DOMINO 9125W
B&B L1 DOMINETTE 2144
B&B L1 DOMINETTE 7226
Carcass: REA **.06** / MARB **.22**

HH ADVANCE 3113N
CL 1 DOMINETTE 0112K
CL 1 DOMINO 320N
HH MISS ADVANCE 4053P
CL 1 DOMINO 732T
CL 1 DOMINETTE 475P
JA L1 DOMINO 426P
B&B L1 DOMINET 7147

187

B&B L1 DOMINO 4118
Sept. 2, 2014 • #43551184

FALL YRLG
Act. BW ... **79**
EPDs:
BW **3.0**
WW **53**
YW **87**
MILK **23**
M&G **50**
Eye Pigment:
LE **100** / RE **70**

CL 1 DOMINO 732T
CL 1 DOMINO 9125W
CL 1 DOMINETTE 475P
CL 1 DOMINO 8153H
B&B L1 DOMINETTE 7162
B&B L1 DOMINETTE 5112
Carcass: REA **.38** / MARB **.00**

CL 1 DOMINO 590R
CL 1 DOMINETTE 507R
CL 1 DOMINO 824H
CL 1 DOMINETTE 200M
CL 1 DOMINO 5131E
CL 1 DOMINET 496
CL 1 DOMINO 8153H
B&B L1 DOMINET 5191

Big framed and rugged with a 79 lb. birth weight.

188

B&B L1 DOMINO 4131
Sept. 3, 2014 • #43551119

FALL YRLG
Act. BW ... **92**
EPDs:
BW **4.0**
WW **50**
YW **83**
MILK **28**
M&G **53**
Eye Pigment:
LE **20** / RE **100**

HH ADVANCE 3113N
CL 1 DOMINO 555R
CL 1 DOMINETTE 3174N
JA L1 DOMINO 426P
B&B L1 DOMINETTE 964
B&B L1 DOMINETTE 7125
Carcass: REA **.08** / MARB **.04**

L1 DOMINO 99496
HH MS ADV 875H
CL 1 DOMINO 9126J
CL 1 DOMINETTE 810H
CL 1 DOMINO 0157K
JA L1 DOMINETTE 7070
B&B MR MAX 1082
B&B L1 DOMINET 9116

Herd bull prospect that's traditionally marked. Lots of volume and muscle. Won't be many more 555 sons for sale and here is a good one!

189

B&B L1 DOMINO 4144
Sept. 7, 2014 • #43551183

FALL YRLG
Act. BW ... **85**
EPDs:
BW **2.9**
WW **49**
YW **82**
MILK **26**
M&G **50**
Eye Pigment:
LE **100** / RE **100**

CL 1 DOMINO 732T
CL 1 DOMINO 9125W
CL 1 DOMINETTE 475P
CL 1 DOMINO 555R
B&B L1 DOMINETTE 7157
B&B L1 DOMINETE 481P
Carcass: REA **.17** / MARB **.04**

CL 1 DOMINO 590R
CL 1 DOMINETTE 507R
CL 1 DOMINO 824H
CL 1 DOMINETTE 200M
HH ADVANCE 3113N
CL 1 DOMINETTE 3174N
CL 1 DOMINO 8153H
B&B L1 DOMINETTE 358

190

B&B L1 DOMINO 4147
Sept. 8, 2014 • #43551188

FALL YRLG
Act. BW ... **87**
EPDs:
BW **3.6**
WW **52**
YW **85**
MILK **25**
M&G **51**
Eye Pigment:
LE **80** / RE **80**

CL 1 DOMINO 732T
CL 1 DOMINO 9125W
CL 1 DOMINETTE 475P
JA L1 DOMINO 426P
B&B L1 DOMINETTE 7174
B&B L1 DOMINETE 861
Carcass: REA **.16** / MARB **.12**

CL 1 DOMINO 590R
CL 1 DOMINETTE 507R
CL 1 DOMINO 824H
CL 1 DOMINETTE 200M
CL 1 DOMINO 0157K
JA L1 DOMINETTE 7070
KB L1 DOMINO 441
B&B MS L1 DOMINO 475

Red necked, deep rib and lots of length.

191

B&B L1 DOMINO 4150
Sept. 9, 2014 • #43551170

FALL YRLG
Act. BW ... **86**
EPDs:
BW **3.9**
WW **52**
YW **84**
MILK **24**
M&G **50**
Eye Pigment:
LE **100** / RE **80**

CL 1 DOMINO 732T
CL 1 DOMINO 9125W
CL 1 DOMINETTE 475P
CL 1 DOMINO 8153H
B&B L1 DOMINETTE 5110
B&B L1 DOMINETTE 6181
Carcass: REA **.32** / MARB **.02**

CL 1 DOMINO 590R
CL 1 DOMINETTE 507R
CL 1 DOMINO 824H
CL 1 DOMINETTE 200M
CL 1 DOMINO 5131E
CL 1 DOMINET 496
B&B MR MAX 1082
B&B MS MARKETTE 1062

192

B&B L1 DOMINO 4156
Sept. 11, 2014 • #43551245

FALL YRLG
Act. BW ... **87**
EPDs:
BW **3.6**
WW **54**
YW **82**
MILK **25**
M&G **52**
Eye Pigment:
LE **100** / RE **100**

CL 1 DOMINO 7128T
HH ADVANCE 0118X
HH MISS ADVANCE 6074S
CL 1 DOMINO 9125W
B&B L1 DOMINETTE 1249
B&B L1 DOMINETTE 8137
Carcass: REA **.28** / MARB **.03**

HH ADVANCE 3113N
CL 1 DOMINETTE 0112K
CL 1 DOMINO 2136M
HH MISS ADVANCE 1013L
CL 1 DOMINO 732T
CL 1 DOMINETTE 475P
JA L1 DOMINO 426P
B&B L1 DOMINETTE 2147

FALL YEARLINGS

193

B&B L1 DOMINO 4158

Sept. 12, 2014 • #43551201

FALL YRLG

Act. BW ... **82**

EPDs:

BW **2.6**

WW **52**

YW **84**

MILK **28**

M&G **54**

Eye Pigment:

LE **70** / RE **90**

CL 1 DOMINO 732T
CL 1 DOMINO 9125W
| CL 1 DOMINETTE 475P

CL 1 DOMINO 555R
B&B L1 DOMINETTE 8142
| B&B L1 DOMINETE 5139

Carcass: REA **.22** / MARB **.04**

Well balanced numbers and sure enough a beef bull.

CL 1 DOMINO 590R
CL 1 DOMINETTE 507R
CL 1 DOMINO 824H
CL 1 DOMINETTE 200M
HH ADVANCE 3113N
CL 1 DOMINETTE 3174N
CL 1 DOMINO 8153H
B&B L1 DOMINETTE 6162

194

B&B L1 DOMINO 4159

Sept. 12, 2014 • #43551200

FALL YRLG

Act. BW ... **89**

EPDs:

BW **4.2**

WW **54**

YW **93**

MILK **24**

M&G **51**

Eye Pigment:

LE **100** / RE **95**

CL 1 DOMINO 732T
CL 1 DOMINO 9125W
| CL 1 DOMINETTE 475P

JA L1 DOMINO 426P
B&B L1 DOMINETTE 8137
| B&B L1 DOMINETTE 2147

Carcass: REA **.24** / MARB **.08**

Growth bull that's long sided and deep.

CL 1 DOMINO 590R
CL 1 DOMINETTE 507R
CL 1 DOMINO 824H
CL 1 DOMINETTE 200M
CL 1 DOMINO 0157K
JA L1 DOMINETTE 7070
CL 1 DOMINO 8153H
B&B MS LEGACY 1009

195

B&B L1 DOMINO 4165

Sept. 14, 2014 • #43551175

FALL YRLG

Act. BW ... **87**

EPDs:

BW **3.4**

WW **57**

YW **95**

MILK **29**

M&G **58**

Eye Pigment:

LE **100** / RE **100**

HH ADVANCE 3113N
CL 1 DOMINO 555R
| CL 1 DOMINETTE 3174N

JA L1 DOMINO 426P
B&B L1 DOMINETTE 6180
| B&B L1 DOMINETTE 2175

Carcass: REA **.24** / MARB **.03**

A WWR of 119 and dam has averaged 112 on her three calves. Outstanding balance of EPD's.

L1 DOMINO 99496
HH MS ADV 875H
CL 1 DOMINO 9126J
CL 1 DOMINETTE 810H
CL 1 DOMINO 0157K
JA L1 DOMINETTE 7070
CL 1 DOMINO 8153H
B&B L1 DOMINET 1063

196

B&B L1 DOMINO 4167

Sept. 14, 2014 • #43551206

FALL YRLG

Act. BW ... **88**

EPDs:

BW **3.1**

WW **55**

YW **92**

MILK **28**

M&G **56**

Eye Pigment:

LE **10** / RE **10**

HH ADVANCE 3113N
CL 1 DOMINO 555R
| CL 1 DOMINETTE 3174N

JA L1 DOMINO 426P
B&B L1 DOMINETTE 8232
| B&B L1 DOMINETTE 986

Carcass: REA **.18** / MARB **.04**

Really well made 555 son, here is a beef bull.

L1 DOMINO 99496
HH MS ADV 875H
CL 1 DOMINO 9126J
CL 1 DOMINETTE 810H
CL 1 DOMINO 0157K
JA L1 DOMINETTE 7070
DHR L1 DOMINO 512D
B&B MS L1 DOMINO 448

197

B&B L1 DOMINO 4175

Sept. 22, 2014 • #43551095

FALL YRLG

Act. BW ... **86**

EPDs:

BW **3.7**

WW **60**

YW **96**

MILK **31**

M&G **61**

Eye Pigment:

LE **80** / RE **80**

CL 1 DOMINO 732T
CL 1 DOMINO 9125W
| CL 1 DOMINETTE 475P

CL 1 DOMINO 555R
B&B L1 DOMINETTE 0212
| B&B L1 DOMINETTE 5159

Carcass: REA **.30** / MARB **.05**

CL 1 DOMINO 590R
CL 1 DOMINETTE 507R
CL 1 DOMINO 824H
CL 1 DOMINETTE 200M
HH ADVANCE 3113N
CL 1 DOMINETTE 3174N
CL 1 DOMINO 8153H
B&B L1 DOMINET 7188

198

B&B L1 DOMINO 4180

Sept. 23, 2014 • #43551114

FALL YRLG

Act. BW ... **82**

EPDs:

BW **3.0**

WW **51**

YW **84**

MILK **23**

M&G **49**

Eye Pigment:

LE **80** / RE **80**

CL 1 DOMINO 732T
CL 1 DOMINO 9125W
| CL 1 DOMINETTE 475P

CL 1 DOMINO 8153H
B&B L1 DOMINETTE 474
| B&B L1 DOMINETE 3125

Carcass: REA **.30** / MARB **.04**

CL 1 DOMINO 590R
CL 1 DOMINETTE 507R
CL 1 DOMINO 824H
CL 1 DOMINETTE 200M
CL 1 DOMINO 5131E
CL 1 DOMINET 496
ARROW CL1 DOM 7068
B&B MS TRAC II 9145

199

B&B L1 DOMINO 4185

Sept. 27, 2014 • #43551264

FALL YRLG

Act. BW ... **79**

EPDs:

BW **2.0**

WW **49**

YW **71**

MILK **26**

M&G **50**

Eye Pigment:

LE **60** / RE **40**

CL 1 DOMINO 7128T
HH ADVANCE 0118X
| HH MISS ADVANCE 6074S

CL 1 DOMINO 555R
B&B L1 DOMINETTE 1195
| B&B L1 DOMINETTE 469

Carcass: REA **.25** / MARB **-.03**

HH ADVANCE 3113N
CL 1 DOMINETTE 0112K
CL 1 DOMINO 2136M
HH MISS ADVANCE 1013L
HH ADVANCE 3113N
CL 1 DOMINETTE 3174N
CL 1 DOMINO 8153H
B&B MS PACKER 1098

200

B&B L1 DOMINO 4187

Sept. 28, 2014 • #43551202

FALL YRLG

Act. BW ... **89**

EPDs:

BW **3.7**

WW **57**

YW **92**

MILK **31**

M&G **59**

Eye Pigment:

LE **80** / RE **100**

CL 1 DOMINO 732T
CL 1 DOMINO 9125W
| CL 1 DOMINETTE 475P

CL 1 DOMINO 555R
B&B L1 DOMINETTE 8155
| B&B L1 DOMINETTE 5210

Carcass: REA **.27** / MARB **.03**

Eye appeal and muscle, dam has an outstanding record.

CL 1 DOMINO 590R
CL 1 DOMINETTE 507R
CL 1 DOMINO 824H
CL 1 DOMINETTE 200M
HH ADVANCE 3113N
CL 1 DOMINETTE 3174N
CL 1 DOMINO 8153H
B&B MS PACKER 1098

201

B&B L1 DOMINO 4231

Sept. 2, 2014 • #43551171

FALL YRLG

Act. BW ... **79**

EPDs:

BW **3.4**

WW **47**

YW **78**

MILK **24**

M&G **47**

Eye Pigment:

LE **100** / RE **100**

CL 1 DOMINO 732T
CL 1 DOMINO 9125W
| CL 1 DOMINETTE 475P

CL 1 DOMINO 8153H
B&B L1 DOMINETTE 5112
| B&B L1 DOMINET 5191

Carcass: REA **.25** / MARB **.03**

CL 1 DOMINO 590R
CL 1 DOMINETTE 507R
CL 1 DOMINO 824H
CL 1 DOMINETTE 200M
CL 1 DOMINO 5131E
CL 1 DOMINET 496
B&B MR MAX 1082
B&B MS TRAC II 9121

202

B&B L1 DOMINO 4236

Sept. 5, 2014 • #43551247

FALL YRLG

Act. BW ... **84**

EPDs:

BW **2.8**

WW **50**

YW **77**

MILK **26**

M&G **51**

Eye Pigment:

LE **70** / RE **70**

CL 1 DOMINO 7128T
HH ADVANCE 0118X
| HH MISS ADVANCE 6074S

CL 1 DOMINO 555R
B&B L1 DOMINETTE 1252
| B&B L1 DOMINETTE 482

Carcass: REA **.26** / MARB **-.02**

HH ADVANCE 3113N
CL 1 DOMINETTE 0112K
CL 1 DOMINO 2136M
HH MISS ADVANCE 1013L
HH ADVANCE 3113N
CL 1 DOMINETTE 3174N
CL 1 DOMINO 8153H
B&B L1 DOMINETE 861

Lot 202 has a black tail and some black pigment as do herd sires 0118, 555 and 8153. This is a long sided beef bull.

HEREFORD BULLS



**The #1
Crossbreeding Sire
on your
BLACK COWS!**

**THE F1 BLACK BALDIE
\$\$ ADVANTAGE...**

YOUR CALF CROP

*Black Baldie heterosis ...more calf
vigor and pounds of performance!*

YOUR COWHERD

*Higher conception, more efficiency,
greater longevity ...More total
lifetime production!*



THE FEEDLOT

*Lower feed conversions, cheaper gains,
added CHB and CAB grid value ...More
total feedlot and carcass return!*

**CIRCLE A RANCH (MO) and HARRIS
RANCH BEEF (CA) Research**
*...Documented Black Baldie 7% higher
heifer conception, 5% lower feedlot
conversion, a +30% more cow longevity
and \$500+ more mother cow lifetime
production return.*



GENERAL INFORMATION

DATE: Friday, FEBRUARY 26, 2016 ...12 Noon CST

LOCATION: Headquarters located off I-70, Quinter Exit 107, 2 mi. south, 1 mi. east, 1½ miles south

LUNCH: Available on the grounds.

PHONES: Gordon Jamison 785/754-3639, (c) 785/299-0441
Cody Jamison (c) 785/299-0020, Daron Jamison (c) 785/650-9639

SALE DAY PHONE: 785/754-3424

SALE BULL VIDEOS: Video of every sale bull available online at www.jamisonranch.com

BID ONLINE: www.dvauction.com ...for information and to register for bidding online, call Tami McIntosh 308/870-3661.

SALE HEADQUARTERS:

Cobblestone Inn & Suites, Quinter, KS • 785/754-3600

Exit 107 off I-70 at Quinter, KS

Ask for Jamison Ranch sale rate. Free breakfast.

Best Western, Wakeeney, KS • 785/743-2700

Located 20 miles east of ranch on I-70

Ask for Jamison Ranch sale rate. Free, full service breakfast.

Other Motels: Wakeeney (20 miles east): Super 8 785/743-6628; Econo Lodge 785/743-5505; **Oakley (30 mi. west):** Best Western Golden Plains 785/672-3254; Kansas Kountry Inn 785/672-3131; Oakley Sleep Inn 785/671-1111; **Quinter: Q Inn 785/754-3337.**

AIRPORTS: Commercial air service is available to Hays, KS or Garden City, KS. Private planes may land at Quinter, KS (sod strip), Wakeeney (3500 ft. paved) or Oakley (5000 ft. paved).

TERMS & CONDITIONS: Terms of the sale are cash. Every sale animal will be sold to the highest bidder with the auctioneer settling bid disputes. Announced changes in catalog information on sale day take precedence over printed material. All cattle are the buyer's property as soon as sold and will be cared for a reasonable length of time at the buyer's risk. Any person attending the sale does so at his own risk. Neither the sale management, owners, nor any person connected with this sale, assumes any liability, legal or otherwise.

In the event of default in any part of the Terms and Conditions for this sale by buyer or seller, it shall be the responsibility of the buyer or seller to instigate action needed to bring about a fair settlement of any claims and to be responsible for any and all costs involved.

GUARANTEE: Every animal in this sale is, to our knowledge, free from any disease or defect. Any known defect will be called at sale time. All bulls have been fertility tested by Hawkeye Breeders Services, Adel, Iowa prior to the sale. They are guaranteed breeders. If an animal fails to breed after a six month trial, it may be returned to the seller if it is in good condition and in compliance with Kansas health regulations. The seller reserves the right to try said animal for 90 days, and if it proves a breeder, return it to the buyer at the buyer's expense. If the animal proves to be a non-breeder, an animal of comparable rank will be substituted or the purchase price will be credited toward purchase of an animal in the next sale. We assume no liability, legal or otherwise, to make any further compensation to the buyer. No warranty of any nature is expressed or implied. All sale cattle are IE and Diluter free.

HEALTH: Herd health is excellent. Individual health papers will be furnished for shipment.

REGISTRATION & TRANSFER: American Hereford Assn. registration certificates will be transferred upon request to buyers at seller's expense. At time of settlement, buyers must give complete information.

PERFORMANCE: Complete Total Performance Records are available on all cattle. Current weight, WDA and scrotal will be available sale day. Carcass ultrasound data will be available on the yearling bulls.

DELIVERY: Free delivery is provided on volume purchases of \$6000 or more. All other deliveries will be provided at cost.

INSURANCE: Insurance can be arranged through American Live Stock / Markel, Cheri & Jim Gies, CO, (c) 970/590-0500 or (h) 970/454-3836.

ABSENTEE BIDS: Those who cannot attend the sale may place phone or mail bids by contacting Gordon Jamison, Jay George (United Live-stock Brokers) or any listed sale representative.

SALE MANAGEMENT: United Livestock Brokers, Inc.
Jay George (c) 605/391-6230 • 1025 28th Rd. NW • Lebo, KS 66856
Sale management acts as agent only and assumes no legal responsibility.

JAMISON RANCH

2271 COUNTY RD. 74
QUINTER, KANSAS 67752

ADDRESS SERVICE REQUESTED

FIRST CLASS



**THE COWMAN'S BREEDING BULL FACTORY!
200 BULLS!**

Herd Bulls • Performance Rancher Bulls • Line 1 Hereford Genetics in Volume!