



SINCE 1944 ...73 YEARS OF
HEREFORD BREED LEADERSHIP!


JAMISON HEREFORDS

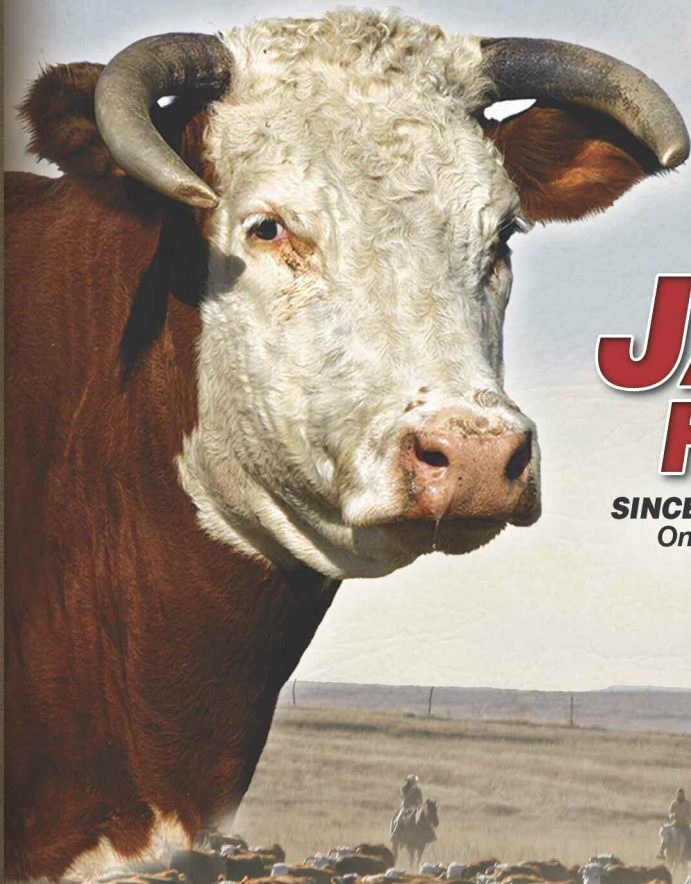
BREEDERS & RANCHERS

FALL FEMALE SALE

FRIDAY **DECEMBER 1, 2017**

QUINTER, KANSAS

 UNITED LIVESTOCK BROKERS, INC.



JAMISON HEREFORDS

SINCE 1944 ...73 Years of Hereford Leadership!
One of America's Most Respected Cowherds!



THE **JA LINE 1** **MATERNAL FACTORY...**

Backed by generations of performance testing, line breeding and building upon elite cow families!

...A Performance Cowherd from Western Kansas' Big, Hard-Grass Ranch Country!



A COWMAN'S PROGRAM!

- ✓ Linebred Line 1
- ✓ Trait Balanced ...Maternal is #1
- ✓ Efficient, Problem-Free Mother Cows
- ✓ Red Pigmented ...generations of selection!
- ✓ Range Country Cattle ...no creep, graze year-round, range country calved
- ✓ The Maternal Factory Behind JA-Bred Breeding Bulls

JAMISON HEREFORDS

jamisonranch.com

BREEDERS & RANCHERS

FALL FEMALE SALE

FRIDAY DECEMBER 1, 2017

12:30 PM • Jamison Ranch Sale Center • Quinter, KS
Off I-70 Exit 107, 2 miles South, 1 mile East, 1 1/2 miles South

300 HERD BUILDING FEMALES

84 Registered Line 1 Herefords

53 Spring Bred Heifers • 30 Fall Cow/Calf Pairs

220 Comm'l Hereford / Black Baldie Bred Heifers

Complete information, page 19

■ AUCTIONEER

LYNN WEISHAAR • Reva, SD • cell 605/641-6278

■ SALE REPRESENTATIVES

Levi Landers, American Hereford Assn. • 308/ 730-1396

Tom Granzow, Kansas Hereford Assn. • 785/ 466-2226

Marc Hotchkiss, Hereford America & The Livestock Link • 605/ 490-1513

Jim Gies, Western Livestock Journal • 970/ 590-0500

Stephen Russell, Kansas Stockman • 785/ 458-2650

Guy Peverley, The Stock Exchange • 785/ 456-4390

Doug Paul, The Stock Exchange • 405/ 820-3982

Chisolm Kinder, Oklahoma Cowman • 405/ 747-6483

Andrew Sylvester, F&R Livestock Resource • 785/ 456-4352

Scott Dirk, Tri-State Livestock News • 605/ 380-6024

■ INSURANCE American Live Stock / Markel

Cheri & Jim Gies (c) 970/ 590-0500 or (h) 970/ 454-3836



UNITED LIVESTOCK BROKERS, INC.

Jay George • 605/391-6230

1025 28th Rd. NW

Lebo, Kansas 66856

Photography by Jay George

■ VETERINARIANS Hoxie (KS) Vet Service • 785/ 675-3378

Mark Olson, DVM • Derek Priddy, DVM

■ SALE DAY PHONE: 785/ 754-3424

■ GENERAL INFORMATION... Sale terms, motels, etc., see page 20

■ Sale Videos, Updates, Information... jamisonranch.com

GORDON JAMISON & SONS

Gordon (c) 785/ 299-0441 (h) 785/ 754-3639

Daron Jamison 785/ 650-9639 • Devin Sweitzer 785/ 299-0663

2271 County Rd. 74 • Quinter, Kansas 67752

WELCOME...

The Jamison family welcomes you to our Breeders & Ranchers Fall Female Sale. Hereford cattle have been our livelihood and passion since the herd was established in 1944. Four Jamison generations and 73 years later, we're pleased to offer these females as a product of our performance seedstock program.

This offering reflects the maternal quality, trait balance and phenotype that have been the JA program's focus. Our #1 priority has been the Maternal Factory requiring an important balance of the measured performance traits combined with a cowboy's eye and savvy for sound structure, doin' ability and fertility. The result ...problem-free, efficient, productive cows that thrive in our western Kansas, hard-grass country.

The bred heifers feature A.I. service of two elite, young Line 1 bulls CL1 Domino 6187D and 6163D, both breed leaders for CE, performance and carcass value. The outstanding, young fall cows are nursing a fancy herdsires and replacement heifer prospect baby calves.

The commercial females are among the very best to sell this season ...225 Hereford and Black Baldie AI bred heifers. Sired by sale-top JA Line 1 bulls, they are backed by leading reputation cowherds in the plains region.

We're pleased with the quality, performance and condition of this offering of Line 1, range country bred, registered and commercial females. Please call with your questions and we'll look forward to seeing you sale day.

Gordon Jamison and Family

View the auction live ...bid online!

DVAuction
Broadcasting Real-Time Auctions

www.dvauction.com

For more information and to register to bid,
call Tami McIntosh 308/ 870-3661

JA A.I. REFERENCE SIRES



- Cooper Herefords' 2017 second hi-seller, \$67,000
- A very complete, structurally balanced, "big dimension" sire prospect
- **In-herd record:**
205 wt. **772 / 105** • 365 wt. **1400 / 113** • REA ratio **105** • MARB ratio **159**
- Hi carcass value ...breed's top 1% for CW, MARB, \$CHB
- Total performance leader, top 20% rank for 15 traits ...Calving Ease, Growth, Maternal, Carcass

CED 3.4 BW 2.6 WW 63 YW 107 MILK 28 M&G 59
CW 82 REA .11 MARB .66 \$CHB 40



- Big ribbed, trait balanced, good doin' beef bull from Cooper's 2017 sale
- **In-herd record:**
205 wt. **753 / 102** • 365 wt. **1291 / 103** • REA ratio **102** • MARB ratio **132**
- Elite Dam of Distinction mother (4 clvs. WR 105 / YR 105)
...\$35,000 hi-selling ET Donor, Cooper 2017 sale

CED 3.2 BW 1.7 WW 65 YW 100 MILK 31 M&G 63
CW 80 REA .12 MARB .47 \$CHB 34



SIRE:
HH ADVANCE 4067B

Select Sires leading A.I. Hereford bull • Pedigree features 5 Dams of Distinction • Hereford's Unique 14-Trait Leader... CE, Growth, Maternal & \$CHB Grid Value ...Few Are Equal!

CL 1 DOMINO 6187D

January 9, 2016 • #43691873
Owners: Jamison; Van Newkirk, NE; Cooper, MT

HH ADVANCE 1013Y
HH ADVANCE 4067B

HH MISS ADVANCE 8255U

CL 1 DOMINO 215Z
CL 1 DOMINETTE 450B

CL 1 DOMINETTE 1178Y

HH ADVANCE 4055P
HH MISS ADVANCE 7003T **DOD**

L1 DOMINO 03571
HH MISS ADVANCE 4009P

CL 1 DOMINO 9122W
CL 1 DOMINETTE 055X **DOD**

CL 1 DOMINO 862U
CL 1 DOMINETTE 777T

Complete, Total Performance Leader ...CE & Growth Curve Bender, Premium Grid Value!



SIRE:
CL 1 DOMINO 215Z

Powerful total performance bull ...Cooper Hereford Ranch, MT, sire • Breed's top 25% for 12 Traits ...top 10% on 6 traits • Complete, Balanced, Breed Elite Cowherd Builder & CHB Carcass Leader!

CL 1 DOMINO 6163D

January 24, 2016 • #43691848
Owners: Jamison; Oleen Bros., KS; Cooper, MT

CL 1 DOMINO 9122W
CL 1 DOMINO 215Z

CL 1 DOMINETTE 055X **DOD**

CL 1 DOMINO 7110T
MONTANA MISS 1179Y **DOD**

MONTANA MISS 753T

CL 1 DOMINO 732T
CL 1 DOMINETTE 475P

CL 1 DOMINO 860U
CL 1 DOMINETTE 7136T **DOD**

CL 1 DOMINO 590R
CL 1 DOMINETTE 332N **DOD**
CL 1 DOMINO 592R
MONTANA MISS 306

A Hi-Maternal, Big Spread Calving Ease, Carcass Premium Beef Bull!

JA REFERENCE SIRES



CL 1 DOMINO 9125W

Jan. 18, 2009
#42994844



CED.....-0.5
BW.....3.4
WW.....★61
YW.....★99
MILK.....★32
M&G.....★63
REA.....★34
MARB.★.16

CL 1 DOMINO 590R (CL 1 Domino 246M)

CL 1 DOMINO 732T

CL 1 DOMINETTE 507R (HH Advance 3113N)

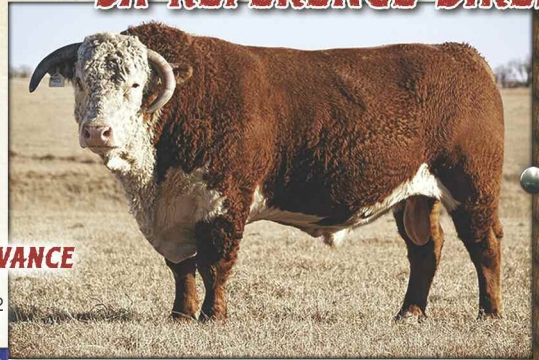
CL 1 DOMINO 824H (CL 1 Domino 640F)

CL 1 DOMINETTE 475P (2 clvs. WR 107 / YR 108)

CL 1 DOMINETTE 200M DOD (CL 1 Domino 9126J)

26 Herds / 553 Progeny WR 101, YR 101 / 129 dgtrs. avg. WR 101
5 Trait Leader: WW • MILK • M&G / CW • MARB

**Cowman's 5-Trait Performance Leader
...Herd Impact Daughters!**



HH ADVANCE 2181Z

Feb. 5, 2012
#43270986



CED.....2.2
BW.....4.1
WW.....★63
YW.....★92
MILK.....★31
M&G.....★63
REA.....★31
MARB.-.11

CL 1 DOMINO 638S (L1 Domino 03396)

CL 1 DOMINO 886U

CL 1 DOMINETTE 440P (CL 1 Domino 9126J)

CL 1 DOMINO 320N (CL 1 Domino 019K)

HH MISS ADVANCE 6054S (8 clvs. WR 102)

HH MISS ADVANCE 4053P (HH Advance 145L)

9 Herds / 232 Progeny WR 102, YR 100 / 22 dgtrs. avg. WR 100
Trait Leader: WW • MILK • M&G

**Sires Powerful Performance Cattle
...Landmark Maternal Pedigree!**



CL 1 DOMINO 555R

Jan. 13, 2005
#42573506



CED.....2.2
BW.....2.4
WW.....52
YW.....87
MILK.....★32
M&G.....★58
REA.....08
MARB.....05

L1 DOMINO 99496 (L1 Domino 97349)

HH ADVANCE 3113N

HH MS ADV 875H (HH Advance 671F)

CL 1 DOMINO 9126J (HH Advance 767G)

CL 1 DOMINETTE 3174N (DOD, 5 clvs. WR 105 / YR 104)

CL 1 DOMINETTE 810H (CL 1 Domino 640F)

26 Herds / 453 Progeny / 190 dgtrs. avg. WR 101
6 Trait Leader: MILK • M&G • SC / BMI • CEZ • BI

Hi-Maternal Cowherd Builder ...Moderate, Milky Females!



HH ADVANCE 4082B

Jan. 6, 2014
#43470127



CED.....2.7
BW.....2.5
WW.....55
YW.....92
MILK.....33
M&G.....60
REA.....22
MARB.....03

CL 1 DOMINO 732T (CL 1 Domino 590R)

CL 1 DOMINO 1161Y

CL 1 DOMINETTE 4126P (CL 1 Domino 1116L)

HH ADVANCE 5104R (CL 1 Domino 206M)

HH MISS ADVANCE 9102W (DOD, 4 clvs. WR 109 / YR 104)

HH MISS ADVANCE 7098T (HH Advance 3196N)

6 Herds / 132 Progeny WR 101, YR 102

Powerful, Complete, Hi-Performance Beef Bull!



CL 1 DOMINO 860U

Jan. 10, 2008
#42897554



CED.....-1.8
BW.....4.4
WW.....★64
YW.....★118
MILK.....★32
M&G.....★65
REA.....★31
MARB.-.02

L1 DOMINO 03396 (L1 Domino 00552)

CL 1 DOMINO 637S

CL 1 DOMINETTE 118L (CL 1 Domino 888H)

CL 1 DOMINO 1172L (HH Advance 767G)

CL 1 DOMINETTE 5142R (DOD, 5 clvs. WR 115 / YR 111)

CL 1 DOMINETTE 810H (CL 1 Domino 640F)

52 Herds / 947 Progeny WR 102, YR 103 / 386 dgtrs. avg. WR 101
6 Trait Leader: WW • YW • MILK • M&G / CW • CHB

**Breed Moving, 6-Trait Performance, Maternal,
CHB Grid Leader!**



CL 1 DOMINO 386A

Jan. 14, 2013
#43379798



CED.....2.6
BW.....1.9
WW.....56
YW.....74
MILK.....38
M&G.....67
REA.....52
MARB.....21

CL 1 DOMINO 9105W (CL 1 Domino 732T)

CL 1 DOMINO 1108Y

CL 1 DOMINETTE 617S (HH Advance 3113N)

CL 1 DOMINO 9126J (HH Advance 767G)

CL 1 DOMINETTE 440P (5 clvs. WR 104 / YR 100)

CL 1 DOMINETTE 974J (HH Advance 629F)

7 Herds / 102 Progeny WR 100 / 4 dgtrs. avg. WR 104

**Elite CE, Cowherd, Carcass Numbers
...Landmark Cooper 617 & 440 Cow Families!**

JA REFERENCE SIRES



CL 1 DOMINO 216Z

Jan. 9, 2012
#43268008



CED... **★5.9**
BW... **★0.0**
WW... **46**
YW... **84**
MILK... **★35**
M&G... **★58**
REA... **-.11**
MARB... **-.10**

CL 1 DOMINO 860U

CL 1 DOMINO 637S (L1 Domino 0339E)

CL 1 DOMINETTE 5142R DOD (CL 1 Domino 1172L)

CL 1 DOMINO 590R (CL 1 Domino 246M)

CL 1 DOMINETTE 759T

CL 1 DOMINETTE 193L (HH Advance 767G)

17 Herds / 272 Progeny / 61 dgters. avg. WR 100
5 Trait Leader: CED • BW • MILK • M&G / CEZ

Hereford 5-Trait Calving Ease Leader
...Moderate, Hi-Maternal Daughters!



HH ADVANCE 3040A

Jan. 4, 2013
#43368367



CED... **2.3**
BW... **2.4**
WW... **40**
YW... **63**
MILK... **33**
M&G... **53**
REA... **-.03**
MARB... **-.10**

HH ADVANCE 0132X

CL 1 DOMINO 7128T (HH Advance 3113N)

HH MISS ADVANCE 6054S (CL 1 Domino 320N)

L1 DOMINO 03571 (L1 Domino 01384)

HH MISS ADVANCE 6155S (5 clvs. WR 101)

Full sister to herdsire
HH Advance 8050U HH MISS ADVANCE 365N (HH Advance 0024K)

11 Herds / 144 Progeny
Complete, Moderate, Hi-Maternal
Cowman's Bull!



HH ADVANCE 0118X

Jan. 14, 2010
#43073967



CED... **2.3**
BW... **2.8**
WW... **50**
YW... **67**
MILK... **17**
M&G... **42**
REA... **.33**
MARB... **.02**

CL 1 DOMINO 7128T

HH ADVANCE 3113N (L1 Domino 9949E)

CL 1 DOMINETTE 0112K (CL 1 Domino 5131E)

CL 1 DOMINO 2136M (CL 1 Domino 9126J)

HH MISS ADVANCE 6074S (5 clvs. WR 101 / YR 101)

HH MISS ADVANCE 1013L (HH Advance 8060H)

19 Herds / 297 Progeny WR 101, YR 99 / 41 dgters.
4 Trait Leader: CEM • US • TS • CEZ

Stockman's Bull ...Balanced Traits and
Moderate, Problem-Free Daughters!



HH ADVANCE 0085X

Jan. 9, 2010
#43074001



CED... **-0.4**
BW... **3.5**
WW... **50**
YW... **74**
MILK... **★29**
M&G... **★54**
REA... **.31**
MARB... **★.18**

HH ADVANCE 8203U

HH ADVANCE 5161R (HH Advance 396N)

HH MISS ADVANCE 6054S (CL 1 Domino 320N)

L1 DOMINO 03571 (L1 Domino 01384)

HH MISS ADVANCE 7017T (4 clvs. WR 105 / 2 clvs. YR 108)

HH MISS ADVANCE 365N (HH Advance 0024K)

6 Herds / 133 Progeny WR 100, YR 99 / 10 dgters. avg. WR 100
5-Trait Leader: MILK • M&G / FAT • MARB / BII

5-Trait Leader ...Pigmented, Milky,
Problem-Free Dgters. ...Premium Grid Value!



JA L1 DOMINO 2110Z

Feb. 5, 2012
#43298667



CED... **-0.2**
BW... **3.1**
WW... **44**
YW... **77**
MILK... **28**
M&G... **50**
REA... **.16**
MARB... **.07**

CL 1 DOMINO 9125W

CL 1 DOMINO 732T (CL 1 Domino 590R)

CL 1 DOMINETTE 475P (CL 1 Domino 824H)

CL 1 DOMINO 555R (HH Advance 3113N)

JA L1 DOMINETTE 9204W (4 clvs. WR 103 / YR 107)

JA L1 DOMINETTE 4119P (JA L1 Domino 208M)

Powerful Stockman's Beef Bull!
The JA Program for Hi-Maternal Genetics!



JA L1 DOMINO 9800W

Jan. 21, 2009
#43032770



CED... **3.5**
BW... **1.2**
WW... **51**
YW... **81**
MILK... **★33**
M&G... **★59**
REA... **-.07**
MARB... **-.11**

CL 1 DOMINO 555R

HH ADVANCE 3113N (L1 Domino 9949E)

CL 1 DOMINETTE 3174 DOD (CL 1 Domino 9126J)

DH DOMINO 6150 (CL 1 Domino 166)

JA L1 DOMINETTE 4152P (8 clvs. WR 102)

JA L1 DOMINETTE 6815 (HH Advance 388C)

8 Herds / 191 Progeny WR 100, YR 100 / 44 dgters. avg. WR 101
7-Trait Leader: MILK • M&G • MCW • SC / BMI • CEZ • BII

All-Around 7-Trait Leader ...Hi-Maternal Herd Builder!

JA REFERENCE SIRES



DH ADVANCE 031

Oct. 5, 2010
#43220398

CED...-0.4
BW.....3.4
WW.....52
YW.....80
MILK.....18
M&G.....44
REA.....21
MARB...-02

L1 DOMINO 03571 (L1 Domino 01384)
HH ADVANCE 8050U
HH MISS ADVANCE 365N (HH Advance 0024K)
DH DOMINO 302 (CL 1 Domino 0144K)
DH DOMINETTE 7155 (5 clvs. WR 102 / YR 103)
DH MISS ADVANCE 3169 (DH Advance 1008)
18 Herds / 214 Progeny WR 101, YR 99 • Trait Leader: MCW • US
**Optimum Trait Balance ...More Red Pigment
...Efficient, Functional Daughters!**



DH DOMINO 239Z

Oct. 28, 2012
#43352351

CED...-0.8
BW.....3.2
WW.....52
YW.....95
MILK.....26
M&G.....52
REA.....19
MARB...-16

DH DOMINO 831
DH DOMINO 302 (CL 1 Domino 0144K)
DH MS ADVANCE 1003 (HH Advance 8093H)
DH DOMINO 650 (CL 1 Domino 295M)
DH DOMINETTE 9130 (5 clvs. WR 111 / YR 110)
DH DOMINETTE 7167 (DH L1 Domino 430)
**Service Sire, Fall Cows ...Multi-Trait Numbers
...Great Mother Cow!**



JA L1 DOMINO 485B

Oct. 15, 2014
#43655012

CED.....3.8
BW.....1.2
WW.....30
YW.....69
MILK.....32
M&G.....47
REA.....-08
MARB.....14

GB L1 DOMINO 175E (HH Advance 767G)
CO L1 DOMINO 946W
CO L1 DOMINETTE 523R DOD (GB L1 Domino 935C)
CL 1 DOMINO 0157K (HH Advance 767G)
JA L1 DOMINETTE 325N (7 clvs. WR 104)
JA L1 DOMINETTE 5613 (GB L1 Domino 919)

**Service Sire, Fall Cows
...Landmark Mother Cow!**



UU DOMINO 4089

Feb. 12, 2014
#43467767

CED.....5.2
BW.....1.0
WW.....62
YW.....98
MILK.....36
M&G.....67
REA.....51
MARB...-39

CL 1 DOMINO 320N (CL 1 Domino 019K)
HH ADVANCE 7146T
HH MISS ADVANCE 5026R (CL 1 Domino 2136M)
HH ADVANCE 9110W (CL 1 Domino 590R)
UU 9110 ADV 2163
UU MS 5170 0231 (H5 3359 Advance 5170)
**Pasture Sire, Spring Heifers ...Super Numbers,
Calving Ease to Carcass!**

JA L1 DOMINO 302A Jan. 28, 2013 • #43385008 (Not Pict'd)

CED.....1.3
BW.....3.2
WW.....51
YW.....93
MILK.....32
M&G.....58
REA.....44
MARB...-01

HH ADVANCE 8050U (L1 Domino 03571)
HH ADVANCE 1098Y
HH MISS ADVANCE 9065W (HH Advance 7101T)
JA L1 DOMINO 7640T (HH Advance 286M)
JA L1 DOMINETTE 1633Y (DOD, 4 clvs. WR 103 / YR 103)
JA L1 DOMINETTE 9225W (CL 1 Domino 555R)
5 Herds / 81 Progeny WR 100, YR 100
**Multi-Trait Leader ...Pay Wt., Super Daughters,
Carcass Grid Leader!**

JAK L1 DOMINO C418 Sept. 24, 2015 • #43643400 (Not Pict'd)

CED.....3.8
BW.....1.6
WW.....57
YW.....94
MILK.....30
M&G.....58
REA.....06
MARB...-03

CL 1 DOMINO 555R (HH Advance 3113N)
JA L1 DOMINO 2208Z
JA L1 DOMINETTE 8018U (JA L1 Domino 6001S)
GB L1 DOMINO 140R (GB L1 Domino 175E)
JAK L1 DOMINETTE A229 (2 clvs. WR 101 / YR 106)
JAK L1 DOMINETTE Y237 (JA L1 Domino 9800W)

**Pasture Sire, Spring Bred Heifers
...Calving Ease, Performance, Maternal!**

JAK L1 DOMINO C43 Feb. 20, 2015 • #43581410 (Not Pict'd)

CED.....1.4
BW.....2.1
WW.....50
YW.....98
MILK.....27
M&G.....52
REA.....21
MARB...-06

CL 1 DOMINO 860U (CL 1 Domino 637S)
JA L1 DOMINO 3737A
JA L1 DOMINETTE 4211P (CL 1 Domino 484)
JA L1 DOMINO 7640T (HH Advance 286M)
JAK L1 DOMINETTE Z414 (1 calf WR 102 / YR 107)
JAK L1 DOMINETTE X304 (JAK L1 Domino S301)

**Pasture Sire, Spring Heifers ...Potent
Genetics & EPDs!**

JAK L1 DOMINO C44 Feb. 20, 2015 • #43581332 (Not Pict'd)

CED.....3.7
BW.....0.7
WW.....52
YW.....84
MILK.....24
M&G.....49
REA.....19
MARB...-06

CL 1 DOMINO 555R (HH Advance 3113N)
JA L1 DOMINO 2208Z
JA L1 DOMINETTE 8018U (JA L1 Domino 6001S)
JA L1 DOMINO 624S (CL 1 Domino 0157K)
JAK L1 DOMINETTE W183
JAK L1 DOMINETTE S144 DOD (JAK L1 Domino N306)

**Pasture Sire, Spring Bred Heifers
Calving Ease & Maternal!**



THE **JAMISON** **FEMALE** **OFFERING**

REPLACEMENT FEMALES FROM ONE OF
HEREFORD'S MOST RESPECTED COWHERD
PROGRAMS!

SPRING BRED HEIFERS ...LOTS 1-53
FALL COW/CALF PAIRS ...LOTS 54-84

COMMERCIAL SPRING BRED HEIFERS
Herefords & F1 Black Baldies
225 hd ...Lots 101 to 325 ...details on page 19

The Registered Hereford Female Offering was
selected directly out of the Jamison program as
well as cooperator / partner herds...

- BLUE TOP HEREFORDS ...Inman, KS
- B&B CATTLE CO. ...Virgil, KS
- CLIMBIN' TREE RANCH ...Westcliffe, CO

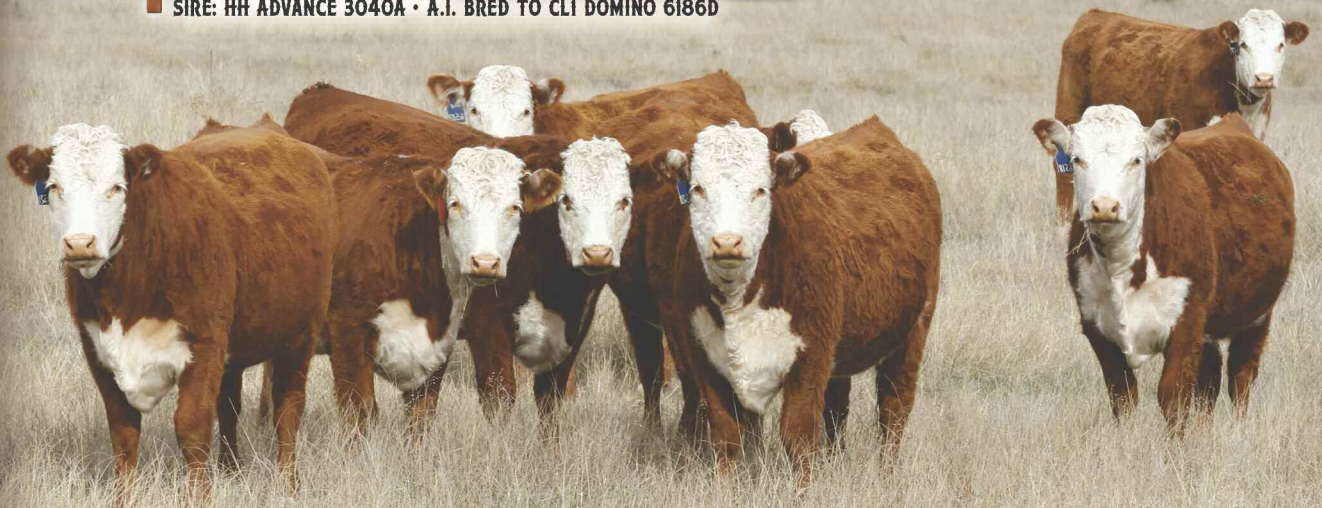


LOT 2
JA LI DOMINETTE 625D
SIRE: HH ADVANCE 3040A • A.I. BRED TO CLI DOMINO 6186D

Sale Videos by:
The Livestock Link

Marc Hotchkiss, Owner
marc@thelivestocklink.com
605.490.1513

View Videos: jamisonranch.com
or thelivestocklink.com



JA HERD BUILDER FEMALES ...GENERATIONS OF QUALITY AND BREED LEADING LINE 1 PERFORMANCE!

1**BRED HEIFER**

BW**2.2**
 WW**39**
 YW**71**
 MILK**26**
 M&G**46**
 CED**2.2**
 REA**-.01**
 MARB**.04**

JA L1 DOMINETTE 619D

March 19, 2016 • #43678349

HH ADVANCE 0132X | CL 1 DOMINO 7128T
HH ADVANCE 3040A | HH MISS ADVANCE 6054S
 | HH MISS ADVANCE 6155S | L1 DOMINO 03571
 | | HH MISS ADVANCE 365N
 CL 1 DOMINO 860U | CL 1 DOMINO 637S
JA L1 DOMINETTE 2733Z | CL 1 DOMINETTE 5142R
 | JA L1 DOMINETTE 701T | CL 1 DOMINO 0157K
 | | JA L1 DOMINETTE 2513M

- A.I. to CL 1 Domino 6187D on April 26, 2017
- P.E. to UU Domino 4089 from May 9 – Aug. 7, 2017

**JA BRED HEIFERS****LOT 4****JA L1 DOMINETTE 657D**

SIRE: JA L1 DOMINO 342A • A.I. TO CLI DOMINO 6163D

2**BRED HEIFER**

BW**0.8**
 WW**38**
 YW**62**
 MILK**31**
 M&G**50**
 CED**3.1**
 REA**.04**
 MARB**.08**

JA L1 DOMINETTE 625D

March 27, 2016 • #43693844

HH ADVANCE 0132X | CL 1 DOMINO 7128T
HH ADVANCE 3040A | HH MISS ADVANCE 6054S
 | HH MISS ADVANCE 6155S | L1 DOMINO 03571
 | | HH MISS ADVANCE 365N
 JA L1 DOMINO 7640T | HH ADVANCE 286M
JA L1 DOMINETTE 1607Y | JAL L1 DOMINETTE 1409L
 | JA L1 DOMINETTE 9305W | CL 1 DOMINO 638S
 | | JA L1 DOMINETTE 637S

- A.I. to CL 1 Domino 6187D on April 26, 2017
- P.E. to JAK L1 Domino C43 from May 9 – Aug. 7, 2017

**LOT 6****JA L1 DOMINETTE 689D**

SIRE: JA L1 DOMINO 302A • A.I. TO CLI DOMINO 6187D

3**BRED HEIFER**

BW**2.9**
 WW**49**
 YW**85**
 MILK**28**
 M&G**53**
 CED**0.8**
 REA**.10**
 MARB**.15**

JA L1 DOMINETTE 651D

Feb. 21, 2016 • #43679536

HH ADVANCE 0132X | CL 1 DOMINO 7128T
JA L1 DOMINO 342A | HH MISS ADVANCE 6054S
 | JA L1 DOMINETTE 0200X | CL 1 DOMINO 555R
 | | JA L1 DOMINETTE 2151M
 CL 1 DOMINO 9125W | CL 1 DOMINO 732T
JA L1 DOMINETTE 4103B | CL 1 DOMINETTE 475P
 | JA L1 DOMINETTE 9623W | HH ADVANCE 286M
 | | JA L1 DOMINETTE 213M

- A.I. to CL 1 Domino 6187D on April 26, 2017
- P.E. to JAK L1 Domino C418 from May 9 – Aug. 7, 2017

**LOT 7****JA L1 DOMINETTE 6100D**

SIRE: JA L1 DOMINO 2110Z • A.I. TO CLI DOMINO 6187D

4**BRED HEIFER**

BW**3.5**
 WW**51**
 YW**85**
 MILK**30**
 M&G**56**
 CED**1.4**
 REA**-.01**
 MARB**.08**

JA L1 DOMINETTE 657D

March 13, 2016 • #43679544

HH ADVANCE 0132X | CL 1 DOMINO 7128T
JA L1 DOMINO 342A | HH MISS ADVANCE 6054S
 | JA L1 DOMINETTE 0200X | CL 1 DOMINO 555R
 | | JA L1 DOMINETTE 2151M
 CL 1 DOMINO 216Z | CL 1 DOMINO 860U
JA L1 DOMINETTE 4510B | CL 1 DOMINETTE 759T
 | JA L1 DOMINETTE 0422X | HH ADVANCE 7085T
 | | JA L1 DOMINO 8604U

- A.I. to CL 1 Domino 6163D on April 26, 2017
- P.E. to JAK L1 Domino C418 from May 9 – Aug. 7, 2017

5**BRED HEIFER**

BW**3.7**
 WW**50**
 YW**88**
 MILK**27**
 M&G**52**
 CED**0.3**
 REA**.30**
 MARB**.03**

JA L1 DOMINETTE 685D

Feb. 23, 2016 • #43694023

HH ADVANCE 1098Y | HH ADVANCE 8050U
JA L1 DOMINO 302A | HH MISS ADVANCE 9065W
 | JA L1 DOMINETTE 1633Y | JA L1 DOMINO 7640T
 | | JA L1 DOMINETTE 9225W
 CL 1 DOMINO 9125W | CL 1 DOMINO 732T
JA L1 DOMINETTE 4115B | CL 1 DOMINETTE 475P
 | JA L1 DOMINETTE 8822U | CL 1 DOMINO 560R
 | | JA L1 DOMINETTE 3769N

- A.I. to CL 1 Domino 6163D on April 26, 2017
- P.E. to JAK L1 Domino C418 from May 9 – Aug. 7, 2017



JAMISON BRED HEIFERS



LOT 8
JA L1 DOMINETTE 6104D
 SIRE: JA L1 DOMINO 2110Z • A.I. TO CL1 DOMINO 6187D



LOT 9
JA L1 DOMINETTE 6110D
 SIRE: JA L1 DOMINO 2110Z • A.I. TO CL1 DOMINO 6163D



LOT 12
JA L1 DOMINETTE 6307D
 SIRE: DH DOMINO 239Z • A.I. TO CL1 DOMINO 6163D



6
BRED HEIFER
 BW2.6
 WW52
 YW89
 MILK30
 M&G57
 CED1.9
 REA30
 MARB01

JA L1 DOMINETTE 689D
 April 20, 2016 • #43679509

HH ADVANCE 1098Y	HH ADVANCE 8050U
JA L1 DOMINO 302A	HH MISS ADVANCE 9065W
JA L1 DOMINETTE 1633Y	JA L1 DOMINO 7640T
	JA L1 DOMINETTE 9225W
HH ADVANCE 2181Z	CL 1 DOMINO 886U
JA L1 DOMINETTE 4424B	HH MISS ADVANCE 6054S
JA L1 DOMINETTE 1207Y	CL 1 DOMINO 555R
	JA L1 DOMINETTE 4211P

- A.I. to CL 1 Domino 6187D on April 26, 2017
- P.E. to JAK L1 Domino C418 from May 9 – Aug. 7, 2017

7
BRED HEIFER
 BW2.4
 WW40
 YW72
 MILK27
 M&G47
 CED1.6
 REA00
 MARB02

JA L1 DOMINETTE 6100D
 Feb. 6, 2016 • #43678376

CL 1 DOMINO 9125W	CL 1 DOMINO 732T
JA L1 DOMINO 2110Z	CL 1 DOMINETTE 475P
JA L1 DOMINETTE 9204W	CL 1 DOMINO 555R
	JA L1 DOMINETTE 4119P
CL 1 DOMINO 216Z	CL 1 DOMINO 860U
JA L1 DOMINETTE 4511B	CL 1 DOMINETTE 759T
JA L1 DOMINETTE 071X	DH DOMINO 575
	JA L1 DOMINETTE 8320U

- A.I. to CL 1 Domino 6187D on April 26, 2017
- P.E. to JAK L1 Domino C418 from May 9 – Aug. 7, 2017

8
BRED HEIFER
 BW1.4
 WW36
 YW64
 MILK24
 M&G42
 CED0.5
 REA11
 MARB05

JA L1 DOMINETTE 6104D
 March 18, 2016 • #43758482

CL 1 DOMINO 9125W	CL 1 DOMINO 732T
JA L1 DOMINO 2110Z	CL 1 DOMINETTE 475P
JA L1 DOMINETTE 9204W	CL 1 DOMINO 555R
	JA L1 DOMINETTE 4119P
DH ADVANCE 031	HH ADVANCE 8050U
JA L1 DOMINETTE 4801B	DH DOMINETTE 7155
JA L1 DOMINETTE 2605Z	JA L1 DOMINO 7640T
	JA L1 DOMINETTE 9210W

- A.I. to CL 1 Domino 6187D on April 26, 2017
- P.E. to UU Domino 4089 from May 9 – Aug. 7, 2017

9
BRED HEIFER
 BW3.0
 WW44
 YW71
 MILK27
 M&G48
 CED0.4
 REA19
 MARB07

JA L1 DOMINETTE 6110D
 Feb. 23, 2016 • #43679555

CL 1 DOMINO 9125W	CL 1 DOMINO 732T
JA L1 DOMINO 2110Z	CL 1 DOMINETTE 475P
JA L1 DOMINETTE 9204W	CL 1 DOMINO 555R
	JA L1 DOMINETTE 4119P
HH ADVANCE 1098Y	HH ADVANCE 8050U
JA L1 DOMINETTE 409B	HH MISS ADVANCE 9065W
JA L1 DOMINETTE 1009Y	JA L1 DOMINO 6001S
	JA L1 DOMINETTE 9646W

- A.I. to CL 1 Domino 6163D on April 26, 2017
- P.E. to UU Domino 4089 from May 9 – Aug. 7, 2017

10
BRED HEIFER
 BW2.9
 WW51
 YW92
 MILK29
 M&G54
 CED1.9
 REA12
 MARB03

JA L1 DOMINETTE 6202D
 Feb. 5, 2016 • #43678387

CL 1 DOMINO 1161Y	CL 1 DOMINO 732T
HH ADVANCE 4082B	CL 1 DOMINETTE 4126P
HH MISS ADVANCE 9102W	HH ADVANCE 5104R
	HH MISS ADVANCE 7098T
CL 1 DOMINO 860U	CL 1 DOMINO 637S
JA L1 DOMINETTE 3731A	CL 1 DOMINETTE 5142R
JA L1 DOMINETTE 8200U	CL 1 DOMINO 555R
	JA L1 DOMINETTE 3756N

- A.I. to CL 1 Domino 6163D on April 26, 2017
- P.E. to UU Domino 4089 from May 9 – Aug. 7, 2017

11 JA L1 DOMINETTE 6300D

March 1, 2016 • #43693941

BRED HEIFER	DH DOMINO 831	DH DOMINO 302
BW3.3	DH DOMINO 239Z	DH MS ADVANCE 1003
WW54	DH DOMINETTE 9130	DH DOMINO 650
YW92		DH DOMINETTE 7167
MILK25	HH ADVANCE 0085X	HH ADVANCE 8203U
M&G52	JA L1 DOMINETTE 2307Z	HH MISS ADVANCE 7017T
.....	JA L1 DOMINETTE 9001W	JA L1 DOMINO 6001S
CEC0.0		JA L1 DOMINETTE 3762N
.....		
REA30		
MARB14		

- A.I. to CL 1 Domino 6163D on April 26, 2017
- P.E. to JAK L1 Domino C43 from May 9 – Aug. 7, 2017

16 JA L1 DOMINETTE 6410D

March 15, 2016 • Unregistered

BRED HEIFER	CL 1 DOMINO 886U	CL 1 DOMINO 638S
BW4.0	HH ADVANCE 2181Z	CL 1 DOMINETTE 440P
WW52	HH MISS ADVANCE 6054S	CL 1 DOMINO 320N
YW84		HH MISS ADVANCE 4053P
MILK24	HH ADVANCE 7085T	L1 DOMINO 0357I
M&G50	JA L1 DOMINETTE 0421X	HH MISS ADVANCE 1088L
.....	JA L1 DOMINETTE 8011U	JA L1 DOMINO 6001S
CEC1.7		COMMERCIAL HEREFORD
.....		
REA22		
MARB01		

- A.I. to CL 1 Domino 6163D on April 26, 2017
- P.E. to JAK L1 Domino C43 from May 9 – Aug. 7, 2017

12 JA L1 DOMINETTE 6307D

March 12, 2016 • #43689513

BRED HEIFER	DH DOMINO 831	DH DOMINO 302
BW4.0	DH DOMINO 239Z	DH MS ADVANCE 1003
WW52	DH DOMINETTE 9130	DH DOMINO 650
YW93		DH DOMINETTE 7167
MILK25	CL 1 DOMINO 9125W	CL 1 DOMINO 732T
M&G51	JA L1 DOMINETTE 2116Z	CL 1 DOMINETTE 475P
.....	JA L1 DOMINETTE 9404W	HH ADVANCE 7085T
CEC-0.6		JA L1 DOMINETTE 669S
.....		
REA16		
MARB15		

- A.I. to CL 1 Domino 6163D on April 26, 2017
- P.E. to JAK L1 Domino C418 from May 9 – Aug. 7, 2017

17 JA L1 DOMINETTE 6413D

March 18, 2016 • #43693955

BRED HEIFER	CL 1 DOMINO 886U	CL 1 DOMINO 638S
BW4.0	HH ADVANCE 2181Z	CL 1 DOMINETTE 440P
WW53	HH MISS ADVANCE 6054S	CL 1 DOMINO 320N
YW84		HH MISS ADVANCE 4053P
MILK24	CL 1 DOMINO 560R	CL 1 DOMINO 3162N
M&G50	JA L1 DOMINETTE 8815U	CL1 DOMINETTE 118L
.....	JA L1 DOMINETTE 3701N	CL 1 DOMINO 1170L
CEC1.7		JA L1 DOMINETTE 0008
.....		
REA22		
MARB-01		

- A.I. to CL 1 Domino 6163D on April 26, 2017
- P.E. to JAK L1 Domino C418 from May 9 – Aug. 7, 2017

13 JA L1 DOMINETTE 6308D

April 12, 2016 • #43689514

BRED HEIFER	DH DOMINO 831	DH DOMINO 302
BW2.0	DH DOMINO 239Z	DH MS ADVANCE 1003
WW40	DH DOMINETTE 9130	DH DOMINO 650
YW71		DH DOMINETTE 7167
MILK22	HH ADVANCE 286M	HH ADVANCE 0024K
M&G42	JA L1 DOMINETTE 7634T	HH MISS ADVANCE 752G
.....	JA L1 DOMINETTE 2153M	DH DOMINO 6150
CEC0.9		JA L1 DOMINO 0611
.....		
REA18		
MARB08		

- A.I. to CL 1 Domino 6163D on April 26, 2017
- P.E. to JAK L1 Domino C418 from May 9 – Aug. 7, 2017

18 JA L1 DOMINETTE 6502D

Jan. 28, 2016 • #43678751

BRED HEIFER	CL 1 DOMINO 7128T	HH ADVANCE 3113N
BW2.9	HH ADVANCE 0118X	CL 1 DOMINETTE 0112K
WW52	HH MISS ADVANCE 6074S	CL 1 DOMINO 2136M
YW80		HH MISS ADVANCE 1013L
MILK18	CL 1 DOMINO 860U	CL 1 DOMINO 637S
M&G44	JA L1 DOMINETTE 1712Y	CL 1 DOMINETTE 5142R
.....	JA L1 DOMINETTE 6254S	CL 1 DOMINO 484
CEC1.7		JA L1 DOMINETTE 4123P
.....		
REA30		
MARB01		

- A.I. to CL 1 Domino 6187D on April 26, 2017
- P.E. to JAK L1 Domino C43 from May 9 – Aug. 7, 2017

14 JA L1 DOMINETTE 6401D

March 2, 2016 • #43678417

BRED HEIFER	CL 1 DOMINO 886U	CL 1 DOMINO 638S
BW2.9	HH ADVANCE 2181Z	CL 1 DOMINETTE 440P
WW54	HH MISS ADVANCE 6054S	CL 1 DOMINO 320N
YW81		HH MISS ADVANCE 4053P
MILK30	JA L1 DOMINO 9800W	CL 1 DOMINO 555R
M&G57	JA L1 DOMINETTE 1815Y	JA L1 DOMINETTE 4152P
.....	JA L1 DOMINETTE 8320U	CL 1 DOMINO 638S
CEC2.5		JA L1 DOMINETTE 6000S
.....		
REA05		
MARB02		

- A.I. to CL 1 Domino 6187D on April 26, 2017
- P.E. to JAK L1 Domino C43 from May 9 – Aug. 7, 2017

19 JA L1 DOMINETTE 6512D

March 18, 2016 • #43678766

BRED HEIFER	CL 1 DOMINO 7128T	HH ADVANCE 3113N
BW2.5	HH ADVANCE 0118X	CL 1 DOMINETTE 0112K
WW49	HH MISS ADVANCE 6074S	CL 1 DOMINO 2136M
YW69		HH MISS ADVANCE 1013L
MILK24	CL 1 DOMINO 638S	L1 DOMINO 03396
M&G49	JA L1 DOMINETTE 0337X	CL 1 DOMINETTE 475P
.....	JA L1 DOMINETTE 617S	CL 1 DOMINO 0157K
CEC2.9		JA L1 DOMINETTE 1801L
.....		
REA13		
MARB07		

- A.I. to CL 1 Domino 6187D on April 26, 2017
- P.E. to JAK L1 Domino C43 from May 9 – Aug. 7, 2017

15 JA L1 DOMINETTE 6409D

March 15, 2016 • #43678424

BRED HEIFER	CL 1 DOMINO 886U	CL 1 DOMINO 638S
BW3.2	HH ADVANCE 2181Z	CL 1 DOMINETTE 440P
WW51	HH MISS ADVANCE 6054S	CL 1 DOMINO 320N
YW79		HH MISS ADVANCE 4053P
MILK24	HH ADVANCE 286M	HH ADVANCE 0024K
M&G50	JA L1 DOMINETTE 9653W	HH MISS ADVANCE 752G
.....	JA L1 DOMINETTE 3243N	JA L1 DOMINO 0224
CEC2.0		JA L1 DOMINETTE 800
.....		
REA19		
MARB-06		

- A.I. to CL 1 Domino 6163D on April 26, 2017
- P.E. to JAK L1 Domino C418 from May 9 – Aug. 7, 2017

20 JA L1 DOMINETTE 6518D

Feb. 7, 2016 • #43678784

BRED HEIFER	CL 1 DOMINO 7128T	HH ADVANCE 3113N
BW3.2	HH ADVANCE 0118X	CL 1 DOMINETTE 0112K
WW50	HH MISS ADVANCE 6074S	CL 1 DOMINO 2136M
YW72		HH MISS ADVANCE 1013L
MILK24	CL 1 DOMINO 9125W	CL 1 DOMINO 732T
M&G49	JA L1 DOMINETTE 2108Z	CL 1 DOMINETTE 475P
.....	JA L1 DOMINETTE 9816W	CL 1 DOMINO 560R
CEC1.4		JA L1 DOMINETTE 1317L
.....		
REA25		
MARB03		

- A.I. to CL 1 Domino 6163D on April 26, 2017
- P.E. to UU Domino 4089 from May 9 – Aug. 7, 2017

JAMISON BRED HEIFERS



LOT 18

JA L1 DOMINETTE 6502D

SIRE: HH ADVANCE 0118X • A.I. TO CLI DOMINO 6187D

21

BRED HEIFER

BW**3.1**
 WW**48**
 YW**69**
 MILK**17**
 M&G**41**

 CED**1.8**

 REA**24**
 MARB**05**

JA L1 DOMINETTE 6521D

Feb. 11, 2016 • #43678790

CL 1 DOMINO 7128T | HH ADVANCE 3113N
HH ADVANCE 0118X | CL 1 DOMINETTE 0112K
 | HH MISS ADVANCE 6074S | CL 1 DOMINO 2136M
 | | HH MISS ADVANCE 1013L
 CL 1 DOMINO 560R | CL 1 DOMINO 3162N
JA L1 DOMINETTE 9836W | CL1 DOMINETTE 118L
 | JA L1 DOMINETTE 2418M | HH ADVANCE 8012H
 | | JA L1 DOMINETTE 9372

- A.I. to CL 1 Domino 6163D on April 26, 2017
- P.E. to UU Domino 4089 from May 9 – Aug. 7, 2017

22

BRED HEIFER

BW**4.0**
 WW**51**
 YW**78**
 MILK**22**
 M&G**48**

 CED**1.9**

 REA**28**
 MARB**01**

JA L1 DOMINETTE 6530D

Feb. 18, 2016 • #43678806

CL 1 DOMINO 7128T | HH ADVANCE 3113N
HH ADVANCE 0118X | CL 1 DOMINETTE 0112K
 | HH MISS ADVANCE 6074S | CL 1 DOMINO 2136M
 | | HH MISS ADVANCE 1013L
 CL 1 DOMINO 560R | CL 1 DOMINO 3162N
JA L1 DOMINETTE 9816W | CL1 DOMINETTE 118L
 | JA L1 DOMINETTE 1317L | GB L1 DOMINO 947C
 | | JA L1 DOMINETTE 9257

- A.I. to CL 1 Domino 6163D on April 26, 2017
- P.E. to JAK L1 Domino C418 from May 9 – Aug. 7, 2017



LOT 21

JA L1 DOMINETTE 6521D

SIRE: HH ADVANCE 0118X • A.I. TO CLI DOMINO 6163D

23

BRED HEIFER

BW**1.9**
 WW**41**
 YW**67**
 MILK**23**
 M&G**43**

 CED**0.5**

 REA**03**
 MARB**07**

JA L1 DOMINETTE 6802D

Jan. 24, 2016 • #43678874

HH ADVANCE 8050U | L1 DOMINO 03571
DH ADVANCE 031 | HH MISS ADVANCE 365N
 | DH DOMINETTE 7155 | DH DOMINO 302
 | | DH MISS ADVANCE 3169
 CL 1 DOMINO 560R | CL 1 DOMINO 3162N
JA L1 DOMINETTE 9828W | CL1 DOMINETTE 118L
 | JA L1 DOMINETTE 1409L | HH ADVANCE 8012H
 | | JA L1 DOMINETTE 8800

- A.I. to CL 1 Domino 6187D on April 26, 2017
- P.E. to UU Domino 4089 from May 9 – Aug. 7, 2017



LOT 22

JA L1 DOMINETTE 6530D

SIRE: HH ADVANCE 0118X • A.I. TO CLI DOMINO 6163D

24

BRED HEIFER

BW**2.6**
 WW**48**
 YW**75**
 MILK**18**
 M&G**42**

 CED**0.9**

 REA**25**
 MARB**02**

JA L1 DOMINETTE 6804D

Jan. 28, 2016 • #43678876

HH ADVANCE 8050U | L1 DOMINO 03571
DH ADVANCE 031 | HH MISS ADVANCE 365N
 | DH DOMINETTE 7155 | DH DOMINO 302
 | | DH MISS ADVANCE 3169
 HH ADVANCE 286M | HH ADVANCE 0024K
JA L1 DOMINETTE 2620Z | HH MISS ADVANCE 752G
 | JA L1 DOMINETTE 9844W | CL 1 DOMINO 560R
 | | J1 L1 DOMINETTE 465P

- A.I. to CL 1 Domino 6187D on April 26, 2017
- P.E. to UU Domino 4089 from May 9 – Aug. 7, 2017

25

BRED HEIFER

BW**3.8**
 WW**60**
 YW**97**
 MILK**23**
 M&G**53**

 CED**-0.4**

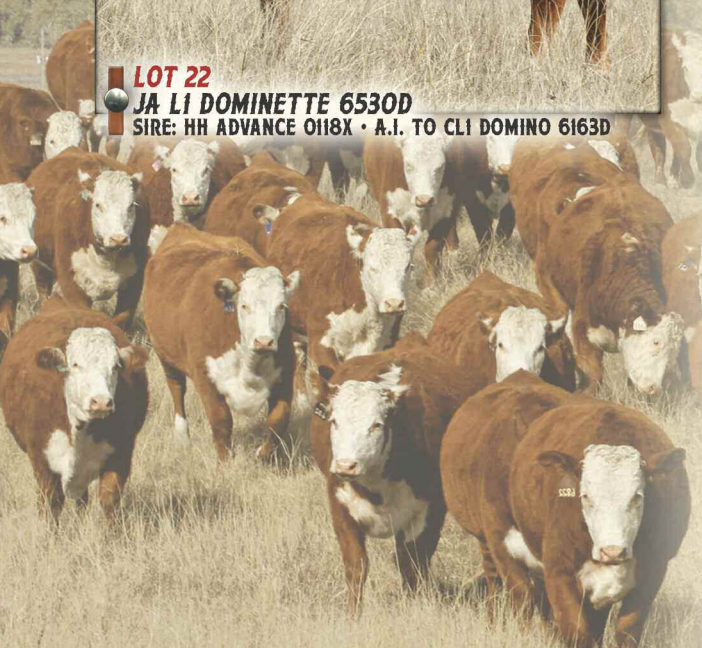
 REA**25**
 MARB**03**

JA L1 DOMINETTE 6806D

Jan. 29, 2016 • #43678878

HH ADVANCE 8050U | L1 DOMINO 03571
DH ADVANCE 031 | HH MISS ADVANCE 365N
 | DH DOMINETTE 7155 | DH DOMINO 302
 | | DH MISS ADVANCE 3169
 CL 1 DOMINO 860U | CL 1 DOMINO 637S
JA L1 DOMINETTE 2746Z | CL 1 DOMINETTE 5142R
 | JA L1 DOMINETTE 803U | JA L1 DOMINO 426P
 | | JA L1 DOMINETTE 5780R

- A.I. to CL 1 Domino 6163D on April 26, 2017
- P.E. to JAK L1 Domino C418 from May 9 – Aug. 7, 2017



26**BRED HEIFER**

BW4.0
 WW52
 YW81
 MILK20
 M&G45
 CED-0.4
 REA10
 MARB04

JA L1 DOMINETTE 6822D

Feb. 19, 2016 • #43678902

HH ADVANCE 8050U
DH ADVANCE 031
 | DH DOMINETTE 7155

CL 1 DOMINO 560R
JA L1 DOMINETTE 8817U
 | JA L1 DOMINETTE 9207

L1 DOMINO 03571
 HH MISS ADVANCE 365N
 DH DOMINO 302
 DH MISS ADVANCE 3169
 CL 1 DOMINO 3162N
 CL1 DOMINETTE 118L
 CL 1 DOMINO 484
 JA L1 DOMINETTE 6304

- A.I. to CL 1 Domino 6163D on April 26, 2017
- P.E. to UU Domino 4089 from May 9 – Aug. 7, 2017

27**BRED HEIFER**

BW1.8
 WW53
 YW88
 MILK33
 M&G59
 CED4.2
 REA05
 MARB-04

BT L1 DOMINETTE 6000D

Jan. 25, 2016 • #43720766

CL 1 DOMINO 860U
CL 1 DOMINO 216Z
 | CL 1 DOMINETTE 759T

CL 1 DOMINO 555R
BT L1 DOMINETTE 4010B
 | BT L1 DOMINETTE 0604

CL 1 DOMINO 637S
 CL 1 DOMINETTE 5142R
 CL 1 DOMINO 590R
 CL 1 DOMINETTE 193L
 HH ADVANCE 3113N
 CL 1 DOMINETTE 3174N
 JA L1 DOMINO 5617R
 BT L1 DOMINETTE 8823

- A.I. to CL 1 Domino 6163D on April 26, 2017
- P.E. to JAK L1 Domino C44 from May 9 – Aug. 7, 2017

28**BRED HEIFER**

BW2.8
 WW54
 YW81
 MILK22
 M&G49
 CED2.9
 REA37
 MARB06

BT L1 DOMINETTE 6003D

Jan. 27, 2016 • #43716751

CL 1 DOMINO 7128T
HH ADVANCE 0118X
 | HH MISS ADVANCE 6074S

JA L1 DOMINO 8000U
BT L1 DOMINETTE 2015
 | BT L1 DOMINETTE 9657

HH ADVANCE 3113N
 CL 1 DOMINETTE 0112K
 CL 1 DOMINO 2136M
 HH MISS ADVANCE 1013L
 JA L1 DOMINO 6001S
 JA L1 DOMINETTE 460P
 JA L1 DOMINO 5617R
 JA L1 DOMINETTE 9238

- A.I. to CL 1 Domino 6187D on April 26, 2017
- P.E. to JAK L1 Domino C44 from May 9 – Aug. 7, 2017

29**BRED HEIFER**

BW3.0
 WW56
 YW82
 MILK30
 M&G58
 CED2.0
 REA36
 MARB10

BT L1 DOMINETTE 6007D

Feb. 4, 2016 • #43693767

CL 1 DOMINO 1108Y
CL 1 DOMINO 386A
 | CL 1 DOMINETTE 440P

CL 1 DOMINO 555R
BT L1 DOMINETTE 3200A
 | JA L1 DOMINETTE 3100N

CL 1 DOMINO 9105W
 CL 1 DOMINETTE 617S
 CL 1 DOMINO 9126J
 CL 1 DOMINETTE 974J
 HH ADVANCE 3113N
 CL 1 DOMINETTE 3174N
 DH DOMINO 6150
 JA L1 DOMINETTE 750S

- A.I. to CL 1 Domino 6187D on April 26, 2017
- P.E. to JAK L1 Domino C44 from May 9 – Aug. 7, 2017

30**BRED HEIFER**

BW2.6
 WW51
 YW74
 MILK34
 M&G60
 CED1.9
 REA20
 MARB13

BT L1 DOMINETTE 6008D

Feb. 5, 2016 • #43693770

CL 1 DOMINO 1108Y
CL 1 DOMINO 386A
 | CL 1 DOMINETTE 440P

JA L1 DOMINO 9800W
BT L1 DOMINETTE 3808A
 | JA L1 DOMINETTE 0202X

CL 1 DOMINO 9105W
 CL 1 DOMINETTE 617S
 CL 1 DOMINO 9126J
 CL 1 DOMINETTE 974J
 CL 1 DOMINO 555R
 JA L1 DOMINETTE 4152P
 CL 1 DOMINO 555R
 JA L1 DOMINETTE 4152P

- A.I. to CL 1 Domino 6163D on April 26, 2017
- P.E. to JAK L1 Domino C44 from May 9 – Aug. 7, 2017

31**BRED HEIFER**

BW4.5
 WW46
 YW71
 MILK26
 M&G49
 CED1.3
 REA08
 MARB01

BT L1 DOMINETTE 6011D

Feb. 7, 2016 • #43693773

HH ADVANCE 0132X
HH ADVANCE 3040A
 | HH MISS ADVANCE 6155S

JA L1 DOMINO 5617R
BT L1 DOMINETTE 9675
 | JA L1 DOMINETTE 951

CL 1 DOMINO 7128T
 HH MISS ADVANCE 6054S
 L1 DOMINO 03571
 HH MISS ADVANCE 365N
 HH ADVANCE 286M
 JA L1 DOMINETTE 204M
 HH ADVANCE 438D
 JA L1 DOMINETTE 7080

- A.I. to CL 1 Domino 6187D on April 26, 2017
- P.E. to JAK L1 Domino C44 from May 9 – Aug. 7, 2017

32**BRED HEIFER**

BW2.3
 WW49
 YW80
 MILK28
 M&G53
 CED1.6
 REA15
 MARB12

BT L1 DOMINETTE 6014D

Feb. 17, 2016 • #43716738

CL 1 DOMINO 732T
CL 1 DOMINO 9125W
 | CL 1 DOMINETTE 475P

JA L1 DOMINO 8000U
BT L1 DOMINETTE 2020
 | JA L1 DOMINETTE 0202X

CL 1 DOMINO 590R
 CL 1 DOMINETTE 507R
 CL 1 DOMINO 824H
 CL 1 DOMINETTE 200M
 JA L1 DOMINO 6001S
 JA L1 DOMINETTE 460P
 CL 1 DOMINO 555R
 JA L1 DOMINETTE 4152P

- A.I. to CL 1 Domino 6187D on April 26, 2017
- P.E. to JAK L1 Domino C44 from May 9 – Aug. 7, 2017

33**BRED HEIFER**

BW3.7
 WW59
 YW91
 MILK30
 M&G60
 CED0.0
 REA20
 MARB15

BT L1 DOMINETTE 6015D

March 1, 2016 • #43716739

CL 1 DOMINO 732T
CL 1 DOMINO 9125W
 | CL 1 DOMINETTE 475P

HH ADVANCE 0132X
BT L1 DOMINETTE 344A
 | BT L1 DOMINETTE 0604

CL 1 DOMINO 590R
 CL 1 DOMINETTE 507R
 CL 1 DOMINO 824H
 CL 1 DOMINETTE 200M
 CL 1 DOMINO 7128T
 HH MISS ADVANCE 6054S
 JA L1 DOMINO 5617R
 BT L1 DOMINETTE 8823

- A.I. to CL 1 Domino 6163D on April 26, 2017
- P.E. to JAK L1 Domino C44 from May 9 – Aug. 7, 2017

34**BRED HEIFER**

BW2.2
 WW53
 YW85
 MILK31
 M&G58
 CED1.4
 REA17
 MARB10

BT L1 DOMINETTE 6018D

March 7, 2016 • #43716744

CL 1 DOMINO 732T
CL 1 DOMINO 9125W
 | CL 1 DOMINETTE 475P

CL 1 DOMINO 555R
JA L1 DOMINETTE 0202X
 | JA L1 DOMINETTE 4152P

CL 1 DOMINO 590R
 CL 1 DOMINETTE 507R
 CL 1 DOMINO 824H
 CL 1 DOMINETTE 200M
 HH ADVANCE 3113N
 CL 1 DOMINETTE 3174N
 DH DOMINO 6150
 JA L1 DOMINETTE 6815

- A.I. to CL 1 Domino 6163D on April 26, 2017
- P.E. to JAK L1 Domino C44 from May 9 – Aug. 7, 2017

35**BRED HEIFER**

BW1.3
 WW48
 YW77
 MILK23
 M&G47
 CED3.4
 REA10
 MARB05

BT L1 DOMINETTE 6020D

March 8, 2016 • #43725627

JA L1 DOMINO 9800W
JA L1 DOMINO 3807A
 | JA L1 DOMINETTE 0204X

HH ADVANCE 286M
BT L1 DOMINETTE 8630
 | JA L1 DOMINETTE 8404

CL 1 DOMINO 555R
 JA L1 DOMINETTE 4152P
 CL 1 DOMINO 555R
 JA L1 DOMINETTE 316N
 HH ADVANCE 0024K
 HH MISS ADVANCE 752G
 HH ADVANCE 400D
 JA L1 DOMINETTE 5601

- A.I. to CL 1 Domino 6187D on April 26, 2017
- P.E. to JAK L1 Domino C44 from May 9 – Aug. 7, 2017

JAMISON BRED HEIFERS



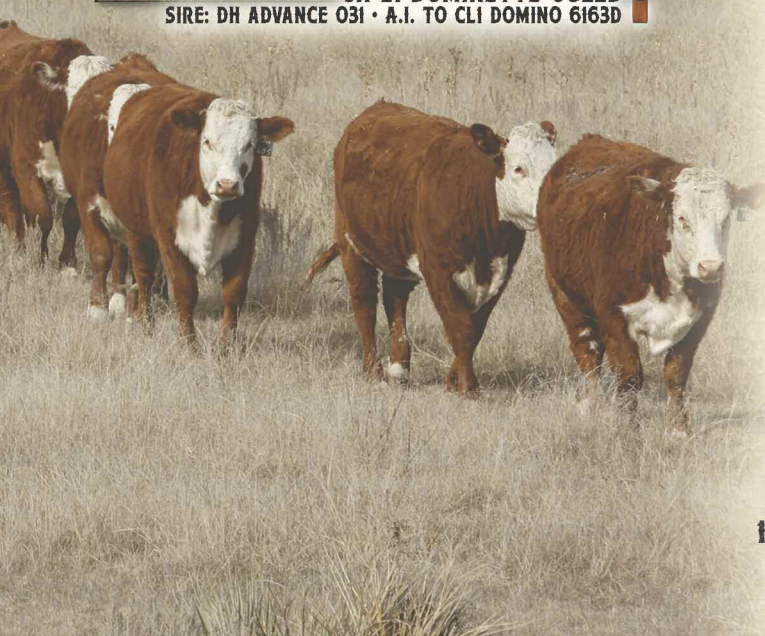
LOT 23
JA L1 DOMINETTE 6802D
 SIRE: DH ADVANCE 031 • A.I. TO CL1 DOMINO 6187D



LOT 24
JA L1 DOMINETTE 6804D
 SIRE: DH ADVANCE 031 • A.I. TO CL1 DOMINO 6187D



LOT 26
JA L1 DOMINETTE 6822D
 SIRE: DH ADVANCE 031 • A.I. TO CL1 DOMINO 6163D



36

BRED HEIFER

BW**0.6**
 WW**45**
 YW**78**
 MILK**27**
 M&G**50**

 CED**4.3**

 REA**06**
 MARB**08**

BT L1 DOMINETTE 6021D

March 10, 2016 • #43725628

JA L1 DOMINO 9800W | CL 1 DOMINO 555R
JA L1 DOMINO 3807A | JA L1 DOMINETTE 4152P
 | JA L1 DOMINETTE 0204X | CL 1 DOMINO 555R
 | | JA L1 DOMINETTE 316N
 JA L1 DOMINO 8000U | JA L1 DOMINO 6001S
BT L1 DOMINETTE 1108 | JA L1 DOMINETTE 460P
 | JA L1 DOMINETTE 406P | CL 1 DOMINO 0157K
 | | JA L1 DOMINETTE 7809

- A.I. to CL 1 Domino 6187D on April 26, 2017
- P.E. to JAK L1 Domino C44 from May 9 – Aug. 7, 2017

37

BRED HEIFER

BW**-0.6**
 WW**43**
 YW**76**
 MILK**29**
 M&G**50**

 CED**7.1**

 REA**-08**
 MARB**-01**

CTR L1 DOMINETTE 6051D

Feb. 1, 2016 • #43720745

CL 1 DOMINO 860U | CL 1 DOMINO 637S
CL 1 DOMINO 216Z | CL 1 DOMINETTE 5142R
 | CL 1 DOMINETTE 759T | CL 1 DOMINO 590R
 | | CL1 DOMINETTE 193L
 CL 1 DOMINO 648S | CL 1 DOMINO 461P
MONTANA MISS 918W | CL 1 DOMINETTE 249M
 | MONTANA MISS 497P | HH ADVANCE 0072K
 | | MONTANA MISS 247

- P.E. to JAK L1 Domino C44 from May 9 – Aug. 7, 2017

38

BRED HEIFER

BW**-0.1**
 WW**40**
 YW**73**
 MILK**28**
 M&G**48**

 CED**5.1**

 REA**15**
 MARB**08**

CTR L1 DOMINETTE 6052D

Feb. 1, 2016 • #43720747

CL 1 DOMINO 860U | CL 1 DOMINO 637S
CL 1 DOMINO 216Z | CL 1 DOMINETTE 5142R
 | CL 1 DOMINETTE 759T | CL 1 DOMINO 590R
 | | CL1 DOMINETTE 193L
 HH ADVANCE 396N | CL 1 DOMINO 824H
KB L1 DOMINETTE 702T | HH MS ADVANCE 8037H
 | KB L1 DOMINETTE 335 | JA L1 DOMINO 9213
 | | KB L1 DOMINETTE 823

- A.I. to CL 1 Domino 6163D on April 26, 2017
- P.E. to JAK L1 Domino C44 from May 9 – Aug. 7, 2017

39

BRED HEIFER

BW**1.4**
 WW**47**
 YW**84**
 MILK**28**
 M&G**51**

 CED**4.3**

 REA**00**
 MARB**02**

CTR L1 DOMINETTE 6055D

Feb. 4, 2016 • #43720752

CL 1 DOMINO 860U | CL 1 DOMINO 637S
CL 1 DOMINO 216Z | CL 1 DOMINETTE 5142R
 | CL 1 DOMINETTE 759T | CL 1 DOMINO 590R
 | | CL1 DOMINETTE 193L
 GB L1 DOMINO 6134K | GB L1 DOMINO 471H
CTR L1 DOMINETTE 2904Z | GB L1 DOM PRCS 4103H
 | JA L1 DOMINETTE 7712T | CL 1 DOMINO 8153H
 | | JA L1 DOMINETTE 4106P

- A.I. to CL 1 Domino 6187D on April 26, 2017
- P.E. to JAK L1 Domino C44 from May 9 – Aug. 7, 2017

40

BRED HEIFER

BW**1.2**
 WW**46**
 YW**79**
 MILK**32**
 M&G**55**

 CED**3.3**

 REA**-05**
 MARB**01**

CTR L1 DOMINETTE 6056D

Feb. 4, 2016 • #43720753

CL 1 DOMINO 860U | CL 1 DOMINO 637S
CL 1 DOMINO 216Z | CL 1 DOMINETTE 5142R
 | CL 1 DOMINETTE 759T | CL 1 DOMINO 590R
 | | CL1 DOMINETTE 193L
 EL ADVANCE 640S | HH ADVANCE 1117L
EL MISS ADVANCE 124Y | DBH MS CHALLENGE 239H
 | EL MISS ADVANCE 741T | HH ADVANCE 399N
 | | HH MISS ADVANCE 0078K

- A.I. to CL 1 Domino 6187D on April 26, 2017
- P.E. to JAK L1 Domino C44 from May 9 – Aug. 7, 2017

41**BRED HEIFER**

BW1.8
 WW47
 YW83
 MILK30
 M&G53
 CED3.5
 REA03
 MARB00

CTR L1 DOMINETTE 6057D

Feb. 6, 2016 • #43720754

CL 1 DOMINO 860U
CL 1 DOMINO 216Z
 | CL 1 DOMINETTE 759T

EL ADVANCE 640S
EL MISS ADVANCE 145Y
 | EL MISS ADVANCE 742T

- A.I. to CL 1 Domino 6187D on April 26, 2017
- P.E. to JAK L1 Domino C44 from May 9 – Aug. 7, 2017

CL 1 DOMINO 637S
 CL 1 DOMINETTE 5142R
 CL 1 DOMINO 590R
 CL1 DOMINETTE 193L
 HH ADVANCE 1117L
 DBH MS CHALLENGE 239H
 HH ADVANCE 399N
 HH MISS ADVANCE 0078K

42**BRED HEIFER**

BW2.2
 WW47
 YW84
 MILK31
 M&G55
 CED3.5
 REA13
 MARB03

CTR L1 DOMINETTE 6060D

Feb. 10, 2016 • #43720757

CL 1 DOMINO 860U
CL 1 DOMINO 216Z
 | CL 1 DOMINETTE 759T

UU AXTON 6210
UU MS AXTON 1134
 | UU MS EPIC 8247

- A.I. to CL 1 Domino 6187D on April 26, 2017
- P.E. to JAK L1 Domino C44 from May 9 – Aug. 7, 2017

CL 1 DOMINO 637S
 CL 1 DOMINETTE 5142R
 CL 1 DOMINO 590R
 CL1 DOMINETTE 193L
 UU GENERAL 3056
 UU DOMINETTE 3271
 SR EPIC 206
 UU MS GOGGLES 4187

43**BRED HEIFER**

BW4.4
 WW54
 YW93
 MILK27
 M&G54
 CED0.3
 REA22
 MARB05

CTR L1 DOMINETTE 6061D

Feb. 12, 2016 • #43779525

CL 1 DOMINO 9125W
JA L1 DOMINO 2110Z
 | JA L1 DOMINETTE 9204W

HH ADVANCE 2181Z
CTR L1 DOMINETTE 4051B
 | CTR L1 DOMINETTE 2903Z

- A.I. to CL 1 Domino 6187D on April 26, 2017
- P.E. to JAK L1 Domino C44 from May 9 – Aug. 7, 2017

CL 1 DOMINO 732T
 CL 1 DOMINETTE 475P
 CL 1 DOMINO 555R
 JA L1 DOMINETTE 4119P
 CL 1 DOMINO 886U
 HH MISS ADVANCE 6054S
 GB L1 DOMINO 6134K
 JA L1 DOMINETTE 304N

44**BRED HEIFER**

BW2.5
 WW52
 YW76
 MILK35
 M&G61
 CED2.0
 REA38
 MARB09

CTR L1 DOMINETTE 6064D

March 1, 2016 • #43779526

CL 1 DOMINO 1108Y
CL 1 DOMINO 386A
 | CL 1 DOMINETTE 440P

CL 1 DOMINO 637S
CL 1 DOMINETTE 0135X
 | CL 1 DOMINETTE 475P

- A.I. to CL 1 Domino 6187D on April 26, 2017
- P.E. to JAK L1 Domino C44 from May 9 – Aug. 7, 2017

CL 1 DOMINO 9105W
 CL 1 DOMINETTE 617S
 CL 1 DOMINO 9126J
 CL 1 DOMINETTE 974J
 L1 DOMINO 03396
 CL1 DOMINETTE 118L
 CL 1 DOMINO 824H
 CL 1 DOMINETTE 200M

45**BRED HEIFER**

BW1.9
 WW46
 YW83
 MILK32
 M&G55
 CED2.1
 REA28
 MARB04

CTR L1 DOMINETTE 6065D

March 1, 2016 • #43694085

HH ADVANCE 7085T
JA L1 DOMINO 0413X
 | JA L1 DOMINETTE 432P

JA L1 DOMINO 1602Y
CTR L1 DOMINETTE 3600A
 | EL MISS ADVANCE 127Y

- A.I. to CL 1 Domino 6163D on April 26, 2017
- P.E. to JAK L1 Domino C44 from May 9 – Aug. 7, 2017

L1 DOMINO 03571
 HH MISS ADVANCE 1088L
 CL 1 DOMINO 0157K
 JA L1 DOMINETTE 1223L
 JA L1 DOMINO 7640T
 JA L1 DOMINETTE 9204W
 CL 1 DOMINO 988W
 HH MISS ADVANCE 7240T

46**BRED HEIFER**

BW3.4
 WW44
 YW79
 MILK27
 M&G49
 CED0.2
 REA17
 MARB07

CTR L1 DOMINETTE 6070D

March 4, 2016 • #43694087

HH ADVANCE 7085T
JA L1 DOMINO 0413X
 | JA L1 DOMINETTE 432P

JA L1 DOMINO 7640T
CTR L1 DOMINETTE 3654A
 | EL MISS ADVANCE 145Y

- A.I. to CL 1 Domino 6163D on April 26, 2017
- P.E. to JAK L1 Domino C44 from May 9 – Aug. 7, 2017

L1 DOMINO 03571
 HH MISS ADVANCE 1088L
 CL 1 DOMINO 0157K
 JA L1 DOMINETTE 1223L
 HH ADVANCE 286M
 JAL L1 DOMINETTE 1409L
 EL ADVANCE 640S
 EL MISS ADVANCE 742T

47**BRED HEIFER**

BW2.6
 WW48
 YW85
 MILK29
 M&G53
 CED2.9
 REA08
 MARB11

CTR L1 DOMINETTE 6072D

March 14, 2016 • #43725431

JA L1 DOMINO 9800W
JA L1 DOMINO 3807A
 | JA L1 DOMINETTE 0204X

EL ADVANCE 839U
EL MISS ADVANCE 129Y
 | EL MISS ADVANCE 910W

- A.I. to CL 1 Domino 6163D on April 26, 2017
- P.E. to JAK L1 Domino C44 from May 9 – Aug. 7, 2017

CL 1 DOMINO 555R
 JA L1 DOMINETTE 4152P
 CL 1 DOMINO 555R
 JA L1 DOMINETTE 316N
 EL ADVANCE 611 S
 HH MISS ADVANCE 3180N
 EL ADVANCE 611 S
 EL MISS ADVANCE 537R

48**BRED HEIFER**

BW3.1
 WW45
 YW74
 MILK29
 M&G51
 CED2.5
 REA01
 MARB12

CTR L1 DOMINETTE 6074D

March 17, 2016 • #43779527

HH ADVANCE 0132X
HH ADVANCE 3040A
 | HH MISS ADVANCE 6155S

H5 408 DOMINO 7100
UU HALEY 1156
 | UU MS ADV 529 9004

- A.I. to CL 1 Domino 6163D on April 26, 2017
- P.E. to JAK L1 Domino C44 from May 9 – Aug. 7, 2017

CL 1 DOMINO 7128T
 HH MISS ADVANCE 6054S
 L1 DOMINO 03571
 HH MISS ADVANCE 365N
 CJH HARLAND 408
 H5 MS 001 DOMET 4193L
 H5 255 ADVANCE 529
 UU MS YAMPA 3082

49**BRED HEIFER**

BW2.2
 WW42
 YW76
 MILK31
 M&G52
 CED2.0
 REA09
 MARB11

CTR L1 DOMINETTE 6077D

March 26, 2016 • #43694097

HH ADVANCE 7085T
JA L1 DOMINO 0413X
 | JA L1 DOMINETTE 432P

JA L1 DOMINO 0413X
CTR L1 DOMINETTE 3403A
 | HH MISS ADVANCE 7240T

- A.I. to CL 1 Domino 6163D on April 26, 2017
- P.E. to JAK L1 Domino C44 from May 9 – Aug. 7, 2017

L1 DOMINO 03571
 HH MISS ADVANCE 1088L
 CL 1 DOMINO 0157K
 JA L1 DOMINETTE 1223L
 HH ADVANCE 7085T
 JA L1 DOMINETTE 432P
 HH ADVANCE 5104R
 HH MISS ADVANCE 5164R

50**BRED HEIFER**

BW2.9
 WW46
 YW72
 MILK27
 M&G50
 CED1.5
 REA16
 MARB16

CTR L1 DOMINETTE 6079D

April 4, 2016 • #43779530

HH ADVANCE 8203U
HH ADVANCE 0085X
 | HH MISS ADVANCE 7017T

JA L1 DOMINO 0413X
CTR L1 DOMINETTE 3407A
 | MONTANA MISS 791T

- A.I. to JA L1 Domino 9800W on April 26, 2017
- P.E. to JAK L1 Domino C44 from May 9 – Aug. 7, 2017

HH ADVANCE 5161R
 HH MISS ADVANCE 752G
 CL 1 DOMINO 320N
 HH MISS ADVANCE 5106R
 HH ADVANCE 7085T
 JA L1 DOMINETTE 432P
 CL 1 DOMINO 592R
 MONTANA MISS 4169

51

BRED HEIFER

BW**3.6**
 WW**46**
 YW**71**
 MILK**25**
 M&G**48**
 CED**0.2**
 REA**.11**
 MARB**.14**

CTR L1 DOMINETTE 6081D

April 6, 2016 • #43779531

HH ADVANCE 8203U	HH ADVANCE 5161R
HH ADVANCE 0085X	HH MISS ADVANCE 752G
HH MISS ADVANCE 7017T	CL 1 DOMINO 320N
	HH MISS ADVANCE 5106R
EL ADVANCE 640S	HH ADVANCE 1117L
EL MISS ADVANCE 111Y	DBH MS CHALLENGE 239H
EL MISS ADVANCE 801U	HH ADVANCE 671F
	HH MISS ADVANCE 346N

- A.I. to JA L1 Domino 9800W on April 26, 2017
- P.E. to JAK L1 Domino C44 from May 9 – Aug. 7, 2017

52

BRED HEIFER

BW**3.3**
 WW**46**
 YW**70**
 MILK**25**
 M&G**48**
 CED**0.4**
 REA**.10**
 MARB**.14**

CTR L1 DOMINETTE 6082D

April 6, 2016 • #43779532

HH ADVANCE 8203U	HH ADVANCE 5161R
HH ADVANCE 0085X	HH MISS ADVANCE 752G
HH MISS ADVANCE 7017T	CL 1 DOMINO 320N
	HH MISS ADVANCE 5106R
EL ADVANCE 640S	HH ADVANCE 1117L
EL MISS ADVANCE 111Y	DBH MS CHALLENGE 239HL
EL MISS ADVANCE 801U	HH ADVANCE 671F
	HH MISS ADVANCE 346N

- A.I. to JA L1 Domino 9800W on April 26, 2017
- P.E. to JAK L1 Domino C44 from May 9 – Aug. 7, 2017

53

BRED HEIFER

BW**1.7**
 WW**44**
 YW**71**
 MILK**26**
 M&G**48**
 CED**2.6**
 REA**.18**
 MARB**.14**

CTR L1 DOMINETTE 6084D

April 19, 2016 • #43779534

HH ADVANCE 8203U	HH ADVANCE 5161R
HH ADVANCE 0085X	HH MISS ADVANCE 752G
HH MISS ADVANCE 7017T	CL 1 DOMINO 320N
	HH MISS ADVANCE 5106R
CL 1 DOMINO 0157K	HH ADVANCE 767G
JA L1 DOMINETTE 723T	CL 1 DOMINETTE 861H
JA L1 DOMINETTE 0278M	GB L1 DOMINO 935C
	JA L1 DOMINETTE 0854

- A.I. to JA L1 Domino 9800W on April 26, 2017
- P.E. to JAK L1 Domino C44 from May 9 – Aug. 7, 2017

53x

BRED HEIFER

BW**2.1**
 WW**43**
 YW**75**
 MILK**21**
 M&G**43**
 CED**2.0**
 REA**.11**
 MARB**.05**

JA L1 DOMINETTE 6860D IET

Feb. 7, 2016 • #43848887

HH ADVANCE 8050U	L1 DOMINO 03571
DH ADVANCE 031	HH MISS ADVANCE 365N
DH DOMINETTE 7155	DH DOMINO 302
	DH MISS ADVANCE 3169
CL 1 DOMINO 0157K	HH ADVANCE 767G
JA L1 DOMINETTE 325N	CL 1 DOMINETTE 861H
JA L1 DOMINETTE 5613	GB L1 DOMINO 919
	JA L1 DOMINETTE 5860

- A.I. to CL 1 Domino 6187D on April 26, 2017
- P.E. to UU Domino 4089 from May 9 – Aug. 7, 2017

53y

BRED HEIFER

BW**3.0**
 WW**49**
 YW**76**
 MILK**19**
 M&G**44**
 CED**1.5**
 REA**.25**
 MARB**-.01**

JA L1 DOMINETTE 6861D IET

March 7, 2016 • #43848888

HH ADVANCE 8050U	L1 DOMINO 03571
DH ADVANCE 031	HH MISS ADVANCE 365N
DH DOMINETTE 7155	DH DOMINO 302
	DH MISS ADVANCE 3169
HH ADVANCE 286M	HH ADVANCE 0024K
JA L1 DOMINETTE 4652P	HH MISS ADVANCE 752G
JA L1 DOMINETTE 100L	HH ADVANCE 767G
	JA L1 DOMINETTE 9202

- A.I. to CL 1 Domino 6187D on April 26, 2017
- P.E. to UU Domino 4089 from May 9 – Aug. 7, 2017



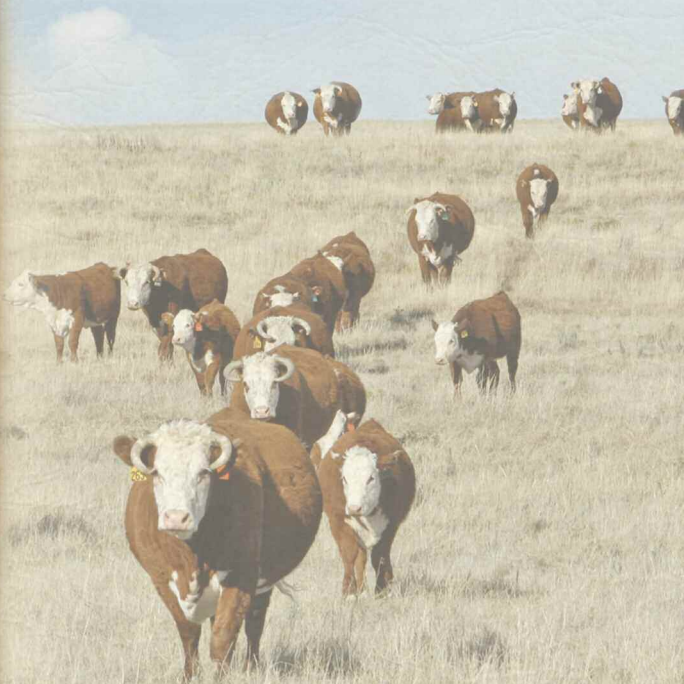
JA FALL PAIRS



LOT 59
JA L1 DOMINETTE 5409C
 SIRE: HH ADVANCE 2181Z
 AT SIDE: BULL CALF Sired BY DH DOMINO 239



LOT 61
JA L1 DOMINETTE 5621C
 SIRE: JA L1 DOMINO 1602Y
 AT SIDE: BULL CALF Sired BY DH DOMINO 239



54**FALL PAIR**

BW2.4
 WW45
 YW74
 MILK30
 M&G53
 CED1.5
 REA01
 MARB04

JA L1 DOMINETTE 514C

Feb. 10, 2015 • #43598297

HH ADVANCE 0132X HH ADVANCE 3040A HH MISS ADVANCE 6155S	CL 1 DOMINO 7128T HH MISS ADVANCE 6054S L1 DOMINO 03571 HH MISS ADVANCE 365N CL 1 DOMINO 860U JA L1 DOMINETTE 2715Z JA L1 DOMINETTE 8200U
--	--

• P.E. to DH Domino 239 from Dec. 1, 2016 – Mar. 20, 2017

55**FALL PAIR**

BW3.7
 WW58
 YW104
 MILK29
 M&G57
 CED0.7
 REA46
 MARB08

JA L1 DOMINETTE 553C

Feb. 19, 2015 • #43581872

HH ADVANCE 1098Y JA L1 DOMINO 302A JA L1 DOMINETTE 1633Y	HH ADVANCE 8050U HH MISS ADVANCE 9065W JA L1 DOMINO 7640T JA L1 DOMINETTE 9225W CL 1 DOMINO 9125W JA L1 DOMINETTE 3109A JA L1 DOMINETTE 9652W
---	--

• Bull Calf #7336 / Sire: DH 239 / Born: Sept. 24, 2017 / BW 76

56**FALL PAIR**

BW1.9
 WW45
 YW79
 MILK29
 M&G52
 CED1.1
 REA26
 MARB06

JA L1 DOMINETTE 5154C

Feb. 17, 2015 • #43581871

CL 1 DOMINO 9125W JA L1 DOMINO 2110Z JA L1 DOMINETTE 9204W	CL 1 DOMINO 732T CL 1 DOMINETTE 475P CL 1 DOMINO 555R JA L1 DOMINETTE 4119P HH ADVANCE 1098Y JA L1 DOMINETTE 303A JA L1 DOMINETTE 1623Y
---	--

• Bull Calf #7340 / Sire: DH 239 / Born: Sept. 28, 2017 / BW 86

57**FALL PAIR**

BW3.7
 WW53
 YW64
 MILK29
 M&G56
 CED0.3
 REA09
 MARB14

JA L1 DOMINETTE 5313C

Feb. 9, 2015 • #43583851

HH ADVANCE 8203U HH ADVANCE 0085X HH MISS ADVANCE 7017T	HH ADVANCE 5161R HH MISS ADVANCE 752G CL 1 DOMINO 320N HH MISS ADVANCE 5106R CL 1 DOMINO 638W JA L1 DOMINETTE 9328W JA L1 DOMINETTE 5606R
--	--

• Bull Calf #7334 / Sire: DH 239 / Born: Sept. 22, 2017 / BW 84

58**FALL PAIR**

BW2.9
 WW51
 YW80
 MILK28
 M&G53
 CED1.7
 REA23
 MARB10

JA L1 DOMINETTE 5324C

Feb. 27, 2015 • #43586226

HH ADVANCE 8203U HH ADVANCE 0085X HH MISS ADVANCE 7017T	HH ADVANCE 5161R HH MISS ADVANCE 752G CL 1 DOMINO 320N HH MISS ADVANCE 5106R CL 1 DOMINO 555R JA L1 DOMINETTE 1204Y JA L1 DOMINETTE 701T
--	---

• Bull Calf #7343 / Sire: DH 239 / Born: Oct. 30, 2017 / BW 60

59**FALL PAIR**

BW2.9
 WW52
 YW81
 MILK32
 M&G58
 CED3.0
 REA06
 MARB00

JA L1 DOMINETTE 5409C

Feb. 3, 2015 • #43586256

CL 1 DOMINO 886U HH ADVANCE 2181Z HH MISS ADVANCE 6054S	CL 1 DOMINO 638S CL 1 DOMINETTE 440P CL 1 DOMINO 320N HH MISS ADVANCE 4053P L1 DOMINO 03571 HH MISS ADVANCE 1088L CL 1 DOMINO 0157K JA L1 DOMINETTE 2613M
--	--

• Bull Calf #7338 / Sire: DH 239 / Born: Sept. 26, 2017 / BW 82

60**FALL PAIR**

BW2.7
 WW51
 YW81
 MILK28
 M&G54
 CED3.3
 REA18
 MARB-08

JA L1 DOMINETTE 5430C

Feb. 18, 2015 • #43586304

CL 1 DOMINO 886U HH ADVANCE 2181Z HH MISS ADVANCE 6054S	CL 1 DOMINO 638S CL 1 DOMINETTE 440P CL 1 DOMINO 320N HH MISS ADVANCE 4053P CL 1 DOMINO 0157K JA L1 DOMINETTE 807U JA L1 DOMINETTE 6719S
--	---

• Hfr Calf #7335 / Sire: DH 239 / Born: Sept. 24, 2017 / BW 82

61**FALL PAIR**

BW1.8
 WW45
 YW71
 MILK27
 M&G49
 CED1.9
 REA29
 MARB-06

JA L1 DOMINETTE 5621C

April 19, 2015 • #43586379

JA L1 DOMINO 7640T JA L1 DOMINO 1602Y JA L1 DOMINETTE 9204W	HH ADVANCE 286M JAL L1 DOMINETTE 1409L CL 1 DOMINO 555R JA L1 DOMINETTE 4119P CL 1 DOMINO 860U JA L1 DOMINETTE 3735A JA L1 DOMINETTE 4230P
--	---

• Bull Calf #7344 / Sire: DH 239 / Born: Oct. 27, 2017 / BW 82

62**FALL PAIR**

BW1.4
 WW34
 YW68
 MILK35
 M&G51
 CED2.7
 REA09
 MARB11

JA L1 DOMINETTE 3501A

Feb. 12, 2013 • #43382135

GB L1 DOMINO 175E CO L1 DOMINO 946W CO L1 DOMINETTE 523R	HH ADVANCE 767G GB L1 DOM PRC3 3134 GB L1 DOMINO 935C CO L1 DOMINETTE 206M JA L1 DOMINO 7640T JA L1 DOMINETTE 1603Y JA L1 DOMINETTE 9328W
---	--

• Bull Calf #7330 / Sire: DH 239 / Born: Sept. 1, 2017 / BW 80

63**FALL PAIR**

BW1.8
 WW43
 YW69
 MILK22
 M&G44
 CED2.5
 REA04
 MARB09

JA L1 DOMINETTE 9225W

March 19, 2009 • #43033056

HH ADVANCE 3113N CL 1 DOMINO 555R CL 1 DOMINETTE 3174N	L1 DOMINO 99496 HH MS ADV 875H CL 1 DOMINO 9126J CL 1 DOMINETTE 810H CL 1 DOMINO 965J JA L1 DOMINETTE 5772R JA L1 DOMINETTE 2608M
---	--

• Hfr Calf #7345 / Sire: DH 239 / Born: Oct. 31, 2017 / BW 60

64

FALL PAIR

BW3.7
 WW48
 YW77
 MILK28
 M&G52
 CED0.7
 REA16
 MARB10

BT L1 DOMINETTE 5007C

Feb. 14, 2015 • #43596846

HH ADVANCE 8203U
HH ADVANCE 0085X
 | HH MISS ADVANCE 7017T

CL 1 DOMINO 555R
JA L1 DOMINETTE 0201X
 | JA L1 DOMINETTE 4152P

• Bull Calf #7334 / Sire: DH 239 / Born: Sept. 9, 2017 / BW 86

HH ADVANCE 5161R
 HH MISS ADVANCE 752G
 CL 1 DOMINO 320N
 HH MISS ADVANCE 5106R
 HH ADVANCE 3113N
 CL 1 DOMINETTE 3174N
 DH DOMINO 6150
 JA L1 DOMINETTE 6815

FALL PAIRS



LOT 64
BT L1 DOMINETTE 5007C
 SIRE: HH ADVANCE 0085X

AT SIDE: BULL CALF Sired BY DH DOMINO 239



LOT 65
BT L1 DOMINETTE 5014C
 SIRE: JA L1 DOMINO 9800W

AT SIDE: BULL CALF Sired BY DH DOMINO 239



65

FALL PAIR

BW1.3
 WW47
 YW73
 MILK24
 M&G47
 CED3.1
 REA06
 MARB08

BT L1 DOMINETTE 5014C

March 5, 2015 • #43597622

CL 1 DOMINO 555R
JA L1 DOMINO 9800W
 | JA L1 DOMINETTE 4152P

HH ADVANCE 286M
BT L1 DOMINETTE 8630
 | JA L1 DOMINETTE 8404

• Bull Calf #7331 / Sire: DH 239 / Born: Sept. 1, 2017 / BW 72

HH ADVANCE 3113N
 CL 1 DOMINETTE 3174N
 DH DOMINO 6150
 JA L1 DOMINETTE 6815
 HH ADVANCE 0024K
 HH MISS ADVANCE 752G
 HH ADVANCE 400D
 JA L1 DOMINETTE 5601

66

FALL PAIR

BW4.2
 WW49
 YW78
 MILK26
 M&G50
 CED0.7
 REA25
 MARB11

BT L1 DOMINETTE 5016C

March 8, 2015 • #43596853

HH ADVANCE 8203U
HH ADVANCE 0085X
 | HH MISS ADVANCE 7017T

JA L1 DOMINO 8000U
BT L1 DOMINETTE 1122
 | BT L1 DOMINETTE 9657

• Bull Calf #7332 / Sire: DH 239 / Born: Sept. 2, 2017 / BW 82

HH ADVANCE 5161R
 HH MISS ADVANCE 752G
 CL 1 DOMINO 320N
 HH MISS ADVANCE 5106R
 JA L1 DOMINO 6001S
 JA L1 DOMINETTE 460P
 JA L1 DOMINO 5617R
 JA L1 DOMINETTE 9238

67

FALL PAIR

BW2.5
 WW46
 YW68
 MILK25
 M&G48
 CED2.1
 REA20
 MARB10

BT L1 DOMINETTE 5017C

March 21, 2015 • #43596850

HH ADVANCE 8203U
HH ADVANCE 0085X
 | HH MISS ADVANCE 7017T

JA L1 DOMINO 5617R
BT L1 DOMINETTE 0635
 | JA L1 DOMINETTE 9203

• Bull Calf #7342 / Sire: DH 239 / Born: Oct. 22, 2017 / BW 84

HH ADVANCE 5161R
 HH MISS ADVANCE 752G
 CL 1 DOMINO 320N
 HH MISS ADVANCE 5106R
 HH ADVANCE 286M
 JA L1 DOMINETTE 204M
 CL 1 DOMINO 484
 JA L1 DOMINETTE 6815

68

FALL PAIR

BW3.5
 WW47
 YW72
 MILK25
 M&G49
 CED0.3
 REA22
 MARB06

BT L1 DOMINETTE 5020C

April 5, 2015 • #43597626

CL 1 DOMINO 9125W
JA L1 DOMINO 2110Z
 | JA L1 DOMINETTE 9204W

HH ADVANCE 0085X
BT L1 DOMINETTE 3309A
 | BT L1 DOMINETTE 9675

• Hfr Calf #7341 / Sire: DH 239 / Born: Oct. 20, 2017 / BW 82

CL 1 DOMINO 732T
 CL 1 DOMINETTE 475P
 CL 1 DOMINO 555R
 JA L1 DOMINETTE 4119P
 HH ADVANCE 8203U
 HH MISS ADVANCE 7017T
 JA L1 DOMINO 5617R
 JA L1 DOMINETTE 951

69

FALL PAIR

BW3.3
 WW50
 YW79
 MILK19
 M&G44
 CED1.2
 REA19
 MARB01

CTR L1 DOMINETTE 5078C

March 16, 2015 • #43597627

HH ADVANCE 8050U
DH ADVANCE 031
 | DH DOMINETTE 7155

KB L1 DOMINO 842U
CTR L1 DOMINETTE 2915Z
 | KB L1 DOMINETTE 950W

• Hfr Calf #7333 / Sire: DH 239 / Born: Sept. 8, 2017 / BW 84

L1 DOMINO 0357I
 HH MISS ADVANCE 365N
 DH DOMINO 302
 DH MISS ADVANCE 3169
 KB L1 DOMINO 655
 MONTANA MISS 310
 CL 1 DOMINO 6105S
 KB L1 DOMINETTE 636

70**FALL PAIR**

BW**2.2**
 WW**38**
 YW**74**
 MILK**28**
 M&G**47**
 CED**2.8**
 REA**06**
 MARB**14**

CTR L1 DOMINETTE 5092C

April 15, 2015 • #43582557

HH ADVANCE 7085T	L1 DOMINO 03571
JA L1 DOMINO 0413X	HH MISS ADVANCE 1088L
JA L1 DOMINETTE 432P	CL 1 DOMINO 0157K
	JA L1 DOMINETTE 1223L
EL ADVANCE 839U	EL ADVANCE 611 S
EL MISS ADVANCE 129Y	HH MISS ADVANCE 3180N
EL MISS ADVANCE 910W	EL ADVANCE 611 S
	EL MISS ADVANCE 537R

• Bull Calf #7339 / Sire: DH 239 / Born: Sept. 26, 2017 / BW 84

71**FALL PAIR**

BW**2.5**
 WW**43**
 YW**74**
 MILK**26**
 M&G**48**
 CED**2.1**
 REA**05**
 MARB**14**

CTR L1 DOMINETTE 3407A

March 8, 2013 • #43371499

HH ADVANCE 7085T	L1 DOMINO 03571
JA L1 DOMINO 0413X	HH MISS ADVANCE 1088L
JA L1 DOMINETTE 432P	CL 1 DOMINO 0157K
	JA L1 DOMINETTE 1223L
CL 1 DOMINO 592R	CL 1 DOMINO 9126J
MONTANA MISS 791T	CL 1 DOMINETTE 974J
MONTANA MISS 4169	CL 1 DOMINO 965J
	JA L1 DOMINETTE 0220

• P.E. to DH Domino 239 from Dec. 1, 2016 – Mar. 20, 2017

72**FALL PAIR**

BW**3.0**
 WW**45**
 YW**74**
 MILK**20**
 M&G**43**
 CED**2.6**
 REA**16**
 MARB**02**

B&B L1 DOMINETTE 5147

Sept. 12, 2015 • #43725703

HH ADVANCE 7034T	L1 DOMINO 03571
HH ADVANCE 1207Y	HH MISS ADVANCE 1088L
HH MISS ADVANCE 6054S	CL 1 DOMINO 320N
	HH MISS ADVANCE 4053P
CL 1 DOMINO 8153H	CL 1 DOMINO 5131E
B&B L1 DOMINETTE 5109	CL 1 DOMINET 496
B&B L1 DOMINETTE 6120	HH ADVANCE 311C
	B&B MS L1 DOM 2122

• Bull Calf #791 / Sire: JA 485B / Born: Sept. 19, 2017 / BW 80

73**FALL PAIR**

BW**2.7**
 WW**51**
 YW**81**
 MILK**24**
 M&G**49**
 CED**2.9**
 REA**11**
 MARB**07**

B&B L1 DOMINETTE 5151

Sept. 13, 2015 • #43724473

HH ADVANCE 7034T	L1 DOMINO 03571
HH ADVANCE 1207Y	HH MISS ADVANCE 1088L
HH MISS ADVANCE 6054S	CL 1 DOMINO 320N
	HH MISS ADVANCE 4053P
JA L1 DOMINO 426P	CL 1 DOMINO 0157K
B&B L1 DOMINETTE 8128	JA L1 DOMINETTE 7070
B&B L1 DOMINETTE 962	DHR L1 DOMINO 512D
	B&B MS TRAC II 9107

• P.E. to JA L1 Domino 485B from Dec. 1, 2016 – Mar. 20, 2017

74**FALL PAIR**

BW**2.2**
 WW**45**
 YW**73**
 MILK**27**
 M&G**49**
 CED**2.4**
 REA**20**
 MARB**03**

B&B L1 DOMINETTE 5169

Sept. 16, 2015 • #43723790

HH ADVANCE 0081X	HH ADVANCE 7034T
FS ADVANCE 264Z	HH MISS ADVANCE 5139R
HH MISS ADVANCE 7109T	HH ADVANCE 5104R
	HH MISS ADVANCE 5130R
CL 1 DOMINO 555R	HH ADVANCE 3113N
B&B L1 DOMINETTE 1175	CL 1 DOMINETTE 3174N
B&B L1 DOMINETTE 2153	CL 1 DOMINO 8153H
	B&B MS 335F DOM 1020

• Bull Calf #785 / Sire: JA 485B / Born: Sept. 9, 2017 / BW 76

75**FALL PAIR**

BW**2.0**
 WW**49**
 YW**87**
 MILK**29**
 M&G**54**
 CED**2.0**
 REA**24**
 MARB**06**

B&B L1 DOMINETTE 5191

Sept. 25, 2015 • #43724029

HH ADVANCE 1098Y	HH ADVANCE 8050U
JA L1 DOMINO 302A	HH MISS ADVANCE 9065W
JA L1 DOMINETTE 1633Y	JA L1 DOMINO 7640T
	JA L1 DOMINETTE 9225W
CL 1 DOMINO 030X	CL 1 DOMINO 7139T
B&B L1 DOMINETTE 3123	CL 1 DOMINETTE 5142R
B&B L1 DOMINETTE 1170	CL 1 DOMINO 9125W
	B&B L1 DOMINETTE 8115

• Bull Calf #783 / Sire: JA 485B / Born: Sept. 3, 2017 / BW 74

76**FALL PAIR**

BW**2.2**
 WW**47**
 YW**74**
 MILK**26**
 M&G**49**
 CED**2.7**
 REA**27**
 MARB**05**

B&B L1 DOMINETTE 5195

Sept. 28, 2015 • #43724198

HH ADVANCE 0081X	HH ADVANCE 7034T
FS ADVANCE 264Z	HH MISS ADVANCE 5139R
HH MISS ADVANCE 7109T	HH ADVANCE 5104R
	HH MISS ADVANCE 5130R
CL 1 DOMINO 9125W	CL 1 DOMINO 732T
B&B L1 DOMINETTE 1251	CL 1 DOMINETTE 475P
B&B L1 DOMINETTE 5110	CL 1 DOMINO 8153H
	B&B L1 DOMINETTE 6181

• Bull Calf #788 / Sire: JA 485B / Born: Sept. 13, 2017 / BW 96

77**FALL PAIR**

BW**2.8**
 WW**49**
 YW**75**
 MILK**22**
 M&G**47**
 CED**1.9**
 REA**23**
 MARB**01**

B&B L1 DOMINETTE 5199

Sept. 28, 2015 • #43724200

CL 1 DOMINO 7128T	HH ADVANCE 3113N
HH ADVANCE 0118X	CL 1 DOMINETTE 0112K
HH MISS ADVANCE 6074S	CL 1 DOMINO 2136M
	HH MISS ADVANCE 1013L
CL 1 DOMINO 555R	HH ADVANCE 3113N
B&B L1 DOMINETTE 2132Z	CL 1 DOMINETTE 3174N
B&B L1 DOMINETTE 8167	CL 1 DOMINO 555R
	B&B L1 DOMINETTE 456

• Hfr Calf #790 / Sire: JA 485B / Born: Sept. 16, 2017 / BW 82

78**FALL PAIR**

BW**3.5**
 WW**46**
 YW**83**
 MILK**20**
 M&G**43**
 CED**0.3**
 REA**31**
 MARB**04**

B&B L1 DOMINETTE 5205

Sept. 29, 2015 • #43723973

CL 1 DOMINO 860U	CL 1 DOMINO 637S
JA L1 DOMINO 2719Z	CL 1 DOMINETTE 5142R
JA L1 DOMINETTE 325N	CL 1 DOMINO 0157K
	JA L1 DOMINETTE 5613
CL 1 DOMINO 8153H	CL 1 DOMINO 5131E
B&B L1 DOMINETTE 7165	CL 1 DOMINET 496
B&B L1 DOMINETTE 2195	CL 1 DOMINO 8153H
	B&B L1 DOMINET 5189

• Bull Calf #794 / Sire: JA 485B / Born: Oct. 4, 2017 / BW 82

79**FALL PAIR**

BW**4.2**
 WW**52**
 YW**78**
 MILK**19**
 M&G**45**
 CED**0.4**
 REA**30**
 MARB**04**

B&B L1 DOMINETTE 5212

Oct. 2, 2015 • #43724008

CL 1 DOMINO 7128T	HH ADVANCE 3113N
HH ADVANCE 0118X	CL 1 DOMINETTE 0112K
HH MISS ADVANCE 6074S	CL 1 DOMINO 2136M
	HH MISS ADVANCE 1013L
CL 1 DOMINO 9125W	CL 1 DOMINO 732T
B&B L1 DOMINETTE 2125	CL 1 DOMINETTE 475P
B&B L1 DOMINETTE 462	CL 1 DOMINO 8153H
	B&B L1 DOMINETTE 6110

• Hfr Calf #786 / Sire: JA 485B / Born: Sept. 6, 2017 / BW 74

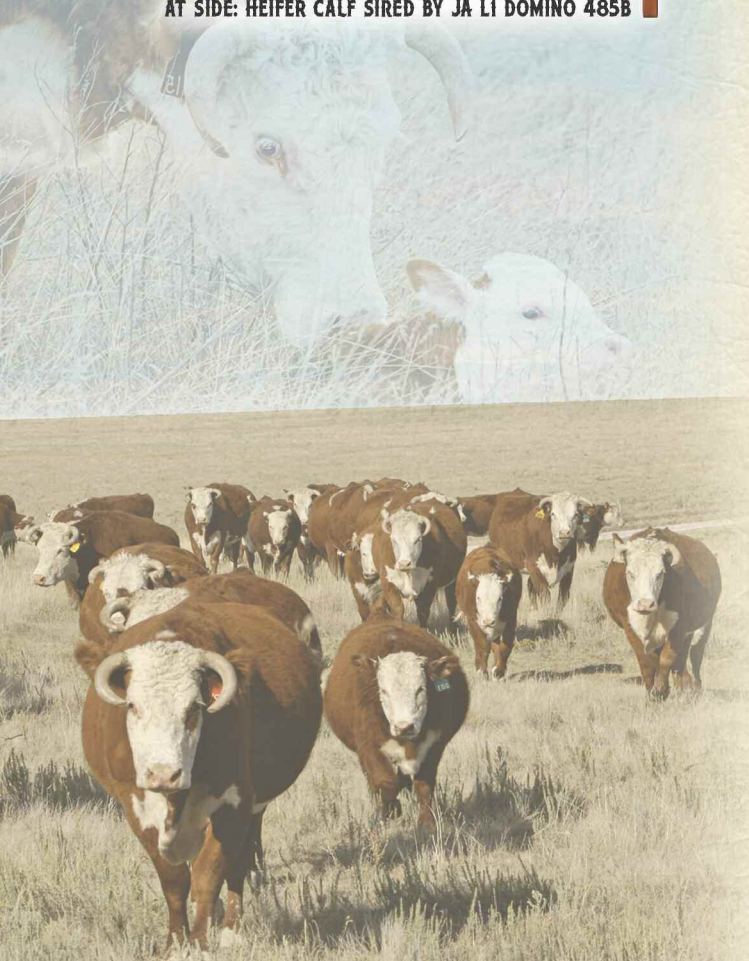
FALL PAIRS



LOT 72
B&B L1 DOMINETTE 5147
 SIRE: HH ADVANCE 1207Y
 AT SIDE: BULL CALF BY JA L1 DOMINO 485B



LOT 82
B&B L1 DOMINETTE 5245
 SIRE: JA L1 DOMINO 2719Z
 AT SIDE: HEIFER CALF SIRE BY JA L1 DOMINO 485B



80

FALL PAIR

BW**2.7**
 WW**46**
 YW**69**
 MILK**17**
 M&G**40**

 CED**1.1**

 REA**28**
 MARB**03**

B&B L1 DOMINETTE 5216

Oct. 4, 2015 • #43724001

CL 1 DOMINO 7128T | HH ADVANCE 3113N
HH ADVANCE 0118X | CL 1 DOMINETTE 0112K
 | HH MISS ADVANCE 6074S | CL 1 DOMINO 2136M
 | | HH MISS ADVANCE 1013L
 CL 1 DOMINO 9125W | CL 1 DOMINO 732T
B&B L1 DOMINETTE 2111 | CL 1 DOMINETTE 475P
 | B&B L1 DOMINETTE 2147 | CL 1 DOMINO 8153H
 | | B&B MS LEGACY 1009

• Bull Calf #789 / Sire: JA 485B / Born: Sept. 14, 2017 / BW 84

81

FALL PAIR

BW**1.8**
 WW**43**
 YW**66**
 MILK**28**
 M&G**49**

 CED**2.8**

 REA**12**
 MARB**04**

B&B L1 DOMINETTE 5234

Oct. 16, 2015 • #43723985

HH ADVANCE 0081X | HH ADVANCE 7034T
FS ADVANCE 264Z | HH MISS ADVANCE 5139R
 | HH MISS ADVANCE 7109T | HH ADVANCE 5104R
 | | HH MISS ADVANCE 5130R
 CL 1 DOMINO 555R | HH ADVANCE 3113N
B&B L1 DOMINETTE 1240 | CL 1 DOMINETTE 3174N
 | B&B L1 DOMINETTE 2226 | DHR L1 DOMINO 828D
 | | B&B L1 DOMINET 7199

• P.E. to JA L1 Domino 485B from Dec. 1, 2016 – Mar. 20, 2017

82

FALL PAIR

BW**2.8**
 WW**47**
 YW**80**
 MILK**25**
 M&G**48**

 CED**1.2**

 REA**19**
 MARB**01**

B&B L1 DOMINETTE 5245

Oct. 28, 2015 • #43724766

CL 1 DOMINO 860U | CL 1 DOMINO 637S
JA L1 DOMINO 2719Z | CL 1 DOMINETTE 5142R
 | JA L1 DOMINETTE 325N | CL 1 DOMINO 0157K
 | | JA L1 DOMINETTE 5613
 CL 1 DOMINO 555R | HH ADVANCE 3113N
B&B L1 DOMINETTE 9246 | CL 1 DOMINETTE 3174N
 | B&B L1 DOMINETTE 463 | CL 1 DOMINO 8153H
 | | B&B L1 DOMINETE 6181

• Hfr Calf #793 / Sire: JA 485B / Born: Sept. 26, 2017 / BW 93

83

FALL PAIR

BW**3.6**
 WW**49**
 YW**88**
 MILK**21**
 M&G**46**

 CED**1.3**

 REA**21**
 MARB**05**

B&B L1 DOMINETTE 5247

Oct. 30, 2015 • #43724765

CL 1 DOMINO 860U | CL 1 DOMINO 637S
JA L1 DOMINO 2719Z | CL 1 DOMINETTE 5142R
 | JA L1 DOMINETTE 325N | CL 1 DOMINO 0157K
 | | JA L1 DOMINETTE 5613
 JA L1 DOMINO 426P | CL 1 DOMINO 0157K
B&B L1 DOMINETTE 8239 | JA L1 DOMINETTE 7070
 | B&B L1 DOMINETTE 478P | CL 1 DOMINO 8153H
 | | B&B L1 DOMINET 7188

• Hfr Calf #784 / Sire: JA 485B / Born: Sept. 4, 2017 / BW 74

84

FALL PAIR

BW**3.9**
 WW**53**
 YW**94**
 MILK**29**
 M&G**55**

 CED**0.1**

 REA**36**
 MARB**01**

B&B L1 DOMINETTE 5248

Oct. 30, 2015 • #43725697

HH ADVANCE 1098Y | HH ADVANCE 8050U
JA L1 DOMINO 302A | HH MISS ADVANCE 9065W
 | JA L1 DOMINETTE 1633Y | JA L1 DOMINO 7640T
 | | JA L1 DOMINETTE 9225W
 JA L1 DOMINO 0615X | JA L1 DOMINO 7640T
B&B L1 DOMINETTE 3183 | JA L1 DOMINETTE 5754R
 | B&B L1 DOMINETTE 1213 | CL 1 DOMINO 555R
 | | B&B L1 DOMINETTE 2141

• Hfr Calf #792 / Sire: JA 485B / Born: Sept. 20, 2017 / BW 80

COMMERCIAL BRED HEIFERS...

HEREFORDS & BLACK BALDIES

- 225 Hd. Hereford & F1 Black Baldie Bred Heifers
- Jamison Hereford Line 1 Genetics
- Replacement Quality Cowherd Builders
- Spring 2016 Heifers ...Bred to Calve at 24 months
- Complete Health Program
- A.I. bred to Select Sires' Connealy Comrade, a Calving Ease and Carcass Value Leader!
- All Bred and Summer Grazed on Jamison Ranch
- Preg Checked November 15 ...sorted into calving interval groups
- **BUYER'S OPTION...**
 - Minimum 10 hd. purchase with option to take entire respective group up to full load lots

HEREFORD HEIFERS, LOTS 101-220

- 120 Head
- **Jamison Line 1 Genetics** ...bred by Paulich Ranch, CO; Marvin & Lynn Gleason, KS; Means Ranch, CO; Rusher Ranch, CO. These ranches have invested in the sale-top, highest performance Jamison bulls for over 30 years!
- **A.I. Bred April 26, 2017 to Select Sires' Angus Connealy Comrade**
- Angus Pasture Sires ...low birth weight bulls
- **Start Calving February 2, 2018**

F1 BLACK BALDIE HEIFERS, LOTS 221-325

- 105 Head
- Jamison Herefords Line 1 sires out of commercial Angus cows ...Bred by Cliff Crago Ranch, SD.
- **A.I. Bred April 26, 2017 to Select Sires' Angus Connealy Comrade**
- Angus Pasture Sires ...low birth weight bulls
- **Start Calving February 2, 2018**



A.I. SIRE...



CONNELLY COMRADE 1385 #170314605
Connealy Consensus 7229 x GAR New Design 5050
• Act. BW 74 / 205 wt. 816/111 / 365 wt. 1419/113
CED 17 BW -3.6 WW 47 YW 91 MILK 29
CW 68 REA .67 MARB .55 \$BEEF 103.69
• A proven Calving Ease, Hi-Value Carcass Sire
• Sire of superior daughters!
• Select Sires' #1 selling sire ...2015 & 2016
**A SELECT SIRES COMMERCIAL INDUSTRY,
BALANCED TRAIT, BEEF BULL!**



JAMISON RANCH...

**Performance Hereford Cattle and Reputation Performance
Quarter Horses ...Five Generations Ranching in Western
Kansas' Big, Hard-Grass Country!**



GENERAL INFORMATION

DATE: FRIDAY, DECEMBER 1, 2017 ...12:30 PM CST

LOCATION: Jamison Livestock Sales Center & Arena ...ranch headquarters located off I-70, Quinter Exit 107, 2 mi. South, 1 mi. East, 1½ miles South.

LUNCH: Available on the grounds.

RANCH PHONES: OFFICE 785/ 754-3424

Gordon (h) 785/ 754-3639, **Gordon (c)** 785/ 299-0441,
Daron Jamison 785/ 650-9639, **Devin Sweitzer** 785/ 299-0663

SALE CATTLE VIDEOS: Produced by **THE LIVESTOCK LINK**. Videos of every registered female lot and groups of the commercial bred heifers, go to: www.jamisonranch.com

SALE DAY PHONE: 785/ 754-3424

BID ONLINE: www.dvauction.com ...to register for bidding online, call Tami McIntosh 308/ 870-3661; office 402/ 316-5460.

INTERNET & PHONE BIDDERS ...Buyer number registration **approved** by making phone contact with Gordon Jamison, Daron Jamison or Sale Mgr. Jay George about your cattle of interest the week prior to the sale.

SALE HEADQUARTERS... Cobblestone Inn & Suites, Quinter, KS, 785/ 754-3600 ...Exit 107 off I-70 at Quinter, KS. Free Breakfast.

Best Western, Wakeeney, KS, 785/ 743-2700 ...Located 20 mi. east of ranch on I-70. Free, full service breakfast. **Request Jamison Ranch Sale rate at either headquarters motel.**

Other Motels: Wakeeney Super 8 785/ 743-6442; Econo Lodge 785/ 743-5505; **Oakley** (30 miles west) Sleep Inn 785/ 671-1111; Best Western Golden Plains 785/ 672-3254; Kansas Kountry Inn 785/ 672-3131.

AIRPORTS: Commercial air service is available to Hays, KS or Garden City, KS. Private planes may land at Quinter, KS (sod strip), Wakeeney (3500 ft. paved) or Oakley (5000 ft. paved).

TERMS & CONDITIONS: Terms of sale are cash. Every sale animal will be sold to the highest bidder with auctioneer settling bid disputes. Announced changes in catalog information on sale day take precedence over printed material. All cattle are the buyer's property as soon as sold and will be cared for a reasonable length of time at the buyer's risk. Any person attending the sale does so at his own risk. Neither sale management, owners, nor any person connected with this sale, assumes any liability, legal or otherwise.

In the event of default in any part of the Terms and Conditions for this sale by buyer or seller, it shall be the responsibility of the buyer or seller to instigate any action needed to bring about a fair settlement of any claims and to be responsible for any and all costs.

GUARANTEE: Every animal in this sale, to the best of our knowledge, is free of disease or defect. Any known defects will be announced at sale time. Cattle are at the buyer's risk, expense and responsibility from the time of purchase. No other warranty or guarantee is expressed or implied.

PREGNANCY STATUS: All spring bred heifers will be pregnancy tested with results announced sale day. Pregnant females are sold as breeders without further guarantee. All fall calving cows sell open and ready to breed.

HEALTH: Herd health is excellent. Individual health papers will be furnished for shipment anywhere in the U.S.

REGISTRATION & TRANSFER: American Hereford Assn. registration certificates will be transferred upon request to buyers at seller's expense. Buyers must give complete transfer information at time of settlement.

LOADOUT: Loadout of cattle is available immediately upon completion of the entire sale, and will be directed by the Jamison sale crew foreman. Loadout papers will be provided by sale clerks at sale settlement. **No delivery provided on registered or commercial females, either one.**

TRUCKING: Buyers are responsible for their own trucking. We will assist in making arrangements. Recommended livestock haulers: Woolsey Livestock Transportation, Billings, MT, office 406/652-0517, Bob 406/670-1877 • DeLohn Golden, TX 254/597-1234 • Martin Mickelson, Logan, UT 435/757-0811.

INSURANCE: Arrange insurance through American Live Stock / Markel, Cheri & Jim Gies, Eaton, CO, (c) 970/590-0500, (h) 970/454-3836. Sale clerks will assist with insurance.

ABSENTEE BIDS: Anyone who cannot attend the sale may place phone or mail bids by contacting Gordon Jamison, Daron Jamison, Sale Manager Jay George or any listed sale representative.

SALE MANAGEMENT: UNITED LIVESTOCK BROKERS, INC.

Jay George 605/ 391-6230 • 1025 28th Rd. NW, Lebo, KS 66856

Sale management acts as agent only and assumes no legal responsibility.

JAMISON HEREFORDS

SINCE 1944 ...Performance Herd Bulls for Ranchers & Breeders

**SPRING TOTAL PERFORMANCE
BULL SALE**

FRIDAY **FEBRUARY 23, 2018**

200 BULLS

Yearlings & Two Yr. Olds

A COWMAN'S PROGRAM...

- ✓ Linebred Line 1
- ✓ Trait Balanced
- ✓ Functional, Efficient Beef Bulls
- ✓ Range Country Calving Ease
- ✓ Carcass Ultrasounded
- ✓ Range-Raised (no creep)
- ✓ Volume Selection
- ✓ The #1 Crossbreeding Sire
on Your Black Cows

**...BACKED BY THE
JAMISON GUARANTEE!**

JAMISON RANCH

2271 COUNTY RD. 74
QUINTER, KANSAS 67752

ADDRESS SERVICE REQUESTED

FIRST CLASS

JAMISON...

HEADQUARTERED IN WESTERN KANSAS'
BIG, HARDGRASS RANCH COUNTRY!

**ONE OF AMERICA'S
MOST RESPECTED COWHERDS!**

