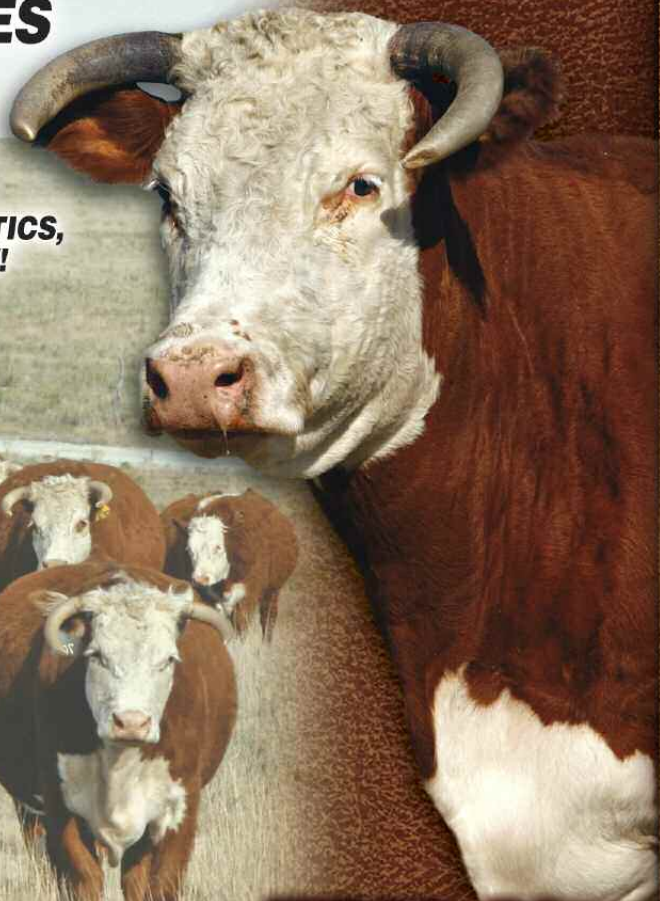


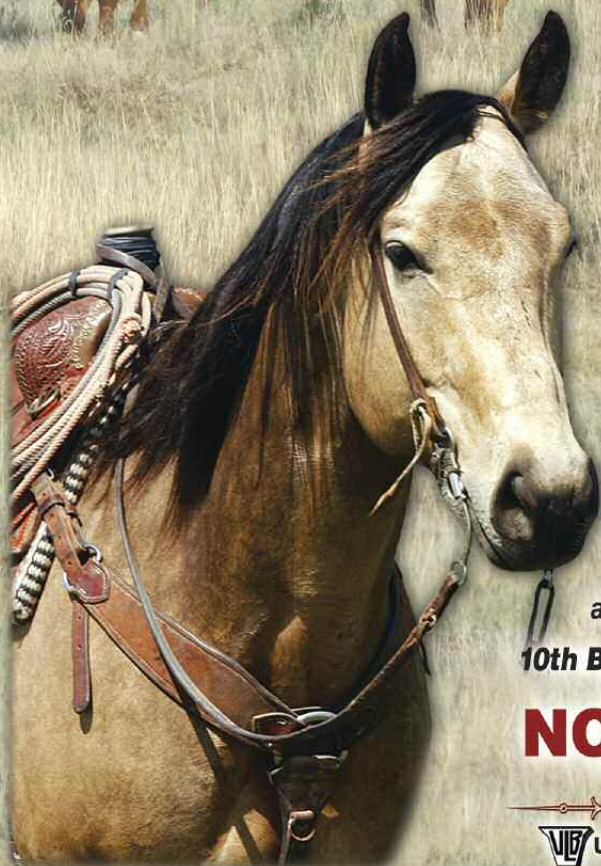
JAMISON

HEREFORDS & QUARTER HORSES

**GENERATIONS OF PROVEN GENETICS,
PERFORMANCE AND QUALITY!**



**SINCE 1944 ...69 Years of
Hereford Leadership!**



*A Premier Hereford
and Quarter Horse Event!*

**10th BREEDERS AND RANCHERS
PRODUCTION SALE**

NOV. 7 & 8, 2013
QUINTER, KANSAS



UNITED LIVESTOCK BROKERS, INC.

JAMISON

HEREFORDS & QUARTER HORSES

10th BREEDERS & RANCHERS PRODUCTION SALE

FRIDAY **NOV. 7 & 8, 2013**

Thurs., Nov. 7th • Performance Preview, 2 pm
Fri., Nov. 8th ...Cattle Sale 10:30 am ...Horse Sale 1:00 pm
Sale cattle and horses on display all day

Jamison Ranch Livestock Arena ...located off I-70,
Quinter Exit 107, 2 miles south, 1 mile east, 1½ miles south

108 REG. HEREFORD FEMALES

JA Replacement Bred Heifers • Fall Pairs • Spring Bred Cows

195 COMM. HEREFORD & F1 RED BALDIE BRED HFERS

100 QUARTER HORSES

68 Seasoned Ranchers & Started Prospects Under Saddle
2013 Foals • A Breeding Stallion • Select Broodmares

— AUCTIONEERS —

LYNN WEISHAAR

Reva, SD
605/866-4670 or 605/641-6278

SETH WEISHAAR

Belle Fourche, SD
605/892-2640 or 605/210-1124

— SALE REPRESENTATIVES —

Levi Landers, American Hereford Assn. • 308/ 730-1396
Tom Granzow, Kansas Hereford Assn. • 785/ 466-2226
Marc Hotchkiss, Hereford America • 605/ 490-1513
Doug Hayes, American Quarter Horse Journal
Jim Gies, Western Livestock Journal • 970/590-0500
Doug Paul, The Stock Exchange • 405/820-3982
Guy Peverly, High Plains Journal • 785/456-4390
Andrew Sylvester, Kansas Stockman • 785/456-4352
Scott Dirk, Tri-State Livestock News • 605/380-6024
Craig Talkington, Special Assignment • 785/ 623-1789

— INSURANCE —

Jim Gies, 970/454-3836 or (c) 970-590-0500 • Harding & Harding
All horses left at the ranch after Sunday, Nov. 10th must be insured!



UNITED LIVESTOCK BROKERS, INC.

Jay George • 605/391-6230
1025 28th Rd. NW
Lebo, Kansas 66856

Sale Photography by Jay George

— VETERINARIAN —

Max Mann, DVM • Quinter (KS) Vet Service • 785/754-3411

SALE DAY PHONE • 785/754-3424

GENERAL INFORMATION Sale terms, motels, etc. ...see page 48.

LOADOUT — Every effort will be made to honor loadout requests for registered cattle and horses prior to sale completion. It will be directed by the sale crew foremen and at their convenience. Sale clerks will provide loadout papers at settlement.

JAMISON RANCH Herefords & Quarter Horses
Online Sale Videos...

www.jamisonranch.com • www.dvauction.com

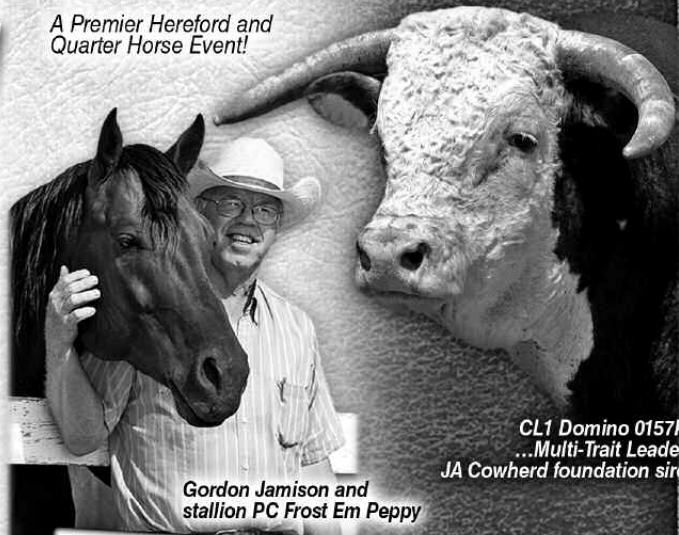
www.jamisonranch.com ...sale updates and information!

GORDON JAMISON & SONS

785/754-3639 or 785/650-9639

2271 COUNTY RD. 74 • QUINTER, KANSAS 67752

A Premier Hereford and
Quarter Horse Event!



Gordon Jamison and
stallion PC Frost Em Peppy

CL1 Domino 0157K
...Multi-Trait Leader
JA Cowherd foundation sire

WELCOME! ...to our Fall Hereford Female and Quarter Horse Production Sale.

Good quality Hereford cattle and "cow savvy" Quarter Horses are the heart of our ranching operation and we are pleased to offer the results of our breeding program.

2013 has been a year of challenges. We had almost no moisture until August, then a bit more in September. The wheat is coming up and the grass is green. These tough Hereford cattle have handled the drought well and are in good condition. The colt crop will be bigger and older as a result of a later sale date. We think they are our best ever!

The broke geldings and mares are top of the line, a really solid set. We think we have as many ranch-solid, older geldings to offer as any breeder sale in the country. We purchase many of these older horses from top cow ranches and test them here in our ranch environment before we offer them to you.

Our Hereford female sale is exciting! Many daughters of 9125, 860 and 555 are selling. These are some of the strongest maternal sires in the breed. We A.I.'d every heifer, using 216, the high seller in the Cooper sale, and 1098 and 0132 from Holdens. We are confident the results will be excellent. The heifers, for the most part, were pasture exposed to 1602 and 031, two of the top young bulls anywhere. Read up on them in the reference sires section.

We want to welcome Blue Top Herefords, Climbin' Tree Ranch and Bill Stuckert to our sale as cooperator herds with these heifers all born and developed here on the ranch and Oleen Bros and Coleman Herefords as guest consignors with top offerings. All the genetics are the same with a strong Line One foundation.

Our family outfit is dedicated to faith and integrity, good Herefords, good horses and good ranching. We appreciate the opportunity to present to you the product of our efforts.

**Gordon Jamison
& the Jamison Family and crew**

View the auction live!
Bid online!

www.dvauction.com

DVAuction
Broadcasting Real-Time Auctions

Visit our website for more information and bidder registration.
Call Tami McIntosh 308/870-3661 or Roxane Shipps 402/649-7946.

Anyone wishing to bid by phone or through DVAuction, please call Gordon Jamison about your horses of interest the week prior to the sale and be prepared to Email a Bank Letter to Daron Jamison ...daron@jamisonranch.com.

DVAuction ...Broadcasting the Entire Event LIVE!
Performance Preview, Thursday 2 pm • Sale, Friday 10:30 am

JA REFERENCE SIRES...



CL 1 DOMINO 860U Jan. 10, 2008 • #42897554

CL 1 DOMINO 637S	L1 DOMINO 0339E	L1 DOMINO 00552
	CL 1 DOMINETTE 118L	L1 DOMINETTE 96893 (DOD)
CL 1 DOMINETTE 5142R	CL 1 DOMINO 1172L	CL 1 DOMINO 888H
	CL 1 DOMINETTE 810H	CL 1 DOMINETTE 903J

Dam of Distinction
4 clvs. WR 108 / YR 111

CED -2.4 BW 4.7 WW 63★ YW 118★ MILK 35★ M&G 67★
Carcass EPDs: REA .46★ MARB .04
720 Progeny avg. WR 101 / YR 102 • 102 dgtrs. progeny avg. WR 102

**HEREFORD BREED IMPACT POWERHOUSE
...6-TRAIT PERFORMANCE & CARCASS LEADER!**

CL 1 DOMINO 555R Jan. 13, 2005 • #42573506

HH ADVANCE 3113N	L1 DOMINO 9949E	L1 DOMINO 97349
	HH MISS ADV 875H 1ET	L1 DOMINETTE 95369 (DOD)
CL 1 DOMINETTE 3174N	CL 1 DOMINO 9126J 1ET	HH ADVANCE 671F 1ET
	CL 1 DOMINETTE 810H	HH MS ADVNC 339C (DOD)

Dam of Distinction
5 clvs. WR 105 / YR 104

CED 2.8 BW 2.3 WW 52 YW 85 MILK 34★ M&G 60★
Carcass EPDs: REA .10 MARB -.09
325 Progeny avg. WR 100 / YR 99 • 61 dgtrs. progeny avg. WR 100
Sired JA 2009, '10, '11 top selling bulls

THREE-TRAIT, HI-MATERNAL COWHERD BUILDER!

CL 1 DOMINO 9125W Jan. 18, 2009 • #42994844

CL 1 DOMINO 732T	CL 1 DOMINO 590R	CL 1 DOMINO 246M
	CL 1 DOMINETTE 507R (DOD)	CL 1 DOMINETTE 258M
CL 1 DOMINETTE 475P	CL 1 DOMINO 824H	HH ADVANCE 3113N
	CL 1 DOMINETTE 200M (DOD)	CL 1 DOMINETTE 1120L

4 clvs. WR 110 / YR 107
2 clvs. WR 108 / YR 108
4 clvs. WR 106 / YR 102

CED 0.3 BW 3.3 WW 66★ YW 105★ MILK 49★ M&G 82★
Carcass EPDs: REA .19 MARB .20★
247 Progeny avg. WR 102 / YR 102 • 5 dgtrs. progeny avg. WR 102

**COWMAN'S 6-TRAIT LEADER SIRE
...PAYWT., MATERNAL, CARCASS VALUE!**

HH ADVANCE 0085X Jan. 13, 2005 • #42573506

HH ADVANCE 8203U	HH ADVANCE 5161R	HH ADVANCE 396N
	HH MISS ADVANCE 752G	HH MS ADVANCE 2118M
HH MISS ADVANCE 7017T	CL 1 DOMINO 320N	KB L1 DOMINO 519
	HH MISS ADVANCE 5106R	HH MISS ADVANCE 454D

3 clvs. WR 107 / YR 108

CED -1.8 BW 3.9 WW 56 YW 84 MILK 25 M&G 53
Carcass EPDs: REA .30 MARB .19
9 Progeny avg. WR 104 / YR 102

**REAL RANCHERS' HERD BULL ...COMPLETE,
MUSCLE, PIGMENT, EXTRA CARCASS VALUE!**

GB L1 DOMINO 6134K Sept. 18, 2006 • #42750617

GB L1 DOMINO 471H	GB L1 DOMINO 1144E	GB L1 DOMINO 935C
	GB L1 DOM PRCS 1139E	GB L1 DOM PRCS 9132C
GB L1 DOM PRCS 4103H ET	CL 1 DOMINO 9126J	HH ADVANCE 767G
	GB L1 DOM PRCS 626 (DOD)	GB L1 DOM PRCS 7113

10 clvs. WR 104 / YR 103
7 clvs. WR 108 / YR 106

CED 2.3 BW 2.0 WW 47 YW 91 MILK 26 M&G 50
Carcass EPDs: REA -.02 MARB .28
54 Progeny avg. WR 100 / YR 103

**COMPLETE BEEF BULL ...SUPERB BALANCED
NUMBERS ...THREE GENERATION "DOD" COW LINE!**

JA L1 DOMINO 9800W Jan. 21, 2009 • #43032770

CL 1 DOMINO 555R | HH ADVANCE 3113N | L1 DOMINO 99496
 | CL 1 DOMINETTE 3174N (DOD) | HH MS ADV 875H
 | CL 1 DOMINO 9126J
 | CL 1 DOMINETTE 810H
 | DH DOMINO 6150 | CL 1 DOMINO 166
JA L1 DOMINETTE 4152P | HH MISS ADV 7011W
 | JA L1 DOMINETTE 6815 | HH ADVANCE 388C
 | JA L1 DOMINETTE 0120
 7 clvs. WR 102 / YR 106 | 2010 Cow Sale \$18,000 top selling lot

CED **2.7** BW **2.0** WW **55** YW **80** MILK **27** M&G **54**
 Carcass EPDs: REA **.20** MARB **-.11**
 82 Progeny avg. WR 101 / YR 101

**POWERFUL & COMPLETE ...FUNCTIONAL,
 ALL-AROUND, PERFORMANCE CATTLE!**



JA L1 DOMINO 7640T Feb. 13, 2007 • #42848084

HH ADVANCE 286M | HH ADVANCE 0024K | CL 1 DOMINO 824H
 | HH MISS ADVANCE 752G | HH MISS ADVANCE 894H
 | KB L1 DOMINO 519
 | HH MISS ADVANCE 454D
 | HH ADVANCE 8012H | HH ADVANCE 697F 1ET
JA L1 DOMINETTE 1409L | HH MS ADVNC 160A (DOD)
 | JA L1 DOMINETTE 8800 (DOD) | CL 1 DOMINO 386
 | JA L1 DOMINETTE 6421
 9 clvs. WR 105 / YR 109 | 8 clvs. WR 106 / YR 104

CED **0.9** BW **1.0*** WW **38** YW **79** MILK **25** M&G **43**
 Carcass EPDs: REA **.44*** MARB **.02**
 15 Progeny avg. WR 100

**CALVING EASE, COW EFFICIENCY, CARCASS REA
 ...MODERATE, PIGMENTED, 3-TRAIT LEADER!**



JA L1 DOMINO 1602Y Jan. 30, 2011 • #43232230

JA L1 DOMINO 7640T | HH ADVANCE 286M | HH ADVANCE 0024K
 | HH MISS ADVANCE 752G | HH MISS ADVANCE 894H
 | HH ADVANCE 8012H | JA L1 DOMINET 8800 (DOD)
 | CL 1 DOMINO 555R | HH ADVANCE 3113N
 | CL 1 DOMINET 3174N (DOD) | CL 1 DOMINO 208M
JA L1 DOMINETTE 9204W | JA L1 DOMINET 1317L (DOD)
 | JA L1 DOMINETTE 4119P
 2 clvs. WR 108 / YR 101

CED **3.2** BW **-1.5** WW **39** YW **64** MILK **28** M&G **48**
 Carcass EPDs: REA **.47** MARB **-.04**

2012 top seller to Jamison Ranch, OK • Major service sire on JA sale bred heifers!

**SUPER CALVING EASE, RED MEATED, RED PIGMENTED,
 YOUNG SIRE ...PEDIGREE OF GREAT COWS!**



CO L1 DOMINO 946W Mar. 20, 2009 • #43003699

GB L1 DOMINO 175E | HH ADVANCE 767G | CL 1 DOMINO 500E
 | GB L1 DOM PRCS 3134 (DOD) | HH MISS ADVANCE 251B
 | GB L1 DOMINO 159
 | GB L1 DOM PRCS 105
 | GB L1 DOMINO 935C | CL 1 DOMINO 5131E
CO L1 DOMINETTE 523R | GB L1 DOM PRCS 115 (DOD)
 | CO L1 DOMINETTE 206M | GB L1 DOMINO 017D
 | CO L1 DOMINETTE 913
 Dam of Distinction | 6 clvs. WR 106 / YR 103

CED **2.7** BW **2.4** WW **34** YW **66** MILK **32** M&G **49**
 Carcass EPDs: REA **.00** MARB **.08**

**HI-MATERNAL SON OF 8-TRAIT LEADER GB 175E
 ...AN ELITE COLEMAN COW!**



DH ADVANCE 031 Oct. 5, 2010 • #43220398

HH ADVANCE 8050U | L1 DOMINO 03571 | L1 DOMINO 01384
 | HH MISS ADVANCE 365N | L1 DOMINETTE 00532
 | HH MISS ADVANCE 103L | HH MISS ADVANCE 103L
 | DH DOMINO 302 | CL 1 DOMINO 0144K
DH DOMINETTE 7155 | DH MISS ADVANCE 3169 | DH DOMINETTE 2151
 | DH ADVANCE 1008
 | DH DOMINETTE 5112
 2 clvs. WR 107 / YR 111

CED **1.6** BW **3.0** WW **57** YW **91** MILK **24** M&G **53**
 Carcass EPDs: REA **.38** MARB **-.12**
 Top seller 2012 Debter, AL sale

**TOTAL TRAIT HH ADVANCE 8050U SON
 ...MODERATE, MUSCLE & RED EYED!**





JA SERVICE SIRES... A.I. & Pasture

CL 1 DOMINO 216Z Jan. 9, 2012 • #43268008

CL 1 DOMINO 860U	CL 1 DOMINO 637S	L1 DOMINO 03396
	CL 1 DOMINETTE 5142R (DOD)	CL 1 DOMINETTE 118L
CL 1 DOMINETTE 759T	CL 1 DOMINO 590R	CL 1 DOMINO 1172L
	CL 1 DOMINETTE 193L	CL 1 DOMINETTE 810H
		CL 1 DOMINO 246M
		CL 1 DOMINETTE 258M
		HH ADVANCE 767G
		CL 1 DOMINETTE 318

CED **3.5** BW **0.9** WW **58** YW **107** MILK **34** M&G **63**
 Carcass EPDs: REA **.16** MARB **-.05** • An A.I. Service Sire
 Cooper 2013 \$80,000 top selling bull • In herd: BW 74/ 205 wt. 732 / 365 Wt. 1318

ULTRA COMPLETE ...BALANCED BW to YW BIG SPREAD, HI-MATERNAL BULL!



HH ADVANCE 1098Y Jan. 11, 2011 • #43173131

HH ADVANCE 8050U	L1 DOMINO 03571	L1 DOMINO 01384
	HH MISS ADVANCE 365N	L1 DOMINETTE 00532
HH MISS ADVANCE 9065W	HH ADVANCE 7101T	HH ADVANCE 0024K
	HH MISS ADVANCE 1028L	HH MISS ADVANCE 103L
		HH ADVANCE 4140P
		HH MISS ADVANCE 1121L
		HH ADVANCE 6052F
		HH MISS ADVANCE 7319G

CED **4.2** BW **1.9** WW **59** YW **87** MILK **34** M&G **63**
 Carcass EPDs: REA **.50** MARB **-.13**
 Holden 2012 \$102,000 top selling bull • An A.I. Service Sire

A FUTURE SUPERSIRE FOR CURVE BENDING CE WITH HI-PERFORMANCE, MILK & CARCASS YIELD GRADE!



HH ADVANCE 0132X Jan. 17, 2010 • #43073963

CL 1 DOMINO 7128T	HH ADVANCE 3113N	L1 DOMINO 99496
	CL 1 DOMINETTE 0112K	HH MS ADV 875H
HH MISS ADVANCE 6054S	CL 1 DOMINO 320N	CL 1 DOMINO 5131E
	HH MISS ADVANCE 4053P	CL 1 DOMINETTE 411
		CL 1 DOMINO 019K
		CL 1 DOMINETTE 996J
		HH ADVANCE 145L
		HH MISS ADVANCE 011K

CED **3.7** BW **0.5** WW **42** YW **62** MILK **29** M&G **50**
 Carcass EPDs: REA **-.17** MARB **.23**
 Leading GENEX A.I. Sire

COMPLETE, BALANCED, POWERFUL, CALVING EASE LEADER!



JA L1 DOMINO 0413X Feb. 7, 2010 • #43130100

HH ADVANCE 7085T	L1 DOMINO 03571	L1 DOMINO 01384
	HH MS ADVANCE 1088L (DOD)	L1 DOMINETTE 00532
JA L1 DOMINETTE 432P	CL 1 DOMINO 0157K	CL 1 DOMINO 824H
	JA L1 DOMINETTE 1223L	HH MS ADVANCE 8016H
		HH ADVANCE 767G
		CL 1 DOMINETTE 861H (DOD)
		CL 1 DOMINO 484
		JA L1 DOMINET 503 (DOD)

CED **3.3** BW **1.6** WW **41** YW **76** MILK **27** M&G **47**
 Carcass EPDs: REA **.06** MARB **.12** • Pasture Service Sire

COMPLETE HEREFORD BEEF BULL ...TOP JA COW FAMILY!

JA L1 DOMINO 0908X Mar. 11, 2010 • #43130247

GB L1 DOMINO 6134K	GB L1 DOMINO 471H	GB L1 DOMINO 1144E
	GB L1 DOM PRCS 4103H (DOD)	GB L1 DOM PRCS 1139E
JA L1 DOMINETTE 8810U	CL 1 DOMINO 560R	CL 1 DOMINO 9126J
	JA L1 DOMINETTE 4652P	GB L1 DOM PRCS 626 (DOD)
		CL 1 DOMINO 3162N
		CL 1 DOMINETTE 118L
		HH ADVANCE 286M
		JA L1 DOMINET 100L (DOD)

CED **1.8** BW **3.2** WW **49** YW **87** MILK **25** M&G **50**
 Carcass EPDs: REA **.02** MARB **.19** • Pasture Service Sire

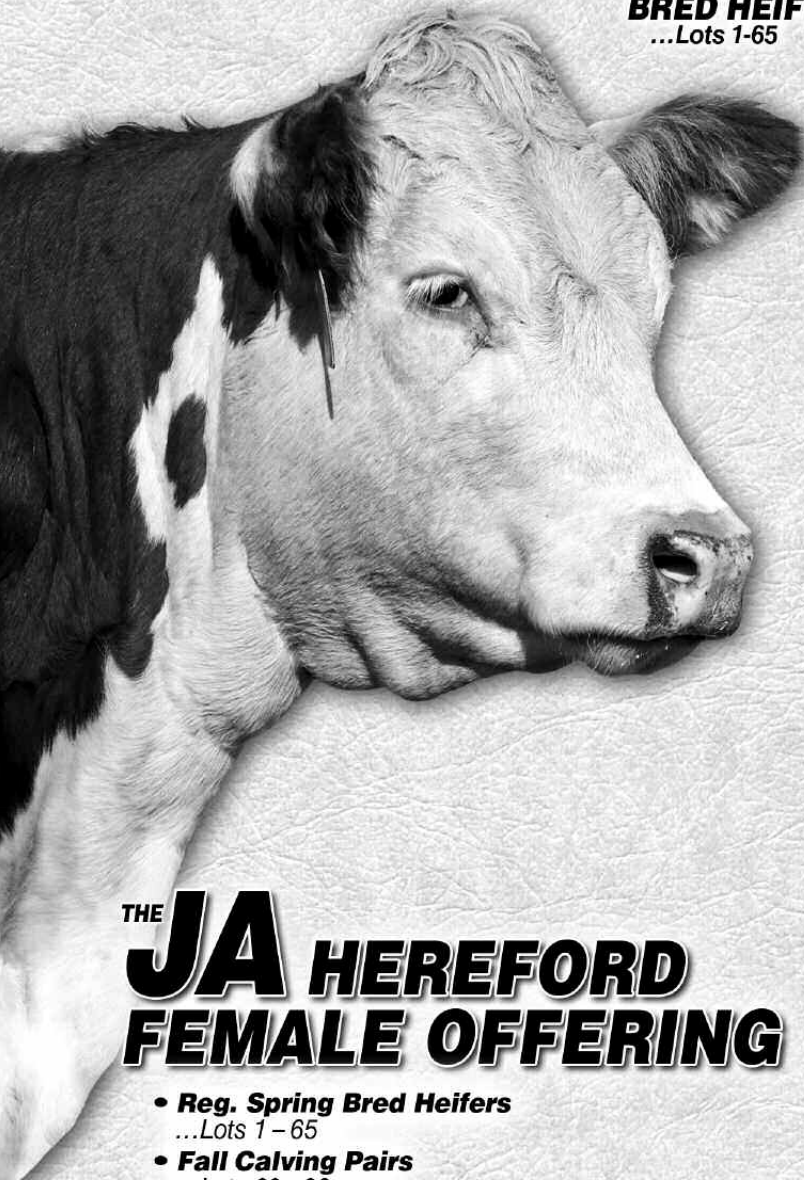
ALL-AROUND CE SIRE ...TOP COW FAMILY, HERD BUILDING DAUGHTERS!

JA L1 DOMINO 0620X Mar. 4, 2010 • #43130160

JA L1 DOMINO 7640T	HH ADVANCE 286M	HH ADVANCE 0024K
	JA L1 DOMINETTE 1409L	HH MISS ADVANCE 752G
JA L1 DOMINETTE 428P	CL 1 DOMINO 0157K	HH ADVANCE 8012H
	JA L1 DOMINETTE 656	JA L1 DOMINET 8800 (DOD)
		HH ADVANCE 767G
		CL 1 DOMINETTE 861H (DOD)
		GB L1 DOMINO 307
		JA L1 DOMINETTE 4712

CED **3.3** BW **0.2** WW **37** YW **61** MILK **23** M&G **41**
 Carcass EPDs: REA **.07** MARB **.12** • Pasture Service Sire

SOLID CALVING EASE ...RED PIGMENTED BEEF BULL!



**SPRING
BRED HEIFERS**
...Lots 1-65



LOT 3
Sire: CL1 Domino 9125W
BW **4.7** WW **67** YW **103** MILK **32** M&G **65**



LOT 4
Sire: CL1 Domino 9125W
BW **4.2** WW **62** YW **97** MILK **32** M&G **62**



LOT 5
Sire: CL1 Domino 9125W
BW **2.9** WW **56** YW **87** MILK **28** M&G **56**



LOT 7
Sire: CL1 Domino 9125W
BW **4.6** WW **63** YW **99** MILK **32** M&G **63**

THE **J A** HEREFORD
FEMALE OFFERING

- **Reg. Spring Bred Heifers**
...Lots 1 - 65
- **Fall Calving Pairs**
...Lots 66 - 92
- **Spring Bred Cows**
...Lots 93 - 108
- **Commercial Bred Heifers**
...Lots 201 - 399 ...Information on Page 19

The Registered Hereford Female Offering was selected directly out of the Jamison program as well as cooperator and partner herds...

- Blue Top Herefords ...Inman, KS ...cooperator
- Climbin' Tree Ranch ...Westcliffe, CO...cooperator & partner
- Oleen Bros. ...Dwight, KS ...partner
- Coleman Herefords ...Westcliffe, CO ...partner
- Stuckert Herefords ...Tulsa, OK ...cooperator

JAMISON HEREFORDS...

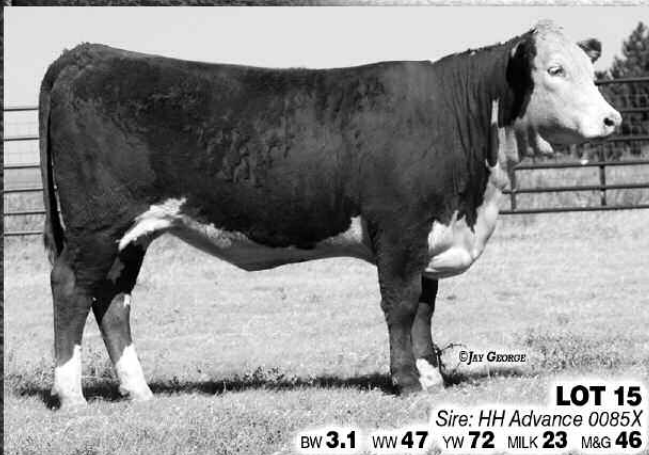
Performance balanced Line 1 genetics backed by one of the breed's most respected cowherds!



LOT 9
Sire: CL1 Domino 555R
BW 2.5 WW 41 YW 73 MILK 26 M&G 47



LOT 11
Sire: CL1 Domino 555R
BW 3.1 WW 48 YW 75 MILK 32 M&G 56



LOT 15
Sire: HH Advance 0085X
BW 3.1 WW 47 YW 72 MILK 23 M&G 46



LOT 16
Sire: CO L1 Domino 946W
BW 4.4 WW 47 YW 79 MILK 29 M&G 53

1 JA L1 DOMINETTE 1103Y

Mar. 7, 2011 • #43232185

Bred Heifer

BW	3.2
WW	54
YW	80
MILK	35
M&G	62
CE	1.5
REA	-.09
MARB	.16

CL 1 DOMINO 732T
CL 1 DOMINO 9125W
| CL 1 DOMINETTE 475P

CL 1 DOMINO 638S
JA L1 DOMINETTE 8314U
| JA L1 DOMINETTE 4450P

CL 1 DOMINO 590R
CL 1 DOMINETTE 507R
CL 1 DOMINO 824H
CL 1 DOMINETTE 200M
L1 DOMINO 03396
CL 1 DOMINETTE 475P
JA L1 DOMINO 1424L
JA L1 DOMINETTE 213M

- A.I. bred to CL 1 Domino 216Z on Apr. 22, 2013
- PE to DH Advance 031 from May 5 to May 20, 2013
- PE to CO L1 Domino 946W from June 8 to Aug. 8, 2013

2 JA L1 DOMINETTE 2101Z TWIN

Jan. 27, 2012 • #43298657

Bred Heifer

BW	4.7
WW	67
YW	103
MILK	32
M&G	65
CE	0.1
REA	.18
MARB	.15

CL 1 DOMINO 732T
CL 1 DOMINO 9125W
| CL 1 DOMINETTE 475P

CL 1 DOMINO 560R
JA L1 DOMINETTE 9815W
| JA L1 DOMINETTE 2526M

CL 1 DOMINO 590R
CL 1 DOMINETTE 507R
CL 1 DOMINO 824H
CL 1 DOMINETTE 200M
CL 1 DOMINO 3162N
CL 1 DOMINETTE 118L
CL 1 DOMINO 7176G
JA L1 DOMINETTE 7504

- A.I. bred to CL 1 Domino 216Z on Apr. 22, 2013
- PE to JA L1 Domino 1602Y from May 5 to Aug. 8, 2013
- Twin to Lot 3 and a top heifer. Should be lots of maternal strength, cow family is good uddered.

3 JA L1 DOMINETTE 2103Z TWIN

Jan. 27, 2012 • #43298660

Bred Heifer

BW	4.2
WW	62
YW	97
MILK	32
M&G	62
CE	0.3
REA	.12
MARB	.15

CL 1 DOMINO 732T
CL 1 DOMINO 9125W
| CL 1 DOMINETTE 475P

CL 1 DOMINO 560R
JA L1 DOMINETTE 9815W
| JA L1 DOMINETTE 2526M

CL 1 DOMINO 590R
CL 1 DOMINETTE 507R
CL 1 DOMINO 824H
CL 1 DOMINETTE 200M
CL 1 DOMINO 3162N
CL 1 DOMINETTE 118L
CL 1 DOMINO 7176G
JA L1 DOMINETTE 7504

- A.I. bred to CL 1 Domino 216Z on Apr. 22, 2013
- PE to JA L1 Domino 1602Y from May 5 to Aug. 8, 2013
- Twin to Lot 2 and just as good.

4 JA L1 DOMINETTE 2105Z

Feb. 5, 2012 • #43298663

Bred Heifer

BW	2.9
WW	56
YW	87
MILK	28
M&G	56
CE	1.0
REA	.25
MARB	.08

CL 1 DOMINO 732T
CL 1 DOMINO 9125W
| CL 1 DOMINETTE 475P

HH ADVANCE 286M
JA L1 DOMINETTE 9614W
| JA L1 DOMINETTE 4160P

CL 1 DOMINO 590R
CL 1 DOMINETTE 507R
CL 1 DOMINO 824H
CL 1 DOMINETTE 200M
HH ADVANCE 0024K
HH MISS ADVANCE 752G
DH DOMINO 6150
JA L1 DOMINETTE 5562

- A.I. bred to CL 1 Domino 216Z on Apr. 22, 2013
- PE to DH Advance 031 from May 5 to Aug. 8, 2013
- Red marked with an outstanding 286 dam. Should be safe in calf to 216, one of the top young sires in the business.

5 JA L1 DOMINETTE 2111Z

Feb. 7, 2012 • #43298668

Bred Heifer

BW	5.5
WW	61
YW	95
MILK	28
M&G	58
CE	-0.5
REA	.18
MARB	.08

CL 1 DOMINO 732T
CL 1 DOMINO 9125W
| CL 1 DOMINETTE 475P

JA L1 DOMINO 4922P
JA L1 DOMINETTE 9909W
| JA L1 DOMINETTE 3406N

CL 1 DOMINO 590R
CL 1 DOMINETTE 507R
CL 1 DOMINO 824H
CL 1 DOMINETTE 200M
HH ADVANCE 8017H
JA L1 DOMINETTE 7444
HH ADVANCE 8012H
JA L1 DOMINETTE 6547

- A.I. bred to HH Advance 0132X on Apr. 22, 2013
- PE to JA L1 Domino 1602Y from May 5 to Aug. 8, 2013
- Extra volume and capacity, will make a top end cow.

6**JA L1 DOMINETTE 2122Z**

Feb. 20, 2012 • #43298689

<i>Bred Heifer</i>	
BW	4.6
WW	63
YW	99
MILK	32
M&G	63
CEU	-0.4
REA	19
MARB	13

CL 1 DOMINO 732T
CL 1 DOMINO 9125W
 CL 1 DOMINETTE 475P

CL 1 DOMINO 590R
 CL 1 DOMINETTE 507R
 CL 1 DOMINO 824H
 CL 1 DOMINETTE 200M
 CL 1 DOMINO 3162N
 CL 1 DOMINETTE 118L
 GB L1 DOMINO 808A
 JA L1 DOMINETTE 7011

CL 1 DOMINO 560R
JA L1 DOMINETTE 9827W
 JA L1 DOMINETTE 3807N

- A.I. bred to CL 1 Domino 216Z on Apr. 22, 2013
- PE to JA L1 Domino 1602Y from May 5 to Aug. 8, 2013
- We think these 9125 daughters bred to 216 are exciting. Heifer 2122 has an easy keeping, nice uddered mother and she should be the same.

11**JA L1 DOMINETTE 2212Z**

Apr. 1, 2012 • #43298720

<i>Bred Heifer</i>	
BW	3.1
WW	48
YW	75
MILK	32
M&G	56
CEU	2.5
REA	-0.05
MARB	00

HH ADVANCE 3113N
CL 1 DOMINO 555R
 CL 1 DOMINETTE 3174N

CL 1 DOMINO 638S
JA L1 DOMINETTE 8300U
 JA L1 DOMINETTE 5788R

- A.I. bred to CL 1 Domino 216Z on Apr. 22, 2013
- PE to DH Advance 031 from May 5 to Aug. 8, 2013
- Lots of maternal strength in this pedigree and a nice made heifer.

7**JA L1 DOMINETTE 2127Z**

Mar. 6, 2012 • #43298697

<i>Bred Heifer</i>	
BW	2.6
WW	47
YW	81
MILK	25
M&G	48
CEU	1.5
REA	18
MARB	-0.07

HH ADVANCE 3113N
CL 1 DOMINO 555R
 CL 1 DOMINETTE 3174N

L1 DOMINO 99496
 HH MS ADV 875H
 CL 1 DOMINO 9126J
 CL 1 DOMINETTE 810H
 HH ADVANCE 0024K
 HH MISS ADVANCE 752G
 HH ADVANCE 1018L
 JA L1 DOMINETTE 322N

HH ADVANCE 286M
JA L1 DOMINETTE 8612U
 JA L1 DOMINETTE 6202S

- A.I. bred to CL 1 Domino 216Z on Apr. 22, 2013
- PE to DH Advance 031 from May 5 to Aug. 8, 2013
- The 555 daughters are some of our best ever cows. The 555 x 286 cross insures a good udder and the high volume, deep ribbed, easy keeping kind.

12**JA L1 DOMINETTE 2213Z**

Apr. 26, 2012 • #43298721

<i>Bred Heifer</i>	
BW	2.1
WW	44
YW	71
MILK	25
M&G	47
CEU	2.2
REA	00
MARB	-0.06

HH ADVANCE 3113N
CL 1 DOMINO 555R
 CL 1 DOMINETTE 3174N

HH ADVANCE 286M
JA L1 DOMINETTE 7605T
 JA L1 DOMINETTE 0253

- A.I. bred to CL 1 Domino 216Z on Apr. 22, 2013
- PE to DH Advance 031 from May 5 to Aug. 8, 2013
- One of the younger heifers out of a top 286 cow.

8**JA L1 DOMINETTE 2131Z**

Apr. 2, 2012 • #43298701

<i>Bred Heifer</i>	
BW	3.3
WW	56
YW	91
MILK	33
M&G	60
CEU	1.2
REA	02
MARB	13

CL 1 DOMINO 732T
CL 1 DOMINO 9125W
 CL 1 DOMINETTE 475P

CL 1 DOMINO 590R
 CL 1 DOMINETTE 507R
 CL 1 DOMINO 824H
 CL 1 DOMINETTE 200M
 GB L1 DOMINO 6134K
 GB L1 DOM 471H
 GB L1 DOM PRCS 4103H
 CL 1 DOMINO 555R
 JA L1 DOMINETTE 4223P

GB L1 DOMINO 6134K
JA L1 DOMINETTE 9700W
 JA L1 DOMINETTE 7211T

- A.I. bred to CL 1 Domino 216Z on Apr. 22, 2013
- PE to JA L1 Domino 1602Y from May 5 to Aug. 8, 2013
- One of the highest indexing 9125 daughters with strong numbers across the board. Strong cow families behind this lady.

13**JA L1 DOMINETTE 2214Z**

May 1, 2012 • #43298722

<i>Bred Heifer</i>	
BW	2.6
WW	45
YW	71
MILK	31
M&G	53
CEU	2.5
REA	-0.13
MARB	02

HH ADVANCE 3113N
CL 1 DOMINO 555R
 CL 1 DOMINETTE 3174N

CL 1 DOMINO 638S
JA L1 DOMINETTE 8314U
 JA L1 DOMINETTE 4450P

- A.I. bred to CL 1 Domino 216Z on Apr. 22, 2013
- PE to DH Advance 031 from May 5 to May 20, 2013
- PE to JA L1 Domino 0620X from June 8 to Aug. 8, 2013
- A May heifer out of a heavy milking 638 daughter.

9**JA L1 DOMINETTE 2200Z**

Feb. 19, 2012 • #43298707

<i>Bred Heifer</i>	
BW	2.5
WW	41
YW	73
MILK	26
M&G	47
CEU	1.5
REA	-0.01
MARB	02

HH ADVANCE 3113N
CL 1 DOMINO 555R
 CL 1 DOMINETTE 3174N

L1 DOMINO 99496
 HH MS ADV 875H
 CL 1 DOMINO 9126J
 CL 1 DOMINETTE 810H
 CL 1 DOMINO 5131E
 GB L1 DOM PRCS 115
 HH ADVANCE 8012H
 JA L1 DOMINETTE 800

GB L1 DOMINO 935C
JA L1 DOMINETTE 5024R
 JA L1 DOMINETTE 1413L

- A.I. bred to CL 1 Domino 216Z on Apr. 22, 2013
- PE to DH Advance 031 from May 5 to Aug. 8, 2013
- We have never offered many 555 females and heifer 2200 is one of the best! Very feminine and clean made, she has the look of a top cow. Dam is a top producer with WR 107 on her progeny.

14**JA L1 DOMINETTE 2300Z**

Mar. 4, 2012 • #43298724

<i>Bred Heifer</i>	
BW	3.3
WW	54
YW	83
MILK	22
M&G	49
CEU	0.9
REA	0.21
MARB	10

HH ADVANCE 8203U
HH ADVANCE 0085X
 HH MISS ADVANCE 7017T

JA L1 DOMINO 4922P
JA L1 DOMINETTE 9901W
 JA L1 DOMINETTE 329N

- A.I. bred to HH Advance 0132X on Apr. 22, 2013
- PE to JA L1 Domino 1602Y from May 5 to Aug. 8, 2013
- The first daughter of 0085 and should be safe in calf to the Holden 0132. It's hard to let this kind go.

10**JA L1 DOMINETTE 2201Z**

Feb. 19, 2012 • #43298708

<i>Bred Heifer</i>	
BW	2.9
WW	48
YW	78
MILK	31
M&G	55
CEU	2.2
REA	-0.03
MARB	-0.05

HH ADVANCE 3113N
CL 1 DOMINO 555R
 CL 1 DOMINETTE 3174N

L1 DOMINO 99496
 HH MS ADV 875H
 CL 1 DOMINO 9126J
 CL 1 DOMINETTE 810H
 DH DOMINO 6150
 JA L1 DOMINETTE 8437
 JA L1 DOMINO 0224
 JA L1 DOMINETTE 8905

JA L1 DOMINO 3105N
JA L1 DOMINETTE 5151R
 JA L1 DOMINETTE 3215N

- A.I. bred to CL 1 Domino 216Z on Apr. 22, 2013
- PE to DH Advance 031 from May 5 to May 20, 2013
- PE to CO L1 Domino 946W from June 8 to Aug. 8, 2013
- Heifer 2201 had a WR 110 and should be safe to 216. She still has her horns, they have been sloped.

15**JA L1 DOMINETTE 2306Z**

Mar. 19, 2012 • #43298731

<i>Bred Heifer</i>	
BW	3.1
WW	47
YW	72
MILK	23
M&G	46
CEU	-0.2
REA	0.22
MARB	19

HH ADVANCE 8203U
HH ADVANCE 0085X
 HH MISS ADVANCE 7017T

JA L1 DOMINO 6001S
JA L1 DOMINETTE 9011W
 JA L1 DOMINETTE 0409

- A.I. bred to HH Advance 0132X on Apr. 22, 2013
- PE to JA L1 Domino 1602Y from May 5 to Aug. 8, 2013
- The 0085 daughters look good. Granddam 0409 was a top producer and the mother of 8633 that has worked so well for Oleens, Bauers and Verquers.



LOT 18
Sire: CO L1 Domino 946W
BW 2.5 WW 35 YW 62 MILK 30 M&G 47



LOT 20
Sire: CO L1 Domino 946W
BW 2.5 WW 37 YW 69 MILK 28 M&G 47



LOT 25
Sire: CL1 Domino 860U
BW 4.8 WW 56 YW 101 MILK 27 M&G 55



LOT 27
Sire: CL1 Domino 860U
BW 4.6 WW 57 YW 98 MILK 28 M&G 56

16

JA L1 DOMINETTE 2501Z TWIN

Feb. 1, 2012 • #43298781

Bred Heifer

BW 4.4
WW 47
YW 79
MILK 29
M&G 53
CED 0.8
REA 11
MARB 12

GB L1 DOMINO 175E
CO L1 DOMINO 946W
| CO L1 DOMINETTE 523R

HH ADVANCE 7085T
JA L1 DOMINETTE 0422X
| JA L1 DOMINETTE 8604U

HH ADVANCE 767G
GB L1 DOM PRCS 3134
GB L1 DOMINO 935C
CO L1 DOMINETTE 206M
L1 DOMINO 03571
HH MISS ADVANCE 1088L
HH ADVANCE 286M
JA L1 DOMINETTE 1206L

- A.I. bred to HH Advance 0132X on Apr. 22, 2013
- PE to JA L1 Domino 1602Y from May 5 to Aug. 8, 2013
- The first daughter of 946 that we've sold. She is red marked and correct.

17

JA L1 DOMINETTE 2502Z

Feb. 6, 2012 • #43298786

Bred Heifer

BW 2.1
WW 39
YW 70
MILK 30
M&G 49
CED 3.0
REA 06
MARB 00

GB L1 DOMINO 175E
CO L1 DOMINO 946W
| CO L1 DOMINETTE 523R

JA L1 DOMINO 8801U
JA L1 DOMINETTE 0273X
| JA L1 DOMINETTE 7515T

HH ADVANCE 767G
GB L1 DOM PRCS 3134
GB L1 DOMINO 935C
CO L1 DOMINETTE 206M
CL 1 DOMINO 555R
JA L1 DOMINETTE 3264N
CL 1 DOMINO 4134P
JA L1 DOMINETTE 300N

- A.I. bred to CL 1 Domino 216Z on Apr. 22, 2013
- PE to DH Advance 031 from May 5 to May 20, 2013
- PE to JA L1 Domino 0620X from June 8 to Aug. 8, 2013
- Lots of nice udders behind heifer 2502.

18

JA L1 DOMINETTE 2512Z

Feb. 21, 2012 • #43298801

Bred Heifer

BW 2.5
WW 35
YW 62
MILK 30
M&G 47
CED 2.1
REA 02
MARB 01

GB L1 DOMINO 175E
CO L1 DOMINO 946W
| CO L1 DOMINETTE 523R

CL 1 DOMINO 555R
JA L1 DOMINETTE 0200X
| JA L1 DOMINETTE 2151M

HH ADVANCE 767G
GB L1 DOM PRCS 3134
GB L1 DOMINO 935C
CO L1 DOMINETTE 206M
HH ADVANCE 3113N
CL 1 DOMINETTE 3174N
DH DOMINO 6150
JA L1 DOMINETTE 0951

- A.I. bred to CL 1 Domino 216Z on Apr. 22, 2013
- PE to DH Advance 031 from May 5 to Aug. 8, 2013
- Dam 0200's first calf and she'll be just like her dam ...clean made and feminine.

19

JA L1 DOMINETTE 2515Z

Mar. 15, 2012 • #43298804

Bred Heifer

BW 2.4
WW 39
YW 67
MILK 27
M&G 47
CED 1.9
REA -01
MARB 06

GB L1 DOMINO 175E
CO L1 DOMINO 946W
| CO L1 DOMINETTE 523R

CL 1 DOMINO 555R
JA L1 DOMINETTE 0244X
| JA L1 DOMINETTE 1251L

HH ADVANCE 767G
GB L1 DOM PRCS 3134
GB L1 DOMINO 935C
CO L1 DOMINETTE 206M
HH ADVANCE 3113N
CL 1 DOMINETTE 3174N
HH ADVANCE 6063F
JA L1 DOMINETTE 723

- A.I. bred to CL 1 Domino 216Z on Apr. 22, 2013
- PE to DH Advance 031 from May 5 to Aug. 8, 2013
- All these 946 heifers are from first-calf heifers. Bred to 216 will insure calving ease and quality.

20

JA L1 DOMINETTE 2519Z

Apr. 25, 2012 • #43302639

Bred Heifer

BW 2.5
WW 37
YW 69
MILK 28
M&G 47
CED 1.9
REA 00
MARB 15

GB L1 DOMINO 175E
CO L1 DOMINO 946W
| CO L1 DOMINETTE 523R

GB L1 DOMINO 6134K
JA L1 DOMINETTE 0909X
| JA L1 DOMINETTE 8204U

HH ADVANCE 767G
GB L1 DOM PRCS 3134
GB L1 DOMINO 935C
CO L1 DOMINETTE 206M
GB L1 DOMINO 471H
GB L1 DOM PRCS 4103H
CL 1 DOMINO 555R
JA L1 DOMINETTE 1250L

- A.I. bred to CL 1 Domino 216Z on Apr. 22, 2013
- PE to JA L1 Domino 1602Y from May 5 to Aug. 8, 2013
- Should be safe to 216 and from a cow family of deep ribbed, easy keeping cows.

21**JA L1 DOMINETTE 2607Z**

Mar. 21, 2012 • #43298823

<i>Bred Heifer</i>	
BW	2.5
WW	44
YW	78
MILK	22
M&G	44
.....
CED	0.8
.....
REA	31
MARB	05

HH ADVANCE 286M
JA L1 DOMINO 7640T
 | CL 1 DOMINETTE 1409L
 JA L1 DOMINO 6001S
JA L1 DOMINETTE 9000W
 | JA L1 DOMINETTE 6602S

HH ADVANCE 0024K
 HH MISS ADVANCE 752G
 HH ADVANCE 8012H
 JA L1 DOMINETTE 8800
 GB L1 DOMINO 935C
 JA L1 DOMINETTE 0212
 HH ADVANCE 286M
 JA L1 DOMINETTE 3808N

- A.I. bred to HH Advance 1098Y on Apr. 22, 2013
- PE to DH Advance 031 from May 5 to Aug. 8, 2013
- We lost sire 7640 and are only selling one daughter. She is double-bred to 286 and dam 9000 is outstanding.

26**JA L1 DOMINETTE 2738Z**

Feb. 23, 2012 • #43298868

<i>Bred Heifer</i>	
BW	3.8
WW	54
YW	97
MILK	25
M&G	52
.....
CED	-0.6
.....
REA	29
MARB	02

CL 1 DOMINO 637S
CL 1 DOMINO 860U
 | CL 1 DOMINETTE 5142R
 CL 1 DOMINO 7176G
JA L1 DOMINETTE 2526M
 | JA L1 DOMINETTE 7504

L1 DOMINO 03396
 CL 1 DOMINETTE 118L
 CL 1 DOMINO 1172L
 CL 1 DOMINETTE 810H
 GB L1 DOMINO 250
 CL 1 DOMINETTE 405
 HH ADVANCE 3021C
 JA L1 DOMINETTE 5405

- A.I. bred to HH Advance 1098Y on Apr. 22, 2013
- PE to JA L1 Domino 1602Y from May 5 to Aug. 8, 2013
- Probably my pick as the best 860 daughter in the sale, she is moderate sized and very sharp and feminine. Should be safe to 1098, the \$102,000 top seller in Holden's 2012 sale.

22**JA L1 DOMINETTE 2702Z**

Jan. 30, 2012 • #43298829

<i>Bred Heifer</i>	
BW	3.2
WW	53
YW	93
MILK	26
M&G	52
.....
CED	1.1
.....
REA	22
MARB	08

CL 1 DOMINO 637S
CL 1 DOMINO 860U
 | CL 1 DOMINETTE 5142R
 HH ADVANCE 8017H
JA L1 DOMINETTE 6901S
 | JA L1 DOMINETTE 101L

L1 DOMINO 03396
 CL 1 DOMINETTE 118L
 CL 1 DOMINO 1172L
 CL 1 DOMINETTE 810H
 XP L1 DOMINO 90085
 HH MISS ADVANCE 251B
 HH ADVANCE 767G
 JA L1 DOMINETTE 9222

- A.I. bred to JA L1 Domino 1602Y on Apr. 22, 2013
- PE to DH Advance 031 from May 5 to Aug. 8, 2013
- One of just a handful of heifers with the horns still on.

27**JA L1 DOMINETTE 2744Z**

Mar. 3, 2012 • #43298877

<i>Bred Heifer</i>	
BW	4.6
WW	57
YW	98
MILK	28
M&G	56
.....
CED	-0.2
.....
REA	22
MARB	02

CL 1 DOMINO 637S
CL 1 DOMINO 860U
 | CL 1 DOMINETTE 5142R
 JA L1 DOMINO 208M
JA L1 DOMINETTE 8102U
 | JA L1 DOMINETTE 6708S

L1 DOMINO 03396
 CL 1 DOMINETTE 118L
 CL 1 DOMINO 1172L
 CL 1 DOMINETTE 810H
 HH ADVANCE 767G
 JA L1 DOMINETTE 0008
 CL 1 DOMINO 8153H
 JA L1 DOMINETTE 1217L

- A.I. bred to HH Advance 0132X on Apr. 22, 2013
- PE to JA L1 Domino 1602Y from May 5 to Aug. 8, 2013
- Heifer 2744 had a WR 111 and is a big growthy heifer. She is red marked and long made, one of our best!

23**JA L1 DOMINETTE 2710Z**

Feb. 5, 2012 • #43298840

<i>Bred Heifer</i>	
BW	5.5
WW	59
YW	105
MILK	26
M&G	56
.....
CED	-1.4
.....
REA	29
MARB	01

CL 1 DOMINO 637S
CL 1 DOMINO 860U
 | CL 1 DOMINETTE 5142R
 JA L1 DOMINO 4922P
JA L1 DOMINETTE 7916T
 | JA L1 DOMINETTE 2282M

L1 DOMINO 03396
 CL 1 DOMINETTE 118L
 CL 1 DOMINO 1172L
 CL 1 DOMINETTE 810H
 HH ADVANCE 8017H
 JA L1 DOMINETTE 7444
 JA L1 DOMINO 9213
 JA L1 DOMINETTE 0304

- A.I. bred to HH Advance 0132X on Apr. 22, 2013
- PE to JA L1 Domino 1602Y from May 5 to Aug. 8, 2013
- Clean necked and feminine, check out her WW and YW EPD's.

28**JA L1 DOMINETTE 2750Z**

Apr. 11, 2012 • #43298883

<i>Bred Heifer</i>	
BW	4.8
WW	53
YW	94
MILK	26
M&G	53
.....
CED	-1.2
.....
REA	20
MARB	01

CL 1 DOMINO 637S
CL 1 DOMINO 860U
 | CL 1 DOMINETTE 5142R
 JA L1 DOMINO 4922P
JA L1 DOMINETTE 8916U
 | JA L1 DOMINETTE 8905

L1 DOMINO 03396
 CL 1 DOMINETTE 118L
 CL 1 DOMINO 1172L
 CL 1 DOMINETTE 810H
 HH ADVANCE 8017H
 JA L1 DOMINETTE 7444
 JAK L1 DOMINO E34
 JA L1 DOMINETTE 6418

- A.I. bred to HH Advance 0132X on Apr. 22, 2013
- PE to JA L1 Domino 1602Y from May 5 to Aug. 8, 2013
- Not many 860 daughters have ever been offered for sale. He has 102 daughters in production with an avg. WR 102. Heifer 2750 should be safe to the Holden 0132 bull. What an opportunity for a top calf!

24**JA L1 DOMINETTE 2720Z TWIN**

Feb. 10, 2012 • #43298850

<i>Bred Heifer</i>	
BW	2.9
WW	55
YW	103
MILK	27
M&G	54
.....
CED	0.7
.....
REA	34
MARB	03

CL 1 DOMINO 637S
CL 1 DOMINO 860U
 | CL 1 DOMINETTE 5142R
 HH ADVANCE 286M
JA L1 DOMINETTE 7621T
 | JA L1 DOMINETTE 214M

L1 DOMINO 03396
 CL 1 DOMINETTE 118L
 CL 1 DOMINO 1172L
 CL 1 DOMINETTE 810H
 HH ADVANCE 0024K
 HH MISS ADVANCE 752G
 CL 1 DOMINO 0157K
 JA L1 DOMINETTE 9254

- A.I. bred to HH Advance 1098Y on Apr. 22, 2013
- PE to DH Advance 031 from May 5 to Aug. 8, 2013
- A twin, we saved her sister for a replacement. The 860 daughters are making some of the top cows in the breed.

29**JA L1 DOMINETTE 2751Z**

Apr. 16, 2012 • #43298884

<i>Bred Heifer</i>	
BW	3.6
WW	53
YW	97
MILK	31
M&G	58
.....
CED	0.6
.....
REA	14
MARB	10

CL 1 DOMINO 637S
CL 1 DOMINO 860U
 | CL 1 DOMINETTE 5142R
 CL 1 DOMINO 638S
JA L1 DOMINETTE 8317U
 | JA L1 DOMINETTE 601S

L1 DOMINO 03396
 CL 1 DOMINETTE 118L
 CL 1 DOMINO 1172L
 CL 1 DOMINETTE 810H
 L1 DOMINO 03396
 CL 1 DOMINETTE 475P
 CL 1 DOMINO 0157K
 JA L1 DOMINETTE 1421L

- A.I. bred to HH Advance 1098Y on Apr. 22, 2013
- PE to JA L1 Domino 1602Y from May 5 to Aug. 8, 2013
- Two of the best ever Cooper cows are in this pedigree, 5142 and 475. All the numbers line up here!

25**JA L1 DOMINETTE 2725Z**

Feb. 13, 2012 • #43298855

<i>Bred Heifer</i>	
BW	4.8
WW	56
YW	101
MILK	27
M&G	55
.....
CED	-0.8
.....
REA	28
MARB	00

CL 1 DOMINO 637S
CL 1 DOMINO 860U
 | CL 1 DOMINETTE 5142R
 JA L1 DOMINO 3105N
JA L1 DOMINETTE 8751U
 | JA L1 DOMINETTE 6636S

L1 DOMINO 03396
 CL 1 DOMINETTE 118L
 CL 1 DOMINO 1172L
 CL 1 DOMINETTE 810H
 DH DOMINO 6150
 JA L1 DOMINETTE 8437
 HH ADVANCE 286M
 JA L1 DOMINETTE 3934N

- A.I. bred to HH Advance 0132X on Apr. 22, 2013
- PE to JA L1 Domino 1602Y from May 5 to Aug. 8, 2013
- Big, red marked and powerful, this is an outstanding 860 daughter and everyone will find her!

30**JA L1 DOMINETTE 2802Z**

Feb. 27, 2012 • #43298889

<i>Bred Heifer</i>	
BW	3.0
WW	55
YW	81
MILK	26
M&G	54
.....
CED	2.2
.....
REA	17
MARB	01

CL 1 DOMINO 555R
JA L1 DOMINO 9800W
 | JA L1 DOMINETTE 4152P
 CL 1 DOMINO 638S
JA L1 DOMINETTE 8313U
 | JA L1 DOMINETTE 6601S

HH ADVANCE 3113N
 CL 1 DOMINETTE 3174N
 DH DOMINO 6150
 JA L1 DOMINETTE 6815
 L1 DOMINO 03396
 CL 1 DOMINETTE 475P
 HH ADVANCE 286M
 JA L1 DOMINETTE 3290N

- A.I. bred to CL 1 Domino 216Z on Apr. 22, 2013
- PE to JA L1 Domino 1602Y from May 5 to Aug. 8, 2013
- High volume heifer that should make a top cow. Sire 9800 topped our 2010 sale and breeds just like his sire.



©JAY GEORGE

LOT 28
Sire: CL1 Domino 860U
BW 4.8 WW 53 YW 94 MILK 26 M&G 53



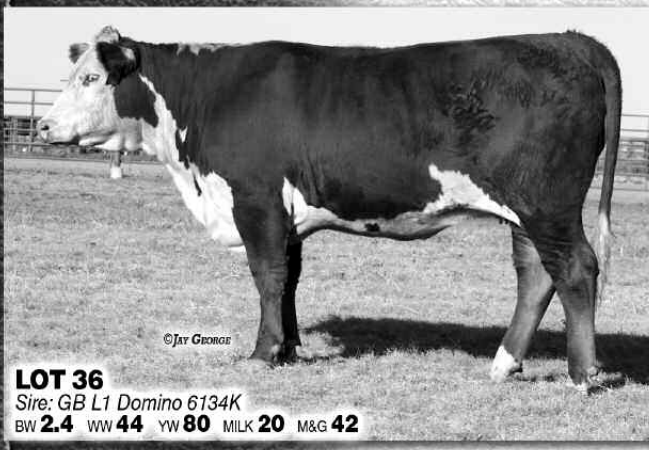
©JAY GEORGE

LOT 33
Sire: GB L1 Domino 6134K
BW 2.8 WW 44 YW 79 MILK 25 M&G 46



©JAY GEORGE

LOT 35
Sire: GB L1 Domino 6134K
BW 3.7 WW 49 YW 87 MILK 25 M&G 49



©JAY GEORGE

LOT 36
Sire: GB L1 Domino 6134K
BW 2.4 WW 44 YW 80 MILK 20 M&G 42

31

JA L1 DOMINETTE 2803Z

Mar. 2, 2012 • #43298891

Bred Heifer

BW	1.6
WW	48
YW	79
MILK	25
M&G	49
CE	2.1
REA	23
MARB	-02

CL 1 DOMINO 555R
JA L1 DOMINO 9800W
| JA L1 DOMINETTE 4152P

HH ADVANCE 1018L
JA L1 DOMINETTE 6202S
| JA L1 DOMINETTE 322N

HH ADVANCE 3113N
CL 1 DOMINETTE 3174N
DH DOMINO 6150
JA L1 DOMINETTE 6815
CL 1 DOMINO 824H
HH MS ADVANCE 8082H
CL 1 DOMINO 0157K
JA L1 DOMINETTE 5617

- A.I. bred to CL 1 Domino 216Z on Apr. 22, 2013
- PE to JA L1 Domino 1602Y from May 5 to Aug. 8, 2013
- Nice made heifer out of a cow that really mothers up her babies.

32

JA L1 DOMINETTE 2810Z

Apr. 5, 2012 • #43298898

Bred Heifer

BW	4.1
WW	61
YW	89
MILK	26
M&G	57
CE	0.3
REA	22
MARB	00

CL 1 DOMINO 555R
JA L1 DOMINO 9800W
| JA L1 DOMINETTE 4152P

CL 1 DOMINO 560R
JA L1 DOMINETTE 8848U
| JA L1 DOMINETTE 0702

HH ADVANCE 3113N
CL 1 DOMINETTE 3174N
DH DOMINO 6150
JA L1 DOMINETTE 6815
CL 1 DOMINO 3162N
CL 1 DOMINETTE 118L
IH 2110 DOMINO 7907
JA L1 DOMINETTE 5506

- A.I. bred to CL 1 Domino 216Z on Apr. 22, 2013
- PE to JA L1 Domino 1602Y from May 5 to Aug. 8, 2013
- A clean made, younger-aged heifer that is a typical 9800.

33

JA L1 DOMINETTE 2905Z

Feb. 7, 2012 • #Applied For

Bred Heifer

BW	2.8
WW	44
YW	79
MILK	25
M&G	46
CE	1.0
REA	15
MARB	15

GB L1 DOMINO 471H
GB L1 DOMINO 6134K
| GB L1 DOM PRCS 4103H

CL 1 DOMINO 7176G
JA L1 DOMINETTE 5501R
| JA L1 DOMINETTE 0702

GB L1 DOMINO 1144E
GB L1 DOM PRCS 1139E
CL 1 DOMINO 9126J
GB L1 DOM PRCS 626
GB L1 DOMINO 250
CL 1 DOMINETTE 405
IH 2110 DOMINO 7907
JA L1 DOMINETTE 5506

- A.I. bred to CL 1 Domino 216Z on Apr. 22, 2013
- PE to DH Advance 031 from May 5 to May 20, 2013
- PE to JA L1 Domino 0620X from June 8 to Aug. 8, 2013
- One of the most rugged, heaviest boned females in the sale with a lot of muscle expression.

34

JA L1 DOMINETTE 2908Z

Feb. 8, 2012 • #43298902

Bred Heifer

BW	2.6
WW	40
YW	66
MILK	22
M&G	42
CE	0.6
REA	-01
MARB	13

GB L1 DOMINO 471H
GB L1 DOMINO 6134K
| GB L1 DOM PRCS 4103H

DH DOMINO 6150
JA L1 DOMINETTE 4162P
| JA L1 DOMINETTE 5700

GB L1 DOMINO 1144E
GB L1 DOM PRCS 1139E
CL 1 DOMINO 9126J
GB L1 DOM PRCS 626
CL 1 DOMINO 166
HH MISS ADV 7011W
CL 1 DOMINO 129
JA L1 DOMINETTE 6817

- A.I. bred to CL 1 Domino 216Z on Apr. 22, 2013
- PE to DH Advance 031 from May 5 to May 20, 2013
- PE to JA L1 Domino 0620X from June 8 to Aug. 8, 2013
- Here's a 6134 daughter that should be safe to 216. Pedigree goes back to one of the best 386 daughters we ever had.

35

JA L1 DOMINETTE 2912Z

Mar. 3, 2012 • #43298908

Bred Heifer

BW	3.7
WW	49
YW	87
MILK	25
M&G	49
CE	1.0
REA	07
MARB	19

GB L1 DOMINO 471H
GB L1 DOMINO 6134K
| GB L1 DOM PRCS 4103H

CL 1 DOMINO 560R
JA L1 DOMINETTE 9836W
| JA L1 DOMINETTE 2418M

GB L1 DOMINO 1144E
GB L1 DOM PRCS 1139E
CL 1 DOMINO 9126J
GB L1 DOM PRCS 626
CL 1 DOMINO 3162N
CL 1 DOMINETTE 118L
HH ADVANCE 8012H
JA L1 DOMINETTE 9372

- A.I. bred to CL 1 Domino 216Z on Apr. 22, 2013
- PE to DH Advance 031 from May 5 to May 20, 2013
- PE to JA L1 Domino 0620X from June 8 to Aug. 8, 2013
- Lots of volume and capacity and the easy keeping kind.

36**JA L1 DOMINETTE 2915Z**

Mar. 13, 2012 • #43298909

Bred Heifer

BW**2.4**
 WW**44**
 YW**80**
 MILK**20**
 M&G**42**

 CED**1.6**

 REA**-.08**
 MARB**.15**

GB L1 DOMINO 471H
GB L1 DOMINO 6134K
 |GB L1 DOM PRCS 4103H

GB L1 DOMINO 1144E
 GB L1 DOM PRCS 1139E
 CL 1 DOMINO 9126J
 GB L1 DOM PRCS 626
 LF L1 DOMINO 4574
 LF MS ADV STAR 4024
 CL 1 DOMINO 557E
 JA L1 DOMINETTE 4637

LF L1 DOMINO 605
JA L1 DOMINETTE 2751M
 |JA L1 DOMINETTE 0107

- A.I. bred to CL 1 Domino 216Z on Apr. 22, 2013
- PE to DH Advance 031 from May 5 to May 20, 2013
- PE to JA L1 Domino 0620X from June 8 to Aug. 8, 2013
- Out of a top producing eleven year old cow, heifer 2915 is stout made and an easy keeper.

41**BT L1 DOMINETTE 2016**

Mar. 6, 2012 • #43310135

Bred Heifer

BW**2.8**
 WW**39**
 YW**80**
 MILK**24**
 M&G**43**

 CED**2.6**

 REA**.17**
 MARB**.07**

JA L1 DOMINO 6001S
JA L1 DOMINO 8000U
 |JA L1 DOMINETTE 460P

JA L1 DOMINO A408P
BT L1 DOMINETTE 7443
 |BT MS DOMINETTE 210

- A.I. bred to JA L1 Domino 1602Y on Apr. 22, 2013
- PE to JA L1 Domino 1602Y from May 5 to May 17, 2013
- PE to CO L1 Domino 946W from June 8 to Aug. 8, 2013

37**JA L1 DOMINETTE 2916Z**

Mar. 13, 2012 • #43298910

Bred Heifer

BW**0.9**
 WW**27**
 YW**57**
 MILK**21**
 M&G**34**

 CED**2.4**

 REA**-.15**
 MARB**.18**

GB L1 DOMINO 471H
GB L1 DOMINO 6134K
 |GB L1 DOM PRCS 4103H

GB L1 DOMINO 1144E
 GB L1 DOM PRCS 1139E
 CL 1 DOMINO 9126J
 GB L1 DOM PRCS 626
 HH ADVANCE 697F
 HH MISS ADVANCE 160A
 CL 1 DOMINO 5131E
 JA L1 DOMINETTE 6510

HH ADVANCE 8012H
JA L1 DOMINETTE 1413L
 |JA L1 DOMINETTE 800

- A.I. bred to JA L1 Domino 7640T on Apr. 22, 2013
- PE to DH Advance 031 from May 5 to May 20, 2013
- PE to JA L1 Domino 0620X from June 8 to Aug. 8, 2013

42**BT L1 DOMINETTE 2021**

May 10, 2012 • #43310125

Bred Heifer

BW**1.9**
 WW**46**
 YW**75**
 MILK**25**
 M&G**48**

 CED**4.3**

 REA**.13**
 MARB**.04**

JA L1 DOMINO 6001S
JA L1 DOMINO 8000U
 |JA L1 DOMINETTE 460P

JA L1 DOMINO 5617R
BT L1 DOMINETTE 9658
 |JA L1 DOMINETTE 704T

- A.I. bred to JA L1 Domino 1602Y on Apr. 22, 2013
- PE to JA L1 Domino 1602Y from May 5 to May 17, 2013
- PE to CO L1 Domino 946W from June 8 to Aug. 8, 2013

38**BT L1 DOMINETTE 2005**

Feb. 16, 2012 • #43310141

Bred Heifer

BW**2.4**
 WW**36**
 YW**59**
 MILK**21**
 M&G**39**

 CED**1.3**

 REA**.13**
 MARB**.01**

JA L1 DOMINO 6001S
JA L1 DOMINO 8000U
 |JA L1 DOMINETTE 460P

GB L1 DOMINO 935C
 JA L1 DOMINETTE 0212
 CL 1 DOMINO 9126J
 JA L1 DOMINETTE 2003M
 CL 1 DOMINO 166
 L1 DOMINETTA 343
 BT L1 DOMINO 227
 CK DYAWNA 5134

GL1 DOMINO 6012A
BT MS DOMINETTE 340
 |BT MS DOMINO 452

- A.I. bred to JA L1 Domino 1602Y on Apr. 22, 2013
- PE to JA L1 Domino 1602Y from May 5 to May 17, 2013
- PE to CO L1 Domino 946W from June 8 to Aug. 8, 2013

43**CO L1 DOMINETTE 222Z**

Mar. 18, 2012 • #43280585

Bred Heifer

BW**2.8**
 WW**43**
 YW**59**
 MILK**17**
 M&G**38**

 CED**2.0**

 REA**.15**
 MARB**-.05**

CL 1 DOMINO 7128T
HH ADVANCE 0118X
 |HH MISS ADVANCE 6074S

JA L1 DOMINO 5603R
CO L1 DOMINETTE 819U
 |CO L1 DOMINETTE 312N

- A.I. bred to JA L1 Domino 1602Y on May 27, 2013
- PE to JA L1 Domino 0908X from June 8 to Aug. 8, 2013

39**BT L1 DOMINETTE 2006**

Feb. 20, 2012 • #43310129

Bred Heifer

BW**1.6**
 WW**45**
 YW**72**
 MILK**22**
 M&G**44**

 CED**3.6**

 REA**.22**
 MARB**.04**

JA L1 DOMINO 6001S
JA L1 DOMINO 8000U
 |JA L1 DOMINETTE 460P

GB L1 DOMINO 935C
 JA L1 DOMINETTE 0212
 CL 1 DOMINO 9126J
 JA L1 DOMINETTE 2003M
 HH ADVANCE 286M
 JA L1 DOMINETTE 204M
 CL1 DOMINO 6105F
 ER MISS ADVANCE 2156

JA L1 DOMINO 5617R
BT L1 DOMINETTE 8625
 |ER L1 DOMINETTE 0317K

- A.I. bred to HH Advance 1098Y on Apr. 22, 2013
- PE to JA L1 Domino 1602Y from May 5 to May 17, 2013
- PE to CO L1 Domino 946W from June 8 to Aug. 8, 2013

44**CO L1 DOMINETTE 226Z**

Mar. 20, 2012 • #43280611

Bred Heifer

BW**3.1**
 WW**35**
 YW**57**
 MILK**23**
 M&G**40**

 CED**0.0**

 REA**.16**
 MARB**-.03**

HH ADVANCE 710T
HH ADVANCE 9075W
 |HH MISS ADVANCE 1028L

HH ADVANCE 216M
CO L1 DOMINETTE 516R
 |HH MISS ADVANCE 970J

- A.I. bred to CL 1 Domino 065X on May 28, 2013
- PE to CL 1 Domino 065X from May 28 to Aug. 14, 2013

40**BT L1 DOMINETTE 2009**

Feb. 24, 2012 • #43310130

Bred Heifer

BW**1.9**
 WW**44**
 YW**62**
 MILK**23**
 M&G**45**

 CED**2.7**

 REA**.18**
 MARB**.01**

JA L1 DOMINO 6001S
JA L1 DOMINO 8000U
 |JA L1 DOMINETTE 460P

GB L1 DOMINO 935C
 JA L1 DOMINETTE 0212
 CL 1 DOMINO 9126J
 JA L1 DOMINETTE 2003M
 HH ADVANCE 286M
 JA L1 DOMINETTE 204M
 GL1 DOMINO 6012A
 BT MS DOMINO 452

JA L1 DOMINO 5617R
BT L1 DOMINETTE 8613
 |BT MS DOMINETTE 340

- A.I. bred to HH Advance 1098Y on Apr. 22, 2013
- PE to JA L1 Domino 1602Y from May 5 to May 17, 2013
- PE to CO L1 Domino 946W from June 8 to Aug. 8, 2013

45**CO L1 DOMINETTE 236Z**

Mar. 23, 2012 • #43280606

Bred Heifer

BW**2.6**
 WW**32**
 YW**62**
 MILK**23**
 M&G**39**

 CED**0.4**

 REA**.18**
 MARB**.03**

HH ADVANCE 710T
HH ADVANCE 9075W
 |HH MISS ADVANCE 1028L

HH ADVANCE 216M
CO L1 DOMINETTE 610S
 |CO L1 DOMINETTE 221M

- A.I. bred to JA L1 Domino 1602Y on May 27, 2013
- PE to JA L1 Domino 0908X from June 8 to Aug. 8, 2013

46**CO L1 DOMINETTE 240Z**

Mar. 25, 2012 • #43280604

<i>Bred Heifer</i>	
BW	2.2
WW	42
YW	76
MILK	19
M&G	41
CEW	2.3
REA	-.07
MARB	.18

GB L1 DOMINO 1144E
GB L1 DOMINO 471H
 GB L1 DOM PRCS 1139E

GB L1 DOMINO 935C
 GB L1 DOM PRCS 9132C
 HH ADVANCE 767G
 GB L1 DOM PRCS 7113
 JA L1 DOMINO 503
 KB 501 DOMINET 4124
 JA L1 DOMINO 9213
 KB L1 DOMINETTE 065

KB L1 DOMINO 383
KB L1 DOMINETTE 623
 KB L1 DOMINETTE 356

- A.I. bred to JA L1 Domino 1602Y on May 27, 2013
- PE to JA L1 Domino 0908X from June 8 to Aug. 8, 2013

51**CO L1 DOMINETTE 267Z**

Apr. 23, 2012 • #43280589

<i>Bred Heifer</i>	
BW	4.8
WW	49
YW	93
MILK	17
M&G	41
CEW	0.4
REA	-.05
MARB	.15

GB L1 DOMINO 1144E
GB L1 DOMINO 471H
 GB L1 DOM PRCS 1139E

GB L1 DOMINO 935C
 GB L1 DOM PRCS 9132C
 HH ADVANCE 767G
 GB L1 DOM PRCS 7113
 HH ADVANCE 286M
 JA L1 DOMINETTE 2210M
 HH ADVANCE 216M
 CO L1 DOMINETTE 100L

JA L1 DOMINO 5603R
CO L1 DOMINETTE 807U
 CO L1 DOMINETTE 522R

- A.I. bred to JA L1 Domino 1602Y on May 27, 2013
- PE to JA L1 Domino 0908X from June 8 to Aug. 8, 2013

47**CO L1 DOMINETTE 245Z**

Mar. 28, 2012 • #43280632

<i>Bred Heifer</i>	
BW	4.0
WW	49
YW	78
MILK	28
M&G	52
CEW	-0.2
REA	.22
MARB	-.10

CL 1 DOMINO 7139T
CL 1 DOMINO 065X
 CL 1 DOMINETTE 5142R

CL 1 DOMINO 590R
 CL 1 DOMINETTE 530R
 CL 1 DOMINO 1172L
 CL 1 DOMINETTE 810H
 CL 1 DOMINO 824H
 HH MISS ADVANCE 894H
 L1 DOMINO 99496
 HH MISS ADVANCE 0117K

HH ADVANCE 0024K
CO L1 DOMINETTE 029X
 CO L1 DOMINETTE 828U

- A.I. bred to HH Advance 1098Y on May 28, 2013
- PE to CO L1 Domino 847U from June 6 to Aug. 14, 2013

52**CO L1 DOMINETTE 268Z**

Apr. 23, 2012 • #43280572

<i>Bred Heifer</i>	
BW	0.7
WW	41
YW	73
MILK	24
M&G	45
CEW	3.9
REA	.00
MARB	.09

GB L1 DOMINO 534J
GB L1 DOMINO 8139M
 GB L1 DOM PRCS 4103H

GB L1 DOMINO 1144E
 GB L1 DOM PRCS 922C
 CL 1 DOMINO 9126J
 GB L1 DOM PRCS 626
 CL 1 DOMINO 9126J
 CL 1 DOMINETTE 8184H
 HH ADVANCE 216M
 MONTANA MISS 708

CL 1 DOMINO 6152S
CO L1 DOMINETTE 944W
 CO L1 DOMINETTE 529R

- A.I. bred to JA L1 Domino 1602Y on May 27, 2013
- PE to JA L1 Domino 0908X from June 8 to Aug. 8, 2013

48**CO L1 DOMINETTE 250Z**

Apr. 1, 2012 • #43280584

<i>Bred Heifer</i>	
BW	2.0
WW	45
YW	61
MILK	23
M&G	45
CEW	2.7
REA	.20
MARB	.00

CL 1 DOMINO 7128T
HH ADVANCE 0118X
 HH MISS ADVANCE 6074S

HH ADVANCE 3113N
 CL 1 DOMINETTE 0112K
 CL 1 DOMINO 2136M
 HH MISS ADVANCE 1013L
 CL 1 DOMINO 246M
 GB L1 DOM PRCS 626
 HH ADVANCE 0024K
 CO L1 DOMINETTE 315N

GB L1 DOMINO 647K
CO L1 DOMINETTE 821U
 CO L1 DOMINETTE 521R

- A.I. bred to JA L1 Domino 1602Y on May 27, 2013
- PE to JA L1 Domino 0908X from June 8 to Aug. 8, 2013

53**CO L1 DOMINETTE 271Z**

May 4, 2012 • #43280557

<i>Bred Heifer</i>	
BW	1.3
WW	37
YW	46
MILK	23
M&G	41
CEW	2.5
REA	-.11
MARB	.05

CL 1 DOMINO 7139T
CL 1 DOMINO 065X
 CL 1 DOMINETTE 5142R

CL 1 DOMINO 590R
 CL 1 DOMINETTE 530R
 CL 1 DOMINO 1172L
 CL 1 DOMINETTE 810H
 L1 DOMINO 03396
 XP L1 DOMINETTE 04015
 XP L1 DOMINO 00063
 XP L1 DOMINETTE 96047

XP L1 DOMINO 06070
XP L1 DOMINETTE 10057
 XP L1 DOMINETTE 05030

- A.I. bred to JA L1 Domino 1602Y on May 27, 2013
- PE to JA L1 Domino 0908X from June 8 to Aug. 8, 2013

49**CO L1 DOMINETTE 251Z**

Apr. 4, 2012 • #43280617

<i>Bred Heifer</i>	
BW	2.4
WW	43
YW	76
MILK	23
M&G	44
CEW	2.3
REA	.03
MARB	.08

GB L1 DOMINO 534J
GB L1 DOMINO 8139M
 GB L1 DOM PRCS 4103H

GB L1 DOMINO 1144E
 GB L1 DOM PRCS 922C
 CL 1 DOMINO 9126J
 GB L1 DOM PRCS 626
 GB L1 DOMINO 250
 GB L1 DOM PRCS 766
 GB L1 DOMINO 5129
 JA L1 DOMINETTE 4916

GB L1 DOMINO 017D
CO L1 DOMINETTE 331N
 CO L1 DOMINETTE 112L

- A.I. bred to CL 1 Domino 065X on May 28, 2013
- PE to CL 1 Domino 065X from May 28 to Aug. 14, 2013

54**CO L1 DOMINETTE 273Z**

May 9, 2012 • #43280603

<i>Bred Heifer</i>	
BW	-0.4
WW	38
YW	69
MILK	26
M&G	45
CEW	5.1
REA	.18
MARB	.16

HH ADVANCE 767G
GB L1 DOMINO 175E
 GB L1 DOM PRCS 3134

CL 1 DOMINO 500E
 HH MISS ADVANCE 251B
 GB L1 DOMINO 159
 GB L1 DOM PRCS 105
 L1 DOMINO 97349
 L1 DOMINETTE 95369
 CL 1 DOMINO 484
 JA L1 DOMINETTE 6700

L1 DOMINO 99496
CO L1 DOMINETTE 638S
 JA L1 DOMINETTE 9209

- A.I. bred to JA L1 Domino 1602Y on May 27, 2013
- PE to JA L1 Domino 0908X from June 8 to Aug. 8, 2013

50**CO L1 DOMINETTE 265Z**

Apr. 15, 2012 • #43280594

<i>Bred Heifer</i>	
BW	3.6
WW	47
YW	79
MILK	17
M&G	40
CEW	1.1
REA	-.02
MARB	.14

GB L1 DOMINO 1144E
GB L1 DOMINO 471H
 GB L1 DOM PRCS 1139E

GB L1 DOMINO 935C
 GB L1 DOM PRCS 9132C
 HH ADVANCE 767G
 GB L1 DOM PRCS 7113
 HH ADVANCE 286M
 JA L1 DOMINETTE 2210M
 GB L1 DOMINO 168E
 CO L1 DOMINETTE 914

JA L1 DOMINO 5603R
CO L1 DOMINETTE 727I
 CO L1 DOMINETTE 312N

- A.I. bred to JA L1 Domino 1602Y on May 27, 2013
- PE to JA L1 Domino 0908X from June 8 to Aug. 8, 2013

55**CO L1 DOMINETTE 275Z**

May 11, 2012 • #43280565

<i>Bred Heifer</i>	
BW	2.1
WW	51
YW	90
MILK	34
M&G	59
CEW	3.5
REA	.26
MARB	.11

HH ADVANCE 767G
GB L1 DOMINO 175E
 GB L1 DOM PRCS 3134

CL 1 DOMINO 500E
 HH MISS ADVANCE 251B
 GB L1 DOMINO 159
 GB L1 DOM PRCS 105
 CL 1 DOMINO 9126J
 CL 1 DOMINETTE 8184H
 L1 DOMINO 99496
 HH MS ADVANCE 2214M

CL 1 DOMINO 6152S
CO L1 DOMINETTE 961W
 CO L1 DOMINETTE 703T

- A.I. bred to JA L1 Domino 1602Y on May 27, 2013
- PE to JA L1 Domino 0908X from June 8 to Aug. 8, 2013

56**CO L1 DOMINETTE 279Z**

May 21, 2012 • #43280599

<i>Bred Heifer</i>	
BW	0.9
WW	42
YW	80
MILK	29
M&G	49
.....
CED	4.2
.....
REA	03
MARB	05

GB L1 DOMINO 534J
GB L1 DOMINO 8139M
 |GB L1 DOM PRCS 4103H

GB L1 DOMINO 1144E
 GB L1 DOM PRCS 922C
 CL 1 DOMINO 9126J
 GB L1 DOM PRCS 626
 HH ADVANCE 767G
 CL 1 DOMINETTE 861H
 CL 1 DOMINO 386
 JA L1 DOMINETTE 642I

CL 1 DOMINO 0157K
JA L1 DOMINETTE 703T
 |JA L1 DOMINETTE 8800

- A.I. bred to JA L1 Domino 1602Y on May 27, 2013
- PE to JA L1 Domino 0908X from June 8 to Aug. 8, 2013

61**FWS 484 ECHO 1231**

Jan. 26, 2012 • #43267434

<i>Bred Heifer</i>	
BW	2.7
WW	43
YW	71
MILK	19
M&G	41
.....
CED	2.2
.....
REA	-11
MARB	06

L1 DOMINO 890061
CL 1 DOMINO 484
 |CL 1 DOMINETTE 761

JA L1 DOMINO 4922P
JA L1 DOMINETTE 7913T
 |JA L1 DOMINETTE 8509

- A.I. bred to CL 1 Domino 216Z on Apr. 22, 2013
- PE to DH Advance 031 from May 5 to May 20, 2013
- PE to JA L1 Domino 0620X from June 8 to Aug. 8, 2013

L1 DOMINO 870130
 L1 DOMINETTE 850625
 HH ADVANCE 5436
 CL 1 DOMINETTE 3033
 HH ADVANCE 8017H
 JA L1 DOMINETTE 7444
 HH ADVANCE 3021C
 JA L1 DOMINETTE 5613

57**CO L1 DOMINETTE 280Z**

May 22, 2012 • #43280569

<i>Bred Heifer</i>	
BW	0.4
WW	46
YW	82
MILK	30
M&G	53
.....
CED	4.6
.....
REA	22
MARB	09

GB L1 DOMINO 534J
GB L1 DOMINO 8139M
 |GB L1 DOM PRCS 4103H

GB L1 DOMINO 1144E
 GB L1 DOM PRCS 922C
 CL 1 DOMINO 9126J
 GB L1 DOM PRCS 626
 HH ADVANCE 767G
 GB L1 DOM PRCS 3134
 L1 DOMINO 99496
 CO L1 DOMINETTE 321N

GB L1 DOMINO 175E
CO L1 DOMINETTE 949W
 |CO L1 DOMINETTE 653S

- A.I. bred to JA L1 Domino 1602Y on May 27, 2013
- PE to JA L1 Domino 0908X from June 8 to Aug. 8, 2013

62**FWS 484 EDNA 1234**

Jan. 31, 2012 • #43267449

<i>Bred Heifer</i>	
BW	3.9
WW	49
YW	84
MILK	23
M&G	47
.....
CED	1.6
.....
REA	-02
MARB	05

L1 DOMINO 890061
CL 1 DOMINO 484
 |CL 1 DOMINETTE 761

FWS 343 ADVANCER 0300
FWS 300 MISS 0850
 |FWS 9912 MS ADV 0123

- A.I. bred to CL 1 Domino 216Z on Apr. 22, 2013
- PE to DH Advance 031 from May 5 to May 20, 2013
- PE to JA L1 Domino 0620X from June 8 to Aug. 8, 2013

L1 DOMINO 870130
 L1 DOMINETTE 850625
 HH ADVANCE 5436
 CL 1 DOMINETTE 3033
 HH ADVANCE 343C
 FWS MS STARFIRE 0056
 FWS 343 ADVANCER 9912
 FWS MISS VISA 9616

58**CTR L1 DOMINETTE 223Z**

Apr. 11, 2012 • #43267930

<i>Bred Heifer</i>	
BW	5.5
WW	54
YW	96
MILK	25
M&G	52
.....
CED	-0.8
.....
REA	20
MARB	08

KB L1 DOMINO 521R
KB L1 DOMINO 844U
 |KB DOMINENTTE 353N

CL 1 DOMINO 3138N
 MONTANA MISS 310
 JD BIG ARTHUR 180
 CL 1 DOMINETTE 7188G
 CL 1 DOMINO 484
 MONTANA MISS 1134
 BAR-N CENTURION 921J
 KB L1 DOMET 6147

KB L1 DOMINO 311
KB L1 DOMINETTE 878U
 |KB MISS CENTURION 283

- PE to CO L1 Domino 946W from May 5 to Aug. 8, 2013

63**FWS 426 EILEEN 1236**

Feb. 14, 2012 • #43267474

<i>Bred Heifer</i>	
BW	4.6
WW	51
YW	87
MILK	22
M&G	48
.....
CED	1.4
.....
REA	02
MARB	13

CL 1 DOMINO 0157K
JA L1 DOMINO 426P
 |JA L1 DOMINETTE 7070

JA L1 DOMINO 2405M
FWS 2405 ASHLEY 0915
 |FWS MS STARFIRE 0109

- A.I. bred to CL 1 Domino 216Z on Apr. 22, 2013
- PE to DH Advance 031 from May 5 to May 20, 2013
- PE to JA L1 Domino 0620X from June 8 to Aug. 8, 2013

HH ADVANCE 767G
 CL 1 DOMINETTE 61H
 DR DOMINO 3135
 JA L1 DOMINETTE 1213
 HH ADVANCE 8012H
 JA L1 DOMINETTE 9263
 K&B STARFIRE 8429
 FWS PACETTE 9255

59**CTR L1 DOMINETTE 2919Z**

Apr. 1, 2012 • #43274697

<i>Bred Heifer</i>	
BW	3.7
WW	50
YW	88
MILK	22
M&G	47
.....
CED	0.4
.....
REA	10
MARB	26

GB L1 DOMINO 471H
GB L1 DOMINO 6134K
 |GB L1 DOM PRCS 4103H

GB L1 DOMINO 1144E
 GB L1 DOM PRCS 1139E
 CL 1 DOMINO 9126J
 GB L1 DOM PRCS 626
 HH ADVANCE 6052F
 HH MS ADVANCE 4054D
 HH ADVANCE 249B
 HH MISS ADVANCE 390C

HH ADVANCE 932J
HH MISS ADVANCE 1120L
 |HH MISS ADVANCE 550E

- A.I. bred to CL 1 Domino 216Z on Apr. 22, 2013
- PE to DH Advance 031 from May 5 to May 20, 2013
- PE to CO L1 Domino 946W from June 8 to Aug. 8, 2013

64**FWS 426 ELAINE 1238**

Feb. 17, 2012 • #43267476

<i>Bred Heifer</i>	
BW	3.5
WW	50
YW	82
MILK	22
M&G	47
.....
CED	2.5
.....
REA	04
MARB	09

CL 1 DOMINO 0157K
JA L1 DOMINO 426P
 |JA L1 DOMINETTE 7070

K&B STARFIRE 8429
FWS MS STARFIRE 0115
 |FWS MS ADVANCE 9611

- A.I. bred to CL 1 Domino 216Z on Apr. 22, 2013
- PE to DH Advance 031 from May 5 to May 20, 2013
- PE to JA L1 Domino 0620X from June 8 to Aug. 8, 2013

HH ADVANCE 767G
 CL 1 DOMINETTE 861H
 DR DOMINO 3135
 JA L1 DOMINETTE 1213
 B STARFIRE 61
 K&B BONNIE LASS 4542
 HH ADVANCE 3021C
 FWS PACETTE 9255

60**CTR L1 DOMINETTE 2922Z**

Apr. 13, 2012 • #43274702

<i>Bred Heifer</i>	
BW	0.9
WW	42
YW	80
MILK	26
M&G	47
.....
CED	3.9
.....
REA	22
MARB	13

GB L1 DOMINO 471H
GB L1 DOMINO 6134K
 |GB L1 DOM PRCS 4103H

GB L1 DOMINO 1144E
 GB L1 DOM PRCS 1139E
 CL 1 DOMINO 9126J
 GB L1 DOM PRCS 626
 CL 1 DOMINO 9126J
 CL 1 DOMINETTE 996J
 HH ADVANCE 0024K
 HH MS ADV 7008G

EL ADVANCE 611 S
EL MISS ADVANCE 906W
 |HH MISS ADVANCE 4043P

- A.I. bred to JA L1 Domino 7640T on Apr. 22, 2013
- PE to DH Advance 031 from May 5 to May 20, 2013
- PE to CO L1 Domino 946W from June 8 to Aug. 8, 2013

65**FWS 426 ELEANOR 1239**

Feb. 21, 2012 • #43267501

<i>Bred Heifer</i>	
BW	3.8
WW	53
YW	91
MILK	19
M&G	46
.....
CED	1.9
.....
REA	24
MARB	02

CL 1 DOMINO 0157K
JA L1 DOMINO 426P
 |JA L1 DOMINETTE 7070

CL 1 DOMINO 8153H
JA L1 DOMINETTE 7703T
 |JA L1 DOMINETTE 4204P

- A.I. bred to CL 1 Domino 216Z on Apr. 22, 2013
- PE to DH Advance 031 from May 5 to May 20, 2013
- PE to JA L1 Domino 0620X from June 8 to Aug. 8, 2013

HH ADVANCE 767G
 CL 1 DOMINETTE 861H
 DR DOMINO 3135
 JA L1 DOMINETTE 1213
 CL 1 DOMINO 5131E
 CL 1 DOMINET 496
 JA L1 DOMINO 9213
 JA L1 DOMINETTE 0718



FALL CALVING PAIRS
...Lots 66-92

Lot 84 and her "U142" heifer calf

66

JA L1 DOMINETTE 1012Y

Mar. 25, 2011 • #43262168

Fall Calver

BW	3.1
WW	46
YW	74
MILK	22
M&G	45
CE	1.6
REA	06
MARB	15

GB L1 DOMINO 935C
JA L1 DOMINO 6001S
| JA L1 DOMINETTE 0212

CL 1 DOMINO 560R
JA L1 DOMINETTE 9821W
| JA L1 DOMINETTE 3200N

CL 1 DOMINO 5131E
GB L1 DOM PRCS 115
CL 1 DOMINO 484
JA L1 DOMINETTE 7316
CL 1 DOMINO 3162N
CL 1 DOMINETTE 118L
CL 1 DOMINO 484
JA L1 DOMINETTE 1980L

• PE to JA L1 Domino 0908X ...Nov. 20, 2012 to Apr. 20, 2013

67

JA L1 DOMINETTE 1018Y

Apr. 15, 2011 • #43232174

Fall Calver

BW	3.8
WW	50
YW	83
MILK	24
M&G	49
CE	1.8
REA	18
MARB	13

GB L1 DOMINO 935C
JA L1 DOMINO 6001S
| JA L1 DOMINETTE 0212

CL 1 DOMINO 560R
JA L1 DOMINETTE 9844W
| JA L1 DOMINETTE 465P

CL 1 DOMINO 5131E
GB L1 DOM PRCS 115
CL 1 DOMINO 484
JA L1 DOMINETTE 7316
CL 1 DOMINO 3162N
CL 1 DOMINETTE 118L
CL 1 DOMINO 9126J
JA L1 DOMINETTE 1282L

• PE to JA L1 Domino 0908X ...Nov. 20, 2012 to Apr. 20, 2013

68

JA L1 DOMINETTE 1104Y

Mar. 8, 2011 • #43232186

Fall Calver

BW	4.0
WW	62
YW	96
MILK	33
M&G	64
CE	0.5
REA	07
MARB	17

CL 1 DOMINO 732T
CL 1 DOMINO 9125W
| CL 1 DOMINETTE 475P

CL 1 DOMINO 560R
JA L1 DOMINETTE 8817U
| JA L1 DOMINETTE 9207

CL 1 DOMINO 590R
CL 1 DOMINETTE 507R
CL 1 DOMINO 824H
CL 1 DOMINETTE 200M
CL 1 DOMINO 3162N
CL 1 DOMINETTE 118L
CL 1 DOMINO 484
JA L1 DOMINETTE 6304

• PE to JA L1 Domino 0908X ...Nov. 20, 2012 to Apr. 20, 2013

69

JA L1 DOMINETTE 1206Y

Feb. 10, 2011 • #43232208

Fall Calver

BW	2.1
WW	48
YW	88
MILK	28
M&G	52
CE	3.9
REA	-03
MARB	-04

HH ADVANCE 3113N
CL 1 DOMINO 555R
| CL 1 DOMINETTE 3174N

CL 1 DOMINO 0157K
JA L1 DOMINETTE 316N
| JA L1 DOMINETTE 9233

L1 DOMINO 99496
HH MS ADV 875H
CL 1 DOMINO 9126J
CL 1 DOMINETTE 810H
HH ADVANCE 767G
CL 1 DOMINETTE 861H
CL 1 DOMINO 484
JA L1 DOMINETTE 6721

• Bull Calf #3550 by CO L1 Domino 946W; Born: July 1, 2013

70

JA L1 DOMINETTE 1610Y

Feb. 13, 2011 • #43232239

Fall Calver

BW	2.9
WW	48
YW	86
MILK	24
M&G	47
CE	1.0
REA	30
MARB	07

HH ADVANCE 286M
JA L1 DOMINO 7640T
| JA L1 DOMINETTE 1409L

JA L1 DOMINO 6001S
JA L1 DOMINETTE 9007W
| JA L1 DOMINETTE 1206L

HH ADVANCE 0024K
HH MISS ADVANCE 752G
HH ADVANCE 8012H
JA L1 DOMINETTE 8800
GB L1 DOMINO 935C
JA L1 DOMINETTE 0212
CL 1 DOMINO 484
JA L1 DOMINETTE 6419

• Bull Calf #3551 by CO L1 Domino 946W; Born: July 2, 2013

71

JA L1 DOMINETTE 1720Y

May 5, 2011 • #43232285

Fall Calver

BW	3.3
WW	55
YW	97
MILK	25
M&G	52
CE	-0.1
REA	37
MARB	04

CL 1 DOMINO 637S
CL 1 DOMINO 860U
| CL 1 DOMINETTE 5142R

HH ADVANCE 286M
JA L1 DOMINETTE 7629T
| JA L1 DOMINETTE 1419L

L1 DOMINO 03396
CL 1 DOMINETTE 118L
CL 1 DOMINO 1172L
CL 1 DOMINETTE 810H
HH ADVANCE 0024K
HH MISS ADVANCE 752G
HH ADVANCE 8012H
JA L1 DOMINETTE 8404

• Hfr Calf #3690 by JA L1 Domino 0620X; Born: June 30, 2013

72

JA L1 DOMINETTE 0909X

Mar. 12, 2010 • #43130248

Fall Calver

BW	1.2
WW	45
YW	75
MILK	25
M&G	47
CE	2.5
REA	06
MARB	22

GB L1 DOMINO 471H
GB L1 DOMINO 6134K
| GB L1 DOM PRCS 4103H

CL 1 DOMINO 555R
JA L1 DOMINETTE 8204U
| JA L1 DOMINETTE 1250L

GB L1 DOMINO 1144E
GB L1 DOM PRCS 1139E
CL 1 DOMINO 9126J
GB L1 DOM PRCS 626
HH ADVANCE 3113N
CL 1 DOMINETTE 3174N
HH ADVANCE 6063F
HH MISS ADVANCE 111A

• PE to JA L1 Domino 0908X ...Nov. 20, 2012 to Apr. 20, 2013

73

JA L1 DOMINETTE 4468P

May 1, 2004 • #42498286

Fall Calver

BW	2.9
WW	45
YW	77
MILK	18
M&G	40
CE	2.6
REA	-03
MARB	13

HH ADVANCE 8012H
JA L1 DOMINO 1424L
| JA L1 DOMINETTE 8437

CL 1 DOMINO 0157K
JA L1 DOMINETTE 214M
| JA L1 DOMINETTE 9254

HH ADVANCE 697F
HH MISS ADVANCE 160A
HH ADVANCE 400D
JA L1 DOMINETTE 5514
HH ADVANCE 767G
CL 1 DOMINETTE 861H
CL 1 DOMINO 484
JA L1 DOMINETTE 6609

• PE to CO L1 Domino 946W ...Nov. 20, 2012 to Apr. 20, 2013

74

MONTANA MISS 070X

Feb. 8, 2010 • #43085940

Fall Calver

BW	2.1
WW	52
YW	84
MILK	24
M&G	50
CE	3.3
REA	38
MARB	11

L1 DOMINO 03396
CL 1 DOMINO 6105S
| CL 1 DOMINETTE 243M

CL 1 DOMINO 9126J
MONTANA MISS 728T
| MONTANA MISS 756

L1 DOMINO 00552
L1 DOMINETTE 96893
CL 1 DOMINO 9126J
CL 1 DOMINETTE 8151H
HH ADVANCE 767G
CL 1 DOMINETTE 490
JA L1 DOMINO 503
MONTANA MISS 503

• PE to JA L1 Domino 0908X ...Nov. 20, 2012 to Apr. 20, 2013

75**MONTANA MISS 087X**

Feb. 13, 2010 • #43085913

<i>Fall Calves</i>	
BW	3.9
WW	57
YW	93
MILK	27
M&G	55
.....
CED	3.3
.....
REA	13
MARB	14

CL 1 DOMINO 3138N
KB L1 DOMINO 521R
 | MONTANA MISS 310

CL 1 DOMINO 9126J
 CL 1 DOMINETTE 825H
 CL 1 DOMINO 484
 MONTANA MISS 837
 CL 1 DOMINO 9126J
 CL 1 DOMINETTE 9151J
 HH ADVANCE 249B
 HH MISS ADVANCE 391C

CL 1 DOMINO 3162N
MONTANA MISS 637
 | HH MS ADVANCE 5048E

• PE to CO L1 Domino 946W ...Nov. 20, 2012 to Apr. 20, 2013

80**JA L1 DOMINETTE 7724T**

Apr. 17, 2007 • #42848664

<i>Fall Calves</i>	
BW	4.3
WW	47
YW	83
MILK	9
M&G	33
.....
CED	-0.5
.....
REA	40
MARB	-17

CL 1 DOMINO 5131E
CL 1 DOMINO 8153H
 | CL 1 DOMINET 496

CL 1 DOMINO 166
 CL 1 DOMINETTE 0046
 CL 1 DOMINO 386
 L1 DOMINETTE 850413
 HH ADVANCE 0024K
 HH MISS ADVANCE 752G
 JA L1 DOMINO 9213
 JA L1 DOMINETTE 9370

HH ADVANCE 286M
JA L1 DOMINETTE 4656P
 | JA L1 DOMINETTE 1291L

• PE to CO L1 Domino 946W ...Nov. 20, 2012 to Apr. 20, 2013

76**KB L1 DOMINETTE 0146X**

Mar. 23, 2010 • #43086180

<i>Fall Calves</i>	
BW	3.9
WW	63
YW	93
MILK	24
M&G	55
.....
CED	1.0
.....
REA	08
MARB	06

CL 1 DOMINO 648S
CL 1 DOMINO 849U
 | CL 1 DOMINETTE 591R

CL 1 DOMINO 461P
 CL 1 DOMINETTE 249M
 CL 1 DOMINO 3162N
 CL 1 DOMINETTE 767G
 GB L1 DOMINO 935C
 JA L1 DOMINETTE 9203
 CL 1 DOMINO 3138N
 KB L1 DOMINETTE 4109P

JA L1 DOMINO 6002S
KB L1 DOMINETTE 891U
 | KB L1 DOMINETTE 635

• Hfr Calf #3419 by JA L1 Domino 9800W; Born: June 1, 2013

81**HH MISS ADVANCE 1120L ET**

Feb. 23, 2001 • #42151522

<i>Fall Calves</i>	
BW	4.9
WW	51
YW	83
MILK	19
M&G	44
.....
CED	-0.3
.....
REA	17
MARB	26

HH ADVANCE 6052F
HH ADVANCE 932J
 | HH MS ADVANCE 4054D

CL 1 DOMINO 392
 HH MISS ADVANCE 160A
 L1 DOMINO 910282
 HH MISS ADVANCE 218B
 HH ADVANCE 9012Y
 HH MISS ADVANCE 001Z
 CL 1 DOMINO 055
 HH MISS ADVANCE 940Y

HH ADVANCE 249B
HH MISS ADVANCE 550E
 | HH MISS ADVANCE 390C

• PE to CO L1 Domino 946W ...Nov. 20, 2012 to Apr. 20, 2013

77**KB L1 DOMINETTE 908W**

Jan. 9, 2009 • #43002945

<i>Fall Calves</i>	
BW	6.7
WW	63
YW	91
MILK	26
M&G	58
.....
CED	-0.5
.....
REA	04
MARB	19

CL 1 DOMINO 477P
CL 1 DOMINO 795T
 | CL 1 DOMINETTE 258M

CL 1 DOMINO 9126J
 CL 1 DOMINETTE 839H
 HH ADVANCE 8093H
 CL 1 DOMINETTE 0113K
 CL 1 DOMINO 3138N
 MONTANA MISS 310
 HH ADVANCE 2107M
 KB MISS CENTURION 236

KB L1 DOMINO 521R
KB L1 DOMINETTE 744T
 | KB L1 DOMINETTE 514R

• PE to CO L1 Domino 946W ...Nov. 20, 2012 to Apr. 20, 2013

82**XP L1 DOMINETTE 0D5009**

Feb. 23, 2005 • #42578202

<i>Fall Calves</i>	
BW	3.9
WW	36
YW	62
MILK	4
M&G	22
.....
CED	-0.9
.....
REA	13
MARB	24

XP L1 DOMINO 99013
XP L1 DOMINO 01050
 | XP L1 DOMINETTE 98024

XP L1 DOMINO 96085
 XP L1 DOMINETTE 96081
 XP L1 DOMINO 90121
 XP L1 DOMINETTE 90062
 L1 DOMINO 93469
 L1 DOMINETTE 880467
 L1 DOMINO 890020
 L1 DOMINETTE 860077

L1 DOMINO 95461
XP L1 DOMINETTE 00080
 | L1 DOMINETTE 910241

• Bull Calf #3490 by JA L1 Domino 0413X; Born: June 10, 2013

78**EL MISS ADVANCE 802U**

Jan. 14, 2008 • #42871493

<i>Fall Calves</i>	
BW	0.2
WW	35
YW	64
MILK	22
M&G	40
.....
CED	4.7
.....
REA	09
MARB	14

HH ADVANCE 872X
EL ADVANCE 512R
 | CL 1 DOMINETTE 3135N

CL 1 DOMINO 603
 HH MISS ADVANCE 690U
 CL 1 DOMINO 9126J
 CL 1 DOMINETTE 825H
 HH ADVANCE 6052F
 HH MISS ADVANCE 766G
 CL 1 DOMINO 7120G
 HH MISS ADVANCE 866H

HH ADVANCE 145L
HH MISS ADVANCE 3180N
 | HH MISS ADVANCE 045K

• PE to CO L1 Domino 946W ...Nov. 20, 2012 to Apr. 20, 2013

83**JAK L1 DOMINETTE W47**

Mar. 1, 2009 • #42992548

<i>Fall Calves</i>	
BW	3.7
WW	43
YW	75
MILK	24
M&G	45
.....
CED	-0.3
.....
REA	20
MARB	21

JA L1 DOMINO 8088
JAK L1 DOMINO N306
 | JAK L1 DOMINETTE K274

HH ADVANCE 3021C
 JA L1 DOMINETTE 2558
 JAK L1 DOMINO F230
 JAK L1 DOMINETTE F197
 HH ADVANCE 767G
 JA L1 DOMINETTE 0008
 JAK L1 DOMINO F230
 JAK L1 DOMINETTE F258

JA L1 DOMINO 208M
JAK L1 DOMINETTE R268
 | JAK L1 DOMINETTE K193

• Hfr Calf #A398 by CL 1 Domino 186; Born: Sept. 17, 2013; BW 84
 • Sire "186" is the \$32,000 Cooper-bred bull we own with Ken Coleman

79**JA L1 DOMINETTE 8505U**

Feb. 3, 2008 • #42936082

<i>Fall Calves</i>	
BW	3.4
WW	56
YW	96
MILK	24
M&G	52
.....
CED	1.6
.....
REA	40
MARB	15

CL 1 DOMINO 9126J
CL 1 DOMINO 4134P
 | CL 1 DOMINETTE 8104H

HH ADVANCE 767G
 CL 1 DOMINETTE 490
 L1 DOMINO 95461
 CL 1 DOMINETTE 178
 GB L1 DOMINO 250
 CL 1 DOMINETTE 405
 DR DOMINO 3135
 JA L1 DOMINETTE 1213

CL 1 DOMINO 7176G
JA L1 DOMINETTE 2529M
 | JA L1 DOMINETTE 7070

• PE to CO L1 Domino 946W ...Nov. 20, 2012 to Apr. 20, 2013

84**JAK L1 DOMINETTE W155**

Sept. 10, 2009 • #43056894

<i>Fall Calves</i>	
BW	3.4
WW	46
YW	64
MILK	16
M&G	39
.....
CED	1.7
.....
REA	00
MARB	02

HH ADVANCE 286M
JA L1 DOMINO 5603R
 | JA L1 DOMINETTE 2210M

HH ADVANCE 0024K
 HH MISS ADVANCE 752G
 CL 1 DOMINO 484
 JA L1 DOMINETTE 6565
 CL 1 DOMINO 484
 JA L1 DOMINETTE 6554
 JA L1 DOMINO 5604
 JA L1 DOMINETTE 0801

JA L1 DOMINO 9213
JAK L1 DOMINETTE N319
 | JAK L1 DOMINETTE H391

• Hfr Calf #A264; Sire, U142; Born: Sept. 3, 2013; BW 79
 • Sire "U142" is a JA L1 Domino 4922P son out of a "9213" dam



FALL CALVING PAIRS
...Lots 66-92

Lot 85 and her CL 1 Domino 186 bull calf



Lot 87 and her GB L1 Domino 140R heifer calf

85

JAK L1 DOMINETTE W281

Sept. 23, 2009 • #43056947

Fall Calver

BW	5.5
WW	51
YW	78
MILK	17
M&G	43
CE	1.7
REA	21
MARB	05

HH ADVANCE 8017H
JA L1 DOMINO 4922P
| JA L1 DOMINETTE 7444

JAK L1 DOMINO N306
JAK L1 DOMINETTE R78
| JET MS R223

XP L1 DOMINO 90085
HH MISS ADVANCE 251B
HH ADVANCE 400D
JA L1 DOMINETTE 232

JA L1 DOMINO 8088
JAK L1 DOMINETTE K274
JET DOMINO K093
JET MS A003

• Bull Calf #A266; Sire, CL 1 Domino 186; Born: Sept. 3, 2013; BW 84 lbs.

86

JAK L1 DOMINETTE W375

Nov. 2, 2009 • #43056849

Fall Calver

BW	0.2
WW	46
YW	66
MILK	23
M&G	46
CE	2.6
REA	05
MARB	51

GB L1 DOMINO 935C
JA L1 DOMINO 6001S
| JA L1 DOMINETTE 0212

JAK L1 DOMINO F72
JAK L1 DOMINETTE L47
| JAK L1 DOMINETTE H439

CL 1 DOMINO 5131E
GB L1 DOM PRCS 115
CL 1 DOMINO 484
JA L1 DOMINETTE 7316

JA L1 DOMINO 3202
JAK L1 DOMINETTE D113
JAK L1 DOMINO F230
JA L1 DOMINETTE 4306

• W375 was bred to "1609," a JA L1 Domino 7640 son

87

JAK L1 DOMINETTE X315

Sept. 23, 2010 • #43144705

Fall Calver

BW	2.7
WW	55
YW	102
MILK	26
M&G	53
CE	3.2
REA	07
MARB	29

GB L1 DOMINO 1144E
GB L1 DOMINO 471H
| GB L1 DOM PRCS 1139E

JA L1 DOMINO 9213
JAK L1 DOMINETTE U200
| JAK L1 DOMINETTE S390

GB L1 DOMINO 935C
GB L1 DOM PRCS 9132C
HH ADVANCE 767G
GB L1 DOM PRCS 7113

CL 1 DOMINO 484
JA L1 DOMINETTE 6554
JAK L1 DOMINO N306
JAK L1 DOMINETTE M315

• PE to GB L1 Domino 140R ...Nov. 24, 2012 to Jan. 20, 2013
• "140" is a GB L1 Domino 175E son owned with Pedretti, CA

88

JAK L1 DOMINETTE X316

Sept. 24, 2010 • #43144640

Fall Calver

BW	4.0
WW	44
YW	91
MILK	19
M&G	41
CE	2.0
REA	11
MARB	05

HH ADVANCE 8017H
JA L1 DOMINO 4922P
| JA L1 DOMINETTE 7444

JA L1 DOMINO 315N
JAK L1 DOMINETTE S193
| JA L1 DOMINETTE 4248P

XP L1 DOMINO 90085
HH MISS ADVANCE 251B
HH ADVANCE 400D
JA L1 DOMINETTE 232

CL 1 DOMINO 0157K
JA L1 DOMINETTE 8800
JA L1 DOMINO 9213
JA L1 DOMINETTE 0108

• Hfr Calf #A479; Sire, GB L1 Domino 140R; Born: Oct. 13, 2013; BW 70 lbs.

89

JAK L1 DOMINETTE X353

Sept. 29, 2010 • #43144699

Fall Calver

BW	3.4
WW	41
YW	71
MILK	20
M&G	40
CE	0.1
REA	02
MARB	18

HH ADVANCE 286M
JA L1 DOMINO 8633U
| JA L1 DOMINETTE 0409

JA L1 DOMINO 4922P
JAK L1 DOMINETTE U155
| JAK L1 DOMINETTE N386

HH ADVANCE 0024K
HH MISS ADVANCE 752G
HH ADVANCE 8012H
JA L1 DOMINETTE 6805

HH ADVANCE 8017H
JA L1 DOMINETTE 7444
JA L1 DOMINO 9213
JAK L1 DOMINETTE F262

• Bull Calf #A381; Sire, GB L1 Domino 140R; Born: Sept. 16, 2013; BW 67 lbs.

90

JAK L1 DOMINETTE X368

Oct. 4, 2010 • #43144692

Fall Calver

BW	1.3
WW	47
YW	78
MILK	20
M&G	43
CE	2.5
REA	42
MARB	26

HH ADVANCE 286M
JA L1 DOMINO 8633U
| JA L1 DOMINETTE 0409

JA L1 DOMINO 6001S
JAK L1 DOMINETTE U113
| JAK L1 DOMINETTE S154

HH ADVANCE 0024K
HH MISS ADVANCE 752G
HH ADVANCE 8012H
JA L1 DOMINETTE 6805

GB L1 DOMINO 935C
JA L1 DOMINETTE 0212
JA L1 DOMINO 9213
JET MS Y226

• Hfr Calf #A490; Sire, GB 1 Domino 140R; Born: Oct. 17, 2013; BW 80 lbs.

91

JAK L1 DOMINETTE X382

Oct. 8, 2010 • #43155648

Fall Calver

BW	5.7
WW	51
YW	85
MILK	25
M&G	51
CE	-0.6
REA	17
MARB	-32

CL 1 DOMINO 555R
JA L1 DOMINO 8801U
| JA L1 DOMINETTE 3264N

JA L1 DOMINO 4922P
JAK L1 DOMINETTE T151
| JAK L1 DOMINETTE K169

HH ADVANCE 3113N
CL 1 DOMINETTE 3174N
HH ADVANCE 6063F
JA L1 DOMINETTE 830

HH ADVANCE 8017H
JA L1 DOMINETTE 7444
JAK L1 DOMINO D231
JA L1 DOMINETTE 5410

• Hfr Calf #A489; Sire, GB 1 Domino 140R; Born: Oct. 16, 2013; BW 81 lbs.

92

JAK L1 DOMINETTE X415

Oct. 23, 2010 • #43144683

Fall Calver

BW	1.4
WW	44
YW	80
MILK	24
M&G	46
CE	2.6
REA	31
MARB	21

GB L1 DOMINO 935C
JA L1 DOMINO 6001S
| JA L1 DOMINETTE 0212

JAK L1 DOMINO N306
JAK L1 DOMINETTE T167
| JAK L1 DOMINETTE P220

CL 1 DOMINO 5131E
GB L1 DOM PRCS 115
CL 1 DOMINO 484
JA L1 DOMINETTE 7316

JA L1 DOMINO 8088
JAK L1 DOMINETTE K274
JAK L1 DOMINO H448
JAK L1 DOMINETTE L273

• Hfr Calf #A478; Sire, GB 1 Domino 140R; Born: Oct. 13, 2013; BW 86 lbs.



SPRING CALVING COWS

...Lots 93 - 108

93

JA L1 DOMINETTE 9013W

Mar. 24, 2009 • #43033044

<i>Spring Calves</i>	
BW	3.3
WW	46
YW	75
MILK	16
M&G	39
.....
CED	1.2
.....
REA	.08
.....
MARB	.09

GB L1 DOMINO 935C
JA L1 DOMINO 6001S
 | CL 1 DOMINETTE 0212
 JA L1 DOMINETTE 0224
JA L1 DOMINETTE 2258M
 | JA L1 DOMINETTE 5702

CL 1 DOMINO 5131E
 GB L1 DOM PRCS 115
 CL 1 DOMINO 484
 JA L1 DOMINETTE 7316
 CL 1 DOMINO 484
 JA L1 DOMINETTE 7100
 CL 1 DOMINO 129
 JA L1 DOMINETTE 1515

• PE to JA L1 Domino 9800W ...May 15 to Sept. 13, 2013

94

JA L1 DOMINETTE 701T

Jan. 17, 2007 • #42848134

<i>Spring Calves</i>	
BW	1.2
WW	38
YW	71
MILK	22
M&G	41
.....
CED	4.5
.....
REA	-.05
.....
MARB	.03

HH ADVANCE 767G
CL 1 DOMINO Q157K
 | CL 1 DOMINETTE 861H
 CL 1 DOMINO 7176G
JA L1 DOMINETTE 2513M
 | JA L1 DOMINETTE 6256

CL 1 DOMINO 500E
 HH MISS ADVANCE 251B
 HH ADVANCE 438D
 CL 1 DOMINETTE 544E
 GB L1 DOMINO 250
 CL 1 DOMINETTE 405
 GB L1 DOMINO 096
 JA L1 DOMINETTE 1708

• PE to JA L1 Domino 9800W ...May 15 to Sept. 13, 2013

95

JA L1 DOMINETTE 7605T

Jan. 24, 2007 • #42848189

<i>Spring Calves</i>	
BW	2.5
WW	44
YW	64
MILK	17
M&G	39
.....
CED	1.5
.....
REA	.00
.....
MARB	.00

HH ADVANCE 0024K
HH ADVANCE 286M
 | HH MISS ADVANCE 752G
 CL 1 DOMINO 484
JA L1 DOMINETTE 0253
 | JA L1 DOMINETTE 5516

CL 1 DOMINO 824H
 HH MISS ADVANCE 894H
 KB L1 DOMINO 519
 HH MISS ADVANCE 454D
 L1 DOMINO 890061
 CL 1 DOMINETTE 761
 HH ADVANCE 3021C
 JA L1 DOMINETTE 2106

• PE to JA L1 Domino 9800W ...May 15 to Sept. 13, 2013

96

J1 L1 DOMINETTE 465P

Feb. 1, 2004 • #42538003

<i>Spring Calves</i>	
BW	1.8
WW	40
YW	68
MILK	22
M&G	42
.....
CED	4.2
.....
REA	.09
.....
MARB	.00

HH ADVANCE 767G
CL 1 DOMINO 9126J
 | CL 1 DOMINETTE 490
 CL 1 DOMINO 484
JA L1 DOMINETTE 1282L
 | JA L1 DOMINETTE 650

CL 1 DOMINO 500E
 HH MISS ADVANCE 251B
 CL 1 DOMINO 166
 CL 1 DOMINETTE 130
 L1 DOMINO 890061
 CL 1 DOMINETTE 761
 BB 7Z STD LAD 4032
 HH MISS ADVANCE 880X

• PE to JA L1 Domino 9800W ...May 15 to Sept. 13, 2013

97

EL MISS ADVANCE 110Y

Jan. 8, 2011 • #43164650

<i>Spring Calves</i>	
BW	0.9
WW	41
YW	74
MILK	28
M&G	48
.....
CED	1.3
.....
REA	.16
.....
MARB	.08

CL 1 DOMINO 637S
CL 1 DOMINO 993W
 | CL 1 DOMINETTE 5142R
 L1 DOMINO 04434
L1 DOMINETTE 07499
 | L1 DOMINETTE 01397

L1 DOMINO 03396
 CL 1 DOMINETTE 118L
 CL 1 DOMINO 1172L
 CL 1 DOMINETTE 810H
 L1 DOMINO 02492
 L1 DOMINETTE 97325
 L1 DOMINO 98367
 L1 DOMINETTE 95443

• A.I. bred to JA L1 Domino 1602Y on Apr. 25, 2013
 • PE to JA L1 Domino 0413X from May 15 to Aug. 12, 2013

98

EL MISS ADVANCE 125Y

Jan. 23, 2011 • #43164630

<i>Spring Calves</i>	
BW	3.6
WW	52
YW	86
MILK	25
M&G	51
.....
CED	0.6
.....
REA	.30
.....
MARB	.09

CL 1 DOMINO 637S
CL 1 DOMINO 993W
 | CL 1 DOMINETTE 5142R
 HH ADVANCE 932J
HH MISS ADVANCE 1120L ET
 | HH MISS ADVANCE 550E

L1 DOMINO 03396
 CL 1 DOMINETTE 118L
 CL 1 DOMINO 1172L
 CL 1 DOMINETTE 810H
 HH ADVANCE 6052F
 HH MS ADVANCE 4054D
 HH ADVANCE 249B
 HH MISS ADVANCE 390C

• A.I. bred to HH Advance 2181Z on Apr. 25, 2013
 • PE to JA L1 Domino 0413X from May 15 to Aug. 12, 2013

99

EL MISS ADVANCE 142Y

Feb. 10, 2011 • #43164652

<i>Spring Calves</i>	
BW	2.7
WW	41
YW	74
MILK	24
M&G	44
.....
CED	3.0
.....
REA	-.01
.....
MARB	.27

EL ADVANCE 611 S
EL ADVANCE 839U
 | HH MISS ADVANCE 3180N
 HH ADVANCE 4055P
HH MISS ADVANCE 9206W
 | HH MISS ADVANCE 5162R

CL 1 DOMINO 9126J
 CL 1 DOMINETTE 996J
 HH ADVANCE 145L
 HH MISS ADVANCE 045K
 HH ADVANCE 145L
 HH MISS ADVANCE 9065J
 L1 DOMINO 96943
 HH MS ADV 7008G

• A.I. bred to HH Advance 2181Z on Apr. 25, 2013
 • PE to JA L1 Domino 0413X from May 15 to Aug. 12, 2013

100

UU MS 5170 ADV 107Z

Feb. 10, 2011 • #43174657

<i>Spring Calves</i>	
BW	3.2
WW	39
YW	71
MILK	31
M&G	50
.....
CED	1.3
.....
REA	.12
.....
MARB	.13

H5 767 ADVANCE 349
H5 349 ADVANCE 5170
 | H5 MS 7159 DOMET 267
 UU SPECIAL 3218
UU MS SPECKLES 5301
 | UU MS NEFF 1070

HH ADVANCE 767G
 H5 MS 8020 DOM 5174
 CL 1 DOMINO 7159G
 H5 MS 767 ADVANCE 0108
 UU SPECIAL 0240
 UU MS GENERAL 8004
 UU YAMPA DOM 6016
 UU MS DOMINO 7045

• PE to JA L1 Domino 0413X from May 15 to Aug. 12, 2013

101

EL MISS ADVANCE 916W

Jan. 26, 2009 • #42967233

<i>Spring Calves</i>	
BW	2.2
WW	49
YW	78
MILK	26
M&G	51
.....
CED	1.3
.....
REA	.34
.....
MARB	-.03

CL 1 DOMINO 603
HH ADVANCE 872X
 | HH MISS ADVANCE 690U
 HH ADVANCE 5104R
HH MISS ADVANCE 7240T
 | HH MISS ADVANCE 5164R

HH ADVANCE S436
 CL 1 DOMINETTE 302
 HH ADVANCE P265
 HH MISS ADVANCE N125
 CL 1 DOMINO 206M
 HH MISS ADVANCE 153L
 CL 1 DOMINO 180L
 HH MISS ADVANCE 793G

• PE to JA L1 Domino 0413X from May 10 to Aug. 12, 2013

102**KB L1 DOMINETTE 950W**

Jan. 22, 2009 • #43002868

<i>Spring Calves</i>	
BW	4.0
WW	56
YW	93
MILK	22
M&G	50
.....
CED	1.7
.....
REA	15
MARB	20

L1 DOMINO 03396
CL 1 DOMINO 6105S
 | CL 1 DOMINETTE 243M

L1 DOMINO 00552
 L1 DOMINETTE 96893
 CL 1 DOMINO 9126J
 CL 1 DOMINETTE 8151H
 HH ADVANCE 767G
 CL 1 DOMINETTE 6113F
 HH ADVANCE 0072K
 KB L1 DOMINETTE 111

CL 1 DOMINO 180L
KB L1 DOMINETTE 636
 | KB L1 DOMINETTE 323

- A.I. bred to CL1 Domino 216Z on May 10, 2013
- PE to JA L1 Domino 0413X from May 20 to Aug. 12, 2013

107**JA L1 DOMINETTE 660S**

Feb. 6, 2006 • #42717699

<i>Spring Calves</i>	
BW	4.5
WW	56
YW	106
MILK	23
M&G	51
.....
CED	2.1
.....
REA	18
MARB	13

CL 1 DOMINO 0157K
JA L1 DOMINO 426P
 | JA L1 DOMINETTE 7070

GB L1 DOMINO 808A
JA L1 DOMINETTE 3804N
 | JA L1 DOMINETTE 8206

- A.I. bred to CL 1 Domino 955W on May 10, 2013
- PE to JA L1 Domino 0413X from May 20 to Aug. 12, 2013

HH ADVANCE 767G
 CL 1 DOMINETTE 861H
 DR DOMINO 3135
 JA L1 DOMINETTE 1213
 GB L1 DOMINO 3100
 GB L1 DOM PRCS 2173
 CL 1 DOMINO 484
 JA L1 DOMINETTE 6543

103**KB L1 DOMINETTE 878U**

Jan. 30, 2008 • #42878432

<i>Spring Calves</i>	
BW	3.8
WW	50
YW	93
MILK	21
M&G	46
.....
CED	-0.4
.....
REA	15
MARB	04

CL 1 DOMINO 484
KB L1 DOMINO 311
 | MONTANA MISS 1134

L1 DOMINO 890061
 CL 1 DOMINETTE 761
 JA L1 DOMINO 503
 MONTANA MISS J336
 BP MANNING ET 109G
 LCI 83A TRANSALTA LS 36C
 CL 1 DOMINO 501
 TW L1 DOMINET W807

BAR-N CENTURION 921J
KB MISS CENTURION 283
 | KB L1 DOMET 6147

- A.I. bred to HH Advance 2181Z on May 10, 2013
- PE to 413 from May 20 to Aug. 12, 2013

108**HH MISS ADVANCE 6215S ET**

Feb. 2, 2006 • #42736799

<i>Spring Calves</i>	
BW	3.1
WW	42
YW	63
MILK	16
M&G	37
.....
CED	-2.1
.....
REA	09
MARB	11

HH ADVANCE 6052F
HH ADVANCE 932J
 | HH MS ADVANCE 4054D

CL 1 DOMINO 522E
CL 1 DOMINETTE 7108G
 | CL 1 DOMINETTE 0005

- A.I. bred to CL 1 Domino 955W on May 10, 2013
- PE to JA L1 Domino 0413X from May 20 to Aug. 12, 2013

CL 1 DOMINO 392
 HH MISS ADVANCE 160A
 L1 DOMINO 910282
 HH MISS ADVANCE 218B
 GB L1 DOMINO 250
 CL 1 DOMINETTE 272
 HH ADVANCE 815X
 CL 1 DOMINET 885

104**MONTANA MISS 8107U**

Feb. 20, 2008 • #42880793

<i>Spring Calves</i>	
BW	0.8
WW	48
YW	78
MILK	26
M&G	51
.....
CED	6.3
.....
REA	-22
MARB	16

CL 1 DOMINO 246M
CL 1 DOMINO 590R
 | CL 1 DOMINETTE 258M

CL 1 DOMINO 9126J
 CL 1 DOMINETTE 952J
 HH ADVANCE 8093H
 CL 1 DOMINETTE 0113K
 L1 DOMINO 95461
 CL 1 DOMINETTE 178
 CL 1 DOMINO 484
 JA L1 DOMINETTE 7809

CL 1 DOMINO 965J
MONTANA MISS 4169
 | JA L1 DOMINETTE 0220

- PE to JA L1 Domino 0413X from May 10 to Aug. 12, 2013

105**CO L1 DOMINETTE 742T**

Mar. 22, 2007 • #42809391

<i>Spring Calves</i>	
BW	5.2
WW	46
YW	81
MILK	12
M&G	35
.....
CED	0.3
.....
REA	06
MARB	-06

HH ADVANCE 286M
JA L1 DOMINO 5603R
 | JA L1 DOMINETTE 2210M

HH ADVANCE 0024K
 HH MISS ADVANCE 752G
 CL 1 DOMINO 484
 JA L1 DOMINETTE 6565
 HH ADVANCE 836H
 HH MISS ADVANCE 621F
 CL 1 DOMINO 7120G
 HH MISS ADVANCE 970J

HH ADVANCE 216M
CO L1 DOMINETTE 522R
 | CO L1 DOMINETTE 100L

- PE to JA L1 Domino 0413X from May 10 to Aug. 12, 2013

106**HH MISS ADVANCE 7105T**

Jan. 13, 2007 • #42785339

<i>Spring Calves</i>	
BW	3.9
WW	42
YW	65
MILK	30
M&G	51
.....
CED	1.1
.....
REA	06
MARB	23

CL 1 DOMINO 206M
HH ADVANCE 5212R
 | HH MISS ADVANCE 1028L

CL 1 DOMINO 9126J
 CL 1 DOMINETTE 825H
 HH ADVANCE 6052F
 HH MISS ADVANCE 731G
 CL 1 DOMINO 888H
 CL 1 DOMINET 357
 HH ADVANCE 8060H
 HH MISS ADVANCE 961J

CL 1 DOMINO 0124K
HH MISS ADVANCE 4119P
 | HH MISS ADVANCE 175L

- A.I. bred to CL 1 Domino 955W on May 10, 2013
- PE to JA L1 Domino 0413X from May 20 to Aug. 12, 2013



JAMISON QUARTER HORSES

**SUN FROST, DRIFTWOOD AND HANCOCK
BRED PERFORMANCE HORSES FROM
WESTERN KANSAS' BIG, RANCH COUNTRY!**

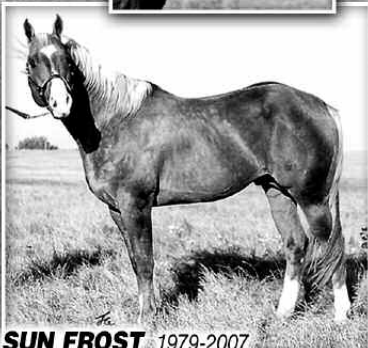
RANCH HORSES OUR SPECIALTY!

*The Ranch Horses & Started Performance
Horse Prospects... For information,
Trainer, Ty Hotchkiss 605/ 210-0242
Gordon Jamison 785/ 754-3639
(c) 785/ 299-0441*

- **JA Reference Stallions** ...pages 21 & 22
- **2013 JA Foals** ...Lots 401 - 426
- **Stallion JA Tequila Drift** ...Lot 427
- **Broodmares** ...Lots 428 - 431
- **Prospect Geldings & Mares**
...started under saddle, Lots 432 - 451
- **Ranch & Performance Horses** ...Lots 452 - 499



A PROGRAM BUILT UPON THE BLOOD OF LEGENDS!



SUN FROST 1979-2007

Doc's Jack Frost x Driftwood Ike

- The "Legends" Supreme Performance Sire •
- Progeny and grandprogeny total earnings \$10 Million •
- A sire of championship PRCA, AQHA, NCHA and Ranch performance horses

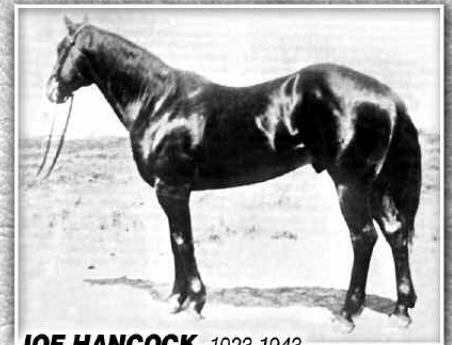
A JA influence through stallions PC Frost Em Peppy, Citisun Cline, Stan Wood and Cajunative!



DRIFTWOOD 1932-1960

- California Cow Horse Hall of Fame • National Cowhorse Assn. Hall of Fame • AQHA Hall of Fame
- "A Great Rope Horse and Sire of Rope Horse Legends!"

A JA influence through foundation Driftwood mares, daughters of famed rope horse stallion Wilywood and our Sun Frost stallions!



JOE HANCOCK 1923-1943

- A great matched race horse of his time • AQHA Hall of Fame • All-Time Great Sire of Rope and Ranch Horses!

A JA influence through Blue Valentine grandsons Roan Bar Valentine and Blues Orphan Drift ...and many JA Hancock bred mares!

RANCH-RAISED, ALL-AROUND PERFORMANCE QUARTER HORSES!



JA QUARTER HORSES REFERENCE STALLIONS

SUN FROST...
"The Supreme Performance Sire"
Progeny & grandprogeny total earnings
\$10 Million!

**Reference
Stallion**

PC FROST EM PEPPY
2002 Bay Stallion • #4283829

SUN FROST

DOC'S JACK FROST
PRISSY CLINE

DOC BAR (*Lightning Bar AAA*)
CHANTELLA AAA (*War Chant AAA*)
DRIFTWOOD IKE (*Driftwood*)
JOSEPHINE EL (*Super Charge AAAT*)

PC PEPPY KATE

TUFF TIME PEPPY
CROSS FIRE KATE

PEPPY SAN BADGER (*Mr San Peppy*)
SISSY FRECKLES (*Jewel's Leo Bars*)
SAK EM SAN (*Peppy San*)
PRISSY CLINE (*Driftwood Ike*)

15.0 hh / 1275 lbs.

Power, performance, pedigree ... Frost Em Peppy, a Cowan Bros. T4 bred son of the great Sun Frost, is backed by a landmark mare line that doubles his pedigree to Prissy Cline. Dam PC Peppy Kate also produced stallions PC Cline Frost (Hodges, TX) and PC Mr Sun Peppy (Treasure State, MT) and two Cowan Bros. broodmares. Bold and intelligent with athleticism and speed found in pro-caliber performers, his foals are superb athletes in the image of their sire. Deep in proven, potent blood, Frost Em Peppy is impacting our program and the performance horse industry. Owned with Cowan Bros. T4 Quarter Horses, SD.

**Reference
Stallion**

PC CITISUN CLINE
2004 Palomino Stallion • #4638222

SUN FROST

DOC'S JACK FROST
PRISSY CLINE

DOC BAR (*Lightning Bar AAA*)
CHANTELLA AAA (*War Chant AAA*)
DRIFTWOOD IKE (*Driftwood*)
JOSEPHINE EL (*Super Charge AAAT*)

PC PEPPY KATE

TUFF TIME PEPPY
CROSS FIRE KATE

PEPPY SAN BADGER (*Mr San Peppy*)
SISSY FRECKLES (*Jewel's Leo Bars*)
SAK EM SAN (*Peppy San*)
PRISSY CLINE (*Driftwood Ike*)

15.1 hh / 1225 lbs.

Citisun Cline is a superb, first class athlete and a very impressive Sun Frost stallion. A beautiful, golden Palomino, he is a standup, sharp profiling, big dimension horse with exceptional, extended movement. Backed by an elite Cowan Bros. T4 mare line, his cowhorse, speedhorse pedigree stacks champion cutting sires Doc's Jack Frost, Peppy San Badger, Jewel's Leo Bars and Peppy San; rodeo arena sires Driftwood Ike and Sak Em San; and AAA-runners Lightning Bar, Chantella and Super Charge! Citisun progeny are talented young horses that raise the performance bar to a new level! Owned with Cowan Bros. T4 Quarter Horses, SD.

**Reference
Stallion**

PC KATWOOD OAKS
2003 Dun Stallion • #4478348

DOCS OAKS SUGAR

DOC'S OAK
MISS SUGAR BINGO

DOC BAR (*Lightning Bar AAA*)
SUSIE'S BAY (*Poco Tivio*)
MR SUGAR BOY (*Sugar Bars AAA*)
CUTIE BINGO (*Leo Bingo*)

PC KATY ANN

SUN FROST
CHUMSFANCY

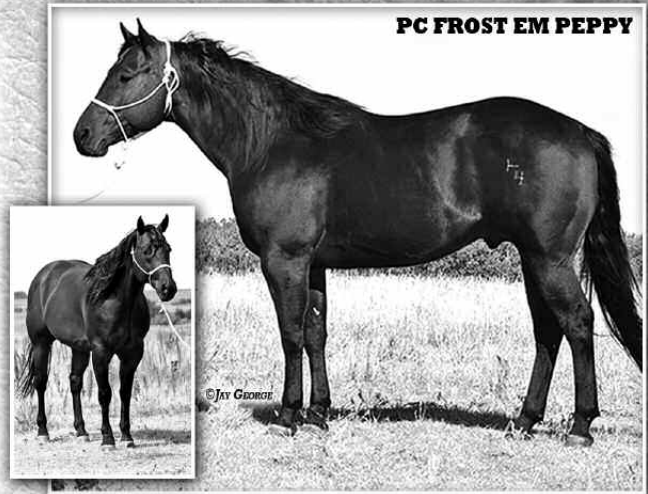
DOC'S JACK FROST (*Doc Bar*)
PRISSY CLINE (*Driftwood Ike*)
CHUMWOOD (*Orphan Drift*)
POCOS FANCY REBEL (*Poco Speedy*)

15.1 hh / 1235 lbs.

Katwood is a performance cowhorse whose Doc's Oak, Sun Frost and linebred Driftwood bloodlines have been proven at the highest level of Pro Rodeo, NRCHA and NCHA competition. Handsome, standup and well built, this Dun possesses powerful, balanced stature and sound structure. Cowan Bros. T4 bred, Katwood's exceptional natural ability, cowsense and disposition are trademarks of their Doc's Oaks Sugar x Sun Frost cross. Katwood's progeny are smart, trainable, first class athletes! Owned with Cowan Bros. T4 Quarter Horses, SD.

A 1st CLASS COWHORSE STALLION!

PC FROST EM PEPPY

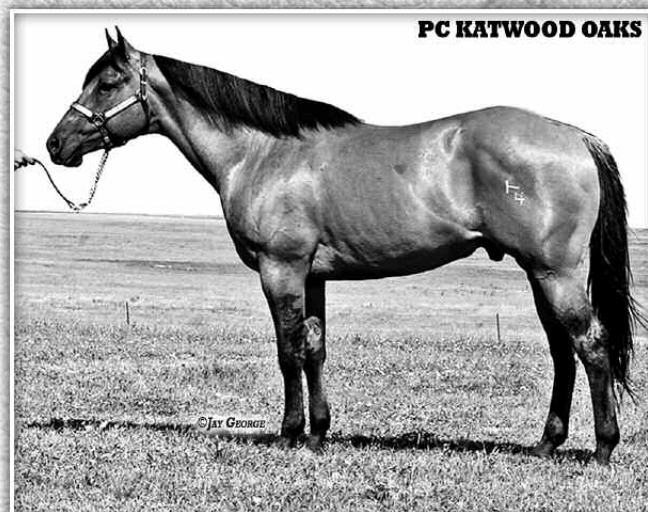


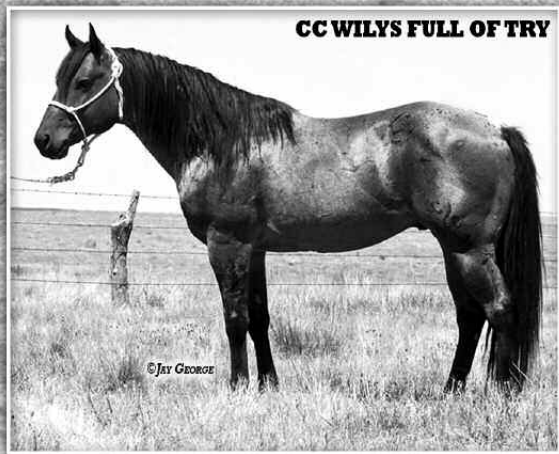
TWO SUN FROST FULL BROTHERS...
Bringing the power and potency of Doc's Jack Frost and Driftwood ...and a landmark Cowan Bros. broodmare to the Jamison program!

PC CITISUN CLINE



PC KATWOOD OAKS





CC WILYS FULL OF TRY

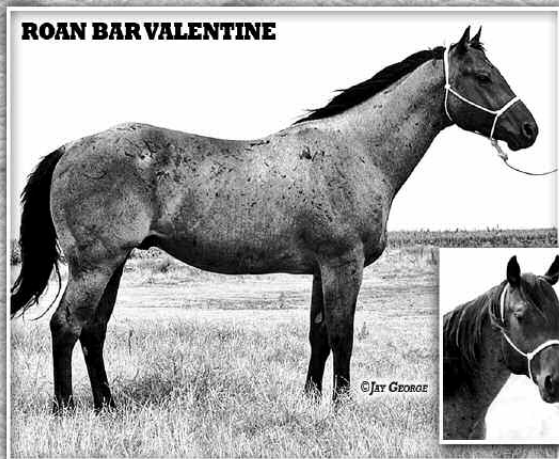
©Jay George

Reference Stallion **CC WILYS FULL OF TRY**
2004 Bay Roan Stallion • #4572317

WILY PLAYBOY	WILYWOOD PLAYGIRL DOC	ORPHAN DRIFT (<i>Driftwood Ike</i>) OUI OUI (<i>Poco Speedy x Driftwood</i>) FRECKLES PLAYBOY (<i>Jewel's Leo Bars</i>) DOCAWIMPY (<i>Clark's Doc Bar</i>)
FLAMEWOOD MISS ROAN	PLENTY TRY FLAMEWOOD MISS	GOOSEBERRY (<i>Blue Valentine</i>) HEATHER DIVIDEND (<i>Jets Sabre</i>) ORPHAN DRIFT (<i>Driftwood Ike</i>) POCO FERNWOOD (<i>Poco Speedy x Driftwood</i>)

15.0 hh / 1200 lbs.
Wilys Full Of Try was bred to be a performance horse. His correct, sound structure, shape and good looks qualify him to be a breeding horse. His linebred 4x Driftwood pedigree features full blood brother and sister Willywood and Flamewood Miss. Crosses to World Champion Cutting Horse Freckles Playbo and Steer Roping Champion Blue Valentine round out the tabulation. Rodeo built with proven rodeo champion bloodlines backed by one of Stanley Johnston's great mare lines, this Bay Roan is destined to be a real performance sire!

A RODEO BUILT, LINEBRED DRIFTWOOD STALLION!



ROAN BAR VALENTINE

©Jay George

Reference Stallion **ROAN BAR VALENTINE**
2001 Blue Roan Stallion • #4192752

LEO HANCOCK HAYES	BLUE VALENTINE DOLL 01	RED MAN (<i>Joe Hancock</i>) BEAUTY'S DREAM (<i>Valentine</i>) RIP RIP (<i>Leo</i>) ZAID A REED (<i>Reed Art</i>)
FANCYS BAR MAID	REDS MISTER GILL GO BARMAID GO	RED CEDAR BARK (<i>Fancy Roan Bar</i>) FANCYS MISS GILL (<i>Fancy Roan Bar</i>) ROAN BAR COUNTRY (<i>Roan Bar Go</i>) MISS PRISSEY RAIDER (<i>Ribbon Raider</i>)

15.2 hh / 1300 lbs.
Roan Bar Valentine is a big, handsome, powerful, blue roan Blue Valentine grandson. His outstanding, linebred Roan Bar (intensely linebred Peter McCue) dam enhances the package. An imposing big-mover, he possesses the structure, withers, soundness and movement that makes top ranch/arena geldings. Possessing dimension, profile and athleticism, the Roan Bar Valentine foals are always impressive highlights for our sales!

BLUE VALENTINE ...PROVEN, POTENT ARENA CHAMPION BLOOD!



BLUES ORPHAN DRIFT

©Jay George

Reference Stallion **BLUES ORPHAN DRIFT**
1997 Bay Stallion • #3586484

LEO HANCOCK HAYES	BLUE VALENTINE DOLL 01	RED MAN (<i>Joe Hancock</i>) BEAUTY'S DREAM (<i>Valentine</i>) RIP RIP (<i>Leo</i>) ZAID A REED (<i>Reed Art</i>)
MISS SUSITA HANCOCK	GOOSEBERRY MISS SUSITA DRIFT	BLUE VALENTINE (<i>Red Man</i>) FOX HASTINGS (<i>Plenty Coup</i>) ORPHAN DRIFT (<i>Driftwood Ike</i>) MISS JUDY SUE (<i>Poco Speedy</i>)

15.1 hh, 1350 lbs.
Blues Orphan Drift served our JA program as a sire of well made, very trainable, young geldings that have been a highlight of our annual sale. His greatest attribute are his outstanding daughters ...beautiful, balanced, deep, correct matrons with program building quality and production. Backed by two crosses to Wyoming Steer Roper Blue Valentine and two shots of AQHA Hall of Fame Legend Driftwood. Blues Orphan Drift consistently breeds the intelligence, disposition, stature, movement and quality that makes great ranch / arena horses and top broodmares.

BLUE VALENTINE & DRIFTWOOD ...POTENT BLOOD!



PC SUN WOOD

STAN WOOD
...full brother to
PC Sun Wood

Reference Stallion **PC STAN WOOD**
2000 Buckskin Stallion • #4040795

SUN FROST	DOC'S JACK FROST PRISSEY CLINE	DOC BAR (<i>Lightning Bar AAA</i>) CHANTELLA AAA (<i>War Chant AAA</i>) DRIFTWOOD IKE (<i>Driftwood</i>) JOSEPHINE EL (<i>Super Charge AAAT</i>)
COWAN KITTEN	ORPHAN DRIFT POCO COKEY	DRIFTWOOD IKE (<i>Driftwood</i>) ORPHAN ANNIE C (<i>Tailor Made C</i>) POCO SPEEDY (<i>Poco Bueno</i>) RIVBEAR COKE (<i>River Bear</i>)

15.0 hh / 1150 lbs.
PC Stan Wood's Sun Frost x Cowan Kitten pedigree presents the most potent bloodlines produced in the Cowan Bros. T4 program. Cowan Kitten was a landmark daughter of legendary Stanley Johnston stallion Orphan Drift. She produced a lifetime of great horses including famed full brothers PC Sun Wood and Gunner Wood and four stallion producing broodmares. Stan Wood's classy, fancy foals possess the natural talent to compete as top arena performers and the quality to excel as breeding horses.

1st CLASS ATHLETE FROM A LANDMARK MARE!

401

JA CHILLIWOOD FROST

APRIL 29, 2013 • BAY FILLY • #PENDING

PC FROST EM PEPPY

SUN FROST

PC PEPPY KATE

DVA MISSY PEPPY

BAY

TUFF TIME PEPPY

CHILLIWOOD

DOC'S JACK FROST
PRISSY CLINE
TUFF TIME PEPPY
CROSS FIRE KATE

PEPPY SAN BADGER
SISSY FRECKLES
ORPHAN DRIFT
MISS JUDY SUE

Bay and beautiful with four black feet ...and, one of the best fillies we've raised. A maternal sister to the DVA Maxi Driftwood stud, her Sun Frost, Orphan Drift, Peppy San Badger pedigree insures performance. Her maternal line has produced our very best broodmares...DVA Missy Peppy is 23 years old and still going strong.

402

JA PEPPY JACKFROST

MAY 3, 2013 • RED ROAN STALLION • #PENDING

PC FROST EM PEPPY

SUN FROST

PC PEPPY KATE

JACKIE WILYWOOD

BAY ROAN

WILYWOOD

JACKIE BLUES

DOC'S JACK FROST
PRISSY CLINE
TUFF TIME PEPPY
CROSS FIRE KATE

ORPHAN DRIFT
OUI OUI
BLUES N BOURBON
JACKIE JEFF

Stallion prospect with stature and the eagle eye. Jackie Wilywood is a beautiful mare and a top producer. Here is a colt who can't help but be good and the color won't hold him back either.

403

JA ELLIE FROST

MAY 9, 2013 • BUCKSKIN FILLY • #PENDING

PC FROST EM PEPPY

SUN FROST

PC PEPPY KATE

JA ELEGANT WILYWOOD

BUCKSKIN

WILYWOOD

PINES ELEGANCE

DOC'S JACK FROST
PRISSY CLINE
TUFF TIME PEPPY
CROSS FIRE KATE

ORPHAN DRIFT
OUI OUI
POCO PINE DISCOUNT
MISS FANCY RAWHIDE

A really sharp buckskin filly. Dam Elegant Wilywood is Wilywood's youngest daughter and a top producer. We have held nothing back this year or this filly wouldn't be for sale. One right off the top, she would fit anywhere.

404

JA SENOR PEPPY

MAY 18, 2013 • BAY STALLION • #PENDING

PC FROST EM PEPPY

SUN FROST

PC PEPPY KATE

JA SENORITA SUSITA

BAY

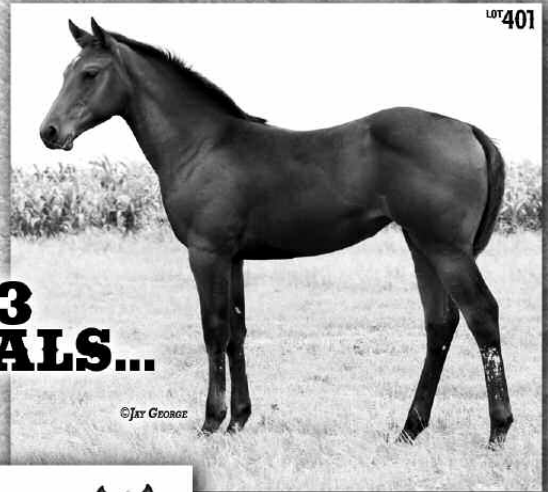
BLUES ORPHAN DRIFT

WILY SENORITA

DOC'S JACK FROST
PRISSY CLINE
TUFF TIME PEPPY
CROSS FIRE KATE

LEO HANCOCK HAYES
MISS SUSITA HANCOCK
WILYWOOD
MISS SENORITA CHICK

Here is a colt who can't help but be a big boned, stout made, full of muscle prospect. We think this is the best set of colts we have ever had and JA Senior Peppy sure contributes.



**JA
2013
FOALS...**

©JAY GEORGE



LOT 402

©JAY GEORGE

Hi-caliber prospects for breeders, ranchers and arena cowboys...an investment in power, performance and pedigree for the future!



LOT 403

©JAY GEORGE



LOT 404

©JAY GEORGE



405

JA FROSTY SUNCLINE

APRIL 30, 2013 • PALOMINO STALLION • #PENDING

PC CITISUN CLINE	SUN FROST	DOC'S JACK FROST
	PC PEPPY KATE	PRISSY CLINE
WILY FROSTY LADY	WILY FROSTY WOOD	TUFF TIME PEPPY
	BAY	CROSS FIRE KATE
		WILYWOOD
		PC KIMBER FROST
		MR FLINTROCK
		LADY CINCH

Wily Frosty Lady's first foal, he came in a cold snap and froze the tips of his ears. Double-bred Sun Frost with three crosses back to the Prissy Cline mare. It's fun to stir these Driftwood genetics and see the results turn out well.

406

JA GINGERSNIP

MAY 1, 2013 • BAY FILLY • #PENDING

PC CITISUN CLINE	SUN FROST	DOC'S JACK FROST
	PC PEPPY KATE	PRISSY CLINE
WILY GINGERWOOD	WILYWOOD	TUFF TIME PEPPY
	BAY	CROSS FIRE KATE
		ORPHAN DRIFT
		OUI OUI
		SNIPPYS DRIFTWOOD
		GIGIWOOD

Her buckskin full brother sold for \$4500 last year as a stallion prospect to Hillcrest Colony, Canada. Here is a lady that is bay, but she is just as good as her brother. Her pedigree and conformation say she probably should raise babies someday.



407

JA SUSITA CLINE

MAY 7, 2013 • PALOMINO FILLY • #PENDING

PC CITISUN CLINE	SUN FROST	DOC'S JACK FROST
	PC PEPPY KATE	PRISSY CLINE
BAY SUSITA DRIFT	DRIFTYS BAY	TUFF TIME PEPPY
	BAY	CROSS FIRE KATE
		MY DRIFTY PRIDE
		ADONS BAY BABY
		PLENTY TRY
		MISS SUSITA DRIFT

A strong mixture of Driftwood genetics in a pretty palomino. This is Bay Susita Drift's sixth colt by Citisun Cline and they have all been good.



408

JA SENOR SUNFROST

MAY 10, 2013 • PALOMINO STALLION • #PENDING

PC CITISUN CLINE	SUN FROST	DOC'S JACK FROST
	PC PEPPY KATE	PRISSY CLINE
JA SENORITA DRIFTER	BLUES ORPHAN DRIFT	TUFF TIME PEPPY
	BAY	CROSS FIRE KATE
		LEO HANCOCK HAYES
		MISS SUSITA HANCOCK
		WILYWOOD
		MISS SENORITA CHICK

Palomino stallion prospect backed by one of our best mare families! This guy has the golden color everyone likes and conformation to match. He will look great under saddle or equally good heading a band of mares.



409

JA CLINEWOOD BABY

May 13, 2013 • BAY FILLY • #PENDING

PC CITISUN CLINE	SUN FROST	DOC'S JACK FROST
	PC PEPPY KATE	PRISSY CLINE
JA ORPHAN DRIFT BABY DUN	BLUES ORPHAN DRIFT	TUFF TIME PEPPY
	WILYWOOD BABY	CROSS FIRE KATE
		LEO HANCOCK HAYES
		MISS SUSITA HANCOCK
		WILYWOOD
		SKIP SHI BABY

A filly with a bright future! Our best genetics here, the Willywood Baby mare won the calf roping and the conformation class at the Foundation Quarter Horse Show. The Blues Orphan Drift mares really click with the Sun Frost studs.



410

JA CITISUN LEW

May 14, 2013 • PALOMINO STALLION • #PENDING

PC CITISUN CLINE	SUN FROST	DOC'S JACK FROST
	PC PEPPY KATE	PRISSY CLINE
MISS TINY LOUWOOD BAY	WILYWOOD	TUFF TIME PEPPY
	MISS TINY LOU	CROSS FIRE KATE
		ORPHAN DRIFT
		OUI OUI
		ALOULOU
		MISS FOLLY UP

Outstanding Palomino stallion prospect. Watch this colt move on the video. A full brother sold to Philips Ranch, a full sister to Bates Creek Farm in Missouri, and a full sister enters our broodmare band next season. Color, conformation and pedigree all in one package!



411

JA SUNWOOD CLINE

May 15, 2013 • BUCKSKIN STALLION • #PENDING

PC CITISUN CLINE	SUN FROST	DOC'S JACK FROST
	PC PEPPY KATE	PRISSY CLINE
MISS SUNSHINE WOOD BAY	WILYWOOD	TUFF TIME PEPPY
	FLINTROCK SALLY	CROSS FIRE KATE
		ORPHAN DRIFT
		OUI OUI
		MR FLINTROCK
		PINES CRICKET

Miss Sunshine Wood produced another good one and it never hurts to be buckskin. A free mover that glides along and has brothers and sisters riding with the best.



412

JA LAUGHING CLINE

May 6, 2013 • PALOMINO FILLY • #PENDING

PC CITISUN CLINE	SUN FROST	DOC'S JACK FROST
	PC PEPPY KATE	PRISSY CLINE
PC LAUGHING DELLUXE SORREL	PC LAUGHING SUNDUST	TUFF TIME PEPPY
	PC OAKA DELLA	CROSS FIRE KATE
		SUN FROST
		MISS GIRL BARS
		DOC'S OAKS SUGAR
		SHORTCAKE DELL

Linebred Sun Frost and Driftwood, this palomino filly has the genetics to turn on the power. Strong performance potential and the genetic mix to really kick in on an outcross stallion.





413

JA WINNWOOD FROST

MAY 20, 2013 • BUCKSKIN STALLION • #PENDING

PC CITISUN CLINE

SUN FROST
PC PEPPY KATE

DOC'S JACK FROST
PRISSY CLINE
TUFF TIME PEPPY
CROSS FIRE KATE

JA WINNWOOD LADY

GRAY

WILY FROSTY WOOD
TR WINNING HANCOCK

WILYWOOD
PC KIMBER FROST
MR ILLUMINATOR
MISS GOLDEN WIN

Winnwood Lady's first colt and what a job she's done. Study this pair, it's hard to fault either one. A stallion prospect from an elite mare family.



414

JA ABBIE CLINEFROST

MAY 24, 2013 • BUCKSKIN FILLY • #PENDING

PC CITISUN CLINE

SUN FROST
PC PEPPY KATE

DOC'S JACK FROST
PRISSY CLINE
TUFF TIME PEPPY
CROSS FIRE KATE

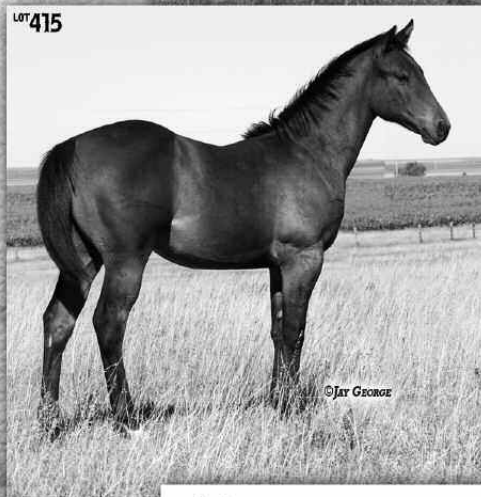
TUCKER WOOD DRIFT

BAY

DOUBLE DRIFTWOOD
TUCKERS MOSS ROSE

WILYWOOD
WIMPA STAR BAR
STEVE TUCKER
ABBIE MOSS

It's hard to believe this classy buckskin filly will get a new home, she really needs to stay here. A full brother, JA Citisun Tucker, is a sale feature and sells as Lot 432. Probably as much Driftwood as you will ever find in one pedigree.



415

JA FROSTY TRY SUN

MAY 12, 2013 • DUN STALLION • #PENDING

CC WILYS FULL OF TRY

WILY PLAYBOY
FLAMEWOOD MISS ROAN

WILYWOOD
PLAYGIRL DOC
PLENTY TRY
FLAMEWOOD MISS

JA GLORY SUNFROST

BUCKSKIN

PC CITISUN CLINE
TEQITA GLORY TRAIN

SUN FROST
PC PEPPY KATE
A NIGHT TRAIN
TEQITA DOCS HANNA

Glory Sunfrost's first baby. An interesting combination here of strong Driftwood genetics with Sun Frost, Blue Valentine and Freckles Playboy stirred in. Top prospect that's just starting to come.



416

JA TRYDRIFT

MAY 13, 2013 • ROAN STALLION • #PENDING

CC WILYS FULL OF TRY

WILY PLAYBOY
FLAMEWOOD MISS ROAN

WILYWOOD
PLAYGIRL DOC
PLENTY TRY
FLAMEWOOD MISS

JA ROSEDRIFT

RED ROAN

BLUES ORPHAN DRIFT
IMA COUNTRY RED ROSE

LEO HANCOCK HAYES
MISS SUSITA HANCOCK
COUNTRY JOHN RED
BOBBI BARNES

Top roan colt that's stuffed full of roan genetics. He is more than color, he is made right and bred right. Dam JA Rose Drift will fill your eye and she proves what she is with her progeny.

417

JA CODI TRAIN
MAY 17, 2013 • BAY FILLY • #PENDING

CC WILYS FULL OF TRY

WILY PLAYBOY
FLAMEWOOD MISS ROAN

WILYWOOD
PLAYGIRL DOC
PLENTY TRY
FLAMEWOOD MISS

A RAINY NIGHT
SORREL

A NIGHT TRAIN
TEQITA DOCS RAINY

GREAT PINE
POCOS BAR FLOWER
DOCS LETTERS
TRES MUCHACHAS

A Rainy Night is a top producer that has three daughters in our broodmare band and has had sons top two of our sales and top sellers in others. A top notch filly that should carry on the family tradition of excellence.



418

JA TRYIN ORPHAN
MAY 20, 2013 • BAY ROAN STALLION • #PENDING

CC WILYS FULL OF TRY

WILY PLAYBOY
FLAMEWOOD MISS ROAN

WILYWOOD
PLAYGIRL DOC
PLENTY TRY
FLAMEWOOD MISS

JA ORPHAN BUCK DEE
BAY

BLUES ORPHAN DRIFT
BUCKS CLABBER DEE

LEO HANCOCK HAYES
MISS SUSITA HANCOCK
SHEIK'S KINGBEE
WHOS PARR DEE

The JA Orphan Buck Dee mare was a high seller in last year's sale to Scott and Marci New in Arizona. They left her here to breed back and this good colt goes in this sale. Top prospect!



419

SPOTTED TAILS GIRL COLT
APR. 18, 2013 • BLUE ROAN STALLION • #PENDING

CC WILYS FULL OF TRY

WILY PLAYBOY
FLAMEWOOD MISS ROAN

WILYWOOD
PLAYGIRL DOC
PLENTY TRY
FLAMEWOOD MISS

SPOTTED TAILS GIRL
BROWN

DEER LIGHT DOC
GAYLA VARDEN

KEKO DRIFTBAR CHEX
BROWNIE LIGHT
WESTERN CHARM
MOLLY VARDEN

Blue roan horse colt owned by Spotted Tail Cattle Co. in Nebraska. Mother really milks and raised a nice baby.



420

JA JOHNDRIFT
MAY 8, 2013 • CHESTNUT STALLION • #PENDING

BLUES ORPHAN DRIFT

LEO HANCOCK HAYES
MISS SUSITA HANCOCK

BLUE VALENTINE
DOLL 01
GOOSEBERRY
MISS SUSITA DRIFT

JA FROSTEM ROSE
CHESTNUT

PC FROST EM PEPPY
IMA COUNTRY RED ROSE

SUN FROST
PC PEPPY KATE
COUNTRY JOHN RED
BOBBI BARNES

A reversal of the usual here with Blues Orphan Drift on top and Frost Em on the bottom. It works great either way. Outstanding genetics and correct conformation should make for a really good ride.





421

JA LADY LUCKWOOD

MAY 11, 2013 • DUN FILLY • #PENDING

BLUES ORPHAN DRIFT	LEO HANCOCK HAYES	BLUE VALENTINE
	MISS SUSITA HANCOCK	DOLL 01
JA LADY FROSTYWOOD	WILY FROSTY WOOD	GOOSEBERRY
	LADY LUCK WINS	MISS SUSITA DRIFT
DUN		WILYWOOD
		PC KIMBER FROST
		WILYWOOD
		LADY JET BAILEY

If we weren't selling them all, Lady Luckwood would likely see a future as a broodmare in our band. Blues Orphan Drift mares are top producers and the double-bred Wilywood pedigree adds another touch of spice.



422

JA ARIEL DRIFT

MAY 14, 2013 • BLACK FILLY • #PENDING

BLUES ORPHAN DRIFT	LEO HANCOCK HAYES	BLUE VALENTINE
	MISS SUSITA HANCOCK	DOLL 01
JA DUDES FAITH	HES A MACHO DUDE	GOOSEBERRY
	CHESTNUT	MISS SUSITA DRIFT
	TEQITA DOCS FAITH	BLONDY'S DUDE
		TOOTIE WIMPY
		DOCS LETTERS
		TEQITA ARIEL

Black fillies are not plentiful and ones this good even more scarce. There won't be a lot more Blues Orphan Drift progeny available here, tap into this opportunity! Dam sells as Lot 428.



423

JA LADY PLENTYROAN

MAY 1, 2013 • BLUE ROAN FILLY • #PENDING

ROAN BAR VALENTINE	LEO HANCOCK HAYES	BLUE VALENTINE
	FANCYS BAR MAID	DOLL 01
JA LADY PLENTYWOOD	DVA MAXI DRIFTWOOD	REDS MISTER GILL
	BAY	GO BARMAID GO
	MIP LAUGHING PLENTY	WILYWOOD
		DVA MISSY PEPPY
		CEE JAYS VALENTINE
		JK FLICKABRUCE

What a package! ...blue as they come and pretty as a picture. We have just sold dam JA Lady Plentywood to Juan Meza for export to Columbia. We would like to keep this filly to replace her, but will offer her to the public. Step up and get a good one.



424

JA RED ROANTRAIN

MAY 3, 2013 • SORREL STALLION • #PENDING

ROAN BAR VALENTINE	LEO HANCOCK HAYES	BLUE VALENTINE
	FANCYS BAR MAID	DOLL 01
TEQITA LOVELY LADY	A NIGHT TRAIN	REDS MISTER GILL
	GRULLO	GO BARMAID GO
	TEQITA SMOOTH HOLLY	GREAT PINE
		POCOS BAR FLOWER
		TEQUES SMOOTH SON
		TEQUES LOCOMOTIVE

When you cross a blue roan stallion with a grullo mare and get a sorrel, you scratch your head. Who cares, this guy is good and an outstanding performance or breeding prospect.

LOT 425

425

JA SMOKIN VALENTINE

MAY 11, 2013 • BAY ROAN STALLION • #PENDING

ROAN BAR VALENTINE

LEO HANCOCK HAYES
FANCYS BAR MAID

BLUE VALENTINE
DOLL 01
REDS MISTER GILL
GO BARMAID GO

SMOKIN HOT COCOA

BAY

DOCTOR I SMOKE
MY CREME DE COCOA

MR GUN SMOKE
DOCS HOT SOCKS
PUT THE HAMMERDOWN
TEQUES LADY 370

A full brother sold as a three year old last year for \$5500 to John Hadley in North Dakota. Here is the same kind, grow him a couple years, start him right and the future is bright.



426

JA BAR LETTERS

MAY 20, 2013 • BAY STALLION • #PENDING

ROAN BAR VALENTINE

LEO HANCOCK HAYES
FANCYS BAR MAID

BLUE VALENTINE
DOLL 01
REDS MISTER GILL
GO BARMAID GO

ROOSTERS LACY LETTERS

BAY

ROOSTERS SHORTY
LACY LETTERS

GALLO DEL CIELO
SHORTY LENA SIX
DOC'S J JAY
EIGHTEEN LETTERS

Blue Valentine crossed on Rooster and Doc's J Jay has got to produce a sound mind and a good ride. The Lacy Letters mare is a full sister to stallions Capitol Letters, Docs Letters and Letters Reminder.



LOT 426

A Proven Breeding Stallion
...Linebred Driftwood on a great AQHA foundation Tequesquite Ranch mare!

Consigned by...
Shannon Creek Cattle Co., Olsburg, KS

For information
...Alan & Sharon Hubbard
785/468-3552



LOT 427
JA Tequita Drift

427

JA TEQITA DRIFT

2003 GRULLO STALLION • #4471724

TR SPECIAL DRIFT

WILY ROX
ROANY WOOD

WILYWOOD
BAY LADY ROX
WILYWOOD
ROYAL ROAN NOTE

TEQITA DOLLY MAY

A NIGHT TRAIN
TEQITA MAGGIE MAY

GREAT PINE
POCOS BAR FLOWER
DOCS LETTERS
IMY CREME DE COCOA



A Double Grandson of Rope Horse Sire Wilywood!
A top, Grullo, cowhorse athlete ...a proven ranch and performance horse sire!

JA Tequita Drift is a genuine cowhorse / performance stallion bred and built in the tradition of the all-around Quarter Horse. Through sire Special Drift, he is double-bred to the great South Dakota rope horse stallion Wilywood making four crosses to Driftwood. Dam Tequita Dolly May, a landmark Jamison mare, originated from the famed Tequesquite Ranch, New Mexico, and Albert Mitchell's foundation AQHA mare band. Tequita is a good looking, medium-sized, well balanced, shapely horse with flawless, low hocked structure. A potent breeder of his dun color factor, this Grullo sires standup, strong, shapely performance geldings. Owner Shannon Creek Cattle Co. has a number of high quality, young daughters slated for their mare band, therefore, Tequita Drift is offered for sale.



428

JA DUDES FAITH
2000 CHESTNUT MARE • #4055990

HES A MACHO DUDE

BLONDYS DUDE
TOOTIE WIMPY

SMALL TOWN DUDE
BLONDY QUEEN
MISTER WIMPY
MISS PATSY CHIEF

TEQITA DOCS FAITH

DOCS LETTERS
TEQITA ARIEL

DOC'S J JAY
EIGHTEEN LETTERS
ADVANCE GUARD
TEQ HAMMER N SHANE

P.E. to PC Citisun Cline from May 1 – Nov. 1, 2013



429

TEQITA DOCS JAZZ
1998 SORREL MARE • #3659184

A NIGHT TRAIN

GREAT PINE
POCOS BAR FLOWER

POCO BRIGHT STAR
CRIER'S BETTY
BARS OF IRON
RANCHOS HOBBY

TEQITA DOCS JASMINE

DOCTOR CITATION
TEQITA PATRONA

DOC'S J JAY
MISS SATURN
ADVANCE GUARD
TEQUES LADY 370

P.E. to Roan Bar Valentine from May 1 – Nov. 1, 2013



430

CYNTHIA PEPPY MIKE
1995 BAY MARE • #3419888

POCOANITA CHAMP

PEPONITA
POCO OCHATA

PEPPY SAN
BONITA TIVIO
POCO LAD
MISS OCHATA

LAST DRIFT

TOP DOUBLE BID
WANDER WOOD

DOUBLE BID
KRISTY FIVE
DRIFTWOOD
BAR BEE

P.E. to Roan Bar Valentine from May 1 – Nov. 1, 2013

431

SPOTTED TAILS MAIDEN
2007 BAY ROAN MARE • #4982779

BIG STRETCH HANCOCK

GOOSEBERRY
LADY LON HANCOCK

BLUE VALENTINE
FOX HASTINGS
LADY'S BIG TIMBER
SANKAN BEE

SPOTTED TAILS GIRL
BROWN

DEER LIGHT DOC
GAYLA VARDEN

KEKO DRIFTBAR CHEX
BROWNIE LIGHT
WESTERN CHARM
MOLLY VARDEN

P.E. to Roan Bar Valentine from May 1 – Nov. 1, 2013



JA Prospect Geldings...

432

JA CITISUN TUCKER 2010 BAY GELDING • #5355176

PC CITISUN CLINE	SUN FROST	DOC'S JACK FROST
	PC PEPPY KATE	PRISSY CLINE
TUCKER WOOD DRIFT	DOUBLE DRIFTWOOD	TUFF TIME PEPPY
	TUCKERS MOSS ROSE	CROSS FIRE KATE
		WILYWOOD
		WIMPA STAR BAR
		STEVE TUCKER
		ABBIE MOSS

15.2 hh

Big, bay and good looking, this guy is impressive now and will just fill out and get better. I like everything about this colt. His mother is one of our best and always produces a good one. If you like big horses that can move well and do it all, here he is!

LOT 432



433

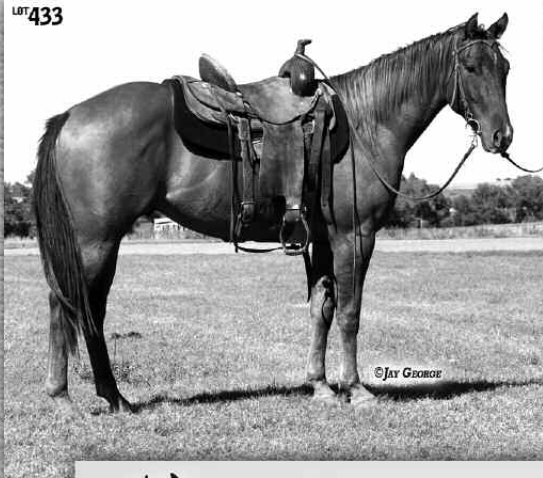
JA CITISUN ROXWOOD 2010 RED DUN GELDING • #5355154

PC CITISUN CLINE	SUN FROST	DOC'S JACK FROST
	PC PEPPY KATE	PRISSY CLINE
WILY ROXY WOOD	WILY FROSTY WOOD	TUFF TIME PEPPY
	TR MISS ROXY HANCOCK	CROSS FIRE KATE
		WILYWOOD
		PC KIMBER FROST
		WILY ROX
		TR WINNING HANCOCK

14.3 hh

Cute and pretty and bred to be a performance horse, Roxwood is nicely started and soft and ready to move on. We really like this mare family and crossed on Citisun all the pieces fit in place.

LOT 433



434

JA FOXY STANWOOD 2010 SORREL GELDING • #5366929

PC STAN WOOD	SUN FROST	DOC'S JACK FROST
	COWAN KITTEN	PRISSY CLINE
WILY FOXARITA	WILYWOOD	ORPHAN DRIFT
	BARETTA BANDIT	POCO COKEY
		ORPHAN DRIFT
		OUI OUI
		MR FLINTROCK
		BAR BARETTA

14.3 hh

A maternal brother to feature gelding JA Wily Sunfox. Stanwood on top will insure the power is there. Here should be a good one, the fundamentals are in place and he is ready to reach for the stars.

LOT 434



435

JA BADGER VALENTINE 2010 SORREL GELDING • #5366926

ROAN BAR VALENTINE	LÉO HANCOCK HAYES	BLUE VALENTINE
	FANCYS BAR MAID	DOLL 01
TR BADGERS FROST	KENS TWISTY FROST	REDS MISTER GILL
	MS WILY ROSE	GO BARMAID GO
		SUN FROST
		MISS TWISTY JET
		WILYWOOD
		MISS MITO JN

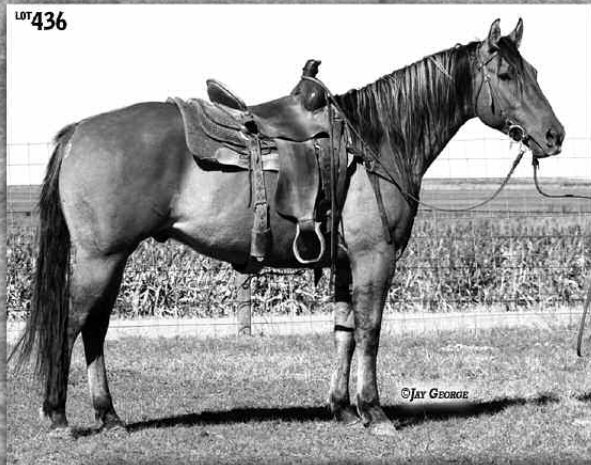
15.1 hh

A Blue Valentine, Sun Frost, Wilywood cross, he is coming on well. A project that should result in the best.

LOT 435



LOT 436



JA Prospect Geldings...

436

JA FRITZY KATWOOD

2009 DUN GELDING • #5266403

PC KATWOOD OAKS

DOCS OAKS SUGAR
PC KATY ANN

DOC'S OAK
MISS SUGAR BINGO
SUN FROST
CHUMSFANCY

JA FRITZY DRIFT

TR SPECIAL DRIFT
I DO BELIEVE

WILY ROX
ROANY WOOD
KING FRITZ TWO
MAKE MONEY HONEY

14.3 hh

I think here could be one of the very best we have ever sold. He is made like a ranch horse should be and cinches really deep. He's black footed and good footed, has a solid mind and just needs time and experience.

LOT 437



437

JA ROOSTER CLINE

2007 BUCKSKIN GELDING • #5003658

PC CITISUN CLINE

SUN FROST
PC PEPPY KATE

DOC'S JACK FROST
PRISSY CLINE
TUFF TIME PEPPY
CROSS FIRE KATE

ROOSTERS LACY LETTER

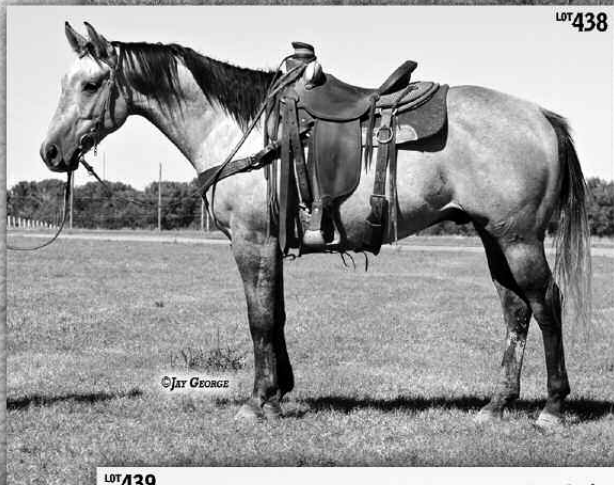
ROOSTERS SHORTY
LACY LETTERS

GALLO DEL CIELO
SHORTY LENA SIX
DOC'S J JAY
EIGHTEEN LETTERS

14.2 hh

Buckskin and handsome, Rooster was his dam's first colt and she shorted him some on milk. We gave him some extra time to develop and he is going to be really good. Mother has a super good disposition and rides the best. Take Rooster on, he is ready for the challenge.

LOT 438



438

JA DRIFTING BULLY

2007 GRULLO GELDING • #5006820

BLUE BULLY

BULLY BULLION
BLUE JEAN WRANGLER

SPECIAL EFFORT
MARY POPPINS
ROCKET WRANGLER
WHAT'S HER NAME

WILY ANGELETA

WILYWOOD
FOGGY FLINTROCK

ORPHAN DRIFT
OUI OUI
MR FLINTROCK
CINCH CAT

15.0 hh

Gray or grullo, I'm not sure which. Really good to look at and I love to watch him move ...very sure footed and agile! When he is finished, he should be at the top of the pile. Bully Bullion and Rocket Wrangler on Wilywood, how could you go wrong?

LOT 439



439

CAJUN SUN

2006 RED DUN GELDING • UNREGISTERED

PC DOX CAJUN

BOON DOX JOHN
PC CAJUN LADY

BOON BAR
DUDE'S QUEEN
SUN FROST
LETA DRIFT

PC SUNORITA

SUN FROST
PC BONITA LADY

DOC'S JACK FROST
PRISSY CLINE
BOON DOX JOHN
SUNLACE

14.3 hh

A horse that had an injury and got started late. He is still green and just nicely started, but has no issues and will make a good one.

JA Prospect Saddle Mares...

440

JA WILY DRIFT BRENDA

2010 SORREL MARE • #5355172

TR SPECIAL DRIFT

WILY ROX
ROANY WOOD

WILYWOOD
BAY LADY ROX
WILYWOOD
ROYAL ROAN NOTE

CL BRENDA LEE

SUPER CL
CALIENTE GAL

CAPITOL LETTERS
AGGIE BELLE
MR SNOOPER
CALIENTE SKIP

15.1 hh

Big and pretty backed by a really solid cowhorse and ropehorse pedigree. This filly is soft and willing and an eyecatcher. Ride her and then breed her, she is broodmare quality.



441

JA FROSTY ROSEDRIFT

2010 BAY MARE • #5432408

PC FROST EM PEPPY

SUN FROST
PC PEPPY KATE

DOC'S JACK FROST
PRISSY CLINE
TUFF TIME PEPPY
CROSS FIRE KATE

JA ROSEDRIFT

BLUES ORPHAN DRIFT
IMA COUNTRY RED ROSE

LEO HANCOCK HAYES
MISS SUSITA HANCOCK
COUNTRY JOHN RED
BOBBI BARNES

15.1 hh

Dam Rosedrift is one of my extra special favorites. I have high hopes for this filly and hate to see her go. Frosty Rosedrift has all the pieces for a very bright future.



442

JA STANWOOD LADY

2010 BUCKSKIN MARE • #5355011

PC STAN WOOD

SUN FROST
COWAN KITTEN

DOC'S JACK FROST
PRISSY CLINE
ORPHAN DRIFT
POCO COKEY

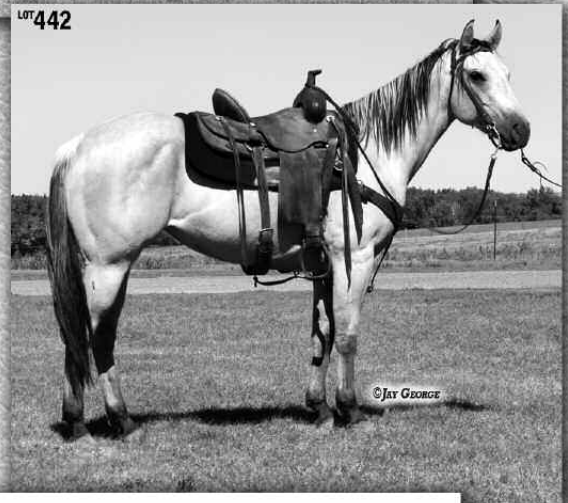
MISS WILYWOOD

WILYWOOD
COOKIES SHARA

ORPHAN DRIFT
OUI OUI
MY PARKER ASHWOOD
COOKIE SHAMS DANCER

14.3 hh

Buttermilk buckskin and pretty as a picture, she is coming on well and needs to raise colts someday. PC Stan Wood is a full brother to PC Sunwood and PC Gunner Wood. Here are front row genetics in a lovely package.



443

JA SPECIAL RAIN

2010 SORREL MARE • #5447138

TR SPECIAL DRIFT

WILY ROX
ROANY WOOD

WILYWOOD
BAY LADY ROX
WILYWOOD
ROYAL ROAN NOTE

JA DUDES RAINY NIGHT

HES A MACHO DUDE
A RAINY NIGHT

BLONDY'S DUDE
TOOTIE WIMPY
A NIGHT TRAIN
TEQITA DOCS RAINY

14.3 hh

A full sister to Lot 445 JA Wily Rain. TR Special Drift provides the performance ability and sting and Blondys Dude and Night Train add to the picture.





444 JA FROSTED FAITHWOOD

2010 Bay Mare • #5355010

PC FROST EM PEPPY	SUN FROST	DOC'S JACK FROST
	PC PEPPY KATE	PRISSY CLINE
JA FAITHWOOD	TR SPECIAL DRIFT	TUFF TIME PEPPY
	TEQITA DOCS FAITH	CROSS FIRE KATE
		WILY ROX
		ROANY WOOD
		DOCS LETTERS
		TEQITA ARIEL

15.0 hh

A true performance filly, she's bred to be good. Nicely started and moving out well, time and experience will bring on the frosting.

445 JA WILY RAIN

2009 Bay Mare • #5447471

TR SPECIAL DRIFT	WILY ROX	WILYWOOD
	ROANY WOOD	BAY LADY ROX
JA DUDES RAINY NIGHT	HES A MACHO DUDE	WILYWOOD
	A RAINY NIGHT	ROYAL ROAN NOTE
		BLONDY'S DUDE
		TOOTIE WIMPY
		A NIGHT TRAIN
		TEQITA DOCS RAINY

14.3 hh

A full sister to Lot 443 JA Special Rain, they make a nice pair. The Rainy Night mare has produced more high sellers than any other mare on our ranch.

446 JA FANCY LITTLEWOOD

2009 Dun Mare • #5264661

TR SPECIAL DRIFT	WILY ROX	WILYWOOD
	ROANY WOOD	BAY LADY ROX
JA LITTLE FANCY	GOTTABEASMAST PEPPY	WILYWOOD
	SMART AND FANCY TOO	ROYAL ROAN NOTE
		GOTTAHAVEAPEPPY DOC
		BAR DIAMOND DREAM
		GOTTAHAVEAPEPPY DOC
		EASTERS SUPERDANDY

14.2 hh

Nice, friendly mare family behind this filly. She is petite, dun and pretty. Nicely started.

447 JA FOXARITA KATWOOD

2009 Dun Mare • #5264504

PC KATWOOD OAKS	DOCS OAKS SUGAR	DOC'S OAK
	PC KATY ANN	MISS SUGAR BINGO
WILY FOXARITA	WILYWOOD	SUN FROST
	BARETTA BANDIT	CHUMSFANCY
		ORPHAN DRIFT
		OUI OUI
		MR FLINTROCK
		BAR BARETTA

15.0 hh

Wily Foxarita has produced our very best and she did it again here. I wouldn't know what to change on this filly except keep her here. Cinches really deep, a pretty head and neck, and good feet and legs. Well started with a big stop.

448

JA CITISUN SPICE

2009 Bay Mare • #5266540

PC CITISUN CLINE	SUN FROST	DOC'S JACK FROST
	PC PEPPY KATE	PRISSY CLINE
WILYWOODS SPICE	WILYWOOD	TUFF TIME PEPPY
	MISS SENORITA CHICK	CROSS FIRE KATE
		ORPHAN DRIFT
		OUI OUI
		NEBRASKA BOY
		MISS SPANISH FACE

15.1 hh

Big in stature, big in quality. Dam is a full sister to our Wily Vaquero stud and to Wily Senorita. Citisun Spice is a favorite of mine. She has quite a bit of sting, but learns quickly and retains the knowledge. A real opportunity to bid on our very best.

LOT 448



449

JA RAVENWOOD

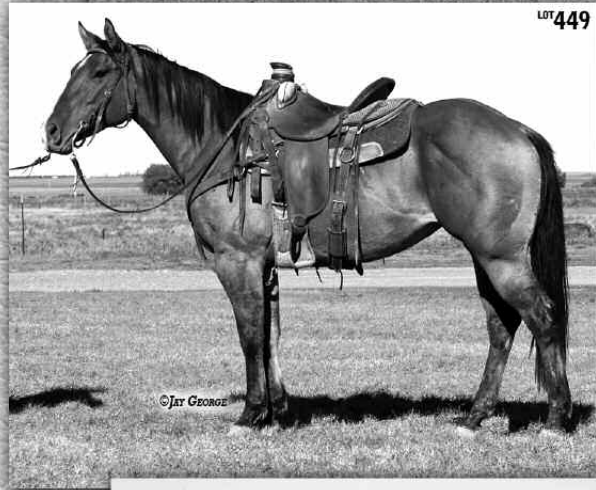
2009 Dun Mare • #5267426

DVA MAXI DRIFTWOOD	WILYWOOD	ORPHAN DRIFT
	DVA MISS PEPPY	OUI OUI
WC RAVENWOOD	DAKOTA DRIFT	TUFF TIME PEPPY
	WATCH BOLLER CRYSTAL	CHLLIWOOD
		WILYWOOD
		WIMPA STAR BAR
		BOLLERS CRYSTAL
		WATCH JOE JACKIE BAR

14.3 hh

Double-bred Wilywood and the only Maxi Driftwood mare in the sale. Kind and friendly, she is started well and moving on nicely.

LOT 449



450

JA FROSTEM ROXWOOD

2008 Dun Mare • #5101715

PC FROST EM PEPPY	SUN FROST	DOC'S JACK FROST
	PC PEPPY KATE	PRISSY CLINE
TR MISS ROXY HANCOCK	WILY ROX	TUFF TIME PEPPY
	TR WINNING HANCOCK	CROSS FIRE KATE
		WILYWOOD
		BAY LADY ROX
		MR ILLUMINATOR
		MISS GOLDEN WIN

Move on to another level, this young mare is already in the performance world. Bred the best with some experience on barrels. She will catch your eye, watch her in the preview.

LOT 450



451

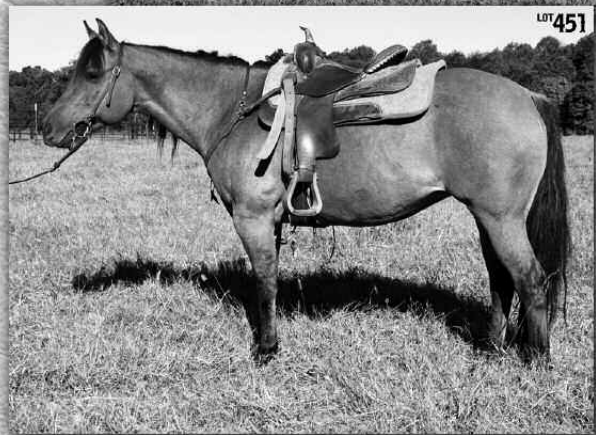
JA DANDY LASSWOOD

2007 Dun Mare • #5003683

TR SPECIAL DRIFT	WILY ROX	WILYWOOD
	ROANY WOOD	BAY LADY ROX
SMART AND DANDY TOO	GOTTAHAVEPEPPY DOC	WILYWOOD
	EASTERS SUPERDANDY	ROYAL ROAN NOTE
		SMART PEPPY DOC
		SCRIPS IDA RED
		DOCS SUPER DANDY
		ITS EASTER SUNDAY

Another mare that is well beyond just started. Ready for the big jobs. Her mother was maybe the friendliest mare we ever had on the place.

LOT 451





Ranch/Performance Horses

452

HEZA GWINNER 1126
2009 RED DUN GELDING • #5271449

HEZA DOC 1126

DOC'S POCONUT BAR
SILVER BAY 1126

CLARK'S DOC BAR
POCONUT QUEEN
YELLAR MEAT 1126
SHEZA SILVERTONE

NORTH DAKOTA 1126

YELLAR MEAT 1126
TOO FAR OUT

SHENANIGAN NICK
CEDARS KELLEY
VENTURE OUT
ZUNA KEENO BABY

14.2 hh / 1025 lbs.

A really solid four year old with many miles of outside riding and some rope experience. A nice size for those who don't like to climb.



453

TUCKER SKY LEO
2009 BUCKSKIN GELDING • #5236426

TUCKER JOE LEO

MONSIEUR JOE LEO
EMBEZZLERS BONNIE

MONSIEUR JOE JACK
GOLDIE BELLE LEO
EMBEZZLER
EASTER BONNET 2

KIDNAP SKYLER

CHESTERS SUPREME
LADY SKY HIGH

WINDCHESTER
KIDNAP AMBER
SKY HIGH LEO
LADYBIRDPAY

15 1/2 hh / 1040 lbs.

Classy buckskin that has seen some country and followed lots of cattle. Nice, soft handle and easy to get along with.



454

GENUINE CLEGG
2008 SORREL GELDING • APHA #950,375

CHILL OUT DOC

GENUINE DOC
CUT ME SUM SLAK JACK

DOC BAR
GAY BAR'S GEN
DOC'S JACK SPRAT
COLONELS PEG

QUARIKA

QUALITY CHECK
PAPRIKA MISS

CHECKERBOARD KID
RATCHETT TINK
SANDY MAN JR
DALOMAS CLEGG

14.3 hh / 1100 lbs.

A super cowhorse, here is one of my favorites. Extremely athletic, he is smooth to ride and has a running walk. "Clegg" will more than watch a cow; he will put her where you want her. Some heeling experience as well. I call him one of our best!



455

MICHAELAS LIGHTNING
2008 BAY GELDING • #5069048

ZANS LAST REQUEST

ZANS LAST LIGHT
EXCLUSIVE SUSIE

ZAN PARR BAR
SKIP LIGHT TROUBLE
BOSTON MAC
TWO EYED JODIE SUE

MISTY MERRY MORNIN

GO OON DIAL
FEELING MERRY HEMP

MR MOON DIAL
AM 2 GO
NOBLE FEELING
LOTTIE STAR

15.0 hh / 1175 lbs.

Very nice to look at with a pretty head and solid bay color. A good outside horse that will really travel. He is a high energy horse that doesn't work as well in the corral.



456 DZN DEEB'S BLONDY 1126
2008 PALOMINO GELDING • #5175700

DOCS ZIPPO NUT 1126

DOC'S POCONUT BAR
ZIPPO STAR 1126

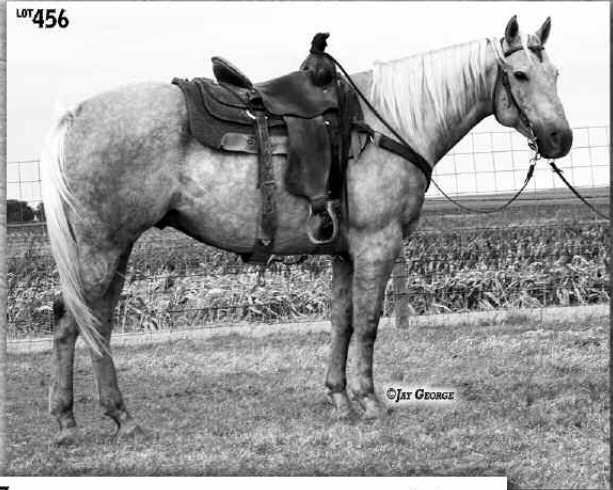
CLARK'S DOC BAR
POCONUT QUEEN
YELLAR MEAT 1126
MISS SHADOW PINE
YELLAR MEAT 1126
SHEZA SILVERTONE
NICKISKIN 1126
BOBS EASY LADY

GO DEBBIE BLACK 1126

HORSE TRAILER 1126
EASY LADY 1126

15.0 hh / 1200 lbs.

"Blondy" is a sale standout. He is super nice to look at and rides to match his looks. A very deep cinching horse that's light on the rein and knows where his feet are at all times.



457 DZN BEEGEE 1126
2008 CHESTNUT GELDING • #5175732

DOCS ZIPPO NUT 1126

DOC'S POCONUT BAR
ZIPPO STAR 1126

CLARK'S DOC BAR
POCONUT QUEEN
YELLAR MEAT 1126
MISS SHADOW PINE
SHENANIGAN NICK
CEDARS KELLEY
MR SILVERTONE JACK
CHAMP'S SUNDOWN

BLACK GOLD 1126

YELLAR MEAT 1126
SHEZA SILVERTONE

15.0 hh / 1100 lbs.

"Beegee" was developed by Ramon Chavez and Ramon always makes a good one. Ready to put right to work.



458 OLE JACKS PATCHES
2008 SORREL GELDING • #5105747

OLE WATCH JOE

WATCH JOE JACK
OLE ROSE SNIP

TWO EYED JACK
WATCH JO MOORE
OLE HEP CAT
TAD'S SNIP

OLE LEOS PATTIE

OLE WATCH LEO
MISTY PATTIE

OLE WATCH JOE
THIRSTYS DELIGHT
BUNNY PAT JACK
MISTY STEEL REY

14.2 hh / 1075 lbs.

Smaller made and easy to catch, "Patches" isn't our prettiest horse, but works for about any level of rider. Ridden all summer by a young girl.



459 ROCKIN THE SHOW
2008 BLACK GELDING • #5099876

SQUEEK BY BADGER

GOLD JACK BADGER
ISLE SQUEEK BY

ZAN GOLD JACK
BARBIE BONANZA TWO
ISLE BREEZE
IM'N OLE TOOT

CLASSIC SHOW BABY

ROCKET FOLKS
CLASSIC DEBUTANTE

WEE FOLK
SHALOMAR
PERFECTION JOHN
CLASSIC QUESTION

15½ hh / 1150 lbs.

Black and pretty and very soft and responsive. A really solid ranch horse with a lot of experience. He loves to work a cow and is fun to sort on.





Ranch/Performance Horses

460 **DOLLYS CLASSIC JACK** 2008 BAY ROAN GELDING • #5159271

CLASSIC SWEET JACK

TWO ID SWEET JACK
BLONDYS LADY BELL

TWO ID BARTENDER
MISS SWEETY JACK
BIMZAN RED BUCK
LADY DUDETTE RED

PLAYBOYS ANNY DOLL

BECKWITH PLAYBOY
DOCS ANNY DOLL

BECKWITH DUN
MISS PLAYBOY
DOCS DECATHOLON
GOLDEN ANNY DOLL

14.3 hh / 1185 lbs.

Very well made and a pretty bay roan, "Jack" has seen the big country and been over the miles. A real solid ranch horse with "notice me" looks.



461 **SLIPS SCOOTER** 2007 BAY GELDING • #5051600

MY LITTLE NIBBLES

JILLS GO BAR
MISS CHEROKEE DECK

GO BAR MEYERS
NIPPER PARKER
XEROX PEPPY
LADY FLY DECK TWO

MISS POCO SLIP TWO

CUTTERS VICTORY
MISTY FLY DECK

POCO FORD CUTTER
FLOSSIES BOOTS
ROLL ON SLIP
LADY FLY DECK TWO

15.1 hh / 1160 lbs.

Really nice handle on Scooter and he will work a cow. Good for all levels of riders. Scooter has a scar on his back that doesn't show when he is saddled. It's never bothered him a bit.



462 **DOX BEST HAND** 2007 SORREL GELDING • #4973211

DOX NOBLE CHANCE

DOX OUTSIDE CHANCE
CEE THE FRECKLES

DOC O'LENA
SMART HICKORY
COLONEL FRECKLES
CEE BAR HARRIETT

COLONELS GOLDEN HAND

COLONEL BOOTS BAR
LITTLE HIRED LIGHT

COLONEL FRECKLES
DOC'S MOTHER GOOSE
LI'L HIRED MAN
SUNLIGHT SUE

14.3 hh / 1080 lbs.

Solid and dependable, a nice sized horse if you don't like to step high. He looks the part of a linebred Doc Bar pedigree. No holes or bad habits.



463 **POCOS SWEET LEO** 2007 RED ROAN GELDING • #4997416

TWO SWEET LEO

TWO ID SWEET JACK
PANNY ANN LEO

TWO ID BARTENDER
MISS SWEETY JACK
LEO STAR DECK
PANY LADY

POCOS SHADY JACKIE

POCOS STAR REVIEW
JACKS ROAN JANE

POCO BUENO IMAGE
STARS REVUE
SHADY CHARLEY LANE
HI EASY JACKIE

15.2 hh / 1200 lbs.

Friendly and level headed, I trust him enough to haul my grand-kids around. He is more than a kid horse when you need the job done. I recommend Leo to put the visitors on or go rope the neighbor's bull.

464

JA WILY SUNFOX
2007 RED DUN GELDING • #5026185

PC CITISUN CLINE	SUN FROST	DOC'S JACK FROST
	PC PEPPY KATE	PRISSY CLINE
WILY FOXARITA	WILYWOOD	TUFF TIME PEPPY
	BARETTA BANDIT	CROSS FIRE KATE
		ORPHAN DRIFT
		OUI OUI
		MR FLINTROCK
		BAR BARETTA

15.0 hh / 1100 lbs.

Quiet, good for any level rider and one of our very best! Very soft and very athletic, he's got a good mind. Jarrett Harmon started and developed Sunfox and did a super job. Lots of rope experience. A full brother topped the spring Billings Horse Sale. We all need more horses like this.



465

PICACHO BLUE TARI
2007 GRAY GELDING • #5028349

PRISS BLUE BOY	MACK FLIT	FLIT N FRECKLES
	MISS MODENAS PRISS	CINDY CLABBER
PICACHO DELINDA	HEE HOSS HAMMOND	BREEZES SMOKY BLUE
	LINDA DE PICACHO	MISS MODENA
		ROBIN TARI
		JAE BAR BONITA
		PICACHO JOE
		POCO DELINDA

15.1 hh / 1175 lbs.

A pretty gray that's nicely made. He has seen big ranch country and done every ranch job.



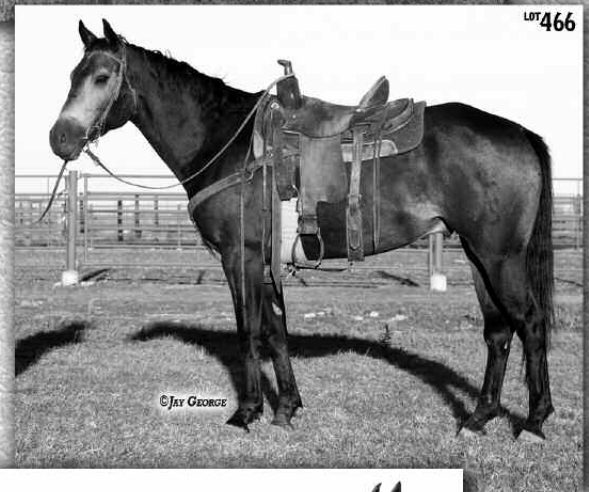
466

SOUTHERN HAWKEYE
2007 BUCKSKIN GELDING • #5011915

TENS HAWKEYE	TEN O SEA	DOCS VOYAGER
	SNIPPY LENA	DAVIE O LENA
SPARKYS HOT CHICK	BLACK CHICK GOLD	MAXI LENA
	SPARKYS HOT CHEX	SNIP'S SHOWFLAKE
		BLACK CHICK 89
		MISS EAGLE 95
		GRAY PIE SPARKY
		HOT CHEX OLENA

15.1 hh / 1120 lbs.

Dark buckskin and black footed, "Hawkeye" will sure work a cow and is good at it. Too much horse for the timid. He has a bump on the hock, but it doesn't bother him.



467

DANDEE SWENCEE
2007 PALOMINO GELDING • #5034439

TS SWENCEE	TEN SNIPS	TEN O SEA
	MISS SWENCEE GOLD	SNIPPY LENA
DANDEE GAY STAR	DANDEES GOOD FRIDAY	BLACK CHICK GOLD
	GAY BAR GLAMOUR	MISS SWENCEE
		IMA DANDEE BAR
		GO SQUEEKY MISS
		GAY BAR LOST TRACK
		GLAMOUR BAY HY

15.1 hh / 1185 lbs.

When I think ranch horse, I see "Swencee" ... a long legged horse that travels out and listens well. No job is too big for this guy. Easy to catch and easy to ride.





Ranch/Performance Horses

468

FOXY CHADEAU
2007 GRAY GELDING • #4993836

CHADEAU CHASON

POKEY JAG BAR
SHADY SECRET

RUNNIN JAGABAR
POKEY STAR
MY WINNING WAYS
MISS LUCKY WIN
CALL ME SONNY
TAYLOR BERT LEO
RAINY DAY TOY
PONDIE'S READY

RAINY DAY FOX

LUCKY GAMBLER ME
RAINYS CHIPPA GOLD

15.1 hh / 1200 lbs.

A silver gray with black points, he will catch your eye. Lots of muscle and he cinches deep. Too much horse for the inexperienced, but sure no buck or bad habits, he just moves quickly and stops hard. This kind is hard to find. An old scar on the hind leg, we guarantee him sound.



469

JA HAPPY BLANTON
2006 BAY GELDING • #

RED MARK BLANTON

SHORT GO LUCK
WILMETH'S ROSE

LUCKY'S LAST
CARMELLA STAR
MR BLANTON
SAN SIEMON ROSY

ALMOST HAPPY

WILYWOOD
ALMOST SUGAR

ORPHAN DRIFT
OUI OUI
HAPPY FLY
NAUGHTY BETTEY BAR

16.0 hh / 1300 lbs.

A big man's horse, "Blanton" is big footed and stout. He has a good handle and a good attitude, but could use some more experience to express his full potential. We sold him several years ago and bought him back this year in late summer.



470

EL TACO RUMMY
2005 SORREL GELDING • #4745561

EL TACO GRANDE

KILOWATT
GI GI WATT

SPARK'S FLASH
COOKIE MOUNT
KILOWATT
WATA CLASSY DUN

PEACHES MEG

BARS HIGH GEAR
SI SI PEACHES

GO THREE CHARGES
NOT TIL NOW
EASY FIND
WHIMMY BAR LEO

14.3 hh / 1085 lbs.

A quiet, smaller horse that is friendly and easy to catch even in a herd of horses. No bad habits and rides the same every time.



471

CM SILVER VERSE
2006 RED ROAN OVERO GELDING • APHA #878,204

SILVER ELITE

HEATH BAR NONE
HOW D SILVERETTA

SULLIVANS HEATHEN
SIGGY BABE
TEE JAY ROMAN
HIA WATHA BART

VERSARYS BABY DOLL

VERSARYS STAR
TRIPLE SILK

VERSARYS BARS
BOBBIE SOX TWO
TRIPLE SONNY
TEES SAINTED LACE

15.0 hh / 1200 lbs.

An unusual color and a solid dependable ranch horse. He will carry you all day and then some. Lots of rope experience and very broke. Enjoy the ride and be noticed as well.

472

KDO STORMIN SIZZLER

2006 GRAY GELDING • #4813120

KLASSIC SIZZLER

WATCH JO PAC

KROGS SIZZL PINE

WATCH JO JACK CODY
PAYTONS PAC BAILEY
PAPRIKA PINE
KROG'S SIZZL

STORMIN SURF

FEATURE THE SURF

STORMIN MISS BJ

TRUCKLE FEATURE
RULE THE SURF
STORMIN NICK
QUICK M MISS

15.0 hh / 1200 lbs.

Some will say we've never sold a better one. "Sizzler" looks the part and backs it up with the ride. Watch him move, notice how little pressure it takes to get response. An outstanding head horse, he is quiet in the box and gets to cattle quick. Big outside country, arena roping, or sorting in the corral, few do it better!

LOT 472



473

RAZR PEPONITA BAR

2006 CHESTNUT GELDING • #4874761

IOU OLENA

OLENAS MINT

NINA LEE PEPPY

DOC O'LENA
PEPPERMINT CHEX
WRECKLESS DIAMOND
HILL'S MISS 47

PEPS DOUBLE DOC

PARKS PEPONITA

DOUBLE DOC RIO

PEPONITA
LENA SUSETTE
DOC QUIXOTE
DOCS SNICKER BAR

15.0 hh / 1150 lbs.

A cow eater, everyone on the ranch loves to work cattle on Razr. He is very dependable, turn him out all winter and when he comes back in, he's just the same and ready to go. Every ranch needs a Razr, he will be the turn to horse for the tough jobs, to haul the company, or just check cows and enjoy the ride.

LOT 473



474

GUN TRACKS

2006 GRAY GELDING • #4870415

WILLIES GUN

PLAYGUN

SANS PEACH

FRECKLES PLAYBOY
MISS SILVER PISTOL
SANCTUARY
WILLY'S PEACH

SLIM SHADY PLEASURE

IMPRESSIVE PLEASURE

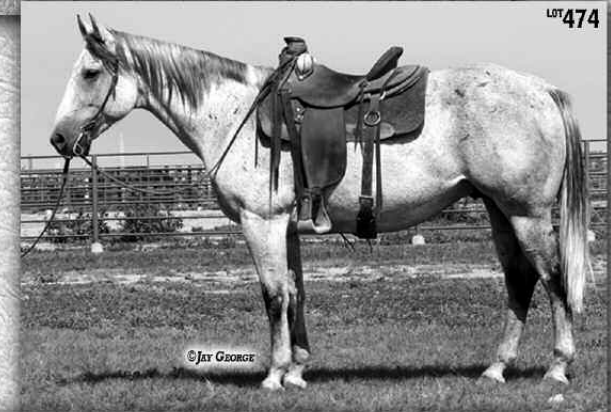
TRACK OF FIRE

STEEL IMPRESSION
BEAUTY DONDI
OKLAHOMA TRACKS
TEE PEPPY CROSS

15.1 hh / 1170 lbs.

Another sale feature, nice gray color and nice to ride. Everyone comments on his soft handle and willing attitude. Good for most anyone, but very able to get the cowboy to the cow and the cow in the pen.

LOT 474



475

SPECIAL BLACK DIAMON

2006 BLACK GELDING • #4863681

BB BRONCO BILLIE BAR

TROUBLE STEEL BAR

SEVENTY FIVE GOLD

MR TROUBLE STEP
GRAY NUNN
DENNIS GOOD
GOLD QUSIE SUE

DIAMONDS BUTTON BAR

BB BRONCO BILLIE BAR

JOE BARS DIAMOND

TROUBLE STEEL BAR
SEVENTY FIVE GOLD
JOE BAR STAR
MINNI DIAMOND

14.2 hh / 1070 lbs.

Not very experienced or especially pretty, just black and friendly. He sure won't top the sale, but if you want to develop one your way, he is ready for a job.

LOT 475





Ranch/Performance Horses

476

WARDS POSSUM
2006 GRAY GELDING • UNREGISTERED

15.2 hh / 1180 lbs.
A flea bit gray that can sure be an asset on the ranch. He is just a good, big, strong, dependable, ranch horse.



477

REESE
2006 BAY GELDING • UNREGISTERED

15½ hh / 1120 lbs.
We have used Reese a couple seasons and he is a solid dependable ranch horse that works and watches a cow really well. Roped on and rode in the big country.



478

WEDDO THRICE
2006 SORREL ROAN GELDING • UNREGISTERED

15.0 hh / 1125 lbs.
Flaxen mane and tail, he couldn't decide whether to be roan or sorrel. Weddo can really get down and turn, if you want to run poles or barrels here is a horse that can do it. He won't get hot minded either, very level headed and dependable.



479

ROJO ROAN
2006 RED ROAN GELDING • GRADE

15.3 hh / 1100 lbs.
A really striking Red Roan that rides well. Most everyone gets along well with "Rojo" and everyone comments on his color.

480

FJ SEA BISCUIT
2005 BLACK GELDING • #4717450

FJ LITTLE RICHARD

SMOOTH FIRST DOWN
FRISCO MISTY

FIRST DOWN KELLY
CEE LADY JET
FRISCO FLARE
MULBERRY MIST

BEDETTA CASH

CASH TREAT
ROCKETTAS LADY

DASH FOR CASH
BEDAWEE
ROCKET WRANGLER
DECKETTA

15.3 hh / 1200 lbs.

Bred to run and he can, but with a level, dependable mind. Sea Biscuit has run barrels and would be ready to go. Broke the best, we call him a sale feature! Raised and developed by John Garcia, he's been roped on, ranched on, competed on and hauled, or would be great to just ride and enjoy. Why not ride the best?

LOT 480



481

PEPE MONCADO
2005 BUCKSKIN GELDING • UNREGISTERED

14.3 hh / 1050 lbs.

Smaller in stature, but big on try. Pepe is a very accomplished heel horse and the right size for it. Watch him rope on the video.

LOT 481



482

SUPER COMO TU
2005 BAY GELDING • #4694622

COMO TU

CHICKS A BLAZIN
JULIAS DASH

CHICKS BEDUINO
FOR THE LOVE OF HONEY
THE DASH
MISS BOBBIES TRY

SUPER GOING LADY

MERGANSER
GOING SUPER

DUCK DANCE TB
HUG TINY
SUPER SOUND CHARGE
QUE SERA SERA

14.3 1/2 hh / 1140 lbs.

Nice solid bay that handles soft and is bred to get there fast. Good for everyone and fun to ride, he is an eye catcher that cinches deep.

LOT 482



483

BADLANDS GOLD BUCK
2006 BUCKSKIN GELDING • #4872796

TWO EYED GOLD ZAN

TWO EYED RED BUCK
ZAN SKIP JACK

MR BARON RED
IMA TYREE
ZAN GOLD JACK
BUCK FIVE TEN

MISS BADLANDS BUCK

ZAN SKIP BADLANDS
BUCK FIVE TEN

ZAN PARR BAR
MR DUSTY BADLANDS
SKIP BADLANDS 510
GOLDEN TRES

15.3 hh / 1225 lbs.

Big, strong buckskin horse. The Two Eyed Jack and Zan Parr Bar pedigree always results in standup, level minded horses. Solid ranch horse, been there and done it.

LOT 483





Ranch/Performance Horses

484

DOCS QUICK FRECKLE

2005 Sorrel Gelding • #4797181

COMOS ONE FRECKLE

DOCTOR COMO
MISS FRECKLES JEWEL

SON OFA DOC
BABY FOOT
COLONEL FRECKLES
ILLINI THREE

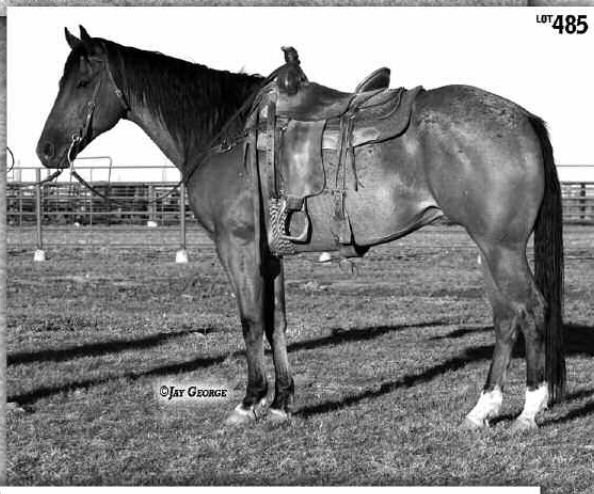
MISS GRAY EMOTION

QUICK EMOTION
ASPER JEL

ME QUICK TOO
JACQUE SONOITA
MOUNTAIN VIEW
DUICIE AUBERT

15.3 hh / 1200 lbs.

Big and strong, an all-day kind of gelding. He has a nice, soft handle and looks good on the job. He is a bit of a cowboy horse, there can be a few kinks with some time off on a frosty morning. Nothing serious, just not suited for the inexperienced.



485

ROOSTER ROANY

2004 Bay Roan Gelding • #4609404

DA WATCH ROOSTER

MR GALLO DEL CIELO
IMA WATCH JOE

GALLO DEL CIELO
HOT BLUE DELINE
WATCH JOE JACK
IMA TYREE

HONEY DO DELUXE

COLOR ME DELUXE
SISTER GOODBODY

SONNY DELUXE
SUGAR MOON GAL
SPANISH ARRAY
DOLLIE DATER

15.1 hh / 1250 lbs.

Another sale highlight! Rooster spent a good part of his life working on the Bell Ranch in New Mexico and is solid as a rock. A very good looking horse that is made right. Maybe too much horse for the timid, but both his mind and experience suit him for most anyone. Certainly one of our best.



486

DOC JACKSTRAW

2004 Sorrel Gelding • #4556118

SALE ANGEL

ANGEL STRAW
SALE TAG

MASTER STRAW
IVA JOE
RUFFEMUP
DUDES LIL TAG

DOC BEE DECK

CINNAMON APPLEJACKS
ME THIRSTY JAN

JACKIES GOLD BEE
CINNAMON DOC BAR
TRIPLE FOWL
VANIPPA JANE

15.1 hh / 1130 lbs.

Experienced and solid, just a good, dependable ranch horse. He won't spin a hole in the ground or run backwards, but is steady and won't change with lots of time off.



487

SKYFIRE LUCK

2004 Red Roan Gelding • #4590460

BERRY SKYFIRE 7616

SKY HIGH LEO
PRAIRIE FIRE SIOUX

DOC O'LENA
MAUDIE LEO
FLYING X 6
SUGAR SIOUX

LUCKY FOXIE SAN

LUCKY MAC SAN
PRINCESS ROBIN BARS

LUCKY BOTTOM REBEL
MISS PEPPY DUSTER
RANCH COLONEL
PRINCESS ROUGE

16.0 hh / 1325 lbs.

The big man on the ranch, he has done it all. This was my personal horse for a couple years, but at age 64 he is too big for me. Skyfire will work his heart out if you treat him fair, he really bonds to the rider with time. He doesn't like surprises and could pull back when tied if you scare him.

488

WB FLYING STORMY
2004 Bay Gelding • #4605792

STORMYS PEPPY

PEPPY SANBAR
BIG JIMS BABY

PEPPY SAN BADGER
LADY CHARBAR
BIG JIM BATTLE BAR
LUCKY ROPERS APRIL

POCO BONNIE JESS

CAPTAIN JESSIE BUENO
BONNIE BRENNIA

JESSIE TIVIO
SF AIR BRAKES
MR POCO BLACKBURN
ASHWOOD MAID

15.1 hh / 1280 lbs.

Beautiful blood bay and he rides as good as he looks. I rate him high, he should fit everyone. Strong cowhorse pedigree, there are few anywhere that look like this and ride as soft and easy. Ride the best, Stormy covers all the bases.



489

YO LONESOME
2004 Bay Gelding • #4493201

LONESOME PRAIRIE

LONE DRIFTER
LADY ROANIE BAY

DRIFTWOOD IKE
MOORE YEN
ROAN PRAIRIE
TRAVELIN TIVO

YO HOLLY VALENTINE

COOL ROAN STAR
YO SKIPPER BELL

COOL BLUE HAZE
TOY BREAKER
TWO EYED PAZZAZ
SKIPS FANCY DREAM

15.2 hh / 1275 lbs.

Big and strong, his pedigree says ranch horse deluxe. The Driftwood x Blue Valentine mix always works well. "Yo" was started late and had quite a bit of time off so hasn't seen the use his years would indicate. No buck and no bad habits, but remember he is big and strong.



490

REPETES WINKY 1126
2003 Sorrel Gelding • #4462196

HEZA DOC 1126

DOC'S POCONUT BAR
SILVER BAY 1126

CLARK'S DOC BAR
POCONUT QUEEN
YELLAR MEAT 1126
SHEZA SILVERTONE

ZIPPO STAR 1126

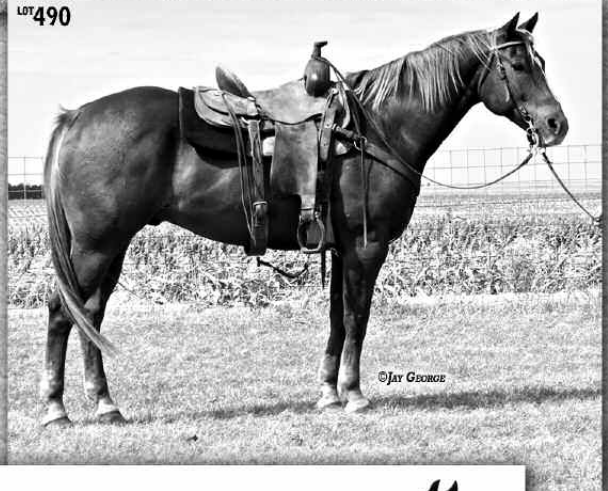
YELLAR MEAT 1126
MISS SHADOW PINE

SHENANIGAN NICK
CEDARS KELLEY
ZIPPPOS JIM
SHADOWS LIGHT

15 1/2 hh / 1150 lbs.

Soft and pretty and a nice ride, Winky has spent his life on the ranch and in the feedlot and has experienced it all. Almost a kid horse when used steady, with time off he will be a little cold backed. Nothing serious, he acts like a dime store horse you put quarters in and it lasts 30 seconds and he is good to go.

LOT 490



491

JAY FROM TWITTY
2002 Sorrel Gelding • #4219352

ART OF GOLD

THE GENUINE ARTICLE
TIPSY ORCHID

OBVIOUS CONCLUSION
MENTA
SKIP N CHANCE
SCOTCH TIPSY

RIMS TROUBLE DANDEE

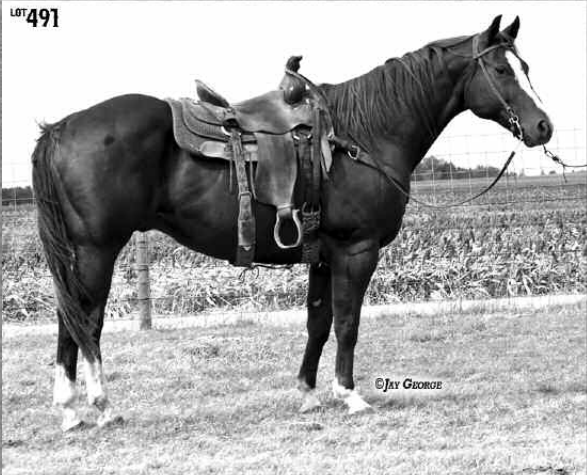
IMA DANDEE BAR
TROUBLE SEEKER

DOC'S DEE BAR
SILVER ISLE
GOLDSEEKER BARS
MISS KACHINA

15.2 hh / 1275 lbs.

Stout and easy to get along with. Really nice made, he has lived his entire life in the ranch world and has done it all. Should be no surprises here. If you want a big, good looking who is dependable, here he is!

LOT 491





Ranch/Performance Horses

492

SNW IMA TUF POCO
2002 BAY GELDING • #4264685

IMA TUF LENA

TUF N BUSY
SMART BO LENA

BUENO CHEX
KEEPING BUSY
SMART PEPPY LENA
FRECKLES BO PEEP

WEAVERS MISS POCO

POCO IMA DOC
BEAUS MISS FOX

POCO BUENO 2
DOC TILLY
BEAUS RED MAN
PRETTY MISS FOX

15.0 hh / 1150 lbs.

I have always admired the Bueno Chex horses and here is a good one. Very laid back and quiet, but with lots of ability. "Poco" has been headed on and had lots of pasture roping. Years of experience sure help, but Poco was born good and stayed good.



493

REMINDERS GOLD
2001 BAY GELDING • #4063425

LETTERS REMINDER

DOC'S J JAY
EIGHTEEN LETTERS

DOC BAR
PAULA JUMPUP
AGAINU
MISS BERTY ABNER

HIGH COUNTRY GOLD

WIN OR LOSE 2
VENTURE'S SANDY

WIN OR LOSE
FORD FALCON
MR VENTURE
JO ANN BAILEY

15.1 hh / 1100 lbs.

If you need dependable and solid, here he is. Broke the best and works a cow. Easy to catch and easy to get on, I recommend him for anyone. Letters Reminder is a full brother to Capitol Letters and Docs Letters. Bred to be just what he is, steady, always the same and a fun ride.



494

LYNX LADDY BOY
2001 BROWN GELDING • #4109676

PEPPYS BOY 895

VIBRANT PEPPY
STARY PEACH

PEPPY SAN BADGER
VIBORA CHICA
RHEA BILLIE STAR
PROUD PEACH

LYNX DUCHESS

DOC'S LYNX
DUCHESS M KING

DOC BAR
JAMEEN TIVIO
KING
M'S DUCHESS

14.3 hh / 1180 lbs.

An outstanding cutting and cow horse, "Lynx" was born by embryo transfer and is a three-quarter brother to Shania Cee, a Triple Crown winner and cutting horse legend. Where do you find a horse with Peppy San Badger, Doc Bar and King P234 right on his papers? Buy with confidence, a do it all horse that will treat you right.



495

CLASSY ROBBIE SOX
2001 SORREL GELDING • #4051694

CLASSICAL SKIPPER

SOMETHING CLASSIC
SKIP N TEEKA

SKIPPA LARK
SUMMERS TRICK
SKIP N CHANT
TEEKADOLL SKIP

SKIPS BOBBIE SOX

SKIPS APPROACH
ROYAL VINTAGE

SKIPA STAR
SKIPS VIXEN
SKIPPA PRINCE
KITTY BAR

15.2 hh / 1200 lbs.

A linebred Wiescamp pedigree and a solid ranch horse. With his nice, soft handle and good disposition, he would make a good youth or ladies horse, but can also do the big ranch jobs!

496

CLASSICAL CONCLUSIVE
2000 Sorrel Gelding • #3888413

CLASSICAL SKIPPER

SOMETHING CLASSIC
SKIP N TEEKA

SKIPPA LARK
SUMMERS TRICK
SKIP N CHANT
TEEKADOLL SKIP

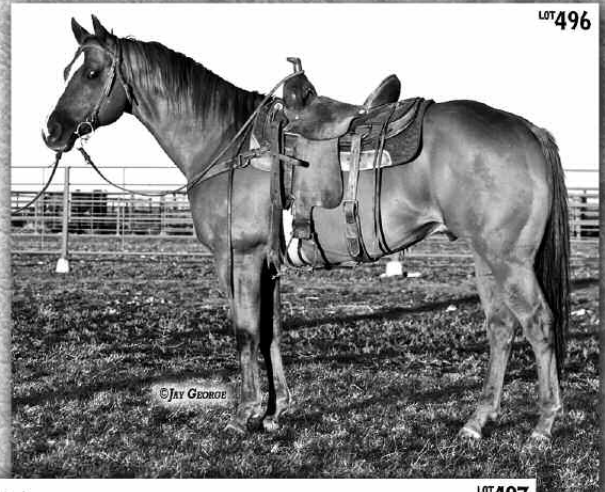
KIDS CONCLUSIVE MISS

SCARLET KID
CONCLUSIVE SANCITA

IMPRESSIVE
SCARLET DODGER
CONCLUSIVE
SANCITA

15.1 hh / 1200 lbs.

A really good looking horse that you can depend on. No holes here ...I would think he fits everyone. A ranch horse machine, he is always the same. Buy with confidence!



497

CAPITOL CHATTER
1999 Sorrel Gelding • #3859800

CAPITOL LETTERS

DOC'S J JAY
EIGHTEEN LETTERS

DOC BAR
PAULA JUMPUP
AGAINU
MISS BERTY ABNER

MISS PIXIE LADY

SCORPIO SON
BUCK'S ROYAL LADY

WIN OR LOSE
SHEILADEE
AGAINU
ROYAL CHARMER

14.3 hh / 1150 lbs.

I've never ridden a better-broke, all-around horse. "Chatter" is a nice size and very well mannered. He has competed successfully in a variety of events and is right in his prime. This kind is seldom for sale and we feature him as the best for those of you who want a smaller horse that is fun to ride and easy to win on.



498

REYES
2005 Bay Gelding • GRADE

15.2 hh / 1135 lbs.

Big, leggy gelding from Ramon Chavez. He rides quiet and handles well. Lots of outside riding and feedlot time.



499

TS PEPPY HANCOCK
2007 Gray Mare • #496397

PS FREDDIE HANCOCK

HOUSES HAMMER
RANCHO BEE REBEL

TRACE OF GLEN
HOUSES DEE DEE
REBEL PIE JACK
NIFTY NORMA BEE

BDL SAN LU DOCK

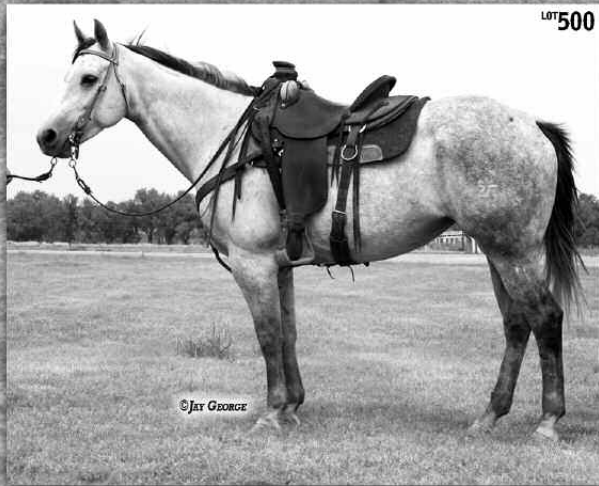
DOC THE DOCK
MR SANS LU

DOC'S DEE BAR
SPARKLE MUSIC
MR SAN PEPPY
MY LU GIRL

15.0 hh / 1100 lbs.

This is Dave Back's personal horse and he has done a nice job with her. Very soft, responsive and dependable. For more information, call Dave at 937-248-6981. As a foal, she was registered as gray, but changed color to sorrel.





500 SMOOTH JACKIE HERMAN

2005 SORREL MARE • #4760957

HERMANS HANCOCK

LAMMEY HANCOCK
PRETTY AND SMOOTH

DEE BEE REVELLE
LIL PAWNEE CHITA
SMOOTH HERMAN
VALS JOYEETA

JACK CLAIR

TEE J BIT O JACK
CLAIRITA TALENT

JACKIE BEE
POCO BIT O BAR
BAR TALENT
CLAIR VANDY

15.0 hh / 1100 lbs.

Gray and pretty, Scott and Tanner Samuelson have been roping a lot on this mare and getting along well. Watch her on the video and in the preview. Broke the best! Call Scott, 785-672-0333. As a foal, she was registered as sorrel, but changed color to gray.

GENERAL INFORMATION

SALE DATE: Friday, November 8, 2013

Cattle 10:30 am • Horses 1:00 pm

PREVIEW: Performance Horse Preview, Thurs., Nov 7 ...2 pm

LOCATION:

Jamison Ranch Livestock Arena ...ranch headquarters located off I-70, Quinter Exit 107, 2 mi. south, 1 mi. east, 1/2 miles south

LUNCH: Available on the grounds.

RANCH PHONES: Office 785/754-3424, Gordon 785/754-3639
Gordon (cell) 754/299-0441, Daron Jamison 785/650-9639

SALE DAY PHONE: 785/754-3424

BID ONLINE: www.dvauction.com

...for information and to register for bidding online, call Tami McIntosh 308/870-3661 or Roxane Shipps 402/649-794.

MOTELS:

Sale Headquarters...

Best Western - Wakeeney, KS • 785/743-2700

Located 20 miles east of ranch on I-70

Ask for Jamison Ranch sale rate. Free, full service breakfast.

Other Motels: Wakeeney Super 8 785/743-6442; Econo Lodge 785/743-5505; Oakley (30 miles west) Sleep Inn 785/671-1111; Best Western Golden Plains 785/672-3254; Kansas Kountry Inn 785/672-3131; Quinter Q Inn 785/ 754-3337.

AIRPORTS:

Commercial air service is available to Hays, KS or Garden City, KS. Private planes may land at Quinter, KS (sod strip), Wakeeney (3500 ft. paved) or Oakley (5000 ft. paved).

TERMS & CONDITIONS:

Terms of the sale are cash. Every sale animal will be sold to the highest bidder with the auctioneer settling bid disputes. Announced changes in catalog information on sale day take precedence over printed material. All cattle and horses are the buyer's property as soon as sold and will be cared for a reasonable length of time at the buyer's risk. Any person attending the sale does so at his own risk. Neither sale management, owners, nor any person connected with this sale, assumes any liability, legal or otherwise.

In the event of default in any part of the Terms and Conditions for this sale by buyer or seller, it shall be the responsibility of the buyer or seller to instigate any action needed to bring about a fair settlement of any claims and to be responsible for any and all costs.

GUARANTEE:

Every animal in this sale is, to the best of our knowledge, free from disease or defect. Any known defect will be called at sale time.

Each horse has passed a general, visual vet exam for physical soundness. They will be guaranteed to pass an x-ray vet exam within 24 hours after the sale with a veterinarian of mutual agreement between buyer and seller. Inspection will be paid by the buyer as long as the horse passes the exam. **Potential buyers should thoroughly examine their horses of interest ...all sales are absolutely final.** Horses are at the buyers risk, expense and responsibility from time of purchase. No other warranty or guarantee is expressed or implied.

HEALTH:

Health of the cattle and horses is excellent. Health papers for all livestock will be furnished for shipment. Horse health papers will include a negative Coggins test.

PREGNANCY STATUS:

All heifers, cows and broodmares will be pregnancy checked with results announced sale day. Pregnant females sell as breeders with no further guarantee. **Note ...Fall calves at side will have their dam's lot number with the letter "A" added.**

REGISTRATION & TRANSFER:

American Hereford Assn. and AQHA registration certificates will be transferred to buyers at seller's expense. At time of settlement, buyers must give complete name and address information for making transfers including AHA and AQHA membership numbers if available.

TRUCKING:

Buyers are responsible for their own trucking. We will assist in making trucking arrangements. Recommended horse haulers: Woolsey Livestock Transportation, Billings, MT ...office 406/652-0517, Bob 406/670-1877, Bill 406/671-0228 • DeLon Golden, TX 254/597-1234 • Martin Mickelson, Logan, UT 435/757-0811

INSURANCE:

Insurance can be arranged through Harding & Harding Livestock Insurance agent Jim Gies, CO, 970/454-3836. Sale clerks will assist with your insurance needs. **Buyers leaving horses past Sunday, Nov. 10th will be required to insure their horses.**

ABSENTEE BIDS:

Anyone who cannot attend the sale may place phone or mail bids by contacting Gordon Jamison, Daron Jamison, Jay George (United Livestock Brokers) or any listed sale representative.

SALE MANAGEMENT:

UNITED LIVESTOCK BROKERS, INC.

Jay George 605/391-6230

1025 28th Rd. NW, Lebo, KS 66856

Sale management acts as agent only and assumes no legal responsibility.