

# Jerry Knippling and Sons

## 62nd Annual Sale **SELLING 50 BULLS**

**Online Auction Bidding  
Opens January 18, 2019 and  
Closes January 27, 2019**



[www.KnipplingCattle.com](http://www.KnipplingCattle.com)



Jerry Knippling (black hat, far left), Joe Knippling (behind block, center)  
First Knippling Sale - 1/20/1958, Miller, SD

# Welcome Cattle Producers,

We would like to invite you to the ranch to view the bulls that we will offer in our 62nd Annual bull sale. 2018 met us with many challenges, with a calving season blizzard that will not soon be forgotten. A big Thanks goes out to all that helped us get through it. Summer started with small frequent rains making it hard to get quality hay put up, then it turned hot and dry with the crops and pastures being stressed to the max.

I am sure that your operations have had challenges too, that is why a Hereford bull just makes sense. Hereford sired cattle provide efficiency, longevity, and docility as well as excellent carcass merit. Hereford bulls are very desirable in both straight and crossbred programs no matter if you sell calves off the cow, finish, or raise females.

We feel this set of bulls is very even, from the first to the last. We do not sell yearlings, so they have not been topped, these bulls are the best of the best. Not many two-year-old bull programs can say that. In our program we put an emphasis on quality trouble free females with length, muscle, good disposition, sound feet and legs, and good hair. These bulls are an extension of our program.

We believe bulls that aren't fed hard but have the opportunity to grow will have longevity. The bulls were never creep fed. We feel that not creep feeding allows the best opportunity for evaluating the cows. They were raised on a high roughage ration then turned out on grass for the summer as yearlings.

Our auction will be the same as last year. There will not be a sale order and we will be using a horse race style format. We know that it may be new to some, but we feel that not being restricted by a sale order will benefit our customers. How often have you said "Who made this sale order anyway?" You can come view the bulls at your convenience. The bidding will still occur over a week time frame, which gives our customers, more time to compare the bulls. If anyone does not feel comfortable with the bidding format, please let us know and we will have help available.



## Registered Bull Sells For \$1000 In Special Cattle Sale Here Mon.

A strong demand for breeding cows and bulls was evidenced by buyers from South Dakota, Minnesota and Iowa at the sale held on Monday at the Miller Livestock Auction company.

Seven hundred head of breeding cows, of the Angus and Hereford strains, sold for an average price of \$200 a head. Bids ranged from \$150 to \$230.

Knippling Bros. of Gann Valley consigned 21 registered bulls to the sale, which were all sold, and averaged \$499. Top price paid for an individual bull was \$1000.

J. M. Magness, who cried the sale, said that the cattle offered were of exceptionally high quality.

First Sale Write-Up

**Thank you, The Jerry Knippling Family**

Horse race style on  
[www.TheLivestockLink.com](http://www.TheLivestockLink.com)

**The Livestock  
Link**

See bidding instructions on page 18.

Jerry Knippling & Sons LLC  
34957 225th Street  
Gann Valley, SD 57341

Randy Knippling H: 605/293-3493 - C: 605/680-3185  
Garin Haak H: 605/293-3289 - C: 605/680-4637





# Herd Bulls



**UU TURNING POINT (4183) - #43467860** - CED: -0.2 BW: 4.6 WW: 77 YW: 126 M: 36 MG: 75  
Turning Point was the high selling bull in Van Newkirk's 2015 sale. He is out of the same cow as the 2112 bull. Turning Point is a bull with a large frame, quiet disposition and he is as deep and long as you can make them. Owned with Stuber Ranch and Van Newkirks.



**UPS DOMINO 1034 - #43213248** - CED: 10.5 BW: 1.5 WW: 41 YW: 72 M: 32 MG: 53  
1034 is a 5216 son with great numbers, a lot of natural thickness and calving ease. His females are going to make great cows.

**UU DOMINO 3025 - #43364642** - CED: 7.3 BW: 2.9 WW: 55 YW: 88 M: 39 MG: 67  
Top selling bull in Van Newkirk's 2014 sale. A moderate framed bull with a great hind quarter. He is producing standout bulls and females.

**ECR 860 DOMINO 2039 - #43331015** - CED: -3.7 BW: 3.7 WW: 62 YW: 101 M: 26 MG: 57  
2039 is a moderate framed 860U son. Like anything with CL 1 Domino 860U in its pedigree, his calves have explosive growth. His females have perfect freckled bags. He is the total package.



**ECR HIGH CLASS 3009 - #43401783** - CED: 4.4 BW: 2.6 WW: 61 YW: 84 M: 18 MG: 48  
Top selling horned bull at FECR 2014 sale. 8050U is siring cattle that are real herd improvers. We feel that 3009 is doing the same as his sire, creating exceptional females as well as impressive bulls. Owned with Keith Carmichael, Jimmy Atlas, and Blume Herefords.

**R 955W NORTH STAR 8Z - #43297019** - CED: -0.3 BW: 5.5 WW: 54 YW: 96 M: 32 MG: 59  
Top selling bull in Ridder's 2013 sale owned with Hermann Ranch. 8Z has extra thickness, great yellow hair, and excellent disposition.

**KB L1 DOMINO 1202Y - #43179212** - CED: -2.0 BW: 5.1 WW: 61 YW: 103 M: 28 MG: 58  
We own this bull with Brian Carmichael. Exceptional length, easy fleshing, thickness and calving ease are what he provides. We can't wait to calve out the heifers sired by him. They look like they are going to be great cows.

**R 105Y NORTH STAR 1B (Callaway) - #43497826** - CED: 4.4 BW: 3.5 WW: 63 YW: 92 M: 44 MG: 75

The top bull sold at Ridder's 2015 sale. We used him with great success on our heifers. His calves come small and have excellent growth. They have a lot of thickness, pigmented eyes and great disposition.



**R 102W NORTH STAR 44B - #43495947** - CED: -5.5 BW: 6.7 WW: 52 YW: 86 M: 22 MG: 48  
We really like the 102W sons at Ridders. They all are super long. He is probably the best 102W son we bought. He has extra eye pigment. Look for more sons in the future.

**R 0141 NORTH STAR 50B - #43495965** - CED: 5.2 BW: 2.5 WW: 68 YW: 121 M: 32 MG: 66  
50B was the top selling bull in Ridder's 2016 sale, out of one of their top cows. He has it all, great carcass, moderate birth weights, great disposition, longevity, exceptional females, explosive growth, and unmatched depth and thickness. Most of all he knows what his job is, siring 45 calves naturally his first year.

**R 330A NORTH STAR 4C - #43601439** - CED: 3.3 BW: 5.6 WW: 57 YW: 96 M: 37 MG: 63  
The top calf in Ridder's 2016 sale. 4C is a Cooper sired bull with about as much length and hind quarter as one can find. Look for more sons in the future.







**Lot 1**

## KR 1202 DOMINO 702E

Reg. # 43824677 - DOB: 3/5/17

ACT. BW:  
**80**

205 WT:  
**713**

5/10/18 WT:  
**1370**

12/4/18 WT:  
**1770**

SCROTAL:  
**36**

DISPOSITION:  
**7**

CL 1 DOMINO 7110T  
**KB L1 DOMINO 1202Y**  
KB L1 DOMINETTE 647  
UU DOMINO 3025  
**KR 3025 BELLE 546C**  
KBR 93U BELLE 231Z

CL 1 DOMINO 590R  
CL 1 DOMINETTE 332N (DOD)  
KB L1 DOMINO 454P (SOD)  
KB L1 DOMINETTE 414P (DOD)  
HH ADVANCE 7146T  
UU MS 5170 ADV 1149 (DOD)  
R 0041 NORTH STAR 93U  
KBR 45U BELLE 029G (DOD)

CED: 4.4 BW: 3.3 WW: 54 YW: 89 M: 30 MG: 57

*Out of a 3025 daughter and 1202. He is thick topped with a small head and shoulders.*

### Volume Buyer Discount

- \*3% on 3 bulls
- \*4% on 4 bulls
- \*5% on 5 or more bulls

### Delivery

- \*Free delivery on bulls \$3,500 or more within 400 miles
- \* \$100 off if you pick up within one week of the sale.

### Guarantee

\*All bulls \$3,500 or more are guaranteed for 60 days after turn out. It will be made with a suitable replacement or credit in the next year's sale. Should a problem arise contact us right away.

## Disposition Rating

Explanation of the disposition rating: In the course of getting ready for the sale, we have had the bulls singled out three times and pushed them to see what they would tolerate. We then used this to give them a disposition rating (dis). See the key below.

### Disposition Rating

- 1
- 2
- 3
- 4
- 5
- 6
- 7
- 8
- 9
- 10

### Explanation

- Will hunt you down
- Aggressive if cornered
- Somewhere between a 2 and a 4
- Nervous, but not aggressive
- Can hold in corner, but if you give him an opening, he will leave
- Can hold in corner and he will stand quietly
- Can grab by horn and turn them around
- You can walk them around with your hand on hip
- You can scratch them, very quiet
- Likes to be scratched





**Lot 2**

### KR 1202 DOMINO 704E

Reg. # 43824679 - DOB: 3/8/17

ACT. BW:  
**96**  
205 WT:  
**776**  
5/10/18 WT:  
**1600**  
12/4/18 WT:  
**1810**  
SCROTAL:  
**40**  
DISPOSITION:  
**8**

CL 1 DOMINO 7110T  
**KB L1 DOMINO 1202Y**  
KB L1 DOMINETTE 647  
UU DOMINO 3025  
**KR 3025 BELLE 568C**  
KR 45U BELLE 106H

( CL 1 DOMINO 590R  
CL 1 DOMINETTE 332N (DOD)  
KB L1 DOMINO 454P (SOD)  
KB L1 DOMINETTE 414P (DOD)  
HH ADVANCE 7146T  
UU MS 5170 ADV 1149 (DOD)  
R 157K NORTH STAR 45U (SOD)  
K LADY DOMINO 6168

CED: -1.5 BW: 6.8 WW: 66 YW: 119 M: 30 MG: 63

Out of another 3025 daughter, he is the heaviest weaning bull in the sale. His mother is a heifer. If her first calf is this impressive, we are excited to see what the future holds.



**Lot 3**

### KR 1202 DOMINO 707E

Reg. # 43824685 - DOB: 3/10/17

ACT. BW:  
**93**  
205 WT:  
**637**  
5/10/18 WT:  
**1405**  
12/4/18 WT:  
**1650**  
SCROTAL:  
**40**  
DISPOSITION:  
**7**

CL 1 DOMINO 7110T  
**KB L1 DOMINO 1202Y**  
KB L1 DOMINETTE 647  
KBR RANCHER 510-B  
**KBR 510B BELLE 04G (DOD)**  
KR RANCHER BELLE 728D

( CL 1 DOMINO 590R  
CL 1 DOMINETTE 332N (DOD)  
KB L1 DOMINO 454P (SOD)  
KB L1 DOMINETTE 414P (DOD)  
CTY RANCHER 204M  
KR 509 BELLE 57Y  
CTY RANCHER 204M  
SBH L1 DOMINO MISS 2024

CED: 3.4 BW: 4.8 WW: 51 YW: 85 M: 22 MG: 47

A very well put together 1202 son with a lot of extra length.



**Lot 4**

### KR 1202 DOMINO 708E

Reg. # 43824686 - DOB: 3/10/17

ACT. BW:  
**82**  
205 WT:  
**756**  
5/10/18 WT:  
**1480**  
12/4/18 WT:  
**1830**  
SCROTAL:  
**43**  
DISPOSITION:  
**9**

CL 1 DOMINO 7110T  
**KB L1 DOMINO 1202Y**  
KB L1 DOMINETTE 647  
UU DOMINO 3025  
**KR 3025 ADVANCE 504C**  
KBR 737 DOMINO BELLE 942F

( CL 1 DOMINO 590R  
CL 1 DOMINETTE 332N (DOD)  
KB L1 DOMINO 454P (SOD)  
KB L1 DOMINETTE 414P (DOD)  
HH ADVANCE 7146T  
UU MS 5170 ADV 1149 (DOD)  
KB L1 DOMINO 737T  
KR RANCHER BELLE 744D

CED: 1.5 BW: 5.1 WW: 65 YW: 107 M: 27 MG: 60

This long made 1202 son who is out of a powerful 3025 daughter will catch your eye. Great numbers! Look at the spread between birth and weaning weight.



**Lot 5**

### KR 1202 DOMINO 710E

Reg. # 43824688 - DOB: 3/11/17

ACT. BW:  
**83**  
205 WT:  
**691**  
5/10/18 WT:  
**1345**  
12/4/18 WT:  
**1720**  
SCROTAL:  
**39**  
DISPOSITION:  
**8**

CL 1 DOMINO 7110T  
**KB L1 DOMINO 1202Y**  
KB L1 DOMINETTE 647  
H5 408 DOMINO 7100 (SOD)  
**KR 7100 HALEY 505C**  
KBR 0635 BELLE 354A

( CL 1 DOMINO 590R  
CL 1 DOMINETTE 332N (DOD)  
KB L1 DOMINO 454P (SOD)  
KB L1 DOMINETTE 414P (DOD)  
CJH HARLAND 408 (SOD)  
H5 MS 001 DOMET 4193 (DOD)  
UPS ADVANCE 0635  
KBR 45U BELLE 065G (DOD)

CED: 4.5 BW: 2.1 WW: 38 YW: 62 M: 29 MG: 48

One of our top 7100 cows produced a long, deep, easy fleshing, calving ease son.





**Lot 6**

### KR 4069 HARLEY 711E

Reg. # 43824695 - DOB: 3/10/17

ACT. BW: **95**  
205 WT: **676**  
5/10/18 WT: **1410**  
12/4/18 WT: **1810**  
SCROTAL: **39**  
DISPOSITION: **8**

H5 408 DOMINO 7100 (SOD)  
**UU HARLEY 4069**  
UU MS ADVANCE 8048  
R 157K NORTH STAR 32P  
**KBR 32P BELLE 050G**  
KR L1 BELLE 512-B  
CJH HARLAND 408 (SOD)  
H5 MS 001 DOMET 4193 (DOD)  
HH ADVANCE 6091S ET  
UU MS ADVANCE 6144 (DOD)  
K 64H RIBSTONE LAD 157K (CHB, SOD)  
R L1 DOMINETTE 967  
SBH L1 DOMINO 1014  
SBH MISS L1 DOMINO 2004

CED: **9.5** BW: **2.7** WW: **47** YW: **75** M: **27** MG: **50**

We had a Harley son with some late calvers and this was the only one that moved up earlier. He is built like a brick and has a great disposition.



**Lot 7**

### KR 1202 DOMINO 714E

Reg. # 43824699 - DOB: 3/12/17

ACT. BW: **87**  
205 WT: **739**  
5/10/18 WT: **1440**  
12/4/18 WT: **1830**  
SCROTAL: **40**  
DISPOSITION: **8**

CL 1 DOMINO 7110T  
**KB L1 DOMINO 1202Y**  
KB L1 DOMINETTE 647  
H5 408 DOMINO 7100 (SOD)  
**KR 7100 HALEY 542C**  
KBR 32P BELLE 058G  
CL 1 DOMINO 590R  
CL 1 DOMINETTE 332N (DOD)  
KB L1 DOMINO 454P (SOD)  
KB L1 DOMINETTE 414P (DOD)  
CJH HARLAND 408 (SOD)  
H5 MS 001 DOMET 4193 (DOD)  
R 157K NORTH STAR 32P  
KR 204 BELLE 531 B

CED: **4.5** BW: **4.1** WW: **59** YW: **99** M: **27** MG: **56**

A smooth-made, high volume, easy fleshing, 1202 son that is long-sided and extremely thick.



**Lot 8**

### KR 1202 DOMINO 718E

Reg. # 43824704 - DOB: 3/13/17

ACT. BW: **92**  
205 WT: **761**  
5/10/18 WT: **1510**  
12/4/18 WT: **1930**  
SCROTAL: **42**  
DISPOSITION: **7.5**

CL 1 DOMINO 7110T  
**KB L1 DOMINO 1202Y**  
KB L1 DOMINETTE 647  
KB L1 DOMINO 7152T ET  
**KBR 7152 BELLE 3120A**  
KR RIB 32P BELLE 743D  
CL 1 DOMINO 590R  
CL 1 DOMINETTE 332N (DOD)  
KB L1 DOMINO 454P (SOD)  
KB L1 DOMINETTE 414P (DOD)  
CL 1 DOMINO 3162N (CHB)  
MONTANA MISS 0144  
R 157K NORTH STAR 32P  
KR 509 BELLE 53X

CED: **-5.6** BW: **6.9** WW: **60** YW: **95** M: **22** MG: **52**

1202 shows a lot of length, great thickness, and easy fleshing ability. This bull is a chip off the old block.



**Lot 9**

### KR 3009 HIGH CLASS 719E

Reg. # 43824705 - DOB: 3/13/17

ACT. BW: **82**  
205 WT: **683**  
5/10/18 WT: **1410**  
12/4/18 WT: **1640**  
SCROTAL: **38**  
DISPOSITION: **7**

HH ADVANCE 8050U ET (SOD)  
**ECR HIGH CLASS 3009**  
ECR L18 GEN LADY 6131 (DOD)  
H5 408 DOMINO 7100 (SOD)  
**KR 7100 HALEY 400B**  
KBR 9014 BELLE 218Z  
L1 DOMINO 03571 (SOD)  
HH MISS ADVANCE 365N  
GO EXCEL L18 (SOD)  
ECR LADY GE 131  
CJH HARLAND 408 (SOD)  
H5 MS 001 DOMET 4193 (DOD)  
UPS DOMINO 9014  
GO MS 306 ADVANCE S33 (DOD)

CED: **7.5** BW: **1.2** WW: **52** YW: **79** M: **24** MG: **49**

A moderate framed, High Class son out of a good 7100 cow.





**Lot 10**

### KR 8Z DOMINO 720E

Reg. # 43824707 - DOB: 3/14/17

ACT. BW: **98**  
205 WT: **689**  
5/10/18 WT: **1490**  
12/4/18 WT: **1820**  
SCROTAL: **41**  
DISPOSITION: **8**

CL 1 DOMINO 955W (CHB, SOD)  
**R 955W NORTH STAR 8Z**  
R STARLETTE 068  
R 0041 NORTH STAR 91U  
**KR 91U BELLE 158H**  
KR RIB 32P BELLE 709D  
CL 1 DOMINO 637S 1ET  
CL 1 DOMINETTE 5152R  
LCI BD 31R STANMORE 327U  
R STARLETTE 628  
CJH L1 DOMINO 0041 (SOD)  
R STARLETTE 332  
R 157K NORTH STAR 32P  
SBH MISS L1 DOMINO 2007

CED: -1.6 BW: 5.5 WW: 51 YW: 92 M: 25 MG: 51

A powerful, fully pigmented, 8Z son with the look of a herd bull. 8Z calves always have a good rear ends and great dispositions. Don't let this one get away.



**Lot 12**

### KR 4183 TURNING POINT 724E

Reg. # 43824712 - DOB: 3/15/17

ACT. BW: **94**  
205 WT: **774**  
5/10/18 WT: **1455**  
12/4/18 WT: **1840**  
SCROTAL: **43**  
DISPOSITION: **9**

UU ADVANCE 0014  
**UU TURNING POINT**  
UU MS RENDITION 0135  
R 157K NORTH STAR 45U (SOD)  
**KBR 45U RIBLET 307A**  
VOH MISS DOMINETTE 795 (DOD)  
HH ADVANCE 7146T  
UU MS DAKOTA 8045 (DOD)  
SR RENDITION 58  
UU MS 4149 7330  
K 64H RIBSTONE LAD 157K (CHB, SOD)  
R STARLETTE 551 (DOD)  
KB L1 DOMINO 460P  
VOH MISS DOMINETTE 356

CED: -1.5 BW: 5.1 WW: 65 YW: 105 M: 31 MG: 63

A large-framed Turning Point son with great hair and a good disposition.



**Lot 13**

### KR 50B SUPERSTAR 727E

Reg. # 43824718 - DOB: 3/15/17

ACT. BW: **92**  
205 WT: **704**  
5/10/18 WT: **1390**  
12/4/18 WT: **1820**  
SCROTAL: **41**  
DISPOSITION: **7**

CL 1 DOMINO 0141 1ET (CHB)  
**R 0141 NORTH STAR 50B**  
R STARLETTE 458 (DOD)  
R 54U NORTH STAR ER15X  
**KBR 15X RIBLET 235Z**  
KBR 7152 BELLE 06G  
CL 1 DOMINO 860U (SOD)  
CL 1 DOMINETTE 475P  
CL 1 DOMINO 6107F (SOD)  
R SUPER LADY 440  
R 157K NORTH STAR 54U  
R STARLETTE ER867 (DOD)  
KB L1 DOMINO 7152T ET  
KR 21 BELLE 12Y

CED: 2.9 BW: 2.9 WW: 60 YW: 91 M: 28 MG: 57

A deep and dark pigmented 50B son out of a great cow. There is a lot of red meat in this moderate framed bull. He is built like a tank.



**Lot 14**

### KR 1202 DOMINO 728E

Reg. # 43824720 - DOB: 3/16/17

ACT. BW: **98**  
205 WT: **749**  
5/10/18 WT: **1540**  
12/4/18 WT: **1890**  
SCROTAL: **41**  
DISPOSITION: **8**

CL 1 DOMINO 7110T  
**KB L1 DOMINO 1202Y**  
KB L1 DOMINETTE 647  
UU HARELY 2112  
**KR 2112 HALEY 578C**  
KBR 45U RIBLET 2112Z  
CL 1 DOMINO 590R  
CL 1 DOMINETTE 332N (DOD)  
KB L1 DOMINO 454P (SOD)  
KB L1 DOMINETTE 414P (DOD)  
H5 408 DOMINO 7100 (SOD)  
UU MS RENDITION 0135  
R 157K NORTH STAR 45U (SOD)  
VOH MISS STAND DOM 5100 (DOD)

CED: -0.8 BW: 7.2 WW: 67 YW: 123 M: 30 MG: 63

Another thick topped, long sided, 1202 son that has a large frame. He should really stretch out some calves.





**Lot 15**

### KR 1B CALLAWAY 732E

Reg. # 43824741 - DOB: 3/16/17

ACT. BW: **82**  
205 WT: **658**  
5/10/18 WT: **1250**  
12/4/18 WT: **1630**  
SCROTAL: **37**  
DISPOSITION: **8**

CL 1 DOMINO 105Y  
**R 105Y NORTH STAR 1B**  
R STARLETTE 201 (DOD)  
ECR HIGH CLASS 3009  
**KR 3009 CLASSY 558C**  
KR 049 BELLE 50A

CL 1 DOMINO 929W  
CL 1 DOMINETTE 9140W 1ET (DOD)  
CL 1 DOMINO 955W (CHB, SOD)  
R STARLETTE 037  
HH ADVANCE 8050U ET (SOD)  
ECR L18 GEN LADY 6131 (DOD)  
IH 821 DOMINO 049  
KR 7009 BELLE 148X

CED: **7.0** BW: **2.7** WW: **50** YW: **70** M: **29** MG: **54**

A clean-made 1B son that is very stylish with eye pigment, great disposition, and calving ease.



**Lot 16**

### KR 50B SUPERSTAR 733E

Reg. # 43824742 - DOB: 3/17/17

ACT. BW: **72**  
205 WT: **724**  
5/10/18 WT: **1410**  
12/4/18 WT: **1760**  
SCROTAL: **38**  
DISPOSITION: **7.5**

CL 1 DOMINO 0141 1ET (CHB)  
**R 0141 NORTH STAR 50B**  
R STARLETTE 458 (DOD)  
H5 408 DOMINO 7100 (SOD)  
**KR 7100 HALEY 404B**  
KBR 9014 BELLE 253Z

CL 1 DOMINO 860U (SOD)  
CL 1 DOMINETTE 475P  
CL 1 DOMINO 6107F (SOD)  
R SUPER LADY 440  
CJH HARLAND 408 (SOD)  
H5 MS 001 DOMET 4193 (DOD)  
UPS DOMINO 9014  
MS CAVE 816

CED: **13.1** BW: **-0.7** WW: **53** YW: **88** M: **32** MG: **59**

A 50B son that is deep sided and deep flanked with a muscular hind quarter. Would make a real nice set of baldy calves.



**Lot 17**

### KR 2039 DOMINO 735E

Reg. # 43824745 - DOB: 3/17/17

ACT. BW: **94**  
205 WT: **718**  
5/10/18 WT: **1500**  
12/4/18 WT: **NA**  
SCROTAL: **NA**  
DISPOSITION: **NA**

CL 1 DOMINO 860U (SOD)  
**ECR 860 DOMINO 2039**  
ECR 7195 DOMINETTE 9030 (DOD)  
R 19M NORTH STAR 80W  
**KBR 80W BELLE 3110A**  
KBR 32P BELLE 905F

CL 1 DOMINO 637S 1ET  
CL 1 DOMINETTE 5142R (DOD)  
HH ADVANCE 7195T (SOD)  
IH 129 INSETTE 3608  
R 102J NORTH STAR 19M (SOD)  
R STARLETTE 458 (DOD)  
R 157K NORTH STAR 32P  
KR 509 BELLE 106X

CED: **-2.5** BW: **5.0** WW: **63** YW: **103** M: **22** MG: **54**

The 3110 cow is one of our top 80W cows matched up with 2039 it is hard to find fault with him.



**Lot 19**

### KR 4183 TURNING POINT 737E

Reg. # 43824748 - DOB: 3/17/17

ACT. BW: **88**  
205 WT: **639**  
5/10/18 WT: **1390**  
12/4/18 WT: **1660**  
SCROTAL: **38**  
DISPOSITION: **7**

UU ADVANCE 0014  
**UU TURNING POINT**  
UU MS RENDITION 0135  
ECR 860 DOMINO 2039  
**KR 2039 BELLE 434B**  
KR 32P BELLE 805E

HH ADVANCE 7146T  
UU MS DAKOTA 8045 (DOD)  
SR RENDITION 58  
UU MS 4149 7330  
CL 1 DOMINO 860U (SOD)  
ECR 7195 DOMINETTE 9030 (DOD)  
R 157K NORTH STAR 32P  
KR 204 BELLE 509-B

CED: **-1.3** BW: **4.7** WW: **65** YW: **102** M: **26** MG: **59**

A pigmented Turning Point son out of a good cow family. Turning Point always adds length and frame. A rancher's kind of bull.





**Lot 21**

### KR 1B CALLAWAY 739E

Reg. # 43824750 - DOB: 3/17/17

ACT. BW:  
**75**

205 WT:  
**624**

5/10/18 WT:  
**1470**

12/4/18 WT:  
**1760**

SCROTAL:  
**39**

DISPOSITION:  
**7**

CL 1 DOMINO 105Y  
**R 105Y NORTH STAR 1B**  
R STARLETTE 201 (DOD)

UPS ADVANCE 0734  
**KBR 0734 BELLE 396A**  
KR 22S BELLE 847E

CL 1 DOMINO 929W  
CL 1 DOMINETTE 9140W 1ET (DOD)  
CL 1 DOMINO 955W (CHB,SOD)  
R STARLETTE 037  
DS 3019 ADV 7602  
UPS MISS DOMINO 8632  
R 461 NORTH STAR 22S  
KR 24N BELLE 613-C

CED: **10.2** BW: **1.7** WW: **52** YW: **85** M: **30** MG: **56**

*If you are looking for calving ease, here is your bull. With a 75 lb. birth weight, he should still sire calves that are stout and easy fleshing.*



**Lot 23**

### KR 1B CALLAWAY 745E

Reg. # 43824754 - DOB: 3/18/17

ACT. BW:  
**95**

205 WT:  
**661**

5/10/18 WT:  
**1310**

12/4/18 WT:  
**1670**

SCROTAL:  
**39**

DISPOSITION:  
**8**

CL 1 DOMINO 105Y  
**R 105Y NORTH STAR 1B**  
R STARLETTE 201 (DOD)

ECR 860 DOMINO 2039  
**KR 2039 BELLE 531C**  
KR 45U BELLE 148H (DOD)

CL 1 DOMINO 929W  
CL 1 DOMINETTE 9140W 1ET (DOD)  
CL 1 DOMINO 955W (CHB,SOD)  
R STARLETTE 037  
CL 1 DOMINO 860U (SOD)  
ECR 7195 DOMINETTE 9030 (DOD)  
R 157K NORTH STAR 45U (SOD)  
VOH L1 DOMINETTE 516 (DOD)

CED: **-3.6** BW: **6.7** WW: **63** YW: **100** M: **34** MG: **66**

*A big volume 1B son that has a smooth stride, great hair, and good disposition.*



**Lot 24**

### KR 1202 DOMINO 748E

Reg. # 43824757 - DOB: 3/19/17

ACT. BW:  
**90**

205 WT:  
**803**

5/10/18 WT:  
**1510**

12/4/18 WT:  
**1830**

SCROTAL:  
**36**

DISPOSITION:  
**7**

CL 1 DOMINO 7110T  
**KB L1 DOMINO 1202Y**  
KB L1 DOMINETTE 647

UU BRITISHER 3050  
**KR 3050 BELLE 5112C**  
SR VESTA 662

CL 1 DOMINO 590R  
CL 1 DOMINETTE 332N (DOD)  
KB L1 DOMINO 454P (SOD)  
KB L1 DOMINETTE 414P (DOD)  
FA 105T BRITISHER 5X  
UU MS 5170 ADV 1045 (DOD)  
BB 1065 DOMINO 4034  
SR SHANA 3117

CED: **-0.8** BW: **5.9** WW: **63** YW: **110** M: **29** MG: **60**

*A well made 1202 son that will make some nice baldies with some extra frame. He had pink eye as a calf and has a white spot in his eye but he can see fine.*

**Lot 25**

### KR 2039 DOMINO 749E

Reg. # 43824758 - DOB: 3/19/17

ACT. BW:  
**95**

205 WT:  
**698**

5/10/18 WT:  
**1380**

12/4/18 WT:  
**1720**

SCROTAL:  
**39**

DISPOSITION:  
**8**

CL 1 DOMINO 860U (SOD)  
**ECR 860 DOMINO 2039**  
ECR 7195 DOMINETTE 9030 (DOD)

R 54U NORTH STAR ER15X  
**KBR 15X RIBLET 250Z**  
MONTANA MISS 0117X (DOD)

CL 1 DOMINO 637S 1ET  
CL 1 DOMINETTE 5142R (DOD)  
HH ADVANCE 7195T (SOD)  
IH 129 INSETTE 3608  
R 157K NORTH STAR 54U  
R STARLETTE ER867 (DOD)  
CL 1 DOMINO 6105S (CHB)  
MONTANA MISS 791T

CED: **-1.5** BW: **5.6** WW: **53** YW: **83** M: **23** MG: **50**

*A 2039 son that is deep, thick, and well put together. 2039 females have perfect udders. Very stylish.*





**Lot 26**

**KR 4183 TURNING POINT 751E**

Reg. # 43824760 - DOB: 3/19/17

ACT. BW: **95**  
205 WT: **692**  
5/10/18 WT: **1520**  
12/4/18 WT: **1820**  
SCROTAL: **40**  
DISPOSITION: **8**

UU ADVANCE 0014  
**UU TURNING POINT**  
UU MS RENDITION 0135  
R 157K NORTH STAR 32P  
**KBR 32P BELLE 802E**  
KB 204 BELLE 514-B

HH ADVANCE 7146T  
UU MS DAKOTA 8045 (DOD)  
SR RENDITION 58  
UU MS 4149 7330  
K 64H RIBSTONE LAD 157K (CHB,SOD)  
R L1 DOMINETTE 967  
CTY RANCHER 204M  
KR 76J BELLE 47Y

CED: **0.5** BW: **5.8** WW: **62** YW: **107** M: **27** MG: **58**

A full brother to the Lot 40 bull last year that sold for \$8,500. He has depth and length with almost identical numbers to his brother. His mother never misses.



**Lot 28**

**KR 1B CALLAWAY 754E**

Reg. # 43824770 - DOB: 3/20/17

ACT. BW: **87**  
205 WT: **655**  
5/10/18 WT: **1280**  
12/4/18 WT: **1470**  
SCROTAL: **38**  
DISPOSITION: **8**

CL 1 DOMINO 105Y  
**R 105Y NORTH STAR 1B**  
R STARLETTE 201 (DOD)  
ECR 860 DOMINO 2039  
**KR 2039 BELLE 596C**  
KR 204 BELLE 634-C

CL 1 DOMINO 929W  
CL 1 DOMINETTE 9140W 1ET (DOD)  
CL 1 DOMINO 955W (CHB,SOD)  
R STARLETTE 037  
CL 1 DOMINO 860U (SOD)  
ECR 7195 DOMINETTE 9030 (DOD)  
CTY RANCHER 204M  
KR 76J BELLE 35Y

CED: **0.2** BW: **4.8** WW: **60** YW: **90** M: **29** MG: **59**

A good haired 1B son out of a perfect 2039 daughter.



**Lot 29**

**KR 50B SUPERSTAR 755E**

Reg. # 43824771 - DOB: 3/20/17

ACT. BW: **93**  
205 WT: **745**  
5/10/18 WT: **1500**  
12/4/18 WT: **1870**  
SCROTAL: **41**  
DISPOSITION: **8**

CL 1 DOMINO 0141 1ET (CHB)  
**R 0141 NORTH STAR 50B**  
R STARLETTE 458 (DOD)  
UPS ADVANCE 0635  
**KBR 0635 BELLE 354A**  
KBR 45U BELLE 065G (DOD)

CL 1 DOMINO 860U (SOD)  
CL 1 DOMINETTE 475P  
CL 1 DOMINO 6107F (SOD)  
R SUPER LADY 440  
HH ADVANCE 8141U  
UPS MISS KNIGHT 5916  
R 157K NORTH STAR 45U (SOD)  
VOH MISS STAND DOM 5100 (DOD)

CED: **0.4** BW: **5.2** WW: **59** YW: **106** M: **28** MG: **58**

This cow always has a good one. He is good haired, stands out wide on all four corners, and is as thick and deep as his sire.



**Lot 30**

**KR 4183 TURNING POINT 757E**

Reg. # 43824780 - DOB: 3/20/17

ACT. BW: **91**  
205 WT: **628**  
5/10/18 WT: **1350**  
12/4/18 WT: **1640**  
SCROTAL: **39**  
DISPOSITION: **8**

UU ADVANCE 0014  
**UU TURNING POINT**  
UU MS RENDITION 0135  
CL 1 DOMINO 417P  
**KB L1 DOMINETTE 9133W**  
KB AMY 1157 (DOD)

HH ADVANCE 7146T  
UU MS DAKOTA 8045 (DOD)  
SR RENDITION 58  
UU MS 4149 7330  
CL 1 DOMINO 212M (SOD)  
CL 1 DOMINETTE 0112K 1ET  
JNHR DIAMOND ET 414B (SOD)  
KB L1 DOMINETTE 7130

CED: **0.6** BW: **5.3** WW: **60** YW: **102** M: **26** MG: **56**

A Turning Point son that is as long as a train. He is out of a good Line 1 cow.





**Lot 31**

### KR 8Z NORTH STAR 761E

Reg. # 43824791 - DOB: 3/22/17

ACT. BW: **85**  
205 WT: **694**  
5/10/18 WT: **1380**  
12/4/18 WT: **1720**  
SCROTAL: **41**  
DISPOSITION: **8**

CL 1 DOMINO 955W (CHB, SOD)  
**R 955W NORTH STAR 8Z**  
R STARLETTE 068  
UPS DOMINO 9014  
**KBR 9014 BELLE 253Z**  
MS CAVE 816  
CL 1 DOMINO 637S 1ET  
CL 1 DOMINETTE 5152R  
LCI BD 31R STANMORE 327U  
R STARLETTE 628  
UPS DOMINO 5216 (SOD)  
UPS MISS DOMINO 7805  
UPS DESERT GOLD 4007  
MLM LADY STAR 8183

CED: **6.1** BW: **2.8** WW: **46** YW: **76** M: **30** MG: **53**

*This 8Z son is extra thick across his top while carrying muscle down his leg well. Be sure to find this good dispositioned bull. WOW!*



**Lot 32**

### KR 3009 HIGH CLASS 764E

Reg. # 43824798 - DOB: 3/23/17

ACT. BW: **82**  
205 WT: **706**  
5/10/18 WT: **1280**  
12/4/18 WT: **1540**  
SCROTAL: **36**  
DISPOSITION: **8**

HH ADVANCE 8050U ET (SOD)  
**ECR HIGH CLASS 3009**  
ECR L18 GEN LADY 6131 (DOD)  
UU HARLEY 2017  
**KR 2017 HALEY 486B**  
KBR 80W BELLE 268Z  
L1 DOMINO 03571 (SOD)  
HH MISS ADVANCE 365N  
GO EXCEL L18 (SOD)  
ECR LADY GE 131  
H5 408 DOMINO 7100 (SOD)  
UU MS ADVANCE 9156  
R 19M NORTH STAR 80W  
KR RIB 32P BELLE 726D

CED: **1.8** BW: **3.4** WW: **60** YW: **79** M: **21** MG: **51**

*A moderate framed, long sided, High Class son.*



**Lot 33**

### KR 50B SUPERSTAR 765E

Reg. # 43824800 - DOB: 3/23/17

ACT. BW: **77**  
205 WT: **732**  
5/10/18 WT: **1515**  
12/4/18 WT: **1850**  
SCROTAL: **37**  
DISPOSITION: **8**

CL 1 DOMINO 0141 1ET (CHB)  
**R 0141 NORTH STAR 50B**  
R STARLETTE 458 (DOD)  
R 461 NORTH STAR 22S  
**KR 22S BELLE 847E**  
KR 24N BELLE 613-C  
CL 1 DOMINO 860U (SOD)  
CL 1 DOMINETTE 475P  
CL 1 DOMINO 6107F (SOD)  
R SUPER LADY 440  
CJH 9005 ADVANCE 461 (SOD)  
R STARLETTE 328 (DOD)  
R 157K RIBSTONE 24N  
KR 7009 BELLE 122X

CED: **8.0** BW: **2.4** WW: **59** YW: **102** M: **26** MG: **55**

*This bull has always been a stand out, with 50B depth, and a great spread between birth and weaning weights. Out of one of our top older cows.*



**Lot 34**

### KR 8Z NORTH STAR 767E

Reg. # 43824802 - DOB: 3/23/17

ACT. BW: **82**  
205 WT: **749**  
5/10/18 WT: **1550**  
12/4/18 WT: **1880**  
SCROTAL: **44**  
DISPOSITION: **9**

CL 1 DOMINO 955W (CHB, SOD)  
**R 955W NORTH STAR 8Z**  
R STARLETTE 068  
CL 1 DOMINO 0100X  
**KBR 100X BELLE 305Z**  
MONTANA MISS 0119X ET  
CL 1 DOMINO 637S 1ET  
CL 1 DOMINETTE 5152R  
LCI BD 31R STANMORE 327U  
R STARLETTE 628  
CL 1 DOMINO 860U (SOD)  
CL1 DOMINETTE 193L  
CL 1 DOMINO 862U  
KB DOMINETTE 353N ET

CED: **-1.1** BW: **5.4** WW: **61** YW: **105** M: **33** MG: **64**

*His full brother topped the sale in 2016. He has a lot of power in his pedigree. He walks around like he owns the place but is quiet as a kitten.*





**Lot 35**

### KR 4183 TURNING POINT 773E

Reg. # 43824816 - DOB: 3/26/17

ACT. BW: **77**  
205 WT: **588**  
5/10/18 WT: **1390**  
12/4/18 WT: **1610**  
SCROTAL: **39**  
DISPOSITION: **6.5**

UU ADVANCE 0014  
**UU TURNING POINT**  
UU MS RENDITION 0135  
KBR RANCHER 510-B  
**KBR 510B BELLE 066G**  
KR RIB 32P BELLE 743D

(HH ADVANCE 7146T  
UU MS DAKOTA 8045 (DOD)  
SR RENDITION 58  
UU MS 4149 7330  
CTY RANCHER 204M  
KR 509 BELLE 57Y  
R 157K NORTH STAR 32P  
KR 509 BELLE 53X)

CED: **3.0** BW: **3.9** WW: **62** YW: **102** M: **23** MG: **54**

A Turning Point son with extra frame, good hair, and a deep body. He has the Turning Point length. Best way to add pounds is length.



**Lot 36**

### KR 4C NORTH STAR 775E

Reg. # 43824818 - DOB: 3/27/17

ACT. BW: **78**  
205 WT: **704**  
5/10/18 WT: **1380**  
12/4/18 WT: **1690**  
SCROTAL: **40**  
DISPOSITION: **8**

CL 1 DOMINO 330A 1ET  
**R 330A NORTH STAR 4C**  
R STARLETTE 119 (DOD)  
UPS DOMINO 1034  
**KR 1034 BELLE 452B**  
KBR 32P BELLE 802E

(CL 1 DOMINO 144Y 1ET  
CL 1 DOMINETTE 617S  
K 64H RIBSTONE LAD 157K (CHB,SOD)  
R STARLETTE 815 (DOD)  
UPS DOMINO 5216 (SOD)  
UPS MISS DOMINO 9106  
R 157K NORTH STAR 32P  
KB 204 BELLE 514-B)

CED: **11.4** BW: **1.9** WW: **46** YW: **78** M: **30** MG: **53**

A freckle-faced 4C son that is a deep flanked, soggy made bull with great hair. Look for more 4C sons in the future.



**Lot 37**

### KR 1034 DOMINO 776E

Reg. # 43824819 - DOB: 3/27/17

ACT. BW: **86**  
205 WT: **673**  
5/10/18 WT: **1330**  
12/4/18 WT: **1390**  
SCROTAL: **37**  
DISPOSITION: **7**

UPS DOMINO 5216 (SOD)  
**UPS DOMINO 1034**  
UPS MISS DOMINO 9106  
HH ADVANCE 6001S  
**MONTANA MISS 0163X**  
MONTANA MISS 753T

(UPS DOMINO 3027 (SOD)  
UPS MISS MOM 2756 (DOD)  
CL 1 DOMINO 637S 1ET  
UPS MISS DOMINO 4369 (DOD)  
CL 1 DOMINO 206M (CHB)  
HH MISS ADVANCE 1088L (DOD)  
CL 1 DOMINO 592R 1ET  
MONTANA MISS 306)

CED: **4.0** BW: **2.5** WW: **41** YW: **64** M: **32** MG: **53**

A stout made 1034 son with good yellow hair. 0163X cow is a good older cow with a good udder. This cross should make good females.



**Lot 38**

### KR 2039 DOMINO 777E

Reg. # 43824822 - DOB: 3/27/17

ACT. BW: **93**  
205 WT: **642**  
5/10/18 WT: **1435**  
12/4/18 WT: **1820**  
SCROTAL: **38**  
DISPOSITION: **9**

CL 1 DOMINO 860U (SOD)  
**ECR 860 DOMINO 2039**  
ECR 7195 DOMINETTE 9030 (DOD)  
R 157K NORTH STAR 45U (SOD)  
**KBR 45U RIBLET 238Z**  
K LADY DOMINO 6168

(CL 1 DOMINO 637S 1ET  
CL 1 DOMINETTE 5142R (DOD)  
HH ADVANCE 7195T (SOD)  
IH 129 INSETTE 3608  
K 64H RIBSTONE LAD 157K (CHB,SOD)  
R STARLETTE 551 (DOD)  
K L1 ADVANCER 012  
K LADY DOMINO 091)

CED: **-1.2** BW: **5.0** WW: **57** YW: **100** M: **24** MG: **53**

Keep all the females. This bull is out of an exceptional cow and his sire, 2039, is producing great females. This powerhouse will also make feeder cattle that will squash the scale down. Quiet as a kitten.





**Lot 40**

### KR 3009 HIGH CLASS 779E

Reg. # 43824828 - DOB: 3/27/17

ACT. BW: **95**  
205 WT: **652**  
5/10/18 WT: **1390**  
12/4/18 WT: **1660**  
SCROTAL: **36**  
DISPOSITION: **7**

HH ADVANCE 8050U ET (SOD)  
**ECR HIGH CLASS 3009**  
ECR L18 GEN LADY 6131 (DOD)  
HH ADVANCE 8086U  
**KB L1 DOMINETTE 051X**  
KB L1 DOMINETTE 620  
L1 DOMINO 03571 (SOD)  
HH MISS ADVANCE 365N  
GO EXCEL L18 (SOD)  
ECR LADY GE 131  
HH ADVANCE 5212R (CHB, SOD)  
HH MISS ADVANCE 5143R  
CL 1 DOMINO 373N  
KB AMY 1157 (DOD)

CED: **1.9** BW: **3.6** WW: **56** YW: **85** M: **21** MG: **49**

A moderate-framed, High Class son out of a good Line 1 cow.



**Lot 41**

### KR 2039 DOMINO 782E

Reg. # 43824842 - DOB: 3/29/17

ACT. BW: **98**  
205 WT: **721**  
5/10/18 WT: **1350**  
12/4/18 WT: **1760**  
SCROTAL: **41**  
DISPOSITION: **8**

CL 1 DOMINO 860U (SOD)  
**ECR 860 DOMINO 2039**  
ECR 7195 DOMINETTE 9030 (DOD)  
KB L1 DOMINO 842U  
**KBR 842U BELLE 276Z**  
KB L1 DOMINETTE 991W (DOD)  
CL 1 DOMINO 637S 1ET  
CL 1 DOMINETTE 5142R (DOD)  
HH ADVANCE 7195T (SOD)  
IH 129 INSETTE 3608  
KB L1 DOMINO 655 ET (CHB)  
MONTANA MISS 310 (DOD)  
CL 1 DOMINO 6105S (CHB)  
KB L1 DOMINETTE 633

CED: **-4.3** BW: **5.8** WW: **61** YW: **94** M: **25** MG: **55**

A smooth-made 2039 son that is dark red with eye pigment. He has a good rear end and would make a real nice set of baldy calves.



**Lot 43**

### KR 44B BRITISHER 784E

Reg. # 43824857 - DOB: 3/29/17

ACT. BW: **87**  
205 WT: **731**  
5/10/18 WT: **1410**  
12/4/18 WT: **1780**  
SCROTAL: **37**  
DISPOSITION: **8**

FA 71S BRITISHER 102W  
**R 102W NORTH STAR 44B**  
R STARLETTE 892  
UPS DOMINO 1034  
**KR 1034 ROBIN 476B**  
GO MS PJ EXCEL S213  
FA 109L BRITISHER 71S  
FA BRITISHER LADY ET 5P  
SR FUTURE 304  
RCN STARLETTE 037  
UPS DOMINO 5216 (SOD)  
UPS MISS DOMINO 9106  
GO L18 EXCEL N40  
GO MS MARK DOMINO 0042

CED: **1.8** BW: **5.0** WW: **55** YW: **93** M: **27** MG: **54**

A large framed 44B with eye pigment and a big thick top. A clean up calf that will stand with the best of the AI'd bulls.



**Lot 44**

### KR 2039 DOMINO 791E

Reg. # 43824887 - DOB: 3/31/17

ACT. BW: **87**  
205 WT: **641**  
5/10/18 WT: **1260**  
12/4/18 WT: **1640**  
SCROTAL: **40**  
DISPOSITION: **7**

CL 1 DOMINO 860U (SOD)  
**ECR 860 DOMINO 2039**  
ECR 7195 DOMINETTE 9030 (DOD)  
CL 1 DOMINO 6105S (CHB)  
**KB L1 DOMINETTE 991W (DOD)**  
KB L1 DOMINETTE 633  
CL 1 DOMINO 637S 1ET  
CL 1 DOMINETTE 5142R (DOD)  
HH ADVANCE 7195T (SOD)  
IH 129 INSETTE 3608  
L1 DOMINO 03396 (SOD)  
CL 1 DOMINETTE 243M  
CL1 DOMINO 180L  
KB AMY 1158 (DOD)

CED: **-4.8** BW: **3.6** WW: **46** YW: **76** M: **24** MG: **47**

He has been a standout since he was a calf. He is a thick made, Line 1 bred bull with good hair and is red necked with pigment.





**Lot 46**

### KR 44B BRITISHER 796E

Reg. # 43824900 - DOB: 4/1/17

ACT. BW: **92**  
205 WT: **738**  
5/10/18 WT: **1440**  
12/4/18 WT: **1760**  
SCROTAL: **39**  
DISPOSITION: **7**

FA 71S BRITISHER 102W  
**R 102W NORTH STAR 44B**  
R STARLETTE 892  
R 0041 NORTH STAR 93U  
**KBR 93U BELLE 231Z**  
KBR 45U BELLE 029G (DOD)  
FA 109L BRITISHER 71S  
FA BRITISHER LADY ET 5P  
SR FUTURE 304  
RCN STARLETTE 037  
CJH L1 DOMINO 0041 (SOD)  
R GENERAL LASS 924 (DOD)  
R 157K NORTH STAR 45U (SOD)  
VOH MISS SLVR PATEND 717 (DOD)

CED: **-2.1** BW: **6.7** WW: **55** YW: **92** M: **24** MG: **52**

44B puts frame and bone in his offspring. With a 738 lb. weaning weight, the 231 cow and the Canadian breeding really clicked.



**Lot 47**

### KR 50B SUPER STAR 797E

Reg. # 43844563 - DOB: 4/1/17

ACT. BW: **79**  
205 WT: **670**  
5/10/18 WT: **1370**  
12/4/18 WT: **1790**  
SCROTAL: **38**  
DISPOSITION: **8**

CL 1 DOMINO 0141 1ET (CHB)  
**R 0141 NORTH STAR 50B**  
R STARLETTE 458 (DOD)  
R 327U NORTH STAR 65Y  
**KR 65Y BELLE 4131B**  
KR RANCHER BELLE 737D  
CL 1 DOMINO 860U (SOD)  
CL 1 DOMINETTE 475P  
CL 1 DOMINO 6107F (SOD)  
R SUPER LADY 440  
LCI BD 31R STANMORE 327U  
R STARLETTE 881 (DOD)  
CTY RANCHER 204M  
KR 21 BELLE 17Y

CED: **8.0** BW: **3.5** WW: **62** YW: **113** M: **26** MG: **57**

Like all 50B sons, he is long and deep bodied. He is a large framed bull with a 79 lb. birth weight.



**Lot 49**

### KR 1034 DOMINO 7102E

Reg. # 43824913 - DOB: 4/3/17

ACT. BW: **95**  
205 WT: **746**  
5/10/18 WT: **1450**  
12/4/18 WT: **1850**  
SCROTAL: **40**  
DISPOSITION: **7**

UPS DOMINO 5216 (SOD)  
**UPS DOMINO 1034**  
UPS MISS DOMINO 9106  
UPS ADVANCE 0635  
**KBR 0635 BELLE 330A**  
KBR 45U BELLE 029G (DOD)  
UPS DOMINO 3027 (SOD)  
UPS MISS MOM 2756 (DOD)  
CL 1 DOMINO 637S 1ET  
UPS MISS DOMINO 4369 (DOD)  
HH ADVANCE 8141U  
UPS MISS KNIGHT 5916  
R 157K NORTH STAR 45U (SOD)  
VOH MISS SLVR PATEND 717 (DOD)

CED: **-0.6** BW: **4.9** WW: **56** YW: **97** M: **29** MG: **57**

This meat wagon might be the best 1034 son we have raised. He has eye pigment, great hair, and great depth of rib. 1034s are exceptional female with tremendous hind quarters.



**Lot 50**

### KR 50B SUPER STAR 7109E

Reg. # 43824926 - DOB: 4/6/17

ACT. BW: **78**  
205 WT: **743**  
5/10/18 WT: **1460**  
12/4/18 WT: **1860**  
SCROTAL: **37**  
DISPOSITION: **7.5**

CL 1 DOMINO 0141 1ET (CHB)  
**R 0141 NORTH STAR 50B**  
R STARLETTE 458 (DOD)  
R 157K NORTH STAR 45U (SOD)  
**KR 45U RIBLET 356A**  
GO MS L18 EXCEL S70  
CL 1 DOMINO 860U (SOD)  
CL 1 DOMINETTE 475P  
CL 1 DOMINO 6107F (SOD)  
R SUPER LADY 440  
K 64H RIBSTONE LAD 157K (CHB, SOD)  
R STARLETTE 551 (DOD)  
GO EXCEL L18 (SOD)  
GO MS STARMAN N156

CED: **2.1** BW: **3.0** WW: **60** YW: **106** M: **30** MG: **61**

The 50B sons all look the same, extra deep, long, and easy fleshing. They are easy to handle and easy to look at.





**Lot 51**

### KR 50B SUPER STAR 7114E

Reg. # 43824932 - DOB: 4/8/17

ACT. BW: **88**  
205 WT: **647**  
5/10/18 WT: **1380**  
12/4/18 WT: **1740**  
SCROTAL: **39**  
DISPOSITION: **8**

CL 1 DOMINO 0141 1ET (CHB)  
**R 0141 NORTH STAR 50B**  
R STARLETTE 458 (DOD)  
R 19M NORTH STAR 80W  
**KBR 80W BELLE 339A**  
KBR 737 DOMINO BELLE 942F

CL 1 DOMINO 860U (SOD)  
CL 1 DOMINETTE 475P  
CL 1 DOMINO 6107F (SOD)  
R SUPER LADY 440  
R 102J NORTH STAR 19M (SOD)  
R STARLETTE 458 (DOD)  
KB L1 DOMINO 737T  
KR RANCHER BELLE 744D

CED: **3.8** BW: **4.2** WW: **57** YW: **111** M: **23** MG: **52**

Another 50B that will definitely catch your eye. He is deep flanked with great muscle expression and big volume. Put him in a pasture by the road.



**Lot 52**

### KR 50B SUPER STAR 7117E

Reg. # 43824938 - DOB: 4/9/17

ACT. BW: **79**  
205 WT: **689**  
5/10/18 WT: **1440**  
12/4/18 WT: **1790**  
SCROTAL: **39**  
DISPOSITION: **7**

CL 1 DOMINO 0141 1ET (CHB)  
**R 0141 NORTH STAR 50B**  
R STARLETTE 458 (DOD)  
UPS DOMINO 1034  
**KR 1034 ROBIN 4105B**  
KBR 737 DOMINO BELLE 942F

CL 1 DOMINO 860U (SOD)  
CL 1 DOMINETTE 475P  
CL 1 DOMINO 6107F (SOD)  
R SUPER LADY 440  
UPS DOMINO 5216 (SOD)  
UPS MISS DOMINO 9106  
KB L1 DOMINO 737T  
KR RANCHER BELLE 744D

CED: **7.5** BW: **3.1** WW: **52** YW: **97** M: **28** MG: **54**

The 50Bs are so consistent. They are all deep and thick with a big rear end. Consistency is what you want when you sell calves. These bulls are all peas in a pod.



**Lot 54**

### KR 50B SUPER STAR 7120E

Reg. # 43824943 - DOB: 4/10/17

ACT. BW: **89**  
205 WT: **749**  
5/10/18 WT: **1390**  
12/4/18 WT: **1830**  
SCROTAL: **37**  
DISPOSITION: **7**

CL 1 DOMINO 0141 1ET (CHB)  
**R 0141 NORTH STAR 50B**  
R STARLETTE 458 (DOD)  
R 327U NORTH STAR 65Y  
**KR 65Y BELLE 487B**  
MS GOLD CAVE 02

CL 1 DOMINO 860U (SOD)  
CL 1 DOMINETTE 475P  
CL 1 DOMINO 6107F (SOD)  
R SUPER LADY 440  
LCI BD 31R STANMORE 327U  
R STARLETTE 881 (DOD)  
UPS DESERT GOLD 4007  
MSLR 45 (DOD)

CED: **3.8** BW: **3.8** WW: **62** YW: **107** M: **31** MG: **62**

This smooth made 50B son is very attractive with a deep flank and powerful numbers. He is deep and long.



**Lot 55**

### KR 50B SUPER STAR 7132E

Reg. # 43824965 - DOB: 4/14/17

ACT. BW: **93**  
205 WT: **740**  
5/10/18 WT: **1310**  
12/4/18 WT: **1810**  
SCROTAL: **36**  
DISPOSITION: **8**

CL 1 DOMINO 0141 1ET (CHB)  
**R 0141 NORTH STAR 50B**  
R STARLETTE 458 (DOD)  
R 157K NORTH STAR 45U (SOD)  
**KBR 45U RIBLET 306A**  
GO MS L18 EXCEL S207

CL 1 DOMINO 860U (SOD)  
CL 1 DOMINETTE 475P  
CL 1 DOMINO 6107F (SOD)  
R SUPER LADY 440  
K 64H RIBSTONE LAD 157K (CHB,SOD)  
R STARLETTE 551 (DOD)  
GO EXCEL L18 (SOD)  
GO MS 205 EXCEL N46

CED: **-2.4** BW: **5.6** WW: **65** YW: **102** M: **29** MG: **61**

A very attractive 50B son that travels well. He is quiet and has a big rear end. The 50B daughters look like they are going to make fabulous cows.





**Lot 56**

### KR 50B SUPER STAR 7128E

Reg. # 43824959 - DOB: 4/13/17

ACT. BW: **82**  
205 WT: **734**  
5/10/18 WT: **1390**  
12/4/18 WT: **1790**  
SCROTAL: **38**  
DISPOSITION: **8**

CL 1 DOMINO 0141 1ET (CHB)  
**R 0141 NORTH STAR 50B**  
R STARLETTE 458 (DOD)  
CL 1 DOMINO 860U (SOD)  
CL 1 DOMINETTE 475P  
CL 1 DOMINO 6107F (SOD)  
R SUPER LADY 440  
CL 1 DOMINO 862U  
**MONTANA MISS 0110X ET**  
KB DOMINETTE 353N ET  
CL 1 DOMINO 637S 1ET  
CL 1 DOMINETTE 5131R  
JD BIG ARTHUR 180  
CL 1 DOMINETTE 7188G

CED: **3.0** BW: **3.1** WW: **60** YW: **98** M: **31** MG: **61**

*If disposition means anything to you take a look at a 50B son. This deep, quiet bull has muscle that carries down his leg well.*



**Lot 57**

### KR 50B SUPER STAR 7129E

Reg. # 43824961 - DOB: 4/13/17

ACT. BW: **78**  
205 WT: **682**  
5/10/18 WT: **1320**  
12/4/18 WT: **1710**  
SCROTAL: **36**  
DISPOSITION: **8**

CL 1 DOMINO 0141 1ET (CHB)  
**R 0141 NORTH STAR 50B**  
R STARLETTE 458 (DOD)  
CL 1 DOMINO 860U (SOD)  
CL 1 DOMINETTE 475P  
CL 1 DOMINO 6107F (SOD)  
R SUPER LADY 440  
DS 3019 ADV 7602  
**KBR 0734 BELLE 3107A**  
KR 93U BELLE 137H (DOD)  
CL 1 DOMINO 860U (SOD)  
CL 1 DOMINETTE 475P  
CL 1 DOMINO 6107F (SOD)  
R SUPER LADY 440  
DS 3019 ADV 7602  
UPS ADVANCE 0734  
UPS MISS DOMINO 8632  
R 0041 NORTH STAR 93U  
KBR L1 BELLE 915F (DOD)

CED: **7.4** BW: **1.9** WW: **54** YW: **98** M: **27** MG: **54**

*A good 50B son that is long, thick, and deep. The 50B sons have a good balance between calving ease and growth. They may not be heifer bulls but very easy calving with all that length.*



**Lot 58**

### KR 50B SUPER STAR 7123E

Reg. # 43824948 - DOB: 4/11/17

ACT. BW: **78**  
205 WT: **599**  
5/10/18 WT: **1310**  
12/4/18 WT: **1720**  
SCROTAL: **38**  
DISPOSITION: **7**

CL 1 DOMINO 0141 1ET (CHB)  
**R 0141 NORTH STAR 50B**  
R STARLETTE 458 (DOD)  
KB L1 DOMINO 808U  
**KBR 808 BELLE 038G**  
KR 22S BELLE 847E  
CL 1 DOMINO 860U (SOD)  
CL 1 DOMINETTE 475P  
CL 1 DOMINO 6107F (SOD)  
R SUPER LADY 440  
KB L1 DOMINO 218 (CHB)  
KB L1 DOMINETTE 686  
R 461 NORTH STAR 22S  
KR 24N BELLE 613-C

CED: **7.5** BW: **0.8** WW: **54** YW: **89** M: **24** MG: **51**

*Keep a couple of these 50B sons together and have calves that will all look the same, super thick and very deep. Consistency.*



**Lot 59**

### KR 50B SUPER STAR 7133E

Reg. # 43824966 - DOB: 4/14/17

ACT. BW: **87**  
205 WT: **701**  
5/10/18 WT: **1285**  
12/4/18 WT: **1710**  
SCROTAL: **39**  
DISPOSITION: **6**

CL 1 DOMINO 0141 1ET (CHB)  
**R 0141 NORTH STAR 50B**  
R STARLETTE 458 (DOD)  
ECR 860 DOMINO 2039  
**KR 2039 BELLE 494B**  
SR VESTA 662  
CL 1 DOMINO 860U (SOD)  
CL 1 DOMINETTE 475P  
CL 1 DOMINO 6107F (SOD)  
R SUPER LADY 440  
CL 1 DOMINO 860U (SOD)  
ECR 7195 DOMINETTE 9030 (DOD)  
BB 1065 DOMINO 4034  
SR SHANA 3117

CED: **4.6** BW: **2.2** WW: **53** YW: **87** M: **29** MG: **56**

*A dark red 50B son that is red to the ground. He is fully pigmented and has a lot of depth of body.*





**Lot 60**

### KR 4294 AUTHORITY 7146E

Reg. # 43824992 - DOB: 4/25/17

ACT. BW: **80**  
205 WT: **692**  
5/10/18 WT: **1310**  
12/4/18 WT: **1700**  
SCROTAL: **38**  
DISPOSITION: **9**

CHURCHILL AUTHORITY 027X  
**UU AUTHORITY 4294**  
UU MOM 6218

R 955W NORTH STAR 8Z  
**KR 8Z BELLE 468B**  
KBR 8 RANCHER BELLE 938F (DOD)

(HH ADVANCE 7034T ET  
CHURCHILL LADY 774T (DOD)  
/S 745 MR MOM 3351  
UU MS DOMINO 4332 (DOD)  
CL 1 DOMINO 955W (CHB,SOD)  
R STARLETTE 068  
KBR RANCHER 523-B  
KR 049 BELLE 51A

CED: **-1.5** BW: **4.3** WW: **50** YW: **89** M: **26** MG: **51**

*Our only Authority son. A later born, clean up calf that still can stand right with the Al'd sired ones.*

**Lot 61**

### KR 1B CALLAWAY 7147E

Reg. # 43824993 - DOB: 4/26/17

ACT. BW: **80**  
205 WT: **654**  
5/10/18 WT: **1280**  
12/4/18 WT: **1670**  
SCROTAL: **39**  
DISPOSITION: **8**

CL 1 DOMINO 105Y  
**R 105Y NORTH STAR 1B**  
R STARLETTE 201 (DOD)

R 54U NORTH STAR ER15X  
**KBR 15X RIBLET 392A**  
KB L1 DOMINETTE 051X

(CL 1 DOMINO 929W  
CL 1 DOMINETTE 9140W 1ET (DOD)  
CL 1 DOMINO 955W (CHB,SOD)  
R STARLETTE 037  
R 157K NORTH STAR 54U  
R STARLETTE ER867 (DOD)  
HH ADVANCE 8086U  
KB L1 DOMINETTE 620

CED: **4.2** BW: **3.5** WW: **58** YW: **93** M: **34** MG: **63**

*The 1B sons all come easy and can still compare to the power bulls. He is thick topped and clean made, very attractive.*



**Lot 62**

### KR 50B SUPER STAR 7148E

Reg. # 43824994 - DOB: 4/28/17

ACT. BW: **82**  
205 WT: **718**  
5/10/18 WT: **1325**  
12/4/18 WT: **1750**  
SCROTAL: **42**  
DISPOSITION: **6.5**

CL 1 DOMINO 0141 1ET (CHB)  
**R 0141 NORTH STAR 50B**  
R STARLETTE 458 (DOD)

R 29P NORTH STAR 48X  
**KR 48X RIBLET 393A**  
GO MS 102 DOMINO S155

(CL 1 DOMINO 860U (SOD)  
CL 1 DOMINETTE 475P  
CL 1 DOMINO 6107F (SOD)  
R SUPER LADY 440  
R 157K NORTH STAR 29P  
R STARLETTE 460 (DOD)  
CL1 DOMINO 102L 1ET  
GO MS EXCEL 8001

CED: **3.7** BW: **3.0** WW: **49** YW: **82** M: **29** MG: **54**

*A modest 82 lb. birth weight and still weaned off at over 700 lbs. The 50Bs are just packed full of muscle and growth.*

**Lot 63**

### KR 50B SUPER STAR 7156E

Reg. # 43825013 - DOB: 4/30/17

ACT. BW: **80**  
205 WT: **679**  
5/10/18 WT: **1430**  
12/4/18 WT: **1850**  
SCROTAL: **38**  
DISPOSITION: **6.5**

CL 1 DOMINO 0141 1ET (CHB)  
**R 0141 NORTH STAR 50B**  
R STARLETTE 458 (DOD)

R 157K NORTH STAR 45U (SOD)  
**KR 45U BELLE 106H**  
K LADY DOMINO 6168

(CL 1 DOMINO 860U (SOD)  
CL 1 DOMINETTE 475P  
CL 1 DOMINO 6107F (SOD)  
R SUPER LADY 440  
K 64H RIBSTONE LAD 157K (CHB,SOD)  
R STARLETTE 551 (DOD)  
K L1 ADVANCER 012  
K LADY DOMINO 091

CED: **7.7** BW: **3.0** WW: **58** YW: **109** M: **27** MG: **56**

*A very attractive 50B son with great depth of body and is backed by a good cow. He has a lot of pigment.*



# The Livestock Link

## How the Horse Race style auction works

To bid, please visit [www.TheLivestockLink.com](http://www.TheLivestockLink.com) and click on the "Auctions" tab. If you do not have an account, please click "Click Here to Register" in the User Login box and create an account. After that, click on the sale you would like to bid on. Read the Terms and Conditions, and after reading them, click "Click here if you agree." You can now bid.

The rules of this static auction are as follows:

- The auction will open on **January 18, 2019** and close on **Sunday, January 27, 2019 at 2:00 pm Central Time.**
- This auction is a Horse Race style auction, so **ALL LOTS** will be extended by 10 minutes if there is a bid on **ANY LOT** within the last 10 minutes until no more bids are placed. When no bids are placed in the last 10 minutes all lots will be closed simultaneously.
- Each lot will start at a floor price and will be bid up from that price.
- The lots will be bid up in standard increments. You may place a proxy bid. This feature will automatically bid for you (up to a maximum amount set by you) every time another bid is placed against you.

Please visit the site regularly and make sure you refresh the page often to keep up with the current bid. It is important to be online during the closing process so you can keep a close eye on your prospective lots.

If you have any questions concerning this online auction please contact:

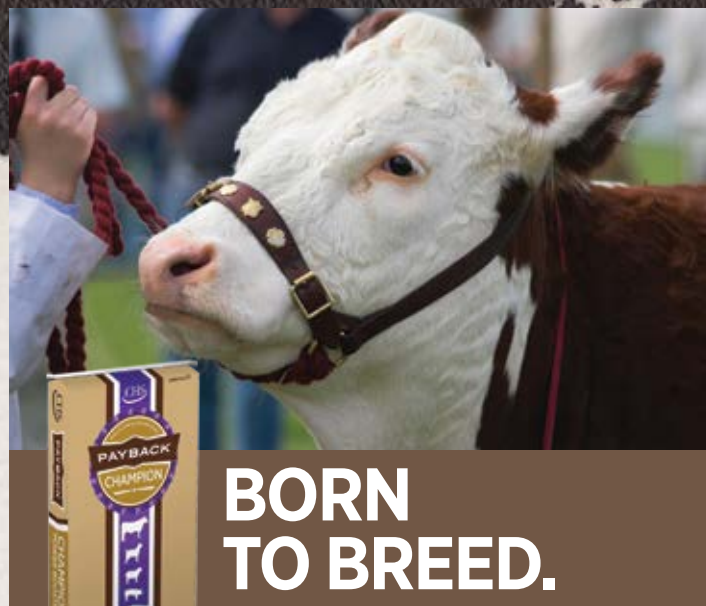
Aaron Friedt

The Livestock Link Online Sales Manager

Cell: (701) 590-9597

Email: [aaron@thelivestocklink.com](mailto:aaron@thelivestocklink.com)

You will receive an email when you are approved for bidding. All applications will be reviewed and processed promptly. You will receive a bidder number only after you have made a purchase in the sale, and that number will only be used at that sale. When the sale is completed, please contact the sale owner or manager for instructions of payment and delivery of your purchase.



Maximize the genetic potential of your breeding stock with CHS Payback Power Booster. Power Booster's protein and essential nutrients promote semen quality in bulls and fertility in your females. It stimulates appetite for excellent growth rate and reduces bloating and other digestive upsets that can compromise overall health.

For more information, contact (customize here).



© 2017 CHS Inc.

[paybacknutrition.com](http://paybacknutrition.com)

A BRAND OF CHS

## How to Create Your Account

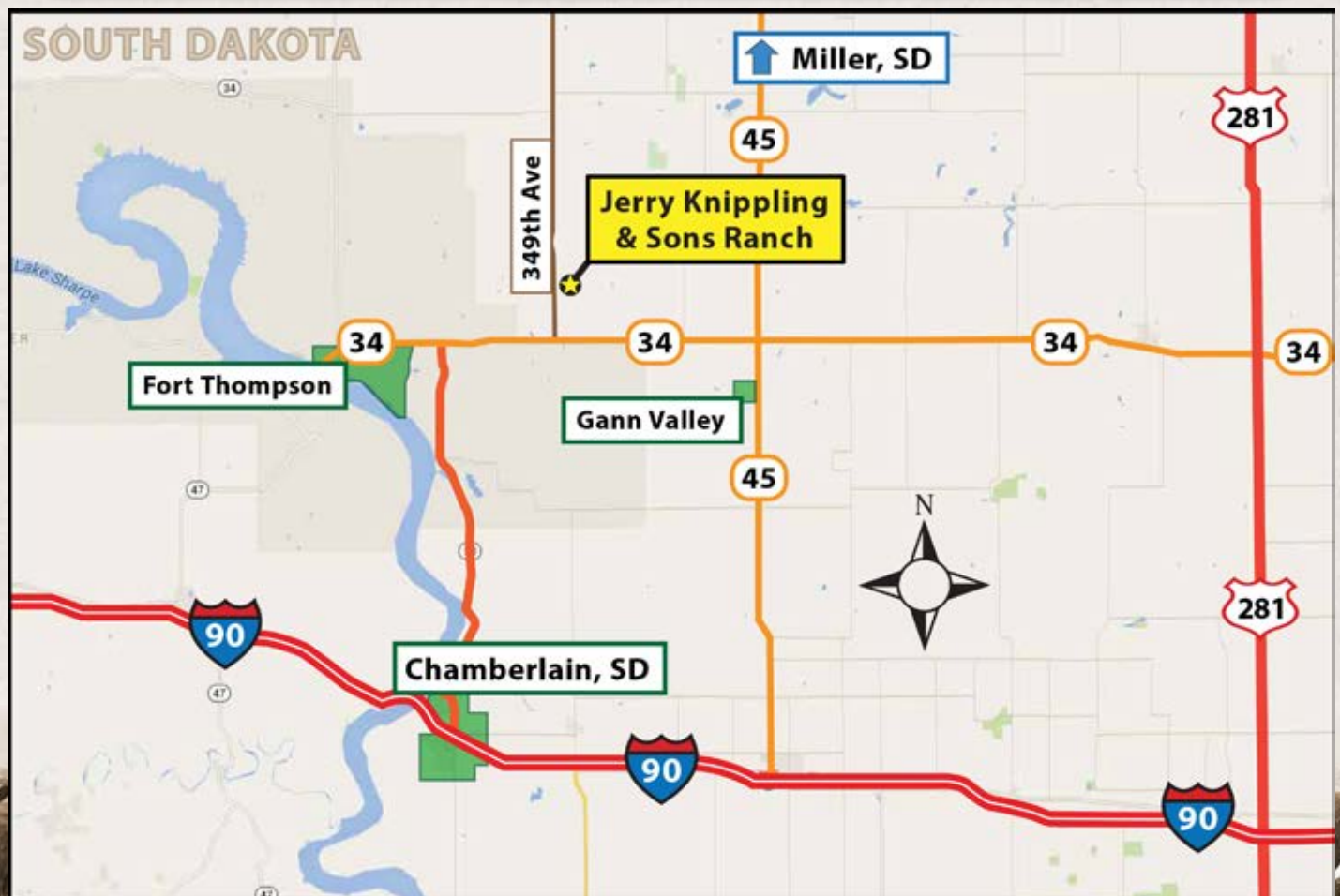
- Visit our website, [www.thelivestocklink.com](http://www.thelivestocklink.com)
- Click the "Auctions" tab.
- Click on "Click Here to Register."
- Enter your e-mail address and password, and fill out all your contact information.
- Fill out your Banking Information. If you are only viewing the sale and do not wish to bid, this information can be left blank.
- Check the checkbox at the bottom of the page that says "I'm not a robot" to prove you are a real person.
- Click "Register" at the bottom of the page.
- You will receive an email with a link to activate your account.
- **Please register to bid at least 24 hours in advance of the sale.**

## Questions?

→ *Contact Aaron Friedt at (701) 590-9597 or Jared Peterson at (605) 641-7573* ←

[www.TheLivestockLink.com](http://www.TheLivestockLink.com)



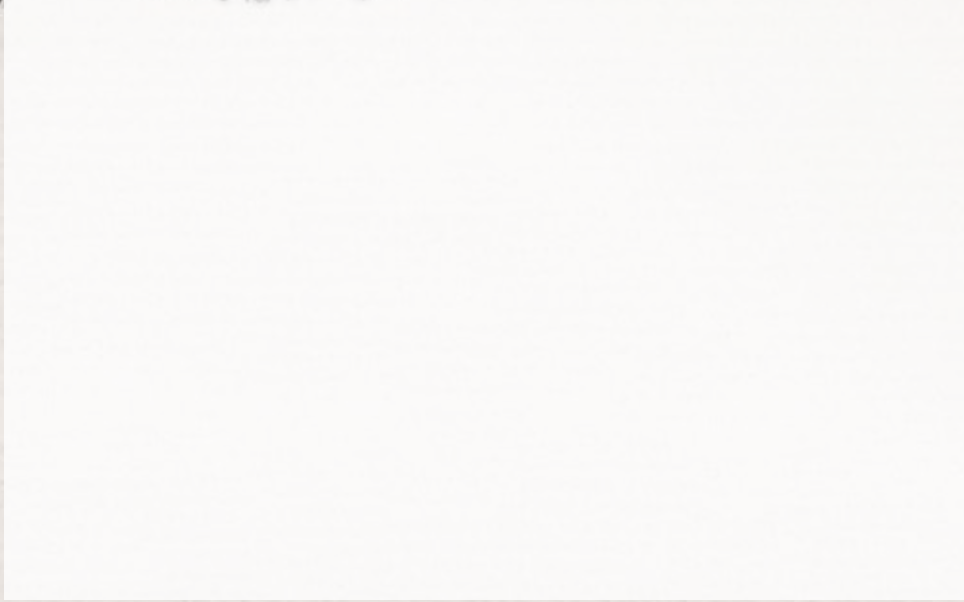




**Jerry Knippling & Sons LLC**  
34957 225th Street  
Gann Valley, SD 57341

FIRST CLASS  
US POSTAGE  
**PAID**  
Fargo, ND  
Permit No.684

Address Service Requested



**[www.KnipplingCattle.com](http://www.KnipplingCattle.com)**