

Leddy

HEREFORD & RED ANGUS



Sunday, February 22, 2015

1:30 p.m. • At Leddy Farm, Twin Brooks, SD

Leddy

HEREFORD & RED ANGUS

Annual Bull Sale

Sun., Feb. 22, 2015 • 1:30 PM CT
Leddy Ranch • Twin Brooks, SD

Contact Information

15293 473RD AVE • TWIN BROOKS, SD 57269

Wade, Lori, Rebecca, & Allison

605.949.0630

Gene

605.530.1659

Auctioneer Chisum Peterson | 605-730-4214

Livestock Reps Jim Scheel; *Cattle Business Weekly*
605-545-1521
Jeff Kapperman; *Tri-State Neighbor*
605-940-5104
Marc Hotchkiss; *Hereford America*
605-490-1513

Delivery We will deliver free of charge to a 200 mile radius of our ranch. Bulls will be kept until the 15th of April free of charge. At that time bulls will be Semen Tested and Delivered. If you need us to keep the bulls longer there will be a \$3/head/day fee.

Lunch Lunch will be served at 12:30 prior to sale start.

Liability Any person attending sale does so at his own risk, and we assume no liability, legal or otherwise, for any accident that may occur.

Catalog Material Special care has been taken to insure accuracy in the matter of EPDs, pedigrees, and other information included in this catalog. Any correction will be announced on sale day.

Semen Test All bulls will be Semen tested the first part of April. Bulls will be sold guaranteed to pass semen test. If a bull doesn't pass the semen test conducted by Dakota Valley Vet, Milbank, SD, 100% of your money will be returned. Bulls will also be given a pink eye and foot rot vaccination. If you wish to take your bull home sale day, you can deduct \$50 from purchase of bull. You must have your bull semen tested by your vet before the 1st of May, and notify us if he does not pass by this date.

Calving Ease Code (CE) (this is not a guarantee but a guide)
*** Can be used on all heifers and cows
** Can be used on larger framed heifers and cows
* Should be used on cows only

This sale will be broadcast live on the internet.

DVAuction
Broadcasting Real-Time Auctions

Real time bidding & proxy bidding available.

Please bring this catalog with you on sale day!

Welcome to our Bull and Female Sale

Leddys have been selling breeding stock since the early 1940's. Through all of those years we have never seen the Record High cattle prices like they are today. I believe the cow/calf man has as much profit potential now as ever before. Many of our customers have received a well deserved pay check for their calves. We know first hand as a family operation that the day to day work can be overwhelming at times, but well worth it when true profit is received.

Bulls were weaned the first part of September. They have been on a ration of silage, hay, stalks, earlage, and a vitamin and mineral pellet. Bulls are not pushed for maximum gain but rather optimum gain for good feet and legs. Bulls will be kept FREE until the 15th of April. At that time bulls will be Semen Tested and delivered FREE. Remember as you're selecting your next Herd bulls to keep in mind the potential of injury. Having an extra bull in the bull pen is always a good idea. It's cheap insurance to get those cows bred in a short period and profit from this high calf market. We feel the A.I. sires that are represented are the best in the country. We select for calving ease while not sacrificing growth. We calve in a 60 day calving window and cull all open females. This allows us to keep only the fertile females, which we all know is where the money is made.

One big change from our past sales is the location. Find directions to Ranch on page 16. The sale will also be broadcast on DVAuction. We hope you can come the day of the sale but if something comes up or the roads are bad in your area. Having the ability to bid on line is a nice back up plan.

This year we will also be offering a group of 30 home raised replacement heifers.

Thanks again and hope to see you at the sale.





Red SSS Oly 554T

RED SSS OLY 554T

Reg.: 1411448

BD: 02/12/2006

BW: 68

WW: 761

MLK CRK CUB 722
RED CROWFOOT OLE'S OSCAR
 RED CROWFOOT OMEGA 9179J

5L NORSEMAN KING 2291
RED SSS GOLD EDGE 77R
 RED SSS GOLD EDBE 714F

GLACIER CUB 446
 MLK CRK LAKOTA 152-HOBO
 RED PRICE 631
 RED OMEGA 7456

VGW KING OF THE WEST
 NORSEMAN 1312 PJM
 SSS BOOMER 803B
 RED SSS GOLD EDGE 233C

CED	-3
BW	-6.7
WW	63
YW	105
Milk	15
TM	47
Marb	0.57

AI Sire from Accelerated Genetics • Sleep at night Calving ease • Both Sons and Daughters are outstanding



Beckton Epic R397 K

BECKTON EPIC R397 K

Reg.: 1042135

BD: 03/19/2005

BW: 78

WW: 638

YW: 1171

BECKTON EPIC D404
BECKTON EPIC K F075
 BECKTON BELGA D483 KR

BECKTON JULIAN GG B571
BECKTON KIT F468 JL
 BECKTON KIT A517 NP

BECKTON SAGA KJ B702
 BECKTON KURUBA B508 PC
 BECKTON KAISER FD 9253
 BECKTON BELGA A036 MB

BKT JULIAN 7526 G
 BKT MARTA 9A13 JL
 BKT NEPTUNE 8460 R
 BCHRCH KIT935 35L416

CED	-2
BW	-0.2
WW	72
YW	120
Milk	17
TM	53
Marb	0.67

AI Sire from ABS • Huge Spread Bull • Performance with moderate birth wt • Out Cross Sire



HXC Conquest 4405P

HXC CONQUEST 4405P

Reg.: 975924

BD: 01/25/2004	BW: 69	WW: 664	YW: 1285	CED	17
BECKTON JULIAN GG B571 BKT JULIAN 7526 G BKT MARTA 9A13 JL				BW	-6.0
HXC ELLIE MAY MA638 BFCK CHEROKEE CNYN 4912 HXC 529E				WW	61
BECKTON JULIAN 6592 BKT BELGA 6746 GS BKT JULIAN 7526 G BKT MARTA 6498 XM				YW	98
BUF CRK CHF 824-1658 MRM 1431 8611 9109 LMAN KING ROB 8621 HXC 329C				Milk	27
				TM	51
				Marb	0.69

AI Sire from Accelerated Genetics • Curve bending EPDs • Daughters are tremendous • A Proven calving ease Sire



GMAR Trilogy 0226

GMRA TRILOGY 0226

Reg.: 1367533

BD: 01/14/2010	BW: 74	WW: 646	YW: 1154	CED	9
MESSMER PACKER S008 MESSMER JOSHUA 019P MESSMER MILLIE 124P				BW	-4.5
GMRA LAKOTA 625 GLACIER CHATEAU 744 GMRA LAKOTA 380				WW	75
BECKTON JULIAN GG B571 MESSMER PANDORA M186 VGW TOP PICK 130 MESSMER MILLIE 9416				YW	118
LMAN KING ROB 8621 GLACIER REBALA BASIN HOBO 79E GMRA LAKOTA 527				Milk	15
				TM	
				Marb	0.75

AI Sire from Accelerated Genetics • Messmer Packer son with added Maternal numbers • Ideal EPD line • moderate frame



RHRA Gold Rush 402 17T

RHRA GOLD RUSH 402 17T

Reg.: 1174416

BD: 03/07/2007	BW: 79	WW: 723	YW: 1198	CE	1
LCHMN GOLD ROBBER 1909E		LMAN KING ROB 8621		BW	-0.8
CCF GOLD BAR 0251		LEACHMAN LARKABA 6384		WW	57
GMRA PRINCESS 720		GMRA EBV 266		YW	100
		GMRA PRINCESS 910		Milk	35
LCC CHEYENNE B221L		BFCK CHEROKEE CNYN 4912		TM	
RHRA MATTIE CHEY 019 402P		HXC 701G		Marb	0.52
RHRA ROB 734 019		BIEBER ROB ROY 6990			
		RHRA MATTIE 541			

AI Sire from Accelerated Genetics • Moderate frame with thickness • Brought into add easy fleshing cattle

BIEBER MAKIN HAY 9913

Reg.: 973797

BD: 05/06/2004	BW: 81	WW: 649	YW: 1161	CE	9
BJR MAKE MY DAY 981		BJR EASY RIDER 781		BW	-1.7
BIEBER MAKE MIMI 7249		BJR TOW KANA 117-710		WW	75
BIEBER SIRENA 6708		BIEBER IMPACT 4399		YW	124
		BIEBER MIMI 4227		Milk	20
BIEBER TITAN 6894		LCHMN VIGOR 1000D		TM	
BIEBER ADELLE 8958		BIEBER KANNA 5983		Marb	0.49
BIEBER ADELLE 7226		BJR MAKE MY DAY 981			
		BIEBER ADELLE 6442			

AI Sire from Accelerated Genetics • Big EPD Spread • Moderate birth weight calves

LRA WELLINGTON 893

Reg.: 1228203

BD: 03/14/2008	BW: 73	WW: 740	YW: 1291	CE	6
TR JULIAN LT151		BECKTON JULIAN GG B571		BW	-2.7
LCOC WELLINGTON A170R		MS GEOMETRIC 917		WW	64
TR JULIAN LT151		GLACIER LOGAN 210		YW	91
		LEACHMAN PRINCESS H1041		Milk	22
LSF LIGHT CANYON 3000N		BFCK CHEROKEE CNYN 4912		TM	
RHRA CHRIS LC 117 541R		LSF TWILIGHT F608 J1425		Marb	0.71
RHRA CHRIS MMD 916		BJR MAKE MY DAY 981			
		RHRA FLASH 623 916			

Extremely Easy Keeping Herd Bull • As good as any AI Sire out there



BIEBER MAKIN HAY 9913



RED ANGUS BULLS

Leddy
408 LRA CONQUEST 408

Reg: 1688804

BD: 02/19/2014

BW: 77

WW: 727

BECKTON JULIAN GG B571
HXC CONQUEST 4405P
HXC ELLIE MAY MA638

RED SIX MILE SAKIC 832S
LRA MS SAKIC 228
LRA MS VACATION 6127

BKT JULIAN 7526 G
BKT MARTA 9A13 JL
BFCK CHEROKEE CNYN 4912
HXC 529E

RED SIX MILE AVIATOR 217P
RED SIX MILE SIERA 257P
2RJL DREAM VACATION P549
LRA MS HI HO 444

CE Code	★★★
BW	-3.7
WW	61
YW	99
Milk	18
TM	48

Top Conquest son from an outstanding Sakic two year old • Calving ease and Performance • Tremendous rib shape and muscle

Leddy
414 LRA EPIC 414

Reg: 1688791

BD: 02/21/2014

BW: 79

WW: 633

BECKTON EPIC K F075
BECKTON EPIC R397 K
BECKTON KIT F468 JL

LRA MONU 690
LRA MS MONU 021
RHRA LIONESS ROB 633F 339

BECKTON EPIC D404
BECKTON BELGA D483 KR
BECKTON JULIAN GG B571
BECKTON KIT A517 NP

BJR MONU 4X-303
MISS L20-S63
BIEBER ROB ROY 6990
RHRA LIONESS 17 479 633

CE Code	★★
BW	-1.5
WW	55
YW	89
Milk	20
TM	47

An Epic son from a moderate frame cow • Her three calves have an avg. birth wt. of 73 lbs



418 LRA OLY 418

Reg: 1688814

BD: 02/22/2014

BW: 82

WW: 754

RED SSS OLY 554T

RED CROWFOOT OLE'S OSCAR
RED SSS GOLD EDGE 77R

LRA MS CONQUEST 277

HXC CONQUEST 4405P
LRA MS MONU 068

MLK CRK CUB 722
RED CROWFOOT OMEGA 9179J
5L NORSEMAN KING 2291
RED SSS GOLD EDBE 714F

BECKTON JULIAN GG B571
HXC ELLIE MAY MA638
LRA MONU 690
R3B RED ICE 0605

CE Code	★★★
BW	-3.4
WW	67
YW	111
Milk	16
TM	49

Calving ease on both sides of his pedigree • Big Spread on his EPD's BW -3.4 to +111 on YW

421 LRA MAKIN HAY 421

Reg: 1688760

BD: 02/23/2014

BW: 85

WW: 736

BIEBER MAKIN HAY 9913

BIEBER MAKE MIMI 7249
BIEBER ADELLE 8958

LRA MS DREAM VACATION 808

2R1L DREAM VACATION P549
LRA MS. MARIAS 150

BJR MAKE MY DAY 981
BIEBER SIRENA 6708
BIEBER TITAN 6894
BIEBER ADELLE 7226

BROWN VACATION H7106
RRM MISS LARK 6866 L223
LRA MARIS 9809
MISS N73-542

CE Code	★
BW	-0.5
WW	65
YW	110
Milk	19
TM	52

Performance bull, backed by a proven producer • 5 calves from his dam have a WW ratio of 105! • Born on the morning of last year's sale and I knew at birth he would make this year's sale.

425 LRA OLY 425

Reg: 1688815

BD: 02/24/2014

BW: 76

WW: 697

RED SSS OLY 554T

RED CROWFOOT OLE'S OSCAR
RED SSS GOLD EDGE 77R

LRA MS CONQUEST 226

HXC CONQUEST 4405P
LRA MS WELLINGTON 0116

MLK CRK CUB 722
RED CROWFOOT OMEGA 9179J
5L NORSEMAN KING 2291
RED SSS GOLD EDBE 714F

BECKTON JULIAN GG B571
HXC ELLIE MAY MA638
LRA WELLINGTON 893
LRA MS DREAM VACATION 880

CE Code	★★★
BW	-5.6
WW	61
YW	101
Milk	18
TM	48

Top 4% for BW EPD! • Another Oly x Conquest both proven calving ease A.I. sires • Three star calving ease

*Leddy***426 LRA TRILOGY 426**

Reg: 1688781

BD: 02/24/2014

BW: 78

WW: 653

MESSMER PACKER S008
GMRA TRILOGY 0226
 GMRA LAKOTA 625

MESSMER JOSHUA 019P
 MESSMER MILLIE 124P
 GLACIER CHATEAU 744
 GMRA LAKOTA 380

LRA MAKE MY DAY 722
LRA MS MAKE MY DAY 940
 LRA MS VACATION 703

BJR MAKE MY DAY 981
 LRA MS. VENDETTA 997
 2RJL DREAM VACATION P549
 LRA MS. RIBEYE 548

CE Code	★★★
BW	-3.6
WW	54
YW	81
Milk	16
TM	42

Three star calving ease bull • Dam has 4 calves with an avg. Birth wt. of 75 pounds • Moderate frame with style

*Leddy***439 LRA GOLD RUSH 439**

Reg: 1688782

BD: 02/27/2014

BW: 75

WW: 621

CCF GOLD BAR 0251
RHRA GOLD RUSH 402 17T
 RHRA MATTIE CHEY 019 402P

LCHMN GOLD ROBBER 1909E
 GMRA PRINCESS 720
 LCC CHEYENNE B221L
 RHRA ROB 734 019

LRA MONU 690
LRA MS MONU 051
 LRA MS. RIBEYE 548

BJR MONU 4X-303
 MISS L20-S63
 LCC RIBEYE A133L
 LRA MS. MARIAS

CE Code	★★★
BW	-2.4
WW	48
YW	76
Milk	21
TM	45

Medium frame Gold Rush son • Light birth wt. bred in • Should work on heifers

*Leddy***442 RLL OLY 442**

Reg: 1688830

BD: 02/27/2014

BW: 76

WW: 645

RED CROWFOOT OLE'S OSCAR
RED SSS OLY 554T
 RED SSS GOLD EDGE 77R

MLK CRK CUB 722
 RED CROWFOOT OMEGA 9179J
 5L NORSEMAN KING 2291
 RED SSS GOLD EDBE 714F

BIEBER MAKIN HAY 9913
LRA MS MAKIN HAY 207
 LRA MS SAKIC 904

BIEBER MAKE MIMI 7249
 BIEBER ADELLE 8958
 RED SIX MILE SAKIC 8325
 MJ MS CANYON 710 109P

CE Code	★★★
BW	-5.4
WW	54
YW	90
Milk	18
TM	45

A smooth shoulder, attractive made Oly son • Combine his -5.4 BW EPD and a 76 pound birth wt. • Three star calving ease

*Leddy***443 LRA CONQUEST 443**

Reg: 1688755

BD: 02/27/2014

BW: 87

WW: 736

BECKTON JULIAN GG B571
HXC CONQUEST 4405P
 HXC ELLIE MAY MA638

BKT JULIAN 7526 G
 BKT MARTA 9A13 JL
 BFCK CHEROKEE CNYN 4912
 HXC 529E

2RJL DREAM VACATION P549
LRA MS VACATION 735
 LRA MS SLAMMER 2120

BROWN VACATION H7106
 RRM MISS LARK 6866 L223
 SEXTON'S SLAMMER 9836
 MISS P114-S14

CE Code	★
BW	-0.8
WW	67
YW	110
Milk	23
TM	56

More of a Performance type bull • YW EPD of +110 ranks among the top percentile of the breed • All three of her bulls have made the bull pen

RED ANGUS BULLS



Leddy
445 LRA OLY 445

Reg: 1688813

BD: 02/28/2014

BW: 92

WW: 796

RED CROWFOOT OLE'S OSCAR
RED SSS OLY 554T
RED SSS GOLD EDGE 77R

HXC CONQUEST 4405P
LRA MS CONQUEST 216
LRA MS ADVANCE 0132

MLK CRK CUB 722
RED CROWFOOT OMEGA 9179J
5L NORSEMAN KING 2291
RED SSS GOLD EDBE 714F

BECKTON JULIAN GG B571
HXC ELLIE MAY MA638
LRA ADVANCE 8142
RHRA MATTIE 27 108 524R

CE Code	★
BW	-1.5
WW	71
YW	114
Milk	18
TM	53

Dam is a hard working Conquest daughter that gave everything to her first calf • A little more birth wt. than one should expect from his pedigree • Highest weaning weight calf from our two year old heifer group



Leddy
447 LRA TRILOGY 447

Reg: 1688793

BD: 02/28/2014

BW: 79

WW: 740

MESSMER PACKER S008
GMRA TRILOGY 0226
GMRA LAKOTA 625

LRA MONU 690
LRA MS MONU 0124
MJ MISS JUDY 92P

MESSMER JOSHUA 019P
MESSMER MILLIE 124P
GLACIER CHATEAU 744
GMRA LAKOTA 380

BJR MONU 4X-303
MISS L20-S63
PFFR CANYON 710
MJ MISS OSCAR 708

CE Code	★★
BW	-2.2
WW	68
YW	107
Milk	19
TM	52

A very attractive, easy going bull • Ideal set of EPD's • Low BW and Performance • Comes from a proven Cow Family

450 LRA OLY 450

Reg: 1688816

BD: 03/01/2014

BW: 74

WW: 713

RED SSS OLY 554T
RED CROWFOOT OLE'S OSCAR
RED SSS GOLD EDGE 77R

MLK CRK CUB 722
RED CROWFOOT OMEGA 9179J
5L NORSEMAN KING 2291
RED SSS GOLD EDBE 714F

LRA MS CONQUEST 236
HXC CONQUEST 4405P
LRA MS WELLINGTON 0131

BECKTON JULIAN GG B571
HXC ELLIE MAY MA638
LRA WELLINGTON 893
LRA MS HI HO 444

CE Code	★★★
BW	-6.0
WW	62
YW	102
Milk	16
TM	47

Sleep easy calving ease • Note the BW EPD -6.0 (top 3% of breed) • Make sure you mark him down, if you have a group of heifers to breed



RED ANGUS BULLS

453 LRA EPIC 453

Reg: 1688179

BD: 03/01/2014

BW: 89

WW: 740

BECKTON EPIC R397 K
BECKTON EPIC K F075
BECKTON KIT F468 JL

BECKTON EPIC D404
BECKTON BELGA D483 KR
BECKTON JULIAN GG B571
BECKTON KIT A517 NP

LRA MS DREAM VACATION 880
2RJL DREAM VACATION P549
LRA MS. MONU 574

BROWN VACATION H7106
RRM MISS LARK 6866 L223
BJR MONU 4X-303
LRA MS. VENDETTA 937

CE Code	★
BW	0.9
WW	69
YW	116
Milk	20
TM	54

True Herd Bull! • An Epic son with a Ton of Performance • Top 5 % of breed for YW EPD • 5 calves from his dam have a WW ratio of 110! • 3 daughters in our herd

456 LRA GOLD RUSH 456

Reg: 1688757

BD: 03/02/2014

BW: 86

WW: 635

RHRA GOLD RUSH 402 17T
CCF GOLD BAR 0251
RHRA MATTIE CHEY 019 402P

LCHMN GOLD ROBBER 1909E
GMRA PRINCESS 720
LCC CHEYENNE B221L
RHRA ROB 734 019

LRA MS VACATION 738
2RJL DREAM VACATION P549
LRA MS. NO EQUAL 5100

BROWN VACATION H7106
RRM MISS LARK 6866 L223
SEXTON'S EQUAL 133
LRA MS. HI HO 340

CE Code	★★
BW	-0.5
WW	53
YW	88
Milk	21
TM	48

Moderate frame, smooth made bull with a balanced set of EPD's • 6 calves from his hard working dam have an avg. 81 pounds at birth

462 LRA GOLD RUSH 462

Reg: 1688789

BD: 03/03/2014

BW: 80

WW: 627

CCF GOLD BAR 0251
RHRA GOLD RUSH 402 17T
 RHRA MATTIE CHEY 019 402P

LCHMN GOLD ROBBER 1909E
 GMRA PRINCESS 720
 LCC CHEYENNE B221L
 RHRA ROB 734 019

LRA MONU 690
LRA MS MONU 089
 LRA MS. VENDETTA 997

BJR MONU 4X-303
 MISS L20-S63
 ODP VENDETTA 2304
 MISS 41-S97

CE Code	★★★
BW	-1.4
WW	46
YW	73
Milk	22
TM	45

Another Gold Rush son with a moderate BW • Very consistent in their type and kind



465 LRA EPIC 465

Reg: 1688785

BD: 03/04/2014

BW: 83

WW: 731

BECKTON EPIC K F075
BECKTON EPIC R397 K
 BECKTON KIT F468 JL

BECKTON EPIC D404
 BECKTON BELGA D483 KR
 BECKTON JULIAN GG B571
 BECKTON KIT A517 NP

FOSTER'S WEST RIVER 47
LRA MS WEST RIVER 018
 LRA MS WELLINGTON 820

GLACIER CHATEAU 744
 BADLANDS CEDAR 922
 LCOC WELLINGTON A170R
 RHRA JEWEL 745 606 228

CE Code	★★
BW	-1.0
WW	68
YW	116
Milk	24
TM	58

A bull that surfaces to the Top of the class • Very correct made bull with depth of body and thickness, yet smooth enough through the shoulders to use on heifers • Maternal brother sold last year to Lee Nelson

470 LRA GOLD RUSH 470

Reg: 1688750

BD: 03/06/2014

BW: 88

WW: 655

CCF GOLD BAR 0251
RHRA GOLD RUSH 402 17T
 RHRA MATTIE CHEY 019 402P

LCHMN GOLD ROBBER 1909E
 GMRA PRINCESS 720
 LCC CHEYENNE B221L
 RHRA ROB 734 019

BJR MONU 4X-303
LRA MS. MONU 574
 LRA MS. VENDETTA 937

RED SSS MONU4X 237C
 RCRA SAMANTHA
 ODP VENDETTA 2304
 MISS N73-S42

CE Code	★
BW	0.3
WW	62
YW	103
Milk	23
TM	54

YW EPD over 100! • Dam is a 10 year old that has been a great producer • Dam is also the grandmother to Lot 453

477 LRA OLY 477

Reg: 1688818

BD: 03/08/2014

BW: 80

WW: 661

RED CROWFOOT OLE'S OSCAR
RED SSS OLY 554T
 RED SSS GOLD EDGE 77R

MESSMER PACKER S008
LRA MS PACKER 256
 LRA MS. NO EQUAL 4118

MLK CRK CUB 722
 RED CROWFOOT OMEGA 9179J
 5L NORSEMAN KING 2291
 RED SSS GOLD EDBE 714F

MESSMER JOSHUA 019P
 MESSMER MILLIE 124P
 SEXTON'S EQUAL 133
 LRA MS SLAMMER 250

CE Code	★★★
BW	-4.1
WW	62
YW	99
Milk	12
TM	42

Oly three star calving ease bull • Low maintenance cow family • Mother is a nice Packer two year old

482 LRA TRILOGY 482

Reg: 1688787

BD: 03/10/2014

BW: 80

WW: 688

MESSMER PACKER S008
GMRA TRILOGY 0226
 GMRA LAKOTA 625

LRA WELLINGTON 893
LRA MS WELLINGTON 0116
 LRA MS DREAM VACATION 880

MESSMER JOSHUA 019P
 MESSMER MILLIE 124P
 GLACIER CHATEAU 744
 GMRA LAKOTA 380
 LCOC WELLINGTON A170R
 RHRA CHRIS LC 117 541R
 2RJL DREAM VACATION P549
 LRA MS. MONU 574

CE Code	★★
BW	-2.5
WW	70
YW	110
Milk	18
TM	53

One of the Best set of EPD's in the sale • Carcass, low birth weight, and performance • Same cow family as lot 453



496 LRA MAKIN HAY 496

Reg: 1688756

BD: 03/15/2014

BW: 87

WW: 688

BIEBER MAKE MIMI 7249
BIEBER MAKIN HAY 9913
 BIEBER ADELLE 8958

2RJL DREAM VACATION P549
LRA MS VACATION 703
 LRA MS. RIBEYE 548

BJR MAKE MY DAY 981
 BIEBER SIRENA 6708
 BIEBER TITAN 6894
 BIEBER ADELLE 7226
 BROWN VACATION H7106
 RRM MISS LARK 6866 L223
 LCC RIBEYE A133L
 LRA MS. MARIAS

CE Code	★
BW	-0.6
WW	60
YW	95
Milk	19
TM	49

6 calves from his dam have a WW ratio of 105 • She has produced multiple bulls for us, including this stylish Makin Hay Son

RED ANGUS BULLS

497 LRA WELLINGTON 497

Reg: 1688794

BD: 03/15/2014

BW: 82

WW: 667

LCOC WELLINGTON A170R
LRA WELLINGTON 893
RHRA CHRIS LC 117 541R

BIEBER MAKIN HAY 9913
LRA MS MAKIN HAY 128
LRA MS. RIBEYE 548

TR JULIAN LT151
LCC PRINCESS K1275
LSF LIGHT CANYON 3000N
RHRA CHRIS MMD 916

BIEBER MAKE MIMI 7249
BIEBER ADELLE 8958
LCC RIBEYE A133L
LRA MS. MARIAS

CE Code	★★
BW	-1.0
WW	64
YW	95
Milk	20
TM	52

Two star calving ease bull with Makin Hay Dam that has a nice udder • Should leave a quality set of replacements



4101 LRA WELLINGTON 4101

Reg: 1688762

BD: 03/17/2014

BW: 80

WW: 725

LCOC WELLINGTON A170R
LRA WELLINGTON 893
RHRA CHRIS LC 117 541R

LRA MONU 690
LRA MS MONU 866
LRA MS. HI HO 320

TR JULIAN LT151
LCC PRINCESS K1275
LSF LIGHT CANYON 3000N
RHRA CHRIS MMD 916

BJR MONU 4X-303
MISS L20-S63
RRM HIGH STRAIGHT L201
MISS L84-S39

CE Code	★★
BW	-2.2
WW	53
YW	81
Milk	20
TM	46

Much like his sire, Moderate frame and easy keeping • If you're looking for a bull to build a cow herd, here he is! • Mother is an ideal Red Angus cow

4102 LRA WELLINGTON 4102

Reg: 1688798

BD: 03/20/2014

BW: 73

WW: 694

LCOC WELLINGTON A170R
LRA WELLINGTON 893
RHRA CHRIS LC 117 541R

HXC CONQUEST 4405P
LRA MS CONQUEST 150
LRA MS VACATION 937

TR JULIAN LT151
LCC PRINCESS K1275
LSF LIGHT CANYON 3000N
RHRA CHRIS MMD 916

BECKTON JULIAN GG B571
HXC ELLIE MAY MA638
2RJL DREAM VACATION P549
RHRA ZEBLINE 27 415 540R

CE Code	★★★
BW	-3.5
WW	61
YW	93
Milk	21
TM	52

Three star calving ease bull • Conquest dam with two calves that have an average birth weight of 70 pounds



Leddy
4108 RLL WELLINGTON 4108

Reg: 1688823

BD: 03/23/2014	BW: 78	WW: 711
LCOC WELLINGTON A170R LRA WELLINGTON 893 RHRA CHRIS LC 117 541R		TR JULIAN LT151 LCC PRINCESS K1275 LSF LIGHT CANYON 3000N RHRA CHRIS MMD 916
RED SIX MILE SAKIC 832S LRA MS SAKIC 912 RHRA STORMY SUE HAWK 368 516		RED SIX MILE AVIATOR 217P RED SIX MILE SIERA 257P RHRA HAWK 946 6 RHRA STORMY SUE HIC 026 368

CE Code	★★★
BW	-2.6
WW	62
YW	90
Milk	22
TM	53

Four calves from this outstanding Sakic cow have an average BW of 77 lbs. and a WW ratio of 106! • 3rd bull to make the bull pen • Dams other calf was a show heifer for one of my daughters • 4108 is made right in so many ways

Leddy
4114 LRA WELLINGTON 4114

Reg: 1688751

BD: 03/26/2014	BW: 74	WW: 686
LCOC WELLINGTON A170R LRA WELLINGTON 893 RHRA CHRIS LC 117 541R		TR JULIAN LT151 LCC PRINCESS K1275 LSF LIGHT CANYON 3000N RHRA CHRIS MMD 916
LSF LIGHT CANYON 3000N RHRA CHRIS LC 117 541R RHRA CHRIS MMD 916		BFCR CHEROKEE CNYN 4912 LSF TWILIGHT F608 J1425 BJR MAKE MY DAY 981 RHRA FLASH 623 916

CE Code	★★★
BW	-4.1
WW	58
YW	86
Milk	23
TM	52

-4.1 BW EPD and a 79 lb BW • Calving ease deluxe • Backed by one of our best cows

Leddy
4117 RLL WELLINGTON 4117

Reg: 1688829

BD: 03/27/2014	BW: 82	WW: 726
LCOC WELLINGTON A170R LRA WELLINGTON 893 RHRA CHRIS LC 117 541R		TR JULIAN LT151 LCC PRINCESS K1275 LSF LIGHT CANYON 3000N RHRA CHRIS MMD 916
HXC CONQUEST 4405P RLL PRUE 144 LRA MS VACATION 9135		BECKTON JULIAN GG B571 HXC ELLIE MAY MA638 2RJL DREAM VACATION P549 RHRA CHRIS LC 117 541R

CE Code	★★
BW	-1.6
WW	71
YW	108
Milk	21
TM	57

Maternal brother was one of the Top Sellers last year • Second bull that made the sale, from this nice maternal Conquest daughter

RED ANGUS BULLS



TH 223 71L Victor 75T

TH 223 71L VICTOR 755T

Polled
Reg: 42800887

BD: 02/02/0007 BW: 38/367 WW: 28/294 YW: 3/40

HRP THM VICTOR 109W 9329
DRF JWR PRINCE VICTOR 711
RHF 964 VICTRA 4057

NJW 1Y WRANGLER 19D
KBCR 19D DOMINETTE 223
KBCR 631 DOMINETTE 066

BTF FORAGE FINDER 109W
TMF VINDY 451
RHF VICTOR 266 964
PAF VICTORIA 2J85

CIRCLE-D WRANGLER 832W
NJW FROSTY 1Y
KBCR B46 NEW DOM 631
KBCR 1D DOMINETTE 702

CED	3.3
BW	1.7
WW	58
YW	97
Milk	32
M&G	61
Marb	0.46

All Sire from Accelerated Genetics • 3/4 brother to Victor 719T • Outstanding set of EPD's • His daughters are near ideal • Sons are deep ribbed



Boyd Worldwide 9050 ET

BOYD WORLDWIDE 9050 ET

Polled
Reg: 42982024

BD: 02/22/0009 BW: 161/976 WW: 128/805 YW: 49/309

KCF BENNETT 3008 M326
SHF RIB EYE M326 R117
HVH MISS HUDSON 83K 8M

FELTONS LEGEND 242
MSU TCF RACHAEL 22S ET
MSU TCF RACHAEL ET 54N

RRH MR FELT 3008
KCF MISS 459 F284
MSU MF HUDSON 19H
SUN VINDY MISS 83K

FELTONS DOMINO 774
FELTONS G15
REMITALL ONLINE 122L
HH MISS ADV 786G 1ET

CED	8.6
BW	-1.2
WW	44
YW	60
Milk	31
M&G	53
Marb	0.21

All Sire from Genex • Calving Ease Specialist • SHF RIB EYE M326 R117 Son



TH 122 711 VICTOR 719T

Polled
Reg.: 42800895

BD: 01/24/2007

HRP THM VICTOR 109W 9329
DRF JWR PRINCE VICTOR 711
RHF 964 VICTRA 4057

NJW 1Y WRANGLER 19D
KBCR 19D DOMINETTE 122
KBCR DOMINETTE 9112

BTF FORAGE FINDER 109W
TMF VINDY 451
RHF VICTOR 266 964
PAF VICTORIA 2J85

CIRCLE-D WRANGLER 832W
NJW FROSTY 1Y
KBCR 434V TRADER 535
KBCR A58 DOMINETTE 523

CE	7.7
BW	0.2
WW	64
YW	89
Milk	27
M&G	59
Marb	-0.07

The #2 Registered bull in the Breed • Noted for his curve bending EPDs • An Extraordinary Group of bulls Sired by him • AI Sire from Genex



MSU TCF Revolution 4R

MSU TCF REVOLUTION 4R

Polled
Reg.: 42593689

BD: 01/04/2005

FELTONS DOMINO 774
FELTONS LEGEND 242
FELTONS G15

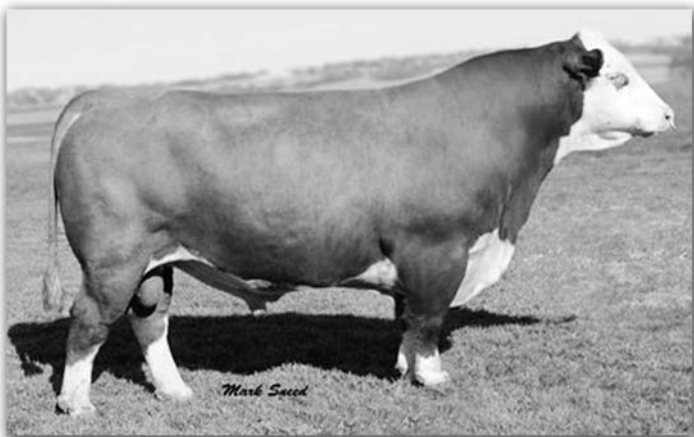
REMITALL ONLINE 122L
MSU TCF RACHAEL ET 54N
HH MISS ADV 786G 1ET

OXH DOMINO 7002
FELTONS B72
FELTONS 549
FELTONS B32

REMITALL EMBRACER 8E
REMITALL CATALINA 24H
CL 1 DOMINO 500E
HH MISS ADVANCE 251B

CE	3.4
BW	2.7
WW	69
YW	108
Milk	31
M&G	65
Marb	0.08

Curve bending sire whose progeny are sought after • Moderate birth weight with performance • The #1 Registered bull in the Breed • AI Sire from Genex



Schu-Lar On Target 22S

SCHU-LAR ON TARGET 22S

Polled
Reg.: 42669011

BD: 02/06/2006

RRH MR FELT 3008
SCHU-LAR 5N OF 9L 3008
SCHU-LAR 9L OF 1F 821C

KPH PHASE 121
SCHU-LAR 208 OF 1H 121 ET
SCHU-LAR 1H OF 1F 597

FELTONS 517
RRH MS VICT 6191
EF F524 FELLIS 821C
SCHU-LAR 1F OF 26C 517

TJ PHASE III
KPH VICKY R40 833
FELTONS MATTHEW 597
SCHU-LAR 1F OF 26C 517

CED	5.2
BW	2.6
WW	69
YW	120
Milk	22
M&G	57
Marb	0.26

Moderate frame bull from Accelerated Genetics • Calving ease and Exceptional daughters

DIRECTIONS TO LEDDY FARM:

Option A

From the junction of Hwy 15 and Hwy 12 go 6 miles west on Hwy 12. Turn south on 472nd Ave. (this is a blacktop road notice Big West-Con elevator is on the east side of this road) Go 4 miles south on 472nd Ave. Turn East on 153rd St. and go one mile East.



Option B

From the junction of Hwy 15 and Hwy 12 go 4 miles south on Hwy 15. Turn West on 153rd St. (gravel road) go 5 miles west.



Directions from Watertown, SD

Head north on I29 to exit number 193. Turn East on to SD Hwy 20 and travel east for 15 miles. Turn north on to 472nd and go 4 miles north. Then turn East on to 153rd St. and go one mile east.

417 LH REVOLUTION 417

Polled
Reg: 43517502

BD: 02/22/2014

BW: 77

WW: 605

FELTONS LEGEND 242
MSU TCF REVOLUTION 4R
MSU TCF RACHAEL ET 54N

FELTONS DOMINO 774
FELTONS G15
REMITALL ONLINE 122L
HH MISS ADV 786G 1ET

SHF RIB EYE M326 R117
LH MS RIB EYE 111
LH MS TRADITION 5136

KCF BENNETT 3008 M326
HVH MISS HUDSON 83K 8M
BAR JZ SABRE 481L
LH MS EXPRESS 0114

CE Code	★★★
BW	1.5
WW	53
YW	87
Milk	22
M&G	48

Revolution and Rib Eye have been two of the heaviest used bulls in the breed, producers of great females and low to moderate BW • 417 had a Bw of 77 lbs. and a below breed avg BW Epd.



438 LH VICTOR 755T 438

Polled
Reg: 43517475

BD: 02/27/2014

BW: 80

WW: 602

DRF JWR PRINCE VICTOR 711
TH 223 711 VICTOR 755T
KBCR 19D DOMINETTE 223

HRP THM VICTOR 109W 9329
RHF 964 VICTRA 4057
NJW 1Y WRANGLER 19D
KBCR 631 DOMINETTE 066

BAR JZ SABRE 481L
LH MS TRADITION 439
LH MS ADVANCE 147

BAR JZ 861 SULTAN 098J
BAR JZ 346C LADY 881J
OXH ADVANCE 9001
KB L1 DOMINETTE 5112

CE Code	★★★
BW	0.5
WW	42
YW	68
Milk	24
M&G	45

Dam's nine calves have avg. 79 lbs. at birth • She has produced 6 bulls that have gone on to work in our customer's pastures. • Bred in calving ease.



HEREFORD BULLS



Leddy
449 LH VICTOR 755T 449

Polled
 Reg: 43517491

BD: 03/01/2014	BW: 88	WW: 687	CE Code ★
DRF JWR PRINCE VICTOR 711 TH 223 711 VICTOR 755T KBCR 19D DOMINETTE 223	HRP THM VICTOR 109W 9329 RHF 964 VICTRA 4057 NJW 1Y WRANGLER 19D KBCR 631 DOMINETTE 066		BW 3.2 WW 57 YW 93 Milk 27 M&G 55
SHF RIB EYE M326 R117 LH MS RIB EYE 187 LH MS FELTON 362 7102	KCF BENNETT 3008 M326 HVH MISS HUDSON 83K 8M LH FELTON 517 362 LH MS TRADITION 338		

Red eyed, short marked bull • Mother is a typical Rib Eye daughter with an ideal udder • Sired by Victor 755T and crossed with Rib Eye should leave an outstanding set of replacements

Leddy
455 LH VICTOR 755T 455

Polled
 Reg: 43517505

BD: 03/02/2014	BW: 80	WW: 616	CE Code ★★
DRF JWR PRINCE VICTOR 711 TH 223 711 VICTOR 755T KBCR 19D DOMINETTE 223	HRP THM VICTOR 109W 9329 RHF 964 VICTRA 4057 NJW 1Y WRANGLER 19D KBCR 631 DOMINETTE 066		BW 1.6 WW 49 YW 78 Milk 25 M&G 50
SHF RIB EYE M326 R117 LH MS RIB EYE 079 LH MS EXPRESS 0103	KCF BENNETT 3008 M326 HVH MISS HUDSON 83K 8M HA FREEWAY 607F LH MS BREAK THRU 183		

3/4 brother to lot 449 • If you're looking for multiple bulls, these two would leave you with a very consistent calf crop. • Two star calving ease

Leddy
459 LH VICTOR 755T 459

Polled
 Reg: 43517465

BD: 03/02/2014	BW: 75	WW: 600	CE Code ★★★
DRF JWR PRINCE VICTOR 711 TH 223 711 VICTOR 755T KBCR 19D DOMINETTE 223	HRP THM VICTOR 109W 9329 RHF 964 VICTRA 4057 NJW 1Y WRANGLER 19D KBCR 631 DOMINETTE 066		BW -0.2 WW 47 YW 74 Milk 27 M&G 50
DR WORLD CLASS 517 10H LH MS WORLD CLASS 775 LH MS TRADITION 380	FELTONS 517 VPI MARATHON LADY 0081 BAR JZ SABRE 481L III MISS A-1 F21		

Negative BW EPD and a 75 lb. actual BW Would work on a group of Black or Red Angus heifers • Just imagine the baldies that he would produce with the extra heterosis. Dam is also the grandmother to Lot 473



LeDdy
460 LH ON TARGET 460

Polled
 Reg: 43517473

BD: 03/03/2014	BW: 90	WW: 660	CE Code ★
SCHU-LAR ON TARGET 225 SCHU-LAR 5N OF 9L 3008 SCHU-LAR 208 OF 1H 121 ET			BW 3.1
LH MS PROSPECTOR 518 HUTH PROSPECTOR K085 LH MS EXPRESS 993			WW 59
RRH MR FELT 3008 SCHU-LAR 9L OF 1F 821C KPH PHASE 121 SCHU-LAR 1H OF 1F 597			YW 108
RRH MR FELT 3008 HUTH 34A PAULA 68F HA FREEWAY 607F LH MS SPECIAL 644			Milk 20
			M&G 49

Phenomenal Cow family • Dam has produced one of the top sellers in 2012 and also in our 2014 sale • Extra pigment on this long sided On-Target son



LeDdy
473 LH WORLD WIDE 473

Polled
 Reg: 43517485

BD: 03/07/2014	BW: 74	WW: 726	CE Code ★★ ★
BOYD WORLDWIDE 9050 ET SHF RIB EYE M326 R117 MSU TCF RACHAEL 225 ET			BW -0.8
LH MS ABOUT TIME 233 CRR ABOUT TIME 743 LH MS WORLD CLASS 775			WW 51
THM DURANGO 4037 CRR D03 CASSIE 206 DR WORLD CLASS 517 10H LH MS TRADITION 380			YW 68
			Milk 30
			M&G 56

Double red eyed son of calving ease specialist World Wide • Dam is an About Time two year old with a picture perfect udder • Grandmother is also the mother of lot 459 another calving ease son selling • Bred in calving ease

HEREFORD BULLS

Leddy

476 LH VICTOR 755T 476

Polled
Reg: 43517510

BD: 03/07/2014

BW: 89

WW: 615

DRF JWR PRINCE VICTOR 711
TH 223 711 VICTOR 755T
KBCR 19D DOMINETTE 223

LH WORLD CLASS 634
LH MS KATE 049
LH MS LANA 8129

HRP THM VICTOR 109W 9329
RHF 964 VICTRA 4057
NJW 1Y WRANGLER 19D
KBCR 631 DOMINETTE 066

DR WORLD CLASS 517 10H
LH MS HUSTLER 0105
LH VICTOR BOOMER P606 524 TWIN
LH MS LYNN 852

CE Code	★
BW	3.0
WW	47
YW	88
Milk	27
M&G	50

Mother is 3 for 3 • Three bull calves and three sale bulls • The 755T sons are deep ribbed and very soft made bulls and the yearling heifers look to be very easy keepers



Leddy

484 LH REVOLUTION 484

Polled
Reg: 43517511

BD: 03/11/2014

BW: 88

WW: 656

FELTONS LEGEND 242
MSU TCF REVOLUTION 4R
MSU TCF RACHAEL ET 54N

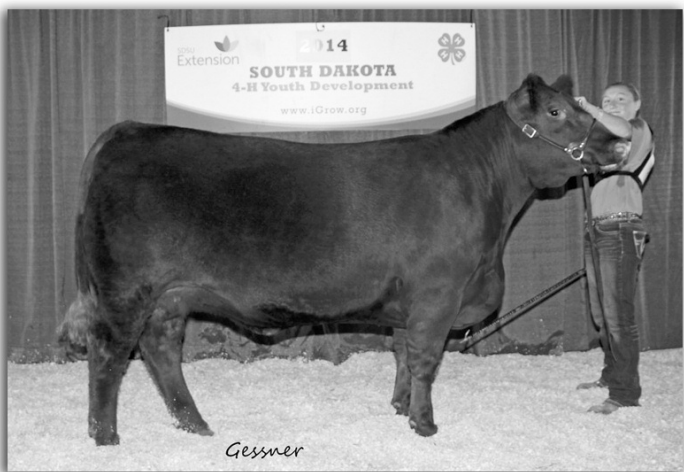
SHF RIB EYE M326 R117
LH MS RIB EYE 047
LH MS EXPRESS 596

FELTONS DOMINO 774
FELTONS G15
REMITALL ONLINE 122L
HH MISS ADV 786G 1ET

KCF BENNETT 3008 M326
HVH MISS HUDSON 83K 8M
HA FREEWAY 607F
LH MS BLAZE 932

CE Code	★
BW	3.3
WW	59
YW	96
Milk	23
M&G	52

Another Revolution and Rib Eye combination, we have found this to be a great cross. You can't say enough good things about the Rib Eye daughter • 484 is a bull with a bright future



HEREFORD BULLS



Leddy
485 LH REVOLUTION 485

Polled
 Reg: 43517449

BD: 03/11/2014 BW: 84

FELTONS LEGEND 242
MSU TCF REVOLUTION 4R
 MSU TCF RACHAEL ET 54N

BAR JZ EMBRACER 117P
LH MS EMBRACER 6141
 LH MS 402 DOMINO 808

WW: 657

FELTONS DOMINO 774
 FELTONS G15
 REMITALL ONLINE 122L
 HH MISS ADV 786G 1ET

REMITALL EMBRACER 8E
 BAR JZ 434 LADY 916C
 LH DOM 8020 402
 LH MS SPECIAL 619

CE Code	★★
BW	2.2
WW	51
YW	84
Milk	21
M&G	47

Maternal brother was the top selling Hereford bull last year. 485 is as good or maybe even better than him.
 • Walks like a true herd bull • Study the photo then come pick him out sale day • Another curve bender from his tremendous dam.

Leddy
487 LH VICTOR 755T 487

Polled
 Reg: 43517496

BD: 03/11/2014 BW: 83

DRF JWR PRINCE VICTOR 711
TH 223 711 VICTOR 755T
 KBCR 19D DOMINETTE 223

FELTONS LEGEND 242
LH MS LEGEND 156
 LH MS WORLD CLASS 964

WW: 639

HRP THM VICTOR 109W 9329
 RHF 964 VICTRA 4057
 NJW 1Y WRANGLER 19D
 KBCR 631 DOMINETTE 066

FELTONS DOMINO 774
 FELTONS G15
 LH WORLD CLASS 634
 LH MS EMBRACER 746

CE Code	★★
BW	1.5
WW	52
YW	87
Milk	26
M&G	51

Light BW Victor 755T son, with a below BW EPD • Dam is a nice young Legend 242 daughter with a beautiful udder

Leddy
488 LH VICTOR 755T 488

Polled
 Reg: 43517471

BD: 03/11/2014 BW: 87

DRF JWR PRINCE VICTOR 711
TH 223 711 VICTOR 755T
 KBCR 19D DOMINETTE 223

HUTH PROSPECTOR K085
LH MS PROSPECTOR 529
 LH MS HEMAN 135

WW: 650

HRP THM VICTOR 109W 9329
 RHF 964 VICTRA 4057
 NJW 1Y WRANGLER 19D
 KBCR 631 DOMINETTE 066

RRH MR FELT 3008
 HUTH 34A PAULA 68F
 HA HEMAN H890
 LH MS EXPRESS 914

CE Code	★
BW	2.7
WW	56
YW	95
Milk	26
M&G	53

A real cattlemen's bull • Deep sided and moderate frame • Top cow family • Mother is a ten year old Huth Prospector daughter

HEREFORD BULLS



Lot 489

Leddy
489 LH VICTOR 719T 489

Polled
Reg: 43517450

BD: 03/12/2014	BW: 90	WW: 745	CE Code	★
DRF JWR PRINCE VICTOR 711 TH 122 711 VICTOR 719T KBCR 19D DOMINETTE 122			BW	2.1
LH FELTON 517 362 LH MS FELTON 517 6131 LH MS HUSTLER 459			WW	62
HRP THM VICTOR 109W 9329 RHF 964 VICTRA 4057 NJW 1Y WRANGLER 19D KBCR DOMINETTE 9112			YW	88
FELTONS 517 LH MS HEMAN 144 LH HUSTLER 018 LH MS HEMAN 193			Milk	29
			M&G	60

His dam is a Dam of Distinction with a WW ratio of 111 on seven calves! • Mother is a true herd bull builder, she is also the grandmother of Lot 4105 • 2011 bull calf sold for \$6500

Leddy
490 LH ON TARGET 490

Polled
Reg: 43517447

BD: 03/13/2014	BW: 85	WW: 600	CE Code	★★
SCHU-LAR 5N OF 9L 3008 SCHU-LAR ON TARGET 225 SCHU-LAR 208 OF 1H 121 ET			BW	2.7
LH FELTON 517 362 LH MS FELTON 362 7113 LH MS HUSTLER 3114			WW	54
RRH MR FELT 3008 SCHU-LAR 9L OF 1F 821C KPH PHASE 121 SCHU-LAR 1H OF 1F 597			YW	93
FELTONS 517 LH MS HEMAN 144 LH HUSTLER 018 LH MS HI VOLT 9101			Milk	17
			M&G	44

On Target son with a moderate birth wt. • Should leave a nice set of replacements

Leddy
491 LH VICTOR 755T 491

Polled
Reg: 43517460

BD: 03/13/2014	BW: 91	WW: 641	CE Code	★
DRF JWR PRINCE VICTOR 711 TH 223 711 VICTOR 755T KBCR 19D DOMINETTE 223			BW	3.0
LH PRINCE 584 LH MS PRINCESS 823 LH MS HUSTLER 568			WW	52
HRP THM VICTOR 109W 9329 RHF 964 VICTRA 4057 NJW 1Y WRANGLER 19D KBCR 631 DOMINETTE 066			YW	84
DRF JWR PRINCE VICTOR 711 LH MS TRADITION 350 LH HUSTLER 018 LH MS DOMINO 0116			Milk	26
			M&G	52

From a heavy milking Prince daughter • Her last three bull calves have made our bull sale • Great disposition

*Leddy***494 LH VICTOR 719T 494**Polled
Reg: 43517457

BD: 03/14/2014

BW: 88

WW: 670

DRF JWR PRINCE VICTOR 711
TH 122 711 VICTOR 719T
KBCR 19D DOMINETTE 122HRP THM VICTOR 109W 9329
RHF 964 VICTRA 4057
NJW 1Y WRANGLER 19D
KBCR DOMINETTE 9112LH VICTOR BOOMER P606 524 TWIN
LH MS VIC BOOMER 946
LH MS HUSTLER 497PW VICTOR BOOMER P606
LH MS HUSTLER 0105
LH HUSTLER 018
LH MS PATRIOT 704

CE Code	★
BW	3.1
WW	56
YW	90
Milk	27
M&G	55

A unique individual! • Very dark colored bull • Full brother sold last year to Kevin Ries

*Leddy***499 LH VICTOR 755T 499**Polled
Reg: 43517506

BD: 03/16/2014

BW: 88

WW: 612

DRF JWR PRINCE VICTOR 711
TH 223 711 VICTOR 755T
KBCR 19D DOMINETTE 223HRP THM VICTOR 109W 9329
RHF 964 VICTRA 4057
NJW 1Y WRANGLER 19D
KBCR 631 DOMINETTE 066LH VICTOR BOOMER P606 524 TWIN
LH MS VIC BOOMER SUE 078
LH MS SARA 456PW VICTOR BOOMER P606
LH MS HUSTLER 0105
HA LEOPOLD L108
LH MS RENAE 0123

CE Code	★
BW	3.7
WW	48
YW	82
Milk	25
M&G	49

Our group of Victor 755T sons are truly something special, extremely consistent • 499's maternal grandmother ranks at the top of our herd for female producers



HEREFORD BULLS

*Leddy***4105 LH REVOLUTION 4105**Polled
Reg: 43517455

BD: 03/22/2014

BW: 90

WW: 798

FELTONS LEGEND 242
MSU TCF REVOLUTION 4R
MSU TCF RACHAEL ET 54NFELTONS DOMINO 774
FELTONS G15
REMITALL ONLINE 122L
HH MISS ADV 786G 1ETLH PRINCE 584
LH MS PRINCESS 986
LH MS FELTON 517 6131DRF JWR PRINCE VICTOR 711
LH MS TRADITION 350
LH FELTON 517 362
LH MS HUSTLER 459

CE Code	★
BW	3.9
WW	70
YW	110
Milk	26
M&G	62

Extra frame and length of body in this Revolution son • If you want to stretch out some small frame Angus cows, this is the bull for you. • Same cow family as lot 489



Leddy
4119 LH REVOLUTION 249 4119

Polled
 Reg: 43517451

BD: 03/29/2014	BW: 95	WW: 767	CE Code	★
MSU TCF REVOLUTION 4R LH REVOLUTION 249 LH MS EMBRACER 6141			BW	+4.1
DR WORLD CLASS 517 10H LH MS WORLD CLASS 6125 III MS MARCH H56			WW	+59
FELTONS LEGEND 242 MSU TCF RACHAEL ET 54N BAR JZ EMBRACER 117P LH MS 402 DOMINO 808			YW	+87
FELTONS 517 VPI MARATHON LADY 0081 III TARGET 19C III MIS IMPRESSIVE C07			Milk	+23
			M&G	+53

Big time WW ratio on this Revolution grandson • Big boned long sided rascal • World Class dam that has produced multiple bulls

Leddy
4129 LH REVOLUTION 249 4129

Polled
 Reg: 43517494

BD: 04/01/2014	BW: 88	WW: 690	CE Code	★
MSU TCF REVOLUTION 4R LH REVOLUTION 249 LH MS EMBRACER 6141			BW	+3.5
CRR ABOUT TIME 743 LH MS ABOUT TIME 161 LH MS PRINCESS 857			WW	+56
FELTONS LEGEND 242 MSU TCF RACHAEL ET 54N BAR JZ EMBRACER 117P LH MS 402 DOMINO 808			YW	+92
THM DURANGO 4037 CRR D03 CASSIE 206 LH PRINCE 584 LH MS HEMAN 135			Milk	+25
			M&G	+53

Dam is an About Time daughter whose two bull calves have made the bull pen. Last years bull sold for \$5000 • Same cow family as Lot 4133

Leddy
4133 LH REVOLUTION 249 4133

Polled
 Reg: 43517459

BD: 04/02/2014	BW: 87	WW: 690	CE Code	★
MSU TCF REVOLUTION 4R LH REVOLUTION 249 LH MS EMBRACER 6141			BW	+3.6
LH PRINCE 584 LH MS PRINCESS 857 LH MS HEMAN 135			WW	+57
FELTONS LEGEND 242 MSU TCF RACHAEL ET 54N BAR JZ EMBRACER 117P LH MS 402 DOMINO 808			YW	+96
DRF JWR PRINCE VICTOR 711 LH MS TRADITION 350 HA HEMAN H890 LH MS EXPRESS 914			Milk	+22
			M&G	+51

Moderate frame Revolution grandson with extra thickness in a correct package • Mother is also the grandmother of Lot 4129 • We are continuing to build our herd with our best cow families and this family is one of the best

Also Selling

19 HEAD OF RED ANGUS HEIFER CALVES

- Heifers will be selling as commercial replacement heifers. The Heifers are all registered but selling as commercial with no papers. The buyer has the option to pay an addition \$100 per heifer to have the papers transferred in to their name.
- **List of Red Angus Heifers Registration Numbers:** 1688805, 1688788, 1688821, 1688808, 1688806, 1688811, 1688810, 1688766, 1688802, 1688819, 1688817, 1688771, 1688812, 1688758, 1688826, 1688754, 1688790, 1688820, 1688774

7 HEAD OF RED BALDIE HEIFER CALVES

- Heifers are all out of Registered Hereford Females, and Sired by Registered Red Angus Bulls

5 HEAD OF HEREFORD HEIFER CALVES

- Heifers will be selling as commercial replacement heifers. All of the heifer calves selling are home raised.



Thank
you

For attending
our 2015 Bull Sale!

Leddy Hereford & Red Angus
15293 473rd Ave.
Twin Brooks, SD 57269

Sunday, February 22, 2015

At the Leddy Farm, Twin Brooks, SD

Change Service Requested