

M  
W

& Guests

Thursday, September 26, 2013



**Mohican West**  
**3100 Sportsman Park Road**  
**Laurel, MT 59044**  
**Tel & Fax 406-633-2600**  
**Terry Powlesland, Mgr.**  
**cell 406-670-8529**

Welcome to the 2013 edition of Mohican West. We again are delighted to have Fred and Doreen McMurry and Mark and Della Ehlke and their families join us in this outstanding offering of Hereford cattle.

This is an outstanding offering of cattle. The females are young and the EPDs are fantastic. The pedigrees are as popular and predictable as any offered anywhere.

As you study the sale catalog you will find many sale features including the Lot 1 bull calf which will be one of the first bull calves to sell anywhere sired by NJW 73S W18 HOMETOWN 10Y. Another great feature is Lot 2 and Lot 3 heifers sired by the popular KJ HVH 33N REDEEM 485T ET and the great full sister to NJW 73S M326 TRUST 100W. The cattle in the offering are ones that we hate to see leave the ranch but we feel they will make a very positive contribution.

Each year we offer one of our proven herd bulls. This year we are offering two of our proven herd bulls. STAR STROKE O'GENIUS 91X's daughters are very easy to look at. They are uniform and will make good cows. Also TH 133U 719T UPGRADE 69X's numbers are fantastic as are his calves. A great opportunity to purchase proven herd bulls poised to enter their prime productive years.

We continue to bring you the best Mohican West has to offer. This year is no exception. We thank all our buyers from the past and invite you back again this year. A special congratulation to Isaac Latimer on having Reserve Senior Yearling Champion at the Canadian Junior National Bonanza with Mohican Market Z406.

We will be happy to visit with you and answer any questions you might have; just give us a call. We will be looking forward to hearing from you and seeing you sale day.

Terry Powlesland



**Mohican Farms**  
**4551 State Route 514**  
**Glenmont, OH 44628**  
**Tel 330-378-3421**  
**Fax 330-378-3501**  
**Conard and Nancy Stitzlein, owners**



# Mohican West

presents

## Hereford Production Sale with Guests

Noon • Thursday, Sept 26, 2013  
at the ranch • Laurel, Montana



Fred, Doreen & Rebecca  
2027 Iris Lane  
Billings, MT 59102  
406-254-1247  
406-348-2303  
Fred cell-406-697-4040  
www.mcmurrycattle.com



**SALE DAY PHONES**  
406-633-2600  
406-670-8529 Terry cell  
330-231-0713 Conard cell



Mark, Della, Lacey & Jane'a  
PO Box 178  
Townsend, MT 59644  
406-266-4121  
Mark cell 406-439-4311  
www.ehlkeherefords.com

### PLEASE JOIN US FOR

Wednesday Viewing.....Beginning at 2:00 P.M. • Social.....6:00 P.M.  
Thursday Mohican West & Guests Sale.....12:00 P.M.

### Sale Staff

Dale Stith, Auctioneer ..... Cell 918-760-1550  
Jim Reed, Midwest Cattle Service..... Cell 417-860-3102  
Joe Rickabaugh, AHA..... Cell 785-633-3188  
Don Birk..... Cell 417-860-8595  
Mike Sorensen, Livestock Plus ..... Cell 641-745-7949  
John Goggins, Western Livestock Reporter ..... 406-698-4159  
Tom Biglieni..... 417-827-8482  
Robbie Schacher..... 817-219-0102  
Chris Poley..... 306-220-5006  
Mark & Jill Hotchkiss ..... Hereford America


### Acknowledgements

Dr. Mark Robinson ..... Herd Veterinarian  
Rocky Mountain Reproductive Services..... Embryo Transfer  
Reyher Embryonics, Belgrade, MT ..... Embryo Transfer  
Bob Woolsey ..... Trucking

### Sale Managers:

Cell 417-860-3102 JIM  
Cell 918-760-1550 DALE

 **DALE STITH**  
Auctioneer  
5239 Old Sardis Pike  
May's Lick, KY 41055  
dalestith@yahoo.com  
cell 918-760-1550  
web site: www.dalestith.com

 **Midwest Cattle Service, Inc.**  
Jim & Linda Reed Ph. 660-527-3507  
PO Box 126 Fax 660-527-3379  
Green Ridge, Mo 65332 Email: reedent@iland.net  
Web Site: www.reedent.com view this catalog online

Photography by Don Birk  
Catalog by Linda Reed



Live audio and live video will allow buyers to bid on animals as if they were present at the sale. Buyers must create an account prior to the sale. Please visit <http://LiveAuctions.tv> to create an account. Contact Brad Fahrmeier at (816) 392-9241 or [brad@LiveAuctions.tv](mailto:brad@LiveAuctions.tv).

# General Information

## Mohican West

3100 Sportsman Park Road  
Laurel, MT 59044  
Terry Powlesland, Mgr. 406-633-2810  
office phone and fax 406-633-2600  
Cell 406-670-8529

## Mohican Polled Hereford Farm

4551 State Rt 514  
Glenmont, OH 44628  
Conard & Nancy Stitzlein  
330-378-3421 • stitz@bright.net  
Matt Stitzlein • 330-378-3487

## Directions

24 Miles west of Billings, MT. on I-90 to Exit 426, then 1 mile south thru Park City to T (Cemetery Road) then 3 miles (left) east to Sportsman Park Road then right to Mohican West.

## Air Travel

Logan International Airport, Billings, MT. is served by Delta, Frontier, United and Northwest. Located about 1 hour from the ranch.

## Hotels

Block of Rooms are available at:

Best Western, Yellowstone Crossing, Laurel, MT  
Ph. 406-628-6888  
Ask for Mohican West Rate

Other Hotels available nearby at Billings, MT.

**Terms:** Cash or check unless prior arrangements are made with the owners.

**Registration Certificates:** Certificates of registration are all in order and will be transferred to the new owner according to instructions given the clerks.

**AI Certificates:** Any female that is mated to an AI sire that is not owned by the seller will not have an AI certificate furnished.

**Genetic Defects:** All cattle selling are guaranteed free of all known genetic defects recognized by the American Hereford Association as of September 26, 2013.

**Insurance:** Insurance will be available through Harding and Harding. Please see the sale cashier for your insurance needs.

**EPD'S:** EPDs are updated regularly by the AHA, so we cannot guarantee the EPDs listed in the catalog. The EPDs are from the Fall 2013 Evaluation of the American Hereford Association.

**Health:** Proper health papers will be available.

**Lunch:** Lunch will be available sale day.

**Trucking:** Trucking will be at cost.

**Bids:** The auctioneer in charge will have final say in regard to all final bids. We hope everyone can attend, but those who cannot may mail or call bids to either of the sale managers or any of the representatives.

**Catalog:** Statements made from the auction box take precedence over printed material in this catalog.

Don't miss out  
Bid Online @

LiveAuctions.TV

Call Katie Colyer, LiveAuctions.TV Representative to get set up  
208-599-2962



*Lot 1--Mohican Take Charge 417A ET*



**Mohican Take Charge 417A ET Bull**

**P43386432 CALVED: FEB 19, 2013 TATTOO: RE-MWLE-417A**  
 SHF WONDER M326 W18 ET KCF BENNETT 3008 M326  
 NJW 73S W18 HOMETOWN 10Y ET SHF GOVERNESS 236G L37  
 P43214853 NJW P606 72N DAYDREAM 73S PW VICTOR BOOMER P606  
 NJW 94J DEW 72N  
 DRF JWR PRINCE VICTOR 71I HRP THM VICTOR 109W 9329  
 TH 223 71I DOMINETTE 404X ET RHF 964 VICTRA 4057  
 P43084282 KBCR 19D DOMINETTE 223 NJW 1Y WRANGLER 19D  
 KBCR 631 DOMINETTE 066  
**EPD'S: BW 2.7 WW 51 YW 92 M 24 M&G 50 FAT -0.013 REA 0.57 MARB 0.09**

- What a combination! A super son of the National Champion, NJW 73S W18 Hometown 10Y, out of the full sister to Select Sires, 755T.
- Conservatively marked with fantastic EPDs.
- A great prospect that offers an outcross for most anyone.
- BW 79 #.
- Terms to be announced.



*Dam of Lot 1--TH 223 71I Dominette 404X ET*



*Lot 2--Mohican Unforgettable Z200*

**2**

**Mohican Unforgettable Z200 Heifer**

P43349585.... CALVED: AUG 10, 2012. TATTOO: RE-Z200 LE-Z200

SHF RADAR M326 R125	KCF BENNETT 3008 M326
KJ HVH 33N REDEEM 485T ET	SHF POSTIVE MISS 73C M15
P42834201 HVH OKSANA 4L 33N	HVH KREMLIN 57F 108K
	HVH GENETIC QUEEN 53H 4L

KCF BENNETT 3008 M326	RRH MR FELT 3008
NJW M326 UNFORGETTABLE 76W ET	KCF MISS 459 F284
P43006709 NJW P606 72N DAYDREAM 73S	PW VICTOR BOOMER P606
	NJW 97J DEW 72N

EPD'S: BW 3.3 WW 63 YW 105 M 20 M&G 52 FAT 0.020 REA 0.81 MARB 0.30

- WOW! What an opportunity.
- Daughter of the popular KJ HVH 33N Redeem 485T and out of the full sister to NJW 73S M326 Trust 100W.



*Reference Sire*

*KJ HVH 33N Redeem 485T*

**Ref**

**KJ HVH 33N Redeem 485T ET Bull**

P42834201.... CALVED: MAR 15, 2007. TATTOO: 485T

KCF BENNETT 3008 M326	RRH MR FELT 3008
SHF RADAR M326 R125	KCF MISS 459 F284
P42584018 SHF POSTIVE MISS 73C M15	RF POSTIVE PLUS 73C
	SHF INTERSTATE D03 G28

HVH KREMLIN 57F 108K	MSU MF HUDSON 19H
HVH OKSANA 4L 33N	HVH OKSANA 10Z 57F
P42353096 HVH GENETIC QUEEN 53H 4L	GK GENETIC EXPLOSION
	HVH MISS 512 35D 53H

EPD'S: BW 3.0 WW 68 YW 107 M 13 M&G 47 FAT 0.055 REA 0.73 MARB 0.30

- CHB, DLF, HYF, IEF



*Lot 3--Mohican Unforgettable Z201*

**3**

**Mohican Unforgettable Z201 Heifer**

**P43349586.....CALVED: AUG 13, 2012 . TATTOO: RE-Z201 LE-Z201**

SHF RADAR M326 R125	KCF BENNETT 3008 M326
KJ HVH 33N REDEEM 485T ET	SHF POSTIVE MISS 73C M15
P42834201 HVH OKSANA 4L 33N	HVH KREMLIN 57F 108K
	HVH GENETIC QUEEN 53H 4L

KCF BENNETT 3008 M326	RRH MR FELT 3008
NJW M326 UNFORGETTABLE 76W ET	KCF MISS 459 F284
P43006709 NJW P606 72N DAYDREAM 73S	PW VICTOR BOOMER P606
	NJW 94J DEW 72N

**EPD'S: BW 3.3 WW 63 YW 105 M 20 M&G 52 FAT 0.020 REA 0.81 MARB 0.30**

- There two sisters are so good you need to toss a coin to determine which one you like the best.
- Definitely future donor material.



*Mohican Upnorth Z425  
Maternal Brother to Lots 2 & 3*

**Ref**

**NJW M326 Unforgettable 76W ET Cow**

**P43306709.....CALVED: FEB 18, 2009 .. TATTOO: 76W**

RRH MR FELT 3008	FELTONS 517
KCF BENNETT 3008 M326	RRH MS VICT 6191
P42693956 KCF MISS 459 F284	FELTONS 459
	KCF MISS X4 B156

PW VICTOR BOOMER P606	REMITALL BOOMER 46B
NJW P606 72N DAYDREAM 73X	PW VICTORIA 964 8114
P42693956 NJW 94J DEW 72N	RU 20X BOULDER 57G
	NJW D32 CLAIRE 94J

**EPD'S: BW 3.3 WW 54 YW 95 M 28 M&G 55 FAT -0.019 REA 0.84 MARB 0.26**

- DLF, HYF, IEF



*NJW M326 Unforgettable 76W ET*



*Lot 4--Mohican Retreat 400A ET*

**4**

**Mohican Retreat 400A ET Bull**  
 P43386409.... CALVED: FEB 9, 2013 .... TATTOO: RE-MW LE-400A

**5**

**Mohican Right Kind 411A ET Bull**  
 P43386426.... CALVED: FEB 14, 2013 .. TATTOO: RE-MW LE-411A

SHF RADAR M326 R125	KCF BENNETT 3008 M326
KJ HVH 33N REDEEM 485T ET	SHF POSTIVE MISS 73C M15
P42834201 HVH OKSANA 4L 33N	HVH KREMLIN 57F 108K
	HVH GENETIC QUEEN 53H 4L

REMITALL PATRIOT ET 13P	REMITALL OLYMPIAN ET 262L
MOHICAN PLUS 409T ET	REMITALL GINGER 23G
P42845175 MOHICAN PLUS 107M	MOHICAN EUREKA 67J
	MOHICAN PLUS 139J

EPD'S: BW 4.4 WW 66 YW 105 M 19 M&G 52 FAT 0.040 REA 0.61 MARB 0.22



*Mohican Plus 409T ET*

- These bull calves are out of perhaps the best daughter of the \$54,000, Mohican Plus 107M. They offer some of the most up to date, proven, predictable genetics available today. If you want to add pounds to your program, these are the ones to do it.
- BW 400A.....82 # BW 411A----82 #
- Selling three-quarter interest and full possession.



*Lot 5--Mohican Right Kind 411A ET*



*Mohican Plus 107M*  
*The \$54,000 Grandmother of Lots 4 & 5*

**Mohican West**





Lot 6A--Mohican Cameo 16A



Mohican Whitehawk Yukon 414Y

**6**

**Mohican Demo Gal 405Y ET** Cow

P43192047.... CALVED: JAN 14, 2011... TATTOO: RE-MW LE-405Y  
 PW MOHICAN NASDAQ P316 REMITALL BOOMER 46B  
 MOHICAN SUMMIT 411S ET PW VICTORIA 964 8114  
 P42711848 MOHICAN LADY 94K MW EUREKA 421E 1ET  
 MOHICAN LADY 168H

AB JWR DEMOLITION 608 3510 PW VICTOR BOOMER P606  
 RHF DEMOLITION F37 7027T ET THM LASSIE DOMINO 6008  
 P42830809 DUNWALKE CAMEO F37 DUNWALKE DP ALPHA 324C  
 DL DOMINETTE 59U

EPD'S: BW 4.4 WW 57 YW 92 M 16 M&G 44 FAT 0.067 REA 0.58 MARB 0.22

• A really stout, productive 2 year old mated to TDP CROSSOVER Z400 from 5-9-13 to 7-1-13. Her dam has been a donor for Roth Hereford Farm and she is now in the Jeff and Cecil Jordan Sunnyside program. This cow is certainly potential donor material.

**6A**

**Mohican Cameo 16A** Heifer

P43386320.... CALVED: FEB 5, 2013 .... TATTOO: RE-MW LE-16A  
 MSU TCF REVOLUTION 4R FELTONS LEGEND 242  
 MOHICAN WHITEHAWK YUKON 414YET MSU TCF RACHAEL ET 54N  
 P43192057 LAGRAND MISS 243R ET PW VICTOR BOOMER P606  
 MOHICAN MISS 424G

MOHICAN SUMMIT 411S ET PW MOHICAN NASDAQ P316  
 MOHICAN DEMO GAL 405Y ET MOHICAN LADY 94K  
 P43192047 RHF DEMOLITION F37 7027T ET AB JWR DEMOLITION 6008 3510  
 DUNWALKE CAMEO F37

EPD'S: BW 3.3 WW 53 YW 84 M 24 M&G 50 FAT 0.058 REA 0.65 MARB 0.26

• The first calf to sell out of Mohican Whitehawk Yukon 414Y. What a heifer calf she is...dark red, great profile with a super mother.



Lot 6--Mohican Demo Gal 405Y ET



Lot 7--MC Victoria 316P W901 ET



TDP Crossover Z400

**7**

**MC Victoria 316P W901 ET**

**Cow**

P43005464.... CALVED: JAN 17, 2009 .. TATTOO: RE-901 LE-901

REMITALL BOOMER 46B

REMITALL KEYNOTE 20X

PW MOHICAN NASDAQ P316

RMILL SALLY'S LASS 120X

P42402313

PW VICTORIA 964 8114

RHF VICTOR 266 964

HVF VICTORIA 1121 05

MOHICAN MINT 19M

FELTONS ENDURANCE 745

ASH LIL PEANUT 203P

MOHICAN LISA M24E

P42533949

ASH MELODY 211M

REMITALL KOOTENAY 9K

BLAIR-ATHOL 20X HEIDI 26J

EPD'S: BW 4.5 WW 58 YW 85 M 16 M&G 45 FAT 0.020 REA 0.83 MARB 0.25

• A stout, deep bodied daughter of PW Mohican Nasdaq P316. She is a maternal sister to TDP Crossover Z400 and TDP Vintage 402U. A cow to be sure and look up. She can do it all. To add to her value she is mated to H BK CCC SR GAME CHANGER ET due 2-2-14 with a heifer calf.

**7A**

**Mohican Jan 39A**

**Heifer**

P43386349.... CALVED: FEB 11, 2013... TATTOO: RE-MW LE-39A

SHF WONDER M326 W18 ET

KCF BENNETT 3008 M326

NJW 73S W18 HOMETOWN 10Y ET

SHF GOVERNESS 286GL37

P43214853

NJW P606 72N DAYDREAM 73S

PW VICTOR BOOMER P606

NJW 94J DEW 72N

PW MOHICAN NASDAQ P316

REMITALL BOOMER 46B

MC VICTORIA 316P W901 ET

PW VICTORIA 964 8114

P43005464

ASH LIL PEANUT 203P

MOHICAN MINT 19M

ASH MELODY 211M

EPD'S: BW 2.9 WW 52 YW 86 M 20 M&G 46 FAT 0.011 REA 0.76 MARB 0.16

• A daughter of National Champion, Hometown . She is a top cow prospect.



Lot 7A--Mohican Jan 39A



Lot 8A--TDP Day Dream 43A



**TDP Peanut 5X**

**Cow**

**P43091768..... CALVED: JAN 27, 2010 .. TATTOO: RE-TDP LE-5X**  
 RF POSTIVE PLUS 73C  
 BKR SANDERSON 73C 60S  
 P42690328 BKR VICTORIA 262D 4J

SHF RIB EYE M326 R117  
 TDP PEANUT 404U ET  
 P42917858 ASH LIL PEANUT 203P

KCF BENNETT 3008 M326  
 HVH MISS HUDSON 83K 8M  
 MOHICAN MINT 19M  
 ASH MELODY 211M

EPD'S: BW 2.1 WW 57 YW 94 M 25 M&G 53 FAT 0.053 REA 0.30 MARB 0.11  
 • This is one of the best daughters of Sanderson that we have offered for sale. Her heifer calf is among the best. Pasture exposed to DR MW Trask Grassmaster W02 from 4-26-13 to 9-1-13. Due 3-15-14.



**TDP Day Dream 43A**

**Heifer**

**43386195 ..... CALVED: FEB 13, 2013 .. TATTOO: RE-TDP LE-43A**  
 SHF WONDER M326 W18 ET  
 NJW 73S W18 HOMETOWN 10Y ET  
 P43214853 NJW P606 72N DAYDREAM 73S

BKR SANDERSON 73C 60S  
 TDP PEANUT 5X  
 P43091768 TDP PEANUT 404U ET

KCF BENNETT 3008 M326  
 SHF GOVERNESS 236G L37  
 PW VICTOR BOOMER P606  
 NJW 94J DEW 72N

EPD'S: BW 1.0 WW 49 YW 87 M 24 M&G 49 FAT 0.028 REA 0.49 MARB 0.10  
 • A superb daughter of National Champion, Hometown 10Y. This is one that we feel has tremendous potential.



Lot 8--TDP Peanut 5X



Lot 9A--Mohican Lucky Lady 51A

9

**Mohican Lucky Lady 38X**

**Cow**

P43094385.... CALVED: FEB 6, 2010 .... TATTOO: RE-MW LE-38X

KCF BENNETT 3008 M326 RRH MR FELT 3008

SHF RIB EYE M326 R117 KCF MISS 459 F284

P42584003 HVH MISS HUDSON 83K 8M MSU MF HUDSON 19H  
SUN VINDY MISS 83K

MOHICAN EUREKA 67J MW EUREKA 421E 1ET

MOHICAN LUCKY LADY 449U ET MOHICAN DEE M21E

P42918120 MOHICAN LUCKY LADY 107L REMITALL BOOMER 46B  
MOHICAN LADY 9G

EPD'S: BW 2.3 WW 45 YW 68 M 16 M&G 38 FAT 0.010 REA 0.19 MARB 0.10

• A really nice daughter of Rib Eye out of 449U. Great EPDs mated to Star Stroke O'Genius 91X from 4-26-13 to 7-7-13. Due 2-10-14.

9A

**Mohican Lucky Lady 51A**

**Heifer**

P43386235.... CALVED: FEB 15, 2013 .. TATTOO: RE-MW LE-51A

REMITALL ONLINE 122L REMITALL EMBRACER 8E

STAR STROKE O'GENIUS 91X ET REMITALL CATALINA 24H

P43069368 GERBER 774 ROSY LANE 623S FELTONS DOMINO 774  
GERBER 8020 ROSY LANE 308N

SHF RIB EYE M326 R117

MOHICAN LUCKY LADY 38X KCF BENNETT 3008 M326

P43094385 MOHICAN LUCKY LADY 449U HVH MISS HUDSON 83K 8M  
MOHICAN EUREKA 67J  
MOHICAN LUCKY LADY 107L

EPD'S: BW 2.5 WW 45 YW 70 M 17 M&G 40 FAT 0.002 REA 0.20 MARB 0.15

• This heifer has the right look. A lot of potential here.

10

**DKJ Lady Call 750K**

**Cow**

P43079031.... CALVED: JAN 5, 2010 .... TATTOO: RE-DKJ LE-750K

PW VICTOR BOOMER P606 REMITALL BOOMER 46B

DKJ HIGH GAIN 545 PW VICTORIA 964 8114

P42671526 ALLEN PRECISE LADY 431H MOHICAN PRECISE 38E  
ALLEN JORDANELLE 180D

DKJ HIGH GAIN 545 PW VICTOR BOOMER P606

MISS P606 669 ALLEN PRECISE LADY 431H

P42934925 DKJ MISS KYLEE 560 LJR 186A KYLE 30K  
ALLEN MISS JACKIE 918P

EPD'S: BW 4.7 WW 36 YW 59 M 21 M&G 39 FAT 0.023 REA 0.39 MARB 0.03

• A granddaughter of the legendary, P606, mated to DR MW TRASK GRASSMASTER W02 from 5-9-13 to 9-1-13. What a mating this could be.

10A

**Mohican Kylee 58A**

**Heifer**

P43386341.... CALVED: FEB 17, 2013 .. TATTOO: RE-MW LE-58A

REMITALL ONLINE 122L REMITALL EMBRACER 8E

STAR STROKE O'GENIUS 91X ET REMITALL CATALINA 24H

P43069368 GERBER 774 ROSY LANE 623S FELTONS DOMINO 774  
GERBER 820 ROSY LANE 308N

DKJ HIGH GAIN 545

DKJ LADY CALL 750K PW VICTOR BOOMER P606

P43079031 MISS P606 669 ALLEN PRECISE LADY 431H  
DKJ HIGH GAIN 545  
DKJ MISS KYLEE 560

EPD'S: BW 4.5 WW 45 YW 71 M 20 M&G 42 FAT 0.004 REA 0.33 MARB 0.11

• Another daughter of Stroke O'Genius that you will like.

11

**Mohican Keepsake Y5**

**Cow**

P43248413.... CALVED: FEB 12, 2011... TATTOO: RE-Y5 LE-Y5

LJR 179A MARIAS 260M LJR PAYMASTER 179A

LJR 260M SENTINEL 26S HHH H33 82H K14

P42708531 RHF PLAYMATE 987 301N WPHF TITAN 626 987

RHF MISS VICTORIA 916J

FELTONS LEGEND 242 FELTONS DOMINO 774

TLR KEEPSAKE 242 709T FELTONS G15

P42803517 ASM 8E KEEPSAKE 516 ET REMITALL EMBRACER 8E  
ASM 23C KEEPSAKE 2069

EPD'S: BW 2.7 WW 47 YW 71 M 19 M&G 43 FAT 0.021 REA 0.13 MARB 0.15

• A daughter of LJR 260M Sentinel 26S that has been used so successfully at Mohican in Ohio. Mated to STAR STROKE O'GENIUS 91X ET from 4-26-13 to 7-7-13. Due 2-5-14.

11A

**Mohican Keepsake 84A**

**Heifer**

P43386354.... CALVED: MAR 10, 2013. TATTOO: RE-MW LE-84A

TH 122 71I VICTOR 719T DRF JWR PRINCE VICTOR 71I

TH 133U 719T UPGRADE 69X KBCR 19D DOMINETTE 122

P43101126 TH 14S 103R MEGAN 133U TH 75J 44M LEGACY 103R  
TH 5N W39 MEGAN 14S

LJR 260M SENTINEL 26S

MOHICAN KEEPSAKE Y5 LJR 179A MARIAS 260M

P43284813 TLR KEEPSAKE 242 709T RHF PLAYMATE 987 301N  
FELTONS LEGEND 242  
ASM 8E KEEPSAKE 516 ET

EPD'S: BW 1.0 WW 55 YW 87 M 21 M&G 49 FAT 0.031 REA 0.27 MARB 0.09

• A daughter of Upgrade that should make a good cow.





Lot 13--Grandview CMR Lady P606 X342

**13**

**Grandview CMR Lady P606 X342 Cow**

P43126242.... CALVED: MAR 7, 2010... TATTOO: RE-X342 LE-X342  
 RF POSTIVE PLUS 73C BAR JZ TRADITION 434V  
 BKR SANDERSON 73C 60S RF VICTRA F243 37Y  
 P42696328 BKR VICTORIA 262D 4J CMF 103T VICTOR 262D  
 BKR AMELIA 36D

PW VICTOR BOOMER P606 REMITALL BOOMER 46B  
 HH P606 BOOMER 136R PW VICTORIA 964 8114  
 P42627403 HH MISS HUNTER 202N MOHICAN HUNTER 57H  
 RJ DANIELLE 61J

EPD'S: BW 4.0 WW 47 YW 82 M 24 M&G 47 FAT 0.076 REA 0.31 MARB 0.06

• What a productive daughter of Sanderson out of an own daughter of P606. A young cow just coming into her prime productive years. Mated to STAR STROKE O'GENIUS 91X ET 4-26-13 to 7-7-13. Due to calve 2-20-14.

**13A**

**Mohican Jill 66A Heifer**

P43386353.... CALVED: FEB 20, 2013 .. TATTOO: RE-MW LE-66A  
 REMITALL ONLINE 122L REMITALL EMBRACER 8E  
 STAR STROKE O'GENIUS 91X ET REMITALL CATALINA 24H  
 P43069368 GERBER 774 ROSY LANE 623S FELTONS DOMINO 774  
 GERBER 8020 ROSY LANE 308N

BKR SANDERSON 73C 60S RF POSTIVE PL8S 73C  
 GRANDVIEW CMR LADY P606 X342 BKR VICTORIA 262D 4J  
 P43126242 HH P606 BOOMER 135R PW VICTOR BOOMER P606  
 HH MISS HUNTER 202N

EPD'S: BW 4.7 WW 51 YW 85 M 21 M&G 47 FAT 0.030 REA 0.29 MARB 0.12

• Another high quality daughter of Stroke. They are such a nice uniform group of calves.



Lot 13A--Mohican Jill 66A



Lot 14A--Mohican Lady 75A

14

**Mohican Lady 8X**

P43091493.... CALVED: JAN 29, 2010 .. TATTOO: RE-MW LE-8X  
 KCF BENNETT 3008 M326 RRH MR FELT 3008  
 SHF RIB EYE M326 R117 KCF MISS 459 F284  
 P42584003 HVH MISS HUDSON 83K 8M MSU MF HUDSON 19H  
 SUN VINDY MISS 83K

Cow

14A

**Mohican Lady 75A**

P43386210.... CALVED: FEB 28, 2013 .. TATTOO: RE-MW LE-75A  
 REMITALL ONLINE 122L  
 STAR STROKE O'GENIUS 91X ET  
 P43069368 GERBER 774 ROSY LANE 623S

Heifer

BKR SANDERSON 73C 60S RF POSTIVE PLUS 73C  
 MOHICAN LADY 12U BKR VICTORIA 262D 4J  
 P42917285 MOHICAN LADY 81S MOHICAN PLENTYWOOD 428P  
 MOHICAN LADY 39P

SHF RIB EYE M326 R117  
 MOHICAN LADY 8X  
 P43091493 MOHICAN LADY 12U

REMITALL EMBRACER 8E  
 REMITALL CATALINA 24H  
 FELTONS DOMINO 774  
 GERBER 8020 ROSY LANE 308N

KCF BENNETT 3008 M326  
 HVH MISS HUDSON 83K 8M  
 BKR SANDERSON 73C 60S  
 MOHICAN LADY 81S

EPD'S: BW 3.2 WW 58 YW 94 M 25 M&G 54 FAT -0.023 REA 0.52 MARB -0.04

• A power packed pedigree--Rib Eye and Sanderson. A productive young female as you can see by the outstanding heifer calf at side. Mated to DR MW Trask Grassmaster W02 5-9-13 to 9-1-13.

EPD'S: BW 4.7 WW 57 YW 92 M 22 M&G 50 FAT -0.021 REA 0.41 MARB 0.07

• Stacked maternal genetics with Gerber Rosy Lane, Rib Eye and Sanderson. females.



Lot 15A--Mohican Foxy Gal 52A

15

**Mohican Foxy Gal 72X**

P43091495.... CALVED: FEB 21, 2010 .. TATTOO: RE-MW LE-72X  
 SHF RIB EYE M326 R117  
 TDP VINTAGE 402U ET  
 P42917848 ASH LIL PEANUT 203P

Cow

15A

**Mohican Foxy Gal 52A**

P43386260.... CALVED: FEB 15, 2013 .. TATTOO: RE-MW LE-52A  
 REMITALL ONLINE 122L  
 STAR STROKE O'GENIUS 91X ET  
 P43069368 GERBER 774 ROSY LANE 623S

Heifer

PW MOHICAN NASDAQ P316  
 MOHICAN FASHION 17S  
 P42711458 MOHICAN FASHION 105P

TDP VINTAGE 402U ET  
 MOHICAN FOXY GAL 72X  
 P43091495 MOHICAN FASHION 17S

REMITALL EMBRACER 8E  
 REMITALL CATALINA 24H  
 FELTONS DOMINO 774  
 GERBER 8020 ROSY LANE 308N

SHF RIB EYE M326 R117  
 ASH LIL PEANUT 203P  
 PW MOHICAN NASDAQ P316  
 MOHICAN FASHION 105P

EPD'S: BW 4.8 WW 61 YW 98 M 23 M&G 54 FAT -0.014 REA 0.64 MARB 0.06

• A stout Vintage daughter out of a really good Nasdaq daughter. Great EPDs. Mated to DR MW TRASK GRASSMASTER W02 from 4-26-13 to 9-1-13. Due 2-3-14.

EPD'S: BW 3.7 WW 55 YW 87 M 21 M&G 48 FAT -0.013 REA 0.44 MARB 0.13

• Put together these Stroke daughters will be foundation females to build on.



Lot 16--Kacz 4K 4R Revolution Z1

16

**KACZ 4K 4R Revolution Z1**

**Cow**

P43178453.... CALVED: JAN 15, 2011... TATTOO: RE-Z1 LE-Z1  
 FELTONS LEGEND 242 FELTONS DOMINO 774  
 MSU TCF REVOLUTION 4R FELTONS G15  
 P42593689 MSU TCF RACHAEL ET 54N REMITALL ONLINE 122L  
 HH MISS ADV 786G 1ET

MOHICAN SHARPSHOOTER 52S REMITALL PATRIOT ET 13P  
 4K GINGER J73 MOHICAN LIZA 621F  
 P42947884 4K HAZEL J73 KFF GK MILKMAN G605 ET  
 4K VIC SUNNY D95 G79

EPD'S: BW 0.7 WW 46 YW 75 M 27 M&G 50 FAT 0.029 REA 0.49 MARB 0.08

• A beautiful fronted, great uddered two year old. Conservatively marked with an outstanding heifer calf. Mated to DR MW TRASK GRASSMASTER W02 from 4-26-13 to 9-1-13. Due 2-10-14.



Lot 16A--Mohican Hazel 68A

16A

**Mohican Hazel 68A**

**Heifer**

P43386395.... CALVED: FEB 23, 2013 .. TATTOO: RE-MW LE-68A  
 TH 122 711 VICTOR 719T DRF JWR PRINCE VICTOR 711  
 TH 133U 719T UPGRADE 69X KBCR 19D DOMINETTE 122  
 P43101126 TH 14S 103R MEGAN 133U TH 75J 44M LEGACY 103R  
 TH 5N W39 MEGAN 14S

MSU TCF REVOLUTION 4R FELTONS LEGEND 242  
 KACZ 4K 4R REVOLUTION Z1 MSU TCF RACHAEL ET 54N  
 P43178453 4K GINGER J73 MOHICAN SHARPSHOOTER 52S  
 4K HAZEL J73

EPD'S: BW 0.8 WW 57 YW 94 M 26 M&G 54 FAT 0.034 REA 0.48 MARB 0.06

• A stout Upgrade heifer calf that will make a good cow just like her mother.



Lot 17--Mohican Sunny 3Y

17

**Mohican Sunny 3Y**

**Cow**

P43191830.... CALVED: JAN 29, 2011... TATTOO: RE-MW LE-3Y  
 FELTONS LEGEND 242 FELTONS DOMINO 774  
 MSU TCF REVOLUTION 4R FELTONS G15  
 P42593689 MSU TCF RACHAEL ET 54N REMITALL ONLINE 122L  
 HH MISS ADV 786G 1ET

MOHICAN EUREKA 67J MW EUREKA 421E 1ET  
 MOHICAN SUNNY 62W MOHICAN DEE M21E  
 P43004066 MOHICAN SUNNY 30S MOHICAN MINT 19M  
 MOHICAN SUNNY 43P

EPD'S: BW 3.1 WW 65 YW 99 M 25 M&G 58 FAT 0.053 REA 0.73 MARB 0.06

• A nice patterned, good milking two year old daughter of Revolution out of one of our best Eureka daughters. Mated to DR MW TRASK GRASSMASTER W02 from 4-26-13 to 9-1-13.



Lot 17A--Mohican Sunny 42A

17A

**Mohican Sunny 42A**

**Heifer**

P43386194.... CALVED: FEB 13, 2013 .. TATTOO: RE-MW LE-42A  
 TH 122 711 VICTOR 719T DRF JWR PRINCE VICTOR 711  
 TH 133U 719T UPGRADE 69X KBCR 19D DOMINETTE 122  
 P43101126 TH 14S 103R MEGAN 133U TH 75J 44M LEGACY 103R  
 TH 5N W39 MEGAN 14S

MSU TCF REVOLUTION 4R FELTONS LEGEND 242  
 MOHICAN SUNNY 3Y MSU TCF RACHAEL ET 54N  
 P43191830 MOHICAN SUNNY 62W MOHICAN EUREKA 67J  
 MOHICAN SUNNY 30S

EPD'S: BW 1.0 WW 64 YW 101 M 25 M&G 56 FAT 0.048 REA 0.59 MARB 0.06

• Upgrade worked well with the Revolution daughters as you can see.





Lot 18--Wolf Rachel A253 X6



**Wolf Rachel A253 X6**

**Cow**



**Mohican Rachel 2A**

**Heifer**

P43140766.... CALVED: FEB 13, 2010 .. TATTOO: RE-X6 LE-X6  
 FELTONS LEGEND 242 FELTONS DOMINO 774  
 MSU TCF REVOLUTION 4R FELTONS G15  
 P42593689 MSU TCF RACHAEL ET 54N REMITALL ONLINE 122L  
 HH MISS ADV 786G 1ET  
 PW VICTOR BOOMER P606 REMITALL BOOMER 46B  
 HEA VICTORIA P606 A253 PW VICTORIA 964 8114  
 P42606388 MISS FELTONS 517 A230 FELTONS 517  
 HEA VICTORIA F653 A212

P43386350.... CALVED: JAN 28, 2013 .. TATTOO: RE-MW LE-2A  
 SHF RIB EYE M326 R117 KCF BENNETT 3008 M326  
 TDP VINTAGE 402U ET HVH MISS HUDSON 83K 8M  
 P42917848 ASH LIL PEANUT 203P MOHICAN MINT 19M  
 ASH MELODY 211M  
 MSU TCF REVOLUTION 4R FELTONS LEGEND 242  
 WOLF RACHEL A253 X6 MSU TCF RACHAEL ET 54N  
 P43140766 HEA VICTORIA P606 A253 PW VICTOR BOOMER P606  
 MISS FELTONS 517 A230

EPD'S: BW 2.5 WW 53 YW 81 M 25 M&G 52 FAT 0.038 REA 0.70 MARB 0.10  
 • A powerful daughter of Revolution that has a star studded pedigree with a P606 mother and a 517 grandmother. Fantastic EPDs. Mated to DR MW TRASK GRASSMASTER W02 from 5-9-13 to 9-1-13.

EPD'S: BW 3.5 WW 57 YW 88 M 24 M&G 53 FAT -0.011 REA 0.67 MARB 0.15  
 • A stylish daughter of Vintage that will get your attention.



Lot 18A--Mohican Rachel 2A



*Lot 19--Mohican Catalina Z428*

**19**

**Mohican Catalina Z428**

**Heifer**

P43305159.... CALVED: JUL 16, 2012... TATTOO: RE-Z428 LE-Z428

**20**

**Mohican Catalina Z430**

**Heifer**

P43305169.... CALVED: JUL 20, 2012... TATTOO: RE-Z430 LE-Z430

**21**

**Mohican Catalina Z432**

**Heifer**

P43305175.... CALVED: JUL 22, 2012... TATTOO: RE-Z432 LE-Z432

FELTONS LEGEND 242	FELTONS DOMINO 774
MSU TCF REVOLUTION 4R	FELTONS G15
P42593689	REMITALL ONLINE 122L
MSU TCF RACHAEL ET 54N	HH MISS ADV 786G 1ET

REMITALL GOVERNOR 236G	REMITALL CASINO 12C
REMITALL CATALINA ET 150L	REMITALL ZERMARVEL 111Z
P42236376	MM RSM STOCKMASTER 512
REMITALL CATALINA 24H	REMITALL CATALINA 139C

EPD'S: BW 4.2 WW 64 YW 105 M 25 M&G 57 FAT 0.004 REA 0.74 MARB 0.06

• A top set of embryo heifers from the elite donor cow, Remitall Catalina 150L. These heifers will make top notch cows. They are perfect to put into your fall calving program. This is a rare opportunity-----don't miss it.



*Lot 20--Mohican Catalina Z430*



*Lot 21--Mohican Catalina Z432*



*MSU TCF Revolution 4R*



Lot 22A--Mohican Carla 6A

**22**

**Boyd Carla 1051**

**P43186787.... CALVED: FEB 20, 2011... TATTOO: RE-1051 LE-1051**  
 FELTONS LEGEND 242 FELTONS DOMINO 774  
 MSU TCF REVOLUTION 4R FELTONS G15  
 P42593689 MSU TCF RACHAEL ET 54N REMITALL ONLINE 122L  
 HH MISS ADV 786G 1ET

**Cow**

**22A**

**Mohican Carla 6A**

**P43388013.... CALVED: JAN 13, 2013 .. TATTOO: RE-MW LE-6A**  
 TH 122 71I VICTOR 719T DRF JWR PRINCE VICTOR 71I  
 TH 71U 719T MR HEREFORD 11X KBCR 19D DOMINETTE 122  
 P43101172 TH 7N 45P RITA 71U NJW FHF 9710 TANK 45P  
 TH 814H 3L RITA 7N

**Heifer**

SHF RIB EYE M326 R117  
 KJ 968R RACHEL 950W ET  
 P43024092 KJ 2403 ROBINETTE 968R

KCF BENNETT 3008 M326  
 HVH MISS HUDSON 83K 8M  
 ALLENDALE ROBIN HOOD  
 MARK DOMETTE MR 2403

MSU TCF REVOLUTION 4R  
 BOYD CARLA 1051  
 P43186787 KJ 968R RACHEL 950W ET

FELTONS LEGEND 242  
 MSU TCF RACHAEL ET 54N  
 SHF RIB EYE M326 R117  
 KJ 2403 BOBINETTE 968R

EPD'S: BW 1.9 WW 67 YW 99 M 31 M&G 65 FAT 0.017 REA 0.71 MARB 0.17

• A big, stout, thick made daughter of Revolution. Her grandmother is a full siser to the Accelerated Genetics sire, KJ 2403 Recruit 966R. Look at the EPDs on this female. They will be hard to duplicate. Mated to TDP CROSSOVER Z400. Due 1-25-14.

EPD'S: BW 1.6 WW 64 YW 86 M 27 M&G 59 FAT 0.005 REA 0.72 MARB -0.06

• A super daughter of Mr Hereford out of a two year old daughter of Revolution. This dark red "sweetie" should be one everyone will mark. She has a brood cow look.



Lot 22--Boyd Carla 1051



Lot 23A--Mohican Class Act 76A

23

**FFV 24R Lady X26**

P43115590.... CALVED: MAR 16, 2010. TATTOO: LE-X26  
 CMF 103T VICTOR 262D RHF IGT VICTOR 103T  
 RF 262D VICTOR 24R K ROSE F243 P6  
 P42619557 RF 347 VICKI 5J M059 JMS VICTOR 858 347  
 RF H19 VICTORIA 5J

Cow

23A

**Mohican Class Act 76A**

P43389707.... CALVED: MAR 1, 2013... TATTOO: RE-MW LE-76A  
 DR WORLD CLASS 517 10H FELTONS 517  
 VPI DW FPH CLASS ACT P414 VPI MARATHON LADY 0081  
 P42544977 VPI MISS PROMISE H820 MSU OPTIMUM Z03  
 JR P183 RARITY U195

Heifer

CMF 408G IMAGE 680M  
 FFV NICKI POSTIVE PLUS R53  
 P42654668 FFV NICKI 268 M03

CMF 103T VICTOR 262D  
 CMF 290D MISS 434V 408G  
 KCF BENNETT 745 H268  
 FFV NIKI Z15 H33

RF 262D VICTOR 24R  
 FFV 24R LADY X26  
 P43115590 FFV NICKI POSTIVE PLUS R53

CMF 103T VICTOR 262D  
 RF 347 VICKI 5J M059  
 CMF 408G IMAGE 680M  
 FFV NICKI 268 M03

EPD'S: BW 2.8 WW 45 YW 70 M 16 M&G 39 FAT 0.066 REA -0.07 MARB 0.08

• A stout granddaughter of CMF 103T Victor 262D that has done an excellent job with her heifer calf. Mated to STAR STROKE O'GENIUS 91X ET from 4-26-13 to 7-7-13. Due 2-2-14.

EPD'S: BW 3.3 WW 49 YW 79 M 19 M&G 44 FAT 0.037 REA 0.14 MARB 0.02

• A fancy, heavy muscled daughter of Class Act P414. She has a great look.



Lot 24--Mohican Sara X120

24

**Mohican Sara X120**

P43119284.... CALVED: APR 20, 2010.. TATTOO: RE-X120 LE-X120  
 LJR 179A MARIAS 260 M LJR PAYMASTER 179A  
 LJR 260M SENTINEL 26S HHH H33 82H K14  
 P42708531 RHF PLAYMATE 987 301N WPHF TITAN 626 987  
 RHF MISS VICTORIA 916J

Cow

24A

**Mohican Sara 28A**

P43386352.... CALVED: FEB 8, 2013 .... TATTOO: RE-MW LE-28A  
 SHF RIB EYE M326 R117 KCF BENNETT 3008 M326  
 TDP VINTAGE 402U ET HVH MISS HUDSON 83K 8M  
 P42917848 ASH LIL PEANUT 203P MOHICAN MINT 19M  
 ASH MELODY 211M

Heifer

MOHICAN LUCKY 47L  
 MOHICAN SARA R10  
 P42667266 MOHICAN SARA 847H

REMITALL BOOMER 46B  
 MOHICAN VINDI M72C  
 BAR B MOHICAN HERITAGE  
 MOHICAN SARA M25F

LJR 260M SENTINEL 26S  
 MOHICAN SARA X120  
 P43119284 MOHICAN SARA R10

LJR 179A MARIAS 260M  
 RHF PLAYMATE 987 301N  
 MOHICAN LUCKY 47L  
 MOHICAN SARA 847H

EPD'S: BW 4.9 WW 44 YW 69 M 15 M&G 37 FAT -0.006 REA 0.27 MARB 0.05

• A big volume three year old that has an excellent heifer calf by Vintage. Mated to TDP CROSSOVER Z400 from 5-9-13 to 7-1-13. Due 3-29-14.

EPD'S: BW 4.6 WW 53 YW 84 M 19 M&G 46 FAT -0.030 REA 0.49 MARB 0.13

• Vintage is now deceased. The value of the Vintage calves will be greater as more of them come into production.

**25A****Mohican Tracy 9A****Heifer**

P43394224.... CALVED: FEB 1, 2013 .... TATTOO: RE-MW LE-9A  
 PW MOHICAN NASDAQ P316 REMITALL BOOMER 46B  
 DR MW TRASK GRASSMASTER W02 PW VICTORIA 964 8114  
 P43094815 RKH MS IRENE 3A20 6G03 BTF GRAZER 540 5015  
 RKH MS IRENE 80H 3A20

ASH TEAMWORK 11T ET MOHICAN ROUGHOUT 428R ET  
 MOHICAN TRACY 79X ASH MELODY 211M  
 P43091501 MOHICAN TRACY 421T ET MOHICAN MINT 19M  
 C&L NJB BELLE 30N

EPD'S: BW 2.7 WW 47 YW 74 M 18 M&G 41 FAT 0.014 REA 0.48 MARB 0.12  
 • A stout, long bodied daughter of Grassmaster W02. This is the only Grassmaster daughter in the sale.

*Lot 25A--Mohican Tracy 9A***25****Mohican Tracy 79X****Cow**

P43091501.... CALVED: FEB 26, 2010 .. TATTOO: RE-MW LE-79X  
 MOHICAN ROUGHOUT 428R ET REMITALL OLYMPIAN ET 262L  
 ASH TEAMWORK 11T ET REMITALL BELLE 92L  
 P42792744 ASH MELODY 211M REMITALL KOOTENAY 9K  
 BLAIR-ATHOL 20X HEIDI 26J

MOHICAN MINT 19M FELTONS ENDURANCE 745  
 MOHICAN TRACY 421T ET MOHICAN LISA M24E  
 P42846073 C&L NJB BELLE 30N C&L LARAMIE 2B 25L  
 LLL MARIA 6T 15H

EPD'S: BW 2.9 WW 46 YW 74 M 15 M&G 39 FAT 0.008 REA 0.47 MARB 0.16  
 • A Teamwork daughter out of a daughter of the famous 30N mated to H BL CCC SR GAME CHANGER ET. Due 2-2-14.

*Lot 25--Mohican Tracy 79X***26****Mohican Queen 7X****Cow**

P43094324.... CALVED: JAN 29, 2010 .. TATTOO: RE-MW LE-7X  
 KCF BENNETT 3008 M326 RRH MR FELT 3008  
 SHF RIB EYE M326 R117 KCF MISS 459 F284  
 P42584003 HVH MISS HUDSON 83K 8M MSU MF HUDSON 19H  
 SUN VINDY MISS 83K

MOHICAN RANGELAND 221R PW MOHICAN NASDAQ P316  
 MOHICAN QUEEN 97U MOHICAN PET 184L  
 P42917388 MOHICAN QUEEN 418P ET MOHICAN TRM JAVA 25J  
 MM MISS PACE 124

EPD'S: BW 3.3 WW 55 YW 89 M 29 M&G 56 FAT -0.027 REA 0.37 MARB 0.26  
 • A young daughter of Rib Eye that has a very promising future. Mated to GV/CMR STRONG 156T Y449. Due 2-4-14.

*Lot 26--Mohican Queen 7X***26A****Mohican Grazer 46A****Bull**

P43386209.... CALVED: FEB 13, 2013 .. TATTOO: RE-MW LE-46A  
 PW MOHICAN NASDAQ P316 REMITALL BOOMER 46B  
 DR MW TRASK GRASSMASTER W02 PW VICTORIA 964 8114  
 P43094815 RKH MS IRENE 3A20 6G03 BTF GRAZER 540 5015  
 RKH MS IRENE 80H 3A20

SHR RIB EYE M326 R117 KCF BENNETT 3008 M326  
 MOHICAN QUEEN 7X HVH MISS HUDSON 83K 8M  
 P43094324 MOHICAN QUEEN 97U MOHICAN RANGELAND 221R  
 MOHICAN QUEEN 418P ET

EPD'S: BW 3.5 WW 52 YW 84 M 24 M&G 50 FAT -0.003 REA 0.43 MARB 0.17  
 • A herd bull prospect by Grassmaster out of a really nice daughter of Rib Eye.

*DR MW Trask Grassmaster W02*



Lot 27--Mohican Whatagirl 6Y

27

**Mohican Whatagirl 6Y**

Cow

P43192026.... CALVED: JAN 29, 2011... TATTOO: RE-MW LE-6Y  
 DRF JWR PRINCE VICTOR 71I HRP THM VICTOR 109W 9329  
 TH 122 71I VICTOR 719T RHF 964 VICTRA 4057  
 P42800895 KBCR 19D DOMINETTE 122 NJW 1Y WRANGLER 19D  
 KBCR DOMINETTE 9112

MOHICAN PRIME UP 72P  
 SPARKS WHATAGIRL 406W ET  
 P42991217 HUTH PAULINE N016

MOHICAN MINT 19M  
 MOHICAN PLUS 107M  
 KCF BENNETT 759 H142  
 HUTH 2D PROSPECTA K077

EPD'S: BW 1.2 WW 59 YW 86 M 21 M&G 51 FAT 0.022 REA 0.43 MARB 0.04

• A very attractive daughter of the popular 719T. Her grandmother, Huth Pauline N016, was one of the elite donors at Star Lake. Mated to STAR STROKE O'GENIUS 91X from 4-26-13 to 7-7-13. Due 2-20-14.

27A

**Mohian Whatgrid 92A**

Heifer

P43386208.... CALVED: MAR 31, 2013. TATTOO: RE-MW LE-92A  
 MSU TCF REVOLUTION 4R FELTONS LEGEND 242  
 MOHICAN WHITEHAWK YUKON 414YET MSU TCF RACHAEL ET 54N  
 P43192057 LAGRAN MISS 243R ET PW VICTOR BOOMER P606  
 MOHICAN MISS 424G

TH 122 71I VICTOR 719T  
 MOHICAN WHATAGIRL 6Y  
 P43192026 SPARKS WHATAGIRL 406W ET

DRF JWR PRINCE VICTOR 71I  
 KBCR 19D DOMINETTE 122  
 MOHICAN PRIME UP 72P  
 HUTH PAULINE N016

EPD'S: BW 1.5 WW 56 YW 84 M 27 M&G 54 FAT 0.038 REA 0.57 MARB 0.16

• A nice patterned heifer sired by Yukon. Get in early as these females will make super cows.



Lot 28--Mohican Tandem 52Y

28

**Mohican Tandem 52Y**

Cow

P43191814.... CALVED: FEB 22, 2011... TATTOO: RE-MW LE-52Y  
 KCF BENNETT 3008 M326 RRH MR FELT 3008  
 SHF RIB EYE M326 R117 KCF MISS 459 F284  
 P42584003 HVH MISS HUDSON 83K 8M MSU MF HUDSON 19H  
 SUN VINDY MISS 83K

JDH 5162 TANDEM 26T  
 JDH MS 26T TANDEM 35W  
 P43006822 AH JDH WRANGLR QUEEN 16T

K&B RED FELTON 5162  
 JDH MS P606 BOOMER 20R  
 JDH 15 WRANGLER 25L  
 AH MS LADY QUEEN 14L

EPD'S: BW 3.0 WW 51 YW 80 M 25 M&G 51 FAT -0.015 REA 0.22 MARB 0.31

• A daughter of Rib Eye that is just a two year old. She has a very nice udder and she will have a great future. Mated to STAR STROKE O'GENIUS 91X ET from 4-26-13 to 9-1-13.



Lot 28A--Mohican 1/U Kon 22A

28A

**Mohican 1/U Kon 22A**

Bull

P43400929.... CALVED: FEB 6, 2013 .... TATTOO: RE-MW LE-22A  
 MSU TCF REVOLUTION 4R FELTONS LEGEND 242  
 MOHICAN WHITEHAWK YUKON 414YET MSU TCF RACHAEL ET 54N  
 P43192057 LAGRAN MISS 243R ET PW VICTOR BOOMER P606  
 MOHICAN MISS 424G

SHF RIB EYE M326 R117  
 MOHICAN TANDEM 52Y  
 P43191814 JDH MS 26T TANDEM 35W

KCF BENNETT 3008 M326  
 HVH MISS HUDSON 83K 8M  
 JDH 5162 TANDEM 26T  
 AH JDH WRANGLER QUEEN 16T

EPD'S: BW 2.6 WW 52 YW 82 M 30 M&G 56 FAT 0.020 REA 0.50 MARB 0.29

• A young herd bull prospect that should sire a super set of females. BW 76 #.

**29****Allen 6T Miss Target 440Y****Cow**

**P43195724.... CALVED: MAR 1, 2011... TATTOO: LE-440**  
 MOHICAN ROUGHOUT 428R ET REMITALL OLYMPIAN ET 262L  
 REMITALL BELLE 92L  
 REMITALL KOOTENAY 9K  
 BLAIR-ATHOL 20X HEIDI 26J

ASH TARGET 6T ET  
 P42792725 ASH MELODY 211M

LLL C&L REDWOOD 113L LLL TIMBER 65H  
 ALLEN MISS REDWOOD 124T BIG T 76A BONITA C32  
 P42803291 ALLEN 984 LDY HEATHER 862N ALLEN 37H HOME RUN 1  
 ALLEN MS 32E BOOMER 648L

EPD'S: BW 4.2 WW 53 YW 82 M 16 M&G 43 FAT 0.006 REA 0.54 MARB 0.13

• A daughter of a son of Roughout that went to Phil Allen, Antimony, UT. This young lady has a Dam of Distinction for a grandmother. Mated to DR MW TRASK GRASSMASTER W02 from 4-26-13 to 9-1-13.

*Lot 29--Allen 6T Miss Target 440Y***29A****Mohican Heather 83A****Heifer**

**P43386340.... CALVED: MAR 9, 2013... TATTOO: RE-MW LE-83A**  
 MSU TCF REVOLUTION 4R FELTONS LEGEND 242  
 MOHICAN WHITEHAWK YUKON 414YET MSU TCF RACHAEL ET 54N  
 P43192057 LAGRAN MISS 243R ET PW VICTOR BOOMER P606  
 MOHICAN MISS 424G

ASH TARGET 6T ET MOHICAN ROUGHOUT 428R ET  
 ALLEN 6T MISS TARGET 440Y ASH MELODY 211M  
 P43195724 ALLEN MISS REDWOOD 124T LLL C&L REDWOOD 113L  
 ALLEN 984 LDY HEATHER 862N

EPD'S: BW 3.3 WW 52 YW 81 M 24 M&G 50 FAT 0.027 REA 0.64 MARB 0.21

• With a dam like this one has, she can't miss making a top cow. A nice two year old pair.

*Lot 29A--Mohican Heather 83A***30A****Mohican Paula 49A****Heifer**

**P43389749.... CALVED: FEB 14, 2013 .. TATTOO: RE-MW LE-49A**  
 TH 122 711 VICTOR 719T DRF JWR PRINCE VICTOR 711  
 TH 133U 719T UPGRADE 69X KBCR 19D DOMINETTE 122  
 P43101126 TH 14S 103R MEGAN 133U TH 75J 44M LEGACY 103R  
 TH 5N W39 MEGAN 14S

FELTONS LEGEND 242 FELTONS DOMINO 774  
 WALKER MISS 242 B319 112 FELTONS G15  
 P43207639 CES VICKY X143 B319 CES WCF VICTOR R270 X143  
 CES VICTORIA 218 Y56

EPD'S: BW 1.5 WW 53 YW 87 M 22 M&G 48 FAT 0.042 REA 0.24 MARB 0.11

• An Upgrade out of a two year old daughter of Feltons Legend 242. Really good EPDs with low birth and high milk.

*Lot 30A--Mohican Paula 49A***30****Walker Miss 242 B319 112****Cow**

**P43207639.... CALVED: FEB 5, 2011..... TATTOO: LE-112**  
 FELTONS DOMINO 774 OXH DOMINO 7002  
 FELTONS LEGEND 242 FELTONS B72  
 P42016383 FELTONS G15 FELTONS 549  
 FELTONS B32

CES WCF VICTOR R270 X143 CES VICTOR 8132 R270  
 CES VICKY X143 B319 CES VICTORIA 103T R302  
 P42374183 CES VICTORIA 218 Y56 RHF VICTOR 424 218  
 CES VICKY 238 W71

EPD'S: BW 0.1 WW 37 YW 57 M 19 M&G 38 FAT 0.043 REA 0.02 MARB 0.20

• A nice two year old that will be a money maker for many years to come. Mated to STAR STROKE O'GENIUS 91X ET from 4-26-13 to 7-7-13. Due 3-1-14.

*Lot 30--Walker Miss 242 B319 112*



*Lot 31--Wagners Heidi 1203*

**31**

**Wagners Heidi 1203**

**P43188823.... CALVED: MAR 20, 2011. TATTOO: RE-1203 LE-1203**  
 R PUCKSTER 2013  
 BAR JZ PUCKSTER 892H  
 R MISS PATEND 421  
 R PATEND 2082  
 R MISS PAGE 143

**Cow**

**31A**

**TDP Heidi 79A**

**P43389746.... CALVED: MAR 2, 2013... TATTOO: RE-TDP LE-79A**  
 TH 122 71I VICTOR 719T  
 TH 133U 719T UPGRADE 69X  
 P43101126 TH 14S 103R MEGAN 133U

**Heifer**

SPARKS TREND 2007  
 P42817055 R MISS PATEND 1315

MOHICAN ROUGHOUT 428R ET REMITALL OLYMPIAN ET 262L  
 ASH HEIDI 28T  
 P42792701 ASH HEIDI 39R ET

EPD'S: BW 4.4 WW 64 YW 102 M 27 M&G 59 FAT 0.004 REA 0.64 MARB 0.1

• A two year old daughter of the popular Sparks Trend 2007 that has some fantastic EPDs. Mated to STAR STROKE O'GENIUS 91Y ET from 4-26-13 to 7-7-13. Due 2-26-14.

SPARKS TREND 2007  
 WAGNERS HEIDI 1203  
 P43188823 ASH HEIDI 28T

EPD'S: BW 4.2 WW 81 YW 130 M 28 M&G 69 FAT 0.023 REA 0.54 MARB 0.02

• An Upgrade daughter that has some of the best EPDs in the sale.

R PUCKSTER 2013  
 R MISS PATEND 1315  
 MOHICAN ROUGHOUT 428R ET  
 ASH HEIDI 39R ET



*Lot 33--Mohican Belle 411Y ET*

**32**

**Mohican Tyra X82**

**P43119270.... CALVED: MAR 30, 2010. TATTOO: RE-X82 LE-X82**  
 DRF JWR PRINCE VICTOR 71I  
 MOHICAN BKR NET WORTH 39T  
 P42788870 BKR VICTORIA 262D 4J

**Cow**

**33**

**Mohican Belle 411Y ET**

**P43198808.... CALVED: MAR 19, 2011. TATTOO: RE-MW LE-411Y**  
 MC RANGER 9615  
 REMITALL ROUTE 66 ET 346R  
 P42733186 REMITALL CATALINA 24H

**Cow**

MOHICAN ROUGHOUT 5R  
 MOHICAN TYRA T22  
 P42920598 EF K376 THYRA N069

EPD'S: BW 3.7 WW 44 YW 77 M 13 M&G 35 FAT 0.000 REA 0.26 MARB -0.11

• A daughter of Net Worth that did such a great job at Mohican in Ohio. Mated to DR MW TRASK GRASSMASTER W02 from 4-26-13 to 9-1-13.

• **LOT 32A**--Steer calf at side.

REMITALL OLYMPIAN 3T 262L  
 REMITALL MW BELLE 54P  
 P43197394 REMITALL BELLE 92L

EPD'S: BW 4.4 WW 50 YW 84 M 12 M&G 37 FAT -0.020 REA 0.27 MARB 0.20

• A sweet Remittal pedigree. This young two year old could be the buy of the sale. Mated to STAR STROKE O'GENIUS 91X ET from 5-9-13 to 9-1-13. Due 3-4-14.

• **LOT 33A**--Steer calf at side.

CIRCLE-D WRANGLER 832W  
 SBF ROYAL GYPSY  
 MM RSM STOCKMASTER 512  
 REMITALL CATALINA 139C

REMITALL GOVERNOR 236G  
 REMITALL CATALINA 24H  
 REMITALL JACK PLANE 90J  
 REMITALL JASMINE 74J





Lot 34--THM 8859 Victoria 1179

**34**

**THM 8859 Victoria 1179**

**Cow**

P43161319.... CALVED: JAN 1, 2011..... TATTOO: RE-THM LE-1179  
 TRM 2128 37E 121 KUDZU 4066 KPH PHASE 121  
 THM HEARTLAND 8859 ET TRM 37E CROMAID 2128  
 P42873515 THM KELLY 29F 3043 CS BOOMER 29F  
 THM 5048 VICTRA 8037

**34A**

**TDP Special Kelly 1A**

**Heifer**

P43389747.... CALVED: JAN 23, 2013 .. TATTOO: RE-TDP LE-1A  
 RHF VICTOR 424 218 PW BEAU VICTOR 424  
 NJB 218 EASY DOMINO ET RHF PERFECT 694 856  
 P24020805 KCF MISS 469R W219 GK BOTTOM LINE 469R  
 KCF MISS 233F R159

JLG 218 SPECIAL ASSET 5648 NJB 218 EASY DOMINO ET  
 THM 5648 VICTORIA 9437 JLG VICTRA 163M 5626  
 P42959243 THM 3060 VICTORIA 7450 THM SLEEP EASY 3060  
 JLG VICTRA DOM 287 17

THM HEARTLAND 8859 ET TRM 2128 37E 121 KUDZU 4066  
 THM 8859 VICTORIA 1179 THM KELLY 29F 3043  
 P43161319 THM 5648 VICTORIA 9437 JLG 218 SPECIAL ASSET 5648  
 THM 3060 VICTORIA 7450

EPD'S: BW 1.1 WW 52 YW 80 M 22 M&G 48 FAT 0.040 REA 0.21 MARB 0.19

• A beautiful uddered two year old that will get your attention. She will be one of the top two year olds to sell this fall. Mated to H BK CCC SR GAME CHANGER ET with a heifer calf pregnancy. Due 1-25-14.

EPD'S: BW 1.0 WW 46 YW 68 M 21 M&G 44 FAT 0.043 REA 0.09 MARB 0.24

• Longevity is bred into this deep bodied Easy Domino daughter. Easy Domino just passed at 16 1/2 years of age. A super cow prospect here.



Lot 34A--TDP Special Kelly 1A



Lot 35--TDP Revolution 416A ET

**35**

**TDP Revolution 416A ET**

**Bull**

P43386429.... CALVED: FEB 19, 2013 .. TATTOO: RE-TDP LE-416A

FELTONS LEGEND 242

FELTONS DOMINO 774

MSU TCF REVOLUTION 4R

FELTONS G15

P42593689

MSU TCF RACHAEL ET 54N

REMITALL ONLINE 122L

HH MISS ADV 786G 1ET

REMITALL KOOTENAY 9K

REMITALL HOLLYWOOD 37H

ASH MELODY 211M

REMITALL GINGER 23G

P42337774

BLAIR-ATHOL 20X HEIDI 26J

REMITALL KEYNOTE 20X

MHR 35A HAZEL 54A 18D

EPD'S: BW 3.2 WW 66 YW 103 M 25 M&G 58 FAT 0.001 REA 1.04 MARB 0.19

• A son of 211M that was National Western Cow-Calf Champion and has produced a number of good ones. This is a bull that is certainly a top herd bull prospect.

**36**

**TDP Melody 433A ET**

**Heifer**

P43386636.... CALVED: MAR 25, 2013. TATTOO: RE-TDP LE-433A

RU 20X BOULDER 57G

REMITALL KEYNOTE 20X

TH JWR SOP 16G 57G TUNDRA 63N

RU 10A DEW 57D

P42387444

TEE-JAY 707B GEMINI 16G ET

KLONDIKE 28U 707B

KILMRLE 452M GEMINI R261

REMITALL KOOTENAY 9K

REMITALL HOLLYWOOD 37H

ASH MELODY 211M

REMITALL GINGER 23G

P42337774

BLAIR-ATHOL 20X HEIDI 26J

REMITALL KEYNOTE 20X

MHR 35A HAZEL 54A 18D

EPD'S: BW 4.6 WW 60 YW 98 M 15 M&G 46 FAT -0.001 REA 0.61 MARB 0.18

• A daughter of the now deceased, Tundra. This is a female that will gain lots of value over time.



Lot 36--TDP Melody 433A ET



*Lot 37--TH 133U 719T Upgrade 69X*

**37**

**TH 133U 719T Upgrade 69X**

**Bull**

P43101126.... CALVED: JAN 31, 2010 .. TATTOO: RE-69X LE-69X  
 DRF JWR PRINCE VICTOR 71I HRP THM VICTOR 109W 9329  
 TH 122 71I VICTOR 719T RHF 964 VICTRA 4057  
 P42800895 KBCR 19D DOMINETTE 122 NJW 1Y WRANGLER 19D  
 KBCR DOMINETTE 9112

- The best breeding son of 719T available. His calves are the proof. They come easily and grow fast. This is an exciting opportunity for you to purchase a proven three year old bull of this caliber. High accuracy--low birth weight bull.
- Terms announced sale day.

TH 75J 44M LEGACY 103R TH 557E 57G LEGACY 44M ET  
 TH 14S 103R MEGAN 133U KB 615C NICKY 75J  
 P42898693 TH 5N W39 MEGAN 14S ALLENDALE ROBIN HOOD  
 TH 38J 57G MEGAN 5N  
 EPD'S: BW -0.1 WW 63 YW 105 M 26 M&G 58 FAT 0.041 REA 0.45 MARB 0.02



*TDP Crossover Z400--Reserve Division Champion at the National Western in Denver*



*Mohican Market Z406—Lot 3 in our 2012 sale*

*Congratulations Isaac Lattimer on your Reserve Senior Champion Heifer at the recent Canadian National Junior Bonanza Expo.*

*A number of prospects like this will be in the sale offering this year.*



*TRM NJW Nasdaq Lady 94T ET--Dam of Z406*



*Mohican Market Z406  
as in the 2012 MW sale where she was purchased*



### Mohican Top Shelf Z1

**Bull**

**P43296700.... CALVED: JAN 2, 2012 .... TATTOO: RE-Z1 LE-Z1**  
 KCF BENNETT 3008 M326 RRH MR FELT 3008  
 NJW 73S M326 TRUST 100W ET KCF MISS 459 F284  
 P43002897 NJW P606 72N DAYDREAM 73S PW VICTOR BOOMER P606  
 NJW 94J DW 72N

TDP VINTAGE 402U ET SHF RIB EYE M326 R117  
 MOHICAN CARMEL 6X ASH LIL PEANUT 203P  
 P43091679 MOHICAN CARMEL 235R ET REMITALL PATRIOT ET 13P  
 MOHICAN CARMEL 145J

**EPD'S: BW 2.1 WW 73 YW 123 M 37 M&G 74 FAT -0.024 REA 1.18 MARB 0.25**

• One of the best sons of Trust. We bred 25 replacement heifer naturally to him. He will have a huge impact in the future at Mohican West. Incredible EPDs. His dam is a fantastic daughter of TDP Vintage 402U.



*Mohican Top Shelf Z1*



### TDP Crossover Z400

**Bull**

**P43292995.... CALVED: JAN 12, 2012 .. TATTOO: RE-Z400 LE-Z400**  
 TH 122 71I VICTOR 719T DRF JWR PRINCE VICTOR 71I  
 TH 133U 719T UPGRADE 69X KBCR 19D DOMINETTE 122  
 P43101126 TH 14S 103R MEGAN 133U TH 75J 44M LEGACY 103R  
 TH 5N W39 MEGAN 14S

MOHICAN MINT 19M FELTONS ENDURANCE 745  
 ASH LIL PEANUT 203P MOHICAN LISA M24E  
 P42533949 ASH MELODY 211M REMITALL KOOTENAY 9K  
 BLAIR-ATHOL 20X HEIDI 26J

**EPD'S: BW 0.0 WW 60 YW 89 M 22 M&G 52 FAT 0.039 REA 0.55 MARB 0.19**

• A bull in which we have a lot of confidence. He was Reserve Division Champion at the National show in Denver. His dam and grandam are from one of our most predictable cow families.



*TDP Crossover Z400*



### Boyd Powerhouse 2028

**Bull**

**P43273759.... CALVED: JAN 18, 2012 .. TATTOO: RE-2028 LE-2028**  
 TH 122 71I VICTOR 719T DRF JWR PRINCE VICTOR 71I  
 TH 71U 719T MR HEREFORD 11X KBCR 19D DOMINETTE 122  
 P43101172 TH 7N 45P RITA 71U NJW FHF 9710 TANK 45P  
 TH 814H 3L RITA 7N

THM DURANGO 4037 CS BOOMER 29F  
 NJW 8S 4027 DOREEN 108X THM 7085 VICTRA 9036  
 P43092795 NJW 9126J K014 DOREEN 8S ET CL 1 DOMINO 9126J 1ET  
 MC 9615 DUTCHESS K014

**EPD'S: BW 2.8 WW 63 YW 91 M 30 M&G 61 FAT -0.028 REA 0.54 MARB -0.06**

• Perhaps one of the best sons of Mr Hereford. His dam is fantastic. she was the Boyd pick of the heifers at Ned & Jan Ward's. She is now a donor in the Boyd program. Great EPDs. Powerhouse could be the replacement for his now deceased sire, Mr Hereford.



*Boyd Powerhouse 2028*



### DR MW Trask Grassmaster W02

**Bull**

**P43094815.... CALVED: FEB 6, 2010 .... TATTOO: W02**  
 REMITALL BOOMER 46B REMITALL KEYNOTE 20X  
 PW MOHICAN NASDAQ P316 RMTLL SALLYS LASS 120X  
 P42402313 PW VICTORIA 964 8114 RHF VICTOR 266 964  
 HVF VICTORIA 1121 05

BTF GRAZER 540 5015 NT PLATO RUPERT 0590  
 RKH MS IRENE 3A20 6G03 AF 120 BANDITA A08  
 P42749866 RKH MS IRENE 80H 3A20 DR ACHIEVER 8403  
 OH IRENE 1F

**EPD'S: BW 2.7 WW 47 YW 75 M 20 M&G 44 FAT 0.019 REA 0.49 MARB 0.08**

• This is a big, stout, large footed son of Nasdaq that we selected to replace his sire as our walking bull. He is deep red, fully pigmented and loaded with muscle. His dam is the "key" as she is a moderate frame, big volume female with a perfect udder. She is very fertile and her genetics are known for their ability to turn grass into meat with little expense. What could be more important in today's world. He has more than lived up to our expectations.



*DR MW Trask Grassmaster W02*



*Lot 38A--MC 9112 100W Daydream 1317*

**38A**

**MC 9112 100W Daydream 1317 Heifer**

**P43397353.... CALVED: FEB 2, 2013 .... TATTOO: RE-1317 LE-1317**

KCF BENNETT 3008 M326 RRH MR FELT 3008

NJW 73S M326 TRUST 100W ET KCF MISS 459 F284

P43002897 NJW P606 72N DAYDREAM 73S PW VICTOR BOOMER P606

NJW 94J DEW 72N

RU 20X GALAXY 58G

REMITALL KEYNOTE 20X

MC 58G MILKYWAY W9112 ET

RU 10A ELM 57E

P43019652 OXH KARN 9304

KB L1 DOMINO 737

OXH TONI 7086

EPD'S: BW 0.7 WW 47 YW 89 M 25 M&G 48 FAT -0.019 REA 0.74 MARB 0.16

• We are pleased and proud to offer a NJW Trust 100W heifer of this quality. HC 1317 is a standout in the 2013 pasture. There is a predictable genetic package. She will work anywhere. Buy her with confidence.

**38**

**MC 58G Milkyway W9112 ET Cow**

**P43019652.... CALVED: JAN 25, 2009 .. TATTOO: RE-9112 LE-9112**

REMITALL KEYNOTE 20X REMITALL TEAMSTER 9T

RU 20X GALAXY 58G REMITALL PATRICIA 99P

P42448111 RU 10A ELM 57E REMITALL ACME 10A

RU 40L BUTTERCUP 57Z

KB L1 DOMINO 737

JA L1 DOMINO 503 2ET

OXH KARN 9304 JB L1 DOMINETTE 513

41144281 OXH TONI 7086 OXH ANDREW 8111

OXH RUBY 4017

EPD'S: BW 2.6 WW 45 YW 82 M 27 M&G 49 FAT 0.019 REA 0.19 MARB 0.15

• The 9112 cow is a daughter of Canadian milk leader RU 20X Galaxy 58G and out of the spectacular donor, OXH KARN 9304. She was produced from embryos purchased at Breeder's Classic, Stone Ridge Manor, Gettysburg, Pa., from our good friend Dan Snyder. This cow simply goes to work every year and brings in a good calf. She is a sound female with good dimension and capacity. Her udder is tight with near perfect teat structure and placement. Her disposition is excellent. She carries AI service of NJW 73S M326 TRUST 100W on May 2, 2013. Safe.

**MC**  
**McMURRY CATTLE**  
**Billings, Montana**

*Lots 38-45*





Lot 40--MC 16R Firefly 1109 ET

40

**MC 16R Firefly 1109 ET**

**Cow**

P43199647.... CALVED: JAN 21, 2011... TATTOO: RE-1109 LE-1109

HARVIE RAFTSMAN 16R	HARVIE HILLS 68H
P42699691 HARVIE MISS FIREFLY 51F	HARVIE MISS JULIE 9J
	HARVIE DEYNOTE 61D
	HARVIE MISS NYLON 1Y

ANHINGA VIC 69R 579	ANHINGA VIC 37J 69R
GV 579 VICTORIA 9710	PAF VICTORIA 31 820
P41000421 GV 2B WHITNEY 9533	NJW 604M WYO 2B
	GV DOMINETTE 9148

EPD'S: BW 2.8 WW 45 YW 73 M 21 M&G 43 FAT -0.037 REA 0.35 MARB -0.10

• It is a pleasure to be able to offer an outstanding daughter of donor 9710. The 1109 cow is a maternal sibling to NJW Tank 45P. Now just a two year old, 1109 has developed into a sound, easy fleshing young female exhibiting added capacity and an ideal udder. Her first calf, a polled son of UPS Domino 3027 arrived unassisted with BW 75#. Sire Harvie Raftsman 16R is a distinguished CHB sire and sire of sought after daughters. Pasture exposed to RVP STAR 45S ZACK 27Z from May 4 to Aug. 6, 2013. Safe to Zack 27Z, a sale feature mating.

41

**MC 719 Victoria 1075**

**Cow**

P43133628.... CALVED: APR 13, 2010.. TATTOO: RE-1075 LE-1075

ANCHOR BRAXTON	VESCOVI D149
E BRAXTON 719	J-BAR-B ANCHOR 27A 1C
P42839583 ANCHOR 17R	ANCHOR 32N
	ANCHOR 43L

STAR 8006 ENYETO 163M ET	H 8E EMBRACER 8006
MC 163M ERICA U884 ET	STAR ROCKIN ERICA 38F
P42923456 MC 9615 DUTCHESS N315	MC RANGER 9615
	MC VICTRESS 218 K005

EPD'S: BW 4.3 WW 49 YW 80 M 17 M&G 41 FAT 0.023 REA 0.36 MARB 0.15

• The 1075 cow brings balanced performance and maternal quality to the offering. This young cow is sired by E Braxton 719, now proven as a calving ease sire (130 @ 97%), sire of adequate milking daughters (10 with WR 101.1) and added carcass value (43 REA @ 102% / 43 IMF@108%). Dam is an Enyeto 163M daughter out of the powerful Ranger 9615 daughter, N315. Enyeto 163M has produced some of the exceptional females of the Hereford breed. Her mating to our young pasture sire, RVP STAR 45S Zack 27Z, from 5-4 to 8-6-13, is a sale feature. Safe in calf.

40A

**MC 1109 3027 Domino 1318**

**Bull**

P43397261.... CALVED: FEB 2, 2013 .... TATTOO: RE-1318 LE-1318

CL 1 DOMINO 9126J 1ET	HH ADVANCE 767G 1ET
UPS DOMINO 3027	CL 1 DOMINETTE 490
42426386 UPS MISS DIAMOND 1353	SH DIAMOND 881
	UPS MS MILEHIGH 8330

HARVIE RAFTSMAN 16R	HARVIE LADIES MAN 4L
MC 16R FIREFLY 1109 ET	HARVIE MISS FIREFLY 51F
P43199647 GV 579 VICTORIA 9710	ANHINGA VIC 69R 579
	GV 2B WHITNEY 9533

EPD'S: BW -0.4 WW 43 YW 71 M 28 M&G 50 FAT -0.013 REA 0.40 MARB 0.12

• Calves from this polled paternal sibling to Churchill Sensation should come easily, grow well and daughters should milk well. Consider him as a top calving ease prospect.



Lot 41--MC 719 Victoria 1075

41A

**MC 1075 100W Trust 1321**

**Bull**

P43397148.... CALVED: FEB 4, 2013 .... TATTOO: RE-1321 LE-1321

KCF BENNETT 3008 M326	RRH MR FELT 3008
NJW 73S M326 TRUST 100W ET	KCF MISS 459 F284
P43002897 NJW P606 72N DAYDREAM 73S	PW VICTOR BOOMER P606
	NJW 94J DEW 72N

E BRAXTON 719	ANCHOR BRAXTON
MC 719 VICTORIA 1075	ANCHOR 17R
P43133628 MC 163M ERICA U884 ET	STAR 8006 ENYETO 163M ET
	MC 9615 DUTCHESS N315

EPD'S: BW 4.7 WW 57 YW 102 M 20 M&G 48 FAT -0.017 REA 0.81 MARB 0.16

• The 1321 BC is sired by National Denver Champion NJW Trust 100W. This mating combines great performance and maternal quality.





**Lot 42--MC Donna Rupert 1077**

**42**

**MC Donna Rupert 1077**

**Cow**

**P43133629.... CALVED: APR 21, 2010.. TATTOO: RE-1077 LE-1077**

NT BTCC L1 PLATO RUPERT	CL 1 DOMINO 226
P42274753 TR DONNA RUPT H28	NT AUSTINA 338
	TR BATTLE ANX A1187
	NT DONNA RUPERT H97

PW VICTOR BOOMER P606	REMITALL BOOMER 46B
MC VICTOR P606 S661 ET	PW VICTORIA 964 8114
P42719957 SNF 2105 VICTRIA 9313 ET	RHF VICTOR 767 2105
	SBF ROYAL PRINCESS 8304

**EPD'S: BW 2.3 WW 39 YW 56 M 26 M&G 45 FAT 0.033 REA 0.39 MARB 0.09**

• The 1077 cow is a daughter of the productive P606 daughter DOD S661, a MM+32 milk EPD female. Maternal grandam, RHF 2105 daughter 9313, was much the same in type and dimension. These are large volume females that raise stout calves every year. Sire NT Rupert is a Trask bred sire noted for efficiency on grass. The 1077 cow is doing a great job raising her 2013 heifer calf. Pasture exposed to MC 346R GLORY W997 ET, a Route 66 son of noted donor KJ C&L J119 Glory, from 5-15 to 6-19-13. Safe.



**Lot 42A--MC 1077 1108 Duchess 1379**

**42A**

**MC 1077 1108 Duchess 1379**

**Heifer**

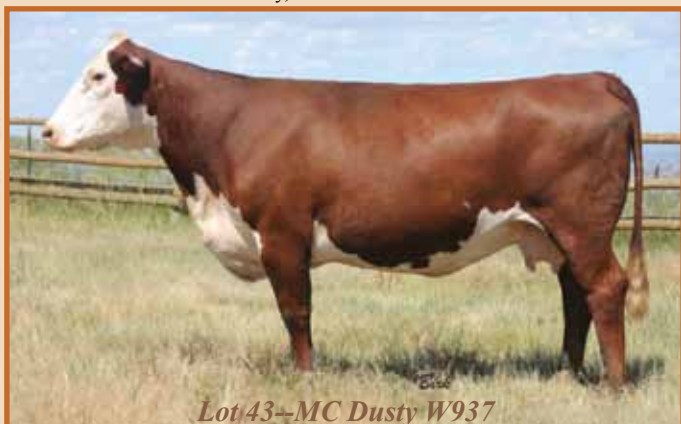
**P43397259.... CALVED: MAR 27, 2013. TATTOO: RE-1379 LE-1379**

MC E M211 1108 ET	MC RANGER DOMINION	MC RANGER 9615
P43197859	GV 579 VICTORIA 9710	MC 9419 MILKMAID 9613
		ANHINGA VIC 69R 579
		GV 2B WHITNEY 9533

NT BTCC L1 PLATO RUPERT	NT PLATO 19 207
MC DONNA RUPERT 1077	TR DONNA RUPT H28
P43133629	PW VICTOR BOOMER P606
	SNF 2105 VICTRIA 9313 ET

**EPD'S: BW 2.6 WW 45 YW 70 M 25 M&G 48 FAT 0.009 REA 0.45 MARB 0.08**

• This is a uniquely bred female. She is developing very quickly on her mother's rich milk and grass. Dam of the 1108 bull that sired this female is 9710, also dam of NJW Tank 45P. Sire of 1108 is CHB sire MC Ranger Dominion M211, one of Ranger 9615's top sons. This heifer will grace any pasture and has potential to be a highly productive cow.



**Lot 43--MC Dusty W937**

**43**

**MC Dusty W937**

**Cow**

**P42990254.... CALVED: FEB 6, 2009 .... TATTOO: RE-937 LE-937**

RU DUSTER 60D	REMITALL KEYNOTE 20X
MC 30N 60D COMMANDER T738 ET	RU SARA 60X
P42804352	C&L LARAMIE 2B 25L
	LLL MARIA 6T 15H

MC RANGER 9615	CIRCLE-D WRANGLER 832W
MC 9615 DUTCHESS N315	SBF ROYAL GYPSY
P42397048	RHF VICTOR 424 218
	MC 25C VICTORIA 9805

**EPD'S: BW 7.4 WW 54 YW 86 M 19 M&G 46 FAT -0.005 REA 0.35 MARB -0.04**

• Visits to this cow's pasture have always been pleasant. Her profile fits our front pastures. W937 is a trouble free individual and an excellent mother to her calves. Her dam, N315, was a powerful Ranger 9615 daughter. Her sire is a Duster 60D son of noted donor 30N, whose progeny have been valued by many discriminating breeders. The maternal pedigree traces to DOD donor K005, RHF 424 218, Vaquero 25C and Star Mark 335F. The mating to 1283 (BW 86#) brings in herd bull dam SB Dottie 109N and the powerful polled GH Adams Gold Nugget 378W. Pasture exposed to MC 378W GOLDEN TREASURE 1283 ET from May 3 to July 19, 2013. Safe.



**MC E 2013 Puckster Dom 1183 ET**  
*Sire of Lot 43A & 45A*

**43A**

**MC 937 1183 Victoria 1362**

**Heifer**

**P43397350.... CALVED: MAR 1, 2013... TATTOO: RE-1362 LE-1362**

R PUCKSTER 2013	BAR JZ PUCKSTER 892H
MC E 2013 PUCKSTER DOM 1183 ET	R MISS PATEND 421
P43242795	TRM BTT CC 774 VICTORIA L117
	FELTONS DOMINO 774
	DDR VICTORIA 964 8D01

MC 30N 60D COMMANDER T738	RU DUSTER 60D
MC DUSTY W937	C&L NJB BELLE 30N
P42990254	MC 9615 DUTCHESS N315
	MC RANGER 9615
	MC VICTRESS 218 K005

**EPD'S: BW 6.1 WW 57 YW 90 M 18 M&G 47 FAT 0.007 REA 0.22 MARB 0.05**

• This is a strong cow prospect bred to balance maternal quality with added carcass value. We would anticipate substantial performance for this individual and her progeny.



Lot 44A--MC 809 1123 Glory 1370



Lot 44A--MC P230 Kate U809

44

**Mc P230 Kate U809**

**Cow**

P42923602.... CALVED: FEB 8, 2008 .... TATTOO: RE-809 LE-809

FELTONS ENDURANCE 743	FELTONS 517
EF F745 FRANK P230	FF PROSPECTITA 997
P42528669 FELTONS KATE P38	FELTONS DOMINO 774
	FELTONS ENDURETT H62

CMF 103T VICTOR 262D	RHF IGT VICTOR 103T
MC 262D VICTORIA M207	K ROSE F243 P6
P42317726 MC 54Y PAULA K003	LJR PARAMETER 54Y
	MC MILKMAID 9819

EPD'S: BW 2.3 WW 52 YW 82 M 15 M&G 41 FAT 0.073 REA -0.13 MARB 0.62  
 • Granddam M207 spent much of her time in our front pastures. She milked heavily, had an ideal udder and was structurally sound. The U809 cow is typical of our best P230 daughters, exhibiting added volume, fleshing ability and top udder quality. This is a very functional cow that will continue to work hard. AI serviced May 2, 2013 to NJW 73S M326 TRUST 100W ET. Safe to AI.



Full sister to herdsire 1283

44A

**MC 809 1123 Glory 1370**

**Heifer**

P43397342.... CALVED: MAR 10, 2013. TATTOO: RE-1370 LE-1370

MC 346R GLORY W997 ET	REMITALL ROUTE 66 ET 346R
MC W997 ROUTE 1 1123	KJ C&L J119 GLORY 352L
P43197900 WSF MC NICKY 751	LB 109L MONARCH 80P
	LB 102F MISS 38L

EF F745 FRANK P230	FELTONS ENDURANCE 745
MC P230 KATE U809	FELTONS KATE P38
P42923602 MC 262D VICTORIA M207	CMF 103T VICTOR 262D
	MC 54Y PAULA K003

EPD'S: BW 1.9 WW 49 YW 78 M 19 M&G 43 FAT 0.031 REA 0.15 MARB 0.33  
 • This cherry red heifer is a vital young female. Her sire, 1123, brings many DOD females from his dam and the 997 bull combines proven genetics from Ranger, Catalina, Governor and J119 (dam of Logic). Udder quality is deep in this pedigree and there is proven performance.

Ref

**MC 378W Golden Treasre 1283 ET**

**Bull**

P43345640.... CALVED: JAN 10, 2012 .. TATOO: RE-1283

GH-ADAMS SHADOW 144S	GH DYNAMIC EARL ET 401M
GH ADAMS GOLD NUGGET ET 378W	HR GOLD DOMINO 251E
P43065317 GH SASSY MAXI ET 12S	GOLDEN-OAK 4J MAXIUM 28M
	GH HARMONY ET 36H

REMITALL ONLINE 122L	REMITALL EMBRACER 8E
SB 122L DOTTIE 109N ET	REMITALL CATALINA 24H
P42406458 FV DOTS PRIDE 3E 0002	NJW WSF MCC WRANGLER 3E
	FMC FERGS PRIDE

EPD'S: BW 5.1 WW 56 YW 94 M 18 M&G 46 FAT -0.013 REA 0.44 MARB -0.09  
 • This yearling pasture sire weighed 86# at birth and has developed very well with 1300+ yearling weight. His disposition is excellent. He is sound with easy fleshing ability. He exhibits added depth and length of body. His sire's pedigree contains noted females JV PEARL 809 and HR Gold Domino 251E, dam of RAMBO. Sires Golden Oak 4J Maximum and Dunoon Page ET 1 are also present. Dam of 1283, donor SB 122L DOTTIE 109N, is a powerful and productive Online daughter. She has produced CC CX UNITED 52S and multiple other progeny of quality.



Lot 45--MC P230 Kate U815

45

**MC P230 Kate U815**

**Cow**

P42923604.... CALVED: FEB 11, 2008... TATTOO: RE-815 LE-815

FELTONS ENDURANCE 745  
EF F745 FRANK P230  
P42528669 FELTONS KATE P38

FELTONS 517  
FF PROSPECTITA 997  
FELTONS DOMINO 774  
FELTONS ENDURETT H62

REMITALL ONLINE 122L  
MC VICTORIA 122L N374 ET  
P42397096 MC 9419 MILKMAID 9613

REMITALL EMBRACER 8E  
REMITALL CATALINA 24H  
SNF IVANHOE 9419  
SCC 063Z 29K KATIE 9230

EPD'S: BW 3.7 WW 58 YW 92 M 20 M&G 49 FAT 0.055 REA -0.05 MARB 0.57

• The U815 cow has maintained excellent condition under historic 2012 drought conditions, presenting us with an added value heifer calf for 2013. This is a top milking (WR 117) EF Frank P230 daughter with exceptional marbling (0.57), added dimension and efficiency.

The cow family contains many breed leading females in the extended pedigree. We are retaining a full sister in the herd. Her dam sold to Charles Gray, OK. AI serviced to NJW FHF 9710 TANK 45P on May 1, 2013. The Tank 45P mating will add to her value. Safe.

45A

**MC 815 1183 Victoria 1347**

**Heifer**

P43397344.... CALVED: FEB 4, 2013 .... TATTOO: RE-1347 LE-1347

R PUCKSTER 2013  
MC E 2013 PUCKSTER DOM 1183ET  
P43242795 TRM BTCC 774 VICTORIA L117

BAR JZ PUCKSTER 892H  
R MISS PATEND 421  
FELTONS DOMINO 774  
DDR VICTORIA 964 8D01

EF F745 FRANK P230  
MC P230 KATE U815  
P42923604 MC VICTORIA 122L N374 ET

FELTONS ENDURANCE 745  
FELTONS KATE P38  
REMITALL ONLINE 122L  
MC 9419 MILKMAID 9613

EPD'S: BW 2.1 WW 52 YW 82 M 19 M&G 45 FAT 0.037 REA 0.02 MARB 0.36

• A standout since she was born. Always easy to spot in the pasture. Sire 1183 combines CHB/SOD proven sires Puckster 2013 and 774 with donors TRM BTCC L117 and DDR 8D01.



Lot 45A--MC 815 1183 Victoria 1347



**RVP STAR 45S Zack 27Z**

**Ref** **RVP Star 45S Zack 27Z** **Bull**  
**P43350856.... CALVED: JAN 24, 2012 .. TATTOO: RE-RVP 27Z**  
 HB STAR BATTLE GRND 2013 C-S PURE GOLD 98170  
 STAR 2013 BATTLE CRY 45S MSU MISS WRANGLER 61J  
 P42667353 STAR ONLNA DOMINETTE 507P REMITALL ONLINE 122L  
 RB L1 DOMINETTE 4059  
 C&T 66F ALTON 91P WTK 75A CONTINENTAL 66F  
 MAPLE HILL 91P XTERA 40X OVHF 20X EVE 19K  
 43350855 C&T 9K AMY 83P C&T 5G JASPER 9K  
 BLAIR-ATHOL 25C AMIGA 42K  
**EPD'S: BW 3.8 WW 42 YW 78 M 11 M&G 32 FAT 0.007 REA 0.36 MARB 0.07**

• An important goal of the McMurry Cattle operation is production of deep set, added dimension beef cattle of quality. We are thrilled to acquire pasture service to a bull destined to enhance these qualities in our program. Our young herd sire, RVP STAR 45S ZACK 27Z, is out of a two year old River Valley female of great quality. His BW was low. There is a lot of substance within the moderate stature of this bull. He has continued to grow, develop and maintain remarkable condition while in the breeding pasture. His disposition is excellent. He is sound and free moving. Females offered in this sale are among the first to carry his service.

**Ref** **MC 346R Glory W997 ET** **Bull**  
**P43003444.... CALVED: JAN 30, 2009 .. TATTOO: RE-997 LE-997**  
 MC RANGER 9615 CIRCLE-D WRANGLER 832W  
 REMITALL ROUTE 66 ET 346R SBF ROYAL GYPSY  
 P42733186 REMITALL CATALINA 24H MM RSM STOCKMASTEER 512  
 REMITALL CATALINA 139C  
 REMITALL GOVERNOR 236G REMITALL CASINO 12C  
 KJ C&L J119 GLORY 352L REMITALL ZERMARVEL 111Z  
 P42161430 SHF INTERSTATE D03 J119 SHF INTERSTATE 20X D03  
 SHF LADY 512 G07 ET  
**EPD'S: BW 4.3 WW 56 YW 91 M 21 M&G 49 FAT -0.027 REA 0.42 MARB 0.13**

**Ref** **MC W997 Route 1 1123** **Bull**  
**P43197900.... CALVED: FEB 5, 2011..... TATTOO: RE-1123 LE-1123**  
 REMITALL ROUTE 66 ET 346R MC RANGER 9615  
 MC 346R GLORY W997 ET REMITALL CATALINA 24H  
 P43003444 KJ C&L J119 GLORY 352L REMITALL GOVERNOR 236G  
 SHF INTERSTATE D03 J119  
 LB 109L MONARCH 80P NJW 8E MONARCH 109L  
 WSF MC NICKY 751 LB 2B MISS 10F  
 P42781901 LB 102F MISS 38L NJW 476A KLONDIKE 102F  
 LB Y53 MISS 3E  
**EPD'S: BW 1.4 WW 47 YW 75 M 22 M&G 46 FAT -0.011 REA 0.43 MARB 0.04**

• A multiple DOD Lloyd Brown cow family contributes genetics to the maternal side of this home raised 997 son. Dam WSF MC NICKY 751 is a sound female with an attractive udder and low birth weight history. Her calving interval is short and she made the early AI group again this year. She is dark and conservatively marked. She brings in a top calf every time.

• This docile Route 66 son has served as a pasture sire for McMurry Cattle and Jim Hultin. Daughters now in production are dark, attractive females with tidy udders. Dam, KJ C&S J119 Glory 352L, is a maternal sibling the highly respected Journagan sire, Logic. Impeccable body and udder structure are features of the J119 cow family.



*Lot 46--E 7W Lady Tailor 830A ET*

**46**

**E 7W Lady Tailor 830A ET**

**Heifer**

P43376206.... CALVED: FEB 24, 2013 .. TATTOO: LE-830A

HARVIE TRAVELER 69T	KAIRURU ABERDEEN 03 0047
HARVIE TAILOR MADE ET 7W	HARVIE PEARL 129P
P41364954 HARVIE MISS FIREFLY 51F	HARVIE DEYNOTE 61D
	HARVIE MISS NYLON 1Y

ANHINGA VIC 69R 579	ANHINGA VIC 37J 69R
GV 579 VICTORIA 9710	PAF VICTORIA 31 820
P41000421 GV 2B WHITNEY 9533	NJW 604M WYO 2B
	GV DOMINETTE 9148

EPD'S: BW 3.5 WW 48 YW 83 M 24 M&G 48 FAT -0.049 REA 0.48 MARB -0.05

• Harvie Tailor Made x 9710 should equal "power cow". 2 year old full sister is raising one of the heaviest calves in our 2 year old group. We still have a few full sib embryos in the tank which makes it easier to let this one go.



*Harvie Tailor Made ET 7W  
Sire of Lot 46*



Lot 47--E196T Missy 405A ET

**Proven family**  
**"7737"**  
 Now a donor  
 for White Hawk  
 Ranch



MC E CC Optima 23H T737 ET

**47**

**E 196T Missy 405A ET**

**Heifer**

P43376189.... CALVED: FEB 26, 2013 .. TATTOO: LE-405A  
 KAIRURU ABERDEEN 03 0047 LELANDS TRANSITION T7  
 KAIRURU PLUM T44  
 HARVIE DAN T-BONE 196T HARVIE LADIES MAN 4L  
 P42843277 HARVIE MS FIREFLY 65P HARVIE MISS FIREFLY 51F

BR DM CHANNING ET  
 MC E CC OPTIMA 23H T737 ET  
 P42861963 MSU 19D OPTIMA 23H

REMITALL ONLINE 122L  
 DM L1 DOMINETTE 820  
 NJW 1Y WRANGLER 19D  
 WNH MS OPTIMA 9401

EPD'S: BW 4.1 WW 54 YW 92 M 20 M&G 47 FAT 0.013 REA 0.59 MARB -0.02  
 • 405A should mature into an outstanding female if her 1/2 sister, X50, is any indication. Cattle sired by T-bone are widely appreciated.

**48**

**E 196T Absolute 454A ET**

**Bull**

P43376207.... CALVED: MAR 4, 2013... TATTOO: LE-454A  
 KAIRURU ABERDEEN 03 0047 LELANDS TRANSITION T7  
 HARVIE DAN T-BONE 196T KAIRURU PLUM T44  
 P42843277 HARVIE MS FIREFLY 65P HARVIE LADIES MAN 4L  
 HARVIE MISS FIREFLY 51F

BR DM CHANNING ET  
 MC E CC OPTIMA 23H T737 ET  
 P42861963 MSU 19D OPTIMA 23H

REMITALL ONLINE 122L  
 DM L1 DOMINETTE 820  
 NJW 1Y WRANGLER 19D  
 WNH MS OPTIMA 9401

EPD'S: BW 4.1 WW 54 YW 92 M 20 M&G 47 FAT 0.013 REA 0.59 MARB -0.02  
 • 454A is a super stout herd bull prospect who stands on all four feet, is deep through the middle and has a big hip. 454A is a full sibling to 405A and a 1/2 sibling to X50.



Lot 48--E 196T Absolute 454A ET



Lot 49--E MC 337U Diva X50

**49**

**E MC 338I Diva X50**

P43081263.... CALVED: FEB 23, 2010 .. TATTOO: LE-X50  
 HARVIE RAFTSMAN 16R HARVIE LADIES MAN 4L  
 HARVIE SAFNBFI COLATERAL 337U HARVIE MISS FIREFLY 51F  
 P42969102 HARVIE MS MEDONTE 1S WILGOR 55K NORTHEAST OL 2N  
 MHPH MS 24K PRINCESS 1195N

**Cow**

**49A**

**E X84 Victoria A055**

P43376164.... CALVED: MAR 5, 2013... TATTOO: LE-A055  
 E 4125 VICTOR BOOMER U806 TOF OAK'S VICTOR 218 4125 ET  
 E U806 VICTOR X84 E 100L CALL GIRL S632ET  
 P43081297 E 80P LADY RELOAD T721 LAGRAND RELOAD 80P ET  
 B BRAXTON LASS 233

**Heifer**

BR DM CHANNING ET  
 MC E CC OPTIMA 23H T737 ET  
 P42861963 MSU 19D OPTIMA 23H

REMITALL ONLINE 122L  
 DM L1 DOMINETTE 820  
 NJW 1Y WRANGLER 19D  
 WNH MS OPTIMA 9401

HARVIE SAF COLATERAL 337U HARVIE RAFTSMAN 16R  
 E MC 337U DIVA X50 HARVIE MS MEDONTE 1S  
 P43081263 MC E CC OPTIMA 23H T7373 ET BR DM CHANNING ET  
 MSU 19D OPTIMA 23H

EPD'S: BW 4.3 WW 54 YW 91 M 15 M&G 42 FAT -0.008 REA 0.52 MARB -0.02

• It would be hard to improve on the udder quality of X50. This "diva" is a great example of 337U's daughters in production. This cow is one of our very best. Full sister sold to Ernst family in an earlier sale. AI 5/3 to TH 512X Playmaker 14Z. Pasture Exposed to E MC 7W SOLID ET Z833 from 5/27/2013 to 6/9/2013. Pasture Exposed to E BRAXTON 719 6/10/2013 to 9/15/2013.

EPD'S: BW 4.2 WW 58 YW 94 M 19 M&G 48 FAT -0.005 REA 0.54 MARB 0.01

• Really eye catching X84 daughter.



Lot 49A--E X84 Victoria A055



Lot 50--LJE 337U Diva X48

**50**

**LJE 337U Diva X48**

P43081260.... CALVED: FEB 20, 2010 .. TATTOO: LE-X48

HARVIE RAFTSMAN 16R	HARVIE LADIES MAN 4L
HARVIE SAFNBFI COLATERAL 337U	HARVIE MISS FIREFLY 51F
P42969102 HARVIE MS MEDONTE 1S	WILGOR 55K NORTHEAST OL 2N
	MHPH MS 24K PRINCESS 1195N

**Cow**

**50A**

**LJE o8X Miss Scarlet 016A**

**Heifer**

P43376179.... CALVED: FEB 2, 2013 .... TATTOO: LE-016A

CRR ABOUT TIME 743	THM DURANGO 4037
SNOWSHOE 743 REGULATOR 08X	CRR D03 CASSIE 206
P43129460 SNOWSHOE P606 SHIMMER T39	PW VICTOR BOOMER P606
	SNOWSHOE D03 SHIMMER 17P

K RIBSTONE STANDARD 27L	STANDARD 16E RIBSTONE 64H
LJE RIBSTONE SHIRLEY R526	K 45D SUPER LADY 78H
42639498 JV SHIRLEY 414	JV L1 DOMINO 213
	JV SHIRLEY 256

HARVIE SAF COLATERAL 337U	HARVIE RAFTSMAN 16R
LJE 337U DIVA X48	HARVIE MS MEDONTE 1S
P43081260 LJE RIBSTONE SHIRLEY R526	K RIBSTONE STANDARD 27L
	JV SHIRLEY 414

EPD'S: BW 3.1 WW 53 YW 93 M 16 M&G 42 FAT 0.001 REA 0.25 MARB 0.16

• Another outstanding 337U daughter that goes back to JV Shirley cow family on the bottom side of her pedigree. X48 posts very solid EPDs in an extremely attractive package. AI ON 5/6 to TH 512X Playmaker 14Z. Observed bred to E MC 7W SOLID ET Z833 on 5/26/2013. Pasture Exposed to E BRAXTON 719 from 6/15/2013 to 9/15/2013.

EPD'S: BW 3.1 WW 51 YW 84 M 23 M&G 49 FAT -0.014 REA 0.47 MARB 0.14

• Pedigree is stacked with good cattle, should mature into an outstanding cow.



Lot 50A--LJR 08X Miss Scarlet 016A





Lot 51--E 337U Diva Y812

51

**E 337U Diva Y812**

Cow

P43195358.... CALVED: FEB 3, 2011..... TATTOO: LE-Y812  
 HARVIE RAFTSMAN 16R HARVIE LADIES MAN 4L  
 HARVIE SAFNBFI COLATERAL 337U HARVIE MISS FIREFLY 51F  
 P42969102 HARVIE MS MEDONTE 1S WILGOR 55K NORTHEAST OL 2N  
 MHPH MS 24K PRINCESS 1195N

51A

**LJE T719 Marley A050**

Heifer

P43376191.... CALVED: MAR 4, 2013... TATTOO: LE-A050  
 ANCHOR BRAXTON VESCOVI D149  
 E BRAXTON 719 J-BAR-B ANCHOR 27A 1C  
 P42839583 ANCHOR 17R ANCHOR 32N  
 ANCHOR 43L

E P606 BOOMER S604  
 E S604 LADY BOOMER U812  
 P42876573 E LADY RANGER R545

PW VICTOR BOOMER P606  
 BE MISS ANCHOR 342  
 MC MONTANA RANGER  
 LADY KERNEL 022

HARVIE SAF COLATERAL 337U HARVIE RAFTSMAN 16R  
 E 337U DIVA Y812 HARVIE MS MEDONTE 1S  
 P43195358 E S604 LADY BOOMER U812 E P606 BOOMER S604  
 E LADY RANGER R545

EPD'S: BW 3.3 WW 52 YW 82 M 20 M&G 46 FAT 0.005 REA 0.56 MARB 0.06  
 • Braxton x 337U that should mature into a real good one. This calf is Lacey's sentimental favorite.

EPD'S: BW 5.2 WW 58 YW 91 M 21 M&G 50 FAT -0.025 REA 0.73 MARB -0.12  
 • This 2 year old has some real maternal cattle in her pedigree and will only improve with age. Just look at her older half sisters in our offering. AI to HARVIE GUNNER 54Z on 5/14/2013. Pasture Exposed to E MC 7W SOLID ET Z833 from 06/03/2013 to 6/10/2013. Pasture exposed to E BRAXTON 719 6/10/2013 to 9/15/2013.



Lot 52--E 337U Diva Y869

52

**E 337U Diva Y869**

Cow

P43195377.... CALVED: FEB 1, 2011..... TATTOO: LE-Y869  
 HARVIE RAFTSMAN 16R HARVIE LADIES MAN 4L  
 HARVIE SAFNBFI COLATERAL 337U HARVIE MISS FIREFLY 51F  
 P42969102 HARVIE MS MEDONTE 1S WILGOR 55K NORTHEAST OL 2N  
 MHPH MS 24K PRINCESS 1195N

52A

**E T719 Lady Braxton A051**

Heifer

P43376091.... CALVED: MAR 4, 2013... TATTOO: LE-A051  
 ANCHOR BRAXTON VESCOVI D149  
 E BRAXTON 719 J-BAR-B ANCHOR 27A 1C  
 P42839583 ANCHOR 17R ANCHOR 32N  
 ANCHOR 43L

MC RANGER DOMINION  
 E M211 LADY RANGER U869  
 P42883137 E 162M LADY KAHLUA R541

MC RANGER 9615  
 MC 9419 MILKMAID 9613  
 LCI 82H KAHLUA 162M  
 B KERNY MISCHIEF 107

HARVIE SAF COLATERAL 337U HARVIE RAFTSMAN 16R  
 E 337U DIVA Y869 HARVIE MS MEDONTE 1S  
 P43195377 E M211 LADY RANGER U869 MC RANGER DOMINION  
 E 162M LADY KAHLUA R451

EPD'S: BW 3.0 WW 50 YW 81 M 19 M&G 44 FAT 0.002 REA 0.49 MARB 0.08  
 • This Braxton heifer calf posts some very respectable EPDs and should mature into a very productive cow.

EPD'S: BW 4.5 WW 55 YW 89 M 19 M&G 46 FAT -0.031 REA 0.59 MARB -0.09  
 • Nicely balanced Colateral daughter whose dam is now a DOD. Y869 should follow in her mother's footsteps. AI to HARVIE GUNNER 54Z on 4/19. Pasture Exposed to E MC 7W SOLID ET Z833 from 5/27/2013 to 6/9/2013. Pasture exposed to E BRAXTON 719 6/10/2013 to 9/15/2013.



Lot 53A--LJE T719 Miss Braxton 003A

**53**

**LJE 337U Diva Y804**

P43195356.... CALVED: MAR 21, 2011. TATTOO: LE-Y804  
 HARVIE RAFTSMAN 16R HARVIE LADIES MAN 4L  
 HARVIE SAFNBFI COLATERAL 337U HARVIE MISS FIREFLY 51F  
 P42969102 HARVIE MS MEDONTE 1S WILGOR 55K NORTHEAST OL 2N  
 MPPH MS 24K PRINCESS 1195N

Cow

**53A**

**LJE T719 Miss Braxton 003A**

P43376158.... CALVED: JAN 19, 2013 .. TATTOO: LE-003A  
 ANCHOR BRAXTON VESCOVI D149  
 E BRAXTON 719 J-BAR-B ANCHOR 27A 1C  
 P42839583 ANCHOR 17R ANCHOR 32N  
 ANCHOR 43L

Heifer

E 100L ALL IN S638ET  
 LJE S638 LADY KAHLUA 0804  
 42870742 LJE 162M KAHLUA HERA 0506

BRL CALL 100L  
 JV SHIRLEY 414  
 LCI 82H KAHLUA 162M  
 B LADY EVAN 489

HARVIE SAF COLATERAL 337U HARVIE RAFTSMAN 16R  
 LJE 337U DIVA Y804 HARVIE MS MEDONTE 1S  
 P43195356 LJE S638 LAYD KAHLUA 0804 E 100L ALL IN S638ET  
 LJE 162M KAHLUA HERA 0506

EPD'S: BW 4.7 WW 50 YW 87 M 18 M&G 42 FAT -0.030 REA 0.35 MARB -0.15  
 • Dark red 337U daughter that is doing a nice job raising her first calf.  
 This 2 year old will keep getting better with age. AI to SNOWSHOE  
 743 REGULATOR 08X ON 5/25. Pasture exposed to E BRAXTON  
 719 6/10/2013 to 9/15/2013.

EPD'S: BW 2.7 WW 47 YW 78 M 18 M&G 41 FAT 0.003 REA 0.37 MARB 0.05  
 • The Braxton 337U cross has worked well for us. This calf will be  
 no different.



Lot 54--LJE 832 Miss Boulder X8

**54**

**LJE 832 Miss Boulder X8**

P43081292.... CALVED: JAN 28, 2010 .. TATTOO: LE-X8  
 TH SHR 605 57G BISMARCK 243RRU 20X BOULDER 57G  
 MC 243R BOULDER U832 YY 125Y PRIMROSE 605F  
 P42880081 GV 579 VICTORIA 9710 ANHINGA VIC 69R 579  
 GV 2B WHITNEY 9533

Cow

**54A**

**LJE 337U Diva 027A**

P43376174.... CALVED: MAR 9, 2013... TATTOO: LE-027A  
 HARVIE RAFTSMAN 16R HARVIE LADIES MAN 4L  
 HARVIE SAFNBFI COLATERAL 337U HARVIE MISS FIREFLY 51F  
 P42969102 HARVIE MS MEDONTE 1S WILGOR 55K NORTHEAST OL 2N  
 MPPH MS 24K PRINCESS 1195N

Heifer

SB 122L PRIDE LINE 32N ET  
 LJE SASSY 0702  
 P42880081 SR MS MOBILIZER 450

REMITALL ONLINE 122L  
 FV DOTS PRIDE 3E 0002  
 REM GLF MOBILIZER ET 57M  
 SR MISS WALPOLE 108

MC 243R BOULDER U832  
 LJE 832 MISS BOULDER X8  
 P43081292 LJE SASSY 0702

TH SHR 605 57G BISMARCK 243R  
 GV 579 VICTORIA 9710  
 SB 122L PRIDE LINE 32N ET  
 SR MS MOBILIZER 450

EPD'S: BW 1.6 WW 40 YW 72 M 20 M&G 40 FAT 0.003 REA 0.29 MARB -0.02  
 • We have sold U832 daughters in past sales that have been widely  
 appreciated. X8 will be the last one we sell. Bon a fide low birth  
 weight and raising a very nice 337U heifer calf. AI to 337U 5/8/13.  
 Pasture Exposed to E MC 7W SOLID ET Z833 from 5/27/2013  
 to 6/9/2013. Pasture exposed to E BRAXTON 719 6/10/2013 to  
 9/15/2013.

EPD'S: BW 4.6 WW 53 YW 92 M 18 M&G 44 FAT -0.012 REA 0.38 MARB -0.03  
 • Real fancy 337U daughter. There are a lot of good things about this  
 heifer calf.



Lot 55A--E 337U Diva A005

55

**E S604 Lady Boomer W73**

Cow

P42990923.... CALVED: APR 9, 2009 .... TATTOO: LE-W73  
 PW VICTOR BOOMER P606 REMITALL BOOMER 46B  
 E P606 BOOMER S604 PW VICTORIA 964 8114  
 P42662957 BE MISS ANCHOR 342 ANCHOR 29L  
 B MARLENE 386

CL 1 DOMINO 0051  
 B STAR DOMINO 001  
 42042066 B STAR MISCHIEF 803

HH ADVANCE 834X  
 CL 1 DOMINETTE 770  
 B EVAN MISCHIEF 20  
 BELL STAR 143

EPD'S: BW 4.4 WW 51 YW 65 M 26 M&G 52 FAT 0.008 REA 0.52 MARB 0.03  
 • P606 granddaughter with a bright future. W73's dam was a very productive cow for us. Daughter sold to Stuber's last year. Pasture exposed to HARVIE SAFNBFI COLATERAL 337U from 5/27/2013 to 7/12/2013. Observed bred to E MC 7W SOLID ET Z833 ON 4/19/2013. Pasture Exposed to E BRAXTON 719 from 7/17/2013 to 9/15/2013.

55A

**E 337U Diva A005**

Heifer

P43376168.... CALVED: JAN 26, 2013 .. TATTOO: LE-A005  
 HARVIE RAFTSMAN 16R HARVIE LADIES MAN 4L  
 HARVIE SAFNBFI COLATERAL 337U HARVIE MISS FIREFLY 51F  
 P42969102 HARVIE MS MEDONTE 1S WILGOR 55K NORTHEAST OL 2N  
 MHPH MS 24K PRINCESS 1195N

E P606 BOOMER S604  
 E S604 LADY BOOMER W73  
 P42990923 B STAR DOMINO 001

PW VICTOR BOOMER P606  
 BE MISS ANCHOR 342  
 CL 1 DOMINO 0051  
 B STAR MISCHIEF 803

EPD'S: BW 4.2 WW 54 YW 81 M 21 M&G 48 FAT -0.006 REA 0.47 MARB 0.01  
 • Very powerful 337U daughter that shows a lot of potential.



Harvie SAFNBFI Colateral 337U  
 Featured Sire

Ref

**Harvie SAFNBFI Colateral 337U**

Bull

P42969102.... CALVED: FEB 25, 2008 .. TATTOO: 337U  
 HARVIE LADIES MAN 4L HARVIE HILLS 68H  
 HARVIE RAFTSMAN 16R HARVIE MISS JULIE 9J  
 P42699691 HARVIE MISS FIREFLY 51F HARVIE DEYNOTE 61D  
 HARVIE MISS NYLON 1Y

WILGOR 55K NORTHEASTN 2N REMITALL ONLINE 122L  
 HARVIE MS MEDONTE 1S WILGOR 174H KEYLINE 29F 55K  
 P42969101 MHPH MS 24K PRINCESS 1195N REMITALL ICON 24K  
 MHPH MS 121J PRINCESS 314LL

EPD'S: BW 4.7 WW 59 YW 100 M 15 M&G 45 FAT -0.022 REA 0.44 MARB -0.02  
 • 337U has bred beyond our expectations. Colateral's calves are all uniform in their make up and have eye appeal. Daughters are making outstanding cows with exceptional udder quality and sons are among the first to leave the bull pen every spring. Unfortunately Colateral was lost in the pasture due to injury this summer but we will sure continue his legacy through AI.  
 • DLF, HYF, IEF



*Lot 56--E S604 Lady Boomer U817*



*Lot 56A--E X84 Victoria A069*

**56**

**E S604 Lady Boomer U817**

**Cow**

P42876574.... CALVED: FEB 18, 2008 .. TATTOO: LE-U817  
 PW VICTOR BOOMER P606 REMITALL BOOMER 46B  
 E P606 BOOMER S604 PW VICTORIA 964 8114  
 P42662957 BE MISS ANCHOR 342 ANCHOR 29L  
 B MARLENE 386

MC RANGER DOMINION MC RANGER 9615  
 E LADY RANGER P463 MC 9419 MILKMAID 9613  
 P42524627 B LADY VAQUERO 907 DK STOCKMAN 710  
 MC LADY VAQUERO 9511

EPD'S: BW 5.5 WW 52 YW 75 M 23 M&G 49 FAT 0.014 REA 0.59 MARB 0.06

• It would be hard to put more depth, dimension and rib shape into a cow than what 817 possesses. She is raising our best X84 heifer calf to date. Pasture Exposed to E U806 VICTOR X84 from 6/2/2013 to 7/17/2013. Pasture Exposed to E BRAXTON 719 from 7/17/2013 to 9/15/2013.

**56A**

**E X84 Victoria A069**

**Heifer**

P43376095.... CALVED: MAR 14, 2013. TATTOO: LE-A069  
 E 4125 VICTOR BOOMER U806 TOF OAK'S VICTOR 218 4125 ET  
 E U806 VICTOR X84 E 100L CALL GIRL S632ET  
 P43081297 E 80P LADY RELOAD T721 LAGRAND RELOAD 80P ET  
 B BRAXTON LASS 233

E P606 BOOMER S604 PW VICTOR BOOMER P606  
 E S604 LADY BOOMER U817 BE MISS ANCHOR 342  
 P42876574 E LADY RANGER P463 MC RANGER DOMINION  
 B LADY VAQUERO 907

EPD'S: BW 3.6 WW 55 YW 81 M 23 M&G 51 FAT 0.008 REA 0.56 MARB 0.06

• A powerful and complete heifer calf, might be the best heifer calf in our offering.

**Ref**

**E U806 Victor X84**

**Bull**

P43081297.... CALVED: MAR 30, 2010. TATTOO: LE-X84  
 TOF OAK'S VICTOR 218 4125 ET RHF VICTOR 424 218  
 E 4125 VICTOR BOOMER U806 BTF 5015 9146  
 P42870113 E 100L CALL GIRL S632ET BRL CALL 100L  
 JV SHIRLEY 414

LAGRAND RELOAD 80P ET AA PRF WIDELOAD  
 E 80P LADY RELOAD T721 TSF MS KEYNOTE 729  
 P42818610 B BRAXTON LASS 233 ANCHOR BRAXTON  
 B KERNY MISCHIEF 815

EPD'S: BW 2.5 WW 58 YW 90 M 24 M&G 53 FAT 0.000 REA 0.54 MARB 0.06

• X84 has matured into a very impressive herd sire with a very nice EPD profile. X84's calves come easy and perform well. This bull will be part of our future breeding decisions.



*E U806 Victor X84  
 Featured Sire*



Lot 57--E S638 Shirley Y612

**57**

**E S638 Shirley Y612**

**Cow**

P43195329.... CALVED: MAR 11, 2011. TATTOO: LE-Y612  
 BRL CALL 100L H 8E EMBRACER 8006  
 E 100L ALL IN S638ET BRL DELUXIE 100A  
 P42698777 JV SHIRLEY 414 JV L1 DOMINO 213  
 JV SHIRLEY 256

HH ADVANCE 0024K CL 1 DOMINO 824H  
 E 0024K MISS ADVANCE S612 HH MISS ADVANCE 894H  
 42662963 E KERNY MISCHIEF P412 KERNEL EVAN MISCHIEF  
 RCH DOMINETTE 1014

EPD'S: BW 3.8 WW 51 YW 74 M 25 M&G 50 FAT -0.007 REA 0.32 MARB 0.00  
 • An S638 daughter out of a DOD. The S638 sired cattle have worked well for us. Pasture Exposed to E MC 7W SOLID ET Z833 from 5/27/2013 to 6/9/2013. Pasture exposed to E BRAXTON 719 6/10/2013 to 9/15/2013.



Lot 57A--E T719 Lady Braxton A021

**57A**

**E T719 Lady Braxton A021**

**Heifer**

P43376172.... CALVED: FEB 12, 2013 .. TATTOO: LE-A021  
 ANCHOR BRAXTON VESCOVI D149  
 E BRAXTON 719 J-BAR-B ANCHOR 27A 1C  
 P42839583 ANCHOR 17R ANCHOR 32N  
 ANCHOR 43L

E 100L ALL IN S628ET BRL CALL 100L  
 E S638 SHIRLEY Y612 JV SHIRLEY 414  
 P43195329 E 0024K MISS ADVANCE S612 HH ADVANCE 0024K  
 E KERNY MISCHIEF P412

EPD'S: BW 3.0 WW 49 YW 75 M 22 M&G 46 FAT 0.013 REA 0.36 MARB 0.12  
 • Braxton heifer calf that posts some great EPDs. There are some very good carcass cattle in this one's pedigree.



Lot 58--LJE S638 Shirley Y601

**58**

**LJE S638 Shirley Y601**

**Cow**

P43195326.... CALVED: APR 4, 2011 .... TATTOO: LE-Y601  
 BRL CALL 100L H 8E EMBRACER 8006  
 E 100L ALL IN S638ET BRL DELUXIE 100A  
 P42698777 JV SHIRLEY 414 JV L1 DOMINO 213  
 JV SHIRLEY 256

E BRAXTON P411 ANCHOR BRAXTON  
 LJE BRAXTON GIRL 0601 B KERNY MISCHIEF 815  
 P42729938 LJE 19D VENUS MISCHIEF NJW 1Y WRANGLER 19D  
 B PAULA MISCHIEF 007

EPD'S: BW 2.5 WW 46 YW 73 M 20 M&G 43 FAT -0.018 REA 0.41 MARB 0.01  
 • Dark red S638 daughter with good pigment. S638 left us with some very useful cattle. Pasture exposed to HARVIE SAFNBFI COLATERAL 337U - 4/13/2013 TO 7/12/2013. Pasture exposed to E BRAXTON 719 - 7/17/2013 to 9/15/2013



Lot 58A--LJE T719 Braxton 018A

**58A**

**LJE T719 Braxton 018A**

**Bull**

P43376154.... CALVED: FEB 19, 2013 .. TATTOO: LE-018A  
 ANCHOR BRAXTON VESCOVI D149  
 E BRAXTON 719 J-BAR-B ANCHOR 27A 1C  
 P42839583 ANCHOR 17R ANCHOR 32N  
 ANCHOR 43L

E 100L ALL IN S638ET BRL CALL 100L  
 LJE S638 SHIRLEY Y601 JV SHIRLEY 414  
 P43195326 LJE BRAXTON GIRL 0601 E BRAXTON P411  
 LJE 19D VENUE MISCHIEF

EPD'S: BW 0.3 WW 41 YW 65 M 19 M&G 40 FAT 0.011 REA 0.38 MARB 0.14  
 • Sure fire calving ease prospect who will be moderate framed. 018A has good pigment.



Lot 59--LJE T719 Ms Medonte Y184



Lot 59A--LJE 447P Miss Domino 004A

**59** **LJE T719 Ms Medonte Y184** Cow  
 P43195296.... CALVED: FEB 11, 2011... TATTOO: LE-Y184  
 ANCHOR BRAXTON VESCOVI D149  
 E BRAXTON 719 J-BAR-B ANCHOR 27A 1C  
 P42839583 ANCHOR 17R ANCHOR 32N  
 ANCHOR 43L

HARVIE RAFTSMAN 16R HARVIE LADIES MAN 4L  
 HARVIE MISS MEDONTE ET 184W HARVIE MISS FIREFLY 51F  
 43053338 MHPH MS 24K PRINCESS 1195N REMITALL ICON 24K  
 MHPH MS 121J PRINCESS 314LL

EPD'S: BW 3.5 WW 47 YW 83 M 18 M&G 42 FAT 0.001 REA 0.36 MARB 0.22

• A hard working Braxton 2 year old out of our 184W cow who is rising rapidly to the top of our herd. Pasture Exposed to E MC 7W SOLID ET Z833 from 5/27/2013 to 6/9/2013. Pasture exposed to E BRAXTON 719 6/10/2013 to 9/15/2013.

**59A** **LJE 447P Miss Domino 004A** Heifer  
 P43381678.... CALVED: JAN 21, 2013 .. TATTOO: LE-004A  
 CL 1 DOMINO 9126J 1ET HH ADVANCE 767G 1ET  
 CL 1 DOMINO 477P CL 1 DOMINETTE 490  
 42482436 CL 1 DOMINETTE 839H CL 1 DOMINO 5131E  
 CL 1 DOMINETTE 318

E BRAXTON 719 ANCHOR BRAXTON  
 LJE T719 MS MEDONTE Y184 ANCHOR 17R  
 P43195296 HARVIE MISS MEDONTE 184W HARVIE RAFTSMAN 16R  
 MHPH MS 24K PRINCESS 1195N

EPD'S: BW 3.2 WW 48 YW 79 M 26 M&G 50 FAT -0.008 REA 0.07 MARB 0.25

• Nice heifer calf sired by 477P which is little different mating for us.



Lot 60--E 734 Frontier Lady X120 ET



Lot 60A--E T719 Lady Braxton A035

**60** **E 634 Frontier Lay X120 ET** Cow  
 P43151962.... CALVED: MAR 18, 2010. TATTOO: LE-X120  
 CMF 103T VICTOR 262D RHF IGT VICTOR 103T  
 CMF 584T FRONTIER 634L K ROSE F243 P6  
 P42264639 DL MIS DOM 243 584T OR DOM 549 F243  
 DL VICKI 400L

NJW Z17 VAQUERO 25C JR SOUTHERN CROSS Z17  
 NJW 25C 1A VACA 12E CRCLE-D 832W DUCHESS 283Z  
 P23839262 NJW 563 NICKETTE 1A CL 1 DOMINO 563  
 NJW P183 003 NICKETTE 1W

EPD'S: BW 3.2 WW 36 YW 48 M 19 M&G 37 FAT 0.048 REA -0.04 MARB -0.05

• A daughter of Ned and Jan Ward's famed 12E cow. X120 is nicely uddered and doing a nice job with her Braxton heifer calf. AI to TH512X 719T Playmaker 14Z on 7/8. Pasture Exposed to E Braxton 719 from 8/1/2013 to 9/15/2013.

**60A** **E T719 Lady Braxton A035** Heifer  
 P43376192.... CALVED: FEB 22, 2013 .. TATTOO: LE-A035  
 ANCHOR BRAXTON VESCOVI D149  
 E BRAXTON 719 J-BAR-B ANCHOR 27A 1C  
 P42839583 ANCHOR 17R ANCHOR 32N  
 ANCHOR 43L

CMF 584T FRONTIER 634L CMF 103T VICTOR 262D  
 E 634 FRONTIER LADY X120 ET DL MIS DOM 243 584T  
 P43151962 NJW 25C 1A VACA 12E NJW Z17 VAQUERO 25C  
 NJW 563 NICKETTE 1A

EPD'S: BW 1.7 WW 40 YW 61 M 19 M&G 39 FAT 0.037 REA 0.19 MARB 0.13

• This Braxton daughter has eye appeal and should mature in to a very productive female.



Lot 61--MC 996R Keepsake W9109 ET



Lot 61A--Show Steer Prospect A015

**61** MC 996R Keepsake W9109 ET Cow

**61A** A015 Steer

P43003439.... CALVED: JAN 24, 2009 .. TATTOO: W9109  
 ALLENDALE ROBIN HOOD KOANUI REBEL Q81  
 KJ 2403 RECRUIT 966R ALLENDALE FANCY U5  
 P42587024 MARK DOMETTE MR 2403 OXH RMK DOM 9091 1ET  
 MISTY MR 331

NS KENO 005 JSF 37 271 DEVO 23C  
 NS 005 KEEPSAKE 401 GK APOLLONIA 834Z  
 P42470947 NS PRINCESS KEEPSAKE 049 WNH NS ELIXIR  
 BAR B 324 KEEPSAKE 701

EPD'S: BW 4.4 WW 48 YW 71 M 27 M&G 51 FAT -0.036 REA 0.11 MARB -0.03

• A young, nicely uddered Recruit daughter purchased from McMurry Cattle. This cow has her whole life ahead of her. AI to Playmaker 14Z on 5/15. Pasture Exposed to E U806 VICTOR X84 from 6/2/2013 to 7/17/2013. Pasture Exposed to E BRAXTON 719 from 7/17/2013 to 9/15/2013.

• DLF, HYF, IEF



E Braxton 719



TH 512X 719T Playmaker 14Z

**Ref** E Braxton 719 Bull

**Ref** TH 512X 719T Playmaker 14Z Bull

P42839583.... CALVED: JAN 30, 2007 .. TATTOO: LE-719  
 VESCOVI D149 VESCOVI Y10  
 ANCHOR BRAXTON LADY VESCOVI Z670  
 P41130339 J-BAR-B ANCHOR 27A 1C TRPL-J MR VRSTY NRDN 27A  
 TRPL-BR-M MS LNX 20X 15A

P43294102.... CALVED: JAN 16, 2012 .. TATTOO: LE-14Z  
 DRF JWR PRINCE VICTOR 711 HRP THM VICTOR 109W 9329  
 TH 122 711 VICTOR 719T RHF 964 VICTRA 4057  
 P42800895 KBCR 19D DOMINETTE 122 NJW 1Y WRANGLER 19D  
 KBCR DOMINETTE 9112

ANCHOR 32N J-B ANCHOR HERMAN 37H  
 ANCHOR 17R EASTON QUEEN 16H  
 P42594187 ANCHOR 43L J-B ANCHOR HERMAN 37H  
 ANCHOR D149 51F

DRF JWR PRINCE VICTOR 711 HRP THM VICTOR 109W 9329  
 TH 122 711 DOMINETTE 512X ET RHF 964 VICTRA 4057  
 P43122877 KBCR 19D DOMINETTE 122 NJW 1Y WRANGLER 19D  
 KBCR DOMINETTE 9112

EPD'S: BW -0.5 WW 69 YW 103 M 26 M&G 60 FAT -0.020 REA 0.66 MARB -0.13

• DLF, HYF, IEF

EPD'S: BW 0.0 WW 42 YW 66 M 19 M&G 39 FAT 0.037 REA 0.37 MARB 0.25

• An outcross pedigree for most programs. Braxton sired cattle are moderate framed with adequate muscle, bone and carcass characteristics. Braxton also offers exceptional calving ease. DLF, IEF

• High selling bull in Topp's 2013 bull sale at \$210,000. It is rare for a low birth weight bull to have the muscle shape and dimension that 14Z has. 14Z' accuracy level on his EPD profile indicates that his progeny should be very predictable and consistent.

Midwest Cattle Service

P.O. Box 126

Green Ridge, MO 65832



**First Class Mail**

**Hereford Production Sale  
Laurel, Montana**



**To:**

**Thursday, Sept 26, 2013 • Noon**