

Look inside
for a DVD of
the Bulls



Pyramid *Beef*

"Profit through Predictability"

3rd Annual Bull Sale

Selling 75 coming
two year old bulls

DEC. 1, 2012

St. Onge Livestock - St. Onge, SD - 1p.m.

For more information, contact:

| | |
|-------------------|--------------|
| Nate Frederickson | 605-254-4872 |
| Jason McLennan | 605-645-1630 |
| Jonathan Marohl | 701-445-3456 |
| Mark Frederickson | 605-642-2139 |

19558 Anchor RD
St. Onge, SD 57779
www.Pyramidbeef.com

Welcome to the sale

Welcome to the 3rd annual sale of Pyramid Beef, LLP. We would like to send a heart-felt thanks to all who have participated in our previous two sales. Your willingness to incorporate our genetics and philosophy is very much appreciated and we hope to gain your confidence, trust and satisfaction with each offering.

A relaxing winter gave way to a hot and relentlessly dry summer. Thankfully prices and beef demand have remained strong. We are committed to producing the kind of cattle that will excel regardless of what Mother Nature throws our way. We will remain diligent in selecting genetics that excel in fertility, maternal, performance from birth to rail, and disposition. We will not propagate genetics that do not also adhere to strict guidelines for soundness, udder quality, maternal instinct and natural fleshing ability.

The bulls selling Dec. 1, 2012, are the strongest and most consistent that we have offered to date. They are a sound, quiet set of bulls that are bred

and developed to cover lot of cows and remain in your program for years to come. The bulls were weaned late last October and back-grounded on a 44 Mcal roughage based ration until yearling data was collected in late April. The bulls were summered on native grass from mid-May until August 7. At that time, we brought the bulls in and have placed them on a high roughage ration that they will remain on until sale time. All of the bulls have been a part of a complete health program from birth until now and have passed a breeding soundness exam.

Our mission is to produce low maintenance, problem-free superior seedstock that create more profit, sustainability and marketing opportunity for our customers.

We thank you again for your interest and invite you to give any one of us a call to assist you or set up a time to view the bulls.

Sincerely,

Pyramid Beef



Jonathan and Michelle Marohl, Cody, Clayton, Cecilia and Lilian

Jason and Karen McLennan, Ava and Joseph

Nate and Jayna Frederickson, Tiernan and Teegan

Mark and Mary Kay Frederickson

Contact Us

Nate FredericksonH: 605-642-1131
 C: 605-254-4872
 Jason McLennanC: 605-645-1630
 Jonathan Marohl.....H: 701-445-3456
 C: 701-202-6905
 Mark Frederickson.....H: 605-642-2139
 C: 320-808-6691

Cattle Viewing

Cattle will be available for viewing at St. Onge Livestock, St. Onge, S.D., on Nov. 30. Prior to that, they will be available for viewing at Brunner Feedlot, Vale, S.D.

Sale Terms & Conditions

All cattle sell under the standard terms and conditions of the American Angus Association and the American Hereford Association. Terms of the sale are cash. **Bulls are cataloged in sale order.**

Herd Health

Bulls have had a complete herd health program as calves. Prior to sale day they have had another round of Vira Shield 6, Fusoguard (Foot-rot), Dectomax Injectable and Pour On for lice control. All bulls have been semen-tested. **All cattle selling have been tested and are guaranteed BVD PI free.**

Lunch, Social & Supper

Please join us for a complimentary lunch before the sale at St. Onge Livestock and stay for the social and supper following the sale!

Genetic Defects

All cattle selling are guaranteed free of any known genetic defects.

Auctioneer

Mark McNameeH: 307-760-9510

Sale Day Contacts

Mark Hotchkiss 605-490-1513
 Hereford America

Vern Frey..... 701-721-0344
 American Angus Association

Tim Olson..... 605-641-5966
 CATL Resources

Chandy Olson, DVM..... 605-641-2325
 Sale Day Vet

Justin Tupper 605-680-0259
 St. Onge Livestock

Clint Ridley..... 605-645-9777
 Order Buyer

St. Onge Livestock..... 605-642-2200

Directions

St. Onge Livestock is located just east off of Hwy. 34 in St. Onge, SD.

Sale Delivery, 2012

Pyramid Beef is offering free delivery on all bulls sold within 300 miles. Receive a \$50 discount per bull if you haul your own sale day.

Accommodations

Sale Headquarters - A Block of Rooms has been reserved at the AmericInn Lodge & Suites. Call for information:
 AmericInn Lodge & Suites Belle Fourche, SD (605) 892-0900
 Best Western Sturgis, SD (605) 347-3604
 Comfort SuitesSpearfish, SD (605) 642-3003
 Holiday InnSpearfish, SD (605) 642-4683

Bull Guarantee

All bulls selling for \$2,500 or more will be covered 50% by **Pyramid Beef** if they are injured during their first breeding season. Breeding season is defined as the 90-day period following the first turnout of the bulls.

50% of the value of the injured bull, minus one-half salvage value, will be given as credit in a future sale or toward a replacement bull if one is available. Salvage value, if any, will be split equally between **Pyramid Beef** and the buyer. All injured bulls must be diagnosed by a veterinarian. Please notify us as soon as possible should injury occur and prior to the injured bull being sold for salvage. All claims must be made by Sept. 1, 2013.

Example: A \$5,000 bull is injured and will not heal. A credit of \$2,500 minus one-half any salvage value will be given to the buyer.



Angus Reference Sires

Angus



S A V Pyramid 8186



S A V Pyramid 8186

Reg. 16107705 Tattoo: 8186 Calved:3/01/08

S A V 8180 Traveler 004 #
S A V Net Worth 4200
S A V May 2410
Boyd New Day 8005 #
S A V Blackbird 5296
S A V Blackbird 1082

Sitz Traveler 8180 #
Boyd Forever Lady 8003
S A F 598 Bando 5175 #
S A V May 6269 #
A A R New Trend #
S V F Forever Lady 57D
S A F 598 Bando 5175 #
S A V Blackbird 4036 #

| CED | BW | WW | Milk | YW | SW | SF | SG | SB | Act. sc |
|-----|------|-----|------|-----|-------|-------|-------|-------|---------|
| +9 | +1.2 | +52 | +29 | +92 | 31.56 | 31.76 | 19.22 | 56.62 | |

| BW | 205R | YR |
|----|------|----|
| | | |

| Marb. | REA | Fat |
|-------|-------|-------|
| +0.22 | +0.44 | +0.15 |



Sinclair Extra 4X13



Mc Cumber 4X13 Extra 9137

Reg. 16464875 Tattoo: 9137 Calved:2/05/09

N Bar Emulation EXT
Sinclair Extra 4X13
N Bar Lady Ida S C C 2P37
MC Cumber Total Value 449
Miss Wix 748 of Mc Cumber
Miss Wix 5206 of Mc Cumber

Emulation N Bar 5522
N Bar Primrose 2424
N Bar Prime Time D806
N Bar Lady Ida F1080
MC Cumber 7111 Total Value
Miss Wix 7007 of Mc Cumber
BT Traveler 228K
Miss Wix 332 of Mc Cumber

| CED | BW | WW | Milk | YW | SW | SF | SG | SB | Act. sc |
|-----|------|-----|------|-----|-------|--------|--------|--------|---------|
| +4 | +2.1 | +40 | +27 | +78 | +4.49 | +21.94 | +15.80 | +57.31 | |

| BW | 205R | YR |
|----|------|----|
| | | |

| Marb. | REA | Fat |
|-------|-----|------|
| 0.41 | .14 | .045 |



GAR Game On

Reg. 15482196 Tattoo: S115 Calved:8/15/05

G A R Precision 1680
G A R Retail Product
G A R Ext 4927
Bon View New Design 1407
G A R 1407 New Design 1683
G A R 616 Rito 3561

Tehama Bando 155
9J9 G A R 856
N Bar Emulation EXT
G A R Traveler 641
B/R New Design 036
Bon View Pride 664
Rito 616 of 4B20 6807 AAA
G A R Ext 2008

| CED | BW | WW | Milk | YW | SW | SF | SG | SB | Act. sc |
|-----|------|-----|------|------|-------|-------|-------|-------|---------|
| +7 | +1.3 | +57 | +29 | +109 | 38.55 | 48.64 | 39.65 | 79.05 | |

| BW | 205R | YR |
|----|------|----|
| | | |

| Marb. | REA | Fat |
|-------|-----|-------|
| 0.57 | .83 | -.018 |



21AR Outfitter 6032



21AR Outfitter 6032

Reg. 15532981 Tattoo: 6032 Calved: 1/18/06

O C C Emblazon 854E
O C C Magnitude 805M
O C C Pollyanna 878G

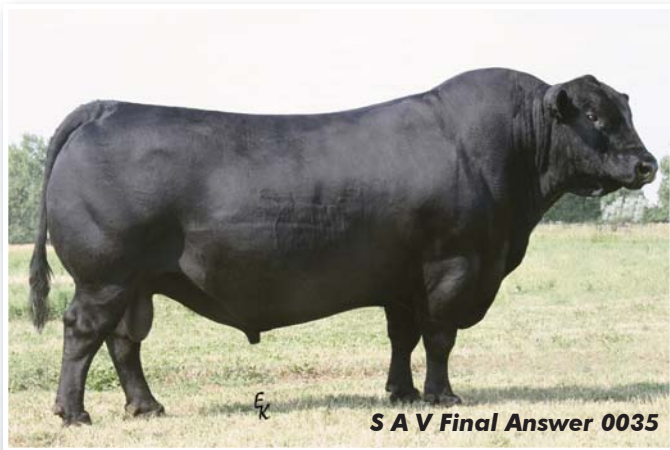
B C C Bushwacker 41-93
21AR Sara E802
21 A R Sara 802

D H D Traveler 6807
Dixie Erica of C H 1019
N Bar Emulation EXT
O C C Pollyanna 934E
Paramont Ambush 2172
R C Anita T Bando 918903
Sitz Traveler 8180
21 A R Sara 602

| CED | BW | WW | Milk | YW | SW | SF | SG | SB | Act. sc |
|-----|------|-----|------|-----|-------|-------|-------|-------|---------|
| -9 | +3.2 | +45 | +25 | +82 | 27.52 | 24.06 | 16.40 | 43.07 | |

| BW | 205R | YR |
|----|------|----|
| | | |

| Marb. | REA | Fat |
|-------|-----|------|
| 0.21 | .15 | .021 |



S A V Final Answer 0035



S A V Final Answer 0035

Reg. 13592905 Tattoo: 0035 Calved: 2/22/00

G D A R Traveler 71
Sitz Traveler 8180
Sitz Everelda Entense 1137

Bon View Bando 598
S A V Emulous 8145
S A V Sky Emulous 2124

Traveler 1148 G D A R
G D A R Miss Blackcap 567
G D A R Rainmaker 340
Sitz Everelda Entense 2335
Tehama Bando 155
Bon View Dora 56
Ellanin Sky Diver
Tail N 0383

| CED | BW | WW | Milk | YW | SW | SF | SG | SB | Act. sc |
|-----|------|-----|------|------|-------|-------|-------|-------|---------|
| +12 | -1.0 | +60 | +26 | +104 | 55.09 | 41.58 | 27.80 | 61.53 | |

| BW | 205R | YR |
|----|------|----|
| | | |

| Marb. | REA | Fat |
|-------|-------|--------|
| +0.52 | +0.45 | +0.046 |

Angus

You're On Your Way To Receiving Premiums.

The Transferred Registration Paper
Is the beginning ...

Proper Management and Records
Are the Key ...

Enrollment in AngusSource
Is the Payoff.



Source-, Age- and Genetic-verification.

AngusSource now offers a second-tier verification option called Gateway. Gateway verifies source and age. Contact AngusSource for more information.



We want to help market your calves. Contact us today to find out more.

816-383-5100
angussource@angus.org
www.angussource.com



Lot 1 • Pyramid 8186 1201



Pyramid 8186 1201

Reg. 17111502 Tattoo: 1201 Calved: 3/20/2011
 SAV Net Worth 4200
SAV Pyramid 8186
 SAV Blackbird 5296
 BC Mr Beef 2231
Summit Lass 645
 Vermilion Lass 6226
 SAV 8180 Traveler 004
 SAV May 2410
 Boyd New Day 8005
 SAV Blackbird 1082
 OCC Emblazon 854E
 Gibbet Hill Pure Pride CF 86
 Vermilion Right Time 4345
 Vermilion Lass 4514

| CED | BW | WW | Milk | YW | SW | SF | SG | SB | Act. sc |
|-----|-----|------|------|-------|-------|-------|-------|-------|---------|
| 5 | 1.9 | 46 | 26 | 86 | 26.59 | 27.84 | 8.23 | 39.95 | 38.1 |
| BW | | 205R | YR | Marb. | | REA | Fat | | |
| 87 | | 99 | 106 | 0.05 | | 0.1 | 0.014 | | |

• Loads of Volume. Easy Fleshing



Lot 2 • Pyramid 8186 1218



Pyramid 8186 1218

Reg. 17111499 Tattoo: 1218 Calved: 4/10/2011
 SAV Net Worth 4200
SAV Pyramid 8186
 SAV Blackbird 5296
 Basin Max 2P48
Summit Lady Blue 782
 Farview Lady Blue 4224
 SAV 8180 Traveler 004
 SAV May 2410
 Boyd New Day 8005
 SAV Blackbird 1082
 Basin Max 602C
 Basin Pride 923M
 Bon View New Design 878
 Farview Lady Blue 029

| CED | BW | WW | Milk | YW | SW | SF | SG | SB | Act. sc |
|-----|-----|------|------|-------|-------|-------|-------|-------|---------|
| 6 | 1.7 | 50 | 26 | 90 | 28.92 | 30.45 | 20.65 | 57.35 | 37 |
| BW | | 205R | YR | Marb. | | REA | Fat | | |
| 86 | | 109 | 106 | 0.36 | | 0.34 | 0.037 | | |

• Pathfinder Dam. Tremendous Muscle



Lot 3 • Pyramid 8186 1219



Pyramid 8186 1219

Reg. 17111505 Tattoo: 1219 Calved: 4/10/2011
 SAV Net Worth 4200
SAV Pyramid 8186
 SAV Blackbird 5296
 Leachman Right Time
Berbos Lucy 3327
 North Fork Lucy 8202
 SAV 8180 Traveler 004
 SAV May 2410
 Boyd New Day 8005
 SAV Blackbird 1082
 N Bar Emulation EXT
 Leachman Erica 0025
 Sitz Traveler 9929
 VDAR Lucy 425

| CED | BW | WW | Milk | YW | SW | SF | SG | SB | Act. sc |
|-----|-----|------|------|-------|-------|------|-------|-------|---------|
| 9 | 0.5 | 47 | 23 | 83 | 30.13 | 24.3 | 12.98 | 48.34 | 38 |
| BW | | 205R | YR | Marb. | | REA | Fat | | |
| 72 | | 101 | 103 | 0.15 | | 0.17 | 0.012 | | |

• Suitable for heifers.



Lot 4 • Pyramid Game On 1140



Pyramid Game On 1140

Reg. 17081301 Tattoo: 1140 Calved: 3/20/2011
 GAR Retail Product
GAR Game On
 GAR 1407 New Design 1683
 KCF Bennett Total
Glacial Lovely 16T
 Glacial Lovely 53M
 GAR Precision 1680
 GAR Ext 4927
 Bon View New Design 1407
 GAR 616 Rito 3561
 Sitz Alliance 6595
 Ext of Conanga 6790
 Glacial Quantum 3330 15K
 KNM Lovely 044

| CED | BW | WW | Milk | YW | SW | SF | SG | SB | Act. sc |
|-----|----|------|------|-------|-------|-------|-------|-------|---------|
| 4 | 2 | 52 | 26 | 92 | 31.79 | 31.76 | 29.18 | 61.73 | 40.4 |
| BW | | 205R | YR | Marb. | | REA | Fat | | |
| 88 | | 110 | 108 | 0.45 | | 0.34 | 0.004 | | |

• Full brother sold last year to Millar Angus and Lagrand Ranch



Lot 5 • Pyramid Game On 1115



Pyramid Game On 1115

Reg. 17081313 Tattoo: 1115 Calved: 3/8/2011

GAR Retail Product

GAR Game On

GAR 1407 New Design 1683

Sitz Alliance 8646

Glacial 8646 Missie 37W

Glacial Missie 043 3K

GAR Precision 1680

GAR Ext 4927

Bon View New Design 1407

GAR 616 Rito 3561

Sitz Alliance 6595

Sitz Barbaramere Nell 2309

Sitz Traveler 043

Valley Missie 542

| CED | BW | WW | Milk | YW |
|-----|-----|----|------|----|
| -1 | 3.4 | 44 | 28 | 84 |

| SW | SF | SG | SB | Act. sc |
|-------|-------|-------|-------|---------|
| 24.83 | 26.55 | 27.67 | 59.23 | 40.4 |

| BW | 205R | YR |
|----|------|-----|
| 89 | 105 | 110 |

| Marb. | REA | Fat |
|-------|-----|-------|
| 0.31 | 0.7 | 0.013 |



Pyramid Game On 1155

Reg. 17081328 Tattoo: 1155 Calved: 3/24/2011

GAR Retail Product

GAR Game On

GAR 1407 New Design 1683

Pine Creek Right Time 1147

Glacial 1147 KATINKA 5n

Glacial Katinka 616 15L

GAR Precision 1680

GAR Ext 4927

Bon View New Design 1407

GAR 616 Rito 3561

Leachman Right Time

Sitz Everelda Entense 1137

Rito 616 of 4B20 6807

GP Katinka 505

| CED | BW | WW | Milk | YW | SW | SF | SG | SB | Act. sc |
|-----|-----|----|------|----|------|-------|-------|-------|---------|
| 5 | 2.4 | 51 | 24 | 97 | 27.5 | 37.65 | 24.36 | 60.11 | 37.9 |

| BW | 205R | YR |
|----|------|-----|
| 89 | 103 | 104 |

| Marb. | REA | Fat |
|-------|------|--------|
| 0.3 | 0.37 | -0.004 |



Lot 7 • Pyramid Extra 1406



Pyramid Extra 1406

Reg. 17216051 Tattoo: 1406 Calved: 4/21/2011

Sinclair Extra 4X13

Mc Cumber 4X13 Extra 9137

Miss Wix 748 of Mc Cumber

Alberda Traveler 416

SAV Primrose 1166

SAV Primrose 5285

N Bar Emulation EXT

N Bar Lady Ida SCC 2P37

MC Cumber Total Value 449

Miss Wix 5206 of Mc Cumber

DHD Traveler 6807

Alberda Queen Kimberly 222

Bon View Emulation Ext 473

SAV Primrose Star 1815

| CED | BW | WW | Milk | YW |
|-----|-----|----|------|----|
| 2 | 2.5 | 46 | 27 | 85 |

| SW | SF | SG | SB | Act. sc |
|-------|-------|------|-------|---------|
| 25.84 | 26.79 | 17.6 | 54.82 | 39.2 |

| BW | 205R | YR |
|----|------|-----|
| 86 | 113 | 112 |

| Marb. | REA | Fat |
|-------|------|-------|
| 0.39 | 0.03 | 0.028 |

• Performance out of a pathfinder.



Lot 8 • Pyramid Extra 1407



Pyramid Extra 1407

Reg. 17216067 Tattoo: 1407 Calved: 4/23/2011

Sinclair Extra 4X13

Mc Cumber 4X13 Extra 9137

Miss Wix 748 of Mc Cumber

SAV 004 Density 4336

YT Madame Pride 824

SAV Madame Pride 2330

N Bar Emulation EXT

N Bar Lady Ida SCC 2P37

MC Cumber Total Value 449

Miss Wix 5206 of Mc Cumber

SAV 8180 Traveler 004

SAV May 7238

SAV Final Answer 0035

SAV Madame Pride 0075

| CED | BW | WW | Milk | YW | SW | SF | SG | SB | Act. sc |
|-----|-----|----|------|----|-------|-------|-------|-------|---------|
| 1 | 2.9 | 48 | 28 | 88 | 25.46 | 29.14 | 20.91 | 64.28 | 39.2 |

| BW | 205R | YR |
|----|------|-----|
| 85 | 105 | 104 |

| Marb. | REA | Fat |
|-------|------|-------|
| 0.5 | 0.22 | 0.038 |



Pyramid Extra 1409

Reg. 17216061 Tattoo: 1409 Calved: 4/24/2011

Sinclair Extra 4X13

Mc Cumber 4X13 Extra 9137

Miss Wix 748 of Mc Cumber

Sitz Traveler 9690

Sitz Eisa Evergreen 182M

Sitz Eisa Evergreen 1616

N Bar Emulation EXT

N Bar Lady Ida SCC 2P37

MC Cumber Total Value 449

Miss Wix 5206 of Mc Cumber

Sitz Traveler 9929

Sitz Eisa Evergreen 1572

Leachman Right Time

Sitz Eisa Evergreen 1872

| CED | BW | WW | Milk | YW |
|-----|-----|----|------|----|
| 1 | 3.2 | 41 | 27 | 89 |

| SW | SF | SG | SB | Act. sc |
|-------|-------|-------|-------|---------|
| 18.14 | 33.13 | 17.64 | 60.68 | 38.7 |

| BW | 205R | YR |
|----|------|-----|
| 85 | 103 | 116 |

| Marb. | REA | Fat |
|-------|-------|-------|
| 0.47 | -0.11 | 0.016 |

• Performance out of a pathfinder.

• Complete- Attractive out of a great young cow.



Lot 10 • Pyramid 8186 1223

10 Pyramid 8186 1223
 Reg. 17111491 Tattoo: 1223 Calved: 4/17/2011

SAV Net Worth 4200
SAV Pyramid 8186
 SAV Blackbird 5296

21AR Right Time B68
21AR Queen View 6445
 21AR Queen View A39

SAV 8180 Traveler 004
 SAV May 2410
 Boyd New Day 8005
 SAV Blackbird 1082
 Leachman Right Time
 Blackbird Lady 309 of LH
 Papa Equator 2928
 Queen View 211 of LH

| CED | BW | WW | Milk | YW | SW | SF | SG | SB | Act. sc |
|-----|-----|----|------|----|-------|-------|-------|----|---------|
| 5 | 1.9 | 46 | 26 | 85 | 26.97 | 26.79 | 14.77 | 52 | 35.2 |

| BW | 205R | YR |
|----|------|-----|
| 86 | 112 | 108 |

| Marb. | REA | Fat |
|-------|------|-------|
| 0.11 | 0.35 | 0.001 |

• Dam's WR 3@111.



Lot 11 • Pyramid 8186 1222

11 Pyramid 8186 1222
 Reg. 17111498 Tattoo: 1222 Calved: 4/17/2011

SAV Net Worth 4200
SAV Pyramid 8186
 SAV Blackbird 5296

Sitz Alliance 6595
Summit Gina 76
 Summit Gina 441

SAV 8180 Traveler 004
 SAV May 2410
 Boyd New Day 8005
 SAV Blackbird 1082
 Sitz Traveler 8180
 Sitz Barbaramere Jet 2698
 Leachman Right Time
 Summit Gina 277

| CED | BW | WW | Milk | YW | SW | SF | SG | SB | Act. sc |
|-----|-----|----|------|----|-------|-------|-------|-------|---------|
| 5 | 2.1 | 51 | 27 | 94 | 27.43 | 34.35 | 14.61 | 55.26 | 39.1 |

| BW | 205R | YR |
|----|------|-----|
| 86 | 108 | 109 |

| Marb. | REA | Fat |
|-------|-----|-------|
| 0.34 | 0.2 | 0.047 |

• Dam's WR 3@109.

12 Pyramid 8186 1205
 Reg. 17111504 Tattoo: 1205 Calved: 4/2/2011

SAV Net Worth 4200
SAV Pyramid 8186
 SAV Blackbird 5296

Sitz Alliance 6595
Farview SA Blanche 4211
 Farview Blanche R 9148

SAV 8180 Traveler 004
 SAV May 2410
 Boyd New Day 8005
 SAV Blackbird 1082
 Sitz Traveler 8180
 Sitz Barbaramere Jet 2698
 Gdar Royce 7173
 Farview GDT Blanche 688

| CED | BW | WW | Milk | YW | SW | SF | SG | SB | Act. sc |
|-----|-----|----|------|----|-------|------|-------|-------|---------|
| 6 | 1.9 | 41 | 27 | 80 | 24.71 | 23.6 | 13.87 | 47.93 | 38.6 |

| BW | 205R | YR |
|----|------|-----|
| 87 | 97 | 100 |

| Marb. | REA | Fat |
|-------|------|------|
| 0.24 | 0.11 | 0.03 |

• Powerful Dam.



Lot 13 • Pyramid Outfitter 1116

13 Pyramid Outfitter 1116
 Reg. 17081296 Tattoo: 1116 Calved: 3/8/2011

OCC Magnitude 805M
21AR Outfitter 6032
 21AR Sara E802

SAV Final Answer 0035
Glacial 0035 Queen 10W
 Glacial 20N Queen 69S

OCC Emblazon 854E
 OCC Pollyanna 878G
 BCC Bushwacker 41-93
 21 AR Sara 802
 Sitz Traveler 8180
 SAV Emulous 8145
 Glacial 7078 VRD 20N
 KNM Queen 058

| CED | BW | WW | Milk | YW | SW | SF | SG | SB | Act. sc |
|-----|-----|----|------|----|-------|-------|-------|-------|---------|
| 3 | 0.8 | 47 | 23 | 89 | 29.12 | 30.62 | 20.41 | 49.52 | 37.6 |

| BW | 205R | YR |
|----|------|-----|
| 73 | 100 | 105 |

| Marb. | REA | Fat |
|-------|------|-------|
| 0.31 | 0.27 | 0.032 |

• Suitable for heifers.





Lot 14 • Pyramid Outfitter 1128

14 Pyramid Outfitter 1128

Reg. 17081334 Tattoo: 1128 Calved: 3/13/2011

OCC Magnitude 805M
21AR Outfitter 6032
 21AR Sara E802

Glacial 7078 VRD 4R
Glacial 4R Blackbird Eve 67T
 Glacial Blackbird Eve 33M

OCC Emblazon 854E
 OCC Pollyanna 878G
 BCC Bushwacker 41-93
 21 AR Sara 802
 Vermilion Dateline 7078
 Glacial Missie 616 6L
 BT Traveler 228K
 RB Blackbird Eve 813

| CED | BW | WW | Milk | YW | SW | SF | SG | SB | Act. sc |
|-----|------|-----|-------|------|------|-------|-------|-------|---------|
| 0 | 1.6 | 44 | 26 | 79 | 29 | 21.38 | 20.11 | 49.61 | 37.1 |
| BW | 205R | YR | Marb. | REA | Fat | | | | |
| 88 | 107 | 105 | 0.29 | 0.21 | 0.02 | | | | |



Lot 15 • Pyramid Outfitter 1130

15 Pyramid Outfitter 1130

Reg. 17081307 Tattoo: 1130 Calved: 3/17/2011

OCC Magnitude 805M
21AR Outfitter 6032
 21AR Sara E802

Rito 616 of 4B20 6807
Glacial 616 Missie 27N
 Valley Missie 542

OCC Emblazon 854E
 OCC Pollyanna 878G
 BCC Bushwacker 41-93
 21 AR Sara 802
 DHD Traveler 6807
 Rita 4B20 of OFB1 Bando
 Valley 054 Rito 104
 Valley Missie 118

| CED | BW | WW | Milk | YW | SW | SF | SG | SB | Act. sc |
|-----|------|-----|-------|------|--------|-------|-------|-------|---------|
| -3 | 2.8 | 39 | 23 | 69 | 25.09 | 13.33 | 16.97 | 37.88 | 38.2 |
| BW | 205R | YR | Marb. | REA | Fat | | | | |
| 89 | 106 | 103 | 0.12 | 0.18 | -0.005 | | | | |



Lot 17 • Pyramid Extra 1414

16 Pyramid Extra 1410

Reg. 17216060 Tattoo: 1410 Calved: 4/27/2011

Sinclair Extra 4X13
Mc Cumber 4X13 Extra 9137
 Miss Wix 748 of Mc Cumber

OCC Great Plains 943G
Sitz Henrietta Pride 552
 Sitz Henrietta Pride 3980

N Bar Emulation EXT
 N Bar Lady Ida SCC 2P37
 MC Cumber Total Value 449
 Miss Wix 5206 of Mc Cumber
 N Bar Emulation EXT
 Dixie Erica of CH 1019
 Sitz Reliant 8898
 Sitz Henrietta Pride 3117

| CED | BW | WW | Milk | YW | SW | SF | SG | SB | Act. sc |
|-----|------|----|-------|------|-------|-------|------|-------|---------|
| -3 | 4.2 | 38 | 28 | 71 | 20.09 | 15.67 | 10.8 | 46.87 | 35 |
| BW | 205R | YR | Marb. | REA | Fat | | | | |
| 94 | 94 | 93 | 0.22 | 0.14 | 0.042 | | | | |

• Complete Balanced.

17 Pyramid Extra 1414

Reg. 17216063 Tattoo: 1414 Calved: 5/7/2011

Sinclair Extra 4X13
Mc Cumber 4X13 Extra 9137
 Miss Wix 748 of Mc Cumber

Woodhill Foresight
YT Rachel 9405
 Sitz Rachel 352

N Bar Emulation EXT
 N Bar Lady Ida SCC 2P37
 MC Cumber Total Value 449
 Miss Wix 5206 of Mc Cumber
 Papa Forte 1921 [D2F-M1F]
 Bon View Gammer 85
 Sitz Rainmaker 6169
 Sitz Rachel 2060

| CED | BW | WW | Milk | YW | SW | SF | SG | SB | Act. sc |
|-----|------|----|-------|------|-------|----|-------|-------|---------|
| 2 | 2.8 | 45 | 26 | 80 | 25.93 | 22 | 21.52 | 60.21 | 36 |
| BW | 205R | YR | Marb. | REA | Fat | | | | |
| 77 | 96 | 95 | 0.37 | 0.23 | 0.016 | | | | |

• Stylish Moderate. Suitable for heifers.

Pyramid Beef Annual Sale, Dec. 1, 2012, 1 p.m., St. Onge, SD



Angus



Lot 18 • Pyramid Extra 1421



Pyramid Extra 1421

Reg. 17216058 Tattoo: 1421 Calved: 6/7/2011

Sinclair Extra 4X13
Mc Cumber 4X13 Extra 9137
 Miss Wix 748 of Mc Cumber

N Bar Emulation EXT
 N Bar Lady Ida SCC 2P37
 MC Cumber Total Value 449
 Miss Wix 5206 of Mc Cumber
 Sitz Rainmaker 8987
 Sitz Barbaramere Jet 3007
 Sitz Reliant 8898
 Sitz Rachel 1527

Sitz Rainmaker 6169
Sitz Rachel 352
 Sitz Rachel 2060

| CED | BW | WW | Milk | YW | SW | SF | SG | SB | Act. sc |
|-----|-----|----|------|-----|-------|-------|-------|-------|---------|
| 0 | 3.6 | 50 | 27 | 81 | 28.28 | 21.04 | 19.52 | 53.96 | 39.7 |
| BW | | | 205R | YR | Marb. | | | REA | Fat |
| 89 | | | 113 | 103 | 0.33 | | | 0.15 | 0.019 |

• Deep bodied.



Pyramid 8186 1229

Reg. 17111495 Tattoo: 1229 Calved: 5/8/2011

SAV Net Worth 4200
SAV Pyramid 8186
 SAV Blackbird 5296

SAV 8180 Traveler 004
 SAV May 2410
 Boyd New Day 8005
 SAV Blackbird 1082
 DHD Traveler 6807
 Rita 4B20 of OFB1 Bando
 Connealy Dateline
 Vermilion Eileen S 6344

Rito 616 of 4B20 6807
Summit Eileen 574
 Summit Eileen 114

| CED | BW | WW | Milk | YW | SW | SF | SG | SB | Act. sc |
|-----|-----|----|------|-----|-------|------|-------|-------|---------|
| 5 | 2.2 | 47 | 23 | 83 | 27.36 | 24.3 | 20.04 | 54.81 | 37.1 |
| BW | | | 205R | YR | Marb. | | | REA | Fat |
| 90 | | | 106 | 101 | 0.16 | | | 0.49 | -0.006 |

• Tremendous Muscle.



Pyramid 8186 1227

Reg. 17111493 Tattoo: 1227 Calved: 5/6/2011

SAV Net Worth 4200
SAV Pyramid 8186
 SAV Blackbird 5296

SAV 8180 Traveler 004
 SAV May 2410
 Boyd New Day 8005
 SAV Blackbird 1082
 DHD Traveler 6807
 Rita 4B20 of OFB1 Bando
 Leachman Right Time
 Vermilion O Lass 4253

Rito 616 of 4B20 6807
Summit Lass 461
 Vermilion Lass 6565

| CED | BW | WW | Milk | YW | SW | SF | SG | SB | Act. sc |
|-----|-----|----|------|-----|-------|-------|-------|-------|---------|
| 5 | 1.9 | 47 | 23 | 81 | 28.83 | 22.23 | 28.87 | 63.42 | 41.2 |
| BW | | | 205R | YR | Marb. | | | REA | Fat |
| 89 | | | 105 | 102 | 0.44 | | | 0.36 | 0.001 |

• Loads of Volume.



Lot 22 • Pyramid Game On 1169



Pyramid 8186 1216

Reg. 17111501 Tattoo: 1216 Calved: 4/9/2011

SAV Net Worth 4200
SAV Pyramid 8186
 SAV Blackbird 5296

SAV 8180 Traveler 004
 SAV May 2410
 Boyd New Day 8005
 SAV Blackbird 1082
 BCC Bushwacker 41-93
 MS CC Blackcap 0196-211
 GDAR SVF Traveler 234D
 21 AR Blackbird Lady 658

21AR Bushwacker E31A
21AR Blackbird Lady 6358
 21AR Blackbird Lady B658

| CED | BW | WW | Milk | YW | SW | SF | SG | SB | Act. sc |
|-----|-----|----|------|-----|-------|-------|-------|-------|---------|
| 9 | 0.2 | 41 | 24 | 77 | 27.76 | 20.52 | 20.12 | 51.42 | 40 |
| BW | | | 205R | YR | Marb. | | | REA | Fat |
| 72 | | | 97 | 102 | 0.26 | | | 0.23 | 0.009 |

• Suitable for Heifers.



Pyramid Game On 1169

Reg. 17081323 Tattoo: 1169 Calved: 3/27/2011

GAR Retail Product
GAR Game On
 GAR 1407 New Design 1683

GAR Precision 1680
 GAR Ext 4927
 Bon View New Design 1407
 GAR 616 Rito 3561
 CAR Duke 104
 Glacial Blackbird 7M
 Sitz Traveler 043
 Valley Missie 542

Glacial 104 Duke 35S
Glacial 35S Missie 49U
 Glacial Missie 043 3K

| CED | BW | WW | Milk | YW | SW | SF | SG | SB | Act. sc |
|-----|----|----|------|----|-------|-------|-------|-------|---------|
| 4 | 2 | 45 | 25 | 84 | 28.42 | 26.15 | 30.63 | 56.37 | 35.5 |
| BW | | | 205R | YR | Marb. | | | REA | Fat |
| 82 | | | 98 | 96 | 0.4 | | | 0.44 | -0.004 |



Pyramid Game On 1162

Reg. 17081327 Tattoo: 1162 Calved: 3/26/2011

GAR Retail Product
GAR Game On
 GAR 1407 New Design 1683

GAR Precision 1680
 GAR Ext 4927
 Bon View New Design 1407
 GAR 616 Rito 3561
 Vermilion Dateline 7078
 KNM Enchantress 005
 Sitz Traveler 043
 Valley Missie 542

Glacial 7078 VRD 20N
Glacial 20N Missie 56S
 Glacial Missie 043 3K

| CED | BW | WW | Milk | YW | SW | SF | SG | SB | Act. sc |
|-----|----|----|------|----|-------|-------|-------|-------|---------|
| 3 | 3 | 43 | 25 | 84 | 23.82 | 26.96 | 28.88 | 56.72 | 37.2 |
| BW | | | 205R | YR | Marb. | | | REA | Fat |
| 89 | | | 95 | 98 | 0.3 | | | 0.63 | -0.006 |



Lot 24 • Pyramid Game On 1120

24 Pyramid Game On 1120

Reg. 17081312 Tattoo: 1120 Calved: 3/11/2011

GAR Retail Product
GAR Game On
 GAR 1407 New Design 1683
 Sitz Alliance 8646
Glacial 8646 Blackbird Eve 34W
 Glacial Blackbird Eve 23K

GAR Precision 1680
 GAR Ext 4927
 Bon View New Design 1407
 GAR 616 Rito 3561
 Sitz Alliance 6595
 Sitz Barabaramere Nell 2309
 High Valley 4C6 Ambush
 Qas Blackbird Eve 23E Et 1X

| CED | BW | WW | Milk | YW | SW | SF | SG | SB | Act. sc |
|-----|-----|----|------|----|-------|-------|------|-------|---------|
| 3 | 1.7 | 44 | 28 | 79 | 30.79 | 21.38 | 29.8 | 56.19 | 39.5 |

| BW | 205R | YR | Marb. | REA | Fat |
|----|------|-----|-------|------|--------|
| 85 | 95 | 103 | 0.35 | 0.53 | -0.004 |

25 Pyramid Game On 1172

Reg. 17081321 Tattoo: 1172 Calved: 3/27/2011

GAR Retail Product
GAR Game On
 GAR 1407 New Design 1683
 Glacial 7078 VRD 4R
Glacial 4R Blackbird 47T
 Glacial Blackbird 7M

GAR Precision 1680
 GAR Ext 4927
 Bon View New Design 1407
 GAR 616 Rito 3561
 Vermilion Dateline 7078
 Glacial Missie 616 6L
 Pine Creek Right Time 1147
 Glacial Blackbird 887

| CED | BW | WW | Milk | YW | SW | SF | SG | SB | Act. sc |
|-----|-----|----|------|----|-------|------|-------|-------|---------|
| 7 | 1.5 | 50 | 25 | 98 | 28.42 | 39.2 | 22.04 | 59.62 | 35.9 |

| BW | 205R | YR | Marb. | REA | Fat |
|----|------|-----|-------|------|-------|
| 86 | 99 | 104 | 0.29 | 0.38 | 0.011 |

26 Pyramid 8186 1203

Reg. 17111503 Tattoo: 1203 Calved: 3/27/2011

SAV Net Worth 4200
SAV Pyramid 8186
 SAV Blackbird 5296
 Leachman Right Time
Vermilion Lass 6565
 Vermilion O Lass 4253

SAV 8180 Traveler 004
 SAV May 2410
 Boyd New Day 8005
 SAV Blackbird 1082
 N Bar Emulation EXT
 Leachman Erica 0025
 Baldridge Oscar
 Vermilion Lass 0169

| CED | BW | WW | Milk | YW | SW | SF | SG | SB | Act. sc |
|-----|----|----|------|----|-------|-------|-------|------|---------|
| 4 | 2 | 52 | 23 | 81 | 32.88 | 20.26 | 20.37 | 57.9 | 42 |

| BW | 205R | YR | Marb. | REA | Fat |
|----|------|-----|-------|------|-------|
| 88 | 117 | 108 | 0.32 | 0.25 | 0.015 |

• Dam stayed in production until 16 years of age.

27 Pyramid 9268 Traveler 1224

Reg. 17111492 Tattoo: 1224 Calved: 4/24/2011

SAV 8180 Traveler 004
Pyramid 004 Traveler 9268
 Black Maid 7166 BCBR
 TM Outreach 027E
Farview Lady Blanche 4150
 Farview Lady Blanche 1153

Sitz Traveler 8180
 Boyd Forever Lady 8003
 N Bar Emulation EXT
 Black Maid 4343 BCBR
 DHD Traveler 6807
 Eldorado 3134 Ideal 8214 156
 N Bar Emulation Ext V1624C
 Farview Lady Blanche 617

| CED | BW | WW | Milk | YW | SW | SF | SG | SB | Act. sc |
|-----|-----|----|------|----|-------|-------|------|-------|---------|
| 2 | 2.8 | 45 | 21 | 90 | 21.02 | 32.53 | 10.2 | 48.71 | 36.2 |

| BW | 205R | YR | Marb. | REA | Fat |
|----|------|-----|-------|------|-------|
| 89 | 106 | 108 | 0.24 | 0.15 | 0.049 |

• Easy Flething Dam.

28 Pyramid 9268 Traveler 1213

Reg. 17111490 Tattoo: 1213 Calved: 4/8/2011

SAV 8180 Traveler 004
Pyramid 004 Traveler 9268
 Black Maid 7166 BCBR
 Basin Max 2P48
Summit Lassie 644
 Summit Lassie 396

Sitz Traveler 8180
 Boyd Forever Lady 8003
 N Bar Emulation EXT
 Black Maid 4343 BCBR
 Basin Max 602C
 Basin Pride 923M
 GDAR Traveler 561
 Summit Lassie 804

| CED | BW | WW | Milk | YW | SW | SF | SG | SB | Act. sc |
|-----|-----|----|------|----|-------|-------|------|-------|---------|
| 7 | 0.9 | 49 | 19 | 90 | 27.68 | 30.86 | 9.39 | 46.66 | 40.1 |

| BW | 205R | YR | Marb. | REA | Fat |
|----|------|-----|-------|------|-------|
| 78 | 107 | 102 | 0.22 | 0.04 | 0.038 |

• Suitable for heifers.



Lot 29 • Pyramid Final Answer 1103

29 Pyramid Final Answer 1103

Reg. 17126696 Tattoo: 1103 Calved: 2/13/2011

Sitz Traveler 8180
SAV Final Answer 0035
 SAV Emulous 8145
 Rito 616 of 4B20 6807
Glacial Missie 616 6L
 TLA Missie 909

GDAR Traveler 71
 Sitz Everelda Entense 1137
 Bon View Bando 598
 SAV Sky Emulous 2124
 DHD Traveler 6807
 Rita 4B20 of OFB1 Bando
 Mc Bee WMR Super X 745
 Valley Missie 542

| CED | BW | WW | Milk | YW | SW | SF | SG | SB | Act. sc |
|-----|-----|------|------|------|------|-------|-------|------|---------|
| 12 | 1.3 | 1+50 | 1+24 | 1+88 | 37.5 | 28.32 | 24.89 | 52.9 | 42.3 |

| BW | 205R | YR | Marb. | REA | Fat |
|----|------|-----|-------|-------|--------|
| 69 | 100 | 100 | 1+.44 | 1+.30 | 1+.040 |

• Suitable for heifers. ET



Lot 30 • Pyramid Final Answer 1105

30 Pyramid Final Answer 1105
 Reg. 17126697 Tattoo: 1105 Calved: 2/14/2011

Sitz Traveler 8180
SAV Final Answer 0035
 SAV Emulous 8145

Rito 616 of 4B20 6807
Glacial Missie 616 6L
 TLA Missie 909

GDAR Traveler 71
 Sitz Everelda Entense 1137
 Bon View Bando 598
 SAV Sky Emulous 2124
 DHD Traveler 6807
 Rita 4B20 of OFB1 Bando
 Mc Bee WMR Super X 745
 Valley Missie 542

| CED | BW | WW | Milk | YW | SW | SF | SG | SB | Act. sc | |
|-----|-------|------|------|------|------|-------|-------|-------|---------|--------|
| 12 | 1-1.3 | 1+50 | 1+24 | 1+88 | 37.5 | 28.32 | 25.29 | 56.68 | 39.5 | |
| BW | | | | 205R | YR | Marb. | | | REA | Fat |
| 69 | | | | 100 | 100 | 1+.43 | | | 1+.34 | 1+.032 |

• Suitable for heifers. ET

31 Pyramid Final Answer 1106
 Reg. 17126698 Tattoo: 1106 Calved: 2/16/2011

Sitz Traveler 8180
SAV Final Answer 0035
 SAV Emulous 8145

Rito 616 of 4B20 6807
Glacial Missie 616 6L
 TLA Missie 909

GDAR Traveler 71
 Sitz Everelda Entense 1137
 Bon View Bando 598
 SAV Sky Emulous 2124
 DHD Traveler 6807
 Rita 4B20 of OFB1 Bando
 Mc Bee WMR Super X 745
 Valley Missie 542

| CED | BW | WW | Milk | YW | SW | SF | SG | SB | Act. sc | |
|-----|-------|------|------|------|------|-------|-------|-------|---------|--------|
| 12 | 1-1.3 | 1+50 | 1+24 | 1+88 | 37.5 | 28.32 | 25.73 | 54.54 | 41.9 | |
| BW | | | | 205R | YR | Marb. | | | REA | Fat |
| 69 | | | | 100 | 100 | 1+.39 | | | 1+.44 | 1+.033 |

• Suitable for heifers. ET



Lot 32 • Pyramid 8186 1209

32 Pyramid 8186 1209
 Reg. 17111500 Tattoo: 1209 Calved: 4/7/2011

SAV Net Worth 4200
SAV Pyramid 8186
 SAV Blackbird 5296

Leachman Right Time
Summit Gina 441
 Summit Gina 277

SAV 8180 Traveler 004
 SAV May 2410
 Boyd New Day 8005
 SAV Blackbird 1082
 N Bar Emulation EXT
 Leachman Erica 0025
 GDAR Traveler 561
 Mandys Valentine 603

| CED | BW | WW | Milk | YW | SW | SF | SG | SB | Act. sc | |
|-----|-----|----|------|------|-------|-------|------|-------|---------|------|
| 9 | 0.6 | 45 | 23 | 82 | 28.68 | 24.06 | 10.6 | 45.94 | 38.7 | |
| BW | | | | 205R | YR | Marb. | | | REA | Fat |
| 78 | | | | 100 | 99 | 0.11 | | | 0.2 | 0.02 |

• Suitable for heifers.

33 Pyramid 8186 1230
 Reg. 17111496 Tattoo: 1230 Calved: 5/10/2011

SAV Net Worth 4200
SAV Pyramid 8186
 SAV Blackbird 5296

21AR Alliance E080
21AR Blackcap 6299A
 21AR Blackcap E38D

SAV 8180 Traveler 004
 SAV May 2410
 Boyd New Day 8005
 SAV Blackbird 1082
 Sitz Alliance 6595
 Glory B Frosty 080Q
 Schmaus Example 18F
 Schmaus Easy 38D

| CED | BW | WW | Milk | YW | SW | SF | SG | SB | Act. sc | |
|-----|----|----|------|------|-------|-------|-------|-------|---------|-------|
| 2 | 3 | 46 | 25 | 83 | 24.99 | 24.7 | 13.03 | 44.37 | 38.3 | |
| BW | | | | 205R | YR | Marb. | | | REA | Fat |
| 95 | | | | 110 | 102 | 0.17 | | | 0.08 | 0.016 |

• Tremendous Muscle.

34 Pyramid Game On 1139
 Reg. 17081320 Tattoo: 1139 Calved: 3/20/2011

GAR Retail Product
GAR Game On
 GAR 1407 New Design 1683

BT Traveler 228K
Glacial Missie 47M
 Valley Missie 542

GAR Precision 1680
 GAR Ext 4927
 Bon View New Design 1407
 GAR 616 Rito 3561
 Sitz Traveler 9929
 BT Everelda Entense 57D
 Valley 054 Rito 104
 Valley Missie 118

| CED | BW | WW | Milk | YW | SW | SF | SG | SB | Act. sc | |
|-----|-----|----|------|------|-------|-------|-------|-------|---------|--------|
| 6 | 1.2 | 41 | 30 | 77 | 29.57 | 20.52 | 28.08 | 56.37 | 39.2 | |
| BW | | | | 205R | YR | Marb. | | | REA | Fat |
| 85 | | | | 107 | 109 | 0.31 | | | 0.52 | -0.007 |



Pyramid Game On 1173

Reg. 17081326 Tattoo: 1173 Calved: 3/27/2011

GAR Retail Product
GAR Game On
GAR 1407 New Design 1683

Glacial 616 Rito 6P
Glacial 6P Lovely 54S
Glacial Lovely 53M

GAR Precision 1680
GAR Ext 4927
Bon View New Design 1407
GAR 616 Rito 3561
Rito 616 of 4B20 6807
Glacial Blackbird 7M
Glacial Quantum 3330 15K
KNM Lovely 044

| CED | BW | WW | Milk | YW | SW | SF | SG | SB | Act. sc |
|-----|-------|------|------|------|-------|-------|-------|-------|---------|
| 4 | 1+2.1 | 1+48 | 1+25 | 1+88 | 33.52 | 29.14 | 31.47 | 60.39 | 35.3 |

| BW | 205R | YR | Marb. | REA | Fat |
|----|------|-----|-------|-------|--------|
| 85 | 100 | 100 | 1+.37 | 1+.47 | 1-.027 |



Lot 38 • Pyramid 8186 1210



Pyramid 8186 1210

Reg. 17111497 Tattoo: 1210 Calved: 4/7/2011

SAV Net Worth 4200
SAV Pyramid 8186
SAV Blackbird 5296

Basin Max 602C
Summit Blanche 75
Farview SA Blanche 4211

SAV 8180 Traveler 004
SAV May 2410
Boyd New Day 8005
SAV Blackbird 1082
GT Maximum
Basin Eline Erica 315U
Sitz Alliance 6595
Farview Blanche R 9148

| CED | BW | WW | Milk | YW | SW | SF | SG | SB | Act. sc |
|-----|-----|----|------|----|-------|-------|-------|-------|---------|
| 10 | 0.1 | 44 | 24 | 83 | 28.17 | 25.51 | 15.26 | 48.47 | 36.2 |

| BW | 205R | YR | Marb. | REA | Fat |
|----|------|----|-------|------|-------|
| 72 | 94 | 95 | 0.25 | 0.11 | 0.025 |

• Suitable for heifers.



Lot 40 • Pyramid Extra 1401

Pyramid Beef Annual Sale, Dec. 1, 2012, 1 p.m., St. Onge, SD



Pyramid Game On 1178

Reg. 17081340 Tattoo: 1178 Calved: 4/1/2011

GAR Retail Product
GAR Game On
GAR 1407 New Design 1683

Pine Creek Right Time 1147
Glacial Blackbird 7M
Glacial Blackbird 887

GAR Precision 1680
GAR Ext 4927
Bon View New Design 1407
GAR 616 Rito 3561
Leachman Right Time
Sitz Everelda Entense 1137
RCC 9929 887
Valley Blackbird 206

| CED | BW | WW | Milk | YW | SW | SF | SG | SB | Act. sc |
|-----|-----|----|------|-----|-------|-------|-------|-------|---------|
| 3 | 2.4 | 55 | 27 | 101 | 30.51 | 40.38 | 24.79 | 63.57 | 38.8 |

| BW | 205R | YR | Marb. | REA | Fat |
|----|------|-----|-------|-----|-------|
| 94 | 119 | 114 | 0.35 | 0.5 | 0.018 |

• High weaning and yearling bull.



Pyramid Game On 1119

Reg. 17081319 Tattoo: 1119 Calved: 3/10/2011

GAR Retail Product
GAR Game On
GAR 1407 New Design 1683

Glacial Total 19T
Glacial 19T Lovely 45W
Glacial 6P Lovely 54S

GAR Precision 1680
GAR Ext 4927
Bon View New Design 1407
GAR 616 Rito 3561
KCF Bennett Total
Glacial 1147 Melody 2N
Glacial 616 Rito 6P
Glacial Lovely 53M

| CED | BW | WW | Milk | YW | SW | SF | SG | SB | Act. sc |
|-----|-----|----|------|----|-------|-------|-------|-------|---------|
| 3 | 1.9 | 48 | 23 | 90 | 28.41 | 31.28 | 28.26 | 60.05 | 34.6 |

| BW | 205R | YR | Marb. | REA | Fat |
|----|------|----|-------|------|--------|
| 80 | 95 | 98 | 0.32 | 0.45 | -0.019 |

• Suitable for heifers.



Pyramid 8186 1228

Reg. 17111494 Tattoo: 1228 Calved: 5/7/2011

SAV Net Worth 4200
SAV Pyramid 8186
SAV Blackbird 5296

GDAR Traveler 561
Summit Queen Mother 379
BJ Queen Mother 901

SAV 8180 Traveler 004
SAV May 2410
Boyd New Day 8005
SAV Blackbird 1082
OCC Traveler 723Z
GDAR Forever Lady 177B
Connealy Dateline
BJ Queen Mother 507

| CED | BW | WW | Milk | YW | SW | SF | SG | SB | Act. sc |
|-----|-----|----|------|----|-------|-------|------|-------|---------|
| 7 | 1.5 | 48 | 21 | 81 | 30.14 | 21.84 | 17.9 | 46.31 | 37.8 |

| BW | 205R | YR | Marb. | REA | Fat |
|----|------|----|-------|------|-------|
| 85 | 109 | 99 | 0.27 | 0.11 | 0.021 |

• Suitable for heifers.



Pyramid Extra 1401

Reg. 17216066 Tattoo: 1401 Calved: 4/12/2011

Sinclair Extra 4X13
Mc Cumber 4X13 Extra 9137
Miss Wix 748 of Mc Cumber

GDAR Game Day 449
S Lady Achievess 9112
S Lady Achievess 6172

N Bar Emulation EXT
N Bar Lady Ida SCC 2P37
MC Cumber Total Value 449
Miss Wix 5206 of Mc Cumber
Boyd New Day 8005
GDAR Miss Wix 474
GAR Grid Maker
GV Lady Achiever 95

| CED | BW | WW | Milk | YW | SW | SF | SG | SB | Act. sc |
|-----|-----|----|------|----|-------|-------|-------|-------|---------|
| 4 | 1.7 | 48 | 25 | 88 | 27.82 | 29.14 | 26.39 | 56.06 | 35.1 |

| BW | 205R | YR | Marb. | REA | Fat |
|----|------|-----|-------|------|-------|
| 72 | 110 | 106 | 0.4 | 0.34 | 0.018 |

• Moderate and Gentle. Suitable for heifers.

Angus



Lot 41 • Pyramid Extra 1419

41 Pyramid Extra 1419

Reg. 17216070 Tattoo: 1419 Calved: 5/12/2011
 Sinclair Extra 4X13
Mc Cumber 4X13 Extra 9137
 Miss Wix 748 of Mc Cumber
 Connealy Thunder
YT Emma E 9403
 Sitz Emma E 412
 N Bar Emulation EXT
 N Bar Lady Ida SCC 2P37
 MC Cumber Total Value 449
 Miss Wix 5206 of Mc Cumber
 Baldrige Kaboom K243 KCF
 Parka of Conanga 241
 OCC Great Plains 943G
 Sitz Emma E 3300

| CED | BW | WW | Milk | YW | SW | SF | SG | SB | Act. sc |
|-----|-----|----|------|----|------|-------|-------|-------|---------|
| 5 | 1.3 | 43 | 27 | 84 | 26.1 | 26.96 | 23.39 | 58.46 | 39 |
| | | | | BW | 205R | YR | | | |
| | | | | 79 | 100 | 101 | Marb. | REA | Fat |
| | | | | | | | 0.42 | 0.18 | 0.019 |

• Complete out of a great young cow. Suitable for heifers.

42 Pyramid Outfitter 1113

Reg. 17081332 Tattoo: 1113 Calved: 3/4/2011
 OCC Magnitude 805M
21AR Outfitter 6032
 21AR Sara E802
 Glacial Total 19T
Glacial 19T Lovely 64W
 Glacial 6P Lovely 22S
 OCC Emblazon 854E
 OCC Pollyanna 878G
 BCC Bushwacker 41-93
 21 AR Sara 802
 KCF Bennett Total
 Glacial 1147 Melody 2N
 Glacial 616 Rito 6P
 Glacial 616 Lovely 5P

| CED | BW | WW | Milk | YW | SW | SF | SG | SB | Act. sc |
|-----|------|----|------|----|-------|-------|-------|-------|---------|
| 8 | -1.2 | 39 | 20 | 71 | 29.01 | 15.29 | 9.84 | 30.86 | 38.4 |
| | | | | BW | 205R | YR | | | |
| | | | | 60 | 88 | 87 | Marb. | REA | Fat |
| | | | | | | | 0.08 | -0.05 | 0.012 |

• Suitable for heifers.

43 Pyramid Outfitter 1114

Reg. 17081310 Tattoo: 1114 Calved: 3/7/2011
 OCC Magnitude 805M
21AR Outfitter 6032
 21AR Sara E802
 BT Traveler 228K
Glacial Blackbird Eve 33M
 RB Blackbird Eve 813
 OCC Emblazon 854E
 OCC Pollyanna 878G
 BCC Bushwacker 41-93
 21 AR Sara 802
 Sitz Traveler 9929
 BT Everelda Entense 57D
 RR 9440 Scotch Cap 1483
 Qas Blackbird Eve 23E Et 1X

| CED | BW | WW | Milk | YW | SW | SF | SG | SB | Act. sc |
|-----|-----|----|------|----|-------|------|-------|-------|---------|
| -1 | 1.8 | 34 | 28 | 63 | 26.03 | 9.42 | 15.58 | 37.55 | 41.9 |
| | | | | BW | 205R | YR | | | |
| | | | | 88 | 98 | 98 | Marb. | REA | Fat |
| | | | | | | | 0.15 | 0.17 | 0.015 |

• Long Bodied.



Lot 45 • Pyramid Outfitter 1168

44 Pyramid Outfitter 1144

Reg. 17081329 Tattoo: 1144 Calved: 3/21/2011
 OCC Magnitude 805M
21AR Outfitter 6032
 21AR Sara E802
 Rito 616 of 4B20 6807
Glacial 616 Lovely 5P
 Glacial Lovely 53M
 OCC Emblazon 854E
 OCC Pollyanna 878G
 BCC Bushwacker 41-93
 21 AR Sara 802
 DHD Traveler 6807
 Rita 4B20 of OFB1 Bando
 Glacial Quantum 3330 15K
 KNM Lovely 044

| CED | BW | WW | Milk | YW | SW | SF | SG | SB | Act. sc |
|-----|-----|----|------|----|-------|-------|-------|-------|---------|
| -1 | 2.1 | 39 | 21 | 67 | 26.37 | 11.39 | 21.1 | 37.48 | 33.9 |
| | | | | BW | 205R | YR | | | |
| | | | | 84 | 93 | 89 | Marb. | REA | Fat |
| | | | | | | | 0.24 | -0.07 | -0.018 |

•

45 Pyramid Outfitter 1168

Reg. 17081347 Tattoo: 1168 Calved: 3/27/2011
 OCC Magnitude 805M
21AR Outfitter 6032
 21AR Sara E802
 Glacial 616 Rito 6P
Glacial 6P Blackbird Eve 95T
 Glacial Blackbird Eve 23K
 OCC Emblazon 854E
 OCC Pollyanna 878G
 BCC Bushwacker 41-93
 21 AR Sara 802
 Rito 616 of 4B20 6807
 Glacial Blackbird 7M
 High Valley 4C6 Ambush
 Qas Blackbird Eve 23E Et 1X

| CED | BW | WW | Milk | YW | SW | SF | SG | SB | Act. sc |
|-----|-----|----|------|----|-------|-------|-------|-------|---------|
| 1 | 1.1 | 45 | 25 | 75 | 32.85 | 16.95 | 20.66 | 43.99 | 39.8 |
| | | | | BW | 205R | YR | | | |
| | | | | 82 | 110 | 101 | Marb. | REA | Fat |
| | | | | | | | 0.22 | 0.26 | 0.007 |

• Suitable for heifers.

46 Pyramid Game Day 1206

Reg. 17119461 Tattoo: 1206 Calved: 4/3/2011
 Boyd New Day 8005
GDAR Game Day 449
 GDAR Miss Wix 474
 Connealy Freightliner
McLennan Lass 9208
 Summit Lass 570
 AAR New Trend
 SVF Forever Lady 57D
 Tehama Band 207
 GDAR Miss Wix 749
 Bon View Bando 598
 Joana Erica of Conanga
 Rito 616 of 4B20 6807
 Vermilion Lass 6565

| CED | BW | WW | Milk | YW | SW | SF | SG | SB | Act. sc |
|-----|-----|----|------|----|-------|-------|-------|-------|---------|
| 6 | 1.1 | 49 | 23 | 88 | 32.28 | 28.73 | 33.01 | 61.88 | 39.1 |
| | | | | BW | 205R | YR | | | |
| | | | | 81 | 113 | 104 | Marb. | REA | Fat |
| | | | | | | | 0.48 | 0.61 | 0.016 |

• Suitable for heifers.

47 Pyramid Game Day 1207

Reg. 17119460 Tattoo: 1207 Calved: 4/6/2011

Boyd New Day 8005
GDAR Game Day 449
 GDAR Miss Wix 474

KR Foresight 745
McLennan Lady Blanche 9240
 Farview Lady Blanche 4150

AAR New Trend
 SVF Forever Lady 57D
 Tehama Band 207
 GDAR Miss Wix 749
 Woodhill Foresight
 Summit Evergreen 115
 TM Outreach 027E
 Farview Lady Blanche 1153

| CED | BW | WW | Milk | YW | SW | SF | SG | SB | Act. sc |
|-----|-----|----|------|----|-------|------|-------|-------|---------|
| 7 | 0.7 | 45 | 23 | 85 | 29.31 | 27.2 | 19.81 | 41.47 | 37.1 |

| BW | 205R | YR | Marb. | REA | Fat |
|----|------|----|-------|------|-------|
| 78 | 98 | 95 | 0.12 | 0.59 | 0.015 |

• Suitable for heifers.

49 Pyramid Extra 1413

Reg. 17216053 Tattoo: 1413 Calved: 5/4/2011

Sinclair Extra 4X13
Mc Cumber 4X13 Extra 9137
 Miss Wix 748 of Mc Cumber

Sitz Alliance 6595
Sitz Barbaramere 2572
 Sitz Barbaramere 1662

N Bar Emulation EXT
 N Bar Lady Ida SCC 2P37
 MC Cumber Total Value 449
 Miss Wix 5206 of Mc Cumber
 Sitz Traveler 8180
 Sitz Barbaramere Jet 2698
 Hyline SVF Traveler 0100
 Sitz Barbaramere 1339

| CED | BW | WW | Milk | YW | SW | SF | SG | SB | Act. sc |
|-----|-----|----|------|----|------|-------|-------|-------|---------|
| 2 | 2.7 | 33 | 27 | 66 | 21.1 | 12.67 | 13.35 | 45.18 | 37.2 |

| BW | 205R | YR | Marb. | REA | Fat |
|----|------|----|-------|-------|-------|
| 83 | 88 | 86 | 0.39 | -0.23 | 0.035 |

•

51 PYRAMID Predominant 1198

Reg. 17333265 Tattoo: 1197 Calved: 4/10/11

S A V 8180 Traveler 004
 S A V 004 Predominant 4438
 S A V Emblynette 1182

Sitz Traveler 043
 Glacial Missie 043 3K
 Valley Missie 542

Sitz Traveler 8180
 Boyd Forever Lady 8003
 S A F 598 Bando 5175
 S A V Emblynette 7319
 Traveler 124 G D A R
 Sitz Everelda Entense 1137
 Valley 054 Rito 104
 Valley Missie 118

| CED | BW | WW | Milk | YW | SW | SF | SG | SB | Act. sc |
|-----|-------|------|------|------|--------|--------|--------|--------|---------|
| 1+4 | 1+3.1 | 1+39 | 1+24 | 1+67 | +26.84 | +11.39 | -12.79 | +44.95 | 38.7 |

| BW | 205R | YR | Marb. | REA | Fat |
|----|------|-----|-------|-------|--------|
| 86 | 100 | 100 | 1+.17 | 1+.22 | 1+.032 |

• ET

48 Pyramid Extra 181

Reg. 17308348 Tattoo: 181 Calved: 4/16/2011

Sinclair Extra 4X13
Mc Cumber 4X13 Extra 9137
 Miss Wix 748 of Mc Cumber

Boyd New Day 8005
SAV Blackbird 3252
 SAV Blackbird 7155

N Bar Emulation EXT
 N Bar Lady Ida SCC 2P37
 MC Cumber Total Value 449
 Miss Wix 5206 of Mc Cumber
 AAR New Trend
 SVF Forever Lady 57D
 N Bar Emulation EXT
 SAV Blackbird 3052

| CED | BW | WW | Milk | YW | SW | SF | SG | SB | Act. sc |
|-----|----|----|------|----|-------|-------|-------|-------|---------|
| 2 | 3 | 38 | 25 | 77 | 20.32 | 21.71 | 13.37 | 48.91 | 32.9 |

| BW | 205R | YR | Marb. | REA | Fat |
|----|------|-----|-------|-------|--------|
| 92 | 97 | 100 | 1+.26 | 1+.12 | 1+.036 |

•

50 PYRAMID Predominant 1197

Reg. 17333265 Tattoo: 1197 Calved: 4/10/11

S A V 8180 Traveler 004
 S A V 004 Predominant 4438
 S A V Emblynette 1182

Sitz Traveler 043
 Glacial Missie 043 3K
 Valley Missie 542

Sitz Traveler 8180
 Boyd Forever Lady 8003
 S A F 598 Bando 5175
 S A V Emblynette 7319
 Traveler 124 G D A R
 Sitz Everelda Entense 1137
 Valley 054 Rito 104
 Valley Missie 118

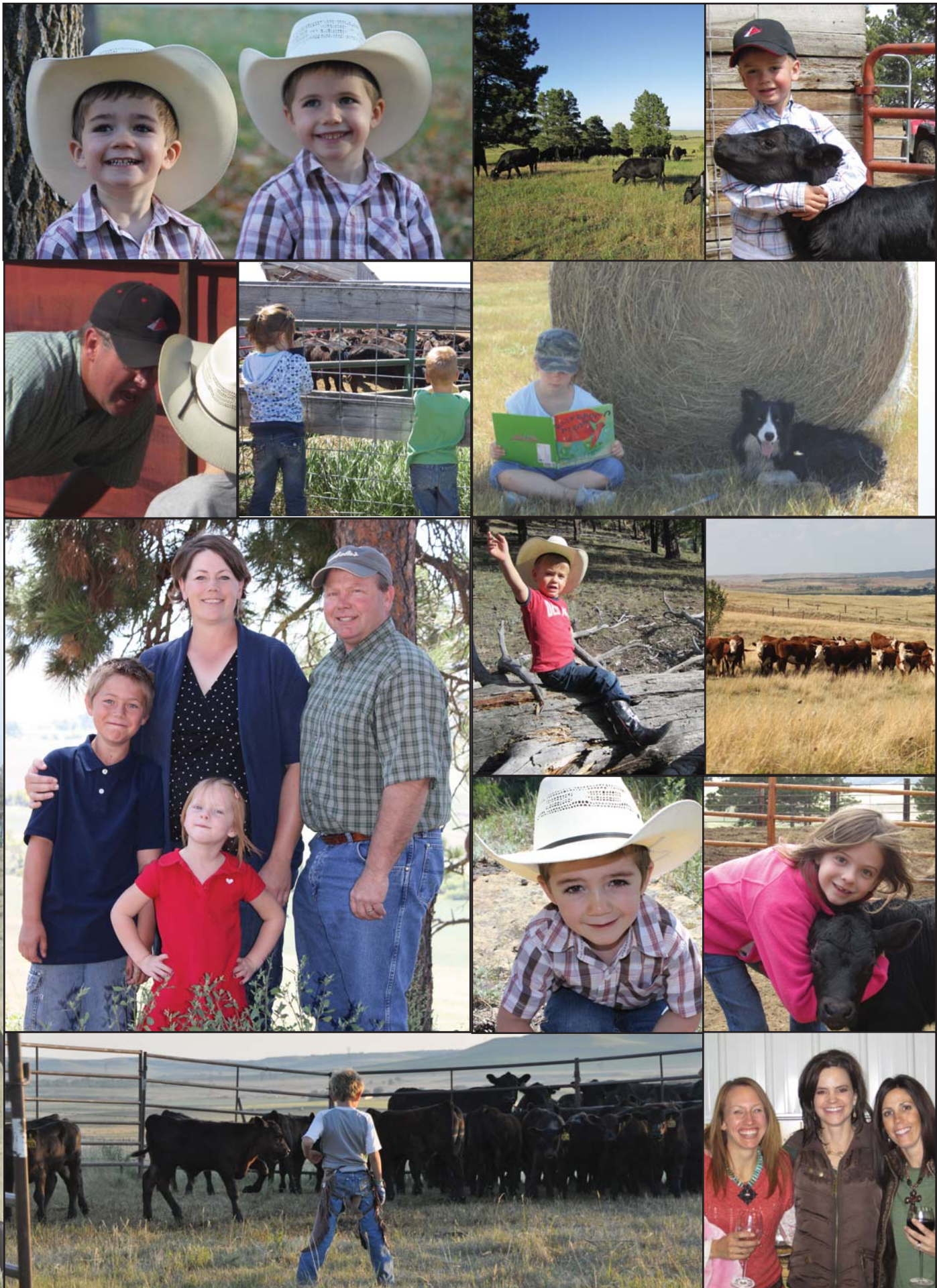
| CED | BW | WW | Milk | YW | SW | SF | SG | SB | Act. sc |
|-----|-------|------|------|------|--------|--------|--------|--------|---------|
| 1+4 | 1+3.1 | 1+39 | 1+24 | 1+67 | +26.84 | +11.39 | -12.79 | +44.95 | 38.7 |

| BW | 205R | YR | Marb. | REA | Fat |
|----|------|-----|-------|-------|--------|
| 88 | 100 | 100 | 1+.17 | 1+.22 | 1+.032 |

• ET







Hereford

Hereford Reference Sires



THR Thor 4029



THR Thor 4029

Reg. 42551314 Tattoo: 613 Calved: 3/06/04

JDF 16D Wrangler 15
JDH 15 Wrangler 25L
Jdh Ms Lute 18J

CI 1 Domino 641F
THR Miss Thor 0266
THR Miss Thor 8050

NJW 5B Wrangler 16Dd
JDF Miss 223B 4E
Walsh Mccann 680 46G
JDH Ms Wrangler 04
HH Advance 438D
CL 1 Dominette 436
HH Advance 6046F
THR Miss Thor 0231

| CED | BW | WW | Milk | YW | \$BMI | \$CEZ | \$BII | \$CHB |
|------|-----|-----|------|------|-------|-------|-------|-------|
| +1.7 | 2.5 | +58 | +22 | +100 | 31 | 19 | 28 | 33 |

| BW | 205R | YR |
|----|------|----|
| | | |

| Marb. | REA | Fat |
|-------|------|-------|
| 0.25 | 0.95 | 0.040 |



CJH Harland 408



CJH Harland 408

Reg. 42536808 Tattoo: 408 Calved: 1/20/04

KB L1 Domino 519
HH Advance 9005J
HH Ms Advance 4054D

L1 Domino 920501
CJH L1 Dominette 0064
CJH L1 Dominette 759

HH Advance 311C
CL 1 Dominette 6008
L1 Domino 910282
HH Miss Advance 218B
L1 Domino 890029
L1 Dominette 850206
JA L1 Domino 5301
CJH L1 Dominette 505

| CED | BW | WW | Milk | YW | \$BMI | \$CEZ | \$BII | \$CHB |
|------|-----|-----|------|-----|-------|-------|-------|-------|
| +4.8 | 1.8 | +54 | +32 | +97 | 28 | 21 | 24 | 31 |

| BW | 205R | YR |
|----|------|----|
| | | |

| Marb. | REA | Fat |
|-------|------|-------|
| 0.52 | 0.20 | 0.093 |



UPS Domino 3027



UPS DOMINO 3027

Reg. 42551314 Tattoo: 613 Calved: 3/06/04

HH Advance 767G 1ET
CI 1 Domino 9126J 1ET
CI 1 Dominette 490

SH Diamond 881
UPS Miss Diamond 1353
UPS Ms Milehigh 8330

CI 1 Domino 500E
HH Miss Advance 251B
CI 1 Domino 166
CI 1 Dominette 130
JNHR 414 Diamnd 164D
SH Red Miss 436
C Mr High 96106 4ET
UPS Ms Red Fork 5537

| CED | BW | WW | Milk | YW | \$BMI | \$CEZ | \$BII | \$CHB |
|-------|------|-----|------|-----|-------|-------|-------|-------|
| +10.1 | -1.2 | +47 | +36 | +78 | 24 | 24 | 19 | 31 |

| BW | 205R | YR |
|----|------|----|
| | | |

| Marb. | REA | Fat |
|-------|------|-------|
| 0.34 | 0.45 | 0.006 |



Golden-Oak 4J Maxium 28M



Golden-Oak 4J Maxium 28M

Reg. 42742991 Tattoo: GORX 28M Calved: 1/12/06

Square-D Explosion 909E
Eagle-Ridge Blaster ET 4J
Kilmorlie 75A Birdy 746D

Ru 20X Boulder 57G
TA-BAR Chantelle 15K
TA-BAR Chantelle ET 15F

Gk Genetic Captain
Square-D Susie 709Z
WTK 55Y Bond 75A
Kilmrle 163Y Birdy 164A
Remital Keynote 20X
RU 10A Dew 57D
Big T 75A Meridian D61
Emerald Chantilly 116M 611X

| CED | BW | WW | Milk | YW | \$BMI | \$CEZ | \$BII | \$CHB |
|------|-----|-----|------|-----|-------|-------|-------|-------|
| -3.1 | 4.6 | +45 | +13 | +74 | 15 | 13 | 15 | 18 |

| BW | 205R | YR |
|----|------|----|
| | | |

| Marb. | REA | Fat |
|-------|-------|--------|
| -0.02 | +0.51 | -0.026 |



Lot 52 • Pyramid 3027 Domino 1109



Lot 53 • Pyramid 3027 Domino 1121

52 PYRAMID 3027 DOMINO 1109
 Reg. 43185507 Tattoo: 1109 Calved: 3/2/2011

CL 1 DOMINO 9126J 1ET
 UPS DOMINO 3027
 UPS MISS DIAMOND 1353
 CJH HARLAND 408
 FHF 408 RITA 21W
 FHF 45P RITA 101T
 HH ADVANCE 767G 1ET
 CL 1 DOMINETTE 490
 SH DIAMOND 881
 UPS MS MILEHIGH 8330
 HH ADVANCE 9005J
 CJH L1 DOMINETTE 0064
 NJW FHF 9710 TANK 45P
 FHF DK 24F RITA 8N

| CED | BW | WW | Milk | YW | SW | SF | SG | SB | Act. sc |
|-----|------|----|------|----|------|------|------|------|---------|
| 7.2 | -0.1 | 52 | 32 | 89 | \$25 | \$22 | \$19 | \$33 | 39.6 |

| BW | 205R | YR |
|----|------|-----|
| 70 | 107 | 100 |

| Marb. | REA | Fat |
|-------|------|-------|
| 0.37 | 0.55 | 0.027 |

• Suitable for heifers. dehorned

53 PYRAMID 3027 DOMINO 1121
 Reg. 43185508 Tattoo: 1121 Calved: 3/11/2012

CL 1 Domino 9126J ET
 UPS DOMINO 3027
 UPS MISS DIAMOND 1353
 FHF 51M STARBUCK 134T
 FHF 134T VICTORIA 19W
 FHF 98170 VICTORIA 84P ET
 JDF 16D WRANGLER 15
 JDH MS LUTE 18J
 CL 1 DOMINO 641F
 THR MISS THOR 8050
 HH ADVANCE 9005J
 CHJ L1 DOMINETTE 0064
 C-S PURE GOLD 98170
 GV 579 VICTORIA 9710

| CED | BW | WW | Milk | YW | SW | SF | SG | SB | Act. sc |
|-----|-----|----|------|----|------|------|------|------|---------|
| 4.2 | 2.4 | 52 | 35 | 91 | \$20 | \$18 | \$16 | \$30 | 40 |

| BW | 205R | YR |
|----|------|-----|
| 83 | 109 | 111 |

| Marb. | REA | Fat |
|-------|------|--------|
| 0.1 | 0.62 | -0.025 |

• Suitable for heifers. Polled.



Lot 54 • Pyramid 9279 Excel 1016



Lot 55 • Pyramid 4029 Thor 1126

54 PYRAMID 9279 EXCEL 1016
 Reg. 43196739 Tattoo: 1016 Calved: 3/21/2012

GO EXCEL L18
 ECR L18 EXTRA DEEP 9279
 OXH CHRISTI 0028
 BP KLONDIKE 602 904 18L
 FHF 18L VICTRA 17P
 FHF 19H VICTRA 27M
 DD EXCEL DESIGN 40
 GO MS 124 ADVANCE 7005
 CL 1 DOMINO 5131E
 OXH LOLA 8328
 KLONDIKE 28U 602C
 BP MISS 904D
 FHF 8403 STARBUCK 19H
 FHF 32F VICTRA 16J

| CED | BW | WW | Milk | YW | SW | SF | SG | SB | Act. sc |
|-----|-----|----|------|----|------|------|------|------|---------|
| 0.2 | 2.9 | 41 | 21 | 65 | \$13 | \$14 | \$12 | \$19 | 36 |

| BW | 205R | YR |
|----|------|----|
| 86 | 95 | 99 |

| Marb. | REA | Fat |
|-------|------|--------|
| -0.07 | 0.43 | -0.034 |

• Suitable for heifers. Dehorned

55 PYRAMID 4029 THOR 1126
 Reg. 43228141 Tattoo: 1126 Calved: 3/12/2011

JDH 15 WRANGLER 25L
 THR THOR 4029
 THR MISS THOR 0266
 CJH HARLAND 408
 FHF 408 RITA 3W ET
 FHF 32F RITA 43J
 JDF 16D WRANGLER 15
 JDH MS LUTE 18J
 CL 1 DOMINO 641F
 THR MISS THOR 8050
 HH ADVANCE 9005J
 CHJ L1 DOMINETTE 0064
 FHF STARBUCK 162A 32F
 FHF RITA 35C 23F

| CED | BW | WW | Milk | YW | SW | SF | SG | SB | Act. sc |
|------|-----|----|------|-----|------|------|------|------|---------|
| -0.2 | 4.7 | 60 | 27 | 104 | \$26 | \$16 | \$23 | \$33 | 39 |

| BW | 205R | YR |
|----|------|-----|
| 91 | 113 | 110 |

| Marb. | REA | Fat |
|-------|-----|------|
| 0.24 | 0.7 | 0.02 |

• Scurred.

Hereford



Lot 56 • Pyramid 4029 Thor 1129



PYRAMID 4029 THOR 1129

Reg. 43228140 Tattoo: 1129 Calved: 3/15/2011

JDH 15 WRANGLER 25L
THR THOR 4029
THR MISS THOR 0266

CJH HARLAND 408
FHF 408 RITA 2W
FHF 32F RITA 43J

JDF 16D WRANGLER 15
JDH MS LUTE 18J
CL 1 DOMINO 641F
THR MISS THOR 8050
HH ADVANCE 9005J
CHJ L1 DOMINETTE 0064
FHF STARBUCK 162A 32F
FHF RITA 35C 23F

| CED | BW | WW | Milk | YW | SW | SF | SG | SB | Act. sc |
|-----|-----|----|------|----|------|------|------|------|---------|
| 1.5 | 2.9 | 57 | 27 | 93 | \$25 | \$17 | \$21 | \$31 | 38.2 |

| BW | 205R | YR | Marb. | REA | Fat |
|----|------|-----|-------|------|-------|
| 81 | 116 | 105 | 0.25 | 0.78 | 0.028 |

• Scurred.



Lot 58 • Pyramid 4029 Thor 1009



PYRAMID 4029 THOR 1047

Reg. 43196785 Tattoo: 1047 Calved: 3/31/2011

JDH 15 WRANGLER 25L
THR THOR 4029
THR MISS THOR 0266

FHF 8403 TANK 19H
FHF 19H POLLY 69N
FHF 35C VICTRA 44G

JDF 16D WRANGLER 15
JDH MS LUTE 18J
CL 1 DOMINO 641F
THR MISS THOR 8050
DR ACHIEVER 8403
FHF RUTH 162A 18E
DND SC K120 VIC 59U 35C
FHF VICTRA 78B 3E

| CED | BW | WW | Milk | YW | SW | SF | SG | SB | Act. sc |
|------|-----|----|------|----|------|------|------|------|---------|
| -0.1 | 2.4 | 49 | 21 | 82 | \$23 | \$16 | \$21 | \$25 | 39.5 |

| BW | 205R | YR | Marb. | REA | Fat |
|----|------|-----|-------|------|-------|
| 89 | 103 | 105 | 0.11 | 0.63 | 0.009 |

• Suitable for heifers. Scurred.

58 Pyramid 4029 THOR 1009
Reg. 43196727 Tattoo: 1009 Calved: 3/8/2011

JDH 15 WRANGLER 25L
THR THOR 4029
THR MISS THOR 0266

CJH HARLAND 408
FHF 408 LYDA 3W
FHF 634L LYDA 23T

JDF 16D WRANGLER 15
JDH MS LUTE 18J
CL 1 DOMINO 641F
THR MISS THOR 8050
HH ADVANCE 9005J
CJH L1 DOMINETTE 0064
CMF 584T FRONTIER 634L
LCG LYDA FRANKLIN 143P

| CED | BW | WW | Milk | YW | SW | SF | SG | SB | Act. sc |
|-----|-----|----|------|----|------|------|------|------|---------|
| 2.4 | 1.4 | 50 | 25 | 81 | \$22 | \$18 | \$19 | \$24 | 38 |

| BW | 205R | YR | Marb. | REA | Fat |
|----|------|----|-------|------|-------|
| 84 | 100 | 94 | 0.26 | 0.39 | 0.074 |

• Suitable for heifers, Scurred.



Lot 60 • Pyramid Keystone 1198



PYRAMID 408 HARLAND 1002

Reg. 43199560 Tattoo: 1002 Calved: 3/2/2011

HH ADVANCE 9005J
CJH HARLAND 408
CJH L1 DOMINETTE 0064

FHF 68P STARBUCK 51S
FHF 51S ERICA 51W
FHF 0112 ERICA 44N

KB L1 DOMINO 519
HH MS ADVANCE 4054D
L1 DOMINO 920501
CJH L1 DOMINETTE 759
FHF 51M STARBUCK 68P
FHF DK 24F RITA 36N
BOYD COW MAKER 0112
FHF NATE'S LADY 162A 56F

| CED | BW | WW | Milk | YW | SW | SF | SG | SB | Act. sc |
|-----|-----|----|------|----|------|------|------|------|---------|
| 1.9 | 3.6 | 59 | 30 | 92 | \$25 | \$17 | \$22 | \$30 | 41.3 |

| BW | 205R | YR | Marb. | REA | Fat |
|----|------|-----|-------|------|-------|
| 88 | 129 | 119 | 0.29 | 0.33 | 0.051 |

• Dehorned. High Weaning weight bull.



PYRAMID KEYSTONE 1198

Reg. 43323009 Tattoo: 1198 Calved: 5/25/2011

FHF M33 STARBUCK 110T ET
PYRAMID 16T 110T 9116
FHF 51M ACHIEVA 70T

CJH HARLAND 408
FHF 408 QUEEN 24W
FHF ROF M326 QUEEN 121T

SHF MARSHAL 236G M33
FHF 614R NATE'S LADY 3M
FHF 0024 STARBUCK 51M
FHF 19H ACHIEVA 88K
HH ADVANCE 9005J
CJH L1 DOMINETTE 0064
KCF BENNETT 3008 M326
SHF POSITIVE MISS 73C N35

| CED | BW | WW | Milk | YW | SW | SF | SG | SB | Act. sc |
|-----|-----|----|------|----|------|------|------|------|---------|
| 1.6 | 2.9 | 54 | 23 | 87 | \$19 | \$16 | \$16 | \$27 | 35.1 |

| BW | 205R | YR | Marb. | REA | Fat |
|----|------|-----|-------|------|-------|
| 79 | 100 | 100 | 0.09 | 0.49 | 0.008 |

• Suitable for heifers. Scurred.



Lot 61 • Pyramid 28M Max 1177



Lot 62 • Pyramid 28M Max 1163

61 PYRAMID 28M MAX 1177
Reg. 43185520 Tattoo: 1177 Calved: 3/31/2011

EAGLE-RIDGE BLASTER ET 4J
GOLDEN-OAK 4J MAXIUM 28M
TA-BAR CHANTELLE 15K

MW LLL FARLEY 24F
FHF DK 24F RITA 42R
FHF 32F RITA 43J

SQUARE-D EXPLOSION 909E
KILMORLIE 75A BIRDY 746D
RU 20X BOULDER 57G
TA-BAR CHANTELLE ET 15F
REMITALL BOOMER 46B
MM MISS PACE 124
FHF STARBUCK 162A 32F
FHF RITA 35C 23F

| CED | BW | WW | Milk | YW | SW | SF | SG | SB | Act. sc |
|------|----|----|------|----|------|------|------|------|---------|
| -1.8 | 4 | 40 | 19 | 65 | \$14 | \$13 | \$13 | \$19 | 37.2 |

| BW | 205R | YR |
|----|------|----|
| 95 | 92 | 88 |

| Marb. | REA | Fat |
|-------|------|-------|
| 0.1 | 0.55 | 0.022 |

• Polled.

62 PYRAMID 28M MAX 1163
Reg. 43185510 Tattoo: 1163 Calved: 3/26/2011

EAGLE-RIDGE BLASTER ET 4J
GOLDEN-OAK 4J MAXIUM 28M
TA-BAR CHANTELLE 15K

MH MONUMENT 3147
FHF ROF 3147 QUEEN 130U ET
SHF POSITIVE MISS 73C N35

SQUARE-D EXPLOSION 909E
KILMORLIE 75A BIRDY 746D
RU 20X BOULDER 57G
TA-BAR CHANTELLE ET 15F
MH DAKOTA 0230
MH MISS PATRIOT 971
RF POSITIVE PLUS 73C
SHF INTERSTATE D03 G28

| CED | BW | WW | Milk | YW | SW | SF | SG | SB | Act. sc |
|------|----|----|------|----|-----|------|-----|------|---------|
| -1.6 | 4 | 50 | 15 | 85 | \$9 | \$11 | \$7 | \$20 | 34.4 |

| BW | 205R | YR |
|----|------|----|
| 83 | 95 | 96 |

| Marb. | REA | Fat |
|-------|------|-------|
| 0.01 | 0.45 | 0.043 |

• Horned.

63 PYRAMID 28M MAX 1175
Reg. 43185517 Tattoo: 1175 Calved: 3/29/2011

EAGLE-RIDGE BLASTER ET 4J
GOLDEN-OAK 4J MAXIUM 28M
TA-BAR CHANTELLE 15K

DY CT GOLDEN BOY 142M
NJF 142M NATES LADY 103R
FHF 614R NATES LADY 3M

SQUARE-D EXPLOSION 909E
KILMORLIE 75A BIRDY 746D
RU 20X BOULDER 57G
TA-BAR CHANTELLE ET 15F
C-S PURE GOLD 98170
DUNWALKE CAMEO 324C G3
BEARTOOTH BUTLER 614 R
FHF 10G NATE'S LADY 90K

| CED | BW | WW | Milk | YW | SW | SF | SG | SB | Act. sc |
|-----|-----|----|------|----|------|------|------|------|---------|
| -1 | 3.1 | 41 | 16 | 70 | \$17 | \$14 | \$16 | \$17 | 39.3 |

| BW | 205R | YR |
|----|------|----|
| 91 | 101 | 98 |

| Marb. | REA | Fat |
|-------|------|------|
| 0.01 | 0.26 | 0.01 |

• Horned.

64 PYRAMID 28M MAX 1179
Reg. 43185511 Tattoo: 1179 Calved: 4/2/2011

EAGLE-RIDGE BLASTER ET 4J
GOLDEN-OAK 4J MAXIUM 28M
TA-BAR CHANTELLE 15K

KCF BENNET 3008 M326
FHF ROF M326 QUEEN 123T ET
SHF POSITIVE MISS 73C N35

SQUARE-D EXPLOSION 909E
KILMORLIE 75A BIRDY 746D
RU 20X BOULDER 57G
TA-BAR CHANTELLE ET 15F
RRH MR FELT 3008
KCF MISS 459 F284
RF POSITIVE PLUS 73C
SHF INTERSTATE D03 G28

| CED | BW | WW | Milk | YW | SW | SF | SG | SB | Act. sc |
|------|-----|----|------|----|------|------|------|------|---------|
| -1.5 | 4.8 | 49 | 14 | 79 | \$17 | \$14 | \$15 | \$23 | 38 |

| BW | 205R | YR |
|----|------|----|
| 90 | 91 | 91 |

| Marb. | REA | Fat |
|-------|------|-------|
| 0.13 | 0.33 | 0.012 |

• Polled.

65 PYRAMID T81 TRAIL BLAZER 1058
Reg. 43196731 Tattoo: 1058 Calved: 4/12/2011

KCF BENNET 3008 M326
SHF TRAIL BLAZER M326 T81 ET
SHF GOVERNESS 236G L64

FHF 19H STARBUCK 20M ET
FHF DK 20M RITA 9S
FHF DK 18L RITA 22P

RRH MR FELT 3008
KCF MISS 459 F284
REMITALL GOVERNOR 236G
SHF LADY MASTER 092 F13
FHF 8403 STARBUCK 19H
FHF CL DOMINETTE 71A
BP KLONDIKE 602 904 18L
FHF DK 0112 RITA 17M

| CED | BW | WW | Milk | YW | SW | SF | SG | SB | Act. sc |
|------|----|----|------|----|------|------|------|------|---------|
| -1.5 | 4 | 42 | 19 | 49 | \$14 | \$13 | \$13 | \$19 | 36 |

| BW | 205R | YR |
|----|------|----|
| 85 | 97 | 89 |

| Marb. | REA | Fat |
|-------|------|-------|
| 0.23 | 0.11 | 0.019 |

• Suitable for heifers. Polled



Hereford



Lot 66 • Pyramid T81 Trail Blazer 1060



PYRAMID T81 TRAIL BLAZER 1060

Reg. 43196782 Tattoo: 1060 Calved: 4/15/2011

KCF BENNET 3008 M326
SHF TRAIL BLAZER M326 T81
 SHF GOVERNESS 236G L64

RRH MR FELT 3008
 KCF MISS 459 F284
 REMITALL GOVERNOR 236G
 SHF LADY MASTER 092 F13
 DR ACHIEVER 8403
 FHF RUTH 162A 18E
 FHF 680 POWERSTROKE 74G
 MS DAKITCH STAMINA 26Y

FHF 8403 TANK 19H
FHF 19H POLLY 69N
 FHF 74J POLLY 93J

| CED | BW | WW | Milk | YW | SW | SF | SG | SB | Act. sc |
|------|-----|----|------|----|------|------|------|------|---------|
| -1.2 | 4.3 | 41 | 20 | 59 | \$19 | \$14 | \$18 | \$22 | 37.3 |

| BW | 205R | YR | Marb. | REA | Fat |
|----|------|----|-------|------|--------|
| 91 | 98 | 98 | 0.21 | 0.22 | -0.022 |

• Dehorned.



Lot 68 • Pyramid 45P Tank 1036



PYRAMID 45P TANK 1199 ET

Reg. 43265285 Tattoo: 1199 Calved: 4/10/2011

FHF 8403 STARBUCK 19H
NJW FHF 9710 TANK 45P
 GV 579 VICTORIA 9710

DR ACHIEVER 8403
 FHF RUTH 162A 18E
 ANHINGA VIC 69R 579
 GV 28 WHITNEY 8533
 DL VICTOR 85X 162A
 FHF MYSTERY LADY 27U
 DND SC K120 VIC 59U 35C
 FHF RITA 8702 53C

FHF 162A STARBUCK 32F
FHF 32F RITA 43J
 FHF RITA 35C 23F

| CED | BW | WW | Milk | YW | SW | SF | SG | SB | Act. sc |
|-----|-----|----|------|----|------|------|------|------|---------|
| -2 | 4.8 | 46 | 29 | 80 | \$13 | \$11 | \$11 | \$25 | 34.5 |

| BW | 205R | YR | Marb. | REA | Fat |
|----|------|-----|-------|------|--------|
| 88 | 100 | 100 | 0.1 | 0.58 | -0.027 |

• Scurred.

PYRAMID 45P TANK 1036

Reg. 43196728 Tattoo: 1036 Calved: 3/27/2011

FHF 8403 STARBUCK 19H
NJW FHF 9710 TANK 45P
 GV 579 VICTORIA 9710

DR ACHIEVER 8403
 FHF RUTH 162A 18E
 ANHINGA VIC 69R 579
 GV 28 WHITNEY 8533
 CL 1 DOMINO 603
 HH MISS ADVANCE 690U
 WTK 135Y RECRUIT 78B
 DHH MS PINNACLE 9208

HH ADVANCE 872X
HLG 872X VICTRA 6ET
 FHF VICTRA 78B 3E

| CED | BW | WW | Milk | YW | SW | SF | SG | SB | Act. sc |
|-----|-----|----|------|----|------|------|------|------|---------|
| 0.8 | 2.2 | 41 | 25 | 69 | \$15 | \$15 | \$13 | \$21 | 41.5 |

| BW | 205R | YR | Marb. | REA | Fat |
|----|------|----|-------|------|--------|
| 84 | 95 | 97 | 0.07 | 0.43 | -0.011 |

• Suitable for heifers.



PYRAMID 4029 THOR 1012

Reg. 43196734 Tattoo: 1012 Calved: 3/20/2011

JDH 15 WRANGLER 25L
THR THOR 4029
 THR MISS THOR 0266

JDF 16D WRANGLER 15
 JDH MS LUTE 18J
 CL 1 DOMINO 641F
 THR MISS THOR 8050
 CL 1 DOMINO 603
 HH MISS ADVANCE 690U
 WTK 135Y RECRUIT 78B
 DHH MS PINNACLE 9208

HH ADVANCE 872X
HLG 872X VICTRA 10T ET
 FHF VICTRA 78B 3E

| CED | BW | WW | Milk | YW | SW | SF | SG | SB | Act. sc |
|-----|----|----|------|----|------|------|------|------|---------|
| 1.7 | 1 | 44 | 22 | 72 | \$24 | \$18 | \$22 | \$22 | 35.1 |

| BW | 205R | YR | Marb. | REA | Fat |
|----|------|----|-------|------|-------|
| 82 | 98 | 96 | 0.11 | 0.59 | 0.016 |

• Suitable for heifers. Polled



PYRAMID 4029 THOR 1025

Reg. 43196749 Tattoo: 1025 Calved: 3/25/2011

JDH 15 WRANGLER 25L
THR THOR 4029
 THR MISS THOR 0266

JDF 16D WRANGLER 15
 JDH MS LUTE 18J
 CL 1 DOMINO 641F
 THR MISS THOR 8050
 KLONDIKE 28U 602C
 BP MISS 904D
 BOYD COW MAKER 0112
 FHF 32F RITA 43J

BP KLONDIKE 602 904 18L
FHF DK 18L RITA 22P
 FHF DK 0112 RITA 17M

| CED | BW | WW | Milk | YW | SW | SF | SG | SB | Act. sc |
|------|-----|----|------|----|------|------|------|------|---------|
| -0.3 | 4.2 | 53 | 21 | 86 | \$20 | \$14 | \$17 | \$27 | 37 |

| BW | 205R | YR | Marb. | REA | Fat |
|----|------|-----|-------|------|-------|
| 96 | 108 | 104 | 0.19 | 0.59 | 0.029 |

• Polled.



Lot 71 • Pyramid 4029 Thor 1051



PYRAMID 4029 THOR 1051

Reg. 43196775 Tattoo: 1051 Calved: 4/1/2011

JDH 15 WRANGLER 25L
THR THOR 4029
 THR MISS THOR 0266

FHF 0024 STARBUCK 51M
FHF 51M POLLY 38T
 FHF 74J POLLY 93J

JDF 16D WRANGLER 15
 JDH MS LUTE 18J
 CL 1 DOMINO 641F
 THR MISS THOR 8050
 GV 9823 VICTOR 0024
 OXH JUDI 7354
 FHF 680 POWERSTROKE 74G
 MS DAKITCH STAMINA 26Y

| CED | BW | WW | Milk | YW |
|------|-----|----|------|----|
| -0.6 | 3.8 | 52 | 26 | 86 |

| SW | SF | SG | SB | Act. sc |
|------|------|------|------|---------|
| \$22 | \$15 | \$20 | \$26 | 39.5 |

| BW | 205R | YR |
|----|------|-----|
| 96 | 104 | 103 |

| Marb. | REA | Fat |
|-------|------|--------|
| 0.08 | 0.53 | -0.003 |

• Polled.



PYRAMID 4029 THOR 1054

Reg. 43196792 Tattoo: 1054 Calved: 4/4/2011

JDH 15 WRANGLER 25L
THR THOR 4029
 THR MISS THOR 0266

ALH 0190 VICTOR 0343
FHF 343 NATES LADY 94T
 FHF 74J NATES LADY 89K

JDF 16D WRANGLER 15
 JDH MS LUTE 18J
 CL 1 DOMINO 641F
 THR MISS THOR 8050
 BTF 5008 VICTOR 0190
 ALH A3 FAVORITE 512
 FHF 680 POWERSTROKE 74G
 FHF NATE'S LADY 162A 64E

| CED | BW | WW | Milk | YW | SW | SF | SG | SB | Act. sc |
|-----|-----|----|------|----|------|------|------|------|---------|
| 1.2 | 1.6 | 42 | 20 | 65 | \$23 | \$17 | \$22 | \$21 | 37 |

| BW | 205R | YR |
|----|------|----|
| 86 | 92 | 89 |

| Marb. | REA | Fat |
|-------|------|-------|
| 0.12 | 0.43 | 0.005 |

• Suitable for heifers. Polled.



PYRAMID 4029 THOR 1055

Reg. 43196774 Tattoo: 1055 Calved: 4/4/2011

JDH 15 WRANGLER 25L
THR THOR 4029
 THR MISS THOR 0266

BP KLONDIKE 602 904 18L
 FHF 18L EVA 38P
 FHF 0112 EVA 34M

JDF 16D WRANGLER 15
 JDH MS LUTE 18J
 CL 1 DOMINO 641F
 THR MISS THOR 8050
 KLONDIKE 28U 602C
 BP MISS 904D
 BOYD COW MAKER 0112
 FHF 534E CL DOMINETE 85J

| CED | BW | WW | Milk | YW |
|-----|----|----|------|----|
| 0.1 | 4 | 51 | 21 | 82 |

| SW | SF | SG | SB | Act. sc |
|------|------|------|------|---------|
| \$22 | \$16 | \$20 | \$25 | 42 |

| BW | 205R | YR |
|----|------|-----|
| 85 | 113 | 110 |

| Marb. | REA | Fat |
|-------|-----|-------|
| 0.08 | 0.6 | 0.008 |

• Polled.



THE POWER OF **BLACK.** ONLY BETTER.

HEREFORDS—THE EFFICIENCY EXPERTS

Adding Hereford genetics to your herd makes perfect business sense in a cost-driven economy. Excellent conversion, hardiness, fertility, longevity and even disposition can help reduce input costs. These Hereford efficiencies are ideal for your herd, your business and your plans for the future. Low-maintenance cattle, long-term profit. Now that's power.

American Hereford Association • P.O. Box 014059, Kansas City, MO 64101 • (816) 842-3757 • www.hereford.org



Hereford

©2006 American Hereford Association.



19558 Anchor RD
St. Onge, SD 57779
www.Pyramidbeef.com



Females are the
Foundation
of our **Program**

