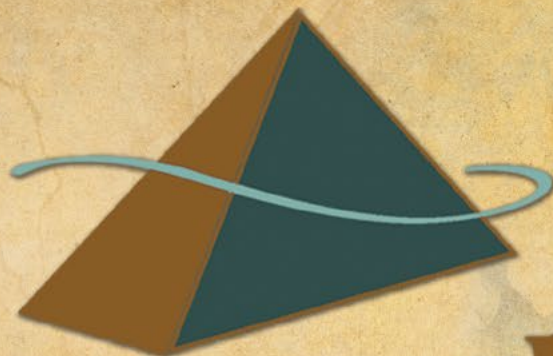


Genetics you should expect ...  
Service you deserve!



# Pyramid *Beef*

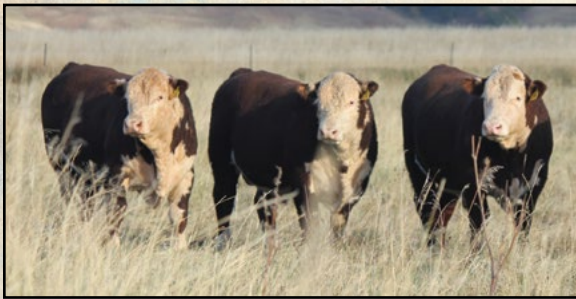
Annual Bull Sale • Dec. 5, 2015 • St. Onge, S.D. • 1 p.m.



# 120

Registered Hereford & Angus  
Coming 2-Year-Old Bulls





Nate Frederickson

Jason McLennan

Jonathan Marohl

Welcome to the 6th annual sale of Pyramid Beef, LLP. And thank you to all of the cattlemen that we have had the chance to meet and do business with. We do not take our relationship with any customer lightly and want all to know that our mission is to not only provide you with the best genetics, but to assure any customer that we will do all in our power to provide unparalleled service to each and every person we do business with.

Once again, most of us are thankful for abundant moisture, an abundance of grass and hay and mostly strong prices and demand for our product. Regardless of markets or, moisture our program is focused on producing and developing cattle that aid our customers in success every year. We demand of ourselves to stay focused on what works under our management for this western environment. We also demand of ourselves to have the discipline to admit what is and what isn't working so that we constantly move forward with what will truly benefit our customers.

The bulls selling Dec. 5th are the result of a cow herd where our breeding, culling and management are focused on creating practical excellence in our cows. The bulls are from mothers that are deep bodied, easy fleshing, have a sound udder and are structurally correct. If they are not from that kind of a mother they are castrated and the mother is sold. The dams of the bulls must also have quiet dispositions and have tremendous maternal instincts. The bulls in this offering are loaded with capacity, exceptionally thick and designed to last for years. We firmly believe these sturdy two year olds are bred and developed to cover more cows for more breeding seasons and leave you with exceptional replacement females and market demanding steers.

The bulls were weaned in the middle of November and back-grounded on a 40 Mcal diet which included barley hay, grass hay, cracked corn and distillers. The bulls were turned out on native grass from May 15 until September 1. Since coming off grass the bulls have been worked up to a 40 Mcal ration which includes cracked corn, dry distillers and brome/crested mixed hay. All of the bulls have been a part of complete health program from birth until now and have passed a breeding soundness exam.

We thank you again for your interest and invite you to give any one of us a call. The bulls can be viewed any day prior to sale day at the new development center located at Frederickson Ranch west of Spearfish.

Sincerely,

*Pyramid Beef*





# Pyramid Beef

— Annual Bull Sale —  
**DEC 5, 2015**

St. Onge Livestock - St. Onge, SD 1 p.m.

**Cattle Viewing:** Cattle will be available for viewing at St. Onge Livestock, St. Onge, S.D., on Dec. 5. Prior to the sale, call anytime to view the cattle.

**Sale Terms & Conditions:** All cattle sell under the standard terms and conditions of the American Angus Association and the American Hereford Association. Terms of the sale are cash. Bulls are cataloged in sale order.

**Herd Health:** Bulls have had a complete herd health program as calves. Prior to sale day they have had another round of Vira Shield 6, Fusoguard (Foot-rot), Dectomax Injectable and Pour On for lice control. All bulls have been semen-tested.

**Lunch, Social & Supper:** Please join us for a complimentary lunch before the sale at St. Onge Livestock and stay for the social and supper following the sale at CATL Resources' headquarters. From St. Onge Livestock, head west toward Belle Fourche on Highway 34 for five miles. Take a right at a semen-tank mailbox.

**Genetic Defects:** All cattle selling are guaranteed free of any known genetic defects.

**Delivery:** Pyramid Beef is offering free delivery on all bulls sold within 300 miles. Receive a \$50 discount per bull if you haul your own sale day.

**Guarantee:** All bulls selling for \$3,000 or more will be covered 50% by Pyramid Beef if they are injured during their first breeding season. Breeding season is defined as the 90-day period following the first turnout of the bulls.

50% of the value of the injured bull, minus one-half salvage value, will be given as credit in a future sale or toward a replacement bull if one is available. Salvage value, if any, will be split equally between Pyramid Beef and the buyer. All injured bulls must be diagnosed by a veterinarian. Please notify us as soon as possible should injury occur and prior to the injured bull being sold for salvage. All claims must be made by Sept. 15, 2015.

**Example:** A \$5,000 bull is injured and will not heal. A credit of \$2,500 minus one-half any salvage value will be given to the buyer.

**Directions:** St. Onge Livestock is located just east off of Hwy. 34 in St. Onge, SD.

## Sale Day Contacts:

Nate Frederickson  
(605) 254-4872

Jason McLennan  
(605) 645-1630

Jonathan Marohl  
(701) 226-7330

Mark Frederickson  
(320) 808-6691

Roger Jacobs, Auctioneer  
(406) 698-7686

Mark Hotchkiss, Hereford America  
(605) 490-1513

Tim Olson, CATL Resources  
(605) 641-5966

Chandy Olson, DVM, Sale Day Vet  
(605) 641-2325

Justin Tupper, St. Onge Livestock  
(605) 680-0259

Clint Ridley, Order Buyer  
(605) 645-9777

Kody Steinbrecher, Phone Orders  
(307) 290-0821

St. Onge Livestock  
(605) 642-2200

### Accommodations:

Sale Headquarters - A Block of Rooms has been reserved at the AmericInn Lodge & Suites.

Call for information:  
AmericInn Lodge & Suites  
Belle Fourche, SD (605) 892-0900

Best Western, Sturgis, SD  
(605) 347-3604

Comfort Suites, Spearfish, SD  
(605) 642-3003

Holiday Inn, Spearfish, SD  
(605) 642-4683

The Lodge, Deadwood, SD  
(605) 584-4800

Ads and sale catalog designed by Strommen Livestock Services,  
Fort Rice, N.D. (701) 445-2020



## American Angus Association® Selection Tools

**Expected Progeny Difference (EPD)**, is the prediction of how future progeny of each animal are expected to perform relative to the progeny of other animals listed in the database. EPDs are expressed in units of measure for the trait, plus or minus. Interim EPDs may appear on young animals when their performance has yet to be incorporated into the American Angus Association National Cattle Evaluation (NCE) procedures. This EPD will be preceded by an "I", and may or may not include the animal's own performance record for a particular trait, depending on its availability, appropriate contemporary grouping, or data edits needed for NCE.

**Accuracy (ACC)**, is the reliability that can be placed on the EPD. An accuracy of close to 1.0 indicates higher reliability. Accuracy is impacted by the number of progeny and ancestral records included in the analysis.

### GROWTH

**Calving Ease Direct (CED)**, is expressed as a difference in percentage of unassisted births, with a higher value indicating greater calving ease in first-calf heifers. It predicts the average difference in ease with which a sire's calves will be born when he is bred to first-calf heifers.

**Birth Weight EPD (BW)**, expressed in pounds, is a predictor of a sire's ability to transmit birth weight to his progeny compared to that of other sires.

**Weaning Weight EPD (WW)**, expressed in pounds, is a predictor of a sire's ability to transmit weaning growth to his progeny compared to that of other sires.

**Residual Average Daily Gain (RADG)**, feed efficiency expressed in pounds per day, is a predictor of a sire's genetic ability for postweaning gain in future progeny compared to that of other sires, given a constant amount of feed consumed.

**Yearling Weight EPD (YW)**, expressed in pounds, is a predictor of a sire's ability to transmit yearling growth to his progeny compared to that of other sires.

**Yearling Height EPD (YH)**, is a predictor of a sire's ability to transmit yearling height, expressed in inches, compared to the that of other sires.

**Scrotal Circumference EPD (SC)**, expressed in centimeters, is a predictor of the difference in transmitting ability for scrotal size compared to that of other sires.

**Docility (DOC)**, is expressed as a difference in yearling cattle temperament, with a higher value indicating more favorable docility. It predicts the average difference of progeny from a sire in comparison with another sire's calves.

### MATERNAL

**Heifer Pregnancy (HP)**, is a selection tool to increase the probability or chance of a sire's daughters becoming pregnant as first-calf heifers during a normal breeding season. A higher EPD is the more favorable direction, and the EPD is reported in percentage units.

**Calving Ease Maternal (CEM)**, is expressed as a difference in percentage of unassisted births with a higher value indicating greater calving ease in first-calf daughters. It predicts the average ease with which a sire's daughters will calve as first-calf heifers when compared to daughters of other sires.

**Maternal Milk EPD (Milk)**, is a predictor of a sire's genetic merit for milk and mothering ability as expressed in his daughters compared to daughters of other sires. In other words, it is that part of a calf's weaning weight attributed to milk and mothering ability.

**Mature Weight EPD (MW)**, expressed in pounds, is a predictor of the difference in mature weight of daughters of a sire compared to the daughters of other sires.

**Mature Height EPD (MH)**, expressed in inches, is a predictor of the difference in mature height of a sire's daughters compared to daughters of other sires.

**Cow Energy Value (\$EN)**, expressed in dollars savings per cow per year, assesses differences in cow energy requirements as an expected dollar savings difference in daughters of sires. A larger value is more favorable when comparing two animals (more dollars saved on feed energy expenses). Components for computing the cow \$EN savings difference include lactation energy requirements and energy costs associated with differences in mature cow size.

### CARCASS

The genetic evaluation produces a single set of EPDs for carcass weight, marbling score, Ribeye area and fat thickness. The units of measure are in carcass trait format and analyzed on an age-constant basis.

**Carcass Weight EPD (CW)**, expressed in pounds is a predictor of the differences in hot carcass weight of a sire's progeny compared to progeny of other sires.

**Marbling EPD (Marb)**, expressed as a fraction of the difference in USDA marbling score of a sire's progeny compared to progeny of other sires.

**Ribeye Area EPD (RE)**, expressed in square inches, is a predictor of the difference in ribeye area of a sire's progeny compared to progeny of other sires.

**Fat Thickness EPD (Fat)**, expressed in inches, is a predictor of the differences in external fat thickness at the 12th rib (as measured between the 12th and 13th ribs) of a sire's progeny compared to progeny of other sires.

### \$VALUE INDEXES

**\$Value indexes**, are multi-trait selection indexes to assist beef producers by adding simplicity to genetic selection decisions. \$Values are reported in dollars per head, where a higher value is more favorable. The \$Value is an estimate of how future progeny of each sire are expected to perform, on average, compared to progeny of other sires in the database if the sires were randomly mated to cows and if calves were exposed to the same environment.

**Weaned Calf Value (\$W)**, an index value expressed in dollars per head, is the expected average difference in future progeny performance for pre-weaning merit. \$W includes both revenue and cost adjustments associated with differences in birth weight, weaning direct growth, maternal milk, and mature cow size.

**Feedlot Value (\$F)**, an index value expressed in dollars per head, is the expected average difference in future progeny performance for postweaning merit compared to progeny of other sires.

**Grid Value (\$G)**, an index value expressed in dollars per head, is the expected average difference in future progeny performance for carcass grid merit compared to progeny of other sires.

**Quality Grade (\$QG)** represents the quality grade segment of the economic advantage found in \$G. \$QG is intended for the specialized user wanting to place more emphasis on improving quality grade. The carcass marbling (Marb) EPD, which is influenced by carcass marbling scores and ultrasound percent intramuscular fat (% IMF) measurements, contribute to \$QG.

**Yield Grade (\$YG)** \$YG represents the yield grade segment of the economic advantage found in \$G. \$YG is intended for the specialized user wanting to place more emphasis on red meat yield. It provides a multi-trait approach to encompass ribeye, fat thickness and weight into an economic value for red meat yield.

**\$G** combines both \$QG and \$YG, and may be the best carcass decision tool for focusing on quality and red meat yield simultaneously.

**Beef Value (\$B)**, an index value expressed in dollars per head, is the expected average difference in future progeny performance for postweaning and carcass value compared to progeny of other sires.



# American Angus Association

## \$Value Indexes

**\$Values** are multi-trait selection indexes expressed in dollars per head, to assist commercial beef producers by adding simplicity to genetic selection decisions. A \$Value has meaning only when used in comparison to the \$Value of another animal. For example, just as with EPDs, variation in \$Values between animals indicates average expected differences in the relative value of progeny if random mating is assumed and the calves are exposed to the same environment.

\$Values			
\$W	\$F	\$G	\$B
+21.28	+13.60	+12.53	+25.32

**Weaned Calf Value (\$W):** an index expressed in dollars per head, is the expected average difference in future progeny performance for preweaning merit. \$W includes both revenue and cost adjustments associated with differences in birth weight, weaning direct growth, maternal milk, and mature cow size.

**Feedlot Value (\$F):** an index expressed in dollars per head, is the expected average difference in future progeny performance for postweaning performance compared to progeny of other sires.

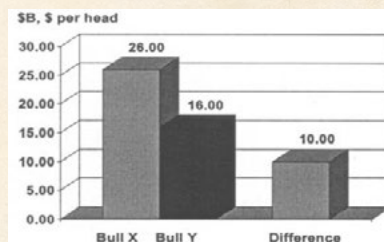
*\$Values have meaning when used in comparing the relative merit or ranking of two individuals. For example, Bull X has a \$B value of +26.00, and Bull Y has a \$B value of +16.00. If these bulls were randomly mated to a comparable set of females and the calves were exposed to the same environment, on the average you would expect Bull X's progeny to have a +10.00 dollar per head advantage in postweaning performance and carcass merit over Bull Y's progeny (26.00 - 16.00 = +10.00 per head)*

**Grid Value (\$G):** an index expressed in dollars per head, is the expected average difference in future progeny performance for carcass grid merit compared to progeny of other sires.

• **Quality Grade (\$QG)** represents the quality grade segment of the economic advantage found in \$G. \$QG is intended for the specialized user wanting to place more emphasis on improving quality grade. The carcass marbling (Marb) EPD, which is influenced by carcass marbling scores and ultrasound percent intramuscular fat (% IMF) measurements, contribute to \$QG.

• **Yield Grade (\$YG)** represents the yield grade segment of the economic advantage found in \$G. \$YG is intended for the specialized user wanting to place more emphasis on red meat yield. It provides a multi-trait approach to encompass ribeye, fat thickness and weight into an economic value for red meat yield.

**Beef Value (\$B):** an index expressed in dollars per head, is the expected average difference in future progeny performance for postweaning and carcass value compared to progeny of other sires. The \$B value combines the contributions of \$F and \$G.



## How to Use \$Values

\$Values should be used to complement the criteria that producers already use when selecting bulls. Different management situations may require varying emphasis on the genetic selection "tools" offered. For instance, one producer might have historically sold calves at weaning, and rarely used the carcass EPDs in bull selection decisions. First he needs to meet his birth weight EPD/calving ease EPD requirements, depending on whether heifers are to be bred. Then selections can be made on Weaned Calf Value (\$W) which characterizes revenue and costs associated with the preweaning phase. He would use \$W to capture preweaning dollar differences when comparing two sires of interest.

In addition, he may want to begin making general progress in improving end-product value to create more predictability in his calves, or he may choose to retain ownership in the future. In this case, the \$B could be used in concert with the selection criteria he has used in the past, such as \$W, to make directional change in postweaning and carcass merit.

The \$Values are not designed to be driven by a single trait, as an index is multi-trait by design. These selection tools are the result of the application of industry-relevant market values to Angus genetics for preweaning, feedlot, and carcass merit.

Keep in mind that selection for an individual trait may be an effective option for some producers. In this case, he might sell fed cattle and have significant carcass data on past groups of steers. This detailed data would allow him to identify the specific trait in need of improvement. In this case, \$B might not be used where the individual end-product EPDs could better assist him in achieving the desired genetic change. The producer still has the opportunity to use \$B as a tool in maintaining the balance between feedlot and carcass traits.

The \$W, \$F, \$G and \$B values on individual animals and the *Sire Evaluation Report* may be viewed at [www.angus.org](http://www.angus.org).

**American Angus Association®**  
 3201 Frederick Avenue • St. Joseph, MO 64506  
 816-383-5100 • [ahir@angus.org](mailto:ahir@angus.org)  
[www.angus.org](http://www.angus.org)

07/08





## SAV RESOURCE 1441

Reg. +17016597 Tattoo: 1441 Calved: 1/07/2011

R R RITO 707 #  
RITO 707 OF IDEAL 3407 7075  
IDEAL 3407 OF 1418 076

S A V 8180 TRAVELER 004 #  
S A V BLACKCAP MAY 4136  
S A V MAY 2397

RITO N BAR  
ERISKAY OF ROLLIN ROCK 3  
IDEAL 1418 OF 8103 4286 #  
IDEAL 076 OF 692 8375  
SITZ TRAVELER 8180 #  
BOYD FOREVER LADY 8003  
S A F 598 BANDO 5175 #  
S A V MAY 7238

CED	BW	WW	Milk	YW
1	3.5	73	30	136

BW	205R	YR
87		

\$W	\$F	\$G	\$B	SC EPD
73.59	118.94	5.38	173.4	1.45

Marb.	REA	Fat
0.09	1.04	.077

Resource progeny are consistently one of the top sire groups everywhere he is used. He ranks near the top of the breed for WW, YW, DOC, MILK, CW, REA, \$W and \$F. He transmits real world fleshing ability, extreme muscle, masculinity, superior feet quality and authentic breed character. His daughters will be his greatest legacy.



Reference Sire B • Tombstone 050



## CONNELY HUSKER 1833

Reg. 17031180 Tattoo: 1833 Calved: 2/24/2011

BALDRIDGE KABOOM K243 KCF #  
CONNELY THUNDER #  
PARKA OF CONANGA 241 #

CONNELY ALL AROUND #  
PEARLA OF CONANGA 8538  
PEARLESCENCE OF CONANGA 194 #

JAUER 353 TRAVELER 589 27 #  
PLEASANTA OF CONANGA 736  
BON VIEW BANDO 598 #  
PARTINA OF CONANGA 6237  
CONNELY WHITMAN #  
ENTRUST OF CONANGA 894  
GAR GRID MAKER #  
PEARL JAM OF CONANGA 6114

CED	BW	WW	Milk	YW
11	-1.9	61	28	107

BW	205R	YR
74	109	114.5

\$W	\$F	\$G	\$B	SC EPD
73.94	67.91	42.48	110.96	.99

Marb.	REA	Fat
.59	.69	-.030

Connealy Husker was added to our program to bring in the influence of two great maternal lines: Connealy Thunder and Connealy All-Around. His progeny are moderate framed, deep-bodied and have the look to make great females. Husker's mother is a top All-Around daughter that is big-bodied, easy-fleshing and sports a near-perfect udder. His first daughters are in production. They have nice udders and are very productive. We are pleased to announce that Husker has recently been leased to Genex.



Reference Sire A • SAV Resource 1441



## TOMBSTONE 050

Reg. 16644975 Tattoo: 50 Calved: 1/14/2010

CONNELY ONWARD #  
SITZ UPWARD 307R #  
SITZ HENRIETTA PRIDE 81M

SITZ ALLIANCE 6595 #  
MYTTY COUNTESS 906  
BALDRIDGE COUNTESS 357

CONNELY LEAD ON #  
ALTUNE OF CONANGA 6104  
SITZ VALUE 7097 #  
SITZ HENRIETTA PRIDE 1370  
SITZ TRAVELER 8180 #  
SITZ BARBARAMERE JET 2698 #  
BON VIEW EMULATION EXT 473 #  
BALDRIDGE COUNTESS 235

CED	BW	WW	Milk	YW
-1	.8	79	28	135

BW	205R	YR
87		

\$W	\$F	\$G	\$B	SC EPD
88.35	80.83	22.50	145.21	2.05

Marb.	REA	Fat
.52	.58	.054

We are using Tombstone as an outcross performance sire. Tombstone calves are born with modest birth weights and excel for growth from birth to yearling. Tombstone ranks in the top 10% of the Angus breed for \$Beef, top 5% for weaning weight, top 1% for yearling weight and top 2% for scrotal. Tombstone is a direct son of the dam to Mitty In Focus. Tombstone's progeny are exhibiting tremendous dispositions. First set of daughters averaged 105 @ weaning. Leased to Genex.



Reference Sire C • Connealy Husker 1833





## CEDARFLO BISMARCK 631

Reg. 17070525 Tattoo: 631 Calved: 2/17/2011

GAR GRID MAKER #  
SAV BISMARCK 5682 #  
SAV ABIGALE 0451

CEDARLO RIGHT TIME 420  
CEDARFLO 420 BLACK BESS 1155 #  
CEDARFLO BLACK BESS 435

GDAR TRAVELER 044 #  
GAR PRECISION 2536  
SCHOENES FIX IT 826 #  
SAV ABIGALE 6062  
LEACHMAN RIGHT TIME #  
CEDARFLO BLACK BESS 46 #  
CEDARFLO 2100 1070  
BLACK BESS OF CEDARFLO 901 #

CED	BW	WW	Milk	YW
8	.2	54	21	86

BW	205R	YR

\$W	\$F	\$G	\$B	SC EPD
52.60	35.32	34.65	68.31	+1.71

Marb.	REA	Fat
.37	.61	-.020

We appreciate Bismarck 631's physical dominance and out cross potential. He sires modest birth weight while stamping his progeny with balance, stoutness and eye appeal. His sons and daughters are extremely consistent in our program and his daughters have the look of being exceptional cows. His sons in the offering are heavier muscled and more masculine than most modest birth weight options in the breed.



Reference Sire D • Cedarflo Bismarck 631



## CONNEALY THUNDER

Reg. 15148659 Tattoo: 587 Calved: 1/28/2005

JAUER 353 TRAVELER 589 27 #  
BALDRIDGE KABOOM K243 KCF #  
PLEASANTA OF CONANGA 736 #

BON VIEW BANDO 598 #  
PARKA OF CONANGA 241 #  
PARTINA OF CONANGA 6237

JAUER 7111 TRAVELER 353 719  
JAUER 6807 TRAVELER 27 085  
G T MAXIMUM #  
PLEASANT PILL OF CONANGA #  
TEHAMA BANDO 155 #  
BON VIEW DORA 56 #  
SCHOENES FIX IT 826 #  
PARTY DATE OF CONANGA

CED	BW	WW	Milk	YW
10	-.9	46	26	91

BW	205R	YR

\$W	\$F	\$G	\$B	SC EPD
63.25	35.41	32.04	107.16	.45

Marb.	REA	Fat
.43	.58	-.006

A double-digit calving ease sire for use on heifers, and highly positive on important traits of CEM and DOC. His daughters are gaining attention for their deep rib, easy fleshing ability and beautiful udders - the cowman kind. One of the highest ranking fertility sires in the PregCheck database. Look to Thunder to make extra Profit through Pregnancies.



Reference Sire E • Connealy Thunder



## MC CUMBER 4X13 EXTRA 9137

Reg. 16464875 Tattoo: 9137 Calved: 2/5/2009

N BAR EMULATION EXT #  
SINCLAIR EXTRA 4X13 #  
N BAR LADY IDA SCC 2P37

MC CUMBER TOTAL VALUE 449  
MISS WIX 748 OF MC CUMBER #  
MISS WIX 5206 OF MC CUMBER

EMULATION N BAR 5522 #  
N BAR PRIMROSE 2424  
N BAR PRIME TIME D806 #  
N BAR LADY IDA F1080  
MC CUMBER 7111 TOTAL VALUE  
MISS WIX 7007 OF MC CUMBER 1  
BT TRAVELER 228K #  
MISS WIX 332 OF MC CUMBER

CED	BW	WW	Milk	YW
4	1.9	44	25	91

BW	205R	YR
80	109	116

\$W	\$F	\$G	\$B	SC EPD
33.03	51.29	16.47	116.99	1.11

Marb.	REA	Fat
.39	.06	.042

Extra was selected as an out-cross herd bull because of his tremendous time-tested maternal lineage. Extra is long sided, smooth made and easy fleshing. His daughters are feminine, fertile, have very nice udders and appear to milk very well. Extra's sons have tremendous libido and are long and athletic and are bred to cover cows.



Reference Sire D • Mc Cumber 4X13,  
Sire of Mc Cumber 4X13 Extra 9137



## 2015 Angus Bull Offering



*Tombstone 050 • Grandsire of Lots 1, 2 & 3*

2

### PYRAMID TOMBSTONE 4410

Reg. 17956892 Tattoo: 4410 Calved: 5/3/2014

TOMBSTONE 050  
PYRAMID TOMBSTONE 2407  
MYTA PRIMROSE 704  
  
OCC GREAT PLAINS 943G#  
SITZ HENRIETTA PRIDE 552#  
SITZ HENRIETTA PRIDE 3980

SITZ UPWARD 307R#  
MYTTY COUNTESS 906  
SAV BANDOS PRIDE 5265  
SAV PRIMROSE 1166#  
N BAR EMULATION EXT#  
DIXIE ERICA OF CH 1019  
SITZ RELIANT 8898#  
SITZ HENRIETTA PRIDE 3117

CED	BW	WW	Milk	YW
-1	3.3	56	28	94

\$W	\$F	\$G	\$B	Scrotal
50	48.29			40

BW	Adj. 205	205R	YR
87	715	110	

Marb.	REA	Fat

Here is a performance bred bull out of a 13 year old pathfinder cow. She is the grandmother to last year's high selling bull to Diamond J Angus of Mandan, ND. He will add performance, longevity and maternal strength to your herd. Maternal brothers have sold to Brian George of Solen, ND.



1

### PYRAMID TOMBSTONE 4409

Reg. 17956883 Tattoo: 4409 Calved: 5/2/2014

TOMBSTONE 050  
PYRAMID TOMBSTONE 2407  
MYTA PRIMROSE 704

MC CUMBER 4X13 EXTRA 9137  
YT BARBARAMERE JET 1403  
SITZ BARBARAMERE JET 2622

SITZ UPWARD 307R#  
MYTTY COUNTESS 906  
SAV BANDOS PRIDE 5265  
SAV PRIMROSE 1166#  
SINCLAIR EXTRA 4X13#  
MISS WIX 748 OF MC CUMBER#  
SITZ ALLIANCE 6595#  
SITZ BARBARAMERE JET 1507#

CED	BW	WW	Milk	YW
3	2.2	53	26	94

\$W	\$F	\$G	\$B	Scrotal
46.99	50.4			37

BW	Adj. 205	205R	YR
78	650	97	

Marb.	REA	Fat

Recommended for use on heifers. Here is a Tombstone bred bull that is very attractive. He is very complete with a great disposition. His pedigree combines many great bulls from our program behind him. Two of our best cow families are stacked behind him to assure you solid steers and fantastic females.

3

### PYRAMID TOMBSTONE 4424

Reg. 17956890 Tattoo: 4424 Calved: 5/17/2014

TOMBSTONE 050  
PYRAMID TOMBSTONE 2407  
MYTA PRIMROSE 704

MC CUMBER 4X13 EXTRA 9137  
YT ELLUNAS ELITE 1412  
SITZ ELLUNAS ELITE 542#

SITZ UPWARD 307R#  
MYTTY COUNTESS 906  
SAV BANDOS PRIDE 5265  
SAV PRIMROSE 1166#  
SINCLAIR EXTRA 4X13#  
MISS WIX 748 OF MC CUMBER#  
OCC GREAT PLAINS 943G#  
SITZ ELLUNAS ELITE 2810

CED	BW	WW	Milk	YW
7	0.4	51	26	96

\$W	\$F	\$G	\$B	Scrotal
46.91	55.49			36.5

BW	Adj. 205	205R	YR
68	619	93	

Marb.	REA	Fat

Recommended for use on heifers. Here is a light birth weight Tombstone bred bull out of a nice young cow. His mother is a direct daughter out of one of the original Sitz cows that we purchased. A moderate framed bull with good balance and a great disposition. He has a strong set of EPD's.







## Lot 4 • Pyramid Resource 4049



### PYRAMID RESOURCE 4049

Reg. 17907367 Tattoo: 4049 Calved: 3/24/2014

RITO 707 OF IDEAL 3407 7075  
SAV RESOURCE 1441  
SAV BLACKCAP MAY 4136

KCF BENNETT TOTAL#  
GLACIAL MISS WIX 17T  
GLACIAL 616 MISS WIX 8P

RR RITO 707#  
IDEAL 3407 OF 1418 076  
SAV 8180 TRAVELER 004#  
SAV MAY 2397#  
SITZ ALLIANCE 6595#  
EXT OF CONANGA 6790  
RITO 616 OF 4B20 6807#  
GLACIAL MISS WIX 30M#

CED	BW	WW	Milk	YW
4	2	57	25	106

\$W	\$F	\$G	\$B	Scrotal
52.01	69.79	12.86	130.09	36.3

BW	Adj. 205	205R	YR
90	650	103	105

Marb.	REA	Fat
0.17	0.61	0.046

The Resources are unmatched in their ability to add performance and volume in a very moderate package and this calf exemplifies all of that. 4049 is backed by the maternal strength of the Miss Wix cow family. The extra depth and rib shape this bull possesses should give him the ability to sire a beautiful set of deep, moderate, easy fleshing females. Cattleman take a hard look.



### PYRAMID RESOURCE 4050

Reg. 17907361 Tattoo: 4050 Calved: 3/26/2014

RITO 707 OF IDEAL 3407 7075  
SAV RESOURCE 1441  
SAV BLACKCAP MAY 4136

KCF BENNETT TOTAL#  
GLACIAL J239 KATINKA 40U  
GLACIAL 1147 KATINKA 5N

RR RITO 707#  
IDEAL 3407 OF 1418 076  
SAV 8180 TRAVELER 004#  
SAV MAY 2397#  
SITZ ALLIANCE 6595#  
EXT OF CONANGA 6790  
PINE CREEK RIGHT TIME 1147#  
GLACIAL KATINKA 616 15L

CED	BW	WW	Milk	YW
9	-0.1	62	26	108

\$W	\$F	\$G	\$B	Scrotal
64.37	69.9	3.48	122.5	37.3

BW	Adj. 205	205R	YR
78	708	112	104

Marb.	REA	Fat
0.07	0.56	0.07

Retaining 1/3 interest. 4050 is a standout son of Resource, with herd bull credentials. Due to his combination of power, depth of body and low birth weight, this bull was used very heavily in our program this spring. His mother is one of our best and we added her to our embryo transplant program this fall. It is very rare to find a Resource son with a negative birth EPD and a CED of +9.







**Lot 6 • Pyramid Resource 4086**



### PYRAMID RESOURCE 4086

Reg. 18229393 Tattoo: 4086 Calved: 4/9/2014

RITO 707 OF IDEAL 3407 7075  
SAV RESOURCE 1441  
SAV BLACKCAP MAY 4136

GLACIAL 7078 VRD 20N  
GLACIAL 20N BLACKBIRDEVE 29R  
GLACIAL BLACKBIRD EVE 33M

RR RITO 707#  
IDEAL 3407 OF 1418 076  
SAV 8180 TRAVELER 004#  
SAV MAY 2397#  
VERMILION DATELINE 7078#  
KNM ENCHANTRESS 005  
BT TRAVELER 228K#  
RB BLACKBIRD EVE 813

CED	BW	WW	Milk	YW
I+2	I+2.6	I+56	I+27	I+104

\$W	\$F	\$G	\$B	Scrotal
59.28	66.75	16.86	125.61	34.8

BW	Adj. 205	205R	YR
93	655	100	100

Marb.	REA	Fat
I+.16	I+.78	I+.035

**Retaining 1/3 interest.** Herd Bull potential here. 4086 is a stout, rugged made bull with loads of eye appeal. He is an ET calf of Black Bird Eve cow family. His 10 year-old dam is a steady producer recording 8 calves @ 103 for weaning. She is a moderate framed, great uttered cow that has left her mark in the herd. Several full sisters of this bull are being retained in the herd. They are the front pasture kind. This bull was used in our program this summer on a select group of cows.



**Lot 7 • Pyramid Resource 4067**



### PYRAMID RESOURCE 4067

Reg. 18098318 Tattoo: 4067 Calved: 3/31/2014

RITO 707 OF IDEAL 3407 7075  
SAV RESOURCE 1441  
SAV BLACKCAP MAY 4136

GLACIAL 7078 VRD 20N  
GLACIAL 20N MISS WIX 74S  
GLACIAL MISS WIX 30M#

RR RITO 707#  
IDEAL 3407 OF 1418 076  
SAV 8180 TRAVELER 004#  
SAV MAY 2397#  
VERMILION DATELINE 7078#  
KNM ENCHANTRESS 005  
GLACIAL QUANTUM 3330 15K  
GLACIAL MISS WIX 5036 12K

CED	BW	WW	Milk	YW
0	3.6	52	22	103

\$W	\$F	\$G	\$B	Scrotal
35.38	67.79	16.48	119.1	33.5

BW	Adj. 205	205R	YR
100	583	92	102

Marb.	REA	Fat
0.11	0.8	0.023

4067 is a moderate, heavy muscled bull and backs that with a REA ratio of 115. Look for this bull to add shape and pounds without increasing frame-size. To top it off, he has that gentle disposition the Resources are known for.





## Lot 8 • Pyramid Thunder 4203



### PYRAMID THUNDER 4203

Reg. 18055814 Tattoo: 4203 Calved: 4/11/2014

BALDRIDGE KABOOM K243 KCF#  
CONNEALY THUNDER#  
PARKA OF CONANGA 241#

SAV PYRAMID 8186  
MCLENNAN VALENTINE 216  
SUMMIT VALENTINE 371

JAUER 353 TRAVELER 589 27#  
PLEASANTA OF CONANGA 736  
BON VIEW BANDO 598#  
PARTINA OF CONANGA 6237  
SAV NET WORTH 4200#  
SAV BLACKBIRD 5296  
GDAR TRAVELER 561#  
MANDYS VALENTINE 603

CED	BW	WW	Milk	YW
8	0.4	45	24	87

\$W	\$F	\$G	\$B	Scrotal
39.27	43.34	24.85	104.53	41.37

BW	Adj. 205	205R	YR
78	662	97	105

Marb.	REA	Fat
0.37	0.3	0.013

Recommended for use on heifers. A high volume, very sound son of Connealy Thunder. Dam is an impressive young SAV Pyramid 8186 daughter that is easy fleshing with a beautiful udder.







## Lot 9 • Pyramid Thunder 4204

9

### PYRAMID THUNDER 4204

Reg. 18055789 Tattoo: 4204 Calved: 4/13/2014

BALDRIDGE KABOOM K243 KCF#  
CONNEALY THUNDER#  
PARKA OF CONANGA 241#

SAV PYRAMID 8186  
MCLENNAN ESTRADA 217  
MCLENNAN ESTRADA 802U

JAUER 353 TRAVELER 589 27#  
PLEASANTA OF CONANGA 736  
BON VIEW BANDO 598#  
PARTINA OF CONANGA 6237  
SAV NET WORTH 4200#  
SAV BLACKBIRD 5296  
21AR OUTFITTER 6032#  
21AR ESTRADA B36

CED	BW	WW	Milk	YW
0	1.4	48	26	88

\$W	\$F	\$G	\$B	Scrotal
44.25	43.04	25.97	110.17	36.43

BW	Adj. 205	205R	YR
85	714	105	105

Marb.	REA	Fat
0.44	0.26	0.02

One of the most impressive bulls in the offering. Long, sound and powerful. Lot 9's dam is another SAV Pyramid 8186 daughter out of the Estrada cow family. Maternal Grand Dam sired by 21AR Outfitter 6032 is as powerful as you can make an Angus cow yet flawlessly uddered and sports impeccable feet.

11

### PYRAMID THUNDER 4209

Reg. 18055786 Tattoo: 4209 Calved: 4/16/2014

BALDRIDGE KABOOM K243 KCF#  
CONNEALY THUNDER#  
PARKA OF CONANGA 241#

SAV PYRAMID 8186  
MCLENNAN LADY BLUE 213  
MCLENNAN LADY BLUE 9231

JAUER 353 TRAVELER 589 27#  
PLEASANTA OF CONANGA 736  
BON VIEW BANDO 598#  
PARTINA OF CONANGA 6237  
SAV NET WORTH 4200#  
SAV BLACKBIRD 5296  
21AR OUTFITTER 6032#  
FARVIEW LADY BLUE 4224

CED	BW	WW	Milk	YW
5	0.7	46	25	87

\$W	\$F	\$G	\$B	Scrotal
41.52	42.64	30.61	110.2	35.53

BW	Adj. 205	205R	YR
80	691	101	101

Marb.	REA	Fat
0.48	0.34	0.005

Recommended for use on heifers. A Thunder son that is long, free moving and well made. 4209 stems from a very productive line of cows and should leave some beautiful, high producing daughters in the herd.

10

### PYRAMID THUNDER 4206

Reg. 18055784 Tattoo: 4206 Calved: 4/15/2014

BALDRIDGE KABOOM K243 KCF#  
CONNEALY THUNDER#  
PARKA OF CONANGA 241#

SAV PYRAMID 8186  
MCLENNAN BARBARAMERE NELL  
MCLENNAN BARBARAMERE NELL

JAUER 353 TRAVELER 589 27#  
PLEASANTA OF CONANGA 736  
BON VIEW BANDO 598#  
PARTINA OF CONANGA 6237  
SAV NET WORTH 4200#  
SAV BLACKBIRD 5296  
SITZ ALLIANCE 8646  
BERBOS BARBARAMERE NELL 3122

CED	BW	WW	Milk	YW
6	1	45	26	88

\$W	\$F	\$G	\$B	Scrotal
39.65	45.14	22.25	109.04	39.99

BW	Adj. 205	205R	YR
80	696	102	107

Marb.	REA	Fat
0.27	0.42	0.007

Retaining 1/3 semen interest. Recommended for use on heifers. 4206 was a bull we chose to use in our own program this summer on heifers. This bull is super sound, big butt-ed and long fronted. His young dam is high volumed, wide tracking and very easy fleshing.

12

### PYRAMID THUNDER 4208

Reg. 18055799 Tattoo: 4208 Calved: 4/16/2014

BALDRIDGE KABOOM K243 KCF#  
CONNEALY THUNDER#  
PARKA OF CONANGA 241#

SAV PYRAMID 8186  
MCLENNAN ESTHER 232  
21AR ESTHER 6365

JAUER 353 TRAVELER 589 27#  
PLEASANTA OF CONANGA 736  
BON VIEW BANDO 598#  
PARTINA OF CONANGA 6237  
SAV NET WORTH 4200#  
SAV BLACKBIRD 5296  
21AR RIGHT TIME C572  
21AR ESTHER C79

CED	BW	WW	Milk	YW
8	0.2	40	26	80

\$W	\$F	\$G	\$B	Scrotal
36.48	34.3	29.82	101.49	35.03

BW	Adj. 205	205R	YR
79	653	96	98

Marb.	REA	Fat
0.47	0.26	0.005

Recommended for use on heifers. 4208 comes from a very dependable line of cows that consistently produce lighter birth weight calves that hit the ground and grow.





**Lot 13 • Pyramid Tombstone 4029**

# 13 PYRAMID TOMBSTONE 4029

Reg. 17905648 Tattoo: 4029 Calved: 3/19/2014

SITZ UPWARD 307R#  
TOMBSTONE 050  
MYTTY COUNTESS 906

SAV FINAL ANSWER 0035#  
GLACIAL 0035 MISSE 101X  
GLACIAL 355 MISSIE 49U

CONNEALY ONWARD#  
SITZ HENRIETTA PRIDE 81M  
SITZ ALLIANCE 6595#  
BALDRIDGE COUNTESS 357  
SITZ TRAVELER 8180#  
SAV EMULOUS 8145  
GLACIAL 104 DUKE 355  
GLACIAL MISSIE 043 3K

CED	BW	WW	Milk	YW
4	0.1	65	26	116

\$W	\$F	\$G	\$B	Scrotal
65.47	82.94	23.98	129.06	38.3

BW	Adj. 205	205R	YR
84	685	108	109

Marb.	REA	Fat
0.6	0.32	0.07

Retaining 1/3 semen interest. 4029 was used back in our program on a large group of heifers this summer. His combination of balance, muscle shape and eye appeal make him one of the better Tombstone sons produced to date. He combines that with Marbling ratio of 138. 4029's mother is a model Angus cow with a weaning ratio of 4 @ 103 and a yearling ratio of 3 @ 104.



**Lot 14 • Pyramid Tombstone 4041**

# 14 PYRAMID TOMBSTONE 4041

Reg. 17905683 Tattoo: 4041 Calved: 3/22/2014

SITZ UPWARD 307R#  
TOMBSTONE 050  
MYTTY COUNTESS 906

SITZ ALLIANCE 8646  
GLACIAL 8646 KATINKA 122X  
GLACIAL J239 KATINKA 40U

CONNEALY ONWARD#  
SITZ HENRIETTA PRIDE 81M  
SITZ ALLIANCE 6595#  
BALDRIDGE COUNTESS 357  
SITZ ALLIANCE 6595#  
SITZ BARBARAMERE NELL 2309#  
KCF BENNETT TOTAL#  
GLACIAL 1147 KATINKA 5N

CED	BW	WW	Milk	YW
3	0.4	57	27	95

\$W	\$F	\$G	\$B	Scrotal
61.73	49.4	20.16	118.39	36.4

BW	Adj. 205	205R	YR
90	671	106	99

Marb.	REA	Fat
0.41	0.36	0.056

4041 is a square-made, rugged performance bull that stems from the Katinka cow family. The Tombstone/8646 cross has been a slam dunk. The Tombstone daughters are leaving their mark in the herd, with a nursing ratio of 105.





Lot 15 • Pyramid Tombstone 4031



Lot 16 • Pyramid Tombstone 4100

## 15 PYRAMID TOMBSTONE 4031

Reg. 17905679 Tattoo: 4031 Calved: 3/20/2014

SITZ UPWARD 307R#  
TOMBSTONE 050  
MYTTY COUNTLESS 906

GLACIAL TOTAL 19T  
GLACIAL 19T MISSIE 60W  
GLACIAL 104 MISSIE 28S

CONNEALY ONWARD#  
SITZ HENRIETTA PRIDE 81M  
SITZ ALLIANCE 6595#  
BALDRIDGE COUNTLESS 357  
KCF BENNETT TOTAL#  
GLACIAL 1147 MELODY 2N  
CAR DUKE 104#  
GLACIAL MISSIE 616 6L

CED	BW	WW	Milk	YW
5	-0.1	59	23	105

\$W	\$F	\$G	\$B	Scrotal
57.28	66.45	27.02	131.62	35.1

BW	Adj. 205	205R	YR
85	618	98	102

Marb.	REA	Fat
0.52	0.38	0.035

4031 is a moderate frame Tombstone son with loads of eye appeal and muscle shape. He sports an impressive Marbling ratio of 119. Full brother sold in 2013 sale, to Doug Materi of Upton, WY.

## 17 PYRAMID TOMBSTONE 4070

Reg. 17906144 Tattoo: 4070 Calved: 4/2/2014

SITZ UPWARD 307R#  
TOMBSTONE 050  
MYTTY COUNTLESS 906

GLACIAL 7078 VRD 20N  
GLACIAL 20N BLACKBIRDEVE 29R  
GLACIAL BLACKBIRD EVE 33M

CONNEALY ONWARD#  
SITZ HENRIETTA PRIDE 81M  
SITZ ALLIANCE 6595#  
BALDRIDGE COUNTLESS 357  
VERMILION DATELINE 7078#  
KNM ENCHANTRESS 005  
BT TRAVELER 228K#  
RB BLACKBIRD EVE 813

CED	BW	WW	Milk	YW
0	1.3	58	25	103

\$W	\$F	\$G	\$B	Scrotal
55.67	63.43	30.15	130.08	35.6

BW	Adj. 205	205R	YR
93	642	102	102

Marb.	REA	Fat
0.48	0.55	0.02

4070 is stout-made, heavy muscled Tombstone out of the Blackbird Eve 29R cow. She is one of our donor cows that has a strong track record. She records a weaning ratio of 8 @ 103. 4070 has one of the Marbling ratios in this offering @ 131. Lot 17's maternal brothers sell as lot #6 and #41.

## 16 PYRAMID TOMBSTONE 4100

Reg. 17905674 Tattoo: 4100 Calved: 4/14/2014

TOMBSTONE 050  
GLACIAL TOMBSTONE 2064  
GLACIAL 0035 BLKBIRD EVE 5W

SITZ ALLIANCE 8646  
GLACIAL 8646 BLKBIRD EVE 34W  
GLACIAL BLACKBIRD EVE 23K

SITZ UPWARD 307R#  
MYTTY COUNTLESS 906  
SAV FINAL ANSWER 0035#  
GLACIAL 4R BLACKBIRD EVE 67T#  
SITZ ALLIANCE 6595#  
SITZ BARBARAMERE NELL 2309#  
HIGH VALLEY 4C6 AMBUSH#  
QAS BLACKBIRD EVE 23E ET 1X

CED	BW	WW	Milk	YW
5	0.3	50	29	85

\$W	\$F	\$G	\$B	Scrotal
57.23	36.29	22.22	89.34	37.0

BW	Adj. 205	205R	YR
93	650	103	101

Marb.	REA	Fat
0.33	0.32	0.032

4100 is the first son to sell out of the 2064 bull, which was the high selling bull in 2013 going to Brian George of Solen, ND. 4100's mother is a very small cow with an impressive weaning ratio of 4 @ 104. Her 0221 son last year was the second high selling bull sold to Barry Emmons of Olive, MT.





## Lot 19 • Pyramid Resource 4221

### 18 PYRAMID TOMBSTONE 4109

Reg. 17905678 Tattoo: 4109 Calved: 4/20/2014

TOMBSTONE 050  
PYRAMID TOMBSTONE 2147  
GLACIAL 8646 BLACKBIRD 41W#

21AR OUTFITTER 6032#  
GLACIAL 6032 MISSIE 131Y  
GLACIAL MISSIE 107U

SITZ UPWARD 307R#  
MYTTY COUNTESS 906  
SITZ ALLIANCE 8646  
GLACIAL BLACKBIRD 822H 27L  
OCC MAGNITUDE 805M#  
21AR SARA E802  
SAV FINAL ANSWER 0035#  
GLACIAL 20N MISSIE 56S

CED	BW	WW	Milk	YW
-3	1.5	51	24	91

BW	Adj. 205	205R	YR
94	617	98	101

\$W	\$F	\$G	\$B	Scrotal
45.69	46.36	21.86	95	37.2

Marb.	REA	Fat
0.34	0.35	0.039

4109 is a well-designed Tombstone grandson out of a bull that sold in our 2013 sale to Little Goose Ranch in Wyoming. Mother is a high producing daughter of Outfitter that stems back to the great 107U donor cow.



### 19 PYRAMID RESOURCE 4221

Reg. 18056205 Tattoo: 4221 Calved: 4/23/2014

RITO 707 OF IDEAL 3407 707S  
SAV RESOURCE 1441  
SAV BLACKCAP MAY 4136

SAV PYRAMID 8186  
MCLENNAN ESTRADA 0263  
MCLENNAN ESTRADA 802U

RR RITO 707#  
IDEAL 3407 OF 1418 076  
SAV 8180 TRAVELER 004#  
SAV MAY 2397#  
SAV NET WORTH 4200#  
SAV BLACKBIRD 5296  
21AR OUTFITTER 6032#  
21AR ESTRADA B36

CED	BW	WW	Milk	YW
2	1.9	58	27	110

BW	Adj. 205	205R	YR
84	702	103	110

\$W	\$F	\$G	\$B	Scrotal
48.89	76.64	7.49	134.83	38.41

Marb.	REA	Fat
0.07	0.67	0.048

Retaining 1/3 semen interest. 4221 is one of three sons of SAV Resource 1441 that we used in our program this past summer. His dam is a gorgeous daughter of SAV Pyramid 8186 that comes in every fall weighing 1235 pounds and has a stout, eye catching calf at side. Lot 19 was an aggressive breeder that covered big country and came in this fall in terrific flesh.

Find videos of all the sale bulls at

[www.pyramidbeef.net](http://www.pyramidbeef.net)

or

[www.TheLivestockLink.com](http://www.TheLivestockLink.com)





## Lot 20 • Pyramid Resource 4224

# 20

### PYRAMID RESOURCE 4224

Reg. 18056201 Tattoo: 4224 Calved: 4/24/2014

RITO 707 OF IDEAL 3407 7075  
SAV RESOURCE 1441  
SAV BLACKCAP MAY 4136

SAV PYRAMID 8186  
MCLENNAN LADY ERICA 101  
SUMMIT LADY ERICA 646

RR RITO 707#  
IDEAL 3407 OF 1418 076  
SAV 8180 TRAVELER 004#  
SAV MAY 2397#  
SAV NET WORTH 4200#  
SAV BLACKBIRD 5296  
LEACHMAN RIGHT TIME#  
FARVIEW LADY ERICA 756#

CED	BW	WW	Milk	YW
-2	4.1	70	32	120

\$W	\$F	\$G	\$B	Scrotal
60.14	86.93	9.99	147.93	39.28

BW	Adj. 205	205R	YR
98	837	123	116

Marb.	REA	Fat
0.12	0.69	0.043

**Retaining 1/3 semen interest.** We used this over powering son of SAV Resource 1441 in our own herd. He takes honors as the heaviest bull at weaning and yearling that we have ever raised. A six frame bull that is long, deep sided and loaded with muscle. His young dam is the most productive cow in our herd and is part of a dominating cow family for production and longevity. If you are attempting to power up your calf crop this bull will do it as well as anything in the breed.



# 21

### PYRAMID RESOURCE 4213

Reg. 18056211 Tattoo: 4213 Calved: 4/19/2014

RITO 707 OF IDEAL 3407 7075  
SAV RESOURCE 1441  
SAV BLACKCAP MAY 4136

SAV PYRAMID 8186  
MCLENNAN LADY ERICA 0226#  
SUMMIT LADY ERICA 643

RR RITO 707#  
IDEAL 3407 OF 1418 076  
SAV 8180 TRAVELER 004#  
SAV MAY 2397#  
SAV NET WORTH 4200#  
SAV BLACKBIRD 5296  
LEACHMAN RIGHT TIME#  
SUMMIT LADY ERICA 101

CED	BW	WW	Milk	YW
6	1.1	57	29	106

\$W	\$F	\$G	\$B	Scrotal
53.46	69.79	13.99	138.48	39.78

BW	Adj. 205	205R	YR
83	692	101	103

Marb.	REA	Fat
0.21	0.64	0.049

**Recommended for use on heifers.** A low birth, very sound, well designed son of Resource that comes from a predictable Pathfinder dam that produces low birth weight calves every year.



Lot 21 • Pyramid Resource 4213



## 22 PYRAMID RESOURCE 4229

Reg. 18056249 Tattoo: 4229 Calved: 4/26/2014

RITO 707 OF IDEAL 3407 7075  
SAV RESOURCE 1441  
SAV BLACKCAP MAY 4136

LEACHMAN RIGHT TIME#  
SUMMIT GINA 441  
SUMMIT GINA 277

RR RITO 707#  
IDEAL 3407 OF 1418 076  
SAV 8180 TRAVELER 004#  
SAV MAY 2397#  
N BAR EMULATION EXT#  
LEACHMAN ERICA 0025  
GDAR TRAVELER 561#  
MANDYS VALENTINE 603

CED	BW	WW	Milk	YW
3	2.6	54	24	104

\$W	\$F	\$G	\$B	Scrotal
43.93	68.21	8.36	129.19	38.92

BW	Adj. 205	205R	YR
87	668	98	102

Marb.	REA	Fat
0.07	0.63	0.042

A moderate, thick, well designed bull out of a great eleven year old never miss Right Time daughter. Sons from this great cow have sold to Linda Edwards, Zach Fecht and Doug Johnson.

## 23 PYRAMID RESOURCE 4234

Reg. 18056232 Tattoo: 4234 Calved: 4/28/2014

RITO 707 OF IDEAL 3407 7075  
SAV RESOURCE 1441  
SAV BLACKCAP MAY 4136

21AR RIGHT TIME C572  
21AR ESTHER 6391  
21AR ESTHER D96A

RR RITO 707#  
IDEAL 3407 OF 1418 076  
SAV 8180 TRAVELER 004#  
SAV MAY 2397#  
LEACHMAN RIGHT TIME#  
21 AR BLACKBIRD LADY 572#  
LEACHMAN RIGHT TIME#  
21AR ESTHER A796

CED	BW	WW	Milk	YW
2	2.4	49	27	88

\$W	\$F	\$G	\$B	Scrotal
46.52	42.35	5.87	107.38	37.38

BW	Adj. 205	205R	YR
90	707	104	95

Marb.	REA	Fat
0	0.37	0.016

Another big bodied son by Resource, Dam is super deep and easy fleshing with a flawless udder, Maternal brother sold last year to Muleshoe Ranch of Belle Fourche, SD.

## 24 PYRAMID RESOURCE 4239

Reg. 18056230 Tattoo: 4239 Calved: 5/1/2014

RITO 707 OF IDEAL 3407 7075  
SAV RESOURCE 1441  
SAV BLACKCAP MAY 4136

BASIN MAX 2P48  
SUMMIT GINA 652  
MANDYS VALENTINE 603

RR RITO 707#  
IDEAL 3407 OF 1418 076  
SAV 8180 TRAVELER 004#  
SAV MAY 2397#  
BASIN MAX 602C#  
BASIN PRIDE 923M#  
LEACHMAN RIGHT TIME#  
INNIWAY MS POWER FIX 435

CED	BW	WW	Milk	YW
4	1.6	64	24	108

\$W	\$F	\$G	\$B	Scrotal
62.64	68.44	14.95	131.95	39.48

BW	Adj. 205	205R	YR
88	775	113	106

Marb.	REA	Fat
0.21	0.48	0.031

Long, wide, deep and backed by a tank of a cow. His dam is admired by all who visit for her mass, volume and natural fleshing ability. The daughters out of this Resource son will be the keeping kind. A maternal brother sold to Kyle Lindberg of Alzada, MT.

## 25 PYRAMID RESOURCE 4228

Reg. 18056246 Tattoo: 4228 Calved: 4/25/2014

RITO 707 OF IDEAL 3407 7075  
SAV RESOURCE 1441  
SAV BLACKCAP MAY 4136

21AR RIGHT TIME C572  
21AR BLACKCAP 6428A  
SCHMAUS BLACKCAP COLOSSAL61C

RR RITO 707#  
IDEAL 3407 OF 1418 076  
SAV 8180 TRAVELER 004#  
SAV MAY 2397#  
LEACHMAN RIGHT TIME#  
21 AR BLACKBIRD LADY 572#  
COLOSSAL 9M9 35Z  
BLACKCAP TONTO 14W

CED	BW	WW	Milk	YW
0	3.3	48	26	101

\$W	\$F	\$G	\$B	Scrotal
33.68	66.94	6.09	118.89	36.29

BW	Adj. 205	205R	YR
95	685	100	108

Marb.	REA	Fat
0.02	0.6	0.042

Bull is athletic, thick from end to end and has tremendous breed character. His dam is long, big middled and productive. A maternal brother sold to L7 Ranch of Terry, MT.



Lot 26 • Pyramid Husker 4020

## 26 PYRAMID HUSKER 4020

Reg. 17905714 Tattoo: 4020 Calved: 3/15/2014

CONNEALY THUNDER#  
CONNEALY HUSKER 1833  
PEARLA OF CONANGA 8538

TOMBSTONE 050  
GLACIAL 050 MISSIE 33Z  
GLACIAL MISSIE 616 6L

BALDRIDGE KABOOM K243 KCF#  
PARKA OF CONANGA 241#  
CONNEALY ALL AROUND#  
PEARLESCENCE OF CONANGA 194#  
SITZ UPWARD 307R#  
MYTTY COUNTESS 906  
RITO 616 OF 4B20 6807#  
TLA MISSIE 909

CED	BW	WW	Milk	YW
4	1	64	28	109

\$W	\$F	\$G	\$B	Scrotal
63.26	70.33	34.78	127.25	40.0

BW	Adj. 205	205R	YR
93	732	116	109

Marb.	REA	Fat
0.56	0.6	0.015

4020 is a true performance bull. He exhibits the highest weaning and yearling ratios in his contemporary and a marbling ratio of 119. He is backed by our highest producing daughter of Tombstone with nursing ratio of 2 @ 114. This bull will add pounds.





**Lot 27 • Pyramid Husker 4071**

**27**

**PYRAMID HUSKER 4071**

Reg. 17905706

Tattoo: 4071

Calved: 4/2/2014

CONNEALY THUNDER#  
CONNEALY HUSKER 1833  
PEARLA OF CONANGA 8538

21AR OUTFITTER 6032#  
GLACIAL 6032 LOVELY 77Z  
GLACIAL LOVELY 16T#

BALDRIDGE KABOOM K243 KCF#  
PARKA OF CONANGA 241#  
CONNEALY ALL AROUND#  
PEARLESCENCE OF CONANGA 194#  
OCC MAGNITUDE 805M#  
21AR SARA E802  
KCF BENNETT TOTAL#  
GLACIAL LOVELY 53M

CED	BW	WW	Milk	YW
5	-1.2	57	25	97

BW	Adj. 205	205R	YR
75	695	110	107

\$W	\$F	\$G	\$B	Scrotal
58.56	53.05	37.12	106.4	34.6

Marb.	REA	Fat
0.55	0.57	0

Recommended for use on heifers. 4071 is a moderate frame and one of the most complete sons of Husker produced to date. In addition to calving ease, he has the performance and carcass data to match. 4071 combines a marbling ratio of 136 and a ribeye ratio of 112.



**Lot 28 • Pyramid Husker 4023**

**28**

**PYRAMID HUSKER 4023**

Reg. 17905716

Tattoo: 4023

Calved: 3/15/2014

CONNEALY THUNDER#  
CONNEALY HUSKER 1833  
PEARLA OF CONANGA 8538

TOMBSTONE 050  
GLACIAL 050 MISSIE 125Z  
GLACIAL MISSIE 107U

BALDRIDGE KABOOM K243 KCF#  
PARKA OF CONANGA 241#  
CONNEALY ALL AROUND#  
PEARLESCENCE OF CONANGA 194#  
SITZ UPWARD 307R#  
MYTTY COUNTLESS 906  
SAV FINAL ANSWER 0035#  
GLACIAL 20N MISSIE 56S

CED	BW	WW	Milk	YW
8	-0.9	64	28	111

BW	Adj. 205	205R	YR
80	706	112	108

\$W	\$F	\$G	\$B	Scrotal
65.32	74.12	33.1	121.82	38

Marb.	REA	Fat
0.53	0.54	0.019

Recommended for use on heifers. 4023 exhibits tremendous length and muscle shape, with a set of EPD's to match. He was used on a select group of heifers this summer. Another successful result of the Husker/Tombstone mating.





## 29 PYRAMID HUSKER 4028

Reg. 17905718 Tattoo: 4028 Calved: 3/19/2014

CONNEALY THUNDER#  
CONNEALY HUSKER 1833  
PEARLA OF CONANGA 8538

TOMBSTONE 050  
GLACIAL 050 BLKBIRD EVE 48Z  
GLACIAL 6P BLACKBIRD EVE 89S

BALDRIDGE KABOOM K243 KCF#  
PARKA OF CONANGA 241#  
CONNEALY ALL AROUND#  
PEARLESCENCE OF CONANGA 194#  
SITZ UPWARD 307R#  
MYTTY COUNTESS 906  
GLACIAL 616 RITO 6P  
GLACIAL BLACKBIRD EVE 33M

CED	BW	WW	Milk	YW
4	0.6	59	27	103

\$W	\$F	\$G	\$B	Scrotal
57.67	62.71	33.49	118.1	38.1

BW	Adj. 205	205R	YR
91	683	108	103

Marb.	REA	Fat
0.45	0.57	-0.01

4028 is a  $\frac{3}{4}$  brother to Lots #26 and #28. He fits the mold with his extra length and shape. Mother is a beautiful made Tombstone daughter.



Lot 29 • Pyramid Husker 4028

## 30 PYRAMID HUSKER 4016

Reg. 17905723 Tattoo: 4016 Calved: 3/14/2014

CONNEALY THUNDER#  
CONNEALY HUSKER 1833  
PEARLA OF CONANGA 8538

TOMBSTONE 050  
GLACIAL 050 BLKBIRD EVE 53Z  
GLACIAL 19T BLACKBIRDEVE 62W

BALDRIDGE KABOOM K243 KCF#  
PARKA OF CONANGA 241#  
CONNEALY ALL AROUND#  
PEARLESCENCE OF CONANGA 194#  
SITZ UPWARD 307R#  
MYTTY COUNTESS 906  
GLACIAL TOTAL 19T  
GLACIAL 6P BLACKBIRD EVE 89S

CED	BW	WW	Milk	YW
8	-1.3	59	26	101

\$W	\$F	\$G	\$B	Scrotal
60.97	58.99	34.56	116.38	36

BW	Adj. 205	205R	YR
80	666	105	100

Marb.	REA	Fat
0.52	0.56	0.006

Recommended for use on heifers. 4016 is another Husker/Tombstone mating. His mother is a small framed, neat uttered Tombstone daughter. We have several Husker females in production and they are doing a great job and are holding their flesh.

## 31 PYRAMID EXTRA 4426

Reg. 17956888 Tattoo: 4426 Calved: 5/17/2014

SINCLAIR EXTRA 4X13#  
MC CUMBER 4X13 EXTRA 9137  
MISS WIX 748 OF MC CUMBER#

CONNEALY THUNDER#  
YT MADAME PRIDE 0442#  
SAV MADAME PRIDE 2330

N BAR EMULATION EXT#  
N BAR LADY IDA SCC 2P37  
MC CUMBER TOTAL VALUE 449  
MISS WIX 5206 OF MC CUMBER  
BALDRIDGE KABOOM K243 KCF#  
PARKA OF CONANGA 241#  
SAV FINAL ANSWER 0035#  
SAV MADAME PRIDE 0075

CED	BW	WW	Milk	YW
4	2.1	53	28	99

\$W	\$F	\$G	\$B	Scrotal
46.48	59.6	24.03	112.62	39

BW	Adj. 205	205R	YR
84	756	113	

Marb.	REA	Fat
1+.43	1+.29	1+.034

Here is one of the most powerful Extra sons to ever sell. He was the highest weaning ratioing bull in his contemporary group at 113. His young Thunder mother has become one of our top producing cows. She exhibits great length, thickness, and a beautiful udder. She is very correct on her feet and legs and has a great disposition. Added performance and the Madame Pride cow family behind him, this bull has the look and the credentials to be an outstanding herd bull.

## 32 PYRAMID EXTRA 4402

Reg. 17956887 Tattoo: 4402 Calved: 4/28/2014

SINCLAIR EXTRA 4X13#  
MC CUMBER 4X13 EXTRA 9137  
MISS WIX 748 OF MC CUMBER#

CONNEALY THUNDER#  
YT MADAME PRIDE 0441  
SAV MADAME PRIDE 2330

N BAR EMULATION EXT#  
N BAR LADY IDA SCC 2P37  
MC CUMBER TOTAL VALUE 449  
MISS WIX 5206 OF MC CUMBER  
BALDRIDGE KABOOM K243 KCF#  
PARKA OF CONANGA 241#  
SAV FINAL ANSWER 0035#  
SAV MADAME PRIDE 0075

CED	BW	WW	Milk	YW
7	0.7	48	27	94

\$W	\$F	\$G	\$B	Scrotal
43.16	53.95	24.45	114.48	37

BW	Adj. 205	205R	YR
74	689	103	

Marb.	REA	Fat
1+.45	1+.31	1+.037

Here is a  $\frac{3}{4}$  brother to 4426. Their mothers are full sisters out of the breed legend Thunder bull. Here is the calving ease version of the two. 4402 will offer calving ease but without sacrificing overall performance. He is out of a great Thunder daughter who just weaned our heaviest calf of the 2015 calf crop.

## 33 PYRAMID EXTRA 4418

Reg. 17958067 Tattoo: 4418 Calved: 5/9/2014

SINCLAIR EXTRA 4X13#  
MC CUMBER 4X13 EXTRA 9137  
MISS WIX 748 OF MC CUMBER#

ER TRAVELER K010#  
ERICA 5247 BCBR#  
ERICA 1362 BCBR

N BAR EMULATION EXT#  
N BAR LADY IDA SCC 2P37  
MC CUMBER TOTAL VALUE 449  
MISS WIX 5206 OF MC CUMBER  
SITZ TRAVELER 6802#  
ER HARMONY H142  
N BAR EMULATION EXT#  
ERICA 6147 BCBR

CED	BW	WW	Milk	YW
4	2.2	43	26	81

\$W	\$F	\$G	\$B	Scrotal
36.39	34.01	15.24	86.87	39.5

BW	Adj. 205	205R	YR
85	720	108	

Marb.	REA	Fat
1+.31	1-.06	1+.033

Here is another top notch performance extra son. He is out of a pathfinder cow that is 10 years old and is still working hard with one of our heaviest bull calves of 2015. He has good length, depth of body and travels well.





**Lot 34 • Pyramid  
Bismarck 4235**



**Lot 35 • Pyramid  
Bismarck 4202**

## 34 PYRAMID BISMARCK 4235

Reg. 18054987 Tattoo: 4235 Calved: 4/28/2014

SAV BISMARCK 5682#  
CEDARFLO BISMARCK 631  
CEDARFLO 420 BLACK BESS 1155#

SAV PYRAMID 8186  
MCLENNAN LASS 107  
SUMMIT LASS 138#

GAR GRID MAKER#  
SAV ABIGALE 0451  
CEDARFLO RIGHT TIME 420  
CEDARFLO BLACK BESS 435  
SAV NET WORTH 4200#  
SAV BLACKBIRD 5296  
GDAR TRAVELER 561#  
SUMMIT LASS 9012

CED	BW	WW	Milk	YW
6	1.5	50	22	81

BW	Adj. 205	205R	YR
85	684	100	98

\$W	\$F	\$G	\$B	Scrotal
47.3	29.23	30.68	73.19	37.91

Marb.	REA	Fat
0.33	0.51	-0.012

**Recommended for use on heifers.** A tremendous heifer bull prospect out of Cedarflo Bismarck 631. His SAV Pyramid 8186 dam is moderate framed, deep sided and great uddered. Lot 34 is long, strong topped and heavy muscled. We calved our first Bismarck 631 daughters this spring and they have great udder quality while being moderate cows with tons of eye appeal.

## 35 PYRAMID BISMARCK 4202

Reg. 18054976 Tattoo: 4202 Calved: 4/2/2014

SAV BISMARCK 5682#  
CEDARFLO BISMARCK 631  
CEDARFLO 420 BLACK BESS 1155#

SAV PYRAMID 8186  
MCLENNAN LADY BLUE 0213#  
FARVIEW LADY BLUE 4224

GAR GRID MAKER#  
SAV ABIGALE 0451  
CEDARFLO RIGHT TIME 420  
CEDARFLO BLACK BESS 435  
SAV NET WORTH 4200#  
SAV BLACKBIRD 5296  
BON VIEW NEW DESIGN 878#  
FARVIEW LADY BLUE 029

CED	BW	WW	Milk	YW
5	1.2	58	24	91

BW	Adj. 205	205R	YR
88	805	118	109

\$W	\$F	\$G	\$B	Scrotal
58.59	41.47	25.73	88.62	40.24

Marb.	REA	Fat
0.32	0.28	-0.005

**Retaining 1/3 semen interest.** A power house since his first week of age. Lot 35 exceeded 800 lbs. at weaning and has developed into very impressive bull. Long sided, deep from front to rear and loaded with red meat. His dam is a fantastic, young SAV Pyramid 8186 daughter that has qualified for Pathfinder status.



36

## PYRAMID BISMARCK 4245

Reg. 18054974

Tattoo: 4245

Calved: 5/8/2014

SAV BISMARCK 5682#  
CEDARFLO BISMARCK 631  
CEDARFLO 420 BLACK BESS 1155#

SAV PYRAMID 8186  
MCLENNAN EMPRESS 0204  
GLORY B EMPRESS 001Q

GAR GRID MAKER#  
SAV ABIGALE 0451  
CEDARFLO RIGHT TIME 420  
CEDARFLO BLACK BESS 435  
SAV NET WORTH 4200#  
SAV BLACKBIRD 5296  
N BAR EMULATION EXT#  
GLORY B EMPRESS 818M

CED	BW	WW	Milk	YW
6	0.7	52	21	84

BW	Adj. 205	205R	YR
84	689	101	100

\$W	\$F	\$G	\$B	Scrotal
49.63	33.15	24.23	79.02	36.89

Marb.	REA	Fat
0.24	0.44	-0.001

Recommended for use on heifers. An attractive, well constructed young bull that has calving ease and maternal on both sides of his pedigree.

37

## PYRAMID BISMARCK 4218

Reg. 18054990

Tattoo: 4218

Calved: 4/21/2014

SAV BISMARCK 5682#  
CEDARFLO BISMARCK 631  
CEDARFLO 420 BLACK BESS 1155#

21AR OUTFITTER 6032#  
MCLENNAN BARBARA 118  
21AR BARBARA 6279

GAR GRID MAKER#  
SAV ABIGALE 0451  
CEDARFLO RIGHT TIME 420  
CEDARFLO BLACK BESS 435  
OCC MAGNITUDE 805M#  
21AR SARA E802  
BOYD NEW DAY 8005#  
GLORY B BARBARA 076Q

CED	BW	WW	Milk	YW
0	1.8	49	20	77

BW	Adj. 205	205R	YR
87	666	98	94

\$W	\$F	\$G	\$B	Scrotal
44.46	22.94	21.95	51.98	37.86

Marb.	REA	Fat
0.2	0.26	-0.001

A moderate, long sided, strong topped son of Cedarflo Bismarck 631. His dam is a beautiful 21AR Outfitter 6032 daughter.



Lot 39 • Pyramid Resource 4046

38

## PYRAMID BISMARCK 4220

Reg. 18054989

Tattoo: 4220

Calved: 4/22/2014

SAV BISMARCK 5682#  
CEDARFLO BISMARCK 631  
CEDARFLO 420 BLACK BESS 1155#

SAV PYRAMID 8186  
MCLENNAN LASS 110  
SUMMIT LASS 570

GAR GRID MAKER#  
SAV ABIGALE 0451  
CEDARFLO RIGHT TIME 420  
CEDARFLO BLACK BESS 435  
SAV NET WORTH 4200#  
SAV BLACKBIRD 5296  
RITO 616 OF 4B20 6807#  
VERMILION LASS 6565

CED	BW	WW	Milk	YW
7	0.6	48	20	75

BW	Adj. 205	205R	YR
85	655	96	89

\$W	\$F	\$G	\$B	Scrotal
46.49	20.16	31.86	71.12	39.72

Marb.	REA	Fat
0.34	0.57	-0.011

Recommended for use on heifers. Lot 38 is attractive and very well made. The Lass cow family from which he stems is our best for longevity combined with a high level of production.

39

## PYRAMID RESOURCE 4046

Reg. 17907357

Tattoo: 4046

Calved: 3/23/2014

RITO 707 OF IDEAL 3407 7075  
SAV RESOURCE 1441  
SAV BLACKCAP MAY 4136

SITZ ALLIANCE 8646  
GLACIAL 8646 MISSE 150X#  
GLACIAL 616 MISSIE 27N

RR RITO 707#  
IDEAL 3407 OF 1418 076  
SAV 8180 TRAVELER 004#  
SAV MAY 2397#  
SITZ ALLIANCE 6595#  
SITZ BARBARAMERE NELL 2309#  
RITO 616 OF 4B20 6807#  
VALLEY MISSIE 542

CED	BW	WW	Milk	YW
5	0.9	59	30	104

BW	Adj. 205	205R	YR
89	740	117	110

\$W	\$F	\$G	\$B	Scrotal
63.73	64.58	14.49	125.04	36.4

Marb.	REA	Fat
0.16	0.62	0.036

4046 was the heaviest weaning bull of his contemporary. This bull will produce calves with the extra shape and power to push the scales down in the fall, and is backed by the maternal strength of Sitz Alliance 8646.



40

**PYRAMID RESOURCE 4055**

Reg. 17907376 Tattoo: 4055 Calved: 3/27/2014

RITO 707 OF IDEAL 3407 7075  
 SAV RESOURCE 1441  
 SAV BLACKCAP MAY 4136

BT TRAVELER 228K#  
 GLACIAL 228K MISSIE 40P  
 GLACIAL MISSIE 043 3K

RR RITO 707#  
 IDEAL 3407 OF 1418 076  
 SAV 8180 TRAVELER 004#  
 SAV MAY 2397#  
 SITZ TRAVELER 9929#  
 BT EVERELDA ENTENSE 57D  
 SITZ TRAVELER 043#  
 VALLEY MISSIE 542

CED	BW	WW	Milk	YW
-1	3.2	44	30	84

\$W	\$F	\$G	\$B	Scrotal
40.31	38.65	7.34	100.01	37.5

BW	Adj. 205	205R	YR
97	635	100	103

Marb.	REA	Fat
0.01	0.59	0.039

4055 is another thick made, heavy muscled son of Resource. Maternal brothers have sold in past sales to Marty Edwards of Gillette, WY and L7 Ranch of Terry, MT.



Lot 40 • Pyramid Resource 4055

41

**PYRAMID RESOURCE 4113**

Reg. 18229392 Tattoo: 4113 Calved: 3/24/2014

RITO 707 OF IDEAL 3407 7075  
 SAV RESOURCE 1441  
 SAV BLACKCAP MAY 4136

GLACIAL 7078 VRD 20N  
 GLACIAL 20N BLACKBIRDEVE 29R  
 GLACIAL BLACKBIRD EVE 33M

RR RITO 707#  
 IDEAL 3407 OF 1418 076  
 SAV 8180 TRAVELER 004#  
 SAV MAY 2397#  
 VERMILION DATELINE 7078#  
 KNM ENCHANTRESS 005  
 BT TRAVELER 228K#  
 RB BLACKBIRD EVE 813

CED	BW	WW	Milk	YW
I+2	I+2.6	I+56	I+27	I+104

\$W	\$F	\$G	\$B	Scrotal
59.28	66.75	16.86	125.61	36.8

BW	Adj. 205	205R	YR
83	625	100	100

Marb.	REA	Fat
I+.16	I+.78	I+.035

4113 is a full brother to the Lot #6 bull. This gentle Resource son fits the mold.



Lot 42 • Pyramid Conservative 4116

42

**PYRAMID CONSERVATIVE 4116**

Reg. 17905726 Tattoo: 4116 Calved: 4/24/2014

SAV FINAL ANSWER 0035#  
 PYRAMID CONSERVATIVE 9012  
 GLACIAL 6P MISSIE 7T

GAR GAME ON  
 GLACIAL BLACKBIRD EVE 112Y  
 GLACIAL 8646 BLKBIRD EVE 25W

SITZ TRAVELER 8180#  
 SAV EMULOUS 8145  
 GLACIAL 616 RITO 6P  
 GLACIAL MISSIE 20N 70R  
 GAR RETAIL PRODUCT#  
 GAR 1407 NEW DESIGN 1683  
 SITZ ALLIANCE 8646  
 GLACIAL BLACKBIRD EVE 20R

CED	BW	WW	Milk	YW
5	0.5	49	26	91

\$W	\$F	\$G	\$B	Scrotal
45.96	47.76	35.56	89.74	35.8

BW	Adj. 205	205R	YR
89	638	101	101

Marb.	REA	Fat
0.52	0.63	0.023

4116 is the only Conservative son in the sale. The Conservative daughters are doing a great job. They are moderate and highly efficient. His mother is a high producing Game On daughter with a nursing ratio of 3 @ 105.



Pyramid Conservative 9012 • Sire of Lot 42



## 43 PYRAMID EXTRA 4433

Reg. 17956886 Tattoo: 4433 Calved: 6/5/2014

SINCLAIR EXTRA 4X13#  
MC CUMBER 4X13 EXTRA 9137  
MISS WIX 748 OF MC CUMBER#

YT SHORT PINES RENOVATOR 830  
YT HENRIETTA PRIDE 0417  
SITZ HENRIETTA PRIDE 552#

N BAR EMULATION EXT#  
N BAR LADY IDA SCC 2P37  
MC CUMBER TOTAL VALUE 449  
MISS WIX 5206 OF MC CUMBER  
SAV 004 DENSITY 4336#  
SAV MADAME PRIDE 2330  
OCC GREAT PLAINS 943G#  
SITZ HENRIETTA PRIDE 3980

CED	BW	WW	Milk	YW
4	2.3	52	30	94

\$W	\$F	\$G	\$B	Scrotal
48.54	51.11	21.73	111.5	39.5

BW	Adj. 205	205R	YR
80	750	112	

Marb.	REA	Fat
1+.38	1+.35	1+.041

An exciting Extra son who is long and thick with a good look. His Mother raised last year's high selling bull. She did it again and now records two calves at 114 weaning ratio for the honors of the top cow in our program. She is on her way to becoming a pathfinder with a very fancy heifer calf this year. A very well balance bull with no faults in any area. He is one of the youngest bulls in the sale and competed at the top. Maternal brother sold to Diamond J Angus of Mandan, ND.

## 45 PYRAMID EXTRA 4406

Reg. 17956884 Tattoo: 4406 Calved: 5/1/2014

SINCLAIR EXTRA 4X13#  
MC CUMBER 4X13 EXTRA 9137  
MISS WIX 748 OF MC CUMBER#

TC GRIDIRON 258#  
YT PRIMROSE 0401  
SAV PRIMROSE 1166#

N BAR EMULATION EXT#  
N BAR LADY IDA SCC 2P37  
MC CUMBER TOTAL VALUE 449  
MISS WIX 5206 OF MC CUMBER  
GAR GRID MAKER#  
TC BLACKBIRD 7049#  
ALBERDA TRAVELER 416#  
SAV PRIMROSE 5285#

CED	BW	WW	Milk	YW
6	1.5	48	25	88

\$W	\$F	\$G	\$B	Scrotal
43.03	43.04	28.02	98.36	39

BW	Adj. 205	205R	YR
72	729	109	

Marb.	REA	Fat
1+.41	1+.39	1+.017

**Recommended for use on heifers.** At branding time he was a stand out. He exhibited the most natural muscle of any calf we have raised. He continued to impress us with his weaning performance as the heaviest actual weight the day

## 44 PYRAMID EXTRA 4421

Reg. 17958063 Tattoo: 4421 Calved: 5/13/2014

SINCLAIR EXTRA 4X13#  
MC CUMBER 4X13 EXTRA 9137  
MISS WIX 748 OF MC CUMBER#

SITZ RAINMAKER 6536  
S ELCONA 1116  
S ELCONA 847

N BAR EMULATION EXT#  
N BAR LADY IDA SCC 2P37  
MC CUMBER TOTAL VALUE 449  
MISS WIX 5206 OF MC CUMBER  
SITZ RAINMAKER 6169#  
SITZ ELSIEMERE 331#  
BALDRIDGE ROCK R913#  
LEGENDARY ELCONA 552

CED	BW	WW	Milk	YW
6	1.3	41	27	85

\$W	\$F	\$G	\$B	Scrotal
34.6	42.53	11.03	86.05	37

BW	Adj. 205	205R	YR
75	692	104	

Marb.	REA	Fat
1+.23	1+.21	1+.065



Sinclair Extra 4X13

udder. 4421 had a full brother who sold to Marty Edwards of Gillette, WY Last year.

**Recommended for use on heifers.** A Cowboy's kind of bull here. Moderate and thick with good length. A bull with eye appeal and great balance. He has a gentle disposition. His young mother is an attractive will balanced cow with a picture perfect

we weighed, yet still moderate. He started looking like a true herd bull with an impressive crest and amazing Angus breed character. He is sound footed and travels exceptionally well. He is backed by the most fertile and consistent producing cow family we have, the Primrose cow family. His mother was our greatest Primrose female we have ever produced. With a feminine front end, a strong top line and above average muscling she was impressive. Finishing her strengths with a level udder, ideal teat size and good attachment, this finished out our search for the mother of our next herd sire. We used this bull this summer in our program. He continued to impress us on pasture herding his cows and maintaining his condition while getting most all of his cows bred up at the front of the season. He will be the Extra son that we continue on with. Selling ½ possession and ½ semen interest. A full brother sold to Marty Edwards of Gillette, WY.





46

## PYRAMID TOMBSTONE 4030

Reg. 17905684

Tattoo: 4030

Calved: 3/20/2014

SITZ UPWARD 307R#  
TOMBSTONE 050  
MYTTY COUNTESS 906

GLACIAL TOTAL 19T  
GLACIAL 19T BLKBIRD EVE 107X  
GLACIAL 4R BLACKBIRD EVE 67T#

CONNEALY ONWARD#  
SITZ HENRIETTA PRIDE 81M  
SITZ ALLIANCE 6595#  
BALDRIDGE COUNTESS 357  
KCF BENNETT TOTAL#  
GLACIAL 1147 MELODY 2N  
GLACIAL 7078 VRD 4R  
GLACIAL BLACKBIRD EVE 33M

CED	BW	WW	Milk	YW
5	-0.5	60	28	102

BW	Adj. 205	205R	YR
85	687	109	103

\$W	\$F	\$G	\$B	Scrotal
66.28	60.13	20.31	126.08	35.8

Marb.	REA	Fat
0.35	0.39	0.036

4030 is a well-balanced Tombstone son that exhibits the length and depth needed to add those extra pounds in the fall. His mother comes from the highly productive Black Bird Eve cow family.

48

## PYRAMID TOMBSTONE 4040

Reg. 17905669

Tattoo: 4040

Calved: 3/22/2014

SITZ UPWARD 307R#  
TOMBSTONE 050  
MYTTY COUNTESS 906

SITZ ALLIANCE 8646  
GLACIAL 8646 ROSEBUD 40W  
GLACIAL ROSEBUD 18M

CONNEALY ONWARD#  
SITZ HENRIETTA PRIDE 81M  
SITZ ALLIANCE 6595#  
BALDRIDGE COUNTESS 357  
SITZ ALLIANCE 6595#  
SITZ BARBARAMERE NELL 2309#  
BT TRAVELER 228K#  
BAR J ROSEBUD 17

CED	BW	WW	Milk	YW
5	-1.2	54	27	90

BW	Adj. 205	205R	YR
80	657	104	96

\$W	\$F	\$G	\$B	Scrotal
61.92	42.46	18.03	102.14	38.2

Marb.	REA	Fat
0.34	0.16	0.039

Recommended for use on heifers. 4040 is another solid Tombstone/8646 mating. His mother is a productive, smaller frame cow.



47

## PYRAMID TOMBSTONE 4034

Reg. 17905660

Tattoo: 4034

Calved: 3/21/2014

SITZ UPWARD 307R#  
TOMBSTONE 050  
MYTTY COUNTESS 906

BT TRAVELER 228K#  
GLACIAL SHOSHONE LADY 29P#  
TLA SHOSHONE LADY 935#

CONNEALY ONWARD#  
SITZ HENRIETTA PRIDE 81M  
SITZ ALLIANCE 6595#  
BALDRIDGE COUNTESS 357  
SITZ TRAVELER 9929#  
BT EVERELDA ENTENSE 57D  
RCC A032 RITO 8704 5036  
HEARTLAND SHOSHONE LADY 533

CED	BW	WW	Milk	YW
4	-0.8	54	27	100

BW	Adj. 205	205R	YR
81	648	103	103

\$W	\$F	\$G	\$B	Scrotal
56.03	60.73	18.54	116.01	35.8

Marb.	REA	Fat
0.32	0.15	0.019

4034 is a stout-made, big-middled Tombstone son, out of a 12-year-old Pathfinder dam.

49

## PYRAMID TOMBSTONE 4044

Reg. 17905647

Tattoo: 4044

Calved: 3/22/2014

SITZ UPWARD 307R#  
TOMBSTONE 050  
MYTTY COUNTESS 906

SAV FINAL ANSWER 0035#  
GLACIAL MISSIE 104U  
GLACIAL 6P MISSIE 10S

CONNEALY ONWARD#  
SITZ HENRIETTA PRIDE 81M  
SITZ ALLIANCE 6595#  
BALDRIDGE COUNTESS 357  
SITZ TRAVELER 8180#  
SAV EMULOUS 8145  
GLACIAL 616 RITO 6P  
GLACIAL 228K MISSIE 40P

CED	BW	WW	Milk	YW
5	-0.7	59	25	103

BW	Adj. 205	205R	YR
85	640	101	98

\$W	\$F	\$G	\$B	Scrotal
62	62.71	25.56	116.93	36.2

Marb.	REA	Fat
0.41	0.58	0.046

4044 follows the type and kind Tombstones are known for. Full Brothers have sold told Joe Ondriezek of Upton, WY and Daryl and Geraldine Storm of Meadow, SD.

50

## PYRAMID TOMBSTONE 4056

Reg. 17905643

Tattoo: 4056

Calved: 3/27/2014

SITZ UPWARD 307R#  
TOMBSTONE 050  
MYTTY COUNTESS 906

PINE CREEK RIGHT TIME 1147#  
GLACIAL BLACKBIRD 7M#  
GLACIAL BLACKBIRD 887

CONNEALY ONWARD#  
SITZ HENRIETTA PRIDE 81M  
SITZ ALLIANCE 6595#  
BALDRIDGE COUNTESS 357  
LEACHMAN RIGHT TIME#  
SITZ EVERELDA ENTENSE 1137  
RCC 9929 887  
VALLEY BLACKBIRD 206

CED	BW	WW	Milk	YW
-3	2.3	58	26	108

BW	Adj. 205	205R	YR
99	634	100	106

\$W	\$F	\$G	\$B	Scrotal
51.06	72.84	13.11	128.74	36.8

Marb.	REA	Fat
0.24	0.45	0.053

4056 is out of our powerful Pine Creek Right Time donor 7M. This cow records a nursing ratio of 104 on 11 calves. This speaks longevity. Two maternal brothers sold in last year's sale to Dahl Ranch of Camp Crook, SD and Muleshoe Ranch of Belle Fourche, SD.





**Lot 52 • Pyramid Bismarck 4243**

**51 PYRAMID TOMBSTONE 4075**  
 Reg. 17905641 Tattoo: 4075 Calved: 4/4/2014

TOMBSTONE 050  
 GLACIAL TOMBSTONE 2064  
 GLACIAL 0035 BLKBIRD EVE 5W

RITO 616 OF 4B20 6807#  
 GLACIAL MISSIE 616 6L  
 TLA MISSIE 909

SITZ UPWARD 307R#  
 MYTTY COUNTESS 906  
 SAV FINAL ANSWER 0035#  
 GLACIAL 4R BLACKBIRD EVE 67T#  
 DHD TRAVELER 6807#  
 RITA 4B20 OF OFB1 BANDO  
 MC BEE WMR SUPER X 745#  
 VALLEY MISSIE 542

CED	BW	WW	Milk	YW
10	-1.4	55	26	97

\$W	\$F	\$G	\$B	Scrotal
59.14	49.01	26.43	104.43	37.6

BW	Adj. 205	205R	YR
83	665	105	105

Marb.	REA	Fat
0.49	0.39	0.047

Recommended for use on heifers. 4075 is out of the great 6L donor cow that records a nursing ratio of 105 on 10 calves. Maternal brother sold in last year's sale to Finney Ranch of Ainsworth, NE.

**52 PYRAMID BISMARCK 4243**  
 Reg. 18054992 Tattoo: 4243 Calved: 5/7/2014

SAV BISMARCK 5682#  
 CEDARFLO BISMARCK 631  
 CEDARFLO 420 BLACK BESS 1155#

SAV PYRAMID 8186  
 MCLENNAN QUEEN MOTHER 119  
 SUMMIT QUEEN MOTHER 79

GAR GRID MAKER#  
 SAV ABIGALE 0451  
 CEDARFLO RIGHT TIME 420  
 CEDARFLO BLACK BESS 435  
 SAV NET WORTH 4200#  
 SAV BLACKBIRD 5296  
 BASIN MAX 2P48  
 SUMMIT QUEEN MOTHER 379

CED	BW	WW	Milk	YW
8	0.3	54	22	90

\$W	\$F	\$G	\$B	Scrotal
51.63	42.46	24.39	82.61	41.7

BW	Adj. 205	205R	YR
85	736	108	104

Marb.	REA	Fat
0.29	0.32	0.004

Recommended for use on heifers. This bull is noticed by everyone who enters the pen. Lot 52 is flawless in his design and as fluid and sound as you can make one. He couples great structure with tremendous volume and muscle mass. His young dam is emerging as one of our elite cows.





### Lot 53 • Pyramid Bismarck 4214

# 53

## PYRAMID BISMARCK 4214

Reg. 18054981 Tattoo: 4214 Calved: 4/19/2014

SAV BISMARCK 5682#  
CEDARFLO BISMARCK 631  
CEDARFLO 420 BLACK BESS 1155#

LT BANDWAGON 3105#  
MCLENNAN BARBARAMERE 0256  
BERBOS BARBARAMERE 5103

GAR GRID MAKER#  
SAV ABIGALE 0451  
CEDARFLO RIGHT TIME 420  
CEDARFLO BLACK BESS 435  
LEACHMAN RIGHT TIME#  
LT MS VIKINGS VALUE 0256  
SAV 8180 TRAVELER 004#  
BERBOS BARBARAMERE 3222

CED	BW	WW	Milk	YW
8	0.3	56	26	86

\$W	\$F	\$G	\$B	Scrotal
61.34	33.94	28.72	78.86	45.78

BW	Adj. 205	205R	YR
83	756	111	103

Marb.	REA	Fat
0.39	0.36	0.012

Recommended for use on heifers. Few heifer bulls will match the body mass and masculinity of lot 36. This bull is tremendously deep and wide and stems from a line of cows that always maintain their flesh while being very productive. In addition, the udder quality on both sides of this bulls pedigree are second to none.



# 54

## PYRAMID BIMARCK 4248

Reg. 18054977 Tattoo: 4248 Calved: 5/13/2014

SAV BISMARCK 5682#  
CEDARFLO BISMARCK 631  
CEDARFLO 420 BLACK BESS 1155#

SAV PYRAMID 8186  
MCLENNAN LASS 0217  
SUMMIT LASS 570

GAR GRID MAKER#  
SAV ABIGALE 0451  
CEDARFLO RIGHT TIME 420  
CEDARFLO BLACK BESS 435  
SAV NET WORTH 4200#  
SAV BLACKBIRD 5296  
RITO 616 OF 4B20 6807#  
VERMILION LASS 6565

CED	BW	WW	Milk	YW
8	0.3	48	20	79

\$W	\$F	\$G	\$B	Scrotal
44.87	27.09	32.95	77.58	39.55

BW	Adj. 205	205R	YR
83	642	94	94

Marb.	REA	Fat
0.41	0.58	0.007

Recommended for use on heifers. This bull is deep, moderate and comes from one of the really strong young cows in our herd. Maternal Grand Dam was in our herd until 16 years of age and had a lifetime weaning ratio of 14@105. She had our 2nd heaviest calf her 15th year of life.

# 55

## PYRAMID BISMARCK 4260

Reg. 18054979 Tattoo: 4260 Calved: 5/30/2014

SAV BISMARCK 5682#  
CEDARFLO BISMARCK 631  
CEDARFLO 420 BLACK BESS 1155#

SAV PYRAMID 8186  
MCLENNAN GINA 0233  
SUMMIT GINA 76

GAR GRID MAKER#  
SAV ABIGALE 0451  
CEDARFLO RIGHT TIME 420  
CEDARFLO BLACK BESS 435  
SAV NET WORTH 4200#  
SAV BLACKBIRD 5296  
SITZ ALLIANCE 6595#  
SUMMIT GINA 441

CED	BW	WW	Milk	YW
5	1.7	47	25	80

\$W	\$F	\$G	\$B	Scrotal
44.87	29.52	28.84	85.61	33.6

BW	Adj. 205	205R	YR
86	659	96	93

Marb.	REA	Fat
0.38	0.4	0.007

One of the very youngest to sell. Dam is the most powerful SAV Pyramid 8186 daughter that we own. She will center our ET program next summer.



56

## PYRAMID RITO 4408

Reg. 17958476

Tattoo: 4408

Calved: 5/3/2014

GAR PREDESTINED#  
RITO 9M25 OF RITA 5F56 PRED  
RITA 5F56 OF 1198 FD

MC CUMBER 4X13 EXTRA 9137  
YT BARBARAMERE JET 2406  
SITZ BARBARAMERE JET 2622

B/R NEW DESIGN 036#  
GAR EXT 4206#  
CA FUTURE DIRECTION 5321#  
RITA 1198 OF 2536 RITO 616  
SINCLAIR EXTRA 4X13#  
MISS WIX 748 OF MC CUMBER#  
SITZ ALLIANCE 6595#  
SITZ BARBARAMERE JET 1507#

CED	BW	WW	Milk	YW
0	4.2	49	20	89

BW	Adj. 205	205R	YR
81	640	96	

\$W	\$F	\$G	\$B	Scrotal
28.85	44.15			34.5

Marb.	REA	Fat

An outcross Rito bred bull. A moderate, thick impressive bull with a great disposition. He is out of one of our greatest Extra daughters. She is an ideal young Angus cow with an excellent udder. His grandmother produced our high selling Extra son last year that sold to Jay Gullickson of Cannonball, ND. She is still producing in the herd at 13 years of age. His mother is a full sister to the mother of the lead off bull. He is one of the top carcass bulls to sell in the entire sale.

58

## PYRAMID EXTRA 4416

Reg. 17956885

Tattoo: 4416

Calved: 5/7/2014

SINCLAIR EXTRA 4X13#  
MC CUMBER 4X13 EXTRA 9137  
MISS WIX 748 OF MC CUMBER#

YT SHORT PINES RENOVATOR 830  
YT BLACKCAP 0413  
SAV BLACKCAP 3273

N BAR EMULATION EXT#  
N BAR LADY IDA SCC 2P37  
MC CUMBER TOTAL VALUE 449  
MISS WIX 5206 OF MC CUMBER  
SAV 004 DENSITY 4336#  
SAV MADAME PRIDE 2330  
BOYD NEW DAY 8005#  
SAV BLACKCAP 6154#

CED	BW	WW	Milk	YW
8	1.1	48	27	94

BW	Adj. 205	205R	YR
71	654	98	

\$W	\$F	\$G	\$B	Scrotal
42.45	53.95	20.58	108.47	33.5

Marb.	REA	Fat
1+.39	1+.25	1+.043

Recommended for use on heifers. A thick deep Extra son who will excel in any environment. He is out of a productive Renovator daughter with an excellent disposition and great udder.

60

## PYRAMID TOMBSTONE 4042

Reg. 17905658

Tattoo: 4042

Calved: 3/22/2014

SITZ UPWARD 307R#  
TOMBSTONE 050  
MYTTY COUNTESS 906

SITZ ALLIANCE 8646  
GLACIAL BLACKBIRD EVE 146X  
GLACIAL 6P BLACKBIRD EVE 89S

CONNEALY ONWARD#  
SITZ HENRIETTA PRIDE 81M  
SITZ ALLIANCE 6595#  
BALDRIDGE COUNTESS 357  
SITZ ALLIANCE 6595#  
SITZ BARBARAMERE NELL 2309#  
GLACIAL 616 RITO 6P  
GLACIAL BLACKBIRD EVE 33M

CED	BW	WW	Milk	YW
3	-0.1	53	27	94

BW	Adj. 205	205R	YR
87	632	100	100

\$W	\$F	\$G	\$B	Scrotal
57.27	50.4	24.76	118.82	35.4

Marb.	REA	Fat
0.43	0.34	0.029

4042 is a larger framed Tombstone that exhibits extra length. His 8646 mother has an in-herd nursing ratio of 103 on 4 calves.

57

## PYRAMID EXTRA 4420

Reg. 17956895

Tattoo: 4420

Calved: 5/12/2014

SINCLAIR EXTRA 4X13#  
MC CUMBER 4X13 EXTRA 9137  
MISS WIX 748 OF MC CUMBER#

CONNEALY THUNDER#  
YT EMMA E 9403  
SITZ EMMA E 412

N BAR EMULATION EXT#  
N BAR LADY IDA SCC 2P37  
MC CUMBER TOTAL VALUE 449  
MISS WIX 5206 OF MC CUMBER  
BALDRIDGE KABOOM K243 KCF#  
PARKA OF CONANGA 241#  
OCC GREAT PLAINS 943G#  
SITZ EMMA E 3300#

CED	BW	WW	Milk	YW
9	0.3	40	23	83

BW	Adj. 205	205R	YR
78	624	96	

\$W	\$F	\$G	\$B	Scrotal
31.71	39.64	23.88	109.96	36

Marb.	REA	Fat
1+.42	1+.27	1+.030

Recommended for use on heifers. This is a calving ease Extra son with an impressive Thunder dam. Phenotypically she is our deepest bodied female and at the top of the list for feet, legs and udder quality. Look to him for producing fantastic females. This bull has a gentle disposition.

59

## PYRAMID TOMBSTONE 4047

Reg. 17905658

Tattoo: 4042

Calved: 3/22/2014

SITZ UPWARD 307R#  
TOMBSTONE 050  
MYTTY COUNTESS 906

BT TRAVELER 228K#  
GLACIAL BLACKBIRD EVE 33M  
RR BLACKBIRD EVE 813

CONNEALY ONWARD#  
SITZ HENRIETTA PRIDE 81M  
SITZ ALLIANCE 6595#  
BALDRIDGE COUNTESS 357  
SITZ TRAVELER 9929#  
BT EVERELDA ENTENSE 57D  
RR 9440 SCOTCH CAP 1483  
QAS BLACKBIRD EVE 23E ET 1X

CED	BW	WW	Milk	YW
3	-.4	56	30	99

BW	Adj. 205	205R	YR

\$W	\$F	\$G	\$B	Scrotal
61.99	43.22	19.08	106.05	39.7

Marb.	REA	Fat
.26	.53	0.033

A bigger frame bull with a lot of length. His mother is one of our greats with a nursing ratio of 11 calves at 104. At 13 years old, this cow still exhibits a nearly perfect udder and feet. A full brother sold in last year's sale to Daryl and Geraldine Storm of Meadow, SD.







Lot 61 • Pyramid Tombstone 4051

## 61 PYRAMID TOMBSTONE 4051

Reg. 17905664 Tattoo: 4051 Calved: 3/26/2014

TOMBSTONE 050  
GLACIAL TOMBSTONE 2064  
GLACIAL 0035 BLKBIRD EVE 5W

GLACIAL TRAVELER 9929 32M  
GLACIAL 32M KATINKA 13R  
GLACIAL 1147 KATINKA 5N

SITZ UPWARD 307R#  
MYTTY COUNTLESS 906  
SAV FINAL ANSWER 0035#  
GLACIAL 4R BLACKBIRD EVE 67T#  
SITZ TRAVELER 9929#  
QAS BLACKBIRD EVE 23E ET 1X  
PINE CREEK RIGHT TIME 1147#  
GLACIAL KATINKA 616 15L

CED	BW	WW	Milk	YW
7	-0.6	55	26	92

\$W	\$F	\$G	\$B	Scrotal
61.27	45.36	18.76	89.37	37.9

BW	Adj. 205	205R	YR
84	696	110	105

Marb.	REA	Fat
0.36	0.17	0.05

4051 is a high performing Tombstone grandson out of the 2064 bull. His mother records a nursing ratio on 8 calves @ 103.



Lot 63 • Pyramid Resource 4236

## 62 PYRAMID TOMBSTONE 4048

Reg. 17911524 Tattoo: 4048 Calved: 3/24/2014

SITZ UPWARD 307R#  
TOMBSTONE 050  
MYTTY COUNTLESS 906

PINE CREEK RIGHT TIME 1147#  
GLACIAL 1147 KATINKA 5N  
GLACIAL KATINKA 616 15L

CONNEALY ONWARD#  
SITZ HENRIETTA PRIDE 81M  
SITZ ALLIANCE 6595#  
BALDRIDGE COUNTLESS 357  
LEACHMAN RIGHT TIME#  
SITZ EVERELDA ENTENSE 1137  
RITO 616 OF 4B20 6807#  
GP KATINKA 505

CED	BW	WW	Milk	YW
2	0.7	65	25	103

\$W	\$F	\$G	\$B	Scrotal
68.63	58.39	11.44	108.55	38.5

BW	Adj. 205	205R	YR
86	711	113	97

Marb.	REA	Fat
0.14	0.26	0.022

4048 was used back on a group of select cows this year to bring in more influence from his highly productive dam Katinka 5N.

## 63 PYRAMID RESOURCE 4236

Reg. 18056235 Tattoo: 4236 Calved: 4/28/2014

RITO 707 OF IDEAL 3407 7075  
SAV RESOURCE 1441  
SAV BLACKCAP MAY 4136

21AR BUSHWACKER E31A  
21AR BLACKBIRD LADY 6358  
21AR BLACKBIRD LADY B658

RR RITO 707#  
IDEAL 3407 OF 1418 076  
SAV 8180 TRAVELER 004#  
SAV MAY 2397#  
BCC BUSHWACKER 41-93#  
MS CC BLACKCAP 0196-211  
GDAR SVF TRAVELER 234D#  
21 AR BLACKBIRD LADY 658#

CED	BW	WW	Milk	YW
3	2.5	54	25	103

\$W	\$F	\$G	\$B	Scrotal
46.34	66.33	18.76	137.18	37.88

BW	Adj. 205	205R	YR
85	708	104	110

Marb.	REA	Fat
0.27	0.75	0.051

A long, sound, big testicled bull that we used clean up this summer. One of the highest marbling bulls of his contemporary. Dam has been very productive and produced one of our best two year old heifers this last year.





## Lot 64 • Pyramid Resource 4238

# 64

### PYRAMID RESOURCE 4238

Reg. 18056223 Tattoo: 4238 Calved: 4/30/2014

RITO 707 OF IDEAL 3407 7075  
SAV RESOURCE 1441  
SAV BLACKCAP MAY 4136

21AR OUTFITTER 6032#  
MCLENNAN ESTRADA 802U  
21AR ESTRADA B36

RR RITO 707#  
IDEAL 3407 OF 1418 076  
SAV 8180 TRAVELER 004#  
SAV MAY 2397#  
OCC MAGNITUDE 805M#  
21AR SARA E802  
LEACHMAN RIGHT TIME#  
ESTRADA 231 OF LH#

CED	BW	WW	Milk	YW
-5	3.2	55	25	107

\$W	\$F	\$G	\$B	Scrotal
42.63	73.14	12.89	136.28	37.45

BW	Adj. 205	205R	YR
93	679	99	110

Marb.	REA	Fat
0.23	0.55	0.056

An absolute tank. A bull that should be able to handle the harshest of enviroments. Lot 12 is as stout as you can make one and comes from a line of cows that follow suite. His incredible dam is also the maternal grand dam to lots 9 and 19.

# 65

### PYRAMID RESOURCE 4215

Reg. 18056210 Tattoo: 4215 Calved: 4/19/2014

RITO 707 OF IDEAL 3407 7075  
SAV RESOURCE 1441  
SAV BLACKCAP MAY 4136

SAV 8180 TRAVELER 004#  
MCLENNAN ESTRADA 0236#  
21AR ESTRADA B36

RR RITO 707#  
IDEAL 3407 OF 1418 076  
SAV 8180 TRAVELER 004#  
SAV MAY 2397#  
SITZ TRAVELER 8180#  
BOYD FOREVER LADY 8003  
LEACHMAN RIGHT TIME#  
ESTRADA 231 OF LH#

CED	BW	WW	Milk	YW
1	2.9	57	28	102

\$W	\$F	\$G	\$B	Scrotal
48.85	62.29	8.78	130.72	41.78

BW	Adj. 205	205R	YR
88	697	102	102

Marb.	REA	Fat
0.18	0.47	0.058

Lot 64 is a load of a bull and packed with muscle. He is very long and has large testicles. His pathfinder 004 dam is the kind that we are trying to produce in mass quantity.







**Lot 67 • Pyramid Resource 4222**

**66**

**PYRAMID RESOURCE 4230**

Reg. 18056196 Tattoo: 4230 Calved: 4/26/2014

RITO 707 OF IDEAL 3407 7075  
SAV RESOURCE 1441  
SAV BLACKCAP MAY 4136

GDAR GAME DAY 449#  
MCLENNAN BARBARMERE NELL 103  
MCLENNAN BARBARMERE NELL

RR RITO 707#  
IDEAL 3407 OF 1418 076  
SAV 8180 TRAVELER 004#  
SAV MAY 2397#  
BOYD NEW DAY 8005#  
GDAR MISS WIX 474#  
SITZ ALLIANCE 8646  
BERBOS BARBARMERE NELL 3122

CED	BW	WW	Milk	YW
4	2.1	57	27	105

BW	Adj. 205	205R	YR
83	712	104	102

\$W	\$F	\$G	\$B	Scrotal
49.23	67.9	17.86	126.81	40.84

Marb.	REA	Fat
0.24	0.78	0.058

If you're trying to add efficiency to your herd this SAV Resource 1441 Son should be a candidate to do just that. Lot 65 is moderate, deep, loaded with rib and has as much muscle shape as any to sell. His young Game Day dam weighs 1080 pounds and will make Pathfinder this year.

**68**

**PYRAMID RESOURCE 4226**

Reg. 18056239 Tattoo: 4226 Calved: 4/24/2014

RITO 707 OF IDEAL 3407 7075  
SAV RESOURCE 1441  
SAV BLACKCAP MAY 4136

21AR RIGHT TIME C572  
21AR ESTHER 6365  
21AR ESTHER C79

RR RITO 707#  
IDEAL 3407 OF 1418 076  
SAV 8180 TRAVELER 004#  
SAV MAY 2397#  
LEACHMAN RIGHT TIME#  
21 AR BLACKBIRD LADY 572#  
LEACHMAN RIGHT TIME#  
ESTHER 131 OF LH

CED	BW	WW	Milk	YW
5	1.8	43	27	88

BW	Adj. 205	205R	YR
86	661	97	98

\$W	\$F	\$G	\$B	Scrotal
38.39	46.54	9.5	111.58	34.26

Marb.	REA	Fat
0.11	0.38	0.034

Modest birthweight, long and smooth jointed bull. Dam is 1150 pound cow with a great udder.

**67**

**PYRAMID RESOURCE 4222**

Reg. 18056204 Tattoo: 4222 Calved: 4/24/2014

RITO 707 OF IDEAL 3407 7075  
SAV RESOURCE 1441  
SAV BLACKCAP MAY 4136

SAV PYRAMID 8186  
MCLENNAN ESTHER 125  
21AR ESTHER 6391

RR RITO 707#  
IDEAL 3407 OF 1418 076  
SAV 8180 TRAVELER 004#  
SAV MAY 2397#  
SAV NET WORTH 4200#  
SAV BLACKBIRD 5296  
21AR RIGHT TIME C572  
21AR ESTHER D96A

CED	BW	WW	Milk	YW
3	2.3	61	29	108

BW	Adj. 205	205R	YR
88	785	115	108

\$W	\$F	\$G	\$B	Scrotal
55.63	70.64	12.21	136.85	37.28

Marb.	REA	Fat
0.13	0.68	0.038

A real truck sired by SAV Resource 1441. Among the heaviest of his contemporary at weaning and yearling. Dam is a high volume, easy fleshing young cow that has a terrific udder. 4222 had the largest Rib Eye of his group.

**69**

**PYRAMID RESOURCE 4217**

Reg. 18056251 Tattoo: 4217 Calved: 4/20/2014

RITO 707 OF IDEAL 3407 7075  
SAV RESOURCE 1441  
SAV BLACKCAP MAY 4136

OCC TRAVELER 723Z#  
SUMMIT LASS 353#  
SUMMIT LASS 123

RR RITO 707#  
IDEAL 3407 OF 1418 076  
SAV 8180 TRAVELER 004#  
SAV MAY 2397#  
QAS TRAVELER 23-4#  
JUANADA OF ROLLIN ROCK 0355#  
CONNEALY DATELINE#  
VERMILION LASS 6369

CED	BW	WW	Milk	YW
6	1	47	26	94

BW	Adj. 205	205R	YR
79	653	96	98

\$W	\$F	\$G	\$B	Scrotal
44.09	54.66	10.62	115.82	36.85

Marb.	REA	Fat
0.09	0.6	0.039

Recommended for use on heifers. Dam is a twelve year old, 1175 pound Pathfinder by 723Z. She happened to be the mother of our highest selling bull in our first production sale.



## 70 PYRAMID HUSKER 4036

Reg. 17905701 Tattoo: 4036 Calved: 3/21/2014

CONNEALY THUNDER#  
CONNEALY HUSKER 1833  
PEARLA OF CONANGA 8538

MOHNEN CROWN ROYAL 316  
BR MISS CR ROYAL 5046Y  
H MAN WAR ALLIANCE 5046

BALDRIDGE KABOOM K243 KCF#  
PARKA OF CONANGA 241#  
CONNEALY ALL AROUND#  
PEARLESCENCE OF CONANGA 194#  
BALDRIDGE MULLEN M528#  
MOHNEN JILT 1283  
GAR 1407 NEW DESIGN 5112  
MS H MAN EXT 003

CED	BW	WW	Milk	YW
12	-2.4	52	26	93

\$W	\$F	\$G	\$B	Scrotal
58.44	49.29	38.52	97.66	37.7

BW	Adj. 205	205R	YR

Marb.	REA	Fat
.56	.52	-.010

Recommended for use on heifers. 4036 is a deep-bodied, rugged-made bull and combines that with a marbling ratio of 115. A sure fire heifer bull that won't sacrifice performance.



Lot 70 • Pyramid Husker 4036

## 71 PYRAMID HUSKER 4072

Reg. 17905693 Tattoo: 4072 Calved: 4/2/2014

CONNEALY THUNDER#  
CONNEALY HUSKER 1833  
PEARLA OF CONANGA 8538

COLEMAN REGIS 904  
GLACIAL 904 MISSIE 17Z  
GLACIAL 8646 MISSE 150X#

BALDRIDGE KABOOM K243 KCF#  
PARKA OF CONANGA 241#  
CONNEALY ALL AROUND#  
PEARLESCENCE OF CONANGA 194#  
SAV FINAL ANSWER 0035#  
COLEMAN DONNA 714  
SITZ ALLIANCE 8646  
GLACIAL 616 MISSIE 27N

CED	BW	WW	Milk	YW
9	-0.6	55	27	94

\$W	\$F	\$G	\$B	Scrotal
57.67	48.99	38.2	102.1	37.1

BW	Adj. 205	205R	YR
80	677	107	104

Marb.	REA	Fat
0.55	0.62	-0.002

Recommended for use on heifers. 4072 is a long-bodied, larger framed Husker son that combines calving ease with performance. He exhibits the extra length needed to add pounds in the fall.

## 72 PYRAMID HUSKER 4007

Reg. 17905720 Tattoo: 4007 Calved: 3/11/2014

CONNEALY THUNDER#  
CONNEALY HUSKER 1833  
PEARLA OF CONANGA 8538

TOMBSTONE 050  
GLACIAL 050 BLKBIRD EVE 140Z  
GLACIAL 6P BLACKBIRD EVE 95T

BALDRIDGE KABOOM K243 KCF#  
PARKA OF CONANGA 241#  
CONNEALY ALL AROUND#  
PEARLESCENCE OF CONANGA 194#  
SITZ UPWARD 307R#  
MYTTY COUNTLESS 906  
GLACIAL 616 RITO 6P  
GLACIAL BLACKBIRD EVE 23K

CED	BW	WW	Milk	YW
1	1.1	62	28	104

\$W	\$F	\$G	\$B	Scrotal
62.41	62.41	31.66	116.23	39.4

BW	Adj. 205	205R	YR
94	716	113	106

Marb.	REA	Fat
0.44	0.5	-0.003

4007 is a larger-frame, higher performing Husker son. He is another successful result of the Husker/Tombstone cross.

## 73 PYRAMID HUSKER 4027

Reg. 17905721 Tattoo: 4027 Calved: 3/18/2014

CONNEALY THUNDER#  
CONNEALY HUSKER 1833  
PEARLA OF CONANGA 8538

TOMBSTONE 050  
GLACIAL 050 MISSIE 74Z  
GLACIAL 8646 MISSIE 49W

BALDRIDGE KABOOM K243 KCF#  
PARKA OF CONANGA 241#  
CONNEALY ALL AROUND#  
PEARLESCENCE OF CONANGA 194#  
SITZ UPWARD 307R#  
MYTTY COUNTLESS 906  
SITZ ALLIANCE 8646  
GLACIAL MISSIE 47M#

CED	BW	WW	Milk	YW
1	0.9	56	29	98

\$W	\$F	\$G	\$B	Scrotal
56.52	55.6	35.79	117.09	37.1

BW	Adj. 205	205R	YR
89	664	105	104

Marb.	REA	Fat
0.57	0.48	0.001

4027 is a higher performing Husker son with a set of EPDs to match.

## 74 PYRAMID HUSKER 4004

Reg. 17905691 Tattoo: 4004 Calved: 3/10/2014

CONNEALY THUNDER#  
CONNEALY HUSKER 1833  
PEARLA OF CONANGA 8538

21AR OUTFITTER 6032#  
GLACIAL 6032 MISSIE 51Z  
GLACIAL 616 MISSIE 27N

BALDRIDGE KABOOM K243 KCF#  
PARKA OF CONANGA 241#  
CONNEALY ALL AROUND#  
PEARLESCENCE OF CONANGA 194#  
OCC MAGNITUDE 805M#  
21AR SARA E802  
RITO 616 OF 4B20 6807#  
VALLEY MISSIE 54Z

CED	BW	WW	Milk	YW
2	0.1	49	25	84

\$W	\$F	\$G	\$B	Scrotal
49.48	35.21	32.82	78.35	37.8

BW	Adj. 205	205R	YR
78	637	101	97

Marb.	REA	Fat
0.38	0.44	-0.023

Recommended for use on heifers. 4004 is the most moderate Husker in the offering and a ¾ brother to Lot #27.





**Lot 75 • Pyramid 8186 4233**

## 75 PYRAMID 8186 4233

Reg. 18054971 Tattoo: 4233 Calved: 4/27/2014

SAV NET WORTH 4200#  
SAV PYRAMID 8186  
SAV BLACKBIRD 5296

RITO 616 OF 4B20 6807#  
SUMMIT LASS 461  
VERMILION LASS 6565

SAV 8180 TRAVELER 004#  
SAV MAY 2410  
BOYD NEW DAY 8005#  
SAV BLACKBIRD 1082  
DHD TRAVELER 6807#  
RITA 4B20 OF 0FB1 BANDO  
LEACHMAN RIGHT TIME#  
VERMILION O LASS 4253

CED	BW	WW	Milk	YW
6	1.2	45	23	78

\$W	\$F	\$G	\$B	Scrotal
42.05	27.38	27.66	98.56	38.45

BW	Adj. 205	205R	YR
85	670	98	98

Marb.	REA	Fat
0.33	0.54	0.004

Recommended for use on heifers. A Very well made and complete son of SAV Pyramid 8186. His sire has been the single most impactful bull of our breeding program. His daughters will rival anything in the Angus breed for eye appeal, structural integrity, udder quality, and productivity.

## 77 PYRAMID GAME DAY 4242

Reg. 18054995 Tattoo: 4242 Calved: 5/7/2014

GDAR GAME DAY 449#  
PYRAMID GAME DAY 2213  
MCLENNAN LASSIE 0255

SAV PYRAMID 8186  
MCLENNAN LASS 211  
SUMMIT LASS 138#

BOYD NEW DAY 8005#  
GDAR MISS WIX 474#  
LT BANDWAGON 3105#  
LASSIE 4233 OF MC CUMBER  
SAV NET WORTH 4200#  
SAV BLACKBIRD 5296  
GDAR TRAVELER 561#  
SUMMIT LASS 9012

CED	BW	WW	Milk	YW
3	2.8	46	27	79

\$W	\$F	\$G	\$B	Scrotal
41.5	28.45	20.02	62.44	34.7

BW	Adj. 205	205R	YR
83	708	104	98

Marb.	REA	Fat
0.16	0.6	0.03

A deep ribbed, muscular, easy traveling son by Game Day. His young dam is tremendous and is as thick as any cow we own.

## 76 PYRAMID 8186 4249

Reg. 18240458 Tattoo: 4249 Calved: 5/15/2014

SAV NET WORTH 4200#  
SAV PYRAMID 8186  
SAV BLACKBIRD 5296

SAV 8180 TRAVELER 004#  
MCLENNAN ESTRADA 9269  
21AR ESTRADA B36

SAV 8180 TRAVELER 004#  
SAV MAY 2410  
BOYD NEW DAY 8005#  
SAV BLACKBIRD 1082  
SITZ TRAVELER 8180#  
BOYD FOREVER LADY 8003  
LEACHMAN RIGHT TIME#  
ESTRADA 231 OF LH#

CED	BW	WW	Milk	YW
3	1.2	43	24	69

\$W	\$F	\$G	\$B	Scrotal
42.84	13.21	15.07	77.47	33.96

BW	Adj. 205	205R	YR
87	625	92	86

Marb.	REA	Fat
0.22	0.13	0.03

This young bull is out of a beautiful 004 daughter from the Estrada cow family. He should leave some exceptional daughters in the herd.

## 78 PYRAMID GAME DAY 4207

Reg. 18055719 Tattoo: 4207 Calved: 4/15/2014

BOYD NEW DAY 8005#  
GDAR GAME DAY 449#  
GDAR MISS WIX 474#

SAV PYRAMID 8186  
MCLENNAN QUEEN MOTHER 215  
SUMMIT QUEEN MOTHER 357#

AAR NEW TREND#  
SVF FOREVER LADY 57D  
TEHAMA BAND 207#  
GDAR MISS WIX 749  
SAV NET WORTH 4200#  
SAV BLACKBIRD 5296  
LEACHMAN RIGHT TIME#  
SUMMIT DATELINE 133

CED	BW	WW	Milk	YW
9	-0.1	41	24	83

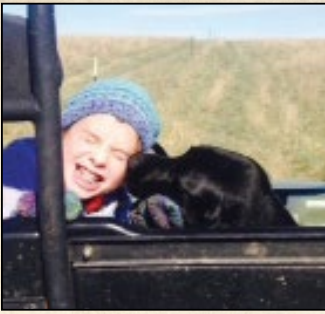
\$W	\$F	\$G	\$B	Scrotal
35.18	38.94	27.1	82.53	37.49

BW	Adj. 205	205R	YR
74	659	96	102

Marb.	REA	Fat
0.48	0.53	0.071

Recommended for use on heifers. The Game Day daughters in our herd are moderate, fertile, feminine cows that raise exceptional calves.

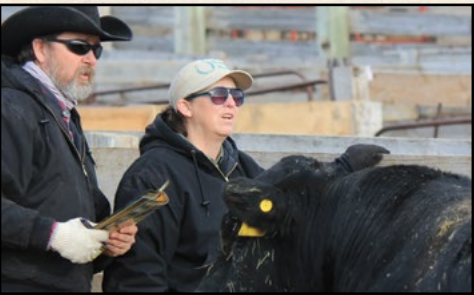














# Managing Herefords

## Hereford EPDs



The American Hereford Association (AHA) measures 11 traits and calculates four profit (\$) indexes. The Hereford Sire Summary, which is distributed each spring, provides breeders with a tremendous amount of information on a large population of Hereford sires. A comprehensive sort of Hereford sires can also be done online at [Hereford.org](http://Hereford.org).

The current suite of Hereford expected progeny differences (EPDs) and \$ indexes includes:

### Calving Ease – Direct (CE)

CE EPDs are based on calving ease scores and birth weights. More positive EPDs are favorable and indicate easier calving. The EPD for direct calving ease indicates the influence of the sire on calving ease in purebred females calving at 2 years of age. In the sire summary, an EPD in a black box indicates that the bull is a trait leader.

### Birth Weight (BW)

Progeny of the sire above can be expected to weigh an average of 3.2 lb. more at birth than progeny sired by a bull with an EPD of -1.0 lb. (2.2 minus -1.0 = 3.2 lb.). Birth weight is an indicator of calving ease. Larger BW EPDs usually, but not always, indicate more calving difficulty. The figure in parentheses found after each EPD is an accuracy value or reliability of the EPD. To learn more about how to use accuracy when evaluating EPDs please refer to the section "Accuracy and Confidence Range" in the Spring 2009 Sire Summary.

### Weaning Weight (WW)

WW EPD reflects pre-weaning growth. Calves sired by a bull with a +30 WW EPD should have a 20 lb. advantage in 205-day adjusted weaning weight compared to calves sired by a bull with an EPD of +10 lb. (30 minus 10 = 20 lb.).

### Yearling Weight (YW)

YW EPD reflects differences in the 365-day adjusted yearling weight for progeny. It is the best estimate of total growth.

### Maternal Milk (MM)

The milking ability of a sire's daughters is expressed in pounds of calf weaned. It predicts the difference in average weaning weights of sires' daughters' progeny due to milking ability. Daughters of the sire with a +14 MM EPD should produce progeny with 205-day weights averaging 24 lb. more (as a result of greater milk production) than daughters of a bull with a MM EPD of -10 lb. (14 minus -10.0 = 24 lb.). This difference in weaning weight is due to total milk production during the entire lactation.

### Maternal Milk & Growth (M&G)

Maternal Milk & Growth reflects what the sire is expected to transmit to his daughters for a combination of growth genetics through weaning and genetics for milking ability. It is an estimate of daughters' progeny weaning weight. A bull with a 29 lb. M&G EPD should sire daughters with progeny weaning weights averaging 19 lb. heavier than progeny of a bull's daughters with a M&G EPD of 10 lb. (29 minus 10 = 19 lb.). It is equal to one-half the sire's weaning weight EPD, plus all of his MM EPD. No accuracy is associated with this since it is simply a mathematical combination of two other EPDs. It is sometimes referred to as "total maternal" or "combined maternal."

### Maternal Calving Ease (MCE)

The MCE EPD indicates how easily a sire's daughters will calve at 2 years of age when compared to the daughters of other sires.

### Scrotal Circumference (SC)

Measured in centimeters and adjusted to 365 days of age, SC EPD is the best estimate of fertility. It is related to the bull's own semen quantity and quality, and is also associated with age at puberty of sons and daughters. Larger SC EPDs suggest younger age at puberty. Yearling sons of a sire with a .7 SC EPD should have yearling scrotal circumference measurements that average 0.7 centimeters (cm) larger than progeny by a bull with an EPD of 0.0 cm. In the Hereford genetic analysis, a multiple-trait model was used for scrotal circumference. Weaning weight was used as a predictor variable to increase the prediction accuracy of SC EPDs. Therefore, an animal with a weaning weight EPD should also have a SC EPD.

### Rib Fat (FAT)

The FAT EPD reflects differences in adjusted 365-day, 12th-rib fat thickness based on carcass measurements of harvested cattle. Sires with low, or negative FAT EPDs are expected to produce leaner progeny than sires with higher EPDs. Ultrasound measures are also incorporated into this trait and have been shown to be highly correlated with the performance of slaughter progeny. All data is expressed on a carcass scale.

### Ribeye Area (REA)

REA EPDs reflect differences in an adjusted 365-day ribeye area measurement based on carcass measurements of harvested cattle. Sires with relatively higher REA EPDs are expected to produce better-muscled and higher percentage yielding slaughter progeny than will sires with lower REA EPDs. Ultrasound measurements are also incorporated into this trait and have been shown to be highly correlated with the performance of slaughter progeny. All data is expressed on a carcass scale.



# Managing Herefords

## Hereford EPDs



### Marbling (MARB)

MARB EPDs reflect differences in an adjusted 365-day marbling score (intramuscular fat, [IMF]) based on carcass measurements of harvested cattle. Breeding cattle with higher MARB EPDs should produce slaughter progeny with a higher degree of IMF and therefore higher quality grades. Ultrasound measurements are also incorporated into this trait and have been shown to be highly correlated with the performance of slaughter progeny. All data is expressed on a carcass scale.

### Baldie Maternal Index (BMI\$)

BMI\$ is a maternally focused index that has a production system based on 1,000-Hereford x Angus females with a progeny harvest endpoint directed toward Certified Hereford Beef (CHB®). This index is more critical of CE than the Brahman Influence Index (BII\$) and also has significant weight on fertility. There is positive weight on WW and a slightly negative weight on YW, which promotes early growth and then a slow down on growth to keep mature size manageable. The emphasis of IMF is greater than the emphasis of REA. This is true because of the price difference of the Choice-Select spread and the fact that there is very little incentive to produce cattle better than a Yield Grade 3. This index is geared to service any commercial program that has British-cross cows.

### Calving Ease Index (CEZ\$)

This is a general purpose index that focuses on identifying bulls that can be used on heifers and then ultimately the calves will be marketed through the CHB program. As you might expect, CE and MCE carry significant weight in this index along with fertility. There is very little weight put on growth traits and less emphasis on carcass. Remember, this is a general index that is specifically designed to be used in a heifer program.

### Brahman Influence Index (BII\$)

BII\$ is a maternally focused index that is based on a 1,000-head cow herd of Brahman x Hereford cows. The progeny for this index will be harvested in a commodity-based system since CHB does not accept Brahman-influenced cattle into the program. This index has less emphasis for CE than any of the other indexes. There is emphasis on both REA and IMF since the cattle will be harvested through a commodity market. The largest emphasis is in fertility, which is measured solely by SC at the present time. Obviously, the target for this index is the producers in the Southern regions of the U.S. where the bulls are typically sold to commercial cattlemen that have Brahman-influenced cow herds.

### Certified Hereford Beef Index (CHB\$)

This is a terminal sire index that is built on a production system where Hereford bulls sire calves for the CHB market. There is some pressure put on CE and then positive weight on both WW and YW. Remember that all offspring in this index are harvested, so they need to be born alive and then grow fast at all stages of life. Of course, we have much more emphasis on fat in this index, as we want the cattle to stay lean. There is also a significant weight on both REA and IMF with more emphasis again on IMF. This index would be used by producers who have a target of producing bulls for a terminal breeding program. It could be used heavily in the Midwest where bulls are used in rotational breeding programs to produce cattle in a retained ownership program or are simply sold to backgrounders. This is the only index that has no emphasis on fertility. Remember that nothing is retained in the herd.







## UPS DOMINO 3027

Reg. 42426386 Tattoo: 3027 Calved: 3/8/2003

HH ADVANCE 767G 1ET  
CL 1 DOMINO 9126J 1ET  
CL 1 DOMINETTE 490

SH DIAMOND 881  
UPS MISS DIAMOND 1353  
UPS MS MILEHIGH 8330

CL 1 DOMINO 500E  
HH MISS ADVANCE 251B  
CL 1 DOMINO 166  
CL 1 DOMINETTE 130  
JNHR 414 DIAMND 164D  
SH RED MISS 436  
C MR HIGH 96106 4ET  
UPS MS RED FORK 5537

CED	BW	WW	Milk	YW
11.2	-1.2	48	37	78

BMI	CEZ	BII	CHB	SC EPD
26	26	19	32	1.1

BW	205R	YR
76	109	

Marb.	REA	Fat
0.36	0.44	0.007

We have used 3027 for six years now and have three sets of daughters in production. He is a sure fire calving ease bull that doesn't sacrifice performance and carcass merit. We have calved two sets of daughters and they have done a tremendous job of raising a calf and maintaining a 365 day calving interval. In addition he exhibits tremendous udder quality and eye pigment. His influence will be a major part of our program in years to come.



Reference Sire B • FHF 4029 Hickok 15X



## PYRAMID 16W 110T 9116

Reg. 42989530 Tattoo: 9116 Calved: 3/26/2009

SHF MARSHAL 236G M33  
FHF M33 STARBUCK 110T ET  
FHF 614R NATES LADY 3M

FHF 0024 STARBUCK 51M  
FHF 51M ACHIEV 70T  
FHF 19H ACHIEVA 88K

REMITALL GOVERNOR 236G  
SHF MISS KEYNOTE 20X E39  
BEARTOOTH BUTLER 614R  
FHF 10G NATE'S LADY 90K  
GV 9823 VICTOR 0024  
OXH JUDI 7354  
FHF 8403 STARBUCK 19H  
FHF MYSTERY LADY 3Y

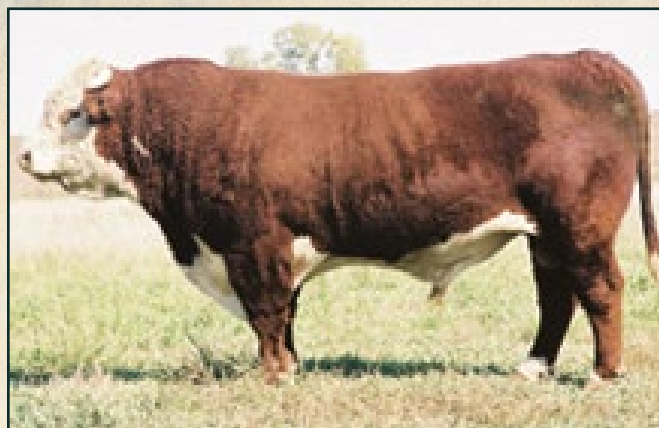
CED	BW	WW	Milk	YW
0.8	2.1	54	24	75

BMI	CEZ	BII	CHB	SC EPD
15	14	12	23	0.6

BW	205R	YR

Marb.	REA	Fat
-0.10	0.56	-0.011

9116 was our high selling bull in our first bull sale and we were fortunate to be able to buy back a breeding interest. We have used him successfully on heifers for four years and have been very pleased with his calving ease. With him being polled it has been a great cross to go back on or 3027 daughters. In addition to his calving ease he has been able to maintain a weaning ratio of 102. His biggest asset to our program will without a doubt be his daughters. They exhibit tremendous eye appeal, udder quality and capacity we all desire in a cow herd.



Reference Sire A • UPS Domino 3027



## FHF 4029 HICKOK 15X

Reg. 43102635 Tattoo: 15X Calved: 3/27/2010

JDH 15 WRANGLER 25L  
THR THOR 4029  
THR MISS THOR 0266

DR WORLD CLASS 517 10H  
FHF 10H VICTRA 31S  
FHF 24F VICTRA 30N

JDF 16D WRANGLER 15  
JDH MS LUTE 18J  
CL1 DOMINO 641F  
THR MISS THOR 8050  
FELTONS 517  
VPI MARATHON LADY 0081  
MW LLL FARLEY 24F  
FHF 19H ICTRA 63K

CED	BW	WW	Milk	YW
0.8	3.8	61	25	89

BMI	CEZ	BII	CHB	SC EPD
29	18	26	31	11.8

BW	205R	YR
76	109	

Marb.	REA	Fat
0.24	0.46	0.028

Hickok was our choice to carry on the influence of the great breeding bull THR Thor 4029. He has as much performance, muscle and volume as any bull that our program has produced. His individual ratios are 125@weaning and 107@yearling. His first daughters calved this spring and will be some of the higher indexing two year-olds. In addition Hickok looks to be a marbling outlier with 16 progeny averaging 112 on IMF. His sons exhibit the capacity and volume that is designed in range conversion. DNA tested homozygous polled. Owned with JMF Herefords of Holloway, MN.







Reference Sire D • Deadwood 38Y



## FHF 9279 DEADWOOD 38Y

Reg. 43196788 Tattoo: 38Y Calved: 3/27/2011

GO EXCEL L18  
ECR L18 EXTRA DEEP 9279  
OXH CHRISTI 0028

FHF 0024 STARBUCK 51M  
FHF 51M RUBY 82S  
FHF 10G RUBY 7J

DD EXCEL DESIGN 40  
GO MS 124 ADVANCE 7005  
CL 1 DOMINO 513E  
OXH LOLA 8328  
GV 9823 VICTOR 0024  
OXH JUDI 7354  
FHF 35C STARBUCK 10G  
FHF 162A RUBY 77G

CED	BW	WW	Milk	YW
0.4	2.2	49	31	68

BMI	CEZ	BII	CHB	SC EPD
15	14	13	23	0.7

BW	205R	YR

Marb.	REA	Fat
-0.10	0.95	-0.027

Deadwood is a smooth polled son of the great breeding bull ECR L18 Extra Deep 9279. He is out of the great Ruby cow, a favorite to most visitors on the ranch. She is moderate framed big bodied and freckled face. Deadwood is very conservatively marked and as you will see sale day transmits this pigments to his calves. Carcass merit and maternal quality will be his greatest contribution. His sons are moderate, exhibit excellent phenotype and tremendous muscle expression. His daughters are moderate framed with excellent milk flow and udder quality. Owned with Ned and Jan Ward Polled Herefords of Sheridan, WY.



NJW 73S W18 Hometown 10Y



## PYRAMID HOMETOWN 4153

Reg. 43494416 Tattoo: 4153 Calved: 4/05/2014

SHF WONDER M326 W18 ET  
NJW 73S W18 HOMETOWN 10Y ET  
NJW P606 72N DAYDREAM 73S

FHF 0024 STARBUCK 51M  
FHF 51M RITA 133T ET  
FHF RITA 35C 23F

KCF BENNETT 3008 M326  
SHF GOVERNESS 236G L37  
PW VICTOR BOOMER P606  
NJW 94J DEW 72N  
GV 9823 VICTOR 0024  
OXH JUDI 7354  
FHF STARBUCK 162A 32F  
FHF RITA 35C 23F

CED	BW	WW	Milk	YW
1.2	3.5	53	29	100

BMI	CEZ	BII	CHB	SC EPD
15	14	11	32	0.6

BW	205R	YR

Marb.	REA	Fat
0.29	0.53	0.006

Hometown 10Y was added for his combination of phenotype and balanced EPD profile. His first daughters are in production. They are deep bodied, easy fleshing and have very tight udders. 10Y also excels in his carcass data, as he is one of the highest marbling bulls in the breed. 10Y will continue to be a part of this program for years to come.



## PYRAMID HOMEGROWN 4137

Reg. 43494439 Tattoo: 4137 Calved: 3/31/2014

SHF WONDER M326 W18 ET  
NJW 73S W18 HOMEGROWN 8Y ET  
NJW P606 72N DAYDREAM 73S

ALH 0190 VICTOR 0343  
FHF 0343 RITA 31U  
FHF 0112 RITA 83R

KCF BENNETT 3008 M326  
SHF GOVERNESS 236G L37  
PW VICTOR BOOMER P606  
NJW 94J DEW 72N  
BTF 5008 VICTOR 0190  
ALH A3 FAVORITE 512  
BOYD COW MAKER 0112  
FHF G160 RITA 87L

CED	BW	WW	Milk	YW
-1.1	3.2	48	24	75

BMI	CEZ	BII	CHB	SC EPD
20	14	20	21	1.3

BW	205R	YR

Marb.	REA	Fat
0.12	0.20	0.032

Homegrown is a genuine Beef Bull. He's loaded with natural thickness volume and performance. Homegrown is a Homozygous Polled full brother to Hometown. His P606 dam never misses and is the dam of several prominent bulls in the breed. First daughters are in production. They are uniform, big bodied and are very easy fleshing.



NJW 73S W18 Homegrown 8Y



# Pyramid *Beef*

## 2015 Hereford Bull Offering



**Lot 79 • Pyramid Domino 4111**

**79**

### PYRAMID DOMINO 4111

Reg. 43490649

Tattoo: 4111

Calved: 3/14/2014

CL 1 DOMINO 9126J 1ET  
UPS DOMINO 3027  
UPS MISS DIAMOND 1353

THR THOR 4029  
FHF 4029 ACHIEVA 155Z  
FHF 51M ACHIEVA 70T

HH ADVANCE 767G 1ET  
CL 1 DOMINETTE 490  
SH DIAMOND 881  
UPS MS MILEHIGH 8330  
JDH 15 WRANGLER 25L  
THR MISS THOR 0266  
FHF 0024 STARBUCK 51M  
FHF 19H ACHIEVA 88K

CED	BW	WW	Milk	YW
6.3	2	56	29	86

BMI	CEZ	BII	CHB	Scrotal
24	21	18	33	36.8

BW	Adj. 205	205R	YR
83	670	106	104

Marb.	REA	Fat
0.22	0.67	-0.002

**Dehorned • Recommended for use on heifers •** This stout made 3027 son is out of a maternal sister to herd bull 9116. He combines low birth weight with ratios of 106 for weaning and 104 for yearling. He does it all - low birth weight, growth, maternal and eye appeal.





Lot 80 • Pyramid Domino 4116

**80 PYRAMID DOMINO 4116**  
 Reg. 43490663 Tattoo: 4116 Calved: 3/16/2014

CL 1 DOMINO 9126J 1ET  
 UPS DOMINO 3027  
 UPS MISS DIAMOND 1353

HH ADVANCE 767G 1ET  
 CL 1 DOMINETTE 490  
 SH DIAMOND 881  
 UPS MS MILEHIGH 8330  
 FHF M33 STARBUCK 110T ET  
 FHF 51M ACHIEVA 70T  
 DR WORLD CLASS 517 10H  
 FHF 32F RITA 43J

PYRAMID 16W 110T 9116  
 FHF 9116 RITA 29Z  
 FHF 10H RITA 62X ET

CED	BW	WW	Milk	YW
5.8	3.2	60	33	93

BMI	CEZ	BII	CHB	Scrotal
21	20	14	35	36.8

BW	Adj. 205	205R	YR
87	697	111	107

Marb.	REA	Fat
0.23	0.59	-0.015

Polled • Scurs • High performing son of 3027 who ratioed 111 for weaning, 106 for yearling, 103 for REA and 129 for IMF. His Dam has an ideal udder and he has always been a favorite of the 3027 sons.

**82 PYRAMID DOMINO 4115**  
 Reg. 43490652 Tattoo: 4115 Calved: 3/16/2014

CL 1 DOMINO 9126J 1ET  
 UPS DOMINO 3027  
 UPS MISS DIAMOND 1353

HH ADVANCE 767G 1ET  
 CL 1 DOMINETTE 490  
 SH DIAMOND 881  
 UPS MS MILEHIGH 8330  
 JDH 15 WRANGLER 25L  
 THR MISS THOR 0266  
 CJH HARLAND 408  
 FHF 634L LYDA 23T

THR THOR 4029  
 FHF 4029 LYDA 108Z  
 FHF 408 LYDA 3W

CED	BW	WW	Milk	YW
7	1.8	57	28	93

BMI	CEZ	BII	CHB	Scrotal
27	22	21	34	36.9

BW	Adj. 205	205R	YR
83	648	103	102

Marb.	REA	Fat
0.3	0.63	0.021

Polled • Scurs • Recommended for use on heifers - low birth, excellent weaning and yearling ratios. If you are looking for added frame in your calf crop, this is the 3927 son that should do that for you.

**81 PYRAMID DOMINO 4110**  
 Reg. 43490660 Tattoo: 4110 Calved: 3/13/2014

CL 1 DOMINO 9126J 1ET  
 UPS DOMINO 3027  
 UPS MISS DIAMOND 1353

HH ADVANCE 767G 1ET  
 CL 1 DOMINETTE 490  
 SH DIAMOND 881  
 UPS MS MILEHIGH 8330  
 THR THOR 4029  
 FHF 10H VICTRA 31S  
 ALH 0190 VICTOR 0343  
 FHF 0112 RITA 83R

FHF 4029 HICKOK 15X  
 FHF 15X RITA 89Z  
 FHF 0343 RITA 31U

CED	BW	WW	Milk	YW
5.8	2.5	56	31	82

BMI	CEZ	BII	CHB	Scrotal
24	21	19	31	37.3

BW	Adj. 205	205R	YR
85	693	110	103

Marb.	REA	Fat
0.26	0.45	0.007

Polled • Scurs • Top performing 3027 son out of a first calf Hickok daughter that has ratioed well on her first two calves. We have calved two sets of Hickok daughters and they are some of our best young cows.

**83 PYRAMID DOMINO 4119**  
 Reg. 43490651 Tattoo: 4119 Calved: 3/18/2014

CL 1 DOMINO 9126J 1ET  
 UPS DOMINO 3027  
 UPS MISS DIAMOND 1353

HH ADVANCE 767G 1ET  
 CL 1 DOMINETTE 490  
 SH DIAMOND 881  
 UPS MS MILEHIGH 8330  
 JDH 15 WRANGLER 25L  
 THR MISS THOR 0266  
 FHF 19H STARBUCK 20M ET  
 FHF 100L NATES LADY 36R

THR THOR 4029  
 FHF 4029 LADY 143Z  
 FHF 30M NATE'S LADY 9T

CED	BW	WW	Milk	YW
5.9	1.6	50	25	72

BMI	CEZ	BII	CHB	Scrotal
23	21	19	28	35.4

BW	Adj. 205	205R	YR
82	618	98	92

Marb.	REA	Fat
0.15	0.58	-0.01

Polled • Scurs • Recommended for use on heifers • Dark red attractive son of 3027 out of a two-year-old Thor daughter. He scanned a 14.3-inch REA. This is a low birth weight bull that will enhance carcass traits.



84

**PYRAMID DOMINO 4109**

Reg. 43490666

Tattoo: 4109

Calved: 3/13/2014

CL 1 DOMINO 9126J 1ET  
UPS DOMINO 3027  
UPS MISS DIAMOND 1353

GOLDEN-OAK 4J MAXIUM 28M  
FHF 28M RITA 7Z  
FHF DK 24F RITA 42R

HH ADVANCE 767G 1ET  
CL 1 DOMINETTE 490  
SH DIAMOND 881  
UPS MS MILEHIGH 8330  
EAGLE-RIDGE BLASTER ET 4J  
TA-BAR CHANTELE 15K  
MW LLL FARLEY 24F  
FHF 32F RITA 43J

CED	BW	WW	Milk	YW
6.4	1.2	47	28	78

BW	Adj. 205	205R	YR
78	632	100	100

BMI	CEZ	BII	CHB	Scrotal
19	21	14	27	35.3

Marb.	REA	Fat
0.25	0.43	0.02

**Scurs • Horn • Recommended for heifers •** Conservatively marked 3027 son that has one of the lowest birth weights in our Hereford offering. His Dam is a two-year-old Maxium 28 daughter that excels in phenotype and udder quality.

86

**PYRAMID DOMINO 4159**

Reg. 43479156

Tattoo: 4159

Calved: 4/7/2014

UPS DOMINO 3027  
PYRAMID DOMINO 2014  
FHF 408 RUBY 4X

THR THOR 4029  
FHF 4029 LADY 123Y  
FHF 104T LADY 36W

CL 1 DOMINO 9126J 1ET  
UPS MISS DIAMOND 1353  
CJH HARLAND 408  
FHF 20M RUBY 28U  
JDH 15 WRANGLER 25L  
THR MISS THOR 0266  
FHF 45P STARBUCK 104T  
FHF M33 LADY 113T ET

CED	BW	WW	Milk	YW
3.6	1.7	55	28	93

BW	Adj. 205	205R	YR
88	667	106	107

BMI	CEZ	BII	CHB	Scrotal
26	19	22	31	39.7

Marb.	REA	Fat
0.22	0.62	0.015

**Polled • Scurs • Excellent growth and carcass ratios.** These two sons of 2014 combine three of ABS's high semen sale Hereford bulls - 3027, Harland, and Thor. If you appreciate predictability in your sires, these two 2014 sons should give it to you.

85

**PYRAMID DOMINO 4145**

Reg. 43479195

Tattoo: 4145

Calved: 4/2/2014

UPS DOMINO 3027  
PYRAMID DOMINO 2014  
FHF 408 RUBY 4X

THR THOR 4029  
FHF 4029 RUTH 24Y  
FHF 20M RUTH 18S

CL 1 DOMINO 9126J 1ET  
UPS MISS DIAMOND 1353  
CJH HARLAND 408  
FHF 20M RUBY 28U  
JDH 15 WRANGLER 25L  
THR MISS THOR 0266  
FHF 19H STARBUCK 20M ET  
FHF 10G RUTH 4P

CED	BW	WW	Milk	YW
2.9	2.5	57	26	94

BW	Adj. 205	205R	YR
85	657	104	105

BMI	CEZ	BII	CHB	Scrotal
25	18	20	32	38

Marb.	REA	Fat
0.19	0.62	-0.003

**Polled • Scurs •** This 2014 son ratios 97 BW, 104 WW, 105 yearling and 103 IMF. Here is a low birth, top performance and carcass quality that the beef industry strives for and needs. Maternal brother sold to Hilgeman Farm of MN.

87

**PYRAMID HOMEGROWN 4151**

Reg. 43494432

Tattoo: 4151

Calved: 4/4/2014

SHF WONDER M326 W18 ET  
NJW 735 W18 HOMEGROWN 8Y ET  
NJW P606 72N DAYDREAM 73S

UPS DOMINO 3027  
NJW 81U 3027 SPIRIT QUEEN 69X  
NJW 4037 55N DURANGO SPIRIT 81U

KCF BENNETT 3008 M326  
SHF GOVERNESS 236G L37  
PW VICTOR BOOMER P606  
NJW 94J DEW 72N  
CL 1 DOMINO 9126J 1ET  
UPS MISS DIAMOND 1353  
THM DURANGO 4037  
NJW 57G SPIRIT QUEEN 55N ET

CED	BW	WW	Milk	YW
6	0.6	55	32	99

BW	Adj. 205	205R	YR
90	671	107	114

BMI	CEZ	BII	CHB	Scrotal
27	22	22	30	42.8

Marb.	REA	Fat
0.25	0.37	0.055

**Polled • DNA tested Homozygous Polled • Herd Bull Deluxe** - 4151 is a Homozygous Polled son who we considered using back in our program but since we are using a maternal brother in our herd we are offering him in the sale. He has always been a favorite among visitors and his Dam is a never miss cow. He has a 107 WW ratio, 114 YW ratio, 115 scrotal ratio with an ideal set of EPD's and \$ Indexes



**Lot 87 • Pyramid Homegrown 4151**





**Lot 88 • Pyramid Hometown 4153**

# 88 PYRAMID HOMETOWN 4153

Reg. 43494416 Tattoo: 4153 Calved: 4/5/2014

SHF WONDER M326 W18 ET  
NJW 73S W18 HOMETOWN 10Y ET  
NJW P606 72N DAYDREAM 73S

FHF 0024 STARBUCK 51M  
FHF 51M RITA 133T ET  
FHF 32F RITA 43J

KCF BENNETT 3008 M326  
SHF GOVERNESS 236G L37  
PW VICTOR BOOMER P606  
NJW 94J DEW 72N  
GV 9823 VICTOR 0024  
OXH JUDI 7354  
FHF STARBUCK 162A 32F  
FHF RITA 35C 23F

CED	BW	WW	Milk	YW
1.2	3.5	53	29	100

BMI	CEZ	BII	CHB	Scrotal
15	14	11	32	35.5

BW	Adj. 205	205R	YR
87	553	88	103

Marb.	REA	Fat
0.29	0.53	0.006

**Polled** • One of the stoutest and thickest bulls in the sale and his Dam 133T transmits that thickness to all of her progeny. This Hometown son will please your eyes when you see him. Maternal brother sold to Paul Koubsky of Glenwood, MN.

# 89 PYRAMID HOMETOWN 4139

Reg. 43494417 Tattoo: 4139 Calved: 4/1/2014

SHF WONDER M326 W18 ET  
NJW 73S W18 HOMETOWN 10Y ET  
NJW P606 72N DAYDREAM 73S

FHF 0024 STARBUCK 51M  
FHF 51M RITA 132T ET  
FHF 32F RITA 43J

KCF BENNETT 3008 M326  
SHF GOVERNESS 236G L37  
PW VICTOR BOOMER P606  
NJW 94J DEW 72N  
GV 9823 VICTOR 0024  
OXH JUDI 7354  
FHF STARBUCK 162A 32F  
FHF RITA 35C 23F

CED	BW	WW	Milk	YW
0	4.2	54	31	90

BMI	CEZ	BII	CHB	Scrotal
16	13	13	30	36.4

BW	Adj. 205	205R	YR
98	664	106	103

Marb.	REA	Fat
0.33	0.35	0.019

**Polled** • Here is a red-eyed conservatively marked son of 10Y. His Dam has been one of our ranch favorites for a number of years. She is a Dam of Distinction who exhibits that volume, rib shape, udder quality and sound structure we all look for. Maternal brother sold to Metler of SD and Chuck Kjersted of SD.



**Lot 89 • Pyramid Hometown 4139**







Lot 90 • Pyramid Hometown 4126



Lot 91 • Pyramid Hometown 4162

## 90 PYRAMID HOMETOWN 4126

Reg. 43494444 Tattoo: 4126 Calved: 3/29/2014

SHF WONDER M326 W18 ET  
NJW 73S W18 HOMETOWN 10Y ET  
NJW P606 72N DAYDREAM 73S

FHF M33 STARBUCK 110T ET  
FHF 110T POLLY 13W  
FHF 51M POLLY 38T

KCF BENNETT 3008 M326  
SHF GOVERNESS 236G L37  
PW VICTOR BOOMER P606  
NJW 94J DEW 72N  
SHF MARSHAL 236G M33  
FHF 614R NATES LADY 3M  
FHF 0024 STARBUCK 51M  
FHF 74G POLLY 93J

CED	BW	WW	Milk	YW
0.5	4.1	56	28	95

BW	Adj. 205	205R	YR
96	675	107	106

BMI	CEZ	BII	CHB	Scrotal
18	14	14	32	36

Marb.	REA	Fat
0.3	0.34	-0.006

**Polled** • One of the favorite Hometown 10Y sons since birth - 107 WW ratio, 106 YW ratio and 134 IMF ratio. This thick, deep rib, high volume son of 10Y will certainly add performance and carcass qualities without sacrificing maternal traits on his daughters. His Dam has a 105 WW ratio on four calves.

## 91 PYRAMID HOMETOWN 4162

Reg. 43494440 Tattoo: 4162 Calved: 4/8/2014

SHF WONDER M326 W18 ET  
NJW 73S W18 HOMETOWN 10Y ET  
NJW P606 72N DAYDREAM 73S

CMF 584T FRONTIER 634L  
FHF 634L LYDA 23T  
LCG LYDA FRANKLIN 143P

KCF BENNETT 3008 M326  
SHF GOVERNESS 236G L37  
PW VICTOR BOOMER P606  
NJW 94J DEW 72N  
CMF 103T VICTOR 262D  
DL MIS DOM 243 584T  
LLL SPADE 106K  
LCG LYDA DUTY 157K

CED	BW	WW	Milk	YW
1.5	2.3	53	26	86

BW	Adj. 205	205R	YR
96	665	105	103

BMI	CEZ	BII	CHB	Scrotal
22	16	20	28	38.1

Marb.	REA	Fat
0.5	0.05	0.085

**Polled** • Dark pigmented son of 10Y that exhibits tremendous depth of rib and muscle expression. If you need to add IMF to your breeding program this 10Y son will do it. 4162 was the high scanning IMF bull in the entire Hereford offering. Maternal brothers sold to Hilda Brimmer of Bidle, MT, Clay Hollenbeck of McClusky, ND, and Wade Dungey of Alladin, WY.

## 92 PYRAMID HOMETOWN 4132

Reg. 43494445 Tattoo: 4132 Calved: 3/30/2014

SHF WONDER M326 W18 ET  
NJW 73S W18 HOMETOWN 10Y ET  
NJW P606 72N DAYDREAM 73S

THR THOR 4029  
FHF 4029 RUTH 9X  
FHF 20M RUTH 18S

KCF BENNETT 3008 M326  
SHF GOVERNESS 236G L37  
PW VICTOR BOOMER P606  
NJW 94J DEW 72N  
JDH 15 WRANGLER 25L  
THR MISS THOR 0266  
FHF 19H STARBUCK 20M ET  
FHF 10G RUTH 4P

CED	BW	WW	Milk	YW
0.8	2.3	57	20	87

BW	Adj. 205	205R	YR
88	567	90	91

BMI	CEZ	BII	CHB	Scrotal
28	17	25	33	38.2

Marb.	REA	Fat
0.29	0.84	0.011

**Polled** • Lighter birth Hometown 10Y son that displays a lot of rib and muscle shape and balance of total structural balance, volume and capacity. His EPD profile and \$ dollar indexes are very positive and should increase his predictability for profitability. Maternal brother sold to Davis Ranch of Belle Fourche, SD.

## 93 PYRAMID HOMETOWN 4169

Reg. 43494441 Tattoo: 4169 Calved: 4/10/2014

SHF WONDER M326 W18 ET  
NJW 73S W18 HOMETOWN 10Y ET  
NJW P606 72N DAYDREAM 73S

BP KLONDIKE 602 904 18L  
FHF DK 18L RITA 22P  
FHF DK 0112 RITA 17M

KCF BENNETT 3008 M326  
SHF GOVERNESS 236G L37  
PW VICTOR BOOMER P606  
NJW 94J DEW 72N  
KLONDIKE 28U 602C  
BP MISS 904D  
BOYD COW MAKER 0112  
FHF 32F RITA 43J

CED	BW	WW	Milk	YW
-0.1	3.8	52	25	86

BW	Adj. 205	205R	YR
95	572	91	98

BMI	CEZ	BII	CHB	Scrotal
19	14	16	31	35.6

Marb.	REA	Fat
0.35	0.58	0.016

**Polled** • Hometown 10Y son that excelled on his ultrasound data - he had a 15.3 REA to ratio 116 along with IMF ratio of 124. His Dam is a never miss cow. Maternal brothers sold to Tyler Franklund of ND, Dan Beckman of Prairie City, SD, and Mackaben Ranch of Belle Fourche, SD.





Lot 95 • Pyramid Hickok 4130

## 95 PYRAMID HICKOK 4130

Reg. 43479177 Tattoo: 4130 Calved: 3/30/2014

THR THOR 4029  
FHF 4029 HICKOK 15X  
FHF 10H VICTRA 31S

FHF 45P STARBUCK 104T  
FHF 104T ERICA 56X  
FHF 10G ERICA 2M

JDH 15 WRANGLER 25L  
THR MISS THOR 0266  
DR WORLD CLASS 517 10H  
FHF 24F VICTRA 30N  
NJW FHF 9710 TANK 45P  
FHF 32F RITA 43J  
FHF 35C STARBUCK 10G  
FHF 105A ERICA 38K

CED	BW	WW	Milk	YW
1.6	2.5	45	23	71

BW	Adj. 205	205R	YR
87	624	99	99

BMI	CEZ	BII	CHB	Scrotal
17	16	15	22	35.7

Marb.	REA	Fat
0.11	0.32	0.005

**Polled •** Dip ribbed, high volume balanced son of Hickok whose sons were a high selling sire group at the 2014 sale. 4130 exhibits that natural thickness and volume that the industry desires. Maternal brother sold to Ray & Teddi Jo Williams of Bidle, MT.

## 94 PYRAMID HOMEGROWN 4137

Reg. 43494439 Tattoo: 4137 Calved: 3/31/2014

SHF WONDER M326 W18 ET  
NJW 73S W18 HOMETOWN 10Y ET  
NJW P606 72N DAYDREAM 73S

ALH 0190 VICTOR 0343  
FHF 0343 RITA 31U  
FHF 0112 RITA 83R

KCF BENNETT 3008 M326  
SHF GOVERNESS 236G L37  
PW VICTOR BOOMER P606  
NJW 94J DEW 72N  
BTF 5008 VICTOR 0190  
ALH A3 FAVORITE 512  
BOYD COW MAKER 0112  
FHF G160 RITA 87L

CED	BW	WW	Milk	YW
-1.1	3.2	48	24	75

BW	Adj. 205	205R	YR
98	568	89	94

BMI	CEZ	BII	CHB	Scrotal
20	14	20	21	39.4

Marb.	REA	Fat
0.12	0.20	0.032

**Polled • Scurs •** Here is a Hometown 8Y son with a balanced EPD profile and an IMF ratio of 132.

## 96 PYRAMID HICKOK 4150

Reg. 43479192 Tattoo: 4150 Calved: 4/3/2014

THR THOR 4029  
FHF 4029 HICKOK 15X  
FHF 10H VICTRA 31S

SHF TRAIL BLAZER M326 T81 ET  
FHF T81 VICTRA 28X  
HLG 872X VICTRA 10T ET

JDH 15 WRANGLER 25L  
THR MISS THOR 0266  
DR WORLD CLASS 517 10H  
FHF 24F VICTRA 30N  
KCF BENNETT 3008 M326  
SHF GOVERNESS 236G L64  
HH ADVANCE 872X  
FHF VICTRA 78B 3E

CED	BW	WW	Milk	YW
0.6	3.8	51	23	72

BW	Adj. 205	205R	YR
92	642	102	100

BMI	CEZ	BII	CHB	Scrotal
23	17	21	24	36.8

Marb.	REA	Fat
0.15	0.26	0.008

**Polled •** Goggle eyed dark red Hickok son that has extra length to make heavy calves. Maternal sister weaned 60% of her body weight as a first calf heifer. Maternal brother sold to Andy Coyle of Spearfish, SD.

## 97 PYRAMID HICKOK 4147

Reg. 43479199 Tattoo: 4147 Calved: 4/2/2014

THR THOR 4029  
FHF 4029 HICKOK 15X  
FHF 10H VICTRA 31S

FHF M33 STARBUCK 110T ET  
FHF 110T VICTRA 15W  
FHF P20 VICTRA 36T

JDH 15 WRANGLER 25L  
THR MISS THOR 0266  
DR WORLD CLASS 517 10H  
FHF 24F VICTRA 30N  
SHF MARSHAL 236G M33  
FHF 614R NATES LADY 3M  
SHF PROGRESS P20  
FHF 19H VICTRA 69N

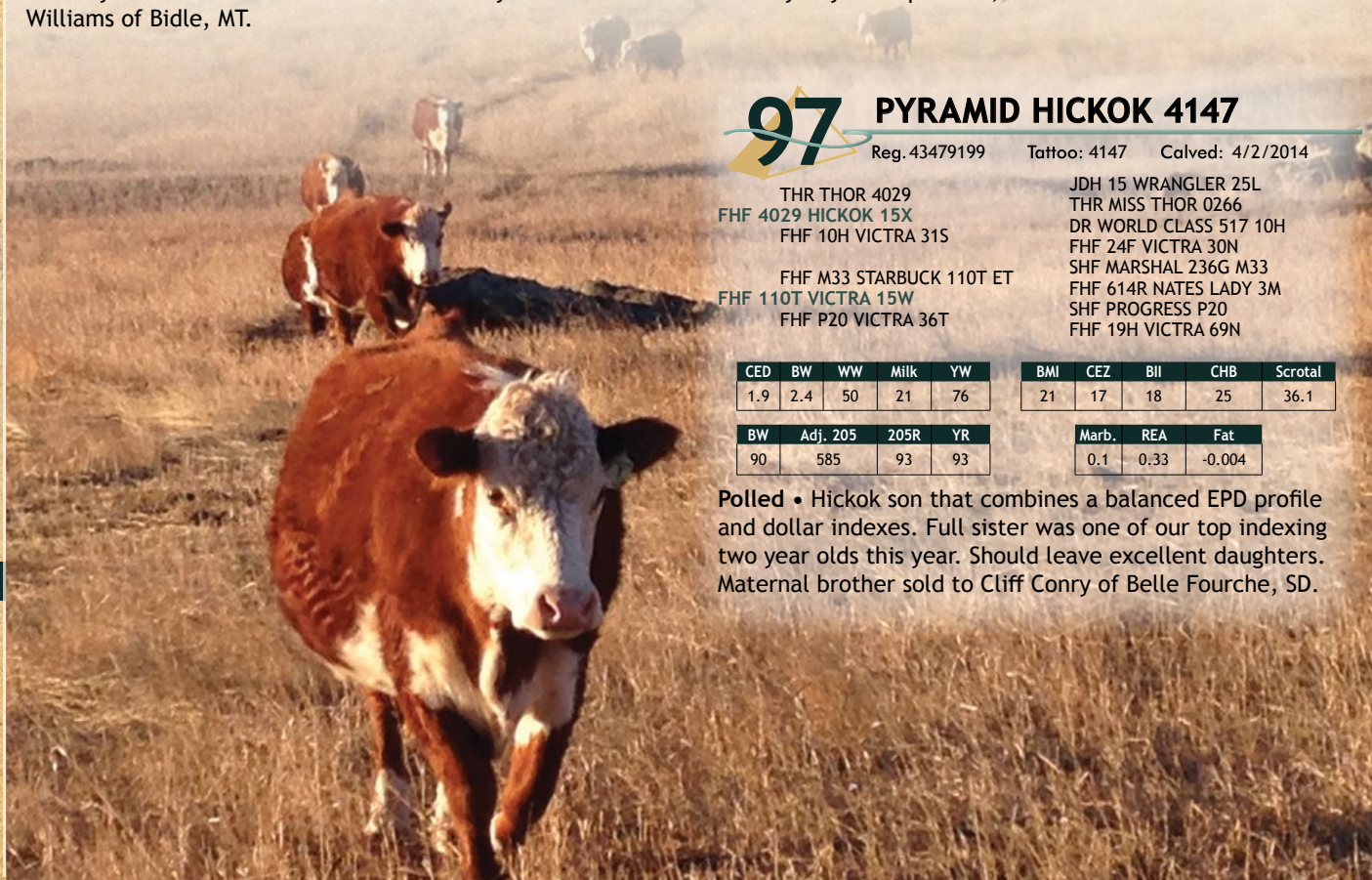
CED	BW	WW	Milk	YW
1.9	2.4	50	21	76

BW	Adj. 205	205R	YR
90	585	93	93

BMI	CEZ	BII	CHB	Scrotal
21	17	18	25	36.1

Marb.	REA	Fat
0.1	0.33	-0.004

**Polled •** Hickok son that combines a balanced EPD profile and dollar indexes. Full sister was one of our top indexing two year olds this year. Should leave excellent daughters. Maternal brother sold to Cliff Conry of Belle Fourche, SD.







Lot 98 • Pyramid Deadwood 4121

## 98 PYRAMID DEADWOOD 4121

Reg. 43479207 Tattoo: 4121 Calved: 3/25/2014

ECR L18 EXTRA DEEP 9279  
FHF 9279 DEADWOOD 38Y  
FHF 51M RUBY 82S

UPS DOMINO 3027  
FHF 3027 RITA 8Z  
FHF 0722 RITA 160X

GO EXCEL L18  
OXH CHRISTI 0028  
FHF 0024 STARBUCK 51M  
FHF 10G RUBY 7J  
CL 1 DOMINO 9126J 1ET  
UPS MISS DIAMOND 1353  
CKP RANCHHAND 0722  
FHF 10H RITA 132U ET

CED	BW	WW	Milk	YW
3.5	2.5	56	33	83

BMI	CEZ	BII	CHB	Scrotal
20	18	16	28	39.1

BW	Adj. 205	205R	YR
84	715	114	106

Marb.	REA	Fat
-0.01	0.76	-0.021

Polled • WW ratio at 114, YW ratio of 106 and MM of 31. Here is a Deadwood son that will have a lot of admirers and the stats to make him one of the top choices. His Dam was one of the high indexing two year olds last year and will be one of the high indexing cows this year.



Lot 100 • Pyramid Deadwood 4188

## 99 PYRAMID DEADWOOD 4152

Reg. 43479184 Tattoo: 4152 Calved: 4/4/2014

ECR L18 EXTRA DEEP 9279  
FHF 9279 DEADWOOD 38Y  
FHF 51M RUBY 82S

FHF 0024 STARBUCK 51M  
FHF 51M POLLY 39T  
FHF 74G POLLY 93J

GO EXCEL L18  
OXH CHRISTI 0028  
FHF 0024 STARBUCK 51M  
FHF 10G RUBY 7J  
GV 9823 VICTOR 0024  
OXH JUDI 7354  
FHF 680 POWERSTROKE 74G  
MS DAKITCH STAMINA 26Y

CED	BW	WW	Milk	YW
-0.4	3.7	51	30	74

BMI	CEZ	BII	CHB	Scrotal
12	12	10	23	36.5

BW	Adj. 205	205R	YR
96	655	104	100

Marb.	REA	Fat
-0.09	0.73	-0.029

Polled • Larger framed Deadwood son out of a Dam of Distinction cow that never misses. 4152 is a dark red nicely balanced bull that is sound in his structure and moves very freely. We have retained many maternal sisters.

## 100 PYRAMID DEADWOOD 4188

Reg. 43479183 Tattoo: 4188 Calved: 4/23/2014

ECR L18 EXTRA DEEP 9279  
FHF 9279 DEADWOOD 38Y  
FHF 51M RUBY 82S

MW LLL FARLEY 24F  
FHF DK 24F RITA 42R  
FHF 32F RITA 43J

GO EXCEL L18  
OXH CHRISTI 0028  
FHF 0024 STARBUCK 51M  
FHF 10G RUBY 7J  
REMITALL BOOMER 46B  
MM MISS PACE 124  
FHF STARBUCK 162A 32F  
FHF RITA 35C 23F

CED	BW	WW	Milk	YW
1.1	1.8	48	25	70

BMI	CEZ	BII	CHB	Scrotal
17	15	15	26	36.1

BW	Adj. 205	205R	YR
89	582	92	100

Marb.	REA	Fat
0.24	0.84	0.028

Polled • REA - 16.1 inches - ratio 123, IMF ratio 171. 4188 is the high carcass bull in the Hereford offering. He is a conservatively marked, smooth polled Deadwood son that is very clean and trim and has the muscle expression that order buyers like to see in feeder calves. Combine these traits with his scan data and he should be an excellent choice. Maternal brothers sold to Clay Hollenbeck of McClusky, ND in the last two sales.

## 101 PYRAMID DEADWOOD 4191

Reg. 43479204 Tattoo: 4191 Calved: 4/30/2014

ECR L18 EXTRA DEEP 9279  
FHF 9279 DEADWOOD 38Y  
FHF 51M RUBY 82S

CJH HARLAND 408  
FHF 408 RITA 10W  
FHF 51M RITA 136T ET

GO EXCEL L18  
OXH CHRISTI 0028  
FHF 0024 STARBUCK 51M  
FHF 10G RUBY 7J  
HH ADVANCE 9005J  
CJH L1 DOMINETTE 0064  
FHF 0024 STARBUCK 51M  
FHF 32F RITA 43J

CED	BW	WW	Milk	YW
2.4	2.3	46	29	72

BMI	CEZ	BII	CHB	Scrotal
12	15	8	23	32.4

BW	Adj. 205	205R	YR
88	554	88	92

Marb.	REA	Fat
0.04	0.7	-0.005

Dehorned • Younger Deadwood son out of a high volume Harland daughter that has a 97 BW, 103 WW and a 105 YW ratio. Our first Deadwood daughters calved this spring and we like their moderate frame and ideal udders. 4191 should sire the same kind of females. Maternal brother sold to Hilda Brimmer of Bidle, MT.





Lot 103 • Pyramid Deadwood 4144

## 103 PYRAMID DEADWOOD 4144

Reg. 43479206 Tattoo: 4144 Calved: 4/2/2014

ECR L18 EXTRA DEEP 9279  
FHF 9279 DEADWOOD 38Y  
FHF 51M RUBY 82S

FHF 19H STARBUCK 20M ET  
FHF 30M NATE'S LADY 9T  
FHF 100L NATES LADY 36R

GO EXCEL L18  
OXH CHRISTI 0028  
FHF 0024 STARBUCK 51M  
FHF 10G RUBY 7J  
FHF 8403 STARBUCK 19H  
FHF CL DOMINETTE 71A  
BRL CALL 100L  
FHF 616 NATE'S LADY 84L

CED	BW	WW	Milk	YW
0.2	1.1	36	22	48

BMI	CEZ	BII	CHB	Scrotal
19	16	20	17	39.4

BW	Adj. 205	205R	YR
88	564	90	90

Marb.	REA	Fat
0.01	0.46	-0.019

**Polled •** Moderate framed red necked, red-legged son of Deadwood whose Dam has the phenotype and eye appeal that we like in a female. Maternal brother sold to Metler of SD, and Hovland of MN.



Lot 103 • Pyramid Keystone 4202

## 102 PYRAMID DEADWOOD 4155

Reg. 43479169 Tattoo: 4155 Calved: 4/5/2014

ECR L18 EXTRA DEEP 9279  
FHF 9279 DEADWOOD 38Y  
FHF 51M RUBY 82S

PYRAMID 16W 110T 9116  
FHF 9116 RITA 68Z  
FHF 408 RITA 66X ET

GO EXCEL L18  
OXH CHRISTI 0028  
FHF 0024 STARBUCK 51M  
FHF 10G RUBY 7J  
FHF M33 STARBUCK 110T ET  
FHF 51M ACHIEVA 70T  
CJH HARLAND 408  
FHF 32F RITA 43J

CED	BW	WW	Milk	YW
1	3.2	58	30	84

BMI	CEZ	BII	CHB	Scrotal
20	15	17	29	40

BW	Adj. 205	205R	YR
85	692	110	109

Marb.	REA	Fat
0.03	0.82	-0.016

**Polled • Scurs •** REA 14.1 inches - ratio 111, IMF ratio 124 - Conservatively marked Deadwood son out of high volume first calf 9116 daughter. This bull has a WW ratio of 110 and yearling ratio of 109 combined with his scan data, he offers all of the needed economic traits the industry is seeking.

## 104 PYRAMID DEADWOOD 4185

Reg. 43479198 Tattoo: 4185 Calved: 4/22/2014

ECR L18 EXTRA DEEP 9279  
FHF 9279 DEADWOOD 38Y  
FHF 51M RUBY 82S

BP KLONDIKE 602 904 18L  
FHF 18L VICTRA 17P  
FHF 19H VICTRA 27M

GO EXCEL L18  
OXH CHRISTI 0028  
FHF 0024 STARBUCK 51M  
FHF 10G RUBY 7J  
KLONDIKE 28U 602C  
BP MISS 904D  
FHF 8403 STARBUCK 19H  
FHF 32F VICTRA 16J

CED	BW	WW	Milk	YW
0.3	2.4	44	23	61

BMI	CEZ	BII	CHB	Scrotal
15	14	13	20	36.2

BW	Adj. 205	205R	YR
88	633	101	100

Marb.	REA	Fat
-0.07	0.62	-0.031

**Polled •** Conservatively marked, red-eyed Deadwood son that will sire the baldie calves that consistently top feeder sales. His Dam has had nine calves and her udder is as neat and tight as it was when she was a two year old. She is easy keeping and sound on her feet and legs. The kind that last and keep us in the business. Maternal brother sold to Hoffman of SD and Dan Beckman of Prairie City, SD.

## 105 PYRAMID KEYSTONE 4202

Reg. 43479144 Tattoo: 4202 Calved: 5/28/2014

FHF M33 STARBUCK 110T ET  
PYRAMID 16W 110T 9116  
FHF 51M ACHIEVA 70T

CJH HARLAND 408  
FHF 408 RITA 21W  
FHF 45P RITA 101T

SHF MARSHAL 236G M33  
FHF 614R NATES LADY 3M  
FHF 0024 STARBUCK 51M  
FHF 19H ACHIEVA 88K  
HH ADVANCE 9005J  
CJH L1 DOMINETTE 0064  
NJW FHF 9710 TANK 45P  
FHF DK 24F RITA 8N

CED	BW	WW	Milk	YW
2.8	1.5	56	29	88

BMI	CEZ	BII	CHB	Scrotal
20	17	15	30	36.7

BW	Adj. 205	205R	YR
84	682	112	100

Marb.	REA	Fat
0.17	0.62	0.01

**Polled •** Youngest Hereford bull in the sale, but certainly one of the best. This thick made wide based son of 9116 is out of one of the most powerful cows in our herd. Her ratios on four calves are BW 90, WW 119, and YW 109. 4202's full brother was one of the high selling bulls in 2014 and sold to L7 Ranch of Terry, MT and a maternal brother topped a previous sale to Thorstenson Ranch of Selby, SD. She is currently in transplant.





Lot 106 • Pyramid Keystone 4107



Lot 107 • Pyramid Keystone 4160

## 107 PYRAMID KEYSTONE 4160

Reg. 43479210 Tattoo: 4160 Calved: 4/7/2014

FHF M33 STARBUCK 110T ET  
PYRAMID 16W 110T 9116  
FHF 51M ACHIEVA 70T

UPS DOMINO 3027  
FHF 3027 RITA 5Y  
FHF 408 RITA 10W

SHF MARSHAL 236G M33  
FHF 614R NATES LADY 3M  
FHF 0024 STARBUCK 51M  
FHF 19H ACHIEVA 88K  
CL 1 DOMINO 9126J 1ET  
UPS MISS DIAMOND 1353  
CJH HARLAND 408  
FHF 51M RITA 136T ET

CED	BW	WW	Milk	YW
4.4	2.4	54	28	90

BW	Adj. 205	205R	YR
87	621	98	105

BMI	CEZ	BII	CHB	Scrotal
20	19	15	29	38.1

Marb.	REA	Fat
0.05	0.6	-0.014

**Polled •** He is a big-bodied dark red bull that has an ideal eye set. He combines a balanced set of EPD's with the phenotype we strive for in our cowherds. His Dam is a 3027/Harland cross, which has worked very well in our herd.

## 106 PYRAMID KEYSTONE 4107

Reg. 43479196 Tattoo: 4107 Calved: 3/13/2014

FHF M33 STARBUCK 110T ET  
PYRAMID 16W 110T 9116  
FHF 51M ACHIEVA 70T

UPS DOMINO 3027  
FHF 3027 RITA 21Z  
FHF 408 RITA 64X ET

SHF MARSHAL 236G M33  
FHF 614R NATES LADY 3M  
FHF 0024 STARBUCK 51M  
FHF 19H ACHIEVA 88K  
CL 1 DOMINO 9126J 1ET  
UPS MISS DIAMOND 1353  
CJH HARLAND 408  
FHF 32F RITA 43J

CED	BW	WW	Milk	YW
4	2.6	62	31	88

BMI	CEZ	BII	CHB	Scrotal
20	18	14	31	37.8

BW	Adj. 205	205R	YR
83	783	124	110

Marb.	REA	Fat
0.1	0.55	0.006

**Polled • Scurs •** BW 83#, WW ratio 24, YW ratio 110, REA ratio 104. This bull has been a stand out since birth. He has tremendous thickness and volume with an abundance of growth yet it is all combined in a moderate package. His Dam is one of our best young cows and weaned the heaviest calf in 2015.

## 108 PYRAMID KEYSTONE 4172

Reg. 43479175 Tattoo: 4172 Calved: 4/11/2014

FHF M33 STARBUCK 110T ET  
PYRAMID 16W 110T 9116  
FHF 51M ACHIEVA 70T

FHF M33 STARBUCK 116T ET  
FHF 116T RUBY 57Y  
FHF 0343 RUBY 15U

SHF MARSHAL 236G M33  
FHF 614R NATES LADY 3M  
FHF 0024 STARBUCK 51M  
FHF 19H ACHIEVA 88K  
SHF MARSHAL 236G M33  
FHF 614R NATES LADY 3M  
ALH 0190 VICTOR 0343  
FHF 51M RUBY 68S

CED	BW	WW	Milk	YW
0.1	3.5	55	25	86

BMI	CEZ	BII	CHB	Scrotal
16	14	13	26	37.8

BW	Adj. 205	205R	YR
88	655	104	106

Marb.	REA	Fat
-0.03	0.58	-0.022

**Polled •** Here is high growth son of 9116 that is conservatively marked out of a young cow with a WW ratio of 108 and YW ratio of 111 on two calves.



# 109 PYRAMID KEYSTONE 4157

Reg. 43479211 Tattoo: 4157 Calved: 4/6/2014

FHF M33 STARBUCK 110T ET  
PYRAMID 16W 110T 9116  
FHF 51M ACHIEVA 70T

UPS DOMINO 3027  
FHF 3027 POLLY 4Y  
FHF 110T POLLY 13W

SHF MARSHAL 236G M33  
FHF 614R NATES LADY 3M  
FHF 0024 STARBUCK 51M  
FHF 19H ACHIEVA 88K  
CL 1 DOMINO 9126J 1ET  
UPS MISS DIAMOND 1353  
FHF M33 STARBUCK 110T ET  
FHF 51M POLLY 38T

CED	BW	WW	Milk	YW
3.8	1.6	53	28	80

BW	Adj. 205	205R	YR
87	637	101	104

BMI	CEZ	BII	CHB	Scrotal
20	18	16	26	39.1

Marb.	REA	Fat
0.03	0.54	-0.008

**Polled • 108 WW ratio.** He is a 9116 son out of a 3027 Dam, a mating we have done often and successfully here at the ranch. We have used 9116 on our 3027 heifers the last four years and the results have been exceptional for calving ease and excellent udders while maintaining the needed thickness and muscle.

# 111 PYRAMID KEYSTONE 4183

Reg. 43479172 Tattoo: 4183 Calved: 4/18/2014

FHF M33 STARBUCK 110T ET  
PYRAMID 16W 110T 9116  
FHF 51M ACHIEVA 70T

SHF TRAIL BLAZER M326 T81 ET  
FHF T81 ACHIEVA 61Y  
FHF 51M ACHIEVA 70T

SHF MARSHAL 236G M33  
FHF 614R NATES LADY 3M  
FHF 0024 STARBUCK 51M  
FHF 19H ACHIEVA 88K  
KCF BENNETT 3008 M326  
SHF GOVERNESS 236G L64  
FHF 0024 STARBUCK 51M  
FHF 19H ACHIEVA 88K

CED	BW	WW	Milk	YW
0.5	3	48	25	57

BW	Adj. 205	205R	YR
89	671	107	95

BMI	CEZ	BII	CHB	Scrotal
16	15	14	21	35.5

Marb.	REA	Fat
0.1	0.23	-0.003

**Polled •** This bull is double bred to FHF 51 Achiever 70T, a cow that has left a positive influence in our herd for udder quality. This bull should be a sure bet to leave daughters with ideal udders.

# 110 PYRAMID KEYSTONE 4171

Reg. 43479189 Tattoo: 4171 Calved: 4/11/2014

FHF M33 STARBUCK 110T ET  
PYRAMID 16W 110T 9116  
FHF 51M ACHIEVA 70T

ECR L18 EXTRA DEEP 9279  
FHF 9279 NATE'S LADY 29Y  
FHF P20 NATE'S LADY 43T

SHF MARSHAL 236G M33  
FHF 614R NATES LADY 3M  
FHF 0024 STARBUCK 51M  
FHF 19H ACHIEVA 88K  
GO EXCEL L18  
OXH CHRISTI 0028  
SHF PROGRESS P20  
FHF 100L NATES LADY 39P

CED	BW	WW	Milk	YW
2.1	2.5	55	25	71

BW	Adj. 205	205R	YR
89	684	108	96

BMI	CEZ	BII	CHB	Scrotal
13	15	10	25	34.8

Marb.	REA	Fat
-0.04	0.62	-0.016

**Polled • Scurs • 108 WW ratio.** This bull has some extra frame to him and should transmit that to his offspring. His Dam is a larger cow and has maintained a WW ratio of 107 on two calves.

# 112 PYRAMID KEYSTONE 4161

Reg. 43479212 Tattoo: 4161 Calved: 4/7/2014

FHF M33 STARBUCK 110T ET  
PYRAMID 16W 110T 9116  
FHF 51M ACHIEVA 70T

BEARTOOTH BUTLER 614R  
FHF 614R SARAH 3Y  
FHF 51S SARAH 17W

SHF MARSHAL 236G M33  
FHF 614R NATES LADY 3M  
FHF 0024 STARBUCK 51M  
FHF 19H ACHIEVA 88K  
BT BUTLER 452M  
ANTONIO MIS J3 270F  
FHF 68P STARBUCK 51S  
FHF 534E SARAH 61J

CED	BW	WW	Milk	YW
2.4	0.8	42	23	56

BW	Adj. 205	205R	YR
82	626	99	94

BMI	CEZ	BII	CHB	Scrotal
11	15	8	17	35.6

Marb.	REA	Fat
-0.07	0.29	-0.014

**Polled • Recommended for use on heifers.** He is a high maternal low birth weight bull that should work on heifers yet leave you an excellent set of replacement heifers.



HEREFORD



# 113 PYRAMID KEYSTONE 4120

Reg. 43479194 Tattoo: 4120 Calved: 3/22/2014

FHF M33 STARBUCK 110T ET  
PYRAMID 16W 110T 9116  
FHF 51M ACHIEVA 70T

UPS DOMINO 3027  
FHF 3027 RENAE 25Z  
FHF 4029 RENAE 20X

SHF MARSHAL 236G M33  
FHF 614R NATES LADY 3M  
FHF 0024 STARBUCK 51M  
FHF 19H ACHIEVA 88K  
CL 1 DOMINO 9126J 1ET  
UPS MISS DIAMOND 1353  
THR THOR 4029  
FHF 122L RENEE 46R ET

CED	BW	WW	Milk	YW
4.8	0.6	50	26	71

BMI	CEZ	BII	CHB	Scrotal
19	19	15	25	35.5

BW	Adj. 205	205R	YR
77	663	105	100

Marb.	REA	Fat
0.08	0.48	-0.003

**Polled • Recommended for use on heifers.** He had a low birth weight with a low birth weight EPD. 4120 is made to order for heifer breeding yet with adequate performance he will keep the weaning weights desirable.

# 115 PYRAMID KEYSTONE 4190

Reg. 43479188 Tattoo: 4190 Calved: 4/28/2014

FHF M33 STARBUCK 110T ET  
PYRAMID 16W 110T 9116  
FHF 51M ACHIEVA 70T

DR WORLD CLASS 517 10H  
FHF 10H VICTRA 31S  
FHF 24F VICTRA 30N

SHF MARSHAL 236G M33  
FHF 614R NATES LADY 3M  
FHF 0024 STARBUCK 51M  
FHF 19H ACHIEVA 88K  
FELTONS 517  
VPI MARATHON LADY 0081  
MW LLL FARLEY 24F  
FHF 19H VICTRA 63K

CED	BW	WW	Milk	YW
1.5	1.6	49	28	59

BMI	CEZ	BII	CHB	Scrotal
17	17	15	19	36.2

BW	Adj. 205	205R	YR
89	597	95	87

Marb.	REA	Fat
0.08	0.19	0.032

**Polled •** One of the younger bulls in the sale and because of his age gives up some performance but with his genetics he is certain to enhance the performance in his offspring. His Dam is the Mother of herd bull - Hickok. Maternal brother sold to Clanton Ranch of Buffalo, SD

# 114 PYRAMID KEYSTONE 4173

Reg. 43479154 Tattoo: 4173 Calved: 4/11/2014

FHF M33 STARBUCK 110T ET  
PYRAMID 16W 110T 9116  
FHF 51M ACHIEVA 70T

CKP RANCHHAND 0722  
FHF 0722 RITA 149X  
FHF 45P RITA 101T

SHF MARSHAL 236G M33  
FHF 614R NATES LADY 3M  
FHF 0024 STARBUCK 51M  
FHF 19H ACHIEVA 88K  
SB 122L GIT-R-DONE 19R ET  
SCHR HELEN 1B LASS 26K  
NJW FHF 9710 TANK 45P  
FHF DK 24F RITA 8N

CED	BW	WW	Milk	YW
1.2	2.7	49	24	77

BMI	CEZ	BII	CHB	Scrotal
16	15	14	22	37.1

BW	Adj. 205	205R	YR
91	591	94	93

Marb.	REA	Fat
-0.08	0.49	-0.024

**Polled •** The Dam of 4173 is one of the most attractive cows in our herd. Her udder has the suspension and teat size to insure longevity.

# 116 PYRAMID KEYSTONE 4105

Reg. 43479202 Tattoo: 4105 Calved: 3/12/2014

FHF M33 STARBUCK 110T ET  
PYRAMID 16W 110T 9116  
FHF 51M ACHIEVA 70T

UPS DOMINO 3027  
FHF 3027 LADYSPORT 11Z  
NJW 139J M326 SKYLARK 152X ET

SHF MARSHAL 236G M33  
FHF 614R NATES LADY 3M  
FHF 0024 STARBUCK 51M  
FHF 19H ACHIEVA 88K  
CL 1 DOMINO 9126J 1ET  
UPS MISS DIAMOND 1353  
KCF BENNETT 3008 M326  
SDL VLY 7C SERENADE 139J

CED	BW	WW	Milk	YW
4.1	1.3	53	26	81

BMI	CEZ	BII	CHB	Scrotal
27	21	25	27	41.7

BW	Adj. 205	205R	YR
85	671	106	101

Marb.	REA	Fat
0.09	0.44	0.001

**Polled • Scurs •** WW ratio 106 - Here a long bodied well balanced son of 9116 with desirable EPD's and \$ indexes.







# PROFITABULL

Enough said.

There's no doubt about it, a registered Hereford bull pays in so many ways — a user-friendly package of docility, stronger fertility and calving ease that sires calves with hybrid vigor and feed efficiency that demand a premium. To learn more about the Hereford-sired advantage or to find a Hereford breeder near you, visit [Hereford.org/profitabull](http://Hereford.org/profitabull).

Buy [Hereford.com](http://Hereford.com)





19975 Bear Ridge Rd  
Spearfish, SD 57783  
[www.pyramidbeef.net](http://www.pyramidbeef.net)



For more information, contact:

Jason McLennan	605-645-1630
Jonathan Marohl	701-445-3456
Nate Frederickson	605-254-4872
Mark Frederickson	605-642-2139