

# STROH HEREFORDS



## 27TH ANNUAL PRODUCTION SALE THURSDAY, FEB. 2, 2017

1:00 p.m. (MT) • At the Ranch

1.5 Miles East of the Killdeer Roundabout on  
Highway 200 or 5 miles west of Dunn Center, ND.



**SH CAPTAIN 552**

### SELLING:

50 Coming Two-Yr-Old Bulls

10 Bred Registered Hereford  
Heifers (Bred to Black Angus Bulls)

10 Bred Commercial Heifers  
(Bred to Black Angus Bulls)

# WELCOME

---

Stroh Herefords would like to invite you, our customers, friends and family to our 27th annual production sale on Thursday, February 2, 2017 at the Ranch. Time changes all things, and as fate would have it this year's sale is an indicator of the passing of time. Over the past years, we have had three generations of Stroh's (Tony, Mike and Matt and one year Lucas) selling cattle at our annual production sale. This year will be our last three generation sale for some time. Tony will be selling his last offering of cattle at this year's sale.

We are excited to bring you this year's offering. We have coming two year old bulls available from eleven different sires. Each sire was chosen to improve different traits within our herd. We have also taken into consideration the valuable input our customers have given us; in regards to their specific needs in a herd sire, when we have chosen herd sires for ourselves.

This year's bulls are cake broke, pail gentle and ready to go to work for you. This set of bulls has pigment, gentle dispositions, are sound on their feet and ready to breed. Remember, a two year old bull can service at least 30% more cows than a yearling bull can.

As always, we strongly encourage you to use a Hereford bull in your cross breeding program. The advantages of using a Hereford bull in a cross breeding program is more documented than ever before. A Hereford bull brings hybrid vigor and performance to the table. A Hereford bull will improve weaning weights, putting more dollars in your pocket on sales day. In these challenging times, efficiency and quality will be something to strive for with the high input costs we are all facing.

We wanted to include some information in regard to this year's sale heifers. The heifers, like the bulls are cake broke and pail gentle. This group of heifers was in the heart of the "Killdeer Hail Storm". The hail literally pounded the grass into the ground. As a result, we started to cake them until the grass came back. The heifers were ultra-sounded by West Dakota Vet Clinic in October.

In closing, we encourage you to stop by and look at this year's offering. Should you have any questions, please do not hesitate to contact us. We look forward to seeing you on sale day. Lunch is at 11:30 and the sale starts at 1:00 Mountain Time.

Best Regards,

*Mike, Dawn, Lucas and Matt Stroh*

1010 Highway 22 South

Killdeer, ND 58640

701-573-4373 or 701-290-1191 (Mikes Cell)

acmecatl@ndsupernet.com

Tony and Leona Stroh

Killdeer, ND 58640



We have been privileged to provide veterinary services for the Stroh Ranch for the past 30 years. They are very caring people and take outstanding care of their cattle. They have a passion for raising docile cattle that perform exceptional in the pasture and at the feedlot.

Their herd is on a full vaccination program. The cowherd is vaccinated pre-breeding with PregGuard Gold FP® 10. The bulls are fertility tested in the spring, and receive PregGuard Gold FP® 10, SolidBac Pinkeye IR/PR vaccine and Fusogard® footrot vaccine before turnout.

The calves receive BoviShield Gold-One Shot and UltraBac 7 at pasture turn out. The calves are dewormed at branding with LongRange and dewormed again at weaning with ivermectin. The calves receive booster vaccinations and are dewormed in the fall.

Best of luck in 2017!

**Dr. Kim Brummond, Dr. Erika Schumacher & Dr. Tim Janke**

West Dakota Veterinary Clinic

93 21st St East

Dickinson, ND 58601

701-483-0240

[www.westdakotavet.com](http://www.westdakotavet.com)

---

**TERMS & CONDITIONS:** All cattle will be sold to the highest bidder without reserve. The terms of the sale will be cash. The auctioneer will settle any dispute as to bids.

Each animal will become the property of the buyer as soon as sold. Cattle will be cared for a reasonable length of time after the sale, at the buyer's risk. Announced changes in catalog information sale day, take precedence over printed material in this catalog. Everyone attending this sale does so at his own responsibility and risk, and without liability on the part of the owner or his employees.

**GUARANTEE:** All bulls of breeding age are guaranteed breeders. If an animal fails to breed after a trial of six months, it may be returned to the seller at buyer's expense. The seller reserves the right to try said animal for six months and if it proves a breeder to return it to the station of buyer at seller's expense. If the animal proves to be a non-breeder it will be replaced with an animal of equal quality or credit will be given for next years sale.

We assume no liability legal or otherwise to make any further compensation to the buyer no other warranty of any nature is expressed or implied.

Extreme care has been taken in copying each pedigree to avoid errors. We are not to be held responsible for any error which might appear and which is beyond our control in the printing of the catalog.

**DELIVERY:** Deliveries will be made on purchase of \$3500 or more to central points up to 400 miles. We will cooperate with buyers on delivery of all cattle regardless of number or distance. No delivery provided for heifers.

**ABSENTEE BIDDING:** Anybody wishing to bid that cannot attend the sale may place a phone bid by contacting any listed sales representative, (Jason Frey, Chad Stoltz and Rick Thompson), Mike Stroh or Scott Weishaar.

**KILLDEER ACCOMMODATIONS:** Cobblestone Hotel & Suites, 701-764-2200; Barrons Lodge, 701-297-1040.

**We will cooperate with delivery arrangements or take \$50.00 (per bull) off if picked up on sale day (Bulls Only)**

# **STROH HEREFORDS 27TH ANNUAL PRODUCTION SALE THURSDAY, FEB. 2, 2017**

**1:00 p.m. (MT) • At the Ranch**

1.5 Miles East of the Killdeer Roundabout on  
Highway 200 or 5 miles west of Dunn Center, ND.

*Join us for a free lunch*

---

**Scott Weishaar, Auctioneer**

**701-872-5299 • Cell: 701-426-6826**

**Jill & Marc Hotchkiss,**

**Hereford America, 605-866-4495**

**Jill Cell: 605-490-1409**

**Marc Cell: 605-490-1513**

**Dr. Erika Schumacher, DVM**

**701-483-0240**

**Jason Frey, Western Ag Reporter**

**701-300-0845**

**Rick Thompson**

**701-290-6839**

**Chad Stoltz**

**701-225-2265 • Cell: 701-290-0546**

---


**Videos online at:**

**[www.thelivestocklink.com](http://www.thelivestocklink.com)**

**The Livestock  
Link**

---

*EPD's are current as of 12/21/16.*



Scott Ellinger is chef-owner of The Brass Rail steak house and adjoining retail meat market in O'Fallon, Missouri. Chef Scott has transformed The Brass Rail into a thriving steak house. Visit [Hereford.org](http://Hereford.org) to hear Chef Scott in his own words.



## He wants it all.

The Brass Rail chef-owner Scott Ellinger's supplier relationships are built on trust. Chef Scott trusts the Certified Hereford Beef brand is backed by producers committed to making sure his customers have a positive dining experience. As a chef and businessman in a profession demanding perfection, Chef Scott wants it all—delicious and nutritious beef produced by America's ranchers.

The stakes have never been higher to create value and efficiency throughout the production system. In the past decade, Hereford has documented dramatic improvements in calving ease, weaning and yearling performance and end product merit.\*

Reduce your risk. Improve your opportunity for profitability.

You want it all in your beef operation? Then take it.



American Hereford Association  
P.O. Box 014059 • Kansas City, MO 64101  
816-842-3757 • [Hereford.org](http://Hereford.org) • [HerefordBeef.org](http://HerefordBeef.org)  
©2016 American Hereford Association

**HEREFORDS. Accountable. Predictable. Profitable. Sustainable.**

\* The Spring 2015 Hereford Pan-American Cattle Evaluation (PACE) documents consistent improvements in all traits of economic importance. From 2004 to 2014, AHA Genetic Trends indicate a 14% reduction in birth weights, 20% improvement in weaning and yearling performance and a 30% improvement in end product merit. [Hereford.org/userfiles/S15\\_Trend.pdf](http://Hereford.org/userfiles/S15_Trend.pdf)

### **FIVE RESEARCH BASED FACTS TO CONSIDER WHEN TRYING DECIDING IF YOU SHOULD PURCHASE A TWO-YEAR OLD BULL OR A YEARLING BULL...**

- 1) Two-Year Old Bulls have better serving ability than their yearling counterparts. They can service at least 30% more cows.
- 2) Two-Year Old Bulls are culled for quality control, more so than a yearling bull.
- 3) A Two-Year Old Bull carries more body fat reserve.
- 4) Two-Year Old Bulls do not require the management that yearling bulls do.
- 5) Two-Year Old Bulls require less supplemental feed than do their yearling counterparts (developing yearling bulls have greater nutritional needs).

# NATIONAL CATTLE EVALUATION TERMS:

---

## **Birth Weight (BW)**

Birth weight is an indicator of calving ease. Larger BW EPD's usually, but not always, indicate more calving difficulty. The figure in parentheses found after each EPD is an accuracy value or reliability of the EPD. To learn more about how to use accuracy when evaluating EPD's please refer to the section "Accuracy and Confidence Range".

## **Weaning Weight (WW)**

WW EPD reflects pre-weaning growth.

## **Yearling Weight (YW)**

YW EPD reflects differences in the 365-day adjusted yearling weight for progeny. It is the best estimate of total growth.

## **Maternal Milk (MM)**

The milking ability of a sire's daughters expressed in lb. of calf weaned. It predicts the difference in average weaning weight of sires' daughters' progeny due to milking ability.

## **Maternal Milk & Growth (MG)**

Maternal Milk & Growth reflects what the sire is expected to transmit to his daughters for a combination of growth genetics through weaning and genetics for milking ability. It is an estimate of daughters' progeny weaning weight. It is equal to one-half the sire's weaning weight EPD, plus all of his milk EPD. No accuracy is associated with this since it is simply a mathematical combination of two other EPD's. Sometimes referred to as "total maternal" or "combined maternal."

## **Rib Fat (FAT)**

The FAT EPD reflects differences in adjusted 365-day, twelfth-rib fat thickness based on carcass measurements of harvested cattle. Sires with low, or negative, FAT EPD's are expected to produce leaner progeny than sires with higher EPD's. Ultrasound measures are also incorporated into this trait and have been shown to be highly correlated with the performance of slaughter progeny. All data is expressed on a carcass scale.

## **Ribeye Area (REA)**

REA EPD's reflect differences in an adjusted 365-day ribeye area measures based on carcass measurements of harvested cattle. Sires with relatively higher REA EPD are expected to produce better muscled and higher percentage yielding slaughter progeny than will sires with lower REA EPD's. Ultrasound measures are also incorporated into this trait and have been shown to be highly correlated with the performance of slaughter progeny. All data is expressed on a carcass scale.

## **Marbling (MARB)**

MARB EPD's reflect differences in an adjusted 365-day marbling score (intramuscular fat) based on carcass measurements of harvested cattle. Breeding cattle with higher MARB EPD's should produce slaughter progeny with a higher degree of intramuscular fat and therefore higher quality grades. Ultrasound measures are also incorporated into this trait and have been shown to be highly correlated with the performance of slaughter progeny. All data is expressed on a carcass scale.

## **Baldy Maternal Index (BMI\$)**

A maternally focused index that has a production system based on 1,000 Hereford x Angus females with a progeny harvest endpoint directed toward CHB. This index is more critical of CE than the BII\$ and also has significant weight on fertility. There is positive weight on WW and a slightly negative weight on YW which promotes early growth and then a slow down on growth to keep mature size manageable. The emphasis of IMF is greater than the emphasis of REA. This is true because of the price difference of the choice-select spread and the fact that there is very little incentive to produce cattle better than a yield grade 3. The question comes up concerning the fact that the CHB program has been successful because of the acceptance of Select grade cattle. In answer to this, we are using a crossbreeding production system that could sell cattle on several grids and the CHB program is installing a choice product. This index is geared to service any commercial program that runs British cross cows.

### Calving Easy Index (CEZ\$)

A general purpose index that focuses on identifying bulls that can be used on heifers and then ultimately the calves will be marketed through CHB. As you might expect, CE and MCE carries significant weight in this index along with fertility. There is very little weight put on growth traits and less emphasis on carcass. Remember, this is a general index that is specifically designed to be used in a heifer program.

### Certified Hereford Beef Index (CHB\$)

A terminal sire index that is built on a production system where Hereford bulls sire calves for the CHB market. There is some pressure put on CE and then positive weight on both WW and YW. Remember that all offspring in this index are harvested, so they need to be born alive and then grow fast at all stages of life. Of course, we have much more emphasis on fat in this index, as we want the cattle to stay lean. There is also a significant weight on both REA and IMF with more emphasis again on IMF. This index would be used by producers who have a target of producing bulls for a terminal breeding program. This index could be used heavily in the Midwest where bulls are used in rotational breeding programs to produce cattle in a retained ownership program or simply sold to backgrounders. This is the only index that has no emphasis on fertility. Remember that nothing is retained in the herd.

### The Hereford Indexes are:

#### Baldy Maternal Index (BMI\$)

An index to maximize profit for commercial cow calf producers who use Hereford bulls in rotational crossbreeding programs on Angus-based cows and heifers. Retained ownership of calves through the feedlot phase of production is assumed, with fed cattle marketed on a Certified Hereford Beef (CHB) LLC pricing grid.

#### Certified Hereford Beef Index (CHB\$)

A terminal sire index, where Hereford bulls are mated to British-cross cows and all offspring are sold as fed cattle on a CHB LLC pricing grid.

#### Calving EZ Index (CEZ\$)

This index is similar to BMI\$, except that Hereford bulls are mated only to yearling heifers. This index has increased emphasis on direct and maternal calving ease compared with the other indexes. The index values for each animal result from multiplying each of the animals EPD's by the relative economic value of a one-unit increase in that trait under each scenario. The economic weightings were developed by Michael MacNeil, research geneticist with the USDA Agricultural Research Service in Miles City, Montana.

---

# THE CERTIFIED HEREFORD BEEF SIRE OF DISTINCTION

---

According to the American Hereford Association. The Certified Hereford Beef Sire of Distinction (CHBS) program recognizes Hereford Bulls that have excelled in carcass traits. The Board initiated this program in August 2007.

To qualify as a CHBS, a bull must:

- Be in the top 25% for the CHB\$ profit index
- Have a minimum accuracy level for both ribeye area (REA) and marbling (MARB) expected progeny difference (EPD)

The CHBS distinction is used to recognize sires in the Hereford breed that excelled in improving carcass traits. Although all bulls have the opportunity, only a few bulls will be recognized. A bull receiving the CHBS status will be recognized with CHB after his name when doing an animal or EPD inquiry on Hereford.org.

### EPD'S FOR 2015 BORN CALVES

CED	BW	WW	YW	M	M&G	CEM	MCW	UDDR	TEAT
1.2	3.2	49	79	21	46	1.4	88	1.16	1.17
SC	CW	FAT	REA	MARB	BMI\$	CEZ\$	BII\$	CHB\$	
0.9	61	.004	.33	.08	18	15	16	24	

# HERD BULLS



**SIRE**

**A**

**CL 1 DOMINO 3146A**

REG#	DOB
43379774	2/4/13



HH ADVANCE 1087Y ET	HH ADVANCE 8050U ET.....	L1 DOMINO 03571
	HH MISS ADVANCE 6109S .....	HH MISS ADVANCE 365N
		CL 1 DOMINO 373N
		HH MISS ADVANCE 4049P
CL 1 DOMINETTE 036X 1ET	HH ADVANCE 5104R.....	CL 1 DOMINO 206M
		HH MISS ADVANCE 153L
	CL 1 DOMINETTE 475P.....	CL 1 DOMINO 824H
		CL 1 DOMINETTE 200M

BW	WW	YW	Milk	M&G	FAT	REA	MRB	BMI\$	CEZ\$	CHB\$
3.8	64	101	37	69	.047	.20	.04	12	12	26

A large outlined, heavily muscled, deep bodied Cooper bull that we are very excited to add to our program. This bull is a performance powerhouse.



**SIRE**

**B**

**CL 1 DOMINO 2142Z 1ET**

REG#	DOB
43268114	1/31/12



L1 DOMINO 08542	L1 DOMINO 06474 .....	L1 DOMINO 04457
	L1 DOMINETTE 02352.....	L1 DOMINETTE 99408
		L1 DOMINO 99360
		L1 DOMINETTE 99468
CL 1 DOMINETTE 332N	CL 1 DOMINO 9126J 1ET .....	HH ADVANCE 767G 1ET
		CL 1 DOMINETTE 490
	CL 1 DOMINETTE 875H .....	CL 1 DOMINO 640F
		CL 1 DOMINETTE 573E

BW	WW	YW	Milk	M&G	FAT	REA	MRB	BMI\$	CEZ\$	CHB\$
1.3	43	69	26	48	.050	.14	.28	23	21	23

A long bodied, heavily muscled Cooper bull that moderates frame size and adds maternal traits to any bloodline.





Casey St. Blanc

## SIRE **CHURCHILL CAPTAIN 2128Z ET**

**C**

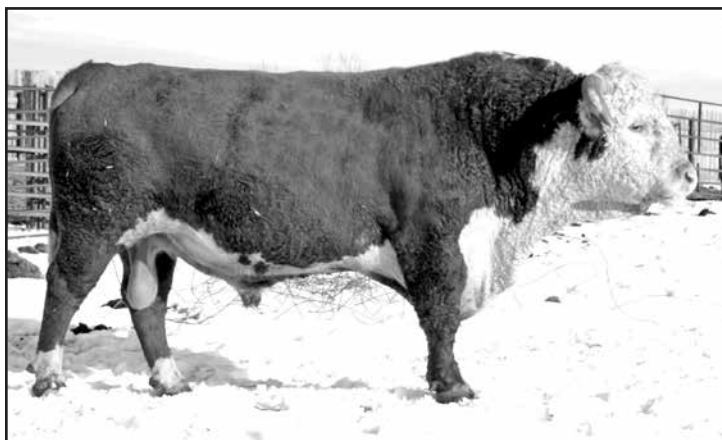
REG#	DOB
43282355	1/19/12

UPS DOMINO 3027 ..... CL 1 DOMINO 9126J 1ET  
 CHURCHILL SENSATION 028X UPS MISS DIAMOND 1353  
 CHURCHILL LADY 7202T ET..... GH RAMBO 279R  
 CL 1 DOMINETTE 301N

CHURCHILL YANKEE ET ..... GH NEON 17N  
 CHURCHILL LADY 9123W ET CHURCHILL LADY 202  
 CHURCHILL LADY 404 ..... CL 1 DOMINO 9126J 1ET  
 CHURCHILL LADY 1192

BW	WW	YW	Milk	M&G	FAT	REA	MRB	BMI\$	CEZ\$	CHB\$
0.6	59	91	38	67	.049	.46	.40	23	22	35

Co-owned with Churchill Cattle Company, Manhattan, MT. This bull consistently produces the cattleman's type of bulls and females.



## SIRE **CHURCHILL RANCHER 8108U ET**

**D**

REG#	DOB
42884833	1/17/08

MH DAKOTA 0230 ..... SR LAD 447  
 CHURCHILL RANCHER 592R JV ANGEL 684  
 CHURCHILL LADY 202 ..... HH ADVANCE 767G 1ET  
 CHURCHILL LADY 0113

CL 1 DOMINO 9126J 1ET ..... HH ADVANCE 767G 1ET  
 CL 1 DOMINETTE 301N CL 1 DOMINETTE 490  
 CL 1 DOMINETTE 8184H ..... CL 1 DOMINO 522E  
 CL 1 DOMINETTE 359

BW	WW	YW	Milk	M&G	FAT	REA	MRB	BMI\$	CEZ\$	CHB\$
3.9	52	90	30	55	.019	-.22	.26	21	16	26

Churchill Rancher is a Certified Hereford Beef Sire of Distinction. He has produced functional females in the Stroh Hereford Program. His impact will be felt in our program for years to come.



**SIRE**  
**E**

**DS RENDITION 359W**

REG#	DOB
43017500	3/22/09

GH NEON 17N..... GH DIFFERENCE BRITISHER 45L  
 CHURCHILL YANKEE ET GH SIR SIMBA LASS 107K  
 CHURCHILL LADY 202 ..... HH ADVANCE 767G 1ET  
 CHURCHILL LADY 0113

BP 146D SANDMAN 46H..... BP SANDMAN 146D  
 DS SHANA 557 BP COMMANDER LADY 128Y  
 OXH PATTI 8153..... BB PATRIOT 0293  
 OXH CANDI 3050

BW	WW	YW	Milk	M&G	FAT	REA	MRB	BMI\$	CEZ\$	CHB\$
3.5	61	81	22	52	.021	.50	.32	20	16	33

*A bull that consistently produces heavily muscled calves.*



**SIRE**  
**F**

**SR NAVARRO 140X**

REG#	DOB
43105343	3/19/10

UPS NAVARRO UPS DOMINO 5216..... UPS DOMINO 3027  
 UPS MISS MOM 2756  
 UPS MISS DOMINO 5875 ..... JA L1 DOMINO 2228M  
 UPS MISS KNIGHT 3910

SR VALORIE 684 BB 1065 DOMINO 4102..... BB 9131 DOMINO 1065  
 ORE CLAUDIA 8047 1ET  
 SH SHANA 4111 ..... BP 146D SANDMAN 46H  
 SR YAMPETTE 706

BW	WW	YW	Milk	M&G	FAT	REA	MRB	BMI\$	CEZ\$	CHB\$
2.9	56	88	28	56	-.005	.73	.25	20	16	33

*140X is one of the powerhouse muscle sires of all of our herd bulls. He is an all-around power bull.*

**SIRE****SR SAGA 1072Z****G**

REG#

DOB

43310476

4/4/12



HH ADVANCE 9005J ..... KB L1 DOMINO 519  
 CJH HARDLAND 408 HH MS ADVANCE 4054D  
 CJH L1 DOMINETTE 0064..... L1 DOMINO 920501  
 CJH L1 DOMINETTE 759

RH FUTURE KING LAD 63M ..... CH 69G KINGDOM 64K  
 SR FUTURA 619 RH FUTURE DOMINO LASS 29J  
 SR MARVEL 978 ..... BBH MARK DOMINO 162  
 SR YAMPETTE 710

BW	WW	YW	Milk	M&G	FAT	REA	MRB	BMI\$	CEZ\$	CHB\$
2.6	45	64	26	48	.022	.14	.21	22	20	23

*This is a long, smooth bodied Harland son we purchased from Stubers out of Bowman, ND.*

**SIRE****THR THOR 3213A****H**

REG#

DOB

43404153

3/31/13



CHURCHILL YANKEE ET ..... GH NEON 17N  
 MAC'S RENDITON 20X CHURCHILL LADY 202  
 MAC'S HARLET 772 ..... CJH HARLAND 408  
 LS CAPTIA 599

THR THOR 4029 ..... JDH 15 WRANGLER 25L  
 THR MISS THOR 7125T THR MISS THOR 0266  
 THR MISS THOR 0264..... THR THOR 5098  
 THR MISS THOR 8125

BW	WW	YW	Milk	M&G	FAT	REA	MRB	BMI\$	CEZ\$	CHB\$
2.0	58	90	16	45	.022	.54	.31	28	19	33

*A heavily muscled 20X son that we purchased from Thorstenson in 2014. We are pleased with the type of cattle he is producing. They are early maturing and easy keepers. Co-Owned with Thorstenson Hereford Ranch, Selby, SD.*

**SIRE****TP DESERT XPERT 327****I**

REG#

DOB

43411704

3/25/13



SHF RIB EYE M326 R117 ..... KCF BENNETT 3008 M326  
 NJW 98S R117 RIBEYE 88X ET HVH MISS HUDSON 83K 8M  
 NJW 9126J DEW DOMINO 98S ..... CL 1 DOMINO 9126J 1ET  
 NJW 57G 74G DEW 5M

L3 ARCH PREMIER 508 ..... GOLDEN ACHIEVER 2072  
 TP LADY HARRIET 128 L3 MISS DONNA D14  
 TP LADY DINA 751..... HPH DESERT DUST 139  
 TP LADY PREMIER 617

BW	WW	YW	Milk	M&G	FAT	REA	MRB	BMI\$	CEZ\$	CHB\$
5.3	57	92	34	62	.020	.16	.28	17	17	30

*A long bodied, stout 88X son purchased from Largents in Kaycee, WY. We are extremely pleased with the females this bull produces.*

**SIRE****UU HARLEY 9130****J**

REG#

DOB

42984917

2/25/09

CJH HARLAND 408 ..... HH ADVANCE 9005J  
 H5 408 DOMINO 7100 CJH L1 DOMINETTE 0064  
 H5 MS 001 DOMET 4193..... H5 501 DOMINO 001  
 H5 MS 767 ADVAN 2124

H5 767 ADVANCE 056 ..... HH ADVANCE 767G 1ET  
 UU MS 056 7115 H5 MS 338 DOMET 5196  
 UU MS MARK 1207 ..... OXH MARK ADV 7364  
 UU MS 660 9031

BW	WW	YW	Milk	M&G	FAT	REA	MRB	BMI\$	CEZ\$	CHB\$
2.9	47	81	33	57	.064	.12	.19	24	19	22

*This bull was purchased from Van Newkirks out of Nebraska. He consistently produces brood cows.*

**SIRE****UU SENSATION 2053****K**

REG#

DOB

**43266549****2/6/12**

CHURCHILL SENSATION 028X  
 UPS DOMINO 3027 .....  
 CHURCHILL LADY 7202T ET.....

CL 1 DOMINO 9126J 1ET  
 UPS MISS DIAMOND 1353  
 GH RAMBO 279R  
 CL 1 DOMINETTE 301N

UU HALEY 0080  
 H5 408 DOMINO 7100 .....  
 UU MS DAKOTA 8105 .....

CJH HARLAND 408  
 H5 MS 001 DOMET 4193  
 UU DAKOTA 3003 ET  
 UU MS BONANZA 5059

BW	WW	YW	Milk	M&G	FAT	REA	MRB	BMI\$	CEZ\$	CHB\$
<b>-1.2</b>	<b>49</b>	<b>67</b>	<b>44</b>	<b>68</b>	<b>.087</b>	<b>.07</b>	<b>.29</b>	<b>24</b>	<b>25</b>	<b>24</b>

*A long, deep bodied, heavy muscled Sensation son that produces tremendous females and consistently produces great bull calves.*

# JR. HERD BULLS

**SIRE****BCC L1 DOMINO 489B****L**

REG#

DOB

**43511205****3/9/14**

KC L1 DOMINO 12050  
 HH ADVANCE 0207X.....  
 KC MISS RIBSTONE 09040.....

HH ADVANCE 8203U ET  
 HH MISS ADVANCE 7066T  
 F 157K RIBSTONE 765  
 KC L1 DOMETT 06100

BCC L1 DOMINETTE 129Y  
 UPS DOMINO 5216.....  
 BCC L1 PRINCESS 549 .....

UPS DOMINO 3027  
 UPS MISS MOM 2756  
 KB L1 DOMINO 116  
 BCC MEDORA 043

BW	WW	YW	Milk	M&G	FAT	REA	MRB	BMI\$	CEZ\$	CHB\$
<b>1.8</b>	<b>45</b>	<b>85</b>	<b>32</b>	<b>55</b>	<b>.025</b>	<b>.23</b>	<b>.23</b>	<b>23</b>	<b>18</b>	<b>25</b>

*This Junior Herd Sire is jointly owned with Baumgarten Cattle Company out of Belfield, N.D. This bull combines calving ease with performance.*

**SIRE****CL 1 DOMINO 432B****M**

REG#

DOB

**43470017****1/6/14**

CL 1 DOMINO 215Z  
 CL 1 DOMINO 9122W 1ET .....  
 CL 1 DOMINETTE 055X.....

CL 1 DOMINO 732T  
 CL 1 DOMINETTE 475P  
 CL 1 DOMINO 860U  
 CL 1 DOMINETTE 7136T 1ET

CL1 DOMINETTE 1152Y  
 HH ADVANCE 9016W ET .....  
 CL 1 DOMINETTE 717T.....

HH ADVANCE 5061R ET  
 HH MISS ADVANCE 4016P ET  
 CL 1 DOMINO 590R  
 CL 1 DOMINETTE 5134R

BW	WW	YW	Milk	M&G	FAT	REA	MRB	BMI\$	CEZ\$	CHB\$
<b>1.5</b>	<b>60</b>	<b>98</b>	<b>36</b>	<b>66</b>	<b>.062</b>	<b>.15</b>	<b>.23</b>	<b>21</b>	<b>17</b>	<b>28</b>

*This bull has an excellent disposition. He had an 84 lb actual birth weight and scanned a 1.00 inch REA/100 lbs. He is in the top 1% of the breed for milk and milk and growth. Purchased from Cooper Hereford Ranch.*

# THANK YOU FOR ATTENDING OUR SALE!

# TWO-YR-OLD BULLS

**LOT  
504**

## SH HARLEY 504

REG#	DOB	H/P/S	Act. BW	Act. WW	Act. YW
43643101	4/4/15	H	95	672	986

H5 408 DOMINO 7100 ..... CJH HARLAND 408  
 UU HARLEY 9130 H5 MS 001 DOMET 4193  
 UU MS 056 7115 ..... H5 767 ADVANCE 056  
 UU MS MARK 1207

F BONANZA 027 ..... LPG BONANZA 52G  
 MISS BONANZA 438 F MS MONTANA 454 1ET  
 SH 1 MISS DOM 5022 ..... CL 1 DOMINO 9149  
 MISS DOMINO 2011

BW	WW	YW	Milk	M&G	FAT	REA	MRB	BMI\$	CEZ\$	CHB\$
5.0	50	86	25	51	.003	.20	.06	20	15	23

*This 9130 son Indexes well in the performance categories but the true highlight of this bull is the longevity in his genetic background. Dam was 11 years old when she raised him. Sire is eight years old and moving great!*



**LOT  
506**

## SHR L1 DOMINO A 506

REG#	DOB	H/P/S	Act. BW	Act. WW	Act. YW
43640076	4/4/15	H	89	740	1025

HH ADVANCE 1087Y ET ..... HH ADVANCE 8050U ET  
 CL 1 DOMINO 3146A HH MISS ADVANCE 6109S  
 CL 1 DOMINETTE 036X 1ET ..... HH ADVANCE 5104R  
 CL 1 DOMINETTE 475P

SH BONANZA 5007 ..... F BONANZA 027  
 MISS BONANZA 812 SH MISS DOMINO 808  
 LADY DOMINO 380 ..... KB L1 DOMINO 661  
 SH LADY SPECIAL 964

BW	WW	YW	Milk	M&G	FAT	REA	MRB	BMI\$	CEZ\$	CHB\$
4.1	49	81	26	51	.008	.15	.01	12	13	21

*A long, deep-bodied 3146A son with exceptional pigmentation. Dam is an excellent 5007 daughter that produces eye appealing progeny. This bull also is a maternal brother to SHR Domino 09!*

**LOT  
507**

## SH HARLEY 507

REG#	DOB	H/P/S	Act. BW	Act. WW	Act. YW
43643124	4/5/15	H	90	544	864

H5 408 DOMINO 7100 ..... CJH HARLAND 408  
 UU HARLEY 9130 H5 MS 001 DOMET 4193  
 UU MS 056 7115 ..... H5 767 ADVANCE 056  
 UU MS MARK 1207

KB L1 DOMINO 563R ..... RCH ADVANCE 2139  
 LADY L1 DOMINO 732 KB DOMINETTE 3128  
 MISS EXPLORER 321 ..... F EXPLORER 953  
 SH 1 MS DOMINO 6076

BW	WW	YW	Milk	M&G	FAT	REA	MRB	BMI\$	CEZ\$	CHB\$
3.3	37	68	22	40	.029	-.12	.15	22	17	17

*Dam 732 is an excellent female that raises them right.*



## LOT 508 SH CAPTAIN 508

REG#	DOB	H/P/S	Act. BW	Act. WW	Act. YW
43643134	4/5/15	H	83	682	940

CHURCHILL SENSATION 028X..... UPS DOMINO 3027  
 CHURCHILL CAPTAIN 2128Z ET CHURCHILL LADY 7202T ET  
 CHURCHILL LADY 9123W ET..... CHURCHILL YANKEE ET  
 CHURCHILL LADY 404

HH ROBIN HOOD L130 ..... SR ROBIN HOOD 249  
 LADY ROBIN HOOD 801 HH MISS PATRIOT 7573  
 SH LADY DOMINO 033..... KB L1 DOMINO 661  
 SH 1 MISS DOM 5056

BW	WW	YW	Milk	M&G	FAT	REA	MRB	BMI\$	CEZ\$	CHB\$
0.9	46	69	29	52	.010	.34	.23	19	19	26

All I can say is he is a chip off the old block, smooth made with tons of muscle not to mention top 10% of the breed in CED and BW.

## LOT 509 SH CAPTAIN 509

REG#	DOB	H/P/S	Act. BW	Act. WW	Act. YW
43643148	4/5/15	H	80	706	988

CHURCHILL SENSATION 028X..... UPS DOMINO 3027  
 CHURCHILL CAPTAIN 2128Z ET CHURCHILL LADY 7202T ET  
 CHURCHILL LADY 9123W ET..... CHURCHILL YANKEE ET  
 CHURCHILL LADY 404

HH ROBIN HOOD L130 ..... SR ROBIN HOOD 249  
 LADY ROBIN HOOD 893 HH MISS PATRIOT 7573  
 SH LADY DOMINO 047..... KB L1 DOMINO 661  
 SH 1 MISS DOM 5022

BW	WW	YW	Milk	M&G	FAT	REA	MRB	BMI\$	CEZ\$	CHB\$
0.5	45	71	32	54	.012	.32	.32	21	19	27

Another calving ease, power house Captain son.

## LOT 510 SH HARLEY 510

REG#	DOB	H/P/S	Act. BW	Act. WW	Act. YW
43643131	4/5/15	H	98	592	886

H5 408 DOMINO 7100 ..... CJH HARLAND 408  
 UU HARLEY 9130 H5 MS 001 DOMET 4193  
 UU MS 056 7115..... H5 767 ADVANCE 056  
 UU MS MARK 1207

KB L1 DOMINO 563R..... RCH ADVANCE 2139  
 LADY L1 DOMINO 791 KB DOMINETTE 3128  
 MISS EXPLORER 3109 ..... F EXPLORER 953  
 SH LADY SPECIAL 829

BW	WW	YW	Milk	M&G	FAT	REA	MRB	BMI\$	CEZ\$	CHB\$
5.5	49	87	17	41	.020	.15	.15	24	16	23

This 9130 son indexes well in performance.



**LOT  
516**

**SH NAVARRO X 516**

REG#	DOB	H/P/S	Act. BW	Act. WW	Act. YW
43643108	4/9/15	H	84	744	956

SR NAVARRO 140X  
 UPS NAVARRO .....  
 SR VALORIE 684.....

UPS DOMINO 5216  
 UPS MISS DOMINO 5875  
 BB 1065 DOMINO 4102  
 SR SHANA 4111

LADY ROBIN HOOD 614  
 HH ROBIN HOOD L130 .....  
 MISS JACKIE 716.....

SR ROBIN HOOD 249  
 HH MISS PATRIOT 7573  
 SH JAC 4047  
 MISS DOMINO 1040

BW	WW	YW	Milk	M&G	FAT	REA	MRB	BMI\$	CEZ\$	CHB\$
2.1	43	66	24	45	-.009	.38	.16	18	15	23

**LOT  
534**

**SH CAPTAIN 534**

REG#	DOB	H/P/S	Act. BW	Act. WW	Act. YW
43644095	4/12/15	H	83	640	940

CHURCHILL CAPTAIN 2128Z ET  
 CHURCHILL SENSATION 028X.....  
 CHURCHILL LADY 9123W ET.....

UPS DOMINO 3027  
 CHURCHILL LADY 7202T ET  
 CHURCHILL YANKEE ET  
 CHURCHILL LADY 404

LADY ROBIN HOOD 935  
 HH ROBIN HOOD L130 .....  
 MISS BONANZA 426 .....

SR ROBIN HOOD 249  
 HH MISS PATRIOT 7573  
 F BONANZA 027  
 SH 1 MS DOMINO 6023

BW	WW	YW	Milk	M&G	FAT	REA	MRB	BMI\$	CEZ\$	CHB\$
3.4	47	85	28	52	.013	.17	.29	19	17	27

Another excellent 2128 son.



**2016 Branding Crew**



**LOT 535 SH CAPTAIN 535**

REG#	DOB	H/P/S	Act. BW	Act. WW	Act. YW
43643129	4/12/15	H	88	608	912

CHURCHILL SENSATION 028X..... UPS DOMINO 3027  
 CHURCHILL CAPTAIN 2128Z ET CHURCHILL LADY 7202T ET  
 CHURCHILL LADY 9123W ET..... CHURCHILL YANKEE ET  
 CHURCHILL LADY 404

OXH DIAMOND 2215 ..... JNHR DIAMOND ET 414B  
 PEARL DIAMOND 757 OXH LILA 8124  
 SH LADY DOMINO 063..... KB L1 DOMINO 661  
 SPECIAL LADY 3033

BW	WW	YW	Milk	M&G	FAT	REA	MRB	BMI\$	CEZ\$	CHB\$
2.5	46	71	27	50	.018	.34	.13	17	18	23

*SH Captain 535 is a solid marked, dark pigmented 2128 son out of excellent Diamond 2215 daughter. This bull has great extension through his hip and has a maternally oriented pedigree and his EPDS support it.*



**LOT 544 SH CAPTAIN 544**

REG#	DOB	H/P/S	Act. BW	Act. WW	Act. YW
43643138	4/14/15	H	78	594	882

CHURCHILL SENSATION 028X..... UPS DOMINO 3027  
 CHURCHILL CAPTAIN 2128Z ET CHURCHILL LADY 7202T ET  
 CHURCHILL LADY 9123W ET..... CHURCHILL YANKEE ET  
 CHURCHILL LADY 404

HH ROBIN HOOD L130 ..... SR ROBIN HOOD 249  
 LADY ROBIN HOOD 807 HH MISS PATRIOT 7573  
 MISS SH SPECIAL 036 ..... F SPECIAL 526 1ET  
 SPECIAL LADY 1052

BW	WW	YW	Milk	M&G	FAT	REA	MRB	BMI\$	CEZ\$	CHB\$
0.0	41	68	27	48	.026	.18	.22	20	20	22

*This is a well-muscled, eye appealing Captain son with excellent maternal figures. This bull would make a heifer bull prospect with an actual birthweight of 78 lbs.*





**LOT  
545**

**SH NAVARRO X 545**

REG#	DOB	H/P/S	Act. BW	Act. WW	Act. YW
43643114	4/14/15	H	99	728	1105

SR NAVARRO 140X  
 UPS NAVARRO ..... UPS DOMINO 5216  
 SR VALORIE 684..... UPS MISS DOMINO 5875  
 BB 1065 DOMINO 4102  
 SR SHANA 4111

LADY CENTURION 667  
 HH CENTURION P517 ..... KB CENTURION 179  
 HH MISS ORE MARK K710  
 SH LADY DOMINO 016..... SH L1 DOMINO 5003  
 SH LADY SPECIAL 772

BW	WW	YW	Milk	M&G	FAT	REA	MRB	BMI\$	CEZ\$	CHB\$
6.5	59	99	25	54	-.004	.61	.04	15	11	28

A stout, high performance 140X son.

**LOT  
547**

**SHR SAGA BLUES 547**

REG#	DOB	H/P/S	Act. BW	Act. WW	Act. YW
43642764	4/15/15	H	75	602	896

SR SAGA 1072Z  
 CJH HARLAND 408 ..... HH ADVANCE 9005J  
 CJH L1 DOMINETTE 0064  
 SR FUTURA 619..... RH FUTURE KING LAD 63M  
 SR MARVEL 978

SH L1 DOMINO 318  
 KB L1 DOMINO 826U ..... KB L1 DOMINO 218  
 KB L1 DOMINETTE 636  
 MISS BONANZA 772 ..... F BONANZA 027  
 MISS SH SPECIAL 105

BW	WW	YW	Milk	M&G	FAT	REA	MRB	BMI\$	CEZ\$	CHB\$
2.7	50	79	24	49	-.010	.25	.08	21	19	25

A large outlined 1072 son out of a great 826U daughter. This bull is built right and moves easily throughout the pasture.





**LOT  
548**

**SHR RENDITION 548**

REG#	DOB	H/P/S	Act. BW	Act. WW	Act. YW
43639811	4/15/15	H	80	676	980

DS RENDITION

CHURCHILL YANKEE ET .....  
 359W  
 DS SHANA 557 .....

GH NEON 17N  
 CHURCHILL LADY 202  
 BP 146D SANDMAN 46H  
 OXH PATTI 8153

MISS DAKOTA

MH DAKOTA LAD 3164 .....  
 LAD 014  
 MISS BONANZA 524 .....

MH DAKOTA 0230  
 MISS 065 DOMNET 611  
 F BONANZA 027  
 SH 1 MISS DOM 5011

BW	WW	YW	Milk	M&G	FAT	REA	MRB	BMI\$	CEZ\$	CHB\$
3.7	56	85	20	47	.011	.40	.12	18	15	27

*A stout 359 son with an excellent dam.*

**LOT  
549**

**SHR L1 SIR DOMINO 549**

REG#	DOB	H/P/S	Act. BW	Act. WW	Act. YW
43639817	4/15/15	H	75	569	866

CL 1 DOMINO

HH ADVANCE 1087Y ET .....  
 3146A  
 CL 1 DOMINETTE 036X 1ET.....

HH ADVANCE 8050U ET  
 HH MISS ADVANCE 6109S  
 HH ADVANCE 5104R  
 CL 1 DOMINETTE 475P

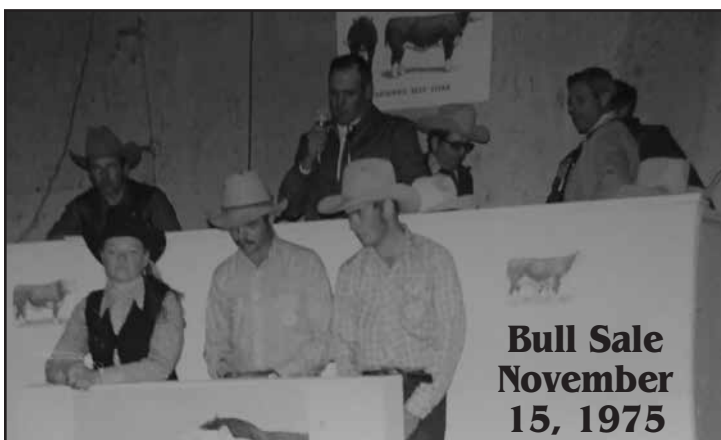
LADY DOMINO

KB L1 DOMINO 826U.....  
 061  
 PEARL DIAMOND 757 .....

KB L1 DOMINO 218  
 KB L1 DOMINETTE 636  
 OXH DIAMOND 2215  
 SH LADY DOMINO 063

BW	WW	YW	Milk	M&G	FAT	REA	MRB	BMI\$	CEZ\$	CHB\$
1.9	49	82	27	51	.022	.06	.09	16	16	22

*A very maternally oriented bull, with a tremendous cow family behind him.*





## LOT 552 SH CAPTAIN 552

REG#	DOB	H/P/S	Act. BW	Act. WW	Act. YW
43643122	4/15/15	H	90	666	992

CHURCHILL SENSATION 028X..... UPS DOMINO 3027  
 CHURCHILL CAPTAIN 2128Z ET CHURCHILL LADY 7202T ET  
 CHURCHILL LADY 9123W ET..... CHURCHILL YANKEE ET  
 CHURCHILL LADY 404

OXH DIAMOND 2215 ..... JNHR DIAMOND ET 414B  
 PEARL DIAMOND 729 OXH LILA 8124  
 MISS SH SPECIAL 014 ..... F SPECIAL 526 1ET  
 SH 1 MS DOMINO 6076

BW	WW	YW	Milk	M&G	FAT	REA	MRB	BMI\$	CEZ\$	CHB\$
3.4	51	86	29	55	.023	.30	.10	17	18	25

*A long bodied, heavy muscled 2128Z ET son with exceptional pigment. 552 has good growth numbers and would excel in a cow calf operation.*

## LOT 553 SH CAPTAIN 553

REG#	DOB	H/P/S	Act. BW	Act. WW	Act. YW
43643120	4/15/15	H	83	610	918

CHURCHILL SENSATION 028X..... UPS DOMINO 3027  
 CHURCHILL CAPTAIN 2128Z ET CHURCHILL LADY 7202T ET  
 CHURCHILL LADY 9123W ET..... CHURCHILL YANKEE ET  
 CHURCHILL LADY 404

F BONANZA 027 ..... LPG BONANZA 52G  
 MISS BONANZA 722 F MS MONTANA 454 1ET  
 SH MISS DOMINO 840 ..... CL 1 DOMINO 9149  
 LADY SUMMIT 013

BW	WW	YW	Milk	M&G	FAT	REA	MRB	BMI\$	CEZ\$	CHB\$
1.5	47	76	24	48	.018	.17	.27	22	20	26

*Another solid Captain 2128Z ET son out of a Bonanza cow.*





# LOT 556

## SHR SENSATION 556

REG#	DOB	H/P/S	Act. BW	Act. WW	Act. YW
43640078	4/15/15	H	85	626	890

CHURCHILL SENSATION 028X.....  
 UU SENSATION 2053  
 UU HALEY 0080 .....

UPS DOMINO 3027  
 CHURCHILL LADY 7202T ET  
 H5 408 DOMINO 7100  
 UU MS DAKOTA 8105

SH BONANZA 5007 .....

F BONANZA 027  
 SH MISS DOMINO 808  
 KB LI DOMINO 661  
 LADY STANDARD 5035

MISS BONANZA 846B

SH LI LADY DOMINO 133.....

BW	WW	YW	Milk	M&G	FAT	REA	MRB	BMI\$	CEZ\$	CHB\$
1.5	42	65	31	52	.022	.14	.13	18	20	20

A smooth muscled, long bodied 2053 son who is a maternal powerhouse with his milk in the top 10% of the breed and his milk & growth in the top 30% of the breed.

# LOT 559

## SHR RENDITION 559

REG#	DOB	H/P/S	Act. BW	Act. WW	Act. YW
43640085	4/15/15	H	95	736	955

CHURCHILL YANKEE ET .....

GH NEON 17N  
 CHURCHILL LADY 202  
 BP 146D SANDMAN 46H  
 OXH PATTI 8153

DS RENDITION 359W

DS SHANA 557.....

MH DAKOTA LAD 3164 .....

MH DAKOTA 0230  
 MISS 065 DOMNET 611  
 HH CENTURION P517  
 SH MISS DOMINO 803

MISS DAKOTA LAD 946

LADY CENTURION 672.....

BW	WW	YW	Milk	M&G	FAT	REA	MRB	BMI\$	CEZ\$	CHB\$
5.7	62	92	23	54	.021	.38	.09	14	12	27

A bull that is an excellent combination of stoutness and middle. He is a 359W son with lots of eye appeal and his Dam 946 is a great Dakota Lad daughter.

# LOT 565

## SH NAVARRO X 565

REG#	DOB	H/P/S	Act. BW	Act. WW	Act. YW
43643147	4/16/15	H	95	644	872

UPS NAVARRO .....

UPS DOMINO 5216  
 UPS MISS DOMINO 5875  
 BB 1065 DOMINO 4102  
 SR SHANA 4111

SR NAVARRO 140X

SR VALORIE 684.....

OXH DIAMOND 2215 .....

JNHR DIAMOND ET 414B  
 OXH LILA 8124  
 F SPECIAL 526 1ET  
 SH I MS DOMINO 6049

PEARL DIAMOND 872

SH LADY SPECIAL 974.....

BW	WW	YW	Milk	M&G	FAT	REA	MRB	BMI\$	CEZ\$	CHB\$
3.7	47	67	24	47	.013	.38	.09	15	15	21

This is a rugged Navarro 140X son out of a Diamond Cow.



**LOT  
566**

**MLS-PRAIRIE XPERT 566**

REG#	DOB	H/P/S	Act. BW	Act. WW	Act. YW
43640644	4/15/15	H	80	575	844

NJW 98S R117 RIBEYE 88X ET ..... SHF RIB EYE M326 R117  
 TP DESERT XPERT 327 NJW 9126J DEW DOMINO 98S  
 TP LADY HARRIET 128 ..... L3 ARCH PREMIER 508  
 TP LADY DINA 751

KB L1 DOMINO 567R..... KB L1 DOMINO 737  
 LADY L1 DOMINO 26 KB L1 DOMINETTE 0111  
 DAISY IMPRINT 412 ..... SR IMPRINT 182  
 LADY ADVANCE 104

BW	WW	YW	Milk	M&G	FAT	REA	MRB	BMI\$	CEZ\$	CHB\$
3.6	42	68	27	48	.011	-.03	.27	18	16	22

*A big boned, deep bodied 327 son with lots of natural thickness and eye appeal. Dam 26 is a great cow that brings in the type the industry wants. 566 is also a highly efficient bull in a moderate package.*



**LOT  
568**

**SHR RANCHER CHARLIE 568**

REG#	DOB	H/P/S	Act. BW	Act. WW	Act. YW
43640045	4/16/15	H	98	586	884

CHURCHILL RANCHER 592R..... MH DAKOTA 0230  
 CHURCHILL RANCHER 8108U ET CHURCHILL LADY 202  
 CL 1 DOMINETTE 301N ..... CL 1 DOMINO 9126J 1ET  
 CL 1 DOMINETTE 8184H

BLL RED ADDITION 175T..... SH RED EDITION 06N  
 MISS RED ADDITION 235 LADY 58K DIAMND 106P  
 PEARL DIAMOND 680 ..... OXH DIAMOND 2215  
 SH LADY DOMINO 083

BW	WW	YW	Milk	M&G	FAT	REA	MRB	BMI\$	CEZ\$	CHB\$
6.3	53	91	23	50	.004	.09	.10	17	13	24

*A big, deep bodied, heavy muscled, stout Rancher son with a lot of eye appeal. Dam 235 is a great brood cow in the making.*



**LOT 573** **SHR RANCHER CHARLIE 573**

REG#	DOB	H/P/S	Act. BW	Act. WW	Act. YW
43639833	4/17/15	H	80	646	920

CHURCHILL RANCHER 592R..... MH DAKOTA 0230  
 CHURCHILL RANCHER 8108U ET CHURCHILL LADY 202  
 CL 1 DOMINETTE 301N ..... CL 1 DOMINO 9126J 1ET  
 CL 1 DOMINETTE 8184H  
 R 157K NORTH STAR 50W ..... K 64H RIBSTONE LAD 157K  
 STAR LADY 108 R STARLETTE 410  
 MISS BONANZA 785 ..... F BONANZA 027  
 SH LADY DOMINO 909

BW	WW	YW	Milk	M&G	FAT	REA	MRB	BMI\$	CEZ\$	CHB\$
2.6	42	72	29	50	.017	-.14	.07	18	17	18

8108 always produces the cowboy's kind and 573 is no exception. He is big boned, rugged in design and long made. Not to mention Dam 108 is an A.H.A Certified Dam of Distinction, which mean she is one of the breed's elite cows.



**LOT 578** **SH CAPTAIN 578**

REG#	DOB	H/P/S	Act. BW	Act. WW	Act. YW
43643128	4/17/15	H	98	670	982

CHURCHILL SENSATION 028X..... UPS DOMINO 3027  
 CHURCHILL CAPTAIN 2128Z ET CHURCHILL LADY 7202T ET  
 CHURCHILL LADY 9123W ET..... CHURCHILL YANKEE ET  
 CHURCHILL LADY 404  
 OXH DIAMOND 2215 ..... JNHR DIAMOND ET 414B  
 PEARL DIAMOND 744 OXH LILA 8124  
 SH MISS DOMINO 013 ..... KB L1 DOMINO 6102  
 SH 1 MS DOMINO 6002

BW	WW	YW	Milk	M&G	FAT	REA	MRB	BMI\$	CEZ\$	CHB\$
4.4	57	90	27	56	.024	.48	.10	16	16	28

This bull has one of the top weaning and yearling weight EPDS in the sale.



**LOT 586 SHR L1 DOMINO Z 586**

REG#	DOB	H/P/S	Act. BW	Act. WW	Act. YW
43640066	4/18/15	H	77	610	946

CL 1 DOMINO 2142Z 1ET  
 L1 DOMINO 08542 ..... L1 DOMINO 06474  
 CL 1 DOMINETTE 352N ..... L1 DOMINETTE 02352  
 CL 1 DOMINETTE 875H  
 CHURCHILL MVP 188 ..... CL 1 DOMINO 986J  
 LADY MVP 612 CHURCHILL LADY 792  
 LADY ADVANCE 101 ..... PD ADVANCE 9023  
 SH 1 MS DOMINO 6038

BW	WW	YW	Milk	M&G	FAT	REA	MRB	BMI\$	CEZ\$	CHB\$
1.5	41	69	24	45	.024	.37	.09	18	18	20

A long made, big middled 2142 son that's smooth in his build and has desirable numbers for heifers. Dam 612 is an MVP daughter that is 10 years old and still going strong.

**LOT 591 SH CAPTAIN 591**

REG#	DOB	H/P/S	Act. BW	Act. WW	Act. YW
43643150	4/20/15	H	98	662	1030

CHURCHILL CAPTAIN 2128Z ET  
 CHURCHILL SENSATION 028X ..... UPS DOMINO 3027  
 CHURCHILL LADY 9123W ET ..... CHURCHILL LADY 7202T ET  
 CHURCHILL LADY 404  
 SH BONANZA 5007 ..... F BONANZA 027  
 MISS BONANZA 900 SH MISS DOMINO 808  
 MISS EXPLORER 516 ..... F EXPLORER 953  
 SH 1 MS DOMINO 6040

BW	WW	YW	Milk	M&G	FAT	REA	MRB	BMI\$	CEZ\$	CHB\$
4.8	53	94	26	53	.000	.36	.16	19	16	29

This bull has 14 out of 19 of the observable traits in the Hereford Breed in the top 50% of the breed.

**LOT 594 SHR RANCHER CHARLIE 594**

REG#	DOB	H/P/S	Act. BW	Act. WW	Act. YW
43640010	4/21/15	H	87	604	896

CHURCHILL RANCHER 8108U ET  
 CHURCHILL RANCHER 592R ..... MH DAKOTA 0230  
 CHURCHILL LADY 202  
 CL 1 DOMINO 9126J 1ET  
 CL 1 DOMINETTE 8184H  
 R 157K NORTH STAR 50W ..... K 64H RIBSTONE LAD 157K  
 STAR LADY 170 R STARLETTE 410  
 LADY L1 DOMINO 797 ..... KB L1 DOMINO 563R  
 SH MISS DOMINO 977

BW	WW	YW	Milk	M&G	FAT	REA	MRB	BMI\$	CEZ\$	CHB\$
4.1	47	79	24	48	.005	.12	.14	21	17	23

A very smooth made, fault free bull. Dam 170 is an excellent young 50W daughter.

# LOT 598

## SHR L1 DOMINO A 598

REG#	DOB	H/P/S	Act. BW	Act. WW	Act. YW
43640077	4/22/15	H	79	526	854

HH ADVANCE 1087Y ET.....  
CL 1 DOMINO 3146A  
CL 1 DOMINETTE 036X 1ET.....

HH ADVANCE 8050U ET  
HH MISS ADVANCE 6109S  
HH ADVANCE 5104R  
CL 1 DOMINETTE 475P

/S MISTER MOM 7745.....  
SUPER MOM 822  
MISS BONANZA 373.....

MISTER MOM 221  
/S MS PEER PLAN 526E  
F BONANZA 027  
SH 1 MISS DOMINO 710

BW	WW	YW	Milk	M&G	FAT	REA	MRB	BMI\$	CEZ\$	CHB\$
4.8	54	85	27	54	.026	.09	.01	14	13	21

A big, long, deep bodied boy that will sire steers that will take a lot to the rail.



# LOT 5103

## SH CAPTAIN 5103

REG#	DOB	H/P/S	Act. BW	Act. WW	Act. YW
43643137	4/22/15	H	83	674	928

CHURCHILL SENSATION 028X.....  
CHURCHILL CAPTAIN 2128Z ET  
CHURCHILL LADY 9123W ET.....

UPS DOMINO 3027  
CHURCHILL LADY 7202T ET  
CHURCHILL YANKEE ET  
CHURCHILL LADY 404

/S MISTER MOM 7745.....  
MISS MOM 802  
LADY ROBIN HOOD 401.....

MISTER MOM 221  
/S MS PEER PLAN 526E  
HH ROBIN HOOD L130  
SH L1 LADY DOMINO 179

BW	WW	YW	Milk	M&G	FAT	REA	MRB	BMI\$	CEZ\$	CHB\$
0.9	47	76	33	56	.028	.41	.25	20	20	26

This bull's Milk and Milk & Growth are in the top 20% of the breed.

# LOT 5106

## SHR DOMINO Z 5106

REG#	DOB	H/P/S	Act. BW	Act. WW	Act. YW
43640071	4/23/15	H	85	610	844

L1 DOMINO 08542.....  
CL 1 DOMINO 2142Z 1ET  
CL 1 DOMINETTE 332N.....

L1 DOMINO 06474  
L1 DOMINETTE 02352  
CL 1 DOMINO 9126J 1ET  
CL 1 DOMINETTE 875H

/S MISTER MOM 7745.....  
LADY MOM 731  
LADY ADVANCE 370.....

MISTER MOM 221  
/S MS PEER PLAN 526E  
PD ADVANCE 9023  
SH 1 MISS DOMINO 705

BW	WW	YW	Milk	M&G	FAT	REA	MRB	BMI\$	CEZ\$	CHB\$
2.9	40	67	25	45	.029	.07	.04	17	18	17

A very eye appealing 2142 son that is out of a proven cow.



# LOT 5108

## SHR RANCHER CHARLIE 5108

REG#	DOB	H/P/S	Act. BW	Act. WW	Act. YW
43640008	4/23/15	H	98	600	880

CHURCHILL RANCHER 592R..... MH DAKOTA 0230  
 CHURCHILL RANCHER 8108U ET CHURCHILL LADY 202  
 CL 1 DOMINETTE 301N ..... CL 1 DOMINO 9126J 1ET  
 CL 1 DOMINETTE 8184H

KB L1 DOMINO 563R..... RCH ADVANCE 2139  
 LADY L1 DOMINO 169 KB DOMINETTE 3128  
 MISS DAKOTA 625..... MH DAKOTA LAD 3164  
 MISS BONANZA 3121

BW	WW	YW	Milk	M&G	FAT	REA	MRB	BMI\$	CEZ\$	CHB\$
6.5	54	92	21	48	.014	-.19	.11	20	13	24

The cowboy's kind with the growth numbers to match, this bull is deep, wide and stout. His weaning weight is in the top 30% percent of the breed and yearling weight comes into the top 20%. Dam is an excellent 563R daughter.

# LOT 5110

## SHR L1 DOMINO Z 5110

REG#	DOB	H/P/S	Act. BW	Act. WW	Act. YW
43639820	4/24/15	H	73	560	856

L1 DOMINO 08542..... L1 DOMINO 06474  
 CL 1 DOMINO 2142Z 1ET L1 DOMINETTE 02352  
 CL 1 DOMINETTE 352N ..... CL 1 DOMINO 9126J 1ET  
 CL 1 DOMINETTE 875H

BLL RED ADDITION 175T..... SH RED EDITION 06N  
 MISS RED ADDITION 080 LADY 58K DIAMND 106P  
 PEARL DIAMOND 4011 ..... OXH DIAMOND 2215  
 SH MISS DOMINO 080

BW	WW	YW	Milk	M&G	FAT	REA	MRB	BMI\$	CEZ\$	CHB\$
0.7	40	65	22	41	.014	.35	.18	22	19	22

Here is a bull with a lot of base and width. Numbers indicate lots of calving ease. Dam 080 is an excellent 175T daughter.

# LOT 5112

## SHR L1 DOMINO Z 5112

REG#	DOB	H/P/S	Act. BW	Act. WW	Act. YW
43640059	4/24/15	H	72	550	760

L1 DOMINO 08542..... L1 DOMINO 06474  
 CL 1 DOMINO 2142Z 1ET L1 DOMINETTE 02352  
 CL 1 DOMINETTE 352N ..... CL 1 DOMINO 9126J 1ET  
 CL 1 DOMINETTE 875H

UU HARLEY 9130 ..... H5 408 DOMINO 7100  
 HARLEY MAMA 328 UU MS 056 7115  
 LADY ROBIN HOOD 03..... SH ROBIN HOOD 724  
 LADY STANDARD 757

BW	WW	YW	Milk	M&G	FAT	REA	MRB	BMI\$	CEZ\$	CHB\$
0.7	37	59	26	45	.051	.03	.24	21	20	18

Here is an excellent 2142 son who was raised by a first calf heifer! This guy is long and deep with an enormous top.

# LOT 5114

## SHR SIR THOR 5114

REG#	DOB	H/P/S	Act. BW	Act. WW	Act. YW
43639831	4/25/15	H	86	680	914

MAC'S RENDITON 20X..... CHURCHILL YANKEE ET  
 THR THOR 3213A MAC'S HARLET 772  
 THR MISS THOR 7125T..... THR THOR 4029  
 THR MISS THOR 0264

CHURCHILL RANCHER 8108U ET... CHURCHILL RANCHER 592R  
 MISS RANCHERETTE 106 CL 1 DOMINETTE 301N  
 LADY MOM 731 ..... /S MISTER MOM 7745  
 LADY ADVANCE 370

BW	WW	YW	Milk	M&G	FAT	REA	MRB	BMI\$	CEZ\$	CHB\$
3.5	55	86	22	49	.024	.21	.22	23	17	28

This 3213A son has some of the better Weaning and Yearling Weight EPD's in this year's sale.



## LOT 5115 SHR SENSATION 5115

REG#	DOB	H/P/S	Act. BW	Act. WW	Act. YW
43639815	4/25/15	H	87	545	845

UU SENSATION 2053  
 CHURCHILL SENSATION 028X..... UPS DOMINO 3027  
 CHURCHILL LADY 7202T ET  
 UU HALEY 0080 ..... H5 408 DOMINO 7100  
 UU MS DAKOTA 8105

LADY ROBIN HOOD 03  
 SH ROBIN HOOD 724 ..... HH ROBIN HOOD L130  
 SH LADY DOMINO 047  
 LADY STANDARD 757 ..... F L2 STANDARD 348  
 SH L1 LADY DOMINO 133

BW	WW	YW	Milk	M&G	FAT	REA	MRB	BMI\$	CEZ\$	CHB\$
1.8	39	67	33	52	.020	.17	.09	17	19	19

*Here is a moderate framed 2053 son. He is a very maternally oriented bull that will produce tremendous females like his mother 03.*



## LOT 5123 SH HARLEY 5123

REG#	DOB	H/P/S	Act. BW	Act. WW	Act. YW
43643163	4/25/15	H	98	649	938

UU HARLEY 9130  
 H5 408 DOMINO 7100 ..... CJH HARLAND 408  
 H5 MS 001 DOMET 4193  
 UU MS 056 7115 ..... H5 767 ADVANCE 056  
 UU MS MARK 1207

MISS RED ADDITION 977  
 BLL RED ADDITION 175T ..... SH RED EDITION 06N  
 LADY 58K DIAMND 106P  
 MISS BONANZA 211 ..... F BONANZA 027  
 SH L1 MISS DOMINO 741

BW	WW	YW	Milk	M&G	FAT	REA	MRB	BMI\$	CEZ\$	CHB\$
5.3	48	86	27	51	.027	.00	.10	19	14	21

*A long, deep bodied 9130 son. This bull has loads of eye appeal and will sire fabulous females with great maternal traits.*



## LOT 5127 SHR L1 DOMINO A 5127

REG#	DOB	H/P/S	Act. BW	Act. WW	Act. YW
43640033	4/27/15	H	75	632	932

HH ADVANCE 1087Y ET ..... HH ADVANCE 8050U ET  
 CL 1 DOMINO 3146A HH MISS ADVANCE 6109S  
 CL 1 DOMINETTE 036X 1ET..... HH ADVANCE 5104R  
 CL 1 DOMINETTE 475P

UU HARLEY 9130 ..... H5 408 DOMINO 7100  
 LADY HARLEY 211 UU MS 056 7115  
 LADY L1 DOMINO 810U..... KB L1 DOMINO 563R  
 MISS BONANZA 3121

BW	WW	YW	Milk	M&G	FAT	REA	MRB	BMI\$	CEZ\$	CHB\$
2.8	56	89	28	56	.033	.25	.13	20	16	26

*This is an impressive 3146 son with loads of volume. He is square with loads of shape. Dam 211 is an eye appealing 9130 daughter.*

## LOT 5132 STR SIR THOR 5132

REG#	DOB	H/P/S	Act. BW	Act. WW	Act. YW
43639814	4/27/15	H	90	594	862

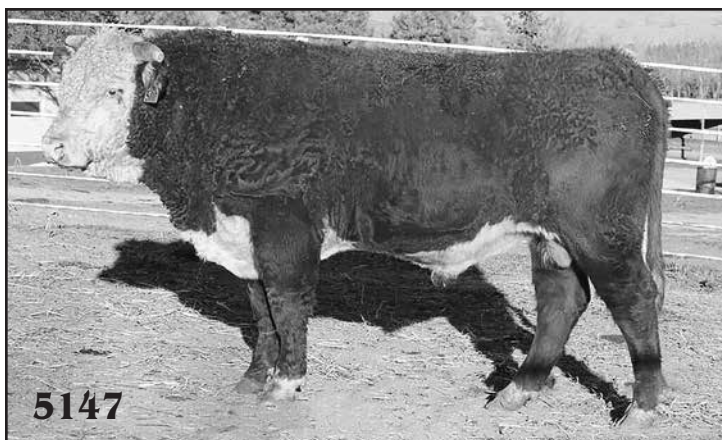
MAC'S RENDITON 20X ..... CHURCHILL YANKEE ET  
 THR THOR 3213A MAC'S HARLET 772  
 THR MISS THOR 7125T..... THR THOR 4029  
 THR MISS THOR 0264

BLL RED ADDITION 175T ..... SH RED EDITION 06N  
 MISS RED ADDITION 026 LADY 58K DIAMND 106P  
 MISS BONANZA 211 ..... F BONANZA 027  
 SH 1 MISS DOMINO 741

BW	WW	YW	Milk	M&G	FAT	REA	MRB	BMI\$	CEZ\$	CHB\$
3.9	53	87	16	42	-.007	.40	.19	24	16	28

*Another phenotypically impressive 3213A son that is a large outlined, deep made bull that cattlemen and women like to see.*





**LOT 5147 SH HARLEY 5147**

REG#	DOB	H/P/S	Act. BW	Act. WW	Act. YW
43643155	5/1/15	H	90	634	956

H5 408 DOMINO 7100 ..... CJH HARLAND 408  
**UU HARLEY 9130** H5 MS 001 DOMET 4193  
 UU MS 056 7115 ..... H5 767 ADVANCE 056  
 UU MS MARK 1207  
 OXH DIAMOND 2215 ..... JNHR DIAMOND ET 414B  
**PEARL DIAMOND 928** OXH LILA 8124  
 MISS BONANZA 3120 ..... F BONANZA 027  
 LADY STANDARD 6018

BW	WW	YW	Milk	M&G	FAT	REA	MRB	BMI\$	CEZ\$	CHB\$
3.5	50	81	26	50	.026	.38	.06	20	16	22

*A bold sprung bull that is hard to fault.*

**LOT 5155 SHR SENSATION 5155**

REG#	DOB	H/P/S	Act. BW	Act. WW	Act. YW
43639832	5/2/15	H	85	592	800

CHURCHILL SENSATION 028X ..... UPS DOMINO 3027  
**UU SENSATION 2053** CHURCHILL LADY 7202T ET  
 UU HALEY 0080 ..... H5 408 DOMINO 7100  
 UU MS DAKOTA 8105  
 KB L1 DOMINO 563R ..... RCH ADVANCE 2139  
**LADY L1 DOMINO 107** KB DOMINETTE 3128  
 MISS EXPLORER 574 ..... F EXPLORER 953  
 SH 1 MISS DOM 5037

BW	WW	YW	Milk	M&G	FAT	REA	MRB	BMI\$	CEZ\$	CHB\$
2.9	50	81	24	49	.030	.12	.16	24	20	24

*Mom's pet, the first one to the pickup every day when food arrives, a long bodied 2053 son.*

**LOT 5160 SHR SIR THOR 5160**

REG#	DOB	H/P/S	Act. BW	Act. WW	Act. YW
43640025	5/4/15	H	80	660	956

MAC'S RENDITON 20X ..... CHURCHILL YANKEE ET  
**THR THOR 3213A** MAC'S HARLET 772  
 THR MISS THOR 7125T ..... THR THOR 4029  
 THR MISS THOR 0264  
 CHURCHILL RANCHER 8108U ET... CHURCHILL RANCHER 592R  
**LADY PENDLETON RANCHER 200** CL 1 DOMINETTE 301N  
 MISS DOMINO 759T ..... KB L1 DOMINO 567R  
 MISS BONANZA 306

BW	WW	YW	Milk	M&G	FAT	REA	MRB	BMI\$	CEZ\$	CHB\$
2.9	59	91	18	48	.001	.38	.18	25	17	31

*This 3213 son is a high indexing bull in the performance categories.*

# LOT 5162

## SHR L1 DOMINO Z 5162

REG#	DOB	H/P/S	Act. BW	Act. WW	Act. YW
43640647	5/4/15	H	90	630	775

L1 DOMINO 08542.....  
CL 1 DOMINO 2142Z 1ET  
CL 1 DOMINETTE 332N .....

L1 DOMINO 06474  
L1 DOMINETTE 02352  
CL 1 DOMINO 9126J 1ET  
CL 1 DOMINETTE 875H

/S MISTER MOM 7745.....  
SUPER MOM 153  
LADY STANDARD 771 .....

MISTER MOM 221  
/S MS PEER PLAN 526E  
F L2 STANDARD 348  
DAISY IMPRINT 468

BW	WW	YW	Milk	M&G	FAT	REA	MRB	BMI\$	CEZ\$	CHB\$
3.6	47	61	25	49	.040	.06	.08	18	17	18

*This bull's Milk and Milk and Growth are in the top 40% of the breed.*

# LOT 5175

## SH CAPTAIN 5175

REG#	DOB	H/P/S	Act. BW	Act. WW	Act. YW
43643126	5/6/15	H	84	630	962

CHURCHILL SENSATION 028X.....  
CHURCHILL CAPTAIN 2128Z ET  
CHURCHILL LADY 9123W ET.....

UPS DOMINO 3027  
CHURCHILL LADY 7202T ET  
CHURCHILL YANKEE ET  
CHURCHILL LADY 404

/S MISTER MOM 7745.....  
MISS MOM 733  
LADY ROBIN HOOD 408.....

MISTER MOM 221  
/S MS PEER PLAN 526E  
HH ROBIN HOOD L130  
MISS EXPLORER 144

BW	WW	YW	Milk	M&G	FAT	REA	MRB	BMI\$	CEZ\$	CHB\$
1.1	48	77	31	55	.031	.36	.22	21	20	26

*This Captain 2128Z ET son has 14 of the 19 observable traits in the top 50% of the Hereford breed.*



# LOT 5182

## SHR L1 DOMINO A 5182

REG#	DOB	H/P/S	Act. BW	Act. WW	Act. YW
43639838	5/7/15	H	90	670	985

HH ADVANCE 1087Y ET.....  
CL 1 DOMINO 3146A  
CL 1 DOMINETTE 036X 1ET.....

HH ADVANCE 8050U ET  
HH MISS ADVANCE 6109S  
HH ADVANCE 5104R  
CL 1 DOMINETTE 475P

KB L1 DOMINO 9175W.....  
LADY L1 DOMINO 118  
MISS DAKOTA LAD 925.....

CL 1 DOMINO 0152K  
KB ROBYN 362  
MH DAKOTA LAD 3164  
MISS EXPLORER 541

BW	WW	YW	Milk	M&G	FAT	REA	MRB	BMI\$	CEZ\$	CHB\$
4.8	59	98	30	60	.032	.20	.11	14	12	26

*This CL 1 DOMINO 3146A son's Weaning Weight, Yearling Weight, Milk and Milk and Growth are all in the top 10% of the Hereford breed.*



**LOT  
5185**

**SHR L1 DOMINO Z 5185**

REG#	DOB	H/P/S	Act. BW	Act. WW	Act. YW
43639999	5/10/15	H	85	610	822

L1 DOMINO 08542 .....  
 CL 1 DOMINO 2142Z 1ET  
 CL 1 DOMINETTE 352N .....

L1 DOMINO 06474  
 L1 DOMINETTE 02352  
 CL 1 DOMINO 9126J 1ET  
 CL 1 DOMINETTE 875H

CHURCHILL RANCHER 8108U ET...  
 MISS RANCHERETTE 152  
 MISS BONANZA 812 .....

CHURCHILL RANCHER 592R  
 CL 1 DOMINETTE 301N  
 SH BONANZA 5007  
 LADY DOMINO 380

BW	WW	YW	Milk	M&G	FAT	REA	MRB	BMI\$	CEZ\$	CHB\$
2.6	45	67	24	46	.037	.02	.24	20	18	22

*This CL 1 DOMINO 2142Z 1ET son, has marbling in the top 10% of the Hereford Breed.*



**LOT  
5189**

**SHR SENSATION 5189**

REG#	DOB	H/P/S	Act. BW	Act. WW	Act. YW
43708304	5/11/15	H	80	609	880

CHURCHILL SENSATION 028X.....  
 UU SENSATION 2053  
 UU HALEY 0080 .....

UPS DOMINO 3027  
 CHURCHILL LADY 7202T ET  
 H5 408 DOMINO 7100  
 UU MS DAKOTA 8105

/S MISTER MOM 7745.....  
 SUPER MOM 846A  
 LADY ADVANCE 104 .....

MISTER MOM 221  
 /S MS PEER PLAN 526E  
 PD ADVANCE 9023  
 SH 1 MISS DOMINO 712

BW	WW	YW	Milk	M&G	FAT	REA	MRB	BMI\$	CEZ\$	CHB\$
0.7	45	64	32	54	.052	.10	.15	21	22	20

*Here is a 2053 son that will be sure to catch your eye. He is a moderate bull with loads of muscle. His dam 846, is an excellent Mr. Mom daughter that Mike is very proud of.*



**LOT 5191 SHR RANCHER CHARLIE 5191**

REG#	DOB	H/P/S	Act. BW	Act. WW	Act. YW
43639812	5/12/15	H	88	575	808

CHURCHILL RANCHER 592R..... MH DAKOTA 0230  
 CHURCHILL RANCHER 8108U ET CHURCHILL LADY 202  
 CL 1 DOMINETTE 301N ..... CL 1 DOMINO 9126J 1ET  
 CL 1 DOMINETTE 8184H

MH DAKOTA LAD 3164 ..... MH DAKOTA 0230  
 MISS DAKOTA LAD 017 MISS 065 DOMNET 611  
 MISS DAKOTA 617 ..... MH DAKOTA LAD 3164  
 MISS BONANZA 3120

BW	WW	YW	Milk	M&G	FAT	REA	MRB	BMI\$	CEZ\$	CHB\$
4.0	45	72	24	47	.024	-.19	.09	16	14	18

Here is another smooth made, fault free Rancher son.



**LOT 5193 SHR SIR THOR 5193**

REG#	DOB	H/P/S	Act. BW	Act. WW	Act. YW
43640070	5/13/15	H	83	658	908

THR THOR 3213A MAC'S RENDITON 20X..... CHURCHILL YANKEE ET  
 THR MISS THOR 7125T..... MAC'S HARLET 772  
 THR THOR 4029  
 THR MISS THOR 0264

LADY MOM 714 /S MISTER MOM 7745..... MISTER MOM 221  
 /S MS PEER PLAN 526E  
 LADY DOMINO 354..... KB LI DOMINO 661  
 SH 1 MISS DOMINO 782

BW	WW	YW	Milk	M&G	FAT	REA	MRB	BMI\$	CEZ\$	CHB\$
3.0	53	79	21	47	-.004	.56	.11	21	17	27

Here is a bull to build a cow herd with. He is long and thick with lots of middle. 5193 has a great genetic package. Dam 714 is an A.H.A. Dam of Distinction and sire 3213 is a high quality 20X son.

# LOT 5197

## SHR SIR THOR 5197

REG#	DOB	H/P/S	Act. BW	Act. WW	Act. YW
43640028	5/14/15	H	80	600	786

THR THOR 3213A

MAC'S RENDITON 20X.....  
THR MISS THOR 7125T.....

CHURCHILL YANKEE ET  
MAC'S HARLET 772  
THR THOR 4029  
THR MISS THOR 0264

LADY PENDLETON RANCHER 205  
LADY BONANZA 815.....

CHURCHILL RANCHER 8108U ET...  
CL 1 DOMINETTE 301N  
F BONANZA 027  
MISS EXPLORER 343

BW	WW	YW	Milk	M&G	FAT	REA	MRB	BMI\$	CEZ\$	CHB\$
2.8	52	75	17	43	.029	.09	.23	24	17	25

A big bodied bull that's very square over his top and is fault free.

# LOT 5202

## SHR RANCHER CHARLIE 5202

REG#	DOB	H/P/S	Act. BW	Act. WW	Act. YW
43639810	5/17/15	H	80	550	845

CHURCHILL RANCHER 8108U ET  
CL 1 DOMINETTE 301N .....

MH DAKOTA 0230  
CHURCHILL LADY 202  
CL 1 DOMINO 9126J 1ET  
CL 1 DOMINETTE 8184H

MISS RED ADDITION 010  
MISS EXPLORER 331 .....

SH RED EDITION 06N  
LADY 58K DIAMND 106P  
F EXPLORER 953  
SH 1 MISS DOM 5037

BW	WW	YW	Milk	M&G	FAT	REA	MRB	BMI\$	CEZ\$	CHB\$
5.1	48	89	23	47	.002	-.02	.12	18	13	23

A large outlined, long made Rancher son out of a 175T daughter.



# LOT 5209

## MLS-PRAIRIE FUSION 5209

REG#	DOB	H/P/S	Act. BW	Act. WW	Act. YW
43644098	5/20/15	H	83	576	836

TP DESERT XPERT 327  
TP LADY HARRIET 128 .....

SHF RIB EYE M326 R1 17  
NJW 9126J DEW DOMINO 98S  
L3 ARCH PREMIER 508  
TP LADY DINA 751

LADY NAVARRO 304  
LADY L1 DOMINO 916 .....

UPS NAVARRO  
SR VALORIE 684  
KB L1 DOMINO 563R  
MISS BONANZA 3111

BW	WW	YW	Milk	M&G	FAT	REA	MRB	BMI\$	CEZ\$	CHB\$
4.6	56	90	27	55	.005	.31	.23	19	15	30

Here is a long bodied, thick bull with a very strong, expressive stifle. This bull takes a lot after his grandsire 140X! Dam 304 is a great young cow in the making. Retaining a 1/4 interest.



# COMMERCIAL BULLS

**LOT  
501**

## SH HARLEY PAPA 501

DOB	H/P/S	Act. BW	Act. WW	Act. YW
3/31/15	H	80	570	914

**LOT  
503**

## SH HARLEY PAPA 503

DOB	H/P/S	Act. BW	Act. WW	Act. YW
4/4/15	H	90	690	1025

# REGISTERED AND COMMERCIAL BRED HEIFERS

The registered and commercial sale heifers were run with the following two registered Angus Bulls: 6800 YELLOWSTONE 1466 RS and 0420 CHINOOK 2608 RS. These bulls were purchased from Richard Schmidt out of Gladstone, ND The heifers were exposed to these two bulls from June 19, 2016 until August 30, 2016.

This is the last cut off of what we had planned to retain in our commercial herd. They are out of some of our best Hereford Herd Sires to ensure the quality and performance we expect out of our cattle. This group of heifers is cake broke and pail gentle.

Both the registered and commercial sale heifer groups have the brood cow look. They have had all their vaccinations, Preg. Guard 10 and been poured with Dectomax. They were ultra-sounded by West Dakota Vet Clinic on October 26, 2016. If you have any questions, please do not hesitate to contact Mike 701-290-1191.

**LOT  
518**

## LADY RANCHER 518

REG#	DOB	H/P/S
43640068	4/9/15	H

CHURCHILL RANCHER 592R.....  
CHURCHILL RANCHER 8108U ET  
CL 1 DOMINETTE 301N .....

LADY MVP 628

CHURCHILL MVP 188.....  
MISS BONANZA 276 .....

MH DAKOTA 0230  
CHURCHILL LADY 202  
CL 1 DOMINO 9126J 1ET  
CL 1 DOMINETTE 8184H

CL 1 DOMINO 986J  
CHURCHILL LADY 792  
F BONANZA 027  
SH LADY SPECIAL 861

BW	WW	YW	Milk	M&G	FAT	REA	MRB	BMI\$	CEZ\$	CHB\$
3.4	44	70	26	49	.011	.09	.01	16	15	18

**LOT  
522****SENSIBLE LADY 522**

REG#	DOB	H/P/S
43643115	4/10/15	H

CHURCHILL SENSATION 028X..... UPS DOMINO 3027  
 CHURCHILL CAPTAIN 2128Z ET CHURCHILL LADY 7202T ET  
 CHURCHILL LADY 9123W ET..... CHURCHILL YANKEE ET  
 CHURCHILL LADY 404

LADY L1 DOMINO 704 KB L1 DOMINO 563R..... RCH ADVANCE 2139  
 MISS BONANZA 4026 ..... KB DOMINETTE 3128  
 F BONANZA 027  
 MISS EXPLORER 115

BW	WW	YW	Milk	M&G	FAT	REA	MRB	BMI\$	CEZ\$	CHB\$
2.8	53	84	22	48	.019	.26	.18	23	19	27

**LOT  
560****LADY RANCHER 560**

REG#	DOB	H/P/S
43640094	4/15/15	H

CHURCHILL RANCHER 592R..... MH DAKOTA 0230  
 CHURCHILL RANCHER 8108U ET CHURCHILL LADY 202  
 CL 1 DOMINETTE 301N ..... CL 1 DOMINO 9126J 1ET  
 CL 1 DOMINETTE 8184H

MISS DOMINO 971 KB L1 DOMINO 567R..... KB L1 DOMINO 737  
 MISS ROBIN HOOD 391 ..... KB L1 DOMINETTE 0111  
 HH ROBIN HOOD L130  
 SH LADY DOMINO 065

BW	WW	YW	Milk	M&G	FAT	REA	MRB	BMI\$	CEZ\$	CHB\$
3.3	45	86	23	46	.001	.06	.19	20	15	24

**LOT  
596****MISS PRAIRIE XPERT 596**

REG#	DOB	H/P/S
43640095	4/21/15	H

TP DESERT XPERT 327 NJW 98S R117 RIBEYE 88X ET .... SHF RIB EYE M326 R117  
 TP LADY HARRIET 128 ..... NJW 9126J DEW DOMINO 98S  
 L3 ARCH PREMIER 508  
 TP LADY DINA 751

YANKEE GIRL 3140 CHURCHILL YANKEE ET ..... GH NEON 17N  
 MISS BONANZA 858 ..... CHURCHILL LADY 202  
 SH BONANZA 5007  
 MISS ROBIN HOOD 391

BW	WW	YW	Milk	M&G	FAT	REA	MRB	BMI\$	CEZ\$	CHB\$
5.1	54	95	27	54	-.002	.28	.31	17	15	31

**LOT  
5118****SENSATIONAL LADY 5118**

REG#	DOB	H/P/S
43639843	4/25/15	H

UU SENSATION 2053 CHURCHILL SENSATION 028X..... UPS DOMINO 3027  
 UU HALEY 0080 ..... CHURCHILL LADY 7202T ET  
 H5 408 DOMINO 7100  
 UU MS DAKOTA 8105

SUPER MOM 132 /S MISTER MOM 7745..... MISTER MOM 221  
 LADY STANDARD 757 ..... /S MS PEER PLAN 526E  
 F L2 STANDARD 348  
 SH L1 LADY DOMINO 133

BW	WW	YW	Milk	M&G	FAT	REA	MRB	BMI\$	CEZ\$	CHB\$
2.1	47	74	32	56	.044	.17	.12	19	20	21

# LOT 5138

## LADY PENDLETON RANCHER 5138

REG#	DOB	H/P/S
43639829	4/28/15	H

CHURCHILL RANCHER 592R..... MH DAKOTA 0230  
 CHURCHILL RANCHER 8108U ET CHURCHILL LADY 202  
 CL 1 DOMINO 9126J 1ET  
 CL 1 DOMINETTE 301N ..... CL 1 DOMINETTE 8184H

LADY L1 DOMINO 101 KB L1 DOMINO 563R..... RCH ADVANCE 2139  
 MISS ROBIN HOOD 360..... KB DOMINETTE 3128  
 HH ROBIN HOOD L130  
 SH LADY DOMINO 044

BW	WW	YW	Milk	M&G	FAT	REA	MRB	BMI\$	CEZ\$	CHB\$
3.4	47	82	21	45	.003	.01	.18	22	16	24

# LOT 5172

## LADY HARLEY 5172

REG#	DOB	H/P/S
43644096	5/4/15	H

UU HARLEY 9130 H5 408 DOMINO 7100 ..... CJH HARLAND 408  
 UU MS 056 7115..... H5 MS 001 DOMET 4193  
 H5 767 ADVANCE 056  
 UU MS MARK 1207

SH LADY DOMINO 063 KB L1 DOMINO 661 ..... HH ADVANCE 492D  
 SPECIAL LADY 3033 ..... MONTANA MISS J241  
 KB MR SPECIAL 926  
 LADY DOMINO 559

BW	WW	YW	Milk	M&G	FAT	REA	MRB	BMI\$	CEZ\$	CHB\$
1.9	34	52	24	41	.022	.01	.10	17	17	14

# LOT 5210

## LADY HARLEY 5210

REG#	DOB	H/P/S
43643106	5/20/15	H

UU HARLEY 9130 H5 408 DOMINO 7100 ..... CJH HARLAND 408  
 UU MS 056 7115..... H5 MS 001 DOMET 4193  
 H5 767 ADVANCE 056  
 UU MS MARK 1207

PEARL DIAMOND 583 OXH DIAMOND 2215 ..... JNHR DIAMOND ET 414B  
 SH LADY DOMINO 031..... OXH LILA 8124  
 KB L1 DOMINO 661  
 LADY DUKE 4100

BW	WW	YW	Milk	M&G	FAT	REA	MRB	BMI\$	CEZ\$	CHB\$
3.3	39	71	27	47	.018	.22	.05	16	15	17

# LOT 5213

## SENSATIONAL LADY 5213

REG#	DOB	H/P/S
43642771	5/24/15	H

UU SENSATION 2053 CHURCHILL SENSATION 028X..... UPS DOMINO 3027  
 UU HALEY 0080 ..... CHURCHILL LADY 7202T ET  
 H5 408 DOMINO 7100  
 UU MS DAKOTA 8105

MISS RANCHERETTE 133 CHURCHILL RANCHER 8108U ET... CHURCHILL RANCHER 592R  
 LADY PURE GOLD 741 ..... CL 1 DOMINETTE 301N  
 GOLDEN ACHIEVER 2072  
 MISS ROBIN HOOD 391

BW	WW	YW	Milk	M&G	FAT	REA	MRB	BMI\$	CEZ\$	CHB\$
0.4	42	70	33	54	.049	.00	.27	21	21	22

# LOT 5234

## PRINCESS NAVARRO 5234

REG#	DOB	H/P/S
43643144	6/29/15	H

SR NAVARRO 140X UPS NAVARRO ..... UPS DOMINO 5216  
 SR VALORIE 684..... UPS MISS DOMINO 5875  
 BB 1065 DOMINO 4102  
 SR SHANA 4111

MISS BONANZA 864 SH BONANZA 5007 ..... F BONANZA 027  
 MISS BONANZA 3111 ..... SH MISS DOMINO 808  
 F BONANZA 027  
 LADY STANDARD 5028

BW	WW	YW	Milk	M&G	FAT	REA	MRB	BMI\$	CEZ\$	CHB\$
3.1	47	75	22	46	-.010	.37	.13	18	15	24

**STROH HEREFORDS**  
**1010 Hwy 22 S**  
**Killdeer, ND 58640**

FIRST CLASS  
US POSTAGE  
**PAID**  
Fargo, ND  
Permit No. 684



**SHR L1 DOMINO A 506**

