

68 years of raising cattle with today's cattleman in mind

STROH HEREFORD RANCH



*29th Annual Ranch Ready
Production Sale*

THURS., FEB. 7, 2019

1:00 p.m. (MT) • At the Ranch



SHR L1 Willow 725

SELLING: 55 Coming Two-Year-Old Bulls

(A two-year-old Bull has more longevity and can cover more cows than a yearling bull. These bulls are cake broke, and ready to go to work for you.)

16 Bred Registered Hereford Heifers

(Bred to Black Angus Bulls)

12 Bred Commercial Heifers

(Bred to Black Angus Bulls)



Dear Cattlemen and Women:

Stroh Hereford Ranch would like to welcome you to our 29th Annual Ranch Ready Production Sale which will once again be held at the ranch on Thursday, February 7th, 2019. The ranch is located 1.5 miles east of the Killdeer Roundabout on Highway 200 or 5 miles west of Dunn Center.

In reflecting upon 2018, what a year it was. We experienced extreme conditions during calving and another year of drought conditions in our area. Through this all we realized the importance of a sound mother cow and the role she has on the ranch. The mama cow is truly the backbone of every working ranch. This is why we select sires which will produce cows that thrive in extreme environments. We select sires that will advance our maternal and dry matter intake traits, which will not only improve our cow herd, but our customers as well.

As always, we do not push our cattle to gain as fast as possible. We feel that this helps with structural integrity and longevity. After weaning, we give the bull calves just enough feed to keep them growing, and not to get them fat. In the summer the yearling bulls are caked once daily to keep them growing. Other than cake, they receive a mineral supplement with IGR to control the flies. In the fall we do a step up ration to keep the rumen healthy and to avoid acidosis. The bulls are fed to a desired condition and then the ration is modified to ensure a healthy condition. We feel the bulls are in optimal condition at this time. We do this to show the bulls potential, without overfeeding them in order to hide flaws. What you see is what you get. For the past 68 years this has been proven to be a good combination to produce bulls with sound feet that get up and go and last.

We feel that this particular set of cattle really embodies our program. The bulls are as rugged and powerful as ever. They have sufficient pigment and are phenotypically correct. Remember, a two year old bull can service 30% more cows than a yearling bull can. The heifers are feminine, and have the brood cow look. As always, the bulls are cake broke, pail gentle and ready to go to work for you.

Over the years one of our goals has been to improve our genetics and pass this on to our customers. This year at the Holiday Stock Cow and Bred Heifer Sale at Stockmen's Livestock in Dickinson, North Dakota Stroh Sired baldy heifers from the Keison Ranch in Keene, North Dakota (sold by Scott Woroniecki, Hebron, North Dakota) and Stroh Sired baldy heifers from the Hokanson Ranch in Alamo, North Dakota topped the market that day.

Over the years, numerous research based articles have been released showing the benefits of using Hereford Bulls in cross breeding programs. A Hereford Bull will improve weaning weights and heterosis bringing highbred vigor and performance to the playing field. Black baldy calves are valuable from the pasture to the plate and baldy steers are highly sought after by a number of quality beef programs.

In closing, we want to thank all of our past customers for their continued dedication and support. We value the feedback they have given us in regard to our cattle. This feedback helps us to grow. We would also like to invite you to stop by the ranch to look at the cattle prior to sale day. Should you have any questions please do not hesitate to contact us. Donuts and coffee will be out sale day morning, and lunch will be served at 11:30. The sale will begin at 1:00 Mountain Time. We look forward to seeing you!

Sincerely,

Mike, Dawn, Lucas and Matthew Stroh

1010 Highway 22 South
Killdeer, ND 58640

Tony and Leona Stroh
Killdeer, ND 58640

701-573-4373 (home phone)

701-290-1191 (Mike's Cell)

701-690-4860 (Matt's Cell)

acmecatl@ndsupernet.com

STROH HEREFORD RANCH RECOGNIZED AS GOLD TPR BREEDERS



Gold TPR breeders are truly the Gold standard when it comes to timely and complete data reporting. Gold TPR breeders are leaders when it comes to performance in recording as they are measuring production at all stages through complete calf crop reporting.

The Gold TPR Breeder recognition is presented to progressive Hereford breeders who have measured traits and collected and promptly submitted performance data at all levels of production. Gold TPR Breeders must meet a specific set of requirements in order to be eligible for the program.

- Herd inventory submitted prior to inventory surcharge deadline.
- Complete reporting of calving ease and reproductive status for each dam on inventory.
- Complete reporting of birth, weaning and yearling weights for all live calves recorded in the calf crop.
- Complete reporting of scrotal measurements for each bull calf with a recorded yearling weight.
- Ultrasound data reported on 25% or more of the calf crop.

The **Livestock**™
Livestock Videoing • Video Sales
• Bid-by-Click Online Sales
To view events go to
www.TheLivestockLink.com *Link*
Bid Online!

If you are unable to attend the sale, you can register to watch or bid online through The Livestock Link by following these instructions:

- Visit our website, www.thelivestocklink.com.
- Click the "Auctions" tab.
- Click on "Click Here to Register" below "USER-LOGIN".
- Enter your e-mail address and password, and fill out all your contact information.
- Fill out your banking information. If you are only viewing the sale and do not wish to bid, this information can be left blank.
- Check the checkbox at the bottom of the page that says "I'm not a robot" to prove you are a real person.
- Click "Register" at the bottom of the page.
- You will receive an email with a link to activate your account.
- ***Please register to bid at least 24 hours in advance of the sale.***

You will receive an email when you are approved for bidding. All applications will be reviewed and processed promptly. You will receive a bidder number only after you have made a purchase in the sale, and that number will only be used at that sale. When the sale is completed, please contact the sale owner or manager for instructions of payment and delivery of your purchase.

To use our service, you must have access to high speed internet.

***Questions? Contact Aaron Friedt at (701) 590-9597
or Jared Peterson at (605) 641-7573***

www.thelivestocklink.com

68 years of raising cattle with today's cattleman in mind

STROH HEREFORD RANCH

29th Annual Ranch Ready
Production Sale

**THURSDAY,
FEBRUARY 7, 2019**

1:00 p.m. (MT) • At the Ranch

1.5 Miles East of the Killdeer Roundabout on
Highway 200 or 5 miles west of Dunn Center, ND.

Join us for a free lunch

SELLING: 55 Coming Two-Year-Old Bulls

(A two-year-old Bull has more longevity and can cover more cows than a yearling bull. These bulls are cake broke, and ready to go to work for you.)

16 Bred Registered Hereford Heifers

(Bred to Black Angus Bulls)

12 Bred Commercial Heifers

(Bred to Black Angus Bulls)

Scott Weishaar, Auctioneer

701-872-5299 • Cell: 701-426-6826

Jill & Marc Hotchkiss,

Hereford America, 605-866-4495

Jill's Cell: 605-490-1409

Marc's Cell: 605-490-1513

Dr. Erika Schumacher, DVM

701-483-0240

Levi Landers, American Hereford Association

308-730-1396

Will Bollum, Western Ag Reporter

507-244-0833

Chad Stoltz

701-225-2265 • Cell: 701-290-0546

Videos online at:

www.thelivestocklink.com

**The Livestock
Link**

EPD's are current as of 1/5/19.



We have been privileged to provide veterinary services for the Stroh Ranch for the past 31 years. They are very caring people and take outstanding care of their cattle. They have a passion for raising docile cattle that perform exceptional in the pasture and at the feedlot.

Their herd is on a full vaccination program. The cowherd is vaccinated pre-breeding with PregGuard Gold FP® 10. The bulls are fertility tested in the spring, and receive PregGuard Gold FP® 10, SolidBac Pinkeye IR/PR vaccine and Fusogard® footrot vaccine before turnout.

The calves receive BoviShield Gold-One Shot and UltraBac 7 at pasture turn out. The calves are dewormed at branding with LongRange and dewormed again at weaning with ivermectin. The calves receive booster vaccinations and are dewormed in the fall.

Best of luck in 2019!

Dr. Kim Brummond, Dr. Erika Schumacher & Dr. Tim Janke

West Dakota Veterinary Clinic

93 21st St East

Dickinson, ND 58601

701-483-0240

www.westdakotavet.com

TERMS & CONDITIONS: All cattle will be sold to the highest bidder without reserve. The terms of the sale will be cash. The auctioneer will settle any dispute as to bids.

Each animal will become the property of the buyer as soon as sold. Cattle will be cared for a reasonable length of time after the sale, at the buyer's risk. Announced changes in catalog information sale day, take precedence over printed material in this catalog. Everyone attending this sale does so at his own responsibility and risk, and without liability on the part of the owner or his employees.

GUARANTEE: All bulls of breeding age are guaranteed breeders. If an animal fails to breed after a trial of six months, it may be returned to the seller at buyer's expense. The seller reserves the right to try said animal for six months and if it proves a breeder to return it to the station of buyer at seller's expense. If the animal proves to be a non-breeder it will be replaced with an animal of equal quality or credit will be given for next years sale.

We assume no liability legal or otherwise to make any further compensation to the buyer no other warranty of any nature is expressed or implied.

Extreme care has been taken in copying each pedigree to avoid errors. We are not to be held responsible for any error which might appear and which is beyond our control in the printing of the catalog.

DELIVERY: Deliveries will be made on purchase of \$3500 or more to central points up to 400 miles. We will cooperate with buyers on delivery of all cattle regardless of number or distance. No delivery provided for heifers.

ABSENTEE BIDDING: Anybody wishing to bid that cannot attend the sale may place a phone bid by contacting any listed sales representative, (Will Bollum, Chad Stoltz, Levi Landers and Jill Hotchkiss), Mike Stroh, Matt Stroh or Scott Weishaar.

KILLDEER ACCOMMODATIONS: Cobblestone Hotel & Suites, 701-764-2200; Mountain View Hotel, 701-764-5843.

We will cooperate with delivery arrangements or take \$50.00 (per bull) off if picked up on sale day (Bulls Only)

TRAIT DEFINITIONS

The American Hereford Association (AHA) currently produces expected progeny differences (EPDs) for 17 traits and calculates three profit (\$) indexes.

CALVING EASE DIRECT (CED) – CE EPD is based on calving ease scores and birth weights and is measured on a percentage. CE EPD indicates the influence of the sire on calving ease in females calving at 2 years of age. For example, if sire A has a CE EPD of 6 and sire B has a CE EPD of -2, then you would expect on average if comparably mated, sire A's calves would be born with an 8% more likely chance of being unassisted when compared to sire B's calves.

BIRTH WEIGHT (BW) – BW EPD is an indicator trait for calving ease and is measured in pounds. For example, if sire A has a BW EPD of 3.6 and sire B has a BW EPD of 0.6, then you would expect on average if comparably mated, sire A's calves would come 3 lb. heavier at birth when compared to sire B's calves. Larger BW EPDs usually, but not always, indicate more calving difficulty. The figure in parentheses found after each EPD is an accuracy value or reliability of the EPD.

WEANING WEIGHT (WW) – WW EPD is an estimate of pre-weaning growth that is measured in pounds. For example, if sire A has a WW EPD of 60 and sire B has a WW EPD of 40, then you would expect on average if comparably mated, sire A's calves would weigh 20 lb. heavier at weaning when compared to sire B's calves.

YEARLING WEIGHT (YW) – YW EPD is an estimate of post-weaning growth that is measured in pounds. For example, if sire A has a YW EPD of 100 and sire B has a YW EPD of 70, then you would expect on average if comparably mated, sire A's calves would weigh 30 lb. heavier at a year of age when compared to sire B's calves.

DRY MATTER INTAKE (DMI) – The Dry Matter Intake EPD predicts the daily consumption of pounds of feed. For example, if sire A has a DMI EPD of 1.1 and sire B has a DMI EPD of 0.1, you would expect sire B's progeny, if comparably mated, to consume on average 1 pound of feed less per day.

SCROTAL CIRCUMFERENCE (SC) – Measured in centimeters and adjusted to 365 days of age, SC EPD is the best estimate of fertility. It is related to the bull's own semen quantity and quality, and is also associated with age at puberty of sons and daughters. Larger SC EPDs suggest younger age at puberty. Yearling sons of a sire with a .7 SC EPD should have yearling scrotal circumference measurements that average 0.7 centimeters (cm) larger than progeny by a bull with an EPD of 0.0 cm. In the Hereford genetic analysis, a multiple-trait model was used for scrotal circumference. Weaning weight was used as a predictor variable to increase the prediction accuracy of SC EPDs. Therefore, an animal with a weaning weight EPD should also have a SC EPD.

SUSTAINED COW FERTILITY (SCF) – The AHA's new Sustained Cow Fertility EPD (SCF) is a prediction of a cow's ability to continue to calve from three years of age through twelve years of age, given she calved as a two-year-old. The EPD is expressed as a deviation in the proportion of the ten-possible calving's to twelve years old expressed as a probability. For example, the daughters of a bull with a 30 EPD would have the genetic potential to have one more calf by age twelve than the daughters from a bull with a 20 EPD. In other words, the daughters from the 30 EPD bull would have a 10% greater probability of having one more calf than the bull with a 20 EPD. This is equivalent to saying that the daughters are 10% more likely to remain in the herd to age 12.

MATERNAL MILK (Milk) – The milking ability of a sire's daughters is expressed in pounds of calf weaned. It predicts the difference in average weaning weights of sires' daughters' progeny due to milking ability. Daughters of the sire with a +14 MM EPD should produce progeny with 205-day weights averaging 24 lb. more (as a result of greater milk production) than daughters of a bull with a MM EPD of -10 lb. (14 minus -10.0 = 24 lb.). This difference in weaning weight is due to total milk production during the entire lactation.

MATERNAL MILK & GROWTH (M&G) – Maternal Milk & Growth reflects what the sire is expected to transmit to his daughters for a combination of growth genetics through weaning and genetics for milking ability. It is an estimate of daughters' progeny weaning weight. A bull with a 29 lb. M&G EPD should sire daughters with progeny weaning weights averaging 19 lb. heavier than progeny of a bull's daughters with a M&G EPD of 10 lb. (29 minus 10 = 19 lb.). It is equal to one-half the sire's weaning weight EPD, plus all of his MM EPD. No accuracy is associated with this since it is simply a mathematical combination of two other EPDs. It is sometimes referred to as "total maternal" or "combined maternal."

MATERNAL CALVING EASE (MCE) – MCE EPD predicts how easily a sire's daughters will calve at 2 years of age and is measured on a percentage. For example, if sire A has a MCE EPD of 7 and sire B has a CE EPD of -3, then you would expect on average if comparably mated, sire A's daughters would calve with a 10% more likely chance of being unassisted when compared to sire B's daughters.

MATURE COW WEIGHT (MCW) – The MCW EPD was designed to help breeders select sires that will either increase or decrease mature size of cows in the herd. The trait was developed after years of cow weight data collection and the EPD relates directly to the maintenance requirements of a cow herd. An example of how the MCW EPD allows breeders to compare sires: If sire A has a MCW EPD of 100 and sire B has an EPD of 85, then you would expect the females of sire A, if mated to similar cows, to be 15 lb. heavier at mature size.

UDDER SUSPENSION (UDDR) – Scores range from 9 (very tight) to 1 (very pendulous) and represent assessments of udder support. Weak udder suspension results in pendulous udders that make it difficult for a calf to nurse. Weak suspension in the udder indicates a lack of support in the ligament that ties the udder to the cow's body wall. Over time, weakness in this ligament will allow the udder to hang down too far from the body and may subject the udder to serious problems and increased potential for injury. UDDR EPDs are reported on the scoring scale. Differences in sire EPDs predict the difference expected in the sires' daughters' udder characteristics when managed in the same environment. For example, if sire A has a UDDR EPD of 0.4, and sire B has a UDDR EPD of -0.1, the difference in the values is 0.5, or one-half of a score. If daughters of sires A and B are raised and managed in the same environment, you would expect half a score better udder suspension in daughters of sire A, compared to sire B.

TEAT SIZE (TEAT) – Scores range from 9 (very small) to 1 (very large, balloon shaped) and are subjective assessments of the teat length and circumference. Oversized teats are

difficult for newborn calves to nurse, and the calf may not receive adequate colostrum. This could lead to a higher incidence of scours or decreased immunity levels in the newborn calf. TEAT EPDs are reported on the scoring scale. Differences in sire EPDs predict the difference expected in the sires' daughters' udder characteristics when managed in the same environment. For example, if sire A has a teat size EPD of 0.4, and sire B has a teat size EPD of -0.1, the difference in the values is 0.5, or one-half of a score. If daughters of sires A and B are raised and managed in the same environment, you would expect half a score smaller teat size in daughters of sire A, compared to sire B.

CARCASS WEIGHT (CW) – Carcass weight is a beneficial trait when considering the impact that pounds have relative to end product value. At the same age constant endpoint, sires with higher values for carcass weight will add more pounds of hot carcass weight compared to sires with lower values for carcass weight. For example, if sire A has a CW EPD of 84 and sire B has a CW EPD 64, then you would expect the progeny of sire A, if harvested at the same age constant endpoint, to have a 20-lb. advantage in terms of hot carcass weight.

RIB FAT (FAT) – The FAT EPD reflects differences in adjusted 365-day, 12th-rib fat thickness based on carcass measurements of harvested cattle. Sires with low, or negative FAT EPDs are expected to produce leaner progeny than sires with higher EPDs. Ultrasound measures are also incorporated into this trait and have been shown to be highly correlated with the performance of slaughter progeny. All data is expressed on a carcass scale.

RIBEYE AREA (REA) – REA EPDs reflect differences in an adjusted 365-day ribeye area measurement based on carcass measurements of harvested cattle. Sires with relatively higher REA EPDs are expected to produce better-muscled and higher percentage yielding slaughter progeny than will sires with lower REA EPDs. Ultrasound measurements are also incorporated into this trait and have been shown to be highly correlated with the performance of slaughter progeny. All data is expressed on a carcass scale.

MARBLING (MRB) – MARB EPDs reflect differences in an adjusted 365-day marbling score (intramuscular fat, IMF) based on carcass measurements of harvested cattle. Breeding cattle with higher MARB EPDs should produce slaughter progeny with a higher degree of IMF and therefore higher quality grades. Ultrasound measurements are also incorporated into this trait and have been shown to be highly correlated with the performance of slaughter progeny. All data is expressed on a carcass scale.

BALDY MATERNAL INDEX (BMI\$) – The Baldy Maternal Index is a maternally focused index that is based on a production system that uses Hereford x Angus cross cows. Progeny of these cows are directed towards Certified Hereford Beef. This index has significant weight on Sustained Cow Fertility, which predicts fertility and longevity of females. There is a slightly positive weight on Weaning Weight, Mature Cow Weight and Milk which accounts for enough growth but ensures females do not increase inputs. There is some negative emphasis on Dry Matter Intake, but a positive weighting on Carcass Weight which is anticipated to provide profitability from finishing of non-replacement females and castrated males. Marbling and Rib-eye Area are also positively weighted to keep the harvested progeny successful for CHB. This index is geared to identify Hereford bulls that will be profitable when used in a rotational cross with mature commercial Angus cows.

BRAHMAN INFLUENCE INDEX (BII\$) – The Brahman Influence Index is a maternally focused index that is based on a production system that uses Brahman x Hereford cross cows. Progeny of these cows are directed towards a commodity beef market since Certified Hereford Beef does not accept Brahman influenced cattle. This index has significant weight on Sustained Cow Fertility, which predicts fertility and longevity of females. There is a slightly positive weight on Weaning Weight, Mature Cow Weight and Milk which accounts for enough growth but ensures females do not increase inputs. There is some negative emphasis on Dry Matter Intake, but a positive weighting on Carcass Weight which is anticipated to provide profitability in finishing non-replacement females and castrated males. Marbling and Rib-eye Area are also positively weighted to keep harvested progeny successful for a variety of commodity based programs. This index targets producers that use Hereford bulls on Brahman influenced cows.

CERTIFIED HEREFORD BEEF INDEX (CHB\$) – The Certified Hereford Beef Index is a terminal sire index that is built on a production system where Hereford bulls are mated to mature commercial Angus cows and all progeny will be targeted for Certified Hereford Beef after the finishing phase. This index has significant weight on Carcass Weight to ensure profit on the rail. As well there is a positive weighting for Average Daily Gain along with a negative weighting on Dry Matter Intake to ensure efficient pounds of growth in the finishing phase. Keep in mind, this production system takes advantage of complimentary breeding with the commercial Angus cow. Although Marbling is weighted positively in this index, a positive weighting for Rib-eye Area and a negative weighting for Back Fat are a greater priority in this index to allow for optimum end-product merit. This is the only index that has no emphasis on fertility. Remember that no replacement heifers are being retained.

THE CHB SIRE OF DISTINCTION

The Certified Hereford Beef Sire of Distinction program recognizes Hereford bulls who excel in carcass traits. The American Hereford Association Board of Directors initiated the program in 2007 to to recognize superior carcass bulls.

Qualifications - To qualify as a Certified Hereford Beef Sire of Distinction, a bull must be in the top 25% for the CHB\$ profit index and have a minimum accuracy level of 30% for both ribeye area (REA) and marbling (MRB) expected progeny difference (EPD). The Certified Hereford Beef Sires distinction is used to recognize sires in the Hereford breed that excel in improving carcass traits. A bull receiving the CHBS status will be recognized with CHB after his name when doing an animal or EPD inquiry on Hereford.org.

EPD'S FOR 2017 BORN CALVES

CED	BW	WW	YW	DMI	SC	SCF	Milk	M&G	MCE
1.9	3.1	52	83	0.1	0.9	14.4	24	49	2.0
MCW	UDDR	TEAT	CW	FAT	REA	MRB	BMI\$	BII\$	CHB\$
88	1.20	1.21	65	.010	.38	.11	319	386	101



THE BALD-FACED TRUTH

ABOUT HEREFORD GENETICS

It's obvious – Hereford-sired calves deliver a \$51 increase in net profit per cow, per year.* Hereford genetics bring legendary hybrid vigor, improved fertility, feed efficiency and easy-handling docility to your program. Read the research, and see why Hereford heterosis pays off, at HerefordTruth.com.



*Compared to Angus-sired calves. Source: Daley, David A. and Earley, Sean P. Impacts of Crossbreeding on Profitability in Vertically Coordinated Beef Industry Marketing Systems. American Hereford Association. Retrieved from <https://hereford.org/wp-content/uploads/2017/02/HarrisHeterosisReport.pdf>. 57100-A02

FIVE RESEARCH BASED FACTS TO CONSIDER WHEN TRYING DECIDING IF YOU SHOULD PURCHASE A TWO-YEAR OLD BULL OR A YEARLING BULL...

- 1) Two-Year-Old Bulls have better serving ability than their yearling counterparts. They can service at least 30% more cows.
- 2) Two-Year-Old Bulls are culled for quality control, more so than a yearling bull.
- 3) A Two-Year-Old Bull carries more body fat reserve.
- 4) Two-Year-Old Bulls do not require the management that yearling bulls do.
- 5) Two-Year-Old Bulls require less supplemental feed than do their yearling counterparts (developing yearling bulls have greater nutritional needs).

HERD BULLS



SIRE

A

BCC L1 DOMINO 489B

REG#

43511205

DOB

3/9/14



KC L1 DOMINO 12050 HH ADVANCE 0207X..... HH ADVANCE 8203U ET
 HH MISS ADVANCE 7066T
 KC MISS RIBSTONE 09040..... F 157K RIBSTONE 765
 KC L1 DOMETT 06100

BCC L1 DOMINETTE 129Y UPS DOMINO 5216..... UPS DOMINO 3027
 UPS MISS MOM 2756
 BCC L1 PRINCESS 549 KB L1 DOMINO 116
 BCC MEDORA 043

CED	BW	WW	YW	Milk	M&G	FAT	REA	MRB	BMI\$	CHB\$
8.9	1.5	50	77	33	58	.036	.21	.30	296	95

This bull combines calving ease with performance. He is jointly owned with Baumgarten Cattle Company out of Belfield, ND.



SIRE

B

CL 1 DOMINO 2142Z 1ET

REG#

43268114

DOB

1/31/12



L1 DOMINO 08542 L1 DOMINO 06474..... L1 DOMINO 04457
 L1 DOMINETTE 99408
 L1 DOMINETTE 02352..... L1 DOMINO 99360
 L1 DOMINETTE 99468

CL 1 DOMINETTE 332N CL 1 DOMINO 9126J 1ET HH ADVANCE 767G 1ET
 CL 1 DOMINETTE 490
 CL 1 DOMINO 640F
 CL 1 DOMINETTE 875H CL 1 DOMINETTE 573E

CED	BW	WW	YW	Milk	M&G	FAT	REA	MRB	BMI\$	CHB\$
8.7	1.2	39	66	30	49	.046	.37	.20	215	85

A long bodied, heavily muscled Cooper bull that moderates frame size and adds maternal traits to any bloodline. This will be the last year progeny from this sire will sell.

HERD BULLS



SIRE
C

CL 1 DOMINO 3146A

REG#	DOB
43379774	2/4/13



HH ADVANCE 1087Y ET	HH ADVANCE 8050U ET.....	L1 DOMINO 03571
HH MISS ADVANCE 6109S	HH MISS ADVANCE 365N	HH MISS ADVANCE 4049P
CL 1 DOMINETTE 036X 1ET	HH ADVANCE 5104R.....	CL 1 DOMINO 206M
CL 1 DOMINETTE 475P.....	HH MISS ADVANCE 153L	CL 1 DOMINO 824H
		CL 1 DOMMINETTE 200M

CED	BW	WW	YW	Milk	M&G	FAT	REA	MRB	BMI\$	CHB\$
4.9	3.1	69	103	37	71	.046	.41	.08	297	100

A large outlined, heavily muscled, deep bodied Cooper bull that we are very excited to add to our program. This bull is a performance powerhouse.



SIRE
D

CL 1 DOMINO 432B

REG#	DOB
43470017	1/6/14



CL 1 DOMINO 215Z	CL 1 DOMINO 9122W 1ET	CL 1 DOMINO 732T
CL 1 DOMINETTE 055X.....	CL 1 DOMINETTE 475P	CL 1 DOMINETTE 7136T 1ET
CL 1 DOMINETTE 1152Y	HH ADVANCE 9016W ET	HH ADVANCE 5061R ET
CL 1 DOMINETTE 717T.....	HH MISS ADVANCE 4016P ET	CL 1 DOMINO 590R
		CL 1 DOMINETTE 5134R

CED	BW	WW	YW	Milk	M&G	FAT	REA	MRB	BMI\$	CHB\$
2.8	3.1	62	103	26	57	.046	.40	-.01	248	102

This bull has an excellent disposition. He had an 84 lb actual birth weight. He is in the top 15% of the breed for Milk and Milk & Growth. Purchased from Cooper Hereford Ranch.

HERD BULLS



SIRE

E

CHURCHILL CAPTAIN 2128Z ET

REG#

DOB

43282355

1/19/12

UPS DOMINO 3027 CL 1 DOMINO 9126J 1ET
 CHURCHILL SENSATION 028X UPS MISS DIAMOND 1353
 CHURCHILL LADY 7202T ET GH RAMBO 279R
 CL 1 DOMINETTE 301N

CHURCHILL YANKEE ET GH NEON 17N
 CHURCHILL LADY 9123W ET CHURCHILL LADY 202
 CHURCHILL LADY 404 CL 1 DOMINO 9126J 1ET
 CHURCHILL LADY 1192

CED	BW	WW	YW	Milk	M&G	FAT	REA	MRB	BMI\$	CHB\$
5.7	1.3	47	81	35	58	.056	.49	.26	358	107

Co-owned with Churchill Cattle Company, Manhattan, MT. He consistently produces the cattleman's type of bulls and females.



SIRE

F

THR THOR 3213A

REG#

DOB

43404153

3/31/13



CHURCHILL YANKEE ET GH NEON 17N
 MAC'S RENDITON 20X CHURCHILL LADY 202
 MAC'S HARLET 772 CJH HARLAND 408
 LS CAPTIA 599

THR THOR 4029 JDH 15 WRANGLER 25L
 THR MISS THOR 7125T THR MISS THOR 0266
 THR MISS THOR 0264 THR THOR 5098
 THR MISS THOR 8125

CED	BW	WW	YW	Milk	M&G	FAT	REA	MRB	BMI\$	CHB\$
5.5	1.6	48	68	19	43	.016	.51	.28	289	103

A heavily muscled 20X son that we purchased from Thorstenson in 2014. We are pleased with the type of cattle he is producing. They are early maturing and easy keepers. Co-owned with Thorstenson Hereford Ranch, Selby, SD.

HERD BULLS



SIRE

G

TP DESERT XPERT 327

REG#

43411704

DOB

3/25/13



NJW 98S R117 SHF RIB EYE M326 R117 KCF BENNETT 3008 M326
 RIBEYE 88X ET HVH MISS HUDSON 83K 8M
 NJW 9126J DEW DOMINO 98S CL 1 DOMINO 9126J 1ET
 NJW 57G 74G DEW 5M

TP LADY HARRIET 128 L3 ARCH PREMIER 508 GOLDEN ACHIEVER 2072
 L3 MISS DONNA D14
 TP LADY DINA 751 HPH DESERT DUST 139
 TP LADY PREMIER 617

CED	BW	WW	YW	Milk	M&G	FAT	REA	MRB	BMI\$	CHB\$
-7.7	4.4	44	73	31	53	.016	.48	.22	303	90

A long bodied, stout 88X son purchased from Largents in Kaycee, WY. We are extremely pleased with the females this bull produces.



SIRE

H

UU SENSATION 2053

REG#

43266549

DOB

2/6/12

CHURCHILL SENSATION 028X UPS DOMINO 3027 CL 1 DOMINO 9126J 1ET
 CHURCHILL LADY 7202T ET UPS MISS DIAMOND 1353
 GH RAMBO 279R
 CL 1 DOMINETTE 301N

UU HALEY 0080 H5 408 DOMINO 7100 CJH HARLAND 408
 H5 MS 001 DOMET 4193
 UU MS DAKOTA 8105 UU DAKOTA 3003 ET
 UU MS BONANZA 5059

CED	BW	WW	YW	Milk	M&G	FAT	REA	MRB	BMI\$	CHB\$
13.7	-1.3	42	58	41	62	.086	.22	.21	382	93

A long, deep bodied, heavy muscled Sensation son that produces tremendous females and consistently produces great bull calves.

JR. HERD BULLS



SIRE

I

H5 10Y HOMETOWN 6194

REG#	DOB
43713062	2/16/16



NJW 73S W18 HOMETOWN 10Y ET	SHF WONDER M326 W18 ET.....	KCF BENNETT 3008 M326
NJW P606 72N DAYDREAM 73S ...	HH ADVANCE 7056T.....	SHF GOVERNESS 236G L37
H5 MS 7056 ADVANCE 1281	HH ADVANCE 5104R	PW VICTOR BOOMER P606
H5 MS 486 DOMET 627.....	HH MISS ADVANCE 5020R ET	NJW 94J DEW 72N
	CL 1 DOMINO 486P	
	H5 MS 767 ADVANCE 415	

CED	BW	WW	YW	Milk	M&G	FAT	REA	MRB	BMI\$	CHB\$
5.5	2.5	56	90	30	58	.006	.33	.21	308	97

We are very excited to bring this bull into our program. He brings a lot of length, width and muscling to the table! This guy is a true power house phenotypically and genotypically especially when you take a look at the maternal figures +58 on Milk and Growth and +30 on Milk! We look forward to the impact he will have on our program in the years to come.



SIRE

J

SH MR TRUST 622

REG#	DOB
43731733	9/14/16



NJW 73S M326 TRUST 100W ET	KCF BENNETT 3008 M326	RRH MR FELT 3008
NJW P606 72N DAYDREAM 73S ...	L3 DIAMOND 679.....	KCF MISS 459 F284
L3 LADY DIAMOND 8000	DH LADY PREMIER 653	PW VICTOR BOOMER P606
		NJW 94J DEW 72N
		UPS DOMINO 3027
		L3 DUSTY LADY 339
		GOLDEN ACHIEVER 2072
		DH LADY EDGE 769

CED	BW	WW	YW	Milk	M&G	FAT	REA	MRB	BMI\$	CHB\$
-3.4	4.5	58	108	28	57	.006	.63	.32	441	139

Here is a bull straight out of the high desert. He's long and thick with loads of eye appeal. He has a strong genetic package that we feel will complement the line one genetics we have been incorporating over the years. The hopes are that this bull's progeny will allow us to offer an outcross without sacrificing the need for maternally oriented high performing cattle.

JR. HERD BULLS



SIRE
K

SR SCOPE 117E

REG#	DOB
43826523	3/4/17

CL 1 DOMINO 860U.....
CL 1 DOMINO 0130X 1ET
 CL 1 DOMINETTE 440P 1ET.....

SR BENITA 464B

BRC FACTOR Y19
 SR DOODLES 842

CL 1 DOMINO 637S 1ET
 CL 1 DOMINETTE 5142R
 CL 1 DOMINO 9126J 1ET
 CL 1 DOMINETTE 974J

F 157K RIBSTONE 763
 BRC MISS KAHLUA 205
 CHURCHILL YANKEE ET
 MLM 5196 LADY 8058

CED	BW	WW	YW	Milk	M&G	FAT	REA	MRB	BMI\$	CHB\$
-0.6	4.2	65	100	35	67	.046	.51	.10	268	97

High performing phenotypic bull co-owned with Stuber Hereford Ranch, Bowman, ND.

SIRE
L

H5 0945 DOMINO 7208 ET

REG#	DOB
43792634	2/23/17



LJS MARK DOMINO 0709.....
LJS MARK DOMINO 0945
 LJS MS ADVANCE 0601

H5 MS 408 DOMET 764

CJH HARLAND 408.....
 H5 MS GP DOMET 4118.....

OXH MARK DOMINO 0125
 LJS MS MARK DOMINO 0414
 HH ADVANCE 255M 1ET
 LJS MS MARK DOMINO 0344

HH ADVANCE 9005J
 CJH L1 DOMINETTE 0064
 C GAME PLAN 2040
 H5 MS 500 DOMET 8182

CED	BW	WW	YW	Milk	M&G	FAT	REA	MRB	BMI\$	CHB\$
10.6	3.1	53	98	27	54	.016	.64	.29	254	134

A balanced bull that moderates frame. Co-owned with Harrell Hereford Ranch, Baker City, OR.



TWO-YEAR-OLD BULLS

**LOT
711**

SHR L1 DOMINO B 711

REG#	DOB	H/P/S	Act. BW	Act. WW	Act. YW
43819791	3/29/17	H	89	790	900

KC L1 DOMINO 12050..... HH ADVANCE 0207X
 BCC L1 DOMINO 489B KC MISS RIBSTONE 09040
 BCC L1 DOMINETTE 129Y..... UPS DOMINO 5216
 BCC L1 PRINCESS 549

UU HARLEY 9130 H5 408 DOMINO 7100
 LADY HARLEY 771 UU MS 056 7115
 LADY STANDARD 771 F L2 STANDARD 348
 DAISY IMPRINT 468

CED	BW	WW	YW	Milk	M&G	FAT	REA	MRB	BMI\$	CHB\$
3.6	3.0	49	62	32	56	.016	.33	.19	291	104

12 of 20 EPDs in the top 50% or higher of the breed including CHB which means you can market his calves through the CHB Program. His dam is a productive young cow with a bright future on the ranch.



**LOT
714**

STR L1 DOMINO SHEP 714E

REG#	DOB	H/P/S	Act. BW	Act. WW	Act. YW
43819850	3/30/17	H	90	766	1015

CL 1 DOMINO 215Z..... CL 1 DOMINO 9122W 1ET
 CL 1 DOMINO 432B CL 1 DOMINETTE 055X
 CL1 DOMINETTE 1152Y..... HH ADVANCE 9016W ET
 CL 1 DOMINETTE 717T

CHURCHILL RANCHER 8108U ET... CHURCHILL RANCHER 592R
 LADY RANCHER 5161 CL 1 DOMINETTE 301N
 LADY YANKEE 174 DS RENDITION 359W
 LADY ROBIN HOOD 838

CED	BW	WW	YW	Milk	M&G	FAT	REA	MRB	BMI\$	CHB\$
-1.5	5.3	65	98	30	62	.026	.41	.09	267	101

A large rugged 432B son that performs well. Dam 5161 is shaping up to be a model brood cow. 714 is truly a candidate for the modern rancher who wants to put pounds on calves being in the top 5% of the breed for weaning weight and the top 12% of the breed for yearling weight, while maintaining the ability to create a tremendous group of momma cows.

Thank You For
 Attending Our Sale!

TWO-YEAR-OLD BULLS



716

**LOT
716**

SHR L1 DOMINO SHEP 716

REG#	DOB	H/P/S	Act. BW	Act. WW	Act. YW
43819891	3/31/17	H	76	744	944

CL 1 DOMINO 215Z.....
CL 1 DOMINO 432B
 CL1 DOMINETTE 1152Y.....

DS RENDITION 359W.....
LADY RENDITION 546
 LADY HARLEY 271

CL 1 DOMINO 9122W 1ET
 CL 1 DOMINETTE 055X
 HH ADVANCE 9016W ET
 CL 1 DOMINETTE 717T

CHURCHILL YANKEE ET
 DS SHANA 557
 UU HARLEY 9130
 PEARL DIAMOND 841

CED	BW	WW	YW	Milk	M&G	FAT	REA	MRB	BMI\$	CHB\$
3.8	2.4	59	84	26	56	.026	.36	.01	244	93

Another sure shot 432B son that takes care of business. This is a smooth bull with great muscling, you can't go wrong with. This guys dam is a great 359W daughter!



724

**LOT
724**

SHR L1 DOMINO SHEP 724

REG#	DOB	H/P/S	Act. BW	Act. WW	Act. YW
43819895	4/1/17	H	85	718	1035

CL 1 DOMINO 215Z.....
CL 1 DOMINO 432B
 CL1 DOMINETTE 1152Y.....

UU HARLEY 9130

LADY HARLEY 579
 LADY L1 DOMINO 714

CL 1 DOMINO 9122W 1ET
 CL 1 DOMINETTE 055X
 HH ADVANCE 9016W ET
 CL 1 DOMINETTE 717T

H5 408 DOMINO 7100
 UU MS 056 7115
 KB L1 DOMINO 563R
 MISS BONANZA 3121

CED	BW	WW	YW	Milk	M&G	FAT	REA	MRB	BMI\$	CHB\$
0.1	4.8	62	102	24	55	.026	.39	.07	262	102

Here is a great bull stemming from some of the very best genetics on the ranch. Dam 524 is a great momma cow in the making raising great calves and you can't forget the 432B on the top side, this guy is full of red hair and loads of muscle.

TWO-YEAR-OLD BULLS



**LOT
725**

SHR L1 WILLOW 725

REG#	DOB	H/P/S	Act. BW	Act. WW	Act. YW
43819921	4/1/17	H	96	708	1065

HH ADVANCE 1087Y ET HH ADVANCE 8050U ET
CL 1 DOMINO 3146A HH MISS ADVANCE 6109S
 CL 1 DOMINETTE 036X 1ET..... HH ADVANCE 5104R
 CL 1 DOMINETTE 475P
 /S MISTER MOM 7745..... MISTER MOM 221
SUPER MOM 846A /S MS PEER PLAN 526E
 LADY ADVANCE 104 PD ADVANCE 9023
 SH 1 MISS DOMINO 712

CED	BW	WW	YW	Milk	M&G	FAT	REA	MRB	BMI\$	CHB\$
2.9	4.4	55	90	28	56	.026	.35	.06	301	97

Here is a power bull. Imagine a whole pot load of feeder calves looking just like him, long, deep and chalk full of muscle, he is truly a candidate that would excel anyone's program to the next level and would leave a lasting mark on ones herd. He is truly ranch ready.



**LOT
734**

MLS-PIONEER 734

REG#	DOB	H/P/S	Act. BW	Act. WW	Act. YW
43819386	4/3/17	H	70	610	858

CHURCHILL SENSATION 028X..... UPS DOMINO 3027
UU SENSATION 2053 CHURCHILL LADY 7202T ET
 UU HALEY 0080 H5 408 DOMINO 7100
 UU MS DAKOTA 8105
 HH ADVANCE 0118X..... CL 1 DOMINO 7128T 1ET
CL1 DOMINETTE 4138B HH MISS ADVANCE 6074S
 CL 1 DOMINO 4102P 1ET
 CL 1 DOMINETTE 7138T..... CL 1 DOMINETTE 2132M

CED	BW	WW	YW	Milk	M&G	FAT	REA	MRB	BMI\$	CHB\$
9.0	0.7	40	60	26	46	.056	.15	.14	315	85

A fancy 2053 son out of my 2015 purchase from the Cooper Hereford Ranch Production Sale. His dam has a wonderful udder and the look of a brood cow. He has the genetic potential to create some model brood cows without sacrificing the need for feeder calves. 734 will compliment any working ranch!!

TWO-YEAR-OLD BULLS

**LOT
736**

SHR L1 SHEP 736

REG#	DOB	H/P/S	Act. BW	Act. WW	Act. YW
43819887	4/3/17	H	80	668	994

CL 1 DOMINO 432B
 CL 1 DOMINO 215Z.....
 CL1 DOMINETTE 1152Y.....
 CL 1 DOMINO 9122W 1ET
 CL 1 DOMINETTE 055X
 HH ADVANCE 9016W ET
 CL 1 DOMINETTE 717T

PRINCESS NAVARRO 521
 SR NAVARRO 140X.....
 MISS BONANZA 610.....
 UPS NAVARRO
 SR VALORIE 684
 F BONANZA 027
 SH L1 LADY DOMINO 832

CED	BW	WW	YW	Milk	M&G	FAT	REA	MRB	BMI\$	CHB\$
1.9	3.3	55	91	24	52	.036	.43	.12	275	105

A 432B son with the old style look of a Hereford bull with all of the modern genetics. Not to mention a CHB number that will help with the marketability of his calves.

**LOT
740**

SHR L1 SHEP 740

REG#	DOB	H/P/S	Act. BW	Act. WW	Act. YW
43819889	4/4/17	H	71	658	870

CL 1 DOMINO 432B
 CL 1 DOMINO 215Z.....
 CL1 DOMINETTE 1152Y.....
 CL 1 DOMINO 9122W 1ET
 CL 1 DOMINETTE 055X
 HH ADVANCE 9016W ET
 CL 1 DOMINETTE 717T

LADY HARLEY 523
 UU HARLEY 9130.....
 PEARL DIAMOND 841.....
 H5 408 DOMINO 7100
 UU MS 056 7115
 OXH DIAMOND 2215
 MISS EXPLORER 134

CED	BW	WW	YW	Milk	M&G	FAT	REA	MRB	BMI\$	CHB\$
5.4	1.5	47	72	24	47	.016	.25	.01	274	94

Here is a 432B son that is out of a good Harley daughter.



743

**LOT
743**

SHR L1 WILLOW 743

REG#	DOB	H/P/S	Act. BW	Act. WW	Act. YW
43819719	4/5/17	H	89	794	1035

CL 1 DOMINO 3146A
 HH ADVANCE 1087Y ET.....
 CL 1 DOMINETTE 036X 1ET.....
 HH ADVANCE 8050U ET
 HH MISS ADVANCE 6109S
 HH ADVANCE 5104R
 CL 1 DOMINETTE 475P

MISS RED ADDITION 216
 BLL RED ADDITION 175T.....
 MISS ROBIN HOOD 322.....
 SH RED EDITION 06N
 LADY 58K DIAMND 106P
 SH L1 DOMINO 130
 SH LADY DOMINO 039

CED	BW	WW	YW	Milk	M&G	FAT	REA	MRB	BMI\$	CHB\$
3.1	3.8	55	85	31	58	.006	.48	.11	308	108

Here is a 3146A son with plenty of positive attributes including great growth and superb structure. This bull has 12 out of 20 traits in the top 50% or higher of the breed. He is a stout bull who will excel in a cross breeding program, creating the highly sought after F1 Baldy. He will add pounds to a calf crop and help create a solid set of feeder calves. 743 has the phenotypic and genotypic tabulations to reach far beyond the breeding pasture. Retaining 1/4 semen interest.

TWO-YEAR-OLD BULLS



LOT 744

SHR L1 WILLOW 744

REG#	DOB	H/P/S	Act. BW	Act. WW	Act. YW
43819617	4/5/17	H	85	750	1015

HH ADVANCE 1087Y ET
CL 1 DOMINO 3146A
 CL 1 DOMINETTE 036X 1ET.....

HH ADVANCE 8050U ET
 HH MISS ADVANCE 6109S
 HH ADVANCE 5104R
 CL 1 DOMINETTE 475P

CHURCHILL RANCHER 8108U ET...
MISS RANCHERETTE 119
 LADY DOMINO 856.....

CHURCHILL RANCHER 592R
 CL 1 DOMINETTE 301N
 KB L1 DOMINO 567R
 MISS BONANZA 276

CED	BW	WW	YW	Milk	M&G	FAT	REA	MRB	BMI\$	CHB\$
5.5	2.2	55	84	30	58	.016	.26	.17	315	97

A great 3146 son out of a great cow family on the ranch. Dam 119 is a model Rancher daughter that raises a tremendous calf every year. He has the look of his sire with lot of red and a whole lot of beef.

LOT 754

SHR L1 DOMINO B 754

REG#	DOB	H/P/S	Act. BW	Act. WW	Act. YW
43819795	4/6/17	H	90	724	960

KC L1 DOMINO 12050.....
BCC L1 DOMINO 489B
 BCC L1 DOMINETTE 129Y.....

HH ADVANCE 0207X
 KC MISS RIBSTONE 09040
 UPS DOMINO 5216
 BCC L1 PRINCESS 549

CHURCHILL RANCHER 8108U ET...
LADY PENDLETON RANCHER 410
 MISS DOMINO 759T

CHURCHILL RANCHER 592R
 CL 1 DOMINETTE 301N
 KB L1 DOMINO 567R
 MISS BONANZA 306

CED	BW	WW	YW	Milk	M&G	FAT	REA	MRB	BMI\$	CHB\$
2.9	3.6	50	75	27	52	.026	.16	.24	307	93

A high marbling 489B son out of a very feminine Rancher daughter.

LOT 757

SHR PRAIRIE XPERT 757

REG#	DOB	H/P/S	Act. BW	Act. WW	Act. YW
43819769	4/6/17	H	83	775	1060

NJW 98S R117 RIBEYE 88X ET
TP DESERT XPERT 327
 TP LADY HARRIET 128

SHF RIB EYE M326 R117
 NJW 9126J DEW DOMINO 98S
 L3 ARCH PREMIER 508
 TP LADY DINA 751

SHR DOMINO 09

UPS DOMINO 3027
 MISS BONANZA 812
 BLL RED ADDITION 175T
 PEARL DIAMOND 4011

CED	BW	WW	YW	Milk	M&G	FAT	REA	MRB	BMI\$	CHB\$
1.2	2.5	45	75	29	52	.006	.52	.25	344	101

This is a very balanced 327 son out of a good 09 daughter! If you put this guy on Red Angus cows his daughters would qualify for the Premium Red Baldy Program!!

TWO-YEAR-OLD BULLS



**LOT
758**

SHR L1 DOMINO Z 758

REG#	DOB	H/P/S	Act. BW	Act. WW	Act. YW
43819785	4/6/17	H	85	716	992

CL I DOMINO 2142Z 1ET
 CL I DOMINETTE 332N
 L1 DOMINO 08542
 L1 DOMINETTE 02352
 CL I DOMINO 9126J 1ET
 CL I DOMINETTE 875H

QUEEN DOMINO 3153
 MISS DOMINO 931
 SHR DOMINO 09
 UPS DOMINO 3027
 MISS BONANZA 812
 KB L1 DOMINO 567R
 MISS EXPLORER 343

CED	BW	WW	YW	Milk	M&G	FAT	REA	MRB	BMI\$	CHB\$
6.2	2.4	43	74	26	47	.026	.43	.22	316	97

A great 2142 son out of a superb 09 daughter. This guy is thick and would definitely complement any working ranch.



**LOT
763**

MLS-SPUR 763

REG#	DOB	H/P/S	Act. BW	Act. WW	Act. YW
43819373	4/7/17	H	76	708	940

CL I DOMINO 3146A
 CL I DOMINETTE 036X 1ET
 HH ADVANCE 1087Y ET
 HH ADVANCE 8050U ET
 HH MISS ADVANCE 6109S
 HH ADVANCE 5104R
 CL I DOMINETTE 475P

LADY L1 DOMINO 26
 DAISY IMPRINT 412
 KB L1 DOMINO 567R
 KB L1 DOMINO 737
 KB L1 DOMINETTE 0111
 SR IMPRINT 182
 LADY ADVANCE 104

CED	BW	WW	YW	Milk	M&G	FAT	REA	MRB	BMI\$	CHB\$
5.1	1.9	46	70	28	51	.006	.12	.02	295	84

A very balanced 3146A son with a lot of red and a whole lot of muscle! His dam is a very productive cow producing great sons and daughters. He has a beautiful half sister that is a model brood cow in our program.

TWO-YEAR-OLD BULLS



**LOT
766**

SHR SENSATION 766

REG#	DOB	H/P/S	Act. BW	Act. WW	Act. YW
43819346	4/8/17	H	75	746	942

CHURCHILL SENSATION 028X..... UPS DOMINO 3027
 CHURCHILL LADY 7202T ET
 UU SENSATION 2053 H5 408 DOMINO 7100
 UU HALEY 0080 UU MS DAKOTA 8105

KB L1 DOMINO 563R..... RCH ADVANCE 2139
 KB DOMINETTE 3128
 LADY L1 DOMINO 05 F BONANZA 027
 MISS BONANZA 3120 LADY STANDARD 6018

CED	BW	WW	YW	Milk	M&G	FAT	REA	MRB	BMI\$	CHB\$
9.0	0.4	43	60	26	48	.046	.14	.19	330	86

A square made 2053 son with a great coat of hair. He definitely is a cowboys kind of bull.



**LOT
773**

SHR L1 DOMINO B 773

REG#	DOB	H/P/S	Act. BW	Act. WW	Act. YW
43819824	4/9/17	H	78	746	1010

KC L1 DOMINO 12050..... HH ADVANCE 0207X
 KC MISS RIBSTONE 09040
 BCC L1 DOMINO 489B UPS DOMINO 5216
 BCC L1 DOMINETTE 129Y..... BCC L1 PRINCESS 549

UU HARLEY 9130 H5 408 DOMINO 7100
 HARLEY MAMA 489 UU MS 056 7115
 LADY L1 DOMINO 05 KB L1 DOMINO 563R
 MISS BONANZA 3120

CED	BW	WW	YW	Milk	M&G	FAT	REA	MRB	BMI\$	CHB\$
8.1	1.4	49	75	27	52	.026	.17	.22	285	90

A 489 son with a great muscle pattern and even better disposition. With the 9130 on the bottom side he will make some tremendous momma cows.

TWO-YEAR-OLD BULLS



**LOT
774**

SHR SENSATION 774

REG#	DOB	H/P/S	Act. BW	Act. WW	Act. YW
43819669	4/9/17	H	89	750	1020

CHURCHILL SENSATION 028X.....
UU SENSATION 2053
UU HALEY 0080

UPS DOMINO 3027
CHURCHILL LADY 7202T ET
H5 408 DOMINO 7100
UU MS DAKOTA 8105

CHURCHILL RANCHER 8108U ET...
MISS RANCHERETTE 176
MISS BONANZA 306

CHURCHILL RANCHER 592R
CL 1 DOMINETTE 301N
F BONANZA 027
MISS SPECTACULAR 761

CED	BW	WW	YW	Milk	M&G	FAT	REA	MRB	BMI\$	CHB\$
6.9	1.9	45	69	32	55	.036	.05	.18	329	84

A smooth made 2053 son with a favorable BMI which would help to qualify for the Red Baldy Program!! He also has some great maternal figures.



**LOT
778**

SHR L1 WILLOW 778

REG#	DOB	H/P/S	Act. BW	Act. WW	Act. YW
43819614	4/10/17	H	88	784	1050

HH ADVANCE 1087Y ET.....
CL 1 DOMINO 3146A
CL 1 DOMINETTE 036X 1ET.....

HH ADVANCE 8050U ET
HH MISS ADVANCE 6109S
HH ADVANCE 5104R
CL 1 DOMINETTE 475P

KB L1 DOMINO 9175W.....
LADY L1 DOMINO 111
MISS DOMINO 931

CL 1 DOMINO 0152K
KB ROBYN 362
KB L1 DOMINO 567R
MISS EXPLORER 343

CED	BW	WW	YW	Milk	M&G	FAT	REA	MRB	BMI\$	CHB\$
4.6	3.4	56	88	29	57	.026	.32	.11	323	99

A deep soggy 3146 son out of a moderate 9175W daughter. This guy has a lot of red and has 11 of 20 observable traits in the top 50% or better of the bred.

TWO-YEAR-OLD BULLS



**LOT
780**

SHR L1 SHEP 780

REG#	DOB	H/P/S	Act. BW	Act. WW	Act. YW
43819875	4/10/17	H	75	722	992

CL 1 DOMINO 432B
 CL 1 DOMINO 215Z.....
 CL 1 DOMINETTE 1152Y.....
 CL 1 DOMINO 9122W 1ET
 CL 1 DOMINETTE 055X
 HH ADVANCE 9016W ET
 CL 1 DOMINETTE 717T

QUEEN THOR 5168
 THR THOR 3213A.....
 LADY STAR 206.....
 MAC'S RENDITON 20X
 THR MISS THOR 7125T
 R 157K NORTH STAR 50W
 LADY L1 DOMINO 789

CED	BW	WW	YW	Milk	M&G	FAT	REA	MRB	BMI\$	CHB\$
4.8	2.5	57	86	25	53	.016	.44	.10	273	101

A deep, heavily muscled 432B son out of a very beautiful 3213 daughter that has a bright future in our breeding program! This guy checks a lot of the box's every rancher is concerned about, including easy calving, optimal performance, and maternal traits! We feel that this guys influence could be felt far beyond the breeding pasture. We are retaining 1/4 interest!!



**LOT
783**

SHR PRAIRIE XPERT 783

REG#	DOB	H/P/S	Act. BW	Act. WW	Act. YW
43819918	4/10/17	H	85	684	920

TP DESERT XPERT 327
 TP LADY HARRIET 128.....
 NJW 98S R117 RIBEYE 88X ET.....
 SHF RIB EYE M326 R117
 NJW 9126J DEW DOMINO 98S
 L3 ARCH PREMIER 508
 TP LADY DINA 751

SUPER MOM 822
 /S MISTER MOM 7745.....
 MISS BONANZA 373.....
 MISTER MOM 221
 /S MS PEER PLAN 526E
 F BONANZA 027
 SH 1 MISS DOMINO 710

CED	BW	WW	YW	Milk	M&G	FAT	REA	MRB	BMI\$	CHB\$
-0.6	2.7	39	63	25	45	.006	.45	.12	317	96

Here is a 327 son that is built like a brick. Not to mention he has some Mr. Mom on the bottom side.

TWO-YEAR-OLD BULLS



**LOT
790**

SHR L1 SHEP 790

REG#	DOB	H/P/S	Act. BW	Act. WW	Act. YW
43819877	4/11/17	H	93	732	972

CL 1 DOMINO 215Z.....
CL 1 DOMINO 432B
 CL1 DOMINETTE 1152Y.....

THR THOR 3213A.....
QUEEN THOR 5183
 LADY L1 DOMINO 246.....

CL 1 DOMINO 9122W 1ET
 CL 1 DOMINETTE 055X
 HH ADVANCE 9016W ET
 CL 1 DOMINETTE 717T

MAC'S RENDITON 20X
 THR MISS THOR 7125T
 KB L1 DOMINO 826U
 PEARL DIAMOND 583

CED	BW	WW	YW	Milk	M&G	FAT	REA	MRB	BMI\$	CHB\$
0.3	4.7	61	97	26	56	.016	.44	.01	264	104

Here is a deep and stout 432B son raised by an excellent 3213 daughter. His CHB numbers qualify his calves for the CHB Marketing Program.



**LOT
793**

SHR PRAIRIE XPART 793

REG#	DOB	H/P/S	Act. BW	Act. WW	Act. YW
43819761	4/11/17	H	89	650	974

NJW 98S R117 RIBEYE 88X ET
TP DESERT XPART 327
 TP LADY HARRIET 128.....

SR NAVARRO 140X.....
LADY NAVARRO 367
 PEARL DIAMOND 912.....

SHF RIB EYE M326 R117
 NJW 9126J DEW DOMINO 98S
 L3 ARCH PREMIER 508
 TP LADY DINA 751

UPS NAVARRO
 SR VALORIE 684
 OXH DIAMOND 2215
 SH LADY DOMINO 068

CED	BW	WW	YW	Milk	M&G	FAT	REA	MRB	BMI\$	CHB\$
-2.7	4.2	42	75	25	46	.006	.44	.23	308	100

A moderate framed bull out of a Navarro cow and he should be an easy keeper according to his dry matter intake EPD.

TWO-YEAR-OLD BULLS



**LOT
794**

SHR PRAIRIE XPERT 794

REG#	DOB	H/P/S	Act. BW	Act. WW	Act. YW
43819783	4/11/17	H	80	650	868

NJW 98S R117 RIBEYE 88X ET SHF RIB EYE M326 R117
 TP DESERT XPERT 327 NJW 9126J DEW DOMINO 98S
 TP LADY HARRIET 128 L3 ARCH PREMIER 508
 TP LADY DINA 751

SR NAVARRO 150X UPS NAVARRO
 PRINCES NAVARRO 3149 SR CAPTIA 661
 LADY ROBIN HOOD 75 SH ROBIN HOOD 724
 LADY STANDARD 657

CED	BW	WW	YW	Milk	M&G	FAT	REA	MRB	BMI\$	CHB\$
-1.2	2.3	35	61	27	44	.016	.30	.29	295	93

A rugged made 327 son out of another good Navarro cow.



**LOT
798**

SHR L1 DOMINO B 798

REG#	DOB	H/P/S	Act. BW	Act. WW	Act. YW
43819803	4/12/17	H	80	702	970

KC L1 DOMINO 12050 HH ADVANCE 0207X
 BCC L1 DOMINO 489B KC MISS RIBSTONE 09040
 BCC L1 DOMINETTE 129Y UPS DOMINO 5216
 BCC L1 PRINCESS 549

UU SENSATION 2053 CHURCHILL SENSATION 028X
 SENSATIONAL LADY 415 UU HALEY 0080
 MISS RED ADDITION 080 BLL RED ADDITION 175T
 PEARL DIAMOND 4011

CED	BW	WW	YW	Milk	M&G	FAT	REA	MRB	BMI\$	CHB\$
10.9	0.5	45	69	32	55	.026	.31	.20	319	100

This 489 son is built like a brick and has a dam that we cannot say enough about. He is very maternally orientated and has a 319 BMI, perfect for the rancher who likes baldy cows.

TWO-YEAR-OLD BULLS

**LOT
7102**

SHR SIR THOR 7102

REG#	DOB	H/P/S	Act. BW	Act. WW	Act. YW
43819902	4/12/17	H	85	626	964

THR THOR 3213A
 MAC'S RENDITON 20X CHURCHILL YANKEE ET
 THR MISS THOR 7125T MAC'S HARLET 772
 THR MISS THOR 0264

LADY L1 DOMINO 704
 KB L1 DOMINO 563R RCH ADVANCE 2139
 MISS BONANZA 4026 KB DOMINETTE 3128
 MISS EXPLORER 115

CED	BW	WW	YW	Milk	M&G	FAT	REA	MRB	BMI\$	CHB\$
3.4	3.0	48	78	13	37	-.004	.34	.03	286	96

Here is a 3213 son with some longevity behind him. His dam raised a tremendous bull calf at 11 years old.

**LOT
7112**

SHR L1 WILLOW 7112

REG#	DOB	H/P/S	Act. BW	Act. WW	Act. YW
43819932	4/14/17	H	87	682	954

CL 1 DOMINO 3146A
 HH ADVANCE 1087Y ET HH ADVANCE 8050U ET
 CL 1 DOMINETTE 036X 1ET HH MISS ADVANCE 6109S
 HH ADVANCE 5104R
 CL 1 DOMINETTE 475P

MISS DOMINO 931
 KB L1 DOMINO 567R KB L1 DOMINO 737
 MISS EXPLORER 343 KB L1 DOMINETTE 0111
 SH 1 MS DOMINO 6040

CED	BW	WW	YW	Milk	M&G	FAT	REA	MRB	BMI\$	CHB\$
2.5	4.0	51	83	23	48	.016	.21	.13	326	94

A balanced 3146A son that profiles out nice. His mother is a smaller framed deep cow with a nice udder!



**LOT
7115**

SHR SENSATION 7115

REG#	DOB	H/P/S	Act. BW	Act. WW	Act. YW
43819699	4/14/17	H	65	650	934

UU SENSATION 2053
 CHURCHILL SENSATION 028X UPS DOMINO 3027
 UU HALEY 0080 CHURCHILL LADY 7202T ET
 H5 408 DOMINO 7100
 UU MS DAKOTA 8105

LADY STAR 206
 R 157K NORTH STAR 50W K 64H RIBSTONE LAD 157K
 R STARLETTE 410
 KB L1 DOMINO 563R
 MISS BONANZA 245

CED	BW	WW	YW	Milk	M&G	FAT	REA	MRB	BMI\$	CHB\$
10.2	1.0	40	59	32	52	.036	.23	.14	338	95

Here is a 2053 son to get excited about! He has dark red hair and is as long as a tractor trailer with tons of muscle. This bull has the potential to thrive anywhere you put him not to mention his 65 pound BW.

TWO-YEAR-OLD BULLS



**LOT
7118**

SHR SIR THOR 7118

REG#	DOB	H/P/S	Act. BW	Act. WW	Act. YW
43819727	4/14/17	H	80	720	1030

THR THOR 3213A
 THR MISS THOR 7125T.....

MAC'S RENDITON 20X.....
 CHURCHILL YANKEE ET
 MAC'S HARLET 772
 THR THOR 4029
 THR MISS THOR 0264

LADY STAR 233
 PEARL DIAMOND 719

R 157K NORTH STAR 50W

K 64H RIBSTONE LAD 157K
 R STARLETTE 410
 OXH DIAMOND 2215
 SH LADY DOMINO 034

CED	BW	WW	YW	Milk	M&G	FAT	REA	MRB	BMI\$	CHB\$
8.4	1.9	42	68	22	43	.006	.51	.23	315	109

A large outlined rugged in design bull that comes down with superior substance of bone. This guy hits the mark for the cowboys kind category and will fit in nicely on any ranch big or small.

**LOT
7131**

SHR L1 DOMINO B 7131

REG#	DOB	H/P/S	Act. BW	Act. WW	Act. YW
43819821	4/15/17	H	70	656	936

BCC L1 DOMINO 489B
 BCC L1 DOMINETTE 129Y.....

HH ADVANCE 0207X
 KC MISS RIBSTONE 09040
 UPS DOMINO 5216
 BCC L1 PRINCESS 549

SAGA LADY 478
 MISS RED ADDITION 235.....

SR SAGA 1072Z

CJH HARLAND 408
 SR FUTURA 619
 BLL RED ADDITION 175T
 PEARL DIAMOND 680

CED	BW	WW	YW	Milk	M&G	FAT	REA	MRB	BMI\$	CHB\$
6.6	2.6	45	71	26	49	.006	.18	.13	298	95

A 489 son with some easy calving genetics in his background. Dam 478 ratioed 102% on two calves for the BW category.

**LOT
7138**

SHR PRAIRIE XPERT 7138

REG#	DOB	H/P/S	Act. BW	Act. WW	Act. YW
43819751	4/17/17	H	87	644	904

TP DESERT XPERT 327
 TP LADY HARRIET 128

NJW 98S R117 RIBEYE 88X ET

SHF RIB EYE M326 R117
 NJW 9126J DEW DOMINO 98S
 L3 ARCH PREMIER 508
 TP LADY DINA 751

SH L1 DOMINO 318
 MISS BONANZA 772

KB L1 DOMINO 826U.....

KB L1 DOMINO 218
 KB L1 DOMINETTE 636
 F BONANZA 027
 MISS SH SPECIAL 105

CED	BW	WW	YW	Milk	M&G	FAT	REA	MRB	BMI\$	CHB\$
-2.2	3.7	45	77	26	48	-.014	.36	.16	285	96

A big rugged cowboys kind of bull that is a sure attention getter. His mother is a great 826U daughter that raises them right!

TWO-YEAR-OLD BULLS



**LOT
7140**

SHR L1 WILLOW 7140

REG#	DOB	H/P/S	Act. BW	Act. WW	Act. YW
43819731	5/17/17	H	94	700	1100

HH ADVANCE 1087Y ET
CL 1 DOMINO 3146A
 CL 1 DOMINETTE 036X 1ET.....

HH ADVANCE 8050U ET
 HH MISS ADVANCE 6109S
 HH ADVANCE 5104R
 CL 1 DOMINETTE 475P

CHURCHILL RANCHER 8108U ET...
LADY PENDLETON RANCHER 246
 LADY MOM 714

CHURCHILL RANCHER 592R
 CL 1 DOMINETTE 301N
 /S MISTER MOM 7745
 LADY DOMINO 354

CED	BW	WW	YW	Milk	M&G	FAT	REA	MRB	BMI\$	CHB\$
2.1	4.4	58	104	36	65	.016	.22	.07	298	92

Here is a bull that is sure to be a dominate factor in your breeding plan. He is large outlined and soggy made with superior genetic potential. This guy is pure muscle! He is backed up by one of the great cow family's of the ranch going back to a Mr. Mom daughter that is an A.H.A Dam of Distinction.

**LOT
7141**

SHR CAPTAIN 7141

REG#	DOB	H/P/S	Act. BW	Act. WW	Act. YW
43819758	4/17/17	H	86	714	1015

CHURCHILL SENSATION 028X.....
CHURCHILL CAPTAIN 2128Z ET
 CHURCHILL LADY 9123W ET.....

UPS DOMINO 3027
 CHURCHILL LADY 7202T ET
 CHURCHILL YANKEE ET
 CHURCHILL LADY 404

UU HARLEY 9130

H5 408 DOMINO 7100
 UU MS 056 7115
 SR IMPRINT 182
 LADY ADVANCE 104

CED	BW	WW	YW	Milk	M&G	FAT	REA	MRB	BMI\$	CHB\$
2.9	3.1	47	80	29	53	.026	.30	.17	320	97

A rugged 2128 son that falls into the ranchers deluxe category. Out of a great 9130 daughter that is a front pasture cow.

Group of cattle shown at the 2018 All Breeds Cattle Tour.



TWO-YEAR-OLD BULLS



LOT 7143 **SHR CAPTAIN MARVELOUS 7143**

REG#	DOB	H/P/S	Act. BW	Act. WW	Act. YW
43810523	5/17/17	H	85	696	928

CHURCHILL SENSATION 028X..... UPS DOMINO 3027
 CHURCHILL CAPTAIN 2128Z ET CHURCHILL LADY 7202T ET
 CHURCHILL LADY 9123W ET..... CHURCHILL YANKEE ET
 CHURCHILL LADY 404

LADY MOM 714 /S MISTER MOM 7745..... MISTER MOM 221
 LADY DOMINO 354..... /S MS PEER PLAN 526E
 KB L1 DOMINO 661
 SH 1 MISS DOMINO 782

CED	BW	WW	YW	Milk	M&G	FAT	REA	MRB	BMI\$	CHB\$
3.5	2.8	45	74	32	55	.016	.39	.05	340	99

Here is a bull that you need to check out! He has a big hip, good middle and dark pigment! He has a great BMI which qualifies his calves for the Premium Red Baldy Program. Dam 714 raises them right, year in and year out. She raised a stout bull at 11 years old and she is an A.H.A Dam of Distinction! Not to mention she raised the mother of 7140 which is selling in this years sale!



LOT 7146 **SHR L DOMINO B 7146**

REG#	DOB	H/P/S	Act. BW	Act. WW	Act. YW
43819814	4/17/17	H	75	704	1035

BCC L1 DOMINO 489B KC L1 DOMINO 12050..... HH ADVANCE 0207X
 BCC L1 DOMINETTE 129Y..... KC MISS RIBSTONE 09040
 UPS DOMINO 5216
 BCC L1 PRINCESS 549

LADY RANCHER 445 CHURCHILL RANCHER 8108U ET... CHURCHILL RANCHER 592R
 MISS RANCHERETTE 121 CL 1 DOMINETTE 301N
 CHURCHILL RANCHER 8108U ET
 LADY MOM 727

CED	BW	WW	YW	Milk	M&G	FAT	REA	MRB	BMI\$	CHB\$
9.0	1.4	47	81	32	55	.026	.15	.31	287	93

A very balanced thick 489B son out of a great little Rancher cow! He is an easy calving bull being in the top 5% of the breed for calving ease direct!

TWO-YEAR-OLD BULLS



**LOT
7150**

SHR SIR THOR 7150

REG#	DOB	H/P/S	Act. BW	Act. WW	Act. YW
43819619	4/18/17	H	85	724	972

THR THOR 3213A
 THR MISS THOR 7125T.....

CHURCHILL YANKEE ET
 MAC'S HARLET 772
 THR THOR 4029
 THR MISS THOR 0264

LADY L1 DOMINO 129
 LADY ROBIN HOOD 614.....

KB L1 DOMINO 563R.....
 KB DOMINETTE 3128
 HH ROBIN HOOD L130
 MISS JACKIE 716

CED	BW	WW	YW	Milk	M&G	FAT	REA	MRB	BMI\$	CHB\$
5.0	1.7	44	69	14	36	-.004	.37	.18	288	100

A 3213 son with an excellent dry matter intake number!

**LOT
7151**

SHR PRAIRIE XPERT 7151

REG#	DOB	H/P/S	Act. BW	Act. WW	Act. YW
43819908	4/18/17	H	98	662	942

TP DESERT XPERT 327
 TP LADY HARRIET 128

NJW 98S R117 RIBEYE 88X ET
 NJW 9126J DEW DOMINO 98S
 L3 ARCH PREMIER 508
 TP LADY DINA 751

MISS DOMINO 761T
 SH L1 LADY DOMINO 202.....

KB L1 DOMINO 567R.....
 KB L1 DOMINETTE 0111
 KB L1 DOMINO 661
 LADY STANDARD 5055

CED	BW	WW	YW	Milk	M&G	FAT	REA	MRB	BMI\$	CHB\$
-6.5	5.3	43	73	22	43	-.014	.33	.11	312	95

A 327 son out of a tremendous cow that raised a calf at 11 years old! He has a desirable dry matter intake number as well as mature cow weight that means more productive momma cows!

Videos online at:
www.thelivestocklink.com

The **Livestock**
 Link

TWO-YEAR-OLD BULLS



**LOT
7152**

SHR SIR THOR 7152

REG#	DOB	H/P/S	Act. BW	Act. WW	Act. YW
43819618	4/18/17	H	95	752	1035

THR THOR 3213A
 THR MISS THOR 7125T.....

MAC'S RENDITON 20X.....
 CHURCHILL YANKEE ET
 MAC'S HARLET 772
 THR THOR 4029
 THR MISS THOR 0264

LADY DOMINO 121
 MISS EXPLORER 516

KB L1 DOMINO 826U.....
 KB L1 DOMINETTE 636
 F EXPLORER 953
 SH 1 MS DOMINO 6040

CED	BW	WW	YW	Milk	M&G	FAT	REA	MRB	BMI\$	CHB\$
2.1	3.8	51	83	21	46	.006	.45	.31	303	104

Here is a balanced bull that has a superior set of carcass numbers which means his calves can be marketed in the CHB Program!

**LOT
7158**

SHR L1 WILLOW 7158

REG#	DOB	H/P/S	Act. BW	Act. WW	Act. YW
43819732	4/19/17	H	98	808	1050

CL 1 DOMINO 3146A
 CL 1 DOMINETTE 036X 1ET.....

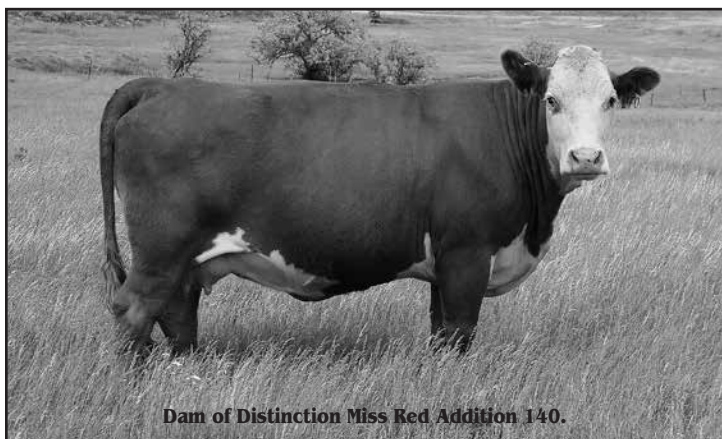
HH ADVANCE 1087Y ET.....
 HH ADVANCE 8050U ET
 HH MISS ADVANCE 6109S
 HH ADVANCE 5104R
 CL 1 DOMINETTE 475P

LADY L1 DOMINO 246
 PEARL DIAMOND 583

KB L1 DOMINO 826U.....
 KB L1 DOMINETTE 636
 OXH DIAMOND 2215
 SH LADY DOMINO 031

CED	BW	WW	YW	Milk	M&G	FAT	REA	MRB	BMI\$	CHB\$
0.5	5.0	64	99	33	65	-.004	.38	-.09	276	99

Wow! All I can say is PERFORMANCE! This is a high performing 3146 son with a great momma cow behind him and look at those maternal figures!



Dam of Distinction Miss Red Addition 140.

TWO-YEAR-OLD BULLS



LOT 7165 SHR L1 WILLOW 7165

REG#	DOB	H/P/S	Act. BW	Act. WW	Act. YW
43819896	4/21/17	H	85	718	944

HH ADVANCE 1087Y ET HH ADVANCE 8050U ET
 CL I DOMINO 3146A HH MISS ADVANCE 6109S
 CL I DOMINETTE 036X 1ET..... HH ADVANCE 5104R
 CL I DOMINETTE 475P

GO EXCEL L18 DD EXCEL DESIGN 40
 MISS EXCEL 601 GO MS 124 ADVANCE 7005
 LADY ADVANCE 123 PD ADVANCE 9023
 SH I MISS DOMINO 756

CED	BW	WW	YW	Milk	M&G	FAT	REA	MRB	BMI\$	CHB\$
2.8	3.5	58	89	29	58	-.004	.21	.03	296	92

A long made bull with a lot of hip and muscle!! This guy is out of a great momma cow that raised him at 11 years old! Not to mention the performance!



LOT 7166 MLS-KICK OFF 7166

REG#	DOB	H/P/S	Act. BW	Act. WW	Act. YW
43819382	4/21/17	H	93	675	974

NJW 98S R117 RIBEYE 88X ET SHF RIB EYE M326 R117
 TP DESERT XPERT 327 NJW 9126J DEW DOMINO 98S
 TP LADY HARRIET 128 L3 ARCH PREMIER 508
 TP LADY DINA 751

R 157K NORTH STAR 50W K 64H RIBSTONE LAD 157K
 LADY NORTH STAR 388 R STARLETTE 410
 PEARL DIAMOND 744 OXH DIAMOND 2215
 SH MISS DOMINO 013

CED	BW	WW	YW	Milk	M&G	FAT	REA	MRB	BMI\$	CHB\$
-6.5	7.0	46	84	28	51	.006	.39	.10	310	94

Kick off your herds genetic potential. 7166 is a good thick curly haired rugged 327 son that fits into the ranchers deluxe category. 7166 has a full sister in production and another full sister in the replacement pen! There is lot of cow power behind this guy. Dam 388 is a very productive cow that is an anchor in my cow herd!

TWO-YEAR-OLD BULLS



**LOT
7171**

SHR L1 DOMINO SHEP 7171

REG#	DOB	H/P/S	Act. BW	Act. WW	Act. YW
43819361	4/22/17	H	77	636	898

CL 1 DOMINO 215Z.....
CL 1 DOMINO 432B
 CL1 DOMINETTE 1152Y.....

CL 1 DOMINO 9122W 1ET
 CL 1 DOMINETTE 055X
 HH ADVANCE 9016W ET
 CL 1 DOMINETTE 717T

THR THOR 3213A.....
QUEEN THOR 5217
 LADY PENDLETON RANCHER 246..

MAC'S RENDITON 20X
 THR MISS THOR 7125T
 CHURCHILL RANCHER 8108U ET
 LADY MOM 714

CED	BW	WW	YW	Milk	M&G	FAT	REA	MRB	BMI\$	CHB\$
4.4	2.2	52	83	27	53	.016	.35	-.02	270	98

Here is a heavily pigmented 432B son that is long and smooth, he definitely is a ranch ready bull that can propel your herd to its highest potential.

**LOT
7176**

SHR L1 DOMINO B 7176

REG#	DOB	H/P/S	Act. BW	Act. WW	Act. YW
43819807	4/22/17	H	88	630	904

KC L1 DOMINO 12050.....
BCC L1 DOMINO 489B
 BCC L1 DOMINETTE 129Y.....

HH ADVANCE 0207X
 KC MISS RIBSTONE 09040
 UPS DOMINO 5216
 BCC L1 PRINCESS 549

CHURCHILL CAPTAIN 2128Z ET.....
MS CAPTAIN 420
 MISS BONANZA 722

CHURCHILL SENSATION 028X
 CHURCHILL LADY 9123W ET
 F BONANZA 027
 SH MISS DOMINO 840

CED	BW	WW	YW	Milk	M&G	FAT	REA	MRB	BMI\$	CHB\$
3.3	3.3	46	77	27	50	.026	.17	.27	319	92

A really good 489B son that really has the look of a herd bull! 7176 is out of a Captain daughter!!



TWO-YEAR-OLD BULLS



**LOT
7188**

SHR CAPTAIN MARVELOUS 7188

REG#	DOB	H/P/S	Act. BW	Act. WW	Act. YW
43819911	4/26/17	H	90	672	922

CHURCHILL SENSATION 028X.....
CHURCHILL CAPTAIN 2128Z ET
 CHURCHILL LADY 9123W ET.....

UPS DOMINO 3027
 CHURCHILL LADY 7202T ET
 CHURCHILL YANKEE ET
 CHURCHILL LADY 404

LADY ROBIN HOOD 801
 HH ROBIN HOOD L130
 SH LADY DOMINO 033.....

SR ROBIN HOOD 249
 HH MISS PATRIOT 7573
 KB L1 DOMINO 661
 SH 1 MISS DOM 5056

CED	BW	WW	YW	Milk	M&G	FAT	REA	MRB	BMI\$	CHB\$
2.6	2.3	39	69	29	48	.006	.35	.19	342	106

A smooth made 2128 son that is out of a nice Robin Hood cow!



**LOT
7199**

SHR L1 DOMINO B 7199

REG#	DOB	H/P/S	Act. BW	Act. WW	Act. YW
43819823	4/28/17	H	71	692	900

BCC L1 DOMINO 489B
 KC L1 DOMINO 12050.....
 BCC L1 DOMINETTE 129Y.....

HH ADVANCE 0207X
 KC MISS RIBSTONE 09040
 UPS DOMINO 5216
 BCC L1 PRINCESS 549

LADY RANCHER 485
 CHURCHILL RANCHER 8108U ET...
 SUPER MOM 846A

CHURCHILL RANCHER 592R
 CL 1 DOMINETTE 301N
 /S MISTER MOM 7745
 LADY ADVANCE 104

CED	BW	WW	YW	Milk	M&G	FAT	REA	MRB	BMI\$	CHB\$
8.5	1.4	49	71	29	54	.036	.21	.40	301	92

A really balanced 489 that profiles out nice. He has one of the best dispositions in the sale! Look for him in the pens on sale day.

TWO-YEAR-OLD BULLS



**LOT
7201**

SHR SENSATION 7201

REG#	DOB	H/P/S	Act. BW	Act. WW	Act. YW
43819723	4/29/17	H	80	718	974

CHURCHILL SENSATION 028X.....
UU SENSATION 2053
UU HALEY 0080

UPS DOMINO 3027
CHURCHILL LADY 7202T ET
H5 408 DOMINO 7100
UU MS DAKOTA 8105

CHURCHILL RANCHER 8108U ET...
LADY PENDLETON RANCHER 227
LADY MOM 727

CHURCHILL RANCHER 592R
CL 1 DOMINETTE 301N
/S MISTER MOM 7745
LADY ADVANCE 123

CED	BW	WW	YW	Milk	M&G	FAT	REA	MRB	BMI\$	CHB\$
9.8	0.5	43	68	35	57	.046	.17	.13	323	90

A square made 2053 son with tons of muscle. He definitely is a cowboys kind of bull! He has some of the best genetics on the ranch backing him up. His BMI qualifies him for the Red Baldy Program.

**LOT
7204**

SHR PRAIRIE XPERT 7204

REG#	DOB	H/P/S	Act. BW	Act. WW	Act. YW
43819733	4/30/17	H	98	710	942

NJW 98S R117 RIBEYE 88X ET
TP DESERT XPERT 327
TP LADY HARRIET 128

SHF RIB EYE M526 R117
NJW 9126J DEW DOMINO 98S
L3 ARCH PREMIER 508
TP LADY DINA 751

SR NAVARRO 140X

UPS NAVARRO
SR VALORIE 684
BLL RED ADDITION 175T
MISS BONANZA 245

CED	BW	WW	YW	Milk	M&G	FAT	REA	MRB	BMI\$	CHB\$
-6.4	5.4	51	82	29	55	.016	.43	.22	308	94

This guy scanned his eye balls out posting a great ribeye and superb marbling! 2.51 actual IMF.



TWO-YEAR-OLD BULLS



**LOT
7205**

SHR L1 WILLOW 7205

REG#	DOB	H/P/S	Act. BW	Act. WW	Act. YW
43819626	4/30/17	H	90	726	1015

HH ADVANCE 1087Y ET
 CL 1 DOMINO 3146A
 CL 1 DOMINETTE 036X 1ET.....

HH ADVANCE 8050U ET
 HH MISS ADVANCE 6109S
 HH ADVANCE 5104R
 CL 1 DOMINETTE 475P

CHURCHILL RANCHER 8108U ET...
 MISS RANCHERETTE 133
 LADY PURE GOLD 741

CHURCHILL RANCHER 592R
 CL 1 DOMINETTE 301N
 GOLDEN ACHIEVER 2072
 MISS ROBIN HOOD 391

CED	BW	WW	YW	Milk	M&G	FAT	REA	MRB	BMI\$	CHB\$
4.4	2.9	56	91	32	60	.026	.35	.02	303	102

Here is a super thick 3146 son out of a great rancher cow!!



**LOT
7210**

SHR L1 WILLOW 7210

REG#	DOB	H/P/S	Act. BW	Act. WW	Act. YW
43819600	5/2/17	H	93	750	1060

HH ADVANCE 1087Y ET
 CL 1 DOMINO 3146A
 CL 1 DOMINETTE 036X 1ET.....

HH ADVANCE 8050U ET
 HH MISS ADVANCE 6109S
 HH ADVANCE 5104R
 CL 1 DOMINETTE 475P

CHURCHILL RANCHER 8108U ET...
 MISS RANCHERETTE 16
 LADY DOMINO 354.....

CHURCHILL RANCHER 592R
 CL 1 DOMINETTE 301N
 KB L1 DOMINO 661
 SH 1 MISS DOMINO 782

CED	BW	WW	YW	Milk	M&G	FAT	REA	MRB	BMI\$	CHB\$
1.5	4.1	59	92	35	64	.016	.25	.03	305	92

7210 is a long and dark bull with a lot of power. Dam 16 is one of the first 8108 daughters we raised, she is a beauty!

TWO-YEAR-OLD BULLS

**LOT
7211**

SHR PRAIRIE XPERT 7211

REG#	DOB	H/P/S	Act. BW	Act. WW	Act. YW
43819746	5/2/17	H	90	608	902

NJW 98S R117 RIBEYE 88X ET SHF RIB EYE M526 R117
 TP DESERT XPERT 327 NJW 9126J DEW DOMINO 98S
 TP LADY HARRIET 128 L3 ARCH PREMIER 508
 TP LADY DINA 751

BLL RED ADDITION 175T SH RED EDITION 06N
 MISS RED ADDITION 281 LADY 58K DIAMND 106P
 LADY ROBIN HOOD 423 HH ROBIN HOOD L130
 SH LADY DOMINO 031

CED	BW	WW	YW	Milk	M&G	FAT	REA	MRB	BMI\$	CHB\$
-5.2	4.9	40	72	25	45	-.004	.36	.10	295	96

An efficient 327 son with desirable mature cow weight and solid dry matter intake numbers. He is perfect for the cowman that runs in rough terrain.

**LOT
7212**

SHR SIR THOR 7212

REG#	DOB	H/P/S	Act. BW	Act. WW	Act. YW
43819915	5/2/17	H	90	684	868

MAC'S RENDITON 20X CHURCHILL YANKEE ET
 THR THOR 3213A MAC'S HARLET 772
 THR MISS THOR 7125T THR THOR 4029
 THR MISS THOR 0264

SH BONANZA 5007 F BONANZA 027
 MISS BONANZA 811 SH MISS DOMINO 808
 LADY ROBIN HOOD 4020 HH ROBIN HOOD L130
 SH LADY DOMINO 092

CED	BW	WW	YW	Milk	M&G	FAT	REA	MRB	BMI\$	CHB\$
-0.8	3.3	41	59	22	43	-.004	.35	.19	310	100

Some old school breeding in this guy. He has Bonanza on the bottom side which really makes this mating unique. He is another efficient bull good for rough country!

**LOT
7219**

SHR SENSATION 7219

REG#	DOB	H/P/S	Act. BW	Act. WW	Act. YW
43819736	5/6/17	H	89	650	896

CHURCHILL SENSATION 028X UPS DOMINO 3027
 UU SENSATION 2053 CHURCHILL LADY 7202T ET
 UU HALEY 0080 H5 408 DOMINO 7100
 UU MS DAKOTA 8105

SR NAVARRO 150X UPS NAVARRO
 PRINCESS NAVARRO 261 SR CAPTIA 661
 SUPER MOM 822 /S MISTER MOM 7745
 MISS BONANZA 373

CED	BW	WW	YW	Milk	M&G	FAT	REA	MRB	BMI\$	CHB\$
5.5	2.1	43	69	32	53	.046	.27	.09	336	96

Another super 2053 son with 11 of 20 traits in the top 50% or better not to mention the fact his red baldy females would qualify for the Red Baldy Program!!

**LOT
7225**

SHR PRAIRIE XPERT 7225

REG#	DOB	H/P/S	Act. BW	Act. WW	Act. YW
43819341	5/11/17	H	88	572	850

NJW 98S R117 RIBEYE 88X ET SHF RIB EYE M526 R117
 TP DESERT XPERT 327 NJW 9126J DEW DOMINO 98S
 TP LADY HARRIET 128 L3 ARCH PREMIER 508
 TP LADY DINA 751

MH DAKOTA LAD 3164 MH DAKOTA 0230
 MISS DAKOTA LAD 017 MISS 065 DOMNET 611
 MISS DAKOTA 617 MH DAKOTA LAD 3164
 MISS BONANZA 3120

CED	BW	WW	YW	Milk	M&G	FAT	REA	MRB	BMI\$	CHB\$
-1.5	3.8	37	62	23	42	.016	.22	.15	302	88

This 327 son has scores well in the good udder portion of his EPDs.

TWO-YEAR-OLD BULLS

**LOT
7229**

SHR L1 DOMINO B 7229

REG#	DOB	H/P/S	Act. BW	Act. WW	Act. YW
43819808	5/12/17	H	88	712	978

KC L1 DOMINO 12050..... HH ADVANCE 0207X
 BCC L1 DOMINO 489B KC MISS RIBSTONE 09040
 BCC L1 DOMINETTE 129Y..... UPS DOMINO 5216
 BCC L1 PRINCESS 549

CHURCHILL RANCHER 8108U ET... CHURCHILL RANCHER 592R
 RANCHER LADY 422 CL 1 DOMINETTE 301N
 LADY L1 DOMINO 111 KB L1 DOMINO 9175W
 MISS DOMINO 931

CED	BW	WW	YW	Milk	M&G	FAT	REA	MRB	BMI\$	CHB\$
4.7	3.4	53	86	31	58	.026	.17	.22	305	92

This 489 son performs well and is out of a solid Rancher momma cow.

**LOT
7232**

SHR CAPTAIN 7232

REG#	DOB	H/P/S	Act. BW	Act. WW	Act. YW
43819735	5/14/17	H	80	674	810

CHURCHILL SENSATION 028X..... UPS DOMINO 3027
 CHURCHILL CAPTAIN 2128Z ET CHURCHILL LADY 7202T ET
 CHURCHILL LADY 9123W ET..... CHURCHILL YANKEE ET
 CHURCHILL LADY 404

KB L1 DOMINO 826U..... KB L1 DOMINO 218
 LADY L1 DOMINO 259 KB L1 DOMINETTE 636
 MISS BONANZA 524 F BONANZA 027
 SH 1 MISS DOM 5011

CED	BW	WW	YW	Milk	M&G	FAT	REA	MRB	BMI\$	CHB\$
6.6	0.9	44	70	28	50	-.004	.41	.04	316	106

This Captain son has 12 of 20 EPDs in the top 50% or better of the breed. His calves would qualify for the CHB Marketing Program, keep an eye out for this one!

**LOT
7240**

SHR SENSATION 7240

REG#	DOB	H/P/S	Act. BW	Act. WW	Act. YW
43819668	5/22/17	H	90	600	792

CHURCHILL SENSATION 028X..... UPS DOMINO 3027
 UU SENSATION 2053 CHURCHILL LADY 7202T ET
 UU HALEY 0080 H5 408 DOMINO 7100
 UU MS DAKOTA 8105

BLL RED ADDITION 175T..... SH RED EDITION 06N
 MISS RED ADDITION 172 LADY 58K DIAMND 106P
 PEARL DIAMOND 680 OXH DIAMOND 2215
 SH LADY DOMINO 083

CED	BW	WW	YW	Milk	M&G	FAT	REA	MRB	BMI\$	CHB\$
5.6	2.8	43	65	30	52	.016	.27	.02	337	96

The youngest bull in the sale! He is a cowboys bull with a lot of red and great muscle. Above all the he has look of a herd bull with 11 of 20 are in the top 50% or better of the breed.



REGISTERED AND COMMERCIAL BRED HEIFERS



Once again this year the registered and commercial sale heifers we will be offering were run with two registered Black Angus Bulls purchased from Richard Schmidt out of Gladstone, North Dakota. The heifers were exposed to these two bulls from June 18, 2018 until August 28, 2018.

Both the registered and commercial heifers have that fancy brood cow look and are straight out of the replacement pen. They have had all of their vaccinations, Preg. Guard 10 and have been poured with Ivomec. These heifers were ultra-sounded on December 19, 2018 by Doc. Rowe. The heifers are cake broke, range ready, and ready to work for you. If you have any questions, please do not hesitate to contact Mike at 701-290-1191 or Matt at 701-690-4860.

**LOT
723**

QUEEN THOR 723

REG#	DOB	H/P/S
43819598	4/1/17	H

THR THOR 3213A
 THR MISS THOR 7125T.....

CHURCHILL YANKEE ET
 MAC'S HARLET 772
 THR THOR 4029
 THR MISS THOR 0264

MISS RANCHERETTE 11
 LADY MVP 615

CHURCHILL RANCHER 592R
 CL 1 DOMINETTE 301N
 CHURCHILL MVP 188
 MISS EXPLORER 332

CED	BW	WW	YW	Milk	M&G	FAT	REA	MRB	BMI\$	CHB\$
5.8	1.4	41	68	23	44	.016	.25	.20	307	96

Here is a super 3213A daughter! This heifer brings some key traits to the table including low birthing and good dry matter intake numbers. Mark her as an efficient brood cow prospect! Not to mention the Rancher on the bottom side!

REGISTERED BRED HEIFERS

**LOT
782**

MISS PRAIRIE XPERT 782

REG#	DOB	H/P/S
43819350	4/10/17	H

NJW 98S R117 RIBEYE 88X ET SHF RIB EYE M526 R117
 TP DESERT XPERT 327 NJW 9126J DEW DOMINO 98S
 TP LADY HARRIET 128 L3 ARCH PREMIER 508
 TP LADY DINA 751

KB L1 DOMINO 826U KB L1 DOMINO 218
 LADY DOMINO 061 KB L1 DOMINETTE 636
 PEARL DIAMOND 757 OXH DIAMOND 2215
 SH LADY DOMINO 063

CED	BW	WW	YW	Milk	M&G	FAT	REA	MRB	BMI\$	CHB\$
-2.8	4.5	47	80	24	48	-.004	.37	.12	290	93

Here is beautiful 327 daughter out of a solid momma cow she has some good carcass numbers!!

**LOT
786**

LADY L1 DOMINO Z 786

REG#	DOB	H/P/S
43819942	4/11/17	H

L1 DOMINO 08542 L1 DOMINO 06474
 CL 1 DOMINO 2142Z 1ET L1 DOMINETTE 02352
 CL 1 DOMINETTE 332N CL 1 DOMINO 9126J 1ET
 CL 1 DOMINETTE 875H

KB L1 DOMINO 567R KB L1 DOMINO 737
 MISS DOMINO 961 KB L1 DOMINETTE 0111
 LADY DOMINO 380 KB L1 DOMINO 661
 SH LADY SPECIAL 964

CED	BW	WW	YW	Milk	M&G	FAT	REA	MRB	BMI\$	CHB\$
3.1	3.1	34	62	20	37	.006	.25	.12	280	93

This is a chance to get a great 2142 daughter with the genetics to be run in rough country!!

**LOT
7106**

MAGNOLIA L1 DOMINO B 7106

REG#	DOB	H/P/S
43819810	4/12/17	H

KC L1 DOMINO 12050 HH ADVANCE 0207X
 BCC L1 DOMINO 489B KC MISS RIBSTONE 09040
 BCC L1 DOMINETTE 129Y UPS DOMINO 5216
 BCC L1 PRINCESS 549

CHURCHILL RANCHER 8108U ET... CHURCHILL RANCHER 592R
 LADY RANCHER 423 CL 1 DOMINETTE 301N
 LADY L1 DOMINO 107 KB L1 DOMINO 563R
 MISS EXPLORER 574

CED	BW	WW	YW	Milk	M&G	FAT	REA	MRB	BMI\$	CHB\$
4.3	3.1	52	81	26	52	.016	.19	.21	290	92

One of the first 489B daughters to be offered!! Out of a top notch young Rancher daughter!! She has several good qualities and would work well in variety of settings!

**LOT
7107**

LADY L1 DOMINO Z 7107

REG#	DOB	H/P/S
43819752	4/12/17	H

L1 DOMINO 08542 L1 DOMINO 06474
 CL 1 DOMINO 2142Z 1ET L1 DOMINETTE 02352
 CL 1 DOMINETTE 332N CL 1 DOMINO 9126J 1ET
 CL 1 DOMINETTE 875H

UU HARLEY 9130 H5 408 DOMINO 7100
 HARLEY MAMA 328 UU MS 056 7115
 LADY ROBIN HOOD 03 SH ROBIN HOOD 724
 LADY STANDARD 757

CED	BW	WW	YW	Milk	M&G	FAT	REA	MRB	BMI\$	CHB\$
9.7	0.6	32	55	27	43	.036	.25	.20	252	92

Another easy calving efficient 2142 daughter out of a tremendous 9130 daughter!

REGISTERED BRED HEIFERS

LOT 7129 QUEEN THOR 7129

REG#	DOB	H/P/S
43819920	4/15/17	H

THR THOR 3213A
 MAC'S RENDITON 20X CHURCHILL YANKEE ET
 THR MISS THOR 7125T MAC'S HARLET 772
 THR MISS THOR 0264

PEARL DIAMOND 841
 OXH DIAMOND 2215 JNHR DIAMOND ET 414B
 MISS EXPLORER 134 OXH LILA 8124
 F EXPLORER 953
 LADY STANDARD 4019

CED	BW	WW	YW	Milk	M&G	FAT	REA	MRB	BMI\$	CHB\$
1.5	3.9	39	56	16	36	-.004	.27	.12	307	93

Easy keeping 3213 daughter out of a nine year old cow!!

LOT 7139 MAGNOLIA L1 DOMINO 7139

REG#	DOB	H/P/S
43819819	4/17/17	H

BCC L1 DOMINO 489B
 KC L1 DOMINO 12050 HH ADVANCE 0207X
 BCC L1 DOMINETTE 129Y KC MISS RIBSTONE 09040
 UPS DOMINO 5216
 BCC L1 PRINCESS 549

LADY DESERT FREQUENCY 473
 L3 DESERT FREQUENCY 118 L3 WINN RAMBO 851
 SH BONANZA 5007
 SH L1 LADY DOMINO 235

CED	BW	WW	YW	Milk	M&G	FAT	REA	MRB	BMI\$	CHB\$
7.6	1.2	45	74	28	50	.016	.33	.25	297	101

A maternally orientated heifer out of a Desert Frequency momma cow!!

LOT 7142 QUEEN THOR 7142

REG#	DOB	H/P/S
43819900	4/17/17	H

THR THOR 3213A
 MAC'S RENDITON 20X CHURCHILL YANKEE ET
 THR MISS THOR 7125T MAC'S HARLET 772
 THR MISS THOR 0264

PEARL DIAMOND 680
 OXH DIAMOND 2215 JNHR DIAMOND ET 414B
 SH LADY DOMINO 083 OXH LILA 8124
 KB L1 DOMINO 6102
 SH 1 MISS DOMINO 787

CED	BW	WW	YW	Milk	M&G	FAT	REA	MRB	BMI\$	CHB\$
5.3	2.1	42	66	18	39	.006	.43	.15	305	99

9 out of 20 traits in the top 50% or higher of the breed. This heifer was raised by a cow that left the ranch at 12 years old; she for sure has longevity in her corner!



REGISTERED BRED HEIFERS

LOT 7153 QUEEN THOR 7153

REG#	DOB	H/P/S
43819755	4/18/17	H

THR THOR 3213A
 MAC'S RENDITON 20X CHURCHILL YANKEE ET
 MAC'S HARLET 772
 THR MISS THOR 7125T THR THOR 4029
 THR MISS THOR 0264

MISS L1 DOMINO 331
 KB L1 DOMINO 826U KB L1 DOMINO 218
 KB L1 DOMINETTE 636
 MISS BONANZA 397 F BONANZA 027
 SH LADY SPECIAL 874

CED	BW	WW	YW	Milk	M&G	FAT	REA	MRB	BMI\$	CHB\$
1.4	3.7	51	79	21	47	-.004	.37	.13	282	99

This is a good 3213 daughter that goes back to KB L1 Domino 826U, who was a very influential bull in our program!

LOT 7164 MAGNOLIA L1 DOMINO 7164

REG#	DOB	H/P/S
43819818	4/21/17	H

BCC L1 DOMINO 489B
 KC L1 DOMINO 12050 HH ADVANCE 0207X
 KC MISS RIBSTONE 09040
 BCC L1 DOMINETTE 129Y UPS DOMINO 5216
 BCC L1 PRINCESS 549

HARLEY MAMA 471
 UU HARLEY 9130 H5 408 DOMINO 7100
 UU MS 056 7115
 SHR STANDARD 766 F L2 STANDARD 348
 MISS EXPLORER 327

CED	BW	WW	YW	Milk	M&G	FAT	REA	MRB	BMI\$	CHB\$
8.4	1.5	42	65	28	49	.026	.14	.24	290	93

An efficient heifer that would work well in rugged terrain.

LOT 7167 LADY L1 DOMINO Z 7167

REG#	DOB	H/P/S
43819904	4/21/17	H

CL 1 DOMINO 2142Z 1ET
 L1 DOMINO 08542 L1 DOMINO 06474
 L1 DOMINETTE 02352
 CL 1 DOMINETTE 332N CL 1 DOMINO 9126J 1ET
 CL 1 DOMINETTE 875H

PEARL DIAMOND 744
 OXH DIAMOND 2215 JNHR DIAMOND ET 414B
 OXH LILA 8124
 SH MISS DOMINO 013 KB L1 DOMINO 6102
 SH 1 MS DOMINO 6002

CED	BW	WW	YW	Milk	M&G	FAT	REA	MRB	BMI\$	CHB\$
1.4	4.1	39	70	24	43	.016	.36	.06	263	93

An economical 2142 daughter out of a great 10 year old 2215 daughter!

LOT 7172 MAGNOLIA L1 DOMINO 7172

REG#	DOB	H/P/S
43819811	4/22/17	H

BCC L1 DOMINO 489B
 KC L1 DOMINO 12050 HH ADVANCE 0207X
 KC MISS RIBSTONE 09040
 BCC L1 DOMINETTE 129Y UPS DOMINO 5216
 BCC L1 PRINCESS 549

LADY DESERT FREQUENCY 436
 L3 DESERT FREQUENCY 118 L3 WINN RAMBO 851
 SBC LADY GOLD 4012
 MISS RANCHERETTE 106 CHURCHILL RANCHER 8108U ET
 LADY MOM 731

CED	BW	WW	YW	Milk	M&G	FAT	REA	MRB	BMI\$	CHB\$
5.9	2.6	48	90	27	50	.016	.23	.21	272	97

Here is a good 489B heifer with a positive yearling number, not to mention dam 423 is a beautiful cow that works hard for us year round!

REGISTERED BRED HEIFERS

**LOT
7178**

LADY L1 DOMINO Z 7178

REG#	DOB	H/P/S
43819905	4/23/17	H

CL 1 DOMINO 2142Z 1ET
 L1 DOMINO 08542 L1 DOMINO 06474
 CL 1 DOMINETTE 332N L1 DOMINETTE 02352
 CL 1 DOMINETTE 875H

PEARL DIAMOND 746
 OXH DIAMOND 2215 JNHR DIAMOND ET 414B
 OXH LILA 8124
 SH LADY DOMINO 081 KB L1 DOMINO 661
 LADY DUKE 1000

CED	BW	WW	YW	Milk	M&G	FAT	REA	MRB	BMI\$	CHB\$
2.7	4.3	46	78	22	45	.006	.41	.08	271	94

Another sure shot brood cow by 2142!

**LOT
7180**

MISSY SHEPPET 7180

REG#	DOB	H/P/S
43819848	4/24/17	H

CL 1 DOMINO 432B
 CL 1 DOMINO 215Z CL 1 DOMINO 9122W 1ET
 CL 1 DOMINETTE 055X
 CL 1 DOMINETTE 1152Y HH ADVANCE 9016W ET
 CL 1 DOMINETTE 717T

LADY RENDITION 5141
 DS RENDITION 359W CHURCHILL YANKEE ET
 DS SHANA 557
 SHR STANDARD 766 F L2 STANDARD 348
 MISS EXPLORER 327

CED	BW	WW	YW	Milk	M&G	FAT	REA	MRB	BMI\$	CHB\$
0.9	4.4	61	95	24	55	.026	.39	.08	246	97

Possibly one of the most complete females genetically in the offering. The 432B daughters were brought into production last spring and are doing a tremendous job for us! Don't miss this opportunity to procure a 432 daughter!

**LOT
7192**

LADY L1 DOMINO Z 7192

REG#	DOB	H/P/S
43819779	4/26/17	H

CL 1 DOMINO 2142Z 1ET
 L1 DOMINO 08542 L1 DOMINO 06474
 CL 1 DOMINETTE 332N L1 DOMINETTE 02352
 CL 1 DOMINETTE 875H

LADY NAVARRO 3133
 SR NAVARRO 140X UPS NAVARRO
 SR VALORIE 684
 MISS BONANZA 929 SH BONANZA 5007
 MISS EXPLORER 486

CED	BW	WW	YW	Milk	M&G	FAT	REA	MRB	BMI\$	CHB\$
3.8	3.2	43	74	25	46	.016	.32	.18	259	91

An efficient 2142 daughter out of a great Navarro cow!

**LOT
7209**

LADY L1 DOMINO Z 7209

REG#	DOB	H/P/S
43819899	5/1/17	H

CL 1 DOMINO 2142Z 1ET
 L1 DOMINO 08542 L1 DOMINO 06474
 CL 1 DOMINETTE 332N L1 DOMINETTE 02352
 CL 1 DOMINETTE 875H

MISS DAKOTA 638
 MH DAKOTA LAD 3164 MH DAKOTA 0230
 MISS EXPLOER 249 MISS 065 DOMNET 611
 SH MISS DOMINO 825

CED	BW	WW	YW	Milk	M&G	FAT	REA	MRB	BMI\$	CHB\$
-0.1	5.5	40	77	21	41	.016	.14	.09	261	83

An efficient 2142 daughter out of an 11 year old Dakota Lad cow that left her mark on the place!

STROH HEREFORDS
1010 Hwy 22 S
Killdeer, ND 58640

FIRST CLASS
US POSTAGE
PAID
Fargo, ND
Permit No. 684



SHR L1 Shep 780

