

69 years of raising cattle with today's cattleman in mind

STROH HEREFORD RANCH



*30th Annual Ranch Ready
Production Sale*

THURS., FEB. 6, 2020

1:00 p.m. (MT) • At the Ranch



SHR HOMETOWN 806

SELLING: 49 Coming Two-Year-Old Bulls

(A two-year-old bull has more longevity and can cover more cows than a yearling bull. These bulls are cake broke and ready to go to work for you.)

10 Bred Registered Hereford Heifers

(Bred to Black Angus bulls)

15 Bred Commercial Heifers

(Bred to Black Angus bulls)

2 Weaned Heifer Calves



Dear Cattlemen and Women:

Stroh Hereford Ranch would like to cordially invite you to our 30th Annual Ranch Ready Production Sale on Thursday, February 6th, 2020 at 1:00 Mountain Time. The ranch is located 1.5 miles east of the Killdeer Roundabout on Highway 200 or 5 miles west of Dunn Center.

Wow! What a year 2019 has been. Precipitation which kept many farmers and ranchers alike from getting their spring and fall work done. Poor markets which went along with what came from the fields and out of the pasture had an adverse effect on the agricultural community. Now more than ever efficiency is key to surviving today's strained agricultural economy. Along with the perseverance and spirit the American farmer and rancher have always had.

Over the years we have seen things come and go, but our goal has always remained the same. Our goal is to improve upon our genetics in order to provide our customers with a selection of bulls which meet the needs of today's volatile market. This year's bulls have the same ranch ready look about them; they are long, thick, deep, and rugged. They were raised on North Dakota prairie up until we brought them in this fall! The quality runs deep from top to bottom, and we strive to deliver a uniform set of bulls that aren't all fluff. This is because we want our customers to know what they are getting and that their expectations can be met!

On sale day the bulls will be sale ready, not butcher ready or Denver Show Ring ready. They are developed on a forage diet for soundness and longevity purposes. As always to help with gentleness the bulls are cake broke. They have sufficient pigment and are phenotypically correct. Remember that a two-year-old bull can service 30% more cows than a yearling bull can.

In today's cattle market the baldy steer is of more value than ever. Black baldy calves are sought after by a number of quality beef programs. Also keep in mind that premiums are now being paid for Red baldy females, while the steers still qualify for the Certified Hereford Beef Program.

Our vaccination program is as follows: before we turn out in the spring our calves are given BoviShield Gold-One Shot and UltraBac 7. At branding the calves are dewormed. The calves receive booster shots in the fall and are once again dewormed. Our cows are vaccinated before we turn them out for breeding with PregGuard Gold 10 in the spring. The bulls are fertility tested in the spring and they also receive PregGuard Gold 10. This year's sale bulls were poured in December.

We want to thank our past customers for their dedication and support. We would like to invite you to stop in and look at the cattle prior to sale day. Should you have any questions please do not hesitate to contact us. Donuts and coffee will be out sale day morning, and lunch will be served at 11:30. The sale will start at 1:00. We look forward to seeing you!

Sincerely,

Mike, Dawn, Lucas and Matthew Stroh

1010 Highway 22 South
Killdeer, ND 58640
701-573-4373 (home phone)
701-290-1191 (Mike's Cell)
701-690-4860 (Matt's Cell)
acmecatl@ndsupernet.com
strohherefordranch.com

Tony and Leona Stroh
Killdeer, ND 58640



Like us on Facebook

Thank You For Attending Our Sale!



Matt, Dawn, Mike and Lucas Stroh

The **Livestock**™ Link

Livestock Videoing • Video Sales
• Bid-by-Click Online Sales
To view events go to
www.TheLivestockLink.com

Bid Online!

If you are unable to attend the sale, you can register to watch or bid online through The Livestock Link by following these instructions:

- Visit our website, www.thelivestocklink.com.
- Click the "Auctions" tab.
- Click on "Click Here to Register" below "USER-LOGIN".
- Enter your e-mail address and password, and fill out all your contact information.
- Fill out your banking information. If you are only viewing the sale and do not wish to bid, this information can be left blank.
- Check the checkbox at the bottom of the page that says "I'm not a robot" to prove you are a real person.
- Click "Register" at the bottom of the page.
- You will receive an email with a link to activate your account.
- ***Please register to bid at least 24 hours in advance of the sale.***

You will receive an email when you are approved for bidding. All applications will be reviewed and processed promptly. You will receive a bidder number only after you have made a purchase in the sale, and that number will only be used at that sale. When the sale is completed, please contact the sale owner or manager for instructions of payment and delivery of your purchase.

To use our service, you must have access to high speed internet.

*Questions? Contact Aaron Friedt at (701) 590-9597
or Jared Peterson at (605) 641-7573*

www.thelivestocklink.com

69 years of raising cattle with today's cattleman in mind

STROH HEREFORD RANCH

30th Annual Ranch Ready
Production Sale

**THURSDAY,
FEBRUARY 6, 2020**

1:00 p.m. (MT) • At the Ranch

1.5 Miles East of the Killdeer Roundabout on
Highway 200 or 5 miles west of Dunn Center, ND.

Join us for a free lunch

SELLING: 49 Coming Two-Year-Old Bulls

(A two-year-old bull has more longevity and can cover more cows than a yearling bull. These bulls are cake broke and ready to go to work for you.)

10 Bred Registered Hereford Heifers

(Bred to Black Angus bulls)

15 Bred Commercial Heifers

(Bred to Black Angus bulls)

2 Weaned Heifer Calves

Scott Weishaar, Auctioneer

701-872-5299 • Cell: 701-426-6826

Jill & Marc Hotchkiss,

Hereford America, 605-866-4495

Jill's Cell: 605-490-1409

Marc's Cell: 605-490-1513

Kevin Murnin, American Hereford Association

406-853-4638

Will Bollum, Western Ag Reporter

507-244-0833

Dustin Carter, Cattle Business Weekly

712-898-9972

Videos online at: www.thelivestocklink.com

**The Livestock
Link**

EPD's are current as of 1/6/20.



Learn more at
herefordtruth.com

THE BALD-FACED TRUTH

ABOUT HEREFORD GENETICS

7%

Higher pregnancy
rates

\$51

More per cow,
per year

Hereford
genetics
maximize the
value of your herd
by leveraging traits
such as fertility, feed
efficiency, docility and
feedlot profitability to your
advantage.

\$30

Advantage in feedlot
profitability

\$20

Advantage in feed
efficiency

*Compared to Angus-sired calves. Source: Daley, David A. and Early, Sean P. Impacts of Crossbreeding on Profitability in Vertically Coordinated Beef Industry Marketing Systems. American Hereford Association. Retrieved from https://hereford.org/wp-content/uploads/2017/02/Harris_HeterosisReport.pdf. 57100C06

TERMS & CONDITIONS: All cattle will be sold to the highest bidder without reserve. The terms of the sale will be cash. The auctioneer will settle any dispute as to bids.

Each animal will become the property of the buyer as soon as sold. Cattle will be cared for a reasonable length of time after the sale, at the buyer's risk. Announced changes in catalog information sale day, take precedence over printed material in this catalog. Everyone attending this sale does so at his own responsibility and risk, and without liability on the part of the owner or his employees.

GUARANTEE: All bulls of breeding age are guaranteed breeders. If an animal fails to breed after a trial of six months, it may be returned to the seller at buyer's expense. The seller reserves the right to try said animal for six months and if it proves a breeder to return it to the station of buyer at seller's expense. If the animal proves to be a non-breeder it will be replaced with an animal of equal quality or credit will be given for next years sale.

We assume no liability legal or otherwise to make any further compensation to the buyer no other warranty of any nature is expressed or implied.

Extreme care has been taken in copying each pedigree to avoid errors. We are not to be held responsible for any error which might appear and which is beyond our control in the printing of the catalog.

DELIVERY: Deliveries will be made on purchase of \$3500 or more to central points up to 400 miles. We will cooperate with buyers on delivery of all cattle regardless of number or distance. No delivery provided for heifers.

ABSENTEE BIDDING: Anybody wishing to bid that cannot attend the sale may place a phone bid by contacting any listed sales representative, (Will Bollum, Dustin Carter, Kevin Murnin and Jill Hotchkiss), Mike Stroh, Matt Stroh or Scott Weishaar.

KILLDEER ACCOMMODATIONS: Cobblestone Hotel & Suites, 701-764-2200; Mountain View Hotel, 701-764-5843.

We will cooperate with delivery arrangements or take \$50.00 (per bull) off if picked up on sale day (Bulls Only)

TRAIT DEFINITIONS

The American Hereford Association (AHA) currently produces expected progeny differences (EPDs) for 17 traits and calculates three profit (\$) indexes.

CALVING EASE DIRECT (CED) – CE EPD is based on calving ease scores and birth weights and is measured on a percentage. CE EPD indicates the influence of the sire on calving ease in females calving at 2 years of age. For example, if sire A has a CE EPD of 6 and sire B has a CE EPD of -2, then you would expect on average if comparably mated, sire A's calves would be born with an 8% more likely chance of being unassisted when compared to sire B's calves.

BIRTH WEIGHT (BW) – BW EPD is an indicator trait for calving ease and is measured in pounds. For example, if sire A has a BW EPD of 3.6 and sire B has a BW EPD of 0.6, then you would expect on average if comparably mated, sire A's calves would come 3 lb. heavier at birth when compared to sire B's calves. Larger BW EPDs usually, but not always, indicate more calving difficulty. The figure in parentheses found after each EPD is an accuracy value or reliability of the EPD.

WEANING WEIGHT (WW) – WW EPD is an estimate of pre-weaning growth that is measured in pounds. For example, if sire A has a WW EPD of 60 and sire B has a WW EPD of 40, then you would expect on average if comparably mated, sire A's calves would weigh 20 lb. heavier at weaning when compared to sire B's calves.

YEARLING WEIGHT (YW) – YW EPD is an estimate of post-weaning growth that is measured in pounds. For example, if sire A has a YW EPD of 100 and sire B has a YW EPD of 70, then you would expect on average if comparably mated, sire A's calves would weigh 30 lb. heavier at a year of age when compared to sire B's calves.

DRY MATTER INTAKE (DMI) – The Dry Matter Intake EPD predicts the daily consumption of pounds of feed. For example, if sire A has a DMI EPD of 1.1 and sire B has a DMI EPD of 0.1, you would expect sire B's progeny, if comparably mated, to consume on average 1 pound of feed less per day.

SCROTAL CIRCUMFERENCE (SC) – Measured in centimeters and adjusted to 365 days of age, SC EPD is the best estimate of fertility. It is related to the bull's own semen quantity and quality, and is also associated with age at puberty of sons and daughters. Larger SC EPDs suggest younger age at puberty. Yearling sons of a sire with a .7 SC EPD should have yearling scrotal circumference measurements that average 0.7 centimeters (cm) larger than progeny by a bull with an EPD of 0.0 cm. In the Hereford genetic analysis, a multiple-trait model was used for scrotal circumference. Weaning weight was used as a predictor variable to increase the prediction accuracy of SC EPDs. Therefore, an animal with a weaning weight EPD should also have a SC EPD.

SUSTAINED COW FERTILITY (SCF) – The AHA's new Sustained Cow Fertility EPD (SCF) is a prediction of a cow's ability to continue to calve from three years of age through twelve years of age, given she calved as a two-year-old. The EPD is expressed as a deviation in the proportion of the ten-possible calving's to twelve years old expressed as a probability. For example, the daughters of a bull with a 30 EPD would have the genetic potential to have one more calf by age twelve than the daughters from a bull with a 20 EPD. In other words, the daughters from the 30 EPD bull would have a 10% greater probability of having one more calf than the bull with a 20 EPD. This is equivalent to saying that the daughters are 10% more likely to remain in the herd to age 12.

MATERNAL MILK (Milk) – The milking ability of a sire's daughters is expressed in pounds of calf weaned. It predicts the difference in average weaning weights of sires' daughters' progeny due to milking ability. Daughters of the sire with a +14 MM EPD should produce progeny with 205-day weights averaging 24 lb. more (as a result of greater milk production) than daughters of a bull with a MM EPD of -10 lb. (14 minus -10.0 = 24 lb.). This difference in weaning weight is due to total milk production during the entire lactation.

MATERNAL MILK & GROWTH (M&G) – Maternal Milk & Growth reflects what the sire is expected to transmit to his daughters for a combination of growth genetics through weaning and genetics for milking ability. It is an estimate of daughters' progeny weaning weight. A bull with a 29 lb. M&G EPD should sire daughters with progeny weaning weights averaging 19 lb. heavier than progeny of a bull's daughters with a M&G EPD of 10 lb. (29 minus 10 = 19 lb.). It is equal to one-half the sire's weaning weight EPD, plus all of his MM EPD. No accuracy is associated with this since it is simply a mathematical combination of two other EPDs. It is sometimes referred to as "total maternal" or "combined maternal."

MATERNAL CALVING EASE (MCE) – MCE EPD predicts how easily a sire's daughters will calve at 2 years of age and is measured on a percentage. For example, if sire A has a MCE EPD of 7 and sire B has a CE EPD of -3, then you would expect on average if comparably mated, sire A's daughters would calve with a 10% more likely chance of being unassisted when compared to sire B's daughters.

MATURE COW WEIGHT (MCW) – The MCW EPD was designed to help breeders select sires that will either increase or decrease mature size of cows in the herd. The trait was developed after years of cow weight data collection and the EPD relates directly to the maintenance requirements of a cow herd. An example of how the MCW EPD allows breeders to compare sires: If sire A has a MCW EPD of 100 and sire B has an EPD of 85, then you would expect the females of sire A, if mated to similar cows, to be 15 lb. heavier at mature size.

UDDER SUSPENSION (UDDR) – Scores range from 9 (very tight) to 1 (very pendulous) and represent assessments of udder support. Weak udder suspension results in pendulous udders that make it difficult for a calf to nurse. Weak suspension in the udder indicates a lack of support in the ligament that ties the udder to the cow's body wall. Over time, weakness in this ligament will allow the udder to hang down too far from the body and may subject the udder to serious problems and increased potential for injury. UDDR EPDs are reported on the scoring scale. Differences in sire EPDs predict the difference expected in the sires' daughters' udder characteristics when managed in the same environment. For example, if sire A has a UDDR EPD of 0.4, and sire B has a UDDR EPD of -0.1, the difference in the values is 0.5, or one-half of a score. If daughters of sires A and B are raised and managed in the same environment, you would expect half a score better udder suspension in daughters of sire A, compared to sire B.

TEAT SIZE (TEAT) – Scores range from 9 (very small) to 1 (very large, balloon shaped) and are subjective assessments of the teat length and circumference. Oversized teats are

difficult for newborn calves to nurse, and the calf may not receive adequate colostrum. This could lead to a higher incidence of scours or decreased immunity levels in the newborn calf. TEAT EPDs are reported on the scoring scale. Differences in sire EPDs predict the difference expected in the sires' daughters' udder characteristics when managed in the same environment. For example, if sire A has a teat size EPD of 0.4, and sire B has a teat size EPD of -0.1, the difference in the values is 0.5, or one-half of a score. If daughters of sires A and B are raised and managed in the same environment, you would expect half a score smaller teat size in daughters of sire A, compared to sire B.

CARCASS WEIGHT (CW) – Carcass weight is a beneficial trait when considering the impact that pounds have relative to end product value. At the same age constant endpoint, sires with higher values for carcass weight will add more pounds of hot carcass weight compared to sires with lower values for carcass weight. For example, if sire A has a CW EPD of 84 and sire B has a CW EPD 64, then you would expect the progeny of sire A, if harvested at the same age constant endpoint, to have a 20-lb. advantage in terms of hot carcass weight.

RIB FAT (FAT) – The FAT EPD reflects differences in adjusted 365-day, 12th-rib fat thickness based on carcass measurements of harvested cattle. Sires with low, or negative FAT EPDs are expected to produce leaner progeny than sires with higher EPDs. Ultrasound measures are also incorporated into this trait and have been shown to be highly correlated with the performance of slaughter progeny. All data is expressed on a carcass scale.

RIBEYE AREA (REA) – REA EPDs reflect differences in an adjusted 365-day ribeye area measurement based on carcass measurements of harvested cattle. Sires with relatively higher REA EPDs are expected to produce better-muscled and higher percentage yielding slaughter progeny than will sires with lower REA EPDs. Ultrasound measurements are also incorporated into this trait and have been shown to be highly correlated with the performance of slaughter progeny. All data is expressed on a carcass scale.

MARBLING (MRB) – MARB EPDs reflect differences in an adjusted 365-day marbling score (intramuscular fat, IMF) based on carcass measurements of harvested cattle. Breeding cattle with higher MARB EPDs should produce slaughter progeny with a higher degree of IMF and therefore higher quality grades. Ultrasound measurements are also incorporated into this trait and have been shown to be highly correlated with the performance of slaughter progeny. All data is expressed on a carcass scale.

BALDY MATERNAL INDEX (BMI\$) – The Baldy Maternal Index is a maternally focused index that is based on a production system that uses Hereford x Angus cross cows. Progeny of these cows are directed towards Certified Hereford Beef. This index has significant weight on Sustained Cow Fertility, which predicts fertility and longevity of females. There is a slightly positive weight on Weaning Weight, Mature Cow Weight and Milk which accounts for enough growth but ensures females do not increase inputs. There is some negative emphasis on Dry Matter Intake, but a positive weighting on Carcass Weight which is anticipated to provide profitability from finishing of non-replacement females and castrated males. Marbling and Rib-eye Area are also positively weighted to keep the harvested progeny successful for CHB. This index is geared to identify Hereford bulls that will be profitable when used in a rotational cross with mature commercial Angus cows.

BRAHMAN INFLUENCE INDEX (BII\$) – The Brahman Influence Index is a maternally focused index that is based on a production system that uses Brahman x Hereford cross cows. Progeny of these cows are directed towards a commodity beef market since Certified Hereford Beef does not accept Brahman influenced cattle. This index has significant weight on Sustained Cow Fertility, which predicts fertility and longevity of females. There is a slightly positive weight on Weaning Weight, Mature Cow Weight and Milk which accounts for enough growth but ensures females do not increase inputs. There is some negative emphasis on Dry Matter Intake, but a positive weighting on Carcass Weight which is anticipated to provide profitability in finishing non-replacement females and castrated males. Marbling and Rib-eye Area are also positively weighted to keep harvested progeny successful for a variety of commodity based programs. This index targets producers that use Hereford bulls on Brahman influenced cows.

CERTIFIED HEREFORD BEEF INDEX (CHB\$) – The Certified Hereford Beef Index is a terminal sire index that is built on a production system where Hereford bulls are mated to mature commercial Angus cows and all progeny will be targeted for Certified Hereford Beef after the finishing phase. This index has significant weight on Carcass Weight to ensure profit on the rail. As well there is a positive weighting for Average Daily Gain along with a negative weighting on Dry Matter Intake to ensure efficient pounds of growth in the finishing phase. Keep in mind, this production system takes advantage of complimentary breeding with the commercial Angus cow. Although Marbling is weighted positively in this index, a positive weighting for Rib-eye Area and a negative weighting for Back Fat are a greater priority in this index to allow for optimum end-product merit. This is the only index that has no emphasis on fertility. Remember that no replacement heifers are being retained.

THE CHB SIRE OF DISTINCTION

The Certified Hereford Beef Sire of Distinction program recognizes Hereford bulls who excel in carcass traits. The American Hereford Association Board of Directors initiated the program in 2007 to to recognize superior carcass bulls.

Qualifications - To qualify as a Certified Hereford Beef Sire of Distinction, a bull must be in the top 25% for the CHB\$ profit index and have a minimum accuracy level of 30% for both ribeye area (REA) and marbling (MRB) expected progeny difference (EPD). The Certified Hereford Beef Sires distinction is used to recognize sires in the Hereford breed that excel in improving carcass traits. A bull receiving the CHBS status will be recognized with CHB after his name when doing an animal or EPD inquiry on Hereford.org.

EPD'S FOR 2018 BORN CALVES

CED	BW	WW	YW	DMI	SC	SCF	Milk	M&G	MCE
2.2	3.0	51	83	0.2	0.9	14.7	23	49	1.8
MCW	UDDR	TEAT	CW	FAT	REA	MRB	BMI\$	BII\$	CHB\$
87	1.22	1.23	64	.011	.36	.08	319	384	99

HERD BULLS



SIRE
A

BCC L1 DOMINO 489B

REG#	DOB
43511205	3/9/14



HH ADVANCE 0207X.....	HH ADVANCE 8203U ET
KC L1 DOMINO 12050	HH MISS ADVANCE 7066T
KC MISS RIBSTONE 09040.....	F 157K RIBSTONE 765
	KC L1 DOMETT 06100
UPS DOMINO 5216.....	UPS DOMINO 3027
BCC L1 DOMINETTE 129Y	UPS MISS MOM 2756
BCC L1 PRINCESS 549	KB L1 DOMINO 116
	BCC MEDORA 043

CED	BW	WW	YW	Milk	M&G	FAT	REA	MRB	BMI\$	CHB\$
6.3	2.0	53	78	34	61	.031	.26	.26	294	92

This bull combines calving ease with performance. Owned with Baumgarten Cattle Company, Belfield, ND.



SIRE
B

CL 1 DOMINO 3146A

REG#	DOB
43379774	2/4/13



HH ADVANCE 8050U ET.....	L1 DOMINO 03571
HH ADVANCE 1087Y ET	HH MISS ADVANCE 365N
HH MISS ADVANCE 6109S	CL 1 DOMINO 373N
	HH MISS ADVANCE 4049P
HH ADVANCE 5104R.....	CL 1 DOMINO 206M
CL 1 DOMINETTE 036X 1ET	HH MISS ADVANCE 153L
CL 1 DOMINETTE 475P	CL 1 DOMINO 824H
	CL 1 DOMINETTE 200M

CED	BW	WW	YW	Milk	M&G	FAT	REA	MRB	BMI\$	CHB\$
4.9	3.2	68	103	40	73	.041	.37	.04	305	94

A large outlined, heavily muscled, deep bodied Cooper bull that we are very excited to add to our program. This bull is a performance powerhouse.

HERD BULLS



Casey St. Blanc

SIRE
C

CL 1 DOMINO 432B

REG#	DOB
43470017	1/6/14



CL 1 DOMINO 9122W 1ET	CL 1 DOMINO 732T
CL 1 DOMINO 215Z	CL 1 DOMINETTE 475P
CL 1 DOMINETTE 055X.....	CL 1 DOMINO 860U
	CL 1 DOMINETTE 7136T 1ET
HH ADVANCE 9016W ET	HH ADVANCE 5061R ET
CL1 DOMINETTE 1152Y	HH MISS ADVANCE 4016P ET
CL 1 DOMINETTE 717T.....	CL 1 DOMINO 590R
	CL 1 DOMINETTE 5134R

CED	BW	WW	YW	Milk	M&G	FAT	REA	MRB	BMI\$	CHB\$
1.4	2.9	61	98	29	59	.061	.27	-.05	261	101

This bull has an excellent disposition. He had an 84 lb. act. birth weight. He is in the top 15% of the breed for Milk and Milk & Growth. Purchased from Cooper Hereford Ranch.



SIRE
D

CHURCHILL CAPTAIN 2128Z ET

REG#	DOB
43282355	1/19/12

UPS DOMINO 3027	CL 1 DOMINO 9126J 1ET
CHURCHILL SENSATION 028X	UPS MISS DIAMOND 1353
CHURCHILL LADY 7202T ET.....	GH RAMBO 279R
	CL 1 DOMINETTE 301N
CHURCHILL YANKEE ET	GH NEON 17N
CHURCHILL LADY 9123W ET	CHURCHILL LADY 202
CHURCHILL LADY 404	CL 1 DOMINO 9126J 1ET
	CHURCHILL LADY 1192

CED	BW	WW	YW	Milk	M&G	FAT	REA	MRB	BMI\$	CHB\$
5.0	1.3	49	81	36	61	.041	.46	.21	341	94

Owned with Churchill Cattle Company, Manhattan, MT. He consistently produces the cattleman's type of bulls and females.

HERD BULLS



SIRE
E

H5 10Y HOMETOWN 6194

REG#	DOB
43713062	2/16/16



NJW 73S W18 HOMETOWN 10Y ET	KCF BENNETT 3008 M326
NJW P606 72N DAYDREAM 73S	SHF GOVERNESS 236G L37
	PW VICTOR BOOMER P606
	NJW 94J DEW 72N
H5 MS 7056 ADVANCE 1281	HH ADVANCE 5104R
H5 MS 486 DOMET 627	HH MISS ADVANCE 5020R ET
	CL 1 DOMINO 486P
	H5 MS 767 ADVANCE 415

CED	BW	WW	YW	Milk	M&G	FAT	REA	MRB	BMI\$	CHB\$
6.6	2.4	60	93	30	60	.001	.30	.08	314	92

We are very excited to bring this bull into our program. He brings a lot of length, width and muscling to the table! This guy is a true power house phenotypically and genotypically especially when you take a look at the maternal figures +60 on Milk and Growth and +30 on Milk! We look forward to the impact he will have on our program in the years to come.

SIRE
F

SH CAPTAIN 553

REG#	DOB
43643120	4/15/15

CHURCHILL CAPTAIN 2128Z ET	UPS DOMINO 3027
CHURCHILL SENSATION 028X	CHURCHILL LADY 7202T ET
CHURCHILL LADY 9123W ET	CHURCHILL YANKEE ET
	CHURCHILL LADY 404
MISS BONANZA 722	LPG BONANZA 52G
SH MISS DOMINO 840	F MS MONTANA 454 1ET
	CL 1 DOMINO 9149
	LADY SUMMIT 013

CED	BW	WW	YW	Milk	M&G	FAT	REA	MRB	BMI\$	CHB\$
0.4	4.0	53	81	22	49	-.009	.38	.11	344	88

Solid Captain 2128Z ET son out of a Bonanza cow.



HERD BULLS



SIRE
G

TP DESERT XPERT 327

REG#	DOB
43411704	3/25/13



SHF RIB EYE M326 R117
 NJW 98S R117 RIBEYE 88X ET
 NJW 9126J DEW DOMINO 98S

KCF BENNETT 3008 M326
 HVH MISS HUDSON 83K 8M
 CL 1 DOMINO 9126J 1ET
 NJW 57G 74G DEW 5M

L3 ARCH PREMIER 508
 TP LADY HARRIET 128
 TP LADY DINA 751.....

GOLDEN ACHIEVER 2072
 L3 MISS DONNA D14
 HPH DESERT DUST 139
 TP LADY PREMIER 617

CED	BW	WW	YW	Milk	M&G	FAT	REA	MRB	BMI\$	CHB\$
-6.3	4.0	45	77	27	50	.011	.58	.22	371	92

A long bodied, stout 88X son purchased from Largent's in Kaycee, WY. We are extremely pleased with the females this bull produces.



SIRE
H

THR THOR 3213A

REG#	DOB
43404153	3/31/13



CHURCHILL YANKEE ET
 MAC'S RENDITON 20X
 MAC'S HARLET 772

GH NEON 17N
 CHURCHILL LADY 202
 CJH HARLAND 408
 LS CAPTIA 599

THR THOR 4029.....
 THR MISS THOR 7125T
 THR MISS THOR 0264.....

JDH 15 WRANGLER 25L
 THR MISS THOR 0266
 THR THOR 5098
 THR MISS THOR 8125

CED	BW	WW	YW	Milk	M&G	FAT	REA	MRB	BMI\$	CHB\$
5.6	2.0	46	69	31	54	.011	.43	.24	263	99

A heavily muscled 20X son that we purchased from Thorstenson in 2014. We are pleased with the type of cattle he is producing. They are early maturing and easy keepers. Owned with Thorstenson Hereford Ranch, Selby, SD.

HERD BULLS



SIRE
I

UU SENSATION 2053

REG#	DOB
43266549	2/6/12

UPS DOMINO 3027.....
CHURCHILL SENSATION 028X
 CHURCHILL LADY 7202T ET.....

 H5 408 DOMINO 7100
UU HALEY 0080
 UU MS DAKOTA 8105

CL 1 DOMINO 9126J 1ET
 UPS MISS DIAMOND 1353
 GH RAMBO 279R
 CL 1 DOMINETTE 301N

 CJH HARLAND 408
 H5 MS 001 DOMET 4193
 UU DAKOTA 3003 ET
 UU MS BONANZA 5059

CED	BW	WW	YW	Milk	M&G	FAT	REA	MRB	BMI\$	CHB\$
12.8	-1.2	40	63	38	59	.081	.15	.16	371	83

A long, deep bodied, heavy muscled Sensation son that produces tremendous females and consistently produces great bull calves.

JR. HERD BULLS



SIRE
J

CL 1 DOMINO 878F

REG#	DOB
43903454	1/9/18



CL 1 DOMINO 3100A 1ET.....
CL1 DOMINO 5110C
 CL 1 DOMINETTE 055X.....

 CL 1 DOMINO 386A 1ET.....
CL1 DOMINETTE 528C
 CL1 DOMINETTE 120Y.....

L1 DOMINO 08542
 CL 1 DOMINETTE 812U 1ET
 CL 1 DOMINO 860U
 CL 1 DOMINETTE 7136T 1ET

 CL 1 DOMINO 1108Y 1ET
 CL 1 DOMINETTE 440P 1ET
 GB L1 DOMINO 175E
 CL 1 DOMINETTE 916W

CED	BW	WW	YW	Milk	M&G	FAT	REA	MRB	BMI\$	CHB\$
8.4	1.3	62	100	34	65	.071	.30	.22	235	99

Owned with Coopers Herefords, Willow Creek, MT.

JR. HERD BULLS

SIRE
K

H5 0945 DOMINO 7208 ET

REG#	DOB
43792634	2/23/17



LJS MARK DOMINO 0709.....
LJS MARK DOMINO 0945
LJS MS ADVANCE 0601

OXH MARK DOMINO 0125
LJS MS MARK DOMINO 0414
HH ADVANCE 255M 1ET
LJS MS MARK DOMINO 0344

CJH HARLAND 408.....
H5 MS 408 DOMET 764
H5 MS GP DOMET 4118.....

HH ADVANCE 9005J
CJH L1 DOMINETTE 0064
C GAME PLAN 2040
H5 MS 500 DOMET 8182

CED	BW	WW	YW	Milk	M&G	FAT	REA	MRB	BMI\$	CHB\$
5.2	4.4	59	104	29	59	.021	.53	.28	234	127

A balanced bull that moderates frame. Owned with Harrell Hereford Ranch, Baker City, OR.



SIRE
L

KB L1 DOMINO 952G ET

REG#	DOB
44013079	2/16/19

HH ADVANCE 4101B.....
HH ADVANCE 6092D ET
MONTANA MISS 753T

HH ADVANCE 221 ET
HH MISS ADVANCE 1056Y ET
CL 1 DOMINO 592R 1ET
MONTANA MISS 306

CL 1 DOMINO 215Z.....
MONTANA MISS 647D 1ET
CL 1 DOMINETTE 617S.....

CL 1 DOMINO 9122W 1ET
CL 1 DOMINETTE 055X
HH ADVANCE 3113N 1ET
CL 1 DOMINETTE 4180P

CED	BW	WW	YW	Milk	M&G	FAT	REA	MRB	BMI\$	CHB\$
2.9	2.9	56	92	30	59	.061	.52	.11	289	99

952 is a maternal bull with high performance records and tremendous stretch from end to end. He is red all over, with depth and style. Owned with Baker Hereford Ranch, Rapid City, SD.

SIRE
M

SHR L1 DOMINO B 7176

REG#	DOB
43819807	4/22/17

KC L1 DOMINO 12050.....
BCC L1 DOMINO 489B
BCC L1 DOMINETTE 129Y.....

HH ADVANCE 0207X
KC MISS RIBSTONE 09040
UPS DOMINO 5216
BCC L1 PRINCESS 549

CHURCHILL CAPTAIN 2128Z ET.....
MS CAPTAIN 420
MISS BONANZA 722

CHURCHILL SENSATION 028X
CHURCHILL LADY 9123W ET
F BONANZA 027
SH MISS DOMINO 840

CED	BW	WW	YW	Milk	M&G	FAT	REA	MRB	BMI\$	CHB\$
1.9	3.5	48	80	27	51	.031	.18	.24	314	85

A really good 489B son! 7176 is out of a Captain daughter!

JR. HERD BULLS



SIRE
N

SH MR TRUST 622

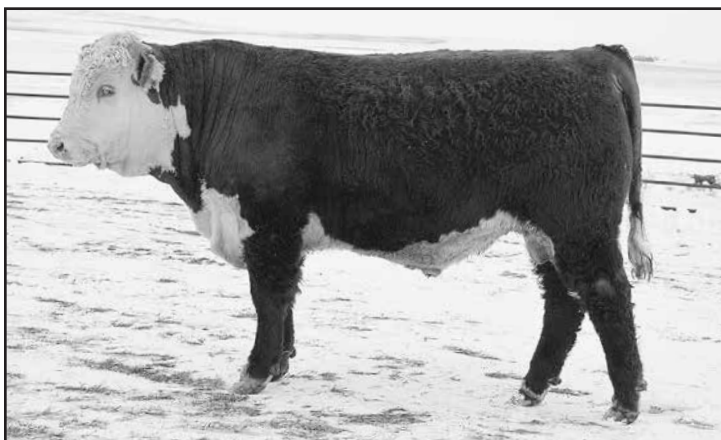
REG#	DOB
43731733	9/14/16



KCF BENNETT 3008 M326	RRH MR FELT 3008
NJW 73S M326 TRUST 100W ET	KCF MISS 459 F284
NJW P606 72N DAYDREAM 73S	PW VICTOR BOOMER P606
	NJW 94J DEW 72N
L3 DIAMOND 679	UPS DOMINO 3027
L3 LADY DIAMOND 8000	L3 DUSTY LADY 339
DH LADY PREMIER 653	GOLDEN ACHIEVER 2072
	DH LADY EDGE 769

CED	BW	WW	YW	Milk	M&G	FAT	REA	MRB	BMI\$	CHB\$
1.5	2.7	54	100	27	54	-.009	.58	.23	436	126

Here is a bull straight out of the high desert. He's long and thick with loads of eye appeal. He has a strong genetic package that we feel will complement the line one genetics we have been incorporating over the years. The hopes are that this bull's progeny will allow us to offer an outcross without sacrificing the need for maternally oriented high performing cattle.



SIRE
O

SR SCOPE 117E

REG#	DOB
43826523	3/4/17

CL 1 DOMINO 860U.....	CL 1 DOMINO 637S 1ET
CL 1 DOMINO 0130X 1ET	CL 1 DOMINETTE 5142R
CL 1 DOMINETTE 440P 1ET	CL 1 DOMINO 9126J 1ET
	CL 1 DOMINETTE 974J
BRC FACTOR Y19	F 157K RIBSTONE 763
SR BENITA 464B	BRC MISS KAHLUA 205
SR DOODLES 842	CHURCHILL YANKEE ET
	MLM 5196 LADY 8058

CED	BW	WW	YW	Milk	M&G	FAT	REA	MRB	BMI\$	CHB\$
3.2	5.3	71	113	34	69	.031	.58	.11	312	113

High performing phenotypic bull. Owned with Stuber Hereford Ranch, Bowman, ND.

TWO-YEAR-OLD BULLS



**LOT
806**

SHR HOMETOWN 806

REG#	DOB	H/P/S	Act. BW	Act. WW	Act. YW
43938644	3/25/18	H	75	634	1245

NJW 73S W18 HOMETOWN 10Y ET..
H5 10Y HOMETOWN 6194
H5 MS 7056 ADVANCE 1281.....

SHF WONDER M326 W18 ET
NJW P606 72N DAYDREAM 73S
HH ADVANCE 7056T
H5 MS 486 DOMET 627

UU SENSATION 2053.....
SENSATIONAL LADY 415
MISS RED ADDITION 080.....

CHURCHILL SENSATION 028X
UU HALEY 0080
BLL RED ADDITION 175T
PEARL DIAMOND 401 I

CED	BW	WW	YW	Milk	M&G	FAT	REA	MRB	BMI\$	CHB\$
11.5	0.3	47	79	30	53	.011	.29	.11	326	95

SHR Hometown 806 here is a tremendous opportunity for any modern rancher! This combination of Hometown 6194 and Sensation 2053 is a sure shot way to add length, depth muscle and maternal power to any program! His dam 415 is moving up the ranks and turning into an elite brood cow, even raising the 798 bull in last year's sale! 806 is a true candidate for any working ranch and is truly a ranch ready bull. We believe this bull has the phenotypical Genotypically capability to be seen far beyond the breeding pasture! We will be retaining 1/2 interest and selling full possession!



**LOT
810**

SHR L1 DOMINO B 810

REG#	DOB	H/P/S	Act. BW	Act. WW	Act. YW
43939871	3/26/18	H	80	602	1135

KC L1 DOMINO 12050.....
BCC L1 DOMINO 489B
BCC L1 DOMINETTE 129Y.....

HH ADVANCE 0207X
KC MISS RIBSTONE 09040
UPS DOMINO 5216
BCC L1 PRINCESS 549

UU SENSATION 2053.....
SENSATIONAL LADY 5163
LADY ROBIN HOOD 39.....

CHURCHILL SENSATION 028X
UU HALEY 0080
SH ROBIN HOOD 724
LADY STANDARD 728

CED	BW	WW	YW	Milk	M&G	FAT	REA	MRB	BMI\$	CHB\$
6.6	1.3	45	71	32	55	.031	.22	.20	315	92

A super 489B son that is well balanced and heavily muscled and has a set of tremendous maternal traits behind him. Dam 5163 is another tremendous 2053 daughter!

TWO-YEAR-OLD BULLS



**LOT
818**

SHR HOMETOWN 818

REG#	DOB	H/P/S	Act. BW	Act. WW	Act. YW
43938645	3/27/18	H	90	626	1215

NJW 73S W18 HOMETOWN 10Y ET..
H5 10Y HOMETOWN 6194
H5 MS 7056 ADVANCE 1281.....

SHF WONDER M326 W18 ET
NJW P606 72N DAYDREAM 73S
HH ADVANCE 7056T
H5 MS 486 DOMET 627

CHURCHILL CAPTAIN 2128Z ET.....
MS CAPTAIN 418
PEARL DIAMOND 941

CHURCHILL SENSATION 028X
CHURCHILL LADY 9123W ET
OXH DIAMOND 2215
SH LADY DOMINO 033

CED	BW	WW	YW	Milk	M&G	FAT	REA	MRB	BMI\$	CHB\$
-0.2	4.3	54	89	29	56	.001	.33	.05	328	94

About as deep sided, easy fleshing and heavily muscled as they come! 818 is a cowboys kind of bull and a true indicator of what we strive to produce for modern ranches! Dam 418 is a sure shot brood cow that does a phenomenal job for us! 818 is a sure fire way to maximize profit with desirable performance maternal and \$ traits even qualifying for the Premium Red Baldy Program.



**LOT
836**

SHR JR CAPTAIN 836

REG#	DOB	H/P/S	Act. BW	Act. WW	Act. YW
43939013	3/30/18	H	88	700	1250

CHURCHILL CAPTAIN 2128Z ET.....
SH CAPTAIN 553
MISS BONANZA 722

CHURCHILL SENSATION 028X
CHURCHILL LADY 9123W ET
F BONANZA 027
SH MISS DOMINO 840

THR THOR 3213A.....
QUEEN THOR 651
MISS L1 DOMINO 331.....

MAC'S RENDITON 20X
THR MISS THOR 7125T
KB L1 DOMINO 826U
MISS BONANZA 397

CED	BW	WW	YW	Milk	M&G	FAT	REA	MRB	BMI\$	CHB\$
-3.0	5.1	60	91	27	57	-.009	.42	.08	306	93

Here is a great 553 son that is long, smooth and thick. Dam 651 is a good young cow that has a bright future here at SHR!

TWO-YEAR-OLD BULLS



839

**LOT
839**

SHR L1 WILLOW 3146A

REG#	DOB	H/P/S	Act. BW	Act. WW	Act. YW
43938156	3/31/18	H	85	662	1225

HH ADVANCE 1087Y ET
CL 1 DOMINO 3146A
 CL 1 DOMINETTE 036X 1ET.....

HH ADVANCE 8050U ET
 HH MISS ADVANCE 6109S
 HH ADVANCE 5104R
 CL 1 DOMINETTE 475P

CHURCHILL RANCHER 8108U ET.....
MISS RANCHERETTE 119
 LADY DOMINO 856.....

CHURCHILL RANCHER 592R
 CL 1 DOMINETTE 301N
 KB L1 DOMINO 567R
 MISS BONANZA 276

CED	BW	WW	YW	Milk	M&G	FAT	REA	MRB	BMI\$	CHB\$
5.5	2.4	55	86	32	60	.021	.22	.11	318	92

A smooth made 3146 that has a desirable birth to weaning spread. Dam 119 is an easy keeping Rancher daughter that is easy to look at!



850

**LOT
850**

SHR SENSATION 850

REG#	DOB	H/P/S	Act. BW	Act. WW	Act. YW
43939847	4/1/18	H	80	726	1125

CHURCHILL SENSATION 028X.....
UU SENSATION 2053
 UU HALEY 0080

UPS DOMINO 3027
 CHURCHILL LADY 7202T ET
 H5 408 DOMINO 7100
 UU MS DAKOTA 8105

SH BONANZA 5007
PRINCESS BONANZA 970
 SH L1 LADY DOMINO 235.....

F BONANZA 027
 SH MISS DOMINO 808
 KB L1 DOMINO 661
 SH 1 MISS DOMINO 705

CED	BW	WW	YW	Milk	M&G	FAT	REA	MRB	BMI\$	CHB\$
9.3	0.7	39	60	29	49	.031	.23	.16	381	91

Here is a 2053 you'll have to find in the pens sale day. A rugged bull raised by a Bonanza 5007 daughter that is still going strong today! This guy falls into the cowman kind category - smaller framed, easy doing, great convenience traits and tremendous actual performance! Not to mention his daughters would qualify for the Premium Red Baldy Program!

TWO-YEAR-OLD BULLS



**LOT
858**

SHR L1 DOMINO B 858

REG#	DOB	H/P/S	Act. BW	Act. WW	Act. YW
43939867	4/3/18	H	70	588	1020

KC L1 DOMINO 12050.....
BCC L1 DOMINO 489B
 BCC L1 DOMINETTE 129Y.....

HH ADVANCE 0207X
 KC MISS RIBSTONE 09040
 UPS DOMINO 5216
 BCC L1 PRINCESS 549

CL 1 DOMINO 3146A.....
LADY L1 DOMINO A 5133
 MISS RANCHERETTE 121

HH ADVANCE 1087Y ET
 CL 1 DOMINETTE 036X 1ET
 CHURCHILL RANCHER 8108U ET
 LADY MOM 727

CED	BW	WW	YW	Milk	M&G	FAT	REA	MRB	BMI\$	CHB\$
9.7	0.3	45	64	34	57	.031	.21	.20	295	91

This guy is big middled, smooth and as stout as a linebacker. 858 brings some convenience traits to the table such as easy calving and low birth weight, where he excels to the 10% of the breed! Not to mention the desirable dry matter intake number, he is perfect for the rancher who runs in tough country!



**LOT
863**

SHR L1 SHEP 863

REG#	DOB	H/P/S	Act. BW	Act. WW	Act. YW
43939021	4/3/18	H	89	578	1175

CL 1 DOMINO 215Z.....
CL 1 DOMINO 432B
 CL1 DOMINETTE 1152Y.....

CL 1 DOMINO 9122W 1ET
 CL 1 DOMINETTE 055X
 HH ADVANCE 9016W ET
 CL 1 DOMINETTE 717T

UU SENSATION 2053.....
SENSATIONAL LADY 683
 LADY DOMINO 063.....

CHURCHILL SENSATION 028X
 UU HALEY 0080
 KB L1 DOMINO 826U
 LADY L1 DOMINO 715

CED	BW	WW	YW	Milk	M&G	FAT	REA	MRB	BMI\$	CHB\$
1.0	3.9	60	96	30	59	.041	.28	-.02	294	97

Here is an excellent 432B son raised by a great 2053 daughter! Long bodied, deep sided and big hipped tied into a smooth thick package. You can't go wrong putting this guy on momma cows. He will create a desirable set of feeder calves without sacrificing the need to build momma cows!

TWO-YEAR-OLD BULLS



**LOT
867**

SHR PRAIRIE XPERT 867

REG#	DOB	H/P/S	Act. BW	Act. WW	Act. YW
43939856	4/3/18	H	90	688	1160

NJW 98S R117 RIBEYE 88X ET
 TP DESERT XPERT 327
 TP LADY HARRIET 128

SHF RIB EYE M326 R117
 NJW 9126J DEW DOMINO 98S
 L3 ARCH PREMIER 508
 TP LADY DINA 751

CHURCHILL RANCHER 8108U ET.....
 MISS RANCHERETT 3164
 MISSY DAKOTA LAD 786

CHURCHILL RANCHER 592R
 CL 1 DOMINETTE 301N
 MH DAKOTA LAD 3164
 LADY ADVANCE 428

CED	BW	WW	YW	Milk	M&G	FAT	REA	MRB	BMI\$	CHB\$
-3.4	4.7	52	84	27	53	.001	.34	.15	324	89

Well balanced 327 son with astounding eye appeal! 867 has all the makings to be a key component in your breeding program. Dam 3164 is a standout Rancher female that grabs eyes every time we enter the pasture!



**LOT
868**

SHR CAPTAIN 868

REG#	DOB	H/P/S	Act. BW	Act. WW	Act. YW
43939027	4/3/18	H	85	634	1175

CHURCHILL SENSATION 028X.....
 CHURCHILL CAPTAIN 2128Z ET
 CHURCHILL LADY 9123W ET.....

UPS DOMINO 3027
 CHURCHILL LADY 7202T ET
 CHURCHILL YANKEE ET
 CHURCHILL LADY 404

/S MISTER MOM 7745.....
 LADY MOM 714
 LADY DOMINO 354.....

MISTER MOM 221
 /S MS PEER PLAN 526E
 KB L1 DOMINO 661
 SH 1 MISS DOMINO 782

CED	BW	WW	YW	Milk	M&G	FAT	REA	MRB	BMI\$	CHB\$
2.1	3.2	44	74	34	56	.011	.36	.03	328	93

Big middle, ideal muscle and cow power! 868 is a knock out candidate to make females. Dam 714 set the bench mark for every cow that has come after her here at SHR. 714 was a great producer with an excellent disposition. 868 is the last chance to buy a direct son from this tremendous MR. MOM 7745 daughter!

TWO-YEAR-OLD BULLS



**LOT
869**

SHR SHEP L1 DOMINO B 869

REG#	DOB	H/P/S	Act. BW	Act. WW	Act. YW
43938195	4/4/18	H	87	628	1240

CL 1 DOMINO 215Z.....
 CL 1 DOMINO 432B
 CL1 DOMINETTE 1152Y.....

CL 1 DOMINO 9122W 1ET
 CL 1 DOMINETTE 055X
 HH ADVANCE 9016W ET
 CL 1 DOMINETTE 717T

KB L1 DOMINO 826U.....
 SH L1 DOMINO 318
 MISS BONANZA 772

KB L1 DOMINO 218
 KB L1 DOMINETTE 636
 F BONANZA 027
 MISS SH SPECIAL 105

CED	BW	WW	YW	Milk	M&G	FAT	REA	MRB	BMI\$	CHB\$
1.7	3.5	57	97	26	54	.021	.24	-.03	253	96

All I can say is WOW - this 432B son is an ideal candidate for the commercial cowman, falling into the ranchers deluxe category, he comes down on a big hoof - works his way into a large outline and moves around like a cat. With a good growth curve that is attainable in any condition and good maternal traits dam 318 is a standout 826U daughter that raises them right!



**LOT
884**

SHR SENSATION 884

REG#	DOB	H/P/S	Act. BW	Act. WW	Act. YW
43938181	4/4/18	H	83	624	1160

CHURCHILL SENSATION 028X.....
 UU SENSATION 2053
 UU HALEY 0080

UPS DOMINO 3027
 CHURCHILL LADY 7202T ET
 H5 408 DOMINO 7100
 UU MS DAKOTA 8105

R 157K NORTH STAR 50W

K 64H RIBSTONE LAD 157K
 R STARLETTE 410
 KB L1 DOMINO 563R
 MISS BONANZA 397

CED	BW	WW	YW	Milk	M&G	FAT	REA	MRB	BMI\$	CHB\$
11.7	1.0	41	68	28	49	.041	.19	.11	350	87

Here is a bull that keeps on impressing us - short, thick with plenty of length. He has his papas look to him, dam 221 is a great little 50W cow that raises quality calves every time!

TWO-YEAR-OLD BULLS



887

**LOT
887**

SHR PRAIRIE XPERT 887

REG#	DOB	H/P/S	Act. BW	Act. WW	Act. YW
43938636	4/5/18	H	83	740	1225

NJW 98S R117 RIBEYE 88X ET
 TP DESERT XPERT 327
 TP LADY HARRIET 128

SHF RIB EYE M326 R117
 NJW 9126J DEW DOMINO 98S
 L3 ARCH PREMIER 508
 TP LADY DINA 751

UPS DOMINO 3027
 NORTHERN LIGHT LADY 384
 MISS BONANZA 812

CL 1 DOMINO 9126J 1ET
 UPS MISS DIAMOND 1353
 SH BONANZA 5007
 LADY DOMINO 380

CED	BW	WW	YW	Milk	M&G	FAT	REA	MRB	BMI\$	CHB\$
-1.0	2.6	46	72	29	52	.011	.51	.22	413	97

A large outlined high performing cowboys kind of bull! You will definitely notice this muscular 327 son sale day!



889

**LOT
889**

SHR L1 DOMINO SHEP 889

REG#	DOB	H/P/S	Act. BW	Act. WW	Act. YW
43938669	4/5/18	H	90	570	1125

CL 1 DOMINO 215Z.....
 CL 1 DOMINO 432B
 CL1 DOMINETTE 1152Y.....

CL 1 DOMINO 9122W 1ET
 CL 1 DOMINETTE 055X
 HH ADVANCE 9016W ET
 CL 1 DOMINETTE 717T

UU HARLEY 9130
 HARLEY MAMA 471
 SHR STANDARD 766

H5 408 DOMINO 7100
 UU MS 056 7115
 F L2 STANDARD 348
 MISS EXPLORER 327

CED	BW	WW	YW	Milk	M&G	FAT	REA	MRB	BMI\$	CHB\$
4.6	2.5	48	79	25	49	.041	.14	.06	273	93

Here is a great 432B son out of a sure shot 9130 daughter. He is super balanced with plenty of thickness. Look for him in the pens sale day.

TWO-YEAR-OLD BULLS



**LOT
892**

SHR SIR THOR 892

REG#	DOB	H/P/S	Act. BW	Act. WW	Act. YW
43938158	4/5/18	H	84	590	1160

MAC'S RENDITON 20X.....
THR THOR 3213A
THR MISS THOR 7125T.....

CHURCHILL YANKEE ET
MAC'S HARLET 772
THR THOR 4029
THR MISS THOR 0264

KB L1 DOMINO 563R.....
LADY L1 DOMINO 129
LADY ROBIN HOOD 614.....

RCH ADVANCE 2139
KB DOMINETTE 3128
HH ROBIN HOOD L130
MISS JACKIE 716

CED	BW	WW	YW	Milk	M&G	FAT	REA	MRB	BMI\$	CHB\$
6.1	1.7	40	69	20	40	.001	.28	.17	272	94

Here is a bull with a great big square hip, a big middle and a smooth shoulder. This guy should be a definitive way to maximize profit with calves with his above average marbling EPD making him perfect for the rancher that sells on the grid.



**LOT
893**

SHR L1 DOMINO B 893

REG#	DOB	H/P/S	Act. BW	Act. WW	Act. YW
43938685	4/5/18	H	82	625	1190

KC L1 DOMINO 12050.....
BCC L1 DOMINO 489B
BCC L1 DOMINETTE 129Y.....

HH ADVANCE 0207X
KC MISS RIBSTONE 09040
UPS DOMINO 5216
BCC L1 PRINCESS 549

CHURCHILL CAPTAIN 2128Z ET.....
SENSIBLE LADY 524
MISS RED ADDITION 975.....

CHURCHILL SENSATION 028X
CHURCHILL LADY 9123W ET
BLL RED ADDITION 175T
MISS BONANZA 245

CED	BW	WW	YW	Milk	M&G	FAT	REA	MRB	BMI\$	CHB\$
4.4	2.4	50	78	32	57	.021	.30	.19	308	93

Soggy made 489B son with tremendous potential to create momma cows, indexing well in the maternal traits category's his dam 524 is a great Captain daughter!

TWO-YEAR-OLD BULLS



LOT 898

MLS-COWBOYUP 898

REG#	DOB	H/P/S	Act. BW	Act. WW	Act. YW
43939311	4/6/18	H	95	694	1230

NJW 73S W18 HOMETOWN 10Y ET..
H5 10Y HOMETOWN 6194
 H5 MS 7056 ADVANCE 1281.....

SHF WONDER M326 W18 ET
 NJW P606 72N DAYDREAM 73S
 HH ADVANCE 7056T
 H5 MS 486 DOMET 627

SH YANKEE 139

MLS-LADY OF THE NORTH 4030
 LADY L1 DOMINO 26

DS RENDITION 359W
 LADY L1 DOMINO 835
 KB L1 DOMINO 567R
 DAISY IMPRINT 412

CED	BW	WW	YW	Milk	M&G	FAT	REA	MRB	BMI\$	CHB\$
-1.0	4.5	56	85	27	55	-.009	.15	.05	281	75

Cowboyup is a cowboys kind of bull! Long spined, rugged and smooth. Dam 4030 is a small framed cow that has a high efficiency raising calves that ratio above the mark in weaning and yearling weight.



LOT 899

SHR L1 WILLOW 899

REG#	DOB	H/P/S	Act. BW	Act. WW	Act. YW
43939852	4/6/18	H	70	630	1110

HH ADVANCE 1087Y ET

CL 1 DOMINO 3146A
 CL 1 DOMINETTE 036X 1ET.....

HH ADVANCE 8050U ET
 HH MISS ADVANCE 6109S
 HH ADVANCE 5104R
 CL 1 DOMINETTE 475P

CHURCHILL YANKEE ET

YANKEE GIRL 3140
 MISS BONANZA 858

GH NEON 17N
 CHURCHILL LADY 202
 SH BONANZA 5007
 MISS ROBIN HOOD 391

CED	BW	WW	YW	Milk	M&G	FAT	REA	MRB	BMI\$	CHB\$
4.0	2.8	54	89	29	56	.021	.30	.15	295	95

A smooth made 3146 son that has a desirable frame size. Dam 3140 is a direct Yankee daughter that helped to combine the best of Canadian and U.S. genetics. Twin to 8100.

TWO-YEAR-OLD BULLS



**LOT
8100**

SHR L1 DOMINO 8100

REG#	DOB	H/P/S	Act. BW	Act. WW	Act. YW
44016576	4/6/18	H	70	640	1098

HH ADVANCE 1087Y ET
CL 1 DOMINO 3146A
 CL 1 DOMINETTE 036X 1ET.....

HH ADVANCE 8050U ET
 HH MISS ADVANCE 6109S
 HH ADVANCE 5104R
 CL 1 DOMINETTE 475P

CHURCHILL YANKEE ET
YANKEE GIRL 3140
 MISS BONANZA 858

GH NEON 17N
 CHURCHILL LADY 202
 SH BONANZA 5007
 MISS ROBIN HOOD 391

CED	BW	WW	YW	Milk	M&G	FAT	REA	MRB	BMI\$	CHB\$
3.3	3.1	55	90	29	57	.021	.30	.15	295	95

Here is probably the most complete 3146 son we have ever offered. Deep sided, square tied together in a moderate package that is simply astounding to visually appraise. He has 9 of 20 traits in the top 50% or better at this time. He excels in performance and maternal categories. This stud has all the tools to be seen from the pasture to the plate for years to come! Twin to 899.



**LOT
8101**

SHR CAPTAIN 8101

REG#	DOB	H/P/S	Act. BW	Act. WW	Act. YW
43938199	4/6/18	H	94	685	1255

CHURCHILL SENSATION 028X.....
CHURCHILL CAPTAIN 2128Z ET
 CHURCHILL LADY 9123W ET.....

UPS DOMINO 3027
 CHURCHILL LADY 7202T ET
 CHURCHILL YANKEE ET
 CHURCHILL LADY 404

BLL RED ADDITION 175T
MISS RED ADDITION 010
 MISS EXPLORER 331

SH RED EDITION 06N
 LADY 58K DIAMND 106P
 F EXPLORER 953
 SH 1 MISS DOM 5037

CED	BW	WW	YW	Milk	M&G	FAT	REA	MRB	BMI\$	CHB\$
-2.1	5.4	53	91	29	55	.001	.36	.06	325	92

Here is a soggy 2128 son with ample muscle. He looks to excel in profitability by adding pounds of red meat while being able to sire females that will work for any ranch. He qualifies for the Premium Red Baldy Program!

TWO-YEAR-OLD BULLS



LOT 8105 SHR PRAIRIE XPERT 8105

REG#	DOB	H/P/S	Act. BW	Act. WW	Act. YW
43938639	4/6/18	H	94	672	1100

NJW 98S R117 RIBEYE 88X ET SHF RIB EYE M326 R117
 TP DESERT XPERT 327 NJW 9126J DEW DOMINO 98S
 TP LADY HARRIET 128 L3 ARCH PREMIER 508
 TP LADY DINA 751

UU HARLEY 9130 H5 408 DOMINO 7100
 HARLEY MAMA 404 UU MS 056 7115
 LADY T-BONE ROBIN HOOD 21 SH ROBIN HOOD 724
 SHR STANDARD 766

CED	BW	WW	YW	Milk	M&G	FAT	REA	MRB	BMI\$	CHB\$
-3.1	3.4	44	64	29	51	.011	.38	.17	347	92

Here is a rugged 327 that falls into the cowboys kind category. Long bodied, stout with a good coat of hair. He moves around with ease. This guy should have no problem walking hills to get the job done!

LOT 8107 SHR PRAIRIE XPERT 8107

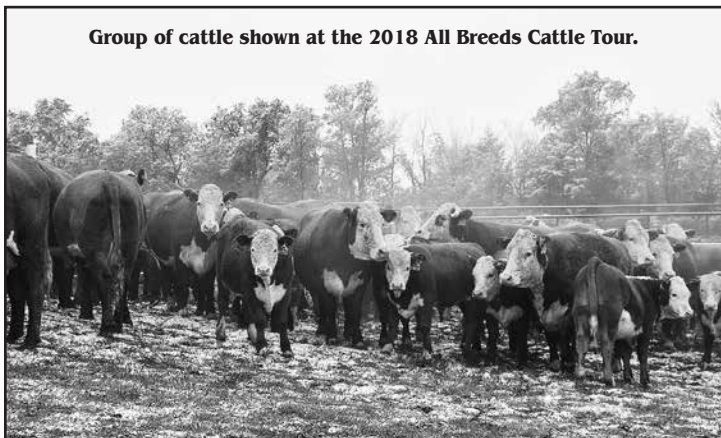
REG#	DOB	H/P/S	Act. BW	Act. WW	Act. YW
43939036	4/7/18	H	92	608	1185

NJW 98S R117 RIBEYE 88X ET SHF RIB EYE M326 R117
 TP DESERT XPERT 327 NJW 9126J DEW DOMINO 98S
 TP LADY HARRIET 128 L3 ARCH PREMIER 508
 TP LADY DINA 751

/S MISTER MOM 7745..... MISTER MOM 221
 SUPER MOM 822 /S MS PEER PLAN 526E
 MISS BONANZA 373 F BONANZA 027
 SH 1 MISS DOMINO 710

CED	BW	WW	YW	Milk	M&G	FAT	REA	MRB	BMI\$	CHB\$
-4.2	5.0	46	80	23	46	.001	.40	.04	339	90

A curly haired 327 son that meets the specifications for the Premium Red Baldy Program



TWO-YEAR-OLD BULLS



8110

**LOT
8110**

SHR HOMETOWN 8110

REG#	DOB	H/P/S	Act. BW	Act. WW	Act. YW
43938661	4/8/18	H	88	602	1235

NJW 73S W18 HOMETOWN 10Y ET..
H5 10Y HOMETOWN 6194
H5 MS 7056 ADVANCE 1281.....

SHF WONDER M326 W18 ET
NJW P606 72N DAYDREAM 73S
HH ADVANCE 7056T
H5 MS 486 DOMET 627

CHURCHILL RANCHER 8108U ET.....
LADY RANCHER 423
LADY L1 DOMINO 107

CHURCHILL RANCHER 592R
CL 1 DOMINETTE 301N
KB L1 DOMINO 563R
MISS EXPLORER 574

CED	BW	WW	YW	Milk	M&G	FAT	REA	MRB	BMI\$	CHB\$
2.0	4.0	60	95	27	57	.001	.25	.08	303	89

A more traditional marked 6194 son that has plenty of stretch from front to back!



8122

**LOT
8122**

SHR L1 DOMINO B 8122

REG#	DOB	H/P/S	Act. BW	Act. WW	Act. YW
43939870	4/9/18	H	93	700	1210

KC L1 DOMINO 12050.....
BCC L1 DOMINO 489B
BCC L1 DOMINETTE 129Y.....

HH ADVANCE 0207X
KC MISS RIBSTONE 09040
UPS DOMINO 5216
BCC L1 PRINCESS 549

CHURCHILL RANCHER 8108U ET.....
LADY RANCHER 5161
LADY YANKEE 174.....

CHURCHILL RANCHER 592R
CL 1 DOMINETTE 301N
DS RENDITION 359W
LADY ROBIN HOOD 838

CED	BW	WW	YW	Milk	M&G	FAT	REA	MRB	BMI\$	CHB\$
-2.0	4.8	60	86	35	65	.021	.29	.17	286	92

An old style 489B son with a great deal of appeal. He is a high performing bull out of a gentle 8108 daughter, who raised the 714 bull that was a crowd favorite in sale!

TWO-YEAR-OLD BULLS



LOT
8133

SHR SENSATION 8133

REG#	DOB	H/P/S	Act. BW	Act. WW	Act. YW
43938166	4/10/18	H	90	634	1145

CHURCHILL SENSATION 028X.....
UU SENSATION 2053
UU HALEY 0080

UPS DOMINO 3027
CHURCHILL LADY 7202T ET
H5 408 DOMINO 7100
UU MS DAKOTA 8105

BLL RED ADDITION 175T.....
MISS RED ADDITION 157
MISS BONANZA 211

SH RED EDITION 06N
LADY 58K DIAMND 106P
F BONANZA 027
SH 1 MISS DOMINO 741

CED	BW	WW	YW	Milk	M&G	FAT	REA	MRB	BMI\$	CHB\$
3.8	3.0	48	78	31	54	.021	.17	.05	340	84

A dark curly haired 2053 son that is a sure shot way to bring length and pay weight to a calf crop.



LOT
8134

SHR L1 WILLOW 8134A

REG#	DOB	H/P/S	Act. BW	Act. WW	Act. YW
43938149	4/10/18	H	80	612	1055

HH ADVANCE 1087Y ET.....
CL 1 DOMINO 3146A
CL 1 DOMINETTE 036X 1ET.....

HH ADVANCE 8050U ET
HH MISS ADVANCE 6109S
HH ADVANCE 5104R
CL 1 DOMINETTE 475P

SH ROBIN HOOD 724

HH ROBIN HOOD L130
SH LADY DOMINO 047
F L2 STANDARD 348
MISS EXPLORER 327

CED	BW	WW	YW	Milk	M&G	FAT	REA	MRB	BMI\$	CHB\$
4.5	2.3	47	70	33	56	.021	.21	.09	314	90

Long and smooth - here is a bull with some cow power behind him!

TWO-YEAR-OLD BULLS

**LOT
8139**

SHR SENSATION 8139

REG#	DOB	H/P/S	Act. BW	Act. WW	Act. YW
43939039	4/10/18	H	94	528	1035

CHURCHILL SENSATION 028X.....
UU SENSATION 2053
UU HALEY 0080

UPS DOMINO 3027
CHURCHILL LADY 7202T ET
H5 408 DOMINO 7100
UU MS DAKOTA 8105

SH BONANZA 5007

F BONANZA 027
SH MISS DOMINO 808
HH ROBIN HOOD L130
SH LADY DOMINO 065

CED	BW	WW	YW	Milk	M&G	FAT	REA	MRB	BMI\$	CHB\$
2.2	3.3	35	63	28	45	.031	.10	.09	352	89

A curly haired yellow bull out of a tremendous cow!



8144

**LOT
8144**

SHR L1 DOMINO B 8144

REG#	DOB	H/P/S	Act. BW	Act. WW	Act. YW
43938682	4/11/18	H	85	602	1245

KC L1 DOMINO 12050.....
BCC L1 DOMINO 489B
BCC L1 DOMINETTE 129Y.....

HH ADVANCE 0207X
KC MISS RIBSTONE 09040
UPS DOMINO 5216
BCC L1 PRINCESS 549

SR NAVARRO 140X.....
PRINCESS NAVARRO 521
MISS BONANZA 610

UPS NAVARRO
SR VALORIE 684
F BONANZA 027
SH L1 LADY DOMINO 832

CED	BW	WW	YW	Milk	M&G	FAT	REA	MRB	BMI\$	CHB\$
2.5	3.4	52	87	29	55	.021	.29	.20	269	95

Awesome 489B son with ample length, he carries around a lot of muscle. He would definitely be a bull to put in the front pasture!

Videos online at:
www.thelivestocklink.com

The **Livestock**
Link

TWO-YEAR-OLD BULLS



8145

**LOT
8145**

SHR PRAIRIE XPERT 8145

REG#	DOB	H/P/S	Act. BW	Act. WW	Act. YW
43938185	4/11/18	H	80	690	1145

NJW 98S R117 RIBEYE 88X ET
 TP DESERT XPERT 327
 TP LADY HARRIET 128

SHF RIB EYE M326 R117
 NJW 9126J DEW DOMINO 98S
 L3 ARCH PREMIER 508
 TP LADY DINA 751

BLL RED ADDITION 175T
 MISS RED ADDITION 235
 PEARL DIAMOND 680

SH RED EDITION 06N
 LADY 58K DIAMND 106P
 OXH DIAMOND 2215
 SH LADY DOMINO 083

CED	BW	WW	YW	Milk	M&G	FAT	REA	MRB	BMI\$	CHB\$
0.7	3.1	46	70	24	47	-.009	.50	.12	343	95

WOW! A great 327 son that is balanced with a great big hip, ideal depth and overall great phenotype. Dam 235 is a standout 175T daughter that is very efficient!



8146

**LOT
8146**

SHR PRAIRIE XPERT 8146

REG#	DOB	H/P/S	Act. BW	Act. WW	Act. YW
43939839	4/11/18	H	77	606	1125

NJW 98S R117 RIBEYE 88X ET
 TP DESERT XPERT 327
 TP LADY HARRIET 128

SHF RIB EYE M326 R117
 NJW 9126J DEW DOMINO 98S
 L3 ARCH PREMIER 508
 TP LADY DINA 751

KB L1 DOMINO 563R.....
 LADY L1 DOMINO 916
 MISS BONANZA 3111

RCH ADVANCE 2139
 KB DOMINETTE 3128
 F BONANZA 027
 LADY STANDARD 5028

CED	BW	WW	YW	Milk	M&G	FAT	REA	MRB	BMI\$	CHB\$
3.4	1.6	41	65	18	39	.011	.37	.20	330	89

Here is a small framed bull with tremendous amount of muscle. His stature makes him a badlands deluxe! He is a good opportunity for a rancher that is looking to add some efficiency to his cow herd. Dam 916 is one of dad and grandpas favorite cows.

TWO-YEAR-OLD BULLS



8154

**LOT
8154**

SHR COWTOWN 8154

REG#	DOB	H/P/S	Act. BW	Act. WW	Act. YW
43938204	4/14/18	H	95	682	1120

NJW 73S W18 HOMETOWN 10Y ET..
H5 10Y HOMETOWN 6194
H5 MS 7056 ADVANCE 1281.....

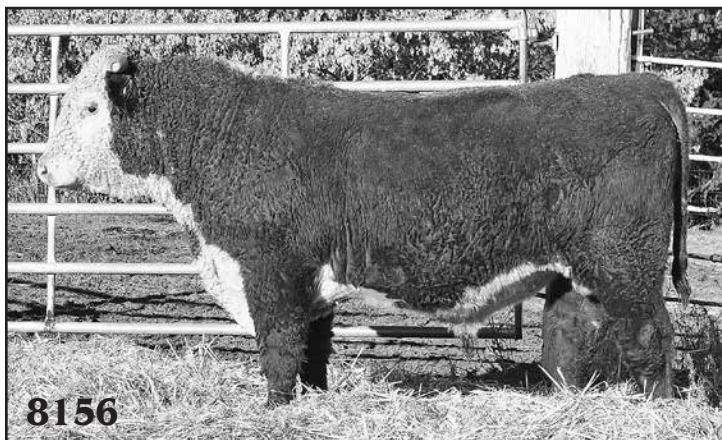
SHF WONDER M326 W18 ET
NJW P606 72N DAYDREAM 73S
HH ADVANCE 7056T
H5 MS 486 DOMET 627

MH DAKOTA LAD 3164
MISS DAKOTA LAD 051
LADY CENTURION 667.....

MH DAKOTA 0230
MISS 065 DOMNET 611
HH CENTURION P517
SH LADY DOMINO 016

CED	BW	WW	YW	Milk	M&G	FAT	REA	MRB	BMI\$	CHB\$
-0.2	4.6	54	78	26	53	.001	.24	.00	301	89

Here is an awesome Hometown son that has a lot of depth, muscle and overall durability. He is a definitive ranchers deluxe bull. Dam 051 is a standout 3164 daughter. Definitely look for this guy sale day!



8156

**LOT
8156**

SHR COWTOWN 8156

REG#	DOB	H/P/S	Act. BW	Act. WW	Act. YW
44099773	4/14/18	H	84	640	1177

NJW 73S W18 HOMETOWN 10Y ET..
H5 10Y HOMETOWN 6194
H5 MS 7056 ADVANCE 1281.....

SHF WONDER M326 W18 ET
NJW P606 72N DAYDREAM 73S
HH ADVANCE 7056T
H5 MS 486 DOMET 627

UPS DOMINO 3027.....
NORTHERN LIGHT LADY 3107
SUPER MOM 139.....

CL 1 DOMINO 9126J 1ET
UPS MISS DIAMOND 1353
/S MISTER MOM 7745
LADY STANDARD 651S

CED	BW	WW	YW	Milk	M&G	FAT	REA	MRB	BMI\$	CHB\$
6.8	2.3	53	82	31	58	.011	.33	.13	335	96

A dark smooth bull that carries a lot of red meat - may just be the steal of the sale!

TWO-YEAR-OLD BULLS



LOT 8161 MLS-PAYWEIGHT 8161

REG#	DOB	H/P/S	Act. BW	Act. WW	Act. YW
43939315	4/14/18	H	88	698	1190

THR THOR 3213A
 THR MISS THOR 7125T
 CHURCHILL YANKEE ET
 MAC'S HARLET 772
 THR THOR 4029
 THR MISS THOR 0264
 LADY HARLEY 252
 MISS MOM 802
 H5 408 DOMINO 7100
 UU HARLEY 9130
 UU MS 056 7115
 /S MISTER MOM 7745
 LADY ROBIN HOOD 401

CED	BW	WW	YW	Milk	M&G	FAT	REA	MRB	BMI\$	CHB\$
5.2	2.9	50	80	29	54	.021	.42	.15	284	101

Here is an awesome 3213 son that will inject muscle and substance of bone across a calf crop without sacrificing the need to make mother cows. Dam 252 is a phenomenal 9130 daughter that leads my program in making females. 8161 is a cowboys kind of bull that will propel any program forward!



LOT 8170 SHR L1 WILLOW 8170A

REG#	DOB	H/P/S	Act. BW	Act. WW	Act. YW
43938167	4/15/18	H	85	638	1235

CL 1 DOMINO 3146A
 CL 1 DOMINETTE 036X 1ET
 HH ADVANCE 1087Y ET
 HH ADVANCE 8050U ET
 HH MISS ADVANCE 6109S
 HH ADVANCE 5104R
 CL 1 DOMINETTE 475P
 STAR LADY 170
 LADY L1 DOMINO 797
 R 157K NORTH STAR 50W
 R STARLETTE 410
 KB L1 DOMINO 563R
 SH MISS DOMINO 977

CED	BW	WW	YW	Milk	M&G	FAT	REA	MRB	BMI\$	CHB\$
7.0	3.2	51	84	30	56	.021	.32	.04	303	95

A smooth balanced 3146 son that falls into the ranchers choice category. This guy has all the makings to create mother cows that will get the job done year in and year out. With 50W on the bottom side this guy is a definitive ranch ready bull!

TWO-YEAR-OLD BULLS



8177

LOT SHR L1 SHEP 8177

REG#	DOB	H/P/S	Act. BW	Act. WW	Act. YW
43939861	4/15/18	H	87	612	1095

CL 1 DOMINO 215Z.....
CL 1 DOMINO 432B
 CL1 DOMINETTE 1152Y.....

CL 1 DOMINO 9122W 1ET
 CL 1 DOMINETTE 055X
 HH ADVANCE 9016W ET
 CL 1 DOMINETTE 717T

L3 DESERT FREQUENCY 118
LADY DESERT FREQUENCY 4020
 SUPER MOM 153

L3 WINN RAMBO 851
 SBC LADY GOLD 4012
 /S MISTER MOM 7745
 LADY STANDARD 771

CED	BW	WW	YW	Milk	M&G	FAT	REA	MRB	BMI\$	CHB\$
1.3	3.1	53	81	26	52	.031	.29	-.01	248	97

Here is a square made 432B son with an ample amount of extension from end to end. With a lot of durability and a desirable dry matter intake index - perfect for the rancher who wants to maintain fleshy cows in dry conditions.



8182

LOT SHR L1 DOMINO B 8182

REG#	DOB	H/P/S	Act. BW	Act. WW	Act. YW
44095141	4/16/18	H	92	639	1170

KC L1 DOMINO 12050.....
BCC L1 DOMINO 489B
 BCC L1 DOMINETTE 129Y.....

HH ADVANCE 0207X
 KC MISS RIBSTONE 09040
 UPS DOMINO 5216
 BCC L1 PRINCESS 549

CL 1 DOMINO 3146A.....
LADY L1 DOMINO A 555
 LADY T-BONE ROBIN HOOD 21

HH ADVANCE 1087Y ET
 CL 1 DOMINETTE 036X 1ET
 SH ROBIN HOOD 724
 SHR STANDARD 766

CED	BW	WW	YW	Milk	M&G	FAT	REA	MRB	BMI\$	CHB\$
0.0	4.4	59	87	35	64	.021	.29	.13	307	93

There is a lot to like about this guy - soggy, plenty of muscle mass, dimension and the look of a breeder bull! Dam 555 has had many brothers in the sale which proves there is power in the cow family. This guys milk EPD is off the charts which should help to give a boost to some momma cows that need it!

TWO-YEAR-OLD BULLS



**LOT
8208**

SHR COWTOWN 8208

REG#	DOB	H/P/S	Act. BW	Act. WW	Act. YW
43938183	4/20/18	H	94	580	1130

NJW 73S W18 HOMETOWN 10Y ET..
H5 10Y HOMETOWN 6194
H5 MS 7056 ADVANCE 1281.....

SHF WONDER M326 W18 ET
NJW P606 72N DAYDREAM 73S
HH ADVANCE 7056T
H5 MS 486 DOMET 627

SR NAVARRO 150X.....
PRINCESS NAVARRO 231
MISS DOMINO 956

UPS NAVARRO
SR CAPTIA 661
KB L1 DOMINO 567R
SH L1 LADY DOMINO 279

CED	BW	WW	YW	Milk	M&G	FAT	REA	MRB	BMI\$	CHB\$
-2.0	4.6	51	89	24	50	.001	.29	.07	271	97

His name says it all, Cowntown 8208, caught our photographers attention when we brought the bulls into the holding pen on picture day. He is deep sided and fleshy with a hind quarter with expressive muscling. Dam 231 is a big soggy momma cow that will catch eyes and she was a good 4-H heifer!



**LOT
8213**

SHR SENSATION 8213

REG#	DOB	H/P/S	Act. BW	Act. WW	Act. YW
43938162	4/21/18	H	78	590	1080

CHURCHILL SENSATION 028X.....
UU SENSATION 2053
UU HALEY 0080

UPS DOMINO 3027
CHURCHILL LADY 7202T ET
H5 408 DOMINO 7100
UU MS DAKOTA 8105

CHURCHILL RANCHER 8108U ET.....
MISS RANCHERETTE 133
LADY PURE GOLD 741

CHURCHILL RANCHER 592R
CL 1 DOMINETTE 301N
GOLDEN ACHIEVER 2072
MISS ROBIN HOOD 391

CED	BW	WW	YW	Milk	M&G	FAT	REA	MRB	BMI\$	CHB\$
10.7	-0.3	37	62	33	51	.051	.14	.14	327	87

Here is an awesome 2053 son with loads of eye appeal. Not to mention extremely smooth in his design, he stems from a smaller framed, smooth cow family that really does good work.

TWO-YEAR-OLD BULLS



8216

**LOT
8216**

SHR L1 DOMINO A 8216

REG#	DOB	H/P/S	Act. BW	Act. WW	Act. YW
43938172	4/21/18	H	85	568	1100

HH ADVANCE 1087Y ET
CL 1 DOMINO 3146A
CL 1 DOMINETTE 036X 1ET.....

HH ADVANCE 8050U ET
HH MISS ADVANCE 6109S
HH ADVANCE 5104R
CL 1 DOMINETTE 475P

UU HARLEY 9130
LADY HARLEY 200
LADY L1 DOMINO 825

H5 408 DOMINO 7100
UU MS 056 7115
KB L1 DOMINO 563R
SH LADY DOMINO 909

CED	BW	WW	YW	Milk	M&G	FAT	REA	MRB	BMI\$	CHB\$
4.9	2.3	51	80	30	55	.031	.24	.09	292	91

Here is a moderate 3146 son with a lot of potential to sire calves that will work out well on the grid!



8225

**LOT
8225**

SHR L1 WILLOW 8225A

REG#	DOB	H/P/S	Act. BW	Act. WW	Act. YW
43938154	4/25/18	H	83	618	1102

HH ADVANCE 1087Y ET
CL 1 DOMINO 3146A
CL 1 DOMINETTE 036X 1ET.....

HH ADVANCE 8050U ET
HH MISS ADVANCE 6109S
HH ADVANCE 5104R
CL 1 DOMINETTE 475P

KB L1 DOMINO 9175W
LADY L1 DOMINO 111
MISS DOMINO 931

CL 1 DOMINO 0152K
KB ROBYN 362
KB L1 DOMINO 567R
MISS EXPLORER 343

CED	BW	WW	YW	Milk	M&G	FAT	REA	MRB	BMI\$	CHB\$
6.2	2.9	53	83	30	56	.021	.25	.07	326	93

Here is a bull that just keeps on coming - deep sided, square made and chock-full of muscle. Dam 111 raises them right, putting bulls into the past two sales!

TWO-YEAR-OLD BULLS

**LOT
8233**

SHR COWTOWN 8233

REG#	DOB	H/P/S	Act. BW	Act. WW	Act. YW
43938679	4/26/18	H	85	615	1135

NJW 73S W18 HOMETOWN 10Y ET..
H5 10Y HOMETOWN 6194
H5 MS 7056 ADVANCE 1281.....

SHF WONDER M326 W18 ET
NJW P606 72N DAYDREAM 73S
HH ADVANCE 7056T
H5 MS 486 DOMET 627

CHURCHILL CAPTAIN 2128Z ET.....
SENSIBLE LADY 502
PEARL DIAMOND 918

CHURCHILL SENSATION 028X
CHURCHILL LADY 9123W ET
OXH DIAMOND 2215
SH LADY DOMINO 011

CED	BW	WW	YW	Milk	M&G	FAT	REA	MRB	BMI\$	CHB\$
4.5	2.8	54	85	30	57	.001	.38	.08	323	96

Here is a bull with unrivaled genetic potential. This Hometown 6194 and Captain combination is a sure shot way to maximize your input dollars in today's volatile cattle markets!



8234

**LOT
8234**

SHR HOMETOWN 8234

REG#	DOB	H/P/S	Act. BW	Act. WW	Act. YW
43939855	4/26/18	H	87	600	1175

NJW 73S W18 HOMETOWN 10Y ET..
H5 10Y HOMETOWN 6194
H5 MS 7056 ADVANCE 1281.....

SHF WONDER M326 W18 ET
NJW P606 72N DAYDREAM 73S
HH ADVANCE 7056T
H5 MS 486 DOMET 627

SHR DOMINO 09

QUEEN DOMINO 3153
MISS DOMINO 931

UPS DOMINO 3027
MISS BONANZA 812
KB L1 DOMINO 567R
MISS EXPLORER 343

CED	BW	WW	YW	Milk	M&G	FAT	REA	MRB	BMI\$	CHB\$
4.4	3.3	54	91	25	52	.001	.33	.11	360	96

These Hometown cattle are hard to hate and this guy is no exception. Good expressive muscle pattern, and the look of a herd bull. He will be fun to visually appraise in the pens sale day!



The crowd at Stroh Hereford Ranch during the 2018 All Breeds Cattle Tour.

TWO-YEAR-OLD BULLS



**LOT
8241**

SHR L1 SHEP 8241

REG#	DOB	H/P/S	Act. BW	Act. WW	Act. YW
43939879	4/28/18	H	71	566	1150

CL 1 DOMINO 215Z.....
CL 1 DOMINO 432B
 CL1 DOMINETTE 1152Y.....

CL 1 DOMINO 9122W 1ET
 CL 1 DOMINETTE 055X
 HH ADVANCE 9016W ET
 CL 1 DOMINETTE 717T

UU SENSATION 2053.....
SENSATIONAL LADY 6112
 MISS RED ADDITION 172.....

CHURCHILL SENSATION 028X
 UU HALEY 0080
 BLL RED ADDITION 175T
 PEARL DIAMOND 680

CED	BW	WW	YW	Milk	M&G	FAT	REA	MRB	BMI\$	CHB\$
5.9	1.7	53	88	29	56	.041	.29	.02	301	97

Big, square, deep and red, this guy has the look to be a key component in your cross breeding program, to create a set of baldies with pay weight to be profitable!

**LOT
8246**

SHR L1 SHEP 8246

REG#	DOB	H/P/S	Act. BW	Act. WW	Act. YW
43938641	5/1/18	H	83	594	1070

CL 1 DOMINO 215Z.....
CL 1 DOMINO 432B
 CL1 DOMINETTE 1152Y.....

CL 1 DOMINO 9122W 1ET
 CL 1 DOMINETTE 055X
 HH ADVANCE 9016W ET
 CL 1 DOMINETTE 717T

CHURCHILL RANCHER 8108U ET.....
LADY PENDLETON RANCHER 410
 MISS DOMINO 759T

CHURCHILL RANCHER 592R
 CL 1 DOMINETTE 301N
 KB L1 DOMINO 567R
 MISS BONANZA 306

CED	BW	WW	YW	Milk	M&G	FAT	REA	MRB	BMI\$	CHB\$
1.6	3.0	53	80	26	52	.031	.15	.04	286	92

Smooth made 432B son that will work well in big country.



TWO-YEAR-OLD BULLS



**LOT
8247**

SHR SIR THOR 8247

REG#	DOB	H/P/S	Act. BW	Act. WW	Act. YW
44095147	5/3/18	H	90	645	1174

MAC'S RENDITON 20X.....	CHURCHILL YANKEE ET
THR THOR 3213A	MAC'S HARLET 772
THR MISS THOR 7125T.....	THR THOR 4029
	THR MISS THOR 0264
KB L1 DOMINO 826U.....	KB L1 DOMINO 218
LADY L1 DOMINO 255	KB L1 DOMINETTE 636
LADY ROBIN HOOD 408.....	HH ROBIN HOOD L130
	MISS EXPLORER 144

CED	BW	WW	YW	Milk	M&G	FAT	REA	MRB	BMI\$	CHB\$
2.7	2.9	45	74	26	49	-.009	.31	.13	263	98

Here is a Thor son that will inject some spine into a calf crop. Dam 255 is a small, efficient momma.



**LOT
8249**

SHR L1 DOMINO B SHEP 8249

REG#	DOB	H/P/S	Act. BW	Act. WW	Act. YW
43938196	5/3/18	H	71	574	1075

CL 1 DOMINO 215Z.....	CL 1 DOMINO 9122W 1ET
CL 1 DOMINO 432B	CL 1 DOMINETTE 055X
CL1 DOMINETTE 1152Y.....	HH ADVANCE 9016W ET
	CL 1 DOMINETTE 717T
UU HARLEY 9130	H5 408 DOMINO 7100
HARLEY MAMA 328	UU MS 056 7115
LADY ROBIN HOOD 03.....	SH ROBIN HOOD 724
	LADY STANDARD 757

CED	BW	WW	YW	Milk	M&G	FAT	REA	MRB	BMI\$	CHB\$
9.1	0.5	43	71	26	47	.041	.18	.08	279	98

A thick 432B son that will breed! He will help to create mother cows that can work in a multitude of conditions.

TWO-YEAR-OLD BULLS



LOT 8268	SHR L1 WILLOW 8268					
	REG#	DOB	H/P/S	Act. BW	Act. WW	Act. YW
	43939850	5/16/18	H	87	544	1020

HH ADVANCE 1087Y ET HH ADVANCE 8050U ET
 CL I DOMINO 3146A HH MISS ADVANCE 6109S
 CL I DOMINETTE 036X 1ET..... HH ADVANCE 5104R
 CL I DOMINETTE 475P

CHURCHILL YANKEE ET GH NEON 17N
 YANKEE LADY 3113 CHURCHILL LADY 202
 MISS BONANZA 846B SH BONANZA 5007
 SH L1 LADY DOMINO 133

CED	BW	WW	YW	Milk	M&G	FAT	REA	MRB	BMI\$	CHB\$
1.0	3.6	54	86	29	56	.011	.27	.12	283	94

Here is a 3146 son with plenty of red meat in a moderate package, he is hard to fault and should grab your eyes on sale day!



LOT 8270	SHR PRAIRIE XPERT 8270					
	REG#	DOB	H/P/S	Act. BW	Act. WW	Act. YW
	43939845	5/19/18	H	93	466	950

NJW 98S R117 RIBEYE 88X ET SHF RIB EYE M526 R117
 TP DESERT XPERT 327 NJW 9126J DEW DOMINO 98S
 TP LADY HARRIET 128 L3 ARCH PREMIER 508
 TP LADY DINA 751

KB L1 DOMINO 567R..... KB L1 DOMINO 737
 MISS DOMINO 961 KB L1 DOMINETTE 0111
 LADY DOMINO 380..... KB L1 DOMINO 661
 SH LADY SPECIAL 964

CED	BW	WW	YW	Milk	M&G	FAT	REA	MRB	BMI\$	CHB\$
-1.0	3.0	39	65	20	40	-.009	.39	.15	360	95

This bull here is pretty cool to appraise! He is chock-full of muscle and not afraid to lead the bulls around the pasture. You have to appreciate his frame size. If you run in rough country this guy will go out cover cows and help your operation profit!

TWO-YEAR-OLD BULLS



**LOT
8273**

SHR SENSATION 8273

REG#	DOB	H/P/S	Act. BW	Act. WW	Act. YW
43938176	5/29/18	H	90	552	1035

CHURCHILL SENSATION 028X.....
 UU SENSATION 2053
 UU HALEY 0080

UPS DOMINO 3027
 CHURCHILL LADY 7202T ET
 H5 408 DOMINO 7100
 UU MS DAKOTA 8105

R 157K NORTH STAR 50W

K 64H RIBSTONE LAD 157K
 R STARLETTE 410
 KB L1 DOMINO 563R
 MISS BONANZA 245

CED	BW	WW	YW	Milk	M&G	FAT	REA	MRB	BMI\$	CHB\$
10.3	1.0	39	63	30	49	.041	.18	.10	334	88

Don't count this young bull out, he's just as impressive as his older counterparts. Long bodied, deep sided and chock-full of red meat. Not to mention we only have one more set of this sire group to sell, so get on this opportunity while it's here folks! This bull is a Premium Red Baldy Program candidate!

THE BALD-FACED TRUTH

ABOUT HEREFORD GENETICS

Take advantage of hybrid vigor with Hereford genetics.



HEREFORD ADVANTAGE

Use the Hereford Advantage program to increase added market power and brand recognition with feeder cattle sired by a Hereford bull battery ranking in the top 50% for the CHB\$ index.



MATERNAL ADVANTAGE

The Maternal Advantage program generates females with added longevity, more docility, increased fertility and more profit per year. Can be utilized by producers using Hereford bulls on British-based cows or Brahman-based cows in their breeding program.



PREMIUM RED BALDY

Premium Red Baldy is designed to take advantage of the best traits of both Hereford and Red Angus. Females must be sired by bulls in the top 50% of the breed for Baldy Maternal Index (BMI\$) or Herdbuilder Index (HB).



REGISTERED AND COMMERCIAL BRED HEIFERS



This year's sale heifers were run with two Black Angus Bulls. One was purchased from Opp Angus out of Hebron, ND and the other was a Black Angus Bull purchased from Richard Schmidt of Gladstone, ND. The bulls were put out on July 6, 2019 and pulled on September 1, 2019.

The sale heifers have had all of their vaccinations, Preg. Guard 10, and have been poured with Ivomec. These girls are cake broke, gentle and ready to work for you. They are a visually pleasing group of heifers.

The heifers were ultra-sounded by Doc Rowe on Saturday, December 21, 2019. This year we will be offering 10 registered bred heifers, 15 commercial heifers and 2 registered weanling heifers. It was a challenge choosing which heifers to put into this year's sale because the quality of this group of heifers runs deep.

Matt has decided to include two of his weanling heifers in this year's sale due to the fact that it is our 30th Annual Production Sale. His goal was to have a "Three for Thirty" offering, but mother was not fast enough at the gate! If you have any questions regarding this year's heifer offering please do not hesitate to contact Mike at 701-290-1191 or Matt at 701-690-4860.

LOT 830 LADY MAGNOLIA L1 830

REG#	DOB
43939873	3/29/18

KC L1 DOMINO 12050..... HH ADVANCE 0207X
 BCC L1 DOMINO 489B KC MISS RIBSTONE 09040
 BCC L1 DOMINETTE 129Y..... UPS DOMINO 5216
 BCC L1 PRINCESS 549

CHURCHILL RANCHER 8108U ET..... CHURCHILL RANCHER 592R
 LADY PENDLETON RANCHER 5171 CL 1 DOMINETTE 301N
 LADY L1 DOMINO 05 KB L1 DOMINO 563R
 MISS BONANZA 3120

CED	BW	WW	YW	Milk	M&G	FAT	REA	MRB	BMI\$	CHB\$
2.0	3.9	50	84	28	52	.021	.11	.17	289	86

A beautiful, deep heifer with awesome potential. Dam 5171 is a sure shot rancher daughter!

REGISTERED BRED HEIFERS

LOT 873 LADY XPERT 873

REG#	DOB
43938202	4/4/18

NJW 98S R117 RIBEYE 88X ET SHF RIB EYE M526 R117
 TP DESERT XPERT 327 NJW 9126J DEW DOMINO 98S
 TP LADY HARRIET 128 L3 ARCH PREMIER 508
 TP LADY DINA 751

SH ROBIN HOOD 724 HH ROBIN HOOD L130
 LADY ROBIN HOOD 03 SH LADY DOMINO 047
 LADY STANDARD 757 F L2 STANDARD 348
 SH L1 LADY DOMINO 133

CED	BW	WW	YW	Milk	M&G	FAT	REA	MRB	BMI\$	CHB\$
2.0	2.0	30	58	23	38	.001	.31	.18	328	94

An easy doing, light BW heifer out of a good 9 year old cow!

LOT 876 SENSATIONAL LADY 876

REG#	DOB
43938201	4/4/18

CHURCHILL SENSATION 028X..... UPS DOMINO 3027
 UU SENSATION 2053 CHURCHILL LADY 7202T ET
 UU HALEY 0080 H5 408 DOMINO 7100
 UU MS DAKOTA 8105

BLL RED ADDITION 175T SH RED EDITION 06N
 MISS RED ADDITION 026 LADY 58K DIAMND 106P
 MISS BONANZA 211 F BONANZA 027
 SH 1 MISS DOMINO 741

CED	BW	WW	YW	Milk	M&G	FAT	REA	MRB	BMI\$	CHB\$
7.0	1.8	43	73	29	50	.021	.18	.08	347	88

Here is a superb brood cow prospect. She has all the tools necessary to propel your program forward even in tough years. We can't say enough good things about our 2053 daughters and now you have a chance to get one of your own!

LOT 8127 MISSY L1 SHEPETT 8127

REG#	DOB
43938671	4/9/18

CL 1 DOMINO 215Z..... CL 1 DOMINO 9122W 1ET
 CL 1 DOMINO 432B CL 1 DOMINETTE 055X
 CL1 DOMINETTE 1152Y..... HH ADVANCE 9016W ET
 CL 1 DOMINETTE 717T

SR SAGA 1072Z CJH HARLAND 408
 SAGA LADY 477 SR FUTURA 619
 LAFY NAVARRO 260..... SR NAVARRO 140X
 MISS BONANZA 900

CED	BW	WW	YW	Milk	M&G	FAT	REA	MRB	BMI\$	CHB\$
2.0	3.6	57	86	27	55	.031	.28	.01	282	101

A high performing 432B daughter that will raise growthy calves year in and year out. This is another opportunity to get in on some prenominal brood cow potential!

LOT 8141 SENSATIONAL LADY 8141

REG#	DOB
43938209	4/10/18

CHURCHILL SENSATION 028X..... UPS DOMINO 3027
 UU SENSATION 2053 CHURCHILL LADY 7202T ET
 UU HALEY 0080 H5 408 DOMINO 7100
 UU MS DAKOTA 8105

BLL RED ADDITION 175T SH RED EDITION 06N
 MISS RED ADDITION 080 LADY 58K DIAMND 106P
 PEARL DIAMOND 4011 OXH DIAMOND 2215
 SH MISS DOMINO 080

CED	BW	WW	YW	Milk	M&G	FAT	REA	MRB	BMI\$	CHB\$
13.1	-0.6	36	63	31	49	.031	.25	.13	331	93

All I can say is WOW! This heifer may be the highlight of the sale! If you want to see the type of cattle she can raise, look at 806, he was raised by 8141's full sister!

REGISTERED BRED HEIFERS

**LOT
8149**

LADY MAGNOLIA L1 8149

REG#	DOB
43939000	4/11/18

KC L1 DOMINO 12050..... HH ADVANCE 0207X
 BCC L1 DOMINO 489B KC MISS RIBSTONE 09040
 BCC L1 DOMINETTE 129Y..... UPS DOMINO 5216
 BCC L1 PRINCESS 549

CL 1 DOMINO 3146A..... HH ADVANCE 1087Y ET
 LADY L1 DOMINO 592 CL 1 DOMINETTE 036X 1ET
 LADY HARLEY 253..... UU HARLEY 9130
 LADY L1 DOMINO 835

CED	BW	WW	YW	Milk	M&G	FAT	REA	MRB	BMI\$	CHB\$
4.6	2.5	51	77	31	56	.031	.22	.16	288	90

Here is another good 489B daughter. Dam 592 is a sure shot 3146 daughter that stems from a great set of momma cows!

**LOT
8168**

LADY MAGNOLIA L1 8168

REG#	DOB
43939869	4/15/18

KC L1 DOMINO 12050..... HH ADVANCE 0207X
 BCC L1 DOMINO 489B KC MISS RIBSTONE 09040
 BCC L1 DOMINETTE 129Y..... UPS DOMINO 5216
 BCC L1 PRINCESS 549

CL 1 DOMINO 2142Z 1ET..... L1 DOMINO 08542
 LADY L1 DOMINO Z 5143 CL 1 DOMINETTE 332N
 STAR LADY 194..... R 157K NORTH STAR 50W
 PEARL DIAMOND 7011

CED	BW	WW	YW	Milk	M&G	FAT	REA	MRB	BMI\$	CHB\$
4.1	3.2	45	71	33	55	.031	.28	.13	275	90

Here is an easy keeping, maternally oriented female that stems back to cows that know how to work!

**LOT
8171**

LADY MAGNOLIA L1 8171

REG#	DOB
43939876	4/15/18

KC L1 DOMINO 12050..... HH ADVANCE 0207X
 BCC L1 DOMINO 489B KC MISS RIBSTONE 09040
 BCC L1 DOMINETTE 129Y..... UPS DOMINO 5216
 BCC L1 PRINCESS 549

THR THOR 3213A..... MAC'S RENDITON 20X
 QUEEN THOR 5217 THR MISS THOR 7125T
 LADY PENDLETON RANCHER 246..... CHURCHILL RANCHER 8108U ET
 LADY MOM 714

CED	BW	WW	YW	Milk	M&G	FAT	REA	MRB	BMI\$	CHB\$
4.7	2.4	51	77	35	60	.021	.30	.17	295	93

Here is a heifer out of a cow with a proven record; her dam raised the 7171 bull in last year's sale as a first calf heifer. She herself is very maternally orientated and looks to be content out on the prairie working for her owner!

**LOT
8218**

MISS PRAIRIE XPERT 8218

REG#	DOB
43938164	4/21/18

NJW 98S R117 RIBEYE 88X ET SHF RIB EYE M326 R117
 TP DESERT XPERT 327 NJW 9126J DEW DOMINO 98S
 TP LADY HARRIET 128 L3 ARCH PREMIER 508
 TP LADY DINA 751

KB L1 DOMINO 9175W CL 1 DOMINO 0152K
 LADY L1 DOMINO 150 KB ROBYN 362
 LADY ROBIN HOOD 938..... HH ROBIN HOOD L130
 MISS BONANZA 438

CED	BW	WW	YW	Milk	M&G	FAT	REA	MRB	BMI\$	CHB\$
0.3	3.6	42	84	25	46	.001	.33	.17	343	93

Out of an Iconic momma cow, 8218 has all the tools to be a mainstay momma cow in anyone's program for years to come!

REGISTERED BRED HEIFERS

**LOT
8257**

MISS PRAIRIE XPERT 8257

REG#	DOB
43939863	4/20/18

NJW 98S R117 RIBEYE 88X ET SHF RIB EYE M326 R117
 TP DESERT XPERT 327 NJW 9126J DEW DOMINO 98S
 TP LADY HARRIET 128 L3 ARCH PREMIER 508
 TP LADY DINA 751

DS RENDITION 359W CHURCHILL YANKEE ET
 LADY RENDITION 4037 DS SHANA 557
 MISS BONANZA 404 F BONANZA 027
 SH 1 MISS DOM 5056

CED	BW	WW	YW	Milk	M&G	FAT	REA	MRB	BMI\$	CHB\$
-5.0	5.2	51	85	22	48	.001	.41	.15	320	90

Here is a heifer that does well in carcass traits; dam 4037 is a good cow that crossed well with 327!

HAPPY NEW YEAR:

This year is a special year for the Stroh Hereford Ranch. We are having our 30th Annual Production Sale! I wanted to do something special so I put two of my very own weaned heifer calves into the sale. These are tremendous heifers that have three generations of forward thinking, and selective breeding for working ranches behind them!

Sincerely,

Matt Stroh

**LOT
926**

MLS-LADY XPERT 926

REG#	DOB
44048563	4/2/19

NJW 73S M326 TRUST 100W ET KCF BENNETT 3008 M326
 SH MR TRUST 622 NJW P606 72N DAYDREAM 73S
 L3 LADY DIAMOND 8000 L3 DIAMOND 679
 DH LADY PREMIER 653

TP DESERT XPERT 327 NJW 98S R117 RIBEYE 88X ET
 MLS-LADY XPERT 660 TP LADY HARRIET 128
 LADY NORTH STAR 388 R 157K NORTH STAR 50W
 PEARL DIAMOND 744

CED	BW	WW	YW	Milk	M&G	FAT	REA	MRB	BMI\$	CHB\$
1.6	2.8	46	84	26	49	.001	.52	.18	398	110

Here is an awesome Trust daughter that stems back to a phenomenal cow family! 926 is very complete and looks to be just as phenomenal as her mother and grandmother. Her grandmother raised the 7166 bull that sold in last year's sale. 926's dam, 660 is a young cow that is blazing a path in my program. I am excited to say she has raised two replacement quality females and her future looks bright! A can't miss opportunity!

**LOT
998**

MLS-L1 DOMMINETTE 998

REG#	DOB
44048350	4/12/19

HH ADVANCE 1087Y ET HH ADVANCE 8050U ET
 CL 1 DOMINO 3146A HH MISS ADVANCE 6109S
 CL 1 DOMINETTE 036X 1ET HH ADVANCE 5104R
 CL 1 DOMINETTE 475P

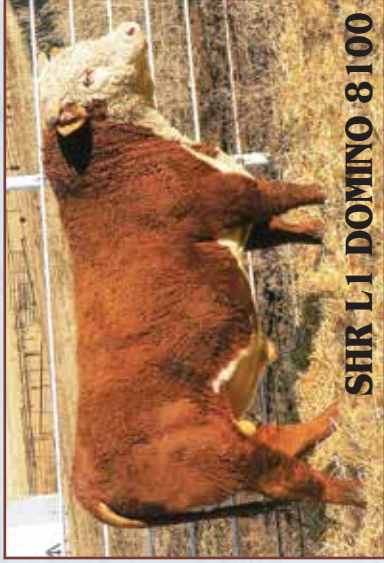
CL 1 DOMINO 215Z CL 1 DOMINO 9122W 1ET
 MLS-L1 DOMINETTE 600 CL 1 DOMINETTE 055X
 CL1 DOMINETTE 4138B HH ADVANCE 0118X
 CL 1 DOMINETTE 7138T

CED	BW	WW	YW	Milk	M&G	FAT	REA	MRB	BMI\$	CHB\$
-1.8	4.9	68	108	29	64	.051	.34	.04	272	88

Here is a deep bodied extremely feminine 3146A daughter out of my 600 Momma cow. This female is straight line bred and has loads of potential to bring a program forward! Dam 600 is a great calm cow who is setting the bar for my cow herd! Don't miss this opportunity!

STROH HEREFORDS
1010 Hwy 22 S
Killdeer, ND 58640

FIRST CLASS
US POSTAGE
PAID
Fargo, ND
Permit No. 684



SHR L1 DOMINO 8100

