

STUBER RANCH

48th Annual Sale
APRIL 16, 2016

1 PM • AT THE RANCH • BOWMAN, ND

Five generations, 107 years on the same ranch,
85 years in the seedstock business and
48 years of retained ownership!



STUBER RANCH

48TH ANNUAL SALE

PROGRAM, PRODUCTION, PRODUCT AND PROFILE
...with quiet dispositions, correct structure, solid markings,
wide based, good udders, eye pigment!



SAT. APRIL 16, 2016

Sale Time 1:00 p.m. MDT • Lunch 11:30 a.m. • At the ranch

SELLING:

- 95 HORNED YEARLING BULLS**
- 20 POLLED YRLG BULLS**
- 65 YEARLING REGISTERED HEIFERS**
- 125 COMMERCIAL HEREFORD HEIFERS**
...75 from Stuber Ranch / 50 from Tom Burke Ranch
- 37 BWF FI COMMERCIAL HEIFERS**

AUCTIONEER: Joe Goggins • Billings, MT
406/373-6844 • (cell) 406/861-5664

SPECIAL GUESTS:

Jack Ward, Exec. VP, American Hereford Assn.
Sam Shaw, President, American Hereford Assn.
Terri Barber, Vice-President, American Hereford Assn.
Joe Van Newkirk, American Hereford Assn. Director
Pete Atkins, American Hereford Assn. Director
Steve Brooks, President, ND Stockmen's Assn.
Julie Ellingson, ND Stockmen's Assn. Exec. Vice President
Andy Mrnak, President, North Dakota Hereford Assn.
Joana Friesz, Secretary, North Dakota Hereford Assn.
Anna Lemm, North Dakota Hereford Queen
Harry Kerr, Bowman Auction Market

SALE REPRESENTATIVES:

Levi Landers, American Hereford Assn. • 308/730-1396
Art Handel, Handel Marketing • 605/399-9278 or (c) 605/391-8233
Devin Murnin, Western Livestock Journal • (c) 406/696-1502
Marc & Jill Hotchkiss, Hereford America • 605/866-4495 • (c) 605/490-1513
Leo Heinrich, Heinrich Livestock • 701/523-5754, (c) 701/523-6840
Jason Frey, Western Livestock Reporter • (c) 701/300-0845
Kirby Goettsch, Farm And Ranch Guide • (c) 605/380-3939
Scott Dirk, Tri-State Livestock News • (c) 605/380-6024
Jack Chastain, Texas Hereford Magazine • 817/821-3544

SALE CLERK: Wells Fargo Bank with Marc Hotchkiss & Crew

VETERINARIAN: Bowman Animal Clinic, Don Kruger, DVM • 701/523-3234

INSURANCE: ...Ask any sale representative.

ACCOMMODATIONS: There are good motels in Bowman...

Northwinds Lodge 701/523-5641 • Bowman Lodge 701/523-7750
Budget Host Four U Motel 701/523-3243 • Super 8 701/523-5613
Bowman Inn & Suites 701/458-2000 • El Vu Motel 701/523-5224

AIRPORT: Bowman has a lighted, 5800 ft., concrete runway.

SALE DAY PHONES:

701/523-5297 OR 701/523-3522

Roger (c) 701/523-6813 ...Duane (c) 701/523-1479
Extra sale day lines: 701/523-7408 • 701/523-7409

SALE LOCATION: ...10 miles North of Bowman or 16 miles South
of Amidon on Hwy. 85, then 5 miles West, then 1/2 mile South

CATALOG & UPDATES ONLINE:

www.stuberranch.com • www.herefordamerica.com

SALE CATTLE DVD ...available late March, call Roger.

DVAuction For more information and to register to
Broadcasting Real-Time Auctions bid, call Tami McIntosh 308/870-3661.

WELCOME TO OUR 48TH ANNUAL PRODUCTION SALE!



It is our pleasure to welcome your attendance at our 48th Annual Sale on Saturday, April 16, 2016. For those of you that can't make the, please view our web-site or participate on DV Auction online.

This has been a good year with ample rain, good growing conditions and a mild winter. Calves weaned with little sickness and adapted to their feed regiment with ease. We don't push the cattle the first month to give them a time to adjust to their new surroundings. The cattle will be grown out with their future usefulness in mind. This year, we ran 35 more bull calves than heifers, which allowed us to cull deep.

Many cattle are sold on a first impression. We like to produce cattle that will present a good profile, be fault-free, wide based, long spined, good muscle shape with strong performance numbers. We have moderated our birth weight and frame size and kept as much performance as possible and improved carcass numbers.

We have developed a cow herd of working females. We pay attention to the unmeasured traits of disposition, structure, solid markings, eye pigment, as disease free as possible and wide based. Emphasis on challenging the environment, fault-free udders, support the upper end of milk production, improve marbling and maintain good fertility. Calving ease is big requirement for our operation. All heifers have to calve as yearlings or they go to the feedlot.

We have retained ownership on our commercial cattle for 48 years. Our conversion rate over that time has been consistently 20 per cent better than yard average. When feeding cattle, that is a big advantage and a place where Herefords excel.

Don't forget the importance of the Hereford cow and Hereford-cross females in America's cowherd. Her disposition is the best, longevity is superb, adaptability for all areas and most important she is identifiable. There has never been a greater opportunity for Hereford genetics to have an influence in your herd and the cattle you produce. We provide a lot of information for theselection process on what you want to do in your program.

The Certified Hereford Beef program is working, growing and creating demand for white-faced cattle. Let us know if we can help you in your marketing plans.

Cattle will be ultrasounded, the bulls fertility tested and the heifers are "Bangs" vaccinated and had all of their pre-breeding shots.

Your interest in our seedstock program and support are greatly appreciated. Let us know what we can do to make your selection process easier. We are open to your questions and you can view the cattle at anytime. We look forward to seeing you sale day or your participation online, stop by for lunch and visit with other good cattlemen.

—The Stubers

PS...Join us Friday night at the Bowman Lodge and Saturday night at the Bowman Country Club for hospitality and food.

STUBER RANCH

Roger 701/523-5371 • Duane 701/523-3496

Lauren 701/523-5297

7606 149th Ave. SW • BOX 56 • Bowman, ND 58623
E-mail: dstuber@ndsupernet.com • www.stuberranch.com

Reference
Sire

GJH HARLAND 408

Jan. 20, 2004

| | |
|------|--------|
| BW | ...1.8 |
| WW | ...54 |
| YW | ...93 |
| MILK | ...30 |
| M&G | ...58 |
| SC | ...1.6 |
| CED | ...5.9 |
| CEM | ...5.8 |
| FAT | ...07 |
| REA | ...15 |
| MARB | ...46 |

HH ADVANCE 9005J
#42536808

KB L1 DOMINO 519
HH MS ADVANCE 4054D
L1 DOMINO 920501
CJH L1 DOMINETTE 759

HH ADVANCE 311C
CL 1 DOMINETTE 6008
L1 DOMINO 910282
HH MISS ADVANCE 218B
L1 DOMINO 890029
L1 DOMINETTE 850206
JA L1 DOMINO 5301
CJH L1 DOMINETTE 505

BMI \$28 / CHB \$31

Continues to be a "genetic giant" and his daughters are our herd's foundation. He's a real calving ease bull that drops BW, increases weaning weight, shows excellent growth, adds muscle with top-end marbling. His females are productive with good udders, extra milk, pigment, easy doing and a stout female look. Great calving ease numbers. Sons are long, thick, stand wide and strong topped. He is one of the breed's top marbling bulls. Sold to Stan Cline and owned with Imig, Pied Piper and Mill Creek. Leased to ABS. Semen available.

Stuber Herd Bulls...



Harland 408

Reference
Sire

CHURCHILL YANKEE

Jan. 20, 2006

| | |
|------|--------|
| BW | ...2.7 |
| WW | ...55 |
| YW | ...91 |
| MILK | ...20 |
| M&G | ...47 |
| SC | ...0.1 |
| CED | ...1.7 |
| CEM | ...5.1 |
| FAT | ...01 |
| REA | ...37 |
| MARB | ...56 |

GH NEON 17N
#42731411

GH DIFFERENCE BRTSHR 45L
GH SIR SIMBA LASS 107K
HH ADVANCE 767G 1ET
CHURCHILL LADY 0113

GH MR DIFFERENCE 73J
FA BRITISHER LADY 59F
FA BRITISHER 59G
FA BRITISHER LADY 138G
CL 1 DOMINO 500E
HH MISS ADVANCE 251B
CHURCHILL MONTANA 1ET
CHURCHILL LADY 6101

BMI \$19 / CHB \$38

One of the nation's top multi-trait leader sires of the most important economic traits. Holds the BW down, explosive growth, eye appeal with terrific REA, MARB and CHB. Offspring are long-spined, thick-topped and wide over the rump. Daughters have great eye appeal, ideal hair coats with perfect dispositions. Daughters are making superior brood cows with some of the best production in the sale. Sons are ideal for cross breeding to hold down BW, increase growth, milk and carcass. Owned with Churchill and Pied Piper. Leased to ABS. Semen available.



Yankee

Reference
Sire

UPS NAVARRO

Sept. 3, 2007

| | |
|------|--------|
| BW | ...4.1 |
| WW | ...46 |
| YW | ...93 |
| MILK | ...34 |
| M&G | ...57 |
| SC | ...1.1 |
| CED | ...0.4 |
| CEM | ...2.5 |
| FAT | ...00 |
| REA | ...71 |
| MARB | ...40 |

UPS DOMINO 5216
#42854992

UPS DOMINO 3027
UPS MISS MOM 2756
JA L1 DOMINO 2228M
UPS MISS KNIGHT 3910

CL 1 DOMINO 9126J
UPS MISS DIAMOND 1353
/S MISTER MOM 7745
UPS MS ADVANCE 7573
CL 1 DOMINO 484
JA L1 DOMINETTE 6421
BCD 721G KNIGHT 4K
UPS MISS DOMINO 7578

BMI \$21 / CHB \$32

Navarro and his offspring "cover all the bases" in the beef cattle business and offspring have been very popular in our sales. Moderate frame, ideal markings, excellent production and carcass numbers. His growth, milk, carcass and scrotal EPD's get higher with his production. Offspring are the "rancher's kind" with eye appeal, great gaining ability, super muscle shape, milk and carcass potential. His sire group is consistent in their appearance, wide based, good pigment, super hair and very sound. Daughters produce excellent performance cattle. Co-owned with Upstream. Semen available.



Navarro

Reference
Sire

CHURCHILL SENSATION 028X

Jan. 14, 2010

| | |
|------|---------|
| BW | ...-2.8 |
| WW | ...50 |
| YW | ...71 |
| MILK | ...44 |
| M&G | ...69 |
| SC | ...1.6 |
| CED | ...13.0 |
| CEM | ...5.8 |
| FAT | ...05 |
| REA | ...32 |
| MARB | ...38 |

UPS DOMINO 3027
#43092364

CL 1 DOMINO 9126J
UPS MISS DIAMOND 1353
GH RAMBO 279R
CL 1 DOMINETTE 301N

HH ADVANCE 767G
CL 1 DOMINETTE 490
SH DIAMOND 881
UPS MS MILEHIGH 8330
GH NEON 17N
HR GOLD DOMINO 251E
CL 1 DOMINO 9126J
CL 1 DOMINETTE 8184H

BMI \$29 / CHB \$30

Nation's #1 calving ease bull ...calves come 5 to 10 days early, have vigor in their nursing ability. His calves have wide and long loins, thick tops, good muscle shape to the quarter, good bone, nice hair coats and "eye appeal." Does give up some frame, but the weight is there with their extra thickness. His daughters and production may be his biggest asset. Good milk flow, level, small teats, good dispositions and calve early. He's truly the "Answer Bull" to many breeding decisions. Owned with Churchill, Upstream, Van Newkirk and leased to Genex. Semen available through Genex.



Sensation

Reference
Sire

CL 1 DOMINO 0130X

Jan. 29, 2010

| | |
|------|--------|
| BW | ...0.7 |
| WW | ...61 |
| YW | ...106 |
| MILK | ...36 |
| M&G | ...67 |
| SC | ...1.2 |
| CED | ...3.5 |
| CEM | ...0.8 |
| FAT | ...00 |
| REA | ...54 |
| MARB | ...10 |

CL 1 DOMINO 860U
#43082390

CL 1 DOMINO 637S
CL 1 DOMINETTE 5142R
CL 1 DOMINO 9126J
CL 1 DOMINETTE 974J

L1 DOMINO 03396
CL 1 DOMINETTE 118L
CL1 DOMINO 1172L
CL 1 DOMINETTE 810H
HH ADVANCE 767G
CL 1 DOMINETTE 490
HH ADVANCE 629F
CL 1 DOMINETTE 543E

BMI \$19 / CHB \$32

Low birth weight sire with good muscle shape, strong top, pigment, wide loin with some good numbers. Stout, thick with good growth, super milk and balanced carcass numbers. 0130X was the top selling bull in Cooper's 2011 sale. Dam is one of Mark's most productive cows. Daughters are in production and look very productive with superb udder shape and great disposition. Calves are small at birth with good growth and profile. His data in our herd matches that of Sensation. Owned with Churchill, Cooper and Bowen. Semen available.



0130X

Stuber Herd Bulls...



Reference Sire **HH ADVANCE 0132X** Jan. 17, 2010

| | | | |
|---------------------|--------------------------|-----------------------|----------------------|
| BW ... 1.7 | CL 1 DOMINO 7128T | HH ADVANCE 3113N | L1 DOMINO 99496 |
| WW48 | #43073963 | CL 1 DOMINETTE 0112K | HH MS ADV 875H |
| YW74 | | CL 1 DOMINO 320N | CL 1 DOMINO 5131E |
| MILK29 | HH MS ADVNC 6054S | HH MISS ADVANCE 4053P | CL 1 DOMINETTE 411 |
| M&G53 | | | CL 1 DOMINO 019K |
| SC ... 1.5 | BMI \$23 / CHB \$21 | | CL 1 DOMINETTE 996J |
| CEC ... 2.5 | | | HH ADVANCE 145L |
| CEM ... 3.5 | | | HH MISS ADVANCE 011K |
| FAT07 | | | |
| REA ... -.08 | | | |
| MARB28 | | | |

A low BW bull with good marbling, marked right, strong profile, structure and deep flank with shape and muscle in his quarter and down his back. His in-herd performance is at the top with good weaning weights, long sided, good growth and conversion with profile. Daughters are feminine with growth and muscle. His outstanding sire group have extra volume, good muscle and top performance. Owned with Holden, Hoffman, Churchill and Genex. Semen available at Genex.



Reference Sire **SR NAVARRO 450X** Mar. 30, 2010

| | | | |
|---------------------|---------------------|----------------------|-----------------------|
| BW ... 4.6 | UPS NAVARRO | UPS DOMINO 5216 | UPS DOMINO 3027 |
| WW54 | #43105064 | UPS MISS DOMINO 5875 | UPS MISS MOM 2756 |
| YW93 | | CTY BONANZA 01K | JA L1 DOMINO 2228M |
| MILK29 | SR ROSA 3125 | SR WESTY 938 | UPS MISS KNIGHT 3910 |
| M&G56 | | | LPG BONANZA 52G |
| SC ... 1.0 | BMI \$18 / CHB \$30 | | COURTNEY LASS D4173 |
| CEC ... -.01 | | | FA WESTWIND BRTSHR 6F |
| CEM ... 1.1 | | | EE MS 4920 6060 |
| FAT ... -.04 | | | |
| REA46 | | | |
| MARB12 | | | |

"Top End" home-raised breeding bull that is one of Navarro's top sons. A growth bull with good thickness, muscle shape in the quarter and correct structure, he exhibits extra rib shape, stands wide, marked right with pigment, large testicles. Dam, maybe our best cow when you consider profile, production, ideal udder and longevity, has a sound udder at age 13, raised four sons used in our herd, plus produced the 2009 top seller SR Saga 1137 to Upstream and Loehr. She is now in an ET program with Bill Breeding. 450X produces the Rancher's Kind! We plan on getting him collected. He will see heavy use this breeding season.



Reference Sire **UPS INDIGO 8648** Aug. 18, 2008

| | | | |
|---------------------|---------------------------|--------------------|--------------------------|
| BW ... 0.2 | UPS INDIGO 5216 | UPS DOMINO 3027 | CL 1 DOMINO 9126J |
| WW46 | #42950381 | UPS MISS MOM 2756 | UPS MS DIAMOND 1353 |
| YW78 | | GH NEON 17N | /S MISTER MOM 7745 |
| MILK23 | UPS MISS NEON 6529 | UPS MISS STAR 0835 | UPS MS ADVANCE 7573 |
| M&G46 | | | GH DIFFERENCE BRTSHR 45L |
| SC ... 0.9 | BMI \$19 / CHB \$19 | | GH SIR SIMBA LASS 107K |
| CEC ... 3.5 | | | MLM 300 STAR 437 |
| CEM ... 6.7 | | | UPS MISS DOMINO 5707 |
| FAT14 | | | |
| REA43 | | | |
| MARB25 | | | |

An old-fashioned looking Hereford bull with today's genetic numbers. Extremely long sided, carries a strong back and shows some muscle expression into his quarter. Marked right with good yellow, curly hair. Has a negative BW with calving ease, milk and good carcass numbers. Some really interesting sons and daughters will sell. Semen available.



Reference Sire **SR INDIGO 1181Y** Apr. 28, 2011

| | | | |
|---------------------|------------------------|---------------------|-----------------------|
| BW ... 5.4 | UPS INDIGO 8648 | UPS DOMINO 5216 | UPS DOMINO 3027 |
| WW65 | #43209974 | UPS MISS NEON 6529 | UPS MISS MOM 2756 |
| YW ... 1.29 | | BP 146D SANDMAN 46H | GH NEON 17N |
| MILK21 | SR SHANA 3107 | SR CRESCETA 5102 | UPS MISS STAR 0835 |
| M&G53 | | | BP SANDMAN 146D |
| SC ... 1.9 | BMI \$28 / CHB \$36 | | BP COMMANDER LDY 128Y |
| CEC ... -.07 | | | SR CRESCENT 451 |
| CEM ... 3.3 | | | SR SENA 120 |
| FAT04 | | | |
| REA87 | | | |
| MARB22 | | | |

One of the top selling bulls in our 2012 sale to Pied Piper where he was the top gaining bull with a long back, wide-deep quarter and a good, curly, yellow coat of hair. A clean fronted, muscular bull with shape and stands on good bone. Has real top-end sons selling with good performance, large testicles, thick backs, deep-wide quarters with frame and muscle. Dam a good uddered female at age 13 with a good record. She is thick, deep sided, full of muscle and made right. Semen available.



Reference Sire **BRC FACTOR Y19** Mar. 12, 2011

| | | | |
|---------------------|----------------------------|-------------------------|-----------------------|
| BW ... 5.1 | F 157K RIBSTONE 763 | K 64H RIBSTONE LAD 157K | STRD 16E RIBSTONE 64H |
| WW63 | #43192554 | F 9126 DOMINETTE 417 | K 61Z SUPER LADY 41G |
| YW ... 1.03 | | BP KAHLUA 1K | CL 1 DOMINO 9126J |
| MILK22 | BRC MISS KAHLUA 205 | BRC MS COMMANDER 907 | F EXTRA LASS 273 |
| M&G53 | | | LCI KAHLUA 82H |
| SC ... 1.2 | BMI \$21 / CHB \$29 | | BP BEN LADY 64H |
| CEC ... 2.6 | | | LCI SO ALTA LAD 52D |
| CEM ... 1.5 | | | BRC 15X MS DOM A43 |
| FAT04 | | | |
| REA11 | | | |
| MARB16 | | | |

Top selling bull in the fall 2013 Brillhart sale. "Deluxe Cattleman's" bull that is long and thick down his top, exhibits muscled quarter, stands on strong bone, super-sized testicles and correct in his structure. His daughters are outstanding and making productive cows. Sons show the shape and structure that all progressive cattleman like. Factor has good performance, moderate BW and balanced carcass numbers. Backed by productive cow. Semen available.

Reference Site

CL 1 DOMINO 1161Y

Feb. 3, 2011

| | |
|------|--------|
| BW | ...2.8 |
| WW | ...63 |
| YW | ...101 |
| MILK | ...32 |
| M&G | ...64 |
| SC | ...1.4 |
| CED | ...2.6 |
| CEM | ...3.9 |
| FAT | ...02 |
| REA | ...55 |
| MARB | ...17 |

CL 1 DOMINO 732T

#43189589

CL 1 DOMINETTE 4126P

BMI \$19 / CHB \$25

A genuine low BW bull with a good muscle pattern, some rib and correct. Good backed, stands on some base, marked right, moderate frame with volume and comes from a cow family that lowers BW. Calves are correct in their make-up, show muscle shape down the back and into the quarter. Daughters are now in production and show good udders and a lot of eye appeal. Some real top-end sons and daughter sell. *Owned with Cooper. Semen available.*

| |
|---------------------|
| CL 1 DOMINO 590R |
| CL 1 DOMINETTE 507R |
| CL1 DOMINO 1116L |
| CL1 DOMINETTE 193L |

| |
|----------------------|
| CL 1 DOMINO 246M |
| CL 1 DOMINETTE 258M |
| HH ADVANCE 3113N |
| CL1 DOMINETTE 1120L |
| CL 1 DOMINO 888H |
| CL 1 DOMINETTE 7146G |
| HH ADVANCE 767G |
| CL 1 DOMINETTE 318 |

Stuber Herd Bulls...



Reference Site

NJW 73S W18 HOMETOWN 10Y ET

Feb. 3, 2011

| | |
|------|--------|
| BW | ...2.2 |
| WW | ...62 |
| YW | ...105 |
| MILK | ...32 |
| M&G | ...63 |
| SC | ...1.4 |
| CED | ...2.7 |
| CEM | ...1.0 |
| FAT | ...05 |
| REA | ...46 |
| MARB | ...54 |

SHF WONDER M326 W18

#P43214853

NJW P606 72N DAYDREAM 73S

BMI \$25 / CHB \$38

Used A.I. from the Ned and Jan Ward program in Wyoming. Great show bull with the rancher look with his volume, thickness, deep sided and massive look. His carcass numbers superb along with moderate BW, growth and milk. First daughters have calved with neat udder and a brood cow look.

| |
|------------------------|
| KCF BENNETT 3008 M326 |
| SHF GOVERNESS 236G L37 |
| PW VICTOR BOOMER P606 |
| NJW 94J DEW 72N |

| |
|------------------------|
| RRH MR FELT 3008 |
| KCF MISS 459 F284 |
| MM RSM STCKMSTR 512 |
| CSHF INTRSTATE D03 G80 |
| REMITALL BOOMER 46B |
| PW VICTORIA 964 8114 |
| RU 20X BOULDER 57G |
| NJW D32 CLAIRE 94J |



Reference Site

SR STEP UP 2201 Z ET

July 30, 2012

| | |
|------|--------|
| BW | ...3.6 |
| WW | ...50 |
| YW | ...86 |
| MILK | ...30 |
| M&G | ...55 |
| SC | ...1.0 |
| CED | ...2.0 |
| CEM | ...4.9 |
| FAT | ...01 |
| REA | ...80 |
| MARB | ...03 |

UPS INDIGO 5216

#P43361258

NJW BW LADYSPORT DEW 78P ET

BMI \$19 / CHB \$25

Polled. This bull has it all and is out of 78P, one of the breed's "Power Cows!" Terrific at birth with his balance, thickness, correct, wide based and muscle pattern. Has a growth pattern similar to "Right On." He exhibits good profile with super rib depth. Athletic, easy to look at, shows pigment and good hair character. *Semen available.*

| |
|-----------------------|
| UPS DOMINO 3027 |
| UPS MISS MOM 2756 |
| RU 20X BOULDER 57G |
| SDL VLY LADYSPORT 120 |

| |
|----------------------|
| CL 1 DOMINO 9126J |
| UPS MS DIAMOND 1353 |
| /S MISTER MOM 7745 |
| UPS MS ADVANCE 7573 |
| REMITALL KEYNOTE 20X |
| RU 10A DEW 57D |
| RU DUSTER 60D |
| GK LADYSPORT 131A |



Reference Site

SR RIGHT ON 2203 Z ET

Aug. 12, 2012

| | |
|------|--------|
| BW | ...1.0 |
| WW | ...52 |
| YW | ...87 |
| MILK | ...35 |
| M&G | ...61 |
| SC | ...1.1 |
| CED | ...5.8 |
| CEM | ...4.5 |
| FAT | ...00 |
| REA | ...68 |
| MARB | ...15 |

CHURCHILL SENSATION 028X

#P43361265

NJW BW LADYSPORT DEW 78P ET

BMI \$22 / CHB \$30

Smooth Polled. Outstanding son of Sensation out of 78P, one of the breed's top cows. Top-end performance, super long, thick and deep quarter, great eye appeal, stands and walks wide, free moving, good shape down the top, low BW. Actual WW of 919 / YW 1609, weighed 2480 lbs. at 30 months. Note his strong EPD's. Truly one of Sensation's top sons! We have six brothers from six different sires and consider all of them Herd Bull caliber. *Owned with Rankin. Semen available.*

| |
|-------------------------|
| UPS DOMINO 3027 |
| CHURCHILL LADY 7202T ET |
| RU 20X BOULDER 57G |
| SDL VLY LADYSPORT 120 |

| |
|-----------------------|
| CL 1 DOMINO 9126J |
| UPS MISS DIAMOND 1353 |
| GH RAMBO 279R |
| CL 1 DOMINETTE 301N |
| REMITALL KEYNOTE 20X |
| RU 10A DEW 57D |
| RU DUSTER 60D |
| GK LADYSPORT 131A |



Reference Site

SR BAKKEN 62Z

Mar. 12, 2012

| | |
|------|--------|
| BW | ...4.7 |
| WW | ...72 |
| YW | ...129 |
| MILK | ...36 |
| M&G | ...72 |
| SC | ...2.1 |
| CED | ...1.2 |
| CEM | ...4.5 |
| FAT | ...01 |
| REA | ...73 |
| MARB | ...27 |

UPS NAVARRO

#43310651

SR SCRIPTIA 926W

BMI \$29 / CHB \$41

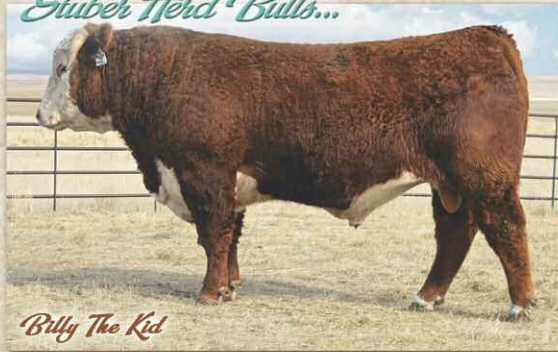
Top selling bull in 2012 to Churchill and Van Newkirk. Big hipped, wide based, deep sided, marked right, bone, wide based and real gentle. Was the high gaining bull at right at 4.5 lbs. per day. Milk and big scrotal. His Script momma is a good one! Check his carcass numbers. Take a look at his EPD profile. His offering have explosive growth, good muscle shape, great performance numbers and give you the look of productive cattle. *Semen available.*

| |
|----------------------|
| UPS DOMINO 5216 |
| UPS MISS DOMINO 5875 |
| SR SCRIPT 187 |
| SR SABRINA 284 |

| |
|----------------------|
| UPS DOMINO 3027 |
| UPS MISS MOM 2756 |
| JA L1 DOMINO 2228M |
| UPS MISS KNIGHT 3910 |
| CJH HARLAND 408 |
| SR RAPTIA 363 |
| OXH SABRE 7299 |
| SR FACETA 064 |



Suber Herd Bulls...



Billy The Kid

Reference Sire

BCC BILLY THE KID 330A

Feb. 3, 2011

| | | |
|----------------------|--|------------------------|
| BW ... 4.8 | SHF WONDER M326 W18 | KCF BENNETT 3008 M326 |
| WW61 | NJW 73S W18 HOMETOWN 10Y ET | SHF GOVERNESS 236G L37 |
| YW ... 1.11 | [NJW P606 72N DAYDREAM 73S | PW VICTOR BOOMER P606 |
| MILK30 | #43418825 | NJW 94J DEW 72N |
| M&G60 | TFR HIGH COTTON 328 | LAGRAND RELOAD 80P |
| SC ... 1.2 | BCC SWEET CAROLINE 071X ET | CRR D03 COTTON 356 |
| CEW ... -0.3 | [BCC KAY 415 | HH ADVANCE 026K |
| CEM ... 0.4 | BMI \$20 / CHB \$34 | DS MS NORWEST 8634 |
| FAT ... 0.02 | The new "KID" on the block, "BILLY" that is. One of the very top bulls in Denver 2014. Huge hip with a deep quarter. Super long and thick down his top line. Good balance in his make up with rib. Short marked with eye pigment. Good milk. Strong performance, large scrotal, sheath up, good bone and a large REA. Certainly the "Rancher's Kind" with look, growth, milk, moderate BW and carcass. Check out his EPD profile. His first offspring look good. His daughters are fabulous. Owned with Baumgarten and Loehr. Semen available. | |
| REA ... 0.59 | | |
| MARB ... 0.27 | | |



Caption 43A

Reference Sire

R 2Y CAPTION 43A

Mar. 18, 2013

| | | |
|----------------------|---|---------------------------|
| BW ... 3.6 | SNS 838S MARK LAD 34W | AD 33H LAD 838S |
| WW ... 0.46 | YV 34W MAJOR MARK LAD 2Y | SNS 232P PYRAMID GAL 1T |
| YW ... 0.70 | [YV 46R MAJOR MAMA 950W | MW MAJOR 46R |
| MILK ... 0.23 | #43398502 | SNS 67F SLVR SKY LDY 107H |
| M&G ... 0.46 | R 157K NORTH STAR 54U | K 64H RIBSTONE LAD 157K |
| SC ... 0.9 | R STARLETTE 037 | R STARLETTE 105 |
| CEW ... 2.0 | [R STARLETTE 803 | CJH L1 DOMINO 0041 |
| CEM ... 1.1 | BMI \$18 / CHB \$20 | R STARLETTE 263 |
| FAT ... 0.05 | Top selling bull in Ridder's 2014 sale. Correct, highly pigmented, clean made, thick. Curly hair coat, good bone, presents a good profile. From a dam with excellent progeny numbers. Carcass ratios are strong. Offspring are clean made with good muscle shape and give a good profile. Dam has strong carcass numbers on herself and progeny. Semen available. | |
| REA ... 0.08 | | |
| MARB ... 0.18 | | |



Lad 8A

Reference Sire

SNS 40W WESTERN LAD 8A

Feb. 8, 2013

| | | |
|-----------------------|--|----------------------------|
| BW ... 4.9 | PAHL 90P SPADE 3S | FA POWER BRTRSHR 90P |
| WW ... 0.49 | PAHL 3S WESTPOINT 40W | PAHL 179K PATIENCE 147P |
| YW ... 0.78 | [PAHL 179K PATIENCE 147P | TH 118G SLVR BRIT LAD 179K |
| MILK ... 0.23 | #43527756 | CHATAWAY 31R MS 93B 26F |
| M&G ... 0.48 | AD 33H LAD 12R | F-R 8020 LAD 33H |
| SC ... 1.0 | SNS 12R MARK DOMINO LASS 16X | AD 83D VOLT LASS 9J |
| CEW ... 0.6 | [SNS 232P DAND PYRAMID LASS 11T | PYRAMID 159M ROCK 232P |
| CEM ... -0.3 | BMI \$18 / CHB \$22 | SNS 139L DANDY SKY LS 45R |
| FAT ... -0.03 | Outcross genetics purchased in Calgary with Van Newkirk from the Nixdorf family. Extra bone, long sided, good growth look with good hair and eye appeal. This guy has some size to him, presents a long, deep body and has several good offspring in the sale. | |
| REA ... 0.36 | | |
| MARB ... -0.07 | | |



Saga 1302Z

Reference Sire

SR SAGA 1302Z

April 28, 2012

| | | |
|----------------------|--|--------------------------|
| BW ... 3.5 | HH ADVANCE 9005J | KB L1 DOMINO 519 |
| WW ... 0.51 | CJH HARLAND 408 | HH MS ADVANCE 4054D |
| YW ... 0.93 | [CJH L1 DOMINETTE 0064 | L1 DOMINO 920501 |
| MILK ... 0.26 | #43310432 | CJH L1 DOMINETTE 759 |
| M&G ... 0.52 | CTY BONANZA 01K | LPG BONANZA 52G |
| SC ... 1.5 | SR ROSA 3125 | COURTNEY LASS D4173 |
| CEW ... 3.3 | [SR WESTY 938 | FA WESTWIND BRITISHER 6F |
| CEM ... 3.2 | BMI \$24 / CHB \$27 | EE MS 4920 6060 |
| FAT ... 0.00 | Used on heifers the last two years with success. Good balance. Same dam as herd sire 450X. 1302 has developed into a bull with good size, ample muscle and correct made. Calves come moderate with no calving problem and grow fast. Maternal brother sells as Lot 190. Dam is a power cow with a good udder and longevity and is still in production at age 13. She is in an ET program at B&C Cattle Company in Texas. | |
| REA ... 0.05 | | |
| MARB ... 0.14 | | |



Gus 942

Reference Sire

SR SUSTAIN 942Z

March 31, 2012

| | | |
|----------------------|--|-----------------------|
| BW ... 1.0 | UPS DOMINO 3027 | CL 1 DOMINO 9126J |
| WW ... 0.52 | CHURCHILL SENSATION 028X | UPS MISS DIAMOND 1353 |
| YW ... 0.83 | [CHURCHILL LADY 7202T | GH RAMBO 279R |
| MILK ... 0.37 | #43311137 | CL 1 DOMINETTE 301N |
| M&G ... 0.63 | SR SAGA 1447 | CJH HARLAND 408 |
| SC ... 0.9 | SR MINA 077X | SR ROSA 3101 |
| CEW ... 7.0 | [SR MAXIE 837 | KB L1 DOMINO 655 |
| CEM ... 4.1 | BMI \$21 / CHB \$33 | SR ANDA 558 |
| FAT ... -0.05 | Owned with Gustafson and out of one of our best cows. Correct made bull with style and balance. Holds the birth weight down with grow, milk and carcass. Offspring in sale have eye-appeal and are correct made. | |
| REA ... 0.53 | | |
| MARB ... 0.20 | | |

Reference Sire

C STOCKMAN 2059

January 6, 2012

| | |
|------|-------|
| BW | 3.6 |
| WW | 48 |
| YW | 69 |
| MILK | 41 |
| M&G | 65 |
| SC | 0.5 |
| CED | 1.0 |
| CEM | 3.7 |
| FAT | -0.03 |
| REA | 50 |
| MARB | 11 |

NJW 98S R117 RIBEYE 88X

#43270627

SHF RIB EYE M326 R117

NJW 9126J DEW DOMINO 98S

C-S PURE GOLD 98170

HH MISS ADVANCE 104A

KCF BENNETT 3008 M326

HVH MISS HUDSON 83K 8M

CL 1 DOMINO 9126J

NJW 57G 74G DEW 5M

C GOLD RUSH

C MS DOM 93218

HH ADVANCE 9012Y

HH MISS ADVANCE 995Y

BMI \$13 / CHB \$26

Outcross genetics for us. You have to appreciate his length of body, extreme thickness, ideal muscle shape, bone and stands on good feet and legs. Very active pasture bull that gets the job done. First calves have arrived and they look outstanding with a very consistent profile. You have to appreciate his fleshing ability, his "look" and disposition. Has some outstanding folks in his background. Owned with Ned and Jan Ward, Colyer Hereford and B&C Cattle. Semen available.

New Studer Herd Bulls...



Reference Sire

UU TURNING POINT

February 23, 2014

| | |
|------|-------|
| BW | 3.0 |
| WW | 59 |
| YW | 105 |
| MILK | 36 |
| M&G | 65 |
| SC | 1.2 |
| CED | 1.7 |
| CEM | 0.1 |
| FAT | -0.01 |
| REA | 66 |
| MARB | 08 |

UU ADVANCE 0014

#43467860

HH ADVANCE 7146T

UU MS DAKOTA 8045

SR RENDITION 58

UU MS 4149 7330

CL 1 DOMINO 320N

HH MISS ADVANCE 5026R

UU DAKOTA 3003

UU JUNIOR 5168

CHURCHILL YANKEE

SR ROSATA 575

H5 9126 DOMINO 4149

UU MS NEFF 4318

BMI \$18 / CHB \$32

He is a "stud." Massive build, correct structure, full pigment with a deep rib and flank. Presents a "cowman's look" with his long body and attractive profile. Has good size, strong back, large testicles, ideal markings, good hair coat and the easy doing look. His genetic package is strong and his mother has a good production record. Weighs right at 2300 pounds at two years of age. First 10 calves out of heifers calved unassisted in the mid-80 pound average. Owned with Knippling and Van Newkirk. Semen available.



Reference Sire

KCF BENNETT INFLUENCE 280

Feb. 20, 2012

| | |
|------|-------|
| BW | 4.7 |
| WW | 73 |
| YW | 131 |
| MILK | 24 |
| M&G | 61 |
| SC | 1.9 |
| CED | 2.1 |
| CEM | 4.0 |
| FAT | -0.05 |
| REA | 55 |
| MARB | 84 |

KCF BENNETT REVOLUTION X51

#P43282587

MSU TCF REVOLUTION 4R

KCF MISS PROFICIENT U201

KCF BENNETT 3008 M326

KCF MISS 774 N45

FELTONS LEGEND 242

MSU TCF RACHAEL ET 54N

EFBEEF SCHU-LAR PROFICIENT N093

KCF MISS 774 L82

RRH MR FELT 3008

KCF MISS 459 F284

FELTONS DOMINO 774

KCF MISS H142 L72

BMI \$36 / CHB \$51

Used A.I. and in our Embryo program. Influence has growth to go along with his outstanding carcass numbers. Offspring have frame and show good performance. One of the top heifers selling is by Influence. Owned by Knoll Crest Farm and Express Ranches.



A beautiful vista that we are proud to call home!

AMERICAN HEREFORD ASSN. SIRE EVALUATION RANKING
2014 - 2015 Calves

| | BW | WW | YW | MILK | M&G | SC | CED | CEM | BF | REA | MARB | CHB |
|------------------|------|-----|-----|------|-----|------|-------|------|-------|------|------|-------|
| TOP VALUE | -8.0 | 91 | 149 | 46 | 78 | 2.7 | 12.5 | 8.9 | -.093 | 1.48 | 1.00 | \$47 |
| TOP 25% | 2.1 | 55 | 88 | 25 | 52 | 1.0 | 2.8 | 2.5 | -.010 | .45 | .15 | \$27 |
| TOP 50% | 3.3 | 49 | 80 | 22 | 46 | 0.8 | 1.2 | 1.4 | .003 | .31 | .08 | \$23 |
| TOP 75% | 4.4 | 44 | 70 | 17 | 40 | 0.6 | -0.4 | 0.3 | .017 | .18 | .01 | \$20 |
| LOW VALUE | 13.4 | -23 | -35 | -10 | -22 | -1.1 | -17.4 | -6.8 | .166 | -.76 | -.52 | \$-10 |



Stuber Sale Bulls...



0
 ■ ■ ■ ■ ■
 BW1.9
 WW56
 YW96
 MILK28
 CED5.4
 CEM4.8
 REA24
 MARB62
 CHB ...\$36

SR INFLUENCE 05G
 ■ FEB. 28, 2015 • #P43614016 • BE 05

KCF BENNETT REVOLUTION X51
 KCF BENNETT INFLUENCE Z80
 KCF MISS M326 R52

CHURCHILL SENSATION 028X
 SR SENITA 279Z
 SR HARLET 047X

MSU TCF REVOLUTION 4R
 KCF MISS PROFICIENT U201
 KCF BENNETT 3008 M326
 KCF MISS 774 N45
 UPS DOMINO 3027
 CHURCHILL LADY 7202T
 CJH HARLAND 408
 SR SHANA 3117

BW 82 / ADJ. 205 602 ■ POLLED with good frame and growth potential. Stands correct, free moving, marked right with on red eye and scrotum. BW down, growth up with top-end marbling and good REA. Shows a wide back and small scurs.



1
 ■ ■ ■ ■ ■
 BW0.7
 WW59
 YW91
 MILK37
 CED8.2
 CEM4.8
 REA40
 MARB21
 CHB ...\$33

SR SUSTAIN 15C
 ■ MAR. 4, 2015 • #43613982 • BE 15

UPS DOMINO 3027
 CHURCHILL SENSATION 028X
 CHURCHILL LADY 7202T

CHURCHILL AUTHORITY 027X
 SR AUTRY 217Z
 SR DOODLES 832

CL 1 DOMINO 9126J
 UPS MISS DIAMOND 1353
 GH RAMBO 279R
 CL 1 DOMINETTE 301N
 HH ADVANCE 7034T
 CHURCHILL LADY 774T
 CHURCHILL YANKEE
 SR SABRINA 3100

BW 81 / ADJ. 205 766 ■ Strong topped, wide behind, bases out and red to the toes. Presents a deep side with full eye and scrotal pigment. His numbers are some of the best offered with and 81 pound BW. Dam represents the program ...103 YW, good production, milk and REA. *Will keep a semen interest.*



3
 ■ ■ ■ ■ ■
 BW2.3
 WW57
 YW86
 MILK29
 CED2.5
 CEM3.1
 REA48
 MARB21
 CHB ...\$32

SR WS SUSTAIN II 35C
 ■ MAR. 5, 2015 • #43613992 • BE 35

CHURCHILL SENSATION 028X
 SR SUSTAIN 942Z
 SR MINA 077X

HH ADVANCE 8203U
 WS TESSIE 244Z
 WS CAPITA 736

UPS DOMINO 3027
 CHURCHILL LADY 7202T
 SR SAGA 1447
 SR MAXIE 837
 HH ADVANCE 5161R
 HH MISS ADVANCE 752G
 IHM 821 DOMINO 1598
 WS GOLDIE 700

BW 79 / ADJ. 205 730 ■ Smaller framed, trim made, short marked, free moving bull that stands wide behind. Full eye and scrotal pigment and super large testicles. Great balance to his numbers. Dam has the start of good production numbers. Should be ideal heifer bull.



4
 ■ ■ ■ ■ ■
 BW1.7
 WW52
 YW78
 MILK33
 CED6.6
 CEM4.1
 REA27
 MARB16
 CHB ...\$27

SR SUSTAIN 45C
 ■ MAR. 6, 2015 • #43614028 • BE 45

UPS DOMINO 3027
 CHURCHILL SENSATION 028X
 CHURCHILL LADY 7202T

CTY BRITISHER 7721T
 SR BRITANY 2109Z
 SR SANDMAN 4114

CL 1 DOMINO 9126J
 UPS MISS DIAMOND 1353
 GH RAMBO 279R
 CL 1 DOMINETTE 301N
 CTY BRITISHER 107L
 COURTNEY LASS 45J R524
 BP 146D SANDMAN 46H
 SR GOLDIE 748

BW 82 / ADJ. 205 690 ■ Deep, thick and full of rib. Carries good width high, body length, bone with a wide loin and deep quarter. Fully pigmented and short marked. EPD's will work for a lot of breeding programs.

6
 ■ ■ ■ ■ ■
 BW0.6
 WW54
 YW78
 MILK36
 CED6.3
 CEM4.3
 REA38
 MARB27
 CHB ...\$31

SR SUSTAIN 65C
 ■ MAR. 6, 2015 • #43613984 • BE 65

UPS DOMINO 3027
 CHURCHILL SENSATION 028X
 CHURCHILL LADY 7202T

HH ADVANCE 8203U
 SR TESSIE 221Z
 SR RAPTIA 602

CL 1 DOMINO 9126J
 UPS MISS DIAMOND 1353
 GH RAMBO 279R
 CL 1 DOMINETTE 301N
 HH ADVANCE 5161R
 HH MISS ADVANCE 752G
 PDHR 15E STANDARD LAD 24H
 SR ROSA 270

BW 76 / ADJ. 205 775 ■ A good one with his wide back, correct structure, great muscle shape and strong loin and quarter. Sheath is tight, great curly hair, full pigment with large testicles. Shows a big weaning weight and strong carcass numbers. Some good performance folks in his background. *Will keep a semen interest.*

7

SR DISPATCH 75C

■ MAR. 7, 2015 ■ #43613976 ■ BE 75

■ ■ ■ ■ ■
 BW3.6
 WW68
 YW103
 MILK35
 CED3.2
 CEM2.0
 REA58
 MARB25
 CHB\$35

NJW 73S W18 HOMETOWN 10Y | SHF WONDER M326 W18
BCC BILLY THE KID 330A | NJW P606 72N DAYDREAM 73S
 | BCC SWEET CAROLINE 071X | TFR HIGH COTTON 328
 | | BCC KAY 415
 CHURCHILL SENSATION 028X | UPS DOMINO 3027
SR SENITA 208Z | CHURCHILL LADY 7202T
 | SR DOODLES 969W | CHURCHILL YANKEE
 | SR FACETA 1116

BW 90 / ADJ. 205 844 ■ Super performance prospect with carcass. Red necked, extra-long with a strong loin and one goggle eye. Shows growth, muscled quarter and real wide down the top. Large testicles. Dam is a carcass female with good growth numbers. Big 205 day weight. Sensation females get the job done.



8

SR DISPATCH 85C

■ MAR. 7, 2015 ■ #43614030 ■ BE 85

■ ■ ■ ■ ■
 BW3.3
 WW56
 YW92
 MILK24
 CED1.1
 CEM2.6
 REA48
 MARB29
 CHB\$33

NJW 73S W18 HOMETOWN 10Y | SHF WONDER M326 W18
BCC BILLY THE KID 330A | NJW P606 72N DAYDREAM 73S
 | BCC SWEET CAROLINE 071X | TFR HIGH COTTON 328
 | | BCC KAY 415
 CHURCHILL YANKEE | GH NEON 17N
SR DOODLES 2115Z | CHURCHILL LADY 202
 | SR VANCIA 382 | CHURCHILL ADVANCE 109
 | | SR SABRINA 184

BW 87 / ADJ. 205 648 ■ Good, even numbers with a long side, real yellow and short marked. Good loin and long hipped, shows deep quarter. Good eye and scrotal pigment. Pedigree stacked with above average REA and MARB EPD's.



9

SR SUSTAIN 95C

■ MAR. 8, 2015 ■ #43613986 ■ BE 95

■ ■ ■ ■ ■
 BW0.2
 WW52
 YW78
 MILK36
 CED8.4
 CEM4.9
 REA43
 MARB43
 CHB\$33

UPS DOMINO 3027 | CL 1 DOMINO 9126J
CHURCHILL SENSATION 028X | UPS MISS DIAMOND 1353
 | CHURCHILL LADY 7202T | GH RAMBO 279R
 | | CL 1 DOMINETTE 301N
 UPS NAVARRO | UPS DOMINO 5216
SR NAVITA 227Z | UPS MISS DOMINO 5875
 | SR DOODLES 818 | CHURCHILL YANKEE
 | | SR WESTY 060

BW 74 / ADJ. 205 684 ■ Powerhouse with some great data. He is correct, good marked, pigmented and exhibits balance to his width and depth. Out at the pins, sheath tight, large scrotum with curly hair and made right. Top gainer with a good WW and top carcass. Dam's numbers are super with strong carcass and a 93 BW ratio on her calves. *Will keep a semen interest and maybe some possession.*



10

SR DS MATCH 105C

■ MAR. 11, 2015 ■ #43614019 ■ BE 105

■ ■ ■ ■ ■
 BW5.1
 WW71
 YW117
 MILK34
 CED1.5
 CEM3.2
 REA43
 MARB06
 CHB\$33

CL 1 DOMINO 732T | CL 1 DOMINO 590R
CL 1 DOMINO 1161Y | CL 1 DOMINETTE 507R
 | CL 1 DOMINETTE 4126P | CL 1 DOMINO 1116L
 | | CL 1 DOMINETTE 193L
 LBH 39T STERLING 53W | CC 77J STERLING 39T
DS SHERRY 282Z | LBH 157K MS RIBSTONE 209T
 | DS NAVITA 054X | UPS NAVARRO
 | | DLS HARLET 676

BW 92 / ADJ. 205 790 ■ Big numbers on a great looking bull. Good headed, deep and thick with balance, wide based with a strong quarter. Full pigment with large testicles. Some really good numbers to work with. Has some frame and should have a good YW. Dam has some of the best growth and carcass numbers in our herd. Big WW.



11

SR HOMETOWN 115C

■ MAR. 12, 2015 ■ #43613969 ■ BE 115

■ ■ ■ ■ ■
 BW2.0
 WW53
 YW72
 MILK28
 CED2.3
 CEM1.8
 REA40
 MARB36
 CHB\$29

SHF WONDER M326 W18 | KCF BENNETT 3008 M326
NJW 73S W18 HOMETOWN 10Y | SHF GOVERNESS 236G L37
 | NJW P606 72N DAYDREAM 73S | PW VICTOR BOOMER P606
 | | NJW 94J DEW 72N
 E BRAXTON 719 | ANCHOR BRAXTON
E T719 LADY BRAXTON Y73 | ANCHOR 17R
 | E S604 LADY BOOMER W73 | E P606 BOOMER S604
 | | B STAR DOMINO 001

BW 85 / ADJ. 205 639 ■ **POLLED** with good pigment, mossy hair, volume to his mid-rib, solid marked and easy to look at. Some great numbers to add to your program. Pedigree reads different from a lot of the breed. Carcass numbers are superb. Dam has a great udder and is a real easy female to look at.



12

■ ■ ■ ■ ■
 BW3.7
 WW63
 YW112
 MILK28
 CED1.4
 CEM3.5
 REA65
 MARB48
 CHB\$40

SR GK INFLUENCE 125G

■ MAR. 12, 2015 • #P43613973 • BE 125

KCF BENNETT REVOLUTION X51 | MSU TCF REVOLUTION 4R
 KCF BENNETT INFLUENCE Z80 | KCF MISS PROFICIENT U201
 | KCF MISS M326 R52 | KCF BENNETT 3008 M326
 | UPS NAVARRO | KCF MISS 774 N45
 GK NAVITA 202Z | UPS DOMINO 5216
 | GK CADDIE 8122 | UPS MISS DOMINO 5875
 | | KB L1 DOMINO 6119S
 | | GK DELIGHT 612

BW 93 / ADJ. 205 748 ■ POLLED. Taller bull with frame, growth and presents a good side look. Wide back with a good turn over the rib and the loin area. Light curly hair with some pigment. Scurs. Take a long and hard look at his carcass and growth numbers. Check his big weaning weight.

13

■ ■ ■ ■ ■
 BW5.2
 WW67
 YW113
 MILK21
 CED-0.8
 CEM2.2
 REA58
 MARB41
 CHB\$40

SR INFLUENCE 135G

■ MAR. 13, 2015 • #P43613997 • BE 135

KCF BENNETT REVOLUTION X51 | MSU TCF REVOLUTION 4R
 KCF BENNETT INFLUENCE Z80 | KCF MISS PROFICIENT U201
 | KCF MISS M326 R52 | KCF BENNETT 3008 M326
 | MH TRS KEYNOTE 966 | KCF MISS 774 N45
 SR KEYNA 254Z | REMITALL KEYNOTE 20X
 | SR VALORIE 768 | MH MISS ANTON 170
 | | BB 1065 DOMINO 4102
 | | SR ROSA 371

BW 93 / ADJ. 205 635 ■ POLLED. Clean made bull with some good growth potential. Sheath is up, exhibits a lot of body, smooth fronted with some eye and scrotal pigment. One of the better gainers with a good quarter.

14

■ ■ ■ ■ ■
 BW0.5
 WW46
 YW72
 MILK34
 CED8.7
 CEM4.9
 REA17
 MARB25
 CHB\$25

SR SUSTAIN 145C

■ MAR. 13, 2015 • #43614031 • BE 145

UPS DOMINO 3027 | CL 1 DOMINO 9126J
 CHURCHILL SENSATION 028X | UPS MISS DIAMOND 1353
 | CHURCHILL LADY 7202T | GH RAMBO 279R
 | | CL 1 DOMINETTE 301N
 | | HH ADVANCE 9005J
 SR HARLET 218Z | CJH HARLAND 408 | CJH L1 DOMINETTE 0064
 | SR MONITA 622 | MH DAKOTA 3146
 | | SR MANDY 0101

BW 75 / ADJ. 205 626 ■ Correct made, light colored with good bone and a big tear drop on his nose. Excellent quarter and a strong top with full pigment and extra large testicles. Stands wide and is backed up by some good cow folks on the bottom side. Low BW with good gain numbers.

15

■ ■ ■ ■ ■
 BW3.5
 WW66
 YW104
 MILK28
 CED4.7
 CEM3.5
 REA31
 MARB20
 CHB\$32

SR FACTOR 155C

■ MAR. 13, 2015 • #43618367 • BE 155

F 157K RIBSTONE 763 | K 64H RIBSTONE LAD 157K
 BRC FACTOR Y19 | F 9126 DOMINETTE 417
 | BRC MISS KAHLUA 205 | BP KAHLUA 1K
 | | BRC MS COMMANDER 907
 UPS DOMINO 3027 | CL 1 DOMINO 9126J
 SR SURGETTE 281Z | UPS MISS DIAMOND 1353
 | SR HARLET 0143X | CJH HARLAND 408
 | | SR SHANA 2115

BW 89 / ADJ. 205 804 ■ Full pigment with a goggle eye, good hair, clean sheath, good bone, carries head up on his shoulder. One of the better bulls selling with his big WW and gain record. EPD's across the board look good. He's wide end to end and square over the rump. Dam a low BW female with big milk numbers and good growth. *Will keep a semen interest.*

16

■ ■ ■ ■ ■
 BW0.7
 WW46
 YW78
 MILK23
 CED4.2
 CEM4.4
 REA19
 MARB52
 CHB\$31

SR RENDITION 165C

■ MAR. 14, 2015 • #43613540 • BE 165

GH NEON 17N | GH DIFFERENCE BRSHR 45L
 CHURCHILL YANKEE | GH SIR SIMBA LASS 107K
 | CHURCHILL LADY 202 | HH ADVANCE 767G
 | | CHURCHILL LADY 0113
 | | HH ADVANCE 9005J
 CJH HARLAND 408 | CJH L1 DOMINETTE 0064
 SR HARLET 006X | SR ULIA 720 | UPS ODYSSEY
 | | JV PEARL 613

BW 76 / ADJ. 205 599 ■ Red-necked with volume, rib and is easy to look at. Has some pigment, red to the toes and good haired. Smooth fronted and a full rib look Dam holds birth weight down with growth and big MARB numbers.

17

SR SCOPE 175G

■ MAR. 19, 2015 ■ #43614008 ■ BE 175

■ ■ ■ ■ ■
 BW3.4
 WW54
 YW94
 MILK32
 CED1.3
 CEM1.2
 REA49
 MARB13
 CHB\$30

CL 1 DOMINO 860U
CL 1 DOMINO 0130X
 |CL 1 DOMINETTE 440P
 UPS NAVARRO
SR NAVITA 266Z
 |SR LINETA 6147
 CL 1 DOMINO 637S
 CL 1 DOMINETTE 5142R
 CL 1 DOMINO 9126J
 CL 1 DOMINETTE 974J
 UPS DOMINO 5216
 UPS MISS DOMINO 5875
 SR LINER 1143
 SR ROBYN 129

BW 89 / ADJ. 205 646 ■ Has the grow look with a lot of body, lower quarter and muscle. Full pigment and short marked with a lot of natural muscle expression. His numbers show good balance. Some real productive cows in the lower part of his pedigree.



18

SR INDIGO 185G

■ MAR. 20, 2015 ■ #43613938 ■ BE 185

■ ■ ■ ■ ■
 BW5.2
 WW57
 YW93
 MILK22
 CED-2.8
 CEM2.0
 REA26
 MARB30
 CHB\$26

UPS DOMINO 5216
UPS INDIGO 8648
 |UPS MISS NEON 6529
 HH ADVANCE 8203U
SR TESSIE 154Y
 |SR YAMPETTE 531
 UPS DOMINO 3027
 UPS MISS MOM 2756
 GH NEON 17N
 UPS MISS STAR 0835
 HH ADVANCE 5161R
 HH MISS ADVANCE 752G
 DH YAMPA DOMINATOR
 BB STANDARD LADY 7211

BW 98 / ADJ. 205 670 ■ Long, yellow, correct with good hair and full pigment. Good side view, out at the pins and smooth made. Dam is a high MARB cow with growth numbers.



19

SR RIGHT ON 195G

■ MAR. 20, 2015 ■ #43614025 ■ BE 195

■ ■ ■ ■ ■
 BW2.6
 WW56
 YW91
 MILK31
 CED3.7
 CEM2.3
 REA62
 MARB27
 CHB\$32

CHURCHILL SENSATION 028X
SR RIGHT ON 2203 Z ET
 |NJW BW LADYSPORT DEW 78P
 TH 223 711 VICTOR 755T
H B/R MADISON 2077 ET
 |TH 16G 20N GEMINI 89T
 UPS DOMINO 3027
 CHURCHILL LADY 7202T
 RU 20X BOULDER 57G
 SADDLE VLY LADYSPORT 120
 DRF JWR PRINCE VICTOR 711
 KBCR 19D DOMINETTE 223
 NPH 20X SPARTAN 20N
 TEE-JAY 707B GEMINI 16G

BW 87 / ADJ. 205 655 ■ POLLED. Super long, goggle-eyed, full red with big testicles, good hair coat. Pins are out, muscles down, carries himself on good bone. His numbers and udder scores are the best. Dam a low BW cow with growth, milk and strong carcass numbers. Dam had one of the higher selling bulls last year to Sandrock. **Will keep a semen interest.**



20

SR DISPATCH 205G

■ MAR. 20, 2015 ■ #43613964 ■ BE 205

■ ■ ■ ■ ■
 BW5.4
 WW58
 YW99
 MILK26
 CED-1.9
 CEM1.8
 REA40
 MARB26
 CHB\$31

NJW 73S W18 HOMETOWN 10Y
BCC BILLY THE KID 330A
 |BCC SWEET CAROLINE 071X
 HH ADVANCE 8203U
SR TESSIE 1118Y
 |SR HARLET 606
 SHF WONDER M326 W18
 NJW P606 72N DAYDREAM 73S
 TFR HIGH COTTON 328
 BCC KAY 415
 HH ADVANCE 5161R
 HH MISS ADVANCE 752G
 CJH HARLAND 408
 SR SHANA 3110

BW 94 / ADJ. 205 617 ■ This guy got started slower at weaning time. Correct made, good pigment, long body with some shape down his back and into his quarter. Big growth numbers and gain with carcass. Dam has strong production numbers along with carcass.



21

SR SCOPE 215G

■ MAR. 21, 2015 ■ #43613962 ■ BE 215

■ ■ ■ ■ ■
 BW2.8
 WW48
 YW86
 MILK28
 CED1.2
 CEM1.2
 REA25
 MARB08
 CHB\$25

CL 1 DOMINO 860U
CL 1 DOMINO 0130X
 |CL 1 DOMINETTE 440P
 CTY BRITISHER 7721T
SR BRITANY 1109Y
 |SR ANDA 491
 CL 1 DOMINO 637S
 CL 1 DOMINETTE 5142R
 CL 1 DOMINO 9126J
 CL 1 DOMINETTE 974J
 CTY BRITISHER 107L
 COURTNEY LASS 45J R524
 RH SILVER STNDRD LAD 60M
 SR SHANA 1104

BW 86 / ADJ. 205 629 ■ Yellow, good haired bull with some muscle shape and a little pigment in both eyes. Real wide back, some leg, correct structure, pins out and trim fronted.





What's one more calf worth?

VITAFERM[®]

WITH THE AMAFERM[®] ADVANTAGE

- Improved Conception Rates
- Better Body Condition Score
- Greater A.I. Success
- Fewer Nonproductive Cow Days
- More Eggs Per Flush

For More Information, Call...
Dorothy Orts • 816-344-5739
 or visit...
www.vitaferm.com

Used successfully by Stuber Ranch.
 Observed good fertility in both the heifers and the bulls!

22 SR INDIGO 225G

■ MAR. 23, 2015 • #43613921 • BE 225

| | | |
|--------------------|------------------------|----------------------|
| ■ ■ ■ ■ ■ | UPS DOMINO 5216 | UPS DOMINO 3027 |
| BW ... 5.2 | UPS INDIGO 8648 | KCF MISS MOM 2756 |
| WW ... 67 | UPS MISS NEON 6529 | GH NEON 17N |
| YW ... 102 | HH ADVANCE 8203U | UPS MISS STAR 0835 |
| MILK ... 21 | SR TESSIE 119Y | HH ADVANCE 5161R |
| | SR ROSA 568 | HH MISS ADVANCE 752G |
| | | CTY BONANZA 01K |
| | | SR ANDREA 047 |

BW **97** / ADJ. 205 **778** ■ Yellow, curly haired, lot of body and even width down his back. Super large testicles, long sided, strong hip and short marked.

23 SR INFLUENCE 235G ET

■ MAR. 23, 2015 • #P43614101 • BE 235

| | | |
|----------------------------------|----------------------------|--------------------------|
| ■ ■ ■ ■ ■ | KCF BENNETT REVOLUTION X51 | MSU TCF REVOLUTION 4R |
| KCF BENNETT INFLUENCE 280 | KCF MISS M326 R52 | KCF MISS PROFICIENT U201 |
| | CTY BONANZA 01K | KCF BENNETT 3008 M326 |
| LS ROSA 453 | LS ROBYN 004 | KCF MISS 774 N45 |
| | | LPG BONANZA 52G |
| | | COURTNEY LASS D4173 |
| | | HR ROBIN HOOD 52F |
| | | LS GOLDIE 704 |

BW **66** / ADJ. 205 **ET** ■ **POLLED**. Real yellow, good hair, some eye pigment, marked right. Scurs. Stands tall, shows good muscle shape and has the growth look. Look at his numbers and what they can do for you. This is a twin embryo calf to Lot 24 that split and full sibling to Lots 27, 54 and 65. Dam a great looking female.

24 SR INFLUENCE 245G ET

■ MAR. 23, 2015 • #P43614102 • BE 245

| | | |
|----------------------------------|----------------------------|--------------------------|
| ■ ■ ■ ■ ■ | KCF BENNETT REVOLUTION X51 | MSU TCF REVOLUTION 4R |
| KCF BENNETT INFLUENCE 280 | KCF MISS M326 R52 | KCF MISS PROFICIENT U201 |
| | CTY BONANZA 01K | KCF BENNETT 3008 M326 |
| LS ROSA 453 | LS ROBYN 004 | KCF MISS 774 N45 |
| | | LPG BONANZA 52G |
| | | COURTNEY LASS D4173 |
| | | HR ROBIN HOOD 52F |
| | | LS GOLDIE 704 |

BW **65** / ADJ. 205 **ET** ■ **POLLED**. Just about a copy to Lot 23. Marked right, bone, big foot, red to the toes, great quarter, correct with a good hair coat. Take a long look at his numbers and what they can do for you. This is a twin embryo calf to Lot 23 that split and full sib to Lots 27, 54 and 65. Dam a great looking female.

25 SR WESTERN LAD 255G

■ MAR. 23, 2015 • #43614276 • BE 255

| | | |
|-------------------------------|----------------------------|-------------------------------|
| ■ ■ ■ ■ ■ | PAHL 3S WESTPOINT 40W | PAHL 90P SPADE 3S |
| SNS 40W WESTERN LAD 8A | SNS 12R MARK DOMINO LS 16X | PAHL 179K PATIENCE 147P |
| | CHURCHILL SENSATION 028X | AD 33H LAD 12R |
| SR SENITA 250Z | SR CADDIE 9121W | SNS 232P DAVID PYRAMID LS 11T |
| | | UPS DOMINO 3027 |
| | | CHURCHILL LADY 7202T |
| | | KB L1 DOMINO 6119S |
| | | SR SHANA 3117 |

BW **95** / ADJ. 205 **674** ■ First son of our new Canadian bull. Real interesting with yellow, curly hair, growth potential, bone and markings. Has good pigment and large testicles with a extra long side and mover real free. Good loin and top gainer with balance to his numbers.

27 SR INFLUENCE 275G ET

■ MAR. 24, 2015 • #P43614098 • BE 275

| | | |
|----------------------------------|----------------------------|--------------------------|
| ■ ■ ■ ■ ■ | KCF BENNETT REVOLUTION X51 | MSU TCF REVOLUTION 4R |
| KCF BENNETT INFLUENCE 280 | KCF MISS M326 R52 | KCF MISS PROFICIENT U201 |
| | CTY BONANZA 01K | KCF BENNETT 3008 M326 |
| LS ROSA 453 | LS ROBYN 004 | KCF MISS 774 N45 |
| | | LPG BONANZA 52G |
| | | COURTNEY LASS D4173 |
| | | HR ROBIN HOOD 52F |
| | | LS GOLDIE 704 |

BW **88** / ADJ. 205 **566** ■ **POLLED**. Full sib to Lots 23, 24 54 and 65. Moderate frame, correct made, some goggle to his eye with full eye and scrotal pigment. His numbers will work. Dam a good cow. Scurs.

28

SR FORTE 285C

■ MAR. 24, 2015 ■ #43613429 ■ BE 285

■■■■■
 BW4.0
 WW54
 YW88
 MILK28

 CED1.7
 CEM2.7

 REA12
 MARB29
 CHB\$27

CL 1 DOMINO 7128T
HH ADVANCE 0132X
 |HH MISS ADVANCE 6054S
 CJH HARLAND 408
SR HARLET 738
 |SR ROBYN 348

HH ADVANCE 3113N
 CL 1 DOMINETTE 0112K
 CL 1 DOMINO 320N
 HH MISS ADVANCE 4053P
 HH ADVANCE 9005J
 CJH L1 DOMINETTE 0064
 HR ROBIN HOOD 52F
 BB STANDARD LADY 7211

BW 96 / ADJ. 205 707 ■ Pins out, curly haired, sheath tight, strong down his top line, muscles down and stands on a good base. Good eye pigment and large scrotal. Good WW and gain numbers. Dam has strong production numbers ...WW 107 / YW 105 / MPPA 106.



29

SR NAVARRO II 295C

■ MAR. 24, 2015 ■ #43613531 ■ BE 295

■■■■■
 BW4.6
 WW62
 YW102
 MILK28

 CED1.0
 CEM2.6

 REA43
 MARB21
 CHB\$32

UPS NAVARRO
SR NAVARRO 450X
 |SR ROSA 3125
 CJH HARLAND 408
SR HARLET 9119W
 |SR VANCIA 382

UPS DOMINO 5216
 UPS MISS DOMINO 5875
 CTY BONANZA 01K
 SR WESTY 938
 HH ADVANCE 9005J
 CJH L1 DOMINETTE 0064
 CHURCHILL ADVANCE 109
 SR SABRINA 184

BW 96 / ADJ. 205 763 ■ You've got to like this guy's look ...he is three dimensional, exhibits balance, correct made, long and free moving. Head up on his shoulder, full eye pigment, large testicles. Dam has MPPA 107 with BW ratio 98, WW 109, YW 106, MARB +30. Numbers are stout with big 205 day weight. Good cows in his background. **Keep a semen interest.**



31

SR RIGHT ON 315C

■ MAR. 25, 2015 ■ #P43613489 ■ BE 315

■■■■■
 BW0.5
 WW49
 YW82
 MILK25

 CED4.0
 CEM3.0

 REA63
 MARB18
 CHB\$29

CHURCHILL SENSATION 028X
SR RIGHT ON 2203 Z ET
 |NJW BW LADYSPORT DEW 78P
 TH JWR SOP 16G 57G TUNDRA 63N
TDP MELODY 428U
 |ASH MELODY 211M

UPS DOMINO 3027
 CHURCHILL LADY 7202T
 RU 20X BOULDER 57G
 SADDLE VLY LADYSPORT 120
 RU 20X BOULDER 57G
 TEE-JAY 707B GEMINI 16G
 REMITALL KOOTENAY 9K
 BLAIR-ATHOL 20X HEIDI 26J

BW 75 / ADJ. 205 610 ■ **POLLED.** Full eye pigment, exhibits growth, good hair, clean sheathed with the thick top and loin. Long sided, has some bone and good marked. BW is down with good milk and REA. Dam has a super udder.



32

SR FORTE 325C

■ MAR. 23, 2015 ■ #43613528 ■ BE 325

■■■■■
 BW4.1
 WW55
 YW90
 MILK23

 CED0.5
 CEM3.6

 REA11
 MARB41
 CHB\$30

CL 1 DOMINO 7128T
HH ADVANCE 0132X
 |HH MISS ADVANCE 6054S
 CHURCHILL YANKEE
SR DOODLES 9111W
 |SR SHANDA 549

HH ADVANCE 3113N
 CL 1 DOMINETTE 0112K
 CL 1 DOMINO 320N
 HH MISS ADVANCE 4053P
 GH NEON 17N
 CHURCHILL LADY 202
 DS SANDMAN 1283
 UU MS NEFF 0067

BW 94 / ADJ. 205 708 ■ Good growth potential, a lot of rib, clean underneath, curly hair with full eye and scrotal pigment and large testicles. Gives you the masculine look to his head, long body and carries his width high. Dam a real high MARB cow.



34

SR SCOPE 345C

■ MAR. 25, 2015 ■ #43614015 ■ BE 345

■■■■■
 BW0.3
 WW59
 YW98
 MILK38

 CED6.5
 CEM3.1

 REA49
 MARB15
 CHB\$31

CL 1 DOMINO 860U
CL 1 DOMINO 0130X
 |CL 1 DOMINETTE 440P
 CHURCHILL SENSATION 028X
SR SENITA 278Z
 |SR HARLET 002X

CL 1 DOMINO 637S
 CL 1 DOMINETTE 5142R
 CL 1 DOMINO 9126J
 CL 1 DOMINETTE 974J
 UPS DOMINO 3027
 CHURCHILL LADY 7202T
 CJH HARLAND 408
 SR NATIEA 774

BW 76 / ADJ. 205 708 ■ Solid made, thick top, big quarter. Good haired, light colored, correct, free moving, clean made. Big WW with low BW, good growth and useable carcass data. Dam is on her way to making a terrific cow ...MPPA 109, BW ratio 91, WW ratio 116, YW ratio 108. Her EPD's across the board are fantastic. Three great females on the bottom side. **Keep a semen interest.**





36

■ ■ ■ ■ ■
 BW**6.9**
 WW**67**
 YW**124**
 MILK**23**
 CED**-1.1**
 CEM**0.8**
 REA**83**
 MARB**10**
 CHB**\$36**

MITCH'S SUSTAIN 365G

■ MAR. 25, 2015 • #43613556 • BE 365

UPS INDIGO 8648
SR INDIGO 1181Y
 SR SHANA 3107
 KB L1 DOMINO 655
MITCH'S MAXIE 045X
 MITCH'S KAYE 775

UPS DOMINO 5216
 UPS MISS NEON 6529
 BP 146D SANDMAN 46H
 SR CRESCETA 5102
 CL 1 DOMINO 9126J
 MONTANA MISS 6154
 OXH MARK DOMINO 3018
 LS DELIGHT 501

BW **80** / ADJ. 205 **745** ■ Stout made, good muscle pattern in his quarter, pins out, wide based and gives you a balanced look. Light colored, good haired, sheath tight, bone with a big butt. Large testicles. Take a look at his large growth, milk and REA. Good fronted and correct.

38

■ ■ ■ ■ ■
 BW**3.5**
 WW**50**
 YW**88**
 MILK**31**
 CED**1.8**
 CEM**1.6**
 REA**69**
 MARB**23**
 CHB**\$30**

SR NAVARRO 385G

■ MAR. 25, 2015 • #43613923 • BE 385

UPS NAVARRO
 UPS DOMINO 5216
 UPS MISS DOMINO 5875
 KB L1 DOMINO 655
SR MAXIE 126Y
 SR DOODLES 849

UPS DOMINO 3027
 UPS MISS MOM 2756
 JA L1 DOMINO 2228M
 UPS MISS KNIGHT 3910
 CL 1 DOMINO 9126J
 MONTANA MISS 6154
 CHURCHILL YANKEE
 PH SILVER BELLE 8674

BW **89** / ADJ. 205 **676** ■ The Navarro sons really do a good job of breeding on. This one carries his width high down his back and into his quarter. Gives you a masculine look with some pigment and large testicles. Stands out on his legs, stands on bone and has good width to his base. Cow family of wide based, deep bodied cows with good udders.

39

■ ■ ■ ■ ■
 BW**3.8**
 WW**47**
 YW**76**
 MILK**25**
 CED**0.6**
 CEM**3.6**
 REA**05**
 MARB**12**
 CHB**\$19**

SR FORTE 395G

■ MAR. 26, 2015 • #43613222 • BE 395

CL 1 DOMINO 7128T
HH ADVANCE 0132X
 HH MISS ADVANCE 6054S
 TS 166 DOMINO 1455
SR MARY 4128
 SR MANDY 0101

HH ADVANCE 3113N
 CL 1 DOMINETTE 0112K
 CL 1 DOMINO 320N
 HH MISS ADVANCE 4053P
 CL 1 DOMINO 166
 TS PEERLESS MOM 5417
 BB 7Z STD LAD 4032
 SR MEG 000

BW **90** / ADJ. 205 **712** ■ Growthy, wide down the back and stands correct and on good bone Wide and deep into his quarter with extra volume and spring of rib. Has good pigment and large testicles. Dam one of our thickest cows and, at age 12, still has a good udder.

41

■ ■ ■ ■ ■
 BW**4.2**
 WW**65**
 YW**115**
 MILK**29**
 CED**1.1**
 CEM**1.2**
 REA**37**
 MARB**03**
 CHB**\$31**

SR SCOPE 415G

■ MAR. 27, 2015 • #43613945 • BE 415

CL 1 DOMINO 860U
CL 1 DOMINO 0130X
 CL 1 DOMINETTE 440P
 CTY BRITISHER 7721T
SR BRITANY 173Y
 SR HARLET 9112W

CL 1 DOMINO 637S
 CL 1 DOMINETTE 5142R
 CL 1 DOMINO 9126J
 CL 1 DOMINETTE 974J
 CTY BRITISHER 107L
 COURTNEY LASS 45J R524
 CJH HARLAND 408
 SR ROSA 568

BW **95** / ADJ. 205 **767** ■ Red scrotum and pigment to one eye. Yellow, good haired and red to the toes. Smooth made through his shoulder and underneath. Big WW. Super strong growth and milk numbers. Set back with foot rot this winter, but is catching up. Cow family has growth.

45

■ ■ ■ ■ ■
 BW**1.1**
 WW**54**
 YW**91**
 MILK**32**
 CED**7.3**
 CEM**3.1**
 REA**56**
 MARB**12**
 CHB**\$30**

SR SUSTAIN 455G

■ MAR. 28, 2015 • #43613463 • BE 455

UPS DOMINO 3027
CHURCHILL SENSATION 028X
 CHURCHILL LADY 7202T
 SR NATIONAL 305
SR NATIA 804
 SR TONYA 563

CL 1 DOMINO 9126J
 UPS MISS DIAMOND 1353
 GH RAMBO 279R
 CL 1 DOMINETTE 301N
 REMITALL NATION WIDE ET 93N
 BARBIE Q BEEF MR 9024
 FA BRITISHER 41M
 SR YAMPETTE 706

BW **77** / ADJ. 205 **614** ■ **POLLED.** Sensation son with two goggle eyes and two tear drops with a red scrotum. Note the low birth weight and BW EPD. Should make a heifer bull.

46

MAC'S FORTE 465C

■ MAR. 29, 2015 ■ #43613894 • BE 465

■ ■ ■ ■ ■
 BW ... 4.9
 WW ... 55
 YW ... 92
 MILK ... 29
 CED ... -0.2
 CEM ... 2.2
 REA14
 MARB23
 CHB ... \$25

CL 1 DOMINO 7128T
 HH ADVANCE 0132X
 HH MISS ADVANCE 6054S
 UPS NAVARRO
 MAC'S NAVITA 0131X
 MAC'S MONITA 610
 HH ADVANCE 3113N
 CL 1 DOMINETTE 0112K
 CL 1 DOMINO 320N
 HH MISS ADVANCE 4053P
 UPS DOMINO 5216
 UPS MISS DOMINO 5875
 MH DAKOTA 3146
 MAC'S FRECKLES 330

BW 98 / ADJ. 205 695 ■ Has the look of heifer bull and a bull that would fire on solid marked cows. Red-necked, red to the toes and perfect marked. Extra long and clean sheathed with big testicles. Dam has phenomenal record of a MPPA 106, WW 108, YW 105. The Navarro daughters produce.



47

SR SUSTAIN 475C

■ MAR. 29, 2015 ■ #43613452 • BE 475

■ ■ ■ ■ ■
 BW ... 2.1
 WW ... 54
 YW ... 90
 MILK ... 35
 CED ... 6.5
 CEM ... 2.6
 REA47
 MARB11
 CHB ... \$29

UPS DOMINO 3027
 CHURCHILL SENSATION 028X
 CHURCHILL LADY 7202T
 SR NATIONAL 305
 SR NATIEA 774
 SR TONYA 563
 CL 1 DOMINO 9126J
 UPS MISS DIAMOND 1353
 GH RAMBO 279R
 CL 1 DOMINETTE 301N
 REMITALL NATION WIDE ET 93N
 BARBIE Q BEEF MR 9024
 FA BRITISHER 41M
 SR YAMPETTE 706

BW 86 / ADJ. 205 670 ■ Growth bull with a big hip and loin. Deep sided, strong down his back, good bone with blocky, bold look. Fully pigmented with large testicles and short marked. Gives you some real strong numbers to work with. Dam has a real strong production and EPD profile. She has some frame to her.



50

SR MATCH 0505

■ MAR. 29, 2015 ■ #43613493 • BE 505

■ ■ ■ ■ ■
 BW ... 2.6
 WW ... 43
 YW ... 80
 MILK ... 28
 CED ... 2.7
 CEM ... 3.2
 REA13
 MARB09
 CHB ... \$20

CL 1 DOMINO 732T
 CL 1 DOMINO 1161Y
 CL 1 DOMINETTE 4126P
 CJH HARLAND 408
 SR HARLET 905W
 SR CAPTIA 6140
 CL 1 DOMINO 590R
 CL 1 DOMINETTE 507R
 CL 1 DOMINO 1116L
 CL 1 DOMINETTE 193L
 HH ADVANCE 9005J
 CJH L1 DOMINETTE 0064
 IHM 821 DOMINO 1598
 ORE 115L MISS 5087

BW 87 / ADJ. 205 454 ■ Full eye and scrotal pigment with large testicles. Strong backed, volume to his rib area, correct made and stands on bone. Carries his width high and long down his back and is clean sheathed.



51

SR SCOPE 0515

■ MAR. 29, 2015 ■ #P43613970 • BE 515

■ ■ ■ ■ ■
 BW ... 2.0
 WW ... 65
 YW ... 102
 MILK ... 29
 CED ... 2.1
 CEM ... 0.5
 REA47
 MARB16
 CHB ... \$32

CL 1 DOMINO 860U
 CL 1 DOMINO 0130X
 CL 1 DOMINETTE 440P
 CMR ILR DOMINO 86P
 GRANDVIEW CMR 86P BELLE Y358
 JWR P416 PATRIOTS BELLE 168S
 CL 1 DOMINO 637S
 CL 1 DOMINETTE 5142R
 CL 1 DOMINO 9126J
 CL 1 DOMINETTE 974J
 CJH L1 DOMINO 552
 ILR MISS VINDY 32D
 REMITALL PATRIOT ET 13P
 PW BOOMTOWN GIRL P416

BW 92 / ADJ. 205 677 ■ Real muscular look with good bone. Carries his width high down into a full quarter. Dam a high performance female with low birth weight and ideal carcass numbers.

52

SR SUSTAIN 0525

■ MAR. 30, 2015 ■ #43613538 • BE 525

■ ■ ■ ■ ■
 BW ... 1.0
 WW ... 51
 YW ... 80
 MILK ... 36
 CED ... 7.2
 CEM ... 4.2
 REA44
 MARB25
 CHB ... \$29

UPS DOMINO 3027
 CHURCHILL SENSATION 028X
 CHURCHILL LADY 7202T
 UPS NAVARRO
 SR NAVITA 001X
 SR TONYA 563
 CL 1 DOMINO 9126J
 UPS MISS DIAMOND 1353
 GH RAMBO 279R
 CL 1 DOMINETTE 301N
 UPS DOMINO 5216
 UPS MISS DOMINO 5875
 FA BRITISHER 41M
 SR YAMPETTE 706

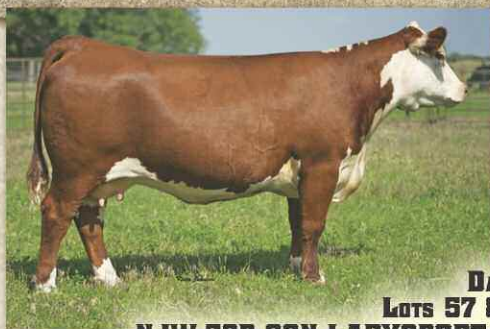
BW 85 / ADJ. 205 686 ■ Correct made with good frame and wide behind. Smooth fronted, red necked, head up on his shoulder and has a long reach to his walk. His low BW along with his growth, milk and carcass EPD's are impressive.



Gale Day 2015

Gus and Tom Gustafson bought heifers! Long-time customers!

Burke Ranch ... Long-time customers!



**DAM OF
LOTS 57 & 62
NJW 78P 63N LADYSPORT 51W**
...daughter of "Power Cow" NJW 78P



54

SR INFLUENCE C545 ET

■ MAR. 30, 2015 ■ #43614110 ■ BE 545

■ ■ ■ ■ ■
BW4.0
WW63
YW110
MILK25
CED1.4
CEM2.9
REA12
MARB35
CHB\$34

KCF BENNETT REVOLUTION X51
KCF BENNETT INFLUENCE Z80
| KCF MISS M326 R52
CTY BONANZA 01K
LS ROSA 453
| LS ROBYN 004

MSJ TCF REVOLUTION 4R
KCF MISS PROFICIENT U201
KCF BENNETT 3008 M326
KCF MISS 774 N45
LPG BONANZA 52G
COURTNEY LASS D4173
HR ROBIN HOOD 52F
LS GOLDIE 704
BW **98** / ADJ. 205 **700** ■ **POLLED**. A lot of growth, wide down the back and carries his width down into his quarter. Long hipped, clean underneath with a good disposition and markings. One red eye and red scrotal with large testicles. Full brother to lots 23, 24, 27 and 65. Dam low BW with good production numbers.

55

SR SUSTAIN C555

■ MAR. 30, 2015 ■ #43613527 ■ BE 555

■ ■ ■ ■ ■
BW1.5
WW50
YW78
MILK33
CED6.8
CEM3.9
REA26
MARB23
CHB\$28

UPS DOMINO 3027
CHURCHILL SENSATION 028X
| CHURCHILL LADY 7202T
KB L1 DOMINO 6119S
SR CADDIE 9107W
| SR MARKET 079

CL 1 DOMINO 9126J
UPS MISS DIAMOND 1353
GH RAMBO 279R
CL 1 DOMINETTE 301N
KB L1 DOMINO 218
OXH CRYSTAL 2258
AY MARK DOMINO 7926
SR SHINA 883
BW **91** / ADJ. 205 **680** ■ Smooth made with a moderate profile. Good hip, stands wide, deep quarter and clean sheathed. Good pigment, large testicles, light colored and shows good balance in his look. His numbers fit.

56

SR FORTE C565

■ MAR. 30, 2015 ■ #43613949 ■ BE 565

■ ■ ■ ■ ■
BW4.1
WW50
YW78
MILK26
CED0.1
CEM1.5
REA-0.4
MARB21
CHB\$22

CL 1 DOMINO 7128T
HH ADVANCE 0132X
| HH MISS ADVANCE 6054S
CTY BRITISHER 7721T
SR BRITANY 175Y
| SR MINA 978W

HH ADVANCE 3113N
CL 1 DOMINETTE 0112K
CL 1 DOMINO 320N
HH MISS ADVANCE 4053P
CTY BRITISHER 107L
COURTNEY LASS 45J R524
SR SAGA 1447
SR MONITA 798
BW **92** / ADJ. 205 **634** ■ Growth look with his long side and almost full eye pigment and a red scrotum. Wide at the loin and pins, light colored and stands correct.

57

SR SURE SHOT 575C ET

■ MAR. 30, 2015 ■ #43618371 ■ BE 575

■ ■ ■ ■ ■
BW2.6
WW55
YW95
MILK22
CED-0.9
CEM0.9
REA63
MARB-0.4
CHB\$28

CRR ABOUT TIME 743
RST TIMES A WASTIN 0124
| RST MS 1000 BLAZER 2029
TH JWR SOP 16G 57G TUNDRA 63N
NJW 78P 63N LADYSPORT 51W
| NJW BW LADYSPORT DEW 78P

THM DURANGO 4037
CRR D03 CASSIE 206
MJB BLAZER 1000
MS RST 858 VICTOR 9059
RU 20X BOULDER 57G
TEE-JAY 707B GEMINI 16G
RU 20X BOULDER 57G
SADDLE VLY LADYSPORT 120
BW **96** / ADJ. 205 **761** ■ Strong profile, correct structure, full eye and scrotal pigment. Stands on good bone, strong top, wide quarter and is red to his toes. A big weaning weight. An ET calf from a daughter of the "Genetic Giant" 78P. Polled full brother is Lot 62. This one has a lot going for him. **Keep a semen interest and, if he scans good, some possession.**

58

SR RENDITION C585

■ MAR. 30, 2015 ■ #43613934 ■ BE 585

■ ■ ■ ■ ■
BW4.9
WW51
YW98
MILK25
CED0.0
CEM2.0
REA41
MARB44
CHB\$35

GH NEON 17N
CHURCHILL YANKEE
| CHURCHILL LADY 202
UPS NAVARRO
SR NAVITA 147Y
| SR ROSATA 575

GH DIFFERENCE BRISHR 45L
GH SIR SIMBA LASS 107K
HH ADVANCE 767G
CHURCHILL LADY 0113
UPS DOMINO 5216
UPS MISS DOMINO 5875
SR BONANZA 1293
SR SHANA 3107
BW **99** / ADJ. 205 **665** ■ Eye appeal with a strong profile. Good eye and full scrotal pigment. Deep sided with volume and length to the rib area. Strong top and loin. His growth, milk and carcass numbers rank with the best. This one is really easy to look at.

59

SR GK INDIGO 6595

■ MAR. 30, 2015 ■ #43613495 ■ BE 595

■ ■ ■ ■ ■
 BW3.2
 WW46
 YW73
 MILK24

 CED-0.6
 CEM3.9

 REA43
 MARB09
 CHB\$20

UPS DOMINO 5216
UPS INDIGO 8648
 UPS MISS NEON 6529
 PPF MARK DON 5398
GK JULIE 913W
 GK SABRINA 3130

UPS DOMINO 3027
 UPS MISS MOM 2756
 GH NEON 17N
 UPS MISS STAR 0835
 MDA MARK DONALD 2051
 PPF MS 8148 MARK 2624
 OXH SABRE 7299
 GK WESTY 878

BW 96 / ADJ. 205 655 ■ Yellow, curly haired with a lot of grow in him. Long in his reach, short marked, some eye pigment, good headed and gives you solid numbers.



Lot 60

60

SR DOMAIN 605C ET

■ MAR. 30, 2015 ■ #43614113 ■ BE 605

■ ■ ■ ■ ■
 BW3.5
 WW58
 YW93
 MILK34

 CED0.6
 CEM4.5

 REA65
 MARB19
 CHB\$33

SHF RIB EYE M326 R117
NJW 98S R117 RIBEYE 88X
 NJW 9126J DEW DOMINO 98S
 GOLDEN OAK OUTCROSS 18U
CHURCHILL LADY 1162Y
 DCC 8006 PATTI 4266

KCF BENNETT 3008 M326
 HVH MISS HUDSON 83K 8M
 CL 1 DOMINO 9126J
 NJW 57G 74G DEW 5M
 GOLDEN-OAK FUSION 3S
 GLDN-OAK 60D MALLORY 15M
 H 8E EMBRACER 8006
 OXH PATTI 2175

BW 91 / ADJ. 205 667 ■ Square made with his head up and clean underneath. Good hip, full rib and a lot of capacity. Great volume, super quarter, terrific top and wide end to end. Full red, large testicles. He is an ET brother to the Denver 2015 "Foundation Lady" and to our 2015 second top selling heifer to Loehr. His EPD profile works for most. *Keep a semen interest. ET brother is Lot 114.*



Lot 62

61

SR SCOPE 615C

■ MAR. 31, 2015 ■ #43613940 ■ BE 615

■ ■ ■ ■ ■
 BW2.2
 WW55
 YW99
 MILK28

 CED1.6
 CEM1.7

 REA29
 MARB06
 CHB\$26

CL 1 DOMINO 860U
CL 1 DOMINO 0130X
 CL 1 DOMINETTE 440P
 CTY BRITISHER 7721T
SR BRITANY 168Y
 SR CINDY 515

CL 1 DOMINO 637S
 CL 1 DOMINETTE 5142R
 CL 1 DOMINO 9126J
 CL 1 DOMINETTE 974J
 CTY BRITISHER 107L
 COURTNEY LASS 45J R524
 UU YAMPA 3107
 SR SABRINA 280

BW 84 / ADJ. 205 672 ■ Full red eye and scrotum. Smooth made, good hip, wide at the loin and clean sheathed. Red necked and medium light colored. Gives you a growth EPD set of numbers.



Lot 64

62

SR SURE SHOT 625C ET

■ MAR. 31, 2015 ■ #43617381 ■ BE 625

■ ■ ■ ■ ■
 BW2.6
 WW55
 YW95
 MILK22

 CED-0.9
 CEM0.9

 REA63
 MARB04
 CHB\$28

CRR ABOUT TIME 743
RST TIMES A WASTIN 0124
 RST MS 1000 BLAZER 2029
 TH JWR SOP 166 57G TUNDRA 63N
NJW 78P 63N LADYSPORT 51W
 NJW BW LADYSPORT DEW 78P

THM DURANGO 4037
 CRR D03 CASSIE 206
 NJB BLAZER 1000
 IMS RST 858 VICTOR 9059
 RU 20X BOULDER 57G
 TEE-JAY 707B GEMINI 16G
 RU 20X BOULDER 57G
 SADDLE VLY LADYSPORT 120

BW 98 / ADJ. 205 655 ■ **POLLED.** Good profile with bone and correct structure. Full eye and scrotal pigment, free moving, good leg set, smooth made and a strong top line. Shows good muscle and uniform in his width and depth. An embryo calf from a daughter of the "Genetic Giant" 78P. Polled full brother sells as Lot 57.

64

SR SUSTAIN 645C

■ MAR. 31, 2015 ■ #43613235 ■ BE 645

■ ■ ■ ■ ■
 BW-0.3
 WW44
 YW68
 MILK32

 CED7.5
 CEM4.2

 REA23
 MARB11
 CHB\$22

UPS DOMINO 3027
CHURCHILL SENSATION 028X
 CHURCHILL LADY 7202T
 FA BRITISHER 41M
SR TONYA 563
 SR YAMPETTE 706

CL 1 DOMINO 9126J
 UPS MISS DIAMOND 1353
 GH RAMBO 279R
 CL 1 DOMINETTE 301N
 LPG 82B STANDARD LAD 59K
 FA BRITISHER LADY 94J
 DH YAMPA DOMINATOR
 SR DONNAL 437

BW 74 / ADJ. 205 664 ■ Gives a bold look with good frame, some growth and bone. Profiles deep and thick. Some pigment around one eye and a red scrotum. His numbers are adequate. Stands out wide and stout.

65

SR INFLUENCE 655C ET

■ MAR. 31, 2015 ■ #43614100 ■ BE 655

■ ■ ■ ■ ■
 BW4.0
 WW66
 YW114
 MILK25

 CED0.7
 CEM2.7

 REA17
 MARB36
 CHB\$36

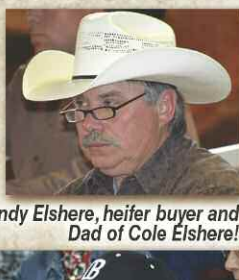
KCF BENNETT REVOLUTION X51
KCF BENNETT INFLUENCE 280
 KCF MISS M326 R52
 CTY BONANZA 01K
LS ROSA 453
 LS ROBYN 004

MSU TCF REVOLUTION 4R
 KCF MISS PROFICIENT U201
 KCF BENNETT 3008 M326
 KCF MISS 774 N45
 LPG BONANZA 52G
 COURTNEY LASS D4173
 HR ROBIN HOOD 52F
 LS GOLDIE 704

BW 92 / ADJ. 205 709 ■ **POLLED.** Growth with good hair and a long side. Full eye and scrotal pigment, red to the toes with a masculine look. Scurred. Looks wide and deep. Dam the right kind with good production and low BW. Big weaning weight. Full ET brothers sell as Lots 23, 24, 27 and 54.



Sidwells ...bought top selling bull!



Andy Elshere, heifer buyer and Dad of Cole Elshere!

Sale Day 2015

Don & Ginger Dudley
...bought top selling Sensation son!



66

■ ■ ■ ■ ■
BW3.6
WW47
YW79
MILK ...27
CED1.1
CEM ...3.3
REA21
MARB ...23
CHB ...\$24

SR FORTE 665G

■ MAR. 31, 2015 • #43613902 • BE 665

CL 1 DOMINO 7128T
HH ADVANCE 0132X
HH MISS ADVANCE 6054S
UPS NAVARRO
SR NAVITA 0137X
SR SABRINA 3100

HH ADVANCE 3113N
CL 1 DOMINETTE 0112K
CL 1 DOMINO 320N
HH MISS ADVANCE 4053P
UPS DOMINO 5216
UPS MISS DOMINO 5875
OXH SABRE 7299
BB MS 4017 LAD 6181

BW 95 / ADJ. 205 670 ■ Two red eyes, red scrotum and red to the toes. Work on solid marked cows. Medium color with good rib spread and out in the pin area.

67

■ ■ ■ ■ ■
BW2.3
WW53
YW79
MILK ...27
CED0.9
CEM ...4.1
REA05
MARB ...36
CHB ...\$26

SR FORTE 675G

■ MAR. 31, 2015 • #43613942 • BE 675

CL 1 DOMINO 7128T
HH ADVANCE 0132X
HH MISS ADVANCE 6054S
HH ADVANCE 8203U
SR TESSIE 170Y
SR HARLET 9119W

HH ADVANCE 3113N
CL 1 DOMINETTE 0112K
CL 1 DOMINO 320N
HH MISS ADVANCE 4053P
HH ADVANCE 5161R
HH MISS ADVANCE 752G
CJH HARLAND 408
SR VANCIA 382

BW 81 / ADJ. 205 666 ■ Heifer bull that is short marked on top. Moderate framed, trim underneath and complete eye and scrotal pigment. Dam has a terrific production record and one of our better females.

70

■ ■ ■ ■ ■
BW2.4
WW51
YW87
MILK ...30
CED6.3
CEM ...2.9
REA40
MARB ...35
CHB ...\$30

SR SUSTAIN 705G

■ FEB. 25, 2015 • #43614079 • BE 705

UPS DOMINO 3027
CHURCHILL SENSATION 028X
CHURCHILL LADY 7202T
SR INDIGO 1181Y
SR DIANE 388A
SR ROBYN 205

CL 1 DOMINO 9126J
UPS MISS DIAMOND 1353
GH RAMBO 279R
CL 1 DOMINETTE 301N
UPS INDIGO 8648
SR SHANA 3107
HR ROBIN HOOD 52F
SR ADDY 673

BW 86 / ADJ. 205 581 ■ Mossy yellow hair with a moderate frame. Good pigment. Volume look, stands on good bone and gives you a wide-deep look. Wide based and stands correct. This guy was sick on his mother which hurt his weaning weight. Dam a thick, deep bodied female with a good udder.

71

■ ■ ■ ■ ■
BW1.5
WW53
YW95
MILK ...34
CED3.3
CEM ...1.7
REA55
MARB ...14
CHB ...\$29

SR ILR SCOPE 715G

■ FEB. 26, 2015 • #43614044 • BE 715

CL 1 DOMINO 860U
CL 1 DOMINO 0130X
CL 1 DOMINETTE 440P
UPS NAVARRO
BAR-S-LHF MS NAVARRO 305
CL 1 DOMINETTE 848U

CL 1 DOMINO 637S
CL 1 DOMINETTE 5142R
CL 1 DOMINO 9126J
CL 1 DOMINETTE 974J
UPS DOMINO 5216
UPS MISS DOMINO 5875
CL 1 DOMINO 9126J
CL 1 DOMINETTE 446P

BW 81 / ADJ. 205 643 ■ Has the look of a heifer bull from a female that topped the Loehr sale a couple of years ago. Got some growth, wide at the loin, long back and good marked. Real yellow, total red eyes and scrotal and good headed. Shared with Iron Lake Ranch.

72

■ ■ ■ ■ ■
BW4.5
WW55
YW91
MILK ...25
CED0.5
CEM ...0.8
REA30
MARB ...17
CHB ...\$28

SR CAPTION 725G

■ FEB. 28, 2015 • #43633367 • BE 725

YV 34W MAJOR MARK LAD 2Y
R 2Y CAPTION 43A
R STARLETTE 037
CL 1 DOMINO 0130X
SR SCOPIA 302A
SR TESSIE 041X

SNS 838S MARK LAD 34W
YV 46R MAJOR MAMA 950W
R 157K NORTH STAR 54U
R STARLETTE 803
CL 1 DOMINO 860U
CL 1 DOMINETTE 440P
HH ADVANCE 8203U
SR CAPTIA 5106

BW 90 / ADJ. 205 733 ■ Smooth fronted, correct, clean made with a long stride and good bone. Medium colored curly hair coat with a thick top, muscled quarter and a wide base. Big WW with some good EPD's to work with. Dam has the look of making a top end cow. Her numbers are some of the best. Will keep a semen interest.

73

SR DS CAPTION 735G

■ FEB. 28, 2015 • #43633368 • BE 735

■ ■ ■ ■ ■
 BW4.6
 WW52
 YW84
 MILK ...27

 CED ...1.3
 CEM ...1.8

 REA ...15
 MARB ...20
 CHB ...\$24

R 2Y CAPTION 43A
 YV 34W MAJOR MARK LAD 2Y | SNS 838S MARK LAD 34W
 | R STARLETTE 037 | YV 46R MAJOR MAMA 950W
 | | R 157K NORTH STAR 54U
 | | R STARLETTE 803
 HH ADVANCE 0132X | CL 1 DOMINO 7128T
 | | HH MISS ADVANCE 6054S
 | | DLS NAVARRO
 | | DLS HARLET 676

DS FORTIA 306A
 | | DS NAVITA 054X

BW 87 / ADJ. 205 555 ■ This goggle eyed rascal will work on solid colored cows. Curly haired, short marked, pigmented, correct structure and has some leg under him. Free and easy moving with good body length.



74

SR SUSTAIN 745C

■ MAR. 1, 2015 • #43614050 • BE 745

■ ■ ■ ■ ■
 BW0.8
 WW48
 YW74
 MILK ...29

 CED ...8.3
 CEM ...3.4

 REA ...26
 MARB ...27
 CHB ...\$28

CHURCHILL SENSATION 028X
 UPS DOMINO 3027 | CL 1 DOMINO 9126J
 | CHURCHILL LADY 7202T | UPS MISS DIAMOND 1353
 | | GH RAMBO 279R
 | | CL 1 DOMINETTE 301N
 FA 105T BRITISHER 5X | DA 121M BRITISHER 105T
 | | FA 235P BRTSHR LADY 166U
 | | CJH HARLAND 408
 | | SR ANDREA 160

SYNTHIA 315A
 | | SR HARLET 0110X

BW 75 / ADJ. 205 579 ■ Super eye appeal, moderate framed, good bone, balance to his look and clean sheathed. This guy is classy to look at and has a lot of pigment. Presents a balance set of EPD's.



75

SR SUSTAIN 755C

■ MAR. 2, 2015 • #43614046 • BE 755

■ ■ ■ ■ ■
 BW1.3
 WW60
 YW92
 MILK ...37

 CED ...8.1
 CEM ...4.4

 REA ...20
 MARB ...35
 CHB ...\$32

CHURCHILL SENSATION 028X
 UPS DOMINO 3027 | CL 1 DOMINO 9126J
 | CHURCHILL LADY 7202T | UPS MISS DIAMOND 1353
 | | GH RAMBO 279R
 | | CL 1 DOMINETTE 301N
 HH ADVANCE 0132X | CL 1 DOMINO 7128T
 | | HH MISS ADVANCE 6054S
 | | SR SAGA 1137
 | | SR DOODLES 830

SR FORTIA 308A
 | | SR SONYA 080X

BW 77 / ADJ. 205 738 ■ Smooth made bull that has the look of a heifer bull. Correct made, smooth fronted, goggle eye and red to the toes. Gives a good side view and exhibits a deep, thick quarter. Some real stylish cows on the bottom side. Big weaning weight.



76

SR SUSTAIN 765C

■ MAR. 2, 2015 • #43614066 • BE 765

■ ■ ■ ■ ■
 BW0.6
 WW55
 YW83
 MILK ...35

 CED ...7.7
 CEM ...3.8

 REA ...41
 MARB ...25
 CHB ...\$31

CHURCHILL SENSATION 028X
 UPS DOMINO 3027 | CL 1 DOMINO 9126J
 | CHURCHILL LADY 7202T | UPS MISS DIAMOND 1353
 | | GH RAMBO 279R
 | | CL 1 DOMINETTE 301N
 FA 58U BRITISHER 169X | LBH 157K RIBSTONE 58U
 | | FA 37S BRTSHR LADY 165U
 | | KB L1 DOMINO 6119S
 | | SR PEGGY 075

SR BRITANNIA 347A
 | | SR CADDIE 9131W

BW 75 / ADJ. 205 709 ■ Could be an ideal heifer bull. Fully pigmented with large testicles. Gives you a good profile, correct made, clean sheathed, goggle eyes and bone. Has good width and depth with a strong loin. His numbers profile ranks with the best. Bunch of good made, thick cows on the bottom side.

78

SR LS SUSTAIN 785C

■ MAR. 6, 2015 • #43614092 • BE 785

■ ■ ■ ■ ■
 BW1.6
 WW56
 YW86
 MILK ...34

 CED ...7.2
 CEM ...3.0

 REA ...39
 MARB ...17
 CHB ...\$30

CHURCHILL SENSATION 028X
 UPS DOMINO 3027 | CL 1 DOMINO 9126J
 | CHURCHILL LADY 7202T | UPS MISS DIAMOND 1353
 | | GH RAMBO 279R
 | | CL 1 DOMINETTE 301N
 CHURCHILL AUTHORITY 027X | HH ADVANCE 7034T
 | | CHURCHILL LADY 774T
 | | SR LAD 447
 | | LS CRESCETA 6105

LS AUTRY 3119A
 | | LS MARLA 392

BW 84 / ADJ. 205 657 ■ One goggle eye, marked with the best, moderate frame and is wide end to end. Has full eye and scrotal pigment and large testicles. Two Dams of Distinction up close in the pedigree. Dam is a low BW, high growth and milk female with good REA.

79

SR CAPTION 795C

■ MAR. 6, 2015 • #43633369 • BE 795

■ ■ ■ ■ ■
 BW4.9
 WW51
 YW78
 MILK ...28

 CED ...3.0
 CEM ...1.3

 REA ...14
 MARB ...11
 CHB ...\$23

R 2Y CAPTION 43A
 YV 34W MAJOR MARK LAD 2Y | SNS 838S MARK LAD 34W
 | R STARLETTE 037 | YV 46R MAJOR MAMA 950W
 | | R 157K NORTH STAR 54U
 | | R STARLETTE 803
 CHURCHILL SENSATION 028X | UPS DOMINO 3027
 | | CHURCHILL LADY 7202T
 | | MH DAKOTA 3146
 | | SR MANDY 0101

SR SENITA 349A
 | | SR MONITA 622

BW 89 / ADJ. 205 605 ■ A lot of red around the eyes. Good marked, yellow, red-necked, wide back and stands on good bone. Out wide in the pin area, stands correct and easy to look at. Weaned with the best.



81

■ ■ ■ ■ ■
 BW ... **3.8**
 WW ... **55**
 YW ... **92**
 MILK ... **30**
 CED ... **3.1**
 CEM ... **2.4**
 REA ... **.55**
 MARB ... **.13**
 CHB ... **\$.30**

SR RIGHT ON 815C

■ MAR. 7, 2015 • #P43614069 • BE 815

CHURCHILL SENSATION 028X
SR RIGHT ON 2203 Z ET
 | NJW BW LADYSPORT DEW 78P
 HH ADVANCE 0132X
SR FORTIA 352A
 | SR CAPTIA 5106

UPS DOMINO 3027
 CHURCHILL LADY 7202T
 RU 20X BOULDER 57G
 SADDLE VLY LADYSPORT 120
 CL 1 DOMINO 7128T
 HH MISS ADVANCE 6054S
 IHM 821 DOMINO 1598
 SR LANTIA 117

BW **82** / ADJ. 205 **671** ■ **POLLED**. Two big goggle eyes and total red. Real thick, unique look and muscle shape, wide down the back and moves like a stud horse. Nice curly haircoat. Great bull for solid marked cows.

82

■ ■ ■ ■ ■
 BW ... **3.0**
 WW ... **66**
 YW ... **104**
 MILK ... **35**
 CED ... **5.3**
 CEM ... **3.1**
 REA ... **.58**
 MARB ... **.01**
 CHB ... **\$.31**

MITCH'S MATCH 825C

■ MAR. 7, 2015 • #43614048 • BE 825

CL 1 DOMINO 732T
CL 1 DOMINO 1161Y
 | CL 1 DOMINETTE 4126P
 CHURCHILL SENSATION 028X
MITCHS SENITA 312A
 | MITCH'S MAXIE 045X

CL 1 DOMINO 590R
 CL 1 DOMINETTE 507R
 CL 1 DOMINO 1116L
 CL 1 DOMINETTE 193L
 UPS DOMINO 3027
 CHURCHILL LADY 7202T
 KB L1 DOMINO 655
 MITCH'S KAYE 775

BW **89** / ADJ. 205 **823** ■ Long with good frame and clean sheathed. Shows extended growth curve, light colored and good headed. Weaned over 800 pounds. Full pigment with large testicles. Same cow family as Lot 36. Dam is light BW with milk. You can go to town with his numbers.

83

■ ■ ■ ■ ■
 BW ... **4.7**
 WW ... **60**
 YW ... **100**
 MILK ... **30**
 CED ... **0.5**
 CEM ... **2.0**
 REA ... **.53**
 MARB ... **.12**
 CHB ... **\$.30**

SR MATCH 835C

■ MAR. 8, 2015 • #43614074 • BE 835

CL 1 DOMINO 732T
CL 1 DOMINO 1161Y
 | CL 1 DOMINETTE 4126P
 UPS NAVARRO
SR NAVITA 369A
 | B&S TAMEREEN 866

CL 1 DOMINO 590R
 CL 1 DOMINETTE 507R
 CL 1 DOMINO 1116L
 CL 1 DOMINETTE 193L
 UPS DOMINO 5216
 UPS MISS DOMINO 5875
 CHURCHILL YANKEE
 JV ADA 634

BW **90** / ADJ. 205 **647** ■ Correct made, solid red, clean underneath, long stride and presents a correct profile. One goggle eye, medium colored with good hair. Super-sized testicular growth. Super strong performance cows on the bottom side. Great set of EPD's.

84

■ ■ ■ ■ ■
 BW ... **3.7**
 WW ... **58**
 YW ... **94**
 MILK ... **32**
 CED ... **3.8**
 CEM ... **3.2**
 REA ... **.49**
 MARB ... **.20**
 CHB ... **\$.31**

SR RIGHT ON 845C

■ MAR. 8, 2015 • #43614081 • BE 845

CHURCHILL SENSATION 028X
SR RIGHT ON 2203 Z ET
 | NJW BW LADYSPORT DEW 78P
 HH ADVANCE 0132X
SR FORTIA 390A
 | SR HARLET 738

UPS DOMINO 3027
 CHURCHILL LADY 7202T
 RU 20X BOULDER 57G
 SADDLE VLY LADYSPORT 120
 CL 1 DOMINO 7128T
 HH MISS ADVANCE 6054S
 C/JH HARLAND 408
 SR ROBYN 348

BW **87** / ADJ. 205 **690** ■ **POLLED**. Super profile with two red goggle eyes and a good head. Shows growth and with balance. Long side, wide back, loin and quarter. Short marked and smooth made. His EPD's rank up front. This dude has a lot going for him. Small scurs. Super set of females on the lower part of his pedigree. Good weaning weight.

85

■ ■ ■ ■ ■
 BW ... **3.4**
 WW ... **61**
 YW ... **99**
 MILK ... **36**
 CED ... **5.3**
 CEM ... **2.1**
 REA ... **.41**
 MARB ... **.15**
 CHB ... **\$.32**

SR SUSTAIN 855C

■ MAR. 8, 2015 • #43614071 • BE 855

UPS DOMINO 3027
CHURCHILL SENSATION 028X
 | CHURCHILL LADY 7202T
 CTY LAD 055X
SR JODY 362A
 | SR NATIA 800

CL 1 DOMINO 9126J
 UPS MISS DIAMOND 1353
 GH RAMBO 279R
 CL 1 DOMINETTE 301N
 AGA 72R LAD 49U
 COURTNEY LASS 444P T789
 SR NATIONAL 305
 SR KAYE 574

BW **87** / ADJ. 205 **727** ■ Deep and wide and the look of a bull. Stands on good bone, is correct made, extra volume, pins out and good hair. Almost full pigment and super large testicles. The cow family is strong. You can really work with his EPD set of numbers. Pushed the scale down at weaning time.

86

SR SUSTAIN II 865C

■ MAR. 8, 2015 ■ #43614056 ■ BE 865

■ ■ ■ ■ ■
 BW3.9
 WW55
 YW92
 MILK33
 CED2.8
 CEM2.6
 REA41
 MARB22
 CHB\$31

CHURCHILL SENSATION 028X | UPS DOMINO 3027
SR SUSTAIN 942Z | CHURCHILL LADY 7202T
 | SR MINA 077X | SR SAGA 1447
 | | SR MAXIE 837
 HH ADVANCE 0132X | CL 1 DOMINO 7128T
SR FORTIA 329A | HH MISS ADVANCE 6054S
 | SR VALORIE 758 | BB 1065 DOMINO 4102
 | | SR PASSIA 423

BW 89 / ADJ. 205 **683** ■ Real yellow, short marked, good hair and shows volume. Deep sided, correct profile, square rumped and his sheath is up. This fellow gives you a good set of numbers to go with his classy look.



88

SR GK SUSTAIN 885C

■ MAR. 12, 2015 ■ #43614058 ■ BE 885

■ ■ ■ ■ ■
 BW2.3
 WW56
 YW82
 MILK36
 CED5.8
 CEM3.0
 REA34
 MARB22
 CHB\$30

UPS DOMINO 3027 | CL 1 DOMINO 9126J
CHURCHILL SENSATION 028X | UPS MISS DIAMOND 1353
 | CHURCHILL LADY 7202T | GH RAMBO 279R
 | | CL 1 DOMINETTE 301N
 FA 58U BRITISHER 169X | LBH 157K RIBSTONE 58U
GK BRITANNIA 333A | FA 37S BRITISHER LADY 165U
 | GK JULIE 913W | PPF MARK DON 5398
 | | GK SABRINA 3130

BW 90 / ADJ. 205 **685** ■ This fellow gives you a sweet look with his full pigment and super large testicles. Short marked, tight sheathed, yellow and good hair. Red to the toes, wide loin and deep side. His EPD's match the best. Pushed the scale down at weaning and is gaining on feed with the best.



90

SR CAPTION 905C

■ MAR. 14, 2015 ■ #43633374 ■ BE 905

■ ■ ■ ■ ■
 BW3.2
 WW50
 YW81
 MILK27
 CED2.1
 CEM1.5
 REA30
 MARB16
 CHB\$25

YV 34W MAJOR MARK LAD 2Y | SNS 838S MARK LAD 34W
R 2Y CAPTION 43A | YV 46R MAJOR MAMA 950W
 | R STARLETTE 037 | R 157K NORTH STAR 54U
 | | R STARLETTE 803
 CL 1 DOMINO 0130X | CL 1 DOMINO 860U
SR SCOPIA 309A | CL 1 DOMINETTE 440P
 | SR NAVITA 0137X | UPS NAVARRO
 | | SR SABRINA 3100

BW 73 / ADJ. 205 **685** ■ Clean made underneath, moderate frame, curly hair coat. Strong topped and clean fronted. Birth weight is down.



92

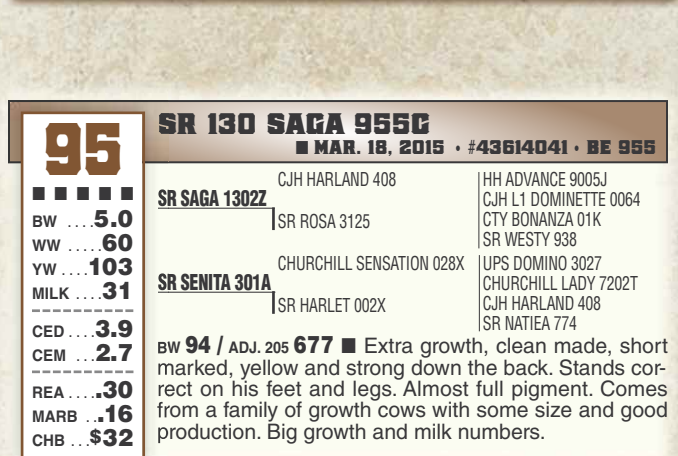
SR RIGHT ON 925C

■ MAR. 16, 2015 ■ #43614076 ■ BE 925

■ ■ ■ ■ ■
 BW3.3
 WW64
 YW97
 MILK27
 CED3.2
 CEM2.8
 REA68
 MARB18
 CHB\$35

CHURCHILL SENSATION 028X | UPS DOMINO 3027
SR RIGHT ON 2203 Z ET | CHURCHILL LADY 7202T
 | NJW BW LADYSPORT DEW 78P | RU 20X BOULDER 57G
 | | SADDLE VLY LADYSPORT 120
 FA 105T BRITISHER 5X | DA 121M BRITISHER 105T
SR SYNTHIA 377A | FA 235P BRISHR LADY 166U
 | SR TESSIE 170Y | HH ADVANCE 8203U
 | | SR HARLET 9119W

BW 83 / ADJ. 205 **701** ■ Good marked, medium colored, full eye pigment with a long top. Two small, red goggle eyes, clean underneath, long hipped and red to the toes. Balance to his side look, good muscle pattern in the quarter and smooth fronted. Dam is a super cow from a good cow family.



94

SR RIGHT ON 945C

■ MAR. 17, 2015 ■ #P43614086 ■ BE 945

■ ■ ■ ■ ■
 BW1.1
 WW58
 YW96
 MILK33
 CED4.7
 CEM2.8
 REA63
 MARB21
 CHB\$33

CHURCHILL SENSATION 028X | UPS DOMINO 3027
SR RIGHT ON 2203 Z ET | CHURCHILL LADY 7202T
 | NJW BW LADYSPORT DEW 78P | RU 20X BOULDER 57G
 | | SADDLE VLY LADYSPORT 120
 CL 1 DOMINO 0130X | CL 1 DOMINO 860U
SR SCOPIA 398A | CL 1 DOMINETTE 440P
 | K&B KNOCKOUT LADY 7243T | UPS KOOTENAY 3251
 | | K&B IDA 7733

BW 73 / ADJ. 205 **731** ■ **POLLED.** Conservative marked, red to the toes, full pigment and good headed. Shows growth potential, real long sided, good muscle shape in the lower quarter and wide based. Whopping big WW, low BW and a strong set of EPD numbers.

95

SR 130 SAGA 955C

■ MAR. 18, 2015 ■ #43614041 ■ BE 955

■ ■ ■ ■ ■
 BW5.0
 WW60
 YW103
 MILK31
 CED3.9
 CEM2.7
 REA30
 MARB16
 CHB\$32

CJH HARLAND 408 | HH ADVANCE 9005J
SR SAGA 1302Z | CJH L1 DOMINETTE 0064
 | SR ROSA 3125 | CTY BONANZA 01K
 | | SR WESTY 938
 CHURCHILL SENSATION 028X | UPS DOMINO 3027
SR SENITA 301A | CHURCHILL LADY 7202T
 | SR HARLET 002X | CJH HARLAND 408
 | | SR NATIEA 774

BW 94 / ADJ. 205 **677** ■ Extra growth, clean made, short marked, yellow and strong down the back. Stands correct on his feet and legs. Almost full pigment. Comes from a family of growth cows with some size and good production. Big growth and milk numbers.

96**SR RIGHT ON 965C**

■ MAR. 22, 2015 ■ #43614049 ■ BE 965

■ ■ ■ ■ ■
 BW2.6
 WW48
 YW86
 MILK25
 CED4.0
 CEM2.7
 REA45
 MARB14
 CHB\$28

CHURCHILL SENSATION 028X
SR RIGHT ON 2203 Z ET
 | NJW BW LADYSPORT DEW 78P

FA 105T BRITISHER 5X
SR SYNTHIA 313A
 | SR BRITANY 0103X

UPS DOMINO 3027
 CHURCHILL LADY 7202T
 RU 20X BOULDER 57G
 SADDLE VLY LADYSPORT 120

DA 121M BRITISHER 105T
 FA 235P BRTSHR LADY 166U
 CTY BRITISHER 7721T
 SR HARLET 859

BW **83** / ADJ. 205 **524** ■ Pigmented with large red scrotum. Long body, free moving, with a lot of upper body width and red to his feet.

97**SR RIGHT ON 975C**

■ MAR. 23, 2015 ■ #P43614040 ■ BE 975

■ ■ ■ ■ ■
 BW1.2
 WW55
 YW90
 MILK27
 CED4.9
 CEM3.3
 REA71
 MARB15
 CHB\$31

CHURCHILL SENSATION 028X
SR RIGHT ON 2203 Z ET
 | NJW BW LADYSPORT DEW 78P

FA 105T BRITISHER 5X
SR SYNTHIA 300A
 | SR NAVITA 0108X

UPS DOMINO 3027
 CHURCHILL LADY 7202T
 RU 20X BOULDER 57G
 SADDLE VLY LADYSPORT 120

DA 121M BRITISHER 105T
 FA 235P BRTSHR LADY 166U
 UPS NAVARRO
 SR SHANA 538

BW **75** / ADJ. 205 **637** ■ POLLED. Long sided, good marked, two red eyes and curly haired. Smooth made, clean sheathed, wide up high with good muscle shape to his lower quarter. Cow family with some power.

98**SR RIGHT ON 985C**

■ MAR. 24, 2015 ■ #43614080 ■ BE 985

■ ■ ■ ■ ■
 BW1.6
 WW55
 YW95
 MILK32
 CED5.3
 CEM3.6
 REA58
 MARB16
 CHB\$31

CHURCHILL SENSATION 028X
SR RIGHT ON 2203 Z ET
 | NJW BW LADYSPORT DEW 78P

CL 1 DOMINO 0130X
SR SCOPIA 389A
 | SR HARLET 9119W

UPS DOMINO 3027
 CHURCHILL LADY 7202T
 RU 20X BOULDER 57G
 SADDLE VLY LADYSPORT 120

CL 1 DOMINO 860U
 CL 1 DOMINETTE 440P
 CJH HARLAND 408
 SR VANCIA 382

BW **84** / ADJ. 205 **626** ■ Some pigment with large testicles. Shows a lot of growth for his age, correct made, good balance, shoulder laid in right and length of side. You got to like his numbers profile. Birth weight is down.

99**SR MATCH 995C**

■ APR. 1, 2015 ■ #43613525 ■ BE 995

■ ■ ■ ■ ■
 BW4.8
 WW54
 YW84
 MILK26
 CED1.3
 CEM2.6
 REA36
 MARB11
 CHB\$22

CL 1 DOMINO 732T
CL 1 DOMINO 1161Y
 | CL 1 DOMINETTE 4126P

PPF MARK DON 5398
SR JULIE 9105W
 | SR SHANA 4101

CL 1 DOMINO 590R
 CL 1 DOMINETTE 507R
 CL 1 DOMINO 1116L
 CL 1 DOMINETTE 193L

MDA MARK DONALD 2051
 PPF MS 8148 MARK 2624
 BP 146D SANDMAN 46H
 BB MS 4017 LAD 8160

BW **97** / ADJ. 205 **620** ■ Some red around the eyes and a large, red scrotum. Stout made with bone and deep and thick. Short marked with curly hair. Gives you a good side look with a lot of meat in him and wide in the stifle.

100**SR RENDITION 1005C**

■ APR. 1, 2015 ■ #43613496 ■ BE 1005

■ ■ ■ ■ ■
 BW1.8
 WW46
 YW80
 MILK26
 CED3.4
 CEM5.3
 REA36
 MARB40
 CHB\$31

GH NEON 17N
CHURCHILL YANKEE
 | CHURCHILL LADY 202

CJH HARLAND 408
SR HARLET 919W
 | SR GETTA 592

GH DIFFERENCE BRTSHR 45L
 GH SIR SIMBA LASS 107K
 HH ADVANCE 767G
 CHURCHILL LADY 0113

HH ADVANCE 9005J
 CJH L1 DOMINETTE 0064
 HH NUGGET 899N
 SR RAPTIA 363

BW **81** / ADJ. 205 **620** ■ POLLED. This guy gives you a good profile. He is stout with bone, deep and thick, good back and curly haired. Wide at the top and in the base. Long down the back and wide in the stifle. Scurs. He has a number profile that will work with strong carcass numbers.

101**SR SPOT ON 1015C ET**

■ APR. 1, 2015 ■ #P43618363 ■ BE 1015

■ ■ ■ ■ ■
 BW2.6
 WW53
 YW88
 MILK33
 CED2.6
 CEM4.9
 REA60
 MARB12
 CHB\$31

SHF RIB EYE M326 R117
NJW 98S R117 RIBEYE 88X
 | NJW 9126J DEW DOMINO 98S

RU 20X BOULDER 57G
NJW BW LADYSPORT DEW 78P
 | SADDLE VLY LADYSPORT 120

KCF BENNETT 3008 M326
 HVH MISS HUDSON 83K 8M
 CL 1 DOMINO 9126J
 NJW 57G 74G DEW 5M

REMITALL KEYNOTE 20X
 RU 10A DEW 57D
 RU DUSTER 60D
 GK LADYSPORT 131A

BW **96** / ADJ. 205 **790** ■ POLLED. Two large goggle eyes, super long, red to the toes and red necked. Thick down his top line, good footed, sheath up, correct back leg setting and medium colored. Super wide end to end. Small scurs. Large scrotal. Big weaning weight. ET son out of the "Genetic Giant" 78P. ET brother sells as Lot 150.

104**SR MATCH 1045C**

■ APR. 2, 2015 ■ #43613557 ■ BE 1045

■ ■ ■ ■ ■
 BW4.2
 WW55
 YW89
 MILK33
 CED1.1
 CEM3.6
 REA17
 MARB06
 CHB\$23

CL 1 DOMINO 732T
CL 1 DOMINO 1161Y
 | CL 1 DOMINETTE 4126P

SR SCRIPT 187
SR SCRIPTIA 049X
 | SR TONYA 416

CL 1 DOMINO 590R
 CL 1 DOMINETTE 507R
 CL 1 DOMINO 1116L
 CL 1 DOMINETTE 193L

CJH HARLAND 408
 SR RAPTIA 363
 FA BRITISHER 41M
 SR ANDREA 0109

BW **94** / ADJ. 205 **703** ■ Good balance, length down the back, long side, good bone and steps out long. Full eye pigment with large testicles. Red necked with a big WW and strong numbers. Dam has a lot of volume and is easy doing. She nursed him to a big weaning weight.

105**SR MATCH 1055C**

■ APR. 2, 2015 ■ #43613539 ■ BE 1055

■ ■ ■ ■ ■
 BW4.5
 WW65
 YW110
 MILK31
 CED2.0
 CEM3.0
 REA54
 MARB02
 CHB\$30

CL 1 DOMINO 732T
CL 1 DOMINO 1161Y
 | CL 1 DOMINETTE 4126P

CJH HARLAND 408
SR HARLET 002X
 | SR NATIEA 774

CL 1 DOMINO 590R
 CL 1 DOMINETTE 507R
 CL 1 DOMINO 1116L
 CL 1 DOMINETTE 193L

HH ADVANCE 9005J
 CJH L1 DOMINETTE 0064
 SR NATIONAL 305
 SR TONYA 563

BW **91** / ADJ. 205 **718** ■ Full pigment, correct made with a good back leg. Clean made with good muscle shape to his quarter. Wide in the top third of his body with full rib capacity. One of the better weaning weights. Dam's MPPA 105 with production numbers for BW 98, WW 105, YW 105. Her carcass, growth, milk numbers are strong. Good cow line.

106**SR LS MATCH 1065C**

■ APR. 2, 2015 ■ #43613494 ■ BE 1065

■ ■ ■ ■ ■
 BW3.2
 WW55
 YW88
 MILK25
 CED2.1
 CEM4.0
 REA51
 MARB03
 CHB\$27

CL 1 DOMINO 732T
CL 1 DOMINO 1161Y
 | CL 1 DOMINETTE 4126P

CHURCHILL YANKEE
LS DOODLES 911W
 | LS BOWETTE 535

CL 1 DOMINO 590R
 CL 1 DOMINETTE 507R
 CL 1 DOMINO 1116L
 CL 1 DOMINETTE 193L

GH NEON 17N
 CHURCHILL LADY 202
 SR BOWMAN 263
 LS GOLDIE 704

BW **86** / ADJ. 205 **621** ■ Has the growth look to him. Good pigment, masculine look, stands correct on good bone and exhibits a good base.

108**SR STEP UP 1085C**

■ APR. 2, 2015 ■ #43613562 ■ BE 1085

■ ■ ■ ■ ■
 BW3.7
 WW55
 YW90
 MILK28
 CED2.4
 CEM4.3
 REA57
 MARB07
 CHB\$26

UPS DOMINO 5216
SR STEP UP 2201 Z ET
 | NJW BW LADYSPORT DEW 78P

CJH HARLAND 408
SR HARLET 059X
 | SR LINETA 6116

UPS DOMINO 3027
 UPS MISS MOM 2756
 RU 20X BOULDER 57G
 SADDLE VLY LADYSPORT 120

HH ADVANCE 9005J
 CJH L1 DOMINETTE 0064
 SR LINER 1143
 SR FACETA 1116

BW **89** / ADJ. 205 **713** ■ Good pigment and scrotal size. Correct at all angles, good bone, a lot of style, is wide and deep in the quarter. Wide off his walk and holds his head up on his shoulders. A lot of style and easy to look at. Weaning weight is good. Cow family is a bunch of performance females with strong records. Bred a little different ...his numbers will work.

109

SR DIABLO 1095C

■ APR. 2, 2015 • #43613473 • BE 1095

■ ■ ■ ■ ■
 BW3.9
 WW58
 YW103
 MILK26
 CED0.8
 CEM2.9
 REA59
 MARB23
 CHB\$32

| | |
|------------------------|----------------------|
| UPS INDIGO 8648 | UPS DOMINO 5216 |
| SR INDIGO 1181Y | UPS MISS NEON 6529 |
| SR SHANA 3107 | BP 146D SANDMAN 46H |
| | SR CRESCETA 5102 |
| CHURCHILL YANKEE | GH NEON 17N |
| SR DOODLES 849 | CHURCHILL LADY 202 |
| PH SILVER BELLE 8674 | RVH SILVER 50B 26E |
| | 7MI 025Z MS DOM 3016 |

BW 92 / ADJ. 205 711 ■ Shows growth, yellow, curly hair, long with a good muscle pattern. Real wide at the loin and a thick, deep quarter. Take a good look at his numbers. Big weaning weight. The 1181 sons are loaded with top-end performance. Will help most programs with his carcass.



Lot 101 Pedigree on page 20

110

SR SUSTAIN 1105C

■ APR. 2, 2015 • #43613889 • BE 1105

■ ■ ■ ■ ■
 BW1.3
 WW52
 YW86
 MILK36
 CED7.1
 CEM4.4
 REA51
 MARB29
 CHB\$31

| | |
|---------------------------------|-----------------------|
| UPS DOMINO 3027 | CL 1 DOMINO 9126J |
| CHURCHILL SENSATION 028X | UPS MISS DIAMOND 1353 |
| CHURCHILL LADY 7202T | GH RAMBO 279R |
| | CL 1 DOMINETTE 301N |
| UPS NAVARRO | UPS DOMINO 5216 |
| SR NAVITA 0108X | UPS MISS DOMINO 5875 |
| SR SHANA 538 | BP 146D SANDMAN 46H |
| | SR MARVEL 974 |

BW 88 / ADJ. 205 654 ■ A little freckle on his back, but loaded with eye pigment, bone and nice curl to his hair. Longer made with growth and a good quarter and moves out real long. Note his carcass numbers along with a set of EPD's. Dam has produced two herd bull full brothers. She has an outstanding production record and EPD profile.



Pedigree on page 20 Lot 108

111

SR SUSTAIN 1115C

■ APR. 2, 2015 • #43613519 • BE 1115

■ ■ ■ ■ ■
 BW0.6
 WW53
 YW74
 MILK33
 CED7.6
 CEM3.9
 REA36
 MARB24
 CHB\$28

| | |
|---------------------------------|-----------------------|
| UPS DOMINO 3027 | CL 1 DOMINO 9126J |
| CHURCHILL SENSATION 028X | UPS MISS DIAMOND 1353 |
| CHURCHILL LADY 7202T | GH RAMBO 279R |
| | CL 1 DOMINETTE 301N |
| CHURCHILL YANKEE | GH NEON 17N |
| SR DOODLES 969W | CHURCHILL LADY 202 |
| SR FACETA 1116 | LS ADVANCE G254 |
| | SR RESA 791 |

BW 88 / ADJ. 205 656 ■ One red eye, red scrotal and large testicles. Gives a good side look and shows muscle to the lower quarter. Sheath up, moderate frame, good bone and bases out wide. Good carcass and low birth weight.



Lot 111

112

SR WS RENDITION 1125C

■ APR. 2, 2015 • #43613249 • BE 1125

■ ■ ■ ■ ■
 BW3.6
 WW49
 YW78
 MILK23
 CED1.7
 CEM3.3
 REA17
 MARB38
 CHB\$30

| | |
|--------------------------|--------------------------|
| GH NEON 17N | GH DIFFERENCE BRTSHR 45L |
| CHURCHILL YANKEE | GH SIR SIMBA LASS 107K |
| CHURCHILL LADY 202 | HH ADVANCE 767G |
| | CHURCHILL LADY 0113 |
| PH SIGNATURE 9736 | OXH SIGNATURE 7352 |
| PH SILVIA BA 5248 | SH MISS ADVANCER 914 |
| SR ANDREA 213 | FA BRITISHER 126G |
| | JV JENNY 668 |

BW 90 / ADJ. 205 613 ■ Full pigment. Light colored, sheath up, good marked. Smooth made, red to the toes, clean fronted with a long stride. Good MARB with balanced numbers.



Lot 113

113

SR DS MATCH 1135C

■ APR. 3, 2015 • #43613957 • BE 1135

■ ■ ■ ■ ■
 BW4.5
 WW58
 YW97
 MILK29
 CED1.0
 CEM3.0
 REA60
 MARB02
 CHB\$28

| | |
|--------------------------|-----------------------|
| CL 1 DOMINO 732T | CL 1 DOMINO 590R |
| CL 1 DOMINO 1161Y | CL 1 DOMINETTE 507R |
| CL 1 DOMINETTE 4126P | CL 1 DOMINO 1116L |
| | CL 1 DOMINETTE 193L |
| UPS NAVARRO | UPS DOMINO 5216 |
| DS NAVARRO 197Y | UPS MISS DOMINO 5875 |
| DS VANCIA 771 | CHURCHILL ADVANCE 109 |
| | DS DELIGHT 510 |

BW 98 / ADJ. 205 674 ■ Two goggle eyes, medium yellow with good hair. Wide at the hip, head up on his shoulder, moves out with a long stride and show a lot of muscle shape. Clean underneath and stands on good bone.



114

■ ■ ■ ■ ■
 BW ... **3.5**
 WW ... **58**
 YW ... **93**
 MILK ... **34**
 CED ... **0.6**
 CEM ... **4.5**
 REA ... **.65**
 MARB ... **.19**
 CHB ... **\$.33**

SR DOMAIN 1145G ET

■ APR. 3, 2015 • #43614114 • BE 1145

SHF RIB EYE M326 R117
NJW 98S R117 RIBEYE 88X
 | NJW 9126J DEW DOMINO 98S
 GOLDEN OAK OUTCROSS 18U
CHURCHILL LADY 1162Y ET
 | DCC 8006 PATTI 4266

KCF BENNETT 3008 M326
 HVH MISS HUDSON 83K 8M
 CL 1 DOMINO 9126J
 NJW 57G 74G DEW 5M
 GOLDEN-OAK FUSION 3S
 GLDN-OAK 60D MALLORY 15M
 H 8E EMBRACER 8006
 OXH PATTI 2175

BW **93** / ADJ. 205 **641** ■ The extra 3-D look with a lot of rib and deep sides. Clean sheath, good pigment, large testicles, strong top and square rump. This is an ET brother to the "Foundation Lady" sold in Denver in 2015 and to the second top selling heifer in our sale last year to Loehr. His EPD profile works for most. **Keep a semen interest.** ET brother is Lot 60.



DAM OF
 Lots 60 & 114
CHURCHILL LADY 1162Y

STUBER RANCH BULLS

PROGRAM, PRODUCTION, PRODUCT AND PROFILE
 ...with quiet dispositions, correct structure, solid markings,
 wide based, good udders, eye pigment!



119

■ ■ ■ ■ ■
 BW ... **0.0**
 WW ... **45**
 YW ... **68**
 MILK ... **35**
 CED ... **7.8**
 CEM ... **4.3**
 REA ... **.07**
 MARB ... **.39**
 CHB ... **\$.25**

SR SUSTAIN 1195G

■ APR. 5, 2015 • #43613533 • BE 1195

UPS NAVARRO
SR BAKKEN 62Z
 | SR SCRIPTA 926W
 SR SAGA 1447
SR MINA 035X
 | SR DELIGHT 767

UPS DOMINO 5216
 UPS MISS DOMINO 5875
 SR SCRIPT 187
 SR SABRINA 284
 C/JH HARLAND 408
 SR ROSA 3101
 SR RAPTURE 342
 SR FRANCI 98

BW **91** / ADJ. 205 **708** ■ You got to like this bull for his EPD profile and large testicles. Has some pigment, growth, short marked on top, good bone and thick in the loin area. Gives you the stout look and a great side profile. Long in the hip and full of muscle. Dam has good production record with strong carcass.



120

■ ■ ■ ■ ■
 BW ... **5.1**
 WW ... **53**
 YW ... **96**
 MILK ... **20**
 CED ... **-1.0**
 CEM ... **1.3**
 REA ... **.29**
 MARB ... **.16**
 CHB ... **\$.24**

SR DIABLO 1205G

■ APR. 6, 2015 • #43613254 • BE 1205

UPS INDIGO 8648
SR INDIGO 1181Y
 | SR SHANA 3107
 MH DAKOTA 3146
SR MONITA 62S
 | SR SHANA 268

UPS DOMINO 5216
 UPS MISS NEON 6529
 BP 146D SANDMAN 46H
 SR CRESCETA 5102
 MH DAKOTA 0230
 MH MISS PATRIOT 844
 FA BRITISHER 126G
 SR SHINA 883

BW **97** / ADJ. 205 **647** ■ Stout made with eye pigment and wide based. Good bone, marked right, muscle shape, correct structure and a great coat of hair.

121

■ ■ ■ ■ ■
 BW ... **4.6**
 WW ... **48**
 YW ... **90**
 MILK ... **26**
 CED ... **-0.3**
 CEM ... **1.8**
 REA ... **.20**
 MARB ... **.18**
 CHB ... **\$.26**

SR NAVARRO II 1215G

■ APR. 6, 2015 • #43613886 • BE 1215

UPS NAVARRO
SR NAVARRO 450X
 | SR ROSA 3125
 CTY BRITISHER 7721T
SR BRITANY 0103X
 | SR HARLET 859

UPS DOMINO 5216
 UPS MISS DOMINO 5875
 CTY BONANZA 01K
 SR WESTY 938
 CTY BRITISHER 107L
 COURTNEY LASS 45J R524
 C/JH HARLAND 408
 SR RAPTIA 363

BW **92** / ADJ. 205 **652** ■ Two big red eyes, short marked and red to the toes. Wide base, good hip and a strong loin area.

122

SR RENDITION 1225C

■ APR. 6, 2015 • #43613931 • BE 1225

■ ■ ■ ■ ■
 BW4.8
 WW58
 YW93
 MILK ...23
 CED ...-0.1
 CEM ...3.2
 REA ...37
 MARB ...26
 CHB ...\$33

GH NEON 17N
CHURCHILL YANKEE
 CHURCHILL LADY 202
 SR SAGA 1447
SR MINA 141Y
 SR TONYA 563
 GH DIFFERENCE BRSSH 45L
 GH SIR SIMBA LASS 107K
 HH ADVANCE 767G
 CHURCHILL LADY 0113
 CJH HARLAND 408
 SR ROSA 3101
 FA BRITISHER 41M
 SR YAMPETTE 706

BW 93 / ADJ. 205 **720** ■ Real long body, good bone with some pigment. A little on greener side due to some sickness after weaning, but is catching up. Large testicles with a big weaning weight.



123

SR STEP UP 1235C

■ APR. 6, 2015 • #43614013 • BE 1235

■ ■ ■ ■ ■
 BW ...4.7
 WW51
 YW83
 MILK ...24
 CED ...0.7
 CEM ...3.5
 REA ...59
 MARB ...26
 CHB ...\$29

UPS DOMINO 5216
SR STEP UP 2201 Z ET
 NJW BW LADYSPORT DEW 78P
 SR DOUBLE BARRELL 739W
SR DEBE 277Z
 SR DOODLES 070X
 UPS DOMINO 3027
 UPS MISS MOM 2756
 RU 20X BOULDER 57G
 SADDLE VLY LADYSPORT 120
 GH ADAMS TOP GUN ET 516T
 MAC'S HARLET 77Z
 CHURCHILL YANKEE
 SR HARLET 8138

BW 93 / ADJ. 205 **560** ■ Smooth made with some pigment. Has the grow look to him, stands on good bone and presents a stout look. Wide down his top and clean underneath.



125

SR NAVARRO 1255C

■ APR. 6, 2015 • #43613267 • BE 1255

■ ■ ■ ■ ■
 BW ...1.6
 WW44
 YW84
 MILK ...31
 CED ...2.9
 CEM ...2.2
 REA ...46
 MARB ...21
 CHB ...\$26

UPS DOMINO 5216
UPS NAVARRO
 UPS MISS DOMINO 5875
 SR BONANZA 1293
SR ROSATA 6135
 SR PEGGY 075
 UPS DOMINO 3027
 UPS MISS MOM 2756
 JA L1 DOMINO 2228M
 UPS MISS KNIGHT 3910
 CTY BONANZA 01K
 BARBIE Q BEEF MR 9024
 CL 1 DOMINO 166
 PH SILVER BELLE 8674

BW 80 / ADJ. 205 **706** ■ Super son of Navarro. Yellow, curly hair, thick made and stands on good bone. Strong top, perfect markings and wide off his walk. Has a number set that will work. Two full brothers working in Registered Herd. Mom a super cow at ten years with a good udder. We ET'd her this fall and got a bunch of embryos. **Will keep a semen interest.**



126

SR DS DIABLO 1265C

■ APR. 7, 2015 • #43613460 • BE 1265

■ ■ ■ ■ ■
 BW ...4.8
 WW55
 YW100
 MILK ...22
 CED ...-0.3
 CEM ...3.2
 REA ...61
 MARB ...23
 CHB ...\$32

UPS INDIGO 8648
SR INDIGO 1181Y
 SR SHANA 3107
 CHURCHILL YANKEE
DS DOODLES 801
 DS GETTA 586
 UPS DOMINO 5216
 UPS MISS NEON 6529
 BP 146D SANDMAN 46H
 SR CRESCETA 5102
 GH NEON 17N
 CHURCHILL LADY 202
 HH NUGGET 899N
 DS RAPTURE 355

BW 97 / ADJ. 205 **628** ■ Short marked bull with pigmented eyes and large testicles. Good length to his side, red to his toes and should really work on solid marked cows. These kind of EPD profiles are hard to get. Cow family of performance cows.

129

SR INDIGO 1295C

■ APR. 9, 2015 • #43613951 • BE 1295

■ ■ ■ ■ ■
 BW ...3.6
 WW55
 YW93
 MILK ...22
 CED ...0.7
 CEM ...3.9
 REA ...40
 MARB ...20
 CHB ...\$26

UPS DOMINO 5216
UPS INDIGO 8648
 UPS MISS NEON 6529
 CTY BRITISHER 7721T
SR BRITANY 181Y
 SR BRETA 9104W
 UPS DOMINO 3027
 UPS MISS MOM 2756
 GH NEON 17N
 UPS MISS STAR 0835
 CTY BRITISHER 107L
 COURTNEY LASS 45J R524
 GH ADAMS TOP GUN ET 516T
 BARBIE Q BEEF MR 9024

BW 89 / ADJ. 205 **741** ■ Big weaning bull with good pigment and large testicles. Yellow, curly, long sided and carries his head up. Has a big weaning weight and moderate birth weight.

130

SR NAVARRO 1305C

■ APR. 9, 2015 • #43613943 • BE 1305

■ ■ ■ ■ ■
 BW ...3.5
 WW50
 YW90
 MILK ...30
 CED ...1.3
 CEM ...3.0
 REA ...48
 MARB ...32
 CHB ...\$31

UPS DOMINO 5216
UPS NAVARRO
 UPS MISS DOMINO 5875
 CRR 4037 ORIGINAL 766
SR ORA 172Y
 B&S OAKETTE 902W
 UPS DOMINO 3027
 UPS MISS MOM 2756
 JA L1 DOMINO 2228M
 UPS MISS KNIGHT 3910
 THM DURANGO 4037
 CRR D03 JULIANNE 217
 S BIG OAK 20S
 JV ADA 634

BW 86 / ADJ. 205 **654** ■ Some growth extension and deep flanked. Clean made with full quarter and gives you a good side look. Adequate bone, some eye pigment and marked right. Number balance up good.



131

■ ■ ■ ■ ■
 BW5.3
 WW63
 YW109
 MILK20
 CED ...-0.4
 CEM ...2.6
 REA57
 MARB ...36
 CHB ...\$37

SR DIABLO 1315C

■ APR. 9, 2015 • #43613907 • BE 1315

UPS INDIGO 8648
 SR INDIGO 1181Y
 SR SHANA 3107
 CHURCHILL YANKEE
 SR DOODLES 0139X
 SR SHANA 268
 UPS DOMINO 5216
 UPS MISS NEON 6529
 BP 146D SANDMAN 46H
 SR CRESCETA 5102
 GH NEON 17N
 CHURCHILL LADY 202
 FA BRITISHER 126G
 SR SHINA 883

BW 101 / ADJ. 205 715 ■ nDeep made, square off his hump down into a thick quarter. Marked solid, good bone, sheath up, correct structure and wide off his back legs. Check out his REA and MARB numbers. Dam a high MARB, low BW, strong growth female.



134

■ ■ ■ ■ ■
 BW5.5
 WW50
 YW98
 MILK31
 CED ...-0.2
 CEM ...1.6
 REA66
 MARB ...33
 CHB ...\$33

SR NAVARRO 1345C

■ APR. 12, 2015 • #43613920 • BE 1345

UPS NAVARRO
 UPS MISS DOMINO 5875
 UPS NAVARRO
 SR NAVITA 116Y
 SR DOODLES 830
 UPS DOMINO 5216
 UPS MISS MOM 2756
 JA L1 DOMINO 2228M
 UPS MISS KNIGHT 3910
 UPS DOMINO 5216
 UU MS DOMINO 5875
 CHURCHILL YANKEE
 SR ANDREA 283

BW 103 / ADJ. 205 660 ■ Full pigmented with large testicles. Yellow, curly haired, deep sided with extra rib. Keeps his head up and is good marked. Double-bred Navarro with strong growth EPD's and some of the best carcass numbers. At catalog time, he is gaining with the best. Dam is off to a good production record.



135

■ ■ ■ ■ ■
 BW4.0
 WW52
 YW85
 MILK24
 CED1.7
 CEM4.0
 REA32
 MARB ...20
 CHB ...\$25

SR INDIGO 1355C

■ APR. 12, 2015 • #43613490 • BE 1355

UPS INDIGO 8648
 UPS MISS NEON 6529
 S BIG OAK 20S
 B&S OAKETTE 902W
 JV ADA 634
 UPS DOMINO 5216
 UPS MISS NEON 6529
 UPS DOMINO 3027
 UPS MISS MOM 2756
 GH NEON 17N
 UPS MISS STAR 0835
 K 64H RIBSTONE LAD 157K
 S 59K LASS 36M
 HH ADVANCE 9012Y
 JV ADA 424

BW 96 / ADJ. 205 697 ■ You have to like the look this guy gives. Two goggle eyes, mossy hair, well-muscled quarter, real deep sided and wide. Clean sheathed, red to the toes and strong down his top. Came off the cow good. Dam has an outstanding production record for WW and YW, good milk and strong REA and MARB numbers. Outstanding cow line.



144

■ ■ ■ ■ ■
 BW5.1
 WW56
 YW89
 MILK18
 CED2.0
 CEM ...-0.2
 REA16
 MARB ...10
 CHB ...\$26

SR FACTOR 1445C

■ APR. 19, 2015 • #43613262 • BE 1445

BRC FACTOR Y19
 BRC MISS KAHLUA 205
 RH FUTURE KING LAD 63M
 SR FUTURA 693
 SR SADIE 772
 F 157K RIBSTONE 763
 K 64H RIBSTONE LAD 157K
 F 9126 DOMINETTE 417
 BP KAHLUA 1K
 BRC MS COMMANDER 907
 CH 69G KINGDOM 64K
 RH FUTURE DOMINO LS 29J
 KB L1 DOMINO 506
 SR LEAH 590

BW 96 / ADJ. 205 649 ■ Short marked with two big red eyes. Head up, good bone, body deep with rib capacity. Stands correct, red to the toes and shows growth potential. Long down the spine.

145

SR NAVARRO II 1455C

■ APR. 19, 2015 • #43613499 • BE 1455

■ ■ ■ ■ ■
 BW ... 4.9
 WW ... 51
 YW ... 89
 MILK ... 29
 CED ... 0.2
 CEM ... 1.6
 REA27
 MARB14
 CHB ... \$27

UPS NAVARRO
SR NAVARRO 450X
 SR ROSA 3125

CJH HARLAND 408
SR HARLET 928W
 SR CAPTIA 5115

UPS DOMINO 5216
 UPS MISS DOMINO 5875
 CTY BONANZA 01K
 SR WESTY 938
 HH ADVANCE 9005J
 CJH L1 DOMINETTE 0064
 IHM 821 DOMINO 1598
 SR REDDY 0092

BW 100 / ADJ. 205 **651** ■ Total red with large scotal area. Head up on his shoulder, good depth of body, correct made and stands on good bone. Light colored, good hair and give you a good side view.



149

SR MATCH 1495C

■ APR. 20, 2015 • #43613546 • BE 1495

■ ■ ■ ■ ■
 BW ... 6.1
 WW ... 61
 YW ... 99
 MILK ... 28
 CED ... -1.1
 CEM ... 1.6
 REA50
 MARB ... -.12
 CHB ... \$27

CL 1 DOMINO 732T
CL 1 DOMINO 1161Y
 CL 1 DOMINETTE 4126P

GH ADAMS TOP GUN ET 516T
SR BARITA 028X
 SR DELIGHT 618

CL 1 DOMINO 590R
 CL 1 DOMINETTE 507R
 CL1 DOMINO 1116L
 CL1 DOMINETTE 193L
 GLDN-OAK 4J MAXIUM 28M
 GH SYDNEY 809ET 95M
 SR RAPTURE 342
 SR ROSA 305

BW 103 / ADJ. 205 **739** ■ Younger bull that really gives you a stout look. A 3-D profile, correct, bone and stout looking. Wide at the loin, over the rump and down into the quarter. Strong topped and long hipped. Holds his own in a strong pen of bulls that are older than him. Full pigment with super-sized testicles.



150

SR SPOT ON 1504B ET

■ OCT 30, 2014 • #P43526717 • BE 1504

■ ■ ■ ■ ■
 BW ... 2.6
 WW ... 53
 YW ... 88
 MILK ... 33
 CED ... 2.6
 CEM ... 4.9
 REA60
 MARB12
 CHB ... \$31

SHF RIB EYE M326 R117
NJW 98S R117 RIBEYE 88X
 NJW 9126J DEW DOMINO 98S

RU 20X BOULDER 57G
NJW BW LADYSPORT DEW 78P
 SADDLE VLY LADYSPORT 120

KCF BENNETT 3008 M326
 HVH MISS HUDSON 83K 8M
 CL 1 DOMINO 9126J
 NJW 57G 74G DEW 5M
 REMITALL KEYNOTE 20X
 RU 10A DEW 57D
 RU DUSTER 60D
 GK LADYSPORT 131A

BW 89 / ADJ. 205 **na** ■ POLLED. Late fall ET bull out of 78P and full brother to Lot 101. Super all over, he's thick, deep sided, good bone. Good eye pigment, red scrotal, large testicles. Good balance and a lot of quarter. On grass this summer, but really responded to feed. Long sided, full quarter with some character to his hair coat. **Keep a semen interest.**



152

SR WS NAVARRO II 1525C

■ APR. 21, 2015 • #43613453 • BE 1525

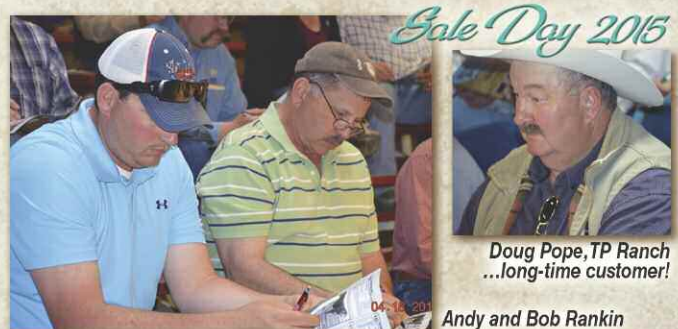
■ ■ ■ ■ ■
 BW ... 5.0
 WW ... 52
 YW ... 83
 MILK ... 27
 CED ... 0.2
 CEM ... 1.9
 REA33
 MARB09
 CHB ... \$27

UPS NAVARRO
SR NAVARRO 450X
 SR ROSA 3125

CHURCHILL ADVANCE 109
WS VANCIA 791
 PH SILVIA BA 5248

UPS DOMINO 5216
 UPS MISS DOMINO 5875
 CTY BONANZA 01K
 SR WESTY 938
 H5 9012Y ADVANCE 501
 CHURCHILL LADY 901
 PH SIGNATURE 9736
 SR ANDREA 213

BW 102 / ADJ. 205 **653** ■ Two goggle eyes, red-necked and shows growth. Long stride, correct made and easy and free moving. Dam a volume cow with a good production record.



156

SR MATCH 1565C

■ APR. 23, 2015 • #43613464 • BE 1565

■ ■ ■ ■ ■
 BW ... 3.3
 WW ... 59
 YW ... 92
 MILK ... 26
 CED ... 2.3
 CEM ... 3.8
 REA40
 MARB08
 CHB ... \$28

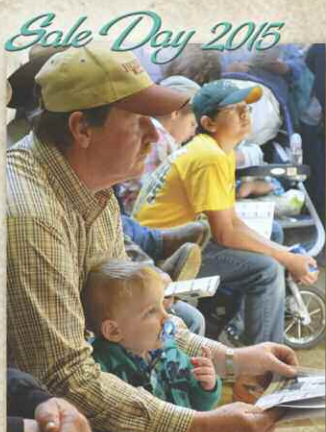
CL 1 DOMINO 732T
CL 1 DOMINO 1161Y
 CL 1 DOMINETTE 4126P

CHURCHILL YANKEE
SR DOODLES 818
 SR WESTY 060

CL 1 DOMINO 590R
 CL 1 DOMINETTE 507R
 CL1 DOMINO 1116L
 CL1 DOMINETTE 193L
 GH NEON 17N
 CHURCHILL LADY 202
 FA WESTWIND BRITISHER 6F
 JV PEARL 613

BW 90 / ADJ. 205 **656** ■ Good muscled quarter that carries deep. Short marked with pigmented eyes. Stands on good bone and is clean made. Nice top with even width and bases out on his legs.





Freidt ...bought top-end bull!



Henglefeld,
long-time
customer!



Mrnaks purchased top 0130X son!

160 SR MATCH 1605G

■ APR. 26, 2015 ■ #43613481 ■ BE 1605

| | | |
|---|---|---|
| <p>■ ■ ■ ■ ■</p> <p>BW2.9</p> <p>WW58</p> <p>YW94</p> <p>MILK23</p> <p>CEB2.6</p> <p>CEM2.3</p> <p>REA42</p> <p>MARB17</p> <p>CHB ...\$30</p> | <p>CL 1 DOMINO 732T</p> <p>CL 1 DOMINO 1161Y</p> <p>CL 1 DOMINETTE 4126P</p> <p>CHURCHILL YANKEE</p> <p>SR DOODLES 8106</p> <p>SR MARTY 454</p> | <p>CL 1 DOMINO 590R</p> <p>CL 1 DOMINETTE 507R</p> <p>CL 1 DOMINO 1116L</p> <p>CL 1 DOMINETTE 193L</p> <p>GH NEON 17N</p> <p>CHURCHILL LADY 202</p> <p>OXH MARK DOMINO 0088</p> <p>SR MAGGIE 0112</p> |
|---|---|---|

BW **96** / ADJ. 205 **637** ■ Full eye pigment and red all over. Gives you a growth look, deep body and wide in the high priced cuts. Has the volume look and stands on good bone. Good EPD's across the board. Dam is low birth weight and good MARB.

166 SR SCOPE 1665G

■ MAY 2, 2015 ■ #43613981 ■ BE 1665

| | | |
|---|---|--|
| <p>■ ■ ■ ■ ■</p> <p>BW0.0</p> <p>WW55</p> <p>YW93</p> <p>MILK32</p> <p>CEB4.0</p> <p>CEM3.2</p> <p>REA43</p> <p>MARB36</p> <p>CHB ...\$31</p> | <p>CL 1 DOMINO 860U</p> <p>CL 1 DOMINO 0130X</p> <p>CL 1 DOMINETTE 440P</p> <p>UPS NAVARRO</p> <p>SR NAVITA 213Z</p> <p>SR HARLET 9119W</p> | <p>CL 1 DOMINO 637S</p> <p>CL 1 DOMINETTE 5142R</p> <p>CL 1 DOMINO 9126J</p> <p>CL 1 DOMINETTE 974J</p> <p>UPS DOMINO 5216</p> <p>UPS MISS DOMINO 5875</p> <p>CJH HARLAND 408</p> <p>SR VANCIA 382</p> |
|---|---|--|

BW **75** / ADJ. 205 **680** ■ Shows a lot of muscle expression, stands on good bone, free moving, smooth fronted and is wide and deep in his quarter. Bases out wide in his walk and his pins are out. Dam has super EPD's from BW to MARB. His EPD's are hard to get ...Growth, BW, Milk and Carcass.

173 SR RIGHT ON 1735G

■ MAY 18, 2015 ■ #P43613537 ■ BE 1735

| | | |
|---|--|---|
| <p>■ ■ ■ ■ ■</p> <p>BW2.7</p> <p>WW60</p> <p>YW95</p> <p>MILK29</p> <p>CEB3.2</p> <p>CEM1.8</p> <p>REA46</p> <p>MARB13</p> <p>CHB ...\$30</p> | <p>CHURCHILL SENSATION 028X</p> <p>SR RIGHT ON 2203 Z ET</p> <p>NJW BW LADYSPORT DEW 78P</p> <p>TH JWR SOP 16G 57G TUNDRA 63N</p> <p>JWR 201P TRISHA 029U</p> <p>JWR M37 JACKIE 201P</p> | <p>UPS DOMINO 3027</p> <p>CHURCHILL LADY 7202T</p> <p>RU 20X BOULDER 57G</p> <p>SADDLE VLY LADYSPORT 120</p> <p>RU 20X BOULDER 57G</p> <p>TEE-JAY 707B GEMINI 16G</p> <p>DRF JWR PRINCE VICTOR 711</p> <p>JWR 93B VICKY M37</p> |
|---|--|---|

BW **92** / ADJ. 205 **749** ■ POLLED. Hope you are as tired of reading these footnotes as I am of writing them. But look, here is a good one! Bold looking, deep sided, two goggle eyes and short marked. Good reach to his walk, wide based, deep flanked and stands on good bone. Great big WW with a strong set of EPD's. Should have a good yearling weight.

190 SR SUSTAIN 1905G ET

■ MAR. 19, 2015 ■ #43620412 ■ BE 1905

| | | |
|---|---|--|
| <p>■ ■ ■ ■ ■</p> <p>BW1.9</p> <p>WW54</p> <p>YW81</p> <p>MILK32</p> <p>CEB5.4</p> <p>CEM2.8</p> <p>REA18</p> <p>MARB06</p> <p>CHB ...\$26</p> | <p>UPS DOMINO 3027</p> <p>CHURCHILL SENSATION 028X</p> <p>CHURCHILL LADY 7202T</p> <p>CTY BONANZA 01K</p> <p>SR ROSA 312S</p> <p>SR WESTY 938</p> | <p>CL 1 DOMINO 9126J</p> <p>UPS MISS DIAMOND 1353</p> <p>GH RAMBO 279R</p> <p>CL 1 DOMINETTE 301N</p> <p>LPG BONANZA 52G</p> <p>COURTNEY LASS D4173</p> <p>FA WESTWIND BRITISHER 6F</p> <p>EE MS 4920 6060</p> |
|---|---|--|

BW **88** / ADJ. 205 **774** ■ Here is another and as the saying goes, "one of the best was saved for last." Gives you the deep, thick, long profile with good muscle shape. Stands correct on good bone, clean sheath, out wide at the pins with a big rib cage. Exceptional large scrotal area, almost full eye pigment and the look of a breeding bull. Dam has produced many herd bulls and is sound at age 13 ...these Bonanza females stay sound and productive for a long time and have a youthful look and sound udders. **Will keep a semen interest.**



26 Three Generations!

Stuber Registered Heifers...



Great offering of productive females that fit with their profile, performance numbers and carcass. Their EPD profile is similar to ones we keep. There will be top-end heifers offered from each sire group. You'll find females that are easy to look at, have some exceptional EPD's, extra milk and, in most cases, good carcass data. They are "Bangs" vaccinated and have had all of their preconditioning and pre-breeding shots. Heifers are in good condition and ready to breed to your bull of choice or, *if you A.I., we will offer two straws of semen on any herd bull we own to use on the heifers. If you don't pick up semen at the ranch, you will pay shipping costs. Certificates will be based on cost or the price of certificates we have on our partnership bulls.*



502

SR SENITA 502G

■ MAR. 5, 2015 • #43614033 • BE 502

BW0.0
 WW52
 YW81
 MILK33

 CED7.8
 CEM4.7

 REA27
 MARB25
 CHB\$28

UPS DOMINO 3027
CHURCHILL SENSATION 028X
 | CHURCHILL LADY 7202T

| CL 1 DOMINO 9126J
 UPS MISS DIAMOND 1353
 GH RAMBO 279R
 CL 1 DOMINETTE 301N

CTY BRITISHER 7721T
SR BRITANY 2126Z
 | SR CINDY 5109

| CTY BRITISHER 107L
 COURTNEY LASS 45J R524
 UU YAMPA 3107
 SR SHANA 2110

BW 71 / ADJ. 205 583 ■ Real yellow, curly haired heifer that shows growth and stands correct. Some rib and good capacity with a deep chest and some muscle into the quarter. Classy female with a feminine look and has some eye pigment. Note her low BW and a balanced set of EPD's.



513

SR WS SENITA 513G

■ MAR. 12, 2015 • #43614023 • BE 513

BW1.5
 WW52
 YW72
 MILK34

 CED7.7
 CEM4.0

 REA26
 MARB31
 CHB\$29

UPS DOMINO 3027
CHURCHILL SENSATION 028X
 | CHURCHILL LADY 7202T

| CL 1 DOMINO 9126J
 UPS MISS DIAMOND 1353
 GH RAMBO 279R
 CL 1 DOMINETTE 301N

BB 7052 DOMINO 0041
WS DURA 290Z
 | WS RENDITION 015X

BB 5097 DOMINO 7052
 BB MS 1065 DOMINO 8005
 CHURCHILL YANKEE
 PH SILVIA BA 5248

BW 84 / ADJ. 205 548 ■ Deep, thick, red-eyed with yellow hair. Presents a correct profile with her head up on her shoulder. Gives the appearance of making a productive cow. Her numbers will keep you in the seed stock business. Start of nice level udder with small teats.



514

SR DEBBIE 514G

■ MAR. 12, 2015 • #43614026 • BE 514

BW2.0
 WW47
 YW81
 MILK31

 CED5.1
 CEM3.9

 REA30
 MARB28
 CHB\$29

CHURCHILL SENSATION 028X
SR SUSTAIN 942Z
 | SR MINA 077X

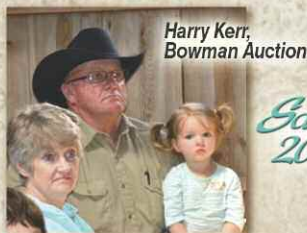
UPS DOMINO 3027
 CHURCHILL LADY 7202T
 SR SAGA 1447
 SR MAXIE 837

CJH HARLAND 408
SR HARLET 2107Z
 | SR FUTURA 631

HH ADVANCE 9005J
 CJH L1 DOMINETTE 0064
 RH FUTURE KING LAD 63M
 SR SABRINA 982

BW 81 / ADJ. 205 534 ■ Moderate frame with the blocky-3-D look. Good quartered, correct structure, stands on good bone and has a square rump with the feminine look. Two red eyes and short marked. Some good carcass EPD's with useful BW, milk and growth. She gives you the productive cow look.

Gruber Sale Heifers...



Harry Kerr,
Bowman Auction

*Sale Day
2015*



Tara Turnbull, heifer buyer!



Leonard Lodoen and Mark Giedd



Dale Venhuizen and
Pete Loehr bought
top selling heifers!



Gene Rapp, heifer
and bull buyer!



Rod Gierau, heifer buyer!



Jerome Ollerich, purchased
top selling heifer!

515

SR FORTIA 515G

■ MAR. 15, 2015 • #43613550 • BE 515

BW3.7
WW50
YW79
MILK ...24
CED ...-1.2
CEM ...-2.4
REA20
MARB ...24
CHB ...\$25

CL 1 DOMINO 7128T
HH ADVANCE 0132X
HH MISS ADVANCE 6054S
HH ADVANCE 8203U
SR TESSIE 041X
SR CAPTIA 5106

HH ADVANCE 3113N
CL 1 DOMINETTE 0112K
CL 1 DOMINO 320N
HH MISS ADVANCE 4053P
HH ADVANCE 5161R
HH MISS ADVANCE 752G
IHM 821 DOMINO 1598
SR LANTIA 117

BW 90 / ADJ. 205 557 ■ Elite looking female with her head up on her shoulder, long side and a strong top line. Has some grow in her. Almost complete eye color. Udder looks good and has the makings of a pasture cow. Her numbers match her look. Dam a productive cow with positive production ratios.

517

SR TAMMY 517G

■ MAR. 19, 2015 • #43613915 • BE 517

BW5.2
WW60
YW102
MILK ...27
CED1.0
CEM ...-0.8
REA56
MARB ...23
CHB ...\$33

NJW 73S W18 HOMETOWN 10Y
BCC BILLY THE KID 330A
BCC SWEET CAROLINE 071X
KB L1 DOMINO 655
SR MAXIE 111Y
SR HARLET 857

SHF WONDER M326 W18
NJW P606 72N DAYDREAM 73S
TFR HIGH COTTON 328
BCC KAY 415
CL 1 DOMINO 9126J
MONTANA MISS 6154
CJH HARLAND 408
SR ANDREA 160

BW 91 / ADJ. 205 657 ■ A lot of rib and capacity with a wide loin and a long hip. Carries her width high end to end, two red eyes and marked right with the brood matron look. Exhibits a long side and correct made. Big WW with some fantastic numbers to work with. The "Billy the Kid" heifers have the phenotype of making productive cows.

518

SR INDITA 518G

■ MAR. 20, 2015 • #43613409 • BE 518

BW3.2
WW48
YW83
MILK ...20
CED1.0
CEM ...-3.7
REA42
MARB ...14
CHB ...\$23

UPS DOMINO 5216
UPS INDIGO 8648
UPS MISS NEON 6529
UPS ODYSSEY
SR ULIA 706
SR ROSA 270

UPS DOMINO 3027
UPS MISS MOM 2756
GH NEON 17N
UPS MISS STAR 0835
REMITALL KOOTENAY 9K
UPS MISS PURE GOLD 0613
CTY BONANZA 01K
SR PEGGY 084

BW 93 / ADJ. 205 552 ■ Full eye pigment, right kind of muscle shape, free moving, long stride with some frame. Marked good with the start of a level udder. Gives you a feminine look.

519

SR SCOPIA 519G

■ MAR. 21, 2015 • #43614037 • BE 519

BW1.7
WW48
YW91
MILK ...28
CED1.7
CEM ...-1.9
REA38
MARB ...08
CHB ...\$26

CL 1 DOMINO 860U
CL 1 DOMINO 0130X
CL 1 DOMINETTE 440P
CTY BRITISHER 7721T
SR BRITANY 2135Z
SR SHANA 3107

CL 1 DOMINO 637S
CL 1 DOMINETTE 5142R
CL 1 DOMINO 9126J
CL 1 DOMINETTE 974J
CTY BRITISHER 107L
COURTNEY LASS 45J R524
BP 146D SANDMAN 46H
SR CRESCETA 5102

BW 72 / ADJ. 205 557 ■ Low BW with good milk, growth and carcass data. Long sided, yellow with some grow and two red eyes. Deep rib floor, feminine and real free on her move. Certainly presents the cow look. Super cows on the bottom side that has produced herd bulls. Her granddam has been in ET program.

521

SR MATTIE 521G

■ MAR. 22, 2015 • #43613927 • BE 521

BW3.2
WW51
YW91
MILK ...29
CED1.3
CEM ...-1.7
REA45
MARB ...06
CHB ...\$26

CL 1 DOMINO 732T
CL 1 DOMINO 1161Y
CL 1 DOMINETTE 4126P
UPS NAVARRO
SR NAVITA 136Y
SR MURIAL 148

CL 1 DOMINO 590R
CL 1 DOMINETTE 507R
CL 1 DOMINO 1116L
CL 1 DOMINETTE 193L
UPS DOMINO 5216
UPS MISS DOMINO 5875
IH SURPASS 806
SR SHINA 883

BW 84 / ADJ. 205 610 ■ Total red with the beginning of a small teat-level udder. Good rib shape and moderate frame. Gives you some good numbers to work with. The 1161 daughters in production has the look of making producing cows.

Gluber Sale Heifers...

525

SR DS MATTIE 525C

■ MAR. 23, 2015 • #43613937 • BE 525

BW**3.9**
 WW**61**
 YW**105**
 MILK**28**
 CED**1.5**
 CEM**3.3**
 REA**.71**
 MARB **-.05**
 CHB ...**\$29**

CL 1 DOMINO 732T
CL 1 DOMINO 1161Y
 CL 1 DOMINETTE 4126P
 UPS NAVARRO
DS NAVITA 153Y
 DS SHANA 4107
 CL 1 DOMINO 590R
 CL 1 DOMINETTE 507R
 CL1 DOMINO 1116L
 CL1 DOMINETTE 193L
 UPS DOMINO 5216
 UPS MISS DOMINO 5875
 BP 146D SANDMAN 46H
 OXH PATTI 8153

BW 86 / ADJ. 205 661 ■ Presents a stout look, is wide end to end with full rib shape. Good eye pigment, bone and gives you the easy doing look. Production from this cow family grow. Take a look and her WW, YW EPD and big REA.



526

SR DOODLES 526C

■ MAR. 23, 2015 • #43613914 • BE 526

BW**3.8**
 WW**50**
 YW**92**
 MILK**20**
 CED**1.2**
 CEM**3.3**
 REA**.41**
 MARB **.42**
 CHB ...**\$34**

GH NEON 17N
CHURCHILL YANKEE
 CHURCHILL LADY 202
 UPS NAVARRO
SR NAVITA 107Y
 SR ROSITA 863
 GH DIFFERENCE BRITSHR 45L
 GH SIR SIMBA LASS 107K
 HH ADVANCE 767G
 CHURCHILL LADY 0113
 UPS DOMINO 5216
 UPS MISS DOMINO 5875
 SR BONANZA 1293
 SR LORI 391

BW 86 / ADJ. 205 481 ■ Classy with a real feminine look and is sure the kind you would like to own. Two red eyes, good marked, side profile perfect and stands on good bone. Thick with a strong top, spring to her rib and the start of an ideal udder. Was a little sick on her mother, which hurt the WW, but look at her carcass and growth numbers.



528

SR SCOPIA 528C

■ MAR. 24, 2015 • #43613939 • BE 528

BW**2.7**
 WW**54**
 YW**96**
 MILK**30**
 CED**0.8**
 CEM**1.4**
 REA**.39**
 MARB **.12**
 CHB ...**\$28**

CL 1 DOMINO 860U
CL 1 DOMINO 0130X
 CL 1 DOMINETTE 440P
 CTY BRITISHER 7721T
SR BRITANY 156Y
 SR VESTA 614
 CL 1 DOMINO 637S
 CL 1 DOMINETTE 5142R
 CL 1 DOMINO 9126J
 CL 1 DOMINETTE 974J
 CTY BRITISHER 107L
 COURTNEY LASS 45J R524
 BB 1065 DOMINO 4034
 SR SHANA 3107

BW 80 / ADJ. 205 590 ■ Some pigment on her eyes, short marked, correct made with good balance to depth and side. Comes from a cow family of growth females that all have been productive. Note the BW and REA.



529

SR TAMMY 529C

■ MAR. 24, 2015 • #43613948 • BE 529

BW**3.9**
 WW**57**
 YW**104**
 MILK**28**
 CED**1.1**
 CEM**1.7**
 REA**.48**
 MARB **.26**
 CHB ...**\$33**

NJW 73S W18 HOMETOWN 10Y
BCC BILLY THE KID 330A
 BCC SWEET CAROLINE 071X
 SR CALIBER 1129W
SR DILIA 174Y
 SR HARLET 9133W
 SHF WONDER M326 W18
 NJW P606 72N DAYDREAM 73S
 TFR HIGH COTTON 328
 BCC KAY 415
 GH ADAMS TOP GUN ET 516T
 SR ROSATA 579
 CJH HARLAND 408
 ORE 222 MISS 7130

BW 86 / ADJ. 205 652 ■ Big, stout with a lot of bone and the right structure. Shows muscle, wide based and deep quartered. Wide at the pins, has volume and a good chest floor. Almost full eye pigment with a big WW and a powerful set of EPD's. Dam has super production results.

533

SR ESTER 533C

■ MAR. 25, 2015 • #43617377 • BE 533

BW**5.0**
 WW**47**
 YW**81**
 MILK**24**
 CED**-0.2**
 CEM**0.5**
 REA**.39**
 MARB **.08**
 CHB ...**\$26**

PAHL 3S WESTPOINT 40W
SNS 40W WESTERN LAD 8A
 SNS 12R MRK DOMINO LS 16X
 CHURCHILL YANKEE
SR DOODLES 2124Z
 SR ROSATA 575
 PAHL 90P SPADE 3S
 PAHL 179K PATIENCE 147P
 AD 33H LAD 12R
 SNS 232P DAND PYRAMID LS 11T
 GH NEON 17N
 CHURCHILL LADY 202
 SR BONANZA 1293
 SR SHANA 3107

BW 92 / ADJ. 205 515 ■ Take a look at the first daughter to sell from our Western Lad bull from one of our most productive cow families. She is in because we try to put in a good one from each sire group. Correct made, good top, bone, great hair, solid red with rib and capacity. Two red-eyes and a feminine look.

534

SR TAMMY 534C

■ MAR. 25, 2015 • #P43613971 • BE 534

BW**3.5**
 WW**59**
 YW**93**
 MILK**28**
 CED**0.9**
 CEM**-0.2**
 REA**.50**
 MARB **.21**
 CHB ...**\$30**

NJW 73S W18 HOMETOWN 10Y
BCC BILLY THE KID 330A
 BCC SWEET CAROLINE 071X
 CMR ILR DOMINO 86P
GV CMR 12T MS 86P Z301
 CMR AW P606 226 MISS 12T
 SHF WONDER M326 W18
 NJW P606 72N DAYDREAM 73S
 TFR HIGH COTTON 328
 BCC KAY 415
 CJH L1 DOMINO 552
 ILR MISS VINDY 32D
 PW VICTOR BOOMER P606
 TF COW MADE 920 226

BW 89 / ADJ. 205 613 ■ Gives you some good numbers to go along with her volume, moderate frame, correct markings and the start of a good udder. Shows capacity, stands on good bone with almost full eye pigment.

535**SR SCOPIA 535C**

■ MAR. 25, 2015 • #43614029 • BE 535

BW**3.3**
 WW**57**
 YW**100**
 MILK**28**

 CED**0.9**
 CEM**2.5**

 REA**.52**
 MARB**.05**
 CHB**\$.26**

CL 1 DOMINO 860U
CL 1 DOMINO 0130X
 | CL 1 DOMINETTE 440P

UPS INDIGO 8648
SR INDITA 2113Z
 | SR CALIE 865

CL 1 DOMINO 637S
 CL 1 DOMINETTE 5142R
 CL 1 DOMINO 9126J
 CL 1 DOMINETTE 974J

 UPS DOMINO 5216
 UPS MISS NEON 6529
 S CHUVALO 65R
 SR KAYE 577

BW **85** / ADJ. 205 **584** ■ Long bodied, good muscle expression, correct made, thick-deep quarter and wide at the rump and pins. Her base is wide, two red eyes, level udder and has extra bone. Her growth, milk and REA will work.

538**SR FORTIA 538C**

■ MAR. 26, 2015 • #43613560 • BE 538

BW**4.6**
 WW**52**
 YW**87**
 MILK**28**

 CED**0.2**
 CEM**3.3**

 REA**.25**
 MARB**.24**
 CHB**\$.26**

CL 1 DOMINO 7128T
HH ADVANCE 0132X
 | HH MISS ADVANCE 6054S

UPS NAVARRO
SR NAVITA 055X
 | SR SHANA 5121

HH ADVANCE 3113N
 CL 1 DOMINETTE 0112K
 CL 1 DOMINO 320N
 HH MISS ADVANCE 4053P

 UPS DOMINO 5216
 UPS MISS DOMINO 5875
 BP 146D SANDMAN 46H
 MLM LADY DOMINO 0066

BW **95** / ADJ. 205 **616** ■ Medium colored, good marked, head up, deep sided with a strong chest floor. Has the cow look with some growth in her. Full eye pigment with the start of a small-teat level udder. Dam has strong production numbers especially growth and REA.



Five generations, 107 years on the same ranch,
 85 years in the seedstock business and
 48 years of retained ownership!

Stuber Sale Heifers...**540****SR DOODLES 540C**

■ MAR. 27, 2015 • #43613501 • BE 540

BW**1.3**
 WW**45**
 YW**74**
 MILK**27**

 CED**2.8**
 CEM**6.3**

 REA**.22**
 MARB**.44**
 CHB**\$.29**

GH NEON 17N
CHURCHILL YANKEE
 | CHURCHILL LADY 202

SR SCRIPT 187
SR SCRIPTIA 939W
 | SR LINA 331

GH DIFFERENCE BRTSHR 45L
 GH SIR SIMBA LASS 107K
 HH ADVANCE 767G
 CHURCHILL LADY 0113

 CJH HARLAND 408
 SR RAPTIA 363
 REMITALL ONLINE 122L
 BB MS 4033 LAD 8152

BW **79** / ADJ. 205 **585** ■ Low birth weight female with milk and good carcass. Volume look, correct made, good marked, wide at the pins and a deep quarter. Strong back, stands on good bone and gives the look of a classy-appealing lady. The cow family has produced some good ones.

545**SR LS INDITA 545C**

■ MAR. 28, 2015 • #43613250 • BE 545

BW**3.4**
 WW**52**
 YW**82**
 MILK**21**

 CED**0.5**
 CEM**2.6**

 REA**.36**
 MARB**.15**
 CHB**\$.21**

UPS DOMINO 5216
UPS INDIGO 8648
 | UPS MISS NEON 6529

MH DAKOTA 3146
LS MONITA 604
 | LS MARLA 39

UPS DOMINO 3027
 UPS MISS MOM 2756
 GH NEON 17N
 UPS MISS STAR 0835

 MH DAKOTA 0230
 MH MISS PATRIOT 844
 SR LAD 447
 LS CRESCETA 6105

BW **93** / ADJ. 205 **616** ■ Feminine, solid marked, shows growth and presents a good side profile. Has some eye pigment, long side and hip with some good numbers to work with.

547**SR WS FORTIA 547C**

■ MAR. 29, 2015 • #43613544 • BE 547

BW**4.2**
 WW**49**
 YW**83**
 MILK**28**

 CED**0.4**
 CEM**2.1**

 REA**.15**
 MARB**.27**
 CHB**\$.24**

CL 1 DOMINO 7128T
HH ADVANCE 0132X
 | HH MISS ADVANCE 6054S

UPS NAVARRO
WS NAVITA 022X
 | WS MONITA 6105

HH ADVANCE 3113N
 CL 1 DOMINETTE 0112K
 CL 1 DOMINO 320N
 HH MISS ADVANCE 4053P

 UPS DOMINO 5216
 UPS MISS DOMINO 5875
 MH DAKOTA 3146
 OXH BESS 8056

BW **95** / ADJ. 205 **612** ■ Extra good marked with great hair and moderate frame. Full rib area, correct structure, almost complete eye pigment. Start of good udder and gives you the cow look. Her data works.

548**SR SENITA 548C**

■ MAR. 29, 2015 • #43613482 • BE 548

BW**0.5**
 WW**43**
 YW**66**
 MILK**29**

 CED**7.1**
 CEM**4.0**

 REA**.41**
 MARB**.07**
 CHB**\$.23**

UPS DOMINO 3027
CHURCHILL SENSATION 028X
 | CHURCHILL LADY 7202T

BB 6149 MR CLASSIC 3169
SR VESTA 8110
 | BB MS 4209 MARK DON 0255

CL 1 DOMINO 9126J
 UPS MISS DIAMOND 1353
 GH RAMBO 279R
 CL 1 DOMINETTE 301N

 BB MARK CLASSIC 6149
 BB MS WASH 0084
 BB MARK DONALD 4209
 BB MS HI VOLT 6249

BW **77** / ADJ. 205 **607** ■ Moderate frame with two red eyes. Short marked, hair right and exhibit muscle shape. Low BW with milk and REA.

549**SR FORTIA 549C**

■ MAR. 29, 2015 • #43613959 • BE 549

BW**3.8**
 WW**49**
 YW**83**
 MILK**28**

 CED**0.6**
 CEM**2.3**

 REA**.23**
 MARB**.18**
 CHB**\$.24**

CL 1 DOMINO 7128T
HH ADVANCE 0132X
 | HH MISS ADVANCE 6054S

UPS NAVARRO
SR NAVITA 199Y
 | SR NATIEA 774

HH ADVANCE 3113N
 CL 1 DOMINETTE 0112K
 CL 1 DOMINO 320N
 HH MISS ADVANCE 4053P

 UPS DOMINO 5216
 UPS MISS DOMINO 5875
 SR NATIONAL 305
 SR TONYA 563

BW **84** / ADJ. 205 **599** ■ Thick made, light colored, deep body with rib and flank. Shows volume with some growth. Shows a balance set of EPD's.

Stuber Sale Heifers...

550

SR INDITA 550G

■ MAR. 29, 2015 • #43613413 • BE 550

BW **5.0**
 WW **50**
 YW **83**
 MILK ... **21**

 CED ... **-0.3**
 CEM ... **2.5**

 REA ... **36**
 MARB ... **.08**
 CHB ... **\$21**

UPS DOMINO 5216
UPS INDIGO 8648 | UPS MISS NEON 6529
 MH DAKOTA 3146
SR MONITA 727 | SR SABRINA 284

UPS DOMINO 3027
 UPS MISS MOM 2756
 GH NEON 17N
 UPS MISS STAR 0835
 MH DAKOTA 0230
 MH MISS PATRIOT 844
 OXH SABRE 7299
 SR FACETA 064

BW 98 / ADJ. 205 627 ■ Big weaning weight with some good numbers. Goggle eyed, great hair, correct structure and red to the toes. Good upper body width, wide based, marked right and the look of making a great cow.



Let **551**

551

SR MATTIE 551G

■ MAR. 30, 2015 • #43613849 • BE 551

BW **1.9**
 WW **58**
 YW **92**
 MILK ... **28**

 CED ... **4.1**
 CEM ... **4.8**

 REA ... **49**
 MARB ... **.05**
 CHB ... **\$28**

CL 1 DOMINO 732T
CL 1 DOMINO 1161Y | CL 1 DOMINETTE 4126P
 CJH HARLAND 408
SR HARLET 076X | SR CADDIE 874

CL 1 DOMINO 590R
 CL 1 DOMINETTE 507R
 CL 1 DOMINO 1116L
 CL 1 DOMINETTE 193L
 HH ADVANCE 9005J
 CJH L1 DOMINETTE 0064
 KB L1 DOMINO 6119S
 SR DELIGHT 6136

BW 81 / ADJ. 205 618 ■ Long back, marked real good, great hair coat and red to the toes. She has the cowy look, feminine, shows capacity and wide in the rib and hip area. Deep chested and fully pigmented with the numbers to match.



Let **552**

552

SR FORTIA 552G

■ MAR. 30, 2015 • #43613891 • BE 552

BW **2.9**
 WW **39**
 YW **70**
 MILK ... **25**

 CED ... **1.8**
 CEM ... **2.2**

 REA ... **10**
 MARB ... **.30**
 CHB ... **\$22**

CL 1 DOMINO 7128T
HH ADVANCE 0132X | HH MISS ADVANCE 6054S
 UPS NAVARRO
SR NAVITA 0125X | SR MARTY 454

HH ADVANCE 3113N
 CL 1 DOMINETTE 0112K
 CL 1 DOMINO 320N
 HH MISS ADVANCE 4053P
 UPS DOMINO 5216
 UPS MISS DOMINO 5875
 OXH MARK DOMINO 0088
 SR MAGGIE 0112

BW 88 / ADJ. 205 527 ■ Gives you a good look with her markings and capacity. Well-muscled, classy and carries her weight high. Correct made, extended growth curve and presents an ideal side view. You can make her work in a lot of way. Two red eyes and a good udder.



Let **553**

553

SR BAKKETTE 553G

■ MAR. 30, 2015 • #43613447 • BE 553

BW **2.9**
 WW **53**
 YW **92**
 MILK ... **32**

 CED ... **0.9**
 CEM ... **2.4**

 REA ... **63**
 MARB ... **.23**
 CHB ... **\$32**

UPS NAVARRO
SR BAKKEN 62Z | SR SCRIPTA 926W
 SR RAPTURE 342
SR DELIGHT 767 | SR FRANCI 988

UPS DOMINO 5216
 UPS MISS DOMINO 5875
 SR SCRIPT 187
 SR SABRINA 284
 PDHR 15E STNDRD LAD 24H
 SR FRANCI 671
 HH ADVANCE 872X
 SR SADIE 772

BW 85 / ADJ. 205 629 ■ A real performance prospect. Short marked, good hair, two red eyes, got some body, carries down at the rib and flank. Shows thickness high, wide at the stifle and free moving. Only in the sale to present a good one from Bakken. Her numbers will give confidence to most breeding programs.

556

SR RP FORTIA 556G

■ MAR. 30, 2015 • #43613518 • BE 556

BW **6.1**
 WW **52**
 YW **84**
 MILK ... **28**

 CED ... **-1.6**
 CEM ... **2.1**

 REA ... **23**
 MARB ... **.15**
 CHB ... **\$26**

CL 1 DOMINO 7128T
HH ADVANCE 0132X | HH MISS ADVANCE 6054S
 GH ADAMS TOP GUN ET 516T
SR BARETA 965W | SR PASSIA 423

HH ADVANCE 3113N
 CL 1 DOMINETTE 0112K
 CL 1 DOMINO 320N
 HH MISS ADVANCE 4053P
 GLDN-OAK 4J MAXIUM 28M
 GH SYDNEY 809ET 95M
 SR PASSAGE 441
 SR STERLING 111

BW 98 / ADJ. 205 632 ■ The growth look with deep rib and flank. Solid marked, shows capacity and stands on strong bone. Head up on her shoulder, has some pigment and her udder looks level. Big weaning weight along with growth, milk and carcass numbers.

558

SR FORTIA 558G

■ MAR. 31, 2015 • #43613854 • BE 558

BW **3.9**
 WW **50**
 YW **89**
 MILK ... **28**

 CED ... **1.7**
 CEM ... **3.2**

 REA ... **21**
 MARB ... **.33**
 CHB ... **\$28**

CL 1 DOMINO 7128T
HH ADVANCE 0132X | HH MISS ADVANCE 6054S
 UPS NAVARRO
SR NAVITA 086X | SR HARLET 8124

HH ADVANCE 3113N
 CL 1 DOMINETTE 0112K
 CL 1 DOMINO 320N
 HH MISS ADVANCE 4053P
 UPS DOMINO 5216
 UPS MISS DOMINO 5875
 CJH HARLAND 408
 SR VIKI 412

BW 96 / ADJ. 205 646 ■ Good weaning weight and a solid set of EPD's. Red to the toes, good base, long side with some grow in her Eyes have some red to match her curly, good hair coat. Dam has a productive record for growth and carcass.

560**SR SENITA 560G**

■ MAR. 31, 2015 • #43613269 • BE 560

BW1.5
 WW44
 YW80
 MILK ...35

 CED ...6.6
 CEM ...2.4

 REA ...26
 MARB ...22
 CHB ...26

UPS DOMINO 3027
CHURCHILL SENSATION 028X
 |CHURCHILL LADY 7202T

IHM 821 DOMINO 1598
SR CAPTIA 6140
 |ORE 115L MISS 5087

CL 1 DOMINO 9126J
 UPS MISS DIAMOND 1353
 GH RAMBO 279R
 CL 1 DOMINETTE 301N

 CJH L1 DOMINO 821
 IHM 2110 DOMINETA 9585
 LS 288 DOMINO 115L
 ORE 290 MISS 2070

BW 87 / ADJ. 205 567 ■ Super strong cow family all across the data. Show grow-dam a big cow. A lot of back and rib with good balance to her side view. Red eyes, stands wide behind and is correct and has some bone. Dam has a very productive record.

564**SR STELLA 564G**

■ MAR. 31, 2015 • #43613446 • BE 564

BW3.8
 WW48
 YW83
 MILK ...27

 CED ...2.2
 CEM ...3.6

 REA ...48
 MARB ...09
 CHB ...24

UPS DOMINO 5216
SR STEP UP 2201 Z ET
 |NJW BW LADYSPORT DEW 78P

CJH HARLAND 408
SR HARLET 762
 |SR WESTY 051

UPS DOMINO 3027
 UPS MISS MOM 2756
 RU 20X BOULDER 57G
 SADDLE VLY LADYSPORT 120

 HH ADVANCE 9005J
 CJH L1 DOMINETTE 0064
 FA WESTWIND BRITISHER 6F
 BB MS PATRIOT 5184

BW 90 / ADJ. 205 617 ■ Total volume, correct made, out at the pins and shows good muscle end to end. Udder looks good, strong top, full hip, bone and has good pigment.

566**MAC'S DOODLES 566G**

■ APR. 1, 2015 • #43613456 • BE 566

BW1.3
 WW48
 YW81
 MILK ...20

 CED ...3.4
 CEM ...5.4

 REA ...10
 MARB ...49
 CHB ...29

GH NEON 17N
CHURCHILL YANKEE
 |CHURCHILL LADY 202

CJH HARLAND 408
MAC'S HARLET 7118
 |MAC'S FRECKLES 330

GH DIFFERENCE BRISHR 45L
 GH SIR SIMBA LASS 107K
 HH ADVANCE 767G
 CHURCHILL LADY 0113

 HH ADVANCE 9005J
 CJH L1 DOMINETTE 0064
 DS COMPEL 311
 SR ENEZ 470

BW 77 / ADJ. 205 565 ■ Birth weight down, growth up and there is carcass. Long striding, free moving, red to the toes and feminine look. BW 77. Shows a long side, clean fronted and the start of a good udder.

568**SR TAMMY 568G**

■ APR. 2, 2015 • #43613933 • BE 568

BW3.0
 WW46
 YW80
 MILK ...26

 CED ...-0.3
 CEM ...1.6

 REA ...22
 MARB ...27
 CHB ...26

NJW 73S W18 HOMETOWN 10Y
BCC BILLY THE KID 330A
 |BCC SWEET CAROLINE 071X

HH ADVANCE 8203U
SR TESSIE 145Y
 |SR ROSATA 579

SHF WONDER M326 W18
 NJW P606 72N DAYDREAM 73S
 TFR HIGH COTTON 328
 BCC KAY 415

 HH ADVANCE 5161R
 HH MISS ADVANCE 752G
 SR BONANZA 1293
 SR LORI 391

BW 82 / ADJ. 205 506 ■ Full pigment, clean front, some frame, marked right and correct made. Long side with some depth of body. Gives you a sharp look. You can work with her numbers.

572**SR BRAXIE 572G**

■ FEB. 26, 2015 • #P43617025 • BE 572

BW2.2
 WW45
 YW75
 MILK ...27

 CED ...2.1
 CEM ...3.1

 REA ...31
 MARB ...24
 CHB ...24

ANCHOR BRAXTON
E BRAXTON 719
 |ANCHOR 17R

UPS NAVARRO
SR NAVITA 3131A
 |SJWR 201P TRISHA 029U

VESCOVI D149
 J-BAR-B ANCHOR 27A 1C
 ANCHOR 32N
 ANCHOR 43L

 UPS DOMINO 5216
 UPS MISS DOMINO 5875
 TH JWR SOP 16G 57G TUNDRA 63N
 JWR M37 JACKIE 201P

BW 77 / ADJ. 205 580 ■ Darker red with great Hereford marking. Short marked with moderate frame with good length of body. She is attractive to look at and bred somewhat different. Good eye pigment and should have an ideal udder. The EPD's will work.

575**SR ESTER 575G**

■ MAR. 4, 2015 • #43613853 • BE 575

BW4.6
 WW53
 YW83
 MILK ...30

 CED ...2.9
 CEM ...0.6

 REA ...30
 MARB ...05
 CHB ...25

PAHL 3S WESTPOINT 40W
SNS 40W WESTERN LAD 8A
 |SNS 12R MRK DOMINO LS 16X

CHURCHILL SENSATION 028X
SR SENITA 321A
 |SR MONITA 6122

PAHL 90P SPADE 3S
 PAHL 179K PATIENCE 147P
 AD 33H LAD 12R
 SNS 232P DAND PYRAMID LS 11T

 UPS DOMINO 3027
 CHURCHILL LADY 7202T
 MH DAKOTA 3146
 SR MARVEL 974

BW 85 / ADJ. 205 592 ■ Reach to her step to allow her to cover a lot of ground. Real yellow and good haired. Extra frame with capacity to her mid-section. Pigment around one eye.

577**SR FLOE 577G**

■ MAR. 5, 2015 • #P43614059 • BE 577

BW6.4
 WW73
 YW127
 MILK ...23

 CED ...-1.6
 CEM ...1.7

 REA ...69
 MARB ...45
 CHB ...43

KCF BENNETT REVOLUTION X51
KCF BENNETT INFLUENCE Z80
 |KCF MISS M326 R52

KJ HVH 33N REDEEM 485T
SR REDA 339A
 |TDP MELODY 428U

MSU TCF REVOLUTION 4R
 KCF MISS PROFICIENT U201
 KCF BENNETT 3008 M326
 KCF MISS 774 N45

 SHF RADAR M326 R125
 HVH OKSANA 4L 33N
 TH JWR SOP 16G 57G TUNDRA 63N
 ASH MELODY 211M

BW 87 / ADJ. 205 632 ■ This lady has it all! ...major league performance with show ring style. Stout, head up, stands correct, right muscle shape, light colored, some eye pigment and stands on a wide base with a clean front. Look at her carcass numbers and growth. Stout, good uddered cow family. We would like to keep a part of her or a couple of flushes.

Gluber Sale Heifers...

Stuber Sale Heifers...

579

SR SCOPIA 579C

■ MAR. 7, 2015 • #43653161 • BE 579

BW ...**3.1**
 WW ...**57**
 YW ...**96**
 MILK ...**30**
 CED ...**1.8**
 CEM ...**0.9**
 REA ...**.28**
 MARB ...**.01**
 CHB ...**\$.28**

CL 1 DOMINO 860U
CL 1 DOMINO 0130X
 | CL 1 DOMINETTE 440P
 CHURCHILL AUTHORITY 027X
SR AUTRY 3111A
 | SR ROSA 360
 CL 1 DOMINO 637S
 CL 1 DOMINETTE 5142R
 CL 1 DOMINO 9126J
 CL 1 DOMINETTE 974J
 HH ADVANCE 7034T
 CHURCHILL LADY 7747T
 CTY BONANZA 01K
 SR MANDY 608

BW **80** / ADJ. 205 **586** ■ Moderate frame, body wide and long, yellow, curly hair, muscled deep into her quarter and presents a good side look. Strong top with rib and volume. Pigment in one eye. Her numbers are pretty darn good. Owned by J. Hadachek, Iowa out of a heifer purchased from Stuber Ranch.



583

SR SENITA 583C

■ MAR. 8, 2015 • #43614088 • BE 583

BW ...**0.6**
 WW ...**52**
 YW ...**81**
 MILK ...**34**
 CED ...**7.8**
 CEM ...**3.7**
 REA ...**.37**
 MARB ...**.16**
 CHB ...**\$.27**

UPS DOMINO 3027
CHURCHILL SENSATION 028X
 | CHURCHILL LADY 7202T
 CTY LAD 055X
SR JODY 399A
 | SR HARLET 7114
 CL 1 DOMINO 9126J
 UPS MISS DIAMOND 1353
 GH RAMBO 279R
 CL 1 DOMINETTE 301N
 AGA 72R LAD 49U
 COURTNEY LASS 444P T789
 CJH HARLAND 408
 SR PEGGY 075

BW **74** / ADJ. 205 **581** ■ Could very well be the star of the sale! Deep side with balance and real thick down the top. Shows good muscle expression, red to the toes, full pigment and certainly gives the elite look. Moderate frame from the kid's show heifer. A great number set to work with. Cow family has a lot of gas in it. **Would like a flush at a later date.**



584

SR SENITA 584C

■ MAR. 13, 2015 • #43618362 • BE 584

BW ...**2.2**
 WW ...**48**
 YW ...**72**
 MILK ...**29**
 CED ...**7.6**
 CEM ...**2.8**
 REA ...**.15**
 MARB ...**.36**
 CHB ...**\$.28**

UPS DOMINO 3027
CHURCHILL SENSATION 028X
 | CHURCHILL LADY 7202T
 SPEARHEAD MAGNUM P28
SR MAGGIE 397A ET
 | JV ADA 634
 CL 1 DOMINO 9126J
 UPS MISS DIAMOND 1353
 GH RAMBO 279R
 CL 1 DOMINETTE 301N
 FELTONS MAGNUM 434
 FELTONS KATE P70
 HH ADVANCE 9012Y
 JV ADA 424

BW **84** / ADJ. 205 **513** ■ Real yellow and curly haired with a red-neck and partial eye pigment. Good muscle shape, extra rib capacity, wide at the loin, stands wide and marked right. Good MARB.



585

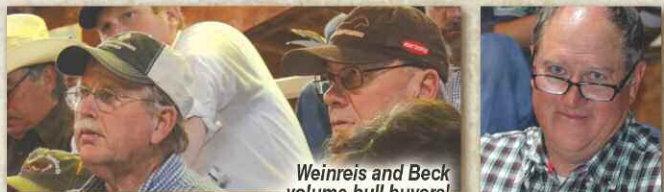
SR WS RHONDA 585C

■ MAR. 15, 2015 • #43614089 • BE 585

BW ...**4.5**
 WW ...**49**
 YW ...**84**
 MILK ...**30**
 CED ...**1.5**
 CEM ...**2.0**
 REA ...**.45**
 MARB ...**.02**
 CHB ...**\$.26**

CHURCHILL SENSATION 028X
SR RIGHT ON 2203 Z ET
 | NJW BW LADYSPORT DEW 78P
 CTY LAD 055X
LS JODY 3106A
 | LS LUCY 770
 UPS DOMINO 3027
 CHURCHILL LADY 7202T
 RU 20X BOULDER 57G
 SADDLE VLY LADYSPORT 120
 AGA 72R LAD 49U
 COURTNEY LASS 444P T789
 BB 1065 DOMINO 4034
 LS BOWETTE 535

BW **84** / ADJ. 205 **595** ■ Gives you the sweet look. Volume, rib spread and deep sided. Two red-eyes, short marked with a wide loin and back. Moderate frame and sure has the cow look. Good data to work with. Structure and leg setting right.



Weinreis and Beck
 ...volume bull buyers!

587

SR RHONDA 587C

■ MAR. 20, 2015 • #43614055 • BE 587

BW ...**4.6**
 WW ...**55**
 YW ...**87**
 MILK ...**29**
 CED ...**1.0**
 CEM ...**2.1**
 REA ...**.42**
 MARB ...**.10**
 CHB ...**\$.28**

CHURCHILL SENSATION 028X
SR RIGHT ON 2203 Z ET
 | NJW BW LADYSPORT DEW 78P
 FA 58U BRITISHER 169X
SR BRITANNIA 324A
 | SR JULIE 9105W
 UPS DOMINO 3027
 CHURCHILL LADY 7202T
 RU 20X BOULDER 57G
 SADDLE VLY LADYSPORT 120
 LBH 157K RIBSTONE 58U
 FA 37S BRITISHER LADY 165U
 PPF MARK DON 5398
 SR SHANA 4101

BW **87** / ADJ. 205 **556** ■ Good eye pigment, correct made, good marked, clean front and smooth shoulder. Red to the toes, good shape to her quarter with a great hair coat. Almost full eye pigment.



Ernst, bought top
 0132X son!

Leo Heinrich,
 major bull buyer!



589

BW ... **3.3**
 WW ... **52**
 YW ... **95**
 MILK ... **26**
 CED ... **2.1**
 CEM ... **2.9**
 REA ... **24**
 MARB ... **12**
 CHB ... **\$27**

SR 130 HARLET 589C

■ MAR. 26, 2015 • #43614057 • BE 589

| | |
|-----------------------|-----------------------|
| CJH HARLAND 408 | HH ADVANCE 9005J |
| SR SAGA 1302Z | CJH L1 DOMINETTE 0064 |
| SR ROSA 3125 | CTY BONANZA 01K |
| | SR WESTY 938 |
| UPS NAVARRO | UPS DOMINO 5216 |
| SR NAVITA 332A | UPS MISS DOMINO 5875 |
| SR ROSA 443 | CTY BONANZA 01K |
| | SR MANDY 788 |

BW **79** / ADJ. 205 **623** ■ Smaller framed, short marked, right kind of hair and has good pigment. Weaned with the best and presents of good set of EPD's to work with.



590

BW ... **4.3**
 WW ... **51**
 YW ... **89**
 MILK ... **24**
 CED ... **1.5**
 CEM ... **3.6**
 REA ... **16**
 MARB ... **19**
 CHB ... **\$26**

SR DS 130 HARLET 590C

■ MAR. 27, 2015 • #43614085 • BE 590

| | |
|-----------------------|-----------------------|
| CJH HARLAND 408 | HH ADVANCE 9005J |
| SR SAGA 1302Z | CJH L1 DOMINETTE 0064 |
| SR ROSA 3125 | CTY BONANZA 01K |
| | SR WESTY 938 |
| UPS INDIGO 8648 | UPS DOMINO 5216 |
| DS INDITA 394A | UPS MISS NEON 6529 |
| DS DOODLES 801 | CHURCHILL YANKEE |
| | DS GETTA 586 |

BW **87** / ADJ. 205 **571** ■ Pigmented eyes, upstanding look, good marked, yellow, long and correct. Gives you the "cow look." A little greener.



591

BW ... **2.5**
 WW ... **45**
 YW ... **78**
 MILK ... **28**
 CED ... **3.6**
 CEM ... **3.1**
 REA ... **57**
 MARB ... **10**
 CHB ... **\$26**

SR RHONDA 591C

■ MAR. 29, 2015 • #P43614061 • BE 591

| | |
|------------------------------|--------------------------|
| CHURCHILL SENSATION 028X | UPS DOMINO 3027 |
| SR RIGHT ON 2203 Z ET | CHURCHILL LADY 7202T |
| NJW BW LADYSPORT DEW 78P | RU 20X BOULDER 57G |
| | SADDLE VLY LADYSPORT 120 |
| SR NAVARRO 41Y | UPS NAVARRO |
| SR AZITA 346A | B&S TAMEREEN 866 |
| SR TONYA 563 | FA BRITISHER 41M |
| | SR YAMPETTE 706 |

BW **76** / ADJ. 205 **504** ■ Herd marker. Goggle eyed, good loin, ideal muscle shape down back with great hair. Long body, red to toes, clean fronted and smooth made.



592

BW ... **5.0**
 WW ... **51**
 YW ... **81**
 MILK ... **22**
 CED ... **0.8**
 CEM ... **-0.2**
 REA ... **25**
 MARB ... **06**
 CHB ... **\$23**

SR CAPTIA 592C

■ APR. 2, 2015 • #43633375 • BE 592

| | |
|--------------------------|--------------------------|
| YV 34W MAJOR MARK LAD 2Y | SNS 838S MARK LAD 34W |
| R 2Y CAPTION 43A | YV 46R MAJOR MAMA 950W |
| R STARLETTE 037 | R 157K NORTH STAR 54U |
| | R STARLETTE 803 |
| FA 105T BRITISHER 5X | DA 121M BRITISHER 105T |
| SR SYNTHIA 379A | FA 235P BRTSHR LADY 166U |
| SR NAVITA 1116Y | UPS NAVARRO |
| | SR MARVEL 147 |

BW **90** / ADJ. 205 **630** ■ This lady has the look. Volume, two red eyes, curly hair coat and show width and muscle expression end to end. Marked with the best, correct made and stands on good bone. Strong cow family!

597

BW ... **5.8**
 WW ... **54**
 YW ... **92**
 MILK ... **26**
 CED ... **-0.1**
 CEM ... **2.1**
 REA ... **32**
 MARB ... **07**
 CHB ... **\$27**

SR NORA 597C

■ APR. 3, 2015 • #43613483 • BE 597

| | |
|------------------------|-----------------------|
| UPS NAVARRO | UPS DOMINO 5216 |
| SR NAVARRO 450X | UPS MISS DOMINO 5875 |
| SR ROSA 3125 | CTY BONANZA 01K |
| | SR WESTY 938 |
| CJH HARLAND 408 | HH ADVANCE 9005J |
| SR HARLET 8118 | CJH L1 DOMINETTE 0064 |
| SR SANDMAN 4114 | BP 146D SANDMAN 46H |
| | SR GOLDIE 748 |

BW **100** / ADJ. 205 **593** ■ Heifer with a good look, marked right, eyes red, correct made with her head up on her shoulder. Has some leg and body with good length. Shows a strong side view.



**STUBER RANCH...
GOLD TPR BREEDER**

598

SR INDITA 598G

■ APR. 3, 2015 • #43613924 • BE 598

BW ...**3.7**
WW ...**51**
YW ...**86**
MILK ...**28**
CED ...**-1.2**
CEM ...**3.3**
REA ...**.31**
MARB ...**.08**
CHB ...**\$22**

UPS INDIGO 8648

UPS DOMINO 5216
UPS MISS NEON 6529

UPS DOMINO 3027
UPS MISS MOM 2756
GH NEON 17N
UPS MISS STAR 0835

SR JULIE 127Y

PPF MARK DON 5398
SR ROSA 493

MDA MARK DONALD 2051
PPF MS 8148 MARK 2624
CTY BONANZA 01K
SR MARVEL 974

BW 94 / ADJ. 205 624 ■ Two red eyes, yellow, curly hair, long sided and has some grow. Wide through her mid-section and loin with a long hip. Comes from a cow family of production-oriented females. Mother's MPPA 109; production for WW 114 / YW 113. Different pedigree.

599

SR NAVITA 599C

■ APR. 4, 2015 • #43613488 • BE 599

BW ...**0.5**
WW ...**36**
YW ...**63**
MILK ...**30**
CED ...**3.3**
CEM ...**3.2**
REA ...**.47**
MARB ...**.21**
CHB ...**\$24**

UPS NAVARRO

UPS DOMINO 5216
UPS MISS DOMINO 5875

UPS DOMINO 3027
UPS MISS MOM 2756
JA L1 DOMINO 2228M
UPS MISS KNIGHT 3910

SR VALORIE 768

BB 1065 DOMINO 4102
SR ROSA 371

BB 9131 DOMINO 1065
ORE CLAUDIA 8047
CTY BONANZA 01K
SR ANDREA 1100

BW 69 / ADJ. 205 541 ■ Low birth weight with good carcass. Marked right, bone, moderate frame, red legs and correct structure. These Navarro females make good, productive cows.

5101

SR DS NORA 5101C

■ APR. 5, 2015 • #43613561 • BE 5101

BW ...**4.3**
WW ...**54**
YW ...**87**
MILK ...**30**
CED ...**1.0**
CEM ...**2.2**
REA ...**.33**
MARB ...**.19**
CHB ...**\$28**

SR NAVARRO 450X

UPS NAVARRO
SR ROSA 3125

UPS DOMINO 5216
UPS MISS DOMINO 5875
CTY BONANZA 01K
SR WESTY 938

DS HARLET 056X

CJH HARLAND 408
DS GETTA 586

IHH ADVANCE 9005J
CJH L1 DOMINETTE 0064
HH NUGGET 899N
DS RAPTURE 355

BW 92 / ADJ. 205 627 ■ Presents of good profile. Long sided, correct made, good back that is wide and deep. Easy moving, medium color, some eye pigment and has the growth look. Weaning weight is good and numbers make her easy to breed. Real strong family of productive cows on the bottom side.

5106

SR SCOPIA 5106C

■ APR. 6, 2015 • #43613972 • BE 5106

BW ...**0.8**
WW ...**51**
YW ...**87**
MILK ...**32**
CED ...**4.7**
CEM ...**1.7**
REA ...**.28**
MARB ...**.04**
CHB ...**\$24**

CL 1 DOMINO 0130X

CL 1 DOMINO 860U
CL 1 DOMINETTE 440P

CL 1 DOMINO 637S
CL 1 DOMINETTE 5142R
CL 1 DOMINO 9126J
CL 1 DOMINETTE 974J

SR KENDRA 200Z

KB L1 DOMINO 842U
KB L1 DOMINETTE 9103W

KB L1 DOMINO 655
MONTANA MISS 310
CL 1 DOMINO 7110T
KB L1 DOMINETTE 7116T

BW 69 / ADJ. 205 586 ■ Super long, correct made, head up and has the cow look. Presents a strong side profile and clean made. Unique pedigree for the ranch. Dam is big cow with good production numbers.

5102

SR MATTIE 5102C

■ APR. 5, 2015 • #43613956 • BE 5102

BW ...**4.7**
WW ...**61**
YW ...**108**
MILK ...**32**
CED ...**0.8**
CEM ...**2.9**
REA ...**.38**
MARB ...**-.03**
CHB ...**\$28**

CL 1 DOMINO 1161Y

CL 1 DOMINO 732T
CL 1 DOMINETTE 4126P

CL 1 DOMINO 590R
CL 1 DOMINETTE 507R
CL 1 DOMINO 1116L
CL 1 DOMINETTE 193L

SR DILIA 187Y

SR CALIBER 1129W
SR SCRIPTIA 926W

GH ADAMS TOP GUN ET 516T
SR ROSATA 579
SR SCRIPT 187
SR SABRINA 284

BW 93 / ADJ. 205 674 ■ This is the same cow family behind Bakken and take a look at the figures. Red eyed, bone, short marked, lot of rib and chest, stands correct and gives you the cow look. Feminine headed with the performance EPD's. Dam's production record real strong.

5107

SR SENITA 5107C

■ APR. 6, 2015 • #43613455 • BE 5107

BW ...**3.1**
WW ...**43**
YW ...**79**
MILK ...**29**
CED ...**5.1**
CEM ...**2.0**
REA ...**.27**
MARB ...**.19**
CHB ...**\$25**

CHURCHILL SENSATION 028X

UPS DOMINO 3027
CHURCHILL LADY 7202T

CL 1 DOMINO 9126J
UPS MISS DIAMOND 1353
GH RAMBO 279R
CL 1 DOMINETTE 301N

SR CAPTIA 7117

IHM 821 DOMINO 1598
SR MANDY 782

CJH L1 DOMINO 821
IHM 2110 DOMINETTA 9585
BB 7Z STD LAD 4032
SR VERDA 928

BW 92 / ADJ. 205 466 ■ Cow look, feminine and looks like a lady. Correct structure, good marked, head up and smooth fronted. Yellow hair wide at the hip and strong back. Good pigment around the eyes and a good set of EPD's to work with.

5103

SR WS FORTIA 5103C

■ APR. 5, 2015 • #43613968 • BE 5103

BW ...**2.7**
WW ...**47**
YW ...**83**
MILK ...**29**
CED ...**1.6**
CEM ...**3.0**
REA ...**.22**
MARB ...**.17**
CHB ...**\$25**

HH ADVANCE 0132X

CL 1 DOMINO 7128T
IHH MISS ADVANCE 6054S

HH ADVANCE 3113N
CL 1 DOMINETTE 0112K
CL 1 DOMINO 320N
HH MISS ADVANCE 4053P

WS NAVITA 1134Y

UPS NAVARRO
IWS ROSA 374

UPS DOMINO 5216
UPS MISS DOMINO 5875
CTY BONANZA 01K
IWS SHANA 138

BW 81 / ADJ. 205 600 ■ Lighter colored and marked with the best. Length of side and smooth front. Full eye pigment. Dam a growth cow with good production results.

5108

SR NAVITA 5108C

■ APR. 7, 2015 • #43613498 • BE 5108

BW ...**1.9**
WW ...**42**
YW ...**85**
MILK ...**35**
CED ...**1.8**
CEM ...**4.0**
REA ...**.42**
MARB ...**.34**
CHB ...**\$27**

UPS NAVARRO

UPS DOMINO 5216
UPS MISS DOMINO 5875

UPS DOMINO 3027
UPS MISS MOM 2756
JA L1 DOMINO 2228M
UPS MISS KNIGHT 3910

SR SCRIPTIA 926W

SR SCRIPT 187
SR SABRINA 284

CJH HARLAND 408
SR RAPTIA 363
OXH SABRE 7299
SR FACETA 064

BW 75 / ADJ. 205 599 ■ Lot of capacity, moderate frame and big chest floor. Long in her walk, eye pigment and stands on good bone. Full sister to herd sire Bakken. Dam's production numbers and EPD's are outstanding. Carcass, growth, milk and BW in one package.



McMillens
...long-time
customers!

Reno Ranch
...major bull
buyer!



Ned and Bell Ward bought top-end heifer!

Wonder if Roger will ever
quit talking?!!

5110

BW2.9
WW50
YW81
MILK22
CED1.8
CEM2.5
REA44
MARB21
CHB ...\$24

SR INDITA 5110C

■ APR. 9, 2015 • #43613412 • BE 5110

UPS INDIGO 8648

UPS DOMINO 5216
UPS MISS NEON 6529

UPS DOMINO 3027
UPS MISS MOM 2756
GH NEON 17N
UPS MISS STAR 0835
REMITALL KOOTENAY 9K
UPS MISS PURE GOLD 0613
HH ADVANCE 9012Y
JV PEARL 441

SR ULIA 720

UPS ODYSSEY
JV PEARL 613

BW **88** / ADJ. 205 **586** ■ Last heifer put in the sale and she deserves a good look. Muscled, deep sided, volume, bone and correct. Wide based, muscle in the lower quarter, good pigment and the udder looks right. Has the efficient cow look. Long through the mid-section and neat coat of hair. Her EPD's give you a good opportunity to improve.

5112

BW2.3
WW48
YW82
MILK30
CED1.8
CEM2.8
REA47
MARB27
CHB ...\$29

SR TAMMY 5112C

■ APR. 9, 2015 • #43613950 • BE 5112

BCC BILLY THE KID 330A

NJW 73S W18 HOMETOWN 10Y
BCC SWEET CAROLINE 071X

SHF WONDER M326 W18
NJW P606 72N DAYDREAM 73S
TFR HIGH COTTON 328
BCC KAY 415
CHURCHILL NEON 626S
BB MS 3007 MARK DONALD 6070
SR SCRIPT 187
SR LINA 331

SR JOEY 179Y

BB 626S NEON 9067
SR SCRIPTIA 939W

BW **79** / ADJ. 205 **564** ■ Great rear end, deep chest, two red eyes, bone, thick top and carries her width end to end. Carcass EPD's work along with growth and milk.

5115

BW4.7
WW53
YW88
MILK19
CED-1.1
CEM3.9
REA49
MARB08
CHB ...\$22

SR INDITA 5115C

■ APR. 14, 2015 • #43613477 • BE 5115

UPS INDIGO 8648

UPS DOMINO 5216
UPS MISS NEON 6529

UPS DOMINO 3027
UPS MISS MOM 2756
GH NEON 17N
UPS MISS STAR 0835

SR CALIE 865

S CHUVALO 65R
SR KAYE 577

DS SANDMAN 1283
LPG STNDRD DOMINO LS 52H
OXH MARK DOMINO 3018
SR PASSIA 329

BW **92** / ADJ. 205 **506** ■ Good growth, yellow haired, balanced end to end and marked with the best. Full pigment, marked with a lot of red, long side and has the brood matron look.

5117

BW2.2
WW51
YW88
MILK33
CED2.7
CEM2.9
REA48
MARB06
CHB ...\$22

SR MATTIE 5117C

■ APR. 14, 2015 • #43613535 • BE 5117

CL 1 DOMINO 1161Y

CL 1 DOMINO 732T
CL 1 DOMINETTE 4126P

CL 1 DOMINO 590R
CL 1 DOMINETTE 507R
CL1 DOMINO 1116L
CL1 DOMINETTE 193L

UU MS AXTON 9251

UU GENERAL 3056
UU MS DOMINO 5204

JV GENERAL 660
UU MS GENERATOR 1010
H5 767 ADVANCE 056
UU MS 660 9010

BW **82** / ADJ. 205 **624** ■ Two red eyes, extended growth curve, long stride and short marked. Feminine, head up on her shoulder, udder looks right. Gives you a set of good performance numbers that will work in a lot of breeding programs. Dam's production numbers rank with the best.

5119

BW2.0
WW50
YW76
MILK22
CED0.5
CEM3.6
REA38
MARB31
CHB ...\$29

SR WS DOODLES 5119C

■ APR. 15, 2015 • #43613960 • BE 5119

CHURCHILL YANKEE

GH NEON 17N
CHURCHILL LADY 202

GH DIFFERENCE BRTSHR 45L
GH SIR SIMBA LASS 107K
HH ADVANCE 767G
CHURCHILL LADY 0113
MDA MARK DONALD 2051
PPF MS 8148 MARK 2624
MH DAKOTA 3146
OXH BESS 8056

WS JULIE 1101Y

PPF MARK DON 5398
WS MONITA 6105

BW **74** / ADJ. 205 **619** ■ Volume, strong top, big rib, deep side and wide base with some eye pigment. Dam a solid cow with a good production numbers. Her EPD's should work for everyone.

5120

SR DOODLES 5120C

■ APR. 16, 2015 • #43613414 • BE 5120

BW**3.4**
 WW**48**
 YW**83**
 MILK**18**
 CED**1.3**
 CEM**3.0**
 REA**01**
 MARB**50**
 CHB**\$20**

GH NEON 17N
CHURCHILL YANKEE
 CHURCHILL LADY 202
 L1 DOMINO 03473
SR NEILIE 732
 SR ANDREA 047
 GH DIFFERENCE BRSSH 45L
 GH SIR SIMBA LASS 107K
 HH ADVANCE 767G
 CHURCHILL LADY 0113
 L1 DOMINO 01418
 L1 DOMINETTE 95435
 FA BRITISHER 126G
 SR CRESCETA 5102

BW **88** / ADJ. 205 **524** ■ Greener, feminine, good balanced heifer that is good marked and presents a good side view. Good eye pigment an udder. Dam has a productive record.



5124

SR NORA 5124C

■ APR. 20, 2015 • #43613547 • BE 5124

BW**2.6**
 WW**45**
 YW**78**
 MILK**26**
 CED**1.0**
 CEM**2.0**
 REA**33**
 MARB**19**
 CHB**\$27**

UPS NAVARRO
SR NAVARRO 450X
 SR ROSA 3125
 CHURCHILL YANKEE
SR DOODLES 030X
 SR MURIAL 148
 UPS DOMINO 5216
 UPS MISS DOMINO 5875
 CTY BONANZA 01K
 SR WESTY 938
 GH NEON 17N
 CHURCHILL LADY 202
 IH SURPASS 806
 SR SHINA 883

BW **81** / ADJ. 205 **581** ■ Identifying spot on her nose, red-eyed and short marked. Good leg set, wide based and some muscle in her quarter. Cow family is solid with good production numbers.



5126

SR DS ESTER 5126C

■ APR. 27, 2015 • #43614275 • BE 5126

BW**5.4**
 WW**50**
 YW**78**
 MILK**21**
 CED**-0.6**
 CEM**1.1**
 REA**38**
 MARB**03**
 CHB**\$24**

PAHL 3S WESTPOINT 40W
SNS 40W WESTERN LAD 8A
 SNS 12R MRK DOMINO LS 16X
 SR DOUBLE BARRELL 739W
DS DEBE 237Z
 DS DOODLES 801
 PAHL 90P SPADE 3S
 PAHL 179K PATIENCE 147P
 AD 33H LAD 12R
 SNS 232P DAND PYRAMID LS 11T
 GH ADAMS TOP GUN ET 516T
 MAC'S HARLET 772
 CHURCHILL YANKEE
 DS GETTA 586

BW **89** / ADJ. 205 **543** ■ Somewhat greener with a lot of growth potential. Has some leg under her, yellow haired and reaches out in her walk. Good marked and the start of an ideal udder.



5129

SR BENITA 5129C

■ MAY 1, 2015 • #43613524 • BE 5129

BW**4.6**
 WW**60**
 YW**99**
 MILK**24**
 CED**2.4**
 CEM**2.0**
 REA**27**
 MARB**16**
 CHB**\$29**

F 157K RIBSTONE 763
BRC FACTOR Y19
 BRC MISS KAHLUA 205
 SR SAGA 376
SR SHELLIE 987W
 SR VALORIE 758
 K 64H RIBSTONE LAD 157K
 F 9126 DOMINETTE 417
 BP KAHLUA 1K
 BRC MS COMMANDER 907
 CJH HARLAND 408
 SR SABRINA 284
 BB 1065 DOMINO 4102
 SR PASSIA 423

BW **91** / ADJ. 205 **636** ■ You will like a lot about this female. Super long for her age, gives the feminine look, marked right. It is hard not to get her looking excellent. Full pigment and was the second to last female to go into the sale. Just calving the first Factor females and they are good. Dam 987 is one of our top females with good production data.

5130

MAC'S SR SCOPIA 5130C

■ MAY 3, 2015 • #43613991 • BE 5130

BW**1.5**
 WW**58**
 YW**100**
 MILK**23**
 CED**2.2**
 CEM**1.7**
 REA**56**
 MARB**17**
 CHB**\$32**

CL 1 DOMINO 860U
CL 1 DOMINO 0130X
 CL 1 DOMINETTE 440P
 MH TRS KEYNOTE 966
MACS KEYNA 240Z
 MAC'S HARLET 772
 CL 1 DOMINO 637S
 CL 1 DOMINETTE 5142R
 CL 1 DOMINO 9126J
 CL 1 DOMINETTE 974J
 REMITALL KEYNOTE 20X
 MH MISS ANTON 170
 CJH HARLAND 408
 LS CAPTIA 599

BW **73** / ADJ. 205 **635** ■ Take a look here: BW 1.5 to YW 100. The 3-D look, real thick end to end and stands correct on a wide base. Red eyes with perfect markings. Gives you easy doing female look. Mother was Mac's show heifer. He is graduating from High School and needs some money.

5137

SR NORA 5137C

■ MAY 11, 2015 • #43613529 • BE 5137

BW**5.7**
 WW**55**
 YW**95**
 MILK**27**
 CED**0.0**
 CEM**1.5**
 REA**27**
 MARB**08**
 CHB**\$28**

UPS NAVARRO
SR NAVARRO 450X
 SR ROSA 3125
 CJH HARLAND 408
SR HARLET 9112W
 SR ROSA 568
 UPS DOMINO 5216
 UPS MISS DOMINO 5875
 CTY BONANZA 01K
 SR WESTY 938
 HH ADVANCE 9005J
 CJH L1 DOMINETTE 0064
 CTY BONANZA 01K
 SR ANDREA 047

BW **95** / ADJ. 205 **582** ■ This young heifer kind of catches your eye. Extra long for her age, ideal markings, clean profile and red to her toes. Full pigment, light colored and should make an ideal pasture cow.

5138**SR BENITA 5138G**

MAY 12, 2015 • #43613541 • BE 5138

BW ...**3.4**
 WW ...**51**
 YW ...**87**
 MILK ...**24**

 CED ...**2.1**
 CEM ...**1.9**

 REA ...**40**
 MARB ...**18**
 CHB ...**\$28**

BRC FACTOR Y19

F 157K RIBSTONE 763
 BRC MISS KAHLUA 205

K 64H RIBSTONE LAD 157K
 F 9126 DOMINETTE 417
 BP KAHLUA 1K
 BRC MS COMMANDER 907

 UPS NAVARRO
 UPS DOMINO 5216
 UPS MISS DOMINO 5875
 PDHR 15E STNDRD LAD 24H
 SR ROSA 270

SR TESSIE 009X

SR RAPTIA 602

BW **80** / ADJ. 205 **584** ■ Solid marked with red eyes. Good top and bases wide. Pins out, bone and stands correct. Some decent numbers to work with.

5140**SR MATTIE 5140G**

MAY 14, 2015 • #43613265 • BE 5140

BW ...**4.8**
 WW ...**63**
 YW ...**99**
 MILK ...**26**

 CED ...**0.4**
 CEM ...**1.9**

 REA ...**53**
 MARB ...**23**
 CHB ...**\$23**

CL 1 DOMINO 1161Y

CL 1 DOMINO 732T
 CL 1 DOMINETTE 4126P

CL 1 DOMINO 590R
 CL 1 DOMINETTE 507R
 CL 1 DOMINO 1116L
 CL 1 DOMINETTE 193L

SR LINETA 6116

SR LINER 1143
 SR FACETA 1116

REMITALL ONLINE 122L
 BB MS RED STAN 8247
 LS ADVANCE G254
 SR RESA 791

BW **90** / ADJ. 205 **644** ■ Classy looking, good marked, eye pigment and smooth fronted. Strong top and loin, up headed, correct made and stands on good bone. Her growth and REA numbers compete with the best.

5142**SR SCOPIA 5142G**

MAY 21, 2015 • #43653160 • BE 5142

BW ...**-1.1**
 WW ...**50**
 YW ...**82**
 MILK ...**33**

 CED ...**5.6**
 CEM ...**2.1**

 REA ...**41**
 MARB ...**15**
 CHB ...**\$27**

CL 1 DOMINO 0130X

CL 1 DOMINO 860U
 CL 1 DOMINETTE 440P

CL 1 DOMINO 637S
 CL 1 DOMINETTE 5142R
 CL 1 DOMINO 9126J
 CL 1 DOMINETTE 974J

SR SENITA 357A

CHURCHILL SENSATION 028X
 SR WESTY 060

UPS DOMINO 3027
 CHURCHILL LADY 7202T
 FA WESTWIND BRITISHER 6F
 JV PEARL 613

BW **60** / ADJ. 205 **564** ■ Younger, but look at her BW, milk, growth and balanced carcass numbers. She gives you the look with a lot of style. Long hip, some good eye pigment, good lower quarter muscle, bone, wide hip and marked right. Owned by J. Hadachek, Iowa out of a heifer purchased from Stuber Ranch.

5143**SR MAXIE 5143G**

MAY 23, 2015 • #43613444 • BE 5143

BW ...**6.1**
 WW ...**50**
 YW ...**84**
 MILK ...**22**

 CED ...**0.1**
 CEM ...**-1.7**

 REA ...**10**
 MARB ...**12**
 CHB ...**\$23**

KB L1 DOMINO 655

CL 1 DOMINO 9126J
 MONTANA MISS 6154

HH ADVANCE 767G
 CL 1 DOMINETTE 490
 HH ADVANCE 311C
 MONTANA MISS J938

SR NEILIE 754

L1 DOMINO 03473
 SR MARKET 079

L1 DOMINO 01418
 L1 DOMINETTE 95435
 AY MARK DOMINO 7926
 SR SHINA 883

BW **106** / ADJ. 205 **603** ■ Young heifer with growth, correct made, some leg, yellow, curly hair and has good reach to her step. The cows on the bottom side are volume cows with good udders.



The Certified Hereford Beef program is growing and creating demand for white-faced cattle. There has never been a greater opportunity for renewed Hereford genetics to have an influence on our nation's cowherd and our nation's feedlots.

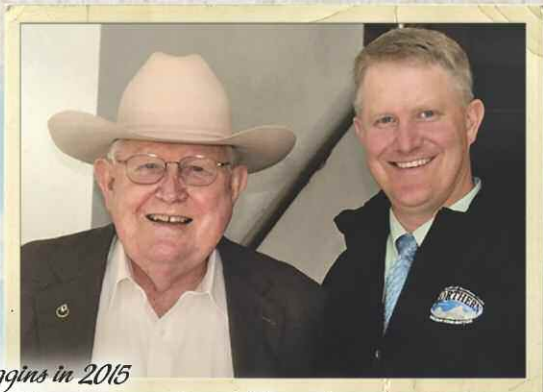
Stuber Ranch Commercial Heifers...

The commercial heifers selling are all home raised from our commercial cow herd. Most of the black baldy heifers come from our first calf heifers. A fancy set of broody females with milk, muscle and enough growth, they have been wintered on a growing ration with their future use in mind and will be in just the right condition. They should weigh in the 825 to 900 lb. range. All are Bangs vaccinated and have had all of their preconditioning procedures. They will also have all of their breeding shots by sale day.

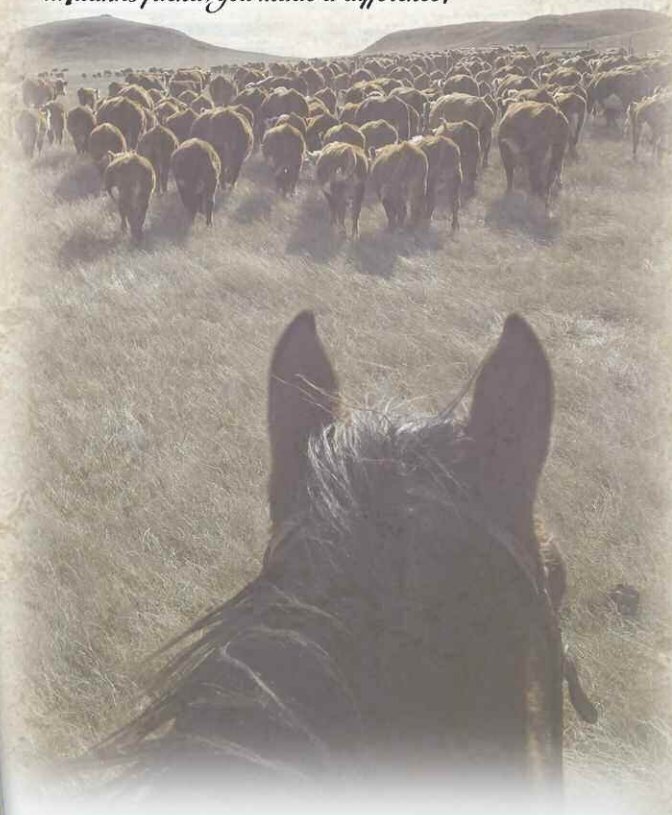
The Tom Burke commercial heifers are similar to the Stuber Ranch heifers and have been developed in a similar manner. Same terms and conditions apply.

NO DELIVERY is provided on the commercial heifers, but we will be happy to help you make arrangements.

| # Head | Price | Buyer |
|--------|-------|-------|
| | | |
| | | |
| | | |
| | | |
| | | |
| | | |
| | | |
| | | |
| | | |
| | | |
| | | |
| | | |
| | | |
| | | |
| | | |
| | | |
| | | |
| | | |
| | | |
| | | |
| | | |
| | | |
| | | |
| | | |
| | | |



*We lost
Pat Goggins in 2015
...Thanks friend, you made a difference!*



**AMERICA'S COWHERD NEEDS
THE HEREFORD FEMALE!**
The Hereford and Hereford-cross female are vital and identifiable in America's cowherd. Her disposition is the best, longevity is superb; she is adaptable to all environments and can produce with the best. Never has the opportunity been as great for Hereford genetics to influence your herd in a profitable way!

STUBER RANCH

PROUD TO SPONSOR

COLE ELSHERE

Three-Time National Finals Rodeo Saddle Bronc Qualifier!



Photo by Richard Field Levine

Members of
Cole's Fan Club
...Lauren & Wendy!



TERMS AND CONDITIONS

TERMS — Terms of the sale are cash. Every animal will be sold to the highest bidder with the auctioneer settling disputes as to bids. Announced changes in catalog information sale day take precedence over printed material in this catalog. All cattle are the buyer's property as soon as sold and will be cared for a reasonable length of time at the buyer's risk. Neither Stuber Ranch nor any person connected with this sale assumes any liability, legal or otherwise.

GUARANTEE — Every animal in this sale is, to the best of our knowledge, free from any disease or defect. Any known defect will be called at sale time. All animals are guaranteed breeders. If an animal fails to breed after a trial of six months, it may be returned to the seller if in good condition and in compliance with North Dakota Health Regulations. The seller reserves the right to try said animal for six months, and if it proves a breeder, return it to the buyer at the buyer's expense. If the animal proves to be a non-breeder, either an animal of comparable rank will be substituted or credit given in a future sale on an animal for animal basis. We assume no liability, legal or otherwise, to make any further compensation to the buyer. No other warranty of any nature is expressed or implied.

DELIVERY — Delivery will be made in groups of five registered animals or on purchases of \$5000 or more to central points up to 300 miles. We will cooperate with buyers on delivery of all cattle regardless of number or distance. **No delivery provided on commercial cattle.**

ABSENTEE BIDS — Anyone wishing to bid who cannot attend the sale may place phone or mail bids by contacting Roger or Duane Stuber, or any listed sale representative. Sight-unseen purchases are at the buyer's approval upon receiving the animals.

HEALTH — Stuber herd health is excellent. North Dakota is Bovine Brucellosis-Free and accredited Bovine Tuberculosis-Free. Females are officially calfhood Bangs vaccinated. Individual health papers will be furnished for shipment anywhere. All cattle are on a complete preconditioning program.

PERFORMANCE — Cattle are on a complete performance evaluation program with records kept on about every thing that can be measured. We will provide any extra information you may need. We are recognized by the American Hereford Association as a **GOLD STAR BREEDER.**

ULTRASOUND — Sale cattle will be ultrasounded and data provided on a supplement sheet. There is a strong correlation between ultrasound measurement of yearling breeding cattle and the actual carcass measurement of their progeny. We have years of ultrasound data and all sale cattle have carcass EPDs. If you desire, that information can be provided.

JOIN US...
Pre-Sale Get Together
Hospitality and Food
 Friday Evening, April 15th
 Bowman Lodge & Convention Center
 Located on Hwy. 12
 6:30 – 9:00 pm

CUSTOMERS AND CREW...
After-the-Sale
STEAK SUPPER
BOWMAN COUNTRY CLUB
 2 mi. South of Bowman on Hwy. 85
 and 1 ½ mile East
 Wrap up the day with a good meal and
 good conversation ...gather for
 supper some time after 6 p.m.

Catalog prepared by Lezlie Moore 605/683-4800.

STUBER RANCH



Keeping watch!



Factor and a friend!



7 months

Newest family member!
 Miss Blakelee Annetta Kidd
 Born: July 27, 2015
 Parents:
 Garrett & Sydnee Kidd
 Grandma:
 Wendy Stuber
 Great Grandma:
 Lauren Stuber

Sunny day out of the wind!



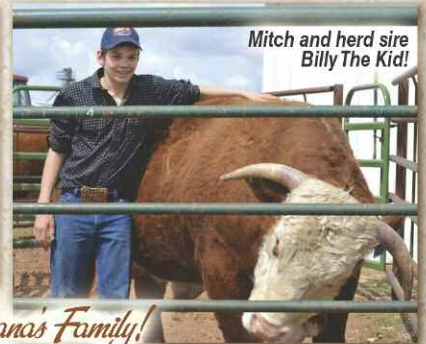
We appreciate each bidder and buyer
 ...thanks for your interest in our cattle!

2015 ND STATE FAIR

Mace and his prize winning doe!



Mika



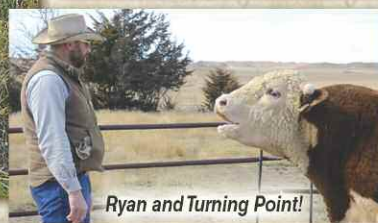
Mitch and herd sire Billy The Kid!



Ryan, Kristy, Paige, Cooper and Kenzie Pagel

Duane & Dana's Family!

Macormick Lee Stuber
 BCHS Class of 2016



Ryan and Turning Point!

S
5

STUBER RANGH

Box 56
BOWMAN, NORTH DAKOTA 58623

FIRST CLASS

TO:



PROGRAM, PRODUCTION, PRODUCT AND PROFILE

...with quiet dispositions, correct structure, solid markings, wide based, good udders, eye pigment!

