

- Topp Angus -
FOUNDATION FEMALE SALE



SATURDAY
SEPTEMBER 2, 2017
Noon • At the Ranch, Grace City, ND

TOPP
ANGUS

Welcome TO TOPP ANGUS

At Topp Angus we have many goals within our ranch and breeding program but number one has always and will always be our relationship with our customers. We are constantly striving for feedback and communication with our customers and friends as a way to better our program and be able to build a stronger business relationship that will benefit both.

After customer relations, Topp Angus has three main areas of focus: genetic improvement, providing value to our customers and theirs, and sustainability.

GENETIC IMPROVEMENT

At Topp Angus, we strive to breed the most balanced, complete genetics in the industry. We will not focus on being the best at any one single trait, but instead all traits as a whole. If you are looking for the lowest birth genetics available in the marketplace, we are not it. While we appreciate low/moderate birthweights since we calve out on pasture, we will not sacrifice other traits and growth potential to chase low birthweights. We expect our females to be able to have a live calf unassisted, with the calf up and nursing shortly thereafter but will never get caught up in chasing the lowest birthweights. If you are looking for strictly carcass traits in your cattle, again we are not the place for you. We understand that the end product is the ultimate goal, and we must keep that in mind. We will forever be looking to improve our carcass traits and will not lose sight of that. However, there are so many traits that can not be sacrificed up to that point so they must all go hand in hand. If you are looking for strictly growth, again we are not your program. We maintain that if you want the most pounds per cow exposed in the spring, the genetics need to be balanced for live births, efficiency, health, and growth. We are very proud of the fact that our cattle can be at the top of multiple real world performance tests, but rather than focus on strictly being the highest growth cattle in the market we focus on balancing high performing progeny with a cowherd that is efficient in growth, efficiency, and live calves. Maternal traits are also a main focus here but when it comes to pure milk production, we will not focus on having the highest milk producing Angus around. We believe that a mother cow has to be able to produce adequate milk supply to produce a healthy, fat calf. She must also be able to maintain condition and breed back. We ask a lot of her, but it doesn't begin and end with milk production. We insist on maintaining a cowherd that has enough milk to produce that fat healthy calf, but also insist on strong udder attachments for longevity, proper teat size and spacing for problem free initial nursing and long term udder quality. The list goes on and on, but if you are looking for a single trait, there are other herds that are no doubt doing it better. We breed for balance to be near the top of all desirable traits and are constantly looking for ways to improve our product as a whole.

PROVIDING VALUE

At Topp Angus, it is important that you are receiving the greatest value for your genetic purchase. Our goal is to offer the most balanced genetics possible, with no holes predictability bred in to ensure marketability no matter your market. We have a product that we are confident in and stand behind 100% genetically. As our customer base grows, we will be looking to provide marketing options for you that will benefit you. We believe that as a customer, you will be producing a set of calves that are worth more, and we want to develop a program that makes sure you get paid for that. Great thought and careful planning will be put into this and as we plan, we would sincerely look for feedback from you as to what is most beneficial in your operation.

SUSTAINABILITY

Sustainability can be viewed many different ways. As with everything else, we try to be balanced in our goals. Outstanding pure profit is a nice concept and one that our banker would surely appreciate, but that is not what our business can be based on. Our sustainability depends upon our customers' profitability. We look to develop a program that keeps you profitable and coming back. We look to provide an atmosphere that is great for raising a family. We look to be great stewards of our land and environment. But most importantly, we value the friendships and relationships that can be developed in this business that, at the end of the day, makes all the time and effort much more than worth it.

TOPP ANGUS

PAUL TOPP - 701-650-8371

Grace City, North Dakota

toppangus@daktel.com

TOPPANGUS.COM

www.facebook.com/ToppAngus

*Your Visit is Always
Welcome!*

LOCATION

8205 14th Street NE
Grace City, ND 58445



From Grace City: 5 mi. North on 82nd Avenue
and 1/2 mi. East on 14th Street.

TOPP ANGUS FOUNDATION FEMALE SALE

SATURDAY, SEPTEMBER 2, 2017

Noon • At the Ranch, Grace City, ND

SALE MANAGER



American Angus Hall of Fame..... 816-532-0811
 Tom Burke 816-853-2697
 Kurt Schaff 816-520-6447
 Jeremy Haag 816-516-1309

A truly unique opportunity to acquire foundation quality females from some of the most elite cow families in the breed!

Auctioneer

Joe Goggins 406-861-5664

Sale Day Representatives

Kurt Kangus, *Angus Journal*..... 605-295-3673
 Kirby Goetsch, *Farm & Ranch Guide*..... 605-380-3939
 Luke Keller, *Cattle Business Weekly* 701-471-1142

Local Accommodations

Chieftain Conference Center..... 701-652-3131
 Cobblestone Inn 701-652-3000
 Carrington Inn & Suites..... 701-652-3982
All hotels located in Carrington, ND, approx. 25 miles from Topp Angus.

Air Travel

Hector International Airport
 Fargo, ND Approx. 130 miles
 Bismarck Municipal Airport
 Bismarck, ND..... Approx. 150 miles

SIGHT UNSEEN

Call Paul or any of the sales staff to discuss your needs. Bids are handled in confidence with satisfaction guaranteed.

TERMS & CONDITIONS

Cattle will sell under the suggested Terms and Conditions of the American Angus Association, found online at www.angus.org/Pub/suggested_sale_terms.pdf

LIABILITY

Topp Angus assumes no liability for accidents or injuries that occur on the sale premises.

LIVESTOCK MORTALITY INSURANCE

To properly insure your investment, James Bessler, 815-762-2641, will be available to assist you with mortality insurance.

HERD HEALTH

The herd health protocol for Topp Angus Ranch has been designed to maximize biosecurity and immunity. Veterinary consult by Town & Country Veterinary Service (Trisa Tedrow DVM, 701-947-2000); testing performed at NDSU Veterinary Diagnostic Laboratory. View complete herd health statement as www.toppangus.com.

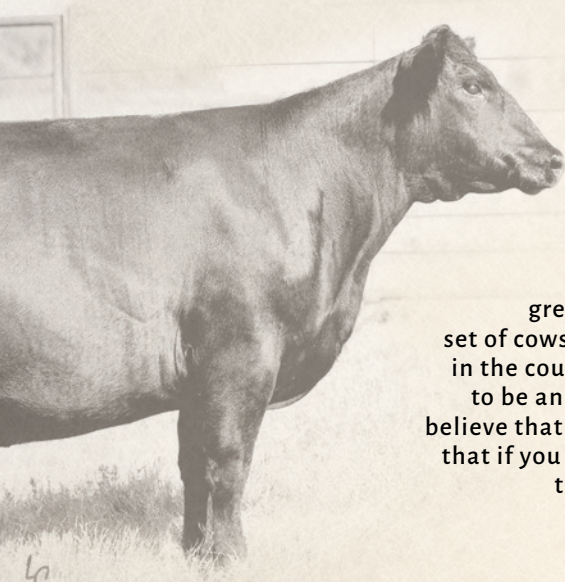
Sale book prepared by the Sale Managers, TOM BURKE, KURT SCHAFF, JEREMY HAAG, AMERICAN ANGUS HALL OF FAME, at the WORLD ANGUS HEADQUARTERS, PO Box 660, Smithville, MO 64089-0660. Phone: (816) 532-0811. Fax: (816) 532-0851. E-Mail: angushall@earthlink.net - www.angushall.com

VIDEOS

Videos will be available online of all sale lots.

ONLINE BIDDING

Available through www.TheLivestockLink.com. Advance Registration required. Contact Aaron Friedt at 701-590-9597 for more information.



FEATURE LOT

A BUYER'S CHOICE

Of The Topp Angus Fall Calving Herd With Calf At Side

The key to any successful breeding program is the development of a reliable, consistently productive cowherd. Topp Angus had the great fortune of being able to purchase as our genetic base a tremendous set of cows from the heart of one of the greatest and most time proven cowherds in the country – TC Ranch from Franklin Nebraska. We have taken what we view to be an elite set of cows and are constantly looking to improve upon that. We believe that every great family begins with a great mother. We believe very firmly that if you can maintain and improve upon a core group of superior cow families, that as a group, the whole herd will become more and more consistent. We will continue on with only the most productive and consistent families at the ranch and will add to their stories...

TA MARCIA 0616



TOPP HANCOCK 2154

This son of Lot 1 is the top proven calving-ease sire owned with White Angus Farm of Illinois.



TC FRANKLIN 619

\$50,000 Accelerated Genetics sire from the Marcia family.



TC TOUCHDOWN 772

\$21,000 Accelerated Genetics sire from the Marcia family



1

TA MARCIA 0616

DOB 9/15/10 TATTOO 616 AAA 16965113 COW

Mytty In Focus #

Vin-Mar Focus In 8847 AAA #16135296
Baldrige Erroline S216

Sitz Tradition RLS 8702 #

TC Marcia 6170 AAA 15417830
TC Marcia 9069 #

SAF Focus of ER #

Mytty Countess 906
Rito 112 of 2536 Rito 616 #+
Baldrige Erroline L540 +
Vermilion Dateline 7078 #
RLS Eisa Evergreen 5018 +
War Command 7131 3247#
TC Marcia 6171 #

CED	BW	WW	YW	SC	DOC	HP	MILK	CW	MARB	RE	\$W	\$B
+9	+1.3	+55	+101	+1.72	+16	+8.1	+33	+40	+36	+23	+56.75	+114.15

This unparalleled producer has served as a cornerstone donor and produced the top-selling, second top-selling and co-fourth top-selling bulls of the 2017 Topp Inaugural Bull Sale as well as an impressive array of daughters featured in this sale.

This cow balances a progeny birth ratio of 98 combined with progeny weaning and yearling ratios of 105 on three natural calves and a progeny IMF ratio of 110 on eight head, produced from a Topp foundation female selected from TC Ranch in Nebraska, tracing to the fourth consecutive generation Pathfinder Dam TC Marcia 9069.
EXPOSED TO TC FREAL 625.

Dominant Top-Selling Sons of Lot 1 in the 2017 Topp Inaugural Bull Sale



TOPP CAPITALIST 6032

The \$9,750 top-seller to Glenn Ringgenberg of South Dakota.



TOPP MOGUL 6017

The \$8,000 top-seller to Hamco Cattle Company of Manitoba, Canada.



TOPP CAPITALIST 5314

The \$5,000 co-fourth top-seller to Harding Angus of North Dakota.



TOPP CAPITALIST 5330

The \$5,000 co-fourth top-seller to Matt Roland of North Dakota.

TOPP MARCIA FAMILY



TOPP MARCIA 6006 - LOT 1A

1a

TOPP MARCIA 6006

DOB 1/13/16 TATTOO 6006 AAA +18581036 COW

Bred to calve 2/11/18 to QUAKER HILL RAMPAGE OA36. Examined safe.

1b

TOPP MARCIA 6022

DOB 1/18/16 TATTOO 6022 AAA +18581047 COW

Bred to calve 1/18/18 to BALDRIDGE COLONEL C251. Examined safe.

1c

TOPP MARCIA 6002

DOB 1/12/16 TATTOO 6002 AAA +18578036 COW

Bred to calve 2/14/18 to QUAKER HILL RAMPAGE OA36. Examined safe.

1d

TOPP MARCIA 6005

DOB 1/13/16 TATTOO 6005 AAA +18581039 COW

Bred to calve 2/14/18 to BALDRIDGE COLONEL C251. Examined safe.

1e

TOPP MARCIA 6016

DOB 1/18/16 TATTOO 6016 AAA +18581044 COW

Bred to calve 2/5/18 to QUAKER HILL RAMPAGE OA36. Examined safe.

1f

TOPP MARCIA 6019

DOB 1/18/16 TATTOO 6019 AAA +18581046 COW

Bred to calve 1/18/18 to BALDRIDGE COLONEL C251. Examined safe.

1g

TOPP MARCIA 6012

DOB 1/16/16 TATTOO 6012 AAA +18581042 COW

Exposed to TC FREAL 625 from 5/13/17 to 7/13/17.

SAV Final Answer 0035 #

Connealy Capitalist 028AAA16752262
Prides Pita of Conanga 8821

Vin-Mar Focus In 8847 #

TA Marcia 0616 AAA16965113
TC Marcia 6170

Sitz Traveler 8180 #

SAV Emulous 8145
CRA Bextor 872 5205 608 #
Prides Trav of Conanga 6499
Mytty In Focus #
Baldrige Erroline S216
Sitz Tradition RLS 8702 #
TC Marcia 9069 #

CED	BW	WW	YW	SC	DOC	HP	MILK	CW	MARB	RE	\$W	\$B
I+11	I+.8	I+57	I+100	I+1.34	I+16	I+10.5	I+26	I+37	I+.40	I+.40	58.06	105.2

An impressive array of full sisters from a successful embryo mating by the \$120,000 Select Sires proven sire Connealy Capitalist 028 from the featured Lot 1 donor TA Marcia 0616 who combines a progeny birth ratio of 98 with progeny weaning and yearling ratios of 105 on three natural calves along with a progeny IMF ratio of 110 on eight head. The grandam is the Topp foundation female selected from TC Ranch in Nebraska and the third dam is a fourth consecutive generation Pathfinder Dam.

A full brother was the \$9,700 top-seller of the 2017 Topp Inaugural Bull Sale where a maternal brother was the \$8,000 second top-seller and other full brothers were selected by leading registered and commercial cattlemen.



TOPP MARCIA 6022 - LOT 1B



TOPP MARCIA 6012 - LOT 1G

TOPP MARCIA FAMILY

This special attraction Marcia heifer from the embryo program is sired by the \$145,000 Musgrave Big Sky from the featured Lot 1 donor TA Marcia 0616 who combines a progeny birth ratio of 98 with progeny winning ratios of 105 on three natural calves and a progeny IMF ratio of 110 on eight head.



TC MARCIA 0616
The dam of Lots 1A through 2B.

TOPP MARCIA 6007 - LOT 2A

2

TOPP MARCIA 7020

DOB 1/15/17 TATTOO 7020 AAA +18804624 COW

Connealy Earnan 076E +
Musgrave Big Sky AAA 17614813
SAV Primrose 7861

Vin-Mar Focus In 8847 #

TA Marcia 0616 AAA 16965113
TC Marcia 6170

Connealy Consensus #
Brazila of Conanga 3991 839A +
SAF 598 Bando 5175 #+
SAV Primrose 8244 #
Mytty In Focus #
Baldrige Erroline S216
Sitz Tradition RLS 8702 #
TC Marcia 9069 #

CED	BW	WW	YW	SC	DOC	HP	MILK	CW	MARB	RE	\$W	\$B
I+9	I+1.7	I+61	I+107	I+1.21	I+17	I+10.6	I+29	I+39	I+.58	I+.29	63.65	126.52

A special sale attraction from the Topp Angus embryo program.

2a

TOPP MARCIA 6007

DOB 1/14/16 TATTOO 6007 AAA +18612168 COW

Exposed to TC FREAL 625 from 5/13/17 to 7/13/17.

2b

TOPP MARCIA 6014

DOB 1/16/16 TATTOO 6014 AAA +18612171 COW

Bred to calve 1/14/18 to TC FREAL 625. Examined safe.

Diamond in the Rough
Circle A Mogul 3463 AAA 17750079
Circle A Forever Lady 7226 +

Vin-Mar Focus In 8847 #

TA Marcia 0616 AAA 16965113
TC Marcia 6170

Diamond Justice 901S #
Diamond Black Lady 7206 #
Circle A Endeavor 2058 +
SydGen Forever Lady 2904 +
Mytty In Focus #
Baldrige Erroline S216
Sitz Tradition RLS 8702 #
TC Marcia 9069 #

CED	BW	WW	YW	SC	DOC	HP	MILK	CW	MARB	RE	\$W	\$B
I+9	I+1.2	I+64	I+113	I+1.32	I+17	I+11.2	I+23	I+50	I+.44	I+.58	62.1	151.32

Flush sisters to TC Mogul 6017, the bull selected by Hamco Cattle Company of Manitoba, Canada as the \$8,000 second top-seller of the 2017 Topp Inaugural Bull Sale where maternal brothers included the \$9,750 top-seller in the 5,000 co-fourth top-sellers.

These daughters of the featured Lot 1 donor are by the Topp low birth and high growth sire Circle A Mogul 3463.



TC MARCIA 6170
The grandam of Lots 1A through 2B.

TOPP MARCIA 6014 - LOT 2B

TOPP BARBARA FAMILY



TOPP BARBARA 5401 - LOT 3A



TA BARBARA 1307
Maternal sister to Lots 3A and 3B.



TOPP CAPITALIST 6073
Full brother to Lots 3 and 3A.



TOPP CAPITALIST 5411
Full brother to Lots 3 and 3A.



TC BARBARA 3088
The Pathfinder Dam of Lots 3A and 3B and grandam of Lots 4 through 4C.

3

TOPP BARBARA 6023

DOB 1/18/16 TATTOO 6023 AAA +18581140 COW
Bred to calve 1/16/18 to HA COWBOY UP 5405. Examined safe.

3a

TOPP BARBARA 5401

DOB 9/12/15 TATTOO 5401 AAA +18438173 COW
Exposed to TC FREAL 625 from 5/13/17 to 7/13/17.

SAV Final Answer 0035 #
Connealy Capitalist 028 AAA 16752262
Prides Pita of Conanga 8821

TC Freedom 104 #
TC Barbara 3088 AAA #14392396
TC Barbara 356

Sitz Traveler 8180 #
SAV Emulous 8145
CRA Bextor 872 5205 608 #
Prides Trav of Conanga 6499
Connealy Forefront #
TC Ruby 9095 #
Hoff Hi Steaks SC 6036
TC Barbara 9013 #

CED	BW	WW	YW	SC	DOC	HP	MILK	CW	MARB	RE	\$W	\$B
1+11	1+1	1+45	1+79	1+96	1+20	1+10.3	1+22	1+26	1+25	1+34	45.95	78.25

A promising pair of brood cow prospects sired by Connealy Capitalist 028 from the Topp foundation Pathfinder Dam TC Barbara 3088 who combines a progeny birth ratio of 94 with a progeny weaning ratio of 104 on ten natural calves and a progeny yearling ratio of 103 on eight head along with 28 head evaluated by ultrasound and 23 daughters in production. Full brothers highlighted the 2017 Topp Inaugural Bull Sale and maternal sisters include the second-generation top donor TC Barbara 5016.

3b

TOPP BARBARA 5422

DOB 9/20/15 TATTOO 5422 AAA +18435808 COW
Bred to calve 2/1/18 to HA COWBOY UP 5405. Examined safe.

HA Image Maker 0415 #+
Mohnen Wolf Creek 1871 AAA +17032793
Mohnen Jilt 1283

TC Freedom 104 #
TC Barbara 3088 AAA #14392396
TC Barbara 356

Hero 6267 of RR 2418 #
HA Rito Blackcap 9038
Boyd New Day 8005 #+
Mohnen Jilt 143
Connealy Forefront #
TC Ruby 9095 #
Hoff Hi Steaks SC 6036
TC Barbara 9013 #

CED	BW	WW	YW	SC	DOC	HP	MILK	CW	MARB	RE	\$W	\$B
1+11	1-.4	1+44	1+78	1+67	1+21	1+9.6	1+26	1+26	1+10	1+34	48.74	71.91

A product of the embryo program by the \$17,000 Topp herd sire Mohnen Wolf Creek 1871, produced from the Topp foundation Pathfinder Dam TC Barbara 3088.

TOPP BARBARA FAMILY



TOPP BARBARA 5403 - LOT 4



TOPP CRAFTSMAN 2129
Maternal brother to Lots 4 through 4C.

4

TOPP BARBARA 5403

DOB 9/12/15 TATTOO 5403 AAA +18438156 COW

Bred to calve 1/17/18 to QUAKER HILL RAMPAGE OA36. Examined safe.

4a

TOPP BARBARA 6047

DOB 2/4/16 TATTOO 6047 AAA +18581098 COW

Exposed to TC FREAL 625 from 5/13/17 to 7/13/17.

4b

TOPP BARBARA 6054

DOB 2/5/16 TATTOO 6054 AAA +18581102 COW

Bred to calve 2/9/18 to QUAKER HILL RAMPAGE OA36. Examined safe.

4c

TOPP BARBARA 6062

DOB 2/9/16 TATTOO 6062 AAA +18581107 COW

Bred to calve 1/21/18 to QUAKER HILL RAMPAGE OA36. Examined safe.



TOPP CAPITALIST 5410

Full brother to Lots 4 through 4C.



TOPP CAPITALIST 5424

Full brother to Lots 4 through 4C.

SAV Final Answer 0035 #
Connealy Capitalist 028 AAA 16752262
Prides Pita of Conanga 8821

BCC Bushwacker 41-93 #
TC Barbara 5016 AAA 15182033
TC Barbara 3088 #

Sitz Traveler 8180 #
SAV Emulous 8145
CRA Bextor 872 5205 608 #
Prides Trav of Conanga 6499
Paramont Ambush 2172 #
RC Anita T Bando 918903
TC Freedom 104 #
TC Barbara 356

CED	BW	WW	YW	SC	DOC	HP	MILK	CW	MARB	RE	\$W	\$B
1+7	1+1.1	1+5.6	1+9.0	1+.89	1+21	1+11.9	1+24	1+34	1+.30	1+.38	60.13	101.5

An incredible opportunity to acquire an impressive group of full sisters produced in the embryo program at Topp Angus.

These heifers are by the Select Sires proven sire Connealy Capitalist 028 who was the \$120,000 second top-selling bull of a past Connealy sale and one of the leading sons of the iconic Pathfinder Sire SAV Final Answer 0035.

The donor dam of these heifers balances a progeny birth ratio of 95 with a progeny weaning ratio of 109 on seven natural calves and a progeny yearling ratio of 108 on six head with 14 daughters in production who post a collective progeny weaning ratio of 102.

The Pathfinder grandam is also a Topp foundation donor whose daughters sell as Lots 3, 3A and 3B.



TC BARBARA 5016

The dam of Lots 4 through 4C and maternal sister to Lots 3, 3A and 3B.

TOPP PRIDE FAMILY



TOPP PRIDE 6033 - LOT 5



TC VANCE 011
Produced from a maternal sister to Lots 5 through 5D.

5

TOPP PRIDE 6033

DOB 1/20/16 TATTOO 6033 AAA +18581119 COW
Exposed to TC FREAL 625 from 5/13/17 to 7/13/17.

5a

TOPP PRIDE 6038

DOB 1/22/16 TATTOO 6038 AAA +18581122 COW
Bred to calve 1/18/18 to QUAKER HILL RAMPAGE OA36. Examined safe.

5b

TOPP PRIDE 6011

DOB 1/15/16 TATTOO 6011 AAA +18581115 COW
Bred to calve 2/23/18 to BALDRIDGE COLONEL C251. Examined safe.

5c

TOPP PRIDE 6059

DOB 2/9/16 TATTOO 6059 AAA +18581128 COW
Exposed to TC FREAL 625 from 5/13/17 to 7/13/17.

SAV Final Answer 0035 #
Connealy Capitalist 028 AAA 16752262
Prides Pita of Conanga 8821

Sitz Traveler 8180 #
SAV Emulous 8145
CRA Bextor 872 5205 608 #
Prides Trav of Conanga 6499
Connealy Forefront #
TC Ruby 9095 #
TC Dividend 963 #
TC Pride 6093

TC Freedom 104 #
TC Pride 4226 AAA 15023993
TC Pride 8067 #

CED	BW	WW	YW	SC	DOC	HP	MILK	CW	MARB	RE	\$W	\$B
I+9	I+1.2	I+45	I+79	I+1.42	I+16	I+10.2	I+25	I+27	I+.41	I+.29	46.34	86.91

A very impressive group of flush sisters produced in the embryo program at Topp Angus by the \$120,000 Select Sires proven sire Connealy Capitalist 028 backed by one of the leading herd sire producing cow families in the history of TC Ranch.

The donor dam of these heifers is a solid producer with 15 daughters in production who post a collective progeny weaning ratio of 103, along with 31 progeny evaluated by ultrasound, and she is also the granddam of the Genex sire TC Vance 011.

TC Pride 8067, the Pathfinder granddam, was the \$37,000 second top-seller of the 2006 TC Female Sale and her progeny includes the \$25,000 Genex sire TC Foreman 016 and the \$13,500 TC Grid Topper 355 from the same cow family that also produced the famous Pathfinder Sire TC Stockman 365.



TC PRIDE 4226
The dam of Lots 5 through 5D.



TC PRIDE 8067
\$37,000 Pathfinder granddam of Lots 5 through 5D.



TC FOREMAN 016
\$25,000 maternal brother to the dam of Lots 5 through 5D.

TOPP PRIDE & GEORGINA FAMILIES



TOPP GEORGINA 6013 - LOT 6



TC THUNDER 805
Maternal brother to Lots 6, 6A and 6B.

5d

TOPP PRIDE 6021

DOB 1/18/16 TATTOO 6021 AAA +18612170 COW

Exposed to TC FREAL 625 from 5/13/17 to 7/13/17.

Diamond in the Rough

Circle A Mogul 3463 AAA 17750079
Circle A Forever Lady 7226 +

TC Freedom 104 #

TC Pride 4226 AAA 15023993
TC Pride 8067 #

Diamond Justice 901S #
Diamond Black Lady 7206 #
Circle A Endeavor 2058 +
SydGen Forever Lady 2904 +
Connealy Forefront #
TC Ruby 9095 #
TC Dividend 963 #
TC Pride 6093

CED	BW	WW	YW	SC	DOC	HP	MILK	CW	MARB	RE	\$W	\$B
I+7	I+1.7	I+5.2	I+9.2	I+1.40	I+16	I+10.9	I+22	I+40	I+.45	I+.48	50.09	135.67

This intriguing heifer from the Pride family is a product of the embryo program by the Topp featured sire Circle A Mogul 3463 who combines a progeny birth ratio of 99 with a progeny weaning ratio 103 on his first 25 progeny in the AHIR program.

The donor dam is a maternal sister to the \$25,000 TC Foreman 016 and to the \$13,500 TC Grid Topper 355, stemming from the \$37,000 Pathfinder Dam TC Pride 8067.



TA PRIDE 0615
Maternal sister Lots 5 through 5D.



TA FOREVER 3738
Maternal sister to Lots 6, 6A and 6B.

6

TOPP GEORGINA 6013

DOB 1/16/16 TATTOO 6013 AAA +18581082 COW

Bred to calve 2/23/18 to BALDRIDGE COLONEL C251. Examined safe.

6a

TOPP GEORGINA 6056

DOB 2/5/16 TATTOO 6056 AAA +18581085 COW

Bred to calve 1/15/18 to QUAKER HILL RAMPAGE OA36. Examined safe.

6b

TOPP GEORGINA 6057

DOB 2/5/16 TATTOO 6057 AAA +18581088 COW

Bred to calve 2/4/18 to BALDRIDGE COLONEL C251. Examined safe.

SAV Final Answer 0035 #

Connealy Capitalist 028 AAA 16752262
Prides Pita of Conanga 8821

TC Grid Topper 355 #+

TC Forever 6123 AAA 15417974
TC Forever 1004

Sitz Traveler 8180 #

SAV Emulous 8145
CRA Bextor 872 5205 608 #
Prides Trav of Conanga 6499
GAR Grid Maker #+
TC Pride 8067 #
Bon View Spectrum 1176 #
TC Forever 9047

CED	BW	WW	YW	SC	DOC	HP	MILK	CW	MARB	RE	\$W	\$B
I+10	I+.6	I+4.8	I+8.6	I+.74	I+13	I+12.7	I+20	I+23	I+.53	I+.45	47.54	83.29

A trio of flush sisters by Connealy Capitalist 028 from a proven donor dam by the Pathfinder Sire TC Grid Topper 355, from the family that produced the Pathfinder Sire JR Juice 2005.



TC FOREVER 6123
The dam of Lots 6, 6A and 6B.

TOPP PEGGY FAMILY



TOPP PEGGY 5350 - LOT 7A



TC PEGGY 5092
The fourth-generation Pathfinder Dam of Lots 7 through 7C.

7

TOPP PEGGY 7021

DOB 1/15/17 TATTOO 7021 AAA +18804641 COW

Connealy Earnan 076E +
Musgrave Big Sky AAA #17614813
SAV Primrose 7861

TC Freedom 104 #
TC Peggy 5092 AAA #15169383
TC Peggy 0111 #+

Connealy Consensus #
Brazila of Conanga 3991 839A +
SAF 598 Bando 5175 #+
SAV Primrose 8244 #
Connealy Forefront #
TC Ruby 9095 #
QAS Traveler 23-4 #
TC Peggy 1028 #

CED	BW	WW	YW	SC	DOC	HP	MILK	CW	MARB	RE	\$W	\$B
I+3	I+3.3	I+55	I+92	I+.66	I+21	I+9.0	I+28	I+33	I+.56	I+.25	53.42	111.68

The first of four maternal sisters from the Peggy Family produced in the embryo program at Topp Angus from the fourth consecutive generation Pathfinder Dam TC Peggy 5092 who balances a progeny birth ratio of 100 with progeny weaning and yearling ratios of 109 and 107 respectively on 8 natural calves combined with progeny IMF and ribeye ratios of 103 and 102 respectively on five head. This daughter of the \$145,000 Musgrave Big Sky has three maternal sisters in production who post a collective progeny ratio of 102.

7b

TOPP PEGGY 6055

DOB 2/5/16 TATTOO 6055 AAA +18581110 COW

Bred to calve 1/17/18 to QUAKER HILL RAMPAGE OA36. Examined safe.

SAV Final Answer 0035 #
Connealy Capitalist 028 AAA #16752262
Prides Pita of Conanga 8821

TC Freedom 104 #
TC Peggy 5092 AAA #15169383
TC Peggy 0111 #+

Sitz Traveler 8180 #
SAV Emulous 8145
CRA Bextor 872 5205 608 #
Prides Trav of Conanga 6499
Connealy Forefront #
TC Ruby 9095 #
QAS Traveler 23-4 #
TC Peggy 1028 #

CED	BW	WW	YW	SC	DOC	HP	MILK	CW	MARB	RE	\$W	\$B
I+5	I+2.4	I+51	I+85	I+.80	I+20	I+9.0	I+25	I+31	I+.38	I+.36	48.92	89.94

A bred heifer from the Peggy family by the proven Select Sires bull Connealy Capitalist 028 who was the \$120,000 second top-selling bull of a past Connealy Angus Sale.

The dam of this heifer is a fourth consecutive generation Pathfinder Dam who balances a progeny birth ratio of 100 with progeny weaning and yearling ratios of 109 and 107 respectively on eight natural calves along with progeny IMF and ribeye ratios of 103 and 102 respectively on five head.

7a

TOPP PEGGY 5350

DOB 8/11/15 TATTOO 5350 AAA +18435814 COW

Exposed to TC FREAL 625 from 5/13/17 to 7/13/17.

HA Image Maker 0415 #+
Mohnen Wolf Creek 1871 AAA +17032793
Mohnen Jilt 1283

TC Freedom 104 #
TC Peggy 5092 AAA #15169383
TC Peggy 0111 #+

Hero 6267 of RR 2418 #
HA Rito Blackcap 9038
Boyd New Day 8005 #+
Mohnen Jilt 143
Connealy Forefront #
TC Ruby 9095 #
QAS Traveler 23-4 #
TC Peggy 1028 #

CED	BW	WW	YW	SC	DOC	HP	MILK	CW	MARB	RE	\$W	\$B
I+5	I+1.9	I+50	I+84	I+.51	I+21	I+8.3	I+28	I+31	I+.23	I+.36	51.48	84.66

This bred heifer from the embryo program is by the \$17,000 Topp featured herd sire Mohnen Wolf Creek 1871 from the fourth consecutive generation Pathfinder Dam TC Peggy 5092.

The Pathfinder third dam served as a foundation donor in the Foxcross herd in West Virginia and she is a three-quarter sister to the famous Pathfinder Dam TC Peg 9100.

7c

TOPP PEGGY 6025

DOB 1/18/16 TATTOO 6025 AAA +18612169 COW

Bred to calve 2/14/18 to BALDRIDGE COLONEL C251. Examined safe.

Diamond in the Rough
Circle A Mogul 3463 AAA #17750079
Circle A Forever Lady 7226 +

TC Freedom 104 #
TC Peggy 5092 AAA #15169383
TC Peggy 0111 #+

Diamond Justice 901S #
Diamond Black Lady 7206 #
Circle A Endeavor 2058 +
SydGen Forever Lady 2904
Connealy Forefront #
TC Ruby 9095 #
QAS Traveler 23-4 #
TC Peggy 1028 #

CED	BW	WW	YW	SC	DOC	HP	MILK	CW	MARB	RE	\$W	\$B
I+3	I+2.9	I+58	I+98	I+.78	I+21	I+9.6	I+22	I+44	I+.43	I+.55	52	138.26

An opportunity to select among daughters of the prolific fourth consecutive generation Pathfinder Dam TC Peggy 5092.

This daughter of the Topp featured herd sire Circle A Mogul 3463 has three maternal sisters in production who post a collective progeny weaning ratio of 102.

TOPP ERIANNA & RUBY FAMILIES



TOPP ERIANNA 6049 - LOT 8



TC RUBY 6530
The dam of Lot9.

8

TOPP ERIANNA 6049

DOB 2/4/16 TATTOO 6049 AAA +18581069 COW

Bred to calve 2/23/18 to QUAKER HILL RAMPAGE OA36. Examined safe.

SAV Final Answer 0035 #

Connealy Capitalist 028 AAA +16752262
Prides Pita of Conanga 8821

Leachman Right Time #+

Mohnen Erianna 2576 AAA +16110631
Mohnen Erianna 129

Sitz Traveler 8180 #

SAV Emulous 8145

CRA Bextor 872 5205 608 #

Prides Trav of Conanga 6499

N Bar Emulation EXT #

Leachman Erica 0025

Bon View Bando 598 #

Mohnen Erianna 97

CED	BW	WW	YW	SC	DOC	HP	MILK	CW	MARB	RE	\$W	\$B
I+11	I-.1	I+50	I+84	I+.18	I+15	I+10.7	I+25	I+38	I+.23	I+.46	53.24	101.55

A daughter of Connealy Capitalist 028 produced in the embryo program from the Topp foundation donor Mohnen Erianna 2576 who was selected as the \$19,000 top-selling female of the 2013 Mohnen Sale and has gone on to earn a progeny birth ratio of 94 combined with a progeny weaning ratio of 105 on four natural calves and a progeny yearling ratio of 107 on three head combined with a progeny ribeye ratio of 102 on 16 head.

9

TOPP RUBY 7037

DOB 1/19/17 TATTOO 7037 AAA +18804562 COW

Vermilion Payweight J847 #

Basin Payweight 107S AAA +15332022
Basin Lucy 3829 +

Diamond Yellowstone 975P

TC Ruby 6530 AAA 15824762
TC Ruby 0224

Vermilion Dateline 7078 #

Vermilion Lass 7969

CA Future Direction 5321 +

Basin Lucy 178E

Vermilion Yellowstone #

Diamond Erica 751J

Sitz Alliance 6595 #

TC Ruby 3131 #

CED	BW	WW	YW	SC	DOC	HP	MILK	CW	MARB	RE	\$W	\$B
I-2	I+3.8	I+63	I+106	I+.90	I+21	I+8.8	I+22	I+56	I+.66	I+.46	52.03	157.85

A special feature from the embryo program by the high growth Pathfinder Sire Basin Payweight 107S produced from the Topp foundation donor TC Ruby 6530 who records a progeny weaning ratio of 107 on five natural calves along with a progeny IMF ratio of 174 on one head, from the same herd sire producing family that produced the \$54,000 Pathfinder Sire TC Freedom 104. Seven maternal sisters post a collective progeny weaning ratio of 102.

8a

TOPP ERIANNA 7043

DOB 1/21/17 TATTOO 7043 AAA 18804635 COW

8b

TOPP ERIANNA 7050

DOB 1/22/17 TATTOO 7050 AAA +18804636 COW

Connealy Earnan 076E+

Musgrave Big Sky AAA 17614813
SAV Primrose 7861

Leachman Right Time #+

Mohnen Erianna 2576 AAA +16110631
Mohnen Erianna 129

Connealy Consensus #

Brazila of Conanga 3991 839A +

SAF 598 Bando 5175 #+

SAV Primrose 8244 #

N Bar Emulation EXT #

Leachman Erica 0025

Bon View Bando 598 #

Mohnen Erianna 97

CED	BW	WW	YW	SC	DOC	HP	MILK	CW	MARB	RE	\$W	\$B
I+9	I+.8	I+54	I+91	I+.04	I+16	I+10.7	I+28	I+40	I+.41	I+.35	59.43	124.15

The result of mating the \$145,000 Musgrave Big Sky with the \$19,000 Mohnen Erianna 2576, backed by generations of breeding in the Mohnen and Bon View herds.



MOHNEN ERIANNA 2576
The \$19,000 dam of Lot 8, 8A and 8B.

TOPP DONNA FAMILY



COLEMAN DONNA 0176 - LOT 10



KMK DONNA J311
The \$60,000 valued dam of Lot 10.

10

COLEMAN DONNA 0176

DOB 8/9/10 TATTOO 176 AAA +16879616 COW

RR Hero 6267 #
Hero 6267 of RR 2418 AAA #11808572
RR Everelda Entense 0413

DHD Traveler 6807 #
KMK Donna J311 AAA +13642847
Brooks Donna 319 +

Highwood Hero LCH #
Blackbird of RR 1204 #
QAS Traveler 23-4 #
RR Everelda Entense 8320 TPB
QAS Traveler 23-4 #
Bemindful Maid DHD 0807 #
Rito 9J9 of B1567T26 #
AAR Donna 1853 #

CED	BW	WW	YW	SC	DOC	HP	MILK	CW	MARB	RE	\$W	\$B
+9	+0.8	+32	+55	-.04	+20	+5.5	+24	+1	-.44	+10	+35.99	-13.21

The foundation Topp Donna donor with a progeny weaning ratio of 104 on three natural calves, by the Pathfinder Sire Hero 6267 of RR 2418 from the family that produced the Pathfinder sire AAR New Trend.

Maternal siblings include the \$200,000 valued Coleman Donna 386.
Exposed to TC FREAL 625.

10a

TOPP DONNA 7001

DOB 1/8/17 TATTOO 7001 AAA +18803275 COW

10b

TOPP DONNA 7010

DOB 1/12/17 TATTOO 7010 AAA +18804631 COW

10c

TOPP DONNA 7023

DOB 1/15/17 TATTOO 7023 AAA +18804632 COW

Connealy Earnan 076E +
Musgrave Big Sky AAA 17614813
SAV Primrose 7861

Hero 6267 of RR 2418 #
Coleman Donna 0176 AAA +16879616
KMK Donna J311 +

Connealy Consensus #
Brazilia of Conanga 3991 839A +
SAF 598 Bando 5175 #+
SAV Primrose 8244 #
RR Hero 6267 #
RR Everelda Entense 0413
DHD Traveler 6807 #
Brooks Donna 319 +

CED	BW	WW	YW	SC	DOC	HP	MILK	CW	MARB	RE	\$W	\$B
1+9	1+1.4	1+49	1+84	1+33	1+19	1+9.3	1+25	1+19	1+18	1+22	53.53	67.77

A trio of flush sisters from the high-maternal Donna family sired by the \$145,000 Musgrave Big Sky.



ALC LYN T03L

The grandam of Lots 11A and 11B.

11a

TOPP BLANCHE 6080

DOB 2/26/16 TATTOO 6080 AAA PENDING COW

Bred to calve 2/1/18 to HA COWBOY UP 5405. Examined safe.

11b

TOPP BLANCHE 6086

DOB 3/2/16 TATTOO 6086 AAA PENDING COW

Bred to calve 1/18/18 to HA COWBOY UP 5405. Examined safe.

GAR Grid Maker #+
SAV Bismarck 5682 AAA #+15109865
SAV Abigale 0451

SAV Net Worth 4200 #
SR Lyn 9909 AAA +16588170
ALC LYN T03L

GDAR Traveler 044 #
GAR Precision 2536 #
Schoenes Fix It 826 #
SAV Abigale 6062
SAV 8180 Traveler 004 #
SAV May 2410 +
Connealy Leadtime #
ALC Janice F17J

S	CED	BW	WW	YW	SC	DOC	HP	MILK	CW	MARB	RE	\$W	\$B
D	+12	+1	+53	+88	+1.03	+11	+12.1	+20	+30	+19	+6.5	+64.31	+106.64
	1+4	+2.8	+55	+97	1+.82	1+3	1+11.4	+27	1+40	1+.52	1+.41	+47.62	+123.88

TOPP BLACKBIRD FAMILY

This special attraction female is a maternal sister to SAV Pioneer 7301, the \$65,000 top-selling bull of the 2008 Schaff Angus Valley Sale who went on to become a proven Pathfinder Sire and a popular member of the Genex AI Stud. The productive donor dam of this heifer balances a progeny birth ratio of 95 with a progeny weaning ratio of 109 on four natural calves and a progeny yearling ratio of 106 on three head along with a progeny ribeye ratio of 108 on seven head.



TOPP BLACKBIRD 6084 - LOT 12



SAV BLACKBIRD 5297

The dam of Lots 12, 12A and 12B.

12

TOPP BLACKBIRD 6084 [CAFI]

DOB 3/1/16 TATTOO 6084 AAA +18754348 COW

Bred to calve 1/16/18 to BALDRIDGE COLONEL C151. Examined safe

SAV Final Answer 0035 #

SAV Priority 7283 AAA 15688351

SAV Blackcap May 5530 #+

Boyd New Day 8005 #+

SAV Blackbird 5297 AAA 15108071

SAV Blackbird 1082

Sitz Traveler 8180 #

SAV Emulous 8145

BCC Bushwacker 41-93 #

SAV May 7238

AAR New Trend #

SVF Forever Lady 57D

SAF 598 Bando 5175 #+

SAV Blackbird 4036 #

CED	BW	WW	YW	SC	DOC	HP	MILK	CW	MARB	RE	\$W	\$B
I+4	I+3.5	I+57	I+97	I+.55	I+15	I+9.8	I+26	I+34	I+1.6	I+.56	54.7	93.83

12a

TOPP BLACKBIRD 6078 [CAFI]

DOB 2/5/16 TATTOO 6078 AAA +18763840 COW

Bred to calve 1/18/18 to BALDRIDGE COLONEL C151. Examined safe

12b

TOPP BLACKBIRD 6074 [CAFI]

DOB 1/16/16 TATTOO 6074 AAA +18763839 COW

Bred to calve 1/16/18 to BALDRIDGE COLONEL C151. Examined safe

Sitz Traveler 8180 #

SAV Final Answer 0035 AAA #13592905

SAV Emulous 8145

Boyd New Day 8005 #+

SAV Blackbird 5297 AAA 15108071

SAV Blackbird 1082

GDAR Traveler 71 #

Sitz Everelda Entense 1137

Bon View Bando 598 #

SAV Sky Emulous 2124

AAR New Trend #

SVF Forever Lady 57D

SAF 598 Bando 5175 #+

SAV Blackbird 4036 #

CED	BW	WW	YW	SC	DOC	HP	MILK	CW	MARB	RE	\$W	\$B
I+7	I+1.9	I+53	I+93	I+.90	I+11	I+10.2	I+29	I+27	I+.30	I+.37	57.21	89.55

A special opportunity to acquire full sisters to the \$65,000 Genex Pathfinder Sire SAV Pioneer 7301 who is one of the breed's leading high-maternal and balanced-trait sires. The productive donor dam has a progeny birth ratio of 95 balanced with a progeny weaning ratio of 109 on four natural calves and a progeny yearling ratio 106 on three head along with a progeny ribeye ratio of 108 on seven head, backed by one of the oldest and most productive families in the SAV program.



SAV PIONEER 7301

\$65,000 full brother Lots 12A and 12B and maternal brother Lot 12.



TOPP BLACKBIRD 6078 - LOT 12A

TOPP EMBLYNETTE & QUEEN FAMILIES



TOPP EMBLYNETTE 6077 - LOT 13



SAV ABUNDANCE 6117
\$135,000 maternal brother to the dam of Lot 13, 13A and 13B.

13

TOPP EMBLYNETTE 6077

DOB 1/22/16 TATTOO 6077 AAA PENDING COW

Bred to calve 1/16/18 to BALDRIDGE COLONEL C151. Examined safe.

13a

TOPP EMBLYNETTE 6076

DOB 1/21/16 TATTOO 6076 AAA PENDING COW

Bred to calve 1/15/18 to HA COWBOY UP 5405. Examined safe.

13b

TOPP EMBLYNETTE 6075

DOB 1/17/16 TATTOO 6075 AAA PENDING COW

Bred to calve 2/23/18 to BALDRIDGE COLONEL C151. Examined safe.

SAV Final Answer 0035 #

SAV Priority 7283 AAA 15688351

SAV Blackcap May 5530 #+

S A V Royalty 8471 +

SAV Emblynette 0314 AAA 16637986

S A V Emblynette 7563 +

Sitz Traveler 8180 #

S A V Emulous 8145

BCC Bushwacker 41-93 #

S A V May 7238

FV 20K King 308M #

S A V Rosetta 0523

S A V Net Worth 4200 #

S A V Emblynette 7261 #

14

TOPP QUEEN 6260

DOB 8/15/16 TATTOO 6260 AAA +18804615 COW

14a

TOPP QUEEN 6261

DOB 8/15/16 TATTOO 6261 AAA +18804616 COW

Werner War Party 2417 #+

RB Tour Of Duty 177 AAA +16984170

BA Lady 6807305 +

Boyd New Day 8005 #+

SAV Queen 7404 AAA 15688280

SAV Queen 5593 #+

Connealy Onward #

BAAR USA Lady Jaye 489 +

Vermilion Dateline 7078 #

GD Lady Hi Flyer 302 +

AAR New Trend #

SVF Forever Lady 57D

SAF 598 Bando 5175 #+

SAV Queen 7323

CED	BW	WW	YW	SC	DOC	HP	MILK	CW	MARB	RE	\$W	\$B
+7	+2.1	+65	+103	+55	+25	+6.9	+15	+31	+17	+58	+58.41	+88.50
-1	+4.3	+64	+117	+64	+9	+7.4	+27	+53	+35	+67	+49.41	+148.90

Maternal sisters to the \$35,000 SAV Yieldmaker 3971 who was the top yearling weight bull of the 2014 SAV Sale, from the powerful SAV Queen 7404.

CED	BW	WW	YW	SC	DOC	HP	MILK	CW	MARB	RE	\$W	\$B
+7	+2.1	+65	+103	+55	+25	+6.9	+15	+31	+17	+58	+58.41	+88.50
-1	+4.3	+64	+117	+64	+9	+7.4	+27	+53	+35	+67	+49.41	+148.90

A tremendous trio flush sisters by the Genex sire SAV Priority 7283 from a top-indexing donor dam who is the maternal sister to SAV Abundance 6117, the new Genex sire who was the \$135,000 featured Lot 1 bull of the record-setting 2017 SAV Sale.

The dam records a progeny weaning ratio of 108 on two natural calves after earning individual weaning and yearling ratios of 110 and 117 respectively combined with individual IMF ribeye ratios of 121 and 118 respectively, stemming from a productive grandam who is now featured in the Ingram Angus program.



SAV EMBLYNETTE 7563

The grand dam of Lots 13, 13A and 13B.



SAV QUEEN 7404

The dam of Lots 14 and 14A.



TOPP QUEEN 6260 - LOT 14

TOPP BESSIE HEIRESS FAMILY



TOPP BESSIE HEIRESS 6089 - LOT 15



SAV BESSIE HEIRESS 1184
The grandam of Lots 15 through 15D.

15

TOPP BESSIE HEIRESS 6089

DOB 3/6/16 TATTOO 6089 AAA +18736919 COW

Bred to calve 2/14/18 to QUAKER HILL RAMPAGE OA36. Examined safe.

15a

TOPP BESSIE HEIRESS 6085

DOB 3/1/16 TATTOO 6085 AAA +18736914 COW

Bred to calve 2/14/18 to HA COWBOY UP 5405. Examined safe.

15b

TOPP BESSIE HEIRESS 6087

DOB 3/4/16 TATTOO 6087 AAA +18736915 COW

Exposed to TC FREAL 625 from 5/13/17 to 7/13/17.

15c

TOPP BESSIE HEIRESS 6088

DOB 3/5/16 TATTOO 6088 AAA +18736917 COW

Bred to calve 2/2/18 to BALDRIDGE COLONEL C251. Examined safe.

Rito 707 of Ideal 3407 7075 +

SAV Resource 1441 AAA +17016597
SAV Blackcap May 4136

SAV Iron Mountain 8066 #

SAV Bessie Heiress 1412 AAA +17018689
SAV Bessie Heiress 1184

RR Rito 707 #

Ideal 3407 of 1418 076
SAV 8180 Traveler 004 #
SAV May 2397 #+
TC Gridiron 258 #
SAV Madame Pride 3249
SAF 598 Bando 5175 #+
SAV Bessie Heiress 8067

15d

TOPP BESSIE HEIRESS 6083

DOB 2/27/16 TATTOO 6083 AAA +18737792 COW

Bred to calve 1/16/18 to QUAKER HILL RAMPAGE OA36. Examined safe.

SAV Heritage 6295

SAV Harvester 0338 AAA 16687737
SAV Emblynette 7749 +

SAV Iron Mountain 8066 #

SAV Bessie Heiress 1412 AAA +17018689
SAV Bessie Heiress 1184

CAR Duke 104 #

SAV Blackcap May 4136
SAV Net Worth 4200 #
Sav Emblynette Diamond 6377 #
TC Gridiron 258 #
SAV Madame Pride 3249
SAF 598 Bando 5175 #+
SAV Bessie Heiress 8067

CED	BW	WW	YW	SC	DOC	HP	MILK	CW	MARB	RE	\$W	\$B
I-3	I+5.5	I+7.1	I+12.8	I+.88	I-1	I+13.0	I+2.1	I+4.9	I+.43	I+.41	52.33	142.71

The dam of this heifer is a maternal sister to a long line of prominent individuals including SAV Heavy Hitter 6347, the \$57,500 top-selling bull of the 2007 SAV Sale.

The proven high performance and high maternal sire of this heifer was the \$275,000 record-selling bull of a past SAV Sale whose progeny include the \$400,000 SAV International 2020 and the \$260,000 SAV Cutting Edge 4867

CED	BW	WW	YW	SC	DOC	HP	MILK	CW	MARB	RE	\$W	\$B
I-2	I+4.1	I+7.1	I+13.0	I+.90	I+1.0	I+13.0	I+1.7	I+4.8	I+.24	I+.75	53.43	132.87

This powerful group of bred heifers are flush sisters featuring a pedigree that combines the herd sire producing Bessie Heiress and Blackcap May families from an outstanding donor dam who combines a progeny birth ratio of 96 with a progeny weaning ratio of 106 on her first natural calf.

The dam of these heifers is a maternal sister to a long line of prominent individuals including SAV Heavy Hitter 6347, the \$57,500 top-selling bull of the 2007 SAV Sale.

These heifers are by the popular Genex sire SAV Resource 1441 who was the \$110,000 top-selling bull of the 2012 SAV sale and has no equal among proven sires for combining performance, fleshing-ease, muscle, structural soundness, breed character and fertility.



SAV BESSIE HEIRESS 4149

Maternal sister to the dam of Lots 15 through 15D.



SAV HEAVY HITTER 6347

Maternal brother to the dam of Lots 15 through 15D.



TOPP BESSIE HEIRESS 6085 - LOT 15A

TOPP BLACKCAP MAY & ABIGALE FAMILIES



TOPP BLACKCAP MAY 6263 - LOT 16



SAV BLACKCAP MAY 4136
The record-setting double grandam of Lots 16, 16A and 16B.

16 TOPP BLACKCAP MAY 6263
DOB 9/1/16 TATTOO 6263 AAA PENDING COW

17 TOPP ABIGALE 6266
DOB 9/8/16 TATTOO 6266 AAA PENDING COW

16a TOPP BLACKCAP MAY 6264
DOB 9/1/16 TATTOO 6264 AAA PENDING COW

17a TOPP ABIGALE 6267
DOB 9/9/16 TATTOO 6267 AAA PENDING COW

16b TOPP BLACKCAP MAY 6265
DOB 9/2/16 TATTOO 6265 AAA PENDING COW

Rito 707 of Ideal 3407 7075
SAV Renown 3439 AAA +17633839
SA V Blackcap May 4136

SAV Brand Name 9115 #
SAV Blackcap May 1639 AAA +16977667
SAV Blackcap May 4136

RR Rito 707 #
Ideal 3407 of 1418 076 +
SAV 8180 Traveler 004 #
SAV May 2397 #+
SAV Bismarck 5682 #+
SAV Blackcap May 5530 #+
SAV 8180 Traveler 004 #
SAV May 2397 #+

Rito 707 of Ideal 3407 7075
SAV Renown 3439 AAA +17633839
SA V Blackcap May 4136

SA V Providence 6922 #+
SA V Abigale 0312 AAA 16637984
SA V Abigale 7006 +

RR Rito 707 #
Ideal 3407 of 1418 076 +
SAV 8180 Traveler 004 #
SAV May 2397 #+
SA V 004 Predominant 4439 #+
SA V May 7239
SA V Net Worth 4200 #
SA V Abigale 8213 #

CED	BW	WW	YW	SC	DOC	HP	MILK	CW	MARB	RE	\$W	\$B
+1	+2.8	+73	+124	+76	+35	+12	+20	+45	+0.05	+73	+62.77	+109.67
+2	+3.1	+67	+120	+1.08	+22	+7.8	+23	+50	+0.01	+75	+57.41	+132.16

A tremendous trio of double granddaughters of SAV Blackcap May 4136, the all-time world record income-producing cow who has generated \$8,463,000 on 171 progeny in SAV sales to date, in addition to 55 daughters retained in the SAV herd. The donor dam has a progeny weaning ratio of 109 on her first natural calf, and she is maternal sister to an impressive array of prominent individuals including Resource, Renown, Recharge, Seedstock, Sensation, Pedigree, Universal, Revolution, Heritage, President, Governor, Raindance, Rainfall, Rainmaster and Reign.



TOPP ABIGALE 6266 - LOT 17

CED	BW	WW	YW	SC	DOC	HP	MILK	CW	MARB	RE	\$W	\$B
+1	+2.8	+73	+124	+76	+35	+12	+20	+45	+0.05	+73	+62.77	+109.67
+3	+4.4	+70	+126	+1.01	+1	+9.9	+32	+51	+1.35	+49	+59.56	+137.65

This powerful Abigale heifer by the \$175,000 SAV Renown 3439 is from a top-indexing donor dam who combines an individual birth ratio 99 with individual weaning and yearling ratios of 111 and 113 respectively. The high-performance grandam balances a progeny birth ratio of 98 with a progeny weaning ratio of 105 on eight natural calves and a progeny yearling ratio of 107 on four head and the third dam is a prolific Pathfinder Dam.

18 TOPP ABIGALE 6268
DOB 9/17/16 TATTOO 6268 AAA PENDING COW

Werner War Party 2417 #+
RB Tour Of Duty 177 AAA +16984170
BA Lady 6807 305 +

SA V 8180 Traveler 004 #
SA V Abigale 5631 AAA 15107848
SA V Abigale 0451

Connealy Onward #
BAAR USA Lady Jaye 489 +
Vermilion Dateline 7078 #
CD Lady Hi Flyer 302 +
Sitz Traveler 8180 #
Boyd Forever Lady 8003 +
Schoenes Fix It 826 #
SA V Abigale 6062

CED	BW	WW	YW	SC	DOC	HP	MILK	CW	MARB	RE	\$W	\$B
+6	+2.8	+67	+116	+31	+27	+12.7	+34	+58	+33	+87	+67.80	+140.56
+5	+8	+55	+87	+1.23	+0	+12.8	+30	+42	+30	+28	+66.81	+110.79

The dam of this heifer balances a progeny birth ratio of 94 with a progeny weaning ratio of 104 on eight calves and she is a full sister to the \$375,000 SAV Abigale 5650 from the same family that produced Bismarck, Mandan, Adapter, Eliminator, Pursuit, Fieldmaster, Recruit and Charlo.

TOPP ANGUS FOUNDATION FEMALE SALE **REFERENCE SIRES**



HA COWBOY UP 5405
 \$350,000 all-time top-selling bull in Montana through the 2016 Hinman Sale.



BALDRIDGE COLONEL C251
 \$580,000 top-selling Lot 1 bull of the 2017 Baldrige Brothers Sale.



QUAKER HILL RAMPAGE OA36
 A one-time EPD record-breaker.



CONNELY CAPITALIST 028
 The \$120,000 second top-selling bull of the past Connealy sale.



MUSGRAVE BIG SKY
 The \$145,000 top-selling bull of the 2013 Musgrave sale.



TC FREAL 625
 The \$25,000 second top-selling bull of the 2017 TC Sale.



CIRCLE A MOGUL 3463
 The top-selling bull of the 2014 Circle A Fall Sale.



MOHNEN WOLF CREEK 1871
 The \$17,000 co-top-selling bull of the 2012 Mohnen Sale.



SAV RESOURCE 1441
 The \$110,000 top-selling bull of his sire group in the 2012 SAV Sale.



SAV RENOWN 3439
 The \$175,000 lead-off bull of the 2014 SAV Sale.

- Top Angus - FOUNDATION FEMALE SALE

