

Our goal is to produce average birth weight, high performance, heavy-musclcd Herefords that offer an alternative to the exotics.

Tricky's Herefords BULL SALE

2:00 PM (CDT) • Miner Co. 4-H Grounds, Howard, SD
203 W Wilson and S Half Street

Saturday, April 16, 2016

Selling 33 Yearling Hereford Bulls • 1 Yearling Simmental Bull



4 Head Top 1% REA; 13 Head Top 10% YW; 17 Head Top 10% REA; 24 Head Top 25% REA; 25 Head Top 25% YW.



Ty Tricky's
Herefords

Dick & Betty Wettlaufer - (605) 485-2648 • Cell: (605) 270-3465
44132 234th St. • Winfred, SD 57076-7318
E-mail: rwettlaufer@triotel.net

www.TrickysHerefords.com

Tricky's Herefords BULL SALE

2:00 PM (CDT) • Miner Co. 4-H Grounds, Howard, SD
203 W Wilson and S Half Street

Saturday, April 16, 2016

Selling 33 Yearling Hereford Bulls
1 Yearling Simmental Bull

**The Livestock
Link**

Videos by The Livestock Link
www.TheLivestockLink.com

AUCTIONEER: JAY ELFELDT..... 308/293-3049

SALE DAY Dick Wettlaufer.....605/270-3465
PHONES: Phil Eggers 605/351-5438

SPECIAL GUESTS: Mark and Jeanne Johnson
South Dakota Hereford Association Managers

TERMS and CONDITIONS:

Insurance will be available sale day.

GUARANTEE:

Every animal in this sale, is to the best of our knowledge, free from any disease or defect. Any known defects will be called at sale time. Animals are guaranteed breeders. If an animal fails to breed after a trial of six months, it may be returned to the seller if in good condition and in compliance with South Dakota health regulations. The seller reserves the right to try said animal for six months, and if it proves a breeder, return it to the buyer at the buyer's expense. No adjustments will be made after nine months of sale day. If the animal proves to be a nonbreeder, an animal of comparable rank will be substituted. We assume no liability, legal or otherwise, to make any further compensation to the buyer. No other warranty of any nature is expressed or implied.

HEALTH:

3 rounds of Bovi-Shield Gold and One Shot otherwise similar.

DELIVERY:

Free delivery up to 200 miles and free keep until May 15, 2016. Will cooperate on longer hauls and extended feeding. Free delivery up to 400 miles on purchases of \$5000 or more.

DISCOUNT:

\$50 haul your own bull sale day. 10% discount for repeat customers on purchases of \$3000 or more.

VET:

Lake Vet of Madison 605-256-3547.

ABSENTEE BIDDING:

If you would like to place a bid but are unable to attend the sale, please direct your bid to Tricky or any of the sale staff.

AIR TRAVEL:

Sioux Falls Regional Airport is served by several major airlines. Special arrangements can also be made with the Madison Airport.

WELCOME

Betty and I would like to welcome you to our inaugural bull sale. We are excited to offer you the top yearlings from our program that focus on big yearling weights, ribeyes, and moderate birthweights. As you study the bulls, notice that their EPD's are all above breed average. Twenty five bulls are in the top 25% of the breed for yearling weight and ribeye area.

We're excited to offer you a more predictable set of EPD's. GE EPD's will be available sale day with many bulls being confirmed as homozygous and polled. Many of the bulls in this sale are sired by the breed's leading sires, including MSU TCF Revolution 4R and NJW 73S M326 Trust 100W ET.

Bulls will be available for viewing after 12:00 p.m., Friday, April 15, or please visit the ranch before the sale any time; we'd be happy to show you around. If you have questions or cannot be here for the sale, we would be happy to help select the right bull for you.

Thank you for taking the time to check out our bulls. We look forward to helping your program succeed.

Remember average does not move you, and everyone's cows are above average (we think).

Tricky & Betty Wettlaufer

Ty Tricky's Herefords

Dick & Betty Wettlaufer - (605) 485-2648 • Cell: (605) 270-3465
44132 234th St. • Winfred, SD 57076-7318
E-mail: rwettlaufer@triotel.net

www.TrickysHerefords.com

Weights current as of 3/8/16. EPD's current as of 3/21/16. GE-EPD's current as of 3/24/16.

Catalog by Hereford America.

HERD SIRES

Ty NJW 73S M326 TRUST 100W ET

REG. #: P43002897 • DOB: 02/24/2009

RRH MR FELT 3008
KCF BENNETT 3008 M326
KCF MISS 459 F284

FELTONS 517
RRH MS VICT 6191
FELTONS 459
KCF MISS X4 B156

PW VICTOR BOOMER P606
NJW P606 72N DAYDREAM 73S
NJW 94J DEW 72N

REMITALL BOOMER 46B
PW VICTORIA 964 8114
RU 20X BOULDER 57G
NJW D32 CLAIRE 94J

CED	BW	WW	YW	M	MG	CEM	BMI\$	CEZ\$
-1.8	3.8	68	120	36	70	5.3	\$24	\$14
MCW	UDR	SC	CW	FAT	REA	MRB	BIIS	CHBS
144	1.44	1.4	80	-0.054	1.29	0.19	\$18	\$42



Ty MSU TCF REVOLUTION 4R

REG. #: P42593689 • DOB: 01/04/2005

FELTONS DOMINO 774
FELTONS LEGEND 242
FELTONS G15

OXH DOMINO 7002
FELTONS B72
FELTONS 549
FELTONS B32

REMITALL ONLINE 122L
MSU TCF RACHAEL ET 54N
HH MISS ADV 786G 1ET

REMITALL EMBRACER 8E
REMITALL CATALINA 24H
CL 1 DOMINO 500E
HH MISS ADVANCE 251B

CED	BW	WW	YW	M	MG	CEM	BMI\$	CEZ\$
3.4	2.7	67	106	23	56	0.9	\$22	\$17
MCW	UDR	SC	CW	FAT	REA	MRB	BIIS	CHBS
107	1.49	1.0	83	0.025	1.01	0.15	\$16	\$35



Ty TH 49U 719T SHEYENNE 3X

REG. #: P43101191 • DOB: 01/16/2010

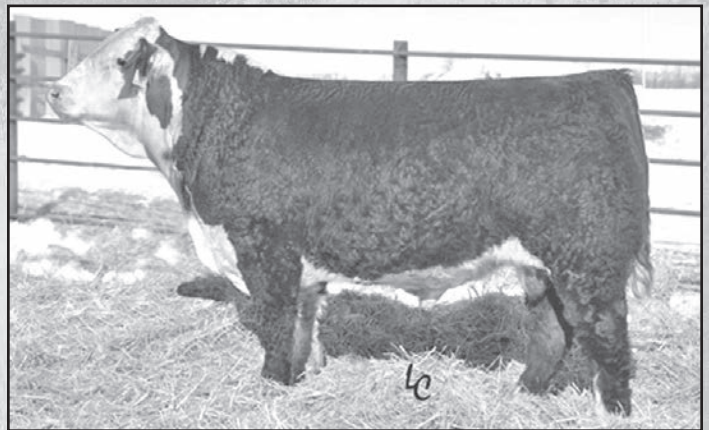
DRF JWR PRINCE VICTOR 71I
TH 122 71I VICTOR 719T
KBCR 19D DOMINETTE 122

HRP THM VICTOR 109W 9329
RHF 964 VICTRA 4057
NJW 1Y WRANGLER 19D
KBCR DOMINETTE 9112

TH 75J 44M LEGACY 103R
TH 23S 103R DUCHESS 49U
TH 53P W39 DUCHESS 23S

TH 557E 57G LEGACY 44M ET
KB 615C NICKY 75J
ALLENDALE ROBIN HOOD
TH 5M 3L DUCHESS 53P

CED	BW	WW	YW	M	MG	CEM	BMI\$	CEZ\$
13.1	-3.2	65	87	26	59	1.0	\$29	\$26
MCW	UDR	SC	CW	FAT	REA	MRB	BIIS	CHBS
106	1.14	1.3	68	0.000	0.35	0.25	\$22	\$37



SALE BULLS



C01 • TRICKYS BOY 1823-152 C01

REG. #: P43592157 • DOB: 02/16/2015 • POLLED

R 3RD REVOLUTION 4160
GR 4TH REVOLUTION 152

WHITEHAWK 4R REVOLUTION 2328
R MISS FELT 3078

K&B RED FELTON 8031U
RV LADY OF FELTON 1823
RV STOCKER LADY 8523

KCF BENNETT 3008 M326
K&B MS SILVER ADVANCE 6026S
RV STOCKER 6662
RV MS NEW DIMEN 3523

CED	BW	WW	YW	M	MG	CEM	BMI\$	CEZ\$	ADJ
0.2	3.6	67	123	29	62	0.8	\$27	\$15	1447
MCW	UDR	SC	CW	FAT	REA	MRB	BIIS	CHBS	YWR
129	1.03	2.0	83	-0.033	0.93	0.02	\$23	\$36	122

A TANK! The best combination of type and EPD's that I've seen this year. He's really thick and stout with a big rear and top. Ranks in the top 1% for ribeye, weaning wt., yearling wt., and scrotal measurement; top 10% for milk. He has a 16.07" ribeye and an adjusted yearling wt. of 1495#. We will be retaining a semen interest in him.



C01



C03 • TRICKYS BOY W18-152 C03

REG. #: P43592159 • DOB: 02/23/2015 • HOMO POLLED

R 3RD REVOLUTION 4160
GR 4TH REVOLUTION 152

WHITEHAWK 4R REVOLUTION 2328
R MISS FELT 3078

BAR JZ NAPOLEON 958T
TRICKYSNAPI2Y9-6012-958T;W18
RV BOULDER LASS 6012

BAR JZ KIRBY 638L
BAR JZ PANDORA 577N
ANL SBS 57G KEYSTONE 87L
RV SUPERSTAR 0012

CED	BW	WW	YW	M	MG	CEM	BMI\$	CEZ\$	ADJ
0.9	4.3	61	99	20	50	1.8	\$19	\$15	1172
MCW	UDR	SC	CW	FAT	REA	MRB	BIIS	CHBS	YWR
105	1.05	0.9	71	-0.064	0.97	-0.19	\$15	\$30	99

Top 1% for ribeye and top 10% for yearling wt. He's red necked with a bigger frame (6.5), wide top and rump. Has a good eyeset with one red eye. His dam has the biggest ribeye on our place.



C05 • TRICKYS SHEYENNE A32-3X C05

REG. #: P43592162 • DOB: 03/02/2015 • POLLED

TH 122 711 VICTOR 719T
TH 49U 719T SHEYENNE 3X
TH 23S 103R DUCHESS 49U

DRF JWR PRINCE VICTOR 711
KBCR 19D DOMINETTE 122
TH 75J 44M LEGACY 103R
TH 53P W39 DUCHESS 23S

MCCOY 55M ABSOLUTE 49S
TRICKYS ABSOLUTION X05-4R A32
TRICKYSGIRL 15R-4R X05

MCCOY 3J MATADOR 55M
MCCOY 58G CONNIE 119L
MSU TCF REVOLUTION 4R
MC FRANNIE 15R

CED	BW	WW	YW	M	MG	CEM	BMI\$	CEZ\$	ADJ
9.3	-0.3	65	94	23	56	1.4	\$23	\$22	1183
MCW	UDR	SC	CW	FAT	REA	MRB	BIIS	CHBS	YWR
117	1.16	1.0	70	0.011	0.47	0.11	\$17	\$33	100

Deep made with big top and quarter, dark red with a low birth weight. He's in the top 15% for YW, 25% for REA and 4% for birth weight EPD's.



C05



C07 • TRICKYS SHEYENNE A08=3X C07

REG. #: P43592164 • DOB: 03/04/2015 • HOMO POLLED

TH 122 711 VICTOR 719T
TH 49U 719T SHEYENNE 3X
TH 23S 103R DUCHESS 49U

DRF JWR PRINCE VICTOR 711
KBCR 19D DOMINETTE 122
TH 75J 44M LEGACY 103R
TH 53P W39 DUCHESS 23S

MSU TCF REVOLUTION 4R
TRICKYS REVA 8210-4R A08
RV MISS STOCKER 8210

FELTONS LEGEND 242
MSU TCF RACHAEL ET 54N
RV STOCKER 6662
RV MS STARLET 0210

CED	BW	WW	YW	M	MG	CEM	BMI\$	CEZ\$	ADJ
8.7	-1.1	64	90	24	56	0.6	\$27	\$22	1288
MCW	UDR	SC	CW	FAT	REA	MRB	BIIS	CHBS	YWR
92		1.1		0.036	0.45	0.41	\$21	\$37	109

Really stout, deep, soggy, thick made, square hiped, dark red, red necked, I guess we like him. He's in the top 10% for YW, top 25% for ribeye and top 4% for birth weight EPD's. We will be keeping 1/2 interest.



C07

SALE BULLS

Ty C09 • TRICKYS SHEYENNE A16-3X C09
 REG. #: P43592163 • DOB: 03/03/2015 • HOMO POLLED

TH 122 711 VICTOR 719T	DRF JWR PRINCE VICTOR 71I	BW	76
TH 49U 719T SHEYENNE 3X	KBCR 19D DOMINETTE 122	ADJ	205
TH 23S 103R DUCHESS 49U	TH 75J 44M LEGACY 103R		676
	TH 53P W39 DUCHESS 23S	WWR	93
		ADJ	365
MSU TCF REVOLUTION 4R	FELTONS LEGEND 242		
TRICKYS REVA W35-4R A16	MSU TCF RACHAEL ET 54N		
TRICKYSNAPI407P-958T;W35	BAR JZ NAPOLEON 958T		
	DDC MIS SPIDEL 60S 407P		

CED	BW	WW	YW	M	MG	CEM	BMI\$	CEZ\$	
8.5	-0.1	59	96	22	51	1.3	\$24	\$22	1180
MCW	UDR	SC	CW	FAT	REA	MRB	BIIS	CHBS	YWR
101	1.21	1.2	70	-0.026	0.67	0.00	\$19	\$32	99



Ty C10 • TRICKYS SHEYENNE A34-3X C10
 REG. #: P43592292 • DOB: 03/05/2015 • POLLED

TH 122 711 VICTOR 719T	DRF JWR PRINCE VICTOR 71I	BW	72
TH 49U 719T SHEYENNE 3X	KBCR 19D DOMINETTE 122	ADJ	205
TH 23S 103R DUCHESS 49U	TH 75J 44M LEGACY 103R		784
	TH 53P W39 DUCHESS 23S	WWR	108
		ADJ	365
MSU TCF REVOLUTION 4R	FELTONS LEGEND 242		
TRICKYS REVA T729-4R A34	MSU TCF RACHAEL ET 54N		
TRICKY'S RED EYED GIRL T729	DDC MR BOND LINEDRIVE 424P		
	TRICKY'S MS ADVANCE 503 9313		

CED	BW	WW	YW	M	MG	CEM	BMI\$	CEZ\$	
9.5	-1.4	61	83	21	52	1.6	\$27	\$23	1187
MCW	UDR	SC	CW	FAT	REA	MRB	BIIS	CHBS	YWR
90		1.1		0.032	0.47	0.27	\$21	\$33	100



Ty C11 • TRICKYS SHEYENNE A06-3X C11
 REG. #: P43592293 • DOB: 03/05/2015 • HOMO POLLED

TH 122 711 VICTOR 719T	DRF JWR PRINCE VICTOR 71I	BW	75
TH 49U 719T SHEYENNE 3X	KBCR 19D DOMINETTE 122	ADJ	205
TH 23S 103R DUCHESS 49U	TH 75J 44M LEGACY 103R		600
	TH 53P W39 DUCHESS 23S	WWR	83
		ADJ	365
MSU TCF REVOLUTION 4R	FELTONS LEGEND 242		
TRICKYS REVA W52-4R A06	MSU TCF RACHAEL ET 54N		
TRICKYS GIRL 45P-371R;W52	BAR JZ EXECUTOR 371R		
	ERNST MS COW MAKER P45		

CED	BW	WW	YW	M	MG	CEM	BMI\$	CEZ\$	
9.2	-1.8	46	66	17	40	1.5	\$21	\$23	1035
MCW	UDR	SC	CW	FAT	REA	MRB	BIIS	CHBS	YWR
75		0.7		0.012	0.29	0.08	\$17	\$23	87



Ty C16 • TRICKYS SHEYENNE A22-3X C16
 REG. #: P43592298 • DOB: 03/08/2015 • HOMO POLLED

TH 122 711 VICTOR 719T	DRF JWR PRINCE VICTOR 71I	BW	85
TH 49U 719T SHEYENNE 3X	KBCR 19D DOMINETTE 122	ADJ	205
TH 23S 103R DUCHESS 49U	TH 75J 44M LEGACY 103R		860
	TH 53P W39 DUCHESS 23S	WWR	118
		ADJ	365
MSU TCF REVOLUTION 4R	FELTONS LEGEND 242		
TRICKYSREVA X37-4R A22	MSU TCF RACHAEL ET 54N		
TRICKYSGIRL U45-371R X37	BAR JZ EXECUTOR 371R		
	TRICKY'S FANCY GIRL U45		

CED	BW	WW	YW	M	MG	CEM	BMI\$	CEZ\$	
7.7	2.9	74	111	24	61	0.2	\$23	\$20	1308
MCW	UDR	SC	CW	FAT	REA	MRB	BIIS	CHBS	YWR
130		1.0		-0.028	0.87	0.03	\$16	\$40	110



Thick top and quarter, light BW and dark red. Ranks in top 10% for YW, 5% for REA and 4% for BW.

A really square, dark red, clean necked, wide based thick bull. Top 30% for YW, 16% for ribeye and 2% for BW.

Top 2% for BW, 50% for REA, this bull with average growth and muscle will make a easy calving heifer bull for sure!

Really long bodied and rump with big RE, YW, & WW numbers. Yearling wt. - 1315 and RE - 14.3. Top 1% for YW and REA, and top 30% for BW.

SALE BULLS

Ty C18 • TRICKYS SHEYENNE A03-3X C18
 REG. #: P43592300 • DOB: 03/09/2015 • HOMO POLLED

TH 122 711 VICTOR 719T	DRF JWR PRINCE VICTOR 71I
TH 49U 719T SHEYENNE 3X	KBCR 19D DOMINETTE 122
TH 23S 103R DUCHESS 49U	TH 75J 44M LEGACY 103R
	TH 53P W39 DUCHESS 23S
PF COOPER 9036	CMR TF 242 GARRETT 430
TRICKYS REVA W12-4R A03	PF MISS HUNTER 7036
TRICKSNAPO437P-958T;W12	BAR JZ NAPOLEON 958T
	DDC MIS VIC BOND 437P

CED	BW	WW	YW	M	MG	CEM	BMI\$	CEZ\$	
8.3	1.3	64	98	22	54	1.0	\$24	\$22	1240
MCW	UDR	SC	CW	FAT	REA	MRB	BIIS	CHBS	YWR
113		1.3		-0.016	0.55	-0.12	\$18	\$30	104

Top 15% for BW and YW, top 25% for REA. Red necked, calving ease, big scrotum. Bigger framed for a Sheyenne calf.



Ty C22 • TRICKYS REVOLUTION W04-4R C22
 REG. #: P43610296 • DOB: 03/13/2015 • HOMO POLLED

FELTONS LEGEND 242	FELTONS DOMINO 774
MSU TCF REVOLUTION 4R	FELTONS G15
MSU TCF RACHAEL ET 54N	REMITALL ONLINE 122L
	HH MISS ADV 786G 1ET
BAR JZ NAPOLEON 958T	BAR JZ KIRBY 638L
TRICKYS MH3 6322-NAPO-W04	BAR JZ PANDORA 577N
RV CENTURION LASS 6322	HH CENTURION P44I
	RV ROCKETTE 3022

CED	BW	WW	YW	M	MG	CEM	BMI\$	CEZ\$	
3.5	1.6	55	91	20	47	2.0	\$20	\$17	1158
MCW	UDR	SC	CW	FAT	REA	MRB	BIIS	CHBS	YWR
96	1.33	0.8	70	0.005	0.73	0.12	\$16	\$30	98

Clean made, small-jointed and refined about his bone. Heavy muscled with a red neck. Top 20% for BW and YW, and top 2% for Ribeye.



Ty C23 • TRICKYS SHEYENNE A38-3X C23
 REG. #: P43610295 • DOB: 03/13/2015 • POLLED

TH 122 711 VICTOR 719T	DRF JWR PRINCE VICTOR 71I
TH 49U 719T SHEYENNE 3X	KBCR 19D DOMINETTE 122
TH 23S 103R DUCHESS 49U	TH 75J 44M LEGACY 103R
	TH 53P W39 DUCHESS 23S
PF COOPER 9036	CMR TF 242 GARRETT 430
TRICKYS COO X32-9036 A38	PF MISS HUNTER 7036
TRICKYS GIRL 6249-948T X32	BAR JZ NAPOLEON 958T
	RV DIAMOND 6249

CED	BW	WW	YW	M	MG	CEM	BMI\$	CEZ\$	
8.4	0.2	56	74	21	49	1.3	\$25	\$23	1157
MCW	UDR	SC	CW	FAT	REA	MRB	BIIS	CHBS	YWR
90		1.1		-0.017	0.34	0.05	\$20	\$28	97

Big top, square hip, red neck and light birthweight. Upper 5% for birth weight, 50% for YW and 40% for REA.



Ty C28 • TRICKYS REVOLUTION Z43-4R C28
 REG. #: P43610300 • DOB: 03/13/2015 • HOMO POLLED

FELTONS LEGEND 242	FELTONS DOMINO 774
MSU TCF REVOLUTION 4R	FELTONS G15
MSU TCF RACHAEL ET 54N	REMITALL ONLINE 122L
	HH MISS ADV 786G 1ET
MCCOY 55M ABSOLUTE 49S	MCCOY 3J MATADOR 55M
TRICKYSMS. MCCOY X31-55M Z43	MCCOY 58G CONNIE 119L
TRICKY S GIRL 418P-4R X31	MSU TCF REVOLUTION 4R
	DDC MIS ENOCH BOND 418P

CED	BW	WW	YW	M	MG	CEM	BMI\$	CEZ\$	
4.5	2.9	68	110	20	54	1.9	\$22	\$18	1232
MCW	UDR	SC	CW	FAT	REA	MRB	BIIS	CHBS	YWR
116		1.1		0.027	0.95	0.00	\$16	\$33	104

Best phenotype! Heavy muscled, stylish and wide based. Top 30% for BW, top 3% for RE and top 1% for RE. ADJ. RE - 14.55.



SALE BULLS

Ty C280 • TRICKYS GUNNER R040-308A C128

REG. #: P43610301 • DOB: 03/14/2015 • POLLED

HYALITE ON TARGET 936
BAR JZ GUNNER 308A
BAR JZ RENE 872W

SCHU-LAR ON TARGET 22S
HYALITE TS LASS 310
SHF RIB EYE M326 R117
BAR JZ JULIE 118R

HUTH STACKED DECK M020
ERNST BELLA R040

RRH MR FELT 3008
K HUTH ENHANTRESS K001
BOYD COW MAKER 0112
ERNST 31E PROSPECTA K044

ERNST COWGIRL N052

CED	BW	WW	YW	M	MG	CEM	BMI\$	CEZ\$	ADJ
3.0	3.8	60	101	26	56	3.7	\$26	\$19	1047
MCW	UDR	SC	CW	FAT	REA	MRB	BIIS	CHBS	YWR
124		1.5		-0.002	0.21	0.25	\$21	\$33	

Greener (raised by a foster cow), needs more cookies and time, weaned light but gained 4#/day after weaning. Extended with a long spine. Upper 50%BW, 10%YW and 50% REA EPDs.



C280

Ty C29 • TRICKYS REVOLUTION W31-4R C29

REG. #: P43610302 • DOB: 03/15/2015 • HOMO POLLED

FELTONS LEGEND 242
MSU TCF REVOLUTION 4R
MSU TCF RACHAEL ET 54N

FELTONS DOMINO 774
FELTONS G15
REMITALL ONLINE 122L
HH MISS ADV 786G 1ET

TRICKY'S BOY T703 LD 428P
TRICKYSGIRL 6249-T703/W31
RV DIAMOND 6249

TRICKY'S BOY 501R 218M
DDC MIS WRANGLER 19D LDR 428P
TH 57G BOULDER 20L
RV TESSA 2249

CED	BW	WW	YW	M	MG	CEM	BMI\$	CEZ\$	ADJ
0.7	3.8	55	83	18	45	1.4	\$26	\$17	1083
MCW	UDR	SC	CW	FAT	REA	MRB	BIIS	CHBS	YWR
98	1.35	1.6	62	0.005	0.64	0.03	\$25	\$26	91

Stylish, balanced, extended and really attractive. Big scrotum, red neck and one red eye. Top 40% for YW and top 10% for ribeye.



C29

Ty C31 • TRICKYS TRUST U27-100W C31

REG. #: P43618850 • DOB: 03/16/2015 • POLLED

KCF BENNETT 3008 M326
NJW 73S M326 TRUST 100W ET
NJW P606 72N DAYDREAM 73S

RRH MR FELT 3008
KCF MISS 459 F284
PW VICTOR BOOMER P606
NJW 94J DEW 72N

GRANDVIEW 70AKS SONORA 145R
TRICKY'S SONORITA 415P U27

REMITALL ONLINE 122L
DJB 46B BETH 1L
DDC VIC 843H 029K
DDC MIS BOND PZAZZ 804H

DDC MIS PZAZZ BOND VIC 415P

CED	BW	WW	YW	M	MG	CEM	BMI\$	CEZ\$	ADJ
-1.4	4.0	56	95	29	57	4.5	\$21	\$14	1236
MCW	UDR	SC	CW	FAT	REA	MRB	BIIS	CHBS	YWR
113		1.1		-0.014	0.86	0.21	\$18	\$32	104

Scurred, big red eyes, dark red and red necked. Big middled and thick, thick, thick! Upper 15% for YW and 2% for ribeye.



C31

Ty C32 • TRICKYS REVOLUTIONX43-4R C32

REG. #: P43610304 • DOB: 03/16/2015 • HOMO POLLED

FELTONS LEGEND 242
MSU TCF REVOLUTION 4R
MSU TCF RACHAEL ET 54N

FELTONS DOMINO 774
FELTONS G15
REMITALL ONLINE 122L
HH MISS ADV 786G 1ET

TRICKY'S BOY T703 LD 428P
TRICKYS GIRL 616-703T X43

TRICKY'S BOY 501R 218M
DDC MIS WRANGLER 19D LDR 428P
R PATHFINDER 2363
R MISS PERKINS 618

R MISS PATHFINDER 616

CED	BW	WW	YW	M	MG	CEM	BMI\$	CEZ\$	ADJ
1.3	2.7	53	85	20	47	0.3	\$21	\$16	1165
MCW	UDR	SC	CW	FAT	REA	MRB	BIIS	CHBS	YWR
108		1.0		0.028	0.62	0.19	\$18	\$27	98

Stylish and well balanced with lots of middle, really thick and uniform down his top & with a wide stifle. PRETTY! Top 50% for BW, 30% for YW and 10% for ribeye.



C32

SALE BULLS

Ty C33 • TRICKYS REVOLUTION W12-4R C33

REG. #: P43610305 • DOB: 03/16/2015 • HOMO POLLED

FELTONS LEGEND 242
MSU TCF REVOLUTION 4R
MSU TCF RACHAEL ET 54N

FELTONS DOMINO 774
FELTONS G15
REMITALL ONLINE 122L
HH MISS ADV 786G 1ET

BAR JZ NAPOLEON 958T
TRICKSNAPO437P-958T;W12
DDC MIS VIC BOND 437P

BAR JZ KIRBY 638L
BAR JZ PANDORA 577N
DDC BOND 702G 103A 950J
DDC MS VIC BOND 116L

CED	BW	WW	YW	M	MG	CEM	BMI\$	CEZ\$	
3.6	1.8	47	81	18	41	2.3	\$19	\$18	1085
MCW	UDR	SC	CW	FAT	REA	MRB	BII\$	CHBS	YWR
93	1.40	0.8	63	0.000	0.69	0.00	\$16	\$24	91

Upper 20% for BW, 50% for YW and 4% for ribeye. Clean body type, refined about his joints & bone with a good shape.



Ty C41 • TRICKYS REVOLUTION X26-4R C41

REG. #: P43610760 • DOB: 03/19/2015 • HOMO POLLED

FELTONS LEGEND 242
MSU TCF REVOLUTION 4R
MSU TCF RACHAEL ET 54N

FELTONS DOMINO 774
FELTONS G15
REMITALL ONLINE 122L
HH MISS ADV 786G 1ET

MSU TCF REVOLUTION 4R
TRICKYS GIRL T710-4R X26
TRICKY'S GIRL T710 401 371P

FELTONS LEGEND 242
MSU TCF RACHAEL ET 54N
BAR JZ EXECUTOR 371R
MONTANA MISS 401P

CED	BW	WW	YW	M	MG	CEM	BMI\$	CEZ\$	
4.2	1.4	57	91	17	46	1.9	\$21	\$18	1184
MCW	UDR	SC	CW	FAT	REA	MRB	BII\$	CHBS	YWR
85		0.9		0.032	0.94	0.06	\$17	\$29	100

Red neck and legs, clean with a big hip, quarter and top. Excellent balance and style!
Upper 15% for BW, YW and upper 1% for ribeye.

4 HEAD TOP 1% REA; 13 HEAD TOP 10% YW;
17 HEAD TOP 10% REA; 24 HEAD TOP 25% REA;
25 HEAD TOP 25% YW.

THE FOLLOWING HAVE
TESTED HOMOZYGOUS POLLED:

C03	C18	C33
C07	C22	C41
C09	C28	C46
C11	C29	C79
C16	C32	

Ty C43 • TRICKYS REVOLUTION 1523-4R C43

REG. #: P43610761 • DOB: 03/20/2015 • POLLED

FELTONS LEGEND 242
MSU TCF REVOLUTION 4R
MSU TCF RACHAEL ET 54N

FELTONS DOMINO 774
FELTONS G15
REMITALL ONLINE 122L
HH MISS ADV 786G 1ET

SHF WELLS 2013 W72
RV LADY OF WELLS 1523
RV MS NEW DIMEN 3523

R PUCKSTER 2013
SHF PROGRESS T148
RJH NEW DIMENSION K40
RV INGRID 9523

CED	BW	WW	YW	M	MG	CEM	BMI\$	CEZ\$	
3.3	1.0	53	82	19	46	2.0	\$25	\$19	1137
MCW	UDR	SC	CW	FAT	REA	MRB	BII\$	CHBS	YWR
103	1.24	1.2	63	0.029	0.46	0.23	\$22	\$28	96

Scurred, light birth weight and good shape. Upper 10% for BW, 40% for YW and 25% for ribeye.



Ty C46 • TRICKYS REVOLUTION W02-4R C46

REG. #: P43610762 • DOB: 03/21/2015 • HOMO POLLED

FELTONS LEGEND 242
MSU TCF REVOLUTION 4R
MSU TCF RACHAEL ET 54N

FELTONS DOMINO 774
FELTONS G15
REMITALL ONLINE 122L
HH MISS ADV 786G 1ET

BAR JZ EXECUTOR 371R
TRICKYS GIRL T731-371R W02
TRICKY'S DOLL T731 218M

BAR JZ KIRBY 638L
BAR JZ 56E LADY 869J
DDC MR BOND LINEDRIVE 424P
DDC MIS POWER PLAY 218M

CED	BW	WW	YW	M	MG	CEM	BMI\$	CEZ\$	
2.8	2.7	57	97	15	43	1.7	\$16	\$16	1214
MCW	UDR	SC	CW	FAT	REA	MRB	BII\$	CHBS	YWR
106		0.6		0.006	0.85	-0.16	\$11	\$25	102

GUTS, BUTTS, AND NUTS! Style, balance wide-based with good numbers. Really attractive! Top 40% for BW, 10% for YW and 1% for ribeye.



SALE BULLS

Ty C50 • TRICKYS GUNNER X31-308A C50

REG. #: 43647378 • DOB: 03/22/2015 • HORNED

HYALITE ON TARGET 936 BAR JZ GUNNER 308A BAR JZ RENE 872W MSU TCF REVOLUTION 4R TRICKY'S GIRL 418P-4R X31 DDC MIS ENOCH BOND 418P	SCHU-LAR ON TARGET 22S HYALITE TS LASS 310 SHF RIB EYE M326 R117 BAR JZ JULIE 118R FELTONS LEGEND 242 MSU TCF RACHAEL ET 54N DDC BOND 702G 103A 950J DDC MS ENF 338C EN 850H
--	---

	CED	BW	WW	YW	M	MG	CEM	BMI\$	CEZ\$	
	2.2	4.6	65	107	26	58	1.9	\$24	\$17	1074
	MCW	UDR	SC	CW	FAT	REA	MRB	BII\$	CHBS	YWR
	111		1.5		0.006	0.64	0.07	\$19	\$33	

Red neck, one red eye. Show steer rump and quarter, really stylish and well balanced. Upper 4% for YW and 10% for ribeye.

Ty C56 • TRICKYSREVOLUTIONU33-4R C56

REG. #: P43610769 • DOB: 03/26/2015 • POLLED

FELTONS LEGEND 242 MSU TCF REVOLUTION 4R MSU TCF RACHAEL ET 54N BAR JZ EXECUTOR 371R TRICKY'S GIRL 371R U33 R MISS PAGE 1436	FELTONS DOMINO 774 FELTONS G15 REMITALL ONLINE 122L HH MISS ADV 786G 1ET BAR JZ KIRBY 638L BAR JZ 56E LADY 869J R PAGE 123K R MISS ADVANCE 1050
---	--

	CED	BW	WW	YW	M	MG	CEM	BMI\$	CEZ\$	
	3.3	2.5	54	87	16	43	1.1	\$15	\$16	1118
	MCW	UDR	SC	CW	FAT	REA	MRB	BII\$	CHBS	YWR
	100	1.33	0.4	68	0.000	0.69	-0.09	\$11	\$25	94

Long top, bigger frame with big ribeye#, really extended front. Top 35% for BW, 30% for YW and 5% for ribeye.

Ty C57 • TRICKYS GUNNER Z22-308A C57

REG. #: P43610770 • DOB: 03/28/2015 • POLLED

HYALITE ON TARGET 936 BAR JZ GUNNER 308A BAR JZ RENE 872W MSU TCF REVOLUTION 4R TRICKYS REVA U44-4R Z22 TRICKY'S GIRL 5031 371R U44	SCHU-LAR ON TARGET 22S HYALITE TS LASS 310 SHF RIB EYE M326 R117 BAR JZ JULIE 118R FELTONS LEGEND 242 MSU TCF RACHAEL ET 54N BAR JZ EXECUTOR 371R RV MS BOULDER 5031
--	---

	CED	BW	WW	YW	M	MG	CEM	BMI\$	CEZ\$	
	2.7	3.5	64	110	23	55	2.8	\$22	\$17	1250
	MCW	UDR	SC	CW	FAT	REA	MRB	BII\$	CHBS	YWR
	113		1.3		0.019	0.61	0.02	\$17	\$31	105

Growthy Gunner son with a big yearling weight. Top 50% for BW, 2% for YW and 15% for ribeye.

Ty C63 • TRICKYS TRUST X32-100W C63

REG. #: P43618858 • DOB: 03/30/2015 • POLLED

KCF BENNETT 3008 M326 NJW 73S M326 TRUST 100W ET NJW P606 72N DAYDREAM 73S BAR JZ NAPOLEON 958T TRICKYS GIRL 6249-948T X32 RV DIAMOND 6249	RRH MR FELT 3008 KCF MISS 459 F284 PW VICTOR BOOMER P606 NJW 94J DEW 72N BAR JZ KIRBY 638L BAR JZ PANDORA 577N TH 57G BOULDER 20L RV TESSA 2249
---	--

	CED	BW	WW	YW	M	MG	CEM	BMI\$	CEZ\$	
	-0.9	3.2	49	85	23	48	4.1	\$20	\$15	1136
	MCW	UDR	SC	CW	FAT	REA	MRB	BII\$	CHBS	YWR
	98		0.9		-0.044	0.76	0.10	\$17	\$29	96

Red neck with a tight neck and sheath. Good top with a big rump and stifle. Ranks in upper 10% for yearling weight and upper 2% for ribeye.

Ty C60 • TRICKYS TRUST X23-100W C60

REG. #: P43618857 • DOB: 03/29/2015 • POLLED

KCF BENNETT 3008 M326 NJW 73S M326 TRUST 100W ET NJW P606 72N DAYDREAM 73S BAR JZ EXECUTOR 371R TRICKYS GIRL 1588-371R X23 R MISS PATHFINDER 1558	RRH MR FELT 3008 KCF MISS 459 F284 PW VICTOR BOOMER P606 NJW 94J DEW 72N BAR JZ KIRBY 638L BAR JZ 56E LADY 869J R PATHFINDER 2363 R MISS WRANGLER 922
--	--

	CED	BW	WW	YW	M	MG	CEM	BMI\$	CEZ\$	
	-0.1	4.2	59	100	31	60	3.2	\$22	\$15	1223
	MCW	UDR	SC	CW	FAT	REA	MRB	BII\$	CHBS	YWR
	115		1.3		-0.015	0.80	0.12	\$18	\$32	103

Red neck, eyes and legs. Big smooth Trust son in upper 4% of breed for YW and 2% for ribeye.



SALE BULLS

Ty C68 • TRICKYS GUNNER X21-308A C68
 REG. #: P43613405 • DOB: 04/12/2015 • POLLED

HYALITE ON TARGET 936							SCHU-LAR ON TARGET 22S			BW
BAR JZ GUNNER 308A							HYALITE TS LASS 310			93
BAR JZ RENE 872W							SHF RIB EYE M326 R117			ADJ
							BAR JZ JULIE 118R			205
										680
BAR JZ NAPOLEON 958T							BAR JZ KIRBY 638L			WWR
TRICKYS GIRL 1436-958T X21							BAR JZ PANDORA 577N			94
R MISS PAGE 1436							R PAGE 123K			ADJ
							R MISS ADVANCE 1050			365
CED	BW	WW	YW	M	MG	CEM	BMI\$	CEZ\$	1157	
2.4	4.1	58	98	22	50	2.3	\$28	\$19		
MCW	UDR	SC	CW	FAT	REA	MRB	BIIS	CHBS	YWR	
104	1.30	1.8	65	-0.011	0.36	0.15	\$25	\$31	97	

Red eyed, clean made with a red neck. Wide quarter, big hip and stifle and stands in upper 10% for YW and 40% for ribeye.



Ty C70 • TRICKYS GUNNER X14-308A C70
 REG. #: 43613402 • DOB: 04/11/2015 • HORNED

HYALITE ON TARGET 936							SCHU-LAR ON TARGET 22S			BW
BAR JZ GUNNER 308A							HYALITE TS LASS 310			88
BAR JZ RENE 872W							SHF RIB EYE M326 R117			ADJ
							BAR JZ JULIE 118R			205
										725
MSU TCF REVOLUTION 4R							FELTONS LEGEND 242			WWR
TRICKYS GIRL U27-4R X14							MSU TCF RACHAEL ET 54N			100
TRICKY'S SONORITA 415P U27							GRANDVIEW 7OAKS SONORA 145R			ADJ
							DDC MIS PZAZZ BOND VIC 415P			365
CED	BW	WW	YW	M	MG	CEM	BMI\$	CEZ\$	1247	
2.6	4.1	60	102	27	57	3.1	\$24	\$18		
MCW	UDR	SC	CW	FAT	REA	MRB	BIIS	CHBS	YWR	
109		1.4		-0.006	0.63	0.13	\$19	\$33	105	

Really wide based, big top rump and quarter, clean neck and deep flank. Really good rear 2/3s (and front 1/3) A BLOCKBUSTER in top 45% for BW, 3% for YW and 10% for REA.



Ty C72 • TRICKYS GUNNER Z74-308A C72
 REG. #: P43613404 • DOB: 04/12/2015 • POLLED

HYALITE ON TARGET 936							SCHU-LAR ON TARGET 22S			BW
BAR JZ GUNNER 308A							HYALITE TS LASS 310			84
BAR JZ RENE 872W							SHF RIB EYE M326 R117			ADJ
							BAR JZ JULIE 118R			205
										696
BAR JZ NAPOLEON 958T							BAR JZ KIRBY 638L			WWR
TRICKYS NAPI							BAR JZ PANDORA 577N			96
TRICKY'S GIRL 437P 371R U47							BAR JZ EXECUTOR 371R			ADJ
							DDC MIS VIC BOND 437P			365
CED	BW	WW	YW	M	MG	CEM	BMI\$	CEZ\$	1120	
3.7	2.5	53	88	22	49	3.6	\$20	\$18		
MCW	UDR	SC	CW	FAT	REA	MRB	BIIS	CHBS	YWR	
92	1.35	1.0	62	-0.023	0.61	-0.09	\$16	\$25	94	

Scurred, red-eyed, long spined and more refined. Top 35% for BW, 25% for YW and 10% for RE.

Ty C74 • TRICKYS GUNNER Z04-308A C74
 REG. #: P43613415 • DOB: 04/16/2015 • POLLED

HYALITE ON TARGET 936							SCHU-LAR ON TARGET 22S			BW
BAR JZ GUNNER 308A							HYALITE TS LASS 310			90
BAR JZ RENE 872W							SHF RIB EYE M326 R117			ADJ
							BAR JZ JULIE 118R			205
										751
BAR JZ NAPOLEON 958T							BAR JZ KIRBY 638L			WWR
TRICKYSNAPI 988-958T Z04							BAR JZ PANDORA 577N			103
R MISS ONLINE 988							SMN 709 LINEMAN 0403			ADJ
							R MISS DOMINO 899			365
CED	BW	WW	YW	M	MG	CEM	BMI\$	CEZ\$	1267	
2.2	3.9	59	108	27	56	3.2	\$21	\$17		
MCW	UDR	SC	CW	FAT	REA	MRB	BIIS	CHBS	YWR	
97	1.37	1.3	73	-0.028	0.59	-0.02	\$16	\$30	107	

Red eye, big top, rump and quarter and clean fronted, looks a lot like C70. Upper 2% for YW and 10% for REA EPD's.

Ty C73 • TRICKYSGUNNER Z17-308A C73
 REG. #: P43613406 • DOB: 04/13/2015 • POLLED

HYALITE ON TARGET 936							SCHU-LAR ON TARGET 22S			BW
BAR JZ GUNNER 308A							HYALITE TS LASS 310			85
BAR JZ RENE 872W							SHF RIB EYE M326 R117			ADJ
							BAR JZ JULIE 118R			205
										720
MSU TCF REVOLUTION 4R							FELTONS LEGEND 242			WWR
TRICKYSREVA W19-4R Z17							MSU TCF RACHAEL ET 54N			99
TRICKYS GIRL T20-371R; W19							BAR JZ EXECUTOR 371R			ADJ
							TRICKY'S MOLETTA T720 001K			365
CED	BW	WW	YW	M	MG	CEM	BMI\$	CEZ\$	1154	
3.8	2.7	58	96	24	53	3.1	\$21	\$18		
MCW	UDR	SC	CW	FAT	REA	MRB	BIIS	CHBS	YWR	
103	1.37	1.0	67	-0.019	0.74	0.00	\$16	\$30	97	

Red neck, big middled and stout. 3 stars for thick! Top 35% for BW, 10% for YW and 3% for RE EPD's.



SALE BULLS

Ty C79 • TRICKYSGUNER W38-308A C79

REG. #: P43613419 • DOB: 04/22/2015 • HOMO POLLED

HYALITE ON TARGET 936
BAR JZ GUNNER 308A
BAR JZ RENE 872W

SCHU-LAR ON TARGET 22S
HYALITE TS LASS 310
SHF RIB EYE M326 R117
BAR JZ JULIE 118R

TRICKY'S BOY T703 LD 428P
TRICKYSGIRL474S-T703;W38
S&S MISS LAMP 474S

TRICKY'S BOY 501R 218M
DDC MIS WRANGLER 19D LDR 428P
TH JWR SOP 16G 57G TUNDRA 63N
S&S MISS LAMP 20K

CED	BW	WW	YW	M	MG	CEM	BMI\$	CEZ\$	
0.1	5.7	66	111	27	60	1.3	\$23	\$15	1424
MCW	UDR	SC	CW	FAT	REA	MRB	BI\$	CHBS	YWR
124		1.6		-0.019	0.60	-0.01	\$19	\$32	108

Another TANK, stout, heavy duty, with red eyes, and big yearling wt. (adj - 1433) THICK, THICK, THICK... EPD's top 1% for YW and 15% for ribeye.



C79

Ty C82 • TRICKYS Z61-A05 C82

REG. #: P43613421 • DOB: 05/08/2015 • POLLED

MSU TCF REVOLUTION 4R
TRICKYS REVOLUTION W37-4R A05
TRICKYS GIRL 5031 T703 W37

FELTONS LEGEND 242
MSU TCF RACHAEL ET 54N
TRICKY'S BOY T703 LD 428P
RV MS BOULDER 5031

PF COOPER 9036
TRICKYS COO X21-9036 Z61
TRICKYS GIRL 1436-958T X21

CMR TF 242 GARRETT 430
PF MISS HUNTER 7036
BAR JZ NAPOLEON 958T
R MISS PAGE 1436

CED	BW	WW	YW	M	MG	CEM	BMI\$	CEZ\$	
-1.6	7.1	60	102	18	48	-0.2	\$18	\$12	1203
MCW	UDR	SC	CW	FAT	REA	MRB	BI\$	CHBS	YWR
102	1.34	1.0	71	-0.012	0.68	0.01	\$16	\$29	92

Thick top, rump and quarter, clean made with red neck, leg and scrotum. The youngest bull of the group. In top 5% for YW and REA.



C82

Ty C47 • BLACK SIMMENTAL

DOB: 05/08/2015

BWF 1/2 Simmental. Sire - Upgrade. Out of a high percentage commercial cow. Very thick, big rump, clean-wide based with an 18" ribeye. BF - .42, REA - 14.39 and IMF - 3.2. Parents have been black for generations.

BW
88
ADJ
205
WWR
ADJ
365
1412
YWR



C47

Ty C78 • COMMERCIAL HEREFORD

Purebred, commercial Hereford out of Bar JZ Gunner 308A. Heavy muscled top and quarter, one red eye, 6 frame. Adj RE - 13.81, IMF - 4.35.

BW
90
ADJ
205
WWR
ADJ
365
1232
YWR
104



C78



Tricky's Herefords

Dick & Betty Wettlaufer

44132 234th St.

Winfred, SD 57076-7318

FIRST CLASS
US POSTAGE
PAID
Fargo, ND
Permit No. 684



**Tricky's Herefords
BULL SALE**

2:00 PM (CDT)

Miner Co. 4-H Grounds, Howard, SD

203 W Wilson and S Half Street

**Saturday,
April 16, 2016**

