



Amdahl

Angus & Hereford

WEDNESDAY, MAY 10, 2023

1:04 p.m. MST • at the ranch, North of Rapid City, SD



**Black River
Lot 1**

AMDAHL ANGUS & HEREFORD

Look forward to working with you to increase your bottom line

Wednesday, May 10th, 2023

47th Annual Production Sale

1:04 PM MT • at the Ranch 12 miles N. of Rapid City, SD



Sale Day Phones

Tim: 605-929-3717 | JD: 605-999-6487



Auctioneer

Doug Dietterle
605-580-1362



Wes Tiemann
816-244-4462

Sale Representatives

Marc Hotchkiss, The Livestock Link 605-490-1513
Scott Dirk, Tri-State Livestock News 605-380-6024
Beau Ravellette, RPI Promotions..... 605-685-8155
Don Ravellette, RPI Promotions 605-685-5147
Rod Geppert, American Angus Association..... 605-295-3673
Chris Earl, CK6 Consulting 630-675-6559
Kody Fleeman..... 573-881-0117
Kaden Leddy, The Cattle Business Weekly..... 605-924-0757

This sale will be broadcast live on the internet.



**Pictures were taken at
the end of March**

**Bulls will sell in
catalog order**

*Where Quality
Runs
Generations
Deep*

visit us on the web to view photos & videos

AmdahlAngusandHereford.com

Tim Amdahl: 605-929-3717 • JD Amdahl: 605-999-6487

Tim & Marcia Amdahl, JD & Annie Amdahl

21747 Coyote Lane, Piedmont, SD 57769

TimAmdahl@yahoo.com



Raising beef cattle in South Dakota since 1884 | Registered Cattle since 1972

Welcome to the AMDAHL RANCH SPRING TURNOUT SALE

Sale will be held at 1:04pm at the ranch on May 10th. We once again feel blessed to not only work with livestock on a daily basis, but continue to do what we love and enjoy alongside people like you all. We so appreciate your interest in our program and look forward to serving you in your breeding decisions and seed stock needs.

All cattle are born and raised right on the ranch. Calves are not creep fed. As the weaning weights increase, we feel confident that our genetics continue to excel in our harsh western climate.

Whether you're in the commercial or registered cattle business, we know the key to your success is producing a live calf at birth and the top cut quality calf that weighs down the scales come weaning time, still keeping as our top priority that females are the backbone to any successful operation. That's why we base our breeding decisions on maternal traits, growth and structural soundness.

We are especially excited to offer some cutting edge ET calves and pregnancies along with some excellent bred females. It's exciting to own some new sires that we feel will really complement our breeding program.

The bulls have already been semen tested, vaccinated and branded and are ready to turn out.

Thank you again for investing and showing your support to our family as we hold our Spring Turnout Sale. We hope that you contact us directly if you have any specific questions or if we can be of any assistance at all. We are here to serve you for your cattle needs. There are lots of options to purchase Angus cattle, we so appreciate your interest in the Amdahl Ranch Program.



Tim & Marcia Amdahl

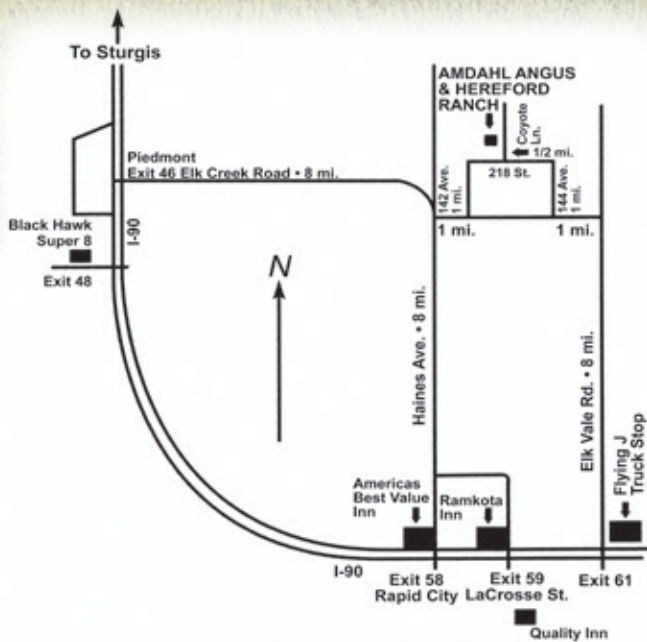


J.D., Annie,
Coley, and Maverick Amdahl



Everett Mockabee - hired hand

The Amdahls  JOHN 3:16



Selling

- ◆ 1 proven herd sire
- ◆ 52 Angus Bulls
- ◆ 12 Hereford Bulls
- ◆ 10 Angus Pairs
- ◆ 3 Donor Pairs
- ◆ 5 ET Calves
- ◆ 5 Pregnancies
- ◆ 30 Commercial Open Angus Heifers
- ◆ 3 Open Fall Heifers

Sale Day Information

Guarantee

All bulls selling will be covered 50% by the Amdahl's until September 1, 2023. Buyer must let us know immediately if injury occurs to a bull. If a bull becomes injured and does not recover, we will give you credit towards one replacement bull or credit in next years sale less salvage value (\$1,800). Bull needs to be evaluated by a qualified vet before selling. We want to work with our customers in their future success. We are here to help and encourage you in the cattle business. If our customers want additional coverage it will be available sale day.

Wintering Info

The bulls are ready to leave right After the sale. Bulls kept longer than 1 week after the sale will be charged for feed. \$100 discount if you take your bulls home on sale day.

Delivery

The bulls will be delivered starting right away to central locations and if possible, to your ranch. We are offering free nation wide delivery on purchases of 3 or more bulls and/or females. Purchases of less than 3 animals qualify for 200 mile free delivery (but not on females).

Volume Discount

We offer volume discounts according to the number of bulls you purchase. Purchase 5 or more bulls and receive a 5% discount. Purchase 10 or more bulls and receive a 10% discount. Must be bought by one individual.

Terms and Conditions

Amdahl Ranch is selling 100% of bulls and females. We reserve the right to collect a few select bulls at buyers convenience. Unless other wise announced sale day.

Sale Order

Sale order in catalog order.

Marketing Options

It would be out pleasure to help assist you in your marketing needs on cattle sired by our bulls. We have order buyers feeders and heifer developers that we would help facilitate contracts between buyers and sellers.

DNA Testing

Angus bulls have been HD50K tested and tested to be defect free. And for accuracy in calving ease, maternal and Carcass quality.

Inspection of Cattle

Cattle will be available for inspection at the ranch anytime prior to the sale, call to make arrangements.

Health

Interstate health papers furnished on all cattle selling.

EPDs & \$Values

The American Angus Association is now calculating EPDs on a weekly basis using all available carcass harvest data, ultrasound data and the Igenity Angus specific genome profile data. It is possible new data has been submitted between the date the catalog was finalized and sale day which will affect the individual EPDs and \$Value Indexes of the animals selling. If your purchasing decision relies highly on the most current carcass data available, please look up animals of interest on the American Angus Association web page prior to viewing the sale offering.

Supplement Sheets

Will be available sale day with any updates.

Lunch

Lunch will be available sale day.

Sight-Unseen Purchases

If you can't attend our sale, we would be happy to help you select and purchase your bull. We know our bulls well and by visiting with you, we feel we can buy a bull that will fit your program. Some people prefer this. Call anytime at 605-929-3717 or 605-999-6487.

We have the strongest set of bulls we have ever offered front to back in our catalog. We would like to show you our bulls and females before sale day. We appreciate you as a customer and look forward to working with you.

OUR 5-STAR SYSTEM

★★★★★

CALVING EASE

5-Star Rating System: Most of our bulls offered for sale could be used on first calf heifers due to shape and size. To help you identify our calving ease proven bulls, we have a 5-Star rated system, 5-Star being our easiest calving. Our 1 and 2 Stars are for cows, because the sires are less proven on heifers. Our 3, 4 & 5-Star rated bulls are out of proven calving ease bloodlines for birth weight and shape. These bulls will work the easiest on heifers.

Additional Insurance

Will be available sale day.

Liability

All persons attending this sale do so at their own risk, legal or otherwise, for their safety or the behavior of the animals. The Owners, Auction Service and Sale Staff assume no liability for property loss or any accidents that may occur.

Announcements

From the block will take precedence over the catalog. Buyers unable to attend may send their bids to the Auction Service, Field Representatives or Auctioneer.





Lot
1

AMDAHL BLACK RIVER 093

BD: 1/21/20 Reg No: 19799437 Tattoo: 093

CONNEALY BLACK GRANITE
BAR R JET BLACK 5063
BAR R IRIS ANITA 0113

ANGUS

G A R PROPHET
AMDAHL ERICA 431-465
S A 1117 HOMER 431 228

CONNEALY CONSENSUS 7229
EURA ELGA OF CONANGA 9109
SITZ UPWARD 307R
BAR R ANITA 7081

C R A BEXTOR 872 5205 608
G A R OBJECTIVE 1885
S A 650H HOMER 1117 911
S A 8210 ANCHOR 228 630

BW	82
Adj. 205	864
Adj. 365	1429
C/E	3

CED	BW	WW	YW	DOC	HP	Milk	CW	MB	RE	\$M	\$C
+7	+2.9	+87	+148	+20	+8.8	+32	+67	+0.43	+0.95	+66	+259

• SALE FEATURE

- Sells with 100 straws of semen.
- Selling half interest half possession.
- Black River is truly a phenotype powerhouse.
- He has exceptional feet and is a breeding piece to improve any herd.
- He earned a 205 day weight of 864lbs and a yearling weight of 1429lbs.
- He is in the top 5% in WW and YW.
- +31 on milk power.
- Top 10% on claw and angle foot scores.

A
M
D
A
H
L

A
N
G
U
S

B
U
L
L
S

Sire



SITZ Profound 680G

BD: 2/01/2019 Reg No: *19392993 Tattoo: 680G

Sitz Stellar 726D
Sire Mohnen Substantial 272
SITZ Pride 200B

Sitz Epponia 223C
Dam Sitz Upward 9873
Sitz Epponia 31Z

Benfield Substance 8506
Mohnen Glyn Mawr Elba 1758
Connealy Final Product
Sitz Pride 308Y

Sitz Upward 307R
Sitz Emma E 659
Sitz Top Seed 539X
Sitz Epponia 75R

CED	BW	WW	YW	DOC	HP	Milk	CW	MB	RE	\$M	\$C
+5	+0.4	+69	+135	+8	+14.3	+30	+54	+0.73	+0.36	+66	+255



Lot 2 AMDAHL Profound 2162

BD: 2/3/22 Reg No: 20411831 Tattoo: 2162

SITZ Stellar 726D
SITZ Profound 680G
SITZ Epponia 223C



G A R Phoenix
AMDAHL Dixie Erica 094
AMDAHL Nightwatch 821 026

MOHLEN SUBSTANTIAL 272
SITZ PRIDE 200B
SITZ UPWARD 9873
SITZ EPPONIA 31Z

G A R SURE FIRE
G A R PROPHET N744
O C C AMDAHL EMBLAZON 709U
AMDAHL JD NIGHTWATCH 679-821

BW
78
Adj. 205
813
Adj. 365
1277
C/E
5

CED	BW	WW	YW	DOC	HP	Milk	CW	MB	RE	\$M	\$C
+11	+1.5	+67	+134	+12	+19.0	+32	+59	+0.81	+0.55	+77	+288

SALE FEATURE

- Highly recommended for heifers.
- Earned a weaning ratio of 104.
- Earned a yearling ratio of 106.
- SC 1%
- HP 1%
- Milk, CED, YW \$M, \$F and \$C 15%



Lot 3 AMDAHL Profound 2186

BD: 2/12/22 Reg No: 20411858 Tattoo: 2186

SITZ Stellar 726D
SITZ Profound 680G
SITZ Epponia 223C



AMDAHL'S Rocketeer 636
AMDAHL Miss Erica 0133
AMDAHL'S TJ Miss BP 907-3105

MOHLEN SUBSTANTIAL 272
SITZ PRIDE 200B
SITZ UPWARD 9873
SITZ EPPONIA 31Z

MUSGRAVE AVIATOR
AMDAHL ERICA 431-465
CB BLOCK PARTY 156
AMDAHL'S MISS BLAZE 608-907

BW
64
Adj. 205
801
Adj. 365
1244
C/E
4

CED	BW	WW	YW	DOC	HP	Milk	CW	MB	RE	\$M	\$C
+3	+1.2	+59	+110	+6	+8.8	+37	+49	+0.77	+0.44	+66	+249

- Recommended for heifers.
- One of the largest spread bulls in the offering
- 64lbs at birth 801lbs at weaning.
- Milk 4%
- Claw 10%

A
M
D
A
H
L

A
N
G
U
S

B
U
L
L
S

Lot 4 AMDAHL PROFOUND 2188

BD: 2/14/22 Reg No: 20411865 Tattoo: 2188

SITZ STELLAR 726D
SITZ PROFOUND 680G
SITZ EPPONIA 223C



AMDAHL RANGE MASTER 830
AMDAHL MISS ERICA 084
AMDAHL MISS ERICA 440-7169

MOHNEN SUBSTANTIAL 272
SITZ PRIDE 200B
SITZ UPWARD 9873
SITZ EPPONIA 31Z

HA COWBOY UP 5405
AMDAHL MISS BP 380-509
AMDAHL'S ALL AMERICAN 324
AMDAHL MISS PROPHET 041-440

BW	69
Adj. 205	763
Adj. 365	1245
C/E	5

CED	BW	WW	YW	DOC	HP	Milk	CW	MB	RE	\$M	\$C
+11	-2.0	+63	+129	+5	+11.8	+23	+49	+0.69	+0.41	+49	+234

• SALE FEATURE

- Highly recommended for heifers.
- Big spread heifer bull.
- Loaded with Pathfinder cows in his pedigree
- BW 4%
- CED and SC 15%



Lot 5 AMDAHL PROFOUND 2181

BD: 2/10/22 Reg No: 20411871 Tattoo: 2181

SITZ STELLAR 726D
SITZ PROFOUND 680G
SITZ EPPONIA 223C



AMDAHL'S ALL AMERICAN 224
AMDAHL ANNIE 009
AMDAHL ANNIE 493-814

MOHNEN SUBSTANTIAL 272
SITZ PRIDE 200B
SITZ UPWARD 9873
SITZ EPPONIA 31Z

MYTTY IN FOCUS
D R QUEEN 127
CONNEALY ARMORY
PAR MODERATOR PAXTON 493

BW	64
Adj. 205	692
Adj. 365	1116
C/E	5

CED	BW	WW	YW	DOC	HP	Milk	CW	MB	RE	\$M	\$C
+9	-0.5	+61	+106	+14	+9.8	+27	+34	+0.61	+0.10	+80	+225

- Highly recommended for heifers.
- Dam is a very feminine All American daughter.
- BW, SC and \$M 15%

Lot 6 AMDAHL PROFOUND 2183

BD: 2/11/22 Reg No: 20411869 Tattoo: 2183

SITZ STELLAR 726D
SITZ PROFOUND 680G
SITZ EPPONIA 223C



AMDAHL'S ULTIMATE 802
AMDAHL QUEEN 032
AMDAHL QUEEN 540-8124

MOHNEN SUBSTANTIAL 272
SITZ PRIDE 200B
SITZ UPWARD 9873
SITZ EPPONIA 31Z

O C C LINEBRED 661L
P A R ERIKA'S TRAVELER 52
AMDAHL'S ROCKETEER 636
AMDAHL QUEEN 3101-540

BW	79
Adj. 205	690
Adj. 365	1111
C/E	5

CED	BW	WW	YW	DOC	HP	Milk	CW	MB	RE	\$M	\$C
+10	-0.4	+45	+88	+5	+14.1	+40	+34	+1.00	+0.28	+68	+246

- Highly recommended for heifers.
- Dam has great feet and udder.
- PAP 5%
- Milk 1%
- Great footed
- Marb 15%

Lot 7 AMDAHL PROFOUND 2191

BD: 2/15/22 Reg No: 20411862 Tattoo: 2191

SITZ STELLAR 726D
SITZ PROFOUND 680G
SITZ EPPONIA 223C



AMDAHL'S ULTIMATE 802
AMDAHL MISS BLACKBIRD 0123
AMDAHL MISS HEAVY 592-703

MOHNEN SUBSTANTIAL 272
SITZ PRIDE 200B
SITZ UPWARD 9873
SITZ EPPONIA 31Z

O C C LINEBRED 661L
P A R ERIKA'S TRAVELER 52
AMDAHL'S HEAVY DUTY 323
AMDAHL MISS PLATIUM 274-592

BW	80
Adj. 205	767
Adj. 365	1236
C/E	2

CED	BW	WW	YW	DOC	HP	Milk	CW	MB	RE	\$M	\$C
-5	+3.2	+53	+109	+9	+10.7	+31	+48	+0.95	+0.14	+41	+233

- Great herd bull look.
- Milk and Marb 20%



A
M
D
A
H
L

A
N
G
U
S

B
U
L
L
S

Sire



Amdahl's Rocketeer 636

BD: 1/27/2016 Reg No: *18529618 Tattoo: 636

— Koupals B&B Identity
Musgrave Aviator
Sire — MCA TL Forever Lady 1429-138

Sitz Upward 307R
 B&B Erica 605
 S A V Final Answer 0035
 ALC Forever Lady R02S

— G A R Prophet
Amdahl Erica 431-465
Dam — S A 1117 Homer 431 228

C R A Bextor 872 5205 608
 G A R Objective 1885
 S A 650H Homer 1117 911
 S A 8210 Anchor 228 630

CED	BW	WW	YW	DOC	HP	Milk	CW	MB	RE	\$M	\$C
+3	+1.8	+64	+112	+14	+11.9	+25	+51	+0.62	+0.76	+63	+263



Lot 8 AMDAHL ROCKETEER 2109

BD: 1/20/22 Reg No: 20406027 Tattoo: 2109

— MUSGRAVE AVIATOR
AMDAHL'S ROCKETEER 636
 — AMDAHL ERICA 431-465

KOUPALS B&B IDENTITY
 MCA TL FOREVER LADY 1429-138
 G A R PROPHET
 S A 1117 HOMER 431 228

— CONNEALY BLACK GRANITE
AMDAHL MISS BG 459-8129
 — AMDAHL MISS LINK 515-459

CONNEALY CONSENSUS 7229
 EURA ELGA OF CONANGA 9109
 SA 652 MISSING LINK 848 620
 ST MISS HOT FLASH BLACKBIRD

CED	BW	WW	YW	DOC	HP	Milk	CW	MB	RE	\$M	\$C
+6	+1.4	+56	+96	+17	+10.9	+24	+37	+0.51	+0.72	+59	+233

- **SALE FEATURE**
- Big scrotal and easy fleshing Rocketeer son.

BW
84
Adj. 205
734
Adj. 365
1308
C/E
3



Lot 9 AMDAHL ROCKETEER 2094

BD: 1/13/22 Reg No: 20406016 Tattoo: 2094

— MUSGRAVE AVIATOR
AMDAHL'S ROCKETEER 636
 — AMDAHL ERICA 431-465

KOUPALS B&B IDENTITY
 MCA TL FOREVER LADY 1429-138
 G A R PROPHET
 S A 1117 HOMER 431 228

— BVC AVIATOR 4007
AMDAHL MISS AVIATOR 233-8109
 — PAR BROADSIDE LINK 233

MUSGRAVE AVIATOR
 BVC ROGUE PRIDE CC7 228
 AKERS MISSING LINK 9603
 P A R BROADSIDE 160

CED	BW	WW	YW	DOC	HP	Milk	CW	MB	RE	\$M	\$C
+6	+0.6	+52	+92	+16	+12.9	+26	+40	+0.47	+0.65	+71	+250

- **SALE FEATURE**
- Recommended for heifers.
- Great footed Rocketeer son with good herd bull look.

BW
79
Adj. 205
773
Adj. 365
1325
C/E
4

Lot 10 AMDAHL ROCKETEER 2125

BD: 1/23/22		Reg No: 20406041		Tattoo: 2125		BW	
MUSGRAVE AVIATOR		KOUPLS B&B IDENTITY		81		Adj. 205	
AMDAHL'S ROCKETEER 636		MCATL FOREVER LADY 1429-138		767		Adj. 365	
AMDAHL ERICA 431-465		G A R PROPHET		1333		C/E	
AMDAHL'S HEAVY DUTY 323		S A 1117 HOMER 431 228		3			
AMDAHL MISS MVP 778-763		W H S LIMELIGHT 64V					
AMDAHL MISS BLOCK 778-378		D R BLACKBIRD 133					
		CB BLOCK PARTY 156					
		S A 48 HUNTER 778 506					

CED	BW	WW	YW	DOC	HP	Milk	CW	MB	RE	\$M	\$C
+3	+1.7	+66	+109	+17	+12.6	+22	+42	+0.64	+0.55	+69	+243

• Large framed Rocketeer son that will add pounds.

Lot 11 AMDAHL ROCKETEER 2126

BD: 1/24/22		Reg No: 20406042		Tattoo: 2126		BW	
MUSGRAVE AVIATOR		KOUPLS B&B IDENTITY		84		Adj. 205	
AMDAHL'S ROCKETEER 636		MCATL FOREVER LADY 1429-138		723		Adj. 365	
AMDAHL ERICA 431-465		G A R PROPHET		1288		C/E	
SHB PURE PLATIUM Z164		S A 1117 HOMER 431 228		3			
AMDAHL MISS PLATIUM 274-592		PURE GOLD OF PAR					
AMDAHL JD MISS MODE 803-274		S H B 837 RITA 3136					
		AMDAHL'S MODERATOR 829					
		AMDAHL JD MS HONESTY 602-803					

CED	BW	WW	YW	DOC	HP	Milk	CW	MB	RE	\$M	\$C
+4	+1.3	+41	+80	+9	+11.9	+28	+34	+0.70	+0.45	+53	+233

• Moderate and easy fleshing Rocketeer son with great feet.

Lot 12 AMDAHL ROCKETEER 2154

BD: 1/31/22		Reg No: 20406064		Tattoo: 2154		BW	
MUSGRAVE AVIATOR		KOUPLS B&B IDENTITY		81		Adj. 205	
AMDAHL'S ROCKETEER 636		MCATL FOREVER LADY 1429-138		739		Adj. 365	
AMDAHL ERICA 431-465		G A R PROPHET		1304		C/E	
CONNEALY ARMORY		S A 1117 HOMER 431 228		3			
AMDAHL DIXIE ERICA 903		CONNEALY ARSENAL 2174					
AMDAHL'S DIXIE ERICA 1188-933		EBBA OF CONANGA 808					
		O C C LINEBRED 661L					
		K S U MISS MAYOR 1188					

CED	BW	WW	YW	DOC	HP	Milk	CW	MB	RE	\$M	\$C
+5	+1.3	+39	+68	+11	+10.4	+26	+24	+0.22	+0.40	+56	+188

• Will make great females.

Lot 13 AMDAHL ROCKETEER 2156

BD: 2/1/22		Reg No: 20406066		Tattoo: 2156		BW	
MUSGRAVE AVIATOR		KOUPLS B&B IDENTITY		88		Adj. 205	
AMDAHL'S ROCKETEER 636		MCATL FOREVER LADY 1429-138		681		Adj. 365	
AMDAHL ERICA 431-465		G A R PROPHET		1180		C/E	
CTS REMEDY 1T01		S A 1117 HOMER 431 228		1			
AMDAHL DIXIE ERICA 644-866		CONNEALY THUNDER					
AMDAHL DIXIE ERICA 382-644		CTS 7V03 BELLEMERE MAID 9T02					
		CONNEALY BLACK GRANITE					
		AMDAHL DIXIE ERICA 163-382					

CED	BW	WW	YW	DOC	HP	Milk	CW	MB	RE	\$M	\$C
-4	+3.7	+63	+113	+6	+7.8	+23	+46	+1.10	+0.51	+44	+263

• Will add fleshing ability and udder quality.

Lot 14 AMDAHL ROCKETEER 2158

BD: 2/2/22		Reg No: 20406068		Tattoo: 2158		BW	
MUSGRAVE AVIATOR		KOUPLS B&B IDENTITY		89		Adj. 205	
AMDAHL'S ROCKETEER 636		MCATL FOREVER LADY 1429-138		739		Adj. 365	
AMDAHL ERICA 431-465		G A R PROPHET		1454		C/E	
MUSGRAVE BIG SKY		S A 1117 HOMER 431 228		1			
AMDAHL MISS BIG SKY 397-641		CONNEALY EARNAN 076E					
AMDAHL TJ MIS BLAZE 3198-397		SAV PRIMROSE 7861					
		AMDAHL'S EMBAZON 0005					
		K S U MISS 602C 3198					

CED	BW	WW	YW	DOC	HP	Milk	CW	MB	RE	\$M	\$C
-3	+3.4	+71	+127	+17	+9.2	+29	+46	+0.33	+0.38	+51	+199

• Deep bodied
• Earned a yearling ratio of 108

Lot 15 AMDAHL ROCKETEER 2166

BD: 2/5/22		Reg No: 20406073		Tattoo: 2166		BW	
MUSGRAVE AVIATOR		KOUPLS B&B IDENTITY		82		Adj. 205	
AMDAHL'S ROCKETEER 636		MCATL FOREVER LADY 1429-138		750		Adj. 365	
AMDAHL ERICA 431-465		G A R PROPHET		1195		C/E	
CONNEALY COUNTDOWN		S A 1117 HOMER 431 228		3			
AMDAHL MISS CD 509-758		CONNEALY FINAL SOLUTION					
AMDAHL MISS BP 380-509		ENTARNA OF CONANGA 140					
		AMDAHL BLOCK PARTY 368					
		AMDAHL MISS HOMER 172-380					

CED	BW	WW	YW	DOC	HP	Milk	CW	MB	RE	\$M	\$C
+5	+2.2	+66	+114	+24	+8.0	+16	+42	+0.48	+0.68	+52	+221

• Dam has great feet and udder structure.

A
M
D
A
H
L

A
N
G
U
S

B
U
L
L
S

Lot 16 AMDAHL ROCKETEER 2170

BD: 2/6/22 Reg No: 20425810 Tattoo: 2170

MUSGRAVE AVIATOR
AMDAHL'S ROCKETEER 636
AMDAHL ERICA 431-465

KOUPALS B&B IDENTITY
MCATL FOREVER LADY 1429-138
G A R PROPHET
S A 1117 HOMER 431 228

CTS REMEDY 1T01
AMDAHL MISS REMEDY 666-873
AMDAHL MISS ALL-IN 3164-666

CONNEALY THUNDER
CTS 7V03 BELLEMERE MAID 9T02
DEER VALLEY ALL IN
AMDAHL'S MISS MVP 916-3164

BW	76
Adj.	205
	782
Adj.	365
	1152
	C/E
	3

CED	BW	WW	YW	DOC	HP	Milk	CW	MB	RE	\$M	\$C
+3	+0.5	+59	+109	+17	+13.0	+22	+42	+0.58	+0.71	+58	+247

- Larger framed Rocketeer son.
- Dam WR 2/101

Lot 17 AMDAHL ROCKETEER 2198

BD: 2/19/22 Reg No: 20406092 Tattoo: 2198

MUSGRAVE AVIATOR
AMDAHL'S ROCKETEER 636
AMDAHL ERICA 431-465

KOUPALS B&B IDENTITY
MCATL FOREVER LADY 1429-138
G A R PROPHET
S A 1117 HOMER 431 228

VIN-MAR CONSENSUS 2616
AMDAHL MISS CONSENSU543-6184
PAR BROADSIDE ECHELON 543

CONNEALY CONSENSUS 7229
COR BLACKCAP 6224 Z38 MIDLND
P A R DAKOTA BROADSIDE 261
P A R ERICA'S ECHELON 301

BW	79
Adj.	205
	755
Adj.	365
	1225
	C/E
	4

CED	BW	WW	YW	DOC	HP	Milk	CW	MB	RE	\$M	\$C
+6	+1.9	+63	+109	+22	+13.5	+26	+39	+0.74	+0.43	+86	+252

- Recommended for heifers.
- Earned a yearling ratio of 102.
- Great footed
- \$M 5%

Lot 18 AMDAHL ROCKETEER 2202

BD: 2/22/22 Reg No: 20406096 Tattoo: 2202

MUSGRAVE AVIATOR
AMDAHL'S ROCKETEER 636
AMDAHL ERICA 431-465

KOUPALS B&B IDENTITY
MCATL FOREVER LADY 1429-138
G A R PROPHET
S A 1117 HOMER 431 228

AMDAHL'S MODERATOR 829
AMDAHL MISS MODE 681-3138
S A 322 GLORY 681 339

JAUER MODERATOR 297 523
JAUER 077 GLADIATOR 982 2011
S A 950G GLORY 322 306
S A 880H HELMSMAN 339 872

BW	82
Adj.	205
	685
Adj.	365
	1093
	C/E
	3

CED	BW	WW	YW	DOC	HP	Milk	CW	MB	RE	\$M	\$C
+6	+0.9	+40	+72	+2	+4.4	+24	+35	+0.65	+0.63	+42	+222

- Angle and SC 15%
- \$EN 10%

Lot 19 AMDAHL ROCKETEER 2203

BD: 2/24/22 Reg No: 20406097 Tattoo: 2203

MUSGRAVE AVIATOR
AMDAHL'S ROCKETEER 636
AMDAHL ERICA 431-465

KOUPALS B&B IDENTITY
MCATL FOREVER LADY 1429-138
G A R PROPHET
S A 1117 HOMER 431 228

AMDAHL'S HEAVY DUTY 323
AMDAHL MISS HEAVY 380-870
AMDAHL MISS HOMER 172-380

W H S LIMELIGHT 64V
D R BLACKBIRD 133
O C C HOMER 650H
AMDAHL MISS PP 7155-172

BW	79
Adj.	205
	827
Adj.	365
	1384
	C/E
	4

CED	BW	WW	YW	DOC	HP	Milk	CW	MB	RE	\$M	\$C
+10	+0.9	+66	+121	+11	+13.4	+33	+49	+0.60	+0.78	+61	+250

- Recommended for heifers.
- Earned a weaning ratio of 106 with a weaning weight of 827lbs.
- Milk 15%
- CEM 4%
- Dam WR 3/103
- Dam YR 3/103

Lot 20 AMDAHL ROCKETEER 2219

BD: 4/2/22 Reg No: 20406112 Tattoo: 2219

MUSGRAVE AVIATOR
AMDAHL'S ROCKETEER 636
AMDAHL ERICA 431-465

KOUPALS B&B IDENTITY
MCATL FOREVER LADY 1429-138
G A R PROPHET
S A 1117 HOMER 431 228

CONNEALY ARMORY
AMDAHL DIXIE ERICA 801
AMDAHL DIXIE ERICA ET933-672

CONNEALY ARSENAL 2174
EBBA OF CONANGA 808
CONNEALY BLACK GRANITE
AMDAHL'S DIXIE ERICA 1188-933

BW	72
Adj.	205
	709
Adj.	365
	1135
	C/E
	5

CED	BW	WW	YW	DOC	HP	Milk	CW	MB	RE	\$M	\$C
+14	-1.9	+66	+119	+14	+12.8	+43	+57	+0.31	+0.62	+62	+238

- Highly recommended for heifers.
- Many Pathfinders and donor cows in his pedigree.
- CED, \$W and BW 4%
- Milk 1%



Sire



Amdahl Range Master 830

BD: 1/13/2018 Reg No: *19274953 Tattoo: 830

HA Cowboy Up 5405
Sire
HA Outside 3008
HA Blackcap Lady 1602

KG Solution 0018
HA Ever Lady 1575
Sitz Upward 307R
HA Blackcap Lady 5515

Amdahl Miss BP 380-509
Dam
Amdahl Block Party 368
Amdahl Miss Homer 172-380

CB Block Party 156
Amdahl's Miss Blaze 272 041
O C C Homer 650H
Amdahl Miss PP 7155-172

CED	BW	WW	YW	DOC	HP	Milk	CW	MB	RE	\$M	\$C
+7	+2.8	+71	+125	+4	+10.1	+17	+37	+0.58	+0.35	+41	+204

Lot 21 AMDAHL RANGE MASTER 2140

BD: 1/27/22 Reg No: 20406056 Tattoo: 2140

HA COWBOY UP 5405
AMDAHL RANGE MASTER 830
AMDAHL MISS BP 380-509

HA OUTSIDE 3008
HA BLACKCAP LADY 1602
AMDAHL BLOCK PARTY 368
AMDAHL MISS HOMER 172-380

AMDAHL'S ALL AMERICAN 324
AMDAHL MISS AVIATOR 471-899
AMDAHL MISS BP 154-471

MYTTY IN FOCUS
D R QUEEN 127
CB BLOCK PARTY 156
AMDAHL MISS HOMER62 2170-154

BW
83
Adj. 205
766
Adj. 365
1347
C/E
2

CED	BW	WW	YW	DOC	HP	Milk	CW	MB	RE	\$M	\$C
+3	+3.2	+59	+110	+6	+10.0	+15	+34	+0.14	+0.30	+31	+172

- Dam WR 3/102
- Dam is a nice uddered All American daughter.



Lot 22 AMDAHL RANGE MASTER 2115

BD: 1/21/22 Reg No: 20406033 Tattoo: 2115

HA COWBOY UP 5405
AMDAHL RANGE MASTER 830
AMDAHL MISS BP 380-509

HA OUTSIDE 3008
HA BLACKCAP LADY 1602
AMDAHL BLOCK PARTY 368
AMDAHL MISS HOMER 172-380

SCHLESKES CONSENSUS 2327A
AMDAHL JD MISS UPDATE50-5139
P A R EMBLAZON 50

CONNELLY CONSENSUS 7229
D 104 MONIQUE R585
O C C EMBLAZON 854E
P A R HEAVY DRIVE 478

BW
90
Adj. 205
829
Adj. 365
1423
C/E
1

CED	BW	WW	YW	DOC	HP	Milk	CW	MB	RE	\$M	\$C
+2	+2.7	+68	+122	+21	+7.5	+22	+48	+0.24	+0.61	+45	+202

- Long bodied Range Master son.
- One of the top weaning weight bulls of the sale.
- Weaning ratio of 106 and yearling ratio of 105.
- His dam is one of the best phenotype females we have ever raised.



AMDAHL JD MISS UPDATE50-5139
DAM OF LOT 22

A
M
D
A
H
L
S
B
U
L
S

Lot 23 AMDAHL RANGE MASTER 2189
BD: 2/10/22 Reg No: 20406087 Tattoo: 2189

HA COWBOY UP 5405
AMDAHL RANGE MASTER 830
AMDAHL MISS BP 380-509



G A R SURE FIRE
AMDAHL ERICA MAY 9106
AMDAHL ERICA 465-760

HA OUTSIDE 3008
HA BLACKCAP LADY 1602
AMDAHL BLOCK PARTY 368
AMDAHL MISS HOMER 172-380
CONNEALY IN SURE 8524
CHAIR ROCK 5050 G A R 8086
S A V PURSUIT 0160
AMDAHL ERICA 431-465

BW
89
Adj. 205
870
Adj. 365
1398
C/E
2

CED	BW	WW	YW	DOC	HP	Milk	CW	MB	RE	\$M	\$C
+5	+2.5	+61	+110	+14	+13.0	+39	+45	+0.76	+0.36	+46	+222

- Top weaning weight bull in the offering- 870lbs.
- SC 10%
- Milk 2%
- Dam WR 2/110



Lot 24 AMDAHL RANGE MASTER 2209
BD: 3/3/22 Reg No: 20406103 Tattoo: 2209

HA COWBOY UP 5405
AMDAHL RANGE MASTER 830
AMDAHL MISS BP 380-509



3F EPIC 4631
AMDAHL ERICA 544-9158
AMDAHL ERICA HICKOK 104-544

HA OUTSIDE 3008
HA BLACKCAP LADY 1602
AMDAHL BLOCK PARTY 368
AMDAHL MISS HOMER 172-380

VARILEK PRODUCT 2010 04
ZEBU QUEEN 1072
MILL BAR HICKOK 7242
D R ERICA 104

BW
80
Adj. 205
706
Adj. 365
1223
C/E
2

CED	BW	WW	YW	DOC	HP	Milk	CW	MB	RE	\$M	\$C
+3	+3.1	+84	+149	+22	+10.7	+19	+51	+0.66	+0.50	+34	+219

- Earned a yearling ratio of 106.
- YW 4%
- WW 5%
- SC 10%

Lot 25 AMDAHL RANGE MASTER 2082
BD: 1/11/22 Reg No: 20406010 Tattoo: 2082

HA COWBOY UP 5405
AMDAHL RANGE MASTER 830
AMDAHL MISS BP 380-509



BUBS SOUTHERN CHARM AA31
AMDAHL DIXIE ERICA 080
AMDAHL MISS TOUR DUTY83-6146

HA OUTSIDE 3008
HA BLACKCAP LADY 1602
AMDAHL BLOCK PARTY 368
AMDAHL MISS HOMER 172-380
SILVEIRAS CONVERSION 8064
HICKORY HILL ERICA 009
R B TOUR OF DUTY 177
PAR TRANSFORMING BROADSIDE83

BW
76
Adj. 205
715
Adj. 365
1267
C/E
4

CED	BW	WW	YW	DOC	HP	Milk	CW	MB	RE	\$M	\$C
+10	+0.5	+62	+105	+10	+8.7	+22	+29	+0.61	+0.65	+46	+206

- Recommended for heifers.
- His dam has a good udder and good feet.

Lot 26 AMDAHL RANGE MASTER 2197
BD: 2/18/22 Reg No: 20406091 Tattoo: 2197

HA COWBOY UP 5405
AMDAHL RANGE MASTER 830
AMDAHL MISS BP 380-509



G A R PHOENIX
AMDAHL MISS QUEEN 937
D R QUEEN 127

HA OUTSIDE 3008
HA BLACKCAP LADY 1602
AMDAHL BLOCK PARTY 368
AMDAHL MISS HOMER 172-380

G A R SURE FIRE
G A R PROPHET N744
S A V FINAL ANSWER 0035
D R QUEEN 7036

BW
87
Adj. 205
822
Adj. 365
1345
C/E
1

CED	BW	WW	YW	DOC	HP	Milk	CW	MB	RE	\$M	\$C
-1	+5.3	+80	+130	+17	+12.2	+17	+47	+0.64	+0.46	+59	+226

- Earned a weaning ratio of 105 with an impressive 822lbs weaning weight.
- SC 4%
- WW 10%

Bulls were developed on a high roughage ration to help with longevity.

Sire

Amdahl Black River 093

BD: 1/21/2020 Reg No: +*19799437 Tattoo: 093



Connealy Black Granite
Bar R Jet Black 5063
 Sire Bar R Iris Anita 0113

Connealy Consensus 7229
 Eura Elga of Conanga 9109
 Sitz Upward 307R
 Bar R Anita 7081

G A R Prophet
Amdahl Erica 431-465
 Dam S A 1117 Homer 431 228

C R A Bextor 872 5205 608
 G A R Objective 1885
 S A 650H Homer 1117 911
 S A 8210 Anchor 228 630

CED	BW	WW	YW	DOC	HP	Milk	CW	MB	RE	\$M	\$C
+7	+2.9	+87	+148	+20	+8.8	+32	+67	+0.43	+0.95	+66	+259

A
M
D
A
H
L

Lot 27 AMDAHL BLACK RIVER 2132

BD: 1/25/22 Reg No: 20406048 Tattoo: 2132

BAR R JET BLACK 5063
AMDAHL BLACK RIVER 093
 AMDAHL ERICA 431-465

CONNEALY BLACK GRANITE
 BAR R IRIS ANITA 0113
 G A R PROPHET
 S A 1117 HOMER 431 228

BW	78
Adj. 205	723
Adj. 365	1355
C/E	5

AMDAHL RANGE MASTER 830
AMDAHL DIXIE ERICA 003
 AMDAHL DIXIE ERICA 801

HA COWBOY UP 5405
 AMDAHL MISS BP 380-509
 CONNEALY ARMORY
 AMDAHL DIXIE ERICA ET933-672

CED	BW	WW	YW	DOC	HP	Milk	CW	MB	RE	\$M	\$C
+13	+0.5	+56	+113	+22	+7.2	+26	+39	+0.53	+0.74	+44	+218

• SALE FEATURE

- Highly recommended for heifers.
- 2132 is one of the very best Black River sons in the offering.
- Keep all the daughters.



A
N
G
U
S
B
U
L
S

Lot 28 AMDAHL BLACK RIVER 2178

BD: 2/9/22 Reg No: 20406081 Tattoo: 2178

BAR R JET BLACK 5063
AMDAHL BLACK RIVER 093
 AMDAHL ERICA 431-465

CONNEALY BLACK GRANITE
 BAR R IRIS ANITA 0113
 G A R PROPHET
 S A 1117 HOMER 431 228

BW	83
Adj. 205	726
Adj. 365	1124
C/E	3

JAUER MODERATOR 297 523
AMDAHL DIXIE MODERATOR 828
 JAUER HOMER 550 109

O C C MODERATOR 825M
 JAUER HELMSMAN 784 297
 O C C HOMER 650H
 JAUER TRAVELDGE 550 327

CED	BW	WW	YW	DOC	HP	Milk	CW	MB	RE	\$M	\$C
+4	+1.7	+52	+88	+19	+8.9	+25	+32	+0.40	+0.60	+50	+189

- Dam is 15 year old cow with a great udder.

Lot 29 AMDAHL BLACK RIVER 2118

BD: 1/21/22 Reg No: 20406036 Tattoo: 2118

BAR R JET BLACK 5063
AMDAHL BLACK RIVER 093
 AMDAHL ERICA 431-465

CONNEALY BLACK GRANITE
 BAR R IRIS ANITA 0113
 G A R PROPHET
 S A 1117 HOMER 431 228

BW	81
Adj. 205	773
Adj. 365	1336
C/E	4

MILL BAR HICKOK 7242
AMDAHL MISS HICKOK 031-560
 AMDAHL MISS 778 031

CONNEALY CONSENSUS 7229
 MILL BAR BEMINDFUL MAID 6304
 O C C PROTOTYPE 847P
 S A 48 HUNTER 778 506

CED	BW	WW	YW	DOC	HP	Milk	CW	MB	RE	\$M	\$C
+10	+0.8	+65	+112	+25	+10.5	+28	+44	+0.50	+0.65	+70	+236

- Recommended for heifers.
- 2118 will make tremendous mother cows.

A
M
D
A
H
L

A
N
G
U
S

B
U
L
L
S

Lot 30 AMDAHL BLACK RIVER 2096

BD: 1/14/22 Reg No: 20406017 Tattoo: 2096

BAR R JET BLACK 5063
AMDAHL BLACK RIVER 093
AMDAHL ERICA 431-465

CONNEALY BLACK GRANITE
BAR R IRIS ANITA 0113
G A R PROPHET
S A 1117 HOMER 431 228

CONNEALY TREASURE 0369
AMDAHL PREDESTINED 0114
PAR PREDESTINED LINK 283

MGR TREASURE
JMC HIPPIE EXEC 0369 45121
AKERS MISSING LINK 9603
P A R PREDESTINED BESSIE 128

BW	71
Adj. 205	774
Adj. 365	1345
C/E	
	4

CED	BW	WW	YW	DOC	HP	Milk	CW	MB	RE	\$M	\$C
+8	+1.3	+67	+113	-	-	+23	-	-	-	+73	-

- Recommended for heifers.
- Thick and moderate Black River son.

Lot 31 AMDAHL BLACK RIVER 2201

BD: 2/22/22 Reg No: 20406095 Tattoo: 2201

BAR R JET BLACK 5063
AMDAHL BLACK RIVER 093
AMDAHL ERICA 431-465

CONNEALY BLACK GRANITE
BAR R IRIS ANITA 0113
G A R PROPHET
S A 1117 HOMER 431 228

AKERS MISSING LINK 9603
PAR BROADSIDE LINK 233
P A R BROADSIDE 160

O C C MISSING LINK 830M
O C C BLACKBIRD 736K
O C C BROADSIDE 876B
C R R 5411 IDEAL N381

BW	82
Adj. 205	728
Adj. 365	1115
C/E	
	2

CED	BW	WW	YW	DOC	HP	Milk	CW	MB	RE	\$M	\$C
+4	+1.8	+50	+94	+18	+6.2	+17	+45	+0.40	+0.70	+27	+207

- Dam is a moderate with a great udder.
- Angle 20%

Lot 32 AMDAHL BLACK RIVER 2208

BD: 3/1/22 Reg No: 20406102 Tattoo: 2208

BAR R JET BLACK 5063
AMDAHL BLACK RIVER 093
AMDAHL ERICA 431-465

CONNEALY BLACK GRANITE
BAR R IRIS ANITA 0113
G A R PROPHET
S A 1117 HOMER 431 228

JAUER 8214 ANCHOR 889 173
JAUER 173 ANCHOR 109 7401
JAUER HOMER 550 109

JAUER 646 ANCHOR 8214 544
JAUER EXODUS 889 849 C
O C C HOMER 650H
JAUER TRAVELDGE 550 327

BW	88
Adj. 205	771
Adj. 365	1189
C/E	
	1

CED	BW	WW	YW	DOC	HP	Milk	CW	MB	RE	\$M	\$C
+0	+4.0	+68	+119	+1	+8.1	+23	+56	+0.41	+0.55	+38	+218

- Claw and angle 15%
- Out of a Pathfinder donor dam who is still grazing the pasture at 16 years of age.

Lot 33 AMDAHL BLACK RIVER 2210

BD: 3/5/22 Reg No: 20406104 Tattoo: 2210

BAR R JET BLACK 5063
AMDAHL BLACK RIVER 093
AMDAHL ERICA 431-465

CONNEALY BLACK GRANITE
BAR R IRIS ANITA 0113
G A R PROPHET
S A 1117 HOMER 431 228

AMDAHLS EXTRA 526
AMDAHL MISS EXTRA ET7401-737
JAUER 173 ANCHOR 109 7401

KOUPALS B&B EXTRA 0011
D R BLACKBIRD 148
JAUER 8214 ANCHOR 889 173
JAUER HOMER 550 109

BW	82
Adj. 205	668
Adj. 365	1134
C/E	
	4

CED	BW	WW	YW	DOC	HP	Milk	CW	MB	RE	\$M	\$C
+8	+2.2	+67	+120	+15	+12.6	+27	+60	+0.41	+0.57	+66	+250

- Recommended for heifers.
- Claw 10%
- Angle 15%



Lot 34 AMDAHL BLACK RIVER 2215

BD: 3/21/22 Reg No: 20406109 Tattoo: 2215

BAR R JET BLACK 5063
AMDAHL BLACK RIVER 093
AMDAHL ERICA 431-465

CONNEALY BLACK GRANITE
BAR R IRIS ANITA 0113
G A R PROPHET
S A 1117 HOMER 431 228

BUSHES PURE POWER 477
SK MISS POWER ELLUNA 20
R K MISS FAME ELLUNA 2A

BUSHES ABSOLUTE POWER
BUSHES 4966 LADY 406
R K MR FAME 15
R K MISS FORTUNE ELLUNA

BW	79
Adj. 205	683
Adj. 365	1081
C/E	
	2

CED	BW	WW	YW	DOC	HP	Milk	CW	MB	RE	\$M	\$C
+0	+3.9	+57	+87	+22	+3.4	+25	+32	+0.13	+0.56	+51	+177

- Very attractive Black River son.
- Great feet
- Angle 10%

A
M
D
A
H
L

A
N
G
U
S

B
U
L
L
S

Lot 35 AMDAHL BLACK RIVER 2221

BD: 4/27/22 Reg No: 20406114 Tattoo: 2221

BAR R JET BLACK 5063
AMDAHL BLACK RIVER 093
AMDAHL ERICA 431-465

CONNEALY BLACK GRANITE
BAR R IRIS ANITA 0113
G A R PROPHET
S A 1117 HOMER 431 228

O C C TRANSFORMATION 680T
PAR TRANSFORMING BROADSIDE83
P A R BLAZING BROADSIDE 78

O C C FOCUS 813F
O C C DIXIE ERICA 603N
O C C BROADSIDE 876B
P A R BLAZING RUBY 78

BW
78
Adj. 205
772
Adj. 365
1208
C/E
4

CED	BW	WW	YW	DOC	HP	Milk	CW	MB	RE	\$M	\$C
+3	+1.6	+66	+116	+7	+3.1	+29	+41	+0.25	+0.87	+31	+178

- Recommended for heifers.
- Earned a weaning ratio of 106
- Dam is a moderate and easy fleshing 10 year old cow.

Your satisfaction and success is our #1 goal.

Sire



Amdahl Southern Charm 077

BD: 1/17/2020 Reg No: +*19799336 Tattoo: 077

Silveiras Conversion 8064
BUBS Southern Charm AA31
Sire
Hickory Hill Erica 009

BT Crossover 758N
EXG Saras Dream S609 R3
Connealy Stimulus 8419
Hickory Hill Erica TA32

Mill Bar Hickok 7242
Amdahl Erica Hickok 104-544
Dam
D R Erica 104

Connealy Consensus 7229
Mill Bar Bemindful Maid 6304
Mytty In Focus
D R Erica 967

CED	BW	WW	YW	DOC	HP	Milk	CW	MB	RE	\$M	\$C
+3	+3.4	+80	+136	+14	+10.9	+30	+54	+0.40	+0.80	+48	+223

Lot 36 AMDAHL CHARM 2173

BD: 2/7/22 Reg No: 20406078 Tattoo: 2173

BUBS SOUTHERN CHARM AA31
AMDAHL SOUTHERN CHARM 077
AMDAHL ERICA HICKOK 104-544

SILVEIRAS CONVERSION 8064
HICKORY HILL ERICA 009
MILL BAR HICKOK 7242
D R ERICA 104

AMDAHL'S ROCKETEER 636
AMDAHL ERICA ROSE 9133
AMDAHL JD MISS UPDATE50-5139

MUSGRAVE AVIATOR
AMDAHL ERICA 431-465
SCHELSKES CONSENSUS 2327A
P A R EMBLAZON 50

BW
81
Adj. 205
819
Adj. 365
1390
C/E
2

CED	BW	WW	YW	DOC	HP	Milk	CW	MB	RE	\$M	\$C
+6	+1.9	+66	+111	+21	+9.1	+33	+47	+0.25	+0.74	+53	+211

- **SALE FEATURE**
- True herd bull look.
- Earned a massive 819lbs weaning weight.
- YW 103
- Dam WR 2/103
- His dam is one of the best cows in the herd.



36

A
M
D
A
H
L

A
N
G
U
S

B
U
L
L
S



37

Lot 37 AMDAHL CHARM 2205

BD: 2/26/22 Reg No: 20406099 Tattoo: 2205

BUBS SOUTHERN CHARM AA31		SILVEIRAS CONVERSION 8064	BW
AMDAHL SOUTHERN CHARM 077		HICKORY HILL ERICA 009	72
AMDAHL ERICA HICKOK 104-544		MILL BAR HICKOK 7242	Adj. 205
		D R ERICA 104	752
			Adj. 365
G A R PHOENIX		G A R SURE FIRE	1118
AMDAHL MISS PROMISE 929		G A R PROPHET N744	C/E
AMDAHL'S PROMISE 716-736		AMDAHL'S ALL AMERICAN 324	5
		AMDAHL HOMERS PROMISE 72-716	

CED	BW	WW	YW	DOC	HP	Milk	CW	MB	RE	\$M	\$C
+16	-2.0	+56	+101	+11	+8.7	+26	+35	+0.66	+0.86	+57	+228

- Highly recommended for heifers.
- Moderate and easy fleshing Charm son.
- Great feet
- CED 1%
- Angle 15%

Lot 38 AMDAHL CHARM 2020

BD: 12/31/21 Reg No: 20405704 Tattoo: 2020

BUBS SOUTHERN CHARM AA31		SILVEIRAS CONVERSION 8064	BW
AMDAHL SOUTHERN CHARM 077		HICKORY HILL ERICA 009	71
AMDAHL ERICA HICKOK 104-544		MILL BAR HICKOK 7242	Adj. 205
		D R ERICA 104	675
			Adj. 365
MILLARS BROKEN BOW 799		KM BROKEN BOW 002	1286
AMDAHL BLACKBIRD 9120		MILLARS ERICA 530	C/E
AMDAHL BLACKBIRD 290-7110		PRAIRIE PRIDE NEXT STEP 2036	4
		P A R HOMER'S BLACKBIRD 290	

CED	BW	WW	YW	DOC	HP	Milk	CW	MB	RE	\$M	\$C
+6	+1.5	+67	+122	+11	+7.7	+25	+52	+0.51	+0.93	+50	+248

- Recommended for heifers.
- Good footed Charm son.

We breed for cattle to thrive in harsh conditions.

Sire



Baldrige Flagstone F411

BD: 5/09/2018 Reg No: +*19478642 Tattoo: F411

— Mogck Bullseye
Hoover No Doubt
 Sire — Miss Blackcap Ellston J2

Mogck Sure Shot
 Mogck Mary 1255
 SydGen C C & 7
 Miss Blackcap Ellston D154

— Styles Upgrade J59
Baldrige Isabel Y69
 Dam — Baldrige Isabel T935

Sitz Upward 307R
 Plainview Lassie 71B
 Baldrige Kaboom K243 KCF
 Baldrige Isabel P4527

CED	BW	WW	YW	DOC	HP	Milk	CW	MB	RE	\$M	\$C
-3	+3.6	+71	+130	+34	+10.0	+29	+57	+0.92	+0.61	+87	+297

Lot 39 AMDAHL FLAGSTONE 2141

BD: 1/27/22 Reg No: 20411794 Tattoo: 2141

— HOOVER NO DOUBT
BALDRIDGE FLAGSTONE F411
 — BALDRIDGE ISABEL Y69

— AMDAHL'S ROCKETEER 636
AMDAHL BLACKBIRD 997
 — D R BLACKBIRD 120

— MOGCK BULLSEYE
 — MISS BLACKCAP ELLSTON J2
 — STYLES UPGRADE J59
 — BALDRIDGE ISABEL T935

— MUSGRAVE AVIATOR
 — AMDAHL ERICA 431-465
 — H A R B WINDY 702 JH
 — D R BLACKBIRD 3779

BW	79
Adj. 205	721
Adj. 365	1318
C/E	2

CED	BW	WW	YW	DOC	HP	Milk	CW	MB	RE	\$M	\$C
+1	+2.5	+60	+105	+31	+11.1	+24	+33	+0.93	+0.47	+86	+260

• **SALE FEATURE**

• 2141 has a royal pedigree of donors and Pathfinders.



Lot 40 AMDAHL FLAGSTONE 2165

BD: 2/4/22 Reg No: 20411839 Tattoo: 2165

— HOOVER NO DOUBT
BALDRIDGE FLAGSTONE F411
 — BALDRIDGE ISABEL Y69

— AMDAHL BLOCK PARTY 368
AMDAHL MISS BP 380-509
 — AMDAHL MISS HOMER 172-380

— MOGCK BULLSEYE
 — MISS BLACKCAP ELLSTON J2
 — STYLES UPGRADE J59
 — BALDRIDGE ISABEL T935

— CB BLOCK PARTY 156
 — AMDAHL'S MISS BLAZE 272 041
 — O C C HOMER 650H
 — AMDAHL MISS PP 7155-172

BW	81
Adj. 205	716
Adj. 365	1305
C/E	4

CED	BW	WW	YW	DOC	HP	Milk	CW	MB	RE	\$M	\$C
+13	-1.7	+54	+97	+27	+6.6	+28	+31	+0.72	+0.50	+76	+239

- Recommended for heifers.
- Female making powerhouse.
- Maternal brother to Range Master.
- Dam WR 6/104



A
M
D
A
H
L

A
N
G
U
S

B
U
L
L
S

A
M
D
A
H
L

A
N
G
U
S

B
U
L
L
S

Lot 41 AMDAHL FLAGSTONE 2055

BD: 1/7/22 Reg No: 20425808 Tattoo: 2055

HOOVER NO DOUBT
BALDRIDGE FLAGSTONE F411
BALDRIDGE ISABEL Y69

MOGCK BULLSEYE
MISS BLACKCAP ELLSTON J2
STYLES UPGRADE J59
BALDRIDGE ISABEL T935

AMDAHL'S HEAVY DUTY 323
AMDAHL MISS HEAVY 699-818
AMDAHL MISS AVIATOR 471-699

W H S LIMELIGHT 64V
D R BLACKBIRD 133
BVC AVIATOR 4007
AMDAHL MISS BP 154-471

BW	82
Adj. 205	814
Adj. 365	1360
C/E	2

CED	BW	WW	YW	DOC	HP	Milk	CW	MB	RE	\$M	\$C
+4	+1.6	+66	+118	+33	+11.3	+30	+46	+0.67	+0.48	+80	+256

• Good footed and deep bodied Flagstone son.



Lot 42 AMDAHL FLAGSTONE 2045

BD: 1/6/22 Reg No: 20411837 Tattoo: 2045

HOOVER NO DOUBT
BALDRIDGE FLAGSTONE F411
BALDRIDGE ISABEL Y69

MOGCK BULLSEYE
MISS BLACKCAP ELLSTON J2
STYLES UPGRADE J59
BALDRIDGE ISABEL T935

CB BLOCK PARTY 156
AMDAHL JD MISS BP 026-581
AMDAHL NIGHTWATCH 821 026

WERNER WAR PARTY 2417
CB 965 MAINLINE
O C C AMDAHL EMBLAZON 709U
AMDAHL JD NIGHTWATCH 679-821



BW	80
Adj. 205	746
Adj. 365	1242
C/E	1

CED	BW	WW	YW	DOC	HP	Milk	CW	MB	RE	\$M	\$C
-3	+3.6	+67	+109	+18	+11.2	+30	+44	+0.65	+0.45	+80	+251

• Great footed Flagstone son.
• Dam is a great footed 8 year old cow.



Lot 43 AMDAHL FLAGSTONE 2168

BD: 2/8/22 Reg No: 20425811 Tattoo: 2168

HOOVER NO DOUBT
BALDRIDGE FLAGSTONE F411
BALDRIDGE ISABEL Y69

MOGCK BULLSEYE
MISS BLACKCAP ELLSTON J2
STYLES UPGRADE J59
BALDRIDGE ISABEL T935

SCHESKES CONSENSUS 2327A
AMDAHL MISS ELBA 546-6178
S T MISS HOTLINE ELBA E 9

CONNELLY CONSENSUS 7229
D 104 MONIQUE R585
BUSHS HOT LINE 579
R K MISS FAME ELBA E-11A



BW	89
Adj. 205	734
Adj. 365	1126
C/E	1

CED	BW	WW	YW	DOC	HP	Milk	CW	MB	RE	\$M	\$C
-1	+1.6	+60	+104	+33	+10.6	+34	+28	+0.93	+0.39	+87	+247

• Will make moderate and easy fleshing females.



BALDRIDGE GENESIS G421
SIRE OF LOT 44

Lot 44 AMDAHL GENESIS 2061

BD: 1/8/22 Reg No: 20405439 Tattoo: 2061

HOOVER NO DOUBT
BALDRIDGE GENESIS G421
SPRING COVE LIZA 021

MOGCK BULLSEYE
MISS BLACKCAP ELLSTON J2
C C A EMBLAZON 702
SPRING COVE LIZA 721

MOGCK FRONTMAN 1141
AMDAHL JD MISS FM 030-610
AMDAHL'S JD MISS 22 030

KESSLERS FRONTMAN R001
MOGCK ENTELLO 1446
O C C PROTOTYPE 847P
P A R TRAVELING HOMER 22

BW	82
Adj. 205	728
Adj. 365	1285
C/E	3

CED	BW	WW	YW	DOC	HP	Milk	CW	MB	RE	\$M	\$C
+7	-0.4	+40	+80	+17	+11.8	+17	+20	+0.79	+0.45	+70	+230

• Used to improve foot quality and to add thickness.

Sire Amdahl's Ultimate 802

BD: 3/19/2008 Reg No: 16267946 Tattoo: 802



933 was a Linebred daughter. She served in our program for 10 years and earned Pathfinder and donor cow status.

O C C Linebred 661L <i>Sire</i>	O C C Homer 650H O C C Dixie Erica 686J	O C C Focus 813F O C C Dixie Erica 816B O C C Emblazon 854E O C C Dixie Erica 816B
P A R Erika's Traveler 52 <i>Dam</i>	P A R Gladiator 270 P A R Traveling ADO	O C C Gladiator 612G P A R Travelers Heroine 13 P A R Heavy Traveler 67 P R M Erika's Top Dawg 68

CED	BW	WW	YW	DOC	HP	Milk	CW	MB	RE	\$M	\$C
+18	-3.7	+38	+70	+0	+9.9	+22	+17	-0.04	-0.09	+46	+141

Lot 45 AMDAHL ULTIMATE 2062

BD: 1/8/22 Reg No: 20405440 Tattoo: 2062

O C C LINEBRED 661L
AMDAHL'S ULTIMATE 802
P A R ERIKA'S TRAVELER 52

AMDAHL RANGE MASTER 830
AMDAHL MISS EDWINA 0107
AMDAHL MISS CONSENSUS351-597

O C C HOMER 650H
O C C DIXIE ERICA 686J
P A R GLADIATOR 270
P A R TRAVELING ADO
HA COWBOY UP 5405
AMDAHL MISS BP 380-509
BLACKTOP CONSENSUS 205
AMDAHL'S EDWINA 351

BW	80
Adj. 205	801
Adj. 365	1446
C/E	3

CED	BW	WW	YW	DOC	HP	Milk	CW	MB	RE	\$M	\$C
+5	+2.3	+67	+116	+1	+9.8	+23	+37	+0.43	+0.20	+53	+181

- Recommended for cows or larger framed heifers.
- His dam is one of the very best females from 2020.



45

Lot 46 AMDAHL ULTIMATE 2047

BD: 1/6/22 Reg No: 20405431 Tattoo: 2047

O C C LINEBRED 661L
AMDAHL'S ULTIMATE 802
P A R ERIKA'S TRAVELER 52

G A R PHOENIX
AMDAHL MISS ELBA 017
PRA JUNEAU ONWARD 2239

O C C HOMER 650H
O C C DIXIE ERICA 686J
P A R GLADIATOR 270
P A R TRAVELING ADO
G A R SURE FIRE
G A R PROPHET N744
KOU PAL JUNEAU 797
PRA ONWARD VRD 9184

BW	56
Adj. 205	739
Adj. 365	1302
C/E	5

CED	BW	WW	YW	DOC	HP	Milk	CW	MB	RE	\$M	\$C
+12	-1.0	+56	+96	+6	+11.2	+26	+39	+0.29	+0.39	+60	+199

- Highly recommended for heifers.
- Dam is a good uddered female out of the highly proven donor cow PRA 2239.

Lot 47 AMDAHL ULTIMATE 2104

BD: 1/16/22 Reg No: 20406022 Tattoo: 2104

O C C LINEBRED 661L
AMDAHL'S ULTIMATE 802
P A R ERIKA'S TRAVELER 52

G A R PHOENIX
AMDAHL MISS QUEEN 081
AMDAHL'S MISS MVP 7197-3152

O C C HOMER 650H
O C C DIXIE ERICA 686J
P A R GLADIATOR 270
P A R TRAVELING ADO
G A R SURE FIRE
G A R PROPHET N744
AMDAHL'S MVP 040
KSU MISS NEWSLINE 7197

BW	75
Adj. 205	715
Adj. 365	1213
C/E	5

CED	BW	WW	YW	DOC	HP	Milk	CW	MB	RE	\$M	\$C
+14	-0.9	+47	+85	+13	+10.3	+24	+30	-0.11	+0.48	+51	+160

- Highly recommended for heifers.
- 2104 is a well balanced Ultimate son.
- His dam is a stylish, larger framed female.

A
M
D
A
H
L

A
N
G
U
S

B
U
L
L
S

Sire

Sitz Resilient 10208

BD: 2/15/2018 Reg No: *19057457 Tattoo: 10208

Sitz Stellar 726D
Sire
Mohnen Substantial 272
SITZ PRIDE 200B

Sitz Miss Burgess 1856
Dam
Sitz Top Game 561X
Sitz Miss Burgess 4381

Benfield Substance 8506
Mohnen Glyn Mawr Elba 1758
Connealy Final Product
Sitz Pride 308Y

GDAR Game Day 449
Sitz Pride 88T
Sitz Rainmaker 10899
Sitz Miss Burgess 1609

CED	BW	WW	YW	DOC	HP	Milk	CW	MB	RE	\$M	\$C
+8	+0.2	+75	+133	+10	+15.9	+21	+44	+0.86	+0.71	+85	+269



Lot 48 AMDAHL RESILIENT 2068

BD: 1/10/22 Reg No: 20406006 Tattoo: 2068

SITZ STELLAR 726D
SITZ RESILIENT 10208
SITZ MISS BURGESS 1856

HA PRIME CUT 4493
AMDAHL MISS ANNIE 987
AMDAHL ANNIE 5109-752

MOHLEN SUBSTANTIAL 272
SITZ PRIDE 200B
SITZ TOP GAME 561X
SITZ MISS BURGESS 4381

VERMILION SIRLOIN
HA MISS BLACKCAP 9127
O C C X-TRA EASY 708X
AMDAHL JD ANNIE294-5109

BW
75
Adj. 205
756
Adj. 365
1329
C/E
4

CED	BW	WW	YW	DOC	HP	Milk	CW	MB	RE	\$M	\$C
+7	+0.0	+68	+110	+18	+8.1	+24	+29	+0.74	+0.58	+76	+229

- Recommended for heifers.
- Good footed Resilient son.

Lot 49 AMDAHL RESILIENT 2032

BD: 1/2/22 Reg No: 20405422 Tattoo: 2032

SITZ STELLAR 726D
SITZ RESILIENT 10208
SITZ MISS BURGESS 1856

AMDAHL'S ROCKETEER 636
AMDAHL MISS ERICA 0115
AMDAHL'S MISS BLAZE 272 041

MOHLEN SUBSTANTIAL 272
SITZ PRIDE 200B
SITZ TOP GAME 561X
SITZ MISS BURGESS 4381

MUSGRAVE AVIATOR
AMDAHL ERICA 431-465
O C C LINEBRED 661L
P A R HEAVY BLAZE 272

BW
68
Adj. 205
757
Adj. 365
1303
C/E
5

CED	BW	WW	YW	DOC	HP	Milk	CW	MB	RE	\$M	\$C
+9	-0.3	+57	+99	+15	+14.0	+32	+42	+0.85	+0.43	+90	+266

- Recommended for heifers.
- Great feet

Lot 50 AMDAHL RESILIENT 2114

BD: 1/21/22 Reg No: 20406032 Tattoo: 2114

SITZ STELLAR 726D
SITZ RESILIENT 10208
SITZ MISS BURGESS 1856

AMDAHL HEAVY PLUS 805
AMDAHL DIXIE ERICA 0166
O C C DIXIE ERICA 744W

MOHLEN SUBSTANTIAL 272
SITZ PRIDE 200B
SITZ TOP GAME 561X
SITZ MISS BURGESS 4381

AMDAHL'S HEAVY DUTY 323
AMDAHL JD ANNIE 294-405
O C C PROPHET 666P
V-BAR DIXIE ERICA 7152

BW
74
Adj. 205
773
Adj. 365
1331
C/E
4

CED	BW	WW	YW	DOC	HP	Milk	CW	MB	RE	\$M	\$C
+4	+1.5	+64	+104	+10	+11.9	+26	+39	+0.47	+0.75	+69	+226

- Recommended for heifers.
- Moderate and good footed Resilient son.



Price discovery with Amdahl Genetics. Our loyal customers and friends Bret Heath and Family sold their calves at Martin livestock and the results were sale topping prices. Steers weighed 728 lbs. Congratulations to The Heath Ranch.

Lot 51 AMDAHL RESILIENT 2169

BD: 2/6/22 Reg No: 20406075 Tattoo: 2169

SITZ STELLAR 726D
SITZ RESILIENT 10208
SITZ MISS BURGESS 1856

MOHNEN SUBSTANTIAL 272
SITZ PRIDE 200B
SITZ TOP GAME 561X
SITZ MISS BURGESS 4381
MGR TREASURE
JMC HIPPIE EXEC 0369 45121
AMDAHL'S EMBAZON 0005
AMDAHL DIXIE MODERATOR 828

BW	72
Adj.	205
	713
Adj.	365
	1148
	C/E
	4

CONNEALY TREASURE 0369
AMDAHL DIXIE ERICA 0178
AMDAHL DIXIE EMBLAZE 828 239

CED	BW	WW	YW	DOC	HP	Milk	CW	MB	RE	\$M	\$C
+5	+0.8	+71	+118	+8	+11.0	+26	+36	+1.05	+0.52	+65	+250

- Recommended for heifers.
- Will make long lasting females.
- PAP 5%
- Marb, YW and \$G 15%

Lot 52 AMDAHL TREASURE 2212

BD: 3/12/22 Reg No: 20406106 Tattoo: 2212

CONNEALY TREASURE 0369
AMDAHL TREASURE 0168
AMDAHL MISS BLAZE 397-753

MGR TREASURE
JMC HIPPIE EXEC 0369 45121
O C C BIG TIME 746Z
AMDAHL TJ MIS BLAZE 3198-397

BW	70
Adj.	205
	752
Adj.	365
	1139
	C/E
	5

O C C MISSING LINK 830M
AMDAHL'S DIXIE ERICA 769N 049
O C C DIXIE ERICA 769N

O C C HEADLINER 661H
O C C DIXIE ERICA 946K
O C C LINEBRED 661L
O C C DIXIE ERICA 608L

CED	BW	WW	YW	DOC	HP	Milk	CW	MB	RE	\$M	\$C
+13	-2.4	+50	+85	-	-	+22	-	-	-	+67	-

- Highly recommended for heifers.
- Earned a weaning ratio of 111.
- BW 3%
- CED 10%

Lot 53 AMDAHL HEAVY PLUS 2138

BD: 1/26/22 Reg No: 20406054 Tattoo: 2138

AMDAHL HEAVY PLUS 805
AMDAHL HEAVY PLUS 0149
AMDAHL BLACKBIRD 148-7174

AMDAHL'S HEAVY DUTY 323
AMDAHL JD ANNIE 294-405
AMDAHL'S ALL AMERICAN 324
D R BLACKBIRD 148

BW	74
Adj.	205
	774
Adj.	365
	1353
	C/E
	4

CONNEALY WEIGH UP 9109 5147
AMDAHL ELLUNA 0138
SK MISS FOCUS ELLUNA 2D

PLATTEMERE WEIGH UP K360
EURA ELGA OF CONANGA 9109
S MR IN FOCUS 3
R K MISS FAME ELUNA 9A

CED	BW	WW	YW	DOC	HP	Milk	CW	MB	RE	\$M	\$C
+9	+1.0	+61	+103	-	-	+26	-	-	-	+53	-

- Recommended for heifers.
- Big spread heifer bull.

Welcome to the Spring Amdahl Bull Sale!

Family, faith, hard-work, genetic progress, and optimism is what this program and family is all about. What an excellent spring offering that should accompany and help maximize a wave of green grass and a fantastic commercial market. It is an exciting time to be in the cattle business and a very opportune time to take advantage of the Amdahl unwavering dedication to genetics that will first maintain the performance traits that make commercial producers profitable. There is a exciting combination of youth, energy and aggressiveness in the Amdahl program that is infectious and needed throughout the country. It will surely bring this program to new levels of performance and competitiveness that will benefit commercial and purebred producers across the country. We at CK6 Consulting are honored to come on board and become part of that mission, family and team. We thank you for taking timeto look at this offering and if we can be of assistance please don't hesitate to contact us. We look forward to meeting you at the Sale!

Matthew 6:19-21



God Bless Chris Earl, Wes Tiemann, & Kody Fleeman

Chris Earl 630-675-6559
Wes Tiemann 816-244-4462



A
M
D
A
H
L

H
E
R
E
F
O
R
D

B
U
L
L
S

Sire

BCC UPROAR 946G

BD: 2/18/2019 Reg No: 44054179 Tattoo: 946

Sire: SHF TAHOE R117 T100
HAROLDSON'S UPGRADE T100 33D
 MOHICAN MISSEY 93W

Dam: NJW 73S W18 HOMETOWN 10Y ET
BCC SCARLET 403B
 BCC DARLA 202Z

SHF RIB EYE M326 R117
 SHF LADY 512 L73
 MOHICAN RANGELAND 221R
 MOHICAN MISSEY 401R ET

SHF WONDER M326 W18 ET
 NJW P606 72N DAYDREAM 73S
 THM DURANGO 4037
 BCC MARIA 836

CED	BW	WW	YW	Milk	M&G	SC	REA	Marb	CHB
+3.1	+3.7	+58	+100	+20	+49	+0.9	+0.43	+0.10	+105



Lot 54 TA UPROAR 150

BD: 8/15/21 Reg No: 44384358 Tattoo: 150

Sire: SHF TAHOE R117 T100
BCC UPROAR 946G
 BCC SCARLET 403B

Dam: KB L1 DOMINO 623D 1ET
TA L1 DOMINETTE 9100G
 MONTANA MISS 1102Y ET

SHF RIB EYE M326 R117
 NJW 73S W18 HOMETOWN 10Y ET
 BCC DARLA 202Z

CL 1 DOMINO 215Z
 HH MISS ADVANCE 1072Y ET
 HH ADVANCE 9027W
 MONTANA MISS 310

CED	BW	WW	YW	Milk	M&G	SC	REA	Marb	CHB
+3.1	+3.0	+56	+92	+26	+54	+0.9	+0.45	+0.13	\$120

BW
77
Adj. 205
717
Adj. 365
1149
C/E
3

- **SALE FEATURE**
- Polled
- Second to none feet and phenotype.

Lot 55 TA UPROAR 151

BD: 8/25/21 Reg No: 44384359 Tattoo: 151

Sire: SHF TAHOE R117 T100
BCC UPROAR 946G
 BCC SCARLET 403B

Dam: CHURCHILL SENSATION 028X
TA L1 DOMINETTE 820F ET
 MONTANA MISS 745T

SHF RIB EYE M326 R117
 MOHICAN MISSEY 93W
 NJW 73S W18 HOMETOWN 10Y ET
 BCC DARLA 202Z

UPS DOMINO 3027
 CHURCHILL LADY 7202T ET
 KB L1 DOMINO 454P
 MONTANA MISS 210

CED	BW	WW	YW	Milk	M&G	SC	REA	Marb	CHB
+5.5	+1.1	+49	+81	+28	+52	+1.1	+0.49	+0.14	\$118

- Polled
- Great footed

Lot 56 TA UPROAR 243K

BD: 2/15/22 Reg No: 44388321 Tattoo: 243K

Sire: SHF TAHOE R117 T100
BCC UPROAR 946G
 BCC SCARLET 403B

Dam: BEHM 100W CUDA 504C
TA DOMINETTE 0328H
 TA L1 DOMINETTE 830F

SHF RIB EYE M326 R117
 MOHICAN MISSEY 93W
 NJW 73S W18 HOMETOWN 10Y ET
 BCC DARLA 202Z

NJW 73S M326 TRUST 100W ET
 BEHM R294 JASMAN102Y
 KB L1 DOMINO 504C ET
 TA L1 DOMINETTE 625D

CED	BW	WW	YW	Milk	M&G	SC	REA	Marb	CHB
+5.2	+3.1	+67	+109	+30	+63	+1.1	+0.67	+0.23	\$137

- Horned
- Recommended for heifers or cows.
- His mother was the top weaning weight heifer in 2020.

A
M
D
A
H
L
E
R
E
F
O
R
D
B
U
L
L
S

Lot 57 **TA UPROAR 216K**
 BD: 1/8/22 Reg No: 44388075 Tattoo: 216K

BW	82
Adj.	205
	699
Adj.	365
	1360
C/E	
	3

CED	BW	WW	YW	Milk	M&G	SC	REA	Marb	CHB
+4.3	+1.8	+51	+84	+25	+51	+0.8	+0.46	+0.18	\$124

HAROLDSON'S UPGRADE T100 33D
 BCC UPROAR 946G
 BCC SCARLET 403B
 SHF TAHOE R117 T100
 MOHICAN MISSEY 93W
 NJW 73S W18 HOMETOWN 10Y ET
 BCC DARLA 202Z
 HH ADVANCE 2005Z
 CL 1 DOMINETTE 7136T 1ET
 CL 1 DOMINO 2121Z
 MONTANA MISS 137Y



- Horned
- Pigmented around the eyes.
- Dam has a great udder.

Lot 58 **TA UPROAR 205K**
 BD: 1/2/22 Reg No: 44388474 Tattoo: 205K

BW	82
Adj.	205
	750
Adj.	365
	1358
C/E	
	3

CED	BW	WW	YW	Milk	M&G	SC	REA	Marb	CHB
+1.5	+2.7	+56	+91	+23	+51	+1.0	+0.48	+0.15	\$124

HAROLDSON'S UPGRADE T100 33D
 BCC UPROAR 946G
 BCC SCARLET 403B
 SHF TAHOE R117 T100
 MOHICAN MISSEY 93W
 NJW 73S W18 HOMETOWN 10Y ET
 BCC DARLA 202Z
 CL 1 DOMINO 215Z
 HH MISS ADVANCE 1072Y ET
 JA L1 DOMINO 6002S
 KB L1 DOMINETTE 622

- Horned
- Royally bred to make exceptional females.
- Dam is a perfect udder 623 daughter.

Lot 59 **TA UPROAR 239K**
 BD: 1/28/22 Reg No: 44388317 Tattoo: 239K

BW	84
Adj.	205
	702
Adj.	365
	1298
C/E	
	3

CED	BW	WW	YW	Milk	M&G	SC	REA	Marb	CHB
-1.1	+3.4	+53	+92	+27	+54	+1.0	+0.46	+0.13	\$125

HAROLDSON'S UPGRADE T100 33D
 BCC UPROAR 946G
 BCC SCARLET 403B
 SHF TAHOE R117 T100
 MOHICAN MISSEY 93W
 NJW 73S W18 HOMETOWN 10Y ET
 BCC DARLA 202Z
 CL 1 DOMINO 6104D
 CL 1 DOMINETTE 0332H
 TA L1 DOMINETTE 630D
 CL 1 DOMINO 4168B 1ET
 CL 1 DOMINETTE 362A
 CL 1 DOMINO 2121Z
 MONTANA MISS 3133 A

- Polled
- Pigmented around the eyes.
- Dam is a moderate and an easy fleshing female.

Lot 60 **TA UPROAR 241K**
 BD: 2/9/22 Reg No: 44388319 Tattoo: 241K

BW	83
Adj.	205
	710
Adj.	365
	1284
C/E	
	3

CED	BW	WW	YW	Milk	M&G	SC	REA	Marb	CHB
+1.5	+2.4	+50	+85	+23	+48	+0.9	+0.51	+0.01	\$109

HAROLDSON'S UPGRADE T100 33D
 BCC UPROAR 946G
 BCC SCARLET 403B
 SHF TAHOE R117 T100
 MOHICAN MISSEY 93W
 NJW 73S W18 HOMETOWN 10Y ET
 BCC DARLA 202Z
 CL 1 DOMINO 269Z 1ET
 CL 1 DOMINETTE 807F
 CHURCHILL LADY 5143R ET
 SHF TAHOE R117 T100
 MOHICAN MISSEY 93W
 NJW 73S W18 HOMETOWN 10Y ET
 BCC DARLA 202Z
 CL 1 DOMINO 860U
 CL 1 DOMINETTE 759T 1ET
 CHURCHILL MVP 188
 CHURCHILL LADY 103

- Horned
- Dam is a moderate and a good footed 5 year old cow.



A
M
D
A
H
L
E
R
E
F
O
R
D
B
U
L
L
S

Lot
61

TA UPROAR 242K

BD: 2/10/22 Reg No: 44388320 Tattoo: 242K

HAROLDSON'S UPGRADE T100 33D
BCC UPROAR 946G
BCC SCARLET 403B

SHF TAHOE R117 T100
MOHICAN MISSEY 93W
NJW 735 W18 HOMETOWN 10Y ET
BCC DARLA 202Z

UPS SENSATION 2504 ET
TA DOMINETTE O346H
TA L1 DOMINETTE 833F

CHURCHILL SENSATION 028X
NJW BW LADYSPORT DEW 78P ET
KB L1 DOMINO 504C ET
MONTANA MISS 207 Z

BW	80
Adj. 205	667
Adj. 365	1262
C/E	3

CED	BW	WW	YW	Milk	M&G	SC	REA	Marb	CHB
+3.7	+2.3	+50	+85	+27	+52	+1.0	+0.52	+0.08	\$118

- Polled
- Recommended for cows or larger framed heifers.



The 376 cow what is a corner stone Donor cow for her exceptional production and stunning phenotype

Sire



KB L1 DOMINO 623D 1ET

BD: 2/15/2016 Reg No: 43675659 Tattoo: 623D

CL 1 DOMINO 9122W 1ET
CL 1 DOMINO 215Z
Sire
CL 1 DOMINETTE 055X

CL 1 DOMINO 732T
CL 1 DOMINETTE 475P
CL 1 DOMINO 860U
CL 1 DOMINETTE 7136T 1ET

HH ADVANCE 4055P
HH MISS ADVANCE 1072Y ET
Dam
HH MISS ADVANCE 7003T

HH ADVANCE 145L
HH MISS ADVANCE 9065J
CL 1 DOMINO 320N
HH MISS ADVANCE 5139R ET

CED	BW	WW	YW	Milk	M&G	SC	REA	Marb	CHB
+4.7	+2.4	+54	+84	+32	+59	+0.8	+0.20	+0.26	+140



Lot
62

TA L1 DOMINO 238K

BD: 1/27/22 Reg No: 44388315 Tattoo: 238K

CL 1 DOMINO 215Z
KB L1 DOMINO 623D 1ET
HH MISS ADVANCE 1072Y ET

CL 1 DOMINO 9122W 1ET
CL 1 DOMINETTE 055X
HH ADVANCE 4055P
HH MISS ADVANCE 7003T

KB L1 DOMINO 504C ET
TA L1 DOMINETTE 830F
TA L1 DOMINETTE 625D

HH ADVANCE 2005Z
CL 1 DOMINETTE 7136T 1ET
CL 1 DOMINO 2121Z
KB L1 DOMINETTE 3157 A

BW	82
Adj. 205	709
Adj. 365	1290
C/E	3

CED	BW	WW	YW	Milk	M&G	SC	REA	Marb	CHB
+5.6	+2.2	+53	+83	+32	+59	+1.0	+0.22	+0.24	\$128

- Horned
- Pigmented around the eyes.
- Recommended for cows or larger framed heifers.

Lot 63 TA L1 DOMINO 204K

BD: 1/2/22 Reg No: 44388473 Tattoo: 204K

CL 1 DOMINO 215Z	CL 1 DOMINO 9122W 1ET	BW
KB L1 DOMINO 623D 1ET	CL 1 DOMINETTE 055X	79
HH MISS ADVANCE 1072Y ET	HH ADVANCE 4055P	Adj. 205
	HH MISS ADVANCE 7003T	697
	HH ADVANCE 8093H	Adj. 365
CL 1 DOMINO 0152K	CL 1 DOMINETTE 874H 1ET	1342
KB L1 DOMINETTE 9172W	CL 1 DOMINO 501	C/E
KB L1 DOMINETTE 701	MCH MS L1 DM 2171 ET	4

CED	BW	WW	YW	Milk	M&G	SC	REA	Marb	CHB
+6.8	+1.2	+42	+67	+29	+50	+0.5	+0.10	+0.18	\$114

- Horned
- Recommended for heifers.

Lot 64 TA DOMINO 235K

BD: 1/23/22 Reg No: 44388312 Tattoo: 235K

CL 1 DOMINO 215Z	CL 1 DOMINO 9122W 1ET	BW
KB L1 DOMINO 623D 1ET	CL 1 DOMINETTE 055X	85
HH MISS ADVANCE 1072Y ET	HH ADVANCE 4055P	Adj. 205
	HH MISS ADVANCE 7003T	696
	HH ADVANCE 7034T ET	Adj. 365
HH ADVANCE 1207Y	HH MISS ADVANCE 6054S	1228
MONTANA MISS 326A	KB L1 DOMINO 842U	C/E
MONTANA MISS 108Y	MONTANA MISS 8107U	3

CED	BW	WW	YW	Milk	M&G	SC	REA	Marb	CHB
+6.5	+2.9	+55	+83	+24	+52	+0.9	+0.16	+0.16	\$116

- Horned
- Good footed 623 son.

Lot 65 TA L1 DOMINO 206K

BD: 1/2/22 Reg No: 44388475 Tattoo: 206K

CL 1 DOMINO 215Z	CL 1 DOMINO 9122W 1ET	BW
KB L1 DOMINO 623D 1ET	CL 1 DOMINETTE 055X	83
HH MISS ADVANCE 1072Y ET	HH ADVANCE 4055P	Adj. 205
	HH MISS ADVANCE 7003T	705
	CL 1 DOMINO 592R 1ET	Adj. 365
KB L1 DOMINO 0102X	KB L1 DOMINETTE 616	1400
TA L1 DOMINETTE 624D	CL 1 DOMINO 9126J 1ET	C/E
KB L1 DOMINETTE 656	KB L1 DOMINETTE 353 ET	3

CED	BW	WW	YW	Milk	M&G	SC	REA	Marb	CHB
+6.4	+1.4	+41	+67	+32	+52	+0.9	+0.15	+0.19	\$125

- Horned
- Recommended for cows or larger framed heifers.
- Dam has flawless phenotype.



NutraLix Inc.
The Brand of Quality

Welcome Cattlemen!

Nutra-lix, Inc. is proud to partner with Amdahl Angus & Hereford as we bring superior quality supplements paired with their superior quality genetics. Congratulations to this year's buyers!

800.568.6952 *It's at Home on Your Range!* www.NutraLix.com

A
M
D
A
H
L
H
E
R
E
F
O
R
D
B
U
L
L
S

A
M
D
A
H
L

F
E
M
A
L
E
S



Lot 66 **AMDAHL ERICA 544-9140**
 BD: 2/20/19 Reg No: 19504424 Tattoo: 9140

— KM BROKEN BOW 002
 — SPRING COVE RENO 4021
 — SPRING COVE LIZA 021



— MILL BAR HICKOK 7242
 — AMDAHL ERICA HICKOK 104-544
 — D R ERICA 104

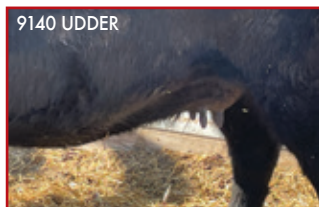
— SUMMITCREST COMPLETE 1P55
 — SUMMITCREST PRINCESS OP12
 — C C A EMBLAZON 702
 — SPRING COVE LIZA 721

— CONNEALY CONSENSUS 7229
 — MILL BAR BEMINDFUL MAID 6304
 — MYTTY IN FOCUS
 — D R ERICA 967

CED	BW	WW	YW	DOC	HP	Milk	CW	MB	RE	\$M	\$C
+0	+3.2	+87	+155	+29	+17.6	+33	+67	+0.90	+0.68	+84	+310

• SALE FEATURE

- 9140 is the all around package for phenotype with an outstanding EPD profile.
 - Erica 9140 is a strong topped, deep ribbed female who has second to none foot structure.
 - WW, YW, \$M and \$C 1%
 - She has 23 EPDs that rank in the top 20% of the breed.
 - This mating to Black River will certainly put any program on a trajectory for success in the future.
 - She has earned a nursing ratio of 115.
- 9140 sells safe bred to Amdahl Black River with a heifer due 5-18-23.



Lot 66a **AMDAHL ERICA 3151**
 BD: 2/20/23 Reg No: 20627340 Tattoo: 3151

— CONNEALY CLARITY
 — POSS REMINGTON
 — POSS BLUEBLOOD 6502



— SPRING COVE RENO 4021
 — AMDAHL ERICA 544-9140
 — AMDAHL ERICA HICKOK 104-544

— CHERRY CREEK LAND GRANT
 — BRESHIE OF CONANGA 6988
 — POSS EASY IMPACT 0119
 — POSS BLUEBLOOD 920

— KM BROKEN BOW 002
 — SPRING COVE LIZA 021
 — MILL BAR HICKOK 7242
 — D R ERICA 104

CED	BW	WW	YW	DOC	HP	Milk	CW	MB	RE	\$M	\$C
+4	+2.9	+76	+130	+24	+19.3	+27	+64	+0.72	+0.60	+92	+309

Lot 66b **AMDAHL ERICA 3154**
 BD: 2/22/23 Reg No: 20627350 Tattoo: 3154

— CONNEALY CLARITY
 — POSS REMINGTON
 — POSS BLUEBLOOD 6502

— SPRING COVE RENO 4021
 — AMDAHL ERICA 544-9140
 — AMDAHL ERICA HICKOK 104-544

— CHERRY CREEK LAND GRANT
 — BRESHIE OF CONANGA 6988
 — POSS EASY IMPACT 0119
 — POSS BLUEBLOOD 920

— KM BROKEN BOW 002
 — SPRING COVE LIZA 021
 — MILL BAR HICKOK 7242
 — D R ERICA 104

CED	BW	WW	YW	DOC	HP	Milk	CW	MB	RE	\$M	\$C
+4	+2.7	+86	+150	+29	+17.0	+32	+72	+0.93	+0.75	+91	+331

• LOTS 66A & 66B SELLS WITH RECIPIENT COW

- High bidder has the option to double it and get the opportunity to have two full sisters.
- This combination of the Erica cow family crossed with Poss Remington is curve bending and maternally stacked. Erica 9140 is strong topped, deep ribbed and has second to none foot structure. She ranks in the top 1% of the breed for WW, YW, \$M and \$C. She has 23 EPDs that rank in the top 20%. This young heifer calf will certainly put any program on the trajectory for success in the future.

Lot 67 **AMDAHL ERICA 1215**
BD: 10/13/21 Reg No: 20355073 Tattoo: 1215

— HOOVER NO DOUBT
BALDRIDGE FLAGSTONE F411
— BALDRIDGE ISABEL Y69

— DEER VALLEY GROWTH FUND
AMDAHL ERICA HICKOK 544-9201
— AMDAHL ERICA HICKOK 104-544

MOGCK BULLSEYE
MISS BLACKCAP ELLSTON J2
STYLES UPGRADE J59
BALDRIDGE ISABEL T935

BASIN PAYWEIGHT 1682
DEER VALLEY RITA 36113
MILL BAR HICKOK 7242
D R ERICA 104

CED	BW	WW	YW	DOC	HP	Milk	CW	MB	RE	\$M	\$C
+8	+1.5	+79	+133	+26	+15.3	+28	+44	+0.70	+0.49	+82	+251

• SALE FEATURE

- Moderate, easy fleshing and deep bodied Flagstone daughter with exceptional feet.
- 1215 is the natural calf of the donor cow 9201. She was a later born fall heifer because her mom was flushed, so we put her in the early spring breeding heifer pen.
- WW and HP 10%
- \$W and \$M 5%
- YW, CEM, DOC and Angle 15%
- She sells safe bred to Poss Pendleton, AI bred on 4-15-23.

SIRE: FLAGSTONE



67

Lot 68 **AMDAHL BLACKBIRD 1157**
BD: 2/9/21 Reg No: 20105886 Tattoo: 1157

— SITZ STELLAR 726D
SITZ RESILIENT 10208
— SITZ MISS BURGESS 1856

— SA 652 MISSING LINK 848 620
AMDAHL'S BLACKBIRD 120-414
— D R BLACKBIRD 120

MOHNEN SUBSTANTIAL 272
SITZ PRIDE 200B
SITZ TOP GAME 561X
SITZ MISS BURGESS 4381

SA 830M MISSING LINK 652 325
S A 841 ANCHOR 620 075
H A R B WINDY 702 JH
D R BLACKBIRD 3779

CED	BW	WW	YW	DOC	HP	Milk	CW	MB	RE	\$M	\$C
+10	+0.1	+62	+104	+22	+13.4	+28	+29	+0.77	+0.59	+94	+243

• SALE FEATURE

- One of the very finest bred females we have ever produced and offer for sale.
- 1157 is very deep bodied and good footed with extra eye appeal.
- \$M 1%
- \$EN 10%
- Angle and \$W 15%
- 1157 sells safe bred to Spring Cove Mission due 5-1-23.

DAM: BLACKBIRD 120-414



68



SPRING COVE MISSION (REG: 20103153)
SERVICE SIRE FOR MANY LOTS IN THE SALE

Lot 69 **AMDAHL BLACKBIRD 1103**
BD: 1/19/21 Reg No: 20105819 Tattoo: 1103

— G A R EARLY BIRD
G A R ASHLAND
— CHAIR ROCK AMBUSH 1018

— AMDAHL'S ROCKETEER 636
AMDAHL BLACKBIRD 997
— D R BLACKBIRD 120

G A R DAYLIGHT
G A R PROGRESS 830
B/R AMBUSH 28
G A R YIELD GRADE N366

MUSGRAVE AVIATOR
AMDAHL ERICA 431-465
H A R B WINDY 702 JH
D R BLACKBIRD 3779

CED	BW	WW	YW	DOC	HP	Milk	CW	MB	RE	\$M	\$C
+8	+1.6	+69	+117	+21	+10.3	+26	+33	+0.85	+0.78	+69	+243

- 1103 earned a weaning ratio of 104.
- Many donor and Pathfinder cows in her pedigree.
- 1103 sells safe bred to Spring Cove Mission with a heifer due 5-19-23.

A
M
D
A
H
L

B
R
E
D

F
E
M
A
L
E
S



Lot 70 **AMDAHL MISS LASS 1166**
 BD: 2/15/21 Reg No: 20074022 Tattoo: 1166

S A V RESOURCE 1441
 GMAR RESOURCE F373
 GMAR FOUNDATION B146

RITO 707 OF IDEAL 3407 7075
 S A V BLACKCAP MAY 4136
 MUSGRAVE FOUNDATION
 GMAR NEW DESIGN 6009

HERBSTER LAUREL 466
 AMDAHL MISS LASS ET 602-744
 AMDAHL LASS OCC LEGEND 602

S A V MERIT 0616
 LIMESTONE MAY 8195
 O C C LEGEND 616L
 P A R AMBUSH LASSIE 1DA

CED	BW	WW	YW	DOC	HP	Milk	CW	MB	RE	\$M	\$C
+6	+1.6	+57	+102	+14	+7.9	+29	+40	-0.03	+0.60	+44	+166

- Long bodied and deep ribbed Resource daughter.
- Many Pathfinders in her pedigree.
- Dam has earned a nursing ratio of 105 on her 4 calves.
- 1166 sells safe bred to Spring Cove Mission with a bull due 5-17-23.

Lot 71 **AMDAHL MISS ANNIE 1114**
 BD: 1/22/21 Reg No: 20105809 Tattoo: 1114

G A R EARLY BIRD
 G A R ASHLAND
 CHAIR ROCK AMBUSH 1018

G A R DAYLIGHT
 G A R PROGRESS 830
 B/R AMBUSH 28
 G A R YIELD GRADE N366

CONNEALY ARMORY
 AMDAHL MISS ANNIE 961
 AMDAHL'S MISS B P 176-393

CONNEALY ARSENAL 2174
 EBBA OF CONANGA 808
 CB BLOCK PARTY 156
 AMDAHL MISS LINK 2138-176

CED	BW	WW	YW	DOC	HP	Milk	CW	MB	RE	\$M	\$C
+13	-0.2	+66	+118	+17	+10.5	+27	+38	+0.68	+0.63	+65	+236

- Great mating here to make an excellent mother cow.
- CED 10%
- Many Pathfinder cows in her pedigree.
- 1114 sells safe bred to Amdahl Ultimate due 5-1-23.

Lot 72 **AMDAHL MISS QUEEN 1058**
 BD: 1/10/21 Reg No: 20105810 Tattoo: 1058

G A R EARLY BIRD
 G A R ASHLAND
 CHAIR ROCK AMBUSH 1018

G A R DAYLIGHT
 G A R PROGRESS 830
 B/R AMBUSH 28
 G A R YIELD GRADE N366

CONNEALY ARMORY
 AMDAHL MISS QUEEN 960
 AMDAHL'S QUEEN B P 709-3101

CONNEALY ARSENAL 2174
 EBBA OF CONANGA 808
 CB BLOCK PARTY 156
 AMDAHL HOMER QUEEN 531-709

CED	BW	WW	YW	DOC	HP	Milk	CW	MB	RE	\$M	\$C
+7	+0.2	+63	+100	+13	+10.5	+30	+32	+0.59	+0.86	+66	+216

- 1058 is a highly maternal and well balanced female.
- PAP 10%
- \$W 15%
- RE 20%
- 1058 sells safe bred to Spring Cove Mission with a bull due 5-20-23.



Lot 73 **AMDAHL PROMISE 1072**
 BD: 1/13/21 Reg No: 20106018 Tattoo: 1072

SILVEIRAS CONVERSION 8064
 BUBS SOUTHERN CHARM AA31
 HICKORY HILL ERICA 009

BT CROSSOVER 758N
 EXG SARAS DREAM S609 R3
 CONNEALY STIMULUS 8419
 HICKORY HILL ERICA TA32

AMDAHL'S ALL AMERICAN 324
 AMDAHL'S PROMISE 716-736
 AMDAHL HOMERS PROMISE 72-716

MYTTY IN FOCUS
 D R QUEEN 127
 P A R HOMER 62
 PAR TRAVELING WESTWIND 72

CED	BW	WW	YW	DOC	HP	Milk	CW	MB	RE	\$M	\$C
+11	-0.3	+50	+86	+8	+10.4	+31	+33	+0.58	+0.57	+56	+212

- Long bodied Charm daughter out of one of the very top producing females in our program.
- 1072 sells safe bred to Spring Cove Mission due 5-1-23.

Lot 74 **AMDAHL MISS ERICA 1029**
 BD: 1/5/21 Reg No: 20106007 Tattoo: 1029

SILVEIRAS CONVERSION 8064
 BUBS SOUTHERN CHARM AA31
 HICKORY HILL ERICA 009

BT CROSSOVER 758N
 EXG SARAS DREAM S609 R3
 CONNEALY STIMULUS 8419
 HICKORY HILL ERICA TA32

S A V RINGMASTER 1184
 AMDAHL MISS RING 025-856
 AMDAHL'S MISS 3130 025

S A V 707 RITO 9969
 S A V EMBLYNETTE 5416
 O C C LINEBRED 661L
 K S U MISS 616 3130

CED	BW	WW	YW	DOC	HP	Milk	CW	MB	RE	\$M	\$C
+8	+0.2	+56	+96	+11	+11.6	+23	+34	+0.34	+0.66	+59	+215

• Deep bodied Charm daughter who will make an excellent mother cow.
 1029 sells safe bred to Spring Cove Mission due 5-19-23.

Lot 76 **AMDAHL BLACKBIRD JD 133-6124**
 BD: 3/8/16 Reg No: 18509111 Tattoo: 6124

WERNER WAR PARTY 2417
 R B TOUR OF DUTY 177
 B A LADY 6807 305

CONNEALY ONWARD
 BAAR USA LADY JAYE 489
 VERMILION DATELINE 7078
 G D LADY HI FLYER 302

S A V FINAL ANSWER 0035
 D R BLACKBIRD 133
 D R BLACKBIRD 2511

SITZ TRAVELER 8180
 S A V EMULOUS 8145
 O C C NEUTON 713
 D R RITA TRAVELER 0631

CED	BW	WW	YW	DOC	HP	Milk	CW	MB	RE	\$M	\$C
+4	+2.5	+67	+116	+21	+12.9	+34	+48	+0.45	+0.79	+52	+232

• 6124 is a larger framed Tour of Duty daughter who has gotten it done throughout the years.
 • Milk 10%
 • RE 15%
 • WW, DOC and \$W 20%
 • She has earned a nursing ratio of 107 on her 5 calves.
 • YW 5/107
 • Pathfinder cow
 • Calving intervals 5/369
 • 6124 sells safe bred to Amdahl Black River due 5-21-23.

Lot 77 **AMDAHL BLACKBIRD 148-460**
 BD: 3/28/14 Reg No: 17986058 Tattoo: 460

C R A BEXTOR 872 5205 608
 G A R PROPHET
 G A R OBJECTIVE 1885

B A R EXT TRAVELER 205
 CRA LADY JAYE 608 498 S EASY
 S S OBJECTIVE T510 OT26
 G A R 1407 NEW DESIGN 2232

H A R B WINDY 702 JH
 D R BLACKBIRD 148
 D R BLACKBIRD 5043

A A R REALLY WINDY 1205
 H A R B BLACK LADY 073 JH
 DR COLE COMMITMENT
 D R BLACKBIRD 2585

CED	BW	WW	YW	DOC	HP	Milk	CW	MB	RE	\$M	\$C
+4	+2.1	+68	+115	+19	+11.4	+36	+41	+0.58	+0.11	+66	+214

• 460 is a highly proven donor Pathfinder cow that has raised many daughters that now serve in the herd. She has also produced many herd bulls that have been top sellers throughout the years.
 • Milk 4%; \$W 5%
 • She has weaned off 6 natural bull calves for an average weaning weight of 837lbs.
 • 460 sells safe bred to Baldrige Flagstone due 5-4-23.

SON OF BLACKBIRD 148-460



Lot 75 **AMDAHL BLACKBIRD 290-7110**
 BD: 2/17/17 Reg No: 18951653 Tattoo: 7110

SYDGEN 928 DESTINATION 5420
 PRAIRIE PRIDE NEXT STEP 2036
 FLYING V MISS PRIDE 426

B/R DESTINATION 727-928
 SHADY BROOK ENTENSE 76D 29H
 BOYD NEW DAY 8005
 FLYING V PRIDE 1290

ANGUS

PAR DAKOTA HOMER 05
 P A R HOMER'S BLACKBIRD 290
 C R R FREIGHTLINER N281

O C C HOMER 650H
 P A R TRAVELING EMBLAZON 333
 CONNEALY FREIGHTLINER
 C R R BLACKBIRD J094

CED	BW	WW	YW	DOC	HP	Milk	CW	MB	RE	\$M	\$C
+9	+1.4	+83	+144	+12	+9.7	+27	+70	+0.15	+0.52	+47	+231

• **SALE FEATURE**
 • 7110 earned her way to the donor pen for her superior production and performance.
 • She has earned a nursing ration of 109 on her 4 calves.
 • YR 3/108
 • She was flushed and then was moved to May calving.
 • Calving intervals 4/366
 • Many daughters retained in the herd.
 • 7110 sells safe bred to Amdahl Black River due 5-3-23.



A
M
D
A
H
L
B
R
E
D
F
E
M
A
L
E
S

A
M
D
A
H
L
F
E
M
A
L
E
S

Lot 78 HUWA 0529 FAIR N SQUARE 2107
 BD: 8/21/22 Reg No: 20434093 Tattoo: 2107

WOODHILL BLUEPRINT
 MYERS FAIR-N-SQUARE M39
 MYERS MISS BEAUTY M136

ANGUS

HOOVER KNOW HOW
 HUWA 6017 KNOW HOW 0529
 HUWA 2902 PAYWEIGHT 6017

CONNELLY CONFIDENCE PLUS
 WOODHILL EVERGREEN Z291-B233
 CONNEALY THUNDER
 MYERS MISS BEAUTY M476

HOOVER NO DOUBT
 BLKCP EMPRESS ELLSTON L265
 BASIN PAYWEIGHT 1682
 GOODE PROPHET 2902

CED	BW	WW	YW	DOC	HP	Milk	CW	MB	RE	\$M	\$C
+2	+3.2	+92	+162	+16	+12.9	+27	+68	+0.96	+0.80	+54	+282

SALE FEATURE

- 2107 is a very feminine and good footed Fair-N-Square daughter who is loaded with Pathfinder and donor cows in her pedigree.
- WW and YW 1%
- Claw, Angle, \$B, \$C and CW 15%
- \$W and \$F 10%
- Sells open

MAT. GRANDAM: 6017



AMDAHL ERICA HICKOK 544-9202
 DAM OF LOTS 79 & 81

Lot 80 AMDAHL MISS PROMISE 2236
 BD: 8/3/22 Reg No: 20625646 Tattoo: 2236

SITZ STELLAR 726D
 SITZ RESILIENT 10208
 SITZ MISS BURGESS 1856

RED BOOK

AMDAHL LANDMARK 712
 AMDAHL MISS PROMISE 0203
 AMDAHL MISS PROMISE 929

MOHNE SUBSTANTIAL 272
 SITZ PRIDE 200B
 SITZ TOP GAME 561X
 SITZ MISS BURGESS 4381

AMDAHL'S BLOCK PARTY 557
 AMDAHL MISS ULTIMATE747W-103
 G A R PHOENIX
 AMDAHL'S PROMISE 716-736

CED	BW	WW	YW	DOC	HP	Milk	CW	MB	RE	\$M	\$C
+11	-1.8	+70	+117	+11	+16.1	+27	+38	+0.77	+0.12	+85	+239

- Very feminine and great footed Resilient daughter who will make an excellent mother cow in her future home.
- Dam has a nice and well balanced udder.
- Sells open



HUWA 6017 KNOW HOW 0529
 DAM OF LOT 78

Lot 79 AMDAHL ERICA 2232
 BD: 8/2/22 Reg No: 20625642 Tattoo: 2232

HOOVER NO DOUBT
 BALDRIDGE FLAGSTONE F411
 BALDRIDGE ISABEL Y69

RED BOOK

DEER VALLEY GROWTH FUND
 AMDAHL ERICA HICKOK 544-9202
 AMDAHL ERICA HICKOK 104-544

MOGCK BULLSEYE
 MISS BLACKCAP ELLSTON J2
 STYLES UPGRADE J59
 BALDRIDGE ISABEL T935

BASIN PAYWEIGHT 1682
 DEER VALLEY RITA 36113
 MILL BAR HICKOK 7242
 D R ERICA 104

CED	BW	WW	YW	DOC	HP	Milk	CW	MB	RE	\$M	\$C
+10	+0	+80	+146	+28	+12.5	+23	+60	+0.34	+0.84	+87	+276

SALE FEATURE

- 2232 has true donor cow potential.
- Her dam, Erica 9202 is long spined with second to none disposition.
- Tremendous feet with breed leading performance and foot scores.
- Sells open

Lot 81 AMDAHL ERICA 3070
 BD: 1/1/23 Reg No: 20627360 Tattoo: 3070

HOOVER NO DOUBT
 BALDRIDGE FLAGSTONE F411
 BALDRIDGE ISABEL Y69

RED BOOK

DEER VALLEY GROWTH FUND
 AMDAHL ERICA HICKOK 544-9202
 AMDAHL ERICA HICKOK 104-544

MOGCK BULLSEYE
 MISS BLACKCAP ELLSTON J2
 STYLES UPGRADE J59
 BALDRIDGE ISABEL T935

BASIN PAYWEIGHT 1682
 DEER VALLEY RITA 36113
 MILL BAR HICKOK 7242
 D R ERICA 104

CED	BW	WW	YW	DOC	HP	Milk	CW	MB	RE	\$M	\$C
+3	+2.9	+87	+152	+32	+12.5	+30	+67	+0.49	+0.62	+77	+273

SELLS WITH RECIPIENT COW

- 9202 is the definition of performance and power.
- Her grandam, Amdahl Erica 544 was the most prolific donor cow in the Amdahl program.
- Erica 9202 is long spined with second to none disposition.
- Her EPD profile is breed leading and cutting edge for all the economic categories.
- This young heifer calf, 3070 has second to none phenotype with an outstanding EPD profile.

SIRE: FLAGSTONE



AMDAHL JD MISS UPDATE50-5139



Lot 82a **AMDAHL MISS UPDATE 3011**
BD: 12/18/22 Reg No: 20624946 Tattoo: 3011

SITZ ACCOMPLISHMENT 720F
RRR FREE STATE R1110
BALDRIDGE ERICA E167

SCHELKES CONSENSUS 2327A
AMDAHL JD MISS UPDATE50-5139
P A R EMBLAZON 50

POSS ACHIEVEMENT
SITZ BARBARAMERE NELL 166D
BALDRIDGE 38 SPECIAL
ERICA OF ELLSTON L5

CONNEALY CONSENSUS 7229
D 104 MONIQUE R585
O C C EMBLAZON 854E
P A R HEAVY DRIVE 478

CED	BW	WW	YW	DOC	HP	Milk	CW	MB	RE	\$M	\$C
+4	+1.3	+63	+113	+29	+12.2	+29	+42	+0.51	+0.58	+67	+229

• SELLS WITH RECIP COW (REG: 17781965)

- 5139 is a must-see when visiting the ranch.
- She has second to none phenotype and is one of the best footed and longest bodied cow we have ever raised.
- 5139 has a WR 5/106
- RRR Free State was the top selling bull in the 2021 RRR sale.
- He checks all the boxes for real world economic values.
- He has 8 EPDs in the top 15% of the breed and stands upon good feet.



Lot 82b **AMDAHL MISS UPDATE 3027**
BD: 12/22/22 Reg No: 20627091 Tattoo: 3027

CONNEALY FORTUNE 752L
OSTRAND GRAND ISLAND 491
S A QUEEN IDELETTE 28

SCHELKES CONSENSUS 2327A
AMDAHL JD MISS UPDATE50-5139
P A R EMBLAZON 50

MGR TREASURE
QUICK FAIR OF CONANGA 831
CONNEALY ARSENAL 2174
S A QUEEN IDELETTE 306

CONNEALY CONSENSUS 7229
D 104 MONIQUE R585
O C C EMBLAZON 854E
P A R HEAVY DRIVE 478

CED	BW	WW	YW	DOC	HP	Milk	CW	MB	RE	\$M	\$C
-2	+3.5	+80	+144	+30	+8.5	+26	+57	+0.51	+0.61	+45	+230

• SELLS WITH RECIP COW

- 5139 is a must-see when visiting the ranch.
 - She has second to none phenotype and is one of the best footed and longest bodied cow we have ever raised.
 - 5139 has a WR 5/106
 - Grand Island was the top selling bull in the 2022 Ostrand sale.
 - He is a performance powerhouse out of one of the very best females I have seen anywhere in the country.
 - In our program, great feet are a must and he is no exception.
- WW, YW, RADG and CW 1%



Lot 82c **PREGNANCY**

CONNEALY CLARITY
POSS REMINGTON
POSS BLUEBLOOD 6502

SCHELKES CONSENSUS 2327A
AMDAHL JD MISS UPDATE50-5139
P A R EMBLAZON 50

CHERRY CREEK LAND GRANT
BRESHIE OF CONANGA 6988
POSS EASY IMPACT 0119
POSS BLUEBLOOD 920

CONNEALY CONSENSUS 7229
D 104 MONIQUE R585
O C C EMBLAZON 854E
P A R HEAVY DRIVE 478

CED	BW	WW	YW	DOC	HP	Milk	CW	MB	RE	\$M	\$C
+4	+1.6	+74	+124	+34	+12.0	+23	+58	+0.7	+0.8	+75	+269

- Heifer pregnancy due 1-1-24
- 5139 is a must-see when visiting the ranch.
- She has second to none phenotype and is one of the best footed and longest bodied cow we have ever raised.
- 5139 has a WR 5/106
- This pregnancy is sired by Poss Pendleton that sold for \$260,000.
- This mating will certainly create the type of female that will improve any cow herd in the country.



A
M
D
A
H
L

P
R
E
G
N
A
N
C
I
E
S

HUWA 6017 KNOW HOW 0529



Lot **83a**

PREGNANCY

— SPRING COVE RENO 4021
BALDRIDGE HEADSTART
— BALDRIDGE ISABEL E048

KM BROKEN BOW 002
SPRING COVE LIZA 021
CONNELY CONFIDENCE PLUS
BALDRIDGE ISABEL Y69

— HOOVER KNOW HOW
HUWA 6017 KNOW HOW 0529
— HUWA 2902 PAYWEIGHT 6017

HOOVER NO DOUBT
BLKCP EMPRESS ELLSTON L265
BASIN PAYWEIGHT 1682
GOODE PROPHET 2902

CED	BW	WW	YW	DOC	HP	Milk	CW	MB	RE	\$M	\$C
+7	+1.2	+76	+136	+22	+17.2	+33	+61	+1.25	+0.82	+90	+335

- Heifer pregnancy due 1-1-24.
- 0529 is a full sister to Huwa All In
- One which was the \$120,000 bull that has been selling semen at record prices.
- She is a great footed, easy fleshing 3 year old that is backed by generations of Pathfinders and donor cows.
- This pregnancy is sired by Baldrige Headstart who sold for \$240,000.
- This mating is truly a top tier genetic opportunity.

SIRE: HEADSTART



Lot **83b**

PREGNANCY

— SITZ FEAT 729H
SPRING COVE FEAT 25K
— SPRING COVE LIZA 767

SITZ ACCOMPLISHMENT 720F
SITZ SITZ FOREVER LADY 12F
SYDGEN 928 DESTINATION 5420
SPRING COVE LIZA 021

— HOOVER KNOW HOW
HUWA 6017 KNOW HOW 0529
— HUWA 2902 PAYWEIGHT 6017

HOOVER NO DOUBT
BLKCP EMPRESS ELLSTON L265
BASIN PAYWEIGHT 1682
GOODE PROPHET 2902

CED	BW	WW	YW	DOC	HP	Milk	CW	MB	RE	\$M	\$C
+9	+1.4	+73	+126	+16	+16.6	+31	+55	+1.20	+0.77	+71	+294

- Heifer pregnancy due 1-1-24.
- 0529 is a full sister to Huwa All In
- One which was the \$120,000 bull that has been selling semen at record prices.
- She is a great footed, easy fleshing 3 year old that is backed by generations of Pathfinders and donor cows.
- This pregnancy is sired by an owned herd sire Spring Cove Feat which sold for \$50,000.
- This mating will certainly make second to none females.

SIRE: FEAT



Lot
84

PREGNANCY

MILL BRAE IDENTIFIED 4031
BALDRIDGE WAR CRY K041
ERICA OF ELLSTON T220

KOUPALS B&B IDENTITY
MILL BRAE PRO BLACKCAP 1092
BALDRIDGE 38 SPECIAL
ERICA OF ELLSTON R96

SPRING COVE RENO 4021
AMDAHL ERICA 544-9128
AMDAHL ERICA HICKOK 104-544

KM BROKEN BOW 002
SPRING COVE LIZA 021
MILL BAR HICKOK 7242
D R ERICA 104

CED	BW	WW	YW	DOC	HP	Milk	CW	MB	RE	\$M	\$C
+7	+2.0	+86	+148	+30	+16.9	+25	+70	+0.97	+0.77	+89	+318

- Heifer pregnancy due 1-1-24.
- 9128 has an exceptional udder with great foot structure.
- She has 16 EPDs in the top 20% of the breed.
- WW, YW, HP and \$C 1%
- Her dam, Amdahl Erica 544 was the most prolific donor cow in the Amdahl program.
- This pregnancy was sired by an owned herd sire Baldridge War Cry who sold for \$100,000.
- War Cry offers exceptional phenotype and performance and is backed by some of the greatest cows in the breed.

FULL SISTER TO 9128



BALDRIDGE WAR CRY K041
SIRE OF LOT 84



SPRING COVE RENO 4021
MATERNAL GRANDSIRE OF LOTS 84 & 85

Lot
85

PREGNANCY

BALDRIDGE BRONC
BROOKDALE BRUTUS 390
BROOKDALE JODIE 786

EF COMMANDO 1366
BALDRIDGE ISABEL Y69
S A V RESOURCE 1441
BROOKDALE JODIE 73

SPRING COVE RENO 4021
POSS ELMARETTA 0654
POSS ELMARETTA 648

KM BROKEN BOW 002
SPRING COVE LIZA 021
CONNEALY POWER PLAY
POSS ELMARETTA 9104

CED	BW	WW	YW	DOC	HP	Milk	CW	MB	RE	\$M	\$C
+5	+2.2	+95	+159	+13	+16.4	+28	+71	+0.68	+0.69	+89	+298

- Heifer pregnancy due 1-1-24
- 0654 is a long topped and great uddered Reno daughter who offers a cutting edge EPD profile.
- She has 12 EPDs in the top 15% of the breed.
- This pregnancy is sired by Brookdale Brutus which was the top selling bull in the 2021 Brookdale sale.
- Brutus is a very well muscled herd bull that has impressive phenotype on a great set of feet.

DAM: 0654



BROOKDALE BRUTUS 390
SIRE OF LOT 85

Lot

86 ANGUS COMMERCIAL OPEN HEIFERS out of 100% Amdahl Genetics

These heifers were bought from the Bork Ranch. Bork and Sons Ranch have been long time customers and friends utilizing Amdahl Genetics in their breeding program.

- Heifers are bangs vaccinated and have received all their shots and are ready for breeding.
- Heifers will be sold in three groups of ten, winning bidder has the option to pick or buy all the heifers.
- Average weight on these heifers sale day will be approximately 840lbs.

Lot A 10 HEAD X \$

Lot B 10 HEAD X \$

Lot C 10 HEAD X \$

H E R D S I R E S Semen Available



BALDRIDGE WAR CRY REG #20342803

- \$100,000 sale topper at the 2023 Baldrige Performance Angus Sale.
- Owned with Stone Pointe Cattle, NE, Huwa Cattle Co., CO and Edgar Brothers, SD.
- From one of the exciting young donor dams in the breed today whose family is responsible for Hoover Dam.
- Maternal brother to BA7 Oaks Bold Ruler who leads the Alta Genetics catalog.
- Impressive phenotype and style!
- To order semen, contact CK6 Source.



HUWA STEADFAST REG #20338444

- \$29,000 sale topper at the 2023 Huwa Angus Sale.
- Steadfast checks all the EPD boxes and most importantly has second to none depth of body and maternal power.
- He offers an outcross pedigree to many herds.
- He is heifer bull safe, ranking in the top 1% of the breed for CED.
- To order semen, contact Sire Buyer.



SPRING COVE FEAT REG #20425117

- \$50,000 sale topper at the 2023 Spring Cove Angus Sale.
- Owned with Reverse Rocking R, NM, Stone Pointe Cattle, NE.
- Calving ease son of "Feat" out of a maternal sister to Spring Cove Reno 4021.
- He is royally bred and checks all the boxes for economic value.
- To order semen, contact CK6 Source.





Amdahl Angus & Hereford

21747 Coyote Lane
Piedmont, SD 57769

PRESORTED
FIRST CLASS
U.S. POSTAGE
PAID
PERMIT NO. 618
RAPID CITY, SD

Address Service Requested

Wednesday, May 10, 2023

1:04 p.m. MST
at the ranch, North of Rapid City, SD



Uproar



Amdahl Miss Update 5139

Selling:

- ◆ 1 PROVEN HERD SIRE
- ◆ 52 ANGUS BULLS
- ◆ 12 HEREFORD BULLS
- ◆ 10 ANGUS PAIRS
- ◆ 3 DONOR PAIRS
- ◆ 5 ET CALVES
- ◆ 5 PREGNANCIES
- ◆ 30 COMMERCIAL OPEN ANGUS HEIFERS
- ◆ 3 OPEN FALL HEIFERS