

Blacktop Farms
Steve & Lori Repenning

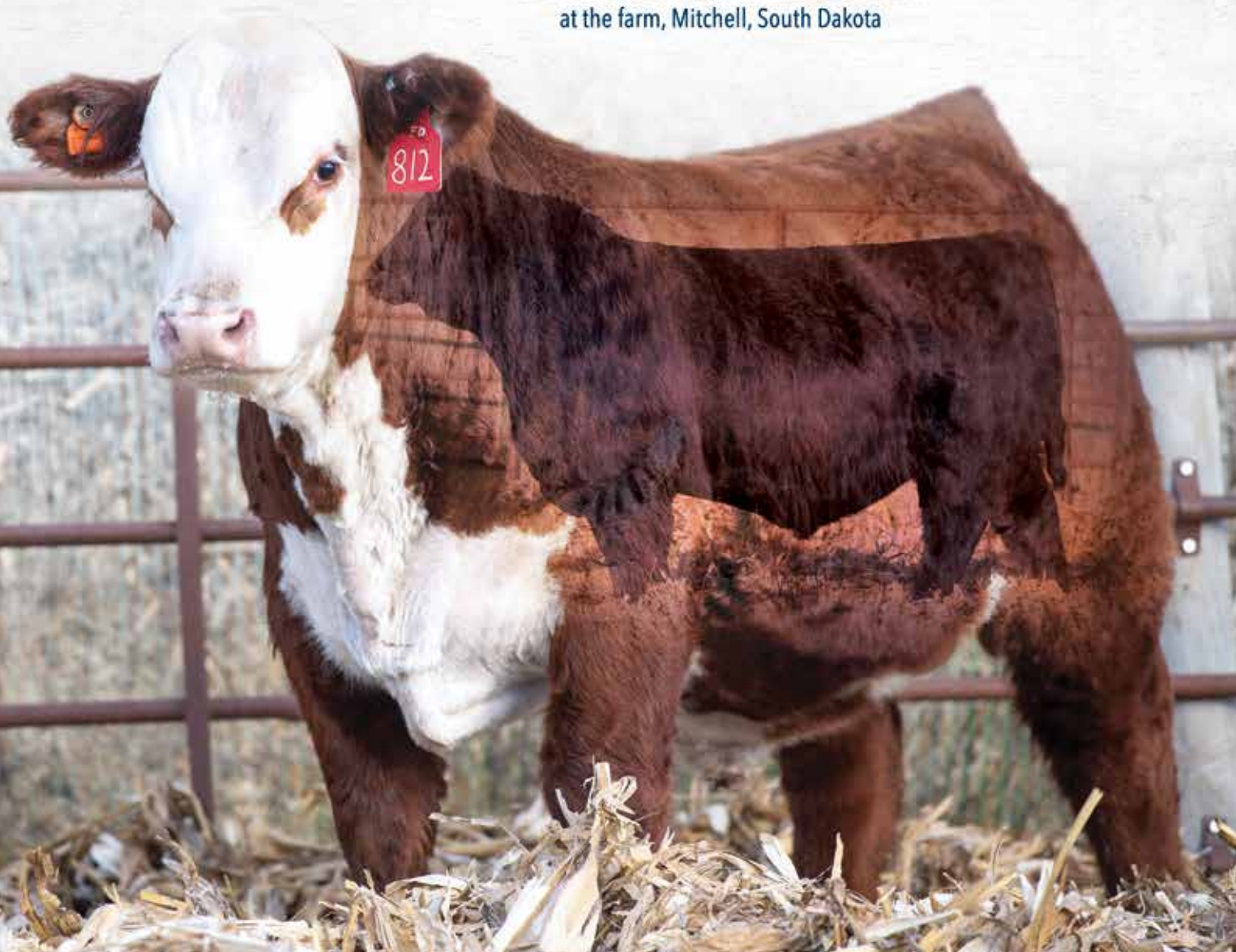
PAVING

THE WAY SALE

Bull Sale
ANGUS & HEREFORD

FEBRUARY 18, 2022 • 5 P.M.

at the farm, Mitchell, South Dakota



Blacktop Farms
Steve & Lori Repenning

PAVING THE WAY SALE

Bull Sale
ANGUS & HEREFORD

FEBRUARY 18, 2022

5:00 PM - PAVING THE WAY BULL SALE
At the farm, Mitchell, SD
41366 258th St.
Mitchell, SD 57301

NEED HELP?

Do you hate buying bulls? Don't have internet?
Does Covid have you locked down? **We can help!**

We can line you up a personal shopper or assist you in picking and/or buying your selections. The ringmen are also good sources of information. Let us know what you are needing. We are always glad to help.



SALE DAY INFORMATION

SALE DAY CONTACTS

Steve Repenning..... 605-999-3259
Lori Repenning..... 605-999-3260

SALE STAFF

Chisum Peterson, Auctioneer..... 605-730-4214
Rod Geppert, American Angus Assn. 605-295-3673
Chris Effling 605-769-0142

DIRECTIONS

Blacktop Farms is located at 41366 258th Street, Mitchell, SD
Directions from Mitchell, SD are 3 ½ miles south of I-90 on Highway 37, 3 ½ miles east on 258th Street

PLEASE NOTE

All persons who attend the sale do so at their own risk. Owners assume no liability, legal or otherwise, for accidents or loss of property that may occur.

GUARANTEE AND HEALTH

All bulls will pass a semen test and will be guaranteed breeding sound for the first breeding season. Animal becomes buyers risk day of sale. We strongly encourage you to purchase mortality insurance. Blacktop Farms is not liable for the death of an animal. Insurance will be available sale day. We do not cover death loss or leg fractures. If breeding troubles are reported by September 1, 2022, the bull may then be returned to breeder in good condition. A replacement bull or credit on next year's sale will be offered.

Bulls will be freeze branded and vaccinated with Bovishield 5 VL5 and Clostridium. All bulls tested BVD negative.

DELIVERY AND POSSESSION

Free delivery up to 200 miles. Bulls will be grouped together for full loads. Delivery will start early March. Bulls kept beyond arranged delivery date will have a \$3 per day boarding fee. Blacktop Farms will keep 1/3 revenue sharing interest in all bulls. Buyer has 100% possession.

BID ONLINE AT



FIND US ON FACEBOOK



Blacktop Farms

FOR VIDEOS, VISIT... www.blacktopfarms.com



Dam's Udder for Lots 1-3



1

BLACKTOP ENDURE 1714

Hereford | Reg# 44270204 | Herd Id 1714 | P | DOB 2/6/21

KCF BENNETT ENCORE Z311 ET | JDH VICTOR 719T 33Z ET
NJW 79Z Z311 ENDURE 173D ET | **BLACKTOP KEYSHONA 714**
 BW 91H 100W RITA 79Z ET | BLACKTOP KEYSHONA 433 ET

BW 82
 AdjWW 738

	CE	BW	WW	YW	MM	UDDR	TEAT	REA	MARB	BMI	CHB
EPD	7.9	3.1	75	117	36	1.2	1.3	0.67	0.23	405	147
%Rank W15			1	2				10	15	20	5

Powerful, curve bender. Looks, numbers, & outstanding dam. You won't find many like him this year. Potential heifer bull.



2

BLACKTOP PERFECTO 1534 ET

Hereford | Reg# 44270270 | Herd Id 1534 | HomoPolled | DOB 1/30/21

NJW 98S R117 RIBEYE 88X ET | JDH VICTOR 719T 33Z ET
LCX PERFECTO 11B ET | **BLACKTOP KEYSHONA 714**
 WLL ZOEY 3Z | BLACKTOP KEYSHONA 433 ET

BW 80
 AdjWW 755

	CE	BW	WW	YW	MM	UDDR	TEAT	REA	MARB	BMI	CHB
EPD	15.9	-0.6	64	93	33	1.3	1.3	0.4	0.14	437	110
%Rank	1	4	10							10	

Half brother to Lot 1 by Perfecto, the muscle maker. Calving ease, big weaning herdsire prospect. Heifer bull.



3

BLACKTOP PERFECTO 1430 ET

Hereford | Reg# 44270228 | Herd Id 1430 | Dehorned | DOB 2/8/21

NJW 98S R117 RIBEYE 88X ET | JDH VICTOR 719T 33Z ET
LCX PERFECTO 11B ET | **BLACKTOP KEYSHONA 714**
 WLL ZOEY 3Z | BLACKTOP KEYSHONA 433 ET

BW 74
 AdjWW 603

	CE	BW	WW	YW	MM	UDDR	TEAT	REA	MARB	BMI	CHB
EPD	11.1	1	71	108	37	1.3	1.4	0.78	0.05	452	129
%Rank	5	15	1	7				2		5	20

Full sib to Lot 2. Moderate framed. Big spread, top 5% CED to top 1% WW EPD. Top 2 % REA bonus. Heifer bull. Dehorned.





4

BLACKTOP ENDURE 1812

Hereford | Reg# 44270186 | Herd Id 1812 | P | DOB 1/25/21

KCF BENNETT ENCORE Z311 ET KJ 968R POLLED SOLUTION 668ZET
NJW 79Z Z311 ENDURE 173D ET BLACKTOP APHRODITES 812 BW 66
 BW 91H 100W RITA 79Z ET BLACKTOP APHRODITES 380 Adj WW 715

	CE	BW	WW	YW	MM	UDDR	TEAT	REA	MARB	BMI	CHB
TEPD	9	1.1	67	101	27	1.3	1.3	0.64	0.14	342	115
%Rank	10	15	7	15				10			

A favorite of everyone who has looked through our 2021 calves. Stout, thick ended, pigment galore. Dam 2 BWR of 81, 2 WWR 105.5.
 Heifer bull.



5

BLACKTOP ENDURE 1433

Hereford | Reg# 44270214 | Herd Id 1433 | P | DOB 2/8/21

KCF BENNETT ENCORE Z311 ET GO 3196 ADVANCE S109
NJW 79Z Z311 ENDURE 173D ET BLACKTOP KEYSHONA 433 ET BW 84
 BW 91H 100W RITA 79Z ET STAR KKH SSF KEYSHONA 25W ET Adj WW 674

	CE	BW	WW	YW	MM	UDDR	TEAT	REA	MARB	BMI	CHB
EPD	1.2	4.8	69	116	28	1.1	1.1	0.6	0.11	321	140
%Rank			4	2				15			10

Eye catcher, the 433 cow is mother of the dam of Lots 1-3. We also have used her Encore son in herd for 3 years. Great udder.



6

BLACKTOP ENDURE 1338

Hereford | Reg# 44270246 | Herd Id 1338 | HomoPolled | DOB 2/15/21

KCF BENNETT ENCORE Z311 ET TH 122 711 VICTOR 719T
NJW 79Z Z311 ENDURE 173D ET BLACKTOP MISSY 338 BW 90
 BW 91H 100W RITA 79Z ET BLACKTOP MISSY 111 Adj WW 649

	CE	BW	WW	YW	MM	UDDR	TEAT	REA	MARB	BMI	CHB
EPD	2.1	3.3	63	104	28	1.2	1.3	0.91	0.08	440	143
%Rank			15	10				1		10	10

Dark cherry red. Extended, deep. Easy keeping cow family. Top 1% REA, top 10% CHB.
 Use this one to sell on the grid.



7

BLACKTOP ENCORE 1664

Hereford | Reg# 44270251 | Herd Id 1664 | HomoPolled | DOB 2/17/21

KCF BENNETT ENCORE Z311 ET | KJ 968R POLLED SOLUTION 668ZET | BW 70
NJW 79Z Z311 ENDURE 173D ET BLACKTOP MISS ME 664 | AdjWW 621
 BW 91H 100W RITA 79Z ET | BLACKTOP MISSY 316

	CE	BW	WW	YW	MM	UDDR	TEAT	REA	MARB	BMI	CHB
EPD	4	2.5	69	106	29	1.25	1.25	0.72	0.1	398	129
%Rank			4	10				5			20

Here is a looker. Loads of pigment. Stout, big hip, capacious.



7

8

BLACKTOP ENCORE 1458

Hereford | Reg# 44270248 | Herd Id 1458 | P | DOB 2/15/21

KCF BENNETT ENCORE Z311 ET | JDH AH 10M VISION 35X ET | BW 70
NJW 79Z Z311 ENDURE 173D ET BLACKTOP MISSY 458 | AdjWW 732
 BW 91H 100W RITA 79Z ET | BLACKTOP MISSY 146 ET

	CE	BW	WW	YW	MM	UDDR	TEAT	REA	MARB	BMI	CHB
EPD	0.1	3.8	59	93	26	1.15	1.2	0.54	0.13	405	120
%Rank										20	

Big goggles, soggy moderate bull. Dam has amazing 94.6 BWR, 102 WWR on 5 calves.



8

9

BLACKTOP ENCORE 1762

Hereford | Reg# 44270230 | Herd Id 1762 | P | DOB 2/8/21

KCF BENNETT ENCORE Z311 ET | NJW 73S W18 HOMETOWN 10Y ET | BW 70
NJW 79Z Z311 ENDURE 173D ET BLACKTOP VICKY 762 ET | AdjWW 644
 BW 91H 100W RITA 79Z ET | BLACKTOP VICKY 031 ET

	CE	BW	WW	YW	MM	UDDR	TEAT	REA	MARB	BMI	CHB
EPD	6.4	2.9	63	105	29	1.1	1.15	0.64	0.2	371	143
%Rank			15	10				15	20		10

Top end growth and carcass potential. Top 10% CHB.



10

BLACKTOP 719T 1645 ET

Hereford | Reg# 44302239 | Herd Id 645 | P | DOB 3/5/21

DRF JWR PRINCE VICTOR 71I | BR MOLER ET | BW 80
TH 122 71I VICTOR 719T | **MSU KEEPSAKE 14S** | AdjWW 640
 KBCR 19D DOMINETTE 122 | MSU KEEPSAKE 32N

	CE	BW	WW	YW	MM	UDDR	TEAT	REA	MARB	BMI	CHB
EPD	2.3	2.6	56	85	25	1.2	1.2	0.34	0.03	248	106
%Rank											

Embryo bull by 719T, out of 145, a cow that won many state and national awards. Extended, wide topped, big hipped.



11

BLACKTOP CUDA 1837

Hereford | Reg# 44270361 | Herd Id 1837 | HomoP | DOB 1/9/21

NJW 73S M326 TRUST 100W ET | KCF BENNETT ENCORE Z311 ET | BW 80
BEHM 100W CUDA 504C | **BLACKTOP FRAPPE 837** | AdjWW 734
 BEHM R294 JASMAN102Y | BLACKTOP FRAPPE 149

	CE	BW	WW	YW	MM	UDDR	TEAT	REA	MARB	BMI	CHB
EPD	-2.7	5.5	81	130	41	1.1	1	0.64	0.31	311	163
%Rank			1	1				10	10		2

One of the high performance bulls of the sale. Top 1% WW and YW EPDs. Top 10% carcass EPDs.



11

If you are unable to attend the sale, you can register to watch or bid online through *The Livestock Link*.
www.TheLivestockLink.com
 Contact
 Aaron Friedt 701-590-9597 or
 Jared Peterson at 605-641-7573

BID ONLINE AT



13

BLACKTOP CUDA 1956

Hereford | Reg# 44270182 | Herd Id 1956 | HomoP | DOB 1/19/21

NJW 73S M326 TRUST 100W ET | JDH VICTOR 719T 33Z ET
BEHM 100W CUDA 504C | **BLACKTOP HANNAH 956** | BW 72
 BEHM R294 JASMAN102Y | BLACKTOP HANNAH 350 | Adj WW 657

	CE	BW	WW	YW	MM	UDDR	TEAT	REA	MARB	BMI	CHB
EPD	8.9	0.4	65	111	34	1.3	1.1	0.62	0.15	370	159
%Rank	10	10	9	5				15			2

Hard to beat numbers, top 10% in calving ease and growth & top 2% CHB. Beautiful dam with a really nice udder.



15

16

BLACKTOP ENCORE 1681

Hereford | Reg# 44270272 | Herd Id 1681 | P | DOB 3/4/21

KCF BENNETT ENCORE Z311 ET | CRR CATAPULT 109
BLACKTOP ENCORE 8433 | **BLACKTOP FRAPPE 681** | BW 82
 BLACKTOP KEYSHONA 433 ET | BLACKTOP FRAPPE 149 | Adj WW 653

	CE	BW	WW	YW	MM	UDDR	TEAT	REA	MARB	BMI	CHB
EPD	1.2	3.5	55	91	29	1.1	1.1	0.4	0.09	301	118
%Rank											

Younger, wide based, soft, big topped.



12

BLACKTOP CUDA 1985

Hereford | Reg# 44270175 | Herd Id 1985 | HomoP | DOB 1/14/21

NJW 73S M326 TRUST 100W ET | KCF BENNETT HOMELAND C34
BEHM 100W CUDA 504C | **BLACKTOP KEEPSAKE 985** | BW 76
 BEHM R294 JASMAN102Y | BLACKTOP KEEPSAKE 730 | Adj WW 760

	CE	BW	WW	YW	MM	UDDR	TEAT	REA	MARB	BMI	CHB
EPD	1.5	3	68	114	31	1.3	1.2	0.56	0.43	419	156
%Rank			5	3				20	3	15	3

Our top adjusted weaning weight bull. Larger framed, fast growing baldy maker.



14

BLACKTOP CUDA 1934

Hereford | Reg# 44270362 | Herd Id 1934 | HomoP | DOB 1/9/21

NJW 73S M326 TRUST 100W ET | KCF BENNETT HOMELAND C34
BEHM 100W CUDA 504C | **BLACKTOP KEYSHONA 934** | BW 58
 BEHM R294 JASMAN102Y | BLACKTOP KEYSHONA 433 ET | Adj WW 670

	CE	BW	WW	YW	MM	UDDR	TEAT	REA	MARB	BMI	CHB
EPD	15.7	-1.5	53	79	30	1.4	1.4	0.37	0.47	454	142
%Rank	1	2							2	5	10

THE calving ease Hereford of the sale. Top 2% CED and BW in the breed. Also, top 10% carcass numbers. Grandam is the 433 cow, matriarch of many of our best cows.



15

BLACKTOP CUDA 19000

Hereford | Reg# 44270183 | Herd Id 19000 | HomoP | DOB 1/21/21

NJW 73S M326 TRUST 100W ET | BLACKTOP CATAPULT 6350
BEHM 100W CUDA 504C | **BLACKTOP MISSY 9000** | BW 68
 BEHM R294 JASMAN102Y | BLACKTOP MISSY 518 | Adj WW 663

	CE	BW	WW	YW	MM	UDDR	TEAT	REA	MARB	BMI	CHB
EPD	7.7	0.6	57	92	30	1.4	1.4	0.62	0.4	448	166
%Rank	15	10						15	4	5	2

Very nice heifer bull prospect. Smaller framed dam with an excellent udder. Really nice carcass EPDs as well. Smooth and complete.



17

BLACKTOP ENCORE 1717

Hereford | Reg# 44270260 | Herd Id 1717 | P | DOB 2/21/21

KCF BENNETT ENCORE Z311 ET | R LEADER 6964
BLACKTOP ENCORE 8433 | **BLACKTOP MISSY 717** | BW 78
 BLACKTOP KEYSHONA 433 ET | BLACKTOP MISSY 526 | Adj WW 662

	CE	BW	WW	YW	MM	UDDR	TEAT	REA	MARB	BMI	CHB
EPD	5.1	3.1	62	100	27	1.3	1.3	0.37	0.31	404	149
%Rank			20	20					10	20	5

One good looking beast, this one lands in the top 20% in many growth and carcass numbers. Deep and stout.



ANGUS

18

BLACKTOP PLAYBOOK 1995

Angus || Reg# 20130209 || Tag 995 || DOB 02/16/21

TEX PLAYBOOK 5437
BLACKTOP PLAYBOOK 8161
 BLACKTOP JESSICA 161

BLACKTOP COMPETITOR 7032
BLACKTOP ERIANNA 995
 BLACKTOP ERIANNA 616

BW 80
 AdjWW 819

	CED	BW	WN	YW	DOC	HP	MILK	MARB	RE	\$M	\$B	\$C
EPD	7	2.2	83	143	17	14.9	30	0.44	0.63	84	154	284
%Rank			4	5		20	20			5	25	10

Completely homegrown pedigree to start our roll. Not only is he handsome but he will sire fast growing calves, top 5% weaning and yearling. His dam is one of our best two year olds. 108 weaning ratio.



18

19

BLACKTOP PLAYBOOK 1935

Angus || Reg# 20130208 || Tag 935 || DOB 02/09/21

TEX PLAYBOOK 5437
BLACKTOP PLAYBOOK 8161
 BLACKTOP JESSICA 161

BLACKTOP XXL 5333
BLACKTOP ROSELLA 935
 BLACKTOP ROSELLA 455

BW 72
 AdjWW 762

	CED	BW	WN	YW	DOC	HP	MILK	MARB	RE	\$M	\$B	\$C
EPD	10	-0.1	71	124	24	13.4	38	0.26	0.61	82	139	262
%Rank			20	20		20	2			10		25

Soggy, moderate heifer bull. Top 20% in over 7 EPD's. Hard to find calving ease, pounds, maternal and docility all in one package.



19

20

BLACKTOP PLAYBOOK 1933

Angus || Reg# 20130207 || Tag 933 || DOB 02/07/21

TEX PLAYBOOK 5437
BLACKTOP PLAYBOOK 8161
 BLACKTOP JESSICA 161

CONNALLY BLACKHAWK 6198
BLACKTOP GEORGINA 933
 BLACKTOP GEORGINA 621

BW 76
 AdjWW 716

	CED	BW	WN	YW	DOC	HP	MILK	MARB	RE	\$M	\$B	\$C
EPD	11	-0.4	64	109	24	19.2	27	0.84	0.21	96	129	263
%Rank			20			20	1	40	25	1		25

Fertility, maternal traits highlight this potential heifer bull. Top 1% heifer pregnancy.



visit www.blacktopfarms.com
 for videos

21

BLACKTOP PAY RAISE 1712

Angus || Reg# 20130213 || Tag 712 || DOB 02/23/21

ICC PAY RAISE 4886
BLACKTOP PAY RAISE 9105
 BLACKTOP BANDOLIER LADY 105

S A V BRUISER 9164
BLACKTOP ERIANNA 712
 BLACKTOP ERIANNA 471

BW 86
 AdjWW 751

	CED	BW	WN	YW	DOC	HP	MILK	MARB	RE	\$M	\$B	\$C
EPD	9	2.6	89	154	23	17.2	30	0.35	0.73	74	149	267
%Rank			30	2		25	5		30	20	30	20

This cow has hit another home run with this calf. We cannot say enough about the mother of this bull. Beautiful with a gorgeous udder. Raised 3 calves with 100 BWR, 112 WWR. He is wide based, packed full of muscle.



21



22

22

BLACKTOP EXEMPLIFY 1804

Angus || Reg# 20130249 || Tag 804 || DOB 01/22/21

CONNEALY CONFIDENCE PLUS TEX PLAYBOOK 5437
LINZ EXEMPLIFY 71124 **BLACKTOP BANDOLIER LADY 804**
 M A R E R I C A 1617 BLACKTOP BANDOLIER LADY 607

BW 86
 AdjWW 913

	CED	BW	WN	YW	DOC	HP	MILK	MARB	RE	\$M	\$B	\$C
EPD	3	3.5	104	182	32	9.9	26	0.39	0.71	63	166	278
%Rank			1	1	2		45				15	15

Poundmaker. Our heaviest adjusted weaning weight bull in the sale. Soggy, deep ribbed, you will like him! Young dam has weaned 2 calves @ 111 WWR.



23

23

BLACKTOP EXEMPLIFY 1565

Angus || Reg# 20130267 || Tag 565 || DOB 02/03/21

CONNEALY CONFIDENCE PLUS A A R T E N X 7008 S A
LINZ EXEMPLIFY 71124 **BLACKTOP EMILY 565**
 M A R E R I C A 1617 BLACKTOP EMILY 143

BW 88
 AdjWW 766

	CED	BW	WN	YW	DOC	HP	MILK	MARB	RE	\$M	\$B	\$C
EPD	9	1.3	75	129	10	9	26	0.81	0.59	62	155	263
%Rank	30		15	15			45	25			25	25

A favorite, solid pretty boy. Big growth and marbling.



24

24

BLACKTOP EXEMPLIFY 1832

Angus || Reg# 20130247 || Tag 832 || DOB 02/06/21

CONNEALY CONFIDENCE PLUS S A V R E C H A R G E 3436
LINZ EXEMPLIFY 71124 **BLACKTOP REIGN 832**
 M A R E R I C A 1617 BLACKTOP REIGN 37

BW 78
 AdjWW 685

	CED	BW	WN	YW	DOC	HP	MILK	MARB	RE	\$M	\$B	\$C
EPD	0	2.7	83	147	16	14.6	23	0.7	0.74	71	164	284
%Rank			4	4		20			30	25	15	10

Top 4% growth with good carcass and docility.



25

BLACKTOP EXEMPLIFY 1134

Angus || Reg# 20130253 || Tag 134 || DOB 01/26/21

CONNEALY CONFIDENCE PLUS CONNEALY IMPRESSION
LINZ EXEMPLIFY 71124 **BLACKTOP EILEEN 134**
 M A R E R I C A 1617 BLACKTOP EILEEN 762

BW 90
 AdjWW 772

	CED	BW	WN	YW	DOC	HP	MILK	MARB	RE	\$M	\$B	\$C
EPD	5	1.6	76	128	23	15.7	29	0.73	0.67	79	154	279
%Rank			10	20	25	15	25			10	25	15

Frame builder. 10 year old dam still growing good ones.



26

BLACKTOP EXEMPLIFY 1275

Angus || Reg# 20130252 || Tag 275 || DOB 02/05/21

CONNEALY CONFIDENCE PLUS S I T Z U P W A R D 307R
LINZ EXEMPLIFY 71124 **BLACKTOP PATSY 275**
 M A R E R I C A 1617 BLACKTOP PATSY 797

BW 80
 AdjWW 687

	CED	BW	WN	YW	DOC	HP	MILK	MARB	RE	\$M	\$B	\$C
EPD	6	0.3	64	115	26	10	30	0.91	0.76	73	156	275
%Rank		30			15		20	20	30	25	25	15

Deep ribbed, potential heifer bull. Carcass and dollar value king.



27

BLACKTOP EXEMPLIFY 1726

Angus | Reg# 20130250 | Tag 726 | DOB 01/18/21

CONNEALY CONFIDENCE PLUS
LINZ EXEMPLIFY 71124
M A R ERICA 1617

TOMBSTONE 050
BLACKTOP EILEEN 726
BLACKTOP EILEEN 134

BW 92
AdjWW 769

	CED	BW	WN	YW	DOC	HP	MILK	MARB	RE	\$M	\$B	\$C
EPD	7	1.8	80	142	24	16	32	0.45	0.87	89	157	293
%Rank			10	10	20	10	15		15	3	25	10

All around winner in top of the breed in most EPDs. Dam has weaned 3 @ 106, 107 YW.



27

28

BLACKTOP EXEMPLIFY 1954

Angus | Reg# 20130246 | Tag 954 | DOB 01/09/21

CONNEALY CONFIDENCE PLUS
LINZ EXEMPLIFY 71124
M A R ERICA 1617

CONNEALY BLACKHAWK 6198
BLACKTOP ERIANNA 954
BLACKTOP ERIANNA 220

BW 55
AdjWW 794

	CED	BW	WN	YW	DOC	HP	MILK	MARB	RE	\$M	\$B	\$C
EPD	4	1.3	80	131	21	9.9	31	0.51	0.57	64	145	252
%Rank			10	15	35		15					

Heifer bull, high gaining EPDs. Twin.



28

29

BLACKTOP EXEMPLIFY 1610

Angus | Reg# 20130251 | Tag 610 | DOB 01/29/21

CONNEALY CONFIDENCE PLUS
LINZ EXEMPLIFY 71124
M A R ERICA 1617

S A V BRUISER 9164
BLACKTOP EILEEN 610
BLACKTOP EILEEN 337

BW 80
AdjWW 696

	CED	BW	WN	YW	DOC	HP	MILK	MARB	RE	\$M	\$B	\$C
EPD	9	0.4	73	133	16	16.6	37	0.66	0.43	68	137	246
%Rank	30	30	15	15		10	3					

If you want to raise deep easy fleshing females this is your bull. Heifer bull that will still produce pounds at weaning.



30

BLACKTOP EXEMPLIFY 1068

Angus | Reg# 20130254 | Tag 68 | DOB 02/17/21

CONNEALY CONFIDENCE PLUS
LINZ EXEMPLIFY 71124
M A R ERICA 1617

ELLINGSON DOMINANCE 2079
BLACKTOP BANDOLIER LADY 68
BLACKTOP BANDOLIER LADY 401

BW 70
AdjWW 733

	CED	BW	WN	YW	DOC	HP	MILK	MARB	RE	\$M	\$B	\$C
EPD	18	-3.2	66	115	24	9	36	0.74	0.89	76	143	261
%Rank	1	1	30		20		4		15	15		25

Heifer bull that checks a lot of boxes. Top 1% calving ease in the breed.



31

BLACKTOP RESILIENT 1767

Angus | Reg# 20130227 | Tag 767 | DOB 01/13/21

SITZ STELLAR 726D
SITZ RESILIENT 10208
SITZ MISS BURGESS 1856

BLACKTOP CASH 5223
BLACKTOP ELBANARA 767
BLACKTOP ELBARANA 834

BW 80
AdjWW 805

	CED	BW	WN	YW	DOC	HP	MILK	MARB	RE	\$M	\$B	\$C
EPD	8	1	87	151	26	15.2	26	0.43	1.03	84	153	282
%Rank			2	3	15	15	45		5	5	25	15

One of our farm favorites, very complete, long & thick with really nice EPD profile. Dam has 3 outstanding calves 98 BWR, 107 WWR, 113 YWR. Stout, square, poundmaker. Potential heifer bull.



31



32

32

BLACKTOP RESILIENT 188

Angus | Reg# 20228274 | Tag 88 | DOB 1/12/21

SITZ STELLAR 726D
SITZ RESILIENT 10208
 SITZ MISS BURGESS 1856

S A V TEN SPEED 3022
BLACKTOP ERIANNA 88
 BLACKTOP ERIANNA 509

BW 76
 AdjWW 751

	CED	BW	WN	YW	DOC	HP	MILK	MARB	RE	\$M	\$B	\$C
EPD	7	-0.2	78	138	21	14	36	0.94	0.62	78	154	278
%Rank		20	10	10		25	4	15		15	25	15

Twin. Good looking bull with amazing numbers. Potential heifer bull.

33

BLACKTOP RESILIENT 1512

Angus | Reg# 20130224 | Tag 512 | DOB 02/05/21

SITZ STELLAR 726D
SITZ RESILIENT 10208
 SITZ MISS BURGESS 1856

CONNELLY SHREK 4242
BLACKTOP GEORGINA 512
 BLACKTOP GEORGINA 240

BW 92
 AdjWW 815

	CED	BW	WN	YW	DOC	HP	MILK	MARB	RE	\$M	\$B	\$C
EPD	3	2.7	88	155	11	16.2	27	0.7	0.81	78	169	297
%Rank			2	2		10	40		20	15	15	5

M1C. Bigger, deep ribbed bull. Fertility, growth and big dollar values. Nice balance of data.



35

34

BLACKTOP RESILIENT 1525

Angus | Reg# 20130225 | Tag 525 | DOB 01/25/21

SITZ STELLAR 726D
SITZ RESILIENT 10208
 SITZ MISS BURGESS 1856

RB RILEY 890-2181
BLACKTOP KATINKA KAY 525
 TR MS KATINKA KAY 5002R

BW 82
 AdjWW 809

	CED	BW	WN	YW	DOC	HP	MILK	MARB	RE	\$M	\$B	\$C
EPD	10	-0.1	72	121	25	14.9	38	1.27	0.63	76	158	281
%Rank		20	25	20	25	20	2	3		15	20	15

Don't miss this one. Top 25% of the breed in every EPD we cataloged except one! AND he should have been pictured! Dam is out of our Katinka Kay cow from Thomas Ranch. She has weaned 5 calves at 105, 105 YWR, 122 Marb ratio.
 Heifer bull.



35

BLACKTOP RESILIENT 1087

Angus | Reg# 20130222 | Tag 87 | DOB 01/12/21

SITZ STELLAR 726D
SITZ RESILIENT 10208
 SITZ MISS BURGESS 1856

S A V TEN SPEED 3022
BLACKTOP ERIANNA 87
 BLACKTOP ERIANNA 509

BW 84
 AdjWW 817

	CED	BW	WN	YW	DOC	HP	MILK	MARB	RE	\$M	\$B	\$C
EPD	6	1.9	85	146	26	17.6	29	0.89	0.78	98	167	315
%Rank			3	4	15	4	25	20	25	1	15	2

Top 1% \$Maternal. Cow making machine. Has more than 10 EPDs in the top 30% of the breed. Don't miss this one. Potential heifer bull.



36

BLACKTOP RESILIENT 1984

Angus | Reg# 20130230 | Tag 984 | DOB 01/29/21

SITZ STELLAR 726D
SITZ RESILIENT 10208
 SITZ MISS BURGESS 1856

GAFFNEY COMPETITOR 361
BLACKTOP BANDO 984
 BLACKTOP BANDO 445

BW 80
 AdjWW 729

	CED	BW	WN	YW	DOC	HP	MILK	MARB	RE	\$M	\$B	\$C
EPD	4	2.5	90	156	25	12.9	28	0.65	1	86	169	305
%Rank			1	2	20		30		10	4	15	4

Early growth and muscle. Top 4% \$C which is a combined number of maternal, growth and carcass.



37

BLACKTOP RESILIENT 1936

Angus | Reg# 20130228 | Tag 936 | DOB 01/14/21

SITZ STELLAR 726D
SITZ RESILIENT 10208
 SITZ MISS BURGESS 1856

CONNELLY BLACKHAWK 6198
BLACKTOP BANDOLIER LADY 936
 BLACKTOP BANDOLIER LADY 464

BW 84
 AdjWW 824

	CED	BW	WN	YW	DOC	HP	MILK	MARB	RE	\$M	\$B	\$C
EPD	5	1.9	79	143	21	12.1	26	0.76	0.53	66	160	274
%Rank			10	5	35		45	30			20	20

109 weaning ratio. Fast growing, will sire big calves to make you money.



38

BLACKTOP RESILIENT 1958

Angus | Reg# 20130229 | Tag 958 | DOB 01/12/21

SITZ STELLAR 726D
SITZ RESILIENT 10208
 SITZ MISS BURGESS 1856

CONNEALY BLACKHAWK 6198
BLACKTOP ERICA 958
 BLACKTOP ERICA 638

BW 82
 AdjWW 791

	CED	BW	WN	YW	DOC	HP	MILK	MARB	RE	\$M	\$B	\$C
EPD	4	1.5	92	159	20	12.5	20	0.52	0.73	77	156	279
%Rank			1	1	40				30	15	25	15

Potential heifer bull. Top 1% weaning and yearling EPDs. Out of a smaller first calf heifer as well. Front pasture look.



38

39

BLACKTOP RESILIENT 1510

Angus | Reg# 20130223 | Tag 510 | DOB 02/07/21

SITZ STELLAR 726D
SITZ RESILIENT 10208
 SITZ MISS BURGESS 1856

BASIN PAYWEIGHT 1075
BLACKTOP EILEEN 510
 BLACKTOP EILEEN 719

BW 78
 AdjWW 730

	CED	BW	WN	YW	DOC	HP	MILK	MARB	RE	\$M	\$B	\$C
EPD	8	0.6	57	100	20	15.9	31	0.58	0.52	88	131	258
%Rank			35		40	10	15			3		30

Heifer bull with good docility and good fertility EPDs in heifer pregnancy and \$M. Moderate sized dam.



40

BLACKTOP RESILIENT 1615

Angus | Reg# 20130226 | Tag 615 | DOB 01/30/21

SITZ STELLAR 726D
SITZ RESILIENT 10208
 SITZ MISS BURGESS 1856

R B RESOLUTE 1844
BLACKTOP PRIDE 615
 BLACKTOP PRIDE 514

BW 78
 AdjWW 678

	CED	BW	WN	YW	DOC	HP	MILK	MARB	RE	\$M	\$B	\$C
EPD	5	0.7	64	101	15	11.2	25	0.66	0.35	77	118	230
%Rank										15		

Heifer bull out of a soggy, easy fleshing cow.



41

41

BLACKTOP COMMODORE 1925

Angus | Reg# 20130242 | Tag 925 | DOB 01/16/21

CONNEALY COMRADE 1385
KESSLERS COMMODORE 6516
 KESSLERS RAINBOW 0595

BLACKTOP XXL 5333
BLACKTOP EILEEN 925
 BLACKTOP EILEEN 134

BW 80
 AdjWW 911

	CED	BW	WN	YW	DOC	HP	MILK	MARB	RE	\$M	\$B	\$C
EPD	12	-0.5	83	139	21	11.2	32	0.89	0.51	68	146	257
%Rank	10	15	4	10	35		15	20				30

Hard to beat numbers and look. Larger framed, calving ease bull with top 10% weaning and yearling EPDs. Second largest adjusted weaning weight, over 900 pounds.



42

BLACKTOP COMMODORE 1609

Angus | Reg# 20130239 | Tag 609 | DOB 01/29/21

CONNEALY COMRADE 1385
KESSLERS COMMODORE 6516
 KESSLERS RAINBOW 0595

R B RESOLUTE 1844
BLACKTOP QUEEN 609
 BLACKTOP QUEEN 310

BW 86
 AdjWW 774

	CED	BW	WN	YW	DOC	HP	MILK	MARB	RE	\$M	\$B	\$C
EPD	13	-0.6	75	132	22	8.6	24	0.79	0.58	47	148	239
%Rank	10	15	15	15	30			30				

Larger framed potential heifer bull. Top end growth.



42



43

43

BLACKTOP COMMODORE 1956

Angus | Reg# 20130244 | Tag 956 | DOB 01/09/21

CONNEALY COMRADE 1385
KESSLERS COMMODORE 6516
 KESSLERS RAINBOW 0595

BASIN ADVANCE 5016
BLACKTOP ERIANNA 956
 BLACKTOP ERIANNA 274

BW 74
 Adj WW 758

	CED	BW	WN	YW	DOC	HP	MILK	MARB	RE	\$M	\$B	\$C
EPD	15	-1.2	73	137	13	14.1	28	0.9	0.59	60	171	282
%Rank	2	10	15	10		25	30	20			10	15

Heifer bull with a lot of bells and whistles. High heifer pregnancy, \$Beef and \$Combined.



44

44

BLACKTOP COMMODORE 1940

Angus | Reg# 20130243 | Tag 940 | DOB 01/17/21

CONNEALY COMRADE 1385
KESSLERS COMMODORE 6516
 KESSLERS RAINBOW 0595

V A R LEGEND 5019
BLACKTOP ERICA 940
 BLACKTOP ERICA 027

BW 84
 Adj WW 800

	CED	BW	WN	YW	DOC	HP	MILK	MARB	RE	\$M	\$B	\$C
EPD	4	3.2	85	152	16	13	23	0.77	0.65	58	166	273
%Rank			3	2				30			15	20

Bull full of performance and frame. Excellent marbling and \$Beef.



45

BLACKTOP COMMODORE 1903

Angus | Reg# 20130240 | Tag 903 | DOB 01/11/21

CONNEALY COMRADE 1385
KESSLERS COMMODORE 6516
 KESSLERS RAINBOW 0595

BASIN ADVANCE 5016
BLACKTOP BANDOLIER LADY 903
 BLACKTOP BANDOLIER LADY 731

BW 70
 Adj WW 743

	CED	BW	WN	YW	DOC	HP	MILK	MARB	RE	\$M	\$B	\$C
EPD	12	0	81	145	19	13	22	0.95	1.02	82	167	299
%Rank	10	25	5	4				15	5	10	15	5

Heifer bull that should have been pictured. Excellent growth and carcass. Hard to beat numbers.



47

46

BLACKTOP COMMODORE 1911

Angus | Reg# 20130241 | Tag 911 | DOB 01/09/21

CONNEALY COMRADE 1385
KESSLERS COMMODORE 6516
 KESSLERS RAINBOW 0595

V A R LEGEND 5019
BLACKTOP BANDOLIER LADY 911
 BLACKTOP BANDOLIER LADY 675

BW 90
 Adj WW 777

	CED	BW	WN	YW	DOC	HP	MILK	MARB	RE	\$M	\$B	\$C
EPD	-4	4.9	80	138	30	17.2	13	0.63	0.46	64	140	246
%Rank			10	10	5	5						

Buy this Commodore son if you want pounds to sell with great dispositions. Also top 5% in heifer pregnancy EPD.



47

BLACKTOP COMMODORE 1425

Angus | Reg# 20130238 | Tag 425 | DOB 01/29/21

CONNEALY COMRADE 1385
KESSLERS COMMODORE 6516
 KESSLERS RAINBOW 0595

GAR-EGL PROTEGE
BLACKTOP ERIANNA 425
 BLACKTOP ERIANNA 641

BW 74
 Adj WW 841

	CED	BW	WN	YW	DOC	HP	MILK	MARB	RE	\$M	\$B	\$C
EPD	13	-1.1	74	121	27	15.3	21	0.89	0.49	93	154	293
%Rank	10	10	15	25	15	15		20		2	25	10

High performing heifer bull. Dam has weaned 6 calves 97 BWR, 103 WWR. Easy keeping, soggy son.



48

BLACKTOP BEAST MODE 1716

Angus | Reg# 20130194 | Tag 716 | DOB 01/14/21

G A R PROPHET
BALDRIDGE BEAST MODE B074
BALDRIDGE ISABEL Y69

SANDPOINT BUTKUS X797
BLACKTOP KOTA 716
BLACKTOP KOTA 400

BW 68
AdjWW 782

	CED	BW	WN	YW	DOC	HP	MILK	MARB	RE	\$M	\$B	\$C
EPD	12	0.3	80	147	25	7.7	27	0.83	0.37	57	152	254
%Rank	10	30	10	4	20		40	25			30	

Maternal brother to last years sale topper. This bulls mother has raised 3 calves with a 91 BWR, 106 WWR, 104 YWR. Excellent choice for heifers.



48

49

BLACKTOP BEAST MODE 1913

Angus | Reg# 20130195 | Tag 913 | DOB 01/14/21

G A R PROPHET
BALDRIDGE BEAST MODE B074
BALDRIDGE ISABEL Y69

BLACKTOP XXL 5333
BLACKTOP BANDOLIER LADY 913
BLACKTOP BANDOLIER LADY 676

BW 72
AdjWW 820

	CED	BW	WN	YW	DOC	HP	MILK	MARB	RE	\$M	\$B	\$C
EPD	7	1.7	80	134	13	10.9	24	0.79	0.72	54	142	238
%Rank			10	10				30				

Big boy. High performing, big growth EPDs out of a good looking first calf heifer.



49

50

BLACKTOP BEAST MODE 1500

Angus | Reg# 20130193 | Tag 500 | DOB 01/30/21

G A R PROPHET
BALDRIDGE BEAST MODE B074
BALDRIDGE ISABEL Y69

CONNELLY SHREK 4242
BLACKTOP KOTA 500
BLACKTOP KOTA 132

BW 74
AdjWW 698

	CED	BW	WN	YW	DOC	HP	MILK	MARB	RE	\$M	\$B	\$C
EPD	9	-0.1	70	123	28	12.1	38	1.16	0.54	73	162	283
%Rank	30	25	20	25	10		2	5		25	20	15

Moderate framed heifer bull. Outstanding growth, high marbling EPD. Great \$ values which indicate excellent balance.



51

BLACKTOP BEAST MODE 1465

Angus | Reg# 20130192 | Tag 465 | DOB 02/28/21

G A R PROPHET
BALDRIDGE BEAST MODE B074
BALDRIDGE ISABEL Y69

CONNELLY SHREK 4242
BLACKTOP MISTY 465
BLACKTOP MISTY 742

BW 82
AdjWW 756

	CED	BW	WN	YW	DOC	HP	MILK	MARB	RE	\$M	\$B	\$C
EPD	2	1.9	88	148	20	9.7	16	0.74	0.42	61	155	262
%Rank			2	3	40						25	25

Potential heifer bull with scale busting weaning and yearling predictions.



52

BLACKTOP COMPETITOR 1187

Angus | Reg# 20130200 | Tag 187 | DOB 03/15/21

GAFFNEY COMPETITOR 361
BLACKTOP COMPETITOR 7032
BLACKTOP BARB 32

RIVER HILLS OBJECTIVE T310
BLACKTOP ERIANNA 187
BLACKTOP ERIANNA 862

BW 84
AdjWW 877

	CED	BW	WN	YW	DOC	HP	MILK	MARB	RE	\$M	\$B	\$C
EPD	3	2.4	85	139	13	13	39	0.66	0.95	62	157	266
%Rank			3	10			2		10		25	25

Sired by our 7032 bull that was a favorite on the SD Angus Tour and out of a 10 year old good ole cow, you can't go wrong here. She has raised 9 calves 101 BWR, 108 WWR, 102 YWR, 105 IMF.



53

BLACKTOP COMPETITOR 1223

Angus | Reg# 20130201 | Tag 223 | DOB 03/09/21

GAFFNEY COMPETITOR 361
BLACKTOP COMPETITOR 7032
BLACKTOP BARB 32

CONNELLY FINAL PRODUCT
BLACKTOP MISTY 223
BLACKTOP MISTY 945

BW 82
AdjWW 760

	CED	BW	WN	YW	DOC	HP	MILK	MARB	RE	\$M	\$B	\$C
EPD	11	0.1	70	110	12	8.4	28	0.65	0.54	46	110	189
%Rank	15	25	20				30					

Heifer bull. Dam has raised 8 calves 97 BWR, 102 WWR.





54

54 BLACKTOP CONTENDER 1853

Angus || Reg# 20135029 || Tag 853 || DOB 01/16/21

CONNEALY GUINNESS LD CAPITALIST 316
JINDRA CONTENDER BLACKTOP KATINKA KAY 853
 JINDRA BLACKBIRD LASSY J 856 BLACKTOP KATINKA KAY 778

BW 68
 Adj WW 766

	CED	BW	WN	YW	DOC	HP	MILK	MARB	RE	\$M	\$B	\$C
EPD	10	1	76	123	22	18.9	27	0.98	0.51	89	139	269
%Rank	20		10	25	30	2	40	15		3		20

Check, check, check... this bulls meets everyones needs and catches your eye as well. Dam is a maternal sister to Blacktop Cash Crop, high selling bull to ABS. Heifer bull.



55

55 BLACKTOP CONTENDER 1801

Angus || Reg# 20135033 || Tag 801 || DOB 01/21/21

CONNEALY GUINNESS TEX PLAYBOOK 5437
JINDRA CONTENDER BLACKTOP BANDOLIER LADY 801
 JINDRA BLACKBIRD LASSY J 856 BLACKTOP BANDOLIER LADY 464

BW 84
 Adj WW 786

	CED	BW	WN	YW	DOC	HP	MILK	MARB	RE	\$M	\$B	\$C
EPD	8	1	64	113	30	17.3	21	0.82	0.44	99	131	269
%Rank					5	4		25		1		20

One of our favorite bulls to look at. Really gentle, high heifer pregnancy and marbling. Potential heifer bull.



56 BLACKTOP CONTENDER 1618

Angus || Reg# 20135037 || Tag 618 || DOB 02/10/21

CONNEALY GUINNESS R B TOUR OF DUTY 177
JINDRA CONTENDER BLACKTOP ERIANNA 618
 JINDRA BLACKBIRD LASSY J 856 BLACKTOP ERIANNA 418

BW 86
 Adj WW 809

	CED	BW	WN	YW	DOC	HP	MILK	MARB	RE	\$M	\$B	\$C
EPD	-4	3.5	79	140	16	16.5	23	0.28	0.63	53	142	237
%Rank			10	10		10						

Powerful cow bull. Dam has raised 4 calves 114 WWR, 114 YWR, 116 Marb, 104 REA.



57 BLACKTOP CONTENDER 1523

Angus || Reg# 20135044 || Tag 523 || DOB 01/29/21

CONNEALY GUINNESS A A R TEN X 7008 S A
JINDRA CONTENDER BLACKTOP BANDOLIER LADY 523
 JINDRA BLACKBIRD LASSY J 856 BLACKTOP BANDOLIER LADY 204

BW 96
 Adj WW 746

	CED	BW	WN	YW	DOC	HP	MILK	MARB	RE	\$M	\$B	\$C
EPD	1	4.1	73	127	21	13.6	26	0.53	0.68	70	151	266
%Rank			15	20	35	30	45			30	30	25

Growth, muscle, maternal. Hard to combine all those in one bull.



58 BLACKTOP CONTENDER 1164

Angus || Reg# 20135045 || Tag 164 || DOB 02/14/21

CONNEALY GUINNESS VERMILION X FACTOR
JINDRA CONTENDER BLACKTOP JESSICA 164
 JINDRA BLACKBIRD LASSY J 856 BLACKTOP JESSICA 851

BW 60
 Adj WW 723

	CED	BW	WN	YW	DOC	HP	MILK	MARB	RE	\$M	\$B	\$C
EPD	19	-2.3	57	107	19	13.5	31	0.83	0.52	67	138	246
%Rank	1	3				30	15	25				

Sleep all night calving ease. 10 year old dam 8 calves 89 BWR, 101 WWR, 101 YWR, 152 IMF ratio, 107 REAR.



59 BLACKTOP CONTENDER 1080

Angus || Reg# 20135035 || Tag 80 || DOB 01/24/21

CONNEALY GUINNESS LD CAPITALIST 316
JINDRA CONTENDER BLACKTOP ERICA 80
 JINDRA BLACKBIRD LASSY J 856 BLACKTOP ERICA 166

BW 80
 Adj WW 810

	CED	BW	WN	YW	DOC	HP	MILK	MARB	RE	\$M	\$B	\$C
EPD	6	1.8	92	147	25	14.2	14	0.79	0.64	55	162	265
%Rank			1	4	20	25		30			20	25

Extended bull, top end growth, docility.



60 BLACKTOP CONTENDER 1816

Angus || Reg# 20135031 || Tag 816 || DOB 01/17/21

CONNEALY GUINNESS TEX PLAYBOOK 5437
JINDRA CONTENDER BLACKTOP BANDO 816
 JINDRA BLACKBIRD LASSY J 856 BLACKTOP BANDO 602

BW 72
 Adj WW 749

	CED	BW	WN	YW	DOC	HP	MILK	MARB	RE	\$M	\$B	\$C
EPD	7	0.9	59	100	28	14.7	18	0.8	0.27	80	127	245
%Rank					10	20		30		10		

Heifer bull, moderate framed. Excellent maternal traits and disposition.



61

BLACKTOP CONTENDER 1809

Angus | Reg# 20130248 | Tag 809 | DOB 02/09/21

CONNEALY GUINNESS LD CAPITALIST 316
JINDRA CONTENDER BLACKTOP ERICA 809
 JINDRA BLACKBIRD LASSY J 856 BLACKTOP ERIANNA 616

BW 84
 AdjWW 794

	CED	BW	WN	YW	DOC	HP	MILK	MARB	RE	\$M	\$B	\$C
EPD	-3	4.9	89	144	10	11.6	13	0.05	0.79	36	139	216
%Rank			2	5	85				25			

High performing handsome bull. Will make you more pounds to sell with that 89 weaning EPD!



61

62

BLACKTOP BLACKSMITH 198

Angus | Reg# 20130264 | Tag 98 | DOB 01/25/21

CONNEALY BLACK GRANITE S WHITLOCK 179
MARDA BLACKSMITH 683 BLACKTOP KOTA 98
 SA V BLACKCAP MAY 3092 BLACKTOP KOTA 735

BW 68
 AdjWW 770

	CED	BW	WN	YW	DOC	HP	MILK	MARB	RE	\$M	\$B	\$C
EPD	10	-0.7	67	120	31	12.4	36	0.26	0.62	69	116	219
%Rank	20	15	30	25	3		4			30		

Easy keeping, deep ribbed heifer bull.



63

BLACKTOP XXL 1060

Angus | Reg# 20130197 | Tag 60 | DOB 01/30/21

CONNEALY SHREK 4242 R B TOUR OF DUTY 177
BLACKTOP XXL 5333 BLACKTOP KATINKA KAY 60
 BLACKTOP BANDOLIER LADY 333 BLACKTOP KATINKA KAY 490

BW 82
 AdjWW 729

	CED	BW	WN	YW	DOC	HP	MILK	MARB	RE	\$M	\$B	\$C
EPD	4	0.5	59	94	16	11.6	28	0.85	0.62	61	135	236
%Rank							30	25				

Potential heifer bull. Outstanding dam has weaned 4 calves at 108 ratio.



64

BLACKTOP WEIGH UP 1602

Angus | Reg# 20200733 | Tag 602 | DOB 02/01/21

PLATTEMERE WEIGH UP K360 SANDPOINT BUTKUS X797
J&J WEIGH UP 294 BLACKTOP BANDO 602
 J & J MISS GEORGINA 294 BLACKTOP BANDO 445

BW 76
 AdjWW 734

	CED	BW	WN	YW	DOC	HP	MILK	MARB	RE	\$M	\$B	\$C
EPD	5	0.3	83	146	26	10.1	24	0.52	0.82	48	160	256
%Rank		30	4	4	15				20		20	30

This will be the last WeighUp sired calf. Potential heifer bull with top 4% weaning and yearling growth. Another great docility EPD bull.



visit
www.blacktopfarms.com
 for videos

BLACKTOP BIPARTISAN 0839

REG: AAA 19871908 ANGUS CED 12
 Sire: GAR Ashland BW .6
 Dam: Blacktop Rosalie 839 WW 90
 MGS: TEX Playbook 5437 YW 157
 Marb 0.67
 RE 1.30

This bull has the numbers, DNA & looks!



SEMEN AVAILABLE

Owned with Griswold Cattle
 Contact to Order Semen - 405-372-3300



Steve & Lori Repenning
41366 258th St.
Mitchell, SD 57301



Blacktop Farms

PAVING

THE WAY SALE

BULL SALE
ANGUS & HEREFORD

FEBRUARY 18, 2022 • 5 P.M.
AT THE FARM, MITCHELL, SOUTH DAKOTA