

# **BOWMAN RANCH**

2023

*Angus Bull Sale*



February 9th, 2023

1:00 p.m. MDT

Selling 38 Angus bulls at the  
ranch 1 mile south of Rhame, ND

Eric and Andrea  
Dillon, Liv, and Grayson Bowman

8301 158th Ave SW  
Rhame, ND 58651

ph 701-279-6795  
Eric's cell 701-440-0278  
Dillon's cell 701-440-9774

Cattlemen,

Bowman Ranch invites you to our 2023 production sale, February 9th, at the ranch 1 mile south of Rhame, ND. We are extremely excited about this year's offering and feel that the quality runs deep. The 38 bulls selling are selected from the top 50% of their calf crop. The bulls are thick, deep sided, and have as good of disposition as you'll find.

As I write this letter, I am about to turn the calendar to 2023. Reflecting back on 2022, every one of us in the cattle business was certainly presented with some challenges. Multiple spring and fall blizzards along with some of the coldest temperatures I can remember made this 2022 calf crop one I will never forget. They made us work for it that is for sure. I think most of us raising cattle for a living are blessed with a short memory. I know I find myself already looking forward to the upcoming calving season and seeing new babies hit the ground. I firmly believe that there will be good times ahead in the cattle business.

Bowman Ranch continues to focus on the mother cow. Making it through tough conditions makes a quality mother cow possessing all the convenience traits, more important than ever. We don't have time to deal with bad dispositions, poor udders, or tough doing cows. We are a family operation and provide all the day to day labor. We demand that each cow earns her keep. They have to maintain a sensible frame score, be structurally sound, easy to handle, and have an acceptable udder, while weaning a heavy calf and breeding back on time each year. Cows aren't given a second chance and have to perform every year. Our registered herd is treated exactly the same as our commercial herd. They survive and thrive on limited resources on a 100% forage diet. The cows once again did a good job growing these bull calves achieving an average 205 day weight of 730 lbs on mother's milk and what Mother Nature provided. We do not creep feed calves as we feel we can't properly evaluate our cow herd if creep is provided.

The bulls have once again been DNA tested and parent verified with the Zoetis HD50K test. Genomic enhanced EPDs increase the accuracy of each EPD and we feel it is a worthy investment. The Livestock Link will offer online bidding for our sale if you are unable to attend. Videos of the bulls will be available for viewing before the sale on their website: [www.thelivestocklink.com](http://www.thelivestocklink.com).

We want to thank all of our past customers for your support of our operation and look forward to welcoming new ones. We know that there are many places to source your angus genetics. We sincerely appreciate you considering us. We value the relationships we have developed with each of you. We would love to show you the bulls prior to sale day and would encourage you to do so. We look forward to visiting with each of you.

Please join us for lunch beginning at 11:30 am on sale day Thursday, February 9, 2023.

Sincerely,

Eric & Andrea Bowman and Family

[www.bowmanranchnd.com](http://www.bowmanranchnd.com)



## Sale Format:

We will once again be hosting a video auction bull sale. Scott Weishaar will serve as our auctioneer. We want everyone to be aware that bulls will not go through a sale ring. A video of each bull will be playing on a screen while he is selling. Bidding will also be available online through The Livestock Link. Sale bulls will be penned nearby our sale facility for easy viewing. Please allow yourself adequate time to inspect the bulls prior to the sale. We will be happy to assist you in any way we can. You are welcome to view the bulls anytime prior to the sale at the ranch.

Sale 1:00pm

## Sale Location:

At the ranch one mile south of Rhame, ND in the shop on the north driveway.

## Auctioneer:

Scott Weishaar 701-872-5299(h)  
701-426-6826(c)



## Delivery:

Bowman Ranch will deliver bulls for free within 300 miles of Rhame beginning April 1, 2023.



## Liability:

All persons who attend the sale do so at their own risk. Bowman Ranch assumes no liability for accidents or injuries that occur on the sale premises.

## Herd Health:

All bulls were vaccinated with InForce 3 and Vision 7 in the spring of 2022. At preconditioning they received BoviShield One Shot and Vision 7 Somnous. Bovishield Gold 5 and Vision 7 Somnous were boosted at weaning. In the feedlot, bulls were given Multi-Min 90, vaccinated with Fusoguard for footrot, wormed with Safe Guard, and poured for lice with Clean Up II. All bulls selling are free of any known genetic defects unless otherwise noted.

## Bull Development:

Bulls are developed on a high roughage ration right here on the ranch. The ration consists of chopped grass, alfalfa, and oats hay, corn silage, ground corn, distillers grain, and a vitamin-mineral supplement. We target around 3 pounds of daily gain to ensure a bull ready to go to work breeding cows.

## Breeding Soundness:

Each bull will have passed a breeding soundness exam performed by Fallon County Vet Service prior to delivery.

## EPD and Production Data Explained

<b>BW</b>	Actual Birthweight
84	
<b>WW</b>	Actual Weaning Weight taken 10/13/22
749	
<b>205 WT</b>	Adjusted 205 day weights
728	
<b>WR</b>	Weaning Ratio
105	
<b>Dam WR</b>	Dam's Weaning Ratio's
3@103	Number of calves weaned@Average Weaning Ratio

CED	BW	WW	YW	SC	DOC	MILK
6	1.0	65	114	.94	19	26
Marb	RE	Claw	Angle	\$M	\$W	\$B
.55	.52	.43	.44	67	64	134

Numbers are Bowman Ranch Sale Bull Averages

CED	BW	WW	YW	SC	DOC	MILK
6	1.2	61	108	.86	18	27
Marb	RE	Claw	Angle	\$M	\$W	\$B
.63	.62	.50	.48	62	57	138

Spring 2023 Breed average Non-Parent Bulls

**Expected Progeny Difference (EPD)**, is the prediction of how future progeny of each animal are expected to perform relative to the progeny of other animals listed in the database. EPDs are expressed in units of measure for the trait, plus or minus.

### PRODUCTION EPDS

**Calving Ease Direct (CED)**, is expressed as a difference in percentage of unassisted births, with a higher value indicating greater calving ease in first-calf heifers. It predicts the average difference in ease with which a sire's calves will be born when he is bred to first-calf heifers.

**Birth Weight EPD (BW)**, expressed in pounds, is a predictor of a sire's ability to transmit birth weight to his progeny compared to that of other sires.

**Weaning Weight EPD (WW)**, expressed in pounds, is a predictor of a sire's ability to transmit weaning growth to his progeny compared to that of other sires.

**Yearling Weight EPD (YW)**, expressed in pounds, is a predictor of a sire's ability to transmit yearling growth to his progeny compared to that of other sires.

**Scrotal Circumference EPD (SC)**, expressed in centimeters, is a predictor of the difference in transmitting ability for scrotal size compared to that of other sires.

### MATERNAL EPDS

**Maternal Milk EPD (Milk)**, is a predictor of a sire's genetic merit for milk and mothering ability as expressed in his daughters compared to daughters of other sires. In other words, it is that part of a calf's weaning weight attributed to milk and mothering ability.

### MANAGEMENT EPDS

**Docility (Doc)**, is expressed as a difference in yearling cattle temperament, with a higher value indicating more favorable docility. It predicts the average difference of progeny from a sire in comparison with another sire's calves. In herds where temperament problems are not an issue, this expected difference would not be realized.

**Claw Set EPD (Claw)**, is expressed in units of claw-set score, with a lower EPD being more favorable indicating a sire will produce progeny with more ideal claw set. The ideal claw set is toes that are symmetrical, even and appropriately spaced.

**Foot Angle EPD (Angle)**, is expressed in units of foot-angle score, with a lower EPD being more favorable indicating a sire will produce progeny with more ideal foot angle. The ideal is a 45-degree angle at the pastern joint with appropriate toe length and heel depth.

### CARCASS EPDS

**Marbling EPD (Marb)**, expressed as a fraction of the difference in USDA marbling score of a sire's progeny compared to progeny of other sires.

**Ribeye Area EPD (RE)**, expressed in square inches, is a predictor of the difference in ribeye area of a sire's progeny compared to progeny of other sires.

### \$VALUE INDEXES

**\$Value indexes**, an economic selection index allows multiple change in several different traits at once pertaining to a specific breeding objective. The \$Value is an estimate of how future progeny of each sire are expected to perform, on average, compared to progeny of other sires if the sires were randomly mated to cows and if calves were exposed to the same environment.

**Maternal Weaned Calf Value (\$M)**, an index, expressed in dollars per head, predicts profitability differences from conception to weaning with the underlying breeding objective assuming that individuals retain their own replacement females within herd and sell the rest of the cull female and all male progeny as feeder calves. The model assumes commercial producers will replace 25% of their breeding females in the first generation and 20% of their breeding females in each subsequent generation. Traits included are as follows: calving ease direct, calving ease maternal, weaning weight, milk, heifer pregnancy, docility, mature cow weight, claw set and foot angle.

**Weaned Calf Value (\$W)**, an index, expressed in dollars per head, to predict profitability differences in progeny due to genetics from birth to weaning. The underlying objective being producers will retain 20% of the female progeny as replacements and sell the rest of the cull females and their male counterparts as feeder calves. Traits included are as follows (in no particular order): birth weight, weaning weight, milk, and mature cow weight.

**Beef Value (\$B)**, a terminal index, expressed in dollars per carcass, to predict profitability differences in progeny due to genetics for postweaning and carcass traits. This terminal index assumes commercial producers wean all male and female progeny, retain ownership of these animals through the feedlot phase and market these animals on a carcass grid. Traits included in the index are as follows: yearling weight, dry-matter intake, marbling, carcass weight, ribeye area and fat.

Source: AAA

# REFERENCE SIRES

## A SITZ STELLAR 726D

Reg: 18397542

BD: 01/23/2016

Benfield Substance 8506

HA Image Maker 0415

Mohnen Substantial 272

Benfield Edella 1105

Mohnen Glyn Mawr Elba 1758

LT Territory 5824 of EA

Mahnen Glyn Mawr Elba 1345

Connealy Final Product

Connealy Product 568

Sitz Pride 200B

Ebonista of Conanga 471

Sitz Pride 308Y

Sitz Upward 307R

Sitz Pride 44P

CED	BW	WW	YW	SC	DOC	MILK
3	-.3	71	128	.91	17	18
Marb	RE	Claw	Angle	\$M	\$W	\$B
.63	.57	.30	.39	59	60	138



## B LD CAPITALIST 316

Reg: 17666102

BD: 01/26/2013

SAV Final Answer 0035

Sitz Traveler 8180

Connealy Capitalist 028

SAV Emulous 8145

Prides Pita of Conanga 8821

CRA Bextor 872 5205 608

Prides Trav of Conanga 6499

CA Future Direction 5321

GAR Precision 1680

CA Miss Power Fix 308

LD Dixie Erica 2053

LD Royce Onaroll 810

LD Dixie Erica Oar 0853

Dixie Erica of RR 8553

CED	BW	WW	YW	SC	DOC	MILK
12	-.6	65	113	.44	12	25
Marb	RE	Claw	Angle	\$M	\$W	\$B
.68	.63	.43	.44	70	78	152



## C CONNEALY DRY VALLEY

Reg: 18533906

BD: 02/08/2016

Mogck Bullseye

MOGCK Sure Shot

Hoover No Doubt

Mogck Mary 1255

Miss Blackcap Ellston J2

SydGen CC&7

Miss Blackcap Ellston D154

Summitcrest Complete 1P55

CF Right Design 1802

Summitcrest Elba 1M17

Becca of Conanga 1617

Baldrige Kaboom K243 KCF

Brisha of Conanga 746 1237

Beckah of Conanga 747

CED	BW	WW	YW	SC	DOC	MILK
5	3.6	55	106	1.46	13	23
Marb	RE	Claw	Angle	\$M	\$W	\$B
1.01	.56	.39	.43	93	45	161



# REFERENCE SIRES

## D BASIN PAYWEIGHT 1682

Reg: 17038724

BD: 02/11/2011

Vermillion Payweight J847

Vermillion Dateline 7078

Vermillion Lass 7969

Basin Payweight 006S

CA Future Direction 5321

Basin Lucy 3829

Basin Lucy 178E

SAV Final Answer 0035

HARB Pendelton765 JH

HARB Black Lady 375 JH

21AR O Lass 7017

VDAR Legend 1281

21AR O Lass F24A

21AR O Lass A24

CED	BW	WW	YW	SC	DOC	MILK
7	.6	66	118	.99	24	31
Marb	RE	Claw	Angle	\$M	\$W	\$B
.57	.27	.57	.48	73	86	137

## E CTS REMEDY 1T01

Reg: 17331233

BD: 08/23/2011

Baldrige Kaboom K243 KCF

Jauer 353 Traveler 589 27

Pleasant of Conanga 736

Connealy Thunder

Bon View Bando 598

Parka of Conanga 241

Partina of Conanga 6237

LT 598 Bando 9074

SAF 598 Bando 5175

Mill Coulee Barbara K 323

CTS 7V03 Bellemere Maid 9T02

Bon View New Design 1407

SVA Rita 7V03 of 1407 502

JBS 334 Bellemere Maid 502

CED	BW	WW	YW	SC	DOC	MILK
1	-.2	54	115	-.02	21	28
Marb	RE	Claw	Angle	\$M	\$W	\$B
.57	.76	.37	.33	56	53	157

## F TEHAMA PATRIARCH F028

Reg: 18981191

BD: 02/03/2017

Hoover Dam

Syngen CC&7

Erica of Ellston C124

SS Niagra Z29

B/R New Day 454

Jet SS X 144

Jet SS T151

Baldrige Kaboom K243 KCF

Connealy Thunder

Parka of Conanga 241

Tehama Elite Blackbird D826

MCC Daybreak

Tehama Elite Blackbird Z630

Tehama Elite Blackbird T766

CED	BW	WW	YW	SC	DOC	MILK
14	-1.7	66	130	1.21	23	30
Marb	RE	Claw	Angle	\$M	\$W	\$B
.80	.85	.45	.42	87	68	159

## G MOHNEN SUBSTANTIAL 272

Reg: 17292558

BD: 01/03/2012

HA Image Maker 0145

Hero 6267 of RR 2418

HA Rito Blackcap 9038

Benfield Substance

Jauer Java 8136

Benfield Edella 1105

Benfield Edella 7813

LT Territory 5824 of EA

Sitz Tradition RLS 8702

EA Lucy 141

Mohnen Glyn Mawr Elba 1758

Baldrige Mullen M528

Mohnen Glyn Mawr Elba 1345

Mohnen Glyn Mawr Elba 721

CED	BW	WW	YW	SC	DOC	MILK
13	-2.0	60	107	1.29	20	18
Marb	RE	Claw	Angle	\$M	\$W	\$B
.26	.45	.41	.45	71	61	97

## H SHIPWHEEL RESOURCE 8531

Reg: 19534683

BD: 04/08/2018

SAV Resource 1441

Rito 707 of Ideal 3407 7075

SAV Blackcap May 4136

Shipwheel Resource 5621

Mytty In Focus

Apex Eriskay 5506

Apexette Eriskay 3032

S Chism 6175

Shipwheel Montana 2600

Dr J Ms Wide Track 374 M15

Shipwheel Eola 533

Sitz Far & Wide 6908

Shipwheel Eola 396

DR J Miss Apex I16

CED	BW	WW	YW	SC	DOC	MILK
3	1.0	63	126	1.3	26	19
Marb	RE	Claw	Angle	\$M	\$W	\$B
.13	.37	.54	.56	38	47	133

## I BAR 9 PAINTROCK CHINOOK 972L

Reg: 19578610

BD: 03/07/2019

Paintrock Mountain Man

Kesslers Frontman R001

Enchantress of PR 3635

Paintrock Trapper

Isaacs Alliance 7161

Emulous of Paintrock 93-9

Paintrock Emulous 446-6

CAR Chinook 786

AAR Really Windy 1205

CAR Miss Marie 5109

BAR 9 Windy Chinook 72L1

CAR Efficient 534

Bar 9 Efficient Windy 2L10

Bar 9 Windy Lead L10

CED	BW	WW	YW	SC	DOC	MILK
7	.4	60	110	1.37	27	33
Marb	RE	Claw	Angle	\$M	\$W	\$B
.27	.65	.47	.54	69	65	131

# 1 BOWMAN STELLAR 232

<b>Reg: 20456371</b>		<b>BD: 03/05/22</b>		<b>BW</b>		
		Benfield Substance 8506		84		
Mohnen Substantial 272		Mohnen Glyn Mawr Elba 1758		<b>WW</b>		
Sitz Stellar 726D		Connealy Final Product		848		
SITZ Pride 200B		Sitz Pride 308Y		<b>205 WT</b>		
		Connealy Consensus 7229		843		
Mill Bar Hickok 7242		Mill Bar Bemindful Maid 6304		<b>WR</b>		
Bowman Flower 009		HA Cowboy Up 5405		118		
Bowman Flower 827		Bowman Flower 410		<b>Dam WR</b>		
				1@118		
<b>CED</b>	<b>BW</b>	<b>WW</b>	<b>YW</b>	<b>SC</b>	<b>DOC</b>	<b>MILK</b>
2	2.2	81	134	1.02	28	22
<b>Marb</b>	<b>RE</b>	<b>Claw</b>	<b>Angle</b>	<b>\$M</b>	<b>\$W</b>	<b>\$B</b>
.33	.70	.41	.42	68	74	131



Lot 1 is a well balanced, larger framed, long spined, Stellar son. He is extremely docile and weaned off of his beautiful Hickok two year old dam at an impressive 848 lbs.



Lot 2 is Dillon's bull. He is a powerfully built heifer bull that has a lot to offer. His HD50K test ranks him in the top 6% of the breed in 5 traits including docility, claw, angle, and CED.

# 2 BOWMAN STELLAR 247

<b>Reg: 20456376</b>		<b>BD: 03/08/22</b>		<b>BW</b>		
		Benfield Substance 8506		79		
Mohnen Substantial 272		Mohnen Glyn Mawr Elba 1758		<b>WW</b>		
Sitz Stellar 726D		Connealy Final Product		774		
SITZ Pride 200B		Sitz Pride 308Y		<b>205 WT</b>		
		Basin Payweight 006S		790		
Basin Payweight 1682		21AR O Lass 7017		<b>WR</b>		
Bowman Flower 060		C C A Uno 049		111		
Bowman Flower 562		TC Flower 8121		<b>Dam WR</b>		
				1@111		
<b>CED</b>	<b>BW</b>	<b>WW</b>	<b>YW</b>	<b>SC</b>	<b>DOC</b>	<b>MILK</b>
11	-1.4	66	116	.69	26	23
<b>Marb</b>	<b>RE</b>	<b>Claw</b>	<b>Angle</b>	<b>\$M</b>	<b>\$W</b>	<b>\$B</b>
.42	.35	.29	.34	86	67	113

# 3 BOWMAN STELLAR 285

<b>Reg: 20456393</b>		<b>BD: 03/14/22</b>		<b>BW</b>		
		Benfield Substance 8506		102		
Mohnen Substantial 272		Mohnen Glyn Mawr Elba 1758		<b>WW</b>		
Sitz Stellar 726D		Connealy Final Product		866		
SITZ Pride 200B		Sitz Pride 308Y		<b>205 WT</b>		
		Basin Payweight 006S		825		
Basin Payweight 1682		21AR O Lass 7017		<b>WR</b>		
Bowman Barbie 784		C C A Uno 049		122		
Bowman Barbie 418		Sodak Barbie R029		<b>Dam WR</b>		
				4@111		
<b>CED</b>	<b>BW</b>	<b>WW</b>	<b>YW</b>	<b>SC</b>	<b>DOC</b>	<b>MILK</b>
1	1.9	83	147	.97	20	23
<b>Marb</b>	<b>RE</b>	<b>Claw</b>	<b>Angle</b>	<b>\$M</b>	<b>\$W</b>	<b>\$B</b>
.93	.49	.38	.37	66	72	153

Lot 3 is quite a bull. He is loaded with muscle and built like a tank. He is probably the thickest bull we have ever raised. Ranks in the top 3% of the breed in WW and YW and has some of the best carcass traits in the offering. To top it off, he comes from a great cow family and weaned off at 866 lbs.



Bull videos can be viewed at the Livestock Link. Preregistration is required 24 hours in advance to bid online sale day.



All bulls have been Zoetis HD50K tested.

[www.bowmanranchnd.com](http://www.bowmanranchnd.com)

## 4 BOWMAN STELLAR 208

<b>Reg: 20456375</b>		<b>BD: 02/26/22</b>		<b>BW</b>		
		Benfield Substance 8506		74		
Mohnen Substantial 272		Mohnen Glyn Mawr Elba 1758		<b>WW</b>		
				800		
<b>Sitz Stellar 726D</b>		Connealy Final Product		<b>205 WT</b>		
SITZ Pride 200B		Sitz Pride 308Y		773		
		Basin Payweight 006S		<b>WR</b>		
Basin Payweight 1682		21AR O Lass 7017		108		
<b>Bowman Flower 058</b>		EXAR Upshot 0562B		<b>Dam WR</b>		
Bowman Flower 410		Bowman Flower 017		1@108		
<b>CED</b>	<b>BW</b>	<b>WW</b>	<b>YW</b>	<b>SC</b>	<b>DOC</b>	<b>MILK</b>
6	.9	66	114	.82	22	25
<b>Marb</b>	<b>RE</b>	<b>Claw</b>	<b>Angle</b>	<b>\$M</b>	<b>\$W</b>	<b>\$B</b>
.41	.46	.34	.30	81	67	134



**LOT 4**

Lot 4 is an attractive Stellar son with excellent feet. This was Dillon's favorite bull calf all summer long.

## 5 BOWMAN STELLAR 206

<b>Reg: 20456396</b>		<b>BD: 02/26/22</b>		<b>BW</b>		
		Benfield Substance 8506		74		
Mohnen Substantial 272		Mohnen Glyn Mawr Elba 1758		<b>WW</b>		
				800		
<b>Sitz Stellar 726D</b>		Connealy Final Product		<b>205 WT</b>		
SITZ Pride 200B		Sitz Pride 308Y		722		
		Connealy Consensus		<b>WR</b>		
Connealy Consensus 7229		Blue Lilly of Conanga 16		107		
<b>Bowman Lola 829</b>		B C Mid Emblazon 854E 702		<b>Dam WR</b>		
Bowman Lola 911		Bowman Lola 611		3@102		
<b>CED</b>	<b>BW</b>	<b>WW</b>	<b>YW</b>	<b>SC</b>	<b>DOC</b>	<b>MILK</b>
11	-.2	64	115	1.50	17	28
<b>Marb</b>	<b>RE</b>	<b>Claw</b>	<b>Angle</b>	<b>\$M</b>	<b>\$W</b>	<b>\$B</b>
.48	.70	.34	.48	84	69	139

## 6 BOWMAN STELLAR 276

<b>Reg: 20456386</b>		<b>BD: 03/12/22</b>		<b>BW</b>		
		Benfield Substance 8506		94		
Mohnen Substantial 272		Mohnen Glyn Mawr Elba 1758		<b>WW</b>		
				758		
<b>Sitz Stellar 726D</b>		Connealy Final Product		<b>205 WT</b>		
SITZ Pride 200B		Sitz Pride 308Y		683		
		Basin Payweight 006S		<b>WR</b>		
Basin Payweight 1682		21AR O Lass 7017		101		
<b>Bowman Flower 709</b>		SSAF General Sully 167		<b>Dam WR</b>		
Bowman Flower 577		Bowman Flower 141		4@97		
<b>CED</b>	<b>BW</b>	<b>WW</b>	<b>YW</b>	<b>SC</b>	<b>DOC</b>	<b>MILK</b>
-5	2.7	73	123	.48	18	21
<b>Marb</b>	<b>RE</b>	<b>Claw</b>	<b>Angle</b>	<b>\$M</b>	<b>\$W</b>	<b>\$B</b>
.66	.72	.40	.45	41	58	140

Lot 6 is deep bodied and thick made.

## 7 BOWMAN STELLAR 252

<b>Reg: 20456378</b>		<b>BD: 03/09/22</b>		<b>BW</b>		
		Benfield Substance 8506		91		
Mohnen Substantial 272		Mohnen Glyn Mawr Elba 1758		<b>WW</b>		
				732		
<b>Sitz Stellar 726D</b>		Connealy Final Product		<b>205 WT</b>		
SITZ Pride 200B		Sitz Pride 308Y		747		
		Basin Payweight 006S		<b>WR</b>		
Basin Payweight 1682		21AR O Lass 7017		105		
<b>Bowman Missie 070</b>		Connealy Thunder		<b>Dam WR</b>		
Bowman Missie 710		Bowman Missie 537		1@105		
<b>CED</b>	<b>BW</b>	<b>WW</b>	<b>YW</b>	<b>SC</b>	<b>DOC</b>	<b>MILK</b>
3	2.0	69	119	.18	10	25
<b>Marb</b>	<b>RE</b>	<b>Claw</b>	<b>Angle</b>	<b>\$M</b>	<b>\$W</b>	<b>\$B</b>
.31	.52	.27	.43	70	66	127



**LOT 7**

Lot 7 is another of Dillon's bulls. He has a good hind quarter and plenty of capacity. He comes from a cow family that is really good.



## 8 BOWMAN STELLAR 219

<b>Reg: 20456379</b>		<b>BD: 02/28/22</b>		<b>BW</b>		
		Benfield Substance 8506		75		
Mohnen Substantial 272		Mohnen Glyn Mawr Elba 1758		<b>WW</b>		
		Connealy Final Product		684		
<b>Sitz Stellar 726D</b>		Sitz Pride 308Y		<b>205 WT</b>		
SITZ Pride 200B		S A V Recharge 3436		666		
Shipwheel Recharge 7513		DR J Ms Danny Boy M64		<b>WR</b>		
		Brooks Retail Product 8915		93		
<b>Bowman Missie 096</b>		Bowman Missie 705		<b>Dam WR</b>		
Bowman Missie 132				1@93		
<b>CED</b>	<b>BW</b>	<b>WW</b>	<b>YW</b>	<b>SC</b>	<b>DOC</b>	<b>MILK</b>
10	-1.5	49	97	1.00	24	26
<b>Marb</b>	<b>RE</b>	<b>Claw</b>	<b>Angle</b>	<b>\$M</b>	<b>\$W</b>	<b>\$B</b>
.48	.35	.28	.31	62	51	118

Lot 8 is a solid built heifer bull with good feet. His feet EPD's are in the top 10% of the breed and his HD50K test backs this up as well.

## 9 BOWMAN STELLAR 236 DDC

<b>Reg: 20456401</b>		<b>BD: 03/05/22</b>		<b>BW</b>		
		Benfield Substance 8506		83		
Mohnen Substantial 272		Mohnen Glyn Mawr Elba 1758		<b>WW</b>		
		Connealy Final Product		696		
<b>Sitz Stellar 726D</b>		Sitz Pride 308Y		<b>205 WT</b>		
SITZ Pride 200B		K C F Bennett Absolute		705		
HAYNES Outright 452		HAYNES ND 454 Miss 179		<b>WR</b>		
		SF Bex 0370		104		
<b>Bowman Sally 921</b>		Bowman Sally 121		<b>Dam WR</b>		
Bowman Sally 462				2@97		
<b>CED</b>	<b>BW</b>	<b>WW</b>	<b>YW</b>	<b>SC</b>	<b>DOC</b>	<b>MILK</b>
2	2.3	81	139	.42	21	24
<b>Marb</b>	<b>RE</b>	<b>Claw</b>	<b>Angle</b>	<b>\$M</b>	<b>\$W</b>	<b>\$B</b>
.99	.40	.46	.43	60	71	152

Lot 9 is wide topped and thick butted with tons of volume. His growth numbers are in the top 10% of the breed. Has the highest marb epd in the sale.

## 10 BOWMAN STELLAR 259

<b>Reg: 20456390</b>		<b>BD: 03/10/22</b>		<b>BW</b>		
		Benfield Substance 8506		96		
Mohnen Substantial 272		Mohnen Glyn Mawr Elba 1758		<b>WW</b>		
		Connealy Final Product		730		
<b>Sitz Stellar 726D</b>		Sitz Pride 308Y		<b>205 WT</b>		
SITZ Pride 200B		TC Aberdeen 759		657		
R5 Monument 087		KMD Lass 54		<b>WR</b>		
		Mc Cumber Equator 6122		97		
<b>Bowman Blackbird Mary 750</b>		M A Blackbird Mary 0889		<b>Dam WR</b>		
M A Blackbird Mary 5089				4@94		
<b>CED</b>	<b>BW</b>	<b>WW</b>	<b>YW</b>	<b>SC</b>	<b>DOC</b>	<b>MILK</b>
1	1.4	46	82	.35	16	26
<b>Marb</b>	<b>RE</b>	<b>Claw</b>	<b>Angle</b>	<b>\$M</b>	<b>\$W</b>	<b>\$B</b>
.60	.48	.46	.53	56	48	123

Lot 10 is a smooth made, pretty complete Stellar son.

## 11 BOWMAN STELLAR 240

<b>Reg: 20456402</b>		<b>BD: 03/07/22</b>		<b>BW</b>		
		Benfield Substance 8506		89		
Mohnen Substantial 272		Mohnen Glyn Mawr Elba 1758		<b>WW</b>		
		Connealy Final Product		658		
<b>Sitz Stellar 726D</b>		Sitz Pride 308Y		<b>205 WT</b>		
SITZ Pride 200B		Basin Payweight 006S		627		
Basin Payweight 1682		21AR O Lass 7017		<b>WR</b>		
		SSAF General Sully 167		93		
<b>Bowman Ruth 928</b>		WC Predestined 2255 960		<b>Dam WR</b>		
Bowman Ruth 525				2@98		
<b>CED</b>	<b>BW</b>	<b>WW</b>	<b>YW</b>	<b>SC</b>	<b>DOC</b>	<b>MILK</b>
-4	3.0	69	115	1.15	18	19
<b>Marb</b>	<b>RE</b>	<b>Claw</b>	<b>Angle</b>	<b>\$M</b>	<b>\$W</b>	<b>\$B</b>
.54	.40	.32	.41	65	57	132

Lot 11 is a Stellar son out of a Payweight 1682 daughter. This cross has worked well for us.

## 12 BOWMAN CAPITALIST 228

<b>Reg: 20456377</b>		<b>BD: 03/03/22</b>		<b>BW</b>		
		S A V Final Answer 0035		84		
Connealy Capitalist 028		Prides Pita of Conanga 8821		<b>WW</b>		
		C A Future Direction 5321		794		
<b>LD Capitalist 316</b>		LD Dixie Erica Oar 0853		<b>205 WT</b>		
LD Dixie Erica 2053		Deer Valley Patriot 3222		786		
Connealy National 390C		Ellza of Conanga 390C		<b>WR</b>		
		Mill Bar Hickok 7242		110		
<b>Blackbird 068 BCBR</b>		Blackbird 5104 BCBR		<b>Dam WR</b>		
Blackbird 8269 BCBR				1@110		
<b>CED</b>	<b>BW</b>	<b>WW</b>	<b>YW</b>	<b>SC</b>	<b>DOC</b>	<b>MILK</b>
12	.3	66	115	.36	18	33
<b>Marb</b>	<b>RE</b>	<b>Claw</b>	<b>Angle</b>	<b>\$M</b>	<b>\$W</b>	<b>\$B</b>
.56	.99	.52	.51	66	74	152



**LOT 12**

Lot 12 is Dillon's bull. He is thick topped, wide based, and full of muscle, yet will work on heifers. He is very complete and attractive and has about everything you could want...except a full set of ears.

## 13 BOWMAN CAPITALIST 201

<b>Reg: 20456370</b>		<b>BD: 02/24/22</b>		<b>BW</b>		
		S A V Final Answer 0035		78		
Connealy Capitalist 028		Prides Pita of Conanga 8821		<b>WW</b>		
LD Capitalist 316		C A Future Direction 5321		824		
LD Dixie Erica 2053		LD Dixie Erica Oar 0853		<b>205 WT</b>		
		Mohnen Substantial 272		816		
Sitz Stellar 726D		SITZ Pride 200B		<b>WR</b>		
Bowman BlackBess 004		MAR 4097 Aberdeen 2194		114		
Cedarflo 2194 BlackBess 1178		Cedarflo 7301 Black Bess 51		<b>Dam WR</b>		
				1@114		
<b>CED</b>	<b>BW</b>	<b>WW</b>	<b>YW</b>	<b>SC</b>	<b>DOC</b>	<b>MILK</b>
6	2.8	75	133	0.57	1	26
<b>Marb</b>	<b>RE</b>	<b>Claw</b>	<b>Angle</b>	<b>\$M</b>	<b>\$W</b>	<b>\$B</b>
.57	.66	.42	.48	47	65	153

Lot 13 is a stout made, big boned, larger framed, high performance Capitalist son. This bull is very attractive and likes to be noticed. He stood out all summer long. Herd bull potential.

## 14 BOWMAN CAPITALIST 235

<b>Reg: 20457846</b>		<b>BD: 03/05/22</b>		<b>BW</b>		
		S A V Final Answer 0035		82		
Connealy Capitalist 028		Prides Pita of Conanga 8821		<b>WW</b>		
LD Capitalist 316		C A Future Direction 5321		784		
LD Dixie Erica 2053		LD Dixie Erica Oar 0853		<b>205 WT</b>		
		Thomas Up River 1614		742		
Bowman Up River 725		Missie 3408 BCBR		<b>WR</b>		
Bowman Missie 992		C C A Uno 049		110		
Bowman Missie 519		Bowman Missie 131		<b>Dam WR</b>		
				2@99		
<b>CED</b>	<b>BW</b>	<b>WW</b>	<b>YW</b>	<b>SC</b>	<b>DOC</b>	<b>MILK</b>
7	1.0	59	99	1.2	19	35
<b>Marb</b>	<b>RE</b>	<b>Claw</b>	<b>Angle</b>	<b>\$M</b>	<b>\$W</b>	<b>\$B</b>
.75	.65	.33	.55	84	73	138

Lot 14 is full of natural thickness with ample capacity. He is hard to fault and comes from a great cow family.

## 15 BOWMAN CAPITALIST 274

<b>Reg: 20456400</b>		<b>BD: 03/12/22</b>		<b>BW</b>		
		S A V Final Answer 0035		88		
Connealy Capitalist 028		Prides Pita of Conanga 8821		<b>WW</b>		
LD Capitalist 316		C A Future Direction 5321		824		
LD Dixie Erica 2053		LD Dixie Erica Oar 0853		<b>205 WT</b>		
		Baldrige Kaboom K243 KCF		817		
Connealy Thunder		Parka of Conanga 241		<b>WR</b>		
Bowman Missie 909		Thomas Up River 1614		121		
Bowman Missie 714		Bowman Missie 314		<b>Dam WR</b>		
				2@109		
<b>CED</b>	<b>BW</b>	<b>WW</b>	<b>YW</b>	<b>SC</b>	<b>DOC</b>	<b>MILK</b>
3	1.2	78	137	1.04	25	27
<b>Marb</b>	<b>RE</b>	<b>Claw</b>	<b>Angle</b>	<b>\$M</b>	<b>\$W</b>	<b>\$B</b>
.57	.65	.45	.45	68	76	151



**LOT 15**

Lot 15 is a larger framed performance bull. His HD50K test places him in the top 9% of the breed for 4 traits including WW, YW and docility.



**LOT 16**

Lot 16 carries a lot of natural thickness in a moderate framed package. He stands on excellent feet with numbers in the top 1% claw and 10% angle. He comes from an excellent cow family and should work on heifers.

## 16 BOWMAN CAPITALIST 241

<b>Reg: 20456387</b>		<b>BD: 03/07/22</b>		<b>BW</b>		
		S A V Final Answer 0035		80		
Connealy Capitalist 028		Prides Pita of Conanga 8821		<b>WW</b>		
LD Capitalist 316		C A Future Direction 5321		702		
LD Dixie Erica 2053		LD Dixie Erica Oar 0853		<b>205 WT</b>		
		Baldrige Kaboom K243 KCF		661		
Connealy Thunder		Parka of Conanga 241		<b>WR</b>		
Bowman Missie 710		C C A Uno 049		98		
Bowman Missie 537		Bowman Missie 132		<b>Dam WR</b>		
				4@100		
<b>CED</b>	<b>BW</b>	<b>WW</b>	<b>YW</b>	<b>SC</b>	<b>DOC</b>	<b>MILK</b>
6	1.4	68	110	.67	23	27
<b>Marb</b>	<b>RE</b>	<b>Claw</b>	<b>Angle</b>	<b>\$M</b>	<b>\$W</b>	<b>\$B</b>
.61	.37	.28	.38	96	76	125

# 17 BOWMAN CAPITALIST 222

<b>Reg: 20456373</b>	<b>BD: 03/01/2022</b>	<b>BW</b>				
S A V Final Answer 0035		85				
Connealy Capitalist 028	Prides Pita of Conanga 8821	<b>WW</b>				
		724				
<b>LD Capitalist 316</b>	C A Future Direction 5321	<b>205 WT</b>				
LD Dixie Erica 2053	LD Dixie Erica Oar 0853	713				
	HA Outside 3008	<b>WR</b>				
HA Cowboy Up 5405	HA Blackcap Lady 1602	100				
<b>Bowman Eve 039</b>	EXAR Upshot 0562B	<b>Dam WR</b>				
Bowman Eve 425	Bowman Eve 101	<b>1@100</b>				
<b>CED</b>	<b>BW</b>	<b>WW</b>	<b>YW</b>	<b>SC</b>	<b>DOC</b>	<b>MILK</b>
10	.6	64	116	.75	15	34
<b>Marb</b>	<b>RE</b>	<b>Claw</b>	<b>Angle</b>	<b>\$M</b>	<b>\$W</b>	<b>\$B</b>
.48	.71	.53	.47	35	65	146



Lot 17 is a smooth shouldered calving ease bull that will work on heifers.



Lot 18 is a balanced and complete Capitalist son. He has a good set of numbers with HD50K ranking him in the top 10% of the breed in WW, SC, Doc, Claw, and Angle. He has good feet and is docile as can be.

# 18 BOWMAN CAPITALIST 205

<b>Reg: 20456372</b>	<b>BD: 02/26/22</b>	<b>BW</b>				
S A V Final Answer 0035		82				
Connealy Capitalist 028	Prides Pita of Conanga 8821	<b>WW</b>				
		706				
<b>LD Capitalist 316</b>	C A Future Direction 5321	<b>205 WT</b>				
LD Dixie Erica 2053	LD Dixie Erica Oar 0853	686				
	PA Power Tool 9108	<b>WR</b>				
Raven Powerball 53	Raven Emma E 4241	96				
<b>Bowman Missie 030</b>	C C A Uno 049	<b>Dam WR</b>				
Bowman Missie 532	Bowman Missie 138	<b>1@96</b>				
<b>CED</b>	<b>BW</b>	<b>WW</b>	<b>YW</b>	<b>SC</b>	<b>DOC</b>	<b>MILK</b>
4	2.4	73	125	1.74	24	25
<b>Marb</b>	<b>RE</b>	<b>Claw</b>	<b>Angle</b>	<b>\$M</b>	<b>\$W</b>	<b>\$B</b>
.30	.54	.34	.39	68	67	131



Lot 19 is a deep bodied, long fronted, attractive Payweight son. His mother is a really good cow with a BW ratio of 7@96. He should work on heifers. You will find this guy in the pen.

# 19 BOWMAN PAYWEIGHT 291

<b>Reg: 20456383</b>	<b>BD: 03/15/22</b>	<b>BW</b>				
Vermilion Payweight J847		84				
Basin Payweight 0065	Basin Lucy 3829	<b>WW</b>				
		750				
<b>Basin Payweight 1682</b>	HARB Pendleton 765 J H	<b>205 WT</b>				
21AR O Lass 7017	21AR O Lass F24A	693				
	Sitz Upward 307R	<b>WR</b>				
C C A Uno 049	Mytty Countess 906	102				
<b>Bowman Barbie 418</b>	B/R New Frontier 095	<b>Dam WR</b>				
Sodak Barbie R029	Sodak Barbie M098	<b>7@101</b>				
<b>CED</b>	<b>BW</b>	<b>WW</b>	<b>YW</b>	<b>SC</b>	<b>DOC</b>	<b>MILK</b>
7	-.3	51	90	.99	16	26
<b>Marb</b>	<b>RE</b>	<b>Claw</b>	<b>Angle</b>	<b>\$M</b>	<b>\$W</b>	<b>\$B</b>
.74	.36	.58	.52	53	55	132

## 20 BOWMAN PAYWEIGHT 280

<b>Reg: 20456384</b>		<b>BD: 03/13/22</b>		<b>BW</b>		
Basin Payweight 006S		Vermilion Payweight J847		96		
Basin Payweight 1682		Basin Lucy 3829		<b>WW</b>		
21AR O Lass 7017		HARB Pendleton 765 J H		768		
C C A Uno 049		21AR O Lass F24A		<b>205 WT</b>		
Bowman Flower 562		Sitz Upward 307R		705		
TC Flower 8121		Mytty Countess 906		<b>WR</b>		
TC Flower 6027		TC Dividend 503		104		
				<b>Dam WR</b>		
				6@99		
<b>CED</b>	<b>BW</b>	<b>WW</b>	<b>YW</b>	<b>SC</b>	<b>DOC</b>	<b>MILK</b>
1	2.2	62	109	.87	16	27
<b>Marb</b>	<b>RE</b>	<b>Claw</b>	<b>Angle</b>	<b>\$M</b>	<b>\$W</b>	<b>\$B</b>
.58	.23	.44	.43	77	63	120

Lot 20 is a well built, deep ribbed 1682 son with a good hind quarter. He has more length of body than a typical Payweight son.

## 21 BOWMAN PATRIARCH 209

<b>Reg: 20456369</b>		<b>BD: 02/26/22</b>		<b>BW</b>		
S S Niagara Z29		Hoover Dam		56		
Tehama Patriarch F028		Jet S S X144		<b>WW</b>		
Tehama Elite Blackbird D826		Connealy Thunder		700		
Sitz Stellar 726D		Tehama Elite Blackbird Z630		<b>205 WT</b>		
Bowman Eve 003		Mohnen Substantial 272		711		
Bowman Eve 811		SITZ Pride 200B		<b>WR</b>		
Bowman Eve 610		Mohnen Impressive 1093		100		
				<b>Dam WR</b>		
				1@100		
<b>CED</b>	<b>BW</b>	<b>WW</b>	<b>YW</b>	<b>SC</b>	<b>DOC</b>	<b>MILK</b>
16	-2.1	54	97	1.74	23	28
<b>Marb</b>	<b>RE</b>	<b>Claw</b>	<b>Angle</b>	<b>\$M</b>	<b>\$W</b>	<b>\$B</b>
.56	.47	.44	.56	71	61	112

Lot 21 is a stretchy, sleep all night heifer bull. HD50K ranks him in top 4% CED, 9% BW, and 10% CEM.

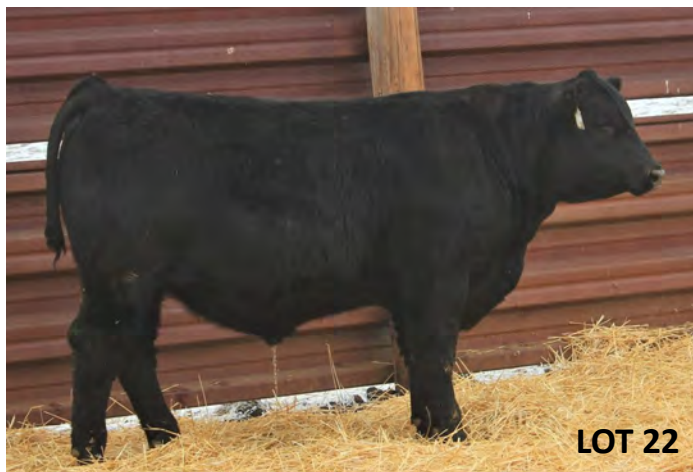
## 22 BOWMAN SUBSTANTIAL 270

<b>Reg: 20456382</b>		<b>BD: 03/11/22</b>		<b>BW</b>		
Benfield Substance 8506		H A Image Maker 0415		74		
Mohnen Substantial 272		Benfield Edella 1105		<b>WW</b>		
Mohnen Glyn Mawr Elba 1758		LT Territory 5824 of EA		758		
Kesslers Frontman R001		Mohnen Glyn Mawr Elba 1345		<b>205 WT</b>		
Bowman Blackbird 318		Connealy Front Page 0228		704		
Bowman Blackbird 104		Kesslers Bell 0024		<b>WR</b>		
Bowman Blackbird 822		Mytty In Focus		104		
				<b>Dam WR</b>		
				8@104		
<b>CED</b>	<b>BW</b>	<b>WW</b>	<b>YW</b>	<b>SC</b>	<b>DOC</b>	<b>MILK</b>
16	-2.5	60	98	1.46	9	26
<b>Marb</b>	<b>RE</b>	<b>Claw</b>	<b>Angle</b>	<b>\$M</b>	<b>\$W</b>	<b>\$B</b>
.38	.65	.42	.40	63	66	102

Lot 22 is a docile, can't miss heifer bull with some muscle and performance. His EPD's for CED and BW rank in the top 2% of the breed.



LOT 21



LOT 22

## 23 BOWMAN SUBSTANTIAL 225

<b>Reg: 20456374</b>		<b>BD: 03/03/22</b>		<b>BW</b>		
Benfield Substance 8506		H A Image Maker 0415		70		
Mohnen Substantial 272		Benfield Edella 1105		<b>WW</b>		
Mohnen Glyn Mawr Elba 1758		LT Territory 5824 of EA		638		
HAYNES Outright 452		Mohnen Glyn Mawr Elba 1345		<b>205 WT</b>		
Bowman Blackbird Mary 053		K C F Bennett Absolute		643		
Bowman Blackbird Mary 312		HAYNES ND 454 Miss 179		<b>WR</b>		
M A Blackbird Mary 5089		C C A Uno 049		90		
				<b>Dam WR</b>		
				1@90		
<b>CED</b>	<b>BW</b>	<b>WW</b>	<b>YW</b>	<b>SC</b>	<b>DOC</b>	<b>MILK</b>
7	-.9	59	102	1.02	32	20
<b>Marb</b>	<b>RE</b>	<b>Claw</b>	<b>Angle</b>	<b>\$M</b>	<b>\$W</b>	<b>\$B</b>
.04	.51	.49	.48	82	59	85

Lot 23 is a heifer bull with excellent docility.

## 24 BOWMAN SUBSTANTIAL 243

<b>Reg: 20456389</b>		<b>BD: 03/07/22</b>		<b>BW</b>		
H A Image Maker 0415				84		
<b>Benfield Substance 8506</b>		Benfield Edella 1105		<b>WW</b>		
Mohnen Substantial 272		LT Territory 5824 of EA		836		
Mohnen Glyn Mawr Elba 1758		Mohnen Glyn Mawr Elba 1345		<b>205 WT</b>		
KM Broken Bow 002		Summitcrest Complete 1P55		747		
Bowman Blackbird Mary 730		Summitcrest Princess 0P12		<b>WR</b>		
Bowman Blackbird Mary 591		SSAF General Sully 167		110		
		Bowman Blackbird Mary 226		<b>Dam WR</b>		
				3@110		
<b>CED</b>	<b>BW</b>	<b>WW</b>	<b>YW</b>	<b>SC</b>	<b>DOC</b>	<b>MILK</b>
1	.9	71	118	.49	16	24
<b>Marb</b>	<b>RE</b>	<b>Claw</b>	<b>Angle</b>	<b>\$M</b>	<b>\$W</b>	<b>\$B</b>
.57	.62	.59	.55	69	71	120



Lot 24 is a powerhouse bull that weaned off at 836 lbs. He is thick, thick, thick.

## 25 BOWMAN DRY VALLEY 248

<b>Reg: 20456394</b>		<b>BD: 03/08/22</b>		<b>BW</b>		
Mogck Bullseye				87		
Hoover No Doubt		Miss Blackcap Ellston J2		<b>WW</b>		
<b>Connealy Dry Valley</b>		Summitcrest Complete 1P55		744		
Becca of Conanga 1617		Brisha of Conanga 746 1237		<b>205 WT</b>		
Mohnen Impressive 1093		Basin Excitement		721		
Bowman Eve 811		Mohnen Jilt 787		<b>WR</b>		
Bowman Eve 610		C C A Uno 049		106		
		Bowman Eve 305		<b>Dam WR</b>		
				3@100		
<b>CED</b>	<b>BW</b>	<b>WW</b>	<b>YW</b>	<b>SC</b>	<b>DOC</b>	<b>MILK</b>
8	1.8	60	106	1.26	19	23
<b>Marb</b>	<b>RE</b>	<b>Claw</b>	<b>Angle</b>	<b>\$M</b>	<b>\$W</b>	<b>\$B</b>
.76	.24	.55	.38	82	58	131

Lot 25 is our biggest framed Dry Valley son out of a really nice Impressive 1093 daughter.

## 26 BOWMAN DRY VALLEY 210

<b>Reg: 20456399</b>		<b>BD: 02/26/22</b>		<b>BW</b>		
Mogck Bullseye				96		
Hoover No Doubt		Miss Blackcap Ellston J2		<b>WW</b>		
<b>Connealy Dry Valley</b>		Summitcrest Complete 1P55		776		
Becca of Conanga 1617		Brisha of Conanga 746 1237		<b>205 WT</b>		
Bowman Barbie 859		HA Outside 3008		707		
Bowman Barbie 535		HA Cowboy Up 5405		<b>WR</b>		
		HA Blackcap Lady 1602		104		
		C C A Uno 049		<b>Dam WR</b>		
		Sodak Barbie R029		3@97		
<b>CED</b>	<b>BW</b>	<b>WW</b>	<b>YW</b>	<b>SC</b>	<b>DOC</b>	<b>MILK</b>
2	4.1	70	116	1.05	5	25
<b>Marb</b>	<b>RE</b>	<b>Claw</b>	<b>Angle</b>	<b>\$M</b>	<b>\$W</b>	<b>\$B</b>
.47	.39	.42	.32	74	63	132

Lot 26 is a deep ribbed, big boned Dry Valley son. His mother is one of our best Cowboy Up daughters with a BW ratio of 3@98.

## 27 BOWMAN DRY VALLEY 2102

<b>Reg: 20456398</b>		<b>BD: 03/20/22</b>		<b>BW</b>		
Mogck Bullseye				88		
Hoover No Doubt		Miss Blackcap Ellston J2		<b>WW</b>		
<b>Connealy Dry Valley</b>		Summitcrest Complete 1P55		680		
Becca of Conanga 1617		Brisha of Conanga 746 1237		<b>205 WT</b>		
Coleman Charlo 0256		O C C Paxton 730P		689		
Bowman Marcia 852		Bohi Abigale 6014		<b>WR</b>		
Bowman Marcia 359		C C A Uno 049		102		
		TC Marcia 5161		<b>Dam WR</b>		
				3@99		
<b>CED</b>	<b>BW</b>	<b>WW</b>	<b>YW</b>	<b>SC</b>	<b>DOC</b>	<b>MILK</b>
7	2.3	59	99	1.64	12	24
<b>Marb</b>	<b>RE</b>	<b>Claw</b>	<b>Angle</b>	<b>\$M</b>	<b>\$W</b>	<b>\$B</b>
.78	.57	.47	.53	84	59	134



Lot 27 is a square made female maker out of a really nice Charlo daughter. We are looking forward to calving our first Dry Valley daughters this spring.

## 28 BOWMAN DRY VALLEY 275

Reg: 20456403		BD: 03/12/22		BW		
Hoover No Doubt		Mogck Bullseye		82		
Connealy Dry Valley		Miss Blackcap Ellston J2		WW		
Becca of Conanga 1617		Summitcrest Complete 1P55		722		
MAR 4097 Aberdeen 2194		Brisha of Conanga 746 1237		205 WT		
Cedarflo 2194 BlackBess 1178		V D A R Really Windy 4097		668		
Cedarflo 7301 Black Bess 51		MAR Aberdeen Image 914		WR		
Cedarflo Black Bess 204		S A V Pioneer 7301		99		
		Dam WR		3@98		
CED	BW	WW	YW	SC	DOC	MILK
2	.5	61	107	.52	11	27
Marb	RE	Claw	Angle	\$M	\$W	\$B
.56	.48	.46	.40	81	67	142



Lot 28 is a long bodied, clean fronted, and athletic moving Dry Valley.

## 29 BOWMAN DRY VALLEY 282

Reg: 20456381		BD: 03/13/22		BW		
Hoover No Doubt		Mogck Bullseye		86		
Connealy Dry Valley		Miss Blackcap Ellston J2		WW		
Becca of Conanga 1617		Summitcrest Complete 1P55		662		
S Chisum 813		Brisha of Conanga 746 1237		205 WT		
Bowman Royalty 229		S Chisum 6175		622		
Evenson Queen 8315		S Black Satin 6209		WR		
		F V 20K King 308M		92		
		Evenson Queen 030		Dam WR		
				9@99		
CED	BW	WW	YW	SC	DOC	MILK
6	.1	45	80	.80	8	24
Marb	RE	Claw	Angle	\$M	\$W	\$B
.58	.18	.49	.52	64	49	109

Lot 29 is moderate framed with tons of body. His dam is coming 11 years old and is still doing a real nice job. This bull should make good daughters.

## 30 BOWMAN REMEDY 278

Reg: 20456395		BD: 03/13/22		BW		
Connealy Thunder		Baldrige Kaboom K243 KCF		90		
CTS Remedy 1T01		Parka of Conanga 241		WW		
CTS 7V03 Bellemere Maid 9T02		LT 598 Bando 9074		780		
Mohnen Impressive 1093		SVA Rita 7V03 of 1407 502		205 WT		
Bowman Marcia 812		Basin Excitement		750		
Bowman Marcia 643		Mohnen Jilt 787		WR		
		KM Broken Bow 002		111		
		Bowman Marcia 210		Dam WR		
				3@111		
CED	BW	WW	YW	SC	DOC	MILK
-3	1.7	64	119	.3	13	25
Marb	RE	Claw	Angle	\$M	\$W	\$B
.44	.70	.41	.41	36	54	146

Lot 30 is a bigger framed, long spined Remedy son. His mother is a really nice cow.

## 31 BOWMAN REMEDY 286

Reg: 20456380		BD: 03/14/22		BW		
Connealy Thunder		Baldrige Kaboom K243 KCF		98		
CTS Remedy 1T01		Parka of Conanga 241		WW		
CTS 7V03 Bellemere Maid 9T02		LT 598 Bando 9074		832		
Brooks Retail Product 8915		SVA Rita 7V03 of 1407 502		205 WT		
Bowman Missie 132		G A R Retail Product		788		
Bowman Missie 705		Blackbird 1172 BCBR		WR		
		H A Image Maker 0415		116		
		M A Missie 5172		Dam WR		
				10@100		
CED	BW	WW	YW	SC	DOC	MILK
-6	3.3	70	134	.96	17	31
Marb	RE	Claw	Angle	\$M	\$W	\$B
.30	.66	.38	.43	45	58	152

Lot 31 might be the biggest framed bull in the offering. He has extra length of body and will sire pounds and performance. He ranks in the top 10% of the breed in 7 EPD's. His dam is a great old cow with a BW ratio of 10@93 while maintaining a 364 day calving interval on 10 calves.



### 32 BOWMAN REMEDY 260

<b>Reg: 20456385</b>		<b>BD: 03/10/22</b>		<b>BW</b>		
Connealy Thunder		Baldridge Kaboom K243 KCF		86		
CTS Remy 1T01		Parka of Conanga 241		<b>WW</b>		
CTS 7V03 Bellemere Maid 9T02		L T 598 Bando 9074		722		
C C A Uno 049		SVA Rita 7V03 of 1407 502		<b>205 WT</b>		
Bowman Muriel 565		Sitz Upward 307R		654		
Bowman Muriel 032		Mytty Countess 906		<b>WR</b>		
		Degrand 6985 Meat Packer		97		
		KEM 2254 BCBR		<b>Dam WR</b>		
				6@95		
<b>CED</b>	<b>BW</b>	<b>WW</b>	<b>YW</b>	<b>SC</b>	<b>DOC</b>	<b>MILK</b>
10	.5	41	82	.66	24	27
<b>Marb</b>	<b>RE</b>	<b>Claw</b>	<b>Angle</b>	<b>\$M</b>	<b>\$W</b>	<b>\$B</b>
.80	.19	.48	.40	53	40	120



Lot 32 is a moderate framed, correct made Remedy that should work on heifers. HD50K test ranks him in the top 10% for CED. Dam has BW ratio of 6@98.



Lot 33 is a soft made bull that should work on heifers. His dam raises a good one every year.

### 33 BOWMAN RESOURCE 2129

<b>Reg: 20456392</b>		<b>BD: 04/08/22</b>		<b>BW</b>		
Shipwheel Resource 5621		S A V Resource 1441		82		
Shipwheel Resource 8531		Apex Eriskay 5506		<b>WW</b>		
Shipwheel Eola 533		Shipwheel Montana 2600		726		
Connealy Consensus 7229		Shipwheel Eola 396		<b>205 WT</b>		
Bowman Marcia 777		Connealy Consensus		766		
Bowman Marcia 359		Blue Lilly of Conanga 16		<b>WR</b>		
		C C A Uno 049		113		
		TC Marcia 5161		<b>Dam WR</b>		
				4@109		
<b>CED</b>	<b>BW</b>	<b>WW</b>	<b>YW</b>	<b>SC</b>	<b>DOC</b>	<b>MILK</b>
11	.4	61	120	.23	25	27
<b>Marb</b>	<b>RE</b>	<b>Claw</b>	<b>Angle</b>	<b>\$M</b>	<b>\$W</b>	<b>\$B</b>
.48	.75	.57	.50	55	58	147



### 34 BOWMAN RESOURCE 2114

<b>Reg: 20456391</b>		<b>BD: 03/29/22</b>		<b>BW</b>		
Shipwheel Resource 5621		S A V Resource 1441		84		
Shipwheel Resource 8531		Apex Eriskay 5506		<b>WW</b>		
Shipwheel Eola 533		Shipwheel Montana 2600		750		
Basin Payweight 1682		Shipwheel Eola 396		<b>205 WT</b>		
Bowman Flower 765		Basin Payweight 006S		714		
Bowman Flower 410		21AR O Lass 7017		<b>WR</b>		
		EXAR Upshot 0562B		105		
		Bowman Flower 017		<b>Dam WR</b>		
				4@98		
<b>CED</b>	<b>BW</b>	<b>WW</b>	<b>YW</b>	<b>SC</b>	<b>DOC</b>	<b>MILK</b>
9	.2	71	128	1.52	28	22
<b>Marb</b>	<b>RE</b>	<b>Claw</b>	<b>Angle</b>	<b>\$M</b>	<b>\$W</b>	<b>\$B</b>
.65	.47	.56	.52	74	68	138

Lot 34 is a really attractive, easy fleshing heifer bull that is very docile. His Payweight dam has a BW ratio of 4@92.

### 35 BOWMAN TRAPPER 2104

<b>Reg: 20457860</b>		<b>BD: 03/21/22</b>		<b>BW</b>		
Paintrock Mountain Man		Paintrock Mountain Man		66		
Paintrock Trapper		Emulous of Paintrock 93-9		<b>WW</b>		
Bar 9 Paintrock Chinook 972L		CAR Chinook 786		762		
BAR 9 Windy Chinook 72L1		Bar 9 Efficient Windy 2L10		<b>205 WT</b>		
HAYNES Outright 452		K C F Bennett Absolute		805		
Bowman Pride 008		HAYNES ND 454 Miss 179		<b>WR</b>		
Bowman Pride 639		R5 Monument 087		113		
Bowman Pride 326		Bowman Pride 326		<b>Dam WR</b>		
				1@113		
<b>CED</b>	<b>BW</b>	<b>WW</b>	<b>YW</b>	<b>SC</b>	<b>DOC</b>	<b>MILK</b>
10	-1.6	63	112	.99	39	29
<b>Marb</b>	<b>RE</b>	<b>Claw</b>	<b>Angle</b>	<b>\$M</b>	<b>\$W</b>	<b>\$B</b>
.37	.52	.56	.58	50	66	129



**LOT 35**

Lot 35 is a stout made heifer bull. His docility EPD and HD50K test rank him in the top 1% of the breed. He is one you will find.



**LOT 36**

Lot 36 is Grayson's bull out of a beautiful Stunner daughter he bought from Brooks Chalky Butte Ranch. He is as balanced and nice to look at as any bull in the offering. This guy does about everything right.

### 36 BOWMAN TRAPPER 2103

<b>Reg: 20457861</b>		<b>BD: 03/20/22</b>		<b>BW</b>		
Paintrock Mountain Man		Paintrock Mountain Man		87		
Paintrock Trapper		Emulous of Paintrock 93-9		<b>WW</b>		
Bar 9 Paintrock Chinook 972L		CAR Chinook 786		740		
BAR 9 Windy Chinook 72L1		Bar 9 Efficient Windy 2L10		<b>205 WT</b>		
Musgrave 316 Stunner		LD Capitalist 316		771		
Blackbird 050 BCBR		MCATL Blackbird 831-1378		<b>WR</b>		
Blackbird 8322 BCBR		Mill Bar Hickok 7242		108		
Blackbird 210 BCBR		Blackbird 210 BCBR		<b>Dam WR</b>		
				1@108		
<b>CED</b>	<b>BW</b>	<b>WW</b>	<b>YW</b>	<b>SC</b>	<b>DOC</b>	<b>MILK</b>
5	2.1	69	114	1.39	11	21
<b>Marb</b>	<b>RE</b>	<b>Claw</b>	<b>Angle</b>	<b>\$M</b>	<b>\$W</b>	<b>\$B</b>
66	56	.52	.48	60	61	140

### 37 BOWMAN TRAPPER 2105

<b>Reg: 20457862</b>		<b>BD: 03/24/22</b>		<b>BW</b>		
Paintrock Mountain Man		Paintrock Mountain Man		81		
Paintrock Trapper		Emulous of Paintrock 93-9		<b>WW</b>		
Bar 9 Paintrock Chinook 972L		CAR Chinook 786		720		
BAR 9 Windy Chinook 72L1		Bar 9 Efficient Windy 2L10		<b>205 WT</b>		
Basin Payweight 1682		Basin Payweight 006S		805		
Bowman Erica 079		21AR O Lass 7017		<b>WR</b>		
Bowman Erica 464		SF Bex 0370		113		
Bowman Erica 011		Bowman Erica 011		<b>Dam WR</b>		
				1@113		
<b>CED</b>	<b>BW</b>	<b>WW</b>	<b>YW</b>	<b>SC</b>	<b>DOC</b>	<b>MILK</b>
5	1.4	82	143	1.68	26	36
<b>Marb</b>	<b>RE</b>	<b>Claw</b>	<b>Angle</b>	<b>\$M</b>	<b>\$W</b>	<b>\$B</b>
.74	.42	.50	.54	57	84	159

Lot 37 is a really nice bull with a great set of numbers. He ranks in the top 10% of the breed in 8 of them including WW and YW.

### 38 BOWMAN TRAPPER 2109

<b>Reg: 20457863</b>		<b>BD: 03/25/22</b>		<b>BW</b>		
Paintrock Mountain Man		Paintrock Mountain Man		78		
Paintrock Trapper		Emulous of Paintrock 93-9		<b>WW</b>		
Bar 9 Paintrock Chinook 972L		CAR Chinook 786		694		
BAR 9 Windy Chinook 72L1		Bar 9 Efficient Windy 2L10		<b>205 WT</b>		
Shipwheel Recharge 7513		S A V Recharge 3436		729		
Bowman Barbie 0108		DR J Ms Danny Boy M64		<b>WR</b>		
Bowman Barbie 501		C C A Uno 049		102		
Bowman Barbie 302		Bowman Barbie 302		<b>Dam WR</b>		
				1@102		
<b>CED</b>	<b>BW</b>	<b>WW</b>	<b>YW</b>	<b>SC</b>	<b>DOC</b>	<b>MILK</b>
6	1.1	65	117	1.29	27	31
<b>Marb</b>	<b>RE</b>	<b>Claw</b>	<b>Angle</b>	<b>\$M</b>	<b>\$W</b>	<b>\$B</b>
-.08	.52	.42	.38	72	68	104

Lot 38 is another good Trapper grandson with good feet. He should work on heifers.



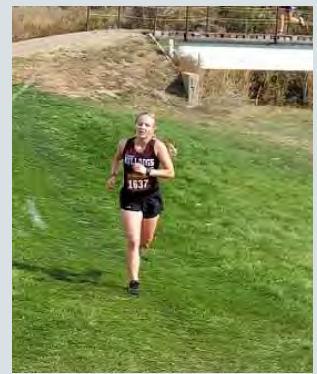
2022 Bowman County Harvest Bowl  
Agriculture Honoree



2022 ND FFA Livestock Evaluation  
Champion Individual & Team  
National FFA Livestock Evaluation Gold  
Individual & Team,  
2022 NILE Champion Team

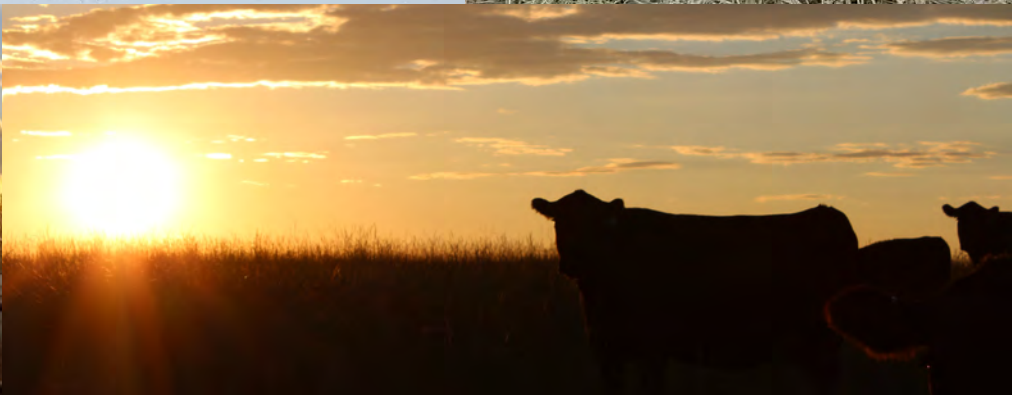


Thank you coaches and volunteers for the time you dedicate to activities in our community.  
A special thank you to Beth Criswell for her countless hours with the livestock judging team!  
Thank you Dakota Western Bank for allowing Beth to coach!



Thank you to our 2022 Bowman County 4-H Sale Buyers  
West Plains Inc                      Pro Point                      Frontier Travel Center





# WHY WE TEST WITH HD50K™ FROM ZOETIS



Powered by HD50K™ from Zoetis, our cattle sell with genomic-enhanced expected progeny differences (GE-EPDs).

With GE-EPDs, we're confident that customers like you can minimize risk in their investment — and enhance the productivity of your cattle.

The benefits of buying HD50K-tested bulls and heifers goes beyond added accuracy for the complete range of traits for more productive daughters and progeny. You'll know early on what that animal is likely to transmit to its offspring and potential for performance in the feedlot and on the rail. You can also match the HD50K tested sires you buy from us to replacement heifers — through GeneMax™ Advantage™ — to make better-informed breeding and management decisions down the road.

Knowing an animal's potential. Continuous progress of your herd. That's why we test with HD50K.

For more information: Contact your Zoetis representative  
 Call Zoetis customer service at 877-233-3362  
 Email Zoetis at [geneticservice@zoetis.com](mailto:geneticservice@zoetis.com)  
<https://www.zoetis.com/animal-genetics/beef/index.aspx>

All trademarks are the property of Zoetis Services LLC or a related company or a licensor unless otherwise noted. GeneMax is a registered trademark of Angus Genetics, Inc. ©2019 Zoetis Services LLC. All rights reserved. 50K-00020

Number of progeny records in conventional genetic evaluation needed to achieve the same accuracy as GE-EPDs powered by HD50K

Trait	Progeny Equivalents
Heifer Pregnancy (HP)	17
Calving Ease Direct (CED)	26
Birth Weight (BW)	23
Milk	36
Docility (Doc)	12
Claw Set (Claw)	10
Foot Angle (Foot)	10
Scrotal Circumference (SC)	15
Weaning Weight (WW)	27
Yearling Weight (YW)	23
Dry Matter Intake (DMI)	12
Yearling Height (YH)	17
Mature Weight (MW)	15
Carcass Weight (CW)	15
Marbling (Marb)	11
Ribeye Area (RE)	17
Fat Thickness (Fat)	14

*Stop by anytime to look at bulls or females!*



**Bid Online!**  
 If you are unable to attend the sale, you can register to watch or bid online through The Livestock Link by following these instructions:

**The Livestock Link™**  
 Livestock Videoing • Video Sales  
 • Bid-by-Click Online Sales  
 For view events go to  
[www.TheLivestockLink.com](http://www.TheLivestockLink.com)

*See You Sale Day!*

- Visit our website, [www.thelivestocklink.com](http://www.thelivestocklink.com)
- Click the "Auctions" tab
- Click on "Click Here to Register"
- Enter your e-mail address and password, and fill out all your contact information
- Fill out your Banking Information. If you are only viewing the sale and do not wish to bid, this information can be left blank.
- Check the checkbox at the bottom of the page that says "I'm not a robot" to prove you are a real person
- Click "Register" at the bottom of the page
- You will receive an email with a link to activate your account.
- **Please register to bid at least 24 hours in advance of the sale.**
- Contact Aaron Friedl at (701) 590-9597 for help or with any questions.

You will receive an email when you are approved for bidding. All applications will be reviewed and processed promptly. You will receive a bidder number only after you have made a purchase in the sale, and that number will only be used at that sale. When the sale is completed, please contact the sale owner or manager for instructions of payment and delivery of your purchase.

To use our service, you must have access to High Speed Internet.

**Questions?**

**Contact Aaron Friedl at (701) 590-9597 or Support at (605) 920-9261**

[www.TheLivestockLink.com](http://www.TheLivestockLink.com)



PC Derek Sample, American Beef Producer

Bowman Ranch  
Eric and Andrea  
Dillon, Liv, and Grayson Bowman  
8301 158th Ave SW  
Rhome, ND 58651



**BOWMAN**  
2023 **RANCH**

*Angus Bull Sale*

*February 9th*

[www.bowmanranchnd.com](http://www.bowmanranchnd.com)