



**BOWMAN**  
RANCH



*Annual Production Sale*

**Thursday February 12, 2026**

At the Ranch, Rhame, ND • 1 p.m. MST



#### CONTACT US, ANYTIME!

ERIC BOWMAN.....(701) 440-0278

ANDREA BOWMAN.....(701) 523-6239

DILLON BOWMAN.....(701) 440-9774

E-mail.....bowmanranch5@gmail.com

www.**BowmanRanchND**.com



#### *Cattlemen,*

Bowman Ranch invites you to our 2026 production sale. After several years of selling private treaty, this is our 10th annual production sale. This sale has been in the making for much longer than that. My first trip to Rhame was with Eric in the spring of 2001. It was one of the first true tests of our relationship. What do his cows look like? I remember he had one registered cow, and I asked him why he didn't have more. After we got married and slowly started to build our own herd we combined some of the priorities we both had. Disposition was a non-negotiable for me.

Our herd and family have come a long way in the years since we got married in 2003. We continue to strive to grow a herd we are proud of, will work efficiently and help us best utilize the natural resources we have available in southwest North Dakota. Every year Eric says I think these are the best bulls we've raised to which I reply—that's the point, we are supposed to be striving for better every year.

We recognize we can always be better but are excited about this year's offering. We are grateful for the opportunity to raise our kids in the ranching business and know that we could not do it without the support of each of our customers. To the people who have been to every sale, blizzard or not, heated sale building or not, you have no idea what your support means to us. We don't take it for granted. Each of the kids continues to take on more responsibilities each year and we know we couldn't do it without them and appreciate the sacrifices they have made to support our dreams.

2025 has been another wild year that has tested our patience and at the same time made us look at what can be done when we get moisture and have record market prices. Thanks for choosing to support our program and family.

Join us sale day for homemade lunch beginning at 11:30 am on Thursday, February 12, 2026.

Sincerely,  
The Tired Ranch Mom and crew

*Eric, Andrea, Dillon, Livia and Grayson*



# BOWMAN RANCH

## SALE DAY PHONES:

ERIC BOWMAN.....(701) 440-0278  
ANDREA BOWMAN.....(701) 523-6239  
DILLON BOWMAN.....(701) 440-9774

## AUCTIONEER:

### SCOTT WEISHAAR

Home.....701-872-5299  
Cell .....701-426-6826

**SALE LOCATION:** At the ranch one mile south of Rhame, ND in the shop on the north driveway.

**SALE FORMAT:** We will once again be hosting a video auction bull sale. Scott Weishaar will serve as our auctioneer. We want everyone to be aware that bulls will not go through a sale ring. A video of each bull will be playing on a screen while he is selling. Bidding will also be available online with DVAuction. Sale bulls will be penned nearby our sale facility for easy viewing. Please allow yourself adequate time to inspect the bulls prior to the sale. We will be happy to assist you in any way we can. You are welcome to view the bulls anytime prior to the sale at the ranch.

**DELIVERY:** Bowman Ranch will deliver bulls for free within 300 miles of Rhame beginning April 1, 2026.

Catalog designed by *Strommen Livestock Services* · Solen, ND 701-290-3886

**BREEDING SOUNDNESS:** Each bull will have passed a breeding soundness exam performed by Fallon County Vet Service prior to delivery.

**LIABILITY:** All persons who attend the sale do so at their own risk. Bowman Ranch assumes no liability for accidents or injuries that occur on the sale premises.

**HERD HEALTH:** All bulls were vaccinated with InForce 3 and Vision 7 in the spring of 2025. At preconditioning they received BoviShield One Shot and Vision 7 Somnous. Bovishield Gold 5 and Vision 7 Somnous were boosted at weaning. In the feedlot, bulls were vaccinated with Fusoguard for footrot, wormed with Safeguard, and poured for lice with Clean Up II. All bulls selling are free of any known genetic defects and have tested negative for BVD.

**RETAINED INTEREST:** Bowman Ranch is retaining one-third revenue sharing semen interest in every bull selling. Full possession and full salvage value sells on each bull.

**GENETIC TESTING:** The bulls have once again been DNA tested and parent verified with the Zoetis HD50K test. Genomic enhanced EPDs increase the accuracy of each EPD and we feel it is a worthy investment.

**BULL DEVELOPMENT:** Bulls are developed on a high roughage ration right here on the ranch. The ration consists of chopped grass, alfalfa, and barley hay, corn silage, rolled corn, distillers grain, and a vitamin-mineral supplement. We target around 3 pounds of daily gain to ensure a bull ready to go to work breeding cows.

## FIRST YEAR BREEDING

**GUARANTEE:** Bowman Ranch guarantees that our bulls will be sound and fertile breeders. We will offer a first year breeding season guarantee for injuries. Breeding season is defined as the first 90 days following turn out. If a suitable replacement bull is available, he will be provided. If not, 50% of purchase price minus salvage value will be offered as credit at next year's sale. Please notify us as soon as possible if an injury occurs.

## VIDEOS AND ONLINE BIDDING:

DVAuction will offer online bidding for our sale if you are unable to attend. Videos of the bulls will be available for viewing on their website: [www.dvauction.com](http://www.dvauction.com), or on the livestock link website: [www.thelivestocklink.com](http://www.thelivestocklink.com)

**The Livestock Link**  
[www.TheLivestockLink.com](http://www.TheLivestockLink.com)

# DVAuction

Broadcasting Real-Time Auctions



Can't make the sale? **Bid from home with DV Auction's "real-time" internet bidding service!** Buying online is as easy as 1, 2, 3...

1. Create an account at [www.DVAuction.com](http://www.DVAuction.com) under the "register" tab.
2. Apply for bidding approval by clicking on the "details" tab at least 24 hours prior to the auction - a DV representative will notify you when you are approved
3. Tune in for the sale and make your purchases!

After the sale, contact Eric to arrange transportation and payment. High speed internet is required for successful bidding - be sure to check the lag-time monitor in the top left corner to ensure real-time broadcasts.

**PROXY BIDDING:** If you can't make time to watch the sale, register a proxy bid and DVAuction represent your bid while you're away. Look for the "proxy bid" tab on the auction listing and fill in your maximum bids. They'll handle the rest!

**HAVING TROUBLES?** During the auction, you can type a message to the operator at any time for assistance. DVAuction support can always be reached at (402) 747-5557.

# What our data tells you. . .

**Expected Progeny Difference (EPD)**, is the prediction of how future progeny of each animal are expected to perform relative to the progeny of other animals listed in the database. EPDs are expressed in units of measure for the trait, plus or minus.

## PRODUCTION EPDS

**CALVING EASE DIRECT (CED)**, is expressed as a difference in percentage of unassisted births, with a higher value indicating greater calving ease in first-calf heifers. It predicts the average difference in ease with which a sire's calves will be born when he is bred to first-calf heifers.

**BIRTH WEIGHT EPD (BW)**, expressed in pounds, is a predictor of a sire's ability to transmit birth weight to his progeny compared to that of other sires.

**WEANING WEIGHT EPD (WW)**, expressed in pounds, is a predictor of a sire's ability to transmit weaning growth to his progeny compared to that of other sires.

**YEARLING WEIGHT EPD (YW)**, expressed in pounds, is a predictor of a sire's ability to transmit yearling growth to his progeny compared to that of other sires.

**SCROTAL CIRCUMFERENCE EPD (SC)**, expressed in centimeters, is a predictor of the difference in transmitting ability for scrotal size compared to that of other sires.

## MATERNAL EPDS

**MATERNAL MILK EPD (MILK)**, is a predictor of a sire's genetic merit for milk and mothering ability as expressed in his daughters compared to daughters of other sires. In other words, it is that part of a calf's weaning weight attributed to milk and mothering ability.

## CARCASS EPDS

**MARBLING EPD (MARB)**, expressed as a fraction of the difference in USDA marbling score of a sire's progeny compared to progeny of other sires.

**RIBEYE AREA EPD (REA)**, expressed in square inches, is a predictor of the difference in ribeye area of a sire's progeny compared to progeny of other sires.

## MANAGEMENT EPDS

**DOCILITY (DOC)**, is expressed as a difference in yearling cattle temperament, with a higher value indicating more favorable docility. It predicts the average difference of progeny from a sire in comparison with another sire's calves. In herds where temperament problems are not an issue, this expected difference would not be realized.

**CLAW SET EPD (CLAW)**, is expressed in units of claw-set score, with a lower EPD being more favorable indicating a sire will produce progeny with more ideal claw set. The ideal claw set is toes that are symmetrical, even and appropriately spaced.

**FOOT ANGLE EPD (ANGLE)**, is expressed in units of foot-angle score, with a lower EPD being more favorable indicating a sire will produce progeny with more ideal foot angle. The ideal is a 45-degree angle at the pastern joint with appropriate toe length and heel depth.

## \$VALUE INDEXES

\$Value indexes, an economic selection index allows multiple change in several different traits at once pertaining to a specific breeding objective. The \$Value is an estimate of how future progeny of each sire are expected to perform, on average, compared to progeny of other sires if the sires were randomly mated to cows and if calves were exposed to the same environment. Maternal Weaned

**CALF VALUE (\$M)**, an index, expressed in dollars per head, predicts profitability differences from conception to weaning with the underlying breeding objective assuming that individuals retain their own replacement females within herd and sell the rest of the cull female and all male progeny as feeder calves. The model assumes commercial producers will replace 25% of their breeding females in the first generation and 20% of their breeding females in each subsequent generation. Traits included are as follows: calving ease direct, calving ease maternal, weaning weight, milk, heifer pregnancy, docility, mature cow weight, claw set and foot angle.

**WEANED CALF VALUE (\$W)**, an index, expressed in dollars per head, to predict profitability differences in progeny due to genetics from birth to weaning. The underlying objective being producers will retain 20% of the female progeny as replacements and sell the rest of the cull females and their male counterparts as feeder calves. Traits included are as follows (in no particular order): birth weight, weaning weight, milk, and mature cow weight.

**BEEF VALUE (\$B)**, a terminal index, expressed in dollars per carcass, to predict profitability differences in progeny due to genetics for postweaning and carcass traits. This terminal index assumes commercial producers wean all male and female progeny, retain ownership of these animals through the feedlot phase and market these animals on a carcass grid. Traits included in the index are as follows: yearling weight, dry-matter intake, marbling, carcass weight, ribeye area and fat. Source: AAA

1

## REGISTERED ANIMAL NAME



BD: 02/05/23

Reg #: 20757781

Tattoo: 302

**SIRE**  
Paternal Grandsire  
Paternal Granddam

**DAM**  
Maternal Grandsire  
Maternal Granddam

Paternal Grandsire Sire  
Paternal Grandsire Dam  
Paternal Granddam Sire  
Paternal Granddam Dam  
Maternal Grandsire Sire  
Maternal Grandsire Dam  
Maternal Granddam Sire  
Maternal Granddam Dam

BW	73
Act. WW	802
Adj. 205	719
WR	109
Dam WR	1/109

**CALF'S ACTUAL PERFORMANCE**

**DAM'S PERFORMANCE**

**TYPE OF GENETIC TEST PERFORMED**



CED	BW	WW	YW	SC	Milk	Marb	REA	Doc	Claw	Angle	\$M	\$W	\$B
7	0.5	66	117	0.75	30	0.89	0.55	4	0.38	0.45	56	70	163

Footnote



## CAB

**CERTIFIED ANGUS BEEF**, The Targeting the Brand™ logo highlights registered Angus bulls with greater genetic potential to produce calves that meet the most challenging specifications of the Certified Angus Beef brand. Only 1-4 non-parent Angus Bulls qualify.

# B Our Program...

Bowman Ranch continues to focus on the mother cow. Making it through tough conditions makes a quality mother cow possessing all the convenience traits, more important than ever. We don't have time to deal with bad dispositions, poor udders, or tough doing cows. We are a family operation and provide all the day to day labor. We demand that each cow earns her keep. They have to maintain a sensible frame score, be structurally sound, easy to handle, and have an acceptable udder, while weaning a heavy calf and breeding back on time each year. Cows aren't given a second chance and have to perform every year. Our registered herd is treated exactly the same as our commercial herd. They survive and thrive on limited resources on a 100% forage diet. We strive to graze our cowherd 8.5-9 months of the year and will go 10 months if the forage is there and the winter allows it. We then supplement home grown hay and a dry mineral supplement. We do not creep feed any of our registered calves as we feel we can't properly evaluate our cow herd if creep is provided. These bulls have to do it on mother's milk and what Mother Nature provides on SW North Dakota grass.

All animals selling were born and raised right here on the ranch. Every registered calf is weighed on a digital scale within 24 hours of birth. In April, they get their first round of vaccinations followed by another round at preconditioning in September and boosters at weaning in October. Weaning weights were taken September 1st which we used to calculate adjusted 205 day weights. This is done so we can ratio the bulls with the ones that get banded at that time. Actual weaning weights were taken on the bulls when they were weaned on October 5th.

After weaning, bulls are placed in the feedlot here on the ranch. Bulls are fed a high roughage ration consisting of chopped grass, alfalfa, and barley hay, corn silage, rolled corn, distillers grain, and a vitamin/mineral supplement. I personally feed and evaluate them each and every day. We target around 3 pounds of daily gain leading up to the sale. Bulls are then backed down to begin to harden up to ensure a bull that is ready to go to work breeding cows.



# Kash Deposit sons



*Reference Sire*

**A**

## BASIN KASH DEPOSIT 2138

BD: 01/27/2022

Reg #: 20342726

Tattoo: 2138

Basin Deposit 6249  
**BASIN SAFE DEPOSIT 9324**  
Basin Joy 2006

Basin Rainmaker 4404  
**BASIN CAMILLA 9044**  
Basin Camilla 7026

Basin Advance 3134  
Basin Lucy 4288  
Summitcrest Complete 1P55  
Basin Joy 566T  
Basin Rainmaker 2704  
Basin Joy 1036  
EXAR Stud 4658B  
Basin Camilla 5220

CED	BW	WW	YW	SC	Doc	Milk	Marb	REA	Claw	Angle	\$M	\$W	\$B
6	0.5	66	115	.85	26	24	0.95	0.62	0.21	0.29	87	65	157

Sire of Lots 1-7.



**1**

## 1 BOWMAN KASH DEPOSIT 580

BD: 03/04/25

Reg #: 21375452

Tattoo: 580

Basin Safe Deposit 9324  
**BASIN KASH DEPOSIT 2138**  
Basin Camilla 9044

LD Capitalist 316  
**BOWMAN LORRAINE 223**  
Bowman Lorraine 050

Basin Deposit 6249  
Basin Joy 2006  
Basin Rainmaker 4404  
Basin Camilla 7026

Connealy Capitalist 028  
LD Dixie Erica 2053  
Sitz Stellar 726D  
Bowman Lorraine 515

<b>BW</b>	<b>79</b>
<b>Act. WW</b>	<b>850</b>
<b>Adj. 205</b>	<b>833</b>
<b>WR</b>	<b>118</b>
<b>Dam WR</b>	<b>2/110</b>



CED	BW	WW	YW	SC	Doc	Milk	Marb	REA	Claw	Angle	\$M	\$W	\$B
1	1.5	96	161	0.89	27	18	0.82	0.5	0.36	0.42	68	89	165

Lot 1 is a thick made, big bodied bull that is as rugged as they come. He was a standout all summer. He is a bull who ranks at the top of our program for growth with an actual weaning weight of 850 lbs. His WW EPD and HD50K ranks him top 2%. His dam is an attractive young cow off to a tremendous start.

# Kash Deposit sons

## 2

### BOWMAN KASH DEPOSIT 503

BD: 02/19/25

Reg #: 21380377

Tattoo: 503

Basin Safe Deposit 9324  
**BASIN KASH DEPOSIT 2138**  
Basin Camilla 9044

LD Capitalist 316  
**BOWMAN MISSIE 304**  
Bowman Missie 101

Basin Deposit 6249  
Basin Joy 2006  
Basin Rainmaker 4404  
Basin Camilla 7026  
Connealy Capitalist 028  
LD Dixie Erica 2053  
Sitz Stellar 726D  
Bowman Missie 934

<b>BW</b>	<b>71</b>
<b>Act. WW</b>	<b>766</b>
<b>Adj. 205</b>	<b>771</b>
<b>WR</b>	<b>103</b>
<b>Dam WR</b>	<b>1/103</b>



CED	BW	WW	YW	SC	Doc	Milk	Marb	REA	Claw	Angle	\$M	\$W	\$B
8	0	54	90	0.02	7	21	0.53	0.64	0.24	0.36	77	50	136

Lot 2 is a heifer bull that comes with ample amounts of muscle shape and power. He comes from an outstanding cow family. His teat, udder, and claw EPD's all rank in the top 1%.



## 3

### BOWMAN KASH DEPOSIT 537



BD: 02/27/25

Reg #: 21375470

Tattoo: 537

Basin Safe Deposit 9324  
**BASIN KASH DEPOSIT 2138**  
Basin Camilla 9044

LD Capitalist 316  
**BOWMAN FLOWER 301**  
Bowman Flower 103

Basin Deposit 6249  
Basin Joy 2006  
Basin Rainmaker 4404  
Basin Camilla 7026  
Connealy Capitalist 028  
LD Dixie Erica 2053  
Sitz Stellar 726D  
Bowman Flower 931

<b>BW</b>	<b>74</b>
<b>Act. WW</b>	<b>814</b>
<b>Adj. 205</b>	<b>840</b>
<b>WR</b>	<b>112</b>
<b>Dam WR</b>	<b>1/112</b>



CED	BW	WW	YW	SC	Doc	Milk	Marb	REA	Claw	Angle	\$M	\$W	\$B
10	0.3	69	123	0.36	29	21	0.94	0.62	0.35	0.46	65	61	176

Lot 3 is a long and extended heifer bull that comes with a striking look from the side. He shares a cow family with lot 27. His first calf heifer dam weaned him off at 814 lbs. He has the highest \$B index in the offering.

# Kash Deposit sons



4

## BOWMAN KASH DEPOSIT 525

BD: 02/23/25

Reg #: 21375466

Tattoo: 525

Basin Safe Deposit 9324  
**BASIN KASH DEPOSIT 2138**  
Basin Camilla 9044

U-2 Coalition 206C  
**BOWMAN QUEEN 3110**  
Bowman Queen 962

Basin Deposit 6249  
Basin Joy 2006  
Basin Rainmaker 4404  
Basin Camilla 7026

HF Syndicate 213Z  
U2 Erelite 109Z  
Coleman Charlo 0256  
Bowman Queen 216

BW	74
Act. WW	734
Adj. 205	765
WR	102
Dam WR	1/102



CED	BW	WW	YW	SC	Doc	Milk	Marb	REA	Claw	Angle	\$M	\$W	\$B
1	2.8	76	142	0.62	23	25	0.56	0.8	0.46	0.47	42	62	156

Lot 4 is long bodied and thick made with lots of growth.



5

## BOWMAN KASH DEPOSIT 505

BD: 02/20/25

Reg #: 21375467

Tattoo: 505

Basin Safe Deposit 9324  
**BASIN KASH DEPOSIT 2138**  
Basin Camilla 9044

Sitz Accomplishment 720F  
**BOWMAN BLACKBIRD 326**  
Bowman Blackbird 980

Basin Deposit 6249  
Basin Joy 2006  
Basin Rainmaker 4404  
Basin Camilla 7026

Poss Achievement  
Sitz Barbaramere Nell 166D  
HAYNES Outright 452  
Blackbird 6302 BCBR

BW	77
Act. WW	718
Adj. 205	719
WR	96
Dam WR	1/96



CED	BW	WW	YW	SC	Doc	Milk	Marb	REA	Claw	Angle	\$M	\$W	\$B
5	-0.1	67	116	1.31	21	27	1.04	0.74	0.39	0.36	79	72	163

Lot 5 is a well balanced bull with a lot to offer. This CAB stamp bull has our highest marbling EPD in the offering.



# Kash Deposit sons

6

## BOWMAN KASH DEPOSIT 544



BD: 03/01/25

Reg #: 21375465

Tattoo: 544

Basin Safe Deposit 9324  
**BOWMAN KASH DEPOSIT 2138**  
Basin Camilla 9044

Connealy Dry Valley  
**BOWMAN LIVIA 3102**  
Bowman Livia 972

Basin Deposit 6249  
Basin Joy 2006  
Basin Rainmaker 4404  
Basin Camilla 7026

Hoover No Doubt  
Becca of Conanga 1617  
Thomas Up River 1614  
Bowman Livia 339

BW	77
Act. WW	806
Adj. 205	818
WR	110
Dam WR	1/110



CED	BW	WW	YW	SC	Doc	Milk	Marb	REA	Claw	Angle	SM	\$W	\$B
5	0.8	83	131	1.51	22	30	0.96	0.74	0.38	0.39	83	94	163

Lot 6 is very long bodied offering a little extra growth and frame. He weaned off of a 2 year old heifer weighing 806 lbs.



7

## BOWMAN KASH DEPOSIT 5101



BD: 03/07/25

Reg #: 21375439

Tattoo: 5101

Basin Safe Deposit 9324  
**BOWMAN KASH DEPOSIT 2138**  
Basin Camilla 9044

Shipwheel Recharge 7513  
**BOWMAN MISSIE 071**  
Bowman Missie 314

Basin Deposit 6249  
Basin Joy 2006  
Basin Rainmaker 4404  
Basin Camilla 7026

S A V Recharge 3436  
DR J Ms Danny Boy M64  
Mytty In Focus  
Bowman Missie 131

BW	84
Act. WW	800
Adj. 205	772
WR	109
Dam WR	4/100



CED	BW	WW	YW	SC	Doc	Milk	Marb	REA	Claw	Angle	SM	\$W	\$B
10	-0.7	73	124	2	23	27	0.84	0.54	0.36	0.43	82	78	153

Lot 7 is a heavy weaning Kash Deposit son weaning off his mother at 800 lbs. He will work on heifers.

# THANK YOU 2025 4-H MARKET SALE BUYERS



Dakota Western Bank - Liv's Steer



Plain's Ag - Liv's Pig



Bowman Grain - Gray's Steer



Miller Construction - Gray's Pig



*Reference Sire*

## B U-2 COALITION 206C

BD: 01/23/2015

Reg #: 18626847

Tattoo: 206C

Connealy Consensus 7229  
**HF SYNDICATE 213Z**  
 HF Miss Blackcap 27R  
 Young Dale Xclusive 25X  
**U2 ERELITE 109Z**  
 U-2 Erelite 1X

Connealy Consensus  
 Blue Lilly of Conanga 16  
 TC Freedom 104  
 HF Miss Blackcap 50N  
 Young Dale Knock Out 134U  
 Young Dale Pollyanna 60T  
 S A V Final Answer 0035  
 U-2 Erelite 8109U

CED	BW	WW	YW	SC	Doc	Milk	Marb	REA	Claw	Angle	\$M	\$W	\$B
11	1.1	55	108	.93	33	28	0.42	0.49	0.34	0.41	55	58	131

Sire of Lots 8-18.



| 8 |

# 8

## BOWMAN COALITION 557

BD: 03/02/25

Reg #: 21375449

Tattoo: 557

HF Syndicate 213Z  
**U-2 COALITION 206C**  
 U2 Erelite 109Z

Connealy Consensus 7229  
 HF Miss Blackcap 27R  
 Young Dale Xclusive 25X  
 U-2 Erelite 1X

Sitz Stellar 726D  
**BOWMAN BARBIE 157**  
 Bowman Barbie 825

Mohnen Substantial 272  
 SITZ Pride 200B  
 Thomas Up River 1614  
 Bowman Barbie 127

<b>BW</b>	<b>83</b>
<b>Act. WW</b>	<b>796</b>
<b>Adj. 205</b>	<b>768</b>
<b>WR</b>	<b>108</b>
<b>Dam WR</b>	<b>3/100</b>



CED	BW	WW	YW	SC	Doc	Milk	Marb	REA	Claw	Angle	\$M	\$W	\$B
9	1.1	69	120	0.46	32	33	0.28	0.82	0.38	0.37	98	78	135

Lot 8 is a calving ease Coalition son that is easy to pick out in the pen. He has plenty of body shape and eye appeal. Not only is he one of our favorite bulls in the pen, he should sire some outstanding females. He excels in calving ease, heifer pregnancy, foot quality, udder quality, milk, and docility which is exactly what I look for to build a cow herd. His HD50K test ranks him in the top 15% in 10 traits.


**9**
**BOWMAN COALITION 593**

BD: 03/06/25

Reg #: 21375462

Tattoo: 593

 HF Syndicate 213Z  
**U-2 COALITION 206C**  
 U2 Erelite 109Z

 Connealy Consensus 7229  
 HF Miss Blackcap 27R  
 Young Dale Xclusive 25X  
 U-2 Erelite 1X

 Sitz Stellar 726D  
**BOWMAN PRIDE 217**  
 Bowman Pride 072

 Mohnen Substantial 272  
 SITZ Pride 200B  
 Basin Payweight 1682  
 Bowman Pride 728

<b>BW</b>	<b>86</b>
<b>Act. WW</b>	<b>804</b>
<b>Adj. 205</b>	<b>799</b>
<b>WR</b>	<b>113</b>
<b>Dam WR</b>	<b>2/110</b>



CED	BW	WW	YW	SC	Doc	Milk	Marb	REA	Claw	Angle	\$M	\$W	\$B
6	3.1	72	131	0.47	30	24	0.52	0.5	0.29	0.34	79	63	138

Lot 9 is powerfully constructed and big topped with ample bone. He excels in foot quality and docility.


**10**
**BOWMAN COALITION 5130**

BD: 03/10/25

Reg #: 21375419

Tattoo: 5130

 HF Syndicate 213Z  
**U-2 COALITION 206C**  
 U2 Erelite 109Z

 Connealy Consensus 7229  
 HF Miss Blackcap 27R  
 Young Dale Xclusive 25X  
 U-2 Erelite 1X

 C C A Uno 049  
**BOWMAN MARCIA 359**  
 TC Marcia 5161

 Sitz Upward 307R  
 Mytty Countess 906  
 Basin Best Bet  
 TC Marcia 7019

<b>BW</b>	<b>102</b>
<b>Act. WW</b>	<b>754</b>
<b>Adj. 205</b>	<b>772</b>
<b>WR</b>	<b>109</b>
<b>Dam WR</b>	<b>11/103</b>



CED	BW	WW	YW	SC	Doc	Milk	Marb	REA	Claw	Angle	\$M	\$W	\$B
7	3	74	123	1.49	25	25	0.31	0.89	0.31	0.37	90	72	120

Lot 10 does a lot of things right with a nice epd profile. His dam is a coming 13 year old who has raised 11 calves ratioing 103.



# Coalition sons

## 11 BOWMAN COALITION 562

BD: 03/03/25

Reg #: 21375444

Tattoo: 562

HF Syndicate 213Z  
U-2 COALITION 206C  
U2 Erelite 109Z

Connealy Consensus 7229  
HF Miss Blackcap 27R  
Young Dale Xclusive 25X  
U-2 Erelite 1X

Basin Payweight 1682  
BOWMAN PRIDE 072  
Bowman Pride 728

Basin Payweight 006S  
21AR O Lass 7017  
C C A Uno 049  
Bowman Pride 326

<b>BW</b>	<b>76</b>
<b>Act. WW</b>	<b>672</b>
<b>Adj. 205</b>	<b>662</b>
<b>WR</b>	<b>94</b>
<b>Dam WR</b>	<b>4/102</b>



CED	BW	WW	YW	SC	Doc	Milk	Marb	REA	Claw	Angle	\$M	\$W	\$B
11	0.7	47	74	1.85	39	30	0.25	0.27	0.4	0.4	88	56	94

Lot 11 is bull that will work on heifers with extra body mass, muscle shape and expression. He sports our top docility EPD of +39.



## 12 BOWMAN COALITION 550

BD: 03/02/25

Reg #: 21375450

Tattoo: 550

HF Syndicate 213Z  
U-2 COALITION 206C  
U2 Erelite 109Z

Connealy Consensus 7229  
HF Miss Blackcap 27R  
Young Dale Xclusive 25X  
U-2 Erelite 1X

Sitz Stellar 726D  
BOWMAN BLACKBESS 180  
Cedarflo C041 BlackBess 768

Mohnen Substantial 272  
SITZ Pride 200B  
Baldridge Compass C041  
CEDARFLO 0119 Black Bess 234

<b>BW</b>	<b>84</b>
<b>Act. WW</b>	<b>724</b>
<b>Adj. 205</b>	<b>721</b>
<b>WR</b>	<b>102</b>
<b>Dam WR</b>	<b>3/108</b>

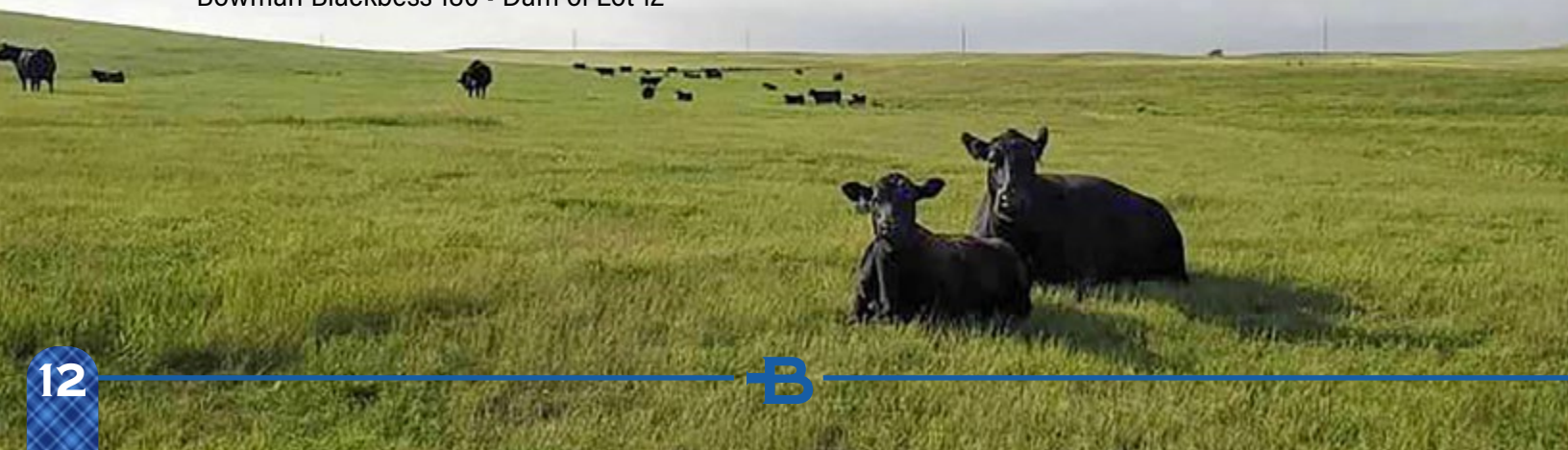


CED	BW	WW	YW	SC	Doc	Milk	Marb	REA	Claw	Angle	\$M	\$W	\$B
8	0	53	108	0.85	27	20	0.5	0.13	0.38	0.36	44	34	119

Lot 12 is a stylish Coalition son out of a fantastic young Stellar daughter who is off to a tremendous start to her career. This bull should work on heifers.



Bowman Blackbess 180 • Dam of Lot 12





## 13 BOWMAN COALITION 548

BD: 03/01/25 Reg #: 21375461 Tattoo: 548

HF Syndicate 213Z  
U-2 COALITION 206C  
U2 Erelite 109Z

Connealy Consensus 7229  
HF Miss Blackcap 27R  
Young Dale Xclusive 25X  
U-2 Erelite 1X

Sitz Stellar 726D  
BOWMAN BLACKBIRD 229  
Bowman Blackbird 980

Mohnen Substantial 272  
SITZ Pride 200B  
HAYNES Outright 452  
Blackbird 6302 BCBR

BW	75
Act. WW	684
Adj. 205	695
WR	98
Dam WR	2/101



CED	BW	WW	YW	SC	Doc	Milk	Marb	REA	Claw	Angle	\$M	\$W	\$B
12	-1.6	48	99	0.82	29	17	0.83	0.52	0.31	0.43	66	30	136

Lot 13 is a moderate, deep bodied heifer bull who excels in maternal traits. He is also one of the most docile bulls in the pen.



## 14 BOWMAN COALITION 590

BD: 03/05/25 Reg #: 21375421 Tattoo: 590

HF Syndicate 213Z  
U-2 COALITION 206C  
U2 Erelite 109Z

Connealy Consensus 7229  
HF Miss Blackcap 27R  
Young Dale Xclusive 25X  
U-2 Erelite 1X

C C A Uno 049  
BOWMAN MISSIE 519  
Bowman Missie 131

Sitz Upward 307R  
Mytty Countess 906  
Brooks Retail Product 8915  
Bowman Missie 705

BW	82
Act. WW	738
Adj. 205	711
WR	100
Dam WR	9/100



CED	BW	WW	YW	SC	Doc	Milk	Marb	REA	Claw	Angle	\$M	\$W	\$B
16	-0.3	54	102	0.46	22	35	0.52	0.9	0.27	0.49	72	62	142

Lot 14 is a make it to every basketball game heifer bull that offers much more than just calving ease. The cow family behind this bull is one of the best on the ranch. His dam, granddam, and great granddam were all great producing cows with lots of longevity.



# Coalition sons

## 15 BOWMAN COALITION 5133

BD: 03/10/25 Reg #: 21375430 Tattoo: 5133

HF Syndicate 213Z  
U-2 COALITION 206C  
U2 Erelite 109Z

Connealy Consensus 7229  
HF Miss Blackcap 27R  
Young Dale Xclusive 25X  
U-2 Erelite 1X

BW	96
Act. WW	794
Adj. 205	756
WR	107
Dam WR	6/100

MAR 4097 Aberdeen 2194  
CEDARFLO 2194 BLACKBESS 1178  
Cedarflo 7301 Black Bess 51

V D A R Really Windy 4097  
MAR Aberdeen Image 914  
S A V Pioneer 7301  
Cedarflo Black Bess 204



CED	BW	WW	YW	SC	Doc	Milk	Marb	REA	Claw	Angle	\$M	\$W	\$B
5	1.6	72	130	1.29	27	28	0.45	0.31	0.44	0.44	62	69	145

Lot 15 is a bigger outlined Coalition son who is expressive and muscular.



## 16 BOWMAN COALITION 5122

BD: 03/08/25 Reg #: 21375451 Tattoo: 5122

HF Syndicate 213Z  
U-2 COALITION 206C  
U2 Erelite 109Z

Connealy Consensus 7229  
HF Miss Blackcap 27R  
Young Dale Xclusive 25X  
U-2 Erelite 1X

BW	80
Act. WW	668
Adj. 205	703
WR	99
Dam WR	2/100

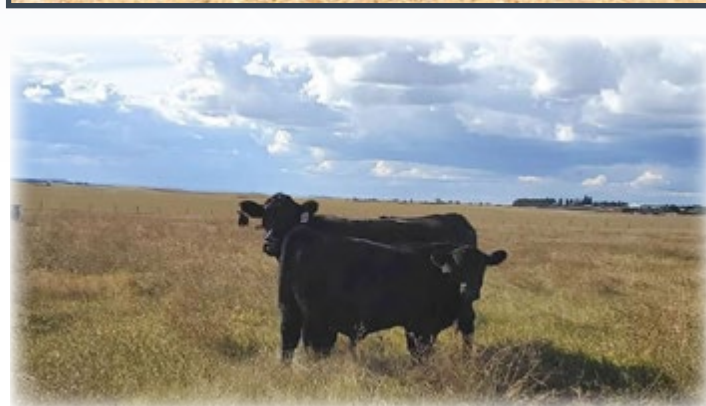
Mohnen Substantial 272  
BOWMAN QUEEN 114  
Bowman Queen 955

Benfield Substance 8506  
Mohnen Glyn Mawr Elba 1758  
S Whitlock 179  
Bowman Queen 301



CED	BW	WW	YW	SC	Doc	Milk	Marb	REA	Claw	Angle	\$M	\$W	\$B
7	1.6	68	124	1.16	23	30	0.2	0.63	0.4	0.48	69	70	119

Lot 16 is a wide based, well built Coalition son.



## 17 BOWMAN COALITION 552

BD: 03/02/25 Reg #: 21375460 Tattoo: 552

HF Syndicate 213Z  
U-2 COALITION 206C  
U2 Erelite 109Z

Connealy Consensus 7229  
HF Miss Blackcap 27R  
Young Dale Xclusive 25X  
U-2 Erelite 1X

BW	70
Act. WW	696
Adj. 205	740
WR	105
Dam WR	2/99

Sitz Stellar 726D  
BOWMAN BLACKBIRD MARY 212  
Bowman Blackbird Mary 907

Mohnen Substantial 272  
SITZ Pride 200B  
Mohnen Impressive 1093  
Bowman Blackbird Mary 704



CED	BW	WW	YW	SC	Doc	Milk	Marb	REA	Claw	Angle	\$M	\$W	\$B
14	-1.3	64	121	0.98	24	19	0.33	0.63	0.28	0.43	71	55	118

Lot 17 is a good footed, sound structured, sleep all night heifer bull.



## 18 BOWMAN COALITION 547

BD: 03/01/25 Reg #: 21375446 Tattoo: 547

HF Syndicate 213Z  
U-2 COALITION 206C  
U2 Erelite 109Z

Connealy Consensus 7229  
HF Miss Blackcap 27R  
Young Dale Xclusive 25X  
U-2 Erelite 1X

BW	71
Act. WW	694
Adj. 205	628
WR	89
Dam WR	3/101

HAYNES Outright 452  
BOWMAN PRIDE 008  
Bowman Pride 639

K C F Bennett Absolute  
HAYNES ND 454 Miss 179  
R5 Monument 087  
Bowman Pride 326



CED	BW	WW	YW	SC	Doc	Milk	Marb	REA	Claw	Angle	\$M	\$W	\$B
15	-2.2	52	103	1.43	35	29	0.82	0.42	0.43	0.5	52	50	147

Lot 18 is a long bodied, smooth shouldered calving ease Coalition son with docility in the top 1%. He will work on heifers.





Reference Sire

C

## RAVEN REPUBLIC I564

BD: 01/04/2021

Reg #: 20143727

Tattoo: I564

Connealy Confidence Plus  
E&B PLUS ONE  
E&B Lady 1023 Precision 936

Connealy Thunder  
SITZ EMMA E 2738  
Sitz Emma E 2253

Connealy Confidence 0100  
Elbanna of Conanga 1209  
E&B 1680 Precision 1023  
E&B Lady 878 New Design 441  
Baldrige Kaboom K243 KCF  
Parka of Conanga 241  
Sitz Alliance 7059  
Sitz Emma E 1627

CED	BW	WW	YW	SC	Doc	Milk	Marb	REA	Claw	Angle	\$M	\$W	\$B
11	-1.0	72	128	.79	23	22	1.11	0.27	0.33	0.42	85	72	154

Sire of Lots 19-24.



19

## 19 BOWMAN REPUBLIC 583

BD: 03/05/25

Reg #: 21375458

Tattoo: 583

E&B Plus One  
RAVEN REPUBLIC I564  
Sitz Emma E 2738

Connealy Dry Valley  
BOWMAN MISSIE 245  
Bowman Missie 314

Connealy Confidence Plus  
E&B Lady 1023 Precision 936  
Connealy Thunder  
Sitz Emma E 2253

Hoover No Doubt  
Becca of Conanga 1617  
Mytty In Focus  
Bowman Missie 131

BW	75
Act. WW	816
Adj. 205	837
WR	118
Dam WR	2/110



CED	BW	WW	YW	SC	Doc	Milk	Marb	REA	Claw	Angle	\$M	\$W	\$B
10	-0.2	79	137	1.04	20	23	0.62	0.47	0.43	0.49	68	83	146

Lot 19 is a neat fronted bull who comes with plenty of length and extension. This heifer bull offers a big time spread from birth to yearling. He will certainly catch your eye and sports an actual weaning weight of 816 lbs.

## 20 BOWMAN REPUBLIC 5102

BD: 03/07/25

Reg #: 21375454

Tattoo: 5102

E&B Plus One  
**RAVEN REPUBLIC 1564**  
Sitz Emma E 2738

Connealy Confidence Plus  
E&B Lady 1023 Precision 936  
Connealy Thunder  
Sitz Emma E 2253

Bowman Payweight 841  
**BOWMAN ANNIE 2120**  
Bowman Annie 824

Basin Payweight 1682  
Bowman Missie 131  
Coleman Charlo 0256  
WC Aberdeen 2180 833

<b>BW</b>	<b>84</b>
<b>Act. WW</b>	<b>762</b>
<b>Adj. 205</b>	<b>773</b>
<b>WR</b>	<b>109</b>
<b>Dam WR</b>	<b>2/104</b>



CED	BW	WW	YW	SC	Doc	Milk	Marb	REA	Claw	Angle	\$M	\$W	\$B
7	0.9	69	127	0.86	25	26	0.85	0.2	0.46	0.47	79	73	147

Lot 20 may be a little short on ears, but there's no shortage of ribshape, muscle, and bone.



## 21 BOWMAN REPUBLIC 518

BD: 02/22/25

Reg #: 21389492

Tattoo: 518

E&B Plus One  
**RAVEN REPUBLIC 1564**  
Sitz Emma E 2738

Connealy Confidence Plus  
E&B Lady 1023 Precision 936  
Connealy Thunder  
Sitz Emma E 2253

Sitz Accomplishment 720F  
**BOWMAN BARBIE 347**  
Bowman Barbie 535

Poss Achievement  
Sitz Barbaramere Nell 166D  
C C A Uno 049  
Sodak Barbie R029

<b>BW</b>	<b>76</b>
<b>Act. WW</b>	<b>726</b>
<b>Adj. 205</b>	<b>811</b>
<b>WR</b>	<b>109</b>
<b>Dam WR</b>	<b>1/109</b>



CED	BW	WW	YW	SC	Doc	Milk	Marb	REA	Claw	Angle	\$M	\$W	\$B
9	-1.7	67	118	1.13	24	21	0.71	0.6	0.41	0.32	77	66	134

Lot 21 is a wide made, powerfully constructed bull that will work on heifers. His HD50K ranks him in top 10% in CED, BW, docility, foot angle, teat, and udder.

## 22 BOWMAN REPUBLIC 553

BD: 03/02/25

Reg #: 21375464

Tattoo: 553

E&B Plus One  
**RAVEN REPUBLIC 1564**  
Sitz Emma E 2738

Connealy Confidence Plus  
E&B Lady 1023 Precision 936  
Connealy Thunder  
Sitz Emma E 2253

U-2 Coalition 206C  
**BOWMAN ANNIE 3107**  
Bowman Annie 824

HF Syndicate 213Z  
U2 Erelite 109Z  
Coleman Charlo 0256  
WC Aberdeen 2180 833

<b>BW</b>	<b>88</b>
<b>Act. WW</b>	<b>728</b>
<b>Adj. 205</b>	<b>739</b>
<b>WR</b>	<b>99</b>
<b>Dam WR</b>	<b>1/99</b>



CED	BW	WW	YW	SC	Doc	Milk	Marb	REA	Claw	Angle	\$M	\$W	\$B
-5	4.9	82	152	0.75	29	28	0.48	0.64	0.38	0.43	71	72	139

Lot 22 was a calf we all had our eye on since birth. He was the widest topped, most square built calf in the pasture. His HD50K test shows him in the top 1% on both WW and YW. He will make an eye popping set of feeder steers.

## 23 BOWMAN REPUBLIC 506

BD: 02/20/25

Reg #: 21375473

Tattoo: 506

E&B Plus One  
**RAVEN REPUBLIC 1564**  
Sitz Emma E 2738

Sitz Stellar 726D  
**BOWMAN MISSIE 320**  
Bowman Missie 603

Connealy Confidence Plus  
E&B Lady 1023 Precision 936  
Connealy Thunder  
Sitz Emma E 2253  
  
Mohnen Substantial 272  
SITZ Pride 200B  
S A V Final Answer 0035  
Bowman Missie 132

<b>BW</b>	<b>72</b>
<b>Act. WW</b>	<b>696</b>
<b>Adj. 205</b>	<b>715</b>
<b>WR</b>	<b>96</b>
<b>Dam WR</b>	<b>1/96</b>



CED	BW	WW	YW	SC	Doc	Milk	Marb	REA	Claw	Angle	\$M	\$W	\$B
2	2.1	67	117	1.71	24	28	0.53	0.48	0.26	0.35	91	74	112

Lot 23 is a deep, soggy Republic son with excellent feet.



## 24 BOWMAN REPUBLIC 5111

BD: 03/08/25

Reg #: 21375437

Tattoo: 5111

E&B Plus One  
**RAVEN REPUBLIC 1564**  
Sitz Emma E 2738

Basin Payweight 1682  
**BOWMAN PRIDE 941**  
Bowman Pride 506

Connealy Confidence Plus  
E&B Lady 1023 Precision 936  
Connealy Thunder  
Sitz Emma E 2253  
  
Basin Payweight 006S  
21AR O Lass 7017  
K C F Bennett Absolute  
Bowman Pride 327

<b>BW</b>	<b>85</b>
<b>Act. WW</b>	<b>658</b>
<b>Adj. 205</b>	<b>698</b>
<b>WR</b>	<b>99</b>
<b>Dam WR</b>	<b>5/103</b>



CED	BW	WW	YW	SC	Doc	Milk	Marb	REA	Claw	Angle	\$M	\$W	\$B
13	-1	66	124	-0.02	8	33	0.64	0.41	0.46	0.49	54	75	145

Lot 24 is a sureshot heifer bull who should sire growth and performance.



**Dillon**

Sophomore at Northwest College in Wyoming



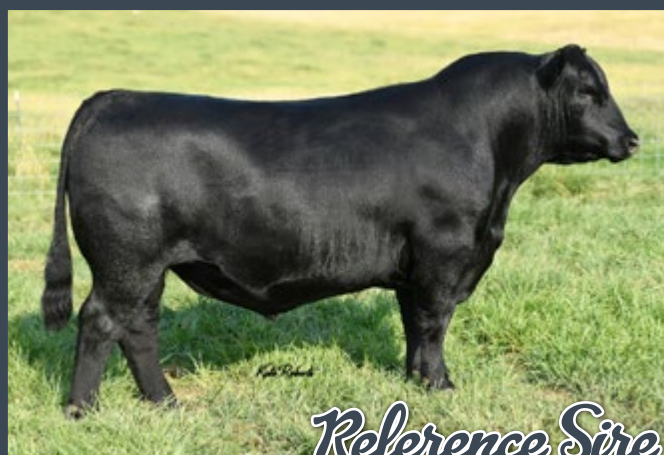
**Liv**

Senior at Bowman County High School



**Grayson**

Freshman at Bowman County High School



*Reference Sire*

## D BALDRIDGE FLAGSTONE F411

BD: 05/09/2018

Reg #: 19478642

Tattoo: F411

Mogck Bullseye  
**HOOVER NO DOUBT**  
Miss Blackcap Ellston J2

Styles Upgrade J59  
**BALDRIDGE ISABEL Y69**  
Baldrige Isabel T935

MOGCK Sure Shot  
Mogck Mary 1255  
SydGen C C & 7  
Miss Blackcap Ellston D154  
Sitz Upward 307R  
Plainview Lassie 71B  
Baldrige Kaboom K243 KCF  
Baldrige Isabel P4527

CED	BW	WW	YW	SC	Doc	Milk	Marb	REA	Claw	Angle	\$M	\$W	\$B
-1	3.5	69	126	1.19	34	21	0.75	0.76	0.24	0.20	82	52	164

Sire of Lots 25-33.



25

## 25 BOWMAN FLAGSTONE 572

BD: 03/04/25

Reg #: 21375428

Tattoo: 572

Hoover No Doubt  
**BALDRIDGE FLAGSTONE F411**  
Baldrige Isabel Y69

Connealy Thunder  
**BOWMAN MISSIE 710**  
Bowman Missie 537

Mogck Bullseye  
Miss Blackcap Ellston J2  
Styles Upgrade J59  
Baldrige Isabel T935

Baldrige Kaboom K243 KCF  
Parka of Conanga 241  
C C A Uno 049  
Bowman Missie 132

<b>BW</b>	87
<b>Act. WW</b>	826
<b>Adj. 205</b>	773
<b>WR</b>	109
<b>Dam WR</b>	7/101



CED	BW	WW	YW	SC	Doc	Milk	Marb	REA	Claw	Angle	\$M	\$W	\$B
7	0.7	67	115	0.92	30	24	0.41	0.36	0.25	0.29	104	72	126

Lot 25 is as stout and heavy structured as they come yet still possesses modest birth weight and calving ease numbers. He is out of a fantastic Thunder cow who hasn't had a bull calf miss the sale pen. At 9 years old she has near perfect udder and feet. His EPD's show he should sire the same. His claw and angle EPD's are top 1%, \$M top 2%, docility and \$EN top 10%.



26

## 26 BOWMAN FLAGSTONE 5138

BD: 03/11/25 Reg #: 21375447 Tattoo: 5138

Hoover No Doubt  
**BALDRIDGE FLAGSTONE F411**  
Baldrige Isabel Y69

4M Ace 709  
**BOWMAN MARCIA 036**  
Bowman Marcia 643

Mogck Bullseye  
Miss Blackcap Ellston J2  
Styles Upgrade J59  
Baldrige Isabel T935  
Musgrave Aviator  
KGM Enchantress 4054  
KM Broken Bow 002  
Bowman Marcia 210

BW	84
Act. WW	746
Adj. 205	750
WR	106
Dam WR	4/102



CED	BW	WW	YW	SC	Doc	Milk	Marb	REA	Claw	Angle	\$M	\$W	\$B
7	1.2	69	127	0.51	24	27	0.23	0.83	0.4	0.36	99	72	146

Lot 26 is a neat fronted bull that's big middled and stout, with a touch more frame. At catalog print time he is our top gaining bull since weaning.



Bowman Marcia 036  
Dam of Lot 26

## 27 BOWMAN FLAGSTONE 5103

BD: 03/07/25 Reg #: 21375448 Tattoo: 5103

Hoover No Doubt  
**BALDRIDGE FLAGSTONE F411**  
Baldrige Isabel Y69

Sitz Stellar 726D  
**BOWMAN FLOWER 103**  
Bowman Flower 931

Mogck Bullseye  
Miss Blackcap Ellston J2  
Styles Upgrade J59  
Baldrige Isabel T935  
Mohnen Substantial 272  
SITZ Pride 200B  
HAYNES Outright 452  
Bowman Flower 141

BW	76
Act. WW	698
Adj. 205	700
WR	99
Dam WR	3/101



CED	BW	WW	YW	SC	Doc	Milk	Marb	REA	Claw	Angle	\$M	\$W	\$B
4	1.4	61	110	0.48	28	15	0.69	0.78	0.32	0.41	57	41	157

Lot 27 is Dillon's bull who is out of a fantastic, docile cow, who is one of the favorites on the ranch. He is a standout for feet and udder quality.



Bowman Flower 103  
Dam of Lot 27

## 28 BOWMAN FLAGSTONE 5143

BD: 03/11/25 Reg #: 21375432 Tattoo: 5143

Hoover No Doubt  
**BALDRIDGE FLAGSTONE F411**  
Baldrige Isabel Y69

Mohnen Impressive 1093  
**BOWMAN MARCIA 812**  
Bowman Marcia 643

Mogck Bullseye  
Miss Blackcap Ellston J2  
Styles Upgrade J59  
Baldrige Isabel T935  
Basin Excitement  
Mohnen Jilt 787  
KM Broken Bow 002  
Bowman Marcia 210

BW	95
Act. WW	744
Adj. 205	732
WR	103
Dam WR	6/107



CED	BW	WW	YW	SC	Doc	Milk	Marb	REA	Claw	Angle	\$M	\$W	\$B
-3	2.1	66	116	1.12	25	30	0.58	0.7	0.35	0.33	78	71	130

Lot 28 is a larger framed bull that should sire some performance to his steer calves. His dam is a pathfinder.

# Flagstone sons

## 29 BOWMAN FLAGSTONE 596

BD: 03/07/25

Reg #: 21375426

Tattoo: 596

Hoover No Doubt  
**BALDRIDGE FLAGSTONE F411**  
Baldrige Isabel Y69

Mogck Bullseye  
Miss Blackcap Ellston J2  
Styles Upgrade J59  
Baldrige Isabel T935

R5 Monument 087  
**BOWMAN PRIDE 639**  
Bowman Pride 326

TC Aberdeen 759  
KMD Lass 54  
Connealy Impression  
TC Pride 8217

BW	88
Act. WW	710
Adj. 205	658
WR	93
Dam WR	8/101



CED	BW	WW	YW	SC	Doc	Milk	Marb	REA	Claw	Angle	\$M	\$W	\$B
-2	2.6	61	112	0.28	28	26	0.81	0.58	0.35	0.35	60	51	158

Lot 29 is a high volume Flagstone son who earned the CAB stamp. His dam is a pathfinder.



29

## 30 BOWMAN FLAGSTONE 5147

BD: 03/12/25

Reg #: 21375443

Tattoo: 5147

Hoover No Doubt  
**BALDRIDGE FLAGSTONE F411**  
Baldrige Isabel Y69

Mogck Bullseye  
Miss Blackcap Ellston J2  
Styles Upgrade J59  
Baldrige Isabel T935

Basin Payweight 1682  
**BOWMAN FLOWER 060**  
Bowman Flower 562

Basin Payweight 006S  
21AR O Lass 7017  
C C A Uno 049  
TC Flower 8121

BW	90
Act. WW	680
Adj. 205	680
WR	96
Dam WR	4/100



CED	BW	WW	YW	SC	Doc	Milk	Marb	REA	Claw	Angle	\$M	\$W	\$B
10	1.4	62	118	0.66	29	26	0.84	0.76	0.29	0.33	87	60	164

Lot 30 is a moderate framed Flagstone son with some muscle and really good feet with a nice look to him. If you study his EPD's he comes as a very balanced package.



30

## 31 BOWMAN FLAGSTONE 5118

BD: 03/08/25

Reg #: 21375463

Tattoo: 5118

Hoover No Doubt  
**BALDRIDGE FLAGSTONE F411**  
Baldrige Isabel Y69

Mogck Bullseye  
Miss Blackcap Ellston J2  
Styles Upgrade J59  
Baldrige Isabel T935

LD Capitalist 316  
**BOWMAN BRUCETTE 204**  
Bowman Brucette 011

Connealy Capitalist 028  
LD Dixie Erica 2053  
Sitz Stellar 726D  
Bowman Brucette 624

BW	87
Act. WW	778
Adj. 205	794
WR	112
Dam WR	2/108



CED	BW	WW	YW	SC	Doc	Milk	Marb	REA	Claw	Angle	\$M	\$W	\$B
4	2.4	73	124	1.05	20	21	0.7	0.81	0.46	0.31	62	62	158

Lot 31 is a bold ribbed, big bodied bull. His teat and udder scores are right at the top of the breed and his Capitalist 316 dam is one of the best looking cows on the place. We are expecting big things from her after weaning 2 calves ratioing 108.



## 32 BOWMAN FLAGSTONE 5157

BD: 03/19/25

Reg #: 21375440

Tattoo: 5157

Hoover No Doubt  
**BALDRIDGE FLAGSTONE F411**  
Baldrige Isabel Y69

Sitz Stellar 726D  
**BOWMAN SHADYBELLE 006**  
Cedarflo 1385 ShadyBelle 308

Mogck Bullseye  
Miss Blackcap Ellston J2  
Styles Upgrade J59  
Baldrige Isabel T935

Mohnen Substantial 272  
SITZ Pride 200B  
Connealy Comrade 1385  
Cedarflo 2174 Shady Bell 426

<b>BW</b>	86
<b>Act. WW</b>	722
<b>Adj. 205</b>	739
<b>WR</b>	104
<b>Dam WR</b>	3/101



CED	BW	WW	YW	SC	Doc	Milk	Marb	REA	Claw	Angle	\$M	\$W	\$B
1	3.1	83	137	1.48	22	18	0.62	0.62	0.45	0.41	55	66	139

Lot 32 is long spined and correct made offering extra growth.



## 33 BOWMAN FLAGSTONE 541

BD: 02/28/25

Reg #: 21375475

Tattoo: 541

Hoover No Doubt  
**BALDRIDGE FLAGSTONE F411**  
Baldrige Isabel Y69

Connealy Comrade 1385  
**CEDARFLO 1385 SHADYBELLE 308**  
Cedarflo 2174 Shady Bell 426

Mogck Bullseye  
Miss Blackcap Ellston J2  
Styles Upgrade J59  
Baldrige Isabel T935

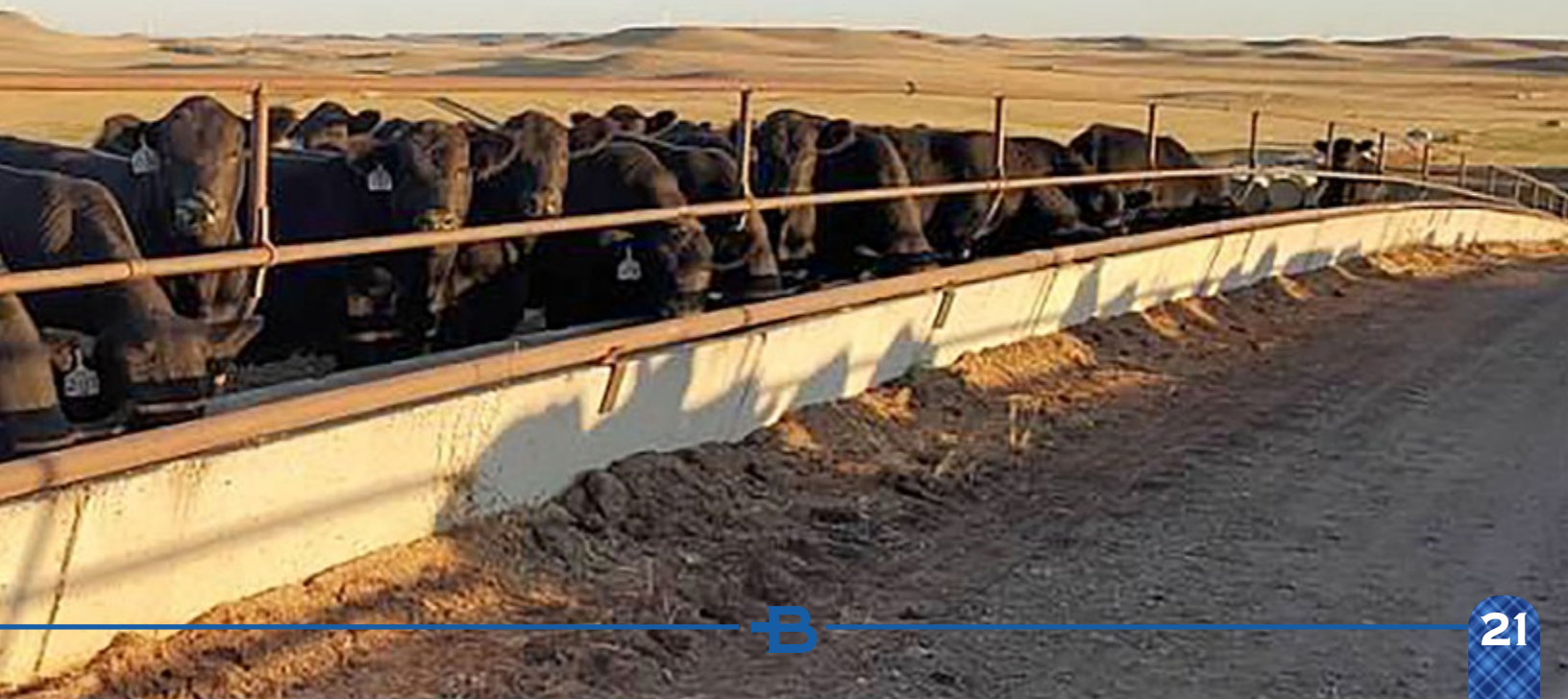
Connealy Consensus 7229  
Happy Gee of Conanga 919  
Connealy Arsenal 2174  
Cedarflo 1165 Shady Bell 509

<b>BW</b>	76
<b>Act. WW</b>	652
<b>Adj. 205</b>	618
<b>WR</b>	87
<b>Dam WR</b>	6/96



CED	BW	WW	YW	SC	Doc	Milk	Marb	REA	Claw	Angle	\$M	\$W	\$B
11	-0.3	61	105	0.04	26	16	0.66	0.81	0.44	0.37	67	53	133

Lot 33 is a heifer bull with a powerful hind quarter for a bull with that much calving ease.





*Reference Sire*

## E SITZ MILESTONE

BD: 02/01/2020

Reg #: 19677875

Tattoo: 636H

Poss Achievement  
**SITZ ACCOMPLISHMENT 720F**  
Sitz Barbaramere Nell 166D

Sitz Upward 307R  
**TALON EVERELDA 0179**  
Riverbend Everelda 3179

Poss Lasting Impact 3118  
Poss Erica 327  
S A V Resource 1441  
Sitz Barbaramere Nell 14Y  
Connealy Onward  
Sitz Henrietta Pride 81M  
Sitz Alliance 6595  
Shadybrook Ever Entense 482G

CED	BW	WW	YW	SC	Doc	Milk	Marb	REA	Claw	Angle	\$M	\$W	\$B
2	2.8	83	149	1.40	22	20	0.51	0.86	0.45	0.33	77	67	154

Sire of Lots 34-39.



34

## 34 BOWMAN MILESTONE 5100

BD: 03/07/25

Reg #: 21375445

Tattoo: 5100

Sitz Accomplishment 720F  
**SITZ MILESTONE**  
Talon Everelda 0179

Mill Bar Hickok 7242  
**BOWMAN FLOWER 009**  
Bowman Flower 827

Poss Achievement  
Sitz Barbaramere Nell 166D  
Sitz Upward 307R  
Riverbend Everelda 3179

Connealy Consensus 7229  
Mill Bar Bemindful Maid 6304  
HA Cowboy Up 5405  
Bowman Flower 410

<b>BW</b>	<b>97</b>
<b>Act. WW</b>	<b>746</b>
<b>Adj. 205</b>	<b>698</b>
<b>WR</b>	<b>99</b>
<b>Dam WR</b>	<b>4/112</b>



CED	BW	WW	YW	SC	Doc	Milk	Marb	REA	Claw	Angle	\$M	\$W	\$B
2	2.5	57	104	1.29	24	21	0.54	0.63	0.52	0.39	59	45	136

Lot 34 is a very complete bull that's hard to fault. His pathfinder dam "009" is an outstanding cow with good feet and a nice udder. Her production record speaks for itself weaning 4 calves ratioing 112.



Bowman Flower 009  
Dam of Lot 34

## 35 BOWMAN MILESTONE 560

BD: 03/03/25

Reg #: 21375433

Tattoo: 560

Sitz Accomplishment 720F  
**SITZ MILESTONE**  
Talon Everelda 0179

Poss Achievement  
Sitz Barbaramere Nell 166D  
Sitz Upward 307R  
Riverbend Everelda 3179

Mohnen Impressive 1093  
**BOWMAN EVE 811**  
Bowman Eve 610

Basin Excitement  
Mohnen Jilt 787  
C C A Uno 049  
Bowman Eve 305

<b>BW</b>	<b>85</b>
<b>Act. WW</b>	<b>854</b>
<b>Adj. 205</b>	<b>789</b>
<b>WR</b>	<b>111</b>
<b>Dam WR</b>	<b>6/103</b>



CED	BW	WW	YW	SC	Doc	Milk	Marb	REA	Claw	Angle	\$M	\$W	\$B
10	-0.2	65	125	1.58	21	25	0.36	0.62	0.62	0.42	52	60	154

Lot 35 is a large framed bull that is as deep and bold centered as they come. He earned the honor as our heaviest calf at weaning time coming off his mother at 854 lbs.



## 36 BOWMAN MILESTONE 540

BD: 02/28/25

Reg #: 21375456

Tattoo: 540

Sitz Accomplishment 720F  
**SITZ MILESTONE**  
Talon Everelda 0179

Poss Achievement  
Sitz Barbaramere Nell 166D  
Sitz Upward 307R  
Riverbend Everelda 3179

Sitz Stellar 726D  
**BOWMAN MARCIA 207**  
Bowman Marcia 036

Mohnen Substantial 272  
SITZ Pride 200B  
4M Ace 709  
Bowman Marcia 643

<b>BW</b>	<b>70</b>
<b>Act. WW</b>	<b>768</b>
<b>Adj. 205</b>	<b>734</b>
<b>WR</b>	<b>104</b>
<b>Dam WR</b>	<b>2/99</b>



CED	BW	WW	YW	SC	Doc	Milk	Marb	REA	Claw	Angle	\$M	\$W	\$B
12	-1.1	78	142	0.97	21	29	0.75	0.87	0.39	0.46	86	85	149

Lot 36 is bigger framed and powerful. He is a heifer bull who is also one of the top gaining bulls in the pen.



# Milestone sons

## 37 BOWMAN MILESTONE 592

BD: 3/6/2025

Reg #: 21375455

Tattoo: 592

Sitz Accomplishment 720F  
**SITZ MILESTONE**  
Talon Everelda 0179

Poss Achievement  
Sitz Barbaramere Nell 166D  
Sitz Upward 307R  
Riverbend Everelda 3179

Sitz Stellar 726D  
**BOWMAN MARCIA 220**  
Bowman Marcia 028

Mohnen Substantial 272  
SITZ Pride 200B  
Mill Bar Hickok 7242  
Bowman Marcia 812

<b>BW</b>	82
<b>Act. WW</b>	678
<b>Adj. 205</b>	707
<b>WR</b>	100
<b>Dam WR</b>	2/101



CED	BW	WW	YW	SC	Doc	Milk	Marb	REA	Claw	Angle	\$M	\$W	\$B
8	-0.3	70	115	1.11	19	20	0.4	0.99	0.3	0.35	88	69	126

Lot 37 is a more moderate framed Milestone with some extreme thickness from the back end.



## 38 BOWMAN MILESTONE 5135

BD: 3/10/2025

Reg #: 21375434

Tattoo: 5135

Sitz Accomplishment 720F  
**SITZ MILESTONE**  
Talon Everelda 0179

Poss Achievement  
Sitz Barbaramere Nell 166D  
Sitz Upward 307R  
Riverbend Everelda 3179

Mohnen Impressive 1093  
**BOWMAN BLACKBIRD MARY 809**  
Bowman Blackbird Mary 625

Basin Excitement  
Mohnen Jilt 787  
S A V Final Answer 0035  
Bowman Blackbird Mary 312

<b>BW</b>	88
<b>Act. WW</b>	740
<b>Adj. 205</b>	709
<b>WR</b>	100
<b>Dam WR</b>	4/96



CED	BW	WW	YW	SC	Doc	Milk	Marb	REA	Claw	Angle	\$M	\$W	\$B
9	0.6	61	111	1.24	20	24	0.86	0.42	0.49	0.46	86	59	130

Lot 38 is big centered, moderate framed bull out of a good footed cow. He offers excellent numbers for teat, udder, and carcass traits.



## 39 BOWMAN MILESTONE 588

BD: 3/5/2025

Reg #: 21375438

Tattoo: 588

Sitz Accomplishment 720F  
**SITZ MILESTONE**  
Talon Everelda 0179

Poss Achievement  
Sitz Barbaramere Nell 166D  
Sitz Upward 307R  
Riverbend Everelda 3179

Shipwheel Recharge 7513  
**BOWMAN MISSIE 096**  
Bowman Missie 132

S A V Recharge 3436  
DR J Ms Danny Boy M64  
Brooks Retail Product 8915  
Bowman Missie 705

<b>BW</b>	90
<b>Act. WW</b>	730
<b>Adj. 205</b>	704
<b>WR</b>	99
<b>Dam WR</b>	4/102



CED	BW	WW	YW	SC	Doc	Milk	Marb	REA	Claw	Angle	\$M	\$W	\$B
5	0.7	54	99	2.08	25	24	0.37	0.35	0.4	0.42	96	52	109

Lot 39 is a larger framed Milestone. His mother sired one of our sale features each of the last 2 years.





Reference Sire

## F SITZ STELLAR 726D

BD: 01/23/2016

Reg #: 18397542

Tattoo: 726D

Benfield Substance 8506  
**MOHNEN SUBSTANTIAL 272**  
 Mohnen Glyn Mawr Elba 1758

Connealy Final Product  
**SITZ PRIDE 200B**  
 Sitz Pride 308Y

H A Image Maker 0415  
 Benfield Edella 1105  
 LT Territory 5824 of EA  
 Mohnen Glyn Mawr Elba 1345  
 Connealy Product 568  
 Ebonista of Conanga 471  
 Sitz Upward 307R  
 Sitz Pride 44P

CED	BW	WW	YW	SC	Doc	Milk	Marb	REA	Claw	Angle	\$M	\$W	\$B
4	0	69	125	0.77	17	15	0.50	0.41	0.28	0.40	41	55	133

Sire of Lots 40-46.



## 40 BOWMAN STELLAR 507



BD: 2/21/2025

Reg #: 21375471

Tattoo: 507

Mohnen Substantial 272  
**SITZ STELLAR 726D**  
 Sitz Pride 200B

U-2 Coalition 206C  
**BOWMAN MURIEL 377**  
 Bowman Muriel 565

Benfield Substance 8506  
 Mohnen Glyn Mawr Elba 1758  
 Connealy Final Product  
 Sitz Pride 308Y

HF Syndicate 213Z  
 U2 Erelite 109Z  
 C C A Uno 049  
 Bowman Muriel 032

BW	83
Act. WW	752
Adj. 205	776
WR	104
Dam WR	1/104



CED	BW	WW	YW	SC	Doc	Milk	Marb	REA	Claw	Angle	\$M	\$W	\$B
2	2.1	57	108	1.44	19	25	0.86	0.31	0.4	0.41	70	53	127

Lot 40 represents a lot of the good things Stellar has done for our program for several years. They are just all around good cattle. This guy is no exception and also has good carcass traits earning the CAB stamp.



## 41 BOWMAN STELLAR 524

BD: 2/23/2025 Reg #: 21375474 Tattoo: 524

Mohnen Substantial 272	Benfield Substance 8506	<b>BW</b>	72
<b>SITZ STELLAR 726D</b>	Mohnen Glyn Mawr Elba 1758	<b>Act. WW</b>	694
SITZ Pride 200B	Connealy Final Product	<b>Adj. 205</b>	731
	Sitz Pride 308Y	<b>WR</b>	98
		<b>Dam WR</b>	1/98
U-2 Coalition 206C	HF Syndicate 213Z		
<b>BOWMAN LOLA 3101</b>	U2 Erelite 109Z		
Bowman Lola 705	KM Broken Bow 002		
	Bowman Lola 581		

CED	BW	WW	YW	SC	Doc	Milk	Marb	REA	Claw	Angle	\$M	\$W	\$B
9	-1	58	111	1.07	26	25	0.39	0.43	0.33	0.48	62	54	118

Lot 41 is a long bodied Stellar that will work on heifers.

## 42 BOWMAN STELLAR 598

BD: 3/7/2025 Reg #: 21375457 Tattoo: 598

Mohnen Substantial 272	Benfield Substance 8506	<b>BW</b>	95
<b>SITZ STELLAR 726D</b>	Mohnen Glyn Mawr Elba 1758	<b>Act. WW</b>	712
SITZ Pride 200B	Connealy Final Product	<b>Adj. 205</b>	715
	Sitz Pride 308Y	<b>WR</b>	101
		<b>Dam WR</b>	2/100
Connealy Dry Valley	Hoover No Doubt		
<b>BOWMAN BARBIE 249</b>	Becca of Conanga 1617		
Bowman Barbie 309	H A Image Maker 0415		
	Bowman Barbie 826		

CED	BW	WW	YW	SC	Doc	Milk	Marb	REA	Claw	Angle	\$M	\$W	\$B
3	2.3	57	105	0.29	6	26	0.63	0.52	0.43	0.45	54	49	138

Lot 42 is a well built bull out of a nice Dry Valley daughter.

## 43 BOWMAN STELLAR 515

BD: 2/22/2025 Reg #: 21375472 Tattoo: 515

Mohnen Substantial 272	Benfield Substance 8506	<b>BW</b>	73
<b>SITZ STELLAR 726D</b>	Mohnen Glyn Mawr Elba 1758	<b>Act. WW</b>	708
SITZ Pride 200B	Connealy Final Product	<b>Adj. 205</b>	705
	Sitz Pride 308Y	<b>WR</b>	94
		<b>Dam WR</b>	1/94
Sitz Accomplishment 720F	Poss Achievement		
<b>BOWMAN MISSIE 356</b>	Sitz Barbaramere Nell 166D		
Bowman Missie 519	C C A Uno 049		
	Bowman Missie 131		

CED	BW	WW	YW	SC	Doc	Milk	Marb	REA	Claw	Angle	\$M	\$W	\$B
7	0.4	64	111	0.55	11	18	0.56	0.18	0.33	0.41	69	52	127

Lot 43 is a heifer bull that is top 1% of breed for teat and udder epd's. He comes from a really good cow family. His granddam is the mother of lot 14.

## 44 BOWMAN STELLAR 582

BD: 3/4/2025 Reg #: 21375459 Tattoo: 582

Mohnen Substantial 272	Benfield Substance 8506	<b>BW</b>	77
<b>SITZ STELLAR 726D</b>	Mohnen Glyn Mawr Elba 1758	<b>Act. WW</b>	698
SITZ Pride 200B	Connealy Final Product	<b>Adj. 205</b>	672
	Sitz Pride 308Y	<b>WR</b>	95
		<b>Dam WR</b>	2/98
Connealy Dry Valley	Hoover No Doubt		
<b>BOWMAN LORRAINE 272</b>	Becca of Conanga 1617		
Bowman Lorraine 515	Connealy Impression		
	Bowman Lorraine 313		

CED	BW	WW	YW	SC	Doc	Milk	Marb	REA	Claw	Angle	\$M	\$W	\$B
5	1	71	122	1.05	15	15	0.46	0.66	0.42	0.35	56	52	132

Lot 44 is a stout made Stellar son with good heifer pregnancy, teat, and udder EPD's.

## 45 BOWMAN STELLAR 5152

BD: 3/16/2025

Reg #: 21375425

Tattoo: 5152

Mohnen Substantial 272  
**SITZ STELLAR 726D**  
SITZ Pride 200B

KM Broken Bow 002  
**PRIMROSE 6338 BCB**  
Primrose 0759 BCB

Benfield Substance 8506  
Mohnen Glyn Mawr Elba 1758  
Connealy Final Product  
Sitz Pride 308Y  
Summitcrest Complete 1P55  
Summitcrest Princess OP12  
Brooks Retail Product 549  
Primrose 3424 BCB

<b>BW</b>	<b>88</b>
<b>Act. WW</b>	<b>678</b>
<b>Adj. 205</b>	<b>682</b>
<b>WR</b>	<b>96</b>
<b>Dam WR</b>	<b>8/99</b>



CED	BW	WW	YW	SC	Doc	Milk	Marb	REA	Claw	Angle	\$M	\$W	\$B
7	1.3	65	107	0.32	9	17	0.33	0.41	0.45	0.49	56	52	103

Lot 45 has more length of body and extended front than your typical Stellar son. His mother is a productive coming 10 year old Broken Bow daughter.



45

## 46 BOWMAN STELLAR 531



BD: 2/25/2025

Reg #: 21375429

Tattoo: 531

Mohnen Substantial 272  
**SITZ STELLAR 726D**  
SITZ Pride 200B

KM Broken Bow 002  
**BOWMAN LOLA 705**  
Bowman Lola 581

Benfield Substance 8506  
Mohnen Glyn Mawr Elba 1758  
Connealy Final Product  
Sitz Pride 308Y  
Summitcrest Complete 1P55  
Summitcrest Princess OP12  
McD Performer3308  
Bowman Lola 211

<b>BW</b>	<b>88</b>
<b>Act. WW</b>	<b>722</b>
<b>Adj. 205</b>	<b>678</b>
<b>WR</b>	<b>96</b>
<b>Dam WR</b>	<b>7/100</b>



CED	BW	WW	YW	SC	Doc	Milk	Marb	REA	Claw	Angle	\$M	\$W	\$B
5	1.8	58	98	1.15	12	25	0.98	0.16	0.18	0.46	83	58	144

Lot 46 is a high marbling Stellar who has the best claw EPD in our sale.



46



Left: Bowman County FFA was the State Champion Livestock Judging Team. They advanced to the National competition where the team placed 7th overall. Grayson was the 5th high individual in hogs!

Right: Liv took home the Senior Herdsman Champion award while Grayson was named the Intermediate Herdsman Champion at the Bowman County Fair.

# Accomplishment sons

## 47 BOWMAN ACCOMPLISHMENT 563

BD: 3/3/2025

Reg #: 21375427

Tattoo: 563

Poss Achievement  
**SITZ ACCOMPLISHMENT 720F**  
Sitz Barbaramere Nell 166D

Poss Lasting Impact 3118  
Poss Erica 327  
S A V Resource 1441  
Sitz Barbaramere Nell 14Y

Basin Payweight 1682  
**BOWMAN FLOWER 765**  
Bowman Flower 410

Basin Payweight 006S  
21AR O Lass 7017  
EXAR Upshot 0562B  
Bowman Flower 017

<b>BW</b>	90
<b>Act. WW</b>	760
<b>Adj. 205</b>	722
<b>WR</b>	102
<b>Dam WR</b>	7/100



CED	BW	WW	YW	SC	Doc	Milk	Marb	REA	Claw	Angle	\$M	\$W	\$B
6	1.1	66	111	0.57	18	21	0.72	0.52	0.5	0.35	75	63	134

Lot 47 is out of a really good cow. He has good teat and udder scores ranking in top 5% with epds and HD50K test.



## 48 BOWMAN ACCOMPLISHMENT 5137

BD: 3/11/2025

Reg #: 21375468

Tattoo: 5137

Sitz Accomplishment 720F  
**BROOKS ACCOMPLISHMENT 3303**  
Primrose 9514 BCBP

Poss Achievement  
Sitz Barbaramere Nell 166D  
Brooks Payweight 6285  
Primrose 5437 BCBP

LD Capitalist 316  
**BOWMAN LORRAINE 375**  
Bowman Lorraine 050

Connealy Capitalist 028  
LD Dixie Erica 2053  
Sitz Stellar 726D  
Bowman Lorraine 515

<b>BW</b>	66
<b>Act. WW</b>	712
<b>Adj. 205</b>	765
<b>WR</b>	102
<b>Dam WR</b>	1/102



CED	BW	WW	YW	SC	Doc	Milk	Marb	REA	Claw	Angle	\$M	\$W	\$B
10	0.6	71	122	1.31	12	24	0.52	0.65	0.45	0.38	61	68	129

Lot 48 is a heifer bull that is moderate in frame and stout in his design. His HD50K test shows teat and udder in top 9%.



## 49 BOWMAN ACCOMPLISHMENT 5128

BD: 3/9/2025

Reg #: 21375420

Tattoo: 5128

Sitz Accomplishment 720F  
**BROOKS ACCOMPLISHMENT 1376**  
Primrose 5537 BCBP

Poss Achievement  
Sitz Barbaramere Nell 166D  
S S Gem6 Rito X14  
Primrose 0759 BCBP

C C A Uno 049  
**BOWMAN FLOWER 562**  
TC Flower 8121

Sitz Upward 307R  
Mytty Countess 906  
TC Dividend 503  
TC Flower 6027

<b>BW</b>	95
<b>Act. WW</b>	716
<b>Adj. 205</b>	752
<b>WR</b>	106
<b>Dam WR</b>	9/101



CED	BW	WW	YW	SC	Doc	Milk	Marb	REA	Claw	Angle	\$M	\$W	\$B
3	2.8	58	99	1.07	15	18	0.57	0.52	0.52	0.43	57	40	104

Lot 49 should make some nice females. His HD50K test showed teat, udder, and heifer pregnancy in top 12%.



# Accomplishment & Capitalist sons



## 50 BOWMAN ACCOMPLISHMENT 5188

BD: 4/7/2025 Reg #: 21375469 Tattoo: 5188

Sitz Accomplishment 720F  
**BROOKS ACCOMPLISHMENT 3303**  
Primrose 9514 BCBP

U-2 Coalition 206C  
**BOWMAN ERICA 3112**  
Bowman Erica 079

Poss Achievement  
Sitz Barbaramere Nell 166D  
Brooks Payweight 6285  
Primrose 5437 BCBP  
HF Syndicate 213Z  
U2 Erelite 109Z  
Basin Payweight 1682  
Bowman Erica 464

BW	74
Act. WW	610
Adj. 205	768
WR	103
Dam WR	1/103



CED	BW	WW	YW	SC	Doc	Milk	Marb	REA	Claw	Angle	\$M	\$W	\$B
12	0.5	78	140	1.24	17	14	0.23	0.67	0.53	0.39	62	64	136

Lot 50 is a heifer bull offering extra calving ease while also possessing explosive growth and a bold design.

## 52 BOWMAN CAPITALIST 5140

BD: 3/11/2025 Reg #: 21375453 Tattoo: 5140

Connealy Capitalist 028  
**LD CAPITALIST 316**  
LD Dixie Erica 2053

Shipwheel Resource 8531  
**BOWMAN MISSIE 2117**  
Bowman Missie 519

S A V Final Answer 0035  
Prides Pita of Conanga 8821  
C A Future Direction 5321  
LD Dixie Erica Oar 0853

Shipwheel Resource 5621  
Shipwheel Eola 533  
C C A Uno 049  
Bowman Missie 131

BW	82
Act. WW	692
Adj. 205	713
WR	101
Dam WR	2/95



CED	BW	WW	YW	SC	Doc	Milk	Marb	REA	Claw	Angle	\$M	\$W	\$B
9	-1.1	48	92	0.95	18	34	0.74	0.67	0.42	0.56	59	58	157

Lot 52 is the only direct son of Capitalist 316 we are offering this year. They are making fantastic cows. He is a bull that will work on heifers.

## 51 BOWMAN ACCOMPLISHMENT 5183

BD: 4/1/2025 Reg #: 21375422 Tattoo: 5183

Sitz Accomplishment 720F  
**BROOKS ACCOMPLISHMENT 1376**  
Primrose 5537 BCBP

C C A Uno 049  
**BOWMAN MISSIE 537**  
Bowman Missie 132

Poss Achievement  
Sitz Barbaramere Nell 166D  
S S 6em6 Rito X14  
Primrose 0759 BCBP  
Sitz Upward 307R  
Mytty Countess 906  
Brooks Retail Product 8915  
Bowman Missie 705

BW	86
Act. WW	676
Adj. 205	721
WR	102
Dam WR	8/99



CED	BW	WW	YW	SC	Doc	Milk	Marb	REA	Claw	Angle	\$M	\$W	\$B
8	0.4	55	98	1.83	15	22	0.25	0.46	0.35	0.39	73	54	112

Lot 51 is moderate framed with claw and angle eps in top 15%.



## G

### SHIPWHEEL ESSENTIAL 2672

BD: 05/03/2022

Reg #: 20601830

Tattoo: 2672

Shipwheel Resource 5621  
**SHIPWHEEL ESSENTIAL 9536**  
Shipwheel Pinetop 720

Sitz Far & Wide 6908  
**SHIPWHEEL CHLOE 4121**  
Shipwheel Chloe 970

S A V Resource 1441  
Apex Eriskay 5506  
LT Regions 4110  
Shipwheel Pinetop 572  
Sitz Upward 307R  
Sitz Barbaramere Nell 653  
Sitz Rainmaker 6536  
Apexette Chloe 2050

CED	BW	WW	YW	SC	Doc	Milk	Marb	REA	Claw	Angle	SM	SW	SB
4	1.3	63	106	1.11	31	24	0.46	0.92	0.42	0.46	67	59	128

Sire of Lots 53-56.

## Reference Sire



## 53 BOWMAN ESSENTIAL 5187

BD: 4/5/2025

Reg #: 21375436

Tattoo: 5187

Shipwheel Essential 9536  
**SHIPWHEEL ESSENTIAL 2672**  
Shipwheel Chloe 4121

HAYNES Outright 452  
**BOWMAN PRIDE 933**  
Bowman Pride 326

Shipwheel Resource 5621  
Shipwheel Pinetop 720  
Sitz Far & Wide 6908  
Shipwheel Chloe 970

K C F Bennett Absolute  
HAYNES ND 454 Miss 179  
Connealy Impression  
TC Pride 8217

BW	86
Act. WW	746
Adj. 205	821
WR	116
Dam WR	5/110



CED	BW	WW	YW	SC	Doc	Milk	Marb	REA	Claw	Angle	SM	SW	SB
1	1.8	76	125	1.65	30	26	0.41	0.65	0.57	0.55	46	71	123

Lot 53 is a bigger framed growthy Essential. His mother is a big time producing pathfinder weaning 5 calves ratioing 110.



Bowman Pride 933 • Dam of Lot 53

## 54 BOWMAN ESSENTIAL 5186

BD: 4/3/2025

Reg #: 21375431

Tattoo: 5186

Shipwheel Essential 9536  
**SHIPWHEEL ESSENTIAL 2672**  
Shipwheel Chloe 4121

Connealy Consensus 7229  
**BOWMAN MISSIE 867**  
Bowman Missie 5105

Shipwheel Resource 5621  
Shipwheel Pinetop 720  
Sitz Far & Wide 6908  
Shipwheel Chloe 970

Connealy Consensus  
Blue Lilly of Conanga 16  
McD Performer3308  
Bowman Missie 705

BW	92
Act. WW	634
Adj. 205	679
WR	96
Dam WR	6/102



CED	BW	WW	YW	SC	Doc	Milk	Marb	REA	Claw	Angle	SM	SW	SB
4	1	63	110	0.77	33	30	0.75	0.55	0.49	0.52	70	69	131

Lot 54 comes from a pathfinder dam. He offers good docility and carcass traits.



54

## 55 BOWMAN ESSENTIAL 5179

BD: 3/31/2025 Reg #: 21375441 Tattoo: 5179

Shipwheel Essential 9536  
**SHIPWHEEL ESSENTIAL 2672**  
Shipwheel Chloe 4121

Sitz Stellar 726D  
**BOWMAN LORRAINE 050**  
Bowman Lorraine 515

Shipwheel Resource 5621  
Shipwheel Pinetop 720  
Sitz Far & Wide 6908  
Shipwheel Chloe 970  
Mohnen Substantial 272  
SITZ Pride 200B  
Connealy Impression  
Bowman Lorraine 313

BW	76
Act. WW	620
Adj. 205	667
WR	94
Dam WR	4/93



CED	BW	WW	YW	SC	Doc	Milk	Marb	REA	Claw	Angle	\$M	\$W	\$B
7	0.1	50	83	0.65	20	17	0.47	0.82	0.43	0.48	54	39	112

Lot 55 is a moderate framed Essential that should work on heifers.



## 56 BOWMAN ESSENTIAL 5181

BD: 3/31/2025 Reg #: 21375423 Tattoo: 5181

Shipwheel Essential 9536  
**SHIPWHEEL ESSENTIAL 2672**  
Shipwheel Chloe 4121

S A V Final Answer 0035  
**BOWMAN MISSIE 518**  
Bowman Missie 355

Shipwheel Resource 5621  
Shipwheel Pinetop 720  
Sitz Far & Wide 6908  
Shipwheel Chloe 970  
Sitz Traveler 8180  
S A V Emulous 8145  
Connealy Stimulus 8419  
Bowman Missie 808

BW	78
Act. WW	668
Adj. 205	732
WR	103
Dam WR	9/102



CED	BW	WW	YW	SC	Doc	Milk	Marb	REA	Claw	Angle	\$M	\$W	\$B
7	1.1	68	103	0.71	26	23	0.44	0.57	0.43	0.46	75	68	110

Lot 56 is a calving ease Essential son. His coming 11 year old Final Answer dam is one of the deepest bodied, easiest fleshing cows in the herd. She has weaned 9 calves ratioing 102 at weaning and 97 at birth. He should work on heifers.

# THANK YOU!

THANK YOU TO OUR FAMILY, FRIENDS, AND CUSTOMERS FOR YOUR CONTINUED SUPPORT. WE APPRECIATE YOUR WORDS OF ENCOURAGEMENT, LENDING HAND, AND TRUST IN OUR CATTLE.

# LITTLE MISSOURI FENCING

Jett Ouradnik | 701.440.8241 | Amidon, ND



Eric & Andrea Bowman  
8301 158th Ave SW  
Rhame, ND 58651

*Annual Production Sale*  
**Thursday, Feb. 12, 2026**  
At the Ranch, Rhame, ND • 1 p.m.  
*Selling*  
**56 Angus Bulls**

