

Durbin Creek Ranch



Cattle for Commercial Cowmen
From Commercial Cowmen



The Agar Family

3292 Grass Creek Rd • Thermopolis, WY 82443 • (307) 921-8825 • www.durbincreekranch.com

11th Annual Bull Sale

Wednesday, February 8, 2023

Worland, Wyoming

100 2-Year-Old, PAP Tested, Range Ready Hereford Bulls
250 F1 Baldy Heifer Calves

Durbin Creek Ranch Annual Bull Sale

Sales Staff

Auctioneer

Joe Goggins (406) 861-5664

Hereford World

Kevin Murnin (406) 863-4638

Western Livestock Journal

Devin Murnin (406) 696-1502

Wyoming Livestock Roundup

Curt Cox (307) 630-4604

Western Ag Reporter

Dwayne Dietz (406) 672-8500

Tri-State Livestock News

Matt Wznick (406) 489-2414

Hereford America

Marc & Jill Hotchkiss (605) 866-4495

Agar Livestock, Special Assignment

Matt Agar (208) 739-0689

Big Horn Basin Livestock

Danny Vigil (307) 388-0781

Sale Day Numbers

Bruce's Cell: (307) 921-3021

Wyatt's Cell: (307) 921-8825

Jake's Cell: (541) 519-5366

Hotel Information

Ask for the "Durbin Creek Bull Sale Rate"

Days Inn

500N 10th St.

Worland, WY

(307) 347-4251

Or

Comfort Inn

100N Rd 11

Worland, WY

(307) 347-9898



Neighbors and friends,

Once again, let us welcome you to the Durbin Creek program and thank you for your interest. As a family we feel incredibly blessed to make a living off the land and working side by side. Without you, our customers, it would not be possible. Our goal at DCR is to produce cattle that thrive in the adverse conditions of the Inter-Mountain Region with few extra inputs. The last few years have definitely put that philosophy to the test. Everywhere we operated has seen record drought conditions. However, being eternal optimists, we let mother nature sort the cattle and have a better, easier fleshing cowherd because of it. It is an environment that demands optimums rather than maximums.

Over the years, we have not only retained ownership on our home raised cattle, but also purchased many of our bull customer's calves. This has allowed us the opportunity to collect feedlot and carcass data on large groups of DCR bred calves; and it is reassuring to see the numbers. The cattle harvested in 2022 have been gaining well over 4 lbs. a day with finish weights over 1,600 lbs. Coupling that with choice and prime carcasses that hit the high 90 percentile, we feel that we are moving in the right direction with our third phase traits. We are a couple of years into operating Washakie Feeders now and have just completed another expansion. It has been an amazing journey so far and has allowed us opportunities on a LARGER scale to work with you, our customers. Find one of us on sale day if you are interested in talking about marketing opportunities.

This is an extremely deep and powerful set of bulls from top to bottom that excel in the traits important to the Inter-Mountain cattleman. They should sire calves that generate dollars from birth until they hit the rail. This is your opportunity to get into the largest set of PAP tested 2 year old bulls in the breed, out of a cowherd that works everyday at higher elevations.

The F1 baldy females are once again a product of our customer's programs and are sired exclusively by DCR bulls. Producers that purchase them continue to be impressed with the mother cows that they make. If you are considering using Hereford bulls, I challenge you to come take a look at them. Once again thank you and we would love to see you at the sale!

In Christ Love,
The Agar Family

SALE LOCATION: The sale will be held at Big Horn Basin Livestock, located at 1310 Lane 12.

TERMS & CONDITIONS: Terms of the sale are cash or check. Every animal becomes the property of the buyer directly after the animal has been sold.

BULL DEVELOPMENT: Bulls are run in a commercial environment beside their mothers on native forage until weaning. After weaning, they are developed on hay and light grain ration through the winter, and then returned to forage as yearlings. They have been ran outside in large pastures since.

BULL FEEDING: Arrangements can be made for bulls to be returned to Washakie Feeders and put on feed. Bulls will be kept in the contemporary group they were in here at DCR. The bulls risk will be incurred by the buyer, insurance options will be available sale day.

BULL GUARANTEE: All bulls have passed a semen test and a breeding soundness evaluation by 2 independent vet clinics prior to the sale. To ensure your investment, DCR will guarantee all bulls selling against breeding injury and to be sound breeders for the first breeding season. Breeding season is defined as a 90 day period following the first turn out of the bull. If a problem should arise, contact us prior to the salvage of the bull, options will be discussed and a credit of the bull's purchase value minus salvage value will be given in an upcoming sale. Please notify us as soon as the problem or injury occurs. No claims will be accepted after September 1st.

HEIFER DEVELOPMENT: Arrangements can be made to return heifers to Washakie Feeders to be developed and AI'd to the bull of your choice, including any of the DCR calving ease bulls. Costs can be negotiated between the buyer, the lot, and DCR after the sale.

DELIVERY: Free delivery to central locations in the Wyoming area. Delivery arrangements can be made to other states after the sale. If you pick up your bull sale day you will get a \$50 rebate.

LIABILITY: All persons who attend the sale do so at their own risk. The owners and sale barn assume no liability.

Wednesday, February 8, 2023

Big Horn Basin Livestock

1:00 pm mst

1310 Lane 12, Worland WY (307) 347-9201

We would love it if you
would join us

Tuesday, February 7 for our
Pre-Sale Dinner at Green
Hills Restaurant & Bar
located at 1455 Airport Rd.
at 6:00 pm

Bulls will be
available for viewing
all day Tuesday and
Wednesday.

For questions about the bulls,
please contact Wyatt Agar
(307) 921-8825 or email at
durbincreekranch@yahoo.com

EPD Explanation

CED - Calving Ease Direct
BW - Birth Weight
WW - Weaning Weight
YW - Yearling Weight
SC - Scrotal Circumference
MILK
M&G - Milk & Growth
Fat
REA - Rib Eye Area
Marb - Marbling

Hereford Association Average for 2017

CED 2.6 BW 2.8 WW 53 YW 86 SC 1.0
MILK 25 M&G 52 Fat .016 REA .39 Marb .10

EPD's were current as of December 1, 2022.

Current weights and Scrotal Circumferences
were taken on November 30, 2022

Directions to Worland Sale Barn

- From Big Horn Ave., turn South onto 5th Street
- Go two blocks and turn West (right) onto Culbertson Ave.
- Then S.W. (left) onto Railroad Ave.
- Go 7 blocks and turn West (right) onto a dirt road that crosses the railroad tracks, directly across from Washakie Ave.



Bruce and Mary Agar
Faith, Family & Livestock
45 Years of Vision

What is PAP

PAP (Brisket Disease) in cattle is physiologically known as bovine pulmonary hypertension and is problematic in calves raised at altitudes over 6,000 ft. The average pressure within the pulmonary artery is the pulmonary arterial pressure (PAP) value that producers at high altitude should consider when selecting sires for their herd. Since PAP is a moderately to highly heritable trait (~40%), it's an indicator trait that can be used to minimize the risk of brisket disease.

Interpreting PAP

- **Up to 41:** Considered an excellent score for any animal more than 12 months. Ideal for high altitudes.
- **PAP 41-45:** An acceptable range for animals greater than 16 months. Adequate for high altitudes.
- **PAP 45-48:** An acceptable range for only older animals that have been in high elevations for an extended period of time. Younger animals may become problematic at high altitudes.
- **Pap Greater than 49:** Animals scoring in this range must be considered high-risk at altitude, not only for themselves but offspring.



Buying a DCR bull is just the beginning!

Let us help you with your marketing options through Washakie Feeders and our buyer base.

- Calf marketing with the ability to get performance data back.
- Back grounding and retained ownership — facilitating finishing options if desired.
- Heifer development with breeding options

Over the years, we have not only retained ownership in our home-raised cattle, but also purchased many of our bull customers' calves. This has allowed us the opportunity to collect feedlot and carcass data on large groups of DCR-bred calves and it is reassuring to see the numbers

Feed data on 525 head of DCR-sired steers on 2/20/2022.

- 203 days on feed
- 4.28 lb./day gained
- 5.86 dry matter conversion
- 98% Choice or better
- Cattle fed for \$1.025/lb. gained when the average cost nationally was around \$1.25.

F1 Baldy Females

- The females offered are a product of our customers programs and are sired exclusively by DCR bulls

PAP Testing

- Those of us that operate at high altitudes understand the impact Altitude Sickness can have on our bottom line. We also understand the downward genetic pressure we can put on it through selection. The 110 head of bulls in the sale average 38 on their PAP test. There were only two at 42. Consistency is key!



Reference Sires

UPS Endure 8179



KCF Bennett Encore Z311 ET
 NJW 79Z Z311 Endure 173D ET
 BW 91H 100W Rita 79Z ET

UPS Spartan 0723
 UPS Miss Spartan 4915
 UPS Miss Neon 7734

SCHU-LAR On Target 22S
 KCF Miss Revolution X338 ET
 NJW 73S M326 Trust 100W ET
 Remitall Rita 91H

DS Spartan 8008
 UPS Miss Domino 8623
 GH Neon 17N
 UPS Miss Advance 4332

CED	BW	WW	YW	SC	MILK	M&G	FAT	REA	MARB	BMI	BII	CHB
-0.4	3.9	63	117	0.6	25	57	0.068	0.85	0.28	\$369	\$458	\$171

Endure's Economic Son!

A bull that is truly designed for the Inter-Mountain region. Progeny are moderate, stout and offer an impressive early growth curve with lots of early maturity.

UPS Endure 8128



KCF Bennett Encore Z311 ET
 NJW 79Z Z311 Endure 173D ET
 BW 91H 100W Rita 79Z ET

R Revolution 4190
 UPS Miss Revolution 4013
 UPS Miss Tug 9092

SCHU-LAR On Target 22S
 KCF Miss Revolution X338 ET
 NJW 73S M326 Trust 100W ET
 Remitall Rita 91H

MSU TCF Revolution 4R
 R Miss Advance 1478
 SHF Tug R117 T57
 UPS Miss Domino 7776

CED	BW	WW	YW	SC	MILK	M&G	FAT	REA	MARB	BMI	BII	CHB
7.0	1.0	64	106	1.4	31	63	0.038	0.77	0.21	\$337	\$421	\$146

Unparalleled calving ease sire, with a huge early growth curve!

The first 51 calves born at DCR have a birth ration of 95%. Daughters are very early maturing and have a cowy look to them.

DCR 1 **DCR DVB 8179 ENDURE 1512**
 BW: 82 WW: 560 YW: 1030 Current: 1445
 4/18/2021 PAP: 39 SC: 40 Dams Age: 6 REG #: 44315829

NJW 79Z Z311 Endure 173D ET
 UPS Endure 8179
 UPS Miss Spartan 4915

DCR Koot 713
 DCR 713 Keri 5021
 Red Hills Keri T85

KCF Bennett Encore Z311 ET
 BW 91H 100W Rita 79Z ET
 UPS Spartan 0723
 UPS Miss Neon 7734

UPS Kootenay 0302 1ET
 DH Sweet Honesty 128
 Remitall Patriot ET 13P
 Link AM Governess 922J



CED	BW	WW	YW	SC	MILK	M&G	FAT	REA	MARB	BMI	BII	CHB
1.6	3.6	56	102	0.8	22	50	0.038	0.62	0.20	\$340	\$416	\$147



DCR 2 **DCR DVB 8179 ENDURE 1517**
 BW: 77 WW: 670 YW: 1160 Current: 1565
 3/31/2021 PAP: 37 SC: 38.5 Dams Age: 6 REG #: 44315833

NJW 79Z Z311 Endure 173D ET
 UPS Endure 8179
 UPS Miss Spartan 4915

THR Thor 3060A
 DCR 3060 Taylormade 5046
 Heritage Taylormade 1003 ET

KCF Bennett Encore Z311 ET
 BW 91H 100W Rita 79Z ET
 UPS Spartan 0723
 UPS Miss Neon 7734

THR Thor 4029
 THR Miss Thor 7016T
 NJW 139J Duster 47P
 TF Cow Made 920 226

CED	BW	WW	YW	SC	MILK	M&G	FAT	REA	MARB	BMI	BII	CHB
3.7	2.5	55	91	0.9	24	52	0.048	0.64	0.20	\$369	\$445	\$136

Birth Ratio 94%

DCR 3 **DCR DVB 8179 ENDURE 1523**
 BW: 78 WW: 540 YW: 1010 Current: 1400
 5/2/2021 PAP: 37 SC: 40.5 Dams Age: 6 REG #: 44315835

NJW 79Z Z311 Endure 173D ET
 UPS Endure 8179
 UPS Miss Spartan 4915

THR Thor 3060A
 DCR Lady Image 5073
 DCR 713 Image 2005

KCF Bennett Encore Z311 ET
 BW 91H 100W Rita 79Z ET
 UPS Spartan 0723
 UPS Miss Neon 7734

THR Thor 4029
 THR Miss Thor 7016T
 DCR Koot 713
 DH Prospect Image 771



CED	BW	WW	YW	SC	MILK	M&G	FAT	REA	MARB	BMI	BII	CHB
3.6	2.3	53	92	0.8	23	50	0.048	0.58	0.23	\$341	\$417	\$141

Birth Ratio 94%

DCR 4 DCR DVB 8179 ENDURE 1526
 BW: 84 WW: 630 YW: 1120 Current: 1520
 4/12/2021 PAP: 37 SC: 40 Dams Age: 10 REG #: 44315838

NJW 79Z Z311 Endure 173D ET
 UPS Endure 8179
 UPS Miss Spartan 4915

KCF Bennett Encore Z311 ET
 BW 91H 100W Rita 79Z ET
 UPS Spartan 0723
 UPS Miss Neon 7734

TW Hercules
 DCR Silver 1023
 DCR R117 Silver 1023

MSU TCF Revolution 4R
 Ash Anne 52U
 SHF Rib Eye M326 R117
 DH Silver Sensation 229



CED BW WW YW SC MILK M&G FAT REA MARB BMI BII CHB
 0.1 4.1 59 101 0.7 23 53 0.048 0.59 0.24 \$370 \$454 \$142

DCR 7 DCR DVB 8179 ENDURE 1546
 BW: 82 WW: 610 YW: 1095 Current: 1515
 3/30/2021 PAP: 36 SC: 40 Dams Age: 4 REG #: 4431584

NJW 79Z Z311 Endure 173D ET
 UPS Endure 8179
 UPS Miss Spartan 4915

KCF Bennett Encore Z311 ET
 BW 91H 100W Rita 79Z ET
 UPS Spartan 0723
 UPS Miss Neon 7734

BAR-RZ 980 Babe Ruth 48B
 DCR 48B Red Rose 7043
 DCR 713 Red Rose 2010

CRR Helton 980
 BAR-RZ 72S Waverly 73W
 DCR Koot 713
 DCR 14K Red Rose 8016



CED BW WW YW SC MILK M&G FAT REA MARB BMI BII CHB
 1.6 3.9 60 104 0.8 25 55 0.038 0.70 0.19 \$347 \$426 \$145

DCR 5 DCR DVB 8179 ENDURE 1529
 BW: 84 WW: 540 YW: 1020 Current: 1445
 4/18/2021 PAP: 36 SC: 38.5 Dams Age: 6 REG #: 44315840



NJW 79Z Z311 Endure 173D ET
 UPS Endure 8179
 UPS Miss Spartan 4915

KCF Bennett Encore Z311 ET
 BW 91H 100W Rita 79Z ET
 UPS Spartan 0723
 UPS Miss Neon 7734

DCR 100W Trusted 320 ET
 DCR Diana 5201
 DCR 7006 Diana 1013

NJW 73S M326 Trust 100W ET
 DCR Diana 7020
 K&B Red Felton 7006T
 DCR Diana 7020

CED BW WW YW SC MILK M&G FAT REA MARB BMI BII CHB
 0.0 4.4 59 101 0.9 23 52 0.028 0.64 0.21 \$368 \$449 \$137



DCR 8 DCR DVB 8179 ENDURE 1554
 BW: 78 WW: 545 YW: 1030 Current: 1415
 3/22/2021 PAP: 38 SC: 40 Dams Age: 3 REG #: 44315850

NJW 79Z Z311 Endure 173D ET
 UPS Endure 8179
 UPS Miss Spartan 4915

KCF Bennett Encore Z311 ET
 BW 91H 100W Rita 79Z ET
 UPS Spartan 0723
 UPS Miss Neon 7734

DCR 200Z Precedence 518 ET
 DCR DVB 518 Perfect 8326
 DCR 713 Perfect 4018

Churchill Red Bull 200Z
 Red Hills Keri T85
 DCR Koot 713
 DCR 638 Perfect 0115

CED BW WW YW SC MILK M&G FAT REA MARB BMI BII CHB
 0.6 3.8 57 103 0.9 25 53 0.028 0.57 0.18 \$356 \$433 \$142

DCR 6 DCR DVB 8179 ENDURE 1541
 BW: 81 WW: 680 YW: 1180 Current: 1585
 3/26/2021 PAP: 38 SC: 40 Dams Age: 5 REG #: 44315844

NJW 79Z Z311 Endure 173D ET
 UPS Endure 8179
 UPS Miss Spartan 4915

KCF Bennett Encore Z311 ET
 BW 91H 100W Rita 79Z ET
 UPS Spartan 0723
 UPS Miss Neon 7734

NJW 78P 88X Cowboss 199B
 DCR 199B Sunny 6271
 DCR 3232 Dom 7019

NJW 98S R117 Ribeye 88X ET
 NJW BW Ladysport Dew 78P ET
 UPS Kootenay 3232 1ET
 Sun MS L1 Dom 58L



CED BW WW YW SC MILK M&G FAT REA MARB BMI BII CHB
 2.1 3.0 54 96 0.7 25 51 0.028 0.68 0.19 \$358 \$432 \$145

Yearling Ratio 104%

DCR 9 DCR HD 8128 ENDURE 103H
 BW: 70 WW: 580 YW: 1048 Current: 1520
 4/7/2021 PAP: 42 SC: 37 Dams Age: 4 REG #: 44398059

NJW 79Z Z311 Endure 173D ET
 UPS Endure 8128
 UPS Miss Revolution 4013

KCF Bennett Encore Z311 ET
 BW 91H 100W Rita 79Z ET
 R Revolution 4190
 UPS Miss Tug 9092

NJW 78P 88X Cowboss 199B
 DCR HD 199B Tara 7001
 DCR HD Y215 Tara A302

NJW 98S R117 Ribeye 88X ET
 NJW BW Ladysport Dew 78P ET
 Red Hills Big Gun Y215
 DCR 722 Tara 128X



CED BW WW YW SC MILK M&G FAT REA MARB BMI BII CHB
 6.3 2.2 63 103 1.2 31 63 0.018 0.66 0.1 \$354 \$431 \$125

SCURRED
 Birth Ratio 96%

DCR 10 **DCR HD 8128 ENDURE 104**
 BW: 68 WW: 670 YW: 1140 Current: 1610
 4/23/2021 PAP: 39 SC: 37.5 Dams Age: 4 REG #: 44398064

NJW 79Z Z311 Endure 173D ET
 UPS Endure 8128
 UPS Miss Revolution 4013

KCF Bennett Encore Z311 ET
 BW 91H 100W Rita 79Z ET
 R Revolution 4190
 UPS Miss Tug 9092

NJW 78P 88X Cowboss 199B
 DCR HD 199B Dominet 7633
 DCR Dominet 5099

NJW 98S R117 Ribeye 88X ET
 NJW BW Ladysport Dew 78P ET
 DCR 136X Dependable 376
 DCR 7006 Dominet 0112



CED BW WW YW SC MILK M&G FAT REA MARB BMI BII CHB
 7.2 1.6 55 93 1.2 28 56 0.018 0.59 0.15 \$371 \$445 \$127
 Birth Ratio 97% Yearling Ratio 109%
 Weaning Ratio 113%

DCR 13 **DCR HD 8128 ENDURE 108**
 BW: 75 WW: 620 YW: 1090 Current: 1560
 3/28/2021 PAP: 38 SC: 39.5 Dams Age: 3 REG #: 44398075

NJW 79Z Z311 Endure 173D ET
 UPS Endure 8128
 UPS Miss Revolution 4013

KCF Bennett Encore Z311 ET
 BW 91H 100W Rita 79Z ET
 R Revolution 4190
 UPS Miss Tug 9092

DCR 136X Dependable 376
 DCR HD Dom 809
 DCR 722 L1 Dom 009

NJW 12E 4037 Duration 136X ET
 DCR 7006 Miss Daisy 9037
 DCR Koot 722
 DCR 3232 Dom 7019



CED BW WW YW SC MILK M&G FAT REA MARB BMI BII CHB
 5.6 2.4 57 95 1.1 25 54 0.028 0.58 0.16 \$341 \$416 \$132

DCR 11 **DCR HD 8128 ENDURE 107H**
 BW: 60 WW: 560 YW: 1030 Current: 1500
 4/13/2021 PAP: 37 SC: 40 Dams Age: 6 REG #: 44398070



NJW 79Z Z311 Endure 173D ET
 UPS Endure 8128
 UPS Miss Revolution 4013

KCF Bennett Encore Z311 ET
 BW 91H 100W Rita 79Z ET
 R Revolution 4190
 UPS Miss Tug 9092

DCR 136X Dependable 376
 DCR Dominet 5099
 DCR 7006 Dominet 0112

NJW 12E 4037 Duration 136X ET
 DCR 7006 Miss Daisy 9037
 K&B Red Felton 7006T
 DCR Dominet 5005

CED BW WW YW SC MILK M&G FAT REA MARB BMI BII CHB
 10.9 0.3 47 81 1.1 23 46 0.028 0.49 0.2 \$355 \$425 \$127
 Birth Ratio 80%



DCR 14 **DCR 8128 ENDURE 1109**
 BW: 78 WW: 543 YW: 1025 Current: 1350
 4/12/2021 PAP: SC: Dams Age: 8 REG #: 44329170

NJW 79Z Z311 Endure 173D ET
 UPS Endure 8128
 UPS Miss Revolution 4013

KCF Bennett Encore Z311 ET
 BW 91H 100W Rita 79Z ET
 R Revolution 4190
 UPS Miss Tug 9092

Standard 68L Dom Lad 38T
 BP 38T Standard Lady 146A
 BP 171N Gen Robon Lass 49S

STR Standard 256B Dom Lad 68L
 K 64H Ribstone Lady 112N
 LBH 114L General 171N
 BP Young Lady 138M

CED BW WW YW SC MILK M&G FAT REA MARB BMI BII CHB
 4.6 3.9 57 95 1.2 29 58 0.018 0.47 0.08 \$315 \$385 \$123

DCR 12 **DCR 8128 ENDURE 1108**
 BW: 68 WW: 600 YW: 1010 Current: 1540
 4/15/2021 PAP: 37 SC: 40 Dams Age: 11 REG #: 44329167

NJW 79Z Z311 Endure 173D ET
 UPS Endure 8128
 UPS Miss Revolution 4013

KCF Bennett Encore Z311 ET
 BW 91H 100W Rita 79Z ET
 R Revolution 4190
 UPS Miss Tug 9092

NJW 167L Radar 38T
 DCR 38T Daisey 016
 DCR 0302 Cindy 8025

SHF Radar M326 R125
 NJW 45G Ladysport 167L
 WNH Keynote 9401
 DH Basic Cindy 297



CED BW WW YW SC MILK M&G FAT REA MARB BMI BII CHB
 5.8 1.6 58 90 1.1 24 53 0.028 0.46 0.07 \$314 \$384 \$117
 Birth Ratio 92%

DCR 15 **DCR 8128 ENDURE 1152**
 BW: 64 WW: 670 YW: 1140 Current: 1610
 3/26/2021 PAP: 38 SC: 40.5 Dams Age: 6 REG #: 44398120

NJW 79Z Z311 Endure 173D ET
 UPS Endure 8128
 UPS Miss Revolution 4013

KCF Bennett Encore Z311 ET
 BW 91H 100W Rita 79Z ET
 R Revolution 4190
 UPS Miss Tug 9092

JB 354 Anchor Cadet
 BP 725YCadet Lady 31C
 BP 124P Ribstone Lady 10W

Anchor 49R
 JB 488 Neda Herman 354M
 K 117K Ribstone Lad 124P
 BP 31K Builder Girl 21R



CED BW WW YW SC MILK M&G FAT REA MARB BMI BII CHB
 10.0 2.0 59 93 1.0 23 53 0.028 0.53 0.17 \$284 \$360 \$126
 Birth Ratio 85%

DCR 16 **DCR 8128 ENDURE 1153**
 BW: 68 WW: 570 YW: 1036 Current: 1505
 4/18/2021 PAP: 37 SC: 40 Dams Age: 5 REG #: 44329192

NJW 79Z Z311 Endure 173D ET
UPS Endure 8128
 UPS Miss Revolution 4013

KCF Bennett Encore Z311 ET
 BW 91H 100W Rita 79Z ET
 R Revolution 4190
 UPS Miss Tug 9092

Anchor 44U
BP 44U Anchor Lady 121D
 Ribstone 124P Lass 81T

Anchor 49R
 Anchor 5M
 K 117K Ribstone Lad 124P
 K 76E Classic Lady 176J



CED BW WW YW SC MILK M&G FAT REA MARB BMI BII CHB
 9.7 1.8 55 88 0.9 24 51 0.028 0.43 0.18 \$326 \$401 \$120
 Birth Ratio 94%

DCR 19 **DCR 8128 ENDURE 1168**
 BW: 70 WW: 560 YW: 1035 Current: 1505
 4/15/2021 PAP: 35 SC: 42 Dams Age: 5 REG #: 44329409

NJW 79Z Z311 Endure 173D ET
UPS Endure 8128
 UPS Miss Revolution 4013

KCF Bennett Encore Z311 ET
 BW 91H 100W Rita 79Z ET
 R Revolution 4190
 UPS Miss Tug 9092

BBSF 465Y Boyd 78B
BP 78B Miss Wayne 45D
 BP 44U Anchor Lady 165A

Square-D John Wayne 465Y
 BBSF 52U Racquelle 65Y
 Anchor 44U
 K 47M Ribstone Lady 28R



CED BW WW YW SC MILK M&G FAT REA MARB BMI BII CHB
 8.0 2.4 62 98 1.1 29 60 0.018 0.61 0.10 \$355 \$432 \$124
 Birth Ratio 94%



DCR 17 **DCR 8128 ENDURE 1156**
 BW: 72 WW: 740 YW: 1210 Current: 1680
 4/22/2021 PAP: NA SC: 40.5 Dams Age: 5 REG #: 44329394

NJW 79Z Z311 Endure 173D ET
UPS Endure 8128
 UPS Miss Revolution 4013

KCF Bennett Encore Z311 ET
 BW 91H 100W Rita 79Z ET
 R Revolution 4190
 UPS Miss Tug 9092

JDH TS 20W Cracker Jack 23A ET
BP 23A Miss Cracker Jack 42D
 BP 124P Ribstone Lady 182U

AH JDH Cracker Jack 26U ET
 JDH MS 15T Wrangler 20W ET
 K 117K Ribstone Lad 124P
 K 68L Standard Lady 72R

CED BW WW YW SC MILK M&G FAT REA MARB BMI BII CHB
 5.7 3.9 61 103 1.0 20 51 0.048 0.59 0.06 \$315 \$388 \$122
 Weaning Ratio 120%
 Yearling Ratio 114%



DCR 20 **DCR 8128 ENDURE 1178**
 BW: 85 WW: 540 YW: 1010 Current: 1440
 4/1/2021 PAP: 38 SC: 39 Dams Age: 6 REG #: 44398091

NJW 79Z Z311 Endure 173D ET
UPS Endure 8128
 UPS Miss Revolution 4013

KCF Bennett Encore Z311 ET
 BW 91H 100W Rita 79Z ET
 R Revolution 4190
 UPS Miss Tug 9092

Anchor 44U
BP 44U Anchor Lady 160C
 BP 38T Standard Lady 44X

Anchor 49R
 Anchor 5M
 Standard 68L Dom Lad 38T
 K 28L Reform Lady 154R

CED BW WW YW SC MILK M&G FAT REA MARB BMI BII CHB
 3.1 4.4 61 100 1.1 27 57 0.028 0.42 0.15 \$337 \$316 \$121

DCR 18 **DCR 8128 ENDURE 1165**
 BW: 67 WW: 605 YW: 1110 Current: 1505
 4/12/2021 PAP: 37 SC: 39 Dams Age: 6 REG #: 44329401

NJW 79Z Z311 Endure 173D ET
UPS Endure 8128
 UPS Miss Revolution 4013

KCF Bennett Encore Z311 ET
 BW 91H 100W Rita 79Z ET
 R Revolution 4190
 UPS Miss Tug 9092

LBH 40W Ribstone 24Y
BP 24Y Ribstone Lady 35C
 BP 144P Standard Lady 22Z

LBH 157K Ribstone 40W
 LBH 268P Miss Standard 270T
 K 68L Standard Lad 144P
 BP 124P Ribstone Lady 13U



CED BW WW YW SC MILK M&G FAT REA MARB BMI BII CHB
 9.5 3.4 60 99 1.2 25 55 0.038 0.36 0.16 \$296 \$374 \$115
 Birth Ratio 89%



DCR 8128 ENDURE 1182
21 BW: 65 WW: 520 YW: 990 Current: 1410
 4/16/2021 PAP: 35 SC: 39.5 Dams Age: 7 REG #: 44329396

NJW 79Z Z311 Endure 173D ET
UPS Endure 8128
 UPS Miss Revolution 4013

KCF Bennett Encore Z311 ET
 BW 91H 100W Rita 79Z ET
 R Revolution 4190
 UPS Miss Tug 9092

Anchor 44U
BP 44U Anchor Lady 17B
 BP 1449 Standard Lady 163U

Anchor 49R
 Anchor 5M
 K 68L Standard Lad 144P
 K 64H Ribstone Lady 152L



CED BW WW YW SC MILK M&G FAT REA MARB BMI BII CHB
 12.5 1.0 55 91 1.1 24 52 0.028 0.42 0.21 \$325 \$403 \$123
 Birth Ratio 89%

DCR 8128 ENDURE 1190
23 BW: 65 WW: 575 YW: 1070 Current: 1460
 4/29/2021 PAP: 39 SC: 39 Dams Age: 7 REG #: 4399667

NJW 79Z Z311 Endure 173D ET
UPS Endure 8128
 UPS Miss Revolution 4013

KCF Bennett Encore Z311 ET
 BW 91H 100W Rita 79Z ET
 R Revolution 4190
 UPS Miss Tug 9092

BP 44U Anchor 38Y
DCR 38Y Standard 4031
 DCR 713 Standard 1031

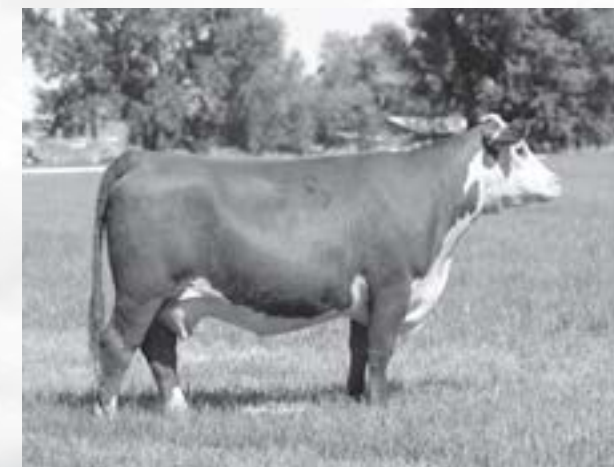
Anchor 44U
 K 64H Ribstone Lady 184M
 DCR Koot 713
 DCR 2001 Standard 6008



CED BW WW YW SC MILK M&G FAT REA MARB BMI BII CHB
 10.1 1.0 54 90 1.1 26 53 0.038 0.55 0.18 \$320 \$393 \$126
 Birth Ratio 89%



DCR 428B Manhattan 0018
 Lot 1 in 2022 Bull Sale



DCR 199B Standard Lady 7625
 Maternal sister to Lot 23
 Out of the great 4031 cow

DCR 8128 ENDURE 1183
22 BW: 68 WW: 750 YW: 1220 Current: 1600
 4/18/2021 PAP: 37 SC: 40.5 Dams Age: 7 REG #: 44329406

NJW 79Z Z311 Endure 173D ET
UPS Endure 8128
 UPS Miss Revolution 4013

KCF Bennett Encore Z311 ET
 BW 91H 100W Rita 79Z ET
 R Revolution 4190
 UPS Miss Tug 9092

CL 1 Domino 955W
BP 955 L1 Domino Lady 45B
 K 47M Ribstone Lady 54P

CL 1 Domino 637S 1ET
 CL 1 Dominette 5152R
 K 64H Ribstone Lad 47M
 K 76E Classic Lady 149K



CED BW WW YW SC MILK M&G FAT REA MARB BMI BII CHB
 7.4 2.3 55 88 1.2 29 56 0.008 0.61 0.01 \$331 \$394 \$118
 Birth Ratio 93%
 Weaning Ratio 119%
 Yearling Ratio 112%

DCR 8128 ENDURE 1191
24 BW: 72 WW: 560 YW: 1040 Current: 1415
 4/20/2021 PAP: 36 SC: 40 Dams Age: 6 REG #: 44329179

NJW 79Z Z311 Endure 173D ET
UPS Endure 8128
 UPS Miss Revolution 4013

KCF Bennett Encore Z311 ET
 BW 91H 100W Rita 79Z ET
 R Revolution 4190
 UPS Miss Tug 9092

LBH 40W Ribstone 24Y
BP 24Y Ribstone Lady 60C
 BP 39T Ribstone Lady 90W

LBH 157K Ribstone 40W
 LBH 268P Miss Standard 270T
 Ribstone 10N Lad 39T
 Standard 68L Dom Lady 113T



CED BW WW YW SC MILK M&G FAT REA MARB BMI BII CHB
 9.6 3.2 57 96 1.3 28 56 0.048 0.36 0.15 \$295 \$370 \$118

DCR 8128 ENDURE 1192
25 BW: 68 WW: 590 YW: 1070 Current: 1535
 4/21/2021 PAP: 37 SC: 39.5 Dams Age: 5 REG #: 44329399

NJW 79Z Z311 Endure 173D ET
UPS Endure 8128
 UPS Miss Revolution 4013

KCF Bennett Encore Z311 ET
 BW 91H 100W Rita 79Z ET
 R Revolution 4190
 UPS Miss Tug 9092

BBSF 465Y Boyd 78B
BP 78B Miss Wayne 169D
 Ribstone 65R Lady 74T

Square-D John Wayne 465Y
 BBSF 52U Racquelle 65Y
 K 47M Ribstone Lad 65R
 K 28L Reform Lady 98P



CED BW WW YW SC MILK M&G FAT REA MARB BMI BII CHB
 8.6 2.9 59 94 1.2 24 54 0.028 0.53 0.16 \$338 \$416 \$123
 Birth Ratio 94%

DCR 8128 ENDURE 1198
28 BW: 62 WW: 680 YW: 1100 Current: 1520
 4/23/2021 PAP: 37 SC: 41 Dams Age: 4 REG #: 44329402

NJW 79Z Z311 Endure 173D ET
UPS Endure 8128
 UPS Miss Revolution 4013

KCF Bennett Encore Z311 ET
 BW 91H 100W Rita 79Z ET
 R Revolution 4190
 UPS Miss Tug 9092

BP 247 Kootenay 115C
BP 115C Miss Kootenay 6E
 BP 23A Miss Cracker Jack 99C

DCR 713 Kootenay 247
 BP 38T Standard Lady 20A
 JDH TS 20W Cracker Jack 23A ET
 BP 44U Anchor Lady 57Y



CED BW WW YW SC MILK M&G FAT REA MARB BMI BII CHB
 7.0 2.0 56 94 1.0 31 59 0.028 0.51 0.19 \$332 \$108 \$125
 Birth Ratio 87%
 Weaning Ratio 113%
 Yearling Ratio 105%



DCR 8128 ENDURE 1185
26 BW: 82 WW: 750 YW: 1218 Current: 1690
 4/22/2021 PAP: 36 SC: 41 Dams Age: 9 REG #: 44398096

NJW 79Z Z311 Endure 173D ET
UPS Endure 8128
 UPS Miss Revolution 4013

KCF Bennett Encore Z311 ET
 BW 91H 100W Rita 79Z ET
 R Revolution 4190
 UPS Miss Tug 9092

F 765 Ribstone 991
BP 991 Ribstone Lady 8Z
 K 41K Sandstone Lady 113P

F 157 Ribstone 765
 F Miss Mom 177
 GH Sandstone ET 41K
 K 12F Maverick Lady 113K

CED BW WW YW SC MILK M&G FAT REA MARB BMI BII CHB
 3.7 4.1 55 88 1.2 28 56 -0.012 0.40 -0.07 \$310 \$368 \$102
 SCURRED
 Yearling Ratio 114%
 Weaning Ratio 121%



DCR 8128 ENDURE 1400
29 BW: 80 WW: 550 YW: 1020 Current: 1440
 4/2/2021 PAP: 38 SC: 36 Dams Age: 4 REG #: 44408597

NJW 79Z Z311 Endure 173D ET
UPS Endure 8128
 UPS Miss Revolution 4013

KCF Bennett Encore Z311 ET
 BW 91H 100W Rita 79Z ET
 R Revolution 4190
 UPS Miss Tug 9092

BBSF 465Y Boyd 78B
BP 78B Miss Wayne 127E
 BP 38T Standard Dom Lady 22W

Square-D John Wayne 465Y
 BBSF 52U Racquelle 65Y
 Standard 68L Dom Lad 38T
 Thesnif 279J Golden Lady 118S

CED BW WW YW SC MILK M&G FAT REA MARB BMI BII CHB
 0.9 4.3 64 96 1.3 30 62 0.033 0.58 0.20 \$371 \$456 \$134

DCR 8128 ENDURE 1197
27 BW: 60 WW: 620 YW: 1095 Current: 1515
 4/23/2021 PAP: 36 SC: 41.5 Dams Age: 5 REG #: 44329398

NJW 79Z Z311 Endure 173D ET
UPS Endure 8128
 UPS Miss Revolution 4013

KCF Bennett Encore Z311 ET
 BW 91H 100W Rita 79Z ET
 R Revolution 4190
 UPS Miss Tug 9092

DCR 713 Kootenay 247
BP 247 Miss Kootenay 72D
 BP 38T Standard Lady 96X

DCR Koot 713
 DCR 0302 Wine 7032
 Standard 68L Dom Lad 38T
 K 28L Reform Lady 189R



CED BW WW YW SC MILK M&G FAT REA MARB BMI BII CHB
 11.4 0.5 53 87 1.4 25 51 0.038 0.58 0.22 \$325 \$399 \$137
 Birth Ratio 83%
 Yearling Ratio 103%

DCR 8128 ENDURE 1401
30 BW: 75 WW: 595 YW: 1065 Current: 1485
 4/24/2021 PAP: 37 SC: 43 Dams Age: 4 REG #: 44399697

NJW 79Z Z311 Endure 173D ET
UPS Endure 8128
 UPS Miss Revolution 4013

KCF Bennett Encore Z311 ET
 BW 91H 100W Rita 79Z ET
 R Revolution 4190
 UPS Miss Tug 9092

BBSF 465Y Boyd 78B
BP 78B Miss Wayne 122E
 BP 38T Standard Lady 136X

Square-D John Wayne 465Y
 BBSF 52U Racquelle 65Y
 Standard 68L Dom Lad 38T
 Thesnif 28L Reform Lady 117S



CED BW WW YW SC MILK M&G FAT REA MARB BMI BII CHB
 3.3 4.2 62 99 1.3 28 59 0.028 0.58 0.12 \$337 \$414 \$127
 HORNED

DCR 8128 ENDURE 1439
31 BW: 82 WW: 540 YW: 1010 Current: 1450
 4/15/2021 PAP: 38 SC: 40 Dams Age: 4 REG #: 44408604

NJW 79Z Z311 Endure 173D ET
UPS Endure 8128
 UPS Miss Revolution 4013

KCF Bennett Encore Z311 ET
 BW 91H 100W Rita 79Z ET
 R Revolution 4190
 UPS Miss Tug 9092

BBSF 465Y Boyd 78B
BP 78B Miss Wayne 141E
 BP 38T Standard Lady 50Z

Square-D John Wayne 465Y
 BBSF 52U Racquelle 65Y
 Standard 68L Dom Lad 38T
 K 15N Domino Lady 137R



CED BW WW YW SC MILK M&G FAT REA MARB BMI BII CHB
 1.4 4.2 63 100 1.3 30 62 0.038 0.60 0.19 \$358 \$442 \$136

DCR 8128 ENDURE 1440
32 BW: 75 WW: 760 YW: 1240 Current: 1650
 4/9/2021 PAP: 40 SC: 40 Dams Age: 4 REG #: 44409003

NJW 79Z Z311 Endure 173D ET
UPS Endure 8128
 UPS Miss Revolution 4013

KCF Bennett Encore Z311 ET
 BW 91H 100W Rita 79Z ET
 R Revolution 4190
 UPS Miss Tug 9092

BBSF 465Y Boyd 78B
BP 78B Miss Wayne 11E
 BP 38T Standard Lady 140A

Square-D John Wayne 465Y
 BBSF 52U Racquelle 65Y
 Standard 68L Dom Lad 38T
 BP 4S Admiral Lady 12W



CED BW WW YW SC MILK M&G FAT REA MARB BMI BII CHB
 2.5 4.2 62 101 1.3 30 61 0.038 0.48 0.19 \$346 \$430 \$128
 Weaning Ratio 121%
 Yearling Ratio 114%

DCR 8128 ENDURE 1486
33 BW: 70 WW: 690 YW: 1190 Current: 1600
 5/1/2021 PAP: 38 SC: 43 Dams Age: 6 REG #: 44406560

NJW 79Z Z311 Endure 173D ET
UPS Endure 8128
 UPS Miss Revolution 4013

KCF Bennett Encore Z311 ET
 BW 91H 100W Rita 79Z ET
 R Revolution 4190
 UPS Miss Tug 9092

JDH TS 20W Cracker Jack 23A ET
BP 23A Miss Cracker Jack 33C
 BP 44U Anchor Lady 64Z

AH JDH Cracker Jack 26U ET
 JDH MS 15T Wrangler 20W ET
 Anchor 44U
 THESNIF 64H Portia 86M



CED BW WW YW SC MILK M&G FAT REA MARB BMI BII CHB
 8.9 2.5 54 87 0.8 21 48 0.038 0.53 0.07 \$322 \$388 \$122
 HORNED Weaning Ratio 114%
 Birth Ratio 96% Yearling Ratio 114%

Reference Sire

DCR 428B Manhattan 6009



Churchill Sensation 028X
 Churchill Manhattan 428B ET
 Churchill Lady 002X ET

UPS Domino 3027
 Churchill Lady 7202T ET
 Golden Oak Outcross 18U
 Churchill Lady 600S ET

DCR Justify 716
 DCR 38Y Ella C 4085
 DCR 713 Ella C 1035

BBSF 610F Justify 79J
 DH Rich Rose 505
 DCR Koot 713
 DCR 14K Paulina 4001

CED BW WW YW SC MILK M&G FAT REA MARB BMI BII CHB
 2.8 3.1 76 115 1.5 34 72 0.028 0.50 0.22 \$316 \$414 \$126

High Performing, Power Bull!

With 101 head of progeny recorded they have posted a birth ratio of 99% and a weaning ratio of 105%. Sons are long sided and rugged, while daughters are making range matrons. The first set of feeder calves sired by him graded 96.5 % Choice or better with an average daily gain of 4.01 and a dry matter conversion of 5.8. He hits all the corners! All these bulls are out of first calf heifers.



Churchill Manhattan 428B



6009 son that won Reserve Champion Hereford Steer at the Wyoming State Fair 2022

DCR 34 DCR 6009 MANHATTAN 1020
 BW: 73 WW: 805 YW: 1245 Current: 1685
 3/17/2021 PAP: 37 SC: 40.5 Dams Age: 2 REG #: 44255630

Churchill Manhattan 428B
DCR 428B Manhattan 6009
 DCR 38Y Ella C 4085

Churchill Sensation 028X
 Churchill Lady 002X ET
 DCR Justify 716
 DCR 713 Ella C 1035

DCR 136X Dependable 376
DCR 376 Ella 9236 ET
 DCR 199B Ella 6358 ET

NJW 12E 4037 Duration 136X ET
 DCR 7006 Miss Daisy 9037
 NJW 78P 88X Cowboss 199B ET
 DCR 722 Ella C 0119

CED BW WW YW SC MILK M&G FAT REA MARB BMI BII CHB
 2.4 2.7 62 95 1.2 31 62 0.018 0.47 0.18 \$348 \$430 \$121

Weaning Ratio 133%
 Yearling Ratio 114%



DCR 37 DCR 6009 MANHATTAN 1047
 BW: 78 WW: 810 YW: 1220 Current: 1730
 3/28/2021 PAP: 39 SC: 41 Dams Age: 2 REG #: 44255681

Churchill Manhattan 428B
DCR 428B Manhattan 6009
 DCR 38Y Ella C 4085

Churchill Sensation 028X
 Churchill Lady 002X ET
 DCR Justify 716
 DCR 713 Ella C 1035

NJW 78P 88X Cowboss 199B
DCR Miss Daisy 9359
 DCR 713 Miss Daisy 2036

NJW 98S R117 Ribeye 88X ET
 NJW BW Ladysport Dew 78P ET
 DCR Koot 713
 DCR 328 Miss Daisy 4025A

CED BW WW YW SC MILK M&G FAT REA MARB BMI BII CHB
 -2.2 3.8 67 107 1.3 29 63 0.018 0.56 0.11 \$345 \$427 \$118

Weaning Ratio 138%
 Yearling Ratio 115%



DCR 35 DCR 6009 MANHATTAN 1024
 BW: 85 WW: 545 YW: 1025 Current: 1710
 3/20/2021 PAP: 36 SC: 43 Dams Age: 2 REG #: 44402152

Churchill Manhattan 428B
DCR 428B Manhattan 6009
 DCR 38Y Ella C 4085

Churchill Sensation 028X
 Churchill Lady 002X ET
 DCR Justify 716
 DCR 713 Ella C 1035

BAR-RZ 56X Cassius Clay 83C
DCR 83C Miss Kootenay 9160
 BP 247 Miss Kootenay 121E

BAR-RZ 85U Rolex 56X
 BAR-RZ 192S Western Star 7W
 DCR 713 Kootenay 247
 BP 265Y Standard 180A

CED BW WW YW SC MILK M&G FAT REA MARB BMI BII CHB
 -5.5 5.4 67 112 1.3 28 62 0.028 0.46 0.13 \$354 \$438 \$119



DCR 38 DCR 6009 MANHATTAN 1055
 BW: 75 WW: 635 YW: 1115 Current: 1525
 4/1/2021 PAP: 40 SC: 41 Dams Age: 2 REG #: 44255751

Churchill Manhattan 428B
DCR 428B Manhattan 6009
 DCR 38Y Ella C 4085

Churchill Sensation 028X
 Churchill Lady 002X ET
 DCR Justify 716
 DCR 713 Ella C 1035

BBSF 465Y Boyd 78B
DCR 78B Miss Cal 9002
 BP 10B Miss Cal 151D

Square-D John Wayne 465Y
 BBSF 52U Racquelle 65Y
 Hills-Galore 36T 605 Easy 10B
 BP 955 L1 Domino Lady 45B

CED BW WW YW SC MILK M&G FAT REA MARB BMI BII CHB
 0.2 4.8 71 107 1.3 31 66 0.018 0.48 0.12 \$344 \$431 \$119

Weaning Ratio 109%
 Yearling Ratio 106%

DCR 36 DCR 6009 MANHATTAN 1040
 BW: 74 WW: 570 YW: 1030 Current: 1440
 3/26/2021 PAP: 39 SC: 40 Dams Age: 2 REG #: 44255663

Churchill Manhattan 428B
DCR 428B Manhattan 6009
 DCR 38Y Ella C 4085

Churchill Sensation 028X
 Churchill Lady 002X ET
 DCR Justify 716
 DCR 713 Ella C 1035

NJW 78P 88X Cowboss 199B
DCR 199B Ella 9228
 DCR 376 Ella 5023

NJW 98S R117 Ribeye 88X ET
 NJW BW Ladysport Dew 78P ET
 DCR 136X Dependable 376
 DCR 7006 Ella 9014

CED BW WW YW SC MILK M&G FAT REA MARB BMI BII CHB
 2.5 3.1 62 98 1.4 32 62 0.017 0.46 0.16 \$354 \$437 \$119



DCR 39 DCR 6009 MANHATTAN 1063
 BW: 73 WW: 720 YW: 1170 Current: 1610
 4/3/2021 PAP: 36 SC: 41 Dams Age: 2 REG #: 44255757

Churchill Manhattan 428B
DCR 428B Manhattan 6009
 DCR 38Y Ella C 4085

Churchill Sensation 028X
 Churchill Lady 002X ET
 DCR Justify 716
 DCR 713 Ella C 1035

DCR 200Z Precedence 518 ET
DCR DVB 518 Perfect 9405
 DCR 713 Perfect 4018

Churchill Red Bull 200Z
 Red Hills Keri T85
 DCR Koot 713
 DCR 638 Perfect 0115

CED BW WW YW SC MILK M&G FAT REA MARB BMI BII CHB
 0.6 3.2 62 104 1.4 27 58 -0.012 0.44 -0.05 \$347 \$415 \$106

Weaning Ratio 123%



DCR 40 **DCR 6009 MANHATTAN 1081**
 BW: 71 WW: 620 YW: 1090 Current: 1590
 4/10/2021 PAP: 39 SC: 38 Dams Age: 2 REG #: 44257156

Churchill Manhattan 428B
DCR 428B Manhattan 6009
 DCR 38Y Ella C 4085

Churchill Sensation 028X
 Churchill Lady 002X ET
 DCR Justify 716
 DCR 713 Ella C 1035

NJW 78P 88X Cowboss 199B
DCR 199B Lauretta 9226 ET
 DCR 3281 Lauretta 623

NJW 98S R117 Ribeye 88X ET
 NJW BW Ladysport Dew 78P ET
 WNH Keynote 9401
 DH Lauretta Bell 281

CED BW WW YW SC MILK M&G FAT REA MARB BMI BII CHB
 2.0 2.9 62 98 1.2 31 62 0.008 0.49 0.12 \$353 \$431 \$118

Birth Ratio 96%
 Weaning Ratio 108%



DCR 41 **DCR 6009 MANHATTAN 1085**
 BW: 78 WW: 620 YW: 1090 Current: 1520
 4/14/2021 PAP: 37 SC: 40 Dams Age: 2 REG #: 44329750

Churchill Manhattan 428B
DCR 428B Manhattan 6009
 DCR 38Y Ella C 4085

Churchill Sensation 028X
 Churchill Lady 002X ET
 DCR Justify 716
 DCR 713 Ella C 1035

BAR-RZ 56X Cassius Clay 83C
DCR 83C Nuss Jitterbug 9135
 BP 115C Nuss Jiitebat 88E

BAR-RZ 85U Rolex 56X
 BAR-RZ 192S Western Star 7W
 BP 247 Kootenay 115C
 BP 44U Anchor Lady 88C

CED BW WW YW SC MILK M&G FAT REA MARB BMI BII CHB
 1.5 4.2 65 108 1.4 28 61 0.028 0.4 0.14 \$352 \$436 \$116

Weaning Ratio 110%
 Yearling Ratio 107%

DCR 42 **DCR 6009 MANHATTAN 1006**
 BW: 74 WW: 600 YW: 1110 Current: 1500
 3/5/2021 PAP: 36 SC: 41 Dams Age: 2 REG #: 44410815

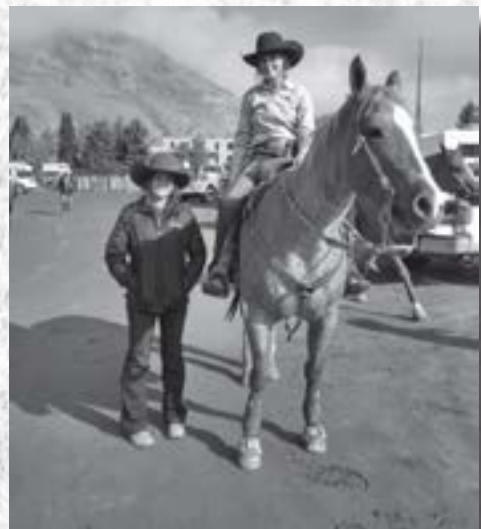
Churchill Manhattan 428B
DCR 428B Manhattan 6009
 DCR 38Y Ella C 4085

Churchill Sensation 028X
 Churchill Lady 002X ET
 DCR Justify 716
 DCR 713 Ella C 1035

BAR-RZ 56X Cassius Clay 83C
DCR 83C Miss Kootenay 9132
 BP 115C Miss Kootenay 6E

BAR-RZ 85U Rolex 56X
 BAR-RZ 192S Western Star 7W
 BP 247 Kootenay 115C
 BP 23A Miss Cracker Jack 99C

CED BW WW YW SC MILK M&G FAT REA MARB BMI BII CHB
 2.1 3.6 64 106 1.3 27 59 0.042 0.48 0.18 \$357 \$442 \$124



Reference Sire

NJW 78P 88X Cowboss 199B ET



SHF Rib Eye M326 R117
 NJW 98S R117 88X ET
 NJW 9126J Dew Domino 98S

KCF Bennett 3008 M326
 HVH Miss Hudson 83K 8M
 CL1 Domino 9126J 1ET
 NJW 57G 74G Dew 1ET

RU 20X Boulder 57G
 NJW BW Ladysport Dew 78P
 Saddle VLY Ladysport 120

Remital Keynote 20X
 RU 10A Dew 57D
 RU Duster 60D
 GK Ladysport 131A

CED BW WW YW SC MILK M&G FAT REA MARB BMI BII CHB
 2.9 3.2 56 95 1.3 36 64 -0.002 0.56 0.06 \$401 \$471 \$117

Eight Trait Leader!!

The longer we use 199B in our commercial program the more impressive his real world data becomes! His calves come easy, mature early, convert feed and hang up dollar generating carcasses. Sons are stout and economic, daughters are broody and very productive. Sired the Champion Carcass Steer at the Hot Springs County Fair in 2019. Feeder calves killed last year graded 98% choice or better. He's coming 9 and is still actively working in the pasture with almost 700 hd of progeny recorded. You will not find a truer proven sire!



DCR 199B Daisy 9239
 Cowboss 199B Daughter



DCR 199B Image 9306
 Cowboss 199B Daughter

DCR 43 DCR 199B COWBOSS 1175
 BW: 75 WW: 580 YW: 1065 Current: 1480
 4/1/2021 PAP: 37 SC: 38 Dams Age: 5 REG #: 44406544

NJW 98S R117 Ribeye 88X ET SHF Rib Eye M326 R117
 NJW 78P 88X Cowboss 199B ET NJW 9126J Dew Domino 98S
 NJW BW Ladysport Dew 78P ET RU 20X Boulder 57G
 Saddle VLY Ladysport 120

Churchill Manhattan 428B ET Churchill Sensation 028X
 DCR 428B Beauty 6217 Churchill Lady 002X ET
 DCR 106 Beauty 4047 DCR 7006 Equity 106
 Boss Beauty 106W



CED BW WW YW SC MILK M&G FAT REA MARB BMI BII CHB
 2.3 3.4 57 92 1.2 31 59 0.008 0.44 0.09 \$380 \$454 \$110

DCR 46 DCR 199B COWBOSS 1286
 BW: 78 WW: 590 YW: 1055 Current: 1495
 4/9/2021 PAP: 39 SC: 40 Dams Age: 5 REG #: 44397053

NJW 98S R117 Ribeye 88X ET SHF Rib Eye M326 R117
 NJW 78P 88X Cowboss 199B ET NJW 9126J Dew Domino 98S
 NJW BW Ladysport Dew 78P ET RU 20X Boulder 57G
 Saddle VLY Ladysport 120

BAR-RZ 980 Babe Ruth 48B CRR Helton 980
 DCR 48B Sweet Honesty 6290 BAR-RZ 72S Waverly 73W
 DCR Sweet Honesty 2058 TW Hercules
 DCR 14K Sweet Scarlet 8020



CED BW WW YW SC MILK M&G FAT REA MARB BMI BII CHB
 1.8 4.0 57 93 1.1 30 59 0.008 0.56 0.09 \$367 \$439 \$119



DCR 44 DCR 199B COWBOSS 1257
 BW: 72 WW: 535 YW: 995 Current: 1405
 4/15/2021 PAP: 38 SC: 38 Dams Age: 11 REG #: 44406547

NJW 98S R117 Ribeye 88X ET SHF Rib Eye M326 R117
 NJW 78P 88X Cowboss 199B ET NJW 9126J Dew Domino 98S
 NJW BW Ladysport Dew 78P ET RU 20X Boulder 57G
 Saddle VLY Ladysport 120

DCR Koot 713 UPS Kootenay 3232 ET
 DCR 713 Dominet 0101 DH Sweet Honesty 128
 DCR Dominet 0018 SBR Yank 186E
 DCR Dominet 3091

CED BW WW YW SC MILK M&G FAT REA MARB BMI BII CHB
 3.3 2.8 47 80 1.0 23 47 -0.002 0.38 0.03 \$371 \$431 \$103



DCR 47 DCR 199B COWBOSS 1287
 BW: 82 WW: 620 YW: 1120 Current: 1520
 4/10/2021 PAP: 37 SC: 38 Dams Age: 9 REG #: 44257821

NJW 98S R117 Ribeye 88X ET SHF Rib Eye M326 R117
 NJW 78P 88X Cowboss 199B ET NJW 9126J Dew Domino 98S
 NJW BW Ladysport Dew 78P ET RU 20X Boulder 57G
 Saddle VLY Ladysport 120

DCR Koot 713 UPS Kootenay 0302 1ET
 DCR 713 Mary 2011 DH Sweet Honesty 128
 DCR Mary 5007 SB Boomer 14K
 DCR Miss Marathon 6102

CED BW WW YW SC MILK M&G FAT REA MARB BMI BII CHB
 0.2 3.6 50 89 0.9 24 49 -0.002 0.47 0.04 \$360 \$422 \$112
 SCURRED

DCR 45 DCR 199B COWBOSS 1284
 BW: 78 WW: 570 YW: 1040 Current: 1460
 4/2/2021 PAP: 39 SC: 36.5 Dams Age: 4 REG #: 44399692

NJW 98S R117 Ribeye 88X ET SHF Rib Eye M326 R117
 NJW 78P 88X Cowboss 199B ET NJW 9126J Dew Domino 98S
 NJW BW Ladysport Dew 78P ET RU 20X Boulder 57G
 Saddle VLY Ladysport 120

BAR-RZ 980 Babe Ruth 48B CRR Helton 980
 DCR 428B Flora 7031 BAR-RZ 72S Waverly 73W
 DCR Flora 3044 TW Hercules
 DCR 38T Flora 001



CED BW WW YW SC MILK M&G FAT REA MARB BMI BII CHB
 -0.4 3.5 52 86 1.0 30 56 0.008 0.52 0.07 \$385 \$455 \$117
 HORNED

DCR 48 DCR 199B COWBOSS 1295
 BW: 72 WW: 540 YW: 1070 Current: 1505
 4/12/2021 PAP: 36 SC: 36 Dams Age: 7 REG #: 44257824

NJW 98S R117 Ribeye 88X ET SHF Rib Eye M326 R117
 NJW 78P 88X Cowboss 199B ET NJW 9126J Dew Domino 98S
 NJW BW Ladysport Dew 78P ET RU 20X Boulder 57G
 Saddle VLY Ladysport 120

NJW 12E 4037 Duration 136X ET THM Durango 4037
 DCR 136X Sunny 4062 NJW 25C 1A Vaca 12E
 DCR 3232 Dom 7019 UPS Kootenay 3232 1ET
 Sun MS L1 Dom 58L



CED BW WW YW SC MILK M&G FAT REA MARB BMI BII CHB
 1.9 2.3 47 81 0.9 29 52 -0.002 0.46 0.06 \$345 \$404 \$112
 Birth Ratio 95%

DCR 49 DCR 199B COWBOSS 1310
 BW: 75 WW: 540 YW: 1010 Current: 1400
 4/10/2021 PAP: 37 SC: 39.5 Dams Age: 10 REG #: 44328997

NJW 98S R117 Ribeye 88X ET
 NJW 78P 88X Cowboss 199B ET
 NJW BW Ladysport Dew 78P ET

SHF Rib Eye M326 R117
 NJW 9126J Dew Domino 98S
 RU 20X Boulder 57G
 Saddle VLY Ladysport 120

K&B Red Felton 7006T
 DCR 7006 Dominet 1001
 DCR 16 Dom 6049

KCF Bennett 3008 M326
 K&B Sweet Sally 5044
 NH Cowboy Pride 328M ET
 DCR Dutchess E50 0016



CED BW WW YW SC MILK M&G FAT REA MARB BMI BII CHB
 0.4 4.2 51 84 1.2 26 51 -0.002 0.48 0.09 \$361 \$427 \$112

DCR 52 DCR 199B COWBOSS 1320
 BW: 68 WW: 580 YW: 1050 Current: 1450
 4/12/2021 PAP: 37 SC: 39 Dams Age: 8 REG #: 44329108

NJW 98S R117 Ribeye 88X ET
 NJW 78P 88X Cowboss 199B ET
 NJW BW Ladysport Dew 78P ET

SHF Rib Eye M326 R117
 NJW 9126J Dew Domino 98S
 RU 20X Boulder 57G
 Saddle VLY Ladysport 120

TW Hercules
 DCR Dominet 3045
 DCR 722 Dominet 0126

MSU TCF Revolution 4R
 Ash Anne 52U
 DCR Koot 722
 DCR 3232 Dominet 7021



CED BW WW YW SC MILK M&G FAT REA MARB BMI BII CHB
 4.9 2.0 49 80 0.9 25 49 0.008 0.44 0.14 \$370 \$439 \$117

SCURRED
 Birth Ratio 90%

DCR 50 DCR 199B COWBOSS 1313
 BW: 68 WW: 700 YW: 1170 Current: 1590
 3/28/2021 PAP: 36 SC: 38 Dams Age: 5 REG #: 44406548

NJW 98S R117 Ribeye 88X ET
 NJW 78P 88X Cowboss 199B ET
 NJW BW Ladysport Dew 78P ET

SHF Rib Eye M326 R117
 NJW 9126J Dew Domino 98S
 RU 20X Boulder 57G
 Saddle VLY Ladysport 120

Churchill Manhattan 428B ET
 DCR 428B Dominet 6240
 DCR 136X Dominet 4053

Churchill Sensation 028X
 Churchill Lady 002X ET
 NJW 12E Duration 136X ET
 DR 713 Dominet 0123



CED BW WW YW SC MILK M&G FAT REA MARB BMI BII CHB
 4.3 2.0 57 101 1.2 33 62 0.018 0.46 0.09 \$382 \$454 \$110

Birth Ratio 91%
 Weaning Ratio 106%
 Yearling Ratio 103%

DCR 53 DCR 199B COWBOSS 1335
 BW: 76 WW: 560 YW: 1030 Current: 1430
 4/3/2021 PAP: 38 SC: 40 Dams Age: 4 REG #: 44328914

NJW 98S R117 Ribeye 88X ET
 NJW 78P 88X Cowboss 199B ET
 NJW BW Ladysport Dew 78P ET

SHF Rib Eye M326 R117
 NJW 9126J Dew Domino 98S
 RU 20X Boulder 57G
 Saddle VLY Ladysport 120

Hills-Galore 36T 605 Easy 10B
 BP 10B Miss Cal 80E
 BP 24Y Ribstone Lady 36C

JB 531 Braxton Cal 605U
 Hills-Galore 91F 20L Glena 36T
 LBH 40W Ribstone 24Y
 BP 144P Standard Lady 75W



CED BW WW YW SC MILK M&G FAT REA MARB BMI BII CHB
 0.3 5.0 61 104 1.1 31 61 0.018 0.4 -0.01 \$368 \$439 \$102

DCR 51 DCR 199B COWBOSS 1318
 BW: 70 WW: 580 YW: 1040 Current: 1405
 4/12/2021 PAP: 39 SC: 38 Dams Age: 6 REG #: 44329054

NJW 98S R117 Ribeye 88X ET
 NJW 78P 88X Cowboss 199B ET
 NJW BW Ladysport Dew 78P ET

SHF Rib Eye M326 R117
 NJW 9126J Dew Domino 98S
 RU 20X Boulder 57G
 Saddle VLY Ladysport 120

THR Thor 3068A
 DCR Miss Standard 5040
 DCR 713 Standard 1028

THR Thor 4029
 THR Miss Thor 8015U
 DCR Koot 713
 DCR 1012 Standard 6030



CED BW WW YW SC MILK M&G FAT REA MARB BMI BII CHB
 3.4 2.4 50 82 1.1 29 54 -0.002 0.48 0.08 \$359 \$423 \$113

Birth Ratio 93%

DCR 54 DCR 199B COWBOSS 1344
 BW: 82 WW: 520 YW: 1010 Current: 1460
 4/20/2021 PAP: 38 SC: 40 Dams Age: 4 REG #: 44399688

NJW 98S R117 Ribeye 88X ET
 NJW 78P 88X Cowboss 199B ET
 NJW BW Ladysport Dew 78P ET

SHF Rib Eye M326 R117
 NJW 9126J Dew Domino 98S
 RU 20X Boulder 57G
 Saddle VLY Ladysport 120

DCR 100W Trusted 320 ET
 DCR 320 Sunny 7026
 DCR 44X Sunny 3054

NJW 73S M326 Trust 100W ET
 DCR Diana 7020
 DCR Justify 716
 DCR 3232 Dom 7019



CED BW WW YW SC MILK M&G FAT REA MARB BMI BII CHB
 -1.5 4.3 50 84 0.9 26 51 -0.002 0.46 0.06 \$384 \$448 \$111

DCR 199B COWBOSS 1348
55 BW: 75 WW: 650 YW: 1130 Current: 1525
 4/12/2021 PAP: 38 SC: 41 Dams Age: 4 REG #: 44328923

NJW 98S R117 Ribeye 88X ET
 NJW 78P 88X Cowboss 199B ET
 NJW BW Ladysport Dew 78P ET

SHF Rib Eye M326 R117
 NJW 9126J Dew Domino 98S
 RU 20X Boulder 57G
 Saddle VLY Ladysport 120

Hills-Galore 36T 605 Easy 10B
 BP 10B Miss Cal 147E
 BP 177Z Ribstone Lady 159C

JB 531 Braxton Cal 605U
 Hills-Galore 91F 20L Glena 36T
 BP 991 Ribstone Lad 177Z
 Thesnif 47M Ribstone Lady 8P

CED BW WW YW SC MILK M&G FAT REA MARB BMI BII CHB
 1.4 4.8 58 95 1.3 31 60 0.008 0.44 0.09 \$375 \$449 \$114
 HORNED
 Weaning Ratio 105%



DCR 199B COWBOSS 1402
58 BW: 78 WW: 660 YW: 1125 Current: 1525
 4/4/2021 PAP: 36 SC: 41 Dams Age: 4 REG #: 44408598

NJW 98S R117 Ribeye 88X ET
 NJW 78P 88X Cowboss 199B ET
 NJW BW Ladysport Dew 78P ET

SHF Rib Eye M326 R117
 NJW 9126J Dew Domino 98S
 RU 20X Boulder 57G
 Saddle VLY Ladysport 120

DCR 713 Kootenay 247
 BP 24Y Ribstone Lady 14A
 BP 24Y Ribstone Lady 125E

DCR Koot 713
 DCR 0302 Wine 7032
 LBH 40W Ribstone 24Y
 BP 38T Standard Lady 44X

CED BW WW YW SC MILK M&G FAT REA MARB BMI BII CHB
 -3.3 5.9 65 108 1.4 33 66 0.023 0.45 0.05 \$355 \$432 \$109
 Weaning Ratio 104%



DCR 199B COWBOSS 1352
56 BW: 78 WW: 620 YW: 1100 Current: 1500
 3/30/2021 PAP: 39 SC: 40 Dams Age: 5 REG #: 44407990

NJW 98S R117 Ribeye 88X ET
 NJW 78P 88X Cowboss 199B ET
 NJW BW Ladysport Dew 78P ET

SHF Rib Eye M326 R117
 NJW 9126J Dew Domino 98S
 RU 20X Boulder 57G
 Saddle VLY Ladysport 120

NJW 78P 88X Cowboss 199B
 DCR 199B Ella 6357 ET
 DCR 722 Ella C 0119

NJW 98S R117 Ribeye 88X ET
 NJW BW Ladysport Dew 78P ET
 DCR Koot 722
 DCR 3232 Ella C 7026T

CED BW WW YW SC MILK M&G FAT REA MARB BMI BII CHB
 2.0 3.0 53 87 1.1 30 57 -0.007 0.57 0.1 \$387 \$456 \$118



DCR 199B COWBOSS 1407
59 BW: 72 WW: 565 YW: 1045 Current: 1445
 4/2/2021 PAP: 37 SC: 33.5 Dams Age: REG #: 44406554

NJW 98S R117 Ribeye 88X ET
 NJW 78P 88X Cowboss 199B ET
 NJW BW Ladysport Dew 78P ET

SHF Rib Eye M326 R117
 NJW 9126J Dew Domino 98S
 RU 20X Boulder 57G
 Saddle VLY Ladysport 120

DCR 100W Trusted 320 ET
 DCR 320 Ella C
 DCR 722 Ella C 0119

NJW 73S M326 Trust 100W ET
 DCR Diana 7020
 DCR Koot 722
 DCR 3232 Ella C 7026T

CED BW WW YW SC MILK M&G FAT REA MARB BMI BII CHB
 2.5 2.6 53 84 1.1 30.0 56.0 0.0 0.5 0.1 \$384 \$452 \$112
 Birth Ratio 96%

DCR 199B COWBOSS 1359
57 BW: 70 WW: 630 YW: 1120 Current: 1520
 3/30/2021 PAP: 38 SC: 43 Dams Age: 6 REG #: 44407991

NJW 98S R117 Ribeye 88X ET
 NJW 78P 88X Cowboss 199B ET
 NJW BW Ladysport Dew 78P ET

SHF Rib Eye M326 R117
 NJW 9126J Dew Domino 98S
 RU 20X Boulder 57G
 Saddle VLY Ladysport 120

BP 44U Anchor 38Y
 DCR 38Y Diana 5100
 DCR 100W Diana 3013 ET

Anchor 44U
 K 64H Ribstone Lady 184M
 NJW 73S M326 Trust 100W ET
 DCR Diana 7020

CED BW WW YW SC MILK M&G FAT REA MARB BMI BII CHB
 2.0 3.8 54 90 1.2 29 56 -0.002 0.46 0.08 \$384 \$452 \$111
 Birth Ratio 93%



DCR 199B COWBOSS 1415
60 BW: 75 WW: 670 YW: 1130 Current: 1530
 4/3/2021 PAP: 39 SC: 40 Dams Age: 8 REG #: 44406764

NJW 98S R117 Ribeye 88X ET
 NJW 78P 88X Cowboss 199B ET
 NJW BW Ladysport Dew 78P ET

SHF Rib Eye M326 R117
 NJW 9126J Dew Domino 98S
 RU 20X Boulder 57G
 Saddle VLY Ladysport 120

DCR Koot 713
 DCR 713 Flora 3015 ET
 DCR 703 Flora 1015

UPS Kootenay 3232 ET
 DH Sweet Honesty 128
 Marc 9603 Optimum 703
 DCR Flora 5035

CED BW WW YW SC MILK M&G FAT REA MARB BMI BII CHB
 -0.6 3.8 56 96 1.2 28 56 -0.007 0.47 0.04 \$365 \$432 \$111
 HORNED



DCR 199B COWBOSS 1418
61 BW: 72 WW: 550 YW: 1040 Current: 1440
 4/5/2021 PAP: 36 SC: 39.5 Dams Age: 6 REG #: 44407992

NJW 98S R117 Ribeye 88X ET
 NJW 78P 88X Cowboss 199B ET
 NJW BW Ladysport Dew 78P ET

SHF Rib Eye M326 R117
 NJW 9126J Dew Domino 98S
 RU 20X Boulder 57G
 Saddle VLY Ladysport 120

BP 44U Anchor 38Y
 DCR 38Y Diana 5077
 DCR 100W Diana 3016 ET

Anchor 44U
 K 64H Ribstone Lady 184M
 NJW 73S M326 Trust 100W ET
 DCR Diana 7020



CED BW WW YW SC MILK M&G FAT REA MARB BMI BII CHB
 3.7 3.2 53 87 1.1 30 56 0.008 0.48 0.1 \$396 \$467 \$113

Birth Ratio 96%

DCR 199B COWBOSS 1433
64 BW: 68 WW: 670 YW: 1150 Current: 1560
 4/8/2021 PAP: 39 SC: 42 Dams Age: 6 REG #: 44407994

NJW 98S R117 Ribeye 88X ET
 NJW 78P 88X Cowboss 199B ET
 NJW BW Ladysport Dew 78P ET

SHF Rib Eye M326 R117
 NJW 9126J Dew Domino 98S
 RU 20X Boulder 57G
 Saddle VLY Ladysport 120

DCR Koot 713
 DCR 713 Diana 5063
 DCR Diana 7020

UPS Kootenay 3232 ET
 DH Sweet Honesty 128
 SB Boomer 14K
 DCR 703 Diana 2008



CED BW WW YW SC MILK M&G FAT REA MARB BMI BII CHB
 2.9 3.0 52 89 1.1 25 51 -0.002 0.48 0.08 \$367 \$433 \$115

SCURRED

Birth Ratio 91%

Weaning Ratio 104%

Yearling Ratio 104%



DCR 199B COWBOSS 1422
62 BW: 75 WW: 590 YW: 1062 Current: 1485
 4/15/2021 PAP: 39 SC: 38 Dams Age: 6 REG #: 44407995

NJW 98S R117 Ribeye 88X ET
 NJW 79P 88X Cowboss 199B ET
 NJW BW Ladysport Dew 78P ET

SHF Rib Eye M326 R117
 NJW 9126J Dew Domino 98S
 RU 20X Boulder 57G
 Saddle VLY Ladysport 120

DCR 100W Trusted 320 ET
 DCR Dominet 5030C
 DCR 713 Dominet 1029

NJW 73S M326 Trust 100W ET
 DCR Diana 7020
 DCR Koot 713
 DCR Dutchess E50 0016

CED BW WW YW SC MILK M&G FAT REA MARB BMI BII CHB
 0.5 3.2 53 89 1.1 28 55 -0.002 0.49 0.07 \$382 \$450 \$113



DCR 199B COWBOSS 1435
65 BW: 76 WW: 625 YW: 1085 Current: 1485
 4/28/2021 PAP: 39 SC: 41 Dams Age: 5 REG #: 44397055

NJW 98S R117 Ribeye 88X ET
 NJW 78P 88X Cowboss 199B ET
 NJW BW Ladysport Dew 78P ET

SHF Rib Eye M326 R117
 NJW 9126J Dew Domino 98S
 RU 20X Boulder 57G
 Saddle VLY Ladysport 120

Churchill Manhattan 428B ET
 DCR 428B Chablis 6210
 DCR 135 Chablis 4077

Churchill Sensation 028X
 Churchill Lady 002X ET
 DCR 713 Kootenay 135
 Red Hills Miss Chablis S273

CED BW WW YW SC MILK M&G FAT REA MARB BMI BII CHB
 -0.2 3.5 56 92 1.1 30 58 0.008 0.46 0.05 \$398 \$469 \$110

HORNED

Weaning Ratio 104%

Yearling Ratio 104%

DCR 199B COWBOSS 1425
63 BW: 76 WW: 645 YW: 1115 Current: 1515
 3/30/2021 PAP: 39 SC: 40 Dams Age: 5 REG #: 44406551

NJW 98S R117 Ribeye 88X ET
 NJW 78P 88X Cowboss 199B ET
 NJW BW Ladysport Dew 78P ET

SHF Rib Eye M326 R117
 NJW 9126J Dew Domino 98S
 RU 20X Boulder 57G
 Saddle VLY Ladysport 120

NJW 78P 88X Cowboss 199B
 DCR 199B Ella 6358 ET
 DCR 722 Ella C 0119

NJW 98S R117 Ribeye 88X ET
 NJW BW Ladysport Dew 78P ET
 DCR Koot 722
 DCR 3232 Ella C 7026T



CED BW WW YW SC MILK M&G FAT REA MARB BMI BII CHB
 1.4 3.2 53 84 1.0 32 59 -0.012 0.6 0.08 \$395 \$463 \$116

DCR 199B COWBOSS 1454
66 BW: 68 WW: 660 YW: 1140 Current: 1560
 4/10/2021 PAP: 39 SC: 40.5 Dams Age: 5 REG #: 44408600

NJW 98S R117 Ribeye 88X ET
 NJW 78P 88X Cowboss 199B ET
 NJW BW Ladysport Dew 78P ET

SHF Rib Eye M326 R117
 NJW 9126J Dew Domino 98S
 RU 20X Boulder 57G
 Saddle VLY Ladysport 120

NJW 78P 88X Cowboss 199B
 DCR 199B Silver 6299
 DCR R117 Silver 1023

NJW 98S R117 Ribeye 88X ET
 NJW BW Ladysport Dew 78P ET
 SHF Rib Eye M326 R117
 DH Silver Sensation 229



CED BW WW YW SC MILK M&G FAT REA MARB BMI BII CHB
 2.3 3.1 54 91 1.2 32 59 -0.002 0.49 0.11 \$402 \$475 \$117

Birth Ratio 91%

Weaning Ratio 104%

Yearling Ratio 104%

DCR 67 DCR 199B COWBOSS 1464
 BW: 80 WW: 650 YW: 1110 Current: 1550
 4/29/2021 PAP: 36 SC: 39 Dams Age: 5 REG #: 44406763

NJW 98S R117 Ribeye 88X ET
 NJW 78P 88X Cowboss 199B ET
 NJW BW Ladysport Dew 78P ET

SHF Rib Eye M326 R117
 NJW 9126J Dew Domino 98S
 RU 20X Boulder 57G
 Saddle VLY Ladysport 120

BAR-RZ 980 Babe Ruth 48B
 DCR 48B Tara 6294
 DCR 713 Tara 1034

CRR Helton 980
 BAR-RZ 72S Waverly 73W
 DCR Koot 713
 DH Tara Tradition 278



CED BW WW YW SC MILK M&G FAT REA MARB BMI BII CHB
 2.7 3.6 57 93 1.1 30 59 0.003 0.59 0.1 \$358 \$428 \$124

Weaning Ratio 108%
 Yearling Ratio 106%

DCR 70 DCR 199B COWBOSS 1485
 BW: 78 WW: 590 YW: 1060 Current: 1470
 4/15/2021 PAP: 40 SC: 41 Dams Age: 6 REG #: 44408602

NJW 98S R117 Ribeye 88X ET
 NJW 78P 88X Cowboss 199B ET
 NJW BW Ladysport Dew 78P ET

SHF Rib Eye M326 R117
 NJW 9126J Dew Domino 98S
 RU 20X Boulder 57G
 Saddle VLY Ladysport 120

NJW 12E 4037 Duration 136X ET
 DCR 136X Pearl 6016
 DCR 347 Pearl 6016

THM Durango 4037
 NJW 25C 1A Vaca 12E
 SB Boomer 14K
 DH Sunny Pearl 47



CED BW WW YW SC MILK M&G FAT REA MARB BMI BII CHB
 -0.8 4.1 51 90 0.9 29 54 0.008 0.35 0.05 \$361 \$426 \$103



DCR 68 DCR 199B COWBOSS 1465
 BW: 80 WW: 740 YW: 1190 Current: 1600
 4/10/2021 PAP: 38 SC: 41 Dams Age: 5 REG #: 44407993

NJW 98S R117 Ribeye 88X ET
 NJW 78P 88X Cowboss 199B ET
 NJW BW Ladysport Dew 78P ET

SHF Rib Eye M326 R117
 NJW 9126J Dew Domino 98S
 RU 20X Boulder 57G
 Saddle VLY Ladysport 120

DCR 242 Legend 107
 DCR 107 Flora 6350 ET
 DCR 703 Flora 1015

Feltons Legend 242
 DH Sweet Honesty 128
 Marc 9603 Optimum 703
 DCR Flora 5035

CED BW WW YW SC MILK M&G FAT REA MARB BMI BII CHB
 0.5 3.8 53 88 1.1 29 56 -0.002 0.43 0.05 \$347 \$411 \$103

SCURRED
 Weaning Ratio 116%
 Yearling Ratio 108%



DCR 71 DCR 199B COWBOSS 1489
 BW: 80 WW: 560 YW: 1020 Current: 1420
 5/1/2021 PAP: 39 SC: 37 Dams Age: 6 REG #: 44408986

NJW 98S R117 Ribeye 88X ET
 NJW 78P 88X Cowboss 199B ET
 NJW BW Ladysport Dew 78P ET

SHF Rib Eye M326 R117
 NJW 9126J Dew Domino 98S
 RU 20X Boulder 57G
 Saddle VLY Ladysport 120

DCR 100W Trust 318 ET
 DCR Gladys's 5041
 Remitall Gladys's 351R

NJW 73S M326 Trust 100W ET
 DH Devo May 404
 Remitall Olympian ET 262L
 Remitall Gladys 268G

CED BW WW YW SC MILK M&G FAT REA MARB BMI BII CHB
 0.6 3.8 55 94 1.1 27 54 -0.002 0.54 0.07 \$334 \$400 \$121

DCR 69 DCR 199B COWBOSS 1474
 BW: 65 WW: 700 YW: 1180 Current: 1620
 4/30/2021 PAP: 39 SC: 40.5 Dams Age: 5 REG #: 44408985

NJW 98S R117 Ribeye 88X ET
 NJW 78P 88X Cowboss 199B ET
 NJW BW Ladysport Dew 78P ET

SHF Rib Eye M326 R117
 NJW 9126J Dew Domino 98S
 RU 20X Boulder 57G
 Saddle VLY Ladysport 120

Churchill Manhattan 428B ET
 DCR 428B Silver 6221
 DCR 38Y Silver 4060

Churchill Sensation 028X
 Churchill Lady 002X ET
 BP 44U Anchor 38Y
 DCR R117 Silver 1023



CED BW WW YW SC MILK M&G FAT REA MARB BMI BII CHB
 3.8 2.6 56 91 1.3 32 60 0.023 0.44 0.12 \$403 \$478 \$112

Birth Ratio 90%
 Weaning Ratio 117%

DCR 72 DCR 199B COWBOSS 1494
 BW: 75 WW: 560 YW: 1040 Current: 1460
 4/25/2021 PAP: 38 SC: 39 Dams Age: 5 REG #: 44397054

NJW 98S R117 Ribeye 88X ET
 NJW 78P 88X Cowboss 199B ET
 NJW BW Ladysport Dew 78P ET

SHF Rib Eye M326 R117
 NJW 9126J Dew Domino 98S
 RU 20X Boulder 57G
 Saddle VLY Ladysport 120

BAR-RZ 980 Babe Ruth 48B
 DCR 48B Ella C 6257
 DCR 3232 Ella C 7026T

CRR Helton 980
 BAR-RZ 72S Waverly 73W
 UPS Kootenay 3232 1ET
 DCR 14K Paulina 4001



CED BW WW YW SC MILK M&G FAT REA MARB BMI BII CHB
 2.6 3.5 55 89 1.1 28 56 0.002 0.58 0.11 \$361 \$431 \$123

Reference Sire

DCR 320 Trust 7237

DCR 73 DCR DVB 6072 COWBOSS 1503
 BW: 84 WW: 680 YW: 1150 Current: 1585
 3/30/2021 PAP: 38 SC: 38 Dams Age: 7 REG #: 44293803

NJW 78P 88X Cowboss 199B ET
DCR 199B Cowboss 6072
 Red Hills Keri T85

NJW 98S R117 Ribeye 88X ET
 NJW BW Ladysport Dew 78P ET
 Remitall Patriot ET 13P
 Link AM Governess 922J

DCR 713 Kootenay 57X
DCR 57X Diana 4008
 DCR 7006 Diana 0114

DCR Koot 713
 DCR 703 Diana 2008
 K&B Red Felton 7006T
 DCR 2008 Diana 6058

CED BW WW YW SC MILK M&G FAT REA MARB BMI BII CHB
 -3.0 4.5 51 88 1.0 20 45 -0.022 0.37 0.06 \$375 \$439 \$113
 SCURRED



NJW 73S M326 Trust 100W ET
DCR 100W Trusted 320 ET
 DCR Diana 7020

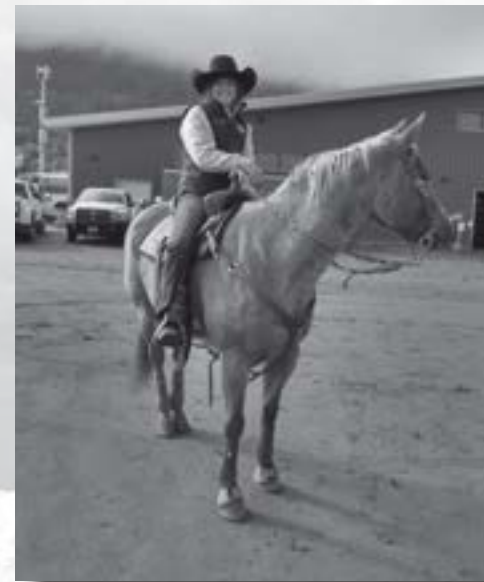
KCF Bennerr 3008 M326
 NJW P606 72N Daydream 73S
 SB Boomer 14K
 DCR 703 Diana 2008

BP 44U Anchor 38Y
DCR 38Y Dominet 4046
 DCR 713 Dominet 1029

Anchor 44U
 K 64H Ribstone Lady 184M
 DCR Koot 713
 DCR Dutchess E50 0016

CED BW WW YW SC MILK M&G FAT REA MARB BMI BII CHB
 0.6 4.1 55 85 0.9 23 50 0.038 0.36 0.14 \$375 \$451 \$98

Powerful Payweight, Gauranteed Maternal.
 Sometimes numbers don't tell the whole story. Walk through the pen of bulls and start sorting rugged, stout cowboy type bulls and you will end up with more 7237 sons in your pen than not. Yet when you study the females in his pedigree every one stayed in production past 10. These are cattle designed for the rancher that still has to pay the bills.



DCR 74 DCR DVB 6072 COWBOSS 1504
 BW: 83 WW: 720 YW: 1140 Current: 1570
 4/1/2021 PAP: 36 SC: 40 Dams Age: 7 REG #: 44293805

NJW 78P 88X Cowboss 199B ET
DCR 199B Cowboss 6072
 Red Hills Keri T85

NJW 98S R117 Ribeye 88X ET
 NJW BW Ladysport Dew 78P ET
 Remitall Patriot ET 13P
 Link AM Governess 922J

DCR Koot 713
DCR 713 Perfect 4018
 DCR 638 Perfect 0115

UPS Kootenay 3232 ET
 DH Sweet Honesty 128
 DCR 0302 Keynote638
 DH Hello Dolly 744

CED BW WW YW SC MILK M&G FAT REA MARB BMI BII CHB
 -1.5 3.6 51 90 0.9 23 48 -0.022 0.39 0.02 \$316 \$376 \$114
 Weaning Ratio 109%

DCR 75 DCR DVB 6072 COWBOSS 1542
 BW: 85 WW: 710 YW: 1160 Current: 1580
 3/30/2021 PAP: 39 SC: 42 Dams Age: 5 REG #: 44294823

NJW 78P 88X Cowboss 199B ET
DCR 199B Cowboss 6072
 Red Hills Keri T85

NJW 98S R117 Ribeye 88X ET
 NJW BW Ladysport Dew 78P ET
 Remitall Patriot ET 13P
 Link AM Governess 922J

DCR 242 Legend 107
DCR 107 Flora 6253 ET
 DCR 703 Flora 1015

Feltons Legend 242
 DH Sweet Honesty 128
 Marc 9603 Optimum 703
 DCR Flora 5035

CED BW WW YW SC MILK M&G FAT REA MARB BMI BII CHB
 -2.9 4.6 52 86 1.1 25 51 -0.012 0.38 0.02 \$334 \$395 \$106
 Weaning Ratio 108%
 Yearling Ratio 103%



DCR 320 Diana 0043
 A Trust 320 Daughter



DCR 320 Tara 0085
 A Trust 320 Daughter

DCR 76 **DCR HD 7237 TRUST 101**
 BW: 62 WW: 650 YW: 1130 Current: 1550
 4/21/2021 PAP: 36 SC: 39.5 Dams Age: 6 REG #: 44398054

DCR 100W Trusted 320 ET
 DCR 320 Trust 7237
 DCR 38Y Dominet 4046

NJW 73S M326 Trust 100W ET
 DCR Diana 7020
 BP 44U Anchor 38Y
 DCR 713 Dominet 1029

BP 44U Anchor 38Y
 DCR HD 38Y Tara 5053
 DCR HD Y215 Tara A302

Anchor 44U
 K 64H Ribstone Lady 184M
 Red Hills Big Gun Y215
 DCR 722 Tara 128X



CED BW WW YW SC MILK M&G FAT REA MARB BMI BII CHB
 5.1 2.7 59 97 1.1 25 54 0.028 0.56 0.12 \$333 \$407 \$121

Weaning Ratio 104%
 Yearling Ratio 105%

DCR 79 **DCR 7237 TRUST 1120**
 BW: 70 WW: 535 YW: 995 Current: 1405
 3/25/2021 PAP: 38 SC: 40 Dams Age: 7 REG #: 44408317

DCR 100W Trusted 320 ET
 DCR 320 Trust 7237
 DCR 38Y Dominet 4046

NJW 73S M326 Trust 100W ET
 DCR Diana 7020
 BP 44U Anchor 38Y
 DCR 713 Dominet 1029

Anchor 44U
 BP 44U Anchor Lady 101B
 BP 32U Standard Lady 33Z

Anchor 49R
 Anchor 5M
 BP 192R Standard Lad 32U
 BP 24L Super Lady 135X



CED BW WW YW SC MILK M&G FAT REA MARB BMI BII CHB
 1.3 4.6 57 89 0.8 22 51 0.028 0.25 0.18 \$329 \$408 \$100

Birth Ratio 93%

DCR 77 **DCR 7237 TRUST 1113**
 BW: 70 WW: 555 YW: 1035 Current: 1455
 4/11/2021 PAP: 36 SC: 39 Dams Age: 9 REG #: 44329184

DCR 100W Trusted 320 ET
 DCR 320 Trust 7237
 DCR 38Y Dominet 4046

NJW 73S M326 Trust 100W ET
 DCR Diana 7020
 BP 44U Anchor 38Y
 DCR 713 Dominet 1029

Anchor 44U
 BP 44U Anchor Lady 172Z
 K 45D Super Lady 75L

Anchor 49R
 Anchor 5M
 K 61 Super Lad 45D
 K Classic Lady 75L



CED BW WW YW SC MILK M&G FAT REA MARB BMI BII CHB
 5.6 3.2 58 95 1.0 24 52 0.028 0.38 0.18 \$337 \$415 \$120

Birth Ratio 93%

DCR 80 **DCR 7237 TRUST 1160**
 BW: 70 WW: 690 YW: 1160 Current: 1580
 4/15/2021 PAP: 38 SC: 41 Dams Age: 7 REG #: 44329405

DCR 100W Trusted 320 ET
 DCR 320 Trust 7237
 DCR 38Y Dominet 4046

NJW 73S M326 Trust 100W ET
 DCR Diana 7020
 BP 44U Anchor 38Y
 DCR 713 Dominet 1029

LBH 40W Ribstone 24Y
 BP24Y Ribstone Lady 61B
 BP 96T Ribstone Lady 17W

LBH 157K Ribstone 40W
 LBH 268P Miss Standard 270T
 Ribstone 77P Lad 96T
 K 28L Reform Lady 189R



CED BW WW YW SC MILK M&G FAT REA MARB BMI BII CHB
 8.0 3.5 62 107 1.4 26 57 0.038 0.43 0.09 \$297 \$372 \$117

Birth Ratio 93%
 Weaning Ratio 108%

Yearling Ratio 106%

DCR 78 **DCR HD 7053 TRUST 1118**
 BW: 80 WW: 700 YW: 1180 Current: 1620
 4/22/2021 PAP: 36 SC: 42 Dams Age: 4 REG #: 44405300

DCR 100W Trusted 320 ET
 DCR 320 Trust 7237
 DCR 38Y Dominet 4046

NJW 73S M326 Trust 100W ET
 DCR Diana 7020
 BP 44U Anchor 38Y
 DCR 713 Dominet 1029

NJW 78P 88X Cowboss 199B
 DCR HD 199B Diana 7053
 DCR HD 38T Diana 200Z

NJW 98S R117 Ribeye 88X ET
 NJW BW Ladysport Dew 78P ET
 NJW 167L Radar 38T
 DCR 713 Diana 0103



CED BW WW YW SC MILK M&G FAT REA MARB BMI BII CHB
 3.1 3.6 61 100 1.2 30 60 0.018 0.59 0.1 \$345 \$420 \$125

Weaning Ratio 116%
 Yearling Ratio 118%

DCR 81 **DCR 7237 TRUST 1164**
 BW: 70 WW: 755 YW: 1220 Current: 1655
 4/12/2021 PAP: 41 SC: 43 Dams Age: 7 REG #: 44329165

DCR 100W Trusted 320 ET
 DCR 320 Trust 7237
 DCR 38Y Dominet 4046

NJW 73S M326 Trust 100W ET
 DCR Diana 7020
 BP 44U Anchor 38Y
 DCR 713 Dominet 1029

LBH 40W Ribstone 24Y
 BP 24Y Ribstone Lady 18B
 BP 38T Standard Lady 34X

LBH 157K Ribstone 40W
 LBH 268P Miss Standard 270T
 Standard 68L Dom Lad 38T
 PB 31K Builder Girl 21R



CED BW WW YW SC MILK M&G FAT REA MARB BMI BII CHB
 8.5 2.8 59 98 1.3 29 58 0.058 0.46 0.22 \$322 \$404 \$128

Birth Ratio 93%
 Weaning Ratio 117%

Yearling Ratio 111%

Reference Sire

DCR 301 International 8175 ET

DCR 82 **DCR 7237 TRUST 1174**
 BW: 62 WW: 585 YW: 1040 Current: 1465
 4/14/2021 PAP: 39 SC: 39 Dams Age: 6 REG #: 44408987

DCR 100W Trusted 320 ET
 DCR 320 Trust 7237
 DCR 38Y Dominet 4046

NJW 73S M326 Trust 100W ET
 DCR Diana 7020
 BP 44U Anchor 38Y
 DCR 713 Dominet 1029

Anchor 44U
 BP 44U Anchor Lady 88C
 BP 38T Standard Lady 115Y

Anchor 49R
 Anchor 5M
 Standard 68L Dom Lad 38T
 BP Miss Silverstone 2R



DCR Koot 713
 DCR 713 International 301
 DCR 7006 Ella 9014

UPS Kootenay 3232 1ET
 DH Sweet Honesty 128
 K&B Red Felton 7006T
 DCR 14K Pauline 4001

Star 8006 Enyeto 163M ET
 THM TLS Lacey Lou 8763
 THM TL'S Lacey 3057 ET

H 8E Embracer 8006
 Star Rockin Erica 38F
 Remitall Keynote 20X
 THM Victra Dom 152 5043

CED BW WW YW SC MILK M&G FAT REA MARB BMI BII CHB
 1.5 4.8 55 85 0.9 25 53 0.018 0.23 0.06 \$336 \$406 \$93
 Birth Ratio 83%

CED BW WW YW SC MILK M&G FAT REA MARB BMI BII CHB
 -2.9 4.7 60 98 1.5 27 57 -0.002 0.42 -0.04 \$394 \$462 \$108

Powerfully Constructed, Economically Driven!
 Big footed, heavy boned and lots of lower quarter, 8175 is powerful from every angle.
 His progeny offer as much fleshing ability as any cattle in the breed. The Koot 713
 cattle have always worked well in the lot and on the rail.



DCR 83 **DCR 7237 TRUST 1184**
 BW: 72 WW: 760 YW: 1240 Current: 1665
 4/17/2021 PAP: 37 SC: 40 Dams Age: 7 REG #: 44329408

DCR 100W Trusted 320 ET
 DCR 320 Trust 7237
 DCR 38Y Dominet 4046

NJW 73S M326 Trust 100W ET
 DCR Diana 7020
 BP 44U Anchor 38Y
 DCR 713 Dominet 1029

LBH 40W Ribstone 24Y
 BP 24Y Ribstone Lady 33B
 BP 38T Standard Lady 27X

LBH 157K Ribstone 40W
 LBH 268P Miss Standard 270T
 Standard 68L Dom Lad 38T
 K 28L Reform Lady 202R

CED BW WW YW SC MILK M&G FAT REA MARB BMI BII CHB
 6.7 3.8 59 93 1.3 27 56 0.038 0.37 0.14 \$321 \$397 \$117
 SCURRED Yearling Ratio 114%
 Weaning Ratio 120%

DCR 84 **DCR HD 7237 TRUST 1469**
 BW: 65 WW: 725 YW: 1190 Current: 1620
 4/18/2021 PAP: 38 SC: 40 Dams Age: 5 REG #: 44407937

DCR 100W Trusted 320 ET
 DCR 320 Trust 7237
 DCR 38Y Dominet 4046

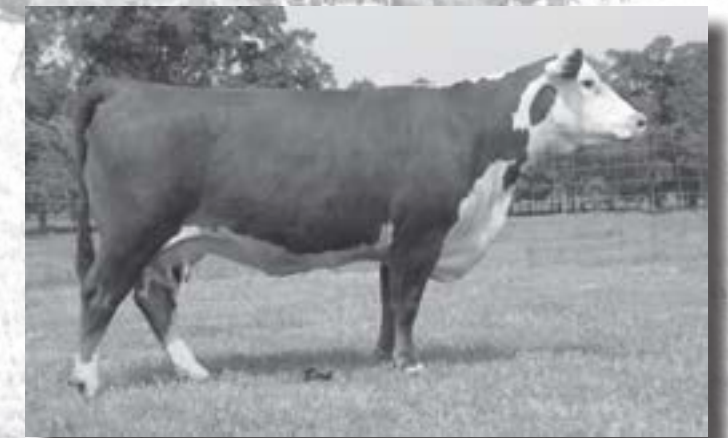
NJW 73S M326 Trust 100W ET
 DCR Diana 7020
 BP 44U Anchor 38Y
 DCR 713 Dominet 1029

Churchill Manhattan 428B ET
 DCR HD 428B Choice 6233
 DCR HD 136X Choice 4072

Churchill Sensation 028X
 Churchill Lady 002X ET
 NJW 12E Duration 136X ET
 DCR 638 Choice 0120



DCR Koot 713
 Sire of DCR 301 International 8175 ET



THM TLS Lacey Lou 8763
 Dam of DCR 301 International 8175 ET

CED BW WW YW SC MILK M&G FAT REA MARB BMI BII CHB
 0.5 3.7 56 88 0.9 26 53 0.038 0.34 0.09 \$361 \$434 \$98
 Birth Ratio 90% Yearling Ratio 111%
 Weaning Ratio 117%

DCR DCR HD 8175 INTERNATIONAL 117H

85 BW: 75 WW: 620 YW: 1090 Current: 1560
4/15/2021 PAP: 37 SC: 40 Dams Age: 3 REG #: 44401842

DCR 713 International 301
DCR 301 International 8175 ET
THM TLS Lacey Lou 8763

DCR Koot 713
DCR 7006 Ella 9014
Star 8006 Enyeto 163M ET
THM TL'S Lacey 3057 ET

DCR 136X Dependable 376
DCR HD 376 Josie 800
DCR HD Josie 4074

NJW 12E 4037 Duration 136X ET
DCR 7006 Miss Daisy 9037
TW Hercules
DCR 38T Flora 001



CED BW WW YW SC MILK M&G FAT REA MARB BMI BII CHB
-2.1 4.1 56 91 1.1 24 52 0.028 0.34 -0.01 \$353 \$419 \$104

DCR DCR 8175 INTERNATIONAL 1264

88 BW: 76 WW: 542 YW: 1010 Current: 1485
3/31/2021 PAP: 40 SC: 39 Dams Age: 3 REG #: 44257804

DCR 713 International 301
DCR 301 International 8175 ET
THM TLS Lacey Lou 8763

DCR Koot 713
DCR 7006 Ella 9014
Star 8006 Enyeto 163M ET
THM TL'S Lacey 3057 ET

BAR-RZ 980 Babe Ruth 48B
DCR 48B Flora 8046
DCR Flora 3044

CRR Helton 980
BAR-RZ 72S Waverly 73W
TW Hercules
DCR 38T Flora 001



CED BW WW YW SC MILK M&G FAT REA MARB BMI BII CHB
-1.1 4.7 59 92 1.3 23 52 0.018 0.44 -0.01 \$350 \$417 \$108

DCR DCR 8175 INTERNATIONAL 1255

86 BW: 78 WW: 462 YW: 930 Current: 1405
3/27/2021 PAP: 36 SC: 37 Dams Age: 3 REG #: 44400318

DCR 713 International 301
DCR 301 International 8175 ET
THM TLS Lacey Lou 8763

DCR Koot 713
DCR 7006 Ella 9014
Star 8006 Enyeto 163M ET
THM TL'S Lacey 3057 ET

Churchill Manhattan 428B ET
DCR 428B Lauretta 8313 ET
DCR 3281 Lauretta 623

Churchill Sensation 028X
Churchill Lady 002X ET
WNH Keynote 9401 0302 ET
DH Lauretta Bell 281



CED BW WW YW SC MILK M&G FAT REA MARB BMI BII CHB
-2.8 4.6 60 94 1.3 25 55 0.018 0.39 -0.07 \$385 \$452 \$99

DCR DCR 8175 INTERNATIONAL 1270

89 BW: 78 WW: 560 YW: 1030 Current: 1500
4/3/2021 PAP: 36 SC: 42 Dams Age: 3 REG #: 44257811

DCR 713 International 301
DCR 301 International 8175 ET
THM TLS Lacey Lou 8763

DCR Koot 713
DCR 7006 Ella 9014
Star 8006 Enyeto 163M ET
THM TL'S Lacey 3057 ET

DCR 200Z Precedence 518 ET
DCR 518 May 8153 ET
DCR 100W Devo May 3010 ET

Churchill Red Bull 200Z
Red Hills Keri T85
NJW 73S M326 Trust 100W ET
DH Devo May 404



CED BW WW YW SC MILK M&G FAT REA MARB BMI BII CHB
-2.9 4.7 60 98 1.5 27.0 57.0 0.002 0.4 0.0 \$394 \$462 \$108

DCR DCR 8175 INTERNATIONAL 1260

87 BW: 77 WW: 610 YW: 1083 Current: 1555
3/31/2021 PAP: 39 SC: 42.5 Dams Age: 3 REG #: 44257788

DCR 713 International 301
DCR 301 International 8175 ET
THM TLS Lacey Lou 8763

DCR Koot 713
DCR 7006 Ella 9014
Star 8006 Enyeto 163M ET
THM TL'S Lacey 3057 ET

Churchill Manhattan 428B ET
DCR 428B Manhattan
DCR 38Y Anchor May 6302

Churchill Sensation 028X
Churchill Lady 002X ET
BP 44U Anchor 38Y
DCR Wisper 6055



CED BW WW YW SC MILK M&G FAT REA MARB BMI BII CHB
-1.7 4.7 61 96 1.3 25 55 0.028 0.37 -0.02 \$372 \$443 \$100

SCURRED

DCR DCR 8175 INTERNATIONAL 1296

90 BW: 86 WW: 470 YW: 960 Current: 1415
4/11/2020 PAP: 37 SC: 40.5 Dams Age: 3 REG #: 44257825

DCR 713 International 301
DCR 301 International 8175 ET
THM TLS Lacey Lou 8763

DCR Koot 713
DCR 7006 Ella 9014
Star 8006 Enyeto 163M ET
THM TL'S Lacey 3057 ET

Standard 68L Dom Lad 38T
DCR 428B Standard 8107
BP 120S Goldrush Lady 124X

STR Standard 256B Dom Lad 68L
K 64H Ribstone Lady 112N
Thesnif 279J Goldrush 120S
K 47M Ribstone Lady 28R



CED BW WW YW SC MILK M&G FAT REA MARB BMI BII CHB
-6.7 5.9 64 102 1.4 27 59 0.028 0.4 -0.07 \$378 \$448 \$97

Reference Sire

THM Grits And Grace 7059



TH 133U 719T Upgrade 69X
 Mohican THM Excede Z426
 NJW M326 Unforgettable 76W ET

THM JLG Treutlen 5666
 THM TL'S Tuesday Morning 5068
 THM TL'S Heidi Lou 7529

TH 122 711 Victor 719T
 TH 14S 103R Megan 133U
 KCF Bennett 3008 M326
 NJW P606 72N Daydream 73S

THM Easy Choice 5052
 JLG Victra 163M 5626
 THM Durango 4037
 THM TL's Heidi 2017

CED	BW	WW	YW	SC	MILK	M&G	FAT	REA	MARB	BMI	BII	CHB
-1.1	3.8	72	113	1.5	29	65	-0.002	0.55	-0.18	\$347	\$416	\$95

Tried and True!

7059 has quietly amassed an impressive track record here as a go-to heifer bull. 98 head of calves recorded have posted a 100% birth ratio and 106% yearling ratio. They are cattle that are not necessarily light birthweight but are shaped right. They come easy, grow fast and mature early.

All these bulls are out of 1st calf heifers.



DCR 91 **DCR 7059 GRIT 1005**
 BW: 75 WW: 576 YW: 1047 Current: 1520
 3/8/2021 PAP: 38 SC: 40 Dams Age: 2 REG #: 44255621

Mohican THM Excede Z426
 THM Grits And Grace 7059
 THM TL'S Tuesday Morning 5068

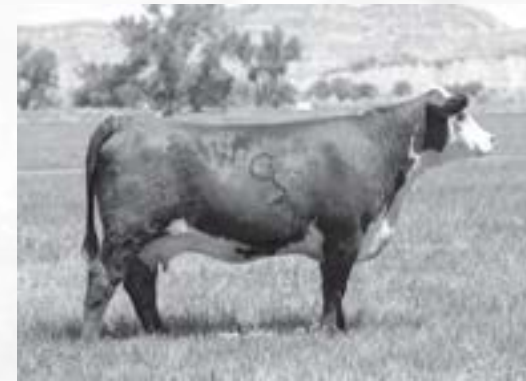
DCR 136X Dependable 376
 DCR 376 Ella 9257 ET
 DCR 199B Ella 6358 ET

TH 133U 719T Upgrade 69X
 NJW M326 Unforgettable 76W ET
 THM JLG Truetlen 5666
 THM TLS Heidi Lou 7529

NJW 12E 4037 Duration 136X ET
 DCR 7006 Miss Daisy 9037
 NJW 78P 88X Cowboss 199B ET
 DCR 722 Ella C 0119



CED	BW	WW	YW	SC	MILK	M&G	FAT	REA	MARB	BMI	BII	CHB
-0.3	3.4	61	96	1.1	29	59	0.008	0.49	-0.04	\$362	\$429	\$104



DCR 376 Ella 9224 ET
 Flush sister to the dam of lot 91



DCR 247 Anchor Lady 9083
 Dam of Lot 92

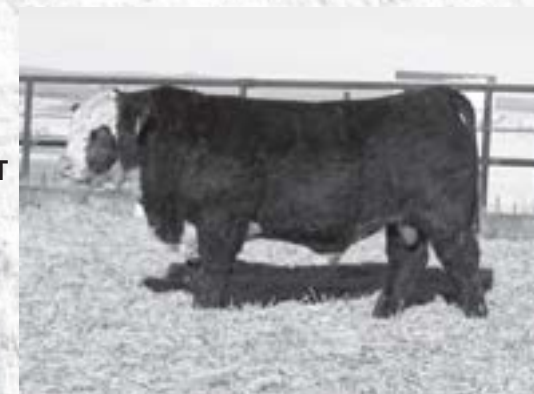
DCR 92 **DCR 7059 TRUE GRIT 1012**
 BW: 78 WW: 652 YW: 1123 Current: 1595
 3/13/2021 PAP: 38 SC: 41 Dams Age: 2 REG #: 44255615

Mohican THM Excede Z426
 THM Grits And Grace 7059
 THM TL'S Tuesday Morning 5068

DCR 713 Kootenay 247
 DCR 247 Anchor Lady 9083
 BP 44U Anchor Lady 172Z

TH 133U 719T Upgrade 69X
 NJW M326 Unforgettable 76W ET
 THM JLG Truetlen 5666
 THM TLS Heidi Lou 7529

DCR Koot 713
 DCR 0302 Wine 7032
 Anchor 44U
 K 45D Super Lady 75L



CED	BW	WW	YW	SC	MILK	M&G	FAT	REA	MARB	BMI	BII	CHB
-6.4	5.2	65	105	1.2	25	57	0.008	0.43	-0.11	\$328	\$396	\$95

Weaning Ratio 107%

Yearling Ratio 103%

DCR 93 **DCR 7059 GRIT 1015**
 BW: 74 WW: 572 YW: 1043 Current: 1515
 3/14/2021 PAP: 37 SC: 36.5 Dams Age: 2 REG #: 44255618

Mohican THM Excede Z426
THM Grits And Grace 7059
 THM TL'S Tuesday Morning 5068

TH 133U 719T Upgrade 69X
 NJW M326 Unforgettable 76W ET
 THM JLG Truetlen 5666
 THM TLS Heidi Lou 7529

DCR 199B Cowboss 6072
DCR DVB 6072 Pearl 9608
 DCR 57X Pearl 4036

NJW 78P 88X Cowbos 199B
 Red Hills Keri T85
 DCR 713 Kootenay 57X
 DCR 347 Pearl 6016



CED BW WW YW SC MILK M&G FAT REA MARB BMI BII CHB
 0.0 4.0 60 99 1.2 24 55 -0.002 0.44 -0.07 \$348 \$413 \$103
 Birth Ratio 82%

DCR 95 **DCR 7059 GRIT 1035**
 BW: 70 WW: 712 YW: 1183 Current: 1655
 3/18/2021 PAP: 39 SC: 40 Dams Age: 2 REG #: 44410812

Mohican THM Excede Z426
THM Grits And Grace 7059
 THM TL'S Tuesday Morning 5068

TH 133U 719T Upgrade 69X
 NJW M326 Unforgettable 76W ET
 THM JLG Truetlen 5666
 THM TLS Heidi Lou 7529

BAR_RZ 56X Cassius Clay 83C
DCR 83C Miss Cal 9437
 BP 10B Miss Cal 4E

BAR-RZ 85U Rolex 56X
 BAR-RZ 192S Western Star 7W
 Hills-Galore 36T 605 Easy 10B
 BP 38T Standard Lady 51C



CED BW WW YW SC MILK M&G FAT REA MARB BMI BII CHB
 -0.4 4.0 61 102 1.3 27 57 0.012 0.48 -0.1 \$377 \$443 \$101
 Birth Ratio 95%
 Weaning Ratio 118%



DCR 94 **DCR 7059 GRIT 1031**
 BW: 75 WW: 557 YW: 1028 Current: 1500
 3/24/2021 PAP: 36 SC: 40.5 Dams Age: 2 REG #: 44255650

Mohican THM Excede Z426
THM Grits And Grace 7059
 THM TL'S Tuesday Morning 5068

TH 133U 719T Upgrade 69X
 NJW M326 Unforgettable 76W ET
 THM JLG Truetlen 5666
 THM TLS Heidi Lou 7529

DCR 713 Kootenay 247
DCR 247 Standard Lady 9079
 BP 44U Anchor Lady 93A

DCR Koot 713
 DCR 0302 Wine 7032
 Anchor 44U
 K 117K Ribstone Lady 108N

CED BW WW YW SC MILK M&G FAT REA MARB BMI BII CHB
 -4.2 4.4 66 106 1.3 23 56 0.008 0.45 -0.1 \$316 \$384 \$95
 Birth Ratio 83%



DCR 96 **DCR 7059 GRIT 1038**
 BW: 68 WW: 637 YW: 1108 Current: 1580
 3/20/2021 PAP: 39 SC: 41.5 Dams Age: 2 REG #: 44411914

Mohican THM Excede Z426
THM Grits And Grace 7059
 THM TL'S Tuesday Morning 5068

TH 133U 719T Upgrade 69X
 NJW M326 Unforgettable 76W ET
 THM JLG Truetlen 5666
 THM TLS Heidi Lou 7529

DCR 713 Kootenay 247
DCR 247 Anchor Lady 9020
 BP 44U Anchor Lady 110C

DCR Koot 713
 DCR 0302 Wine 7032
 Anchor 44U
 BP 38T Standard Dom Lady 73W

CED BW WW YW SC MILK M&G FAT REA MARB BMI BII CHB
 -1.4 4.3 63 101 1.4 25 57 -0.008 0.47 -0.13 \$324 \$387 \$100
 SCURRED
 Birth Ratio 92%



DCR 713 Kootenay 247
 Trait Leader Maternal Grandsire to
 multiple bulls in the sale
 including Lots 92, 94, 96 and more.

DCR 97 **DCR 7059 GRIT 1041**
 BW: 71 WW: 597 YW: 1093 Current: 1500
 3/26/2021 PAP: 37 SC: 39 Dams Age: 2 REG #: 44255667

Mohican THM Excede Z426
THM Grits And Grace 7059
 THM TL'S Tuesday Morning 5068

TH 133U 719T Upgrade 69X
 NJW M326 Unforgettable 76W ET
 THM JLG Truetlen 5666
 THM TLS Heidi Lou 7529

DCR 200Z Precedence 518 ET
DCR DVB 518 Tara 9430
 DCR 38Y Tara 5083

Churchill Red Bull 200Z
 Red Hills Keri T85
 BP 44U Anchor 38Y
 DCR 713 Tara 3008

CED BW WW YW SC MILK M&G FAT REA MARB BMI BII CHB
 1.4 3.3 61 100 1.4 27 57 -0.002 0.42 -0.04 \$364 \$432 \$104
 Birth Ratio 97%



DCR 98 **DCR 7059 GRIT 1043**
 BW: 73 WW: 652 YW: 1123 Current: 1595
 3/27/2021 PAP: 38 SC: 42 Dams Age: 2 REG #: 44255671

Mohican THM Excede Z426
THM Grits And Grace 7059
 THM TL'S Tuesday Morning 5068

TH 133U 719T Upgrade 69X
 NJW M326 Unforgettable 76W ET
 THM JLG Truetlen 5666
 THM TLS Heidi Lou 7529

DCR 199B Cowboss 6072
DCR DVB Tara 9436
 DCR HD Tara 5204

NJW 78P 88X Cowbos 199B
 Red Hills Keri T85
 DCR 136X Dependable 376
 DCR 722 Tara 128X



CED BW WW YW SC MILK M&G FAT REA MARB BMI BII CHB
 -0.6 3.9 64 103 1.3 28 60 -0.002 0.53 -0.07 \$360 \$428 \$107

Weaning Ratio 112%
 Yearling Ratio 106%

DCR 101 **DCR 7059 GRIT 1052**
 BW: 74 WW: 507 YW: 978 Current: 1450
 4/1/2021 PAP: 38 SC: 39 Dams Age: 2 REG #: 44255689

Mohican THM Excede Z426
THM Grits And Grace 7059
 THM TL'S Tuesday Morning 5068

TH 133U 719T Upgrade 69X
 NJW M326 Unforgettable 76W ET
 THM JLG Truetlen 5666
 THM TLS Heidi Lou 7529

Hills-Galore 44Z Resolute 128D
DCR 128D Ella 9334
 DCR 136X Ella 3046

RST X51 Revolution 4102
 Hills-Galore 52R Calli 44Z
 NJW 12E Duration 136X ET
 DCR 0302 Ella 8030



CED BW WW YW SC MILK M&G FAT REA MARB BMI BII CHB
 0.5 3.4 64 106 1.2 25 57 0.008 0.61 -0.05 \$352 \$421 \$107



DCR 99 **DCR 7059 GRIT 1048**
 BW: 74 WW: 667 YW: 1138 Current: 1610
 3/28/2021 PAP: 37 SC: 39 Dams Age: 2 REG #: 44255684

Mohican THM Excede Z426
THM Grits And Grace 7059
 THM TL'S Tuesday Morning 5068

TH 133U 719T Upgrade 69X
 NJW M326 Unforgettable 76W ET
 THM JLG Truetlen 5666
 THM TLS Heidi Lou 7529

DCR 199B Cowboss 6072
DCR DVB 6072 Standard 9427
 DCR 38Y Standard 5072

NJW 78P 88X Cowbos 199B
 Red Hills Keri T85
 BP 44U Anchor 38Y
 DCR 57X Standard 3085

CED BW WW YW SC MILK M&G FAT REA MARB BMI BII CHB
 -0.7 3.9 62 104 1.3 26 57 -0.002 0.46 -0.07 \$346 \$412 \$102

Weaning Ratio 113%
 Yearling Ratio 107%



DCR 128D Dominet 9233 ET
 Paternal sister to dam of Lot 101

DCR 100 **DCR 7059 GRIT 1050**
 BW: 74 WW: 602 YW: 1073 Current: 1545
 4/1/2021 PAP: 37 SC: 39.5 Dams Age: 2 REG #: 44255687

Mohican THM Excede Z426
THM Grits And Grace 7059
 THM TL'S Tuesday Morning 5068

TH 133U 719T Upgrade 69X
 NJW M326 Unforgettable 76W ET
 THM JLG Truetlen 5666
 THM TLS Heidi Lou 7529

DCR 200Z Precedence 518 ET
DCR DVB 518 Gladys 9304
 DCR 713 Gladys 4007

Churchill Red Bull 200Z
 Red Hills Keri T85
 DCR Koot 713
 Remitall Gladys 351R



CED BW WW YW SC MILK M&G FAT REA MARB BMI BII CHB
 -0.1 3.7 61 102 1.3 26 56 -0.002 0.45 -0.05 \$341 \$408 \$107

DCR 102 **DCR 7059 GRIT 1058**
 BW: 73 WW: 657 YW: 1128 Current: 1600
 4/2/2021 PAP: 38 SC: 40 Dams Age: 2 REG #: 44255754

Mohican THM Excede Z426
THM Grits And Grace 7059
 THM TL'S Tuesday Morning 5068

TH 133U 719T Upgrade 69X
 NJW M326 Unforgettable 76W ET
 THM JLG Truetlen 5666
 THM TLS Heidi Lou 7529

DCR 200Z Precedence 518 ET
DCR DVB 518 Diana 9404
 DCR 57X Diana 4008

Churchill Red Bull 200Z
 Red Hills Keri T85
 DCR 713 Kootenay 57X
 DCR 7006 Diana 0114



CED BW WW YW SC MILK M&G FAT REA MARB BMI BII CHB
 -0.6 3.7 60 98 1.4 25 55 -0.012 0.41 -0.04 \$376 \$443 \$104

Weaning Ratio 113%
 Yearling Ratio 107%

DCR 103 **DCR 7059 GRIT 1044**
 BW: 73 WW: 595 YW: 1060 Current: 1485
 3/28/2021 PAP: NA CS: NA Dams Age: 2 REG #: 44402144

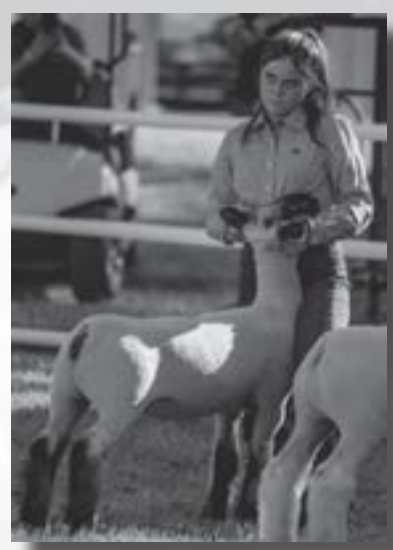
Mohican THM Excede Z426
THM Grits And Grace 7059
 THM TL'S Tuesday Morning 5068

TH 133U 719T Upgrade 69X
 NJW M326 Unforgettable 76W ET
 THM JLG Truetlen 5666
 THM TLS Heidi Lou 7529

BAR-RZ 56X Cassius Clay 83C
DCR 83C Miss Cal 9488
 BP 10B Miss Cal 4E

BAR-RZ 85U Rolex 56X
 BAR-RZ 192S Western Star 7W
 Hills-Galore 36T 605 Easy 10B
 BP 38T Standard Lady 51C

CED BW WW YW SC MILK M&G FAT REA MARB BMI BII CHB
 0.3 3.9 61 102 1.2 27 57 0.007 0.48 -0.1 \$378 \$443 \$102



DCR 106 **DCR GRIT 1075**
 BW: 74 WW: 568 YW: 1040 Current: 1500
 4/6/2021 PAP: 37 SC: 36 Dams Age: 2 REG #: 44257146

Mohican THM Excede Z426
THM Grits And Grace 7059
 THM TL'S Tuesday Morning 5068

TH 133U 719T Upgrade 69X
 NJW M326 Unforgettable 76W ET
 THM JLG Truetlen 5666
 THM TLS Heidi Lou 7529

DCR 200Z Precedence 518 ET
DCR DVB 518 Chablis 9412
 DCR 135 Chablis 4077

Churchill Red Bull 200Z
 Red Hills Keri T85
 DCR 713 Kootenay 135
 Red Hills Miss Chablis

CED BW WW YW SC MILK M&G FAT REA MARB BMI BII CHB
 -1.0 3.7 60 99 1.4 26 55 -0.012 0.41 -0.07 \$373 \$438 \$102



DCR 104 **DCR 7059 GRIT 1061**
 BW: 75 WW: 428 YW: 898 Current: 1370
 4/2/2021 PAP: 35 SC: 39.5 Dams Age: 2 REG #: 44255755

Mohican THM Excede Z426
THM Grits And Grace 7059
 THM TL'S Tuesday Morning 5068

TH 133U 719T Upgrade 69X
 NJW M326 Unforgettable 76W ET
 THM JLG Truetlen 5666
 THM TLS Heidi Lou 7529

DCR 199B Cowboss 6072
DCR DVB 6072 Image 9428
 DCR Lady Image 5073

NJW 78P 88X Cowbos 199B
 Red Hills Keri T85
 THR Thor 3060A
 DCR 713 Image 2005

CED BW WW YW SC MILK M&G FAT REA MARB BMI BII CHB
 -3.6 3.2 60 96 1.3 27 58 -0.002 0.46 -0.06 \$345 \$410 \$104



DCR 107 **DCR 7059 GRIT 1093**
 BW: 73 WW: 540 YW: 1010 Current: 1450
 4/20/2021 PAP: 37 SC: 40 Dams Age: 2 REG #: 44257211

Mohican THM Excede Z426
THM Grits And Grace 7059
 THM TL'S Tuesday Morning 5068

TH 133U 719T Upgrade 69X
 NJW M326 Unforgettable 76W ET
 THM JLG Truetlen 5666
 THM TLS Heidi Lou 7529

DCR 199B Cowboss 6072
DCR DVB 6072 Standard 9448
 DCR 312 Standard 6268

NJW 78P 88X Cowbos 199B
 Red Hills Keri T85
 DCR 713 Iconic 312
 DCR 7006 Standard 1017

CED BW WW YW SC MILK M&G FAT REA MARB BMI BII CHB
 -2.5 4.6 62 99 1.2 26 57 -0.012 0.47 -0.08 \$349 \$414 \$107

DCR 105 **DCR 7059 GRIT 1064**
 BW: 70 WW: 740 YW: 1210 Current: 1610
 3/21/2021 PAP: 37 SC: 41.5 Dams Age: 2 REG #: 44409046

Mohican THM Excede Z426
THM Grits And Grace 7059
 THM TL'S Tuesday Morning 5068

TH 133U 719T Upgrade 69X
 NJW M326 Unforgettable 76W ET
 THM JLG Truetlen 5666
 THM TLS Heidi Lou 7529

THM Grits and Grace 7059
DCR 6009 Manhattan 9133
 DCR 38Y Anchor 7334 ET

Mohican THM Excede Z426
 THM TL'S Tuesday Morning 5068
 BP 44U Anchor 38Y
 Grandview CMR MS Innovator 9182

CED BW WW YW SC MILK M&G FAT REA MARB BMI BII CHB
 -2.4 4.5 68 108 1.4 27 61 0.008 0.52 -0.14 \$326 \$393 \$94
 Birth Ratio 95% Yearling Ratio 112
 Weaning Ratio 123%



DCR 108 **DCR 7059 GRIT 1102**
 BW: 71 WW: 590 YW: 1063 Current: 1535
 4/23/2021 PAP: 39 SC: 40.5 Dams Age: 2 REG #: 44329762

Mohican THM Excede Z426
THM Grits And Grace 7059
 THM TL'S Tuesday Morning 5068

TH 133U 719T Upgrade 69X
 NJW M326 Unforgettable 76W ET
 THM JLG Truetlen 5666
 THM TLS Heidi Lou 7529

DCR 200Z Precedence 518 ET
DCR DVB 518 Ella 9423
 DCR 713 Ella C 5052

Churchill Red Bull 200Z
 Red Hills Keri T85
 DCR Koot 713
 DCR 713 Ella C 1035

CED BW WW YW SC MILK M&G FAT REA MARB BMI BII CHB
 0.2 3.1 59 98 1.4 27 57 -0.002 0.46 -0.04 \$356 \$422 \$108
 Birth Ratio 96% Yearling Ratio 102%



DCR
109 BW: 70 WW: 574 YW: 1030 Current: 1400
 4/18/2021 PAP: 38 SC: 38 Dams Age: 2 REG #: 44409790

Mohican THM Excede Z426
THM Grits And Grace 7059
 THM TL'S Tuesday Morning 5068

TH 133U 719T Upgrade 69X
 NJW M326 Unforgettable 76W ET
 THM JLG Truetlen 5666
 THM TLS Heidi Lou 7529

THM Grits and Grace 7059
DCR 7059 Lady Dom 9172
 DCR 479 Lady Dom 7025

MSU TCF Revolution 4R
 THM TL'S Tuesday Morning 5068
 DCR 713 Range Boss 479
 DCR 44X Com 3057

CED BW WW YW SC MILK M&G FAT REA MARB BMI BII CHB
 -2.1 3.6 65 102 1.3 26 58 -0.007 0.51 -0.12 \$331 \$395 \$99
 Birth Ratio 94%



DCR
111

250 Head of High Altitude, F1 Baldy Heifer Calves Sired by DCR Bulls

- Heifers will be penned in groups of 25
- Selling in groups of 5 with a run on the pen if desired.

Consigned by
2K Cattle Company
 &
Durbin Creek Ranch

Why the Baldy Advantage

- ◆ A 7% advantage in conception rate
- ◆ 51% more per cow per year
- ◆ Improve disposition & handling ability
- ◆ Increase value of females
- ◆ Data based on the Circle A Ranch Heterosis Project beginning in 2007, conducted by Circle A Angus Ranch.

For questions about the heifers, please contact Bruce at (307) 867-2402 or (307) 921-3021.



DCR
110 BW: 72 WW: 600 YW: 1100 Current: 1510
 4/2/2021 PAP: NA SC: NA Dams Age: 2 REG #: 44255756

Mohican THM Excede Z426
THM Grits And Grace 7059
 THM TL'S Tuesday Morning 5068

TH 133U 719T Upgrade 69X
 NJW M326 Unforgettable 76W ET
 THM JLG Truetlen 5666
 THM TLS Heidi Lou 7529

DCR 199B Cowboss 6072
DCR DVB 6072 Scarlet 9445
 DCR 3060 Scarlet 6242

NJW 78P 88X Cowbos 199B
 Red Hills Keri T85
 THR Thor 3060A
 DCR 3428 Scarlet 6033

CED BW WW YW SC MILK M&G FAT REA MARB BMI BII CHB
 0.5 3.2 61 98 1.3 26 57 -0.003 0.49 -0.06 \$339 \$405 \$105
 Birth Ratio 97%





Amy Landrus
Contract Sales Representative
Powell, WY
Mobile: (307) 254 - 1454

- Liquid Supplements
- Low Moisture Cooked Tubs
- Weatherized Mineral
- Confined Feed Balancers

We would like to thank Anipro for providing the pre-sale dinner at the Green Hills Restaurant and Bar.



Madi Shults
Sr. Territory Representative
Merck Animal Health
(970) 208-5545

Nasalgen³-PMH
The *first and only* intranasal vaccine with both viral and bacterial pneumonia protection.

Bovine Rhinotracheitis-Parainfluenza 3-Respiratory Syncytial Virus-Mannheimia Haemolytica-Pasteurella Multocida Vaccine

Copyright © 2021 Intervet Inc., d/b/a Merck Animal Health, a subsidiary of Merck & Co., Inc. All rights reserved.

We would like to thank Madi and everyone from Merck for supplying breakfast the morning of the bull sale!

Durbin Creek Ranch

ROPE!



DCR Speedy Twist (Amy)-DCR Speedy Fair X Smart Lelita X Smart Little Twister



DCR Frosted Red Rose (Fancy)-PC Wades Frost X Moons Red Rose X Kellys Golden Moon

RUN!

RANCH!



DCR Bay Star (Bear)-LZM Brown Conchos X Bessys Best Gold X Goldchainingmaker



DCR Cowboy Frost (Junior)-PC Wades Frost X Twilalita X Kellys Golden Dun

REAL!

Ranch Horses Ready To Perform



Thermopolis, Wyoming

James Arviso & "Rihanna"
DCR Sunny Reed



2021 Gold Buckle Beer Open 2nd Place
2022 National High School Rodeo Finals Heading Champions
2022 World Series American Rodeo Open 2nd Place
\$200,000+ Heading Earnings

Find us on Facebook, check out our website or give us a call for information on current horses for sale!

House: (307) 867-2403

Jake Cell: (541) 519-5366

Hannah Cell: (307) 240-0641

www.durbincreekranch.com

Thank You For 11 Years Of Success!!

The Cows Behind the Program!



We would like to give out a big "Thank you" to all the employees of Durbin Creek Ranch and Washakie Feeders. You make this sale possible, we couldn't do it without you.



DCR 199B Lacey Lou 0001



DCR 128D Dominet 9209 ET



DCR 199B Leslie 7064



DCR 6009 Dom 9164



DCR 479 Miss Cal 0149



DCR 376 Ella 9206 ET



Dana DCR199B Ontime 8166 ET



DCR 518 Ella 8639



DCR 376 Ella 9205 ET



DCR 7167 Diana 9202 ET



DCR 7167 Diana 9230 ET



DCR 428B Standard Lady 9623

Born In Wyoming!
Changing the Breed!

Durbin Creek Ranch
3292 Grass Creek Rd
Thermopolis, WY 82443

Thank you for your interest in the
Durbin Creek Program. We look forward to
seeing you next year.

