



TOWNSEND • MONTANA



MONTANA MADE  
**PRODUCTION SALE**

SATURDAY, SEPTEMBER 19, 2020  
SMART AUCTIONS ONLINE SALE & RANCH OPEN HOUSE



***Open House starts at 1:00 PM / Sale Cattle will be on display***

***Please, join us for supper served after the close out of the sale, 6:00 PM***

*Everyone is welcome to come earlier if you have interest in looking at other cattle that are located at different places on the ranch.*



# MONTANA MADE PRODUCTION SALE

SATURDAY, SEPTEMBER 19, 2020  
SMART AUCTIONS ONLINE SALE  
& RANCH OPEN HOUSE

*Welcome to our  
Montana Made Female Sale and Open House!*

It has certainly been a year unlike any other. Our hope is that everyone has been able to weather the storm, stay healthy and prosper.

The MD genetic defect has altered what we have on offer this year, reducing the number of bred heifers has led to adding additional fall yearlings.

All animals in the catalog have been DNA'd or have DNA in process. All animals will have AHA Genetically Enhanced EPDs.

We are happy to be working with Smart Auctions to bring you this sale in a convenient, mobile, reliable, and secure online bidding setting. You will be able to view, select, bid, buy and pay for animals in our sale from the convenience of your smartphone, tablet, or PC.

Though we are working with Smart Auctions to help make our sale convenient for you, we are inviting you to come to the ranch on Saturday, September 19th for a ranch Open House. We will have sale cattle on display and facilitate the viewing of other cattle at various ranch locations. Online bidding options will be available at the ranch and we will start serving supper at 6pm, immediately after the sale close out.

Our breeding philosophy is to focus on the female. Our cows are expected to perform: calve and mother without assistance, breed back in a timely manner and wean a good calf. The registered cattle are managed the same as the commercial cows. We don't single trait select, nor do we select for extremes. We select for traits that will complement one another, while continuously working at keeping our genetics problem free.

Again this year, we have a select offering of weaned bull calves that we think are pretty special and are uniquely bred. The females being offered represent our very best top end and are indicative of the future here.

Thanks to our current/past customers for purchasing cattle from our program to make a difference in yours. We appreciate your confidence and support. Be sure to reach out with any questions you may have. Our family is truly blessed to be involved in agriculture and with this great breed of cattle.

Warmest Regards, *the Ehlke Family*

Mark Ehlke 406-439-4311 / Lacey Ehlke 406-439-1544  
Jane'a Ehlke 406-202-2766



3925 MT Highway 284 / P.O. Box 178 / Townsend, MT 59644  
info@ehlkeherefords.com / www.ehlkeherefords.com



**RANCH OPEN HOUSE SCHEDULE**

**Saturday, September 19<sup>th</sup>**

1:00 PM . . . . . Sale cattle on display at the ranch.  
*Everyone is welcome to come earlier if you have interest in looking at other cattle located at different places on the ranch.*  
 6:00 PM . . . . . Supper and social during sale close-out

**SALE INFORMATION & FORMAT smartauctions**

Visit [smartauctions.co](http://smartauctions.co) to sign up as a bidder and register for Ehlke Herefords auction alerts. Starting Tuesday, September 15, 2020, you may view the Ehlke Montana Made Female Sale and be sure to **Text EHLKE to 76278 to receive mobile alerts.**

**Sale closes Horse Race Style at 6:00 PM MST on Saturday, September, 19, 2020.**

Dustin Layton, Layton Auction Services/SmartAuctions .405-464-2455  
 Smart Auctions Customer Service . . . . .937-733-6000

**SALE DAY PHONES & INFORMATION**

Mark Ehlke . . . . .406-439-4300  
 Lacey Ehlke Jepson . . . . .406-439-1544  
 Jane'a Ehlke . . . . .406-202-2766  
 Della Ehlke . . . . .406-439-4300  
[info@ehlkeherefords.com](mailto:info@ehlkeherefords.com)

**SALE REPRESENTATIVES**

Dale Stith . . . . .918-760-1550  
 Dustin Layton, Smart Auctions . . . . .405-464-2455  
 Kevin Murnin, AHA . . . . .406-853-4638  
 John Goggins, Western Livestock Reporter . . . . .406-698-4159  
 Marc & Jill Hotchkiss, Hereford America . . . . .605-490-1513  
 Devin Murnin, Western Livestock Journal . . . . .406-696-1502

**DELIVERY**

Bob Woolsey Trucking . . . . .406-670-1877  
 Transportation will be provided at cost to central points, buyers share not to exceed \$500/animal.

**TERMS & CONDITIONS**

All cattle sell under the terms and conditions of the American Hereford Association. The Terms & Conditions can be reviewed online at, <https://tinyurl.com/ahasaleterms> or printed copies are available upon request.

**SALE UPDATES**

Corrections or additions of any information contained in the sale catalog will be provided via supplemental information and will take precedence over any printed material.

# MONTANA MADE PRODUCTION SALE

## SALE INFORMATION



### **DIRECTIONS**

Ranch Location Address: 3925 Highway 284, Townsend, MT  
Entering Townsend from either direction you will be on Front St (Highway 287), turn East at the flashing light onto Broadway St (Highway 12) for 2 miles and turn left at the next flashing light, head North on Highway 284 for another 2.5 miles, Ranch turnoff is on your RIGHT with a white archway with two grain silos. Signs will be up.

### **AIR TRAVEL**

Helena Regional Airport is approx. 40 miles from the ranch, and Bozeman Yellowstone International Airport in Belgrade is approx. 60 miles from the ranch. Both have rental car agencies in the airports and both have Delta, United, Alaska and some American and Frontier airline flights.

### **LODGING**

Mustang Motel (very basic amenities) . . . . .406-266-3491  
412 N Front Street Townsend, MT (4 miles from ranch)  
Sacajawea Hotel . . . . .406-285-6515  
5 N Main Street Three Forks, MT (appx. 35 miles from ranch)  
*Most hotel chains are available in both Helena (40 miles) and Belgrade/Bozeman (60 miles).*

### **LIABILITY**

Anyone attending the Open House/Sale Close out does so at their own risk and without liability on the part of the owners or their employees.

### **ACKNOWLEDGMENTS**

Will Oliver, Chuteside Vet, Three Forks, MT / Herd Vet  
Jane'a Ehlke, Ehlke Herefords / Photos & Videos  
Will Malcolm, Sleeping Giant Genetics / Embryologist  
Generation 6 Marketing / Sale Catalog  
LivestockDirect / Sale Catalog Printing

### **GENOMIC EPDS**

All sale cattle were genetically tested to provide genomic enhanced EPDs, which are shown in the catalog.



# SPRING BORN CALVES



*Lot 1A*



*Lot 1B*

*Offering choice; you select one, we will keep the other heifer. Dam D160 and Granddam 486B are very elite females. Retaining the option of 1 future flush at buyer's convenience and seller's expense. Both heifers are outstanding and it will be difficult to decide which is better.*

**1A**

E 252 F *Demi* 0003 ET

POLLED | BD: 3/13/20 | AHA#: 44117753 | ACT. BW: ET  
 NJW 160Z 10W WHIT 33B ILR HOMETOWN 332A ET  
**NJW 79Z 33B FORWARD 252 F E 332A EDNA D160**  
 BW 91H 100W RITA 79Z ET ILR 156T IRON LADY 486B ET

CE	BW	WW	YW	MM	M&G	MCE	SC	Fat	REA	Marb	BMI\$	BII\$	CHBS
3.8	2.4	58	99	32	61	5.2	0.9	0.013	0.92	0.15	439	516	125

0003 is the 1st 252F off spring we have to offer and is she ever powerful! 0003 shows excellent definition and dimension as well as posting an exceptional number profile. This one is bred to excel.

**1B**

E 174E *Miss Whoopsie* 0002 ET

POLLED | BD: 3/5/20 | AHA#: 44117752 | ACT. BW: ET  
 TH 403A 475Z PIONEER 358C ET ILR HOMETOWN 332A ET  
**TH FRONTIER 174E E 332A EDNA D160**  
 FTF TRUSTING LADY 312A ILR 156T IRON LADY 486B ET

CE	BW	WW	YW	MM	M&G	MCE	SC	Fat	REA	Marb	BMI\$	BII\$	CHBS
3.0	2.5	64	114	34	66	1.6	1.6	0.043	0.51	0.08	396	476	102

0002 is a touch more refined her makeup than her 1/2 sib. 0002 posts and outstanding number profile as well. This heifer may be just a tick longer and have just a bit more frame.

# SPRING BORN CALVES



**E 332A Edna D160 - Lot 1A & 1B Dam**



**ILR 156T Iron Lady 486B ET  
Granddam of Lots 1A, 1B & 2**



*Lot 2*

**2** E 174E *Yellowstone* 0001 ET

POLLED | BD: 2/29/20 | AHA#: 44117751 | ACT. BW: ET

TH 403A 475Z PIONEER 358C ET  
**TH FRONTIER 174E**  
FTF TRUSTING LADY 312A

ILR HOMETOWN 332A ET  
**E 332A EDNA D160**  
ILR 156T IRON LADY 486B ET

Pay special attention here! 0001 checks all the boxes; big top and hip, has depth and dimension, good pigment, sound in his make up and the list goes on. 0001's dam, D160 and his maternal grand dam 486B are doing an incredible job in our program and the mating to TH FRONTIER 174E sure worked. Retaining a full 1/2 interest. Possession negotiable.

CE	BW	WW	YW	MM	M&G	MCE	SC	Fat	REA	Marb	BMIS	BIIS	CHBS
1.2	1.8	64	112	30	62	0.6	1.5	0.043	0.74	-0.09	398	467	103

# SPRING BORN CALVES



*Lot 3*



Dam of Lot 3



Granddam of Lots 3 & 15



*Lot 4*

## **3** E D98 *Big Sky Miss* H010

POLLED | BD: 2/26/20 | AHA#: 44147686 | ACT. BW: 89 LBS.

ILR HOMETOWN 332A ET HARVIE SAFNBFI COLATERAL 337U  
**E ILR ATHENS D98** E 337U DIVA 839BET  
 HARVIE E MS FIREFLY ET 19Z MC GEN QUEEN 9904

CE	BW	WW	YW	MM	M&G	MCE	SC	Fat	REA	Marb	BMI\$	BII\$	CHBS
-6.0	4.1	56	89	26	54	0.9	0.8	0.003	0.45	0.05	410	481	98

This heifer has an outstanding maternal back ground. She goes back to Genetic Explosion on the bottom side. H010's dam is by Colateral who is a trait leader for udder quality. Top side of pedigree also includes some exceptional cattle as well. Could be the sleeper in the entire offering right here. This heifer calf is horned.

## **4** E 174E *Yellowstone* H012

POLLED | BD: 2/29/20 | AHA#: 44154011 | ACT. BW: 94 LBS.

TH 403A 475Z PIONEER 358C ET MC 243R BOULDER U832  
**TH FRONTIER 174E** E 832 MISS BOULDER X9  
 FTF TRUSTING LADY 312A BE LADY BRAXTON 308

CE	BW	WW	YW	MM	M&G	MCE	SC	Fat	REA	Marb	BMI\$	BII\$	CHBS
3.8	1.6	56	102	30	58	1.2	1.2	0.043	0.51	-0.13	336	393	97

This well made, well marked Frontier 174E son continues to impress as he matures. H012's dam has been a real solid producer and this guy may be her best to date. If performance, acceptable calving ease, with a unique pedigree are part of your selection criteria; this bull hits those mile posts.



# SPRING BORN CALVES

5

## E 174E *Yellowstone* H005

POLLED | BD: 2/5/20 | AHA#: 44154010 | ACT. BW: 96 LBS.

TH 403A 475Z PIONEER 358C ET SR CCC TOP TIER 1414B ET  
**TH FRONTIER 174E E 1414 DEBUTANTE 7014 ET**  
 FTF TRUSTING LADY 312A ILR 156T IRON LADY 486B ET

CE	BW	WW	YW	MM	M&G	MCE	SC	Fat	REA	Marb	BMI\$	BIIS	CHB\$
1.1	2.6	60	103	29	59	1.2	1.2	0.033	0.62	-0.02	394	464	102

This guy has been an eye catcher since birth; showing quality from every angle. H005 is dark red, has good pigment and is made right. We are really looking forward to future production out of H005's dam, who we feel is very uniquely bred, out of the Top Tier bull and going back to Beth 1L, and has two 1/2 sibs in this sale. We are retaining a 1/4 interest.



*Lot 5*



6

PICK OF THE

## *Fall Yearling Bulls*

We originally thought of offering an individual fall born bull here but when trying to make a selection, the thought came why not offer choice and let the buyer decide. Selection will be made from a group of approximately 40 bulls. Sires include Digby 20C, Magnitude 737, Playmaker 14Z and Braxton 719 among others. Selection must be made by October 31, 2020. Ehlke Herefords may retain an interest.

# OPEN FALL YEARLING HEIFERS



*Lot 7*



Dam of Lots 7 & 8



*Lot 8*

**7**

E 4030 *Gabbie* 9015 ET

DEHORND | BD: 8/30/19 | AHA#: 44085453 | ACT. BW: ET

NJW 73S 980 HUTTON 109Z ET

CMR GVP MR MATERNAL 156T

**BR HUTTON 4030**

**ILR 156T IRON LADY 486B ET**

BR CSF BRIELLE 8052 ET

DJB 46B BETH 1L

CE	BW	WW	YW	MM	M&G	MCE	SC	Fat	REA	Marb	BMI\$	BIIS	CHBS
0.6	3.4	59	94	32	61	3.5	0.9	0.023	0.55	0.05	351	421	106

A highly maternal individual here combining 4030 with 486B. 9015 has plenty of depth and dimension and still maintains her femininity. Foundation type female here.

**8**

E 4030 *Gabbie* 9016 ET

DEHORND | BD: 9/1/19 | AHA#: 44085452 | ACT. BW: ET

NJW 73S 980 HUTTON 109Z ET

CMR GVP MR MATERNAL 156T

**BR HUTTON 4030**

**ILR 156T IRON LADY 486B ET**

BR CSF BRIELLE 8052 ET

DJB 46B BETH 1L

CE	BW	WW	YW	MM	M&G	MCE	SC	Fat	REA	Marb	BMI\$	BIIS	CHBS
-3.0	5.2	61	100	35	65	1.7	1.2	-0.017	0.74	0.17	387	467	122

9016 may be a bit deeper and have a little more hip than her full sister, 9015. The only reason that these two sell is the fact that they are horned.

# OPEN FALL YEARLING HEIFERS



*Lot 10*



Dam of Lot 10



*Lot 9*



Dam of Lot 9

**9**

E 507C *Lady Dew* 9011 ET

POLLED | BD: 8/28/19 | AHA#: 44079606 | ACT. BW: ET

NJW 98S R117 RIBEYE 88X ET PW MOHICAN NASDAQ P316  
**CHURCHILL TORO 507C** E MC P316 MS NASDAQ 701A ET  
 SR CCC LADYSPORT 2205 Z ET HARVIE MISS FIREFLY 51F

CE	BW	WW	YW	MM	M&G	MCE	SC	Fat	REA	Marb	BMI\$	BII\$	CHBS
5.7	2.2	55	95	27	55	2.9	1.0	-0.027	0.67	0.01	437	503	110

A somewhat rare opportunity here to acquire a granddaughter of Harvies famed 51F cow. 9011 put it all together and has an outstanding number profile as well. Udder quality should be outstanding here. We are retaining two full sisters.

**10**

E 20C *Ursula* 9012 ET

POLLED | BD: 8/28/19 | AHA#: 44086060 | ACT. BW: ET

OTAPAWA SKYMATE 2046 E BRAXTON 719  
**RSK E 2046 DIGBY ET 20C** E T719 PRECIOUS Z35  
 HARVIE MISS FIREFLY 51F E 16R LADY RAFTSMAN X35

CE	BW	WW	YW	MM	M&G	MCE	SC	Fat	REA	Marb	BMI\$	BII\$	CHBS
-1.8	3.7	51	75	23	49	-1.0	0.6	0.003	0.35	-0.11	402	459	89

Digby 20C daughter out of Z35 who is a donor cow for us and Hagen's. Our Braxton influenced females are highly appreciated year in- year out for their maternal qualities and 9012 should be right there as well.

# OPEN FALL YEARLING HEIFERS



*Lot 11*



*Lot 12*

**11**

E 20C *Ursula* G46

POLLED | BD: 8/10/19 | AHA#: 44078791 | ACT. BW: 85 LBS.

OTAPAWA SKYMATE 2046

E 719 BRAXTON A012

**RSK E 2046 DIGBY ET 20C**

**E A012 LADY BRAXTON D104**

HARVIE MISS FIREFLY 51F

E 337U DIVA Y37

CE	BW	WW	YW	MM	M&G	MCE	SC	Fat	REA	Marb	BMI\$	BII\$	CHB\$
-0.6	4.1	56	87	25	53	-2.8	0.5	-0.027	0.39	-0.07	348	409	98

G46 is another example of the 20C x Braxton influenced mating. G46 has been the pick of this group by more than a few visitors this summer. Bottom side of this pedigree is full of phenotypically beautiful females and sire is the 2017 Agribition champion bull. Lots of quality here.

**12**

E 20C *Ursula* G62

POLLED | BD: 8/15/19 | AHA#: 44078793 | ACT. BW: 81 LBS.

OTAPAWA SKYMATE 2046

HARVIE SAFNBFI COLATERAL 337U

**RSK E 2046 DIGBY ET 20C**

**E 337U DIVA A014**

HARVIE MISS FIREFLY 51F

E T731 OPTIMA W1

CE	BW	WW	YW	MM	M&G	MCE	SC	Fat	REA	Marb	BMI\$	BII\$	CHB\$
1.6	3.0	55	82	19	47	0.8	0.8	-0.027	0.28	-0.07	342	402	97

Digby 20C out of a Colateral 337U bred dam. Colateral 337U is a trait leader for udder quality ranking, at the very top of the breed for both suspension and teat size

# OPEN FALL YEARLING HEIFERS



**13** E 332A *Edna* G78  
 POLLED | BD: 8/19/19 | AHA#: 44075947 | ACT. BW: 95 LBS.  
 NJW 73S W18 HOMETOWN 10Y ET HARVIE SAFNBFI COLATERAL 337U  
**ILR HOMETOWN 332A ET E 337U DIVA 09B ET**  
 NJW 43T 4037 FOREVER EDNA 28X ET GV 579 VICTORIA 9710

CE	BW	WW	YW	MM	M&G	MCE	SC	Fat	REA	Marb	BMI\$	BII\$	CHBS
-2.1	4.9	58	102	27	56	-1.0	0.6	-0.027	0.44	-0.07	377	440	108

332A out of a Colateral 337U bred dam. 332A has tested MD free. This genetic mating has worked very well for us in past years. G78 is dark red with good pigment and has for sure received high appraisals from visitors this year.

**14** E D83 *Shiney* G115  
 POLLED | BD: 9/9/19 | AHA#: 44075929 | ACT. BW: 88 LBS.  
 E 4L SCHATZEE ET Z712 HARVIE SAFNBFI COLATERAL 337U  
**E Z712 SCHATZEE D83 E 337U DIVA A030**  
 EPHR LINNETTE 530T BE MISS ANCHOR 342

CE	BW	WW	YW	MM	M&G	MCE	SC	Fat	REA	Marb	BMI\$	BII\$	CHBS
0.7	3.5	65	102	27	60	3.0	0.0	0.003	0.71	0.02	380	455	107

G115 is by D83 out of one of our better 337U daughters. Sire D83 was highly regarded on the 2019 WLJ tour stop we hosted. G115 stems from a highly productive cow family and her number profile is reflective of that.



# OPEN FALL YEARLING HEIFERS



*Lot 15*



Granddam of Lots 3 & 15



Sire of Lot 15



*Lot 16*

**15**

E C039 *Fireplay* G97

POLLED | BD: 8/31/19 | AHA#: 44075941 | ACT. BW: 92 LBS.

TH 512X 719T PLAYMAKER 14Z HARVIE SAFNBFI COLATERAL 337U  
**E ILR 14Z HOLLOWAY C039** **E 377U DIVA B054**  
 HARVIE E MS FIREFLY ET 19Z E S604 LADY BOOMER Z803

CE	BW	WW	YW	MM	M&G	MCE	SC	Fat	REA	Marb	BMI\$	BII\$	CHBS
-3.2	4.6	63	90	25	56	0.4	0.8	-0.037	0.44	-0.06	381	454	90

Colateral 337U influence here on the dam's side with sire C039 being out of Playmaker 14Z, who has left us with very useful progeny through the years. Just a real nice heifer here.

**16**

E 737 *Megan* G60

POLLED | BD: 8/14/19 | AHA#: 44075969 | ACT. BW: 84 LBS.

MOHICAN BAR STAR REVVED UP 78A HARVIE SAFNBFI COLATERAL 337U  
**BAR STAR MAGNITUDE 737** **E 337U DIVA B061**  
 BAR STAR 91X WHATAGIRL 410 MC E GOVERNESS 346R 1091 ET

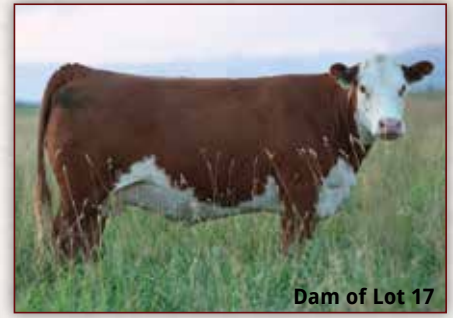
CE	BW	WW	YW	MM	M&G	MCE	SC	Fat	REA	Marb	BMI\$	BII\$	CHBS
-1.1	4.5	60	99	24	51	-0.8	1.0	0.003	0.27	0.13	354	432	97

G60 is the first of two Mangitude 737 heifers in the offering and is out of a real special Colateral 337U daughter that traces back to Remittal Marvel ET 110K. 737 is beginning to put together a solid "fan base."

# OPEN FALL YEARLING & FALL BRED HEIFERS



*Lot 17*



Dam of Lot 17

**17**

E 737 *Megan* G44

POLLED | BD: 8/10/19 | AHA#: 44075927 | ACT. BW: 78 LBS.

MOHICAN BAR STAR REVVED UP 78A C 19D NOTICE ME 1319 ET

**BAR STAR MAGNITUDE 737 E 1319 DIVA D05 ET**

BAR STAR 91X WHATAGIRL 410 LJE 337U DIVA X48

CE	BW	WW	YW	MM	M&G	MCE	SC	Fat	REA	Marb	BMI\$	BII\$	CHB\$
3.8	2.9	58	93	23	53	1.4	1.0	0.013	0.39	0.09	375	450	101

G44 is bred somewhat similar to G60. The Marvel 110K is swapped out for Colyer's C Notice ME ET on the bottom side. Very uniquely bred heifer here.

## FALL BRED HEIFERS



*Lot 18*

**18**

LJE 332A *Edna* 21F

POLLED | BD: 8/22/18 | AHA#: 43975009 | ACT. BW: 77 LBS.

NJW 73S W18 HOMETOWN 10Y ET E BRAXTON 719

**ILR HOMETOWN 332A ET LJE T719 LADY BRAXTON 812Z**

NJW 43T 4037 FOREVER EDNA 28X ET LJE P425 SHIRLEY 0812

CE	BW	WW	YW	MM	M&G	MCE	SC	Fat	REA	Marb	BMI\$	BII\$	CHB\$
-2.1	3.8	52	77	23	49	-1.9	0.5	0.013	0.42	0.14	311	380	95

A beautiful female with quality and the right look to her. Out of a Braxton 719 daughter who we can't say enough good things about. This heifer is well balanced, sound structured with lots of potential. Ranks in the top 10% for marbling. AI'd to NJW 202C 81E STEWARD 98G ET on 4/20 and pasture exposed to NJW 202C 81E STEWARD 98G ET from 6/1 to 8/4. Ultrasound shows safe in calf.

# FALL BRED HEIFERS



*Lot 19*



*Lot 20*

## 19 LJE C009 *Paula* 818

POLLED | BD: 8/30/18 | AHA#: 43975020 | ACT. BW: 80 LBS.  
 E BRAXTON 719                      E U806 VICTOR X84  
**E T719 BRAXTON C009**            **LJE X84 VICTORIA 5018**  
 E 337U DIVA A008                LJE S638 CALL GIRL 0805

CE	BW	WW	YW	MM	M&G	MCE	SC	Fat	REA	Marb	BMI\$	BIIS	CHBS
1.0	3.4	61	89	27	57	1.7	0.5	0.023	0.73	0.19	298	376	125

This big bodied, powerful female is at the top of our list. She is deep ribbed, soggy and made right. This heifer balances out on profile and paper, ranking in the top 5% for REA, and is just a very complete individual. Some real cow power here. Al'd to NJW 202C 81E STEWARD 98G ET on 4/20 and pasture exposed to NJW 202C 81E STEWARD 98G ET from 6/1 to 8/4. Ultrasound shows safe in calf to 98G.

## 20 E C009 *Paula* F115

POLLED | BD: 8/21/18 | AHA#: 43975021 | ACT. BW: 80 LBS.  
 E BRAXTON 719                      HARVIE AXA MILE MARKER ET 109Y  
**E T719 BRAXTON C009**            **E 109Y SHIRLEY A006**  
 E 337U DIVA A008                E 16R LADY RAFTSMAN W14

CE	BW	WW	YW	MM	M&G	MCE	SC	Fat	REA	Marb	BMI\$	BIIS	CHBS
-1.2	4.6	63	94	25	57	2.0	7.0	-0.027	0.46	-0.06	367	435	105

A soggy powerhouse female with quality and the right look to her, a standout in the group for sure. This heifer is very well balanced phenotypically and on a paper. Dam is a powerful female that's done a great job for us and has been consistent and reliable. Lots of potential here. Al'd to TH FRONTIER 174E on 4/20, pasture exposed to NJW 202C 81E STEWARD 98G ET from 6/1 to 8/4. Ultrasound shows safe in calf.



# FALL BRED HEIFERS



Sire of Lots 21 & 22

*Lot 22*



*Lot 21*

**21**

E D31 *Jan* F119

POLLED | BD: 8/22/18 | AHA#: 43975015 | ACT. BW: 72 LBS.

E 4L SCHATZEE ET Z712 HARVIE SAFNBFI COLATERAL 337U  
**E Z712 SCHATZEE D31** E 377U DIVA A040  
 E T719 LADT BRAXTON Z855 E S638 ANCHOR LADY U803

CE	BW	WW	YW	MM	M&G	MCE	SC	Fat	REA	Marb	BMI\$	BIIS	CHBS
8.9	0.5	33	53	15	31	6.2	0.2	0.033	0.37	-0.04	389	432	78

Sure fire calving ease bred in here. Out of a Colateral 337U daughter. Colateral is ranked in the top 5% for 6 traits and remains in the top 1% for udder quality. We can't say enough good things about his females, they're some of our best cows. . AI'd to NJW 202C 81E STEWARD 98G ET on 4/20 and pasture exposed to NJW 202C 81E STEWARD 98G ET from 6/1 to 8/4. Ultrasound shows safe in calf to 98G.

**22**

E D31 *Jan* F136

POLLED | BD: 8/31/18 | AHA#: 43974991 | ACT. BW: 84 LBS.

E 4L SCHATZEE ET Z712 ANCHOR 61Z  
**E Z712 SCHATZEE D31** B LADY ANCHOR 435  
 E T719 LADT BRAXTON Z855 B LADY NORTHSTAR 230

CE	BW	WW	YW	MM	M&G	MCE	SC	Fat	REA	Marb	BMI\$	BIIS	CHBS
4.5	2.6	52	83	25	51	4.5	0.4	-0.007	0.38	0.23	362	438	98

A very well made Schatzee D31 daughter out of an Anchor bred cow. These two bloodlines have crossed really well for us. This short marked, pigmented heifer should prove to be a very useful individual. She's stout, made right and attractive. AI'd to NJW 202C 81E STEWARD 98G ET on 4/20 and pasture exposed to NJW 202C 81E STEWARD 98G ET from 6/1 to 8/4. Ultrasound shows safe in calf to 98G.

# SPRING BRED HEIFERS



*Lot 23*



*Lot 24*

**23**

E C009 *Paula* F114

POLLED | BD: 8/16/18 | AHA#: 43975029 | ACT. BW: 91 LBS.

E BRAXTON 719                      E 4L SCHATZEE ET Z712  
**E T719 BRAXTON C009**            **E Z712 STAR B016**  
 E 337U DIVA A008                E 19D WRANGLER STAR P433

CE	BW	WW	YW	MM	M&G	MCE	SC	Fat	REA	Marb	BMI\$	BII\$	CHBS
-3.4	6.6	55	94	16	44	0.2	0.8	-0.037	0.36	-0.15	255	305	105

Very balanced heifer with plenty of rib and length to her. She goes back to Schatzee Z712 on the bottom side who packs in a lot of performance. Her dam has been consistent and reliable year after year making this heifer a great cow prospect. There's a little more frame here than F114's half sisters. Pasture exposed to NJW 202C 81E STEWARD 98G ET from 6/1 to 8/4. Ultrasound shows safe in calf to 98G

**24**

E 4140B *Ms Riley* G8

POLLED | BD: 2/13/19 | AHA#: 44041036 | ACT. BW: 85 LBS.

C MILES MCKEE 2103 ET                      NJW 78P TWENTYTWELVE 190Z  
**ILR H MILES 4140B ET**                      **E 190Z MISS BELL C072**  
 BOYD E70 QUEEN 0118                      E 196T GYPSY X25

CE	BW	WW	YW	MM	M&G	MCE	SC	Fat	REA	Marb	BMI\$	BII\$	CHBS
-2.1	4.3	56	87	37	65	2.5	0.5	0.003	0.47	-0.03	354	417	105

This heifer is a real eye catcher for sure. She's a powerfully designed female who's dark and thick with loads of pigment. One of the only Miles 4140 daughters to be offered in the sale. G8's dam is one of our most powerful, standout cows. This one is hard to let go. AI'd to TH FRONTIER 174E on 4/20, pasture exposed to NJW 202C 81E STEWARD 98G ET from 6/1 to 8/4. Ultrasound shows safe in calf.

# SPRING BRED HEIFERS



*Lot 25*

**25**

E 172E *Janice* 91

POLLED | BD: 2/18/19 | AHA#: 44041045 | ACT. BW: 75 LBS.

NJW 73S W18 HOMEGROWN 8Y ET E 719 BRAXTON A012

NJW 0118 8Y HOMEGROWN 172E ET LJE A012 LADY BRAXTON 68

BOYD E70 QUEEN 0118 LJE 337U DIVA Y908

CE	BW	WW	YW	MM	M&G	MCE	SC	Fat	REA	Marb	BMI\$	BII\$	CHBS
7.6	1.7	47	66	28	51	5.4	0.3	0.003	0.23	-0.02	345	402	77

A more moderate heifer here that goes back to Braxton T719 who has produced some of our very best females. Sure fire calving ease bred in here, she's a little lighter in her color but her dam is a nice young cow that's earning her keep here. AI'd to E ILR ATHENS D98 on 4/20 and pasture exposed to NJW 202C 81E STEWARD 98G ET from 6/1 to 8/4. Ultrasound shows safe in calf to 98G.



*The Ehlke Advantage*

## ACCURACY

We believe the only good kind of data is accurate data! When it comes to utilizing EPDs and performance data in our herd we recognize these resources as tools that work side by side with phenotype selection. We realize the importance of accurate records and how that information plays a role in building a successful, predictable cow herd.

## 1<sup>ST</sup> GENERATION

Our family is proud to be first generation ranchers and have enjoyed watching our kids grow up in the cattle business. We are excited to have the second generation involved on the ranch as we continue to grow. **Starting from humble beginnings has challenged us to work hard and expect more from our cow herd – every cow has to earn her keep!**

## OUTCROSS

When searching for new genetics to add to our herd we know the importance of powerful, outcross genetics that will perform with predictability. If you're looking for an outcross or something different to add to your herd, we look forward to the opportunity to get to know your operation and help create your success!



# *Reference Sires*



## **NJW 202C 81E STEWARD 98G ET**

{DLF,HYF,MSUDF,MDF} | POLLED | BD: 2/11/19 | AHA#: 44056521

We are thrilled to have been able to add 98G to our program. This guy brings an incredible maternal background into breeding decisions. 98G has developed very well over the course of this past summer all while being out with a group of cows. He is homozygous polled and the number profile backing this guy up is also exceptional.



## **E Z712 SCHATZEE D31**

{DLF,HYF,IEF} | POLLED | BD: 2/11/16 | AHA#: 43693292

D31 is a great example of a genetic blend we really like; blending the power, performance and growth of Schatzee Z712 with the maternal aspect of the Braxton line covers all the bases. It would be hard to put more muscle, depth and dimension into an individual as this bull possesses. This bull is homozygous polled.



## **E Z712 SCHATZEE D83**

{DLF,HYF,IEF} | POLLED | BD: 3/14/16 | AHA#: 43693243

D83 is a goggle eyed, dark red, high performance Schatzee Z712 who certainly catches the eye of every ranch visitor. D83's dam was a highly predictable producer for us. This free moving guy will continue to see use here. This bull is homozygous polled.





**ILR HOMETOWN 332A ET**

## **ILR HOMETOWN 332A ET**

{CHB,DLF,HYF,IEF,MSUDF,MDF} | POLLED | BD: 3/17/13 | AHA#: 43385499

Powerfully constructed 10Y son with depth, muscle definition and length of spine. 332A is well pigmented, structurally sound and posts an outstanding EPD profile. The 332A daughters in production here are outstanding young cows; tidy udders and good milk flow are the norm. 332A is one of the best 10Y sons working today. Owned with Iron Lake Ranch, Langley Farms, LLC and Woolfolk Farms.



**E T719 BRAXTON C009**

## **E T719 BRAXTON C009**

{DLF,HYF,IEF,MSUDF} | POLLED | BD: 1/22/15 | AHA#: 43587975

Smooth made, homozygous polled, Braxton 719 son that is backed by a very productive cow family. The maternal is bred into C009. We are very much looking forward to having his daughters in production. C09 is nicely pigmented and short marked; he will see continued use here. Structural soundness and calving ease are hallmarks of the Braxton line of cattle. Owned with Anchor Polled Herefords.



**RSK E 2046 DIGBY 20C**

## **RSK E 2046 DIGBY 20C**

{DLF,HYF,IEF,MSUDF,MDF} | POLLED | BD: 1/26/15 | AHA#: 43864448

Very correct in his structure, with a big solid foot. He has a presence and stature that can't be copied. Long necked and long spined, he will add pounds and performance to progeny all while maintaining appeal. Digby was the 2017 CWA Canadian National Champion Bull and the 2017 Canadian Agribition champion polled bull.



**BAR STAR MAGNITUDE**

## **BAR STAR MAGNITUDE**

{DLF,HYF,IEF,MSUDF,MDF} | POLLED | BD: 2/15/17 | AHA#: 43826937

737 was widely admired at the 2018 NWSS down in the yards. 737 is incredibly long spined with a huge hip and is very free moving. He is also dark cherry red with great pigment. Progeny to date are loaded with performance and eye appeal. Owned with Bar Star Cattle.

***Bulls for Sale Private Treaty  
Spring and Fall, 18 month old  
and yearlings.***



*Thank You!*

***for checking out our sale offering. We hope to see you at the ranch on Saturday, September 19<sup>th</sup> or online at [Smartauctions.co](http://Smartauctions.co)!***

## *Terms & Conditions*

**Bidder/User Registration and Responsibility:** Buyers (a.k.a. users) must register to participate. Establishing a user account or bidding or buying at this auction/sale acknowledges bidders consent to the terms and conditions as outlined below. Bidders will be solely responsible for any and all actions taken with their bidding account including all purchase amounts, freight, and any costs associated with collecting same

Cattle will sell under the standard terms and conditions recommended by the American Hereford Association. Invoices will be sent via Smart Auctions immediately following the close of the sale, payment is due per their terms, or can be made at the ranch for those in attendance.

Terms of all sales will be cash unless arrangements are made between purchaser and seller prior to sale. Individual health papers will be furnished with each animal permitting shipment to any state.

Certificates of registration are all in order and will be transferred to the new owner when payment is made.

All sale cattle have DNA tested to be free of any known genetic diseases or defects recognized, parentage has been verified and EPDs genomically enhanced. EPDs are current as of catalog print date.

The animal becomes the property of the purchaser as soon as sold but it shall be the responsibility of the seller to see that animals are properly cared for until delivered to the purchaser.

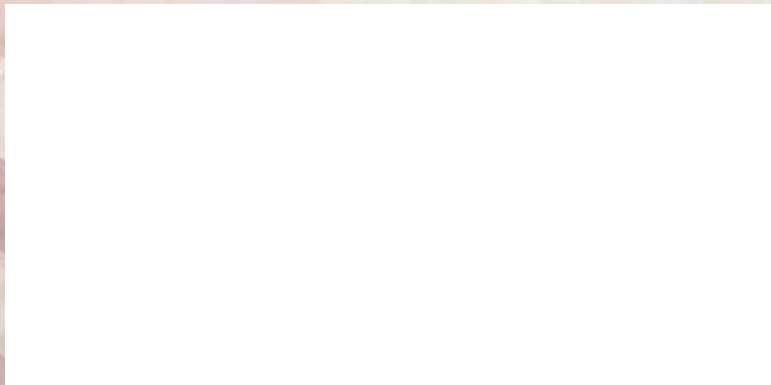
Any death or injury after the animal is sold is at the buyer's risk. Buyers are encouraged to insure their purchases. Livestock mortality insurance contacts will be available.

Anyone attending the Open House/Sale Close out does so at their own risk and without liability on the part of the owners or their employees.

Corrections or additions of any information contained in the sale catalog will be provided via supplemental information and will take precedence over any printed material.



P.O. Box 178  
Townsend, MT 59644



Catalog designed by



[www.generation6.co](http://www.generation6.co)