

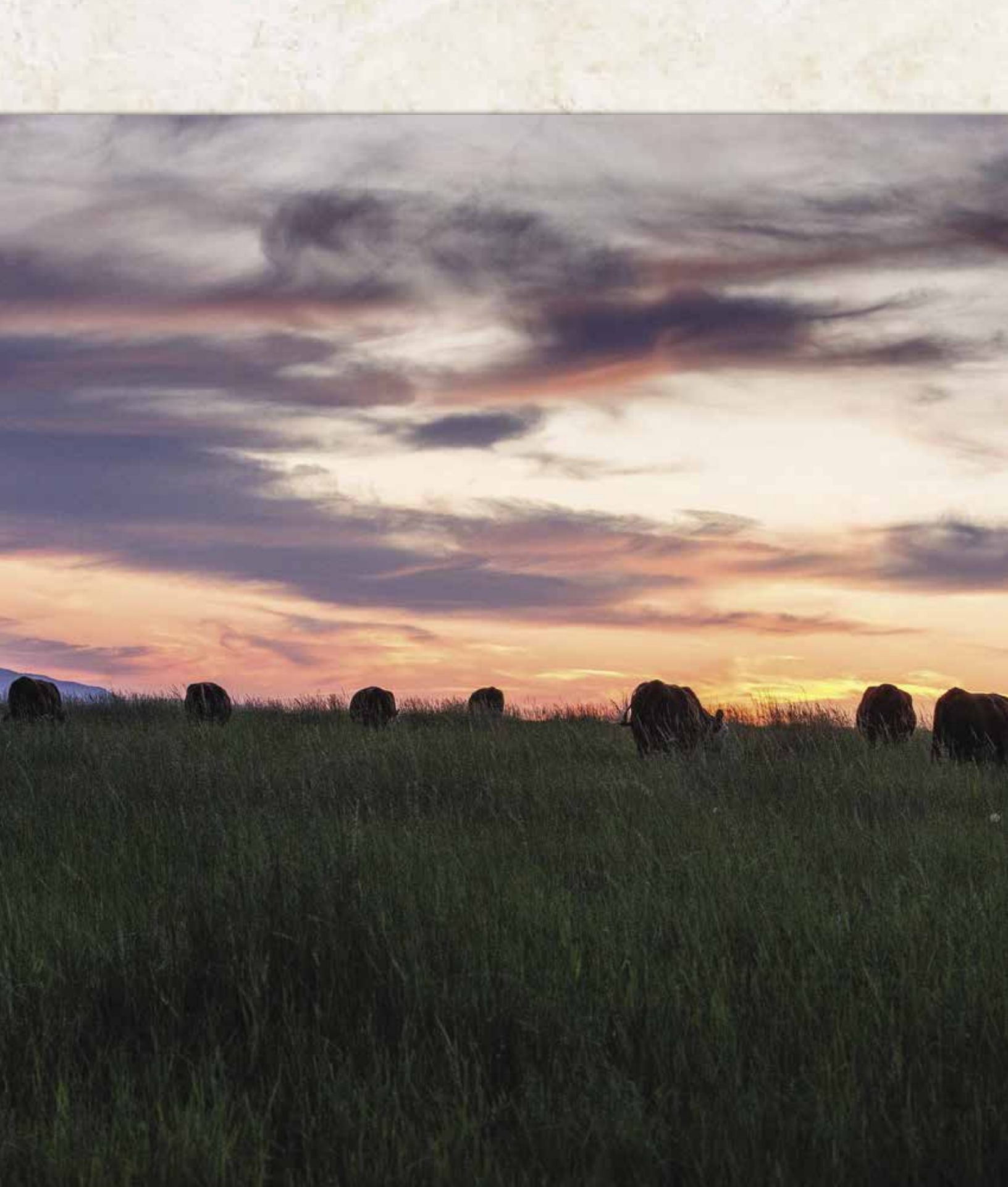


TOWNSEND • MONTANA



MONTANA MADE
PRODUCTION SALE

SATURDAY, SEPTEMBER 16, 2023
SMART AUCTIONS ONLINE SALE & RANCH OPEN HOUSE



Sale cattle will be on display September 12th as part of the Montana Hereford Association Tour, Friday afternoon, September 15, and all-day Saturday, September 16

Please join us for supper and to watch the online sale closeout at 5 pm MST on Saturday



MONTANA MADE PRODUCTION SALE

SATURDAY, SEPTEMBER 16, 2023
SMART AUCTIONS ONLINE SALE
& RANCH OPEN HOUSE

THE EHLKE ADVANTAGE

ACCURACY

We believe the only good kind of data is accurate data! When it comes to utilizing EPDs and performance data in our herd we recognize these resources as tools that work side by side with phenotype selection. We realize the importance of accurate records and how that information plays a role in building a successful, predictable cow herd.

1ST GENERATION

Our family is proud to be first generation ranchers and have enjoyed watching our kids grow up in the cattle business. We are excited to have the second generation involved on the ranch as we continue to grow. **Starting from humble beginnings has challenged us to work hard and expect more from our cow herd – every cow has to earn her keep!**

OUTCROSS

When searching for new genetics to add to our herd **we know the importance of powerful, outcross genetics that will perform with predictability.** If you're looking for an outcross or something different to add to your herd, we look forward to the opportunity to get to know your operation and help create your success!

Thank you to our current/past customers for purchasing cattle from our program to make a difference in yours. We appreciate your confidence and support. Be sure to reach out with any questions you may have. Our family is truly blessed to be involved in agriculture and with this great breed of cattle.

Warmest Regards, *the Ehlke Family*



3925 MT Highway 284 / P.O. Box 1487 / Townsend, MT 59644
info@ehlkeherefords.com / www.ehlkeherefords.com

Connect with us online!   



RANCH OPEN HOUSE SCHEDULE

Sale Closeout starts at 5pm on Saturday, September 16th

Sale Animals will be on display the afternoon of Friday, September 15th and all-day Saturday, September 16th

Supper and Social at 5pm

Watch Online Sale Closeout

SALE INFORMATION & FORMAT smartauctions

Visit smartactions.co to sign up as a bidder. Ehlke Montana Made Sale will be live on Tuesday, September 12th, with closeout on Saturday September 16th at 5pm MST.

Text EHLKE to 76278 to receive mobile alerts.

Sale closes Horse Race Style at 5:00 PM MST on Saturday, September, 16, 2023.

Dustin Layton, Layton Auction Services/SmartAuctions .405-464-2455
Smart Auctions Customer Service937-733-6000

SALE DAY PHONES & INFORMATION

Mark Ehlke406-439-4311
Lacey Ehlke Jepson406-439-1544
Jane'a Ehlke Merkel406-202-2766
Della Ehlke406-439-4300
info@ehlkeherefords.com

SALE REPRESENTATIVES

Dustin Layton, Smart Auctions405-464-2455
Kevin Murnin, AHA406-853-4638
John Goggins, Western Livestock Reporter406-698-4159
Marc & Jill Hotchkiss, Hereford America605-490-1513
Devin Murnin, Western Livestock Journal406-696-1502

ANIMALS ON DISPLAY

At the MHA Hereford Tour Stop on Tuesday, September 12th
Pre-Sale the afternoon of Friday, September 15 and all day Saturday, September 16

Sale will be live on Tuesday, September 12th, with closeout on Saturday September 16th at 5pm MST

DELIVERY

Bob Woolsey Trucking406-670-1877
We will work with you to provide the most cost-effective delivery possible. Usually, that will be to central points at a shared cost. For Canadian buyers, we will deliver up to the nearest point of entry.

LIVESTOCK INSURANCE

Devin Murnin406-696-1502

SALE UPDATES

Corrections or additions of any information contained in the sale catalog will be provided via supplemental information and will take precedence over any printed material.

DIRECTIONS

Ranch Location Address: 3925 Highway 284, Townsend, MT
Entering Townsend from either direction you will be on Front St (Highway 287), turn East at the flashing light onto Broadway St (Highway 12) for 2 miles and turn left at the next flashing light, head North on Highway 284 for another 2.5 miles, Ranch turnoff is on your RIGHT with a white archway with two grain silos. Signs will be up.

AIR TRAVEL

Helena Regional Airport is approx. 40 miles from the ranch, and Bozeman Yellowstone International Airport in Belgrade is approx. 60 miles from the ranch.

MONTANA MADE PRODUCTION SALE

SALE INFORMATION



LODGING

Mustang Motel (cabins are bigger than regular rooms) 406-266-3491
412 N Front Street Townsend, MT (4 miles from ranch)
Sacajawea Hotel406-285-6515
5 N Main Street Three Forks, MT (appx. 35 miles from ranch)
*Most hotel chains are available in both Helena (40 miles) and
Belgrade/Bozeman (60 miles).*

LIABILITY

Anyone attending the Open House/Sale Close out does so at their own risk and without liability on the part of the owners or their employees.

ACKNOWLEDGMENTS

Chuteside Vet, Three Forks, MT / Herd Vet
Big Sky Large Animal Clinic, Willow Creek, MT/ Herd Vet
Jane'a Merkel/Sale Cattle Photos and Videos and Ranch Photos
Livestock Link/ Video Catalog EPDs
Will Malcolm, Sleeping Giant Genetics / Embryologist
Generation 6 Marketing / Sale Catalog
LivestockDirect / Sale Catalog Printing

GENOMIC EPDS

All sale cattle were genetically tested to provide genomic enhanced EPDs. EPDs are current as of catalog printing but do change slightly periodically. You are able to view an animal's most current EPDS on the AHA website.



TERMS AND CONDITIONS

Bidder/User Registration and Responsibility: Buyers (a.k.a. users) must register to participate. Establishing a user account or bidding or buying at this auction/sale acknowledges bidders consent

to the terms and conditions as outlined below. Bidders will be solely responsible for any and all actions taken with their bidding account including all purchase amounts, freight, and any costs associated with collecting same

Cattle will sell under the standard terms and conditions recommended by the American Hereford Association. Invoices will be sent via Smart Auctions immediately following the close of the sale, payment is due per their terms, or can be made at the ranch for those in attendance.

Terms of all sales will be cash unless arrangements are made between purchaser and seller prior to sale. Individual health papers will be furnished with each animal permitting shipment to any state.

Certificates of registration are all in order and will be transferred to the new owner when payment is made.

All sale cattle have DNA tested to be free of any known genetic diseases or defects recognized, parentage has been verified and EPDs genomically enhanced. EPDs are current as of catalog print date.

The animal becomes the property of the purchaser as soon as sold but it shall be the responsibility of the seller to see that animals are properly cared for until delivered to the purchaser.

Any death or injury after the animal is sold is at the buyer's risk. Buyers are encouraged to insure their purchases. Livestock mortality insurance contacts will be available.

Anyone attending the Open House/Sale Close out does so at their own risk and without liability on the part of the owners or their employees.



Mark and Della Ehlke



Jake, Jane'a, McCoy and Maverick Merkel



Lacey and Zach Jepson



Pat Reiser, Erin Payne, Andrew Arnold

Thank You

**TO OUR RANCH HELP.
WE COULDN'T DO IT WITHOUT YOU!**



BRED HEIFERS



1016



Dam of 1013



1013



Dam of 1016

1013

E 507C *Lady Dew* 1013 ET

{DLF,HYF,IEF,MSUDF} | POLLED | BD: 8/21/21 | AHA#: 44315492 | BW: 87 LBS.

NJW 98S R117 RIBEYE 88X ET
CHURCHILL TORO 507C
 SR CCC LADYSPORT 2205 Z ET

PW VICTOR BOOMER P606
HARVIE E MS FIREFLY ET 19Z
 HARVIE MISS FIREFLY 51F

CE	BW	WW	YW	SC	Milk	M&G	CEM	Fat	REA	Marb	BMI\$	BIIS	CHBS
0.0	2.9	61	97	0.9	37	67	4.5	-0.01	0.59	0.00	\$375	\$444	\$100

What a way to start off the bred heifer offering. Our Toro daughters out of a full sister in blood to 19Z are making excellent, productive, front pasture females. 1013 will be no different. This one is hard to let go of. *AI to GREEN JCS MAKERS MARK 229G ET on 4/20/23. Pasture exposure to JDH MRD 54E 8G BENTON 35K ET from 6/9/23 to 7/24/23. Ultrasound indicates safe in calf (bull) to AI exposure.*

1016

E T719 *Lady Braxton* 1016 ET

{DLF,HYF,IEF,MSUDF,MDF} | POLLED | BD: 8/24/21 | AHA#: 44310048 | BW: 89 LBS.

ANCHOR BRAXTON
E BRAXTON 719
 ANCHOR 17R

CMR GVP MR MATERNAL 156T
ILR 156T IRON LADY 486B ET
 DJB 16B BETH 1L

CE	BW	WW	YW	SC	Milk	M&G	CEM	Fat	REA	Marb	BMI\$	BIIS	CHBS
-3.8	2.6	46	67	1.0	29	52	1.3	0.02	0.45	0.34	\$377	\$455	\$134

A rare opportunity to buy a Braxton 719 daughter. 1016's dam goes back to the dam of Beth 1L twice. The maternal aspect behind 1016 is extremely solid. The Braxton 719 females are known for out producing themselves everywhere they have gone and with the Beth 1L influence, 1016 very well could be a "program" type cow. *AI to JDH MRD 54E 8G BENTON 35K ET on 4/20/23. Pasture exposure to JDH MRD 54E 8G BENTON 35K ET from 6/9/23 to 7/24/23. Ultrasound indicates safe in calf (bull) to AI exposure.*

BRED HEIFERS



25



J52

25

LJE 98G *Clara* 25

J52

E 98G *Clara* J52

{DLF,HYF,IEF,MSUDF,MDF} | HOMO POLLED | BD:8/4/21 | AHA#:44310013 | BW:83LBS.

{DLF,HYF,IEF,MSUDF,MDF} | HOMO POLLED | BD:8/11/21 | AHA#:44310098 | BW:72LBS.

NJW 160B 028 HISTORIC 81E ET E 4L SCHATZEE ET Z712
 NJW 202C 81E STEWARD 98G ET LJE Z712 GRACE 713
 NJW 160Z 8Y HOME MAKER 202C LJE X84 VICTORIA 029B

NJW 160B 028 HISTORIC 81E ET E 4L SCHATZEE ET Z712
 NJW 202C 81E STEWARD 98G ET E Z712 GRACE E23
 NJW 160Z 8Y HOME MAKER 202C E S638 ANCHOR LADY U803

CE	BW	WW	YW	SC	Milk	M&G	CEM	Fat	REA	Marb	BMI\$	BII\$	CHB\$
-5.1	5.3	69	106	1.3	36	70	-2.5	-0.40	0.82	0.00	\$390	\$465	\$124

This heifer is the perfect example of why we invested in the 98G bull, and is more than likely the finest that is being offered here out of him. This heifer is very complete in her makeup, is well marked and has pigment. 25 is just an exceptional individual. *AI to GREEN JCS MAKERS MARK 229G ET on 4/20/23. Pasture exposure to JDH MRD 54E 8G BENTON 35K ET from 6/9/23 to 7/24/23. Ultrasound indicates safe in calf (heifer) to AI exposure.*

CE	BW	WW	YW	SC	Milk	M&G	CEM	Fat	REA	Marb	BMI\$	BII\$	CHB\$
0.8	4.3	65	105	1.2	32	64	1.3	0.02	0.73	0.20	\$429	\$517	\$134

A high performing 98G daughter here that shows real promise. 98G ET progeny have been popular here. *AI to GREEN JCS MAKERS MARK 229G ET on 4/20/23. Pasture exposure to JDH MRD 54E 8G BENTON 35K ET from 6/9/23 to 7/24/23. Ultrasound indicates safe in calf (bull) to AI exposure.*



BRED HEIFERS



J125



J67

J67 E 98G *Clara* J67

{DLF,HYF,IEF,MSUDF,MDF} | HOMOPOLLED | BD: 8/18/21 | AHA#: 44309987 | BW: 72LBS.

NJW 160B 028 HISTORIC 81E ET HARVIE DAN SNIPER 203Z
 NJW 202C 81E STEWARD 98G ET E 203Z DANELLE E106 {DOD}
 NJW 160Z 8Y HOME MAKER 202C E 100W MS NORTHSTAR C027

CE	BW	WW	YW	SC	Milk	M&G	CEM	Fat	REA	Marb	BMI\$	BII\$	CHBS
6.7	1.2	60	92	1.1	43	73	3.8	-0.01	0.69	0.12	\$469	\$549	\$136

Moderate framed 98G daughter that combines low birth weight with performance. J67 is balanced in the flesh and posts a nice EPD profile. A brood cow in the making here. AI to JDH MRD 54E 8G BENTON 35K ET on 4/20/23. Pasture exposure to JDH MRD 54E 8G BENTON 35K ET from 6/9/23 to 7/24/23. Ultrasound indicates safe in calf to pasture exposure.

J125 E 98G *Clara* J125

{DLF,HYF,IEF,MSUDF} | POLLED | BD: 9/24/21 | AHA#: 44310029 | BW: 79 LBS.

NJW 160B 028 HISTORIC 81E ET E U806 VICTOR X84
 NJW 202C 81E STEWARD 98G ET E X84 VICTORIA C131
 NJW 160Z 8Y HOME MAKER 202C E P606 BOOMER GAL S605

CE	BW	WW	YW	SC	Milk	M&G	CEM	Fat	REA	Marb	BMI\$	BII\$	CHBS
-3.9	2.9	59	93	0.4	38	67	1.4	0.02	0.67	0.23	\$425	\$509	\$135

Nicely balanced Steward 98G daughter, both on paper and in the flesh. J125 posts respectable carcass numbers as well. AI to JDH MRD 54E 8G BENTON 35K ET on 4/21/23. Pasture exposure to JDH MRD 54E 8G BENTON 35K ET from 6/9/23 to 7/24/23. Ultrasound indicates safe in calf to pasture exposure.

BRED HEIFERS



J132



J71

J132

E 98G *Clara* J132

{DLF,HYF,IEF,MSUDF} | POLLED | BD: 10/10/21 | AHA#: 44310085 | BW: 93 LBS.

NJW 160B 028 HISTORIC 81E ET B NORTHSTAR 652
 NJW 202C 81E STEWARD 98G ET B LADY NORTHSTAR 223
 NJW 160Z 8Y HOME MAKER 202C B ROCKETTE 737

CE	BW	WW	YW	SC	Milk	M&G	CEM	Fat	REA	Marb	BMI\$	BII\$	CHB\$
-0.8	4.8	65	95	1.1	30	63	-1.1	-0.01	0.36	-0.02	\$353	\$426	\$102

Moderate framed, nicely made Steward 98G daughter. 98G progeny have been well received wherever he has been used. AI to JDH MRD 54E 8G BENTON 35K ET on 4/19/23. Pasture exposure to JDH MRD 54E 8G BENTON 35K ET from 6/9/23 to 7/24/23. Ultrasound indicates safe in calf (bull) to AI exposure.

J71

E 6153 *Rita* J71

{DLF,HYF,IEF,MSUDF,MDF} | HOMO POLLED | BD: 8/20/21 | AHA#: 44315487 | BW: 86 LBS.

R LEADER 6964 E 337U COLLATERAL Y80
 BOYD 31Z BLUEPRINT 6153 E Y80 ROXIE B080
 NJW 91H 100W RITA 31Z ET BE LADY BRAXTON 308

CE	BW	WW	YW	SC	Milk	M&G	CEM	Fat	REA	Marb	BMI\$	BII\$	CHB\$
2.7	3.9	58	90	0.8	36	66	-0.8	0.03	0.33	-0.04	\$433	\$503	\$95

Real nicely made, high performing Blueprint daughter here. J71 is nicely marked and clean through her front end. Nice heifer. AI to JDH MRD 54E 8G BENTON 35K ET on 4/20/23. Pasture exposure to JDH MRD 54E 8G BENTON 35K ET from 6/9/23 to 7/24/23. Ultrasound indicates safe in calf (heifer) to AI exposure.

BRED HEIFERS



J124



Dam of 211



211

211

LJE D83 *Shiney* 211

{DLF,HYF,IEF,MSUDF,MDF} | HOMO POLLED | BD:8/26/21 | AHA#:44310096 | BW:79LBS.

E 4L SCHATZEE ET Z712
E Z712 SCHATZEE D83
EPHR LINNETTE 530T

E 719 BRAXTON A012
LJE A012 LADY BRAXTON 68
LJE 337U DIVA Y908

CE	BW	WW	YW	SC	Milk	M&G	CEM	Fat	REA	Marb	BMI\$	BII\$	CHBS
-2.5	4.2	62	95	0.1	26	57	1.0	0.04	0.79	-0.05	\$367	\$434	\$101

A nice example here of the D83 bull mated to a Braxton line female, a solid phenotypic individual here. A 1/2 sib was quite popular in last year's sale. AI to JDH MRD 54E 8G BENTON 35K ET on 4/20/23. Pasture exposure to JDH MRD 54E 8G BENTON 35K ET from 6/9/23 to 7/24/23. Ultrasound indicates safe in calf (bull) to AI exposure.

J124

E D83 *Shiney* J124

{DLF,HYF,IEF,MSUDF,MDF} | HOMO POLLED | BD:9/22/21 | AHA#:44310010 | BW:81LBS.

E 4L SCHATZEE ET Z712
E Z712 SCHATZEE D83
EPHR LINNETTE 530T

HARVIE SAFNBFI COLATERAL 337U
E 337U DIVA 268B ET
MC GEN QUEEN 9904

CE	BW	WW	YW	SC	Milk	M&G	CEM	Fat	REA	Marb	BMI\$	BII\$	CHBS
0.5	4.3	62	95	0.4	16	47	3.1	-0.01	0.51	-0.01	\$439	\$515	\$90

Dark red pigmented daughter of the D83 bull, a high performance sire who adds REA as well. We really like this heifer, she deserves full appraisal. AI to GREEN JCS MAKERS MARK 229G ET on 4/19/23. Pasture exposure to JDH MRD 54E 8G BENTON 35K ET from 6/9/23 to 7/24/23. Ultrasound indicates safe in calf to pasture exposure.

BRED HEIFERS



Dam of J108



14J

LJE C009 *Paula* 14J

{DLF,HYF,IEF,MSUDF} | POLLED | BD: 9/1/21 | AHA#: 44310002 | BW: 84 LBS.

E BRAXTON 719
E T719 BRAXTON C009
E 337U DIVA A008

ILR H MILES 4140B ET
LJE 4140B MS RILEY 11F
LJE 1414 DEBUTANTE 10D

CE	BW	WW	YW	SC	Milk	M&G	CEM	Fat	REA	Marb	BMI\$	BIIS	CHBS
0.2	3.7	56	86	0.6	33	61	2.0	0.03	0.64	0.18	\$294	\$367	\$124

Another C009 daughter who is very similar in type to her 1/2 sibs. C009's dam is one of the best uddered cows to grace our pastures. AI to JDH MRD 54E 8G BENTON 35K ET on 4/19/23. Pasture exposure to JDH MRD 54E 8G BENTON 35K ET from 6/9/23 to 7/24/23. Ultrasound indicates safe in calf to pasture exposure.

J108

E C009 *Paula* J108

{DLF,HYF,IEF,MSUDF} | POLLED | BD: 9/10/21 | AHA#: 44310019 | BW: 78 LBS.

E BRAXTON 719
E T719 BRAXTON C009
E 337U DIVA A008

E ILR ATHENS D98
E D98 BIG SKY MISS F69
E T719 LADY BRAXTON Z855

CE	BW	WW	YW	SC	Milk	M&G	CEM	Fat	REA	Marb	BMI\$	BIIS	CHBS
8.3	2.4	49	78	0.8	26	51	5.0	0.06	0.31	0.24	\$265	\$337	\$127

J108 is very clean lined and smooth made. The maternal and udder quality are certainly bred in here. Sire C009's progeny have been very well received by all who have seen them. Good heifer here. AI to JDH MRD 54E 8G BENTON 35K ET on 4/19/23. Pasture exposure to JDH MRD 54E 8G BENTON 35K ET from 6/9/23 to 7/24/23. Ultrasound indicates safe in calf (bull) to AI exposure.

BRED HEIFERS



Maternal Granddam of 14J, J108, J114, J131

J131



J114

J114

E C009 *Paula* J114

{DLF,HYF,IEF,MSUDF} | POLLED | BD: 9/13/21 | AHA#: 44310026 | BW: 72 LBS.

E BRAXTON 719
E T719 BRAXTON C009
E 337U DIVA A008

ILR HOMETOWN 332A ET
E 332A EDNA F88
E 203Z FAITH C053

CE	BW	WW	YW	SC	Milk	M&G	CEM	Fat	REA	Marb	BMI\$	BII\$	CHB\$
5.6	1.4	43	68	0.8	21	43	5.0	0.02	0.19	0.10	\$269	\$327	\$96

Smooth made, well marked C009 daughter that also posts calving ease numbers. Just a real nice heifer here. AI to NJW 202C 81E STEWARD 98G ET on 4/20/23. Pasture exposure to JDH MRD 54E 8G BENTON 35K ET from 6/9/23 to 7/24/23. Ultrasound indicates safe in calf (heifer) to AI exposure.

J131

E C009 *Paula* J131

{DLF,HYF,IEF,MSUDF} | POLLED | BD: 10/7/21 | AHA#: 44310005 | BW: 81 LBS.

E BRAXTON 719
E T719 BRAXTON C009
E 337U DIVA A008

E U806 VICTOR X84
E X84 VICTORIA E36
E P606 BECCA B045

CE	BW	WW	YW	SC	Milk	M&G	CEM	Fat	REA	Marb	BMI\$	BII\$	CHB\$
4.8	1.6	43	63	0.7	21	43	4.4	0.06	0.22	0.28	\$284	\$355	\$97

Another low BW C009 daughter. The C009 daughters are sound, productive and really out produce themselves. AI to NJW 202C 81E STEWARD 98G ET on 5/10/23. Pasture exposure to JDH MRD 54E 8G BENTON 35K ET from 6/9/23 to 7/24/23. Ultrasound indicates safe in calf to AI exposure.

BRED HEIFERS



214



J83

214

LJE C009 *Paula* 214

{DLF,HYF,IEF,MSUDF} | POLLED | BD: 9/3/21 | AHA#: 44310091 | BW: 80 LBS.

E BRAXTON 719
E T719 BRAXTON C009
E 337U DIVA A008

ILR H MILES 4140B ET
LJE 4140B MS RILEY 88
LJE S638 CALL GIRL 0805

CE	BW	WW	YW	SC	Milk	M&G	CEM	Fat	REA	Marb	BMI\$	BII\$	CHB\$
0.7	4.4	48	71	0.7	23	47	2.7	0.10	0.24	0.17	\$216	\$280	\$108

Just another example of a nicely made C009 daughter here. 214 Ratioed well among her contemporaries for IMF. 214 is moderate framed. AI to JDH MRD 54E 8G BENTON 35K ET on 4/19/23. Pasture exposure to JDH MRD 54E 8G BENTON 35K ET from 6/9/23 to 7/24/23. Ultrasound indicates safe in calf (heifer) to AI exposure.

J83

E C009 *Paula* J83

{DLF,HYF,IEF,MSUDF} | POLLED | BD: 8/27/21 | AHA#: 44310038 | BW: 75 LBS.

E BRAXTON 719
E T719 BRAXTON C009
E 337U DIVA A008

HARVIE GUNNER 54Z
HARVIE MS LADY 75B
E 16R LADY RAFTSMAN U809

CE	BW	WW	YW	SC	Milk	M&G	CEM	Fat	REA	Marb	BMI\$	BII\$	CHB\$
4.7	2.2	49	75	0.5	26	50	4.2	0.20	0.37	0.16	\$318	\$386	\$119

A feminine, nicely made C009 daughter here, that is stylish but still has adequate performance. The Braxton line is very maternal and C009's dam is one of the finest uddered cows to ever grace our pastures. AI to JDH MRD 54E 8G BENTON 35K ET on 4/19/23. Pasture exposure to JDH MRD 54E 8G BENTON 35K ET from 6/9/23 to 7/24/23. Ultrasound indicates safe in calf (heifer) to AI exposure.

BRED HEIFERS



J97



J90

J90 E F78 *Msc Braxton* J90

{DLF,HYF,IEF,MSUDF,MDF} | POLLED | BD: 9/2/21 | AHA#: 44310088 | BW: 70 LBS.

E 719 BRAXTON A012
E A012 BRAXTON F78
 E 337U DIVA B061

E 4L SCHATZEE ET Z712
E Z712 GRACE E148
 E T719 LADY BRAXTON A035

CE	BW	WW	YW	SC	Milk	M&G	CEM	Fat	REA	Marb	BMI\$	BII\$	CHBS
-1.4	3.4	47	74	0.3	19	43	1.0	0.01	0.30	0.22	\$319	\$390	\$96

J90 has a double shot of Braxton 719 in her makeup. J90 sure should be a sound, predictable producer. *AI to JDH MRD 54E 8G BENTON 35K ET on 4/19/23. Pasture exposure to JDH MRD 54E 8G BENTON 35K ET from 6/9/23 to 7/24/23. Ultrasound indicates safe in calf (heifer) to AI exposure.*

J97 E F78 *Msc Braxton* J97

{DLF, HYF, IEF, MSUDF} | POLLED | BD: 9/6/21 | AHA#: 44310000 | BW: 80 LBS.

E 719 BRAXTON A012
E A012 BRAXTON F78
 E 337U DIVA B061

ANCHOR 11X
E 11X MS ANCHOR C026
 EPHR LINNETTE 530T

CE	BW	WW	YW	SC	Milk	M&G	CEM	Fat	REA	Marb	BMI\$	BII\$	CHBS
3.0	2.3	53	78	0.6	26	53	0.4	0.01	0.10	0.15	\$271	\$342	\$90

Pretty much a total outcross pedigree here. Maternal coming in here from both sides of the pedigree. J97 ratioed well for IMF. *AI to GREEN JCS MAKERS MARK 229G ET on 4/20/23. Pasture exposure to JDH MRD 54E 8G BENTON 35K ET from 6/9/23 to 7/24/23. Ultrasound indicates safe in calf (heifer) to AI exposure.*

BRED HEIFERS



15J



J95

15J LJE F78 *Msc Braxton* 15J

{DLF,HYF,IEF,MSUDF,MDF} | POLLED | BD: 9/6/21 | AHA#: 44310094 | BW: 73 LBS.

E 719 BRAXTON A012
E A012 BRAXTON F78
 E 337U DIVA B061

E S604 BOOMER Z545
E Z545 DIVA MISCHIEF 032B
 LJE 337U DIVA Y901

CE	BW	WW	YW	SC	Milk	M&G	CEM	Fat	REA	Marb	BMI\$	BIIS	CHBS
5.9	2.0	47	69	0.7	27	50	2.1	-0.02	0.56	0.02	\$394	\$452	\$121

Another heifer that doubles up on the 337U and Braxton 719 lines. This mating has really worked well here. 15J is dark red, short marked with good pigment. Nice heifer here. *AI to NJW 202C 81E STEWARD 98G ET on 4/19/23. Pasture exposure to JDH MRD 54E 8G BENTON 35K ET from 6/9/23 to 7/24/23. Ultrasound indicates safe in calf to pasture exposure.*

J95 E F78 *Msc Braxton* J95

{DLF, HYF, IEF, MSUDF} | POLLED | BD: 9/4/21 | AHA#: 44310058 | BW: 84 LBS.

E 719 BRAXTON A012
E A012 BRAXTON F78
 E 337U DIVA B061

TH 512X 719T PLAYMAKER 14Z
E 14Z PLAYGIRL C023
 E 337U DIVA Y840

CE	BW	WW	YW	SC	Milk	M&G	CEM	Fat	REA	Marb	BMI\$	BIIS	CHBS
-2.3	4.0	52	86	0.9	23	49	-1.2	-0.02	0.13	0.04	\$310	\$374	\$83

A clean and refined F78 daughter that goes back to Colaeral 337U, a trait leader for udder quality; he really worked well for us. *AI to JDH MRD 54E 8G BENTON 35K ET on 4/19/23. Pasture exposure to JDH MRD 54E 8G BENTON 35K ET from 6/9/23 to 7/24/23. Ultrasound indicates safe in calf to pasture exposure.*

BRED HEIFERS



Maternal Granddam of J113

J113



J107



J107 LJE F78 *Msc Braxton* J107

{DLF,HYF,IEF,MSUDF} | POLLED | BD: 9/9/21 | AHA#: 44310031 | BW: 81 LBS.

E 719 BRAXTON A012
E A012 BRAXTON F78
 E 337U DIVA B061

E ILR 14Z HOLLOWAY C039
LJE C039 FIREPLAY 726
 LJE X84 VICTORIA 031B

CE	BW	WW	YW	SC	Milk	M&G	CEM	Fat	REA	Marb	BMI\$	BII\$	CHBS
-4.9	2.9	55	82	0.6	28	56	-5.3	-0.02	0.33	0.09	\$298	\$365	\$96

F78 daughter here that goes back to the 19Z donor on the bottom side. J107 is well balanced in her makeup. AI to JDH MRD 54E 8G BENTON 35K ET on 4/20/23. Pasture exposure to JDH MRD 54E 8G BENTON 35K ET from 6/9/23 to 7/24/23. Ultrasound indicates safe in calf (bull) to AI exposure.

J113 E F78 *Msc Braxton* J113

{DLF,HYF,IEF,MSUDF,MDF} | POLLED | BD: 9/13/21 | AHA#: 44310095 | BW: 87 LBS.

E 719 BRAXTON A012
E A012 BRAXTON F78
 E 337U DIVA B061

ILR H MILES 4140B ET
E 4140B MS RILEY F57
 E 337U DIVA Y37

CE	BW	WW	YW	SC	Milk	M&G	CEM	Fat	REA	Marb	BMI\$	BII\$	CHBS
1.3	5.4	60	97	1.0	27	57	5.7	-0.20	0.67	0.14	\$316	\$389	\$122

The maternal aspect behind J113 is solid with 2 shots of both 337U and Braxton 719, along with a dose of Miles McKee. J113 ratioed well for IMF among her contemporaries. AI to JDH MRD 54E 8G BENTON 35K ET on 4/19/23. Pasture exposure to JDH MRD 54E 8G BENTON 35K ET from 6/9/23 to 7/24/23. Ultrasound indicates safe in calf (bull) to AI exposure.

BRED HEIFERS



J73



Dam of J118



J118

J73

E 20C *Ursula* J73

{DLF,HYF,IEF,MSUDF} | POLLED | BD: 8/20/21 | AHA#: 44310102 | BW: 79 LBS.

OTAPAWA SKYMATE 2046 (ET)
RSK E 2046 DIGBY ET 20C
HARVIE MISS FIREFLY 51F

HARVIE DAN SNIPER 203Z
E 203Z DANELLE E107
E 61Z BERVA C055

CE	BW	WW	YW	SC	Milk	M&G	CEM	Fat	REA	Marb	BMI\$	BIIS	CHBS
7.3	1.3	55	82	0.8	31	58	8.7	-0.02	0.30	0.03	\$289	\$353	\$104

A real feminine Digby 20C daughter with a lot of style. J73 also shows depth and a nicely muscled hip. We are very high on our Digby daughters in production. *AI to GREEN JCS MAKERS MARK 229G ET on 4/19/23. Pasture exposure to JDH MRD 54E 8G BENTON 35K ET from 6/9/23 to 7/24/23. Ultrasound indicates safe in calf (heifer) to AI exposure.*

J118

E 174E *Paradise* J118

{DLF,HYF,IEF,MSUDF} | POLLED | BD: 9/14/21 | AHA#: 44315490 | BW: 83 LBS.

TH 403A 475Z PIONEER 358C ET
TH FRONTIER 174E
FTF TRUSTING LADY 312A

PYRAMID 16W 110T 9116
ILR 16W LADY BETH 835 ET
DJB 46B BETH 1L

CE	BW	WW	YW	SC	Milk	M&G	CEM	Fat	REA	Marb	BMI\$	BIIS	CHBS
1.2	3.0	62	100	1.2	39	70	0.8	0.03	0.70	-0.15	\$442	\$506	\$112

A real opportunity here to grab onto a daughter of the 835 cow; a direct daughter of Beth 1L, sired by Pyramid 16W 110T 9116, which makes the 835 cow 1 of a kind. Frontier 174E will add growth and performance as well. J118 is as red as you can make one. J118 only sells to settle a partnership. Owned with Iron Lake Ranch. *AI to JDH MRD 54E 8G BENTON 35K ET on 4/20/23. Pasture exposure to JDH MRD 54E 8G BENTON 35K ET from 6/9/23 to 7/24/23. Ultrasound indicates safe in calf (heifer) to AI exposure.*

BRED HEIFERS



J100



Dam of 16J



Sire of 16J



16J

16J LJE G41 *Lady Cottonwood* 16J

{DLF,HYF,IEF,MSUDF,MDF} | HOMO POLLED | BD: 9/6/21 | AHA#: 44310078 | BW: 75 LBS.

NJW 0118 8Y HOMEGROWN 172E ET ILR HOMETOWN 332A ET
E CANTON G41 LJE 332A DIVA 4D
 E 337U DIVA Y37 LJE 337U DIVA X53

CE	BW	WW	YW	SC	Milk	M&G	CEM	Fat	REA	Marb	BMI\$	BII\$	CHBS
5.9	1.9	50	86	1.0	21	46	0.4	0.01	0.56	0.05	\$338	\$399	\$119

Short marked, dark red, highly pigmented, well made daughter of our G41 bull. It would take effort to put more maternal in a pedigree than 16J has. There is 337U twice, as well as ultimately going back to Ward's 73S cow twice, with a dose of Braxton 719. 16J is loaded up on calving ease as well. 16J is worth a second look. *AI to JDH MRD 54E 8G BENTON 35K ET on 4/19/23. Pasture exposure to JDH MRD 54E 8G BENTON 35K ET from 6/9/23 to 7/24/23. Ultrasound indicates safe in calf (heifer) to AI exposure.*

J100 E 1414 *Debutante* J100 ET

{DLF,HYF,IEF,MSUDF} | POLLED | BD: 9/8/21 | AHA#: 44310033 | BW: 108 LBS.

C STOCKMAN 2059 ET MC 243R BOULDER U832
SR CCC TOP TIER 1414B ET E 832 MISS BOULDER X9
 NJW BW LADYSPORT DEW 78P ET BE LADY BRAXTON 308

CE	BW	WW	YW	SC	Milk	M&G	CEM	Fat	REA	Marb	BMI\$	BII\$	CHBS
1.1	2.1	41	65	0.7	32	52	4.9	-0.01	0.46	0.05	\$349	\$401	\$107

Short marked, highly pigmented daughter of Top Tier, a bull who was lost way too young, and the X9 cow who just keeps on raising good ones. A real unique genetic tool here. *AI to GREEN JCS MAKERS MARK 229G ET on 4/19/23. Pasture exposure to JDH MRD 54E 8G BENTON 35K ET from 6/9/23 to 7/24/23. Ultrasound indicates safe in calf (heifer) to AI exposure.*

BRED HEIFERS



26



J54

26

LJE 332A *Edna* 26

{DLF,HYF,IEF,MSUDF,MDF} | POLLED | BD: 8/9/21 | AHA#: 44310007 | BW: 83 LBS.

NJW 73S W18 HOMETOWN 10Y ET HARVIE SAFNBFI COLATERAL 337U
ILR HOMETOWN 332A ET LJE 337U DIVA 008B
 NJW 43T 4037 FOREVER EDNA 28X ET ANCHOR 16Y

CE	BW	WW	YW	SC	Milk	M&G	CEM	Fat	REA	Marb	BMI\$	BIIS	CHBS
3.9	3.1	55	96	0.9	29	56	2.8	0.02	0.39	0.11	\$427	\$502	\$117

A real solid example of 332A's influence here. 26 exhibits length of spine, depth and muscle all while being feminine up front. Real nice heifer here. AI to JDH MRD 54E 8G BENTON 35K ET on 4/19/23. Pasture exposure to JDH MRD 54E 8G BENTON 35K ET from 6/9/23 to 7/24/23. Ultrasound indicates safe in calf to pasture exposure.

J54

E 332A *Edna* J54

{DLF,HYF,IEF,MSUDF,MDF} | HOMO POLLED | BD: 8/11/21 | AHA#: 44310066 | BW: 68 LBS.

NJW 73S W18 HOMETOWN 10Y ET E BRAXTON 719
ILR HOMETOWN 332A ET E T719 LADY BRAXTON F71
 NJW 43T 4037 FOREVER EDNA 28X ET E 337U DIVA 432B ET

CE	BW	WW	YW	SC	Milk	M&G	CEM	Fat	REA	Marb	BMI\$	BIIS	CHBS
4.7	2.7	45	79	0.8	29	51	3.2	0.02	0.45	0.03	\$406	\$465	\$116

Still another 332A daughter that goes back to Mc Gen Queen 9904, who was a tidy uddered daughter of Genetic Explosion; she was still productive and sound in her late teens. J54 could very well be the "sleeper" in this years' offering. AI to NJW 202C 81E STEWARD 98G ET on 4/20/23. Pasture exposure to JDH MRD 54E 8G BENTON 35K ET from 6/9/23 to 7/24/23. Ultrasound indicates safe in calf (bull) to AI exposure.

BRED HEIFERS



J51



J48

J48

E 332A *Edna* J48

{DLF,HYF,IEF,MSUDF,MDF} | POLLED | BD: 8/10/21 | AHA#: 44310061 | BW: 84 LBS.

NJW 73S W18 HOMETOWN 10Y ET C ETF WILDCAT 4248 ET
ILR HOMETOWN 332A ET **CHURCHILL LADY 6336D ET**
 NJW 43T 4037 FOREVER EDNA 28X ET LJE 337U DIVA X48

CE	BW	WW	YW	SC	Milk	M&G	CEM	Fat	REA	Marb	BMI\$	BII\$	CHB\$
0.7	4.3	58	105	0.6	31	60	-2.8	0.02	0.49	0.13	\$409	\$486	\$119

A moderate framed 332A daughter with a solid maternal aspect on the bottom side. J48 ratioed at the top of her contemporary group from IMF. AI to **GREEN JCS MAKERS MARK 229G ET** on 4/20/23. Pasture exposure to **JDH MRD 54E 8G BENTON 35K ET** from 6/9/23 to 7/24/23. Ultrasound indicates safe in calf (heifer) to AI exposure.

J51

E 332A *Edna* J51

{DLF,HYF,IEF,MSUDF,MDF} | HOMO POLLED | BD: 8/11/21 | AHA#: 44310087 | BW: 77 LBS.

NJW 73S W18 HOMETOWN 10Y ET E MC 7W SOLID ET Z833
ILR HOMETOWN 332A ET **E Z833 MARVEL D142**
 NJW 43T 4037 FOREVER EDNA 28X ET E 337U DIVA Y1

CE	BW	WW	YW	SC	Milk	M&G	CEM	Fat	REA	Marb	BMI\$	BII\$	CHB\$
2.8	1.6	49	87	0.7	28	53	-0.5	0.02	0.27	0.20	\$458	\$535	\$122

Another 332A daughter that posts a lower BW EPD. 332A has done a great job in our program. AI to **NJW 202C 81E STEWARD 98G ET** on 4/19/23. Pasture exposure to **JDH MRD 54E 8G BENTON 35K ET** from 6/9/23 to 7/24/23. Ultrasound indicates safe in calf (heifer) to AI exposure.

YEARLING HEIFERS



2007



Sire of 2009



2009

2007

E ILR 332A *Edna* 2007 ET

{DLF,HYF,IEF,MSUDF,MDF} | POLLED | BD: 8/19/22 | AHA#: 44423100 | BW: 81 LBS.

NJW 73S W18 HOMETOWN 10Y ET PYRAMID 16W 110T 9116
ILR HOMETOWN 332A ET **ILR 16W LADY MARIAH 873 ET**
 NJW 43T 4037 FOREVER EDNA 28X ET H W4 MARIAH 0103 ET

CE	BW	WW	YW	SC	Milk	M&G	CEM	Fat	REA	Marb	BMI\$	BII\$	CHB\$
2.6	4.0	56	98	0.8	31	59	1.9	0.01	0.76	-0.11	\$420	\$478	\$129

Nicely balanced heifer here. 2007's sire has certainly worked well here and dam 873 is really starting to shine. 2007 and her 1/2 sibs sell to settle partnerships. Udder quality stemming from 873 should be exceptional.

2009

E ILR 0001 *Ms McCabe* 2009 ET

{DLF,HYF,IEF,MSUDF,MDF} | POLLED | BD: 8/19/22 | AHA#: 44427584 | BW: 80 LBS.

TH FRONTIER 174E PYRAMID 16W 110T 9116
E 174E YELLOWSTONE 0001 ET **ILR 16W LADY MARIAH 873 ET**
 E 332A EDNA D160 H W4 MARIAH 0103 ET

CE	BW	WW	YW	SC	Milk	M&G	CEM	Fat	REA	Marb	BMI\$	BII\$	CHB\$
5.5	2.1	57	90	1.6	37	66	1.1	0.03	0.82	-0.08	\$390	\$461	\$117

Another daughter of the 873 cow here. 2009's sire is a home raised Frontier 174E son who goes back to Beth IL on his bottom side. There is a lot of maternal in 2009's pedigree and could really be a beneficial addition to a breeding program.

YEARLING HEIFERS

2010

E 9116 *Judi* 2010 ET

{DLF,HYF,IEF,MSUDF,MDF} | POLLED | BD: 8/20/22 | AHA#: 44423025 | BW: 83 LBS.

FHF M33 STARBUCK 110T ET

CMR GVP MR MATERNAL 156T

PYRAMID 16W 110T 9116

ILR 156T IRON LADY 486B ET

FHF 51M ACHIEVA 70T

DJB 46B BETH 1L

CE	BW	WW	YW	SC	Milk	M&G	CEM	Fat	REA	Marb	BMI\$	BII\$	CHB\$
1.2	3.8	56	89	1.1	29	57	3.7	0.00	0.55	0.00	\$421	\$488	\$119

2010 is very uniquely bred. There is very limited semen left on her sire, Pyramid 16W 110T 9116, whose daughters have been highly sought after. 2010's dam is a highly pigmented individual that goes back to the Beth 1L cow also. 2010 deserves full appraisal.



2010

Dam

2021

E 173D *Rita* 2021 ET

{DLF,HYF,IEF,MSUDF,MDF} | HOMOPOLLED | BD:8/29/22 | AHA#:44427607 | BW:84LBS.

KCF BENNETT ENCORE Z311 ET

E BRAXTON 719

NJW 79Z Z311 ENDURE 173D ET

LJE T719 MS BRAXTON 031A

BW 91H 100W RITA 79Z ET

LJE 16R LADY RAFTSMAN Y711

CE	BW	WW	YW	SC	Milk	M&G	CEM	Fat	REA	Marb	BMI\$	BII\$	CHB\$
4.7	3.5	69	111	0.5	32	66	3.8	0.01	0.79	0.30	\$419	\$515	\$180

2021 is a result of mating Endure 173D with MS BRAXTON 031A, a cow that we sent to RSK Farms in Manitoba, CA and who has gone on and done a nice job for them. Lots of power and style combined here and 2021's number profile is a bonus.



2021

K48

E BRB 126H *Millie* K48

{DLF,HYF,IEF,MSUDF,MDF} | HOMOPOLLED | BD:8/23/22 | AHA#:44427615 | BW:98LBS.

NJW 78P 88X COWBOSS 199B ET

MC 243R BOULDER U832

NJW 79Z 199B COWBOSS 126H ET

E 832 MISS BOULDER X9

BW 91H 100W RITA 79Z ET

BE LADY BRAXTON 308

CE	BW	WW	YW	SC	Milk	M&G	CEM	Fat	REA	Marb	BMI\$	BII\$	CHB\$
-2.0	5.4	67	111	1.1	37	71	1.4	0.01	0.75	-0.01	\$340	\$412	\$127

K48 has been a standout among her contemporaries since day 1. K48's dam is the X9 cow, who we own with BRB Cattle. X9 is a true matriarch within our herd whose progeny have always been at the top of her contemporary group. K48's sire is from NJW who sold north of the border into Canada and by all accounts is doing a very nice job there. K48 sells only to settle a partnership and deserves a second look.



K48

BULL CALVES



17K

We have only offered a limited number of bull calves through the years in this predominantly female sale. They have all been unique in their make up and these two certainly fit that description. Ehlke Herefords will retain a 1/4 in herd interest in both bull calves.



17K



Sire of 17K

17K

LJE ILR D98 *Spectre* 17K

| POLLED | BD: 11/23/22 | AHA#: 44423124 | BW: 96 LBS.

ILR HOMETOWN 332A ET

PYRAMID 16W 110T 9116

E ILR ATHENS D98

ILR 16W LADY MARIAH 873 ET

HARVIE E MS FIREFLY ET 19Z

H W4 MARIAH 0103 ET

CE	BW	WW	YW	SC	Milk	M&G	CEM	Fat	REA	Marb	BMI\$	BIIS	CHB\$
2.9	3.7	56	88	1.0	31	59	2.9	0.01	0.74	-0.02	\$379	\$442	\$115

17K's dam is a result of mating Pyramid 16W 110T 9116 to the H W4 Mariah 0103 cow making her a one of a kind individual. 17K's sire is out of our 19Z donor cow and 332A, a bull that still gets some use here through AI. The maternal make up here is extremely solid. 17K will be an outcross to most programs.

BULL CALVES



3011



Sire of 3011 & to Exportable Embryo Lot



Dam of 3011

One of the first Guardians to sell. 3011 goes back to the Beth 1L on the bottom side of his pedigree. Couple that up with the performance behind Guardian and the 3011 progeny should be something special. It appears like 3011 will be freckle faced like his dam and maternal grand dam. 3011 weaned at 700 lbs at 6 months of age.

3011

E 1015 *Sentinel* 3011 ET

{DLF, HYF, IEF, MSUDF, MDF} | POLLED | BD: 2/16/23 | AHA#: 44462703 | BW: 93 LBS.

LOEWEN GENESIS G16 ET
C GKB GUARDIAN 1015 ET
 C CJC BELLE AIR LASS 8037 ET

ILR HOMETOWN 332A ET
E 332A EDNA D160
 ILR 156T IRON LADY 486B ET

CE	BW	WW	YW	SC	Milk	M&G	CEM	Fat	REA	Marb	BMI\$	BII\$	CHBS
0.3	4.0	64	104	1.5	32	64	-1.6	0.02	0.83	0.30	\$508	\$604	\$165

EMBRYOS



873



JDH MRD 54E 8G BENTON 35K

873 ILR 16W *Ladyc Mariah* 873 ET
SELLING 4 EMBRYOS *Embryos*

LOEWEN GENESIS G16 ET PYRAMID 16W 110T 9116
C GKB GUARDIAN 1015 ET ILR 16W LADY MARIAH 873 ET
C CJC BELLE AIR LASS 8037 ET H W4 MARIAH 0103 ET

AHA EXPECTED PROGENY VALUES

CE	BW	WW	YW	SC	Milk	M&G	CEM	Fat	REA	Marb	BMI\$	BII\$	CHB\$
3.2	4.6	64	99	1.4	31	62	1.6	0.03	0.86	0.21	411	496	152

873 ILR 16W *Ladyc Mariah* 873 ET
SELLING 4 EMBRYOS *Embryos*

JDH AH BENTON 8G ET PYRAMID 16W 110T 9116
JDH MRD 54E 8G BENTON 35K ILR 16W LADY MARIAH 873 ET
JDH MS 40B TRUST 3373 54E H W4 MARIAH 0103 ET

AHA EXPECTED PROGENY VALUES

CE	BW	WW	YW	SC	Milk	M&G	CEM	Fat	REA	Marb	BMI\$	BII\$	CHB\$
5.6	2.3	60	91	0.9	31	61	3.2	0.06	0.90	0.12	415	492	139

We are offering two lots of 4 Embryos each out of the 873 cow. These 2 matings are bringing some exciting pedigrees together.

EMBRYOS



19Z

19Z

HARVIE E

Ms Firefly ET 19Z
Embryos

SELLING 4 EMBRYOS

LOEWEN GENESIS G16 ET
C GKB GUARDIAN 1015 ET
C CJC BELLE AIR LASS 8037 ET

PW VICTOR BOOMER P606
HARVIE E MS FIREFLY ET 19Z
HARVIE MISS FIREFLY 51F

CE	BW	WW	YW	SC	Milk	M&G	CEM	Fat	REA	Marb	BMI\$	BII\$	CHBS
-1.9	4.7	62	99	0.9	33	64	2.2	0.00	0.73	0.21	376	459	135

We are also offering a lot of 4 embryos out of our 19Z donor who has done a super job for us. There are not going to be many more opportunities out of 19Z in the future.



REFERENCE SIRES



C009

E T719 *Braxton* C009

{DLF,HYF,IEF,MSUDF,MDF} | HOMO POLLED | BD: 1/22/15 | AHA#: 43587975

ANCHOR BRAXTON
E BRAXTON 719
ANCHOR 17R

SNOWSHOE 743 REGULATOR 08X
E 337U DIVA A008
E M211 LADY RANGER U855

CE	BW	WW	YW	SC	Milk	M&G	CEM	Fat	REA	Marb	BMI\$	BIIS	CHBS
2.4	4.2	52	76	0.1	21	47	4.6	0.04	0.32	0.18	176	241	110



F78

E A012 *Braxton* F78

{DLF,HYF,IEF,MDF} | HOMO POLLED | BD: 3/10/18 | AHA#: 43923570

E BRAXTON 719
E 719 BRAXTON A012
CHURCHILL LADY 1149Y

HARVIE SAFNBFI COLATERAL 337U
E 337U DIVA B061
MC E GOVERNESS 346R 1091 ET

CE	BW	WW	YW	SC	Milk	M&G	CEM	Fat	REA	Marb	BMI\$	BIIS	CHBS
2.3	2.8	45	67	0.7	25	48	-0.1	0.00	0.25	0.20	292	357	96



332A

ILR *Hometown* 332A ET

{DLF,HYF,IEF,MSUDF,MDF} | POLLED | BD: 3/7/13 | AHA#: 43385499

SHF WONDER M326 W18 ET
NJW 73S W18 HOMETOWN 10Y ET
NJW P606 72N DAYDREAM 73S

THM DURANGO 4037
NJW 43T 4037 FOREVER EDNA 28X ET
NJW FOREVER RADIANT 43T ET

CE	BW	WW	YW	SC	Milk	M&G	CEM	Fat	REA	Marb	BMI\$	BIIS	CHBS
1.4	2.9	50	99	0.8	30	55	-0.9	-0.02	0.51	0.11	423	492	127

REFERENCE SIRES

98G

NJW 202C 81E *Steward* 98G

{DLF,HYF,IEF,MSUDF} | HOMO POLLED | BD: 2/11/19 | AHA#: 44056521

CHURCHILL SENSATION 028X NJW 73S W18 HOMEGROWN 8Y ET
NJW 160B 028X HISTORIC 81E ET NJW 160Z 8Y HOME MAKER 202C
 NJW 73S 38W DAYDREAM 160B NJW 73S 88X DAYDREAM 160Z

CE	BW	WW	YW	SC	Milk	M&G	CEM	Fat	REA	Marb	BMI\$	BII\$	CHB\$
0.8	2.9	59	88	1.0	38	67	-3.6	0.10	0.71	0.16	443	524	121

98G is the sire of several sale animals and also used AI on several. He is a CHB sire and brings an incredible maternal background. He is homozygous polled and has an exceptional number profile.



35K

JDH MRD 54E 8G *Benton* 35K

{DLF,HYF,IEF,MSUDF,MDF} | POLLED | BD: 1/31/22 | AHA#: 44341381

JDH 11B STUD 3134 63E BR TRUST 0217 3373
JDH AH BENTON 8G ET JDH MS 40B TRUST 3373 54E
 JDH AH MS 34X VICTOR 33Z45C ET JDH RBC MS 123 REDEEM 40B ET

CE	BW	WW	YW	SC	Milk	M&G	CEM	Fat	REA	Marb	BMI\$	BII\$	CHB\$
5.1	0.7	64	102	0.5	32	64	3.0	0.09	0.89	0.36	456	554	162

This up and coming sire has really grabbed the attention of all visitors. 35K is deep set, with good length, is very well muscled, and is also dark red with pigment. 35K has an outstanding EPD profile to go along with his physical attributes. He was the natural service sire on this sale group of bred heifers and was used quite heavily AI. 35K froze high quality semen the same day he stepped off the trailer from Minnesota.



229G

GREEN JCS *Makers Mark* 229G ET

{CHB,DLF,HYF,IEF,MSUDF,MDF} | HOMO POLLED | BD: 2/18/19 | AHA#: 44042074

R LEADER 6964 JDH VICTOR 719T 33Z ET
BOYD 31Z BLUEPRINT 6153 JDH AH MERCEDES 11E ET
 NJW 91H 100W RITA 31Z ET AH MS 25L RUMBLER 19Z

CE	BW	WW	YW	SC	Milk	M&G	CEM	Fat	REA	Marb	BMI\$	BII\$	CHB\$
10.5	-1.2	55	91	1.6	32	60	7.8	0.031	0.66	0.03	533	596	138

229G was used AI on several sale animals. He is a CHB sire, homozygous polled and has a great number profile.



MOHICAN
Dow Jones^{65J}



Birk

REF

MOHICAN *Dow Jones* 65J

{DLF,HYF,IEF,MSUDF,MDF} | POLLED | BD: 2/20/21 | AHA#: 44239102

EFBEEF TFL U208 TESTED X651 ET [CHB] NJW76S 27A SALUTE 201C
 INNISFAIL WHR X651/723 4013 ET [CHB] MOHICAN MATTIE 403E ET
 INNISFAIL P230 T723 GV CMR Y490 MATTIE 86P A287

CE	BW	WW	YW	SC	Milk	M&G	CEM	Fat	REA	Marb	BMIS	BIIS	CHBS
-4.8	4.4	80	127	1.5	34	74	2.0	0.051	0.82	0.34	420	530	180

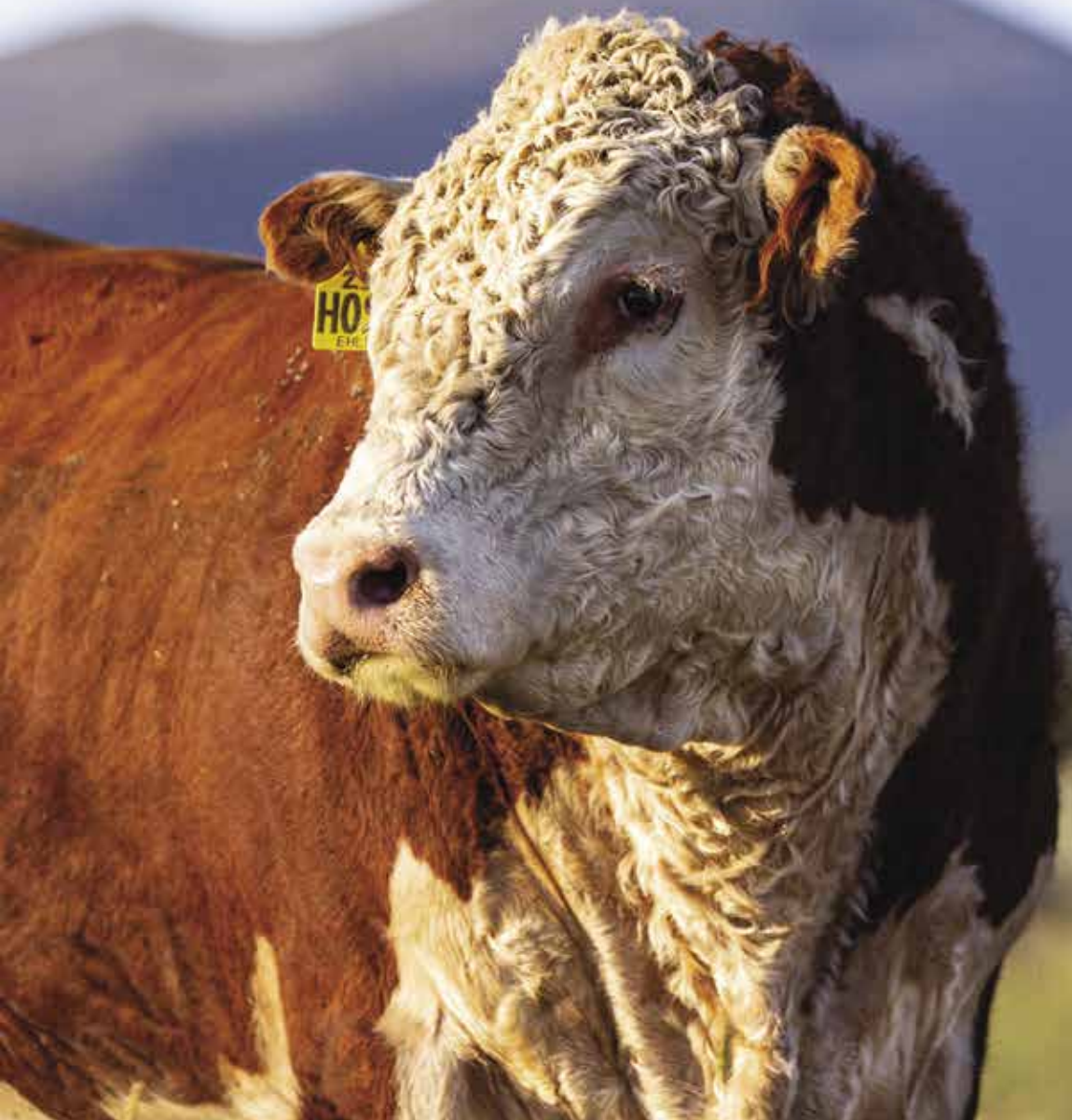
We couldn't be more pleased to be a partner on 65J. Dow Jones has extreme growth and carcass numbers while also having a strong maternal background. 65J is made right, structurally sound, with a good foot; is short marked with pigment. First calves here show great potential with birth weights averaging in the low 80lb range. Owned with Mohican West and Clifford Farms.

Bulls for Sale

by Private Treaty

18-MONTH-OLD AND YEARLINGS

Contact us today to learn more!





P.O. Box 1487
Townsend, MT 59644



MONTANA MADE PRODUCTION SALE

SATURDAY, SEPTEMBER 16, 2023
SMART AUCTIONS ONLINE SALE
& RANCH OPEN HOUSE

Catalog designed by



Generation 6
marketing

www.generation6.co