



MONTANA MADE PRODUCTION SALE

SATURDAY, SEPTEMBER 20, 2025
SMART AUCTIONS ONLINE SALE & RANCH OPEN HOUSE



Sale cattle will be on display Friday afternoon, September 19, and all day Saturday, September 20
Please join us for our open house, steak feed and watch the online sale closeout at 5pm MST Saturday.



MONTANA MADE PRODUCTION SALE

SATURDAY, SEPTEMBER 20, 2025
SMART AUCTIONS ONLINE SALE
& RANCH OPEN HOUSE

THE EHLKE ADVANTAGE

ACCURACY

We believe the only good kind of data is accurate data! When it comes to utilizing EPDs and performance data in our herd we recognize these resources as tools that work side by side with phenotype selection. We realize the importance of accurate records and how that information plays a role in building a successful, predictable cow herd.

1ST GENERATION

Our family is proud to be first generation ranchers and have enjoyed watching our kids grow up in the cattle business. We are excited to have the second generation involved on the ranch as we continue to grow. **Starting from humble beginnings has challenged us to work hard and expect more from our cow herd — every cow has to earn her keep!**




OUTCROSS

When searching for new genetics to add to our herd **we know the importance of powerful, outcross genetics that will perform with predictability.** If you're looking for an outcross or something different to add to your herd, we look forward to the opportunity to get to know your operation and help create your success!

On behalf of everyone here at Ehlke Herefords, we invite you to our annual Montana Made Sale and close out steak dinner on September 20th. Our Sale Offering this year has fewer lots than in past sales due to a private treaty sale earlier this year. Despite a few less numbers, we are confident that this offering measures up. Special thanks to those of you who have purchased in past sales, we appreciate your confidence and support. We are seeing a lot of change to the "Hereford landscape" here in Montana; we look forward to exciting changes and new faces in the industry. Please feel free to contact us with any question you may have and we hope to see you on September 20th.



Scan Here for Sale Animal Videos

3925 MT Highway 284 / P.O. Box 1487 / Townsend, MT 59644
info@ehlkeherefords.com / www.ehlkeherefords.com
Connect with us online!    **LinkedIn**



RANCH OPEN HOUSE SCHEDULE

Sale Closeout starts at 5pm on Saturday, September 20th

Sale Animals will be on display the afternoon of Friday, September 19th and all day Saturday, September 20th
 Supper and Social at 5pm
 Watch Online Sale Closeout

SALE INFORMATION & FORMAT **smartauctions**

Ehlke Montana Made Sale will be live on Tuesday, September 16th, with closeout on Saturday, September 20th starting at 5pm MST – racehorse style. **Visit smartauctions.co to sign up as a bidder and Text EHLKE to 76278 to receive mobile alerts.**

Dustin Layton, Layton Auction Services/Smart Auctions 405-464-2455
 SmartAuctions Customer Service 937-733-6000

SALE DAY PHONES & INFORMATION

Mark Ehlke 406-439-4311
 Lacey Ehlke Jepson 406-439-1544
 Della Ehlke 406-439-4300
info@ehlkeherefords.com

SALE REPRESENTATIVES

Dustin Layton, Smart Auctions 405-464-2455
 Kane Aegerter, AHA, *Hereford World* 402-641-8699
 Kevin Murnin, *Western Livestock Journal* 406-863-4368
 John Goggins, *Western Livestock Reporter* 406-698-4159
 Marc & Jill Hotchkiss, *Hereford America* 605-490-1513

ANIMALS ON DISPLAY

Pre-Sale the afternoon of Friday, September 19 and all day Saturday, September 20
 Sale will be live on Tuesday, September 16th, with closeout on Saturday, September 20th at 5pm MST

DELIVERY

Bob Woolsey Trucking 406-670-1877
 We will work with you to provide the most cost-effective delivery possible. Usually, that will be to central points at a shared cost. For Canadian buyers, we will deliver up to the nearest point of entry.

LIVESTOCK INSURANCE

Devin Murnin 406-696-1502

SALE UPDATES

Corrections or additions of any information contained in the sale catalog will be provided via supplemental information and will take precedence over any printed material.

DIRECTIONS

Ranch Location Address: 3925 Highway 284, Townsend, MT 59644
 Entering Townsend from either direction you will be on Front St (Highway 287), turn East at the flashing light onto Broadway St (Highway 12) for 2 miles and turn left at the next flashing light, head North on Highway 284 for another 2.5 miles, Ranch turnoff is on your RIGHT with a white archway with two grain silos. Signs will be up.

AIR TRAVEL

Helena Regional Airport is approx. 40 miles from the ranch, and Bozeman Yellowstone International Airport in Belgrade is approx. 60 miles from the ranch.

MONTANA MADE PRODUCTION SALE

SALE INFORMATION



LODGING

Mustang Motel (*cabins are bigger than regular rooms*) . . 406-266-3491
412 N Front Street Townsend, MT (4 miles from ranch)

Sacajawea Hotel 406-285-6515
5 N Main Street Three Forks, MT (approximately 35 miles from ranch)

Most hotel chains are available in both Helena (40 miles) and
Belgrade/Bozeman (60 miles).

Ehlke "Hereford House" VRBO – Townsend
4 bedrooms, 3 bath. Fenced yard and play area.

LIABILITY

Anyone attending the Open House/Sale Close out does so at their own
risk and without liability on the part of the owners or their employees.

ACKNOWLEDGMENTS

Chuteside Vet, Three Forks, MT / Herd Vet
Big Sky Large Animal Clinic, Willow Creek, MT / Herd Vet
Jane'a Merkel / Sale Cattle Photos and Videos, and Ranch Photos
Livestock Link / Video Catalog EPDs
Will Malcolm, Sleeping Giant Genetics / Embryologist
AHA Creative Services / Sale Catalog

GENOMIC EPDS

All sale cattle were genetically tested to provide
genomic enhanced EPDs. EPDs are current as
of catalog printing but do change slightly periodically. You are able
to view an animals most current EPDs on the AHA website or by
accessing Herefords on Demand.



TERMS AND CONDITIONS

Bidder/User Registration and Responsibility: Buyers (a.k.a. users)
must register to participate. Establishing a user account or bidding
or buying at this auction/sale acknowledges bidders consent to
the terms and conditions as outlined below. Bidders will be solely
responsible for any and all actions taken with their bidding account
including all purchase amounts, freight, and any costs associated with
collecting same.

Cattle will sell under the standard terms and conditions
recommended by the American Hereford Association. Invoices will be
sent via Smart Auctions immediately following the close of the sale,
payment is due per their terms, or can be made at the ranch for those
in attendance.

Terms of all sales will be cash unless arrangements are made between
purchaser and seller prior to sale. Individual health papers will be
furnished with each animal permitting shipment to any state.

Certificates of registration are all in order and will be transferred
to the new owner when payment is made. All sale cattle have DNA
tested to be free of any known genetic diseases or defects recognized,
parentage has been verified and EPDs genomically enhanced. EPDs
are current as of catalog print date.

The animal becomes the property of the purchaser as soon as sold
but it shall be the responsibility of the seller to see that animals are
properly cared for until delivered to the purchaser.

Any death or injury after the animal is sold is at the buyer's risk.
Buyers are encouraged to insure their purchases. Livestock mortality
insurance can be purchased from Devin Murnin 406-696-1502.

BRED REPLACEMENTS



This year's bred heifer offering may be less than past years as far as number of lots, but we feel overall quality continues to improve. The sires used AI and in the pasture will certainly add additional genetic attributes as well. We have our favorites in each sire group, but rather than provide individual footnotes, we will let you be the judge. All heifers will be confirmed pregnant by ultrasound. Calf sex (if determined) will be made available in supplement.

1

E H121 MS *Maternal* L98

{DLF,HYF,IEF,MSUDF,MDF,DBF} | HOMO POLLED | BD: 9/17/23 | P44514484 | BW: 79 LB.

E T719 BRAXTON C009
E C009 VAUGHN H121
ILR 156T IRON LADY 486B ET

MOHICAN TEN GAUGE 233A
MOHICAN MATTIE 122D
GRANDVIEW CMR 1L MATTIE Y490ET



CE	BW	WW	YW	SC	MILK	M&G	CEM	FAT	REA	MARB	BMI\$	BIIS	CHBS
-1.7	3.7	62	93	0.7	32	62	2.0	0.022	0.64	0.15	\$400	\$481	\$140

Bred AI on 4-19-25 to CHURCHILL JACK FROST 458M ET (Reg. #44567107), then pasture exposed from 6-2-25 to 8-15-25 to E A250 CO'DIGO L45 (Reg. #44514533).

2

LJE H121 MS *Maternal* 18L

{DLF,HYF,IEF,MSUDF,MDF,DBF} | HOMO POLLED | BD: 8/16/23 | P44523063 | BW: 72 LB.

E T719 BRAXTON C009
E C009 VAUGHN H121
ILR 156T IRON LADY 486B ET

ILR HOMETOWN 332A ET
LJE 332A EDNA 13F
LJE A012 LADY BRAXTON 015C



CE	BW	WW	YW	SC	MILK	M&G	CEM	FAT	REA	MARB	BMI\$	BIIS	CHBS
2.8	2.0	43	73	1.0	22	44	2.8	0.002	0.48	0.21	\$358	\$423	\$125

Bred AI on 4-19-25 to CHURCHILL JACK FROST 458M ET (Reg. #44567107), then pasture exposed from 6-2-25 to 8-15-25 to E A250 CO'DIGO L45 (Reg. #44514533).



BRED REPLACEMENTS



3

E H121 MS *Maternal* L110

{DLF,HYF,IEF,MSUDF,MDF,DBF} | HOMO POLLED | BD: 10/3/23 | P44514560 | BW: 84 LB.

E T719 BRAXTON C009
E C009 VAUGHN H121
ILR 156T IRON LADY 486B ET

C ETF WILDCAT 4248 ET
CHURCHILL LADY 6336D ET
LJE 337U DIVA X48



CE	BW	WW	YW	SC	MILK	M&G	CEM	FAT	REA	MARB	BMI\$	BI\$	CHB\$
-3.9	4.9	57	87	0.7	26	54	-0.7	0.022	0.60	0.08	\$304	\$372	\$118

Bred AI on 4-19-25 to CHURCHILL JACK FROST 458M ET (Reg. #44567107), then pasture exposed from 6-2-25 to 8-15-25 to E A250 CO'DIGO L45 (Reg. #44514533).

4

E H121 MS *Maternal* L46

{DLF,HYF,IEF,MSUDF,MDF,DBF} | POLLED | BD: 8/16/23 | P44514544 | BW: 78 LB.

E T719 BRAXTON C009
E C009 VAUGHN H121
ILR 156T IRON LADY 486B ET

KT BUILT TUFF 1010
ERNST MS BUILT TUFF 499
ERNST MS 8619 DOMINO 248



CE	BW	WW	YW	SC	MILK	M&G	CEM	FAT	REA	MARB	BMI\$	BI\$	CHB\$
6.9	1.5	57	81	0.8	29	58	10.1	0.002	0.64	0.26	\$443	\$528	\$140

Bred AI on 4-18-25 to E 6112 SOONER K4 (Reg. #44357320), then pasture exposed from 6-2-25 to 8-15-25 to E A250 CO'DIGO L45 (Reg. #44514533).



BRED REPLACEMENTS



Lot 5

5

E H121 MS *Maternal* **L75**

{DLF,HYF,IEF,MSUDF,MDF,DBF} | HOMO POLLED | BD: 9/4/23 | P44514498 | BW: 70 LB.

E T719 BRAXTON C009
E C009 VAUGHN H121
ILR 156T IRON LADY 486B ET

CHURCHILL RED BULL 200Z
CHURCHILL LADY 5146C
E MC 719 VICTORIA X1



CE	BW	WW	YW	SC	MILK	M&G	CEM	FAT	REA	MARB	BMI\$	BIIS	CHBS
6.2	1.7	46	70	0.5	25	48	7.4	0.032	0.17	0.20	\$356	\$427	\$99

Bred AI on 4-18-25 to E 6112 SOONER K4 (Reg. #44357320), then pasture exposed from 6-2-25 to 8-15-25 to E A250 CO'DIGO L45 (Reg. #44514533).

6

LJE 0001 MS *Mcabe* **8L**

{DLF,HYF,IEF,MSUDF,MDF,DBF} | HOMO POLLED | BD: 8/6/23 | P44514534 | BW: 78 LB.

TH FRONTIER 174E
E 174E YELLOWSTONE 0001 ET
E 332A EDNA D160

C MILES MCKEE 2103 ET
ILR 357 LADY SMILES 725
ILR KJ LADY VICKY 357A ET



CE	BW	WW	YW	SC	MILK	M&G	CEM	FAT	REA	MARB	BMI\$	BIIS	CHBS
4.5	1.8	52	81	1.1	41	68	0.6	0.032	0.84	0.13	\$433	\$503	\$149

Bred AI on 4-18-25 to E 6112 SOONER K4 (Reg. #44357320), then pasture exposed from 6-2-25 to 8-15-25 to E A250 CO'DIGO L45 (Reg. #44514533).



Lot 6



E 174E YELLOWSTONE 0001 ET — Sire of Lot 6

BRED REPLACEMENTS



Lot 7

7

E 0001 MS *Mcabe* L33

{DLF,HYF,IEF,MSUDF,MDF,DBF} | HOMO POLLED | BD: 8/11/23 | P44514504 | BW: 72 LB.

TH FRONTIER 174E
E 174E YELLOWSTONE 0001 ET
 E 332A EDNA D160

BAR STAR MAGNITUDE 737
E 737 MEGAN H015
 E 337U DIVA A102



CE	BW	WW	YW	SC	MILK	M&G	CEM	FAT	REA	MARB	BMI\$	BIIS	CHBS
4.5	1.9	61	105	1.3	41	72	0.0	0.112	0.51	0.23	\$359	\$445	\$151

Bred AI on 5-8-25 to CHURCHILL JACK FROST 458M ET (Reg. #44567107), then pasture exposed from 6-2-25 to 8-15-25 to E A250 CO'DIGO L45 (Reg. #44514533).

8

E 0001 MS *Mcabe* L40

{DLF,HYF,IEF,MSUDF,MDF,DBF} | HOMO POLLED | BD: 8/13/23 | P44514489 | BW: 78 LB.

TH FRONTIER 174E
E 174E YELLOWSTONE 0001 ET
 E 332A EDNA D160

HARVIE SAFNBFI COLATERAL 337U
E 337U DIVA B061
 MC E GOVERNESS 346R 1091 ET



CE	BW	WW	YW	SC	MILK	M&G	CEM	FAT	REA	MARB	BMI\$	BIIS	CHBS
5.8	2.1	59	92	1.3	28	58	0.3	0.032	0.58	0.09	\$354	\$427	\$129

Bred AI on 4-19-25 to CHURCHILL JACK FROST 458M ET (Reg. #44567107), then pasture exposed from 6-2-25 to 8-15-25 to E A250 CO'DIGO L45 (Reg. #44514533).



Lot 8

BRED REPLACEMENTS



C GKB GUARDIAN 1015 ET — Sire of Lots 9 & 10

Lot 9

9

E 1015 *Belle* L34

{DLF,HYF,IEF,MSUDF,MDF,DBF} | POLLED | BD: 8/11/23 | P44514483 | BW: 90 LB.

LOEWEN GENESIS G16 ET
C GKB GUARDIAN 1015 ET
C CJC BELLE AIR LASS 8037 ET

E MC 7W SOLID ET Z833
E Z833 MARVEL D51
E 337U DIVA A072



CE	BW	WW	YW	SC	MILK	M&G	CEM	FAT	REA	MARB	BMI\$	BIIS	CHBS
-0.8	4.7	70	106	1.2	21	56	0.2	0.032	0.73	0.32	\$512	\$616	\$171

Bred AI on 4-18-25 to CHURCHILL JACK FROST 458M ET (Reg. #44567107), then pasture exposed from 6-2-25 to 8-15-25 to E A250 CO'DIGO L45 (Reg. #44514533).

10

E 1015 *Belle* L41

{DLF,HYF,IEF,MSUDF,MDF,DBF} | POLLED | BD: 8/13/23 | P44514502 | BW: 85 LB.

LOEWEN GENESIS G16 ET
C GKB GUARDIAN 1015 ET
C CJC BELLE AIR LASS 8037 ET

RSK E 2046 DIGBY ET 20C
E 20C URSULA G46
E A012 LADY BRAXTON D104



CE	BW	WW	YW	SC	MILK	M&G	CEM	FAT	REA	MARB	BMI\$	BIIS	CHBS
1.8	4.8	73	113	1.9	32	68	-1.2	-0.018	0.43	0.31	\$468	\$574	\$156

Bred AI on 4-19-25 to CHURCHILL JACK FROST 458M ET (Reg. #44567107), then pasture exposed from 6-2-25 to 8-15-25 to E A250 CO'DIGO L45 (Reg. #44514533).



E 20C URSULA G46 — Dam of Lot 10



Lot 10

BRED REPLACEMENTS



11

E 65J *Mattie* L22

{DLF,HYF,IEF,MSUDF,MDF,DBF} | POLLED | BD: 8/9/23 | P44514563 | BW: 72 LB.

INNISFAIL WHR X651/723 4013 ET E BRAXTON 719
MOHICAN DOW JONES 65J E T719 LADY BRAXTON A047
 MOHICAN MATTIE 403E ET E 337U DIVA Y852



CE	BW	WW	YW	SC	MILK	M&G	CEM	FAT	REA	MARB	BMI\$	BII\$	CHBS\$
7.1	1.2	60	84	0.8	34	64	8.0	0.042	0.63	0.23	\$452	\$539	\$142

Bred AI on 4-18-25 to E 6112 SOONER K4 (Reg. #44357320), then pasture exposed from 6-2-25 to 8-15-25 to E A250 CO'DIGO L45 (Reg. #44514533).

12

E 65J *Mattie* L24

{DLF,HYF,IEF,MSUDF,MDF,DBF} | POLLED | BD: 8/9/23 | P44514507 | BW: 78 LB.

INNISFAIL WHR X651/723 4013 ET H H PERFECT TIMING 0150 ET
MOHICAN DOW JONES 65J E 150 PERFECT LADY B003
 MOHICAN MATTIE 403E ET E MC 7W LADY TAILOR Z737



CE	BW	WW	YW	SC	MILK	M&G	CEM	FAT	REA	MARB	BMI\$	BII\$	CHBS\$
2.0	2.2	61	101	0.8	26	56	0.0	0.002	0.44	0.18	\$323	\$402	\$145

Bred AI on 5-9-25 to CHURCHILL JACK FROST 458M ET (Reg. #44567107), then pasture exposed from 6-2-25 to 8-15-25 to E A250 CO'DIGO L45 (Reg. #44514533).



BRED REPLACEMENTS



E P606 BECCA B045 — Dam of Lot 13

Lot 13

13

E 65J *Mattie* L30

{DLF,HYF,IEF,MSUDF,MDF,DBF} | POLLED | BD: 8/11/23 | P44514531 | BW: 75 LB.

INNISFAIL WHR X651/723 4013 ET

MOHICAN DOW JONES 65J

MOHICAN MATTIE 403E ET

PW VICTOR BOOMER P606

E P606 BECCA B045

E 16R MISS RAFTSMAN T723



CE	BW	WW	YW	SC	MILK	M&G	CEM	FAT	REA	MARB	BMI\$	BIIS	CHBS
-0.3	2.2	64	99	1.1	38	70	1.6	0.032	0.81	0.16	\$390	\$472	\$141

Bred AI on 4-19-25 to CHURCHILL JACK FROST 458M ET (Reg. #44567107), then pasture exposed from 6-2-25 to 8-15-25 to E A250 CO'DIGO L45 (Reg. #44514533).

14

E 65J *Mattie* L36

{DLF,HYF,IEF,MSUDF,MDF,DBF} | POLLED | BD: 8/12/23 | P44514532 | BW: 84 LB.

INNISFAIL WHR X651/723 4013 ET

MOHICAN DOW JONES 65J

MOHICAN MATTIE 403E ET

E 306U SCOTCHMAN B011

E B011 DOMINETTE D63

B LADY RAMBO 411



CE	BW	WW	YW	SC	MILK	M&G	CEM	FAT	REA	MARB	BMI\$	BIIS	CHBS
2.1	2.2	67	107	1.4	29	63	3.1	0.072	0.78	0.26	\$397	\$490	\$167

Bred AI on 4-19-25 to E 6112 SOONER K4 (Reg. #44357320), then pasture exposed from 6-2-25 to 8-15-25 to E A250 CO'DIGO L45 (Reg. #44514533).



Lot 14

BRED REPLACEMENTS



Lot 15

15

LJE 65J *Mattie* 37

{DLF,HYF,IEF,MSUDF,MDF,DBF} | POLLED | BD: 8/13/23 | P44514554 | BW: 75 LB.

INNISFAIL WHR X651/723 4013 ET
MOHICAN DOW JONES 65J
MOHICAN MATTIE 403E ET

HARVIE DAN SNIPER 203Z
LJE 203Z FAITH 610
LJE 337U DIVA 008B



CE	BW	WW	YW	SC	MILK	M&G	CEM	FAT	REA	MARB	BMI\$	BIIS	CHBS
6.2	-0.4	61	86	0.8	42	73	3.2	0.052	0.72	0.19	\$449	\$533	\$147

Bred AI on 4-18-25 to E 6112 SOONER K4 (Reg. #44357320), then pasture exposed from 6-2-25 to 8-15-25 to E A250 CO'DIGO L45 (Reg. #44514533).

16

E 20C *Ursula* L27

{DLF,HYF,IEF,MSUDF,MDF,DBF} | HOMO POLLED | BD: 8/9/23 | P44514569 | BW: 87 LB.

OTAPAWA SKYMATE 2046 (ET)
RSK E 2046 DIGBY ET 20C
HARVIE MISS FIREFLY 51F

HARVIE SAFNBFI COLATERAL 337U
E 337U DIVA A067
E LADY RANGER R558

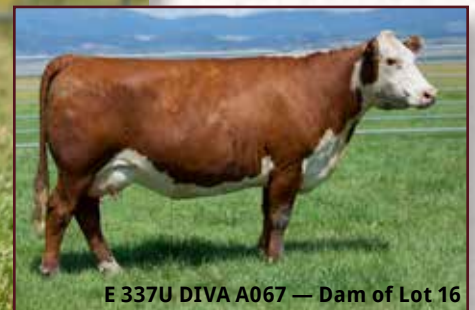


CE	BW	WW	YW	SC	MILK	M&G	CEM	FAT	REA	MARB	BMI\$	BIIS	CHBS
-0.2	4.9	61	98	1.0	30	60	-1.2	-0.048	0.40	0.03	\$407	\$481	\$115

Bred AI on 5-9-25 to CHURCHILL JACK FROST 458M ET (Reg. #44567107), then pasture exposed from 6-2-25 to 8-15-25 to E A250 CO'DIGO L45 (Reg. #44514533).



Lot 16



E 337U DIVA A067 — Dam of Lot 16

BRED REPLACEMENTS



17

E F78 MS *Braxton* L64

{DLF,HYF,IEF,MSUDF,MDF,DBF} | HOMO POLLED | BD: 8/29/23 | P44514492 | BW: 83 LB.

E 719 BRAXTON A012
E A012 BRAXTON F78
E 337U DIVA B061

HARVIE SAFNBFI COLATERAL 337U
E 337U DIVA 268B ET
MC GEN QUEEN 9904

Bred AI on 4-18-25 to E 6112 SOONER K4 (Reg. #44357320), then pasture exposed from 6-2-25 to 8-15-25 to E A250 CO'DIGO L45 (Reg. #44514533).



CE	BW	WW	YW	SC	MILK	M&G	CEM	FAT	REA	MARB	BMI\$	BIIS	CHBS
6.6	3.3	57	89	0.9	25	53	3.6	0.012	0.58	0.22	\$399	\$481	\$128



FALL YEARLING OPEN HEIFERS



JDH MRD 54E 8G BENTON 35K ET — Sire of Lot 18

Lot 18

18

E 35K *Marie* M39

{DLF,HYF,IEF,MSUDF,MDF,DBF} | POLLED | BD: 8/8/24 | P44671982 | BW: 80 LB.

JDH AH BENTON 8G ET

NJW 79Z 33B FORWARD 252F

JDH MRD 54E 8G BENTON 35K ET

E 252F WHITNEY J68

JDH MS 40B TRUST 3373 54E

E 150 PERFECT LADY B003



CE	BW	WW	YW	SC	MILK	M&G	CEM	FAT	REA	MARB	BMI\$	BIIS	CHBS
5.6	2.6	65	109	0.3	30	62	6.5	0.032	0.81	0.20	\$444	\$533	\$156

Nicely made, well balanced daughter of Benton 35K from Delaney's.

19

E 2135 *Ursula* 4018 ET

{DLF,HYF,IEF,MSUDF,MDF,DBF} | HOMO POLLED | BD: 8/9/24 | P44638771 | BW: 87 LB.

LOEWEN GENESIS G16 ET

RSK E 2046 DIGBY ET 20C

C ARLO 2135 ET

E 20C URSULA G46

C 88X NOTICE ME 1311 ET

E A012 LADY BRAXTON D104



CE	BW	WW	YW	SC	MILK	M&G	CEM	FAT	REA	MARB	BMI\$	BIIS	CHBS
6.2	3.7	58	95	1.7	30	59	5.9	-0.018	0.53	0.12	\$344	\$417	\$128

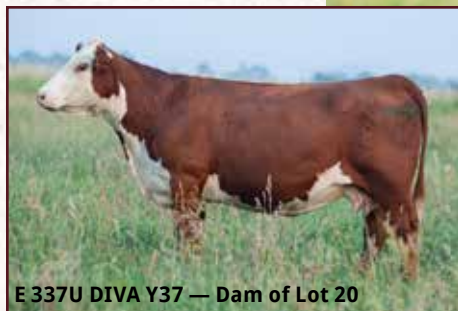
A super complete Arlo daughter whose dam is a daughter of past Agribition Champion RSK E DIGBY ET 20C. 4018 presents an exceptional maternal background and is one that should probably never leave here.



E 20C URSULA G46 — Dam of Lot 19

Lot 19

FALL YEARLING OPEN HEIFERS



E 337U DIVA Y37 — Dam of Lot 20

Lot 20

20

E 507C *Lady Dew* 4022 ET

{DLF,HYF,IEF,MSUDF,MDF,DBF} | HOMO POLLED | BD: 8/14/24 | P44609417 | BW: 95 LB.

NJW 98S R117 RIBEYE 88X ET
CHURCHILL TORO 507C ET
SR CCC LADYSPORT 2205 Z ET

HARVIE SAFNBFI COLATERAL 337U
E 337U DIVA Y37
E T719 LADY BRAXTON W37



CE	BW	WW	YW	SC	MILK	M&G	CEM	FAT	REA	MARB	BMI\$	BIIS	CHBS
1.8	3.8	69	109	0.8	37	71	3.1	-0.018	0.56	0.08	\$391	\$474	\$115

Another very maternal prospect here. 4022's natural dam is still in production at 14 years of age; her offspring have always been at the top end of their contemporary group. 4022 is a real solid prospect.

21

E 153 *Diva* M68

{DLF,HYF,IEF,MSUDF,MDF,DBF} | HOMO POLLED | BD: 8/15/24 | P44670016 | BW: 75 LB.

LOEWEN GENESIS G16 ET
KSU LAND GRANT 153 ET
KSU MISS MISTY 956 ET

HARVIE SAFNBFI COLATERAL 337U
E 337U DIVA B061
MC E GOVERNESS 346R 1091 ET



CE	BW	WW	YW	SC	MILK	M&G	CEM	FAT	REA	MARB	BMI\$	BIIS	CHBS
8.5	1.7	59	90	0.9	22	52	6.7	0.012	0.26	0.24	\$382	\$468	\$123

A KSU Land Grant 153 daughter here out of a Colateral 337U daughter. M68 is well balanced both in the flesh and on paper and deserves serious appraisal. A really good genetic tool here.



KSU LAND GRANT 153 ET — Sire of Lot 21

Lot 21

FALL YEARLING OPEN HEIFERS



Lot 22

22

LJE 65J *Mattie* 15M

{DLF,HYF,IEF,MSUDF,MDF,DBF} | HOMO POLLED | BD: 8/9/24 | P44609387 | BW: 72 LB.

INNISFAIL WHR X651/723 4013 ET
MOHICAN DOW JONES 65J

ILR HOMETOWN 332A ET
LJE 332A EDNA 12F

MOHICAN MATTIE 403E ET

LJE Z833 MARVEL 007C

A low birthweight, high growth daughter out of Mohican Down Jones, who's progeny continue to impress all who have seen them. 15M's dam is a solid producer sired by 332A, a bull that was used highly here. A very nice genetic package.



CE	BW	WW	YW	SC	MILK	M&G	CEM	FAT	REA	MARB	BMI\$	BII\$	CHB\$
5.7	0.4	58	104	1.6	28	57	7.0	0.032	0.53	0.27	\$406	\$493	\$155



BULL CALVES

GE-EPDs will be available on the supplement sheet provided on sale day.

GE-EPDs will be available via supplement sheet as soon as available – will be posted at www.ehlkeherefords.com and information at SmartAuctions will be updated



Lot 23

23

LJE 316 Townsend 5006 ET

POLLED | BD: 2/16/25 | P44671516 | BW: 98 LB.

CSC 508 50B BRAWN 704
CSC 701 OSHOTO 316
CSC 502 LADY DEW 701

PYRAMID 16W 110T 9116
ILR 16W LADY BETH 835 ET
DJB 46B BETH 1L

An exciting prospect here. One of the first Oshoto sons to be offered; his dam is one of a kind direct daughter of Beth 1L, sired by Pyramid 16W. 5006 is very well pigmented, short marked, and is really well put together. 5006's full sisters are outstanding. A real solid genetic prospect here.

CE	BW	WW	YW	SC	MILK	M&G	CEM	FAT	REA	MARB	BMI\$	BIIS	CHBS
0.2	3.9	56	97	1.1	36	64	2.6	0.002	0.59	0.02	\$436	\$505	\$126



ILR 16W LADY BETH 835 ET — Dam of Lot 23



CSC 701 OSHOTO 316 — Sire of Lot 23

BULL CALVES

GE-EPDs will be available on the supplement sheet provided on sale day.

GE-EPDs will be available via supplement sheet as soon as available – will be posted at www.ehlkeherefords.com and information at SmartAuctions will be updated



Lot 24

24

E 2135 *High Country* 5007ET

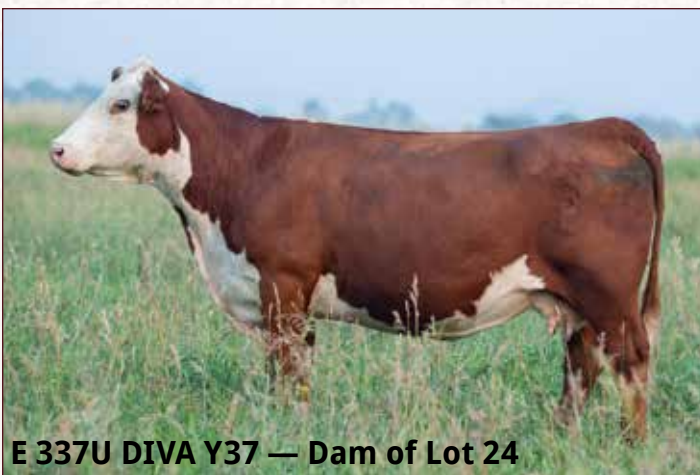
POLLED | BD: 2/17/25 | P44671509 | BW: 105 LB.

LOEWEN GENESIS G16 ET
C ARLO 2135 ET
C 88X NOTICE ME 1311 ET

HARVIE SAFNBFI COLATERAL 337U
E 337U DIVA Y37
E T719 LADY BRAXTON W37

A super long spined son of C ARLO 2135 ET and our Y37 donor cow, who is doing a great job of raising her natural calf this year at 14 years of age. Y37 has been a maternal stand out here and this mating to Arlo adds another super maternal aspect to 5007 ET's pedigree. 5007 will sire the front pasture kind!

CE	BW	WW	YW	SC	MILK	M&G	CEM	FAT	REA	MARB	BMI\$	BIIS	CHBS
1.9	4.7	64	100	1.2	29	61	0.5	0.002	0.63	0.15	\$430	\$514	\$139



E 337U DIVA Y37 — Dam of Lot 24



C ARLO 2135 ET — Sire of Lot 24

BULL CALVES

GE-EPDs will be available on the supplement sheet provided on sale day.

GE-EPDs will be available via supplement sheet as soon as available – will be posted at www.ehlkeherefords.com and information at SmartAuctions will be updated



Lot 25

25

E 360L *Vanguard* N12

{DBP} | POLLED | BD: 2/18/25 | P44671499 | BW: 96 LB.

BIRDWELL VANGUARD 5022 9337 BR HUTTON 4030ET
CHURCHILL VANGUARD 360L ET **E 4030 GABBIE 1003ET**
 CHURCHILL LADY 1162Y ET HARVIE MISS MEDONTE ET 184W

A very well made, nicely balanced son of Churchill Vanguard 360L ET. N12's dam is a daughter of BR Hutton 4030 ET and is definitely a front pasture type female that has done an outstanding job for us to date. N12 offers a real unique genetic background; his daughters should really excel

CE	BW	WW	YW	SC	MILK	M&G	CEM	FAT	REA	MARB	BMI\$	BIIS	CHBS
0.4	3.7	59	97	0.6	25	54	2.6	0.002	0.87	0.24	\$451	\$535	\$140



E 4030 GABBIE 1003ET — Dam of Lot 25



CHURCHILL VANGUARD 360L ET — Sire of Lot 25

EMBRYOS



C 8037 GENESIS GAL 1049 ET — Dam of Lots 26 & 27

We are pleased to offer two matings each out of our donor females C8037 Genesis Gal 1049 ET, a full sister to Guardian, and ILR 16W Lady Beth 835 ET, a one of a kind, direct daughter of Beth 1L. All progeny out of these two donors have to date, been flat out excellent and these matings should obviously continue that pattern.

26

Four (4) IVF *Embryos*

JDH AH BENTON 8G ET
JDH MRD 54E 8G BENTON 35K ET
JDH MS 40B TRUST 3373 54E

LOEWEN GENESIS G16 ET
C 8037 GENESIS GAL 1049 ET
C CJC BELLE AIR LASS 8037 ET

	CE	BW	WW	YW	SC	MILK	M&G	CEM	FAT	REA	MARB	BMI\$	BIIS	CHBS
Sire	1.6	2.9	64	109	0.5	30	62	1.2	0.092	0.93	0.39	457	558	173
Dam	4.3	3.9	71	116	1.7	29	64	1.9	0.032	0.64	0.51	471	587	202

Embryos are exportable.

27

Four (4) Conventional *Embryos*

BIRDWELL VANGUARD 5022 9337
CHURCHILL VANGUARD 360L ET
CHURCHILL LADY 1162Y ET

LOEWEN GENESIS G16 ET
C 8037 GENESIS GAL 1049 ET
C CJC BELLE AIR LASS 8037 ET

	CE	BW	WW	YW	SC	MILK	M&G	CEM	FAT	REA	MARB	BMI\$	BIIS	CHBS
Sire	0.4	2.7	62	101	0.3	31	62	6.9	0.022	1.16	0.44	472	571	165
Dam	4.3	3.9	71	116	1.7	29	64	1.9	0.032	0.64	0.51	471	587	202



JDH MRD 54E 8G BENTON 35K ET — Sire of Lot 26



CHURCHILL VANGUARD 360L ET — Sire of Lot 27

EMBRYOS



ILR 16W LADY BETH 835 ET — Dam of Lots 28 & 29

28

Four (4) Conventional *Embryos*

CHURCHILL W4 SHERMAN 2157K ET PYRAMID 16W 110T 9116
CHURCHILL JACK FROST 458M ET **ILR 16W LADY BETH 835 ET**
 BR VALIDATED B413 6035 7098 DJB 46B BETH 1L

	CE	BW	WW	YW	SC	MILK	M&G	CEM	FAT	REA	MARB	BMI\$	BIIS	CHBS
Sire	7.0	-1.0	62	89	1.1	32	63	4.4	0.082	1.02	0.74	575	700	198
Dam	-0.6	3.5	54	88	0.6	35	62	2.0	0.032	0.90	0.14	531	608	162

29

Four (4) Conventional *Embryos*

LOEWEN DCF DEFIANCE H49 ET PYRAMID 16W 110T 9116
LOEWEN SANDHILL L70 ET **ILR 16W LADY BETH 835 ET**
 SCHU-LAR 44J VIVIAN 26D E158 DJB 46B BETH 1L

	CE	BW	WW	YW	SC	MILK	M&G	CEM	FAT	REA	MARB	BMI\$	BIIS	CHBS
Sire	7.4	2.0	63	101	1.4	24	55	1.1	0.112	0.62	0.71	533	659	186
Dam	-0.6	3.5	54	88	0.6	35	62	2.0	0.032	0.90	0.14	531	608	162



CHURCHILL JACK FROST 458M ET — Sire of Lot 28



LOEWEN SANDHILL L70 ET — Sire of Lot 29

REFERENCE SIRES



E C009 VAUGHN H121

A

E C009 *Vaughn* H121

{DLF,HYF,IEF,MSUDF,MDF} | HOMO POLLED | BD: 9/4/20 | 44192394

E BRAXTON 719
E T719 BRAXTON C009
E 337U DIVA A008

CMR GVP MR MATERNAL 156T
ILR 156T IRON LADY 486B ET
DJB 46B BETH 1L



CE	BW	WW	YW	SC	MILK	M&G	CEM	FAT	REA	MARB	BMI\$	BIIS	CHBS
-2.6	4.9	56	86	0.9	23	51	5.0	0.022	0.49	0.15	\$343	\$417	\$115

H121 is a home bred and raised bull that we retained and have used for the maternal aspect he brings to bear. H121 is a grandson of the Beth 1L cow and having the Braxton influence only adds to H121's maternal influence.

B

MOHICAN *Dow Jones* 65J

{CHB} {DLF,HYF,IEF,MSUDF,MDF,DBF} | POLLED | BD: 2/20/21 | 44239102

EFBEEF TFL U208 TESTED X651 ET
INNISFAIL WHR X651/723 4013 ET
INNISFAIL P230 T723

NJW 76S 27A SALUTE 201C
MOHICAN MATTIE 403E ET
GV CMR Y490 MATTIE 86P A287



CE	BW	WW	YW	SC	MILK	M&G	CEM	FAT	REA	MARB	BMI\$	BIIS	CHBS
2.9	0.8	69	110	1.4	33	68	5.1	0.042	0.80	0.31	\$379	\$475	\$175

We couldn't be more pleased to be a partner on 65J. Down Jones posts extreme growth and carcass numbers all while having a strong maternal background. The 65J sons here have been among the first to leave our bull offering and his daughters have been visitor favorites. Owned with Clifford Farms and Steve Wolff.



MOHICAN DOW JONES 65J

REFERENCE SIRES



C CHURCHILL *Jack Frost* 458M ET

{DLF,HYF,IEF,MSUDF,MDF,DBF} | HOMO POLLED | BD: 1/11/24 | 44567107

KCF BENNETT RESOLVE G595 EFBEF BR VALIDATED B413
CHURCHILL W4 SHERMAN 2157K ET BR VALIDATED B413 6035 7098
CHURCHILL LADY 079H ET BR BENNETT 4R Y428 2101 6035



CE	BW	WW	YW	SC	MILK	M&G	CEM	FAT	REA	MARB	BMI\$	BIIS	CHBS
7.0	-1.0	62	89	1.1	32	63	4.4	0.082	1.02	0.74	\$575	\$700	\$198

Jack Frost was used AI on a majority of our heifers this spring and in our ET matings. Jack Frost is a combination of 2 of the "hottest" individuals currently in the Hereford breed. We are excited to be an owner of 458M owned with Churchill Cattle Co, Grand Meadows Farm and Spaeth Farms.



D E 6112 *Sooner* K4

{DLF,HYF,IEF,MSUDF,MDF,DBF} | HOMO POLLED | BD: 1/30/22 | 44357320

DM BR SOONER CHURCHILL TORO 507C ET
ILR U201 SOONER 6112 ET E 507C LADY DEW 9011 ET
KCF MISS PROFICIENT U201 E MC P316 MS NASDAQ 701A ET



CE	BW	WW	YW	SC	MILK	M&G	CEM	FAT	REA	MARB	BMI\$	BIIS	CHBS
8.9	1.5	49	81	1.3	23	48	4.9	-0.018	0.61	0.13	\$390	\$456	\$120

Home raised DM BR SOONER grandson that was the high performing individual of his contemporary group. K4 was retained to use as a maternal outcross sire for our program. The K4 progeny to date show real promise. K4 was used AI on several of the bred heifers in this offering.



E E A250 *Co'digo* L45

{DLF,HYF,IEF,MSUDF,MDF,DBF} | HOMO POLLED | BD: 8/15/23 | 44514533

EFBEF TFL U208 TESTED X651 ET RSK E 2046 DIGBY ET 20C
EFBEF X651 TESTED A250 E 20C URSULA G62
EFBEF 6378 KATE W484 E 337U DIVA A014



CE	BW	WW	YW	SC	MILK	M&G	CEM	FAT	REA	MARB	BMI\$	BIIS	CHBS
7.2	1.2	59	93	1.2	32	61	4.5	0.042	0.47	0.38	\$394	\$488	\$147

L45 was the pasture sire on the bred heifers in this year's offering. A very well balanced, nicely muscled A250 son out of one of our very best Digby 20C daughters. L45 is home bred and raised and was retained to bring an outcross influence into our program. He was a favorite of everyone who went through our bull pens this spring.



Thank You

THANKS FOR
EVERYTHING YOU DO!



Andrew Arnold and Pat Reiser





NOTES



Bulls for Sale

by Private Treaty

18-MONTH-OLD AND YEARLINGS

*Contact us to get on our bull catalog mailing list
Make your bull picks early ... we can hold them until spring*





PO Box 1487
Townsend, MT 59644

MONTANA MADE PRODUCTION SALE

SATURDAY, SEPTEMBER 20, 2025
SMART AUCTIONS ONLINE SALE & RANCH OPEN HOUSE