

Fawcett's
ELMCREEKRANCH
Annual Production Sale :: February 8th, 2021 :: Ree Heights, South Dakota



Welcome!

Welcome to our annual sale,

The bulls that we will be selling represent two different calving intervals meaning we run two different cow herds, one at the north end of the ranch and one at the south. The north end of the ranch calve in February through March and the bulls produced from this group of cows are what make up the yearling bulls in the sale. The cows running the south end of the ranch calve the end of March through the end of May and the bulls produced by these cows are the two-year-old bulls in the sale.

The yearling bulls are weaned in October, processed and started on a mild grower ration to ensure longevity. The two-year-old bulls selling leave the yards and go to pasture as soon as the grass has greened up and stay out on a section of pasture in the hills with zero supplement throughout the summer until mid fall when we bring them in closer and begin feeding them for the sale. The strong survive when we talk about the two-year-olds as they are on their own from May until October.

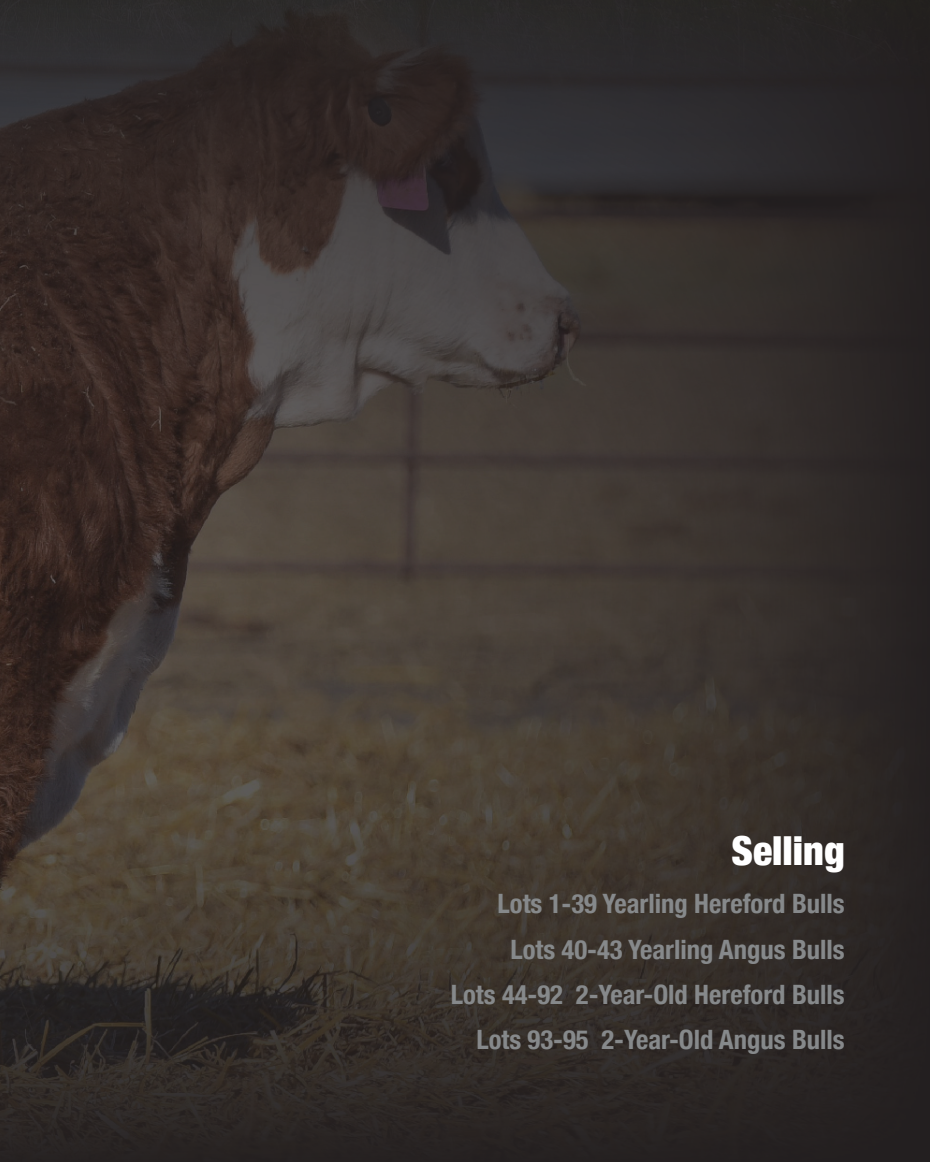
We run our operation with the same expectations as any good commercial operation and that is to keep inputs to a bare minimum and demand maximum output. These cattle have to be easy fleshing, sound structured, great footed and are to be able to raise a calf that will push down the scale in the fall with a minimal labor force.

We search out the best herd bulls in the breed to ensure our customers have access to breed leading genetics. Horned or polled, if you are seeking to raise feeder cattle that demand a premium, bulls to raise top replacements, genetics to increase the value of your purebred operation or to simply add longevity and profit margins then FECR is your source for the rancher's kind.

If you are unable to be here in person to view the bulls please call any of us to discuss them and we will help you get what you are after.

From all of us here at Fawcett's Elm Creek Ranch thank you for your consideration.

Fawcett's Elm Creek Ranch



Annual Production
SALE

February 8, 2021

1 p.m. cst :: Ree Heights, SD

please join us for lunch prior to the sale

Horned yearling & 2-year-old Hereford bulls

Polled yearling & 2-year-old Hereford bulls

Yearling & 2-year-old Angus bulls

Selling

Lots 1-39 Yearling Hereford Bulls

Lots 40-43 Yearling Angus Bulls

Lots 44-92 2-Year-Old Hereford Bulls

Lots 93-95 2-Year-Old Angus Bulls

live broadcast and online bidding

The Livestock Link™
Livestock Videoing - Video Sales
- Bid-by-Click Online Sales
To view events go to
www.TheLivestockLink.com

The RANCHER'S Kind



Monday, February 8th, 2021

12 p.m. CST Lunch • 1 p.m. CST Annual Production Sale

Fawcett's
ELMCREEKRANCH
Ree Heights, South Dakota

www.fawcettselmcreekranch.com

Keith, Cheryl, Matt & Erin

605-870-0161 :: 605-943-5664

kcfawcett@hotmail.com

Daniel, Kyla, Hollis & Ivy

605-870-6172 :: 605-943-5583

danfawcett869@hotmail.com

Weston, Kristin, Falon & Jensen

605-478-0077

INTERNET BIDDING

Livestock Link • www.thelivestocklink.com

Absentee bidders who wish to utilize the internet may bid online at www.thelivestocklink.com

ACCOMMODATIONS

Super 8 • Miller, SD • 605-853-2721

Dew Drop Inn • Miller, SD • 605-853-2431

TRANSPORTATION

Pierre • commercial airlines, Pierre, SD

Miller • paved landing strip, Miller, SD

Highmore • small plane strip, Highmore, SD

VOLUME DISCOUNT

Bulls 3% on three head; 4% on four head; 5% on five or more

HERD HEALTH

All of the cattle selling will be ready for immediate shipment and accompanied by proper health certificates.

Fawcett's Elm Creek Ranch has a full vaccination program.

TERMS & CONDITIONS

This will be a video auction. All animals will be penned outside. All animals will sell to the highest bidder with the auctioneer settling any disputes as to bids. Announced changes in catalog information will take precedence over any printed material in catalog. The animals become the property of the highest bidder as soon as sold and will be cared for, for a reasonable time, at buyer's risk.

BREEDING GUARANTEE

All bulls will be guaranteed through the first 60 day breeding season. In the event, an animal fails to breed, a suitable replacement will be made or credit will be given in the next sale. The bred heifers are safe in calf and thus will be considered a breeder at the time of sale, no further guarantee will apply.

PEDIGREE

All registered animals in the sale are clean of any genetic defect to the best of our knowledge. All potential genetic defect carriers have been DNA'd and will have a profile on file with the AHA. The registered bred heifers have been DNA'd and will be pro- filed for ET permits.

LIABILITY

All persons attending the sale and related functions do so at their own risk. Fawcett's Elm Creek Ranch, the sale management and staff assume no liability, legal or otherwise, for any accidents or injuries that may occur.

RETAINED OWNERSHIPS

We will retain a percentage of several of the bulls and the registered heifers. Terms will be announced sale day.

ABSENTEE BIDS

Any person unable to attend can place a bid through Keith or Daniel or any of the listed sale representatives. Please have credit references available.

DELIVERY

Free delivery on bulls to any one location within a 300 mile radius if delivered by Fawcett's Elm Creek Ranch. We will cooperate on deliveries outside that area. Day of sale receive \$50 credit on any bull hauled that day.

INSURANCE

Handle Marketing will be available sale day to handle insurance needs. Art Handle 605-391-8233.



Understanding Hereford EPDs

The American Hereford Association (AHA) currently produces expected progeny differences (EPDs) for 15 traits and calculates four profit (\$) indexes. Research is ongoing to develop traits for fertility, feed intake and docility.

Today, DNA-marker tests can be used to enhance the accuracy of Hereford EPDs. AHA blends marker information with phenotypic information and pedigree to produce a GE-EPD. Look for the GE-EPD logo denoting an animal has been tested.

The current suite of Hereford EPDs and \$ indexes includes:

Birth Weight (BW)

BW EPD is an indicator trait for calving ease and is measured in pounds. For example, if sire A has a BW EPD of 3.6 and sire B has a BW EPD of 0.6, then you would expect on average if comparably mated, sire A's calves would come 3 lb. heavier at birth when compared to sire B's calves. Larger BW EPDs usually, but not always, indicate more calving difficulty. The figure in parentheses found after each EPD is an accuracy value or reliability of the EPD.

Weaning Weight (WW)

WW EPD is an estimate of pre-weaning growth that is measured in pounds. For example, if sire A has a WW EPD of 60 and sire B has a WW EPD of 40, then you would expect on average if comparably mated, sire A's calves would weigh 20 lb. heavier at weaning when compared to sire B's calves.

Yearling Weight (YW)

YW EPD is an estimate of post-weaning growth that is measured in pounds. For example, if sire A has a YW EPD of 100 and sire B has a YW EPD of 70, then you would expect on average if comparably mated, sire A's calves would weigh 30 lb. heavier at a year of age when compared to sire B's calves.

Maternal Milk (MM)

The milking ability of a sire's daughters is expressed in pounds of calf weaned. It predicts the difference in average weaning weights of sires' daughters' progeny due to milking ability. Daughters of the sire with a +14 MM EPD should produce progeny with 205-day weights averaging 24 lb. more (as a result of greater milk production) than daughters of a bull with a MM EPD of -10 lb. (14 minus -10.0 = 24 lb.). This difference in weaning weight is due to total milk production during the entire lactation.

Maternal Milk & Growth (M&G)

Maternal Milk & Growth reflects what the sire is expected to transmit to his daughters for a combination of growth genetics through weaning and genetics for milking ability. It is an estimate of daughters' progeny weaning weight. A bull with a 29 lb. M&G EPD should sire daughters with progeny weaning weights averaging 19 lb. heavier than progeny of a bull's daughters with a M&G EPD of 10 lb. (29 minus 10 = 19 lb.). It is equal to one-half the sire's weaning weight EPD, plus all of his MM EPD. No accuracy is associated with this since it is simply a mathematical combination of two other EPDs. It is sometimes referred to as "total maternal" or "combined maternal."

Maternal Calving Ease (MCE)

MCE EPD predicts how easily a sire's daughters will calve at 2 years of age and is measured on a percentage. For example, if sire A has a MCE EPD of 7 and sire B has a CE EPD of -3, then you would expect on average if comparably mated, sire A's daughters would calve with a 10% more likely chance of being unassisted when compared to sire B's daughters.

Maternal Calving Ease (MCE)

MCE EPD predicts how easily a sire's daughters will calve at 2 years of age and is measured on a percentage. For example, if sire A has a MCE EPD of 7 and sire B has a CE EPD of -3, then you would expect on average if comparably mated, sire A's daughters would calve with a 10% more likely chance of being unassisted when compared to sire B's daughters.

Mature Cow Weight (MCW)

The MCW EPD was designed to help breeders select sires that will either increase or decrease mature size of cows in the herd. The trait was developed after years of cow weight data collection and the EPD relates directly to the maintenance requirements of a cow herd. An example of how the MCW EPD allows breeders to compare sires: if sire A has a MCW EPD of 100 and sire B has an EPD of 85, then you would expect the females of sire A, if mated to similar cows, to be 15 lb. heavier at mature size.

Udder Suspension (UDDR)

Scores range from 9 (very tight) to 1 (very pendulous) and represent assessments of udder support. Weak udder suspension results in pendulous udders that make it difficult for a calf to nurse. Weak suspension in the udder indicates a lack of support in the ligament that ties the udder to the cow's body wall. Over time, weakness in this ligament will allow the udder to hang down too far from the body and may subject the udder to serious problems and increased potential for injury.

UDDR EPDs are reported on the scoring scale. Differences in sire EPDs predict the difference expected in the sires' daughters' udder characteristics when managed in the same environment. For example, if sire A has a UDDR EPD of 0.4, and sire B has a UDDR EPD of -0.1, the difference in the values is 0.5, or one-half of a score. If daughters of sires A and B are raised and managed in the same environment, you would expect half a score better udder suspension in daughters of sire A, compared to sire B.

Teat Size (TEAT)

Scores range from 9 (very small) to 1 (very large, balloon shaped) and are subjective assessments of the teat length and circumference. Oversized teats are difficult for newborn calves to nurse, and the calf may not receive adequate colostrum. This could lead to a higher incidence of scours or decreased immunity levels in the newborn calf.

TEAT EPDs are reported on the scoring scale. Differences in sire EPDs predict the difference expected in the sires' daughters' udder characteristics when managed in the same environment. For example, if sire A has a teat size EPD of 0.4, and sire B has a teat size EPD of -0.1, the difference in the values is 0.5, or one-half of a score. If daughters of sires A and B are raised and managed in the same environment, you would expect half a score smaller teat size in daughters of sire A, compared to sire B.

Scrotal Circumference (SC)

Measured in centimeters and adjusted to 365 days of age, SC EPD is the best estimate of fertility. It is related to the bull's own semen quantity and quality, and is also associated with age at puberty of sons and daughters. Larger SC EPDs suggest younger age at puberty. Yearling sons of a sire with a .7 SC EPD should have yearling scrotal circumference measurements that average 0.7 centimeters (cm) larger than progeny by a bull with an EPD of 0.0 cm. In the Hereford genetic analysis, a multiple-trait model was used for scrotal circumference. Weaning weight was used as a predictor variable to increase the prediction accuracy of SC EPDs. Therefore, an animal with a weaning weight EPD should also have a SC EPD."

Sustained Cow Fertility (SCF)

The AHA's new Sustained Cow Fertility EPD (SCF) is a prediction of a cow's ability to continue to calve from three years of age through twelve years of age, given she calved as a two-year-old. The EPD is expressed as a deviation in the proportion of the ten-possible calving's to twelve years old expressed as a probability. For example, the daughters of a bull with a 30 EPD would have the genetic potential to have one more calf by age twelve than the daughters from a bull with a 20 EPD. In other words, the daughters from the 30 EPD bull would have a 10% greater probability of having one more calf than the bull with a 20 EPD. This is equivalent to saying that the daughters are 10% more likely to remain in the herd to age 12.

Dry Matter Intake

The Dry Matter Intake EPD predicts the daily consumption of pounds of feed. For example, if sire A has a DMI EPD of 1.1 and sire B has a DMI EPD of 0.1, you would expect sire B's progeny, if comparably mated, to consume on average 1 pound of feed less per day.

Carcass Weight (CW)

Carcass weight is a beneficial trait when considering the impact that pounds have relative to end product value. At the same age constant endpoint, sires with higher values for carcass weight will add more pounds of hot carcass weight compared to sires with lower values for carcass weight. For example, if sire A has a CW EPD of 84 and sire B has a CW EPD 64, then you would expect the progeny of sire A, if harvested at the same age constant endpoint, to have a 20-lb. advantage in terms of hot carcass weight.

Rib Fat (FAT)

The FAT EPD reflects differences in adjusted 365-day, 12th-rib fat thickness based on carcass measurements of harvested cattle. Sires with low, or negative FAT EPDs are expected to produce leaner progeny than sires with higher EPDs. Ultrasound measures are also incorporated into this trait and have been shown to be highly correlated with the performance of slaughter progeny. All data is expressed on a carcass scale.

Ribeye Area (REA)

REA EPDs reflect differences in an adjusted 365-day ribeye area measurement based on carcass measurements of harvested cattle. Sires with relatively higher REA EPDs are expected to produce better-muscler and higher percentage yielding slaughter progeny than will sires with lower REA EPDs. Ultrasound measurements are also incorporated into this trait and have been shown to be highly correlated with the performance of slaughter progeny. All data is expressed on a carcass scale.

Marbling (MARB)

MARB EPDs reflect differences in an adjusted 365-day marbling score (intramuscular fat, IMF) based on carcass measurements of harvested cattle. Breeding cattle with higher MARB EPDs should produce slaughter progeny with a higher degree of IMF and therefore higher quality grades. Ultrasound measurements are also incorporated into this trait and have been shown to be highly correlated with the performance of slaughter progeny. All data is expressed on a carcass scale.

Baldy Maternal Index (BMI\$)

The Baldy Maternal Index is a maternally focused index that is based on a production system that uses Hereford x Angus cross cows. Progeny of these cows are directed towards Certified Hereford Beef. This index has significant weight on Sustained Cow Fertility, which predicts fertility and longevity of females. There is a slightly positive weight on Weaning Weight, Mature Cow Weight and Milk which accounts for enough growth but ensures females do not increase inputs. There is some negative emphasis on Dry Matter Intake, but a positive weighting on Carcass Weight which is anticipated to provide profitability from finishing of non-replacement females and castrated males. Marbling and Rib-eye Area are also positively weighted to keep the harvested progeny successful for CHB. This index is geared to identify Hereford bulls that will be profitable when used in a rotational cross with mature commercial Angus cows.

Brahman Influence Index (BII\$)

The Brahman Influence Index is a maternally focused index that is based on a production system that uses Brahman x Hereford cross cows. Progeny of these cows are directed towards a commodity beef market since Certified Hereford Beef does not accept Brahman influenced cattle. This index has significant weight on Sustained Cow Fertility, which predicts fertility and longevity of females. There is a slightly positive weight on Weaning Weight, Mature Cow Weight and Milk which accounts for enough growth but ensures females do not increase inputs. There is some negative emphasis on Dry Matter Intake, but a positive weighting on Carcass Weight which is anticipated to provide profitability in finishing non-replacement females and castrated males. Marbling and Rib-eye Area are also positively weighted to keep harvested progeny successful for a variety of commodity based programs. This index targets producers that use Hereford bulls on Brahman influenced cows.

Certified Hereford Beef Index (CHB\$)

The Certified Hereford Beef Index is a terminal sire index that is built on a production system where Hereford bulls are mated to mature commercial Angus cows and all progeny will be targeted for Certified Hereford Beef after the finishing phase. This index has significant weight on Carcass Weight to ensure profit on the rail. As well there is a positive weighting for Average Daily Gain along with a negative weighting on Dry Matter Intake to ensure efficient pounds of growth in the finishing phase. Keep in mind, this production system takes advantage of complimentary breeding with the commercial Angus cow. Although Marbling is weighted positively in this index, a positive weighting for Rib-eye Area and a negative weighting for Back Fat are a greater priority in this index to allow for optimum end-product merit. This is the only index that has no emphasis on fertility. Remember that no replacement heifers are being retained.

Hereford Breed Averages

CED	BW	WW	YW	Scrotal	SCF	MILK	M&G	Udder	Teat	REA	MARB	BMI\$	CHB\$
2.8	2.4	57	91	1.2	17.0	26	55	1.10	1.30	0.37	0.20	362	122

The Yearling Hereford Bulls

The yearling bulls come predominately from the group of cows calving late January through mid March. These bulls have been on a high roughage ration at a low MCAL to ensure longevity. We want our bulls to be able to work hard and last years without any problems. You will find many 1/2 and 3/4 brothers in this offering to help you to have a consistent calf crop. Most all of the bulls in this group are the result of Artificial Insemination. Carcass data will be available on sale day. If there are any questions on pedigrees or any other information you are interested in please ask.



lot 1

ECR 238 FORTIFY 0008

DOB: 2/23/20 • Reg. #44196271 • Polled • Tattoo 0008

BOYD FT KNOX 17Y XZ5 4040 (DLF,HYF,IEF,MSUDF,MDF)
sire NJW 84B 4040 FORTIFIED 238F (DLF,HYF,IEF,MSUDF,MDF)
 NJW 16S 100W JOEY 84B ET (DLF,HYF,IEF,MSUDF,MDF)

TH 22R 16S LAMBEAU 17Y
 DOSS MY EYES ADORE U DHZ5
 NJW 73S M326 TRUST 100W ET
 TLELL 117F JOEY 16S

CHURCHILL BRAVO 3275A ET (DLF,HYF,IEF)
dam ECR 3275 DOMINETTE 8173
 ECR 2004 DOMINETTE 4005

HH ADVANCE 0132X
 CHURCHILL LADY 9123W ET
 ECR 9279 DOMINO 2004
 ECR 017 DOMINETTE 2082

CED	BW	WW	YW	Scrotal	SCF	MILK	M&G	Udder	Teat	REA	MARB	BMIS	CHBS
2.7	2.5	58	92	1.2	16.6	27	56	1.1	1.2	0.37	0.2	357	122

ACT BW 84 lbs. • ADJ WW 657 lbs. • LE Pigment 0 • RE Pigment 0 • ADJ Scrotal 34

- Lower birth weight bull with cow power
- Great set of EPD's including carcass numbers



Lot 1 • ECR 238 Fortify 0008

lot 2

ECR 203 LONG RANGE 0075

DOB: 3/3/20 • Reg. #44196669 • Polled • Tattoo 0075

NJW 135U 10Y HOMETOWN 27A (DLF,HYF,IEF,MSUDF,MDC)
sire NJW 76S 27A LONG RANGE 203D ET (DLF,HYF,IEF,MSUDF,MDF)
 NJW 55N STARDUST 76S (DLF,HYF,IEF,MSUDF,MDF)

NJW 73S W18 HOMETOWN 10Y ET
 NJW 4037 34S DURANGO VACA 135U
 NJW BW TRAILDUST 161L
 NJW 57G SPIRIT QUEEN 55N ET

H/TSR/CHEZ/FULL THROTTLE ET (CHB)(DLF,HYF,IEF)
dam CKCC MS FULL THROTTLE 8649F
 KJ MISS L1 18-1 117-3

H WCC/WB 668 WYARNO 9500 ET
 R SWEET RED WINE 039
 KJ L1 DOM 7034 18-1
 KJ MISS L1 7631 28-9

CED	BW	WW	YW	Scrotal	SCF	MILK	M&G	Udder	Teat	REA	MARB	BMIS	CHBS
1.2	3.6	63	105	1.1	19.7	27	59	1.20	1.30	0.45	-0.01	391	101

ACT BW 86 lbs. • ADJ WW 794 lbs. • LE Pigment 100 • RE Pigment 100 • ADJ Scrotal 35

- Weaned off heavy with a 133 WW ratio
- Long bodied bull with added shape



Lot 2 • ECR 203 Long Range 0075

lot 3

ECR 7076 ADVANCE 0080

DOB: 3/3/20 • Reg. #44194268 • Horned • Tattoo 0080

CL 1 DOMINO 1131Y 1ET (CHB)(DLF,HYF,IEF)
sire HH ADVANCE 7076E ET (DLF,HYF,IEF,MSUDF)
 HH MISS ADVANCE 0121X (DLF,HYF,IEF)

CL 1 DOMINO 955W
 CL 1 DOMINETTE 615S
 HH ADVANCE 8203U ET
 HH MISS ADVANCE 7050T

UPS UNDISPUTED ET (DLF,HYF,IEF)
dam ECR 3304 RACHAEL 6094
 BAR JZ RACHAEL 575Z (DOD)

SHF WONDER M326 W18 ET
 UPS MISS DIAMOND 1353
 MSU TCF REVOLUTION 4R
 BAR JZ DANIELLE 148X

CED	BW	WW	YW	Scrotal	SCF	MILK	M&G	Udder	Teat	REA	MARB	BMIS	CHBS
1.3	3.5	57	89	0.9	17.1	32	60	1.2	1.2	0.38	0.23	373	128

ACT BW 86 lbs. • ADJ WW 738 lbs. • LE Pigment 90 • RE Pigment 90 • ADJ Scrotal 34

- Heavy weaning at 738
- Dark red with added power from Undisputed on the bottom side



Lot 3 • ECR 7076 Advance 0080



Lot 4 • ECR 1628 Advance 0088

lot 4

ECR 1628 ADVANCE 0088

DOB: 3/4/20 • Reg. #44194166 • Horned • Tattoo 0088

sire CL 1 DOMINO 955W {SOD}{CHB}{DLF,HYF,IEF}
MC ADVANCE 955W 1628 ET {DLF,HYF,IEF,MSUDF}
 HH MISS ADVANCE 1079Y ET {DLF,HYF,IEF}

CL 1 DOMINO 637S 1ET
 CL 1 DOMINETTE 5152R
 HH ADVANCE 8050U ET
 HH MISS ADVANCE 6109S

dam UPS UNDISPUTED ET {DLF,HYF,IEF}
ECR 3304 MISS BOBBIE 6024
 ECR 005 BOBBIE SUE 4366

SHF WONDER M326 W18 ET
 UPS MISS DIAMOND 1353
 BAR JZ SHOW OF FORCE 005Z
 ECR 9279 DOMINETTE 2239

CED	BW	WW	YW	Scrotal	SCF	MILK	M&G	Udder	Teat	REA	MARB	BMIS	CHBS
4.8	2.8	62	98	1.2	18	29	60	1.1	1.1	0.59	0.04	372	111

ACT BW 87 lbs. • ADJ WW 736 lbs. • LE Pigment 100 • RE Pigment 75 • ADJ Scrotal 38.5

- 736 lb at weaning
- 1628 has been a consistant producer of powerful cattle that come off the cow with more weight and mass than average, this bull is no exception



Lot 5 • ECR 4126 Advance 0089

lot 5

ECR 4126 ADVANCE 0089

DOB: 3/5/20 • Reg. #44192459 • Horned • Tattoo 0089

sire CL 1 DOMINO 1131Y 1ET {CHB}{DLF,HYF,IEF}
HH ADVANCE 7076E ET {DLF,HYF,IEF,MSUDF}
 HH MISS ADVANCE 0121X {DLF,HYF,IEF}

CL 1 DOMINO 955W
 CL 1 DOMINETTE 615S
 HH ADVANCE 8203U ET
 HH MISS ADVANCE 7050T

dam UPS DOMINO 3027 {SOD}{DLF,HYF,IEF,MSUDF,MDF}
ECR BOBBI 4004
 ECR BOBBY 2242 {DOD}

CL 1 DOMINO 9126J 1ET
 UPS MISS DIAMOND 1353
 ECR L18 EXTRA DEEP 9279
 ECR 491 SABRINA 8166

CED	BW	WW	YW	Scrotal	SCF	MILK	M&G	Udder	Teat	REA	MARB	BMIS	CHBS
2.8	2.9	52	84	0.7	19.3	34	60	1.3	1.3	0.42	0.27	403	133

ACT BW 87 lbs. • ADJ WW 702 lbs. • LE Pigment 100 • RE Pigment 100 • ADJ Scrotal 32.5

- Great blend of some of the greats in the breed
- Traditionally marked and yellow hided



HH Advance 4126B • Sire of Lot 6

lot 6

ECR 4126 ADVANCE 0091

DOB: 3/5/20 • Reg. #44192213 • Horned • Tattoo 0091

sire HH ADVANCE 1013Y ET {DLF,HYF,IEF}
HH ADVANCE 4126B {DLF,HYF,IEF,MSUDF}
 HH MISS ADVANCE 1179Y ET {DLF,HYF,IEF}

HH ADVANCE 4055P
 HH MISS ADVANCE 7003T
 HH ADVANCE 7034T ET
 HH MISS ADVANCE 5139R ET

dam KB L1 DOMINO 842U {DLF,IEF}
ECR 842 DOMINETTE 3427
 DKF 860 DOMINETTE 0410 ET

KB L1 DOMINO 655 ET
 MONTANA MISS 310
 CL 1 DOMINO 860U
 DKF 179 SASSY 473

CED	BW	WW	YW	Scrotal	SCF	MILK	M&G	Udder	Teat	REA	MARB	BMIS	CHBS
4.3	3.6	57	98	1.4	16.3	24	53	1.3	1.3	0.36	0.08	338	106

ACT BW 86 lbs. • ADJ WW 722 lbs. • LE Pigment 100 • RE Pigment 100 • ADJ Scrotal 38.5

- Pedigree full of elites such as 4126, 842, 860 and 473
- Curve bending from BW to YW
- WW ratio 102

lot 7

ECR 4126 ADVANCE 0112

DOB: 3/12/20 • Reg. #44191869 • Horned • Tattoo 0112

sire HH ADVANCE 1013Y ET {DLF,HYF,IEF}
HH ADVANCE 4126B {DLF,HYF,IEF,MSUDF}
 HH MISS ADVANCE 1179Y ET {DLF,HYF,IEF}

dam DKF 5042 CENTURION 7473
ECR MS GENETIC EXPLOSION 1410
 ECR LADY GE 131 {DLF,HYF,IEF}

HH ADVANCE 4055P
 HH MISS ADVANCE 7003T
 HH ADVANCE 7034T ET
 HH MISS ADVANCE 5139R ET
 K&B EXCEL 5042
 DKF 179 SASSY 473
 GK GENETIC EXPLOSION
 LADY GEN 664

CED	BW	WW	YW	Scrotal	SCF	MILK	M&G	Udder	Teat	REA	MARB	BMIS	CHBS
4.8	3.3	52	83	1.4	19.2	24	50	1.3	1.3	0.28	0.13	375	104

ACT BW 85 lbs. • ADJ WW 680 lbs. • LE Pigment 70 • RE Pigment 100 • ADJ Scrotal 35

- 97% BW and 108% WW ratio is exactly what we are all after
- Lower than average BW with above average WW
- Added longevity



Lot 7 • ECR 4126 Advance 0112

lot 8

ECR 1628 ADVANCE 0116

DOB: 3/11/20 • Reg. #44192694 • Horned • Tattoo 0116

sire CL 1 DOMINO 955W {SOD}{CHB}{DLF,HYF,IEF}
MC ADVANCE 955W 1628 ET {DLF,HYF,IEF,MSUDF}
 HH MISS ADVANCE 1079Y ET {DLF,HYF,IEF}

dam ECR 4202 DOMINO 0271 ET {DLF,HYF,IEF}
ECR 0271 LADY GEN 4262
 ECR LADY GEN 8305 {DOD}

CL 1 DOMINO 637S 1ET
 CL 1 DOMINETTE 5152R
 HH ADVANCE 8050U ET
 HH MISS ADVANCE 6109S
 MH DAKOTA LAD 4202
 RCH L1 DOMINETTE 0001
 K&B EXCEL 5042
 ECR LADY GEN 449

CED	BW	WW	YW	Scrotal	SCF	MILK	M&G	Udder	Teat	REA	MARB	BMIS	CHBS
3.3	3.9	54	93	1.1	19.2	22	48	1.1	1.1	0.45	-0.04	375	97

ACT BW 86 lbs. • ADJ WW 768 lbs. • LE Pigment 50 • RE Pigment 100 • ADJ Scrotal 37

- Big stretchy bull with that herd bull look
- Power in the blood



Lot 8 • ECR 1628 Advance 0116

lot 9

ECR 1628 ADVANCED 0125

DOB: 3/13/20 • Reg. #44191962 • Polled • Tattoo 0125

sire CL 1 DOMINO 955W {SOD}{CHB}{DLF,HYF,IEF}
MC ADVANCE 955W 1628 ET {DLF,HYF,IEF,MSUDF}
 HH MISS ADVANCE 1079Y ET {DLF,HYF,IEF}

dam KJ HVH 33N REDEEM 485T ET {SOD}{DLF,HYF,IEF}
ECR LADY REDEEM 3124
 RV MS BOOMER 6749

CL 1 DOMINO 637S 1ET
 CL 1 DOMINETTE 5152R
 HH ADVANCE 8050U ET
 HH MISS ADVANCE 6109S
 SHF RADAR M326 R125
 HVH OKSANA 4L 33N
 PW VICTOR BOOMER P606
 RV MS PATRIOT 7049

CED	BW	WW	YW	Scrotal	SCF	MILK	M&G	Udder	Teat	REA	MARB	BMIS	CHBS
3.3	3.1	56	85	1	18.4	28	56	1.3	1.3	0.52	0.02	374	101

ACT BW 83 lbs. • ADJ WW 810 lbs. • LE Pigment 50 • RE Pigment 90 • ADJ Scrotal 37

- Rare opportunity to get the herd bull 1628 in a polled package
- Performance bull to add pounds, 117 WW ratio



Lot 9 • ECR 1628 Advanced 0125



Lot 10 • ECR 1628 Advance 0130

lot 10

ECR 1628 ADVANCE 0130

DOB: 3/13/20 • Reg. #44171594 • Horned • Tattoo 0130

sire CL 1 DOMINO 955W {SOD}{CHB}{DLF,HYF,IEF}
MC ADVANCE 955W 1628 ET {DLF,HYF,IEF,MSUDF}
 HH MISS ADVANCE 1079Y ET {DLF,HYF,IEF}

dam AH JDH CRACKER JACK 26U ET {SOD}{DLF,HYF,IEF,MDF}
ECR LADY WRANGLER 1178
 ECR 25L LADY WRANGLER 9342

CL 1 DOMINO 637S 1ET
 CL 1 DOMINETTE 5152R
 HH ADVANCE 8050U ET
 HH MISS ADVANCE 6109S
 NJW 1Y WRANGLER 19D
 CRR D03 VIOLET 349
 JDH AH 25L WRANGLER 19T ET
 ECR 43L MISS JENNY 521

CED	BW	WW	YW	Scrotal	SCF	MILK	M&G	Udder	Teat	REA	MARB	BMIS	CHBS
4.9	2.5	55	81	0.9	17	28	56	1.3	1.3	0.52	0.09	362	116

ACT BW 84 lbs. • ADJ WW 800 lbs. • LE Pigment 0 • RE Pigment 100 • ADJ Scrotal 37.5

- The most powerful horned bull in the sale
- 97% BW ratio with a 117% WW ratio



Lot 11 • ECR 4126 Advance 0134

lot 11

ECR 4126 ADVANCE 0134

DOB: 3/14/20 • Reg. #44192579 • Horned • Tattoo 0134

sire HH ADVANCE 1013Y ET {DLF,HYF,IEF}
HH ADVANCE 4126B {DLF,HYF,IEF,MSUDF}
 HH MISS ADVANCE 1179Y ET {DLF,HYF,IEF}

dam NJW 98S R117 RIBEYE 88X ET {SOD}{DLF,HYF,IEF,MSUDF,MDF}
ECR 88X CLASSY LADY 4092 {DOD}
 ECR HIGH CLASS LADY 1290

HH ADVANCE 4055P
 HH MISS ADVANCE 7003T
 HH ADVANCE 7034T ET
 HH MISS ADVANCE 5139R ET
 SHF RIB EYE M326 R117
 NJW 9126J DEW DOMINO 98S
 PURPLE CURRENCY 24U ET
 ECR 19D DOMINETTE 7513

CED	BW	WW	YW	Scrotal	SCF	MILK	M&G	Udder	Teat	REA	MARB	BMIS	CHBS
4.7	3.7	58	94	1.2	18.8	27	56	1.5	1.5	0.45	0.13	383	111

ACT BW 84 lbs. • ADJ WW 758 lbs. • LE Pigment 100 • RE Pigment 60 • ADJ Scrotal 34.5

- Mother is a Dam of Distinction
- Middle framed, easy fleshing and stout



Lot 12 • ECR WF Charles 0908 ET

lot 12

ECR WF CHARLES 0908 ET

DOB: 3/10/20 • Reg. #44205074 • Horned • Tattoo 0908

sire REMITALL ONLINE 122L {SOD}{CHB}{DLF,HYF,IEF}
DM BR SOONER {CHB}{DLF,HYF,IEF}
 DM L1 DOMINETTE 901 {DLF,HYF,IEF}

dam UPS SENSATION 2296 ET {DLF,HYF,IEF,MSUDF,MDF}
ECR MISS SENSATION 4328 ET {DLF,HYF,IEF,MSUDF}
 ECR LADY FLOW 212ET {DLF,HYF,IEF}

REMITALL EMBRACER 8E
 REMITALL CATALINA 24H
 HH ADVANCE 688F 1ET
 DM L1 DOMINETTE P640
 CHURCHILL SENSATION 028X
 UPS JT MISS NEON 7811 1ET
 DKF RO CASH FLOW 0245 ET
 RV GOLDEN LADY 5064

CED	BW	WW	YW	Scrotal	SCF	MILK	M&G	Udder	Teat	REA	MARB	BMIS	CHBS
0	4.3	60	92	1	17	32	62	1.15	1.25	0.61	0.13	376	130

ACT BW 89 lbs. • ADJ WW 780 lbs. • LE Pigment 0 • RE Pigment 95 • ADJ Scrotal 36

- Extremely rare genetics that will add mass, power and look to any calf crop
- Backed by a top donor

lot 13

ECR 7076 ADVANCE 0144

DOB: 3/14/20 • Reg. #44193618 • Horned • Tattoo 0144

CL 1 DOMINO 1131Y 1ET {CHB}{DLF,HYF,IEF} CL 1 DOMINO 955W
 CL 1 DOMINETTE 615S
 sire **HH ADVANCE 7076E ET** {DLF,HYF,IEF,MSUDF} HH ADVANCE 8203U ET
 HH MISS ADVANCE 0121X {DLF,HYF,IEF} HH MISS ADVANCE 7050T
 HH ADVANCE 2029Z ET {DLF,HYF,IEF} HH ADVANCE 8203U ET
 dam **ECR 2029 MISS ADVANCE 5194** HH MISS ADVANCE 5139R ET
 ECR 017 DOMINETTE 2173 CL 1 DOMINO 017X
 ECR 743 MISS FLAME 0339

CED	BW	WW	YW	Scrotal	SCF	MILK	M&G	Udder	Teat	REA	MARB	BMIS	CHBS
2.3	3.7	55	79	0.8	14.8	31	58	1.1	1.1	0.38	0.21	338	124

ACT BW 89 lbs. • ADJ WW 708 lbs. • LE Pigment 100 • RE Pigment 100 • ADJ Scrotal 34.5

- Straight L1 pedigree
- Full pigmentation backed by a great cow family



ECR CHEZ L18 Sensation 7076 ET • Sire of Lot 14

lot 14

ECR 7076 EXCEL DOMINO 0167

DOB: 3/17/20 • Reg. #44194921 • Horned • Tattoo 0167

GO EXCEL L18 {SOD}{DLF,HYF,IEF} DD EXCEL DESIGN 40
 GO MS 124 ADVANCE 7005
 sire **ECR CHEZ L18 SENSATION 7076 ET** {DLF,HYF,IEF} UPS SENSATION 2296 ET
 ECR MISS SENSATION 4406 ET {DLF,HYF,IEF,MSUDF} ECR LADY FLOW 212ET
 NJW 73S W18 HOMETOWN 10Y ET {SOD}{CHB}{DLF,HYF,IEF,MSUDF,MDC} SHF WONDER M326 W18 ET
 dam **ECR 10Y DOMINETTE 6485 ET** NJW P606 72N DAYDREAM 73S
 ECR 7195 DOMINETTE 0038 {DLF,HYF,IEF} HH ADVANCE 7195T
 ECR 4198 DOMINETTE 8075

CED	BW	WW	YW	Scrotal	SCF	MILK	M&G	Udder	Teat	REA	MARB	BMIS	CHBS
1.2	3.8	58	91	1.5	18.4	35	64	1.1	1.2	0.42	0.02	374	101

ACT BW 90 lbs. • ADJ WW 710 lbs. • LE Pigment 0 • RE Pigment 10 • ADJ Scrotal 34

- The ECR 7076 offspring are consistently powerful and 0167 is no exception
- Dam is a daughter of the great 0038 donor



Lot 14 • ECR 7076 Excel Domino 0167

SEMEN / CERTIFICATE STORE ONLINE!

Semen / Certificate Store now on fawcettselmcreekranch.com

Our semen/cert store offers our elite sires
 Visit fawcettselmcreekranch.com to place your orders

www.fawcettselmcreekranch.com

Heifer Bulls - Lots 15-25 Lots 15-25 safe for use on heifers, but still have cow power quality



Lot 15 • ECR 238 Fortified 0010

lot 15

ECR 238 FORTIFIED 0010

DOB: 2/23/20 • Reg. #44196353 • Polled • Tattoo 0010

BOYD FT KNOX 17Y XZ5 4040 (DLF,HYF,IEF,MSUDF,MDF)
 sire NJW 84B 4040 FORTIFIED 238F (DLF,HYF,IEF,MSUDF,MDF)
 NJW 16S 100W JOEY 84B ET (DLF,HYF,IEF,MSUDF,MDF)

BAR JZ SLEEP ON 738C (DLF,HYF,IEF,MSUDF)
 dam ECR 738 DOMINETTE 8278
 ECR 394 DOMINETTE 6577 (DLF,HYF,IEF,MSUDF)

TH 22R 16S LAMBEAU 17Y
 DOSS MY EYES ADORE U DHZ5
 NJW 73S M326 TRUST 100W ET
 TLELL 117F JOEY 16S
 HYALITE ON TARGET 936
 BAR JZ VIRGINIA 500Y
 CL 1 DOMINO 394A
 ECR 5042 DOMINETTE 8297

CED	BW	WW	YW	Scrotal	SCF	MILK	M&G	Udder	Teat	REA	MARB	BMIS	CHBS
9.3	-0.7	53	86	1.4	20.6	28	54	1.3	1.4	0.33	0.25	413	123

ACT BW 76 lbs. • ADJ WW 712 lbs. • LE Pigment 100 • RE Pigment 100 • ADJ Scrotal 36

- We have been extremely happy with the Fortified offspring. They come easy and grow quickly. Study these 238's. They are consistent and will sire the type of cattle that will be utilized in purebred and commercial operations for years to come
- 92% BW to 116% WW



Lot 16 • ECR 238 Fortified 0015

lot 16

ECR 238 FORTIFIED 0015

DOB: 2/23/20 • Reg. #44196241 • Polled • Tattoo 0015

BOYD FT KNOX 17Y XZ5 4040 (DLF,HYF,IEF,MSUDF,MDF)
 sire NJW 84B 4040 FORTIFIED 238F (DLF,HYF,IEF,MSUDF,MDF)
 NJW 16S 100W JOEY 84B ET (DLF,HYF,IEF,MSUDF,MDF)

UPS UNDISPUTED ET (DLF,HYF,IEF)
 dam ECR 3304 MISS EXCEL 8088
 ECR EXCEL VICKY 5013

TH 22R 16S LAMBEAU 17Y
 DOSS MY EYES ADORE U DHZ5
 NJW 73S M326 TRUST 100W ET
 TLELL 117F JOEY 16S
 SHF WONDER M326 W18 ET
 UPS MISS DIAMOND 1353
 TH 60W 719T VICTOR 43Y
 ECR LADY EXCEL 3376 ET

CED	BW	WW	YW	Scrotal	SCF	MILK	M&G	Udder	Teat	REA	MARB	BMIS	CHBS
5.4	1.2	56	91	1.2	20.3	27	55	1.2	1.3	0.35	0.22	409	121

ACT BW 77 lbs. • ADJ WW 719 lbs. • LE Pigment 100 • RE Pigment 100 • ADJ Scrotal 36

- Calving ease throughout his pedigree
- 123% weaning weight ratio
- When he out grows being able to be used on heifers you turn him out on your cows and he will excel



Lot 17 • ECR 238 Fortified 0020

lot 17

ECR 238 FORTIFIED 0020

DOB: 2/25/20 • Reg. #44196212 • Polled • Tattoo 0020

BOYD FT KNOX 17Y XZ5 4040 (DLF,HYF,IEF,MSUDF,MDF)
 sire NJW 84B 4040 FORTIFIED 238F (DLF,HYF,IEF,MSUDF,MDF)
 NJW 16S 100W JOEY 84B ET (DLF,HYF,IEF,MSUDF,MDF)

UPS UNDISPUTED ET (DLF,HYF,IEF)
 dam ECR 3304 LADY DIAMONDS 8044
 ECR 43Y VICKY 5026

TH 22R 16S LAMBEAU 17Y
 DOSS MY EYES ADORE U DHZ5
 NJW 73S M326 TRUST 100W ET
 TLELL 117F JOEY 16S
 SHF WONDER M326 W18 ET
 UPS MISS DIAMOND 1353
 TH 60W 719T VICTOR 43Y
 ECR 5216 DOMINETTE 3161

CED	BW	WW	YW	Scrotal	SCF	MILK	M&G	Udder	Teat	REA	MARB	BMIS	CHBS
7.4	0.2	55	90	1.4	20.4	28	55	1.1	1.2	0.4	0.24	411	123

ACT BW 78 lbs. • ADJ WW 637 lbs. • LE Pigment 100 • RE Pigment 100 • ADJ Scrotal 34.5

- Long bodied, high performing 238 son
- Calving ease throughout his pedigree
- Added carcass value

lot 18 **ECR 1628 EXTRA ADVANCE 0071**

DOB: 3/1/20 • Reg. #44171596 • Horned • Tattoo 0071

sire CL 1 DOMINO 955W {SOD}{CHB}{DLF,HYF,IEF}
MC ADVANCE 955W 1628 ET {DLF,HYF,IEF,MSUDF}
 HH MISS ADVANCE 1079Y ET {DLF,HYF,IEF}

CL 1 DOMINO 637S 1ET
 CL 1 DOMINETTE 5152R
 HH ADVANCE 8050U ET
 HH MISS ADVANCE 6109S

dam ECR L18 EXTRA DEEP 9279 {SOD}{CHB}{DLF,HYF,IEF}
ECR MISS LITTLE EXTRA 1240
 ECR 4129 LADY LASS 6345

GO EXCEL L18
 OXH CHRISTI 0028
 K&B SILVER ADVANCE 4129
 ECR 552 LADY LASS 345

CED	BW	WW	YW	Scrotal	SCF	MILK	M&G	Udder	Teat	REA	MARB	BMIS	CHBS
7.6	1.9	56	83	0.8	17.1	28	56	1.3	1.4	0.68	-0.01	364	113

ACT BW 81 lbs. • ADJ WW 754 lbs. • LE Pigment 50 • RE Pigment 75 • ADJ Scrotal 36

- Straight horned pedigree
- I found 1628 in Tennessee as he was a result of an embryo purchased from Holden and he might be one of the most influential horned bulls here on the ranch as he sires cattle with low birth weights with added performance.
- Great cow family behind him



Lot 18 • ECR 1628 Extra Advance 0071

lot 19 **ECR 238 FORTIFY 0078**

DOB: 3/2/20 • Reg. #44196337 • Polled • Tattoo 0078

sire BOYD FT KNOX 17Y XZ5 4040 {DLF,HYF,IEF,MSUDF,MDF}
NJW 84B 4040 FORTIFIED 238F {DLF,HYF,IEF,MSUDF,MDF}
 NJW 16S 100W JOEY 84B ET {DLF,HYF,IEF,MSUDF,MDF}

TH 22R 16S LAMBEAU 17Y
 DOSS MY EYES ADORE U DHZ5
 NJW 73S M326 TRUST 100W ET
 TLELL 117F JOEY 16S

dam UPS UNDISPUTED ET {DLF,HYF,IEF}
ECR 3304 MISS DIAMOND 8255
 ECR LADY WHO 4340

SHF WONDER M326 W18 ET
 UPS MISS DIAMOND 1353
 ECR WHO MAKER 210 ET
 ECR 19D DOMINETTE 7513

CED	BW	WW	YW	Scrotal	SCF	MILK	M&G	Udder	Teat	REA	MARB	BMIS	CHBS
3.5	2.4	59	98	1.4	19.3	30	59	1.2	1.3	0.48	0.19	403	126

ACT BW 85 lbs. • ADJ WW 667 lbs. • LE Pigment 100 • RE Pigment 100 • ADJ Scrotal 34

- Not often the opportunity arises to get Whomaker in a pedigree.
- Great set of EPD's



Lot 19 • ECR 238 Fortify 0078

lot 20 **ECR 1628 ADVANCE 0115**

DOB: 3/11/20 • Reg. #44191957 • Horned • Tattoo 0115

sire CL 1 DOMINO 955W {SOD}{CHB}{DLF,HYF,IEF}
MC ADVANCE 955W 1628 ET {DLF,HYF,IEF,MSUDF}
 HH MISS ADVANCE 1079Y ET {DLF,HYF,IEF}

CL 1 DOMINO 637S 1ET
 CL 1 DOMINETTE 5152R
 HH ADVANCE 8050U ET
 HH MISS ADVANCE 6109S

dam ECR L18 EXTRA DEEP 9279 {SOD}{CHB}{DLF,HYF,IEF}
ECR 7195 LADY STAR 3081
 ECR 7195 LADY STAR 9229

GO EXCEL L18
 OXH CHRISTI 0028
 HH ADVANCE 7195T
 ECR 5042 LADY STAR 7246

CED	BW	WW	YW	Scrotal	SCF	MILK	M&G	Udder	Teat	REA	MARB	BMIS	CHBS
6.7	2.2	54	83	0.9	19.8	30	57	1.2	1.3	0.64	-0.01	400	111

ACT BW 82 lbs. • ADJ WW 778 lbs. • LE Pigment 75 • RE Pigment 100 • ADJ Scrotal 34.5

- 95% BW to 112% WW ratio
- Straight horned pedigree
- Long bodied bull



Lot 20 • ECR 1628 Advance 0015



Lot 21 • ECR 11E No Fail 0127

lot 21

ECR 11E NO FAIL 0127

DOB: 3/12/20 • Reg. #44196236 • Polled • Tattoo 0127

INNISFAIL WHR X651/723 4013 ET (CHB){DLF,HYF,IEF,MSUDF,MDF} **EFBEEF TFL U208 TESTED X651 ET**
 sire **INNISFAIL 4013 11E {DLF,HYF,IEF}** INNISFAIL P230 T723
 INNISFAIL Z84 436B KCF BENNETT 732T Z84 ET
 INNISFAIL 9P 948W
 dam **ECR 173D LADY ENDURE 8076** KCF BENNETT ENCORE Z311 ET
 ECR LADY REDEEM 3141 BW 91H 100W RITA 79Z ET
 KJ HVH 33N REDEEM 485T ET
 DKF 19D MISS PATRIOT 7507

CED	BW	WW	YW	Scrotal	SCF	MILK	M&G	Udder	Teat	REA	MARB	BMIS	CHBS
6.1	1.6	62	99	1.2	17.6	25	56	1.4	1.4	0.44	0.38	390	148

ACT BW 78 lbs. • ADJ WW 761 lbs. • LE Pigment 100 • RE Pigment 100 • ADJ Scrotal 33.5

- Looking for a new pedigree?
- Looking for impeccable EPD's?
- Looking for a herd bull?



Lot 22 • ECR 721 Domino 0206

lot 22

ECR 721 DOMINO 0206

DOB: 3/20/20 • Reg. #44194602 • Horned • Tattoo 0206

CL 1 DOMINO 215Z (CHB){DLF,HYF,IEF,MSUDF,MDF} **CL 1 DOMINO 9122W 1ET**
 sire **F 215Z DOMINO 721 {DLF,HYF,IEF}** CL 1 DOMINETTE 055X
 F 105Y DOMINETTE 420 {DLF,HYF,IEF} F 5216 DOMINETTE 228
 dam **ECR 0133 CHRISTI 6172** HH ADVANCE 8141U
 ECR 9075 CHRISTI 3298 ET K&B MISS EXCEL 4216
 HH ADVANCE 9075W ET
 OXH CHRISTI 0028

CED	BW	WW	YW	Scrotal	SCF	MILK	M&G	Udder	Teat	REA	MARB	BMIS	CHBS
7	1.5	54	85	1.1	17.4	37	64	1.3	1.4	0.34	0.2	365	118

ACT BW 79 lbs. • ADJ WW 754 lbs. • LE Pigment 100 • RE Pigment 100 • ADJ Scrotal 36

- Great pedigree stemming back to Bob's mother and some of the greatest in the breed on the top side
- Low birth weight bull with cow power



Lot 23 • ECR 53D Journey 0225

lot 23

ECR 53D JOURNEY 0225

DOB: 3/22/20 • Reg. #44194264 • Polled • Tattoo 0225

LJR 023R WHITMORE 10W (SOD){CHB}{DLF,HYF,IEF,MSUDF,MDF} **KJ C&L J119 LOGIC 023R ET**
 sire **NJW 84B 10W JOURNEY 53D {DLF,HYF,IEF,MSUDF}** LJR MICKEY 278N
 NJW 16S 100W JOEY 84B ET (DLF,HYF,IEF,MSUDF,MDF) **NJW 73S M326 TRUST 100W ET**
 TLELL 117F JOEY 16S
 dam **ECR Z311 MISS THOR 6082** SCHU-LAR ON TARGET 22S
 THR MISS THOR 4047B KCF MISS REVOLUTION X338 ET
 NJW 37U 100W TRUST 113Z
 THR MISS THOR 1161Y

CED	BW	WW	YW	Scrotal	SCF	MILK	M&G	Udder	Teat	REA	MARB	BMIS	CHBS
6.6	2.1	72	115	1.5	19.1	23	59	1.2	1.1	0.54	0.22	398	130

ACT BW 83 lbs. • ADJ WW 808 lbs. • LE Pigment 100 • RE Pigment 100 • ADJ Scrotal 35

- I've been anxiously waiting to write the footnote on this bull as I work down the list. I've traveled a lot of miles to find herd bulls to ensure that our customers have access to the best genetics in the country. It's been awhile since I've seen one that is on this bulls level. Shouldn't be selling him. **HERD BULL, BEEF BULL**
- Individual performance-BW 97% to WW 118%, sire-287 calves with BW 98% and WW 103%, dam 3 calves BW 100% and WW 116%, full pigment, weaned off at 808 lbs
- Terms to be announced sale day, will be retaining ownership/possession, call to discuss details

lot **24**

ECR 53D JOURNEY 0279

DOB: 3/28/20 • Reg. #44201653 • Polled • Tattoo 0279

LJR 023R WHITMORE 10W {SOD}{CHB}{DLF,HYF,IEF,MSUDF,MDF}
sire **NJW 84B 10W JOURNEY 53D** {DLF,HYF,IEF,MSUDF}
 NJW 16S 100W JOEY 84B ET {DLF,HYF,IEF,MSUDF,MDF}

TH 60W 719T VICTOR 43Y {SOD}{DLF,HYF,IEF}
dam **ECR 43Y VICKYS DOM 5015**
 ECR 9075 DOMINETTE 3178

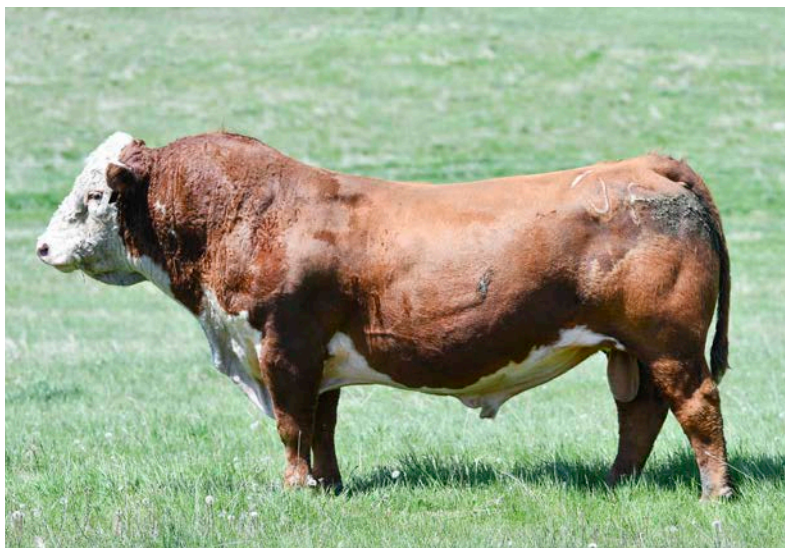
KJ C&L J119 LOGIC 023R ET
 LJR MICKEY 278N
 NJW 73S M326 TRUST 100W ET
 TLELL 117F JOEY 16S

TH 122 71I VICTOR 719T
 TH 77S 45P RUBY 60W
 HH ADVANCE 9075W ET
 IH 9126 DOMINETTE 631

CED	BW	WW	YW	Scrotal	SCF	MILK	M&G	Udder	Teat	REA	MARB	BMIS	CHBS
4.5	1.3	61	92	1	17.6	24	54	1	0.9	0.51	0.08	371	116

ACT BW 86 lbs. • ADJ WW 734 lbs. • LE Pigment 100 • RE Pigment 100 • ADJ Scrotal 34

- Low birth weight with above average weaning weight
- Long bodied bull that's sure to get the job done and add pounds at weaning



NWJ 84B 10W Journey 53D • Sire of Lots 23 & 24

lot **25**

ECR 1628 ADVANCE 0295

DOB: 4/1/20 • Reg. #44192754 • Polled • Tattoo 0295

CL 1 DOMINO 955W {SOD}{CHB}{DLF,HYF,IEF} CL 1 DOMINette 5152R
sire **MC ADVANCE 955W 1628 ET** {DLF,HYF,IEF,MSUDF} HH ADVANCE 8050U ET
 HH MISS ADVANCE 1079Y ET {DLF,HYF,IEF} HH MISS ADVANCE 6109S

TH 60W 719T VICTOR 43Y {SOD}{DLF,HYF,IEF} TH 122 71I VICTOR 719T
dam **ECR 43Y MISS VICTOR 4434** TH 77S 45P RUBY 60W
 ECR 19T MS WRANGLER 0358 JDH AH 25L WRANGLER 19T ET
 ECR 4129 MISS PAT 6235

CED	BW	WW	YW	Scrotal	SCF	MILK	M&G	Udder	Teat	REA	MARB	BMIS	CHBS
4.7	1.9	53	81	0.6	16.4	24	51	1.2	1.2	0.45	0.04	344	106

ACT BW 84 lbs. • ADJ WW 712 lbs. • LE Pigment 100 • RE Pigment 100 • ADJ Scrotal 34

- Great option for use on heifers
- Below average birth, above average growth and above average carcass



NJW 84B 4040 Fortified 238F • Sire of Lots 15, 16, 17, 19

Fawcett's
ELMCREEKRANCH
 Ree Heights, South Dakota

www.fawcettselmcreekranch.com

If planning to utilize online bidding, please contact Dan or any sale staff prior to the sale in case there happens to be a problem with the internet during the auction.

live broadcast and online bidding

The **Livestock**™
Link

Livestock Videoing • Video Sales
 • Bid-by-Click Online Sales

To view events go to
www.TheLivestockLink.com

Videos of all sale cattle will be posted by February 1st, 2021
 Please visit our website, www.fawcettselmcreekranch.com



Lot 26 • ECR 4126 Advance 0180



lot 26

ECR 4126 ADVANCE 0180

DOB: 3/19/20 • Reg. #44196561 • Horned • Tattoo 0180

sire HH ADVANCE 1013Y ET {DLF,HYF,IEF}
HH ADVANCE 4126B {DLF,HYF,IEF,MSUDF}
 HH MISS ADVANCE 1179Y ET {DLF,HYF,IEF}

HH ADVANCE 4055P
 HH MISS ADVANCE 7003T
 HH ADVANCE 7034T ET
 HH MISS ADVANCE 5139R ET

dam MH DAKOTA LAD 4202
ECR DAKOTA LASS 9111
 IH 2110 DOMINET 5439 {DOD}

MH DAKOTA 0230
 MH MISS DEBONAIR 8305
 IHM 409 DOMINO 2110
 IH MS LEGEND 3520

CED	BW	WW	YW	Scrotal	SCF	MILK	M&G	Udder	Teat	REA	MARB	BMIS	CHBS
-0.4	5.3	49	86	1.2	18.5	23	47	1.5	1.5	0.23	0.01	359	92

ACT BW 92 lbs. • ADJ WW 725 lbs. • LE Pigment 100 • RE Pigment 100 • ADJ Scrotal 38

- Big, stout bull out of a powerful cow
- Really like 4126 and his offspring



Lot 27 • ECR WF Festus 0905 ET

lot 27

ECR WF FESTUS 0905 ET

DOB: 2/24/20 • Reg. #44205077 • Horned • Tattoo 0905

sire CRR 719 CATAPULT 109 {SOD}{DLF,HYF,IEF,MDF}
HFR JCG AUGUSTUS 286W 1818 ET {DLF,HYF,IEF,MSUDF}
 STAR KKH SSF MIRROR IMAGE 286W {DLF,HYF,IEF,MSUDF}

TH 122 711 VICTOR 719T
 CRR 4037 ECLIPSE 808
 MSU TCF TITLEIST 2T ET
 STAR KKH BRITE KESSIE 266S ET

dam UPS SENSATION 2296 ET {DLF,HYF,IEF,MSUDF,MDF}
ECR MISS SENSATION 4328 ET {DLF,HYF,IEF,MSUDF}
 ECR LADY FLOW 212ET {DLF,HYF,IEF}

CHURCHILL SENSATION 028X
 UPS JT MISS NEON 7811 1ET
 DKF RO CASH FLOW 0245 ET
 RV GOLDEN LADY 5064

CED	BW	WW	YW	Scrotal	SCF	MILK	M&G	Udder	Teat	REA	MARB	BMIS	CHBS
-4.5	6.1	61	95	1.1	12.3	29	59	1.05	1.05	0.57	-0.03	291	103

ACT BW 88 lbs. • ADJ WW 802 lbs. • LE Pigment 100 • RE Pigment 100 • ADJ Scrotal 39

- Power bull with growth and performance
- Dam is a very impressive individual



Lot 28 • ECR WF Doc Sooner 0906 ET

lot 28

ECR WF DOC SOONER 0906 ET

DOB: 3/1/20 • Reg. #44205075 • Polled • Tattoo 0906

sire REMITALL ONLINE 122L {SOD}{CHB}{DLF,HYF,IEF}
DM BR SOONER {CHB}{DLF,HYF,IEF}
 DM L1 DOMINETTE 901 {DLF,HYF,IEF}

REMITALL EMBRACER 8E
 REMITALL CATALINA 24H
 HH ADVANCE 688F 1ET
 DM L1 DOMINETTE P640

dam UPS SENSATION 2296 ET {DLF,HYF,IEF,MSUDF,MDF}
ECR MISS SENSATION 4328 ET {DLF,HYF,IEF,MSUDF}
 ECR LADY FLOW 212ET {DLF,HYF,IEF}

CHURCHILL SENSATION 028X
 UPS JT MISS NEON 7811 1ET
 DKF RO CASH FLOW 0245 ET
 RV GOLDEN LADY 5064

CED	BW	WW	YW	Scrotal	SCF	MILK	M&G	Udder	Teat	REA	MARB	BMIS	CHBS
0	4.3	60	92	1	17	32	62	1.15	1.25	0.61	0.13	376	130

ACT BW 92 lbs. • ADJ WW 788 lbs. • LE Pigment 100 • RE Pigment 100 • ADJ Scrotal 36

- This bull is of RARE genetics. There have only been 125 calves born out of this bull's sire and semen has commanded upwards of \$10,000 a straw
- More importantly than his genetic value, this bull is good. He is long and thick and backed by a great cow

lot 29

ECR 1628 ADVANCE 0183

DOB: 3/19/20 • Reg. #44192115 • Horned • Tattoo 0183

sire CL 1 DOMINO 955W {SOD}{CHB}{DLF,HYF,IEF}
MC ADVANCE 955W 1628 ET {DLF,HYF,IEF,MSUDF}
 HH MISS ADVANCE 1079Y ET {DLF,HYF,IEF}

dam H BK CCC SR GAME CHANGER ET {CHB}{DLF,HYF,IEF,MSUDF}
ECR CHANGED LADY 5113
 H WMS LADY VICTOR 1006

CL 1 DOMINO 637S 1ET
 CL 1 DOMINETTE 5152R
 HH ADVANCE 8050U ET
 HH MISS ADVANCE 6109S

KJ HVH 33N REDEEM 485T ET
 NJW 78P 63N LADYSPORT 51W ET
 TH 122 71I VICTOR 719T
 H DELHAWK LADY 9805 ET

CED	BW	WW	YW	Scrotal	SCF	MILK	M&G	Udder	Teat	REA	MARB	BMIS	CHBS
1.9	3.6	64	98	1.2	17.4	29	61	1.2	1.1	0.62	-0.08	366	104

ACT BW 87 lbs. • ADJ WW 783 lbs. • LE Pigment 75 • RE Pigment 100 • ADJ Scrotal 36

- Beef bull, stout, wide bodied with extra shape
- 3.8 - 107



Lot 29 • ECR 1628 Advance 0183

lot 30

ECR 6305 BRAVO 0204

DOB: 3/21/20 • Reg. #44192689 • Horned • Tattoo 0204

sire CHURCHILL BRAVO 3275A ET {DLF,HYF,IEF}
ECR BRAVO 6305 {DLF,HYF,IEF,MSUDF}
 ECR 5216 HARRIET 1116 {DOD}{DLF,HYF,IEF,MSUDF}

dam HH ADVANCE 0001X ET {DLF,HYF,IEF}
THR MISS THOR 4195B
 THR MISS THOR 7038T

HH ADVANCE 0132X
 CHURCHILL LADY 9123W ET
 UPS DOMINO 5216
 ECR 408 HARRIET 9071

CL 1 DOMINO 0124K 1ET
 HH MISS ADVANCE 1028L
 JA L1 DOMINO 500R
 THR MISS THOR R5256

CED	BW	WW	YW	Scrotal	SCF	MILK	M&G	Udder	Teat	REA	MARB	BMIS	CHBS
0.4	4.4	51	79	1.1	15.8	29	54	1	1	0.36	0.02	327	95

ACT BW 89 lbs. • ADJ WW 712 lbs. • LE Pigment 100 • RE Pigment 50 • ADJ Scrotal 35

- Herd bull 6305 was a keep bull and we are more than satisfied with the job he has done
- Long bodied bull sure to produce those heavy baldies



ECR Bravo 6305 • Sire of Lot 30

lot 31

ECR 7586 SHAMELESS 0286

DOB: 3/30/20 • Reg. #44194169 • Polled • Tattoo 0286

sire DKF RO CASH FLOW 0245 ET {SOD,DLF,HYF,IEF}
ECR SHAMELESS 7586 ET {DLF,HYF,IEF}
 RV GOLDEN LADY 5064 {DLF,HYF,IEF}

dam CL 1 DOMINO 3131A {DLF,HYF,IEF}
ECR 3131 DOMINETTE 6036
 ECR GC DOMINETTE 4399

CRR ABOUT TIME 743
 JRR MISS TOBEY 711T
 K&B DOMINO 2570
 RV MS GOLD DUST 3064

CL 1 DOMINO 1161Y
 CL1 DOMINETTE 119Y
 H BK CCC SR GAME CHANGER ET
 ECR 5042 DOMINETTE 8297

CED	BW	WW	YW	Scrotal	SCF	MILK	M&G	Udder	Teat	REA	MARB	BMIS	CHBS
0.6	4.5	60	90	0.9	15.6	30	60	1.10	1.10	0.64	-0.02	342	109

ACT BW 82 lbs. • ADJ WW 730 lbs. • LE Pigment 100 • RE Pigment 100 • ADJ Scrotal 34

- If you are looking for a polled bull to add mass and pounds, this is your guy



Lot 31 • ECR 7586 Shameless 0286



Lot 32 • ECR 7076 Advance 0299

lot **32**

ECR 7076 ADVANCE 0299

DOB: 4/1/20 • Reg. #44203296 • Horned • Tattoo 0299

sire CL 1 DOMINO 1131Y 1ET {CHB}{DLF,HYF,IEF}
HH ADVANCE 7076E ET {DLF,HYF,IEF,MSUDF}
 HH MISS ADVANCE 0121X {DLF,HYF,IEF}

CL 1 DOMINO 955W
 CL 1 DOMINETTE 615S
 HH ADVANCE 8203U ET
 HH MISS ADVANCE 7050T

dam K&B ADVANCER 0133X ET {DLF,HYF,IEF}
ECR 0133 DOMINETTE 4275 {DOD}
 ECR 7195 DOMINETTE 9047 {DOD}

HH ADVANCE 8141U
 K&B MISS EXCEL 4216
 HH ADVANCE 7195T
 IH 129 INSETTE 4152

CED	BW	WW	YW	Scrotal	SCF	MILK	M&G	Udder	Teat	REA	MARB	BMIS	CHBS
1	4.4	51	76	0.9	17	35	61	1.2	1.2	0.3	0.27	365	126

ACT BW 95 lbs. • ADJ WW 764 lbs. • LE Pigment 100 • RE Pigment 100 • ADJ Scrotal 36

- Powerful pedigree
- Big, long bodied bull with added power and mass
- Ribeye and marbling with high CHB



Lot 33 • ECR 173 Endure 0326

lot **33**

ECR 173 ENDURE 0326

DOB: 4/1/20 • Reg. #44193357 • Polled • Tattoo

sire KCF BENNETT ENCORE Z311 ET {CHB,DLF,HYF,IEF,MSUDF}
 NJW 79Z Z311 ENDURE 173D ET {CHB,DLF,HYF,IEF,MSUDF,MDF}
 BW 91H 100W RITA 79Z ET {DLF,HYF,IEF,MSUDF,MDF}

SCHU-LAR ON TARGET 22S
 KCF MISS REVOLUTION X338 ET
 NJW 73S M326 TRUST 100W ET
 REMITALL RITA 91H

dam TH 60W 719T VICTOR 43Y {SOD,DLF,HYF,IEF}
ECR 43Y VICKY 5069
 ECR 5216 DOMINETTE 3103 {DOD}

TH 122 711 VICTOR 719T
 TH 77S 45P RUBY 60W
 UPS DOMINO 5216
 ECR 4126 DOMINETTE 8060

CED	BW	WW	YW	Scrotal	SCF	MILK	M&G	Udder	Teat	REA	MARB	BMIS	CHBS
3.0	3.4	69	108	1.1	19.1	28	63	1.20	1.20	0.63	0.20	406	131

ACT BW 85 lbs. • ADJ WW 802 lbs. • LE Pigment 50 • RE Pigment 50 • ADJ Scrotal 35

- Growthy, massive Endure son here with a great spread on EPD's



Lot 34 • ECR 1628 Advance 0371

lot **34**

ECR 1628 ADVANCE 0371

DOB: 4/8/20 • Reg. #44192168 • Polled • Tattoo 0371

sire CL 1 DOMINO 955W {SOD}{CHB}{DLF,HYF,IEF}
MC ADVANCE 955W 1628 ET {DLF,HYF,IEF,MSUDF}
 HH MISS ADVANCE 1079Y ET {DLF,HYF,IEF}

CL 1 DOMINO 637S 1ET
 CL 1 DOMINETTE 5152R
 HH ADVANCE 8050U ET
 HH MISS ADVANCE 6109S

dam H WCC/WB 668 WYARNO 9500 ET {SOD}{DLF,HYF,IEF}
ECR LADY EXCEL 3342 ET
 ECR L18 GEN LADY 6131 {DOD}{DLF,HYF,IEF}

TH JWR SOP 16G 57G TUNDRA 63N
 H KATHY 668 ET
 GO EXCEL L18
 ECR LADY GE 131

CED	BW	WW	YW	Scrotal	SCF	MILK	M&G	Udder	Teat	REA	MARB	BMIS	CHBS
1.1	4.2	63	97	0.9	16.8	31	62	1.2	1.2	0.5	0	352	103

ACT BW 91 lbs. • ADJ WW 798 lbs. • LE Pigment 0 • RE Pigment 15 • ADJ Scrotal 36

- Big time figures here. Growth and Power
- 117% weaning weight ratio

lot 35

ECR 4126 BOB 0381

DOB: 4/9/20 • Reg. #44191937 • Horned • Tattoo 0381

sire HH ADVANCE 1013Y ET {DLF,HYF,IEF}
HH ADVANCE 4126B {DLF,HYF,IEF,MSUDF}
 HH MISS ADVANCE 1179Y ET {DLF,HYF,IEF}

dam ECR L18 EXTRA DEEP 9279 {SOD}{CHB}{DLF,HYF,IEF}
ECR MISS BOBBI 2450
 IH 129 INSETTE 3864

HH ADVANCE 4055P
 HH MISS ADVANCE 7003T
 HH ADVANCE 7034T ET
 HH MISS ADVANCE 5139R ET
 GO EXCEL L18
 OXH CHRISTI 0028
 SR INSIGHT 129
 IH 2110 DOMINET 5533

CED	BW	WW	YW	Scrotal	SCF	MILK	M&G	Udder	Teat	REA	MARB	BMIS	CHBS
3.9	4.3	57	97	1.2	16.4	27	55	1.4	1.4	0.47	0.03	340	103

ACT BW 90 lbs. • ADJ WW 755 lbs. • LE Pigment 10 • RE Pigment 20 • ADJ Scrotal 34.5

- High quality bull with a great pedigree
- If your replacement heifers are a driving factor in your herd bull selection, I suggest taking a look here



Lot 35 • ECR 4126 Bob 0381

lot 36

ECR 7586 SHAMELESS 0397

DOB: 4/8/20 • Reg. #44194620 • Polled • Tattoo 0397

sire DKF RO CASH FLOW 0245 ET {SOD,DLF,HYF,IEF}
ECR SHAMELESS 7586 ET {DLF,HYF,IEF}
 RV GOLDEN LADY 5064 {DLF,HYF,IEF}

dam CHURCHILL BRAVO 3275A ET {DLF,HYF,IEF}
ECR 3275 LADY VICTOR 6269
 H W4 LADY VICTOR 1007

CRR ABOUT TIME 743
 JRR MISS TOBEY 711T
 K&B DOMINO 2570
 RV MS GOLD DUST 3064
 HH ADVANCE 0132X
 CHURCHILL LADY 9123W ET
 TH 122 711 VICTOR 719T
 H W4 LADY NATURAL 9043 ET

CED	BW	WW	YW	Scrotal	SCF	MILK	M&G	Udder	Teat	REA	MARB	BMIS	CHBS
-3.1	4.8	53	84	0.8	14.1	31	58	1	0.9	0.41	-0.02	317	105

ACT BW 89 lbs. • ADJ WW 733 lbs. • LE Pigment 100 • RE Pigment 100 • ADJ Scrotal 36.5

- Massive, body body body. Big hip and a pedigree to sire cattle with power



Lot 36 • ECR 7586 Shameless 0397

lot 37

ECR 1628 ADVANCE 0410

DOB: 4/9/20 • Reg. #44192704 • Horned • Tattoo 0410

sire CL 1 DOMINO 955W {SOD}{CHB}{DLF,HYF,IEF}
MC ADVANCE 955W 1628 ET {DLF,HYF,IEF,MSUDF}
 HH MISS ADVANCE 1079Y ET {DLF,HYF,IEF}

dam MH DAKOTA LAD 4202
ECR 4202 DOMINETTE 4349 ET
 ECR 7195 DOMINETTE 9058 {DLF,HYF,IEF}

CL 1 DOMINO 637S 1ET
 CL 1 DOMINETTE 5152R
 HH ADVANCE 8050U ET
 HH MISS ADVANCE 6109S
 MH DAKOTA 0230
 MH MISS DEBONAIR 8305
 HH ADVANCE 7195T
 IH 270 MISS MARK 294

CED	BW	WW	YW	Scrotal	SCF	MILK	M&G	Udder	Teat	REA	MARB	BMIS	CHBS
1.7	4.4	56	92	0.9	18.3	24	52	1.2	1.3	0.42	0	365	99

ACT BW 89 lbs. • ADJ WW 746 lbs. • LE Pigment 40 • RE Pigment 100 • ADJ Scrotal 36.5

- Weight is in length and this bull has it
- Backed by one of best producing herd bulls



Lot 37 • ECR 1628 Advance 0410



Lot 38 • ECR 1818 Gusto 0416 ET

lot 38

ECR 1818 GUSTO 0416 ET

DOB: 4/9/20 • Reg. #44203571 • Horned • Tattoo 0416

sire CRR 719 CATAPULT 109 {SOD}{DLF,HYF,IEF,MDF} TH 122 711 VICTOR 719T
 HFR JCG AUGUSTUS 286W 1818 ET {DLF,HYF,IEF,MSUDF} CRR 4037 ECLIPSE 808
 STAR KKH SSF MIRROR IMAGE 286W {DLF,HYF,IEF,MSUDF} MSU TCF TITLEIST 2T ET
 STAR KKH BRITE KESSIE 266S ET

dam UPS SENSATION 2296 ET {DLF,HYF,IEF,MSUDF,MDF} CHURCHILL SENSATION 028X
 ECR MISS SENSATION 4554 ET {DLF,HYF,IEF,MSUDF} UPS JT MISS NEON 7811 1ET
 ECR LADY FLOW 212ET {DLF,HYF,IEF} DKF RO CASH FLOW 0245 ET
 RV GOLDEN LADY 5064

CED	BW	WW	YW	Scrotal	SCF	MILK	M&G	Udder	Teat	REA	MARB	BMIS	CHBS
-3.2	4.8	59	92	1.1	11.5	30	60	1.15	1.15	0.59	-0.07	274	93

ACT BW 86 lbs. • ADJ WW 804 lbs. • LE Pigment 90 • RE Pigment 100 • ADJ Scrotal 33

• This bull is different. He's out there and will sire cattle with extra eye appeal



Lot 39 • ECR 6305 Bravo 0447

lot 39

ECR 6305 BRAVO 0447

DOB: 4/13/20 • Reg. #44193619 • Polled • Tattoo 0447

sire CHURCHILL BRAVO 3275A ET {DLF,HYF,IEF} HH ADVANCE 0132X
 ECR BRAVO 6305 {DLF,HYF,IEF,MSUDF} CHURCHILL LADY 9123W ET
 ECR 5216 HARRIET 1116 {DOD}{DLF,HYF,IEF,MSUDF} UPS DOMINO 5216
 ECR 408 HARRIET 9071

dam DKF RO CASH FLOW 0245 ET {SOD,DLF,HYF,IEF} CRR ABOUT TIME 743
 ECR UNLEASHED FLO 5203 {DLF,HYF,IEF,MSUDF} JRR MISS TOBEY 711T
 LCX UNLEASHED LADY 101 {DOD,DLF,HYF,IEF} TRIARA UNLEASHED 893U
 CT MISS ZING 10U

CED	BW	WW	YW	Scrotal	SCF	MILK	M&G	Udder	Teat	REA	MARB	BMIS	CHBS
-2.7	5.1	64	95	1.3	18.9	35	67	1.00	1.00	0.54	0.00	388	101

ACT BW 90 lbs. • ADJ WW 758 lbs. • LE Pigment 100 • RE Pigment 100 • ADJ Scrotal 35

• One of the best bulls in the sale
 • Natural calf out of a donor cow

Angus Breed Averages

CED	BW	WW	YW	Milk	Marb	REA	Fat	SW	SF	SG	SB
6	1.2	56	99	25	0.51	0.53	0.012	56	82	44	127



Lot 40 • ECR Rainmaker 001

lot 40

ECR RAINMAKER 001

DOB: 2/22/20 • Reg. #pending • Tattoo 001

sire BASIN RAINMAKER 2704 BASIN RAINMAKER P175
 BASIN RAINMAKER 4404 BASIN ERICA 7520 BV
 BASIN JOY 1036 BASIN PAYWEIGHT 107S
 BASIN JOY 566T

dam HA COWBOY UP 5405 HA OUTSIDE 3008
 ECR MISS COWBOY UP 845 HA BLACKCAP LADY 1602
 ECR ANGUS 5202

CED	BW	WW	YW	Milk	Marb	REA	Fat	SW	SF	SG	SB
9.0	1.6	62	125	20	0.25	0.40	-0.03	55	82	32	122

ACT BW 80 lbs. • ADJ WW 680 lbs. • ADJ Scrotal 34

• Dang nice Angus bull with BW for use on heifers but quality and performance for cows

lot **41**

ECR RAINMAKER 005

DOB: 2/28/20 • Reg. #pending • Tattoo 005

sire BASIN RAINMAKER 2704
BASIN RAINMAKER 4404
BASIN JOY 1036

BASIN RAINMAKER P175
BASIN ERICA 7520 BV
BASIN PAYWEIGHT 107S
BASIN JOY 566T

dam BRUIN TORQUE 5261
ECR MISS TORQUE 805
ECR ANGUS 7886

SAVE 004 DENSITY 4336
FALCON BLACKBIRD 6071

CED	BW	WW	YW	Milk	Marb	REA	Fat	SW	SF	SG	SB
7.0	1.5	57	110	28	0.40	0.70	0.010	58	109	40	148

ACT BW 82 lbs. • ADJ WW 752 lbs. • ADJ Scrotal 34

- Long as a train
- Safe for use on heifers with the performance for cows



Lot 41 • ECR Rainmaker 005

lot **42**

ECR RESOURCE 016

DOB: 3/26/20 • Reg. #pending • Tattoo 016

sire SAV RESOURCE 1441
ECR RESOURCE 623 (EVENTIDE)
ECR 6753 PEG 331

RITO 707 OF IDEAL 3407 7075
SAV BLACKCAP MAY 4136
BC LOOKOUT 7024
LAGRAND PEG 6753

dam HF PROWLER 43U
ECR MISS PROWLER 562
ECR ANGUS 6753

HF KODIAK 5R
HF ROSEBUD 98P

CED	BW	WW	YW	Milk	Marb	REA	Fat	SW	SF	SG	SB
2.0	2.5	60	110	18	0.35	0.70	0.010	45	91	38	125

ACT BW 84 lbs. • ADJ WW 760 lbs. • ADJ Scrotal 33.5

- Moderate birth weight with big time weaning weight



Lot 42 • ECR Resource 016

lot **43**

ECR EXTENSION 023

DOB: 3/30/20 • Reg. #pending • Tattoo 023

sire SINCLAIR EMULATION XXP
SAV EXTENSION 6856
SAV BLACKCAP MAY 4136

N BAR EMULATION EXT
N BAR PRIMROSE Y3051
SAV 8180 TRAVELER 004
SAV MAY 2397

dam HF PROWLER 43U
ECR MISS PROWLER 528
ECR ANGUS 6575

HF KODIAK 5R
HF ROSEBUD 98P

CED	BW	WW	YW	Milk	Marb	REA	Fat	SW	SF	SG	SB
8.0	0.4	56	96	24	0.44	0.35	0.034	59	71	37	110

ACT BW 85 lbs. • ADJ WW 772 lbs. • ADJ Scrotal 36

- Long bodied, shapy bull that has that herd bull presence
- Youngest Angus bull but weaned off the heaviest



Lot 43 • ECR Extension 023

The 2-year-old Hereford Bulls

We are excited about this years group of two-year-old bulls. This group of bulls predominately come from the second group of cows calving from mid March through May. In this group of cows you will find calves sired by AI sires and the bulls resulting from embryo transplant. This group of bulls leave the yards as soon as the grass has greened in the spring and are on their own until fall without supplement, and then are fed a high roughage ration out on pasture where they have room to travel. They are sound, hard in their condition and ready to work and last.



lot 44 ECR 628 REDEEMS ADVANCE 9057

DOB: 3/1/19 • Reg. #44062353 • Polled • Tattoo 9057

sire HH ADVANCE 4075B ET (CHB){DLF,HYF,IEF,MSUDF,MDF}
H FHF ADVANCE 628 ET (DLF,HYF,IEF,MSUDF,MDF)
 FHF 408 RITA 21W {DLF,HYF,IEF,MSUDF}

HH ADVANCE 1013Y ET
 HH MISS ADVANCE 0121X
 CJH HARLAND 408
 FHF 45P RITA 101T

dam KJ HVH 33N REDEEM 485T ET (SOD){DLF,HYF,IEF}
ECR LADY REDEEM 3124
 RV MS BOOMER 6749

SHF RADAR M326 R125
 HVH OKSANA 4L 33N
 PW VICTOR BOOMER P606
 RV MS PATRIOT 7049

CED	BW	WW	YW	Scrotal	SCF	MILK	M&G	Udder	Teat	REA	MARB	BMIS	CHBS
1.1	3.4	57	87	0.6	17	22	51	1.2	1.3	0.45	0.08	361	109

ACT BW 86 lbs. • ADJ WW 752 lbs. • LE Pigment 90 • RE Pigment 70 • ADJ Scrotal 43

- Heavy weaning weight
- 628 and Redeem genetics in one package. Expect easy fleshing progeny



H FHF Advance 628 ET • Sire of Lots 44 & 46

lot 45 ECR 53D JOURNEY 9071

DOB: 3/2/19 • Reg. #44080167 • Polled • Tattoo 9071

sire LJR 023R WHITMORE 10W (SOD){CHB}{DLF,HYF,IEF,MSUDF,MDF}
NJW 84B 10W JOURNEY 53D (DLF,HYF,IEF,MSUDF)
 NJW 16S 100W JOEY 84B ET (DLF,HYF,IEF,MSUDF,MDF)

KJ C&L J119 LOGIC 023R ET
 LJR MICKEY 278N
 NJW 73S M326 TRUST 100W ET
 TLELL 117F JOEY 16S

dam UPS UNDISPUTED ET (DLF,HYF,IEF)
ECR WF MISS DIAMOND 7112
 RST GAT NST 8051 DREAM 45B ET

SHF WONDER M326 W18 ET
 UPS MISS DIAMOND 1353
 H EXCEL 8051 ET
 STAR KKH SSF KEYONNA 318Y ET

CED	BW	WW	YW	Scrotal	SCF	MILK	M&G	Udder	Teat	REA	MARB	BMIS	CHBS
7	2.1	66	105	1.3	17.7	27	61	1.2	1.1	0.63	0.14	376	125

ACT BW 84 lbs. • ADJ WW 652 lbs. • LE Pigment 50 • RE Pigment 60 • ADJ Scrotal 45.5

- Big, stout, long bodied, short marked beef bull
- Great set of EPD's with low birth and high growth



Lot 45 • ECR 53D Journey 9071

lot 46 ECR 628 ADVANCE 9080

DOB: 3/2/19 • Reg. #44063339 • Horned • Tattoo 9080

sire HH ADVANCE 4075B ET (CHB){DLF,HYF,IEF,MSUDF,MDF}
H FHF ADVANCE 628 ET (DLF,HYF,IEF,MSUDF,MDF)
 FHF 408 RITA 21W {DLF,HYF,IEF,MSUDF}

HH ADVANCE 1013Y ET
 HH MISS ADVANCE 0121X
 CJH HARLAND 408
 FHF 45P RITA 101T

dam MH DAKOTA 4262
DKF 4262 MS SASSY 8285
 DFK 8020 SASSY 297

MH DAKOTA 0230
 MH MISS 95 SPECTRE 7151
 OXH MARK DOMINO 9148
 HH MISS BREAKER 1296

CED	BW	WW	YW	Scrotal	SCF	MILK	M&G	Udder	Teat	REA	MARB	BMIS	CHBS
-0.3	4.5	50	88	0.5	15.9	15	40	1.1	1.2	0.34	0.16	343	120

ACT BW 90 lbs. • ADJ WW 676 lbs. • LE Pigment 0 • RE Pigment 50 • ADJ Scrotal 41.5

- His dam has 11 calves on her records showing mild BW's, 7 of those 11 made the bull sale or the replacement pen
- Added longevity from a cow family with middle framed easy fleshing cattle



Lot 46 • ECR 628 Advance 9080



Lot 47 • ECR 628 Advance 9095

lot 47

ECR 628 ADVANCE 9095

DOB: 3/2/19 • Reg. #44061997 • Horned • Tattoo 9095

sire HH ADVANCE 4075B ET {CHB}{DLF,HYF,IEF,MSUDF,MDF}
H FHF ADVANCE 628 ET {DLF,HYF,IEF,MSUDF,MDF}
 FHF 408 RITA 21W {DLF,HYF,IEF,MSUDF}

dam ECR 4202 DOMINO 0271 ET {DLF,HYF,IEF}
ECR 0271 MISS DAISY 3240
 EJF MISS DAISY 8306 {DOD}

HH ADVANCE 1013Y ET
 HH MISS ADVANCE 0121X
 CJH HARLAND 408
 FHF 45P RITA 101T
 MH DAKOTA LAD 4202
 RCH L1 DOMINETTE 0001
 K&B EXCEL 5042
 EJF MISS DAISY 498

CED	BW	WW	YW	Scrotal	SCF	MILK	M&G	Udder	Teat	REA	MARB	BMIS	CHBS
2.1	3.5	54	90	0.7	17.7	24	51	1.1	1.1	0.54	0.06	377	121

ACT BW 87 lbs. • ADJ WW 742 lbs. • LE Pigment 90 • RE Pigment 30 • ADJ Scrotal 45

- Well made 628 son that excels in his scan data with above average ribeye and marbling
- Big weaning weight bull



Lot 48 • ECR 628 Advance 9112

lot 48

ECR 628 ADVANCE 9112

DOB: 3/8/19 • Reg. #44061998 • Horned • Tattoo 9112

sire HH ADVANCE 4075B ET {CHB}{DLF,HYF,IEF,MSUDF,MDF}
H FHF ADVANCE 628 ET {DLF,HYF,IEF,MSUDF,MDF}
 FHF 408 RITA 21W {DLF,HYF,IEF,MSUDF}

dam ECR 4202 DOMINO 0271 ET {DLF,HYF,IEF}
ECR 0271 LADY GEN 4262
 ECR LADY GEN 8305 {DOD}

HH ADVANCE 1013Y ET
 HH MISS ADVANCE 0121X
 CJH HARLAND 408
 FHF 45P RITA 101T
 MH DAKOTA LAD 4202
 RCH L1 DOMINETTE 0001
 K&B EXCEL 5042
 ECR LADY GEN 449

CED	BW	WW	YW	Scrotal	SCF	MILK	M&G	Udder	Teat	REA	MARB	BMIS	CHBS
0.3	4.7	57	101	0.7	17.7	16	44	1	1.1	0.46	0.06	368	116

ACT BW 89 lbs. • ADJ WW 666 lbs. • LE Pigment 10 • RE Pigment 100 • ADJ Scrotal 41

- Stems from a great cow family including a Dam of Distinction and one of my favorites, 449
- Nice spread of moderate birth weight with great growth and performance



Lot 49 • ECR 628 Advance 9113

lot 49

ECR 628 ADVANCE 9113

DOB: 3/6/19 • Reg. #44063344 • Horned • Tattoo 9113

sire HH ADVANCE 4075B ET {CHB}{DLF,HYF,IEF,MSUDF,MDF}
H FHF ADVANCE 628 ET {DLF,HYF,IEF,MSUDF,MDF}
 FHF 408 RITA 21W {DLF,HYF,IEF,MSUDF}

dam MH DAKOTA LAD 4202
ECR 4202 DOMINETTE 4349 ET
 ECR 7195 DOMINETTE 9058 {DLF,HYF,IEF}

HH ADVANCE 1013Y ET
 HH MISS ADVANCE 0121X
 CJH HARLAND 408
 FHF 45P RITA 101T
 MH DAKOTA 0230
 MH MISS DEBONAIR 8305
 HH ADVANCE 7195T
 IH 270 MISS MARK 294

CED	BW	WW	YW	Scrotal	SCF	MILK	M&G	Udder	Teat	REA	MARB	BMIS	CHBS
-0.7	4.9	55	99	0.5	16.9	19	46	1.1	1.2	0.41	0.12	358	119

ACT BW 88 lbs. • ADJ WW 652 lbs. • LE Pigment 40 • RE Pigment 60 • ADJ Scrotal 42

- Long bodied bull with some growth
- Nice blend of power and calving ease on his dam's side with 4202 and 7195 both in his pedigree

lot 50

ECR 721 MILES DOMINO 9119

DOB: 3/7/19 • Reg. #44200937 • Polled • Tattoo 9119

CL 1 DOMINO 215Z {CHB}{DLF,HYF,IEF,MSUDF,MDF}
 sire **F 215Z DOMINO 721 {DLF,HYF,IEF}**
 F 105Y DOMINETTE 420 {DLF,HYF,IEF}

CRR 719 CATAPULT 109 {SOD}{DLF,HYF,IEF,MDF}
 dam **KLD RW MILA D78 ET {DLF,HYF,IEF,MSUDF}**
 RW MINDY 3078 6096 {DLF,HYF,IEF,MSUDF}

CL 1 DOMINO 9122W 1ET
 CL 1 DOMINETTE 055X
 CL 1 DOMINO 105Y
 F 5216 DOMINETTE 228

TH 122 711 VICTOR 719T
 CRR 4037 ECLIPSE 808
 RW KW HUMMER K23 3078
 RW DEDE 23C 9145

CED	BW	WW	YW	Scrotal	SCF	MILK	M&G	Udder	Teat	REA	MARB	BMIS	CHBS
4.5	2.8	63	100	1.1	16.3	36	67	1.3	1.3	0.35	0.11	345	108

ACT BW 85 lbs. • ADJ WW 644 lbs. • LE Pigment 60 • RE Pigment 100 • ADJ Scrotal 43.5

• Middle framed easy fleshing bull with plenty of mass and power



Lot 50 • ECR 721 Miles Domino 9119

lot 51

ECR 173D ENDURE 9131

DOB: 3/7/19 • Reg. #44063343 • Polled • Tattoo 9131

KCF BENNETT ENCORE Z311 ET {CHB}{DLF,HYF,IEF,MSUDF}
 sire **NJW 79Z Z311 ENDURE 173D ET {CHB}{DLF,HYF,IEF,MSUDF,MDF}**
 BW 91H 100W RITA 79Z ET {DLF,HYF,IEF,MSUDF,MDF}

ECR 9022 DAKOTA 1157 {DLF,HYF,IEF}
 dam **ECR 1157 DOMINETTE 4520**
 ECR 7195 DOMINETTE 9239 {DOD}

SCHU-LAR ON TARGET 22S
 KCF MISS REVOLUTION X338 ET
 NJW 73S M326 TRUST 100W ET
 REMITALL RITA 91H

ECR 4202 DAKOTA LAD 9022
 ECR 491 SABRINA 8166
 HH ADVANCE 7195T
 ECR 5042 LADY DOM 7460

CED	BW	WW	YW	Scrotal	SCF	MILK	M&G	Udder	Teat	REA	MARB	BMIS	CHBS
0.2	3.9	57	96	1	18.6	26	55	1.3	1.3	0.57	0.19	401	134

ACT BW 88 lbs. • ADJ WW 656 lbs. • LE Pigment 100 • RE Pigment 100 • ADJ Scrotal 42

• Middle framed Endure son with big time growth numbers
 • Excels compared to his contemporaries when scanned with his ribeye and marbling



NJW 79Z Z311 Endure 173D ET • Sire of Lots 51 & 52

lot 52

ECR 173D ENDURE 9150

DOB: 3/16/19 • Reg. #44062004 • Polled • Tattoo 9150

KCF BENNETT ENCORE Z311 ET {CHB}{DLF,HYF,IEF,MSUDF}
 sire **NJW 79Z Z311 ENDURE 173D ET {CHB}{DLF,HYF,IEF,MSUDF,MDF}**
 BW 91H 100W RITA 79Z ET {DLF,HYF,IEF,MSUDF,MDF}

H WCC/WB 668 WYARNO 9500 ET {SOD}{DLF,HYF,IEF}
 dam **ECR GENETIC LADY 3355 ET**
 ECR LADY GE 131 {DLF,HYF,IEF}

SCHU-LAR ON TARGET 22S
 KCF MISS REVOLUTION X338 ET
 NJW 73S M326 TRUST 100W ET
 REMITALL RITA 91H

TH JWR SOP 16G 57G TUNDRA 63N
 H KATHY 668 ET
 GK GENETIC EXPLOSION
 LADY GEN 664

CED	BW	WW	YW	Scrotal	SCF	MILK	M&G	Udder	Teat	REA	MARB	BMIS	CHBS
-0.3	4.3	55	92	0.8	20.3	25	53	1.3	1.3	0.4	0.25	417	128

ACT BW 90 lbs. • ADJ WW 628 lbs. • LE Pigment 70 • RE Pigment 100 • ADJ Scrotal 42

• With over 720 offspring with data turned in, Endures EPD's continue to improve. Birth weight stays moderate, growth numbers continue to climb and carcass numbers are impeccable making his figures some of the top in the breed. They do all of this while staying in a mid frame due to being long bodied and stout
 • This bull is no exception to his sires track record having meat in muscle with ample pigmentation



Lot 52 • ECR 173D Endure 9150



Lot 53 • ECR 173D Endure 9177

lot **53**

ECR 173D ENDURE 9177

DOB: 3/17/19 • Reg. #44061561 • Polled • Tattoo 9177

sire KCF BENNETT ENCORE Z311 ET (CHB){DLF,HYF,IEF,MSUDF}
 NJW 79Z Z311 ENDURE 173D ET (CHB){DLF,HYF,IEF,MSUDF,MDF}
 BW 91H 100W RITA 79Z ET (DLF,HYF,IEF,MSUDF,MDF)

dam HH ADVANCE 8050U ET {SOD}{DLF,HYF,IEF}
ECR 8050 DOMINETTE 1323
 ECR 767 MISS HOTTIE 564

SCHU-LAR ON TARGET 22S
 KCF MISS REVOLUTION X338 ET
 NJW 73S M326 TRUST 100W ET
 REMITALL RITA 91H
 L1 DOMINO 03571
 HH MISS ADVANCE 365N
 HH ADVANCE 767G 1ET
 ECR MISS FLAME 369

CED	BW	WW	YW	Scrotal	SCF	MILK	M&G	Udder	Teat	REA	MARB	BMIS	CHBS
3.1	3.4	62	99	1.1	22.8	27	58	1.3	1.3	0.62	0.18	461	134

ACT BW 89 lbs. • ADJ WW 728 lbs. • LE Pigment 100 • RE Pigment 100 • ADJ Scrotal 43.5

• Big weaning weight bull with added performance, full pigmentation and as long as a train



Lot 54 • ECR 173D Endure 9193

lot **54**

ECR 173D ENDURE 9193

DOB: 3/18/19 • Reg. #44063032 • Polled • Tattoo 9193

sire KCF BENNETT ENCORE Z311 ET (CHB){DLF,HYF,IEF,MSUDF}
 NJW 79Z Z311 ENDURE 173D ET (CHB){DLF,HYF,IEF,MSUDF,MDF}
 BW 91H 100W RITA 79Z ET (DLF,HYF,IEF,MSUDF,MDF)

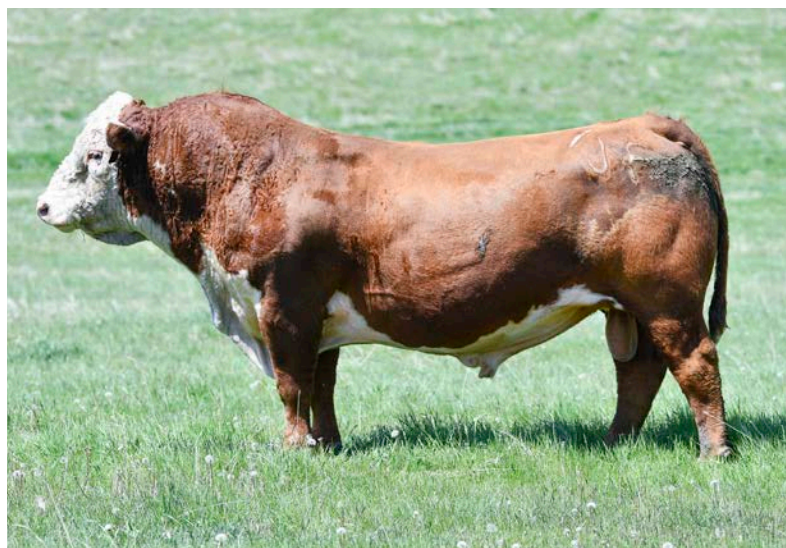
dam CHURCHILL SENSATION 028X {SOD}{DLF,HYF,IEF,MDF}
ECR LADY EXTRA 4018
 ECR LADY EXTRA 2073

SCHU-LAR ON TARGET 22S
 KCF MISS REVOLUTION X338 ET
 NJW 73S M326 TRUST 100W ET
 REMITALL RITA 91H
 UPS DOMINO 3027
 CHURCHILL LADY 7202T ET
 ECR L18 EXTRA DEEP 9279
 IH INSETTE 1665

CED	BW	WW	YW	Scrotal	SCF	MILK	M&G	Udder	Teat	REA	MARB	BMIS	CHBS
3.5	2.5	60	100	1.3	22.2	29	60	1.30	1.35	0.62	0.25	460	135

ACT BW 84 lbs. • ADJ WW 668 lbs. • LE Pigment 80 • RE Pigment 100 • ADJ Scrotal 43.5

• Stout beef bull with added shape and power



NJW 84B 10W Journey 53D • Sire of Lot 55

lot **55**

ECR 53D JOURNEY 9198

DOB: 3/18/19 • Reg. #44079172 • Polled • Tattoo 9198

sire LJR 023R WHITMORE 10W {SOD}{CHB}{DLF,HYF,IEF,MSUDF,MDF}
 NJW 84B 10W JOURNEY 53D {DLF,HYF,IEF,MSUDF}
 NJW 16S 100W JOEY 84B ET (DLF,HYF,IEF,MSUDF,MDF)

dam CL 1 DOMINO 394A {DLF,HYF,IEF}
ECR 394 DOMINETTE 7047
 ECR 860 DOMINETTE 0232 {DOD}

KJ C&L J119 LOGIC 023R ET
 LJR MICKEY 278N
 NJW 73S M326 TRUST 100W ET
 TLELL 117F JOEY 16S
 CL 1 DOMINO 105Y
 CL 1 DOMINETTE 7157T
 CL 1 DOMINO 860U
 ECR 4011 MISS DOM 6424

CED	BW	WW	YW	Scrotal	SCF	MILK	M&G	Udder	Teat	REA	MARB	BMIS	CHBS
4.1	2.6	63	116	1	16.3	23	55	1	1	0.53	0.09	345	120

ACT BW 87 lbs. • ADJ WW 607 lbs. • LE Pigment 0 • RE Pigment 0 • ADJ Scrotal 46

• EPD profile suggesting offspring will have a lower than average birth weight with big time growth and performance without sacrificing carcass

lot 56

ECR 7094 DOMINO 9200

DOB: 3/18/19 • Reg. #44078028 • Horned • Tattoo 9200

CL 1 DOMINO 105Y
 CL 1 DOMINETTE 7157T
 HH ADVANCE 7195T
 ECR 456 DOMINETTE 8054

CL 1 DOMINO 394A {DLF,HYF,IEF}
 sire **ECR 394 DOMINO 7094** {DLF,HYF,IEF,MSUDF}
 ECR 7195 DOMINETTE 0079

HH ADVANCE 2029Z ET {DLF,HYF,IEF}
 dam **ECR 2029 MISS ADVANCE 7218**
 ECR 9279 DOMINETTE 3153

HH ADVANCE 8203U ET
 HH MISS ADVANCE 5139R ET
 ECR L18 EXTRA DEEP 9279
 ECR 456 DOMINETTE 8047

CED	BW	WW	YW	Scrotal	SCF	MILK	M&G	Udder	Teat	REA	MARB	BMIS	CHBS
7.9	2.1	51	82	0.9	20.1	31	57	1.10	1.20	0.31	0.12	397	108

ACT BW 82 lbs. • ADJ WW 606 lbs. • LE Pigment 100 • RE Pigment 100 • ADJ Scrotal 41

- Lower BW bull that could cover a ton of heifers or turn him out to breed a bunch of cows

lot 57

ECR 394 DOMINO 9201

DOB: 3/17/19 • Reg. #44080163 • Horned • Tattoo

CL 1 DOMINO 105Y {SOD,DLF,HYF,IEF}
 CL 1 DOMINETTE 7157T {DLF,HYF,IEF}

sire **CL 1 DOMINO 394A** {DLF,HYF,IEF}
 CL 1 DOMINETTE 7157T {DLF,HYF,IEF}

ECR L18 EXTRA DEEP 9279 {SOD,CHB,DLF,HYF,IEF}
 dam **ECR 9279 HARRIET 6449**
 ECR 408 HARRIET 9230 {DOD,DLF,HYF,IEF}

CL 1 DOMINO 929W
 CL 1 DOMINETTE 9140W 1ET
 CL 1 DOMINO 4102P 1ET
 CL 1 DOMINETTE 439P

GO EXCEL L18
 OXH CHRISTI 0028
 CJH HARLAND 408
 ECR 477 LADY DOMINO 7140

CED	BW	WW	YW	Scrotal	SCF	MILK	M&G	Udder	Teat	REA	MARB	BMIS	CHBS
4.6	3.1	58	95	0.6	17.4	31	60	1.00	1.10	0.40	0.10	364	114

ACT BW 86 lbs. • ADJ WW 648 lbs. • LE Pigment 60 • RE Pigment 0 • ADJ Scrotal 44

- Weaning weight ratio of 107% compared to his contemporaries
- Great maternal pedigree with power

lot 58

ECR 394 DOMINO 9216

DOB: 3/18/19 • Reg. #44063354 • Horned • Tattoo 9216

CL 1 DOMINO 105Y {SOD}{DLF,HYF,IEF}
 CL 1 DOMINETTE 9140W 1ET
 CL 1 DOMINO 4102P 1ET
 CL 1 DOMINETTE 439P

sire **CL 1 DOMINO 394A** {DLF,HYF,IEF}
 CL 1 DOMINETTE 7157T {DLF,HYF,IEF}

UPS ADVANCE 0652 {DLF,HYF,IEF}
 dam **ECR 0652 MISS SENTRY 5507**
 K&B LADY SENTRY 0083X {DOD}

DS 3019 ADV 7602
 UPS MISS DOMINO 8709
 UPS DOMINO 3027
 K&B KNOCKOUT LADY 8164U

CED	BW	WW	YW	Scrotal	SCF	MILK	M&G	Udder	Teat	REA	MARB	BMIS	CHBS
6.2	1.7	53	93	0.7	18.6	25	51	1	1.2	0.26	0.14	377	113

ACT BW 80 lbs. • ADJ WW 684 lbs. • LE Pigment 100 • RE Pigment 100 • ADJ Scrotal 38

- Low birth weight bull suitable for use on heifers
- Long bodied bull



Lot 58 • ECR 394 Domino 9216

If planning to utilize online bidding, please contact Dan or any sale staff prior to the sale in case there happens to be a problem with the internet during the auction.

live broadcast and online bidding

The **Livestock**™
Link

Livestock Videoing • Video Sales
 • Bid-by-Click Online Sales

To view events go to
www.TheLivestockLink.com

Videos of all sale cattle will be posted by February 1st, 2021
 Please visit our website, www.fawcettselmcreekranch.com

lot 59

ECR 3371 REWARDS 9228

DOB: 3/19/19 • Reg. #44063371 • Polled • Tattoo 9228

sire KJ HVH 33N REDEEM 485T ET {SOD}{DLF,HYF,IEF}
ECR REWARD 3371 ET {DLF,HYF,IEF}
 DKF 860 DOMINETTE 0500 ET {DLF,HYF,IEF}

dam NJW 73S W18 HOMEGROWN 8Y ET {SOD}{DLF,HYF,IEF,MSUDF,MDF}
ECR 8Y DOMINETTE 6469 ET
 ECR 7195 DOMINETTE 0038 {DLF,HYF,IEF}

SHF RADAR M326 R125
 HVH OKSANA 4L 33N
 CL 1 DOMINO 860U
 DKF 179 SASSY 473

SHF WONDER M326 W18 ET
 NJW P606 72N DAYDREAM 73S
 HH ADVANCE 7195T
 ECR 4198 DOMINETTE 8075

CED	BW	WW	YW	Scrotal	SCF	MILK	M&G	Udder	Teat	REA	MARB	BMIS	CHBS
0.6	3.9	59	100	1.1	18.6	31	61	1.1	1.1	0.41	0.11	378	106

ACT BW 85 lbs. • ADJ WW 684 lbs. • LE Pigment 90 • RE Pigment 65 • ADJ Scrotal 41

- Power in the blood
- Traces back to the 0038 donor

lot 60

ECR 3371 REWARDS 9234

DOB: 3/20/19 • Reg. #44061820 • Polled • Tattoo 9234

sire KJ HVH 33N REDEEM 485T ET {SOD}{DLF,HYF,IEF}
ECR REWARD 3371 ET {DLF,HYF,IEF}
 DKF 860 DOMINETTE 0500 ET {DLF,HYF,IEF}

dam UPS UNDISPUTED ET {DLF,HYF,IEF}
ECR 3304 DOMINETTE 6073
 ECR 9022 DOMINETTE 3088

SHF RADAR M326 R125
 HVH OKSANA 4L 33N
 CL 1 DOMINO 860U
 DKF 179 SASSY 473

SHF WONDER M326 W18 ET
 UPS MISS DIAMOND 1353
 ECR 4202 DAKOTA LAD 9022
 ECR 7195 SABRINA 0004

CED	BW	WW	YW	Scrotal	SCF	MILK	M&G	Udder	Teat	REA	MARB	BMIS	CHBS
-3.2	5.2	64	109	1	18.3	29	61	1	1	0.38	0.06	368	101

ACT BW 91 lbs. • ADJ WW 600 lbs. • LE Pigment 100 • RE Pigment 100 • ADJ Scrotal 48

- Long bodied polled bull with full pigmentation

lot 61

ECR 628 ADVANCE 9271

DOB: 3/25/19 • Reg. #44063030 • Horned • Tattoo 9271

sire HH ADVANCE 4075B ET {CHB}{DLF,HYF,IEF,MSUDF,MDF}
H FHF ADVANCE 628 ET {DLF,HYF,IEF,MSUDF,MDF}
 FHF 408 RITA 21W {DLF,HYF,IEF,MSUDF}

dam HH ADVANCE 2029Z ET {DLF,HYF,IEF}
ECR 2029 DOMINETTE 4098
 ECR 8203 DOMINETTE 1047

HH ADVANCE 1013Y ET
 HH MISS ADVANCE 0121X
 CJH HARLAND 408
 FHF 45P RITA 101T

HH ADVANCE 8203U ET
 HH MISS ADVANCE 5139R ET
 HH ADVANCE 8203U ET
 IH 821 DOMINETTE 3792

CED	BW	WW	YW	Scrotal	SCF	MILK	M&G	Udder	Teat	REA	MARB	BMIS	CHBS
0.5	5.1	64	103	0.9	14.8	19	52	1.1	1.2	0.56	0.11	339	127

ACT BW 92 lbs. • ADJ WW 718 lbs. • LE Pigment 100 • RE Pigment 100 • ADJ Scrotal 43

- Double shot of 8203 on the bottom side so expect progeny with extra power, mass and carcass.

lot 62

ECR 53D JOURNEY 9283

DOB: 3/28/19 • Reg. #44077187 • Polled • Tattoo 9283

sire LJR 023R WHITMORE 10W {SOD}{CHB}{DLF,HYF,IEF,MSUDF,MDF}
NJW 84B 10W JOURNEY 53D {DLF,HYF,IEF,MSUDF}
 NJW 16S 100W JOEY 84B ET {DLF,HYF,IEF,MSUDF,MDF}

dam UPS UNDISPUTED ET {DLF,HYF,IEF}
ECR 3304 MISS DIAMOND 7149
 ECR 88X MISS RIBLET 4123

KJ C&L J119 LOGIC 023R ET
 LJR MICKEY 278N
 NJW 73S M326 TRUST 100W ET
 TLELL 117F JOEY 16S

SHF WONDER M326 W18 ET
 UPS MISS DIAMOND 1353
 NJW 98S R117 RIBEYE 88X ET
 DKF 19D MISS PATRIOT 7507

CED	BW	WW	YW	Scrotal	SCF	MILK	M&G	Udder	Teat	REA	MARB	BMIS	CHBS
4.7	2.8	71	108	1.3	20.4	29	65	1.2	1.1	0.67	0.15	418	126

ACT BW 86 lbs. • ADJ WW 670 lbs. • LE Pigment 100 • RE Pigment 95 • ADJ Scrotal 42

- Really like these Journeys. EPD's are always good and when you look up individual performance they always out do their contemporaries
- 123% weaning weight ratio



Lot 62 • ECR 53D Journey 9282

lot 63

ECR 394 DOMINO 9316

DOB: 3/29/19 • Reg. #44063360 • Horned • Tattoo 9316

sire CL 1 DOMINO 105Y {SOD}{DLF,HYF,IEF}
CL 1 DOMINO 394A {DLF,HYF,IEF}
 CL 1 DOMINETTE 7157T {DLF,HYF,IEF}

dam HH ADVANCE 2029Z ET {DLF,HYF,IEF}
ECR 2029 MISS ADVANCE 5362 ET
 AL MISS EXTRA 1116 {DLF,HYF,IEF,MSUDF}

CL 1 DOMINO 929W
 CL 1 DOMINETTE 9140W 1ET
 CL 1 DOMINO 4102P 1ET
 CL 1 DOMINETTE 439P

HH ADVANCE 8203U ET
 HH MISS ADVANCE 5139R ET
 ECR L18 EXTRA DEEP 9279
 SR HARLET 660 {DOD}

CED	BW	WW	YW	Scrotal	SCF	MILK	M&G	Udder	Teat	REA	MARB	BMIS	CHBS
6.1	2.7	58	96	0.8	19.2	26	54	0.90	1.20	0.31	0.20	389	119

ACT BW 84 lbs. • ADJ WW 654 lbs. • LE Pigment 100 • RE Pigment 98 • ADJ Scrotal 42.5

- Looking to add MARBLING? 130% marbling ratio

lot 64

ECR 3371 REWARDS 9325

DOB: 3/30/19 • Reg. #44087180 • Polled • Tattoo 9325

sire KJ HVH 33N REDEEM 485T ET {SOD}{DLF,HYF,IEF} SHF RADAR M326 R125
 HVH OKSANA 4L 33N
ECR REWARD 3371 ET {DLF,HYF,IEF} CL 1 DOMINO 860U
 DKF 860 DOMINETTE 0500 ET {DLF,HYF,IEF} DKF 179 SASSY 473

dam ECR 5216 DOMINO 0340 {DLF,HYF,IEF} UPS DOMINO 5216
ECR 0340 DOMINETTE 5383 ECR LADY GEN 449
 ECR DOMINETTE 1451 ECR 4129 FLAME 7450
 ECR LADY DOMINO 460

CED	BW	WW	YW	Scrotal	SCF	MILK	M&G	Udder	Teat	REA	MARB	BMIS	CHBS
-2.2	4.7	60	94	1	18.7	22	52	1.2	1.1	0.41	0.05	370	96

ACT BW 86 lbs. • ADJ WW 644 lbs. • LE Pigment 75 • RE Pigment 100 • ADJ Scrotal 43.5

• Built with power from the ground up



Lot 64 • ECR 3371 Rewards 9325

lot 65

ECR 7076 ADVANCE 9367

DOB: 4/5/19 • Reg. #44087212 • Horned • Tattoo 9367

sire CL 1 DOMINO 1131Y 1ET {CHB}{DLF,HYF,IEF} CL 1 DOMINO 955W
 CL 1 DOMINETTE 615S
HH ADVANCE 7076E ET {DLF,HYF,IEF,MSUDF} HH ADVANCE 8203U ET
 HH MISS ADVANCE 0121X {DLF,HYF,IEF} HH MISS ADVANCE 7050T

dam HH ADVANCE 9075W ET {SOD}{CHB}{DLF,HYF,IEF} HH ADVANCE 7101T
ECR 9075 DOMINETTE 3178 HH MISS ADVANCE 1028L
 IH 9126 DOMINETTE 631 {DOD} CL 1 DOMINO 9126J 1ET
 IH 129 INSETTE 4140

CED	BW	WW	YW	Scrotal	SCF	MILK	M&G	Udder	Teat	REA	MARB	BMIS	CHBS
1.4	3.4	49	71	0.9	14.3	33	57	1.2	1.1	0.3	0.14	328	120

ACT BW 87 lbs. • ADJ WW 680 lbs. • LE Pigment 100 • RE Pigment 100 • ADJ Scrotal 44

• 156% marbling ratio when scanned

lot 66

ECR SOONER ON CANDY 9368 ET

DOB: 4/4/19 • Reg. #44205060 • Horned • Tattoo 9368

sire BR CSF COPPER ET {DLF,HYF,IEF,MSUDF} DM BR SOONER
 BR GABRIELLE 5082
BR SOONER ON SOONER {DLF,HYF,IEF,MSUDF} DM BR SOONER
 BR MS SOONER 7172 {DLF,HYF,IEF,MSUDF} BR DOMINETTE 0013

dam UPS SENSATION 2296 ET {DLF,HYF,IEF,MSUDF,MDF} CHURCHILL SENSATION 028X
ECR CANDI 5451 ET {DLF,HYF,IEF,MSUDF} UPS JT MISS NEON 7811 1ET
 ECR LADY FLOW 212ET {DLF,HYF,IEF} DKF RO CASH FLOW 0245 ET
 RV GOLDEN LADY 5064

CED	BW	WW	YW	Scrotal	SCF	MILK	M&G	Udder	Teat	REA	MARB	BMIS	CHBS
-0.1	4.1	62	100	1	15	31	62	1.1	1.2	0.7	0.12	351	134

ACT BW 90 lbs. • ADJ WW 706 lbs. • LE Pigment 20 • RE Pigment 100 • ADJ Scrotal 46

• Pay attention here, his mother is a prolific donor
 • Suitable for use in a registered herd but will do whats needed to make an awesome set of baldies

lot 67

ECR 7586 SHAMELESS 9372 ET

DOB: 4/4/19 • Reg. #44205057 • Polled • Tattoo 9372

sire DKF RO CASH FLOW 0245 ET {SOD}{DLF,HYF,IEF} CRR ABOUT TIME 743
 JRR MISS TOBEY 711T
ECR SHAMELESS 7586 ET {DLF,HYF,IEF} K&B DOMINO 2570
 RV GOLDEN LADY 5064 {DLF,HYF,IEF} RV MS GOLD DUST 3064

dam JCS COOL KAT 6928 {DLF,IEF} CJH L1 DOMINO 1106
JCS TATER TOT 3560 {DLF,HYF,IEF} JCS MISS ROYALTY 3676
 JCS MISS 510 EXCELLA 9201 F L18 EXCEL 510
 JCS MISS ROYALTY 4767

CED	BW	WW	YW	Scrotal	SCF	MILK	M&G	Udder	Teat	REA	MARB	BMIS	CHBS
-2	5.1	54	88	1	12	30	57	1.1	1.1	0.43	-0.07	278	97

ACT BW 90 lbs. • ADJ WW 702 lbs. • LE Pigment 100 • RE Pigment 80 • ADJ Scrotal 43.5

• Performance polled bull
 • Will add pounds



Lot 67 • ECR 7586 Shameless 9372 ET



Lot 68 • ECR 3371 Rewards 9383

lot 68

ECR 3371 REWARDS 9383

DOB: 4/6/19 • Reg. #44076263 • Polled • Tattoo 9383

sire KJ HVH 33N REDEEM 485T ET {SOD}{DLF,HYF,IEF} SHF RADAR M326 R125
 HVH OKSANA 4L 33N
ECR REWARD 3371 ET {DLF,HYF,IEF} CL 1 DOMINO 860U
 DKF 860 DOMINETTE 0500 ET {DLF,HYF,IEF} DKF 179 SASSY 473

dam UPS UNDISPUTED ET {DLF,HYF,IEF} SHF WONDER M326 W18 ET
ECR 3304 DOMINETTE 6417 UPS MISS DIAMOND 1353
 ECR 9075 DOMINETTE 3082 HH ADVANCE 9075W ET
 ECR 7195 DOMINETTE 9030

CED	BW	WW	YW	Scrotal	SCF	MILK	M&G	Udder	Teat	REA	MARB	BMIS	CHBS
1.2	2.4	55	84	1	19.1	29	56	1	1.1	0.34	0.02	383	98

ACT BW 83 lbs. • ADJ WW 640 lbs. • LE Pigment 100 • RE Pigment 100 • ADJ Scrotal 40.5

• These Reward cattle are the right kind. Easy fleshing with length and power



Lot 69 • ECR 7076 Advance 9393

lot 69

ECR 7076 ADVANCE 9393

DOB: • Reg. #44087168 • Polled • Tattoo 9393

sire CL 1 DOMINO 1131Y 1ET {CHB}{DLF,HYF,IEF} CL 1 DOMINO 955W
 CL 1 DOMINETTE 615S
HH ADVANCE 7076E ET {DLF,HYF,IEF,MSUDF} HH ADVANCE 8203U ET
 HH MISS ADVANCE 0121X {DLF,HYF,IEF} HH MISS ADVANCE 7050T

dam ECR 4202 DAKOTA LAD 9022 {DLF,HYF,IEF} MH DAKOTA LAD 4202
ECR 9022 UNLEASHED LADY 3230 IH 129 INSETTE 215
 LCX UNLEASHED LADY 101 {DOD,DLF,HYF,IEF} TRIARA UNLEASHED 893U
 CT MISS ZING 10U

CED	BW	WW	YW	Scrotal	SCF	MILK	M&G	Udder	Teat	REA	MARB	BMIS	CHBS
0.3	4.9	57	88	0.6	14.3	33	62	1.20	1.20	0.40	0.16	326	121

ACT BW 89 lbs. • ADJ WW 682 lbs. • LE Pigment 100 • RE Pigment 10 • ADJ Scrotal 42.5

• Big, long, stretchy polled bull
 • Rancher's kind

Fawcett's
ELMCREEKRANCH
 Ree Heights, South Dakota
www.fawcettselmcreekranch.com

lot 70

ECR 5002 ADVANCE 9394

DOB: 4/7/19 • Reg. #44087678 • Horned • Tattoo 9394

sire HH ADVANCE 3006A {DLF,HYF,IEF} HH ADVANCE 0002X
 HH MISS ADVANCE 1142Y
HH ADVANCE 5002C {DLF,HYF,IEF,MSUDF} HH ADVANCE 0002X
 HH MISS ADVANCE 3124A {DOD}{DLF,HYF,IEF,MSUDF} HH MISS ADVANCE 1079Y ET

dam ECR 4202 DAKOTA LAD 9022 {DLF,HYF,IEF} MH DAKOTA LAD 4202
ECR 9022 MS EXPLOSION 7355 IH 129 INSETTE 215
 ECR MS GENETIC EXPLOSION 1410 DKF 5042 CENTURION 7473
 ECR LADY GE 131

CED	BW	WW	YW	Scrotal	SCF	MILK	M&G	Udder	Teat	REA	MARB	BMIS	CHBS
2.3	3.0	57	89	1.4	17.3	37	65	1.00	1.10	0.31	0.07	352	106

ACT BW 84 lbs. • ADJ WW 692 lbs. • LE Pigment 60 • RE Pigment 501 • ADJ Scrotal 42.5

• 122% weaning ratio with a huge ribeye

lot 71

ECR 394 DOMINO 9399

DOB: 4/3/19 • Reg. #44086827 • Horned • Tattoo 9399

sire CL 1 DOMINO 105Y {SOD}{DLF,HYF,IEF}
CL 1 DOMINO 394A {DLF,HYF,IEF}
 CL 1 DOMINETTE 7157T {DLF,HYF,IEF}

CL 1 DOMINO 929W
 CL 1 DOMINETTE 9140W 1ET
 CL 1 DOMINO 4102P 1ET
 CL 1 DOMINETTE 439P

UPS ADVANCE 0652 {DLF,HYF,IEF}
 dam **ECR MISS ADVANCE 5249**
 ECR 7195 MISS EXCEL 0013

DS 3019 ADV 7602
 UPS MISS DOMINO 8709
 HH ADVANCE 7195T
 ECR 5042 MISS EXCEL 8322

CED	BW	WW	YW	Scrotal	SCF	MILK	M&G	Udder	Teat	REA	MARB	BMIS	CHBS
4.6	1.9	55	90	0.7	18.4	28	55	1	1.1	0.36	0.15	376	116

ACT BW 85 lbs. • ADJ WW 696 lbs. • LE Pigment 20 • RE Pigment 100 • ADJ Scrotal 40.5

• Lower birth weight bull with added growth, performance and a heavy weaning weight



Lot 71 • ECR 394 Domino 9399

lot 72

ECR 173D ENDURE 9400

DOB: 4/5/19 • Reg. #44087169 • Polled • Tattoo 9400

KCF BENNETT ENCORE Z311 ET {CHB}{DLF,HYF,IEF,MSUDF}
 sire **NJW 79Z Z311 ENDURE 173D ET** {CHB}{DLF,HYF,IEF,MSUDF,MDF}
 BW 91H 100W RITA 79Z ET {DLF,HYF,IEF,MSUDF,MDF}

SCHU-LAR ON TARGET 22S
 KCF MISS REVOLUTION X338 ET
 NJW 73S M326 TRUST 100W ET
 REMITALL RITA 91H

MSU TCF TITLEIST 2T ET {DLF,HYF,IEF}
 dam **DKF MISS GINGER 1268 ET**
 STAR GINGER GAL 511P ET {DLF,HYF,IEF}

S&S KODIAK 49J
 MSU TCF RACHAEL ET 56N
 REMITALL ONLINE 122L
 REMITALL GINGER 23G

CED	BW	WW	YW	Scrotal	SCF	MILK	M&G	Udder	Teat	REA	MARB	BMIS	CHBS
0.9	4.4	67	120	1.2	15.3	27	60	1.3	1.3	0.88	0.29	377	164

ACT BW 89 lbs. • ADJ WW 670 lbs. • LE Pigment 30 • RE Pigment 100 • ADJ Scrotal 45

• Look at the bull, look at his EPD's, buy the bull
 • He's been a standout since day 1



Lot 72 • ECR 173D Endure 9400

lot 73

ECR 7586 SHAMELESS 9408

DOB: 4/6/19 • Reg. #44205062 • Polled • Tattoo 9408

DKF RO CASH FLOW 0245 ET {SOD}{DLF,HYF,IEF}
 sire **ECR SHAMELESS 7586 ET {DLF,HYF,IEF}**
 RV GOLDEN LADY 5064 {DLF,HYF,IEF}

CRR ABOUT TIME 743
 JRR MISS TOBEY 711T
 K&B DOMINO 2570
 RV MS GOLD DUST 3064

CL 1 DOMINO 860U {SOD}{DLF,HYF,IEF}
 dam **DKF 860 DOMINETTE 0397 ET**
 DKF 179 SASSY 473 {DLF,IEF}

CL 1 DOMINO 637S 1ET
 CL 1 DOMINETTE 5142R
 KB CENTURION 179
 DKF 335F MS SASSY 704

CED	BW	WW	YW	Scrotal	SCF	MILK	M&G	Udder	Teat	REA	MARB	BMIS	CHBS
-2.2	4.8	50	85	0.7	13.4	30	55	1.1	1.05	0.45	-0.04	303	102

ACT BW 82 lbs. • ADJ WW 624 lbs. • LE Pigment 100 • RE Pigment 95 • ADJ Scrotal 42

• Bred to be middle frame, easy fleshing with added longevity and power



ECR Shameless 7586 ET • Sire of Lot 73



Lot 74 • ECR 6305 Bravo 9411

lot 74

ECR 6305 BRAVO 9411

DOB: 4/8/19 • Reg. #44087209 • Horned • Tattoo 9411

sire CHURCHILL BRAVO 3275A ET {DLF,HYF,IEF}
ECR BRAVO 6305 {DLF,HYF,IEF,MSUDF}
 ECR 5216 HARRIET 1116 {DOD}{DLF,HYF,IEF,MSUDF}

HH ADVANCE 0132X
 CHURCHILL LADY 9123W ET
 UPS DOMINO 5216
 ECR 408 HARRIET 9071

dam DHD TURBO HH 1103 {DLF,HYF,IEF}
ECR DOMINETTE 5589
 ECR 286 SABRINA 8198

CHURCHILL HOLLAND 987W ET
 CHURCHILL LADY 962W
 IH 769 SABRE 286
 IH 503 DOMINET 7672

CED	BW	WW	YW	Scrotal	SCF	MILK	M&G	Udder	Teat	REA	MARB	BMIS	CHBS
-4.5	6	58	86	1	15.7	25	54	1.1	1	0.32	0.07	329	96

ACT BW 92 lbs. • ADJ WW 676 lbs. • LE Pigment 60 • RE Pigment 50 • ADJ Scrotal 44

- Great in his design and flawless structured
- Added longevity



Lot 75 • ECR 173D Endure 9422

lot 75

ECR 173D ENDURE 9422

DOB: 4/6/19 • Reg. #44087204 • Polled • Tattoo 9422

sire KCF BENNETT ENCORE Z311 ET {CHB}{DLF,HYF,IEF,MSUDF}
NJW 79Z Z311 ENDURE 173D ET {CHB}{DLF,HYF,IEF,MSUDF,MDF}
 BW 91H 100W RITA 79Z ET {DLF,HYF,IEF,MSUDF,MDF}

SCHU-LAR ON TARGET 22S
 KCF MISS REVOLUTION X338 ET
 NJW 73S M326 TRUST 100W ET
 REMITALL RITA 91H

dam NJW 37U 100W TRUST 113Z {CHB}{DLF,HYF,IEF}
THR MISS THOR 4146B
 THR MISS THOR 9107W

NJW 73S M326 TRUST 100W ET
 NJW 4037 80L FAITH 37U
 L1 DOMINO 05455
 THR MISS THOR 6243S

CED	BW	WW	YW	Scrotal	SCF	MILK	M&G	Udder	Teat	REA	MARB	BMIS	CHBS
0.8	4.9	71	116	1.3	20.4	30	66	1.2	1.1	0.69	0.21	434	142

ACT BW 90 lbs. • ADJ WW 724 lbs. • LE Pigment 100 • RE Pigment 100 • ADJ Scrotal 42

- Checks all the boxes, performance data and carcass data all above average
- Long bodied, fully pigmented and dark red



Lot 76 • ECR 7076 Advance 9435

lot 76

ECR 7076 ADVANCE 9435

DOB: 4/5/19 • Reg. #44086844 • Horned • Tattoo 9435

sire CL 1 DOMINO 1131Y 1ET {CHB}{DLF,HYF,IEF}
HH ADVANCE 7076E ET {DLF,HYF,IEF,MSUDF}
 HH MISS ADVANCE 0121X {DLF,HYF,IEF}

CL 1 DOMINO 955W
 CL 1 DOMINETTE 615S
 HH ADVANCE 8203U ET
 HH MISS ADVANCE 7050T

dam CL 1 DOMINO 2109Z {DLF,HYF,IEF}
ECR 2109 GEN LADY 508 ET {DOD}
 ECR L18 GEN LADY 6131 {DOD}{DLF,HYF,IEF}

CL 1 DOMINO 994W 1ET
 CL 1 DOMINETTE 759T 1ET
 GO EXCEL L18
 ECR LADY GE 131

CED	BW	WW	YW	Scrotal	SCF	MILK	M&G	Udder	Teat	REA	MARB	BMIS	CHBS
1.7	3.6	63	93	0.8	15	33	64	1.1	1.1	0.38	0.22	336	122

ACT BW 85 lbs. • ADJ WW 710 lbs. • LE Pigment 50 • RE Pigment 90 • ADJ Scrotal 43

- Oh boy look at my bull
- Donor Dam of Distinction up close on the bottom side

lot 77

ECR 628 ADVANCE 9440

DOB: 4/11/19 • Reg. #44087208 • Horned • Tattoo 9440

sire HH ADVANCE 4075B ET {CHB}{DLF,HYF,IEF,MSUDF,MDF}
H FHF ADVANCE 628 ET {DLF,HYF,IEF,MSUDF,MDF}
 FHF 408 RITA 21W {DLF,HYF,IEF,MSUDF}

dam ECR L18 EXTRA DEEP 9279 {SOD}{CHB}{DLF,HYF,IEF}
ECR BOBBY SUE 2075
 IH 821 DOMINETTE 3611

HH ADVANCE 1013Y ET
 HH MISS ADVANCE 0121X
 CJH HARLAND 408
 FHF 45P RITA 101T
 GO EXCEL L18
 OXH CHRISTI 0028
 CJH L1 DOMINO 821
 IH 2110 DOMINETA 1669

CED	BW	WW	YW	Scrotal	SCF	MILK	M&G	Udder	Teat	REA	MARB	BMIS	CHBS
2.1	3.6	57	92	0.5	14.8	24	52	1.1	1.2	0.58	0.09	340	129

ACT BW 89 lbs. • ADJ WW 664 lbs. • LE Pigment 0 • RE Pigment 100 • ADJ Scrotal 39

- Balanced EPD's
- Very nice Bob daughter on the bottom side



H FHF Advance 628 ET • Sire of Lot 77

lot 78

ECR 7586 SHAMELESS 9445

DOB: 4/14/19 • Reg. #44087205 • Polled • Tattoo 9445

sire DKF RO CASH FLOW 0245 ET {SOD}{DLF,HYF,IEF}
ECR SHAMELESS 7586 ET {DLF,HYF,IEF}
 RV GOLDEN LADY 5064 {DLF,HYF,IEF}

dam H WCC/WB 668 WYARNO 9500 ET {SOD}{DLF,HYF,IEF}
ECR LADY EXCEL 3376 ET
 ECR L18 GEN LADY 6131 {DOD}{DLF,HYF,IEF}

CRR ABOUT TIME 743
 JRR MISS TOBEY 711T
 K&B DOMINO 2570
 RV MS GOLD DUST 3064
 TH JWR SOP 16G 57G TUNDRA 63N
 H KATHY 668 ET
 GO EXCEL L18
 ECR LADY GE 131

CED	BW	WW	YW	Scrotal	SCF	MILK	M&G	Udder	Teat	REA	MARB	BMIS	CHBS
-1	4.6	51	86	0.5	15	31	56	1.2	1.1	0.28	0	315	92

ACT BW 88 lbs. • ADJ WW 630 lbs. • LE Pigment 6 • RE Pigment 75 • ADJ Scrotal 41

- Big stretchy bull with tons of mass and power



Lot 78 • ECR 7586 Shameless 9445

lot 79

ECR 3304 UNDISPUTED 9449

DOB: 4/12/19 • Reg. #44063044 • Polled • Tattoo 9449

sire SHF WONDER M326 W18 ET {SOD}{CHB}{DLF,HYF,IEF,MDC}
UPS UNDISPUTED ET {DLF,HYF,IEF}
 UPS MISS DIAMOND 1353 {DLF,HYF,IEF,MSUDF}

dam UPS SENSATION 2296 ET {DLF,HYF,IEF,MSUDF,MDF}
ECR RO MISS TOBEY 421 ET
 JRR MISS TOBEY 711T {DLF,HYF,IEF}

KCF BENNETT 3008 M326
 SHF GOVERNESS 236G L37
 SH DIAMOND 881
 UPS MS MILEHIGH 8330
 CHURCHILL SENSATION 028X
 UPS JT MISS NEON 7811 1ET
 FELTONS OZZIE 492
 JRR RANDI 524R

CED	BW	WW	YW	Scrotal	SCF	MILK	M&G	Udder	Teat	REA	MARB	BMIS	CHBS
1.8	3.9	64	103	1.4	19.7	37	69	1.1	1.2	0.42	0.14	402	113

ACT BW 88 lbs. • ADJ WW 760 lbs. • LE Pigment 100 • RE Pigment 100 • ADJ Scrotal 43.5

- Big, dark red and short marked Undisputed son
- Easy Flething, heavy weaning and full pigment



Lot 79 • ECR 3304 Undisputed 9449



Lot 80 • ECR 628 Advance 9461 ET

lot 80

ECR 628 ADVANCE 9461 ET

DOB: 4/11/19 • Reg. #44200942 • Horned • Tattoo 9461

sire HH ADVANCE 4075B ET {CHB}{DLF,HYF,IEF,MSUDF,MDF}
H FHF ADVANCE 628 ET {DLF,HYF,IEF,MSUDF,MDF}
 FHF 408 RITA 21W {DLF,HYF,IEF,MSUDF}

HH ADVANCE 1013Y ET
 HH MISS ADVANCE 0121X
 CJH HARLAND 408
 FHF 45P RITA 101T

dam UPS SENSATION 2296 ET {DLF,HYF,IEF,MSUDF,MDF}
ECR CANDI 5451 ET {DLF,HYF,IEF,MSUDF}
 ECR LADY FLOW 212ET {DLF,HYF,IEF}

CHURCHILL SENSATION 028X
 UPS JT MISS NEON 7811 1ET
 DKF RO CASH FLOW 0245 ET
 RV GOLDEN LADY 5064

CED	BW	WW	YW	Scrotal	SCF	MILK	M&G	Udder	Teat	REA	MARB	BMIS	CHBS
1.2	3.5	62	95	0.9	13.6	26	57	1	1.2	0.8	0.11	332	134

ACT BW 94 lbs. • ADJ WW 774 lbs. • LE Pigment 70 • RE Pigment 80 • ADJ Scrotal 42.5

- Candi's favorite son
- Mass, power, shape, balance and backed by a great donor
- Scanned with a big ribeye and added marbling



Lot 81 • ECR SL Rushmore 9466 ET

lot 81

ECR SL RUSHMORE 9466 ET

DOB: 4/10/19 • Reg. #44088097 • Horned • Tattoo 9466

sire UPS SENSATION 2296 ET {DLF,HYF,IEF,MSUDF,MDF}
ECR RO RUSHMORE 418 ET {DLF,HYF,IEF,MDF}
 JRR MISS TOBEY 711T {DLF,HYF,IEF}

CHURCHILL SENSATION 028X
 UPS JT MISS NEON 7811 1ET
 FELTONS OZZIE 492
 JRR RANDI 524R

dam ECR L18 EXTRA DEEP 9279 {SOD}{CHB}{DLF,HYF,IEF}
AL MISS EXTRA 1116 {DLF,HYF,IEF,MSUDF}
 SR HARLET 660 {DOD}

GO EXCEL L18
 OXH CHRISTI 0028
 CJH HARLAND 408
 ORE 222 MISS 7130

CED	BW	WW	YW	Scrotal	SCF	MILK	M&G	Udder	Teat	REA	MARB	BMIS	CHBS
2.1	4.6	63	91	1.5	17	35	66	1.2	1.3	0.35	0.08	356	101

ACT BW 88 lbs. • ADJ WW 732 lbs. • LE Pigment 100 • RE Pigment 10 • ADJ Scrotal 44

- Big weaner, long bodied with tons of performance
- Backed by an awesome donor



Lot 82 • ECR 7076 Advance 9467

lot 82

ECR 7076 ADVANCE 9467

DOB: 4/8/19 • Reg. #44087113 • Horned • Tattoo 9467

sire CL 1 DOMINO 1131Y 1ET {CHB}{DLF,HYF,IEF}
HH ADVANCE 7076 ET {DLF,HYF,IEF,MSUDF}
 HH MISS ADVANCE 0121X {DLF,HYF,IEF}

CL 1 DOMINO 955W
 CL 1 DOMINETTE 615S
 HH ADVANCE 8203U ET
 HH MISS ADVANCE 7050T

dam HH ADVANCE 2029Z ET {DLF,HYF,IEF}
ECR 2029 DOMINETTE 4478
 ECR 5216 DOMINETTE 1192

HH ADVANCE 8203U ET
 HH MISS ADVANCE 5139R ET
 UPS DOMINO 5216
 ECR 408 HAZEL 9351

CED	BW	WW	YW	Scrotal	SCF	MILK	M&G	Udder	Teat	REA	MARB	BMIS	CHBS
3.2	3.8	56	77	1.0	17.1	30	58	1.20	1.10	0.34	0.28	371	124

ACT BW 89 lbs. • ADJ WW 668 lbs. • LE Pigment 100 • RE Pigment 100 • ADJ Scrotal 42

- Big, long and deep
- Full pigment, moderate birth with plenty of performance

lot 83

ECR 173D ENDURE 9476

DOB: 4/9/19 • Reg. #44087175 • Polled • Tattoo 9476

sire KCF BENNETT ENCORE Z311 ET {CHB}{DLF,HYF,IEF,MSUDF}
 NJW 79Z Z311 ENDURE 173D ET {CHB}{DLF,HYF,IEF,MSUDF,MDF}
 BW 91H 100W RITA 79Z ET {DLF,HYF,IEF,MSUDF,MDF}

SCHU-LAR ON TARGET 22S
 KCF MISS REVOLUTION X338 ET
 NJW 73S M326 TRUST 100W ET
 REMITALL RITA 91H

dam TH 60W 719T VICTOR 43Y {SOD}{DLF,HYF,IEF}
 ECR 43Y FLO 4012
 ECR FLO 2206

TH 122 711 VICTOR 719T
 TH 77S 45P RUBY 60W
 DKF RO CASH FLOW 0245 ET
 ECR 6246 DOMINETTE 8339

CED	BW	WW	YW	Scrotal	SCF	MILK	M&G	Udder	Teat	REA	MARB	BMIS	CHBS
3	2.4	61	98	0.8	19	28	59	1.2	1.2	0.53	0.14	400	125

ACT BW 84 lbs. • ADJ WW 658 lbs. • LE Pigment 40 • RE Pigment 100 • ADJ Scrotal 42

- Long bodied Endure son with a great set of EPD's
- Performance bull with a predictability



Lot 83 • ECR 173D Endure 9476

lot 84

ECR 628 ADVANCE 9490 ET

DOB: 4/13/19 • Reg. #44200944 • Horned • Tattoo 9490

sire HH ADVANCE 4075B ET {CHB}{DLF,HYF,IEF,MSUDF,MDF}
 H FHF ADVANCE 628 ET {DLF,HYF,IEF,MSUDF,MDF}
 FHF 408 RITA 21W {DLF,HYF,IEF,MSUDF}

HH ADVANCE 1013Y ET
 HH MISS ADVANCE 0121X
 CJH HARLAND 408
 FHF 45P RITA 101T

dam UPS SENSATION 2296 ET {DLF,HYF,IEF,MSUDF,MDF}
 ECR CANDI 5451 ET {DLF,HYF,IEF,MSUDF}
 ECR LADY FLOW 212ET {DLF,HYF,IEF}

CHURCHILL SENSATION 028X
 UPS JT MISS NEON 7811 1ET
 DKF RO CASH FLOW 0245 ET
 RV GOLDEN LADY 5064

CED	BW	WW	YW	Scrotal	SCF	MILK	M&G	Udder	Teat	REA	MARB	BMIS	CHBS
1.2	3.5	62	95	0.9	13.6	26	57	1	1.2	0.77	0.1	330	132

ACT BW 92 lbs. • ADJ WW 726 lbs. • LE Pigment 20 • RE Pigment 60 • ADJ Scrotal 42

- After he was pictured I said to send him to the herd bull pasture, guess nobody was listening...



Lot 84 • ECR 628 Advance 9490 ET

lot 85

ECR 1628 ADVANCE 9496

DOB: 4/12/19 • Reg. #44088068 • Horned • Tattoo 9496

sire CL 1 DOMINO 955W {SOD}{CHB}{DLF,HYF,IEF}
 MC ADVANCE 955W 1628 ET {DLF,HYF,IEF,MSUDF}
 HH MISS ADVANCE 1079Y ET {DLF,HYF,IEF}

CL 1 DOMINO 637S 1ET
 CL 1 DOMINETTE 5152R
 HH ADVANCE 8050U ET
 HH MISS ADVANCE 6109S

dam HH ADVANCE 2029Z ET {DLF,HYF,IEF}
 ECR 2029 MISS ADVANCE 6134
 ECR 7195 LADY STAR 3081

HH ADVANCE 8203U ET
 HH MISS ADVANCE 5139R ET
 ECR L18 EXTRA DEEP 9279
 ECR 7195 LADY STAR 9229

CED	BW	WW	YW	Scrotal	SCF	MILK	M&G	Udder	Teat	REA	MARB	BMIS	CHBS
4.6	3.5	60	89	1.1	18.6	26	56	1.1	1.2	0.65	0.01	386	114

ACT BW 86 lbs. • ADJ WW 604 lbs. • LE Pigment 100 • RE Pigment 80 • ADJ Scrotal 42

- Well balanced, long bodied bull who is middle framed
- Top end



Lot 85 • ECR 1628 Advance 9496



Lot 86 • ECR 7076 Advance 9509

lot **86**

ECR 7076 ADVANCE 9509

DOB: 4/14/19 • Reg. #44087177 • Horned • Tattoo 9509

sire CL 1 DOMINO 1131Y 1ET {CHB}{DLF,HYF,IEF}
HH ADVANCE 7076 ET {DLF,HYF,IEF,MSUDF}
 HH MISS ADVANCE 0121X {DLF,HYF,IEF}

dam HH ADVANCE 7195T {SOD}{DLF,HYF,IEF}
ECR 7195 DOMINETTE 9041
 IH 2110 DOMINETA 1581

CL 1 DOMINO 955W
 CL 1 DOMINETTE 615S
 HH ADVANCE 8203U ET
 HH MISS ADVANCE 7050T

L1 DOMINO 03571
 HH MISS ADVANCE 3128N
 IHM 409 DOMINO 2110
 IH MS 8 ADVANCE 6109

CED	BW	WW	YW	Scrotal	SCF	MILK	M&G	Udder	Teat	REA	MARB	BMIS	CHBS
0.4	4.4	50	80	0.6	18.1	30	55	1.30	1.30	0.22	0.19	368	113

ACT BW 91 lbs. • ADJ WW 636 lbs. • LE Pigment 40 • RE Pigment 95 • ADJ Scrotal 42

- Dam's 10th calf
- Added longevity with a great 7195 daughter standing behind him



Lot 87 • ECR 6305 Bravo 9520

lot **87**

ECR 6305 BRAVO 9520

DOB: 4/16/10 • Reg. #pending • Horned • Tattoo 9520

sire CHURCHILL BRAVO 3275A ET {DLF,HYF,IEF}
ECR BRAVO 6305 {DLF,HYF,IEF,MSUDF}
 ECR 5216 HARRIET 1116 {DOD}{DLF,HYF,IEF,MSUDF}

dam CL 1 DOMINO 394A {DLF,HYF,IEF}
ECR 394 DOMINETTE 8557
 AKJ 7195 BOULDER LASS 0129

HH ADVANCE 0132X
 CHURCHILL LADY 9123W ET
 UPS DOMINO 5216
 ECR 408 HARRIET 9071

CL 1 DOMINO 105Y
 CL 1 DOMINETTE 7157T
 HH ADVANCE 7195T
 RV BOULDER LASS 6089

CED	BW	WW	YW	Scrotal	SCF	MILK	M&G	Udder	Teat	REA	MARB	BMIS	CHBS
0.0	3.5	48	88	1.0	18	28	58	1.00	1.10	0.36	0.12	375	110

ACT BW 85 lbs. • ADJ WW 71 lbs. • LE Pigment 100 • RE Pigment 100 • ADJ Scrotal 40

- Mid framed long bodied bull with a balanced set of EPD's



Lot 88 • ECR 5204 Domino 9527

lot **88**

ECR 5204 DOMINO 9527

DOB: 4/15/19 • Reg. #44086835 • Horned • Tattoo 9527

sire HH ADVANCE 2029Z ET {DLF,HYF,IEF}
ECR 2029 ADV DOMINO 5204 {DLF,HYF,IEF,MSUDF}
 DKF 860 DOMINETTE 0397 ET

dam CHURCHILL SENSATION 028X {SOD}{DLF,HYF,IEF,MDF}
ECR LADY SENSATION 4013
 ECR BOBBY SUE 2319

HH ADVANCE 8203U ET
 HH MISS ADVANCE 5139R ET
 CL 1 DOMINO 860U
 DKF 179 SASSY 473

UPS DOMINO 3027
 CHURCHILL LADY 7202T ET
 ECR L18 EXTRA DEEP 9279
 ECR ANGEL 7869

CED	BW	WW	YW	Scrotal	SCF	MILK	M&G	Udder	Teat	REA	MARB	BMIS	CHBS
6.3	1.5	48	66	1.1	21.1	30	54	1.1	1.2	0.38	0.09	415	105

ACT BW 84 lbs. • ADJ WW 706 lbs. • LE Pigment 100 • RE Pigment 100 • ADJ Scrotal 40.5

- Really like both the sire and dam of this bull and he is no exception
- Goes back to Sensation on the bottom side and the cow continually calves with a below average birth weight and weans off heavier than average

lot 89

ECR 6305 BRAVO 9561

DOB: 4/22/19 • Reg. #44061858 • Horned • Tattoo 9561

sire CHURCHILL BRAVO 3275A ET {DLF,HYF,IEF}
ECR BRAVO 6305 {DLF,HYF,IEF,MSUDF}
 ECR 5216 HARRIET 1116 {DOD}{DLF,HYF,IEF,MSUDF}

dam K&B ADVANCER 0133X ET {DLF,HYF,IEF}
ECR 0133 DOMINETTE 6128
 ECR 842 DOMINETTE 3427

HH ADVANCE 0132X
 CHURCHILL LADY 9123W ET
 UPS DOMINO 5216
 ECR 408 HARRIET 9071
 HH ADVANCE 8141U
 K&B MISS EXCEL 4216
 KB L1 DOMINO 842U
 DKF 860 DOMINETTE 0410 ET

CED	BW	WW	YW	Scrotal	SCF	MILK	M&G	Udder	Teat	REA	MARB	BMIS	CHBS
-2.3	5.1	57	83	1.2	15.2	31	59	1	1.1	0.37	0.11	326	104

ACT BW 90 lbs. • ADJ WW 635 lbs. • LE Pigment 90 • RE Pigment 60 • ADJ Scrotal 40.5

- Plenty of mass and power
- Will make a heck of a set of baldies



Lot 89 • ECR 6305 Bravo 9561

lot 90

ECR 6017 DOMINO 9565

DOB: 4/17/19 • Reg. #44085767 • Horned • Tattoo 9565

sire CL 1 DOMINO 3131A {DLF,HYF,IEF}
ECR 3131 DOMINO 6017 {DLF,HYF,IEF}
 ECR 2109 DOMINETTE 4367

dam ECR L18 EXTRA DEEP 9279 {SOD}{CHB}{DLF,HYF,IEF}
ECR 9279 DOMINETTE 3159
 ECR 7195 DOMINETTE 0079

CL 1 DOMINO 1161Y
 CL1 DOMINETTE 119Y
 CL 1 DOMINO 2109Z
 ECR 5042 NETWORK LADY 8352
 GO EXCEL L18
 OXH CHRISTI 0028
 HH ADVANCE 7195T
 ECR 456 DOMINETTE 8054

CED	BW	WW	YW	Scrotal	SCF	MILK	M&G	Udder	Teat	REA	MARB	BMIS	CHBS
5.3	2.9	58	82	1.0	17.5	29	58	1.1	1.2	0.37	0.03	361	104

ACT BW 86 lbs. • ADJ WW 740 lbs. • LE Pigment 100 • RE Pigment 100 • ADJ Scrotal 44

- High quality business mans bull
- Heavy weaning weight and full pigment



Lot 90 • ECR 6017 Domino 9565

lot 91

ECR 1628 ADVANCE 9569

DOB: 4/19/19 • Reg. #44088796 • Polled • Tattoo 9569

sire CL 1 DOMINO 955W {SOD}{CHB}{DLF,HYF,IEF}
MC ADVANCE 955W 1628 ET {DLF,HYF,IEF,MSUDF}
 HH MISS ADVANCE 1079Y ET {DLF,HYF,IEF}

dam CHURCHILL BRAVO 3275A ET {DLF,HYF,IEF}
ECR 3275 MISS DIAMOND 6285
 ECR 25L LADY WRANGLER 9342

CL 1 DOMINO 637S 1ET
 CL 1 DOMINETTE 5152R
 HH ADVANCE 8050U ET
 HH MISS ADVANCE 6109S
 HH ADVANCE 0132X
 CHURCHILL LADY 9123W ET
 JDH AH 25L WRANGLER 19T ET
 ECR 43L MISS JENNY 521

CED	BW	WW	YW	Scrotal	SCF	MILK	M&G	Udder	Teat	REA	MARB	BMIS	CHBS
0.1	4.3	64	93	1.0	16.1	28	61	1.10	1.10	0.49	0.04	340	103

ACT BW 88 lbs. • ADJ WW 648 lbs. • LE Pigment 30 • RE Pigment 100 • ADJ Scrotal 41

- Long bodied, high performing bull with plenty of depth and pigment



Lot 91 • ECR 1628 Advance 9569



Lot 92 • ECR Golden Pond 9673 ET

lot 92

ECR GOLDEN POND 9673 ET

DOB: 5/5/19 • Reg. #44205063 • Polled • Tattoo 9673

sire CRR ABOUT TIME 743 {SOD}{DLF,HYF,IEF,MDF}
DKF RO CASH FLOW 0245 ET {SOD}{DLF,HYF,IEF}
 JRR MISS TOBEY 711T {DLF,HYF,IEF}

THM DURANGO 4037
 CRR D03 CASSIE 206
 FELTONS OZZIE 492
 JRR RANDI 524R

dam K&B DOMINO 2570
RV GOLDEN LADY 5064 {DLF,HYF,IEF}
 RV MS GOLD DUST 3064 {DOD}

CL 1 DOMINO 0140K 1ET
 K&B MISS DOMINO 9507
 C -S PURE GOLD 98170
 RV MS ACCLAIM 7064

CED	BW	WW	YW	Scrotal	SCF	MILK	M&G	Udder	Teat	REA	MARB	BMIS	CHBS
-1.3	3.6	49	77	1.0	16.3	37	62	1.15	1.15	0.55	-0.06	351	102

ACT BW 87 lbs. • ADJ WW 676 lbs. • LE Pigment 75 • RE Pigment 50 • ADJ Scrotal 43

- Will add pounds to any calf crop
- Easy fleshing bull with extra mass

lot 93

ECR MATERNAL MADE 951

DOB: 4/4/19 • Reg. #pending • Tattoo 951

sire CONNEALY NIOBRARA 5451
CONNEALY MATERNAL MADE
 EBONY LILLY OF CONANGA 167T

CONNEALY CONFIDENCE PLUS
 BRITHA OF CONANGA 167
 GDAR GAME DAY 449
 EBONY ENA OF CONANGA 1221

dam SAV BRILLIANCE 8077
ECR 6753 PEG 2602 ET
 LAGRAND PEG 6753

SAV BISMARCK 5682
 SAV BLACKCAP MAY 5270
 LAGRAND SUN DANCE 4211
 TC PEG 7021

CED	BW	WW	YW	Milk	Marb	REA	Fat	SW	SF	SG	SB
3.5	1.3	51	95	29	0.60	0.51	0.038	51	100	38	132

ACT BW 78 lbs. • ADJ WW 708 lbs. • ADJ Scrotal 42.5

- Low birth weight bull suitable for use on heifers or young cows

lot 94

ECR MATERNAL MADE 954

DOB: 4/10/19 • Reg. #pending • Tattoo 954

sire CONNEALY NIOBRARA 5451
CONNEALY MATERNAL MADE
 EBONY LILLY OF CONANGA 167T

CONNEALY CONFIDENCE PLUS
 BRITHA OF CONANGA 167
 GDAR GAME DAY 449
 EBONY ENA OF CONANGA 1221

dam BC MARATHON 7022
LAGRAND MISS CHEYENNE 7329
 LAGRABD MISS CHEYENNE 4036

OCC KIRBY 633K
 GIBBET HILL MIGNONNE E37
 BON VIEW NEW DESIGN 878
 BCC MISS CHEYENNE 41-94

CED	BW	WW	YW	Milk	Marb	REA	Fat	SW	SF	SG	SB
3.0	1.5	47	85	30	0.45	0.25	0.026	50	67	20	120

ACT BW 86 lbs. • ADJ WW 732 lbs. • ADJ Scrotal 42.5

- Big weaning weight bull with added pounds and performance



Lot 95 • ECR Maternal Made 947

lot 95

ECR MATERNAL MADE 947

DOB: 3/31/19 • Reg. #pending • Tattoo 947

sire CONNEALY NIOBRARA 5451
CONNEALY MATERNAL MADE
 EBONY LILLY OF CONANGA 167T

CONNEALY CONFIDENCE PLUS
 BRITHA OF CONANGA 167
 GDAR GAME DAY 449
 EBONY ENA OF CONANGA 1221

dam HF PROWLER 43U
ECR PROWLER 528
 LAGRAND PRIDE 6575

HF KODIAK 5R
 HF ROSEBUD 98P
 LAGRAND SUN DANCE 4211
 BON VIEW PRIDE 664

CED	BW	WW	YW	Milk	Marb	REA	Fat	SW	SF	SG	SB
6.0	0.8	48	95	26	0.75	0.21	0.038	36	100	50	135

ACT BW 86 lbs. • ADJ WW 758 lbs. • ADJ Scrotal 42.5

- Powerful Angus bull with plenty of length and a great disposition
- Big weaning weight

REF SIRE MC ADVANCE 955W 1628 ET {DLF,HYF,IEF,MSUDF}

DOB: 10/19/16 • Reg. #43771630 • Horned • Tattoo 1628

sire HH ADVANCE 1013Y ET {DLF,HYF,IEF}
sire **HH ADVANCE 4075B ET {DLF,HYF,IEF}**
 HH MISS ADVANCE 0121X {DLF,HYF,IEF}

dam CJH HARLAND 408 {SOD}{DLF,HYF,IEF}
dam **FHF 408 RITA 21W {DLF,HYF,IEF}**
 FHF 45P RITA 101T

HH ADVANCE 4055P
 HH MISS ADVANCE 7003T
 HH ADVANCE 8203U ET
 HH MISS ADVANCE 7050T

HH ADVANCE 9005J
 CJH L1 DOMINETTE 0064
 NJW FHF 9710 TANK 45P
 FHF DK 24F RITA 8N

CED	BW	WW	YW	Scrotal	SCF	MILK	M&G	Udder	Teat	REA	MARB	BMIS	CHBS

REF SIRE HH ADVANCE 7076 ET {DLF,HYF,IEF,MSUDF}

DOB: 1/8/17 • Reg. #43786179 • Horned • Tattoo 7076

sire CL 1 DOMINO 955W {CHB,SOD,DLF,HYF,IEF}
sire **CL 1 DOMINO 1131Y 1ET {CHB,DLF,HYF,IEF}**
 CL 1 DOMINETTE 615S {DLF,HYF,IEF}

dam HH ADVANCE 8203U ET {SOD,DLF,IEF}
dam **HH MISS ADVANCE 0121X {DLF,HYF,IEF}**
 HH MISS ADVANCE 7050T {DLF,HYF,IEF}

CL 1 DOMINO 637S 1ET
 CL 1 DOMINETTE 5152R
 CL 1 DOMINO 461P 1ET
 CL 1 DOMINETTE 440P 1ET

HH ADVANCE 5161R
 HH MISS ADVANCE 752G
 HH ADVANCE 4140P
 HH MISS ADVANCE 2197 M

CED	BW	WW	YW	Scrotal	SCF	MILK	M&G	Udder	Teat	REA	MARB	BMIS	CHBS
2.7	3.5	53	76	0.6	14.0	35	61	1.20	1.20	0.34	0.34	347	141

If planning to utilize online bidding, please contact Dan or any sale staff prior to the sale in case there happens to be a problem with the internet durin

live broadcast and online bidding

The Livestock Link™

Livestock Videoing • Video Sales
 • Bid-by-Click Online Sales

To view events go to
www.TheLivestockLink.com

Videos of all sale cattle will be posted by February 1st, 2021
 Please visit our website, www.fawcettselmcreekranch.com





NJW 84B 4040 Fortified 238F

REF SIRE NJW 84B 4040 FORTIFIED 238F {DLF,HYF,IEF,MSUDF,MDF}

DOB: 3/5/18 • Reg. #43943448 • Polled • Tattoo 84B238F

sire TH 22R 16S LAMBEAU 17Y {DLF,HYF,IEF,MSUDF,MDF}
 BOYD FT KNOX 17Y XZ5 4040 {DLF,HYF,IEF,MSUDF,MDF}
 DOSS MY EYES ADORE U DHZ5 {DLF,HYF,IEF}

TH 121L 63N TUNDRA 16S
 TH 62N 3L KELSEY 22R
 BOYD WORLDWIDE 9050 ET
 DHF COVER GIRL C902

dam NJW 73S M326 TRUST 100W ET {SOD,CHB,DLF,HYF,IEF,MSUDF,MDF}
 NJW 16S 100W JOEY 84B ET {DLF,HYF,IEF,MSUDF,MDF}
 TLELL 117F JOEY 16S {DLF,HYF,IEF}

KCF BENNETT 3008 M326
 NJW P606 72N DAYDREAM 73S
 GERBER WATCHFIRE 117F
 TLELL 60D ROO 29J

CED	BW	WW	YW	Scrotal	SCF	MILK	M&G	Udder	Teat	REA	MARB	BMI\$	CHBS
10.3	0.6	58	101	1.8	21.3	26	55	1.30	1.40	0.44	0.25	434	136



HH Advance 4126B

REF SIRE HH ADVANCE 4126B {DLF,HYF,IEF,MSUDF}

DOB: 1/13/14 • Reg. #43470169 • Horned • Tattoo 4126

sire HH ADVANCE 4055P {DLF,IEF}
 HH ADVANCE 1013Y ET {DLF,HYF,IEF}
 HH MISS ADVANCE 7003T {DOD,DLF,HYF,IEF}

HH ADVANCE 145L
 HH MISS ADVANCE 9065J
 CL 1 DOMINO 320N
 HH MISS ADVANCE 5139R ET

dam HH ADVANCE 7034T ET {DLF,HYF,IEF}
 HH MISS ADVANCE 1179Y ET {DLF,HYF,IEF}
 HH MISS ADVANCE 5139R ET {DLF,HYF,IEF}

L1 DOMINO 03571
 HH MISS ADVANCE 1088L
 CL 1 DOMINO 2136M
 HH MS ADVANCE 8037H

CED	BW	WW	YW	Scrotal	SCF	MILK	M&G	Udder	Teat	REA	MARB	BMI\$	CHBS
5.4	4.5	63	107	2.0	18.9	25	57	1.50	1.50	0.38	0.07	373	103



NJW 79Z Z311 Endure 173D ET

REF SIRE NJW 79Z Z311 ENDURE 173D ET {CHB,DLF,HYF,IEF,MSUDF,MDF}

DOB: 2/22/16 • Reg. #43722088 • Polled • Tattoo 79Z173D

sire SCHU-LAR ON TARGET 22S {SOD,DLF,HYF,IEF,MSUDF}
 KCF BENNETT ENCORE Z311 ET {CHB,DLF,HYF,IEF,MSUDF,MDF}
 KCF MISS REVOLUTION X338 ET {DLF,HYF,IEF}

SCHU-LAR 5N OF 9L 3008
 SCHU-LAR 208 OF 1H 121 ET
 MSU TCF REVOLUTION 4R
 JW 718 VICTORIA 9106

dam NJW 73S M326 TRUST 100W ET {SOD,CHB,DLF,HYF,IEF,MSUDF,MDF}
 BW 91H 100W RITA 79Z ET {DLF,HYF,IEF,MSUDF,MDF}
 REMITALL RITA 91H {DLF,HYF,IEF}

KCF BENNETT 3008 M326
 NJW P606 72N DAYDREAM 73S
 FELTONS 517
 REMITALL FLORIAL RITA 102F

CED	BW	WW	YW	Scrotal	SCF	MILK	M&G	Udder	Teat	REA	MARB	BMI\$	CHBS
1.2	4.4	78	131	1.4	21.6	28	67	1.30	1.30	0.82	0.32	464	159



ECR CHEZ L18 Sensation 7076 ET

REF SIRE ECR CHEZ L18 SENSATION 7076 ET {DLF,HYF,IEF}

DOB: 2/26/17 • Reg. #43859746 • Horned • Tattoo 7076

sire DD EXCEL DESIGN 40 {SOD}
 GO EXCEL L18 {SOD,DLF,HYF,IEF}
 GO MS 124 ADVANCE 7005

DUNROBIN EXCEL 3Z ET
 MISS LL BRIGADER 211
 GO 9012Y ADVANCE 124
 GO MS 804 DOM 4005

dam UPS SENSATION 2296 ET {DLF,HYF,IEF,MSUDF,MDF}
 ECR MISS SENSATION 4406 ET {DLF,HYF,IEF,MSUDF,MDF}
 ECR LADY FLOW 212ET {DLF,HYF,IEF}

CHURCHILL SENSATION 028X
 UPS JT MISS NEON 7811 1ET
 DKF RO CASH FLOW 0245 ET
 RV GOLDEN LADY 5064

CED	BW	WW	YW	Scrotal	SCF	MILK	M&G	Udder	Teat	REA	MARB	BMI\$	CHBS
1.0	2.4	56	85	1.8	15.7	41	69	1.10	1.20	0.44	-0.06	328	88

REF SIRE NJW 84B 10W JOURNEY 53D {DLF,HYF,IEF,MSUDF}

DOB: 2/1/16 • Reg. #43721750 • Polled • Tattoo 84B53D

sire KJ C&L J119 LOGIC 023R ET {SOD,DLF,HYF,IEF} DRF JWR PRINCE VICTOR 711
 SHF INTERSTATE D03 J119
 LJR 023R WHITMORE 10W {CHB,SOD,DLF,HYF,IEF,MSUDF,MDF} LJR D188 SABRE 69H
 LJR MICKEY 278N {DOD,DLF,IEF} LJR BROOKE 188L

dam NJW 73S M326 TRUST 100W ET {SOD,CHB,DLF,HYF,IEF,MSUDF,MDF} KCF BENNETT 3008 M326
 NJW 16S 100W JOEY 84B ET {DLF,HYF,IEF,MSUDF,MDF} NJW P606 72N DAYDREAM 73S
 TLELL 117F JOEY 16S {DLF,HYF,IEF} GERBER WATCHFIRE 117F
 TLELL 60D ROO 29J

CED	BW	WW	YW	Scrotal	SCF	MILK	M&G	Udder	Teat	REA	MARB	BMIS	CHBS
10.5	0.6	67	105	1.5	19.5	22	55	1.10	1.00	0.69	0.13	412	134



NJW 84B 10W Journey 53D

REF SIRE ECR BRAVO 6305 {DLF,HYF,IEF,MSUDF}

DOB: 3/29/16 • Reg. #43745278 • Horned • Tattoo 6305

sire HH ADVANCE 0132X {DLF,HYF,IEF} CL 1 DOMINO 7128T 1ET
 HH MISS ADVANCE 6054S
 CHURCHILL BRAVO 3275A ET {DLF,HYF,IEF} CHURCHILL YANKEE ET
 CHURCHILL LADY 9123W ET {DLF,HYF,IEF} CHURCHILL LADY 404

dam UPS DOMINO 5216 {SOD,DLF,IEF} UPS DOMINO 3027
 ECR 5216 HARRIET 1116 {DOD,DLF,HYF,IEF,MSUDF} UPS MISS MOM 2756
 ECR 408 HARRIET 9071 CJH HARLAND 408
 IH 129 INSETTE 2388

CED	BW	WW	YW	Scrotal	SCF	MILK	M&G	Udder	Teat	REA	MARB	BMIS	CHBS
-3.6	5.6	62	88	1.3	17.2	26	56	0.90	0.90	0.43	0.06	352	94



ECR Bravo 6305

REF SIRE ECR SHAMELESS 7586 ET {DLF,HYF,IEF}

DOB: 4/3/17 • Reg. #43849494 • Polled • Tattoo 7586

sire CRR ABOUT TIME 743 {SOD,DLF,HYF,IEF,MDF} THM DURANGO 4037
 CRR D03 CASSIE 206
 DKF RO CASH FLOW 0245 ET {SOD,DLF,HYF,IEF} FELTONS OZZIE 492
 JRR MISS TOBEY 711T {DLF,HYF,IEF} JRR RANDI 524R

dam K&B DOMINO 2570 CL 1 DOMINO 0140K 1ET
 RV GOLDEN LADY 5064 {DLF,HYF,IEF} K&B MISS DOMINO 9507
 RV MS GOLD DUST 3064 {DOD} C -S PURE GOLD 98170
 RV MS ACCLAIM 7064

CED	BW	WW	YW	Scrotal	SCF	MILK	M&G	Udder	Teat	REA	MARB	BMIS	CHBS
-5.4	6.3	59	92	0.7	12.7	33	63	1.10	1.10	0.70	-0.13	301	101



ECR Shameless 7586 ET

REF SIRE ECR FHF ADVANCE 628 ET {DLF,HYF,IEF}

DOB: 2/20/16 • Reg. #43720817 • Horned • Tattoo 628

sire HH ADVANCE 1013Y ET {DLF,HYF,IEF} HH ADVANCE 4055P
 HH MISS ADVANCE 7003T
 HH ADVANCE 4075B ET {DLF,HYF,IEF} HH ADVANCE 8203U ET
 HH MISS ADVANCE 0121X {DLF,HYF,IEF} HH MISS ADVANCE 7050T

dam CJH HARLAND 408 {SOD}{DLF,HYF,IEF} HH ADVANCE 9005J
 FHF 408 RITA 21W {DLF,HYF,IEF} CJH L1 DOMINETTE 0064
 FHF 45P RITA 101T NJW FHF 9710 TANK 45P
 FHF DK 24F RITA 8N

CED	BW	WW	YW	Scrotal	SCF	MILK	M&G	Udder	Teat	REA	MARB	BMIS	CHBS



ECR FHF Advance 628 ET

Fawcett's
ELMCREEKRANCH
21115 344th Ave
Ree Heights, SD 57371

FIRST CLASS MAIL - DATED MATERIAL - PLEASE DO NOT DELAY

The
RANCHER'S
Kind