

# Friedt Herefords

## Annual Production Sale

Wednesday,  
**February 14, 2018**

1 p.m. MST Stockmen's West, Dickinson, ND



LOT 735



LOT 754

### **SELLING:**

30 Yearling Bulls  
11 2-year old Bulls  
20 Registered Yearling Heifers  
26 Unregistered Yearling Heifers  
5 Friedt F1 BWF Yearling Heifers  
20 F1 BWF heifers from Duane and Garrett Zent

*Where performance counts*



# THE BALD-FACED TRUTH

## ABOUT HEREFORD GENETICS

---

It's obvious – Hereford-sired calves deliver a \$51 increase in net profit per cow, per year.\* Hereford genetics bring legendary hybrid vigor, improved fertility, feed efficiency and easy-handling docility to your program. Read the research, and see why Hereford heterosis pays off, at [Hereford.org/genetics](https://hereford.org/genetics)



\*Compared to Angus-sired calves. Source: Daley, David A. and Earley, Sean P. Impacts of Crossbreeding on Profitability in Vertically Coordinated Beef Industry Marketing Systems. American Hereford Association. Retrieved from <https://hereford.org/wp-content/uploads/2017/02/HarrisHeterosisReport.pdf>

# Friedt Herefords

*Where you can buy with confidence*

11th Annual Production Sale

Wed., February 14, 2018

1 p.m. MST

Stockmen's West, Dickinson, ND



## SELLING



30 Yearling Bulls

11 Coming 2-Year-Old Bulls

20 Registered Yearling Heifers

26 Unregistered Yearling Heifers

5 Friedt F1 BWF Yearling Heifers

20 F1 BWF heifers from Duane and Garrett Zent

### SALE STAFF

Stockmen's West.....	701-225-8145
Auctioneer: Scott Weishaar .....	701-872-5299
Cell.....	701-426-6826
Jill & Marc Hotchkiss, Hereford America.....	605-866-4495
Jill Cell.....	605-490-1409
Travis Kuhlka, DVM .....	Herd Veterinarian

### Ringmen:

Art Handel .....	605-399-9278
Cell.....	605-391-8233
Levi Landers, AHA .....	308-730-1396
Kirby Goettsch, Farm & Ranch Guide.....	605-380-3939

### Insurance:

Art Handel, Merkel Livestock Insurance .....	605-391-8233
Troy Bargmann, Dakota Community Bank.....	701-227-4000
Cell.....	701-290-4043

### Online Bidding:

Please visit [www.TheLivestockLink.com](http://www.TheLivestockLink.com) and click the "Auctions" tab. For questions please call 701/590-9597.

**Delivery:** We will cooperate on delivery or take \$50.00 off sale price if picked up on sale day (bulls only). Free delivery on purchases of \$5,000 or more.

\*No free delivery on heifers.

**Heifers:** The registered heifers will be sold in groups of three with the bidder getting the option of choice or all three heifers. The remaining heifers will be sold as commercial heifers with the option to buy the papers for \$100.

**Feeding arrangements:** We will offer to feed only the yearling bulls until April 1st at a cost of \$100 per head. The charge will be made at the time of settlement on sale day. We would appreciate that the animal be insured before delivery back to the seller, as injury or death is an insurable risk. Animals that are being cared for by seller are done so at the purchaser's risk. Insurance representatives Art Handel and Troy Bargmann will be on hand to provide insurance.

Catalog by HEREFORD AMERICA

Welcome to the Friedt Hereford's Production Sale. We were greatly affected by the drought of 2017. The efficiency of the Hereford breed came through for us this year. Despite one of the worst droughts in recent history, our bulls weaned off well and have continued to develop in the feedlot.

In order to maintain pasture health we sold late-bred and older, less productive pairs early on. Our yearling heifers were sent to a feedlot for several months, enabling us to maintain our best genetics and keeping us ready for the future.

We are excited by a great set of ET calves by the breed leading sire CL 1 Domino 215Z and the 118 donor cow we raised. 118 has 5 bulls in the sale and her natural heifer calf by Scope 53A is one of our best heifers.

Our heifer offering is one of the strongest we have ever offered. We are keeping fewer heifers for ourselves to help balance cow numbers and available pasture. This was an extremely hard task picking out sale heifers! We wanted to keep them all.

Buzz words around the industry include disposition, udder quality, carcass data, structural soundness and longevity just to name a few. These qualities are all things we have selected for since the purchase of our first registered stock. We do not breed for a single trait. Our cattle must perform in all aspects of the production cycle. Our ultrasound data shows we are on the right track, our cattle meet the 1.1 per 100 pound of carcass weight and have marbling scores above average. We will have yearling weights, scrotal circumference, and ultrasound data available at the sale as well as on our website.

We are a family run operation. Our children grew up showing cattle and being a part of the operation. They are all involved in Friedt Herefords. Now our grandchildren have a keen interest in the operation, the cattle, and everything that goes on around them. We select cattle that are docile and easy to handle.

Please be sure to call us with any questions about the sale cattle or our program in general. We welcome you to the ranch to check the cattle at any time. We look forward to seeing you on sale day!

**Please join us for a Certified Hereford Beef lunch.**

**Videos will be available for viewing on our website two to three weeks prior to sale day.**

**Supplement sheet with final weights and ultrasound data will be available on sale day and on our website prior to the sale.**

# Friedt Herefords

*Where you can buy with confidence*

Gary, Kirsten and Aaron Friedt  
Megan and Dusty Dukart  
Lindsey and Drew Courtney  
8733 55th St. S.W.  
Mott, ND 58646

(701) 824-2300 - home • (701) 290-7231 - Gary cell  
(701) 290-7230 - Megan • (701) 590-9597 - Aaron  
gfriedt@hotmail.com • [www.friedtherefords.com](http://www.friedtherefords.com)

# HERD BULLS

## FH L1 DOMINO 902 CHB,DLF,HYF,IEF

DOB: 1/15/2009 Reg. # 43034275

HH ADVANCE 5104R SOD,CHB,DLF,IEF  
**HH ADVANCE 7056T SOD,DLF,IEF**  
 HH MISS ADVANCE 5020R ET DLF,IEF

CL 1 DOMINO 206M DLF,HYF,IEF  
 HH MISS ADVANCE 153L DOD,DLF,IEF  
 CL 1 DOMINO 180L DLF,IEF  
 HH MISS ADVANCE 1028L DLF,HYF,IEF

OXH MARK DOMINO 3043 DLF,IEF  
**FH L1 DOMINETTE 535 DOD,DLF,HYF,IEF**  
 OXH BESS 8268 DOD,DLF,HYF,IEF

OXH MARK DOMINO 8020 SOD,DLF,IEF  
 OXH CHRISTI 1019 DOD  
 OXH STEALTH 3361 SOD  
 OXH LOLA 6014

BW	WW	YW	MILK	M&G	REA	MARB	CHB
4.1	62	105	31	62	.30	-.06	\$27

We lost this bull this spring of 2016 before we had a chance to turn him out on cows. He was a special bull here, repeatedly siring sale topping bulls as well as leaving a group of females that continue to raise sale toppers. To date he has 35 daughters that have a 102.5 weaning ratio on 64 head of calves. Owned with Boehnke Herefords.



## FH NAVARRO 242 MD CHB,DLF,HYF,IEF

DOB: 2/11/2012 Reg. # 43295208

UPS DOMINO 5216 SOD,DLF,IEF  
**UPS NAVARRO SOD,CHB,DLF,HYF,IEF**  
 UPS MISS DOMINO 5875 DLF,IEF

CL 1 DOMINO 9126J 1ET SOD,CHB,DLF,IEF  
**FH L1 DOMINETTE 612 MF DLF,HYF,IEF**  
 OXH MRNA 1363

UPS DOMINO 3027 CHB,SOD,DLF,HYF,IEF  
 UPS MISS MOM 2756 DOD  
 JA L1 DOMINO 2228M SOD,CHB,DLF,IEF  
 UPS MISS KNIGHT 3910

HH ADVANCE 767G 1ET SOD,DLF,IEF  
 CL 1 DOMINETTE 490 DOD  
 MR BEEF 9045 SOD,DLF,HYF,IEF  
 OXH RUBY 4042 DOD

BW	WW	YW	MILK	M&G	REA	MARB	CHB
2.4	55	97	29	56	.54	.09	\$30

This is a home raised bull we are very proud of. He showcases all the traits we've been working hard to develop. He is below average in birth weight, yet has the power to pass on extra performance to his offspring. Based on the performance of his only daughter, we are keeping a large group of his females.



## H5 9131 DOMINO 2185 CHB,DLF,HYF,IEF

DOB: 2/16/2012 Reg. # 43280136

CHURCHILL YANKEE ET CHB,SOD,DLF,HYF,IEF  
**H5 YANKEE 9131 CHB,DLF,HYF,IEF**  
 H5 MS 9126 DOMET 594 DOD,DLF,HYF,IEF

CJH HARLAND 408 SOD,CHB,DLF,HYF,IEF  
**H5 MS 408 DOMET 915 DOD,DLF,HYF,IEF**  
 H5 MS 465 DOMET 7272

GH NEON 17N CHB,SOD,DLF,HYF,IEF  
 CHURCHILL LADY 202 DLF,HYF,IEF  
 CL 1 DOMINO 9126J 1ET SOD,CHB,DLF,IEF  
 H5 MS 7038 DOM 9182 DOD

HH ADVANCE 9005J DLF,IEF  
 CJH L1 DOMINETTE 0064 DLF,HYF,IEF  
 H5 9126 DOMINO 465 SOD,DLF,IEF  
 H5 MS 9213 ADVANCE 4117

BW	WW	YW	MILK	M&G	REA	MARB	CHB
3.3	63	112	35	67	.72	.18	\$34

Purchased in the 2013 Harrell Hereford Ranch sale where he was the top selling bull, he continues to impress us with his outstanding performance and carcass traits. We have some outstanding bulls from him in the offering and his females in production are awesome with 102.2 weaning weight ratio.



## H5 1147 ADVANCE 417 DLF,HYF,IEF

DOB: 1/27/2014 Reg. # 43471019

HH ADVANCE 4055P CHB,DLF,IEF  
**H5 4055 ADVANCE 1147 1 ET CHB,DLF,HYF,IEF**  
 H5 MS 767 ADVAN 298 DOD,DLF,HYF,IEF

H5 408 DOMINO 7100 SOD,DLF,HYF,IEF  
**H5 MS 7100 DOMET 215 DLF,HYF,IEF**  
 H5 MS YANKEE 0125 1ET

HH ADVANCE 145L SOD,DLF,IEF  
 HH MISS ADVANCE 9065J DOD  
 HH ADVANCE 767G 1ET SOD,DLF,IEF  
 H5 MS 398 DOMET 795

CJH HARLAND 408 SOD,CHB,DLF,HYF,IEF  
 H5 MS 001 DOMET 4193 DOD,DLF,HYF,IEF  
 CHURCHILL YANKEE ET CHB,SOD,DLF,HYF,IEF  
 H5 MS 767 ADVANC 231 DOD,DLF,HYF,IEF

BW	WW	YW	MILK	M&G	REA	MARB	CHB
3.6	75	115	32	70	.44	.33	\$29

Friedt Herefords purchased a semen interest in this co-top selling bull at Harrell Hereford Ranch, Baker City, Oregon because of his individual performance, carcass data and outstanding first calf producing dam. 417 has proven himself to be a performance breeding bull with outstanding carcass data. Owned with Sand Rock Ranch, Benton, WI and Harrell Hereford Ranch. Semen available.



# HERD BULLS

## H5 9131 YANKEE 156 CHB,DLF,HYF,IEF

DOB: 2/4/2011 Reg. # 43190945

CHURCHILL YANKEE ET CHB,SOD,DLF,HYF,IEF  
**H5 YANKEE 9131** CHB,DLF,HYF,IEF  
 H5 MS 9126 DOMET 594 DOD,DLF,HYF,IEF

H5 501 DOMINO 001 SOD,DLF,IEF  
**H5 MS 001 DOMET 8147** DLF,HYF,IEF  
 H5 MS 9126 DOMET 589

CL 1 DOMINO 17N CHB,SOD,DLF,HYF,IEF  
 CHURCHILL LADY 202 DLF,HYF,IEF  
 CL 1 DOMINO 9126J 1ET SOD,CHB,DLF,IEF  
 H5 MS 7038 DOM 9182 DOD

CL 1 DOMINO 501 SOD,DLF,HYF,IEF  
 H5 MS 500 DOMET 8182  
 CL 1 DOMINO 9126J 1ET SOD,CHB,DLF,IEF  
 H5 MS 9012 DOMET 958 DOD

BW	WW	YW	MILK	M&G	REA	MARB	CHB
3.3	57	95	28	57	.30	.07	\$27

Another Harrell bull that has sired sale toppers for us. He also puts nice udders on his females.



## CL 1 DOMINO 215Z CHB,DLF,HYF,IEF

DOB: 1/8/2012 Reg. # 43268007

CL 1 DOMINO 732T SOD,CHB,DLF,IEF  
**CL 1 DOMINO 9122W 1ET** CHB,DLF,HYF,IEF  
 CL 1 DOMINETTE 475P DLF,HYF,IEF

CL 1 DOMINO 860U SOD,CHB,DLF,HYF,IEF  
**CL 1 DOMINETTE 055X** DOD,DLF,HYF,IEF  
 CL 1 DOMINETTE 7136T 1ET DOD,DLF,HYF,IEF

CL 1 DOMINO 590R CHB,DLF,IEF  
 CL 1 DOMINETTE 507R DOD,DLF,HYF,IEF  
 CL 1 DOMINO 824H SOD,DLF,IEF  
 CL 1 DOMINETTE 200M DOD

CL 1 DOMINO 637S 1ET CHB  
 CL 1 DOMINETTE 5142R DOD,DLF,HYF,IEF  
 L1 DOMINO 890061 DLF,IEF  
 CL 1 DOMINETTE 273M 1ET DOD

BW	WW	YW	MILK	M&G	REA	MARB	CHB
1.4	69	112	25	59	.49	.28	\$28

215Z was used in our ET program as well as an AI sire. His calves are proving him to be a great breeding bull. A special pick of 215Z daughters will be offered.



## HH ADVANCE 5019C ET DLF,HYF,IEF

DOB: 12/31/2014 Reg. # 43578975

CL 1 DOMINO 9122W 1ET CHB,DLF,HYF,IEF  
**CL 1 DOMINO 215Z** CHB,DLF,HYF,IEF  
 CL 1 DOMINETTE 055X DOD,DLF,HYF,IEF

HH ADVANCE 4055P CHB,DLF,IEF  
**HH MISS ADVANCE 1072Y ET** DLF,HYF,IEF  
 HH MISS ADVANCE 7003T DOD,DLF,HYF,IEF

CL 1 DOMINO 732T SOD,CHB,DLF,IEF  
 CL 1 DOMINETTE 475P DLF,HYF,IEF  
 CL 1 DOMINO 860U SOD,CHB,DLF,HYF,IEF  
 CL 1 DOMINETTE 7136T 1ET DOD,DLF,HYF,IEF

HH ADVANCE 145L SOD,DLF,IEF  
 HH MISS ADVANCE 9065J DOD  
 CL 1 DOMINO 320N SOD,DLF,HYF,IEF  
 HH MISS ADVANCE 5139R ET DLF,HYF,IEF

BW	WW	YW	MILK	M&G	REA	MARB	CHB
4.3	68	109	27	61	.50	.26	\$34

5019C is a great combination of outstanding EPDs, individual performance, scan data, and a pedigree that is loaded with cow power. He has tremendous depth of side, length of body, a big top, and is great up through his front shoulder and neck. He combines the great 055X Cooper cow with the 5139R cow family for loads of maternal strength. Used AI, owned by Harrell Hereford Ranch, Baker City, OR.



## SR SCOPE 53A CHB,DLF,HYF,IEF

DOB: 3/08/2013 Reg. # 43421724

CL 1 DOMINO 860U SOD,CHB,DLF,HYF,IEF  
**CL 1 DOMINO 0130X 1ET** CHB,DLF,HYF,IEF  
 CL 1 DOMINETTE 440P 1ET DLF,HYF,IEF

CJH HARLAND 408 SOD,CHB,DLF,HYF,IEF  
**SR HARLET 076X** DLF,HYF,IEF  
 SR CADDIE 874

CL 1 DOMINO 637S 1ET CHB  
 CL 1 DOMINETTE 5142R DOD,DLF,HYF,IEF  
 CL 1 DOMINO 9126J 1ET SOD,CHB,DLF,IEF  
 CL 1 DOMINETTE 974J

HH ADVANCE 9005J DLF,IEF  
 CJH L1 DOMINETTE 0064 DLF,HYF,IEF  
 KB L1 DOMINO 6119S  
 SR DELIGHT 6136

BW	WW	YW	MILK	M&G	REA	MARB	CHB
0.2	52	83	29	55	.30	.15	\$28

The top selling bull in the 2014 Stuber Ranch sale. 53A was purchased because of his low birth weight pedigree and outstanding carcass performance. His calves come easy and are very vigorous at birth. He sired a nice set of calves that could be used on heifers. Owned with Boehnke Herefords.



# SALE FEATURE - 5 sons of our 118 DONOR COW

Lot  
714

## FH 2185 DOMINO 714ET

DOB: 1/23/2017

Reg. # 43842329

H5 YANKEE 9131 *CHB,DLF,HYF,IEF*  
**H5 9131 DOMINO 2185** *CHB,DLF,HYF,IEF*  
 H5 MS 408 DOMET 915 *DOD,DLF,HYF,IEF*

CHURCHILL YANKEE ET *CHB,SOD,DLF,HYF,IEF*  
 H5 MS 9126 DOMET 594 *DOD,DLF,HYF,IEF*  
 CJH HARLAND 408 *SOD,CHB,DLF,HYF,IEF*  
 H5 MS 465 DOMET 7272

FH L1 DOMINO 902 *CHB,DLF,HYF,IEF*  
**FH L1 DOMINETTE 118** *DOD,DLF,HYF,IEF*  
 FH 1135 DOMINETTE 509

HH ADVANCE 7056T *SOD,DLF,IEF*  
 FH L1 DOMINETTE 535 *DOD,DLF,HYF,IEF*  
 KB L1 DOMINO 1135  
 FH L1 DOMINETTE 330

BW	WW
85	625

BW	WW	YW	MILK	M&G	REA	MARB	CHB
3.9	60	105	32	62	.58	.06	\$31

Pigment RE 100% LE 50%.

This is a stout Harrell 2185 bull calf. He has a good disposition and will produce great females. His ET donor dam, 118, ratios 111 at weaning and 119 at yearling on her progeny.



We will be retaining ¼ within herd use semen interest in these five bulls.

We may choose to retain an early spring breeding season possession on a bull of our choice from this flush. Call Gary for more details.



FH 53 Miss Scope 730 - 2017 heifer calf. 53A x 118.

**FH L1 Dominette 118 — 43217851**  
 Pictured in her working clothes nursing her SR Scope 53A daughter that adjusted at 703 pounds during one of the worst droughts in recent history.



FH Navarro 446 - High selling bull in our 2015 sale. 242 x 118.



FH L1 Domino 530 - High selling bull in our 2016 sale. 2185 x 118.

# SALE FEATURE - 4 ET sons of 118 sired by 215Z

Lot  
748

## FH L1 DOMINO 748 ET

DOB: 2/7/2017 Reg. # 43840219

CL 1 DOMINO 9122W 1ET CHB,DLF,HYF,IEF  
**CL 1 DOMINO 215Z CHB,DLF,HYF,IEF**  
 CL 1 DOMINETTE 055X DOD,DLF,HYF,IEF

CL 1 DOMINO 732T SOD,CHB,DLF,IEF  
 CL 1 DOMINETTE 475P DLF,HYF,IEF  
 CL 1 DOMINO 860U SOD,CHB,DLF,HYF,IEF  
 CL 1 DOMINETTE 7136T 1ET DOD,DLF,HYF,IEF

FH L1 DOMINO 902 CHB,DLF,HYF,IEF  
**FH L1 DOMINETTE 118 DOD,DLF,HYF,IEF**  
 FH 1135 DOMINETTE 509

HH ADVANCE 7056T SOD,DLF,IEF  
 FH L1 DOMINETTE 535 DOD,DLF,HYF,IEF  
 KB L1 DOMINO 1135  
 FH L1 DOMINETTE 330

BW	WW
88	679 ET

BW	WW	YW	MILK	M&G	REA	MARB	CHB
2.0	60	100	28	58	.41	.15	\$28

Pigment RE 60% LE 10%.

The 215Z x 118 flush produced 4 bull calves. He is wide across is top and carries his width and thickness back through his quarter and down to his base. He will be a herd builder!



Lot  
754

## FH L1 DOMINO 754 ET

DOB: 2/9/2017 Reg. # 43840220

CL 1 DOMINO 9122W 1ET CHB,DLF,HYF,IEF  
**CL 1 DOMINO 215Z CHB,DLF,HYF,IEF**  
 CL 1 DOMINETTE 055X DOD,DLF,HYF,IEF

CL 1 DOMINO 732T SOD,CHB,DLF,IEF  
 CL 1 DOMINETTE 475P DLF,HYF,IEF  
 CL 1 DOMINO 860U SOD,CHB,DLF,HYF,IEF  
 CL 1 DOMINETTE 7136T 1ET DOD,DLF,HYF,IEF

FH L1 DOMINO 902 CHB,DLF,HYF,IEF  
**FH L1 DOMINETTE 118 DOD,DLF,HYF,IEF**  
 FH 1135 DOMINETTE 509

HH ADVANCE 7056T SOD,DLF,IEF  
 FH L1 DOMINETTE 535 DOD,DLF,HYF,IEF  
 KB L1 DOMINO 1135  
 FH L1 DOMINETTE 330

BW	WW
92	732 ET

BW	WW	YW	MILK	M&G	REA	MARB	CHB
3.0	66	108	28	61	.45	.13	\$28

Pigment RE 20% LE 0%.

Here is a very stout 215Z son out of the flush with 118 that carries extra thickness and capacity. He is square on all four corners and really presses the scale down.



Lot  
766

## FH L1 DOMINO 766 ET

DOB: 2/12/2017 Reg. # 43840218

CL 1 DOMINO 9122W 1ET CHB,DLF,HYF,IEF  
**CL 1 DOMINO 215Z CHB,DLF,HYF,IEF**  
 CL 1 DOMINETTE 055X DOD,DLF,HYF,IEF

CL 1 DOMINO 732T SOD,CHB,DLF,IEF  
 CL 1 DOMINETTE 475P DLF,HYF,IEF  
 CL 1 DOMINO 860U SOD,CHB,DLF,HYF,IEF  
 CL 1 DOMINETTE 7136T 1ET DOD,DLF,HYF,IEF

FH L1 DOMINO 902 CHB,DLF,HYF,IEF  
**FH L1 DOMINETTE 118 DOD,DLF,HYF,IEF**  
 FH 1135 DOMINETTE 509

HH ADVANCE 7056T SOD,DLF,IEF  
 FH L1 DOMINETTE 535 DOD,DLF,HYF,IEF  
 KB L1 DOMINO 1135  
 FH L1 DOMINETTE 330

BW	WW
97	692 ET

BW	WW	YW	MILK	M&G	REA	MARB	CHB
3.6	64	107	28	60	.42	.11	\$28

Pigment RE 75% LE 75%.

This is probably the longest 215Z calf in the flush. He is thick and wide based and carries himself well around the pen.



Lot  
767

## FH 215Z DOMINO 767 ET

DOB: 2/12/2017 Reg. # 43855500

CL 1 DOMINO 9122W 1ET CHB,DLF,HYF,IEF  
**CL 1 DOMINO 215Z CHB,DLF,HYF,IEF**  
 CL 1 DOMINETTE 055X DOD,DLF,HYF,IEF

CL 1 DOMINO 732T SOD,CHB,DLF,IEF  
 CL 1 DOMINETTE 475P DLF,HYF,IEF  
 CL 1 DOMINO 860U SOD,CHB,DLF,HYF,IEF  
 CL 1 DOMINETTE 7136T 1ET DOD,DLF,HYF,IEF

FH L1 DOMINO 902 CHB,DLF,HYF,IEF  
**FH L1 DOMINETTE 118 DOD,DLF,HYF,IEF**  
 FH 1135 DOMINETTE 509

HH ADVANCE 7056T SOD,DLF,IEF  
 FH L1 DOMINETTE 535 DOD,DLF,HYF,IEF  
 KB L1 DOMINO 1135  
 FH L1 DOMINETTE 330

BW	WW
85	566 ET

BW	WW	YW	MILK	M&G	REA	MARB	CHB
2.9	63	105	28	60	.43	.13	\$28

Pigment RE 30% LE 75%.

This 215Z ET son had a poor recip mother but really put it on after weaning. He has caught up to his brothers and is looking really good.



# YEARLING BULLS

Lot  
**700**

## FH 519 DOMINO 700

DOB: 12/5/2016

Reg. # 43855261

H5 9131 YANKEE 156 *CHB,DLF,HYF,IEF*  
**FH 156 DOMINO 519** *DLF,HYF,IEF*  
 JBN L1 DOMINETTE 87

H5 YANKEE 9131 *CHB,DLF,HYF,IEF*  
 H5 MS 001 DOMET 8147 *DLF,HYF,IEF*  
 CL 1 DOMINO 417P *DLF,IEF*  
 JBN L1 DOMINETTE 412 *DLF,IEF*

CL 1 DOMINO 124Y 1ET *CHB,DLF,HYF,IEF*  
**FH L1 DOMINETTE 425**  
 FH L1 DOMINETTE 240 *DLF,HYF,IEF*

CL 1 DOMINO 9125W 1ET *DLF,HYF,IEF*  
 CL 1 DOMINETTE 6128S 1ET *DOD,DLF,IEF*  
 SR NAVARRO 740X *CHB,DLF,HYF,IEF*  
 FH L1 DOMINETTE 803

BW	WW
83	598

BW	WW	YW	MILK	M&G	REA	MARB	CHB
3.0	48	84	24	48	.24	.13	\$26

Pigment RE 20% LE 80%.

This is a long sided, short marked bull that will work really well on black or red cows.

To Participate as an Absentee Buyer:

The **Livestock**<sup>™</sup>  
 Link  
 Livestock Videoing - Video Sales  
 - Bid-By-Click Online Sales

Please visit [www.TheLivestockLink.com](http://www.TheLivestockLink.com) and click the "Auctions" tab. Online buyers must be registered at least 24 hours before the date of sale. For questions please call 701/590-9597.

Lot  
**702**

## FH 242 NAVARRO 702 BA

DOB: 12/24/2016

Reg. # 43840140

UPS NAVARRO *SOD,CHB,DLF,HYF,IEF*  
**FH NAVARRO 242 MD** *CHB,DLF,HYF,IEF*  
 FH L1 DOMINETTE 612 MF *DLF,HYF,IEF*

UPS DOMINO 5216 *SOD,DLF,IEF*  
 UPS MISS DOMINO 5875 *DLF,IEF*  
 CL 1 DOMINO 9126J 1ET *SOD,CHB,DLF,IEF*  
 OXH MRNA 1363

KB L1 DOMINO 521R *DLF,HYF,IEF*  
**KB L1 DOMINETTE 731T**  
 KB L1 DOMINETTE 592R

CL 1 DOMINO 3138N 1ET *DLF,HYF,IEF*  
 MONTANA MISS 310 *DOD,DLF,HYF,IEF*  
 RCH ADVANCE 2139 *DLF,IEF*  
 KB AMY 393

BW	WW
86	603

BW	WW	YW	MILK	M&G	REA	MARB	CHB
3.4	51	88	24	50	.35	.09	\$28

Pigment RE 10% LE 100%.

A thick made calf out of our home raised 242 bull. He is thick topped with a good rear quarter.



Lot  
**703**

## FH L1 DOMINO 703 MD

DOB: 12/20/2016

Reg. # 43840143

CL 1 DOMINO 9125W 1ET *DLF,HYF,IEF*  
**CL 1 DOMINO 124Y 1ET** *CHB,DLF,HYF,IEF*  
 CL 1 DOMINETTE 6128S 1ET *DOD,DLF,IEF*

CL 1 DOMINO 732T *SOD,CHB,DLF,IEF*  
 CL 1 DOMINETTE 475P *DLF,HYF,IEF*  
 L1 DOMINO 03396 *SOD,DLF,IEF*  
 CL 1 DOMINETTE 095K *DLF,IEF*

H5 9131 YANKEE 156 *CHB,DLF,HYF,IEF*  
**FH L1 DOMINETTE 516 MD**  
 MISS L1 ADVANCE 0840JB

H5 YANKEE 9131 *CHB,DLF,HYF,IEF*  
 H5 MS 001 DOMET 8147 *DLF,HYF,IEF*  
 L1 ADVANCE DOMINO 0615 JB  
 MISS L1 ADVANCE 04116 JB

BW	WW
91	620

BW	WW	YW	MILK	M&G	REA	MARB	CHB
5.0	59	97	27	57	.32	.05	\$27

Pigment RE 100% LE 100%.

This calf is one of our favorites. He's a well balanced calf with good eye appeal and has performed very well to date. His mother is a first calf heifer with a lot of potential to be a herd builder for us.



Lot  
**706**

## FH 417 ADVANCE 706 ET

DOB: 1/9/2017

Reg. # 43862681

H5 4055 ADVANCE 1147 1 ET *CHB,DLF,HYF,IEF*  
**H5 1147 ADVANCE 417** *DLF,HYF,IEF*  
 H5 MS 7100 DOMET 215 *DLF,HYF,IEF*

HH ADVANCE 4055P *CHB,DLF,IEF*  
 H5 MS 767 ADVAN 298 *DOD,DLF,HYF,IEF*  
 H5 408 DOMINO 7100 *SOD,DLF,HYF,IEF*  
 H5 MS YANKEE 0125 1ET

FH L1 DOMINO 902 *CHB,DLF,HYF,IEF*  
**FH L1 DOMINETTE 259** *DLF,HYF,IEF*  
 FH L1 DOMINETTE 5100

HH ADVANCE 7056T *SOD,DLF,IEF*  
 FH L1 DOMINETTE 535 *DOD,DLF,HYF,IEF*  
 FH 026K DOMINO 304 *SOD,CHB,DLF,IEF*  
 FH PATTI 701 *DLF,HYF,IEF*

BW	WW
87	586 ET

BW	WW	YW	MILK	M&G	REA	MARB	CHB
4.1	65	106	28	61	.42	.17	\$29

Pigment RE 100% LE 10%.

This long bodied calf had a poorer milking recip dam. He has developed into a thick bull with great conformation. He has a great disposition.





# YEARLING BULLS

Lot  
**716**

## FH 5019C DOMINO 716

DOB: 1/25/2017

Reg. # 43842331

CL 1 DOMINO 215Z CHB,DLF,HYF,IEF  
HH ADVANCE 5019C ET DLF,HYF,IEF  
HH MISS ADVANCE 1072Y ET DLF,HYF,IEF

CL 1 DOMINO 9122W 1ET CHB,DLF,HYF,IEF  
CL 1 DOMINETTE 055X DOD,DLF,HYF,IEF  
HH ADVANCE 4055P CHB,DLF,IEF  
HH MISS ADVANCE 7003T DOD,DLF,HYF,IEF

FH L1 DOMINO 040 DLF,HYF,IEF

H5 501 DOMINO 001 SOD,DLF,IEF

FH L1 DOMINETTE 271

FH L1 DOMINETTE 5100

JBN L1 DOMINETTE 823

CL 1 DOMINO 417P DLF,IEF

LGM 065 DOMNET 8120

BW	WW
85	604

BW	WW	YW	MILK	M&G	REA	MARB	CHB
3.6	57	97	25	54	.40	.13	\$30

Pigment RE 75% LE 90%.

716 is a moderate framed calf by 5019C. He is really thick from end to end and is marked right. His dam has 101 ratio at weaning and a 102.5 ratio at yearling on her progeny.



Lot  
**717**

## FH 2185 DOMINO 717

DOB: 1/25/2017

Reg. # 43840197

H5 YANKEE 9131 CHB,DLF,HYF,IEF  
H5 9131 DOMINO 2185 CHB,DLF,HYF,IEF  
H5 MS 408 DOMET 915 DOD,DLF,HYF,IEF

CHURCHILL YANKEE ET CHB,SOD,DLF,HYF,IEF  
H5 MS 9126 DOMET 594 DOD,DLF,HYF,IEF  
CJH HARLAND 408 SOD,CHB,DLF,HYF,IEF  
H5 MS 465 DOMET 7272

CL 1 DOMINO 417P DLF,IEF

CL 1 DOMINO 212M SOD,DLF,IEF

JBN L1 DOMINETTE 823

CL 1 DOMINETTE 0112K 1ET

LGM 065 DOMNET 8120

WT 90 DOMINO 065 SOD

L MS TRANSITION 6192

BW	WW
85	522

BW	WW	YW	MILK	M&G	REA	MARB	CHB
3.2	50	87	26	50	.44	.12	\$29

Pigment RE 60% LE 100%.

Here is a 2185 son that is going to be a cow maker! His full sister had a beautiful udder.



Lot  
**727**

## FH 5019C DOMINO 727

DOB: 1/29/2017

Reg. # 43842328

CL 1 DOMINO 215Z CHB,DLF,HYF,IEF  
HH ADVANCE 5019C ET DLF,HYF,IEF  
HH MISS ADVANCE 1072Y ET DLF,HYF,IEF

CL 1 DOMINO 9122W 1ET CHB,DLF,HYF,IEF  
CL 1 DOMINETTE 055X DOD,DLF,HYF,IEF  
HH ADVANCE 4055P CHB,DLF,IEF  
HH MISS ADVANCE 7003T DOD,DLF,HYF,IEF

CJH HARLAND 408 SOD,CHB,DLF,HYF,IEF

HH ADVANCE 9005J DLF,IEF

FH L1 DOMINETTE 808 MF

CJH L1 DOMINETTE 0064 DLF,HYF,IEF

FH L1 DOMINETTE 616MF

CL 1 DOMINO 9126J 1ET SOD,CHB,DLF,IEF

OXH JEAN 9250

BW	WW
86	626

BW	WW	YW	MILK	M&G	REA	MARB	CHB
3.4	57	95	30	59	.40	.19	\$31

Pigment RE 100% LE 100%.

This long sided calf is short marked and has a lot of thickness. His dam had a high selling bull calf at the Black Hills Stock Show in 2015 to Dale Peterson, Kadoka, SD.



Lot  
**735**

## FH 2185 DOMINO 735

DOB: 1/30/2017

Reg. # 43840206

H5 YANKEE 9131 CHB,DLF,HYF,IEF  
H5 9131 DOMINO 2185 CHB,DLF,HYF,IEF  
H5 MS 408 DOMET 915 DOD,DLF,HYF,IEF

CHURCHILL YANKEE ET CHB,SOD,DLF,HYF,IEF  
H5 MS 9126 DOMET 594 DOD,DLF,HYF,IEF  
CJH HARLAND 408 SOD,CHB,DLF,HYF,IEF  
H5 MS 465 DOMET 7272

CL 1 DOMINO 849U CHB,DLF,HYF,IEF

CL 1 DOMINO 648S SOD,CHB,DLF,IEF

FH L1 DOMINETTE 2312

CL 1 DOMINETTE 591R 1ET

FH L1 DOMINETTE 330

KB L1 DOMINO 1135

FH ANDI 606 1ET

BW	WW
89	720

BW	WW	YW	MILK	M&G	REA	MARB	CHB
4.0	58	97	30	59	.43	.13	\$31

Pigment RE 75% LE 90%.

735 is one of the standouts from the 2017 calf crop and he has it all. Length, thickness, muscle, and disposition make this one complete calf. His mother is a good milking female with a great udder. His dam has a 105 weaning ratio and a 104.5 ratio at yearling with a 123% ratio for marbling on her progeny.



# YEARLING BULLS

Lot  
**736**

## FH L1 DOMINO 736 AF

DOB: 1/31/2017 Reg. # 43840207

CL 1 DOMINO 9122W 1ET CHB,DLF,HYF,IEF  
**CL 1 DOMINO 215Z CHB,DLF,HYF,IEF**  
 CL 1 DOMINETTE 055X DOD,DLF,HYF,IEF

CL 1 DOMINO 732T SOD,CHB,DLF,IEF  
 CL 1 DOMINETTE 475P DLF,HYF,IEF  
 CL 1 DOMINO 860U SOD,CHB,DLF,HYF,IEF  
 CL 1 DOMINETTE 7136T 1ET DOD,DLF,HYF,IEF

FH 026K DOMINO 304 SOD,CHB,DLF,IEF  
**FH L1 DOMINETTE 802 AF DOD**  
 FH L1 DOMINETTE 340 AF DOD

HH ADVANCE 026K 1ET DLF,HYF,IEF  
 RCH DOMINETTE 9029 DOD  
 KB L1 DOMINO 1135  
 FH STARLET 104

BW	WW
89	672

BW	WW	YW	MILK	M&G	REA	MARB	CHB
3.5	66	109	25	58	.61	.09	\$32

Pigment RE 100% LE 100%.  
 A natural calf by 215Z that is what our breeding program is all about. Two red eyes complement his length, thickness, and structural soundness. He is out of a 9 year old cow that does not miss. She has a 105.9 weaning ratio and a 104.4 yearling ratio on 7 head.



Lot  
**740**

## FH 53A DOMINO 740

DOB: 2/2/2017 Reg. # 43840210

CL 1 DOMINO 0130X 1ET CHB,DLF,HYF,IEF  
**SR SCOPE 53A CHB,DLF,HYF,IEF**  
 SR HARLET 076X DLF,HYF,IEF

CL 1 DOMINO 860U SOD,CHB,DLF,HYF,IEF  
 CL 1 DOMINETTE 440P 1ET DLF,HYF,IEF  
 CJH HARLAND 408 SOD,CHB,DLF,HYF,IEF  
 SR CADDIE 874

CL 1 DOMINO 849U CHB,DLF,HYF,IEF  
**FH L1 DOMINETTE 2059**  
 FH L1 DOMINETTE 734

CL 1 DOMINO 648S SOD,CHB,DLF,IEF  
 CL 1 DOMINETTE 591R 1ET  
 FH 026K DOMINO 304 SOD,CHB,DLF,IEF  
 FH 014 DOMINETTE 226

BW	WW
84	678

BW	WW	YW	MILK	M&G	REA	MARB	CHB
2.1	55	87	28	56	.37	.13	\$30

Pigment RE 0% LE 0%.  
 This calf carries himself like a herd bull and we are really pleased with his thickness and length of body. His dam has a weaning ratio of 119, and yearling ratio of 110.



Lot  
**743**

## FH L1 DOMINO 743 AF

DOB: 2/4/2017 Reg. # 43840202

H5 4055 ADVANCE 1147 1 ET CHB,DLF,HYF,IEF  
**H5 1147 ADVANCE 417 DLF,HYF,IEF**  
 H5 MS 7100 DOMET 215 DLF,HYF,IEF

HH ADVANCE 4055P CHB,DLF,IEF  
 H5 MS 767 ADVAN 298 DOD,DLF,HYF,IEF  
 H5 408 DOMINO 7100 SOD,DLF,HYF,IEF  
 H5 MS YANKEE 0125 1ET

FH L1 DOMINO 902 CHB,DLF,HYF,IEF  
**FH L1 DOMINETTE 2036 AF**  
 FH L1 DOMINETTE 340 AF DOD

HH ADVANCE 7056T SOD,DLF,IEF  
 FH L1 DOMINETTE 535 DOD,DLF,HYF,IEF  
 KB L1 DOMINO 1135  
 FH STARLET 104

BW	WW
84	784

BW	WW	YW	MILK	M&G	REA	MARB	CHB
4.2	75	112	31	68	.48	.13	\$29

Pigment RE 0% LE 25%.  
 743 is a moderate framed calf out of a good uddered dam. He shows great natural thickness.



Lot  
**749**

## FH 417 ADVANCE 749 ET

DOB: 2/8/2017 Reg. # 43862690

H5 4055 ADVANCE 1147 1 ET CHB,DLF,HYF,IEF  
**H5 1147 ADVANCE 417 DLF,HYF,IEF**  
 H5 MS 7100 DOMET 215 DLF,HYF,IEF

HH ADVANCE 4055P CHB,DLF,IEF  
 H5 MS 767 ADVAN 298 DOD,DLF,HYF,IEF  
 H5 408 DOMINO 7100 SOD,DLF,HYF,IEF  
 H5 MS YANKEE 0125 1ET

FH L1 DOMINO 902 CHB,DLF,HYF,IEF  
**FH L1 DOMINETTE 259 DLF,HYF,IEF**  
 FH L1 DOMINETTE 5100

HH ADVANCE 7056T SOD,DLF,IEF  
 FH L1 DOMINETTE 535 DOD,DLF,HYF,IEF  
 FH 026K DOMINO 304 SOD,CHB,DLF,IEF  
 FH PATTI 701 DLF,HYF,IEF

BW	WW
86	621 ET

BW	WW	YW	MILK	M&G	REA	MARB	CHB
4.1	65	106	28	61	.42	.17	\$29

Pigment RE 100% LE 90%.  
 A long bodied, thick made son of the Harrell 417 bull. He is correct in his structure and has a good performance record.



# YEARLING BULLS

Lot  
**751**

## FH L1 DOMINO 751

DOB: 2/8/2017

Reg. # 43858004

H5 9131 DOMINO 2185 *CHB,DLF,HYF,IEF*  
**FH L1 DONIMO 507 BA** *DLF,HYF,IEF*  
 MONTANA MISS 8165U

H5 YANKEE 9131 *CHB,DLF,HYF,IEF*  
 H5 MS 408 DOMET 915 *DOD,DLF,HYF,IEF*  
 JH MARK 9454 1ET  
 MONTANA MISS J336 *DOD*

FH NAVARRO 242 MD *CHB,DLF,HYF,IEF*  
**FH MISS NAVARRO 403**  
 FH L1 DOMINETTE 112

UPS NAVARRO *SOD,CHB,DLF,HYF,IEF*  
 FH L1 DOMINETTE 612 MF *DLF,HYF,IEF*  
 H5 001 DOMINO 819 *DLF,HYF,IEF*  
 FH L1 DOMINETTE 910 *DOD*

BW	WW	BW	WW	YW	MILK	M&G	REA	MARB	CHB
79	590	2.3	50	81	30	55	.43	.11	\$28

Pigment RE 100% LE 100%.  
 This calf was born on sale day last year. He has two red eyes and is short marked. He should work on heifers.



Lot  
**752**

## FH L1 DOMINO 752 MD

DOB: 2/8/2017

Reg. # 43840215

H5 4055 ADVANCE 1147 1 ET *CHB,DLF,HYF,IEF*  
**H5 1147 ADVANCE 417** *DLF,HYF,IEF*  
 H5 MS 7100 DOMET 215 *DLF,HYF,IEF*

HH ADVANCE 4055P *CHB,DLF,IEF*  
 H5 MS 767 ADVAN 298 *DOD,DLF,HYF,IEF*  
 H5 408 DOMINO 7100 *SOD,DLF,HYF,IEF*  
 H5 MS YANKEE 0125 1ET

FH L1 DOMINO 902 *CHB,DLF,HYF,IEF*  
**FH L1 DOMINETTE 426 MD**  
 FH L1 DOMINETTE 953 MF

HH ADVANCE 7056T *SOD,DLF,IEF*  
 FH L1 DOMINETTE 535 *DOD,DLF,HYF,IEF*  
 FH L1 DOMINO 695 MF *DLF,HYF,IEF*  
 LS SABRINA 081 *DOD*

BW	WW	BW	WW	YW	MILK	M&G	REA	MARB	CHB
88	657	4.4	65	105	31	63	.36	.17	\$31

Pigment RE 100% LE 100%.  
 This is a powerful Harrell 417 calf. He is long bodied and is heavy muscled. As an added advantage he has extra capacity and is heavily pigmented with two red eyes.



Lot  
**753**

## FH 5019C ADVANCE 753 MD

DOB: 2/9/2017

Reg. # 43843135

CL 1 DOMINO 215Z *CHB,DLF,HYF,IEF*  
**HH ADVANCE 5019C ET** *DLF,HYF,IEF*  
 HH MISS ADVANCE 1072Y ET *DLF,HYF,IEF*

CL 1 DOMINO 9122W 1ET *CHB,DLF,HYF,IEF*  
 CL 1 DOMINETTE 055X *DOD,DLF,HYF,IEF*  
 HH ADVANCE 4055P *CHB,DLF,IEF*  
 HH MISS ADVANCE 7003T *DOD,DLF,HYF,IEF*

UPS NAVARRO *SOD,CHB,DLF,HYF,IEF*  
**SR NAVITA 101Y**  
 SR DOODLES 8103

UPS DOMINO 5216 *SOD,DLF,IEF*  
 UPS MISS DOMINO 5875 *DLF,IEF*  
 CHURCHILL YANKEE ET *CHB,SOD,DLF,HYF,IEF*  
 SR SIGNA 144

BW	WW	BW	WW	YW	MILK	M&G	REA	MARB	CHB
84	531	2.8	54	90	26	53	.35	.30	\$31

Pigment RE 100% LE 100%.  
 These 5019C calves show a lot of eye appeal. His Navarro dam has been really consistent. This calf possesses lots of natural thickness and will perform well on black cattle.



Lot  
**763**

## FH TURNING POINT 763

DOB: 2/11/2017

Reg. # 43855492

UU ADVANCE 0014 *CHB,DLF,HYF,IEF*  
**UU TURNING POINT** *CHB,DLF,HYF,IEF*  
 UU MS RENDITION 0135 *DLF,HYF,IEF*

HH ADVANCE 7146T *CHB,DLF,HYF,IEF*  
 UU MS DAKOTA 8045 *DOD,DLF,HYF,IEF*  
 SR RENDITION 58  
 UU MS 4149 7330

UPS NAVARRO *SOD,CHB,DLF,HYF,IEF*  
**FH MISS NAVIA 035**  
 FH MISS L1 026K 411

UPS DOMINO 5216 *SOD,DLF,IEF*  
 UPS MISS DOMINO 5875 *DLF,IEF*  
 HH ADVANCE 026K 1ET *DLF,HYF,IEF*  
 FH PATTI 701 *DLF,HYF,IEF*

BW	WW	BW	WW	YW	MILK	M&G	REA	MARB	CHB
85	553	3.6	57	100	29	57	.70	.16	\$29

Pigment RE 100% LE 90%.  
 This Turning Point son is extra long, marked well, and has moderate birth weight. Dam has great carcass traits with a ribeye ratio of 105 and a marbling ratio of 120.



# YEARLING BULLS

**Lot 765** **FH NAVARRO 765**  
DOB: 2/11/2017 Reg. # 43855493

UPS NAVARRO SOD,CHB,DLF,HYF,IEF  
**FH NAVARRO 242 MD** CHB,DLF,HYF,IEF  
 FH L1 DOMINETTE 612 MF DLF,HYF,IEF

UPS DOMINO 5216 SOD,DLF,IEF  
 UPS MISS DOMINO 5875 DLF,IEF  
 CL 1 DOMINO 9126J 1ET SOD,CHB,DLF,IEF  
 OXH MRNA 1363

CL 1 DOMINO 124Y 1ET CHB,DLF,HYF,IEF  
**FH L1 DOMINETTE 453**  
 FH L1 DOMINETTE 298 BA DLF,HYF,IEF

CL 1 DOMINO 9125W 1ET DLF,HYF,IEF  
 CL 1 DOMINETTE 6128S 1ET DOD,DLF,IEF  
 CL 1 DOMINO 849U CHB,DLF,HYF,IEF  
 KB L1 DOMINETTE 414P DOD,DLF,HYF,IEF

BW	WW	BW	WW	YW	MILK	M&G	REA	MARB	CHB
80	721	3.4	58	97	32	61	.47	.05	\$27

Pigment RE 100% LE 100%.  
 765 is a moderate framed calf with ample thickness and capacity. His dam is smaller framed and milks very well.



**Lot 770** **FH 242 NAVARRO 770 LC**  
DOB: 2/14/2017 Reg. # 43840216

UPS NAVARRO SOD,CHB,DLF,HYF,IEF  
**FH NAVARRO 242 MD** CHB,DLF,HYF,IEF  
 FH L1 DOMINETTE 612 MF DLF,HYF,IEF

UPS DOMINO 5216 SOD,DLF,IEF  
 UPS MISS DOMINO 5875 DLF,IEF  
 CL 1 DOMINO 9126J 1ET SOD,CHB,DLF,IEF  
 OXH MRNA 1363

FH L1 DOMINO 902 CHB,DLF,HYF,IEF  
**FH L1 DOMINETTE 257 LF**  
 FH L1 DOMINETTE 323 LF DLF,IEF

HH ADVANCE 7056T SOD,DLF,IEF  
 FH L1 DOMINETTE 535 DOD,DLF,HYF,IEF  
 KB L1 DOMINO 1135  
 FH MISS 3007 009 LF

BW	WW	BW	WW	YW	MILK	M&G	REA	MARB	CHB
87	620	3.7	55	94	30	58	.36	.03	\$29

Pigment RE 10% LE 100%.  
 Out of our home raised 242 bull, this moderate framed calf is really long. His mother has a beautiful udder and ratios 112.5 for weaning and 105.5 for yearling on her progeny.



**Lot 775** **FH SCOPE 775**  
DOB: 2/19/2017 Reg. # 43855503

CL 1 DOMINO 0130X 1ET CHB,DLF,HYF,IEF  
**SR SCOPE 53A** CHB,DLF,HYF,IEF  
 SR HARLET 076X DLF,HYF,IEF

CL 1 DOMINO 860U SOD,CHB,DLF,HYF,IEF  
 CL 1 DOMINETTE 440P 1ET DLF,HYF,IEF  
 CJH HARLAND 408 SOD,CHB,DLF,HYF,IEF  
 SR CADDIE 874

FH L1 DOMINO 745 DLF,HYF,IEF  
**FH L1 DOMINETTE 062**  
 FH STARLET 123

KB L1 DOMINO 1135  
 FH ANDI 607 1ET  
 ST STAR MARK 988  
 FH TONI 625

BW	WW	BW	WW	YW	MILK	M&G	REA	MARB	CHB
82	605	2.4	46	74	25	48	.34	.09	\$28

Pigment RE 10% LE 100%.  
 775 is a thick made calf sired by our low birth weight Scope bull. His moderate framed dam has a small, tight udder, and ratios 104.7 at weaning and 104 at yearling.

**Lot 776** **FH SCOPE 776**  
DOB: 2/19/2017 Reg. # 43855506

CL 1 DOMINO 0130X 1ET CHB,DLF,HYF,IEF  
**SR SCOPE 53A** CHB,DLF,HYF,IEF  
 SR HARLET 076X DLF,HYF,IEF

CL 1 DOMINO 860U SOD,CHB,DLF,HYF,IEF  
 CL 1 DOMINETTE 440P 1ET DLF,HYF,IEF  
 CJH HARLAND 408 SOD,CHB,DLF,HYF,IEF  
 SR CADDIE 874

CL 1 DOMINO 124Y 1ET CHB,DLF,HYF,IEF  
**FH L1 DOMINETTE 465 LC**  
 FHH L1 DOMINETTE 257 LF

CL 1 DOMINO 9125W 1ET DLF,HYF,IEF  
 CL 1 DOMINETTE 6128S 1ET DOD,DLF,IEF  
 FH L1 DOMINO 902 CHB,DLF,HYF,IEF  
 FH L1 DOMINETTE 323 LF DLF,IEF

BW	WW	BW	WW	YW	MILK	M&G	REA	MARB	CHB
80	560	2.1	55	86	29	57	.24	.07	\$29

Pigment RE 100% LE 100%.  
 We accidentally dehorned this calf. He is cool fronted and his smooth shoulder gives him the look of a heifer bull.

**Lot 793** **FH 2185 DOMINO 793**  
DOB: 2/28/2017 Reg. # 43855510

H5 YANKEE 9131 CHB,DLF,HYF,IEF  
**H5 9131 DOMINO 2185** CHB,DLF,HYF,IEF  
 H5 MS 408 DOMET 915 DOD,DLF,HYF,IEF

CHURCHILL YANKEE ET CHB,SOD,DLF,HYF,IEF  
 H5 MS 9126 DOMET 594 DOD,DLF,HYF,IEF  
 CJH HARLAND 408 SOD,CHB,DLF,HYF,IEF  
 H5 MS 465 DOMET 7272

SR SAGA 1447 CHB,DLF,HYF,IEF  
**SR DILIA 2103Z**  
 SR SHANA 4111

CJH HARLAND 408 SOD,CHB,DLF,HYF,IEF  
 SR ROSA 3101 DOD,DLF,IEF  
 BP 146D SANDMAN 46H SOD  
 SR YAMPETTE 706 DOD

BW	WW	BW	WW	YW	MILK	M&G	REA	MARB	CHB
84	531	3.8	57	98	28	56	.43	.14	\$29

Pigment RE 80% LE 75%.  
 Here is a calf that will make females. He is long sided and carries a thick top. His dam has a very nice udder.

**Lot 794** **FH 2185 DOMINO 794**  
DOB: 3/1/2017 Reg. # 43855513

H5 YANKEE 9131 CHB,DLF,HYF,IEF  
**H5 9131 DOMINO 2185** CHB,DLF,HYF,IEF  
 H5 MS 408 DOMET 915 DOD,DLF,HYF,IEF

CHURCHILL YANKEE ET CHB,SOD,DLF,HYF,IEF  
 H5 MS 9126 DOMET 594 DOD,DLF,HYF,IEF  
 CJH HARLAND 408 SOD,CHB,DLF,HYF,IEF  
 H5 MS 465 DOMET 7272

FH L1 DOMINO 695 MF DLF,HYF,IEF  
**FH L1 DOMINETTE 162 DOD**  
 UU MS NEFF 0161

FH 026K DOMINO 304 SOD,CHB,DLF,IEF  
 OXH LOLA 7002 DOD  
 UU YAMPA DOM 6016 SOD  
 UU MS 804 7027

BW	WW	BW	WW	YW	MILK	M&G	REA	MARB	CHB
87	572	3.8	56	97	30	58	.53	.11	\$29

Pigment RE 100% LE 100%.  
 Another good 2185 son who stands on a wide base and carries extra thickness down his top. His heavy milking dam consistently brings in a good one. She ratios 109.8 at weaning and 110.3 at yearling.

# YEARLING BULLS

Lot  
795

## FH 242 NAVARRO 795

DOB: 3/3/2017

Reg. # 43855515

UPS NAVARRO SOD,CHB,DLF,HYF,IEF  
**FH NAVARRO 242 MD CHB,DLF,HYF,IEF**  
 FH L1 DOMINETTE 612 MF DLF,HYF,IEF

UPS DOMINO 5216 SOD,DLF,IEF  
 UPS MISS DOMINO 5875 DLF,IEF  
 CL 1 DOMINO 9126J 1ET SOD,CHB,DLF,IEF  
 OXH MRNA 1363

H5 9131 YANKEE 156 CHB,DLF,HYF,IEF  
**FH L1 DOMINETTE 318**  
 K&B KNOCKOUT LADY 7051T DOD

H5 YANKEE 9131 CHB,DLF,HYF,IEF  
 H5 MS 001 DOMET 8147 DLF,HYF,IEF  
 UPS KOOTENAY 3251 1ET CHB  
 OXH MRNA 2180

BW	WW
82	630

BW	WW	YW	MILK	M&G	REA	MARB	CHB
2.6	52	91	27	53	.44	.12	\$27

Pigment RE 100% LE 100%.

This calf is super thick and moderately framed. He is short marked with a good quarter. His dam is thick made with a great udder. His half brother, 6124, is also in the sale as a two year old.



Lot  
797

## FH SCOPE 797

DOB: 3/3/2017

Reg. # 43855516

CL 1 DOMINO 0130X 1ET CHB,DLF,HYF,IEF  
**SR SCOPE 53A CHB,DLF,HYF,IEF**  
 SR HARLET 076X DLF,HYF,IEF

CL 1 DOMINO 860U SOD,CHB,DLF,HYF,IEF  
 CL 1 DOMINETTE 440P 1ET DLF,HYF,IEF  
 CJH HARLAND 408 SOD,CHB,DLF,HYF,IEF  
 SR CADDIE 874

FH L1 DOMINO 695 MF DLF,HYF,IEF  
**FH L1 DOMINETTE 174**  
 FH L1 DOMINETTE 346

FH 026K DOMINO 304 SOD,CHB,DLF,IEF  
 OXH LOLA 7002 DOD  
 OXH 5125 DOMINO 7358  
 FH MISS PLAN 724

BW	WW
86	669

BW	WW	YW	MILK	M&G	REA	MARB	CHB
3.4	51	85	26	52	.28	.10	\$27

Pigment RE 10% LE 50%.

797 is a Scope 53A son that is long sided with good thickness. His dam ratios 100.3 at weaning and 107.5 at yearling with a 123 marbling ratio.



Lot  
798

## FH 242 NAVARRO 798

DOB: 3/11/2017

Reg. # 43855518

UPS NAVARRO SOD,CHB,DLF,HYF,IEF  
**FH NAVARRO 242 MD CHB,DLF,HYF,IEF**  
 FH L1 DOMINETTE 612 MF DLF,HYF,IEF

UPS DOMINO 5216 SOD,DLF,IEF  
 UPS MISS DOMINO 5875 DLF,IEF  
 CL 1 DOMINO 9126J 1ET SOD,CHB,DLF,IEF  
 OXH MRNA 1363

FH L1 DOMINO 902 CHB,DLF,HYF,IEF  
**FH L1 DOMINETTE 141**  
 FH L1 DOMINETTE 518

HH ADVANCE 7056T SOD,DLF,IEF  
 FH L1 DOMINETTE 535 DOD,DLF,HYF,IEF  
 KB L1 DOMINO 1135  
 FH MISS M PLAN 303 DOD

BW	WW
89	595

BW	WW	YW	MILK	M&G	REA	MARB	CHB
4.3	57	96	27	56	.42	.00	\$29

Pigment RE 50% LE 70%.

The Navarro 242 sons have been sale favorites. 242 sires length and thickness which is evident in this son and we feel his females will be his greatest asset.



## 2-YEAR-OLD BULLS

We are offering a good selection of 2 year old bulls that were summered on pasture. They are sound on their feet, correct in their structure and not overfed.

**Lot 630** **FH L1 DOMINO 630 BA**  
 DOB: 1/22/2016 Reg. # 43747746

UPS NAVARRO SOD,CHB,DLF,HYF,IEF  
**FH NAVARRO 242 MD** CHB,DLF,HYF,IEF  
 FH L1 DOMINETTE 612 MF DLF,HYF,IEF

UPS DOMINO 5216 SOD,DLF,IEF  
 UPS MISS DOMINO 5875 DLF,IEF  
 CL 1 DOMINO 9126J 1ET SOD,CHB,DLF,IEF  
 OXH MRNA 1363

CL 1 DOMINO 124Y 1ET CHB,DLF,HYF,IEF  
**FH L1 DOMINETTE 315 BA**  
 MONTANA MISS 163Y

CL 1 DOMINO 9125W 1ET DLF,HYF,IEF  
 CL 1 DOMINETTE 6128S 1ET DOD,DLF,IEF  
 CL 1 DOMINO 849U CHB,DLF,HYF,IEF  
 MONTANA MISS 937W

BW	WW	YW	MILK	M&G	REA	MARB	CHB
84	614	1139	2.5	52	84	28	54 .37 .15 \$28

Pigment RE 0% LE 40%.  
 This is a 242 son that has the look of a heifer bull. He is smooth shouldered and small headed. He was used this summer by our vet. Will be Trich tested prior to sale.

**Lot 665** **FH NAVARRO 665**  
 DOB: 2/9/2016 Reg. # 43747809

UPS NAVARRO SOD,CHB,DLF,HYF,IEF  
**FH NAVARRO 242 MD** CHB,DLF,HYF,IEF  
 FH L1 DOMINETTE 612 MF DLF,HYF,IEF

UPS DOMINO 5216 SOD,DLF,IEF  
 UPS MISS DOMINO 5875 DLF,IEF  
 CL 1 DOMINO 9126J 1ET SOD,CHB,DLF,IEF  
 OXH MRNA 1363

CL 1 DOMINO 6105S CHB  
**FH L1 DOMINETTE 218 BA**  
 MONTANA MISS 8165U

L1 DOMINO 03396 SOD,DLF,IEF  
 CL 1 DOMINETTE 243M  
 JH MARK 9454 1ET  
 MONTANA MISS J336 DOD

BW	WW	YW	MILK	M&G	REA	MARB	CHB
87	588	1202	3.7	54	92	24	51 .51 .04 \$28

Pigment RE 35% LE 100%.  
 One of the deepest sided and thickest made bulls we have offered in this sale. He has a tremendous quarter. Dam is a solid producer with heifer 777 in the sale.

**Lot 668** **FH NAVARRO 668**  
 DOB: 2/11/2016 Reg. # 43747813

UPS NAVARRO SOD,CHB,DLF,HYF,IEF  
**FH NAVARRO 242 MD** CHB,DLF,HYF,IEF  
 FH L1 DOMINETTE 612 MF DLF,HYF,IEF

UPS DOMINO 5216 SOD,DLF,IEF  
 UPS MISS DOMINO 5875 DLF,IEF  
 CL 1 DOMINO 9126J 1ET SOD,CHB,DLF,IEF  
 OXH MRNA 1363

CL 1 DOMINO 417P DLF,IEF  
**JBN L1 DOMINETTE 87**  
 JBN L1 DOMINETTE 412 DLF,IEF

CL 1 DOMINO 212M SOD,DLF,IEF  
 CL 1 DOMINETTE 0112K 1ET  
 ARROW CL1 1127 DLF,IEF  
 JBN L1 DOMINETTE 003

BW	WW	YW	MILK	M&G	REA	MARB	CHB
88	505	1145	4.0	45	84	19	42 .18 .11 \$26

Pigment RE 0% LE 0%.  
 Another bull that will cover a lot of cows at turnout time. He's square made and thick. His mother was sick during the summer which is why he has a lower weaning weight.

**Lot 670** **FH NAVARRO 670 AF**  
 DOB: 2/15/2016 Reg. # 43747816

UPS NAVARRO SOD,CHB,DLF,HYF,IEF  
**FH NAVARRO 242 MD** CHB,DLF,HYF,IEF  
 FH L1 DOMINETTE 612 MF DLF,HYF,IEF

UPS DOMINO 5216 SOD,DLF,IEF  
 UPS MISS DOMINO 5875 DLF,IEF  
 CL 1 DOMINO 9126J 1ET SOD,CHB,DLF,IEF  
 OXH MRNA 1363

KB L1 DOMINO 1135  
**FH L1 DOMINETTE 545**  
 FH STARLET 104

JA L1 DOMINO 503 2ET SOD  
 MONTANA MISS J336 DOD  
 ST STAR MARK 988  
 FH MS WASH 804V

BW	WW	YW	MILK	M&G	REA	MARB	CHB
87	587	1201	4.4	51	95	26	51 .46 .05 \$29

Pigment RE 100% LE 0%.  
 This bull was used as a cleanup bull on our ranch. His dam comes from one of our strongest cow families on the ranch. He will be Trich tested prior to the sale.

**Lot 660** **FH NAVARRO 660**  
 DOB: 2/5/2016 Reg. # 43747802

UPS NAVARRO SOD,CHB,DLF,HYF,IEF  
**FH NAVARRO 242 MD** CHB,DLF,HYF,IEF  
 FH L1 DOMINETTE 612 MF DLF,HYF,IEF

UPS DOMINO 5216 SOD,DLF,IEF  
 UPS MISS DOMINO 5875 DLF,IEF  
 CL 1 DOMINO 9126J 1ET SOD,CHB,DLF,IEF  
 OXH MRNA 1363

FH 026K DOMINO 304 SOD,CHB,DLF,IEF  
**FH L1 DOMINETTE 652**  
 FH PATTI 516

HH ADVANCE 026K 1ET DLF,HYF,IEF  
 RCH DOMINETTE 9029 DOD  
 OXH STEALTH 2342  
 BB MISS DOMINO 6012

BW	WW	YW	MILK	M&G	REA	MARB	CHB
87	558	1157	3.9	53	98	22	48 .69 -.04 \$29

Pigment RE 100% LE 100%.  
 Another 242 son with an attractive profile. He is long sided and thick. He will cover a lot of cows at breeding season.



## 2-YEAR-OLD BULLS

**Lot 677** **FH 2185 DOMINO 677**  
 DOB: 2/17/2016 Reg. # 43748313

H5 YANKEE 9131 CHB,DLF,HYF,IEF  
**FH 9131 DOMINO 2185** CHB,DLF,HYF,IEF  
 H5 MS 408 DOMET 915 DOD,DLF,HYF,IEF

CHURCHILL YANKEE ET CHB,SOD,DLF,HYF,IEF  
 H5 MS 9126 DOMET 594 DOD,DLF,HYF,IEF  
 CJH HARLAND 408 SOD,CHB,DLF,HYF,IEF  
 H5 MS 465 DOMET 7272

KB L1 DOMINO 842U DLF,IEF  
**FH L1 DOMINETTE 211** DOD  
 KB L1 DOMINETTE 9134W

KB L1 DOMINO 655 ET CHB,DLF,IEF  
 MONTANA MISS 310 DOD,DLF,HYF,IEF  
 CL 1 DOMINO 7110T DLF,HYF,IEF  
 KB L1 DOMINETTE 721T

BW	WW	YW	BW	WW	YW	MILK	M&G	REA	MARB	CHB
80	640	1196	2.4	55	93	29	56	.55	.09	\$31

Pigment RE 50% LE 100%.  
 This bull is bred to raise cows. His sire, 2185, is a maternal powerhouse. His dam, 211, is one of our best cows and raised a high seller to Hermann Ranch in Lemmon, SD.



**Lot 6118** **FH L1 DOMINO 6118**  
 DOB: 3/11/2016 Reg. # 43748743

HH ADVANCE 7056T SOD,DLF,IEF  
**FH L1 DOMINO 902** CHB,DLF,HYF,IEF  
 FH L1 DOMINETTE 535 DOD,DLF,HYF,IEF

HH ADVANCE 5104R SOD,CHB,DLF,IEF  
 HH MISS ADVANCE 5020R ET DLF,IEF  
 OXH MARK DOMINO 3043 DLF,IEF  
 OXH BESS 8268 DOD,DLF,HYF,IEF

FH 026K DOMINO 304 SOD,CHB,DLF,IEF  
**FH L1 DOMINETTE 803**  
 FH PATTI 701 DLF,HYF,IEF

HH ADVANCE 026K 1ET DLF,HYF,IEF  
 RCH DOMINETTE 9029 DOD  
 MH PATRIOT 3159 SOD  
 FH MISS RED 001

BW	WW	YW	BW	WW	YW	MILK	M&G	REA	MARB	CHB
92	730	1197	5.3	59	104	27	56	.50	.03	\$31

Pigment RE 80% LE 75%.  
 Here is a 902 son with extra length that is plenty thick. He stands square on all four corners and has a good producing dam.



**Lot 6120** **FH L1 DOMINO 6120 BA**  
 DOB: 3/12/2016 Reg. # 43748744

HH ADVANCE 7056T SOD,DLF,IEF  
**FH L1 DOMINO 902** CHB,DLF,HYF,IEF  
 FH L1 DOMINETTE 535 DOD,DLF,HYF,IEF

HH ADVANCE 5104R SOD,CHB,DLF,IEF  
 HH MISS ADVANCE 5020R ET DLF,IEF  
 OXH MARK DOMINO 3043 DLF,IEF  
 OXH BESS 8268 DOD,DLF,HYF,IEF

JA L1 DOMINO 6002S DLF,HYF,IEF  
**KB L1 DOMINETTE 879U** DLF,HYF,IEF  
 KB L1 DOMINETTE 647 DLF,HYF,IEF

GB L1 DOMINO 935C SOD,DLF,IEF  
 JA L1 DOMINETTE 9203  
 KB L1 DOMINO 454P SOD,DLF,IEF  
 KB L1 DOMINETTE 414P DOD,DLF,HYF,IEF

BW	WW	YW	BW	WW	YW	MILK	M&G	REA	MARB	CHB
91	635	1231	4.2	57	96	32	60	.29	-.05	\$30

Pigment RE 0% LE 35%.  
 6120 is a long sided bull that would work great on a black or red set of cows.

**Lot 6121** **FH L1 DOMINO 6121 MD**  
 DOB: 3/13/2016 Reg. # 43748746

HH ADVANCE 7056T SOD,DLF,IEF  
**FH L1 DOMINO 902** CHB,DLF,HYF,IEF  
 FH L1 DOMINETTE 535 DOD,DLF,HYF,IEF

HH ADVANCE 5104R SOD,CHB,DLF,IEF  
 HH MISS ADVANCE 5020R ET DLF,IEF  
 OXH MARK DOMINO 3043 DLF,IEF  
 OXH BESS 8268 DOD,DLF,HYF,IEF

FH L1 DOMINO 695 MF DLF,HYF,IEF  
**FH L1 DOMINETTE 955 MF**  
 FH L1 DOMINETTE 329 MF

FH 026K DOMINO 304 SOD,CHB,DLF,IEF  
 OXH LOLA 7002 DOD  
 OXH 5125 DOMINO 7358  
 LS SABRINA 081 DOD

BW	WW	YW	BW	WW	YW	MILK	M&G	REA	MARB	CHB
87	659	1062	3.6	50	83	26	51	.28	-.06	\$27

Pigment RE 100% LE 50%.  
 Another 902 son with extra length. He has a lot of potential to sire good baldy calves.



**Lot 6124** **FH NAVARRO 6124**  
 DOB: 3/14/2016 Reg. # 43748750

UPS NAVARRO SOD,CHB,DLF,HYF,IEF  
**FH NAVARRO 242 MD** CHB,DLF,HYF,IEF  
 FH L1 DOMINETTE 612 MF DLF,HYF,IEF

UPS DOMINO 5216 SOD,DLF,IEF  
 UPS MISS DOMINO 5875 DLF,IEF  
 CL 1 DOMINO 9126J 1ET SOD,CHB,DLF,IEF  
 OXH MRNA 1363

H5 9131 YANKEE 156 CHB,DLF,HYF,IEF  
**FH L1 DOMINETTE 318**  
 K&B KNOCKOUT LADY 7051T DOD

H5 YANKEE 9131 CHB,DLF,HYF,IEF  
 H5 MS 001 DOMET 8147 DLF,HYF,IEF  
 UPS KOOTENAY 3251 1ET CHB  
 OXH MRNA 2180

BW	WW	YW	BW	WW	YW	MILK	M&G	REA	MARB	CHB
90	672	1179	3.8	55	97	27	54	.44	.10	\$28

Pigment RE 0% LE 0%.  
 This bull is short marked and really thick. He comes from a good cow family. Maternal brother to bull 795.

## 2-YEAR-OLD BULLS

*Lot*  
**6151**

### FH L1 DOMINO 6151

DOB: 3/31/2016

Reg. # P43748778

HH ADVANCE 7056T *SOD,DLF,IEF*  
**FH L1 DOMINO 902** *CHB,DLF,HYF,IEF*  
 FH L1 DOMINETTE 535 *DOD,DLF,HYF,IEF*

HH ADVANCE 5104R *SOD,CHB,DLF,IEF*  
 HH MISS ADVANCE 5020R ET *DLF,IEF*  
 OXH MARK DOMINO 3043 *DLF,IEF*  
 OXH BESS 8268 *DOD,DLF,HYF,IEF*

SR NATIONAL 305 *CHB*  
**WJS MIDWAY NATIONAL LADY 62W**  
 WJS MIDWAY CASINO HUNTRES 561R

REMITALL NATION WIDE ET 93N *CHB,SOD*  
 BARBIE Q BEEF MR 9024 *DOD*  
 HH HUNTER 113N  
 WJS CASINO LADY H784

BW	WW	YW
88	627	NA

BW	WW	YW	MILK	M&G	REA	MARB	CHB
5.2	63	108	29	60	.55	-.05	\$32

Pigment RE 0% LE 0%.

Polled, scurred son of 902. This bull is thick made with a long top. Dam is a solid producer who raises a quality calf every year.



## REGISTERED YEARLING HEIFERS - BUYERS CHOICE

We are offering the pick of two CL 1 Domino 215Z daughters. Only one heifer sells. Friedt Herefords will retain the heifer not selected.

Both of these heifers are out of 10 year old cows that have stood the test of time and consistently performed for our program.

215Z has been a consistent breeding bull across the nation and these heifers are a good representation of our program.

*Lot*  
**725**

### FH 215Z DOMINETTE 725

DOB: 1/28/2017

Reg. # 43855271

CL 1 DOMINO 9122W 1ET *CHB,DLF,HYF,IEF*  
**CL 1 DOMINO 215Z** *CHB,DLF,HYF,IEF*  
 CL 1 DOMINETTE 055X *DOD,DLF,HYF,IEF*

CL 1 DOMINO 732T *SOD,CHB,DLF,IEF*  
 CL 1 DOMINETTE 475P *DLF,HYF,IEF*  
 CL 1 DOMINO 860U *SOD,CHB,DLF,HYF,IEF*  
 CL 1 DOMINETTE 7136T 1ET *DOD,DLF,HYF,IEF*

KB L1 DOMINO 1135  
**FH L1 DOMINETTE 760**  
 FH L1 DOMINETTE 410

JA L1 DOMINO 503 2ET *SOD*  
 MONTANA MISS J336 *DOD*  
 CL 1 DOMINO 484 *SOD,DLF,HYF,IEF*  
 SR MANDY 911

BW	WW
93	602

BW	WW	YW	MILK	M&G	REA	MARB	CHB
4.6	62	101	25	56	.41	.14	\$29

A feminine, correct made daughter of the breed leading 215Z. Her dam has some of the elite Hereford sires in her pedigree including CL 1 Domino 484, GB L1 Domino 804, and CL 1 Domino 501.



*Lot*  
**761**

### FH 215Z DOMINETTE 761 LC

DOB: 2/11/2017

Reg. # 43858007

CL 1 DOMINO 9122W 1ET *CHB,DLF,HYF,IEF*  
**CL 1 DOMINO 215Z** *CHB,DLF,HYF,IEF*  
 CL 1 DOMINETTE 055X *DOD,DLF,HYF,IEF*

CL 1 DOMINO 732T *SOD,CHB,DLF,IEF*  
 CL 1 DOMINETTE 475P *DLF,HYF,IEF*  
 CL 1 DOMINO 860U *SOD,CHB,DLF,HYF,IEF*  
 CL 1 DOMINETTE 7136T 1ET *DOD,DLF,HYF,IEF*

CJH HARLAND 408 *SOD,CHB,DLF,HYF,IEF*  
**FH L1 DOMINETTE 737 LF** *DOD*  
 IH 503 DOMINETA 8335 *DOD,DLF,IEF*

HH ADVANCE 9005J *DLF,IEF*  
 CJH L1 DOMINETTE 0064 *DLF,HYF,IEF*  
 JA L1 DOMINO 503 2ET *SOD*  
 IH 324 DOMINETA 6295

BW	WW
82	576

BW	WW	YW	MILK	M&G	REA	MARB	CHB
2.9	58	98	26	55	.43	.21	\$29

We are offering another outstanding heifer by 215Z. Her 10 year old Harland dam has been a consistent producer that boasts strong carcass traits. Dam ratios 110 for ribeye and 112 for marbling on her progeny.





# REGISTERED YEARLING HEIFERS - BUYERS CHOICE

We are offering two ET females from our 259 donor cow out of H5 1147 Advance 417, who was the co-top selling bull in the 2015 Harrell Hereford Ranch production sale. This flush produced two bulls and three heifers by 417. The two bull calves are offered in the sale as Lots 706 and 749. These heifers offer an opportunity to purchase the top maternal and performance oriented females in our herd. Only one heifer sells. Friedt Herefords will retain the heifer not selected.

**Lot 705 FH 417 MISS ADVANCE 705 ET**  
 DOB: 1/9/2017 Reg. # 43862680

H5 4055 ADVANCE 1147 1 ET CHB,DLF,HYF,IEF  
**H5 1147 ADVANCE 417 DLF,HYF,IEF**  
 H5 MS 7100 DOMET 215 DLF,HYF,IEF

HH ADVANCE 4055P CHB,DLF,IEF  
 H5 MS 767 ADVAN 298 DOD,DLF,HYF,IEF  
 H5 408 DOMINO 7100 SOD,DLF,HYF,IEF  
 H5 MS YANKEE 0125 1ET

FH L1 DOMINO 902 CHB,DLF,HYF,IEF  
**FH L1 DOMINETTE 259 DLF,HYF,IEF**  
 FH L1 DOMINETTE 5100

HH ADVANCE 7056T SOD,DLF,IEF  
 FH L1 DOMINETTE 535 DOD,DLF,HYF,IEF  
 FH 026K DOMINO 304 SOD,CHB,DLF,IEF  
 FH PATTI 701 DLF,HYF,IEF

BW	WW	BW	WW	YW	MILK	M&G	REA	MARB	CHB
82	685	4.1	65	106	28	61	.42	.17	\$29

*This pick of the flush heifer has brood cow written all over her. She has performance driven EPDs paired with extra capacity.*



**Lot 732 FH 417 MISS ADVANCE 732 ET**  
 DOB: 1/29/2017 Reg. # 43862685

H5 4055 ADVANCE 1147 1 ET CHB,DLF,HYF,IEF  
**H5 1147 ADVANCE 417 DLF,HYF,IEF**  
 H5 MS 7100 DOMET 215 DLF,HYF,IEF

HH ADVANCE 4055P CHB,DLF,IEF  
 H5 MS 767 ADVAN 298 DOD,DLF,HYF,IEF  
 H5 408 DOMINO 7100 SOD,DLF,HYF,IEF  
 H5 MS YANKEE 0125 1ET

FH L1 DOMINO 902 CHB,DLF,HYF,IEF  
**FH L1 DOMINETTE 259 DLF,HYF,IEF**  
 FH L1 DOMINETTE 5100

HH ADVANCE 7056T SOD,DLF,IEF  
 FH L1 DOMINETTE 535 DOD,DLF,HYF,IEF  
 FH 026K DOMINO 304 SOD,CHB,DLF,IEF  
 FH PATTI 701 DLF,HYF,IEF

BW	WW	BW	WW	YW	MILK	M&G	REA	MARB	CHB
83	602	4.1	65	106	28	61	.42	.17	\$29

*This pick of the flush heifer is long bodied and feminine made. You will find extra length and maternal strength in this package.*



# REGISTERED YEARLING HEIFERS

The registered heifers will be sold in groups of three with the high bidder getting the option of choice or all three heifers. The remaining heifers will be sold as commercial heifers with the option to buy the papers for \$100.

**Lot 709** **FH 242 MISS AVA 709**  
 DOB: 1/16/2017 Reg. # 43840176

UPS NAVARRO SOD,CHB,DLF,HYF,IEF  
**FH NAVARRO 242 MD CHB,DLF,HYF,IEF**  
 FH L1 DOMINETTE 612 MF DLF,HYF,IEF

CL 1 DOMINO 124Y 1ET CHB,DLF,HYF,IEF  
**FH L1 DOMINETTE 448**  
 FH MISS NAVIA 267

UPS DOMINO 5216 SOD,DLF,IEF  
 UPS MISS DOMINO 5875 DLF,IEF  
 CL 1 DOMINO 9126J 1ET SOD,CHB,DLF,IEF  
 OXH MRNA 1363

CL 1 DOMINO 9125W 1ET DLF,HYF,IEF  
 CL 1 DOMINETTE 6128S 1ET DOD,DLF,IEF  
 SR NAVARRO 740X CHB,DLF,HYF,IEF  
 FH L1 DOMINETTE 9937

BW	WW	BW	WW	YW	MILK	M&G	REA	MARB	CHB
82	600	2.8	54	90	30	57	.44	.13	\$28

*This is a very feminine heifer by Navarro 242. She will make a good cow.*



**Lot 719** **FH 5019 MISS ADA 719 AF**  
 DOB: 1/26/2017 Reg. # 43855269

CL 1 DOMINO 215Z CHB,DLF,HYF,IEF  
**HH ADVANCE 5019C ET DLF,HYF,IEF**  
 HH MISS ADVANCE 1072Y ET DLF,HYF,IEF

FH L1 DOMINO 695 MF DLF,HYF,IEF  
**FH L1 DOMINETTE 100 AF**  
 FH STARLET 104

CL 1 DOMINO 9122W 1ET CHB,DLF,HYF,IEF  
 CL 1 DOMINETTE 055X DOD,DLF,HYF,IEF  
 HH ADVANCE 4055P CHB,DLF,IEF  
 HH MISS ADVANCE 7003T DOD,DLF,HYF,IEF

FH 026K DOMINO 304 SOD,CHB,DLF,IEF  
 OXH LOLA 7002 DOD  
 ST STAR MARK 988  
 FH MS WASH 804

BW	WW	BW	WW	YW	MILK	M&G	REA	MARB	CHB
84	551	3.7	56	89	25	52	.44	.11	\$29

*719 is long, deep sided AI heifer by 5019C. She has top Holden Hereford genetics from 5019C and consistent maternal production on the dam's side.*



**Lot 726** **FH 417 MISS ADVANCE 726 ET**  
 DOB: 1/29/2017 Reg. # 43862682

H5 4055 ADVANCE 1147 1 ET CHB,DLF,HYF,IEF  
**H5 1147 ADVANCE 417 DLF,HYF,IEF**  
 H5 MS 7100 DOMET 215 DLF,HYF,IEF

FH L1 DOMINO 902 CHB,DLF,HYF,IEF  
**FH L1 DOMINETTE 259 DLF,HYF,IEF**  
 FH L1 DOMINETTE 5100

HH ADVANCE 4055P CHB,DLF,IEF  
 H5 MS 767 ADVAN 298 DOD,DLF,HYF,IEF  
 H5 408 DOMINO 7100 SOD,DLF,HYF,IEF  
 H5 MS YANKEE 0125 1ET

HH ADVANCE 7056T SOD,DLF,IEF  
 FH L1 DOMINETTE 535 DOD,DLF,HYF,IEF  
 FH 026K DOMINO 304 SOD,CHB,DLF,IEF  
 FH PATTI 701 DLF,HYF,IEF

BW	WW	BW	WW	YW	MILK	M&G	REA	MARB	CHB
75	602	4.1	65	106	28	61	.42	.17	\$29

*This moderate framed heifer is correctly made and super feminine. She could be the sleeper in the offering.*



**Lot 738** **FH 53A MISS SCOPE 738 AF**  
 DOB: 2/2/2017 Reg. # 43855273

CL 1 DOMINO 0130X 1ET CHB,DLF,HYF,IEF  
**SR SCOPE 53A CHB,DLF,HYF,IEF**  
 SR HARLET 076X DLF,HYF,IEF

FH L1 DOMINO 902 CHB,DLF,HYF,IEF  
**FH L1 DOMINETTE 2024 AF DOD**  
 FH L1 DOMINETTE 545

CL 1 DOMINO 860U SOD,CHB,DLF,HYF,IEF  
 CL 1 DOMINETTE 440P 1ET DLF,HYF,IEF  
 CJH HARLAND 408 SOD,CHB,DLF,HYF,IEF  
 SR CADDIE 874

HH ADVANCE 7056T SOD,DLF,IEF  
 FH L1 DOMINETTE 535 DOD,DLF,HYF,IEF  
 KB L1 DOMINO 1135  
 FH STARLET 104

BW	WW	BW	WW	YW	MILK	M&G	REA	MARB	CHB
84	636	2.9	56	97	29	57	.32	.04	\$28

*This Scope 53A is a real feminine made heifer. She gives a great side profile and has a strong maternal background.*



# REGISTERED YEARLING HEIFERS

**Lot 746** **FH MISS SCOPE 746**  
 DOB: 2/5/2017 Reg. # 43856922

CL 1 DOMINO 0130X 1ET *CHB,DLF,HYF,IEF*  
**SR SCOPE 53A** *CHB,DLF,HYF,IEF*  
 SR HARLET 076X *DLF,HYF,IEF*

CL 1 DOMINO 860U *SOD,CHB,DLF,HYF,IEF*  
 CL 1 DOMINETTE 440P 1ET *DLF,HYF,IEF*  
 CJH HARLAND 408 *SOD,CHB,DLF,HYF,IEF*  
 SR CADDIE 874

UPS BRUTUS *DLF,HYF,IEF*  
**FH MISS B NEON 046 MD**  
 FH L1 DOMINETTE 753 MF

GH NEON 17N *CHB,SOD,DLF,HYF,IEF*  
 UPS MISS DIAMOND 2226 *DOD,DLF,IEF*  
 FH 026K DOMINO 304 *SOD,CHB,DLF,IEF*  
 OXH BESS 0343

BW	WW	BW	WW	YW	MILK	M&G	REA	MARB	CHB
89	689	3.1	57	97	24	53	.47	.11	\$31

Another Scope 53A with extra thickness and depth of rib. Her dam always brings in a heavy calf. Her 2015 heifer sold to Jay Krank, Gladstone, ND.



**Lot 771** **FH 2185 DOMINETTE 771 BA**  
 DOB: 2/15/2017 Reg. # 43840204

H5 YANKEE 9131 *CHB,DLF,HYF,IEF*  
**H5 9131 DOMINO 2185** *CHB,DLF,HYF,IEF*  
 H5 MS 408 DOMET 915 *DOD,DLF,HYF,IEF*

CHURCHILL YANKEE ET *CHB,SOD,DLF,HYF,IEF*  
 H5 MS 9126 DOMET 594 *DOD,DLF,HYF,IEF*  
 CJH HARLAND 408 *SOD,CHB,DLF,HYF,IEF*  
 H5 MS 465 DOMET 7272

KB L1 DOMINO 842U *DLF,IEF*  
**FH L1 DOMINETTE 223 BA**  
 MONTANA MISS 9160W *DOD*

KB L1 DOMINO 655 ET *CHB,DLF,IEF*  
 MONTANA MISS 310 *DOD,DLF,HYF,IEF*  
 CL 1 DOMINO 0152K *SOD,DLF,IEF*  
 MONTANA MISS 5107R

BW	WW	BW	WW	YW	MILK	M&G	REA	MARB	CHB
84	607	3.4	60	97	29	58	.58	.06	\$32

This is a thick made brood cow in the making. She is short marked with some pigment. Baker Hereford bloodlines on the bottom side.



**Lot 774** **FH 242 MISS AVA 774**  
 DOB: 2/17/2017 Reg. # 43858015

UPS NAVARRO *SOD,CHB,DLF,HYF,IEF*  
**FH NAVARRO 242 MD** *CHB,DLF,HYF,IEF*  
 FH L1 DOMINETTE 612 MF *DLF,HYF,IEF*

UPS DOMINO 5216 *SOD,DLF,IEF*  
 UPS MISS DOMINO 5875 *DLF,IEF*  
 CL 1 DOMINO 9126J 1ET *SOD,CHB,DLF,IEF*  
 OXH MRNA 1363

FH L1 DOMINO 902 *CHB,DLF,HYF,IEF*  
**FH L1 DOMINETTE 491**  
 FH L1 DOMINETTE 803

HH ADVANCE 7056T *SOD,DLF,IEF*  
 FH L1 DOMINETTE 535 *DOD,DLF,HYF,IEF*  
 FH 026K DOMINO 304 *SOD,CHB,DLF,IEF*  
 FH PATTI 701 *DLF,HYF,IEF*

BW	WW	BW	WW	YW	MILK	M&G	REA	MARB	CHB
80	589	4.1	57	102	27	55	.48	.08	\$30

This moderate framed heifer is backed by 242, 902 and 304, three of the best sires we have used.



**Lot 777** **FH 2185 DOMINETTE 777**  
 DOB: 2/19/2017 Reg. # 43856921

H5 YANKEE 9131 *CHB,DLF,HYF,IEF*  
**H5 9131 DOMINO 2185** *CHB,DLF,HYF,IEF*  
 H5 MS 408 DOMET 915 *DOD,DLF,HYF,IEF*

CHURCHILL YANKEE ET *CHB,SOD,DLF,HYF,IEF*  
 H5 MS 9126 DOMET 594 *DOD,DLF,HYF,IEF*  
 CJH HARLAND 408 *SOD,CHB,DLF,HYF,IEF*  
 H5 MS 465 DOMET 7272

CL 1 DOMINO 6105S *CHB*  
**FH L1 DOMINETTE 218 BA**  
 MONTANA MISS 8165U

L1 DOMINO 03396 *SOD,DLF,IEF*  
 CL 1 DOMINETTE 243M  
 JH MARK 9454 1ET  
 MONTANA MISS J336 *DOD*

BW	WW	BW	WW	YW	MILK	M&G	REA	MARB	CHB
83	717	3.7	58	96	26	55	.58	.10	\$31

This high performing 2185 daughter is feminine, moderate in her frame, and deep bodied. Her dam is one of our top producers. This heifer has great brood cow potential.



# REGISTERED YEARLING HEIFERS

Lot  
**780**

## FH 62Z MISS BAKKEN 780

DOB: 2/21/2017

Reg. # 43858020

UPS NAVARRO SOD,CHB,DLF,HYF,IEF  
SR BAKKEN 62Z CHB,DLF,HYF,IEF  
SR SCRIPTIA 926W DOD,DLF,HYF,IEF

UPS DOMINO 5216 SOD,DLF,IEF  
UPS MISS DOMINO 5875 DLF,IEF  
SR SCRIPT 187 SOD,DLF,IEF  
SR SABRINA 284

FH L1 DOMINETTE 0001  
KB L1 DOMINO 764T DLF,IEF  
KB L1 DOMINO 311 SOD,DLF,IEF  
KB L1 DOMINETTE 402P  
JBN L1 DOMINETTE 817 DLF,IEF  
CL 1 DOMINO 417P DLF,IEF  
JBN 111 DOMINETTE 401 DLF,IEF

BW	WW
82	614

BW	WW	YW	MILK	M&G	REA	MARB	CHB
2.9	56	96	29	58	.50	.18	\$31

This Bakken heifer is long sided and feminine made. She is dark red and her dam has great progeny carcass figures.



Lot  
**783**

## FH 417 MISS ADA 783

DOB: 2/25/2017

Reg. # 43858023

H5 4055 ADVANCE 1147 1 ET CHB,DLF,HYF,IEF  
H5 1147 ADVANCE 417 DLF,HYF,IEF  
H5 MS 7100 DOMET 215 DLF,HYF,IEF

HH ADVANCE 4055P CHB,DLF,IEF  
H5 MS 767 ADVAN 298 DOD,DLF,HYF,IEF  
H5 408 DOMINO 7100 SOD,DLF,HYF,IEF  
H5 MS YANKEE 0125 1ET

H5 9131 DOMINO 2185 CHB,DLF,HYF,IEF  
FH L1 DOMINETTE 544  
FH L1 DOMINETTE 652

H5 YANKEE 9131 CHB,DLF,HYF,IEF  
H5 MS 408 DOMET 915 DOD,DLF,HYF,IEF  
FH 026K DOMINO 304 SOD,CHB,DLF,IEF  
FH PATTI 516

BW	WW
83	700

BW	WW	YW	MILK	M&G	REA	MARB	CHB
5.2	73	119	29	65	.59	.16	\$31

This is one of the last heifers to be picked for the sale. She is out of a great first calf heifer, the kind that can move a program. She is sure to make a great foundation female.



Lot  
**784**

## FH 242 MISS AVA 784

DOB: 2/25/2017

Reg. # 43858024

UPS NAVARRO SOD,CHB,DLF,HYF,IEF  
FH NAVARRO 242 MD CHB,DLF,HYF,IEF  
FH L1 DOMINETTE 612 MF DLF,HYF,IEF

UPS DOMINO 5216 SOD,DLF,IEF  
UPS MISS DOMINO 5875 DLF,IEF  
CL 1 DOMINO 9126J 1ET SOD,CHB,DLF,IEF  
OXH MRNA 1363

H5 9131 DOMINO 2185 CHB,DLF,HYF,IEF  
FH L1 DOMINETTE 410B  
H5 MS 648 DOMET 8237

H5 YANKEE 9131 CHB,DLF,HYF,IEF  
H5 MS 408 DOMET 915 DOD,DLF,HYF,IEF  
CL 1 DOMINO 648S SOD,CHB,DLF,IEF  
H5 MS 9213 DOMET 5116

BW	WW
80	601

BW	WW	YW	MILK	M&G	REA	MARB	CHB
2.9	57	100	30	59	.48	.08	\$29

Another heifer we would rather be keeping. She is sired by 242 and has an abundance of pigment with ample capacity. Dam has a 108 weaning ratio on two head.



Lot  
**786**

## FH 53A MISS SCOPE 786

DOB: 2/25/2017

Reg. # 43858026

CL 1 DOMINO 0130X 1ET CHB,DLF,HYF,IEF  
SR SCOPE 53A CHB,DLF,HYF,IEF  
SR HARLET 076X DLF,HYF,IEF

CL 1 DOMINO 860U SOD,CHB,DLF,HYF,IEF  
CL 1 DOMINETTE 440P 1ET DLF,HYF,IEF  
CJH HARLAND 408 SOD,CHB,DLF,HYF,IEF  
SR CADDIE 874

HH ADVANCE 7056T SOD,DLF,IEF  
FH L1 DOMINETTE 263 ET  
OXH BESS 8268 DOD,DLF,HYF,IEF

HH ADVANCE 5104R SOD,CHB,DLF,IEF  
HH MISS ADVANCE 5020R ET DLF,IEF  
OXH STEALTH 3361 SOD  
OXH LOLA 6014

BW	WW
80	603

BW	WW	YW	MILK	M&G	REA	MARB	CHB
0.3	48	79	28	51	.26	.10	\$29

786 is an attractive Scope daughter whose dam traces back to the Oxley Hereford Ranch.



# REGISTERED YEARLING HEIFERS

**Lot 792** **FH 417 MISS ADA 792 MD**  
 DOB: 2/28/2017 Reg. # 43858031

H5 4055 ADVANCE 1147 1 ET *CHB,DLF,HYF,IEF*  
**H5 1147 ADVANCE 417** *DLF,HYF,IEF*  
 H5 MS 7100 DOMET 215 *DLF,HYF,IEF*

H5 9131 YANKEE 156 *CHB,DLF,HYF,IEF*  
**FH L1 DOMINETTE 572 MD**  
 FH L1 DOMINETTE 256

HH ADVANCE 4055P *CHB,DLF,IEF*  
 H5 MS 767 ADVAN 298 *DOD,DLF,HYF,IEF*  
 H5 408 DOMINO 7100 *SOD,DLF,HYF,IEF*  
 H5 MS YANKEE 0125 1ET

H5 YANKEE 9131 *CHB,DLF,HYF,IEF*  
 H5 MS 001 DOMET 8147 *DLF,HYF,IEF*  
 FH L1 DOMINO 695 MF *DLF,HYF,IEF*  
 FH L1 DOMINETTE 537 MF

BW	WW	BW	WW	YW	MILK	M&G	REA	MARB	CHB
80	722	3.6	63	101	29	61	.46	.23	\$29

*These Harrell 417 females will be strong producers. She is solid marked and has an unmatched disposition. Her mother is a highly productive first calf heifer.*



**Lot 7100** **FH 242 MISS AVA 7100**  
 DOB: 3/14/2017 Reg. # 43858036

UPS NAVARRO *SOD,CHB,DLF,HYF,IEF*  
**FH NAVARRO 242 MD** *CHB,DLF,HYF,IEF*  
 FH L1 DOMINETTE 612 MF *DLF,HYF,IEF*

H5 9131 DOMINO 2185 *CHB,DLF,HYF,IEF*  
**FH L1 DOMINETTE 436 BA**  
 MONTANA MISS 9160W *DOD*

UPS DOMINO 5216 *SOD,DLF,IEF*  
 UPS MISS DOMINO 5875 *DLF,IEF*  
 CL 1 DOMINO 9126J 1ET *SOD,CHB,DLF,IEF*  
 OXH MRNA 1363

H5 YANKEE 9131 *CHB,DLF,HYF,IEF*  
 H5 MS 408 DOMET 915 *DOD,DLF,HYF,IEF*  
 CL 1 DOMINO 0152K *SOD,DLF,IEF*  
 MONTANA MISS 5107R

BW	WW	BW	WW	YW	MILK	M&G	REA	MARB	CHB
83	661	2.9	56	99	28	56	.54	.05	\$30

*A great set of EPDs on this feminine heifer with lots of natural thickness. We only have one Navarro 242 daughter in production and she is doing an outstanding job.*

**Lot 7103** **FH 242 MISS AVA 7103**  
 DOB: 3/15/2017 Reg. # 43858039

UPS NAVARRO *SOD,CHB,DLF,HYF,IEF*  
**FH NAVARRO 242 MD** *CHB,DLF,HYF,IEF*  
 FH L1 DOMINETTE 612 MF *DLF,HYF,IEF*

H5 9131 DOMINO 2185 *CHB,DLF,HYF,IEF*  
**FH L1 DOMINETTE 566**  
 FH L1 DOMINETTE 803

UPS DOMINO 5216 *SOD,DLF,IEF*  
 UPS MISS DOMINO 5875 *DLF,IEF*  
 CL 1 DOMINO 9126J 1ET *SOD,CHB,DLF,IEF*  
 OXH MRNA 1363

H5 YANKEE 9131 *CHB,DLF,HYF,IEF*  
 H5 MS 408 DOMET 915 *DOD,DLF,HYF,IEF*  
 FH 026K DOMINO 304 *SOD,CHB,DLF,IEF*  
 FH PATTI 701 *DLF,HYF,IEF*

BW	WW	BW	WW	YW	MILK	M&G	REA	MARB	CHB
84	666	4.8	61	108	29	60	.66	.13	\$33

*This solid marked heifer is another of our favorites. Dam's side of the pedigree has outstanding females in it.*

**Lot 7106** **FH 2185 DOMINETTE 7106**  
 DOB: 3/16/2017 Reg. # 43858042

H5 YANKEE 9131 *CHB,DLF,HYF,IEF*  
**H5 9131 DOMINO 2185** *CHB,DLF,HYF,IEF*  
 H5 MS 408 DOMET 915 *DOD,DLF,HYF,IEF*

H5 001 DOMINO 819 *DLF,HYF,IEF*  
**FH L1 DOMINETTE 112**  
 FH L1 DOMINETTE 910 *DOD*

CHURCHILL YANKEE ET *CHB,SOD,DLF,HYF,IEF*  
 H5 MS 9126 DOMET 594 *DOD,DLF,HYF,IEF*  
 CJH HARLAND 408 *SOD,CHB,DLF,HYF,IEF*  
 H5 MS 465 DOMET 7272

H5 501 DOMINO 001 *SOD,DLF,IEF*  
 H5 MS 767 ADVANCE 667 *DLF,HYF,IEF*  
 HH ADVANCE 7056T *SOD,DLF,IEF*  
 FH L1 DOMINETTE 536

BW	WW	BW	WW	YW	MILK	M&G	REA	MARB	CHB
91	624	4.1	56	91	32	59	.45	.04	\$28

*This Harrell 2185 heifer is deep sided and thick. She is out of a moderate framed dam who has been a consistent producer.*

**Lot 7117** **FH L1 DOMINETTE 7117 AF**  
 DOB: 3/19/2017 Reg. # 43858049

CL 1 DOMINO 9125W 1ET *DLF,HYF,IEF*  
**CL 1 DOMINO 124Y 1ET** *CHB,DLF,HYF,IEF*  
 CL 1 DOMINETTE 6128S 1ET *DOD,DLF,IEF*

CHURCHILL SENSATION 028X *CHB,SOD,DLF,HYF,IEF*  
**FH MISS SENSATION 553 AF ET**  
 FH L1 DOMINETTE 806 AF *DLF,HYF,IEF*

CL 1 DOMINO 732T *SOD,CHB,DLF,IEF*  
 CL 1 DOMINETTE 475P *DLF,HYF,IEF*  
 L1 DOMINO 03396 *SOD,DLF,IEF*  
 CL 1 DOMINETTE 095K *DLF,IEF*

UPS DOMINO 3027 *CHB,SOD,DLF,HYF,IEF*  
 CHURCHILL LADY 7202T ET *DLF,HYF,IEF*  
 FH 026K DOMINO 304 *SOD,CHB,DLF,IEF*  
 FH STARLET 104

BW	WW	BW	WW	YW	MILK	M&G	REA	MARB	CHB
78	677	2.3	54	85	33	60	.41	.18	\$27

*Another sharp fronted female out of a first calf heifer. Her Sensation dam has a beautiful udder and this young heifer has a productive future ahead of her.*

**Lot 7139** **FH 156 DOMINETTE 7139 MD**  
 DOB: 3/28/2017 Reg. # 43858686

H5 YANKEE 9131 *CHB,DLF,HYF,IEF*  
**H5 9131 YANKEE 156** *CHB,DLF,HYF,IEF*  
 H5 MS 001 DOMET 8147 *DLF,HYF,IEF*

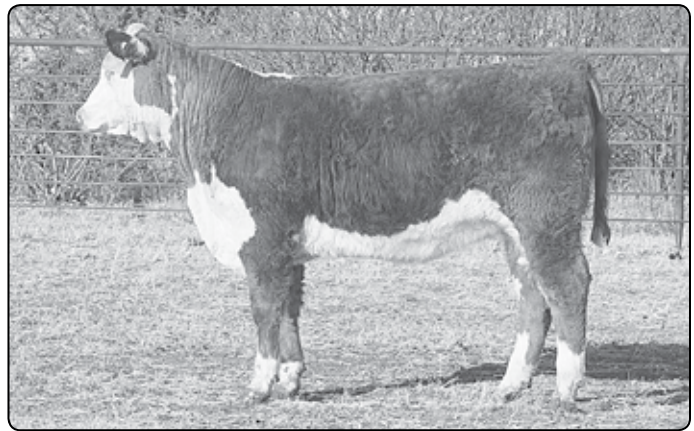
CL 1 DOMINO 849U *CHB,DLF,HYF,IEF*  
**FH L1 DOMINETTE 2314 MD**  
 FH L1 DOMINETTE 612 MF *DLF,HYF,IEF*

CHURCHILL YANKEE ET *CHB,SOD,DLF,HYF,IEF*  
 H5 MS 9126 DOMET 594 *DOD,DLF,HYF,IEF*  
 H5 501 DOMINO 001 *SOD,DLF,IEF*  
 H5 MS 9126 DOMET 589

CL 1 DOMINO 648S *SOD,CHB,DLF,IEF*  
 CL 1 DOMINETTE 591R 1ET  
 CL 1 DOMINO 9126J 1ET *SOD,CHB,DLF,IEF*  
 OXH MRNA 1363

BW	WW	BW	WW	YW	MILK	M&G	REA	MARB	CHB
80	633	2.9	55	85	27	54	.33	.06	\$26

*A clean fronted, angular made heifer with extra dimension and rib shape. Her dam has a perfect udder, and her sire, 156, is also very maternally strong.*



## UNREGISTERED YEARLING HEIFERS

The unregistered heifers will be sold as commercial heifers with the option to buy the papers for an extra \$100.

ID	Birth Date	Sire
750	2/8/2017	028X
772	2/15/2017	2185
778	Commercial	028X
779	2/21/2017	417H
781	2/22/2017	156
862	Commercial	NA
7101	3/14/2017	156
7102	3/15/2017	156
7106	3/16/2017	2185
7118	3/19/2017	124Y
7122	3/23/2017	124Y
7125	3/24/2017	156
7128	3/24/2017	242
7131	3/26/2017	242
7140	3/28/2017	242
7143	4/1/2017	124Y
7145	4/1/2017	242
7147	4/2/2017	124Y
7148	4/3/2017	156
7149	4/4/2017	242
7150	4/7/2017	242
7155	4/12/2017	156
7160	4/22/2017	242
7162	4/23/2017	156
7166	4/26/2017	124Y
7175	5/18/2017	507
<b>Black Baldy Heifers</b>		
0		
0		
7119		
7127		
7169		
7174		



## NATIONAL CATTLE EVALUATION TERMS

### EPD — EXPECTED PROGENY DIFFERENCE:

Estimate of a bull or cow's future progeny performance compared to progeny of a breed average sire or dam. EPDs are expressed in actual pounds, plus or minus, for birth, weaning and yearling weights and maternal performance.

**CED — Calving Ease Direct**

**BW — Birth Weight**

**WW — Weaning Weight**

**YW — Yearling Weight**

**MILK**

**M&G — Milk & Growth**

**CEM — Calving Ease Maternal**

### SCROTAL EVALUATION

Age in Months	12-14	15-20	21-30	30 plus
Acceptable Range (cm)	30-35	31-37	32-39	33-40

### SC — SCROTAL CIRCUMFERENCE:

A measure of fertility. Testicle size indicated by scrotal circumference measured in centimeters is a highly heritable trait very much correlated to reproductive efficiency. A valuable indicator of bull fertility and puberty, and highly related to early puberty in heifers and cow fertility, increased bull scrotal circumference should improve fertility and inherent cow herd productivity.

## 2016 HEREFORD BREED EPD AVERAGE

CED	BW	WW	YW	M	M&G	CEM	FAT	REA	IMF
1.6	3.1	50	81	23	48	1.7	.007	.34	.09

## TERMS & CONDITIONS

All cattle will be sold to the highest bidder without reserve. The terms of the sale will be cash. The auctioneer will settle any dispute as to bids.

Each animal will become the property of the buyer as soon as sold. Cattle will be cared for a reasonable length of time after the sale, at the buyer's risk.

All bulls of breeding age are guaranteed breeders. If an animal fails to breed after a trial of six months, it may be returned to the seller at buyer's expense. The seller reserves the right to try said animal for six months and if it proves a breeder to return it to the station of buyer at seller's expense. If the animal proves to be a non-breeder an equal animal substituted or credit on the purchase of another animal. No adjustments after 9 months.

Herd Health is excellent. Our herd veterinarian is Dr. Travis Kuhlka, DVM 701-400-2953.

Extreme care has been taken in copying each pedigree to avoid errors. We are not to be held responsible for any error which might appear and which is beyond our control in the printing of the catalog. Everyone attending this sale does so at his own responsibility and risk, and without liability on the part of the owner or his employees.





Gary, Kirsten and Aaron Friedt  
Megan and Dusty Dukart  
Lindsey and Drew Courtney  
8733 55th St. S.W.  
Mott, ND 58646

PRESORTED  
FIRST CLASS  
US POSTAGE  
**PAID**  
Fargo, ND  
Permit No. 684

**Wednesday,**  
**February 14, 2018**

**1 p.m. MST Stockmen's West, Dickinson, ND**



**LOT 725**



**LOT 761**

*Where you can buy with confidence*