

Handel Farms
Bruce & Mary Handel
219 S. Pine St.
Menno, SD 57045

Return Service Requested

Handel Farms Gelbvieh & Red Angus Bull Sale • Friday, March 3 2023

GELBIEH & RED ANGUS BULL SALE

FRIDAY, MARCH 3, 2023

Platte Livestock Auction, Platte, SD

1 pm CST

SELLING 66 BULLS



K20 NAPOLEON

- Offering -

Red & Black • Gelbvieh • Balancer • Red Angus

HANDEL FARMS

Bruce & Mary Handel & Family

219 S. Pine St., Menno, SD 57045

605-660-5551 • 605-387-5551

bhandel@goldenwest.net

Sale Location

Platte Livestock Market

West Highway 44, Box 905, Platte, SD 57369

Sale Day Phone: 1-800-337-2655

Cell Phone Numbers:

Bruce Handel: 605-660-5551

Jeremy Handel: 605-660-2680

Justin Handel: 605-660-0368

Austin Handel: 605-760-4857

Auctioneer

Chisum Peterson
605-730-4214

Sale Consultant

Paul Duxbury
605-350-9268

Local Lodging

King's Inn
1-800-337-7756

PO Box 54, Platte, SD 57369
kingsinn@midstates.net

**View video of the bulls on
www.TheLivestockLink.com**



**Sale will be broadcast live on
CattleUSA.com**

**Call Platte Livestock or any Handel cell
phone to bid.**

All sight unseen purchases are guaranteed to
your satisfaction.

Terms & Conditions

Terms of the sale are cash. Settlement is to be
made with the clerk immediately following the sale.

All bulls are guaranteed breeders according to the
AGA guidelines. In no event will the seller be
responsible for more than the purchase price of the
bull.

Handel Farms is retaining 1/3 revenue sharing
semen interest in every bull selling in this sale. Full
possession and full salvage value sells on all bulls
unless otherwise noted.

*All bulls selling are eligible for free board until April
1, 2023. We will semen test bulls and begin delivery on
April 1st. Arrangements may be made for longer stays
at a nominal fee. Haul your bull home the day of the
sale and deduct \$100.00 per bull.*

REFERENCE SIRES

RWG KNUCKLEHEAD 9426												4/8/2019	
		Gelbvieh			Black			Polled					
		90% GV			CDGV170290								
BW	99	JRI Hoss 293A43 ET											
WW	898	JRI Gung Ho 282C51											
YW	1371	JRI Ms Frankie 282R11											
FS	6.6	JRI Santiago 37C31											
SC	41.4	RWG Jasmine 7423											
GAIN		RWG Jasmine's Tradition 7105											
CED	BW	WW	YW	MK	TM	CEM	YG	CW	REA	MB			
10	2.4	77	114	26	64	4	-0.15	28	0.77	0.09			

DDGR OUTLIER 42F												4/8/2019	
		Gelbvieh			Black			Polled					
		94%			AMGV1431966								
BW	89	VRT Lazy TV Sam U451											
WW	807	CCRO Carolina Leverage 3214A											
YW	1501	CCRO Belle of the Ball 1309Y											
FS		DCSF Post Rock Captain 153Z2											
SC	39.8	DDGR 206D											
GAIN		DDGR Sheeza Dream 93W											
CED	BW	WW	YW	MK	TM	CEM	YG	CW	REA	MB			
11	1.8	98	148	23	72	8	-0.22	44	0.92	0.30			

DBCM 513C Gridmaster												3/5/2015	
		Gelbvieh			Red			Polled					
		87%			AMGV1313228								
BW	76	JRI Pop A Top 197T83											
WW	763	JRI Next Step 285X72											
YW	1325	JRI Ms Butterscotch 285T62 ET											
FS	36.3	BEA 801ET											
SC	35.9	BEA BEA 2002Z											
GAIN		BEA 637S											
CED	BW	WW	YW	MK	TM	CEM	YG	CW	REA	MB			
12	-0.1	63	98	19	51	2	-0.21	26	0.71	0.08			

POST ROCK BLK BAL 327E8 (DISTINGUISHED)												10/2/2017	
		Balancer			Black			Polled					
		49%GV/48%AN			AMGV1420332								
BW	87	V A R Discovery 2240											
WW	599	VRT Lazy TV Distinguished C136											
YW	1355	VRT Lazy TV Stella W413											
FS		CTR Momma Maker 0056X											
SC		BDSF Post Rock Miss Boss 316B8											
GAIN		BDSF Post Rock Miss Boss 232X8											
CED	BW	WW	YW	MK	TM	CEM	YG	CW	REA	MB			
11	0.5	79	137	14	54	6	-0.16	47	0.82	0.76			



GELBVIEH & RED ANGUS

Welcome Cattlemen & Friends,

We are looking forward to having you join us Friday, March 3rd at 1 p.m. for our 30th Annual Gelbvieh, Red Angus and Balancer Bull Sale at the Platte Livestock Auction, Platte, S.D.

We will be offering 59 yearling and 7 older bulls. Select from red and black Balancer, Gelbvieh or Red Angus. Twenty-three bulls have been identified as homozygous black.

The bulls have been bunk fed a homegrown high roughage ration to enhance growth, soundness and longevity, not fat. These bulls have never seen a creep or self feeder.

Complete performance and EPD's have been provided for your benefit. The bulls are registered and registration papers will be automatically transferred.

Put more pounds and value on your calf crop with proven Gelbvieh, Balancer, and Red Angus genetics. We use proven herd sires with calving ease, fertility, growth, carcass and maternal excellence. Many of these bulls have low birth and high growth EPD's. We are more than willing to recommend bulls to meet your specifications.

We invite you to the farm to inspect the cattle; they will be here until March 2nd, when they will be moved to Platte Livestock Auction.

If you have any questions, please feel free to contact us.

Hope to see you March 3rd—come early and join us for lunch.

Bruce & Mary Handel & Family

219 S. Pine St., Menno, SD 57045

605-387-5551 • Cell: 605-660-5551

E-mail: bhandel@goldenwest.net

J334	BLACK DIAMOND J334 9/1/2021										
	AMGV1562096			Black				Polled			
	44%GV/50.2%AR/5.9%AN										
BW	84	CAA Red Lazy MC Stout 30S									
WW	557	Red Diamond THIPS Stout 107U									
YW	1193										
FS	5.4	VRT Lazy TV Sam U451									
SC	40	HAND Lady Sam E26									
GAIN	2.8	HAND Alumni C33									
CED	BW	WW	YW	MK	TM	CEM	YG	CW	REA	MB	
12	-0.8	60	89	25	55	5	-0.1	28	0.39	0.3	

J335	RED DIAMOND J335 9/7/2021										
	AMGV1562098			Red				Polled			
	25%GV/50%AR/25%AN										
BW	73	CAA Red Lazy MC Stout 30S									
WW	487	Red Diamond THIPS Stout 107U									
YW	1051										
FS	3.9	GDx Pioneer 009X									
SC	40	HAND Lady Pioneer C260									
GAIN	2.2	HAND Lady Prime X78									
CED	BW	WW	YW	MK	TM	CEM	YG	CW	REA	MB	
11	-1.1	54	78	22	50	5	0.03	24	0.17	0.23	

J336	BLACK DIAMOND J336 10/12/2021										
	AMGV1562097			Black				Polled			
	30.3%GV/50%AR/19.6%AN										
BW	76	CAA Red Lazy MC Stout 30S									
WW	509	Red Diamond THIPS Stout 107U									
YW	930										
FS	4.2	GDx Pioneer 009X									
SC	37	HAND Lady Pioneer B220H									
GAIN	2.7	HAND Lady Ramsis X133									
CED	BW	WW	YW	MK	TM	CEM	YG	CW	REA	MB	
11	-0.7	59	86	25	54	4	0	26	0.28	0.22	

J340	BLACK DIAMOND J340 12/12/2021										
	AMGV1562095			Black				Polled			
	37.5%GV/50%AR/12.5%AN										
BW	85	CAA Red Lazy MC Stout 30S									
WW	584	Red Diamond THIPS Stout 107U									
YW	1228										
FS	4.8	DLW Investment 422Y OF 408 ET									
SC	39.1	HAND Lady Investment C270									
GAIN	3.8	HAND Lady Balancer P38									
CED	BW	WW	YW	MK	TM	CEM	YG	CW	REA	MB	
11	-1.1	56	81	21	49	6	-0.1	24	0.29	0.2	



J342	KNUCKLE HEAD J342 12/27/2021										
	Applied for AMGV			Homo. Black				Polled			
	84%GV/16%AN										
BW	83	JRI Gung Ho 282C51									
WW	597	RWG Knuckle Head 9426									
YW	1193	RWG Jasmine 7423									
FS	49	CCRO Carolina Leverage 3214A									
SC	40	PLA Aria 62D									
GAIN		PLA Miss Upward 13Y ET									
CED	BW	WW	YW	MK	TM	CEM	YG	CW	REA	MB	



J342	K3 1/2/2022										
	Applied for AMGV			Black				Polled			
	69%GV/18%AN/12.5%AR										
BW	85	JRI Gung Ho 282C51									
WW	562	RWG Knuckle Head 9426									
YW	1044	RWG Jasmine 7423									
FS	50	GDx Pioneer 009X									
SC	35	HAND Lady Pioneer E207									
GAIN		HAND Lady Aflame B19									
CED	BW	WW	YW	MK	TM	CEM	YG	CW	REA	MB	

K5	KNUCKLE HEAD K5 1/7/2022										
	Applied for AMGV			Red				Polled			
	75%GV/21.5%AR/3.5%XX										
BW	92	JRI Gung Ho 282C51									
WW	578	RWG Knuckle Head 9426									
YW	1137	RWG Jasmine 7423									
FS	50	WEBR Cardshark 1214									
SC	38	HAND Cardshark B153									
GAIN		HAND Wide Angle Y120									
CED	BW	WW	YW	MK	TM	CEM	YG	CW	REA	MB	



K18	TRADE SECRET K18										2/14/2022	
	AMGV1561683										Red	Polled
	78.2%GV/12.5%AN/9.2%AR											
BW	75	JRI General Patton 213B97 ET										
WW	528	JRI Trade Secret 253G486										
YW	1112	JRI Ms Secret Blend 253E386 ET										
FS	4.5	DBCM 513C										
SC	40.4	HAND Lady Master H97										
GAIN	3.7	HAND Lady Pioneer C116										
CED	BW	WW	YW	MK	TM	CEM	YG	CW	REA	MB		
16	-1.6	70	101	20	56	6	-0.1	27	0.54	0.14		



K20	NAPOLEON K20										2/15/2022	
	AMGV1561682										Black	Polled
	79.3%GV/18.6%AN/2.1%AR											
BW	74	BBDM Bolton Pay Day 45C										
WW	547	JOB Danell Napoleon 01E										
YW	1175	JOB Danell Josephine 33C										
FS	3.8	GDX 522C										
SC	38.5	HAND Lady Dusty H24										
GAIN	3.9	HAND Lady Business F51										
CED	BW	WW	YW	MK	TM	CEM	YG	CW	REA	MB		
13	0.2	70	100	24	58	6	-0.2	24	0.64	0.28		

Picture of K20 is on the cover

Blue Shading indicates EPDs that rank in the top 35% of the breed.

Breed Average EPDs							
	CED	BW	WW	YW	Milk	RE	MB
Gelbvieh	12	0	68	99	21	0.67	0.21
Balancer	13	-0.5	71	110	20	0.49	0.36
Angus	6	1.2	60	107	26	0.57	0.55
Red Angus	13	-1.8	62	100	25	0.14	0.42



K21	NAPOLEON K21										2/15/2022	
	AMGV1561685										Homo. Black	Polled
	99.9%GV											
BW	75	BBDM Bolton Pay Day 45C										
WW	578	JOB Danell Napoleon 01E										
YW	1175	JOB Danell Josephine 33C										
FS	5	LRSF LRL Heisman D202										
SC	40.5	HAND Lady Heisman H83										
GAIN	3.7	HAND Lady Astro E213										
CED	BW	WW	YW	MK	TM	CEM	YG	CW	REA	MB		
14	-0.8	70	98	27	62	8	-0.3	23	0.67	0.26		

K23	MERLIN K23										2/16/2022	
	AMGV1561623										Red	Polled
	17.2%GV/79.7%AR/3.2%AN											
BW	68	LJC Merlin T179										
WW	549	WFL Merlin 018A										
YW	1087	WFL Commitment 042Y										
FS	4.8	PFFR Convoy 9Z										
SC	36.5	HAND Lady Convoy H44										
GAIN	3.4	HAND Lady Master E11										
CED	BW	WW	YW	MK	TM	CEM	YG	CW	REA	MB		
14	-2.6	75	119	30	68	7	-0.1	26	0.51	0.42		



K25	NAPOLEON K25										2/17/2022	
	AMGV1561625										Homo. Black	Polled
	92.8%GV/5.5%AN/1.8%AR											
BW	89	BBDM Bolton Pay Day 45C										
WW	552	JOB Danell Napoleon 01E										
YW	1198	JOB Danell Josephine 33C										
FS	4.1	LRSF LRL Heisman D202										
SC	40.5	HAND Lady Heisman H21										
GAIN	4	HAND Lady Aflame C10										
CED	BW	WW	YW	MK	TM	CEM	YG	CW	REA	MB		
14	-0.9	72	104	26	62	8	-0.2	26	0.66	0.23		



K27	SUB ZERO K27										
	2/17/2022										
	AMGV1562036			Black				Polled			
39.1%GV/50%AN/11%AR											
BW	71	Connealy Capitalist 028									
WW	564	Eathington Sub-Zero 758Z									
YW	1061	KP Miss Proven Queen 21									
FS	4.1	LRL Heisman D202									
SC	35.5	HAND Lady Heisman H184									
GAIN	3.2	HAND Lady Business E264									
CED	BW	WW	YW	MK	TM	CEM	YG	CW	REA	MB	
17	-3	68	108	25	59	8	0.02	32	0.42	0.21	

K33	SUB ZERO K33										
	2/19/2022										
	AMGV1562034			Homo. Black				Polled			
50%GV/50%AN											
BW	64	Connealy Capitalist 028									
WW	495	Eathington Sub-Zero 758Z									
YW	1048	KP Miss Proven Queen 21									
FS	3.3	TOG Twinoak Astronaut 492C ET									
SC	36.1	HAND Lady Astro H283									
GAIN	3.5	HAND Lady Ice W183									
CED	BW	WW	YW	MK	TM	CEM	YG	CW	REA	MB	
17	-2.5	66	101	19	52	8	-0	32	0.41	0.26	

K34	FIRST STEP K34										
	2/20/2022										
	AMGV1561686			Black				Polled			
63.9%GV/36%AN											
BW	91	JRI Next Step 285X72									
WW	576	MDR First Step 7549E									
YW	1140	Dobson Cassandra 549C									
FS	5.3	TOG Twinoak Astronaut 492C ET									
SC	38.6	HAND Lady Astro H301									
GAIN	3.6	HAND Lady Aflame D250									
CED	BW	WW	YW	MK	TM	CEM	YG	CW	REA	MB	
13	-0.6	65	95	14	47	6	-0.1	24	0.42	0.31	



K36	MERLIN K36										
	2/20/2022										
	AMGV1561668			Red				Polled			
25%GV/71.9%AR/3.1%XX											
BW	80	LJC Merlin T179									
WW	563	WFL Merlin 018A									
YW	1095	WFL Commitment 042Y									
FS	5.3	WEBR Cardshark 1214									
SC	39.6	HAND Lady Cardshark H167									
GAIN	3.4	HAND Wide Angle A104									
CED	BW	WW	YW	MK	TM	CEM	YG	CW	REA	MB	
14	-2.4	74	113	33	70	8	-0.2	25	0.52	0.35	

K38	ESQUIRE K38										
	2/21/2022										
	AMGV1561691			Homo. Black				Scurs			
69%GV/30.9%AN											
BW	89	3F Epic 4631									
WW	614	JRI Esquire 254G230 ET									
YW	1307	JRI Ms Prairie Rose 254Z630ET									
FS	5.6	LRSF LRL Heisman D202									
SC	40.7	HAND Lady Heisman H109									
GAIN	4.4	HAND Alumni C33									
CED	BW	WW	YW	MK	TM	CEM	YG	CW	REA	MB	
13	-1.3	80	124	24	64	7	-0.1	46	0.63	0.36	



K39		MERLIN K39									
		2/21/2022									
		AMGV1561687		Red		Polled					
		25%GV/75%AR									
BW	72	LJC Merlin T179									
WW	502	WFL Merlin 018A									
YW	1158	WFL Commitment 042Y									
FS	5.1	BIEBER Rollin Deep Y118									
SC	35.7	HAND Lady Rolling Deep H277									
GAIN	4.1	HAND Wide Angle A196									
CED	BW	WW	YW	MK	TM	CEM	YG	CW	REA	MB	
13	-1.6	76	116	31	69	7	-0.1	28	0.56	0.41	



K39

K41		TRADE SECRET K41									
		2/23/2022									
		AMGV1561688		Red		Polled					
		55.9%GV/37.5%AR/6.3%AN									
BW	82	JRI General Patton 213B97 ET									
WW	539	JRI Trade Secret 253G486									
YW	1103	JRI Ms Secret Blend 253E386 ET									
FS	4.9	BIEBER Rollin Deep Y118									
SC	31.7	HAND Lady Rolling Deep H122									
GAIN	3.6	HAND Wide Angle A240									
CED	BW	WW	YW	MK	TM	CEM	YG	CW	REA	MB	
14	-1	70	103	24	60	7	-0	27	0.41	0.25	



K41



K43		GRIDMASTER K43									
		2/23/2022									
		RAAA4723631		Red		Polled					
		56.2% AR 42.2% GV 1.7% XX									
BW	87	JRI Next Step 285X72									
WW	509	DBCM 513C									
YW	1151	BEA BEA 2002Z									
FS	4.67	WEBR Cardshark 1214									
SC	38.4	HAND Lady Cardshark H231									
GAIN	4.05	HAND Outerlimit Z82									
CED	BW	WW	YW	MK	TM	CEM	YG	CW	REA	MB	
12	-1.3	62	98	26		5	-0.1	21	0.38	0.16	



K43

K46		FRANCHISE K46									
		2/24/2022									
		AMGV1561628		Homo. Black		Polled					
		93.8%GV/6.3%AN									
BW	93	WWG C28									
WW	528	MJBC Franchise F806									
YW	1190	ABCS 026C									
FS	4.1	LRSF LRL Heisman D202									
SC	36.7	HAND Lady Heisman H58									
GAIN	4.1	HAND Lady Replay X156									
CED	BW	WW	YW	MK	TM	CEM	YG	CW	REA	MB	
14	-1.2	67	102	28	61	8	-0.2	29	0.68	0.25	



K46



K50	IN DEMAND K50											
			2/26/2022									
	AMGV1561690		Homo. Black		Polled							
94%GV/5.9%AN												
BW	97	JRI Secret Instinct 254U83										
WW	542	JRI In Demand 254F839 ET										
YW	1249	JRI Ms Poppy Love 254Z72										
FS	4.7	LRSF LRL Heisman D202										
SC	36.8	HAND Lady Heisman H107										
GAIN	4.4	HAND Alumni C33										
CED	BW	WW	YW	MK	TM	CEM	YG	CW	REA	MB		
15	-0.1	70	102	22	56	8	-0.2	30	0.61	0.23		

K56	MERLIN K56											
			3/2/2022									
	AMGV1561630		Red		Polled							
10.3%GV/87.5%AR/2.2%AN												
BW	80	LJC Merlin T179										
WW	530	WFL Merlin 018A										
YW	1060	WFL Commitment 042Y										
FS	4.2	RED SOO LINE Power Eye 161X										
SC	39.9	HAND Lady Power Eye H85										
GAIN	3.3	HAND Outerlimit Z37										
CED	BW	WW	YW	MK	TM	CEM	YG	CW	REA	MB		
16	-3.4	70	113	31	66	8	-0.1	28	0.40	0.47		

K51	IN DEMAND K51											
			2/26/2022									
	AMGV1561629		Black		Polled							
84.4%GV/12.5%AN/3.1%AR												
BW	91	JRI Secret Instinct 254U83										
WW	553	JRI In Demand 254F839 ET										
YW	1227	JRI Ms Poppy Love 254Z72										
FS	5.4	BDGC DC Businessman 401B ET										
SC	38.8	HAND Lady Business H166										
GAIN	4.2	HAND Final Answer B324										
CED	BW	WW	YW	MK	TM	CEM	YG	CW	REA	MB		
13	0.8	68	100	18	52	7	-0.1	26	0.50	0.24		



K56



K51

K58	SUB ZERO K58											
			3/3/2022									
	AMGV1562035		Homo. Black		Polled							
43%GV/55.5%AN/1.6%AR												
BW	79	Connealy Capitalist 028										
WW	534	Eathington Sub-Zero 758Z										
YW	1150	KP Miss Proven Queen 21										
FS	4.7	TOG Twinoak Astronaut 492C ET										
SC	38	HAND Lady Astro H193										
GAIN	3.9	HAND Lady Business E74										
CED	BW	WW	YW	MK	TM	CEM	YG	CW	REA	MB		
16	-2.1	69	105	20	54	8	-0	31	0.41	0.24		



K55

K55	IN DEMAND K55											
			3/1/2022									
	AMGV1561689		Homo. Black		Polled							
95%GV/4.7%AN												
BW	84	JRI Secret Instinct 254U83										
WW	591	JRI In Demand 254F839 ET										
YW	1149	JRI Ms Poppy Love 254Z72										
FS	4.2	LRSF LRL Heisman D202										
SC	38.9	HAND Lady Heisman H227										
GAIN	3.5	HAND Crossfire Z9										
CED	BW	WW	YW	MK	TM	CEM	YG	CW	REA	MB		
14	-0.1	68	97	19	53	8	-0.2	25	0.57	0.22		

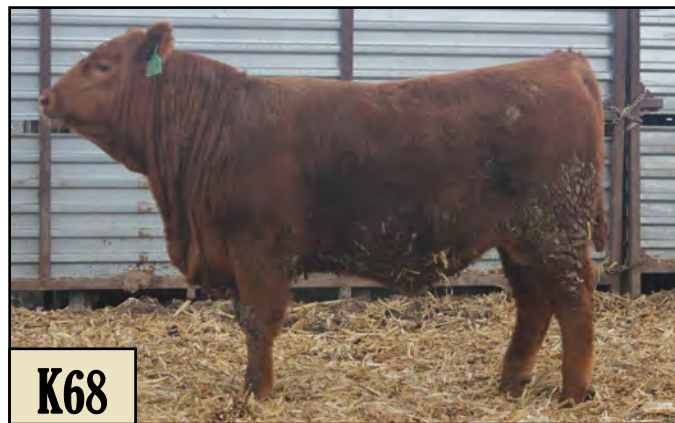


K62		DUSTY K62		3/9/2022						
		Applied for AMGV	Red	Polled						
		28.7%GV/50%AR/20.7%AN								
BW	85	GDX 522C								
WW	474	HAND Dusty H45								
YW	986	HAND Ponderosa F32								
FS	5.5	WEBR Cardshark 1214								
SC	36	HAND Lady Cardshark H119								
GAIN		HAND B134								
CED	BW	WW	YW	MK	TM	CEM	YG	CW	REA	MB



K66		GOLDMASTER K66		3/10/2022						
		AMGV1562105	Red	Polled						
		34%GV/65.7%AR/0%XX								
BW	93	WEBR Goldmaster 648								
WW	567	ULRA Goldmaster 2072								
YW	1174	ULRA Cedar 1415								
FS	5.6	DBCM 513C								
SC	37.7	HAND Lady Master G12								
GAIN	3.8	HAND Wide Angle Y166								
CED	BW	WW	YW	MK	TM	CEM	YG	CW	REA	MB
10	0.4	56	94	24	52	5	-0	20	0.17	0.21

K68		BUCKLE UP K68		3/13/2022						
		RAAA 4723213	Red	Polled						
		99.9% AR 0.1% XX								
BW	87	Six Mile Buckle Up 296B								
WW	551	ULRA Buckle Up 2006								
YW	1143	WDZ-GLS Dolly 113 ET								
FS	4.92	RED Soo Line Power Eye 161X								
SC	35.0	HAND Lady Power Eye H288								
GAIN	3.69	HAND Lady Cardshark F233								
CED	BW	WW	YW	MK	TM	CEM	YG	CW	REA	MB
14	-2.8	58	88	27		7	0.09	21	-0	0.28



K65		BENELLI K65		3/10/2022						
		Applied for AMGV	Red	Polled						
		100%AR								
BW	92	NJCM RED NCJ Lazy MC Venom 34Z								
WW	632	RED Lazy MC Benelli 102B								
YW	1080	RED Lazy MC Firefly 36Z								
FS	5.5	Namken Peacemaker 174A								
SC	35	HAND Lady Peacemaker F84								
GAIN		HAND Cardshark A142								
CED	BW	WW	YW	MK	TM	CEM	YG	CW	REA	MB



K74		DUSTY K74		3/19/2022						
		AMGV1561631	Homo. Black	Polled						
		42.1%GV/56.6%AN/1.3%AR								
BW	73	GDX 522C								
WW	674	HAND Dusty H45								
YW	1097	HAND Ponderosa H32								
FS	4.5	KG Justified 3023								
SC	39.5	HAND Lady Justified H25								
GAIN	2.7	HAND Lady Heisman F29								
CED	BW	WW	YW	MK	TM	CEM	YG	CW	REA	MB
15	-3.2	66	104	19	52	8	0.08	28	0.08	0.56



K82		BENELLI K82									
		3/20/2022									
		AMGV1562103	Red	Polled							
15%GV/71.9%AR/9.8%AN											
BW	65	NJCM RED NCJ Lazy MC Venom 34Z									
WW	498	RED Lazy MC Benelli 102B									
YW	1125	RED Lazy MC Firefly 36Z									
FS	4	WEBR TC Cardshark 1015									
SC	37.6	HAND Lady Shark F86									
GAIN	4	HAND Lady Pioneer A84									
CED	BW	WW	YW	MK	TM	CEM	YG	CW	REA	MB	
13	-1.2	66	98	24	57	8	0.03	18	0.12	0.17	



K82

K84		BENELLI K84									
		3/22/2022									
		AMGV1562104	Red	Polled							
38.7%GV/57.8%AR/3.5%XX											
BW	74	NJCM RED NCJ Lazy MC Venom 34Z									
WW	581	RED Lazy MC Benelli 102B									
YW	1144	RED Lazy MC Firefly 36Z									
FS	5	BDCM 513C									
SC	37.7	HAND Lady Master F259									
GAIN	3.6	HAND Wide Angle Z154									
CED	BW	WW	YW	MK	TM	CEM	YG	CW	REA	MB	
13	-0.4	64	94	19	52	6	-0.1	20	0.26	0.17	



K84



K87		REBEL K87									
		3/23/2022									
		AMGV1561632	Homo. Black	Polled							
76.8%GV/22.6%AN											
BW	80	CCRO Carolina Leverage 3214A									
WW	555	DDGR Rebel 28G									
YW	1088	DDGR 47E									
FS	4.8	TOG Twinoak Astronaut 492C ET									
SC	34.1	HAND Lady Astronaut G179									
GAIN	3.4	HAND Crossfire A3									
CED	BW	WW	YW	MK	TM	CEM	YG	CW	REA	MB	
11	1.5	79	118	20	60	7	-0.2	40	0.71	0.45	



K87

K89		GRIDMASTER K89									
		3/20/2022									
		AMGV1561633	Red	Polled							
68.8%GV/18.8%AR/12.5%AN											
BW	71	JRI Next Step 285X72									
WW	485	BDCM 513C									
YW	1033	BEA 2002Z									
FS	5	009X									
SC	34.2	HAND Lady Pioneer B143									
GAIN	3.5	HAND Mulberry X76									
CED	BW	WW	YW	MK	TM	CEM	YG	CW	REA	MB	
13	-0.2	64	96	22	55	4	-0.1	26	0.51	0.14	

K96		OUTLIER K96									
		3/24/2022									
		Applied for AMGV	Homo. Black	Polled							
79.8%GV/19.9%AN											
BW	71	CCRO Carolina Leverage 3214A									
WW	520	DDGR Outlier 42F									
YW	934	DDGR 206D									
FS	6	TOG Twinoak Astronaut 492C ET									
SC	32	HAND Lady Astro F285									
GAIN		HAND Sundance A208									
CED	BW	WW	YW	MK	TM	CEM	YG	CW	REA	MB	



K102	HEISMAN K102				3/25/2022					
	AMGV1561612	Homo. Black	Polled							
	75%GV/25%AN									
BW	74	VRT Lazy TV Sam U451								
WW	597	LRSF LRL Heisman D202								
YW	1197	OSOF Ms Jo-Leen 9801W								
FS	5.6	GKG MR 620 045X								
SC	36.4	HAND Lady Husker C51								
GAIN	3.8	HAND Sundance Y161								
CED	BW	WW	YW	MK	TM	CEM	YG	CW	REA	MB
14	-0.4	62	91	24	55	8	-0.2	24	0.61	0.27



K103	BENELLI K103				3/26/2022					
	AMGV1562099	Red	Polled							
	6.3%GV/90.6%AR/3.1%XX									
BW	64	NJCM RED NCJ Lazy MC Venom 34Z								
WW	539	RED Lazy MC Benelli 102B								
YW	1177	RED Lazy MC Firefly 36Z								
FS	4.1	LSF BRA No Worries 4657B								
SC	37.8	HAND No Worries F33								
GAIN	4	HAND Cardshark B29								
CED	BW	WW	YW	MK	TM	CEM	YG	CW	REA	MB
14	-2.5	60	96	20	51	8	0.04	18	0.04	0.32

K110	BENELLI K110				3/27/2022					
	AMGV1562100	Red	Polled							
	50%GV/46.9%AR/3.1%XX									
BW	78	NJCM RED NCJ Lazy MC Venom 34Z								
WW	593	RED Lazy MC Benelli 102B								
YW	1208	RED Lazy MC Firefly 36Z								
FS	5.1	BDCG DC Businessman 401B ET								
SC	36.8	HAND Lady Business F133								
GAIN	3.9	HAND Wide Angle A104								
CED	BW	WW	YW	MK	TM	CEM	YG	CW	REA	MB
13	0.3	66	96	21	54	6	-0.1	21	0.31	0.18

K106	REBEL K106				3/27/2022					
	AMGV1561613	Homo. Black	Polled							
	81.9%GV/11.6%AN/6.3%AR									
BW	91	CCRO Carolina Leverage 3214A								
WW	553	DDGR Rebel 28G								
YW	1099	DDGR 47E								
FS	5.3	TOG Twinoak Astronaut 492C ET								
SC	36.7	HAND Lady Astronaut G127								
GAIN	3.4	HAND Lady Ramsis X183								
CED	BW	WW	YW	MK	TM	CEM	YG	CW	REA	MB
11	1.4	77	112	22	62	7	-0.2	36	0.78	0.42

K115	OUTLIER K115				3/28/2022					
	AMGV1561614	Homo. Black	Polled							
	99.9%GV									
BW	93	CCRO Carolina Leverage 3214A								
WW	597	DDGR Outlier 42F								
YW	1226	DDGR 206D								
FS	6.1	TOG Twinoak Astronaut 492C ET								
SC	35.9	HAND Lady Astro F273								
GAIN	3.9	HAND Lady Ice W183								
CED	BW	WW	YW	MK	TM	CEM	YG	CW	REA	MB
12	0.9	79	115	20	60	8	-0.2	31	0.73	0.32



J120	KNUCKLE HEAD J120										
	3/28/2022										
Applied for AMGV		Black					Polled				
84%GV/12.5AN%/6.3%AR											
BW	93	JRI Gung Ho 282C51									
WW	488	RWG Knuckle Head 9426									
YW	984	RWG Jasmine 7423									
FS	6	BDCG DC Businessman 401B ET									
SC	35	HAND Lady Business G345									
GAIN		HAND Lady Leadtime T20									
CED	BW	WW	YW	MK	TM	CEM	YG	CW	REA	MB	



K120

K124	OUTLIER K124										
	3/30/2022										
AMGV1561615		Red					Polled				
75%GV/25%AR											
BW	73	CCRO Carolina Leverage 3214A									
WW	536	DDGR Outlier 42F									
YW	1177	DDGR 206D									
FS	6.1	LRSF LRL Heisman D202									
SC	35.9	HAND Heisman F30									
GAIN	4	HAND ULRA Dawn 1612									
CED	BW	WW	YW	MK	TM	CEM	YG	CW	REA	MB	
11	0.8	80	124	22	62	8	-0.1	32	0.60	0.34	

K148	DISTINGUISHED K148										
	4/3/2022										
AMGV1561681		Homo. Black					Polled				
58%GV/41%AN/0.8%AR											
BW	96	VRT Lazy TV Distinguished C136									
WW	653	DCSF Post Rock BLK BAL 327E8									
YW	1261	DCSF Post Rock Miss Boss 316B8									
FS	5.7	Alumni 7513A ET									
SC	37.7	HAND Lady Alumni D8									
GAIN	3.8	HAND Final Answer B205									
CED	BW	WW	YW	MK	TM	CEM	YG	CW	REA	MB	
13	0.1	79	129	18	57	6	-0.1	44	0.70	0.57	

K134	BENELLI K134										
	3/31/2022										
AMGV1562101		Red					Polled				
34.4%GV/56.3%AR/6.3%AN											
BW	72	NJCM RED NCJ Lazy MC Venom 34Z									
WW	516	RED Lazy MC Benelli 102B									
YW	1087	RED Lazy MC Firefly 36Z									
FS	5.1	BDCM 513C									
SC	36	HAND Lady Master F111									
GAIN	3.6	HAND Lady Pioneer C93									
CED	BW	WW	YW	MK	TM	CEM	YG	CW	REA	MB	
13	-0.7	66	96	18	51	6	-0	21	0.26	0.16	

K150	BENELLI K150										
	4/3/2022										
RAAA 4722807		Red					Polled				
100% AR											
BW	102	NJCM RED NCJ Lazy MC Venom 34Z									
WW	611	RED Lazy MC Benelli 102B									
YW	1207	RED LAZY MC MISS FIREFLY 36Z									
FS	6.23	MEADO-WEST TC HARLEY									
SC	35.7	HAND Miss Harley A63									
GAIN	3.72	HAND VRRR RACHEL X68									
CED	BW	WW	YW	MK	TM	CEM	YG	CW	REA	MB	
12	-0.6	54	80	21		7	0.04	13	-0	0.22	



K134



K150



K158	OUTLIER K158											
			4/4/2022									
	AMGV1561616		Homo. Black		Polled							
85.9%GV/14.1%AN												
BW	83	CCRO Carolina Leverage 3214A										
WW	560	DDGR Outlier 42F										
YW	1122	DDGR 206D										
FS	5.2	DDGR Ponderosa 113D										
SC	37.1	HAND Ponderosa F32										
GAIN	3.5	HAND Lady Investment D82										
CED	BW	WW	YW	MK	TM	CEM	YG	CW	REA	MB		
10	1.1	78	118	20	60	8	-0.2	32	0.68	0.3		



K158

K160	OUTLIER K160											
			4/4/2022									
	AMGV1561618		Homo. Black		Polled							
93.8%GV/6.3%AR												
BW	80	CCRO Carolina Leverage 3214A										
WW	584	DDGR Outlier 42F										
YW	1167	DDGR 206D										
FS	5.2	BDGC DC Businessman 401B ET										
SC	36.1	HAND Lady Business F195										
GAIN	3.7	HAND Investment A97										
CED	BW	WW	YW	MK	TM	CEM	YG	CW	REA	MB		
10	1.5	82	122	24	64	6	-0.2	32	0.74	0.22		

K181	ASTRONAUT K181											
			4/7/2022									
	AMGV1561619		Homo. Black		Polled							
67.2%GV/32.8%AN												
BW	85	DCSF Post Rock Astronaut 157A										
WW	528	TOG Twinoak Astronaut 492C ET										
YW	1120	CCRO Ms C-Cross EC 7309T										
FS	5	Rlver Hills Final Answer W121										
SC	35.8	HAND Final Answer Z115										
GAIN	3.7	HAND Black Ice U161										
CED	BW	WW	YW	MK	TM	CEM	YG	CW	REA	MB		
13	0.4	64	94	16	48	7	-0.1	25	0.41	0.48		



K181

K159	OUTLIER K159											
			4/4/2022									
	AMGV1561617		Black		Polled							
91.2%GV/5.5%AN/3.3%AR												
BW	86	CCRO Carolina Leverage 3214A										
WW	606	DDGR Outlier 42F										
YW	1120	DDGR 206D										
FS	5	LRSF LRL Heisman D202										
SC	35.1	HAND Lady Heisman F27										
GAIN	3.2	HAND Aflame D247										
CED	BW	WW	YW	MK	TM	CEM	YG	CW	REA	MB		
12	0.2	82	124	25	66	8	-0.2	35	0.76	0.28		



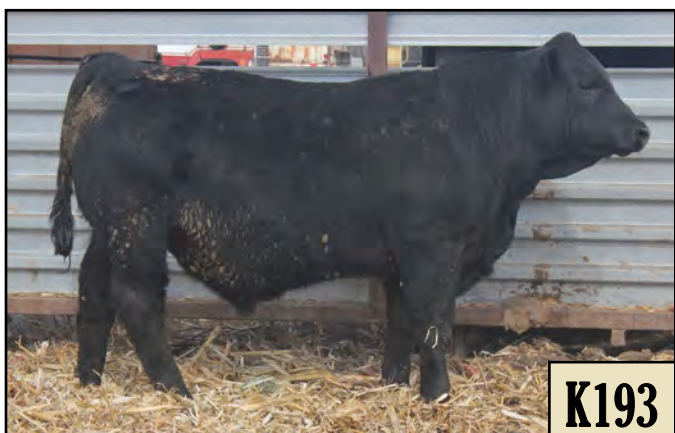
K159

K192	DISTINGUISHED K192											
			4/8/2022									
	AMGV1561684		Homo. Black		Polled							
60.4%GV/38.3%AN/1.2%AR												
BW	94	VRT Lazy TV Distinguished C136										
WW	548	DCSF Post Rock BLK BAL 327E8										
YW	1163	DCSF Post Rock Miss Boss 316B8										
FS	5.3	BEAS 2810Z										
SC	34.8	HAND Lady Aflame D250										
GAIN	3.9	HAND Investment B264										
CED	BW	WW	YW	MK	TM	CEM	YG	CW	REA	MB		
11	0.4	76	120	14	52	6	-0.2	38	0.66	0.49		

K192



K193	HEISMAN K193										
	4/8/2022										
	AMGV1561620			Homo. Black				Polled			
88.7%GV/11%AN											
BW	80	VRT Lazy TV Sam U451									
WW	542	LRSF LRL Heisman D202									
YW	1096	OSOF Ms Jo-Leen 9801W									
FS	4.3	BEAS 2810Z									
SC	35.8	HAND Lady Aflame B318									
GAIN	3.5	HAND Lady Prime X136									
CED	BW	WW	YW	MK	TM	CEM	YG	CW	REA	MB	
14	-0.7	66	98	26	58	8	-0.2	26	0.67	0.24	



K210	DISTINGUISHED K210										
	4/10/2022										
	AMGV1561621			Black				Polled			
62.3%GV/36.7%AN/0.8%AR											
BW	101	VRT Lazy TV Distinguished C136									
WW	606	DCSF Post Rock BLK BAL 327E8									
YW	1299	DCSF Post Rock Miss Boss 316B8									
FS	6.3	GKG MR 620 045X									
SC	38.9	HAND Lady Nebraska E369									
GAIN	4.4	HAND Lady Ramsis X158									
CED	BW	WW	YW	MK	TM	CEM	YG	CW	REA	MB	
12	0.1	71	118	15	50	6	-0.2	38	0.76	0.42	



K206	BENELLI K206										
	4/10/2022										
	RAAA 4722805			Red				Polled			
99.9% AR 0.1% XX											
BW	98	NJCM NJCM RED NCJ Lazy MC Venom 34Z									
WW	649	RED Lazy MC Benelli 102B									
YW	1264	RED LAZY MC MISS FIREFLY 36Z									
FS	5.83	GALL'S BIG RED 318									
SC	36.9	HAND Lady Red F131									
GAIN	3.83	HAND OUTERLIMIT Y22									
CED	BW	WW	YW	MK	TM	CEM	YG	CW	REA	MB	
12	-1.4	63	94	22		8	0.03	18	0.1	0.19	

K220	HEISMAN K220										
	4/11/2022										
	AMGV1561622			Homo. Black				Polled			
88.7%GV/11%AN											
BW	111	VRT Lazy TV Sam U451									
WW	593	LRSF LRL Heisman D202									
YW	1135	OSOF Ms Jo-Leen 9801W									
FS	5.8	BEAS 2810Z									
SC	36.9	HAND Aflame B61									
GAIN	3.4	HAND Lady Ramsis X193									
CED	BW	WW	YW	MK	TM	CEM	YG	CW	REA	MB	
14	-0.7	67	100	24	56	8	-0.2	27	0.70	0.26	



K208	BENELLI K208										
	4/10/2022										
	AMGV1562102			Red				Polled			
18.8% GV/75%AR/6.2%AN											
BW	93	NJCM RED NCJ Lazy MC Venom 34Z									
WW	566	RED Lazy MC Benelli 102B									
YW	1157	RED Lazy MC Firefly 36Z									
FS	6	WFL Merlin 018A									
SC	38.9	HAND Lady Merlin E22									
GAIN	3.8	HAND Lady Pioneer C314									
CED	BW	WW	YW	MK	TM	CEM	YG	CW	REA	MB	
12	0.2	70	100	19	54	7	-0	24	0.23	0.18	



K228	GRIDMASTER K228										
	4/12/2022										
	AMGV1561606			Red		Polled					
77.3%GV/21.9%AR/0.8%XX											
BW	97	JRI Next Step 285X72									
WW	601	DBCM 513C									
YW	1155	BEA 2002Z									
FS	5.6	Wide Angle W12									
SC	37	HAND Wide Angle A88									
GAIN	3.5	HAND Momentum T15									
CED	BW	WW	YW	MK	TM	CEM	YG	CW	REA	MB	
12	0.1	60	88	23	53	4	-0.2	23	0.48	0.16	

K268	ASTRONAUT K268										
	4/19/2022										
	AMGV1561627			Black		Polled					
66.4%GV/32.8%AN/0.8%AR											
BW	95	DCSF Post Rock Astronaut 157A									
WW	541	TOG Twinoak Astronaut 492C ET									
YW	1053	CCRO Ms C-Cross EC 7309T									
FS	4.9	BAR GT CROSS FIRE500W ET									
SC	35.2	HAND Lady Aflame A31									
GAIN	3.2	HAND Kaboom Y29									
CED	BW	WW	YW	MK	TM	CEM	YG	CW	REA	MB	
12	1.4	72	106	14	51	6	-0.1	30	0.45	0.44	

K231	HEISMAN K231										
	4/13/2022										
	AMGV1561624			Homo. Black		Polled					
75%GV/25%AN											
BW	84	VRT Lazy TV Sam U451									
WW	563	LRSF LRL Heisman D202									
YW	1095	OSOF Ms Jo-Leen 9801W									
FS	5.3	Rlver Hills Final Answer W121									
SC	34	HAND Final Answer B324									
GAIN	3.4	HAND Lady Thunder S142									
CED	BW	WW	YW	MK	TM	CEM	YG	CW	REA	MB	
13	-0.4	72	108	26	62	8	-0.1	34	0.59	0.36	



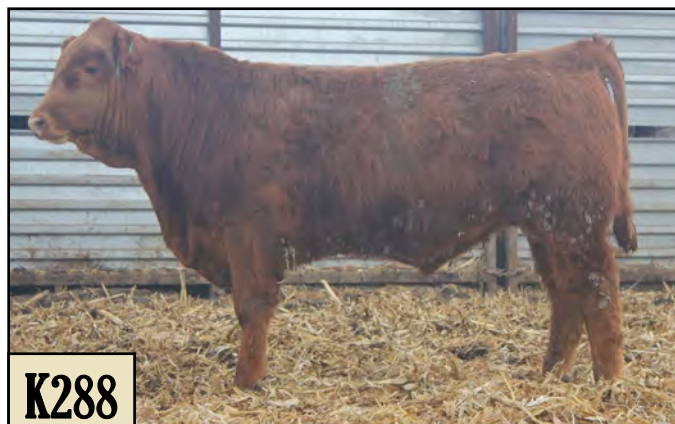
K231

K252	OUTLIER K252										
	4/17/2022										
	AMGV1561626			Red		Polled					
86.7%GV/13.3%AN											
BW	80	CCRO Carolina Leverage 3214A									
WW	600	DDGR Outlier 42F									
YW	1164	DDGR 206D									
FS	5.4	TOG Twinoak Astronaut 492C ET									
SC	32.5	HAND Lady Astronaut F155									
GAIN	3.5	HAND Lady Nebraska B302									
CED	BW	WW	YW	MK	TM	CEM	YG	CW	REA	MB	
12	1.4	84	126	20	62	8	-0.2	37	0.76	0.29	

K288	BENELLI K288										
	4/21/2022										
	RAAA 4722809			Red		Polled					
100% AR											
BW	73	NJCM RED NCJ Lazy MC Venom 34Z									
WW	622	RED Lazy MC Benelli 102B									
YW	1057	RED LAZY MC MISS FIREFLY 36Z									
FS	5.51	MEADO-WEST TC HARLEY									
SC	33.3	HAND Lady Harley B134									
GAIN	2.72	HAND VRRR DYNA W137									
CED	BW	WW	YW	MK	TM	CEM	YG	CW	REA	MB	
13	-0.4	58	88	20		7	0.05	15	-0	0.2	



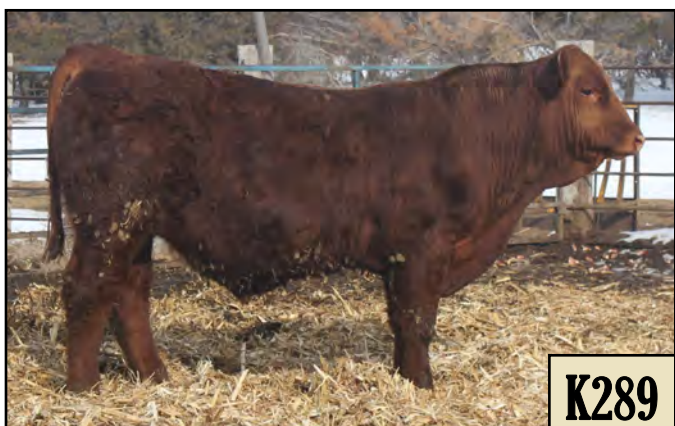
K252



K288



K289		GRIDMASTER K289									
		4/20/2022									
		AMGV1561607	Red	Polled							
93.8%GV/6.3%AR/0%0											
BW	95	JRI Next Step 285X72									
WW	704	DBCM 513C									
YW	1252	BEA 2002Z									
FS	6.5	Wide Angle W12									
SC	34.2	HAND Wide Angle A104									
GAIN	3.4	HAND Starlett T129									
CED	BW	WW	YW	MK	TM	CEM	YG	CW	REA	MB	
11	1.3	66	96	20	54	4	-0.2	27	0.66	0.15	



K289

K336		RECKONING K336									
		5/2/2022									
		AMGV1562106	Red	Polled							
29.3%GV/57.9%AR/12.5%AN											
BW	99	RED U-2 Recon 192Y									
WW	600	RED U-2 Reckoning 149A									
YW	1160	RED U-2 Anexa 271Y									
FS	5.6	GDX Pioneer 009X									
SC	36.6	HAND Lady Pioneer D110									
GAIN	3.6	HAND Wide Angle Z154									
CED	BW	WW	YW	MK	TM	CEM	YG	CW	REA	MB	
11	0.4	62	91	26	57	7	0	24	0.31	0.28	



K336

K294		GRIDMASTER K294									
		4/21/2022									
		AMGV1561608	Red	Polled							
68.8%GV/31.3%AR/0%0											
BW	90	JRI Next Step 285X72									
WW	647	DBCM 513C									
YW	1157	BEA 2002Z									
FS	6	HLH Outerlimit 5188 7047									
SC	37.2	HAND Outerlimit X176									
GAIN	3.2	HAND Miss Pacific 127H									
CED	BW	WW	YW	MK	TM	CEM	YG	CW	REA	MB	
11	-0.4	59	88	24	54	4	-0.1	18	0.44	0.2	

K350		GRIDMASTER K350									
		5/5/2022									
		AMGV1561610	Red	Polled							
77.4%GV/21.9%AR/0.8%XX											
BW	98	JRI Next Step 285X72									
WW	589	DBCM 513C									
YW	1121	BEA 2002Z									
FS	5.4	Wide Angle W12									
SC	34.7	HAND Wide Angle Z154									
GAIN	3.4	HAND Momentum T15									
CED	BW	WW	YW	MK	TM	CEM	YG	CW	REA	MB	
12	0.4	62	91	21	52	4	-0.2	22	0.52	0.16	

K296		GRIDMASTER K296									
		4/23/2022									
		AMGV1561609	Red	Polled							
80.1%GV/18.8%AR/1.2%AN											
BW	80	JRI Next Step 285X72									
WW	574	DBCM 513C									
YW	1120	BEA 2002Z									
FS	6.2	LAZY TV CLASS U226									
SC	39.3	HAND Classy Lady Y12									
GAIN	3.4	HAND Lady Sirloin W16									
CED	BW	WW	YW	MK	TM	CEM	YG	CW	REA	MB	
13	-0.8	65	98	20	53	5	-0.2	24	0.62	0.14	



K350



Below is a breakdown of the bulls in the sale, showing which are Red Angus, Balancer or Gelbvieh. This listing allows you to quickly find the lots that fit your needs. **Red** numbers signify red bulls, black numbers signify black bulls, and **bold** black numbers signify homozygous black bulls.

Red Angus	Percentage	Balancer	Balancer
AR	13%	BA25	BA38
K65	K23	J335	J340
K68	K56	J336	K27
K150	K62	K36	H58
K206	K82	K39	K66
K288	K103	K336	K74
	K208		K84
			K134

Balancer	Balancer	Balancer	Gelbvieh
BA50	BA63	BA75	PB88/PB94
J334	K3	J342	K21
K33	K34	K5	K25
K41	K38	K18	K46
K43	K89	K20	K50
K110	K181	K51	K55
K148	K192	K87	K115
	K210	K96	K158
	K268	K102	K159
	K294	K106	K160
		K120	K193
		K124	K220
		K228	K252
		K231	K289
		K296	
		K350	

Thank You

for attending our Annual Production Sale