

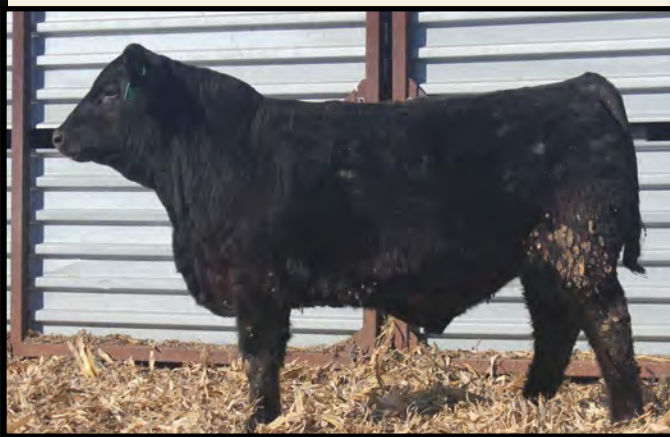
GELBVIEW & RED ANGUS BULL SALE

FRIDAY, MARCH 7, 2025

Platte Livestock Auction, Platte, SD

1 pm CST

SELLING 62 BULLS



M238 Lifeline

- Offering -

Red & Black • Gelbvieh • Balancer • Red Angus

HANDEL FARMS

Bruce & Mary Handel & Family

Austin & Maria Handel

28574 435th Ave Menno, SD 57045

605-660-5551 • 605-387-5551

bhandel@goldenwest.net



GELBVIEH & RED ANGUS

Welcome Cattlemen & Friends,

We are looking forward to having you join us Friday, March 7th at 1 p.m. for our 32nd Annual Gelbvieh, Red Angus and Balancer Bull Sale at the Platte Livestock Auction, Platte, S.D.

We will be offering 62 yearling bulls. Select from red and black Balancer, Gelbvieh or Red Angus. Twenty-one bulls have been identified as homozygous black.

The bulls have been bunk fed a homegrown high roughage ration to enhance growth, soundness and longevity, not fat. These bulls have never seen a creep or self feeder.

Complete performance and EPD's have been provided for your benefit. The bulls are registered and registration papers will be automatically transferred.

Put more pounds and value on your calf crop with proven Gelbvieh, Balancer, and Red Angus genetics. We use proven herd sires with calving ease, fertility, growth, carcass and maternal excellence. Many of these bulls have low birth and high growth EPD's. We are more than willing to recommend bulls to meet your specifications.

We invite you to the farm to inspect the cattle; they will be here until March 6th, when they will be moved to Platte Livestock Auction.

If you have any questions, please feel free to contact us.

Hope to see you March 7th—come early and join us for lunch.

Bruce & Mary Handel & Family

Austin & Maria Handel

28574 435th Ave., Menno, SD 57045

605-387-5551 • Cell: 605-660-5551

E-mail: bhandel@goldenwest.net

Sale Location

Platte Livestock Market

West Highway 44, Box 905, Platte, SD 57369

Sale Day Phone: 1-800-337-2655

Cell Phone Numbers:

Bruce Handel: 605-660-5551

Jeremy Handel: 605-660-2680

Justin Handel: 605-660-0368

Austin Handel: 605-760-4857

Auctioneer

Chisum Peterson
605-730-4214

Sale Consultant

Paul Duxbury
605-350-9268

Local Lodging

King's Inn
1-800-337-7756

PO Box 54, Platte, SD 57369
kingsinn@midstates.net

**View video of the bulls on
www.TheLivestockLink.com**



**Sale will be broadcast live on
CattleUSA.com**

**Call Platte Livestock or any Handel cell
phone to bid.**

All sight unseen purchases are guaranteed to
your satisfaction.

Terms & Conditions

Terms of the sale are cash. Settlement is to be
made with the clerk immediately following the sale.

All bulls are guaranteed breeders according to the
AGA guidelines. In no event will the seller be
responsible for more than the purchase price of the
bull.

Handel Farms is retaining 1/3 revenue sharing
semen interest in every bull selling in this sale. Full
possession and full salvage value sells on all bulls
unless otherwise noted.

*All bulls selling are eligible for free board until April
1, 2025. We will semen test bulls and begin delivery on
April 1st. Arrangements may be made for longer stays
at a nominal fee. Haul your bull home the day of the
sale and deduct \$100.00 per bull.*

REFERENCE SIRE

MAF WALL STREET 223											1/27/2022
		Angus	Black	Polled							
		100% AN	AMAN20452104								
BW		BASIN PAYWEIGHT 1682									
WW		DEER VALLEY WALL STREET									
YW		DEER VALLEY RITA 36113									
FS		CONNEALY UNION 215X									
SC		BM MISS BLACKCAP 263									
GAIN		BM MISS BLACKCAP 2430									
CED	BW	WW	YW	MK	TM	CEM	YG	CW	REA	MB	
17	-2.2	89	148	32	76	6	0.34	65	0.21	1.05	

DDGR OUTLIER 42F											4/8/2019
		Gelbvieh	Black	Polled							
		94%GV	AMGV1431966								
BW	89	VRT Lazy TV Sam U451									
WW	807	CCRO Carolina Leverage 3214A									
YW	1501	CCRO Belle of the Ball 1309Y									
FS		DCSF Post Rock Captain 15322									
SC	39.8	DDGR 206D									
GAIN		DDGR Sheeza Dream 93W									
CED	BW	WW	YW	MK	TM	CEM	YG	CW	REA	MB	
12	0.7	93	139	25	71	7	-0.23	41	0.85	0.36	

DBCM 513C GRIDMASTER											3/5/2015
		Gelbvieh	Red	Polled							
		87%GV	AMGV1313228								
BW	76	JRI Pop A Top 197T83									
WW	763	JRI Next Step 285X72									
YW	1325	JRI Ms Butterscotch 285T62 ET									
FS	36.3	BEA 801ET									
SC	35.9	BEA BEA 2002Z									
GAIN		BEA 637S									
CED	BW	WW	YW	MK	TM	CEM	YG	CW	REA	MB	
12	0.4	69	97	21	56	4	-0.19	20	0.61	0.10	

ULRA BENELLI 1919											1/23/2019
		Red Angus	Red	Polled							
		100%AR	RAAA4143546								
BW	92	RED NCJ LAZY MC VENOM 34Z									
WW	624	RED LAZY MC BENELLI 102B									
YW		RED LAZY MC MISS FIREFLY 36Z									
FS		RED NORTHLINE FAT TONY 605U									
SC		URLA BELLA 1407									
GAIN		896X URLA									
CED	BW	WW	YW	MK	TM	CEM	YG	CW	REA	MB	
12	0.8	75	120	22		8	12	32	0.31	0.24	

M13	DUKE M13		2/10/2024							
	AMGV1619817	Black	Polled							
	45.4%GV/54.7%AN									
BW	85	B BAR WINDY 7 3575								
WW	514	MILLARS DUKE 816								
YW	1058	MILLARS QUEEN LASS 5273								
FS	5.1	DDGR OUTLIER 42F								
SC	33.1	HAND LADY OUTLIER K113								
GAIN	3.5	HAND LADY HEISMAN F10								
CED	BW	WW	YW	MK	TM	CEM	YG	CW	REA	MB
12	-1.3	92	140	27	72	7	0.08	50	0.42	0.35



M18	KOOL-AID MAN M18		2/11/2024							
	RAAA5046417	Red	Polled							
	60.5%AR/39.3%GV									
BW	85	TRIPLE K HUSKER G413								
WW	540	TRIPLE K KOOL-AID MAN E31K								
YW	980	TRIPLE K Y331E								
FS	3.94	ULRICH BENELLI 1919								
SC	31.9	HAND LADY BENELLI K83								
GAIN	2.74	HAND LADY CARD SHARK F97								
CED	BW	WW	YW	MK	TM	CEM	YG	CW	REA	MB
13	0.5	68	96	26		3				



M16	HEISMAN M16		2/11/2024							
	AMGV1619818	Homo. Black	Polled							
	81.3%GV/12.5%AR/6.3%AN									
BW	83	LAZY TV SAM U451								
WW	564	LRL HEISMAN D202								
YW	967	OSOF MS JO-LEEN 9801W								
FS	4.4	DDGR OUTLIER 42F								
SC	37.2	HAND LADY OUTLIER K279								
GAIN	2.5	HAND LADY PEACEMAKER F121								
CED	BW	WW	YW	MK	TM	CEM	YG	CW	REA	MB
13	-0.2	76	113	31	69	8	-0.2	24	0.64	0.28

M34	TRADE SECRET M34		2/16/2024							
	AMGV1619819	Red	Polled							
	64.1%GV/29.7%AR/6.2%AN									
BW	92	JRI GENERAL PATTON 213B97 ET								
WW	559	JRI TRADE SECRET 253G486								
YW	1053	JRI MS SECRET BLEND 253E386 ET								
FS	4.7	WFL MERLIN 018A								
SC	35.3	HAND LADY MERLIN K14								
GAIN	3.1	HAND LADY BUSINESS G411								
CED	BW	WW	YW	MK	TM	CEM	YG	CW	REA	MB
14	-0.3	76	113	19	57	6	-0.1	23	0.43	0.22



Blue Shading indicates EPDs that rank in the top 35% of the breed.

	Breed Average EPDs						
	CED	BW	WW	YW	Milk	RE	MB
Gelbvieh	13	0.1	69	102	23	0.68	0.18
Balancer	13	-0.4	72	112	23	0.5	0.35
Angus	6	1.3	64	114	26	0.62	0.63
Red Angus	13	-1.7	67	107	26	0.17	0.44



M35	HEISMAN M35				2/16/2024					
	AMGV1619820	Black	Polled							
	88.1%GV/11.7%AN									
BW	80	LAZY TV SAM U451								
WW	543	LRL HEISMAN D202								
YW	1034	OSOF MS JO-LEEN 9801W								
FS	4.2	DDGR REBEL 28G								
SC	34.8	HAND LADY REBEL K337								
GAIN	3.1	HAND LADY ASTRONAUT G15								
CED	BW	WW	YW	MK	TM	CEM	YG	CW	REA	MB
13	-0.2	75	109	30	67	7	-0.2	24	0.74	0.35

**M35**

M38	STIMULUS M38				2/18/2024					
	AMGV1619821	Red	Polled							
	65.7%GV/21.9%AR/12.5%AN									
BW	90	JRI GENERAL PATTON 213B97 ET								
WW	482	JRI STIMULUS 214J32								
YW	1018	JRI MS ENVY ME 214C22								
FS	4.8	DBCM 513C								
SC	38.4	HAND LADY MASTER K201								
GAIN	3.4	HAND LADY HARLEY Z123								
CED	BW	WW	YW	MK	TM	CEM	YG	CW	REA	MB
15	-0.4	67	103	22	55	5	-0	18	0.27	0.2

M40	DUKE M40				2/18/2024					
	AMGV1619822	Black	Polled							
	39.8%GV/57.8%AN									
BW	100	B BAR WINDY 7 3575								
WW	552	MILLARS DUKE 816								
YW	1201	MILLARS QUEEN LASS 5273								
FS	6	RWG KNUCKLE HEAD 9426								
SC	36.4	HAND LADY KNUCKLEHEAD K29								
GAIN	4.1	HAND LADY BUSINESS G91								
CED	BW	WW	YW	MK	TM	CEM	YG	CW	REA	MB
7	2.9	95	152	27	76	3	0.15	54	0.39	0.27



M44	HEISMAN M44				2/21/2024					
	AMGV1619823	Homo. Black	Polled							
	100%GV									
BW	85	LAZY TV SAM U451								
WW	510	LRL HEISMAN D202								
YW	1087	OSOF MS JO-LEEN 9801W								
FS	4.5	DDGR TITANIC 352H								
SC	35	HAND LADY TITANIC K331								
GAIN	3.6	HAND LADY INVESTMENT E96								
CED	BW	WW	YW	MK	TM	CEM	YG	CW	REA	MB
12	0.4	70	101	25	60	7	-0.3	12	0.61	0.22

**M44**

M49	TOP GUN M49				2/29/2024					
	AMGV1619824	Homo. Black	Polled							
	73.4%GV/24.6%AN									
BW	83	PHG EMINENCE E02								
WW	489	DDGR TOP GUN 6K								
YW	1043	DDGR 26H								
FS	4.4	POST ROCK BLK BAL 327E8								
SC	36.7	HAND LADY DISTINGUISHED K235								
GAIN	3.5	LAZY TV MS REVELATION D105								
CED	BW	WW	YW	MK	TM	CEM	YG	CW	REA	MB
11	0.3	70	109	17	52	6	-0.1	42	0.61	0.5

**M40**

M52	BUCKLEUP M52										
	3/2/2024										
	RAAA5046419		Red			Polled					
100% AR											
BW	69	SIX MILE BUCKLE UP 296B									
WW	505	ULRICH BUCKLE UP 2006									
YW	990	WDZ-GLS DOLLY 113 ET									
FS	4.21	ULRICH GOLDMASTER 2072									
SC	33.5	HAND LADY GOLDMASTER K59									
GAIN	3.02	HAND LADY CARDSHARK G13									
CED	BW	WW	YW	MK	TM	CEM	YG	CW	REA	MB	
13	-2.4	55	86	26		7	0.05	17	0.05	0.23	

M65	BUCKLEUP M65										
	3/17/2024										
	RAAA5046439		Red			Polled					
100% AR											
BW	75	SIX MILE BUCKLE UP 296B									
WW	546	ULRICH BUCKLE UP 2006									
YW	1051	WDZ-GLS DOLLY 113 ET									
FS	4.67	ULRICH GOLDMASTER 2072									
SC	35.5	HAND LADY GOLDMASTER K255									
GAIN	3.14	HAND LADY HARLEY D138									
CED	BW	WW	YW	MK	TM	CEM	YG	CW	REA	MB	
13	-2.5	52	79	26		7	0.05	15	0	0.26	



M61	WALL STREET M61										
	3/14/2024										
	AMGV1619883		Homo. Black			Polled					
27.4%GV/72.7%AN											
BW	65	DEER VALLEY WALL STREET									
WW	529	MAF WALL STREET 223									
YW	1064	BM MISS BLACKCAP 263									
FS	4.1	TWINOAK ASTRONAUT 492C ET									
SC	34.3	HAND LADY ASTRONAUT H260									
GAIN	3.4	HAND FINAL ANSWER B98									
CED	BW	WW	YW	MK	TM	CEM	YG	CW	REA	MB	
18	-3	72	114	25	62	8	0.14	42	0.26	0.78	

M70	NAPOLEON M70										
	3/19/2024										
	Applied for AMGV		Homo. Black			Polled					
66%GV/32%AN											
BW	78	DANELL NAPOLEON 01E									
WW	520	HAND NAPOLEON K20									
YW	1010	HAND LADY DUSTY H24									
FS	5.1	EARTHINGTON SUB-ZERO									
SC	36	HAND LADY SUB ZERO K15									
GAIN	3.05	HAND LADY ASTRONAUT H33									
CED	BW	WW	YW	MK	TM	CEM	YG	CW	REA	MB	



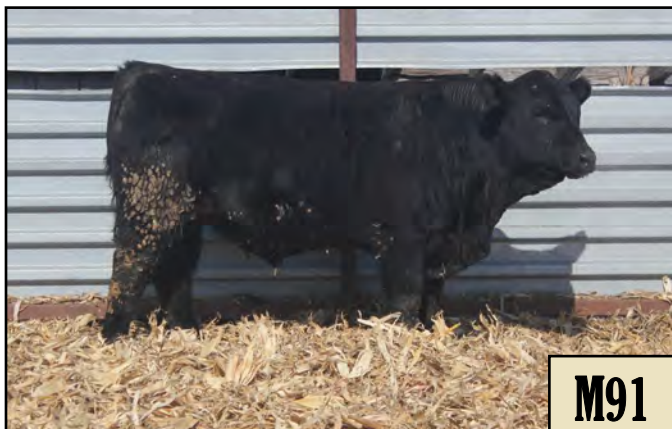
Most ducks fly in a V, this one works for free.

M89	WALL STREET M89										
	3/23/2024										
	AMGV1619884	Homo. Black		Polled							
50%GV/50%AN											
BW	85	DEER VALLEY WALL STREET									
WW	539	MAF WALL STREET 223									
YW	1124	BM MISS BLACKCAP 263									
FS	5	LRL HEISMAN D202									
SC	38	HAND LADY HEISMAN J50									
GAIN	3.7	HAND LADY ASTRONAUT G277									
CED	BW	WW	YW	MK	TM	CEM	YG	CW	REA	MB	
14	-0.4	76	119	28	67	6	0.04	39	0.42	0.66	



M89

M91	WALL STREET M91										
	3/24/2024										
	AMGV1619885	Homo. Black		Polled							
44.9%GV/55.1%AN											
BW	68	DEER VALLEY WALL STREET									
WW	533	MAF WALL STREET 223									
YW	963	BM MISS BLACKCAP 263									
FS	4.7	DDGR Outlier 42F									
SC	38	HAND LADY OUTLIER J51									
GAIN	2.7	HAND ASTRONAUT F65									
CED	BW	WW	YW	MK	TM	CEM	YG	CW	REA	MB	
17	-2.6	75	117	26	64	8	0.06	42	0.38	0.7	



M91

M92	GRIDMASTER M92										
	3/24/2024										
	AMGV1619825	Red		Polled							
62.5%GV/34.4%AR											
BW	83	JRI NEXT STEP 285X72									
WW	589	DBCM 513C									
YW	1097	BEA 2002Z									
FS	5.2	WEBR CARDSHARK 1214									
SC	35.7	HAND LADY CARDSHARK B223									
GAIN	3.2	HAND LADY PRIME U41									
CED	BW	WW	YW	MK	TM	CEM	YG	CW	REA	MB	
11	-0.1	66	97	22	55	4	-0.2	15	0.48	0.1	



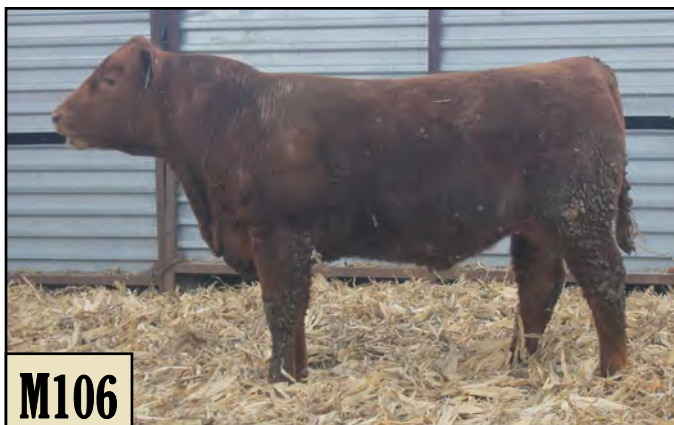
M92

M97	LIFELINE M97										
	3/25/2024										
	AMGV1619826	Black		Polled							
59.2%GV/36.7%AN/3.2%AR											
BW	85	EGL LIFELINE B101									
WW	587	JESE HOMEBOY J 422 ET									
YW	1098	CTR LASS 3200A									
FS	5.5	DC BUSINESSMAN 401B ET									
SC	36	HAND LADY BUSINESS J231									
GAIN	3.2	HAND SUNDANCE A208									
CED	BW	WW	YW	MK	TM	CEM	YG	CW	REA	MB	
11	1	72	110	23	59	4	-0.1	36	0.63	0.11	



M97

M106	BENELLI M106										
	3/26/2024										
	RAAA5046741		Red			Polled					
99.9% AR											
BW	84	RED LAZY MC BENELLI 102B									
WW	611	ULRICH BENELLI 1919									
YW	1231	ULRA BELLA 1407									
FS	6.05	WEBR CARDSHARK 1214									
SC	39.3	HAND LADY CARD SHARK F97									
GAIN	3.87	HAND LADY OUTERLIMITS D38									
CED	BW	WW	YW	MK	TM	CEM	YG	CW	REA	MB	
14	-1.5	65	104	27		8	0.03	22	0.19	0.23	



M106

M110	LIFELINE M110										
	3/28/2024										
	AMGV1619827		Homo. Black			Polled/Scur					
51.9%GV/44.9%AN/2.8%AR											
BW	81	EGL LIFELINE B101									
WW	554	JESE HOMEBOY J 422 ET									
YW	1073	CTR LASS 3200A									
FS	4.3	POST ROCK BLK BAL 327E8									
SC	36.6	HAND LADY DISTINGUISHED J82									
GAIN	3.3	HAND LADY MOMMA E27									
CED	BW	WW	YW	MK	TM	CEM	YG	CW	REA	MB	
10	0.9	73	116	17	54	5	-0.1	40	0.56	0.32	



M110



M120	BENELLI M120										
	3/30/2024										
	AMGV1619828		Red			Polled					
24.6%GV/60.9%AR/12.5%AN											
BW	70	RED LAZY MC BENELLI 102B									
WW	610	ULRICH BENELLI 1919									
YW	1043	ULRA BELLA 1407									
FS	5.3	GDX 009X									
SC	35.8	HAND LADY PIONEER H171									
GAIN	2.8	HAND WIDE ANGLE Y166									
CED	BW	WW	YW	MK	TM	CEM	YG	CW	REA	MB	
15	-1.6	68	103	24	58	8	-0	28	0.38	0.2	

M134	FIFTH SENSE M134										
	3/31/2024										
	AMGV1619886		Red			Polled					
34.4%GV/46.9%AR/18.8%AN											
BW	68	SIX MILE FIFTH SENSE 43F									
WW	464	ULRA FIFTH SENSE 2120									
YW	1032	RED U-2 MS ROBO 383C									
FS	4.6	DBCM 513C									
SC	38.4	HAND LADY MASTER E11									
GAIN	3.6	HAND LADY PIONEER C93									
CED	BW	WW	YW	MK	TM	CEM	YG	CW	REA	MB	
13	-2.9	56	88	19	47	6	-0	18	0.21	0.32	

M136	COWBOY M136										
	4/1/2024										
	AMGV1619829		Homo. Black			Polled					
45.6%GV/52.8%AN											
BW	84	MUSGRAVE COWBOY 668-00649									
WW	597	LAZY TV MIDNIGHT COWBOY J494									
YW	1065	LAZY TV MS COLLEGIAN F169									
FS	5.4	KG JUSTIFIED 3023									
SC	38.9	HAND LADY JUSTIFIED H4									
GAIN	3	HAND LADY HEISMAN F27									
CED	BW	WW	YW	MK	TM	CEM	YG	CW	REA	MB	
14	-0.2	79	125	32	71	5	-0	39	0.50	0.43	



M136



M138	TITANIC M138										
	4/1/2024										
	AMGV1619943			Homo. Black				Polled			
87.5%GV/6.3%AR/6.3%AN											
BW	84	DDGR EMULATION 71E									
WW	632	DDGR Titanic 352H									
YW	1092	DDGR 202E									
FS	4.6	DC BUSINESSMAN 401B ET									
SC	39.5	HAND LADY BUSINESS G45									
GAIN	2.9	HAND LADY HEISMAN E282									
CED	BW	WW	YW	MK	TM	CEM	YG	CW	REA	MB	
11	1.7	80	119	22	62	5	-0.2	26	0.67	0.18	



M138

M142	TITANIC M142										
	4/1/2024										
	AMGV1619830			Homo. Black				Polled			
87.3%GV/9.4%AN/3.25%AR											
BW	86	DDGR EMULATION 71E									
WW	540	DDGR TITANIC 352H									
YW	1027	DDGR 202E									
FS	5.4	TWINOAK ASTRONAUT 492C ET									
SC	37.5	HAND LADY ASTRONAUT G261									
GAIN	3.1	HAND LADY AFLAME B42									
CED	BW	WW	YW	MK	TM	CEM	YG	CW	REA	MB	
13	1.7	74	109	16	52	6	-0.2	20	0.53	0.3	



M142



M151	BENELLI M151										
	4/2/2024										
	RAAA5046421			Red				Polled			
99.9% AR											
BW	87	RED LAZY MC BENELLI 102B									
WW	644	ULRICH BENELLI 1919									
YW	1282	ULRA BELLA 1407									
FS	5.4	WEBR CARDSHARK 1214									
SC	36.5	HAND LADY CARDSHARK H118									
GAIN	3.98	HAND LADY OUTERLIMITS D38									
CED	BW	WW	YW	MK	TM	CEM	YG	CW	REA	MB	
14	-1.7	65	103	27		8	0.03	22	0.19	0.23	



M151

M155	OUTLIER M155										
	4/3/2024										
	AMGV1619831			Homo. Black				Polled			
92.6%GV/7.5%AN											
BW	80	CCRO CAROLINA LEVERAGE 3214A									
WW	543	DDGR OUTLIER 42F									
YW	1033	DDGR 206D									
FS	5.4	TWINOAK ASTRONAUT 492C ET									
SC	35.5	HAND LADY ASTRONAUT F320									
GAIN	3.1	HAND LADY INVESTMENT B118									
CED	BW	WW	YW	MK	TM	CEM	YG	CW	REA	MB	
14	-0.1	77	111	22	60	8	-0.2	28	0.67	0.33	

M158	OUTLIER M158										
	4/3/2024										
	AMGV1620579			Black				Polled			
81.1%GV/18.8%AN											
BW	88	CCRO CAROLINA LEVERAGE 3214A									
WW	587	DDGR Outlier 42F									
YW	1089	DDGR 206D									
FS	5.9	TWINOAK ASTRONAUT 492C ET									
SC	39	HAND LADY ASTRONAUT F5									
GAIN	3.2	HAND LADY PENDLETON B5									
CED	BW	WW	YW	MK	TM	CEM	YG	CW	REA	MB	
13	0	78	116	22	61	7	-0.2	34	0.57	0.39	



M168	GOLDMASTER M168 4/4/2024										
	AMGV1619832		Red			Polled					
40.65%GV/53.15%AR/6.2%AN											
BW	100	WEBR GOLDMASTER 648									
WW	547	ULRICH GOLDMASTER 2072									
YW	1196	ULRA CEDAR 1415									
FS	5.4	DBCM 513C									
SC	36.6	HAND LADY MASTER E4									
GAIN	4.1	HAND LADY PIONEER C294									
CED	BW	WW	YW	MK	TM	CEM	YG	CW	REA	MB	
12	0.2	58	94	18	48	6	-0	21	0.21	0.19	



M168

M169	GOLDMASTER M169 4/4/2024										
	AMGV1619833		Red			Polled					
50%GV/50%AR											
BW	78	WEBR GOLDMASTER 648									
WW	569	ULRICH GOLDMASTER 2072									
YW	930	ULRA CEDAR 1415									
FS	4.6	DC BUSINESSMAN 401B ET									
SC	36.1	HAND LADY BUSINESS F133									
GAIN	2.3	HAND WIDE ANGLE A104									
CED	BW	WW	YW	MK	TM	CEM	YG	CW	REA	MB	
14	-0.9	55	89	26	53	7	-0	22	0.23	0.2	

M170	GOLDMASTER M170 4/4/2024										
	RAAA5046423		Red			Polled					
100% AR											
BW	68	WEBR GOLDMASTER 648									
WW	549	ULRICH GOLDMASTER 2072									
YW	1089	ULRA CEDAR 1415									
FS	4.94	GALL'S BIG RED 318									
SC	34.6	HAND LADY RED F21									
GAIN	3.38	HAND MISS HARLEY C85									
CED	BW	WW	YW	MK	TM	CEM	YG	CW	REA	MB	
11	-0.3	53	90	26		7	0.08	19	0.03	0.22	

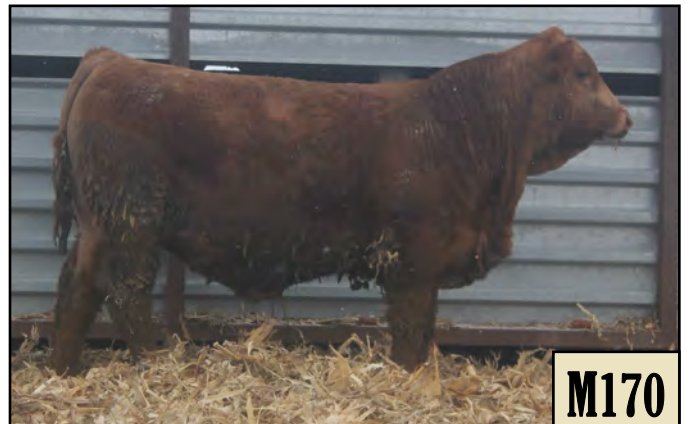


M172	FIFTH SENSE M172 4/4/2024										
	RAAA5046425		Red			Polled					
99.9% AR											
BW	89	SIX MILE FIFTH SENSE 43F									
WW	617	ULRA FIFTH SENSE 2120									
YW	1202	RED U-2 MS ROBO 383C									
FS	5.68	WEBR CARDSHARK 1214									
SC	39.6	HAND LADY CARDSHARK H99									
GAIN	3.65	HAND OUTERLIMIT Y134									
CED	BW	WW	YW	MK	TM	CEM	YG	CW	REA	MB	
10	-1.5	66	107	26		6	0.07	23	0.14	0.34	



M172

M174	OUTLIER M174 4/5/2024										
	AMGV1619834		Black			Polled					
75%GV/12.5%AN/12.5%AR											
BW	78	CCRO CAROLINA LEVERAGE 3214A									
WW	635	DDGR Outlier 42F									
YW	1106	DDGR 206D									
FS	6.2	009X									
SC	33.6	HAND LADY PIONEER E268									
GAIN	3	HAND OUTERLIMIT W60									
CED	BW	WW	YW	MK	TM	CEM	YG	CW	REA	MB	
14	-1.3	78	113	27	66	8	-0.2	34	0.63	0.26	



M170

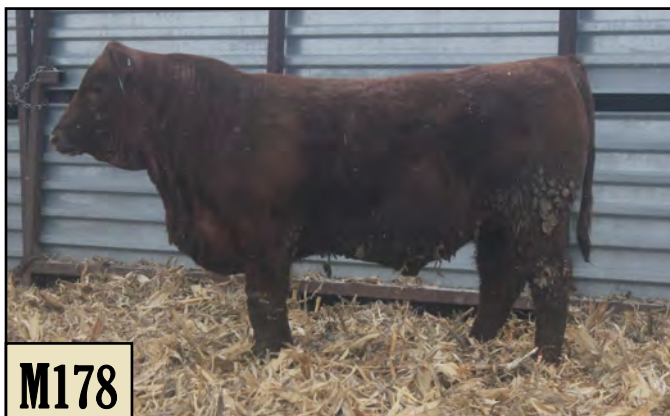


M176	GOLDMASTER M176										
	4/4/2024										
	RAAA5046427		Red			Polled					
100% AR											
BW	75	WEBR GOLDMASTER 648									
WW	582	ULRICH GOLDMASTER 2072									
YW	1111	ULRA CEDAR 1415									
FS	4.94	WEBR CARDSHARK 1214									
SC	37.1	HAND LADY CARDSHARK G13									
GAIN	3.3	HAND GALLS MS BETH 5316									
CED	BW	WW	YW	MK	TM	CEM	YG	CW	REA	MB	
11	-1.1	55	98	25		7	0.09	21	0.06	0.23	



M176

M178	TYCOON M178										
	4/5/2024										
	Applied for AMGV		Red			Polled					
17%GV/82%AR											
BW	81	RED SSS TYCOON 225E									
WW	540	ULRA TYCOON 2242									
YW	1080	ULRA BELLE 1940									
FS	4.9	RED SOO LINE POWER EYE 161X									
SC	34	HAND LADY POWEREYE J13									
GAIN	3.3	HAND LADY MASTER G12									
CED	BW	WW	YW	MK	TM	CEM	YG	CW	REA	MB	



M178

M184	KNUCKLEHEAD M184										
	4/5/2024										
	AMGV1619835		Black			Polled					
82.6%GV/15.6%AN											
BW	90	JRI GUNG HO 282C51									
WW	541	RWG KNUCKLEHEAD 9426									
YW	1111	RWG JASMINE 7423									
FS	5.7	925W									
SC	35.6	HAND LADY IMPACT D298									
GAIN	3.6	HAND LADY NOVA U29									
CED	BW	WW	YW	MK	TM	CEM	YG	CW	REA	MB	
8	3.1	70	112	23	59	4	-0.2	32	0.65	0.12	

M187	BUCKLE UP M187										
	4/5/2024										
	AMGV1619887		Red			Polled					
41.6%GV/50%AR/8.4%AN											
BW	94	SIX MILE BUCKLE UP 296B									
WW	575	ULRICH BUCKLE UP 2006									
YW	1043	WDZ-GLS DOLLY 113 ET									
FS	5.2	DDGR Outlier 42F									
SC	38.4	HAND LADY OUTLIER K99									
GAIN	3	HAND LADY ASTRONAUT F284									
CED	BW	WW	YW	MK	TM	CEM	YG	CW	REA	MB	
11	0.9	78	113	25	64	6	-0.1	27	0.40	0.33	

M192	COWBOY M192										
	4/6/2024										
	AMGV1619888		Homo. Black			Polled					
68%GV/30.5%AN											
BW	87	MUSGRAVE COWBOY 668-00649									
WW	612	LAZY TV MIDNIGHT COWBOY J494									
YW	1016	LAZY TV MS COLLEGIAN F169									
FS	5.9	TWINOAK ASTRONAUT 492C ET									
SC	39	HAND LADY ASTRO H193									
GAIN	2.6	HAND LADY BUSINESS E74									
CED	BW	WW	YW	MK	TM	CEM	YG	CW	REA	MB	
13	1.1	79	118	26	65	4	-0.1	33	0.60	0.3	



M192

M193	OUTLIER M193											
			4/6/2024									
		AMGV1619889	Homo. Black		Polled/Scur							
		84.8%GV/14.9%AN										
BW	74	CCRO CAROLINA LEVERAGE 3214A										
WW	574	DDGR Outlier 42F										
YW	1009	DDGR 206D										
FS	5.7	TWINOAK ASTRONAUT 492C ET										
SC	33.6	HAND LADY ASTRONAUT G179										
GAIN	2.7	HAND CROSSFIRE A3										
CED	BW	WW	YW	MK	TM	CEM	YG	CW	REA	MB		
14	-1	77	113	20	59	8	-0.2	32	0.62	0.38		



M193

M194	KNUCKLEHEAD M194											
			4/6/2024									
		AMGV1619836	Homo. Black		Polled							
		82.6%GV/15.6%AN										
BW	89	JRI GUNG HO 282C51										
WW	606	RWG KNUCKLEHEAD 9426										
YW	1171	RWG JASMINE 7423										
FS	5.9	INVESTMENT 422Y OF 408 ET										
SC	35.6	HAND LADY INVESTMENT D190										
GAIN	3.5	HAND KABOOM X26										
CED	BW	WW	YW	MK	TM	CEM	YG	CW	REA	MB		
9	1.8	75	114	25	62	6	-0.2	35	0.67	0.12		

M196	OUTLIER M196											
			4/6/2024									
		AMGV1619890	Black		Polled							
		100%GV										
BW	62	CCRO CAROLINA LEVERAGE 3214A										
WW	554	DDGR Outlier 42F										
YW	994	DDGR 206D										
FS	4.4	TWINOAK ASTRONAUT 492C ET										
SC	34.6	HAND LADY ASTRO E213										
GAIN	2.8	HAND LADY PRIME X74										
CED	BW	WW	YW	MK	TM	CEM	YG	CW	REA	MB		
17	-2.8	74	104	23	60	9	-0.2	29	0.71	0.31		



M204	GRIDMASTER M204											
			4/6/2024									
		RAAA5046429	Red		Polled							
		56.2% AR 42.2% GV										
BW	80	JRI NEXT STEP 285X72										
WW	547	DBCM 513C										
YW	1026	BEA 2002Z										
FS	4.97	MEADO-WEST TC HARLEY										
SC	38.7	HAND MISS HARLEY A75										
GAIN	3.03	HAND VRRRA DYNA X84										
CED	BW	WW	YW	MK	TM	CEM	YG	CW	REA	MB		
12	0.5	56	82	19		3	-0.1	13	0.29	0.1		

M208	OUTLIER M208											
			4/6/2024									
		AMGV1619837	Homo. Black		Polled							
		71.9%GV/25%AN/3.1%AR										
BW	95	CCRO CAROLINA LEVERAGE 3214A										
WW	499	DDGR Outlier 42F										
YW	1072	DDGR 206D										
FS	5.7	Connealy Revelation 2353										
SC	35.6	LAZY TV MS REVELATION D105										
GAIN	3.6	HAND LAZY TV MS SAM Z398										
CED	BW	WW	YW	MK	TM	CEM	YG	CW	REA	MB		
11	1.8	80	126	19	59	6	-0.2	39	0.83	0.41		



M208



M196



M213	TITANIC M213				4/9/2024					
	AMGV1619838	Homo. Black	Polled							
	84.4%GV/12.5%AN/3.1%AR									
BW	84	DDGR EMULATION 71E								
WW	620	DDGR Titanic 352H								
YW	1007	DDGR 202E								
FS	5.5	DC BUSINESSMAN 401B ET								
SC	36.2	HAND LADY BUSINESS F245								
GAIN	2.4	HAND FINAL ANSWER Z115								
CED	BW	WW	YW	MK	TM	CEM	YG	CW	REA	MB
12	1.5	77	116	21	59	5	-0.2	27	0.60	0.27

M216	BENELLI M216				4/8/2024					
	AMGV1619839	Red	Polled							
	18.2%GV/76.6%AR									
BW	96	RED LAZY MC BENELLI 102B								
WW	597	ULRICH BENELLI 1919								
YW	1177	ULRA BELLA 1407								
FS	6	WEBR CARDSHARK 1214								
SC	39.7	HAND LADY CARDSHARK F163								
GAIN	3.7	HAND CLASSY LADY Y12								
CED	BW	WW	YW	MK	TM	CEM	YG	CW	REA	MB
11	1.2	74	117	24	61	6	-0	26	0.35	0.22



M216

M222	KNUCKLEHEAD M222				4/10/2024					
	AMGV1619840	Black	Polled							
	88.9%GV/9.4%AN									
BW	101	JRI GUNG HO 282C51								
WW	546	RWG KNUCKLEHEAD 9426								
YW	1098	RWG JASMINE 7423								
FS	5.5	INVESTMENT 422Y OF 408 ET								
SC	38.3	HAND INVESTMENT B264								
GAIN	3.5	HAND LADY PRIME Y127								
CED	BW	WW	YW	MK	TM	CEM	YG	CW	REA	MB
5	4.3	76	113	24	62	3	-0.2	24	0.56	0.08



M224	WALL STREET M224				4/10/2024					
	AMGV1619891	Homo. Black	Polled							
	29.7%GV/70.3%AN									
BW	78	DEER VALLEY WALL STREET								
WW	588	MAF WALL STREET 223								
YW	1083	BM MISS BLACKCAP 263								
FS	5.5	DDGR PONDEROSA 113D								
SC	38.2	HAND LADY PONDEROSA H291								
GAIN	3.1	HAND FINAL ANSWER Z115								
CED	BW	WW	YW	MK	TM	CEM	YG	CW	REA	MB
14	-0.9	78	123	28	68	6	0.16	46	0.29	0.79

M238	LIFELINE M238				4/12/2024					
	AMGV1619841	Black	Polled							
	75.6%GV/24.2%AN									
BW	78	EGL LIFELINE B101								
WW	553	JESE HOMEBOY J 422 ET								
YW	1113	CTR LASS 3200A								
FS	5	LRL HEISMAN D202								
SC	40.6	HAND LADY HEISMAN J203								
GAIN	3.5	HAND LADY BUSINESS G241								
CED	BW	WW	YW	MK	TM	CEM	YG	CW	REA	MB
12	0.1	68	102	23	58	6	-0.2	29	0.68	0.12



M238

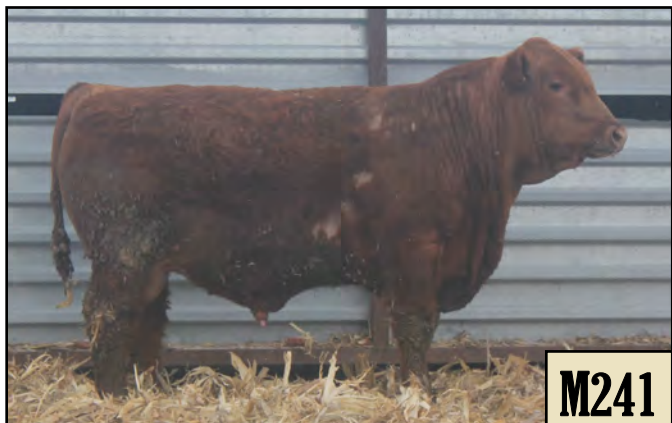


M222



M240	BENELLI M240										4/13/2024
	RAAA5046431		Red		Polled						
	99.9% AR										
BW	103	RED LAZY MC BENELLI 102B									
WW	736	ULRICH BENELLI 1919									
YW	1094	ULRA BELLA 1407									
FS	6.32	WEBR CARDSHARK 1214									
SC	34.9	HAND LADY CARDSHARK E228									
GAIN	2.24	HAND LADY CARDSHARK A44									
CED	BW	WW	YW	MK	TM	CEM	YG	CW	REA	MB	
14	-1.7	65	105	27		8	0.02	24	0.23	0.19	

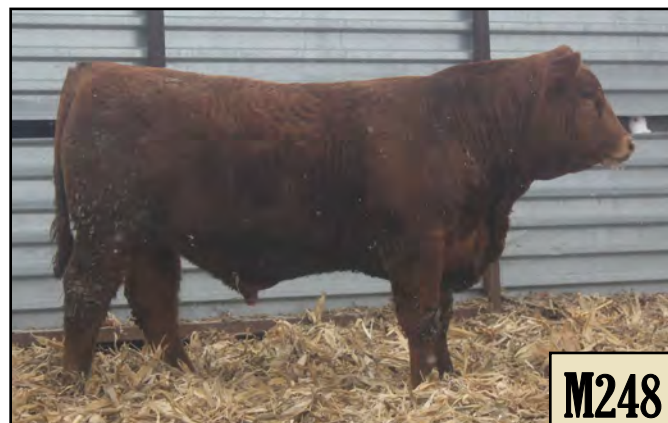
M241	GOLDMASTER M241										4/13/2024
	AMGV1619842		Red		Polled						
	4.7%GV/93.8%AR										
BW	74	WEBR GOLDMASTER 648									
WW	609	ULRICH GOLDMASTER 2072									
YW	1169	ULRA CEDAR 1415									
FS	5	GALL'S BIG RED 318									
SC	36.9	HAND LADY RED F89									
GAIN	3.5	HAND CARDSHARK B137									
CED	BW	WW	YW	MK	TM	CEM	YG	CW	REA	MB	
13	-2.2	54	89	27	54	8	0.06	20	0.06	0.21	



M242	OUTLIER M242										4/13/2024
	AMGV1619843		Black		Polled						
	84.8%GV/8.6%AN/6.7%AR										
BW	91	CCRO CAROLINA LEVERAGE 3214A									
WW	592	DDGR Outlier 42F									
YW	989	DDGR 206D									
FS	5.5	TWINOAK ASTRONAUT 492C ET									
SC	35.9	HAND LADY ASTRONAUT F107									
GAIN	2.5	HAND CROSSFIRE B72									
CED	BW	WW	YW	MK	TM	CEM	YG	CW	REA	MB	
12	1.4	82	121	20	60	6	-0.2	31	0.62	0.37	



M248	BENELLI M248										4/15/2024
	AMGV1619932		Red		Polled						
	18.8%GV/73.4%AR/6.3%AN										
BW	82	RED LAZY MC BENELLI 102B									
WW	618	ULRICH BENELLI 1919									
YW	1162	ULRA BELLA 1407									
FS	5.8	WFL MERLIN 018A									
SC	37.9	HAND LADY MERLIN E22									
GAIN	3.4	HAND LADY PIONEER C314									
CED	BW	WW	YW	MK	TM	CEM	YG	CW	REA	MB	
12	0.1	78	120	24	63	6	-0.1	29	0.46	0.29	



M250	GOLDMASTER M250										4/15/2024
	RAAA5046433		Red		Polled						
	100% AR										
BW	73	WEBR GOLDMASTER 648									
WW	597	ULRICH GOLDMASTER 2072									
YW	1026	ULRA CEDAR 1415									
FS	5.1	WEBR CARDSHARK 1214									
SC	38.9	HAND LADY CARDSHARK F93									
GAIN	2.68	HAND VRRRA GENISIS W32									
CED	BW	WW	YW	MK	TM	CEM	YG	CW	REA	MB	
11	-0.9	52	90	25		6	0.08	18	0.02	0.23	



M251	WALL STREET M251				4/15/2024					
	AMGV1619933	Homo. Black	Polled							
	36%GV/64.1%AN									
BW	66	DEER VALLEY WALL STREET								
WW	574	MAF WALL STREET 223								
YW	1046	BM MISS BLACKCAP 263								
FS	5.1	DDGR PONDEROSA 113D								
SC	37.3	HAND LADY PONDEROSA H159								
GAIN	3	HAND INVESTMENT D166								
CED	BW	WW	YW	MK	TM	CEM	YG	CW	REA	MB
16	-2.5	76	119	28	67	8	0.1	44	0.33	0.72



M251

M262	GRIDMASTER M262				4/17/2024					
	AMGV1619934	Red	Polled							
	81.3%GV/18.8%AR									
BW	93	JRI NEXT STEP 285X72								
WW	588	DBCM 513C								
YW	1114	BEA 2002Z								
FS	5.3	602S								
SC	35	HAND LADY PRIME A55								
GAIN	3.3	HAND CLASSY LADY Y27								
CED	BW	WW	YW	MK	TM	CEM	YG	CW	REA	MB
10	0.9	69	99	21	55	3	-0.2	14	0.50	0.12



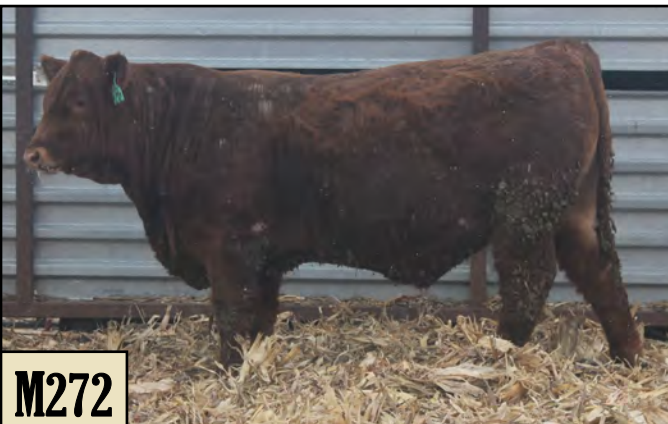
M262



M263	TITANIC M263				4/18/2024					
	AMGV1619935	Homo. Black	Polled							
	88.7%GV/11.4%AN									
BW	73	DDGR EMULATION 71E								
WW	578	DDGR Titanic 352H								
YW	1036	DDGR 202E								
FS	4.9	DDGR PONDEROSA 113D								
SC	39.5	HAND LADY PONDEROSA G206								
GAIN	2.9	HAND LADY INVESTMENT B118								
CED	BW	WW	YW	MK	TM	CEM	YG	CW	REA	MB
13	-0.3	72	106	20	56	7	-0.2	21	0.54	0.3

M270	GRIDMASTER M270				4/19/2024					
	AMGV1619936	Red	Polled							
	68.8%GV/18.4%AR/12.5%AN									
BW	70	JRI NEXT STEP 285X72								
WW	573	DBCM 513C								
YW	1041	BEA 2002Z								
FS	5.6	GDX 009X								
SC	35.5	HAND LADY PIONEER C116								
GAIN	3	HAND LADY PRIME W31								
CED	BW	WW	YW	MK	TM	CEM	YG	CW	REA	MB
14	-1.7	65	95	18	50	5	-0.2	19	0.50	0.09

M272	BENELLI M272				4/19/2024					
	AMGV1619937	Red	Polled							
	28.15%GV/68.79%AR									
BW	94	RED LAZY MC BENELLI 102B								
WW	619	ULRICH BENELLI 1919								
YW	1234	ULRA BELLA 1407								
FS	5.4	DBCM 513C								
SC	35	HAND LADY MASTER G141								
GAIN	3.9	HAND LADY CARDSHARK B44								
CED	BW	WW	YW	MK	TM	CEM	YG	CW	REA	MB
12	0.4	69	107	22	56	6	-0.1	23	0.38	0.16



M272



M274	LIFELINE M274 4/21/2024										
	AMGV1619938		Homo. Black				Polled				
	46.4%GV/28.4%AN/25%AR										
BW	89	EGL LIFELINE B101									
WW	594	JESE HOMEBOY J 422 ET									
YW	1087	CTR LASS 3200A									
FS	4.9	RED SOO LINE POWER EYE 161X									
SC	35.9	HAND LADY POWEREYE J32									
GAIN	3.1	HAND LADY HEISMAN G85									
CED	BW	WW	YW	MK	TM	CEM	YG	CW	REA	MB	
12	0.8	74	115	21	58	5	-0.1	36	0.50	0.2	



M277	OUTLIER M277 4/22/2024										
	AMGV1619939		Black				Polled				
	85.9%GV/14.1%AN										
BW	93	CCRO CAROLINA LEVERAGE 3214A									
WW	650	DDGR Outlier 42F									
YW	1177	DDGR 206D									
FS	5.4	DDGR PONDEROSA 113D									
SC	38.1	HAND PONDEROSA F32									
GAIN	3.3	HAND LADY INVESTMENT D82									
CED	BW	WW	YW	MK	TM	CEM	YG	CW	REA	MB	
10	1.6	83	125	23	65	6	-0.2	34	0.69	0.39	

M278	GRIDMASTER M278 4/22/2024										
	AMGV1619941		Red				Polled				
	43.8%GV/56.3%AR										
BW	77	NEXT STEP 285X72									
WW	571	BDCM 513C									
YW	1121	BEA 2002Z									
FS	5.4	MEADO-WEST TC HARLEY									
SC	40.1	HAND LADY HARLEY B134									
GAIN	3.5	HAND VRRR DYNA W137									
CED	BW	WW	YW	MK	TM	CEM	YG	CW	REA	MB	
13	-0.7	57	87	19	48	4	-0.1	13	0.30	0.11	

M296	KNUCKLEHEAD M296 4/27/2024										
	AMGV1619940		Black				Polled				
	82.6%GV/15.6%AN/1.6%AR										
BW	104	GUNG HO 282C51									
WW	572	RWG KNUCKLEHEAD 9426									
YW	1102	RWG JASMINE 7423									
FS	5.5	GKG MR 620 045X									
SC	36.3	HAND LADY NEBRASKA A140									
GAIN	3.3	HAND BLACK ATLAS W52									
CED	BW	WW	YW	MK	TM	CEM	YG	CW	REA	MB	
6	4.7	78	125	22	61	4	-0.2	36	0.72	0.07	

M318	GRIDMASTER M318 5/11/2024										
	RAAA5046435		Red				Polled				
	56.2% AR /42.2% GV										
BW	77	NEXT STEP 285X72									
WW	660	BDCM 513C									
YW	1220	BEA 2002Z									
FS	5.77	NAMKEN PEACEMAKER 174A									
SC	38.3	HAND LADY PEACEMAKER C59									
GAIN	3.54	HAND VRRR SOPHIE 39W									
CED	BW	WW	YW	MK	TM	CEM	YG	CW	REA	MB	
11	1	66	99	20		4	-0.1	21	0.32	0.15	



Below is a breakdown of the bulls in the sale, showing which are Red Angus, Balancer or Gelbvieh. This listing allows you to quickly find the lots that fit your needs. **Red** numbers signify red bulls, black numbers signify black bulls, and **bold** black numbers signify homozygous black bulls.

Red Angus	Percentage	Balancer	Balancer
AR	13%	BA25	BA38
M52	M178	M61	M18
M65	M216	M120	M40
M106	M241	M224	M134
M151	M248	M272	M168
M170			M187
M172			M204
M176			M251
M240			M278
M250			M318

Balancer	Balancer	Balancer	Gelbvieh
BA50	BA63	BA75	PB88/PB94
M13	M34	M16	M35
M89	M38	M49	M44
M91	M70	M158	M138
M110	M92	M174	M142
M136	M97	M184	M155
M169	M192	M194	M193
M274	M270	M208	M196
		M238	M213
		M262	M222
		M296	M242
			M263
			M277

Thank You

for attending our Annual Production Sale

Handel Farms
Bruce & Mary Handel
219 S. Pine St.
Menno, SD 57045

Return Service Requested

Handel Farms Gelbvieh & Red Angus Bull Sale ● Friday, March 7, 2025