

AN ELITE OFFERING OF HEREFORD, ANGUS,
& SIMMENTAL BULLS, PLUS REGISTERED
& COMMERCIAL FEMALES.



Saturday
March 8, 2025
6:00 PM

W.H. Lyon Fairgrounds Expo Bldg.
Sioux Falls, SD

Welcome to our Sale!

EGGERS

Southview Farms

Philip Eggers
25750 476th Ave - Sioux Falls, SD 57104
Phil: 605.351.5438
eggerssouthviewfarms@gmail.com



Andy, Janna, Evelyn & Blake Mark
29023 457th Ave - Viborg, SD 57070
Andy: 712.441.5920
ajmark398@gmail.com



47881 287th St. - Canton, SD 57013
Erik Scott 605.214.1332
Craig Broughton 605.951.7595
section16cattleco@live.com
www.section16cattleco.com



For sale updates, scan this code
or follow us on Facebook!
We look forward to seeing you
on March 8th!

 [facebook.com/
i29bullrun](https://facebook.com/i29bullrun)

Saturday, March 8, 2025 at 6:00 PM W.H. Lyon Fairgrounds, Expo Building, Sioux Falls, SD

Dear Valued Customers and Friends,

On behalf of the whole I-29 Crew, we are excited to welcome you to our Annual Sale. This event marks a significant milestone for us, and we're honored to have the opportunity to showcase the quality genetics we've worked so hard to develop.

Each year, our goal is to offer bulls that bring superior performance, sound structure, and an outstanding genetic pedigree to meet the diverse needs of the cattle industry. This year's offering is no exception. These bulls have been carefully selected and are ready to go to work for you. Whether you're looking to enhance your herd's growth potential, improve calving ease, or increase overall performance, we believe you'll find exactly what you need in this year's sale.

This year, we are excited to offer a fantastic selection of commercial heifers that have been carefully selected for their quality, genetics, and potential to perform in a variety of production systems.

We invite you to take the time to review the pedigrees, performance data, photos in the catalog, and as always, we're available to answer any questions you may have about the bulls, their bloodlines, or their development.

We remain committed to providing not just top-quality livestock, but also building lasting relationships with our customers. Your success is our success, and we are grateful for the trust you continue to place in us year after year.

We want to THANK TSR Cattle Co for their longtime partnership in the Bull Run and wish you guys the best of luck with future endeavors. We also want to THANK the Eggers for their longtime partnership as well and look forward in seeing what their new partnership with Section 16 Cattle Co brings in the future.

Thank you for your continued support. We look forward to seeing you at the sale and helping you find the right animals to take your operation to the next level.

Regards,

Mark Family Simmental
Section 16 Cattle Co
Eggers Southview Farms

Thanks again for your interest in the Bull Run!



Sale Information



Sale Schedule

Saturday, March 8, 2025

Cattle available for viewing at the Fairgrounds by Noon, March 8th.
Lunch available at 4:30 p.m. followed by the **sale at 6:00 p.m.**

Please note: This sale will be conducted as a video sale using the same bidding process as a live auction. Cattle will be on display at the Fairgrounds beginning at Noon on March 8. If you'd like to view the offering prior, please make arrangements with the sellers.

In the case of inclement weather, due to the schedule of the sale staff and facility, we will make every effort to hold the sale using our Online platform, www.DVAuction.com, and will also make announcements using our website and Facebook page.

Location

Expo Building on the W. H. Lyon Fairgrounds, Sioux Falls, SD

From I-29 - Take the 12th Street exit and head east. Get into the left hand lane, after one block, take a left onto Lyon Blvd. Stay in the right hand lane and exit into the fairgrounds.

Contacts

Phil Eggers, Eggers Southview Farms(605) 351-5438
 Andy Mark, Mark Family Simmental(712) 441-5920
 Greg Mark, Mark Family Simmental(605) 254-3416
 Erik Scott, Section 16 Cattle Co(605) 214-1332
 Craig Broughton, Section 16 Cattle Co(605) 951-7595
 Kade Scott(605) 214-5565
 Jerry Mettler(605) 987-4342
 Tom Kuiper(605) 759-8140

Sale Staff

Chisum Peterson, Auctioneer, Peterson Land & Auction(605) 730-4214
 Aaron Friedt, American Hereford Association(701) 590-9597
 Kelly Schmidt, Special Assignment(406) 599-2395
 Michael Drotzmann, Stockmen's Livestock(605) 760-9803
 Ted Souvignier, Sioux Falls Regional Livestock(605) 660-3962

Veterinarian

Sioux Nation Vet Clinic..... Viborg, SD

Terms & Conditions

Terms - Terms of the sale are cash or check payable during or after the sale and before cattle will be released. Cattle will not be transferred until paid in full. Each animal will be at the buyer's risk immediately after the animal is sold. The auctioneer has complete charge of the sale and in case of a dispute in bidding, his decision will be final. Any announcement from the auction block will take precedence over printed material. All persons attending the sale do so at their own risk. The owners assume no liability for property loss or accidents that may occur.

Guarantee - Cattle will be sold and guaranteed in accordance with the recommended terms and conditions set forth by the breed association. If an animal fails to be a breeder, buyers can choose a replacement, if one is available at the time, or receive credit. Guarantee is void in occurrence of improper management in caring for an animal, or sickness, or injury occurred after sale of the said animal. Mortality insurance will be available on sale day.

Absentee Bidding - If you would like to place a bid but are unable to attend the sale, please direct your bid to any of the owners or sale staff. You may also bid online as the sale will be broadcast live on the Internet at www.DVAuction.com

Delivery - Options are as follows:

Yearling Bulls -- Free Delivery within 200 Miles and a Delivery Date by May 1.
Aged Bulls -- Free Delivery Within 200 Miles and Delivery Date by April 1.
Delivery beyond the allotted miles will be \$2 mile. Feed and Yardage beyond the Delivery Date will be \$5/day. Sellers will work to make cooperative arrangements. Please contact the individual seller with any questions.

All commercial heifers are the responsibility of the buyer to pick up by no later than 11am Sunday March 9th at the Expo Building.

Insurance - Even though animals may be housed by the seller for a convenience to the buyer, animals will be at the buyers risk immediately following the sale and we strongly recommend purchasing insurance. Insurance will be available on sale day.

Semen Interests - Along with full possession, you are purchasing the full semen interests of all bulls unless otherwise noted. The seller will have the option to use the bull artificially for in-herd use, in which case they will be collected at their expense prior to the delivery and breeding season.

Air Travel - Sioux Falls Regional Airport is served by several major airlines.

Announcements - Announcements made the day of the sale take precedence over material printed in the sale catalog or any other advertising. We reserve the right to make any additional or withdraw any sale lot not meeting our specifications prior to sale time.

Acknowledgements

Catalog / AdvertisingStockman Design Services, The Stockman
Videography / Clerking Services Halle Walsh / Phil Eggers

DVAuction

Broadcasting Real-Time Auctions

Visit www.DVAuction.com and register today.

For general questions please contact our office:
402-316-5460 or support@dvauction.com

FOR CATALOG, VIDEOS AND UPDATES VISIT: www.i29bullrun.com

Section 16 Bull Guarantee

Inquire about our Multi-Year Breeding Guarantee!



For more information, go to:
www.section16cattleco.com

- 100% of the calves born at Section 16 are weighed on a digital scale
- 100% of the calves born at Section 16 are DNA sampled for parentage and genetically enhanced EPD's.
- All our bulls are raised together in the same pasture and pens based on breed and calving season. This allows us to keep all the bulls in the same contemporary groups to ratio against each other.
- Example - All of our Hereford Yearling Bulls have been treated exactly the same and have been raised in the same pasture and pens since their DOB. This allows us to compare animal performance against themselves and not have to wonder about if the different environments played into any performance difference.
- We keep a group of Spare and Lease Bulls for our customers to fill any voids they might have during breeding season. Contact Erik 605-214-1332 or Craig 605-951-7595 for more info.
- We believe in standing behind our bulls and customers so much we offer a **4 YEAR BREEDING GUARANTEE** on all bulls sold.

*Thank You to all of our past customers.
We appreciate your business and
relationships very much.*



SALE ORDER:
Aged Hereford Bulls
Yearling Simmental Bulls
Aged Angus Bulls
Yearling Hereford Bulls
Yearling Angus Bulls
Commercial Baldy Heifers
Commercial Hereford Heifers



Hereford Bulls



OBH DAYBREAK 751J ET - SIRE OF LOTS 1 & 2



S16 57H DAYBREAK 570M

BULL Polled DOB: 2/15/24 REG#44536044

Tattoo	Actual BW	BW Ratio	Adj WW	WW Ratio
570M	80	97	684	114

SHF DAYBREAK Y02 D287 ET
OBH DAYBREAK 751J ET
 UPS MISS SENSATION 3785 ET

PYRAMID PERFECTO 8104
FHF 8104 RENE 57H
 FHF D287 RENE 122F

SHF YORK 19H Y02
 SHF MISS M326 T08 ET
 CHURCHILL SENSATION 028X
 MCM MARLIE 816U

LCX PERFECTO 11B ET
 FHF 38Y JUDI 133D
 SHF DAYBREAK Y02 D287 ET
 FHF 2014 LYDA 182C



CED	BW	WW	YW	MILK	SCF	US	TS	MARB	BMI	CHB
+1.5	+2.20	+68	+103	+36	+20.4	+1.30	+1.30	+0.24	+449	+153

- One of the best bulls we have ever raised. Great growth and carcass traits to go along with an attractive animal.



S16 977 DAYBREAK 607M

BULL Homo Polled DOB: 3/16/24 REG#44544303

Tattoo	Actual BW	BW Ratio	Adj WW	WW Ratio
607M	79	97	585	98

SHF DAYBREAK Y02 D287 ET
OBH DAYBREAK 751J ET
 UPS MISS SENSATION 3785 ET

ILR U201 CATAPULT 688 ET
ILR 688 LADY MAUDE 977
 EXR 3203 38W MAUDIE 5051

SHF YORK 19H Y02
 SHF MISS M326 T08 ET
 CHURCHILL SENSATION 028X
 MCM MARLIE 816U

CRR 719 CATAPULT 109
 KCF MISS PROFICIENT U201
 NJW 76S P20 BEEF 38W ET
 WPF 43X 17Y BONNIE 3203 ET



CED	BW	WW	YW	MILK	SCF	US	TS	MARB	BMI	CHB
+9.5	+0.10	+62	+95	+35	+18.3	+1.20	+1.20	+0.13	+398	+130

- Suitable For Heifers
 - 977 raises a good one every year. Here is another good spread bull that will allow you to be very versatile.

Hereford Bulls



3

S16 106G PARAMOUNT 579M

BULL Polled **DOB: 2/22/24** **REG#44537912**

Tattoo	Actual BW	BW Ratio	Adj WW	WW Ratio
579M	96	114	662	111

EFBEEF X651 TESTED A250
PYRAMID ILR PARAMOUNT 1511 ET

FHF ILR 9116 RITA 25D ET

PYRAMID DOMINO 6112

FHF 6112 VICTRA 106G

FHF 88X VICTRA 203B ET

EFBEEF TFL U208 TESTED X651 ET

EFBEEF 6378 KATE W484

PYRAMID 16W 110T 9116

FHF 408 RITA 21W

UPS DOMINO 3027

FHF 9116 RITA 200B

NJW 98S R117 RIBEYE 88X ET

FHF 10H VICTRA 31S



CED	BW	WW	YW	MILK	SCF	US	TS	MARB	BMI	CHB
+3.2	+5.30	+68	+106	+40	+25.9	+1.40	+1.30	+0.35	+501	+140

- Lots of growth and performance in this bull. One of the highest WW bulls in the offering.



4

S16 D8 PARAMOUNT 584M

BULL Homo Polled **DOB: 2/26/24** **REG#44537903**

Tattoo	Actual BW	BW Ratio	Adj WW	WW Ratio
584M	90	105	661	111

EFBEEF X651 TESTED A250
PYRAMID ILR PARAMOUNT 1511 ET

FHF ILR 9116 RITA 25D ET

NJW 73S M326 TRUST 100W ET

MPH 100W BRANDI D8

MPH 743 BRANDI Y1

EFBEEF TFL U208 TESTED X651 ET

EFBEEF 6378 KATE W484

PYRAMID 16W 110T 9116

FHF 408 RITA 21W

KCF BENNETT 3008 M326

NJW P606 72N DAYDREAM 73S

CRR ABOUT TIME 743

MPH 0104 BRANDI M18



CED	BW	WW	YW	MILK	SCF	US	TS	MARB	BMI	CHB
+0.6	+3.90	+71	+110	+28	+19.6	+1.30	+1.30	+0.22	+424	+139

- 584M gets a lot of attention when visitors come to look at bulls. Top 10% in WW and YW.



5

S16 45H PARAMOUNT 596M

BULL Homo Polled **DOB: 3/1/24** **REG#44542009**

Tattoo	Actual BW	BW Ratio	Adj WW	WW Ratio
596M	88	106	631	106

EFBEEF X651 TESTED A250
PYRAMID ILR PARAMOUNT 1511 ET

FHF ILR 9116 RITA 25D ET

PYRAMID FOUNDATION 7155

FHF 7155 VICTRA 45H

FHF 528 VICTRA 109E

EFBEEF TFL U208 TESTED X651 ET

EFBEEF 6378 KATE W484

PYRAMID 16W 110T 9116

FHF 408 RITA 21W

FHF 9279 DEADWOOD 38Y

FHF 15X RITA 182B

SLEEPY 88X RIBEYE 528 ET

FHF 9116 VICTRA 104C



CED	BW	WW	YW	MILK	SCF	US	TS	MARB	BMI	CHB
+3.5	+2.60	+62	+92	+36	+18.2	+1.30	+1.30	+0.28	+429	+174

- This dark red pigmented Paramount son has a real cool pedigree with a great set of numbers.

Hereford Bulls



S16 52D PARAMOUNT 591M

BULL Polled DOB: 2/27/24 REG#44542039

Tattoo	Actual BW	BW Ratio	Adj WW	WW Ratio
591M	81	95	626	105

EFBEEF X651 TESTED A250
PYRAMID ILR PARAMOUNT 1511 ET
FHF ILR 9116 RITA 25D ET

CHURCHILL RED BULL 200Z
S16 KCS MS RED BULL 52D
AH VIOLA RUMBLE 139B

EFBEEF TFL U208 TESTED X651 ET
EFBEEF 6378 KATE W484
PYRAMID 16W 110T 9116
FHF 408 RITA 21W
CHURCHILL SENSATION 028X
CHURCHILL LADY 002X ET
BAR JZ RUMBLE 525X
AH MS 719T VIOLET 80Y



CED	BW	WW	YW	MILK	SCF	US	TS	MARB	BMI	CHB
+5.9	+0.70	+57	+85	+26	+20.2	+1.40	+1.30	+0.24	+427	+141

- Suitable For Heifers - Great female maker here. Dam has been around a long time and has a lot of good cows in this pedigree.



S16 225J PARAMOUNT 582M

BULL Polled DOB: 2/25/24 REG#44537909

Tattoo	Actual BW	BW Ratio	Adj WW	WW Ratio
582M	79	97	584	98

EFBEEF X651 TESTED A250
PYRAMID ILR PARAMOUNT 1511 ET
FHF ILR 9116 RITA 25D ET

CTR 88X XCELLENT G904
S16 MISS 144G G904 225J
S16 MISS 25B 394A 144G

EFBEEF TFL U208 TESTED X651 ET
EFBEEF 6378 KATE W484
PYRAMID 16W 110T 9116
FHF 408 RITA 21W
NJW 98S R117 RIBEYE 88X ET
CTR 743 MITTENS SUE 009X
ILR PEACE OF MIND 394A ET
S16 KCS 112 MS WARNER 25B



CED	BW	WW	YW	MILK	SCF	US	TS	MARB	BMI	CHB
+10.4	+0.90	+70	+104	+36	+18.5	+1.30	+1.30	+0.20	+413	+144

- Suitable For Heifers - You absolutely have to love the numbers on this bull. 225J is a young cow we are very excited about.



PYRAMID ILR PARAMOUNT 1511 ET
SIRE OF LOTS 3-7



S16 9A HOSMER 77E
SIRE OF LOTS 8 & 9



S16 257J HOSMER 564M

BULL Homo Polled DOB: 2/13/24 REG#44536062

Tattoo	Actual BW	BW Ratio	Adj WW	WW Ratio
564M	62	76	626	105

ILR RED POWER 456B
S16 9A HOSMER 77E
S16 LHF DELANEY 9A

ESF 10Y HOMETOWN 510 ET
S16 MISS 5401 510 257J
L 1023 VICTORIA 5401

CHURCHILL RED BULL 200Z
KCF MISS PROFICIENT U201
LHF RED EYE 1129
THR MISS THOR 1251Y
NJW 73S W18 HOMETOWN 10Y ET
K LADY RIBEYE 3142
H W4 VICTOR 1023
L=MS 480P DOMINO 114Y



CED	BW	WW	YW	MILK	SCF	US	TS	MARB	BMI	CHB
+10.5	-0.80	+49	+80	+30	+18.9	+1.30	+1.40	+0.18	+397	+131

- Suitable For Heifers - A very thick heavy muscled Hosmer that will make wonderful females.



S16 7200 HOSMER 567M

BULL Polled DOB: 2/14/24 REG#44536085

Tattoo	Actual BW	BW Ratio	Adj WW	WW Ratio
567M	79	93	614	103

ILR RED POWER 456B
S16 9A HOSMER 77E
S16 LHF DELANEY 9A

PYRAMID 16W 110T 9116
ILR LADY PYRAMID 7200
ECR 2141 LUCY 5261

CHURCHILL RED BULL 200Z
KCF MISS PROFICIENT U201
LHF RED EYE 1129
THR MISS THOR 1251Y
FHF M33 STARBUCK 110T ET
FHF 51M ACHIEVA 70T
CL 1 DOMINO 2141Z 1ET
ECR 0133 LUCY 2410



CED	BW	WW	YW	MILK	SCF	US	TS	MARB	BMI	CHB
+8.9	-0.70	+53	+87	+31	+18.0	+1.50	+1.60	+0.24	+395	+143

- Suitable For Heifers - Another Hosmer with an outcross pedigree that will make great females.

HEREFORD BULLS

Hereford Bulls

HEREFORD BULLS



S16 133F OSMUND 174H
SIRE OF LOTS 10-13



S16 335K OSMUND 571M

BULL Homo Polled DOB: 2/15/24 REG#44536021

Tattoo	Actual BW	BW Ratio	Adj WW	WW Ratio
571M	87	114	709	119

S16 782B HIGHLAND 84E
S16 133F OSMUND 174H
S16 MISS 99U 456B 133F

HH ADVANCE 0246H
S16 252Z MISS ADVANCE 335K
PCR TINA LIL 252Z

TH 90U 17Y LAMBEAU 148B
RANGELINE 511X MOLASSES782BET
ILR RED POWER 456B
FHF 51S RITA 99U

HH ADVANCE 7143E ET
HH MISS ADVANCE 5092C
SCHU-LAR 3T OF 206.5N
PCR IDA LIL 32X



CED	BW	WW	YW	MILK	SCF	US	TS	MARB	BMI	CHB
-0.6	+3.80	+63	+102	+31	+12.3	+1.40	+1.40	+0.01	+291	+110

- Big Time Performance out of this Osmund that goes back to our L1 Sire 0246. Was our top WW bull calf. Dam is a 1st calf heifer.



S16 362K OSMUND 563M

BULL Homo Polled DOB: 2/12/24 REG#44536064

Tattoo	Actual BW	BW Ratio	Adj WW	WW Ratio
563M	71	93	627	105

S16 782B HIGHLAND 84E
S16 133F OSMUND 174H
S16 MISS 99U 456B 133F

OBH DAYBREAK 606G
S16 F121 MISS DAYBREAK 362K
APH 88X LADY TRUST F121 ET

TH 90U 17Y LAMBEAU 148B
RANGELINE 511X MOLASSES782BET
ILR RED POWER 456B
FHF 51S RITA 99U

SHF DAYBREAK Y02 D287 ET
OBH MISS LAMBEAU 606
NJW 98S R117 RIBEYE 88X ET
ASM 705 100W MISS ABIGAIL 303A



CED	BW	WW	YW	MILK	SCF	US	TS	MARB	BMI	CHB
+3.3	+1.90	+56	+86	+20	+16.1	+1.40	+1.40	+0.13	+345	+111

- A lot of S16 breeding in this pedigree. 563M's dam is a beautiful Hereford cow that will be around here for a long time. Dam is a 1st calf heifer.



S16 303K OSMUND 557M

BULL Polled DOB: 2/7/24 REG#44536078

Tattoo	Actual BW	BW Ratio	Adj WW	WW Ratio
557M	79	103	661	111

S16 782B HIGHLAND 84E
S16 133F OSMUND 174H
S16 MISS 99U 456B 133F

S16 133F OSMUND 174H
S16 178H MISS OSMUND 303K
S16 MISS 25B 510 178H

TH 90U 17Y LAMBEAU 148B
RANGELINE 511X MOLASSES782BET
ILR RED POWER 456B
FHF 51S RITA 99U

S16 782B HIGHLAND 84E
S16 MISS 99U 456B 133F
ESF 10Y HOMETOWN 510 ET
S16 KCS 112 MS WARNER 25B



CED	BW	WW	YW	MILK	SCF	US	TS	MARB	BMI	CHB
+4.5	+3.40	+60	+90	+25	+16.8	+1.40	+1.40	+0.08	+359	+114

- Another bull out of a 1st calf heifer that simply performed. Was our 2nd highest WW bull calf.



S16 350K OSMUND 562M

BULL Polled DOB: 2/11/24 REG#44537841

Tattoo	Actual BW	BW Ratio	Adj WW	WW Ratio
562M	80	105	613	103

S16 782B HIGHLAND 84E
S16 133F OSMUND 174H
S16 MISS 99U 456B 133F

S16 782B HIGHLAND 84E
S16 34H MISS HIGHLAND 350K
FHF 8148 VICTRA 34H

TH 90U 17Y LAMBEAU 148B
RANGELINE 511X MOLASSES782BET
ILR RED POWER 456B
FHF 51S RITA 99U

TH 90U 17Y LAMBEAU 148B
RANGELINE 511X MOLASSES782BE
PYRAMID DAYBREAK 8148
FHF 11B VICTRA 153F ET



CED	BW	WW	YW	MILK	SCF	US	TS	MARB	BMI	CHB
+8.8	+1.20	+53	+78	+38	+20.0	+1.50	+1.60	+0.20	+394	+108

- Suitable For Heifers
- Here is line bred Highland that will work on hfrs but also ratioed up there towards the top. Dam is a 1st calf hfr.



S16 J301 VALDRES 576M

BULL Polled DOB: 2/17/24 REG#44536016

Tattoo	Actual BW	BW Ratio	Adj WW	WW Ratio
576M	92	118	635	106

S16 782B HIGHLAND 84E
S16 118F VALDRES 173H
 S16 MISS 5369 456B 118F

ILR U201 SOONER 6112 ET
S16 MISS 867 MISS SOONER J301
 ILR 16W LADY MARIAH 867 ET

TH 90U 17Y LAMBEAU 148B
 RANGELINE 511X MOLASSES782BET
 ILR RED POWER 456B
 L MS FRECKLES 5369
 DM BR SOONER
 KCF MISS PROFICIENT U201
 PYRAMID 16W 110T 9116
 H W4 MARIAH 0103 ET



CED	BW	WW	YW	MILK	SCF	US	TS	MARB	BMI	CHB
+4.5	+4.10	+64	+102	+33	+25.0	+1.50	+1.60	+0.12	+525	+161

- 576M has a very unique pedigree that would make a great outcross to many animals. Wonderful set of EPD's. Dam is 1st calf hfr.



S16 TCK 96G PYRAMID 241M

BULL Polled DOB: 2/16/24 REG#44620691

Tattoo	Actual BW	BW Ratio	Adj WW	WW Ratio
241M	90	104	645	103

PYRAMID 16W 110T 9116
ILR 40X PYRAMID 90H ET
 PCR IDA GOLDIE 40X

S16 782B HIGHLAND 84E
TCK 3B MS HIGHLAND 96G
 TCK MS RED BULL RENDITION 3B

FHF M33 STARBUCK 110T ET
 FHF 51M ACHIEVA 70T
 RPH PCR IDAHO 80U
 PCR ABIGAIL GOLDIE 854U
 TH 90U 17Y LAMBEAU 148B
 RANGELINE 511X MOLASSES782BE
 CHURCHILL RED BULL 200Z
 THR MISS THOR 2043Z

CED	BW	WW	YW	MILK	SCF	US	TS	MARB	BMI	CHB
+4.4	+2.80	+57	+92	+25	+17.0	+1.40	+1.50	+0.12	+369	+124

- Top 4% US and Top 10% TS

- These 90H sons are always the same. Lots of growth, muscle and performance in these bulls. We also feel like they will make awesome females.



S16 TCK 83G PYRAMID 247M

BULL Polled DOB: 3/9/24 REG#44620690

Tattoo	Actual BW	BW Ratio	Adj WW	WW Ratio
247M	95	109	691	111

PYRAMID 16W 110T 9116
ILR 40X PYRAMID 90H ET
 PCR IDA GOLDIE 40X

CHURCHILL PILGRIM 632D ET
TCK 7C MS PILGRIM 83G
 TCK MISS BULL DOG 7C

FHF M33 STARBUCK 110T ET
 FHF 51M ACHIEVA 70T
 RPH PCR IDAHO 80U
 PCR ABIGAIL GOLDIE 854U
 NJW 73S W18 HOMETOWN 10Y ET
 CHURCHILL LADY 002X ET
 CHURCHILL RED BULL 200Z
 S16 MINA 3A

CED	BW	WW	YW	MILK	SCF	US	TS	MARB	BMI	CHB
+1.5	+3.70	+63	+103	+29	+17.1	+1.40	+1.50	+0.06	+373	+125

- Top 10% for TS and US.



S16 L1 HIGHLAND 603M ET

BULL Polled DOB: 3/10/24 REG#44542053

Tattoo	Actual BW	BW Ratio	Adj WW	WW Ratio
603M	77	ET	612	ET

TH 90U 17Y LAMBEAU 148B
S16 782B HIGHLAND 84E
 RANGELINE 511X MOLASSES782BET

HH ADVANCE 3297A ET
HH MISS ADVANCE 7131E ET
 HH MISS ADVANCE 1023Y ET

TH 22R 16S LAMBEAU 17Y
 TH 80N 45P GEMINI 90U
 NJW 98S R117 RIBEYE 88X ET
 TH 122 71I DOMINETTE 511X ET
 CL 1 DOMINO 091X
 HH MISS ADVANCE 9228W
 HH ADVANCE 4055P
 HH MISS ADVANCE 7142T



CED	BW	WW	YW	MILK	SCF	US	TS	MARB	BMI	CHB
+5.1	+1.10	+54	+90	+26	+14.6	+1.60	+1.60	+0.26	+349	+144

- Suitable For Heifers - Here is a Highland out of 7131 Holden Cow. Check this guy out for his EPD's, Style and different pedigree.



HH MISS ADVANCE 7131E ET - DAM OF LOTS 15, 26, 28 & 34



S16 TCK 41E PYRAMID 230M

BULL Polled DOB: 1/29/24 REG#44620688

Tattoo	Actual BW	BW Ratio	Adj WW	WW Ratio
230M	78	100	664	112

PYRAMID 16W 110T 9116
ILR 40X PYRAMID 90H ET
 PCR IDA GOLDIE 40X

TH 122 71I VICTOR 719T
TCK 719 VICTOR MAG 41E
 SHF MAGGIE P20 B8Z

FHF M33 STARBUCK 110T ET
 FHF 51M ACHIEVA 70T
 RPH PCR IDAHO 80U
 PCR ABIGAIL GOLDIE 854U
 DRF JWR PRINCE VICTOR 71I
 KBCR 19D DOMINETTE 12Z
 SHF PROGRESS P20
 SHF MAGGIE R117 W4E

CED	BW	WW	YW	MILK	SCF	US	TS	MARB	BMI	CHB
+6.0	+1.90	+57	+90	+27	+17.1	+1.40	+1.40	+0.09	+367	+119

- Top 10% for TS and US.



Hereford Bulls

HEREFORD BULLS



19

19 S16 TCK 48E PYRAMID 231M

BULL Polled DOB: 1/30/24 REG#44620689

Tattoo	Actual BW	BW Ratio	Adj WW	WW Ratio
231M	86	97	618	108

PYRAMID 16W 110T 9116

ILR 40X PYRAMID 90H ET

PCR IDA GOLDIE 40X

KCF BENNETT ENCORE Z311 ET

48E

4-C 205 BRIGHT LADY Y133 359

FHF M33 STARBUCK 110T ET

FHF 51M ACHIEVA 70T

RPH PCR IDAHO 80U

PCR ABIGAIL GOLDIE 854U

SCHU-LAR ON TARGET 22S

KCF MISS REVOLUTION X338 ET

GV CMR FUTURE DOM Y133 ET

JYF MISS MIXER G824 020S

CED	BW	WW	YW	MILK	SCF	US	TS	MARB	BMI	CHB
+2.4	+3.40	+62	+104	+25	+13.8	+0.90	+0.90	+0.24	+331	+141

- Top 20% in YW and CHB.



20

20 S16 ESF 134 PERFECTO 403

BULL Polled DOB: 3/19/24 REG#44577949

Tattoo	Actual BW	BW Ratio	Adj WW	WW Ratio
403	77	100	688	104

LCX PERFECTO 11B ET

BLACKTOP PERFECTO 2902

BLACKTOP SOLUTION 902

NJW 76S 27A LONG RANGE 203D ET

ESF 203D GLORIA 134

ESF 9349 GLORIA 454

NJW 98S R117 RIBEYE 88X ET

WLL ZOEY 3Z

KJ 968R POLLED SOLUTION 668ZET

BLACKTOP MISSY 717

NJW 135U 10Y HOMETOWN 27A

NJW 55N STARDUST 76S

RV WRANGLER 9349

ESF 10H GLORIA 427

CED	BW	WW	YW	MILK	SCF	US	TS	MARB	BMI	CHB
-0.4	+3.60	+67	+102	+33	+20.9	+1.30	+1.30	-0.03	+412	+100

- A deep, big bodied, heavy muscled bull with pigment. Top 10% WW and Top 20% YW.



21

21 S16 ESF 815 FINAL PRINT 417

BULL Homo Polled DOB: 3/24/24 REG#44577954

Tattoo	Actual BW	BW Ratio	Adj WW	WW Ratio
417	86	107	703	102

BOYD 31Z BLUEPRINT 6153

RST FINAL PRINT 0016

RST MS X651 TESTED 8032

NJW 73S W18 HOMEGROWN 8Y ET

ESF 8Y CASSIE 815 ET

ESF 743 CASSIE 021

R LEADER 6964

NJW 91H 100W RITA 31Z ET

EFBEEF TFL U208 TESTED X651 ET

RST MS 0124 TIMESAWASTIN 6094

SHF WONDER M326 W18 ET

NJW P606 72N DAYDREAM 73S

CRR ABOUT TIME 743

LC LEGEND 10J 0203

CED	BW	WW	YW	MILK	SCF	US	TS	MARB	BMI	CHB
+3.8	+1.40	+71	+110	+34	+17.9	+1.40	+1.40	+0.04	+403	+135

- Suitable For Heifers - Top 5% WW Top 10% YW with a lot of spread from Birth to Grow.



S16 ESF 016 PERFECTO 418

BULL Homo Polled DOB: 3/24/24 REG#44577955

Tattoo	Actual BW	BW Ratio	Adj WW	WW Ratio
418	62	79	642	96

LCX PERFECTO 11B ET
BLACKTOP PERFECTO 2902
 BLACKTOP SOLUTION 902
 NJW 84B 4040 FORTIFIED 238F
ESF 238F VIOLET 016
 ESF 0245 VIOLET 405

NJW 98S R117 RIBEYE 88X ET
 WLL ZOEY 3Z
 KJ 968R POLLED SOLUTION 668ZET
 BLACKTOP MISSY 717
 BOYD FT KNOX 17Y XZ5 4040
 NJW 16S 100W JOEY 84B ET
 DKF RO CASH FLOW 0245 ET
 SPH 67W MS CRACKER JACK 28Y



CED	BW	WW	YW	MILK	SCF	US	TS	MARB	BMI	CHB
+15.5	-2.10	+61	+88	+32	+23.2	+1.30	+1.40	+0.10	+454	+118

- Suitable For Heifers
 - Top 1% CED and Top 3% for BW along with wonderful Maternal traits for keeping back daughters.



DVAuction

Broadcasting Real-Time Auctions

Can't make the sale?
 Let DVAuction bring the sale to you!
Busy during the sale?
 Let DVAuction represent your bid!

Visit www.DVAuction.com and register today.

For general questions please contact our office:
 402-316-5460 or support@dvauction.com

HEREFORD BULLS



S16 ESF 669 RED THUNDER 422

BULL Homo Polled DOB: 3/26/24 REG#44577958

Tattoo	Actual BW	BW Ratio	Adj WW	WW Ratio
422	70	86	632	92

DM ALL AROUND 904G ET
CHURCHILL RED THUNDER 133J E
 BR VALIDATED B413 6035 7098
 RV WRANGLER 9349
ESF 9349 JACKIE 669
 SPH 67W MS CRACKER JACK 28Y

LCX PERFECTO 11B ET
 DM L1 DOMINETTE 301 ET
 EFBEEF BR VALIDATED B413
 BR BENNETT 4R Y428 2101 6035
 JDH 15 WRANGLER 25L
 RV ROCKETTE 3449
 AH JDH CRACKER JACK 26U ET
 JDH MS RED FELTON 5162 67W



CED	BW	WW	YW	MILK	SCF	US	TS	MARB	BMI	CHB
+9.9	-0.50	+42	+64	+27	+23.8	+1.40	+1.50	+0.61	+498	+170

- Suitable For Heifers - Big Time heifer bull with Top 1% for Marbling.



S16 ESF 504 RED THUNDER 428

BULL Polled DOB: 3/27/24 REG#44577959

Tattoo	Actual BW	BW Ratio	Adj WW	WW Ratio
428	71	88	652	96

DM ALL AROUND 904G ET
CHURCHILL RED THUNDER 133J E
 BR VALIDATED B413 6035 7098
 CHURCHILL SENSATION 028X
ESF 028X PATTY 504
 ESF 43Y PATTY 307

LCX PERFECTO 11B ET
 DM L1 DOMINETTE 301 ET
 EFBEEF BR VALIDATED B413
 BR BENNETT 4R Y428 2101 6035
 UPS DOMINO 3027
 CHURCHILL LADY 7202 ET
 TH 60W 719T VICTOR 43Y
 ESF 609 PATTY 111



CED	BW	WW	YW	MILK	SCF	US	TS	MARB	BMI	CHB
+8.5	-1.00	+46	+61	+33	+26.7	+1.50	+1.50	+0.45	+539	+161

- Suitable For Heifers
 - Another Heifer bull with Top Index Numbers, Top Marbling and SCF EPD's.

Hereford Bulls



25

S16 ESF 859 FINAL PRINT 433

BULL Polled DOB: 3/28/24 REG#44577963

Tattoo	Actual BW	BW Ratio	Adj WW	WW Ratio
433	70	87	729	107

BOYD 31Z BLUEPRINT 6153
RST FINAL PRINT 0016
 RST MS X651 TESTED 8032

CSC 8Y POWELL 41
ESF 41 BELLE 859
 JDH MS 42X DIMAGGIO 2094 63C

R LEADER 6964
 NJW 91H 100W RITA 31Z ET
 EFBEF TFL U208 TESTED X651 ET
 RST MS 0124 TIMESAWASTIN 6094
 NJW 73S W18 HOMEGROWN 8Y ET
 LB 123S 32S MISS 72W
 H DIMAGGIO 2094 ET
 AH JDH MS 25L WRANGLER 42X E



CED	BW	WW	YW	MILK	SCF	US	TS	MARB	BMI	CHB
+8.7	-1.00	+70	+98	+34	+16.2	+1.70	+1.70	+0.40	+378	+151

- Suitable For Heifers

- Great pedigree on this heifer bull that doesn't lack any muscle or mass of body.

AGED BULLS



26

S16 L1 DAYBREAK L514 ET

BULL Polled DOB: 9/9/23 REG#44492879

Tattoo	Actual BW	BW Ratio	Adj WW	WW Ratio	Adj YW	YW Ratio
L514	67	ET	637	ET	1132	ET

SHF YORK 19H Y02
SHF DAYBREAK Y02 D287 ET
 SHF MISS M326 T08 ET

HH ADVANCE 3297A ET
HH MISS ADVANCE 7131E ET
 HH MISS ADVANCE 1023Y ET

MSU MF HUDSON 19H
 LOEWEN MISS P20 10W
 KCF BENNETT 3008 M326
 SHF POSTIVE MISS 73C M15
 CL 1 DOMINO 091X
 HH MISS ADVANCE 9228W
 HH ADVANCE 4055P
 HH MISS ADVANCE 7142T



CED	BW	WW	YW	MILK	SCF	US	TS	MARB	BMI	CHB
+2.4	+3.30	+73	+122	+32	+19.4	+1.50	+1.40	+0.30	+443	+167

- Herd Bull Alert!!!!

- L514 was hurt on picture day but we think so much of this bull we will be keeping Fall Possession of him. He is exactly what we were hoping for when started crossing L1 Horned genetics with Polled Genetics.



27

S16 274Z DAYBREAK L525 ET

BULL Scurred DOB: 9/13/23 REG#44509438

Tattoo	Actual BW	BW Ratio	Adj WW	WW Ratio	Adj YW	YW Ratio
L525	71	ET	512	ET	999	ET

SHF YORK 19H Y02
SHF DAYBREAK Y02 D287 ET
 SHF MISS M326 T08 ET

CHURCHILL SENSATION 028X
SR SENITA 274Z
 SR HARLET 059X

MSU MF HUDSON 19H
 LOEWEN MISS P20 10W
 KCF BENNETT 3008 M326
 SHF POSTIVE MISS 73C M15
 UPS DOMINO 3027
 CHURCHILL LADY 7202T ET
 CJH HARLAND 408
 SR LINETA 6116



CED	BW	WW	YW	MILK	SCF	US	TS	MARB	BMI	CHB
+7.4	+1.40	+59	+91	+35	+23.0	+1.40	+1.40	+0.15	+469	+134

- Suitable For Heifers

- An unmatched pedigree with this 274Z son. Great numbers and great longevity.

HEREFORD BULLS

28

S16 L1 DAYBREAK L528 ET

BULL Scurred DOB: 9/14/23 REG#44509442

Tattoo	Actual BW	BW Ratio	Adj WW	WW Ratio	Adj YW	YW Ratio
L528	68	ET	542	ET	1061	ET

SHF YORK 19H Y02
SHF DAYBREAK Y02 D287 ET
 SHF MISS M326 T08 ET
 HH ADVANCE 3297A ET
HH MISS ADVANCE 7131E ET
 HH MISS ADVANCE 1023Y ET

MSU MF HUDSON 19H
 LOEWEN MISS P20 10W
 KCF BENNETT 3008 M326
 SHF POSTIVE MISS 73C M15
 CL 1 DOMINO 091X
 HH MISS ADVANCE 9228W
 HH ADVANCE 4055P
 HH MISS ADVANCE 7142T



CED	BW	WW	YW	MILK	SCF	US	TS	MARB	BMI	CHB
+2.9	+3.10	+71	+116	+32	+18.8	+1.40	+1.30	+0.26	+409	+142

- A full brother to L514 with scurs and as good of numbers.



HH MISS ADVANCE 7131E ET - DAM OF LOTS 15, 26, 28 & 34

29

S16 274Z DAYBREAK L536 ET

BULL Polled DOB: 9/20/23 REG#44509452

Tattoo	Actual BW	BW Ratio	Adj WW	WW Ratio	Adj YW	YW Ratio
L536	76	ET	651	ET	1098	ET

SHF YORK 19H Y02
SHF DAYBREAK Y02 D287 ET
 SHF MISS M326 T08 ET
 CHURCHILL SENSATION 028X
SR SENITA 274Z
 SR HARLET 059X

MSU MF HUDSON 19H
 LOEWEN MISS P20 10W
 KCF BENNETT 3008 M326
 SHF POSTIVE MISS 73C M15
 UPS DOMINO 3027
 CHURCHILL LADY 7202T ET
 CJH HARLAND 408
 SR LINETA 6116



CED	BW	WW	YW	MILK	SCF	US	TS	MARB	BMI	CHB
+9.4	-0.40	+55	+84	+29	+24.3	+1.40	+1.30	+0.26	+479	+131

- Suitable For Heifers - A Cow Maker here!!!! Great maternal numbers, Great Marbling and CED/BW to go with it all.



29

These 4 Full Brothers of Highland and our L1 4020 Holden Cow are Deep, Soggy, Loaded with Pigment and Muscle.

30

S16 L1 HIGHLAND L509 ET

BULL Polled DOB: 9/3/23 REG#44491946

Tattoo	Actual BW	BW Ratio	Adj WW	WW Ratio	Adj YW	YW Ratio
L509	72	ET	546	ET	942	ET

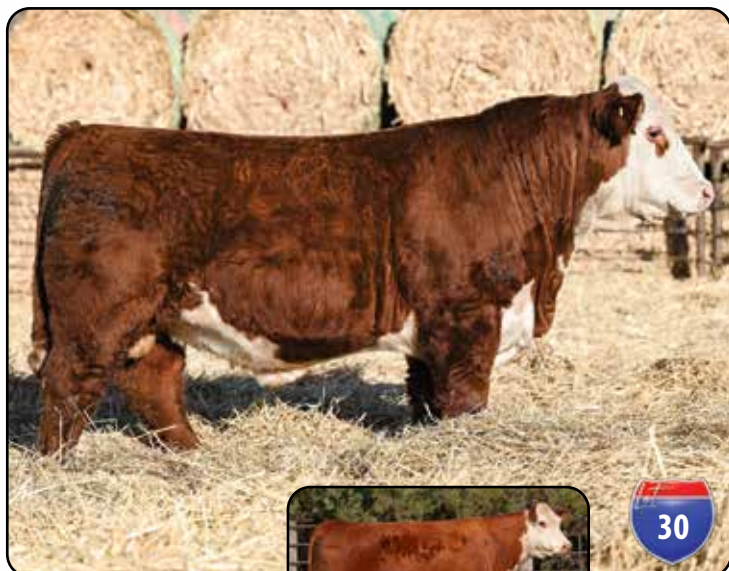
TH 90U 17Y LAMBEAU 148B
S16 782B HIGHLAND 84E
 RANGLINE 511X MOLASSES782BET
 HH ADVANCE 1098Y
HH MISS ADVANCE 4020B ET
 HH MISS ADVANCE 9150W ET

TH 22R 16S LAMBEAU 17Y
 TH 80N 45P GEMINI 90U
 NJW 98S R117 RIBEYE 88X ET
 TH 122 71I DOMINETTE 511X ET
 HH ADVANCE 8050U ET
 HH MISS ADVANCE 9065W ET
 HH ADVANCE 4055P
 HH MISS ADVANCE 1088L



CED	BW	WW	YW	MILK	SCF	US	TS	MARB	BMI	CHB
+5.1	+1.40	+55	+87	+27	+16.1	+1.60	+1.70	+0.15	+364	+135

- Suitable For Heifers



30



HH MISS ADVANCE 4020B ET - DAM OF LOTS 30, 31, 32, 33

Hereford Bulls

HEREFORD BULLS



31

S16 L1 HIGHLAND L512 ET

BULL De-Horned **DOB:** 9/8/23 **REG#**44492881

Tattoo	Actual BW	BW Ratio	Adj WW	WW Ratio	Adj YW	YW Ratio
L512	71	ET	659	ET	1057	ET

TH 90U 17Y LAMBEAU 148B
S16 782B HIGHLAND 84E
 RANGELINE 511X MOLASSES782BET

TH 22R 16S LAMBEAU 17Y
 TH 80N 45P GEMINI 90U
 NJW 98S R117 RIBEYE 88X ET
 TH 122 71I DOMINETTE 511X ET

HH ADVANCE 1098Y
HH MISS ADVANCE 4020B ET
 HH MISS ADVANCE 9150W ET

HH ADVANCE 8050U ET
 HH MISS ADVANCE 9065W ET
 HH ADVANCE 4055P
 HH MISS ADVANCE 1088L



CED	BW	WW	YW	MILK	SCF	US	TS	MARB	BMI	CHB
+4.2	+1.50	+53	+84	+22	+17.5	+1.50	+1.60	+0.16	+387	+139

- Suitable For Heifers



32

S16 L1 HIGHLAND L515 ET

BULL Polled **DOB:** 9/9/23 **REG#**44492877

Tattoo	Actual BW	BW Ratio	Adj WW	WW Ratio	Adj YW	YW Ratio
L515	67	ET	615	ET	1017	ET

TH 90U 17Y LAMBEAU 148B
S16 782B HIGHLAND 84E
 RANGELINE 511X MOLASSES782BET

TH 22R 16S LAMBEAU 17Y
 TH 80N 45P GEMINI 90U
 NJW 98S R117 RIBEYE 88X ET
 TH 122 71I DOMINETTE 511X ET

HH ADVANCE 1098Y
HH MISS ADVANCE 4020B ET
 HH MISS ADVANCE 9150W ET

HH ADVANCE 8050U ET
 HH MISS ADVANCE 9065W ET
 HH ADVANCE 4055P
 HH MISS ADVANCE 1088L



CED	BW	WW	YW	MILK	SCF	US	TS	MARB	BMI	CHB
+8.4	-0.70	+44	+68	+21	+20.1	+1.60	+1.70	+0.19	+397	+110

- Suitable For Heifers

33

S16 L1 HIGHLAND L526 ET

BULL Polled **DOB:** 9/13/23 **REG#**44509439

Tattoo	Actual BW	BW Ratio	Adj WW	WW Ratio	Adj YW	YW Ratio
L526	64	ET	512	ET	970	ET

TH 90U 17Y LAMBEAU 148B
S16 782B HIGHLAND 84E
 RANGELINE 511X MOLASSES782BET

TH 22R 16S LAMBEAU 17Y
 TH 80N 45P GEMINI 90U
 NJW 98S R117 RIBEYE 88X ET
 TH 122 71I DOMINETTE 511X ET

HH ADVANCE 1098Y
HH MISS ADVANCE 4020B ET
 HH MISS ADVANCE 9150W ET

HH ADVANCE 8050U ET
 HH MISS ADVANCE 9065W ET
 HH ADVANCE 4055P
 HH MISS ADVANCE 1088L



CED	BW	WW	YW	MILK	SCF	US	TS	MARB	BMI	CHB
+2.9	+0.70	+49	+76	+22	+14.7	+1.60	+1.70	+0.18	+338	+132

- Suitable For Heifers

34

S16 L1 HIGHLAND L544 ET

BULL Polled **DOB:** 10/30/23 **REG#**44509461

Tattoo	Actual BW	BW Ratio	Adj WW	WW Ratio	Adj YW	YW Ratio
L544	63	ET	499	ET	1046	ET

TH 90U 17Y LAMBEAU 148B
S16 782B HIGHLAND 84E
 RANGELINE 511X MOLASSES782BET

TH 22R 16S LAMBEAU 17Y
 TH 80N 45P GEMINI 90U
 NJW 98S R117 RIBEYE 88X ET
 TH 122 71I DOMINETTE 511X ET

HH ADVANCE 3297A ET
HH MISS ADVANCE 7131E ET
 HH MISS ADVANCE 1023Y ET

CL 1 DOMINO 091X
 HH MISS ADVANCE 9228W
 HH ADVANCE 4055P
 HH MISS ADVANCE 7142T



CED	BW	WW	YW	MILK	SCF	US	TS	MARB	BMI	CHB
+1.0	+3.00	+62	+102	+26	+12.3	+1.40	+1.50	+0.12	+322	+144

- A full brother to Lot #15 just an aged version. L544 is a little younger than the other Fall Bulls but has one of the best EPD profiles in the bunch.



S16 782B HIGHLAND 84E - SIRE OF LOTS 15, 30-34

DVAuction
 Broadcasting Real-Time Auctions

Hereford Bulls

These 5 Guardian sons have Style, Power, Muscle and Maternal all wrapped into one package. 782B is the Dam of Highland 84E and 274Z is Kade's 12 year old Sensation 028X daughter. Both cows are still in production at S16.

35 S16 782 GUARDIAN L513 ET

BULL Polled DOB: 9/8/23 REG#44492822

Tattoo	Actual BW	BW Ratio	Adj WW	WW Ratio	Adj YW	YW Ratio
L513	70	ET	618	ET	1088	ET

LOEWEN GENESIS G16 ET
C GKB GUARDIAN 1015 ET
 C CJC BELLE AIR LASS 8037 ET

NJW 985 R117 RIBEYE 88X ET
RANGELINE 511X MOLASSES782BET
 TH 122 71I DOMINETTE 511X ET

NJW 792 Z311 ENDURE 173D ET
 LOEWEN 77 48 MISS 344N 4RB42ET
 BR BELLE AIR 6011
 C CJC 89T MISS MILES 4264 ET
 SHF RIB EYE M326 R117
 NJW 9126J DEW DOMINO 98S
 DRF JWR PRINCE VICTOR 71I
 KBCR 19D DOMINETTE 122



CED	BW	WW	YW	MILK	SCF	US	TS	MARB	BMI	CHB
+4.8	+2.50	+64	+97	+25	+11.9	+1.40	+1.40	+0.26	+321	+150



36 S16 274Z GUARDIAN L519 ET

BULL Polled DOB: 9/10/23 REG#44510423

Tattoo	Actual BW	BW Ratio	Adj WW	WW Ratio	Adj YW	YW Ratio
L519	78	ET	613	ET	984	ET

LOEWEN GENESIS G16 ET
C GKB GUARDIAN 1015 ET
 C CJC BELLE AIR LASS 8037 ET

CHURCHILL SENSATION 028X
SR SENITA 274Z
 SR HARLET 059X

NJW 792 Z311 ENDURE 173D ET
 LOEWEN 77 48 MISS 344N 4RB42ET
 BR BELLE AIR 6011
 C CJC 89T MISS MILES 4264 ET
 UPS DOMINO 3027
 CHURCHILL LADY 7202T ET
 CJH HARLAND 408
 SR LINETA 6116



CED	BW	WW	YW	MILK	SCF	US	TS	MARB	BMI	CHB
+8.2	-0.20	+52	+85	+30	+27.6	+1.50	+1.40	+0.24	+518	+123

- Suitable For Heifers



SR SENITA 274Z - DAM OF LOTS 27, 29, 36 & 37

37 S16 274Z GUARDIAN L522 ET

BULL Polled DOB: 9/12/23 REG#44510424

Tattoo	Actual BW	BW Ratio	Adj WW	WW Ratio	Adj YW	YW Ratio
L522	81	ET	615	ET	1077	ET

LOEWEN GENESIS G16 ET
C GKB GUARDIAN 1015 ET
 C CJC BELLE AIR LASS 8037 ET

CHURCHILL SENSATION 028X
SR SENITA 274Z
 SR HARLET 059X

NJW 792 Z311 ENDURE 173D ET
 LOEWEN 77 48 MISS 344N 4RB42ET
 BR BELLE AIR 6011
 C CJC 89T MISS MILES 4264 ET
 UPS DOMINO 3027
 CHURCHILL LADY 7202T ET
 CJH HARLAND 408
 SR LINETA 6116



CED	BW	WW	YW	MILK	SCF	US	TS	MARB	BMI	CHB
+4.3	+1.50	+64	+100	+35	+26.0	+1.50	+1.40	+0.45	+532	+166

- Suitable For Heifers

- Herd Bull Alert



Hereford Bulls

HEREFORD BULLS



C GKB GUARDIAN 1015 ET
SIRE OF LOTS 35-39



SCAN ME



38 S16 782B GUARDIAN L533 ET

BULL Scurred DOB: 9/15/23 REG#44510427

Tattoo	Actual BW	BW Ratio	Adj WW	WW Ratio	Adj YW	YW Ratio
L533	79	ET	531	ET	947	ET

LOEWEN GENESIS G16 ET
C GKB GUARDIAN 1015 ET
C CJC BELLE AIR LASS 8037 ET

NJW 98S R117 RIBEYE 88X ET
RANGELINE 511X MOLASSES782BET
TH 122 71I DOMINETTE 511X ET

NJW 79Z Z311 ENDURE 173D ET
LOEWEN 77 48 MISS 344N 4RB42ET
BR BELLE AIR 6011
C CJC 89T MISS MILES 4264 ET
SHF RIB EYE M326 R117
NJW 9126J DEW DOMINO 98S
DRF JWR PRINCE VICTOR 71I
KBCR 19D DOMINETTE 122



CED	BW	WW	YW	MILK	SCF	US	TS	MARB	BMI	CHB
+6.0	+2.40	+62	+92	+25	+15.9	+1.50	+1.50	+0.38	+374	+155

39 S16 782B GUARDIAN L547 ET

BULL Polled DOB: 9/12/23 REG#44538220

Tattoo	Actual BW	BW Ratio	Adj WW	WW Ratio	Adj YW	YW Ratio
L547	83	ET	588	ET	987	ET

LOEWEN GENESIS G16 ET
C GKB GUARDIAN 1015 ET
C CJC BELLE AIR LASS 8037 ET

NJW 98S R117 RIBEYE 88X ET
RANGELINE 511X MOLASSES782BET
TH 122 71I DOMINETTE 511X ET

NJW 79Z Z311 ENDURE 173D ET
LOEWEN 77 48 MISS 344N 4RB42ET
BR BELLE AIR 6011
C CJC 89T MISS MILES 4264 ET
SHF RIB EYE M326 R117
NJW 9126J DEW DOMINO 98S
DRF JWR PRINCE VICTOR 71I
KBCR 19D DOMINETTE 122



CED	BW	WW	YW	MILK	SCF	US	TS	MARB	BMI	CHB
+7.0	+1.50	+58	+90	+24	+20.3	+1.60	+1.50	+0.32	+437	+149

- Suitable For Heifers

Hereford Bulls



Jay Kloos told me he thought this flush would work with Highland's Dam and Authority. He was right!!!! If you want something that works and has an outcross pedigree, here you go.



RANGELINE 511X MOLASSES782BET - DAM OF LOTS 35, 38, 39, 40 & 41



H FHF AUTHORITY 6026 ET



40 S16 782B AUTHORITY L529 ET

BULL Polled DOB: 9/14/23 REG#44509443

Tattoo	Actual BW	BW Ratio	Adj WW	WW Ratio	Adj YW	YW Ratio
L529	81	ET	551	ET	972	ET

PYRAMID 16W 110T 9116
H FHF AUTHORITY 6026 ET
 FHF 408 RITA 21W

NJW 98S R117 RIBEYE 88X ET
RANGELINE 511X MOLASSES782BET
 TH 122 71I DOMINETTE 511X ET

FHF M33 STARBUCK 110T ET
 FHF 51M ACHIEVA 70T
 CJH HARLAND 408
 FHF 45P RITA 101T

SHF RIB EYE M326 R117
 NJW 9126J DEW DOMINO 98S
 DRF JWR PRINCE VICTOR 71I
 KBCR 19D DOMINETTE 122



CED	BW	WW	YW	MILK	SCF	US	TS	MARB	BMI	CHB
+5.8	+2.00	+51	+78	+20	+20.3	+1.40	+1.50	-0.02	+397	+95

41 S16 782B AUTHORITY L538 ET

BULL Homo Polled DOB: 9/15/23 REG#44509457

Tattoo	Actual BW	BW Ratio	Adj WW	WW Ratio	Adj YW	YW Ratio
L538	78	ET	533	ET	875	ET

PYRAMID 16W 110T 9116
H FHF AUTHORITY 6026 ET
 FHF 408 RITA 21W

NJW 98S R117 RIBEYE 88X ET
RANGELINE 511X MOLASSES782BET
 TH 122 71I DOMINETTE 511X ET

FHF M33 STARBUCK 110T ET
 FHF 51M ACHIEVA 70T
 CJH HARLAND 408
 FHF 45P RITA 101T

SHF RIB EYE M326 R117
 NJW 9126J DEW DOMINO 98S
 DRF JWR PRINCE VICTOR 71I
 KBCR 19D DOMINETTE 122



CED	BW	WW	YW	MILK	SCF	US	TS	MARB	BMI	CHB
+7.7	-0.50	+49	+72	+26	+26.9	+1.30	+1.40	+0.10	+496	+100

- Suitable For Heifers - Top 20% CED and Top 10% BW.

Angus Bulls

We used Architect for his BW to YW spread, Docility, Feet Scores and great maternal traits.
We are very happy with his first set of calves here. Lots of muscle, growth and style.



S16 912 ARCHITECT 14M

Bull REG#20921066 DOB: 3/2/24 **ANGUS**

Tattoo	Actual BW	BW Ratio	Adj WW	WW Ratio	Adj YW	YW Ratio
14M	86	112	544	90		

SYDGEN BLUEPRINT
S ARCHITECT 9501
S BLOSSOM 7514

BUSHS TUNDRA 602
MA MS TUNDRA 912
BERBOS BLKCP BARDOLIER 7245

KM BROKEN BOW 002
SITZ FLORABELLE FANNY 4735
S WHITLOCK 179
S BLOSSOM 5525

BASIN EXCITEMENT
BUSHS LADY TIMELESS 2850
SITZ ALLIANCE 455N
BERBOS BLKCAP BARDOLIER 5177

CED	+3
BW	+2.1
WW	+79
YW	+129
MILK	+12
DOC	+23
\$M	+79
\$W	+63
\$C	+231

Top 20% WW, Top 35% YW, Top 20% \$M.



S16 830 ARCHITECT 16M

Bull REG#20921167 DOB: 3/6/24 **ANGUS**

Tattoo	Actual BW	BW Ratio	Adj WW	WW Ratio	Adj YW	YW Ratio
16M	83	108	684	113		

SYDGEN BLUEPRINT
S ARCHITECT 9501
S BLOSSOM 7514

TR VALIDATE A3005
MA MS VALIDATE 830
METTLERS MS COPPER MTN 4114

KM BROKEN BOW 002
SITZ FLORABELLE FANNY 4735
S WHITLOCK 179
S BLOSSOM 5525

S A V FINAL ANSWER 0035
GR MS PRIDE Y101
S A V COPPER MOUNTAIN 1389
METTLERS MS BIG EYE 0327X

CED	+7
BW	+1.3
WW	+78
YW	+126
MILK	+11
DOC	+25
\$M	+61
\$W	+61
\$C	+237

Suitable For Heifers
- Top 20% WW, Top 25% Doc, Top 30% & 10% for
Claw and Angle.



S16 829 ARCHITECT 17M

Bull REG#20921169 DOB: 3/6/24 **ANGUS**

Tattoo	Actual BW	BW Ratio	Adj WW	WW Ratio	Adj YW	YW Ratio
17M	82	106	633	105		

SYDGEN BLUEPRINT
S ARCHITECT 9501
S BLOSSOM 7514

S A V RANCH KING 2463
MA MS RANCH KING 829
METTLERS MS VALIDATE 5102

KM BROKEN BOW 002
SITZ FLORABELLE FANNY 4735
S WHITLOCK 179
S BLOSSOM 5525

S A V 707 RITO 9969
S A V BLACKCAP MAY 5530
TR VALIDATE A3005
TR MS LASSIE 7208T

CED	+7
BW	+0.0
WW	+72
YW	+120
MILK	+23
DOC	+28
\$M	+91
\$W	+74
\$C	+257

Suitable For Heifers
- Top 25% BW, Top 35% WW, Top 15% Doc, Top 30%
Claw and Angle, Top 4% \$M.



ANGUS BULLS



S16 403 PATHFINDER 2M

Bull REG#20921009 DOB: 2/14/24 **ANGUS**

Tattoo	Actual BW	BW Ratio	Adj WW	WW Ratio	Adj YW	YW Ratio
2M	63	82	603	100		

KOUPALS B&B PATHFINDER 8106
PYRAMID PATHFINDER 2043
 GLACIAL 1441 MISSIE 62B
 JMC ANSWER 9452 529B
FELR BARBARA 403
 R T P BARBARA F P 26

LT ENTERPRISES 5213
 B&B BLKBD PROGRESS 3015
 S A V RESOURCE 1441
 GLACIAL 8646 MISSIE 109X
 S A V FINAL ANSWER 0035
 BLACK LUCY OF CONANGA 1864
 CONNEALY FINAL PRODUCT
 R T P BARBARA BISMARCK 946

CED	+11
BW	-2.1
WW	+49
YW	+95
MILK	+28
DOC	+14
\$M	+59
\$W	+53
\$C	+190

Suitable For Heifers

- Top 35% CED, Top 3% BW, Top 35% Milk.



S16 712 PATHFINDER 3M

Bull REG#20927124 DOB: 2/19/24 **ANGUS**

Tattoo	Actual BW	BW Ratio	Adj WW	WW Ratio	Adj YW	YW Ratio
3M	108	140	723	120		

KOUPALS B&B PATHFINDER 8106
PYRAMID PATHFINDER 2062
 GLACIAL 6846 MISSIE 142H
 S A V RENOWN 3439
MA MS RENOWN 712
 METTLERS MS LASS 9010W

LT ENTERPRISES 5213
 B&B BLKBD PROGRESS 3015
 S A V RAINFALL 6846
 GLACIAL 255 MISSIE 22F
 RITO 707 OF IDEAL 3407 7075
 S A V BLACKCAP MAY 4136
 CHESTNUT WACKER 36
 TR MS LASS 3022N

CED	+5
BW	+5.3
WW	+79
YW	+141
MILK	+17
DOC	+16
\$M	+48
\$W	+47
\$C	+227

Big Time Growth

- Top 20% WW and YW, Top 2% Claw Top 4% Angle.



Angus Bulls

ANGUS BULLS



S16 H13 PATHFINDER 19M

Bull REG#20914104 DOB: 3/9/24 **ANGUS**

Tattoo	Actual BW	BW Ratio	Adj WW	WW Ratio	Adj YW	YW Ratio
19M	61	79	589	97		

KOUPALS B&B PATHFINDER 8106
PYRAMID PATHFINDER 2043
 GLACIAL 1441 MISSIE 62B

MA RENOWN 7312
S16 MA MS RENOWN H13
 MS MS RANCH KING 732

LT ENTERPRISES 5213
 B&B BLKBD PROGRESS 3015
 S A V RESOURCE 1441
 GLACIAL 8646 MISSIE 109X
 S A V RENOWN 3439
 METTLERS MS ERICA 9007W
 S A V RANCH KING 2463
 TR MS SNOW WHITE 6093S

CED	+11
BW	-1.2
WW	+54
YW	+96
MILK	+24
DOC	+11
\$M	+51
\$W	+54
\$C	+207

Suitable For Heifers - Top 15% CED, Top 10% BW, Top 15% Claw, Top 35% Angle.



S16 110 FIRESTEEL 6M

Bull REG#20921018 DOB: 2/26/24 **ANGUS**

Tattoo	Actual BW	BW Ratio	Adj WW	WW Ratio	Adj YW	YW Ratio
6M	78	101	662	109		

KG JUSTIFIED 3023
LT FIRESTEEL 1123
 LT ERICA 8120

SITZ DRIVE 625F
MA MS DRIVE 110
 TOPP RUBY 9775

CONNEALY JUDGEMENT
 KG MISS MAGIC 1443
 CONNEALY CONFIDENCE PLUS
 LT ERICA 0121
 SITZ INVASION 574D
 SITZ MISS BURGESS 304D
 TC FREAL 625
 TOPP RUBY 7897

CED	+6
BW	-0.6
WW	+77
YW	+138
MILK	+30
DOC	+23
\$M	+92
\$W	+86
\$C	+312

Suitable For Heifers - Herd Bull Alert - Top 15% BW, Top 20% WW & YW, Top 35% Doc, Top 25% Milk, Top 4% \$M, Top 4% \$W, Top 15% \$C.



S16 810 PRAIRIE FIRE 25M

Bull REG#20973087 DOB: 3/29/24 **ANGUS**

Tattoo	Actual BW	BW Ratio	Adj WW	WW Ratio	Adj YW	YW Ratio
25M	80	104	586	97		

JK HIGH POINT 745
JK PRAIRIE FIRE 005
 J K SOLDIERETTE 525

S A V RENOWN 3439
MA MS RENOWN 810
 METTLERS KATINKA KAY 9022W

HIGH POINT RING OF FIRE 5071
 J K BLACKBIRD 408
 K M KRUGERRAND KRUSH
 J K SOLDIERETTE 051
 RITO 707 OF IDEAL 3407 7075
 S A V BLACKCAP MAY 4136
 CHESTNUT WACKER 36
 TR MS KATINKA KAY 3023N

CED	+3
BW	+2.0
WW	+66
YW	+117
MILK	+31
DOC	+32
\$M	+53
\$W	+62
\$C	+235

Our Youngest Yearling Bull caught up with his older pen mates with plenty of growth in his pedigree.



Angus Bulls



These Fall Aged Prairie Fire Sons all have plenty of muscle and mass to sire a superior set of feeder calves. We love the uniformity in this group of half brothers.



JK HIGH POINT 745
GRANDSIRE OF LOTS 50-55



S16 FIREPROOF 3204

Bull REG#20967031 DOB: 8/13/23 **ANGUS**

Tattoo	Actual BW	BW Ratio	Adj WW	WW Ratio	Adj YW	YW Ratio
3204	84	100	839	100	1281	100

JK HIGH POINT 745	HIGH POINT RING OF FIRE 5071	CED	+3
JK PRAIRIE FIRE 005	J K BLACKBIRD 408	BW	+1.5
J K SOLDIERETTE 525	K M KRUGERRAND KRUSH	WW	+74
	J K SOLDIERETTE 051	YW	+128
BASIN RAINMAKER 4404	BASIN RAINMAKER 2704	MILK	+17
MA MS RAINMASTER 905	BASIN JOY 1036	DOC	+22
METTLERS MS SUNDANCE 2113	PLAINVIEW SUN DANCE G39	\$M	+38
	H MAN PRIME DESIGN 5077	\$W	+57
		\$C	+199

Top 30% and 35% for WW and YW.



S16 FIRETORCH 3209

Bull REG#20967032 DOB: 8/16/23 **ANGUS**

Tattoo	Actual BW	BW Ratio	Adj WW	WW Ratio	Adj YW	YW Ratio
3209	87	106	772	97	1236	95

JK HIGH POINT 745	HIGH POINT RING OF FIRE 5071	CED	+5
JK PRAIRIE FIRE 005	J K BLACKBIRD 408	BW	+2.3
J K SOLDIERETTE 525	K M KRUGERRAND KRUSH	WW	+65
	J K SOLDIERETTE 051	YW	+113
STYLES CASHED IN S8	BARSTOW CASH	MILK	+19
MA MS CASHED IN 806	STYLES PRIDE P302	DOC	+30
MA MS VALIDATE 6125	TR VALIDATE A3005	\$M	+43
	TR MS BLACK ROSE 7204T	\$W	+53
		\$C	+188

Top 10% Doc.



S16 FIREPLUG 3210

Bull REG#20967033 DOB: 8/16/23 **ANGUS**

Tattoo	Actual BW	BW Ratio	Adj WW	WW Ratio	Adj YW	YW Ratio
3210	81	99	742	94	1266	98

JK HIGH POINT 745	HIGH POINT RING OF FIRE 5071	CED	+8
JK PRAIRIE FIRE 005	J K BLACKBIRD 408	BW	+1.0
J K SOLDIERETTE 525	K M KRUGERRAND KRUSH	WW	+55
	J K SOLDIERETTE 051	YW	+101
TR MA LEXICON 7001E	GDAR LEUPOLD 298	MILK	+24
MA MS LEXICON 004	TR MS BLACKCAP 5118C	DOC	+12
METTLERS SUNBEAM MS LUT 0328	PLAINVIEW SUN DANCE G39	\$M	+50
	PLAINVIEW PRIDE C123	\$W	+48
		\$C	+213

Top 35% CED, Top 20% Claw, Top 10% Angle.



Angus Bulls

ANGUS BULLS



S16 FIRESTICK 3212

Bull REG#20967034 DOB: 8/17/23 **ANGUS**

Tattoo	Actual BW	BW Ratio	Adj WW	WW Ratio	Adj YW	YW Ratio
3212	82	100	808	102	1247	97

JK HIGH POINT 745	HIGH POINT RING OF FIRE 5071	CED	+4
JK PRAIRIE FIRE 005	J K BLACKBIRD 408	BW	+1.5
J K SOLDIERETTE 525	K M KRUGERRAND KRUSH	WW	+70
S S NIAGARA Z29	J K SOLDIERETTE 051	YW	+125
TOPP PAMELA 9787	HOOVER DAM	MILK	+24
TA PAMELA 0601	JET S S X144	DOC	+
	B C C BUSHWACKER 41-93	\$M	+45
	BASIN PAMELA L40	\$W	+57
		\$C	+

Top 40% in WW and YW.



S16 FIRETHORN 3214

Bull REG#20967035 DOB: 8/17/23 **ANGUS**

Tattoo	Actual BW	BW Ratio	Adj WW	WW Ratio	Adj YW	YW Ratio
3214	78	95	845	107	1356	105

JK HIGH POINT 745	HIGH POINT RING OF FIRE 5071	CED	+7
JK PRAIRIE FIRE 005	J K BLACKBIRD 408	BW	+1.8
J K SOLDIERETTE 525	K M KRUGERRAND KRUSH	WW	+81
TC FREAL 625	J K SOLDIERETTE 051	YW	+141
TOPP BARBARA 9853	EF AUTHENTIC 0829	MILK	+24
TOPP BARBARA 6136	TC GRMAKER 4063	DOC	+20
	SVA THE DONALD 4030	\$M	+28
	TOPP BARBARA 1319	\$W	+70
		\$C	+216

Suitable For Heifers - Top 15% and 20% for WW and YW, Top 30% \$W.



S16 FIREWALL 3219

Bull REG#20967036 DOB: 8/23/23 **ANGUS**

Tattoo	Actual BW	BW Ratio	Adj WW	WW Ratio	Adj YW	YW Ratio
3219	74	100	739	100	1273	100

JK HIGH POINT 745	HIGH POINT RING OF FIRE 5071	CED	-1
JK PRAIRIE FIRE 005	J K BLACKBIRD 408	BW	+3.9
J K SOLDIERETTE 525	K M KRUGERRAND KRUSH	WW	+68
BASIN RAINMAKER 4404	J K SOLDIERETTE 051	YW	+112
MA MS RAINMAKER 914	BASIN RAINMAKER 2704	MILK	+22
METTLERS MS SUNDANCE 0349X	BASIN JOY 1036	DOC	+16
	PLAINVIEW SUN DANCE G39	\$M	+46
	TR MS TRIPLE BARBARA 2100M	\$W	+54
		\$C	+238

Top 20% DMI, Top 10% \$F.



Balancer Bulls



We really like these two Balancer Bulls for their mass of muscle and pure performance. We feel they will be a great outcross to make awesome commercial feeder calves.



BALANCER BULLS



S16 TRIDENT 3220L

Bull REG#1615165 DOB: 9/1/23 **ANGUS**

Tattoo	Actual BW	Adj WW	Adj YW	Polled
3220L	78	814	1137	
2390J	REVENANT 8308F	VIGILANTE 2101Z	CED	16
8221F	TR MA LEXICON 7001E	6200D ET	BW	-1.2
MA MS LEXICON 901	MA MS RANCH KING 729	BRANDED MAN 3400A	WW	82
		6212D	YW	129
		GDAR LEUPOLD 298	MILK	28
		TR MS BLACKCAP 5118C		
		S A V RANCH KING 2463		
		METTLERS MS BIG EYE 0353X		

Top 15% CED, Top 15% WW, Top 20% YW, Top 20% Milk, Top 15% CW.



S16 TRIPower 3224L

Bull REG#1615166 DOB: 9/10/23 **ANGUS**

Tattoo	Actual BW	Adj WW	Adj YW	Polled
3224L	87	710	1051	
2390J	REVENANT 8308F	VIGILANTE 2101Z	CED	12
8221F	TR MA LEXICON 7001E	6200D ET	BW	0.5
MA MS 004 717	MA MS RANCH KING 729	BRANDED MAN 3400A	WW	70
		6212D	YW	108
		SITZ TRAVELER 8180	MILK	23
		BOYD FOREVER LADY 8003		
		PLAINVIEW SUN DANCE G39		
		TR MS BARBARA 2102M		

Top 20% CW, Top 15% CEM.

MANAGING YOUR NEWLY PURCHASED BULL

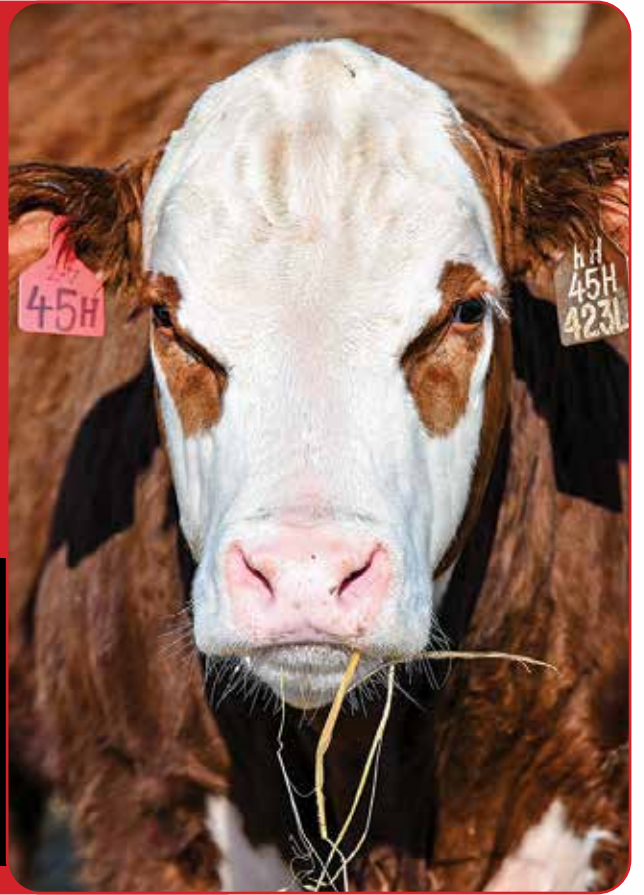
How many cows can my bull breed?

A good rule of thumb is 1 cow/month of age of your bull, up to 2 years old.

- A young bull should be acclimated to grazing pasture for 7-10 days prior to turn out, to allow the rumen to adjust from dry feed.
- Use your young bulls for a maximum of 60 days in order to prevent overuse, severe weight loss and reduced libido.
- After 60 days, remove yearling bulls from the pasture so they can be fed a proper diet for growth.
- NOTE: Your yearling bull is still growing; he is only 60-65% of his mature weight and frame sized. He requires a higher plane of nutrition than a mature bull or cow.

Your yearling bull will have a nutrient requirement of 60% TDN, 48 NEG and 10-11% protein until he is around 2 years old.

- **FRESH GRASS PASTURE** 61% TDN, 31 NEG AND 15% PROTEIN
- **NATURE GRASS PASTURE** 58% TDN, 25 NEG AND 9% PROTEIN
- **CORN STALK GRAZING** 50% TDN, 20 NEG AND 5% PROTEIN
- **GOOD ALFALFA HAY** 60% TDN, 34 NEG AND 18% PROTEIN
- **CORN GRAIN** 88% TDN, 66 NEG AND 7-9% PROTEIN
- **CORN SILAGE** 70% TDN, 46 NEG AND 7-9% PROTEIN



CALF WEIGHT BIRTH STUDY

University studies in Wyoming and data from Montana and Colorado lend credence to the following conclusions:

1. The birth weight itself influences calving ease by 65%.
2. The female has 60 - 70% influence on birth weight of her calf.
3. The bull has 30 -40% influence on birth weight of his progeny.
4. Pelvic measurement and angle, as well as the shape of the calf have 35 - 40% influence on calving ease.
5. Length of gestation greatly affects birth weight. A fetus can gain over one pound per day in the last days of gestation.
6. Weather and temperature the last 30 days affect the length of gestation.
7. Size and maturity of the cow influence calving ease.
8. Remember, everything is relative. Increased growth, frame and performance will increase birthweight. A longer bodied calf will weigh more. If a calf is expected to have genetics for growth, it will display this prior to birth, as well as after.
9. A cow should easily give birth to a calf weighing 8% of her body weight. Thus a 1200 lb. cow should give birth to a 96 lb. calf with ease.
10. At Section 16 Cattle Co. we have seen as much as a 40 lb. difference in calf weights from a single sire. The weight difference seemed to follow the Dams BW EPD almost everytime.

If you are not physically recording birth weights, guessing is as accurate as driving with a broken speedometer

—
what's thought to be 55 MPH in fact be 65 or 70 MPH, and what's thought to be 70-80 lbs. may actually be 80-90 lbs.





MARK'S MAXWELL 1M

Bull REG#4347750 DOB: 1/22/24

Tattoo	Actual BW	Adj WW	Adj YW	Homo Polled
1M	78	754	1150	

G A R HOME TOWN
CLRS JUSTIFIED 7101J
K M J MS SFORCE E101

MARK'S HORIZON 12H
MARK'S BLACKCAP MAY 7K
JND BLACKCAP MAY 70E

G A R ASHLAND
CHAIR ROCK SURE FIRE 6095
HOOKS SHEAR FORCE 38K
CCR 602M L ONE 7116T
HOOK'S FULL FIGURES 11F
CLRS EXTRA SALTY 741E
PROFIT
S A V BLACKCAP MAY 1657

5/8 SM 3/8 AN
HETERO BLACK HOMO POLLED

CE	8
BW	3.6
WW	96
YW	148
ADG	0.33
MCE	4
MILK	25
MWW	74
STAY	11
DOC	16.3
CW	59.6
YG	-0.34
MARB	0.48
BF	-0.085
REA	1.03
API	127
TI	91



CLRS JUSTIFIED 7101J – SIRE OF LOT 58



FOR CATALOG, VIDEOS AND UPDATES VISIT: www.i29bullrun.com

Simmental Bulls



59

MARK'S STANDOUT 2M

Bull REG#4391749 DOB: 1/27/24

Tattoo	Actual BW	Adj WW	Adj YW	Homo Polled
2M	68 Twin	626	994	Homo Polled
OMF EPIC E27		WS ALL-AROUND Z35		
SCHOOLEY STANDOUT 27G		OMF TIME LESS B100		
CLRS BEAUTY QUEEN 420 B		CCR COWBOY CUT 5048Z		
HOOK'S FULL FIGURES 11F		TSN MISS 1407 P146		
MARK'S MS. HAILEY 4H		TJ DIPLOMAT 294D		
KGH MISS EPIC 364A		HOOK'S DOCILA 23D		
		JF EPIC 1206Y		
		KGH MISS LOOKOUT 9132W		

CE	13
BW	0.5
WW	81
YW	117
ADG	0.23
MCE	9
MILK	22
MWW	63
STAY	18
DOC	12.7
CW	41.6
YG	-0.40
MARB	0.42
BF	-0.093
REA	0.93
API	155
TI	89

PUREBRED SM
HETERO BLACK HOMO POLLED



60

MARK'S STANDOUT 3M

Bull REG#4391750 DOB: 1/27/24

Tattoo	Actual BW	Adj WW	Adj YW	Homo Polled
3M	78 Twin	625	1046	Homo Polled
OMF EPIC E27		WS ALL-AROUND Z35		
SCHOOLEY STANDOUT 27G		OMF TIME LESS B100		
CLRS BEAUTY QUEEN 420 B		CCR COWBOY CUT 5048Z		
HOOK'S FULL FIGURES 11F		TSN MISS 1407 P146		
MARK'S MS. HAILEY 4H		TJ DIPLOMAT 294D		
KGH MISS EPIC 364A		HOOK'S DOCILA 23D		
		JF EPIC 1206Y		
		KGH MISS LOOKOUT 9132W		

CE	12
BW	0.5
WW	74
YW	110
ADG	0.23
MCE	8
MILK	22
MWW	59
STAY	15
DOC	16.4
CW	41.4
YG	-0.30
MARB	0.44
BF	-0.084
REA	0.69
API	147
TI	85

PUREBRED SM
HOMO BLACK HOMO POLLED

SCHOOLEY STANDOUT 27G – SIRE OF LOTS 59 & 60



61

MARK'S MAVERICK 4M

Bull REG#4389055 DOB: 2/3/24

Tattoo	Actual BW	Adj WW	Adj YW	Homo Polled
4M	97	651	1167	Homo Polled
ERIXON BITTEN 203A		NCB COBRA 47Y		
SAS COPPERHEAD G354		BMD MISS BLK ICE DANCER		
SAS MISS ARAPHAOE B354		R PLUS RELOAD 2006Z		
W/C BANKROLL 811D		SAS STARLIGHT Z354		
DRC HAZEL 2008H		W/C LOADED UP 1119Y		
1019		MISS WERNING KP 8543U		
		NEVERMORE 8138		
		DRC 507		

CE	3
BW	3.0
WW	95
YW	136
ADG	0.25
MCE	1
MILK	19
MWW	66
STAY	6
DOC	12.6
CW	31.4
YG	-0.26
MARB	0.25
BF	-0.046
REA	0.75
API	96
TI	83

3/4 SM 1/4 AN
RED HOMO POLLED

SIMMENTAL BULLS

Simmental Bulls



OMF JOURNEYMAN J24
SIRE OF LOT 62



GIBBS 9114G ESSENTIAL
SIRE OF LOT 63



MARK'S JOURNEYMAN 8M

Bull REG#4391752 DOB: 2/14/24

Tattoo	Actual BW	Adj WW	Adj YW	Homo Polled
8M	87 ET	695	1242	Homo Polled
MR SR MIC DROP G1534		MR SR 71 RIGHT NOW E1538		
OMF JOURNEYMAN J24		MISS SR C1534		
OMF DEKA D23		WELSHS DEW IT RIGHT067T		
OMF EPIC E27		OMF L.A. WOMAN A25		
OMF HANGEL H29		WS ALL-AROUND Z35		
OMF FANGEL F74		OMF TIME LESS B100		
		W/C EXECUTIVE ORDER 8543B		
		HOOKS ANGEL 11A		

PUREBRED SM HOMO BLACK HOMO POLLED

- Flushmate was a member of the Reserve Champion Pen of 3 purebred bulls at the National Western Stock Show. Full Brother to Lot 65.

CE	12
BW	-0.8
WW	93
YW	148
ADG	0.34
MCE	6
MILK	26
MWW	72
STAY	19
DOC	13.7
CW	34.6
YG	-0.27
MARB	0.28
BF	-0.062
REA	0.69
API	157
TI	95



MARK'S ESSENTIAL 10M

Bull REG#4391753 DOB: 2/16/24

Tattoo	Actual BW	Adj WW	Adj YW	Homo Polled
10M	85	768	1303	Homo Polled
GIBBS 7382E BROAD RANGE		CCR WIDE RANGE 9005A		
GIBBS 9114G ESSENTIAL		SSF BLK LOUISE Y534		
GIBBS 7153E STAR 3136A		HOOK'S BROADWAY 11B		
PROFIT		GIBBS 3136A STAR 0589X		
JND BLACKCAP MAY 70E		WS PILGRIM H182U		
S A V BLACKCAP MAY 1657		WAGR PANARAMA 204Z		
		S A V NET WORTH 4200		
		S A V BLACKCAP MAY 4136		

3/4 SM 1/4 AN HOMO BLACK HOMO POLLED

CE	12
BW	0.7
WW	98
YW	153
ADG	0.34
MCE	8
MILK	23
MWW	73
STAY	15
DOC	15.0
CW	52.3
YG	-0.19
MARB	0.26
BF	-0.009
REA	1.07
API	135
TI	91

Simmental Bulls



OMF JOURNEYMAN J24
SIRE OF LOT 65



SCAN ME



MARK'S RIGHT NOW 12M

Bull REG#4391754 DOB: 2/23/24

Tattoo	Actual BW	Adj WW	Adj YW	Homo Polled
12M	92	716	1267	Homo Polled
MR SR 71 RIGHT NOW E1538		HOOK'S BOZEMAN 8B		
MARK'S RIGHT NOW 11J		MISS SR C1538		
CLRS EXTRA SALTY 741E		CLRS AFTER SHOCK 604 A		
		HOOK'S XCELLENCE 87X		
HPF OPTIMIZER A512		JASS/JS OPTIMIZER 58X		
MARK'S MS. JEWL 5J		HPF RACHELS DREAM X590		
ES F9		CCR SANTA FE 9349Z		
		ES D128		

**PUREBRED SM
HOMO BLACK HOMO POLLED**

- Footnote

CE	10
BW	3.4
WW	92
YW	147
ADG	0.34
MCE	5
MILK	19
MWW	65
STAY	14
DOC	15.6
CW	50.0
YG	-0.26
MARB	0.07
BF	-0.072
REA	0.76
API	124
TI	83



ROSE MIKE M14

Bull REG#4377192 DOB: 2/1/24

Tattoo	Actual BW	Adj WW	Adj YW	Homo Polled
M14	84 ET	674	1090	Homo Polled
MR SR MIC DROP G1534		MR SR 71 RIGHT NOW E1538		
OMF JOURNEYMAN J24		MISS SR C1534		
OMF DEKA D23		WELSHS DEW IT RIGHT067T		
		OMF L.A. WOMAN A25		
OMF EPIC E27		WS ALL-AROUND Z35		
OMF HANGEL H29		OMF TIME LESS B100		
OMF FANGEL F74		W/C EXECUTIVE ORDER 8543B		
		HOOKS ANGEL 11A		

**PUREBRED SM
HOMO BLACK HOMO POLLED**

- Flushmate was a member of the Reserve Champion Pen of 3 purebred bulls at the National Western Stock Show. Full Brother to Lot 62.

CE	12
BW	2.7
WW	98
YW	151
ADG	0.33
MCE	6
MILK	26
MWW	74
STAY	15
DOC	14.3
CW	35.1
YG	-0.53
MARB	0.18
BF	-0.106
REA	1.15
API	141
TI	92



20 F1 BLACK BALDY HEIFERS

RENLI CATTLE COMPANY – Steve, Dallas, Mason and Landon Renli, Canton, SD 605-214-6040

The Renli's have been purchasing Section 16 Hereford bulls for many years. They run one of best sets of cows in Lincoln County and have been offering you a chance to buy into these genetics the past few years here at the Bull Run. This year they will be offering 20 F1 Baldy Females.

- All Heifers will be Bangs Vaccinated
- All Heifers will have had pre-breeding shots and have had a breeding soundness exam
- All Heifers have had 2 rounds of Vaccinations including 2 rounds of Mannheimia Haemolytica
- The Winning Bidder can select 5 or more animals on gate cut basis at load out.



5 F1 BLACK BALDY HEIFERS

Section 16 Cattle Company – Erik 605-214-1332 or Craig 605-951-7595

- These Heifers are all out of Registered Angus Cows and a Registered Hereford Bull
- Hfrs are all Bangs Vaccinated and will have had Pre Breeding Vaccination Shots - Bangs Vaccination and EID Tag done by Valley Vet - Vira Shield 6 given Feb 2025
- Hfrs have all had 3 Rounds of Vaccinations including 3 rounds of Mannheimia Haemolytica - Nasalgen 3 PMH @ Birth - Bovi Shield Gold 5, Nasalgen 3 PMH, Endovac Beef, Vision 7 @ Turn Out - BOVILIS Vista Once after Weaning
- Hfrs are guaranteed breeders. If a heifer fails to breed, just return her to Section 16 to receive full credit. Talk with Erik for details. This does not include Death Loss or Animal Mistreatment.



20 COMMERCIAL HEREFORD HEIFERS

Section 16 Cattle Company – Erik 605-214-1332 or Craig 605-951-7595

- These Heifers are all Registered and have a GE-EPD Profile
- Registration is available for an additional \$500/Hd - Talk to Erik if interested
- Hfrs are all Bangs Vaccinated and will have had Pre Breeding Vaccination Shots - Bangs Vaccination and EID Tag done by Valley Vet - Vira Shield 6 given Feb 2025
- Hfrs have all had 3 Rounds of Vaccinations including 3 rounds of Mannheimia Haemolytica - Nasalgen 3 PMH @ Birth - Bovi Shield Gold 5, Nasalgen 3 PMH, Endovac Beef, Vision 7 @ Turn Out - BOVILIS Vista Once & Vision 7 after Weaning
- Hfrs are guaranteed breeders. If a heifer fails to breed, just return her to Section 16 to receive full credit. Talk with Erik for details. This does not include Death Loss or Animal Mistreatment.
- The Winning Bidder can select 5 or more animals on gate cut basis at load out.



20 COMMERCIAL HEREFORD HEIFERS

Section 16 Cattle Company – Erik 605-214-1332 or Craig 605-951-7595

- These Heifers are all Registered and have a GE-EPD Profile
- Registration is available for an additional \$500/Hd - Talk to Erik if interested
- Hfrs are all Bangs Vaccinated and will have had Pre Breeding Vaccination Shots - Bangs Vaccination and EID Tag done by Valley Vet - Vira Shield 6 given Feb 2025
- Hfrs have all had 3 Rounds of Vaccinations including 3 rounds of Mannheimia Haemolytica - Nasalgen 3 PMH @ Birth - Bovi Shield Gold 5, Nasalgen 3 PMH, Endovac Beef, Vision 7 @ Turn Out - BOVILIS Vista Once & Vision 7 after Weaning
- Hfrs are guaranteed breeders. If a heifer fails to breed, just return her to Section 16 to receive full credit. Talk with Erik for details. This does not include Death Loss or Animal Mistreatment.
- The Winning Bidder can select 5 or more animals on gate cut basis at load out.



THANK YOU for being a meal sponsor!



25797 475th Ave, Renner, SD 57055

(605) 332-0214

www.rennercornermeats.com

Renner Corner Meats has been in business for 70 years and is a family owned operation. We are known for our excellent service and award-winning varieties of smoked meats that are shipped all over the world.

Renner Corner Meats takes pride in always providing fresh quality meat to the tri-state area. Our meat selection is cut fresh daily to ensure you will always have the best for your family. For the past 70 years we have offered the highest quality standards to our customers and have a very strong belief in community and values."



**Worthing
Insurance**

Home · Farm · Auto · Life · Health · Business · Crop · Bonds

LIVESTOCK MORTALITY INSURANCE WILL BE AVAILABLE AT THE SALE.

Insurance Agents, Tara Stubbe and Jerry Stubbe of Worthing Insurance, Inc. will have policies available to purchase for mortality coverage on a broad peril basis including accident, injury, sickness and disease. Theft is also covered. The rate is \$6.50 per \$100 with a \$250 minimum premium.

Please stop by to visit with us regarding insuring your purchase at the sale.

Worthing Insurance Inc. · PO Box 98 Worthing, SD 57077

Office: (605) 372-2410 · Cell: (605) 321-7947 · Fax: (605) 372-2110

tara@worthinginsurance.com



INDEPENDENT
INSURANCE AGENTS



VANS POWER CENTER

Your Power Sports Specialists!

517 Brown Street ● Hull, IA

(712)439-6060

www.vanspowercenter.com



POLARIS



YAMAHA

Revs your Heart



Pifer's

28020 Boondock Ave. • Worthing, SD
605.836.2277 | www.pifers.com |  

Your Land & Equipment **PROFESSIONALS**

LAND AUCTIONS • EQUIPMENT AUCTIONS
LAND MANAGEMENT • LAND SALES
RESIDENTIAL • COMMERCIAL



NEIL BROUGHTON | Land Manager
605.351.4931 • nbroughton@pifers.com

CHRIS BAIR | EQUIP. MANAGER/AGENT
605.271.7730 • cbair@pifers.com

KYLE WALLER | EQUIP. SALES REP
605.409.8850 • kwaller@pifers.com

WHERE YOUR DRIVE FOR SUCCESS

**PARTNER
UP**



MEETS 4 GENERATIONS OF KNOW-HOW

Grossenburg.com    

Beresford, SD | 1610 W Main Street | (605) 763-5020 | Plus 4 SD, 1 WY & 3 NE Locations

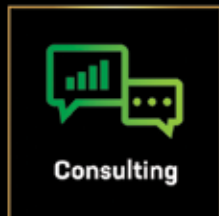


THANK YOU to Frontline Crop Solutions for being our meal sponsor!



ALWAYS OUT FRONT.

Your Local Independent Full-Service
Ag Provider



200 5th Street , Box 354 • Garretson SD 57030
605-594-3232 • www.frontlinecrops.com



Van's
IMPLEMENT LTD.
Hull, IA

Contact us for your Fendt[®]
or Massey Ferguson[®] Needs.

712-439-2641 | vansimplement.com



©2025 AGCO Corporation. Fendt and Massey Ferguson are worldwide brands of AGCO Corporation. AGCO, Fendt and Massey Ferguson are trademarks of AGCO. All rights reserved.



Craig Broughton Family

SECTION 16

CATTLE COMPANY

47881 287th St. - Canton, SD 57013
 Erik 605.214.1332 • Craig 605.951.7595
 section16cattleco@live.com
 www.section16cattleco.com
 Kade 605.214.5565 • Jerry 605.321.9848



Erik Scott Family



EGGERS

Southview Farms

Philip Eggers
 25750 476th Ave - Sioux Falls, SD 57104
 Phil: 605.351.5438
 eggerssouthviewfarms@gmail.com

Semen Interest: Eggers Southview Farms will be retaining 1/4 semen interest in their bulls selling in this sale.



Semen Interest: Mark Family Simmental will be retaining 1/3 revenue sharing semen interest in their bulls selling. We will collect bulls for in-herd use at our expense and buyers convenience. If semen is sold, we retain 1/3 revenue. Buyer will have full possession and full salvage value.



MARK FAMILY

Simmental
 Viborg, SD

Andy, Janna, Evelyn & Blake Mark
 29023 457th Ave - Viborg, SD 57070
 Andy: 712.441.5920
 ajmark398@gmail.com



I-29 BULL RUN
c/o Philip Eggers
25750 476th Avenue
Sioux Falls, SD 57104

RETURN SERVICE REQUESTED

Presorted
First Class
US Postage
PAID
SlateGroup

TO:

FIRST CLASS MAIL – TIME DATED MATERIAL



Philip Eggers
Sioux Falls, SD
605.351.5438



Erik Scott 605.214.1332
Craig Broughton 605.951.7595
Canton, SD



Andy & Janna Mark
Viborg, SD
712.441.5920

Saturday
March 8th
6:00 PM

W.H. Lyon Fairgrounds
Expo Bldg.
Sioux Falls, SD

**An elite offering of Hereford,
Angus & Simmental Bulls,
Plus Registered & Commercial Females**



DVAuction
Broadcasting Real-Time Auctions