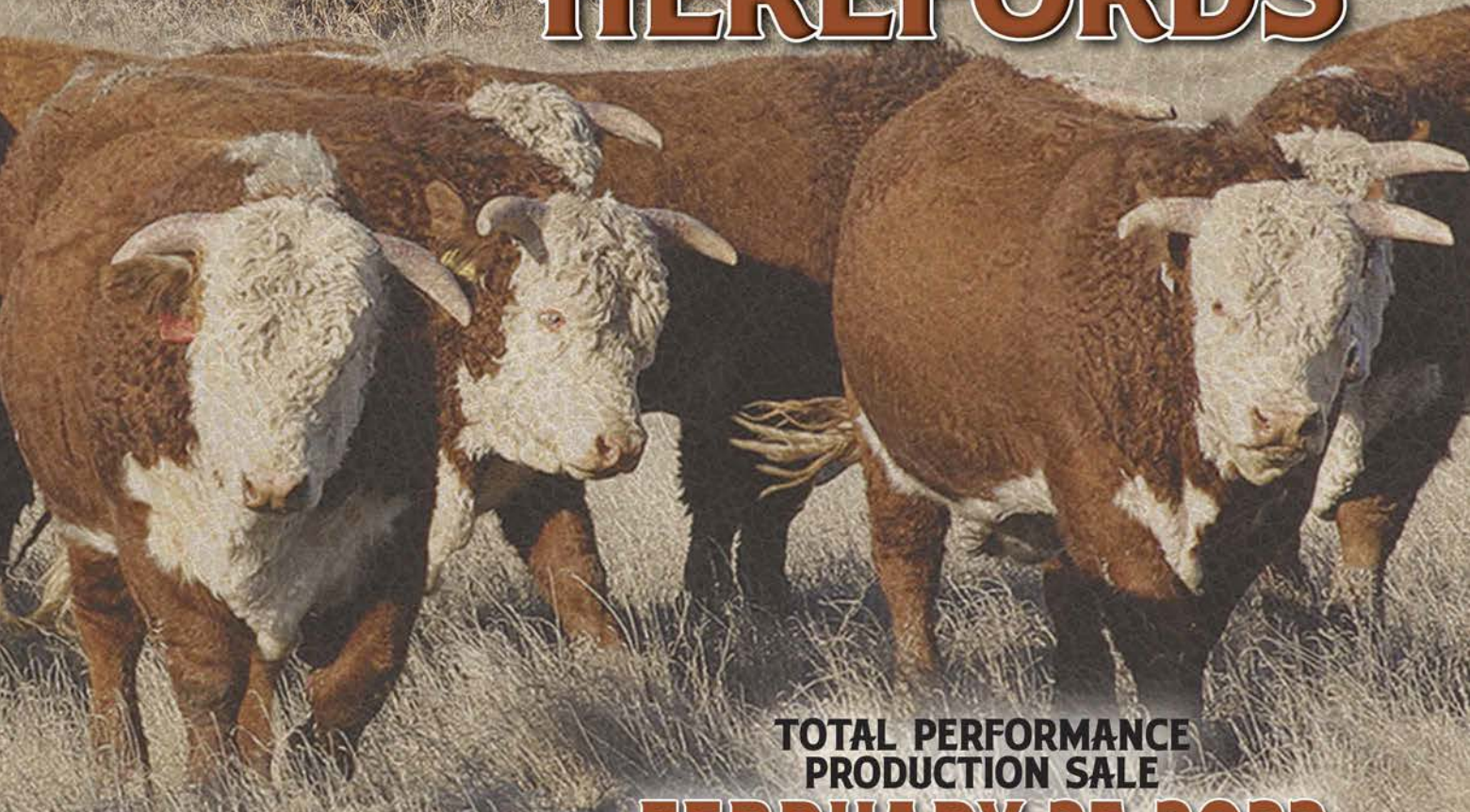




SINCE 1944...

JAMISON HEREFORDS



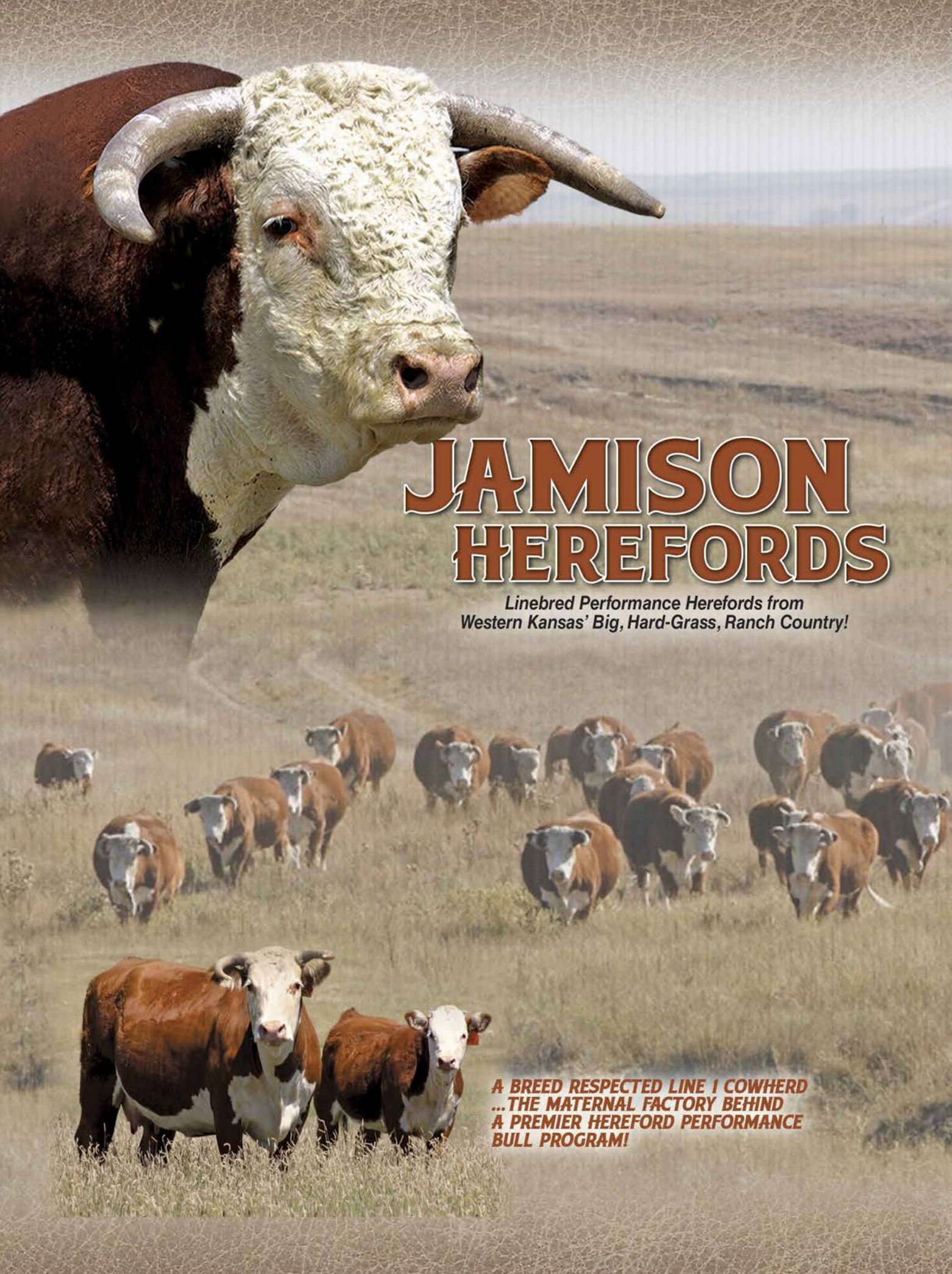
TOTAL PERFORMANCE
PRODUCTION SALE

FEBRUARY 25, 2022

QUINTER, KANSAS



UNITED LIVESTOCK BROKERS, INC.



JAMISON HEREFORDS

*Linebred Performance Herefords from
Western Kansas' Big, Hard-Grass, Ranch Country!*

***A BREED RESPECTED LINE 1 COWHERD
...THE MATERNAL FACTORY BEHIND
A PREMIER HEREFORD PERFORMANCE
BULL PROGRAM!***

JAMISON HEREFORDS

SPRING BULL SALE

FRIDAY FEB. 25, 2022

12 NOON (CST)

Jamison Ranch Sale Center • Quinter, Kansas
I-70 Exit 107, 2 mi. South, 1 mi. East, 1 1/2 miles South

117 New Generation* BULLS

Two Yr. Olds • Fall Yearlings • Spring Yearlings

Guest Consignor: COLEMAN HEREFORDS, Westcliffe, CO
Lots 87 - 117 ...pages 19-24

SINCE 1944 ...78 years of
Hereford leadership!



WELCOME...

The Jamison Family welcomes you to our annual Spring Bull Sale ...always an opportunity to establish and renew relationships with fellow cattlemen as we present the year's breeding bull offering.

Our goal has been to produce predictable, problem-free, performance Hereford genetics. With maternal traits as our #1 priority, we strive for sound, fertile, balanced breeding bulls that offer calving ease, optimal growth, structure, fleshing ability ...and, 100 percent red pigment. These bulls have been developed for the long haul to insure that sound feet and mobility maximize your JA breeding bull investment.

The Line One Herefords founded at the Miles City (MT) Range Station in 1934 are true, total performance, strong maternal cattle upon which we have based our program since 1970. Ranchers reap the benefit of heterosis from our linebred bulls producing the industry's most proven Baldie cross from Black and Red Angus cows. Their Hereford-sired Baldies are the industry's true premium feeder steer and #1 replacement heifer.

Fellow Colorado breeder and herd bull partner Ken Coleman is welcomed as guest consignor. The quality behind his PAP-tested performance bulls speaks for the reputation of his outstanding Line 1 cowherd.

Call with your questions ...we'll look forward to seeing you Feb. 25th!

Gordon Jamison and Family

You're Invited!

HEREFORD STEAK SUPPER!

Pre-Sale Get-together ...Thursday Evening, Feb. 24th

The Historic Western Kansas Saloon

"The best steak in Western Kansas ...bar none!"

Main Street • Wakeeney, Kansas

View the auction live
...Bid online!

DVAuction
Broadcasting Real-Time Auctions

www.dvauction.com

Information and bid registration, call
Tami McIntosh 308/ 870-3661

The Livestock Link

Sale Videos by:
Marc Hotchkiss, Owner
605.210.1956

View Videos: jamisonranch.com
or thelivestocklink.com

VETERINARIAN

Derek Pridey, DVM • Hoxie, KS • 785/ 672-3411

MOTELS

Quinter, KS

Castle Rock Inn 785/ 754-3600 (request JA rate)

Wakeeney, KS (25 miles East)

Best Western 785/ 743-2700 (request JA rate)

Super 8 785/ 743-6442

Econo Lodge 785/ 743-5505

Oakley, KS (30 miles West)

Best Western Golden Plains 785/ 672-3254

Sleep Inn 785/ 671-1111

Oakley Kansas Country Inn 785/ 672-3131

AIRPORTS

Commercial air service is available to
Hays, KS or Garden City, KS. Private planes may
land at Quinter (4000 ft. paved), Wakeeney (3500 ft.
paved) or Oakley (5000 ft. paved).

SALE DAY PHONE:

785/ 754-3424

Lunch served 11 PM

Cattle videos, updates, sale order...

jamisonranch.com

**JAMISON
HEREFORDS**

Gordon (c) 785/ 299-0441

Daron Jamison (c) 785/ 650-9639

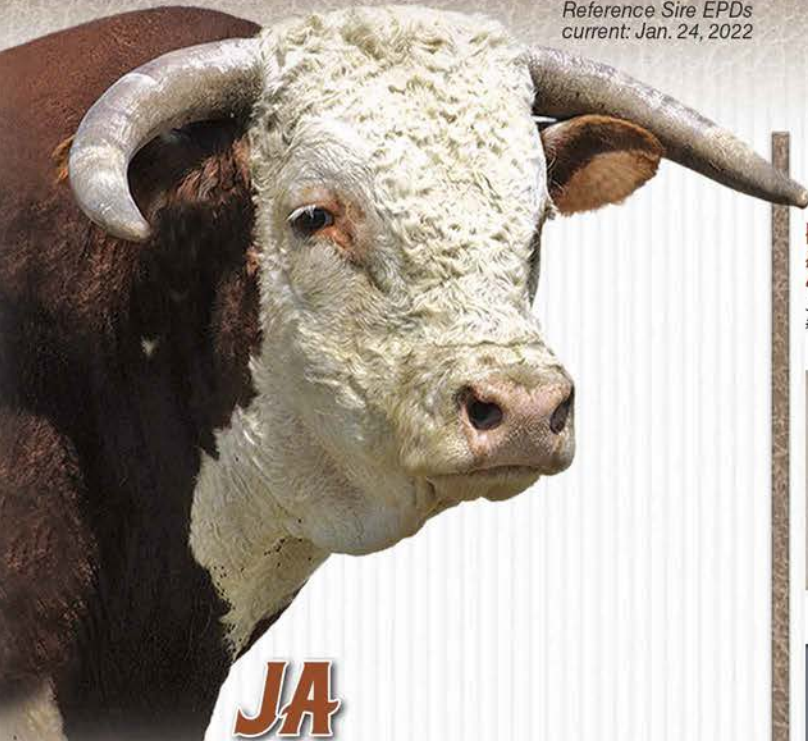
2271 County Rd. 74

QUINTER, KANSAS 67752



UNITED LIVESTOCK BROKERS, INC.
Jay George 605/391-6230 • Lebo, KS

Reference Sire EPDs
current: Jan. 24, 2022



JA REFERENCE SIRES

BREED LEADING LINE 1 SIRES...

- Sire Evaluation Trait Leaders
- Trait Balanced Performance
- Proven Cowherd Builders
- A *New Generation* of Hereford Carcass Leaders
- Sound, Functional Beef Bulls

THE MARKETING TEAM

AUCTIONEER

LYNN WEISHAAR • Reva, SD • 605/ 866-4670 or 605/ 641-6278

SALE REPRESENTATIVES

Alex Acheson, American Hereford Assn. • 785/ 366-1185
Tom Granzow, Kansas Hereford Assn. • 785/ 466-2226
Marc Hotchkiss, Hereford America & The Livestock Link • 605/210-1956
Jim Gies, Western Livestock Journal • 970/ 970-0500
Guy Peverley, The Stock Exchange • 785/ 456-9911
Stephen Russell, Kansas Stockman • 785/ 458-2650
Chisolm Kinder, Oklahoma Cowman • 405/ 235-4391
Jake St. Amant, Tri-State Livestock News • 308/ 568-9084
Nick Wells, High Plains Journal • 785/ 443-0233

INSURANCE

Liberty Mutual • Cheri & Jim Gies (h) 970/454-3836
or (c) 970/590-0500



UNITED LIVESTOCK BROKERS, INC.

Jay George • 605/391-6230
1025 28th Rd. NW
Lebo, Kansas 66856

Photography by Jay George

SALE DAY PHONE 785/ 754-3424

GORDON JAMISON 785/ 299-0441

DARON JAMISON 785/ 650-9639

KEN COLEMAN 719/ 276-4471



HH ADVANCE 4082B

Jan. 6, 2014
#43470127



CED...★7.3
BW.....2.1
WW.....55
YW.....92
MILK...★33
M&G.....60
REA.....09
MARB...★02
SCHB...★100

CL 1 DOMINO 732T (CL 1 Domino 590R)

CL 1 DOMINO 1161Y

CL 1 DOMINETTE 4126P (CL 1 Domino 1116L)

HH ADVANCE 5104R (CL 1 Domino 206M)

HH MISS ADVANCE 9102W DOD (4 clvs. WR 109 / YR 104)

HH MISS ADVANCE 7098T (HH Advance 3196N)

3-Trait Leader: CED • MILK • CEM
Owners: Jamison; B&B, KS; Holden, MT

**Stockman's Proven Herd Builder ... Total Performance
Sire for CE, Paywt., Great Brood Cows!**



CL1 DOMINO 386A

Jan. 14, 2013
#43379798



CED.....4.2
BW.....1.5
WW.....55
YW.....82
MILK...★35
M&G...★62
REA.....56
MARB...★.27
SCHB...★126

CL 1 DOMINO 9105W (CL 1 Domino 732T)

CL 1 DOMINO 1108Y

CL 1 DOMINETTE 617S (HH Advance 3113N)

CL 1 DOMINO 9126J (HH Advance 767G)

CL 1 DOMINETTE 440P (7 clvs. WR 104)

CL 1 DOMINETTE 974J (HH Advance 629F)

6-Trait Leader: MILK • M&G • MCW • TS • MARB • CHB
Owners: Jamison; Cooper; Oleen Bros.; Edgar

**Elite 6-Trait Cowherd Builder ... Super Dgtrs.,
plus CE, CHB Grid Value!**



CL1 DOMINO 4100B

Jan. 15, 2014
#43471521



CED...★7.4
BW.....3.2
WW.....44
YW.....74
MILK...★33
M&G.....55
REA.....10
MARB...★10
SCHB...★105

L1 DOMINO 08469 (L1 Domino 05516)

HH ADVANCE 2005Z

HH MISS ADVANCE 8009U (HH Advance 5212R)

CL 1 DOMINO 9125W (CL 1 Domino 732T)

CL1 DOMINETTE 148Y (6 clvs. WR 100)

CL 1 DOMINETTE 7136T DOD (L1 Domino 890061)

8 Trait Leader: CED • SC • SCF • MILK • CEM • US • TS • BMI
Owners: Jamison; Cooper; B&B

**Profit Balanced 8-Trait Leader ... CE Plus Role Model,
Problem-Free, Productive Females!**

CLI DOMINO 6163D

Jan. 24, 2016
#43691848



CED.....	2.1
BW.....	1.5
WW.....	61
YW.....	86
MILK.....	40
M&G.....	71
REA.....	33
MARB.....	19
SCHB.....	132

CL 1 DOMINO 9122W (CL1 Domino 732T)
CL 1 DOMINO 215Z
CL 1 DOMINETTE 055X DOD (CL1 Domino 860U)
CL 1 DOMINO 7110T (CL1 Domino 590R)
MONTANA MISS 1179Y DOD (5 clvs. WR 104 / 4 clvs. YR 105)
MONTANA MISS 753T (CL1 Domino 592R)

8-Trait Leader: MILK • M&G • CEM • US • TS • CW • BII • CHB
Owners: Jamison; Oleen Bros., KS; Cooper, MT

**Eight-Trait Total Performance Beef Bull
from Cowherd to Carcass!**

CLI DOMINO 6187D

Jan. 29, 2016
#43691873



CED.....	3.7
BW.....	1.5
WW.....	71
YW.....	109
MILK.....	31
M&G.....	67
REA.....	44
MARB.....	46
SCHB.....	147

HH ADVANCE 1013Y (HH Advance 4055P)
HH ADVANCE 4067B
HH MISS ADVANCE 8255U (L1 Domino 0357I)
CL 1 DOMINO 215Z (CL1 Domino 9122W)
CL1 DOMINETTE 450B (4 clvs. WR 100 / YR 102)
CL1 DOMINETTE 1178Y (CL1 Domino 862U)

9-Trait Leader: WW • YW • SC • M&G • CEM • CW • MARB • BII • CHB
Owners: Jamison; Van Newkirk, NE; Cooper, MT

**Dynamic 9-Trait Leader ...BW to YW Spread,
Top Daughters, CHB Grid Value!**



JA L1 DOMINO 6212D

Mar. 9, 2016
#43678407

CED.....	6.2
BW.....	2.4
WW.....	59
YW.....	95
MILK.....	37
M&G.....	67
REA.....	21
MARB.....	08
SCHB.....	91

CL 1 DOMINO 1161Y (CL1 Domino 732T)
HH ADVANCE 4082B
HH MISS ADVANCE 9102W DOD (HH Advance 5104R)
HH ADVANCE 1098Y (HH Advance 8050U)
JA L1 DOMINETTE 301A DOD (5 clvs. WR 105)
JA L1 DOMINETTE 1214Y (CL1 Domino 555R)

Owner: Jamison

**Stalwart JA Sire for Performance & Maternal
...Dam of Distinction Cow!**



HH ADVANCE 5322C

Aug. 8, 2015
#43635761

CED.....	6.6
BW.....	1.4
WW.....	61
YW.....	95
MILK.....	23
M&G.....	53
REA.....	62
MARB.....	19
SCHB.....	113

HH ADVANCE 932J (HH Advance 6052F)
HH ADVANCE 1045L
HH MS ADV 898H (XP L1 Domino 90085)
HH ADVANCE 7034T (L1 Domino 0357I)
HH MISS ADVANCE 1179Y (3 clvs. WR 102)
HH MISS ADVANCE 5139R (CL1 Domino 2136M)

Owners: Jamison; Jon Miller

**Complete & Powerful ...Elite BW to YW Spread,
Premium Grid Value, Fancy Progeny!**

JA L1 DOMINO 3737A

Mar. 16, 2013
#43382442



CED.....	1.5
BW.....	1.0
WW.....	42
YW.....	83
MILK.....	26
M&G.....	47
REA.....	13
MARB.....	04
SCHB.....	110

CL 1 DOMINO 637S (L1 Domino 0339E)
CL 1 DOMINO 860U
CL 1 DOMINETTE 5142R DOD (CL1 Domino 1172L)
CL 1 DOMINO 484 (L1 Domino 890061)
JA L1 DOMINETTE 4211P (10 clvs. WR 103)
JA L1 DOMINETTE 2524M (CL1 Domino 7176G)

Trait Leader: BW • Owner: Jamison

**Total Performance, Pigmented Bull
...Matriarch Mother Cow!**

HH ADVANCE 6193D

Jan. 19, 2016
#43688533



CED.....	0.3
BW.....	3.3
WW.....	59
YW.....	83
MILK.....	27
M&G.....	56
REA.....	35
MARB.....	40
SCHB.....	149

HH ADVANCE 0002X (HH Advance 7026T)
HH ADVANCE 3006A
HH MISS ADVANCE 1142Y (HH Advance 8050U)
HH ADVANCE 8203U (HH Advance 5161R)
HH MISS ADVANCE 0121X (10 clvs. WR 101)
Dam of \$240,000
HH MISS ADVANCE 7050T (HH Advance 4140P)
HH Advance 4075B!

5-Trait Leader: SC • MARB • BMI • BII • CHB
Owners: Jamison; Oleen Bros., KS; Holden, MT

**Maximum Industry Value Sire ...5-Trait Leader
for Maternal, Growth & CHB Values!**

COLEMAN SIRE

FS ADVANCE 8044

Aug. 31, 2018
#43991680



CED.....**6.1**
BW.....**1.2**
WW.....**62**
YW.....**91**
MILK.....**28**
M&G.....**59**
REA.....**39**
MARB.....**12**
SCHB.....**123**

HH ADVANCE 5107C

CL 1 DOMINO 215Z (CL1 Domino 9122W)

HH MISS ADVANCE 9228W (HH Advance 6163S)

HH ADVANCE 1098Y (HH Advance 8050U)

FS MISS ADVANCE 539C

CL 1 DOMINETTE 203Z (GB L1 Domino 175E)

Owners: Coleman; Oleen Bros., KS

A Total Sire ...Balanced CE, Performance, Maternal, Carcass Value!

HH ADVANCE 3297A ET

Aug. 27, 2013
#43442630



CED.....**6.3**
BW.....**3.2**
WW.....**64**
YW.....**112**
MILK.....**33**
M&G.....**65**
REA.....**73**
MARB.....**19**
SCHB.....**162**

CL 1 DOMINO 091X

CL 1 DOMINO 860U (CL1 Domino 637S)

CL 1 DOMINETTE 591R (CL1 Domino 3162N)

HH ADVANCE 6163S (HH Advance 396N)

HH MISS ADVANCE 9228W

HH MISS ADVANCE 6094S (HH Advance 4140P)

8-Trait Leader: YW • MILK • M&G • CEM • CW • REA • BII • CHB
Owners: Coleman; Holden, MT; B&D, KS; Evans, KS

Breed Impact 8-Trait Leader ...Elite Performance ...Superb Daughters ... Top Carcass. Few Compare!

LW 3006 ADVANCE 714E

Jan. 28, 2013
#43826832



CED.....**6.0**
BW.....**-1.3**
WW.....**38**
YW.....**65**
MILK.....**36**
M&G.....**55**
REA.....**-0.08**
MARB.....**18**
SCHB.....**105**

HH ADVANCE 3006A

HH ADVANCE 0002X (HH Advance 7026T)

HH MISS ADVANCE 1142Y (HH Advance 8050U)

CL 1 DOMINO 860U (CL 1 Domino 637S)

CL 1 DOMINETTE 055X DOD

(9 clvs. WR 102)

CL 1 DOMINETTE 7136T DOD (L1 Domino 890061)

10-Trait Leader: BW • DMI • SC • SCF • MILK • CEM • TS • BMI • BII
Owners: Coleman; Oleen Bros.; L Bar W, MT

10-Trait CE and Maternal Leader ...Future Cowherd Builder ...Elite 055X Dam!

CL1 DOMINO 4150B

Jan. 29, 2014
#43466018



CED.....**6.7**
BW.....**0.8**
WW.....**55**
YW.....**92**
MILK.....**26**
M&G.....**53**
REA.....**05**
MARB.....**48**
SCHB.....**152**

CL 1 DOMINO 215Z

CL 1 DOMINO 9122W (CL 1 Domino 732T)

CL 1 DOMINETTE 055X DOD (CL 1 Domino 860U)

CL 1 DOMINO 7139T (CL 1 Domino 590R)

CL 1 DOMINETTE 058X

(4 clvs. WR 104)

CL 1 DOMINETTE 812U (CL 1 Domino 9126J)

7-Trait Leader: CED • BW • SC • CEM • MARB • BII • CHB
Owners: Coleman; Holden, MT; Oleen Bros., KS

Seven-Trait Leader ...Sires CE, Pigmented Beef Cattle, Beautiful Females!

CL1 DOMINO 1161Y

Feb. 3, 2011
#43189589



CED.....**-1.2**
BW.....**3.3**
WW.....**56**
YW.....**84**
MILK.....**13**
M&G.....**41**
REA.....**32**
MARB.....**-0.05**
SCHB.....**92**

CL 1 DOMINO 732T

CL 1 DOMINO 590R (CL1 Domino 246M)

CL 1 DOMINETTE 507R DOD (HH Advance 3113N)

CL 1 DOMINO 1116L (CL1 Domino 888H)

CL 1 DOMINETTE 4126P

(9 clvs. WR 102 / 8 clvs. YR 99)

CL1 DOMINETTE 193L (HH Advance 767G)

2 Trait Leader: SC • TS
Owners: Coleman; Cooper, MT; Oleen Bros., KS; Stuber, ND

Cowman's Fault-Free Maternal Sire ...Functional, Perfect Uddered Females!

JA L1 DOMINO 5319C Feb. 15, 2015 • #43583865 • NOT PICTURED



CED.....**6.5**
BW.....**1.5**
WW.....**48**
YW.....**87**
MILK.....**26**
M&G.....**50**
REA.....**46**
MARB.....**25**
SCHB.....**145**

HH ADVANCE 0085

HH ADVANCE 8203U (HH Advance 5161R)

HH MISS ADVANCE 7017T (CL 1 Domino 320N)

JA L1 DOMINO 7640T (HH Advance 286M)

JA L1 DOMINETTE 1617Y

(6 clvs. WR 107)

JA L1 DOMINETTE 9013W (JA L1 Domino 6001S)

Owner: Jamison

Moderate, Pigmented, Calving Ease & Carcass Sire ...Solid EPD Balance!

JAMISON HEREFORD BULLS

**JAMISON TWO YR. OLD BULLS ...Lots 1 -74
& 18 MO. OLD FALL YEARLINGS ...Lots 75 -86**

Guest Consignor:

COLEMAN HEREFORDS Westcliffe, CO

YEARLING BULLS ...Lots 87-91

TWO YR. OLD BULLS ...Lots 92-117

Sale Cattle Videos

...Performance Updates

...Sale Order

www.jamison ranch.com

Sale cattle videos by:

**The Livestock
Link**

Sale Bulls EPDs current: Jan. 24, 2022



THE COWMAN'S BREEDING BULL SOURCE...

- ✓ Linebred Line 1
 - ✓ Problem-Free Beef Bulls
 - ✓ Range Country Calving Ease
 - ✓ Hereford Baldie Heterosis for Black & Red Angus Cowherds
 - ✓ Reputation Cowherd
 - ✓ Range-Raised (no creep)
 - ✓ Certified Hereford Beef Qualified
- ...AND, BACKED BY THE JAMISON GUARANTEE!**



SONS OF... CLI DOMINO 6187D

Breed Impact 9-Trait Leader!
A dynamic sire group for Calving Ease,
Growth spread, superb daughters and
grid premium feeder cattle!



1

2 YR. OLD

Act. BW ... **73**
EPDs:
CED **6.2**
BW **0.4**
WW **50**
YW **80**
MILK **31**
M&G **56**
REA **35**
MARB **23**

JA L1 DOMINO 002H

Jan. 23, 2020 • #44148995

HH ADVANCE 4067B
CL 1 DOMINO 6187D
CL1 DOMINETTE 450B

JA L1 DOMINO 1602Y
JA L1 DOMINETTE 7600E
CTR L1 DOMINETTE 5084C

Eye Pigment: **LE 100 / RE 100**

Correct and attractive with just a 73 lb. birth weight. Dam is a very nice uddered 1602Y daughter.

HH ADVANCE 1013Y
HH MISS ADVANCE 8255U
CL 1 DOMINO 215Z
CL 1 DOMINETTE 1178Y
JA L1 DOMINO 7640T
JA L1 DOMINETTE 9204W
JA L1 DOMINO 0413X
EL MISS ADVANCE 111Y

2

2 YR. OLD

Act. BW ... **80**
EPDs:
CED **4.0**
BW **1.6**
WW **63**
YW **94**
MILK **35**
M&G **67**
REA **42**
MARB **27**

JA L1 DOMINO 006H

Jan. 31, 2020 • #44149007

HH ADVANCE 4067B
CL 1 DOMINO 6187D
CL1 DOMINETTE 450B

CL 1 DOMINO 6163D
JA L1 DOMINETTE 8627F
JA L1 DOMINETTE 550C

Eye Pigment: **LE 75 / RE 75**

HH ADVANCE 1013Y
HH MISS ADVANCE 8255U
CL 1 DOMINO 215Z
CL 1 DOMINETTE 1178Y
CL 1 DOMINO 215Z
MONTANA MISS 1179Y★
HH ADVANCE 1098Y
JA L1 DOMINETTE 2605Z

3

2 YR. OLD

Act. BW ... **89**
EPDs:
CED **2.5**
BW **2.3**
WW **69**
YW **105**
MILK **32**
M&G **67**
REA **55**
MARB **44**

JA L1 DOMINO 08H

Feb. 16, 2020 • 44287748

HH ADVANCE 4067B
CL 1 DOMINO 6187D
CL1 DOMINETTE 450B

CL 1 DOMINO 215Z
CL1 DOMINETTE 463B
CL 1 DOMINETTE 617S

Eye Pigment: **LE 50 / RE 100**

A herd bull prospect 6187 son that is long-sided and big framed. An ET son of the 463 cow, here is Line 1 genetics from the front row and the bull matches.

HH ADVANCE 1013Y
HH MISS ADVANCE 8255U
CL 1 DOMINO 215Z
CL 1 DOMINETTE 1178Y
CL 1 DOMINO 9122W
CL 1 DOMINETTE 055X★
HH ADVANCE 3113N
CL 1 DOMINETTE 4180P★

4

2 YR. OLD

Act. BW ... **80**
EPDs:
CED **3.6**
BW **1.7**
WW **62**
YW **94**
MILK **34**
M&G **66**
REA **42**
MARB **27**

JA L1 DOMINO 010H

Feb. 1, 2020 • #44149013

HH ADVANCE 4067B
CL 1 DOMINO 6187D
CL1 DOMINETTE 450B

CL 1 DOMINO 6163D
JA L1 DOMINETTE 8630F
JA L1 DOMINETTE 550C

Eye Pigment: **LE 100 / RE 100**

Big framed herd bull prospect with extra frame and more red than most 6187 sons.

HH ADVANCE 1013Y
HH MISS ADVANCE 8255U
CL 1 DOMINO 215Z
CL 1 DOMINETTE 1178Y
CL 1 DOMINO 215Z
MONTANA MISS 1179Y★
HH ADVANCE 1098Y
JA L1 DOMINETTE 2605Z

5

2 YR. OLD

Act. BW ... **83**
EPDs:
CED **3.5**
BW **2.3**
WW **58**
YW **94**
MILK **28**
M&G **57**
REA **36**
MARB **27**

JA L1 DOMINO 011H

Feb. 1, 2020 • #44149014

HH ADVANCE 4067B
CL 1 DOMINO 6187D
CL1 DOMINETTE 450B

UU DOMINO 4089
JA L1 DOMINETTE 7503E
JA L1 DOMINETTE 5304C

Eye Pigment: **LE 80 / RE 90**

Big framed bull that carries some extra white which won't hurt a thing in a crossbreeding program.

HH ADVANCE 1013Y
HH MISS ADVANCE 8255U
CL 1 DOMINO 215Z
CL 1 DOMINETTE 1178Y
HH ADVANCE 7146T
UU 9110 ADV 2163
HH ADVANCE 0085X
JA L1 DOMINETTE 800U

6

2 YR. OLD

Act. BW ... **86**
EPDs:
CED **2.6**
BW **2.4**
WW **57**
YW **91**
MILK **24**
M&G **52**
REA **32**
MARB **19**

JA L1 DOMINO 012H

Feb. 2, 2020 • #44149015

HH ADVANCE 4067B
CL 1 DOMINO 6187D
CL1 DOMINETTE 450B

HH ADVANCE 2181Z
JA L1 DOMINETTE 7424E
JA L1 DOMINETTE 3609A

Eye Pigment: **LE 80 / RE 80**

Frame and length with good numbers.

HH ADVANCE 1013Y
HH MISS ADVANCE 8255U
CL 1 DOMINO 215Z
CL 1 DOMINETTE 1178Y
CL 1 DOMINO 886U
HH MISS ADVANCE 6054S
JA L1 DOMINO 7640T
JA L1 DOMINETTE 9022W

7

2 YR. OLD

Act. BW ... **78**
EPDs:
CED **5.0**
BW **0.7**
WW **55**
YW **87**
MILK **29**
M&G **57**
REA **39**
MARB **34**

JA L1 DOMINO 013H

Feb. 2, 2020 • #44149016

HH ADVANCE 4067B
CL 1 DOMINO 6187D
CL1 DOMINETTE 450B

CL 1 DOMINO 386A
JA L1 DOMINETTE 7900E
JA L1 DOMINETTE 0212X

Eye Pigment: **LE 75 / RE 100**

HH ADVANCE 1013Y
HH MISS ADVANCE 8255U
CL 1 DOMINO 215Z
CL 1 DOMINETTE 1178Y
CL 1 DOMINO 1108Y
CL 1 DOMINETTE 440P
CL 1 DOMINO 555R
JA L1 DOMINETTE 3502N

8

2 YR. OLD

Act. BW ... **87**
EPDs:
CED **-6.1**
BW **3.7**
WW **69**
YW **110**
MILK **29**
M&G **64**
REA **51**
MARB **25**

JA L1 DOMINO 016H

Feb. 3, 2020 • #44149018

HH ADVANCE 4067B
CL 1 DOMINO 6187D
CL1 DOMINETTE 450B

CL 1 DOMINO 386A
JA L1 DOMINETTE 8909F
JA L1 DOMINETTE 3728A

Eye Pigment: **LE 90 / RE 90**

Herd bull prospect that is long-sided and very clean made up front. Dam raised him as a heifer and is a powerful, fault-free, young 386 daughter.

HH ADVANCE 1013Y
HH MISS ADVANCE 8255U
CL 1 DOMINO 215Z
CL 1 DOMINETTE 1178Y
CL 1 DOMINO 1108Y
CL 1 DOMINETTE 440P
CL 1 DOMINO 860U
JA L1 DOMINETTE 6602S★

SONS OF... CLI DOMINO 4100B

Profit Balanced 9-Trait Leader!
Performs the basics better than any
...Calving Ease and role model,
problem-free, perfect uddered females!



9

2 YR. OLD

Act. BW ...**87**
EPDs:
CED**0.5**
BW**3.1**
WW**64**
YW**103**
MILK**27**
M&G**59**
REA**46**
MARB**21**

JA L1 DOMINO 019H

Feb. 7, 2020 • #44149022

HH ADVANCE 4067B
CL 1 DOMINO 6187D
CL1 DOMINETTE 450B

DH ADVANCE 031
JA L1 DOMINETTE 7810E
JA L1 DOMINETTE 1708Y

Eye Pigment: **LE 100 / RE 100**

HH ADVANCE 1013Y
HH MISS ADVANCE 8255U
CL 1 DOMINO 215Z
CL 1 DOMINETTE 1178Y
HH ADVANCE 8050U
DH DOMINETTE 7155
CL 1 DOMINO 860U
JA L1 DOMINETTE 325N

13

2 YR. OLD

Act. BW ...**95**
EPDs:
CED**1.6**
BW**4.8**
WW**51**
YW**89**
MILK**32**
M&G**57**
REA**15**
MARB**02**

JA L1 DOMINO 0113H

Mar. 12, 2020 • #44149043

HH ADVANCE 2005Z
CL 1 DOMINO 4100B
CL1 DOMINETTE 148Y

HH ADVANCE 4082B
JA L1 DOMINETTE 7203E
JA L1 DOMINETTE 4113B

Eye Pigment: **LE 90 / RE 90**

Correct and level-topped.

L1 DOMINO 08469
HH MISS ADVANCE 8009U
CL 1 DOMINO 9125W
CL 1 DOMINETTE 7136T★
CL 1 DOMINO 1161Y
HH MISS ADVANCE 9102W★
CL 1 DOMINO 9125W
JA L1 DOMINETTE 9404W★

10

2 YR. OLD

Act. BW ...**79**
EPDs:
CED**9.1**
BW**1.5**
WW**38**
YW**67**
MILK**27**
M&G**46**
REA**07**
MARB**08**

JA L1 DOMINO 0101H

Feb. 19, 2020 • #44149034

HH ADVANCE 2005Z
CL 1 DOMINO 4100B
CL1 DOMINETTE 148Y

HH ADVANCE 4082B
JA L1 DOMINETTE 7204E
JA L1 DOMINETTE 4511B

Eye Pigment: **LE 0 / RE 0**

L1 DOMINO 08469
HH MISS ADVANCE 8009U
CL 1 DOMINO 9125W
CL 1 DOMINETTE 7136T★
CL 1 DOMINO 1161Y
HH MISS ADVANCE 9102W★
CL 1 DOMINO 216Z
JA L1 DOMINETTE 071X

14

2 YR. OLD

Act. BW ...**95**
EPDs:
CED**2.0**
BW**5.2**
WW**49**
YW**86**
MILK**26**
M&G**51**
REA**21**
MARB**06**

JA L1 DOMINO 0114H

Mar. 14, 2020 • #44149044

HH ADVANCE 2005Z
CL 1 DOMINO 4100B
CL1 DOMINETTE 148Y

UU DOMINO 4089
JA L1 DOMINETTE 7517E
JA L1 DOMINETTE 5422C

Eye Pigment: **LE 20 / RE 20**

L1 DOMINO 08469
HH MISS ADVANCE 8009U
CL 1 DOMINO 9125W
CL 1 DOMINETTE 7136T★
HH ADVANCE 7146T
UU 9110 ADV 2163
HH ADVANCE 2181Z
JA L1 DOMINETTE 1003Y

11

2 YR. OLD

Act. BW ...**102**
EPDs:
CED**-3.3**
BW**6.4**
WW**50**
YW**88**
MILK**30**
M&G**55**
REA**12**
MARB**-04**

JA L1 DOMINO 0103H

Feb. 21, 2020 • #44149035

HH ADVANCE 2005Z
CL 1 DOMINO 4100B
CL1 DOMINETTE 148Y

HH ADVANCE 4082B
JA L1 DOMINETTE 7218E
JA L1 DOMINETTE 4103B

Eye Pigment: **LE 75 / RE 25**

L1 DOMINO 08469
HH MISS ADVANCE 8009U
CL 1 DOMINO 9125W
CL 1 DOMINETTE 7136T★
CL 1 DOMINO 1161Y
HH MISS ADVANCE 9102W★
CL 1 DOMINO 9125W
JA L1 DOMINETTE 9623W★

15

2 YR. OLD

Act. BW ...**83**
EPDs:
CED**2.9**
BW**3.0**
WW**40**
YW**70**
MILK**28**
M&G**48**
REA**15**
MARB**04**

JA L1 DOMINO 0116H

Mar. 19, 2020 • #44150676

HH ADVANCE 2005Z
CL 1 DOMINO 4100B
CL1 DOMINETTE 148Y

JA L1 DOMINO 2110Z
JA L1 DOMINETTE 7101E
JA L1 DOMINETTE 4510B

Eye Pigment: **LE 60 / RE 100**

Stylish and attractively made, this beef bull shows extra thickness in his quarter.

L1 DOMINO 08469
HH MISS ADVANCE 8009U
CL 1 DOMINO 9125W
CL 1 DOMINETTE 7136T★
CL 1 DOMINO 9125W
JA L1 DOMINETTE 9204W
CL 1 DOMINO 216Z
JA L1 DOMINETTE 0422X

12

2 YR. OLD

Act. BW ...**84**
EPDs:
CED**5.5**
BW**2.8**
WW**51**
YW**78**
MILK**34**
M&G**59**
REA**32**
MARB**13**

JA L1 DOMINO 0111H

Mar. 11, 2020 • #44197529

HH ADVANCE 2005Z
CL 1 DOMINO 4100B
CL1 DOMINETTE 148Y

CL 1 DOMINO 386A
JA L1 DOMINETTE 7903E
JA L1 DOMINETTE 0337X

Eye Pigment: **LE 10 / RE 50**

L1 DOMINO 08469
HH MISS ADVANCE 8009U
CL 1 DOMINO 9125W
CL 1 DOMINETTE 7136T★
CL 1 DOMINO 1108Y
CL 1 DOMINETTE 440P
CL 1 DOMINO 638S
JA L1 DOMINETTE 617S

16

2 YR. OLD

Act. BW ...**84**
EPDs:
CED**5.4**
BW**2.4**
WW**42**
YW**74**
MILK**32**
M&G**53**
REA**07**
MARB**05**

JA L1 DOMINO 0117H

Mar. 30, 2020 • #44150677

HH ADVANCE 2005Z
CL 1 DOMINO 4100B
CL1 DOMINETTE 148Y

HH ADVANCE 4082B
JA L1 DOMINETTE 7206E
JA L1 DOMINETTE 4500B

Eye Pigment: **LE 100 / RE 100**

Rugged beef bull with lots of volume. If you like hair, he has extra.

L1 DOMINO 08469
HH MISS ADVANCE 8009U
CL 1 DOMINO 9125W
CL 1 DOMINETTE 7136T★
CL 1 DOMINO 1161Y
HH MISS ADVANCE 9102W★
CL 1 DOMINO 216Z
JA L1 DOMINETTE 2106Z



SONS OF... HH ADVANCE 4082B

The Proven Stockman's Bull!
Select good doin' sons for calving ease, pounds of paywt. and herd building heifers!



17

2 YR. OLD

Act. BW ... **94**
EPDs:
CED **1.9**
BW **5.2**
WW **46**
YW **80**
MILK **23**
M&G **46**
REA **14**
MARB **.01**

JA L1 DOMINO 0120H

Apr. 1, 2020 • 44149046

HH ADVANCE 2005Z
CL 1 DOMINO 4100B
CL1 DOMINETTE 148Y

HH ADVANCE 2181Z
JA L1 DOMINETTE 7423E
JA L1 DOMINETTE 071X

Eye Pigment: **LE 10 / RE 10**

Big volume bull that will always be an easy keeper.

L1 DOMINO 08469
HH MISS ADVANCE 8009U
CL 1 DOMINO 9125W
CL 1 DOMINETTE 7136T★
CL 1 DOMINO 886U
HH MISS ADVANCE 6054S
DH DOMINO 575
JA L1 DOMINETTE 8320U

21

2 YR. OLD

Act. BW ... **90**
EPDs:
CED **3.5**
BW **3.0**
WW **52**
YW **87**
MILK **29**
M&G **55**
REA **.16**
MARB **-.01**

JA L1 DOMINO 0212H

Feb. 17, 2020 • 44149059

CL 1 DOMINO 1161Y
HH ADVANCE 4082B
HH MISS ADVANCE 9102W★

CL 1 DOMINO 9125W
JA L1 DOMINETTE 1111Y
JA L1 DOMINETTE 802U

Eye Pigment: **LE 100 / RE 100**

CL 1 DOMINO 732T
CL 1 DOMINETTE 4126P
HH ADVANCE 5104R
HH MISS ADVANCE 7098T
CL 1 DOMINO 732T
CL 1 DOMINETTE 475P
JA L1 DOMINO 426P
JA L1 DOMINETTE 5636R

18

2 YR. OLD

Act. BW ... **87**
EPDs:
CED **4.1**
BW **3.2**
WW **56**
YW **95**
MILK **26**
M&G **55**
REA **.17**
MARB **-.01**

JA L1 DOMINO 0203H

Feb. 12, 2020 • 44149050

CL 1 DOMINO 1161Y
HH ADVANCE 4082B
HH MISS ADVANCE 9102W★

CL 1 DOMINO 555R
JA L1 DOMINETTE 9215W
JA L1 DOMINETTE 4270P

Eye Pigment: **LE 100 / RE 75**

Lots of muscle in this package and extra length of rib and hip.

CL 1 DOMINO 732T
CL 1 DOMINETTE 4126P
HH ADVANCE 5104R
HH MISS ADVANCE 7098T
HH ADVANCE 3113N
CL 1 DOMINETTE 3174N★
JA L1 DOMINO 0224
JA L1 DOMINETTE 3567

22

2 YR. OLD

Act. BW ... **87**
EPDs:
CED **5.4**
BW **2.0**
WW **52**
YW **83**
MILK **30**
M&G **56**
REA **.28**
MARB **.01**

JA L1 DOMINO 0213H

Feb. 17, 2020 • 44319904

CL 1 DOMINO 1161Y
HH ADVANCE 4082B
HH MISS ADVANCE 9102W★

DH ADVANCE 031
JA L1 DOMINETTE 7800E
JA L1 DOMINETTE 2605Z

Eye Pigment: **LE 50 / RE 10**

CL 1 DOMINO 732T
CL 1 DOMINETTE 4126P
HH ADVANCE 5104R
HH MISS ADVANCE 7098T
HH ADVANCE 8050U
DH DOMINETTE 7155
JA L1 DOMINO 7640T
JA L1 DOMINETTE 9210W★

19

2 YR. OLD

Act. BW ... **83**
EPDs:
CED **5.7**
BW **1.8**
WW **53**
YW **88**
MILK **27**
M&G **53**
REA **.24**
MARB **.01**

JA L1 DOMINO 0206H

Feb. 12, 2020 • 44149053

CL 1 DOMINO 1161Y
HH ADVANCE 4082B
HH MISS ADVANCE 9102W★

CL 1 DOMINO 860U
JA L1 DOMINETTE 2721Z
JA L1 DOMINETTE 7621T

Eye Pigment: **LE 100 / RE 50**

Herd bull prospect with style and balance. He is heavy muscled and thick made. If your cows need more milk, this guy would help.

CL 1 DOMINO 732T
CL 1 DOMINETTE 4126P
HH ADVANCE 5104R
HH MISS ADVANCE 7098T
CL 1 DOMINO 637S
CL 1 DOMINETTE 5142R★
HH ADVANCE 286M
JA L1 DOMINETTE 214M★

23

2 YR. OLD

Act. BW ... **89**
EPDs:
CED **5.6**
BW **2.8**
WW **52**
YW **89**
MILK **30**
M&G **56**
REA **.30**
MARB **.02**

JA L1 DOMINO 0217H

Feb. 24, 2020 • 44149063

CL 1 DOMINO 1161Y
HH ADVANCE 4082B
HH MISS ADVANCE 9102W★

JA L1 DOMINO 7640T
JA L1 DOMINETTE 1619Y★
JA L1 DOMINETTE 9000W

Eye Pigment: **LE 90 / RE 100**

CL 1 DOMINO 732T
CL 1 DOMINETTE 4126P
HH ADVANCE 5104R
HH MISS ADVANCE 7098T
HH ADVANCE 286M
JAL L1 DOMINETTE 1409L
JA L1 DOMINO 6001S
JA L1 DOMINETTE 6602S★

20

2 YR. OLD

Act. BW ... **86**
EPDs:
CED **6.9**
BW **2.1**
WW **50**
YW **83**
MILK **29**
M&G **54**
REA **.20**
MARB **.03**

JA L1 DOMINO 0210H

Feb. 15, 2020 • 44149057

CL 1 DOMINO 1161Y
HH ADVANCE 4082B
HH MISS ADVANCE 9102W★

HH ADVANCE 0085X
JA L1 DOMINETTE 2305Z
JA L1 DOMINETTE 9623W★

Eye Pigment: **LE 75 / RE 50**

Big-boned and a free, easy mover. Dam is a 1600 lb. cow, he will get big.

CL 1 DOMINO 732T
CL 1 DOMINETTE 4126P
HH ADVANCE 5104R
HH MISS ADVANCE 7098T
HH ADVANCE 8203U
HH MISS ADVANCE 7017T
HH ADVANCE 286M
JA L1 DOMINETTE 213M

24

2 YR. OLD

Act. BW ... **75**
EPDs:
CED **8.2**
BW **0.7**
WW **46**
YW **83**
MILK **27**
M&G **50**
REA **.21**
MARB **.08**

JA L1 DOMINO 0220H

Mar. 1, 2020 • 44149065

CL 1 DOMINO 1161Y
HH ADVANCE 4082B
HH MISS ADVANCE 9102W★

CL 1 DOMINO 860U
JA L1 DOMINETTE 2735Z
JA L1 DOMINETTE 2400M

Eye Pigment: **LE 80 / RE 85**

CL 1 DOMINO 732T
CL 1 DOMINETTE 4126P
HH ADVANCE 5104R
HH MISS ADVANCE 7098T
CL 1 DOMINO 637S
CL 1 DOMINETTE 5142R★
HH ADVANCE 8012H
JA L1 DOMINETTE 9220

SONS OF...
JA L1 DOMINO 6212D

*A Stalwart JA Herd Bull
...Potent L1 Pedigree!
Powerful sons offer red pigment,
pounds of payweight and top notch
herd replacements!*



25

2 YR. OLD
Act. BW ... **82**
EPDs:
CED ... **4.8**
BW ... **2.9**
WW ... **54**
YW ... **88**
MILK ... **28**
M&G ... **55**
REA ... **14**
MARB ... **.01**

JA L1 DOMINO 0222H

Mar. 12, 2020 • 44149069

CL 1 DOMINO 1161Y
HH ADVANCE 4082B
HH MISS ADVANCE 9102W★

HH ADVANCE 3040A
JA L1 DOMINETTE 605D
JA L1 DOMINETTE 1714Y

Eye Pigment: LE 100 / RE 100

CL 1 DOMINO 732T
CL 1 DOMINETTE 4126P
HH ADVANCE 5104R
HH MISS ADVANCE 7098T
HH ADVANCE 0132X
HH MISS ADVANCE 6155S
CL 1 DOMINO 860U
JA L1 DOMINETTE 7642T

29

2 YR. OLD
Act. BW ... **87**
EPDs:
CED ... **3.1**
BW ... **3.9**
WW ... **63**
YW ... **104**
MILK ... **36**
M&G ... **67**
REA ... **.33**
MARB ... **-.08**

JA L1 DOMINO 0251H

Feb. 25, 2020 • 44149475

HH ADVANCE 4082B
JA L1 DOMINO 6212D
JA L1 DOMINETTE 301A★

JA L1 DOMINO 302A
JA L1 DOMINETTE 812F
JA L1 DOMINETTE 4415B

Eye Pigment: LE 100 / RE 100

CL 1 DOMINO 1161Y
HH MISS ADVANCE 9102W★
HH ADVANCE 1098Y
JA L1 DOMINETTE 1214Y
HH ADVANCE 0132X
JA L1 DOMINETTE 1633Y★
HH ADVANCE 2181Z
JA L1 DOMINETTE 1607Y★

A big red spot on his face and extra body capacity.

26

2 YR. OLD
Act. BW ... **84**
EPDs:
CED ... **6.1**
BW ... **2.2**
WW ... **54**
YW ... **91**
MILK ... **32**
M&G ... **59**
REA ... **.31**
MARB ... **.00**

JA L1 DOMINO 0230H

Mar. 11, 2020 • 44149068

CL 1 DOMINO 1161Y
HH ADVANCE 4082B
HH MISS ADVANCE 9102W★

JA L1 DOMINO 7640T
JA L1 DOMINETTE 1633Y★
JA L1 DOMINETTE 9225W

Eye Pigment: LE 75 / RE 75

CL 1 DOMINO 732T
CL 1 DOMINETTE 4126P
HH ADVANCE 5104R
HH MISS ADVANCE 7098T
HH ADVANCE 286M
JAL L1 DOMINETTE 1409L
CL 1 DOMINO 555R
JA L1 DOMINETTE 5772R

Clean made and moves out freely. Dam is eleven years old, is problem free and still going strong.

30

2 YR. OLD
Act. BW ... **77**
EPDs:
CED ... **4.9**
BW ... **2.7**
WW ... **61**
YW ... **101**
MILK ... **35**
M&G ... **66**
REA ... **.35**
MARB ... **-.05**

JA L1 DOMINO 0254H

Mar. 1, 2020 • 44149477

HH ADVANCE 4082B
JA L1 DOMINO 6212D
JA L1 DOMINETTE 301A★

JA L1 DOMINO 302A
JA L1 DOMINETTE 837F
JA L1 DOMINETTE 4123B

Eye Pigment: LE 100 / RE 100

CL 1 DOMINO 1161Y
HH MISS ADVANCE 9102W★
HH ADVANCE 1098Y
JA L1 DOMINETTE 1214Y
HH ADVANCE 0132X
JA L1 DOMINETTE 1633Y★
CL 1 DOMINO 9125W
JA L1 DOMINETTE 8638U

Goggle-eyed and red-necked and an eye catcher with a low birth weight.

27

2 YR. OLD
Act. BW ... **91**
EPDs:
CED ... **1.8**
BW ... **3.1**
WW ... **50**
YW ... **89**
MILK ... **29**
M&G ... **54**
REA ... **.25**
MARB ... **.01**

JA L1 DOMINO 0232H

Mar. 17, 2020 • 44149071

CL 1 DOMINO 1161Y
HH ADVANCE 4082B
HH MISS ADVANCE 9102W★

CL 1 DOMINO 860U
JA L1 DOMINETTE 1705Y
JA L1 DOMINETTE 2400M

Eye Pigment: LE 30 / RE 60

CL 1 DOMINO 732T
CL 1 DOMINETTE 4126P
HH ADVANCE 5104R
HH MISS ADVANCE 7098T
CL 1 DOMINO 637S
CL 1 DOMINETTE 5142R★
HH ADVANCE 8012H
JA L1 DOMINETTE 9220

Disposition is excellent, he wants to be a pet. Nicely balanced and well made to complete the package. Dam has always been one of my favorite 860 daughters.

31

2 YR. OLD
Act. BW ... **82**
EPDs:
CED ... **3.8**
BW ... **2.8**
WW ... **62**
YW ... **93**
MILK ... **35**
M&G ... **66**
REA ... **.28**
MARB ... **.00**

JA L1 DOMINO 0255H

Mar. 12, 2020 • 44149478

HH ADVANCE 4082B
JA L1 DOMINO 6212D
JA L1 DOMINETTE 301A★

CL 1 DOMINO 6163D
JA L1 DOMINETTE 8612F
JA L1 DOMINETTE 5416C

Eye Pigment: LE 100 / RE 100

CL 1 DOMINO 1161Y
HH MISS ADVANCE 9102W★
HH ADVANCE 1098Y
JA L1 DOMINETTE 1214Y
CL 1 DOMINO 215Z
MONTANA MISS 1179Y★
HH ADVANCE 2181Z
JA L1 DOMINETTE 0213X

Here is what I hoped a 6212 x 6163 cross would produce. He's a red-necked beef bull deluxe with extreme rib depth and a moderate birth weight.

28

2 YR. OLD
Act. BW ... **85**
EPDs:
CED ... **5.2**
BW ... **2.8**
WW ... **55**
YW ... **93**
MILK ... **25**
M&G ... **52**
REA ... **.22**
MARB ... **.00**

JA L1 DOMINO 0237H

Mar. 26, 2020 • 44149076

CL 1 DOMINO 1161Y
HH ADVANCE 4082B
HH MISS ADVANCE 9102W★

CL 1 DOMINO 860U
JA L1 DOMINETTE 1714Y
JA L1 DOMINETTE 7642T

Eye Pigment: LE 100 / RE 100

CL 1 DOMINO 732T
CL 1 DOMINETTE 4126P
HH ADVANCE 5104R
HH MISS ADVANCE 7098T
CL 1 DOMINO 637S
CL 1 DOMINETTE 5142R★
HH ADVANCE 286M
JA L1 DOMINETTE 3923N

Red-necked and red-eyed. The 4082 sons are all rugged beef bulls.

32

2 YR. OLD
Act. BW ... **84**
EPDs:
CED ... **4.9**
BW ... **3.9**
WW ... **65**
YW ... **99**
MILK ... **30**
M&G ... **62**
REA ... **.38**
MARB ... **-.09**

JA L1 DOMINO 0256H

Mar. 13, 2020 • 44149479

HH ADVANCE 4082B
JA L1 DOMINO 6212D
JA L1 DOMINETTE 301A★

HH ADVANCE 2181Z
JA L1 DOMINETTE 8411F
JA L1 DOMINETTE 320A

Eye Pigment: LE 90 / RE 90

CL 1 DOMINO 1161Y
HH MISS ADVANCE 9102W★
HH ADVANCE 1098Y
JA L1 DOMINETTE 1214Y
CL 1 DOMINO 886U
HH MISS ADVANCE 6054S
HH ADVANCE 9075W
JA L1 DOMINETTE 1604Y

A heifer's first son, he's red-necked with strong pigment.



SONS OF... HH ADVANCE 6193D

Complete, Powerful, 5-Trait Leader!
 Pigmented cattle that combine
 maternal, performance & carcass
 value for a real Profit balance!



33

2 YR. OLD

Act. BW ... **80**
 EPDs:
 CED ... **3.4**
 BW ... **2.4**
 WW ... **58**
 YW ... **92**
 MILK ... **35**
 M&G ... **64**
 REA ... **27**
 MARB ... **01**

JA L1 DOMINO 0259H

Mar. 23, 2020 • 44149482

HH ADVANCE 4082B
JA L1 DOMINO 6212D
 JA L1 DOMINETTE 301A★

CL 1 DOMINO 6163D
JA L1 DOMINETTE 8610F
 JA L1 DOMINETTE 600D

Eye Pigment: **LE 100 / RE 80**

A straight level top and very thick. These 4082 sons and grandsons are all bulls that will add pounds and muscle.

CL 1 DOMINO 1161Y
 HH MISS ADVANCE 9102W★
 HH ADVANCE 1098Y
 JA L1 DOMINETTE 1214Y
 CL 1 DOMINO 215Z
 MONTANA MISS 1179Y★
 HH ADVANCE 3040A
 JA L1 DOMINETTE 4729B

37

2 YR. OLD

Act. BW ... **90**
 EPDs:
 CED ... **2.2**
 BW ... **3.5**
 WW ... **53**
 YW ... **81**
 MILK ... **30**
 M&G ... **56**
 REA ... **31**
 MARB ... **05**

JA L1 DOMINO 0303H

May 1, 2020 • 44197445

DH DOMINO 831
DH DOMINO 239Z
 DH DOMINETTE 9130

CL 1 DOMINO 638S
JA L1 DOMINETTE 0337X
 JA L1 DOMINETTE 617S

Eye Pigment: **LE 75 / RE 20**

A red neck with lots of frame and volume. He will have a lot of mature size.

DH DOMINO 302
 DH MS ADVANCE 1003
 DH DOMINO 650
 DH DOMINETTE 7167
 L1 DOMINO 03396
 CL 1 DOMINETTE 475P
 CL 1 DOMINO 0157K
 JA L1 DOMINETTE 1801L

34

2 YR. OLD

Act. BW ... **77**
 EPDs:
 CED ... **7.9**
 BW ... **1.9**
 WW ... **57**
 YW ... **97**
 MILK ... **32**
 M&G ... **60**
 REA ... **37**
 MARB ... **03**

JA L1 DOMINO 0262H

Apr. 1, 2020 • 44149485

HH ADVANCE 4082B
JA L1 DOMINO 6212D
 JA L1 DOMINETTE 301A★

CL 1 DOMINO 386A
JA L1 DOMINETTE 8900F
 JA L1 DOMINETTE 9652W

Eye Pigment: **LE 100 / RE 100**

CL 1 DOMINO 1161Y
 HH MISS ADVANCE 9102W★
 HH ADVANCE 1098Y
 JA L1 DOMINETTE 1214Y
 CL 1 DOMINO 1108Y
 CL 1 DOMINETTE 440P
 HH ADVANCE 286M
 JA L1 DOMINETTE 0212

38

2 YR. OLD

Act. BW ... **83**
 EPDs:
 CED ... **3.4**
 BW ... **2.7**
 WW ... **53**
 YW ... **80**
 MILK ... **20**
 M&G ... **46**
 REA ... **30**
 MARB ... **18**

JA L1 DOMINO 0504H

Feb. 10, 2020 • 44149083

HH ADVANCE 3006A
HH ADVANCE 6193D
 HH MISS ADVANCE 0121X

HH ADVANCE 2181Z
JA L1 DOMINETTE 5406C
 JA L1 DOMINETTE 9623W★

Eye Pigment: **LE 100 / RE 50**

Red-necked and red-eyed with lots of style. Does have a white spot in one eye.

HH ADVANCE 0002X
 HH MISS ADVANCE 1142Y
 HH ADVANCE 8203U
 HH MISS ADVANCE 7050T
 CL 1 DOMINO 886J
 HH MISS ADVANCE 6054S
 HH ADVANCE 286M
 JA L1 DOMINETTE 213M

35

2 YR. OLD

Act. BW ... **87**
 EPDs:
 CED ... **0.7**
 BW ... **4.0**
 WW ... **50**
 YW ... **80**
 MILK ... **20**
 M&G ... **45**
 REA ... **18**
 MARB ... **05**

JA L1 DOMINO 0300H

Apr. 10, 2020 • 44149472

DH DOMINO 831
DH DOMINO 239Z
 DH DOMINETTE 9130

HH ADVANCE 2181Z
JA L1 DOMINETTE 7412E
 JA L1 DOMINETTE 9845W

Eye Pigment: **LE 75 / RE 100**

Here is the "big boss" of the bunch. A herd bull prospect with frame, extreme depth of rib and volume, and he will always be an easy keeper. Sire 239 is still with us at ten years old.

DH DOMINO 302
 DH MS ADVANCE 1003
 DH DOMINO 650
 DH DOMINETTE 7167
 CL 1 DOMINO 886U
 HH MISS ADVANCE 6054S
 CL 1 DOMINO 560R
 JA L1 DOMINETTE 2231M

39

2 YR. OLD

Act. BW ... **85**
 EPDs:
 CED ... **2.5**
 BW ... **2.6**
 WW ... **49**
 YW ... **72**
 MILK ... **24**
 M&G ... **49**
 REA ... **32**
 MARB ... **21**

JA L1 DOMINO 0505H

Feb. 10, 2020 • 44149084

HH ADVANCE 3006A
HH ADVANCE 6193D
 HH MISS ADVANCE 0121X

CL 1 DOMINO 555R
JA L1 DOMINETTE 9220W
 JA L1 DOMINETTE 4123P

Eye Pigment: **LE 100 / RE 100**

Goggle-eyed and red-necked. Dam is a twelve year old 555 daughter.

HH ADVANCE 0002X
 HH MISS ADVANCE 1142Y
 HH ADVANCE 8203U
 HH MISS ADVANCE 7050T
 HH ADVANCE 3113N
 CL 1 DOMINETTE 3174N★
 JA L1 DOMINO 208M
 JA L1 DOMINETTE 1413L

36

2 YR. OLD

Act. BW ... **83**
 EPDs:
 CED ... **3.7**
 BW ... **2.0**
 WW ... **44**
 YW ... **74**
 MILK ... **30**
 M&G ... **52**
 REA ... **37**
 MARB ... **06**

JA L1 DOMINO 0302H

Apr. 19, 2020 • 44319901

DH DOMINO 831
DH DOMINO 239Z
 DH DOMINETTE 9130

JA L1 DOMINO 7640T
JA L1 DOMINETTE 5609C
 JA L1 DOMINETTE 2503Z★

Eye Pigment: **LE 100 / RE 80**

Not many 239 sons in the sale, they are all alike. Rugged beef bulls that will last a long time.

DH DOMINO 302
 DH MS ADVANCE 1003
 DH DOMINO 650
 DH DOMINETTE 7167
 HH ADVANCE 286M
 JAL L1 DOMINETTE 1409L
 CO L1 DOMINO 946W
 JA L1 DOMINETTE 0212X

40

2 YR. OLD

Act. BW ... **83**
 EPDs:
 CED ... **4.1**
 BW ... **2.6**
 WW ... **45**
 YW ... **69**
 MILK ... **21**
 M&G ... **44**
 REA ... **25**
 MARB ... **21**

JA L1 DOMINO 0515H

Mar. 9, 2020 • 44149091

HH ADVANCE 3006A
HH ADVANCE 6193D
 HH MISS ADVANCE 0121X

JA L1 DOMINO 6001S
JA L1 DOMINETTE 9000W
 JA L1 DOMINETTE 6602S★

Eye Pigment: **LE 100 / RE 30**

HH ADVANCE 0002X
 HH MISS ADVANCE 1142Y
 HH ADVANCE 8203U
 HH MISS ADVANCE 7050T
 GB L1 DOMINO 935C
 JA L1 DOMINETTE 0212
 HH ADVANCE 286M
 JA L1 DOMINETTE 3808N

JAMISON

**New Generation*

HEREFORD BULLS



JA **New Generation* BULLS

...The most powerful and complete Herd Builder,
 Multi-Trait Performance & Carcass Value bulls ever offered!
 A Volume Selection ...Sons of Industry Current
 American Hereford Trait Leader Sires!



LINEBRED ...SOUND STRUCTURED ...PERFORMANCE BALANCED ...RED PIGMENTED!



LOT 14
 Sire: CL1 Domino 4100B
 BW 5.2 WW 49 YW 86 MILK 26 M&G 51
 REA .21 MARB .06



LOT 31
 Sire: JA L1 Domino 6212D
 BW 2.8 WW 62 YW 93 MILK 35 M&G 66
 REA .28 MARB .00



LOT 51
 Sire: CL1 Domino 6163D
 BW 1.6 WW 51 YW 73 MILK 35 M&G 60
 REA .36 MARB .10



SONS OF... CLI DOMINO 6163D

**Powerful, Proven, Hi-Maternal,
Balanced Beef Bull!**
Good doin', rugged sons deliver
the maximum combo of CE,
extra performance, CHB Value
and hi-quality daughters!



41

2 YR. OLD

Act. BW ... **.89**
EPDs:
CED **0.8**
BW **3.2**
WW **53**
YW **76**
MILK **26**
M&G **52**
REA **.26**
MARB **.18**

JA L1 DOMINO 0517H

Apr. 2, 2020 • 44149093

HH ADVANCE 3006A
HH ADVANCE 6193D
HH MISS ADVANCE 0121X

CL 1 DOMINO 555R
JA L1 DOMINETTE 0244X
JA L1 DOMINETTE 1251L

Eye Pigment: **LE 100 / RE 100**

HH ADVANCE 0002X
HH MISS ADVANCE 1142Y
HH ADVANCE 8203U
HH MISS ADVANCE 7050T
HH ADVANCE 3113N
CL 1 DOMINETTE 3174N★
HH ADVANCE 6063F
JA L1 DOMINETTE 723

42

2 YR. OLD

Act. BW ... **.84**
EPDs:
CED **5.3**
BW **0.2**
WW **55**
YW **81**
MILK **38**
M&G **66**
REA **.52**
MARB **.16**

JA L1 DOMINO 0531H

Apr. 25, 2020 • 44197491

CL 1 DOMINO 215Z
CL 1 DOMINO 6163D
MONTANA MISS 1179Y★

JA L1 DOMINO 302A
JA L1 DOMINETTE 690D
JA L1 DOMINETTE 4707B

Eye Pigment: **LE 95 / RE 90**

CL 1 DOMINO 9122W
CL 1 DOMINETTE 055X★
CL 1 DOMINO 7110T
MONTANA MISS 753T
HH ADVANCE 0132X
JA L1 DOMINETTE 1633Y★
CL 1 DOMINO 860U
JA L1 DOMINETTE 9424W

43

2 YR. OLD

Act. BW ... **.82**
EPDs:
CED **2.1**
BW **1.5**
WW **47**
YW **70**
MILK **31**
M&G **54**
REA **.18**
MARB **.11**

JA L1 DOMINO 0602H

Jan. 27, 2020 • 44149096

CL 1 DOMINO 215Z
CL 1 DOMINO 6163D
MONTANA MISS 1179Y★

HH ADVANCE 3040A
JA L1 DOMINETTE 621D
JA L1 DOMINETTE 9210W★

Eye Pigment: **LE 100 / RE 100**

Lots of pigment, a thick-ended beef bull with depth and capacity.

CL 1 DOMINO 9122W
CL 1 DOMINETTE 055X★
CL 1 DOMINO 7110T
MONTANA MISS 753T
HH ADVANCE 0132X
HH MISS ADVANCE 6155S
CL 1 DOMINO 555R
JA L1 DOMINETTE 622S

44

2 YR. OLD

Act. BW ... **.90**
EPDs:
CED **-9.2**
BW **4.9**
WW **64**
YW **97**
MILK **35**
M&G **67**
REA **.38**
MARB **.03**

JA L1 DOMINO 0604H

Jan. 28, 2020 • 44149098

CL 1 DOMINO 215Z
CL 1 DOMINO 6163D
MONTANA MISS 1179Y★

JA L1 DOMINO 2110Z
JA L1 DOMINETTE 8108F
JA L1 DOMINETTE 4709B

Eye Pigment: **LE 90 / RE 100**

CL 1 DOMINO 9122W
CL 1 DOMINETTE 055X★
CL 1 DOMINO 7110T
MONTANA MISS 753T
CL 1 DOMINO 9125W
JA L1 DOMINETTE 9204W
CL 1 DOMINO 860U
JA L1 DOMINETTE 8626U

45

2 YR. OLD

Act. BW ... **.83**
EPDs:
CED **-0.3**
BW **3.3**
WW **59**
YW **91**
MILK **36**
M&G **65**
REA **.29**
MARB **.05**

JA L1 DOMINO 0611H

Feb. 1, 2020 • 44149105

CL 1 DOMINO 215Z
CL 1 DOMINO 6163D
MONTANA MISS 1179Y★

JA L1 DOMINO 302A
JA L1 DOMINETTE 824F
JA L1 DOMINETTE 800U

Eye Pigment: **LE 100 / RE 100**

A goggle-eyed herd bull prospect with a moderate birth weight. I call him a rancher and beef bull deluxe.

CL 1 DOMINO 9122W
CL 1 DOMINETTE 055X★
CL 1 DOMINO 7110T
MONTANA MISS 753T
HH ADVANCE 0132X
JA L1 DOMINETTE 1633Y★
JA L1 DOMINO 426P
JA L1 DOMINETTE 5019R★

46

2 YR. OLD

Act. BW ... **.83**
EPDs:
CED **1.5**
BW **2.3**
WW **49**
YW **74**
MILK **25**
M&G **50**
REA **.25**
MARB **.06**

JA L1 DOMINO 0621H

Mar. 10, 2020 • 44197477

CL 1 DOMINO 215Z
CL 1 DOMINO 6163D
MONTANA MISS 1179Y★

DH ADVANCE 031
JA L1 DOMINETTE 6824F
JA L1 DOMINETTE 1200Y

Eye Pigment: **LE 50 / RE 100**

CL 1 DOMINO 9122W
CL 1 DOMINETTE 055X★
CL 1 DOMINO 7110T
MONTANA MISS 753T
HH ADVANCE 8050U
DH DOMINETTE 7155
CL 1 DOMINO 555R
JA L1 DOMINETTE 4230P

47

2 YR. OLD

Act. BW ... **.83**
EPDs:
CED **1.8**
BW **2.7**
WW **59**
YW **86**
MILK **32**
M&G **62**
REA **.24**
MARB **.09**

JA L1 DOMINO 0623H

Feb. 7, 2020 • 44149112

CL 1 DOMINO 215Z
CL 1 DOMINO 6163D
MONTANA MISS 1179Y★

HH ADVANCE 2181Z
JA L1 DOMINETTE 5416C
JA L1 DOMINETTE 0213X

Eye Pigment: **LE 100 / RE 100**

Very thick made and red-necked.

CL 1 DOMINO 9122W
CL 1 DOMINETTE 055X★
CL 1 DOMINO 7110T
MONTANA MISS 753T
CL 1 DOMINO 886U
HH MISS ADVANCE 6054S
CL 1 DOMINO 555R
JA L1 DOMINETTE 202M

48

2 YR. OLD

Act. BW ... **.83**
EPDs:
CED **2.5**
BW **1.5**
WW **51**
YW **83**
MILK **33**
M&G **59**
REA **.33**
MARB **.18**

JA L1 DOMINO 0624H

Feb. 18, 2020 • 44149432

CL 1 DOMINO 215Z
CL 1 DOMINO 6163D
MONTANA MISS 1179Y★

CL 1 DOMINO 386A
JA L1 DOMINETTE 6900D
JA L1 DOMINETTE 2709Z

Eye Pigment: **LE 100 / RE 100**

Moderate framed with good thickness. Should be strong in maternal traits.

CL 1 DOMINO 9122W
CL 1 DOMINETTE 055X★
CL 1 DOMINO 7110T
MONTANA MISS 753T
CL 1 DOMINO 1108Y
CL 1 DOMINETTE 440P
CL 1 DOMINO 860U
JA L1 DOMINETTE 8637U

49**JA L1 DOMINO 0625H**

Feb. 20, 2020 • 44149433

2 YR. OLD
 Act. BW ... **88**
 EPDs:
 CED ... **2.0**
 BW ... **2.9**
 WW ... **55**
 YW ... **80**
 MILK ... **28**
 M&G ... **56**
 REA ... **.34**
 MARB ... **.07**

CL 1 DOMINO 215Z
CL 1 DOMINO 6163D
 MONTANA MISS 1179Y★

HH ADVANCE 0118X
JA L1 DOMINETTE 6513D
 JA L1 DOMINETTE 9614W

Eye Pigment: LE 100 / RE 100

CL 1 DOMINO 9122W
 CL 1 DOMINETTE 055X★
 CL 1 DOMINO 7110T
 MONTANA MISS 753T
 CL 1 DOMINO 7128T
 HH MISS ADVANCE 6074S
 HH ADVANCE 286M
 JA L1 DOMINETTE 4160P

50**JA L1 DOMINO 0630H**

Mar. 4, 2020 • 44149434

2 YR. OLD
 Act. BW ... **70**
 EPDs:
 CED ... **8.4**
 BW ... **-0.1**
 WW ... **52**
 YW ... **78**
 MILK ... **33**
 M&G ... **59**
 REA ... **.24**
 MARB ... **.14**

CL 1 DOMINO 215Z
CL 1 DOMINO 6163D
 MONTANA MISS 1179Y★

HH ADVANCE 4082B
JA L1 DOMINETTE 6221D
 JA L1 DOMINETTE 3219A

Eye Pigment: LE 100 / RE 100

Thick and square made with lots of pigment. Just a 70 lb. birth weight. He does have one white leg, but is red-necked and short marked otherwise.

CL 1 DOMINO 9122W
 CL 1 DOMINETTE 055X★
 CL 1 DOMINO 7110T
 MONTANA MISS 753T
 CL 1 DOMINO 1161Y
 HH MISS ADVANCE 9102W★
 CL 1 DOMINO 555R
 JA L1 DOMINETTE 202M

51**JA L1 DOMINO 0632H**

Feb. 25, 2020 • 44149435

2 YR. OLD
 Act. BW ... **80**
 EPDs:
 CED ... **3.8**
 BW ... **1.6**
 WW ... **51**
 YW ... **73**
 MILK ... **35**
 M&G ... **60**
 REA ... **.36**
 MARB ... **.10**

CL 1 DOMINO 215Z
CL 1 DOMINO 6163D
 MONTANA MISS 1179Y★

CL 1 DOMINO 9125W
JA L1 DOMINETTE 5108C
 JA L1 DOMINETTE 1606Y★

Eye Pigment: LE 100 / RE 100

Wearing great big goggle-eyes. A heavy muscled beef bull to go with the pigment.

CL 1 DOMINO 9122W
 CL 1 DOMINETTE 055X★
 CL 1 DOMINO 7110T
 MONTANA MISS 753T
 CL 1 DOMINO 732T
 CL 1 DOMINETTE 475P
 JA L1 DOMINO 7640T
 JA L1 DOMINETTE 9304W★

52**JA L1 DOMINO 0634H**

Mar. 8, 2020 • 44149436

2 YR. OLD
 Act. BW ... **63**
 EPDs:
 CED ... **0.6**
 BW ... **2.6**
 WW ... **63**
 YW ... **89**
 MILK ... **32**
 M&G ... **63**
 REA ... **.34**
 MARB ... **.14**

CL 1 DOMINO 215Z
CL 1 DOMINO 6163D
 MONTANA MISS 1179Y★

GB L1 DOMINO 177R
JA L1 DOMINETTE 631D
 JA L1 DOMINETTE 4400B

Eye Pigment: LE 100 / RE 90

Muscle and mass and lots of thickness.

CL 1 DOMINO 9122W
 CL 1 DOMINETTE 055X★
 CL 1 DOMINO 7110T
 MONTANA MISS 753T
 GB L1 DOMINO 8143M
 GB L1 DOM PRCS 690K
 HH ADVANCE 2181Z
 JA L1 DOMINETTE 1813Y

53**JA L1 DOMINO 0639H**

Apr. 13, 2020 • 44197488

2 YR. OLD
 Act. BW ... **69**
 EPDs:
 CED ... **6.7**
 BW ... **0.3**
 WW ... **49**
 YW ... **72**
 MILK ... **31**
 M&G ... **56**
 REA ... **.23**
 MARB ... **.16**

CL 1 DOMINO 215Z
CL 1 DOMINO 6163D
 MONTANA MISS 1179Y★

HH ADVANCE 3040A
JA L1 DOMINETTE 601D
 JA L1 DOMINETTE 4727B

Eye Pigment: LE 100 / RE 100

He started out at 69 lbs. and should be A plus for calving ease. Red-marked and a typical 6163 son.

CL 1 DOMINO 9122W
 CL 1 DOMINETTE 055X★
 CL 1 DOMINO 7110T
 MONTANA MISS 753T
 HH ADVANCE 0132X
 HH MISS ADVANCE 6155S
 CL 1 DOMINO 860U
 JA L1 DOMINETTE 9652W

54**JA L1 DOMINO 0650H**

Feb. 2, 2020 • 44149026

2 YR. OLD
 Act. BW ... **85**
 EPDs:
 CED ... **3.7**
 BW ... **2.1**
 WW ... **63**
 YW ... **102**
 MILK ... **30**
 M&G ... **62**
 REA ... **.32**
 MARB ... **.24**

HH ADVANCE 4067B
CL 1 DOMINO 6187D
 CL1 DOMINETTE 450B

CL 1 DOMINO 216Z
JA L1 DOMINETTE 8712F
 JA L1 DOMINETTE 2104Z

Eye Pigment: LE 100 / RE 100

Very quiet disposition with extra depth and capacity. Lots of red pigment.

HH ADVANCE 1013Y
 HH MISS ADVANCE 8255U
 CL 1 DOMINO 215Z
 CL 1 DOMINETTE 1178Y
 CL 1 DOMINO 860U
 CL 1 DOMINETTE 759T
 CL 1 DOMINO 9125W
 JA L1 DOMINETTE 9205W

55**JA L1 DOMINO 0706H**

Feb. 2, 2020 • 44149450

2 YR. OLD
 Act. BW ... **85**
 EPDs:
 CED ... **3.4**
 BW ... **1.7**
 WW ... **44**
 YW ... **77**
 MILK ... **27**
 M&G ... **49**
 REA ... **.30**
 MARB ... **-.03**

CL 1 DOMINO 860U
JA L1 DOMINO 3737A
 JA L1 DOMINETTE 4211P

HH ADVANCE 9075W
JA L1 DOMINETTE 321A
 JA L1 DOMINETTE 1604Y

Eye Pigment: LE 100 / RE 100

CL 1 DOMINO 637S
 CL 1 DOMINETTE 5142R★
 CL 1 DOMINO 484
 JA L1 DOMINETTE 2524M
 HH ADVANCE 7101T
 HH MISS ADVANCE 1028L
 JA L1 DOMINO 7640T
 JA L1 DOMINETTE 9319W

56**JA L1 DOMINO 0708H**

Feb. 24, 2020 • 44149454

2 YR. OLD
 Act. BW ... **94**
 EPDs:
 CED ... **-3.0**
 BW ... **3.6**
 WW ... **50**
 YW ... **88**
 MILK ... **25**
 M&G ... **50**
 REA ... **.27**
 MARB ... **.00**

CL 1 DOMINO 860U
JA L1 DOMINO 3737A
 JA L1 DOMINETTE 4211P

CL 1 DOMINO 386A
WW DOMINETTE E77
 B&B L1 DOMINETTE 4213

Eye Pigment: LE 100 / RE 100

CL 1 DOMINO 637S
 CL 1 DOMINETTE 5142R★
 CL 1 DOMINO 484
 JA L1 DOMINETTE 2524M
 CL 1 DOMINO 1108Y
 CL 1 DOMINETTE 440P
 CL 1 DOMINO 9125W
 B&B L1 DOMINETTE 8128

57**JA L1 DOMINO 0711H**

Feb. 28, 2020 • 44149457

2 YR. OLD
 Act. BW ... **76**
 EPDs:
 CED ... **6.1**
 BW ... **0.3**
 WW ... **41**
 YW ... **76**
 MILK ... **26**
 M&G ... **46**
 REA ... **.19**
 MARB ... **.07**

CL 1 DOMINO 860U
JA L1 DOMINO 3737A
 JA L1 DOMINETTE 4211P

UU DOMINO 4089
JA L1 DOMINETTE 7500E
 JA L1 DOMINETTE 5320C

Eye Pigment: LE 100 / RE 70

Calving ease heifer bull prospect with beef in the right places.

CL 1 DOMINO 637S
 CL 1 DOMINETTE 5142R★
 CL 1 DOMINO 484
 JA L1 DOMINETTE 2524M
 HH ADVANCE 7146T
 UU 9110 ADV 2163
 HH ADVANCE 0085X
 JA L1 DOMINETTE 7213T★

58**JA L1 DOMINO 0712H**

Feb. 28, 2020 • 44149458

2 YR. OLD
 Act. BW ... **76**
 EPDs:
 CED ... **4.7**
 BW ... **0.2**
 WW ... **41**
 YW ... **72**
 MILK ... **25**
 M&G ... **45**
 REA ... **.24**
 MARB ... **.03**

CL 1 DOMINO 860U
JA L1 DOMINO 3737A
 JA L1 DOMINETTE 4211P

DH ADVANCE 031
JA L1 DOMINETTE 7820E
 JA L1 DOMINETTE 2503Z★

Eye Pigment: LE 100 / RE 100

Some extra frame. He is really red-marked and just a 76 lb. birth weight.

CL 1 DOMINO 637S
 CL 1 DOMINETTE 5142R★
 CL 1 DOMINO 484
 JA L1 DOMINETTE 2524M
 HH ADVANCE 8050U
 DH DOMINETTE 7155
 CO L1 DOMINO 946W
 JA L1 DOMINETTE 0212X



SONS OF... JA L1 DOMINO 3737A

Real Performance Balance Across the Board!
Sons breed the ultimate balance of CE and paywt., plus quality, pigmented, keepin' heifers!



59

2 YR. OLD

Act. BW ... **65**
EPDs:
CED ... **8.7**
BW ... **-0.7**
WW ... **32**
YW ... **68**
MILK ... **24**
M&G ... **40**
REA ... **17**
MARB ... **10**

JA L1 DOMINO 0713H

Feb. 28, 2020 • 44149459

CL 1 DOMINO 860U
JA L1 DOMINO 3737A
JA L1 DOMINETTE 4211P

UU DOMINO 4089
JA L1 DOMINETTE 7509E
JA L1 DOMINETTE 5504C

Eye Pigment: LE **100** / RE **100**

CL 1 DOMINO 637S
CL 1 DOMINETTE 5142R★
CL 1 DOMINO 484
JA L1 DOMINETTE 2524M
HH ADVANCE 7146T
UU 9110 ADV 2163
CO L1 DOMINO 946W
JA L1 DOMINETTE 9828W

63

2 YR. OLD

Act. BW ... **74**
EPDs:
CED ... **1.4**
BW ... **2.4**
WW ... **47**
YW ... **84**
MILK ... **24**
M&G ... **47**
REA ... **22**
MARB ... **-0.4**

JA L1 DOMINO 0718H

Mar. 30, 2020 • 44149464

CL 1 DOMINO 860U
JA L1 DOMINO 3737A
JA L1 DOMINETTE 4211P

HH ADVANCE 2181Z
JA L1 DOMINETTE 7407E
JA L1 DOMINETTE 0613X★

Eye Pigment: LE **100** / RE **100**

CL 1 DOMINO 637S
CL 1 DOMINETTE 5142R★
CL 1 DOMINO 484
JA L1 DOMINETTE 2524M
CL 1 DOMINO 886U
HH MISS ADVANCE 6054S
JA L1 DOMINO 7640T
JA L1 DOMINETTE 570R

60

2 YR. OLD

Act. BW ... **71**
EPDs:
CED ... **6.1**
BW ... **0.0**
WW ... **41**
YW ... **75**
MILK ... **22**
M&G ... **42**
REA ... **23**
MARB ... **06**

JA L1 DOMINO 0714H

Mar. 1, 2020 • 44149460

CL 1 DOMINO 860U
JA L1 DOMINO 3737A
JA L1 DOMINETTE 4211P

GB L1 DOMINO 311W
JA L1 DOMINETTE 700E
JA L1 DOMINETTE 5405C

Eye Pigment: LE **100** / RE **100**

CL 1 DOMINO 637S
CL 1 DOMINETTE 5142R★
CL 1 DOMINO 484
JA L1 DOMINETTE 2524M
GB L1 DOMINO 177R
GB L1 DOM PRCS 160R★
HH ADVANCE 2181Z
JA L1 DOMINETTE 1705Y

64

2 YR. OLD

Act. BW ... **82**
EPDs:
CED ... **0.3**
BW ... **1.8**
WW ... **45**
YW ... **81**
MILK ... **27**
M&G ... **49**
REA ... **22**
MARB ... **-0.3**

JA L1 DOMINO 0719H

Mar. 26, 2020 • 44197471

CL 1 DOMINO 860U
JA L1 DOMINO 3737A
JA L1 DOMINETTE 4211P

JA L1 DOMINO 2110Z
JA L1 DOMINETTE 7103E
JA L1 DOMINETTE 4501B

Eye Pigment: LE **100** / RE **80**

CL 1 DOMINO 637S
CL 1 DOMINETTE 5142R★
CL 1 DOMINO 484
JA L1 DOMINETTE 2524M
CL 1 DOMINO 9125W
JA L1 DOMINETTE 9204W
CL 1 DOMINO 216Z
JA L1 DOMINETTE 2137Z★

Lots of style and balance with red goggles on his eyes.

61

2 YR. OLD

Act. BW ... **76**
EPDs:
CED ... **6.4**
BW ... **1.1**
WW ... **47**
YW ... **77**
MILK ... **21**
M&G ... **45**
REA ... **34**
MARB ... **-0.2**

JA L1 DOMINO 0716H

Mar. 20, 2020 • 44149462

CL 1 DOMINO 860U
JA L1 DOMINO 3737A
JA L1 DOMINETTE 4211P

DH ADVANCE 031
JA L1 DOMINETTE 7816E
JA L1 DOMINETTE 9618W

Eye Pigment: LE **100** / RE **100**

CL 1 DOMINO 637S
CL 1 DOMINETTE 5142R★
CL 1 DOMINO 484
JA L1 DOMINETTE 2524M
HH ADVANCE 8050U
DH DOMINETTE 7155
HH ADVANCE 286M
JA L1 DOMINETTE 7916T

Another low birth weight calving ease bull with lots of red.

65

2 YR. OLD

Act. BW ... **80**
EPDs:
CED ... **0.0**
BW ... **3.9**
WW ... **54**
YW ... **92**
MILK ... **30**
M&G ... **57**
REA ... **34**
MARB ... **-0.5**

JA L1 DOMINO 0803H

Apr. 11, 2020 • 44149501

JA L1 DOMINO 3737A
JAK L1 DOMINO C43
JAK L1 DOMINETTE Z414

JA L1 DOMINO 302A
JA L1 DOMINETTE 819F
JA L1 DOMINETTE 9220W

Eye Pigment: LE **100** / RE **100**

CL 1 DOMINO 860U
JA L1 DOMINETTE 4211P
JA L1 DOMINO 7640T
JAK L1 DOMINETTE X304
HH ADVANCE 0132X
JA L1 DOMINETTE 1633Y★
CL 1 DOMINO 555R
JA L1 DOMINETTE 4123P

A red-necked, big-country kind of bull.

62

2 YR. OLD

Act. BW ... **78**
EPDs:
CED ... **3.5**
BW ... **0.9**
WW ... **47**
YW ... **82**
MILK ... **29**
M&G ... **53**
REA ... **26**
MARB ... **07**

JA L1 DOMINO 0717H

Mar. 20, 2020 • 44149463

CL 1 DOMINO 860U
JA L1 DOMINO 3737A
JA L1 DOMINETTE 4211P

CL 1 DOMINO 386A
JA L1 DOMINETTE 7914E
JA L1 DOMINETTE 0203X

Eye Pigment: LE **100** / RE **100**

CL 1 DOMINO 637S
CL 1 DOMINETTE 5142R★
CL 1 DOMINO 484
JA L1 DOMINETTE 2524M
CL 1 DOMINO 1108Y
CL 1 DOMINETTE 440P
CL 1 DOMINO 555R
JA L1 DOMINETTE 4211P

66

2 YR. OLD

Act. BW ... **87**
EPDs:
CED ... **4.5**
BW ... **2.3**
WW ... **45**
YW ... **76**
MILK ... **29**
M&G ... **52**
REA ... **43**
MARB ... **07**

JA L1 DOMINO 0822H

Apr. 1, 2020 • 44197487

HH ADVANCE 0085X
JA L1 DOMINO 5319C
JA L1 DOMINETTE 1617Y

JA L1 DOMINO 7640T
JA L1 DOMINETTE 1606Y★
JA L1 DOMINETTE 9304W★

Eye Pigment: LE **100** / RE **90**

HH ADVANCE 8203U
HH MISS ADVANCE 7017T
JA L1 DOMINO 7640T
JA L1 DOMINETTE 9013W
HH ADVANCE 286M
JAL L1 DOMINETTE 1409L
CL 1 DOMINO 638S
JA L1 DOMINETTE 7605T

Should be extra longevity in this package, plus he is red-eyed and red-necked.

67**2 YR. OLD**

Act. BW ... **93**
 EPDs:
 CED **0.3**
 BW **3.5**
 WW **51**
 YW **86**
 MILK **25**
 M&G **51**
 REA **41**
 MARB **11**

JA L1 DOMINO 0823H

Apr. 8, 2020 • 44197479

HH ADVANCE 0085X
JA L1 DOMINO 5319C
 JA L1 DOMINETTE 1617Y

DH ADVANCE 031
JA L1 DOMINETTE 6813D
 JA L1 DOMINETTE 2503Z*

Eye Pigment: LE 100 / RE 100

Red-necked and goggle-eyed.

HH ADVANCE 8203U
 HH MISS ADVANCE 7017T
 JA L1 DOMINO 7640T
 JA L1 DOMINETTE 9013W
 HH ADVANCE 8050U
 DH DOMINETTE 7155
 CO L1 DOMINO 946W
 JA L1 DOMINETTE 0212X

71**2 YR. OLD**

Act. BW ... **70**
 EPDs:
 CED **4.3**
 BW **1.3**
 WW **61**
 YW **96**
 MILK **30**
 M&G **60**
 REA **36**
 MARB **12**

JA L1 DOMINO 0856H

Mar. 17, 2020 • 44149494

JA L1 DOMINO 2208Z
JAK L1 DOMINO C418
 JAK L1 DOMINETTE A229

CL 1 DOMINO 386A
JA L1 DOMINETTE 8928F
 JA L1 DOMINETTE 2749Z

Eye Pigment: LE 100 / RE 90

He started out at just 70 lbs. and has grown into an attractive beef bull.

CL 1 DOMINO 555R
 JA L1 DOMINETTE 8018U
 GB L1 DOMINO 140R
 JAK L1 DOMINETTE Y237
 CL 1 DOMINO 1108Y
 CL 1 DOMINETTE 440P
 CL 1 DOMINO 860U
 JA L1 DOMINETTE 5621R

68**2 YR. OLD**

Act. BW ... **65**
 EPDs:
 CED **5.8**
 BW **0.1**
 WW **54**
 YW **90**
 MILK **33**
 M&G **61**
 REA **21**
 MARB **10**

JA L1 DOMINO 0851H

Feb. 18, 2020 • 44149489

JA L1 DOMINO 2208Z
JAK L1 DOMINO C418
 JAK L1 DOMINETTE A229

JA L1 DOMINO 302A
JA L1 DOMINETTE 817F
 JA L1 DOMINETTE 341A

Eye Pigment: LE 10 / RE 10

CL 1 DOMINO 555R
 JA L1 DOMINETTE 8018U
 GB L1 DOMINO 140R
 JAK L1 DOMINETTE Y237
 HH ADVANCE 0132X
 JA L1 DOMINETTE 1633Y*
 HH ADVANCE 0132X
 JA L1 DOMINETTE 1100Y

72**2 YR. OLD**

Act. BW ... **73**
 EPDs:
 CED **0.9**
 BW **3.0**
 WW **61**
 YW **94**
 MILK **30**
 M&G **60**
 REA **32**
 MARB **12**

JA L1 DOMINO 0858H

Apr. 4, 2020 • 44149496

JA L1 DOMINO 2208Z
JAK L1 DOMINO C418
 JAK L1 DOMINETTE A229

HH ADVANCE 6193D
JA L1 DOMINETTE 8658F
 JA L1 DOMINETTE 5804C

Eye Pigment: LE 100 / RE 80

Dark red in color and red-necked.

CL 1 DOMINO 555R
 JA L1 DOMINETTE 8018U
 GB L1 DOMINO 140R
 JAK L1 DOMINETTE Y237
 HH ADVANCE 3006A
 HH MISS ADVANCE 0121X
 DH ADVANCE 031
 JA L1 DOMINETTE 2604Z

69**2 YR. OLD**

Act. BW ... **85**
 EPDs:
 CED **1.0**
 BW **3.5**
 WW **57**
 YW **95**
 MILK **32**
 M&G **60**
 REA **13**
 MARB **03**

JA L1 DOMINO 0852H

Feb. 24, 2020 • 44149490

JA L1 DOMINO 2208Z
JAK L1 DOMINO C418
 JAK L1 DOMINETTE A229

HH ADVANCE 4082B
JA L1 DOMINETTE 8252F
 JA L1 DOMINETTE 8317U*

Eye Pigment: LE 100 / RE 100

A heifer's first calf with volume and thickness. Lots of red markings.

CL 1 DOMINO 555R
 JA L1 DOMINETTE 8018U
 GB L1 DOMINO 140R
 JAK L1 DOMINETTE Y237
 CL 1 DOMINO 1161Y
 HH MISS ADVANCE 9102W*
 CL 1 DOMINO 638S
 JA L1 DOMINETTE 601S

73**2 YR. OLD**

Act. BW ... **85**
 EPDs:
 CED **2.2**
 BW **2.9**
 WW **55**
 YW **87**
 MILK **32**
 M&G **59**
 REA **36**
 MARB **17**

JA L1 DOMINO 0902H

Mar. 16, 2020 • 44149467

CL 1 DOMINO 1108Y
CL 1 DOMINO 386A
 CL 1 DOMINETTE 440P

JA L1 DOMINO 9800W
JA L1 DOMINETTE 5554C
 JA L1 DOMINETTE 8326U*

Eye Pigment: LE 100 / RE 100

Big rancher 386 son that should hit a home run on good black cows.

CL 1 DOMINO 9105W
 CL 1 DOMINETTE 617S
 CL 1 DOMINO 9126J
 CL 1 DOMINETTE 974J
 CL 1 DOMINO 555R
 JA L1 DOMINETTE 4152P
 CL 1 DOMINO 638S
 JA L1 DOMINETTE 564R

70**2 YR. OLD**

Act. BW ... **84**
 EPDs:
 CED **0.8**
 BW **2.1**
 WW **55**
 YW **96**
 MILK **33**
 M&G **61**
 REA **20**
 MARB **03**

JA L1 DOMINO 0854H

Mar. 3, 2020 • 44149492

JA L1 DOMINO 2208Z
JAK L1 DOMINO C418
 JAK L1 DOMINETTE A229

JA L1 DOMINO 302A
JA L1 DOMINETTE 804F
 JA L1 DOMINETTE 4505B

Eye Pigment: LE 100 / RE 100

CL 1 DOMINO 555R
 JA L1 DOMINETTE 8018U
 GB L1 DOMINO 140R
 JAK L1 DOMINETTE Y237
 HH ADVANCE 0132X
 JA L1 DOMINETTE 1633Y*
 CL 1 DOMINO 216Z
 JA L1 DOMINETTE 2503Z*

74**2 YR. OLD**

Act. BW ... **73**
 EPDs:
 CED **3.1**
 BW **1.8**
 WW **49**
 YW **74**
 MILK **25**
 M&G **50**
 REA **41**
 MARB **13**

JA L1 DOMINO 0904H

Mar. 18, 2020 • 44149468

CL 1 DOMINO 1108Y
CL 1 DOMINO 386A
 CL 1 DOMINETTE 440P

DH ADVANCE 031
JA L1 DOMINETTE 6823D
 JA L1 DOMINETTE 1111Y

Eye Pigment: LE 100 / RE 100

Low birth weight 386 son that is long-sided and well made. Lots of pigment in the package.

CL 1 DOMINO 9105W
 CL 1 DOMINETTE 617S
 CL 1 DOMINO 9126J
 CL 1 DOMINETTE 974J
 HH ADVANCE 8050U
 DH DOMINETTE 7155
 CL 1 DOMINO 9125W
 JA L1 DOMINETTE 802U

**LOT 57**

Sire: JA L1 Domino 3737A

BW **0.3** WW **41** YW **76** MILK **26** M&G **46**
 REA **.19** MARB **.07**

**LOT 61**

Sire: JA L1 Domino 3737A

BW **1.1** WW **47** YW **77** MILK **21** M&G **45**
 REA **.34** MARB **-.02**

**LOT 64**

Sire: JA L1 Domino 3737A

BW **1.8** WW **45** YW **81** MILK **27** M&G **49**
 REA **.22** MARB **-.03**



FALL YEARLING BULLS



LOT 75
Sire: **JA L1 Domino 5319C**
BW **2.7** WW **46** YW **77** MILK **26** M&G **49**
REA **.21** MARB **.14**

75

2 YR. OLD
Act. BW ... **78**
EPDs:
CED ... **3.9**
BW ... **2.7**
WW ... **46**
YW ... **77**
MILK ... **26**
M&G ... **49**
REA ... **.21**
MARB ... **.14**

JA L1 DOMINO 0002H

Sept. 13, 2020 • 44317854

HH ADVANCE 0085X
JA L1 DOMINO 5319C
JA L1 DOMINETTE 1617Y

HH ADVANCE 3040A
JA L1 DOMINETTE 611D
JA L1 DOMINETTE 9415W★

Eye Pigment: **LE 80 / RE 80**

HH ADVANCE 8203U
HH MISS ADVANCE 7017T
JA L1 DOMINO 7640T
JA L1 DOMINETTE 9013W
HH ADVANCE 0132X
HH MISS ADVANCE 6155S
HH ADVANCE 7085T
JA L1 DOMINETTE 6000S

78

2 YR. OLD
Act. BW ... **76**
EPDs:
CED ... **3.6**
BW ... **2.2**
WW ... **54**
YW ... **80**
MILK ... **23**
M&G ... **50**
REA ... **.42**
MARB ... **.10**

JA L1 DOMINO 0005H

Sept. 15, 2020 • 44317927

HH ADVANCE 1045L
HH ADVANCE 5322C
HH MISS ADVANCE 1179Y

HH ADVANCE 2181Z
JA L1 DOMINETTE 8409F
JA L1 DOMINETTE 3505A

Eye Pigment: **LE 100 / RE 50**

HH ADVANCE 932J
HH MS ADV 898H★
HH ADVANCE 7034T
HH MISS ADVANCE 5139R
CL 1 DOMINO 886U
HH MISS ADVANCE 6054S
CO L1 DOMINO 946W
JA L1 DOMINETTE 1701Y

76

2 YR. OLD
Act. BW ... **80**
EPDs:
CED ... **3.4**
BW ... **2.1**
WW ... **51**
YW ... **88**
MILK ... **30**
M&G ... **56**
REA ... **.37**
MARB ... **.11**

JA L1 DOMINO 0003H

Sept. 20, 2020 • 44317855

HH ADVANCE 0085X
JA L1 DOMINO 5319C
JA L1 DOMINETTE 1617Y

JA L1 DOMINO 302A
JA L1 DOMINETTE 681D
JA L1 DOMINETTE 4100B

Eye Pigment: **LE 0 / RE 80**

HH ADVANCE 8203U
HH MISS ADVANCE 7017T
JA L1 DOMINO 7640T
JA L1 DOMINETTE 9013W
HH ADVANCE 0132X
JA L1 DOMINETTE 1633Y★
CL 1 DOMINO 9125W
JA L1 DOMINETTE 807U★

79

2 YR. OLD
Act. BW ... **77**
EPDs:
CED ... **5.0**
BW ... **2.2**
WW ... **54**
YW ... **82**
MILK ... **20**
M&G ... **47**
REA ... **.35**
MARB ... **.12**

JA L1 DOMINO 0007H

Sept. 16, 2020 • 44317858

HH ADVANCE 1045L
HH ADVANCE 5322C
HH MISS ADVANCE 1179Y

HH ADVANCE 2181Z
JA L1 DOMINETTE 8431F
JA L1 DOMINETTE 9700W

Eye Pigment: **LE 50 / RE 90**

Red-necked and very thick.

HH ADVANCE 932J
HH MS ADV 898H★
HH ADVANCE 7034T
HH MISS ADVANCE 5139R
CL 1 DOMINO 886U
HH MISS ADVANCE 6054S
GB L1 DOMINO 6134K
JA L1 DOMINETTE 7211T

77

2 YR. OLD
Act. BW ... **79**
EPDs:
CED ... **3.6**
BW ... **1.7**
WW ... **51**
YW ... **83**
MILK ... **26**
M&G ... **52**
REA ... **.39**
MARB ... **.10**

JA L1 DOMINO 0004H

Sept. 20, 2020 • 44317857

HH ADVANCE 0085X
JA L1 DOMINO 5319C
JA L1 DOMINETTE 1617Y

DH DOMINO 539
JA L1 DOMINETTE 9105W
JA L1 DOMINETTE 7202T

Eye Pigment: **LE 100 / RE 100**

Red-eyed with lots of hair.

HH ADVANCE 8203U
HH MISS ADVANCE 7017T
JA L1 DOMINO 7640T
JA L1 DOMINETTE 9013W
L1 DOMINO 99496
DH MS ADVANCE 1003
CL 1 DOMINO 555R
JA L1 DOMINETTE 421P

80

2 YR. OLD
Act. BW ... **81**
EPDs:
CED ... **3.6**
BW ... **2.1**
WW ... **57**
YW ... **91**
MILK ... **25**
M&G ... **53**
REA ... **.44**
MARB ... **.09**

JA L1 DOMINO 0008H

Sept. 16, 2020 • 44317860

HH ADVANCE 1045L
HH ADVANCE 5322C
HH MISS ADVANCE 1179Y

JAK L1 DOMINO C418
JA L1 DOMINETTE 8571F
JA L1 DOMINETTE 6528D

Eye Pigment: **LE 50 / RE 75**

A red necked 5322C son with extra volume and capacity.

HH ADVANCE 932J
HH MS ADV 898H★
HH ADVANCE 7034T
HH MISS ADVANCE 5139R
JA L1 DOMINO 2208Z
JAK L1 DOMINETTE A229
HH ADVANCE 0118X
JA L1 DOMINETTE 0619X★



LOT 77
Sire: **JA L1 Domino 5319C**
BW **1.7** WW **51** YW **83** MM **26** M&G **52** / REA **.39** MB **.10**



LOT 78
Sire: **HH Advance 5322C**
BW **2.2** WW **54** YW **80** MM **23** M&G **50** / REA **.42** MB **.10**



LOT 79
Sire: **HH Advance 5322C**
BW **2.2** WW **54** YW **82** MM **20** M&G **47** / REA **.35** MB **.12**

FALL YEARLING BULLS



LOT 80

Sire: **HH Advance 5322C**

BW **2.1** WW **57** YW **91** MM **25** M&G **53** / REA **.44** MB **.09**

81

2 YR. OLD

Act. BW ... **82**
 EPDs:
 CED ... **3.9**
 BW ... **2.1**
 WW ... **54**
 YW ... **91**
 MILK ... **23**
 M&G ... **50**
 REA ... **.40**
 MARB ... **.09**

JA L1 DOMINO 0010H

Sept. 18, 2020 • 44317862

HH ADVANCE 1045L
HH ADVANCE 5322C
 HH MISS ADVANCE 1179Y

JAK L1 DOMINO C43
JA L1 DOMINETTE 8557F
 JA L1 DOMINETTE 602D

Eye Pigment: **LE 0 / RE 25**

HH ADVANCE 932J
 HH MS ADV 898H★
 HH ADVANCE 7034T
 HH MISS ADVANCE 5139R
 JA L1 DOMINO 3737A
 JAK L1 DOMINETTE Z414
 HH ADVANCE 3040A
 JA L1 DOMINETTE 3714A

84

2 YR. OLD

Act. BW ... **73**
 EPDs:
 CED ... **2.8**
 BW ... **2.6**
 WW ... **49**
 YW ... **84**
 MILK ... **26**
 M&G ... **51**
 REA ... **.28**
 MARB ... **.13**

JA L1 DOMINO 0022H

Oct. 4, 2020 • 44317901

HH ADVANCE 0085X
JA L1 DOMINO 5319C
 JA L1 DOMINETTE 1617Y

HH ADVANCE 3040A
JA L1 DOMINETTE 600D
 JA L1 DOMINETTE 4729B

Eye Pigment: **LE 50 / RE 100**

HH ADVANCE 8203U
 HH MISS ADVANCE 7017T
 JA L1 DOMINO 7640T
 JA L1 DOMINETTE 9013W
 HH ADVANCE 0132X
 HH MISS ADVANCE 6155S
 CL 1 DOMINO 860U
 JA L1 DOMINETTE 9201W

82

2 YR. OLD

Act. BW ... **83**
 EPDs:
 CED ... **4.0**
 BW ... **2.4**
 WW ... **59**
 YW ... **93**
 MILK ... **25**
 M&G ... **54**
 REA ... **.45**
 MARB ... **.22**

JA L1 DOMINO 0012H

Sept. 18, 2020 • 44317863

HH ADVANCE 1045L
HH ADVANCE 5322C
 HH MISS ADVANCE 1179Y

HH ADVANCE 6193D
JA L1 DOMINETTE 8654F
 JA L1 DOMINETTE 5554C

Eye Pigment: **LE 100 / RE 100**

HH ADVANCE 932J
 HH MS ADV 898H★
 HH ADVANCE 7034T
 HH MISS ADVANCE 5139R
 HH ADVANCE 3006A
 HH MISS ADVANCE 0121X
 JA L1 DOMINO 9800W
 JA L1 DOMINETTE 8326U★

85

2 YR. OLD

Act. BW ... **79**
 EPDs:
 CED ... **5.7**
 BW ... **1.6**
 WW ... **46**
 YW ... **80**
 MILK ... **25**
 M&G ... **48**
 REA ... **.25**
 MARB ... **.17**

JA L1 DOMINO 0023H

Oct. 6, 2020 • 44317870

HH ADVANCE 0085X
JA L1 DOMINO 5319C
 JA L1 DOMINETTE 1617Y

JA L1 DOMINO 9800W
JA L1 DOMINETTE 2800Z
 JA L1 DOMINETTE 460P★

Eye Pigment: **LE 0 / RE 90**

HH ADVANCE 8203U
 HH MISS ADVANCE 7017T
 JA L1 DOMINO 7640T
 JA L1 DOMINETTE 9013W
 CL 1 DOMINO 555R
 JA L1 DOMINETTE 4152P
 CL 1 DOMINO 9126J
 JA L1 DOMINETTE 2003M

83

2 YR. OLD

Act. BW ... **81**
 EPDs:
 CED ... **3.2**
 BW ... **2.7**
 WW ... **49**
 YW ... **76**
 MILK ... **24**
 M&G ... **48**
 REA ... **.37**
 MARB ... **.10**

JA L1 DOMINO 0017H

Oct. 3, 2020 • 44317866

HH ADVANCE 0085X
JA L1 DOMINO 5319C
 JA L1 DOMINETTE 1617Y

HH ADVANCE 2181Z
JA L1 DOMINETTE 8415F
 JA L1 DOMINETTE 3515A

Eye Pigment: **LE 50 / RE 90**

HH ADVANCE 8203U
 HH MISS ADVANCE 7017T
 JA L1 DOMINO 7640T
 JA L1 DOMINETTE 9013W
 CL 1 DOMINO 886U
 HH MISS ADVANCE 6054S
 CO L1 DOMINO 946W
 JA L1 DOMINETTE 1606Y★

86

2 YR. OLD

Act. BW ... **76**
 EPDs:
 CED ... **4.1**
 BW ... **2.3**
 WW ... **58**
 YW ... **89**
 MILK ... **26**
 M&G ... **55**
 REA ... **.53**
 MARB ... **.17**

JA L1 DOMINO 0026H

Oct. 21, 2020 • 44317872

HH ADVANCE 1045L
HH ADVANCE 5322C
 HH MISS ADVANCE 1179Y

CL 1 DOMINO 386A
JA L1 DOMINETTE 7917E
 JA L1 DOMINETTE 9821W

Eye Pigment: **LE 100 / RE 100**

Traditional markings and deep ribbed with volume, some extra frame.

HH ADVANCE 932J
 HH MS ADV 898H★
 HH ADVANCE 7034T
 HH MISS ADVANCE 5139R
 CL 1 DOMINO 1108Y
 CL 1 DOMINETTE 440P
 CL 1 DOMINO 560R
 JA L1 DOMINETTE 3200N



LOT 84

Sire: **JA L1 Domino 5319C**

BW **2.6** WW **49** YW **84** MM **26** M&G **51** / REA **.28** MB **.13**



LOT 85

Sire: **JA L1 Domino 5319C**

BW **1.6** WW **46** YW **80** MM **25** M&G **48** / REA **.25** MB **.17**



LOT 86

Sire: **HH Advance 5322C**

BW **2.3** WW **58** YW **89** MM **26** M&G **55** / REA **.53** MB **.17**



THE **JA** COWHERD

The respected maternal factory behind one of Hereford's premier Line 1 breeding programs ...the performance warranty behind every JA bred bull!

JA MOTHER COWS...

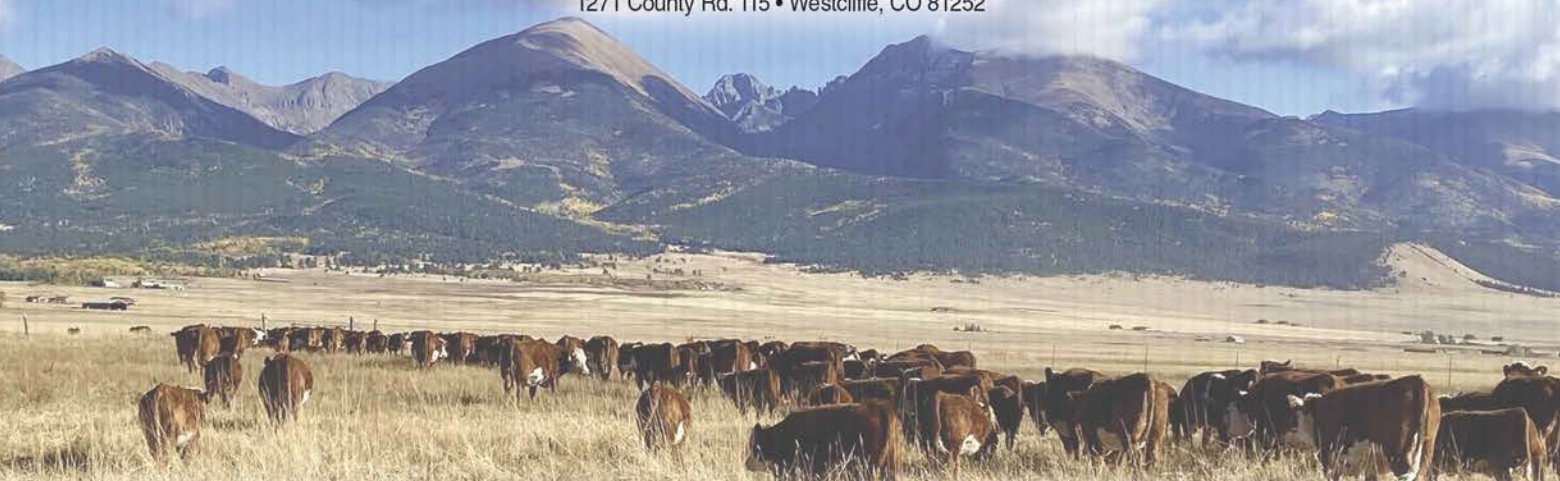
Backed by generations of line breeding, 55 years of American Hereford TPR Whole Herd performance testing, building upon proven elite Line 1 cow families ...and, the "Stockman Savvy" of a very respected cowman breeder!

COLEMAN HEREFORDS

PERFORMANCE & QUALITY from COLORADO'S HIGH COUNTRY!

Guest Consignor:

KEN & SUZANNE COLEMAN
(C)719/ 276-4471 • (h)719/ 783-9324
1271 County Rd. 115 • Westcliffe, CO 81252



REFERENCE SIRE

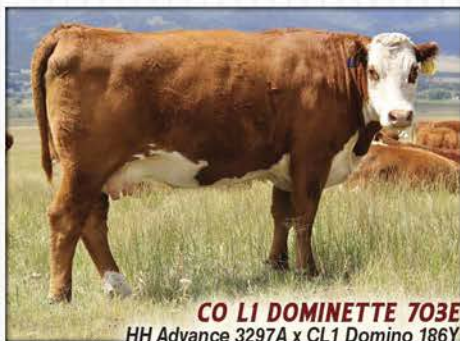


CO LI DOMINETTE 701E
HH Advance 3297A x JA L1 Domino 5603R
• 3 clvs. Avg. WR 106 • Dam of Lot 91

**CO Line 1
MOTHER COWS...**
Dams of this 2022 sale offering!



CO LI DOMINO 748E
HH Advance 3297 x HH Advance 1098Y, GB L1 Domino 175E
• A Dam of Distinction dam ...6 clvs./ WR 104
• A hi-performance, calving ease, hi-maternal Trait Leader
• Sire of Coleman's Lot 112



CO LI DOMINETTE 703E
HH Advance 3297A x CL1 Domino 186Y
• 3 clvs. Avg. WR 100 • Dam of Lot 117



**CO LI
DOMINETTE 521E**
HH Advance 0118X
x GB L1 Domino 175E
• 4 clvs. Avg. WR 108
• Dam of Lot 111



**CO LI
DOMINETTE 412B**
CL1 Domino 065X
x GB L1 Domino 8139M
• Dam of Lot 101

**CO LI
DOMINETTE 427E**
HH Advance 0118X
x GB L1 Domino 175E
• 6 clvs. Avg. WR 103
• Dam of Lot 112



THE CO LINE 1 COWHERD ...A Performance Standard for Function & Maternal Production!

COLEMAN SALE YEARLINGS ...5 HEAD!



Coleman's Yearling Bulls are 50K GE-EPD tested!



LOT 88 Sire: FS Advance 8044F
BW 3.2 WW 63 YW 99 MILK 24 M&G 55 / REA .51 MARB .03



LOT 89 Sire: FS Advance 8044F
BW 1.9 WW 61 YW 92 MILK 33 M&G 64 / REA .36 MARB .07



LOT 91 Sire: HH Advance 9033G
BW 2.4 WW 59 YW 95 MILK 29 M&G 59 / REA .58 MARB .04

87

YEARLING

Act. BW ... **84**
Adj. 205 ... **671**
EPDs:
CED ... **5.0**
BW ... **1.2**
WW ... **57**
YW ... **88**
MILK ... **28**
M&G ... **56**
REA ... **.31**
MARB ... **.11**

CO L1 DOMINO 101J

March 5, 2021 • #44283148

HH ADVANCE 5107C
FS ADVANCE 8044F
FS MISS ADVANCE 539C

GB L1 DOMINO 175E
CO L1 DOMINETTE 090X
JA L1 DOMINETTE 9209

Eye Pigment: **LE 100 / RE 100**

CL 1 DOMINO 215Z
HH MISS ADVANCE 9228W
HH ADVANCE 1098Y
CL 1 DOMINETTE 203Z
HH ADVANCE 767G
GB L1 DOM PRCS 3134
CL 1 DOMINO 484
JA L1 DOMINETTE 6700

101 is a well marked calving ease bull from a good 175E daughter who is 12 years old and still in our herd.

88

YEARLING

Act. BW ... **90**
Adj. 205 ... **715**
EPDs:
CED ... **2.8**
BW ... **3.2**
WW ... **63**
YW ... **99**
MILK ... **24**
M&G ... **55**
REA ... **.51**
MARB ... **.03**

CO L1 DOMINO 108J

March 8, 2021 • #44283441

HH ADVANCE 5107C
FS ADVANCE 8044F
FS MISS ADVANCE 539C

CO L1 DOMINO 650D
CO L1 DOMINETTE 871F
CO L1 DOMINETTE 668D

Eye Pigment: **LE 85 / RE 100**

CL 1 DOMINO 215Z
HH MISS ADVANCE 9228W
HH ADVANCE 1098Y
CL 1 DOMINETTE 203Z
CL 1 DOMINO 374A
CO L1 DOMINETTE 819U
HH ADVANCE 3297A
CO L1 DOMINETTE 170Y

Goggle eyed 8044 son with a lot going for him. He has extra eye appeal, he is deep sided, strong topped and thick made. His dam is a favorite among our younger cows.

89

YEARLING

Act. BW ... **89**
Adj. 205 ... **786**
EPDs:
CED ... **3.1**
BW ... **1.9**
WW ... **61**
YW ... **92**
MILK ... **33**
M&G ... **64**
REA ... **.36**
MARB ... **.07**

CO L1 DOMINO 122J

March 13, 2021 • #44283474

HH ADVANCE 5107C
FS ADVANCE 8044F
FS MISS ADVANCE 539C

CL 1 DOMINO 186Y
CO L1 DOMINETTE 461B*
CO L1 DOMINETTE 969W

Eye Pigment: **LE 75 / RE 80**

CL 1 DOMINO 215Z
HH MISS ADVANCE 9228W
HH ADVANCE 1098Y
CL 1 DOMINETTE 203Z
CL 1 DOMINO 9105W
CL 1 DOMINETTE 5142R*
GB L1 DOMINO 175E
JA L1 DOMINETTE 9209

A powerful herd bull prospect, 122J has been a standout from birth and posted our high adj. 205 day weight 788 lbs. Well muscled with a big top, extra length and good bone, he's backed by Dam of Distinction 461B, a heavy milker with small teat size.

90

YEARLING

Act. BW ... **85**
Adj. 205 ... **728**
EPDs:
CED ... **4.4**
BW ... **1.5**
WW ... **61**
YW ... **89**
MILK ... **23**
M&G ... **54**
REA ... **.40**
MARB ... **.08**

CO L1 DOMINO 142J

March 17, 2021 • #44283510

HH ADVANCE 5107C
FS ADVANCE 8044F
FS MISS ADVANCE 539C

CL 1 DOMINO 1161Y
CO L1 DOMINETTE 700E
CO L1 DOMINETTE 948W

Eye Pigment: **LE 100 / RE 100**

CL 1 DOMINO 215Z
HH MISS ADVANCE 9228W
HH ADVANCE 1098Y
CL 1 DOMINETTE 203Z
CL 1 DOMINO 732T
CL 1 DOMINETTE 4126P
RH DOMINO 6050
CO L1 DOMINETTE 521R

142J aka "Mongoo" is an 8044 son with herd bull looks ...goggle eyes, nice pattern, loads of depth and volume, plus good calving ease and growth. Dam 700E is an outstanding 1161Y daughter whose 13 yr. old dam is the breed's #1 horned cow for teat and udder EPD's.

91

YEARLING

Act. BW ... **84**
Adj. 205 ... **710**
EPDs:
CED ... **6.9**
BW ... **2.4**
WW ... **59**
YW ... **95**
MILK ... **29**
M&G ... **59**
REA ... **.58**
MARB ... **.04**

CO L1 DOMINO 170J

April 1, 2021 • #44283555

CL 1 DOMINO 6128D
HH ADVANCE 9033G
HH MISS ADVANCE 0041X

HH ADVANCE 3297A
CO L1 DOMINETTE 701E
CO L1 DOMINETTE 850U

Eye Pigment: **LE 98 / RE 100**

CL 1 DOMINO 386A
CL 1 DOMINETTE 055X*
HH ADVANCE 7034T
HH MISS ADVANCE 5139R
CL 1 DOMINO 091X
HH MISS ADVANCE 9228W
JA L1 DOMINO 5603R
CO L1 DOMINETTE 507R*

Don't overlook 170J because of his age. He's our first 9033 son to sell and is a bull the more you study the more you'll like. He's marked well and has a lot of thickness and muscle. Out of one of our good 3297 daughters.

92**2 YR. OLD**

Act. BW ... **78**
 Adj. 205 ... **643**
 EPDs:
 CED ... **3.3**
 BW ... **3.0**
 WW ... **65**
 YW ... **109**
 MILK ... **27**
 M&G ... **59**
 REA ... **46**
 MARB ... **30**

CO L1 DOMINO 005H

Mar. 4, 2020 • #44160686

CL 1 DOMINO 9122W
CL 1 DOMINO 215Z
 CL 1 DOMINETTE 055X★
 HH ADVANCE 3297A
CO L1 DOMINETTE 890F
 CO L1 DOMINETTE 421B
 Eye Pigment: **LE 100 / RE 80**

Great looking well marked 215Z son. 005 is a deep sided bull who started out small and grew very well. 215 x 3297 cross should pack quite a punch!

CL 1 DOMINO 732T
 CL 1 DOMINETTE 475P
 CL 1 DOMINO 860U
 CL 1 DOMINETTE 7136T★
 CL 1 DOMINO 091X
 HH MISS ADVANCE 9228W
 HH ADVANCE 0118X
 CO L1 DOMINETTE 151Y★

95**2 YR. OLD**

Act. BW ... **87**
 Adj. 205 ... **644**
 EPDs:
 CED ... **3.9**
 BW ... **4.2**
 WW ... **58**
 YW ... **103**
 MILK ... **31**
 M&G ... **60**
 REA ... **61**
 MARB ... **05**

CO L1 DOMINO 013H

Mar. 7, 2020 • #44160694

CL 1 DOMINO 091X
HH ADVANCE 3297A
 HH MISS ADVANCE 9228W
 CL 1 DOMINO 955W
KX 955W DOMINETTE 18093
 CO L1 DOMINETTE 105Y★
 Eye Pigment: **LE 100 / RE 100**

013 is a fully pigmented, moderate framed bull that is well muscled and has good performance.

CL 1 DOMINO 860U
 CL 1 DOMINETTE 591R
 HH ADVANCE 6163S
 HH MISS ADVANCE 6094S
 CL 1 DOMINO 637S
 CL 1 DOMINETTE 5152R
 CL 1 DOMINO 320N
 CO L1 DOMINETTE 917W

93**2 YR. OLD**

Act. BW ... **78**
 Adj. 205 ... **577**
 EPDs:
 CED ... **6.1**
 BW ... **0.3**
 WW ... **37**
 YW ... **63**
 MILK ... **28**
 M&G ... **46**
 REA ... **12**
 MARB ... **08**

CO L1 DOMINO 009H

Mar. 5, 2020 • #44160690

HH ADVANCE 3006A
LW 3006 ADVANCE 714E
 CL 1 DOMINETTE 055X★
 HH ADVANCE 9075W
CO L1 DOMINETTE 237Z
 CO L1 DOMINETTE 828U
 Eye Pigment: **LE 70 / RE 100**

Top calving ease bull with a low pap score.

HH ADVANCE 0002X
 HH MISS ADVANCE 1142Y
 CL 1 DOMINO 860U
 CL 1 DOMINETTE 7136T★
 HH ADVANCE 7101T
 HH MISS ADVANCE 1028L
 L1 DOMINO 99496
 HH MISS ADVANCE 0117K

96**2 YR. OLD**

Act. BW ... **73**
 Adj. 205 ... **551**
 EPDs:
 CED ... **12.7**
 BW ... **-1.5**
 WW ... **33**
 YW ... **64**
 MILK ... **29**
 M&G ... **45**
 REA ... **17**
 MARB ... **21**

CO L1 DOMINO 018H

Mar. 11, 2020 • #44160701

HH ADVANCE 3006A
LW 3006 ADVANCE 714E
 CL 1 DOMINETTE 055X★
 HH ADVANCE 3297A
CO L1 DOMINETTE 634D
 CO L1 DOMINETTE 660S
 Eye Pigment: **LE 95 / RE 100**

A low birth weight calving ease bull that should work well on heifers. Lots of longevity in his cow family.

HH ADVANCE 0002X
 HH MISS ADVANCE 1142Y
 CL 1 DOMINO 860U
 CL 1 DOMINETTE 7136T★
 CL 1 DOMINO 091X
 HH MISS ADVANCE 9228W
 L1 DOMINO 99496
 JA L1 DOMINETTE 4916

94**2 YR. OLD**

Act. BW ... **74**
 Adj. 205 ... **586**
 EPDs:
 CED ... **8.2**
 BW ... **1.4**
 WW ... **59**
 YW ... **100**
 MILK ... **28**
 M&G ... **57**
 REA ... **51**
 MARB ... **24**

CO L1 DOMINO 010H

Mar. 6, 2020 • #44160690

CL 1 DOMINO 091X
HH ADVANCE 3297A
 HH MISS ADVANCE 9228W
 CL 1 DOMINO 215Z
CO L1 DOMINETTE 805F
 CO L1 DOMINETTE 601D
 Eye Pigment: **LE 95 / RE 95**

Curve bending calving ease bull who should work on heifers and leave behind some outstanding females.

CL 1 DOMINO 860U
 CL 1 DOMINETTE 591R
 HH ADVANCE 6163S
 HH MISS ADVANCE 6094S
 CL 1 DOMINO 9122W
 CL 1 DOMINETTE 055X★
 HH ADVANCE 0081X
 CO L1 DOMINETTE 409B

97**2 YR. OLD**

Act. BW ... **88**
 Adj. 205 ... **586**
 EPDs:
 CED ... **7.0**
 BW ... **2.1**
 WW ... **53**
 YW ... **89**
 MILK ... **28**
 M&G ... **54**
 REA ... **34**
 MARB ... **13**

CO L1 DOMINO 019H

Mar. 12, 2020 • #44160702

HH ADVANCE 3297A
CO L1 DOMINO 818F
 CO L1 DOMINETTE 331A
 GB L1 DOMINO 8139M
CO L1 DOMINETTE 179Y
 CO L1 DOMINETTE 902W
 Eye Pigment: **LE 80 / RE 100**

019 has a well balanced set of numbers. Maternal brother sold to Fuchs Herefords, CO.

CL 1 DOMINO 091X
 HH MISS ADVANCE 9228W
 CL 1 DOMINO 186Y
 CO L1 DOMINETTE 969W
 GB L1 DOMINO 534J
 GB L1 DOM PRCS 4103H★
 RH DOMINO 6050
 CO L1 DOMINETTE 660S



LOT 92
 Sire: CL1 Domino 215Z
 BW 3.0 WW 65 YW 109 MM 27 M&G 59 / REA .46 MB .30



LOT 93
 Sire: LW 3006 Advance 714E
 BW 0.3 WW 37 YW 63 MM 28 M&G 46 / REA .12 MB .08



LOT 94
 Sire: HH Advance 3297A
 BW 1.4 WW 59 YW 100 MM 28 M&G 57 / REA .51 MB .24



LOT 95
 Sire: HH Advance 3297A
 BW 4.2 WW 58 YW 103 MM 31 M&G 60 / REA .61 MB .05



LOT 96
 Sire: LW 3006 Advance 714E
 BW -1.5 WW 33 YW 64 MM 29 M&G 45 / REA .17 MB .21



LOT 98
 Sire: LW 3006 Advance 714E
 BW 0.8 WW 46 YW 70 MM 33 M&G 56 / REA .20 MB .05

98**2 YR. OLD**

Act. BW ... **81**
 Adj. 205 ... **669**
 EPDs:
 CED ... **4.4**
 BW ... **0.8**
 WW ... **46**
 YW ... **70**
 MILK ... **33**
 M&G ... **56**
 REA ... **.20**
 MARB ... **.05**

CO L1 DOMINO 021H

Mar. 13, 2020 • #44160705

HH ADVANCE 3006A
LW 3006 ADVANCE 714E
 CL 1 DOMINETTE 055X★

HH ADVANCE 5233C
CO L1 DOMINETTE 785E
 CO L1 DOMINETTE 575C

Eye Pigment: LE 100 / RE 90

Moderate framed bull with extra length and thickness. 021 has eye appeal and calving ease.

HH ADVANCE 0002X
 HH MISS ADVANCE 1142Y
 CL 1 DOMINO 860U
 CL 1 DOMINETTE 7136T★
 HH ADVANCE 1098Y
 HH MISS ADVANCE 5139R
 CL 1 DOMINO 374A
 CO L1 DOMINETTE 324A

99**2 YR. OLD**

Act. BW ... **88**
 Adj. 205 ... **695**
 EPDs:
 CED ... **3.7**
 BW ... **3.5**
 WW ... **61**
 YW ... **101**
 MILK ... **31**
 M&G ... **62**
 REA ... **.55**
 MARB ... **.07**

CO L1 DOMINO 023H

Mar. 15, 2020 • #44160707

CL 1 DOMINO 091X
HH ADVANCE 3297A
 HH MISS ADVANCE 9228W

CL 1 DOMINO 374A
CO L1 DOMINETTE 646D★
 CO L1 DOMINETTE 461B★

Eye Pigment: LE 100 / RE 60

Well marked 3297 son that we feel is a herd bull prospect. 023 carries extra muscle, is long bodied and is out of a top cow family. His dam is a Dam of Distinction.

CL 1 DOMINO 860U
 CL 1 DOMINETTE 591R
 HH ADVANCE 6163S
 HH MISS ADVANCE 6094S
 HH ADVANCE 1087Y
 CL 1 DOMINETTE 759T
 CL 1 DOMINO 186Y
 CO L1 DOMINETTE 969W

100**2 YR. OLD**

Act. BW ... **88**
 Adj. 205 ... **635**
 EPDs:
 CED ... **3.5**
 BW ... **4.1**
 WW ... **58**
 YW ... **94**
 MILK ... **28**
 M&G ... **57**
 REA ... **.46**
 MARB ... **.05**

CO L1 DOMINO 025H

Mar. 16, 2020 • #44160709

CL 1 DOMINO 091X
HH ADVANCE 3297A
 HH MISS ADVANCE 9228W

JA L1 DOMINO 5603R
CO L1 DOMINETTE 850U
 CO L1 DOMINETTE 507R★

Eye Pigment: LE 100 / RE 100

Goggle-eyed 3297 son with strong performance. Dam is a 14 year old Homer daughter that's still in our herd.

CL 1 DOMINO 860U
 CL 1 DOMINETTE 591R
 HH ADVANCE 6163S
 HH MISS ADVANCE 6094S
 HH ADVANCE 286M
 JA L1 DOMINETTE 2210M
 CL 1 DOMINO 9126J
 CO L1 DOMINETTE 301N

101**2 YR. OLD**

Act. BW ... **80**
 Adj. 205 ... **605**
 EPDs:
 CED ... **2.4**
 BW ... **2.3**
 WW ... **51**
 YW ... **80**
 MILK ... **16**
 M&G ... **41**
 REA ... **.34**
 MARB ... **.00**

CO L1 DOMINO 029H

Mar. 17 2020 • #44160713

CL 1 DOMINO 732T
CL 1 DOMINO 1161Y
 CL 1 DOMINETTE 4126P

HH ADVANCE 0118X
CO L1 DOMINETTE 421B
 CO L1 DOMINETTE 151Y★

Eye Pigment: LE 90 / RE 100

029 has extra thickness and a deep quarter.

CL 1 DOMINO 590R
 CL 1 DOMINETTE 507R★
 CL 1 DOMINO 1116L
 CL 1 DOMINETTE 193L
 CL 1 DOMINO 7128T
 HH MISS ADVANCE 6074S
 GB L1 DOMINO 471H
 CO L1 DOMINETTE 708T

102**2 YR. OLD**

Act. BW ... **82**
 Adj. 205 ... **709**
 EPDs:
 CED ... **2.9**
 BW ... **2.3**
 WW ... **55**
 YW ... **85**
 MILK ... **19**
 M&G ... **47**
 REA ... **.44**
 MARB ... **.05**

CO L1 DOMINO 030H

Mar. 17, 2020 • #44160714

CL 1 DOMINO 732T
CL 1 DOMINO 1161Y
 CL 1 DOMINETTE 4126P

HH ADVANCE 3297A
CO L1 DOMINETTE 679D
 CO L1 DOMINETTE 351A

Eye Pigment: LE 100 / RE 100

This 1161Y son is loaded with thickness and volume. He reminds us a lot of his sire. He's goggle eyed, light BW with strong performance and extra bone.

CL 1 DOMINO 590R
 CL 1 DOMINETTE 507R★
 CL 1 DOMINO 1116L
 CL 1 DOMINETTE 193L
 CL 1 DOMINO 091X
 HH MISS ADVANCE 9228W
 CO L1 DOMINO 847U
 CO L1 DOMINETTE 754T

103**2 YR. OLD**

Act. BW ... **95**
 Adj. 205 ... **708**
 EPDs:
 CED ... **-0.5**
 BW ... **3.9**
 WW ... **55**
 YW ... **80**
 MILK ... **25**
 M&G ... **52**
 REA ... **.26**
 MARB ... **-.04**

CO L1 DOMINO 038H

Mar. 19, 2020 • #44160722

CL 1 DOMINO 732T
CL 1 DOMINO 1161Y
 CL 1 DOMINETTE 4126P

CL 1 DOMINO 186Y
CO L1 DOMINETTE 331A
 CO L1 DOMINETTE 969W

Eye Pigment: LE 100 / RE 100

038 is a larger framed bull with added performance.

CL 1 DOMINO 590R
 CL 1 DOMINETTE 507R★
 CL 1 DOMINO 1116L
 CL 1 DOMINETTE 193L
 CL 1 DOMINO 9105W
 CL 1 DOMINETTE 5142R★
 GB L1 DOMINO 175E
 JA L1 DOMINETTE 9209

104**2 YR. OLD**

Act. BW ... **87**
 Adj. 205 ... **690**
 EPDs:
 CED ... **6.1**
 BW ... **2.8**
 WW ... **57**
 YW ... **91**
 MILK ... **32**
 M&G ... **61**
 REA ... **.40**
 MARB ... **.03**

CO L1 DOMINO 041H

Mar. 21, 2020 • #44160725

HH ADVANCE 3297A
CO L1 DOMINO 818F
 CO L1 DOMINETTE 331A

CL 1 DOMINO 374A
CO L1 DOMINETTE 640D
 CO L1 DOMINETTE 441B

Eye Pigment: LE 100 / RE 100

041 is out of the 818 bull we sold to Pedretti Ranches of Calif. 041 is solid all the way through with a very low pap, goggle eyes and extra growth and performance.

CL 1 DOMINO 091X
 HH MISS ADVANCE 9228W
 CL 1 DOMINO 186Y
 CO L1 DOMINETTE 969W
 HH ADVANCE 1087Y
 CL 1 DOMINETTE 759T
 HH ADVANCE 0118X
 CO L1 DOMINETTE 124Y★

105**2 YR. OLD**

Act. BW ... **83**
 Adj. 205 ... **601**
 EPDs:
 CED ... **2.7**
 BW ... **2.5**
 WW ... **52**
 YW ... **83**
 MILK ... **25**
 M&G ... **51**
 REA ... **.39**
 MARB ... **-.01**

CO L1 DOMINO 051H

Mar. 26, 2020 • #44160734

CL 1 DOMINO 1161Y
CO L1 DOMINO 809F
 CO L1 DOMINETTE 948W

CL 1 DOMINO 955W
KX 955W DOMINETTE 18104
 CO L1 DOMINETTE 309A

Eye Pigment: LE 100 / RE 100

100% pigment on this 809 son.

CL 1 DOMINO 732T
 CL 1 DOMINETTE 4126P
 RH DOMINO 6050
 CO L1 DOMINETTE 521R
 CL 1 DOMINO 637S
 CL 1 DOMINETTE 5152R
 HH ADVANCE 1098Y
 CO L1 DOMINETTE 170Y

**LOT 99**

Sire: HH Advance 3297A

BW 3.5 WW 61 YW 101 MM 31 M&G 62 / REA .55 MB .07

**LOT 100**

Sire: HH Advance 3297A

BW 4.1 WW 58 YW 94 MM 28 M&G 57 / REA .46 MB .05

**LOT 101**

Sire: CL1 Domino 1161Y

BW 2.3 WW 51 YW 80 MMK 16 M&G 41 / REA .34 MB .00

106**2 YR. OLD**

Act. BW ... **86**
 Adj. 205 ... **579**
 EPDs:
 CED ... **1.3**
 BW ... **1.2**
 WW ... **46**
 YW ... **73**
 MILK ... **28**
 M&G ... **51**
 REA ... **09**
 MARB ... **07**

CO L1 DOMINO 058H

Apr. 2, 2020 • #44160743

HH ADVANCE 3006A
LW 3006 ADVANCE 714E

CL 1 DOMINETTE 055X★

CL 1 DOMINO 1161Y

CO L1 DOMINETTE 728E

CO L1 DOMINETTE 090X

Eye Pigment: LE 100 / RE 100

Good thickness in this well marked 714 son.

HH ADVANCE 0002X
 HH MISS ADVANCE 1142Y
 CL 1 DOMINO 860U
 CL 1 DOMINETTE 7136T★
 CL 1 DOMINO 732T
 CL 1 DOMINETTE 4126P
 GB L1 DOMINO 175E
 JA L1 DOMINETTE 9209

110**2 YR. OLD**

Act. BW ... **83**
 Adj. 205 ... **657**
 EPDs:
 CED ... **3.7**
 BW ... **2.1**
 WW ... **56**
 YW ... **83**
 MILK ... **22**
 M&G ... **50**
 REA ... **43**
 MARB ... **04**

CO L1 DOMINO 076H

Apr. 9, 2020 • #44160772

CL 1 DOMINO 732T
CL 1 DOMINO 1161Y
 CL 1 DOMINETTE 4126P

HH ADVANCE 3297A

CO L1 DOMINETTE 750E

CO L1 DOMINETTE 124Y★

Eye Pigment: LE 100 / RE 100

076 is a 1161 son with a lot of things going for him. He has a solid set of numbers and is from a top cow family. His grand dam is our high indexing cow on weaning weight.

CL 1 DOMINO 590R
 CL 1 DOMINETTE 507R★
 CL1 DOMINO 1116L
 CL1 DOMINETTE 193L
 CL 1 DOMINO 091X
 HH MISS ADVANCE 9228W
 CL 1 DOMINO 320N
 CO L1 DOMINETTE 949W

107**2 YR. OLD**

Act. BW ... **88**
 Adj. 205 ... **660**
 EPDs:
 CED ... **3.1**
 BW ... **2.6**
 WW ... **55**
 YW ... **85**
 MILK ... **20**
 M&G ... **48**
 REA ... **29**
 MARB ... **04**

CO L1 DOMINO 068H

Apr. 6, 2020 • #44160760

CL 1 DOMINO 732T
CL 1 DOMINO 1161Y
 CL 1 DOMINETTE 4126P

HH ADVANCE 0132X

HH MISS ADVANCE 2104Z

HH MISS ADVANCE 0074X

Eye Pigment: LE 100 / RE 100

068 is a high performing 1161 son with extra volume. He had a very low pap score and has good pigment. Maternal brother sold to Verquer Herefords, CO.

CL 1 DOMINO 590R
 CL 1 DOMINETTE 507R★
 CL 1 DOMINO 1116L
 CL 1 DOMINETTE 193L
 CL 1 DOMINO 7128T
 HH MISS ADVANCE 6054S
 HH ADVANCE 7101T
 HH MISS ADVANCE 4016P★

111**2 YR. OLD**

Act. BW ... **95**
 Adj. 205 ... **705**
 EPDs:
 CED ... **1.5**
 BW ... **3.5**
 WW ... **61**
 YW ... **90**
 MILK ... **27**
 M&G ... **58**
 REA ... **26**
 MARB ... **21**

CO L1 DOMINO 077H

Apr. 9, 2020 • #44160775

CL 1 DOMINO 215Z
CL 1 DOMINO 4150B
 CL 1 DOMINETTE 058X

HH ADVANCE 0118X

CO L1 DOMINETTE 521C

CO L1 DOMINETTE 969W

Eye Pigment: LE 100 / RE 65

High performing 4150 son. His dam is probably the highest volume cow in our herd.

CL 1 DOMINO 9122W
 CL 1 DOMINETTE 055X★
 CL 1 DOMINO 7139T
 CL 1 DOMINETTE 812U
 CL 1 DOMINO 7128T
 HH MISS ADVANCE 6074S
 GB L1 DOMINO 175E
 JA L1 DOMINETTE 9209

108**2 YR. OLD**

Act. BW ... **92**
 Adj. 205 ... **644**
 EPDs:
 CED ... **-1.5**
 BW ... **2.4**
 WW ... **50**
 YW ... **81**
 MILK ... **29**
 M&G ... **54**
 REA ... **18**
 MARB ... **01**

CO L1 DOMINO 069H

Apr. 7, 2020 • #44160762

HH ADVANCE 3006A
LW 3006 ADVANCE 714E
 CL 1 DOMINETTE 055X★

CL 1 DOMINO 1161Y

CO L1 DOMINETTE 685D

CO L1 DOMINETTE 708T

Eye Pigment: LE 100 / RE 100

Goggle-eyed 714 son who performed well and is backed by a good cow family.

HH ADVANCE 0002X
 HH MISS ADVANCE 1142Y
 CL 1 DOMINO 860U
 CL 1 DOMINETTE 7136T★
 CL 1 DOMINO 732T
 CL 1 DOMINETTE 4126P
 HH ADVANCE 286M
 CO L1 DOMINETTE 547R★

112**2 YR. OLD**

Act. BW ... **82**
 Adj. 205 ... **689**
 EPDs:
 CED ... **2.3**
 BW ... **3.3**
 WW ... **61**
 YW ... **99**
 MILK ... **28**
 M&G ... **58**
 REA ... **32**
 MARB ... **05**

CO L1 DOMINO 078H

Apr. 9, 2020 • #44160777

HH ADVANCE 3297A
CO L1 DOMINO 748E
 CO L1 DOMINETTE 313A★

HH ADVANCE 0118X

CO L1 DOMINETTE 427B★

CO L1 DOMINETTE 109Y★

Eye Pigment: LE 100 / RE 100

078 has a very low pap score. He is a son of the 748 bull we sold to Oleen Brother, KS and his dam is an outstanding cow we recently sold to Leroy Ballard, MT. 078 is well marked and had good performance.

CL 1 DOMINO 091X
 HH MISS ADVANCE 9228W
 HH ADVANCE 1098Y
 CO L1 DOMINETTE 168Y
 CL 1 DOMINO 7128T
 HH MISS ADVANCE 6074S
 GB L1 DOMINO 175E
 CO L1 DOMINETTE 981W

109**2 YR. OLD**

Act. BW ... **88**
 Adj. 205 ... **535**
 EPDs:
 CED ... **4.1**
 BW ... **2.8**
 WW ... **48**
 YW ... **77**
 MILK ... **23**
 M&G ... **47**
 REA ... **08**
 MARB ... **23**

CO L1 DOMINO 073H

Apr. 8, 2020 • #44160768

CL 1 DOMINO 215Z
CL 1 DOMINO 4150B
 CL 1 DOMINETTE 058X

HH ADVANCE 0132X

CO L1 DOMINETTE 534C

CO L1 DOMINETTE 819U

Eye Pigment: LE 100 / RE 100

Low pap score and 100% pigment in this thick made 4150 son.

CL 1 DOMINO 9122W
 CL 1 DOMINETTE 055X★
 CL 1 DOMINO 7139T
 CL 1 DOMINETTE 812U
 CL 1 DOMINO 7128T
 HH MISS ADVANCE 6054S
 JA L1 DOMINO 5603R
 CO L1 DOMINETTE 312N

113**2 YR. OLD**

Act. BW ... **80**
 Adj. 205 ... **604**
 EPDs:
 CED ... **5.2**
 BW ... **1.3**
 WW ... **50**
 YW ... **81**
 MILK ... **19**
 M&G ... **44**
 REA ... **45**
 MARB ... **04**

CO L1 DOMINO 080H

Apr. 9, 2020 • # 44160781

CL 1 DOMINO 732T
CL 1 DOMINO 1161Y
 CL 1 DOMINETTE 4126P

HH ADVANCE 3297A

CO L1 DOMINETTE 670D

CO L1 DOMINETTE 302A

Eye Pigment: LE 100 / RE 100

Here's a 1161Y son with good thickness and volume. 100% pigment with low BW and low pap score. Out of one of our good 3297 daughters.

CL 1 DOMINO 590R
 CL 1 DOMINETTE 507R★
 CL1 DOMINO 1116L
 CL1 DOMINETTE 193L
 CL 1 DOMINO 091X
 HH MISS ADVANCE 9228W
 JA L1 DOMINO 1602Y
 CO L1 DOMINETTE 155Y

**LOT 102**

Sire: CL1 Domino 1161Y

BW 2.3 WW 55 YW 85 MM 19 M&G 47 / REA .44 MB .05

**LOT 109**

Sire: CL1 Domino 4150B

BW 2.8 WW 48 YW 77 MM 23 M&G 47 / REA .08 MB .23

**LOT 112**

Sire: CO L1 Domino 748E

BW 3.3 WW 61 YW 99 MM 28 M&G 58 / REA .32 MB -.05

COLEMAN HEREFORDS

LINE 1 PERFORMANCE & QUALITY
FROM COLORADO'S HIGH COUNTRY!

COLEMANHEREFORDS.COM

Past home to two landmark,
Line 1 sires...



GB L1 DOMINO 175E
An elite Hereford cowherd builder
...a 4-Trait Maternal Leader!



HH ADVANCE 3297A ET
A multi 8-Trait Leader ...Maternal, Performance
& Carcass Value!



114

2 YR. OLD

Act. BW ... **80**
Adj. 205 ... **655**
EPDs:
CED ... **5.6**
BW ... **1.3**
WW ... **50**
YW ... **80**
MILK ... **21**
M&G ... **46**
REA ... **.41**
MARB ... **.06**

CO L1 DOMINO 081H

Apr. 14, 2020 • #44160783

CL 1 DOMINO 732T
CL 1 DOMINO 1161Y
CL 1 DOMINETTE 4126P
HH ADVANCE 3297A
CO L1 DOMINETTE 637D
CO L1 DOMINETTE 969W
CL 1 DOMINO 590R
CL 1 DOMINETTE 507R★
CL 1 DOMINO 1116L
CL 1 DOMINETTE 193L
CL 1 DOMINO 091X
HH MISS ADVANCE 9228W
GB L1 DOMINO 175E
JA L1 DOMINETTE 9209

Eye Pigment: **LE 100 / RE 100**

One of our high indexing bulls with a light BW. He is well marked and from a great 3297 daughter and top cow family.

116

2 YR. OLD

Act. BW ... **78**
Adj. 205 ... **595**
EPDs:
CED ... **5.2**
BW ... **1.3**
WW ... **56**
YW ... **85**
MILK ... **27**
M&G ... **55**
REA ... **.19**
MARB ... **.27**

CO L1 DOMINO 090H

Apr. 26, 2020 • #44160796

CL 1 DOMINO 215Z
CL 1 DOMINO 4150B
CL 1 DOMINETTE 058X
CL 1 DOMINO 065X
CO L1 DOMINETTE 314A
CO L1 DOMINETTE 115Y
CL 1 DOMINO 9122W
CL 1 DOMINETTE 055X★
CL 1 DOMINO 7139T
CL 1 DOMINETTE 812U
CL 1 DOMINO 7139T
CL 1 DOMINETTE 5142R★
GB L1 DOMINO 175E
CO L1 DOMINETTE 226M★

Eye Pigment: **LE 0 / RE 10**

090 was accidentally dehorned. He's a thick made bull with a lot of depth and volume. He has extra bone and is rugged made.

115

2 YR. OLD

Act. BW ... **80**
Adj. 205 ... **720**
EPDs:
CED ... **6.9**
BW ... **2.0**
WW ... **66**
YW ... **103**
MILK ... **23**
M&G ... **56**
REA ... **.52**
MARB ... **.12**

CO L1 DOMINO 088H

Apr. 24, 2020 • #44160792

CL 1 DOMINO 1161Y
CO L1 DOMINO 809F
CO L1 DOMINETTE 948W
HH ADVANCE 3297A
CO L1 DOMINETTE 876F
CO L1 DOMINETTE 515C
CL 1 DOMINO 732T
CL 1 DOMINETTE 4126P
RH DOMINO 6050
CO L1 DOMINETTE 521R
CL 1 DOMINO 091X
HH MISS ADVANCE 9228W
HH ADVANCE 2029Z
CO L1 DOMINETTE 179Y

Eye Pigment: **LE 100 / RE 75**

088 might be our top pick of our two year olds. A light BW and should work on heifers, he was our high indexing bull of this age group. A solid set of numbers, well marked, he had a good PAP score. Dam is doing an excellent job! Herd bull prospect!

117

2 YR. OLD

Act. BW ... **77**
Adj. 205 ... **656**
EPDs:
CED ... **5.4**
BW ... **0.6**
WW ... **46**
YW ... **76**
MILK ... **34**
M&G ... **57**
REA ... **.24**
MARB ... **.16**

CO L1 DOMINO 093H

May 2, 2020 • #441608026

HH ADVANCE 3006A
LW 3006 ADVANCE 714E
CL 1 DOMINETTE 055X★
HH ADVANCE 3297A
CO L1 DOMINETTE 703E
CO L1 DOMINETTE 460B
HH ADVANCE 0002X
HH MISS ADVANCE 1142Y
CL 1 DOMINO 860U
CL 1 DOMINETTE 7136T★
CL 1 DOMINO 091X
HH MISS ADVANCE 9228W
CL 1 DOMINO 186Y
CO L1 DOMINETTE 100Y

Eye Pigment: **LE 100 / RE 100**

093 is a powerful 714 son with loads of thickness. He has a light BW combined with good growth. He has 100% pigment.



LOT 115

Sire: **CO L1 Domino 809F**

BW 2.0 WW 66 YW 103 MM 23 M&G 56 / REA .52 MB .12



LOT 116

Sire: **CL1 Domino 4150B**

BW 1.3 WW 56 YW 85 MM 27 M&G 55 / REA .19 MB .27



LOT 117

Sire: **LW 3006 Advance 714E**

BW 1.3 WW 56 YW 85 MM 27 M&G 55 / REA .19 MB .27

JAMISON HEREFORD BULLS

YOUR #1 BALDIE HETEROISIS SIRE!

- ✓ Higher Heifer Conception ...7%
- ✓ Increased Cowherd Pregnancy Rate ...4.3%
- ✓ Greater Cow Longevity ...30%
- ✓ More Total Lifetime Return Per Cow ...\$514
- ✓ Feedlot Profitability Per Head Advantage ...\$30

*Documented in recent, large scale Harris Ranch (CA), Circle A Ranch (MO), Simplot Livestock (ID) research projects.



PLUS...

- ✓ HEREFORD DISPOSITION
- ✓ SOUND, PROBLEM-FREE STRUCTURE
- ✓ GREATER BREEDING BULL CAPACITY
- ...TRADEMARKS OF THE WHITEFACE BREED!

**HEREFORD-SIRED BALDIE HETEROISIS!
...A RANCHER'S MOST POWERFUL PROFIT TOOL!**

GENERAL INFORMATION

TERMS & CONDITIONS: Terms of the sale are cash. Every sale animal will be sold to the highest bidder with the auctioneer settling bid disputes. Announced changes in catalog information on sale day take precedence over printed material. All cattle are the buyer's property as soon as sold and will be cared for a reasonable length of time at the buyer's risk. Any person attending the sale does so at his own risk. Neither the sale management, owners, nor any person connected with this sale, assumes any liability, legal or otherwise.

In the event of default in any part of the Terms and Conditions for this sale by buyer or seller, it shall be the responsibility of the buyer or seller to instigate action needed to bring about a fair settlement of any claims and to be responsible for any and all costs involved.

GUARANTEE: Every animal in this sale is, to our knowledge, free from any disease or defect. Any known defect will be called at sale time. All bulls have been fertility tested by Hawkeye Breeders Services, Adel, IA prior to the sale. They are guaranteed breeders. If an animal fails to breed after a six month trial, it may be returned to the seller if it is in good condition and in compliance with Kansas health regulations. The seller reserves the right to try said animal for 90 days, and if it proves a breeder, return it to the buyer at the buyer's expense. If the animal proves to be a non-breeder, an animal of comparable rank will be substituted or the purchase price will be credited toward purchase of an animal in the next sale. We assume no liability, legal or otherwise, to make any further compensation to the buyer. No warranty of any nature is expressed or implied. All sale cattle are IE and Diluter free.

Bidding Online, Motels & Airports ...see page 1

HEALTH: Herd health is excellent. Individual health papers will be furnished for shipment.

REGISTRATION & TRANSFER: American Hereford Assn. registration certificates will be transferred upon request to buyers at seller's expense. At time of settlement, buyers must give complete information.

PERFORMANCE: Complete Total Performance Records are available on all cattle. Current weight, WDA and scrotal will be available sale day. Carcass ultrasound data will be available on the yearling bulls.

DELIVERY: Free delivery is provided on volume purchases of \$6000 or more. All other deliveries will be provided at cost.

INSURANCE: Insurance can be arranged through Liberty Mutual, Cheri & Jim Gies, CO, (c) 970/590-0500 or (h) 970/454-3836.

ABSENTEE BIDS: Those who cannot attend the sale may place phone or mail bids by contacting Gordon Jamison, Jay George (United Livestock Brokers) or any listed sale representative.

SALE MANAGEMENT:
United Livestock Brokers, Inc.

Jay George (c) 605/391-6230

1025 28th Rd. NW • Lebo, KS 66856

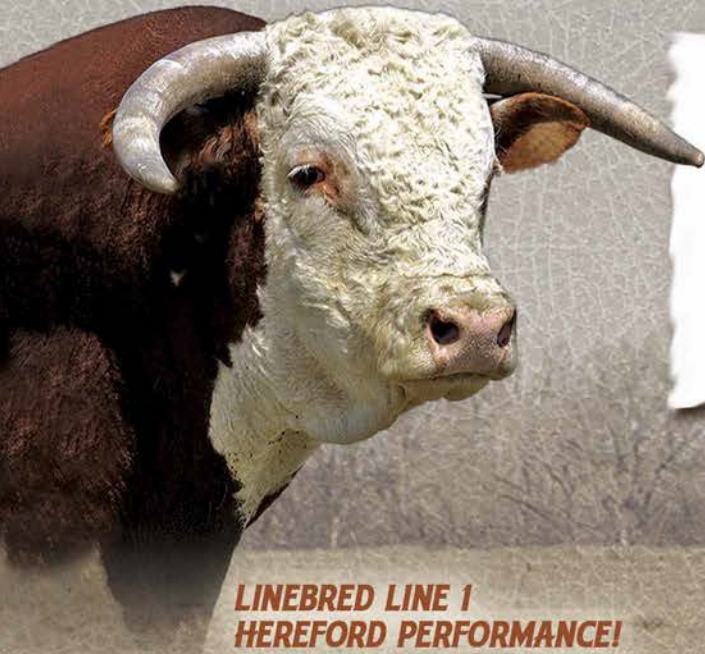
Sale management acts as agent only and assumes no legal responsibility.

JAMISON RANCH

2271 COUNTY RD. 74
QUINTER, KANSAS 67752

ADDRESS SERVICE REQUESTED

FIRST CLASS



**LINEBRED LINE 1
HEREFORD PERFORMANCE!**



THE COWMAN'S BREEDING BULL SOURCE!