

JAMISON & FRIENDS BULL SALE

**TOTAL PERFORMANCE
PRODUCTION SALE**

FEB. 28, 2025

12 Noon (CST) • QUINTER, KANSAS





JAMISON & FRIENDS BULL SALE



**A BREED RESPECTED LINE 1 COWHERD
...THE MATERNAL FACTORY BEHIND
A PREMIER HEREFORD PERFORMANCE
BULL PROGRAM!**

JAMISON & FRIENDS BULL SALE



WELCOME...

The Jamison/High, Coleman, and Butler families welcome you to our 2025 Hereford Bull Sale. We are centered on breeding Line 1 Hereford cattle that demonstrate strong maternal traits, balanced growth EPDs, and the "cover the country" characteristics that commercial cattlemen value. The bulls have all been developed here at the Jamison Ranch with emphasis on long term usefulness and soundness. The terms of sale and guarantee are the traditional Jamison warranty on all bulls sold.

There has been some easing of the drought in our part of the country, giving some relief after a prolonged period of lower than normal moisture levels and difficult forage growing conditions. We have much to be thankful for.

With the cattle market continuing to break records, the year ahead looks to be a great time to be in the cow business, whether you are a commercial producer selling by the pound or a seedstock breeder with an eye on building genetics for the future.

We welcome your participation whether you are here, give us an order, are on the phone, or use DVAuction. Call us and we'll do our best to help you.

Gordon Jamison, Ken Coleman, Lee Butler and Gerald High

TOTAL PERFORMANCE PRODUCTION SALE FRIDAY, FEBRUARY 28, 2025

12 Noon (CST) - Jamison Ranch Sale Center - Quinter, Kansas

I-70 Exit 107, 2 miles south, 1 mile east, 1 1/2 miles south

View the auction live and bid online

DVAuction
Broadcasting Real-Time Auctions

www.dvauction.com

Information and bid registration,
call Tami McIntosh 308/870-3661

The Livestock Link

Sale Videos by:
The Livestock Link Crew
605/210-1956

Videos at jamisonranch.com or
thelivestocklink.com

• VETERINARIAN •

Derek Priddy, DVM - Hoxie, KS - 785/675-3378

• MOTELS •

Quinter, KS

Castle Rock Inn - 785/754-3600 (*request JA rate*)

Wakeeney, KS (25 miles east)

Best Western - 785/743-2700 (*request JA rate*)

Super 8 - 785/743-6442

Econo Lodge - 785/743-5505

Oakley, KS (30 miles west)

Best Western Golden Plains - 785/672-3254

Sleep Inn - 785/671-1111

Oakley Kansas Country Inn - 785/672-3131

• AIRPORTS •

Commercial air service is available to Hays, KS or Garden City, KS. Private planes may land at Quinter (4000 ft. paved), Wakeeney (3500 ft. paved) or Oakley (5000 ft. paved).

• SALE DAY PHONE •

785/754-3424

Lunch served at 11 a.m.

**Cattle videos, updates,
sale order and more**

JAMISONRANCH.COM

Ken Coleman - 719/276-4471

Lee Butler - 620/678-3886

Gerald High - 717/821-0324

Gordon Jamison (c) 785/299-0441
2271 County Road 74, Quinter, Kansas 67752



JA REFERENCE SIRES

BREED LEADING LINE 1 SIRES

- Sire Evaluation Trait Leaders
- Trait Balanced Performance
- Proven Cowherd Builders
- Hereford Carcass Leaders
- Sound, Functional Beef Bulls

• THE MARKETING TEAM •

Auctioneer

Lynn Weishaar • Reva, SD • 605/866-4670 or 605/641-6278

Sale Representatives

Aaron Friedt, American Hereford Assn. • 701/590-9597

Tom Granzow, Kansas Hereford Assn. • 785/466-2226

Marc Hotchkiss, Hereford America and

The Livestock Link • 605/210-1956

Jim Gies, Independent • 970/970-0500

Guy Peverley, The Stock Exchange • 785/456-9911

Stephen Russell, Kansas Stockman • 785/458/2650

• INSURANCE •

Markel at Lloyd's • Cheri and Jim Gies • (h) 970/454 3836
or (c) 970/590-0500

• SALE DAY PHONES •

785-754-3424

Gordon Jamison • 785/299-0441

Ken Coleman • 719/276-4471

Lee Butler • 620/678-3886

Gerald High • 717/821-0324



CL 1 DOMINO 6187D 1/29/16 • 43691873

CED	3.9
BW	1.5
WW	69
YW	108
M	34
M&G	68
REA	0.41
MRB	0.47

HH ADVANCE 4067B ET

HH ADVANCE 1013Y ET (HH ADVANCE 4055P)

HH MISS ADVANCE 8255U (L1 DOMINO 0357I)

CL 1 DOMINO 215Z (CL 1 DOMINO 9122W 1ET)

CL1 DOMINETTE 450B

CL 1 DOMINETTE 1178Y (CL 1 DOMINO 862U)

Owners: Jamison Herefords; Van Newkirk, NE; and Cooper, MT.

CHB Sire + Sire of Distinction.

8-Trait EPD Leader: WW, YW, SC, Milk, M&G, CEM, CW, Marb., CHB.



JA L1 DOMINO 6212D 3/9/16 • 43678407

CED	6.1
BW	2.3
WW	54
YW	88
M	35
M&G	62
REA	0.16
MRB	-0.02

HH ADVANCE 4082B ET

CL 1 DOMINO 1161Y (CL 1 DOMINO 732T)

HH MISS ADVANCE 9102W (HH ADVANCE 5104R)

HH ADVANCE 1098Y (HH ADVANCE 8050U ET)

JA L1 DOMINETTE 301A

JA L1 DOMINETTE 1214Y (CL 1 DOMINO 555R)

Stalwart JA sire for performance and maternal...
Dam of Distinction cow!



JA L1 DOMINO 8628F 3/13/18 • 43918344

CED	7.0
BW	0.3
WW	46
YW	67
M	33
M&G	56
REA	0.27
MRB	0.11

CL 1 DOMINO 6163D

CL 1 DOMINO 215Z (CL 1 DOMINO 9122W 1ET)

MONTANA MISS 1179Y (CL 1 DOMINO 7110T)

JA L1 DOMINO 7640T (HH ADVANCE 286M 1ET)

JA L1 DOMINETTE 5609C

JA L1 DOMINETTE 2503Z (CO L1 DOMINO 946W)



JA L1 DOMINO 8700F 3/4/18 • 43918440

CED	6.7
BW	1.7
WW	44
YW	77
M	27
M&G	49
REA	-0.21
MRB	-0.02

CL 1 DOMINO 216Z 1ET

CL 1 DOMINO 860U (CL 1 DOMINO 637S 1ET)

CL 1 DOMINETTE 759T 1ET (CL 1 DOMINO 590R)

HH ADVANCE 2181Z (CL 1 DOMINO 886U)

JA L1 DOMINETTE 4424B

JA L1 DOMINETTE 1207Y (CL 1 DOMINO 555R)



CL 1 DOMINO 6163D 1/24/16 • 43691848

CED	1.7
BW	1.7
WW	60
YW	82
M	39
M&G	69
REA	0.37
MRB	0.17

CL 1 DOMINO 215Z

CL 1 DOMINO 9122W 1ET (CL 1 DOMINO 732T)

CL 1 DOMINETTE 055X (CL 1 DOMINO 860U)

CL 1 DOMINO 7110T (CL 1 DOMINO 590R)

MONTANA MISS 1179Y

MONTANA MISS 753T (CL 1 DOMINO 592R 1ET)

COLEMAN SIRE



CL 1 DOMINO 1176J 1ET 1/24/21 • 44261265

HH ADVANCE 5345C (HH ADVANCE 3297A ET)

CED	3.8
BW	1.8
WW	57
YW	99
M	39
M&G	67
REA	0.59
MRB	0.32

HH ADVANCE 8392F ET

HH MISS ADVANCE 2022Z ET (HH ADVANCE 9144W)

CL 1 DOMINO 386A 1ET (CL 1 DOMINO 1108Y 1ET)

CL 1 DOMINETTE 6162D

CL 1 DOMINETTE 055X (CL 1 DOMINO 860U)



FS ADVANCE 0079H 9/11/20 • 44204844

HH ADVANCE 6007D ET (CL 1 DOMINO 420B 1ET)

CED	7.3
BW	1.9
WW	54
YW	85
M	33
M&G	60
REA	0.87
MRB	0.25

HH ADVANCE 8120F ET

HH MISS ADVANCE 2178Z (HH ADVANCE 8203U ET)

HH ADVANCE 221 ET (CL 1 DOMINO 955W)

FS MISS ADVANCE 4004B ET

HH MISS ADVANCE 7142T (L1 DOMINO 0357I)



HH ADVANCE 6006D ET 12/28/15 • 43689157

HH ADVANCE 1098Y (HH ADVANCE 8050U ET)

CED	9.5
BW	-0.5
WW	46
YW	72
M	32
M&G	55
REA	0.22
MRB	0.27

HH ADVANCE 4105B ET

L1 DOMINETTE 99374 (L1 DOMINO 96988)

HH ADVANCE 7034T ET (L1 DOMINO 0357I)

HH MISS ADVANCE 1175Y ET

HH MISS ADVANCE 5139R ET (CL 1 DOMINO 2136M)



FS ADVANCE 8044F 8/31/18 • 43991680

CL 1 DOMINO 215Z (CL 1 DOMINO 9122W 1ET)

CED	1.5
BW	1.6
WW	60
YW	91
M	23
M&G	53
REA	0.37
MRB	0.14

HH ADVANCE 5107C

HH MISS ADVANCE 9228W (HH ADVANCE 6163S)

HH ADVANCE 1098Y (HH ADVANCE 8050U ET)

FS MISS ADVANCE 539C

CL 1 DOMINETTE 203Z (GB L1 DOMINO 175E)



CL 1 DOMINO 0186H 1/30/20 • 44139007

HH ADVANCE 3297A ET (CL 1 DOMINO 091X)

CED	5.7
BW	0.6
WW	63
YW	105
M	40
M&G	71
REA	0.58
MRB	0.34

HH ADVANCE 7156E ET

HH MISS ADVANCE 1056Y ET (HH ADVANCE 8050U ET)

CL 1 DOMINO 386A 1ET (CL 1 DOMINO 1108Y 1ET)

CL 1 DOMINETTE 6162D

CL 1 DOMINETTE 055X (CL 1 DOMINO 860U)

CHB Sire.



EHF 286 L1 ADVANCE 082ET 9/14/20 • 44249800

HH ADVANCE 0024K (CL 1 DOMINO 824H)

CED	-1.6
BW	5.4
WW	65
YW	104
M	24
M&G	57
REA	0.36
MRB	0.07

HH ADVANCE 286M 1ET

HH MISS ADVANCE 752G (KB L1 DOMINO 519)

HH ADVANCE 9144W (HH ADVANCE 5104R)

EHF 9144 L1 MS ADVANCE 196

EE MS 454 L1 885 (GM L1 311 454)



B&B CATTLE CO. SIRES



FS ADVANCE 7032E 9/22/17 • 43868716

CL 1 DOMINO 215Z (CL 1 DOMINO 9122W 1ET)

HH ADVANCE 5107C

HH MISS ADVANCE 9228W (HH ADVANCE 6163S)
HH ADVANCE 1059Y (CL 1 DOMINO 7128T 1ET)

FS MISS ADVANCE 541C

FS MISS ADVANCE 3009A ET (HH ADVANCE 8050U ET)

CED	6.1
BW	2.9
WW	68
YW	105
M	20
M&G	54
REA	0.58
MRB	0.22



B&B L1 DOMINO 8173 9/11/18 • 43985497

CL 1 DOMINO 955W (CL 1 DOMINO 637S 1ET)

HH ADVANCE 221 ET

HH MISS ADVANCE 5152R (L1 DOMINO 01362)
JA L1 DOMINO 2719Z (CL 1 DOMINO 860U)

B&B L1 DOMINETTE 5225

B&B L1 DOMINETTE 7230 (JA L1 DOMINO 426P)

CED	-1.4
BW	3.8
WW	50
YW	91
M	36
M&G	61
REA	0.62
MRB	-0.05



JA L1 DOMINO 014H 2/2/20 • 44149017

HH ADVANCE 4067B ET (HH ADVANCE 1013Y ET)

CL 1 DOMINO 6187D

CL1 DOMINETTE 450B (CL 1 DOMINO 215Z)
CL 1 DOMINO 386A 1ET (CL 1 DOMINO 1108Y 1ET)

JA L1 DOMINETTE 7925E

JA L1 DOMINETTE 8613U (HH ADVANCE 286M 1ET)

CED	4.1
BW	1.8
WW	66
YW	106
M	30
M&G	63
REA	0.58
MRB	0.29



CL 1 DOMINO 6128D 1ET 1/14/16 • 43691810

CL 1 DOMINO 1108Y 1ET (CL 1 DOMINO 9105W)

CL 1 DOMINO 386A 1ET

CL 1 DOMINETTE 440P 1ET (CL 1 DOMINO 9126J 1ET)
CL 1 DOMINO 860U (CL 1 DOMINO 637S 1ET)

CL 1 DOMINETTE 055X

CL 1 DOMINETTE 7136T 1ET (L1 DOMINO 89006I)

CED	-2.1
BW	4.4
WW	66
YW	109
M	39
M&G	72
REA	0.068
MRB	0.016

CHB Sire.



EHF L1 ADVANCE 622ET 1/27/16 • 43687569

CL 1 DOMINO 091X (CL 1 DOMINO 860U)

HH ADVANCE 3297A ET

HH MISS ADVANCE 9228W (HH ADVANCE 6163S)
EE 2262 362 553 (EE 0024 L1 2262)

EHF 553 7003 MS ADVANCE 027X

EHF 109L MS ADVANCE 7003 (GBR L1 946 109L)

CED	2.5
BW	4.4
WW	56
YW	96
M	22
M&G	50
REA	0.68
MRB	0.07



HH ADVANCE 1080J ET 1/6/21 • 44238884

CL 1 DOMINO 6128D 1ET (CL 1 DOMINO 386A 1ET)

CL 1 DOMINO 883F 1ET

CL 1 DOMINETTE 450B (CL 1 DOMINO 215Z)
HH ADVANCE 5304C ET (HH ADVANCE 221 ET)

HH MISS ADVANCE 8215E ET

HH MISS ADVANCE 0121X (HH ADVANCE 8203U ET)

CED	-1.7
BW	5.5
WW	68
YW	104
M	29
M&G	63
REA	0.33
MRB	0.24



B&B L1 DOMINO 770 2/28/17 • 43818245

CL 1 DOMINO 1161Y (CL 1 DOMINO 732T)

HH ADVANCE 4082B ET

HH MISS ADVANCE 9102W (HH ADVANCE 5104R)
JA L1 DOMINO 0615X (JA L1 DOMINO 7640T)

B&B L1 DOMINETTE 464B

B&B L1 DOMINETTE 090 (B&B L1 DOMINO 7159)

CED	4.5
BW	2.4
WW	54
YW	96
M	37
M&G	64
REA	0.16
MRB	0.10



EHF 286 L1 ADVANCE 082ET 9/14/20 • 44249800

HH ADVANCE 0024K (CL 1 DOMINO 824H)

HH ADVANCE 286M 1ET

HH MISS ADVANCE 752G (KB L1 DOMINO 519)
HH ADVANCE 9144W (HH ADVANCE 5104R)

EHF 9144 L1 MS ADVANCE 196

EE MS 454 L1 885 (GM L1 311 454)

CED	-1.6
BW	5.4
WW	65
YW	104
M	24
M&G	57
REA	0.36
MRB	0.07



JAMISON & FRIENDS BULLS

COLEMAN BULLS
LOTS 1 - 25

B&B CATTLE
LOTS 26 - 85

JAMISON RANCH
LOTS 86 - 111

EPDs current as of Jan. 20, 2025

Cattle videos, updates, sale order and more
JAMISONRANCH.COM

Sale Videos by:

The **Livestock**
Link



THE COWMAN'S BREEDING BULL SOURCE!

- *Linebred Line 1*
- *Problem-Free Beef Bulls*
- *Range Country Calving Ease*
- *Hereford Baldy Heterosis for Black and Red Angus Cowherds*
- *Reputation Cowherd*
- *Range-Raised (no creep)*
- *Certified Hereford Beef Qualified*

AND BACKED BY THE JAMISON GUARANTEE!

1*2 Yr. Old***CO L1 DOMINO 302L**

3/3/23 • 44461018

Act. BW	78
EPDs	
CED	7.6
BW	1.2
WW	51
YW	80
M	38
M&G	63
REA	0.46
MRB	0.22

HH ADVANCE 8392F ET
CL 1 DOMINO 1176J 1ET
 CL 1 DOMINETTE 6162D

HH ADVANCE 8050U ET
CO L1 DOMINETTE 001H
 CO L1 DOMINETTE 856F

Eye Pigment: **LE 100** **RE 100**

Here's a well marked, thick made 1176 son that had a light birth weight and is out of a very nice 8050 daughter. PAP 38.

HH ADVANCE 5345C
 HH MISS ADVANCE 2022Z ET
 CL 1 DOMINO 386A 1ET
 CL 1 DOMINETTE 055X
 L1 DOMINO 03571
 HH MISS ADVANCE 365N
 HH ADVANCE 3297A ET
 CO L1 DOMINETTE 329A

**302****2***2 Yr. Old***CO L1 DOMINO 304L**

3/3/23 • 44461053

Act. BW	77
EPDs	
CED	8.8
BW	-0.4
WW	49
YW	83
M	32
M&G	57
REA	0.48
MRB	0.31

HH ADVANCE 8392F ET
CL 1 DOMINO 1176J 1ET
 CL 1 DOMINETTE 6162D

HH ADVANCE 3297A ET
CO L1 DOMINETTE 909G
 CO L1 DOMINETTE 948W

Eye Pigment: **LE 100** **RE 100**

304 is a heifer bull prospect. He has good pigment and is out of a great uddered cow family. PAP 41.

HH ADVANCE 5345C
 HH MISS ADVANCE 2022Z ET
 CL 1 DOMINO 386A 1ET
 CL 1 DOMINETTE 055X
 CL 1 DOMINO 091X
 HH MISS ADVANCE 9228W
 RH DOMINO 6050
 CO L1 DOMINETTE 521R

**304****3***2 Yr. Old***CO L1 DOMINO 308L**

3/4/23 • 44461061

Act. BW	92
EPDs	
CED	-0.7
BW	3.4
WW	64
YW	111
M	26
M&G	58
REA	0.61
MRB	0.05

HH ADVANCE 8392F ET
CL 1 DOMINO 1176J 1ET
 CL 1 DOMINETTE 6162D

CL 1 DOMINO 1161Y
CO L1 DOMINETTE 684D 1ET
 CO L1 DOMINETTE 708T

Eye Pigment: **LE 100** **RE 100**

Goggle eye'd herd bull prospect out of 1176. He should sire a lot of performance and leave behind some outstanding daughters. He's thick, deep and out of a top 1161Y daughter. PAP 42.

HH ADVANCE 5345C
 HH MISS ADVANCE 2022Z ET
 CL 1 DOMINO 386A 1ET
 CL 1 DOMINETTE 055X
 CL 1 DOMINO 732T
 CL 1 DOMINETTE 4126P
 HH ADVANCE 286M 1ET
 CO L1 DOMINETTE 547R

**308****4***2 Yr. Old***CO L1 DOMINO 309L**

3/5/23 • 44461063

Act. BW	90
EPDs	
CED	-3.7
BW	3.4
WW	66
YW	104
M	34
M&G	67
REA	0.48
MRB	0.15

HH ADVANCE 7156E ET
CL 1 DOMINO 0186H
 CL 1 DOMINETTE 6162D

FS ADVANCE 8044F
CO L1 DOMINETTE 138J
 CO L1 DOMINETTE 646D

Eye Pigment: **LE 100** **RE 90**

309 is a moderate framed 0186 son with a big top. His dam is a 8044 daughter who is one of our favorite young cows. PAP 42.

HH ADVANCE 3297A ET
 HH MISS ADVANCE 1056Y ET
 CL 1 DOMINO 386A 1ET
 CL 1 DOMINETTE 055X
 HH ADVANCE 5107C ET
 FS MISS ADVANCE 539C
 CL 1 DOMINO 374A 1ET
 CO L1 DOMINETTE 461B

**309****5***2 Yr. Old***CO L1 DOMINO 311L**

3/6/23 • 44461068

Act. BW	78
EPDs	
CED	6.4
BW	0.6
WW	60
YW	101
M	36
M&G	66
REA	0.52
MRB	0.26

HH ADVANCE 7156E ET
CL 1 DOMINO 0186H
 CL 1 DOMINETTE 6162D

GB L1 DOMINO 175E
CO L1 DOMINETTE 103J
 CO L1 DOMINETTE 909G

Eye Pigment: **LE 100** **RE 50**

Light birth weight, well marked 0186 son. Out of a great uddered cow family. PAP 39.

HH ADVANCE 3297A ET
 HH MISS ADVANCE 1056Y ET
 CL 1 DOMINO 386A 1ET
 CL 1 DOMINETTE 055X
 HH ADVANCE 767G 1ET
 GB L1 DOM PRCS 3134
 HH ADVANCE 3297A ET
 CO L1 DOMINETTE 948W

**311**

6*2 Yr. Old***CO L1 DOMINO 314L**

3/7/23 • 44461076

Act. BW	88
EPDs	
CED	0.9
BW	2.8
WW	63
YW	107
M	31
M&G	62
REA	0.63
MRB	0.1

HH ADVANCE 8120F ET
FS ADVANCE 0079H
 FS MISS ADVANCE 4004B ET

CO L1 DOMINO 748E
CO L1 DOMINETTE 028H
 CO L1 DOMINETTE 815F

HH ADVANCE 6007D ET
 HH MISS ADVANCE 2178Z
 HH ADVANCE 221 ET
 HH MISS ADVANCE 7142T
 HH ADVANCE 3297A ET
 CO L1 DOMINETTE 313A
 CL 1 DOMINO 215Z
 CO L1 DOMINETTE 536C

Eye Pigment: **LE 100** **RE 100**

314 is big topped and very thick made. He's well marked and is out of a dam that does it every time. All combined with a very low pap. PAP 35.

**314****7***2 Yr. Old***CO L1 DOMINO 315L**

3/7/23 • 44461077

Act. BW	78
EPDs	
CED	7.6
BW	0.5
WW	47
YW	80
M	35
M&G	59
REA	0.31
MRB	0.21

HH ADVANCE 4105B ET
HH ADVANCE 6006D ET
 HH MISS ADVANCE 1175Y ET

FS ADVANCE 7065E
CO L1 DOMINETTE 152J
 CO L1 DOMINETTE 982G

HH ADVANCE 1098Y
 L1 DOMINETTE 99374
 HH ADVANCE 7034T ET
 HH MISS ADVANCE 5139R ET
 HH ADVANCE 3006A
 HH MISS ADVANCE 1284Y ET
 HH ADVANCE 3297A ET
 CO L1 DOMINETTE 678D

Eye Pigment: **LE 80** **RE 90**

Moderate framed heifer bull prospect with an extremely low PAP score. PAP 33.

**315****8***2 Yr. Old***CO L1 DOMINO 318L**

3/7/23 • 44461081

Act. BW	88
EPDs	
CED	8.4
BW	-1.4
WW	44
YW	82
M	27
M&G	49
REA	0.43
MRB	0.33

GB L1 DOMINO 762E
GB L1 DOMINO 082H
 GB L1 DOM PRCS 6150Z

CL 1 DOMINO 6128D 1ET
CO L1 DOMINETTE 120J
 CO L1 DOMINETTE 670D

GB L1 DOMINO 177R
 GB L1 DOM PRCS 496X
 GB L1 DOMINO 3194W
 GB L1 DOM PRCS 3186W
 CL 1 DOMINO 386A 1ET
 CL 1 DOMINETTE 055X
 HH ADVANCE 3297A ET
 CO L1 DOMINETTE 302A

Eye Pigment: **LE 80** **RE 100**

Big topped 1176 son with extra length and thickness. There's a lot of performance in this bull. PAP 36.

**9***2 Yr. Old***CO L1 DOMINO 326L**

3/10/23 • 44461089

Act. BW	86
EPDs	
CED	3.4
BW	1.8
WW	57
YW	92
M	29
M&G	57
REA	0.42
MRB	0.33

GB L1 DOMINO 762E
GB L1 DOMINO 082H
 GB L1 DOM PRCS 6150Z

HH ADVANCE 3297A ET
CO L1 DOMINETTE 110J
 CO L1 DOMINETTE 806F

GB L1 DOMINO 177R
 GB L1 DOM PRCS 496X
 GB L1 DOMINO 3194W
 GB L1 DOM PRCS 3186W
 CL 1 DOMINO 091X
 HH MISS ADVANCE 9228W
 CL 1 DOMINO 215Z
 CO L1 DOMINETTE 602D

Eye Pigment: **LE 100** **RE 100**

Moderate framed and heavily pigmented. His sire is from Pedretti Ranches we used AI and are pleased with the results. PAP 39.

**326****10***2 Yr. Old***CO L1 DOMINO 329L**

3/11/23 • 44461093

Act. BW	82
EPDs	
CED	6.7
BW	0.7
WW	52
YW	81
M	32
M&G	58
REA	0.52
MRB	0.17

HH ADVANCE 8120F ET
FS ADVANCE 0079H
 FS MISS ADVANCE 4004B ET

LW 3006 ADVANCE 714E ET
CO L1 DOMINETTE 027H
 CO L1 DOMINETTE 668D

HH ADVANCE 6007D ET
 HH MISS ADVANCE 2178Z
 HH ADVANCE 221 ET
 HH MISS ADVANCE 7142T
 HH ADVANCE 3006A
 CL 1 DOMINETTE 055X
 HH ADVANCE 3297A ET
 CO L1 DOMINETTE 170Y

Eye Pigment: **LE 100** **RE 100**

329 puts a lot together, light birth weight, strong performance, well marked, top dam and low pap, all in an attractive package. PAP 36.

**329**

11
<i>2 Yr. Old</i>
Act. BW 78
EPDs
CED 8.6
BW 1.3
WW 55
YW 84
M 29
M&G 57
REA 0.58
MRB 0.14

CO L1 DOMINO 331L

3/12/23 - 44461098

HH ADVANCE 8120F ET
FS ADVANCE 0079H
 FS MISS ADVANCE 4004B ET

HH ADVANCE 6007D ET
 HH MISS ADVANCE 2178Z
 HH ADVANCE 221 ET
 HH MISS ADVANCE 7142T
 CL 1 DOMINO 732T
 CL 1 DOMINETTE 4126P
 HH ADVANCE 3297A ET
 CO L1 DOMINETTE 224Z

CL 1 DOMINO 1161Y
CO L1 DOMINETTE 052H
 CO L1 DOMINETTE 617D

Eye Pigment: **LE 100** **RE 100**

We really like our 0079 sons and think you will too. 331 is goggle eyed, light birth weight and performed very well. He has a nice strong top, extra length, good thickness and is out of a top cow family. PAP 37.



331

12
<i>2 Yr. Old</i>
Act. BW 94
EPDs
CED 2.7
BW 3.6
WW 56
YW 95
M 33
M&G 61
REA 0.58
MRB 0.12

CO L1 DOMINO 336L

3/15/23 - 44461121

HH ADVANCE 8120F ET
FS ADVANCE 0079H
 FS MISS ADVANCE 4004B ET

HH ADVANCE 6007D ET
 HH MISS ADVANCE 2178Z
 HH ADVANCE 221 ET
 HH MISS ADVANCE 7142T
 CL 1 DOMINO 091X
 HH MISS ADVANCE 9228W
 CL 1 DOMINO 186Y 1ET
 CO L1 DOMINETTE 969W

HH ADVANCE 3297A ET
CO L1 DOMINETTE 037H
 CO L1 DOMINETTE 461B

Eye Pigment: **LE 100** **RE 100**

Goggle eyed, extra length and thickness. Good PAP score. PAP 36.



336

13
<i>2 Yr. Old</i>
Act. BW 95
EPDs
CED 0.7
BW 3.2
WW 64
YW 103
M 28
M&G 60
REA 0.42
MRB 0.13

CO L1 DOMINO 339L

3/16/23 - 44461128

HH ADVANCE 5107C ET
FS ADVANCE 8044F
 FS MISS ADVANCE 539C

HH ADVANCE 6007D ET
 HH MISS ADVANCE 2178Z
 HH ADVANCE 221 ET
 HH MISS ADVANCE 7142T
 CL 1 DOMINO 091X
 HH MISS ADVANCE 9228W
 GB L1 DOMINO 175E
 JA L1 DOMINETTE 9209

HH ADVANCE 3297A ET
CO L1 DOMINETTE 784E
 CO L1 DOMINETTE 969W

Eye Pigment: **LE 100** **RE 100**

Extra performance in this 8044 son. 339 has a lot of thickness and is well pigmented. PAP 46.



339

14
<i>2 Yr. Old</i>
Act. BW 80
EPDs
CED 5.4
BW 1.1
WW 53
YW 83
M 25
M&G 52
REA 0.29
MRB 0.11

CO L1 DOMINO 340L

3/17/23 - 44461130

HH ADVANCE 5107C ET
FS ADVANCE 8044F
 FS MISS ADVANCE 539C

HH ADVANCE 6007D ET
 HH MISS ADVANCE 2178Z
 HH ADVANCE 221 ET
 HH MISS ADVANCE 7142T
 CL 1 DOMINO 091X
 HH MISS ADVANCE 9228W
 CL 1 DOMINO 320N
 CO L1 DOMINETTE 949W

HH ADVANCE 0118X
CO L1 DOMINETTE 441B
 CO L1 DOMINETTE 124Y

Eye Pigment: **LE 100** **RE 100**

340 is a well marked 8044 son. PAP 42.



340

15
<i>2 Yr. Old</i>
Act. BW 74
EPDs
CED 4.7
BW 0.8
WW 56
YW 91
M 27
M&G 55
REA 0.41
MRB 0.27

CO L1 DOMINO 344L

3/18/23 - 44461147

GB L1 DOMINO 762E
GB L1 DOMINO 082H
 GB L1 DOM PRCS 6150Z

HH ADVANCE 6007D ET
 HH MISS ADVANCE 2178Z
 HH ADVANCE 221 ET
 HH MISS ADVANCE 7142T
 CL 1 DOMINO 091X
 HH MISS ADVANCE 9228W
 CL 1 DOMINO 320N
 CO L1 DOMINETTE 949W

FS ADVANCE 8044F
CO L1 DOMINETTE 147J
 CO L1 DOMINETTE 427B

Eye Pigment: **LE 75** **RE 100**

344 had a light birth weight and performed well. Should work on heifers. PAP 51.



344

16
<i>2 Yr. Old</i>
Act. BW 82
EPDs
CED 4.1
BW 1.2
WW 54
YW 86
M 32
M&G 59
REA 0.3
MRB 0.25

CO L1 DOMINO 347L

3/20/23 - 44461153

HH ADVANCE 4105B ET
HH ADVANCE 6006D ET
 HH MISS ADVANCE 1175Y ET

HH ADVANCE 1098Y
 L1 DOMINETTE 99374
 HH ADVANCE 7034T ET
 HH MISS ADVANCE 5139R ET
 HH ADVANCE 767G 1ET
 GB L1 DOM PRCS 3134
 CL 1 DOMINO 215Z
 CO L1 DOMINETTE 703E

GB L1 DOMINO 175E
CO L1 DOMINETTE 107J
 CO L1 DOMINETTE 901G

Eye Pigment: **LE 100 RE 100**

Moderate framed 6006 son with a good low PAP score. PAP 36.



17
<i>2 Yr. Old</i>
Act. BW 89
EPDs
CED 2.7
BW 2.9
WW 57
YW 92
M 26
M&G 54
REA 0.38
MRB 0.11

CO L1 DOMINO 350L

3/22/23 - 44461165

HH ADVANCE 5107C ET
FS ADVANCE 8044F
 FS MISS ADVANCE 539C

CL 1 DOMINO 215Z
 HH MISS ADVANCE 9228W
 HH ADVANCE 1098Y
 CL 1 DOMINETTE 203Z
 HH ADVANCE 3297A ET
 CO L1 DOMINETTE 331A
 HH ADVANCE 2029Z ET
 CO L1 DOMINETTE 137Y

CO L1 DOMINO 818F
CO L1 DOMINETTE 035H
 CO L1 DOMINETTE 536C

Eye Pigment: **LE 100 RE 80**

350 is a nice thick 8044 son. PAP 49.



18
<i>2 Yr. Old</i>
Act. BW 85
EPDs
CED 2.6
BW 2.5
WW 59
YW 101
M 28
M&G 58
REA 0.45
MRB 0.2

CO L1 DOMINO 352L

3/24/23 - 44461171

HH ADVANCE 8392F ET
CL 1 DOMINO 1176J 1ET
 CL 1 DOMINETTE 6162D

HH ADVANCE 5345C
 HH MISS ADVANCE 2022Z ET
 CL 1 DOMINO 386A 1ET
 CL 1 DOMINETTE 055X
 CL 1 DOMINO 732T
 CL 1 DOMINETTE 4126P
 HH ADVANCE 3297A ET
 CO L1 DOMINETTE 170Y

CL 1 DOMINO 1161Y
CO L1 DOMINETTE 033H
 CO L1 DOMINETTE 771E

Eye Pigment: **LE 100 RE 100**

There's a lot to like about this top 1176 son. He puts it all together with moderate birth weight, lots of growth, well marked with goggle eyes, eye appeal and out of an excellent cow family. PAP 38.



19
<i>2 Yr. Old</i>
Act. BW 85
EPDs
CED 2.7
BW 1.7
WW 57
YW 90
M 29
M&G 58
REA 0.39
MRB 0.14

CO L1 DOMINO 353L

3/24/23 - 44461172

HH ADVANCE 5107C ET
FS ADVANCE 8044F
 FS MISS ADVANCE 539C

CL 1 DOMINO 215Z
 HH MISS ADVANCE 9228W
 HH ADVANCE 1098Y
 CL 1 DOMINETTE 203Z
 CL 1 DOMINO 091X
 HH MISS ADVANCE 9228W
 CL 1 DOMINO 186Y 1ET
 CO L1 DOMINETTE 969W

HH ADVANCE 3297A ET
CO L1 DOMINETTE 827F
 CO L1 DOMINETTE 461B

Eye Pigment: **LE 90 RE 40**

Good performing 8044 son. PAP 43.



20
<i>2 Yr. Old</i>
Act. BW 82
EPDs
CED 3.8
BW 1.9
WW 56
YW 87
M 29
M&G 57
REA 0.27
MRB 0.16

CO L1 DOMINO 356L

3/26/23 - 44461176

HH ADVANCE 4105B ET
HH ADVANCE 6006D ET
 HH MISS ADVANCE 1175Y ET

HH ADVANCE 1098Y
 L1 DOMINETTE 99374
 HH ADVANCE 7034T ET
 HH MISS ADVANCE 5139R ET
 CL 1 DOMINO 732T
 CL 1 DOMINETTE 4126P
 HH ADVANCE 3297A ET
 CO L1 DOMINETTE 969W

CL 1 DOMINO 1161Y
CO L1 DOMINETTE 070H
 CO L1 DOMINETTE 784E

Eye Pigment: **LE 100 RE 100**

This might be the best 6006 son we ever raised. Be sure to look him up. He has a lot of eye appeal, a moderate frame, well muscled and nicely marked. He had strong performance and an excellent pap score. PAP 35.



21
<i>2 Yr. Old</i>
Act. BW 90
EPDs
CED 4.2
BW 2
WW 61
YW 91
M 33
M&G 64
REA 0.64
MRB 0.24

CO L1 DOMINO 372L

4/9/23 • 44461214

HH ADVANCE 8120F ET
FS ADVANCE 0079H
 FS MISS ADVANCE 4004B ET

HH ADVANCE 6007D ET
 HH MISS ADVANCE 2178Z
 HH ADVANCE 221 ET
 HH MISS ADVANCE 7142T
 CL 1 DOMINO 9122W 1ET
 CL 1 DOMINETTE 055X
 HH ADVANCE 3297A ET
 CO L1 DOMINETTE 441B

CL 1 DOMINO 215Z
CO L1 DOMINETTE 913G
 CO L1 DOMINETTE 762E

Eye Pigment: **LE 100** **RE 100**

Goggle eyed 0079 son with extra length and a good strong top. His dam is a good 215 daughter. PAP 40



22
<i>2 Yr. Old</i>
Act. BW 85
EPDs
CED 4.9
BW 2.3
WW 59
YW 90
M 32
M&G 61
REA 0.34
MRB 0.16

CO L1 DOMINO 373L

4/11/23 • 44461216

CL 1 DOMINO 9109G 1ET
GB L1 DOMINO 137J
 GB L1 DOM PRCS 905G

CL 1 DOMINO 710E 1ET
 CL 1 DOMINETTE 351A
 GB L1 DOMINO 6203Z
 GB L1 DOM PRCS 763E
 CL 1 DOMINO 1161Y
 CO L1 DOMINETTE 948W
 HH ADVANCE 3297A ET
 CO L1 DOMINETTE 521C

CO L1 DOMINO 809F

CO L1 DOMINETTE 169J

CO L1 DOMINETTE 979G

Eye Pigment: **LE 100** **RE 100**

This 137 son performed well and has an excellent pap score. His dam is an outstanding young cow with a great udder and a lot of volume. PAP 34.



23
<i>2 Yr. Old</i>
Act. BW 90
EPDs
CED -0.9
BW 3
WW 62
YW 93
M 19
M&G 50
REA 0.28
MRB 0.06

GG L1 DOMINO 31L

3/19/23 • 44577970

HH ADVANCE 5107C ET
FS ADVANCE 8044F
 FS MISS ADVANCE 539C

CL 1 DOMINO 215Z
 HH MISS ADVANCE 9228W
 HH ADVANCE 1098Y
 CL 1 DOMINETTE 203Z
 CL 1 DOMINO 732T
 CL 1 DOMINETTE 4126P
 HH ADVANCE 1098Y
 CO L1 DOMINETTE 203Z

CL 1 DOMINO 1161Y

CO L1 DOMINETTE 764E

CO L1 DOMINETTE 402B

Eye Pigment: **LE 80** **RE 100**

This 8044 son is deep sided, has a nice top and extra bone. Should sire an excellent set of calves. He has a good cow family to back him up. PAP 37.



24
<i>2 Yr. Old</i>
Act. BW 84
EPDs
CED na
BW na
WW na
YW na
M na
M&G na
REA na
MRB na

JET 32

Black Baldy

SAV RAINFALL 6846

CL1 DOMINO 4150B
CO L1 DOMINETTE 907G
 CO L1 DOMINETTE 329A

CL 1 DOMINO 215Z
 CL 1 DOMINETTE 058X
 CL 1 DOMINO 186Y 1ET
 CO L1 DOMINETTE 803U

Eye Pigment: **LE na** **RE na**

Birth Weight 84 lbs. PAP 38.



25
<i>2 Yr. Old</i>
Act. BW 85
EPDs
CED na
BW na
WW na
YW na
M na
M&G na
REA na
MRB na

JET 33

Black Baldy

HH ADVANCE 4105B ET
HH ADVANCE 6006D ET
 HH MISS ADVANCE 1175Y ET

HH ADVANCE 1098Y
 L1 DOMINETTE 99374
 HH ADVANCE 7034T ET
 HH MISS ADVANCE 5139R ET

Eye Pigment: **LE na** **RE na**

Dam Sired by SAV Rainfall 6846. Birth Weight 85 lbs. PAP 37.



26
<i>2 Yr. Old</i>
Act. BW 81
EPDs
CED 3.7
BW 3.2
WW 59
YW 93
M 23
M&G 52
REA 0.46
MRB 0.13

B&B L1 DOMINO 310

2/15/23 • 44483820

HH ADVANCE 5107C ET
FS ADVANCE 7032E
 FS MISS ADVANCE 541C

CL 1 DOMINO 215Z
 HH MISS ADVANCE 9228W
 HH ADVANCE 1059Y
 FS MISS ADVANCE 3009A ET
 HH ADVANCE 1098Y
 JA L1 DOMINETTE 1705Y
 FS ADVANCE 264Z ET
 B&B L1 DOMINETTE 229

B&B L1 DOMINETTE 019

B&B L1 DOMINETTE 561

Eye Pigment: **LE 90** **RE 100**

A standout in the thickness department, count on him for performance and muscle.



310

27
<i>2 Yr. Old</i>
Act. BW 79
EPDs
CED 7.6
BW 0.5
WW 45
YW 79
M 33
M&G 55
REA 0.28
MRB 0.04

B&B L1 DOMINO 315

2/19/23 • 44483898

HH ADVANCE 4082B ET
B&B L1 DOMINO 770
 B&B L1 DOMINETTE 464B

CL 1 DOMINO 1161Y
 HH MISS ADVANCE 9102W
 JA L1 DOMINO 0615X
 B&B L1 DOMINETTE 090
 JA L1 DOMINO 7640T
 JA L1 DOMINETTE 5754R
 CL 1 DOMINO 555R
 B&B L1 DOMINETTE 427P

B&B L1 DOMINETTE 468B

B&B L1 DOMINETTE 049

Eye Pigment: **LE 100** **RE 100**

Out of an 11 yr old cow that has never missed a calving and always raises a good one. Top 15% BW, UDDR, TEAT. Top 20% SC. Top 25% CED.



315

28
<i>2 Yr. Old</i>
Act. BW 82
EPDs
CED 1
BW 2
WW 47
YW 69
M 35
M&G 59
REA 0.36
MRB 0.01

B&B L1 DOMINO 322

2/23/23 • 44483926

HH ADVANCE 221 ET
B&B L1 DOMINO 8173
 B&B L1 DOMINETTE 5225

FS ADVANCE 5014C ET
B&B L1 DOMINETTE 918
 B&B L1 DOMINETTE 755

CL 1 DOMINO 955W
 HH MISS ADVANCE 5152R
 JA L1 DOMINO 2719Z
 B&B L1 DOMINETTE 7230
 CL 1 DOMINO 215Z
 HH MISS ADVANCE 1072Y ET
 HH ADVANCE 4082B ET
 B&B L1 DOMINETTE 324

Eye Pigment: **LE 100** **RE 100**



322

29
<i>2 Yr. Old</i>
Act. BW 88
EPDs
CED -0.8
BW 3.4
WW 51
YW 90
M 28
M&G 54
REA 0.41
MRB -0.04

B&B L1 DOMINO 324

2/24/23 • 44483933

HH ADVANCE 221 ET
B&B L1 DOMINO 8173
 B&B L1 DOMINETTE 5225

JA L1 DOMINO 6809D
B&B L1 DOMINETTE 957
 B&B L1 DOMINETTE 604

CL 1 DOMINO 955W
 HH MISS ADVANCE 5152R
 JA L1 DOMINO 2719Z
 B&B L1 DOMINETTE 7230
 DH ADVANCE 031
 JA L1 DOMINETTE 2133Z
 CL 1 DOMINO 030X 1ET
 JA L1 DOMINETTE 0714X

Eye Pigment: **LE 70** **RE 90**

Extra frame and length, he surely will sire performance.



324

30
<i>2 Yr. Old</i>
Act. BW 81
EPDs
CED 4.9
BW 2.9
WW 46
YW 85
M 23
M&G 46
REA 0.45
MRB 0.06

B&B L1 DOMINO 327

2/24/23 • 44483952

HH ADVANCE 3297A ET
EHF L1 ADVANCE 622ET
 EHF 553 7003 MS ADVANCE 027X

CL 1 DOMINO 091X
 HH MISS ADVANCE 9228W
 EE 2262 362 553
 EHF 109L MS ADVANCE 7003
 CL 1 DOMINO 860U
 JA L1 DOMINETTE 325N
 CL 1 DOMINO 8153H
 B&B L1 DOMINET 7133

B&B L1 DOMINETTE 534

B&B L1 DOMINETTE 537R

Eye Pigment: **LE 100** **RE 70**

Will be several 622 sons selling. Excellent maternal sire with great teats and udders, and lots of pigment.



327

31
<i>2 Yr. Old</i>
Act. BW 80
EPDs
CED 0.6
BW 3
WW 65
YW 95
M 31
M&G 64
REA 0.47
MRB 0.19

B&B L1 DOMINO 337

2/27/23 • 44483940

CL 1 DOMINO 6187D
JA L1 DOMINO 014H
 JA L1 DOMINETTE 7925E
 JA L1 DOMINO 8921F
JA L1 DOMINETTE 1955J
 JA L1 DOMINETTE 9630G
 HH ADVANCE 4067B ET
 CL1 DOMINETTE 450B
 CL 1 DOMINO 386A 1ET
 JA L1 DOMINETTE 8613U
 CL 1 DOMINO 386A 1ET
 JA L1 DOMINETTE 9614W
 CL 1 DOMINO 6163D
 JA L1 DOMINETTE 6205D

Eye Pigment: **LE 80 RE 80**



32
<i>2 Yr. Old</i>
Act. BW 78
EPDs
CED 3.7
BW 3
WW 61
YW 98
M 26
M&G 57
REA 0.44
MRB 0.18

B&B L1 DOMINO 338

2/28/23 • 44483885

CL 1 DOMINO 6187D
JA L1 DOMINO 014H
 JA L1 DOMINETTE 7925E
 EHF L1 ADVANCE 622ET
B&B L1 DOMINETTE 176
 B&B L1 DOMINETTE 405B
 HH ADVANCE 4067B ET
 CL1 DOMINETTE 450B
 CL 1 DOMINO 386A 1ET
 JA L1 DOMINETTE 8613U
 HH ADVANCE 3297A ET
 EHF 553 7003 MS ADVANCE 027X
 HH ADVANCE 0132X
 B&B L1 DOMINETTE 215

Eye Pigment: **LE 100 RE 100**



33
<i>2 Yr. Old</i>
Act. BW 74
EPDs
CED 5.7
BW 2
WW 41
YW 70
M 22
M&G 43
REA 0.41
MRB 0.04

B&B L1 DOMINO 340

2/28/23 • 44483865

HH ADVANCE 3297A ET
EHF L1 ADVANCE 622ET
 EHF 553 7003 MS ADVANCE 027X
 JA L1 DOMINO 2719Z
B&B L1 DOMINETTE 569
 B&B L1 DOMINETTE 797
 CL 1 DOMINO 091X
 HH MISS ADVANCE 9228W
 EE 2262 362 553
 EHF 109L MS ADVANCE 7003
 CL 1 DOMINO 860U
 JA L1 DOMINETTE 325N
 CL 1 DOMINO 8153H
 B&B L1 DOMINETE 304

Eye Pigment: **LE 100 RE 50**

Extra moderate on frame size with traditional yellow hair. Top 10% for UDDR and TEAT EPD.



34
<i>2 Yr. Old</i>
Act. BW 80
EPDs
CED 3.9
BW 3.2
WW 46
YW 82
M 22
M&G 45
REA 0.45
MRB 0.03

B&B L1 DOMINO 341

2/28/23 • 44483875

HH ADVANCE 3297A ET
EHF L1 ADVANCE 622ET
 EHF 553 7003 MS ADVANCE 027X
 JA L1 DOMINO 2719Z
B&B L1 DOMINETTE 593
 B&B L1 DOMINETTE 574R
 CL 1 DOMINO 091X
 HH MISS ADVANCE 9228W
 EE 2262 362 553
 EHF 109L MS ADVANCE 7003
 CL 1 DOMINO 860U
 JA L1 DOMINETTE 325N
 CL 1 DOMINO 8153H
 B&B L1 DOMINET 601

Eye Pigment: **LE 100 RE 100**

Red necked and red marked and exhibits lots of muscle. Top 10% for UDDR and TEAT EPD.



34A
<i>2 Yr. Old</i>
Act. BW na
EPDs
CED 0.9
BW 2.9
WW 57
YW 96
M 32
M&G 60
REA 0.35
MRB 0.13

B&B L1 DOMINO 342

2/28/23 • 44483877

CL 1 DOMINO 6187D
JA L1 DOMINO 014H
 JA L1 DOMINETTE 7925E
 B&B L1 DOMINO 770
B&B L1 DOMINETTE 155
 B&B L1 DOMINETTE 489
 HH ADVANCE 4067B ET
 CL1 DOMINETTE 450B
 CL 1 DOMINO 386A 1ET
 JA L1 DOMINETTE 8613U
 HH ADVANCE 4082B ET
 B&B L1 DOMINETTE 464B
 JA L1 DOMINO 2719Z
 B&B DOMINETTE 169

Eye Pigment: **LE na RE na**



35
<i>2 Yr. Old</i>
Act. BW 84
EPDs
CED 3.4
BW 2.4
WW 46
YW 88
M 33
M&G 56
REA 0.19
MRB 0.01

B&B L1 DOMINO 350
3/2/23 • 44483945

HH ADVANCE 4082B ET
B&B L1 DOMINO 770
B&B L1 DOMINETTE 464B

JA L1 DOMINO 2719Z
B&B L1 DOMINETTE 8103
B&B L1 DOMINETTE 235

CL 1 DOMINO 1161Y
HH MISS ADVANCE 9102W
JA L1 DOMINO 0615X
B&B L1 DOMINETTE 090
CL 1 DOMINO 860U
JA L1 DOMINETTE 325N
B&B L1 DOMINO 045
B&B L1 DOMINET 999

Eye Pigment: **LE 100** **RE 100**



36
<i>2 Yr. Old</i>
Act. BW 84
EPDs
CED 1.6
BW 3.5
WW 50
YW 89
M 24
M&G 49
REA 0.45
MRB 0.03

B&B L1 DOMINO 358
3/4/23 • 44625937

HH ADVANCE 3297A ET
EHF L1 ADVANCE 622ET
EHF 553 7003 MS ADVANCE 027X

JA L1 DOMINO 2719Z
B&B L1 DOMINETTE 657
B&B L1 DOMINETTE 226

CL 1 DOMINO 091X
HH MISS ADVANCE 9228W
EE 2262 362 553
EHF 109L MS ADVANCE 7003
CL 1 DOMINO 860U
JA L1 DOMINETTE 325N
CL 1 DOMINO 555R
B&B L1 DOMINETE 618

Eye Pigment: **LE 100** **RE 100**

Big goggle eyes and packed with pigment. Lots of beef to round out the pack-age.



37
<i>2 Yr. Old</i>
Act. BW 80
EPDs
CED na
BW na
WW na
YW na
M na
M&G na
REA na
MRB na

360
Unregistered

Eye Pigment: **LE 75** **RE 90**



38
<i>2 Yr. Old</i>
Act. BW 86
EPDs
CED -0.8
BW 3.8
WW 54
YW 91
M 30
M&G 57
REA 0.33
MRB 0.03

B&B L1 DOMINO 364
3/5/23 • 44483946

HH ADVANCE 286M 1ET
EHF 286 L1 ADVANCE 082ET
EHF 9144 L1 MS ADVANCE 196

FS ADVANCE 512C
B&B L1 DOMINETTE 8112
B&B L1 DOMINETTE 464B

HH ADVANCE 0024K
HH MISS ADVANCE 752G
HH ADVANCE 9144W
EE MS 454 L1 885
HH ADVANCE 3006A
FS MISS ADVANCE 335A
JA L1 DOMINO 0615X
B&B L1 DOMINETTE 090

Eye Pigment: **LE 100** **RE 100**

Top 20% SC.



39
<i>2 Yr. Old</i>
Act. BW 83
EPDs
CED 1.8
BW 4.3
WW 69
YW 112
M 25
M&G 59
REA 0.47
MRB 0.06

B&B L1 DOMINO 366
3/6/23 • 44483856

HH ADVANCE 286M 1ET
EHF 286 L1 ADVANCE 082ET
EHF 9144 L1 MS ADVANCE 196

FS ADVANCE 7032E
B&B L1 DOMINETTE 0107
B&B L1 DOMINETTE 747

HH ADVANCE 0024K
HH MISS ADVANCE 752G
HH ADVANCE 9144W
EE MS 454 L1 885
HH ADVANCE 5107C ET
FS MISS ADVANCE 541C
FS ADVANCE 264Z ET
B&B L1 DOMINETTE 348

Eye Pigment: **LE 70** **RE 90**

Big red tear drop on the face and big hiped and long sided. Top 10% for WW and YW.



40
<i>2 Yr. Old</i>
Act. BW 90
EPDs
CED -0.3
BW 3.8
WW 53
YW 93
M 36
M&G 62
REA 0.22
MRB 0.01

B&B L1 DOMINO 374

3/10/23 • 44483922

HH ADVANCE 4082B ET
B&B L1 DOMINETTE 770
 B&B L1 DOMINETTE 464B

FS ADVANCE 512C
B&B L1 DOMINETTE 881
 B&B L1 DOMINETTE 577

CL 1 DOMINO 1161Y
 HH MISS ADVANCE 9102W
 JA L1 DOMINO 0615X
 B&B L1 DOMINETTE 090
 HH ADVANCE 3006A
 FS MISS ADVANCE 335A
 B&B L1 DOMINO 045
 JA L1 DOMINETTE 0235X

Eye Pigment: **LE 100 RE 100**
 Top 15% SC.



374

41
<i>2 Yr. Old</i>
Act. BW 82
EPDs
CED 3.2
BW 4
WW 54
YW 94
M 20
M&G 47
REA 0.51
MRB 0.04

B&B L1 DOMINO 376

3/10/23 • 44483924

HH ADVANCE 3297A ET
EHF L1 ADVANCE 622ET
 EHF 553 7003 MS ADVANCE 027X

HH ADVANCE 0118X
B&B L1 DOMINETTE 896
 B&B L1 DOMINETTE 581

CL 1 DOMINO 091X
 HH MISS ADVANCE 9228W
 EE 2262 362 553
 EHF 109L MS ADVANCE 7003
 CL 1 DOMINO 7128T 1ET
 HH MISS ADVANCE 6074S
 JA L1 DOMINO 2719Z
 B&B L1 DOMINETTE 430P

Eye Pigment: **LE 50 RE 100**
 Top 5% for UDDR and TEAT.



376

42
<i>2 Yr. Old</i>
Act. BW 87
EPDs
CED 2.6
BW 4.3
WW 52
YW 88
M 24
M&G 50
REA 0.47
MRB 0.04

B&B L1 DOMINO 378

3/11/23 • 44483895

HH ADVANCE 3297A ET
EHF L1 ADVANCE 622ET
 EHF 553 7003 MS ADVANCE 027X

MCCABE 03571 DOMINO 1980 ET
B&B L1 DOMINETTE 447
 B&B L1 DOMINETTE 227

CL 1 DOMINO 091X
 HH MISS ADVANCE 9228W
 EE 2262 362 553
 EHF 109L MS ADVANCE 7003
 L1 DOMINO 03571
 EE MS 0024 L1 740
 CL 1 DOMINO 555R
 B&B L1 DOMINETTE 511R

Eye Pigment: **LE 100 RE 100**

Herd bull that stands out. Pigment, goggle eyes and red all over. He has thickness and muscle and is one of my favorites.



378

43
<i>2 Yr. Old</i>
Act. BW 84
EPDs
CED 2.7
BW 2.9
WW 52
YW 86
M 25
M&G 51
REA 0.51
MRB 0.06

B&B L1 DOMINO 3125

3/10/23 • 44483900

HH ADVANCE 3297A ET
EHF L1 ADVANCE 622ET
 EHF 553 7003 MS ADVANCE 027X

FS ADVANCE 264Z ET
B&B L1 DOMINETTE 540
 B&B L1 DOMINETTE 273

CL 1 DOMINO 091X
 HH MISS ADVANCE 9228W
 EE 2262 362 553
 EHF 109L MS ADVANCE 7003
 HH ADVANCE 0081X ET
 HH MISS ADVANCE 7109T
 JA L1 DOMINO 0615X
 JA L1 DOMINETTE 0710X

Eye Pigment: **LE 100 RE 100**

I like to point out thickness and he has it. Long hipped and red necked.



3125

44
<i>2 Yr. Old</i>
Act. BW 84
EPDs
CED 4.2
BW 2.9
WW 59
YW 95
M 24
M&G 54
REA 0.44
MRB 0.14

B&B L1 DOMINO 381

3/11/23 • 44483841

HH ADVANCE 5107C ET
FS ADVANCE 7032E
 FS MISS ADVANCE 541C

JA L1 DOMINO 404B
B&B L1 DOMINETTE 062
 B&B L1 DOMINETTE 604

CL 1 DOMINO 215Z
 HH MISS ADVANCE 9228W
 HH ADVANCE 1059Y
 FS MISS ADVANCE 3009A ET
 HH ADVANCE 1098Y
 JA L1 DOMINETTE 1705Y
 CL 1 DOMINO 030X 1ET
 JA L1 DOMINETTE 0714X

Eye Pigment: **LE 100 RE 100**



381

45
<i>2 Yr. Old</i>
Act. BW na
EPDs
CED 4.1
BW 3.3
WW 55
YW 95
M 25
M&G 52
REA 0.35
MRB 0.1

B&B L1 DOMINO 382
3/11/23 • 44483821

HH ADVANCE 5107C ET
FS ADVANCE 7032E
FS MISS ADVANCE 541C

B&B L1 DOMINO 766
B&B L1 DOMINETTE 025
B&B L1 DOMINETTE 8103

CL 1 DOMINO 215Z
HH MISS ADVANCE 9228W
HH ADVANCE 1059Y
FS MISS ADVANCE 3009A ET
HH ADVANCE 4082B ET
B&N L1 DOMINETTE 342
JA L1 DOMINO 2719Z
B&B L1 DOMINETTE 235

Eye Pigment: **LE 100 RE 90**



382

46
<i>2 Yr. Old</i>
Act. BW 89
EPDs
CED 1.4
BW 2.9
WW 54
YW 89
M 33
M&G 60
REA 0.15
MRB 0.04

B&B L1 DOMINO 384
3/12/23 • 44483906

HH ADVANCE 4082B ET
B&B L1 DOMINO 770
B&B L1 DOMINETTE 464B

HH ADVANCE 3006A
B&B L1 DOMINETTE 716
B&B L1 DOMINETTE 506

CL 1 DOMINO 1161Y
HH MISS ADVANCE 9102W
JA L1 DOMINO 0615X
B&B L1 DOMINETTE 090
HH ADVANCE 0002X
HH MISS ADVANCE 1142Y
HH ADVANCE 0132X
B&B L1 DOMINETTE 372

Eye Pigment: **LE 50 RE 80**

Deep bodied, good capacity bull and moderate frame size.



384

47
<i>2 Yr. Old</i>
Act. BW 86
EPDs
CED -1.4
BW 4
WW 50
YW 90
M 35
M&G 59
REA 0.44
MRB -0.05

B&B L1 DOMINO 386
3/12/23 • 44483950

HH ADVANCE 221 ET
B&B L1 DOMINO 8173
B&B L1 DOMINETTE 5225

JA L1 DOMINO 2719Z
B&B L1 DOMINETTE 9102
B AND B L1 DOMINETTE 0236

CL 1 DOMINO 955W
HH MISS ADVANCE 5152R
JA L1 DOMINO 2719Z
B&B L1 DOMINETTE 7230
CL 1 DOMINO 860U
JA L1 DOMINETTE 325N
GM L1 444-790 ET
B&B L1 DOMINETTE 7230

Eye Pigment: **LE 100 RE 100**

Lots of thickness and muscle and it is stacked on a big frame.



386

48
<i>2 Yr. Old</i>
Act. BW 90
EPDs
CED 0.8
BW 4.4
WW 55
YW 90
M 24
M&G 52
REA 0.48
MRB 0.02

B&B L1 DOMINO 397
3/22/23 • 44483899

HH ADVANCE 3297A ET
EHF L1 ADVANCE 622ET
EHF 553 7003 MS ADVANCE 027X

FS ADVANCE 264Z ET
B&B L1 DOMINETTE 523
B&B L1 DOMINETTE 212

CL 1 DOMINO 091X
HH MISS ADVANCE 9228W
EE 2262 362 553
EHF 109L MS ADVANCE 7003
HH ADVANCE 0081X ET
HH MISS ADVANCE 7109T
CL 1 DOMINO 555R
B&B L1 DOMINETTE 917

Eye Pigment: **LE 100 RE 100**

A stand out in the pen, he will catch your eye from every angle. He has goggle eyes, more frame than most and best of all, he is an easy keeper with lots of thickened and muscle.



397

49
<i>2 Yr. Old</i>
Act. BW 79
EPDs
CED 6
BW 1.5
WW 49
YW 85
M 34
M&G 58
REA 0.29
MRB 0.02

B&B L1 DOMINO 398
3/24/23 • 44483890

HH ADVANCE 4082B ET
B&B L1 DOMINO 770
B&B L1 DOMINETTE 464B

JA L1 DOMINO 0615X
B&B L1 DOMINETTE 362
B&B L1 DOMINETTE 049

CL 1 DOMINO 1161Y
HH MISS ADVANCE 9102W
JA L1 DOMINO 0615X
B&B L1 DOMINETTE 090
JA L1 DOMINO 7640T
JA L1 DOMINETTE 5754R
CL 1 DOMINO 555R
B&B L1 DOMINETTE 427P

Eye Pigment: **LE 100 RE 50**

Volume and length. You've got to have depth of rib to be the easy keeping kind we all need. Top 5% UDDR and TEAT, Top 20% SC, Top 25% BW.



398

50
<i>2 Yr. Old</i>
Act. BW 84
EPDs
CED 1.4
BW 3.5
WW 59
YW 94
M 31
M&G 61
REA 0.51
MRB 0.01

B&B L1 DOMINO 3100

3/25/23 - 44483925

HH ADVANCE 221 ET
B&B L1 DOMINO 8173
 B&B L1 DOMINETTE 5225

HH ADVANCE 5107C ET
B&B L1 DOMINETTE 911
 B&B L1 DOMINETTE 704

CL 1 DOMINO 955W
 HH MISS ADVANCE 5152R
 JA L1 DOMINO 2719Z
 B&B L1 DOMINETTE 7230
 CL 1 DOMINO 215Z
 HH MISS ADVANCE 9228W
 HH ADVANCE 0118X
 B&B L1 DOMINETTE 3197

Eye Pigment: **LE 100** **RE 50**



3100

51
<i>2 Yr. Old</i>
Act. BW 80
EPDs
CED 4.7
BW 2.8
WW 63
YW 104
M 27
M&G 58
REA 0.51
MRB 0.11

B&B L1 DOMINO 3101

3/25/23 - 44483848

HH ADVANCE 5107C ET
FS ADVANCE 7032E
 FS MISS ADVANCE 541C

JA L1 DOMINO 2719Z
B&B L1 DOMINETTE 080
 B&B L1 DOMINETTE 362

CL 1 DOMINO 215Z
 HH MISS ADVANCE 9228W
 HH ADVANCE 1059Y
 FS MISS ADVANCE 3009A ET
 CL 1 DOMINO 860U
 JA L1 DOMINETTE 325N
 JA L1 DOMINO 0615X
 B&B L1 DOMINETTE 049

Eye Pigment: **LE 20** **RE 80**

I call him a herd bull prospect. He shows extra everything, thickness, depth and capacity, and lots of eye appeal.



3101

52
<i>2 Yr. Old</i>
Act. BW 89
EPDs
CED 0
BW 4.4
WW 57
YW 97
M 27
M&G 55
REA 0.44
MRB 0.02

B&B L1 DOMINO 3103

3/31/23 - 44562863

HH ADVANCE 3297A ET
EHF L1 ADVANCE 622ET
 EHF 553 7003 MS ADVANCE 027X

B&B L1 DOMINO 770
B&B L1 DOMINETTE 043
 B&B L1 DOMINETTE 503

CL 1 DOMINO 091X
 HH MISS ADVANCE 9228W
 EE 2262 362 553
 EHF 109L MS ADVANCE 7003
 HH ADVANCE 4082B ET
 B&B L1 DOMINETTE 464B
 HH ADVANCE 0132X
 B&B L1 DOMINETTE 327

Eye Pigment: **LE 20** **RE 20**

Big framed red necked bull and long as a freight train.



3103

53
<i>2 Yr. Old</i>
Act. BW 82
EPDs
CED 4.5
BW 3.6
WW 60
YW 88
M 26
M&G 56
REA 0.61
MRB 0.05

B&B L1 DOMINO 3104

4/1/23 - 44483831

HH ADVANCE 5107C ET
FS ADVANCE 7032E
 FS MISS ADVANCE 541C

HH ADVANCE 221 ET
B&B L1 DOMINETTE 044
 B&B L1 DOMINETTE 0101

CL 1 DOMINO 215Z
 HH MISS ADVANCE 9228W
 HH ADVANCE 1059Y
 FS MISS ADVANCE 3009A ET
 CL 1 DOMINO 955W
 HH MISS ADVANCE 5152R
 GM L1 444-790 ET
 B&B L1 DOMINETTE 917

Eye Pigment: **LE 80** **RE 80**

Top 25% REA.



3104

54
<i>2 Yr. Old</i>
Act. BW 73
EPDs
CED 5.3
BW 1.6
WW 59
YW 95
M 31
M&G 61
REA 0.35
MRB 0.19

B&B L1 DOMINO 3129

4/1/23 - 44483862

CL 1 DOMINO 6187D
JA L1 DOMINO 014H
 JA L1 DOMINETTE 7925E

B&B L1 DOMINO 766
B&B L1 DOMINETTE 113
 B&B L1 DOMINETTE 918

HH ADVANCE 4067B ET
 CL1 DOMINETTE 450B
 CL 1 DOMINO 386A 1ET
 JA L1 DOMINETTE 8613U
 HH ADVANCE 4082B ET
 B&N L1 DOMINETTE 342
 FS ADVANCE 5014C ET
 B&B L1 DOMINETTE 755

Eye Pigment: **LE 70** **RE 70**



3129

55
<i>2 Yr. Old</i>
Act. BW 84
EPDs
CED 3.3
BW 2.6
WW 53
YW 90
M 34
M&G 61
REA 0.34
MRB 0.03

B&B L1 DOMINO 3105
4/2/23 • 44483944

HH ADVANCE 4082B ET
B&B L1 DOMINO 770
B&B L1 DOMINETTE 464B

JA L1 DOMINO 404B
B&B L1 DOMINETTE 7103
B&B L1 DOMINETTE 370

CL L1 DOMINO 1161Y
HH MISS ADVANCE 9102W
JA L1 DOMINO 0615X
B&B L1 DOMINETTE 090
HH ADVANCE 1098Y
JA L1 DOMINETTE 1705Y
JA L1 DOMINO 0615X
JA L1 DOMINETTE 0235X

Eye Pigment: **LE 80 RE 100**

Top 10% for UDDR and TEAT EPD. Top 20% SC.



56
<i>2 Yr. Old</i>
Act. BW 89
EPDs
CED 2
BW 4
WW 50
YW 87
M 32
M&G 57
REA 0.37
MRB -0.04

B&B L1 DOMINO 3109
4/7/23 • 44567142

HH ADVANCE 4082B ET
B&B L1 DOMINO 770
B&B L1 DOMINETTE 464B

HH ADVANCE 221 ET
B&B L1 DOMINETTE 890
B&B L1 DOMINETTE 0107

CL L1 DOMINO 1161Y
HH MISS ADVANCE 9102W
JA L1 DOMINO 0615X
B&B L1 DOMINETTE 090
CL L1 DOMINO 955W
HH MISS ADVANCE 5152R
GM L1 444-790 ET
B&B L1 DOMINETTE 607

Eye Pigment: **LE 30 RE 10**

Top 10% for UDDR and TEAT EPD.



57
<i>2 Yr. Old</i>
Act. BW 81
EPDs
CED 5.7
BW 2
WW 56
YW 86
M 25
M&G 53
REA 0.38
MRB 0.12

B&B L1 DOMINO 3119
5/1/23 • 44483815

HH ADVANCE 5107C ET
FS ADVANCE 7032E
FS MISS ADVANCE 541C

B&B L1 DOMINO 770
B&B L1 DOMINETTE 012
B&B L1 DOMINETTE 629

CL L1 DOMINO 215Z
HH MISS ADVANCE 9228W
HH ADVANCE 1059Y
FS MISS ADVANCE 3009A ET
HH ADVANCE 4082B ET
B&B L1 DOMINETTE 464B
FS ADVANCE 264Z ET
B&B L1 DOMINETTE 214

Eye Pigment: **LE 100 RE 100**



58
<i>2 Yr. Old</i>
Act. BW 83
EPDs
CED -0.9
BW 4.3
WW 50
YW 93
M 28
M&G 53
REA 0.41
MRB -0.06

B&B L1 DOMINO 3120
5/2/23 • 44483932

HH ADVANCE 221 ET
B&B L1 DOMINO 8173
B&B L1 DOMINETTE 5225

JA L1 DOMINO 6809D
B&B L1 DOMINETTE 936
B&B L1 DOMINETTE 688

CL L1 DOMINO 955W
HH MISS ADVANCE 5152R
JA L1 DOMINO 2719Z
B&B L1 DOMINETTE 7230
DH ADVANCE 031
JA L1 DOMINETTE 2133Z
B&B L1 DOMINO 045
B&B L1 DOMINETTE 968

Eye Pigment: **LE 80 RE 80**



59
<i>2 Yr. Old</i>
Act. BW 83
EPDs
CED 4.3
BW 2.8
WW 55
YW 91
M 31
M&G 59
REA 0.29
MRB 0.02

B&B L1 DOMINO 3130
6/10/23 • 44483884

HH ADVANCE 4082B ET
B&B L1 DOMINO 770
B&B L1 DOMINETTE 464B

FS ADVANCE 264Z ET
B&B L1 DOMINETTE 618
B&B L1 DOMINETTE 447

CL L1 DOMINO 1161Y
HH MISS ADVANCE 9102W
JA L1 DOMINO 0615X
B&B L1 DOMINETTE 090
HH ADVANCE 0081X ET
HH MISS ADVANCE 7109T
MCCABE 03571 DOMINO 1980 ET
B&B L1 DOMINETTE 227

Eye Pigment: **LE 50 RE 50**



59A*2 Yr. Old*

Act. BW	na
EPDs	
CED	3.7
BW	2.3
WW	52
YW	86
M	24
M&G	50
REA	0.33
MRB	0.11

B&B L1 DOMINO 3136

8/2/23 • 44534355

HH ADVANCE 5107C ET
FS ADVANCE 7032E
 FS MISS ADVANCE 541C

B&B L1 DOMINETTE 058

JA L1 DOMINO 2719Z
 B&B L1 DOMINETTE 348

Eye Pigment: LE na RE na

CL 1 DOMINO 215Z
 HH MISS ADVANCE 9228W
 HH ADVANCE 1059Y
 FS MISS ADVANCE 3009A ET
 CL 1 DOMINO 860U
 JA L1 DOMINETTE 325N
 CL 1 DOMINO 030X 1ET
 B&B L1 DOMINETTE 617

**3136****60***2 Yr. Old*

Act. BW	85
EPDs	
CED	0.9
BW	5
WW	54
YW	90
M	27
M&G	54
REA	0.41
MRB	0.04

B&B L1 DOMINO 3147

9/5/23 • 44519739

HH ADVANCE 3297A ET
EHF L1 ADVANCE 622ET
 EHF 553 7003 MS ADVANCE 027X

B&B L1 DOMINETTE 9132

CL1 DOMINO 4100B
 B&B L1 DOMINETTE 5179

Eye Pigment: LE 50 RE 100

Red necked and thick made with the capacity of rib to stay fat.

CL 1 DOMINO 091X
 HH MISS ADVANCE 9228W
 EE 2262 362 553
 EHF 109L MS ADVANCE 7003
 HH ADVANCE 2005Z
 CL1 DOMINETTE 148Y
 HH ADVANCE 0118X
 B AND B L1 DOMINETTE 0199

**3147****61***2 Yr. Old*

Act. BW	84
EPDs	
CED	3.2
BW	3.3
WW	52
YW	87
M	25
M&G	51
REA	0.42
MRB	0.04

B&B L1 DOMINO 3148

9/5/23 • 44519740

HH ADVANCE 3297A ET
EHF L1 ADVANCE 622ET
 EHF 553 7003 MS ADVANCE 027X

B&B L1 DOMINETTE 9163

HH ADVANCE 4082B ET
 B&B L1 DOMINETTE 4188

Eye Pigment: LE 100 RE 100

Goggle eyed and red necked and loaded with eye appeal.

CL 1 DOMINO 091X
 HH MISS ADVANCE 9228W
 EE 2262 362 553
 EHF 109L MS ADVANCE 7003
 CL 1 DOMINO 1161Y
 HH MISS ADVANCE 9102W
 HH ADVANCE 0118X
 B&B L1 DOMINETTE 1220

**3148****62***2 Yr. Old*

Act. BW	88
EPDs	
CED	-1.7
BW	4.7
WW	62
YW	101
M	29
M&G	61
REA	0.44
MRB	0.1

B&B L1 DOMINO 3152

9/6/23 • 44519745

CL 1 DOMINO 883F 1ET
HH ADVANCE 1080J ET
 HH MISS ADVANCE 8215F ET

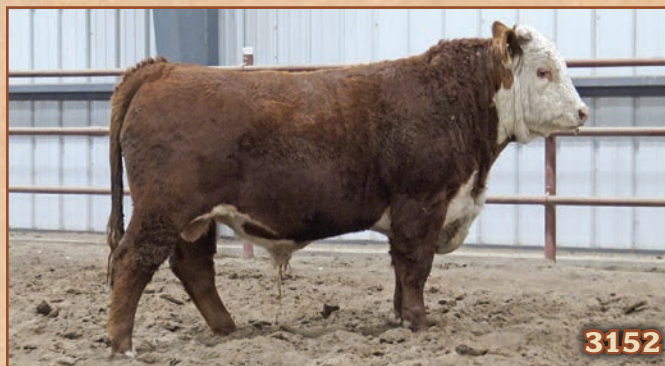
B&B L1 DOMINO 0223

B&B L1 DOMINO 770
 B&B L1 DOMINETTE 4198

Eye Pigment: LE 100 RE 100

Top 25% WW and YW.

CL 1 DOMINO 6128D 1ET
 CL1 DOMINETTE 450B
 HH ADVANCE 5304C ET
 HH MISS ADVANCE 0121X
 HH ADVANCE 4082B ET
 B&B L1 DOMINETTE 464B
 CL 1 DOMINO 9125W 1ET
 B&B L1 DOMINETTE 8167

**3152****63***2 Yr. Old*

Act. BW	76
EPDs	
CED	7
BW	2.7
WW	48
YW	82
M	26
M&G	50
REA	0.36
MRB	0.09

B&B L1 DOMINO 3160

9/9/23 • 44519760

HH ADVANCE 3297A ET
EHF L1 ADVANCE 622ET
 EHF 553 7003 MS ADVANCE 027X

9203

CL1 DOMINO 4100B
 B&B L1 DOMINETTE 5159

Eye Pigment: LE 100 RE 100

CL 1 DOMINO 091X
 HH MISS ADVANCE 9228W
 EE 2262 362 553
 EHF 109L MS ADVANCE 7003
 HH ADVANCE 2005Z
 CL1 DOMINETTE 148Y
 HH ADVANCE 1207Y
 B&B L1 DOMINETTE 8232

**3160**

64	
<i>2 Yr. Old</i>	
Act. BW	81
EPDs	
CED	5
BW	3.4
WW	48
YW	83
M	25
M&G	49
REA	0.39
MRB	0.07

B&B L1 DOMINO 3161
9/9/23 • 44519762

HH ADVANCE 3297A ET
EHF L1 ADVANCE 622ET
EHF 553 7003 MS ADVANCE 027X

CL1 DOMINO 4100B
B&B L1 DOMINETTE 9154
B&B L1 DOMINETTE 5198

CL1 DOMINO 091X
HH MISS ADVANCE 9228W
EE 2262 362 553
EHF 109L MS ADVANCE 7003
HH ADVANCE 2005Z
CL1 DOMINETTE 148Y
HH ADVANCE 0118X
B&B L1 DOMINETTE 283

Eye Pigment: **LE 100 RE 100**



65	
<i>2 Yr. Old</i>	
Act. BW	86
EPDs	
CED	0.7
BW	3.7
WW	60
YW	100
M	36
M&G	66
REA	0.42
MRB	0.08

B&B L1 DOMINO 3165
9/11/23 • 44625936

CL1 DOMINO 386A 1ET
CL1 DOMINO 6128D 1ET
CL1 DOMINETTE 055X

HH ADVANCE 4082B ET
B&B L1 DOMINETTE 8190
B&B L1 DOMINETTE 4219

CL1 DOMINO 1108Y 1ET
CL1 DOMINETTE 440P 1ET
CL1 DOMINO 860U
CL1 DOMINETTE 7136T 1ET
CL1 DOMINO 1161Y
HH MISS ADVANCE 9102W
CL1 DOMINO 9125W 1ET
B&B L1 DOMINETTE 7165

Eye Pigment: **LE 100 RE 80**

A big framed bull with extra volume.



66	
<i>2 Yr. Old</i>	
Act. BW	90
EPDs	
CED	-1.2
BW	5.2
WW	59
YW	93
M	29
M&G	59
REA	0.38
MRB	0.09

B&B L1 DOMINO 3170
9/14/23 • 44519784

CL1 DOMINO 883F 1ET
HH ADVANCE 1080J ET
HH MISS ADVANCE 8215F ET

B&B L1 DOMINO 766
B&B L1 DOMINETTE 0190
B&B L1 DOMINETTE 3132

CL1 DOMINO 6128D 1ET
CL1 DOMINETTE 450B
HH ADVANCE 5304C ET
HH MISS ADVANCE 0121X
HH ADVANCE 4082B ET
B&N L1 DOMINETTE 342
CL1 DOMINO 9125W 1ET
B&B L1 DOMINETTE 5145

Eye Pigment: **LE 90 RE 90**



67	
<i>2 Yr. Old</i>	
Act. BW	71
EPDs	
CED	6.9
BW	1.6
WW	57
YW	94
M	26
M&G	55
REA	0.45
MRB	0.21

B&B L1 DOMINO 3171
9/18/23 • 44519785

CL1 DOMINO 6187D
JA L1 DOMINO 014H
JA L1 DOMINETTE 7925E

EHF L1 ADVANCE 622ET
B&B L1 DOMINETTE 1205
B&B L1 DOMINETTE 7213

HH ADVANCE 4067B ET
CL1 DOMINETTE 450B
CL1 DOMINO 386A 1ET
JA L1 DOMINETTE 8613U
HH ADVANCE 3297A ET
EHF 553 7003 MS ADVANCE 027X
HH ADVANCE 4082B ET
B&B L1 DOMINETTE 2174

Eye Pigment: **LE na RE na**

Herd bull quality with a red neck and lots of length.



68	
<i>2 Yr. Old</i>	
Act. BW	84
EPDs	
CED	3.7
BW	4.2
WW	52
YW	88
M	25
M&G	51
REA	0.38
MRB	0.06

B&B L1 DOMINO 3173
9/19/23 • 44519787

HH ADVANCE 3297A ET
EHF L1 ADVANCE 622ET
EHF 553 7003 MS ADVANCE 027X

HH ADVANCE 3297A ET
B&B L1 DOMINETTE 9230
EHF 553 7003 MS ADVANCE 027X

CL1 DOMINO 091X
HH MISS ADVANCE 9228W
EE 2262 362 553
EHF 109L MS ADVANCE 7003
HH ADVANCE 2005Z
CL1 DOMINETTE 148Y
HH ADVANCE 1207Y
B&B L1 DOMINETTE 456

Eye Pigment: **LE 100 RE 100**

If you need a moderate framed, herd bull with all the bells and whistles, here he is. Top 10% for UDDR and TEAT EPD.



69
<i>2 Yr. Old</i>
Act. BW 86
EPDs
CED 0.9
BW 3.3
WW 56
YW 95
M 32
M&G 60
REA 0.37
MRB 0.07

B&B L1 DOMINO 3174
9/19/23 - 44628843

CL 1 DOMINO 386A 1ET	CL 1 DOMINO 1108Y 1ET
CL 1 DOMINO 6128D 1ET	CL 1 DOMINETTE 440P 1ET
CL 1 DOMINETTE 055X	CL 1 DOMINO 860U
HH ADVANCE 4082B ET	CL 1 DOMINETTE 7136T 1ET
B&B L1 DOMINETTE 7159	CL 1 DOMINO 1161Y
B&B L1 DOMINETTE 2138	HH MISS ADVANCE 9102W
	CL 1 DOMINO 555R
	B&B L1 DOMINETTE 8239

Eye Pigment: **LE 40 RE 80**



70
<i>2 Yr. Old</i>
Act. BW 90
EPDs
CED -2.5
BW 4.2
WW 58
YW 102
M 37
M&G 66
REA 0.47
MRB 0.08

B&B L1 DOMINO 3183
9/25/23 - 44523043

CL 1 DOMINO 386A 1ET	CL 1 DOMINO 1108Y 1ET
CL 1 DOMINO 6128D 1ET	CL 1 DOMINETTE 440P 1ET
CL 1 DOMINETTE 055X	CL 1 DOMINO 860U
JA L1 DOMINO 2719Z	CL 1 DOMINETTE 7136T 1ET
B&B L1 DOMINETTE 5225	CL 1 DOMINO 860U
B&B L1 DOMINETTE 7230	JA L1 DOMINETTE 325N
	JA L1 DOMINO 426P
	B&B L1 DOMINET 7188

Eye Pigment: **LE 40 RE 20**



71
<i>2 Yr. Old</i>
Act. BW 86
EPDs
CED 3.8
BW 3.5
WW 59
YW 93
M 25
M&G 54
REA 0.48
MRB 0.12

B&B L1 DOMINO 3184
9/26/23 - 44519795

HH ADVANCE 5107C ET	CL 1 DOMINO 215Z
FS ADVANCE 7032E	HH MISS ADVANCE 9228W
FS MISS ADVANCE 541C	HH ADVANCE 1059Y
JA L1 DOMINO 404B	FS MISS ADVANCE 3009A ET
B&B L1 DOMINETTE 7193	HH ADVANCE 1098Y
B AND B L1 DOMINETTE 0189	JA L1 DOMINETTE 1705Y
	GM L1 444-790 ET
	B&B L1 DOMINETTE 7164

Eye Pigment: **LE 100 RE 100**

I don't like pink eyes. Here is one who should never sire any. He is red necked and google eyed.



72
<i>2 Yr. Old</i>
Act. BW 86
EPDs
CED 4.6
BW 3.1
WW 60
YW 92
M 21
M&G 51
REA 0.44
MRB 0.12

B&B L1 DOMINO 3188
9/27/23 - 44519800

HH ADVANCE 5107C ET	CL 1 DOMINO 215Z
FS ADVANCE 7032E	HH MISS ADVANCE 9228W
FS MISS ADVANCE 541C	HH ADVANCE 1059Y
HH ADVANCE 0118X	FS MISS ADVANCE 3009A ET
B&B L1 DOMINETTE 7119	CL 1 DOMINO 7128T 1ET
B&B L1 DOMINETTE 4146	HH MISS ADVANCE 6074S
	CL 1 DOMINO 9125W 1ET
	B&B L1 DOMINETTE 456

Eye Pigment: **LE 100 RE 100**



73
<i>2 Yr. Old</i>
Act. BW 88
EPDs
CED 3.2
BW 3.8
WW 56
YW 90
M 23
M&G 51
REA 0.37
MRB 0.09

B&B L1 DOMINO 3191
9/30/23 - 44519803

HH ADVANCE 5107C ET	CL 1 DOMINO 215Z
FS ADVANCE 7032E	HH MISS ADVANCE 9228W
FS MISS ADVANCE 541C	HH ADVANCE 1059Y
B&B L1 DOMINO 317	FS MISS ADVANCE 3009A ET
B&B L1 DOMINETTE 7205	MCCABE Q3571 DOMINO 1980 ET
B&B L1 DOMINETTE 3138	B&B L1 DOMINETTE 168
	CL 1 DOMINO 555R
	B&B L1 DOMINETTE 7181

Eye Pigment: **LE 70 RE 80**



74
<i>2 Yr. Old</i>
Act. BW 85
EPDs
CED 0.3
BW 4.3
WW 56
YW 90
M 22
M&G 50
REA 0.3
MRB 0.01

B&B L1 DOMINO 3193

10/1/23 • 44519809

HH ADVANCE 286M 1ET
EHF 286 L1 ADVANCE 082ET
 EHF 9144 L1 MS ADVANCE 196

HH ADVANCE 0118X
B&B L1 DOMINETTE 7256
 B&B L1 DOMINETTE 4211

Eye Pigment: **LE 100 RE 80**

HH ADVANCE 0024K
 HH MISS ADVANCE 752G
 HH ADVANCE 9144W
 EE MS 454 L1 885
 CL 1 DOMINO 7128T 1ET
 HH MISS ADVANCE 6074S
 CL 1 DOMINO 030X 1ET
 B&B L1 DOMINETTE 296



75
<i>2 Yr. Old</i>
Act. BW 60
EPDs
CED 12.1
BW 0.0
WW 51
YW 78
M 19
M&G 44
REA 0.43
MRB 0.19

B&B L1 DOMINO 3195

10/1/23 • 44520536

HH ADVANCE 5107C ET
FS ADVANCE 7032E
 FS MISS ADVANCE 541C

HH ADVANCE 0118X
B&B L1 DOMINETTE 5180
 B&B L1 DOMINETTE 2107

Eye Pigment: **LE 100 RE 100**

CL 1 DOMINO 215Z
 HH MISS ADVANCE 9228W
 HH ADVANCE 1059Y
 FS MISS ADVANCE 3009A ET
 CL 1 DOMINO 7128T 1ET
 HH MISS ADVANCE 6074S
 CL 1 DOMINO 9125W 1ET
 B&B L1 DOMINETTE 6249



76
<i>2 Yr. Old</i>
Act. BW 72
EPDs
CED 7.9
BW 1.2
WW 52
YW 83
M 25
M&G 51
REA 0.35
MRB 0.15

B&B L1 DOMINO 3196

10/1/23 • 44520537

HH ADVANCE 5107C ET
FS ADVANCE 7032E
 FS MISS ADVANCE 541C

HH ADVANCE 4082B ET
B&B L1 DOMINETTE 8191
 B&B L1 DOMINETTE 1119

Eye Pigment: **LE 100 RE 80**

Top 20% CED and BW.

CL 1 DOMINO 215Z
 HH MISS ADVANCE 9228W
 HH ADVANCE 1059Y
 FS MISS ADVANCE 3009A ET
 CL 1 DOMINO 1161Y
 HH MISS ADVANCE 9102W
 GM L1 444-790 ET
 B&B L1 DOMINET 689



77
<i>2 Yr. Old</i>
Act. BW na
EPDs
CED 4.3
BW 2.8
WW 59
YW 95
M 25
M&G 55
REA 0.37
MRB 0.12

B&B L1 DOMINO 3198

10/1/23 • 44519804

HH ADVANCE 5107C ET
FS ADVANCE 7032E
 FS MISS ADVANCE 541C

HH ADVANCE 4082B ET
B&B L1 DOMINETTE 7181
 B&B L1 DOMINETTE 2194

Eye Pigment: **LE 70 RE 70**

Another bull I call a herd bull prospect. He is thick made and full of muscle.

CL 1 DOMINO 215Z
 HH MISS ADVANCE 9228W
 HH ADVANCE 1059Y
 FS MISS ADVANCE 3009A ET
 CL 1 DOMINO 1161Y
 HH MISS ADVANCE 9102W
 CL 1 DOMINO 9125W 1ET
 B&B L1 DOMINETTE 463



78
<i>2 Yr. Old</i>
Act. BW 84
EPDs
CED 2.4
BW 3.4
WW 59
YW 99
M 26
M&G 56
REA 0.42
MRB 0.11

B&B L1 DOMINO 3201

10/5/23 • 44520541

HH ADVANCE 5107C ET
FS ADVANCE 7032E
 FS MISS ADVANCE 541C

JA L1 DOMINO 2719Z
B&B L1 DOMINETTE 7202
 B&B L1 DOMINETTE 7230

Eye Pigment: **LE 100 RE 100**

CL 1 DOMINO 215Z
 HH MISS ADVANCE 9228W
 HH ADVANCE 1059Y
 FS MISS ADVANCE 3009A ET
 CL 1 DOMINO 860U
 JA L1 DOMINETTE 325N
 JA L1 DOMINO 426P
 B&B L1 DOMINET 7188



79
<i>2 Yr. Old</i>
Act. BW 88
EPDs
CED 2.3
BW 4.6
WW 54
YW 91
M 22
M&G 49
REA 0.37
MRB 0.01

B&B L1 DOMINO 3203

10/11/23 • 44520543

HH ADVANCE 3297A ET
EHF L1 ADVANCE 622ET
 EHF 553 7003 MS ADVANCE 027X

HH ADVANCE 1207Y
B&B L1 DOMINETTE 5159
 B&B L1 DOMINETTE 8232

CL 1 DOMINO 091X
 HH MISS ADVANCE 9228W
 EE 2262 362 553
 EHF 109L MS ADVANCE 7003
 HH ADVANCE 7034T ET
 HH MISS ADVANCE 6054S
 JA L1 DOMINO 426P
 B&B L1 DOMINETE 986

Eye Pigment: **LE 100 RE 60**

He will catch your eye with extra pigment and muscle.



3203

80
<i>2 Yr. Old</i>
Act. BW 82
EPDs
CED 5.3
BW 2.7
WW 58
YW 91
M 20
M&G 49
REA 0.41
MRB 0.11

B&B L1 DOMINO 3205

10/11/23 • 44520545

HH ADVANCE 5107C ET
FS ADVANCE 7032E
 FS MISS ADVANCE 541C

FS ADVANCE 264Z ET
B&B L1 DOMINETTE 5257
 B&B L1 DOMINETTE 1230

CL 1 DOMINO 215Z
 HH MISS ADVANCE 9228W
 HH ADVANCE 1059Y
 FS MISS ADVANCE 3009A ET
 HH ADVANCE 0081X ET
 HH MISS ADVANCE 7109T
 CL 1 DOMINO 555R
 B&B L1 DOMINETTE 2126

Eye Pigment: **LE 80 RE 10**

Red necked beef bull.



3205

81
<i>2 Yr. Old</i>
Act. BW 85
EPDs
CED 3
BW 4.3
WW 54
YW 89
M 20
M&G 48
REA 0.42
MRB 0.02

B&B L1 DOMINO 3210

10/20/23 • 44521040

HH ADVANCE 3297A ET
EHF L1 ADVANCE 622ET
 EHF 553 7003 MS ADVANCE 027X

HH ADVANCE 1207Y
B&B L1 DOMINETTE 8150
 B&B L1 DOMINETTE 476

CL 1 DOMINO 091X
 HH MISS ADVANCE 9228W
 EE 2262 362 553
 EHF 109L MS ADVANCE 7003
 HH ADVANCE 7034T ET
 HH MISS ADVANCE 6054S
 CL 1 DOMINO 8153H
 B&B L1 DOMINETA 6152

Eye Pigment: **LE 100 RE 100**

Full sibling to last years high selling bull that sold for \$13,000 to the Zero Hereford Ranch in Nebraska.



3210

82
<i>2 Yr. Old</i>
Act. BW 82
EPDs
CED 0.2
BW 4.5
WW 55
YW 91
M 31
M&G 58
REA 0.36
MRB 0.12

B&B L1 DOMINO 3211

10/20/23 • 44521043

CL 1 DOMINO 883F 1ET
HH ADVANCE 1080J ET
 HH MISS ADVANCE 8215F ET

CL1 DOMINO 4100B
B&B L1 DOMINETTE 0121
 B&B L1 DOMINETTE 7158

CL 1 DOMINO 6128D 1ET
 CL1 DOMINETTE 450B
 HH ADVANCE 5304C ET
 HH MISS ADVANCE 0121X
 HH ADVANCE 2005Z
 CL1 DOMINETTE 148Y
 JA L1 DOMINO 2719Z
 B&B L1 DOMINETTE 1159

Eye Pigment: **LE 40 RE 60**



3211

83
<i>2 Yr. Old</i>
Act. BW 82
EPDs
CED 5.7
BW 2.9
WW 60
YW 94
M 23
M&G 53
REA 0.38
MRB 0.14

B&B L1 DOMINO 3213

10/25/23 • 44521049

HH ADVANCE 5107C ET
FS ADVANCE 7032E
 FS MISS ADVANCE 541C

CL 1 DOMINO 9125W 1ET
B&B L1 DOMINETTE 4232
 B&B L1 DOMINETTE 6196

CL 1 DOMINO 215Z
 HH MISS ADVANCE 9228W
 HH ADVANCE 1059Y
 FS MISS ADVANCE 3009A ET
 CL 1 DOMINO 732T
 CL 1 DOMINETTE 475P
 JA L1 DOMINO 426P
 B&B L1 DOMINETTE 2226

Eye Pigment: **LE 100 RE 100**



3213

84
<i>2 Yr. Old</i>
Act. BW 88
EPDs
CED -4.1
BW 5.3
WW 65
YW 105
M 33
M&G 65
REA 0.43
MRB 0.08

B&B L1 DOMINO 3220

11/12/23 - 44521068

CL 1 DOMINO 883F 1ET
HH ADVANCE 1080J ET
 HH MISS ADVANCE 8215F ET

CL 1 DOMINO 6128D 1ET
 CL1 DOMINETTE 450B
 HH ADVANCE 5304C ET
 HH MISS ADVANCE 0121X
 CL 1 DOMINO 1161Y
 HH MISS ADVANCE 9102W
 JA L1 DOMINO 2719Z
 B&B L1 DOMINETTE 1139

HH ADVANCE 4082B ET
B&B L1 DOMINETTE 0237
 B&B L1 DOMINETTE 5177

Eye Pigment: **LE 100 RE 100**

Top 20% WW and YW.



3220

85
<i>2 Yr. Old</i>
Act. BW 78
EPDs
CED 3.5
BW 3.3
WW 49
YW 83
M 23
M&G 47
REA 0.43
MRB 0.07

B&B L1 DOMINO 3223

11/19/23 - 44521074

HH ADVANCE 3297A ET
EHF L1 ADVANCE 622ET
 EHF 553 7003 MS ADVANCE 027X

CL 1 DOMINO 091X
 HH MISS ADVANCE 9228W
 EE 2262 362 553
 EHF 109L MS ADVANCE 7003
 HH ADVANCE 3006A
 FS MISS ADVANCE 335A
 HH ADVANCE 0118X
 B&B L1 DOMINETTE 1159

FS ADVANCE 512C
B&B L1 DOMINETTE 8252
 B&B L1 DOMINETTE 4194

Eye Pigment: **LE 40 RE 10**



3223

86
<i>2 Yr. Old</i>
Act. BW 80
EPDs
CED 2.1
BW 2
WW 58
YW 87
M 38
M&G 67
REA 0.35
MRB 0.12

JA L1 DOMINO 3600L

1/31/23 - 44471887

CL 1 DOMINO 215Z
CL 1 DOMINO 6163D
 MONTANA MISS 1179Y

CL 1 DOMINO 9122W 1ET
 CL 1 DOMINETTE 055X
 CL 1 DOMINO 7110T
 MONTANA MISS 753T
 HH ADVANCE 0132X
 JA L1 DOMINETTE 1633Y
 JA L1 DOMINO 302A
 JA L1 DOMINETTE 3209A

JA L1 DOMINO 302A
JA L1 DOMINETTE 910G
 JA L1 DOMINETTE 552C

Eye Pigment: **LE 100 RE 100**

He is in the running for best bull in the sale. A herd bull prospect with a low birth weight, extra pigment and lots of muscle. He is backed up with a dam and granddam that are picture perfect with the performance that proves it all.



3600

87
<i>2 Yr. Old</i>
Act. BW 81
EPDs
CED 4.4
BW 1.4
WW 62
YW 100
M 34
M&G 65
REA 0.35
MRB 0.3

JA L1 DOMINO 300L

2/4/23 - 44471888

HH ADVANCE 4067B ET
CL 1 DOMINO 6187D
 CL1 DOMINETTE 450B

HH ADVANCE 1013Y ET
 HH MISS ADVANCE 8255U
 CL 1 DOMINO 215Z
 CL 1 DOMINETTE 1178Y
 HH ADVANCE 0132X
 JA L1 DOMINETTE 1633Y
 HH ADVANCE 0132X
 JA L1 DOMINETTE 1100Y

JA L1 DOMINO 302A
JA L1 DOMINETTE 817F
 JA L1 DOMINETTE 341A

Eye Pigment: **LE 80 RE 80**



300

88
<i>2 Yr. Old</i>
Act. BW 71
EPDs
CED 5.1
BW 1.2
WW 67
YW 103
M 32
M&G 65
REA 0.35
MRB 0.29

JA L1 DOMINO 302L

2/8/23 - Unregistered

HH ADVANCE 4067B ET
CL 1 DOMINO 6187D
 CL1 DOMINETTE 450B

HH ADVANCE 1013Y ET
 HH MISS ADVANCE 8255U
 CL 1 DOMINO 215Z
 CL 1 DOMINETTE 1178Y
 GB L1 DOMINO 175E
 CO L1 DOMINETTE 523R
 JA L1 DOMINO 7640T
 JA L1 DOMINETTE 570R

CO L1 DOMINO 946W
JA L1 DOMINETTE 2517
 JA L1 DOMINETTE 0613X

Eye Pigment: **LE 100 RE 100**

Herd bull prospect by 6187 and out of a very good uddered, heavy milking cow. 302 is goggle eyed with extra length and some added frame. A calving ease bull with just a 71 lb. birth weight.



302

89
<i>2 Yr. Old</i>
Act. BW 76
EPDs
CED 2.1
BW 1.8
WW 54
YW 76
M 34
M&G 60
REA 0.34
MRB 0.17

JA L1 DOMINO 3601L
2/8/23 - 44471891

CL 1 DOMINO 215Z
CL 1 DOMINO 6163D
MONTANA MISS 1179Y

CL 1 DOMINO 9122W 1ET
CL 1 DOMINETTE 055X
CL 1 DOMINO 7110T
MONTANA MISS 753T
CL 1 DOMINO 1108Y 1ET
CL 1 DOMINETTE 440P 1ET
JA L1 DOMINO 4922P
JA L1 DOMINETTE 329N

CL 1 DOMINO 386A 1ET
JA L1 DOMINETTE 9906G
JA L1 DOMINETTE 9901W

Eye Pigment: **LE 100 RE 100**

Another really strong herd bull prospect. If you want an easy keeper with thick-ness, big red eyes, and lots of body length, here he is! Dam is a perfect uddered 386 daughter.



90
<i>2 Yr. Old</i>
Act. BW 86
EPDs
CED 4.1
BW 1.9
WW 51
YW 85
M 27
M&G 52
REA 0.28
MRB 0.07

JA L1 DOMINO 3700L
2/17/23 - 44471925

CL 1 DOMINO 216Z 1ET
JA L1 DOMINO 8700F
JA L1 DOMINETTE 4424B

CL 1 DOMINO 860U
JA L1 DOMINETTE 2704Z
JA L1 DOMINETTE 7001T

CL 1 DOMINO 860U
CL 1 DOMINETTE 759T 1ET
HH ADVANCE 2181Z
JA L1 DOMINETTE 1207Y
CL 1 DOMINO 637S 1ET
CL 1 DOMINETTE 5142R
GB L1 DOMINO 935C
JA L1 DOMINETTE 101L

Eye Pigment: **LE 90 RE 80**

A big framed bull with a 74 pound birth weight. He will be calving ease plus performance. His tail is a bit short but he can still swat flies.



91
<i>2 Yr. Old</i>
Act. BW 82
EPDs
CED 3.2
BW 2.1
WW 49
YW 81
M 31
M&G 55
REA 0.21
MRB 0.01

JA L1 DOMINO 3701L
2/20/23 - 44471899

CL 1 DOMINO 216Z 1ET
JA L1 DOMINO 8700F
JA L1 DOMINETTE 4424B

JA L1 DOMINO 1602Y
JA L1 DOMINETTE 7603E
JA L1 DOMINETTE 5554C

CL 1 DOMINO 860U
CL 1 DOMINETTE 759T 1ET
HH ADVANCE 2181Z
JA L1 DOMINETTE 1207Y
JA L1 DOMINO 7640T
JA L1 DOMINETTE 9204W
JA L1 DOMINO 9800W
JA L1 DOMINETTE 8326U

Eye Pigment: **LE 30 RE 30**



92
<i>2 Yr. Old</i>
Act. BW 79
EPDs
CED 4.4
BW 2.5
WW 52
YW 87
M 30
M&G 55
REA 0.2
MRB 0.01

JA L1 DOMINO 3703L
2/21/23 - 44471902

CL 1 DOMINO 216Z 1ET
JA L1 DOMINO 8700F
JA L1 DOMINETTE 4424B

JA L1 DOMINO 302A
JA L1 DOMINETTE 812F
JA L1 DOMINETTE 4415B

CL 1 DOMINO 860U
CL 1 DOMINETTE 759T 1ET
HH ADVANCE 2181Z
JA L1 DOMINETTE 1207Y
HH ADVANCE 0132X
JA L1 DOMINETTE 1633Y
HH ADVANCE 2181Z
JA L1 DOMINETTE 1607Y

Eye Pigment: **LE 80 RE 80**

A black tailed bull with some extra frame. If you like and need frame the 8700 sons will provide it. 3703 has a long, thick, level to and is traditionally marked.



93
<i>2 Yr. Old</i>
Act. BW 86
EPDs
CED 1.6
BW 3.2
WW 57
YW 81
M 35
M&G 63
REA 0.49
MRB 0.16

JA L1 DOMINO 3706L
2/24/23 - Unregistered

CL 1 DOMINO 216Z 1ET
JA L1 DOMINO 8700F
JA L1 DOMINETTE 4424B

JAK L1 DOMINO H448
JA L1 DOMINETTE 5806R
JA L1 DOMINETTE 2524M

CL 1 DOMINO 860U
CL 1 DOMINETTE 759T 1ET
HH ADVANCE 2181Z
JA L1 DOMINETTE 1207Y
JAK L1 DOMINO F230
JA L1 DOMINETTE 3206
CL 1 DOMINO 7176G
JA L1 DOMINETTE 7502

Eye Pigment: **LE 80 RE 100**

Another red neck bull with eye appeal and correct structure and good hair. He is thick ended and shows good muscle.



94
<i>2 Yr. Old</i>
Act. BW 75
EPDs
CED 3.5
BW 1.7
WW 51
YW 80
M 30
M&G 56
REA 0.37
MRB 0.13

JA L1 DOMINO 3603L

2/26/23 - Unregistered

CL 1 DOMINO 6163D
JA L1 DOMINO 8628F
 JA L1 DOMINETTE 5609C

HH ADVANCE 7085T ET
JA L1 DOMINETTE 0400X
 JA L1 DOMINETTE 3913N

CL 1 DOMINO 215Z
 MONTANA MISS 1179Y
 JA L1 DOMINO 7640T
 JA L1 DOMINETTE 2503Z
 L1 DOMINO 0357I
 HH MISS ADVANCE 1088L
 HH ADVANCE 8017H 1ET
 JA L1 DOMINETTE 9804

Eye Pigment: **LE 100 RE 100**

A black tailed bull with just a 75 pound birth weight. I call him a herd bull prospect with goggle eyes and a long hip.



95
<i>2 Yr. Old</i>
Act. BW 81
EPDs
CED 5.3
BW 1.5
WW 50
YW 79
M 29
M&G 52
REA 0.2
MRB 0.08

JA L1 DOMINO 3708L

2/27/23 - 44471917

CL 1 DOMINO 216Z 1ET
JA L1 DOMINO 8700F
 JA L1 DOMINETTE 4424B

CL 1 DOMINO 6163D
JA L1 DOMINETTE 0610H
 JA L1 DOMINETTE 650D

CL 1 DOMINO 860U
 CL 1 DOMINETTE 759T 1ET
 HH ADVANCE 2181Z
 JA L1 DOMINETTE 1207Y
 CL 1 DOMINO 215Z
 MONTANA MISS 1179Y
 JA L1 DOMINO 342A
 JA L1 DOMINETTE 4504B

Eye Pigment: **LE 100 RE 100**



96
<i>2 Yr. Old</i>
Act. BW 78
EPDs
CED 3.8
BW 1.9
WW 59
YW 91
M 33
M&G 61
REA 0.25
MRB 0.09

JA L1 DOMINO 3201L

2/27/23 - 44471916

HH ADVANCE 4082B ET
JA L1 DOMINO 6212D
 JA L1 DOMINETTE 301A

CL 1 DOMINO 386A 1ET
JA L1 DOMINETTE 0900H
 JA L1 DOMINETTE 6211D

CL 1 DOMINO 1161Y
 HH MISS ADVANCE 9102W
 HH ADVANCE 1098Y
 JA L1 DOMINETTE 1214Y
 CL 1 DOMINO 732T
 CL 1 DOMINETTE 4126P
 HH ADVANCE 4082B ET
 JA L1 DOMINETTE 3721A

Eye Pigment: **LE 100 RE 100**



97
<i>2 Yr. Old</i>
Act. BW 87
EPDs
CED 0.9
BW 2.6
WW 60
YW 90
M 32
M&G 63
REA 0.34
MRB 0.14

JA L1 DOMINO 3202L

3/1/23 - Unregistered

HH ADVANCE 4082B ET
JA L1 DOMINO 6212D
 JA L1 DOMINETTE 301A

CL 1 DOMINO 6163D
JA L1 DOMINETTE 9702
 JA L1 DOMINETTE 6508D

CL 1 DOMINO 1161Y
 HH MISS ADVANCE 9102W
 HH ADVANCE 1098Y
 JA L1 DOMINETTE 1214Y
 CL 1 DOMINO 732T
 CL 1 DOMINETTE 4126P
 HH ADVANCE 0118X
 JA L1 DOMINETTE 0200X

Eye Pigment: **LE 100 RE 100**

Moderate framed with google eyes and lots of red markings. Lots of performance.



98
<i>2 Yr. Old</i>
Act. BW 90
EPDs
CED 3.8
BW 4
WW 62
YW 96
M 28
M&G 59
REA 0.31
MRB 0.02

JA L1 DOMINO 3605

3/2/23 - Unregistered

CL 1 DOMINO 6163D
JA L1 DOMINO 8628F
 JA L1 DOMINETTE 5609C

HH ADVANCE 7085T ET
JA L1 DOMINETTE 6410
 JA L1 DOMINETTE 3913N

CL 1 DOMINO 215Z
 MONTANA MISS 1179Y
 JA L1 DOMINO 7640T
 JA L1 DOMINETTE 2503Z
 L1 DOMINO 0357I
 HH MISS ADVANCE 1088L
 HH ADVANCE 8017H 1ET
 JA L1 DOMINETTE 9804

Eye Pigment: **LE 80 RE 100**



99*2 Yr. Old*

Act. BW	80
EPDs	
CED	5.4
BW	2
WW	53
YW	81
M	34
M&G	60
REA	0.21
MRB	0.05

JA L1 DOMINO 3204L

3/7/23 • 44472133

HH ADVANCE 4082B ET
JA L1 DOMINO 6212D
 JA L1 DOMINETTE 301A

CL 1 DOMINO 6163D
JA L1 DOMINETTE 600H
 JA L1 DOMINETTE 6508D

CL 1 DOMINO 1161Y
 HH MISS ADVANCE 9102W
 HH ADVANCE 1098Y
 JA L1 DOMINETTE 1214Y
 CL 1 DOMINO 732T
 CL 1 DOMINETTE 4126P
 HH ADVANCE 0118X
 JA L1 DOMINETTE 0200X

Eye Pigment: **LE 100** **RE 100**

Another red neck with two big red eyes. He is moderate framed and out of a top 6163 daughter. A calving ease bull with just a 77 lb. BW.

**100***2 Yr. Old*

Act. BW	83
EPDs	
CED	6.4
BW	1.7
WW	50
YW	80
M	33
M&G	57
REA	0.24
MRB	0.17

JA L1 DOMINO 3205L

3/9/23 • 44472134

HH ADVANCE 4082B ET
JA L1 DOMINO 6212D
 JA L1 DOMINETTE 301A

CL 1 DOMINO 6163D
JA L1 DOMINETTE 0821H
 JA L1 DOMINETTE 6508D

CL 1 DOMINO 1161Y
 HH MISS ADVANCE 9102W
 HH ADVANCE 1098Y
 JA L1 DOMINETTE 1214Y
 CL 1 DOMINO 732T
 CL 1 DOMINETTE 4126P
 HH ADVANCE 0118X
 JA L1 DOMINETTE 0200X

Eye Pigment: **LE 100** **RE 100****101***2 Yr. Old*

Act. BW	76
EPDs	
CED	4.2
BW	1.9
WW	51
YW	82
M	33
M&G	56
REA	0.16
MRB	0.05

JA L1 DOMINO 3709L

3/6/23 • 44472130

CL 1 DOMINO 216Z 1ET
JA L1 DOMINO 8700F
 JA L1 DOMINETTE 4424B

CL 1 DOMINO 6163D
JA L1 DOMINETTE 9637G
 JA L1 DOMINETTE 650D

CL 1 DOMINO 860U
 CL 1 DOMINETTE 759T 1ET
 HH ADVANCE 2181Z
 JA L1 DOMINETTE 1207Y
 CL 1 DOMINO 215Z
 MONTANA MISS 1179Y
 JA L1 DOMINO 342A
 JA L1 DOMINETTE 4504B

Eye Pigment: **LE 100** **RE 100****102***2 Yr. Old*

Act. BW	79
EPDs	
CED	5.3
BW	1.9
WW	48
YW	78
M	32
M&G	57
REA	0.19
MRB	0.1

JA L1 DOMINO 3607L

3/7/23 • 44472132

CL 1 DOMINO 6163D
JA L1 DOMINO 8628F
 JA L1 DOMINETTE 5609C

HH ADVANCE 7085T ET
JA L1 DOMINETTE 8225F
 JA L1 DOMINETTE 3913N

CL 1 DOMINO 215Z
 MONTANA MISS 1179Y
 JA L1 DOMINO 7640T
 JA L1 DOMINETTE 2503Z
 L1 DOMINO 0357I
 HH MISS ADVANCE 1088L
 HH ADVANCE 8017H 1ET
 JA L1 DOMINETTE 9804

Eye Pigment: **LE 80** **RE 100****103***2 Yr. Old*

Act. BW	68
EPDs	
CED	5.7
BW	0.3
WW	47
YW	73
M	28
M&G	52
REA	0.51
MRB	0.15

JA L1 DOMINO 3608L

3/10/23 - Unregistered

CL 1 DOMINO 6163D
JA L1 DOMINO 8628F
 JA L1 DOMINETTE 5609C

HH ADVANCE 7085T ET
JA L1 DOMINETTE 580Z
 JA L1 DOMINETTE 3913N

CL 1 DOMINO 215Z
 MONTANA MISS 1179Y
 JA L1 DOMINO 7640T
 JA L1 DOMINETTE 2503Z
 L1 DOMINO 0357I
 HH MISS ADVANCE 1088L
 HH ADVANCE 8017H 1ET
 JA L1 DOMINETTE 9804

Eye Pigment: **LE 100** **RE 100**

Lots of eye appeal here with muscle in all the right places.



104*2 Yr. Old*

Act. BW	74
EPDs	
CED	5.3
BW	1.3
WW	62
YW	90
M	30
M&G	60
REA	0.53
MRB	0.33

JA L1 DOMINO 3609L

3/10/23 - Unregistered

CL 1 DOMINO 6163D
JA L1 DOMINO 8628F
 JA L1 DOMINETTE 5609C

HH ADVANCE 7085T ET
JA L1 DOMINETTE A4
 JA L1 DOMINETTE 3913N

CL 1 DOMINO 215Z
 MONTANA MISS 1179Y
 JA L1 DOMINO 7640T
 JA L1 DOMINETTE 2503Z
 L1 DOMINO 03571
 HH MISS ADVANCE 1088L
 HH ADVANCE 8017H 1ET
 JA L1 DOMINETTE 9804

Eye Pigment: **LE 100** **RE 100****105***2 Yr. Old*

Act. BW	70
EPDs	
CED	4.8
BW	1.1
WW	67
YW	107
M	30
M&G	64
REA	0.58
MRB	0.3

JA L1 DOMINO 303L

3/11/23 - Unregistered

CL 1 DOMINO 6187D
JA L1 DOMINO 014H
 JA L1 DOMINETTE 7925E

JA L1 DOMINETTE 175J

HH ADVANCE 4067B ET
 CL1 DOMINETTE 450B
 CL 1 DOMINO 386A 1ET
 JA L1 DOMINETTE 8613U

Eye Pigment: **LE 100** **RE 100**

A really strong calving ease prospect out of a first time heifer by 9164. He is red necked and very long sided and strides out with authority.

**106***2 Yr. Old*

Act. BW	79
EPDs	
CED	5.2
BW	1.7
WW	50
YW	87
M	30
M&G	55
REA	0.29
MRB	0.01

JA L1 DOMINO 3207L

4/4/23 - Unregistered

HH ADVANCE 4082B ET
JA L1 DOMINO 6212D
 JA L1 DOMINETTE 301A

CL 1 DOMINO 6163D
JA L1 DOMINETTE 0499
 JA L1 DOMINETTE 6508D

CL 1 DOMINO 1161Y
 HH MISS ADVANCE 9102W
 HH ADVANCE 1098Y
 JA L1 DOMINETTE 1214Y
 CL 1 DOMINO 732T
 CL 1 DOMINETTE 4126P
 HH ADVANCE 0118X
 JA L1 DOMINETTE 0200X

Eye Pigment: **LE 100** **RE 100****107***2 Yr. Old*

Act. BW	89
EPDs	
CED	4.3
BW	2.2
WW	63
YW	93
M	30
M&G	61
REA	0.5
MRB	0.31

JA L1 DOMINO 3209L

4/8/23 - Unregistered

HH ADVANCE 4082B ET
JA L1 DOMINO 6212D
 JA L1 DOMINETTE 301A

CL 1 DOMINO 6163D
JA L1 DOMINETTE 915G 1ET
 JA L1 DOMINETTE 6508D

CL 1 DOMINO 1161Y
 HH MISS ADVANCE 9102W
 HH ADVANCE 1098Y
 JA L1 DOMINETTE 1214Y
 CL 1 DOMINO 732T
 CL 1 DOMINETTE 4126P
 HH ADVANCE 0118X
 JA L1 DOMINETTE 0200X

Eye Pigment: **LE 100** **RE 100**

Build a cow herd with this bull. He will sire extra pigment and lots of capacity. His dam rings all the bells. A moderate frame size to go with everything else.

**108***2 Yr. Old*

Act. BW	82
EPDs	
CED	5.1
BW	2.1
WW	52
YW	85
M	36
M&G	62
REA	0.3
MRB	0.02

JA L1 DOMINO 3210L

4/16/23 - Unregistered

HH ADVANCE 4082B ET
JA L1 DOMINO 6212D
 JA L1 DOMINETTE 301A

CL 1 DOMINO 6163D
JA L1 DOMINETTE E744
 JA L1 DOMINETTE 6508D

CL 1 DOMINO 1161Y
 HH MISS ADVANCE 9102W
 HH ADVANCE 1098Y
 JA L1 DOMINETTE 1214Y
 CL 1 DOMINO 732T
 CL 1 DOMINETTE 4126P
 HH ADVANCE 0118X
 JA L1 DOMINETTE 0200X

Eye Pigment: **LE 80** **RE 40**

109*2 Yr. Old*

Act. BW	74
EPDs	
CED	5.4
BW	0.5
WW	48
YW	72
M	28
M&G	52
REA	0.45
MRB	0.2

JA L1 DOMINO 3614L

5/7/23 • Unregistered

CL 1 DOMINO 6163D
JA L1 DOMINO 8628F
 JA L1 DOMINETTE 5609C

HH ADVANCE 7085T ET
JA L1 DOMINETTE 6530D
 JA L1 DOMINETTE 3913N

CL 1 DOMINO 215Z
 MONTANA MISS 1179Y
 JA L1 DOMINO 7640T
 JA L1 DOMINETTE 2503Z
 L1 DOMINO 0357I
 HH MISS ADVANCE 1088L
 HH ADVANCE 8017H 1ET
 JA L1 DOMINETTE 9804

Eye Pigment: **LE 90** **RE 50**

These 6163 sons and grandsons are just what we want to produce. 3614 really has it all, a 74 lb birth weight with thickness, depth and muscle.

**110***2 Yr. Old*

Act. BW	80
EPDs	
CED	3.3
BW	2.9
WW	61
YW	93
M	30
M&G	61
REA	0.61
MRB	0.17

JA L1 DOMINO 3721L

5/7/23 • Unregistered

CL 1 DOMINO 2162 1ET
JA L1 DOMINO 8700F
 JA L1 DOMINETTE 4424B

JA L1 DOMINETTE 050HEye Pigment: **LE 100** **RE 100**

Younger aged low birth weight bull with a moderate frame size.

HH ADVANCE 4067B ET
 CL1 DOMINETTE 450B
 CL 1 DOMINO 386A 1ET
 JA L1 DOMINETTE 8613U

**111***2 Yr. Old*

Act. BW	82
EPDs	
CED	2.9
BW	2.1
WW	53
YW	82
M	26
M&G	52
REA	0.34
MRB	0.07

390

6/15/23 • Unregistered

CL 1 DOMINO 6163D
JA L1 DOMINO 8628F
 JA L1 DOMINETTE 5609C

HH ADVANCE 7085T ET
JA L1 DOMINETTE 9703G
 JA L1 DOMINETTE 3913N

CL 1 DOMINO 215Z
 MONTANA MISS 1179Y
 JA L1 DOMINO 7640T
 JA L1 DOMINETTE 2503Z
 L1 DOMINO 0357I
 HH MISS ADVANCE 1088L

Eye Pigment: **LE 100** **RE 100**

Goggle eyed, red necked with lots of length. Here is the rancher kind that will stay sound and cover the country.



Thank You

FOR ATTENDING OUR SALE!



JAMISON & FRIENDS BULLS

YOUR #1 BALDY HETEROSIS SIRE!

- Higher Heifer Conception - **7%**
- Increased Cowherd Pregnancy Rate - **4.3%**
- Greater Cow Longevity - **30%**
- More Total Lifetime Return Per Cow - **\$514**
- Feedlot Profitability Per Head Advantage - **\$30**

**Documented in recent, large scale Harris Ranch (CA),
Circle A Ranch (MO), Simplot Livestock (ID) research projects.*



PLUS...

- Hereford Disposition
- Sound, Problem-Free Structure
- Greater Breeding Bull Capacity

TRADEMARKS OF THE WHITEFACE BREED!

HEREFORD-SIRED BALDY HETEROSIS! A RANCHER'S MOST POWERFUL TOOL!

• GENERAL INFORMATION • (Bidding Online, Motels and Airports, see page 1)

TERMS AND CONDITIONS: Terms of the sale are cash. Every sale animal will be sold to the highest bidder with the auctioneer settling bid disputes. Announced changes in catalog information on sale day take precedence over printed material. All cattle are the buyer's property as soon as sold and will be cared for a reasonable length of time at the buyer's risk. Any person attending the sale does so at his own risk. Neither the sale management, owners, nor any person connected with this sale, assumes any liability, legal or otherwise. In the event of default in any part of the Terms and Conditions for this sale by buyer or seller, it shall be the responsibility of the buyer or seller to instigate action needed to bring about a fair settlement of any claims and to be responsible for any and all costs involved.

GUARANTEE: Every animal in this sale is, to our knowledge, free from any disease or defect. Any known defect will be called at sale time. All bulls have been fertility tested by Hawkeye Breeders Services, Adel, IA prior to the sale. They are guaranteed breeders. If an animal fails to breed after a six month trial, it may be returned to the seller if it is in good condition and in compliance with Kansas health regulations. The seller reserves the right to try said animal for 90 days, and if it proves a breeder, return it to the buyer at the buyer's expense. If the animal proves to be a non-breeder, an animal of comparable rank will be substituted or the purchase price will be credited toward purchase of an animal in the next sale. We assume no liability, legal or otherwise, to make any further

compensation to the buyer. No warranty of any nature is expressed or implied. All sale cattle are IE and Diluter free.

HEALTH: Herd health is excellent. Individual health papers will be furnished for shipment.

REGISTRATION AND TRANSFER: American Hereford Association registration certificates will be transferred upon request to buyers at seller's expense. At time of settlement, buyers must give complete information.

PERFORMANCE: Complete Total Performance Records are available on all cattle. Current weight, WDA and scrotal will be available sale day. Carcass ultrasound data will be available on the yearling bulls.

DELIVERY: Free delivery on volume purchases of \$6,000 or more up to 500 miles. All added expenses will be charged at our cost. Bring your own trailer and get a \$100.00 per bull credit. We will deliver to your ranch where possible but many deliveries will be to central points that we will discuss with you.

INSURANCE: Insurance can be arranged through Markel at Lloyd's, Cheri and Jim Gies, CO, (c) 970/590-0500 or (h) 970/454-3836.

ABSENTEE BIDS: Those who cannot attend the sale may place phone or mail bids by contacting any listed sale representative.

JAMISON RANCH

2271 County Road 74
Quinter, Kansas 67752

Address Service Requested

FIRST CLASS



**LINEBRED LINE 1
HEREFORD PERFORMANCE!**



THE COWMAN'S BREEDING BULL SOURCE!