



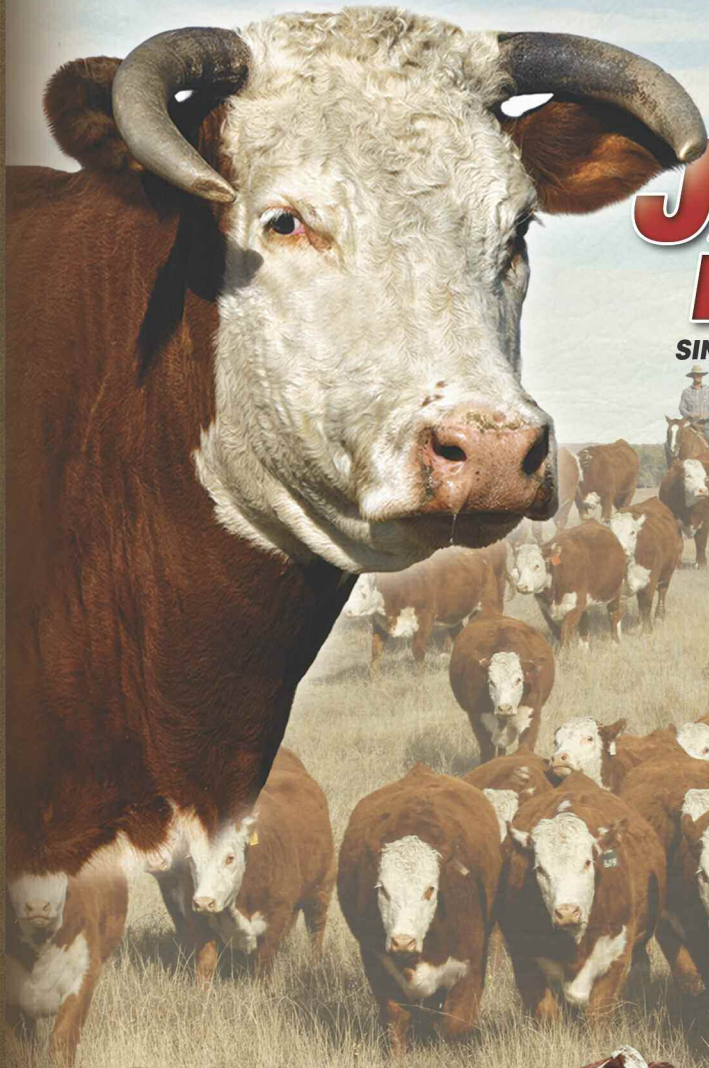
SINCE 1944 ...74 YEARS OF
HEREFORD BREED LEADERSHIP!

JAMISON HEREFORDS

BREEDERS & RANCHERS
FALL FEMALE SALE
NOVEMBER 30, 2018
QUINTER, KANSAS

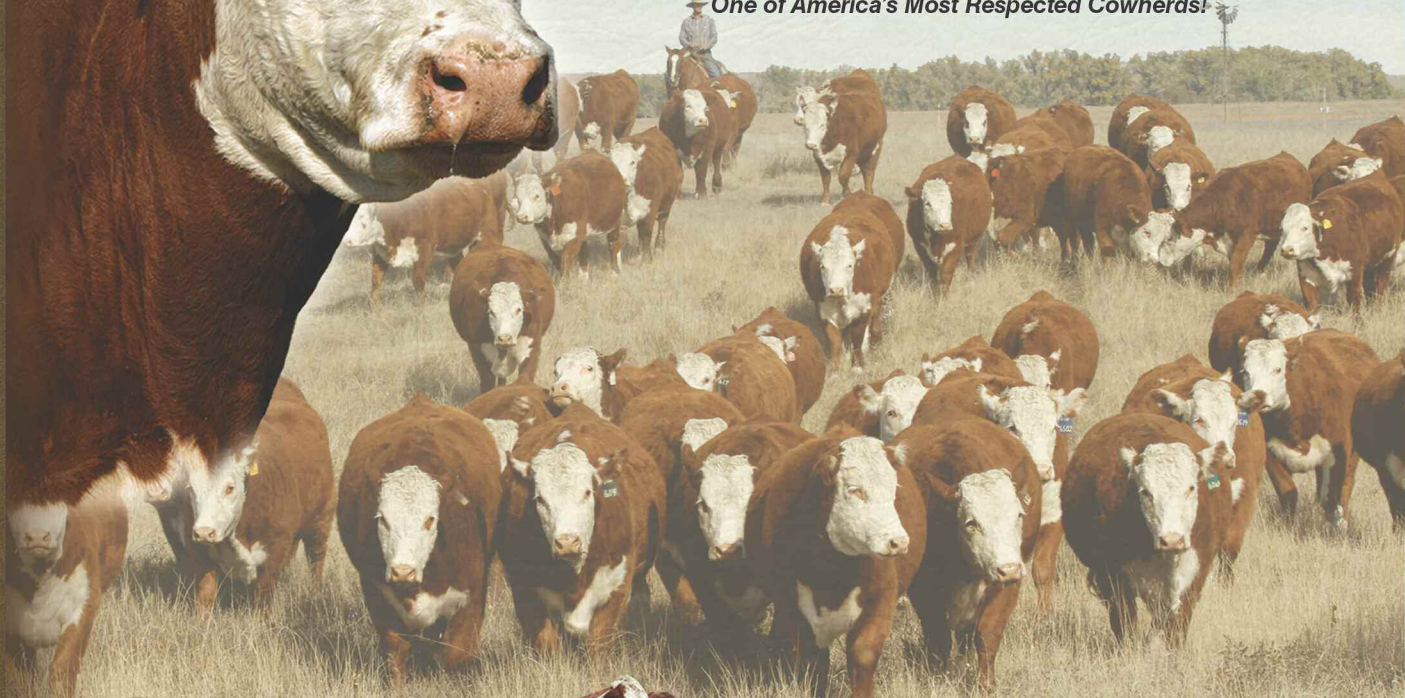
**LINE 1 PERFORMANCE HEREFORDS
FROM WESTERN KANSAS' BIG
RANCH COUNTRY!**

 UNITED LIVESTOCK BROKERS, INC.



JAMISON HEREFORDS

SINCE 1944 ...74 Years of Hereford Leadership!
One of America's Most Respected Cowherds!



THE **JA LINE 1** **MATERNAL FACTORY...**

**A Line 1 Performance Cowherd from Western
Kansas' Big, Hard-Grass Ranch Country!**



SELLING 530 HERD BUILDER FEMALES

- ✓ Registered Hereford Heifers
- ✓ Commercial Herefords
- ✓ F1 Black & Red Baldies



A COWMAN'S PROGRAM!

- ✓ Linebred Line 1
- ✓ Trait Balanced ...Maternal is #1
- ✓ Efficient, Problem-Free Mother Cows
- ✓ Red Pigmented ...generations of selection!
- ✓ Range Country Cattle ...no creep, graze year-round, range-country calved!
- ✓ The Maternal Factory Behind JA-Bred Sale Bulls

JAMISON HEREFORDS

jamisonranch.com



BREEDERS & RANCHERS

FALL FEMALE SALE

FRIDAY **NOVEMBER 30, 2018**

12:30 PM • Jamison Ranch Sale Center • Quinter, KS
Off I-70 Exit 107, 2 miles South, 1 mile East, 1 1/2 miles South

■ AUCTIONEERS

SETH WEISHAAR • Belle Fourche, SD • cell 605/210-1124
LYNN WEISHAAR • Reva, SD • cell 605/641-6278

■ SALE REPRESENTATIVES

Levi Landers, American Hereford Assn. • 308/ 730-1396
Joe Rickabaugh, American Hereford Assn. • 785/ 633-3188
Tom Granzow, Kansas Hereford Assn. • 785/ 466-6790
Marc Hotchkiss, Hereford America & The Livestock Link • 605/ 490-1513
Stephen Russell, Kansas Stockman • 785/ 458-2650
Guy Peverley, The Stock Exchange • 785/ 456-4390
Chisolm Kinder, Oklahoma Cowman • 405/ 747-6483
Andrew Sylvester, F&R Livestock Resource • 785/ 456-4352
Scott Dirk, Tri-State Livestock News • 605/ 380-6024
Jim Gies, Western Livestock Journal • 970/ 590-0500

■ INSURANCE American Live Stock / Markel

Cheri & Jim Gies (c) 970/ 590-0500 or (h) 970/ 454-3836



UNITED LIVESTOCK BROKERS, INC.

Jay George • 605/391-6230
1025 28th Rd. NW
Lebo, Kansas 66856

Photography by Jay George

■ VETERINARIANS Hoxie (KS) Vet Service • 785/ 675-3378

Mark Olson, DVM • Derek Priddy, DVM

■ SALE DAY PHONE: 785/ 754-3424

■ GENERAL INFORMATION... Sale terms, motels, etc., see page 24

■ Sale Videos, Updates, Information... jamisonranch.com

GORDON JAMISON & SONS

Gordon (c) 785/ 299-0441 • Daron Jamison 785/ 650-9639
Devin Sweitzer 785/ 299-0663

2271 County Rd. 74 • Quinter, Kansas 67752

533 HERD BUILDING FEMALES

100 Registered Line 1 Herefords

57 JA Program Spring Bred Heifers

Guest Consignor: Coleman Herefords, Westcliffe, CO
42 Spring Bred Heifers & Cows ...contact info on page 15

433 Commercial Spring Bred Heifers ...A.I. Bred
251 Herefords • 160 F1 Black Baldies • 22 F1 Red Baldies
Complete information, page 23

WELCOME...

The Jamison Family welcomes you to our 2018 Breeders & Ranchers Fall Female Sale. What a year it has been setting records for rainfall, grass and hay production. We're a fourth generation family ranching in western Kansas for 120 years with the fifth generation waiting in the wings. Good ranching with great Hereford cattle and top Quarter Horses are our livelihood and passion.

We are pleased to offer these females as a product of our performance, Line One seedstock program. The registered bred females are replacement quality for performance breeders in all sections of the country. They are the product of problem free, efficient, productive cows that thrive on our western Kansas, hard-grass range. These females are A.I. bred to our mainline JA program herdsires that are among the leading calving ease and performance combination Line 1 bulls in the industry.

The commercial heifers are outstanding, some of the best Herefords and Black Baldies to sell anywhere. Predominantly sired by top performance Jamison bulls, they are A.I. bred to the beef industry's leading Calving Ease Hereford and Angus sires. Pasture clean-up sires were top calving ease Angus and Line 1 Hereford. These heifers were developed and summered on our ranch.

Coleman Herefords is selling an outstanding offering of Line 1 females. Long-time friend and customer, Ken wasn't blessed with moisture on his high country, Colorado ranch this past year and is selling females to adjust to pasture and feed resources. These CO branded females are an elite group reflecting that program's focus upon elite Line 1 genetics, maternal production, udder quality, pigment and building upon top cow families.

Please call with your questions...or just to visit. We'll look forward to seeing you sale day!

Gordon Jamison and Family

View the auction live ...bid online!

DVAuction
Broadcasting Real-Time Auctions

www.dvauction.com

For more information and to register to bid,
call Tami McIntosh 308/ 870-3661

JA A.I SIRES

CL 1 DOMINO 6187D

Jan. 29, 2016
#43691873



CED.....11.7
BW.....1.2
WW.....69
YW.....112
MILK.....24
M&G.....58
REA.....36
MARB.....42



HH ADVANCE 1013Y (HH Advance 4055P)

HH ADVANCE 4067B

HH MISS ADVANCE 8255U (L1 Domino 03571)

CL 1 DOMINO 215Z (CL 1 Domino 9122W)

CL 1 DOMINETTE 450B (3 clvs. WR 103)

CL 1 DOMINETTE 1178Y (CL 1 Domino 862U)

Owners: Jamison, KS; Van Newkirk, NE; Cooper, MT

Total Performance Leader ... Calving Ease, Growth, Total Maternal, Carcass Quality!

CL 1 DOMINO 6163D

Jan. 24, 2016
#43691848



CED.....7.2
BW.....0.7
WW.....62
YW.....93
MILK.....23
M&G.....54
REA.....49
MARB.....18



CL 1 DOMINO 9122W (CL 1 Domino 732T)

CL 1 DOMINO 215Z

CL 1 DOMINETTE 055X DOD (CL 1 Domino 860U)

CL 1 DOMINO 7110T (CL 1 Domino 590R)

MONTANA MISS 1179Y DOD (4 clvs. WR 105 / YR 105)

MONTANA MISS 753T (CL 1 Domino 592R)

Owners: Jamison, KS; Oleen Bros., KS; Cooper, MT

Performance Balanced, Big-Spread Calving Ease, Carcass Premium Beef Bull!

CL 1 DOMINO 4100B

Jan. 15, 2014
#43471521



CED.....8.2
BW.....2.2
WW.....48
YW.....74
MILK.....30
M&G.....54
REA.....23
MARB.....10



L1 DOMINO 08469 (L1 Domino 05516)

HH ADVANCE 2005Z

HH MISS ADVANCE 8009U (HH Advance 5212R)

CL 1 DOMINO 9125W (CL 1 Domino 732T)

CL 1 DOMINETTE 148Y (5 clvs. WR 101 / 3 clvs. YR 102)

CL 1 DOMINETTE 7136T DOD (L1 Domino 890061)

Owners: Jamison, KS; B&B, KS; Cooper, MT

High Maternal, Calving Ease Sire ...Milky Problem-Free Daughters!

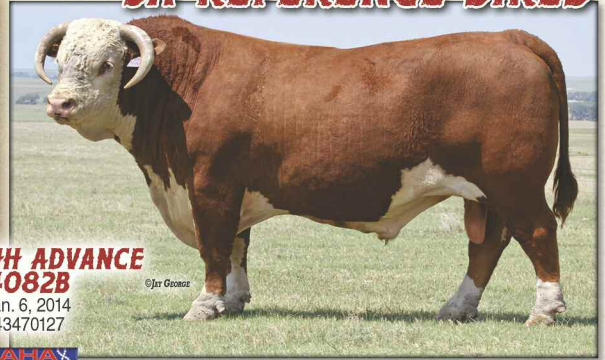
JA REFERENCE SIRES

HH ADVANCE 4082B

Jan. 6, 2014
#43470127



CED.....3.0
BW.....2.1
WW.....47
YW.....88
MILK.....28
M&G.....51
REA.....20
MARB.....00



CL 1 DOMINO 732T (CL 1 Domino 590R)

CL 1 DOMINO 1161Y

CL 1 DOMINETTE 4126P (CL 1 Domino 1116L)

HH ADVANCE 5104R (CL 1 Domino 206M)

HH MISS ADVANCE 9102W DOD (4 clvs. WR 109 / YR 104)

HH MISS ADVANCE 7098T (HH Advance 3196N)

Trait Leader: CEM • TS

Powerful, Total Performance Beef Bull ...Big CHB Feedlot/ Carcass Value!

HH ADVANCE 3040A

Jan. 4, 2013
#43368367



CED.....2.9
BW.....2.4
WW.....44
YW.....62
MILK.....29
M&G.....51
REA.....02
MARB.....05



CL 1 DOMINO 7128T (HH Advance 3113N)

HH ADVANCE 0132X

HH MISS ADVANCE 6054S (CL 1 Domino 320N)

L1 DOMINO 03571 (L1 Domino 01384)

HH MISS ADVANCE 6155S (5 clvs. WR 101)

Full sister to herdsire HH Advance 8050U HH MISS ADVANCE 365N (HH Advance 0024K)

Trait Leader: DMI • MCW • BMI • BII

Complete Cowman's Bull ...Moderate, Hi-Maternal, Efficient Cows!

HH ADVANCE 2181Z

Feb. 5, 2012
#43270986



CED.....2.2
BW.....4.4
WW.....61
YW.....91
MILK.....13
M&G.....43
REA.....20
MARB.....03



CL 1 DOMINO 638S (L1 Domino 03396)

CL 1 DOMINO 886U

CL 1 DOMINETTE 440P (CL 1 Domino 9126J)

CL 1 DOMINO 320N (CL 1 Domino 019K)

HH MISS ADVANCE 6054S (8 clvs. WR 102 / 7 clvs. YR 100)

HH MISS ADVANCE 4053P (HH Advance 145L)

Powerful, Strong Structured, Hi-Performance Cattle!



**HH ADVANCE
0085X**
Jan. 9, 2010
#43074001

CED.....**3.4**
BW.....**3.9**
WW.....**.47**
YW.....**.73**
MILK.....**.20**
M&G.....**.44**
REA.....**.21**
MARB.....**.16**

HH ADVANCE 5161R (HH Advance 396N)
HH ADVANCE 8203U
HH MISS ADVANCE 752G (KB L1 Domino 519)
CL 1 DOMINO 320N (CL 1 Domino 019K)
HH MISS ADVANCE 7017T (4 clvs. WR 106 / 2 clvs. YR 108)
HH MISS ADVANCE 5106R (CL 1 Domino 2136M)
Trait Leader: BMI • BII
**Moderate, Pigmented, Problem-Free Daughters
...Premium Grid Value!**



**DH
ADVANCE
031**
Oct. 5, 2010
#43220398

CED.....**2.7**
BW.....**3.3**
WW.....**.56**
YW.....**.79**
MILK.....**.17**
M&G.....**.45**
REA.....**.46**
MARB.....**.04**

L1 DOMINO 03571 (L1 Domino 01384)
HH ADVANCE 8050U
HH MISS ADVANCE 365N (HH Advance 0024K)
DH DOMINO 302 (CL 1 Domino 0144K)
DH DOMINETTE 7155 (5 clvs. WR 102 / YR 103)
DH MISS ADVANCE 3169 (DH Advance 1008)
Trait Leader: SCF • FAT • REA • BMI • BII
**Optimum Trait Balance ...Efficient, Functional,
Pigmented Daughters ...Carcass REA!**



**DH
DOMINO
239Z**
Oct. 28, 2012
#43352351

CED.....**4.7**
BW.....**3.1**
WW.....**.51**
YW.....**.86**
MILK.....**.25**
M&G.....**.50**
REA.....**.28**
MARB.....**.13**

DH DOMINO 302 (CL 1 Domino 0144K)
DH DOMINO 831
DH MS ADVANCE 1003 (HH Advance 8093H)
DH DOMINO 650 (CL 1 Domino 295M)
DH DOMINETTE 9130 (6 clvs. WR 109 / 5 clvs. YR 110)
DH DOMINETTE 7167 (DH L1 Domino 430)
**Multi-Trait Sire Does It All ...Calving Ease, Paywt.
Maternal, CHB Grid Value!**

JA REFERENCE SIRES



**JA L1
DOMINO
4418B**
Mar. 15, 2014
#43478815

**AHA
GE-EPD**
CED.....**2.4**
BW.....**2.3**
WW.....**.49**
YW.....**.79**
MILK.....**.21**
M&G.....**.46**
REA.....**.47**
MARB.....**-.02**

CL 1 DOMINO 886U (CL 1 Domino 638S)
HH ADVANCE 2181Z
HH MISS ADVANCE 6054S (CL 1 Domino 320N)
JA L2 DOMINO 7640T (HH Advance 286M)
JA L1 DOMINETTE 1634Y
JA L1 DOMINETTE 9210W (CL 1 Domino 555R)

**Stockman's Beef Bull ...Carcass REA
and CHB Bonus!**



**JA L1
DOMINO
302A**
Jan. 28, 2013
#43385008

**AHA
GE-EPD**
CED.....**-2.6**
BW.....**2.7**
WW.....**.49**
YW.....**.95**
MILK.....**.30**
M&G.....**.55**
REA.....**.30**
MARB.....**-.01**

CL 1 DOMINO 7128T (HH Advance 3113N)
HH ADVANCE 0132X
HH MISS ADVANCE 6054S (CL 1 Domino 320N)
JA L1 DOMINO 7640T (HH Advance 286M)
JA L1 DOMINETTE 1633Y DOD (4 clvs. WR 103 / YR 103)
JA L1 DOMINETTE 9225W (CL 1 Domino 555R)

**Breeding Leading L1 Maternal Genetics
...Elite JA Cow Family!**



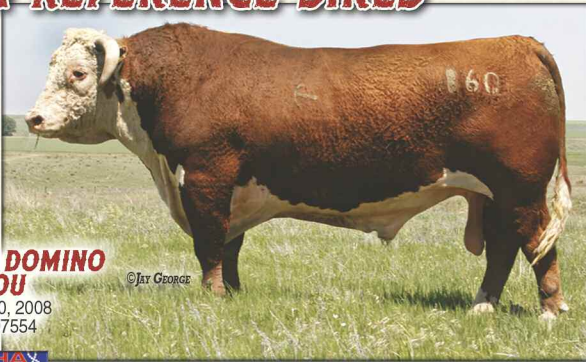
**UU DOMINO
4089**
Feb. 12, 2014
#43467767

**AHA
GE-EPD**
CED.....**6.6**
BW.....**1.4**
WW.....**.42**
YW.....**.87**
MILK.....**.36**
M&G.....**.57**
REA.....**.39**
MARB.....**.33**

CL 1 DOMINO 320N (CL 1 Domino 019K)
HH ADVANCE 7146T
HH MISS ADVANCE 5026R (CL 1 Domino 2136M)
HH ADVANCE 9110W (CL 1 Domino 590R)
UU 9110 ADV 2163
UU MS 5170 0231 DOD (H5 349 Advance 5170)

**Calving Ease Specialist ...Maternal &
CHB Leader!**

JA REFERENCE SIRES



CL1 DOMINO 860U
Jan. 10, 2008
#42897554



CED.....-4.5
BW.....4.7
WW.....*64
YW.....*117
MILK.....*31
M&G.....*63
REA.....*56
MARB.....-.07

L1 DOMINO 03396 (L1 Domino 00552)
CL 1 DOMINO 637S
CL1 DOMINETTE 118L (CL 1 Domino 888H)
CL1 DOMINO 1172L (HH Advance 767G)
CL 1 DOMINETTE 5142R DOD (4 clvs. WR 115 / YR 111)
CL 1 DOMINETTE 810H (CL 1 Domino 640F)
7-Trait Leader: WW • YW • MILK • M&G • CW • REA • CHB
Breed Moving, 7-Trait Performance, Maternal, CHB Leader!



CL1 DOMINO 555R
Jan. 13, 2005
#42573506



CED.....0.6
BW.....2.5
WW.....50
YW.....84
MILK.....*32
M&G.....57
REA.....24
MARB.....00

L1 DOMINO 99496 (L1 Domino 97349)
HH ADVANCE 3113N
HH MS ADV 875H (HH Advance 671F)
CL 1 DOMINO 9126J (HH Advance 767G)
CL 1 DOMINETTE 3174N DOD (5 clvs. WR 105 / YR 104)
CL 1 DOMINETTE 810H (CL 1 Domino 640F)
5-Trait Leader: SC • SCF • MILK • BMI • BII
Premier Cowherd Builder ...Moderate, Milky Fault-Free Females!



CL1 DOMINO 9125W
Jan. 18, 2009
#42994844



CED.....2.2
BW.....3.5
WW.....59
YW.....95
MILK.....*35
M&G.....*65
REA.....*48
MARB.....00

CL 1 DOMINO 590R (CL 1 Domino 246M)
CL 1 DOMINO 732T
CL 1 DOMINETTE 507R DOD (HH Advance 3113N)
CL 1 DOMINO 824H (CL 1 Domino 640F)
CL 1 DOMINETTE 475P (2 clvs. WR 107 / YR 108)
CL 1 DOMINETTE 200M DOD (CL 1 Domino 9126J)
6-Trait Leader: MILK • M&G • CEM • REA • BMI • BII
Cowman's 6-Trait Performance Leader ...Herd Impact Daughters!

COLEMAN REFERENCE SIRES



HH ADVANCE 3297A ET
Aug. 27, 2013
#43442630



CED.....3.1
BW.....3.1
WW.....*65
YW.....*111
MILK.....*31
M&G.....*64
REA.....*80
MARB.....*19

CL 1 DOMINO 860U (CL 1 Domino 637S)
CL 1 DOMINO 091X
CL 1 DOMINETTE 591R (CL 1 Domino 3162N)
HH ADVANCE 6163S (HH Advance 396N)
HH MISS ADVANCE 9228W (8 clvs. WR 102 / 5 clvs. YR 101)
HH MISS ADVANCE 6094S (HH Advance 4140P)
11-Trait Leader: WW • YW • MILK • M&G • CEM • TS / CW • REA • MB / BII • CHB
Breed Moving, 11-Trait Performance Leader... Paywt., Superb Cows, CHB Carcass Value!



HH ADVANCE 9075W ET
Jan. 11, 2009
#42999359



CED.....1.1
BW.....4.3
WW.....53
YW.....83
MILK.....*30
M&G.....56
REA.....*49
MARB.....-.07

HH ADVANCE 4140P (HH Advance 0024K)
HH ADVANCE 7101T
HH MISS ADVANCE 1121L (HH Advance 8060H)
HH ADVANCE 6052F (CL 1 Domino 392)
HH MISS ADVANCE 1028L (4 clvs. WR 103 / YR 103)
HH MISS ADVANCE 731G (HH Advance 5029E)
7-Trait Leader: MILK • CEM / FAT • REA / BMI • BII • CHB
7-Trait Maternal Herd Builder ...Hi-Value Carcass Sire!



HH ADVANCE 0081X
Jan. 8, 2010
#43073921



CED.....5.1
BW.....3.5
WW.....48
YW.....77
MILK.....25
M&G.....49
REA.....30
MARB.....-.04

L1 DOMINO 03571 (L1 Domino 01384)
HH ADVANCE 7034T
HH MISS ADVANCE 1088L (CL 1 Domino 824H)
CL 1 DOMINO 2136M (CL 1 Domino 9126J)
HH MISS ADVANCE 5139R (4 clvs. WR 105 / 3 clvs. YR 102)
HH MS ADVANCE 8037H (CL 1 Domino 500E)
Herd Builder Sire ...Landmark 5139 Dam ...Moderate, Perfect Uddered Daughters!

COLEMAN REFERENCE SIRES



HH ADVANCE 5233C ET
Jan. 27, 2015
#43579149



CED.....**3.5**
BW.....**2.3**
WW.....**45**
YW.....**58**
MILK.....**29**
M&G.....**51**
REA.....**46**
MARB...-**08**

HH ADVANCE 8050U (L1 Domino 03571)
HH ADVANCE 1098Y
HH MISS ADVANCE 9065W (HH Advance 7101T)
CL1 DOMINO 2136M (CL 1 Domino 9126J)
HH MISS ADVANCE 5139R ET (4 chvs. WR 105 / YR 102)
HH MS ADVANCE 8037H (CL 1 Domino 500E)

Hi-Maternal Young Bull ...Landmark Holden 5139 Dam ...Coleman Pasture Sire!



HH ADVANCE 1013Y ET
Jan. 1, 2011
#43173054



CED... **★ 4.6**
BW.....**4.1**
WW.....**56**
YW.....**91**
MILK.....**21**
M&G.....**49**
REA.....**32**
MARB **★ .29**

HH ADVANCE 145L (HH Advance 6052F)
HH ADVANCE 4055P
HH MISS ADVANCE 9065J DOD (KB L1 Domino 519)
CL 1 DOMINO 320N (CL 1 Domino 019K)
HH MISS ADVANCE 7003T DOD (7 chvs. WR 109 / 8 chvs. YR 103)
HH MISS ADVANCE 5139R (CL 1 Domino 2136M)

6-Trait Leader: CED • SC / MARB / BMI • BII • CHB
Breed Moving, 6-Trait Leader ...CE, Performance Maternal, Carcass ...Landmark Cow Line!



CL1 DOMINO 1161Y
Feb. 3, 2011
#43189589



CED.....**0.5**
BW.....**3.5**
WW.....**56**
YW.....**83**
MILK.....**24**
M&G.....**52**
REA.....**40**
MARB...-**19**

CL 1 DOMINO 590R (CL 1 Domino 246M)
CL 1 DOMINO 732T
CL 1 DOMINETTE 507R (HH Advance 3113N)
CL 1 DOMINO 1116L (CL 1 Domino 888H)
CL 1 DOMINETTE 4126P (9 chvs. WR 102 / 8 chvs. YR 99)
CL 1 DOMINETTE 193L (HH Advance 767G)

Big Volume Cowman's Bull ...Great Females, Perfect Udders ...Superb Cooper Dam!



CO L1 DOMINO 547C
March 21, 2015
#43581929



CED.....**0.3**
BW.....**2.6**
WW.....**55**
YW.....**87**
MILK.....**23**
M&G.....**50**
REA.....**24**
MARB...-**08**

CL 1 DOMINO 7139T (CL 1 Domino 590R)
CL 1 DOMINO 065X
CL 1 DOMINETTE 5142R DOD (CL 1 Domino 1172L)
CL 1 DOMINO 320N (CL 1 Domino 019K)
CO L1 DOMINETTE 105Y DOD (3 chvs. WR 106 / 2 chvs. YR 108)
CO L1 DOMINETTE 917W (GB L1 Domino 175E)

Standout Bull ...Trait Balanced, BW, Growth, Milk ...Perfect Dam ...Top Indexing 2017 CO Sire!



HH ADVANCE 0118X
Jan. 14, 2010
#43073967



CED.....**3.9**
BW.....**3.2**
WW.....**52**
YW.....**76**
MILK.....**13**
M&G.....**39**
REA... **★ 46**
MARB...-**05**

HH ADVANCE 3113N (L1 Domino 99496)
CL 1 DOMINO 7128T
CL 1 DOMINETTE 0112K (CL 1 Domino 5131E)
CL 1 DOMINO 2136M (CL 1 Domino 9126J)
HH MISS ADVANCE 6074S
HH MISS ADVANCE 1013L (HH Advance 8060H)

Trait Leader: CEM • REA
Stockman's Beef Bull ...Efficient, Functional, Problem-Free Cattle ...More CHB Value!



CL 1 DOMINO 4150B
Jan. 29, 2014
#43466018



CED... **★ 9.1**
BW... **★ 0.3**
WW.....**56**
YW.....**92**
MILK.....**26**
M&G.....**54**
REA.....**04**
MARB **★ .34**

CL 1 DOMINO 9122W (CL 1 Domino 732T)
CL 1 DOMINO 215Z
CL 1 DOMINETTE 055X DOD (CL 1 Domino 860U)
CL 1 DOMINO 7139T (CL 1 Domino 590R)
CL 1 DOMINETTE 058X (4 chvs. WR 104)
CL 1 DOMINETTE 812U (CL 1 Domino 9126J)

5-Trait Leader: CED • BW • SC • CEM / MARB
Calving Ease, Herd Builder, 5-Trait Leader ...Superb Daughters & Carcass Quality!



THE JAMISON FEMALE OFFERING

REPLACEMENT FEMALES FROM ONE OF
HEREFORD'S MOST RESPECTED LINE 1
COWHERDS!

JAMISON SPRING BRED HEIFERS ...LOTS 1-55

Includes heifers from cooperator herd Blue Top
Herefords, Inman, KS

**COLEMAN SPRING BRED HEIFERS & COWS
...LOTS 56-97**

COMMERCIAL SPRING BRED HEIFERS ...433 HD
Herefords, Black Baldies, Red Baldies
Details, page 23

**NOTE from Sale Manager
JAY GEORGE, ULB, Inc.**

This is Jamison's most outstanding
bred heifer offering yet. Catalog
photos represent a random cross
section of the heifers taken in the
pasture. Study the Livestock Link
videos and catalog data for a
complete evaluation of the quality
this entire offering presents.

Sale Videos by:

**The Livestock
Link**

Marc Hotchkiss, Owner
marc@thelivestocklink.com
605.490.1513

View Videos: jamisonranch.com
or thelivestocklink.com



JA HERD BUILDER FEMALES
...GENERATIONS OF QUALITY
AND BREED LEADING LINE 1 PERFORMANCE!

JAMISON SERVICE SIRES...

The A.I. breeding pasture sires!



**JA L1
DOMINO 6212D**

March 9, 2016 • AHA #43678407

HH Advance 4082B x HH Advance 1098Y • Dam of
Distinction mother, 3 clvs. WR 106 / 2 clvs. YR 106

CED 0.4 BW 2.5 WW 50 YW 84 MILK 28 M&G 53

CARCASS: REA .29 MARB -.07 \$CHB 100

**POWERFUL, COMPLETE BEEF BULL
FOR BW, PERFORMANCE, L1 PEDIGREE!**

JAK L1 DOMINO C418

Sept. 24, 2015 • AHA #43643400

JA L1 Domino 2208Z (CL1 555R) x GB L1 Domino 140R

CED 4.4 BW 1.7 WW 58 YW 91 MILK 26 M&G 55

CARCASS: REA .15 MARB .10 \$CHB 88

**CALVING EASE CURVE BENDER
...MORE MATERNAL VALUE!**

JAK L1 DOMINO C43

Feb. 20, 2015 • AHA #43581410

JA L1 Domino 3737A (CL1 Domino 860U) x JA L1 Domino
7640T • Dam of Dist. cow, 2 clvs. WR 107 / 1 calf YR 107

CED -0.4 BW 4.3 WW 57 YW 100 MILK 27 M&G 55

CARCASS: REA .17 MARB -.17 \$CHB 103

**BALANCED PAYWT. & MATERNAL
...MORE FEEDLOT & GRID VALUE!**

1**BRED HEIFER**

CED **1.4**
 BW **3.9**
 WW **47**
 YW **86**
 MILK **20**
 M&G **44**

 REA **33**
 MARB **-.01**

JA L1 DOMINETTE 701E

January 26, 2017 • #43817816

CL 1 DOMINO 860U | CL 1 DOMINO 637S
JA L1 DOMINO 4739B | CL 1 DOMINETTE 5142R
 | JA L1 DOMINETTE 9634W | HH ADVANCE 286M
 HH ADVANCE 2181Z | JA L1 DOMINETTE 5754R
CTR L1 DOMINETTE 5057C | CL 1 DOMINO 886U
 | CTR L1 DOMINETTE 201Z | HH MISS ADVANCE 6054S
 | | CL 1 DOMINO 993W
 | | EL MISS ADVANCE 801U

- A.I. to CL 1 Domino 6163D on April 25, 2018
- P.E. to JAK L1 Domino C418 from May 10 – Aug. 20, 2018
- Sired by the top selling bull in our 2016 bull sale and out of a two year old heifer. A solid, clean made, feminine heifer.

JA-BRED HEIFERS

LOT 1
JA L1 DOMINETTE 701E
 SIRE: JA L1 DOMINO 4739B • A.I. TO CLI DOMINO 6163D

2**BRED HEIFER**

CED **0.8**
 BW **4.2**
 WW **58**
 YW **92**
 MILK **26**
 M&G **55**

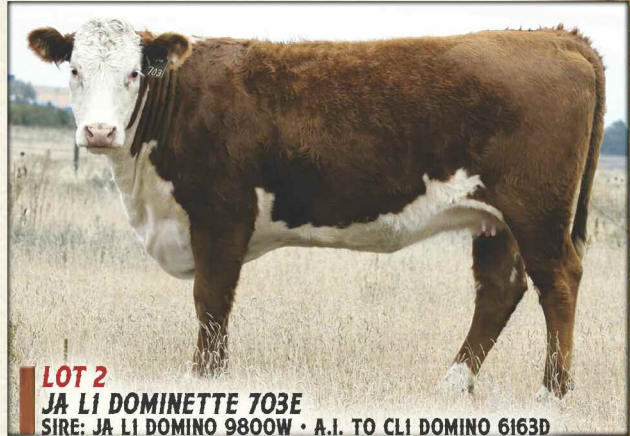
 REA **19**
 MARB **.01**

JA L1 DOMINETTE 703E

February 1, 2017 • #43804208

CL 1 DOMINO 555R | HH ADVANCE 3113N
JA L1 DOMINO 9800W | CL 1 DOMINETTE 3174N
 | JA L1 DOMINETTE 4152P | DH DOMINO 6150
 HH ADVANCE 2181Z | JA L1 DOMINETTE 6815
JA L1 DOMINETTE 5427C | CL 1 DOMINO 886U
 | JA L1 DOMINETTE 8817U | HH MISS ADVANCE 6054S
 | | CL 1 DOMINO 560R
 | | JA L1 DOMINETTE 9207

- A.I. to CL 1 Domino 6163D on April 25, 2018
- P.E. to JAK L1 Domino C418 from May 10 – Aug. 20, 2018
- WWR 110 / YWR 113. Extra frame and top performance in this package.



LOT 2
JA L1 DOMINETTE 703E
 SIRE: JA L1 DOMINO 9800W • A.I. TO CLI DOMINO 6163D

3**BRED HEIFER**

CED **1.2**
 BW **2.9**
 WW **49**
 YW **79**
 MILK **27**
 M&G **52**

 REA **19**
 MARB **.03**

JA L1 DOMINETTE 756E

February 16, 2017 • #43804209

HH ADVANCE 0132X | CL 1 DOMINO 7128T
HH ADVANCE 3040A ET | HH MISS ADVANCE 6054S
 | HH MISS ADVANCE 6155S | L1 DOMINO 03571
 CL 1 DOMINO 860U | HH MISS ADVANCE 365N
JA L1 DOMINETTE 3731A | CL 1 DOMINO 637S
 | JA L1 DOMINETTE 8200U | CL 1 DOMINETTE 5142R
 | | CL 1 DOMINO 555R
 | | JA L1 DOMINETTE 3756N

- A.I. to CL 1 Domino 4100B on April 25, 2018
- P.E. to JAK L1 Domino C43 from May 10 – Aug. 20, 2018
- The maternal look on a heifer with volume and capacity. One of our best!



LOT 9
JA L1 DOMINETTE 7200E
 SIRE: HH ADVANCE 4082B • A.I. TO CLI DOMINO 6187D

4**BRED HEIFER**

CED **2.6**
 BW **1.7**
 WW **44**
 YW **69**
 MILK **29**
 M&G **50**

 REA **10**
 MARB **-.04**

JA L1 DOMINETTE 758E

February 19, 2017 • #43804210

HH ADVANCE 0132X | CL 1 DOMINO 7128T
HH ADVANCE 3040A ET | HH MISS ADVANCE 6054S
 | HH MISS ADVANCE 6155S | L1 DOMINO 03571
 CL 1 DOMINO 555R | HH MISS ADVANCE 365N
JA L1 DOMINETTE 0204X | HH ADVANCE 3113N
 | JA L1 DOMINETTE 316N | CL 1 DOMINETTE 3174N
 | | CL 1 DOMINO 0157K
 | | JA L1 DOMINETTE 9233

- A.I. to CL 1 Domino 6187D on April 25, 2018
- P.E. to JAK L1 Domino C418 from May 10 – Aug. 20, 2018
- Extra pigmentation on a light colored, stylish heifer. Low birth weight and strong performance.



LOT 10
JA L1 DOMINETTE 7223E
 SIRE: HH ADVANCE 4082B • A.I. TO CLI DOMINO 6163D

5**BRED HEIFER**

CED **4.8**
 BW **2.2**
 WW **45**
 YW **63**
 MILK **26**
 M&G **49**

 REA **17**
 MARB **.09**

JA L1 DOMINETTE 761E

February 23, 2017 • #43798762

HH ADVANCE 0132X | CL 1 DOMINO 7128T
HH ADVANCE 3040A ET | HH MISS ADVANCE 6054S
 | HH MISS ADVANCE 6155S | L1 DOMINO 03571
 CL 1 DOMINO 6001S | HH MISS ADVANCE 365N
JA L1 DOMINETTE 1016Y | GB L1 DOMINO 935C
 | JA L1 DOMINETTE 9407W | JA L1 DOMINETTE 0212
 | | HH ADVANCE 7085T
 | | JA L1 DOMINETTE 7523T

- A.I. to CL 1 Domino 4100B on April 25, 2018
- P.E. to JAK L1 Domino C43 from May 10 – Aug. 20, 2018

JA BRED HEIFERS



LOT 14
JA L1 DOMINETTE 7312E
 SIRE: DH DOMINO 239Z • A.I. TO CL1 DOMINO 216Z



LOT 17
JA L1 DOMINETTE 7408E
 SIRE: HH ADVANCE 2181Z • A.I. TO CL1 DOMINO 6163D



LOT 19
JA L1 DOMINETTE 7417E
 SIRE: HH ADVANCE 2181Z • A.I. TO HH ADVANCE 4082B



LOT 20
JA L1 DOMINETTE 7423E
 SIRE: HH ADVANCE 2181Z • A.I. TO CL1 DOMINO 386A

6

BRED HEIFER

CED **1.6**
 BW **2.8**
 WW **49**
 YW **74**
 MILK **26**
 M&G **50**

 REA **.27**
 MARB **.01**

JA L1 DOMINETTE 770E

March 12, 2017 • #43804215

HH ADVANCE 0132X | CL 1 DOMINO 7128T
HH ADVANCE 3040A ET | HH MISS ADVANCE 6054S
 | HH MISS ADVANCE 6155S | L1 DOMINO 03571
 | | HH MISS ADVANCE 365N
 CL 1 DOMINO 860U | CL 1 DOMINO 637S
JA L1 DOMINETTE 3730A | CL 1 DOMINETTE 5142R
 | JA L1 DOMINETTE 8638U | HH ADVANCE 286M
 | | JA L1 DOMINETTE 4468P

- A.I. to CL 1 Domino 386A on April 25, 2018
- P.E. to JAK L1 Domino C43 from May 10 – Aug. 20, 2018
- A feminine, outstanding heifer with a bit more frame.

7

BRED HEIFER

CED **3.6**
 BW **2.9**
 WW **35**
 YW **58**
 MILK **26**
 M&G **44**

 REA **-.03**
 MARB **.05**

JA L1 DOMINETTE 776E

March 23, 2017 • #43804238

HH ADVANCE 0132X | CL 1 DOMINO 7128T
HH ADVANCE 3040A ET | HH MISS ADVANCE 6054S
 | HH MISS ADVANCE 6155S | L1 DOMINO 03571
 | | HH MISS ADVANCE 365N
 HH ADVANCE 7085T | L1 DOMINO 03571
JA L1 DOMINETTE 9405W | HH MISS ADVANCE 1088L
 | JA L1 DOMINETTE 7002T | GB L1 DOMINO 935C
 | | JA L1 DOMINETTE 304N

- A.I. to CL 1 Domino 216Z on April 25, 2018
- P.E. to UU Domino 4089 from May 10 – Aug. 20, 2018

8

BRED HEIFER

CED **3.3**
 BW **2.6**
 WW **42**
 YW **69**
 MILK **23**
 M&G **43**

 REA **.17**
 MARB **.06**

JA L1 DOMINETTE 778E

April 5, 2017 • #43804240

HH ADVANCE 0132X | CL 1 DOMINO 7128T
HH ADVANCE 3040A ET | HH MISS ADVANCE 6054S
 | HH MISS ADVANCE 6155S | L1 DOMINO 03571
 | | HH MISS ADVANCE 365N
 CL 1 DOMINO 555R | HH ADVANCE 3113N
JA L1 DOMINETTE 0211X | CL 1 DOMINETTE 3174N
 | JA L1 DOMINETTE 2751M | LF L1 DOMINO 605
 | | JA L1 DOMINETTE 0107

- A.I. to CL 1 Domino 216Z on April 25, 2018
- P.E. to UU Domino 4089 from May 10 – Aug. 20, 2018

9

BRED HEIFER

CED **4.3**
 BW **2.1**
 WW **45**
 YW **82**
 MILK **22**
 M&G **45**

 REA **.23**
 MARB **.03**

JA L1 DOMINETTE 7200E

January 27, 2017 • #43798680

CL 1 DOMINO 1161Y | CL 1 DOMINO 732T
HH ADVANCE 4082B | CL 1 DOMINETTE 4126P
 | HH MISS ADVANCE 9102W | HH ADVANCE 5104R
 | | HH MISS ADVANCE 7098T
 HH ADVANCE 2181Z | CL 1 DOMINO 886U
JA L1 DOMINETTE 4401B | HH MISS ADVANCE 6054S
 | JA L1 DOMINETTE 1619Y | JA L1 DOMINO 7640T
 | | JA L1 DOMINETTE 9000W

- A.I. to CL 1 Domino 6187D on April 25, 2018
- P.E. to JAK L1 Domino C418 from May 10 – Aug. 20, 2018
- Moderate framed and heavily pigmented. Our 4082 dgrs. in production are some of our very best. A sale feature!

10

BRED HEIFER

CED **0.6**
 BW **2.9**
 WW **44**
 YW **82**
 MILK **28**
 M&G **50**

 REA **.26**
 MARB **-.04**

JA L1 DOMINETTE 7223E

March 3, 2017 • #43798670

CL 1 DOMINO 1161Y | CL 1 DOMINO 732T
HH ADVANCE 4082B | CL 1 DOMINETTE 4126P
 | HH MISS ADVANCE 9102W | HH ADVANCE 5104R
 | | HH MISS ADVANCE 7098T
 CL 1 DOMINO 9125W | CL 1 DOMINO 732T
JA L1 DOMINETTE 4104B | CL 1 DOMINETTE 475P
 | JA L1 DOMINETTE 8204U | CL 1 DOMINO 555R
 | | JA L1 DOMINETTE 1250L

- A.I. to CL 1 Domino 6163D on April 25, 2018
- P.E. to JAK L1 Domino C43 from May 10 – Aug. 20, 2018
- Sale feature! Strong, beautifully balanced, correct, deep and solid red. Stacks HH 4082B, CL1 9125W, CL1 555R. Powerful genetics, phenotype and numbers. True herd builder!

11**BRED HEIFER**

CED **4.1**
 BW **2.3**
 WW **45**
 YW **82**
 MILK **27**
 M&G **50**

 REA **23**
 MARB **.01**

JA L1 DOMINETTE 7227E

March 15, 2017 • #43804570

CL 1 DOMINO 1161Y HH ADVANCE 4082B HH MISS ADVANCE 9102W	CL 1 DOMINO 732T CL 1 DOMINETTE 4126P HH ADVANCE 5104R HH MISS ADVANCE 7098T
CL 1 DOMINO 9125W JA L1 DOMINETTE 4100B JA L1 DOMINETTE 807U	CL 1 DOMINO 732T CL 1 DOMINETTE 475P CL 1 DOMINO 0157K JA L1 DOMINETTE 6719S

- P.E. to JAK L1 Domino C418 from May 10 – Aug. 20, 2018
- 4082 x 9125, maternal excellence stacked generations deep!

12**BRED HEIFER**

CED **3.9**
 BW **2.2**
 WW **46**
 YW **80**
 MILK **25**
 M&G **48**

 REA **21**
 MARB **.06**

JA L1 DOMINETTE 7229E

April 7, 2017 • #43804572

CL 1 DOMINO 1161Y HH ADVANCE 4082B HH MISS ADVANCE 9102W	CL 1 DOMINO 732T CL 1 DOMINETTE 4126P HH ADVANCE 5104R HH MISS ADVANCE 7098T
HH ADVANCE 1098Y JA L1 DOMINETTE 409B JA L1 DOMINETTE 1009Y	HH ADVANCE 8050U HH MISS ADVANCE 9065W JA L1 DOMINO 6001S JA L1 DOMINETTE 9646W

- A.I. to CL 1 Domino 6187D on April 25, 2018
- P.E. to JAK L1 Domino C43 from May 10 – Aug. 20, 2018
- It stings a bit to consider selling these 4082 daughters, especially one from a strong maternal 1098 dam.

13**BRED HEIFER**

CED **3.3**
 BW **3.4**
 WW **48**
 YW **76**
 MILK **20**
 M&G **44**

 REA **34**
 MARB **.08**

JA L1 DOMINETTE 7305E

February 22, 2017 • #43798674

DH DOMINO 831 DH DOMINO 239Z DH DOMINETTE 9130	DH DOMINO 302 DH MS ADVANCE 1003 DH DOMINO 650 DH DOMINETTE 7167
HH ADVANCE 286M JA L1 DOMINETTE 2620Z JA L1 DOMINETTE 9844W	HH ADVANCE 0024K HH MISS ADVANCE 752G CL 1 DOMINO 560R J1 L1 DOMINETTE 465P

- A.I. to CL 1 Domino 216Z on April 26, 2017
- P.E. to JAK L1 Domino C43 from May 9 – Aug. 7, 2017
- DH 239 daughters are just weaning their first calves this fall and look great. Stir in 286 and here is one you would think has to work.

14**BRED HEIFER**

CED **3.6**
 BW **3.2**
 WW **49**
 YW **89**
 MILK **24**
 M&G **49**

 REA **20**
 MARB **.06**

JA L1 DOMINETTE 7312E

March 2, 2017 • #43804247

DH DOMINO 831 DH DOMINO 239Z DH DOMINETTE 9130	DH DOMINO 302 DH MS ADVANCE 1003 DH DOMINO 650 DH DOMINETTE 7167
CL 1 DOMINO 555R JA L1 DOMINETTE 8200U JA L1 DOMINETTE 3756N	HH ADVANCE 3113N CL 1 DOMINETTE 3174N CL 1 DOMINO 1168L CH L1 DOMINETTE 9135

- A.I. to HH Advance 4082B on April 25, 2018
- P.E. to JA L1 Domino 6212D from May 10 – Aug. 20, 2018
- A big spot on her face and strong performance. The 8200 cow has an average WWR 105 on eight calves.

15**BRED HEIFER**

CED **3.7**
 BW **2.9**
 WW **49**
 YW **84**
 MILK **22**
 M&G **46**

 REA **30**
 MARB **.06**

JA L1 DOMINETTE 7316E

March 21, 2017 • #43804258

DH DOMINO 831 DH DOMINO 239Z DH DOMINETTE 9130	DH DOMINO 302 DH MS ADVANCE 1003 DH DOMINO 650 DH DOMINETTE 7167
CL 1 DOMINO 860U JA L1 DOMINETTE 1714Y JA L1 DOMINETTE 7642T	CL 1 DOMINO 637S CL 1 DOMINETTE 5142R HH ADVANCE 286M JA L1 DOMINETTE 3923N

- A.I. to CL 1 Domino 6163D on April 25, 2018
- P.E. to JAK L1 Domino C418 from May 10 – Aug. 20, 2018
- Generations of maternal excellence stacked here.

16**BRED HEIFER**

CED **2.1**
 BW **3.5**
 WW **51**
 YW **84**
 MILK **28**
 M&G **54**

 REA **31**
 MARB **.06**

JA L1 DOMINETTE 7319E

May 26, 2017 • #43804267

DH DOMINO 831 DH DOMINO 239Z DH DOMINETTE 9130	DH DOMINO 302 DH MS ADVANCE 1003 DH DOMINO 650 DH DOMINETTE 7167
HH ADVANCE 1098Y JA L1 DOMINETTE 303A JA L1 DOMINETTE 1623Y	HH ADVANCE 8050U HH MISS ADVANCE 9065W JA L1 DOMINO 7640T JA L1 DOMINETTE 9215W

- A.I. to CL 1 Domino 6163D on April 25, 2018
- P.E. to JAK L1 Domino C43 from May 10 – Aug. 20, 2018

17**BRED HEIFER**

CED **4.7**
 BW **3.2**
 WW **53**
 YW **83**
 MILK **14**
 M&G **41**

 REA **27**
 MARB **.01**

JA L1 DOMINETTE 7408E

March 1, 2017 • #43798626

CL 1 DOMINO 886U HH ADVANCE 2181Z HH MISS ADVANCE 6054S	CL 1 DOMINO 638S CL 1 DOMINETTE 440P CL 1 DOMINO 320N HH MISS ADVANCE 4053P
JA L1 DOMINO 6001S JA L1 DOMINETTE 9000W JA L1 DOMINETTE 6602S	GB L1 DOMINO 935C JA L1 DOMINETTE 0212 HH ADVANCE 286M JA L1 DOMINETTE 3808N

- A.I. to CL 1 Domino 6163D on April 25, 2018
- P.E. to JAK L1 Domino C43 from May 10 – Aug. 20, 2018
- Beautiful, feminine, deep, high capacity, easy keeping heifer with a real "mother cow" look.

18**BRED HEIFER**

CED **2.7**
 BW **4.5**
 WW **57**
 YW **84**
 MILK **22**
 M&G **50**

 REA **24**
 MARB **.00**

JA L1 DOMINETTE 7414E

March 2, 2017 • # Applied For

CL 1 DOMINO 886U HH ADVANCE 2181Z HH MISS ADVANCE 6054S	CL 1 DOMINO 638S CL 1 DOMINETTE 440P CL 1 DOMINO 320N HH MISS ADVANCE 4053P
CL 1 DOMINO 638S JA L1 DOMINETTE 9304W JA L1 DOMINETTE 7605T	L1 DOMINO 0339E CL 1 DOMINETTE 475P HH ADVANCE 286M JA L1 DOMINETTE 0253

- A.I. to CL 1 Domino 6163D on April 25, 2018
- P.E. to UU Domino 4089 from May 10 – Aug. 20, 2018
- Strong performance from a sound, heavy milking "DOD" mother. NOTE: EPDs are pedigree avg. calculated numbers.

19**BRED HEIFER**

CED **1.0**
 BW **3.6**
 WW **48**
 YW **78**
 MILK **18**
 M&G **42**

 REA **15**
 MARB **.00**

JA L1 DOMINETTE 7417E

March 4, 2017 • #43804278

CL 1 DOMINO 886U HH ADVANCE 2181Z HH MISS ADVANCE 6054S	CL 1 DOMINO 638S CL 1 DOMINETTE 440P CL 1 DOMINO 320N HH MISS ADVANCE 4053P
CL 1 DOMINO 555R JA L1 DOMINETTE 9219W JA L1 DOMINETTE 4810P	HH ADVANCE 3113N CL 1 DOMINETTE 3174N GB L1 DOMINO 808A JA L1 DOMINETTE 0221

- A.I. to HH Advance 4082B on April 25, 2018
- P.E. to JAK L1 Domino C418 from May 10 – Aug. 20, 2018
- Dam has a super good udder at age nine; Lot 19 should be the same.

20**BRED HEIFER**

CED **4.1**
 BW **4.0**
 WW **52**
 YW **85**
 MILK **15**
 M&G **41**

 REA **28**
 MARB **.00**

JA L1 DOMINETTE 7423E

March 9, 2017 • #43804308

CL 1 DOMINO 886U HH ADVANCE 2181Z HH MISS ADVANCE 6054S	CL 1 DOMINO 638S CL 1 DOMINETTE 440P CL 1 DOMINO 320N HH MISS ADVANCE 4053P
DH DOMINO 575 JA L1 DOMINETTE 071X JA L1 DOMINETTE 8320U	L1 DOMINO 9949E DH DOMINETTE 995 CL 1 DOMINO 638S JA L1 DOMINETTE 6000S

- A.I. to CL 1 Domino 386A on April 25, 2018
- P.E. to JAK L1 Domino C43 from May 10 – Aug. 20, 2018
- Moderate framed and lots of rib and capacity. Should be a super easy keeper. Presents the perfect balance and structure we like in our brood cows.

JA BRED HEIFERS



LOT 26
JA L1 DOMINETTE 7512E
 SIRE: UU DOMINO 4089 • A.I. TO CLI DOMINO 6163D



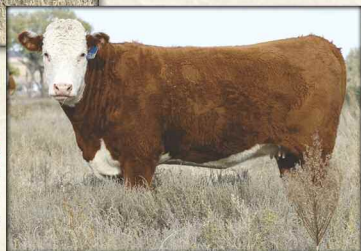
LOT 29
JA L1 DOMINETTE 7556E
 SIRE: JA L1 DOMINO 302A • A.I. TO CLI DOMINO 216Z



LOT 32
JA L1 DOMINETTE 7565E
 SIRE: JA L1 DOMINO 302A • P.E. TO UU DOMINO 4089



LOT 23
JA L1 DOMINETTE 7500E
 SIRE: UU DOMINO 4089
 A.I. TO CLI DOMINO 6187D



LOT 33
JA L1 DOMINETTE 7600E
 SIRE: JA L1 DOMINO 1602Y
 A.I. TO CLI DOMINO 6187D

21

BRED HEIFER

CED **4.0**
 BW **3.2**
 WW **55**
 YW **84**
 MILK **21**
 M&G **49**

 REA **25**
 MARB **04**

JA L1 DOMINETTE 7425E

April 4, 2017 • #43804580

CL 1 DOMINO 886U | CL 1 DOMINO 638S
HH ADVANCE 2181Z | CL 1 DOMINETTE 440P
 | HH MISS ADVANCE 6054S | CL 1 DOMINO 320N
 | | HH MISS ADVANCE 4053P
 CL 1 DOMINO 9125W | CL 1 DOMINO 732T
JA L1 DOMINETTE 1100Y | CL 1 DOMINETTE 475P
 | JA L1 DOMINETTE 8300U | CL 1 DOMINO 638S
 | | JA L1 DOMINETTE 5788R

- A.I. to HH Advance 4082B on April 25, 2018
 P.E. to UU Domino 4089 from May 10 – Aug. 20, 2018
- Frame and style in an eye appealing package. I consider Lot 21 and her dam as two of our best!

22

BRED HEIFER

CED **1.5**
 BW **2.7**
 WW **52**
 YW **88**
 MILK **21**
 M&G **47**

 REA **46**
 MARB **-01**

JA L1 DOMINETTE 7427E

May 20, 2017 • #43804583

HH ADVANCE 2181Z | CL 1 DOMINO 886U
JA L1 DOMINO 4418B | HH MISS ADVANCE 6054S
 | JA L1 DOMINETTE 1634Y | JA L1 DOMINO 7640T
 | | JA L1 DOMINETTE 9210W
 CL 1 DOMINO 860U | CL 1 DOMINO 637S
JA L1 DOMINETTE 2749Z | CL 1 DOMINETTE 5142R
 | JA L1 DOMINETTE 5621R | HH ADVANCE 286M
 | | JA L1 DOMINETTE 2623M

- A.I. to CL 1 Domino 6163D on April 25, 2018
 P.E. to UU Domino 4089 from May 10 – Aug. 20, 2018
- Strong performance, she indexed 105 at both weaning and yearling. Red necked and long sided with good pigment.

23

BRED HEIFER

CED **8.2**
 BW **0.0**
 WW **34**
 YW **67**
 MILK **28**
 M&G **45**

 REA **21**
 MARB **27**

JA L1 DOMINETTE 7500E

February 11, 2017 • #43798498

HH ADVANCE 7146T | CL 1 DOMINO 320N
UU DOMINO 4089 | HH MISS ADVANCE 5026R
 | UU 9110 ADV 2163 | HH ADVANCE 9110W
 | | UU MS 5170 0231
 HH ADVANCE 0085X | HH ADVANCE 8203U
JA L1 DOMINETTE 5320C | HH MISS ADVANCE 7017T
 | JA L1 DOMINETTE 7213T | CL 1 DOMINO 555R
 | | JA L1 DOMINETTE 4203P

- A.I. to CL 1 Domino 6187D on April 25, 2018
 P.E. to JAK L1 Domino C418 from May 10 – Aug. 20, 2018
- Extra low BW from an outstanding cow family. Cowmen will appreciate her moderate, deep ribbed, easy keeping kind.

24

BRED HEIFER

CED **5.5**
 BW **2.6**
 WW **40**
 YW **80**
 MILK **26**
 M&G **46**

 REA **27**
 MARB **21**

JA L1 DOMINETTE 7502E

February 16, 2017 • #43798503

HH ADVANCE 7146T | CL 1 DOMINO 320N
UU DOMINO 4089 | HH MISS ADVANCE 5026R
 | UU 9110 ADV 2163 | HH ADVANCE 9110W
 | | UU MS 5170 0231
 HH ADVANCE 0085X | HH ADVANCE 8203U
JA L1 DOMINETTE 5309C | HH MISS ADVANCE 7017T
 | JA L1 DOMINETTE 9653W | HH ADVANCE 286M
 | | JA L1 DOMINETTE 3243N

- A.I. to CL 1 Domino 6187D on April 25, 2018
 P.E. to JAK L1 Domino C43 from May 10 – Aug. 20, 2018
- Lots of maternal strength in this cow family and a strong topped heifer that catches your eye.

25

BRED HEIFER

CED **5.3**
 BW **1.7**
 WW **39**
 YW **73**
 MILK **28**
 M&G **47**

 REA **28**
 MARB **23**

JA L1 DOMINETTE 7506E

February 19, 2017 • #43798518

HH ADVANCE 7146T | CL 1 DOMINO 320N
UU DOMINO 4089 | HH MISS ADVANCE 5026R
 | UU 9110 ADV 2163 | HH ADVANCE 9110W
 | | UU MS 5170 0231
 HH ADVANCE 0085X | HH ADVANCE 8203U
JA L1 DOMINETTE 5310C | HH MISS ADVANCE 7017T
 | JA L1 DOMINETTE 9220W | CL 1 DOMINO 555R
 | | JA L1 DOMINETTE 4123P

- A.I. to CL 1 Domino 6187D on April 25, 2018
 P.E. to JAK L1 Domino C418 from May 10 – Aug. 20, 2018
- Good pigmentation on a moderate frame from a really good two year old dam.

26

BRED HEIFER

CED**3.5**
 BW**2.8**
 WW**40**
 YW**77**
 MILK**27**
 M&G**47**

 REA**31**
 MARB**22**

JA L1 DOMINETTE 7512E

March 11, 2017 • #43804321

HH ADVANCE 7146T	CL 1 DOMINO 320N
UU DOMINO 4089	HH MISS ADVANCE 5026R
UU 9110 ADV 2163	HH ADVANCE 9110W
	UU MS 5170 0231
HH ADVANCE 0085X	HH ADVANCE 8203U
JA L1 DOMINETTE 5328C	HH MISS ADVANCE 7017T
JA L1 DOMINETTE 0722X	CL 1 DOMINO 860U
	JA L1 DOMINETTE 2870M

- A.I. to CL 1 Domino 6163D on April 25, 2018
- P.E. to JAK L1 Domino C43 from May 10 – Aug. 20, 2018
- *Correct, balanced and broody, a moderate, high quality, high maternal mother cow prospect.*

27

BRED HEIFER

CED**-1.6**
 BW**3.4**
 WW**50**
 YW**98**
 MILK**26**
 M&G**51**

 REA**34**
 MARB**00**

JA L1 DOMINETTE 7551E

February 18, 2017 • #43804368

HH ADVANCE 0132X	CL 1 DOMINO 7128T
JA L1 DOMINO 302A	HH MISS ADVANCE 6054S
JA L1 DOMINETTE 1633Y	JA L1 DOMINO 7640T
	JA L1 DOMINETTE 9225W
CL 1 DOMINO 860U	CL 1 DOMINO 637S
JA L1 DOMINETTE 5709C	CL 1 DOMINETTE 5142R
JA L1 DOMINETTE 104Y	DH DOMINO 539
	JA L1 DOMINETTE 5625R

- A.I. to CL 1 Domino 386A on April 25, 2018
- P.E. to JAK L1 Domino C43 from May 10 – Aug. 20, 2018

28

BRED HEIFER

CED**-0.7**
 BW**2.1**
 WW**48**
 YW**87**
 MILK**30**
 M&G**54**

 REA**42**
 MARB**-0.2**

JA L1 DOMINETTE 7554E

March 28, 2017 • #43817533

HH ADVANCE 0132X	CL 1 DOMINO 7128T
JA L1 DOMINO 302A	HH MISS ADVANCE 6054S
JA L1 DOMINETTE 1633Y	JA L1 DOMINO 7640T
	JA L1 DOMINETTE 9225W
JA L1 DOMINO 1602Y	JA L1 DOMINO 7640T
JA L1 DOMINETTE 5620C	JA L1 DOMINETTE 9204W
JA L1 DOMINETTE 301A	HH ADVANCE 1098Y
	JA L1 DOMINETTE 1214Y

- A.I. to CL 1 Domino 386A on April 25, 2018
- P.E. to UU Domino 4089 from May 10 – Aug. 20, 2018

29

BRED HEIFER

CED**-2.3**
 BW**3.7**
 WW**50**
 YW**92**
 MILK**30**
 M&G**55**

 REA**35**
 MARB**-0.1**

JA L1 DOMINETTE 7556E

April 8, 2017 • #43804387

HH ADVANCE 0132X	CL 1 DOMINO 7128T
JA L1 DOMINO 302A	HH MISS ADVANCE 6054S
JA L1 DOMINETTE 1633Y	JA L1 DOMINO 7640T
	JA L1 DOMINETTE 9225W
CL 1 DOMINO 9125W	CL 1 DOMINO 732T
JA L1 DOMINETTE 5109C	CL 1 DOMINETTE 475P
JA L1 DOMINETTE 9816W	CL 1 DOMINO 560R
	JA L1 DOMINETTE 1317L

- A.I. to CL 1 Domino 216Z on April 25, 2018
- P.E. to JAK L1 Domino C43 from May 10 – Aug. 20, 2018
- *Goggle-eyed heifer stacked deep with elite Hereford, high maternal genetics. She's strong structured, bold ribbed, red pigment prospect with leading growth & maternal numbers.*

30

BRED HEIFER

CED**4.1**
 BW**2.1**
 WW**50**
 YW**78**
 MILK**26**
 M&G**51**

 REA**26**
 MARB**01**

JA L1 DOMINETTE A7557E

May 20, 2017 • #43817819

JA L1 DOMINO 9800W	CL 1 DOMINO 555R
JA L1 DOMINO 3807A	JA L1 DOMINETTE 4152P
JA L1 DOMINETTE 0204X	CL 1 DOMINO 555R
	JA L1 DOMINETTE 316N
JA L1 DOMINO 0620X	JA L1 DOMINO 7640T
CTR L1 DOMINETTE 5072C	JA L1 DOMINETTE 428P
CTR L1 DOMINETTE 3410A	JA L1 DOMINO 0413X
	EL MISS ADVANCE 801U

- A.I. to CL 1 Domino 6163D on April 25, 2018
- P.E. to JAK L1 Domino C43 from May 10 – Aug. 20, 2018

31

BRED HEIFER

CED**2.1**
 BW**2.9**
 WW**55**
 YW**96**
 MILK**24**
 M&G**52**

 REA**23**
 MARB**-0.2**

JA L1 DOMINETTE 7562E

April 25, 2017 • #43817806

JA L1 DOMINO 9800W	CL 1 DOMINO 555R
JA L1 DOMINO 3807A	JA L1 DOMINETTE 4152P
JA L1 DOMINETTE 0204X	CL 1 DOMINO 555R
	JA L1 DOMINETTE 316N
HH ADVANCE 2181Z	CL 1 DOMINO 886U
CTR L1 DOMINETTE 5055C	HH MISS ADVANCE 6054S
EL MISS ADVANCE 145Y	EL ADVANCE 640S
	EL MISS ADVANCE 742T

- A.I. to CL 1 Domino 216Z on April 25, 2018
- P.E. to JAK L1 Domino C418 from May 10 – Aug. 20, 2018

32

BRED HEIFER

CED**-0.4**
 BW**2.5**
 WW**49**
 YW**91**
 MILK**29**
 M&G**54**

 REA**41**
 MARB**-0.1**

JA L1 DOMINETTE 7565E

June 15, 2017 • #43850520

HH ADVANCE 0132X	CL 1 DOMINO 7128T
JA L1 DOMINO 302A	HH MISS ADVANCE 6054S
JA L1 DOMINETTE 1633Y	JA L1 DOMINO 7640T
	JA L1 DOMINETTE 9225W
JA L1 DOMINO 2110Z	CL 1 DOMINO 9125W
JA L1 DOMINETTE 5152C	JA L1 DOMINETTE 9204W
JA L1 DOMINETTE 3721A	CL 1 DOMINO 860U
	JA L1 DOMINETTE 9623W

- P.E. to UU Domino 4089 from May 10 – Aug. 20, 2018
- *This deep, balanced, big-volume, attractive heifer is generations deep in proven maternal blood ...and backed by top-of-the-breed growth, maternal and carcass REA EPDs.*

33

BRED HEIFER

CED**1.9**
 BW**2.5**
 WW**44**
 YW**70**
 MILK**28**
 M&G**50**

 REA**39**
 MARB**-0.3**

JA L1 DOMINETTE 7600E

January 26, 2017 • #43817809

JA L1 DOMINO 7640T	HH ADVANCE 286M
JA L1 DOMINO 1602Y	JAL L1 DOMINETTE 1409L
JA L1 DOMINETTE 9204W	CL 1 DOMINO 555R
	JA L1 DOMINETTE 4119P
JA L1 DOMINO 0413X	HH ADVANCE 7085T
CTR L1 DOMINETTE 5084C	JA L1 DOMINETTE 432P
EL MISS ADVANCE 111Y	EL ADVANCE 640S
	EL MISS ADVANCE 801U

- A.I. to CL 1 Domino 6187D on April 25, 2018
- P.E. to JAK L1 Domino C43 from May 10 – Aug. 20, 2018
- *Long bodied, nice profile, solid red and feminine ...a high maternal heifer and future attractive mother cow.*

34

BRED HEIFER

CED**-2.9**
 BW**3.7**
 WW**48**
 YW**82**
 MILK**30**
 M&G**54**

 REA**37**
 MARB**-0.2**

JA L1 DOMINETTE 7603E

February 1, 2017 • #43798443

JA L1 DOMINO 7640T	HH ADVANCE 286M
JA L1 DOMINO 1602Y	JAL L1 DOMINETTE 1409L
JA L1 DOMINETTE 9204W	CL 1 DOMINO 555R
	JA L1 DOMINETTE 4119P
JA L1 DOMINO 9800W	CL 1 DOMINO 555R
JA L1 DOMINETTE 5554C	JA L1 DOMINETTE 4152P
JA L1 DOMINETTE 8326U	CL 1 DOMINO 638S
	JA L1 DOMINETTE 564R

- A.I. to HH Advance 4082B on April 25, 2018
- P.E. to JA L1 Domino 6212D from May 10 – Aug. 20, 2018
- *Balanced, correct, moderate, red pigmented, complete ...and double-bred to cowherd builder CL1 Domino 555R. She is loaded with high maternal, mother cow credentials.*

35

BRED HEIFER

CED**3.9**
 BW**3.5**
 WW**53**
 YW**88**
 MILK**19**
 M&G**46**

 REA**30**
 MARB**-0.1**

JA L1 DOMINETTE 7655E

April 14, 2017 • #43948362

HH ADVANCE 286M	HH ADVANCE 0024K
JA L1 DOMINO 485B	HH MISS ADVANCE 752G
JA L1 DOMINETTE 325N	CL 1 DOMINO 0157K
	JA L1 DOMINETTE 5613
HH ADVANCE 2181Z	CL 1 DOMINO 886U
JA L1 DOMINETTE 5423C	HH MISS ADVANCE 6054S
JA L1 DOMINETTE 802U	JA L1 DOMINO 426P
	JA L1 DOMINETTE 5636R

- A.I. to CL 1 Domino 6163D on April 25, 2018
- P.E. to JAK L1 Domino C43 from May 10 – Aug. 20, 2018
- *Complete, correct, stylish, and fault-free ...she's double bred to leading maternal foundation sire CL1 Domino 0157K. Sire 485B now serves in the Dufur Herefords herd, OK.*

JA BRED HEIFERS



LOT 34
JA L1 DOMINETTE 7603E
 SIRE: JA L1 DOMINO 1602Y • A.I. TO HH ADVANCE 4082B

36

BRED HEIFER

CED**2.5**
 BW**3.1**
 WW**50**
 YW**77**
 MILK**22**
 M&G**47**

 REA**34**
 MARB**04**

JA L1 DOMINETTE 7805E

January 28, 2017 • #43798384

HH ADVANCE 8050U
DH ADVANCE 031
 | DH DOMINETTE 7155

CL 1 DOMINO 555R
JA L1 DOMINETTE 3222A
 | JA L1 DOMINETTE 9334W

- A.I. to HH Advance 4082B on April 25, 2018
- P.E. to JA L1 Domino 6212D from May 10 – Aug. 20, 2018
- Lot 36 is outstanding! Her cowherd building genetics, deep, balanced "mother cow" phenotype and balanced numbers make her a sale feature!

L1 DOMINO 03571
 HH MISS ADVANCE 365N
 DH DOMINO 302
 DH MISS ADVANCE 3169
 HH ADVANCE 3113N
 CL 1 DOMINETTE 3174N
 CL 1 DOMINO 638S
 JA L1 DOMINETTE 613S



LOT 35
JA L1 DOMINETTE 7655E
 SIRE: JA L1 DOMINO 485B • A.I. TO CL1 DOMINO 6163D

37

BRED HEIFER

CED**-0.4**
 BW**4.3**
 WW**58**
 YW**95**
 MILK**22**
 M&G**51**

 REA**46**
 MARB**01**

JA L1 DOMINETTE 7825E

February 12, 2017 • #43798309

HH ADVANCE 8050U
DH ADVANCE 031
 | DH DOMINETTE 7155

CL 1 DOMINO 860U
JA L1 DOMINETTE 3746A
 | JA L1 DOMINETTE 8817U

- A.I. to CL 1 Domino 6163D on April 25, 2018
- P.E. to JA L1 Domino 6212D from May 10 – Aug. 20, 2018

L1 DOMINO 03571
 HH MISS ADVANCE 365N
 DH DOMINO 302
 DH MISS ADVANCE 3169
 CL 1 DOMINO 637S
 CL 1 DOMINETTE 5142R
 CL 1 DOMINO 560RC
 JA L1 DOMINETTE 9207



LOT 36
JA L1 DOMINETTE 7805E
 SIRE: DH ADVANCE 031 • A.I. TO HH ADVANCE 4082B

38

BRED HEIFER

CED**-0.3**
 BW**3.9**
 WW**53**
 YW**87**
 MILK**19**
 M&G**46**

 REA**44**
 MARB**02**

JA L1 DOMINETTE 7827E

February 17, 2017 • #43798320

HH ADVANCE 8050U
DH ADVANCE 031
 | DH DOMINETTE 7155

CL 1 DOMINO 860U
JA L1 DOMINETTE 3715A
 | JA L1 DOMINETTE 9828W

- A.I. to CL 1 Domino 6163D on April 25, 2018
- P.E. to JAK L1 Domino C418 from May 10 – Aug. 20, 2018

L1 DOMINO 03571
 HH MISS ADVANCE 365N
 DH DOMINO 302
 DH MISS ADVANCE 3169
 CL 1 DOMINO 637S
 CL 1 DOMINETTE 5142R
 CL 1 DOMINO 560R
 JA L1 DOMINETTE 1409L



LOT 42
JA L1 DOMINETTE 7855E
 SIRE: DH ADVANCE 031 • A.I. TO CL1 DOMINO 6163D

40

BRED HEIFER

CED**4.1**
 BW**2.7**
 WW**52**
 YW**66**
 MILK**16**
 M&G**42**

 REA**44**
 MARB**06**

JA L1 DOMINETTE 7837E

March 1, 2017 • #43798268

HH ADVANCE 8050U
DH ADVANCE 031
 | DH DOMINETTE 7155

HH ADVANCE 286M
JA L1 DOMINETTE 9612W
 | JA L1 DOMINETTE 5008R

- A.I. to CL 1 Domino 6187D on April 25, 2018
- P.E. to UU Domino 4089 from May 10 – Aug. 20, 2018

L1 DOMINO 03571
 HH MISS ADVANCE 365N
 DH DOMINO 302
 DH MISS ADVANCE 3169
 HH ADVANCE 0024K
 HH MISS ADVANCE 752G
 GB L1 DOMINO 935C
 JA L1 DOMINETTE 0601

41**BRED HEIFER**

CED **3.0**
 BW **3.7**
 WW **51**
 YW **78**
 MILK **19**
 M&G **44**

 REA **36**
 MARB **04**

JA L1 DOMINETTE 7845E

March 13, 2017 • #43804559

HH ADVANCE 8050U	L1 DOMINO 03571
DH ADVANCE 031	HH MISS ADVANCE 365N
DH DOMINETTE 7155	DH DOMINO 302
	DH MISS ADVANCE 3169
HH ADVANCE 0085X	HH ADVANCE 8203U
JA L1 DOMINETTE 2307Z	HH MISS ADVANCE 7017T
JA L1 DOMINETTE 9001W	JA L1 DOMINO 6001S
	JA L1 DOMINETTE 3762N

- A.I. to CL 1 Domino 6163D on April 25, 2018
- P.E. to JAK L1 Domino C43 from May 10 – Aug. 20, 2018

42**BRED HEIFER**

CED **0.7**
 BW **3.8**
 WW **49**
 YW **79**
 MILK **18**
 M&G **42**

 REA **33**
 MARB **00**

JA L1 DOMINETTE 7855E

April 25, 2017 • #43804598

HH ADVANCE 8050U	L1 DOMINO 03571
DH ADVANCE 031	HH MISS ADVANCE 365N
DH DOMINETTE 7155	DH DOMINO 302
	DH MISS ADVANCE 3169
CL 1 DOMINO 560R	CL 1 DOMINO 3162N
JA L1 DOMINETTE 8822U	CL 1 DOMINETTE 118L
JA L1 DOMINETTE 3769N	CL 1 DOMINO 1168L
	JA L1 DOMINETTE 0204

- A.I. to CL 1 Domino 6163D on April 25, 2018
- P.E. to JAK L1 Domino C418 from May 10 – Aug. 20, 2018
- Long bodied, deep ribbed, eye appealing and refined, this 031 daughter fits the mold of a future top notch, productive mother cow.

43**BRED HEIFER**

CED **5.1**
 BW **1.1**
 WW **44**
 YW **70**
 MILK **31**
 M&G **53**

 REA **44**
 MARB **19**

JA L1 DOMINETTE 7900E

January 25, 2017 • #43798354

CL 1 DOMINO 1108Y	CL 1 DOMINO 9105W
CL 1 DOMINO 386A	CL 1 DOMINETTE 617S
CL 1 DOMINETTE 440P	CL 1 DOMINO 9126J
	CL 1 DOMINETTE 974J
CL 1 DOMINO 555R	HH ADVANCE 3113N
JA L1 DOMINETTE 0212X	CL 1 DOMINETTE 3174N
JA L1 DOMINETTE 3502N	CL 1 DOMINO 7176G
	JA L1 DOMINETTE 9247

- A.I. to CL 1 Domino 6187D on April 25, 2018
- P.E. to JAK L1 Domino C418 from May 10 – Aug. 20, 2018

44**BRED HEIFER**

CED **4.6**
 BW **2.1**
 WW **45**
 YW **78**
 MILK **24**
 M&G **47**

 REA **23**
 MARB **05**

BT L1 DOMINETTE 7000E

January 27, 2017 • #43807312

CL 1 DOMINO 1161Y	CL 1 DOMINO 732T
HH ADVANCE 4082B	CL 1 DOMINETTE 4126P
HH MISS ADVANCE 9102W	HH ADVANCE 5104R
	HH MISS ADVANCE 7098T
CL 1 DOMINO 555R	HH ADVANCE 3113N
BT L1 DOMINETTE A4021B	CL 1 DOMINETTE 3174N
BT L1 DOMINETTE 8630	HH ADVANCE 286M
	JA L1 DOMINETTE 8404

- A.I. to CL 1 Domino 6187D on April 25, 2018
- P.E. to UU Domino 4089 from May 10 – Aug. 20, 2018

45**BRED HEIFER**

CED **5.4**
 BW **2.2**
 WW **51**
 YW **86**
 MILK **24**
 M&G **50**

 REA **29**
 MARB **06**

BT L1 DOMINETTE 7003E

February 3, 2017 • #43807322

CL 1 DOMINO 1161Y	CL 1 DOMINO 732T
HH ADVANCE 4082B	CL 1 DOMINETTE 4126P
HH MISS ADVANCE 9102W	HH ADVANCE 5104R
	HH MISS ADVANCE 7098T
HH ADVANCE 0085X	HH ADVANCE 8203U
BT L1 DOMINETTE 4008B	HH MISS ADVANCE 7017T
BT L1 DOMINETTE 1625	JA L1 DOMINO 5617R
	JA L1 DOMINETTE 951

- A.I. to CL 1 Domino 6163D on April 25, 2018
- P.E. to UU Domino 4089 from May 10 – Aug. 20, 2018

46**BRED HEIFER**

CED **2.5**
 BW **2.5**
 WW **43**
 YW **83**
 MILK **30**
 M&G **51**

 REA **24**
 MARB **04**

BT L1 DOMINETTE 7007E

February 15, 2017 • #43807328

CL 1 DOMINO 1161Y	CL 1 DOMINO 732T
HH ADVANCE 4082B	CL 1 DOMINETTE 4126P
HH MISS ADVANCE 9102W	HH ADVANCE 5104R
	HH MISS ADVANCE 7098T
CO L1 DOMINO 946W	GB L1 DOMINO 175E
BT L1 DOMINETTE 4809B	CO L1 DOMINETTE 523R
BT L1 DOMINETTE 2015	JA L1 DOMINO 8000U
	BT L1 DOMINETTE 9657

- A.I. to CL 1 Domino 6163D on April 25, 2018
- P.E. to UU Domino 4089 from May 10 – Aug. 20, 2018

47**BRED HEIFER**

CED **0.2**
 BW **2.7**
 WW **43**
 YW **82**
 MILK **26**
 M&G **48**

 REA **36**
 MARB **02**

BT L1 DOMINETTE 7009E

February 15, 2017 • #43807335

CL 1 DOMINO 9125W	CL 1 DOMINO 732T
JA L1 DOMINO 2110Z	CL 1 DOMINETTE 475P
JA L1 DOMINETTE 9204W	CL 1 DOMINO 555R
	JA L1 DOMINETTE 4119P
CL 1 DOMINO 555R	HH ADVANCE 3113N
BT L1 DOMINETTE 4017B	CL 1 DOMINETTE 3174N
BT L1 DOMINETTE 0710	CL 1 DOMINO 860U
	JA L1 DOMINO 8527U

- A.I. to CL 1 Domino 6163D on April 25, 2018
- P.E. to UU Domino 4089 from May 10 – Aug. 20, 2018

48**BRED HEIFER**

CED **1.1**
 BW **3.2**
 WW **44**
 YW **85**
 MILK **30**
 M&G **52**

 REA **24**
 MARB **02**

BT L1 DOMINETTE 7010E

February 15, 2017 • #43807330

CL 1 DOMINO 1161Y	CL 1 DOMINO 732T
HH ADVANCE 4082B	CL 1 DOMINETTE 4126P
HH MISS ADVANCE 9102W	HH ADVANCE 5104R
	HH MISS ADVANCE 7098T
CO L1 DOMINO 946W	GB L1 DOMINO 175E
BT L1 DOMINETTE 4809B	CO L1 DOMINETTE 523R
BT L1 DOMINETTE 2015	JA L1 DOMINO 8000U
	BT L1 DOMINETTE 9657

- A.I. to CL 1 Domino 6163D on April 25, 2018
- P.E. to UU Domino 4089 from May 10 – Aug. 20, 2018

49**BRED HEIFER**

CED **4.2**
 BW **1.2**
 WW **47**
 YW **79**
 MILK **29**
 M&G **52**

 REA **28**
 MARB **04**

BT L1 DOMINETTE 7011E

February 23, 2017 • #43807336

CL 1 DOMINO 1161Y	CL 1 DOMINO 732T
HH ADVANCE 4082B	CL 1 DOMINETTE 4126P
HH MISS ADVANCE 9102W	HH ADVANCE 5104R
	HH MISS ADVANCE 7098T
CL 1 DOMINO 555R	HH ADVANCE 3113N
BT L1 DOMINETTE 4010B	CL 1 DOMINETTE 3174N
BT L1 DOMINETTE 0604	JA L1 DOMINO 5617R
	BT L1 DOMINETTE 8823

- A.I. to CL 1 Domino 6187D on April 25, 2018
- P.E. to UU Domino 4089 from May 10 – Aug. 20, 2018
- This "spot faced", solid red heifer is a sale feature with pedigree, performance and phenotype. Very complete, deep, correct and beautiful.

50**BRED HEIFER**

CED **6.4**
 BW **1.2**
 WW **44**
 YW **70**
 MILK **25**
 M&G **47**

 REA **41**
 MARB **01**

BT L1 DOMINETTE 7014E

February 25, 2017 • #43807343

HH ADVANCE 2181Z	CL 1 DOMINO 886U
JA L1 DOMINO 4418B	HH MISS ADVANCE 6054S
JA L1 DOMINETTE 1634Y	JA L1 DOMINO 7640T
	JA L1 DOMINETTE 9210W
JA L1 DOMINO 8000U	JA L1 DOMINO 6001S
BT L1 DOMINETTE 2000	JA L1 DOMINETTE 460P
BT L1 DOMINETTE 9665	JA L1 DOMINO 5617R
	JA L1 DOMINETTE 406P

- A.I. to CL 1 Domino 6163D on April 25, 2018
- P.E. to UU Domino 4089 from May 10 – Aug. 20, 2018
- Moderate, correct, bold ribbed and wide based, here's a fancy, squared-up, good boned heifer with the strong CE, maternal and REA numbers to make a solid mother cow.

JA BRED HEIFERS



LOT 49
BT L1 DOMINETTE 7603E
 SIRE: HH ADVANCE 4082B • A.I. TO CL1 DOMINO 6187D

51

BRED HEIFER

CED**1.3**
 BW**2.9**
 WW**52**
 YW**87**
 MILK**27**
 M&G**52**

 REA**.34**
 MARB**-.01**

BT L1 DOMINETTE 7015E

March 1, 2017 • #43807346

HH ADVANCE 2181Z | CL 1 DOMINO 886U
JA L1 DOMINO 4418B | HH MISS ADVANCE 6054S
 | JA L1 DOMINETTE 1634Y | JA L1 DOMINO 7640T
 | | JA L1 DOMINETTE 9210W
 | | CL 1 DOMINO 555R
 | | JA L1 DOMINETTE 4152P
BT L1 DOMINETTE 3808A | | CL 1 DOMINO 555R
 | | JA L1 DOMINETTE 4152P

- A.I. to CL 1 Domino 6187D on April 25, 2018
 P.E. to UU Domino 4089 from May 10 – Aug. 20, 2018
- Strong made, attractive heifer with depth, balance, rib capacity and size. Her total EPD numbers make her a sold investment as a future mother cow!



LOT 50
BT L1 DOMINETTE 7014E
 SIRE: JA L1 DOMINO 4418B • A.I. TO CL1 DOMINO 6163D

52

BRED HEIFER

CED**3.2**
 BW**3.0**
 WW**52**
 YW**80**
 MILK**23**
 M&G**48**

 REA**.42**
 MARB**-.03**

BT L1 DOMINETTE 7016E

March 6, 2017 • #43807348

HH ADVANCE 2181Z | CL 1 DOMINO 886U
JA L1 DOMINO 4418B | HH MISS ADVANCE 6054S
 | JA L1 DOMINETTE 1634Y | JA L1 DOMINO 7640T
 | | JA L1 DOMINETTE 9210W
 | | HH ADVANCE 286M
BT L1 DOMINETTE 9658 | | JA L1 DOMINETTE 204M
 | | CL 1 DOMINO 0157K
 | | JA L1 DOMINETTE 8437

- A.I. to CL 1 Domino 6163D on April 25, 2018
 P.E. to UU Domino 4089 from May 10 – Aug. 20, 2018



LOT 51
BT L1 DOMINETTE 7015E
 SIRE: JA L1 DOMINO 4418B • A.I. TO CL1 DOMINO 6187D

53

BRED HEIFER

CED**2.0**
 BW**3.7**
 WW**47**
 YW**77**
 MILK**23**
 M&G**46**

 REA**.18**
 MARB**.12**

BT L1 DOMINETTE 7017E

March 7, 2017 • #43807351

HH ADVANCE 8203U | HH ADVANCE 5161R
HH ADVANCE 0085X | HH MISS ADVANCE 752G
 | HH MISS ADVANCE 7017T | CL 1 DOMINO 320N
 | | HH MISS ADVANCE 5106R
 | | CL 1 DOMINO 7128T
BT L1 DOMINETTE 344A | | HH MISS ADVANCE 6054S
 | | JA L1 DOMINO 5617R
 | | BT L1 DOMINETTE 0604 | BT L1 DOMINETTE 8823

- A.I. to CL 1 Domino 6163D on April 25, 2018
 P.E. to UU Domino 4089 from May 10 – Aug. 20, 2018



LOT 54
BT L1 DOMINETTE 7020E
 SIRE: HH ADVANCE 0085X • A.I. TO CL1 DOMINO 6163D

54

BRED HEIFER

CED**4.7**
 BW**3.2**
 WW**50**
 YW**80**
 MILK**24**
 M&G**49**

 REA**.32**
 MARB**.11**

BT L1 DOMINETTE 7020E

March 11, 2017 • #43807357

HH ADVANCE 8203U | HH ADVANCE 5161R
HH ADVANCE 0085X | HH MISS ADVANCE 752G
 | HH MISS ADVANCE 7017T | CL 1 DOMINO 320N
 | | HH MISS ADVANCE 5106R
 | | JA L1 DOMINO 8000U | JA L1 DOMINO 6001S
BT L1 DOMINETTE 2015 | | JA L1 DOMINETTE 460P
 | | JA L1 DOMINO 5617R
 | | BT L1 DOMINETTE 9657 | JA L1 DOMINETTE 9238

- A.I. to CL 1 Domino 6163D on April 25, 2018
 P.E. to UU Domino 4089 from May 10 – Aug. 20, 2018
- Strong CE, growth, maternal and carcass value numbers... plus impressive length, capacity and balance. She'll make her mark as a top, productive cow.

55

BRED HEIFER

CED**3.5**
 BW**2.7**
 WW**46**
 YW**63**
 MILK**21**
 M&G**44**

 REA**.22**
 MARB**.09**

BT L1 DOMINETTE 7027E

March 24, 2017 • #43816963

HH ADVANCE 8203U | HH ADVANCE 5161R
HH ADVANCE 0085X | HH MISS ADVANCE 752G
 | HH MISS ADVANCE 7017T | CL 1 DOMINO 320N
 | | HH MISS ADVANCE 5106R
 | | CL 1 DOMINO 555R | HH ADVANCE 3113N
BT L1 DOMINETTE 3200A | | CL 1 DOMINETTE 3174N
 | | JA L1 DOMINETTE 3100N | DH DOMINO 6150
 | | | JA L1 DOMINETTE 7505

- A.I. to CL 1 Domino 216Z on April 25, 2018
 P.E. to UU Domino 4089 from May 10 – Aug. 20, 2018

COLEMAN HEREFORDS



KEN AND SUZANNE COLEMAN
(h) 719/ 783-9324 • (c) 719/ 276-4471
1271 County Rd 115 • Westcliffe, CO 81252

Where Quality Runs High

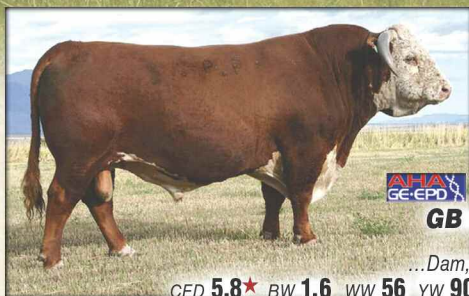
Coleman Herefords scenery and cattle photography by Ken Coleman

www.colemanherefords.com

**PERFORMANCE-BRED LINE 1
HEREFORDS FROM COLORADO'S
HIGH COUNTRY!**



A REPUTATION LINE 1 COWHERD...



**FOUNDATION
COWHERD
BUILDER
SIRE...**

GB L1 DOMINO 175E

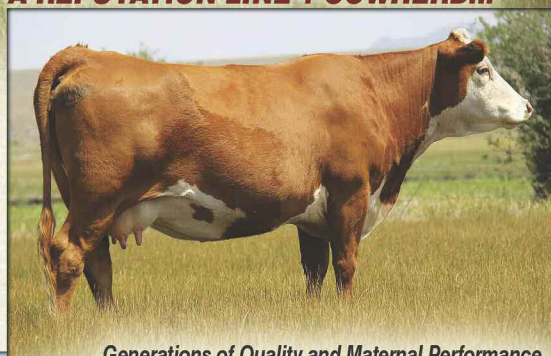
Sire, HH Advance 767G

...Dam, a Dam of Distinction cow

CED **5.8★** BW **1.6** WW **56** YW **90** MILK **33★** M&G **61★**

REA **.33** MARB **.16** \$CHB **115★**

POWERFUL HEREFORD TOTAL PERFORMANCE BEEF BULL!



Generations of Quality and Maternal Performance...

Beautiful, productive, pigmented, perfect uddered mother cows

...THAT'S OUR TRADEMARK!



A.I. SIRE
...The Coleman
Bred Heifers



CL1 DOMINO 215Z

CL1 Domino 9122W x CL1 Domino 860U

...A Dam of Distinction mother

CED **5.7★** BW **1.9** WW **73★** YW **118★** MILK **22** M&G **58★**

REA **.51★** MARB **.28★** \$CHB **100**

A 9-TRAIT CE, PERFORMANCE, COWHERD, CARCASS LEADER!

CO Bred Heifer Pasture Sire...

CO L1 DOMINO 748E

**A BIG-SPREAD CE,
HI-MATERNAL,
PERFORMANCE BULL!**



CL 1 DOMINO 091X (CL 1 Domino 860U)

HH ADVANCE 3297A

HH MISS ADVANCE 9228W (HH Advance 6163S)

HH ADVANCE 1098Y (HH Advance 8050U)

CO L1 DOMINETTE 313A DOD (4 clvs. WR 105 / 3 clvs. YR 105)

CO L1 DOMINETTE 168Y (GB L1 Domino 175E)

CED.....**6.2**
BW.....**1.5**
WW.....**57**
YW.....**97**
MILK.....**31**
M&G.....**59**
REA.....**.20**
MARB.....**.03**



Coleman
Bred Heifer
Pasture Sire...

**LW 3006
ADVANCE 714E**

**ELITE CE AND
MATERNAL L1 GENETICS
...LANDMARK 055X
MOTHER COW!**

HH ADVANCE 3006A

HH ADVANCE 0002X (HH Advance 7026T)

HH MISS ADVANCE 1142Y (HH Advance 8050U)

CL 1 DOMINO 860U (CL 1 Domino 637S)

CL 1 DOMINETTE 055X DOD (8 clvs. WR 105 / 7 clvs. YR 104)

CL 1 DOMINETTE 7136T DOD (L1 Domino 890061)

CED.....**0.8**
BW.....**1.6**
WW.....**58**
YW.....**84**
MILK.....**35**
M&G.....**64**
REA.....**.11**
MARB.....**.05**

COLEMAN-BRED HEIFERS



LOT 58
CO L1 DOMINETTE 716E
 SIRE: CO L1 DOMINO 547C • A.I. TO CLI DOMINO 215Z



LOT 59
CO L1 DOMINETTE 721E
 SIRE: HH ADVANCE 0081X • A.I. TO CLI DOMINO 215Z



LOT 60
CO L1 DOMINETTE 726E
 SIRE: HH ADVANCE 0081X • A.I. TO CLI DOMINO 215Z

A BREED IMPACT SIRE...



HH ADVANCE 3297A ...A mature "Herd Bull" picture!
One of Hereford's Elite, Total Performance Line 1 Sires...
 An 11-Trait Leader for Performance, Building Cowherds and End Product Value!

56

BRED HEIFER

CED**6.6**
 BW**1.7**
 WW**53**
 YW**89**
 MILK**26**
 M&G**52**

 REA**53**
 MARB**21**

CO L1 DOMINETTE 705E

March 3, 2017 • #43823425

CL 1 DOMINO 091X | CL 1 DOMINO 860U
HH ADVANCE 3297A ET | CL 1 DOMINETTE 591R
 | HH MISS ADVANCE 9228W | HH ADVANCE 6163S
 | | HH MISS ADVANCE 6094S
 GB L1 DOMINO 471H | GB L1 DOMINO 1144E
CO L1 DOMINETTE 065X | GB L1 DOM PRCS 1139E
 | CO L1 DOMINETTE 707T | HH ADVANCE 286M
 | | CO L1 DOMINETTE 523R

- A.I. to CL 1 Domino 215Z on May 28, 2018
- P.E. to LW 3006 Advance 714E from June 5 – Sept. 2, 2018
- Great looking 3297A daughter.

57

BRED HEIFER

CED**2.3**
 BW**2.4**
 WW**51**
 YW**90**
 MILK**23**
 M&G**49**

 REA**45**
 MARB**17**

CO L1 DOMINETTE 707E

March 3, 2017 • #43823429

CL 1 DOMINO 091X | CL 1 DOMINO 860U
HH ADVANCE 3297A ET | CL 1 DOMINETTE 591R
 | HH MISS ADVANCE 9228W | HH ADVANCE 6163S
 | | HH MISS ADVANCE 6094S
 RH DOMINO 6050 | XP L1 DOMINO 00063
CO L1 DOMINETTE 981W | RH DOMINETTE 1059
 | CO L1 DOMINETTE 548R | HH ADVANCE 216M
 | | CO L1 DOMINETTE 322N

- A.I. to CL 1 Domino 215Z on May 21, 2018
- P.E. to LW 3006 Advance 714E from June 5 – Sept. 2, 2018

58

BRED HEIFER

CED**5.1**
 BW**1.7**
 WW**56**
 YW**85**
 MILK**20**
 M&G**48**

 REA**36**
 MARB**16**

CO L1 DOMINETTE 716E

March 9, 2017 • #43823449

CL 1 DOMINO 065X | CL 1 DOMINO 7139T
CO L1 DOMINO 547C | CL 1 DOMINETTE 5142R
 | CO L1 DOMINETTE 105Y | CL 1 DOMINO 320N
 | | CO L1 DOMINETTE 917W
 HH ADVANCE 2029Z | HH ADVANCE 8203U
CO L1 DOMINETTE 515C | HH MISS ADVANCE 5139R
 | CO L1 DOMINETTE 179Y | GB L1 DOMINO 8139M
 | | CO L1 DOMINETTE 902W

- A.I. to CL 1 Domino 215Z on May 21, 2018
- P.E. to CO L1 Domino 748E from June 5 – Sept. 2, 2018
- This heifer should make a top cow as she's backed by a great cow family with nice udders.

59

BRED HEIFER

CED**6.1**
 BW**2.2**
 WW**44**
 YW**74**
 MILK**31**
 M&G**52**

 REA**21**
 MARB**02**

CO L1 DOMINETTE 721E

March 12, 2017 • #43823454

HH ADVANCE 7034T | L1 DOMINO 03571
HH ADVANCE 0081X ET | HH MISS ADVANCE 1088L
 | HH MISS ADVANCE 5139R | CL 1 DOMINO 2136M
 | | HH MS ADVANCE 8037H
 CL 1 DOMINO 186Y | CL 1 DOMINO 9105W
CO L1 DOMINETTE 452B | CL 1 DOMINETTE 5142R
 | CO L1 DOMINETTE 157Y | CL 1 DOMINO 320N
 | | CO L1 DOMINETTE 416P

- A.I. to CL 1 Domino 215Z on May 22, 2018
- P.E. to CO L1 Domino 748E from June 5 – Sept. 2, 2018
- Well marked 0081X daughter that performed well.

60

BRED HEIFER

CED**0.5**
 BW**4.0**
 WW**54**
 YW**86**
 MILK**23**
 M&G**50**

 REA**34**
 MARB**-01**

CO L1 DOMINETTE 726E

March 12, 2017 • #43823459

HH ADVANCE 7034T | L1 DOMINO 03571
HH ADVANCE 0081X ET | HH MISS ADVANCE 1088L
 | HH MISS ADVANCE 5139R | CL 1 DOMINO 2136M
 | | HH MS ADVANCE 8037H
 CL 1 DOMINO 065X | CL 1 DOMINO 7139T
CO L1 DOMINETTE 258Z | CL 1 DOMINETTE 5142R
 | CO L1 DOMINETTE 026X | GB L1 DOMINO 175E
 | | CO L1 DOMINETTE 816U

- A.I. to CL 1 Domino 215Z on May 21, 2018
- P.E. to CO L1 Domino 748E from June 5 – Sept. 2, 2018
- Great looking, well patterned 0081X daughter with a lot of potential.

61**BRED HEIFER**

CED **0.1**
 BW **4.9**
 WW **55**
 YW **78**
 MILK **27**
 M&G **55**

 REA **.49**
 MARB **-.10**

CO L1 DOMINETTE 737E

March 14, 2017 • #43823472

HH ADVANCE 1098Y
HH ADVANCE 5233C ET
 | HH MISS ADVANCE 5139R

CL 1 DOMINO 374A
CO L1 DOMINETTE 503C
 | CO L1 DOMINETTE 305A

HH ADVANCE 8050U
 HH MISS ADVANCE 9065W
 CL 1 DOMINO 2136M
 HH MS ADVANCE 8037H
 HH ADVANCE 1087Y
 CL 1 DOMINETTE 759T
 JA L1 DOMINO 1602Y
 CO L1 DOMINETTE 002X

- A.I. to CL 1 Domino 215Z on May 21, 2018
- P.E. to CO L1 Domino 748E from June 5 – Sept. 2, 2018

COLEMAN-BRED HEIFERS**LOT 64****CO L1 DOMINETTE 743E**

SIRE: CL1 DOMINO 1161Y • A.I. TO CL1 DOMINO 215Z

62**BRED HEIFER**

CED **2.9**
 BW **2.4**
 WW **46**
 YW **71**
 MILK **26**
 M&G **49**

 REA **.30**
 MARB **.01**

CO L1 DOMINETTE 738E

March 15, 2017 • #43823477

HH ADVANCE 1098Y
HH ADVANCE 5233C ET
 | HH MISS ADVANCE 5139R

HH ADVANCE 0132X
CO L1 DOMINETTE 532C
 | CO L1 DOMINETTE 170Y

HH ADVANCE 8050U
 HH MISS ADVANCE 9065W
 CL 1 DOMINO 2136M
 HH MS ADVANCE 8037H
 CL 1 DOMINO 7128T
 HH MISS ADVANCE 6054S
 DH ADVANCE 505
 CO L1 DOMINETTE 754T

- A.I. to CL 1 Domino 215Z on May 22, 2018
- P.E. to CO L1 Domino 748E from June 5 – Sept. 2, 2018

**LOT 65****CO L1 DOMINETTE 749E**

SIRE: HH ADVANCE 5233C • A.I. TO CL1 DOMINO 215Z

63**BRED HEIFER**

CED **3.3**
 BW **2.9**
 WW **57**
 YW **93**
 MILK **24**
 M&G **53**

 REA **.53**
 MARB **.19**

CO L1 DOMINETTE 739E

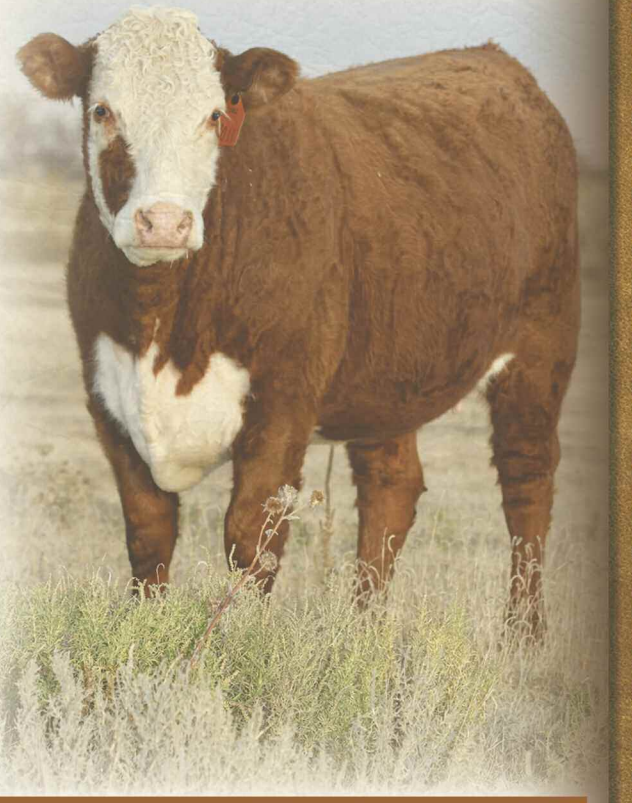
March 15, 2017 • #43823479

CL 1 DOMINO 091X
HH ADVANCE 3297A ET
 | HH MISS ADVANCE 9228W

RH DOMINO 6050
CO L1 DOMINETTE 102Y
 | CO L1 DOMINETTE 842U

CL 1 DOMINO 860U
 CL 1 DOMINETTE 591R
 HH ADVANCE 6163S
 HH MISS ADVANCE 6094S
 XP L1 DOMINO 00063
 RH DOMINETTE 1059
 GB L1 DOMINO 647K
 CO L1 DOMINETTE 439P

- A.I. to CL 1 Domino 215Z on May 22, 2018
- P.E. to LW 3006 Advance 714E from June 5 – Sept. 2, 2018
- 3297A heifer with a lot of eye appeal. She should make a great cow; comes from a cow family with great udders.

THE FUTURE...**...FROM GENERATIONS OF QUALITY, LINE 1 PERFORMANCE AND GREAT MOTHER COWS!****64****BRED HEIFER**

CED **-0.9**
 BW **4.3**
 WW **53**
 YW **85**
 MILK **26**
 M&G **53**

 REA **.38**
 MARB **-.08**

CO L1 DOMINETTE 743E

March 16, 2017 • #43823489

CL 1 DOMINO 732R
CL 1 DOMINO 1161Y
 | CL 1 DOMINETTE 4126P

HH ADVANCE 9075W
CO L1 DOMINETTE 318A
 | CO L1 DOMINETTE 038X

CL 1 DOMINO 590R
 CL 1 DOMINETTE 507R
 CL1 DOMINO 1116L
 CL1 DOMINETTE 193L
 HH ADVANCE 7101T
 HH MISS ADVANCE 1028L
 GB L1 DOMINO 471H
 CO L1 DOMINETTE 730T

- A.I. to CL 1 Domino 215Z on May 21, 2018
- P.E. to CO L1 Domino 748E from June 5 – Sept. 2, 2018
- Goggle-eyed 1161Y daughter! This heifer carries extra bone, pigment and volume.

65**BRED HEIFER**

CED **5.0**
 BW **2.8**
 WW **49**
 YW **68**
 MILK **19**
 M&G **44**

 REA **.41**
 MARB **-.03**

CO L1 DOMINETTE 749E

March 17, 2017 • #43823504

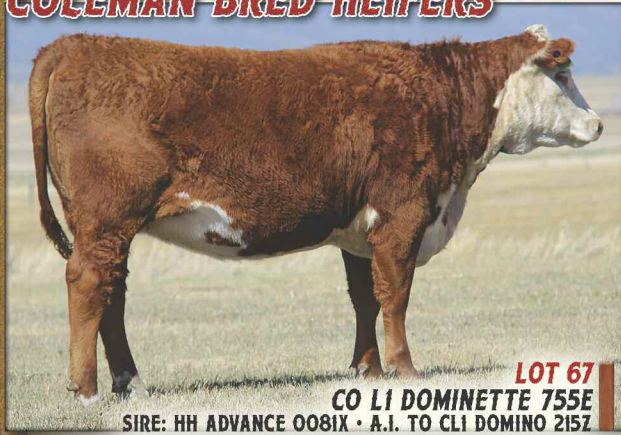
HH ADVANCE 1098Y
HH ADVANCE 5233C ET
 | HH MISS ADVANCE 5139R

HH ADVANCE 0118X
CO L1 DOMINETTE 541C
 | CO L1 DOMINETTE 716T

HH ADVANCE 8050U
 HH MISS ADVANCE 9065W
 CL 1 DOMINO 2136M
 HH MS ADVANCE 8037H
 CL 1 DOMINO 7128T
 HH MISS ADVANCE 6074S
 HH ADVANCE 286M
 CO L1 DOMINETTE 507R

- A.I. to CL 1 Domino 215Z on May 22, 2018
- P.E. to CO L1 Domino 748E from June 5 – Sept. 2, 2018
- These 5233C daughters should make great cows.

COLEMAN-BRED HEIFERS



LOT 67
CO L1 DOMINETTE 755E
 SIRE: HH ADVANCE 0081X • A.I. TO CL1 DOMINO 215Z



LOT 72
CO L1 DOMINETTE 786E
 SIRE: CL1 DOMINO 1161Y • A.I. TO CL1 DOMINO 215Z



LOT 74
CO L1 DOMINETTE 602D
 SIRE: HH ADVANCE 1013Y • P.E. TO HH ADVANCE 3297A

66

BRED HEIFER

CED ... **-4.8**
 BW ... **5.7**
 WW ... **57**
 YW ... **96**
 MILK ... **25**
 M&G ... **54**
 REA ... **.26**
 MARB ... **.03**

CO L1 DOMINETTE 751E

March 19, 2017 • #43823508

CL 1 DOMINO 065X
CO L1 DOMINO 547C
 | CO L1 DOMINETTE 105Y

HH ADVANCE 0132X
CO L1 DOMINETTE 511C
 | CO L1 DOMINETTE 337A

- A.I. to CL 1 Domino 215Z on May 22, 2018
- P.E. to CO L1 Domino 748E from June 5 - Sept. 2, 2018
- Well marked, hi-volume 547C daughter.

CL 1 DOMINO 7139T
 CL 1 DOMINETTE 5142R
 CL 1 DOMINO 320N
 CO L1 DOMINETTE 917W
 CL 1 DOMINO 7128T
 HH MISS ADVANCE 6054S
 HH ADVANCE 9075W
 CO L1 DOMINETTE 523R

67

BRED HEIFER

CED ... **3.6**
 BW ... **2.8**
 WW ... **46**
 YW ... **75**
 MILK ... **27**
 M&G ... **51**
 REA ... **.27**
 MARB ... **.04**

CO L1 DOMINETTE 755E

March 21, 2017 • #43823517

HH ADVANCE 7034T
HH ADVANCE 0081X ET
 | HH MISS ADVANCE 5139R

GB L1 DOMINO 175E
CO L1 DOMINETTE 042X
 | L1 DOMINETTE 0742T

- A.I. to CL 1 Domino 215Z on May 22, 2018
- P.E. to CO L1 Domino 748E from June 5 - Sept. 2, 2018
- Easy fleshing, attractive, feminine 0081X daughter. Dam is a DOD from a great cow family ...check her out sale day!

L1 DOMINO 03571
 HH MISS ADVANCE 1088L
 CL 1 DOMINO 2136M
 HH MS ADVANCE 8037H
 HH ADVANCE 767G
 GB L1 DOM PRCS 3134
 L1 DOMINO 04380
 L1 DOMINETTE 05539

68

BRED HEIFER

CED ... **4.2**
 BW ... **2.4**
 WW ... **47**
 YW ... **74**
 MILK ... **23**
 M&G ... **46**
 REA ... **.39**
 MARB ... **-.07**

CO L1 DOMINETTE 766E

March 27, 2017 • #43823541

CL 1 DOMINO 732R
CL 1 DOMINO 1161Y
 | CL 1 DOMINETTE 4126P

HH ADVANCE 9075W
CO L1 DOMINETTE 330A
 | CO L1 DOMINETTE 711T

- A.I. to CL 1 Domino 215Z on May 22, 2018
- P.E. to LW 3006 Advance 714E from June 5 - Sept. 2, 2018
- Moderate, easy fleshing, goggle-eyed 1161Y daughter from a favorite 9075W dgr. Take advantage of these 1161Y females.

CL 1 DOMINO 590R
 CL 1 DOMINETTE 507R
 CL1 DOMINO 1116L
 CL1 DOMINETTE 193L
 HH ADVANCE 7101T
 HH MISS ADVANCE 1028L
 L1 DOMINO 9949E
 CO L1 DOMINETTE 000

69

BRED HEIFER

CED ... **-2.3**
 BW ... **4.3**
 WW ... **56**
 YW ... **88**
 MILK ... **28**
 M&G ... **57**
 REA ... **.36**
 MARB ... **.01**

CO L1 DOMINETTE 769E

March 28, 2017 • #43823546

CL 1 DOMINO 065X
CO L1 DOMINO 547C
 | CO L1 DOMINETTE 105Y

HH ADVANCE 9075W
CO L1 DOMINETTE 582C
 | CO L1 DOMINETTE 344A

- A.I. to CL 1 Domino 215Z on May 21, 2018
- P.E. to CO L1 Domino 748E from June 5 - Sept. 2, 2018
- This heifer may be the pick of our offering! She fits our eye!

CL 1 DOMINO 7139T
 CL 1 DOMINETTE 5142R
 CL 1 DOMINO 320N
 CO L1 DOMINETTE 917W
 HH ADVANCE 7101T
 HH MISS ADVANCE 1028L
 CL 1 DOMINO 186Y
 CO L1 DOMINETTE 730T

70

BRED HEIFER

CED ... **-3.5**
 BW ... **5.5**
 WW ... **57**
 YW ... **90**
 MILK ... **19**
 M&G ... **48**
 REA ... **.31**
 MARB ... **.01**

CO L1 DOMINETTE 773E

March 31, 2017 • #43823551

CL 1 DOMINO 065X
CO L1 DOMINO 547C
 | CO L1 DOMINETTE 105Y

HH ADVANCE 0118X
CO L1 DOMINETTE 576C
 | CO L1 DOMINETTE 226M

- A.I. to CL 1 Domino 215Z on May 22, 2018
- P.E. to CO L1 Domino 748E from June 5 - Sept. 2, 2018

CL 1 DOMINO 7139T
 CL 1 DOMINETTE 5142R
 CL 1 DOMINO 320N
 CO L1 DOMINETTE 917W
 CL 1 DOMINO 7128T
 HH MISS ADVANCE 6074S
 GB L1 DOMINO 017D
 CO L1 DOMINETTE 911

Sale Videos by:

The Livestock Link

Marc Hotchkiss, Owner
 marc@thelivestocklink.com
 605.490.1513

View Videos: jamisonranch.com
 or thelivestocklink.com

71

BRED HEIFER

CED **6.1**
 BW **2.1**
 WW **55**
 YW **87**
 MILK **22**
 M&G **49**

 REA **53**
 MARB **13**

CO L1 DOMINETTE 780E

April 9, 2017 • #43823559

CL 1 DOMINO 091X
HH ADVANCE 3297A ET
 | HH MISS ADVANCE 9228W

CL 1 DOMINO 860U
 CL 1 DOMINETTE 591R
 HH ADVANCE 6163S
 HH MISS ADVANCE 6094S
 CL 1 DOMINO 7128T
 HH MISS ADVANCE 6074S
 RH DOMINO 6050
 CO L1 DOMINETTE 503R

HH ADVANCE 0118X
CO L1 DOMINETTE 227Z
 | CO L1 DOMINETTE 930W

- A.I. to CL 1 Domino 215Z on May 22, 2018
- P.E. to LW 3006 Advance 714E from June 5 – Sept. 2, 2018
- Great looking 3297A daughter backed by a cow line of exceptional udders.

72

BRED HEIFER

CED **-1.3**
 BW **4.7**
 WW **49**
 YW **82**
 MILK **22**
 M&G **47**

 REA **34**
 MARB **-11**

CO L1 DOMINETTE 786E

April 17, 2017 • #43823564

CL 1 DOMINO 732R
CL 1 DOMINO 1161Y
 | CL 1 DOMINETTE 4126P

CL 1 DOMINO 590R
 CL 1 DOMINETTE 507R
 CL1 DOMINO 1116L
 CL1 DOMINETTE 193L
 HH ADVANCE 7101T
 HH MISS ADVANCE 1028L
 L1 DOMINO 99496
 HH MISS ADVANCE 0117K

HH ADVANCE 9075W
CO L1 DOMINETTE 237Z
 | CO L1 DOMINETTE 828U

- A.I. to CL 1 Domino 215Z on May 21, 2018
- P.E. to CO L1 Domino 748E from June 5 – Sept. 2, 2018
- Moderate framed, big ribbed 1161Y daughter with a lot of pigment.

73

BRED COW

CED **3.4**
 BW **3.0**
 WW **51**
 YW **80**
 MILK **22**
 M&G **48**

 REA **35**
 MARB **-01**

CO L1 DOMINETTE 601D

March 5, 2016 • #43701094

HH ADVANCE 7034T
HH ADVANCE 0081X ET
 | HH MISS ADVANCE 5139R

L1 DOMINO 03571
 HH MISS ADVANCE 1088L
 CL 1 DOMINO 2136M
 HH MS ADVANCE 8037H
 CL 1 DOMINO 7139T
 CL 1 DOMINETTE 5142R
 HH ADVANCE 9075W
 CO L1 DOMINETTE 828U

CL 1 DOMINO 065X
CO L1 DOMINETTE 409B
 | CO L1 DOMINETTE 237Z

- P.E. to HH Advance 3297A from May 27 – Sept. 2, 2018
- This 0081X daughter has a near perfect udder and her first calf had a WR 103.

74

BRED COW

CED **4.4**
 BW **3.8**
 WW **57**
 YW **92**
 MILK **25**
 M&G **54**

 REA **35**
 MARB **20**

CO L1 DOMINETTE 602D

March 6, 2016 • #43701095

HH ADVANCE 4055P
HH ADVANCE 1013Y ET
 | HH MISS ADVANCE 7003T

HH ADVANCE 145L
 HH MISS ADVANCE 9065J
 CL 1 DOMINO 320N
 HH MISS ADVANCE 5139R
 HH ADVANCE 767G
 GB L1 DOM PRCS 3134
 CL 1 DOMINO 484
 JA L1 DOMINETTE 6700

GB L1 DOMINO 175E
CO L1 DOMINETTE 090X
 | JA L1 DOMINETTE 9209

- P.E. to HH Advance 3297A from May 27 – Sept. 2, 2018
- A well-marked, freckle-faced 1013Y dgtr. with extra depth and volume and red teats. Her first calf was our high indexing heifer with WR 121! Comes from a great cow family!

75

BRED COW

CED **1.7**
 BW **5.0**
 WW **52**
 YW **91**
 MILK **20**
 M&G **46**

 REA **35**
 MARB **13**

CO L1 DOMINETTE 622D

March 13, 2016 • #43701098

HH ADVANCE 4055P
HH ADVANCE 1013Y ET
 | HH MISS ADVANCE 7003T

HH ADVANCE 145L
 HH MISS ADVANCE 9065J
 CL 1 DOMINO 320N
 HH MISS ADVANCE 5139R
 HH ADVANCE 7101T
 HH MISS ADVANCE 1028L
 L1 DOMINO 99496
 HH MISS ADVANCE 0117K

HH ADVANCE 9075W
CO L1 DOMINETTE 237Z
 | CO L1 DOMINETTE 828U

- P.E. to CL1 Domino 4150B from May 27 – Sept. 2, 2018
- Hi-volume 1013 daughter.

76

BRED COW

CED **2.3**
 BW **4.2**
 WW **54**
 YW **91**
 MILK **26**
 M&G **53**

 REA **36**
 MARB **16**

CO L1 DOMINETTE 624D

March 14, 2016 • #43701099

HH ADVANCE 4055P
HH ADVANCE 1013Y ET
 | HH MISS ADVANCE 7003T

HH ADVANCE 145L
 HH MISS ADVANCE 9065J
 CL 1 DOMINO 320N
 HH MISS ADVANCE 5139R
 HH ADVANCE 7101T
 HH MISS ADVANCE 1028L
 GB L1 DOMINO 471H
 CO L1 DOMINETTE 730T

HH ADVANCE 9075W
CO L1 DOMINETTE 318A
 | CO L1 DOMINETTE 038X

- P.E. to CL1 Domino 4150B from May 27 – Sept. 2, 2018

77

BRED COW

CED **-0.8**
 BW **3.7**
 WW **55**
 YW **87**
 MILK **24**
 M&G **51**

 REA **40**
 MARB **00**

CO L1 DOMINETTE 626D

March 15, 2016 • #43700665

HH ADVANCE 7101T
HH ADVANCE 9075W ET
 | HH MISS ADVANCE 1028L

HH ADVANCE 4140P
 HH MISS ADVANCE 1121L
 HH ADVANCE 6052F
 HH MISS ADVANCE 731G
 CL 1 DOMINO 7139T
 CL 1 DOMINETTE 5142R
 GB L1 DOMINO 471H
 CO L1 DOMINETTE 850U

CL 1 DOMINO 065X
CO L1 DOMINETTE 207Z
 | CO L1 DOMINETTE 004X

- P.E. to CL1 Domino 4150B from May 27 – Sept. 2, 2018
- Goggle-eyed 9075W daughter.

78

BRED COW

CED **5.1**
 BW **2.3**
 WW **55**
 YW **87**
 MILK **32**
 M&G **59**

 REA **65**
 MARB **11**

CO L1 DOMINETTE 630D

March 17, 2016 • #43700744

CL 1 DOMINO 091X
HH ADVANCE 3297A ET
 | HH MISS ADVANCE 9228W

CL 1 DOMINO 860U
 CL 1 DOMINETTE 591R
 HH ADVANCE 6163S
 HH MISS ADVANCE 6094S
 HH ADVANCE 7101T
 HH MISS ADVANCE 1028L
 L1 DOMINO 99496
 CO L1 DOMINETTE 321N

HH ADVANCE 9075W
CO L1 DOMINETTE 230Z
 | CO L1 DOMINETTE 653S

- P.E. to HH Advance 5233C from June 18 – Sept. 2, 2018
- Hi-performance 3297A dgtr. from a top cow family. Dam is a DOD and granddam is still going strong. Lot 78's first calf had a BW ratio 93, WR 115. Lot 78 will be a great investment!

79

BRED COW

CED **2.4**
 BW **3.2**
 WW **55**
 YW **84**
 MILK **18**
 M&G **45**

 REA **34**
 MARB **08**

CO L1 DOMINETTE 641D

March 23, 2016 • #43703384

HH ADVANCE 8050U
DH ADVANCE 031
 | DH DOMINETTE 7155

L1 DOMINO 03571
 HH MISS ADVANCE 365N
 DH DOMINO 302
 DH MISS ADVANCE 3169
 CL 1 DOMINO 7139T
 CL 1 DOMINETTE 5142R
 GB L1 DOMINO 175E
 CO L1 DOMINETTE 221M

CL 1 DOMINO 065X
CO L1 DOMINETTE 205Z
 | CO L1 DOMINETTE 073X

- P.E. to HH Advance 3297A from May 27 – Sept. 2, 2018

80

BRED COW

CED **7.0**
 BW **0.7**
 WW **44**
 YW **70**
 MILK **25**
 M&G **47**

 REA **30**
 MARB **03**

CO L1 DOMINETTE 642D

March 23, 2016 • #43700762

HH ADVANCE 1087Y
CL 1 DOMINO 374A 1ET
 | CL 1 DOMINETTE 759T

HH ADVANCE 8050U
 HH MISS ADVANCE 6109S
 CL 1 DOMINO 590R
 CL1 DOMINETTE 193L
 CL 1 DOMINO 9105W
 CL 1 DOMINETTE 5142R
 HH ADVANCE 216M
 JA L1 DOMINETTE 8206

CL 1 DOMINO 186Y
CO L1 DOMINETTE 464B
 | CO L1 DOMINETTE 754T

- P.E. to HH Advance 3297A from May 27 – Sept. 2, 2018

COLEMAN BRED FEMALES



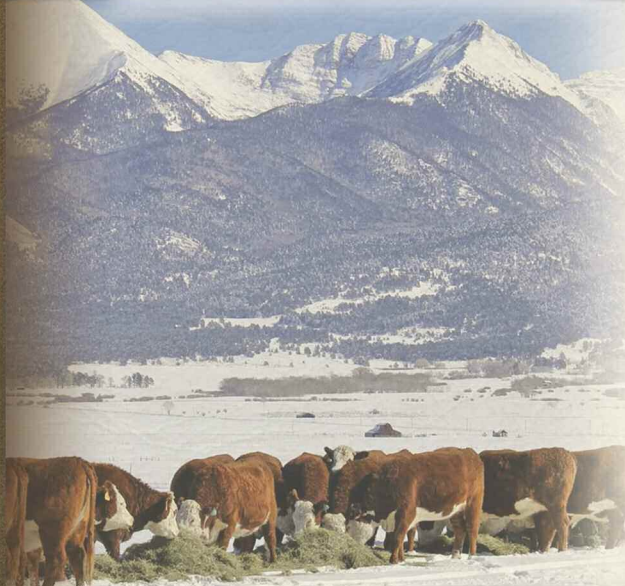
LOT 82
CO L1 DOMINETTE 653D
 SIRE: DH ADVANCE 031 • P.E. TO HH ADVANCE 3297A



LOT 86
CO L1 DOMINETTE 673D
 SIRE: HH ADVANCE 3297A • P.E. TO HH ADVANCE 5233C



LOT 87
CO L1 DOMINETTE 509C
 SIRE: CL1 DOMINO 374A • P.E. TO HH ADVANCE 5233C



81

BRED COW

CED**1.9**
 BW**2.5**
 WW**52**
 YW**91**
 MILK**32**
 M&G**58**

 REA**51**
 MARB**10**

CO L1 DOMINETTE 648D

March 25, 2016 • #43700768

CL 1 DOMINO 091X | CL 1 DOMINO 860U
HH ADVANCE 3297A ET | CL 1 DOMINETTE 591R
 | HH MISS ADVANCE 9228W | HH ADVANCE 6163S
 | | HH MISS ADVANCE 6094S
 CL 1 DOMINO 186Y | CL 1 DOMINO 9105W
CO L1 DOMINETTE 340A | CL 1 DOMINETTE 5142R
 | CO L1 DOMINETTE 029X | HH ADVANCE 0024K
 | | CO L1 DOMINETTE 828U

• P.E. to HH Advance 5233C from June 18 – Sept. 2, 2018

82

BRED COW

CED**2.5**
 BW**2.0**
 WW**52**
 YW**79**
 MILK**18**
 M&G**44**

 REA**39**
 MARB**07**

CO L1 DOMINETTE 653D

March 27, 2016 • #43703385

HH ADVANCE 8050U | L1 DOMINO 03571
DH ADVANCE 031 | HH MISS ADVANCE 365N
 | DH DOMINETTE 7155 | DH DOMINO 302
 | | DH MISS ADVANCE 3169
 CL 1 DOMINO 065X | CL 1 DOMINO 7139T
CO L1 DOMINETTE 203Z | CL 1 DOMINETTE 5142R
 | CO L1 DOMINETTE 047X | GB L1 DOMINO 175E
 | | CO L1 DOMINETTE 749T

• P.E. to HH Advance 3297A from May 27 – Sept. 2, 2018
 • Great looking 031 daughter with a nice udder.

83

BRED COW

CED**3.6**
 BW**1.9**
 WW**57**
 YW**96**
 MILK**26**
 M&G**54**

 REA**57**
 MARB**15**

CO L1 DOMINETTE 660D

April 1, 2016 • #43700796

CL 1 DOMINO 091X | CL 1 DOMINO 860U
HH ADVANCE 3297A ET | CL 1 DOMINETTE 591R
 | HH MISS ADVANCE 9228W | HH ADVANCE 6163S
 | | HH MISS ADVANCE 6094S
 CL 1 DOMINO 065X | CL 1 DOMINO 7139T
CO L1 DOMINETTE 314A | CL 1 DOMINETTE 5142R
 | CO L1 DOMINETTE 115Y | GB L1 DOMINO 175E
 | | CO L1 DOMINETTE 226M

• P.E. to HH Advance 5233C from June 18 – Sept. 2, 2018
 • Extra pigmented 3297A daughter from a top cow family.

84

BRED COW

CED**1.7**
 BW**4.3**
 WW**52**
 YW**80**
 MILK**29**
 M&G**55**

 REA**34**
 MARB**00**

CO L1 DOMINETTE 667D

April 8, 2016 • #43700808

HH ADVANCE 7101T | HH ADVANCE 4140P
HH ADVANCE 9075W ET | HH MISS ADVANCE 1121L
 | HH MISS ADVANCE 1028L | HH ADVANCE 6052F
 | | HH MISS ADVANCE 731G
 CL 1 DOMINO 320N | CL 1 DOMINO 019K
CO L1 DOMINETTE 119Y | CL 1 DOMINETTE 996J
 | CO L1 DOMINETTE 974W | GB L1 DOMINO 175E
 | | CO L1 DOMINETTE 306N

• P.E. to CL1 Domino 4150B from May 27 – Sept. 2, 2018
 • Moderate framed, easy keeping 9075W daughter that did a great job with her first calf.

85

BRED COW

CED**4.2**
 BW**2.6**
 WW**53**
 YW**89**
 MILK**27**
 M&G**53**

 REA**55**
 MARB**12**

CO L1 DOMINETTE 672D

April 16, 2016 • #43700812

CL 1 DOMINO 091X | CL 1 DOMINO 860U
HH ADVANCE 3297A ET | CL 1 DOMINETTE 591R
 | HH MISS ADVANCE 9228W | HH ADVANCE 6163S
 | | HH MISS ADVANCE 6094S
 HH ADVANCE 9075W | HH ADVANCE 7101T
CO L1 DOMINETTE 335A | HH MISS ADVANCE 1028L
 | CO L1 DOMINETTE 226M | GB L1 DOMINO 017D
 | | CO L1 DOMINETTE 911

• P.E. to HH Advance 5233C from June 18 – Sept. 2, 2018
 • Twin to Lot 86

86**BRED COW**

CED2.9
 BW3.3
 WW55
 YW93
 MILK26
 M&G53
 REA56
 MARB11

CO L1 DOMINETTE 673D

April 16, 2016 • #43700830

CL 1 DOMINO 091X
HH ADVANCE 3297A ET
 | HH MISS ADVANCE 9228W

CL 1 DOMINO 860U
 CL 1 DOMINETTE 591R
 HH ADVANCE 6163S
 HH MISS ADVANCE 6094S
 HH ADVANCE 7101T
 HH MISS ADVANCE 1028L
 GB L1 DOMINO 017D
 CO L1 DOMINETTE 911

HH ADVANCE 9075W
CO L1 DOMINETTE 335A
 | CO L1 DOMINETTE 226M

- P.E. to HH Advance 5233C from June 18 – Sept. 2, 2018
- Goggle-eyed, nice uddered 3297A daughter. Twin to Lot 85.

87**BRED COW**

CED4.6
 BW3.7
 WW51
 YW79
 MILK24
 M&G49
 REA37
 MARB04

CO L1 DOMINETTE 509C

March 3, 2015 • #43582170

HH ADVANCE 1087Y
CL 1 DOMINO 374A 1ET
 | CL 1 DOMINETTE 759T

HH ADVANCE 8050U
 HH MISS ADVANCE 6109S
 CL 1 DOMINO 590R
 CL1 DOMINETTE 193L
 CL 1 DOMINO 9105W
 CL 1 DOMINETTE 5142R
 L1 DOMINO 99496
 CO L1 DOMINETTE 411P

CL 1 DOMINO 186Y
CO L1 DOMINETTE 317A
 | CO L1 DOMINETTE 644S

- P.E. to HH Advance 5233C from June 18 – Sept. 2, 2018
- Long bodied 374A daughter who gave us a really nice bull calf this year.

88**BRED COW**

CED-2.8
 BW5.4
 WW50
 YW84
 MILK29
 M&G53
 REA20
 MARB04

CO L1 DOMINETTE 511C

March 4, 2015 • #43581800

CL 1 DOMINO 7128T
HH ADVANCE 0132X
 | HH MISS ADVANCE 6054S

HH ADVANCE 3113N
 CL 1 DOMINETTE 0112K
 CL 1 DOMINO 320N
 HH MISS ADVANCE 4053P
 HH ADVANCE 7101T
 HH MISS ADVANCE 1028L
 GB L1 DOMINO 935C
 CO L1 DOMINETTE 206M

HH ADVANCE 9075W
CO L1 DOMINETTE 337A
 | CO L1 DOMINETTE 523R

- P.E. to HH Advance 5233C from June 18 – Sept. 2, 2018
- Heavily pigmented 0132X daughter whose offspring have earned ratios WR 107 / YR 109.

89**BRED COW**

CED6.6
 BW3.6
 WW46
 YW70
 MILK12
 M&G35
 REA34
 MARB01

CO L1 DOMINETTE 524C

March 7, 2015 • #43581878

CL 1 DOMINO 7128T
HH ADVANCE 0118X
 | HH MISS ADVANCE 6074S

HH ADVANCE 3113N
 CL 1 DOMINETTE 0112K
 CL 1 DOMINO 2136M
 HH MISS ADVANCE 1013L
 HH ADVANCE 286M
 JA L1 DOMINETTE 2210M
 L1 DOMINO 99496
 CO L1 DOMINETTE 411P

JA L1 DOMINO 5603R
CO L1 DOMINETTE 803U
 | CO L1 DOMINETTE 644S

- P.E. to CL1 Domino 4150B from May 27 – Sept. 2, 2018

90**BRED COW**

CED0.5
 BW5.5
 WW62
 YW89
 MILK24
 M&G55
 REA34
 MARB13

CO L1 DOMINETTE 535C

March 11, 2015 • #43581898

HH ADVANCE 8203U
HH ADVANCE 2029Z
 | HH MISS ADVANCE 5139R

HH ADVANCE 5161R
 HH MISS ADVANCE 752G
 CL 1 DOMINO 2136M
 HH MS ADVANCE 8037H
 CL 1 DOMINO 019K
 CL 1 DOMINETTE 996J
 GB L1 DOMINO 175E
 CO L1 DOMINETTE 610S

CL 1 DOMINO 320N
CO L1 DOMINETTE 118Y
 | CO L1 DOMINETTE 955W

- P.E. to CL1 Domino 4150B from May 27 – Sept. 2, 2018
- Well marked, high volume 2029Z daughter with a nice udder and pigmented teats. Dam is a Dam of Distinction.

91**BRED COW**

CED2.3
 BW4.5
 WW54
 YW77
 MILK9
 M&G36
 REA36
 MARB03

CO L1 DOMINETTE 541C

March 14, 2015 • #43581913

CL 1 DOMINO 7128T
HH ADVANCE 0118X
 | HH MISS ADVANCE 6074S

HH ADVANCE 3113N
 CL 1 DOMINETTE 0112K
 CL 1 DOMINO 2136M
 HH MISS ADVANCE 1013L
 HH ADVANCE 0024K
 HH MISS ADVANCE 752G
 CL 1 DOMINO 9126J
 CO L1 DOMINETTE 301N

HH ADVANCE 286M
CO L1 DOMINETTE 716T
 | CO L1 DOMINETTE 507R

- P.E. to CL1 Domino 4150B from May 27 – Sept. 2, 2018

92**BRED COW**

CED1.1
 BW4.8
 WW48
 YW75
 MILK16
 M&G40
 REA37
 MARB03

CO L1 DOMINETTE 422B

March 14, 2014 • #43490028

CL 1 DOMINO 7128T
HH ADVANCE 0118X
 | HH MISS ADVANCE 6074S

HH ADVANCE 3113N
 CL 1 DOMINETTE 0112K
 CL 1 DOMINO 2136M
 HH MISS ADVANCE 1013L
 L1 DOMINO 97349
 L1 DOMINETTE 95369
 HH ADVANCE 438D
 CO L1 DOMINETTE 800

L1 DOMINO 99496
CO L1 DOMINETTE 711T
 | CO L1 DOMINETTE 000

- P.E. to CL1 Domino 4150B from May 27 – Sept. 2, 2018
- If you're looking for a deep ribbed cow with tons of depth and volume that passes it on to her offspring, look no further! One look at her pedigree and you can see where it comes from.

93**BRED COW**

CED2.9
 BW2.0
 WW39
 YW63
 MILK25
 M&G45
 REA34
 MARB01

CO L1 DOMINETTE 305A

February 25, 2013 • #43432011

JA L1 DOMINO 7640T
JA L1 DOMINO 1602Y
 | JA L1 DOMINETTE 9204W

HH ADVANCE 286M
 JAL L1 DOMINETTE 1409L
 CL 1 DOMINO 555R
 JA L1 DOMINETTE 4119P
 CL 1 DOMINO 019K
 CL 1 DOMINETTE 996J
 HH ADVANCE 216M
 JA L1 DOMINETTE 4714P

CL 1 DOMINO 320N
CO L1 DOMINETTE 002X
 | CO L1 DOMINETTE 621S

- P.E. to HH Advance 3297A from May 27 – Sept. 2, 2018
- Heavy muscled, long bodied cow.

94**BRED COW**

CED0.7
 BW4.0
 WW52
 YW86
 MILK29
 M&G55
 REA40
 MARB05

CO L1 DOMINETTE 318A

March 4, 2013 • #43375722

HH ADVANCE 7101T
HH ADVANCE 9075W ET
 | HH MISS ADVANCE 1028L

HH ADVANCE 4140P
 HH MISS ADVANCE 1121L
 HH ADVANCE 6052F
 HH MISS ADVANCE 731G
 GB L1 DOMINO 1144E
 GB L1 DOM PRCS 1139E
 CL 1 DOMINO 3147N
 CO L1 DOMINETTE 512R

GB L1 DOMINO 471H
CO L1 DOMINETTE 038X
 | CO L1 DOMINETTE 730T

- P.E. to CL1 Domino 4150B from May 27 – Sept. 2, 2018
- Lot 94 is a powerful, goggle-eyed 9075W daughter whose calves have performed well. Average WR 105.3 / YR 102.

95**BRED COW**

CED4.8
 BW1.6
 WW40
 YW61
 MILK22
 M&G42
 REA33
 MARB07

CO L1 DOMINETTE 242Z

March 26, 2012 • #43289055

CL 1 DOMINO 824H
HH ADVANCE 0024K
 | HH MISS ADVANCE 894H

CL 1 DOMINO 640F
 CL 1 DOMINETTE 6148F
 CL 1 DOMINO 403
 HH MS ADV 4045D
 CL 1 DOMINO 9126J
 CL 1 DOMINETTE 8184H
 HH ADVANCE 216M
 CO L1 DOMINETTE 220M

CL 1 DOMINO 6152S
CO L1 DOMINETTE 805U
 | CO L1 DOMINETTE 614S

- P.E. to HH Advance 5233C from June 18 – Sept. 2, 2018
- This 0024K daughter has done a good job for us.

COLEMAN-BRED FEMALES



LOT 90
CO L1 DOMINETTE 535C
 SIRE: HH ADVANCE 2029Z • P.E. TO CL1 DOMINO 4150B



LOT 95
CO L1 DOMINETTE 242Z
 SIRE: HH ADVANCE 0024K • P.E. TO HH ADVANCE 5233C



LOT 96
CO L1 DOMINETTE 170Y
 SIRE: DH ADVANCE 505 • P.E. TO CL1 DOMINO 4150B

96

BRED COW

CED-0.9
 BW4.7
 WW52
 YW96
 MILK19
 M&G45
 REA26
 MARB02

CO L1 DOMINETTE 170Y

April 11, 2011 • #43190605

DH ADVANCE 1008
DH ADVANCE 505 1ET
 | DH DOMINETTE 2151

HH ADVANCE 216M
CO L1 DOMINETTE 754T
 | JA L1 DOMINETTE 8206

HH ADVANCE 8093H
 LG MISS RED 210
 DH DOMINO 909
 DH DOMINETTE 584
 HH ADVANCE 836H
 HH MISS ADVANCE 621F
 CL 1 DOMINO 484
 JA L1 DOMINETTE 6543

- P.E. to CL1 Domino 4150B from May 27 – Sept. 2, 2018
- Great looking cow with loads of performance. Her progeny have an average WR 102 / YR 101.6.

97

BRED COW

CED3.9
 BW3.0
 WW51
 YW84
 MILK20
 M&G46
 REA32
 MARB16

CO L1 DOMINETTE 065X

April 1, 2010 • #43108973

GB L1 DOMINO 1144E
GB L1 DOMINO 471H
 | GB L1 DOM PRCS 1139E

HH ADVANCE 286M
CO L1 DOMINETTE 707T
 | CO L1 DOMINETTE 523R

GB L1 DOMINO 935C
 GB L1 DOM PRCS 9132C
 HH ADVANCE 767G
 GB L1 DOM PRCS 7113
 HH ADVANCE 0024K
 HH MISS ADVANCE 752G
 GB L1 DOMINO 935C
 CO L1 DOMINETTE 206M

- P.E. to HH Advance 5233C from June 18 – Sept. 2, 2018
- Lot 97 has been a good cow for us and is backed by a good cow family. She has a nice udder with small teats with great elasticity.

98

BRED HEIFER

CED2.1
 BW2.7
 WW51
 YW80
 MILK31
 M&G56
 REA50
 MARB06

WW DOMINETTE E77

March 11, 2017 • #43865416

CL 1 DOMINO 1108Y
CL 1 DOMINO 386A
 | CL 1 DOMINETTE 440P

CL 1 DOMINO 9125W
B&B L1 DOMINETTE 4213
 | B&B L1 DOMINETTE 8128

CL 1 DOMINO 9105W
 CL 1 DOMINETTE 617S
 CL 1 DOMINO 9126J
 CL 1 DOMINETTE 974J
 CL 1 DOMINO 732T
 CL 1 DOMINETTE 475P
 JA L1 DOMINO 426P
 B&B L1 DOMINETE 962

- A.I. to CL 1 Domino 216Z on April 26, 2018
- P.E. to JA L1 Domino 2911Z from May 5 – July 30, 2018

99

BRED HEIFER

CED3.6
 BW0.8
 WW41
 YW64
 MILK28
 M&G49
 REA43
 MARB03

WW DOMINETTE E718

March 28, 2017 • #43865420

JA L1 DOMINO 7640T
JA L1 DOMINO 1602Y
 | CJA L1 DOMINETTE 9204W

CL 1 DOMINO 9125W
WW DOMINETTE C52
 | WW MS ADVANCE Z2102

HH ADVANCE 286M
 JAL L1 DOMINETTE 1409L
 CL 1 DOMINO 555R
 JA L1 DOMINETTE 4119P
 CL 1 DOMINO 732T
 CL 1 DOMINETTE 475P
 HH ADVANCE 4055P
 HERITAGE 47P R15 CAMEO 8050

- A.I. to CL 1 Domino 216Z on April 26, 2018
- P.E. to JA L1 Domino 2911Z from May 5 – July 30, 2018

COMMERCIAL BRED HEIFERS...

HEREFORDS, BLACK & RED BALDIES ...433 HD.

- Jamison Hereford Line 1 Genetics
- Replacement Quality Cowherd Builders
- Spring 2017 Heifers ...Bred to Calve at 24 months
- Complete Health Program
- **A.I. Bred April 26, 2018 ...Calving Ease Leaders, Hereford Sensation 028X & Angus Connealy Comrade**
- **Start Calving February 1, 2019**
- Summer Grazed on Jamison Ranch
- Veterinary Preg Checked Nov. 15 ...Sell in Calving Interval Groups
- **BUYER'S OPTION...**
Minimum 10 hd. purchase with option to take entire respective group up to full load lots

HEREFORD HEIFERS, 251 HD. ...LOTS 101-351

- 55 Hereford ...Rusher Ranch, CO
A.I. bred April 26 ...Sensation 028X
Pasture sire, JA L1 Domino 2911X ...May 5 to July 30, 2018
- 187 Hereford ...Paulich Ranch, CO / Means Ranch, CO / Gleason Ranch, KS
A.I. bred April 26 ...Connealy Comrade; Pasture sires, Angus
- 9 Hereford ...Yoder Farms, IL
A.I. bred April 26 ...CL1 Domino 216Z; Hereford pasture sires
AHA registration papers available.

BLACK & RED BALDIE HEIFERS, 182 HD. ...LOTS 360-451

- 160 Black Baldies ...Paulich Ranch, CO / Crago Ranch, SD
A.I. bred April 26 ...Connealy Comrade; Pasture sires, Angus
- 22 Red Baldies ...Paulich / Means / Crago
A.I. bred April 26 ...Connealy Comrade; Pasture sires, Angus



A.I. SIRES...

CHURCHILL SENSATION 028X

AHA #43092364

15-Trait Leader ...CED • BW • MILK • M&G • CEM • MCW • US • TS / REA • MARB / BMI • BII • CHB

CED 14.4 BW -2.5 WW 49 YW 68

MILK 50 M&G 75 / REA .47 MARB .30 \$CHB 107

HEREFORD CE LEADER ...HI-MATERNAL PLUS CARCASS VALUE!



CONNELLY COMRADE 1385

AAA #170314605

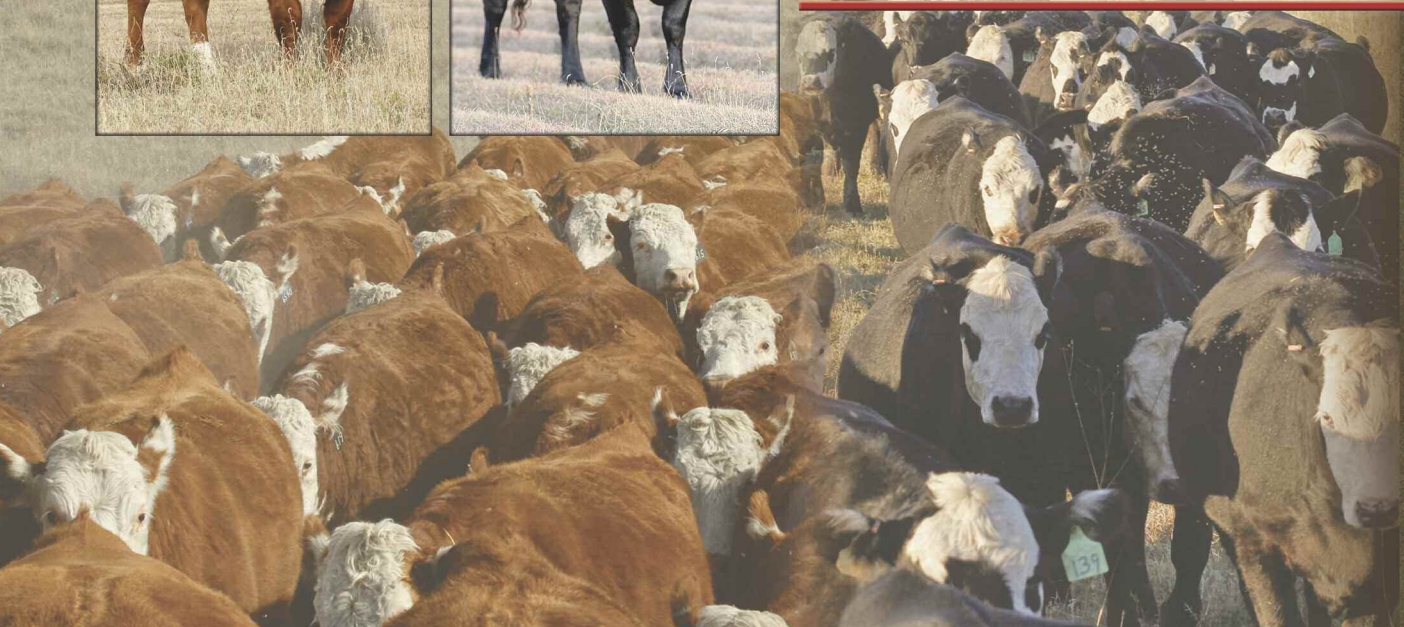
CE Leader, Super Daughters, Proven Carcass Merit

• Select Sires' #1 semen sales!

CED 17 BW -3.9 WW 46 YW 90 MILK 27

REA .58 MARB .62 \$BEEF 93.96

A COMMERCIAL INDUSTRY, BALANCED TRAIT BEEF BULL!



JAMISON RANCH...

Performance Hereford Cattle and Reputation Performance Quarter Horses ...Five Generations Ranching in Western Kansas' Big, Hard-Grass Country!



GENERAL INFORMATION

DATE: FRIDAY, NOVEMBER 30, 2018 ...12:30 PM CST

LOCATION: Jamison Livestock Sales Center & Arena ...ranch headquarters located off I-70, Quinter Exit 107, 2 mi. South, 1 mi. East, 1½ miles South.

LUNCH: Available on the grounds.

RANCH PHONES: OFFICE 785/ 754-3424

Gordon (c) 785/ 299-0441, **Daron Jamison** 785/ 650-9639
Devin Sweitzer 785/ 299-0663

SALE CATTLE VIDEOS: Produced by **THE LIVESTOCK LINK**. Videos of every registered female lot and groups of the commercial bred heifers, go to: www.jamisonranch.com

SALE DAY PHONE: 785/ 754-3424

BID ONLINE: www.dvauction.com ...to register for bidding online, call Tami McIntosh 308/ 870-3661; office 402/ 316-5460.

INTERNET & PHONE BIDDERS ...Buyer number registration approved by making phone contact with Gordon Jamison, Daron Jamison or Sale Mgr. Jay George about your cattle of interest the week prior to the sale.

SALE HEADQUARTERS... Cobblestone Inn & Suites, Quinter, KS, 785/ 754-3600 ...Exit 107 off I-70 at Quinter, KS. Free Breakfast.

Best Western, Wakeeney, KS, 785/ 743-2700 ...Located 20 mi. east of ranch on I-70. Free, full service breakfast. Request Jamison Ranch Sale rate at either headquarters motel.

Other Motels: Wakeeney Super 8 785/ 743-6442; Econo Lodge 785/ 743-5505; **Oakley** (30 miles west) Sleep Inn 785/ 671-1111; Best Western Golden Plains 785/ 672-3254; Kansas Kountry Inn 785/ 672-3131.

AIRPORTS: Commercial air service is available to Hays, KS or Garden City, KS. Private planes may land at Quinter, KS (4000 ft. paved), Wakeeney (3500 ft. paved) or Oakley (5000 ft. paved).

TERMS & CONDITIONS: Terms of sale are cash. Every sale animal will be sold to the highest bidder with auctioneer settling bid disputes. Announced changes in catalog information on sale day take precedence over printed material. All cattle are the buyer's property as soon as sold and will be cared for a reasonable length of time at the buyer's risk. Any person attending the sale does so at his own risk. Neither sale management, owners, nor any person connected with this sale, assumes any liability, legal or otherwise.

In the event of default in any part of the Terms and Conditions for this sale by buyer or seller, it shall be the responsibility of the buyer or seller to instigate any action needed to bring about a fair settlement of any claims and to be responsible for any and all costs.

GUARANTEE: Every animal in this sale, to the best of our knowledge, is free of disease or defect. Any known defects will be announced at sale time. Cattle are at the buyer's risk, expense and responsibility from the time of purchase. No other warranty or guarantee is expressed or implied.

PREGNANCY STATUS: All spring bred heifers will be pregnancy tested with results announced sale day. Pregnant females are sold as breeders without further guarantee. All fall calving cows sell open and ready to breed.

HEALTH: Herd health is excellent. Individual health papers will be furnished for shipment anywhere in the U.S.

REGISTRATION & TRANSFER: American Hereford Assn. registration certificates will be transferred upon request to buyers at seller's expense. Buyers must give complete transfer information at time of settlement.

LOADOUT: Loadout of cattle is available immediately upon completion of the entire sale, and will be directed by the Jamison sale crew foreman. Loadout papers will be provided by sale clerks at sale settlement. **No delivery provided on registered or commercial females, either one.**

TRUCKING: Buyers are responsible for their own trucking. We will assist in making arrangements. Recommended livestock haulers: Woolsey Livestock Transportation, Billings, MT, office 406/652-0517, Bob 406/670-1877 • DeLohn Golden, TX 254/597-1234 • Martin Mickelson, Logan, UT 435/757-0811.

INSURANCE: Arrange insurance through American Live Stock / Markel, Cheri & Jim Gies, Eaton, CO, (c) 970/590-0500, (h) 970/454-3836. Sale clerks will assist with insurance.

ABSENTEE BIDS: Anyone who cannot attend the sale may place phone or mail bids by contacting Gordon Jamison, Daron Jamison, Sale Manager Jay George or any listed sale representative.

SALE MANAGEMENT: UNITED LIVESTOCK BROKERS, INC.
Jay George 605/ 391-6230 • 1025 28th Rd. NW, Lebo, KS 66856

Sale management acts as agent only and assumes no legal responsibility.

JAMISON HEREFORDS

SINCE 1944 ...Performance Herd Bulls for Ranchers & Breeders

**SPRING TOTAL PERFORMANCE
BULL SALE**

FRIDAY **FEBRUARY 22, 2019**

200 BULLS

Yearlings & Two Yr. Olds

A COWMAN'S PROGRAM...

- ✓ Linebred Line 1
- ✓ Trait Balanced
- ✓ Functional, Efficient Beef Bulls
- ✓ Range Country Calving Ease
- ✓ Carcass Ultrasounded
- ✓ Range-Raised (no creep)
- ✓ Volume Selection
- ✓ The #1 Crossbreeding Sire
on Your Black Cows

**...BACKED BY THE
JAMISON GUARANTEE!**

JAMISON RANCH

2271 COUNTY RD. 74
QUINTER, KANSAS 67752

ADDRESS SERVICE REQUESTED

FIRST CLASS



**ONE OF AMERICA'S
MOST RESPECTED COWHERDS!**

**SELLING 530 HERD BUILDER FEMALES
REGISTERED HEREFORDS • COMMERCIAL HEREFORDS
F1 BLACK & RED BALDIES**

**GUEST CONSIGNOR:
COLEMAN HEREFORDS
WESTCLIFFE, COLORADO**

