



**LaDUE**  
**ANGUS RANCH**

*“Striving for Excellence”*

**15th Annual Bull Sale**  
**Thursday, April 16, 2026**  
**1:00pm MT**

*AT THE SALE FACILITY IN MEADOW, SD on Hwy 20*

**SELLING 75 TWO YEAR OLD BULLS**

A.I. Sires: OCC Emblazon, WT Beaver Creek, SAV Resource, Reich Ripper, WT NewCastle

Kent and Janet LaDue - 605.788.2969

Brian LaDue - 605.890.1759

[www.ladueangusranch.com](http://www.ladueangusranch.com)

*“Seek the Lord while He may be found” - Isaiah 55:6*



Thursday April 16, 2026 at 1:00pm MT.

Selling 75 Two Year Old Angus Bulls at the Sale Facility in Meadow, SD

Look for the sign on the north side of Hwy 20 in Meadow!

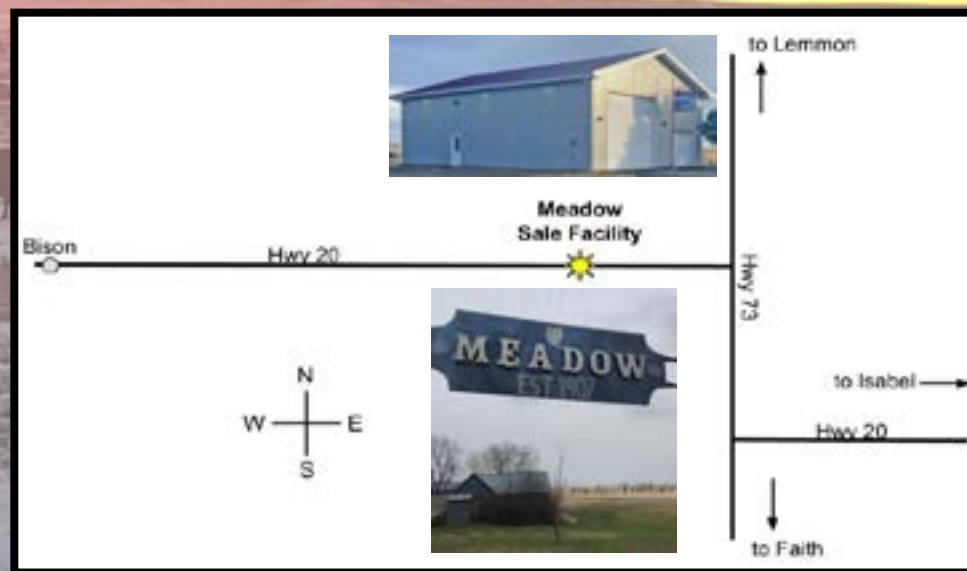
from Bison: 12 miles east on Hwy 20

from Lemmon: 30 miles south on Hwy 73 and 1.5 miles west on Hwy 20

from Faith: 3 miles west of Faith on Hwy 212, 32 miles north on Hwy 73, 1.5 miles west on Hwy 20

from Isabel: 38 miles west on Hwy 20, 6 miles north on Hwy 73, 1.5 miles west on Hwy 20

We would like to say a BIG thank you to Lone Tree Angus Ranch for the use of their sale facility!



INDEX

SALE INFORMATION.....Pages 4-5
REFERENCE SIRES .....Pages 6-7
EMBLAZON BULLS
Lots 401-407 .....Page 8
BEAVER CREEK BULLS
Lots 408-441.....Pages 9-14
RESOURCE BULLS
Lots 443-450.....Pages 15-16

RIPPER BULLS
Lots 451-472 .....Page 16-19
NEWCASTLE BULLS
Lots 442, 473-479.....Pages 19-20
LAR HERD SIRED BULLS
Lots 480-4123.....Pages 21-24
ZOETIS HD50K INFO &
TEST RESULTS.....Pages 25-27



WELCOME TO OUR SALE!

Hello and welcome to our 2026 Bull Sale! Whether you're new to our program or have been with us since the beginning, we are so thankful for you!

Wow! As I look back on the past year, I am so thankful for what a year it has been. From the timely rains we received last spring, summer, and fall to grow grass like we haven't seen for years to being blessed with a cattle market that seems to be long overdue, I am thankful for all that the Lord has blessed us with!

As I write this, I can't help but think of all the ranch families that have been affected by fires and the devastation that they have caused to our agriculture community, my heart truly hurts for those families.

Our goal at LaDue Angus Ranch continues to be breeding and developing well-balanced cattle that will function in our climate and work for you. On our ranch the main focus is the female. We select sires that will build the cow that works for us and doesn't demand that we work for them.

If you are unable to attend the sale, please contact us and we can arrange for someone to assist you. You can register and bid online at www.DVAuction.com.

Whether you are a returning customer or looking for the first time, we THANK YOU for your interest in our program. As always, please reach out with any questions or concerns about the bulls.

Please join us at the sale facility for lunch before the sale, Thursday April 16, 2026 at the Meadow Sale Facility. SEE YOU THERE! - The LaDue Family



## SALE INFORMATION

**Contact Information:**  
 Kent & Janet LaDue  
 Brian LaDue  
 14478 Rabbit Creek Road  
 Meadow, SD 57644  
 605-788-2969  
 ladueangusranch@gmail.com  
 www.ladueangusranch.com

**Sale Day Contacts:**  
 Kent cell: 605-490-1004  
 Brian cell: 605-890-1759  
 Sale Day Phone: 605-788-2500

**Auctioneer:**  
 Seth Weishaar: 605-210-1124

**Ringmen:**  
 Dan Piroutek - 605-544-3316  
 Beau Ravellette - 605-685-8155  
 Donnie Leddy - 605-695-0113

**Feed:**  
 Our bulls are summered on milk and grass without creep feed. At weaning, they are fed a roughage ration and free choice hay and summered on grass as yearlings. They have been developed on a complete mineral program. Our desire is to ensure soundness and longevity and to condition them to work in your pasture.

**Herd Health:**

- At Branding and Pre-weaning: Vision 7 with Somnus, Vista Once SQ
- At Weaning: Inforce 3, Vision 7 with Somnus, Multi-Min
- In January & April: poured with Clean Up II
- April: Two shots of Fusoguard (foot rot) vaccine
- April: All bulls have passed a Breeding Exam/Semen test by Dr. Bleaux Johnson of West River Veterinary Clinic
- Zoetis HD50K Tested
- Tested BVD free

**Delivery:**  
 Receive a \$200 discount per bull if you haul on sale day, or we will deliver the bulls at the buyer's earliest convenience unless other arrangements are made. Free delivery within 300 miles.

**Guarantee:**  
 We guarantee all bulls against injury that would keep them from breeding for the 1st season. If injury occurs and the bull is returned to us, credit is given for next year's sale, or a replacement will be provided if available. It is the buyer's choice which option is more satisfactory. Please notify us as soon as possible should injury occur. Claims must be made by 10-1-26. This guarantee does not cover death. Buyer's satisfaction is our guarantee.

**Why 2 Year Olds:**

- Developed on grass, not pushed
- More mature at breeding = more years of service
- Structurally sound feet
- Able to cover more cows than a yearling bull

## Zoetis HD50K Testing

**What is it?** - HD50K for Angus is a DNA genotyping technology from Zoetis designed for Angus producers and fully endorsed by the American Angus Association and Angus Genetics, Inc. Performing this test on each bull provides percentiles that compare over 1.3 million cattle in the Angus breed so we can continue offering the best cattle possible.

**Why is it useful?** - It provides us as a seedstock producer with information to use to make culling decisions on bulls that just don't meet the mark and it can help producers more accurately choose the right bull that will best fit in with their herd. It helps to provide comprehensive genetic and management solutions for beef producers. Select, mate, and market cattle with more confidence by using this data.

By each bull, you will find 20 data points listed as percentiles to help with your selection decisions. There is also a side by side chart in the back of the catalog to serve as a quick reference and to compare bulls side by side with ease.

We provide you this information so as to help you make decisions, not to confuse you so if you have questions, please let us know and we will do our best to explain!

If you are unable to attend the sale, please visit [www.DVAuction.com](http://www.DVAuction.com) to bid. Be sure to register in advance to be approved before sale day.

Videos of each of the bulls will be available for viewing approximately two weeks prior to sale day on [www.theLivestockLink.com](http://www.theLivestockLink.com) and [www.DVAuction.com](http://www.DVAuction.com)



**This sale will be broadcast live on the internet.**

**DVAuction**  
 Broadcasting Real-Time Auctions

**Real time bidding & proxy bidding available.**

**Watch & Bid online for FREE!**

**Can't make the sale?**  
 Let DVAuction bring the sale to you!

**Busy during the sale?**  
 Let DVAuction represent your bid!

**Visit [www.dvauction.com](http://www.dvauction.com) and Register!**

1. Create an account at [www.DVAuction.com](http://www.DVAuction.com) under the "Create new account" tab
2. Apply for bidding by clicking "apply for bidding" in the upper left corner of your screen. Do this at least 24 hours prior to the auction.
3. Tune in on sale day and make your purchases!

For general questions, please contact the DVAuction Office:  
 402-316-5460 or email at [support@dvauction.com](mailto:support@dvauction.com)

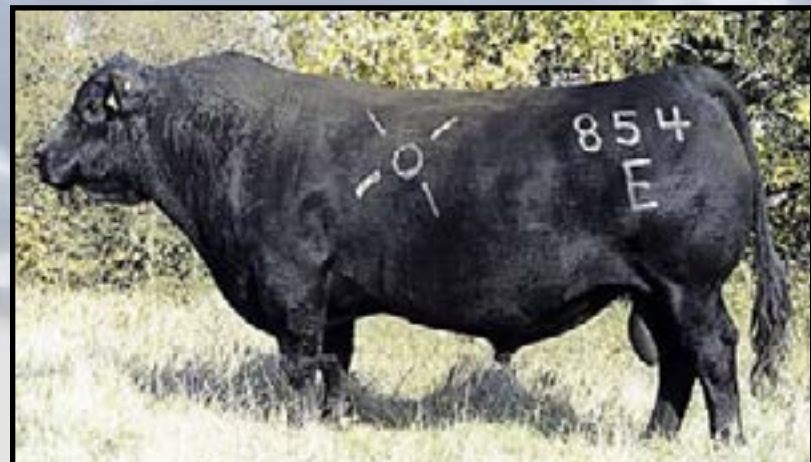
\*High Speed Internet Access Required for bidding\*

# REFERENCE SIRES

## O C C Emblazon 854E

Reg: AAA 12514348

Birth Date: 03/19/1995



Emblazon has depth, length, volume, and muscle. The Emblazon daughters are sound, easy fleshing females with beautiful udders. Emblazon is maintaining his place in history producing impeccable females.

PRODUCTION				
CED	BW	WW	YW	Milk
+12	+4	+45	+71	+16
.91	.97	.97	.95	.95

Q A S Traveler 23-4  
D H D Traveler 6807  
Bemindful Maid D H D 0807

PBC 707 1M F0203  
Dixie Erica of C H 1019  
Dixie Erica of C H 615

## WT Beaver Creek 118

Reg: AAA 17523574

Birth Date: 04/06/2011



Beaver Creek is a low input powerhouse matched with calving ease and a strong build. This year's group of Beaver Creek bulls are the most consistent we've ever had. He continues to prove himself year after year in our herd. Some of our most masculine males and feminine females are out of Beaver Creek.

PRODUCTION				
CED	BW	WW	YW	Milk
+7	-1.0	+38	+70	+16
.38	.82	.78	.71	.44

Gorthy of Graham 18866  
M C C Mule Creek 805  
O C C Dixie Erica 704H

MH Tank 54  
MH Frances 8180  
MH Frances 4138

## S A V Resource 1441

Reg: AAA 17016597

Birth Date: 01/07/2011



Resource is a sire known for his body mass, efficient conversion, and phenotypic power. His daughters will be his greatest legacy with tremendous udders and excellent disposition. Resource is one of the most consistent sires we have used.

PRODUCTION				
CED	BW	WW	YW	Milk
+1	+4.1	+68	+130	+17
.89	.98	.98	.97	.96

R R Rito 707  
Rito 707 of Ideal 3407 7075  
Ideal 3407 of 1418 076

S A V 8180 Traveler 004  
S A V Blackcap May 4136  
S A V May 2397

# REFERENCE SIRES

## Reich Ripper 37B

Reg: AAA 18885267

Birth Date: 4/17/2014



We chose to use Ripper because I was super impressed with the females I saw sired by him! This powerhouse boasts a massive top, square hip, and the kind of structural soundness that turns heads in any pasture. His sons come out masculine and stout; his daughters are strikingly feminine, deep-bodied, and built to last. Ripper is the true definition of masculine males producing feminine females. Don't miss your chance to add these elite bloodlines to your program!

PRODUCTION				
CED	BW	WW	YW	Milk
+1	+1.9	+44	+77	+29
.56	.85	.78	.64	.44

DMM Riptide 87W  
DMM Riptide 2Z  
DMM Dyna Blackcap 38X

Duff 927K Movin Up 874  
Reich Pride 68Z  
Reich Pride 77W

## WT NewCastle Z241

Reg: AAA 18735431

Birth Date: 5/1/2012



We absolutely love the heifers he produces. The Newcastle bred heifers we have really stand out. They are moderate framed and have a ton of capacity. They are excellent cows that will make their own living.

PRODUCTION				
CED	BW	WW	YW	Milk
+9	-.3	+28	+58	+21
.33	.74	.68	.58	.28

Glanworth Waigroup 130-03  
WT Worth It 81  
MH Whitney 2113

O C C Homer 650H  
MH Dixie Erica 622  
MH Dixie Erica 3122



# Emblazon Sons

## 401 LAR Emblazon 401-Y038

Birth Date: 4/30/2024

PRODUCTION				
BW	WW	WWRATIO	YWRATIO	ADJ YW
81	672	103	97	804

D H D Traveler 6807  
**O C C Emblazon 854E**  
 Dixie Erica of C H 1019  
 DAM: Cortachy Boy 639 daughter

CED	BW	WW	YW	YH	MW	MH	Claw	Angle	DMI	FL	PAP	
62	82	60	83	97	79	93	33	97	26	77	42	
HS	HP	CEM	MILK	TEAT	UDDR	SC	DOC	CW	FAT	RE	MARB	TEND
53	81	89	95	28	65	85	78	88	73	48	84	55

**SCROTAL MEASUREMENT**  
38 cm

## 403 LAR Emblazon 403-Y031

Birth Date: 5/2/2024

PRODUCTION				
BW	WW	WWRATIO	YWRATIO	ADJ YW
83	646	99	101	838

D H D Traveler 6807  
**O C C Emblazon 854E**  
 Dixie Erica of C H 1019  
 DAM: Cortachy Boy 639 daughter

CED	BW	WW	YW	YH	MW	MH	Claw	Angle	DMI	FL	PAP	
33	47	77	89	100	79	97	54	90	10	32	32	
HS	HP	CEM	MILK	TEAT	UDDR	SC	DOC	CW	FAT	RE	MARB	TEND
60	90	98	100	46	73	60	60	95	27	31	79	60

**SCROTAL MEASUREMENT**  
34.5 cm



403

## 404 LAR Emblazon 404-Y923

Birth Date: 5/8/2024

PRODUCTION				
BW	WW	WWRATIO	YWRATIO	ADJ YW
85	586	92	91	732

D H D Traveler 6807  
**O C C Emblazon 854E**  
 Dixie Erica of C H 1019  
 DAM: Cortachy Boy 612 daughter

CED	BW	WW	YW	YH	MW	MH	Claw	Angle	DMI	FL	PAP	
57	81	79	94	78	93	97	21	97	20	43	73	
HS	HP	CEM	MILK	TEAT	UDDR	SC	DOC	CW	FAT	RE	MARB	TEND
63	40	94	93	27	63	92	83	94	48	57	89	70

**SCROTAL MEASUREMENT**  
38 cm

## 405 LAR Emblazon 405-Y26

Birth Date: 5/5/2024

PRODUCTION				
BW	WW	WWRATIO	YWRATIO	ADJ YW
81	730	117	116	934

D H D Traveler 6807  
**O C C Emblazon 854E**  
 Dixie Erica of C H 1019  
 DAM: OCC Missing Link daughter

CED	BW	WW	YW	YH	MW	MH	Claw	Angle	DMI	FL	PAP	
21	49	78	94	98	78	87	39	96	28	67	56	
HS	HP	CEM	MILK	TEAT	UDDR	SC	DOC	CW	FAT	RE	MARB	TEND
9	91	59	57	48	34	99	90	96	30	77	91	83

**SCROTAL MEASUREMENT**  
38.5 cm



405

## 407 LAR Emblazon 407-Y615

Birth Date: 4/24/2024

PRODUCTION				
BW	WW	WWRATIO	YWRATIO	ADJ YW
83	616	91	95	766

D H D Traveler 6807  
**O C C Emblazon 854E**  
 Dixie Erica of C H 1019  
 DAM: Cortachy Boy 310 daughter

CED	BW	WW	YW	YH	MW	MH	Claw	Angle	DMI	FL	PAP	
54	64	23	67	39	35	67	13	83	87	89	84	
HS	HP	CEM	MILK	TEAT	UDDR	SC	DOC	CW	FAT	RE	MARB	TEND
37	35	73	87	33	24	60	87	52	35	53	95	96

**SCROTAL MEASUREMENT**  
37 cm



# Beaver Creek Sons

## 408 LAR Beaver Creek 408-Y618

Birth Date: 5/2/2024

PRODUCTION				
BW	WW	WWRATIO	YWRATIO	ADJ YW
72	580	90	89	713

M C C Mule Creek 805  
**WT Beaver Creek 118**  
 MH Frances 8180  
 DAM: Cortachy Boy 322 daughter

CED	BW	WW	YW	YH	MW	MH	Claw	Angle	DMI	FL	PAP	
10	5	100	100	84	100	100	6	33	6	42	3	
HS	HP	CEM	MILK	TEAT	UDDR	SC	DOC	CW	FAT	RE	MARB	TEND
87	13	92	80	77	60	63	65	97	97	88	94	57

**SCROTAL MEASUREMENT**  
38.5 cm



408

## 409 LAR Beaver Creek 409-Y90

Birth Date: 5/2/2024

PRODUCTION				
BW	WW	WWRATIO	YWRATIO	ADJ YW
78	652	97	91	753

M C C Mule Creek 805  
**WT Beaver Creek 118**  
 MH Frances 8180  
 DAM: Cortachy Boy 624 daughter

CED	BW	WW	YW	YH	MW	MH	Claw	Angle	DMI	FL	PAP	
23	34	93	99	93	100	100	7	27	27	52	27	
HS	HP	CEM	MILK	TEAT	UDDR	SC	DOC	CW	FAT	RE	MARB	TEND
66	44	25	44	79	94	74	26	99	100	98	65	34

**SCROTAL MEASUREMENT**  
38 cm



## 410 LAR Beaver Creek 410-Y3059

Birth Date: 5/2/2024

PRODUCTION				
BW	WW	WWRATIO	YWRATIO	ADJ YW
75	644	103	104	834

M C C Mule Creek 805  
**WT Beaver Creek 118**  
 MH Frances 8180  
 DAM: Cole Creek Full Bore daughter

CED	BW	WW	YW	YH	MW	MH	Claw	Angle	DMI	FL	PAP	
3	25	98	93	67	91	87	43	100	11	34	6	
HS	HP	CEM	MILK	TEAT	UDDR	SC	DOC	CW	FAT	RE	MARB	TEND
78	72	43	33	28	32	17	14	97	100	100	88	63

**SCROTAL MEASUREMENT**  
39.5 cm



410

## 412 LAR Beaver Creek 412-Y045

Birth Date: 4/29/2024

PRODUCTION				
BW	WW	WWRATIO	YWRATIO	ADJ YW
84	696	105	105	870

M C C Mule Creek 805  
**WT Beaver Creek 118**  
 MH Frances 8180  
 DAM: Cortachy Boy 714 daughter

CED	BW	WW	YW	YH	MW	MH	Claw	Angle	DMI	FL	PAP	
31	7	54	74	45	22	62	9	26	63	15	38	
HS	HP	CEM	MILK	TEAT	UDDR	SC	DOC	CW	FAT	RE	MARB	TEND
79	30	99	80	73	67	82	32	43	100	9	81	17

**SCROTAL MEASUREMENT**  
37.5 cm



412

# 413

LAR Beaver Creek 413-Y4027  
Birth Date: 4/29/2024

M C C Mule Creek 805  
WT Beaver Creek 118  
MH Frances 8180

DAM: Cole Creek Full Bore daughter

PRODUCTION				
BW	WW	WWRATIO	YWRATIO	ADJ YW
82	578	89	87	720

CED	BW	WW	YW	YH	MW	MH	Claw	Angle	DMI	FL	PAP
33	50	95	96	96	99	100	25	66	4	84	8

HS	HP	CEM	MILK	TEAT	UDDR	SC	DOC	CW	FAT	RE	MARB	TEND
64	69	40	98	61	77	57	50	100	99	98	85	69

SCROTAL MEASUREMENT  
38 cm

# 414

LAR Beaver Creek 414-Y925  
Birth Date: 4/24/2024

M C C Mule Creek 805  
WT Beaver Creek 118  
MH Frances 8180

DAM: Cortachy Boy 639 daughter

PRODUCTION				
BW	WW	WWRATIO	YWRATIO	ADJ YW
82	572	83	82	682

CED	BW	WW	YW	YH	MW	MH	Claw	Angle	DMI	FL	PAP
10	1	98	100	55	70	79	12	71	9	29	49

HS	HP	CEM	MILK	TEAT	UDDR	SC	DOC	CW	FAT	RE	MARB	TEND
49	1	98	59	93	73	2	30	97	88	82	95	13

\*Heifer bull  
SCROTAL MEASUREMENT  
40 cm



414

# 415

LAR Beaver Creek 415-Y128  
Birth Date: 4/26/2024

M C C Mule Creek 805  
WT Beaver Creek 118  
MH Frances 8180

DAM: OCC Legend 913 daughter

PRODUCTION				
BW	WW	WWRATIO	YWRATIO	ADJ YW
79	554	87	92	742

CED	BW	WW	YW	YH	MW	MH	Claw	Angle	DMI	FL	PAP
4	2	91	99	76	91	93	76	82	10	48	27

HS	HP	CEM	MILK	TEAT	UDDR	SC	DOC	CW	FAT	RE	MARB	TEND
75	62	24	62	92	92	6	40	99	94	100	95	48

\*Heifer bull  
SCROTAL MEASUREMENT  
38 cm

# 416

LAR Beaver Creek 416-521  
Birth Date: 5/2/2024

M C C Mule Creek 805  
WT Beaver Creek 118  
MH Frances 8180

DAM: Final Answer daughter

PRODUCTION				
BW	WW	WWRATIO	YWRATIO	ADJ YW
77	604	90	92	762

CED	BW	WW	YW	YH	MW	MH	Claw	Angle	DMI	FL	PAP
14	5	95	98	98	95	100	68	64	36	15	16

HS	HP	CEM	MILK	TEAT	UDDR	SC	DOC	CW	FAT	RE	MARB	TEND
61	11	26	73	31	15	5	38	93	62	84	74	23

\*Heifer bull  
SCROTAL MEASUREMENT  
38 cm

# 417

LAR Beaver Creek 417-773  
Birth Date: 4/26/2024

M C C Mule Creek 805  
WT Beaver Creek 118  
MH Frances 8180

DAM: Heisman daughter

PRODUCTION				
BW	WW	WWRATIO	YWRATIO	ADJ YW
78	668	98	95	787

CED	BW	WW	YW	YH	MW	MH	Claw	Angle	DMI	FL	PAP
3	2	82	98	44	69	82	61	98	41	49	33

HS	HP	CEM	MILK	TEAT	UDDR	SC	DOC	CW	FAT	RE	MARB	TEND
61	4	51	39	80	76	53	78	86	83	72	86	77

\*Heifer bull  
SCROTAL MEASUREMENT  
38 cm

# 418

LAR Beaver Creek 418-Y9137  
Birth Date: 5/13/2024

M C C Mule Creek 805  
WT Beaver Creek 118  
MH Frances 8180

DAM: Regis daughter

PRODUCTION				
BW	WW	WWRATIO	YWRATIO	ADJ YW
83	564	88	97	803

CED	BW	WW	YW	YH	MW	MH	Claw	Angle	DMI	FL	PAP
14	12	57	99	68	73	84	23	29	15	21	4

HS	HP	CEM	MILK	TEAT	UDDR	SC	DOC	CW	FAT	RE	MARB	TEND
33	56	52	59	92	80	96	56	86	6	64	62	79

\*Heifer bull  
SCROTAL MEASUREMENT  
36 cm

# 419

LAR Beaver Creek 419-771  
Birth Date: 4/23/2024

M C C Mule Creek 805  
WT Beaver Creek 118  
MH Frances 8180

DAM: Heisman daughter

PRODUCTION				
BW	WW	WWRATIO	YWRATIO	ADJ YW
78	730	106	105	869

CED	BW	WW	YW	YH	MW	MH	Claw	Angle	DMI	FL	PAP
4	3	79	54	21	19	30	39	92	94	71	3

HS	HP	CEM	MILK	TEAT	UDDR	SC	DOC	CW	FAT	RE	MARB	TEND
64	5	39	32	39	41	5	3	87	82	74	30	48

\*Heifer bull  
SCROTAL MEASUREMENT  
41 cm

# 420

LAR Beaver Creek 420-Y9136  
Birth Date: 4/25/2024

M C C Mule Creek 805  
WT Beaver Creek 118  
MH Frances 8180

DAM: Regis daughter

PRODUCTION				
BW	WW	WWRATIO	YWRATIO	ADJ YW
81	724	106	111	915

CED	BW	WW	YW	YH	MW	MH	Claw	Angle	DMI	FL	PAP
21	11	58	70	36	45	81	34	83	45	40	82

HS	HP	CEM	MILK	TEAT	UDDR	SC	DOC	CW	FAT	RE	MARB	TEND
8	2	85	54	43	32	2	21	81	93	98	85	7

\*Heifer bull  
SCROTAL MEASUREMENT  
42 cm

# 421

LAR Beaver Creek 421-8104  
Birth Date: 5/5/2024

M C C Mule Creek 805  
WT Beaver Creek 118  
MH Frances 8180

MGS: BC Matrix daughter

PRODUCTION				
BW	WW	WWRATIO	YWRATIO	ADJ YW
81	590	89	89	738

CED	BW	WW	YW	YH	MW	MH	Claw	Angle	DMI	FL	PAP
3	1	100	98	98	98	100	17	48	25	27	15

HS	HP	CEM	MILK	TEAT	UDDR	SC	DOC	CW	FAT	RE	MARB	TEND
74	27	38	49	41	39	19	20	99	81	92	63	33

\*Heifer bull  
SCROTAL MEASUREMENT  
39.5 cm

Lots 422 and 424 will sell choice... you pick one and we will keep the other and use him as a herd sire on our ranch.

# 422

LAR Beaver Creek 422-106  
Birth Date: 4/27/2024

M C C Mule Creek 805  
WT Beaver Creek 118  
MH Frances 8180

DAM: Comrade daughter

PRODUCTION				
BW	WW	WWRATIO	YWRATIO	ADJ YW
70	650	101	105	874

CED	BW	WW	YW	YH	MW	MH	Claw	Angle	DMI	FL	PAP
32	19	61	67	86	42	85	52	66	73	46	86

HS	HP	CEM	MILK	TEAT	UDDR	SC	DOC	CW	FAT	RE	MARB	TEND
36	87	53	99	33	11	12	12	73	98	70	68	93

\*Heifer bull  
SCROTAL MEASUREMENT  
41 cm



422

# 424

LAR Beaver Creek 424-Y887  
Birth Date: 5/2/2024

M C C Mule Creek 805  
WT Beaver Creek 118  
MH Frances 8180

DAM: Resource daughter

PRODUCTION				
BW	WW	WWRATIO	YWRATIO	ADJ YW
84	670	100	99	820

CED	BW	WW	YW	YH	MW	MH	Claw	Angle	DMI	FL	PAP
15	10	88	86	96	83	100	12	78	42	91	24

HS	HP	CEM	MILK	TEAT	UDDR	SC	DOC	CW	FAT	RE	MARB	TEND
48	21	16	79	27	9	15	23	98	84	92	92	62

\*Heifer bull  
SCROTAL MEASUREMENT  
39.5 cm



424

# 423

LAR Beaver Creek 423-757  
Birth Date: 5/4/2024

M C C Mule Creek 805  
WT Beaver Creek 118  
MH Frances 8180

DAM: Resource daughter

PRODUCTION				
BW	WW	WWRATIO	YWRATIO	ADJ YW
89	694	108	101	838

CED	BW	WW	YW	YH	MW	MH	Claw	Angle	DMI	FL	PAP
22	35	96	51	77	70	86	32	71	54	80	38

HS	HP	CEM	MILK	TEAT	UDDR	SC	DOC	CW	FAT	RE	MARB	TEND
81	41	66	74	51	46	8	51	96	94	84	83	19

SCROTAL MEASUREMENT  
40.5 cm



423

# 426 LAR Beaver Creek 426-503

Birth Date: 5/4/2024

PRODUCTION				
BW	WW	WWRATIO	YWRATIO	ADJ YW
78	620	93	98	816

M C C Mule Creek 805  
WT Beaver Creek 118  
MH Frances 8180  
DAM: Final Answer daughter

CED	BW	WW	YW	YH	MW	MH	Claw	Angle	DMI	FL	PAP	*Heifer bull	
6	2	66	80	23	47	67	1	29	91	37	38		
HS	HP	CEM	MILK	TEAT	UDDR	SC	DOC	CW	FAT	RE	MARB	TEND	SCROTAL MEASUREMENT
69	26	33	86	31	16	20	1	51	94	65	28	12	39 cm

# 427 LAR Beaver Creek 427-108

Birth Date: 4/26/2024

PRODUCTION				
BW	WW	WWRATIO	YWRATIO	ADJ YW
78	630	96	103	850

M C C Mule Creek 805  
WT Beaver Creek 118  
MH Frances 8180  
DAM: Final Answer daughter

CED	BW	WW	YW	YH	MW	MH	Claw	Angle	DMI	FL	PAP	*Heifer bull	
2	2	79	91	84	88	95	43	59	36	49	89		
HS	HP	CEM	MILK	TEAT	UDDR	SC	DOC	CW	FAT	RE	MARB	TEND	SCROTAL MEASUREMENT
74	55	78	19	73	43	39	14	92	96	84	84	38	37 cm



427

# 429 LAR Beaver Creek 429-Y788

Birth Date: 4/24/2024

PRODUCTION				
BW	WW	WWRATIO	YWRATIO	ADJ YW
73	554	81	86	712

M C C Mule Creek 805  
WT Beaver Creek 118  
MH Frances 8180  
DAM: TC Thunder daughter

CED	BW	WW	YW	YH	MW	MH	Claw	Angle	DMI	FL	PAP	*Heifer bull	
7	3	91	88	86	78	88	3	17	41	65	19		
HS	HP	CEM	MILK	TEAT	UDDR	SC	DOC	CW	FAT	RE	MARB	TEND	SCROTAL MEASUREMENT
25	28	13	62	21	19	36	24	88	97	48	92	68	35.5 cm

# 430 LAR Beaver Creek 430-675

Birth Date: 4/28/2024

PRODUCTION				
BW	WW	WWRATIO	YWRATIO	ADJ YW
81	676	100	107	884

M C C Mule Creek 805  
WT Beaver Creek 118  
MH Frances 8180  
DAM: Cole Creek Cedar Ridge daughter

CED	BW	WW	YW	YH	MW	MH	Claw	Angle	DMI	FL	PAP	*Heifer bull	
64	39	72	75	61	88	90	29	78	63	78	62		
HS	HP	CEM	MILK	TEAT	UDDR	SC	DOC	CW	FAT	RE	MARB	TEND	SCROTAL MEASUREMENT
80	4	58	32	59	69	8	71	79	68	94	100	53	44 cm



430

# 433 LAR Beaver Creek 433-775

Birth Date: 5/7/2024

PRODUCTION				
BW	WW	WWRATIO	YWRATIO	ADJ YW
96	720	110	115	947

M C C Mule Creek 805  
WT Beaver Creek 118  
MH Frances 8180  
DAM: Connealy Thunder daughter

CED	BW	WW	YW	YH	MW	MH	Claw	Angle	DMI	FL	PAP	*Heifer bull	
3	8	87	89	77	76	70	2	69	15	46	16		
HS	HP	CEM	MILK	TEAT	UDDR	SC	DOC	CW	FAT	RE	MARB	TEND	SCROTAL MEASUREMENT
93	39	29	74	25	57	6	57	97	91	99	77	51	41 cm



433

# 435 LAR Beaver Creek 435-Y890

Birth Date: 5/1/2024

PRODUCTION				
BW	WW	WWRATIO	YWRATIO	ADJ YW
85	596	89	91	752

M C C Mule Creek 805  
WT Beaver Creek 118  
MH Frances 8180  
DAM: Resource daughter

CED	BW	WW	YW	YH	MW	MH	Claw	Angle	DMI	FL	PAP	*Heifer bull	
18	15	72	47	89	65	97	11	37	90	42	1		
HS	HP	CEM	MILK	TEAT	UDDR	SC	DOC	CW	FAT	RE	MARB	TEND	SCROTAL MEASUREMENT
62	62	40	46	51	37	42	36	72	100	63	87	33	38.5 cm



435

# 434 LAR Beaver Creek 434-480

Birth Date: 5/2/2024

PRODUCTION				
BW	WW	WWRATIO	YWRATIO	ADJ YW
83	650	100	98	816

M C C Mule Creek 805  
WT Beaver Creek 118  
MH Frances 8180  
DAM: Game Day daughter

CED	BW	WW	YW	YH	MW	MH	Claw	Angle	DMI	FL	PAP	*Heifer bull	
12	4	95	90	44	79	92	10	55	14	11	21		
HS	HP	CEM	MILK	TEAT	UDDR	SC	DOC	CW	FAT	RE	MARB	TEND	SCROTAL MEASUREMENT
27	31	81	59	49	53	2	66	94	60	64	95	60	43 cm



Isaiah 40:8 - "The grass withers and the flowers fall, but the Word of our God stands forever."

# 436 LAR Beaver Creek 436-151

Birth Date: 4/23/2024

PRODUCTION				
BW	WW	WWRATIO	YWRATIO	ADJ YW
70	632	97	101	842

M C C Mule Creek 805  
WT Beaver Creek 118  
MH Frances 8180  
DAM: OCC Just Right daughter

CED	BW	WW	YW	YH	MW	MH	Claw	Angle	DMI	FL	PAP	*Heifer bull	
2	5	93	94	97	97	99	4	18	18	8	69		
HS	HP	CEM	MILK	TEAT	UDDR	SC	DOC	CW	FAT	RE	MARB	TEND	SCROTAL MEASUREMENT
93	6	82	77	32	3	89	53	93	74	92	96	50	37 cm

# 428 LAR Beaver Creek 428-887

Birth Date: 4/24/2024

PRODUCTION				
BW	WW	WWRATIO	YWRATIO	ADJ YW
75	656	95	96	795

M C C Mule Creek 805  
WT Beaver Creek 118  
MH Frances 8180  
DAM: In Sure daughter

CED	BW	WW	YW	YH	MW	MH	Claw	Angle	DMI	FL	PAP	*Heifer bull	
2	2	95	56	82	90	91	26	67	56	16	11		
HS	HP	CEM	MILK	TEAT	UDDR	SC	DOC	CW	FAT	RE	MARB	TEND	SCROTAL MEASUREMENT
80	1	86	4	43	36	16	7	80	97	90	68	19	41 cm

**437** LAR Beaver Creek 437-871  
Birth Date: 4/24/2024

PRODUCTION				
BW	WW	WWRATIO	YWRATIO	ADJ YW
75	672	98	98	807

M C C Mule Creek 805  
WT Beaver Creek 118  
MH Frances 8180  
DAM: Comrade daughter

CED	BW	WW	YW	YH	MW	MH	Claw	Angle	DMI	FL	PAP	*Heifer bull
1	1	99	97	80	91	91	47	87	37	6	11	

HS	HP	CEM	MILK	TEAT	UDDR	SC	DOC	CW	FAT	RE	MARB	TEND	SCROTAL MEASUREMENT
70	23	34	95	59	35	57	17	97	98	97	38	63	38 cm



**438** LAR Beaver Creek 438-872  
Birth Date: 4/26/2024

PRODUCTION				
BW	WW	WWRATIO	YWRATIO	ADJ YW
82	704	103	101	834

M C C Mule Creek 805  
WT Beaver Creek 118  
MH Frances 8180  
DAM: Comrade daughter

CED	BW	WW	YW	YH	MW	MH	Claw	Angle	DMI	FL	PAP	*Heifer bull
16	8	79	80	55	77	83	26	43	27	45	27	

HS	HP	CEM	MILK	TEAT	UDDR	SC	DOC	CW	FAT	RE	MARB	TEND	SCROTAL MEASUREMENT
85	27	32	29	88	53	2	23	87	84	54	66	65	40.5 cm

**439** LAR Beaver Creek 439-180  
Birth Date: 4/26/2024

PRODUCTION				
BW	WW	WWRATIO	YWRATIO	ADJ YW
77	592	92	94	777

M C C Mule Creek 805  
WT Beaver Creek 118  
MH Frances 8180  
DAM: OCC Zar daughter

CED	BW	WW	YW	YH	MW	MH	Claw	Angle	DMI	FL	PAP	*Heifer bull
6	8	96	97	68	89	92	53	70	52	19	37	

HS	HP	CEM	MILK	TEAT	UDDR	SC	DOC	CW	FAT	RE	MARB	TEND	SCROTAL MEASUREMENT
86	20	35	80	19	31	6	68	91	100	96	84	57	40 cm

**440** LAR Beaver Creek 440-Y402  
Birth Date: 4/26/2024

PRODUCTION				
BW	WW	WWRATIO	YWRATIO	ADJ YW
75	694	105	108	891

M C C Mule Creek 805  
WT Beaver Creek 118  
MH Frances 8180  
DAM: Final Answer daughter

CED	BW	WW	YW	YH	MW	MH	Claw	Angle	DMI	FL	PAP	*Heifer bull
2	1	98	100	88	99	100	11	73	1	76	27	

HS	HP	CEM	MILK	TEAT	UDDR	SC	DOC	CW	FAT	RE	MARB	TEND	SCROTAL MEASUREMENT
92	50	44	35	49	22	68	51	98	99	53	97	13	38 cm

**441** LAR Beaver Creek 441-Y791  
Birth Date: 5/13/2024

PRODUCTION				
BW	WW	WWRATIO	YWRATIO	ADJ YW
84	696	108	105	869

M C C Mule Creek 805  
WT Beaver Creek 118  
MH Frances 8180  
DAM: Basin Excitement daughter

CED	BW	WW	YW	YH	MW	MH	Claw	Angle	DMI	FL	PAP	*Heifer bull
26	10	51	75	26	71	23	73	76	29	24	17	

HS	HP	CEM	MILK	TEAT	UDDR	SC	DOC	CW	FAT	RE	MARB	TEND	SCROTAL MEASUREMENT
14	29	61	31	20	38	93	32	34	47	18	74	48	39 cm

LOT 442 is on page 19



**Resource Sons**

**443** LAR Resource 443-569  
Birth Date: 5/8/2024

PRODUCTION				
BW	WW	WWRATIO	YWRATIO	ADJ YW
88	694	106	112	928

Rito 707 of Ideal 3407 7075  
S A V Resource 1441  
S A V Blackcap May 4136  
DAM: BC Matrix daughter

CED	BW	WW	YW	YH	MW	MH	Claw	Angle	DMI	FL	PAP	*Heifer bull
74	55	11	11	49	10	46	25	68	98	36	11	

HS	HP	CEM	MILK	TEAT	UDDR	SC	DOC	CW	FAT	RE	MARB	TEND	SCROTAL MEASUREMENT
93	85	98	86	20	47	41	10	11	30	28	86	65	39 cm



**444** LAR Resource 444-Y9134  
Birth Date: 4/30/2024

PRODUCTION				
BW	WW	WWRATIO	YWRATIO	ADJ YW
82	648	96	97	803

Rito 707 of Ideal 3407 7075  
S A V Resource 1441  
S A V Blackcap May 4136  
DAM: Beaver Creek daughter

CED	BW	WW	YW	YH	MW	MH	Claw	Angle	DMI	FL	PAP	*Heifer bull
11	12	88	54	97	92	99	2	59	93	72	43	

HS	HP	CEM	MILK	TEAT	UDDR	SC	DOC	CW	FAT	RE	MARB	TEND	SCROTAL MEASUREMENT
62	89	79	72	60	91	70	53	78	89	52	73	49	35.5 cm



Lots 445 and 450 will sell choice... you pick one and we will keep the other and use him as a herd sire on our ranch.

**445** LAR Resource 445-636  
Birth Date: 5/3/2024

PRODUCTION				
BW	WW	WWRATIO	YWRATIO	ADJ YW
89	650	101	95	764

Rito 707 of Ideal 3407 7075  
S A V Resource 1441  
S A V Blackcap May 4136  
DAM: BC Matrix daughter

CED	BW	WW	YW	YH	MW	MH	Claw	Angle	DMI	FL	PAP	*Heifer bull
35	35	98	84	85	98	98	42	73	4	78	12	

HS	HP	CEM	MILK	TEAT	UDDR	SC	DOC	CW	FAT	RE	MARB	TEND	SCROTAL MEASUREMENT
78	52	59	95	79	72	67	46	92	65	70	59	56	36 cm



**450** LAR Resource 450-8101  
Birth Date: 4/26/2024

PRODUCTION				
BW	WW	WWRATIO	YWRATIO	ADJ YW
85	746	109	106	876

Rito 707 of Ideal 3407 7075  
S A V Resource 1441  
S A V Blackcap May 4136  
DAM: Beaver Creek daughter

CED	BW	WW	YW	YH	MW	MH	Claw	Angle	DMI	FL	PAP	*Heifer bull
54	45	54	68	79	81	95	4	36	85	59	13	

HS	HP	CEM	MILK	TEAT	UDDR	SC	DOC	CW	FAT	RE	MARB	TEND	SCROTAL MEASUREMENT
57	21	84	64	93	79	31	37	55	16	8	91	55	39 cm



# 446 LAR Resource 446-363 Birth Date: 5/6/2024

Rito 707 of Ideal 3407 7075  
S A V Resource 1441  
S A V Blackcap May 4136  
DAM: BC Matrix daughter

PRODUCTION				
BW	WW	WWRATIO	YWRATIO	ADJ YW
92	698	109	108	899

CED	BW	WW	YW	YH	MW	MH	Claw	Angle	DMI	FL	PAP
54	78	82	30	55	75	62	10	49	68	78	15

HS	HP	CEM	MILK	TEAT	UDDR	SC	DOC	CW	FAT	RE	MARB	TEND
91	18	89	76	36	63	28	55	84	62	75	98	61

SCROTAL MEASUREMENT  
40 cm

# 448 LAR Resource 448-122 Birth Date: 5/10/2024

Rito 707 of Ideal 3407 7075  
S A V Resource 1441  
S A V Blackcap May 4136  
DAM: BC Matrix daughter

PRODUCTION				
BW	WW	WWRATIO	YWRATIO	ADJ YW
90	636	101	96	794

CED	BW	WW	YW	YH	MW	MH	Claw	Angle	DMI	FL	PAP
34	37	91	64	91	86	96	5	36	58	14	26

HS	HP	CEM	MILK	TEAT	UDDR	SC	DOC	CW	FAT	RE	MARB	TEND
90	36	100	23	5	4	58	85	64	36	19	83	66

SCROTAL MEASUREMENT  
36.5 cm

# 449 LAR Resource 449-Y9133 Birth Date: 4/24/2024

Rito 707 of Ideal 3407 7075  
S A V Resource 1441  
S A V Blackcap May 4136  
DAM: Beaver Creek daughter

PRODUCTION				
BW	WW	WWRATIO	YWRATIO	ADJ YW
90	798	116	112	926

CED	BW	WW	YW	YH	MW	MH	Claw	Angle	DMI	FL	PAP
93	88	14	31	50	8	45	21	74	82	61	72

HS	HP	CEM	MILK	TEAT	UDDR	SC	DOC	CW	FAT	RE	MARB	TEND
91	86	97	92	87	80	5	75	33	32	22	96	22

SCROTAL MEASUREMENT  
42 cm



449

## Ripper Sons

# 451 LAR Ripper 451-991 Birth Date: 5/7/2024

DMM Riptide 2Z  
Reich Ripper 37B  
Reich Pride 68Z  
DAM: 991

PRODUCTION				
BW	WW	WWRATIO	YWRATIO	ADJ YW
80	620	94	102	848

CED	BW	WW	YW	YH	MW	MH	Claw	Angle	DMI	FL	PAP
64	48	71	95	71	87	92	39	65	14	44	64

HS	HP	CEM	MILK	TEAT	UDDR	SC	DOC	CW	FAT	RE	MARB	TEND
64	50	95	33	97	83	100	16	89	18	39	50	78

SCROTAL MEASUREMENT  
37 cm

# 452 LAR Ripper 452-058 Birth Date: 5/11/2024

DMM Riptide 2Z  
Reich Ripper 37B  
Reich Pride 68Z  
DAM: BC Balance daughter

PRODUCTION				
BW	WW	WWRATIO	YWRATIO	ADJ YW
83	500	80	88	730

CED	BW	WW	YW	YH	MW	MH	Claw	Angle	DMI	FL	PAP
48	40	89	94	80	98	98	2	72	6	87	81

HS	HP	CEM	MILK	TEAT	UDDR	SC	DOC	CW	FAT	RE	MARB	TEND
27	95	91	14	86	66	86	32	89	6	28	61	69

SCROTAL MEASUREMENT  
36 cm



Lot 459's dam

Lots 455 and 456 will sell choice... you pick one and we will keep the other and use him as a herd sire on our ranch.

# 455 LAR Ripper 455-904 Birth Date: 4/29/2024

DMM Riptide 2Z  
Reich Ripper 37B  
Reich Pride 68Z  
DAM: Upward daughter

PRODUCTION				
BW	WW	WWRATIO	YWRATIO	ADJ YW
79	744	110	113	937

CED	BW	WW	YW	YH	MW	MH	Claw	Angle	DMI	FL	PAP
81	41	39	41	55	55	71	14	4	59	91	97

HS	HP	CEM	MILK	TEAT	UDDR	SC	DOC	CW	FAT	RE	MARB	TEND
36	13	99	52	49	40	85	14	23	21	6	15	75

SCROTAL MEASUREMENT  
41.5 cm



455

# 456 LAR Ripper 456-084 Birth Date: 5/7/2024

DMM Riptide 2Z  
Reich Ripper 37B  
Reich Pride 68Z  
DAM: Beaver Creek daughter

PRODUCTION				
BW	WW	WWRATIO	YWRATIO	ADJ YW
80	664	103	99	824

CED	BW	WW	YW	YH	MW	MH	Claw	Angle	DMI	FL	PAP
90	69	48	94	90	92	96	1	12	47	40	53

HS	HP	CEM	MILK	TEAT	UDDR	SC	DOC	CW	FAT	RE	MARB	TEND
52	51	52	24	64	40	52	49	58	35	1	70	63

SCROTAL MEASUREMENT  
37.5 cm



456

# 457 LAR Ripper 457-035 Birth Date: 4/29/2024

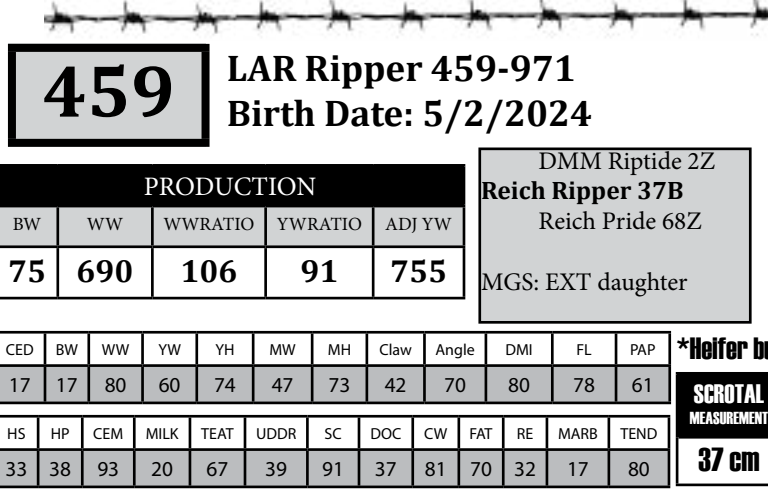
DMM Riptide 2Z  
Reich Ripper 37B  
Reich Pride 68Z  
DAM: BC Certified daughter

PRODUCTION				
BW	WW	WWRATIO	YWRATIO	ADJ YW
74	602	92	93	771

CED	BW	WW	YW	YH	MW	MH	Claw	Angle	DMI	FL	PAP
96	50	35	68	78	79	93	18	54	37	68	69

HS	HP	CEM	MILK	TEAT	UDDR	SC	DOC	CW	FAT	RE	MARB	TEND
24	80	96	62	100	100	78	59	64	25	17	37	72

SCROTAL MEASUREMENT  
36 cm



457

# 459 LAR Ripper 459-971 Birth Date: 5/2/2024

DMM Riptide 2Z  
Reich Ripper 37B  
Reich Pride 68Z  
MGS: EXT daughter

PRODUCTION				
BW	WW	WWRATIO	YWRATIO	ADJ YW
75	690	106	91	755

CED	BW	WW	YW	YH	MW	MH	Claw	Angle	DMI	FL	PAP
17	17	80	60	74	47	73	42	70	80	78	61

HS	HP	CEM	MILK	TEAT	UDDR	SC	DOC	CW	FAT	RE	MARB	TEND
33	38	93	20	67	39	91	37	81	70	32	17	80

SCROTAL MEASUREMENT  
37 cm

# 458 LAR Ripper 458-0115 Birth Date: 5/2/2024

DMM Riptide 2Z  
Reich Ripper 37B  
Reich Pride 68Z  
DAM: BC Alpha daughter

PRODUCTION				
BW	WW	WWRATIO	YWRATIO	ADJ YW
85	668	102	104	860

CED	BW	WW	YW	YH	MW	MH	Claw	Angle	DMI	FL	PAP
86	81	54	77	86	55	78	2	6	39	86	99

HS	HP	CEM	MILK	TEAT	UDDR	SC	DOC	CW	FAT	RE	MARB	TEND
10	34	70	100	78	44	93	55	74	12	4	25	59

SCROTAL MEASUREMENT  
37.5 cm



458

**461** LAR Ripper 461-8179  
Birth Date: 5/5/2024

PRODUCTION				
BW	WW	WWRATIO	YWRATIO	ADJ YW
92	604	91	98	818

DMM Riptide 2Z  
Reich Ripper 37B  
Reich Pride 68Z  
MGS: EXT daughter

CED	BW	WW	YW	YH	MW	MH	Claw	Angle	DMI	FL	PAP	
89	41	55	94	63	72	69	8	18	34	54	77	
HS	HP	CEM	MILK	TEAT	UDDR	SC	DOC	CW	FAT	RE	MARB	TEND
26	76	23	84	98	82	77	11	76	5	6	74	50

SCROTAL MEASUREMENT  
**37.5 cm**



**461**

**464** LAR Ripper 464-Y892  
Birth Date: 5/10/2024

PRODUCTION				
BW	WW	WWRATIO	YWRATIO	ADJ YW
88	548	84	86	716

DMM Riptide 2Z  
Reich Ripper 37B  
Reich Pride 68Z  
DAM: Basin Excitement daughter

CED	BW	WW	YW	YH	MW	MH	Claw	Angle	DMI	FL	PAP	
41	24	81	91	41	67	75	13	46	27	15	95	
HS	HP	CEM	MILK	TEAT	UDDR	SC	DOC	CW	FAT	RE	MARB	TEND
47	72	93	21	87	52	83	70	85	16	36	72	51

SCROTAL MEASUREMENT  
**34.5 cm**

**466** LAR Ripper 466-050  
Birth Date: 5/3/2024

PRODUCTION				
BW	WW	WWRATIO	YWRATIO	ADJ YW
80	650	100	97	801

DMM Riptide 2Z  
Reich Ripper 37B  
Reich Pride 68Z  
DAM: BC Balance daughter

CED	BW	WW	YW	YH	MW	MH	Claw	Angle	DMI	FL	PAP	
45	40	62	96	76	81	76	4	67	46	65	87	
HS	HP	CEM	MILK	TEAT	UDDR	SC	DOC	CW	FAT	RE	MARB	TEND
90	91	46	43	71	49	51	71	80	42	1	73	71

SCROTAL MEASUREMENT  
**39.5 cm**

**469** LAR Ripper 469-016  
Birth Date: 5/7/2024

PRODUCTION				
BW	WW	WWRATIO	YWRATIO	ADJ YW
83	708	111	111	917

DMM Riptide 2Z  
Reich Ripper 37B  
Reich Pride 68Z  
DAM: Resource daughter

CED	BW	WW	YW	YH	MW	MH	Claw	Angle	DMI	FL	PAP	
92	74	75	80	76	82	96	11	88	64	97	78	
HS	HP	CEM	MILK	TEAT	UDDR	SC	DOC	CW	FAT	RE	MARB	TEND
83	37	88	14	99	98	57	52	61	76	16	11	58

SCROTAL MEASUREMENT  
**37 cm**



**469**

**NewCastle Sons**

**442** LAR NewCastle 442-828  
Birth Date: 5/4/2024

PRODUCTION				
BW	WW	WWRATIO	YWRATIO	ADJ YW
79	648	101	103	856

WT Worth It 81  
WT NewCastle Z241  
MH Dixie Erica 622  
DAM: Upward daughter

CED	BW	WW	YW	YH	MW	MH	Claw	Angle	DMI	FL	PAP	
60	38	84	65	65	90	87	55	56	13	41	75	
HS	HP	CEM	MILK	TEAT	UDDR	SC	DOC	CW	FAT	RE	MARB	TEND
47	96	100	24	58	31	51	69	66	76	59	84	56

SCROTAL MEASUREMENT  
**36.5 cm**

**473** LAR NewCastle 473-731  
Birth Date: 4/30/2024

PRODUCTION				
BW	WW	WWRATIO	YWRATIO	ADJ YW
85	726	108	107	881

WT Worth It 81  
WT NewCastle Z241  
MH Dixie Erica 622  
DAM: Upward daughter

CED	BW	WW	YW	YH	MW	MH	Claw	Angle	DMI	FL	PAP	
21	19	64	76	78	78	86	44	79	26	16	90	
HS	HP	CEM	MILK	TEAT	UDDR	SC	DOC	CW	FAT	RE	MARB	TEND
88	33	67	57	61	39	80	8	81	67	91	90	68

\*Heifer bull  
SCROTAL MEASUREMENT  
**38.5 cm**



**473**

**462** LAR Ripper 462-908  
Birth Date: 5/7/2024

PRODUCTION				
BW	WW	WWRATIO	YWRATIO	ADJ YW
85	682	107	106	877

DMM Riptide 2Z  
Reich Ripper 37B  
Reich Pride 68Z  
DAM: Resource daughter

CED	BW	WW	YW	YH	MW	MH	Claw	Angle	DMI	FL	PAP	
34	26	99	83	90	89	98	15	44	25	33	73	
HS	HP	CEM	MILK	TEAT	UDDR	SC	DOC	CW	FAT	RE	MARB	TEND
35	92	76	23	68	38	92	83	90	3	11	30	24

SCROTAL MEASUREMENT  
**37 cm**

**467** LAR Ripper 467-0147  
Birth Date: 5/6/2024

PRODUCTION				
BW	WW	WWRATIO	YWRATIO	ADJ YW
83	644	100	97	801

DMM Riptide 2Z  
Reich Ripper 37B  
Reich Pride 68Z  
MGS: BC Matrix daughter

CED	BW	WW	YW	YH	MW	MH	Claw	Angle	DMI	FL	PAP	
84	43	65	80	69	89	94	3	67	54	84	85	
HS	HP	CEM	MILK	TEAT	UDDR	SC	DOC	CW	FAT	RE	MARB	TEND
96	96	99	38	92	64	80	87	26	9	6	64	13

SCROTAL MEASUREMENT  
**35 cm**

**470** LAR Ripper 470-024  
Birth Date: 5/2/2024

PRODUCTION				
BW	WW	WWRATIO	YWRATIO	ADJ YW
77	594	91	92	761

DMM Riptide 2Z  
Reich Ripper 37B  
Reich Pride 68Z  
DAM: BC Certified daughter

CED	BW	WW	YW	YH	MW	MH	Claw	Angle	DMI	FL	PAP	
10	1	86	91	74	52	77	35	57	20	55	86	
HS	HP	CEM	MILK	TEAT	UDDR	SC	DOC	CW	FAT	RE	MARB	TEND
34	69	43	11	36	21	88	64	89	76	47	29	70

\*Heifer bull  
SCROTAL MEASUREMENT  
**37 cm**

**463** LAR Ripper 463-052  
Birth Date: 4/29/2024

PRODUCTION				
BW	WW	WWRATIO	YWRATIO	ADJ YW
74	660	100	102	842

DMM Riptide 2Z  
Reich Ripper 37B  
Reich Pride 68Z  
DAM: BC Balance daughter

CED	BW	WW	YW	YH	MW	MH	Claw	Angle	DMI	FL	PAP	
45	3	94	98	99	99	97	12	55	10	71	90	
HS	HP	CEM	MILK	TEAT	UDDR	SC	DOC	CW	FAT	RE	MARB	TEND
47	88	48	46	44	24	86	7	97	28	47	73	48

SCROTAL MEASUREMENT  
**37.5 cm**

**468** LAR Ripper 468-Y9132  
Birth Date: 5/11/2024

PRODUCTION				
BW	WW	WWRATIO	YWRATIO	ADJ YW
84	672	104	106	880

DMM Riptide 2Z  
Reich Ripper 37B  
Reich Pride 68Z  
DAM: Resource daughter

CED	BW	WW	YW	YH	MW	MH	Claw	Angle	DMI	FL	PAP	
97	73	48	40	67	27	67	11	94	82	63	65	
HS	HP	CEM	MILK	TEAT	UDDR	SC	DOC	CW	FAT	RE	MARB	TEND
62	47	99	55	100	100	54	17	36	5	19	84	20

SCROTAL MEASUREMENT  
**36.5 cm**

**472** LAR Ripper 472-932  
Birth Date: 5/13/2024

PRODUCTION				
BW	WW	WWRATIO	YWRATIO	ADJ YW
81	536	83	83	694

DMM Riptide 2Z  
Reich Ripper 37B  
Reich Pride 68Z  
DAM: Beaver Creek daughter

CED	BW	WW	YW	YH	MW	MH	Claw	Angle	DMI	FL	PAP	
3	16	95	80	79	95	97	64	92	5	17	16	
HS	HP	CEM	MILK	TEAT	UDDR	SC	DOC	CW	FAT	RE	MARB	TEND
21	4	83	24	80	56	63	96	92	87	77	63	13

\*Heifer bull  
SCROTAL MEASUREMENT  
**37.5 cm**

**474** LAR NewCastle 474-Y9130  
Birth Date: 5/2/2024

PRODUCTION				
BW	WW	WWRATIO	YWRATIO	ADJ YW
78	646	97	103	847

WT Worth It 81  
WT NewCastle Z241  
MH Dixie Erica 622  
DAM: Upward daughter

CED	BW	WW	YW	YH	MW	MH	Claw	Angle	DMI	FL	PAP	
31	33	93	78	81	89	94	13	31	26	68	57	
HS	HP	CEM	MILK	TEAT	UDDR	SC	DOC	CW	FAT	RE	MARB	TEND
45	85	56	50	96	93	84	50	82	71	77	98	93

\*Heifer bull  
SCROTAL MEASUREMENT  
**38 cm**

**476**

**LAR NewCastle 476-541**  
**Birth Date: 4/27/2024**

PRODUCTION				
BW	WW	WWRATIO	YWRATIO	ADJ YW
78	730	107	105	871

WT Worth It 81  
WT NewCastle Z241  
MH Dixie Erica 622  
DAM: Upward daughter

CED	BW	WW	YW	YH	MW	MH	Claw	Angle	DMI	FL	PAP
66	42	75	70	92	76	90	30	3	30	64	67

HS	HP	CEM	MILK	TEAT	UDDR	SC	DOC	CW	FAT	RE	MARB	TEND
20	42	23	69	35	70	80	20	89	36	91	96	70

**SCROTAL MEASUREMENT**  
**39 cm**



**476**

**477**

**LAR NewCastle 477-Y4136**  
**Birth Date: 4/29/2024**

PRODUCTION				
BW	WW	WWRATIO	YWRATIO	ADJ YW
78	708	108	101	841

WT Worth It 81  
WT NewCastle Z241  
MH Dixie Erica 622  
DAM: Upward daughter

CED	BW	WW	YW	YH	MW	MH	Claw	Angle	DMI	FL	PAP
26	13	91	93	97	99	100	33	39	11	58	35

HS	HP	CEM	MILK	TEAT	UDDR	SC	DOC	CW	FAT	RE	MARB	TEND
5	18	74	2	69	82	89	45	74	84	81	87	23

**\*Heifer bull**  
**SCROTAL MEASUREMENT**  
**40.5 cm**



**478**

**LAR NewCastle 478-736**  
**Birth Date: 4/30/2024**

PRODUCTION				
BW	WW	WWRATIO	YWRATIO	ADJ YW
78	670	99	98	814

WT Worth It 81  
WT NewCastle Z241  
MH Dixie Erica 622  
DAM: Upward daughter

CED	BW	WW	YW	YH	MW	MH	Claw	Angle	DMI	FL	PAP
1	1	100	80	98	98	98	21	79	12	27	56

HS	HP	CEM	MILK	TEAT	UDDR	SC	DOC	CW	FAT	RE	MARB	TEND
89	73	95	20	48	58	68	94	92	98	100	86	64

**\*Heifer bull**  
**SCROTAL MEASUREMENT**  
**35.5 cm**

**479**

**LAR NewCastle 479-814**  
**Birth Date: 5/8/2024**

PRODUCTION				
BW	WW	WWRATIO	YWRATIO	ADJ YW
89	644	98	92	762

WT Worth It 81  
WT NewCastle Z241  
MH Dixie Erica 622  
DAM: Upward daughter

CED	BW	WW	YW	YH	MW	MH	Claw	Angle	DMI	FL	PAP
20	5	92	100	99	97	100	16	9	1	42	62

HS	HP	CEM	MILK	TEAT	UDDR	SC	DOC	CW	FAT	RE	MARB	TEND
70	66	84	93	88	87	57	46	97	81	96	97	14

**\*Heifer bull**  
**SCROTAL MEASUREMENT**  
**38.5 cm**



Isaiah 53:5 - "But He was pierced for our transgressions. He was crushed for our iniquities. The punishment that brought us peace was upon Him and by His wounds we are healed."

### ADDITIONAL LAR REFERENCE SIRES

**921** | SAV Resource 1441  
LAR Resource 921-550  
LAR Upward 550

**578** | SAV Final Answer 0035  
LAR Final Answer 578-971  
Rito 616 of 4B20 6807

**243** | OCC Remarkable 937R  
JBob Remarkabull 243  
Hould Juanada 6023  
AAA# 20593701

**014** | SAV Resource 1441  
LAR Resource 014-744  
LAR Matrix 744

**016** | PPA Cortachy Boy 639  
PPA Cortachy Boy 016  
PPA 807 Princess 48  
AAA# 19924380

**919** | PPA Cortachy Boy 639  
PPA Cowboy 919  
PPA 37 Lady 725  
AAA# 19562754

### LAR Herd Bull Sons

**480**

**LAR 480-851**  
**Birth Date: 5/27/2024**

PRODUCTION				
BW	WW	WWRATIO	YWRATIO	ADJ YW
81	590	97	102	844

Sire: LAR 921  
DAM: Comrade daughter

CED	BW	WW	YW	YH	MW	MH	Claw	Angle	DMI	FL	PAP
12	9	77	51	23	32	17	19	8	58	38	37

HS	HP	CEM	MILK	TEAT	UDDR	SC	DOC	CW	FAT	RE	MARB	TEND
17	96	8	25	26	28	53	25	37	60	20	65	55

**\*Heifer bull**  
**SCROTAL MEASUREMENT**  
**37.5 cm**

**485**

**LAR 485-Y79**  
**Birth Date: 5/18/2024**

PRODUCTION				
BW	WW	WWRATIO	YWRATIO	ADJ YW
79	510	91	87	720

Sire: JBob 243  
DAM: RAR Bobcat Bluesky daughter

CED	BW	WW	YW	YH	MW	MH	Claw	Angle	DMI	FL	PAP
4	14	80	65	97	99	100	96	98	39	18	77

HS	HP	CEM	MILK	TEAT	UDDR	SC	DOC	CW	FAT	RE	MARB	TEND
84	77	12	97	10	5	75	90	70	100	56	62	47

**\*Heifer bull**  
**SCROTAL MEASUREMENT**  
**35.5 cm**

**482**

**LAR 482-Y502**  
**Birth Date: 5/29/2024**

PRODUCTION				
BW	WW	WWRATIO	YWRATIO	ADJ YW
79	572	95	94	778

Sire: LAR 014  
DAM: Final Answer daughter

CED	BW	WW	YW	YH	MW	MH	Claw	Angle	DMI	FL	PAP
95	93	53	92	93	55	95	51	15	49	50	97

HS	HP	CEM	MILK	TEAT	UDDR	SC	DOC	CW	FAT	RE	MARB	TEND
89	39	78	83	82	65	51	68	78	47	14	66	80

**SCROTAL MEASUREMENT**  
**43 cm**

**489**

**LAR 489-036**  
**Birth Date: 5/31/2024**

PRODUCTION				
BW	WW	WWRATIO	YWRATIO	ADJ YW
79	560	96	100	833

Sire: LAR 578  
DAM: BC Certified daughter

CED	BW	WW	YW	YH	MW	MH	Claw	Angle	DMI	FL	PAP
2	4	85	90	92	96	99	44	55	16	2	2

HS	HP	CEM	MILK	TEAT	UDDR	SC	DOC	CW	FAT	RE	MARB	TEND
90	25	29	85	16	21	73	80	70	82	46	33	43

**\*Heifer bull**  
**SCROTAL MEASUREMENT**  
**39.5 cm**

**483**

**LAR 483-Y189**  
**Birth Date: 5/1/2024**

PRODUCTION				
BW	WW	WWRATIO	YWRATIO	ADJ YW
76	622	98	97	809

Sire: LAR 578  
DAM: Cortachy Boy 639 daughter

CED	BW	WW	YW	YH	MW	MH	Claw	Angle	DMI	FL	PAP
6	7	100	99	97	96	99	18	86	1	22	1

HS	HP	CEM	MILK	TEAT	UDDR	SC	DOC	CW	FAT	RE	MARB	TEND
100	76	65	97	72	55	38	95	100	61	88	93	35

**\*Heifer bull**  
**SCROTAL MEASUREMENT**  
**41 cm**

**491**

**LAR 491-176**  
**Birth Date: 4/26/2024**

PRODUCTION				
BW	WW	WWRATIO	YWRATIO	ADJ YW
85	652	101	98	809

Sire: LAR 014  
DAM: OCC Zar daughter

CED	BW	WW	YW	YH	MW	MH	Claw	Angle	DMI	FL	PAP
72	64	96	95	100	98	100	26	32	50	47	6

HS	HP	CEM	MILK	TEAT	UDDR	SC	DOC	CW	FAT	RE	MARB	TEND
83	32	60	91	15	8	59	69	91	63	74	93	89

**SCROTAL MEASUREMENT**  
**37 cm**

**492**

**LAR 492-Y235**  
Birth Date: 5/3/2024

PRODUCTION				
BW	WW	WWRATIO	YWRATIO	ADJ YW
85	616	103	105	867

Sire: JBob 243  
DAM: NewCastle daughter

CED	BW	WW	YW	YH	MW	MH	Claw	Angle	DMI	FL	PAP
12	26	63	56	98	71	98	34	65	70	33	75

\*Heifer bull

HS	HP	CEM	MILK	TEAT	UDDR	SC	DOC	CW	FAT	RE	MARB	TEND
54	74	6	82	9	15	90	10	81	91	97	90	25

SCROTAL MEASUREMENT  
**33.5 cm**

**496**

**LAR 496-804**  
Birth Date: 5/25/2024

PRODUCTION				
BW	WW	WWRATIO	YWRATIO	ADJ YW
84	690	116	112	931

Sire: LAR 921  
DAM: Upward daughter

CED	BW	WW	YW	YH	MW	MH	Claw	Angle	DMI	FL	PAP
78	78	61	41	49	52	78	49	7	71	55	60

\*Heifer bull

HS	HP	CEM	MILK	TEAT	UDDR	SC	DOC	CW	FAT	RE	MARB	TEND
50	100	90	100	87	92	65	61	79	81	88	99	97

SCROTAL MEASUREMENT  
**34 cm**

**497**

**LAR 497-Y0106**  
Birth Date: 5/15/2024

PRODUCTION				
BW	WW	WWRATIO	YWRATIO	ADJ YW
84	680	109	105	870

Sire: LAR 578  
DAM: BC Certified daughter

CED	BW	WW	YW	YH	MW	MH	Claw	Angle	DMI	FL	PAP
76	58	60	79	72	71	79	35	49	46	48	7

\*Heifer bull

HS	HP	CEM	MILK	TEAT	UDDR	SC	DOC	CW	FAT	RE	MARB	TEND
90	3	82	91	74	52	48	63	86	86	39	65	92

SCROTAL MEASUREMENT  
**39.5 cm**



**497**

**499**

**LAR 499-2104**  
Birth Date: 4/26/2024

PRODUCTION				
BW	WW	WWRATIO	YWRATIO	ADJ YW
74	624	101	105	871

Sire: PPA 919  
DAM: Beaver Creek daughter

CED	BW	WW	YW	YH	MW	MH	Claw	Angle	DMI	FL	PAP
82	40	61	82	83	75	80	18	69	58	21	92

\*Heifer bull

HS	HP	CEM	MILK	TEAT	UDDR	SC	DOC	CW	FAT	RE	MARB	TEND
33	1	39	46	75	60	34	14	85	100	38	42	44

SCROTAL MEASUREMENT  
**39 cm**



**499**

**4100**

**LAR 4100-738**  
Birth Date: 5/20/2024

PRODUCTION				
BW	WW	WWRATIO	YWRATIO	ADJ YW
79	624	100	109	902

Sire: PPA 016  
DAM: Upward daughter

CED	BW	WW	YW	YH	MW	MH	Claw	Angle	DMI	FL	PAP
36	28	71	52	66	25	25	65	60	67	84	83

\*Heifer bull

HS	HP	CEM	MILK	TEAT	UDDR	SC	DOC	CW	FAT	RE	MARB	TEND
71	68	33	80	11	18	80	89	63	48	38	89	32

SCROTAL MEASUREMENT  
**39.5 cm**



**4100**

**4102**

**LAR 4102-Y915**  
Birth Date: 5/17/2024

PRODUCTION				
BW	WW	WWRATIO	YWRATIO	ADJ YW
80	556	88	90	740

Sire: PPA 016  
DAM: Cortachy Boy 639 daughter

CED	BW	WW	YW	YH	MW	MH	Claw	Angle	DMI	FL	PAP
22	6	81	84	97	25	81	19	25	18	91	76

\*Heifer bull

HS	HP	CEM	MILK	TEAT	UDDR	SC	DOC	CW	FAT	RE	MARB	TEND
93	30	94	100	11	16	52	82	97	69	79	72	43

SCROTAL MEASUREMENT  
**37.5 cm**

**4103**

**LAR 4103-292**  
Birth Date: 6/3/2024

PRODUCTION				
BW	WW	WWRATIO	YWRATIO	ADJ YW
84	670	125	120	992

Sire: JBob 243  
DAM: NewCastle daughter

CED	BW	WW	YW	YH	MW	MH	Claw	Angle	DMI	FL	PAP
18	27	41	62	53	47	68	22	66	44	80	76

\*Heifer bull

HS	HP	CEM	MILK	TEAT	UDDR	SC	DOC	CW	FAT	RE	MARB	TEND
17	67	90	87	8	28	94	80	63	26	43	22	41

SCROTAL MEASUREMENT  
**35 cm**

**4104**

**LAR 4104-758**  
Birth Date: 5/27/2024

PRODUCTION				
BW	WW	WWRATIO	YWRATIO	ADJ YW
84	594	101	105	870

Sire: LAR 014  
DAM: Resource daughter

CED	BW	WW	YW	YH	MW	MH	Claw	Angle	DMI	FL	PAP
80	95	22	72	18	63	40	3	14	71	3	93

\*Heifer bull

HS	HP	CEM	MILK	TEAT	UDDR	SC	DOC	CW	FAT	RE	MARB	TEND
12	28	58	34	42	60	35	26	36	26	47	92	10

SCROTAL MEASUREMENT  
**36.5 cm**



**4104**

**4109**

**LAR 4109-830**  
Birth Date: 5/31/2024

PRODUCTION				
BW	WW	WWRATIO	YWRATIO	ADJ YW
86	550	92	94	784

Sire: LAR 014  
DAM: Resource daughter

CED	BW	WW	YW	YH	MW	MH	Claw	Angle	DMI	FL	PAP
77	74	70	89	75	70	91	42	48	37	11	46

\*Heifer bull

HS	HP	CEM	MILK	TEAT	UDDR	SC	DOC	CW	FAT	RE	MARB	TEND
73	49	41	98	68	76	99	4	66	80	61	60	5

SCROTAL MEASUREMENT  
**37.5 cm**



**4109**

**4110**

**LAR 4110-Y236**  
Birth Date: 5/23/2024

PRODUCTION				
BW	WW	WWRATIO	YWRATIO	ADJ YW
79	560	101	106	875

Sire: JBob 243  
DAM: NewCastle daughter

CED	BW	WW	YW	YH	MW	MH	Claw	Angle	DMI	FL	PAP
43	4	96	93	93	88	97	90	55	9	81	6

\*Heifer bull

HS	HP	CEM	MILK	TEAT	UDDR	SC	DOC	CW	FAT	RE	MARB	TEND
63	73	79	97	31	42	71	85	100	56	99	95	95

SCROTAL MEASUREMENT  
**37.5 cm**

**4112**

**LAR 4112-Y932**  
Birth Date: 5/13/2024

PRODUCTION				
BW	WW	WWRATIO	YWRATIO	ADJ YW
89	674	108	113	913

Sire: LAR 997  
DAM: Cortachy Boy 624 daughter

CED	BW	WW	YW	YH	MW	MH	Claw	Angle	DMI	FL	PAP
54	52	59	73	51	89	94	2	70	78	65	24

\*Heifer bull

HS	HP	CEM	MILK	TEAT	UDDR	SC	DOC	CW	FAT	RE	MARB	TEND
95	36	88	51	84	76	47	48	86	90	30	90	41

SCROTAL MEASUREMENT  
**41.5 cm**

**4113** LAR 4113-Y187  
Birth Date: 6/6/2024

PRODUCTION					Sire: LAR 578
BW	WW	WWRATIO	YWRATIO	ADJ YW	DAM: Cortachy Boy 639 daughter
79	484	89	89	738	

CED	BW	WW	YW	YH	MW	MH	Claw	Angle	DMI	FL	PAP	*Heifer bull
9	25	84	84	91	82	88	33	67	5	63	22	SCROTAL MEASUREMENT <b>36 cm</b>
HS	HP	CEM	MILK	TEAT	UDDR	SC	DOC	CW	FAT	RE	MARB	
33	93	85	89	10	5	94	49	89	94	74	77	50

**4118** LAR 4118-Y237  
Birth Date: 4/26/2024

PRODUCTION					Sire: PPA 919
BW	WW	WWRATIO	YWRATIO	ADJ YW	MGS: BC Matrix daughter
68	600	98	92	765	

CED	BW	WW	YW	YH	MW	MH	Claw	Angle	DMI	FL	PAP	*Heifer bull
13	9	91	99	91	93	85	78	92	3	36	86	SCROTAL MEASUREMENT <b>40 cm</b>
HS	HP	CEM	MILK	TEAT	UDDR	SC	DOC	CW	FAT	RE	MARB	
92	7	5	95	5	18	41	68	96	83	99	94	78

**4119** LAR 4119-136  
Birth Date: 5/25/2024

PRODUCTION					Sire: LAR 921
BW	WW	WWRATIO	YWRATIO	ADJ YW	DAM: BC Balance daughter
75	644	109	101	838	

CED	BW	WW	YW	YH	MW	MH	Claw	Angle	DMI	FL	PAP	*Heifer bull
47	48	57	54	79	66	61	26	62	65	36	21	SCROTAL MEASUREMENT <b>38 cm</b>
HS	HP	CEM	MILK	TEAT	UDDR	SC	DOC	CW	FAT	RE	MARB	
11	46	98	9	34	45	18	32	73	78	39	85	49

John 16:33 - "I have told you these things, so that in Me you may have peace. In this world you will have trouble, but take heart! I have overcome the world."



**4121** LAR 4121-259  
Birth Date: 4/27/2024

PRODUCTION					Sire: PPA 919
BW	WW	WWRATIO	YWRATIO	ADJ YW	DAM: LAR 580 daughter
75	626	95	97	806	

CED	BW	WW	YW	YH	MW	MH	Claw	Angle	DMI	FL	PAP	*Heifer bull
3	2	57	84	78	81	93	51	52	22	53	92	SCROTAL MEASUREMENT <b>38 cm</b>
HS	HP	CEM	MILK	TEAT	UDDR	SC	DOC	CW	FAT	RE	MARB	
81	21	53	94	31	70	94	43	76	100	99	76	50



**4122** LAR 4122-863  
Birth Date: 6/1/2024

PRODUCTION					Sire: PPA 016
BW	WW	WWRATIO	YWRATIO	ADJ YW	DAM: Dash daughter
78	590	100	98	812	

CED	BW	WW	YW	YH	MW	MH	Claw	Angle	DMI	FL	PAP	*Heifer bull
9	6	98	94	95	68	66	10	24	29	94	71	SCROTAL MEASUREMENT <b>39 cm</b>
HS	HP	CEM	MILK	TEAT	UDDR	SC	DOC	CW	FAT	RE	MARB	
66	95	77	77	31	16	93	87	95	78	72	72	9

**4123** LAR 4123-108  
Birth Date: 5/22/2024

PRODUCTION					Sire: LAR 014
BW	WW	WWRATIO	YWRATIO	ADJ YW	DAM: BC Certified daughter
77	550	94	92	766	

CED	BW	WW	YW	YH	MW	MH	Claw	Angle	DMI	FL	PAP	*Heifer bull
64	44	81	66	91	73	96	37	50	76	27	56	SCROTAL MEASUREMENT <b>40 cm</b>
HS	HP	CEM	MILK	TEAT	UDDR	SC	DOC	CW	FAT	RE	MARB	
29	52	81	53	58	59	27	44	79	99	88	85	38

Term	Description	Percentile Rank	Observation
Calving Ease Direct (CED)	Describes differences in genetic merit for the likelihood of unassisted births in first-calf heifers, expressed as a trait of the progeny.	1%	More unassisted calvings
Birth Weight (BW)	Quantifies genetic differences in birth weight, with lower and moderate values and ranks generally desired for ease of calving.	1%	Lighter
Weaning Weight (WW)	Measures difference in genetic merit for adjusted 205-day weaning weight	1%	Heavier
Yearling Weight (YW)	Indicates differences in breeding value for adjusted 365-day weight	1%	Heavier
Yearling Height (YH)	Describes genetic differences in adjusted 365-day hip height	1%	More hip height
Mature Weight (MW)	Quantifies differences in genetic merit for mature cow weight at a constant body condition	1%	Larger cow weight
Mature Height (MH)	Measures genetic variation in mature cow height	1%	More cow height
Foot Score Claw (FSClaw)	Indicates a sire will produce progeny with a more ideal claw set defined as toes being symmetrical, evenly, and appropriately spaced	1%	More ideal claw set
Foot Score Angle (FSAngle)	Indicates a sire will produce progeny with a more ideal foot angle defined as a 45 degree angle at the pastern joint with appropriate length and heel depth	1%	More ideal foot angle
Dry Matter Intake (DMI)	Quantifies genetic differences for feed intake while on feedlot finishing rations	1%	Eat less
Functional Longevity (FL)	Expressed in number of calves, is a predictor of the number of calves a sire's daughters are predicted to produce by 6 years of age compared to that of other sires' daughters	1%	More calves produced
Pulmonary Artrial Pressure (PAP)	Predicts progeny with lower pulmonary arterial pressure which decreases the risk of contracting high altitude disease (HAD) and right sided congestive heart failure	1%	Lower pulmonary arterial pressure
Hair Shed (HS)	Indicates the favorability of progeny who shed their winter hair coat earlier in the spring (putting less energy into thermoregulation)	1%	Earlier hair shed
Heifer Pregnancy (HP)	Predicts the probability of ability of heifers to become pregnant	1%	Increased pregnancy probability
Calving Ease Maternal (CEM)	Indicates differences in genetic merit for the likelihood of unassisted births in first-calf heifers, expressed as a trait of the heifer.	1%	More unassisted calvings
Milking Ability (MILK)	Evaluates differences in genetic merit for the maternal component of calf weaning weight, predominantly due to milking ability of dams (or daughters).	1%	More maternal milk
Teat Size (TEAT)	Expressed in units of teat size score, indicating a sire will produce daughters with smaller teat size	1%	Smaller teat size
Udder Suspension (UDDR)	Expressed in units of udder suspension score, indicating a sire will produce daughters with tighter udder suspension	1%	Tighter udder suspension
Scrotal Circumference (SC)	Describes genetic differences in age at puberty as indicated by adjusted yearling scrotal circumference.	1%	Larger size
Docility (DOC)	Quantifies genetic differences in the probability of acceptable (calm) versus unacceptable (wild) temperament.	1%	More docile
Carcass Weight (CW)	Measures differences in breeding value for pounds of carcass weight at a constant age.	1%	Heavier
Fat Thickness (FAT)	Communicates genetic differences in fat thickness measured adjacent to the ribeye between the 12th and 13th rib, at a constant age.	1%	Leaner
Ribeye (RE)	Describes genetic variation in carcass muscularity as measured by ribeye area between the 12th and 13th rib, at a constant age.	1%	Larger area
Marbling Score (MARB)	Quantifies genetic differences in USDA marbling scores at a constant age	1%	Greater marbling
Tenderness (TEND)	Evaluates differences in genetic merit for tenderness based on the amount of shear force required to slice through cooked steak samples.	1%	More tender



# Zoetis HD50K Test Results

Percent ranks (1-100) are provided by the American Angus Association to assist in establishing direction of interest for each trait.  
Ranks are based on 1,831,477 animals as of 06/27/2025.

Tag #	Calving Ease		Growth & Mature Cow Size					Foot Score		Efficiency				Maternal & Temperament						Carcass			Quality		
	CED	BW	WW	YW	YH	MW	MH	Claw	Angle	DMI	FL	PAP	HS	HP	CEM	MLK	TEAT	UDDR	SC	DOC	CW	FAT	RE	MARB	TEND
401	62	82	60	83	97	79	93	33	97	26	77	42	53	81	89	95	28	65	85	78	88	73	48	84	55
403	33	47	77	89	100	79	97	54	90	10	32	32	60	90	98	100	46	73	60	60	95	27	31	79	60
404	57	81	79	94	78	93	97	21	97	20	43	73	63	40	94	93	27	63	92	83	94	48	57	89	70
405	21	49	78	94	98	78	87	39	96	28	67	56	9	91	59	57	48	34	99	90	96	30	77	91	83
407	54	64	23	67	39	35	67	13	83	87	89	84	37	35	73	87	33	24	60	87	52	35	53	95	96
408	10	5	100	100	84	100	100	6	33	6	42	3	87	13	92	80	77	60	63	65	97	97	88	94	57
409	23	34	93	99	93	100	100	7	27	27	52	27	66	44	25	44	79	94	74	26	99	100	98	65	34
410	3	25	98	93	67	91	87	43	100	11	34	6	78	72	43	33	28	32	17	14	97	100	100	88	63
412	31	7	54	74	45	22	62	9	26	63	15	38	79	30	99	80	73	67	82	32	43	100	9	81	17
413	33	50	95	96	96	99	100	25	66	4	84	8	64	69	40	98	61	77	57	50	100	99	98	85	69
414	10	1	98	100	55	70	79	12	71	9	29	49	49	1	98	59	93	73	2	30	97	88	82	95	13
415	4	2	91	99	76	91	93	76	82	10	48	27	75	62	24	62	92	92	6	40	99	94	100	95	48
416	14	5	95	98	98	95	100	68	64	36	15	16	61	11	26	73	31	15	5	38	83	62	84	74	23
417	3	2	82	98	44	69	82	61	98	41	49	33	61	4	51	39	80	76	53	78	86	83	72	86	77
418	14	12	57	99	68	73	84	23	29	15	21	4	33	56	52	59	92	80	96	56	86	6	64	62	79
419	4	3	79	54	21	19	30	39	92	94	71	3	64	5	39	32	39	41	5	3	87	82	74	30	48
420	21	11	58	70	36	45	81	34	83	45	40	82	8	2	85	54	43	32	2	21	81	93	98	85	7
421	3	1	100	98	98	98	100	17	48	25	27	15	74	27	38	49	41	39	19	20	99	81	92	63	33
422	32	19	61	67	86	42	85	52	66	73	46	86	36	87	53	99	33	11	12	12	73	98	70	68	93
423	22	35	96	51	77	70	86	32	71	54	80	38	81	41	66	74	51	46	8	51	96	94	84	83	19
424	15	10	88	86	96	83	100	12	78	42	91	24	48	21	16	79	27	9	15	23	98	84	92	92	62
426	6	2	66	80	23	47	67	1	29	91	37	38	69	26	33	86	31	16	20	1	51	94	65	28	12
427	2	2	79	91	84	88	95	43	59	36	49	89	74	55	78	19	73	43	39	14	92	96	84	84	38
428	2	2	95	56	82	90	91	26	67	56	16	11	80	1	86	4	43	36	16	7	80	97	90	68	19
429	7	3	91	88	86	78	88	3	17	41	65	19	25	28	13	62	21	19	36	24	88	97	48	92	68
430	64	39	72	75	61	98	90	29	78	63	78	62	80	4	58	32	59	69	8	71	79	68	94	100	53
433	3	8	87	89	77	76	70	2	69	15	46	16	93	39	29	74	25	57	6	57	97	91	99	77	51
434	12	4	95	90	44	79	92	10	55	14	11	21	27	31	81	59	49	53	2	66	94	60	64	95	60
435	18	15	72	47	89	65	97	11	37	90	42	1	62	62	40	46	51	37	42	36	72	100	63	87	33
436	2	5	93	94	97	97	99	4	18	18	8	69	93	6	82	77	32	3	89	53	93	74	92	96	50
437	1	1	99	97	80	91	91	47	87	37	6	11	70	23	34	95	59	35	57	17	97	98	97	38	63
438	16	8	79	80	55	77	83	26	43	27	45	27	85	27	32	29	88	53	2	23	87	84	54	66	65
439	6	8	96	97	68	89	92	53	70	52	19	37	86	20	35	80	19	31	6	68	91	100	96	84	57
440	2	1	98	100	88	99	100	11	73	1	76	27	92	50	44	35	49	22	68	51	98	99	53	97	13
441	26	10	51	75	26	71	23	73	76	29	24	17	14	29	61	31	20	38	93	32	34	47	18	74	48
442	60	38	84	65	65	90	87	55	56	13	41	75	47	96	100	24	58	31	51	69	66	76	59	84	56
443	74	55	11	11	49	10	46	25	68	98	36	11	93	85	98	86	20	47	41	10	11	30	28	86	65
444	11	12	88	54	97	92	99	2	59	93	72	43	62	89	79	72	60	91	70	53	78	89	52	73	49
445	35	35	98	84	85	98	98	42	73	4	78	12	78	52	59	95	79	72	67	46	92	65	70	59	56
446	54	78	82	30	55	75	62	10	49	68	78	15	91	18	89	76	36	63	28	55	84	62	75	98	61
448	34	37	91	64	91	86	96	5	36	58	14	26	90	36	100	23	5	4	58	85	64	36	19	83	66
449	93	88	14	31	50	8	45	21	74	82	61	72	91	86	97	92	87	80	5	75	33	32	22	96	22
450	54	45	54	68	79	81	95	4	36	85	59	13	57	21	84	64	93	79	31	37	55	16	8	91	55
451	64	48	71	95	71	87	92	39	65	14	44	64	64	50	95	33	97	83	100	16	89	18	39	50	78
452	48	40	89	94	80	98	98	2	72	6	87	81	27	95	91	14	86	66	86	32	89	6	28	61	69

Tag #	Calving Ease		Growth & Mature Cow Size					Foot Score		Efficiency				Maternal & Temperament						Carcass			Quality		
	CED	BW	WW	YW	YH	MW	MH	Claw	Angle	DMI	FL	PAP	HS	HP	CEM	MLK	TEAT	UDDR	SC	DOC	CW	FAT	RE	MARB	TEND
454	26	6	75	90	91	96	96	25	66	9	83	77	44	60	87	1	61	27	82	28	46	10	3	81	60
455	81	41	39	41	55	55	71	14	4	59	91	97	36	13	99	52	49	40	85	14	23	21	6	15	75
456	90	69	48	94	90	92	96	1	12	47	40	53	52	51	52	24	64	40	52	49	58	35	1	70	63
457	96	50	35	68	78	79	93	18	54	37	68	69	24	80	96	62	100	100	78	59	64	25	17	37	72
458	86	81	54	77	86	55	78	2	6	39	86	99	10	34	70	100	78	44	93	55	74	12	4	25	59
459	17	17	80	60	74	47	73	42	70	80	78	61	33	38	93	20	67	39	91	37	81	70	32	17	80
461	89	41	55	94	63	72	69	8	18	34	54	77	26	76	23	84	98	82	77	11	76	5	6	74	50
462	34	26	99	83	90	89	98	15	44	25	33	73	35	92	76	23	68	38	92	83	90	3	11	30	24
463	45	3	94	98	99	99	97	12	55	10	71	90	47	88	48	46	44	24	86	7	97	28	47	73	48
464	41	24	81	91	41	67	75	13	46	27	15	95	47	72	93	21	87	52	83	70	85	16	36	72	51
466	45	40	62	96	76	81	76	4	67	46	65	87	90	91	46	43	71	49	51	71	80	42	1	73	71
467	84	43	65	80	69	89	94	3	67	54	84	85	96	96	99	38	92	64	80	87	26	9	6	64	13
468	97	73	48	40	67	27	67	11	84	82	63	65	62	47	99	55	100	100	54	17	36	5	19	84	20
469	92	74	75	80	76	82	96	11	88	64	97	78	83	37	88	14	99	98	57	52	61	76	16	11	58
470	10	1	86	91	74	52	77	35	57	20	55	86	34	69	43	11	36	21	88	64	89	76	47	29	70
472	3	16	95	80	79	95	97	64	92	5	17	16	21	4	83	24	80	56	63	96	92	87	77	63	13
473	21	19	64	76	78	78	86	44	79	26	16	90	88												

**LADUE ANGLUS RANCH**  
KENT & JANET LADUE, BRIAN LADUE  
14478 RABBIT CREEK ROAD  
MEADOW, SD 57644  
**605-788-2969**  
WWW.LADUEANGUSRANCH.COM

Presorted  
1st Class  
US Postage  
Paid  
Permit #35  
Pierre, SD



**JOIN US AT THE SALE FACILITY IN MEADOW, SD ON  
THURSDAY, APRIL 16, 2026 AT 1PM MT**

