

30+ Years of Balance without Compromise



A **SNOWSHOE**
CATTLE COMPANY
SNOWSHOECATTLE.COM

Annual Bull Sale—Monday, March 22, 2021

Arthur, NE | 1 PM (MDT)

Selling 60 Polled Hereford Bulls

Herd Sire, 2-Year-Olds, 18-Month Olds & Yearlings

Plus 12 Registered Hereford and 12 F1 Baldy Open Heifers

Online Bidding—LiveAuctions.TV





Annual Bull Sale
Monday, March 22, 2021

At the Ranch Arthur, NE

Sale Day Schedule

Monday, March 22, 2021

Noon — Complimentary Lunch

1:00 PM (MDT) — Sale

Visitors are always welcome!

Welcome,

It has been our mission to build a cow herd that is balanced in all traits. With this goal in mind, we have developed strong cow families that can perform in a multitude of conditions, provide a growthy calf, and produce a highly marketable carcass. For over 30 years we have been meticulous in our genetic selection and culling, have employed ultra-sound to determine carcass merit, and have been insistent on excellence in phenotype. All of this has been with one goal in mind: Balance without Compromise.



Bernie & Stacie Buzanowski

We realize that a bull purchase is an investment in the future of your business and believe these bulls are worthy of such consideration. We welcome you to inspect our offering with a critical eye. These bulls are backed with a history of performing in variety of environments; from rugged plains to mountain altitudes over 6000 feet, these cattle adapt and perform.

New to our sale this year is a selection of registered open heifers from the core of our herd. The strength of our cow families is evident in their shared genetics. They come from proven maternal performance and we are confident in their ability to do the same. We are also pleased to offer a group of Baldy heifers from a long time customer, sired by Snowshoe Bulls. They are a prime example of the benefits our bulls can provide to the commercial cattleman.

We hope that you will join us Monday, March 22, 2021 at the ranch and look forward to seeing you.

Sincerely,

Bernie & Stacie Buzanowski





Annual Bull Sale
Monday, March 22, 2021

At the Ranch Arthur, NE

Selling 60 Bulls & 24 Females

Bulls Sell in Catalog Order

Bulls	Females
1 Herd Sire	12 Registered Open Heifers
3 Coming 2-Year Olds	from the Heart of our
9 Fall 18-Month Olds	Replacements
48 Yearlings	12 Fancy F1 Baldy Heifers
	Sired by Snowshoe Bulls

Sale Location

Snowshoe Cattle Company

GPS: 194 Broken Axle Road, Keystone, NE

*The ranch is located between Ogallala and Arthur,
just off Hwy 61 at mile marker 104.*

Sale Contacts

Bernie & Stacie Buzanowski

H: 308-726-2138

C: 406-855-8288

Austin Buzanowski 406-839-1255, Rachael Buzanowski 406-647-5233

Sale Staff

Alex Acheson, American Hereford Association	(785) 366-1185
Jay Nordhausen, Ogallala Livestock Auction	(308) 289-1548
Alan Sears, Western Ag Reporter	(970) 396-7521
Drew Feller, Fence Post/Tri-State Livestock	(402) 841-4215
Aaron Friedt, The Livestock Link	(701) 590-9597
Blake Tucker, Superior Livestock	(308) 660-3963

Acknowledgements

David Aborn, Image Livestock Service, Carcass Ultrasound

Can't Join Us?

Watch and Bid live on LiveAuctions.TV

Register prior to sale day.



Questions?

Call 817-725-859

Terms & Conditions

Terms & Conditions: Each animal will be sold to the highest bidder. The auctioneer will settle any disputes from the auction block. Terms of sale are cash. Announced changes in catalog information sale day take precedence over printed materials. All cattle are the buyer's property as soon as sold. Insurance on your purchase is recommended. Any person attending the sale does so at their own risk. Neither the owners, nor any person connected with the sale, assumes any liability, legal or otherwise. Registration papers will be transferred upon request.

Internet Bidding: If you are unable to join us in person, bidding will be available through LiveAuctions.tv

Guarantee: Every animal in this sale is to the best of our knowledge, free from disease or defect. Any known defects will be announced or published prior to purchase. All animals are guaranteed breeders. All bulls selling for \$3000 or more will be guaranteed for one full breeding season. Breeding season is defined as the 90-day period following the first turnout of the bulls. 100% of the original purchase value of the injured bull, minus full salvage value, will be given as credit in a future sale or toward a replacement bull if one is available. All injured bulls must be diagnosed by a veterinarian with a copy of the veterinarian's diagnosis provided to Snowshoe Cattle. All claims must be made by October 1, 2021. Injury resulting in death of a bull will not be the responsibility of the Seller. This is an insurable risk that the purchaser can obtain coverage through a livestock insurance provider.

Health: Health of this herd is excellent. All bulls selling have passed a breeding soundness exam. All bulls have been vaccinated at branding with One Shot Ultra BVD, Inforce 3 and Vision 7; at pre-conditioning and weaning with Bovi-Shield Gold 5 and Vision 7. In addition, they have been dewormed at branding with an injectable and at weaning with Safeguard drench. All bulls will be poured again prior to sale day. Individual health papers will be furnished for shipment anywhere in the U.S. Due to variations in each state's health regulations for bulls leaving Nebraska, not all bulls will be able to get a Health Certificate to go to every state the day of sale.

Feeding Program: The bulls were started on feed at weaning in October and are not creep fed. They have been on a high roughage ration with free choice grass hay. The bulls have been developed in a pasture with ample space to maintain health and encourage good feet and legs. The 2-year-olds and Fall Yearlings summered on Sandhills pasture with free choice mineral and grass. With this program we have been able to grow the bulls in good shape without excess fat and deliver them to our customers ready for breeding.

Delivery: Free delivery within 300 miles.

Hereford Advantage



Increase added marketing power to your feeder cattle.

The American Hereford Association (AHA) launched a program that will bring recognition to calves sired by a Hereford bull battery that ranks in the top 50% for the Certified Hereford Beef Index (\$CHB).

\$CHB is a terminal sire index that is built around Hereford bulls mated to mature commercial Angus cows. This index has significant weight on Carcass Weight, Average Daily Gain, Dry Matter Intake, Marbling, Ribeye Area and Calving Ease.

The Maternal Advantage



The Maternal Advantage program seeks the value added by using a Hereford bull on British-based or Brahman-based cows. The Hereford cross generates females with added longevity, more docility, increased fertility and more profit per year.



Premium Red Baldy

The Premium Red Baldy is a tagging program designed to take advantage of hybrid vigor by maximizing the best traits of both Hereford and Red Angus, providing commercial producers with premium replacement females. Premium Red Baldy uses genetics supported by the only two beef breed associations backed by whole herd reporting.

Cattlemen can take advantage of both programs and reap the benefits offered by the AHA: access to a sire EPD summary, added market exposure, replacement selection tools, genetic improvement tools and access to AHA resources, marketing and staff.

What is the Significance of Ultrasound Data?

Adj. REA – Each bull’s ribeye area is measured in square inches and adjusted to 365 days of age. REA is used in the calculation of yield grade.

Adj. %IMF – This measurement is taken across the 11th, 12th and 13th ribs, similar to the measurement taken of a ribbed carcass when determining USDA quality grade. The percent intramuscular fat (marbling) is adjusted to 365 days of age. Note that the testosterone levels in bulls will lower their marbling by one percent compared to their steer and heifer mates. A bull with a 3 to 4% IMF will produce offspring displaying a marbling score a full percentage point higher likely making the choice grade. (source: David Aborn, Image Livestock Service) This can also be useful in determining the retention of replacement females.

Adj. Backfat – This is the backfat, also referred to as rib fat, measured in inches and adjusted to 365 days of age. Backfat thickness is directly related to the carcass yield grade.

Rib Eye/cwt – This is the adjusted REA divided by the hundred weight of the bull. We strive to produce bulls with a minimum ratio of 1.1

More Ribeye, Less Rib Fat, and competitive IMF – your Snowshoe sired calves will meet the demand of the industry leading programs such as CHB and CAB.

Angus is largely considered the leader for carcass data, and the standard for comparison for marbling in US beef cattle. Below is the 2020 adjusted measurement averages for live-animal ultrasound measures of Angus bulls.

Angus Averages:

- » Adj REA 12.61 Adj.
- » IMF% 3.84
- » Adj. Fat 0.28

(source: American Angus Association)

Snowshoe Bull Offering Averages:

- » **Adj REA 13.79**
- » **Adj. IMF% 3.81**
- » **Adj. Fat 0.26**

By comparison, the 2021 offering of Snowshoe Cattle Polled Hereford bulls is highly competitive to the “yard stick” for the industry!



Capture all of the benefits of Heterosis by using a Snowshoe Hereford Bull on Angus cows and reap the extra paycheck on added pounds at weaning plus have the high quality carcass demanded by Program driven buyers.

*With recent industry news reporting that there is a consumer shift from Select to Choice beef, the demand for cattle with the ability to marble is very real. At Snowshoe Cattle, we are making our genetic decisions with attention to detail when it comes to carcass quality. We maintain our diligence in developing a balance in all traits: correctness in phenotype, thickness, udder quality, mothering ability, and the ability to perform in a rugged Western climate. The bulls in this offering will provide this **balance, without compromise.***

Carcass EPDs on the yearling cattle are not updated at press time to reflect the newly received scan data.

Herd & Reference Sire



40E

40E **A** REG: 43783931 DOB: 1/30/17 Homozygous Polled
JDH 21Z VICTOR 33Z 40E ET



TH 122 71I VICTOR 719T
JDH VICTOR 719T 33Z ET
 JDH MS YANKEE 11U ET

THM DURANGO 4037
JDH MS DURANGO 4037 21Z
 AH JDH WRANGLER QUEEN 22T ET

DRF JWR PRINCE VICTOR 71I
 KBCR 19D DOMINETTE 122
 AH YANKEE 10S
 JDF MS ISAACS 075 60N
 CS BOOMER 29F
 THM 7085 VICTRA 9036
 JDH 15 WRANGLER 25L
 AH MS LADY QUEEN 14L

Pigmentation		
RE	LE	SC
80	100	100
Act BW		90
Adj WW		747
Adj YW		1114

CED	BW	WW	YW	SC	SCF	Milk	Fat	REA	Marb	BMI	CHB
2.1	2.0	57	91	0.8	20.8	28	0.024	0.40	0.11	431	130



- » We selected Vic because of his balance. An impressive son of 33Z, he is a combination package for calving ease, cow making and growth. He has proven to be a reliable calving ease sire with excellent results on heifers. His calves are thrifty at birth and are above the curve on growth. Vic delivers added length of body and hip while maintaining ample depth of rib. He has given us highly marketable bulls and replacement quality females.
- » We are offering 17 sons and 4 daughters of Vic in the sale. We have had 74 calves to date out of Vic with an average birth weight of 76 lbs. He has definitely earned his way and will do the same in his new herd.
- » Offering full possession and ½ revenue sharing semen interest. Included are 75 units of semen. We will continue to utilize Vic in our program via AI. Owned with Delaney Herefords.
- » Top 15% for Carcass Weight (CW), BMI, CHB; 20% Sustained Cow Fertility (SCF); 25% Milk



Snowshoe 40E Lady F51 H53 — daughter to 40E.
 She sells sale day.



Snowshoe 40E Viktor F71 50H — son to 40E.
 He sells sale day.



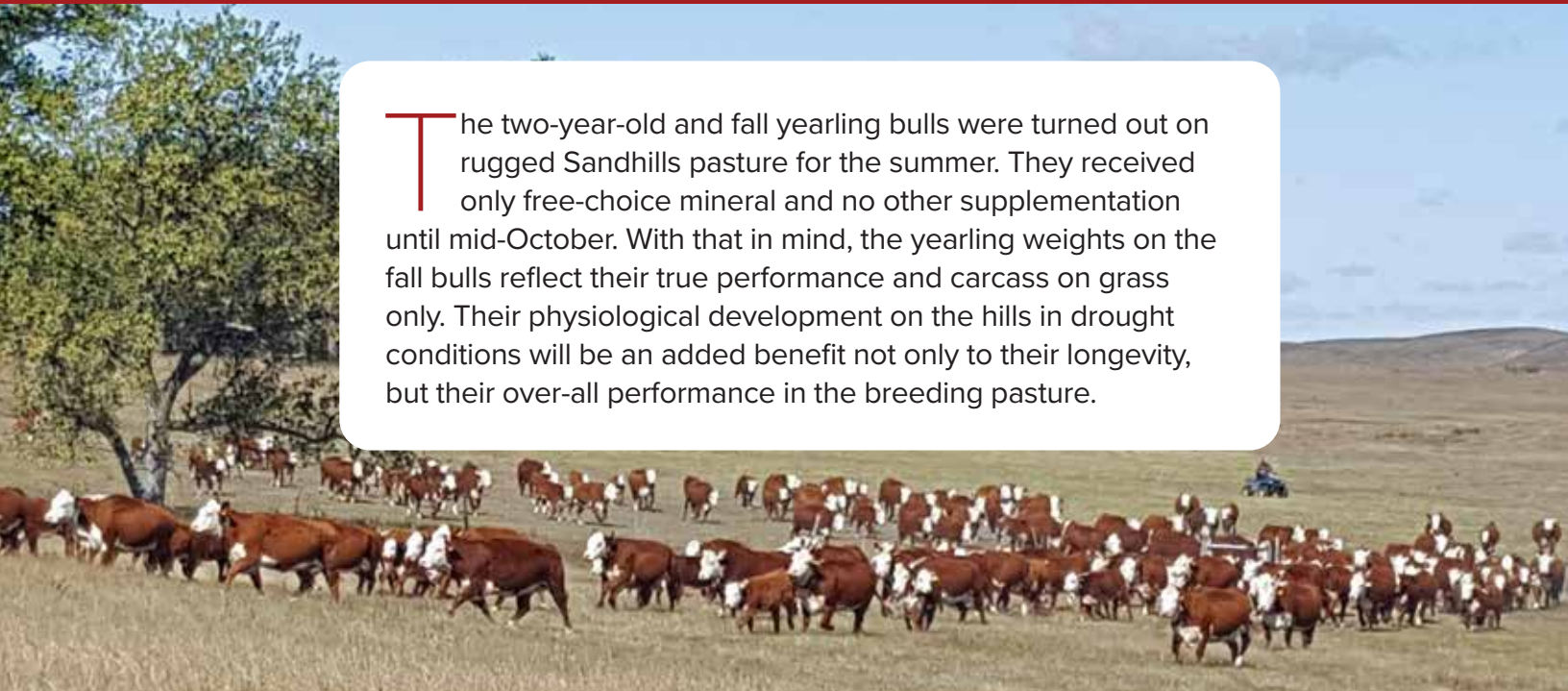
JDH MS Durango 4037 21Z — Dam of 40E



Snowshoe 40E Viktor E73 88H — son to 40E.
 He sells sale day.

Two-Year-Old & Fall Bulls

The two-year-old and fall yearling bulls were turned out on rugged Sandhills pasture for the summer. They received only free-choice mineral and no other supplementation until mid-October. With that in mind, the yearling weights on the fall bulls reflect their true performance and carcass on grass only. Their physiological development on the hills in drought conditions will be an added benefit not only to their longevity, but their over-all performance in the breeding pasture.



64G REG: 44111407 DOB: 3/13/19 POLLED
SNOWSHOE BLUEPRINT A28 64G

R LEADER 6964
BOYD 31Z BLUEPRINT 6153
 NJW 91H 100W RITA 31Z ET

TH 75J 243R BAILOUT 144U ET
SNOWSHOE 144U SERENA T44 A28ET
 SNOWSHOE P606 SERENA T44 ET

HYALITE ON TARGET 936
 R MISS REVOLUTION 1009
 NJW 73S M326 TRUST 100W ET
 REMITALL RITA 91H

TH SHR 605 57G BISMARCK 243R ET
 KB 615C NICKY 75J
 PW VICTOR BOOMER P606
 DRF SELENA S133 K6

Pigmentation		
RE	LE	SC
0	100	100
Act BW		84
Adj WW		536
Adj YW		1076

CED	BW	WW	YW	SC	SCF	Milk	Fat	REA	Marb	BMI	CHB
2.0	3.0	55	88	0.8	17.8	26	0.034	0.33	-0.03	363	96

Ultrasound	
Adj REA	REA/Wt
12.41	1.18
Adj Marb	Adj Fat
3.34	0.27

- » An exciting herd sire prospect, with outstanding muscle expression, smooth front end, and fluid structure.
- » Dam displays a near perfect udder and a long history of maternal performance
- » WR 104; Top 5% Udder; top 10% Teat; top 15% for DMI



Snowshoe P606 Serena T44 — Grandam to 64G, 03H, 100H and H61

Two-Year-Old Bulls



79G **A** REG: 44111850 DOB: 3/19/19 HORNED
SNOWSHOE BENCHMARK D40 79G

TH 403A 475Z PIONEER 358C ET TH 89T 755T STOCKMAN 475Z
 TH 71U 17Y RITA 403A
TH 506B 358C BENCHMARK 531E ET
 TH 512X 145Y DOMINETE 506B ET
 FTF PROSPECTOR 145Y
 TH 122 71I DOMINETTE 512X ET
 MSU TCF REVOLUTION 4R
 KCF MISS PROFICIENT U201
 KCF BENNETT REVOLUTION X51
SNOWSHOE X51 KATIE T10 D40 ET
 SNOWSHOE P606 PEONY T10 ET
 PW VICTOR BOOMER P606
 SNOWSHOE D03 PILAR 3M

Pigmentation		
RE	LE	SC
25	100	100
Act BW		
90		
Adj WW		
521		
Adj YW		
1148		

CED	BW	WW	YW	SC	SCF	Milk	Fat	REA	Marb	BMI	CHB
-1.7	5.1	71	113	1.3	14.5	25	0.034	0.75	0.31	353	146

Ultrasound	
Adj REA	REA/Wt
15.16	1.46
Adj Marb	Adj Fat
4.38	0.32

- » Wow! This young bull offers performance, carcass, maternal excellence and style! He has a beautiful front end, smooth shoulder and loads of capacity with built in carcass performance. He is flawless in his stride and catches the eye immediately.
- » 79G is out of an own daughter of T10, a legacy cow in our program, earned Dam of Distinction status in the Hereford breed and represents six generations of our breeding.
- » Horned
- » Top 5% for WW, YW, CW, \$CHB; top 10% for Marb; top 15% SC; top 20% REA and Udder Quality; top 25% Teat

Snowshoe P606 Peony T10 — Grandam to 79G, 121G, 63H, H76, and H79



111G **A** REG: 44111428 DOB: 5/11/19 POLLED
SNOWSHOE 40E BENTON C76 111G

JDH VICTOR 719T 33Z ET TH 122 71I VICTOR 719T
JDH 21Z VICTOR 33Z 40E ET JDH MS YANKEE 11U ET
 JDH MS DURANGO 4037 21Z THM DURANGO 4037
 AH JDH WRANGLER QUEEN 22T ET
 SNOWSHOE 31U TUFF 31S 42Z KCL 59M JOOMLA 65K 31U
SNOWSHOE 42Z MYSTIC Y22 C76 SNOWSHOE 236G TORI 31S ET
 SNOWSHOE 719T MYSTIC Y22 TH 122 71I VICTOR 719T
 SNOWSHOE 64R MYSTIC W30

Pigmentation		
RE	LE	SC
100	100	100
Act BW		
84		
Adj WW		
509		
Adj YW		
1032		

CED	BW	WW	YW	SC	SCF	Milk	Fat	REA	Marb	BMI	CHB
-2.3	2.7	56	87	0.6	16.4	28	-0.016	0.51	0.00	363	120

Ultrasound	
Adj REA	REA/Wt
14.1	1.56
Adj Marb	Adj Fat
3.42	0.21

- » May born coming 2-year old
- » Out of a beautiful uddered Tuff daughter
- » Offers length of body, a front end built for calving ease
- » Great pigmentation
- » Top 10% Fat; top 15% CW; top 20% for DMI, Udder, and REA; top 25% for Milk and Teat



Snowshoe 719T Mystic Y22 — Grandam to 111G and 51H



Visit SnowshoeCattle.com
 for Videos and Supplemental Information

79G & 111G



118G **A** REG: 44180870 DOB: 8/27/19 POLLED
SNOWSHOE BOTTOM LINE Y14 118G

SCHB TH 403A 475Z PIONEER 358C ET
TH 13Y 358C BOTTOM LINE 206E
 TH 54W 719T BETH 13Y

TH 89T 755T STOCKMAN 475Z
 TH 71U 17Y RITA 403A

TH 122 71I VICTOR 719T
 TH 6S 45P BETH 54W

DRF JWR PRINCE VICTOR 71I
 KBCR 19D DOMINETTE 122

PW VICTOR BOOMER P606
 DCC 125L TEE PEE 5003 ET

TH 122 71I VICTOR 719T
SNOWSHOE 719T FIONA Y14
 SNOWSHOE P606 FIONA U22 ET

CED	BW	WW	YW	SC	SCF	Milk	Fat	REA	Marb	BMI	CHB
7.5	0.3	56	84	1.2	17.7	26	0.034	0.50	0.10	373	111

- » Low birth weight
- » Out of a big-bodied dam with a great udder
- » Top 10% for BW; 15% Calving Ease(CED); 20% SC; 25% REA



Snowshoe 719T Fiona Y14 — Dam of 118G and granddam to 08H



119G **A** REG: 44180865 DOB: 8/28/19 POLLED
SNOWSHOE BOTTOMLINE A62 119G

SCHB TH 403A 475Z PIONEER 358C ET
TH 13Y 358C BOTTOM LINE 206E
 TH 54W 719T BETH 13Y

TH 89T 755T STOCKMAN 475Z
 TH 71U 17Y RITA 403A

TH 122 71I VICTOR 719T
 TH 6S 45P BETH 54W

SHF RADAR M326 R125
 HVH OKSANA 4L 33N

SNOWSHOE 20N SPUD 64R
 SNOWSHOE 60D SAVANNA U38

KJ HVH 33N REDEEM 485T ET
SNOWSHOE 483T SAVANNA X06 A62
 SNOWSHOE 64R SAVANNA X06

CED	BW	WW	YW	SC	SCF	Milk	Fat	REA	Marb	BMI	CHB
-2.7	4.9	71	110	1.0	14.6	24	0.064	0.56	0.14	334	119

- » Built for performance
- » Dam has an excellent udder and consistently produces an outstanding calf
- » MGD is the dam of Lot 77H
- » WR 112; YR 104; Top 5% WW & YW; top 10% CW; top 15% REA



Fall Bulls

121G **A** REG: 44180867 DOB: 8/29/19 POLLED **SNOWSHOE BLUEPRINT A72 121G**

R LEADER 6964
BOYD 31Z BLUEPRINT 6153
NJW 91H 100W RITA 31Z ET

KJ HVH 33N REDEEM 485T ET
SNOWSHOE 485T KATIE T10 A72
SNOWSHOE P606 PEONY T10 ET

HYALITE ON TARGET 936
R MISS REVOLUTION 1009
NJW 73S M326 TRUST 100W ET
REMITALL RITA 91H

SFH RADAR M326 R125
HVH OKSANA 4L 33N
PW VICTOR BOOMER P606
SNOWSHOE D03 PILAR 3M

CED	BW	WW	YW	SC	SCF	Milk	Fat	REA	Marb	BMI	CHB
8.2	2.8	60	94	1.6	19.2	23	0.034	0.44	0.08	390	107

- » Thickness in a moderate package
- » Dam is maternal sister to dam of 79G
- » Top 5% Udder and SC; top 10% Teat; top 15% CED; top 20% WW & SCF; top 25% YW



125G **A** REG: 44180881 DOB: 9/1/19 POLLED **SNOWSHOE BLUEPRINT B43 125G**

R LEADER 6964
BOYD 31Z BLUEPRINT 6153
NJW 91H 100W RITA 31Z ET

SNOWSHOE 31U TUFF 31S 42Z
SNOWSHOE 42Z CLARA BELLE B43
SNOWSHOE 37W CLARA BELLE Y04

HYALITE ON TARGET 936
R MISS REVOLUTION 1009
NJW 73S M326 TRUST 100W ET
REMITALL RITA 91H

KCL 59M JOOMLA 65K 31U
SNOWSHOE 236G TORI 31S ET
SNOWSHOE 64R TRIJICON 37W
SNOWSHOE 417L CLARA BELLE T2

CED	BW	WW	YW	SC	SCF	Milk	Fat	REA	Marb	BMI	CHB
7.3	1.5	57	92	2.2	14.8	31	-0.006	0.48	-0.02	329	110

- » Goggle eyed
- » Out of an impressive Tuff daughter, big bodied with an excellent udder
- » Top 1% for SC; top 15% CED; top 20% BW, Milk & Udder; top 25% Teat



126G **A** REG: 44180875 DOB: 9/1/19 POLLED **SNOWSHOE BLUEPRINT W45 126G**

R LEADER 6964
BOYD 31Z BLUEPRINT 6153
NJW 91H 100W RITA 31Z ET

SNOWSHOE 20N SPUD 64R
SNOWSHOE 64R ANNIE W45
SNOWSHOE P606 ANNIE 21R ET

HYALITE ON TARGET 936
R MISS REVOLUTION 1009
NJW 73S M326 TRUST 100W ET
REMITALL RITA 91H

NPH 20X SPARTAN 20N
BSB 28E LOLITA L3
PW VICTOR BOOMER P606
RPH MISS MANIP 6023

CED	BW	WW	YW	SC	SCF	Milk	Fat	REA	Marb	BMI	CHB
-0.4	3.9	52	86	0.9	19.5	26	0.014	0.47	0.03	399	110

- » Goggle eyed
- » Age of Dam: 10 years
- » Top 5% Udder; top 10% DMI, Teat; top 20% SCF, BMI



Snowshoe 20N Spud 64R — Grand sire to 119G, 126G, 29H, 86H, 94H, 96H, H61 and great grandsire to 55H

Balance without Compromise

	BW	WW	YW	SC	SCF	MILK	FAT	REA	MARB	BMI	CHB
Snowshoe Avg.	2.7	56	89	1.0	18.3	26	0.00	0.44	0.08	380	111
Breed Avg.	2.9	52	84	0.9	16.4	24	0.012	0.37	0.10	347	111



131G **A** REG: COMMERCIAL DOB: 9/16/19 POLLED **SNOWSHOE 131G**

KCL 59M JOOMLA 65K 31U
SNOWSHOE 31U TUFF 31S 42Z
SNOWSHOE 236G TORI 31S ET

GHC STAR MOOSE 59M
KCL 8006 BONISSA 65K
REMITALL GOVERNOR 236G
DIRT ROAD TORI U8 12J

Pigmentation		
RE	LE	SC
0	0	100

Act BW	90
Adj WW	556
Adj YW	913

COMMERCIAL HEREFORD COW Z72

CED	BW	WW	YW	SC	SCF	Milk	Fat	REA	Marb	BMI	CHB
—	—	—	—	—	—	—	—	—	—	—	—

Ultrasound	
Adj REA	REA/Wt
12.40	1.03
Adj Marb	Adj Fat
3.30	0.18

- » Out of an unregistered dam with a great udder
- » Sire has consistently produced offspring with lots of red meat, volume and excellent phenotype.
- » Ultrasound data is actual on 2/1/21

127G **A** REG: 44180873 DOB: 9/3/19 POLLED **SNOWSHOE BOTTOM LINE T24 127G**

SCHB
TH 403A 475Z PIONEER 358C ET
TH 13Y 358C BOTTOM LINE 206E
TH 54W 719T BETH 13Y
MA+
KJ 520E VICTOR 417L
SNOWSHOE 417L BREEZE T24
SNOWSHOE P606 WHISPER 4R ET

TH 89T 755T STOCKMAN 475Z
TH 71U 17Y RITA 403A
TH 122 71I VICTOR 719T
TH 6S 45P BETH 54W
CF VICTOR 78Z 406F
SPH VCR MISS VICKIE 520E
PW VICTOR BOOMER P606
BSB 832W SAVANNA 3F

Pigmentation		
RE	LE	SC
0	50+	100

Act BW	86
Adj WW	507
Adj YW	802

Ultrasound	
Adj REA	REA/Wt
11.37	1.22
Adj Marb	Adj Fat
3.68	0.16

CED	BW	WW	YW	SC	SCF	Milk	Fat	REA	Marb	BMI	CHB
-2.7	4.2	59	92	1.2	16.0	27	0.064	0.53	0.14	353	117

- » Age of Dam: 13 years
- » Dam comes from our foundation cow family with tremendous longevity and performance.
- » Top 20% SC, CW, REA; top 25% WW



Snowshoe Tuff 31S 42Z — Sire to 131G, 33H and H67

128G **A** REG: 44180877 DOB: 9/7/19 POLLED **SNOWSHOE BOTTOM LINE Z07 128G**

SCHB
TH 403A 475Z PIONEER 358C ET
TH 13Y 358C BOTTOM LINE 206E
TH 54W 719T BETH 13Y
MA+
TH 122 71I VICTOR 719T
SNOWSHOE 719T CLARABELL T2 Z07
SNOWSHOE 417L CLARA BELLE T2

TH 89T 755T STOCKMAN 475Z
TH 71U 17Y RITA 403A
TH 122 71I VICTOR 719T
TH 6S 45P BETH 54W
DRF JWR PRINCE VICTOR 71I
KBCR 19D DOMINETTE 122
KJ 520E VICTOR 417L
RPH MISS REM 8623

Pigmentation		
RE	LE	SC
85	100	100

Act BW	86
Adj WW	513
Adj YW	871

Ultrasound	
Adj REA	REA/Wt
11.91	1.21
Adj Marb	Adj Fat
3.24	0.16

CED	BW	WW	YW	SC	SCF	Milk	Fat	REA	Marb	BMI	CHB
0.7	3.6	66	102	1.1	16.7	27	0.024	0.5	0.04	360	113

- » Attractive and balanced
- » Out of a prolific cow family in our program
- » Top 10% WW & CW; top 15% YW; top 20% REA

134G **A** REG: 44180884 DOB: 10/8/19 POLLED **SNOWSHOE 40E VIKTOR C40 134G**

SCHB
JDH VICTOR 719T 33Z ET
JDH 21Z VIKTOR 33Z 40E ET
JDH MS DURANGO 4037 21Z
MA+
SNOWSHOE 31U TUFF 31S 42Z
SNOWSHOE 42Z WHISPER 4R C40
SNOWSHOE P606 WHISPER 4R ET

TH 122 71I VICTOR 719T
JDH MS YANKEE 11U ET
THM DURANGO 4037
AH JDH WRANGLER QUEEN 22T ET
KCL 59M JOOMLA 65K 31U
SNOWSHOE 236G TORI 31S ET
PW VICTOR BOOMER P606
BSB 832W SAVANNA 3F

Pigmentation		
RE	LE	SC
0	0	100

Act BW	82
Adj WW	556
Adj YW	895

CED	BW	WW	YW	SC	SCF	Milk	Fat	REA	Marb	BMI	CHB
1.2	1.9	55	90	1.0	17.5	29	0.004	0.56	0.11	380	127

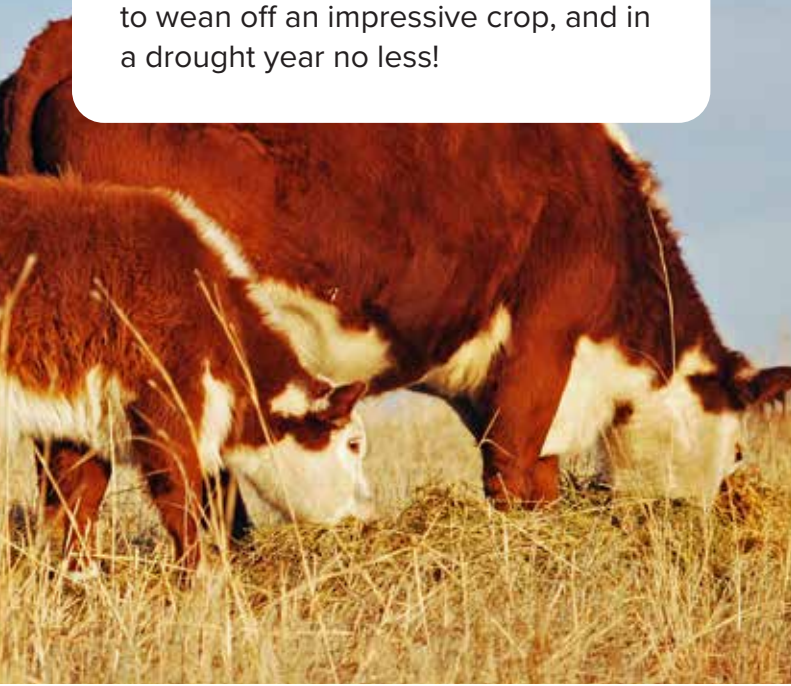
Ultrasound	
Adj REA	REA/Wt
10.80	1.09
Adj Marb	Adj Fat
3.26	0.17

- » Out of a highly productive Tuff daughter
- » Dam is maternal sister to dam of 127G
- » WR 110; YR 108; Top 10% Teat; top 15% CW, REA; top 20% Udder, CHB



Yearling Bulls

The yearling bulls have been raised on mama's milk and green grass — no creep feed. This is a true testament to the performance of our cow herd. Adapting to their first full year in their new home in the Sandhills, we are proud of their ability to wean off an impressive crop, and in a drought year no less!



02H

02H **A** REG: 44209459 DOB: 2/6/20 POLLED
SNOWSHOE 6153 BLUEPRINT 6E 02H



R LEADER 6964
BOYD 31Z BLUEPRINT 6153
 NJW 91H 100W RITA 31Z ET



JDH VICTOR 719T 33Z ET
JDH MS 21Z LEIA 33Z 6E ET
 JDH MS DURANGO 4037 21Z

HYALITE ON TARGET 936
 R MISS REVOLUTION 1009
 NJW 73S M326 TRUST 100W ET
 REMITALL RITA 91H
 TH 122 71I VICTOR 719T
 JDH MS YANKEE 11U ET
 THM DURANGO 4037
 AH JDH WRANGLER QUEEN 22T

Pigmentation		
RE	LE	SC
100	100	100
Act BW 65		
Adj WW 554		

CED	BW	WW	YW	SC	SCF	Milk	Fat	REA	Marb	BMI	CHB
12.7	-0.5	56	89	1.2	18.7	28	0.034	0.41	0.10	397	125

Ultrasound	
Adj REA	REA/Wt
13.01	1.34
Adj Marb	Adj Fat
4.01	0.23

- » Heifer bull, low birth weight
- » Dam is a full sister to lot 40E, our herd sire
- » Well balanced for calving ease, carcass, and maternal performance
- » Excellent pigmentation.
- » Top 5% BW, Udder; top 10% Teat; top 20% SC, CHB; top 25% SCF, CW, BMI

01H **A** REG: 44177567 DOB: 1/24/20 POLLED
SNOWSHOE RANCH HAND D44 01H

TH 403A 475Z PIONEER 358C ET
TH 49B 358C DROVER 134F
 SJP LKP 18Z GLOBAL LADY 49B

TH 89T 755T STOCKMAN 475Z
 TH 71U 17Y RITA 403A
 WLB GLOBAL 72M 50S
 SJP LKP 65S LADY P 530 18Z

Pigmentation		
RE	LE	SC
100	100	100

MSU TCF REVOLUTION 4R
SNOWSHOE 4R TORI 31S D44 ET
 SNOWSHOE 236G TORI 31S ET

FELTONS LEGEND 242
 MSU TCF RACHAEL ET 54N
 REMITALL GOVERNOR 236G
 DIRT ROAD TORI U8 12J

Act BW	82
Adj WW	568

CED	BW	WW	YW	SC	SCF	Milk	Fat	REA	Marb	BMI	CHB
-0.3	3.0	58	98	1.1	15.7	23	0.034	0.41	0.09	330	104

Ultrasound	
Adj REA	REA/Wt
13.67	1.28
Adj Marb	Adj Fat
3.58	0.21

- » Long bodied
- » Out of maternal sister to our herd bull Tuff
- » Top 20% YW, Udder; top 25% WW

03H **A** REG: 44177569 DOB: 2/6/20 POLLED
SNOWSHOE RANCH HAND D03 03H



TH 403A 475Z PIONEER 358C ET
TH 49B 358C DROVER 134F
 SJP LKP 18Z GLOBAL LADY 49B

CHURCHILL RED BULL 200Z
SNOWSHOE 200Z SERENA T44 D03
 SNOWSHOE P606 SERENA T44 ET

TH 89T 755T STOCKMAN 475Z
 TH 71U 17Y RITA 403A
 WLB GLOBAL 72M 50S
 SJP LKP 65S LADY P 530 18Z
 CHURCHILL SENSATION 028X
 CHURCHILL LADY 002X ET
 PW VICTOR BOOMER P606
 DRF SELENA S133 K6

Pigmentation		
RE	LE	SC
100	20	100
Act BW 72		
Adj WW 545		

CED	BW	WW	YW	SC	SCF	Milk	Fat	REA	Marb	BMI	CHB
5.2	0.5	48	80	0.8	22.8	26	0.054	0.37	0.13	434	102

Ultrasound	
Adj REA	REA/Wt
15.15	1.54
Adj Marb	Adj Fat
3.43	0.38

- » Low birth weight and calving ease, attractive muscle shape
- » Top 5% SCF; 10% BW, BMI; top 20% Udder; top 25% Teat



Snowshoe P606 Serena T44 ET — Grandam to 03H

Can't Join Us?
 Bid Live on LiveAuctions.TV





11H **A** REG: 44177585 DOB: 2/9/20 POLLED
SNOWSHOE 40E VIKTOR C34 11H



JDH VICTOR 719T 33Z ET
JDH 21Z VIKTOR 33Z 40E ET
 JDH MS DURANGO 4037 21Z

SNOWSHOE R117 RIBEYE T41 6Z
SNOWSHOE 6Z ELOQUENT W49 C34
 SNOWSHOE 46B ELOQUENT W49

TH 122 71I VICTOR 719T
 JDH MS YANKEE 11U ET
 THM DURANGO 4037
 AH JDH WRANGLER QUEEN 22T ET
 SHF RIB EYE M326 R117
 SNOWSHOE M33 SAVANNA T41 ET
 REMITALL BOOMER 46B
 SNOWSHOE 15G ICICLE 5M

Pigmentation		
RE	LE	SC
100	100	100
Act BW 86		
Adj WW 638		

CED	BW	WW	YW	SC	SCF	Milk	Fat	REA	Marb	BMI	CHB
-0.2	3.8	55	90	1.2	17.9	25	0.004	0.34	0.05	378	116

Ultrasound	
Adj REA	REA/Wt
16.11	1.37
Adj Marb	Adj Fat
4.13	0.30

- » Exceptional disposition
- » Powerful growth with moderate BW
- » Maternal sibling to dams of lots 27H & 29H
- » Great pigmentation
- » WR 109; Top 20% DMI; top 25% SC

08H **A** REG: 44177583 DOB: 2/8/20 POLLED
SNOWSHOE BLUEPRINT B25 08H



R LEADER 6964
BOYD 31Z BLUEPRINT 6153
 NJW 91H 100W RITA 31Z ET

SNOWSHOE 31U TUFF 31S 42Z
SNOWSHOE 42Z FIONA Y14 B25
 SNOWSHOE 719T FIONA Y14

HYALITE ON TARGET 936
 R MISS REVOLUTION 1009
 NJW 73S M326 TRUST 100W ET
 REMITALL RITA 91H
 KCL 59M JOOMLA 65K 31U
 SNOWSHOE 236G TORI 31S ET
 TH 122 71I VICTOR 719T
 SNOWSHOE P606 FIONA U22 ET

Pigmentation		
RE	LE	SC
0	0	100
Act BW 78		
Adj WW 647		

Ultrasound	
Adj REA	REA/Wt
16.65	1.60
Adj Marb	Adj Fat
3.81	0.18

CED	BW	WW	YW	SC	SCF	Milk	Fat	REA	Marb	BMI	CHB
8.4	0.9	55	86	1.7	16.4	28	-0.006	0.49	-0.03	352	107

- » Performance in a low birth weight package
- » Out of an exceptional dam with a great udder and tremendous production record
- » Balanced across the board: Calving ease, fertility, udder quality, feed efficiency and carcass
- » WR 111; Top 5% SC, Udder; top 10% Teat; top 15% CED, BW; top 20% DMI; top 25% REA



Snowshoe 42Z Fiona Y14 B25 — Dam to 08H

15H **A** REG: 44177589 DOB: 2/13/20 POLLED
SNOWSHOE BLUEPRINT U22 15H



R LEADER 6964
BOYD 31Z BLUEPRINT 6153
 NJW 91H 100W RITA 31Z ET

PW VICTOR BOOMER P606
SNOWSHOE P606 FIONA U22 ET
 DCC 125L TEE PEE 5003 ET

HYALITE ON TARGET 936
 R MISS REVOLUTION 1009
 NJW 73S M326 TRUST 100W ET
 REMITALL RITA 91H
 REMITALL BOOMER 46B
 PW VICTORIA 964 8114
 RT DCC 20X KEY MASTER 125L
 PSF 183 TEE PEE 34Y

Pigmentation		
RE	LE	SC
0	100	70
Act BW 76		
Adj WW 586		

CED	BW	WW	YW	SC	SCF	Milk	Fat	REA	Marb	BMI	CHB
6.4	2.2	49	74	1.4	19.3	25	0.004	0.44	-0.05	386	92

Ultrasound	
Adj REA	REA/Wt
13.70	1.48
Adj Marb	Adj Fat
4.28	0.18

- » Dam is currently 13-yrs old and still maintains a beautiful level udder
- » She is the great grandam of lot 08H and grandam of 118G, 18H & 25H
- » Top 5% DMI, Udder; top 10% SC, Teat; top 20% CED, SCF; top 25% BMI



Yearling Bulls

18H **A** REG: 44182207 DOB: 2/15/20 POLLED
SNOWSHOE BLUEPRINT E28 18H

R LEADER 6964
BOYD 31Z BLUEPRINT 6153
 NJW 91H 100W RITA 31Z ET

CHEZ AA NEXT LEVEL ET
SNOWSHOE NL FIONA U22 E28
 SNOWSHOE P606 FIONA U22 ET

HYALITE ON TARGET 936
 R MISS REVOLUTION 1009
 NJW 73S M326 TRUST 100W ET
 REMITALL RITA 91H

GOLDEN OAK OUTCROSS 18U
 R SWEET RED WINE 039
 PW VICTOR BOOMER P606
 DCC 125L TEE PEE 5003 ET

Pigmentation		
RE	LE	SC
100	0	100

Act BW	74
Adj WW	578

Ultrasound	
Adj REA	REA/Wt
13.96	1.34
Adj Marb	Adj Fat
4.88	0.28

CED	BW	WW	YW	SC	SCF	Milk	Fat	REA	Marb	BMI	CHB
8.2	1.8	53	82	1.6	19.7	25	0.024	0.48	0.03	398	105

- » 3-year-old dam is a maternal sister to lot 15H and dam to lot 25H
- » Calving Ease
- » 18H offers balance across all traits.
- » Top 5% SC, Udder; top 10% CED, Teat; top 15% DMI; top 20% SCF; top 25% BW, REA, BMI



Snowshoe 31U Tuff 31S 42Z – Maternal grand sire of lots 111G, 125G, 134G 08H, 27H and 28H.

25H **A** REG: 44180929 DOB: 2/19/20 SCURRED
SNOWSHOE 40E VIKTOR F52 25H

JDH VICTOR 719T 33Z ET
JDH 21Z VICTOR 33Z 40E ET
 JDH MS DURANGO 4037 21Z

SNOWSHOE X51 BANNACK Y27 19C
SNOWSHOE 19C FIONA U22 F52
 SNOWSHOE P606 FIONA U22 ET

TH 122 71I VICTOR 719T
 JDH MS YANKEE 11U ET
 THM DURANGO 4037
 AH JDH WRANGLER QUEEN 22T ET

KCF BENNETT REVOLUTION X51
 SNOWSHOE 719T KATIE Y27
 PW VICTOR BOOMER P606
 DCC 125L TEE PEE 5003 ET

Pigmentation		
RE	LE	SC
100	100	100

Act BW	70
Adj WW	602

Ultrasound	
Adj REA	REA/Wt
13.53	1.36
Adj Marb	Adj Fat
5.59	0.28

CED	BW	WW	YW	SC	SCF	Milk	Fat	REA	Marb	BMI	CHB
2.3	1.3	51	79	0.8	20.9	24	0.004	0.57	0.16	432	127

- » Heifer bull with performance and fertility
- » Out of an exceptional 2-year-old Bannack daughter on track to earn Dam of Distinction
- » Dam bred back in drought conditions and has already calved with a 344-day interval and a Weaning Ratio of 103 on her first calf.
- » Top 10% BMI; top 15% SCF, REA; top 20% BW, DMI, Udder, CHB; top 25% Teat



27H **A** REG: 44180922 DOB: 2/19/20 POLLED
SNOWSHOE 40E VIKTOR F15 27H

JDH VICTOR 719T 33Z ET
JDH 21Z VICTOR 33Z 40E ET
 JDH MS DURANGO 4037 21Z

TH 122 71I VICTOR 719T
 JDH MS YANKEE 11U ET
 THM DURANGO 4037
 AH JDH WRANGLER QUEEN 22T ET

SNOWSHOE 31U TUFF 31S 42Z
SNOWSHOE 42Z ELOQUENT C34 F15
 SNOWSHOE 6Z ELOQUENT W49 C34

KCL 59M JOOMLA 65K 31U
 SNOWSHOE 236G TORI 31S ET
 SNOWSHOE R117 RIBEYE T41 GZ
 SNOWSHOE 46B ELOQUENT W49

Pigmentation		
RE	LE	SC
90	80	100

Act BW	88
Adj WW	508

CED	BW	WW	YW	SC	SCF	Milk	Fat	REA	Marb	BMI	CHB
-5.3	4.8	59	99	1.2	15.1	27	-0.016	0.42	0.01	338	117

Ultrasound	
Adj REA	REA/Wt
12.30	1.30
Adj Marb	Adj Fat
4.13	0.18

- » 2-year-old dam is maternal sister to dam of 29H
- » Top 10% Lean Fat; top 15% YW, SC; top 20% Udder; top 25% WW, Teat



28H **A** REG: 44180987 DOB: 2/19/20 POLLED
SNOWSHOE RANCH HAND D97 28H

TH 403A 475Z PIONEER 358C ET
TH 49B 358C DROVER 134F
 SJP LKP 18Z GLOBAL LADY 49B

TH 89T 755T STOCKMAN 475Z
 TH 71U 17Y RITA 403A
 WLB GLOBAL 72M 50S
 SJP LKP 65S LADY P 530 18Z

SNOWSHOE 31U TUFF 31S 42Z
SNOWSHOE 42Z MYSTIC X61 D97
 SNOWSHOE R117 MYSTIC X61

KCL 59M JOOMLA 65K 31U
 SNOWSHOE 236G TORI 31S ET
 SHF RIB EYE M326 R17
 SNOWSHOE P606 MYSTIC BOOM 17R ET

Pigmentation		
RE	LE	SC
80	100	90

Act BW	68
Adj WW	658

CED	BW	WW	YW	SC	SCF	Milk	Fat	REA	Marb	BMI	CHB
5.4	0.5	48	79	1.0	17.4	25	0.024	0.39	0.16	359	110

Ultrasound	
Adj REA	REA/Wt
14.58	1.41
Adj Marb	Adj Fat
3.78	0.32

- » An incredible package of low birth weight and performance
- » Highly attractive and balanced
- » WR 113; Top 10% BW



29H **A** REG: 44177595 DOB: 2/20/20 POLLED **SNOWSHOE 15B CANUCK E15 29H**

WLB WINCHESTER ANSER 90X 10Z WLB MR CANADA 10Z 15B REMITALL GRAVES JUNO 204S	WLB LEGO 83T 90X WLB 69T JUST LOVELY 84X REMITALL NATION WIDE ET 93N REMITALL JUNO 64N	Pigmentation
SNOWSHOE 20N SPUD 64R SNOWSHOE 64R ELOQUENT C34 E15 SNOWSHOE 62 ELOQUENT W49 C34	NPH 20X SPARTAN 20N BSB 28E LOLITA L3 SNOWSHOE R117 RIBEYE T41 6Z SNOWSHOE 46B ELOQUENT W49	RE LE SC 100 100 100
		Act BW 88 Adj WW 595

CED	BW	WW	YW	SC	SCF	Milk	Fat	REA	Marb	BMI	CHB	Ultrasound
-2.6	4.8	61	97	0.7	16.3	30	-0.006	0.45	-0.02	348	105	Adj REA REA/Wt 13.49 1.31 Adj Marb Adj Fat 3.59 0.25

- » 3-year-old dam is maternal sister to dam of 27H
- » Top 15% Fat; top 20% WW, YW, Teat; top 25% Udder



32H **A** REG: 44180919 DOB: 2/21/20 POLLED **SNOWSHOE 134F RANGE BOSS 32H**

TH 403A 475Z PIONEER 358C ET TH 49B 358C DROVER 134F SJP LKP 18Z GLOBAL LADY 49B	TH 89T 755T STOCKMAN 475Z TH 71U 17Y RITA 403A WLB GLOBAL 72M 50S SJP LKP 65S LADY P 530 18Z	Pigmentation
SNOWSHOE 719T PATERNO 23Y SNOWSHOE 23Y PERFECT MISS C39 SNOWSHOE 417L PERF MISS T23	TH 122 71I VICTOR 719T SNOWSHOE P606 PILAR U09 KJ 520E VICTOR 417L SNOWSHOE D03 PERFECT MISS 24R	RE LE SC 100 100 100
		Act BW 94 Adj WW 642

CED	BW	WW	YW	SC	SCF	Milk	Fat	REA	Marb	BMI	CHB	Ultrasound
-3.3	4.9	62	101	0.9	18.9	22	0.024	0.42	-0.02	377	97	Adj REA REA/Wt 17.03 1.45 Adj Marb Adj Fat 4.01 0.39

- » A powerhouse bull with exceptional growth, muscle shape, carcass and maternal influence
- » Dam is maternal sister to dam of 49H
- » WR 110; Top 15% WW, YW; top 20% Udder; top 25% SCF

33H **A** REG: 44177593 DOB: 2/22/20 POLLED **SNOWSHOE 42Z RUFFNECK B57 33H**

KCL 59M JOOMLA 65K 31U SNOWSHOE 31U TUFF 31S 42Z SNOWSHOE 236G TORI 31S ET	GHC STAR MOOSE 59M KCL 8006 BONISSA 65K REMITALL GOVERNOR 236G DIRT ROAD TORI U8 12J	Pigmentation
KJ HVH 33N REFRESH 483T ET SNOWSHOE 483T MYSTIC X61 B57 SNOWSHOE R117 MYSTIC X61	SHF RADAR M326 R125 HVH OKSANA 4L 33N SHF RIB EYE M326 R117 SNOWSHOE P606 MYSTIC BOOM 17R ET	RE LE SC 10 0 100
		Act BW 84 Adj WW 528

CED	BW	WW	YW	SC	SCF	Milk	Fat	REA	Marb	BMI	CHB	Ultrasound
-2.5	4.1	56	97	1.3	10.8	27	-0.046	0.48	-0.02	268	110	Adj REA REA/Wt 13.64 1.29 Adj Marb Adj Fat 3.66 0.25

- » Dam is maternal sister to dam of 28H
- » Attractive and balanced
- » Top 15% SC; top 20% YW



Snowshoe 719T Paterno 23Y — Grand sire to 32H, 51H, 70H and 82H

34H **A** REG: 44177575 DOB: 2/23/20 POLLED **SNOWSHOE RANCH HAND X60 34H**

TH 403A 475Z PIONEER 358C ET TH 49B 358C DROVER 134F SJP LKP 18Z GLOBAL LADY 49B	TH 89T 755T STOCKMAN 475Z TH 71U 17Y RITA 403A WLB GLOBAL 72M 50S SJP LKP 65S LADY P 530 18Z	Pigmentation
CRR ABOUT TIME 743 SNOWSHOE 743 WILDA X60 DCC M33 WILDA 4120 ET	THM DURANGO 4037 CRR D03 CASSIE 206 SHF MARSHAL 236G M33 AYWON 2B WILDA 10F	RE LE SC 100 100 100
		Act BW 90 Adj WW 578

CED	BW	WW	YW	SC	SCF	Milk	Fat	REA	Marb	BMI	CHB	Ultrasound
-3.3	4.5	58	93	1.0	18.8	23	0.034	0.31	0.02	373	95	Adj REA REA/Wt 13.05 1.27 Adj Marb Adj Fat 3.75 0.25

- » Very productive 10-year-old dam with excellent pigment
- » Great shape and structure
- » Dam is maternal sister to dam of 36H
- » Top 25% SCF

Visit SnowshoeCattle.com
for Videos and Supplemental Information

Yearling Bulls

36H **A** REG: 44180918 DOB: 2/23/20 POLLED **SNOWSHOE RANCH HAND Z16 36H**

TH 403A 475Z PIONEER 358C ET
TH 49B 358C DROVER 134F
SJP LKP 18Z GLOBAL LADY 49B

TH 89T 755T STOCKMAN 475Z
TH 71U 17Y RITA 403A
WLB GLOBAL 72M 50S
SJP LKP 65S LADY P 530 18Z

TH 122 71I VICTOR 719T
SNOWSHOE 719T WILDA 4120 Z16
DCC M33 WILDA 4120 ET

DRF JWR PRINCE VICTOR 71I
KBCR 19D DOMINETTE 122
SHF MARSHAL 236G M33
AYWON 2B WILDA 10F

Pigmentation		
RE	LE	SC
100	100	100

Act BW	80
Adj WW	603

Ultrasound	
Adj REA	REA/Wt
16.30	1.55
Adj Marb	Adj Fat
3.35	0.43

CED	BW	WW	YW	SC	SCF	Milk	Fat	REA	Marb	BMI	CHB
3.0	1.4	51	81	1.2	19.6	24	0.034	0.23	0.04	381	94

- » Low birth weight with impressive growth
- » Dam is maternal sister to dam of 34H
- » WR 104; Top 20% BW, SCF; top 25% SC

42H **A** REG: 44180934 DOB: 2/25/20 POLLED **SNOWSHOE BLUEPRINT F81 42H**

R LEADER 6964
BOYD 31Z BLUEPRINT 6153
NJW 91H 100W RITA 31Z ET

HYALITE ON TARGET 936
R MISS REVOLUTION 1009
NJW 73S M326 TRUST 100W ET
REMITALL RITA 91H

SNOWSHOE 200Z RED GRANITE 32D
SNOWSHOE 32D CABERNET Z23 F81
SNOWSHOE 719T CABERNET X24 Z23

CHURCHILL RED BULL 200Z
SNOWSHOE 64R SAVANNA W16
TH 122 71I VICTOR 719T
SNOWSHOE 64R CABERNET X24

Pigmentation		
RE	LE	SC
50	10	100

Act BW	72
Adj WW	582

Ultrasound	
Adj REA	REA/Wt
14.03	1.41
Adj Marb	Adj Fat
4.13	0.21

CED	BW	WW	YW	SC	SCF	Milk	Fat	REA	Marb	BMI	CHB
9.8	0.7	53	84	1.3	18.9	24	0.014	0.45	-0.01	386	107

- » 2-year-old dam is paternal sister to our 2020 high selling bull
- » Proven low birth weight pedigree
- » Top 10% CED, BW, Teat; top 15% DMI, SC; top 20% Udder; top 25% SCF



43H **A** REG: 44180926 DOB: 2/25/20 POLLED **SNOWSHOE BLUEPRINT C16 43H**

R LEADER 6964
BOYD 31Z BLUEPRINT 6153
NJW 91H 100W RITA 31Z ET

HYALITE ON TARGET 936
R MISS REVOLUTION 1009
NJW 73S M326 TRUST 100W ET
REMITALL RITA 91H

PW VICTOR BOOMER P606
SNOWSHOE P606 LOLITA X10 C16
SNOWSHOE 743 LOLITA X10

REMITALL BOOMER 46B
PW VICTORIA 964 8114
CRR ABOUT TIME 743
BSB 28E LOLITA L3

Pigmentation		
RE	LE	SC
40	90	100

Act BW	84
Adj WW	600

CED	BW	WW	YW	SC	SCF	Milk	Fat	REA	Marb	BMI	CHB	Ultrasound	
Adj REA	REA/Wt												
0.7	3.0	52	80	1.3	21.1	27	0.014	0.43	0.03	420	104	13.73	1.36
Adj Marb	Adj Fat												
4.13	0.21	3.54	0.22										

- » Eye appealing and athletic phenotype
- » Top 5% DMI; top 10% SCF, Teat; top 15% SC, BMI; top 20% Udder



Snowshoe P606 Selena U06 — Dam to 44H

44H **A** REG: 44177586 DOB: 2/25/20 POLLED **SNOWSHOE RANCH HAND U06 44H**

TH 403A 475Z PIONEER 358C ET
TH 49B 358C DROVER 134F
SJP LKP 18Z GLOBAL LADY 49B

TH 89T 755T STOCKMAN 475Z
TH 71U 17Y RITA 403A
WLB GLOBAL 72M 50S
SJP LKP 65S LADY P 530 18Z

PW VICTOR BOOMER P606
SNOWSHOE P606 SELENA U06 ET
DRF SELENA S133 K6

REMITALL BOOMER 46B
PW VICTORIA 964 8114
WILL-VIA HEADLINE S133
FCF DELIVERY QUEEN C264

Pigmentation		
RE	LE	SC
100	100	100

Act BW	84
Adj WW	568

CED	BW	WW	YW	SC	SCF	Milk	Fat	REA	Marb	BMI	CHB	Ultrasound	
Adj REA	REA/Wt												
-5.5	3.9	52	81	0.6	21.2	26	0.054	0.37	0.10	408	95	13.10	1.36
Adj Marb	Adj Fat												
3.91	0.33												

- » 12-year-old dam with multiple daughters in our herd
- » Longevity, fertility and reliable performance
- » Top 10% SCF; top 20% Udder



47H **A** REG: 44180927 DOB: 2/27/20 POLLED **SNOWSHOE BLUEPRINT C23 47H**

R LEADER 6964
BOYD 31Z BLUEPRINT 6153
NJW 91H 100W RITA 31Z ET

HYALITE ON TARGET 936
R MISS REVOLUTION 1009
NJW 73S M326 TRUST 100W ET
REMITALL RITA 91H

NJW FHF 9710 TANK 45P
SNOWSHOE 45P LADY MAE 29P C23
SNOWSHOE S133 LADY MAE 29P ET

FHF 8403 STARBUCK 19H
GV 579 VICTORIA 9710
WILL-VIA HEADLINE S133
CHURCHILL LADY 9115 1ET

Pigmentation		
RE	LE	SC
100	100	100

Act BW	74
Adj WW	664

CED	BW	WW	YW	SC	SCF	Milk	Fat	REA	Marb	BMI	CHB
4.9	1.5	53	82	1.2	15.0	27	0.034	0.34	-0.01	326	103

Ultrasound	
Adj REA	REA/Wt
15.31	1.33
Adj Marb	Adj Fat
3.85	0.40

- » Generations of calving ease with exceptional growth
- » WR 114; Top 15% DMI; top 20% BW, SC, Udder; top 25% Teat

49H **A** REG: 44180938 DOB: 2/28/20 POLLED **SNOWSHOE BLUEPRINT F98 49H**

SCHB
R LEADER 6964
BOYD 31Z BLUEPRINT 6153
NJW 91H 100W RITA 31Z ET

HYALITE ON TARGET 936
R MISS REVOLUTION 1009
NJW 73S M326 TRUST 100W ET
REMITALL RITA 91H

MA+
SNOWSHOE X51 BANNACK Y27 19C
SNOWSHOE 19C PERF MISS T23 F98
SNOWSHOE 417L PERF MISS T23

KCF BENNETT REVOLUTION X51
SNOWSHOE 719T KATIE Y27
KJ 520E VICTOR 417L
SNOWSHOE D03 PERFECT MISS 24R

Pigmentation		
RE	LE	SC
75	75	100

Act BW	76
Adj WW	530

CED	BW	WW	YW	SC	SCF	Milk	Fat	REA	Marb	BMI	CHB
8.0	2.0	56	87	1.3	18.6	24	0.014	0.51	0.06	390	115

Ultrasound	
Adj REA	REA/Wt
14.93	1.70
Adj Marb	Adj Fat
3.58	0.18

- » 2-year-old dam is maternal sister to dam of 32H
- » Low birth weight
- » Top 5% Udder; top 10% Teat; top 15% CED, DMI, SC; top 20% REA; top 25% BMI



A Bannack son at work!



50H

50H **A** REG: 44180939 DOB: 2/28/20 POLLED **SNOWSHOE 40E VIKTOR F71 50H**

SCHB
JDH VICTOR 719T 33Z ET
JDH 21Z VIKTOR 33Z 40E ET
JDH MS DURANGO 4037 21Z

TH 122 71I VICTOR 719T
JDH MS YANKEE 11U ET
THM DURANGO 4037
AH JDH WRANGLER QUEEN 22T ET

MA+
SNOWSHOE X51 BANNACK Y27 19C
SNOWSHOE 19C MYSTIC 28R F71
SNOWSHOE P606 MYSTIC BOOM 28RET

KCF BENNETT REVOLUTION X51
SNOWSHOE 719T KATIE Y27
PW VICTOR BOOMER P606
RPH MISS MANIP 6023

Pigmentation		
RE	LE	SC
65	60	100

Act BW	80
Adj WW	654

CED	BW	WW	YW	SC	SCF	Milk	Fat	REA	Marb	BMI	CHB
1.2	3.3	55	87	0.6	22.0	25	0.004	0.53	0.16	448	128

Ultrasound	
Adj REA	REA/Wt
14.04	1.32
Adj Marb	Adj Fat
4.53	0.34

- » 2-year-old dam
- » Cow family with productive longevity
- » Attractive and balanced both in phenotype and genetic merit
- » Top 5% BMI; top 10% SCF; top 15% CHB; top 20% DMI, Udder, REA; top 25% Teat



51H

51H **A** REG: 44177601 DOB: 2/28/20 POLLED **SNOWSHOE RANCH HAND E103 51H**

MA+
TH 403A 475Z PIONEER 358C ET
TH 49B 358C DROVER 134F
SJP LKP 18Z GLOBAL LADY 49B

TH 89T 755T STOCKMAN 475Z
TH 71U 17Y RITA 403A

SNOWSHOE 719T PATERNO 23Y
SNOWSHOE 23Y MYSTIC C76 E103
SNOWSHOE 42Z MYSTIC Y22 C76

WLB GLOBAL 72M 50S
SJP LKP 65S LADY P 530 18Z

TH 122 71I VICTOR 719T
SNOWSHOE P606 PILAR U09
SNOWSHOE 31U TUFF 31S 42Z
SNOWSHOE 719T MYSTIC Y22

Pigmentation		
RE	LE	SC
100	100	100

Act BW	72
Adj WW	621

CED	BW	WW	YW	SC	SCF	Milk	Fat	REA	Marb	BMI	CHB
1.8	1.0	55	91	1.0	18.9	24	0.024	0.46	0.08	382	108

Ultrasound	
Adj REA	REA/Wt
17.72	1.70
Adj Marb	Adj Fat
3.37	0.24

- » 2-year-old dam
- » Low birth weight
- » Dynamic growth and muscle shape
- » WR 107; Top 15% BW; top 25% SCF

Yearling Bulls

52H A REG: 44180932 DOB: 2/28/20 POLLED SNOWSHOE 40E VIKTOR F59 52H

SCHB JDH VICTOR 719T 33Z ET TH 122 71I VIKTOR 719T
JDH 21Z VICTOR 33Z 40E ET JDH MS YANKEE 11U ET
 JDH MS DURANGO 4037 21Z THM DURANGO 4037
MA+ AH JDH WRANGLER QUEEN 22T ET
 SNOWSHOE 200Z RED GRANITE 32D CHURCHILL RED BULL 200Z
SNOWSHOE 32D LADY VICTORIA F59 SNOWSHOE 64R SAVANNA W16
 SNOWSHOE 90X LDY VICTORIA D53 WLB LEGO 83T 90X
 SNOWSHOE 483T LDY VICTORIA A06

CED	BW	WW	YW	SC	SCF	Milk	Fat	REA	Marb	BMI	CHB
6.8	1.4	52	80	0.7	18.2	22	0.024	0.41	0.08	382	116

- » 2-year-old dam is a paternal sister to our 2020 high selling bull
- » Easy calving with feed efficiency.
- » Top 20% CED, BW, DMI, Udder; top 25% Teat

54H A REG: 44180923 DOB: 3/5/20 POLLED SNOWSHOE 40E VIKTOR W01 54H

SCHB JDH VICTOR 719T 33Z ET TH 122 71I VIKTOR 719T
JDH 21Z VICTOR 33Z 40E ET JDH MS YANKEE 11U ET
 JDH MS DURANGO 4037 21Z THM DURANGO 4037
MA+ AH JDH WRANGLER QUEEN 22T ET
 SNOWSHOE 434V NEW LOOK 4P BAR JZ TRADITION 434V
SNOWSHOE 64R BREEZE W01 DRF CES BUTTERFLY 32H 122L
 SNOWSHOE 417L BREEZE T24 KJ 520E VICTOR 417L
 SNOWSHOE P606 WHISPER 4R ET

CED	BW	WW	YW	SC	SCF	Milk	Fat	REA	Marb	BMI	CHB
-3.2	4.6	58	86	0.8	17.5	25	0.024	0.31	0.02	363	103

- » 11-year-old dam displays added pigmentation on her udder
- » Maternal grandam is dam of lot 127G
- » Top 20% DMI

55H A REG: 44180931 DOB: 3/5/20 POLLED SNOWSHOE 40E VIKTOR F54 55H

SCHB JDH VICTOR 719T 33Z ET TH 122 71I VIKTOR 719T
JDH 21Z VICTOR 33Z 40E ET JDH MS YANKEE 11U ET
 JDH MS DURANGO 4037 21Z THM DURANGO 4037
MA+ AH JDH WRANGLER QUEEN 22T ET
 WLB MR CANADA 10Z 15B WLB WINCHESTER ANSER 90X 10Z
SNOWSHOE 15B WHISPER Y44 F54 REMITALL GRAVES JUNO 204S
 SNOWSHOE 64R WHISPER Y44 SNOWSHOE 20N SPUD 64R
 SNOWSHOE P606 WHISPER 4R ET

CED	BW	WW	YW	SC	SCF	Milk	Fat	REA	Marb	BMI	CHB
0.6	3.5	59	94	0.7	19.8	29	0.024	0.48	0.07	410	120

- » Calving ease-growth combination bull
- » 2-year-old dam is maternal sibling to lot 94H
- » WR 110; Top 15% BMI; top 20% SCF, Milk, Udder & CW; top 25% WW, YW, Teat

59H A REG: 44177605 DOB: 3/12/20 POLLED SNOWSHOE RANCH HAND E98 59H

SCHB TH 403A 475Z PIONEER 358C ET TH 89T 755T STOCKMAN 475Z
TH 49B 358C DROVER 134F TH 71U 17Y RITA 403A
 SJP LKP 18Z GLOBAL LADY 49B WLB GLOBAL 72M 50S
MA+ SJP LKP 65S LADY P 530 18Z
 WLB MR CANADA 10Z 15B WLB WINCHESTER ANSER 90X 10Z
SNOWSHOE 15B BREEZE T24 E98 REMITALL GRAVES JUNO 204S
 SNOWSHOE 417L BREEZE T24 KJ 520E VICTOR 417L
 SNOWSHOE P606 WHISPER 4R ET

CED	BW	WW	YW	SC	SCF	Milk	Fat	REA	Marb	BMI	CHB
1.8	2.6	55	90	0.7	19.9	27	0.064	0.34	0.11	389	99

- » Natural thickness and easy fleshing
- » 2-year-old dam is maternal sister to dam of lot 54H
- » Maternal Grandam is dam of lot 127G
- » WR 104; Top 15% SCF; top 20% Udder; top 25% BMI





Snowshoe P606 Mystic Boom 34R ET — Grandam to 62H

62H A REG: 44182248 DOB: 3/15/20 POLLED SNOWSHOE RANCH HAND C32 62H

TH 403A 475Z PIONEER 358C ET
TH 49B 358C DROVER 134F
SJP LKP 18Z GLOBAL LADY 49B

TH 89T 755T STOCKMAN 475Z
TH 71U 17Y RITA 403A
WLB GLOBAL 72M 50S
SJP LKP 65S LADY P 530 18Z
SHF RIB EYE M326 R117
SNOWSHOE M33 SAVANNA T41 ET
PW VICTOR BOOMER P606
RPH MISS MANIP 6023

CED	BW	WW	YW	SC	SCF	Milk	Fat	REA	Marb	BMI	CHB
-1.6	3.5	56	89	1.0	21.2	27	0.034	0.33	0.11	411	101

Pigmentation		
RE	LE	SC
100	20	100

Ultrasound	
Adj REA	REA/Wt
13.30	1.19
Adj Marb	Adj Fat
3.64	0.40

- » Moderate birth weight in a high growth, high maternal package
- » Dam has a WR of 111 on 4 calves
- » WR 107, Top 10% SCF; top 15% BMI



63H

63H A REG: 44182276 DOB: 3/15/20 POLLED SNOWSHOE BLUEPRINT D40 63H

R LEADER 6964
BOYD 31Z BLUEPRINT 6153
NJW 91H 100W RITA 31Z ET

HYALITE ON TARGET 936
R MISS REVOLUTION 1009
NJW 73S M326 TRUST 100W ET
REMITALL RITA 91H
MSU TCF REVOLUTION 4R
KCF MISS PROFICIENT U201
PW VICTOR BOOMER P606
SNOWSHOE D03 PILAR 3M

CED	BW	WW	YW	SC	SCF	Milk	Fat	REA	Marb	BMI	CHB
3.6	4.0	64	100	1.5	19.3	23	0.024	0.70	0.15	411	128

Pigmentation		
RE	LE	SC
100	0	100

Ultrasound	
Adj REA	REA/Wt
15.10	1.46
Adj Marb	Adj Fat
3.70	0.24

- » Smooth fronted and long bodied
- » Built for calving ease with growth, carcass and proven maternal performance
- » Dam is a maternal sister to the dam of our herd sire Bannack.
- » Top 5% SC, Udder, REA; top 10% Teat; top 15% WW, YW, BMI & CHB

65H A REG: 44182244 DOB: 3/16/20 POLLED SNOWSHOE RANCH HAND Z09 65H

TH 403A 475Z PIONEER 358C ET
TH 49B 358C DROVER 134F
SJP LKP 18Z GLOBAL LADY 49B

TH 89T 755T STOCKMAN 475Z
TH 71U 17Y RITA 403A
WLB GLOBAL 72M 50S
SJP LKP 65S LADY P 530 18Z
DRF JWR PRINCE VICTOR 71I
KBCR 19D DOMINETTE 122
PW VICTOR BOOMER P606
SNOWSHOE D03 PILAR 3M

CED	BW	WW	YW	SC	SCF	Milk	Fat	REA	Marb	BMI	CHB
9.0	-0.6	46	71	0.8	21.8	21	0.054	0.38	0.16	423	107

Pigmentation		
RE	LE	SC
100	100	100

Ultrasound	
Adj REA	REA/Wt
12.37	1.27
Adj Marb	Adj Fat
3.73	0.17

- » Low birth weight with proven maternal history
- » Maternal grandam is full sister to grandam of lot 63H
- » Top 5% BW; top 10% CED, SCF



Snowshoe P606 Peony T10 ET — Maternal grandam to 119G, 63H, H76, H79, Bannack, and full sister to MGD to 65H

66H A REG: 44182272 DOB: 3/16/20 POLLED SNOWSHOE RANCH HAND C30 66H

TH 403A 475Z PIONEER 358C ET
TH 49B 358C DROVER 134F
SJP LKP 18Z GLOBAL LADY 49B

TH 89T 755T STOCKMAN 475Z
TH 71U 17Y RITA 403A
WLB GLOBAL 72M 50S
SJP LKP 65S LADY P 530 18Z
SHF RIB EYE M326 R117
SNOWSHOE M33 SAVANNA T41 ET
PW VICTOR BOOMER P606
RPH MISS MANIP 6023

CED	BW	WW	YW	SC	SCF	Milk	Fat	REA	Marb	BMI	CHB
1.4	2.7	54	89	1.3	21.2	26	0.044	0.35	0.13	411	104

Pigmentation		
RE	LE	SC
0	100	100

Ultrasound	
Adj REA	REA/Wt
14.26	1.40
Adj Marb	Adj Fat
3.60	0.33

- » Eye appealing thickness in a highly maternal package
- » Dam is a maternal sister to 126G
- » Top 10% SCF; top 15% SC



Yearling Bulls



WLB Mr Canada 10Z 15B — Sire to 29H and 69H and Grand sire to 55H, 59H, H56

69H **A** REG: 44182292 DOB: 3/17/20 POLLED
SNOWSHOE 15B CANUCK D43 69H

WLB WINCHESTER ANSER 90X 10Z
WLB MR CANADA 10Z 15B
 REMITALL GRAVES JUNO 204S

WLB LEGO 83T 90X
 WLB 69T JUST LOVELY 84X
 REMITALL NATION WIDE ET 93N
 REMITALL JUNO 64N

MSU TCF REVOLUTION 4R
SNOWSHOE 4R TORI 31S D43 ET
 SNOWSHOE 236G TORI 31S ET

FELTONS LEGEND 242
 MSU TCF RACHAEL ET 54N
 REMITALL GOVERNOR 236G
 DIRT ROAD TORI U8 12J

Pigmentation		
RE	LE	SC
100	60	100
Act BW 82		
Adj WW 525		

Ultrasound	
Adj REA	REA/Wt
11.97	1.32
Adj Marb	Adj Fat
3.45	0.21

CED	BW	WW	YW	SC	SCF	Milk	Fat	REA	Marb	BMI	CHB
1.0	3.4	62	101	0.8	14.5	30	0.004	0.45	-0.01	314	99

- » Moderate birth weight
- » Maternal grandam earned Dam of Distinction
- » Dam is maternal sister to herd bull Tuff
- » Top 15% WW, YW; top 20% Milk, Udder; top 25% Teat



70H **A** REG: 44182267 DOB: 3/17/20 POLLED
SNOWSHOE BLUEPRINT C25 70H

R LEADER 6964
BOYD 31Z BLUEPRINT 6153
 NJW 91H 100W RITA 31Z ET

HYALITE ON TARGET 936
 R MISS REVOLUTION 1009
 NJW 73S M326 TRUST 100W ET
 REMITALL RITA 91H

SNOWSHOE 719T PATERNO 23Y
SNOWSHOE 23Y LADY 26P C25
 SNOWSHOE 579 LADY VICTRIA26PET

TH 122 71I VICTOR 719T
 SNOWSHOE P606 PILAR U09
 ANHINGA VIC 69R 579
 CHURCHILL LADY 911S 1ET

Pigmentation		
RE	LE	SC
50	50	50
Act BW 76		
Adj WW 567		

Ultrasound	
Adj REA	REA/Wt
15.37	1.65
Adj Marb	Adj Fat
3.81	0.21

CED	BW	WW	YW	SC	SCF	Milk	Fat	REA	Marb	BMI	CHB
7.8	1.6	55	87	1.2	17.8	24	0.024	0.41	0.00	373	110

- » Low birth weight
- » Maternal brother to our 2020 high selling bull: Granite 82F
- » Proven maternal longevity
- » Top 15% CED; top 20% BW, DMI, SC, Udder; top 25% Teat



71H **A** REG: 44182287 DOB: 3/18/20 POLLED
SNOWSHOE RANCH HAND E75 71H

TH 403A 475Z PIONEER 358C ET
TH 49B 358C DROVER 134F
 SJP LKP 18Z GLOBAL LADY 49B

TH 89T 755T STOCKMAN 475Z
 TH 71U 17Y RITA 403A
 WLB GLOBAL 72M 50S
 SJP LKP 65S LADY P 530 18Z

SNOWSHOE X51 BANNACK Y27 19C
SNOWSHOE 19C TORI 31S E75
 SNOWSHOE 236G TORI 31S ET

KCF BENNETT REVOLUTION X51
 SNOWSHOE 719T KATIE Y27
 REMITALL GOVERNOR 236G
 DIRT ROAD TORI U8 12J

Pigmentation		
RE	LE	SC
0	60	100
Act BW 82		
Adj WW 541		

CED	BW	WW	YW	SC	SCF	Milk	Fat	REA	Marb	BMI	CHB
-0.9	3.7	59	100	0.9	17.7	23	0.024	0.45	0.16	369	115

Ultrasound	
Adj REA	REA/Wt
13.85	1.37
Adj Marb	Adj Fat
4.23	0.29

- » Highly attractive with reliable maternal and carcass performance
- » 3-year-old dam is maternal sister to our herd bull Tuff, and dam of lot 69H
- » Top 15% YW; top 25% WW



73H **A** REG: 44182241 DOB: 3/19/20 POLLED
SNOWSHOE 40E VIKTOR F60 73H

SCHB JDH VICTOR 719T 33Z ET TH 122 71I VICTOR 719T
JDH 21Z VICTOR 33Z 40E ET JDH MS YANKEE 11U ET
 JDH MS DURANGO 4037 21Z THM DURANGO 4037
MA+ AH JDH WRANGLER QUEEN 22T ET
 NJW 73S W18 HOMETOWN 10Y ET SHF WONDER M326 W18 ET
SNOWSHOE 10Y SAPPHIRE B12 F60 NJW P606 72N DAYDREAM 73S
 SNOWSHOE 483T SAPPHIRE T12 B12 KJ HVH 33N REFRESH 483T ET
 SNOWSHOE P606 SAPPHIRE T12

Pigmentation		
RE	LE	SC
0	60	60

Act BW	78
Adj WW	618

Ultrasound	
Adj REA	REA/Wt
14.88	1.55
Adj Marb	Adj Fat
3.37	0.31

CED	BW	WW	YW	SC	SCF	Milk	Fat	REA	Marb	BMI	CHB
2.9	2.7	59	96	0.9	20.6	31	0.044	0.43	0.14	421	123

- » Terrific birth to weaning performance
- » 2-year-old dam represents generations of volume, udder quality and longevity and is a maternal sister to 91H
- » Top 15% BMI; top 20% SCF, Udder, CW; top 25% WW, YW, Teat, & CHB



Snowshoe 45P Lady Mae 29P Z77 — Dam to 80H

77H **A** REG: 44182309 DOB: 3/24/20 POLLED
SNOWSHOE RANCH HAND U38 77H

TH 403A 475Z PIONEER 358C ET TH 89T 755T STOCKMAN 475Z
TH 49B 358C DROVER 134F TH 71U 17Y RITA 403A
 SJP LKP 18Z GLOBAL LADY 49B WLB GLOBAL 72M 50S
 REMITALL KEYNOTE 20X RU SARA 60X
 RU DUSTER 60D MPH TOP HEADLINER H454
SNOWSHOE 60D SAVANNA U38 BSB 832W SAVANNA 3F
 BSB MPH SAVANNA H852

Pigmentation		
RE	LE	SC
25	0	100

Act BW	80
Adj WW	525

Ultrasound	
Adj REA	REA/Wt
14.19	1.60
Adj Marb	Adj Fat
4.07	0.30

CED	BW	WW	YW	SC	SCF	Milk	Fat	REA	Marb	BMI	CHB
3.5	2.1	54	88	0.7	16.3	19	0.054	0.29	0.17	340	107

- » Moderate birth weight
- » 12-year-old dam stems from our oldest cow family
- » Top 20% Udder

80H **A** REG: 44182343 DOB: 3/28/20 POLLED
SNOWSHOE 40E VIKTOR Z77 80H

SCHB JDH VICTOR 719T 33Z ET TH 122 71I VICTOR 719T
JDH 21Z VICTOR 33Z 40E ET JDH MS YANKEE 11U ET
 JDH MS DURANGO 4037 21Z THM DURANGO 4037
 AH JDH WRANGLER QUEEN 22T ET
 NJW FHF 9710 TANK 45P FHF 8403 STARBUCK 19H
SNOWSHOE 45P LADY MAE 29P Z77 GV 579 VICTORIA 9710
 SNOWSHOE S133 LADY MAE 29P ET WILL-VIA HEADLINE S133
 CHURCHILL LADY 9115 1ET

Pigmentation		
RE	LE	SC
20	35	100

Act BW	92
Adj WW	620

Ultrasound	
Adj REA	REA/Wt
14.65	1.30
Adj Marb	Adj Fat
4.31	0.40

CED	BW	WW	YW	SC	SCF	Milk	Fat	REA	Marb	BMI	CHB
-4.8	4.0	56	90	0.6	15.5	28	0.024	0.36	0.01	340	113

- » Powerful performance out of a high volume, easy fleshing dam
- » Dam is a full sister to the dam of lot 47H
- » WR 113



78H **A** REG: 44182439 DOB: 3/24/20 POLLED
SNOWSHOE RANCH HAND E25 78H

TH 403A 475Z PIONEER 358C ET TH 89T 755T STOCKMAN 475Z
TH 49B 358C DROVER 134F TH 71U 17Y RITA 403A
 SJP LKP 18Z GLOBAL LADY 49B WLB GLOBAL 72M 50S
 SJP LKP 65S LADY P 530 18Z
MA+ WLB ELI 10H 83T
 WLB 50S GLORIA 35U
 WLB LEGO 83T 90X SNOWSHOE 719T PATERNO 23Y
SNOWSHOE 90X MYSTIC C66 E25 SNOWSHOE 64R MYSTIC W13
 SNOWSHOE 23Y MYSTIC W13 C66

Pigmentation		
RE	LE	SC
100	100	100

Act BW	80
Adj WW	580

Ultrasound	
Adj REA	REA/Wt
14.32	1.51
Adj Marb	Adj Fat
3.55	0.20

CED	BW	WW	YW	SC	SCF	Milk	Fat	REA	Marb	BMI	CHB
3.9	1.4	55	85	0.6	20.2	22	0.044	0.42	0.10	401	106

- » Lots of eye appeal and pigmentation
- » Moderate birth weight with outstanding weaning performance
- » 3-year-old dam displays lots of volume and a beautiful udder
- » Top 15% SCF; top 20% BW, BMI



Yearling Bulls

81H A REG: 44182401 DOB: 3/29/20 SCURRED SNOWSHOE 40E VIKTOR E26 81H

SCHB	JDH VICTOR 719T 33Z ET	TH 122 71I VICTOR 719T	Pigmentation		
	JDH 21Z VICTOR 33Z 40E ET	JDH MS YANKEE 11U ET	RE	LE	SC
MA+	JDH MS DURANGO 4037 21Z	THM DURANGO 4037	100	100	100
		AH JDH WRANGLER QUEEN 22T ET	Act BW 76		
	SNOWSHOE X51 BANNACK Y27 19C	KCF BENNETT REVOLUTION X51	Adj WW 556		
	SNOWSHOE 19C MYSTIC BOOM E26	SNOWSHOE 719T KATIE Y27			
	SNOWSHOE P606 MYSTIC BOOM 39RET	PW VICTOR BOOMER P606			
		RPH MISS MANIP 6023			

CED	BW	WW	YW	SC	SCF	Milk	Fat	REA	Marb	BMI	CHB	Ultrasound	
2.7	2.5	53	83	0.6	21.9	25	0.004	0.54	0.18	448	130	Adj REA	REA/Wt
												13.58	1.32
												Adj Marb	Adj Fat
												4.08	0.25

- » Balanced and no compromises necessary
- » Low birth weight, and a weaning ratio of 102
- » Out of a 3-year-old Bannack daughter
- » Top 5% BMI; top 10% SCF; top 15% REA, CHB; top 20% Udder; top 25% Teat, Marb



Snowshoe 719T Paterno 23Y — Grand sire to 32H, 51H, 70H and 82H

84H A REG: 44182371 DOB: 4/1/20 SCURRED SNOWSHOE 40E VIKTOR B51 84H

SCHB	JDH VICTOR 719T 33Z ET	TH 122 71I VICTOR 719T	Pigmentation		
	JDH 21Z VICTOR 33Z 40E ET	JDH MS YANKEE 11U ET	RE	LE	SC
MA+	JDH MS DURANGO 4037 21Z	THM DURANGO 4037	100	100	100
		AH JDH WRANGLER QUEEN 22T ET	Act BW 86		
	KJ HVH 33N REFRESH 483T ET	SNOWSHOE 483T LADY U03 B51	Adj WW 663		
		SNOWSHOE 71I LADY U03 ET			
		SHF RADAR M326 R125			
		HVH OKSANA 4L 33N			
		DRF JWR PRINCE VICTOR 71I			
		CHURCHILL LADY 9115 1ET			

CED	BW	WW	YW	SC	SCF	Milk	Fat	REA	Marb	BMI	CHB	Ultrasound	
-1.0	3.1	59	95	0.9	16.4	29	0.024	0.31	0.02	351	109	Adj REA	REA/Wt
												15.68	1.37
												Adj Marb	Adj Fat
												4.34	0.38

- » Moderate birth weight and high weaning performance
- » Dam has earned Dam of Distinction with a weaning ratio of 110 on five calves
- » WR 121; Top 25% WW, YW, Milk



86H

82H A REG: 44182337 DOB: 3/30/20 POLLED SNOWSHOE 40E VIKTOR C46 82H

SCHB	JDH VICTOR 719T 33Z ET	TH 122 71I VICTOR 719T	Pigmentation		
	JDH 21Z VICTOR 33Z 40E ET	JDH MS YANKEE 11U ET	RE	LE	SC
MA+	JDH MS DURANGO 4037 21Z	THM DURANGO 4037	100	100	100
		AH JDH WRANGLER QUEEN 22T ET	Act BW 82		
	SNOWSHOE 719T PATERNO 23Y	TH 122 71I VICTOR 719T	Adj WW 514		
	SNOWSHOE 23Y PANTHER Y20 C46	SNOWSHOE P606 PILAR U09			
	SNOWSHOE R117 PANTHER Y20	SHF RIB EYE M326 R117			
		SNOWSHOE K849 PANTHER 10R			

CED	BW	WW	YW	SC	SCF	Milk	Fat	REA	Marb	BMI	CHB	Ultrasound	
1.9	2.7	55	89	0.9	19.6	21	0.004	0.44	0.08	408	123	Adj REA	REA/Wt
												14.47	1.59
												Adj Marb	Adj Fat
												4.24	0.24

- » Moderate birth weight
- » Top 15% BMI; top 20% SCF; top 25% Teat



86H A REG: 44182339 DOB: 4/2/20 POLLED SNOWSHOE 40E VIKTOR D24 86H

SCHB	JDH VICTOR 719T 33Z ET	TH 122 71I VICTOR 719T	Pigmentation		
	JDH 21Z VICTOR 33Z 40E ET	JDH MS YANKEE 11U ET	RE	LE	SC
MA+	JDH MS DURANGO 4037 21Z	THM DURANGO 4037	100	50	100
		AH JDH WRANGLER QUEEN 22T ET	Act BW 86		
	SNOWSHOE 20N SPUD 64R	NPH 20X SPARTAN 20N	Adj WW 611		
	SNOWSHOE 64R LADY MAE 277 D24	BSB 28E LOLITA L3			
	SNOWSHOE 45P LADY MAE 29P 277	NJW FHF 9710 TANK 45P			
		SNOWSHOE S133 LADY MAE 29P ET			

CED	BW	WW	YW	SC	SCF	Milk	Fat	REA	Marb	BMI	CHB	Ultrasound	
-2.0	2.9	50	82	0.5	16.1	28	0.014	0.46	0.07	361	126	Adj REA	REA/Wt
												13.80	1.36
												Adj Marb	Adj Fat
												3.54	0.33

- » Excellent performance on the cow and on feed
- » Lots of growth and maternal performance
- » Dam is maternal sister to lot 80H
- » WR 112; Top 15% DMI; top 20% Udder, CW; top 25% Teat



88H

88H **A** REG: 44182353 DOB: 4/4/20 POLLED
SNOWSHOE 40E VIKTOR E73 88H

SCHB **MA+**

JDH VICTOR 719T 33Z ET
JDH 21Z VICTOR 33Z 40E ET
 JDH MS DURANGO 4037 21Z

WLB LEGO 83T 90X
SNOWSHOE 90X TORI A78 E73
 SNOWSHOE 485T TORI U52 A78

TH 122 71I VICTOR 719T
 JDH MS YANKEE 11U ET
 THM DURANGO 4037
 AH JDH WRANGLER QUEEN 22T ET
 WLB ELI 10H 83T
 WLB 50S GLORIA 35U
 KJ HVH 33N REDEEM 485T ET
 SNOWSHOE 64R TORI U52

Pigmentation		
RE	LE	SC
100	100	100
Act BW		
74		
Adj WW		
526		

CED	BW	WW	YW	SC	SCF	Milk	Fat	REA	Marb	BMI	CHB
5.6	1.7	56	85	0.7	18.8	23	0.024	0.43	0.09	394	120

- » Low birth weight
- » Balanced in all traits
- » Top 20% Udder, CW; top 25% CED, BW, SCF, Teat, BMI, CHB



Snowshoe 483T Sapphire T12 B12 — Dam to 91H

91H **A** REG: 44182394 DOB: 4/7/20 POLLED
SNOWSHOE RANCH HAND B12 91H

SCHB **MA+**

TH 403A 475Z PIONEER 358C ET
TH 49B 358C DROVER 134F
 SJP LKP 18Z GLOBAL LADY 49B

KJ HVH 33N REFRESH 483T ET
SNOWSHOE 483T SAPPHIRE T12 B12
 SNOWSHOE P606 SAPPHIRE T12

TH 89T 755T STOCKMAN 475Z
 TH 71U 17Y RITA 403A
 WLB GLOBAL 72M 50S
 SJP LKP 65S LADY P 530 18Z
 SHF RADAR M326 R125
 HVH OKSANA 4L 33N
 PW VICTOR BOOMER P606
 SNOWSHOE S133 CAROLINA 11M

Pigmentation		
RE	LE	SC
100	0	100
Act BW		
90		
Adj WW		
627		

CED	BW	WW	YW	SC	SCF	Milk	Fat	REA	Marb	BMI	CHB
-1.3	3.5	58	98	0.8	18.5	27	0.074	0.30	0.13	368	98

- » Impressive performance
- » Out of a high volume, beautiful uddered dam
- » Dam is grandam of lot 73H
- » WR 115; Top 20% YW; top 25% SCF



Snowshoe 20N Spud 64R — Grand sire to 126G, 94H, 96H

94H **A** REG: 44182432 DOB: 4/9/20 POLLED
SNOWSHOE RANCH HAND Y44 94H

SCHB **MA+**

TH 403A 475Z PIONEER 358C ET
TH 49B 358C DROVER 134F
 SJP LKP 18Z GLOBAL LADY 49B

SNOWSHOE 20N SPUD 64R
SNOWSHOE 64R WHISPER Y44
 SNOWSHOE P606 WHISPER 4R ET

TH 89T 755T STOCKMAN 475Z
 TH 71U 17Y RITA 403A
 WLB GLOBAL 72M 50S
 SJP LKP 65S LADY P 530 18Z
 NPH 20X SPARTAN 20N
 BSB 28E LOLITA L3
 PW VICTOR BOOMER P606
 BSB 832W SAVANNA 3F

Pigmentation		
RE	LE	SC
100	0	100
Act BW		
78		
Adj WW		
509		

CED	BW	WW	YW	SC	SCF	Milk	Fat	REA	Marb	BMI	CHB
2.0	1.4	45	77	0.9	19.9	23	0.064	0.48	0.19	403	117

- » Easy calving
- » Maternal brother to dam of lot 55H
- » Top 20% BW, SCF, Marb, BMI



Visitors Always Welcome!

Yearling Bulls

95H **A** REG: 44182433 DOB: 4/9/20 POLLED **SNOWSHOE RANCH HAND Y05 95H**

TH 403A 475Z PIONEER 358C ET
TH 49B 358C DROVER 134F
SJP LKP 18Z GLOBAL LADY 49B

PW VICTOR BOOMER P606
SNOWSHOE P606 SELENA Y05 ET
DRF SELENA S133 K6

TH 89T 755T STOCKMAN 475Z
TH 71U 17Y RITA 403A
WLB GLOBAL 72M 50S
SJP LKP 65S LADY P 530 18Z
REMITALL BOOMER 46B
PW VICTORIA 964 8114
WILL-VIA HEADLINE S133
FCF DELIVERY QUEEN C264

Pigmentation		
RE	LE	SC
100	90	65
Act BW		
100		
Adj WW		
553		

CED	BW	WW	YW	SC	SCF	Milk	Fat	REA	Marb	BMI	CHB
-7.0	5.1	55	86	0.7	21.3	26	0.044	0.41	0.07	413	97

- » Maternal performance with growth
- » Dam is full sister to dam of lot 44H
- » Top 10% SCF; top 15% BMI; top 20% Udder



97H **A** REG: 44182421 DOB: 4/11/20 POLLED **SNOWSHOE 40E VIKTOR 10S 97H**

JDH VICTOR 719T 33Z ET
JDH 21Z VIKTOR 33Z 40E ET
JDH MS DURANGO 4037 21Z

PW VICTOR BOOMER P606
SNOWSHOE P606 MONTANA MAID 10S
SNOWSHOE S133 CAROLINA 11M

TH 122 71I VICTOR 719T
JDH MS YANKEE 11U ET
THM DURANGO 4037
AH JDH WRANGLER QUEEN 22T ET
REMITALL BOOMER 46B
PW VICTORIA 964 8114
WILL-VIA HEADLINE S133
FLF WV MISS BUTLER U6

Pigmentation		
RE	LE	SC
100	100	100
Act BW		
80		
Adj WW		
564		

CED	BW	WW	YW	SC	SCF	Milk	Fat	REA	Marb	BMI	CHB
-1.0	2.1	49	73	0.7	20.6	31	0.024	0.45	0.09	420	115

- » Longevity and performance! Age of dam: 14 Weaning Ratio 104
- » Top 5% Udder; top 10% DMI, Teat; top 15% SCF, Milk, BMI



96H **A** REG: 44182422 DOB: 4/10/20 POLLED **SNOWSHOE RANCH HAND D87 96H**

TH 403A 475Z PIONEER 358C ET
TH 49B 358C DROVER 134F
SJP LKP 18Z GLOBAL LADY 49B

SNOWSHOE 20N SPUD 64R
SNOWSHOE 64R LADY Z53 D87
SNOWSHOE 31U LADY 13S Z53

TH 89T 755T STOCKMAN 475Z
TH 71U 17Y RITA 403A
WLB GLOBAL 72M 50S
SJP LKP 65S LADY P 530 18Z
NPH 20X SPARTAN 20N
BSB 28E LOLITA L3
KCL 59M JOOMLA 65K 31U
SNOWSHOE 236G LADY 13S ET

Pigmentation		
RE	LE	SC
100	100	100
Act BW		
94		
Adj WW		
548		

CED	BW	WW	YW	SC	SCF	Milk	Fat	REA	Marb	BMI	CHB
-5.8	5.2	60	101	0.8	14.8	25	0.034	0.49	0.11	327	114

- » Combines the thickness of Drover and maternal grandsire Spud
- » Top 15% YW; top 25% WW, CW



100H **A** REG: 44182425 DOB: 4/14/20 POLLED **SNOWSHOE 134F DROVER F62 100H**

TH 403A 475Z PIONEER 358C ET
TH 49B 358C DROVER 134F
SJP LKP 18Z GLOBAL LADY 49B

SNOWSHOE X51 BANNACK Y27 19C
SNOWSHOE 19C SERENA A28 F62
SNOWSHOE 144U SERENA T44 A28ET

TH 89T 755T STOCKMAN 475Z
TH 71U 17Y RITA 403A
WLB GLOBAL 72M 50S
SJP LKP 65S LADY P 530 18Z
KCF BENNETT REVOLUTION X51
SNOWSHOE 719T KATIE Y27
TH 75J 243R BAILOUT 144U ET
SNOWSHOE P606 SERENA T44 ET

Pigmentation		
RE	LE	SC
20	0	80
Act BW		
82		
Adj WW		
534		

CED	BW	WW	YW	SC	SCF	Milk	Fat	REA	Marb	BMI	CHB
-3.5	3.7	58	95	0.7	20.3	22	0.044	0.48	0.17	408	114

- » Out of a 2-year-old Bannack daughter
- » Top 15% SCF, BMI; top 20% Udder; top 25% YW, Marb



Elite Registered Open Females



Elite Registered Open Females



H13



REG: 44177591 DOB: 2/13/20 POLLED

SNOWSHOE 6153 MT MAID D71 H13

R LEADER 6964
BOYD 31Z BLUEPRINT 6153
NJW 91H 100W RITA 31Z ET

HYALITE ON TARGET 936
R MISS REVOLUTION 1009
NJW 73S M326 TRUST 100W ET
REMITALL RITA 91H

WLB LEGO 83T 90X
SNOWSHOE 90X MONTANA MAID D71
SNOWSHOE P606 MONTANA MAID 10S

WLB ELI 10H 83T
WLB 50S GLORIA 35U
PW VICTOR BOOMER P606
SNOWSHOE S133 CAROLINA 11M

Pigmentation		
RE	LE	SC
100	100	na
Act BW		
68		
Adj WW		
520		

CED	BW	WW	YW	SC	SCF	Milk	Fat	REA	Marb	BMI	CHB
9.1	1.1	54	80	1.1	20.2	25	0.034	0.42	0.03	406	106

Ultrasound	
Adj REA	REA/Wt
10.53	1.36
Adj Marb	Adj Fat
3.56	0.16

- » Dark eyed and loads of eye appeal! Out of a proven cow family with extensive longevity
- » Herd building potential. Dam is highly fertile with a 350-day calving interval
- » Top 5% Udder; top 10% CED, DMI, Teat; top 15% BW, SCF, BMI

H21



REG: 44177596 DOB: 2/17/20 POLLED

SNOWSHOE 134F CHANCEY E104 H21

TH 403A 475Z PIONEER 358C ET
TH 49B 358C DROVER 134F
SJP LKP 18Z GLOBAL LADY 49B

TH 89T 755T STOCKMAN 475Z
TH 71U 17Y RITA 403A
WLB GLOBAL 72M 50S
SJP LKP 65S LADY P 530 18Z

SNOWSHOE X51 BANNACK Y27 19C
SNOWSHOE 19C ENCHANTMENT E104
SNOWSHOE 719T ENCHANTMENT Z21

KCF BENNETT REVOLUTION X51
SNOWSHOE 719T KATIE Y27
TH 122 71I VICTOR 719T
SNOWSHOE 21U ENCHANTMENT X19

Pigmentation		
RE	LE	SC
100	100	na
Act BW		
76		
Adj WW		
520		

CED	BW	WW	YW	SC	SCF	Milk	Fat	REA	Marb	BMI	CHB
3.5	2.2	60	97	0.9	20.1	24	0.034	0.48	0.19	407	118

Ultrasound	
Adj REA	REA/Wt
9.31	1.24
Adj Marb	Adj Fat
4.30	0.29

- » Robust, long hipped, high volume and gorgeous. Her dam is a big bodied, level uddered Bannack daughter doing a great job with her first calf
- » Exceptional disposition
- » A foundation caliber female
- » Top 15% SCF, BMI; top 20% YW, Marb; top 25% WW, Udder, REA



Can't Join Us?

Bid Live on LiveAuctions.TV



Elite Registered Open Females



H31 **A** REG: 44180917 DOB: 2/21/20 POLLED **SNOWSHOE 6153 LADY F23 H31**

R LEADER 6964
BOYD 31Z BLUEPRINT 6153
NJW 91H 100W RITA 31Z ET

SNOWSHOE X51 BANNACK Y27 19C
SNOWSHOE 19C LADY W18 F23
SNOWSHOE P606 LADY W18

HYALITE ON TARGET 936
R MISS REVOLUTION 1009
NJW 73S M326 TRUST 100W ET
REMITALL RITA 91H

KCF BENNETT REVOLUTION X51
SNOWSHOE 719T KATIE Y27
PW VICTOR BOOMER P606
CHURCHILL LADY 9115 1ET

Pigmentation		
RE	LE	SC
100	100	na

Act BW	76
Adj WW	617

CED	BW	WW	YW	SC	SCF	Milk	Fat	REA	Marb	BMI	CHB
3.2	3.7	59	94	1.3	20.4	27	0.014	0.55	0.06	418	115

Ultrasound	
Adj REA	REA/Wt
10.54	1.35
Adj Marb	Adj Fat
5.37	0.18

- » An exciting Blueprint daughter produced by another high volume 2-year-old Bannack daughter
- » Pretty fronted and loads of pigment
- » WR 116; Top 10% Teat; top 15% SC, SCF, REA, BMI; top 20% DMI, Udder; top 25% WW

H53 **A** REG: 44180930 DOB: 2/29/20 POLLED **SNOWSHOE 40E LADY F51 H53**

JDH VICTOR 719T 33Z ET
JDH 21Z VICTOR 33Z 40E ET
JDH MS DURANGO 4037 21Z

SNOWSHOE X51 BANNACK Y27 19C
SNOWSHOE 19C LADY B51 F51
SNOWSHOE 483T LADY U03 B51

TH 122 71I VICTOR 719T
JDH MS YANKEE 11U ET
THM DURANGO 4037
AH JDH WRANGLER QUEEN 22T ET

KCF BENNETT REVOLUTION X51
SNOWSHOE 719T KATIE Y27
KJ HVH 33N REFRESH 483T ET
SNOWSHOE 71I LADY U03 ET

Pigmentation		
RE	LE	SC
100	100	na

Act BW	78
Adj WW	535

CED	BW	WW	YW	SC	SCF	Milk	Fat	REA	Marb	BMI	CHB
-4.5	4.5	66	104	0.8	19.2	26	0.004	0.53	0.11	409	128

Ultrasound	
Adj REA	REA/Wt
10.96	1.47
Adj Marb	Adj Fat
5.27	0.29

- » Deep bodied and long hipped. Broody, soft made and nicely pigmented
- » Out of a 2-year-old Bannack daughter
- » Top 10% WW, YW, CW; top 15% BMI; top 20% Udder, REA, CHB; top 25% SCF, Teat



Snowshoe X51 Bannack Y27 19C — Grand sire to 25H, 49H, 50H, 71H, 81H, 100H, H21, H 31, H38, and H53

H56 **A** REG: 44180986 DOB: 3/6/20 POLLED **SNOWSHOE 40E SHIMMER F04 H56**

JDH VICTOR 719T 33Z ET
JDH 21Z VICTOR 33Z 40E ET
JDH MS DURANGO 4037 21Z

WLB MR CANADA 10Z 15B
SNOWSHOE 15B SHIMMER C24 F04
SNOWSHOE 6Z SHIMMER Y07 C24

TH 122 71I VICTOR 719T
JDH MS YANKEE 11U ET
THM DURANGO 4037
AH JDH WRANGLER QUEEN 22T ET

WLB WINCHESTER ANSER 90X 10Z
REMITALL GRAVES JUNO 204S
SNOWSHOE R117 RIBEYE T41 6Z
SNOWSHOE 64R SHIMMER Y07

Pigmentation		
RE	LE	SC
0	100	na

Act BW	80
Adj WW	576

CED	BW	WW	YW	SC	SCF	Milk	Fat	REA	Marb	BMI	CHB
-0.9	4.4	62	99	0.9	19.7	31	0.014	0.39	0.03	405	114

Ultrasound	
Adj REA	REA/Wt
8.81	1.25
Adj Marb	Adj Fat
3.43	0.23

- » Out of an impressive 2-year-old Mr Canada daughter
- » Lots of capacity in a highly maternal balanced package
- » Maternal grand dam is a Dam of Distinction
- » WR 109; Top 15% WW, YW; top 20% SCF, Udder, BMI; top 25% Teat, CW



Visit SnowshoeCattle.com
for Videos and Supplemental Information

Elite Registered Open Females



Snowshoe 64R Trijicon 37W — A Spud son and maternal grand sire to H61

H61 **A** REG: 44182417 DOB: 3/15/20 POLLED **SNOWSHOE 134F SERENA Y09 H61**

TH 403A 475Z PIONEER 358C ET
TH 49B 358C DROVER 134F
SJP LKP 18Z GLOBAL LADY 49B

TH 89T 755T STOCKMAN 475Z
TH 71U 17Y RITA 403A
WLB GLOBAL 72M 50S
SJP LKP 65S LADY P 530 18Z

SNOWSHOE 64R TRIJICON 37W
SNOWSHOE 37W SERENA Y09
SNOWSHOE P606 SERENA T44 ET

SNOWSHOE 20N SPUD 64R
SNOWSHOE 236G HOLLY 46N
PW VICTOR BOOMER P606
DRF SELENA S133 K6

Pigmentation		
RE	LE	SC
85+	0	na
Act BW		70
Adj WW		521

CED	BW	WW	YW	SC	SCF	Milk	Fat	REA	Marb	BMI	CHB
0.8	1.7	47	74	0.8	19.6	24	0.054	0.40	0.14	394	107

Ultrasound	
Adj REA	REA/Wt
9.60	1.37
Adj Marb	Adj Fat
4.49	0.31

- » Stylish and thick
- » Out of a proven cow with a great udder
- » Top 20% SCF; top 25% BW, BMI



WLB Lego 83T 90X — Maternal grand sire to H13, H67, H76, 78H and 88H

H67 **A** REG: 44182283 DOB: 3/17/20 POLLED **SNOWSHOE 42Z PERF MISS E60 H67**

KCL 59M JOOMLA 65K 31U
SNOWSHOE 31U TUFF 31S 42Z
SNOWSHOE 236G TORI 31S ET

GHC STAR MOOSE 59M
KCL 8006 BONISSA 65K
REMITALL GOVERNOR 236G
DIRT ROAD TORI U8 12J

WLB LEGO 83T 90X
SNOWSHOE 90X PERF MISS T23 E60
SNOWSHOE 417L PERF MISS T23

WLB ELI 10H 83T
WLB 50S GLORIA 35U
KJ 520E VICTOR 417L
SNOWSHOE D03 PERFECT MISS 24R

Pigmentation		
RE	LE	SC
100	25	na
Act BW		66
Adj WW		517

CED	BW	WW	YW	SC	SCF	Milk	Fat	REA	Marb	BMI	CHB
3.7	2.2	52	80	1.1	9.9	25	-0.036	0.51	-0.03	254	108

Ultrasound	
Adj REA	REA/Wt
9.97	1.47
Adj Marb	Adj Fat
4.10	0.16

- » Top 5% for lean Fat; top 25% REA

H76 **A** REG: 44182313 DOB: 3/22/20 POLLED **SNOWSHOE 134F KATIE D52 H76**

TH 403A 475Z PIONEER 358C ET
TH 49B 358C DROVER 134F
SJP LKP 18Z GLOBAL LADY 49B

TH 89T 755T STOCKMAN 475Z
TH 71U 17Y RITA 403A
WLB GLOBAL 72M 50S
SJP LKP 65S LADY P 530 18Z

WLB LEGO 83T 90X
SNOWSHOE 90X KATIE T10 D52
SNOWSHOE P606 PEONY T10 ET

WLB ELI 10H 83T
WLB 50S GLORIA 35U
PW VICTOR BOOMER P606
SNOWSHOE D03 PILAR 3M

Pigmentation		
RE	LE	SC
25	100	na
Act BW		70
Adj WW		453

CED	BW	WW	YW	SC	SCF	Milk	Fat	REA	Marb	BMI	CHB
4.2	2.7	55	87	0.6	20.0	19	0.054	0.38	0.15	394	104

Ultrasound	
Adj REA	REA/Wt
9.43	1.36
Adj Marb	Adj Fat
4.21	0.32

- » Fancy made, beautiful shape, dark cherry red and short marked
- » Dam is a maternal sister to the dam of Bannack
- » Top 15% SCF; top 2% Udder, BMI



H79 **A** REG: 44182341 DOB: 3/25/20 POLLED **SNOWSHOE 40E KATIE D45 H79**

JDH VICTOR 719T 33Z ET
JDH 21Z VICTOR 33Z 40E ET
JDH MS DURANGO 4037 21Z

TH 122 71U VICTOR 719T
JDH MS YANKEE 11U ET
THM DURANGO 4037
AH JDH WRANGLER QUEEN 22T ET

KCF BENNETT REVOLUTION X51
SNOWSHOE X51 KATIE T10 D45 ET
SNOWSHOE P606 PEONY T10 ET

MSU TCF REVOLUTION 4R
KCF MISS PROFICIENT U201
PW VICTOR BOOMER P606
SNOWSHOE D03 PILAR 3M

Pigmentation		
RE	LE	SC
0	0	na
Act BW		70
Adj WW		526

CED	BW	WW	YW	SC	SCF	Milk	Fat	REA	Marb	BMI	CHB
2.3	2.9	59	92	0.9	19.8	24	0.014	0.69	0.24	426	141

Ultrasound	
Adj REA	REA/Wt
9.45	1.24
Adj Marb	Adj Fat
4.40	0.23

- » Well made, clean fronted and balanced
- » Highly maternal cow family with proven performance
- » Dam is maternal sister to the dams of Bannack and H76
- » Top 5% REA; top 10% Teat, CW, BMI, CHB; top 15% Marb; top 20% SCF, Udder; top 25% WW



Elite Registered Open Females

H83 **A** REG: 44182381 DOB: 4/1/20 POLLED **SNOWSHOE 40E LADY SAGE Z74 H83**

JDH VICTOR 719T 33Z ET
JDH 21Z VICTOR 33Z 40E ET
JDH MS DURANGO 4037 21Z

TH 122 71I VICTOR 719T
JDH MS YANKEE 11U ET
THM DURANGO 4037
AH JDH WRANGLER QUEEN 22T ET

NJW FHF 9710 TANK 45P
SNOWSHOE 45P LADY SAGE 23R Z74
SNOWSHOE 60D LADY SAGE 23R ET

FHF 8403 STARBUCK 19H
GV 579 VICTORIA 9710
RU DUSTER 60D
CHURCHILL LADY 911S 1ET

Pigmentation		
RE	LE	SC
100	75	na
Act BW		80
Adj WW		523

CED	BW	WW	YW	SC	SCF	Milk	Fat	REA	Marb	BMI	CHB
-3.0	3.5	56	89	0.6	15.0	26	0.024	0.41	0.02	336	115

Ultrasound	
Adj REA	REA/Wt
10.51	1.31
Adj Marb	Adj Fat
4.57	0.28

- » Clean fronted, broody
- » Dam is a full sister to the dam of 80H
- » True combination of maternal performance, femininity, carcass and phenotype

H98 **A** REG: 44182431 DOB: 4/12/20 POLLED **SNOWSHOE 40E SAVANNA C02 H98**

JDH VICTOR 719T 33Z ET
JDH 21Z VICTOR 33Z 40E ET
JDH MS DURANGO 4037 21Z

TH 122 71I VICTOR 719T
JDH MS YANKEE 11U ET
THM DURANGO 4037
AH JDH WRANGLER QUEEN 22T ET

PW VICTOR BOOMER P606
SNOWSHOE P606 SAVANNA T41 C02
SNOWSHOE M33 SAVANNA T41 ET

REMITALL BOOMER 46B
PW VICTORIA 964 8114
SHF MARSHAL 236G M33
BSB 832W SAVANNA 3F

Pigmentation		
RE	LE	SC
10	50	na
Act BW		68
Adj WW		500

CED	BW	WW	YW	SC	SCF	Milk	Fat	REA	Marb	BMI	CHB
0.5	2.4	49	79	1.3	20.8	30	0.014	0.40	0.07	418	113

Ultrasound	
Adj REA	REA/Wt
9.09	1.29
Adj Marb	Adj Fat
3.71	0.32

- » Bred with outstanding maternal performance
- » Low birth weight with a weaning ratio of 110
- » Out of our foundation cow family
- » WR 110; Top 15% SC, BMI; top 20% DMI, Milk, Udder; top 25% Teat



JDH 21Z Victor 33Z 40E ET sells as a feature lot and is the sire of 22 bull and heifer lots.

F1 Commercial Open Yearling Females



Offering 12 F1 Baldy open heifers from long-time customers, Danny & Teresa Marlenee, Circle, MT.

Danny and Teresa have made a point of selecting from our top bulls, two of which have served as herd sires in our program. He has developed a reputation cow herd, with emphasis on breeding quality replacement females with good pigmentation.

- » Bangs Vaccinated; Pyramid 5 w/ Presponse, Vision 7
- » Fast Track Jump Start and Alpha 7 at birth
- » Poured with Ivomec
- » Weighed 778# on 1/22/21

For more information contact: Danny Marlenee (406) 939-0389



134F **A** REG: 43920092 DOB: 1/23/18 POLLED
TH 49B 358C DROVER 134F

TH 89T 755T STOCKMAN 475Z
TH 403A 475Z PIONEER 358C ET
 TH 71U 17Y RITA 403A

 WLB GLOBAL 72M 50S
SJP LKP 18Z GLOBAL LADY 49B
 SJP LKP 65S LADY P 530 18Z

TH 223 71I VICTOR 755T
 TH 16G 20N GEMINI 89T
 TH 22R 16S LAMBEAU 17Y
 TH 7N 45P RITA 71U
 HAROLDSON WLB MUTUMBO ET 72M
 WLB 035J FLORA 14N
 TH 2J 63N TUNDRA 65S
 L3 LADY PREMIER 530

Pigmentation		
RE	LE	SC
100	100	100
Act BW		90
Adj WW		662
Adj YW		1161

CED	BW	WW	YW	SC	SCF	Milk	Fat	REA	Marb	BMI	CHB	AHA GE-EPD
8.7	1.8	56	95	0.8	21.2	22	0.084	0.28	0.18	404	101	

» His first calf crop has been low birth weight with very good growth. We have used him successfully on heifers and are continuing to do so. He is wide based with natural thickness and excellent pigment and is passing this along to his offspring. Drover has given us consistency in thickness, wide tops, attractive base width and correctness. 20 sons are in this year's sale, and three daughters. His second calf crop is underway, and we are looking forward to his influence in our program.



TH 403A 475Z Pioneer 358C ET
 — Sire to Drover 134F



SJP LKP 18Z Global Lady 49B
 — Dam to Drover 134F



Snowshoe 134F Chancey E104 H21
 — Daughter to Drover 134F. She sells sale day.



Snowshoe 134F Range Boss 32H —
 Son to Drover 134F. He sells sale day.



6153 **A** REG: 43764491 DOB: 10/4/16 Homozygous Polled
BOYD 31Z BLUEPRINT 6153


 HYALITE ON TARGET 936
R LEADER 6964
 R MISS REVOLUTION 1009

 NJW 73S M326 TRUST 100W ET
NJW 91H 100W RITA 31Z ET
 REMITALL RITA 91H

SCHU-LAR ON TARGET 22S
 HYALITE TS LASS 310
 MSU TCF REVOLUTION 4R
 R MISS WRANGLER 3007
 KCF BENNETT 3008 M326
 NJW P606 72N DAYDREAM 73S
 FELTONS 517
 REMITALL FLORIAL RITA 102F

Pigmentation		
RE	LE	SC
100	100	100
Act BW		78
Adj WW		759
Adj YW		1313

CED	BW	WW	YW	SC	SCF	Milk	Fat	REA	Marb	BMI	CHB	AHA GE-EPD
12.0	1.1	59	93	1.9	19.8	27	0.034	0.36	-0.01	401	106	

» We made the decision to get in on the ground floor of this young sire due to his eye-appeal, easy fleshing ability, calving ease profile, fertility and carcass merit contributions. We have not been disappointed. He has already proven himself to be a trait leader for Calving Ease, Birth Weight, Dry Matter Intake, Scrotal Circumference, and Udder Quality. We have had great results using him on heifers and the calves are typically marked with his excellent pigmentation. They also display his naturally thick and correct phenotype



NJW 91H 100W Rita 31Z ET — Dam of Blueprint 6153

Balance without Compromise

Reference Sires

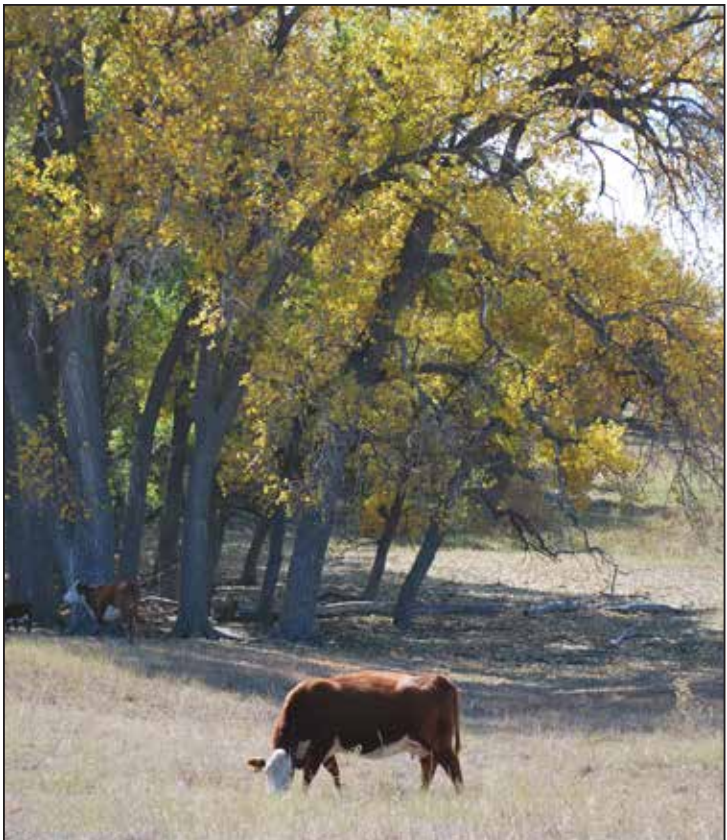


206E **A** REG: 43818504 DOB: 2/1/17 POLLED
TH 13Y 358C BOTTOM LINE 206E

SCHB	TH 89T 755T STOCKMAN 475Z	TH 223 71I VICTOR 755T	<table border="1"> <tr><th colspan="3">Pigmentation</th></tr> <tr><th>RE</th><th>LE</th><th>SC</th></tr> <tr><td>100</td><td>100</td><td>100</td></tr> </table>	Pigmentation			RE	LE	SC	100	100	100
	Pigmentation											
RE	LE	SC										
100	100	100										
MA+	TH 403A 475Z PIONEER 358C ET TH 71U 17Y RITA 403A	TH 16G 20N GEMINI 89T TH 22R 16S LAMBEAU 17Y TH 7N 45P RITA 71U										
	TH 122 71I VICTOR 719T	DRF JWR PRINCE VICTOR 71I	Act BW 94									
	TH 54W 719T BETH 13Y TH 6S 45P BETH 54W	KBCR 19D DOMINETTE 122 NJW FHF 9710 TANK 45P TH 60K W39 BETH 6S	Adj WW 874									
			Adj YW 1480									

CED	BW	WW	YW	SC	SCF	Milk	Fat	REA	Marb	BMI	CHB
-4.8	5.7	79	130	1.5	13.4	26	0.074	0.60	0.14	320	125

» Bottom Line is a powerhouse for growth and carcass performance in a very attractive package. He is a trait leader for Weaning, Yearling and Carcass Weights, Scrotal Circumference, REA and CHB. Out of a proven cow family for maternal excellence, he will make a substantial contribution to our program. Paternal brother to TH 49B 358C Drover 134F.



19C **A** REG: 43573757 DOB: 2/13/15 Homozygous Polled
SNOWSHOE X51 BANNACK Y27 19C

SCHB	MSU TCF REVOLUTION 4R	FELTONS LEGEND 242	<table border="1"> <tr><th colspan="3">Pigmentation</th></tr> <tr><th>RE</th><th>LE</th><th>SC</th></tr> <tr><td>100</td><td>100</td><td>100</td></tr> </table>	Pigmentation			RE	LE	SC	100	100	100
	Pigmentation											
RE	LE	SC										
100	100	100										
MA+	KCF BENNETT REVOLUTION X51 KCF MISS PROFICIENT U201	MSU TCF RACHAEL ET 54N EFBEEF SCHU-LAR PROFICIENT N093 KCF MISS 774 L82										
	TH 122 71I VICTOR 719T	DRF JWR PRINCE VICTOR 71I	Act BW 72									
	SNOWSHOE 719T KATIE Y27 SNOWSHOE P606 PEONY T10 ET	KBCR 19D DOMINETTE 122 PW VICTOR BOOMER P606 SNOWSHOE D03 PILAR 3M	Adj WW 946									
			Adj YW 1439									

CED	BW	WW	YW	SC	SCF	Milk	Fat	REA	Marb	BMI	CHB
4.1	3.8	65	101	0.8	23.1	19	-0.026	1.00	0.39	501	171

» Bannack represents six highly maternal generations of our breeding program and is now a significant influence in his own right. You will see this influence in the pages of this catalog. He is the maternal grandsire of ten lots. His first daughters in production are doing a tremendous job. They are big bodied and broody with square, level udders and nice teats. More importantly, they are raising bull calves that are of herd sire potential and females of foundation quality.

» He has earned Trait Leader recognition for Sustained Cow Fertility, All of the Carcass Traits, and All of the Indexes.

» Bannack truly embodies the mission here at Snowshoe Cattle by providing **Balance in all areas, Without Compromise.**

» Ultrasound Data: REA 18.02 in IMF% 4.39 Fat 0.29 in



Snowshoe 719T KATIE Y27 — Dam of Bannack Y27

A SNOWSHOE CATTLE COMPANY

SNOWSHOECATTLE.COM



We were fortunate to have the opportunity to celebrate Independence Day at Mount Rushmore.



*Our most exciting calf of 2021!
We welcomed our first grandchild, Bennett Lane Buzanowski, to the family on February 4, 2021.*



**More than 30 Years of
Balance without Compromise**





Snowshoe Cattle Co
194 Broken Axle Rd
Arthur, NE 69121

Bernie & Stacie Buzanowski

H: 308-726-2138
C: 406-855-8288

SnowShoeCattle.com



Annual Bull Sale—Monday, March 22, 2021

Arthur, NE | 1 PM (MDT)

Selling 60 Polled Hereford Bulls

Herd Sire, 2-Year-Olds, 18-Month Olds & Yearlings

Plus 12 Registered Hereford and 12 F1 Baldy Open Heifers

Online Bidding—LiveAuctions.TV



**30+ Years of No-Compromise,
Balanced Hereford Genetics**