



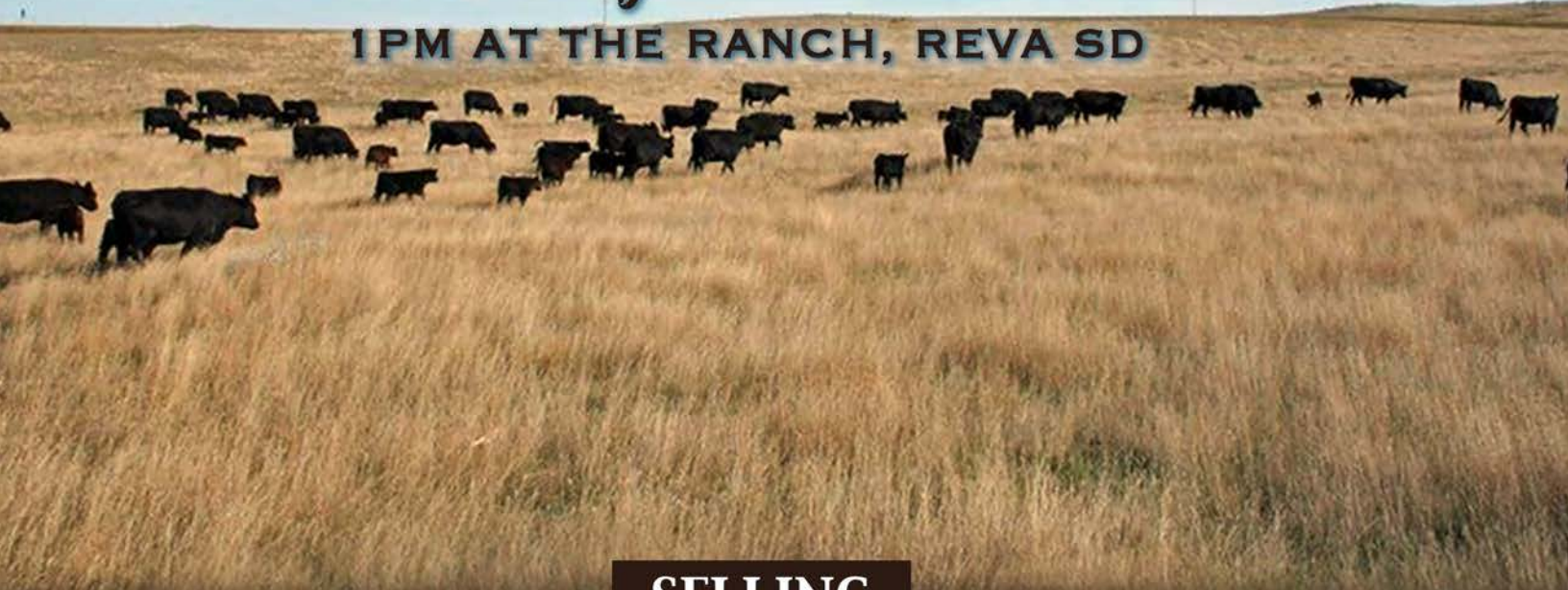
6 decades of genetic selection

Sodak Angus Ranch

64TH ANNUAL PRODUCTION SALE

January 18TH 2021

1PM AT THE RANCH, REVA SD



SELLING

**SELLING 115 BIG, STOUT, RANGE DEVELOPED
18-MONTH RED AND BLACK ANGUS BULLS**

Welcome to our 64th ANNUAL BULL SALE

It truly has been a pleasure to serve our friends, neighbors and fellow cattlemen over the years and we thank you for your trust and support of our breeding program.

As I write this 2020 has sure been the year of unexpected trials for cattle men and women. Mother nature dealt us droughts and hail storms on top of the negative market influences of the COVID -19 pandemic. For the first time in many of our lives we have witnessed cheap to no markets for our cattle while consumers paid record prices and stared at empty shelves! As we close out 2020 we may not know who are political leaders will be however, on a positive note we have worked through our market supply glut and consumers are indicating they still prefer BEEF. With these consumer preferences and the escalation of new local processing facilities across our nation, I believe ranchers can expect better markets in 2021

The 2021 sale bulls are still the same big Angus and Red Angus coming two year olds picked from the top one-third of the Sodak herd. They have been grown on pasture and a high roughage ration this winter insuring sound feet and legs. As in the past, we continue to place strong emphasis on the maternal traits of calving ease, milk and docility. We believe the maternal influence is critical in bull selection and therefore we select our bull offering from only top producing dams and provide their nursing ratios for you convenience.

Retaining the bulls until they reach 2yr old maturity not only provides more benefit in your pastures but also allows us another season to evaluate their docility. Again this year, our bulls and their heifer mates have under gone Zoetis HD 50 and Neogen genomic testing insuring accuracies for growth, maternal and carcass traits along with parentage documentation.. Our 2020 lineup includes sons and grandsons of proven sires like Sodak Legendary C306, Sodak Rocky E360, Sodak Franchise E753, Forster Resource D163 and D041, Sodak Top Draft E335, Le Mar Power Tool 6094, VS Payweight 6249 and Sodak All Star D827. These sires have been selected from proven Pay Weight, Final Answer and Resource lineage for their performance and maternal superiority. The foundation of these lines was established over 40 years ago from the Traveler 23-4 and Bandolier families which are still setting Angus firsts today. The offering consists of many half-brothers capable of minimizing genetic variation and maximizing profits.

As always our breeding program is founded upon actual production measurements which are provided for your selection convenience All calves are weaned at approximately 150 days of age with yearling weights taken on pasture in late summer.

The bull videos and sale catalog will be posted at Sodak Angus .com. On line sale day bidding will be handled on The Livestock Link. For those who wish we will be hosting pre-sale viewing at your convenience to accomodate social distancing preferences.

As always, Sodak Angus will retain, feed and deliver your purchases after May 1st. Bulls will be covered under our first breeding season guarantee..

Hope you can join us for a day of fellowship and we thank you for your patronage and interest in our breeding program. Again, we invite you to stop by at your convenience to view the bulls. If we can be of any assistance whether sale day, prior to or throughout the coming year please call or stop for a visit.

Wishing you good health, friendship and strong markets in 2021.

Vaughn, Lois and Family





SATURDAY, JANUARY 18TH, 2021 · 1PM (MST) · AT THE RANCH · REVA, SD
11:30AM COMPLIMENTARY LUNCH

72 Powerful Black Angus Bulls | 43 Stout Red Angus Bulls

CONTACT INFO:

Vaughn & Lois Meyer:

15571 Sorum Road, Reva, SD 57651
(605) 866-4426 (home) • (605) 430-4372 (cell)
sdangus@sdplains.com

Jeff Meyer:

(605) 210-2966 • sodakra@sdplains.com

Directions to the Sodak Angus Sale:

From Prairie City, SD: Go 4 miles west on Hwy. 20, then 6 miles south and 2 miles west on Sorum Road.

From Junction 79 & 20 (East of Reva, SD): Go 6 miles south, then 2 miles east on Sorum Road.

From Newell, SD: Go north on Hwy. 79 to mile marker 193, then 8 miles east on Sorum Road.

Accommodations:

Country Inn Motel: Bison, SD.....(605) 244-5234
Tipperary Lodge: Buffalo, SD.....(888) 917-5758

Catalog Design by: Branding Impressions.....(605) 347-0878

Announcements by owner: Change or errors will be announced by the owner or the auctioneer at the auction block. Scrotal measurements and reproductive evaluation data will be available sale day.

Terms & Conditions: The cattle will sell under the standard terms and conditions as recommended by the American Angus Association.

Herd Health: All bulls have been in a complete veterinary supervised health program and will be accompanied by health certificates for interstate shipment.

Feeding & Delivery: Sodak Angus will put the utmost care into each animal and deliver free 350 miles and cost in trailer loads. Sodak Angus will feed the bulls free until May 1st, 2021 and deliver there after.

Semen Interest: Sodak Angus will retain one-third semen interest in all sale bulls

Liability: All persons attending the sale do so at their own risk. Sodak Angus assumes no liability, legal or otherwise for any accidents which may occur.

Pre-Sale Viewing of Bulls & Online Catalog:
www.SodakAngus.com

Sodak Angus Ranch Sale Lots

Page 3-5: Black Angus Herd Sires
Page 6-7: Black Angus Herd Sires
Page 8-19: Black Angus Bulls
Page 20-25: Red Angus Bulls

The tentative sale day schedule is:

Bulls will be penned by 9:00 AM
Lunch will begin at 11:30 AM
Sale starts at 1:00 PM

All registered bulls have genomic parentage and genomic enhanced EPDs. Non Registered EPDs are parental averages.

BRING YOUR TRAILERS AND GET \$50 OFF EACH BULL SALE DAY.

The **Livestock** TM
Link

Livestock Videoing • Video Sales
• Bid-by-Click Online Sales

To view events go to
www.TheLivestockLink.com

BLACK ANGUS HERD SIRES

Sodak Legend E308

Calved: 8/6/17 Reg #: 19174683 Tattoo: E308

	LEMAR Final Answer 38A	\$W	+64
	Sodak Legendary C306	\$F	+106
Sodak Legend E308	Sodak Pheobe A330	\$G	+43
	Sodak Sullivan A321	\$B	+149
	Sodak Vanna C100		
	Sodak Vanna A097		

BW	WW	YW	Milk	Marb	REA	Fat	CED	SC
+2.8	+67	+117	+24	+44	+69	+0.23	+2	+85

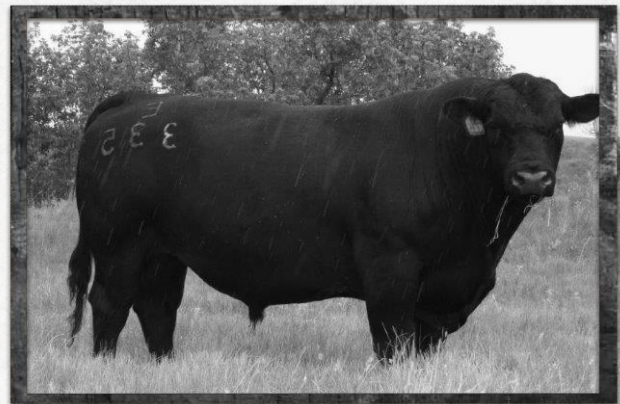
Welcome to
our Sale

Sodak Top Draft E335

Calved: 8/14/17 Reg #: 19174700 Tattoo: E335

	Sodak Final Draft Y537	\$W	+67
	Sodak Top Draft B387	\$F	+92
Sodak Top Draft E335	Sodak Connie Y795	\$G	+35
	Sodak Update Z411	\$B	+127
	Sodak Travette B122		
	Sodak Travette Z236		

BW	WW	YW	Milk	Marb	REA	Fat	CED	SC
+8	+60	+100	+26	+45	+20	+0.40	+9	+92



Sodak Rocky E360

Calved: 8/22/17 Reg #: 19174719 Tattoo: E360

	Basin Payweight 1682	\$W	+62
	Med Rock Nino Weight 545	\$F	+92
Sodak Rocky E360	Med Rock Bonnie El 872 462	\$G	+49
	Sodak Program X381	\$B	+141
	Sodak Eileen C107		
	Sodak Eileen X150		

BW	WW	YW	Milk	Marb	REA	Fat	CED	SC
+2.1	+57	+111	+31	+63	+52	+0.27	+4	+53



Sodak Legendary C306

Calved: 8/3/15 Reg #: 18514976 Tattoo: C306

	S A V Final Answer 0035	\$W	+55
	LEMAR Final Answer 38A	\$F	+85
Sodak Legendary C306	LEMAR Queen 249X	\$G	+26
	SO Payweight 333-11	\$B	+111
	Sodak Pheobe A330		
	Sodak Pheobe X066		

BW	WW	YW	Milk	Marb	REA	Fat	CED	SC
-1.1	+44	+87	+32	+33	+12	+0.77	+10	+1.17



BLACK ANGUS HERD SIRES

SO Ten Speed 012-17

Calved: 1/6/17 Reg #: 18986141 Tattoo: T012

S A V Ten Speed 3022
S A V Ten Speed 3022

CV Erica 442-11

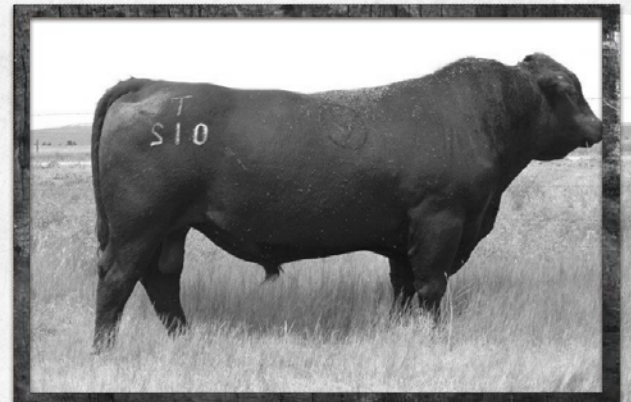
SO Ten Speed 012-17

S A V Ten Speed 3022

CV Erica 442-11

CV Erica 442-11

\$W	+48
\$F	+80
\$G	+44
\$B	+124



BW	WW	YW	Milk	Marb	REA	Fat	CED	SC
+1.1	+56	+102	+20	+49	+46	-.005	+7	-

Le Mar Power Tool 6094

Calved: 2/16/16 Reg #: 18629492 Tattoo: 6094

G A R Predestined
PA Power Tool 9108

Shamrocks Beebee Queen 3095

Le Mar Power Tool 6094

Mytty In Focus

Lemar Pryde 38T

Lemar Pryde 91R

\$W	+62
\$F	+88
\$G	+51
\$B	+139



BW	WW	YW	Milk	Marb	REA	Fat	CED	SC
+1.9	+62	+107	+24	+73	+33	+0.028	+4	+1.17

VS Payweight 6249

Calved: 2/22/16 Reg #: 18707743 Tattoo: 6249

Basin Payweight 006S
Basin Payweight 1682

21AR O Lass 7017

VS Payweight 6249

Werner War Party 2417

VS War Party 433

VS 072

\$W	+74
\$F	+92
\$G	+45
\$B	+136



BW	WW	YW	Milk	Marb	REA	Fat	CED	SC
+1	+61	+107	+30	+54	+47	+0.019	+9	+87

SO Weigh Up 276

Calved: 1/7/17 Reg #: 18985843 Tattoo: S276

Sitz Upward 307R
Plattermere Weigh Up K360

Barbara of Plattermere 337

SO Weigh Up 276-17

Lemar Image Maker 19T

SO Eileen 850-12

Sunny Okanogan Eileen 6772

\$W	+65
\$F	+73
\$G	+44
\$B	+116



BW	WW	YW	Milk	Marb	REA	Fat	CED	SC
-.3	+59	+99	+24	+39	+64	-.027	+14	+35

BLACK ANGUS HERD SIRES

SO Weigh Up 212-17

Calved: 1/16/17 Reg #: 18985844 Tattoo: S212

Plattemere Weigh Up K360
 Sitz Upward 307R
 Barbara of Plattemere 337

SO Weigh Up 212-17

Plus-T Eileen 135-12
 Basin Payweight 107S
 Sunny Okanogan Eileen 7521

\$W	+68
\$F	+111
\$G	+40
\$B	+151



BW	WW	YW	Milk	Marb	REA	Fat	CED	SC
+3.7	+74	+128	+25	+28	+74	-.025	+1	+73

Thank you to all our customers for your
 ————— continued support —————



RED ANGUS HERD SIRES

Sodak Franchise E753

Calved: 9/20/17 Reg #: 3945933 Tattoo: E753

SPUR FRANCHISE 7070
 SPUR FRANCHISE OF GARTON
 H & H IRENE LASS 0135

SODAK FRANCHISE E753

SODAK OSCAR T322/W558
 SODAK PRINCESS Z087
 SODAK PRINCESS X035

BW	WW	YW	Milk	Marb	REA	Fat	HB	GM
-1.3	60	98	27	0.62	0.49	0.01	77	67



Sodak All Star D827

Calved: 8/5/16 Reg #: 3761529 Tattoo: D827

SODAK FINAL ANSWER T576
 SODAK FINAL ANSWER Z335
 SODAK PRINCESS R019

SODAK ALL STAR D827

SODAK OSCAR T322/W558
 SODAK ODA A234
 SODAK ODA X022

BW	WW	YW	Milk	Marb	REA	Fat	HB	GM
1.1	62	97	23	0.26	0.15	0.01	72	29



Forster Resource D041

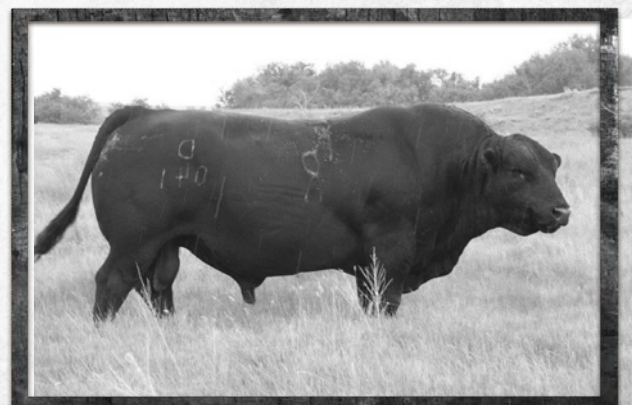
Calved: 4/27/16 Reg #: 3576284 Tattoo: D041

RITO 707 OF IDEAL 3407 7075
 S A V RESOURCE 1441
 S A V BLACKCAP MAY 4136

FORSTER RESOURCE D041

5L NORSE DESIGN 673-5035
 FORSTER LORI 9209
 FORSTER LORI 8092

BW	WW	YW	Milk	Marb	REA	Fat	HB	GM
0.2	64	110	21	0.31	0.51	0.03	61	58



RED ANGUS HERD SIRES

Forster Resource D163

Calved: 5/11/16 Reg #: 3576398 Tattoo: D163

RITO 707 OF IDEAL 3407 7075
S A V RESOURCE 1441
S A V BLACKCAP MAY 4136

FORSTER RESOURCE D163

5L LEGEND 791-7065
FORSTER COPPER QUEEN 8189
FORSTER COPPER QUEEN 5063

BW	WW	YW	Milk	Marb	REA	Fat	HB	GM
0.0	66	112	18	0.29	0.48	0.03	49	55



Forster Resource D023

Calved: 4/22/16 Reg #: 3576267 Tattoo: D023

RITO 707 OF IDEAL 3407 7075
S A V RESOURCE 1441
S A V BLACKCAP MAY 4136

FORSTER RESOURCE D023

BASIN SENSATION 3105
FORSTER JEZZ 6139
FORSTER JEZZ 4053

BW	WW	YW	Milk	Marb	REA	Fat	HB	GM
-0.1	68	119	19	0.28	0.37	0.03	64	63

Sodak Front Line D835

Calved: 8/12/16 Reg #: 3761469 Tattoo: D835

SODAK FINAL ANSWER Y544
SODAK FINAL ANSWER A536
SODAK QUEEN Y065

SODAK FRONT LINE D835

CBR RAM ROD 9130-5125
SODAK EVA Z065
SODAK EVA P812

BW	WW	YW	Milk	Marb	REA	Fat	HB	GM
0.3	63	98	24	0.36	0.04	0.03	51	39

Bid Online!
If you are unable to attend the sale,
you can register to watch or bid
online through The Livestock Link
by following these instructions:

The **Livestock** Link™
Livestock Videoing • Video Sales
• Bid-by-Click Online Sales
To view events go to
www.TheLivestockLink.com

- Visit our website, www.thelivestocklink.com
- Click the "Auctions" tab
- Click on "Click Here to Register"
- Enter your e-mail address and password, and fill out all your contact information
- Fill out your Banking Information. If you are only viewing the sale and do not wish to bid, this information can be left blank.
- Check the checkbox at the bottom of the page that says "I'm not a robot" to prove you are a real person
- Click "Register" at the bottom of the page
- You will receive an email with a link to activate your account.
- **Please register to bid at least 24 hours in advance of the sale.**
- Contact Aaron Friedt at (701) 590-9597 for help or with any questions.

You will receive an email when you are approved for bidding. All applications will be reviewed and processed promptly. You will receive a bidder number only after you have made a purchase in the sale, and that number will only be used at that sale. When the sale is completed, please contact the sale owner or manager for instructions of payment and delivery of your purchase.

To use our service, you must have access to High Speed Internet.

Questions?

→ **Contact Aaron Friedt at (701) 590-9597 or Support at (605) 920-9261** ←

www.TheLivestockLink.com

BLACK ANGUS

1

Sodak Legendary 9303

Calved: 8/11/19 Reg #: 19804166 Tattoo: 9303

LEMAR Final Answer 38A	Marb	.36
Sodak Legendary C306	REA	.02
Sodak Pheobe A330	Fat	.066
Sodak Legendary 9303	\$W	69
Sodak Hurricane Z435	\$F	64
Sodak Polly C030	\$G	27
Sodak Polly Z266	\$B	91

BW	Birth	205 Act	Ratio	WW	365 Act	Ratio	YW	Milk
65	0	524	110	51	1008	110	95	37

• Dam's nursing ratio: 3@106

2

Sodak Legendary 9304

Calved: 8/11/19 Reg #: 19804167 Tattoo: 9304

LEMAR Final Answer 38A	Marb	.36
Sodak Legendary C306	REA	.01
Sodak Pheobe A330	Fat	.063
Sodak Legendary 9304	\$W	59
Sodak Hurricane Z435	\$F	73
Sodak Polly C030	\$G	27
Sodak Polly Z266	\$B	99

BW	Birth	205 Act	Ratio	WW	365 Act	Ratio	YW	Milk
70	.4	492	103	49	936	102	89	30

• Dam's nursing ratio: 3@106

3

Sodak Weigh Up 9305

Calved: 8/12/19 Reg #: 19804168 Tattoo: 9305

Plattemere Weigh Up K360	Marb	.22
SO Weigh Up 276-17	REA	.62
SO Eileen 850-12	Fat	-.013
Sodak Weigh Up 9305	\$W	72
Sodak Traveler T544	\$F	76
Sodak Jackie Z243	\$G	34
Sodak Jackie N746	\$B	111

BW	Birth	205 Act	Ratio	WW	365 Act	Ratio	YW	Milk
62	.1	594	125	63	945	103	101	24

• Dam's nursing ratio: 5@105

4

Sodak Legendary 9310

Calved: 8/12/19 Reg #: 19804170 Tattoo: 9310

LEMAR Final Answer 38A	Marb	.45
Sodak Legendary C306	REA	.23
Sodak Pheobe A330	Fat	.069
Sodak Legendary 9310	\$W	48
Sodak Sullivan A321	\$F	78
Sodak Missey C052	\$G	33
Sodak Missey A013	\$B	111

BW	Birth	205 Act	Ratio	WW	365 Act	Ratio	YW	Milk
75	1.5	538	113	42	996	108	80	29

• Dam's nursing ratio: 3@103

5

Sodak Weigh Up 9311

Calved: 8/13/19 Reg #: 19804172 Tattoo: 9311

Plattemere Weigh Up K360	Marb	.59
SO Weigh Up 212-17	REA	.56
Plus-T Eileen 135-12	Fat	.021
Sodak Weigh Up 9311	\$W	52
Sodak Sullivan A321	\$F	113
Sodak Olive D212	\$G	48
Sodak Olive Z224	\$B	161

BW	Birth	205 Act	Ratio	WW	365 Act	Ratio	YW	Milk
76	4.5	522	110	65	1040	113	112	23

• Dam's nursing ratio: 2@110

6

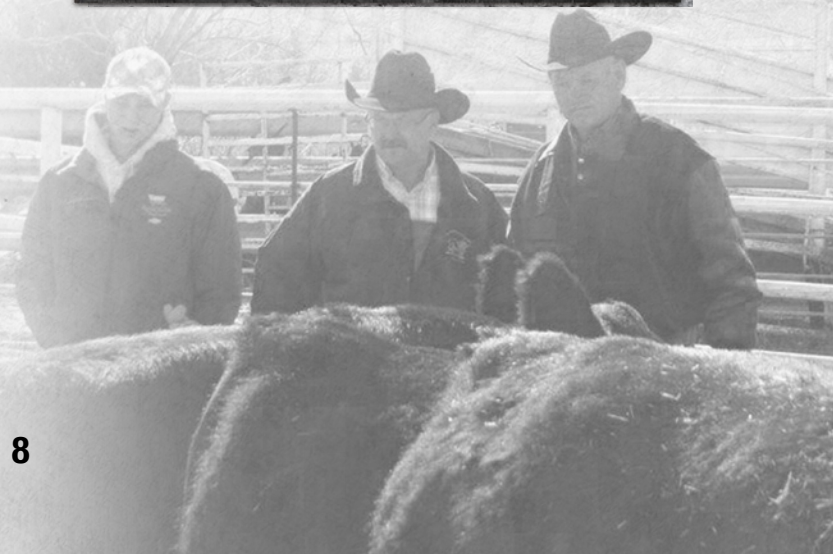
Sodak Performer 9312

Calved: 8/13/19 Reg #: 19804173 Tattoo: 9312

McD Performer 4111	Marb	.60
Sodak Performer D405	REA	.03
Sodak Peggy B022	Fat	.036
Sodak Performer 9312	\$W	60
Sodak Program X381	\$F	52
Sodak Sarah C066	\$G	40
Sodak Sarah Y707	\$B	92

BW	Birth	205 Act	Ratio	WW	365 Act	Ratio	YW	Milk
72	0	616	130	49	1007	109	86	30

• Dam's nursing ratio: 3@111



BLACK ANGUS

7

Sodak Performer 9334

Calved: 8/20/19 Reg #: 19804187 Tattoo: 9334

	McD Performer 4111	Marb	.49
	Sodak Performer D405	REA	.51
	Sodak Peggy B022	Fat	-.004
Sodak Performer 9334		\$W	50
	Sodak Sullivan A321	\$F	61
	Sodak Polly D193	\$G	45
	Sodak Polly Z272	\$B	106

BW	Birth	205 Act	Ratio	WW	365 Act	Ratio	YW	Milk
75	2.5	642	136	59	1008	110	98	18

• Dam's nursing ratio: 2@118



8

Sodak Payday 9336

Calved: 8/20/19 Reg #: 19804189 Tattoo: 9336

	Basin Payweight 1682	Marb	.32
	VS Payweight 6249	REA	.32
	VS War Party 433	Fat	.045
Sodak Payday 9336		\$W	66
	Sodak Final Draft Y537	\$F	86
	Sodak Sarah C076	\$G	30
	Sodak Sarah Z716	\$B	117

BW	Birth	205 Act	Ratio	WW	365 Act	Ratio	YW	Milk
74	0	614	130	59	1042	113	107	35

• Dam's nursing ratio: 3@107

9

Sodak Weigh Up 9352

Calved: 8/26/19 Reg #: 19804196 Tattoo: 9352

	Plattmere Weigh Up K360	Marb	.12
	SO Weigh Up 212-17	REA	.54
	Plus-T Eileen 135-12	Fat	-.013
Sodak Weigh Up 9352		\$W	53
	Sodak Line B B407	\$F	79
	Sodak Agnes D161	\$G	29
	Sodak Agnes B104	\$B	107

BW	Birth	205 Act	Ratio	WW	365 Act	Ratio	YW	Milk
76	1.3	544	114	53	1010	110	94	27

• Dam's nursing ratio: 2@108

10

Sodak Performer 9385

Calved: 9/3/19 Reg #: Commercial Tattoo: 9385

	McD Performer 4111	Marb	.26
	Sodak Performer D405	REA	.50
	Sodak Peggy B022	Fat	.03
Sodak Performer 9385		\$W	73
	Sodak Program X387	\$F	71
	Sodak Emmy D223	\$G	31
	Sodak Emmy A022	\$B	101

BW	Birth	205 Act	Ratio	WW	365 Act	Ratio	YW	Milk
72	.7	572	121	64	1010	110	104	26

• Dam's nursing ratio: 2@110
• EPDs are parental averages.

11

Sodak Legend 9013

Calved: 8/16/19 Reg #: Commercial Tattoo: 9013

	Lemar Final Answer 38A	Marb	.34
	Sodak Legend C306	REA	.55
	Sodak Pheobe A330	Fat	.03
Sodak Legend 9013		\$W	52
	Sodak Program X387	\$F	84
	Sodak Vanna A097	\$G	26
	Sodak Vanna X054	\$B	109

BW	Birth	205 Act	Ratio	WW	365 Act	Ratio	YW	Milk
60	2.4	496	104	65	955	104	114	29

• Dam's nursing ratio: 4@107
• EPDs are parental averages.

Join us for a
COMPLIMENTARY LUNCH Sale Day



BLACK ANGUS

12

Sodak Performer 9315

Calved: 8/15/19 Reg #: 19804176 Tattoo: 9315

	McD Performer 4111	Marb	.27
	Sodak Performer D405	REA	.49
	Sodak Peggy B022	Fat	.033
Sodak Performer 9315		\$W	72
	McD Performer 4111	\$F	74
	Sodak Jill D167	\$G	31
	Sodak Jill B034	\$B	106

BW	Birth	205 Act	Ratio	WW	365 Act	Ratio	YW	Milk
73	1.3	672	142	60	1060	115	110	31

• Dam's nursing ratio: 2@121



13

Sodak Legendary 9330

Calved: 8/19/19 Reg #: 19804185 Tattoo: 9330

	LEMAR Final Answer 38A	Marb	.27
	Sodak Legendary C306	REA	.23
	Sodak Pheobe A330	Fat	.071
Sodak Legendary 9330		\$W	60
	McD Performer 4111	\$F	63
	Sodak Abbey D162	\$G	25
	Sodak Abbey B134	\$B	87

BW	Birth	205 Act	Ratio	WW	365 Act	Ratio	YW	Milk
74	-.2	588	124	52	1035	112	90	30

• Dam's nursing ratio: 2@112

14

Sodak Legend 9301

Calved: 8/3/19 Reg #: 19804164 Tattoo: 9301

	Sodak Legendary C306	Marb	.34
	Sodak Legend E308	REA	.55
	Sodak Vanna C100	Fat	.03
Sodak Legend 9301		\$W	52
	Sodak Top Pick B323	\$F	84
	Sodak Eileen E020	\$G	26
	Sodak Eileen Z246	\$B	109

BW	Birth	205 Act	Ratio	WW	365 Act	Ratio	YW	Milk
68	2.1	514	108	67	972	106	117	27

• Dam's nursing ratio: 1@108

15

Sodak Weigh Up 9302

Calved: 8/11/19 Reg #: 19804165 Tattoo: 9302

	Plattemere Weigh Up K360	Marb	.15
	SO Weigh Up 276-17	REA	.44
	SO Eileen 850-12	Fat	-.021
Sodak Weigh Up 9302		\$W	57
	Sodak Top Cut B377	\$F	59
	Sodak Erica D153	\$G	29
	Sodak Erica B061	\$B	89

BW	Birth	205 Act	Ratio	WW	365 Act	Ratio	YW	Milk
70	.7	556	117	54	903	100	91	25

• Dam's nursing ratio: 2@109



16

Sodak Legend 9307

Calved: 8/12/19 Reg #: 19804169 Tattoo: 9307

	Sodak Legendary C306	Marb	.37
	Sodak Legend E308	REA	.45
	Sodak Vanna C100	Fat	.024
Sodak Legend 9307		\$W	57
	Med Rock Nino Weight 545	\$F	99
	Sodak Erica E045	\$G	36
	Sodak Erica C061	\$B	135

BW	Birth	205 Act	Ratio	WW	365 Act	Ratio	YW	Milk
70	1.8	546	115	60	902	99	109	22

• Dam's nursing ratio: 1@115

BLACK ANGUS

17

Sodak Rocky 9314

Calved: 8/15/19 Reg #: 19804175 Tattoo: 9314

Med Rock Nino Weight 545	Marb	.47
Sodak Rocky E360	REA	.67
Sodak Eileen C107	Fat	.006
Sodak Rocky 9314	\$W	49
SO Unanimous 724-15	\$F	76
Sodak Evelyn E013	\$G	45
Sodak Evelyn B085	\$B	121

BW	Birth	205 Act	Ratio	WW	365 Act	Ratio	YW	Milk
68	.2	612	129	52	1032	112	103	25

• Dam's nursing ratio: 1@129



18

Sodak Payday 9344

Calved: 8/22/19 Reg #: 19804193 Tattoo: 9344

Basin Payweight 1682	Marb	.79
VS Payweight 6249	REA	.66
VS War Party 433	Fat	.031
Sodak Pay Day 9344	\$W	63
Sodak Sullivan X377	\$F	92
Sodak Emmy C012	\$G	58
Sodak Empire X117	\$B	149

BW	Birth	205 Act	Ratio	WW	365 Act	Ratio	YW	Milk
70	1.1	596	126	56	1030	112	101	35

• Dam's nursing ratio: 3@106

19

Sodak Payday 9366

Calved: 8/29/19 Reg #: 19804204 Tattoo: 9366

Basin Payweight 1682	Marb	.79
VS Payweight 6249	REA	.50
VS War Party 433	Fat	.006
Sodak Payday 9366	\$W	43
Sodak Update Z411	\$F	78
Sodak Elba C029	\$G	58
Sodak Elba Y804	\$B	136

BW	Birth	205 Act	Ratio	WW	365 Act	Ratio	YW	Milk
76	1.4	566	121	55	1040	113	100	32

• Dam's nursing ratio: 3@107

20

Sodak Payday 9369

Calved: 8/29/19 Reg #: 19804207 Tattoo: 9369

Basin Payweight 1682	Marb	.70
VS Payweight 6249	REA	.74
VS War Party 433	Fat	.007
Sodak Payday 9369	\$W	69
Sodak Hurricane Z435	\$F	71
Sodak Vision B031	\$G	57
Sodak Vision Z239	\$B	128

BW	Birth	205 Act	Ratio	WW	365 Act	Ratio	YW	Milk
75	.2	588	124	61	1032	112	115	34

• Dam's nursing ratio: 4@104

21

Sodak Payday 9371

Calved: 8/29/19 Reg #: 19804208 Tattoo: 9371

Basin Payweight 1682	Marb	0
VS Payweight 6249	REA	.55
VS War Party 433	Fat	-.002
Sodak Payday 9371	\$W	49
Sodak Program X381	\$F	98
Sodak Peggy C065	\$G	22
Sodak Peggy X144	\$B	121

BW	Birth	205 Act	Ratio	WW	365 Act	Ratio	YW	Milk
74	1.2	624	132	59	1056	114	105	31

• Dam's nursing ratio: 3@106

22

Sodak Payday 9382

Calved: 9/2/19 Reg #: 19804214 Tattoo: 9382

Basin Payweight 1682	Marb	.47
VS Payweight 6249	REA	.39
VS War Party 433	Fat	.026
Sodak Payday 9382	\$W	75
Sodak Hurricane Z435	\$F	73
Sodak Sarah C071	\$G	40
Sodak Sarah Z298	\$B	113

BW	Birth	205 Act	Ratio	WW	365 Act	Ratio	YW	Milk
80	1.3	566	119	66	1015	110	119	34

• Dam's nursing ratio: 3@100

23

Sodak Performer 9388

Calved: 9/5/19 Reg #: 19804217 Tattoo: 9388

McD Performer 4111	Marb	.36
Sodak Performer D405	REA	.33
Sodak Peggy B022	Fat	.070
Sodak Performer 9388	\$W	73
Sodak Heaven Y531	\$F	75
Sodak Eileen B106	\$G	30
Sodak Eileen X123	\$B	106

BW	Birth	205 Act	Ratio	WW	365 Act	Ratio	YW	Milk
75	.2	542	114	55	925	101	84	33

11 • Dam's nursing ratio: 4@104

BLACK ANGUS

24

Sodak Legend 9317

Calved: 8/16/19 Reg #: Commercial Tattoo: 9317

Lemar Final Answer 38A	Marb	.38
Sodak Legend C306	REA	.11
Sodak Pheobe A330	Fat	.04
Sodak Legend 9317	\$W	48
Sodak Bismarck Y536	\$F	84
Sodak Violet A091	\$G	25
Sodak Violet Y793	\$B	105

BW	Birth	205 Act	Ratio	WW	365 Act	Ratio	YW	Milk
60	2.3	525	108	45	995	108	80	33

- Twin • Dam's nursing ratio: 3@114
- EPDs are parental averages.

25

Sodak Performer 9406

Calved: 9/12/19 Reg #: Commercial Tattoo: 9406

McD Performer 4111	Marb	.20
Sodak Performer D405	REA	.42
Sodak Peggy B022	Fat	.03
Sodak Performer 9406	\$W	72
Sodak Final Draft Y537	\$F	71
Sodak Eileenmere B131	\$G	31
Sodak Eileenmere Y762	\$B	101

BW	Birth	205 Act	Ratio	WW	365 Act	Ratio	YW	Milk
72	-.01	580	122	42	1012	110	75	25

- Dam's nursing ratio: 2@120
- EPDs are parental averages.

26

Sodak Top Gun 9325

Calved: 8/18/19 Reg #: 19804181 Tattoo: 9325

Sodak Top Draft B387	Marb	.63
Sodak Top Draft E335	REA	.22
Sodak Travette B122	Fat	.045
Sodak Top Gun 9325	\$W	68
CSG Sign On 83F	\$F	63
Sodak Hannah E052	\$G	43
Sodak Hannah A043	\$B	106

BW	Birth	205 Act	Ratio	WW	365 Act	Ratio	YW	Milk
65	.8	502	105	51	952	104	84	35

- Dam's nursing ratio: 1@105

27

Sodak Weigh Up 9328

Calved: 8/18/19 Reg #: 19804183 Tattoo: 9328

Plattmere Weigh Up K360	Marb	.36
SO Weigh Up 276-17	REA	.71
SO Eileen 850-12	Fat	0
Sodak Weigh Up 9328	\$W	50
McD Performer 4111	\$F	74
Sodak Oahe D175	\$G	41
Sodak Oahe B074	\$B	115

BW	Birth	205 Act	Ratio	WW	365 Act	Ratio	YW	Milk
70	.6	506	106	43	965	105	80	29

- Dam's nursing ratio: 2@106



BLACK ANGUS

28

Sodak Legendary 9331

Calved: 8/19/19 Reg #: 19804186 Tattoo: 9331

LEMAR Final Answer 38A	Marb	.27
Sodak Legendary C306	REA	.29
Sodak Pheobe A330	Fat	.051
Sodak Legendary 9331	\$W	57
Sodak Program X386	\$F	83
Sodak Erica A029	\$G	27
Sodak Erica U060	\$B	110

BW	Birth	205 Act	Ratio	WW	365 Act	Ratio	YW	Milk
65	1.9	556	117	57	980	107	92	22

• Dam's nursing ratio: 4@110



29

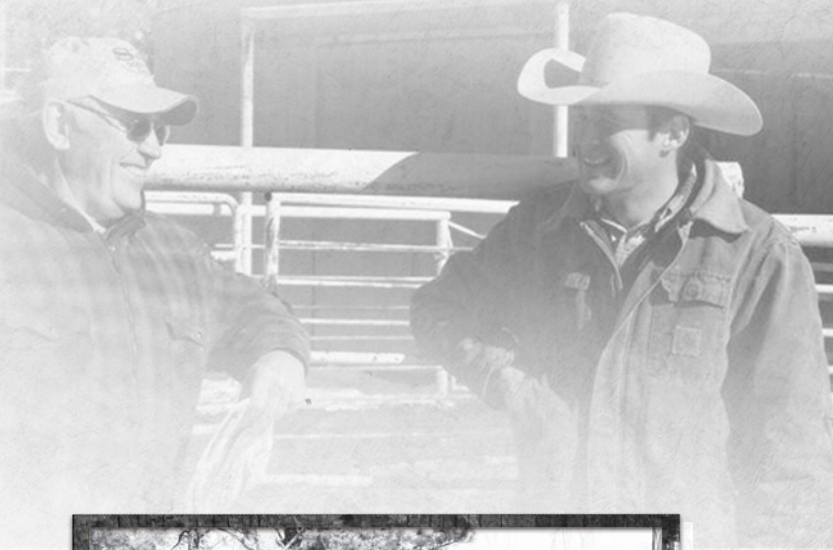
Sodak Weigh Up 9333

Calved: 8/25/19 Reg #: Commercial Tattoo: 9333

Sitz Upward 307A	Marb	.39
Plattemere Weigh Up K360	REA	.64
Barbra of PLT 337	Fat	-.02
Sodak Weigh Up 9333	\$W	47
Sodak Final Draft Y537	\$F	71
Sodak Erica C064	\$G	44
Sodaik Emmy Z207	\$B	115

BW	Birth	205 Act	Ratio	WW	365 Act	Ratio	YW	Milk
72	-.3	500	100	47	1035	112	87	29

• Dam's nursing ratio: 1@105
• EPDs are parental averages.



30

Sodak Weigh Up 9348

Calved: 8/25/19 Reg #: 19804194 Tattoo: 9348

Plattemere Weigh Up K360	Marb	.59
SO Weigh Up 276-17	REA	.50
SO Eileen 850-12	Fat	.006
Sodak Weigh Up 9348	\$W	63
Sodak Final Draft Y537	\$F	81
Sodak Erica C064	\$G	48
Sodak Erica Z207	\$B	129

BW	Birth	205 Act	Ratio	WW	365 Act	Ratio	YW	Milk
85	-1.4	552	116	55	1000	109	99	26

• Dam's nursing ratio: 3@108



31

Sodak Rocky 9358

Calved: 8/27/19 Reg #: 19804199 Tattoo: 9358

Med Rock Nino Weight 545	Marb	.42
Sodak Rocky E360	REA	.40
Sodak Eileen C107	Fat	.011
Sodak Rocky 9358	\$W	65
CSG Sign On 83F	\$F	92
Sodak Olive E060	\$G	39
Sodak Olive A063	\$B	131

BW	Birth	205 Act	Ratio	WW	365 Act	Ratio	YW	Milk
70	2.1	573	121	54	902	99	97	32

• Dam's nursing ratio: 1@120



32

Sodak Legendary 9360

Calved: 8/27/19 Reg #: 19804201 Tattoo: 9360

LEMAR Final Answer 38A	Marb	.61
Sodak Legendary C306	REA	.30
Sodak Pheobe A330	Fat	.055
Sodak Legendary 9360	\$W	65
Sodak Final Draft Y537	\$F	98
Sodak Elaine C126	\$G	43
Sodak Elaine Z227	\$B	141

BW	Birth	205 Act	Ratio	WW	365 Act	Ratio	YW	Milk
76	.9	570	120	51	996	108	93	32

• Dam's nursing ratio: 2@110

34

Sodak Performer 9368

Calved: 8/29/19 Reg #: 19804206 Tattoo: 9368

McD Performer 4111	Marb	.09
Sodak Performer D405	REA	.30
Sodak Peggy B022	Fat	.051
Sodak Performer 9368	\$W	55
Sodak Top Cut B377	\$F	73
Sodak Elaine D155	\$G	19
Sodak Elaine B007	\$B	92

BW	Birth	205 Act	Ratio	WW	365 Act	Ratio	YW	Milk
68	.9	510	105	48	990	108	81	26

• Dam's nursing ratio: 2@105

36

Sodak Performer 9383

Calved: 9/3/19 Reg #: 19804215 Tattoo: 9383

McD Performer 4111	Marb	.24
Sodak Performer D405	REA	.37
Sodak Peggy B022	Fat	.014
Sodak Performer 9383	\$W	61
Sodak Hurricane Z441	\$F	54
Sodak Agnes B104	\$G	30
Sodak Agnes Z276	\$B	84

BW	Birth	205 Act	Ratio	WW	365 Act	Ratio	YW	Milk
80	1.4	524	112	52	966	105	90	30

• Dam's nursing ratio: 3@102

38

Sodak Performer 9404

Calved: 9/10/19 Reg #: 19804222 Tattoo: 9404

McD Performer 4111	Marb	.17
Sodak Performer D405	REA	.56
Sodak Peggy B022	Fat	.020
Sodak Performer 9404	\$W	71
McD Performer 4110	\$F	67
Sodak Olive D239	\$G	29
Sodak Olive X065	\$B	95

BW	Birth	205 Act	Ratio	WW	365 Act	Ratio	YW	Milk
60	-.8	620	131	59	1010	110	97	27

• Dam's nursing ratio: 2@115

33

Sodak Weigh Up 9361

Calved: 8/27/19 Reg #: 19804202 Tattoo: 9361

Plattemere Weigh Up K360	Marb	.15
SO Weigh Up 276-17	REA	.43
SO Eileen 850-12	Fat	.016
Sodak Weigh Up 9361	\$W	62
McD Performer 4110	\$F	70
Sodak Shonda D147	\$G	26
Sodak Shonda B018	\$B	96

BW	Birth	205 Act	Ratio	WW	365 Act	Ratio	YW	Milk
75	2.9	610	128	62	1031	112	103	28

• Dam's nursing ratio: 2@114

35

Sodak Weigh Up 9378

Calved: 9/1/19 Reg #: Commercial Tattoo: 9378

Plattemere Weighup K360	Marb	.28
SO Weigh Up 212-17	REA	.74
Plus T Eileen 135-12	Fat	-.026
Sodak Weigh Up 9378	\$W	68
Lemar Final Answer 38A	\$F	110
Sodak Olive D220	\$G	40
Sodak Olive Y723	\$B	102

BW	Birth	205 Act	Ratio	WW	365 Act	Ratio	YW	Milk
85	2.3	564	119	62	995	108	104	26

• Dam's nursing ratio: 2@109
• EPDs are parental averages.

37

Sodak Weigh Up 9386

Calved: 9/4/19 Reg #: 19804216 Tattoo: 9386

Plattemere Weighup K360	Marb	.27
SO Weigh Up 212-17	REA	.57
Plus T Eileen 135-12	Fat	.003
Sodak Weigh Up 9386	\$W	76
Lemar Final Answer 38A	\$F	87
Sodak Hannah D204	\$G	35
Sodak Hannah Y733	\$B	122

BW	Birth	205 Act	Ratio	WW	365 Act	Ratio	YW	Milk
74	.8	540	114	68	942	103	119	28

• Dam's nursing ratio: 2@107

39

Sodak Legendary 9318

Calved: 8/16/19 Reg #: 19804178 Tattoo: 9318

LEMAR Final Answer 38A	Marb	.19
Sodak Legendary C306	REA	.16
Sodak Pheobe A330	Fat	.064
Sodak Legendary 9318	\$W	36
Sodak Bismarck Y536	\$F	65
Sodak Violet A091	\$G	21
Sodak Violet Y793	\$B	86

BW	Birth	205 Act	Ratio	WW	365 Act	Ratio	YW	Milk
65	-.1	502	105	27	912	100	53	29

• Twin
• Dam's nursing ratio: 5@102

BLACK ANGUS

40

Sodak Legendary 9322

Calved: 8/17/19 Reg #: 19804180 Tattoo: 9322

LEMAR Final Answer 38A	Marb	.14
Sodak Legendary C306	REA	-.03
Sodak Pheobe A330	Fat	.041
Sodak Legendary 9322	\$W	43
Sodak Hurricane Z441	\$F	61
Sodak Peggy C021	\$G	18
Sodak Peggy Z209	\$B	78

BW	Birth	205 Act	Ratio	WW	365 Act	Ratio	YW	Milk
68	-1.1	506	106	33	890	98	60	29

• Dam's nursing ratio: 3@101

42

Sodak Power House 9428

Calved: 9/27/19 Reg #: 19804228 Tattoo: 9428

PA Power Tool 9108	Marb	.38
LEMAR Power Tool 6094	REA	.64
Lemar Pryde 38T	Fat	.016
Sodak Power House 9428	\$W	55
Sodak Heaven Y582	\$F	103
Sodak Oahe B033	\$G	40
Sodak Oahe Y786	\$B	143

BW	Birth	205 Act	Ratio	WW	365 Act	Ratio	YW	Milk
80	2.5	580	122	52	1005	109	97	25

• Dam's nursing ratio: 4@106

44

Sodak Power House 9353

Calved: 8/26/19 Reg #: Commercial Tattoo: 9353

PA Power Tool 9108	Marb	.56
LEMAR Power Tool 6094	REA	.31
Lemar Pryde 38T	Fat	.028
Sodak Power House 9353	\$W	45
Sodak Beacon X379	\$F	72
Sodak Dianna B083	\$G	39
Sodak Dianna U728	\$B	125

BW	Birth	205 Act	Ratio	WW	365 Act	Ratio	YW	Milk
70	2	526	110	50	1010	110	102	24

• Dam's nursing ratio: 4@105
• EPDs are parental averages.

46

Sodak Performer 9363

Calved: 8/28/19 Reg #: Commercial Tattoo: 9363

McD Performer 4111	Marb	.35
Sodak Performer D405	REA	.31
Sodak Peggy B022	Fat	.037
Sodak Performer 9363	\$W	57
Sodak Top Cut B377	\$F	71
Sodak Erica D152	\$G	32
Sodak Erica B061	\$B	91

BW	Birth	205 Act	Ratio	WW	365 Act	Ratio	YW	Milk
65	1.2	536	113	52	1020	111	88	23

• Dam's nursing ratio: 2@106
• EPDs are parental averages.

41

Sodak Pay Day 9350

Calved: 8/25/19 Reg #: 19804195 Tattoo: 9350

Basin Payweight 1682	Marb	.48
VS Payweight 6249	REA	.27
VS War Party 433	Fat	.036
Sodak Pay Day 9350	\$W	54
Sodak Hurricane Z435	\$F	57
Sodak Elaine C042	\$G	38
Sodak Elaine Z252	\$B	95

BW	Birth	205 Act	Ratio	WW	365 Act	Ratio	YW	Milk
70	.2	480	100	60	960	105	109	34

• Dam's nursing ratio: 3@99

43

Sodak Weigh Up 9309

Calved: 8/12/19 Reg #: Commercial Tattoo: 9309

Sitz Upward 307R	Marb	.45
Plattemere Weigh Up K360	REA	.56
Barbra of PLT 337	Fat	.01
Sodak Weigh Up 9309	\$W	57
Connealy Sullivan	\$F	70
Sodak Agnes D266	\$G	46
Sodak Agnes Z276	\$B	115

BW	Birth	205 Act	Ratio	WW	365 Act	Ratio	YW	Milk
68	1.2	590	124	52	1030	112	96	24

• Dam's nursing ratio: 2@112
• EPDs are parental averages.

45

Sodak Performer 9362

Calved: 8/28/19 Reg #: Commercial Tattoo: 9362

McD Performer 4111	Marb	.72
Sodak Performer D405	REA	.33
Sodak Peggy B022	Fat	.028
Sodak Performer 9362	\$W	60
Sodak Program X381	\$F	71
Sodak Sarah C067	\$G	49
Sodak Sarah Y707	\$B	132

BW	Birth	205 Act	Ratio	WW	365 Act	Ratio	YW	Milk
72	.3	528	111	47	990	108	84	27

• Dam's nursing ratio: 2@106
• EPDs are parental averages.

47

Sodak Weigh Up 9450

Calved: 10/24/19 Reg #: Commercial Tattoo: 9450

Sitz Upward 307R	Marb	.42
Plattemere Weigh Up K360	REA	.49
Barbra of PLT 337	Fat	-.02
Sodak Weigh Up 9450	\$W	56
Sodak Top Cut B377	\$F	62
Sodak Travette D169	\$G	38
Sodak Travette B122	\$B	101

BW	Birth	205 Act	Ratio	WW	365 Act	Ratio	YW	Milk
82	2	600	126	51	1000	109	92	23

15 • Dam's nursing ratio: 2@113
• EPDs are parental averages.

48

Sodak Legend 9316

Calved: 8/16/19 Reg #: 19804177 Tattoo: 9316

	Sodak Legendary C306	Marb	.74
	Sodak Legend E308	REA	.47
	Sodak Vanna C100	Fat	.045
Sodak Legend 9316		\$W	79
	Sodak Legendary C306	\$F	83
	Sodak Sarah E005	\$G	52
	Sodak Sarah C076	\$B	135

BW	Birth	205 Act	Ratio	WW	365 Act	Ratio	YW	Milk
75	1.1	530	111	60	922	102	110	37

• Dam's nursing ratio: 1@111

50

Sodak Rocky 9367

Calved: 8/29/19 Reg #: 19804205 Tattoo: 9367

	Med Rock Nino Weight 545	Marb	.37
	Sodak Rocky E360	REA	.44
	Sodak Eileen C107	Fat	.037
Sodak Rocky 9367		\$W	61
	CSG Sign On 83F	\$F	90
	Sodak Belle E082	\$G	35
	Sodak Belle A030	\$B	125

BW	Birth	205 Act	Ratio	WW	365 Act	Ratio	YW	Milk
76	1.8	552	116	62	960	105	108	27

• Dam's nursing ratio: 1@116

52

Sodak Weigh Up 9389

Calved: 9/5/19 Reg #: 19804218 Tattoo: 9389

	Plattermere Weigh Up K360	Marb	.21
	SO Weigh Up 212-17	REA	.48
	Plus-T Eileen 135-12	Fat	.002
Sodak Weigh Up 9389		\$W	62
	CSG Sign On 83F	\$F	88
	Sodak Eileen D222	\$G	31
	Sodak Eileen A068	\$B	119

BW	Birth	205 Act	Ratio	WW	365 Act	Ratio	YW	Milk
68	2.6	512	107	64	905	99	112	30

• Dam's nursing ratio: 2@107

53

Sodak Top Gun 9393

Calved: 9/6/19 Reg #: 19804219 Tattoo: 9393

	Sodak Top Draft B387	Marb	.56
	Sodak Top Draft E335	REA	.39
	Sodak Travette B122	Fat	.009
Sodak Top Gun 9393		\$W	76
	Sodak Legendary C383	\$F	85
	Sodak Travette E033	\$G	45
	Sodak Travette C046	\$B	130

BW	Birth	205 Act	Ratio	WW	365 Act	Ratio	YW	Milk
72	1.9	564	118	69	922	101	112	31

• Dam's nursing ratio: 1@118

49

Sodak Legendary 9327

Calved: 8/18/19 Reg #: 19804182 Tattoo: 9327

	LEMAR Final Answer 38A	Marb	.22
	Sodak Legendary C306	REA	.22
	Sodak Pheobe A330	Fat	.056
Sodak Legendary 9327		\$W	49
	Sodak Heaven Y531	\$F	95
	Sodak Erica B091	\$G	24
	Sodak Erica W086	\$B	119

BW	Birth	205 Act	Ratio	WW	365 Act	Ratio	YW	Milk
72	-.3	456	95	43	885	97	92	31

• Dam's nursing ratio: 4@96

51

Sodak Legendary 9373

Calved: 8/30/19 Reg #: 19804209 Tattoo: 9373

	LEMAR Final Answer 38A	Marb	.48
	Sodak Legendary C306	REA	.33
	Sodak Pheobe A330	Fat	.052
Sodak Legendary 9373		\$W	42
	Sodak Bismarck Y536	\$F	88
	Sodak Gayle A049	\$G	37
	Sodak Gayle Y767	\$B	126

BW	Birth	205 Act	Ratio	WW	365 Act	Ratio	YW	Milk
72	1.2	562	118	51	955	104	99	21

• Dam's nursing ratio: 5@105



54

Sodak Power House 9434

Calved: 10/5/19 Reg #: 19804230 Tattoo: 9434

	PA Power Tool 9108	Marb	.49
	LEMAR Power Tool 6094	REA	.28
	Lemar Pryde 38T	Fat	.060
Sodak Power House 9434		\$W	69
	Sodak Final Draft Z485	\$F	79
	Sodak Connie C128	\$G	36
	Sodak Connie Z205	\$B	115

BW	Birth	205 Act	Ratio	WW	365 Act	Ratio	YW	Milk
78	1.2	520	108	59	916	100	99	26

16 • Dam's nursing ratio: 3@104

BLACK ANGUS

55

Sodak Legend 9306

Calved: 8/12/19 Reg #: Commercial Tattoo: 9306

Lemar Final Answer 38A	Marb	.33
Sodak Legend C306	REA	.12
Sodak Pheobe A330	Fat	.076
Sodak Legend 9306	\$W	49
McD Performer 4111	\$F	72
Sodak Blk Beauty D164	\$G	25
Sodak Blk Beauty B034	\$B	107

BW	Birth	205 Act	Ratio	WW	365 Act	Ratio	YW	Milk
68	1.5	588	123	48	1020	112	91	29

- Dam's nursing ratio: 2@111
- EPDs are parental averages.

57

Sodak Weigh Up 9379

Calved: 9/1/19 Reg #: Commercial Tattoo: 9379

Sitz Upward 307R	Marb	.29
Plattemere Weigh Up K360	REA	.58
Barbra of PLT 337	Fat	-.02
Sodak Weigh Up 9379	\$W	57
Sodak Sullivan A31	\$F	95
Sodak Miss Vision D183	\$G	45
Sodak Miss Vision Z275	\$B	143

BW	Birth	205 Act	Ratio	WW	365 Act	Ratio	YW	Milk
75	3.1	514	108	62	948	103	108	24

- Dam's nursing ratio: 2@104
- EPDs are parental averages.

58

Sodak Weigh Up 9405

Calved: 9/11/19 Reg #: Commercial Tattoo: 9405

Sitz Upward 307R	Marb	.28
Plattemere Weigh Up K360	REA	.65
Barbra of PLT 337	Fat	-.03
Sodak Weigh Up 9405	\$W	61
Sodak Program X387	\$F	99
Sodak Emmy D244	\$G	42
Sodak Emmy B011	\$B	127

BW	Birth	205 Act	Ratio	WW	365 Act	Ratio	YW	Milk
74	2.8	542	114	56	928	101	127	25

- Dam's nursing ratio: 2@107
- EPDs are parental averages.

59

Sodak Payweight 9319

Calved: 8/16/19 Reg #: 19804179 Tattoo: 9319

Basin Payweight 1682	Marb	.55
VS Payweight 6249	REA	.22
VS War Party 433	Fat	.022
Sodak Payweight 9319	\$W	58
Sodak Hurricane Z441	\$F	75
Sodak Missey C080	\$G	41
Sodak Missy Z244	\$B	117

BW	Birth	205 Act	Ratio	WW	365 Act	Ratio	YW	Milk
62	2	562	118	63	945	103	112	34

- Dam's nursing ratio: 3@106

56

Sodak Legend 9321

Calved: 8/17/19 Reg #: Commercial Tattoo: 9321

Lemar Final Answer 38A	Marb	.32
Sodak Legend C306	REA	.42
Sodak Pheobe A330	Fat	.076
Sodak Legend 9321	\$W	44
Sodak Sullivan A321	\$F	67
Sodak Erica C004	\$G	28
Sodak Erica A042	\$B	115

BW	Birth	205 Act	Ratio	WW	365 Act	Ratio	YW	Milk
65	2.8	576	118	46	1046	113	87	26

- Dam's nursing ratio: 3@106
- EPDs are parental averages.



Lot 5



Lot 5

60

Sodak Pay Day 9329

Calved: 8/19/19 Reg #: 19804184 Tattoo: 9329

Basin Payweight 1682	Marb	.41
VS Payweight 6249	REA	.77
VS War Party 433	Fat	.022
Sodak Pay Day 9329	\$W	57
Sodak Update Z410	\$F	82
Sodak Jackie B053	\$G	42
Sodak Jackie Z286	\$B	124

BW	Birth	205 Act	Ratio	WW	365 Act	Ratio	YW	Milk
76	.8	570	120	61	972	106	110	33

- Dam's nursing ratio: 4@104

61

Sodak Pay Day 9332

Calved: 8/19/19 Reg #: 19804190 Tattoo: 9332

Basin Payweight 1682	Marb	.69
VS Payweight 6249	REA	.21
VS War Party 433	Fat	.016
Sodak Pay Day 9332	\$W	47
Sodak Update Z410	\$F	59
Sodqak lone B054	\$G	48
Sodak Inspiration Z254	\$B	107

BW	Birth	205 Act	Ratio	WW	365 Act	Ratio	YW	Milk
65	.9	488	102	63	945	103	114	33

• Dam's nursing ratio: 4@103

63

Sodak Pay Day 9339

Calved: 8/20/19 Reg #: 19804191 Tattoo: 9339

Basin Payweight 1682	Marb	.40
VS Payweight 6249	REA	.46
VS War Party 433	Fat	.018
Sodak Pay Day 9339	\$W	60
Sodak Heaven Y582	\$F	90
Sodak Olive A054	\$G	38
Sodak Olive Y739	\$B	128

BW	Birth	205 Act	Ratio	WW	365 Act	Ratio	YW	Milk
68	1.3	502	105	57	945	103	109	35

• Dam's nursing ratio: 5@104

65

Sodak Weigh Up 9356

Calved: 8/26/19 Reg #: 19804197 Tattoo: 9356

Plattermere Weigh Up K360	Marb	.33
SO Weigh Up 276-17	REA	.66
SO Eileen 850-12	Fat	-.007
Sodak Weigh Up 9356	\$W	38
Sodak Sullivan A321	\$F	78
Sodak Erica C006	\$G	40
Sodak Erica A042	\$B	117

BW	Birth	205 Act	Ratio	WW	365 Act	Ratio	YW	Milk
76	1.3	558	117	52	912	100	93	16

• Dam's nursing ratio: 3@108

67

Sodak Pay Day 9374

Calved: 8/31/19 Reg #: 19804210 Tattoo: 9374

Basin Payweight 1682	Marb	.38
VS Payweight 6249	REA	.60
VS War Party 433	Fat	.011
Sodak Pay Day 9374	\$W	60
Sodak Sullivan X377	\$F	78
Sodak Jackie C033	\$G	40
Sodak Jackie Y741	\$B	118

BW	Birth	205 Act	Ratio	WW	365 Act	Ratio	YW	Milk
78	2.3	790	168	56	1020	111	96	31

• Dam's nursing ratio: 3@113

62

Sodak Performer 9335

Calved: 8/20/19 Reg #: 19804188 Tattoo: 9335

McD Performer 4111	Marb	.52
Sodak Performer D405	REA	.55
Sodak Peggy B022	Fat	.030
Sodak Performer 9335	\$W	55
McD Performer 4111	\$F	59
Sodak Erica D156	\$G	44
Sodak Erica B027	\$B	103

BW	Birth	205 Act	Ratio	WW	365 Act	Ratio	YW	Milk
65	.8	494	103	59	950	104	94	14

• Dam's nursing ratio: 2@103

64

Sodak Power House 9354

Calved: 8/26/19 Reg #: Commercial Tattoo: 9354

GAR Predestined	Marb	.45
Lemar Power Tool 6094	REA	.37
Shamrock BQ 3095	Fat	.028
Sodak Power House 9354	\$W	56
Sodak Alliance 9720	\$F	85
Sodak Eileen Z246	\$G	27
Sodak Eileen X150	\$B	122

BW	Birth	205 Act	Ratio	WW	365 Act	Ratio	YW	Milk
78	1.8	600	126	52	1042	113	92	27

• Dam's nursing ratio: 6@103
• EPDs are parental averages.

66

Sodak Weigh Up 9365

Calved: 8/28/19 Reg #: 19804203 Tattoo: 9365

Plattermere Weigh Up K360	Marb	.18
SO Weigh Up 276-17	REA	.40
SO Eileen 850-12	Fat	-.022
Sodak Weigh Up 9365	\$W	56
Sodak Top Cut B377	\$F	42
Sodak Travette D169	\$G	30
Sodak Travette B122	\$B	73

BW	Birth	205 Act	Ratio	WW	365 Act	Ratio	YW	Milk
68	-1.4	550	117	42	1020	111	71	29

• Dam's nursing ratio: 2@117

68

Sodak Legendary 9380

Calved: 9/1/19 Reg #: 19804213 Tattoo: 9380

LEMAR Final Answer 38A	Marb	.34
Sodak Legendary C306	REA	.51
Sodak Pheobe A330	Fat	.027
Sodak Legendary 9380	\$W	64
Sodak Program X386	\$F	97
Sodak Erica A027	\$G	35
Sodak Erica W086	\$B	133

BW	Birth	205 Act	Ratio	WW	365 Act	Ratio	YW	Milk
75	2.8	556	117	64	1038	113	114	30

• Dam's nursing ratio: 5@100

BLACK ANGUS

69

Sodak Performer 9425

Calved: 9/25/19 Reg #: 19804227 Tattoo: 9425

	McD Performer 4111	Marb	.37
	Sodak Performer D405	REA	.38
	Sodak Peggy B022	Fat	.028
Sodak Performer 9425		\$W	70
	Sodak Heaven Y582	\$F	82
	Sodak Jackie B017	\$G	35
	Sodak Jackie Y741	\$B	117

BW	Birth	205 Act	Ratio	WW	365 Act	Ratio	YW	Milk
75	1.6	572	121	63	1022	111	103	25

• Dam's nursing ratio: 4@112



70

Sodak Recharge 9441

Calved: 10/15/19 Reg #: 19808528 Tattoo: 9441

	S A V Recharge 3436	Marb	.95
	Med Rock Danny Charge 674	REA	.57
	Med Rock Betty DB 798	Fat	.012
Sodak Recharge 9441		\$W	51
	Sodak Heaven Y531	\$F	68
	Sodak Anna B076	\$G	65
	Sodak Anna Y725	\$B	133

BW	Birth	205 Act	Ratio	WW	365 Act	Ratio	YW	Milk
82	2.4	550	117	40	920	101	71	31

• Dam's nursing ratio: 4@105

71

Sodak Power House 9364

Calved: 8/28/19 Reg #: Commercial Tattoo: 9364

	GAR Predestined	Marb	.42
	LEMAR Power Tool 6094	REA	.33
	Shamrock BQ 3095	Fat	.028
Sodak Power House 9364		\$W	45
	Sodak Beacon X379	\$F	72
	Sodak Peggy B043	\$G	32
	Sodak Peggy W101	\$B	133

BW	Birth	205 Act	Ratio	WW	365 Act	Ratio	YW	Milk
80	3	524	111	54	1028	111	103	22

• Dam's nursing ratio: 3@111
• EPDs are parental averages.

72

Sodak Weigh Up 9387

Calved: 9/4/19 Reg #: Commercial Tattoo: 9387

	Sitz Upward 307R	Marb	.26
	Plattemere Weigh Up K360	REA	.52
	Barbra of PLT 337	Fat	-.03
Sodak Weigh Up 9387		\$W	60
	McD Performer 4110	\$F	107
	Sodak Abbey D170	\$G	38
	Sodak Abbey B026	\$B	136

BW	Birth	205 Act	Ratio	WW	365 Act	Ratio	YW	Milk
78	2.8	466	97	59	956	104	102	26

• Dam's nursing ratio: 2@97
• EPDs are parental averages.



73

Sodak Resource 9739

Calved: 9/1/19 Reg #: 4273145 Tattoo: 9739

S A V RESOURCE 1441	Marb	.34
FORSTER RESOURCE D163	REA	.17
FORSTER COPPER QUEEN 8189	Fat	.03
SODAK RESOURCE 9739	HB	139
SODAK OSCAR T322/W558	GM	47
SODAK ALLISON A238		
SODAK ALLISON X029		

BW	Birth	205 Act	Ratio	WW	365 Act	Ratio	YW	Milk
76	.6	490	110	54	1025	111	89	22

• Dam's nursing ratio: 4@107

75

Sodak Resource 9702

Calved: 8/13/19 Reg #: Commercial Tattoo: 9702

S A V RESOURCE 1441	Marb	.30
FORSTER RESOURCE D163	REA	.48
FORSTER COPPER QUEEN 8189	Fat	.03
SODAK RESOURCE 9702	HB	56
SODAK FINAL ANSWER A536	GM	56
SODAK PRINCESS D634		
SODAK PRINCESS Z087		

BW	Birth	205 Act	Ratio	WW	365 Act	Ratio	YW	Milk
72	0	522	118	66	1010	110	113	18

• Dam's nursing ratio: 1@118

• EPDs are parental averages.

76

Sodak Frontline 9713

Calved: 8/20/19 Reg #: 4273137 Tattoo: 9713

SODAK FINAL ANSWER A536	Marb	.47
SODAK FRONT LINE D835	REA	.05
SODAK EVA Z065	Fat	.04
SODAK FRONTLINE 9713	HB	125
SODAK FINAL ANSWER Y544	GM	47
SODAK PRINCESS B23		
SODAK PRINCESS Z076		

BW	Birth	205 Act	Ratio	WW	365 Act	Ratio	YW	Milk
70	.1	612	135	60	1045	113	95	25

• Dam's nursing ratio: 3@111

77

Sodak Frontline 9742

Calved: 9/2/19 Reg #: Commercial Tattoo: 9742

SODAK FINAL ANSWER A536	Marb	.36
SODAK FRONT LINE D835	REA	.03
SODAK EVA Z065	Fat	.03
SODAK FRONTLINE 9742	HB	51
SODAK ROYAL FLUSH Y342	GM	39
SODAK PRINCESS B231		
SODAK PRINCESS X035		

BW	Birth	205 Act	Ratio	WW	365 Act	Ratio	YW	Milk
85	.3	480	107	63	974	106	98	24

• Dam's nursing ratio: 4@102

• EPDs are parental averages.

74

Sodak Frontline 9721

Calved: 8/25/19 Reg #: 4272977 Tattoo: 9721

SODAK FINAL ANSWER A536	Marb	.55
SODAK FRONT LINE D835	REA	-.05
SODAK EVA Z065	Fat	.04
SODAK FRONTLINE 9721	HB	148
SODAK ROYAL FLUSH Y342	GM	47
SODAK PEGGY A221		
SODAK PEGGY Y052		

BW	Birth	205 Act	Ratio	WW	365 Act	Ratio	YW	Milk
76	-.5	494	111	55	970	106	87	24

• Dam's nursing ratio: 5@101



78

Sodak Frontline 9762

Calved: 9/6/19 Reg #: Commercial Tattoo: 9762

SODAK FINAL ANSWER A536	Marb	.42
SODAK FRONT LINE D835	REA	.07
SODAK EVA Z065	Fat	.02
SODAK FRONTLINE 9762	HB	144
SODAK RUMBLER X337	GM	41
SODAK CHERRIE A705		
SODAK CHERRIE U051		

BW	Birth	205 Act	Ratio	WW	365 Act	Ratio	YW	Milk
85	.03	426	96	60	935	102	85	27

• Dam's nursing ratio: 4@101

• EPDs are parental averages.

RED ANGUS

79

Sodak Resource 9715

Calved: 8/21/19 Reg #: Commercial Tattoo: 9715

S A V RESOURCE 1441	Marb	.28
FORSTER RESOURCE D163	REA	.36
FORSTER COPPER QUEEN 8189	Fat	.03
SODAK RESOURCE 9715	HB	72
SODAK FINAL ANSWER Z379	GM	64
SODAK SUSIE D624		
SODAK SUSSIE Y064		

BW	Birth	205 Act	Ratio	WW	365 Act	Ratio	YW	Milk
74	-.1	428	96	68	922	101	119	19

- Dam's nursing ratio: 2@98
- EPDs are parental averages.

81

Sodak Frontline 9710

Calved: 8/19/19 Reg #: Commercial Tattoo: 9710

SODAK FINAL ANSWER A536	Marb	.41
SODAK FRONT LINE D835	REA	.02
SODAK EVA Z065	Fat	.03
SODAK FRONTLINE 9710	HB	144
SODAK OSCAR T322	GM	40
SODAK ODA A232		
SODAK ODA X022		

BW	Birth	205 Act	Ratio	WW	365 Act	Ratio	YW	Milk
72	0	542	120	56	960	105	95	26

- Dam's nursing ratio: 5@104
- EPDs are parental averages.

83

Sodak Frontline 9725

Calved: 8/26/19 Reg #: Commercial Tattoo: 9725

SODAK FINAL ANSWER A536	Marb	.32
SODAK FRONT LINE D835	REA	.25
SODAK EVA Z065	Fat	.03
SODAK FRONTLINE 9725	HB	138
SODAK FINAL ANSWER Z379	GM	43
SODAK EVA B212		
SODAK EVA Z049		

BW	Birth	205 Act	Ratio	WW	365 Act	Ratio	YW	Milk
78	0	534	119	62	994	108	100	22

- Dam's nursing ratio: 3@112
- EPDs are parental averages.

84

Sodak Franchise 9730

Calved: 8/27/19 Reg #: Commercial Tattoo: 9730

SPUR FRANCHISE OF GARTON	Marb	.61
SODAK FRANCHISE E753	REA	.49
SODAK PRINCESS Z087	Fat	.01
SODAK FRANCHISE 9730	HB	77
SODAK OVATION C703	GM	67
SODAK CONNIE E548		
SODAK CONNIE C024		

BW	Birth	205 Act	Ratio	WW	365 Act	Ratio	YW	Milk
76	-1.3	502	112	60	940	103	98	27

- Dam's nursing ratio: 1@112
- EPDs are parental averages.

80

Sodak Frontline 9733

Calved: 8/29/19 Reg #: Commercial Tattoo: 9733

SODAK FINAL ANSWER A536	Marb	.27
SODAK FRONT LINE D835	REA	.33
SODAK EVA Z065	Fat	.02
SODAK FRONTLINE 9733	HB	78
SODAK ROYAL FLUSH Y342	GM	64
SODAK ODA B222		
SODAK HOPE U022		

BW	Birth	205 Act	Ratio	WW	365 Act	Ratio	YW	Milk
85	.8	586	130	63	1005	109	115	23

- Dam's nursing ratio: 4@109
- EPDs are parental averages.

82

Sodak Frontline 9712

Calved: 8/20/19 Reg #: 4272989 Tattoo: 9712

SODAK FINAL ANSWER A536	Marb	.38
SODAK FRONT LINE D835	REA	0
SODAK EVA Z065	Fat	.03
SODAK FRONTLINE 9712	HB	144
SODAK RUMBLER X342	GM	45
SODAK SUSIE B213		
SODAK SUSIE Y064		

BW	Birth	205 Act	Ratio	WW	365 Act	Ratio	YW	Milk
75	-.5	622	138	52	1052	114	82	29

- Dam's nursing ratio: 4@109



85

Sodak Frontline 9731

Calved: 8/27/19 Reg #: Commercial Tattoo: 9731

SODAK FINAL ANSWER A536	Marb	.29
SODAK FRONT LINE D835	REA	.12
SODAK EVA Z065	Fat	.03
SODAK FRONTLINE 9731	HB	57
SODAK ROYAL FLUSH Y342	GM	45
SODAK PRINCESS B201		
SODAK PRINCESS X049		

BW	Birth	205 Act	Ratio	WW	365 Act	Ratio	YW	Milk
80	-2.2	606	135	56	1035	112	85	28

- Dam's nursing ratio: 4@110
- EPDs are parental averages.

87

Sodak Frontline 9746

Calved: 9/5/19 Reg #: Commercial Tattoo: 9746

SODAK FINAL ANSWER A536	Marb	.40
SODAK FRONT LINE D835	REA	.13
SODAK EVA Z065	Fat	.01
SODAK FRONTLINE 9746	HB	65
SODAK FINAL ANSWER Z379	GM	42
SODAK PEGGY B241		
SODAK PEGGY Z036		

BW	Birth	205 Act	Ratio	WW	365 Act	Ratio	YW	Milk
98	2	558	124	62	998	108	96	24

- Dam's nursing ratio: 4@109
- EPDs are parental averages.

89

Sodak All Star 9775

Calved: 9/28/19 Reg #: Commercial Tattoo: 9775

SODAK FINAL ANSWER Z335	Marb	.35
SODAK ALL STAR D827	REA	.19
SODAK ODA A234	Fat	.01
SODAK ALL STAR 9775	HB	74
SODAK OVATION C703	GM	38
SODAK OVATION E706		
SODAK PRINCESS C506		

BW	Birth	205 Act	Ratio	WW	365 Act	Ratio	YW	Milk
62	1.1	550	125	62	1027	111	97	26

- Dam's nursing ratio: 1@125
- EPDs are parental averages.

90

Sodak Resource 9772

Calved: 9/24/19 Reg #: Commercial Tattoo: 9772

S A V RESOURCE 1441	Marb	.31
FORSTER RESOURCE D163	REA	.50
FORSTER COPPER QUEEN 8189	Fat	.02
SODAK RESOURCE 9772	HB	59
SODAK FINAL ANSWER Z335	GM	52
SODAK EVE C534		
SODAK EVA A204		

BW	Birth	205 Act	Ratio	WW	365 Act	Ratio	YW	Milk
85	.1	430	97	64	922	101	109	20

- Dam's nursing ratio: 3@99
- EPDs are parental averages.

86

Sodak Frontline 9732

Calved: 8/28/19 Reg #: 4273143 Tattoo: 9732

SODAK FINAL ANSWER A536	Marb	.44
SODAK FRONT LINE D835	REA	-.13
SODAK EVA Z065	Fat	.03
SODAK FRONTLINE 9732	HB	139
SODAK ROYAL FLUSH Y342	GM	46
SODAK PEGGY B211		
SODAK PEGGY X038		

BW	Birth	205 Act	Ratio	WW	365 Act	Ratio	YW	Milk
76	-.5	564	126	49	1026	111	77	25

- Dam's nursing ratio: 3@102

88

Sodak Resource 9763

Calved: 9/16/19 Reg #: 4273079 Tattoo: 9763

S A V RESOURCE 1441	Marb	.37
FORSTER RESOURCE D041	REA	.25
FORSTER LORI 9209	Fat	.04
SODAK RESOURCE 9763	HB	155
SODAK FINAL ANSWER B514	GM	47
SODAK PEGGY E521		
SODAK PEGGY A236		

BW	Birth	205 Act	Ratio	WW	365 Act	Ratio	YW	Milk
76	-1.0	454	102	55	940	102	90	24

- Dam's nursing ratio: 1@102



RED ANGUS

91

Sodak Resource 9779

Calved: 10/15/19 Reg #: Commercial Tattoo: 9779

S A V RESOURCE 1441	Marb	.25
FORSTER RESOURCE D163	REA	.41
FORSTER COPPER QUEEN 8189	Fat	.03
SODAK RESOURCE 9779	HB	63
FLYING W SKAGWAY 216Z	GM	48
SODAK PRINCESS D607		
SODAK PRINCESS Y066		

BW	Birth	205 Act	Ratio	WW	365 Act	Ratio	YW	Milk
75	-.2	490	113	59	1037	112	105	24

- Dam's nursing ratio: 2@107
- EPDs are parental averages.

92

Sodak Franchise 9717

Calved: 8/21/19 Reg #: Commercial Tattoo: 9717

SPUR FRANCHISE OF GARTON	Marb	.54
SODAK FRANCHISE E753	REA	.46
SODAK PRINCESS Z087	Fat	.01
SODAK FRANCHISE 9717	HB	70
SODAK FINAL ANSWER Y544	GM	53
SODAK ODETTE A242		
SODAK ODA Y039		

BW	Birth	205 Act	Ratio	WW	365 Act	Ratio	YW	Milk
68	-1.2	420	96	59	890	98	95	26

- Dam's nursing ratio: 5@100
- EPDs are parental averages.

94

Sodak Resource 9724

Calved: 8/26/19 Reg #: 4273039 Tattoo: 9724

S A V RESOURCE 1441	Marb	.42
FORSTER RESOURCE D163	REA	.27
FORSTER COPPER QUEEN 8189	Fat	.03
SODAK RESOURCE 9724	HB	139
SODAK FINAL ANSWER B536	GM	48
SODAK PRINCESS D643		
SODAK PRINCESS Z041		

BW	Birth	205 Act	Ratio	WW	365 Act	Ratio	YW	Milk
62	1.5	480	107	61	988	107	99	20

- Dam's nursing ratio: 2@104

96

Sodak Frontline 9729

Calved: 8/26/19 Reg #: 4273139 Tattoo: 9729

SODAK FINAL ANSWER A536	Marb	.39
SODAK FRONT LINE D835	REA	-.03
SODAK EVA Z065	Fat	.03
SODAK FRONTLINE 9729	HB	140
SODAK RUMBLER X342	GM	45
SODAK PEGGY B256		
SODAK PEGGY U109		

BW	Birth	205 Act	Ratio	WW	365 Act	Ratio	YW	Milk
85	-1.0	564	126	52	1008	109	81	25

- Dam's nursing ratio: 4@108



93

Sodak Frontline 9714

Calved: 8/20/19 Reg #: Commercial Tattoo: 9714

SODAK FINAL ANSWER A536	Marb	.36
SODAK FRONT LINE D835	REA	.15
SODAK EVA Z065	Fat	.02
SODAK FRONTLINE 9714	HB	56
SODAK FINAL ANSWER Z379	GM	39
SODAK DIANNA B241B		
SODAK DIANNA Z043		

BW	Birth	205 Act	Ratio	WW	365 Act	Ratio	YW	Milk
80	.5	516	115	57	980	107	92	24

- Dam's nursing ratio: 2@106
- EPDs are parental averages.

95

Sodak Resource 9711

Calved: 8/19/19 Reg #: Commercial Tattoo: 9711

S A V RESOURCE 1441	Marb	.29
FORSTER RESOURCE D163	REA	.43
FORSTER COPPER QUEEN 8189	Fat	.02
SODAK RESOURCE 9711	HB	53
SODAK FINAL ANSWER B566	GM	42
SODAK OLIVIA D595		
SODAK OLIVIA B208		

BW	Birth	205 Act	Ratio	WW	365 Act	Ratio	YW	Milk
60	.1	446	100	60	918	101	107	21

- Dam's nursing ratio: 2@99
- EPDs are parental averages.

97

Sodak Resource 9744

Calved: 9/3/19 Reg #: 4273051 Tattoo: 9744

S A V RESOURCE 1441	Marb	.36
FORSTER RESOURCE D163	REA	.28
FORSTER COPPER QUEEN 8189	Fat	.03
SODAK RESOURCE 9744	HB	146
SODAK FINAL ANSWER Z335	GM	48
SODAK ODA D632		
SODAK HOPE A257		

BW	Birth	205 Act	Ratio	WW	365 Act	Ratio	YW	Milk
70	.8	440	99	62	935	102	101	20

- Dam's nursing ratio: 2@98

98

Sodak Frontline 9749

Calved: 9/6/19 Reg #: 4273141 Tattoo: 9749

SODAK FINAL ANSWER A536	Marb	.42
SODAK FRONT LINE D835	REA	.01
SODAK EVA Z065	Fat	.03
SODAK FRONTLINE 9749	HB	140
SODAK RUMBLER X342	GM	46
SODAK QUEEN B215		
SODAK ESTER Y055		

BW	Birth	205 Act	Ratio	WW	365 Act	Ratio	YW	Milk
85	-.7	438	98	53	926	101	83	27

• Dam's nursing ratio: 4@100

100

Sodak Frontline 9726

Calved: 8/26/19 Reg #: 4273149 Tattoo: 9726

SODAK FINAL ANSWER A536	Marb	.31
SODAK FRONT LINE D835	REA	.05
SODAK EVA Z065	Fat	.03
SODAK FRONTLINE 9726	HB	121
SODAK FINAL ANSWER Z335	GM	46
SODAK PRINCESS C542		
SODAK PRINCESS Y033		

BW	Birth	205 Act	Ratio	WW	365 Act	Ratio	YW	Milk
80	-.3	588	131	59	1032	112	91	23

• Dam's nursing ratio: 3@112

102

Sodak Franchise 9737

Calved: 8/31/19 Reg #: 4273109 Tattoo: 9737

SPUR FRANCHISE OF GARTON	Marb	.65
SODAK FRANCHISE E753	REA	.22
SODAK PRINCESS Z087	Fat	.03
SODAK FRANCHISE 9737	HB	133
SODAK FINAL ANSWER B566	GM	48
SODAK EVA E539		
SODAK EVA B205		

BW	Birth	205 Act	Ratio	WW	365 Act	Ratio	YW	Milk
70	-.6	546	122	52	1005	109	83	26

• Dam's nursing ratio: 1@122

104

Sodak Frontline 9754

Calved: 9/8/19 Reg #: Commercial Tattoo: 9754

SODAK FINAL ANSWER A536	Marb	.28
SODAK FRONT LINE D835	REA	.32
SODAK EVA Z065	Fat	.02
SODAK FRONTLINE 9754	HB	51
SODAK FINAL ANSWER Y544	GM	39
SODAK PRINCESS B247		
SODAK PRINCESS Z071		

BW	Birth	205 Act	Ratio	WW	365 Act	Ratio	YW	Milk
75	0	478	107	62	908	99	93	24

• Dam's nursing ratio: 4@102
• EPDs are parental averages.

99

Sodak Resource 9757

Calved: 8/21/19 Reg #: 4272979 Tattoo: 9757

S A V RESOURCE 1441	Marb	.49
FORSTER RESOURCE D041	REA	.23
FORSTER LORI 9209	Fat	.04
SODAK RESOURCE 9757	HB	152
SODAK FINAL ANSWER Y544	GM	48
SODAK ODETTE A242		
SODAK ODA Y039		

BW	Birth	205 Act	Ratio	WW	365 Act	Ratio	YW	Milk
65	-.8	450	101	53	945	103	88	25

• Dam's nursing ratio: 2@101

101

Sodak Frontline 9727

Calved: 8/26/19 Reg #: 4272987 Tattoo: 9727

SODAK FINAL ANSWER A536	Marb	.38
SODAK FRONT LINE D835	REA	.07
SODAK EVA Z065	Fat	.03
SODAK FRONTLINE 9727	HB	136
SODAK RUMBLER X342	GM	46
SODAK EVA B206		
SODAK EVA Y012		

BW	Birth	205 Act	Ratio	WW	365 Act	Ratio	YW	Milk
78	-.1	428	97	53	980	107	84	26

• Dam's nursing ratio: 4@99

103

Sodak Frontline 9750

Calved: 9/6/19 Reg #: Commercial Tattoo: 9750

SODAK FINAL ANSWER A536	Marb	.32
SODAK FRONT LINE D835	REA	.12
SODAK EVA Z065	Fat	.03
SODAK FRONTLINE 9750	HB	51
SODAK RUMBLER X377	GM	39
SODAK MISSY A237		
SODAK ODA X047		

BW	Birth	205 Act	Ratio	WW	365 Act	Ratio	YW	Milk
95	.2	538	120	56	1012	110	92	23

• Dam's nursing ratio: 5@107
• EPDs are parental averages.

105

Sodak Resource 9723

Calved: 8/25/19 Reg #: 4273005 Tattoo: 9723

S A V RESOURCE 1441	Marb	.30
FORSTER RESOURCE D163	REA	.33
FORSTER COPPER QUEEN 8189	Fat	.03
SODAK RESOURCE 9723	HB	157
FORSTER SEN Y028	GM	47
SODAK HOPE C556		
SODAK HOPE X042		

BW	Birth	205 Act	Ratio	WW	365 Act	Ratio	YW	Milk
90	1.1	530	114	62	1052	114	98	22

• Dam's nursing ratio: 2@109
• Black Red Angus bull

RED ANGUS

106

Sodak Frontline 9716

Calved: 8/16/19 Reg #: Commercial Tattoo: 9716

SODAK FINAL ANSWER A536	Marb	.36
SODAK FRONT LINE D835	REA	.15
SODAK EVA Z065	Fat	.02
SODAK FRONTLINE 9716	HB	142
SODAK FINAL ANSWER Y544	GM	40
SODAK ELAINE A006		
SODAK ELAINE Y777		

BW	Birth	205 Act	Ratio	WW	365 Act	Ratio	YW	Milk
75	-.07	518	109	55	1026	111	92	25

- Dam's nursing ratio: 3@110
- EPDs are parental averages.
- Black Red Angus bull

108

Sodak Resource 9701

Calved: 8/3/19 Reg #: Commercial Tattoo: 9701

SAV RESOURCE 1441	Marb	.30
FORESTER RESOURCE D163	REA	.24
FORSTER COPPER QUEEN 8189	Fat	.01
SODAK RESOURCE 9701	HB	139
SODAK FINAL ANSWER B536	GM	46
SODAK DIANNA D616		
SODAK DIMENSION Y035		

BW	Birth	205 Act	Ratio	WW	365 Act	Ratio	YW	Milk
68	-.03	470	100	52	998	108	98	28

- Dam's nursing ratio: 2@95
- EPDs are parental averages.
- Black Red Angus bull

109

Sodak Resource 9722

Calved: 8/17/19 Reg #: Commercial Tattoo: 9722

SAV RESOURCE 1441	Marb	.33
FORESTER RESOURCE D163	REA	.67
FORSTER COPPER QUEEN 8189	Fat	.02
SODAK RESOURCE 9722	HB	94
SODAK RUMBLER X342	GM	55
SODAK OLIVIA B226		
SODAK LOLIVIA Y004		

BW	Birth	205 Act	Ratio	WW	365 Act	Ratio	YW	Milk
70	2.2	476	100	72	1005	109	126	18

- Dam's nursing ratio: 4@103
- EPDs are parental averages.
- Black Red Angus bull

111

Sodak Resource 9740

Calved: 9/1/19 Reg #: 4272997 Tattoo: 9740

SAV RESOURCE 1441	Marb	.38
FORESTER RESOURCE D163	REA	.19
FORSTER COPPER QUEEN 8189	Fat	.04
SODAK RESOURCE 9740	HB	149
SODAK FINAL ANSWER A536	GM	48
SODAK OPAL C540		
SODAK OPAL A239		

BW	Birth	205 Act	Ratio	WW	365 Act	Ratio	YW	Milk
76	1.3	452	96	57	1044	113	94	23

- Dam's nursing ratio: 3@98
- Black Red Angus bull

107

Sodak Frontline 9719

Calved: 8/16/19 Reg #: Commercial Tattoo: 9719

SODAK FINAL ANSWER A536	Marb	.35
SODAK FRONT LINE D835	REA	.30
SODAK EVA Z065	Fat	.02
SODAK FRONTLINE 9719	HB	135
SODAK FINAL ANSWER Y544	GM	42
SODAK FINAL ANSWER A212		
SODAK PEGGY Y047		

BW	Birth	205 Act	Ratio	WW	365 Act	Ratio	YW	Milk
85	1.7	546	115	60	1006	109	102	23

- Dam's nursing ratio: 4@106
- EPDs are parental averages.
- Black Red Angus bull



110

Sodak Resource 9720

Calved: 9/23/19 Reg #: 4273043 Tattoo: 9720

SAV RESOURCE 1441	Marb	.38
FORESTER RESOURCE D163	REA	.28
FORSTER COPPER QUEEN 8189	Fat	.04
SODAK RESOURCE 9720	HB	147
SODAK FINAL ANSWER A536	GM	48
SODAK PRINCESS D634		
SODAK PRINCESS Z087		

BW	Birth	205 Act	Ratio	WW	365 Act	Ratio	YW	Milk
78	1.1	490	102	59	962	105	96	22

- Dam's nursing ratio: 2@102
- Black Red Angus bull



112

Sodak Frontline 9728

Calved: 8/18/19 Reg #: Commercial Tattoo: 9728

SODAK FINAL ANSWER A536	Marb	.39
SODAK FRONT LINE D835	REA	-.04
SODAK EVA Z065	Fat	.03
SODAK FRONTLINE 9728	HB	52
SODAK ROYAL FLUSH Y342	GM	49
SODAK PRINCESS B159		
SODAK PRINCESS X049		

BW	Birth	205 Act	Ratio	WW	365 Act	Ratio	YW	Milk
76	0	574	121	63	1025	111	100	22

- Dam's nursing ratio: 3@115
- EPDs are parental averages.
- Black Red Angus bull

114

Sodak Resource 9759

Calved: 9/10/19 Reg #: Commercial Tattoo: 9759

SAV RESOURCE 1441	Marb	.29
FORESTER RESOURCE D163	REA	.36
FORSTER COPPER QUEEN 8189	Fat	.01
SODAK RESOURCE 9759	HB	89
SODAK FINAL ANSWER A536	GM	36
SODAK HOPE C541		
SODAK HOPE X155		

BW	Birth	205 Act	Ratio	WW	365 Act	Ratio	YW	Milk
74	.5	462	98	68	920	101	98	21

- Dam's nursing ratio: 3@98
- EPDs are parental averages.
- Black Red Angus bull

113

Sodak Resource 9756

Calved: 9/10/19 Reg #: Commercial Tattoo: 9756

SAV RESOURCE 1441	Marb	.35
FORESTER RESOURCE D163	REA	.49
FORSTER COPPER QUEEN 8189	Fat	.03
SODAK RESOURCE 9756	HB	92
SODAK FINAL ANSWER Y544	GM	52
SODAK PEGGY C545		
SODAK PEGGY Y008		

BW	Birth	205 Act	Ratio	WW	365 Act	Ratio	YW	Milk
55	1.0	514	108	70	920	101	112	18

- Dam's nursing ratio: 2@106
- EPDs are parental averages.
- Black Red Angus bull

115

Sodak Frontline 9755

Calved: 9/10/19 Reg #: 4272967 Tattoo: 9755

SODAK FINAL ANSWER A536	Marb	.39
SODAK FRONT LINE D835	REA	.03
SODAK EVA Z065	Fat	.03
SODAK FRONTLINE 9755	HB	139
SODAK OSCAR T322/W558	GM	46
SODAK ODA A234		
SODAK ODA X022		

BW	Birth	205 Act	Ratio	WW	365 Act	Ratio	YW	Milk
80	-.6	452	96	51	960	105	80	27

- Dam's nursing ratio: 4@103
- Black Red Angus bull



Sodak Angus
Vaughn & Lois Meyer
15571 Sorum Road
Reva, SD 57651
605.866.4426



**VIEW CATALOG AND VIDEOS ONLINE AT:
WWW.SODAKANGUS.COM**